

Donnelly et al: Immuno-metabolic Signatures of Depressive Symptoms

1 **Title Page**

2 Article Type: Research Report

3

4 **Title**

5 Blood Immuno-metabolic Biomarker Signatures of Depression and Affective

6 Symptoms in Young Adults

7

8 **Authors**

9 Nicholas A Donnelly^{1,2,3} MRCPsych, PhD (corresponding author,

10 nick.donnelly@bristol.ac.uk)

11 Ruby SM Tsang^{1,2}, PhD

12 Éimear M Foley^{1,2}, PhD

13 Holly Fraser^{1,2}, PhD

14 Aimee L Hanson¹, PhD

15 Golam M Khandaker^{1,2,3,4} FRCPsych, PhD

16

17 **Affiliations**

18 ¹MRC Integrative Epidemiology Unit, Bristol Medical School, University of Bristol,

19 Bristol, UK

20 ²Centre for Academic Mental Health, Population Health Sciences, Bristol Medical

21 School, University of Bristol, Bristol, UK

Donnelly et al: Immuno-metabolic Signatures of Depressive Symptoms

22 ³Avon and Wiltshire Mental Health Partnership NHS Trust, Bristol, UK

23 ⁴NIHR Bristol Biomedical Research Centre, University Hospitals Bristol and Weston

24 NHS Foundation Trust, Bristol, UK

25

26 [Running Title](#)

27 Immuno-metabolic Signatures of Depressive Symptoms

28

29 [Keywords](#)

- 30 • Depressive disorders
- 31 • Anxiety
- 32 • Inflammation
- 33 • Metabolic Dysregulation
- 34 • Machine learning
- 35 • ALSPAC

Donnelly et al: Immuno-metabolic Signatures of Depressive Symptoms

36 **Highlights**

- 37 • Immuno-metabolic biomarkers show varying, opposing associations with
38 somatic, mood and anxiety symptoms.
- 39 • Depression diagnosis and fatigue are associated with increased extreme-
40 valued inflammatory markers.
- 41 • Two latent components (somatic-inflamed vs anxious-non-inflamed) represent
42 the relationship between biomarkers, symptoms and key covariates.
- 43 • Higher somatic-inflamed scores are associated with greater depressive
44 symptom severity in follow-up.
- 45 • Immuno-metabolic biomarkers predict depression and depression with high
46 somatic symptoms, but not high anxiety symptoms, better than chance.

Donnelly et al: Immuno-metabolic Signatures of Depressive Symptoms

47 **Abstract**

48 **Background**

49 Depression is associated with alterations in immuno-metabolic biomarkers, but it
50 remains unclear whether these alterations are limited to specific markers, and
51 whether there are subtypes of depression and depressive symptoms which are
52 associated with specific patterns of immuno-metabolic dysfunction.

53 **Methods**

54 To investigate whether immuno-metabolic biomarkers could be used to profile
55 subtypes of depression, we applied regression, clustering, and machine learning to a
56 dataset comprising depression diagnosis, depressive and anxiety symptoms, and
57 blood-based immunological and metabolic biomarkers (n=118). We measured
58 inflammatory proteins, cell count, lipids, hormones, and metabolites from up to
59 n=4161 participants (2363 female, 337 with depression) aged 24 years from the
60 Avon Longitudinal Study of Parents and Children birth cohort.

61 **Results**

62 Depression at age 24 was associated with both altered concentrations of immuno-
63 metabolic markers, and increased extreme-valued inflammatory markers.
64 Inflammatory and metabolic biomarkers show distinct, opposing associations with
65 somatic and anxiety symptoms. We identified two latent components representing
66 the relationship between blood biomarkers, symptoms, and covariates, one
67 characterised by higher somatic symptoms and inflammatory markers (neutrophils,
68 WBC, IL-6), and the other characterised by higher anxiety and worry and lower
69 inflammatory markers (CRP, WBC, IL-6). Individuals with higher somatic-
70 inflammatory component scores had greater depressive symptoms severity over the

Donnelly et al: Immuno-metabolic Signatures of Depressive Symptoms

71 next five years. Immuno-metabolic biomarkers predicted depression diagnosis
72 (Balanced Accuracy=0.580) and depression with high somatic symptoms (Balanced
73 Accuracy=0.575) better than chance, but not depression with high anxiety symptoms
74 (Balanced Accuracy=0.479).

75 **Conclusions**

76 Alterations in immuno-metabolic homeostasis is present in young adults with
77 depression well before the typical age of onset of cardiometabolic diseases. The
78 relationships between affective symptoms and blood immunometabolic biomarkers
79 indicate two biotypes of depressive symptoms (somatic-inflamed vs anxious-non-
80 inflamed). These patterns are relevant for prognosis and prediction, highlighting the
81 potential usefulness of immuno-metabolic biomarkers for depression subtyping.

Donnelly et al: Immuno-metabolic Signatures of Depressive Symptoms

82 **1. Introduction**

83 The presence of immunological and metabolic alterations in depression has been
84 widely replicated, including changes in the concentrations of blood inflammatory
85 biomarkers (e.g., cytokines, acute phase proteins and immune cell counts (Foley et
86 al., 2023; Frank et al., 2021; Goldsmith et al., 2016; Lynall et al., 2020; Osimo et al.,
87 2020)) and metabolic biomarkers (e.g., lipids and metabolites (Bot et al., 2020;
88 Davyson et al., 2023)).

89 Existing case-control studies have typically focused on specific biomarker domains
90 (e.g., proteins, metabolic biomarkers, cells). Studies involving broader sets of
91 biomarkers could clarify if immuno-metabolic alterations in depression are restricted
92 to a few biomarkers or reflect broader disruption of immuno-metabolic homeostasis.
93 Studies also typically compare mean biomarker levels between case and control
94 groups, and often overlook substantial individual variability in biomarkers, which can
95 provide important additional information regarding the overall pattern of change
96 (Osimo et al., 2020). Recent neuroimaging findings suggest that depression and
97 other psychiatric disorders are characterised by increased total number of extreme
98 deviations from normative models of grey matter volume (Segal et al., 2023), but it is
99 unclear whether such extreme variability is present in immuno-metabolic measures.

100 Depression is a syndrome comprising core symptoms of low mood and anhedonia,
101 alongside depressive cognitions (e.g., guilt and hopelessness), anxiety symptoms,
102 and somatic symptoms (e.g. fatigue, and changes to sleep and appetite). It is
103 possible that immuno-metabolic processes have differing relationships to different
104 symptoms (Milaneschi et al., 2021). Published symptom-level investigations have
105 involved few specific inflammatory markers, most often interleukin 6 (IL-6) and C-

Donnelly et al: Immuno-metabolic Signatures of Depressive Symptoms

106 reactive protein (CRP). These biomarkers appear to be particularly associated with
107 somatic, atypical or energy-related symptom domains which include increased sleep,
108 increased weight, fatigue, anhedonia and reduced motivation (Chu et al., 2019;
109 Frank et al., 2021; Milaneschi et al., 2021), indicating that particular depression
110 symptom profiles could be associated with specific immuno-metabolic biomarker
111 patterns.

112 By examining the association between a broad set of immuno-metabolic biomarkers
113 and the spectrum of depressive presentations, from individual symptoms to symptom
114 domains and overall diagnosis, it may be possible to identify distinct clusters of
115 biomarker-symptoms associations. Such associations could infer biomarker-based
116 depression biotypes that might inform prognosis and treatment decisions, similar to
117 those proposed using brain imaging data (Tozzi et al., 2024).

118 We report an in-depth exploration of the relationship of blood immuno-metabolic
119 biomarkers (118 inflammatory proteins, cell count, lipids, and hormones) and
120 depression measures (ICD-10 depression diagnosis, 4 symptom domains and 22
121 symptoms) based on data from young adults aged 24 years from the Avon
122 Longitudinal Study of Parents and Children (Northstone et al., 2019), a UK birth
123 cohort. In particular, we aimed to: (1) examine the pattern of immuno-metabolic
124 biomarker associated with ICD-10 depression compared to controls, including
125 extreme values of biomarkers; (2) quantify relationships between individual
126 symptoms and immuno-metabolic variables, and explore if these associations
127 formed distinct clusters or latent components; and (3) investigate whether machine
128 learning models trained on immuno-metabolic variables can predict ICD-10
129 diagnoses of depression and specific symptom profiles within depression identified

Donnelly et al: Immuno-metabolic Signatures of Depressive Symptoms

130 using the symptom clustering approach, comparing model performance with models
131 trained on sociodemographic and clinical data.

132 2. Materials and Methods

133 2.1 Datasets

134 2.1.1 Cohort Profile

135 We used data from the Avon Longitudinal Study of Parents and Children (ALSPAC)
136 birth cohort (Boyd et al., 2013; Fraser et al., 2013; Northstone et al., 2019). This
137 cohort study recruited pregnant women in the Avon region of England between 1990
138 and 1992 (Golding et al., 2001). After all rounds of recruitment, the final number of
139 people recruited as children in study who were alive at age 1 was 14,901.

140 Participants in the study have been followed up with regular clinical and
141 questionnaire-based assessments, and over 80,000 variables are available. Study
142 data are captured and managed using the REDCap tool, hosted at the University of
143 Bristol (Harris et al., 2019, 2009). Variables can be explored through a fully
144 searchable data dictionary (<http://www.bristol.ac.uk/alspac/researchers/our-data/>),
145 and data is available on a managed open access basis.

146 Ethical approval for the study was obtained from the ALSPAC Ethics and Law
147 Committee and Local Research Ethics Committees. All participants provided written
148 informed consent. Biological samples were collected with informed consent and in
149 accordance with the UK Human Tissue Act (2004).

150 2.1.2 Mental Health Data

151 Our main outcomes for our cross-sectional analysis were ICD-10 depression
152 diagnosis and specific symptoms and symptom domains derived from the Clinical
153 Interview Schedule – Revised (CIS-R (Lewis et al., 1992)) and the Community
154 Assessment of Psychic Experiences (CAPE (Mossaheb et al., 2012)) questionnaires
155 at age 24.

Donnelly et al: Immuno-metabolic Signatures of Depressive Symptoms

156 Given previous research suggesting that depressive symptoms can be best
157 described by a “psychological” and a “somatic” factor (Thorp et al., 2020), we
158 derived a domain score for psychological (0–4 scale) and somatic (0-9 scale)
159 symptoms. For comparison to previous studies (Donnelly et al., 2022; Lamers et al.,
160 2020; Milaneschi et al., 2021) we also created atypical (0–5 scale) and anxiety (0–7
161 scale) symptom domain scores.

162 We derived individual depression symptoms, combining items from the CIS-R and
163 CAPE to target a wide set of symptoms, including those previously been associated
164 with inflammation and metabolic dysfunction. This produced a total of 22 individual
165 items: Aches & Pains (ach), Anhedonia (anh), Anxiety (anx), Appetite Decreased
166 (app_dec), Appetite Increased (app_inc), Concentration Impaired (con), Depressive
167 Cognitions – feelings of guilt, inadequacy and helplessness (dcog), Decreased
168 interested in sex (dsx), Fatigue (ftg), Irritability (irt), Morning low mood (morn),
169 Motivation impairment (mot), Panic (pan), Phobias/specific fears (pho), Restlessness
170 (rstl), Sadness/low mood (sad), Slowed movements (slow), Sleep Decreased
171 (slp_dec), Sleep Increased (slp_inc), Self-neglect (sneg), Suicidal Thoughts (stb),
172 and Worry (wor). Full details of score derivations including ALSPAC variable codes
173 used are given in the **Supplementary Methods**.

174 We used the Short Mood and Feeling Questionnaire (SMFQ (Rhew et al., 2010))
175 total score, completed by ALSPAC participants at four timepoints between ages 25
176 and 30, as outcomes in prospective longitudinal analysis.

177 [2.1.3 Blood Biomarkers](#)

178 As exposures we included a set of immune proteins measured by the Olink Target
179 96 Inflammation Panel (Goulding et al., 2022) alongside blood cell counts, lipids,

Donnelly et al: Immuno-metabolic Signatures of Depressive Symptoms

180 hormones and metabolites measured at age 24 (**Supplementary Table 1**). Blood
181 samples were taken during F24 clinic visits in lithium heparin tubes, which were
182 placed on ice immediately, spun down, plasma extracted and frozen at -80°C within
183 90 minutes. A total of 3027 blood samples from the F24 clinic were processed by
184 Olink. The Olink Target 96 Inflammation panel detects a set 92 immune response-
185 related proteins, returning Olink Proteomics' arbitrary normalised protein expression
186 (NPX) values on a \log_2 scale. Within the ALSPAC sample, a correlation of 0.77 has
187 been demonstrated between a clinical chemistry assay and the Olink measure of
188 Interleukin-6, indicating consistency between the measures (Goulding et al., 2022).

189 We combined the Olink data with blood test results from the original F24 clinic, giving
190 a total of 118 immuno-metabolic variables, based on having >90% complete data.

191 We included all Olink measures regardless of limit of detection as all measurements
192 may have biological relevance. For multiple imputation analysis we used Olink data
193 from 3005 individuals who had the same variables measured at age 9 (of whom
194 1826 had measurements at both age 9 and 24, see **Supplementary Methods**).

195 [2.2 Statistical Analysis](#)

196 [2.2.1 Software](#)

197 Statistical Analysis was carried out using R Statistical Software (version 4.4.2 (R
198 Development Core Team, 2017)).

199 [2.2.2 Immuno-metabolic Variable Selection and Preparation](#)

200 All Olink data were expressed as Normalised Protein Expression (NPX values) on a
201 \log_2 scale, therefore, no further transformations were performed. Non-Olink blood
202 variables were \log_2 transformed prior to analysis. All immuno-metabolic variables
203 were z-transformed by subtracting the overall mean value and dividing by the

Donnelly et al: Immuno-metabolic Signatures of Depressive Symptoms

204 standard deviation, such that a 1-unit change in model results represents a 1
205 standard deviation (SD) unit change in the immuno-metabolic variable. Z-
206 transformation was used to allow comparison between all immuno-metabolic
207 variables on the same scale, and for consistency of model fitting.

208 **2.2.3 Univariate Statistical Models**

209 We identified potential covariates using a directed acyclic graph ((Tennant et al.,
210 2021), **Supplementary Methods**): sex assigned at birth (reference group=male),
211 BMI at age 24, daily smoking (reference group=non-smoker), alcohol use (measured
212 via the AUDIT-C questionnaire) and self-reported physical health problems
213 (combining reported diabetes, asthma or COPD, arthritis, heart disease or heart
214 problems, stroke, cancer or kidney disease into a single binary variable indicating
215 absence or presence). In line with ALSPAC guidance when tabulating covariates,
216 cell counts of less than 5 are replaced with “<5”.

217 For each immuno-metabolic variable, we fit two statistical models: (1) unadjusted
218 model: depression diagnosis as outcome and the immuno-metabolic variable as
219 predictor, (2) an adjusted model adding all covariates. Models were fit using the *glm*
220 function, and average marginal effects (AME) calculated using the *marginalEffects*
221 package, where we calculated the average change in probability of depression with a
222 1 SD unit increase in the immuno-metabolic variable. We were interested in both
223 positive and negative changes in risk of depression. Given our large number of
224 immuno-metabolic variables, we controlled the false discovery rate using the
225 Bioconductor *swfdr* package (Boca and Leek, 2018; Korthauer et al., 2019).

226 As sensitivity analyses we investigated the impact of sex on the association between
227 haemoglobin and depression by repeating our models stratified by sex at birth.

Donnelly et al: Immuno-metabolic Signatures of Depressive Symptoms

228 To investigate the impact of attrition from the cohort we used multiple imputation (MI)
229 to impute missing data in our age 24 dataset, using the R *mice* package and the
230 Random Forest method. MI was performed on data from participants who either had
231 blood sample data processed by Olink at age 9 or age 24 (total n = 4164). All age 24
232 blood variables and CIS-R-derived outcomes were imputed. For full details, see
233 **Supplementary Methods.**

234 **2.2.3 Symptom-Biomarker Association**

235 We fit models predicting depression measures (diagnosis, domain scores and
236 symptom scores) using immuno-metabolic variables and the full set of covariates
237 (above) for all pairs of depression- and immuno-metabolic measures. Models were fit
238 with a binomial distribution using *glm*. We then took the matrix of AME values for all
239 pairs of symptoms and immuno-metabolic variables and applied the *hclust* function
240 in the R stats package, using Euclidean distance and the “complete” method. The
241 resulting dendrogram indicated that maximum separation between variables was
242 achieved by a 3-cluster solution. Clusters were manually labelled after inspecting
243 their constituent associations.

244 **2.2.5 Extreme Value Analysis**

245 We explored whether a given immuno-metabolic variable was extreme valued by
246 taking non-depressed participants and calculating a normative model for each
247 variable (using *lm* and our full set of covariates as predictors). Then, for each
248 participant (both non-depressed and depressed) a standardised residual was
249 calculated using the model fit to non-depressed individuals. A standardised residual
250 was classified as “extreme” if the absolute value was greater than 2.6, based on a
251 study applying a similar approach to brain imaging (Segal et al., 2023). We then took
252 the sum of extreme values across immuno-metabolic variables for each individual.

Donnelly et al: Immuno-metabolic Signatures of Depressive Symptoms

253 Models predicting the count of extreme values from depression diagnosis or
254 depression symptoms were fit with all covariates using a Poisson mixed effects
255 model with participant ID as a random intercept.

256 **2.2.6 Partial Least Squares**

257 We fit principal components analysis (PCA) and partial least squares models (PLS)
258 to depressive symptom scores and biomarker variables (from the positive and
259 negative association clusters) using the mixOmics package. PLS was performed
260 using the *sp/s* function (Rohart et al., 2017) in “regression” mode. All covariates were
261 included in PLS models. We selected 2 latent components for further analysis after
262 applying a cross-validation approach, inspecting model performance with 1–5
263 components. A 2-component solution was optimal based on inspecting the Q_2
264 statistic. We next used cross-validation to select the number of variables for each
265 component, selecting variables using the “cor” measure.

266 We extracted PLS component scores for all components and individuals and used
267 the scores as predictors of the total sum score on subsequent SMFQ measurements
268 aged 25 - 30, using a generalised linear mixed model with a poisson distribution, fit
269 with the *glmm* function in the lme4 package.

270 **2.2.7 Machine Learning Model Fitting**

271 We fit elastic net regression models with the *glmnet* R package to predict ICD-10
272 depression diagnosis. In addition, we assessed predictive performance of two
273 symptom profiles within participants with ICD-10 depression: depression *with* high
274 levels of anxiety (high anxiety and worry, sum score ≥ 5) or depression *with* high
275 somatic symptoms (fatigue, decreased sleep, low motivation, and aches & pains;

Donnelly et al: Immuno-metabolic Signatures of Depressive Symptoms

276 sum score ≥ 9). The cut-offs were chosen to produce balanced groups based on the
277 distributions of symptom profile scores.

278 We used four sets of predictors: (1) *Immuno-metabolic*: positive and negative-
279 association cluster variables, plus extreme value counts and covariates; and three
280 sets of comparison predictors: (2) *Sociodemographic*: all covariates, plus maternal
281 occupational social class and history of adverse childhood events aged 0–17
282 (Houtepen et al., 2018); (3) *Mental Health History*: previous CIS-R depression
283 diagnosis at age 18, SMFQ total score at ages 10 to 23, Strengths and Difficulties
284 (SDQ) Total Difficulties Score at ages 7 and 9, and Maternal Edinburgh Postnatal
285 Depression Scale Score; (4) *Full*: all variables included in previous models.

286 Nested cross-validation (20 outer folds, 20 inner folds) was used to tune model
287 hyperparameters (penalty and mixture parameters, see **Supplementary Methods**).

288 Model performance was measured using balanced accuracy (Sensitivity +
289 Specificity) / 2 to allow comparison to similar analyses (e.g. (Winter et al., 2024)),
290 evaluated by fitting a model to the held-out test data on each outer fold, for all 20
291 outer loops and calculating the mean and 95% confidence interval of these
292 performance results.

Donnelly et al: Immuno-metabolic Signatures of Depressive Symptoms

293 **3. Results**

294 **3.1 Cohort Profile**

295 The complete case dataset contained 2954 individuals (Male N=1082, Female
 296 N=1872), of whom 309 (10.5%) had ICD-10 depression at age 24 (**Table 1** and
 297 **Supplementary Figure 1B-G**).

298 **Table 1**

299 **Table 1: Characteristics of ALSPAC study sample**

300

Variable	Overall N = 2,954 ¹	Sex at Birth	
		Male N = 1,082 ¹	Female N = 1,872 ¹
ICD-10 Depression			
No Depression	2,645 (90%)	1,011 (93%)	1,634 (87%)
Depression	309 (10%)	71 (6.6%)	238 (13%)
BMI @ 24	23.6 (21.4, 26.8)	24.1 [21.8, 26.8]	23.3 [21.3, 26.8]
Missing	28	6	22
Daily Smoking @ 24	341 (12%)	130 (12%)	211 (11%)
Missing	18	7	11
AUDIT Alcohol Questionnaire Score @ 24	5.00 (4.00, 7.00)	6.00 [4.00, 8.00]	5.00 [3.00, 7.00]
Missing	32	13	19

Donnelly et al: Immuno-metabolic Signatures of Depressive Symptoms

Self-reported physical health conditions	379 (13%)	148 (14%)	231 (13%)
Missing	85	30	55
Self-reported health by type			
Arthritis	16 (0.6%)	5 (0.5%)	11 (0.6%)
Asthma or COPD	320 (11%)	125 (12%)	195 (11%)
Diabetes	(0.5%)	(0.9%)	-
Heart Disease or Heart problems	23 (0.8%)	6 (0.6%)	17 (0.9%)
Kidney Disease	<5	<5	<5
Stroke or cancer	<5	<5	<5
Missing	85	30	55
¹ n (%); Median [Q1, Q3] note cell counts with n < 5 are replaced with "<5" or not shown in line with ALSPAC guidance.			

301

Donnelly et al: Immuno-metabolic Signatures of Depressive Symptoms

302 **3.2 Biomarker-Depression Associations**

303 We examined the associated between immuno-metabolic variable levels (n=118
304 immuno-metabolic variables) and risk of depression. The results represent the
305 change in probability of depression associated with a 1 standard deviation unit
306 change in the immuno-metabolic variable of interest, where a positive value indicates
307 an increase in risk, and a negative value indicates a decrease in risk.

308 In unadjusted analysis, after correction for multiple comparisons, 11 blood measures
309 were associated with depression (**Table 2**): Haematocrit (average marginal effect
310 [95% confidence interval]) = -0.022 [-0.033, -0.011], Haemoglobin = -0.019 [-0.03, -
311 0.008], Aspartate aminotransferase (AST) = -0.018 [-0.031, -0.005], Red blood cell
312 count = -0.018 [-0.029, -0.007], Alanine aminotransferase (ALT) = -0.017 [-0.029, -
313 0.005]), Platelets = 0.016 [0.006, 0.027], Insulin = 0.018 [0.007, 0.029], CUB domain-
314 containing protein 1 (CDCP1) = 0.019 [0.009, 0.029], White blood cell (WBC) count =
315 0.021 [0.011, 0.031], Interleukin-6 (IL-6) = 0.021 [0.012, 0.031] and Neutrophil count
316 = 0.022 [0.012, 0.032].

317 Evidence for association remained for ALT, IL-6, and neutrophil count after
318 adjustment for covariates (sex at birth, smoking, alcohol use, BMI and physical
319 health conditions), though the respective P-Values did not survive correction for
320 multiple testing. See **Supplementary Table 1** for results for all biomarkers.

Donnelly et al: Immuno-metabolic Signatures of Depressive Symptoms

321 Table 2

322 **Table 2: Immuno-metabolic biomarker associations with ICD-10 depression at**
 323 **age 24 years in the ALSPAC cohort**

Immuno-metabolic Variable	Unadjusted	Adjusted
Alanine aminotransferase (ALT)	-0.017 [-0.029, -0.005]	-0.015 [-0.028, -0.002]
Aspartate aminotransferase (AST)	-0.018 [-0.031, -0.005]	-0.01 [-0.024, 0.003]
CUB domain-containing protein 1 (CDCP1)	0.019 [0.009, 0.029]	0.011 [-0.001, 0.022]
Haemoglobin (Hb)	-0.019 [-0.03, -0.008]	-0.003 [-0.018, 0.013]
Haematocrit (Hct)	-0.022 [-0.033, -0.011]	-0.011 [-0.025, 0.003]
Interleukin-6 (IL-6)	0.021 [0.012, 0.031]	0.016 [0.004, 0.027]
Insulin	0.018 [0.007, 0.029]	0.007 [-0.006, 0.02]
Neutrophils	0.022 [0.012, 0.032]	0.013 [0.002, 0.024]
Platelets	0.016 [0.006, 0.027]	0.009 [-0.003, 0.021]
Red blood cell count (RBC)	-0.018 [-0.029, -0.007]	-0.006 [-0.022, 0.01]

Donnelly et al: Immuno-metabolic Signatures of Depressive Symptoms

White blood cell count (WBC)	0.021 [0.011, 0.031]	0.01 [-0.001, 0.021]
-------------------------------------	----------------------	----------------------

324

325 *Footnote: Biomarkers were selected based on FDR-corrected P-Value (P_{FDR}) of*
326 *<0.05 in the unadjusted model. Values displayed are Average Marginal Effects (95%*
327 *Confidence Interval); positive values indicate higher absolute risk of depression*
328 *associated with a 1 standard deviation unit increase in that immuno-metabolic*
329 *variable; negative values indicate a lower absolute risk of depression associated with*
330 *a 1 standard deviation unit increase. See Supplementary Table 1 for results for all*
331 *biomarkers.*

332

333 We carried out a series of sensitivity analyses. To investigate the impact of missing
334 data due to cohort attrition we used multiple imputation for missing data and fit the
335 same models to the imputed data. The results showed similar patterns of association
336 **(Supplementary Figure 2).**

337 The observed association between haemoglobin and depression was explained by
338 sex at birth. On average males had haemoglobin values 17.6 g/L higher than
339 females, while females had a 5.87% higher rate of depression than males. There
340 was no association between depression and haemoglobin when modelling stratified
341 by sex; for males the average marginal effect of a 1 SD unit change in Hb was -
342 0.001 [-0.017, 0.015] and for females -0.002 [-0.017, 0.014].

343 We adjusted our univariate models for self-reported physical health conditions. As
344 some conditions were rare (e.g. diabetes), we were unable to test associations

Donnelly et al: Immuno-metabolic Signatures of Depressive Symptoms

345 between individual conditions and depression. However, the overall prevalence of
346 self-reported physical health conditions was not higher in participants with
347 depression (12.1%) than in participants without (13.3%), Chi-Squared test $\chi^2_{df=1} =$
348 0.268, P-Value = 0.604.

349 3.3 Symptom-Biomarker Association Clusters

350 We carried out exploratory analyses to investigate whether immuno-metabolic
351 variables were associated with individual depression and anxiety symptoms (n=22)
352 and symptom domains (n=4, **Supplementary Methods and Supplementary Figure**
353 **3**), and whether immuno-metabolic variables could be clustered on these
354 associations.

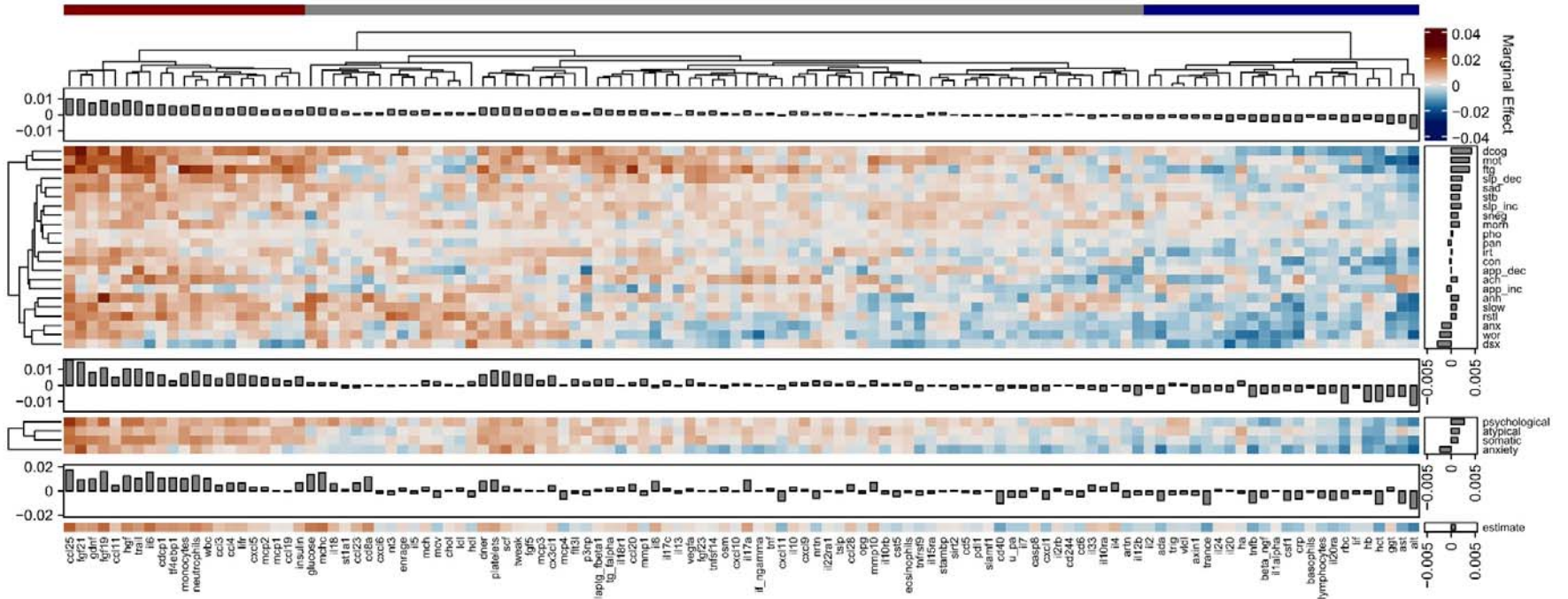
355 We found differing patterns of associations between immuno-metabolic variables
356 and symptoms (**Figure 1**), with some immuno-metabolic biomarkers appearing to
357 have positive associations with most symptoms (e.g. CCL25), whereas others
358 appeared to have largely negative associations (e.g. ALT). Somatic or atypical
359 symptoms or symptom domains as well as psychological symptoms had positive
360 associations with many immuno-metabolic variables (i.e. higher levels of biomarkers
361 were associated with *higher* probability of endorsing a symptom), whereas in general
362 anxiety and worry had negative associations (i.e. higher levels of biomarkers were
363 associated with *lower* probability of endorsing a symptom).

364 Hierarchical clustering applied to all pairwise associations of symptoms and immuno-
365 metabolic variables identified three clusters, which were distinct with regards to their
366 relationship to symptoms (see **Supplementary Table 1** for the cluster identity of all
367 immuno-metabolic variables). Cluster 1 (*negative association*) comprised 24
368 immuno-metabolic variables, including some immune cell counts (lymphocytes,
369 basophils), liver enzymes (ALT, AST and γ GT), metabolic markers (Triglycerides,
370 VLDL) and markers of red blood cell function (Hct, Hb, RBC), alongside cytokines
371 that showed negative associations with symptoms, particularly anxiety and worry.
372 Cluster 3 (*positive association*) comprised 21 biomarkers which included cytokines
373 (e.g., IL6), chemokines (e.g., CCL4 and CCL25) immune cell counts (e.g.,

Donnelly et al: Immuno-metabolic Signatures of Depressive Symptoms

374 neutrophils, monocytes and white blood cells) and growth factors (FGF19, FGF21,
375 HGF, GDNF). Variables in this cluster showed positive associations with specific
376 somatic and psychological symptoms (including depressive cognitions, impaired
377 motivation, fatigue, and decreased sleep). Cluster 2 (*low association*) comprised 73
378 biomarkers with predominantly small associations with symptoms.

379 Figure 1



380

Donnelly et al: Immuno-metabolic Signatures of Depressive Symptoms

381 **Figure 1: Associations of immuno-metabolic variables with depression and**
382 **anxiety-related measures in the ALSPAC cohort**

383 *Matrix plots showing the average marginal effect of a 1 SD-unit change in an*
384 *immuno-metabolic variable on the probability of endorsing a symptom. From top to*
385 *bottom, plots are of 22 individual depressive/anxiety symptom scores: Aches & Pains*
386 *(ach), Anhedonia (anh), Anxiety (anx), Appetite Decreased (app_dec), Appetite*
387 *Increased (app_inc), Concentration Impaired (con), Depressive Cognitions – feelings*
388 *of guilt, inadequacy and helplessness (dcog), Decreased interested in sex (dsx),*
389 *Fatigue (ftg), Irritability (irt), Morning low mood (morn), Motivation impairment (mot),*
390 *Panic (pan), Phobias/specific fears (pho), Restlessness (rstl), Sadness/low mood*
391 *(sad), Slowed movements (slow), Sleep Decreased (slp_dec), Sleep Increased*
392 *(slp_inc), Self-neglect (sneg), Suicidal Thoughts (stb) and Worry (wor) (see*
393 **Supplementary Methods** *for derivations); four depressive/anxiety symptom domain*
394 *scores (anxiety, atypical, psychological and somatic) and ICD-10 depression*
395 *diagnosis. Within each plot, marginal histograms represent the averaged marginal*
396 *effect over all rows for each column in the plot (i.e., average over all outcomes to*
397 *give an overall effect for each immuno-metabolic variable), marginal histograms to*
398 *the right represent the averaged AME over all columns for each row in the plot (i.e.*
399 *average over all immuno-metabolic variables for each outcome). At the top, the*
400 *dendrogram from hierarchical clustering of the CIS-R symptom score matrix;*
401 *immuno-metabolic variables are grouped based clustering of all mental health*
402 *measures. Symptoms are also sorted by a similar clustering process. Note that all*
403 *matrix plots are on the same colour scale. Coloured bars at the top indicate the*
404 *cluster identity assigned to each immuno-metabolic variable: red = positive*
405 *association; grey = low association; blue = negative association.*

Donnelly et al: Immuno-metabolic Signatures of Depressive Symptoms

406

407 **3.4 Extreme Valued Biomarkers in Depression**

408 We carried out an exploratory analysis to test if depression diagnosis was associated
409 with increases in the variability of immuno-metabolic markers, which could be
410 indicative of systemic immune or metabolic dysfunction. We calculated the total
411 number of extreme-valued measurements for each immuno-metabolic variable and
412 each participant.

413 All biomarkers had at least one participant with an extreme value; positive-signed
414 extreme values were more common than negative-signed values (**Figure 2A**). After
415 adjusting for covariates, participants with depression had higher total extreme-valued
416 biomarkers (on average participants without depression had 1.96 [1.90, 2.01]
417 extreme values, participants with depression had 2.25 [2.08, 2.43]; average
418 difference between groups in number of extreme values = 0.248 [0.056, 0.440],
419 **Figure 2B-C**).

420 Next, to test if extreme variability in biomarker level in depression is specific to any
421 biomarker cluster, we fit a model including immuno-metabolic cluster identity. We
422 found an interaction between depression and cluster on the number of extreme
423 values ($\chi^2_{df=2}=11.262$, $P=0.003$). The number of extreme-valued biomarkers was
424 higher in people with depression for biomarkers belonging to the positive association
425 cluster (cluster 3; AME=0.104 [0.033, 0.174]), but not the other two clusters (AME for
426 the negative association cluster 1 = -0.015 [-0.070, 0.040], and AME for low
427 association cluster 2 = 0.067 [-0.085, 0.218]) (**Figure 2D**).

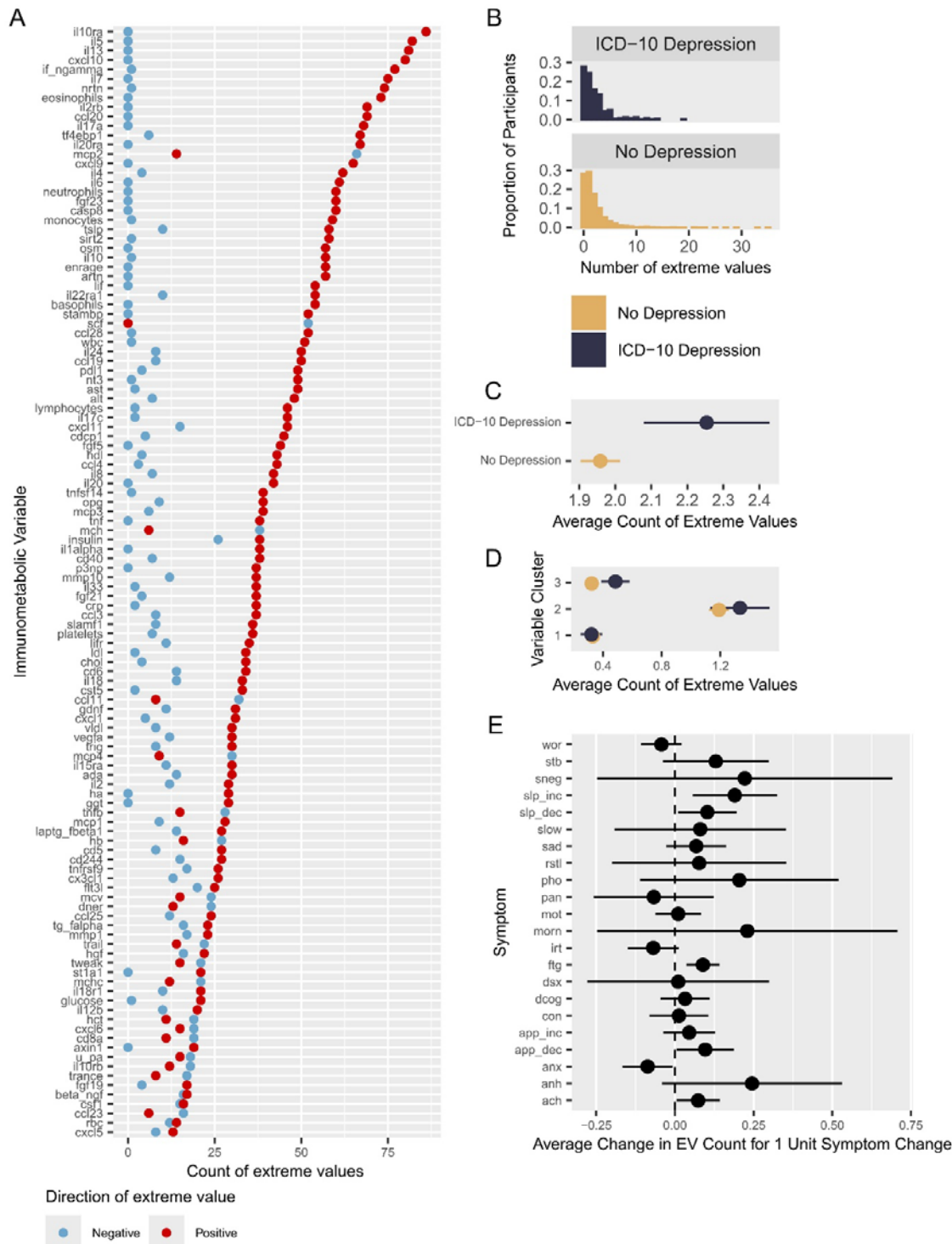
428 Finally, we fit models using scores on our symptom scales as predictors of number
429 of extreme variables (**Figure 2E, Supplementary Table 2**). After correction for

Donnelly et al: Immuno-metabolic Signatures of Depressive Symptoms

430 multiple comparisons, higher scores on the fatigue symptom scale (ftg) were
431 associated with higher extreme immuno-metabolic variables: a 1 unit increase in ftg
432 was associated with an average 0.089 (0.036, 0.142) increase in extreme values,
433 $P_{\text{FDR}} = 0.021$.

Donnelly et al: Immuno-metabolic Signatures of Depressive Symptoms

434 Figure 2



435

436 **Figure 2: Extreme Value Distributions**

Donnelly et al: Immuno-metabolic Signatures of Depressive Symptoms

- 437 A. *Count of total number of positive (red) and negative (blue) valued immuno-*
438 *metabolic variables for each immuno-metabolic variables (refer to*
439 ***Supplementary Table 1*** *for full immuno-metabolic variable definition)*
- 440 B. *Histogram of proportion of participants with different counts of extreme values,*
441 *split by ICD-10 depression diagnosis.*
- 442 C. *Model-predicted average counts of extreme values per participant, split by*
443 *ICD-10 depression diagnosis, with 95% confidence interval*
- 444 D. *Model-predicted mean number of extreme values across immuno-metabolic*
445 *variables, grouped by clusters identified in **Figure 1**, with 95% confidence*
446 *intervals.*
- 447 E. *Model predicted association between symptom score and extreme value*
448 *count: average change in extreme value count associated with a 1 unit*
449 *increase in the focal symptom score, with 95% confidence intervals.*
450 Symptoms as defined in **Figure 1**.

451

452 3.5 Latent Components Underlying Symptom - Immuno-metabolic Biomarker

453 Associations

454 Our clustering analysis identified that some immuno-metabolic variables had similar
455 profiles of association with depression and anxiety symptoms, and conversely some
456 symptoms had similar profiles of association with immuno-metabolic variables. We
457 explored correlations within immuno-metabolic variables. Immuno-metabolic variables
458 were generally positively correlated (**Supplementary Figure 4A and C**), with the
459 average correlation between variables being 0.114, SD = 0.1248. Principal
460 components analysis (PCA) indicated one large principal component (PC) explained
461 16.7% of variance in immuno-metabolic variables, while 8 PCs together explained
462 50% of variance.

463 Applying the same analysis to individual depressive symptoms (**Supplementary**
464 **Figure 4B and D**), we found symptoms were also highly correlated (average
465 correlation = 0.235, SD = 0.144). PCA indicated one large component explained
466 54% of variance.

467 We used Partial Least Squares (PLS) regression to ask if there were latent variables
468 that capture covariation between immuno-metabolic biomarkers and depression
469 symptoms. We fit a PLS model predicting 22 symptoms from the combination of 25
470 depression symptom-associated positive and negative association cluster
471 biomarkers we identified using our clustering analysis and our 5 covariates (sex at
472 birth, BMI at age 24, daily smoking, AUDIT-C score, and self-reported physical
473 health conditions).

474 The best fitting PLS model identified 2 latent components explaining 22.1% of
475 variance in immuno-metabolic variables and 48.5% of variance in the depression

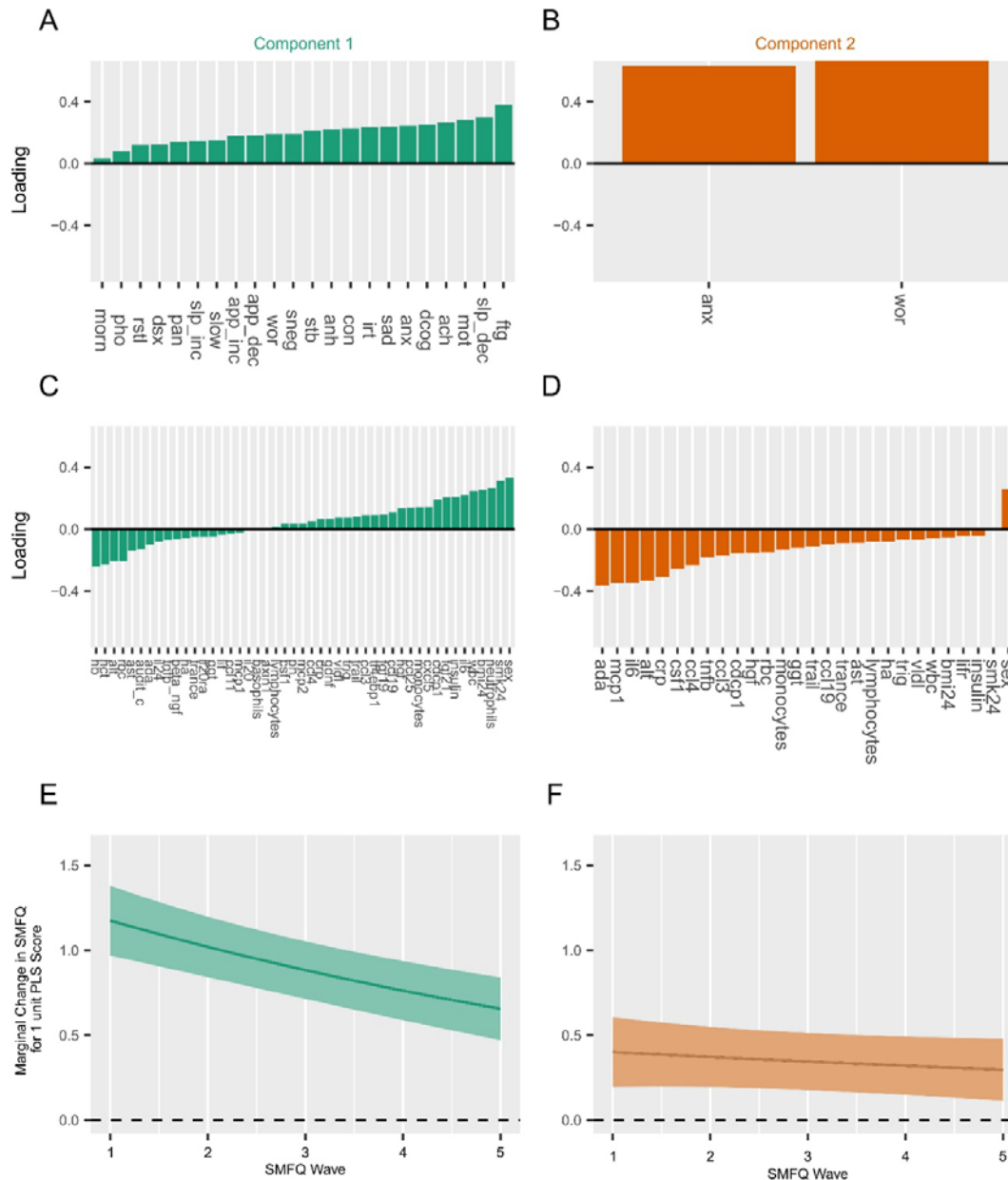
Donnelly et al: Immuno-metabolic Signatures of Depressive Symptoms

476 variables. Component 1 (labelled “*Somatic-Inflamed*”) loaded on multiple somatic
477 and depressive symptoms (the top 4 variables by loading being fatigue, decreased
478 sleep, decreased motivation, and aches & pains); on the immuno-metabolic side this
479 component loaded most highly on higher neutrophil count, WBC count, IL-6 levels as
480 well as female sex, daily smoking, and higher BMI. By contrast, Component 2
481 (labelled “*Anxiety-Non-inflamed*”) loaded on higher worry and anxiety, and lower
482 Adenosine Deaminase, Monocyte Chemotactic Protein 1 (MCP1), IL-6 and CRP
483 levels (**Figure 3A-D**).

484 Higher scores on both Components 1 and 2 were longitudinally associated with
485 higher SMFQ depressive symptoms score at follow-up between ages 25 and 30
486 (**Figure 3E-F**). On average, a 1 SD unit increase in Component 1 score at age 24
487 was associated with a 1.170 [0.969, 1.380] unit increase in SMFQ score at age 25,
488 declining to a 0.656 [0.471, 0.841] unit increase around age 30. For component 2, a
489 1 SD unit increase in score at age 24 was associated with a 0.401 [0.195, 0.607] unit
490 increase in SMFQ score, and a 0.298 [0.115, 0.480] unit increase around age 30.

Donnelly et al: Immuno-metabolic Signatures of Depressive Symptoms

491 Figure 3



492

493 **Figure 3: Latent components derived from Partial Least Squares analysis of**
494 **immuno-metabolic variables and depressive symptoms**

495 *A: PLS Component 1 Loadings on symptoms.*

496 *B: As (A): Component 2 Loadings on symptoms*

497 *C: PLS Component 1 Loadings on immuno-metabolic variables*

Donnelly et al: Immuno-metabolic Signatures of Depressive Symptoms

498 *D: As (C): Component 2 Loadings on immuno-metabolic variables*

499 *E: Plot of Marginal change in SMFQ total score associated with a 1 SD unit increase*

500 *in PLS Component 1 score, with 95% confidence intervals, from generalised linear*

501 *mixed model.*

502 *F: As (F), marginal change in SMFQ total score for 1 unit increase in Component 2*

503 *score*

Donnelly et al: Immuno-metabolic Signatures of Depressive Symptoms

504 **3.6 Prediction of Depression and Specific Symptom Profiles using Immuno-**
505 **metabolic Biomarkers**

506 Finally, we tested how well the immuno-metabolic variables we identified as being
507 associated with depression symptoms predict ICD-10 depression, using elastic net
508 regression. Informed by our symptom-based analyses which suggested a distinction
509 between somatic and mood symptoms vs anxiety symptoms, we also asked if
510 immuno-metabolic variables were better at predicting specific symptom types within
511 ICD-10 depression: depression *with* high levels of anxiety (high anxiety and worry;
512 n=197/337) or depression *with* high somatic symptoms (fatigue, decreased sleep,
513 low motivation and aches & pains; n=158/337), **Supplementary Figure 5**).

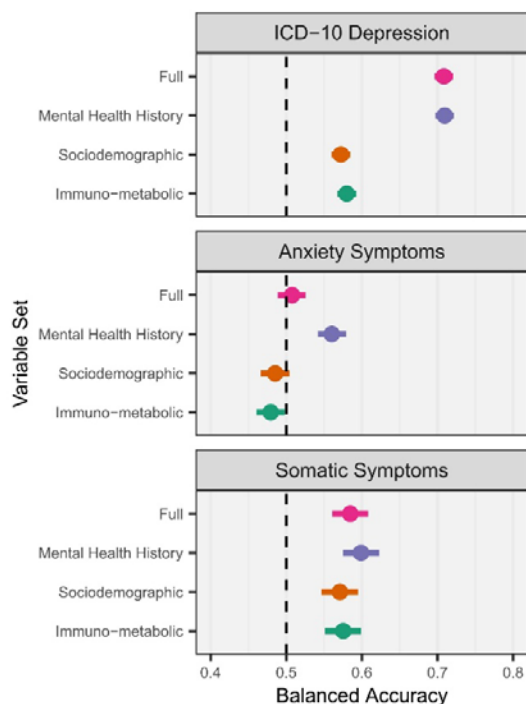
514 After nested cross-validation, models based on immuno-metabolic variables
515 performed better than chance in predicting ICD-10 depression diagnosis (Balanced
516 Accuracy=0.580; 95% CI = [0.568, 0.593]); **Figure 4, Supplementary Table 3**.

517 Performance was similar for models trained using socio-demographic factors (0.572
518 [0.560, 0.585]), while a model trained with past mental health history (0.710 [0.697,
519 0.722]) and a model containing all variables (0.708 [0.696, 0.721]) performed better.

520 Within ICD-10 depression, immuno-metabolic biomarkers could be used to provide
521 above-chance level predictions only of depression *with* high somatic symptoms
522 (0.575 [0.551, 0.599]) whereas immuno-metabolic variables were not predictive of
523 depression *with* high anxiety symptoms (0.479 [0.461, 0.498]). The difference in
524 balanced accuracy for immuno-metabolic variables predicting high somatic and
525 anxiety symptoms was 0.096 [0.066, 0.126]. By contrast, mental health history was
526 predictive of higher levels of both anxiety and somatic symptoms within individuals
527 with depression (**Supplementary Table 3**).

Donnelly et al: Immuno-metabolic Signatures of Depressive Symptoms

528 Figure 4



529

530 **Figure 4: Performance of Machine Learning models predicting ICD-10**
531 **depression diagnosis and specific symptom profiles within individuals with**
532 **ICD-10 depression**

533 *Classification performance (balanced accuracy) of models trained with selected*
534 *immuno-metabolic variables predicting the presence of ICD-10 depression, high*
535 *anxiety symptoms within ICD-10 depression, or high somatic symptoms within ICD-*
536 *10 depression, with 95% confidence intervals*

537 4. Discussion

538 This study provides several insights into the associations between peripheral blood
539 immune and metabolic biomarkers and depression symptoms. We found multiple
540 biomarkers to be associated with a higher probability of depression in young adults
541 as well as greater extreme variability in inflammatory biomarkers. The relationship
542 between biomarkers and depression symptoms varied, with clusters of biomarkers
543 showing distinct and opposing associations with somatic versus anxiety symptoms.

544 We identified two latent components potentially linking immuno-metabolic
545 biomarkers and depression symptoms, one *somatic-inflammatory* component
546 correlated with somatic symptoms, female sex, smoking and higher levels of
547 systemic inflammatory measures, while the *anxious-non-inflamed* component related
548 to anxiety, worry, female sex and lower levels of inflammatory biomarkers and
549 growth factors. Higher somatic-inflamed component scores were associated with
550 higher depressive symptoms severity in subsequent follow-up.

551 Machine learning models trained on immuno-metabolic biomarkers predicted ICD-10
552 depression diagnosis and depression with higher somatic symptoms, but not anxiety
553 symptoms, better than chance. Predictive performance was similar to models trained
554 on sociodemographic data, and to brain-imaging models (Winter et al., 2024).

555 However, performance was at an absolute level considered poor (Alba et al., 2017).

556 Unlike most previous studies (Chu et al., 2019; Davyson et al., 2023; Milaneschi et
557 al., 2021; Osimo et al., 2020), we examined a large number and variety of immuno-
558 metabolic biomarkers (118 in total) including inflammatory proteins, cell count, lipids,
559 and metabolites, which helped us identify key depression-related biomarkers (e.g.,

Donnelly et al: Immuno-metabolic Signatures of Depressive Symptoms

560 IL-6 and neutrophil count), reinforcing previous findings (Foley et al., 2023;

561 Milaneschi et al., 2021; Osimo et al., 2020).

562 In addition, we leverage our larger set of immuno-metabolic variables to show that

563 depression is associated more extreme valued biomarkers, as is the symptom

564 fatigue, consistent with a system-wide disruption in immuno-metabolic homeostasis

565 in young adults at age 24, and with a more somatic profile of symptoms. These

566 differences were not related to current physical health conditions and occur well

567 before the typical age of onset of cardiometabolic diseases, suggesting they are not

568 purely a result of the presence of other conditions.

569 CRP has been associated with depression in meta-analysis (Osimo et al., 2020), but

570 we did not reproduce this finding. There are several possible explanations for this

571 apparent discrepancy. Mendelian randomisation studies have suggested a potential

572 causal role of IL-6 in depression more consistently than CRP (Kappelmann et al.,

573 2021; Perry et al., 2021b). CRP has also been found to have a small or protective

574 effect against some mental disorders (Said et al 2022, Shi & Morrison 2025).

575 Longitudinal analysis of CRP has also suggested that there are specific trajectories

576 of raised CRP across childhood which are predictive of mental disorders (Palmer et

577 al., 2024). Therefore, although CRP is an archetypal clinical measure of systemic

578 inflammation, single cross-sectional measurements may not be as strongly

579 associated with depression as either upstream cytokines (e.g., IL-6), or longitudinal

580 trends.

581 Some lymphocytes, including CD4⁺ helper T cells, CD19⁺ B Cells and NK Cells,

582 have been found to be increased in depression (Foley et al., 2023). We did not find

583 an association between lymphocyte count, or CD244, the NK cell receptor, and

Donnelly et al: Immuno-metabolic Signatures of Depressive Symptoms

584 depression. However, CD244 is expressed on many immune cell types (Agresta et
585 al., 2018). Our null finding could be due to limited resolution of measures used (WBC
586 differential count) rather than flow-cytometry based subtyping.

587 We found several liver enzymes to be negatively associated with depression and
588 anxiety symptoms. This is in contrast to a previous study which have found
589 increased ALT in adults with higher depression scores (Zelber-Sagi et al., 2013). Our
590 study population differs to the previous study, being substantially less male and
591 much younger, meaning lower cumulative exposure to confounders such as alcohol.
592 We also observed a positive correlation between liver enzymes, IL-6 and markers of
593 red blood cell function. Lower Hb could be associated with poor health through
594 multiple mechanism including chronic disease, poor dietary iron intake, blood loss
595 and deficiencies in multiple vitamins (e.g. B12 and folate); therefore, lower liver
596 enzymes could be a correlate of these markers of poor health and lower Hb, which
597 also appeared to be associated with anxiety symptoms.

598 We also identified several novel potential biomarkers associated with depressive
599 symptoms including CCL25, FGF19 and FGF21. Expressed in the gut, CCL25 has
600 been associated with bipolar disorder (Göteson et al., 2022; Poletti et al., 2021),
601 post-traumatic stress disorder (Zhang et al., 2020), bowel inflammation (Wurbel et
602 al., 2011) and impaired intestinal barrier function (Jensen et al., 2023) in
603 schizophrenia. FGF19 and FGF21 are linked to glucose and glycogen metabolism
604 (BonDurant and Potthoff, 2018; Kir et al., 2011); FGF21 is associated with the risk of
605 type-two diabetes (Post et al., 2023).

606 Taken together, our findings suggest that there may be distinct immuno-metabolic
607 biotypes linked to specific symptom patterns in depression (somatic vs anxiety

Donnelly et al: Immuno-metabolic Signatures of Depressive Symptoms

608 symptoms). These putative biotypes could potentially map on to other hypothecated
609 depression biotypes, such as those based on brain imaging (Tozzi et al., 2024).

610 By assaying immuno-metabolic biomarkers, in combination with clinical history
611 (Arribas et al., 2025; Zhang et al., 2024), brain imaging (Fu et al., 2024) or
612 actigraphy (Price et al., 2025), patients could be stratified to give better information
613 on prognosis or targeting specific treatments. For example, an important question for
614 future research is whether patients with a somatic-inflammatory biotype could
615 improve more with anti-inflammatory drugs compared to patients with an anxious-
616 non-inflamed biotype.

617 Given the association we identified between somatic symptoms and FGF19 and
618 FGF21, and these hormones and the effects of GLP-1 receptor agonists (Shao and
619 Jin, 2022), which have recently been associated with numerous potentially beneficial
620 mental health outcomes (Chen et al., 2024; Xie et al., 2025), another avenue might
621 be to explore if depression with somatic symptoms is improved by GLP-1 receptor
622 agonists.

623 Our study has several limitations. The Olink assay is widely used across proteomic
624 studies in other cohort studies including UK Biobank (Sun et al., 2023), but gives
625 results on an arbitrary scale. For IL-6, a high correlation between a clinical chemistry
626 assay and Olink levels has been demonstrated in ALSPAC (Goulding et al., 2022).
627 However, Olink may differ in target epitopes to other assays (Eldjarn et al., 2023),
628 leading to only modest correlations with the SomaScan assay.

629 While the absolute values we report may not be generalisable, the pattern of change
630 in relative levels of immuno-metabolic variables may be relevant to studies using
631 other methods.

Donnelly et al: Immuno-metabolic Signatures of Depressive Symptoms

632 The ALSPAC study is not diverse in terms of ethnicity. Individuals who have
633 continued to participate into early adulthood tend to be women, come from more
634 educated and affluent backgrounds (Donnelly et al., 2022), and have a lower
635 prevalence of depressive symptoms (Office for National Statistics, 2021) than the
636 general UK population. Therefore, the generalisability of our findings to other
637 populations may be limited and our conclusions need to be externally validated in
638 populations with different characteristics, e.g. age, ethnicity and co-morbid health
639 conditions. Larger population sizes are also necessary to improve and validate
640 machine learning models.

641 Immuno-metabolic biomarkers were assayed at age 24. It is possible that
642 longitudinal trends in biomarker levels derived from repeated measurement could
643 yield more accurate prediction, but such datasets remain scarce e.g. (Palmer et al.,
644 2024; Perry et al., 2021a).

645 Our longitudinal follow-up data was limited to SMFQ scores. The SMFQ does not
646 include somatic symptoms. However, at present follow-up CIS-R data is not
647 available from ALSPAC. Additionally, although our sample size is reasonably large,
648 in a group of young adults a small number would be expected to develop psychiatric
649 disorders other than depression, including bipolar affective disorder and psychotic
650 disorders, but may be included in the depression group in the present data.

651 Future studies of longitudinal associations when more detailed psychiatric symptom
652 data are available will be invaluable in evaluating the association of immuno-
653 metabolic biomarkers with long-term trends in psychiatric symptoms.

654 Finally, our cross-sectional study was not designed, or able, to prove causal
655 relationships or suggest mechanisms by which immune or metabolic dysfunction

Donnelly et al: Immuno-metabolic Signatures of Depressive Symptoms

656 might impact the brain systems involved in the manifestation of the subjective
657 experience of depression. Other study designs are necessary to explore this.

658 **5. Conclusions**

659 We found depression is associated with changes in multiple immuno-metabolic
660 markers. Specific patterns of immuno-metabolic biomarkers are associated with
661 differing subsets of depression symptoms (somatic-inflamed vs anxiety-non-
662 inflamed), which are potentially relevant for future symptom severity. Immuno-
663 metabolic biomarkers predict depression and high levels of somatic symptoms, but
664 not anxiety symptoms, better than chance. Our results highlight the heterogeneity of
665 depression and opportunities for immuno-metabolic biomarker-based subtyping,
666 prediction and targeted intervention in future.

667 Acknowledgements

668 We are extremely grateful to all the families who took part in the ALSPAC cohort
669 study, the midwives for their help in recruiting them, and the whole ALSPAC team,
670 which includes interviewers, computer and laboratory technicians, clerical workers,
671 research scientists, volunteers, managers, receptionists and nurses. The views
672 expressed are those of the authors and not necessarily those of the NIHR or the
673 Department of Health and Social Care.

674 Funding

675 GMK acknowledges funding support from the UK Medical Research Council (MRC),
676 grant number: MC_UU_00032/6, which forms part of the MRC Integrative
677 Epidemiology Unit at the University of Bristol. GMK also acknowledges funding from
678 the Wellcome Trust (grant numbers: 201486/Z/16/Z and 201486/B/16/Z), the Medical
679 Research Council (grant numbers: MR/W014416/1; MR/S037675/1; and
680 MR/Z50354X/1), and the UK National Institute of Health and Care Research (NIHR)
681 Bristol Biomedical Research Centre (grant number: NIHR 203315). The views
682 expressed are those of the authors and not necessarily those of the UK NIHR or the
683 Department of Health and Social Care.

684 NAD was supported by an NIHR Clinical Lectureship in General Adult Psychiatry.

685 RSMT is supported by the Tackling Multimorbidity at Scale Strategic Priorities Fund
686 programme (MR/W014416/1).

687 ALM is supported by the Medical Research Council via the Integrative Epidemiology
688 Unit (MC_UU_00032/01).

Donnelly et al: Immuno-metabolic Signatures of Depressive Symptoms

689 The UK Medical Research Council and Wellcome Trust (Grant ref: 217065/Z/19/Z)
690 and the University of Bristol provide core support for ALSPAC. A comprehensive list
691 of grants funding awarded to the ALSPAC study is available from ALSPAC website
692 (<http://www.bristol.ac.uk/alspac/external/documents/grant-acknowledgements.pdf>).
693 This publication is the work of the authors and NAD and GMK will serve as
694 guarantors for the contents of this paper.

695 Preprint

696 An early version of this manuscript was deposited as a preprint to medRxiv:
697 <https://doi.org/10.1101/2024.06.03.24308351>

698 Data Availability

699 Data from the ALSPAC study is available via a managed open access system: in line
700 with ALSPAC data access policy, all raw data used for this work can be accessed by
701 other investigators by making a request to the ALSPAC study executive (see the
702 study website: <http://www.bristol.ac.uk/alspac/researchers/access/>). Available
703 variables can be browsed via the ALSPAC data dictionary
704 (<http://www.bristol.ac.uk/alspac/researchers/our-data/>) and variable search
705 (<https://variables.alspac.bris.ac.uk/>).
706 Analysis scripts are available online: https://github.com/NADonnelly/dep_infl

707 Competing Interests

708 The authors have no competing interests to declare.

Donnelly et al: Immuno-metabolic Signatures of Depressive Symptoms

709 **CRedit authorship statement**

710 Donnelly N: Conceptualisation; Study design; Software; Data Curation; Formal

711 Analysis; Visualization; Writing – Original Draft; Writing – Reviewing & Editing

712 Tsang RSM: Writing – Reviewing & Editing; Resources

713 Foley E: Writing – Reviewing & Editing; Resources

714 Fraser H: Writing – Reviewing & Editing; Resources

715 Hanson A: Writing – Reviewing & Editing; Resources

716 Khandaker GM: Conceptualisation; Study design; Writing – Reviewing & Editing;

717 Funding acquisition; Supervision

718 References

- 719 Agresta, L., Hoebe, K.H.N., Janssen, E.M., 2018. The Emerging Role of CD244
720 Signaling in Immune Cells of the Tumor Microenvironment. *Front. Immunol.* 9.
721 <https://doi.org/10.3389/fimmu.2018.02809>
- 722 Alba, A.C., Agoritsas, T., Walsh, M., Hanna, S., Iorio, A., Devereaux, P.J., McGinn,
723 T., Guyatt, G., 2017. Discrimination and Calibration of Clinical Prediction
724 Models: Users' Guides to the Medical Literature. *JAMA* 318, 1377–1384.
725 <https://doi.org/10.1001/jama.2017.12126>
- 726 Arribas, M., Barnby, J.M., Patel, R., McCutcheon, R.A., Kornblum, D., Shetty, H.,
727 Krakowski, K., Stahl, D., Koutsouleris, N., McGuire, P., Fusar-Poli, P., Oliver,
728 D., 2025. Longitudinal evolution of the transdiagnostic prodrome to severe
729 mental disorders: a dynamic temporal network analysis informed by natural
730 language processing and electronic health records. *Mol. Psychiatry*.
731 <https://doi.org/10.1038/s41380-025-02896-3>
- 732 Boca, S.M., Leek, J.T., 2018. A direct approach to estimating false discovery rates
733 conditional on covariates. *PeerJ* 6, e6035. <https://doi.org/10.7717/peerj.6035>
- 734 BonDurant, L.D., Potthoff, M.J., 2018. Fibroblast Growth Factor 21: A Versatile
735 Regulator of Metabolic Homeostasis. *Annu. Rev. Nutr.* 38, 173–196.
736 <https://doi.org/10.1146/annurev-nutr-071816-064800>
- 737 Bot, M., Milaneschi, Y., Al-Shehri, T., Amin, N., Garmeva, S., Onderwater, G.L.J.,
738 Pool, R., Thesing, C.S., Vijfhuizen, L.S., Vogelzangs, N., Arts, I.C.W.,
739 Demirkan, A., van Duijn, C., van Greevenbroek, M., van der Kallen, C.J.H.,
740 Köhler, S., Ligthart, L., van den Maagdenberg, A.M.J.M., Mook-Kanamori,
741 D.O., de Mutsert, R., Tiemeier, H., Schram, M.T., Stehouwer, C.D.A.,
742 Terwindt, G.M., Willems van Dijk, K., Fu, J., Zhernakova, A., Beekman, M.,
743 Slagboom, P.E., Boomsma, D.I., Penninx, B.W.J.H., BBMRI-NL Metabolomics
744 Consortium, 2020. Metabolomics Profile in Depression: A Pooled Analysis of
745 230 Metabolic Markers in 5283 Cases With Depression and 10,145 Controls.
746 *Biol. Psychiatry* 87, 409–418. <https://doi.org/10.1016/j.biopsych.2019.08.016>
- 747 Boyd, A., Golding, J., Macleod, J., Lawlor, D.A., Fraser, A., Henderson, J., Molloy,
748 L., Ness, A., Ring, S., Davey Smith, G., 2013. Cohort Profile: The 'Children of
749 the 90s'—the index offspring of the Avon Longitudinal Study of Parents and
750 Children. *Int. J. Epidemiol.* 42, 111–127. <https://doi.org/10.1093/ije/dys064>
- 751 Chen, X., Zhao, P., Wang, W., Guo, L., Pan, Q., 2024. The Antidepressant Effects of
752 GLP-1 Receptor Agonists: A Systematic Review and Meta-Analysis. *Am. J.*
753 *Geriatr. Psychiatry Off. J. Am. Assoc. Geriatr. Psychiatry* 32, 117–127.
754 <https://doi.org/10.1016/j.jagp.2023.08.010>
- 755 Chu, A.L., Stochl, J., Lewis, G., Zammit, S., Jones, P.B., Khandaker, G.M., 2019.
756 Longitudinal association between inflammatory markers and specific
757 symptoms of depression in a prospective birth cohort. *Brain. Behav. Immun.*
758 76, 74–81. <https://doi.org/10.1016/j.bbi.2018.11.007>
- 759 Davyson, E., Shen, X., Gadd, D.A., Bernabeu, E., Hillary, R.F., McCartney, D.L.,
760 Adams, M., Marioni, R., McIntosh, A.M., 2023. Metabolomic Investigation of
761 Major Depressive Disorder Identifies a Potentially Causal Association With
762 Polyunsaturated Fatty Acids. *Biol. Psychiatry* 94, 630–639.
763 <https://doi.org/10.1016/j.biopsych.2023.01.027>
- 764 Donnelly, N.A., Perry, B.I., Jones, H.J., Khandaker, G.M., 2022. Childhood immuno-
765 metabolic markers and risk of depression and psychosis in adulthood: A

Donnelly et al: Immuno-metabolic Signatures of Depressive Symptoms

- 766 prospective birth cohort study. *Psychoneuroendocrinology* 139, 105707.
767 <https://doi.org/10.1016/j.psyneuen.2022.105707>
- 768 Eldjarn, G.H., Ferkingstad, E., Lund, S.H., Helgason, H., Magnusson, O.T.,
769 Gunnarsdottir, K., Olafsdottir, T.A., Halldorsson, B.V., Olason, P.I., Zink, F.,
770 Gudjonsson, S.A., Sveinbjornsson, G., Magnusson, M.I., Helgason, A.,
771 Oddsson, A., Halldorsson, G.H., Magnusson, M.K., Saevarsdottir, S.,
772 Eiriksdottir, T., Masson, G., Stefansson, H., Jonsdottir, I., Holm, H., Rafnar,
773 T., Melsted, P., Saemundsdottir, J., Norddahl, G.L., Thorleifsson, G.,
774 Ulfarsson, M.O., Gudbjartsson, D.F., Thorsteinsdottir, U., Sulem, P.,
775 Stefansson, K., 2023. Large-scale plasma proteomics comparisons through
776 genetics and disease associations. *Nature* 622, 348–358.
777 <https://doi.org/10.1038/s41586-023-06563-x>
- 778 Foley, É.M., Parkinson, J.T., Mitchell, R.E., Turner, L., Khandaker, G.M., 2023.
779 Peripheral blood cellular immunophenotype in depression: a systematic
780 review and meta-analysis. *Mol. Psychiatry* 28, 1004–1019.
781 <https://doi.org/10.1038/s41380-022-01919-7>
- 782 Frank, P., Jokela, M., Batty, G.D., Cadar, D., Steptoe, A., Kivimäki, M., 2021.
783 Association Between Systemic Inflammation and Individual Symptoms of
784 Depression: A Pooled Analysis of 15 Population-Based Cohort Studies. *Am.*
785 *J. Psychiatry* 178, 1107–1118.
786 <https://doi.org/10.1176/appi.ajp.2021.20121776>
- 787 Fraser, A., Macdonald-Wallis, C., Tilling, K., Boyd, A., Golding, J., Davey Smith, G.,
788 Henderson, J., Macleod, J., Molloy, L., Ness, A., Ring, S., Nelson, S.M.,
789 Lawlor, D.A., 2013. Cohort Profile: The Avon Longitudinal Study of Parents
790 and Children: ALSPAC mothers cohort. *Int. J. Epidemiol.* 42, 97–110.
791 <https://doi.org/10.1093/ije/dys066>
- 792 Fu, C.H.Y., Antoniadou, M., Erus, G., Garcia, J.A., Fan, Y., Arnone, D., Arnott, S.R.,
793 Chen, T., Choi, K.S., Fatt, C.C., Frey, B.N., Frokjaer, V.G., Ganz, M.,
794 Godlewska, B.R., Hassel, S., Ho, K., McIntosh, A.M., Qin, K., Rotzinger, S.,
795 Sacchet, M.D., Savitz, J., Shou, H., Singh, A., Stolicyn, A., Strigo, I., Strother,
796 S.C., Tosun, D., Victor, T.A., Wei, D., Wise, T., Zahn, R., Anderson, I.M.,
797 Craighead, W.E., Deakin, J.F.W., Dunlop, B.W., Elliott, R., Gong, Q., Gotlib,
798 I.H., Harmer, C.J., Kennedy, S.H., Knudsen, G.M., Mayberg, H.S., Paulus,
799 M.P., Qiu, J., Trivedi, M.H., Whalley, H.C., Yan, C.-G., Young, A.H.,
800 Davatzikos, C., 2024. Neuroanatomical dimensions in medication-free
801 individuals with major depressive disorder and treatment response to SSRI
802 antidepressant medications or placebo. *Nat. Ment. Health* 2, 164–176.
803 <https://doi.org/10.1038/s44220-023-00187-w>
- 804 Golding, Pembrey, Jones, Team, T.A.S., 2001. ALSPAC—The Avon Longitudinal
805 Study of Parents and Children. *Paediatr. Perinat. Epidemiol.* 15, 74–87.
806 <https://doi.org/10.1046/j.1365-3016.2001.00325.x>
- 807 Goldsmith, D.R., Rapaport, M.H., Miller, B.J., 2016. A meta-analysis of blood
808 cytokine network alterations in psychiatric patients: comparisons between
809 schizophrenia, bipolar disorder and depression. *Mol. Psychiatry* 21, 1696–
810 1709. <https://doi.org/10.1038/mp.2016.3>
- 811 Göteson, A., Isgren, A., Sparding, T., Holmén-Larsson, J., Jakobsson, J., Pålsson,
812 E., Landén, M., 2022. A serum proteomic study of two case-control cohorts
813 identifies novel biomarkers for bipolar disorder. *Transl. Psychiatry* 12, 55.
814 <https://doi.org/10.1038/s41398-022-01819-y>

Donnelly et al: Immuno-metabolic Signatures of Depressive Symptoms

- 815 Goulding, N., Goudswaard, L.J., Hughes, D.A., Corbin, L.J., Groom, A., Ring, S.,
816 Timpson, N.J., Fraser, A., Northstone, K., Suderman, M., 2022. Inflammation
817 proteomics datasets in the ALSPAC cohort [version 1; peer review: 1
818 approved, 1 approved with reservations]. Wellcome Open Res.
819 <https://doi.org/10.12688/wellcomeopenres.18482>.
- 820 Harris, P.A., Taylor, R., Minor, B.L., Elliott, V., Fernandez, M., O'Neal, L., McLeod,
821 L., Delacqua, G., Delacqua, F., Kirby, J., Duda, S.N., REDCap Consortium,
822 2019. The REDCap consortium: Building an international community of
823 software platform partners. *J. Biomed. Inform.* 95, 103208.
824 <https://doi.org/10.1016/j.jbi.2019.103208>
- 825 Harris, P.A., Taylor, R., Thielke, R., Payne, J., Gonzalez, N., Conde, J.G., 2009.
826 Research electronic data capture (REDCap)--a metadata-driven methodology
827 and workflow process for providing translational research informatics support.
828 *J. Biomed. Inform.* 42, 377–381. <https://doi.org/10.1016/j.jbi.2008.08.010>
- 829 Houtepen, L.C., Heron, J., Suderman, M.J., Tilling, K., Howe, L.D., 2018. Adverse
830 childhood experiences in the children of the Avon Longitudinal Study of
831 Parents and Children (ALSPAC). *Wellcome Open Res.* 3, 106.
832 <https://doi.org/10.12688/wellcomeopenres.14716.1>
- 833 Jensen, S.B., Sheikh, M.A., Akkouch, I.A., Szabo, A., O'Connell, K.S., Lekva, T.,
834 Engh, J.A., Agartz, I., Elvsåshagen, T., Ormerod, M.B.E.G., Weibell, M.A.,
835 Johnsen, E., Kroken, R.A., Melle, I., Drange, O.K., Nærland, T., Vaaler, A.E.,
836 Westlye, L.T., Aukrust, P., Djurovic, S., Eiel Steen, N., Andreassen, O.A.,
837 Ueland, T., 2023. Elevated Systemic Levels of Markers Reflecting Intestinal
838 Barrier Dysfunction and Inflammasome Activation Are Correlated in Severe
839 Mental Illness. *Schizophr. Bull.* 49, 635–645.
840 <https://doi.org/10.1093/schbul/sbac191>
- 841 Kappelmann, N., Arloth, J., Georgakis, M.K., Czamara, D., Rost, N., Ligthart, S.,
842 Khandaker, G.M., Binder, E.B., 2021. Dissecting the Association Between
843 Inflammation, Metabolic Dysregulation, and Specific Depressive Symptoms: A
844 Genetic Correlation and 2-Sample Mendelian Randomization Study. *JAMA*
845 *Psychiatry* 78, 161–170. <https://doi.org/10.1001/jamapsychiatry.2020.3436>
- 846 Kir, S., Beddow, S.A., Samuel, V.T., Miller, P., Previs, S.F., Suino-Powell, K., Xu,
847 H.E., Shulman, G.I., Kliewer, S.A., Mangelsdorf, D.J., 2011. FGF19 as a
848 Postprandial, Insulin-Independent Activator of Hepatic Protein and Glycogen
849 Synthesis. *Science* 331, 1621–1624. <https://doi.org/10.1126/science.1198363>
- 850 Korthauer, K., Kimes, P.K., Duvallet, C., Reyes, A., Subramanian, A., Teng, M.,
851 Shukla, C., Alm, E.J., Hicks, S.C., 2019. A practical guide to methods
852 controlling false discoveries in computational biology. *Genome Biol.* 20, 118.
853 <https://doi.org/10.1186/s13059-019-1716-1>
- 854 Lamers, F., Milaneschi, Y., Vinkers, C.H., Schoevers, R.A., Giltay, E.J., Penninx,
855 B.W.J.H., 2020. Depression profilers and immuno-metabolic dysregulation:
856 Longitudinal results from the NESDA study. *Brain. Behav. Immun.* 88, 174–
857 183. <https://doi.org/10.1016/j.bbi.2020.04.002>
- 858 Lewis, G., Pelosi, A.J., Araya, R., Dunn, G., 1992. Measuring psychiatric disorder in
859 the community: a standardized assessment for use by lay interviewers.
860 *Psychol. Med.* 22, 465–486. <https://doi.org/10.1017/s0033291700030415>
- 861 Lynall, M.-E., Turner, L., Bhatti, J., Cavanagh, J., de Boer, P., Mondelli, V., Jones,
862 D., Drevets, W.C., Cowen, P., Harrison, N.A., Pariante, C.M., Pointon, L.,
863 Clatworthy, M.R., Bullmore, E., Neuroimmunology of Mood Disorders and
864 Alzheimer's Disease (NIMA) Consortium, 2020. Peripheral Blood Cell-

Donnelly et al: Immuno-metabolic Signatures of Depressive Symptoms

- 865 Stratified Subgroups of Inflamed Depression. *Biol. Psychiatry* 88, 185–196.
866 <https://doi.org/10.1016/j.biopsych.2019.11.017>
- 867 Milaneschi, Y., Kappelmann, N., Ye, Z., Lamers, F., Moser, S., Jones, P.B., Burgess,
868 S., Penninx, B.W.J.H., Khandaker, G.M., 2021. Association of inflammation
869 with depression and anxiety: evidence for symptom-specificity and potential
870 causality from UK Biobank and NESDA cohorts. *Mol. Psychiatry*.
871 <https://doi.org/10.1038/s41380-021-01188-w>
- 872 Mossaheb, N., Becker, J., Schaefer, M.R., Klier, C.M., Schloegelhofer, M.,
873 Papageorgiou, K., Amminger, G.P., 2012. The Community Assessment of
874 Psychic Experience (CAPE) questionnaire as a screening-instrument in the
875 detection of individuals at ultra-high risk for psychosis. *Schizophr. Res.* 141,
876 210–214. <https://doi.org/10.1016/j.schres.2012.08.008>
- 877 Northstone, K., Lewcock, M., Groom, A., Boyd, A., Macleod, J., Timpson, N., Wells,
878 N., 2019. The Avon Longitudinal Study of Parents and Children (ALSPAC): an
879 update on the enrolled sample of index children in 2019. *Wellcome Open Res.*
880 4, 51. <https://doi.org/10.12688/wellcomeopenres.15132.1>
- 881 Office for National Statistics, 2021. Depression or anxiety in adults, Great Britain: 22
882 September to 3 October 2021 [WWW Document]. URL
883 [https://www.ons.gov.uk/peoplepopulationandcommunity/healthandsocialcare/
884 mentalhealth/adhocs/13844depressionoranxietyinadultsgreatbritain22septem
885 berto3october2021](https://www.ons.gov.uk/peoplepopulationandcommunity/healthandsocialcare/mentalhealth/adhocs/13844depressionoranxietyinadultsgreatbritain22septem) (accessed 11.12.23).
- 886 Osimo, E.F., Pillinger, T., Rodriguez, I.M., Khandaker, G.M., Pariante, C.M., Howes,
887 O.D., 2020. Inflammatory markers in depression: A meta-analysis of mean
888 differences and variability in 5,166 patients and 5,083 controls. *Brain. Behav.*
889 *Immun.* 87, 901–909. <https://doi.org/10.1016/j.bbi.2020.02.010>
- 890 Palmer, E.R., Morales-Muñoz, I., Perry, B.I., Marwaha, S., Warwick, E., Rogers,
891 J.C., Uptegrove, R., 2024. Trajectories of Inflammation in Youth and Risk of
892 Mental and Cardiometabolic Disorders in Adulthood. *JAMA Psychiatry* 81,
893 1130–1137. <https://doi.org/10.1001/jamapsychiatry.2024.2193>
- 894 Perry, B.I., Stochl, J., Uptegrove, R., Zammit, S., Wareham, N., Langenberg, C.,
895 Winpenny, E., Dunger, D., Jones, P.B., Khandaker, G.M., 2021a. Longitudinal
896 Trends in Childhood Insulin Levels and Body Mass Index and Associations
897 With Risks of Psychosis and Depression in Young Adults. *JAMA Psychiatry*.
898 <https://doi.org/10.1001/jamapsychiatry.2020.4180>
- 899 Perry, B.I., Uptegrove, R., Kappelmann, N., Jones, P.B., Burgess, S., Khandaker,
900 G.M., 2021b. Associations of Immunological Proteins/Traits with
901 Schizophrenia, Major Depression and Bipolar Disorder: A Bi-Directional Two-
902 Sample Mendelian Randomization Study. *Brain. Behav. Immun.* 97, 176–185.
903 <https://doi.org/10.1016/j.bbi.2021.07.009>
- 904 Poletti, S., Vai, B., Mazza, M.G., Zanardi, R., Lorenzi, C., Calesella, F., Cazzetta, S.,
905 Branchi, I., Colombo, C., Furlan, R., Benedetti, F., 2021. A peripheral
906 inflammatory signature discriminates bipolar from unipolar depression: A
907 machine learning approach. *Prog. Neuropsychopharmacol. Biol. Psychiatry*
908 105, 110136. <https://doi.org/10.1016/j.pnpbp.2020.110136>
- 909 Post, A., Dam, W.A., Sokooti, S., Groothof, D., Gloerich, J., van Gool, A.J., Kremer,
910 D., Gansevoort, R.T., van den Born, J., Kema, I.P., Franssen, C.F.M.,
911 Dullaart, R.P.F., Bakker, S.J.L., 2023. Circulating FGF21 Concentration,
912 Fasting Plasma Glucose, and the Risk of Type 2 Diabetes: Results From the
913 PREVEND Study. *J. Clin. Endocrinol. Metab.* 108, 1387–1393.
914 <https://doi.org/10.1210/clinem/dgac729>

Donnelly et al: Immuno-metabolic Signatures of Depressive Symptoms

- 915 Price, G.D., Collins, A.C., Mackin, D.M., Heinz, M.V., Jacobson, N.C., 2025. Use of
916 passively collected actigraphy data to detect individual depressive symptoms
917 in a clinical subpopulation and a general population. *J. Psychopathol. Clin.*
918 *Sci.* 134, 31–40. <https://doi.org/10.1037/abn0000933>
- 919 R Development Core Team, 2017. R: A Language and environment for statistical
920 computing. Vienna Austria R Found. Stat. Comput.
- 921 Rhew, I.C., Simpson, K., Tracy, M., Lymp, J., McCauley, E., Tsuang, D., Stoep, A.V.,
922 2010. Criterion validity of the Short Mood and Feelings Questionnaire and
923 one- and two-item depression screens in young adolescents. *Child Adolesc.*
924 *Psychiatry Ment. Health* 4, 8. <https://doi.org/10.1186/1753-2000-4-8>
- 925 Rohart, F., Gautier, B., Singh, A., Lê Cao, K.-A., 2017. mixOmics: An R package for
926 'omics feature selection and multiple data integration. *PLoS Comput. Biol.* 13,
927 e1005752. <https://doi.org/10.1371/journal.pcbi.1005752>
- 928 Segal, A., Parkes, L., Aquino, K., Kia, S.M., Wolfers, T., Franke, B., Hoogman, M.,
929 Beckmann, C.F., Westlye, L.T., Andreassen, O.A., Zalesky, A., Harrison, B.J.,
930 Davey, C.G., Soriano-Mas, C., Cardoner, N., Tiego, J., Yücel, M., Braganza,
931 L., Suo, C., Berk, M., Cotton, S., Bellgrove, M.A., Marquand, A.F., Fornito, A.,
932 2023. Regional, circuit and network heterogeneity of brain abnormalities in
933 psychiatric disorders. *Nat. Neurosci.* 1–17. [https://doi.org/10.1038/s41593-](https://doi.org/10.1038/s41593-023-01404-6)
934 [023-01404-6](https://doi.org/10.1038/s41593-023-01404-6)
- 935 Shao, W., Jin, T., 2022. Hepatic hormone FGF21 and its analogues in clinical trials.
936 *Chronic Dis. Transl. Med.* 8, 19–25.
937 <https://doi.org/10.1016/j.cdtm.2021.08.005>
- 938 Sun, B.B., Chiou, J., Traylor, M., Benner, C., Hsu, Y.-H., Richardson, T.G.,
939 Surendran, P., Mahajan, A., Robins, C., Vasquez-Grinnell, S.G., Hou, L.,
940 Kvikstad, E.M., Burren, O.S., Davitte, J., Ferber, K.L., Gillies, C.E., Hedman,
941 Å.K., Hu, S., Lin, T., Mikkilineni, R., Pendergrass, R.K., Pickering, C., Prins,
942 B., Baird, D., Chen, C.-Y., Ward, L.D., Deaton, A.M., Welsh, S., Willis, C.M.,
943 Lehner, N., Arnold, M., Wörheide, M.A., Suhre, K., Kastenmüller, G., Sethi, A.,
944 Cule, M., Raj, A., Kang, Hyun Ming, Burkitt-Gray, L., Melamud, E., Black,
945 M.H., Fauman, E.B., Howson, J.M.M., Kang, Hyun Min, McCarthy, M.I., Nioi,
946 P., Petrovski, S., Scott, R.A., Smith, E.N., Szalma, S., Waterworth, D.M.,
947 Mitnau, L.J., Szustakowski, J.D., Gibson, B.W., Miller, M.R., Whelan, C.D.,
948 2023. Plasma proteomic associations with genetics and health in the UK
949 Biobank. *Nature* 622, 329–338. <https://doi.org/10.1038/s41586-023-06592-6>
- 950 Tennant, P.W.G., Murray, E.J., Arnold, K.F., Berrie, L., Fox, M.P., Gadd, S.C.,
951 Harrison, W.J., Keeble, C., Ranker, L.R., Textor, J., Tomova, G.D., Gilthorpe,
952 M.S., Ellison, G.T.H., 2021. Use of directed acyclic graphs (DAGs) to identify
953 confounders in applied health research: review and recommendations. *Int. J.*
954 *Epidemiol.* 50, 620–632. <https://doi.org/10.1093/ije/dyaa213>
- 955 Thorp, J.G., Marees, A.T., Ong, J.-S., An, J., MacGregor, S., Derks, E.M., 2020.
956 Genetic heterogeneity in self-reported depressive symptoms identified
957 through genetic analyses of the PHQ-9. *Psychol. Med.* 50, 2385–2396.
958 <https://doi.org/10.1017/S0033291719002526>
- 959 Tozzi, L., Zhang, X., Pines, A., Olmsted, A.M., Zhai, E.S., Anene, E.T., Chesnut, M.,
960 Holt-Gosselin, B., Chang, S., Stetz, P.C., Ramirez, C.A., Hack, L.M.,
961 Korgaonkar, M.S., Wintermark, M., Gotlib, I.H., Ma, J., Williams, L.M., 2024.
962 Personalized brain circuit scores identify clinically distinct biotypes in
963 depression and anxiety. *Nat. Med.* 30, 2076–2087.
964 <https://doi.org/10.1038/s41591-024-03057-9>

Donnelly et al: Immuno-metabolic Signatures of Depressive Symptoms

- 965 Winter, N.R., Blanke, J., Leenings, R., Ernsting, J., Fisch, L., Sarink, K., Barkhau, C.,
966 Emden, D., Thiel, K., Flinkenflügel, K., Winter, A., Goltermann, J., Meinert, S.,
967 Dohm, K., Repple, J., Gruber, M., Leehr, E.J., Opel, N., Grotegerd, D.,
968 Redlich, R., Nitsch, R., Bauer, J., Heindel, W., Gross, J., Risse, B., Andlauer,
969 T.F.M., Forstner, A.J., Nöthen, M.M., Rietschel, M., Hofmann, S.G., Pfarr, J.-
970 K., Teutenberg, L., Usemann, P., Thomas-Odenthal, F., Wroblewski, A.,
971 Brosch, K., Stein, F., Jansen, A., Jamalabadi, H., Alexander, N., Straube, B.,
972 Nenadic, I., Kircher, T., Dannlowski, U., Hahn, T., 2024. A Systematic
973 Evaluation of Machine Learning-Based Biomarkers for Major Depressive
974 Disorder. *JAMA Psychiatry* e235083.
975 <https://doi.org/10.1001/jamapsychiatry.2023.5083>
976 Wurbel, M.-A., McIntire, M.G., Dwyer, P., Fiebiger, E., 2011. CCL25/CCR9
977 interactions regulate large intestinal inflammation in a murine model of acute
978 colitis. *PLoS One* 6, e16442. <https://doi.org/10.1371/journal.pone.0016442>
979 Xie, Y., Choi, T., Al-Aly, Z., 2025. Mapping the effectiveness and risks of GLP-1
980 receptor agonists. *Nat. Med.* 1–12. [https://doi.org/10.1038/s41591-024-03412-](https://doi.org/10.1038/s41591-024-03412-w)
981 [w](https://doi.org/10.1038/s41591-024-03412-w)
982 Zelber-Sagi, S., Toker, S., Armon, G., Melamed, S., Berliner, S., Shapira, I., Halpern,
983 Z., Santo, E., Shibolet, O., 2013. Elevated alanine aminotransferase
984 independently predicts new onset of depression in employees undergoing
985 health screening examinations. *Psychol. Med.* 43, 2603–2613.
986 <https://doi.org/10.1017/S0033291713000500>
987 Zhang, L., Hu, X.-Z., Li, X., Chen, Z., Benedek, D.M., Fullerton, C.S., Wynn, G.,
988 Biomarker team, Ursano, R.J., 2020. Potential chemokine biomarkers
989 associated with PTSD onset, risk and resilience as well as stress responses
990 in US military service members. *Transl. Psychiatry* 10, 31.
991 <https://doi.org/10.1038/s41398-020-0693-1>
992 Zhang, Z., Robinson, L., Whelan, R., Jollans, L., Wang, Z., Nees, F., Chu, C.,
993 Bobou, M., Du, D., Cristea, I., Banaschewski, T., Barker, G.J., Bokde, A.L.W.,
994 Grigis, A., Garavan, H., Heinz, A., Brühl, R., Martinot, J.-L., Martinot, M.-L.P.,
995 Artiges, E., Orfanos, D.P., Poustka, L., Hohmann, S., Millenet, S., Fröhner,
996 J.H., Smolka, M.N., Vaidya, N., Walter, H., Winterer, J., Broulidakis, M.J., van
997 Noort, B.M., Stringaris, A., Penttilä, J., Grimmer, Y., Insensee, C., Becker, A.,
998 Zhang, Y., King, S., Sinclair, J., Schumann, G., Schmidt, U., Desrivières, S.,
999 2024. Machine learning models for diagnosis and risk prediction in eating
1000 disorders, depression, and alcohol use disorder. *J. Affect. Disord.* S0165-
1001 0327(24)02041-X. <https://doi.org/10.1016/j.jad.2024.12.053>
1002