

# Predictors and Risk Score for Immune Checkpoint-Inhibitor-Associated Myocarditis Severity

John R. Power MD<sup>1\*</sup>, Charles Dolladille MD PhD<sup>2\*</sup>, Benay Ozbay MD<sup>3</sup>, Adrien Procureur MD<sup>2</sup>, Stephane Ederhy MD<sup>2</sup>, Nicolas L. Palaskas MD<sup>4</sup>, Lorenz H. Lehmann MD<sup>5</sup>, Jennifer Cautela MD<sup>6</sup>, Pierre-Yves Courand MD PhD<sup>7</sup>, Salim S. Hayek MD PhD<sup>8</sup>, Han Zhu MD<sup>9</sup> Vlad G. Zaha MD PhD<sup>10</sup>, Richard K. Cheng MD MSc<sup>11</sup>, Joachim Alexandre MD PhD<sup>12</sup>, François Roubille MD<sup>13</sup>, Lauren A. Baldassarre MD<sup>14</sup>, Yen-Chou Chen MD MS<sup>15</sup>, Alan H. Baik MD<sup>15</sup>, Michal Laufer-Perl MD<sup>16</sup>, Yuichi Tamura MD PhD<sup>17</sup>, Aarti Asnani MD<sup>18</sup>, Sanjeev Francis MD<sup>19</sup>, Elizabeth M. Gaughan MD<sup>20</sup>, Peter P. Rainer MD PhD<sup>21</sup>, Guillaume Bailly MD<sup>22</sup>, Danette Flint MD<sup>23</sup>, Dimitri Arangalage MD PhD<sup>24</sup>, Eve Cariou MD<sup>25</sup>, Roberta Florido MD MHS<sup>26</sup>, Anna Narezkina MD<sup>1</sup>, Yan Liu MD PhD<sup>27</sup>, Shahneen Sandhu MD<sup>28</sup>, Darryl Leong MD PhD<sup>29</sup>, Nahema Issa MD<sup>30</sup>, Nicolas Piriou MD<sup>31</sup>, Lucie Heinzerling MD PhD<sup>32</sup>, Giovanni Peretto MD<sup>33</sup>, Shanthini M. Crusz MD<sup>34</sup>, Nausheen Akhter MD<sup>35</sup>, Joshua E Levenson MD<sup>3</sup>, Isik Turker MD MSCI<sup>36</sup>, Assié Eslami MD<sup>37</sup>, Charlotte Fenioux MD<sup>38</sup>, Pedro Moliner MD PhD<sup>39</sup>, Michel Obeid MD PhD<sup>40</sup>, Wei Ting Chan MD<sup>41</sup>, Stephen M. Ewer MD<sup>42</sup>, Seyed Ebrahim Kassaian MD<sup>43</sup>, International ICI-Myocarditis Registry, Douglas B. Johnson MD MSCI<sup>44</sup>, Anju Nohria MD MSc<sup>45</sup>, Osnat Itzhaki Ben Zadok MD MSc<sup>45</sup>, Javid J. Moselehi MD<sup>15</sup>, Joe-Elie Salem MD PhD<sup>2</sup>

\*These authors have contributed equally

**Affiliations:** 1) University of California San Diego 2) Sorbonne University, APHP, INSERM, CIC-1901, Hopital Pitié-Salpêtrière, Paris, France 3) University of Pittsburgh Medical Center 4) University of Texas MD Anderson Cancer Center 5) Heidelberg University Hospital 6) Aix-Marseille University; University Mediterranean Center of Cardio-Oncology ; North Hospital, Assistance Publique – Hôpitaux de Marseille 7) Hospices Civils de Lyon, Claude Bernard Lyon 1 University 8) University of Michigan 9) Stanford University 10) University of Texas Southwestern Medical Center 11) University of Washington 12) Normandie Univ, UNICAEN, INSERM U1086 ANTICIPE; Caen-Normandy University Hospital 13) CHU Montpellier 14) Yale School of Medicine 15) University of California San Francisco 16) Tel Aviv Sourasky Medical Center, School of Medicine, Tel Aviv University 17) IUHW Mita Hospital 18) Beth Israel Deaconess Medical Center 19) Maine Medical Center 20) University of Virginia 21) Medical University of Graz; BioTechMed Graz; St. Johann in Tirol General Hospital 22) APHP Hopital Lariboisiere 23) Dartmouth Hitchcock Medical Center 24) APHP Hopital Bichat 25) CHU Rangueil Toulouse 26) University of Utah 27) University of Texas at Austin Ascension Seton 28) Peter MacCallum Cancer Centre 29) Mc Master University 30) Bordeaux university hospital 31) CHU Nantes 32) University Hospital, LMU Munich, University Hospital Erlangen 33) Disease Unit for Myocarditis and Arrhythmogenic Cardiomyopathies, IRCCS San Raffaele Scientific Institute 34) Barts Health NHS Trust 35) Northwestern University 36) Washington University 37) Hôpital Européen Georges Pompidou, Université Paris Cité 38) APHP Hopital Henri Mondor 39) Bellvitge University Hospital - Catalan Institute of Oncology, IDIBELL, CIBERCV 40) Centre Hospitalier Universitaire Vaudois 41) Chi Mei Medical Center 42) University of Wisconsin School of Medicine and Public Health 43) Medstar Washington Hospital Center 44) Vanderbilt University Medical Center 45) Mass General Brigham

**Word Count(article):** 3045

**Tables + Figures:** 4

**Corresponding Authors:**

1 *Joe-Elie Salem*, Clinical Investigation Center Paris-Est, CIC-1901, Department of Pharmacology, Pitié-  
2 Salpêtrière University Hospital, Sorbonne Université; 47 Boulevard de l'Hopital, 75013 PARIS ; [joe-](mailto:joe-elie.salem@aphp.fr)  
3 [elie.salem@aphp.fr](mailto:joe-elie.salem@aphp.fr), ORCID : 0000-0002-0331-3307 or

4 *Javid J Moslehi*, Section of Cardio-Oncology & Immunology, Division of Cardiology and the Cardiovascular  
5 Research Institute, University of California San Francisco, 555 Mission Bay Blvd South, Box 3118, San  
6 Francisco, CA 94143-3118, Phone: 415-514-2140; Fax: 415-476-9802; Email: [javid.moslehi@ucsf.edu](mailto:javid.moslehi@ucsf.edu)

7

1 **Abstract (281/350)**

2 **Background:** Immune-checkpoint inhibitors (ICI) are associated with life-threatening myocarditis but  
3 milder presentations are increasingly recognized. The same autoimmune process that causes ICI-  
4 myocarditis can manifest concurrent generalized myositis, myasthenia-like syndrome, and respiratory  
5 muscle failure. Prognostic factors for this “cardiomyotoxicity” are lacking.

6 **Methods:** A multicenter registry collected data retrospectively from 17 countries between 2014-2023. A  
7 multivariable cox regression model (hazard-ratio(HR), [95% confidence-interval]) was used to determine  
8 risk factors for the primary composite outcome: severe arrhythmia, heart failure, respiratory muscle  
9 failure, and/or cardiomyotoxicity-related death. Covariates included demographics, comorbidities,  
10 cardio-muscular symptoms, diagnostics, and treatments. Time-dependent covariates were used and  
11 missing data were imputed. A point-based prognostic risk score was derived and externally validated.

12 **Results:** In 748 patients (67% male, age 23-94), 30-days incidence of the primary composite outcome,  
13 cardiomyotoxic death, and overall death were 33%, 13%, and 17% respectively. By multivariable analysis,  
14 the primary composite outcome was associated with active thymoma (HR=3.60[1.93-6.72]), presence of  
15 cardio-muscular symptoms (HR=2.60 [1.58-4.28]), low QRS-voltage on presenting electrocardiogram (HR  
16 for  $\leq 0.5\text{mV}$  versus  $>1\text{mV}$ =2.08[1.31-3.30]), left ventricular ejection fraction (LVEF)  $<50\%$  (HR=1.78[1.22-  
17 2.60]), and incremental troponin elevation (HR=1.86 [1.44-2.39], 2.99[1.91-4.65], 4.80[2.54-9.08], for 20,  
18 200 and 2000-fold above upper reference limit, respectively). A prognostic risk score developed using  
19 these parameters showed good performance; 30-days primary outcome incidence increased gradually  
20 from 3.9%(risk-score=0) to 81.3%(risk-score $\geq 4$ ). This risk-score was externally validated in two  
21 independent French and US cohorts. This risk score was used prospectively in the external French cohort

1 to identify low risk patients who were managed with no immunosuppression resulting in no cardio-  
2 myotoxic events.

3 **Conclusions:** ICI-myocarditis can manifest with high morbidity and mortality. Myocarditis severity is  
4 associated with magnitude of troponin, thymoma, low-QRS voltage, depressed LVEF, and cardio-  
5 muscular symptoms. A risk-score incorporating these features performed well.

6 **Trial registration number:** *NCT04294771 and NCT05454527*

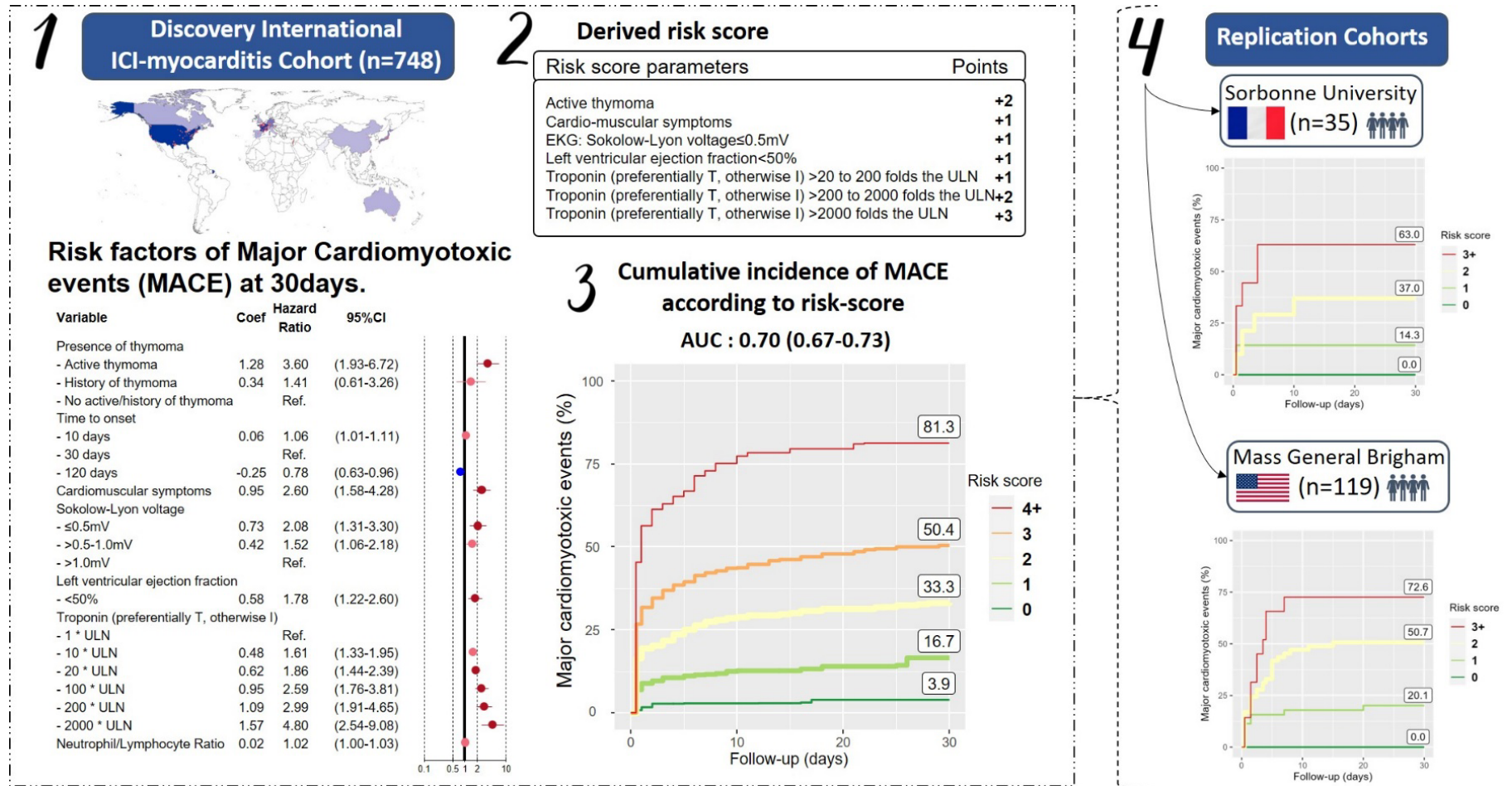
7 **Key Words (6/6):** Myocarditis, immunotherapy, risk-score, mortality, myositis, cardio-oncology

1 **Structured Graphical Abstract (39/40)**

2 **Key Question:** What predicts poor prognosis in ICI-associated myocarditis?

3 **Key Finding:** Troponin, thymoma, cardio-muscular symptoms, low QRS-voltage, and LVEF predicted negative outcomes. A risk score containing these features performed well.

5 **Take-Home Message:** ICI-myocarditis is part of a generalized myotoxicity and early risk-stratified early is possible.



6

## 1 **Introduction**

2 Immune checkpoint inhibitors (ICI) have emerged as a mainstay of cancer therapy with  
3 widespread adoption across multiple tumor types and clinical settings. Almost 50% of patients with  
4 cancer are currently eligible for ICI therapy.<sup>1</sup> ICI activate the immune system with anti-tumor effects but  
5 cause immune related adverse events (irAE) in 70-90% of patients.<sup>2-4</sup> IrAE can affect any organ including  
6 cardio-muscular tissues and range from mild to fatal.<sup>1,5-8</sup> ICI-myocarditis, which occurs in 0.3-1% of ICI  
7 recipients, is the most fatal irAE with mortality estimated at 30-50% in early studies.<sup>5,7,9</sup> However, ICI-  
8 myocarditis severity is heterogeneous; while asymptomatic cases are increasingly recognized, others  
9 patients experience life-threatening arrhythmias, cardiogenic shock, or severe concomitant myositis with  
10 respiratory muscle failure.<sup>5,10</sup> Triage and management of this rare condition remains a significant  
11 challenge even for advanced multidisciplinary teams.

12 To date, prognostic studies of ICI-myocarditis have used pharmacovigilance datasets or cohorts  
13 less than 150 patients, without external validation and with differing results.<sup>7,9,11,12</sup> Proposed predictors  
14 of severity include combination ICI treatment, elevated biomarkers, conduction delays, systolic  
15 dysfunction, inadequate immunosuppression, and simultaneous myasthenia or myositis irAE. Since these  
16 features often coexist, reconciling these data is challenging. Consequently, major knowledge gaps remain  
17 in selecting the appropriate level of care and immunosuppression strategy for ICI-myocarditis. To  
18 address this, we leveraged a web-based platform and built a multicenter registry with approximately 750  
19 adjudicated cases of ICI-myocarditis. In this work, we use this cohort to perform a comprehensive  
20 multivariable analysis of predictors of severe outcomes in ICI-myocarditis. We then generated and  
21 externally validated a risk score to assist clinicians in risk stratification and treatment decisions.

## 1 **Methods**

### 2 **Data Collection**

3           A retrospective registry spanning 127 institutions across 17 countries containing 757 cases of ICI-  
4 myocarditis diagnosed by treating clinicians was used as a discovery cohort ([Table S1](#), [Figure S1](#) for  
5 collaborators). Clinical data were locally adjudicated and submitted by participating centers via a HIPPA-  
6 compliant REDCap web-based platform (IRB:181337; NCT04294771). Submissions were reviewed and  
7 cases were rejected when evidence did not meet Bonaca's diagnostic criteria for myocarditis, a  
8 hierarchical definition incorporating the availability and strength of diagnostic data.<sup>13</sup> Electrocardiograms  
9 (ECG) on presentation were independently interpreted by two cardiologists (B.O. and C.D) blinded to  
10 specific cases who performed quantitative measurements (Sokolow-Lyon Index, PR, and QRS length) and  
11 identified qualitative features (methods previously published).<sup>14,15</sup> The primary outcome, major cardio-  
12 myotoxic events, was defined as any of the following: 1) severe heart failure requiring either intravenous  
13 medicines or mechanical circulatory support 2) severe arrhythmia defined as sustained ventricular  
14 arrhythmia, complete heart block, sudden cardiac death, use of atropine or isoproterenol, and/or use of  
15 pacemaker/defibrillator 3) respiratory failure due to myositis-related respiratory muscles failure  
16 requiring ventilation and/or 4) death due to these conditions (henceforth referred to as cardio-  
17 myotoxicities). Respiratory muscle failure was included to reflect contemporary understanding of ICI-  
18 myocarditis as part of a generalized skeletal myositis that can impair ventilation.<sup>5,8,16,17</sup> The study period  
19 ended 30 days after clinical presentation with ICI-myocarditis to avoid including unrelated endpoints.  
20 Cases were excluded if the primary outcome was met more than 24 hours prior to presentation (n=9),  
21 leaving 748 cases for analysis.

1 Two external independent validation ICI-myocarditis cohorts (using the updated Bonaca’s criteria)  
2 were obtained from Sorbonne University (SU, Paris, France) (prospective cohort of 35 consecutive cases  
3 presenting between April 2023 and April 2024 where the risk score was used to guide treatment;  
4 *NCT05454527*)<sup>5,18</sup> and Mass General Brigham (MGB, Boston, USA) (retrospective cohort of 119  
5 consecutive cases presenting between January 2015 and June 2022, with enough available elements to  
6 compute the replication),<sup>19</sup> both collected after derivation of a risk-score from the discovery cohort. The  
7 same inclusion and exclusion criteria, and outcomes definition from the discovery cohort were applied.

## 8 **Statistical Analysis**

### 9 *Explanatory model*

10 A univariate cox regression model was used to evaluate the association of clinical variables with  
11 major cardio-myotoxic events in the discovery cohort. Independent variables spanned past medical  
12 history, objective data collected during the ICI-myocarditis evaluation, and immunosuppressant use.  
13 Troponin, creatine-kinase, cardio-muscular symptoms, left ventricular ejection fraction(LVEF), and  
14 immunosuppressant use were treated as time-dependent covariates to prevent survivorship bias.  
15 Troponin and creatine-kinase were divided by the contributing institution’s upper limit of normal (ULN).  
16 When both cardiac troponin-T and troponin-I were collected, troponin-T was preferentially used.<sup>18</sup> A  
17 multivariable explanatory model tested pre-selected variables based upon available evidence and clinical  
18 experience. Multivariable analysis was performed after multiple imputation by chained equations of  
19 missing data using 50 imputed datasets. Imputed results were merged according to Rubin’s rule.<sup>20</sup>

20

21



1 Predictive model

2 Starting from an empty predictive model, a stepwise selection procedure was performed using  
3 Schwartz Criteria to select the most impactful variables. The untransformed coefficients of these  
4 variables were used to derive a risk score for predicting the primary outcome with one point assigned for  
5 a coefficient of 0.5-1, two points for a coefficient of >1-1.5, and three points for a coefficient >1.5.  
6 Internal validation was performed with K-fold cross-validation with k-set of 10. External validation was  
7 performed on the two external validation ICI-myocarditis cohorts. For both internal and external  
8 validation, Harrell's c-index assessed the risk score's goodness-of-fit using serial models on days 1-3.  
9 Confidence intervals were obtained with bootstrap, using up to 1000 bootstrap replicates. Sensitivity  
10 analysis was performed with an unimputed dataset as well as a competing risk model to account for  
11 death from other causes. Analyses were conducted with R-v.4.2.2 for Windows, and the R-packages  
12 survival, mice, boot and rms. A two-sided p-value<0.05 was deemed significant.

13

14

## 1 **Results**

### 2 **Patient Characteristics and Outcomes**

3           Among 748 cases of ICI-myocarditis, median(interquartile-range) age was 69(61-77) and 33%  
4 were female ([Table-1](#) for the baseline characteristics). Median time from first ICI dose to myocarditis  
5 presentation was 40(23-77) days with 21% patients receiving combination ICI and 79% receiving ICI  
6 monotherapy (usually anti-PD-1). The most common primary cancers were skin (31%), lung (24%), and  
7 genitourinary (22%); 3% had a thymoma. Half the cohort was classified as definite myocarditis, and one  
8 quarter each as probable and possible. Among those who underwent cardiac MRI(n=459), studies were  
9 consistent with myocarditis in 64% patients and when endomyocardial biopsy or autopsy was performed  
10 (n=290), histopathology was consistent with myocarditis in 67% patients. Patients without supporting  
11 MRI or histopathology met myocarditis criteria by other diagnostics; 84% had cardio-muscular symptoms  
12 within 72h of presentation, 95% had elevated troponin, 94% had abnormal ECG, 42% had depressed  
13 LVEF, and 43% had either concomitant myositis or myasthenia gravis-like syndrome ([Figure-1A](#)).  
14 Corticosteroids were given to 83% of patients and 36% received non-steroidal immunomodulators.

15           The primary composite outcome of major cardio-myotoxic events occurred in one third of  
16 patients within one month of presentation. This included 118/748(16%) patients with heart failure,  
17 143/748(19%) with arrhythmia, 61/748(8%) with respiratory muscle failure, and 92/748(13%) with death  
18 due to cardio-myotoxicity ([Figure-1B](#) for the intersection of primary outcome components). Most cardio-  
19 myotoxicity events and related deaths occurred early in the 30-days study period while overall death  
20 (17%) was more evenly distributed ([Figure-1D](#) for event curves).

## 1 Explanatory Analysis

2 Multivariable modeling found that major cardio-myotoxic events were associated with active  
3 thymoma (HR=3.75[1.82-7.69]), recent ICI initiation (HR for 10 versus 30 days=1.06[1.01-1.11]),  
4 presenting ECG with low QRS-voltage (HR for  $\leq 0.5$ mV versus  $>1$ mV =1.88[1.15-3.07]), LVEF<50%  
5 (HR=1.78[1.19-2.67]), presence of cardio-muscular symptoms (HR=2.60[1.57-4.31]) and troponin  
6 elevation (HR=1.83[1.38-2.43], 2.91 [1.76-4.81], 4.63[2.25-9.53] for 20, 200 and 2000-fold increase over  
7 upper reference limit ([Figure-2A](#)). In this model, notable variables that showed no association with  
8 severe cardio-myotoxicity included age, sex, combination ICI therapy, corticosteroid dose, and use of  
9 non-steroidal immunomodulators.

10 Univariate analysis associated major cardio-myotoxic events with several features, some of which  
11 did not meet significance upon multivariable analysis. Those included high body mass index  
12 (HR=1.10[1.00-1.21]), cardio-muscular symptoms (HR=3.44[2.10-5.63]), pathological Q-waves  
13 (HR=1.96[1.34-2.89]), magnitude of QRS prolongation (HR=1.64[1.18-2.27] for 150ms vs. 90ms), elevated  
14 creatine kinase (HR for 50-fold increase over ULN=2.44[1.77-3.35]), elevated neutrophil-to-lymphocyte  
15 ratio (HR=1.03[1.01-1.04]), and treatment with non-steroidal immunomodulators (HR=1.98[1.34-2.94])  
16 ([Figure S2A](#)). The incremental association of severe cardio-myotoxicity with continuous variables on day  
17 of presentation including biomarkers, ECG, LVEF, and time to onset are displayed in [Figure S3](#). Similar  
18 results were found when multivariable modeling was performed on an unimputed complete dataset  
19 ([Figure S2B](#)). A competing risk analysis correcting for the effect of death due to other causes had overall  
20 unchanged findings and effect size compared to the original multivariable model ([Figure S4](#)).

## 1 Predictive Analysis and Risk Score

2 A stepwise variable selection procedure identified the strongest predictors of the composite  
3 major cardio-myotoxic event outcome to be active thymoma (HR=3.60[1.93-6.72]), presence of cardio-  
4 muscular symptoms (HR=2.60[1.58-4.28]), low QRS-voltage on presenting electrocardiogram (HR for  
5  $\leq 0.5\text{mV}$  versus  $>1\text{mV}=2.08[1.31-3.30]$ ), LVEF<50% (HR=1.78[1.22-2.60]), and elevated troponin  
6 (HR=1.86[1.44-2.39], 2.99[1.91-4.65], 4.80[2.54-9.08], for 20, 200 and 2000-fold increase over  
7 institution's upper limit respectively) ([Figure-2B](#)). A risk score ranging from 0 to 8 was derived by  
8 assigning each predictor a value proportional to its respective regression coefficient: +2 for active  
9 thymoma, +1 for cardio-muscular symptoms, +1 for low QRS-voltage, +1 for LVEF<50%, and +1-3 points  
10 for degree of troponin elevation ([Figure-3A](#)). Classification of the cohort according to risk score on day of  
11 presentation showed 9% with 0 points, 29% with 1 point, 36% with 2 points, 18% with 3 points, and 4%  
12 with 4 or more points ([Figure-3B](#)). 30-days cumulative incidence of major cardio-myotoxic events was  
13 low at 3.9% for patients with risk score of 0 and increased proportionally as risk score increased with  
14 16.7% incidence for 1 point, 33.3% for 2 points, 50.4% for 3 points, and 81.3% for 4 or more points  
15 ([Figure-3C](#)). There was a 1.6% cumulative incidence of cardio-myotoxicity related death for a risk score of  
16 0 compared to 34.8% for a score $\geq 4$ . All components of the primary outcome increased incrementally  
17 with higher risk scores ([Figure-3D](#)).

## 18 Risk Score Validation

19 Internal validation of the risk score showed good performance with a c-index of 0.70[0.67-0.73]  
20 on day one and remained unchanged at 0.71[0.66-0.75] by day three ([Figure-S5](#)). A score of 0 had a  
21 negative predictive value of 97%[90-100] for severe myotoxicity and 98%[91-100] for myotoxicity-related  
22 death ([Table S3](#) for predictive properties per risk score value).

1           The external validation cohorts' characteristics are detailed in [Table-S2](#). Compared to the  
2 discovery cohort, the SU cohort had a higher proportion of score 0 (20%), but scores 1, 2, and 3+ were  
3 similar (31%, 31%, and 17%, respectively) to the discovery cohort ([Figure-S6](#)). The MGB cohort had  
4 almost no patients with score 0(<1%), but more with score 1(37%) and score 2(45%), and fewer with  
5 score 3+(18%). For risk score 0, 30-days cumulative incidence of major cardio-myotoxic events was 0% in  
6 both cohorts and increased incrementally for score 1(22.1% SU vs 20.1% MGB), score 2(39.8% SU vs  
7 50.7% MGB), and were highest for risk score 3+(63% SU vs 72.6% MGB) ([Figure-S6](#)). In the MGB cohort,  
8 the risk score had a c-index of 0.63(0.55-0.71) on day 1 which increased to 0.72(0.63-0.80) on day 2 and  
9 0.75(0.65-0.82) on day 3. In the SU cohort, the risk score had c-index of 0.75(0.53-0.86) on day 1 and  
10 0.74(0.52-0.87) on day 2. In both cohorts, a risk score of 0 had 100% negative predictive value ([Table-S3](#),  
11 [Figure-S5](#)). In the prospective SU validation cohort, all seven patients with risk score of 0 had ICI stopped  
12 but no immunosuppression given per a recently published therapeutic protocol.<sup>5</sup> There was no death or  
13 major cardiomyotoxic events in these seven patients over one month.

14

## 1 Discussion

2 ICI-myocarditis manifests with a wide range of severity. This study used a contemporary  
3 multicenter registry to follow 748 patients with ICI-myocarditis for one month after presentation,  
4 observing 13% mortality from cardio-myotoxicity. ICI-myocarditis was highly morbid with a primary  
5 composite outcome of severe heart failure, arrhythmia, respiratory muscle failure, and cardio-  
6 myotoxicity-related mortality occurring in 33% of patients. Multivariable analysis showed this primary  
7 outcome was associated with elevated troponin, thymoma, cardio-muscular symptoms, LVEF<50%, and  
8 ECG with low QRS-voltage. To avoid over-fitting and favor generalization, a simplified risk score was  
9 generated from these features which predicted adverse outcomes with good accuracy and very high  
10 negative predictive value. The risk score was externally validated in both a prospective cohort of 35  
11 patients at Sorbonne University (Paris, France) and a retrospective cohort of 119 patients at Mass  
12 General Brigham (Boston, USA). In the prospective cohort, all patients with a risk score of zero had ICI  
13 withheld and were managed without immunosuppressants with excellent outcomes.

14 While early reports of ICI-myocarditis estimated a mortality of 50%, this study's lower event rate  
15 is consistent with contemporary reports that include cases with less severe disease.<sup>9,11,21,22</sup> To date, few  
16 cohort studies have analyzed ICI-myocarditis outcomes with sample sizes ranging from 33 to 147. All  
17 studies used a major adverse cardiac event (MACE) primary outcome, typically including cardiovascular  
18 death, complete heart block, ventricular arrhythmias and/or cardiogenic shock.<sup>9,14,23-28</sup> Over 1-5 month  
19 follow-up, 23-64% MACE was observed, similar to our discovery cohort's major cardiomyotoxic event  
20 rate of 33% and our validation cohorts' rates of 31% (SU) and 41% (MGB). Our study used a 30-days  
21 surveillance period which reduced the cumulative event rate but prevented misattribution of late  
22 endpoints in this multimorbid population.

1 With 748 patients, this is the largest cohort of ICI-myocarditis ever studied. Unlike previous  
2 studies, this cohort also included patients with mild or sub-clinical ICI-myocarditis (~20% of the cohort)  
3 reflecting contemporary understanding that milder asymptomatic cases exist.<sup>5,21</sup> In contrast to previous  
4 studies only evaluating a limited number of predictors, our study's size allowed for a large multivariable  
5 analysis including variables implicated in previous studies as well as novel predictors. Consequently,  
6 previous associations with severe outcomes such as combination ICI therapy or corticosteroid use, were  
7 not found to be significant.<sup>9,24,26,27</sup> These findings reframe combination ICI therapy as a risk factor for  
8 developing myocarditis with little prognostic value when other variables are considered.<sup>11,29,30</sup> The lack  
9 of benefit with corticosteroids is provocative given their widespread use. In the discovery cohort, it is  
10 likely that immunosuppression was prescribed to sicker patients at higher risk for adverse events. On the  
11 other hand, the SU prospective validation cohort followed a pre-defined therapeutic algorithm where  
12 patients with risk score of 0 were managed without any immunosuppressants and had no major  
13 cardiomyotoxic events at one month. It is worth considering these findings in light of ongoing debates  
14 over appropriate corticosteroid dosing in ICI-myocarditis, high rates of corticosteroid resistance, and  
15 recent evidence of higher mortality in severe cases when corticosteroids are used as first line therapy  
16 without non-steroidal immunosuppressants.<sup>5,31,32</sup>

17 The strongest predictors of adverse outcomes identified in this study – troponin levels,  
18 thymoma, low QRS-voltage, LVEF and cardio-muscular symptoms – are logical from a mechanistic  
19 perspective. Troponin release is inherent to the inflammatory myocyte necrosis of myocarditis and has  
20 been demonstrated as a surrogate for disease severity in smaller studies.<sup>9,18,24</sup> While univariate analysis  
21 of creatine kinase showed significant association in this and other studies, the multivariable model did  
22 not, suggesting it may be confounded by other biomarkers, namely troponin.<sup>18,33</sup> While only 14/748 (2%)  
23 of patients in this study received ICI for active thymoma, these patients had nearly 4-fold higher severe

1 cardio-myotoxicity risk after multivariable adjustment. This is consistent with increased autoimmunity  
2 seen in thymic neoplasms and fits the leading hypothesis that ICI-myocarditis is associated with thymic  
3 dysregulation and generation of auto-reactive T-cells targeting cardio-muscular antigens and unleashed  
4 by ICI.<sup>8,34–36</sup> Similarly, the prognostic value of low QRS-voltage is also based in pathophysiology as  
5 immune infiltrates have been shown to directly impact myocyte electrophysiology and induce  
6 arrhythmias.<sup>14,37</sup>

7         The results of this analysis are compelling given their clinical utility. Factors such as troponin,  
8 symptoms, ECG features, LVEF and thymoma status can be promptly ascertained in ambulatory and  
9 emergency room settings. While advanced imaging or endomyocardial biopsy results have been linked to  
10 outcomes in previous studies, the inaccessibility of these resource-intensive diagnostics makes them  
11 impractical prognostic tools.<sup>23,25,38</sup> Separately, this study's identification of risk profiles complements  
12 ongoing efforts to optimize immunosuppression for the treatment of ICI-myocarditis. For example, while  
13 ruxolitinib and abatacept have been effectively used to treat severe ICI-myocarditis, asymptomatic cases  
14 without severity infra-clinical surrogates have been managed by simply stopping ICI without steroids or  
15 other immunosuppressants with good outcomes.<sup>5</sup> Two prospective randomized studies are currently  
16 testing abatacept treatment in ICI-myocarditis. While one trial only includes patients with suspected mild  
17 to moderate ICI-myocarditis without ventricular arrhythmias, high-degree atrio-ventricular blocks, or  
18 cardiogenic shock (NCT05335928), the other aims to optimize abatacept dosing in definite ICI-  
19 myocarditis with these latter severe features (NCT05195645). Using predictive risk scores like ours in  
20 future studies could identify patients with the most potential for positive treatment effect.

21         There are multiple potential clinical applications of this risk score. A score of 0 in combination  
22 with thorough clinical assessment may identify patients who can be managed with minimal or no



1 immunosuppression since cardio-myotoxic events are rare in this group. Since over 14% of patients with  
2 a risk score of 1 had major cardio-myotoxic events in the three studied cohorts, inpatient monitoring  
3 may be preferred for a score of 1 or higher. Patients with score equal or above 2 may benefit most from  
4 empiric immunosuppression due to their >30% event rate. Further studies of this risk score may allow  
5 much-needed decision support for clinicians managing this rare and complex disease entity.

6         This study's limitations should be recognized. The discovery cohort was derived from a  
7 multicenter registry wherein treating physicians adjudicated clinical data and outcomes. We attempted  
8 to mitigate this variability by excluding cases with no evidence for myocarditis per Bonaca's criteria and  
9 by utilizing a core lab for ECG interpretation. Second, this cohort had missing data (detailed in [Table 1](#))  
10 which were imputed. Imputation was necessary to power this analysis and prevented bias linked to  
11 potential non-random missingness. Finally, while the model tested known predictor variables, it is  
12 possible that unknown confounders were not included. Nevertheless, this risk score performed well in  
13 two independent external cohorts suggesting the validity of our model despite the aforementioned  
14 limitations.

15         In conclusion, we used a large multicenter registry to study predictors of severe outcomes in ICI-  
16 myocarditis and establish a risk score. This risk score was validated in 2 independent cohorts. These  
17 contemporary cohorts continue to show a high frequency of severe cardio-myotoxicity, occurring in one  
18 third of patients over the first month. A multivariable model showed that magnitude of troponin  
19 increase, pre-existing thymoma, presence of symptoms, low LVEF, and low QRS-voltage were associated  
20 with severe cardio-myotoxicity. These findings were used to derive a practical risk score which  
21 performed well in predicting adverse events in patients who present with ICI-myocarditis. This risk score

- 1 was applied prospectively and was promising in identifying patients who could be safely managed
- 2 without corticosteroids or other immunosuppressants.
- 3

1 **Acknowledgements.** none

2 **Funding.** none

3 **Disclosure of Interest.** JM has served on advisory boards for Bristol Myers Squibb, Takeda, Regeneron,  
4 Deciphera, ImmunoCore, Bitterroot Bio, Kiniksa, Repare Therapeutics, Daiichi Sankyo, Kurome  
5 Therapeutics, Cytokinetics and AstraZeneca and supported by NIH grants (R01HL141466, R01HL155990,  
6 R01HL156021, R01HL170038). AH has served as consultant for Janssen, Pharmacyclics, and clinical trial  
7 enrollment for Ionis and Heartflow. DA has served on ad-boards for Sanofi and has speaker fees for BMS  
8 and Ipsen. MLP has served on advisory boards for BI, AstraZeneca, and Bayer, as a consultant for  
9 Alleviant, AbbVie and Unipharm, received research grants from Novartis, BI, AstraZeneca, Pfizer and  
10 Bayer and as a lecturer for BI, AstraZeneca, Bayer, Alleviant, AbbVie, Unipharm, Novartis, Pfizer,  
11 Medison and NovoNordisk. DBJ has served on advisory boards or as a consultant for BMS, Catalyst  
12 Biopharma, Iovance, Mallinckrodt, Merck, Mosaic ImmunoEngineering, Novartis, Oncosec, Pfizer,  
13 Targovax, and Teiko, and has received research funding from BMS and Incyte. JES has served as  
14 consultant for BMS, AstraZeneca, BeiGene, IPSEN, Eisai, Banook, Novartis and had received grants from  
15 BMS and Novartis. JES have patents pending on the treatment and risk stratification of ICI-myocarditis.  
16 NLP is a consultant for Replimmune and Kiniksa and is supported by The Cancer Prevention and Research  
17 Institute of Texas (RP200670) and NIH/NCI (1P01CA261669-01). PPR served on ad-boards and  
18 consultancy and received travel support from Novartis, Boehringer Ingelheim, Bristol Myers Squibb,  
19 Abbott, Vifor, Bayer, Pfizer, Astra Zeneca – all not related to the contents of this manuscript and is  
20 supported by the Medical University of Graz Flagship Grant VASC Health, the Austrian Society of  
21 Cardiology, and the European Research Area Network (ERA) and Austrian Science Fund (FWF) grants I

1 5898-B and 4168-B. AN receives research support from BMS and has served in ad-boards for Altathera,  
2 AstraZeneca, Bantam, Regeneron and DSMB for Takeda Oncology.

3

4 **Data availability statement.** The international ICI myocarditis registry is open to the entire scientific  
5 community based on a ‘reciprocity principle’, i.e., access to the cohort will only be allowed to those  
6 entities also willing to share data. Access to the database is granted to researchers and clinicians who are  
7 part of the consortium and have been approved by the project’s coordination (Pr Joe-Elie SALEM and Dr  
8 Javid MOSLEHI).

9 **Author Information Statement.**

10 International ICI-Myocarditis Registry: Osnat Itzakhi Ben Zadok (USA), Anita Deswal (USA), Franck Thuny  
11 (France), Anissa Bouali (France), Andrew Hughes (USA), Lisa Moser (USA), Maxime Faure (France), Rocio  
12 Baro Vila (Canada), Jesus Jimenez (USA), Seyed Ebrahim Kassaian (USA), Elise Paven (France), Elena Galli  
13 (France), Teresa Lopez Fernandez (Spain); Lucia Cobarro (Spain), Manhal Habib (Israel), Kazuko Tajiri  
14 (Japan), Fanny Rocher (France), Theodora Bejan-Angoulvant (France), Mehmet Asim Bilen (USA), Susmita  
15 Parashar (USA), Avirup Guha (USA), Wenjing Song (China), David Koenig (Switzerland), Kirsten Mertz  
16 (Switzerland), Carrie Lenneman (USA), Andrew Haydon (Australia), Chloe Lesiuk (France), Romain  
17 Tresorier (France), Yazeed Samara (USA), Christian Grohe (Germany), Pierre Yves Dietrich (Switzerland),  
18 Sean Tierney (USA), Elie Rassy (Lebanon), Elvire Mervoyer (France), Shigeaki Suzuki (Japan), Satoshi  
19 Fukushima (Japan), Avirup Guha (USA), Maxime Robert-Halabi (Canada), Ryota Morimoto (Japan),  
20 Kazuko Tajiri (Japan), Robert Copeland-Halperin (USA), Michael Layoun (USA), Jun Wang (China), Suran  
21 Fernando (Australia), Eugenia Rota (Italy), Yumi Katsume (Japan), Yukiko Kiniwa (Japan), Ellen Warner  
22 (Canada), Nobuhiko Seki (Japan), Theresa Ruf (Germany), Jess DeLaune (USA), Nazanin Aghel (Canada)



## 1 References

- 2 1. Haslam A, Prasad V. Estimation of the Percentage of US Patients With Cancer Who Are Eligible for  
3 and Respond to Checkpoint Inhibitor Immunotherapy Drugs. *JAMA network open* 2019;**2**:e192535–  
4 e192535.
- 5 2. Champiat S, Lambotte O, Barreau E, Belkhir R, Berdelou A, Carbonnel F, Cauquil C, Chanson P,  
6 Collins M, Durrbach A, Ederhy S, Feuillet S, François H, Lazarovici J, Le Pavec J, De Martin E, Mateus  
7 C, Michot J-M, Samuel D, Soria J-C, Robert C, Eggermont A, Marabelle A. Management of immune  
8 checkpoint blockade dysimmune toxicities: a collaborative position paper. *Ann Oncol* 2016;**27**:559–  
9 574.
- 10 3. Postow MA, Sidlow R, Hellmann MD. Immune-Related Adverse Events Associated with Immune  
11 Checkpoint Blockade. *N Engl J Med* 2018;**378**:158–168.
- 12 4. Zhang L, Reynolds KL, Lyon AR, Palaskas N, Neilan TG. The Evolving Immunotherapy Landscape and  
13 the Epidemiology, Diagnosis, and Management of Cardiotoxicity: JACC: CardioOncology Primer.  
14 *JACC CardioOncol* 2021;**3**:35–47.
- 15 5. Salem J-E, Bretagne M, Abbar B, Leonard-Louis S, Ederhy S, Redheuil A, Boussouar S, Nguyen LS,  
16 Procureur A, Stein F, Fenioux C, Devos P, Gougis P, Dres M, Demoule A, Psimaras D, Lenglet T,  
17 Maisonobe T, Pineton DE Chambrun M, Hekimian G, Straus C, Gonzalez-Bermejo J, Klatzmann D,  
18 Rigolet A, Guillaume-Jugnot P, Champtiaux N, Benveniste O, Weiss N, Saheb S, Rouvier P, Plu I,  
19 Gandjbakhch E, Kerneis M, Hammoudi N, Zahr N, Llontop C, Morelot-Panzini C, Lehmann L, Qin J,  
20 Moslehi JJ, Rosenzweig M, Similowski T, Allenbach Y. Abatacept/Ruxolitinib and Screening for  
21 Concomitant Respiratory Muscle Failure to Mitigate Fatality of Immune-Checkpoint Inhibitor  
22 Myocarditis. *Cancer Discov* 2023.
- 23 6. Johnson DB, Balko JM, Compton ML, Chalkias S, Gorham J, Xu Y, Hicks M, Puzanov I, Alexander MR,  
24 Bloomer TL, Becker JR, Slosky DA, Phillips EJ, Pilkinton MA, Craig-Owens L, Kola N, Plautz G, Reshef  
25 DS, Deutsch JS, Deering RP, Olenchock BA, Lichtman AH, Roden DM, Seidman CE, Koralknik IJ,  
26 Seidman JG, Hoffman RD, Taube JM, Diaz LA Jr, Anders RA, Sosman JA, Moslehi JJ. Fulminant  
27 Myocarditis with Combination Immune Checkpoint Blockade. *N Engl J Med* 2016;**375**:1749–1755.
- 28 7. Wang DY, Salem J-E, Cohen JV, Chandra S, Menzer C, Ye F, Zhao S, Das S, Beckermann KE, Ha L,  
29 Rathmell WK, Ancell KK, Balko JM, Bowman C, Davis EJ, Chism DD, Horn L, Long GV, Carlino MS,  
30 Lebrun-Vignes B, Eroglu Z, Hassel JC, Menzies AM, Sosman JA, Sullivan RJ, Moslehi JJ, Johnson DB.  
31 Fatal Toxic Effects Associated With Immune Checkpoint Inhibitors: A Systematic Review and Meta-  
32 analysis. *JAMA Oncol* 2018;**4**:1721–1728.
- 33 8. Axelrod ML, Meijers WC, Screever EM, Qin J, Carroll MG, Sun X, Tannous E, Zhang Y, Sugiura A,  
34 Taylor BC, Hanna A, Zhang S, Amancherla K, Tai W, Wright JJ, Wei SC, Opalenik SR, Toren AL,  
35 Rathmell JC, Ferrell PB, Phillips EJ, Mallal S, Johnson DB, Allison JP, Moslehi JJ, Balko JM. T cells  
36 specific for  $\alpha$ -myosin drive immunotherapy-related myocarditis. *Nature* 2022;**611**:818–826.

- 1 9. Mahmood SS, Fradley MG, Cohen JV, Nohria A, Reynolds KL, Heinzerling LM, Sullivan RJ,  
2 Damrongwatanasuk R, Chen CL, Gupta D, Kirchberger MC, Awadalla M, Hassan MZO, Moslehi JJ,  
3 Shah SP, Ganatra S, Thavendiranathan P, Lawrence DP, Groarke JD, Neilan TG. Myocarditis in  
4 Patients Treated With Immune Checkpoint Inhibitors. *J Am Coll Cardiol* 2018;**71**:1755–1764.
- 5 10. Lehmann LH, Cautela J, Palaskas N, Baik AH, Meijers WC, Allenbach Y, Alexandre J, Rassaf T, Müller  
6 OJ, Aras M, Asnani AH, Deswal A, Laufer-Perl M, Thuny F, Kerneis M, Hayek SS, Ederhy S, Salem J-E,  
7 Moslehi JJ. Clinical Strategy for the Diagnosis and Treatment of Immune Checkpoint Inhibitor-  
8 Associated Myocarditis: A Narrative Review. *JAMA Cardiol* 2021;**6**:1329–1337.
- 9 11. Salem J-E, Manouchehri A, Moey M, Lebrun-Vignes B, Bastarache L, Pariente A, Gobert A, Spano J-P,  
10 Balko JM, Bonaca MP, Roden DM, Johnson DB, Moslehi JJ. Cardiovascular toxicities associated with  
11 immune checkpoint inhibitors: an observational, retrospective, pharmacovigilance study. *Lancet*  
12 *Oncol* 2018;**19**:1579–1589.
- 13 12. Hu J-R, Florido R, Lipson EJ, Naidoo J, Ardehali R, Tocchetti CG, Lyon AR, Padera RF, Johnson DB,  
14 Moslehi J. Cardiovascular toxicities associated with immune checkpoint inhibitors. *Cardiovasc Res*  
15 2019;**115**:854–868.
- 16 13. Bonaca MP, Olenchock BA, Salem J-E, Wiviott SD, Ederhy S, Cohen A, Stewart GC, Choueiri TK, Di  
17 Carli M, Allenbach Y, Kumbhani DJ, Heinzerling L, Amiri-Kordestani L, Lyon AR, Thavendiranathan P,  
18 Padera R, Lichtman A, Liu PP, Johnson DB, Moslehi J. Myocarditis in the Setting of Cancer  
19 Therapeutics: Proposed Case Definitions for Emerging Clinical Syndromes in Cardio-Oncology.  
20 *Circulation* 2019;**140**:80–91.
- 21 14. Power JR, Alexandre J, Choudhary A, Ozbay B, Hayek S, Asnani A, Tamura Y, Aras M, Cautela J, Thuny  
22 F, Gilstrap L, Arangalage D, Ewer S, Huang S, Deswal A, Palaskas NL, Finke D, Lehman L, Ederhy S,  
23 Moslehi J, Salem J-E, International ICI-Myocarditis Registry†. Electrocardiographic Manifestations of  
24 Immune Checkpoint Inhibitor Myocarditis. *Circulation* 2021;**144**:1521–1523.
- 25 15. Power JR, Alexandre J, Choudhary A, Ozbay B, Hayek SS, Asnani A, Tamura Y, Aras M, Cautela J,  
26 Thuny F, Gilstrap L, Arangalage D, Ewer S, Huang S, Deswal A, Palaskas NL, Finke D, Lehmann LH,  
27 Ederhy S, Moslehi J, Salem J-E. Association of early electrical changes with cardiovascular outcomes  
28 in immune checkpoint inhibitor myocarditis. *Arch Cardiovasc Dis* 2022.
- 29 16. Niimura T, Zamami Y, Miyata K, Mikami T, Asada M, Fukushima K, Yoshino M, Mitsuboshi S, Okada  
30 N, Hamano H, Sakurada T, Matsuoka-Ando R, Aizawa F, Yagi K, Goda M, Chuma M, Koyama T, Izawa-  
31 Ishizawa Y, Yanagawa H, Fujino H, Yamanishi Y, Ishizawa K. Characterization of Immune Checkpoint  
32 Inhibitor-Induced Myasthenia Gravis Using the US Food and Drug Administration Adverse Event  
33 Reporting System. *J Clin Pharmacol* 2022.
- 34 17. Saygin D, Ghosh N, Reid P. Immune Checkpoint Inhibitor-Associated Myositis: A Distinct Form of  
35 Inflammatory Myopathy. *J Clin Rheumatol* 2022;**28**:367–373.
- 36 18. Lehmann LH, Heckmann MB, Bailly G, Finke D, Procureur A, Power JR, Stein F, Bretagne M, Ederhy S,  
37 Fenioux C, Hamwy O, Funck-Brentano E, Romano E, Pieroni L, Münster J, Allenbach Y, Anquetil C,  
38 Leonard-Louis S, Palaskas NL, Hayek SS, Katus HA, Giannitsis E, Frey N, Kaya Z, Moslehi J, Prifti E,

- 1 Salem J-E, International ICI-Myocarditis Registry Contributors. Cardiomyocardial Biomarkers in the  
2 Diagnosis and Prognostication of Immune Checkpoint Inhibitor Myocarditis. *Circulation* 2023.
- 3 19. Itzhaki Ben Zadok O, Levi A, Divakaran S, Nohria A. Severe vs Nonsevere Immune Checkpoint  
4 Inhibitor-Induced Myocarditis: Contemporary 1-Year Outcomes. *JACC CardioOncol* 2023;**5**:732–744.
- 5 20. Sterne JAC, White IR, Carlin JB, Spratt M, Royston P, Kenward MG, Wood AM, Carpenter JR. Multiple  
6 imputation for missing data in epidemiological and clinical research: potential and pitfalls. *BMJ*  
7 2009;**338**:b2393.
- 8 21. Palaskas NL, Segura A, Lelenwa L, Siddiqui BA, Subudhi SK, Lopez-Mattei J, Durand JB, Deswal A,  
9 Zhao B, Maximilian Buja L, Iliescu C. Immune checkpoint inhibitor myocarditis: elucidating the  
10 spectrum of disease through endomyocardial biopsy. *Eur J Heart Fail* 2021;**23**:1725–1735.
- 11 22. Ederhy S, Devos P, Pinna B, Funck-Brentano E, Abbar B, Fenieux C, Cohen AA, Moslehi J, Bretagne  
12 M, Allenbach Y, Kharroubi D, Salem J-E. 18F-fluorodeoxyglucose positron emission  
13 tomography/computed tomography imaging for the diagnosis of immune checkpoint inhibitor-  
14 associated myocarditis. *Arch Cardiovasc Dis* 2022;**115**:114–116.
- 15 23. Cadour F, Cautela J, Rapacchi S, Varoquaux A, Habert P, Arnaud F, Jacquier A, Meilhac A, Paganelli F,  
16 Lalevée N, Scemama U, Thuny F. Cardiac MRI Features and Prognostic Value in Immune Checkpoint  
17 Inhibitor-induced Myocarditis. *Radiology* 2022;**303**:512–521.
- 18 24. Zlotoff DA, Hassan MZO, Zafar A, Alvi RM, Awadalla M, Mahmood SS, Zhang L, Chen CL, Ederhy S,  
19 Barac A, Banerji D, Jones-O'Connor M, Murphy SP, Armanious M, Forrestal BJ, Kirchberger MC,  
20 Coelho-Filho OR, Rizvi MA, Sahni G, Mandawat A, Tocchetti CG, Hartmann S, Gilman HK, Zatarain-  
21 Nicolás E, Mahmoudi M, Gupta D, Sullivan R, Ganatra S, Yang EH, Heinzerling LM, Thuny F, Zubiri L,  
22 Reynolds KL, Cohen JV, Lyon AR, Groarke J, Thavendiranathan P, Nohria A, Fradley MG, Neilan TG.  
23 Electrocardiographic features of immune checkpoint inhibitor associated myocarditis. *Journal for*  
24 *immunotherapy of cancer* 2021;**9**.
- 25 25. Thavendiranathan P, Zhang L, Zafar A, Drobni ZD, Mahmood SS, Cabral M, Awadalla M, Nohria A,  
26 Zlotoff DA, Thuny F, Heinzerling LM, Barac A, Sullivan RJ, Chen CL, Gupta D, Kirchberger MC,  
27 Hartmann SE, Weinsaft JW, Gilman HK, Rizvi MA, Kovacina B, Michel C, Sahni G, González-Mansilla  
28 A, Calles A, Fernández-Avilés F, Mahmoudi M, Reynolds KL, Ganatra S, Gavira JJ, González NS, García  
29 de Yébenes Castro M, Kwong RY, Jerosch-Herold M, Coelho-Filho OR, Afilalo J, Zatarain-Nicolás E,  
30 Baksi AJ, Wintersperger BJ, Calvillo-Arguelles O, Ederhy S, Yang EH, Lyon AR, Fradley MG, Neilan TG.  
31 Myocardial T1 and T2 Mapping by Magnetic Resonance in Patients With Immune Checkpoint  
32 Inhibitor-Associated Myocarditis. *J Am Coll Cardiol* 2021;**77**:1503–1516.
- 33 26. Zhang L, Awadalla M, Mahmood SS, Nohria A, Hassan MZO, Thuny F, Zlotoff DA, Murphy SP, Stone  
34 JR, Golden DLA, Alvi RM, Rokicki A, Jones-O'Connor M, Cohen JV, Heinzerling LM, Mulligan C,  
35 Armanious M, Barac A, Forrestal BJ, Sullivan RJ, Kwong RY, Yang EH, Damrongwatanasuk R, Chen CL,  
36 Gupta D, Kirchberger MC, Moslehi JJ, Coelho-Filho OR, Ganatra S, Rizvi MA, Sahni G, Tocchetti CG,  
37 Mercurio V, Mahmoudi M, Lawrence DP, Reynolds KL, Weinsaft JW, Baksi AJ, Ederhy S, Groarke JD,  
38 Lyon AR, Fradley MG, Thavendiranathan P, Neilan TG. Cardiovascular magnetic resonance in  
39 immune checkpoint inhibitor-associated myocarditis. *Eur Heart J* 2020.



- 1 27. Zhang L, Zlotoff DA, Awadalla M, Mahmood SS, Nohria A, Hassan MZO, Thuny F, Zubiri L, Chen CL,  
2 Sullivan RJ, Alvi RM, Rokicki A, Murphy SP, Jones-O'Connor M, Heinzerling LM, Barac A, Forrestal BJ,  
3 Yang EH, Gupta D, Kirchberger MC, Shah SP, Rizvi MA, Sahni G, Mandawat A, Mahmoudi M, Ganatra  
4 S, Ederhy S, Zatarain-Nicolas E, Groarke JD, Tocchetti CG, Lyon AR, Thavendiranathan P, Cohen JV,  
5 Reynolds KL, Fradley MG, Neilan TG. Major Adverse Cardiovascular Events and the Timing and Dose  
6 of Corticosteroids in Immune Checkpoint Inhibitor-Associated Myocarditis. *Circulation*.
- 7 28. Drobni ZD, Zafar A, Zubiri L, Zlotoff DA, Alvi RM, Lee C, Hartmann S, Gilman HK, Villani A-C, Nohria A,  
8 Groarke JD, Sullivan RJ, Reynolds KL, Zhang L, Neilan TG. Decreased Absolute Lymphocyte Count and  
9 Increased Neutrophil/Lymphocyte Ratio With Immune Checkpoint Inhibitor-Associated Myocarditis.  
10 *J Am Heart Assoc* 2020;**9**:e018306.
- 11 29. Naqash AR, Moey MYY, Cherie Tan X-W, Laharwal M, Hill V, Moka N, Finnigan S, Murray J, Johnson  
12 DB, Moslehi JJ, Sharon E. Major Adverse Cardiac Events With Immune Checkpoint Inhibitors: A  
13 Pooled Analysis of Trials Sponsored by the National Cancer Institute-Cancer Therapy Evaluation  
14 Program. *J Clin Oncol* 2022;**40**:3439–3452.
- 15 30. Wei SC, Meijers WC, Axelrod ML, Anang N-AAS, Screever EM, Wescott EC, Johnson DB, Whitley E,  
16 Lehmann L, Courand P-Y, Mancuso JJ, Himmel LE, Lebrun-Vignes B, Wleklinski MJ, Knollmann BC,  
17 Srinivasan J, Li Y, Atolagbe OT, Rao X, Zhao Y, Wang J, Ehrlich LIR, Sharma P, Salem J-E, Balko JM,  
18 Moslehi JJ, Allison JP. A genetic mouse model recapitulates immune checkpoint inhibitor-associated  
19 myocarditis and supports a mechanism-based therapeutic intervention. *Cancer Discov* 2020.
- 20 31. Mason JW, O'Connell JB, Herskowitz A, Rose NR, McManus BM, Billingham ME, Moon TE. A clinical  
21 trial of immunosuppressive therapy for myocarditis. The Myocarditis Treatment Trial Investigators.  
22 *N Engl J Med* 1995;**333**:269–275.
- 23 32. Wang C, Lin J, Wang Y, Hsi DH, Chen J, Liu T, Zhou Y, Ren Z, Zeng Z, Cheng L, Ge J. Case Series of  
24 Steroid-Resistant Immune Checkpoint Inhibitor Associated Myocarditis: A Comparative Analysis of  
25 Corticosteroid and Tofacitinib Treatment. *Front Pharmacol* 2021;**12**:770631.
- 26 33. Vasbinder A, Chen Y, Procureur A, Gradone A, Azam TU, Perry D, Shadid H, Anderson E, Catalan T,  
27 Blakely P, Nelapudi N, Fardous M, Bretagne MC, Adie SK, Pogue KT, Leja M, Yentz S, Schneider B,  
28 Fecher LA, Lao CD, Salem J-E, Hayek SS. Biomarker Trends, Incidence, and Outcomes of Immune  
29 Checkpoint Inhibitor-Induced Myocarditis. *JACC CardioOncol* 2022;**4**:689–700.
- 30 34. Cho J, Ahn M-J, Yoo KH, Lee H, Kim HK, Heo MH, Hong JH, Sun J-M, Lee S-H, Ahn JS, Park K. A phase  
31 II study of pembrolizumab for patients with previously treated advanced thymic epithelial tumor. *J*  
32 *Clin Orthod* 2017;**35**:8521–8521.
- 33 35. Shelly S, Agmon-Levin N, Altman A, Shoenfeld Y. Thymoma and autoimmunity. *Cell Mol Immunol*  
34 2011;**8**:199–202.
- 35 36. Fenioux C, Abbar B, Boussouar S, Bretagne M, Power JR, Moslehi JJ, Gougis P, Amelin D, Dechartres  
36 A, Lehmann LH, Courand P-Y, Cautela J, Alexandre J, Procureur A, Rozes A, Leonard-Louis S, Qin J,  
37 Akhter N, Aghel N, Amidi K, Anderson E, Arangalage D, Aras M, Asnani A, Baldassarre LA, Barovila R,  
38 Barroso AS, Bottinor W, Bouali A, Cariou E, Chang W-T, Cheng RK, Crusz SM, Deswal A, Dietrich P-Y,

- 1 Dy G, Docq C, Ewer S, Fernando S, Flint DL, Florido R, Fukushima S, Galli E, Gaughan E, Habib M,  
2 Haydon A, Heinzerling L, Ben Zadok OI, Issa N, Karlstaedt A, Kitagawa K, Layoun M, Laufer-Perl M,  
3 Lenneman C, Leong D, Lesiuk C, Levenson J, López-Fernández T, Liu Y, Machado K, Moliner P,  
4 Morimoto R, Obeid M, Narezkina A, Palaskas N, Peretto G, Piriou N, Plana JC, Rainer PP, Robert-  
5 Halabi M, Rocher F, Rota E, Roubille F, Ruf T, Sandhu S, Sanjeev F, Seki N, Tajiri K, Tamura Y, Thuny F,  
6 Tresorier R, Turker I, Warner E, Zaha V, Zhu H, Cheynier R, Charmeteau-De Muylder B, Redheuil A,  
7 Tubach F, Cadranet J, Milon A, Ederhy S, Similowski T, Johnson DB, Pizzo I, Catalan T, Benveniste O,  
8 Hayek SS, Allenbach Y, Rosenzweig M, Dolladille C, Salem J-E, International ICI-Myocarditis Registry.  
9 Thymus alterations and susceptibility to immune checkpoint inhibitor myocarditis. *Nat Med* 2023.
- 10 37. Hulsmans M, Clauss S, Xiao L, Aguirre AD, King KR, Hanley A, Hucker WJ, Wülfers EM, Seemann G,  
11 Courties G, Iwamoto Y, Sun Y, Savol AJ, Sager HB, Lavine KJ, Fishbein GA, Capen DE, Da Silva N,  
12 Miquerol L, Wakimoto H, Seidman CE, Seidman JG, Sadreyev RI, Naxerova K, Mitchell RN, Brown D,  
13 Libby P, Weissleder R, Swirski FK, Kohl P, Vinegoni C, Milan DJ, Ellinor PT, Nahrendorf M.  
14 Macrophages Facilitate Electrical Conduction in the Heart. *Cell* 2017;**169**:510-522.e20.
- 15 38. Champion SN, Stone JR. Immune checkpoint inhibitor associated myocarditis occurs in both high-  
16 grade and low-grade forms. *Mod Pathol* 2020;**33**:99–108.

17

18

1 **Figures Legends**

2 **Figure 1: Cardiac workup and clinical event rate.** Results of diagnostics used in myocarditis workup (A),  
3 major cardio-myotoxic events overlap (B), time from first ICI dose to onset of myocarditis (C), and event-  
4 curve of first major cardio-myotoxic event at 30-days (D).

5 **Figure 2: Multivariable analysis of association with 30-days major cardio-myotoxic events.** Explanatory  
6 multivariable model for association with major cardio-myotoxic event (A). Predictive multivariable model  
7 for association with major cardio-myotoxic event using a stepwise selection procedure (B).

8 Abbreviations: CI : confidence interval, coef: coefficient, ICI: immune checkpoint inhibitor, ms: millisecond, mV:  
9 millivolt, Ref: reference, ULN: upper limit of normal, VEGFi: Vascular Endothelial Growth Factor Inhibitor,  
10 Immunomodulator: non-steroidal immunomodulators only

11 **Figure 3: Risk score for major cardio-myotoxic events.** Components of the risk score of major cardio-  
12 myotoxic events at 30-days (A). Distribution of patients according to risk score (B). Cumulative incidence  
13 of major cardio-myotoxic events according to for risk score level (C). Cumulative incidence of  
14 components of the primary composite outcome of cardio-myotoxic events (D).

15

1 **Supplementary Figures Legends**

2 **Figure S1: Geographic distribution of study population (discovery cohort)**

3 **Figure S2: Univariate (A) and Unimputed (B) (n=238) multivariable models for association with major**  
4 **cardio-myotoxic events.**

5 Abbreviations: CAD: coronary artery disease, CI: confidence interval, COPD: Chronic obstructive pulmonary  
6 disease, eGFR: estimated glomerular filtration rate, ICI: immune checkpoint inhibitor, ms: millisecond, mV:  
7 millivolt, Ref: reference, ULN: upper limit of normal, VEGFi: Vascular Endothelial Growth Factor Inhibitor,  
8 Immunomodulator: non-steroidal immunomodulators only

9 **Figure S3: Spline models.** Hazard-ratio for major cardio-myotoxic event at 30 days after presentation as  
10 a function of continuous variable predictors using data available at initial presentation. Troponin and  
11 creatine kinase were log transformed to account for non-linearity.

12 Abbreviations: BMI: body mass index, LVEF: left ventricular ejection fraction, CK: creatine kinase, NLR:  
13 neutrophil to lymphocyte ratio

14 **Figure S4: Predictors of 30-days mortality with competing risk approach.** Illustration of competing risks  
15 for study patients (A). Cumulative incidence of competing risks during study period (B). Explanatory  
16 multivariable model for association with major cardio-myotoxic events fitted using Aalen Johanssen  
17 approach to account for death from other causes (C).

18 Abbreviations: eGFR: estimated glomerular filtration rate, ICI: immune checkpoint inhibitor, ms: millisecond, mV:  
19 millivolt, Ref: reference, ULN: upper limit of normal, VEGFi: Vascular Endothelial Growth Factor Inhibitor,  
20 Immunomodulator: non-steroidal immunomodulators only

1 **Figure S5: Harrel’s c-index of risk score for association with major cardio-myotoxic events.** Graphical  
2 and tabular display of c-index when applied on a daily basis to Discovery Cohort (A), Sorbonne University  
3 Validation Cohort (B), Mass General Brigham Validation Cohort (C)

4 Abbreviations: CI: confidence interval

5 **Figure S6: Validation cohorts risk score distribution and cardio-myotoxic event rate.** Risk score  
6 distribution for Sorbonne University (A) and for Mass General Brigham (B) validation cohorts. Cumulative  
7 incidence of major cardio-myotoxic events according to for risk score level in the Sorbonne University (C)  
8 and in the Mass General Brigham Hospitals (D) validation cohorts

## 1 Figures/Tables

### 2 **Table 1: Discovery cohort characteristics (n=748)**

Variable	ICI-Myocarditis Study Cohort	N missing
<b>Administrative data</b>		
World region		
• North America	343/748 (46%)	0
• Europe	334/748 (45%)	
• Asia	63/748 (8%)	
• Australia	8/748 (1%)	
<b>Demographics</b>		
Age (years, median, (IQR), [range])	69 (61-77) [23-94]	2
Body Mass Index (kg/m <sup>2</sup> )		58
• Underweight (<18.5)	33/690 (5%)	
• Normal weight (18.5-25)	280/690 (41%)	
• Overweight (>25-30)	226/690 (33%)	
• Obese (>30)	151/690 (22%)	
Female	249/747 (33%)	1
<b>Patient history</b>		
Diabetes (either type 1 or 2)	160/707 (23%)	41
Coronary artery disease	134/718 (19%)	30
History of heart failure	60/706 (8%)	42
Stroke	29/710 (4%)	38
Chronic obstructive pulmonary disease	88/699 (13%)	49
Obstructive sleep apnea	60/696 (9%)	52
Chronic kidney disease	100/701 (14%)	47
Peripheral vascular disease	43/709 (6%)	39
Prior organ transplant	4/682 (1%)	66
History of autoimmune disease*	62/714 (9%)	34
Seasonal influenza vaccination in the last year	196/462 (42%)	286
<b>Cancer</b>		
Cancer type		1
• Hemopathy	15/747 (2%)	
• Lung	180/747 (24%)	
• Skin	231/747 (31%)	
• Urogenital	164/747 (22%)	
• Other	157/747 (21%)	
Presence of thymoma		0
• Active thymoma	14/748 (2%)	
• History of thymoma	6/748 (1%)	
• No active or history of thymoma	728/748 (97%)	
<b>Cancer treatments concurrent to ICI</b>		
Vascular Endothelial Growth Factor inhibitors	27/748 (4%)	0
<b>ICI Regimen</b>		
• Anti-PD1 or anti-PDL1 monotherapies	575/741 (78%)	7
• Anti-CTLA4 monotherapy	11/741 (1%)	
• Anti-CTLA4 & anti-PD1/PDL1 combination therapy	151/741 (20%)	
• Other combination regimen	4/741 (1%)	
Time from current line 1 <sup>st</sup> ICI infusion to myocarditis (days)	40 (23-77) [0-953]	48
<b>Clinical examination</b>		
Cardio-muscular symptoms**	625/748 (84%)	0
Heart rate on presentation (beat/minute, median, (IQR), [range])	86 (73-102) [25-220]	55

Variable	ICI-Myocarditis Study Cohort	N missing
<b>Index electrocardiogram (adjudicated blindly from outcomes)</b>		
Heart rhythm on presentation*** <ul style="list-style-type: none"> <li>• Sinus rhythm</li> <li>• Accelerated junctional rhythm</li> <li>• Heart Block, second degree (type I or II)</li> <li>• Supraventricular tachycardia</li> <li>• Complete heart block</li> <li>• Ventricular arrhythmia</li> </ul>	465/588 (79%) 3/588 (1%) 12/588 (2%) 63/588 (11%) 34/588 (6%) 11/588 (2%)	160
Presence of pathological Q-waves# Sokolow-Lyon QRS voltage# <ul style="list-style-type: none"> <li>• ≤0.5mV</li> <li>• &gt;0.5-1.0mV</li> <li>• &gt;1.0mV</li> </ul>	77/535 (14%) 42/535 (8%) 112/535 (21%) 381/535 (71%)	213 213
QRS duration# <ul style="list-style-type: none"> <li>• ≤120ms</li> <li>• &gt;120-150ms</li> <li>• &gt;150ms</li> </ul>	425/535 (79%) 80/535 (15%) 30/535 (6%)	213
<b>Follow-up electrocardiographic features (as assessed by the reporters) ##</b>		
<ul style="list-style-type: none"> <li>• Ventricular arrhythmias and complete heart blocks</li> <li>• Ventricular arrhythmias without complete heart blocks</li> <li>• Complete heart blocks without ventricular arrhythmias</li> <li>• Other significant conductive disorders, excluding complete heart blocks and ventricular arrhythmias</li> <li>• Other rhythm or repolarization abnormalities, excluding conductive disorders and ventricular arrhythmias</li> <li>• None of the above</li> </ul>	26/699 (4%) 74/699 (11%) 69/699 (10%) 74/699 (11%) 417/699 (60%) 39/699 (6%)	49
<b>Left ventricular ejection fraction assessment, nadir (%; lowest of MRI or echo if both available)</b>		
<ul style="list-style-type: none"> <li>• ≥50%</li> <li>• &lt;50%</li> </ul>	406/699 (58%) 293/699 (42%)	49
<b>Cardiac magnetic resonance imaging (MRI) and histopathology</b>		
At least one MRI suggestive or consistent with myocarditis	293/459 (64%)	289
Biopsy or autopsy findings at least suggestive of myocarditis	193/290 (67%)	458
<b>Biology (values are expressed as folds of upper limit of normal)</b>		
Creatine Kinase, initial <ul style="list-style-type: none"> <li>• ≤1</li> <li>• &gt;1-10</li> <li>• &gt;10-50</li> <li>• &gt;50</li> </ul>	204/564 (36%) 200/564 (35%) 135/564 (24%) 25/564 (4%)	184
Creatine Kinase, peak <ul style="list-style-type: none"> <li>• ≤1</li> <li>• &gt;1-10</li> <li>• &gt;10-50</li> <li>• &gt;50</li> </ul>	182/564 (32%) 206/564 (37%) 148/564 (26%) 28/564 (5%)	184
Troponin (preferentially T, otherwise I), initial <ul style="list-style-type: none"> <li>• ≤1</li> <li>• &gt;1-20</li> <li>• &gt;20-200</li> <li>• &gt;200-2000</li> <li>• &gt;2000</li> </ul>	57/673 (8%) 282/673 (42%) 265/673 (39%) 64/673 (10%) 5/673 (1%)	75
Troponin (preferentially T, otherwise I), peak <ul style="list-style-type: none"> <li>• ≤1</li> <li>• &gt;1-20</li> </ul>	32/675 (5%) 236/675 (35%)	73

Variable	ICI-Myocarditis Study Cohort	N missing
<ul style="list-style-type: none"> <li>&gt;20-200</li> <li>&gt;200-2000</li> <li>&gt;2000</li> </ul>	293/675 (43%) 100/675 (15%) 14/675 (2%)	
Neutrophil to Lymphocyte Ratio <sup>s</sup>	6 (3-10) [0-76]	391
Estimated glomerular filtration rate (CKD-EPI, mL/min/1.73m <sup>2</sup> )	75 (54-92) [9-137]	196
<b>Myocarditis staging (criteria detailed in <sup>13</sup>)</b>		
<ul style="list-style-type: none"> <li>Possible</li> <li>Probable</li> <li>Definite</li> </ul>	179/746 (24%) 174/746 (23%) 393/746 (53%)	2
<b>Myocarditis treatment</b>		
Corticosteroids	619/748 (83%)	0
<ul style="list-style-type: none"> <li>Initial daily dose (prednisone equivalent, mg/kg)</li> <li>Peak daily dose (prednisone equivalent, mg/kg)</li> </ul>	2 (1-15) [0-29] 7 (1-16) [0-40]	43 58
Corticosteroids, initial daily dose (prednisone equivalent, mg/kg)		
<ul style="list-style-type: none"> <li>&lt;1</li> <li>1-2</li> <li>&gt;2</li> </ul>	85/576 (15%) 171/576 (30%) 320/576 (56%)	43
Corticosteroids, peak daily dose (prednisone equivalent, mg/kg)		
<ul style="list-style-type: none"> <li>&lt;1</li> <li>1-2</li> <li>&gt;2</li> </ul>	67/561 (12%) 135/561 (24%) 359/561 (64%)	58
Immunomodulators (any, but not corticosteroids)	268/748 (36%)	0

- 1
- 2 \* *Prior autoimmune diseases*: Addison's disease (2), Ankylosing spondylitis (1), Antiphospholipid syndrome (1),
- 3 Autoimmune hepatitis (3), Chronic inflammatory demyelinating polyneuropathy (2), Hashimotos thyroiditis (6),
- 4 Immune gastritis (2), Myasthenia gravis (3), Myositis (3), Other (16), Psoriasis (5), Rheumatoid arthritis (12),
- 5 Sarcoidosis (2), Sjogren (2), Systemic lupus erythematosus (4), Thyroiditis (2), Type 1 diabetes (4); patients with
- 6 more than one disease (6).
- 7 *Other autoimmune diseases details* (1 patient each): Anti-synthetase Syndrome, Atopic asthma, Autoimmune
- 8 polyendocrinopathy-candidiasis-ectodermal dystrophy, Autoimmune nephritis, Bullous pemphigoid, Chronic
- 9 cutaneous lupus, Erythema nodosum, Fibromyalgia, Immune thrombocytopenic purpura, Paraneoplastic
- 10 acrokeratosis, Paraneoplastic limbic encephalitis, Primary generalized osteoarthritis, Raynaud's disease, Ulcerative
- 11 colitis, Viral myocarditis, Unspecified.
- 12 \*\* Any of the following symptoms: Altered mental status, Anorexia / Loss of appetite, Arthralgia / Joint pain,
- 13 Dyskinetic apical impulse, Dysphagia, Dyspnea, Chest pain or discomfort, Cough, Fatigue, Jugular venous
- 14 distention, Lower extremity edema, Myalgias, Nausea/vomiting, Ocular symptoms (ptosis, diplopia, vision
- 15 changes), Orthopnea, Pain other than chest pain (e.g abdominal), Palpitations, Paroxysmal Nocturnal Dyspnea,
- 16 Pre-syncope, Pulmonary rales, Syncope, Third heart sound gallop or S3 gallop, Weakness, Weight gain
- 17 \*\*\* For index electrocardiogram description: If patients had more than one ECG available on first day of
- 18 presentation, sinus rhythm (and supraventricular tachycardia) ECGs were preferred over complete heart block
- 19 and ventricular arrhythmia ones.
- 20 # Q-waves, Sokolow-Lyon voltage, QRS voltage and duration were not measured in patients presenting with
- 21 accelerated junctional rhythm (3), complete heart block (34), and sustained ventricular arrhythmias (11).
- 22 Additionally, measures were missing for 5 patients without fully interpretable ECG available (e.g ventricular
- 23 pacing, full 12-lead missing).
- 24 ## Follow-up (median (IQR) in days : 116 (31-331))
- 25



- 1 EKG features : Ventricular arrhythmias include sustained and non-sustained ventricular tachycardia, Torsade de  
2 Pointes, and ventricular fibrillation.
- 3 Other significant conduction disorders include first or second-degree heart blocks, fascicular blocks (left anterior  
4 or posterior), bundle branch blocks (left, right, or undetermined, including QRS duration>120ms), sinus  
5 dysfunction with escape junctional rhythm, sinus arrest/sinus pause.
- 6 Other repolarization or rhythm abnormalities include supraventricular arrhythmias (including junctional  
7 tachycardias), PR-segment depression, premature atrial and/or ventricular complex(es), left ventricular  
8 hypertrophy, ST segment and T-U waves abnormalities, presence of pathological Q-waves, microvoltage or  
9 Sokolow-Lyon voltage<0.5mV).
- 10 § Blood count collected within 48 hours before the first dose of immunosuppressant (either steroid or  
11 immunomodulator, whichever was first). If no treatment given, first available value.

12

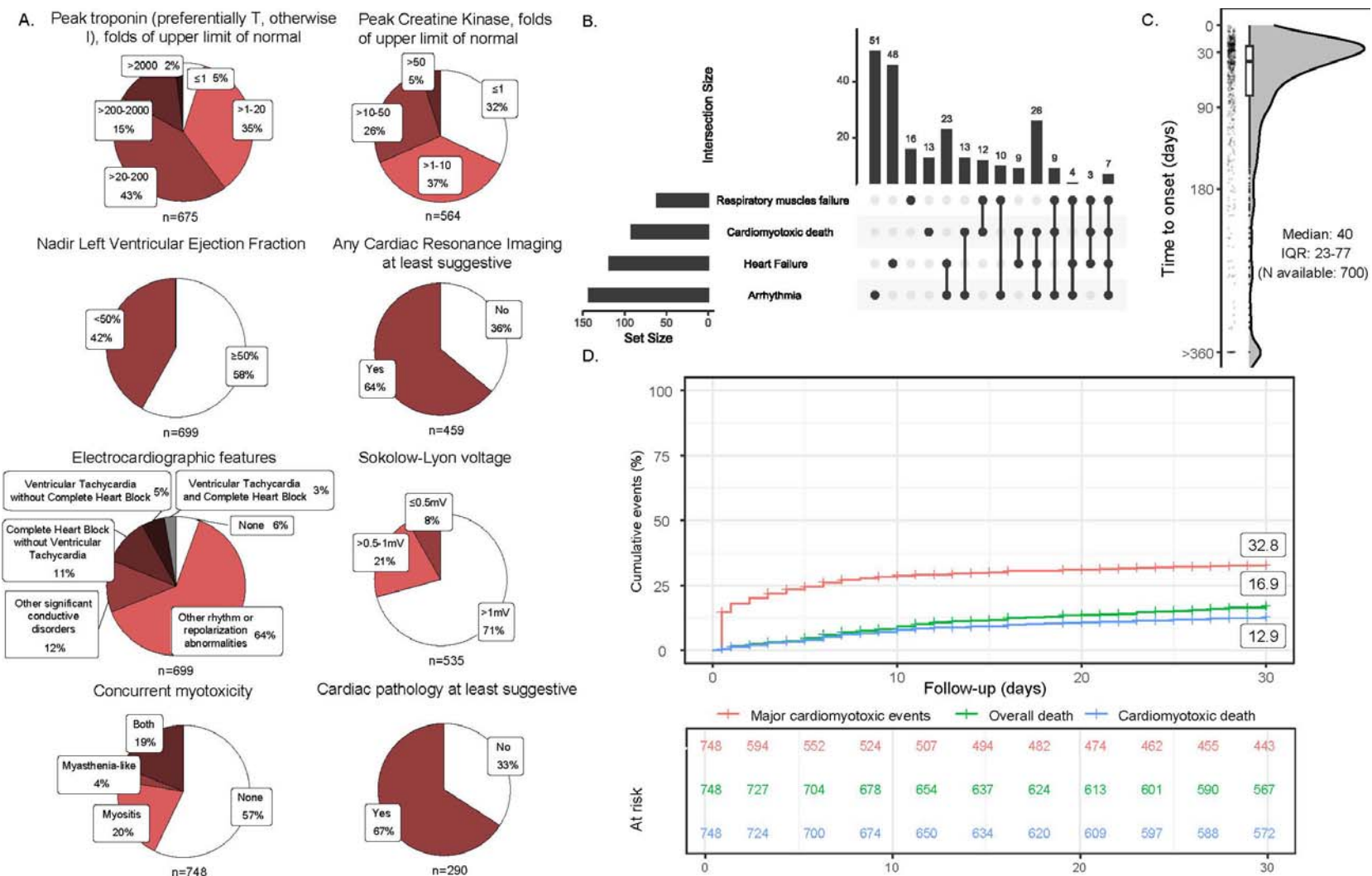
13 Abbreviations:

14 CKD-EPI: Chronic Kidney Disease Epidemiology collaboration (*Ann Intern Med.* 2009 May 5; 150(9): 604–612)

15

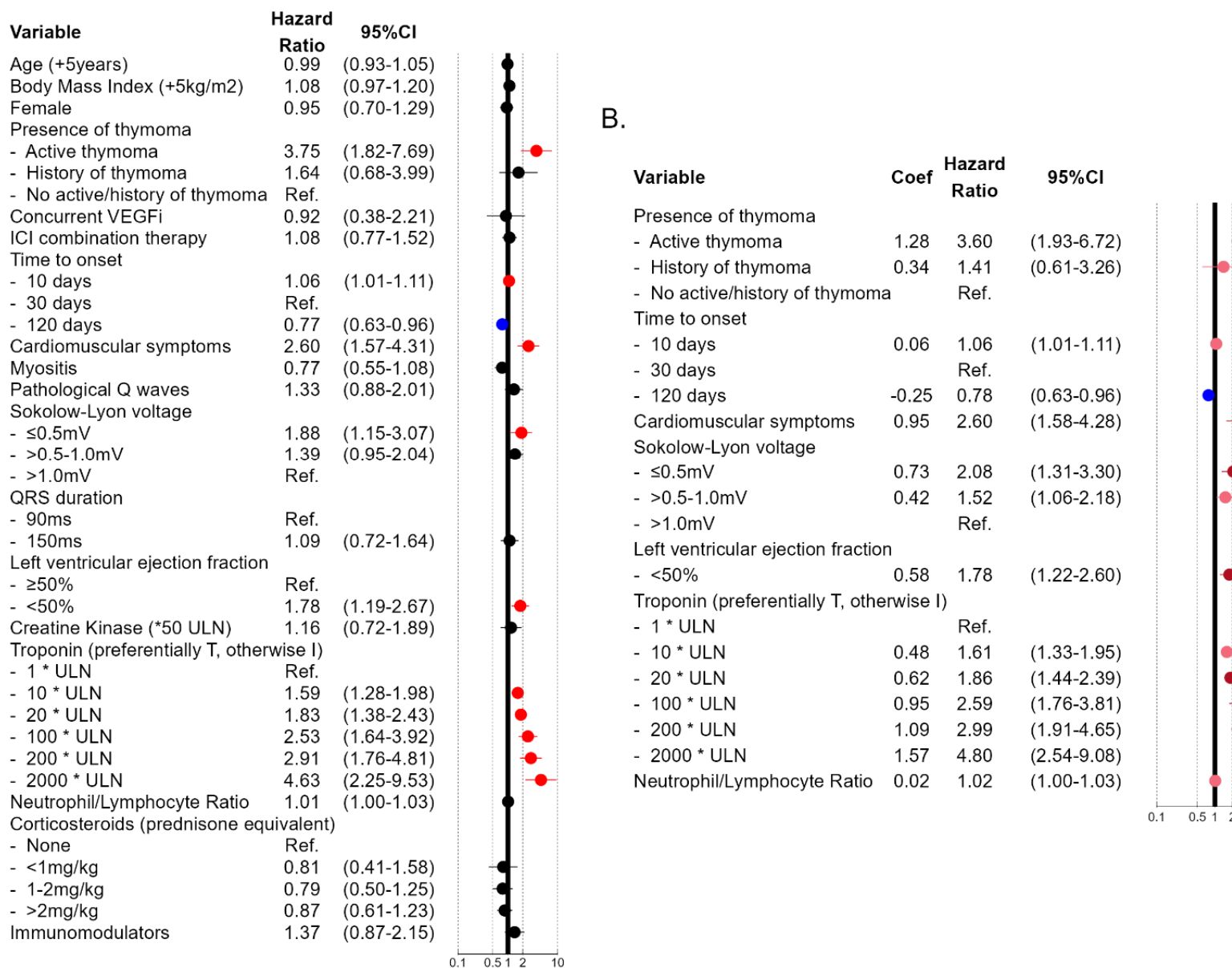
16

1 **Figure 1: Cardiac workup and clinical event rate.** Results of diagnostics used in myocarditis workup (A), major cardio-myotoxic events overlap (B), time from first ICI dose to onset of myocarditis (C), and event-curve of first major cardio-myotoxic event at 30 days (D).



4

1 **Figure 2: Multivariable analysis of association with 30-days major cardio-myotoxic events.** Explanatory  
 2 multivariable model for association with major cardio-myotoxic event (A). Predictive multivariable model  
 3 for association with major cardio-myotoxic event using a stepwise selection procedure (B).



5 **Abbreviations:** CI : confidence interval, coef: coefficient, ICI: immune checkpoint inhibitor, ms: millisecond, mV:  
 6 millivolt, Ref: reference, ULN: upper limit of normal, VEGFi: Vascular Endothelial Growth Factor Inhibitor,  
 7 Immunomodulator: non-steroidal immunomodulators only

- 1 **Figure 3: Risk score for major cardio-myotoxic events.** Components of the risk score of major cardio-myotoxic events at 30-days (A).
- 2 Distribution of patients according to risk score (B). Cumulative incidence of major cardio-myotoxic events according to for risk score level (C). Cumulative incidence of components of the primary composite outcome of cardio-myotoxic events (D).

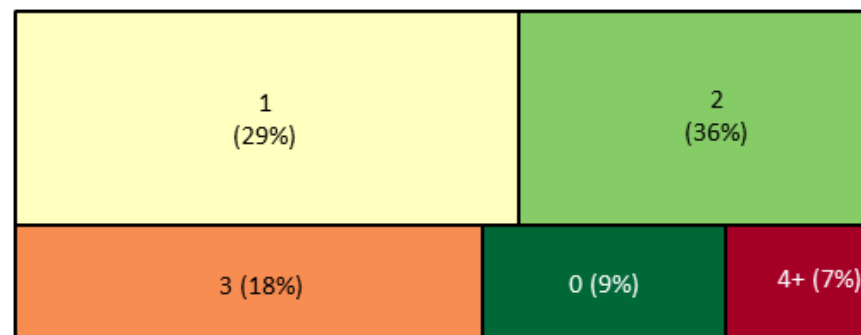
A.

Risk score parameters	Points
Active thymoma	+2
Cardiomuscular symptoms	+1
EKG: Sokolow-Lyon voltage $\leq$ 0.5mV	+1
Left ventricular ejection fraction $<$ 50%	+1
Troponin (preferentially T, otherwise I) $>$ 20 to 200 folds the ULN	+1
Troponin (preferentially T, otherwise I) $>$ 200 to 2000 folds the ULN	+2
Troponin (preferentially T, otherwise I) $>$ 2000 folds the ULN	+3

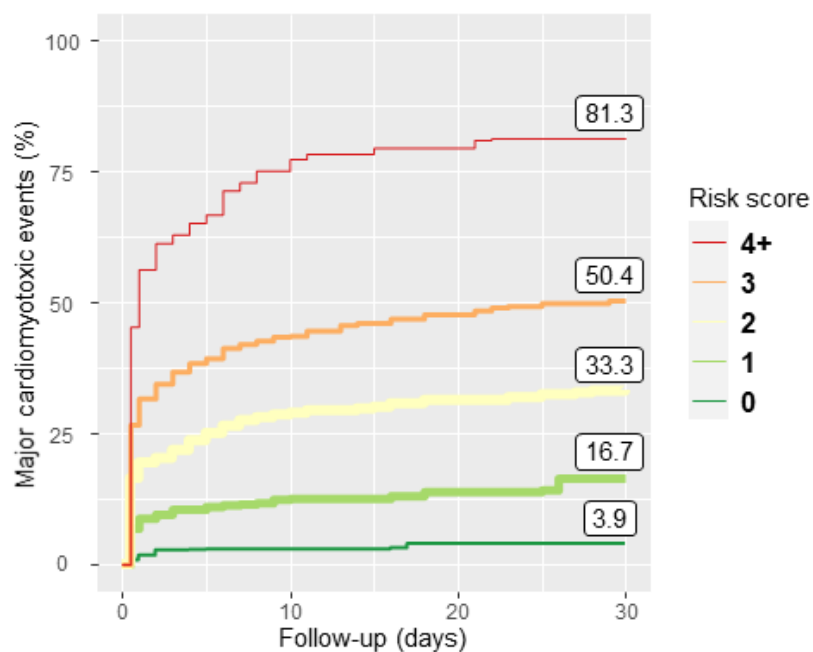
B.



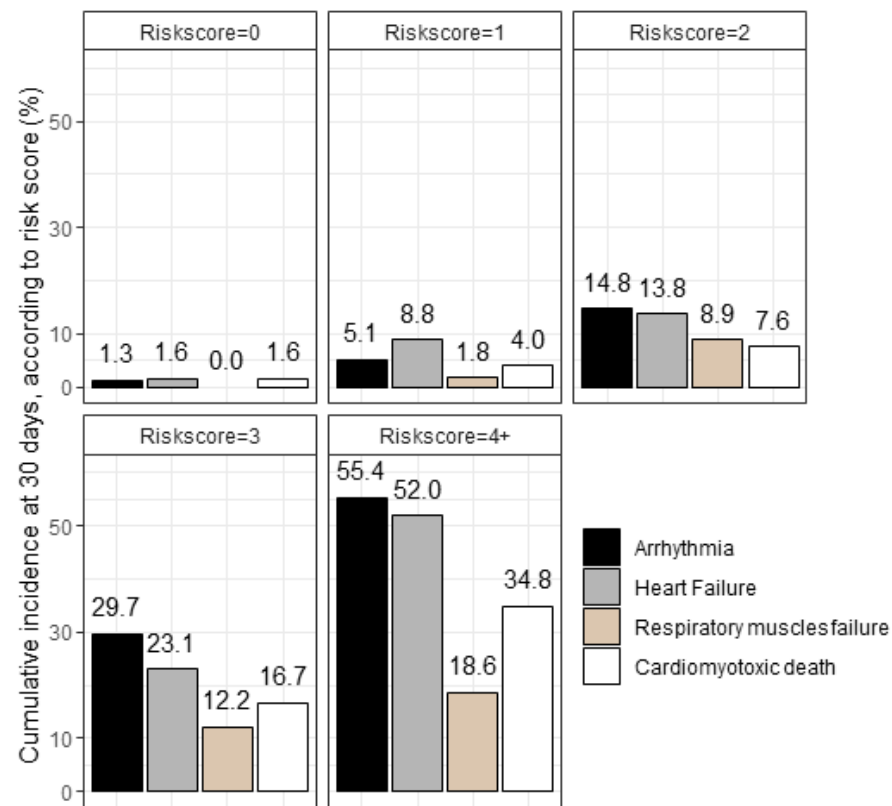
N=748



C.



D.



1 **Supplemental Figures**

2 **Table S1: Collaborators by institution (n=757 cases for discovery cohort, n=127 institutions, n=17**

3 **countries; and n=149 cases for replication cohorts, n=2 institutions, n=2 countries)**

Center	Country	City	Admin	N, discovery cohort	N, validation cohort	Collaborators
Sorbonne University	France	Paris		101	35	Joe Elie Salem, Stephane Ederhy, Sonali Rao, Yves Allenbach, Thomas Similowski
Mass General Brigham	United States	Boston	Massachusetts	1	119	Anju Nohria, Osnat Ithzaki Ben Zadok
University of Texas MD Anderson Cancer Center	United States	Houston	Texas	93	0	Nicolas Palaskas, Anita Deswal
Heidelberg University Hospital	Germany	Heidelberg		36	0	Lorenz Lehmann
Aix-Marseille University, University Mediterranean Center of Cardio-Oncology	France	Marseille		31	0	Jennifer Cautela, Franck Thuny
Hospices Civils de Lyon	France	Lyon		30	0	Pierre-Yves Courand, Anissa Bouali
University of Michigan	United States	Ann Arbor	Michigan	30	0	Salim S. Hayek
Stanford University	United States	Stanford	California	19	0	Han Zhu
University of Texas Southwestern Medical Center	United States	Dallas	Texas	16	0	Vlad G. Zaha
University of Washington	United States	Seattle	Washington	16	0	Richard K. Cheng
Normandie Univ, UNICAEN, INSERM U1086 ANTICIPE; Caen-Normandy University Hospital.	France	Caen		14	0	Joachim Alexandre
CHU Montpellier	France	Montpellier		14	0	François Roubille
Yale School of Medicine	United States	New Haven	Connecticut	14	0	Lauren A. Baldassarre
University of California San Francisco	United States	San Francisco	California	13	0	Javid Moslehi, Alan H. Baik
Tel Aviv Sourasky Medical Center, School of Medicine, Tel Aviv University	Israel	Tel Aviv-Yafo		12	0	Michal Laufer-Perl
Beth Israel Deaconess Medical Center	United States	Boston	Massachusetts	11	0	Aarti Asnani
Maine Medical Center	United States	Portland	Maine	10	0	Sanjeev Francis
University of Virginia	United States	Charlottesville	Virginia	10	0	Elizabeth M. Gaughan
Vanderbilt University Medical Center	United States	Nashville	Tennessee	10	0	Douglas Johnson, Andrew M Hughes
APHP Hopital Lariboisiere	France	Paris		9	0	Guillaume Bailly
Dartmouth Hitchcock Medical Center	United States	Lebanon	New Hampshire	9	0	Danette L Flint
IUHW Mita Hospital	Japan	Tokyo		9	0	Yuichi Tamura
Medical University of Graz; BioTechMed Graz; St. Johann in Tirol General Hospital	Austria	Graz, St. Johann in Tirol		9	0	Peter Rainer, Lisa Moser
APHP Hopital Bichat	France	Paris		8	0	Dimitri Arangalage
CHU Rangueil Toulouse	France	Toulouse		8	0	Eve Cariou
Rabin Medical Center	Israel	Petah Tiqwa		8	0	Osnat Ithzaki Ben Zadok
University of California San Diego Health	United States	San Diego	California	8	0	Anna Narezkina, John Power
University of Utah	United States	Salt Lake	Utah	7	0	Roberta Florido

Center	Country	City	Admin	N, discovery cohort	N, validation cohort	Collaborators
		City				
University of Texas at Austin Ascension Seton	United States	Austin	Texas	7	0	Yan Liu
Barts Health NHS Trust	United Kingdom	London		6	0	Shanthini M Cruz
Maisonneuve-Rosemont Hospital	France	Bordeaux		6	0	Nahema Issa, Maxime Faure
CHU Nantes	France	Nantes		6	0	Nicolas Piriou
Mc Master University	Canada	Hamilton	Ontario	6	0	Darryl Leong, Rocio Baro Vila
Peter MacCallum Cancer Centre	Australia	Melbourne		6	0	Shahneen Sandhu
Disease Unit for Myocarditis and Arrhythmogenic Cardiomyopathies, IRCCS San Raffaele Scientific Institute	Italy	Milan		6	0	Giovanni Peretto
Washington University	United States	St. Louis	Missouri	6	0	Isik Turker, Jesus Jimenez
Hôpital Européen Georges Pompidou, Université Paris Cité	France	Paris		5	0	Assié Eslami
APHP Hopital Henri Mondor	France	Créteil		5	0	Charlotte Fenioux
Bellvitge University Hospital – Catalan Institute of Oncology, IDIBELL, CIBERCV	Spain	Barcelona		5	0	Pedro Moliner
Centre Hospitalier Universitaire Vaudois	Switzerland	Lausanne		5	0	Michel Obeid
Chi Mei Medical Center	Taiwan	Tainan		5	0	Wei Ting Chang
Northwestern University	United States	Chicago	Illinois	5	0	Nausheen Akhter
University of Wisconsin School of Medicine and Public Health	United States	Madison	Wisconsin	5	0	Stephen M. Ewer
Medstar Washington Hospital Center	United States	Washington	District of Columbia	4	0	Sayed Ebrahim Kassaian
University Hospital Erlangen	Germany	Erlangen		4	0	Lucie Heinzerling
University of Pittsburgh Medical Center	United States	Pittsburgh	Pennsylvania	4	0	Joshua E Levenson, Benay Ozbay
CHU Rennes	France	Rennes		3	0	Elise Paven, Elena Galli
Guangdong Academy of Medical Sciences	China	Guangzhou		3	0	
Hospital Universitario La Paz	Spain	Madrid		3	0	Teresa Lopez Fernandez, Lucia Cobarro
Rambam Medical Center	Israel	Haifa		3	0	Manhal Habib
Rosewell Park Cancer Center	United States	Buffalo	New York	3	0	
University of Tsukuba	Japan	Kitaibaraki		3	0	Kazuko Tajiri
Center for Cancer Research National Cancer Institute National Institutes of Health	United States	Bethesda	Maryland	2	0	
CHU Nice	France	Nice		2	0	Fanny Rocher
CHU Tours, University of Tours	France	Tours		2	0	Theodora Bejan-Angoulvant
Cleveland Clinic Foundation	United States	Cleveland	Ohio	2	0	
Emory University	United States	Atlanta	Georgia	2	0	Mehmet Asim Bilen, Susmita Parashar
Houston Methodist Hospital	United States	Houston	Texas	2	0	
Ohio State University Wexner Medical Center	United States	Columbus	Ohio	2	0	Avirup Guha
The First Affiliated Hospital of Weifang Medical University	China	Weifang		2	0	Wenjing Song

Center	Country	City	Admin	N, discovery cohort	N, validation cohort	Collaborators
University Hospital Basel	Switzerland	Basel		2	0	David Koenig, Kirsten Mertz
University of Alabama Birmingham	United States	Birmingham	Alabama	2	0	Carrie Lenneman
University of California at Davis	United States	Davis	California	2	0	
Vidant Medical Center/East Carolina University	United States	Greenville	North Carolina	2	0	
Alfred Health, Monash University	Australia	Melbourne		1	0	Andrew Haydon
Allama Iqbal Medical College	Pakistan	Lahore		1	0	
Anjo Kosei Hospital	Japan	Anjmach		1	0	
Baylor College of Medicine	United States	Houston	Texas	1	0	
Bern University Hospital	Switzerland	Bern		1	0	
Cedars-Sinai Medical Center Network	United States	Los Angeles	California	1	0	Anja Karlstaedt
Centre Léon Bérard	France	Lyon		1	0	Chloe Lesiuk
Charite Campus Mitte (CMM)	Germany	Berlin		1	0	
CHU Brest	France	Brest		1	0	
CHU Clermont Ferrand	France	Clermont-Ferrand		1	0	Romain Tresorier
CHU Lille	France	Lille		1	0	
Clínica Universidad de Navarra	Spain	Pamplona		1	0	
Cliniques universitaires Saint-Luc	Belgium	Bruxelles		1	0	
Cooper University Hospital	United States	Camden	New Jersey	1	0	
Dana Farber Cancer Institute	United States	Boston	Massachusetts	1	0	
Eisenhower Medical Center	United States	Rancho Mirage	California	1	0	Yazeed Samara
ELK Thorax Center	Germany	Berlin		1	0	Christian Grohe
General Hospital of Chinese People's Liberation Army	China	Beijing		1	0	
Geneva University Hospitals and Medical Faculty	Switzerland	Geneva		1	0	Pierre Yves Dietrich
Hartford Hospital	United States	Hartford	Connecticut	1	0	
Heart Care Centers of Illinois	United States	Chicago	Illinois	1	0	Sean Tierney
Hotel Dieu de France University Hospital	Lebanon	Beirut		1	0	Elie Rassy
ICO Nantes	France	Nantes		1	0	Elvire Mervoyer
Institut Bergonié Centre de Lutte contre le Cancer	France	Bordeaux		1	0	
Japan Community Health Organization Kyushu Hospital	Japan	Fukuoka		1	0	
Keio University	Japan	Tokyo		1	0	Shigeaki Suzuki
Kumamoto University	Japan	Kumamoto		1	0	Satoshi Fukushima
Lahey Hospital and Medical Center	United States	Burlington	Massachusetts	1	0	
Markey Cancer Center, University of Kentucky	United States	Lexington	Kentucky	1	0	
Marshall University	United States	Huntington	West Virginia	1	0	
Mayo Clinic	United States	Rochester	Minnesota	1	0	
Georgia Cancer Center, Augusta University	United States	Augusta	Georgia	1	0	Avirup Guha

Center	Country	City	Admin	N, discovery cohort	N, validation cohort	Collaborators
Memorial Sloan Kettering Weill Cornell Medical College	United States	New York	New York	1	0	
Mitsui Memorial Hospital	Japan	Tokyo		1	0	
Montreal Heart Institute	Canada	Montreal	Quebec	1	0	Maxime Robert-Halabi
Mount Vernon Cancer Centre	United Kingdom	London		1	0	
Nagoya University Graduate School of Medicine	Japan	Nagoya		1	0	Ryota Morimoto
National Cancer Center Hospital East	Japan	Kashiwa		1	0	Kazuko Tajiri
New York Institute of Technology College of Osteopathic Medicine	United States	New York	New York	1	0	
New York-Presbyterian Brooklyn Methodist Hospital	United States	New York	New York	1	0	
Northwell Health	United States	New York	New York	1	0	Robert Copeland-Halperin
Providence St. Joseph Health	United States	Portland	Oregon	1	0	Michael Layoun
Qianfoshan Hospital	China	Jinan		1	0	Jun Wang
Royal North Shore Hospital	Australia	Sydney		1	0	Suran Fernando
Saiseikai Narashino Hospital	Japan	Narashino		1	0	
San Giacomo Hospital	Italy	Monopoli		1	0	Eugenia Rota
Sendai Kousei Hospital	Japan	Sendai		1	0	Yumi Katsume
Shinshu University	Japan	Matsumoto		1	0	Yukiko Kiniwa
St. Luke's International Hospital	Japan	Tokyo		1	0	
Sunnybrook Odette Cancer Centre	Canada	Toronto		1	0	Ellen Warner
Teikyo University School of Medicine	Japan	Tokyo		1	0	Nobuhiko Seki
Tokyo to Saiseikai Central Hospital	Japan	Tokyo		1	0	
Tokyo Women's Medical University	Japan	Tokyo		1	0	
University Hospital LMU	Germany	Munich		1	0	Lucie Heinzerling, Theresa Ruf
University Hospital Mainz	Germany	Mainz		1	0	
University of Chicago	United States	Chicago	Illinois	1	0	
University of Florida	United States	Gainesville	Florida	1	0	Jess DeLaune
University of Massachusetts, Berkshire Medical Centre	United States	Pittsfield	Massachusetts	1	0	
University of North Carolina Medical Center Chapel Hill	United States	Chapel Hill	North Carolina	1	0	
University of southern California	United States	Los Angeles	California	1	0	
University of Toronto	Canada	Toronto		1	0	Nazanin Aghel
VCU Medical center	United States	Richmond	Virginia	1	0	
Veterans Affairs Puget Sound Health Care System-Seattle	United States	Seattle	Washington	1	0	



1 **Table S2: Clinical Characteristics of Validation Cohorts**

	Sorbonne University, Paris (France)	Mass General Brigham, Boston (USA)
<b>Presentation date periods</b>	April–2023 - April–2024	January–2015 - June 2022
<b>Sample size</b>	n=35, prospective	n=119, retrospective <sup>19</sup>
<b>Age (years, median, (IQR))</b>	74 (71 - 79)	73 (67 - 76)
<b>Female (n/N) (%)</b>	15 (43%)	40 (34%)
<b>ICI Regimen</b>		
Anti-PD1 or anti-PDL1 monotherapies	33 (94%)	90 (76%)
Anti-CTLA4 monotherapy	0 (0%)	3 (3%)
Anti-CTLA4 & anti-PD1/PDL1 combination therapy	2 (6%)	26 (22%)
<b>Cancer type</b>		
Hemopathy	1 (3%)	2 (2%)
Lung	8 (23%)	30 (25%)
Skin	13 (37%)	36 (30%)
Urogenital	9 (26%)	28 (24%)
Other cancers	4 (11%)	23 (19%)
<b>Time from 1<sup>st</sup> ICI infusion to myocarditis (days, median, (IRQ))</b>	42 (27-79)	52 (26 - 120)
<b>Major Cardiomyotoxic Events (30-days)</b>	11 (31%)	49 (41%)
Respiratory muscle failure requiring ventilation	7 (20%)	6 (5%)
Cardiomyotoxic death	0 (0%)	10 (8%)
Heart Failure requiring intravenous drugs	4 (11%)	30 (25%)
Severe arrhythmia*	5 (14%)	18 (15%)
All-cause mortality (30-days)	0 (0%)	18 (15%)
<b>Risk score parameters within the three first days (day 1 to 3)</b>		
Active thymoma	1 (3%)	0 (0%)
Cardiomuscular symptoms	24 (69%)	117 (98%)
Sokolow Lyon index $\leq 0.5$ mV	3 (9%)	9 (8%)
LVEF<50%	6 (17%)	41 (34%)
Maximum Troponin** (fold upper limit of normal), median (IQR)	26 (10 - 86)	13 (4 - 84)
<b>Diagnostic certainty per updated Bonaca's criteria<sup>5</sup></b>		
Definite myocarditis	35 (100%)	37 (31%)
Probable myocarditis	0 (0%)	31 (26%)
Possible myocarditis	0 (0%)	51 (43%)

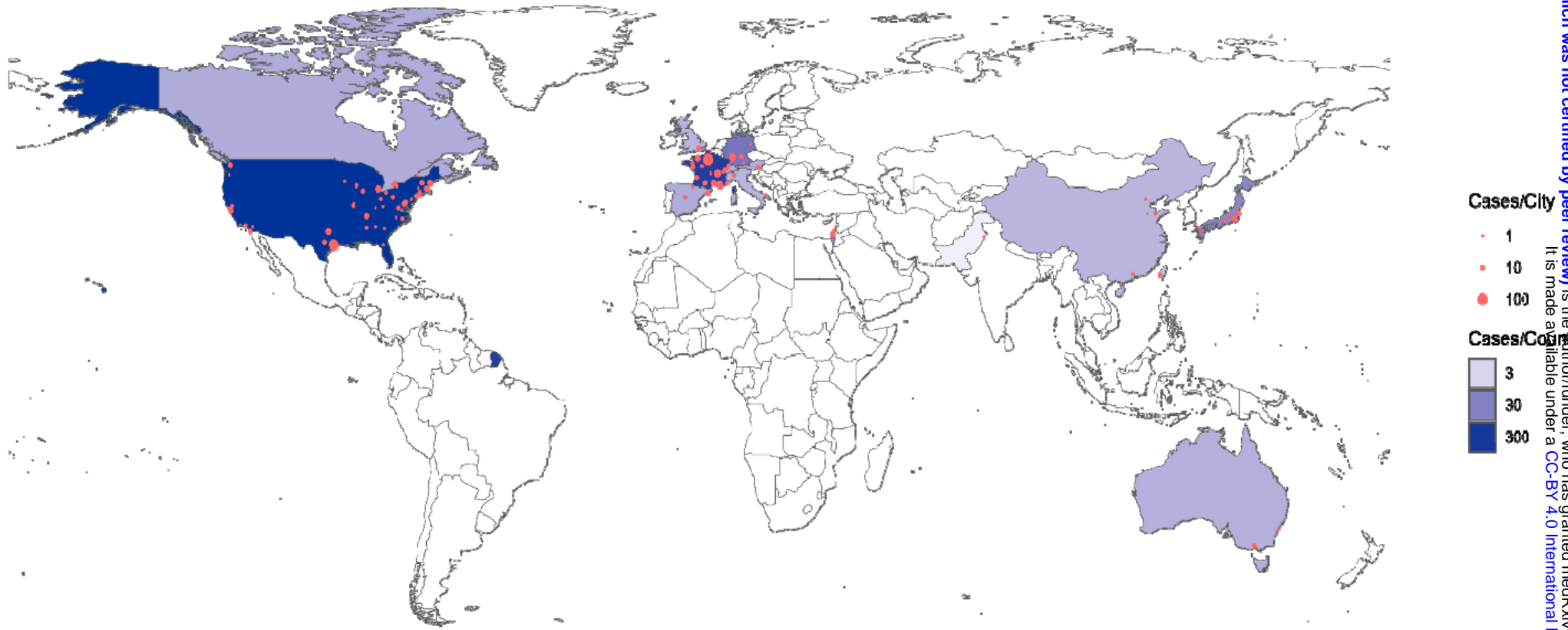
2 \* Severe arrhythmia: defined as sustained ventricular arrhythmia, complete heart block, sudden cardiac  
3 death, use of atropine or isoproterenol, and/or use of pacemaker/defibrillator

4 \*\* preferentially cardiac troponin-T, if unavailable cardiac troponin I

**1 Table S3: Diagnostic properties of the risk score to predict major cardio-myotoxic events at 30 days.**

Risk Score	Sensitivity	Specificity	Positive Predictive Value	Negative Predictive Value
<b>Discovery Cohort: International Redcap</b>				
0+	1.00 (0.98-1.00)	0.00 (0.00-0.01)	0.32 (0.29-0.36)	
1+	0.99 (0.97-1.00)	0.14 (0.11-0.17)	0.35 (0.32-0.39)	0.97 (0.90-1.00)
2+	0.82 (0.77-0.87)	0.48 (0.44-0.52)	0.43 (0.39-0.48)	0.85 (0.80-0.89)
3+	0.46 (0.40-0.53)	0.84 (0.81-0.87)	0.59 (0.52-0.65)	0.77 (0.73-0.80)
4+	0.18 (0.14-0.24)	0.98 (0.96-0.99)	0.80 (0.68-0.89)	0.71 (0.68-0.75)
5+	0.06 (0.03-0.09)	1.00 (0.99-1.00)	0.91 (0.65-0.99)	0.69 (0.65-0.72)
6+	0.01 (0.00-0.04)	1.00 (0.99-1.00)	0.96 (0.35-0.99)	0.68 (0.64-0.71)
<b>Validation Cohort: Sorbonne University</b>				
0	1.00 (0.70-1.00)	0.00 (0.00-0.16)	0.31 (0.18-0.48)	
1	1.00 (0.70-1.00)	0.29 (0.15-0.49)	0.39 (0.24-0.58)	1.00 (0.60-1.00)
2	0.82 (0.51-0.96)	0.67 (0.47-0.82)	0.53 (0.31-0.74)	0.89 (0.66-0.98)
3	0.36 (0.15-0.65)	0.92 (0.73-0.99)	0.67 (0.30-0.91)	0.76 (0.58-0.88)
4	0.18 (0.04-0.49)	0.96 (0.78-1.00)	0.67 (0.20-0.94)	0.72 (0.54-0.85)
5	0.00 (0.00-0.30)	1.00 (0.84-1.00)		0.69 (0.52-0.82)
6	0.00 (0.00-0.30)	1.00 (0.84-1.00)		0.69 (0.52-0.82)
<b>Validation Cohort: Mass General Brigham</b>				
0	1.00 (0.91-1.00)	0.00 (0.00-0.06)	0.41 (0.33-0.50)	
1	1.00 (0.91-1.00)	0.01 (0.00-0.08)	0.42 (0.33-0.51)	1.00 (0.17-1.00)
2	0.80 (0.66-0.89)	0.50 (0.39-0.61)	0.53 (0.41-0.64)	0.78 (0.64-0.88)
3	0.29 (0.18-0.43)	0.90 (0.80-0.95)	0.67 (0.45-0.83)	0.64 (0.54-0.73)
4	0.02 (0.00-0.12)	0.99 (0.92-1.00)	0.50 (0.09-0.91)	0.59 (0.50-0.67)
5	0.00 (0.00-0.09)	1.00 (0.94-1.00)		0.59 (0.50-0.67)
6	0.00 (0.00-0.09)	1.00 (0.94-1.00)		0.59 (0.50-0.67)

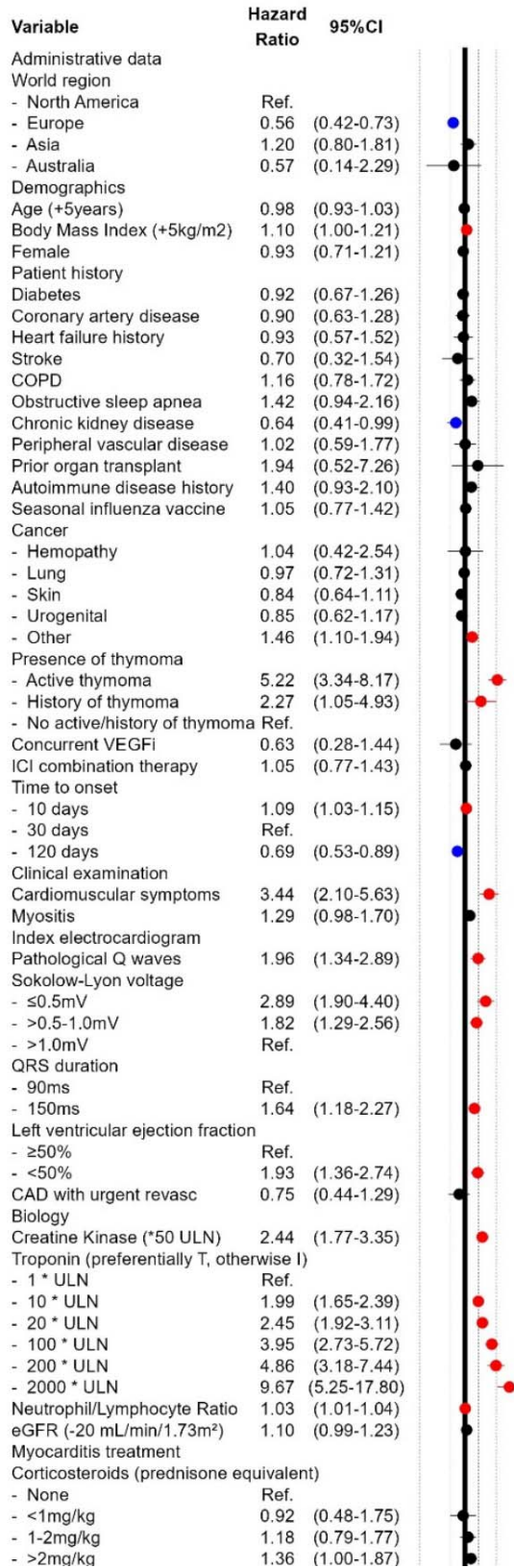
1 Figure S1: Geographic distribution of study population (Discovery Cohort)



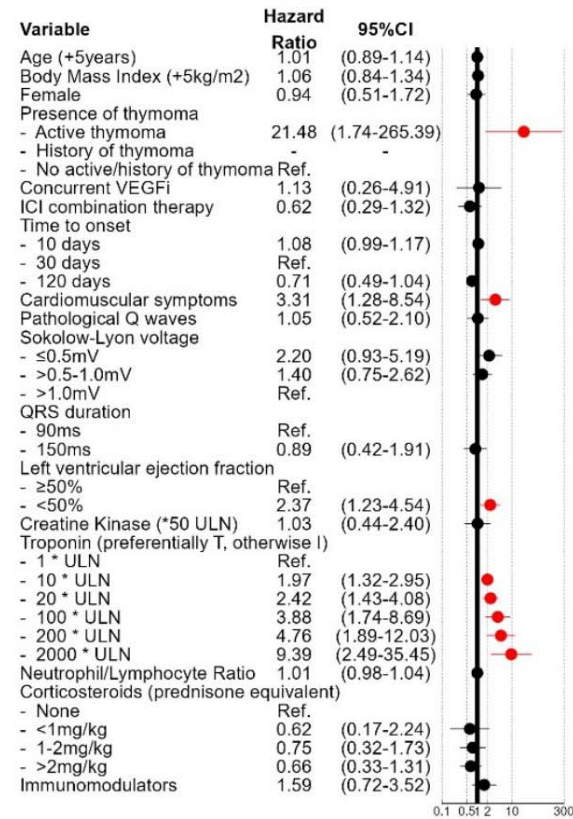
medRxiv preprint doi: <https://doi.org/10.1101/2024.06.02.24308336>; this version posted June 3, 2024. The copyright holder for this preprint (which was not certified by peer review) is the author/funder, who has granted medRxiv a license to display the preprint in perpetuity. It is made available under a [CC-BY 4.0 International license](https://creativecommons.org/licenses/by/4.0/).

1 **Figure S2: Univariate (A) and Unimputed (B) (n=238) multivariable models for association with major**  
 2 **cardio-myotoxic events.**

A.



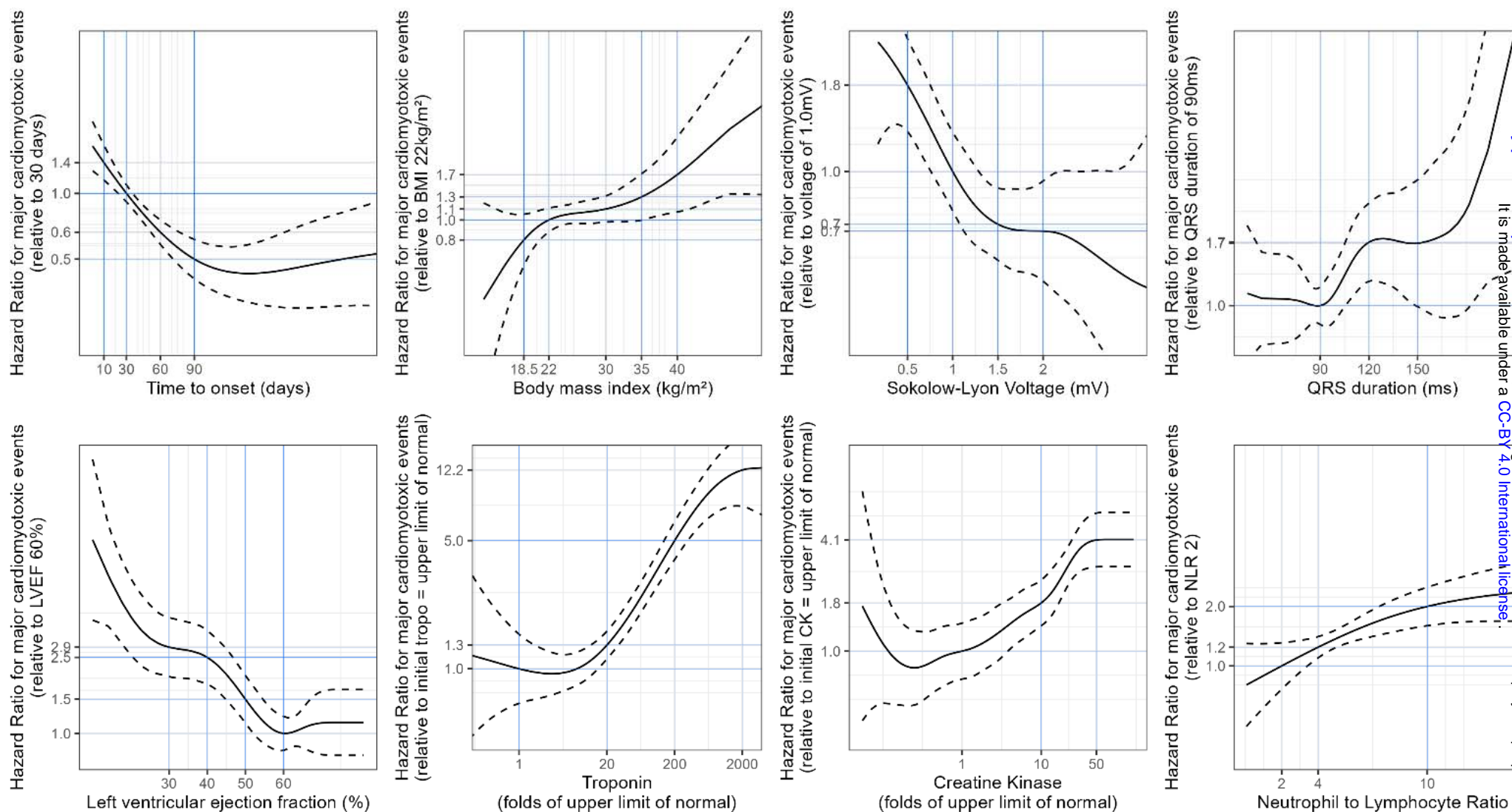
B.



3

1 **Abbreviations:** CAD: coronary artery disease, CI: confidence interval, COPD: Chronic obstructive pulmonary  
2 disease, eGFR: estimated glomerular filtration rate, ICI: immune checkpoint inhibitor, ms: millisecond, mV:  
3 millivolt, Ref: reference, ULN: upper limit of normal, VEGFi: Vascular Endothelial Growth Factor Inhibitor,  
4 Immunomodulator: non-steroidal immunomodulators only

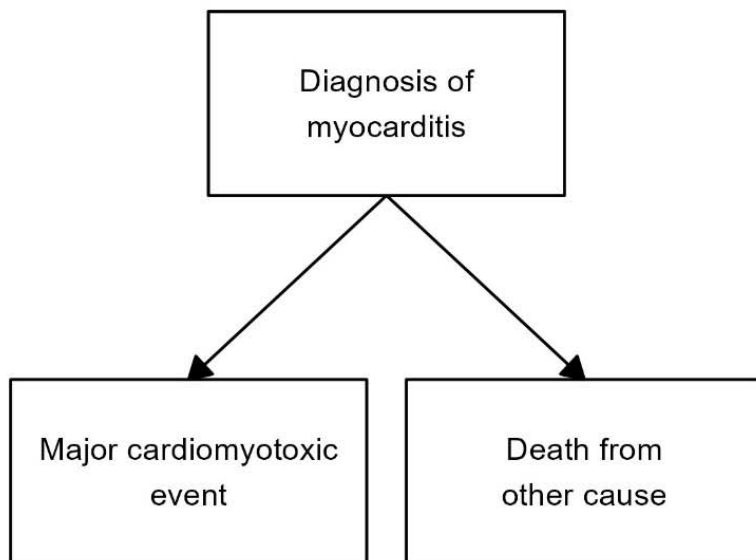
**1 Figure S3: Spline models.** Hazard-ratio for major cardio-myotoxic event at 30 days after presentation as a function of continuous variable predictors  
**2** using data available at initial presentation. Troponin and creatine kinase were log transformed to account for non-linearity. w



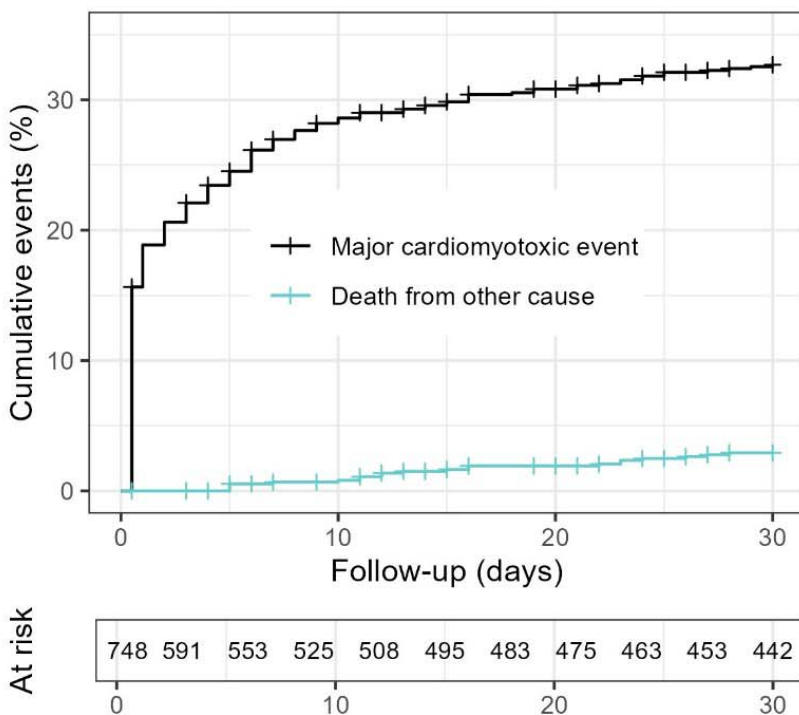
**4 Abbreviations:** BMI: body mass index, LVEF: left ventricular ejection fraction, CK: creatine kinase, NLR: neutrophil to lymphocyte ratio

1 **Figure S4: Predictors of 30-days mortality with competing risk approach.** Illustration of competing risks  
 2 for study patients (A). Cumulative incidence of competing risks during study period (B). Explanatory  
 3 multivariable model for association with major cardio-myotoxic events fitted using Aalen Johansen  
 4 approach to account for death from other causes (C).

A.



B.



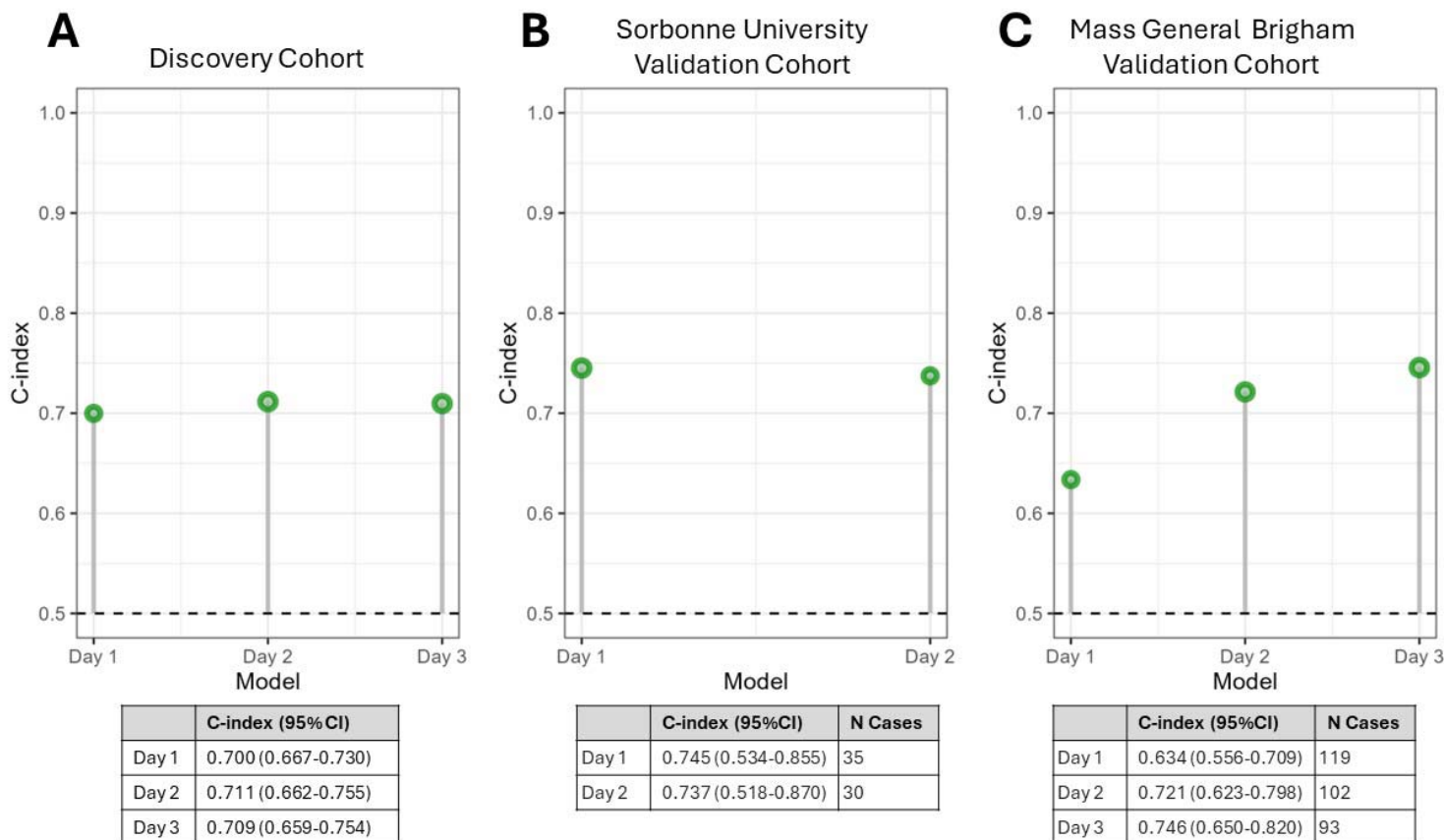
C.

Variable	Hazard Ratio	95% CI
Age (+5years)	0.99	(0.93-1.05)
Body Mass Index (+5kg/m2)	1.08	(0.97-1.20)
Female	0.95	(0.70-1.29)
Presence of thymoma		
- Active thymoma	3.70	(1.81-7.58)
- History of thymoma	1.62	(0.67-3.94)
- No active/history of thymoma	Ref.	
Concurrent VEGFi	0.92	(0.38-2.21)
ICI combination therapy	1.08	(0.77-1.51)
Time to onset		
- 10 days	1.06	(1.01-1.11)
- 30 days	Ref.	
- 120 days	0.77	(0.63-0.96)
Cardiomuscular symptoms		
Myositis	2.61	(1.58-4.33)
Pathological Q waves	0.77	(0.55-1.09)
Sokolow-Lyon voltage		
- ≤0.5mV	1.86	(1.14-3.04)
- >0.5-1.0mV	1.40	(0.96-2.06)
- >1.0mV	Ref.	
QRS duration		
- 90ms	Ref.	
- 150ms	1.09	(0.72-1.64)
Left ventricular ejection fraction		
- ≥50%	Ref.	
- <50%	1.80	(1.19-2.71)
Creatine Kinase (*50 ULN)	1.17	(0.72-1.89)
Troponin (preferentially T, otherwise I)		
- 1 * ULN	Ref.	
- 10 * ULN	1.59	(1.28-1.98)
- 20 * ULN	1.83	(1.38-2.43)
- 100 * ULN	2.54	(1.64-3.92)
- 200 * ULN	2.92	(1.77-4.82)
- 2000 * ULN	4.65	(2.27-9.55)
Neutrophil/Lymphocyte Ratio	1.01	(1.00-1.03)
Corticosteroids (prednisone equivalent)		
- None	Ref.	
- <1mg/kg	0.81	(0.42-1.57)
- 1-2mg/kg	0.79	(0.50-1.25)
- >2mg/kg	0.87	(0.61-1.22)
Immunomodulators	1.36	(0.87-2.15)

6 **Abbreviations:** eGFR: estimated glomerular filtration rate, ICI: immune checkpoint inhibitor, ms: millisecond, mV:  
 7 millivolt, Ref: reference, ULN: upper limit of normal, VEGFi: Vascular Endothelial Growth Factor Inhibitor,  
 8 Immunomodulator: non-steroidal immunomodulators only  
 9

1 **Figure S5: Harrel’s c-index of risk score for association with major cardio-myotoxic events.** Graphical  
 2 and tabular display of c-index when applied on a daily basis to Discovery Cohort (A), Sorbonne University  
 3 Validation Cohort (B), Mass General Brigham Validation Cohort (C)

4  
5

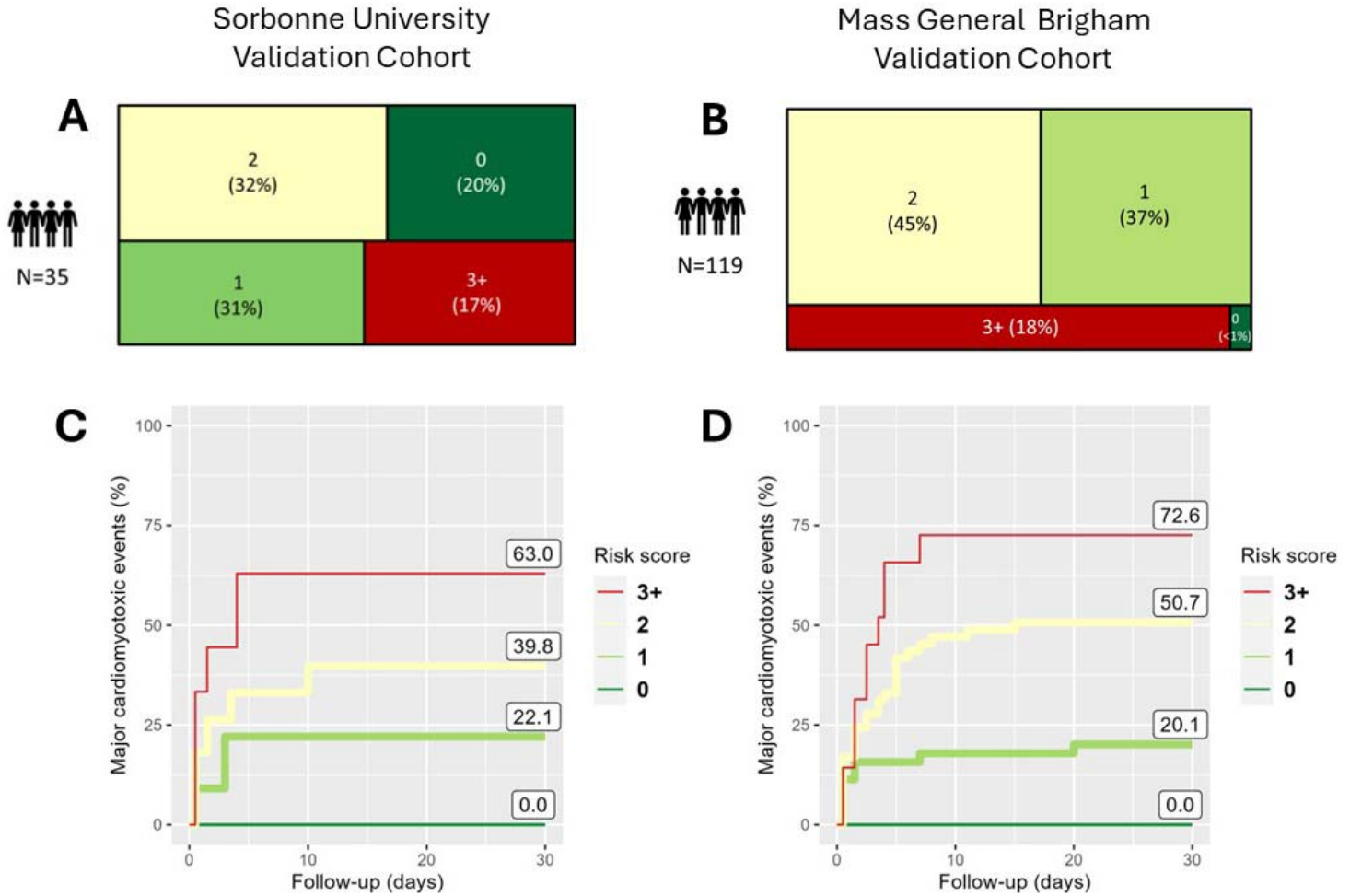


7

8 **Abbreviations:** CI: confidence interval



1 **Figure S6: Validation cohorts risk score distribution and cardio-myotoxic event rate.** Risk  
 2 score distribution for Sorbonne University (A) and for Mass General Brigham (B) validation  
 3 cohorts. Cumulative incidence of major cardio-myotoxic events according to for risk score level  
 4 in the Sorbonne University (C) and in the Mass General Brigham University (D) validation  
 5 cohorts  
 6



7

8