

1 Is Wear Still a Concern in TKA With Contemporary Conventional and Highly Crosslinked 2 Polyethylene Tibial Inserts in the Mid- to Long-Term?

3
4 Devin P. Asher BS¹, Jennifer L. Wright, MS¹, Deborah J. Hall, BS¹, Hannah J. Lundberg, PhD¹,
5 Douglas W. Van Citters, PhD², Joshua J. Jacobs, MD¹, Brett R. Levine, MD, MS¹, Robin
6 Pourzal, PhD¹

7 ¹Department of Orthopedic Surgery, Rush Medical College, Rush University, Chicago, IL,
8 USA

9 ²Thayer School of Engineering, Dartmouth College, Hanover, New Hampshire

10 Corresponding Author:

11 Robin Pourzal, PhD
12 1611 W. Harrison St. Ste. 204-F
13 Chicago, IL 60612
14 312-942-7270
15 robin_pourzal@rush.edu

16 Abstract:

17 Background

18 Modern literature has brought into question if wear of tibial inserts made from conventional or highly-
19 crosslinked polyethylene (HXL PE) is still a factor limiting longevity of total knee arthroplasty (TKA) in
20 the mid- to long-term. It is the objective of this study to determine: 1) most common causes of
21 mid- to long-term TKA failure, 2) the prevalence of delamination, and 3) the medial/lateral linear
22 wear rates of conventional and HXL PE tibial inserts retrieved in the mid- to long-term.

23 Methods

24 A tibial insert retrieval cohort of 107 inserts (79 conventional, 28 HXL PE) with a minimum time
25 *in situ* of 6.5 years (mean 11.7±4) was studied. Failure causes were determined from chart-
26 review, delamination presence was assessed microscopically, and medial/lateral linear wear was
27 determined by minimal thickness changes measured with a dial-indicator.

28 Results

29 The most common mid-to long-term etiologies for failure were instability (44.9%), PE wear
30 15%), aseptic loosening (14%) and infection (13.1%). Delamination occurred in 70% of inserts
31 (72.1% conventional, 64.3% HXLPE). Gross material loss due to delamination appeared to be
32 the underlying reason for at least 33.3% of cases exhibiting instability. Of the cases removed for
33 infection, 75% exhibited no histopathological hallmarks of acute infection. The medial/lateral
34 wear rates were 0.054/0.051 (conventional) and 0.014/0.011 (HXL) mm/year, respectively.

35 Conclusions

36 Polyethylene wear still appears to be a major primary and secondary cause for TKA revision in
37 the mid- to long-term. Wear may manifest as destabilizing delamination or as continuous release
38 of fine wear particles potentially resulting in inflammatory responses and subsequent failure.

39

40

41 **Keywords (max 6)**

42 Total knee arthroplasty, tibial inserts, polyethylene, highly crosslinked, wear, delamination

43 **Introduction:**

44 Total knee arthroplasty (TKA) is performed on more than one million patients in the US
45 annually to treat end-stage osteoarthritis (OA). Revision rates, however, have remained steady in
46 recent years. (1) According to registries and epidemiological studies, the most common causes of
47 failure leading to revision include infection and inflammatory responses, mechanical loosening,
48 and instability, with the proportion of revisions due to aseptic loosening decreasing in favor of
49 infection. (2–5) One limitation of registry reports is that they aggregate early and late failures,
50 which typically represent different rates of etiologies for revision. Therefore, as newer registries
51 increase reporting, they likely overrepresent early failures predominately related to higher rates
52 of early prosthetic joint infection (PJI). (4)

53 Historically, two factors limited long-term implant survivorship: shelf and *in vivo* ultra-high
54 molecular weight polyethylene (PE) oxidation leading to mechanical insert breakdown and
55 particle-induced osteolysis driven by PE wear debris leading to subsequent implant loosening.
56 The advent of highly crosslinked (HXL) PE has led to decreases in revision rates due to wear in
57 the short term (6,7), but long-term clinical and retrieval studies of contemporary HXL PE have
58 not yet been published, particularly with respect to *in vivo* oxidation prevention and long-term
59 biological outcomes. One registry found improved mid-term survivorship (9), but most studies
60 find no difference between conventional and HXL PE performance for TKA in terms of revision
61 rate, cause for revision, or patient satisfaction. (2,6–8) Retrieval studies of contemporary tibial
62 inserts—made from either PE—retrieved at revision surgery indicate that *in vivo* oxidation is
63 frequent, even in the absence of free radicals. (9–11)

64 The current literature reports varying revision rates for wear, with two studies finding unchanged
65 wear-related failures over time. (4,12) Confounding the issue is the difficulty of stratifying

66 reasons for aseptic revisions within registries, based on overall coding discrepancies and lack of
67 transparency. (13) Furthermore, PE wear, especially gross wear caused by delamination, may be
68 the underlying cause of the physical examination finding of instability. However, PE wear may
69 not be included in the coding process as it is often an intra-operative finding not discernable on
70 preoperative evaluation.

71 Moreover, the AJRR reports that only 3% of failures today are associated with wear particle-
72 induced osteolysis. However, with nearly half of all revision cases being attributed to aseptic
73 loosening and non-infectious inflammatory reasons, it is possible that biological reactions to
74 particulate debris still occur on a longer timeline. Further, the reaction to particulate debris may
75 be a secondary factor in a significant number of revision procedures and likely is highly
76 underreported.

77 Therefore, this study aims to answer the following research questions: 1) What are the most
78 common causes of mid- to long-term TKA failure with conventional PE and contemporary HXL
79 PE inserts? 2) What is the prevalence of delamination, and how does it relate to the cause of
80 failure? 3) What are the medial and lateral linear wear rates of conventional PE and
81 contemporary HXL PE inserts measured from mid- to long-term retrievals?

82

83 **Material and Methods**

84 A retrospective chart review was conducted to determine general information on all surgically
85 retrieved TKAs made from conventional PE (retrieved between 2019 and 2024) and HXL PE
86 (retrieved between 2014 and 2024) available in our IRB-approved implant retrieval repository.
87 Data collected included time *in situ*, sex, surgery site laterality, and reason for implant/removal,

88 as well as implant manufacturer, model, and size. Inserts made from conventional or HXL PE
89 with a time *in situ* of > 6.5 years, representing mid- to long-term implants, were included in this
90 study. After performing a review of 688 patients, a total of 110 tibial inserts fit the criteria for the
91 study. Three inserts made from antioxidant doped polyethylene were removed from the study
92 resulting in a final study cohort of 107 inserts. The mean (standard deviation, SD) patient age at
93 revision was 71 (SD 7) years, the mean time in situ was 12 (SD 4) years. There were 63 female
94 and 44 male patients (Table 1). This cohort included 79 conventional and 28 HXL PE inserts
95 from 6 manufacturers (71 Zimmer Biomet—Warsaw, IN, 8 Smith & Nephew—Memphis, TN, 2
96 DePuy—Warsaw, IN, 18 Stryker—Mahwah, NJ, 5 Biomet—Warsaw, IN, 3 other). There were 81
97 cruciate retaining inserts and 26 posterior stabilized inserts.

98 Tibial insert wear and damage was first optically assessed under a stereo microscope. A
99 delamination score was assigned for the medial and lateral sides using a three-tiered numeric
100 rating system where 0 = no visible delamination is present, 1= mild (visible subsurface cracks,
101 milky appearance), and 2 = severe (gross wear and breakdown of the bearing surface) (Figure 1).

102
103 Linear wear was quantified according to a previously published method based on change of
104 minimum thickness (14,15) using a Mitutoyo dial indicator. A 3mm spherical tip was used on
105 both sides of the indicator (Figure 2). Each insert was evaluated for linear wear on the medial
106 and lateral articular surfaces at the narrowest point of the bearing surface. This process was
107 repeated for a total of three measurements per side. Linear wear on each side was defined as the
108 difference between the measured value and the initial minimum thickness. Reference values for
109 the minimal thickness were obtained from either publicly available product information or from
110 short-term retrievals (time *in situ* < 6 months). Linear wear was measured for all inserts, even

111 those with severe delamination, to determine the maximum linear wear independent of damage
112 mechanism. However, because delamination is an erratic process that does not necessarily
113 correlate with the release of wear particles, linear wear rates were only assessed for inserts that
114 were not severely delaminated (i.e. those with bearing surfaces undergoing sliding wear without
115 gross wear due to delamination).

116

117 **Results**

118 In this tibial insert retrieval cohort, the primary reasons for revision were 44.9% instability
119 (48.1% conventional PE, 35.7% HXL PE), 15% polyethylene wear (16.5% conventional PE,
120 10.7% HXL PE), 14% aseptic loosening (13.9% conventional PE, 14.3% HXL PE), and 12.1%
121 infection (13.9% conventional PE, 7.1% HXL PE) (Figure 3). The other reasons for revision
122 included 4.7% pain (2.5% conventional PE, 10.7% HXL PE), 3.7% extensor mechanism
123 disruption (1.3% conventional PE, 10.7% HXL PE), 1.9% osteolysis (1.3% conventional PE,
124 3.6% HXL PE), 2.8% stiffness (1.3% conventional PE, 7.1% HXL PE), and 0.9% distal femur
125 fracture (1.3% conventional PE, 0% HXL PE). With respect to the PJI cases, review of the
126 pathology reports revealed that only 2 of 8 (25%) cases exhibited acute infection, while the
127 others were classified as inflammatory reactions.

128 Delamination occurred in 70% of inserts with 36.4% exhibiting mild and 33.6% severe
129 delamination. Both conventional and HXL PE inserts had delamination (72.1% conventional PE:
130 32.9% mild, 39.2% severe; 64.3% HXL PE: 46.4% mild, 17.9% severe). If delamination was
131 present, it occurred on both the medial and lateral tibial condyles in 54.7% (conventional PE
132 56.1%, HXL PE 50%) of cases, only the medial condyle in 32% (conventional PE 33.3%, HXL

133 PE 27.8%), only the lateral condyle in 9.3% (conventional PE 8.8%, HXL PE 11.1%), and only
134 on the central post in 4% (conventional PE 1.8%, HXL PE 11.1%).

135 When stratified by reason for revision, delamination occurred in 68.7% (35.4% mild, 33.3%
136 severe) of inserts with instability, 93.8% (31.3% mild, 62.5% severe) of inserts removed for
137 wear, 86.7% (46.7% mild, 40% severe) of inserts that underwent aseptic loosening, and 53.9%
138 (30.8% mild, 23.1% severe) of insert removed for infection or other inflammatory responses
139 (Figure 4).

140 Linear wear could be assessed for all inserts except of six (all conventional PE), for which no
141 reference was available. The medial and lateral median (minimum, maximum) linear wear was
142 0.78 mm (0.09, 4.26) and 0.7 mm (0, 2.1) for conventional PE, and 0.12 mm (0, 2.6) and 0.11
143 mm (0, 1.65) for HXL PE inserts, respectively. When excluding inserts with severe delamination,
144 the medial and lateral median (min., max.) linear wear was 0.69 mm (0.09, 2.69) and 0.67 mm
145 (0, 1.44) for conventional PE, and 0.11 mm (0, 0.54) and 0.084 mm (0, 0.7) for HXL PE inserts,
146 respectively. Including inserts with severe delamination there was no linear relationship between
147 wear and time *in situ* for either PE type, except for a positive correlation on the lateral side of
148 conventional PE inserts ($R^2=0.14.5$, $p=0.001$). Excluding inserts with severe delamination,
149 conventional PE inserts had a positive correlation between linear wear and time *in situ* on both
150 the medial ($R^2=0.11.6$, $p=0.008$) and lateral side ($R^2=0.20$, $p<0.001$). For HXL PE inserts
151 without severe delamination, only the lateral side exhibited a positive correlation between wear
152 and time *in situ* ($R^2=0.30$, $p=0.006$) (Figure 5).

153 Wear rates were computed for inserts without severe delamination as the median linear wear over
154 time *in situ*. The median medial and lateral wear rates for conventional and HXL PE were 0.054

155 mm/year (0, 0.17), 0.051 mm/year (0, 0.12), 0.014 mm/year (0, 0.07), and 0.011 mm/year (0,
156 0.05), respectively.

157

158 **Discussion**

159 Instability, PE wear, aseptic loosening and inflammatory responses were the most common mid-
160 to long-term failure reasons for all retrievals whether made of conventional or HXL PE.

161 Delamination and progressive surface wear were also prevalent findings within all reasons for
162 revision. This is a departure from recent registry reports which found infection and other
163 inflammatory responses to be the most common cause of failure. (2) However, registry data is
164 skewed by early failures and therefore are not a reliable measure for mid- to long-term revision
165 causes.

166 The most dominant mid- to long-term TKA failure reason was instability, which coincided with
167 delamination in 68.7% of cases, of which 33.3% was severe delamination damage with material
168 loss. Instability is commonly attributed to malpositioning, cement debonding, or other
169 mechanical issues, which would likely manifest within the first 5 years after primary surgery.
170 (16–21) Therefore, it is plausible that instability in the mid- to long-term frequently may occur
171 secondary to delamination. Delamination, which is the result of surface fatigue wear under
172 combined rolling and sliding motion in the knee, has been a prominent problem in TKA with
173 tibial inserts made from historic PE leading to early failures. (22,23) Embrittlement of the
174 material due to *in vivo* oxidation enables this wear mechanism. Improvements to the material by
175 virtue of sterilization and packaging in an inert atmosphere and the introduction of highly
176 crosslinked materials have mitigated this issue. (24,25) However, several studies have
177 demonstrated that contemporary conventional and HXL PE inserts also undergo subsurface *in*

178 *in vivo* oxidation although on a longer time scale. (10,26,27) The maximum oxidation index is
179 typically located a few hundred micrometers underneath the bearing surface. Our study
180 demonstrates that delamination persists in contemporary conventional and HXL PEs for tibial
181 inserts retrieved in the mid- to long-term. Gross wear associated with delamination may cause
182 instability of the joint or accelerate the process from sub-clinical to symptomatic instability. Even
183 the presence of multiple subsurface cracks that have not yet caused material breakdown may
184 change the mechanical and wear behavior of the insert. While the problem of *in vivo* oxidation
185 has been further addressed by the introduction of antioxidant doped polyethylene (6,7,28), our
186 repository did not yet have a sufficient number of retrievals with the required implantation
187 duration available to investigate trends with these newer materials.

188 After instability, the main reasons for revision were PE wear, aseptic loosening, and PJI or other
189 inflammatory responses. PE wear cases all exhibited some degree of delamination, which was
190 not surprising because delamination is characterized by severe damage to the articular surface.
191 Such gross PE wear can often be assessed as eccentric wear on preoperative radiographs. In the
192 American Joint Replacement Registry (AJRR) PE wear and osteolysis cases are grouped together
193 as a single category, based on ICD 10 coding parameters. In the current study, the two failure
194 reasons were separated because the underlying damage mechanisms are different. Osteolysis
195 presents with obvious osteolytic lesions/bony changes on preoperative radiographs (29), while
196 PE wear cases undergo delamination with material loss most commonly identified
197 intraoperatively. Osteolysis is frequently driven by a foreign body particle response to small
198 particles on the scale of tens to hundreds of nanometers (29–31). Particles trigger a macrophage
199 response that can initiate a cascade of cell responses resulting in periprosthetic bone loss and
200 loosening. Delamination leads to the release of larger particles which may also trigger a tissue

201 response, especially the formation of foreign body giant cells, but not necessarily osteolysis
202 (32,32). While inserts undergoing delamination also generate fine particles during articulation,
203 there is also concern of mechanical failure besides potential inflammatory reactions..
204 Particle induced osteolysis or inflammatory response may also be responsible for failure cases
205 categorized as aseptic loosening and infection. As stated above, it can be assumed that the
206 majority of aseptic loosening cases are not related to mechanical issues such as malpositioning or
207 cement debonding as those would likely manifest early. (16–21) Thus, in the current study of
208 mid- to long-term failures, early stage osteolysis caused by wear debris or other foreign bodies
209 (e.g. cement debris, corrosion products, etc.) may be a possible reason for failure. Additionally,
210 75% of cases labeled as infection related failures did not exhibit hallmarks of PJI according to
211 pathology reports, suggesting a likely inflammatory response to wear debris.
212 The wear analysis in this study clearly shows that measurable wear occurs during the normal
213 articulation of the knee for both conventional and HXL PE. While there was no or only a weak
214 correlation between wear and time *in situ*, it must be considered that there are multiple other
215 factors that drive wear (sex, implant positioning, design, etc.) which could not be assessed here
216 due to the relatively small numbers involved after stratification for these factors. (33) It was of
217 note that the linear wear rates for this mid- to long-term retrieval study were similar to previous
218 studies using the same dial method, (9) but lower than that reported by surface reconstruction
219 methods (33). Yet, it is of note that the latter study focused on early to mid-term TKA failures of
220 a single design. Both the wear rate and the incidence of delamination were higher on the medial
221 compared to lateral compartment, which was expected based on the higher joint loading and
222 surface pressure on the medial side. Joint loading on the medial side has been reported as up to

223 90% of the total force through the joint depending on TKA design due to knee alignment and to
224 the action of the abductors during *in vivo* activity. (34,35)

225 It is important to state that the majority of particles generated from contemporary PE inserts,
226 especially HXL PE inserts, are too small to be identified using polarized light microscopy.
227 However, recent studies of HXL PE acetabular inserts in total hip replacement have shown a
228 prominent presence of PE debris within periprosthetic macrophages by means of infrared
229 spectroscopic imaging.(36,37) In fact, it was shown that osteolysis could occur in inserts with a
230 total volumetric wear rate comparable to well-functioning inserts made from historic PE. These
231 findings demonstrate that despite less volumetric wear in HXL PE inserts, the finer particles
232 generated from HXL PE carry a larger osteolytic potential. (38,39) Future studies need to
233 examine the tissue response of mid- to long-term TKA in more detail as well as the possible
234 association of failure with intracellular fine polyethylene debris.

235 This study had several limitations. First, the study cohort is too limited in size to
236 differentiate differences between tibial insert designs and manufacturers, different insert sizes, or
237 between cruciate retaining and posterior stabilized inserts. It is of great importance to increase
238 this cohort of mid- to long-term retrievals to gain a better understanding of the *in vivo* wear
239 performance of contemporary TKA. Second, an important comparison group—antioxidant doped
240 inserts—could not be included because too few were available in our retrieval database at this
241 time. Third, this study was limited to linear wear measurements based on thickness change. Yet,
242 linear wear was shown to be a good surrogate measure for wear to accurately reflect trends in
243 wear behavior of a retrieval cohort, while underestimating wear on an individual basis. (40)
244 Another limitation of this study is the differences among both conventional and HXL PEs across
245 manufacturers. While treated as only two different groups in this study, the degree of

246 crosslinking and resulting mechanical properties are likely to differ among HXL inserts resulting
247 in additional confounders. (9,14) Finally, this study lacked histopathological analysis of
248 corresponding periprosthetic tissues because tissue samples were not available for all cases.
249 Future studies need to investigate the relationship between wear volume, extent of macrophage
250 response, particle size, and the ultimate reason of failure.

251

252 **Conclusions**

253 This study demonstrates that the reasons for TKA failure in the mid- to long-term differ
254 substantially from registry studies that include early failure. While infection and other
255 inflammatory responses are the most common reason for revision according to the AJRR, in this
256 retrieval cohort the predominant reason for failure was instability. Only 8 of 107 inserts failed
257 due to infection and other inflammatory reactions in our cohort, and only two of these 8
258 demonstrated histopathological findings consistent with periprosthetic joint infection. In both
259 conventional and HXL PE tibial inserts, implant wear can still manifest as 1) delamination
260 leading to gross wear, and 2) milder wear—usually characterized by polishing and three-body
261 wear—resulting in the continuous generation of fine wear debris. The results of this study
262 suggest that delamination may be linked to the onset of instability in the mid- to long-term due to
263 the breakdown of the bearing surface and loss of structural integrity. Other than instability, tibial
264 inserts were removed predominantly for aseptic loosening, PE wear, and other inflammatory
265 responses. The diagnosis of PE wear related TKA failure was mostly linked to the occurrence of
266 delamination. Considering that wear rates were measurable for both conventional and HXL PE,
267 and the fact that loosening due to mechanical issues commonly manifest early, it is likely that the
268 accumulation of wear debris within periprosthetic tissue can cause an inflammatory response

269 resulting in aseptic loosening, effusion, and pain. While only 2% of cases in this cohort were
270 diagnosed with osteolysis, it appears likely that this number is underestimated. The success of
271 HXL PE in total hip arthroplasty may have resulted in a false sense of security for total knee
272 arthroplasty, and only ongoing long-term studies will tell us if PE wear-related issues are truly
273 eliminated. This study suggests that PE wear resulting in loss of structural integrity, manifesting
274 as instability, and/or inflammatory tissue response to wear debris is still a major reason for TKA
275 failure in the mid- to long-term.

276

277

278

279 **Acknowledgements**

280 This study was funded by an internal pilot grant from Rush University Medical Center (Rush
281 Catalyst Award, PIs Lundberg and Pourzal). The authors would like to thank Julia Hochstatter for
282 her valuable contributions in the laboratory.

283

284

285 **Tables**

286 Table 1 Demographics of the study cohort.

	Age (years)	Time in situ (years)	Sex (female, male)	Liner type (cruciate retaining or posterior stabilized)
All	71.16 ± 6.72	11.68 ± 3.94	63, 44	81 CR, 26 PS
Conventional PE	70.55 ± 6.71	12.49 ± 4.01	46, 33	67, 12
HXL PE	72.90 ± 6.58	9.40 ± 2.71	17, 11	14, 14

287

288

289

290 Table 2 Medial and lateral linear wear and wear rate for inserts made from conventional
291 and HXL PE.

	medial linear wear (mm)	lateral linear wear (mm)	medial linear wear without delamination (mm)	lateral liner wear without delamination (mm)	medial linear wear rate (mm/year)	lateral liner wear rate (mm/year)
Conventional PE	0.78 (0.09, 4.26)	0.7 (0, 2.1)	0.69 (0.09, 2.69)	0.67 (0, 1.44)	0.054 (0, 0.17)	0.051 (0, 0.12)
HXL PE	0.12 (0, 2.6)	0.093 (0, 1.65)	0.11 (0, 0.54)	0.084 (0, 0.7)	0.014 (0, 0.07)	0.011 (0, 0.05)

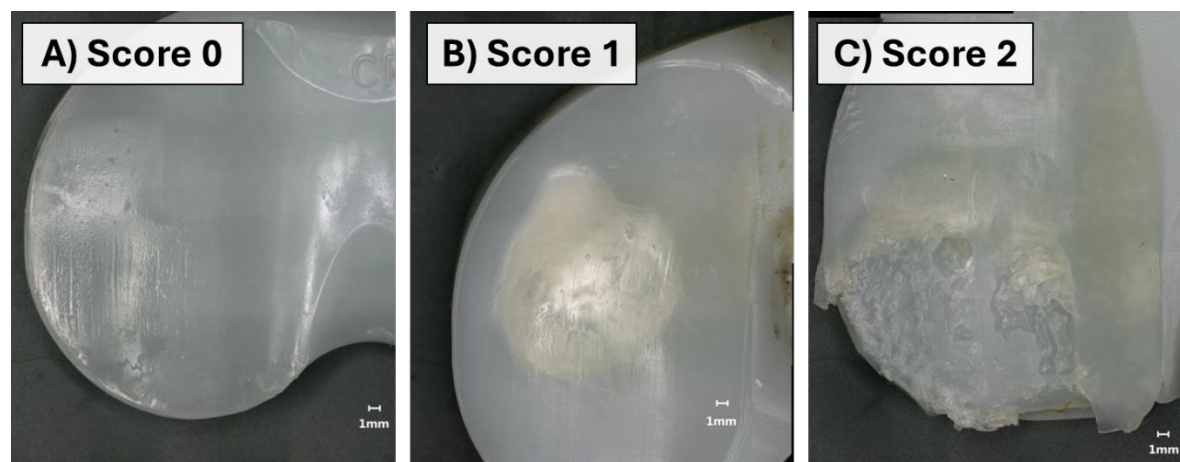
292

293

294

295 **Figures**

296

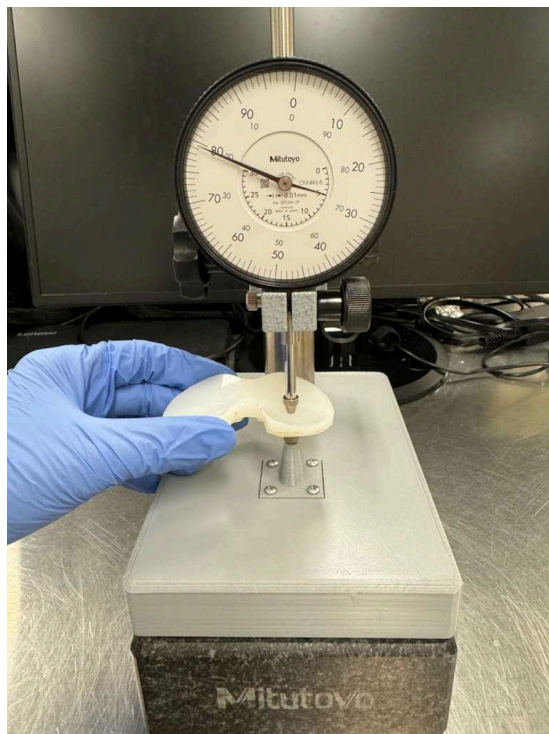


297

298 **Figure 1** Photographs illustrating characteristic features of various degrees of delamination:
299 A) The PE bearing surface exhibits characteristic wear features such as polishing, scratches,
300 striated patterns, and pitting, however, no delamination was noted. B) Subsurface cracks can be
301 seen on the bearing surface characterized by a ‘milky’ surface appearance, but there is no
302 significant material loss. C) Gross material loss associated with delamination on the bearing
303 surface. Note that delamination scores 1 and 2 can vary in the number of affected locations and
304 overall area.

305

306

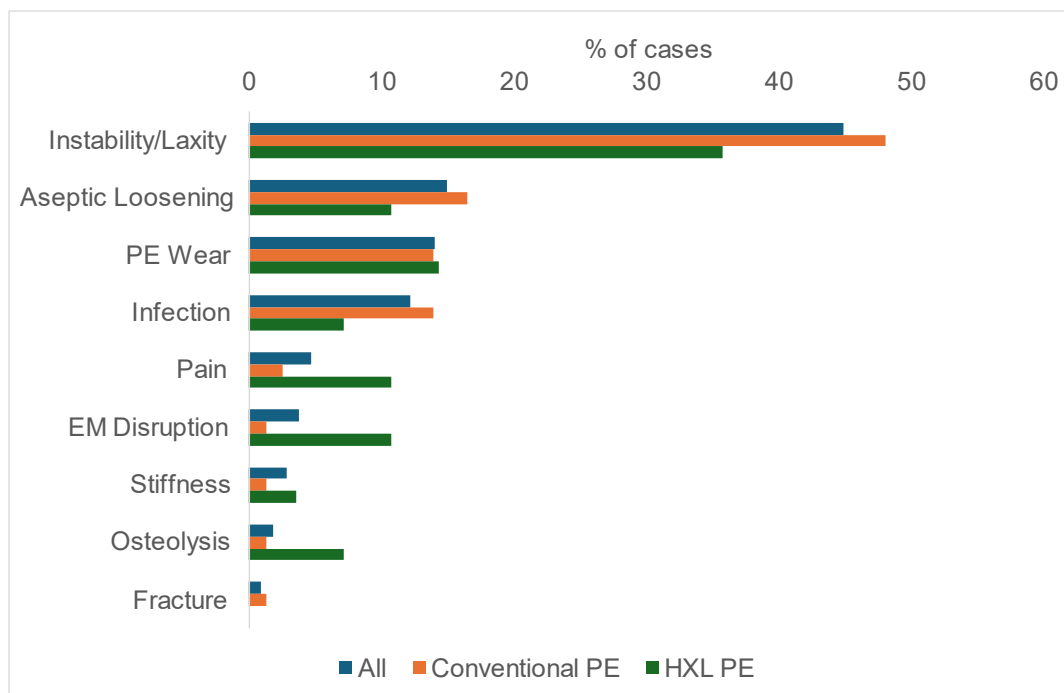


307

308 Figure 2 Measuring rig used for thickness change evaluation as a proxy measure for linear
309 wear.

310

311



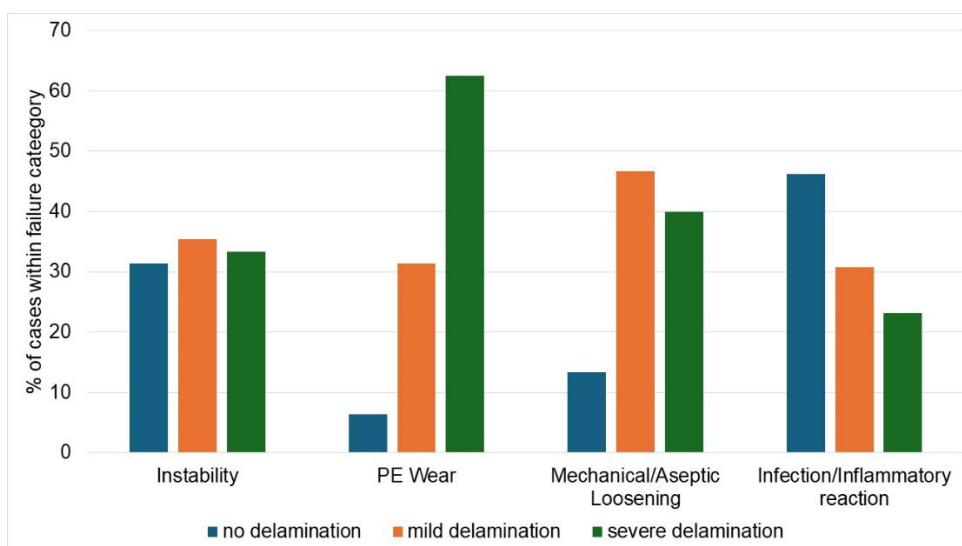
312

313 Figure 3 Illustration of the main reason for mid- to long-term failures associated with this
 314 tibial insert cohort and breakdown by type of polyethylene.

315

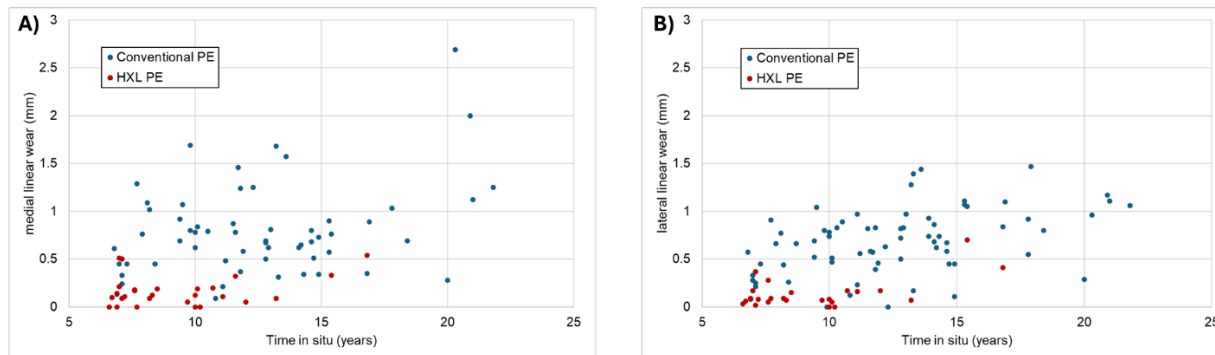
316

317



318

319 Figure 4 Distribution of delamination for tibial inserts grouped by the major reasons for
 320 failure in this cohort.



321

322 Figure 5 Scatter plots illustrating linear wear over time *in situ* on the A) medial, and B)
323 lateral side.

324 References

- 325 1. AJRR. American Joint Replacement Registry (AJRR): 2022 Annual Report. American
326 Academy of Orthopaedic Surgeons (AAOS); 2022.
- 327 2. AJRR. American Joint Replacement Registry (AJRR): 2023 Annual Report. American
328 Academy of Orthopaedic Surgeons (AAOS); 2023.
- 329 3. Upfill-Brown A, Hsiue PP, Sekimura T, Shi B, Ahlquist SA, Patel JN, et al. Epidemiology of
330 Revision Total Knee Arthroplasty in the United States, 2012 to 2019. *Arthroplasty Today*.
331 2022;15:188-195.e6.
- 332 4. Sabah SA, Knight R, Alvand A, Murray DW, Petrou S, Beard DJ, et al. No exponential rise in
333 revision knee replacement surgery over the past 15 years: an analysis from the National Joint
334 Registry. *Osteoarthritis Cartilage*. 2022 Dec 1;30(12):1670–9.
- 335 5. Lewis PL, Robertsson O, Graves SE, Paxton EW, Prentice HA, W-Dahl A. Variation and
336 trends in reasons for knee replacement revision: a multi-registry study of revision burden.
337 *Acta Orthop*. 2021;182–8.
- 338 6. Rowell SL, Muratoglu OK. Investigation of surgically retrieved, vitamin E-stabilized,
339 crosslinked UHMWPE implants after short-term in vivo service. *J Biomed Mater Res B Appl*
340 *Biomater*. 2016;104(6):1132–40.
- 341 7. Ftaita S, Vanden Berghe A, Thienpont E. Vitamin E-enriched polyethylene bearings are not
342 inferior to Arcom bearings in primary total knee arthroplasty at medium-term follow-up. *Arch*
343 *Orthop Trauma Surg*. 2021 Jun 1;141(6):1027–33.
- 344 8. Costa L, Luda MP, Trossarelli L, Prever EMBD, Crova M, Gallinaro P. Oxidation in
345 orthopaedic UHMWPE sterilized by gamma-radiation and ethylene oxide. *Biomaterials*.
346 1998;19:659–68.
- 347 9. Currier BH, Jevsevar KC, Van Citters DW. Oxidation in Retrieved, Never-Irradiated
348 UHMWPE Bearings: What Can We Learn About in Vivo Oxidation? *JBJS*. 2023 Feb
349 15;105(4):293.
- 350 10. Currier BH, Currier JH, Franklin KJ, Mayor MB, Reinitz SD, Van Citters DW.
351 Comparison of Wear and Oxidation in Retrieved Conventional and Highly Cross-Linked
352 UHMWPE Tibial Inserts. *J Arthroplasty*. 2015 Dec;30(12):2349–53.
- 353 11. Currier BH, Currier JH, Holdcroft LA, Van Citters DW. Effectiveness of anti-oxidant
354 polyethylene: What early retrievals can tell us. *J Biomed Mater Res B Appl Biomater*.
355 2018;106(1):353–9.
- 356 12. Kerzner B, Kunze KN, O’Sullivan MB, Pandher K, Levine BR. Temporal Trends of
357 Revision Etiologies in Total Knee Arthroplasty at a Single High-Volume Institution: An
358 Epidemiological Analysis. *Arthroplasty Today*. 2021 Jun;9:68–72.

- 359 13. Wilson JM, Broida SE, Maradit-Kremers H, Browne JB, Springer BD, Berry DJ, et al. Is
360 the American Joint Replacement Registry Able to Correctly Classify Revision Total Knee
361 Arthroplasty Procedural Diagnoses? *J Arthroplasty*. 2023 Jun 1;38(6, Supplement):S32-
362 S35.e3.
- 363 14. Currier JH, Currier BH, Abdel MP, Berry DJ, Titus AJ, Van Citters DW. What factors
364 drive polyethylene wear in total knee arthroplasty? *Bone Jt J*. 2021 Nov;103-B(11):1695–701.
- 365 15. Berry DJ, Currier JH, Mayor MB, Collier JP. Knee Wear Measured in Retrievals: A
366 Polished Tray Reduces Insert Wear. *Clin Orthop Relat Res*. 2012 Jul;470(7):1860.
- 367 16. Wilson CJ, Theodoulou A, Damarell RA, Krishnan J. Knee instability as the primary
368 cause of failure following Total Knee Arthroplasty (TKA): A systematic review on the patient,
369 surgical and implant characteristics of revised TKA patients. *The Knee*. 2017
370 Dec;24(6):1271–81.
- 371 17. Meehan JP, Danielsen B, Kim SH, Jamali AA, White RH. Younger age is associated with
372 a higher risk of early periprosthetic joint infection and aseptic mechanical failure after total
373 knee arthroplasty. *J Bone Joint Surg Am*. 2014 Apr 2;96(7):529–35.
- 374 18. Torino D, Damsgaard C, Kolessar DJ, Hayes DS, Foster B, Constantino J, et al. Tibial
375 Baseplate-Cement Interface Debonding in the ATTUNE Total Knee Arthroplasty System.
376 *Arthroplasty Today*. 2022 Oct;17:165–71.
- 377 19. Keohane D, Sheridan GA, Masterson E. High rate of tibial debonding and failure in a
378 popular knee replacement : a follow-up review. *Bone Jt Open*. 2022 Jun;3(6):495–501.
- 379 20. Sadauskas A, Engh C, Mehta M, Levine B. Implant Interface Debonding After Total
380 Knee Arthroplasty: A New Cause for Concern? *Arthroplasty Today*. 2020 Dec;6(4):972–5.
- 381 21. Keohane D, Power F, Cullen E, O’Neill A, Masterson E. High rate of tibial debonding
382 and failure in a popular knee replacement: A cause for concern. *The Knee*. 2020
383 Mar;27(2):459–68.
- 384 22. Wimmer MA, Laurent MP, Haman JD, Jacobs JJ, Galante JO. Surface damage versus
385 tibial polyethylene insert conformity: A retrieval study. *Clin Orthop*. 2012;470(7):1814–25.
- 386 23. Medel FJ, Kurtz SM, Parvizi J, Klein GR, Kraay MJ, Rimmnac CM. In Vivo Oxidation
387 Contributes to Delamination but not Pitting in Polyethylene Components for Total Knee
388 Arthroplasty. *J Arthroplasty*. 2011;26(5):802–10.
- 389 24. Berry DJ, Currier BH, Mayor MB, Collier JP. Gamma-irradiation sterilization in an inert
390 environment: a partial solution. *Clin Orthop*. 2012 Jul;470(7):1805–13.
- 391 25. Currier BH, Currier JH, Collier JP, Mayor MB, Scott RD. Shelf life and in vivo duration.
392 Impacts on performance of tibial bearings. *Clin Orthop*. 1997;1997(342):111–22.

- 393 26. Hasegawa M, Tone S, Naito Y, Sudo A. Ultra-High-Molecular-Weight Polyethylene in
394 Hip and Knee Arthroplasties. *Materials*. 2023 Mar 7;16(6):2140.
- 395 27. Wilhelm SK, Henrichsen JL, Siljander M, Moore D, Karadsheh M. Polyethylene in total
396 knee arthroplasty: Where are we now? *J Orthop Surg*. 2018 Sep 1;26(3):2309499018808356.
- 397 28. Grupp TM, Fritz B, Kutzner I, Schilling C, Bergmann G, Schwiesau J. Vitamin E
398 stabilised polyethylene for total knee arthroplasty evaluated under highly demanding activities
399 wear simulation. *Acta Biomater*. 2017 15;48:415–22.
- 400 29. Gallo J, Goodman SB, Konttinen YT, Wimmer MA, Holinka M. Osteolysis around total
401 knee arthroplasty: a review of pathogenetic mechanisms. *Acta Biomater*. 2013 Sep;9(9):8046–
402 58.
- 403 30. Ngai V, Kunze J, Cip J, Laurent MP, Jacobs JJ, Wimmer MA. Backside wear of tibial
404 polyethylene components is affected by gait pattern: A knee simulator study using rare earth
405 tracer technology. *J Orthop Res Off Publ Orthop Res Soc*. 2020 Jul;38(7):1607–16.
- 406 31. Tipper JL, Ingham E, Galvin AL, Fisher J. Estimation of the Osteolytic Potential of
407 Noncrosslinked and Crosslinked Polyethylenes and Ceramic-on-Ceramic Total Hip
408 Prostheses. *J ASTM Int*. 2006 May 17;3(6):1–16.
- 409 32. Panez-Toro I, Heymann D, Gouin F, Amiaud J, Heymann MF, Córdova LA. Roles of
410 inflammatory cell infiltrate in periprosthetic osteolysis. *Front Immunol*. 2023;14:1310262.
- 411 33. Pourzal R, Cip J, Rad E, Laurent MP, Berger RA, Jacobs JJ, et al. Joint line elevation and
412 tibial slope are associated with increased polyethylene wear in cruciate-retaining total knee
413 replacement. *J Orthop Res Off Publ Orthop Res Soc*. 2020 Jul;38(7):1596–606.
- 414 34. Halder A, Kutzner I, Graichen F, Heinlein B, Beier A, Bergmann G. Influence of limb
415 alignment on mediolateral loading in total knee replacement: In vivo measurements in five
416 patients. *J Bone Jt Surg - Ser A*. 2012;94(11):1023–9.
- 417 35. Lundberg HJ, Knowlton C, Wimmer MA. Fine tuning total knee replacement contact
418 force prediction algorithms using blinded model validation. *J Biomech Eng [Internet]*.
419 2013;135(2). Available from: <http://www.scopus.com/inward/record.url?eid=2-s2.0-84873659082&partnerID=40&md5=661925c19ccbec627ef7f8bc25b537c1>
- 421 36. Liu S, Hall DJ, Dommann-Scherrer C, Pourzal R, Wahl P. Fourier-transform infrared
422 spectroscopy imaging is a useful adjunct to routine histopathology to identify failure of
423 polyethylene inlays in revision total hip arthroplasty. *APMIS [Internet]*. 2024 [cited 2024 May
424 14];n/a(n/a). Available from: <https://onlinelibrary.wiley.com/doi/abs/10.1111/apm.13421>
- 425 37. Liu S, Hall DJ, Della Valle CJ, Walsh MJ, Jacobs JJ, Pourzal R. Simultaneous
426 Characterization of Implant Wear and Tribocorrosion Debris within its Corresponding Tissue
427 Response Using Infrared Chemical Imaging. *Biotribology*. 2021 Jun 1;26:100163.

- 428 38. Liu A, Ingham E, Fisher J, Tipper JL. Generation of a large volume of clinically relevant
429 nanometre-sized ultra-high-molecular-weight polyethylene wear particles for cell culture
430 studies. *Proc Inst Mech Eng [H]*. 2014 Apr;228(4):418–26.
- 431 39. Tipper JL, Ingham E, Galvin AL, Fisher J. Estimation of the Osteolytic Potential of
432 Noncrosslinked and Crosslinked Polyethylenes and Ceramic-on-Ceramic Total Hip
433 Prostheses. *J ASTM Int*. 2006 May 17;3(6):JAI100558.
- 434 40. Rad EM, Laurent MP, Knowlton CB, Lundberg HJ, Pourzal RR, Wimmer MA. Linear
435 penetration as a surrogate measure for volumetric wear in TKR tibial inserts. In 2018. p. 75–
436 92.
- 437
- 438