

1 **Impact of Cerebrospinal Fluid Leukocyte Infiltration and Neuroimmune Mediators on**  
2 **Survival with HIV-Associated Cryptococcal Meningitis**

3 Samuel Okurut <sup>1,2\*</sup>, David R. Boulware <sup>3</sup>, Yukari C. Manabe <sup>1,4</sup>, Lillian Tugume <sup>1</sup>, Caleb P.  
4 Skipper <sup>3</sup>, Kenneth Ssebambulidde <sup>1</sup>, Joshua Rhein <sup>3</sup>, Abdu K. Musubire <sup>1</sup>, Andrew Akampurira  
5 <sup>1,2</sup>, Elizabeth Okafor <sup>3</sup>, Joseph O. Olobo <sup>5</sup>, Edward N. Janoff <sup>6,7</sup>, and David B. Meya <sup>1,3,8</sup> for  
6 ASTRO Trial Team.

7 <sup>1</sup> Research Department, Infectious Diseases Institute, Makerere University, Kampala, Uganda

8 <sup>2</sup> Department of Medical Microbiology, School of Biomedical Sciences, College of Health  
9 Sciences, Makerere University, Kampala, Uganda

10 <sup>3</sup> Division of Infectious Diseases and International Medicine, Department of Medicine,  
11 University of Minnesota, Minneapolis, MN, USA

12 <sup>4</sup> Division of Infectious Diseases, Department of Medicine, John Hopkins University School of  
13 Medicine, Baltimore, Maryland, MD, USA

14 <sup>5</sup> Department of Immunology and Molecular Biology, School of Biomedical Sciences, College  
15 of Health Sciences, Makerere University, Kampala, Uganda

16 <sup>6</sup> Mucosal and Vaccine Research Program Colorado, Department of Medicine, Division of  
17 Infectious Diseases, University of Colorado Denver, Aurora, Colorado, CO. USA

18 <sup>7</sup> Rocky Mountain Regional Veterans Affairs Medical Center, Aurora CO, USA

19 <sup>8</sup> Department of Medicine, School of Medicine, College of Health Sciences, Makerere  
20 University, Kampala, Uganda

21 **Correspondence to:** Samuel Okurut, Infectious Diseases Institute, College of Health Sciences,  
22 Makerere University, Box 22418, Kampala, Uganda. Email: [okuruts@gmail.com](mailto:okuruts@gmail.com), Mobile:  
23 +256 782, 003931

24 **Word count: 3,121 words**

25 **Abstract (220 words)**

26 **Introduction:** Cryptococcal meningitis remains a prominent cause of death in persons with  
27 advanced HIV disease. CSF leukocyte infiltration predicts survival at 18 weeks; however, how  
28 CSF immune response relates to CSF leukocyte infiltration is unknown.

29 **Methods:** We enrolled 401 adults with HIV-associated cryptococcal meningitis in Uganda  
30 who received amphotericin and fluconazole induction therapy. We assessed the association of  
31 CSF leukocytes, chemokine, and cytokine responses with 18-week survival.

32 **Results:** Participants with CSF leukocytes  $\geq 50/\mu\text{L}$ , had higher probability 68% (52/77) of 18-  
33 week survival compared with 52% (151/292) 18-week survival in those with  $\leq 50$  cells/ $\mu\text{L}$   
34 (Hazard Ratio=1.63, 95% confidence intervals 1.14-2.23;  $p=0.008$ ). Survival was also  
35 associated with higher expression of T helper (Th)-1, Th17 cytokines, and immune regulatory  
36 elements. CSF levels of Programmed Death-1 Ligand, CXCL10, and Interleukin (IL)-2  
37 independently predicted survival. In multivariate analysis, CSF leukocytes were inversely  
38 associated with CSF fungal burden and positively associated with CSF protein, interferon-  
39 gamma (IFN- $\gamma$ ), IL-17A, tumor necrosis factor (TNF)- $\alpha$ , and peripheral blood CD4<sup>+</sup> and CD8<sup>+</sup>  
40 T cells expression.

41 **Conclusion:** 18-week survival after diagnosis of cryptococcal meningitis was associated with  
42 higher CSF leukocytes at baseline with greater T helper 1 (IFN- $\gamma$ , IL-2 and TNF- $\alpha$  cytokines),  
43 T helper 17 (IL-17A cytokine) and CXCR3<sup>+</sup> T cell (CXCL10 chemokine) responses. These  
44 results highlight the interdependent contribution of soluble and cellular immune responses in  
45 predicting survival with HIV-associated cryptococcal meningitis.

46 **Keywords:** CSF white cells, cerebrospinal fluid, chemokines, cytokines, HIV-associated  
47 cryptococcal meningitis, survival, fungal burden, antifungal therapy, immune response

48  
49  
50  
51  
52  
53  
54  
55  
56

## 57 1. Background

58 Cryptococcal meningitis (CM) remains one of the leading causes of AIDS-related death  
59 worldwide[1–3]. Cryptococcal infection of the central nervous system (CNS) leads to  
60 activation of CNS-resident and patrolling immune cells [4–6]. Activated leukocytes in  
61 cerebrospinal fluid (CSF) produce chemokines, cytokines, and other immune-mediating  
62 factors responsible for shaping infection, CNS inflammation and disease outcome [7,8]. The  
63 evoked immune response contributes to cryptococcal killing by anti-fungal medications and  
64 influences cryptococcal fungal burden and host survival [9–11]. Low numbers of leukocytes  
65 in CSF are a harbinger of immune suppression and cryptococcal-related mortality [12,13].  
66 Monocytes, the precursors of macrophages that harbor intracellular replication machinery for  
67 *Cryptococcus*, show impaired immune activation and function among patients with  
68 cryptococcal meningitis with lower probability of survival [14,15]. Increased cryptococcal  
69 phagocytosis by macrophages is associated with increased intracellular fungal replication,  
70 leading to high CSF cryptococcal fungal burden and lower probability of survival [15]. These  
71 earlier observations suggest an influence of cryptococcal and/or other underlying immune  
72 suppressive factors that selectively evade T helper (Th) -mediated defense. The evasion of the  
73 T cell helper function allows unchecked intracellular fungal replication leading to high fungal  
74 burden among patients and a lower probability of recovery.

75 The immune-activated cytokine, chemokine, and checkpoint regulatory responses are  
76 important in orchestrating sequestration of *Cryptococci* in the CNS. The Th1 cytokine  
77 interferon (IFN)- $\gamma$  elicits signal transduction to activate intracellular pathogen killing by  
78 infected macrophages [16]. The CXCL10-interferon inducible protein 10 (IP-10) supports the  
79 recruitment of activated CXCR3<sup>+</sup> T cells and Natural killer (NK) and NK T cells to mediate a  
80 Th1-induced immune response [17]. Women with low CSF levels of the CXCR3<sup>+</sup> T cell  
81 chemoattractant chemokine, CXCL10 and Th17 T cell-activating cytokine, IL-17A were more  
82 likely to die on anti-fungal therapy [18]. These observations suggest immune-mediated evasion  
83 pressure by such factors that impair cryptococcal host recovery, as seen among patients with  
84 high fungal burden and diminished immune response.

85 Casadevall and Pirofski's immune-pathogen damage response framework suggests that  
86 an optimal treatment strategy for infectious pathogens should enhance pathogen killing and  
87 control the potential detrimental effect of host-induced immune response to infection[19].  
88 However, striking a balance between immune- and antifungal-mediated cryptococcal killing  
89 while limiting bystander neuroimmunopathology is a challenge, especially among individuals

90 with severe immune deficiency [20–22]. To understand immune-associated survival  
91 mechanisms with infiltrating CSF leukocytes, we examined whether the expression of CSF  
92 Th1, Th17 cytokines, and chemokine responses correlate with levels of CSF infiltrating  
93 leukocytes, CSF fungal burden, and host 18-week survival after diagnosis or study enrolment.

94

## 95 **2. Methods**

### 96 **2.1. Parent trial, participants, site, and setting**

97 We enrolled 401 consenting adults, 241 males and 160 females, with a median age of  
98 35 years, (interquartile range (IQR); 29–40 years) with cryptococcal meningitis from Mulago  
99 and Kiruddu Hospitals in Kampala and Mbarara Regional Referral Hospital in Mbarara,  
100 Uganda between March 2015 and May 2017. Participants were recruited during the Adjunctive  
101 Sertraline for the Treatment of CM trial (ClinicalTrials.gov: NCT 01802385) [23,24]. The  
102 CSF cryptococcal antigen (CrAg) lateral flow assay was used to diagnose enrolled patients  
103 (Immy Inc., Norman, Oklahoma, USA)[25–27]. Participants or their surrogates provided  
104 written informed consent. The Mulago Hospital Research Ethics committee and University of  
105 Minnesota institutional review board approved the study.

106 The CSF was collected by lumbar puncture. CSF leukocytes were counted in fresh CSF  
107 using a hemocytometer. CSF was centrifuged at 500g for 5 minutes and the supernatant  
108 separated and cryopreserved at -80 °C before thawing for batch testing.

109

### 110 **2.2. Study design**

111 This was an exploratory study, designed to investigate the association between the  
112 levels of CSF leukocyte infiltration demonstrated by the CSF white cell counts and the  
113 associated immune responses at CM diagnosis and 18-week survival after diagnosis or  
114 enrolment. Participants were systematically selected and stratified by CSF leukocyte number:  
115  $\leq 50/\mu\text{L}$ , 51–200 cells/ $\mu\text{L}$ , and 201–500 cells/ $\mu\text{L}$ .

116

### 117 **2.4. Luminex cytokine and chemokine immunophenotyping**

118 The baseline CSF cytokine and chemokine levels were measured using 1:2 dilutions with a  
119 human XL cytokine discovery kit per the manufacturer’s instructions (R&D, Minneapolis,

120 MN). The Luminex CSF data acquisition was performed at the University of Minnesota earlier  
121 explained[18,28]. Briefly, the Th1 cytokines regulated through T-bet and STAT1 transcription  
122 factors were TNF- $\alpha$ , IFN- $\gamma$ , IL-2, and IL-12p70. The Th2 cytokines regulated through Gata 3  
123 and STAT 6 transcription factor-modulated cytokines were IL-4 and IL-13. The T follicular  
124 helper adaptive cells activating cytokines regulated through Bcl-6 and STAT 3 transcription  
125 factors were IL-6 and IL-10. The Th17 cytokines include IL-17A. The innate-like cytokines  
126 were IL-15, IL-8/CXCL8 or CXCL8, IL-1RA or IL-1F3 produced by innate lymphoid and  
127 myeloid cells among neutrophils, monocytes, macrophages, dendritic cells to mediate cellular  
128 chemoattraction to neuroinflammation.

129 The chemokines that work in synergy with induced cytokines and among activated cells  
130 to attract B cells, T cells, and innate lymphoid cells resulting in neuroinflammation were:  
131 CXCR3<sup>+</sup> T cell activating chemokine CXCL10/IP-10 secreted by monocytes, macrophages,  
132 dendritic cells, and in the CNS secreted by microglia cells and astrocytes for lymphocyte  
133 chemoattraction to neuroinflammation. The CCL11/Eotaxin for myelocyte chemoattraction to  
134 neuroinflammation. The IL-8/CXCL8 for neutrophil activation and chemoattraction to  
135 neuroinflammation. The immune checkpoint inhibitor was PD-L1/B7-H1 for control of the  
136 resultant immune response.

137

## 138 **2.5. Statistical analysis.**

139 Data were analyzed using GraphPad Prism version 9.3.0 (San Diego, California, USA).  
140 In the univariate analyses, continuous variables were analyzed using the Mann-Whitney non-  
141 parametric unpaired t-test for comparison of sample medians. The difference in survival  
142 (binary outcome) was determined using univariate Log-Rank test and multivariate Logistics  
143 Regression analysis. The 7.9% (32/401) missingness in survival were systematically imputed  
144 using either all alive or dead approach. Kruskal Wallis test (Analysis of variance; ANOVA)  
145 was used for simple linear group-wise analysis. Principal Component Analysis (PCA),  
146 Multivariate Linear and Logistic Regression and Person Correlation was used for complex  
147 multivariate data analysis and data stratification and among the outcome models. The p-value  
148 <0.050 at 95% confidence interval (CI) was reported as statistically significant.

149

## 150 **3. Results**

151 **3.1. CSF leukocyte infiltration negatively correlates with CSF cryptococcal fungal burden**  
152 **and positively correlate with CSF protein and peripheral CD4<sup>+</sup> and CD8<sup>+</sup> T cell counts.**

153 We defined the baseline participant demographics, clinical, microbiologic, and  
154 immunological features that correlated with CSF leukocyte counts (Table 1 and Figure 1).  
155 Among participants, 51.5% (206/400) were antiretroviral therapy (ART) experienced, with  
156 median CD4<sup>+</sup> T cells/ $\mu$ L of 16 (interquartile range [IQR]; 6-43). The CSF leukocytes were  
157 generally low (median of <5 [IQR; <5-45] cells/ $\mu$ L). The CSF cryptococcal fungal colony  
158 forming units (CFUs) were at a median of 52,000 (IQR; 1195 to 335,000) CFU/mL.

159 The baseline participant demographics, clinical, and laboratory features (Table 1) and  
160 peripheral blood white blood cells (Figure 1) did not differ by CSF leukocyte stratification  
161 (Figure 1 (i)). However, both CSF protein (Figure 1A (ii)) and peripheral CD4<sup>+</sup> and CD8<sup>+</sup> T  
162 cells (Figure 1B (i-ii) respectively) correlated positively with CSF WBC number, whereas  
163 fungal burden was lower and correlated negatively (Figure 1C) (Pearson r, correlation data not  
164 shown). The peripheral white blood cells only had a trend to increasing with CSF white cell  
165 stratification (Figure 1 D).

166

### 167 **3.2. CSF cytokines and chemokine concentration positively correlate with CSF** 168 **leukocytes infiltration**

169 Next, we determined the association of CSF cytokine and chemokine concentration in  
170 relation to CSF leukocyte infiltration. The level of Th1 cytokines (IL-2, IFN- $\gamma$  and TNF- $\alpha$   
171 correlated with the levels of CSF leukocytes infiltration (Figure 2A (i-iii)). Similarly, levels of  
172 Th17 cytokine IL-17, the immune regulatory element, IL-10 cytokine and immune checkpoint  
173 PD-L1 correlated with CSF leukocytes infiltration (Figure 2A-C), as did the CXCR3<sup>+</sup> T cell  
174 chemoattractant chemokine CXCL10/IP-10 and myeloid cells chemoattractant chemokine  
175 CCL11/Eotaxin (Figure 2C-D).

176

### 177 **3.3. Paucity of cellular and soluble immune activated response is associated with low** 178 **probability of 18-week survival**

179 The 18-week survival was 55% (203/369 participants). Survival at 18-weeks of  
180 observation was associated with CSF leukocyte infiltration (Figure 3). The probability of  
181 survival was lowest (151/292 participants; 51.7%) among individuals with CSF leukocytes  
182  $\leq$ 50 cells/ $\mu$ L (median <5) compared with those with 51-200 (median 110) and 201-500 (median  
183 268) cells/ $\mu$ L (51% vs. 67.3% vs. 68%, respectively) (Log Rank p=0.028) (Figure 3B). This  
184 association of CSF WBC number and survival was consistent with fewer (Figure 3C) and more

185 WBC strata (Figure 3A) (stratified adjusted Hazard Ratio, (HR= 1.634, 95% CI; 1.140 to  
186 2.343) and  $p=0.008$ ) (Figure 3C).

187 Survivors had significantly lower levels of CSF fungal burden/CFUs/mL, (Figure 3 D  
188 (i), high levels of CD4<sup>+</sup> and CD8<sup>+</sup> T cells and CSF white cells (Figure 3 D (ii)), high levels of  
189 CXCL10, and IL-17A (Figure 3 D (iii) compared to those who died. Other variables IFN- $\gamma$ ,  
190 CSF protein tended to be lower with survival. (Figure 3D (i)). In contrast, PD-L1, TNF- $\alpha$  and  
191 IL-2 tended to be high with survival (Figure 3D (iii)).

192

### 193 **3.4. Principal component analysis shows clustering of CSF fungal burden, and host** 194 **survival with circulating immune response**

195 To integrate putative survival-related variables, we visualized the associated data  
196 clusters among all participants by Eigenvector projections on principal components (PC) 1 and  
197 PC2, respectively (Figure 4). The principal component analysis (PCA) showed three clusters  
198 of the cellular and soluble immune factors with fungal burden and host survival by Eigenvector  
199 projections on the PCA model (Figure 4A). A diagonal clustering was observed between CSF  
200 cryptococcal CFUs/mL and host survival (PCA cluster (i)) and with (CSF white cells, CD4<sup>+</sup>  
201 and CD8<sup>+</sup> T cells, white blood cells and CSF protein (PCA cluster (ii) (Figure 4A (i-ii)). Two  
202 orthogonal clusters were observed for CSF cryptococcal CFUs/mL and host survival with CSF  
203 cytokines (PCA cluster (i) and (iii); Figure 4A) and CSF cytokines with CSF and peripheral  
204 blood features (PCA cluster (ii) and (iii); Figure 4A) respectively. Cumulatively, the CSF  
205 leukocytes Eigenvector projection on PC1 had a 35.7% effect size, and the CSF cryptococcal  
206 CFUs/mL Eigenvector projection on PC2 with a 12.8% effect size, contributing the greatest  
207 variability to the PCA model (Figure 4B). The principal component with highest effect sizes  
208 are those with the most likelihood that to predict the model outcome for within component,  
209 between components and among components interactions. In this case fungal CFU and CSF  
210 WBC was demonstrated to have the greatest prediction power on survival.

211

### 212 **3.5. CSF leukocyte infiltration correlates with circulating CD4<sup>+</sup> and CD8<sup>+</sup> T cells, and** 213 **CSF fungal burden and levels of IL-17A and TNF- $\alpha$**

214 Next, we determined the contribution of the cellular and soluble immune factors that  
215 independently determine CSF white cells and host survival. After adjusting for PCA  
216 components in cluster (ii) with the CSF white cell counts, CSF cryptococcal, Log<sub>10</sub> CFUs/mL;

217 (p=0.0022), CD4<sup>+</sup> T cells counts; (p=0.0119), CD8<sup>+</sup> T cells counts; (p=0.0015), and CSF  
218 protein, mg/dL; (p=0.0143), each independently predicted CSF leukocyte infiltration among  
219 all patients, (Table 2; Model 1). This observation was consistent even with substitution of 7.9%  
220 (32 of 401) missingness in survival (all alive or all dead) (data not shown). After adjusting for  
221 PCA components in cluster (iii) with the levels of CSF leukocyte infiltration, the levels of IL-  
222 17A; (p<0.0001) a Th17 cytokine, and TNF- $\alpha$ ; (p=0.0261) a Th1 cytokine, independently  
223 predicted the levels of CSF leukocyte infiltration among all patients, (Table 2; Model 2).

224 The CSF white cell infiltration during cryptococcal meningitis (cryptococcal CFU/mL)  
225 is associated with the number of peripheral circulating CD4<sup>+</sup> and CD8<sup>+</sup> T cells and  
226 concentration of CSF protein. These immune modulators together predict the level of IL-17A  
227 and TNF- $\alpha$  cytokine concentration in CSF with cryptococcal meningitis.

228

### 229 **3.6. PD-L1, CXCL10 and IL-2 independently predict survival**

230 After adjusting for all components in the PCA outcome model, elevation in levels of  
231 B7-H1 / PD-L1 in both linear and logistic regression analysis consistently predicted higher  
232 probability of survival (Table 3; Model 1). The higher levels of CXCL10 / IP-10 (model 1-2)  
233 consistently and independently predicted higher probability of survival among all patients.  
234 (Table 3; Model 1). This observation was consistent even after adjusting for 7.9% missingness  
235 in survival (data not shown). The elevation in the levels of IL-2 in both linear and logistic  
236 regression analysis (Model 1-2) consistently and independently predicted higher probability of  
237 survival among all patient (Table 3; Model 1-2) respectively. Each of the soluble immune  
238 factors IFN- $\gamma$ , IL-2, TNF- $\alpha$ , and IL-17A cytokines and CXCL10 / IP-10 chemokine were  
239 independently associated with levels of PD-L1, (in all factors multivariate linear regression  
240 analysis p<0.020 and data not shown).

241

## 242 **4. Discussion**

243 Survival with HIV-associated cryptococcal meningitis is associated with lower CSF  
244 fungal burden, greater CSF leukocyte infiltration and higher levels of neuroimmune factors in  
245 CSF. We found that individuals with CSF leukocytes <50 cells/ $\mu$ L had the poorest clinical and  
246 immunological profile associated with the highest CSF fungal burden, lowest number of  
247 peripheral CD4<sup>+</sup> and CD8<sup>+</sup> T cells, CSF cytokines and the lowest probability of 18-week  
248 survival than individuals compared with those with >50 CSF leukocytes/ $\mu$ L. Among cytokines



249 in CSF, individuals with CSF leukocytes  $<50$  cells/ $\mu$ L had the lowest levels of the Th1 cellular  
250 growth activating cytokine IL-2, cellular activating cytokines IFN- $\gamma$ , cell death activating  
251 cytokine TNF- $\alpha$ , and CXCR3<sup>+</sup> T cell chemoattractant chemokine CXCL10 and Th17 T cell-  
252 activating cytokine IL-17A. In multivariate analysis, infiltrating CSF leukocyte numbers were  
253 negatively associated with CSF cryptococcal fungal burden, but positively associated with CSF  
254 protein concentration and peripheral circulating CD4<sup>+</sup> and CD8<sup>+</sup> T cells. Moreover, elevated  
255 concentrations of CXCL10, IL-2 and PD-L1 independently predicted a higher probability of  
256 18-week survival.

257 In cryptococcal meningitis, nearly 80% of the baseline CD45<sup>+</sup> WBC in CSF are T cells,  
258 among which 70% are CD8<sup>+</sup> and a minority are CD4<sup>+</sup> [8]. Other mononuclear cells central to  
259 the CSF exudate included NK cells, monocytes [8] and B cells [7]. Critical to the outcome of  
260 cryptococcal infection is the balance of an activated cellular immune response with a poly-  
261 functional soluble immune profile that function in synergy [29–31]. The primary cells infected  
262 are tissue resident macrophages that provide an intracellular niche for cryptococcal replication  
263 [29–31]. To prevent intracellular cryptococcal replication requires an activated T cell response.  
264 Cytotoxic CD8<sup>+</sup> T cells and NK T cells are modulated by Th1 CD4<sup>+</sup> T cell stimulation [32]. It  
265 is notable that evasion of multiple components of innate and adaptive immune system  
266 collectively predispose hosts to virulent and lethal cryptococcal disease [29–31]. In this regard,  
267 the immune damage response framework suggests that antifungal therapy alone without  
268 immune modulatory therapy is not sufficient to cure the infection and modulate host immune-  
269 mediated injury and death.—Thus, multivariate linear and logistic regression models that  
270 integrate cytokine, chemokine, and cellular responses, as described herein, reveal the potential  
271 role of poly-functional immune modulated responses to influence fungal burden and host  
272 survival.

273 The inverse association of the CSF fungal burden with the levels of cellular and soluble  
274 immune response and host survival implicates the selective evasion of Th1- and Th17-mediate  
275 control of intracellular *Cryptococcus* replication. We showed that upregulation of IL-17A is  
276 associated with lower CSF cryptococcal fungal burden and improved survival. In the mouse  
277 lung model, elevated IL-17 modulates cryptococcal yeast differentiation to limit spread across  
278 the blood-brain barrier [33–35]. The adaptive immune clearance of *Cryptococcus* requires  
279 precise activation and recruitment of cytokine- and chemokines-producing T cells that serve as  
280 the cornerstones of protection[6]. The evasion of cryptococcal fungal immune control  
281 mechanisms with down-regulated Th1 (IFN- $\gamma$ , TNF- $\alpha$ , IL-2) and Th17 T cell cytokines (IL-

282 17A) and CXCR3<sup>+</sup> T cell chemoattractant chemokine (CXCL10) responses, allows more  
283 vigorous replication of *Cryptococcus* and overwhelming infection. Here we report that fatal  
284 instances of cryptococcal meningitis are associated with a paucity of CSF CXCR3<sup>+</sup> T cell  
285 activating chemokine CXCL10, growth activating cytokine IL-2 and immune checkpoint  
286 regulatory element PD-L1. The down regulated expression of these neuroimmune modulatory  
287 molecules in cryptococcal disease selectively likely impairs recruitment and maturation of  
288 adaptive T cell function in response to the CNS intracellular fungal replication.

289 In this context, *Antonia et al., (2019)* showed that low concentrations of CXCL10 in  
290 circulation were associated with glycoprotein proteolytic cleavage of the CXCL10 chemokine  
291 terminal domain by glycoprotein[33]. The effect of the extracellular cleavage of CXCL10  
292 ligand also affected other members of the CXCR3<sup>+</sup> receptor family of activating chemokines.  
293 These members include CXCL11 and CXCL9 that impair T cell recruitment in response to  
294 intracellular evading class of pathogens [33]. Consistent with our results, patients with low  
295 levels of CSF CXCL10 and a low probability of survival demonstrate impaired fungal  
296 clearance [34] with a high fungal burden [12]. These observations are consistent with a T cell  
297 evasion hypothesis in which impaired immune control of intracellular cryptococcal replication  
298 is associated with paucity of T cell activated response [31]. Th1 T cell produce IFN- $\gamma$ , TNF-  
299  $\alpha$  IL-2 activation cytokines and CXCR3<sup>+</sup> T cells CXCL10 chemoattractant enable infiltration  
300 of CSF by T, NK, NK-T and myeloid cell lineages [35]. The decrement in CXCR3<sup>+</sup> receptor  
301 family chemoattractant chemokines impairs CSF T cell recruitment and cytokine activation at  
302 the site of infection, which allows intracellular replication of *Cryptococcus* resulting in high  
303 fungal burden and impaired host recovery.

304 Among Th-1 cytokines, induction of IFN- $\gamma$  facilitates activation and recruitment of  
305 effector cellular responses needed to control infection [43]. IFN- $\gamma$  induces the chemokine  
306 CXCL10/IP-10, a chemoattractant ligand which recruits activated lymphocytes in response to  
307 CNS infection [37,38]. The disruption of IFN- $\gamma$ -encoding genes increased the susceptibility to  
308 infection and rapid progression to death [36,39]. Whether mutations in IFN- $\gamma$  encoding genes  
309 observed in other infections contribute to the high in hospital mortality rates with Cryptococcal  
310 infection has not been investigated [12,13]. Barber et al., demonstrated the importance of IFN-  
311  $\gamma$  responses in modulating immune activation among intracellular *M. tuberculosis*-infected  
312 macrophages [40]. The absence of an IFN- $\gamma$  activating response limited production of reactive  
313 oxygen species needed to fully activate intracellular/phagosome killing in infected  
314 macrophages with increased mycobacterial burden [40].

315 Clinically, the low peripheral CD4<sup>+</sup> T cell count despite ART treatment at CM  
316 diagnosis potentially implicates the role of ART failure or failed immune reconstitution with  
317 unmasking and/or progression of cryptococcal infection. The use of high dose of antifungals  
318 early can constitute effective pre-emptive therapy to improve outcomes before patients get  
319 severely ill with high CSF cryptococcal fungal burden. However, early diagnosis or staging of  
320 cryptococcal infection is a challenge where patients present late with overt disease 1-2 weeks  
321 after the onset of symptoms [13,41].

322

## 323 **5. Conclusion**

324 Multiple cellular and soluble immune elements appear to mediate adaptive-innate  
325 immune crosstalk to control intracellular cryptococcal replication and modulate host recovery.  
326 A paucity of CSF white cells is associated with higher fungal burden, lower levels of  
327 neuroimmune cytokines, chemokines and checkpoint inhibitors and a lower frequency of  
328 survival at 18-weeks. The decrement in these factors likely conspire to limit T cell-mediated  
329 control of intracellular cryptococcal replication in macrophages with resultant serious infection  
330 and death. The levels of evoked Th1 and Th17A cytokines and CXCR3<sup>+</sup> activating chemokine  
331 CXCL10 and PD-L1 immune checkpoint responses are potentially modifiable to enhance  
332 clinical outcomes. These variables also serve as diagnostic, prognostic, and survival indicators  
333 required to advance immune based therapy to control *Cryptococcus* and improve survival.  
334 Given that antifungal therapy alone is not sufficient to cure cryptococcal meningitis. Immune  
335 modulatory treatment may hold promise going forward.

336

## 337 **6. Funding**

338 This work was supported in part by the National Institutes of Health and National  
339 Institute of Allergy and Infectious Diseases (R01AI078934, R21NS065713, R01AI108479,  
340 T32AI055433 - DBM, DRB, and R01 AI108479 – JR), National Institute of Neurologic  
341 Diseases and Stroke; (R01NS086312 and R25TW009345, and K24AI096925 - JR). Fogarty  
342 International Center training grant; (D43TW009771 – YCM and PhD training scholarship –  
343 SO; R01NS086312 – JR and Northern Pacific Global Health Fellowship Program award  
344 (D43TW009345 - LT). GlaxoSmithKline Trust in Science Africa (COL100044928 - SO).  
345 DELTAS Africa Initiative grant (DEL-15-011 to THRiVE-2 - DBM), Wellcome Trust grant  
346 (107742/Z/15/Z - DBM), and Veterans Affairs Research Service; (I01CX001464 - ENJ), the  
347 Wellcome Trust (Training Health Researchers into Vocational Excellence (THRiVE) in East

348 Africa, grant number (087540-DBM). United Kingdom Medical Research Council/Wellcome  
349 Trust/Department for International Development (MRC MR/M007413/1 - JR) and the Grand  
350 Challenges Canada (S4-0296-01 - JR). Funding agencies had no role in study design, data  
351 collection, data analysis, preparation of the manuscript, or the decision to publish.

352

### 353 **7. Conflict of interest**

354 Authors have declared no substantial conflict of interest. Authors with funding support have  
355 declared and acknowledged sources of funding. SO – was a Fogarty and GlaxoSmithKline-  
356 Trust in Science Africa funded doctoral scholar at Infectious Diseases Institute, Makerere  
357 University. Part of the work contributed to the doctoral successful doctoral thesis examination  
358 at the Department of Medical Microbiology, School of Biomedical Sciences, College of Health  
359 Sciences, Makerere University [42]. AMK - was a member of a data safety monitoring board.

360

### 361 **8. Author contribution**

362 SO - conceptualized the study, framed the hypothesis, designed statistical models,  
363 performed statistical analyses, compiled the results, drafted the first version of the manuscript,  
364 edited the manuscript, managed the publication review process, and sourced and contributed  
365 research funding. DBM - conceptualized the study, framed the hypothesis, supported  
366 experiment design, guided data analysis, guided manuscript writing, contributed to the first  
367 draft version of the manuscript, edited the manuscript, sourced, and contributed research  
368 funding. ENJ - conceptualized the study, framed the hypothesis, guided data analysis, guided  
369 manuscript writing, edited the manuscript, sourced, and contributed research funding. YCM -  
370 conceptualized the study, framed the hypothesis, edited the manuscript, and sourced and  
371 contributed research funding. DRB - designed parent cohort studies, guided data analysis,  
372 edited the manuscript, sourced, and contributed research funding. JR - conceptualized the  
373 study, framed the hypothesis, edited the manuscript contributed to the research funding. OOOJ -  
374 conceptualized the study, framed the hypothesis, and edited the manuscript. LT, CPS EK,  
375 AKM, ECO, managed the patients, contributed data, and reviewed the manuscript. AA  
376 managed patients' diagnostics, contributed data, and reviewed the manuscript.

377

### 378 **9. Acknowledgments**

379 We thank study participants for their involvement in the parent study. We thank the  
380 ASTRO trial team for the clinical management of patients and data collection including Jane  
381 Francis Ndyetukira, Cynthia Ahimbisibwe, Florence Kugonza, Alisat Sadiq, Catherine

382 Nanteza, Kiiza Tadeo Kandole, Darlisha Williams, Edward Mpoza, Apio Alison, Radha  
383 Rajasingham, Mahsa Abassi, Enock Kagimu, Morris K. Rutakingirwa, Fiona Cresswell, and  
384 John Kasibante. We thank the doctoral committee mentorship support from Makerere  
385 University, especially from Bernard S. Bagaya, Freddie Bwanga, and Henry Kajumbula. We  
386 thank institutional support from IDI from Bosco Kafufu, Andrew Kambugu. We thank the  
387 Ph.D. program mentorship support received from; the IDI Research Capacity Building Unit  
388 especially from Barbara D. Castelnuovo, Aidah Nanvuma, Stephen Okoboi, and the Statistics  
389 unit especially Agnes Kiragga. Johns Hopkins University, School of Medicine and Bloomberg  
390 School of Public Health, Department of Molecular Microbiology, and Immunology, especially  
391 from Robert R. Bollinger and Arturo Casadevall. From the University of Colorado, Denver,  
392 Anschutz Medical Campus Aurora, Division of Infectious Disease, Department of Medicine  
393 and Veteran Affairs Research Services especially from Brent Palmer, Tina Powell, and Jeremy  
394 Rakhola. We thank the statistical data analysis mentorship received from the University of  
395 Minnesota, especially from Ananta S. Bangdiwala and Kathy Huppler Hullsiek.

396

## 397 **10. References**

- 398 1. Molloy SF, Kanyama C, Heyderman RS, Loyse A, Kouanfack C, Chanda D, et al.  
399 Antifungal combinations for treatment of cryptococcal meningitis in Africa. *New*  
400 *England Journal of Medicine*. 2018;378: 1004–1017. doi:10.1056/NEJMoa1710922
- 401 2. Wake RM, Govender NP, Omar T, Nel C, Mazanderani AH, Karat AS, et al.  
402 Cryptococcal-related Mortality Despite Fluconazole Preemptive Treatment in a  
403 Cryptococcal Antigen Screen-and-Treat Program. *Clin Infect Dis*. 2020;70: 1683–1690.  
404 doi:10.1093/cid/ciz485
- 405 3. Rajasingham R, Smith RM, Park BJ, Jarvis JN, Govender NP, Chiller TM, et al. Global  
406 burden of disease of HIV-associated cryptococcal meningitis: an updated analysis.  
407 *Lancet Infect Dis*. 2017;17: 873–881. doi:10.1016/S1473-3099(17)30243-8
- 408 4. Nielsen K, Cox GM, Litvintseva AP, Mylonakis E, Malliaris SD, Benjamin DK, et al.  
409 *Cryptococcus neoformans*  $\alpha$  strains preferentially disseminate to the central nervous  
410 system during coinfection. *Infect Immun*. 2005;73: 4922–4933.  
411 doi:10.1128/IAI.73.8.4922-4933.2005
- 412 5. Santiago-Tirado FH, Onken MD, Cooper JA, Klein RS, Doering TL. Trojan horse transit  
413 contributes to blood-brain barrier crossing of a eukaryotic pathogen. *mBio*. 2017;8.  
414 doi:10.1128/mBio.02183-16
- 415 6. Okurut S, Boulware DR, Olobo J, Meya DB. Landmark clinical observations and  
416 immunopathogenesis pathways linked to HIV and *Cryptococcus* fatal central nervous  
417 system co-infection. *Mycoses*. 2020;63: 840–853. doi:10.1111/myc.13122
- 418 7. Okurut S, Meya DB, Bwanga F, Olobo J, Eller MA, Cham-Jallow F, et al. B cell  
419 Compartmentalization in Blood and Cerebrospinal Fluid of HIV-Infected Ugandans  
420 with Cryptococcal Meningitis. *Noverr MC*, editor. *Infect Immun*. 2020;88: e00779-19.  
421 doi:10.1128/IAI.00779-19
- 422 8. Meya DB, Okurut S, Zziwa G, Rolfes MA, Kelsey M, Cose S, et al. Cellular immune  
423 activation in cerebrospinal fluid from ugandans with cryptococcal meningitis and

- 424 immune reconstitution inflammatory syndrome. *Journal of Infectious Diseases*.  
425 2015;211: 1597–1606. doi:10.1093/infdis/jiu664
- 426 9. Esher SK, Zaragoza O, Alspaugh JA. Cryptococcal pathogenic mechanisms: A  
427 dangerous trip from the environment to the brain. *Mem Inst Oswaldo Cruz*. 2018;113:  
428 1–15. doi:10.1590/0074-02760180057
- 429 10. Mora DJ, Fortunato LR, Andrade-Silva LE, Ferreira-Paim K, Rocha IH, Vasconcelos  
430 RR, et al. Cytokine profiles at admission can be related to outcome in AIDS patients  
431 with cryptococcal meningitis. *PLoS One*. 2015;10: 1–17.  
432 doi:10.1371/journal.pone.0120297
- 433 11. Wiesner DL, Moskalenko O, Corcoran JM, McDonald T, Rolfes MA, Meya DB.  
434 Cryptococcal Genotype Influences Immunological Response and Human Clinical  
435 Outcome after Meningitis. *MbioAsmOrg*. 2012;3: 1–10. doi:10.1128/mBio.00196-  
436 12.Updated
- 437 12. Jarvis JN, Bicanic T, Loyse A, Namarika D, Jackson A, Nussbaum JC, et al.  
438 Determinants of mortality in a combined cohort of 501 patients with HIV-associated  
439 cryptococcal meningitis: Implications for improving outcomes. *Clinical Infectious  
440 Diseases*. 2014;58: 736–745. doi:10.1093/cid/cit794
- 441 13. Boulware DR, Meya DB, Muzoora C, Rolfes MA, Huppler Hullsiek K, Musubire A, et  
442 al. Timing of Antiretroviral Therapy after Diagnosis of Cryptococcal Meningitis. *New  
443 England Journal of Medicine*. 2014;370: 2487–2498. doi:10.1056/nejmoa1312884
- 444 14. Scriven JE, Graham LM, Schutz C, Scriba TJ, Wilkinson KA, Wilkinson RJ, et al. A  
445 glucuronoxylomannan-associated immune signature, characterized by monocyte  
446 deactivation and an increased interleukin 10 level, is a predictor of death in cryptococcal  
447 meningitis. *Journal of Infectious Diseases*. 2016;213: 1725–1734.  
448 doi:10.1093/infdis/jiw007
- 449 15. Sabiiti W, Robertson E, Beale MA, Johnston SA, Brouwer AE, Loyse A, et al. Efficient  
450 phagocytosis and laccase activity affect the outcome of HIV-associated cryptococcosis.  
451 *J Clin Invest*. 2014;124: 2000–2008. doi:10.1172/JCI72950
- 452 16. Barber DL, Andrade BB, Sereti I, Sher A. Immune reconstitution inflammatory  
453 syndrome: the trouble with immunity when you had none. *Nat Rev Microbiol*. 2012;10:  
454 150–156. doi:10.1038/nrmicro2712
- 455 17. Campanella GSV, Lee EMJ, Sun J, Luster AD. CXCR3 and heparin binding sites of the  
456 chemokine IP-10 (CXCL10). *Journal of Biological Chemistry*. 2003;278: 17066–17074.  
457 doi:10.1074/jbc.M212077200
- 458 18. Okurut S, Boulware DR, Okafor E, Rhein J, Kajumbula H, Bagaya BS, et al. Divergent  
459 neuroimmune signatures in the cerebrospinal fluid predict differential gender-specific  
460 survival among patients with HIV-associated cryptococcal meningitis. *Front Immunol*.  
461 2023;14. doi:10.3389/fimmu.2023.1275443
- 462 19. Casadevall A, Pirofski L. The damage-response framework of microbial pathogenesis.  
463 *Nat Rev Microbiol*. 2003;1: 17–24. doi:10.1038/nrmicro732
- 464 20. Casadevall A, Pirofski LA. Host-pathogen interactions: Basic concepts of microbial  
465 commensalism, colonization, infection, and disease. *Infect Immun*. 2000;68: 6511–  
466 6518. doi:10.1128/IAI.68.12.6511-6518.2000
- 467 21. Casadevall A, Pirofski LA. Host-pathogen interactions: Redefining the basic concepts  
468 of virulence and pathogenicity. *Infect Immun*. 1999;67: 3703–3713.  
469 doi:10.1128/iai.67.8.3703-3713.1999
- 470 22. Shourian M, Qureshi ST. Resistance and tolerance to cryptococcal infection: An  
471 intricate balance that controls the development of disease. *Front Immunol*. 2019;10: 1–  
472 11. doi:10.3389/fimmu.2019.00066

- 473 23. Rhein J, Huppler Hullsiek K, Tugume L, Nuwagira E, Mpoza E, Evans EE, et al.  
474 Adjunctive sertraline for HIV-associated cryptococcal meningitis: a randomised,  
475 placebo-controlled, double-blind phase 3 trial. *Lancet Infect Dis.* 2019;19: 843–851.  
476 doi:10.1016/S1473-3099(19)30127-6
- 477 24. Rhein J, Morawski BM, Hullsiek KH, Nabeta HW, Kiggundu R, Tugume L, et al.  
478 Efficacy of adjunctive sertraline for the treatment of HIV-associated cryptococcal  
479 meningitis: an open-label dose-ranging study. *Lancet Infect Dis.* 2016;16: 809–818.  
480 doi:10.1016/S1473-3099(16)00074-8
- 481 25. Boulware DR, Rolfes MA, Rajasingham R, von Hohenberg M, Qin Z, Taseera K, et al.  
482 Multisite validation of cryptococcal antigen lateral flow assay and quantification by  
483 laser thermal contrast. *Emerg Infect Dis.* 2014;20: 45–53. doi:10.3201/eid2001.130906
- 484 26. Meya DB, Kiragga AN, Nalintya E, Morawski BM, Rajasingham R, Park BJ, et al.  
485 Reflexive Laboratory-Based Cryptococcal Antigen Screening and Preemptive  
486 Fluconazole Therapy for Cryptococcal Antigenemia in HIV-Infected Individuals With  
487 CD4 <100 Cells/microL: A Stepped-Wedge, Cluster-Randomized Trial. *J Acquir*  
488 *Immune Defic Syndr.* 2019;80: 182–189. doi:10.1097/QAI.0000000000001894
- 489 27. Dyal J, Akampurira A, Butler E, Kiggundu R, Nabeta H, Musubire A, et al.  
490 Reproducibility of CSF quantitative culture methods for *Cryptococcus neoformans*.  
491 *International Journal of Infectious Diseases.* 2014;21: 286.  
492 doi:10.1016/j.ijid.2014.03.1013
- 493 28. Stadelman AM, Ssebambulidde K, Tugume L, Pastick KA, Hullsiek KH, Lofgren S, et  
494 al. Impact of biological sex on cryptococcal meningitis mortality in Uganda and South  
495 Africa. *Med Mycol.* 2021;59: 712–719. doi:10.1093/mmy/myaa108
- 496 29. Rohatgi S, Pirofski LA. Host immunity to *Cryptococcus neoformans*. *Future*  
497 *Microbiology.* Future Medicine Ltd.; 2015. pp. 565–581. doi:10.2217/fmb.14.132
- 498 30. Ma H, May RC. Chapter 5 Virulence in *Cryptococcus* Species. *Advances in Applied*  
499 *Microbiology.* 2009. pp. 131–190. doi:10.1016/S0065-2164(08)01005-8
- 500 31. Gibson JF, Johnston SA. Immunity to *Cryptococcus neoformans* and *C. gattii* during  
501 cryptococcosis. *Fungal Genetics and Biology.* 2015;78: 76–86.  
502 doi:10.1016/j.fgb.2014.11.006
- 503 32. Barb AW. Fc  $\gamma$  receptor compositional heterogeneity: Considerations for  
504 immunotherapy development. *Journal of Biological Chemistry.* American Society for  
505 Biochemistry and Molecular Biology Inc.; 2021. doi:10.1074/jbc.REV120.013168
- 506 33. Antonia AL, Gibbs KD, Trahair ED, Pittman KJ, Martin AT, Schott BH, et al. Pathogen  
507 Evasion of Chemokine Response Through Suppression of CXCL10. *Front Cell Infect*  
508 *Microbiol.* 2019;9. doi:10.3389/fcimb.2019.00280
- 509 34. Chang CC, Omarjee S, Lim a, Spelman T, Gosnell BI, Carr WH, et al. Chemokine levels  
510 and chemokine receptor expression in the blood and the cerebrospinal fluid of HIV-  
511 infected patients with cryptococcal meningitis and cryptococcosis-associated immune  
512 reconstitution inflammatory syndrome. *J Infect Dis.* 2013;208: 1604–1612.  
513 doi:10.1093/infdis/jit388
- 514 35. Chung SH, Ye XQ, Iwakura Y. Interleukin-17 family members in health and disease.  
515 *International Immunology.* Oxford University Press; 2021. pp. 723–729.  
516 doi:10.1093/intimm/dxab075
- 517 36. Kak G, Raza M, Tiwari BK. Interferon-gamma (IFN- $\gamma$ ): Exploring its implications in  
518 infectious diseases. *Biomol Concepts.* 2018;9: 64–79. doi:10.1515/bmc-2018-0007
- 519 37. Vazirinejad R, Ahmadi Z, Arababadi MK, Hassanshahi G, Kennedy D. The biological  
520 functions, structure and sources of CXCL10 and its outstanding part in the  
521 pathophysiology of multiple sclerosis. *Neuroimmunomodulation.* 2014;21: 322–330.  
522 doi:10.1159/000357780

- 523 38. Oslund KL, Zhou X, Lee B, Zhu L, Duong T, Shih R, et al. Synergistic up-regulation of  
524 CXCL10 by virus and IFN  $\gamma$  in human airway epithelial cells. PLoS One. 2014;9: 1–8.  
525 doi:10.1371/journal.pone.0100978
- 526 39. Naik B, Ahmed SMQ, Laha S, Das SP. Genetic Susceptibility to Fungal Infections and  
527 Links to Human Ancestry. Front Genet. 2021;12: 1–12. doi:10.3389/fgene.2021.709315
- 528 40. Daniel L. Barber. Immune reconstitution inflammatory syndrome: the trouble with  
529 immunity when you had none. Nat Rev Microbiol. 2013;23: 1–7.  
530 doi:10.1038/nrmicro2712.Immune
- 531 41. Poplin V, Boulware DR, Bahr NC. Methods for rapid diagnosis of meningitis etiology  
532 in adults. Biomarkers in Medicine. Future Medicine Ltd.; 2020. pp. 459–479.  
533 doi:10.2217/bmm-2019-0333
- 534 42. Okurut S. B cell responses, immune modulation, and survival among patients with HIV-  
535 associated cryptococcal meningitis. Doctoral thesis, Makerere University. 2023.  
536
- 537
- 538



539 **Tables**

540 **Table 1. Participants Baseline Demographics and Clinical Features by CSF Leukocytes**

541

<b>Baseline Demographics</b>	<b>≤50 white cells/μL CSF</b>	<b>51-200 white cells/μL CSF</b>	<b>201-500 white cells/μL CSF</b>	<b>P-value</b>
N	318	57	26	
Age, years	35 (29-41)	32 (29-38)	33 (28-39)	0.227
Females, n (%)	127 (39.9)	22 (39.6)	11 (42.3)	0.950
Weight, kg	51.5 (50-60)	55 (50-60)	50 (49.5-60)	0.428
Months on ART*	10.0 (1.3-39.5)	6.4 (1.2-38.6)	2.7 (0.4-4.5)	0.132
Headache duration, days	14 (7-30)	14 (7.5-30)	14 (7-23.3)	0.924
GCS <15, n (%)	146 (67.3)	29 (50.9)	17 (65.4)	0.149
Hemoglobin, g/dL	11.7 (10.1-13.3)	11.4 (10.1-13.6)	10.5 (9.2-12.4)	0.127
Platelets, x10 <sup>3</sup> /μL	192 (132-251)	203 (145-254)	225.5 (136 -329)	0.258
CSF opening pressure, mm Hg	19.7 (14.7-22.1)	17.7 (13.2-20.9)	19.1 (15.3-20.1)	0.653

542

543 Values are median (IQR). Statistic: Kruskal Wallis test (ANOVA) comparing the variables  
544 among participants across the three CSF white cell class intervals. Not statistically significant  
545 were variables with p-value  $\geq 0.05$  at a 95% confidence interval. ART\* experience -  
546 antiretroviral therapy; reported among 165 participants with  $\leq 50$  cells/μL white cells, 32  
547 participants with 51-200 white cells/μL, and 14 participants with 201-500 white cells/μL. GCS  
548 - Glasgow Coma Scale. CFU –colony forming units in CSF cryptococcal fungal growth culture.  
549 Normal adults CSF opening pressure is <10-15 mmHg that shows generally high CSF opening  
550 pressure above normal among patients with cryptococcal meningitis.

551 **Table 2. Multivariate Linear Regression of Independent Predictors of CSF Leukocytes**  
 552 **Infiltration**

Independent adjusted variables	Estimated Risk Ratios (95% CI; asymptotic)	Dependent	P value
Model 1: (PC1; (ii)) CSF white cell dependent and matched independent colinear predictor variables. Adjusted for PCA cluster (ii) components; (CSF cryptococcal, log <sub>10</sub> CFUs/mL, CD4 <sup>+</sup> T cells /μL, CD8 <sup>+</sup> T cells /μL, CSF protein, mg/dL, and blood white cells /μL).			
CSF cryptococcal, log <sub>10</sub> CFUs/mL	-8.11 (-13.28 to -2.94)	CSF white cells	0.002
CD4 <sup>+</sup> T cells /μL	0.28 (0.06 to 0.50)	CSF white cells	0.012
CD8 <sup>+</sup> T cells /μL	0.05 (0.02 to 0.078)	CSF white cells	0.002
CSF protein, mg/dL	0.09 (0.02 to 0.16)	CSF white cells	0.014
Model 2: PC1; (iii) CSF white cell dependent and matched independent colinear predictor variables. Adjusted for PCA cluster (iii) components; (B7-H1 / PD-L1, CCL11 / Eotaxin, CXCL10 / IP-10, IFN-γ, IL-10, IL-17A, IL-2 and TNF-α)			
IL-17A	3.04 (1.97 to 4.12)	CSF white cells	<0.0001
TNF-α	-0.16 (-0.29 to -0.02)	CSF white cells	0.026

553

554 Statistic: Multivariate Linear Regression (least squares) models among all participants.  
 555 Cytokines; (pg/mL). The values (Risk Ratios) - shown model transformed and normalized  
 556 imputed values (not actual measurements) of variables. P values, p<0.0500 are statistically  
 557 significant. Other variables including peripheral white blood cells, PD-L1, CXCL10, CCL11,  
 558 IFN-γ, IL-2 and IL-10 did not independently predict the levels of CSF white cells with  
 559 cryptococcal meningitis.

560

561

562

563

564 **Table 3. Multivariate Linear and Logistic Regression of Independent Predictors of**  
 565 **Survival.**

<b>Independent adjusted variables</b>	<b>Estimated Risk Ratios (95% CI)</b>	<b>Linear regression, P value</b>	<b>Logistic regression; Odds Ratios (95% CI)</b>
Model 1: All Principal Components survival dependent and matched independent predictor of survival. Adjusted for CSF white cells / $\mu$ L, CSF cryptococcal log <sub>10</sub> CFUs /mL, CD4 T cells / $\mu$ L, CD8 <sup>+</sup> T cells / $\mu$ L, CSF protein, mg/dL, B7-H1 / PD-L1, CCL11 / Eotaxin, CXCL10 / IP-10, IFN- $\gamma$ , IL-10, IL-17A, IL-2, TNF- $\alpha$ and blood white cells / $\mu$ L.			
B7-H1 / PD-L1	0.0010 (4.1e-005 to 0.0021)	0.0414	1.0060 (1.0010 to 1.0110)
CXCL10 / IP-10	-0.0001 (-0.0001 to -5.4e-006)	0.0320	0.9997 (0.9995 to 1.0000)
IL-2	0.0280 (0.0054 to 0.0507)	0.0155	1.1430 (1.0330 to 1.2720)
Model 2: PC2: PCA cluster (iii) survival dependent and matched independent predictor variables. Adjusted for (B7-H1 / PD-L1, CCL11 / Eotaxin, CXCL10 / IP-10, IFN- $\gamma$ , IL-10, IL-17A, IL-2 and TNF- $\alpha$ )			
CXCL10 / IP-10	-0.0001 (-0.0001 to -2.1e-005)	0.0045	0.9997 (0.9995 to 0.9999)
IL-2	0.0207 (0.0014 to 0.0399)	0.0353	1.0920 (1.0080 to 1.1870)

566  
 567 Statistic: Multivariate Linear Regression (Least Squares) and Multivariate Logistic Regression  
 568 Survival outcome dependent predictor variables among all participants. Interpretation: the  
 569 values (Risk Ratios and Odds Ratios) - shown model transformed and normalized imputed  
 570 values (not actual measurements) of variables. In Linear regression, the p-values,  $p < 0.0500$   
 571 were statistically significant. CI – confidence interval. The confidence interval values not  
 572 crossing through zero on either direction (positive or negative) are statistically significant. The  
 573 PCA cluster (ii) adjusted components including (CSF white cells, CSF cryptococcal log<sub>10</sub>  
 574 CFUs, CD4<sup>+</sup> T cells, CD8<sup>+</sup> T cells, CSF protein, and blood white cells) and other variables did  
 575 not predict or match survival in either analyses (model analysis data not shown).

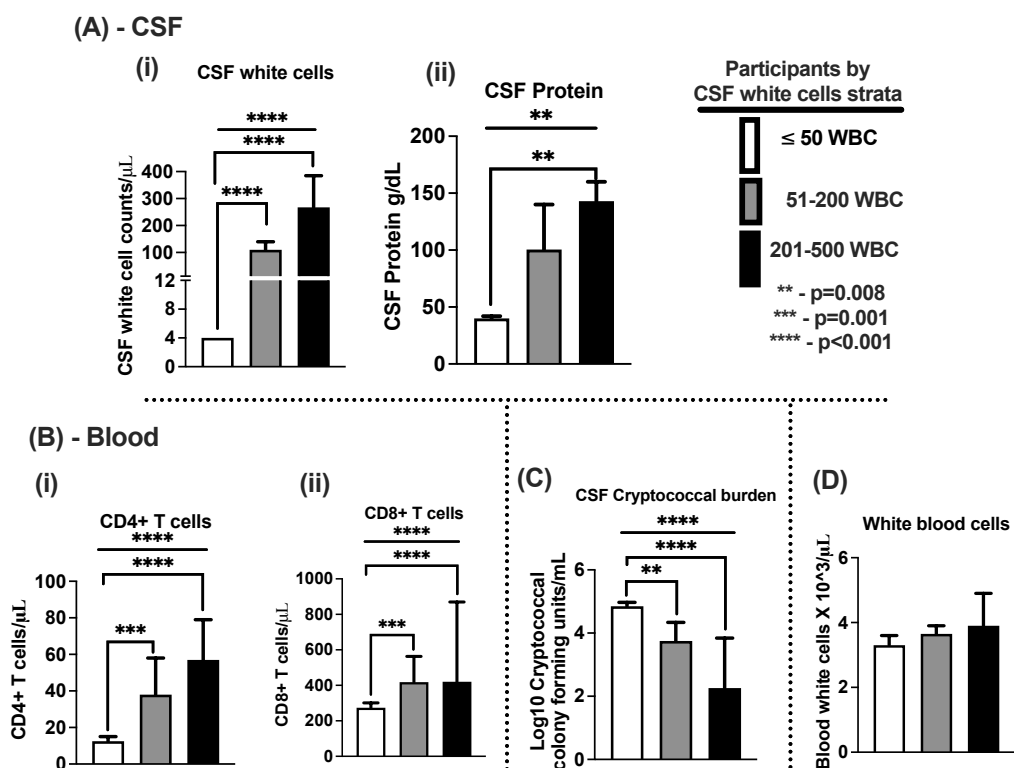
576

577

578 **Figure and Figure Legends**

579 **Figure 1**

580



581

582

583 **Figure 1. the correlation of CSF and blood clinical features.** A - correlation of CSF features  
 584 with 18 weeks survival by levels of CSF white cells. A (i) – CSF white cells, A (ii) – CSF  
 585 proteins and A (iii) CSF cryptococcal fungal burden. B – correlation of peripheral blood  
 586 features with 18 weeks survival by levels of CSF white cells. B (i) – peripheral blood white  
 587 cells, B (ii) - CD4<sup>+</sup> T cells, and B (iii) - CD8<sup>+</sup> T cells. Error bars – median and 95% confidence  
 588 intervals. \* - statistically significant variables reported at p-value <0.050, at 95% confidence  
 589 intervals.

590

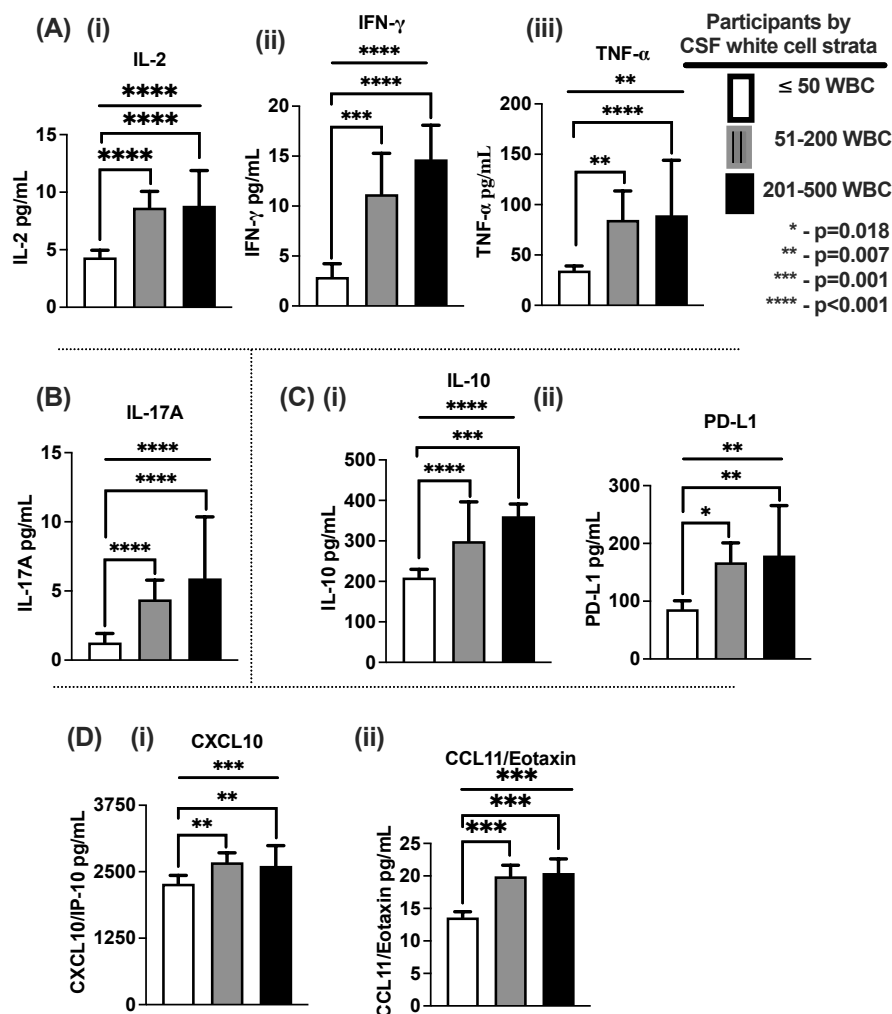
591

592

593

594 **Figure 2**

595



596

597

598 **Figure 2. Correlation of CSF cytokines and chemokine levels with CSF leukocyte counts**

599 A- Th1 cytokines; A (i) - Interleukin 2, A (ii) - Interferon gamma, A (iii) - Tumor necrosis

600 factor alpha. B - Th17 cytokine, IL-17A. C – Immune regulatory elements; (i) – Interleukin 10,

601 and programmed death 1 ligand. D Chemokines; D (i) CXCL10/IP-10 and D (ii) –

602 CCL11/Eotaxin. The CSF white cells; ( $\leq 50$  cells/ $\mu$ L; n=318), (51-200 cells/ $\mu$ L; n=57) and

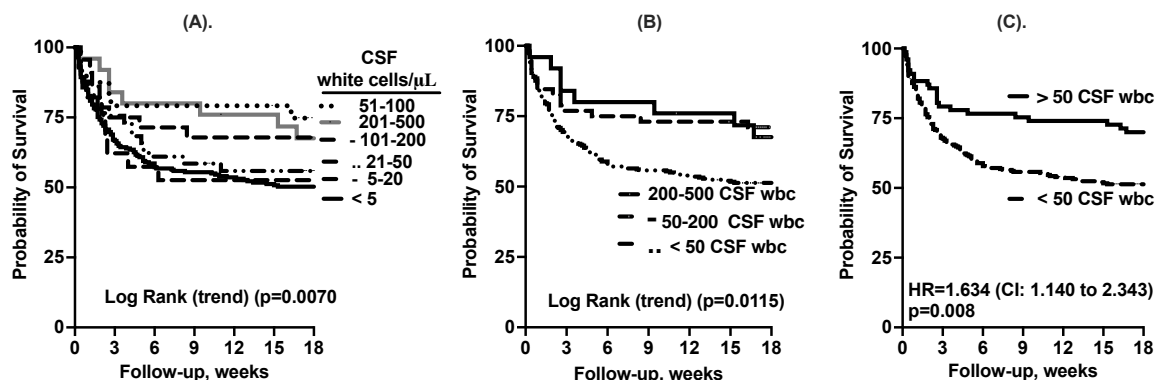
603 (201-500 cells/ $\mu$ L; n=26) participants. Error bars – median and 95% confidence intervals. \* -

604 statistically significant variables reported at p-value  $< 0.050$ , at 95% confidence intervals.

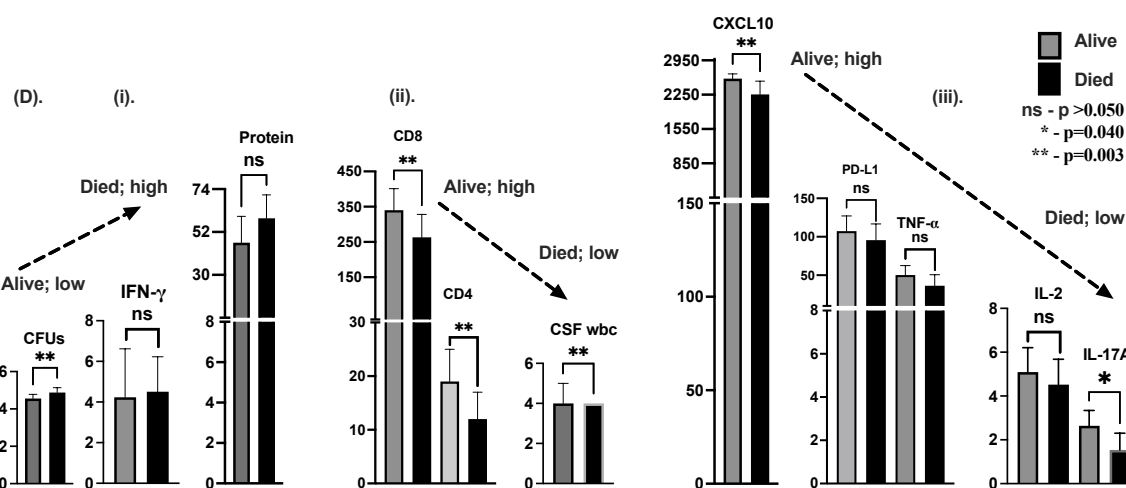
605

606 **Figure 3**

607



608

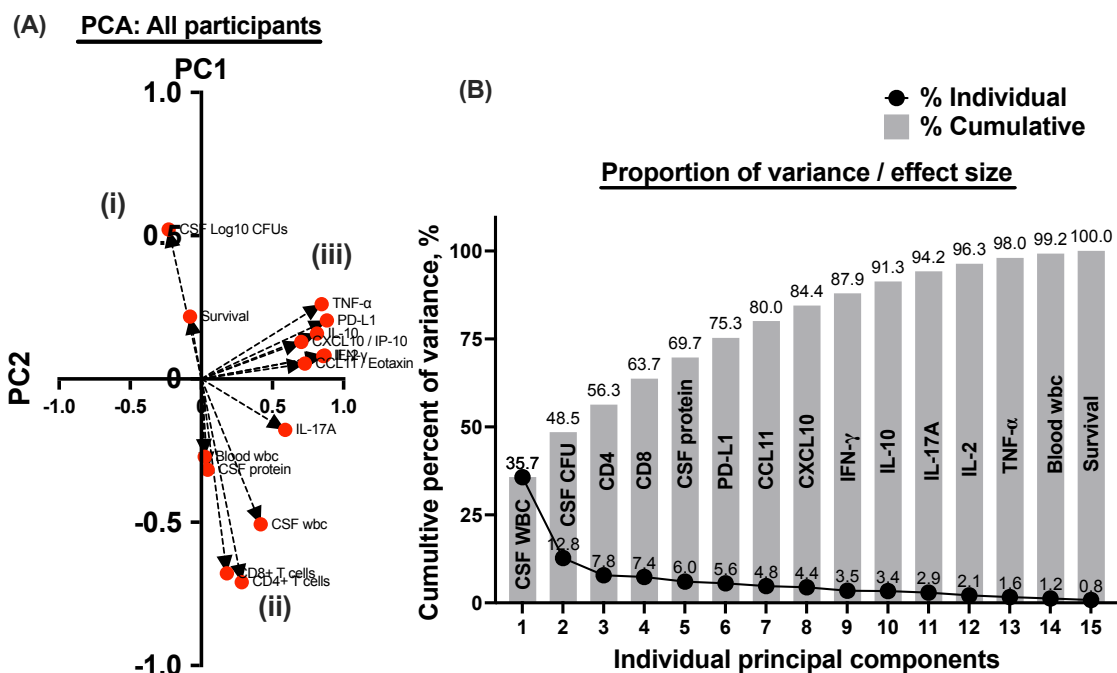


609

610 **Figure 3. correlation of CSF white cells with 18-week survival.** A –survival by CSF white  
 611 cell intervals (<5; n=245), (5-20; n=31), (21-50; n=42), (51-100; n=26), (101-200; n=31), and  
 612 (201-500; n=26). B - 18 weeks survival by CSF white cells; (≤50 cells; n=318), (51-200  
 613 cells/μL; n=57) and (201-500 cells/μL; n=26) participants. C – 18-week survival with CSF ≤50  
 614 cells/μL. D (i-iii) –illustrates univariate immune responses associated with survival between  
 615 survivors and those who died during 18-weeks of follow-up. Statistics - Mann-Whitney  
 616 unpaired t-test. \* - show statically significant variables. NS- not significant. Error bars – show  
 617 95% confidence intervals. p-values, p<0.050 were statistically significant.

618

619 **Figure 4**



620

621 **Figure 4. Principal Component Analyses showing Eigenvector projection (A) and**  
 622 **cumulative effect size contributed by each covariate the PCA model (B) examined among**  
 623 **all participants.** The three planes demonstrated by the Eigenvector projects are; (i-ii) -  
 624 diagonal plane between CSF fungal burden and host survival and CSF white cells, CSF protein,  
 625 peripheral white cells, CD4<sup>+</sup> and CD8<sup>+</sup> T cells. (i-iii) orthogonal plane between CSF fungal  
 626 burden and host survival and the cytokine/chemokine profile. (ii-iii) orthogonal plane between  
 627 CSF fungal burden and host survival and CSF white cells, CSF protein, peripheral white cells,  
 628 CD4<sup>+</sup> and CD8<sup>+</sup> T cells. Eigenvectors >5 shows greater power and association with the  
 629 outcome variable among interacting covariates.

630