

1
2
3
4
5
6
7
8
9
10
11
12
13
14
15
16
17
18
19
20
21
22
23
24
25
26
27

Impact of rotavirus vaccination in Malawi from 2012 to 2022 compared to model predictions before, during, and after the COVID-19 pandemic

Virginia E. Pitzer^{1,2,3*}, Latif Ndeketa^{3,4}, Ernest O. Asare^{1,2}, Daniel Hungerford^{3,5}, Khuzwayo C. Jere^{3,4,5,6}, Nigel A. Cunliffe^{3,5}

¹ Department of Epidemiology of Microbial Disease, Yale School of Public Health, Yale University, New Haven, CT, USA

² Public Health Modeling Unit, Yale School of Public Health, Yale University, New Haven, CT, USA

³ NIHR Global Health Research Group on Gastrointestinal Infections, University of Liverpool, Liverpool, Merseyside, UK

⁴ Malawi-Liverpool-Wellcome Programme, Blantyre, Malawi

⁵ Department of Clinical Infection, Microbiology and Immunology, Institute of Infection, Veterinary and Ecological Sciences, University of Liverpool, Liverpool, UK

⁶ Department of Medical Laboratory Sciences, Faculty of Biomedical Sciences and Health Profession, Kamuzu University of Health Sciences, Blantyre, Malawi

*Corresponding author: virginia.pitzer@yale.edu

Word count

Abstract: 247

Main text: 3643

28 **Abstract**

29

30 **Background**

31 Rotarix® rotavirus vaccine was introduced into the Malawi national immunization program in
32 October 2012. We used a previously developed mathematical models to estimate overall
33 vaccine effectiveness over a 10-year period following rotavirus vaccine introduction.

34

35 **Methods**

36 We analyzed data on children <5 years old hospitalized with acute gastroenteritis in Blantyre,
37 Malawi from January 2012 to June 2022, compared to pre-vaccination data. We estimated
38 vaccine coverage before, during, and after the COVID-19 pandemic using data from rotavirus-
39 negative children. We compared model predictions for the weekly number of rotavirus-
40 associated gastroenteritis (RVGE) cases to the observed number by age to validate model
41 predictions and estimate overall vaccine effectiveness.

42

43 **Results**

44 The number of RVGE and rotavirus-negative acute gastroenteritis cases declined substantially
45 following vaccine introduction. Vaccine coverage among rotavirus-negative controls was >90%
46 with two doses by July 2014, and declined to a low of ~80% in October 2020, before returning
47 to pre-pandemic levels by July 2021. Our models captured the post-vaccination trends in RVGE
48 incidence, with 5.4% to 19.4% of observed weekly RVGE cases falling outside of the 95%
49 prediction intervals. Comparing observed RVGE cases to the model-predicted incidence without
50 vaccination, overall vaccine effectiveness was estimated to be 36.0% (95% prediction interval:
51 33.6%, 39.9%) peaking in 2014 and was highest in infants (52.5%; 95% prediction interval:
52 50.1%, 54.9%).

53

54 **Conclusions**

55 Overall effectiveness of rotavirus vaccination in Malawi is modest despite high vaccine coverage
56 and has plateaued since 2016. Our mathematical models provide a validated platform for
57 assessing strategies to improve rotavirus vaccine impact.

58 **Background**

59
60 Rotavirus is the leading cause of severe diarrhea among children around the world [1,2]. While
61 rotavirus vaccines have been introduced into over half of all countries worldwide [3], vaccine-
62 induced immunity is non-sterilizing and vaccine efficacy and effectiveness tend to be lower in
63 low-income settings [4,5]. As a result, rotavirus is still the most common cause of acute watery
64 diarrhea among infants even in countries with a rotavirus vaccination program [6].

65
66 In Malawi, the monovalent Rotarix® vaccine (RV1; GlaxoSmithKline) was introduced into the
67 national immunization program on October 29, 2012, with two doses administered orally at 6
68 and 10 weeks of age [7]. In the Malawi cohort of a phase III clinical trial, vaccine efficacy was
69 38.1% over two years of follow-up [8]. Estimates of vaccine effectiveness have been slightly
70 higher (61.9%-70.6%), but the overall reduction in rotavirus prevalence among children
71 hospitalized with diarrhea in Blantyre, Malawi has been modest (from 32% pre-vaccine to 24-
72 28% post-vaccine) despite high vaccine coverage (>84% over since 2013) [9–11]. Using a
73 mathematical model fitted to pre- and post-vaccination data from Blantyre, we previously
74 showed that the observed vaccine effectiveness and impact of vaccination could be explained
75 by heterogeneity in vaccine response possibly combined with waning of vaccine-induced
76 immunity [12].

77
78 The COVID-19 pandemic led to disruptions in vaccine delivery and healthcare seeking behavior
79 throughout the world [13]. Across the African Region, coverage with first dose of diphtheria-
80 tetanus-pertussis containing vaccine (DTP1) was estimated to decline by 3% (from 83% in 2019
81 to 80% in 2021-2022), while coverage with the third dose (DTP3) declined by 5% (from 77% to
82 72%) [14]. In Malawi, one study reported a 20.0% decline in inpatient care and a 17.6% decline
83 in immunization services between April 2020 and December 2021 relative to the pre-pandemic
84 period (2015-2019) [15], whereas other studies have reported little to no disruption in maternal
85 health services and cumulative vaccine doses administered [16,17].

86

87 Here, we examine trends in rotavirus-associated gastroenteritis (RVGE) cases by age group over
88 the 10-year period after vaccine introduction in Blantyre, Malawi. Using data from children with
89 rotavirus-negative acute gastroenteritis (test-negative controls), we estimate RV1 coverage
90 before, during, and after the COVID-19 pandemic. By comparing the observed number of RVGE
91 cases by age group to predictions from our previously developed mathematical model, we
92 validate model predictions based on five years of out-of-sample data from 2017 to 2022.
93 Finally, we estimate vaccine impact by comparing the observed RVGE incidence to that
94 predicted by the mathematical model in the absence of vaccination.

95

96 **Methods**

97

98 Surveillance for RVGE has been conducted in Blantyre, Malawi among inpatients and
99 outpatients at Queen Elizabeth Central Hospital (QECH) from July 1997 to June 2007, January
100 2008 to December 2009 [18,19], and since January 2012 [10,20], as previously described.
101 Briefly, children <5 years of age who presented to QECH with acute gastroenteritis (AGE,
102 defined as three or more loose stools in a 24-hour period for less than 14 days) and moderate
103 to severe dehydration were enrolled, fecal samples were collected, and rotavirus testing was
104 carried out using a sensitive and specific enzyme-linked immunosorbent assay (ELISA;
105 Rotaclone®; Meridian Bioscience); the G- and P-types of rotavirus-positive samples were
106 determined using reverse-transcriptase polymerase chain reaction (RT-PCR) [21]. We analyzed
107 aggregate data on the number of rotavirus-positive and rotavirus-negative AGE cases in each
108 week of the surveillance period through June 2022 for 1-month age categories <2 years of age
109 and 1-year age categories for 2 to <5 years of age.

110

111 Sample collection was halted between April and early October 2020 due to the COVID-19
112 pandemic. Following the pandemic, healthcare seeking for diarrhea at QECH substantially
113 declined before gradually increasing to pre-pandemic levels in 2022. To control for changes in
114 healthcare seeking and reporting effort over time, we calculated the 2-year (105-week) moving
115 average of the number of rotavirus-negative AGE cases in the <1 year, 1 to <2 year, and 2 to <5

116 years age groups; we then divided by the mean number of rotavirus-negative AGE cases for the
117 entire surveillance period in each age group to estimate the relative reporting rate over time.

118

119 Vaccination status was recorded on government-issued family-held records. To estimate
120 vaccine coverage over time, we divided the number of age-eligible rotavirus-negative AGE cases
121 who had received one or two doses of the RV1 vaccine by the total number of age-eligible
122 rotavirus-negative AGE cases who presented to QECH in the 9-month (39-week) period
123 centered on each week from October 28, 2012 (week of vaccine introduction) to June 2022.
124 Uncertainty was quantified using 95% binomial confidence intervals.

125

126 To estimate the counterfactual number of RVGE cases that would be expected in each age
127 group over time had the RV1 vaccine not been introduced, we used mathematical models that
128 we previously developed and fitted to pre- and post-vaccination RVGE cases at QECH (Figure S1,
129 Figure S2). Details of the modeling approach have been previously described [12]. Briefly, in the
130 absence of vaccination, the model assumes that infants are born with maternal immunity,
131 which wanes after a period of ~6 months. After each rotavirus infection, individuals are briefly
132 immune to reinfection, then gain partial acquired immunity that reduces the severity and rate
133 of subsequent infections; we assume the risk of moderate-to-severe RVGE is negligible
134 following two natural infections. The model was parameterized based on data from birth cohort
135 studies (see Table S1), then fitted to the 12 years of pre-vaccination data from QECH to
136 estimate the mean transmission rate (as quantified by the basic reproductive number, R_0),
137 amplitude and timing of seasonality in transmission, and the proportion of moderate-to-severe
138 RVGE cases in Blantyre that seek care at QECH and are tested (i.e. reporting fraction). To
139 control for variation in reporting effort over time, we multiplied the reporting fraction by the
140 relative reporting rate (described above). We initially fit the model via maximum a posterior
141 estimation, then used a Markov chain Monte Carlo to obtain samples from the posterior
142 distributions of model parameters (Table S1) [12].

143

144 To model the effect of vaccination with RV1, we explored different assumptions about the
145 probability of responding to each vaccine dose and the potential waning of vaccine-induced
146 immunity. Models 1 and 2 assume that each vaccine dose provides immunity comparable to
147 one natural infection among those who respond to the vaccine, i.e. partial immunity against
148 reinfection and full protection against moderate-to-severe RVGE following two “successful”
149 vaccine doses and/or natural infections. Model 1 assumes the proportions of infants who
150 respond to the first and second dose are independent of one another (i.e. homogeneity in
151 vaccine response), whereas Model 2 assumes that individuals who fail to respond to the first
152 dose may be less likely to respond to subsequent doses (i.e. heterogeneity in vaccine response).
153 The probability of responding to each dose was estimated based on seroconversion data from a
154 vaccine trial conducted in Malawi [8]; uncertainty was characterized using beta distributions, as
155 detailed previously (Table S2) [12]. Neither model was fitted to the post-vaccination data.

156
157 Models 3 and 4 assume each vaccine dose provides, among those who respond, temporary but
158 complete immunity against rotavirus infection. Following the waning of vaccine-induced
159 immunity, vaccinated infants return to their previous level of susceptibility, while those who
160 respond to both vaccine doses move to the next vaccinated (and protected) compartment.
161 Model 3 assumes homogeneity in vaccine response, whereas Model 4 assumes heterogeneity
162 in vaccine response. The probability of responding to each vaccine dose and the rate of waning
163 of vaccine-induced immunity were estimated by fitting to the post-vaccination data from QECH
164 between October 2012 and August 2017 (Table S2) [12].

165
166 To validate model predictions for the impact of rotavirus vaccination in Malawi, we compared
167 the predicted number of RVGE cases from the four models to the observed number of
168 rotavirus-positive AGE cases at QECH. We considered both the total number of cases per week
169 among children <5 years old as well as cases in each of the three age groups (<1 year, 1 to <2
170 years, and 2 to <5 years of age). First, we calculated the Spearman rank correlation coefficient
171 and root mean square error (RMSE) between the model-predicted mean number of RVGE cases
172 stratified by week and age group and the observed number of RVGE cases per week and age

173 group for three time periods: the full 10-year time period from January 2012 to June 2022
174 (excluding the period from April-October 2020 with no surveillance); the in-sample validation
175 period (January 2012-August 2017, previously used for fitting Models 3 and 4); and the out-of-
176 sample validation period (September 2017-June 2022). Second, we calculated the proportion of
177 weeks in which the 95% prediction interval for the model-predicted number of RVGE cases
178 contained the observed number of RVGE cases. To generate the model predictions, we sampled
179 100 times from the joint posterior distributions of the pre- and post-vaccination model
180 parameters. To account for observation error around the mean number of RVGE cases
181 predicted for each week (comparable to the approach used for model fitting), we sampled 100
182 times from a Poisson distribution with rate parameter $\lambda_{w,a}$ equal to the mean number of RVGE
183 cases in week w and age group a for each of the 100 model simulations. The 95% prediction
184 intervals were generated based on the 2.5 and 97.5 percentiles of the resulting 10,000 samples
185 for each week (and within each age group) for the different models.

186
187 Using the validated models, we then estimated the overall vaccine effectiveness for each year
188 following the introduction of RV1 in 2012. For each of the models, we simulated both the
189 predicted mean number of RVGE cases given the estimated vaccine coverage over time as well
190 as the mean number of RVGE cases predicted with no vaccination (i.e. assuming vaccine
191 coverage was 0%). All four models predicted the same number of RVGE cases in the absence of
192 vaccination, as expected. Overall vaccine effectiveness (OE), defined as the reduction in disease
193 incidence among both vaccinated and unvaccinated individuals in a vaccinated population
194 compared to an unvaccinated population [22], in year y and age group a was estimated as:

$$195 \quad OE_{y,a} = 1 - \frac{\sum_{w \in y} Y_{w,a}}{\sum_{w \in y} H_{novacc,w,a}}$$

196 where $Y_{w,a}$ is the observed number of RVGE cases in week w (in year y) and age group a and
197 $H_{novacc,w,a}$ is the model-predicted number of RVGE cases in week w and age group a with no
198 vaccination.

199
200 Code for the model and analysis was written and implemented in MATLAB v9.14 (Mathworks,
201 Natick, MA) and is available at <https://github.com/vepitzer/rotavirusMalawi>.

202

203 **Results**

204 Since the introduction of rotavirus vaccination in October 2012, the number of RVGE cases per
 205 year at QECH has declined from 193 in 2013 to 36 in 2021 (Table 1, Figure S3). However, the
 206 number of rotavirus-negative AGE cases also declined over this time period, from 530 in 2013
 207 to 71 in 2021. Thus, not all of the decline in the incidence of RVGE cases can be attributed to
 208 the RV1 vaccine. There has been reduced healthcare seeking for diarrhea at QECH, particularly
 209 since the onset of the COVID-19 pandemic in 2020 (Table 1, Figures S3-S4).

210

211 There has also been a shift in the age distribution of RVGE cases. Prior to vaccine introduction,
 212 nearly 80% of RVGE cases occurred among infants <1 year old, with 18.6% occurring among 1-
 213 year-olds and only 2% among 2- to <5-year-olds (Table 1). Since 2013, the proportion of RVGE
 214 cases among <1-year-olds has consistently been <65%, with a third of cases occurring among 1-
 215 year-olds and 5% occurring among 2- to <5-year-olds. While there has also been a slight shift in
 216 the burden of non-rotavirus AGE cases to older age groups, it has been less marked (Table 1).

217

218 **Table 1. Number of rotavirus-positive and rotavirus-negative acute gastroenteritis cases**
 219 **diagnosed at Queen Elizabeth Central Hospital in Blantyre, Malawi, 2012-2022.** Values in
 220 parentheses are the percent of cases in each age group.

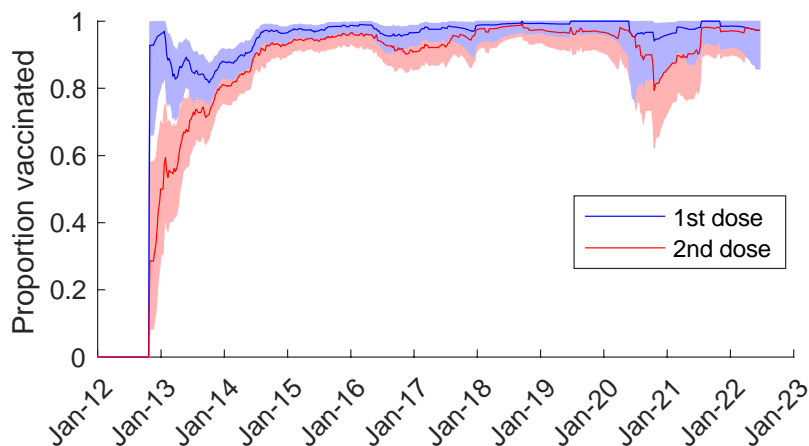
Year	Rotavirus-positive				Rotavirus-negative				
	Age group	<5y	<1y	1-<2y	2-<5y	<5y	<1y	1-<2y	2-<5y
Pre-vaccination (1997-2009)*	39-235	18-189 (79.4%)	8-46 (18.6%)	0-5 (2.0%)	116-423	44-258 (60.8%)	29-121 (29.5%)	11-44 (9.7%)	
2012	192	149 (77.6%)	40 (20.8%)	3 (1.6%)	315	170 (54.0%)	84 (26.7%)	61 (19.4%)	
2013	193	120 (62.2%)	65 (33.7%)	8 (4.2%)	530	328 (61.9%)	162 (30.6%)	40 (7.6%)	
2014	137	81 (59.1%)	52 (38.0%)	4 (2.9%)	648	318 (49.1%)	260 (40.1%)	70 (10.8%)	
2015	161	90 (55.9%)	60 (37.3%)	11 (6.8%)	428	225 (52.6%)	141 (32.9%)	62 (14.5%)	
2016	128	80 (62.5%)	41 (32.0%)	7 (5.5%)	235	143 (60.9%)	68 (28.9%)	24 (10.2%)	
2017	111	72 (64.9%)	29 (26.1%)	10 (9.0%)	235	129 (54.9%)	83 (35.3%)	23 (9.8%)	

2018	110	62 (56.4%)	42 (38.2%)	6 (5.5%)	225	124 (55.1%)	83 (36.9%)	18 (8.0%)
2019	76	46 (60.5%)	26 (34.1%)	4 (5.3%)	154	91 (59.1%)	50 (32.5%)	13 (8.4%)
2020 [#]	26	11 (42.3%)	13 (50.0%)	2 (7.7%)	64	38 (59.4%)	19 (29.7%)	7 (10.9%)
2021	36	21 (58.3%)	12 (33.3%)	3 (8.3%)	71	40 (56.3%)	21 (29.6%)	10 (14.1%)
2022 [§]	26	16 (61.5%)	10 (38.5%)	0 (0%)	46	24 (52.2%)	16 (34.8%)	6 (13.0%)
Post-vaccination (2013-2022 [§])	1004	599 (59.7%)	350 (34.9%)	55 (5.5%)	2636	1460 (55.4%)	903 (34.3%)	273 (10.4%)

221 * The range of yearly values and average age distribution is presented for the pre-vaccination period.
 222 # Excludes the period from April 5 to October 10 when surveillance was halted because of the COVID-19 pandemic.
 223 § Limited to data through June 25, 2022.

224
 225 Vaccine coverage among non-rotavirus AGE controls at QECH reached high levels by January
 226 2015 (approximately two years after vaccine introduction), with >95% having received at least
 227 one dose of RV1 and >90% having received two doses. However, there was a slight decline in
 228 vaccine coverage during the COVID-19 pandemic in 2020-2021, particularly for the second dose,
 229 although coverage has since rebounded to pre-pandemic levels (Figure 1).

230



231
 232 **Figure 1. Coverage with the first and second dose of monovalent rotavirus vaccine among test-**
 233 **negative controls at Queen Elizabeth Central Hospital, January 2012-June 2022.** The 39-week moving
 234 average of the proportion of age-eligible rotavirus-negative acute gastroenteritis cases who had
 235 received one dose (blue) and two doses (red) of the RV1 vaccine are plotted. The shaded regions
 236 represent the 95% binomial confidence intervals.

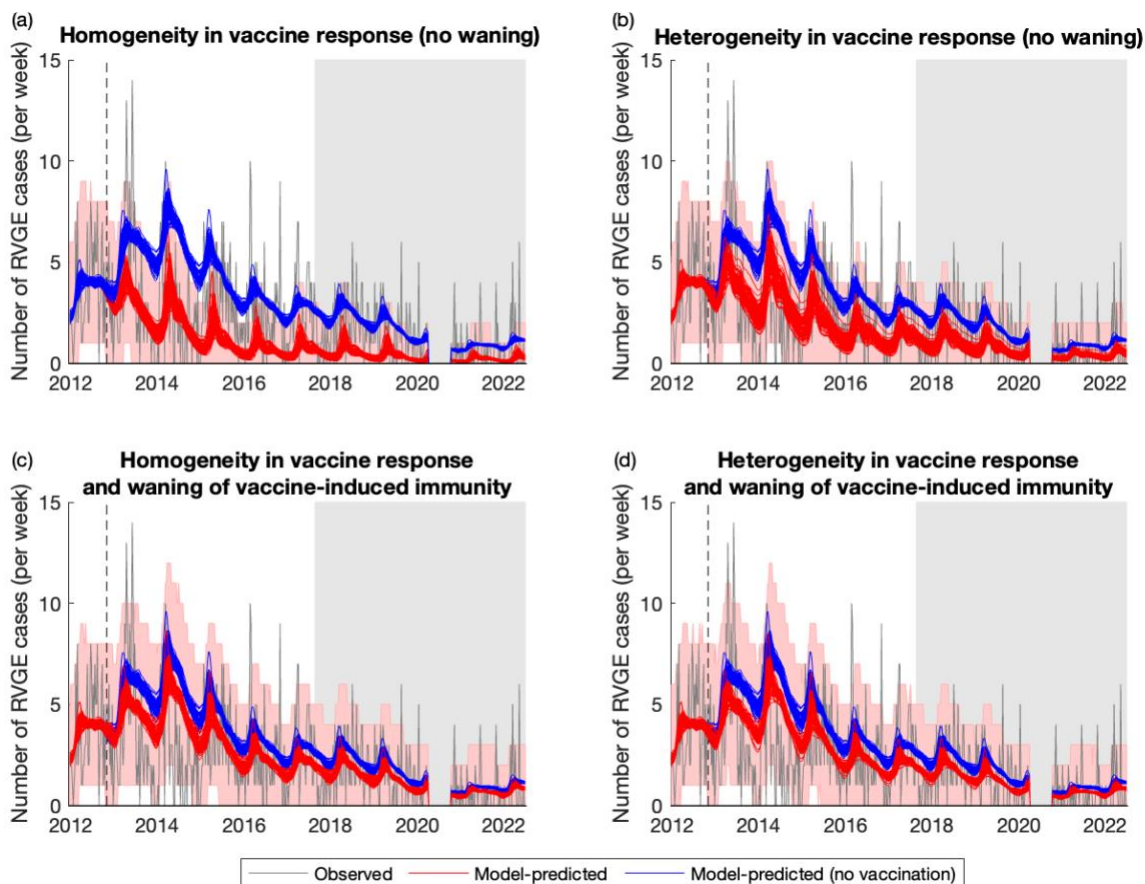
237
 238 Our mathematical models were able to capture the post-vaccination trends in RVGE incidence,
 239 although the model assuming homogeneity in vaccine response and no waning of vaccine-

240 induced immunity (Model 1) tended to overestimate vaccine impact and performed less well
 241 (Figure 2, Figures S5). Observed and model-predicted RVGE cases were moderately correlated
 242 (Spearman’s $\rho = 0.54-0.56$ for Models 1-4), and the RMSE was similar across the four models,
 243 with Model 2 exhibiting the lowest RMSE (Table 2). The percent of weeks in which the observed
 244 number of RVGE cases fell outside the 95% prediction interval of the models was approximately
 245 5% for Models 3 and 4 (as expected). The percentage was slightly higher for Models 1 and 2,
 246 particularly for the 1- to <2-year-old and 2- to <5-year-old age groups (Table 2); however, it is
 247 worth noting that these models were not fitted to the post-vaccination data, whereas Models 3
 248 and 4 were fitted to data through August 2017. The percent of weeks in which the observed
 249 number of RVGE cases fell outside the 95% prediction intervals was similar for the period
 250 before and after August 2017 (Table 2).

251
 252 **Table 2. Validation of model predictions for the impact of vaccination on RVGE cases for January 2012-
 253 June 2022 and the in-sample (January 2012-August 2017) and out-of-sample (August 2017-June 2022)
 254 periods.**

	Time period	Spearman’s correlation between observed & predicted RVGE cases	Root mean square error	Percent of weeks in which the observed number of RVGE cases fell outside the 95% prediction interval			
				All ages	<1 year old	1-<2 years old	2-<5 years old
Model 1: no waning, homogeneous response	Entire period	0.541	1.108	19.4%	8.7%	12.3%	7.5%
	In-sample	0.561	1.293	19.3%	8.8%	12.2%	7.8%
	Out-of-sample	0.402	0.804	19.6%	8.4%	12.4%	7.1%
Model 2: no waning, heterogeneous response	Entire period	0.560	1.058	8.1%	2.7%	7.5%	7.1%
	In-sample	0.579	1.246	8.5%	2.7%	6.4%	7.1%
	Out-of-sample	0.417	0.743	7.6%	2.7%	8.9%	7.1%
Model 3: waning vaccine immunity, homogeneous response	Entire period	0.562	1.072	5.4%	2.5%	4.0%	0.6%
	In-sample	0.581	1.280	6.8%	3.4%	3.1%	1.0%
	Out-of-sample	0.427	0.711	3.6%	1.3%	5.3%	0.0%
Model 4: waning vaccine immunity, heterogeneous response	Entire period	0.562	1.077	5.4%	2.3%	4.6%	0.4%
	In-sample	0.584	1.287	6.8%	3.1%	3.7%	1.0%
	Out-of-sample	0.424	0.715	3.6%	1.3%	6.2%	0.0%

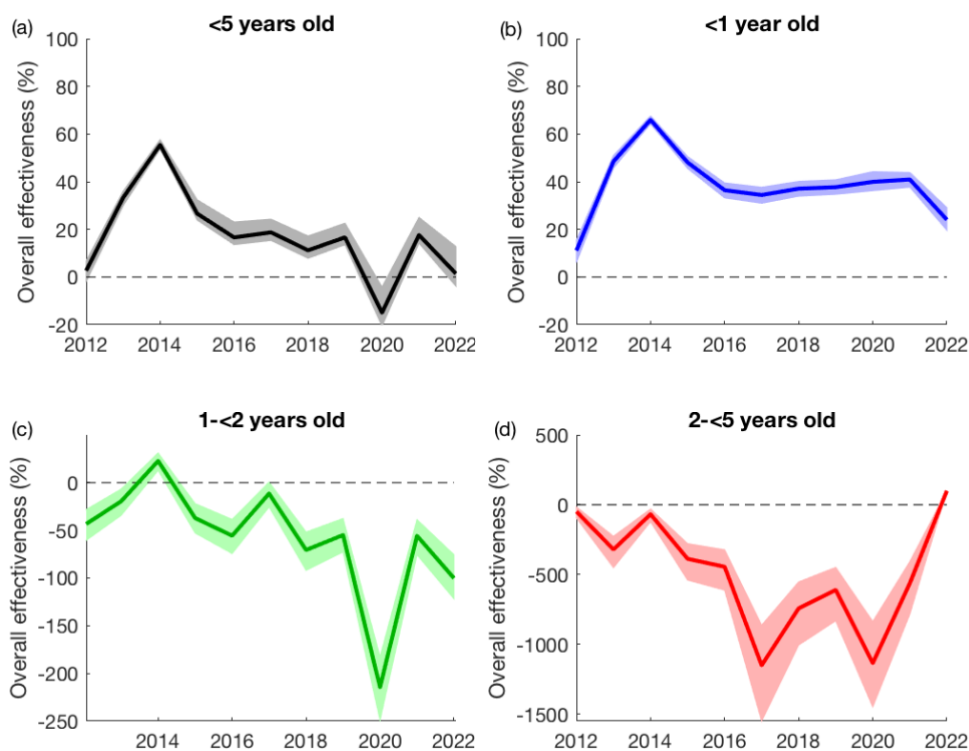
255
 256



257
 258 **Figure 2. Weekly timeseries of observed and model-predicted rotavirus gastroenteritis cases at Queen**
 259 **Elizabeth Central Hospital, January 2012-June 2022.** The observed number of RVGE cases per week is
 260 plotted in grey, while model predictions for the average weekly number of RVGE cases given current
 261 estimates of vaccine coverage (red lines) and assuming no vaccination (blue lines) are plotted for 100
 262 samples from the posterior distribution of model parameters for (a) Model 1, (b) Model 2, (c) Model 3,
 263 and (d) Model 4. The red shaded region represents the 95% prediction intervals assuming the observed
 264 number of cases per week are Poisson distributed. The dashed vertical line shows the week of vaccine
 265 introduction, while the light grey shaded region shows the out-of-sample validation period.

266
 267 Compared to the model-predicted number of RVGE cases with no vaccination, the observed
 268 number of RVGE cases among all children <5 years of age following the introduction of RV1 was
 269 reduced by 36.0% (95% prediction interval: 33.6%, 39.9%). The overall vaccine effectiveness
 270 (OE) was greatest in the <1-year-olds (52.5%; 95% prediction interval: 50.1%, 54.9%), whereas
 271 the post-vaccination incidence of RVGE was slightly higher than predicted under the no-
 272 vaccination scenario for 1-<2-year-olds (OE=-18.6%; 95% prediction interval: -33.4%, -5.6%) and
 273 for 2-<5-year-olds (OE=-336.4%; 95% prediction interval: -238.8%, -471.9%). Overall
 274 effectiveness was greatest in 2014 (two years after vaccine introduction) and lowest in 2020,

275 driven primarily by an increase in cases among 1-<2-year-olds (Figure 3). Since 2017, overall
276 vaccine effectiveness has remained fairly consistent (Table S3), with an average overall
277 effectiveness of 14.5% (95% prediction interval: 10.2%, 19.7%) and an average overall
278 effectiveness in <1-year-olds of 36.4% (95% prediction interval: 33.0%, 39.2%).
279



280
281 **Figure 3. Model-based estimates of overall vaccine effectiveness by year and age group.** The overall
282 effectiveness is estimated by comparing the observed number of RVGE cases in each year to the model-
283 predicted number of RVGE cases per year assuming no vaccination and is plotted for all children <5
284 years old (a) and by age group: (b) <1 year old in blue, (c) 1 to <2 years old in green, and (d) 2 to <5 years
285 old in red. The shaded regions represent the 95% prediction intervals.
286

287 Discussion

288 It has been over 10 years since rotavirus vaccination was introduced into the national
289 immunization program in Malawi. Nevertheless, rotavirus remains a major cause of diarrhea.
290 Over the past decade, we estimate that there has been a 36% reduction in the incidence of
291 RVGE among children under 5 years old presenting to QECH, which is driven by the reduction in
292 incidence in <1-year-olds. While the incidence of RVGE cases among infants decreased by over

293 50%, incidence has increased slightly among 1-year-olds and has more than tripled among 2-<5-
294 year-olds, although the latter age group still represents less than 10% of all RVGE cases (range:
295 2-10 cases per year). Vaccine coverage has remained high, with over 95% of infants receiving at
296 least one dose of the RV1 vaccine and over 90% receiving both doses, according to data from
297 test-negative controls. There was a slight decrease in vaccine coverage during the COVID-19
298 pandemic, particularly for the second dose, which fell to approximately 80% in October 2020.
299 We also noted substantial declines in healthcare seeking for diarrhea before, during, and after
300 the COVID-19 pandemic, as indicated by the number of rotavirus-negative AGE cases presenting
301 to QECH, highlighting the importance of controlling for trends in surveillance when estimating
302 the impact of rotavirus vaccine introduction.

303
304 Our estimate of the overall impact of rotavirus vaccination in Malawi is similar to previous
305 estimates from the first four years after vaccine introduction in Malawi [9,10] and for countries
306 in the Global Rotavirus Surveillance Network [23], but lower than the median estimate reported
307 for high-mortality countries in a recent review [24]. It is notable that overall vaccine impact has
308 plateaued since 2016 and may have even decreased over the past few years. Vaccine coverage
309 in our study population has remained high over this time period, suggesting that the reduced
310 vaccine impact is primarily attributable to the lower vaccine effectiveness in Malawi [8].
311 Nevertheless, other studies have found that the severity of hospitalized RVGE cases has
312 decreased since the introduction of RV1 [20], and infant mortality from all-cause diarrhea has
313 also declined [25]. Thus, there may be additional benefits to vaccine introduction that have not
314 been quantified in this analysis.

315
316 We observed only a slight drop in rotavirus vaccine coverage following the COVID-19 pandemic,
317 primarily affecting coverage with the second dose. This small decrease in coverage is similar to
318 that reported for the African region, based on the WHO and UNICEF Estimates of National
319 Immunization Coverage (WUENIC) data [14]. However, larger reductions in healthcare-seeking
320 for immunization services and other types of healthcare were reported for Malawi based on
321 health service utilization data [15]. It is possible that our estimates of vaccine coverage are

322 higher and less susceptible to pandemic-related disruptions, since they are based on data from
323 test-negative controls who sought care at QECH, and the number of rotavirus-negative AGE
324 cases dropped by over 50% between 2019 and 2021 (Table 1). Nevertheless, the vaccine
325 coverage among test-negative controls should be representative of the population from which
326 the rotavirus-positive cases are detected, which is necessary to provide unbiased estimates of
327 vaccine effectiveness [26–28].

328
329 There are a variety of ways to control for trends in disease incidence when estimating the
330 overall effectiveness of vaccine introduction, i.e. vaccine impact. Numerous studies have
331 estimated rotavirus vaccine impact by comparing the proportion of AGE cases that tested
332 positive for rotavirus before and after vaccine introduction, e.g. [29,30]. The benefit of this
333 approach is that it is relatively insensitive to inconsistencies in surveillance effort over time
334 (provided there is year-round surveillance to account for seasonal changes in the prevalence of
335 different diarrheal pathogens [31]), and it allows for the inclusion of sentinel surveillance sites
336 that may only have data from the pre- or post-vaccination period. Changes in healthcare access
337 and utilization as well as other factors that may bias estimates of vaccine impact (e.g.
338 improvements in hygiene and sanitation) are controlled for to some extent, since they affect
339 both the numerator and denominator of the pre- and post-vaccination rotavirus prevalence.
340 However, this approach has limited power to examine trends in rotavirus patterns and vaccine
341 impact over time. Another common approach is to use interrupted time-series models estimate
342 overall vaccine effectiveness, e.g. [9,29,32]. While this approach is able to assess trends in
343 vaccine impact over time and as a function of vaccine coverage, it is still necessary to control for
344 seasonality and secular trends in disease incidence over time.

345
346 Our analysis highlights the importance of using data on rotavirus-negative cases to control for
347 surveillance trends and healthcare-seeking patterns, as surveillance effort at QECH increased
348 following the introduction of RV1 in 2012 and has been decreasing over the past decade; failure
349 to control for these patterns would lead to underestimation of vaccine impact in 2013–2015 and
350 overestimation of vaccine impact in recent years. We assume that the decline in rotavirus-

351 negative cases reflects decreased healthcare-seeking and/or surveillance effort at QECH, but it
352 is also possible that it reflects a true decline in diarrhea incidence due to social distancing and
353 other behavioral changes during the COVID-19 pandemic, as has been observed in other
354 countries [33,34]. Regardless of the mechanism underlying the decline, our estimates of
355 rotavirus vaccine impact are likely to remain unchanged, since the effect of social distancing is
356 independent of vaccine introduction and likely to be similar across diarrheal pathogens.

357
358 In this analysis, we use a transmission dynamic model to predict the number of rotavirus cases
359 pre- and post-vaccine introduction [12], and we compare the number of observed RVGE cases
360 to that predicted by the model in the absence of vaccination to estimate vaccine impact. This
361 approach is similar to an interrupted time-series model, but can account for other changes to
362 the dynamics of rotavirus transmission, e.g. from changes in the birth rate or population
363 demography over time [35]. Furthermore, by showing that the models incorporating
364 vaccination can reproduce the observed post-vaccination dynamics of rotavirus [12], including
365 for out-of-sample data not used for model fitting, we are able to test different hypotheses
366 about the nature of vaccine-induced immunity. We have shown that such models are also able
367 to reproduce the post-vaccination dynamics of rotavirus across other settings, including the US
368 and Ghana [36,37]. Thus, the models provide a validated platform for predicting the potential
369 impact of strategies to improve vaccine performance, including the introduction of next-
370 generation rotavirus vaccines [38].

371
372 Nevertheless, our analysis has a number of limitations that warrant consideration when
373 interpreting the results. As noted above, we assume test-negative AGE cases are representative
374 controls for estimating vaccine coverage and healthcare seeking patterns. Furthermore, we
375 assume that vaccination did not affect the incidence of non-rotavirus AGE, which may not be
376 true if prevention of rotavirus infection decreases vulnerability to other enteropathogens
377 and/or if diagnostic test sensitivity is low. By comparing post-vaccination RVGE cases to the
378 number predicted by our transmission model, we assume that the model is accurately
379 capturing the underlying natural history of rotavirus infection and immunity. Finally, it is

380 difficult to conduct formal model selection for the four different models of vaccine protection,
381 since there are differences in model structure and only Models 3 and 4 were formally fitted to
382 post-vaccination data.

383
384 In conclusion, we show that the overall effectiveness of rotavirus vaccination in Malawi peaked
385 in 2014 and has since plateaued. Since 2017, the observed number of RVGE cases at QECH was
386 only approximately 15% lower than the incidence predicted in the absence of vaccination
387 despite high vaccine coverage. The COVID-19 pandemic led to a slight decline in vaccine
388 coverage, particularly for the second dose of RV1, but coverage has since returned to pre-
389 pandemic levels as of mid-2021. Novel approaches are needed to improve rotavirus vaccine
390 performance in low-income settings such as Malawi. Our previously published models of
391 rotavirus vaccine impact in Malawi were able to reproduce the post-vaccination dynamics,
392 particularly for the models assuming heterogeneity in vaccine response and/or waning of
393 vaccine-induced immunity. These models provide a validated platform for assessing strategies
394 to improve rotavirus vaccine impact in Malawi.

395

396

397 **Acknowledgements**

398

399 This work was supported by funding from the US National Institutes of Health/National Institute
400 of Allergy and Infectious Diseases (R01AI112970 to VEP), the Wellcome Trust (Programme grant
401 number: 091909/Z/10/Z), the Bill and Melinda Gates Foundation (OPP1180423 and INV-
402 046917), and US Centres for Disease Control and Prevention funds through the World Health
403 Organization (2018/815189-0), and the UK National Institute for Health and Care Research
404 (NIHR) Global Health Research Group on Gastrointestinal Infections at the University of
405 Liverpool using UK aid from the UK Government to support global health research
406 (NIHR133066). Nigel Cunliffe is a NIHR Senior Investigator (NIHR203756). Daniel Hungerford was
407 funded through a NIHR Post-doctoral Fellowship (PDF-2018-11-ST2-006). Nigel Cunliffe,
408 Khuzwayo C Jere and Daniel Hungerford are also affiliated with the NIHR Health Protection
409 Research Unit in Gastrointestinal Infections at the University of Liverpool, a partnership with
410 the UK Health Security Agency in collaboration with the University of Warwick. The funders had
411 no role in study design, data collection and analysis, decision to publish, or preparation of the
412 manuscript. The content is solely the responsibility of the authors and does not necessarily
413 represent the official views of the National Institutes of Health, the NIHR, the Department of
414 Health and Social Care, the UK government or the UK Health Security Agency.

415

416 **References**

- 417
- 418 1. Cohen AL, Platts-Mills JA, Nakamura T, et al. Aetiology and incidence of diarrhoea
419 requiring hospitalisation in children under 5 years of age in 28 low-income and middle-
420 income countries: findings from the Global Pediatric Diarrhea Surveillance network. *BMJ*
421 *Glob Health.* **2022**; 7:9548.
 - 422 2. Troeger C, Khalil IA, Rao PC, et al. Rotavirus Vaccination and the Global Burden of
423 Rotavirus Diarrhea among Children Younger Than 5 Years. *JAMA Pediatr.* **2018**;
424 172(10):958–965.
 - 425 3. Kaur G, Casey RM, Patel JC, Bloem P, Walldorf JA, Hyde TB. Morbidity and Mortality
426 Weekly Report Status of New Vaccine Introduction-Worldwide, 2016-2021. Centers for
427 Disease Control and Prevention | *MMWR.* **2023**; 72(27).
 - 428 4. Sun ZW, Fu Y, Lu HL, et al. Association of Rotavirus Vaccines with Reduction in
429 Rotavirus Gastroenteritis in Children Younger Than 5 Years: A Systematic Review and
430 Meta-analysis of Randomized Clinical Trials and Observational Studies. *JAMA Pediatr.*
431 *American Medical Association;* **2021**; 175(7).
 - 432 5. Jonesteller CL, Burnett E, Yen C, Tate JE, Parashar UD. Effectiveness of Rotavirus
433 Vaccination: A Systematic Review of the First Decade of Global Postlicensure Data,
434 2006–2016. *Clinical Infectious Diseases.* **2017**; 65(5):840–850.
 - 435 6. Buchwald AG, Verani JR, Keita AM, et al. Etiology, Presentation, and Risk Factors for
436 Diarrheal Syndromes in 3 Sub-Saharan African Countries after the Introduction of
437 Rotavirus Vaccines from the Vaccine Impact on Diarrhea in Africa (VIDA) Study.
438 *Clinical Infectious Diseases.* **2023**; 76:S12–S22.
 - 439 7. Bar-Zeev N, Kapanda L, Tate JE, et al. Effectiveness of a monovalent rotavirus vaccine in
440 infants in Malawi after programmatic roll-out: An observational and case-control study.
441 *Lancet Infect Dis.* **2015**; 15(4):422–428.
 - 442 8. Cunliffe NA, Witte D, Ngwira BM, et al. Efficacy of human rotavirus vaccine against
443 severe gastroenteritis in Malawian children in the first two years of life: A randomized,
444 double-blind, placebo controlled trial. *Vaccine.* **2012**; 4414:36–43.
 - 445 9. Bennett A, Pollock L, Jere KC, et al. Direct and possible indirect effects of vaccination on
446 rotavirus hospitalisations among children in Malawi four years after programmatic
447 introduction. *Vaccine.* **2018**; 36(47):7142–7148.
 - 448 10. Bar-Zeev N, Jere KC, Bennett A, et al. Population Impact and Effectiveness of
449 Monovalent Rotavirus Vaccination in Urban Malawian Children 3 Years after Vaccine
450 Introduction: Ecological and Case-Control Analyses. *Clinical Infectious Diseases.* **2016**;
451 62(Suppl 2):S213–S219.
 - 452 11. WHO/UNICEF. Malawi: WHO and UNICEF estimates of immunization coverage: 2016
453 revision [Internet]. WHO Reports. 2016. p. 1–15. Available from:
454 http://www.who.int/immunization/monitoring_surveillance/data/mwi.pdf
 - 455 12. Pitzer VE, Bennett A, Bar-Zeev N, et al. Evaluating strategies to improve rotavirus
456 vaccine impact during the second year of life in Malawi. *Sci Transl Med.* **2019**; 11(505).
 - 457 13. Dalton M, Sanderson B, Robinson LJ, et al. Impact of COVID-19 on routine childhood
458 immunisations in low- and middle-income countries: A scoping review. *PLOS Global*
459 *Public Health. Public Library of Science (PLoS);* **2023**; 3(8):e0002268.

- 460 14. Mboussou F, Kada S, Danovaro-Holliday MC, et al. Status of Routine Immunization
461 Coverage in the World Health Organization African Region Three Years into the COVID-
462 19 Pandemic. **2024**; .
- 463 15. She B, Mangal TD, Adjabeng AY, et al. The changes in health service utilisation in
464 Malawi during the COVID-19 pandemic. **2024**; .
- 465 16. Aranda Z, Binde T, Tashman K, et al. Disruptions in maternal health service use during
466 the COVID-19 pandemic in 2020: experiences from 37 health facilities in low-income and
467 middle-income countries on behalf of the Cross-site COVID-19 Syndromic Surveillance
468 Working Group. *BMJ Glob Health*. **2022**; 7:7247.
- 469 17. Connolly E, Boley EJ, Fejfar DL, et al. Childhood immunization during the COVID-19
470 pandemic: Experiences in Haiti, Lesotho, Liberia and Malawi. *Bull World Health Organ*.
471 World Health Organization; **2022**; 100(2):115-126C.
- 472 18. Cunliffe NA, Ngwira BM, Dove W, et al. Epidemiology of rotavirus infection in children
473 in Blantyre, Malawi, 1997-2007. *J Infect Dis*. **2010**; 202 Suppl(Suppl 1):S168-74.
- 474 19. Turner A, Ngwira B, Witte D, Mwapasa M, Dove W, Cunliffe N. Surveillance of rotavirus
475 gastro-enteritis in children in Blantyre, Malawi. *Paediatr Int Child Health*. **2013**; 33(1):42-
476 5.
- 477 20. Mandolo JJ, Henrion MYR, Mhango C, et al. Reduction in Severity of All-Cause
478 Gastroenteritis Requiring Hospitalisation in Children Vaccinated against Rotavirus in
479 Malawi. *Viruses*. **2021**; 13:2491.
- 480 21. Mhango C, Mandolo JJ, Chinyama E, et al. Rotavirus Genotypes in Hospitalized Children
481 with Acute Gastroenteritis before and after Rotavirus Vaccine Introduction in Blantyre,
482 Malawi, 1997-2019. *Journal of Infectious Diseases*. Oxford University Press; **2022**;
483 225(12):2127-2136.
- 484 22. Halloran M, Struchiner C, Longini. Study Designs for Evaluating Different Efficacy and
485 Effectiveness Aspects of Vaccines. *Am J Epidemiol*. **1997**; 146(10):789-803.
- 486 23. Aliabadi N, Tate JE, Haynes AK, Parashar UD. Sustained Decrease in Laboratory
487 Detection of Rotavirus after Implementation of Routine Vaccination — United States,
488 2000 – 2014. **2015**; 64(13).
- 489 24. Burnett E, Jonesteller CL, Tate JE, Yen C, Parashar UD. Global impact of rotavirus
490 vaccination on childhood hospitalizations and mortality from diarrhea. *Journal of*
491 *Infectious Diseases*. **2017**; 215(11):1666-1672.
- 492 25. Bar-Zeev N, King C, Phiri T, et al. Impact of monovalent rotavirus vaccine on diarrhoea-
493 associated post-neonatal infant mortality in rural communities in Malawi: a population-
494 based birth cohort study. *Lancet Glob Health*. Elsevier Ltd; **2018**; 6(9):e1036-e1044.
- 495 26. Schwartz LM, Halloran ME, Rowhani-rahbar A, Neuzil KM, Victor JC. Rotavirus vaccine
496 effectiveness in low-income settings: An evaluation of the test-negative design. *Vaccine*.
497 The Author(s); **2017**; 35(1):184-190.
- 498 27. Haber M, Lopman BA, Tate JE, Shi M, Parashar UD. A comparison of the test-negative
499 and traditional case-control study designs with respect to the bias of estimates of rotavirus
500 vaccine effectiveness. *Vaccine*. Elsevier Ltd; **2018**; 36(33):5071-5076.
- 501 28. Haber M, Lopman BA, Tate JE, Shi M, Parashar UD. Effect of propensity of seeking
502 medical care on the bias of the estimated effectiveness of rotavirus vaccines from studies
503 using a test-negative case-control design. *Vaccine*. Elsevier Ltd; **2019**; 37(24):3229-3233.

- 504 29. Shioda K, Oliveira LH de, Sanwogou J, et al. Identifying signatures of the impact of
505 rotavirus vaccines on hospitalizations using sentinel surveillance data from Latin
506 American countries. *Vaccine*. Elsevier Ltd; **2020**; 38(2):323–329.
- 507 30. Aliabadi N, Antoni S, Mwenda JM, et al. Global impact of rotavirus vaccine introduction
508 on rotavirus hospitalisations among children under 5 years of age, 2008–16: findings from
509 the Global Rotavirus Surveillance Network. *Lancet Glob Health*. Elsevier Ltd; **2019**;
510 7(7):e893–e903.
- 511 31. Patel MM, Pitzer VE, Alonso WJ, et al. Global seasonality of rotavirus disease. *Pediatr*
512 *Infect Dis J*. **2013**; 32(4):e134-47.
- 513 32. Ngabo F, Tate JE, Gatera M, et al. Effect of pentavalent rotavirus vaccine introduction on
514 hospital admissions for diarrhoea and rotavirus in children in Rwanda: a time-series
515 analysis. *Lancet Glob Health*. **2008**; 4(2):e129–e136.
- 516 33. Kraay ANM, Han P, Kambhampati AK, Wikswa ME, Mirza SA, Lopman BA. Impact of
517 Nonpharmaceutical Interventions for Severe Acute Respiratory Syndrome Coronavirus 2
518 on Norovirus Outbreaks: An Analysis of Outbreaks Reported By 9 US States. *J Infect Dis*.
519 **2021**; 224:9–13.
- 520 34. Burnett E, Parashar UD, Winn A, Tate JE. Trends in rotavirus laboratory detections and
521 internet search volume before and after rotavirus vaccine introduction and in the context
522 of the coronavirus diseases 2019 pandemic--United States, 2000-2021. *J Infect Dis*. **2022**;
523 226:967–974.
- 524 35. Pitzer VE, Viboud C, Simonsen L, et al. Demographic variability, vaccination, and the
525 spatiotemporal dynamics of rotavirus epidemics. *Science (1979)*. **2009**; 325(5938):290–4.
- 526 36. Olson DR, Lopman BA, Konty KJ, et al. Surveillance data confirm multiyear predictions
527 of rotavirus dynamics in New York City. *Sci Adv*. **2020**; 6(February):eaax0586.
- 528 37. Asare E, Al-Mamun MA, Armah GE, et al. Modeling of rotavirus transmission dynamics
529 and impact of vaccination in Ghana. *Vaccine*. **2020**; 38:4820–4828.
- 530 38. Lee B. Update on rotavirus vaccine underperformance in low-to middle-income countries
531 and next-generation vaccines Update on rotavirus vaccine underperformance in low-to
532 middle-income countries and next-generation vaccines. *Hum Vaccin Immunother*. **2021**;
533 17(6):1787–1802.
- 534 39. United Nations Department of Economic and Social Affairs PD. World Population
535 Prospects [Internet]. 2022. Available from: <https://esa.un.org/unpd/wpp/DataQuery/>
- 536 40. Pitzer VE, Viboud C, Lopman BA, Patel MM, Parashar UD, Grenfell BT. Influence of
537 birth rates and transmission rates on the global seasonality of rotavirus incidence. *Journal*
538 *of the Royal Society, Interface / the Royal Society*. **2011**; 8(64):1584–93.
- 539 41. Wilde J, Yolken R, Willoughby R, Eiden J. Improved detection of rotavirus shedding by
540 polymerase chain reaction. *The Lancet*. **1991**; 337(8737):323–326.
- 541 42. Ward RL, Bernstein DI, Young EC, Sherwood JR, Knowlton DR, Schiff GM. Human
542 rotavirus studies in volunteers: Determination of infectious dose and serological response
543 to infection. *Journal of Infectious Diseases*. **1986**; 154(5):871–880.
- 544 43. Anderson EJ, Weber SG. Rotavirus infection in adults. *Lancet Infect Dis*. **2004**; 4(2):91–
545 99.
- 546 44. White LJ, BATTERY J, Cooper B, Nokes DJ, Medley GF. Rotavirus within day care centres
547 in Oxfordshire, UK: characterization of partial immunity. *Journal of the Royal Society,*
548 *Interface / the Royal Society*. **2008**; 5(29):1481–90.

- 549 45. Velázquez F, Matson D, Calva JJ, et al. Rotavirus infection in infants as protection against
550 subsequent infections. *N Engl J Med.* **1996**; 335(14):1022–1028.
- 551 46. Gladstone BP, Ramani S, Mukhopadhyaya I, et al. Protective effect of natural rotavirus
552 infection in an Indian birth cohort. *N Engl J Med.* **2011**; 365(4):337–46.
- 553 47. Koopman JS, Monto AS, Ira M L. The Tecumseh Study XVI: Family and community
554 sources of rotavirus infection. *Am J Epidemiol.* **1989**; 130(4):760–768.
555
556

557 **Table S1. Model parameters.**

Fixed parameters	Variable	Value	Source
Birth rate	$B(t)$	0.0366 to 0.0550 year ⁻¹	[39]
Duration maternal immunity	$1/\omega_M$	26 weeks	[40]
Duration of infectiousness			
First infection	$1/\gamma_1$	1 week	[41]
Subsequent infections	$1/\gamma_2$	0.5 week	[42,43]
Duration of temporary immunity	$1/\omega$	13 weeks	[44], assumption
Relative risk of reinfection			
Following first infection	σ_1	0.62	[45,46]
Following second infection	σ_2	0.35	[45,46]
Relative infectiousness			
Following first infection	ρ_1	0.5	[45,46]
Following second infection	ρ_2	0.1	[47]
Estimated parameters	Variable	Maximum a posteriori estimate (95% credible interval)	
Basic reproductive number	$R_0 = \beta_0/\gamma_1$	78.8 (70.5-96.2)	[12]
Reporting rate (mean)	h	0.017 (0.016-0.018)	[12]
Amplitude of seasonality in transmission	b	0.174 (0.113-0.294)	[12]
Phase shift of seasonal transmission	ϕ	6.9 (4.0-11.2) weeks	[12]

558

559

560 **Table S2. Vaccine parameters.** Models 1 and 2 assume no waning of vaccine-induced immunity;
 561 the probability of responding to each vaccine dose was estimated from seroconversion data
 562 from the RV1 vaccine trial in Malawi [8]. Vaccine-related parameters for Models 3 and 4 were
 563 estimated by fitting to the post-vaccination time series of RVGE cases at Queen Elizabeth
 564 Central Hospital through August 2017 [12].

	Probability of responding to first vaccine dose		Probability of responding to second dose among those responding to the first dose		Duration of vaccine-induced immunity (years)	
	Mean	Distribution	Mean	Distribution	Mean	Distribution
Model 1	0.687	Beta(24.7,11.3)	0.687	Beta(24.7,11.3)	--	--
Model 2	0.527	Beta(19,17)	0.895	Beta(32.2,3.8)	--	--
	Mean	95% CrI	Mean	95% CrI	Mean	95% CrI
Model 3	0.619	(0.471, 0.750)	0.604	(0.467, 0.751)	0.645	(0.526, 0.794)
Model 4	0.483	(0.375, 0.605)	0.791	(0.655, 0.913)	0.965	(0.617, 1.644)

565

566

567 **Table S3. Overall vaccine effectiveness estimates by year.** The overall effectiveness (OE) is
 568 calculated based on the observed number of RVGE cases compared to the model-predicted
 569 incidence of RVGE with no vaccination in each year following vaccine introduction.

Year	Age group			
	All ages <5 years old	<1 year old	1-<2 years old	2-<5 years old
2012*	2.7%	11.1%	-44.7%	-49.1%
2013	33.3%	48.5%	-19.5%	-320.5%
2014	55.5%	66.0%	22.7%	-68.4%
2015	26.6%	48.1%	-37.1%	-387.3%
2016	16.6%	36.4%	-55.6%	-444.4%
2017	18.8%	34.4%	-11.5%	-1150.2%
2018	11.2%	37.1%	-70.7%	-741.9%
2019	16.7%	37.7%	-55.0%	-610.0%
2020 [#]	-15.0%	39.9%	-214.4%	-1134.4%
2021	17.6%	40.9%	-55.7%	-562.2%
2022 [§]	1.4%	24.0%	-100.2%	100.0%
2013-2022[§]	36.0%	52.5%	-18.6%	-336.4%

570 *Rotarix vaccine was introduced on October 29, 2012.

571 [#] Excludes the period from April 5 to October 10 when surveillance was halted because of the COVID-19 pandemic.

572 [§] Limited to data through June 25, 2022.

573

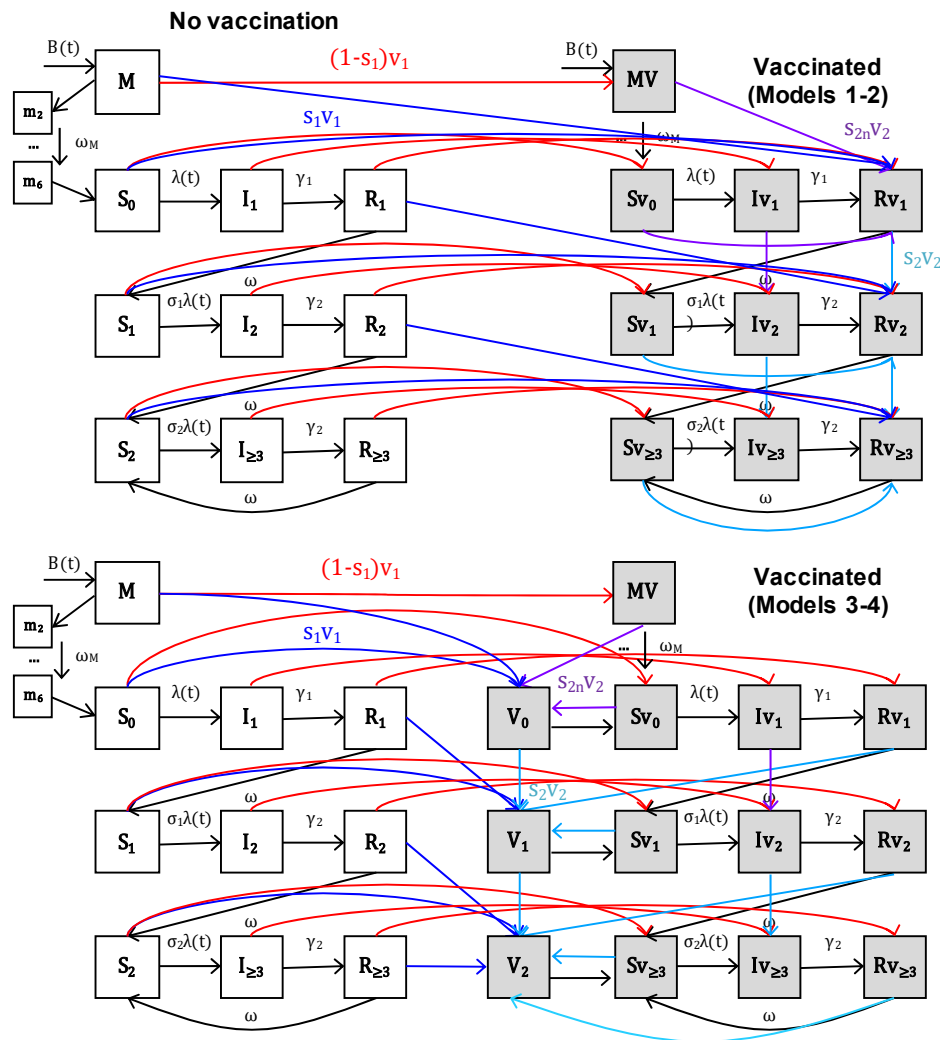
574

575 **Table S4. Model-predicted overall vaccine effectiveness.** The overall effectiveness (OE)
 576 predicted by each of the four vaccination models compared to the model-predicted incidence
 577 of RVGE with no vaccination is presented for the best-fit models.

	All ages <5 years old	<1 year old	1-<2 year old	2-<5 years old
Model 1	58.9%	60.8%	52.5%	19.5%
Model 2	41.1%	43.0%	34.3%	10.4%
Model 3	21.2%	30.1%	-5.3%	-258.5%
Model 4	22.1%	29.3%	2.3%	-247.2%

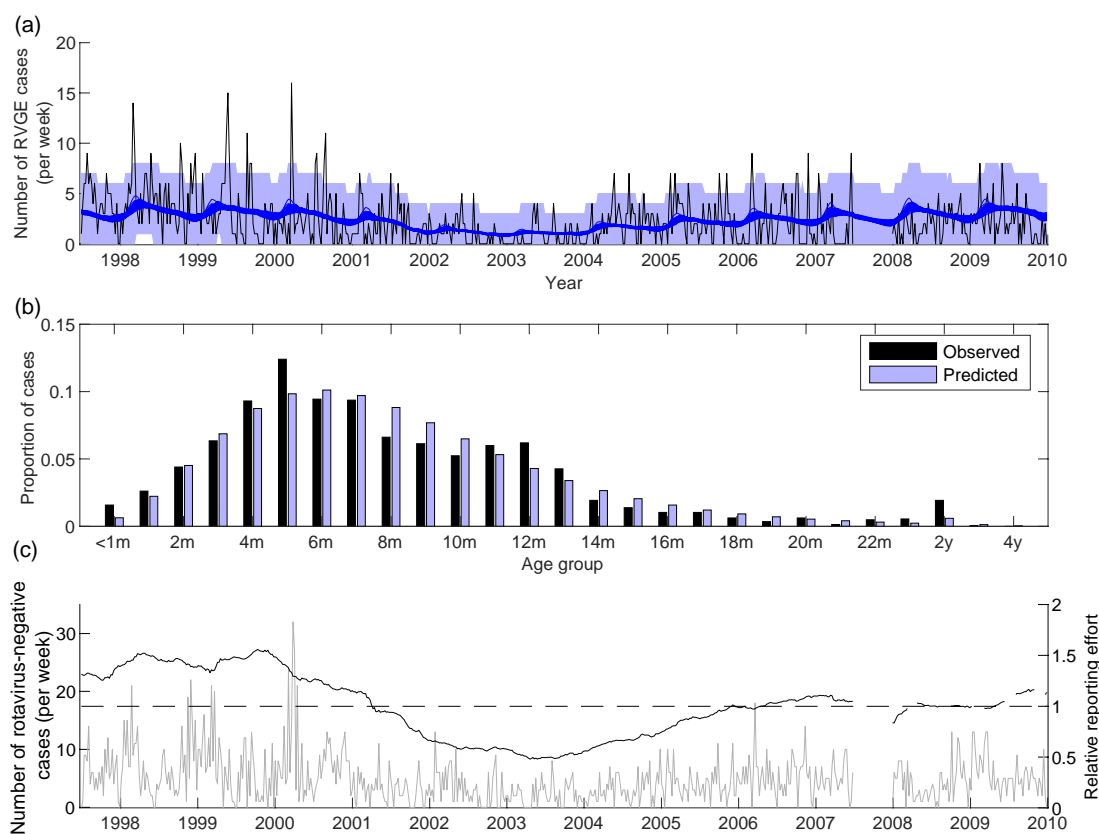
578

579

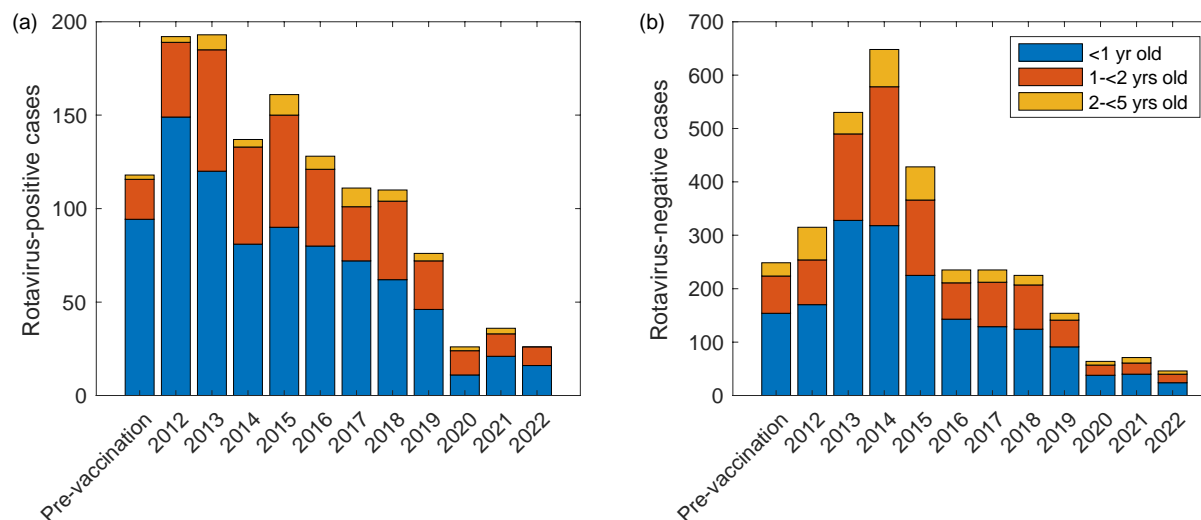


580
581
582
583
584
585
586
587
588
589
590
591
592
593
594

Figure S1. Compartmental diagram of transmission models. Boxes represent the various model states (unvaccinated in white, vaccinated in grey), while the lines represent the movements between model states for (top) Models 1 and 2 (assuming vaccine-induced immunity is comparable to immunity from natural infection) and (bottom) Models 3 and 4 (assuming waning of vaccine-induced immunity). The blue and turquoise lines represent the movement of individuals who respond to the first and subsequent doses of rotavirus vaccine, respectively, while the red lines represent the movement of individuals who fail to respond to the first dose. The purple lines represent the probability of responding to the second dose among those who failed to respond to the first dose when we assume heterogeneity in vaccine response (Models 2 and 4). Individuals who fail to respond to subsequent doses remain in their respective vaccinated compartments. Adapted from [12].

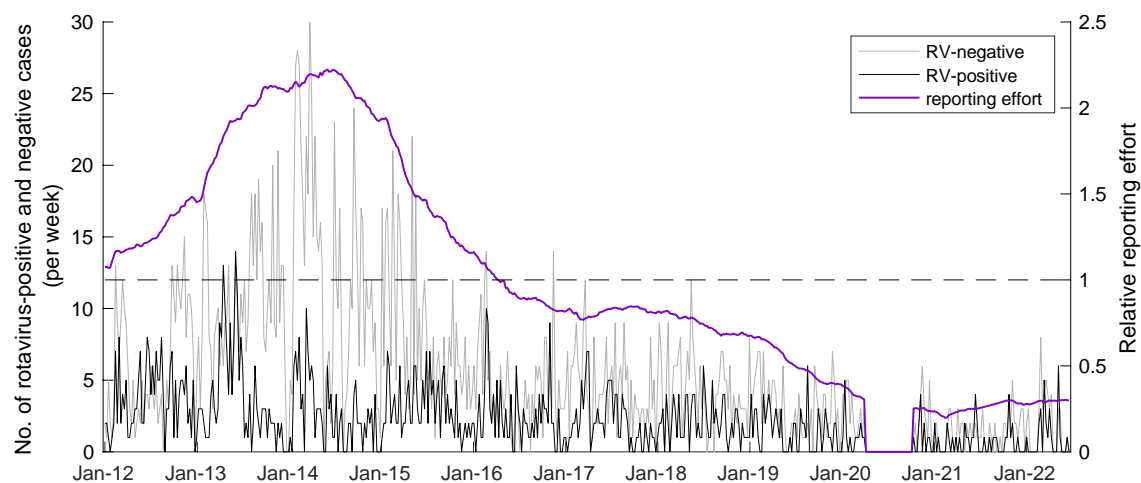


595
596 **Figure S2. Weekly timeseries of rotavirus-positive and negative cases and fitted model for**
597 **pre-vaccination period, July 1997-December 2009.** (a) The number of rotavirus-associated
598 gastroenteritis (RVGE) cases per week diagnosed at Queen Elizabeth Central Hospital in
599 Blantyre, Malawi is plotted in black, while the fitted models are plotted in blue for 100 samples
600 from the posterior distribution of model parameters. The blue shaded region represents the
601 95% prediction intervals assuming the observed number of cases per week are Poisson
602 distributed with a mean equal to the model-predicted weekly average number of cases. (b) The
603 age distribution of observed RVGE cases (black bars) is plotted alongside the model-predicted
604 age distribution of RVGE cases (blue bars). (c) The number of rotavirus-negative acute
605 gastroenteritis cases per week are plotted in grey on the left axis, while the relative reporting
606 effort over time is plotted in black on the right axis; the black dashed line shows a relative
607 reporting effort of 1. The reporting effort is calculated from the 105-week (two-year) moving
608 average of the number of rotavirus-negative cases divided by the average for the entire time
609 period.
610



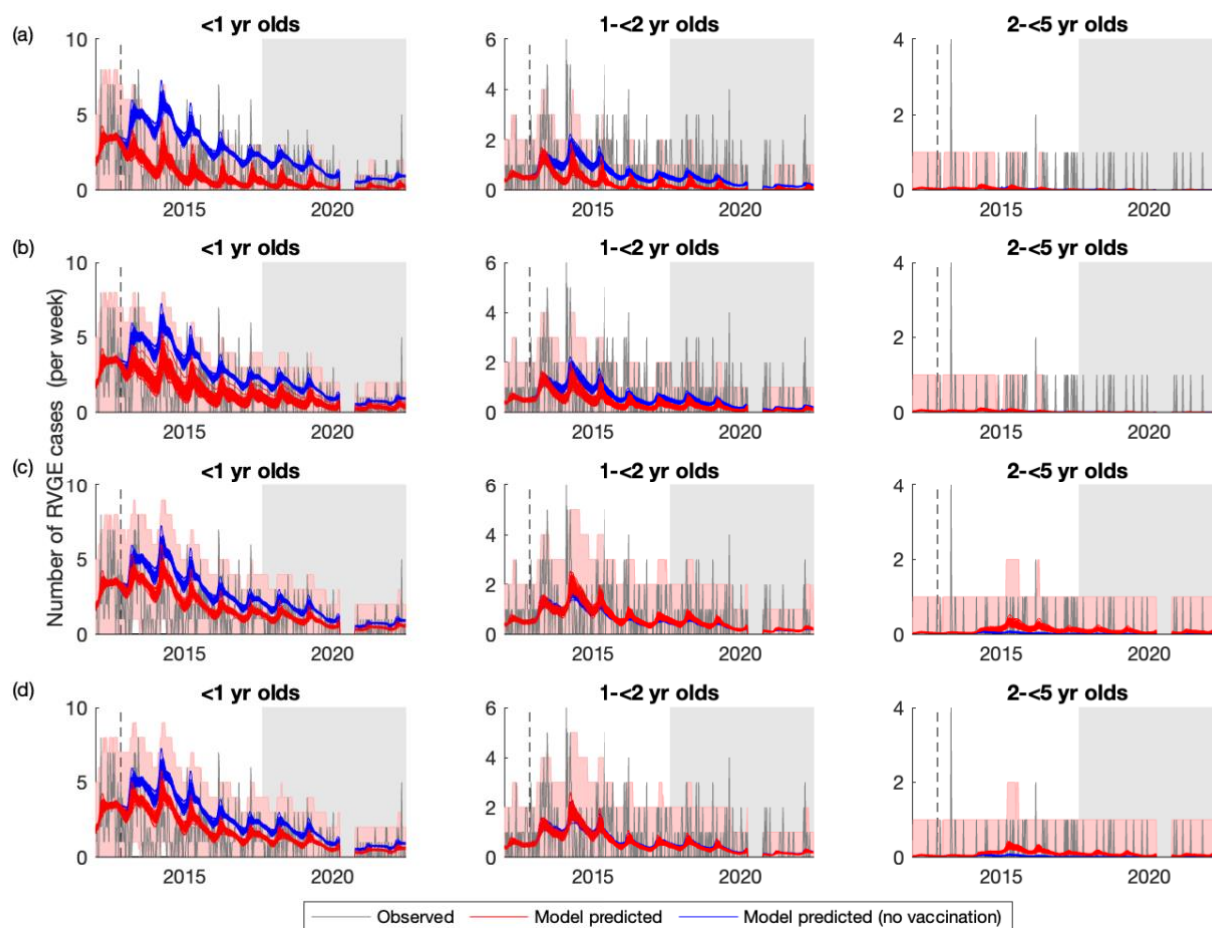
611
612 **Figure S3. Annual cases of rotavirus-positive and rotavirus-negative acute gastroenteritis by**
613 **age group, 1997-2022.** The number of (a) rotavirus-positive and (b) rotavirus-negative acute
614 gastroenteritis cases presenting to Queen Elizabeth Central Hospital in Blantyre, Malawi are
615 plotted by year and age group (blue <1 year old; red 1-<2 years old; yellow 2-<5 years old). The
616 first bar represents the average annual number of cases from the pre-vaccination period (June
617 1997-December 2009); data from 1997 and 2007 were excluded because surveillance was only
618 conducted for six months in these years.
619

620



621
622 **Figure S4. Weekly timeseries of rotavirus-positive and negative cases and relative reporting**
623 **effort, January 2012-June 2022.** The number of rotavirus-positive (black) and rotavirus-
624 negative (grey) acute gastroenteritis cases per week diagnosed at Queen Elizabeth Central
625 Hospital in Blantyre, Malawi are plotted on the left axis. The relative reporting effort over time
626 (purple) is calculated from the 105-week (two-year) moving average of the number of rotavirus-
627 negative cases divided by the average for the entire time period and is plotted on the right axis.
628 The black dashed line shows a relative reporting effort of 1.

629
630



631
632 **Figure S5. Weekly timeseries of observed and model-predicted rotavirus gastroenteritis cases**
633 **by age group at Queen Elizabeth Central Hospital, January 2012-June 2022.** The observed
634 number of RVGE cases per week for three different age groups (<1 year old, left; 1-<2 year old,
635 middle; 2-<5 year old, right) is plotted in grey, while model predictions for the average weekly
636 number of RVGE cases given current estimates of vaccine coverage (red lines) and assuming no
637 vaccination (blue lines) are plotted for 100 samples from the posterior distribution of model
638 parameters for (a) Model 1, (b) Model 2, (c) Model 3, and (d) Model 4. The red shaded region
639 represents the 95% prediction intervals assuming the observed number of cases per week are
640 Poisson distributed. The dashed vertical line shows the week of vaccine introduction, while the
641 light grey shaded region shows the out-of-sample validation period.

642
643