

1 **Baseline immunotypes and immune entropy are indicators of multiple vaccine responsiveness**

2 Alper Cevirgel^{1,2}, Marieke van der Heiden², Sudarshan A. Shetty^{1,2}, Markus Viljanen³, Martijn Vos¹,
3 Elske Bijvank¹, Yannick van Sleen⁴, Celine Imhof^{2,5}, Joeri A.J. Rolwes², Leonard Daniël Samson¹,
4 Lisa Beckers¹, Nynke Rots¹, Josine van Beek¹, Anne-Marie Buisman¹, Debbie van Baarle^{1,2*}

5 ¹Center for Infectious Disease Control, National Institute for Public Health and the Environment,
6 Bilthoven, the Netherlands

7 ²Department of Medical Microbiology and Infection Prevention, Virology and Immunology research
8 group, University Medical Center Groningen, Groningen, the Netherlands

9 ³Information Provision Organization, National Institute for Public Health and the Environment,
10 Bilthoven, the Netherlands

11 ⁴Department of Rheumatology and Clinical Immunology, University of Groningen, The Netherlands

12 ⁵Department of Internal Medicine, Division of Nephrology, University of Groningen, University
13 Medical Center Groningen, Groningen, Netherlands

14 *Corresponding author. Email: d.van.baarle@umcg.nl

15

16

17 **ABSTRACT**

18 Immune aging is associated with decreased vaccine responses, but biomarkers for vaccine
19 responsiveness remain unidentified. We analyzed immunotypes describing baseline immune cell
20 profiles and their associations with triple vaccine responsiveness to influenza, pneumococcal, and
21 SARS-CoV-2 vaccines in adults aged 25-78 years. Additionally, we developed an innovative measure,
22 immune entropy, to quantify cumulative perturbations in the immune cell subset network. Specific
23 immunotypes associated with either weak or robust triple vaccine responsiveness. In addition, immune
24 entropy was inversely related to vaccine responsiveness regardless of age. In a validation cohort of older
25 adults, higher immune entropy was also associated with a lower antibody response to the BNT162b2
26 vaccine. A separate cohort of kidney transplant recipients, typically exhibiting diminished vaccine
27 responses, demonstrated significantly increased immune entropy compared to healthy counterparts. Our
28 findings suggest immunotypes and immune entropy as potential indicators to identify individuals at risk
29 for suboptimal vaccine responses, potentially guiding personalized vaccination strategies.

30

31

32

33

34 **INTRODUCTION**

NOTE: This preprint reports new research that has not been certified by peer review and should not be used to guide clinical practice.

35 Aging of the immune system plays a significant role in the prevalence of age-related diseases and co-
36 morbidities observed in older adults^{1,2}. As individuals age, their immune systems undergo a decline in
37 function. This phenomenon, known as immunosenescence, contributes to increased susceptibility to
38 infectious diseases and diminished vaccine responsiveness^{1,3-5}. Identification of individuals with
39 reduced vaccine responsiveness is vital for the strategic implementation of targeted vaccination
40 programs to ensure their protection⁶⁻⁸.

41
42 Previous studies aimed to identify individuals at risk for reduced vaccine responsiveness by examining
43 single immune cell subsets, such as Th1, Th17, CD38+ naive B cells, CD38+ memory B cells and
44 MAIT cells⁹⁻¹⁶. Although some correlations between these immune cell subsets and a specific vaccine
45 response have been reported, ideally, a universal biomarker predicting multi-vaccine responsiveness
46 would be beneficial to target individuals at risk of generally low vaccine responsiveness. However,
47 several reasons complicate the use of single immune cell subsets to identify these low responder
48 individuals. Since vaccine responsiveness is an emergent property of the immune system, a single
49 immune subset does not capture the complexity of the immune network, and it often fails as a robust
50 predictor of vaccine responsiveness¹⁷⁻¹⁹. Moreover, aging trajectories differ from person to person and
51 inter-individual immune variation increases with age, resulting in diverse immune phenotypes²⁰⁻²³.
52 This increased heterogeneous state of the immune system in older individuals also challenges the
53 identification of shared immune variables.

54
55 Here we employ two innovative measures: (i) immunotypes and (ii) immune entropy, both capturing
56 the total immune subset profile of individuals across a large age range, to discover predictors of low
57 vaccination responsiveness. Immunotypes cluster individuals with similar immune profiles, as
58 previously described²³, whereas immune entropy captures the complexity of the immune network and
59 reflects the total perturbations in the immune network in a single variable. Using the unique set-up of
60 the VITAL clinical trials^{23,24}, we aimed to explore and validate the predictive value of both the
61 immunotypes and immune entropy as biomarkers of vaccine responsiveness to multiple vaccines
62 (influenza booster vaccination, primary pneumococcal vaccination, and primary SARS-CoV-2
63 vaccination) in the same individuals aged 25 to 98 year old^{24,25}. Since immune entropy was introduced
64 as an innovative measure, its associations with immune aging, CMV-seropositivity and sex differences
65 were further investigated.

66
67 Our results reveal significant associations between baseline immunotypes and either weak or robust
68 vaccine responsiveness towards multiple vaccines. Intriguingly, also our integrative biomarker immune
69 entropy was associated with vaccine responsiveness overarching multiple vaccines. By introducing and
70 validating comprehensive immune biomarkers that predict humoral immune responses to multiple
71 vaccines, our research sets the stage for identifying individuals susceptible to overall diminished

72 vaccine response. Consequently, these biomarkers derived from the total immune profile hold the
73 potential to develop novel vaccination approaches tailored to individual immune profiles.

74

75

76 **RESULTS**

77 **Study population defined on baseline characteristics**

78 In this study, we included 305 individuals aged between 25 to 98 years who had immune phenotyping
79 data available at baseline and received the Quadrivalent Inactivated Influenza Vaccine (QIV), Prevenar
80 13 (PCV13) and SARS-CoV-2 vaccines (mRNA-1273 or BNT162b2) from 2019 to 2022 (Figure 1a,
81 Supplementary Figure 1a). Previously participants of the VITAL clinical trials were categorized into
82 nine different immunotypes²³. For 173 participants, immunotype categories and pre- and post-
83 vaccination antibody data for triple vaccine analysis (QIV, PCV13, mRNA-1273) were available
84 (Supplementary Figure 1a). These individuals were between 25 to 78 years old, 46% CMV+, and 50%
85 male (Table 1). Participants' antibody responses to each vaccine were categorized into response
86 quartiles (Q1 to Q4, with Q1 being the lowest and Q4 the highest) based on antibody levels at day 0
87 and day 28 post-vaccination. We used the maximum residual values adjusted for baseline levels
88 (maxRBA)²⁶. Participants were not previously vaccinated with SARS-CoV2 vaccines and only 7
89 individuals showed Spike-specific S1 IgG concentration above the cut-off level for seropositivity (10
90 BAU/mL) indicative of previous infection, therefore, instead of maxRBA, day 28 antibody levels were
91 used for antibody response quartiles.

92

93 **Baseline immunotypes are associated with vaccine responsiveness overarching multiple vaccines**

94 First, we hypothesized that immunotypes identifying individuals with similar baseline immune profiles
95 are associated with their vaccine responsiveness. Interestingly, we observed a high variability in
96 antibody responses to different vaccines between individuals in all immunotypes (Figure 1b). Only 8%
97 of individuals stayed in the same vaccine response quartile across three vaccines. Meanwhile, 38%
98 differed by one quartile, and 77% differed by two quartiles for at least one vaccine. This variability
99 highlights the importance of studying multiple vaccine responses in the same individual. To this end,
100 we calculated a triple vaccine response quartile (Materials and Methods) and quantified the distribution
101 of the immunotypes in these vaccine response groups. The representation of immunotypes was
102 significantly different for the four triple vaccine response groups (chi-squared $p=2.4 \times 10^{-2}$) (Figure 1c).
103 Interestingly, immunotype 8 was absent in vaccine responders showing the highest antibody response
104 (TQ4), and immunotypes 1 and 6 were not present in those showing the lowest antibody response
105 (TQ1). However, only immunotype 8 showed a significant relationship with the triple vaccine response
106 quartile, comprising 48% of the persons in the lowest response group (Benjamini-Hochberg (BH) p_{adj}
107 $=1.0 \times 10^{-4}$). We noted a progressive increase in the proportions of individuals with immunotypes 1 and
108 6 from TQ2 to TQ4. In contrast, the proportions of immunotype 8 were reduced among TQ2 responders

109 compared to those in TQ4. (Figure 1c). These findings imply an association between the pre-vaccination
110 immunotypes and the triple vaccine responsiveness.

111

112 To further explore the associations between immunotypes and triple vaccine responsiveness an ordinal
113 logistic regression model was employed. This model revealed that immunotype 1 was associated with
114 increased odds of belonging to a higher triple vaccine response quartile (Confidence Interval (CI)=[1.5-
115 6.3], $p=3.4 \times 10^{-3}$) (Figure 1d). Individuals with this immunotype had a median age of 41, representing
116 the younger adults in our cohort, who lacked aging-related immune perturbations in their immune subset
117 profiles (Table 1)²³. Furthermore, persons with immunotype 6 also showed significantly increased odds
118 of higher triple vaccine responsiveness (CI=[1.3-9.2], $p=1.5 \times 10^{-2}$) (Figure 1d). Notably, despite their
119 older age (median age of 66) individuals in immunotype 6 resemble more closely individuals in
120 immunotype 1. In addition, these immunotype 6 individuals lack age-related immune subset differences
121 when compared to the mainly older individuals with immunotypes 7, 8 and 9 (Supplementary Figure
122 2a)²³. Conversely, persons categorized as immunotype 8 had significantly lower triple vaccine
123 responsiveness (CI=[0.5 $\times 10^{-1}$ -0.3], $p=1.4 \times 10^{-5}$). Interestingly, 79% of the individuals with immunotype
124 8 (median age 65) were CMV-seropositive (Table 1). However, in a separate ordinal logistic regression
125 model, CMV-seropositivity alone was not associated with triple vaccine responsiveness ($p=3.9 \times 10^{-1}$).
126 Although these associations are potentially interesting, immunotypes are categorical variables that
127 describe immune variation in discreet groups, which may not be easily transferrable to other cohorts.
128 Therefore, we aimed to seek a continuous variable that could account for the underlying differences in
129 the immunotypes that are associated with vaccine responsiveness.

130

131 **Immune entropy represents cumulative perturbations in the immune cell subset network**

132 Next, we hypothesized that overall immune perturbations in the immune cell subset profile negatively
133 associate with vaccine responsiveness. We propose that the underlying reason why certain persons with
134 immunotype 8 are weak responders is related to a highly perturbed immune network. To capture these
135 immune perturbations in just a single biomarker, we calculated the correlation distance between each
136 individual and a reference group of the youngest individuals within our cohort (<35 years old, N=18)
137 and refer to it as immune entropy. The correlation distance calculation was based on a large set of
138 cellular immune subset data in order to capture the complexity of the immune (Supplementary Table
139 1). In short, a higher value of immune entropy indicates a greater deviation of the immune profile from
140 that of the reference group and, therefore, a higher degree of immune perturbation. The younger
141 reference group was selected since younger adults typically exhibit a much lower degree of accumulated
142 perturbations in their immune profiles compared to older adults. Within this reference group, the
143 proportions of male and CMV+ individuals were 50% and 28% respectively.

144

145 As expected, a significant correlation between age and immune entropy was observed (Spearman's rho=
146 0.46, $p=2.0 \times 10^{-10}$, Figure 2a). Moreover, immune entropy was significantly higher in males ($p=2.6 \times 10^{-3}$,
147 Figure 2b), and CMV+ individuals ($p=2.9 \times 10^{-7}$, Figure 2c). Age was not significantly different
148 between males and females or CMV+ or CMV- individuals, and both CMV+ and CMV- individuals
149 showed roughly 50% male/female ratio, suggesting that the differences in immune entropy were not
150 merely driven by the effect of these factors (Supplementary Figure 3a-c). These results indicate that
151 immune entropy reflects the established factors known to influence immune variation. Interestingly,
152 immune entropy was also significantly correlated (BH-adjusted, $p_{\text{adj}} < 0.05$) with serum levels of YKL-
153 40 (Spearman's rho (r)=0.39, $p_{\text{adj}}=4.2 \times 10^{-5}$), CXCL10 ($r=0.31$, $p_{\text{adj}}=2.5 \times 10^{-3}$), IL-1RA ($r=0.28$,
154 $p_{\text{adj}}=6.5 \times 10^{-3}$), CRP ($r=0.27$, $p_{\text{adj}}=6.5 \times 10^{-3}$), IFN γ ($r=0.27$, $p_{\text{adj}}=6.5 \times 10^{-3}$), IL-6 ($r=0.26$,
155 $p_{\text{adj}}=9.8 \times 10^{-3}$), Neopterin ($r=0.23$, $p_{\text{adj}}=2.1 \times 10^{-2}$) and sCD163 ($r=0.21$, $p_{\text{adj}}=4.7 \times 10^{-2}$) out of an
156 (N=29) inflammatory protein panel known to be associated with low-grade inflammation related to
157 aging. (Supplementary Figure 4a-h). In linear regression models while correcting for age, sex and
158 CMV-seropositivity, immune entropy remained significantly associated with CRP ($p=2.2 \times 10^{-3}$), IL-
159 1RA ($p=2.8 \times 10^{-2}$), TNF α ($p=2.9 \times 10^{-2}$) and CXCL10 ($p=4.9 \times 10^{-2}$). These suggest that immune entropy
160 also reflects age-associated perturbations in serum proteins.

161

162 **Immune entropy is a biomarker of triple vaccine responsiveness**

163 Next, we investigated immune entropy in the context of triple vaccine responsiveness. Immune entropy
164 was significantly higher in individuals classified in the lowest triple vaccine response quartile (TQ1) as
165 compared to all other response quartiles (Figure 2d). Moreover, immune entropy was significantly
166 lower in persons classified into immunotype 8 (weak response associated) as compared to those in
167 immunotypes 1 and 6 (robust response associated) ($p_{\text{adj}} < 6.9 \times 10^{-6}$, Figure 2e, Supplementary Table 2).
168 To further investigate the association of immune entropy with vaccine responsiveness, we employed an
169 ordinal logistic regression model. This model revealed that an increase in immune entropy was
170 associated with lower odds of a higher triple vaccine response quartile (CI=[6.8×10^{-11} - 2.0×10^{-4}],
171 $p=3.0 \times 10^{-5}$, Figure 2f red circle). To ensure the robustness of these findings, we conducted a subsequent
172 analysis where we adjusted for potential confounders: age, sex, and CMV-seropositivity in a
173 multivariate ordinal logistic regression model. Even after this correction, immune entropy remained
174 significantly associated with triple vaccine responsiveness (CI=[3.8×10^{-10} - 1.2×10^{-2}], $p=3.3 \times 10^{-3}$, Figure
175 2f blue triangle). Moreover, in separate ordinal logistic regression models, immune entropy was
176 associated with the response to PCV13 (CI=[2.6×10^{-5} - 8.6×10^{-1}], $p=4.4 \times 10^{-2}$) and mRNA-1273
177 (CI=[2.8×10^{-10} - 5.1×10^{-4}], $p=7.3 \times 10^{-5}$ separately. This highlights the strength of immune entropy as a
178 biomarker of vaccine responsiveness.

179

180 **Immune entropy is associated with BNT162b2 SARS-CoV-2 vaccine response in a validation** 181 **cohort**

182 To validate the association between immune entropy and vaccine response, we next assessed immune
183 entropy in a different cohort of older individuals who were previously immune phenotyped using a
184 similar panel of markers as used in the VITAL cohort^{27,28} (Supplementary Figure 1b). A subgroup of
185 these individuals (N=67, aged 64-93) received a primary series of two BNT162b2 SARS-CoV-2
186 vaccines in 2021 (Supplementary Table 3). Generalized additive models identified a significant non-
187 linear relationship between immune entropy and SARS-CoV-2 Spike-specific antibody levels 28 days
188 after the first dose ($p=2.1 \times 10^{-3}$) and the entire primary vaccination series ($p=2.7 \times 10^{-2}$) (Figure 3a-b). To
189 increase the sample size for this analysis, we added a subgroup of individuals from the VITAL study,
190 also comprising older adults (N=32, aged 72-92), who received the BNT162b2 SARS-CoV-2 vaccine.
191 (Supplementary Figure 1b, Supplementary Table 3). In this consolidated analysis (N=99), immune
192 entropy consistently showed a significant association with Spike-specific antibody levels at day 28 after
193 the first vaccine ($p=2.7 \times 10^{-2}$) and the full primary vaccination series ($p=7.9 \times 10^{-3}$) (Figure 3c, d). These
194 results confirm the significant association of immune entropy with vaccine responsiveness across
195 various cohorts, particularly highlighting its impact on enhancing understanding of the varied responses
196 observed in older adults (aged 65 and above), a group typically characterized by lower vaccine efficacy
197²⁹.

198

199 **Kidney transplant recipients show significantly higher immune entropy**

200 Since kidney disease has long been associated with perturbations in the immune system, leading to a
201 heightened vulnerability to infections and a diminished response to vaccinations³⁰⁻³², we assessed
202 immune entropy in a subgroup of kidney transplant recipients who received a primary series of SARS-
203 CoV-2 mRNA-1273 vaccine (N=59, aged 23-77, Supplementary Table 3, Supplementary Figure 1c)³³.
204 We employed a similar immune entropy calculation based on the shared immune cell subset variables
205 between kidney transplant recipients and age-matched generally healthy participants in the present
206 study (VITAL) who received a primary series of SARS-CoV-2 mRNA-1273 vaccine (Supplementary
207 Figure 1a, Supplementary Table 1). Compared to VITAL mRNA-1273 participants (N=194, aged 25-
208 78, Supplementary Figure 1a), immune entropy was substantially higher in kidney transplant recipients
209 ($p < 2.2 \times 10^{-16}$, Figure 4a-b). In VITAL mRNA-1273 participants, immune entropy was non-linearly and
210 significantly ($p=5.9 \times 10^{-7}$) associated with Spike-specific antibody levels after the primary series of
211 mRNA-1273 vaccination in a generalized additive model (GAM)(Figure 4c). Here we observed that
212 individuals showing approximately 0.1 and higher immune entropies exhibited a decreased vaccine
213 response, and 97% of kidney transplant recipients who were low responders showing an immune
214 entropy higher than 0.1. These insights extend the utility of immune entropy as a potent biomarker,
215 applicable not just in aging populations but also in disease settings.

216

217

218 **DISCUSSION**

219 The heterogeneity in immune aging and the lack of predictive biomarkers of immune function have
220 been obstacles in identifying individuals at risk of diminished vaccine responsiveness and
221 immunosenescence. Our study sought to identify predictors of vaccine responsiveness by analyzing
222 baseline immune phenotypes (immunotypes) and the overall degree of immune perturbations (immune
223 entropy). These variables were derived from an examination of individuals' total immune cell subset
224 profiles. We showed that specific immunotypes and immune entropy are predictors of responsiveness
225 overarching multiple vaccines, which was independent of sex, age and CMV status

226

227 It is postulated that cumulative alterations and remodeling of the immune system over time lead to an
228 accumulation of perturbations in immune profiles, consequently contributing to immunosenescence
229 ^{4,34}. While previous research has been valuable in identifying variables associated with aging and
230 immune variation, they fall short in capturing the complexity and integrated nature of immune aging in
231 older adults ^{18,35-37}. We propose that conducting a detailed assessment of these immune states that
232 captures both the baseline state and potential responsiveness of the system could be used to better
233 understand immune function and vaccine responsiveness ³⁸. We previously categorized baseline
234 immunological states, represented as immunotypes, in our cohort of young, middle aged and older
235 adults ²³. In this study, we demonstrated that immunotypes 1 and 6 are associated with robust vaccine
236 responsiveness to three different vaccines, in contrast to immunotype 8, which is associated with weak
237 responsiveness. Persons showing immunotypes 1 and 6 represent a mix of both younger and older
238 individuals with strong immune functionality. Notably, characteristics of these immunotypes are a
239 higher naïve-to-memory CD4+ and CD8+ T-cell ratio, and lower HLA-DR+ T cell numbers, as we have
240 previously outlined^{23,39}. Key immune characteristics of immunotype 8 included a lower percentage of
241 B cells, a lower naïve-to-memory T cell ratio and higher percentages of follicular (CXCR5+) CD4+
242 Teff cells, follicular CD4+ Tem cells, follicular CD8+ T cells and follicular CD8+ Tem cells ²³.
243 Although tissue samples are not available from these individuals to perform further analyses, such
244 striking differences in B cells and follicular T cell compartments could indicate a dysregulation of
245 secondary lymphoid organ structures explaining the observed lower vaccine responsiveness, and these
246 could be potential targets to improve vaccine responses in these people ⁴⁰.

247

248 Although immunotypes were associated with vaccine responsiveness, these may not be easily
249 identifiable across different cohorts since the number of immunotypes depends on the initial inter-
250 individual immune variation present in this cohort. Therefore, we sought to determine a continuous
251 measure that could explain the underlying differences between immunotypes in terms of vaccine
252 responsiveness. This measure, termed immune entropy, was associated with factors traditionally linked
253 to immune variation, such as age, sex and CMV-seropositivity^{21,23,41}. Previous studies reported that
254 males have lower innate and adaptive immune responses and vaccine responsiveness than females⁴¹⁻⁴³.
255 Since males showed significantly higher immune entropy than females irrespective of age and CMV-

256 seropositivity, this could indicate that complex sex-related differences may have an effect on the overall
257 immune perturbations in the immune subset network which were captured by immune entropy. The
258 influence of CMV-seropositivity on the immune cell subset profile is known but its effect on vaccine
259 responsiveness and immune function is still not clearly understood^{22,44}. Since CMV-seropositivity was
260 not associated with triple vaccine responsiveness and the difference in immune entropy could be mainly
261 due to CMV's effect on the effector T-cell cell compartment, we cannot deduce whether CMV-
262 seropositivity is a confounder or associate of vaccine responsiveness in our analysis.

263

264 Immune entropy was negatively associated with responsiveness to PCV13, mRNA-1273 and combined
265 response to QIV, PCV13 and mRNA-1273 (triple vaccine response). This fits with the lack of effect of
266 age on the response to influenza vaccination in comparison to the other vaccines²⁴. Since the VITAL
267 cohort includes adult individuals with a broad age range, immune imprinting, also known as original
268 antigenic sin where immune memory of a pathogen's initial strain could limit the immune system's
269 ability to respond to a new strain plays an important role⁴⁵. Moreover, participants in VITAL cohort
270 were vaccinated with the influenza vaccine in previous years. Individuals older than 60 years were
271 vaccinated via regular vaccination campaigns and the younger adults were yearly vaccinated because
272 they were recruited from healthcare workers. Furthermore, recent research highlighted the critical role
273 of memory B cell activation in the efficacy of influenza vaccination⁴⁶. Since our immunotype and
274 immune entropy analysis do not consider these memory B cells in germinal centers, this could explain
275 the lack of association we observed.

276

277 Kidney transplant recipients respond poorly to vaccines³³ and immune entropy was substantially higher
278 in these individuals than in VITAL participants (aged 25-78) suggesting its potential use in clinical
279 scenarios. This elevation in immune entropy may be attributed to the combination of
280 immunomodulatory drugs used post-transplant and the intrinsic immunological challenges presented
281 by kidney disease itself. Immune entropy was also associated with chronic low-grade inflammation
282 markers such as CRP, IL-1RA, TNFa. In cardiovascular disease, chronic low-grade inflammation was
283 suggested to be casually linked to disease progression⁴⁷. Hence, the integration of immune entropy in
284 such disease contexts could provide a more nuanced and comprehensive understanding of patient
285 immune status.

286

287 For older adults (aged 65+), previous studies reported diminished and more heterogeneous antibody
288 responses to SARS-CoV-2 vaccines, however, the heterogeneity in these responses is not clearly
289 understood²⁹. Interestingly, not only across young to older adults, but also within older adults immune
290 entropy was significantly associated with antibody response to BNT162b2 in the validation cohort (aged
291 64-93). For these older adults, immune entropy levels higher than 0.2 were associated with a further
292 decrease in BNT162b2 vaccine responsiveness, whereas in the 25 to 78-year-old group who received

293 mRNA-1273, immune entropy levels higher than 0.1 were associated with lower responsiveness. This
294 highlights that immune entropy is applicable when studied in large age ranges to pinpoint individuals
295 at risk for low vaccine responsiveness and also in older adults to gain insights into heterogeneity in
296 antibody response to SARS-CoV-2 vaccines.

297

298 Immune entropy is not a single molecule measurement and requires immune subset data obtained via
299 flow cytometry analyses²³. Given the widespread use of flow cytometry in clinical contexts, immune
300 entropy could be assessed in various populations and cohorts to explore its associations with vaccine
301 responsiveness and immune function. We propose that future research could help to reduce the number
302 of immune markers required to measure immune entropy, as long as they capture the relevant
303 accumulation of perturbations in the immune subset profile. In our flow cytometry panel, senescent T
304 cells, and various Th populations (Th1, Th2, Th17) were not present. Incorporating such variables that
305 were shown to be important in aging and vaccine responsiveness could further improve the sensitivity
306 of immune entropy and its predictive power^{16,48}.

307

308 Although immune entropy was clearly associated with vaccine responsiveness, there were outliers in
309 the higher triple vaccine responder groups that showed increased entropy and vice versa. One reason
310 could be that the set of markers used to calculate immune entropy may not reflect the function of the
311 immune network entirely. Immune entropy calculation using the different collections of immune
312 subsets that would represent the vaccine responsiveness the best could improve this.

313

314 Our study underscores the potential utility of both immunotypes and immune entropy as innovative
315 tools to pinpoint individuals at risk of low vaccine effectiveness. This could ultimately guide more
316 personalized vaccination strategies, shifting the healthcare focus from a blanket approach based on age
317 to one rooted in individual effectiveness. This is of high importance to increase vaccine effectiveness
318 as a whole and protect the increasingly vulnerable group of older individuals from infectious diseases.

319

320 **MATERIALS AND METHODS**

321 **Study population**

322 This study used samples from the longitudinal intervention studies VITAL and VITAL-Corona as
323 reported in detail elsewhere^{24,25}. In short, individuals 25 to 98 years old were recruited. All participants
324 were previously vaccinated with the seasonal influenza vaccination in season 2018-2019 and never
325 received a pneumococcal vaccination. Detailed inclusion and exclusion criteria have been reported²⁴.
326 Participants received the seasonal quadrivalent inactivated subunit influenza vaccine in 2019 Autumn
327 (QIV) (2019-2020), and Prevenar 13 (PCV13) in 2020 Summer/Autumn. A group of older individuals
328 received SARS-CoV-2 BNT162b2 (Pfizer) via the national immunization program that started in
329 February 2021 but the majority of participants received the SARS-COV2 mRNA-1273 vaccine

330 (Moderna Biotech, Spain) in 2021 Spring (Supplementary Figure 1a-b) as part of the study via the study
331 team²⁴. Ethical approval was obtained through the Medical Research Ethics Committee Utrecht
332 (EudraCT: 2019-000836-24). All participants provided written informed consent and all procedures
333 were performed with Good Clinical Practice and in accordance with the principles of the Declaration
334 of Helsinki. As a validation cohort, participants from the immune system and aging (ISA) sub-study of
335 the Doetinchem Cohort Study (DCS), were used. These individuals were immune phenotyped in 2017
336 ^{27,28}. Part of these individuals (N=67, aged 64-93, Supplementary Table 3) further participated in a
337 SARS-CoV-2 vaccination study (VOCAAL, EudraCT: 2021-002363-22) and received a primary series
338 of SARS-CoV-2 BNT162b2 (Pfizer) vaccinations from February-April 2021. Kidney transplant
339 recipients were part of the RECOVAC study (EudraCT: 2021-000868-30) ^{30,33}. A subgroup of these
340 individuals was immune phenotyped (N=59, aged 23-77, Supplementary Table 3) before receiving the
341 primary series of two SARS-CoV-2 mRNA-1273 vaccinations in February-March 2021.

342

343 **Serum antibodies and vaccine response profiles**

344 Serum antibody measurements for VITAL and VITAL-Corona studies were described elsewhere in
345 detail²⁴. In short, pre and 28 days post-vaccination, antibody levels for each vaccine (QIV: the H3N2
346 hemagglutination inhibition titer; PCV13: the IgG concentrations against the 13 pneumococcal
347 serotypes; and mRNA-1273: the IgG binding antibody units (BAU) against the Spike S1 protein as
348 measured by Multiplex Immuno Assay were used. Since pre-existing immunity has been shown to
349 influence vaccine response for QIV and PCV13 ^{16,39}, vaccine responsiveness was studied rather than day
350 28 antibody levels, , calculated as the maximum residual values following adjustment for baseline levels
351 (maxRBA) using titer (version 0.0.2) R package²⁶. This process adjusts for the initial antibody levels
352 by using a model that describes how antibody levels exponentially increase from their baseline values.
353 Consequently, participants were categorized into vaccine response quartiles (Q1=lowest, Q4=highest)
354 based on their maxRBA. For mRNA-1273, since pre-existing immunity was not present, day 28
355 antibody levels were directly used to categorize individuals into vaccine response quartiles. A triple
356 vaccine response quartile was determined by averaging the response quartiles for QIV, PCV13, and
357 mRNA-1273. This average was then rounded to define four triple vaccine response categories: TQ1
358 (lowest), TQ2, TQ3, and TQ4 (highest).

359

360 For the validation cohort (ISA), SARS-CoV-2 Spike S1 protein IgG units were measured 28 days for
361 both the first vaccine and the primary series of two vaccinations with respectively Bnt162b2 and with
362 mRNA-1273. The same multiplex platform was used to measure all SARS-CoV-2 Spike S1 protein
363 antibodies in this study ⁴⁹.

364

365 **Immune phenotyping and immunotypes**

366 The immune phenotyping data based on a flow cytometry panel of 18 markers utilized in this study has
367 been described in detail in a previous publication²³. Briefly, baseline immune subset data (n=59) were
368 subjected to a Spearman correlation matrix analysis to elucidate inter-individual relationships.
369 Subsequent clustering was performed, informed by gap statistics analysis to ensure the optimal number
370 of clusters. The entire methodology can be found in the corresponding GitHub repository
371 (<https://github.com/alpercevirgel/Immunitytype-Alper2022>)²³. For the validation cohort (ISA), immune
372 phenotyping was performed as described previously²⁷. PBMCs from kidney transplant recipients
373 participating in the RECOVAC cohort were stained using the following anti-human fluorochrome-
374 conjugated antibodies: CD3 (Sparkblue 550, SK7, Biolegend), CD4 (cFluor-YG584, SK3, Cytex), CD8
375 (BUV805, SK1, BD), CD45RA (Spark NIR 685, HI100, Biolegend), CD95 (BB700, DX2, BD), HLA-
376 DR (BV570, L243, Biolegend), CD38 (APC-Fire810, HIT2, Biolegend), CD19 (eFluor450, HIB19,
377 ThermoFisher), CD27 (VioBright FITC, M-T271, Miltenyi), IgD (BUV395, IA6-2, BD), CD127 (APC-
378 R700, HIL-7R-M21, BD), CD25 (PE-AF700, CD25-3G10, ThermoFisher), CXCR5 (BUV563, RF8B2,
379 BD), CCR7 (BUV616, 2-L1-A, BD), CD28 (BV421, CD28.2, BD) and viability dye (FVS780, BD).
380 Samples were analyzed in Cytex Aurora 5L (Cytex Biosciences) and unmixed using SpectroFlo
381 (v3.1.0). Immune subsets that are used in the immune entropy calculation were exported from FlowJo
382 (version 10.0.7).

383

384 **Cytomegalovirus seropositivity**

385 Immunoglobulin G antibodies against CMV were quantified in serum collected before vaccination by
386 a multiplex immunoassay developed in-house⁵⁰. Seropositivity thresholds were adapted from a previous
387 study⁴⁴. For CMV, a concentration of <7.5 relative units (RU) ml^{-1} was categorized as seronegative,
388 ≥ 7.5 RU ml^{-1} as seropositive.

389

390 **Immune entropy**

391 Immune entropy is defined in this study as the correlation distance from a reference group. This distance
392 is calculated as 1 minus Spearman's rho (Equation 1), indicating the degree of variation in the immune
393 systems of participants when compared to the reference group.

394

$$395 \quad \text{Immune entropy}_{(i)} = 1 - \rho (\text{immune_profile}_{(\text{ref})}, \text{immune_profile}_{(i)})$$

396

397 **Equation 1:** Data frame 'immune_profile' contains 59 immune cell subset variables (Supplementary
398 Table 1) for each individual, and $\text{immune_profile}_{(i)}$ is the vector of 59 variables for a given individual
399 i. ' $\text{immune_profile}_{(\text{ref})}$ ' contains the median of all vectors where $\text{age}_{(i)} < 35$. ' ρ ' represents the Spearman
400 correlation coefficient between $\text{immune_profile}_{(\text{ref})}$ and $\text{immune_profile}_{(i)}$.

401

402 For the validation cohort (ISA) and kidney transplant recipients (RECOVAC), immune entropy is
403 calculated using a similar approach. However, due to minor differences in the flow cytometry panels,
404 slightly different immune subset variables are utilized (Supplementary Table 1).

405

406 **Serum/plasma protein measurements**

407 From the baseline visit study time point, Angiopoietin-2, C5a, CCL2, sCD25, sCD163, CXCL10,
408 sGP130, IL-1RA, sIL-6R, PTX-3, YKL-40, CRP, sCD14, IL-8, Calprotectin, SAA, Neopterin, FABP2,
409 GM-CSF, IFN- α , IL-1 β , TNF- α , IFN- γ , IL-6, and IL-10 were measured from serum, and Elastase, PR3,
410 Cathepsin G, and A1AT-Elastase were measured from plasma as described previously⁵¹.

411

412 **Statistical analysis**

413 Data handling, statistical analyses, and visualization were performed in R (version 4.2.2) and R Studio
414 (version 2022.12.0.353). An ordinal logistic regression was performed to model the triple vaccine
415 response quartile, using immunotypes as an independent variable, and subsequently in a multivariate
416 separate model incorporating immune entropy, age, sex, CMV-seropositivity. For ordinal logistic
417 regression models `clm()` function from `ordinal` (version 2022.11-16) package was used. For
418 immunotypes sum coding was used. This method calculates the deviation of each category from the
419 overall mean of categories and is particularly useful when assessing differences from the mean rather
420 than a specific category⁵². Sum coding was implemented by using `stats` (version 4.2.2) package. Mann-
421 Whitney-Wilcoxon test was used to compare age or immune entropy between sex and CMV-
422 seropositivity differences. The Kruskal-Wallis test from `rstatix` (version 0.7.2) package was utilized to
423 compare immune entropy across immunotypes. Kruskal-Wallis test was subsequently followed by
424 Dunn's test when p-values were lower than 0.05. Benjamini-Hochberg false discovery rate correction
425 is applied p-values are reported as `p.adj`. The correlation between serum proteins and immune entropy
426 was assessed using Spearman's rank correlation using `stats` package. Generalized additive models
427 (GAM) were used to study the association between antibody levels to both SARS-CoV-2 mRNA-1273
428 and BNT162b2 vaccines, and immune entropy. Antibody response was `log10` transformed to ensure
429 normality in GAMs. To accommodate potential non-linear associations, immune entropy was modeled
430 as a smooth term. The optimal complexity of the smooth term was determined by selecting the spline's
431 degrees of freedom (`k`) that resulted in the lowest Akaike Information Criterion (AIC), with `k` values
432 ranging from 3 to 20 tested. GAMs were conducted using the `mgcv` (version 1.9-0) package. In the
433 figures, boxplots display the interquartile range (IQR, 25–75%), with the median indicated by a
434 horizontal line within each box. Whiskers represent the upper- and lower-quartile $\pm 1.5 \times$ IQR. Mean is
435 represented as a black dot and error bars around the mean show the standard error of the mean. These
436 elements combine to provide a detailed visualization of the immune entropy across different
437 immunotypes." Levels of statistical significance are indicated as: $*P < 0.05$, $**P < 0.01$, $***P < 0.001$,
438 and $****P < 0.0001$. Illustrations in the figures are created by using Adobe Illustrator and Biorender.

439

440 **Acknowledgment**

441 We would like to thank all collaborators; Inge Pronk, Linde Woudstra, Jacqueline Zonneveld, Sandra
442 Hoogkamer, Marjolein Izeboud, Olga de Bruin, Helma Lith, Joyce Geeber, Ilse Akkerman, Megan
443 Barnes, Lysanne Bakker, Shirley Man, Silvia Cohen, Ruben Wiegman, Nazela Mir Leibady, Ronith
444 van de Wiele, Rydianne Carvalho De Moura, Emma van Wijlen, Petra Molenaar, Madelène Paets,
445 Martien Poelen, Martijn Vos, Jeroen Hoeboer, Marion Hendriks, Noortje Smits, Jolanda Kool, Maarten
446 Emmelot, Ronald Jacobi, Stefanie Lenz, Floor Peters, Gaby Smits, Marjan Kuijer, Irina Tcherniaeva,
447 Lia de Rond, Mary-lène de Zeeuw-Brouwer, Thierry Ollinger, Wivinne Burny, Rob S van Binnendijk
448 and Marianne A van Houten.

449

450 **Funding**

451 The VITAL project has received funding from the Innovative Medicines Initiative 2 Joint Undertaking
452 (JU) under grant agreement No. 806776 and the Dutch Ministry of Health, Welfare and Sport. The JU
453 receives support from the European Union's Horizon 2020 research and innovation program and
454 EFPIA-members. The VITAL-Corona study was funded by the Dutch Ministry of Health, Welfare and
455 Sport.

456

457 **Author Contributions**

458 NR, JvB, AMB, and DvB conceptualized the study and were involved in funding acquisition.

459 EB was responsible for data management.

460 AC, MV, LB, LS, MvdH, YvS, JR were involved in data acquisition.

461 AC, SAS, MvdH, CI, JR performed data analyses.

462 AC visualized the data.

463 AC wrote the original draft.

464 AC, MvdH, AMB and DvB are involved in writing and editing.

465 All authors critically revised the manuscript before publication.

466

467 **Conflict of Interest**

468 Other authors have no conflict of interest.

469

470 **Data and code availability**

471 The codes used in the manuscript are available from GitHub
472 (https://github.com/alpercevirgel/Trivac_entropy)

473

474

475 **REFERENCES**

- 476 1. Simon, A., Simon, A. K., Holländer, G. A. & McMichael, A. J. Evolution of the immune
477 system in humans from infancy to old age. *Proceedings of The Royal Society B:*
478 *Biological Sciences* (2015) doi:10.1098/rspb.2014.3085.
- 479 2. Bennett G. Childs *et al.* Cellular senescence in aging and age-related disease: from
480 mechanisms to therapy. *Nature Medicine* **21**, 1424–1435 (2015).
- 481 3. Zaoqu Liu *et al.* Immunosenescence: molecular mechanisms and diseases. *Signal*
482 *Transduction and Targeted Therapy* (2023) doi:10.1038/s41392-023-01451-2.
- 483 4. Fulop, T., Larbi, A., Hirokawa, K., Cohen, A. A. & Witkowski, J. M. Immunosenescence
484 is both functional adaptive and dysfunctional maladaptive. *Seminars in Immunopathology*
485 (2020) doi:10.1007/s00281-020-00818-9.
- 486 5. Walford, R. L. & Roy L. Walford. THE IMMUNOLOGIC THEORY OF AGING.
487 *Immunological Reviews* **2**, 171–171 (1969).
- 488 6. Ruochen Wu, Fei Sun, Weiqi Zhang, Jie Ren, & Guanghui Liu. Targeting aging and age-
489 related diseases with vaccines. *Nature Aging* (2024) doi:10.1038/s43587-024-00597-0.
- 490 7. Pedroza-Pacheco, I., Isabela Pedroza-Pacheco, McMichael, A. J., & Andrew J.
491 McMichael. Immune signature atlas of vaccines: learning from the good responders.
492 *Nature Immunology* (2022) doi:10.1038/s41590-022-01361-5.
- 493 8. Goronzy, J. J. & Weyand, C. M. Understanding immunosenescence to improve responses
494 to vaccines. *Nature Immunology* **14**, 428–436 (2013).
- 495 9. Djamel Nehar-Belaid *et al.* Baseline immune states (BIS) associated with vaccine
496 responsiveness and factors that shape the BIS. *Seminars in Immunology* (2023)
497 doi:10.1016/j.smim.2023.101842.
- 498 10. Tsang, J. S. *et al.* Global analyses of human immune variation reveal baseline predictors
499 of postvaccination responses. *Cell* (2014) doi:10.1016/j.cell.2014.03.031.

- 500 11. Tomic, A. *et al.* SIMON, an Automated Machine Learning System, Reveals Immune
501 Signatures of Influenza Vaccine Responses. *Journal of Immunology* **203**, 749–759
502 (2019).
- 503 12. Kotliarov, Y. *et al.* Broad immune activation underlies shared set point signatures for
504 vaccine responsiveness in healthy individuals and disease activity in patients with lupus.
505 *Nature Medicine* **26**, 618–629 (2020).
- 506 13. Fourati, S. *et al.* Pan-vaccine analysis reveals innate immune endotypes predictive of
507 antibody responses to vaccination. *Nature Immunology* (2022) doi:10.1038/s41590-022-
508 01329-5.
- 509 14. Riese, P. *et al.* Distinct immunological and molecular signatures underpinning influenza
510 vaccine responsiveness in the elderly. *Nature Communications* **13**, (2022).
- 511 15. Caroline Boulouis *et al.* MAIT cell compartment characteristics are associated with the
512 immune response magnitude to the BNT162b2 mRNA anti-SARS-CoV-2 vaccine.
513 *Molecular Medicine* **28**, (2022).
- 514 16. S. Ravichandran *et al.* Distinct baseline immune characteristics associated with responses
515 to conjugated and unconjugated pneumococcal polysaccharide vaccines in older adults.
516 *Nature Immunology* (2024) doi:10.1038/s41590-023-01717-5.
- 517 17. J. de Haan & de Haan, J. How emergence arises. *Ecological Complexity* **3**, 293–301
518 (2006).
- 519 18. Chavali, A. K. *et al.* Characterizing emergent properties of immunological systems with
520 multi-cellular rule-based computational modeling. *Trends in Immunology* **29**, 589–599
521 (2008).
- 522 19. Finzer, P. How we become ill: Investigating emergent properties of biological systems
523 could help to better understand the pathology of diseases. *EMBO Reports* **18**, 515–518
524 (2017).

- 525 20. Brodin, P. *et al.* Variation in the Human Immune System Is Largely Driven by Non-
526 Heritable Influences. *Cell* (2015) doi:10.1016/j.cell.2014.12.020.
- 527 21. Liston, A., Carr, E. J. & Linterman, M. A. Shaping Variation in the Human Immune
528 System. *Trends in Immunology* (2016) doi:10.1016/j.it.2016.08.002.
- 529 22. Yan, Z. *et al.* Aging and cmv discordance are associated with increased immune diversity
530 between monozygotic twins. (2021) doi:10.1186/s12979-021-00216-1.
- 531 23. Cevirgel, A. *et al.* Identification of aging-associated immunotypes and immune stability
532 as indicators of post-vaccination immune activation. *Aging cell* (2022)
533 doi:10.1111/acel.13703.
- 534 24. Marieke Van Der Heiden *et al.* Multiple vaccine comparison in the same adults from the
535 VITAL study reveals vaccine-specific and age-related humoral response patterns.
536 *medRxiv* (2024) doi:10.1101/2024.01.22.24301601.
- 537 25. van Baarle, D. *et al.* Preventing infectious diseases for healthy ageing: The VITAL
538 public-private partnership project. *Vaccine* (2020) doi:10.1016/j.vaccine.2020.07.005.
- 539 26. Avey, S. *et al.* Seasonal Variability and Shared Molecular Signatures of Inactivated
540 Influenza Vaccination in Young and Older Adults. *Journal of Immunology* **204**, 1661–
541 1673 (2020).
- 542 27. Samson, L. D. *et al.* In-depth immune cellular profiling reveals sex-specific associations
543 with frailty. *Immunity & Ageing* **17**, 20–20 (2020).
- 544 28. Samson, L. D. *et al.* Frailty is associated with elevated CRP trajectories and higher
545 numbers of neutrophils and monocytes. *Experimental Gerontology* **125**, 110674–110674
546 (2019).
- 547 29. Jorge G. Ruiz & Melissa K. Andrew. COVID-19 vaccination and hybrid immunity in
548 older adults. *The Lancet Healthy Longevity* **4**, e364–e365 (2023).

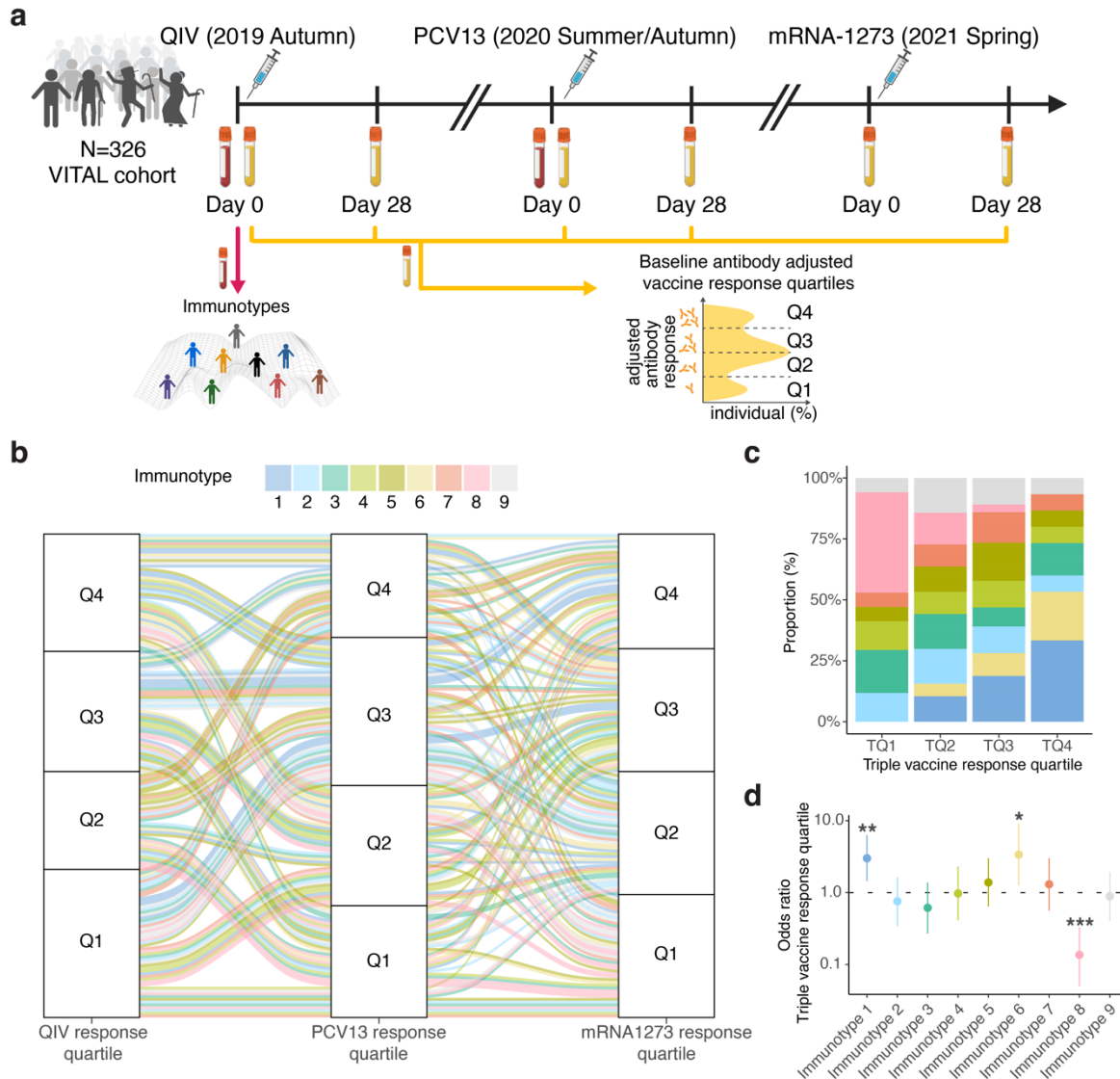
- 549 30. Jan-Stephan F. Sanders *et al.* The RECOVAC Immune-response Study: The
550 Immunogenicity, Tolerability, and Safety of COVID-19 Vaccination in Patients With
551 Chronic Kidney Disease, on Dialysis, or Living With a Kidney Transplant.
552 *Transplantation* 09 (2021) doi:10.1097/tp.0000000000003983.
- 553 31. Babel, N. *et al.* Vaccination in patients with kidney failure: lessons from COVID-19.
554 *Nature Reviews Nephrology* (2022) doi:10.1038/s41581-022-00617-5.
- 555 32. Christian Kurts *et al.* The immune system and kidney disease: basic concepts and clinical
556 implications. *Nature Reviews Immunology* **13**, 738–753 (2013).
- 557 33. Marcia M. L. Kho *et al.* The RECOVAC IR study: the immune response and safety of the
558 mRNA-1273 COVID-19 vaccine in patients with chronic kidney disease, on dialysis, or
559 living with a kidney transplant - a prospective, controlled, multicenter observational
560 cohort by the REnal patients COVID-19 VACcination (RECOVAC) consortium COVID-
561 19 VACcination (RECOVAC) consortium. *Nephrology Dialysis Transplantation* **36**,
562 1761–1764 (2021).
- 563 34. Santoro, A., Bientinesi, E. & Monti, D. Immunosenescence and inflammaging in the
564 aging process: age-related diseases or longevity? *Ageing Research Reviews* (2021)
565 doi:10.1016/j.arr.2021.101422.
- 566 35. Ahmed, E. M. E., Ahmed, E. & Hashish, A. H. On modelling the immune system as a
567 complex system. *Theory in Biosciences* **124**, 413–418 (2006).
- 568 36. Cohen, A. A. Complex systems dynamics in aging: new evidence, continuing questions.
569 *Biogerontology* **17**, 205–220 (2016).
- 570 37. Mazzocchi, F. Complexity in biology: Exceeding the limits of reductionism and
571 determinism using complexity theory. *EMBO Reports* **9**, 10–14 (2008).

- 572 38. Allison J. Lopatkin, Lopatkin, A. J. & Collins, J. J. Predictive biology: modelling,
573 understanding and harnessing microbial complexity. *Nature Reviews Microbiology* **18**,
574 507–520 (2020).
- 575 39. Cevirgel, A. *et al.* Pre-vaccination immunotypes reveal weak and robust antibody
576 responders to influenza vaccination. *Aging Cell* e14048 (2023) doi:10.1111/ace1.14048.
- 577 40. Le Lee, J. & Linterman, M. A. Mechanisms underpinning poor antibody responses to
578 vaccines in ageing. *Immunology Letters* **241**, 1–14 (2022).
- 579 41. Liston, A., Humblet-Baron, S., Duffy, D. & Goris, A. Human immune diversity: from
580 evolution to modernity. *Nature immunology* (2021) doi:10.1038/s41590-021-01058-1.
- 581 42. Klein, S. L. & Flanagan, K. L. Sex differences in immune responses. *Nature Reviews*
582 *Immunology* (2016) doi:10.1038/nri.2016.90.
- 583 43. Takahashi, T. & Iwasaki, A. Sex differences in immune responses. *Science* **371**, 347–348
584 (2021).
- 585 44. Samson, L. D. *et al.* Limited effect of duration of CMV infection on adaptive immunity
586 and frailty: insights from a 27-year-long longitudinal study. *Clinical And Translational*
587 *Immunology* **9**, (2020).
- 588 45. Federica Sicca *et al.* The evolution of humoral immune responses to past and novel
589 influenza virus strains gives evidence for antigenic seniority. *Frontiers in Immunology*
590 **13**, (2022).
- 591 46. Turner, J. S. *et al.* Human germinal centres engage memory and naive B cells after
592 influenza vaccination. *Nature* **586**, 127–132 (2020).
- 593 47. Luigi Ferrucci, Ferrucci, L., Elisa Fabbri & Fabbri, E. Inflammageing: chronic
594 inflammation in ageing, cardiovascular disease, and frailty. *Nature Reviews Cardiology*
595 **15**, 505–522 (2018).

- 596 48. Luca Pangrazzi, Pangrazzi, L., Birgit Weinberger & Weinberger, B. T cells, aging and
 597 senescence. *Experimental Gerontology* **134**, 110887 (2020).
- 598 49. den Hartog, G. *et al.* SARS-CoV-2–Specific Antibody Detection for Seroepidemiology:
 599 A Multiplex Analysis Approach Accounting for Accurate Seroprevalence. *The Journal of*
 600 *Infectious Diseases* **222**, 1452–1461 (2020).
- 601 50. Tcherniaeva, I., Hartog, G. den, Berbers, G. A. M. & van der Klis, F. R. M. The
 602 development of a bead-based multiplex immunoassay for the detection of IgG antibodies
 603 to CMV and EBV. *Journal of Immunological Methods* **462**, 1–8 (2018).
- 604 51. van Sleen, Y. *et al.* Frailty is related to serum inflammaging markers: results from the
 605 VITAL study. *Immunity & Ageing* **20**, 68 (2023).
- 606 52. Schad, D. J., Vasishth, S., Hohenstein, S. & Kliegl, R. How to capitalize on a priori
 607 contrasts in linear (mixed) models: A tutorial. *Journal of Memory and Language* **110**,
 608 104038 (2020).
- 609
- 610 **Table 1:** Age, sex and CMV-seropositivity per immunotype in those participants included in the triple-
 611 vaccine analysis.

| immunotype | median age (range) | CMV seropositivity % | male % | N |
|---|---------------------------|-----------------------------|---------------|----------|
| 1 | 41 (25-76) | 48 | 32 | 25 |
| 2 | 55 (28-78) | 76 | 48 | 21 |
| 3 | 59 (26-71) | 10 | 57 | 21 |
| 4 | 55 (26-75) | 24 | 24 | 17 |
| 5 | 63 (41-78) | 90 | 50 | 20 |
| 6 | 66 (27-77) | 23 | 46 | 13 |
| 7 | 70 (48-78) | 41 | 82 | 17 |
| 8 | 65 (50-76) | 79 | 58 | 19 |
| 9 | 69.5 (50-76) | 15 | 60 | 20 |
| Triple vaccine response quartile | median age (range) | CMV seropositivity % | male % | N |
| TQ1 | 68 (51-76) | 47 | 82 | 17 |
| TQ2 | 63 (26-78) | 49 | 47 | 77 |
| TQ3 | 60 (25-78) | 45 | 42 | 64 |
| TQ4 | 51 (30-69) | 33 | 67 | 15 |

613



614

615 **Figure 1: Baseline immunotypes reveal weak and robust antibody responders overarching**

616 **multiple vaccines. (a)** Vaccination trial design²⁴. Participants' immunotypes categorized based on pre-

617 vaccination immune subset data²³. Antibody response groups were categorized in quartiles based on

618 antibody levels for each vaccine at day 28 post-vaccination. Antibody response quartiles indicate lowest

619 (Q1) to highest (Q4) response quartile for each vaccine. **(b)** Antibody response quartiles illustrated

620 across multiple vaccines. Each line represents an individual followed across the vaccines. The line color

621 represents the individual's immunotype as indicated above. **(c)** Percentages of each immunotype within

622 the calculated triple vaccine response group are displayed. This value is derived from averaging the

623 individual response quartiles across triple vaccines. Triple vaccine response groups (TQ) indicate

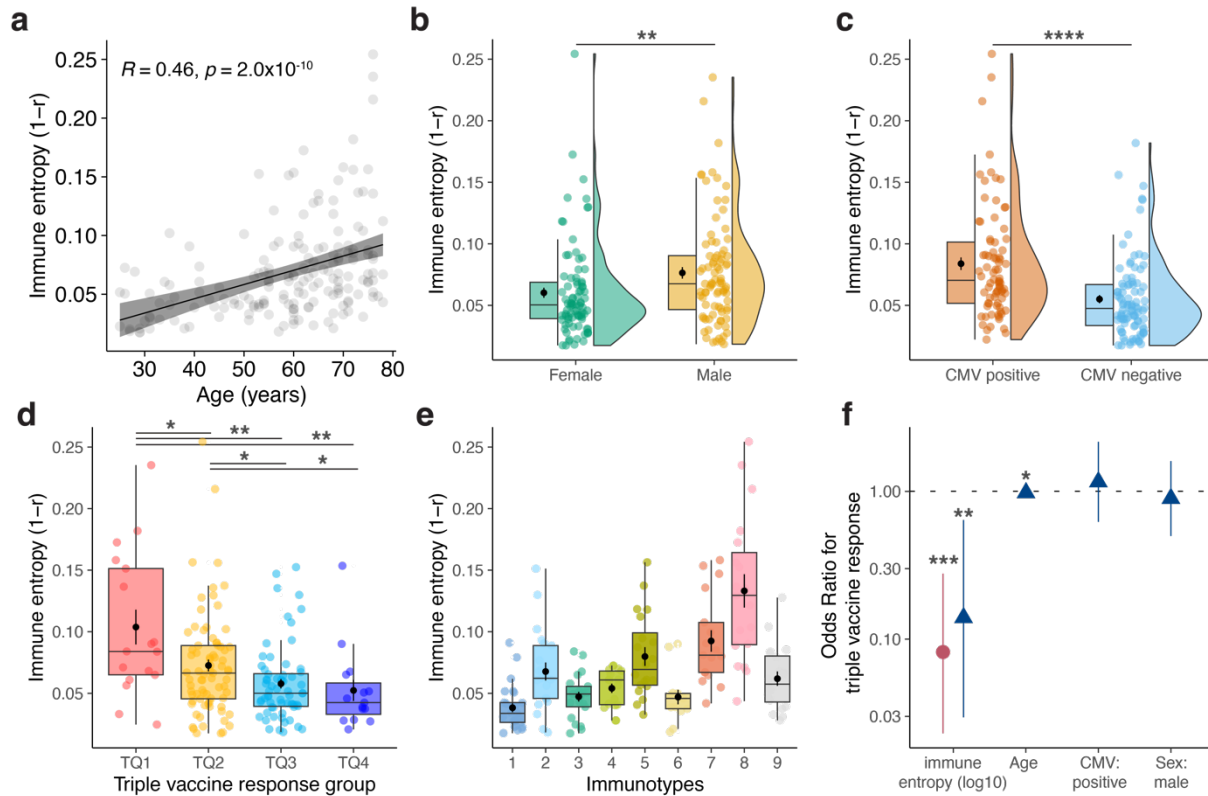
624 lowest (TQ1) to highest (TQ4) response quartile. **(d)** Ordinal logistic regression model for triple vaccine

625 response quartiles. * $P < 0.05$, ** $P < 0.01$, *** $P < 0.001$ showing immunotypes associated with weak

626 and strong vaccine responders.

627

628



629

630 **Figure 2: Immune entropy describes the overall immune perturbations and significant**

631 **associations with triple vaccine responsiveness. (a)** Spearman correlation between immune entropy

632 and age. **(b)** Immune entropy differences in sex and **(c)** CMV seropositivity. The significance was

633 determined by Mann-Whitney-Wilcoxon test. **(d)** Immune entropy in triple vaccine response quartile

634 groups and **(e)** in immunotypes. The significance was determined using Kruskal–Wallis tests. Post hoc

635 tests were performed using Dunn’s test with the Benjamini-Hochberg method to adjust for multiple

636 comparisons. **(f)** Multivariate ordinal logistic regression model of the associations of immune entropy,

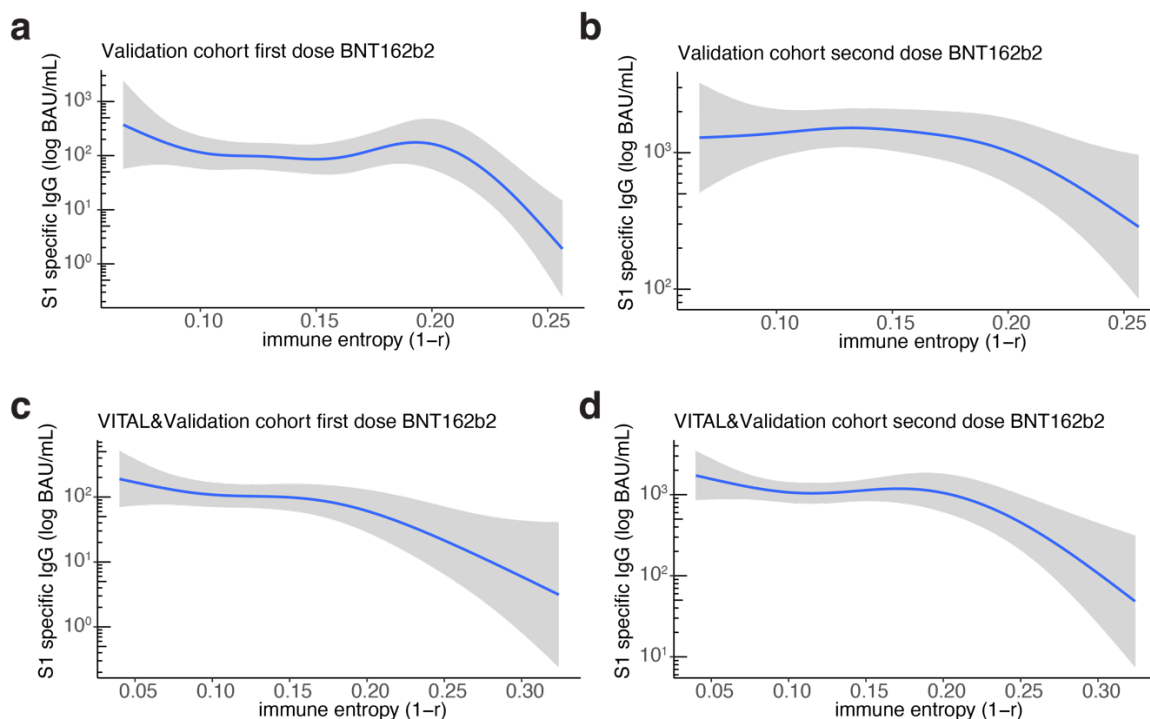
637 age, CMV and sex with the triple vaccine response. The red circle represents the odd ratios for log10

638 transformed immune entropy, the blue triangle shows the odd ratios for log10 transformed immune

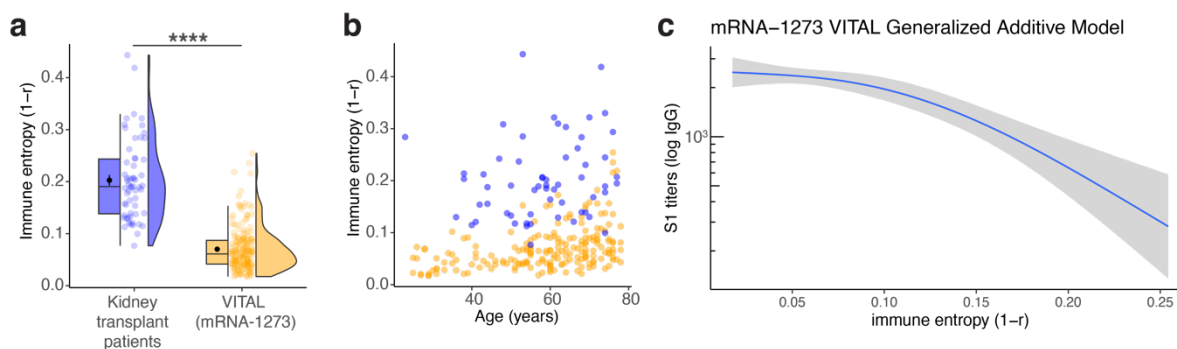
639 entropy, age, CMV seropositivity (CMV positive) and sex (male). * $P < 0.05$, ** $P < 0.01$,

640 *** $P < 0.0001$,

641



642
 643 **Figure 3: Immune entropy is non-linearly and negatively associated with SARS-CoV-2 vaccine**
 644 **antibody response in a validation cohort of older persons.** Generalized additive model of antibody
 645 levels to S1 spike protein of SARS-CoV-2 investigating non-linear association with immune entropy
 646 after (a) first dose and (b) the primary series of SARS-CoV-2 BNT162b2 vaccine (N=67) (c,d) and
 647 after combining BNT162b2 recipients from both the VITAL and the validation cohorts (N=99).
 648



649
 650 **Figure 4: Low SARS-CoV-2 vaccine-responding kidney transplant recipients show increased**
 651 **immune entropy.** (a) Box and violin plots for immune entropy comparing kidney transplant recipients
 652 with generally healthy VITAL participants. The significance was determined by Mann-Whitney-
 653 Wilcoxon test. **** $P < 0.0001$. (b) Immune entropy and age distribution for kidney transplant patients
 654 (blue) and VITAL mRNA1273 (orange) individuals. (c) Generalized additive model predictions of
 655 SARS-CoV-2 S1 binding antibody units (BAU) 28 days post primary vaccination series and immune
 656 entropy in VITAL mRNA-1273 participants.
 657