

Identification of Respiratory Diseases using Peak Energy Analysis of Acoustic Cough

Authors: Sujith Thomas Chandy *1, Balamugesh Thangakunam*1, Gowrisree Rudraraju*2, Narayana Rao Sripada*2, Jayanthi Govindaraj*2, Charishma Gottipulla*2, Baswaraj Mamidgi*2, Shubha Deepti Palreddy*2, Nikhil kumar Reddy Bhoge*2, Harsha Vardhan Reddy Narreddy*2, Prasanna Samuel P*1, Devasahayam Jesudas Christopher*1, djchris@cmcvellore.ac.in *2, Venkat Yechuri*2

*1 Christian Medical College, Vellore, Tamil Nadu, 632004, India

*2 Salcit Technologies, Kothaguda, Hyderabad, 500084, India

Abstract

Background and Objectives:

Cough is a common symptom of respiratory diseases and change in the cough sound can reflect a pathological condition in the lungs. Recent advancement on the analysis of the cough sound has suggested that it has the potential to be used as a non-invasive marker for screening respiratory conditions, such as Asthma, Chronic Pulmonary Obstructive Disease (COPD), Interstitial Lung Disease (ILD) and Bronchiectasis. The energy envelope is distinguishable for normal subjects versus subjects with respiratory conditions. Peak analysis of the energy envelope helps in quantifying the feature variation for these conditions.

This study provides the variation of the peak energy features on the Root Mean Square Energy (RMSE) envelope of cough sounds using machine learning tools. Peak properties of energy contours like peak height, peak prominence, base distance (distance between left and right base of a peak) help in quantifying cough patterns.

Methods and Materials:

Patients presenting with respiratory symptoms to the hospital were recruited to the study. Their cough sounds were recorded through a mobile application. The cough sounds were labeled with corresponding pathologies from spirometry. From every subject three audio recordings were collected before taking a spirometry test. Peak analysis is performed on the features extracted from cough audio signals. Peak features are extracted using the function “`scipy.signal.find_peaks`” from python’s Scipy library. The comparison of these features are done against the clinical diagnosis which the physician finally arrives at after going through the history, spirometry and radiology as per the standard of practice.

Results:

The peak analysis in Asthma shows higher base distance and peak height than that of Normal because of prolonged expulsion and airways constriction. The base distance is observed high in Bronchiectasis but peak height and prominence are less when compared with Normal due to loss of elasticity in the airways. Whereas in COPD the base distance and prominence are found to be less than Normal, Asthma and Bronchiectasis which is attributed to multiple narrowing of the glottis. Additionally, the energy peak heights of the cough were observed to be very close due to conditions like excess mucus, airways inflammation, destruction of lung tissue in COPD.

Conclusion:

Peak analysis of cough provides inferences which can be used as descriptors to differentiate coughs related to respiratory diseases. This study helps us to enhance the performance of Machine Learning models by including the peak energy related features. This peak analysis along with frequency spectral analysis can also be further used in detecting other respiratory conditions.

Keywords: *Cough sound, Respiratory Diseases, Envelope, Audio peak analysis, Peak Prominence*

Introduction:

In recent years, the healthcare industry has seen many innovations in the form of cutting-edge technologies and cutting-edge treatment approaches. Developing predictive and representative health diagnosis systems is essential for continuous monitoring of symptoms to prevent diagnostic mistakes (1). Recently, focus has shifted to data-driven processes and intelligent software, where tools based on computer-aided detection (CAD) and artificial intelligence (AI) are becoming increasingly popular (2). While there is a proven track record of AI based algorithms in image-based diagnosis, voice based diagnosis is getting more attention and making significant strides as sounds carry the signature of many diseases (3,4).

Cough is a common symptom of several respiratory diseases. Any changes in the cough sound can reflect pathological changes in the lungs. In recent years, advancements in

AI techniques have spurred numerous studies aiming to categorize respiratory diseases through the analysis of cough sound (5). The audio features in cough signals usually contain information about predicament of the respiratory system in different pathological conditions (6). The acoustic analysis of the cough sounds critically detects various respiratory maladies such as COVID-19 (7), chronic obstructive pulmonary diseases (COPD) (8), asthma (9-12), pertussis (13,14), croup (15), bronchitis (16), pediatric pneumonia (17), lower and upper respiratory tract diseases (18). Although numerous studies have illustrated that acoustic cough related features can be used to differentiate several respiratory diseases nevertheless, there are only a few correlations between acoustic characteristics and perception ratings. This study aims to quantify the feature variation of various respiratory conditions through the peak analysis of the energy envelope.

Peak energy analysis involves extracting relevant features from the cough sounds. Chatzarrin et al., 2011 (19) proposed peaks of the energy envelope and spectral features of the cough sound to distinguish wet and dry cough. This study emphasizes the energy associated with cough sound peaks as a primary feature for peak analysis. The peak energy can be quantified using techniques like root mean square (RMS) energy calculation. RMS is used to characterize the energy contained in the sound waves of a given cough segment.

This is substantiated by the study done by Ren et al., 2022 (20) which showed variations in the mean inter-peak distance in the root mean square energy (RMSE) between COVID – 19 negative and positive patients. Similarly, Ashby et al., 2022 (21) has proposed RMSE peak analysis as a cough audio segmentation framework for COVID detection. The RMSE was computed from the Short-Term Energy (STE), which is the energy of a signal corresponding to the total magnitude of the signal. Further, the peak energy (peak height) calculated from RMS was an important parameter for investigating the relationship between cough sound and physiological measures of cough strength (22). This shows the weightage of the acoustic features both in conventional and machine learning models. A study carried out by Chung et al., 2021 (23) emphasized the role of loudness and energy ratio as the objective characteristic indicator in the acoustic analysis of cough sounds. In the study, the newly identified characteristics of the cough sound like energy ratio that effectively reflected the acoustic characteristics of pneumonia cough. The accuracy of the ML system to predict the disease by combining the time -domain feature like peak energy with the frequency domain feature is well established in a study conducted by Ismail et al., 2022. The importance of peak energy analysis is well articulated in the study, which implemented it as a part of mixed-

domain feature vector for the quick identification or early screening of COVID-19 (24). Apart from the identification of pathological cough, the peak energy analysis along with the other time domain and frequency domain features was used to clearly distinguish between coughs and other noises in a sleep environment (25).

Based on the features extracted in our previous work, this study would provide insights on variation of the peak energy features on the RMSE envelope of cough sounds. By extracting and scrutinizing the peak properties of energy contours like peak height, peak prominence, base distance (distance between left and right base of a peak), the study aims to unveil intricate details pertaining to cough patterns associated with diverse respiratory diseases. The study also aims to create a strong framework for measuring and distinguishing cough patterns by combining these peak energy features and examining their correlation with various pathological conditions.

Materials and methods

1. Cough dataset

The dataset used in this study was collected from CMC (Christian Medical College), Vellore, Tamil Nadu, India as part of a clinical study. The objective of the study is to validate Swaasa.AI platform for screening and diagnosis of respiratory diseases based on audiometric evaluation of respiratory sounds (coughs and adventitious sounds) using machine learning algorithm. The study was registered under Clinical Trials Registry- India (CTRI/2021/04/032742), and was begun after getting the approval from the CMC- IRB (Institutional Review Board). The validation study cohort consisted of male and female patients 18 and above years of age who presented with symptoms like cough, sore throat, fever etc, assessed through a subset of the St. George's Respiratory Questionnaire (SGRQ). Healthy subjects and patients with suggestive symptoms of underlying respiratory conditions were included in the study. To perform an assessment using Swaasa® AI platform, patients' demographic details and vital signs were collected, followed by interviews using the SGRQ questionnaire to gather information on respiratory symptoms and lung health. Trained healthcare personnel recorded cough sounds using smartphones, ensuring standardized procedures such as maintaining distance, angle, and duration. The collected cough sound samples were then subjected to noise filtering techniques, tailored to the device type. For smartphones with multiple microphones, a noise reduction algorithm based on power level

ratios resulting in automatic denoising of the audio recording is in-built. For the noisy signals, adaptive denoising technique is used to denoise the signals.

The dataset consists of 2180 sound segments which are digital audio files in WAV format out of which 857 are normal, 746 are Asthma, and 577 are COPD. We arrived at this number by using a statistical method, Sample Size Estimation. Sample size can be estimated using statistical criteria. The formula for determining sample size is given below:

$$n = \left(\frac{Z\sigma}{E} \right)^2$$

where Z is the value from the standard normal distribution reflecting the confidence level that will be used, σ is the standard deviation of the outcome variable and E is the desired margin of error. The formula above generates the minimum number of subjects required to ensure that the margin of error in the confidence interval for μ does not exceed E . The feature with maximum variance is used to estimate the sample size based on the favorable error margin. Identify the feature with maximum variance for each disease type, so that we can get the sample size estimates for different diseases. For determining the estimates, we considered Z as 1.96 (95% confidence interval) and margin of error as 0.05 (5%).

To ensure consistency all over the dataset, preprocessing of three major sound properties (Audio Channels, Sample Rate) was done. The audio channels of the cough samples were integrated into mono channels and the sample rates were modified to the default sample rate of 16000 kHz.

2. Acoustic analysis and Peak analysis of the Cough sound

2.1. Acoustic Analysis

Acoustic analysis provides an objective means of evaluating the sound characteristics of coughs. Investigations into waveforms of voluntary cough sounds known as, 'tussiphonograms', indicate the potential diagnostic utility. However, comprehensive validation studies for this purpose are lacking (23). Exploring the acoustic properties of voluntary cough sounds have revealed notable distinctions among coughs associated with various diseases (24). Analyzing the waveforms which capture time and frequency content,

can help identify characteristics in cough sounds that are indicative of the presence of mucus in the airways (25,26).

In our study, we have analyzed Root Mean Square Energy (RMSE) envelope extracted from cough sounds by quantifying the peak features.

2.2. Audio cough recording

Audio cough recordings are captured using a smartphone which has the following specifications.

Audio frequency range 20Hz -20kHz,

Sensitivity : -26 dB to +/-2dB

Maximum sound pressure level: 98dB - 120 dB SPL

Dynamic range: 60dB.

A cough audio recording was done, where the duration of the record was about 10 seconds (Fig 2a). It was found that the 10 second (s) cough sound had 8 cough sequences which were labeled from S1 to S8 respectively. The extrapolation of the cough sequence is shown in fig 2b, where the sequence 2 (S2) was found to have three coughs – C1, C2 and C3. In the above record for 8 sequences there are 27 coughs (this is a scenario of high cough count). The various features are extracted and analyzed from the cough sounds.

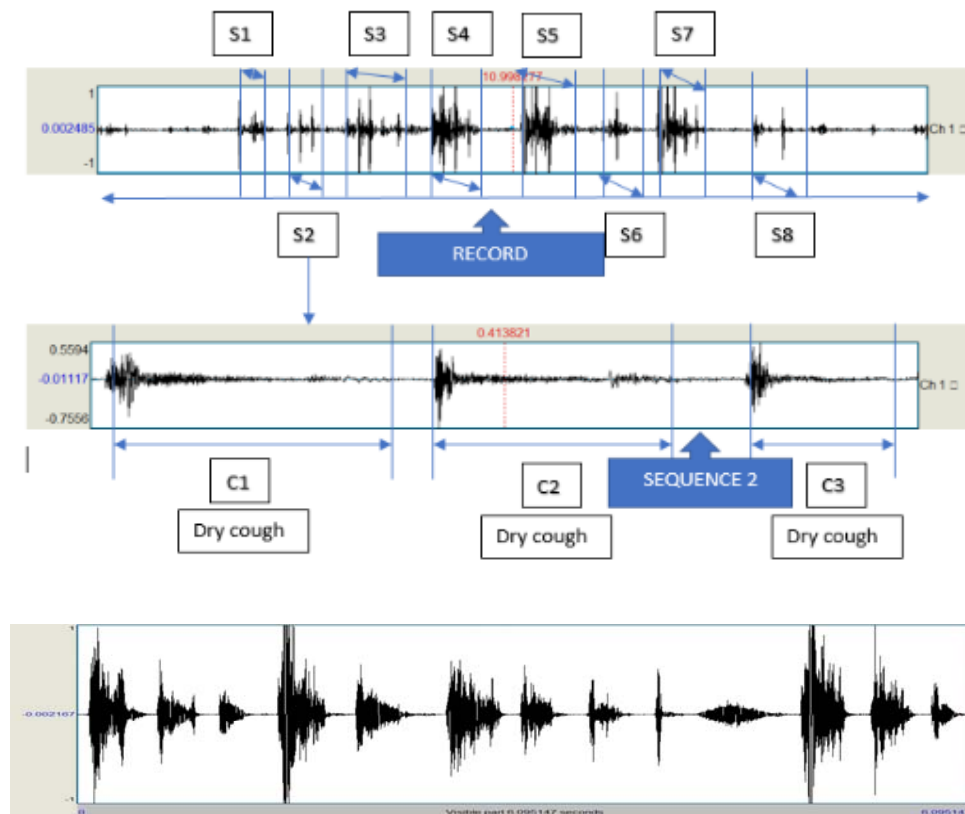


Figure 1a, 1b & 1c- Audio cough recording of 10 seconds. S1-S8 – Sequences. C1-C3 – Cough sounds.

For peak analysis we have merged all the sequences extracted from the audio cough recording and considered the first six seconds from it.

2.3. Peak Analysis

Peak analysis is performed on the features extracted from cough audio signals. Peak features are extracted using the function “`scipy.signal.find_peaks`” from python’s Scipy library. The peak features are obtained from peak properties and they are -

- Peak height - Height of the peak (length).

- Peak prominence - The prominence of a peak measures how much a peak stands out from the surrounding baseline of the signal and is defined as the vertical distance between the peak and its lowest contour line.
- Peak left base - The peak's base to the left.
- Peak right base - The peak's base to the right.

Features such as Root Mean Square Energy (RMSE), Zero-crossing rate (ZCR), and Spectral centroid were extracted using signal standard processing techniques in both time and frequency domain. Peak analysis is performed on the envelopes of these features.

2.4. RMSE peak analysis

Root Mean Square Energy (RMSE) is a time domain feature. Peak analysis is performed on the RMSE envelope. A time-domain graph shows how a signal changes with time, whereas a frequency domain graph shows how much of the signal lies within each given frequency band over a range of frequencies.

Figure 2a

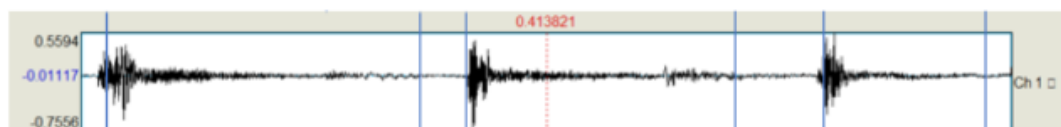


Figure 2b

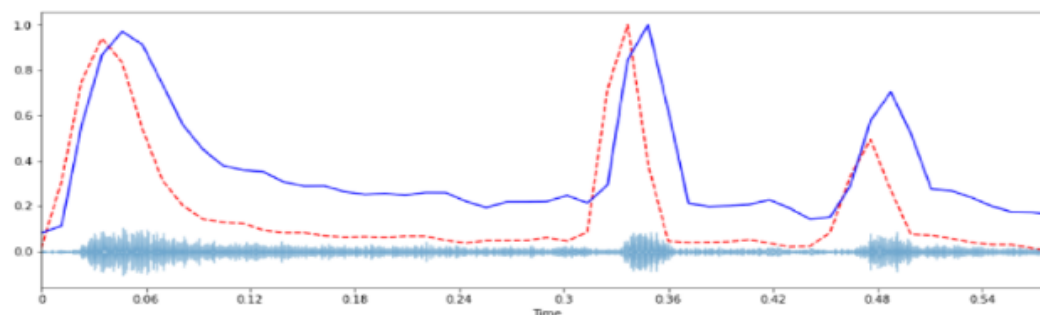


Figure 2a- Audio cough sequence; **Figure 2b-** Acoustic cough feature - Root mean square energy plot. - **RMSE** , --- **Energy**

Fig 2a shows the actual signal and Fig 2b shows the RMSE envelope which is based on all samples in a frame (y-axis in volts and x-axis in frame numbers). It acts as an indicator of the energy, amplitude of the sound.

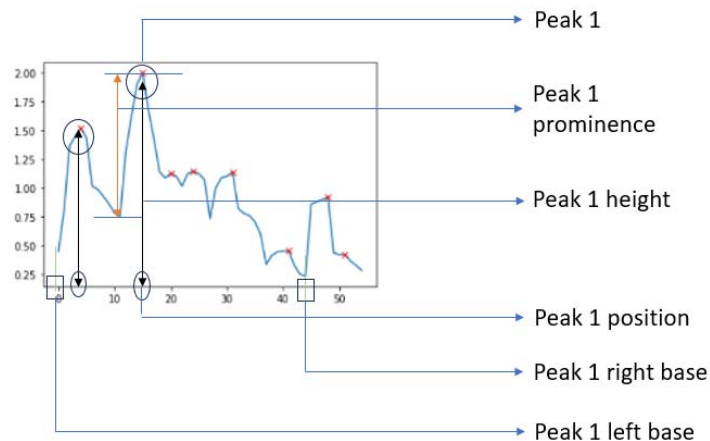


Fig 2c- Various peak features derived from the RMSE plot

The prominence, height and the base distance of the peak was measured in the RMSE peak analysis for normal cough and different pathological conditions. Fig 2c shows the representation of the different features of the RMSE plot for a typical cough sound. It is observed that the base distance of the peak is measured in terms of right base and left base.

Results

1. RMSE peak analysis for different cough sounds

a) RMSE peak height analysis of female subjects

Fig 3 illustrates the histograms of the first RMSE peak height of the COPD (high, medium and low severity) and normal cough sound in the female subjects measured for 6s. The mean peak height of the COPD cough was found to be lower (the average mean value of the peak feature in decibels relative to full scale (dBFS) is low when compared) than the normal cough recorded for 6s. This decrease in the peak heights and decrease in prominence of the COPD cough may be attributed to the excess mucus and inflammation in the airways, destruction in the airways, resulting in less forceful expulsions of air during coughing. It was also observed that the severe condition of COPD exhibited lesser peak heights when compared to the medium and low severe conditions. This connotes the stage of advanced COPD where the respiratory function is significantly compromised.

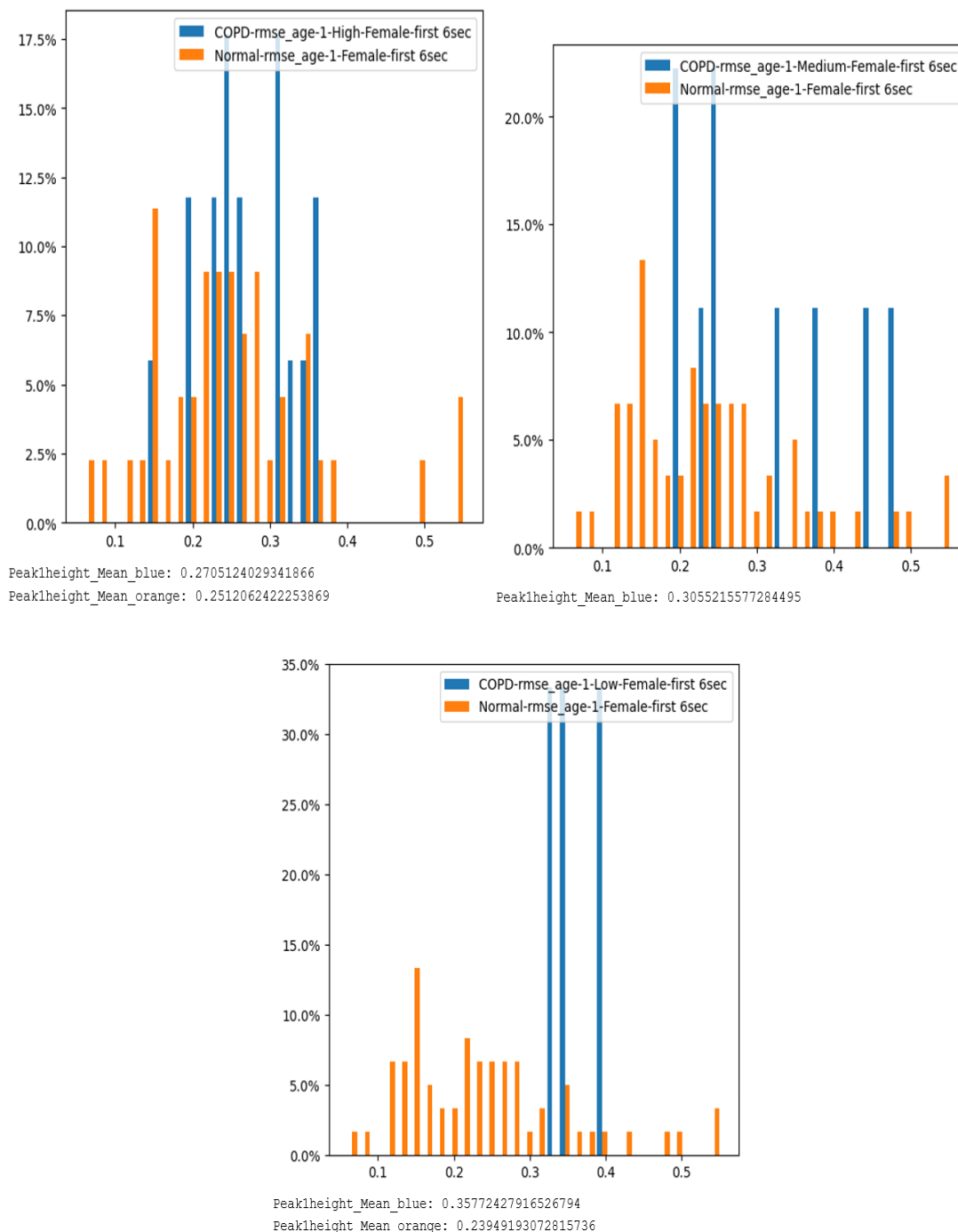


Fig 3- Histogram of RMSE peaks of 6s COPD (high, medium and low severe) cough vs. normal cough in female subjects

Above histograms are generated for the diseases Asthma, Bronchiectasis and ILD also.

b) RMSE peak height analysis of male subjects

The RMSE peak analysis of the COPD cough and normal cough of the male subjects is depicted in Fig 4. The peak heights of the COPD and the normal cough sound recorded for 6s was observed to have a similar pattern to that of the female subjects. Another interesting finding was that, the COPD cough of the male subjects displayed more data points for lesser peak heights when compared to the COPD cough of the female subjects.

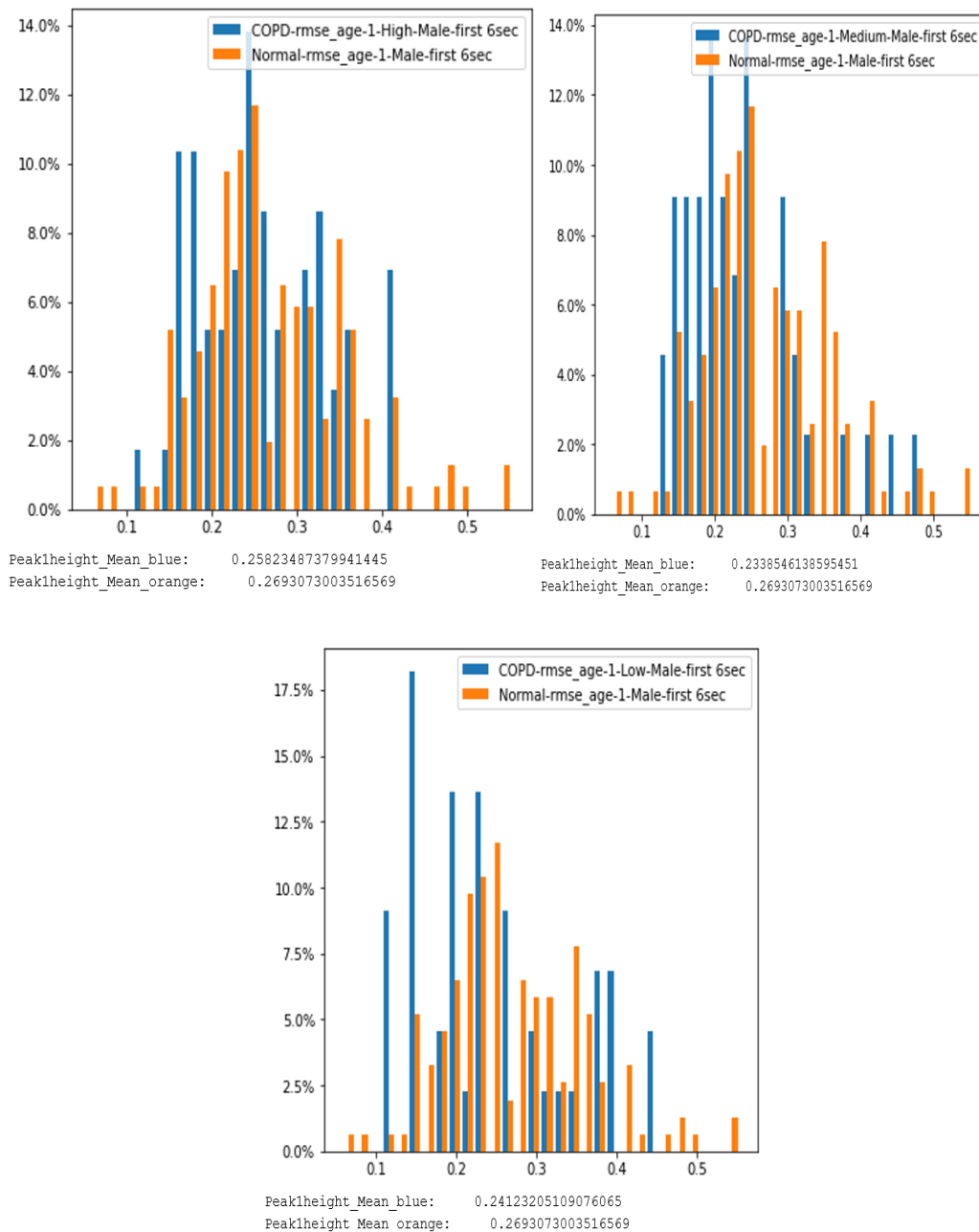


Fig 4- Histogram of RMSE peaks of 6s COPD (high, medium and low severe) cough vs.

normal cough in male subjects

c) **RMSE base distance analysis**

Base distance is the difference between right and left bases. The base distance gives the duration of the cough sequence. In the below figures 5a and 5b the mean base distance of high severity COPD male subjects is 23 frames (x-axis represents the number of frames). And the mean base distance of normal(healthy) male subjects is 20 frames.

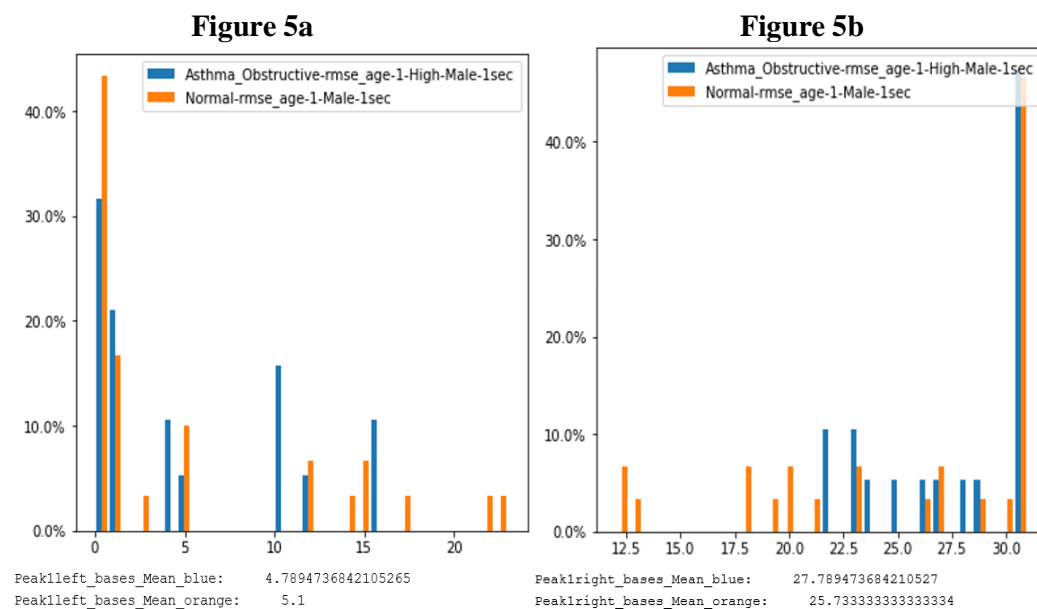


Fig 5a- Histogram of RMSE left base of 6s COPD (high, medium and low severe) cough vs. normal cough in male subjects

Fig 5a- Histogram of RMSE right base of 6s COPD (high, medium and low severe) cough vs. normal cough in male subjects

Table 1: Base distance of female and male subjects in different diseases

RMSE female base distance					
	COPD	Normal	Asthma	Bronchiect	ILD
Minimum	24	21	36	32	16
Average	36	28	40	38	20
Maximun	38	35	51	47	25
RMSE male base distance					
	COPD	Normal	Asthma	Bronchiect	ILD
Minimum	25	21	32	31	15
Average	32	28	42	36	18
Maximun	38	35	54	49	26
RMSE overall base distance					
	COPD	Normal	Asthma	Bronchiect	ILD
Minimum	25	21	33	31	15
Average	34	28	41	37	19
Maximun	38	35	53	49	26

In Table 1 we have captured base distances of different respiratory diseases. In Asthma due to airways constriction cough is produced with high energy and base distance (right base – left base) is very high because of prolonged expulsion.

COPD is a condition of inflammation/obstruction of airways; destruction of lung tissue/alveoli. Cough is prolonged and emerges as a reaction to clear the fluid (mucus), base distance is low due to dynamic narrowing of the glottis.

Bronchiectasis is a condition where inflammation permanently destroys the bronchial walls causing them to widen. The abnormally dilated bronchi filled with excess mucus, which can trigger persistent coughing and make the lungs more vulnerable to infection. Bronchiectasis also has high base distance but less when compared with asthma.

Normal cough emerges as a defense mechanism; as the site of the irritant is mostly in large airways, pressure built inside is high, Energy of the cough is also high, base distance is less.

d) Comparison of peak analysis in different respiratory diseases

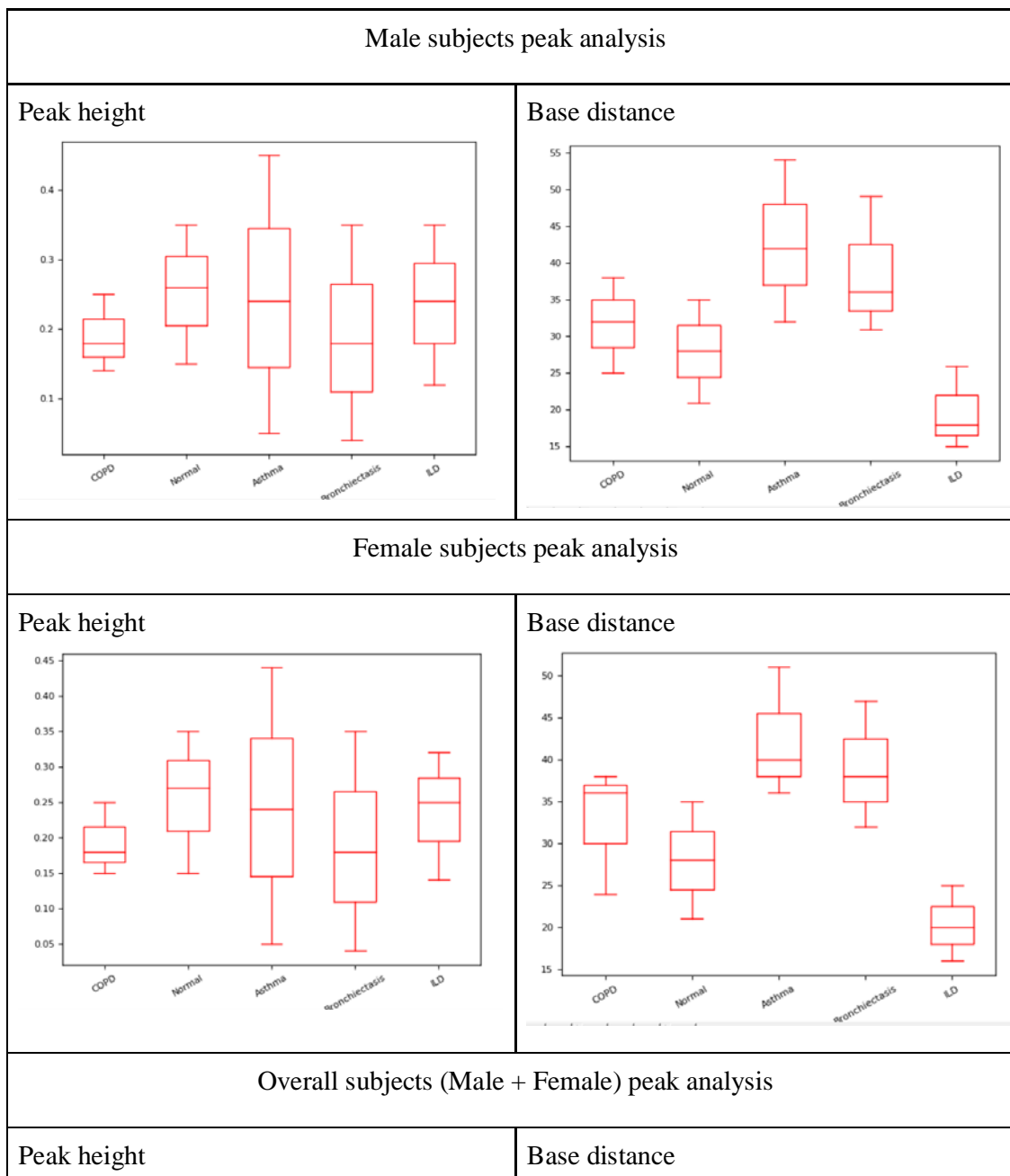
To understand the relation between peak features and the respiratory diseases we have performed correlation between peak features of coughs and spirometry parameters FEV1, FVC and FEV1/FVC. The coughs were collected from the subjects who took the spirometry

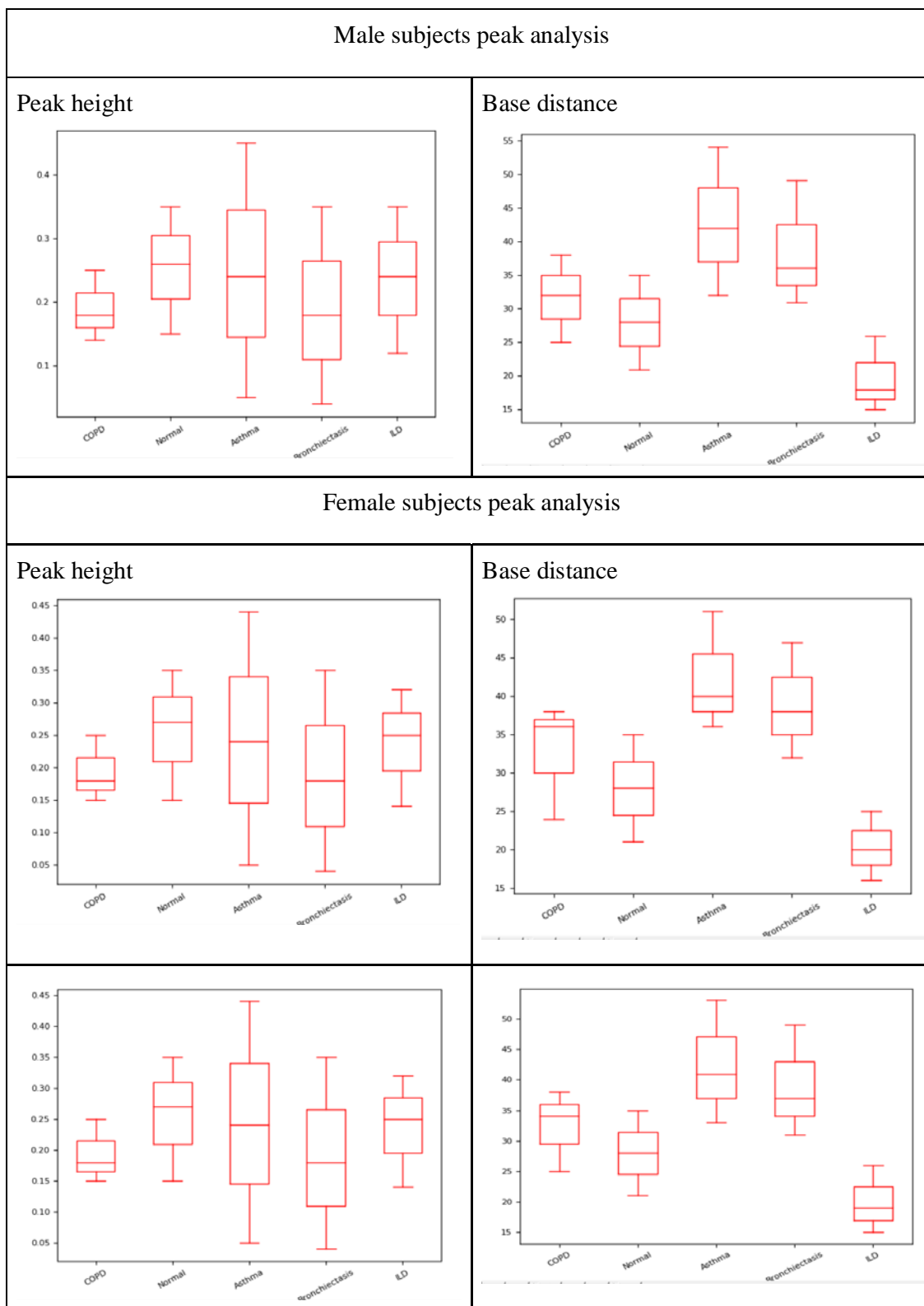
test. The coughs were mapped to spirometry reports from which spirometry parameters were collected.

The p-value from the correlation matrix helps to understand the statistical significance of the data points. In a nutshell, if p-value is $\leq .05$, the null hypothesis is rejected, which implies the data is indeed correlated. If a p-value is less than 0.05 it means that the test of hypothesis is significant and in our interpretation we used stars to flag levels of significance. If a p-value is less than 0.05, it is flagged with one star (*). If a p-value is less than 0.01, it is flagged with 2 stars (**). If a p-value is less than 0.001, it is flagged with three stars (***)

- The peak features of the normal cough, peak height and peak prominence flagged with (***) for the spirometry parameters FEV1, FVC and FEV1/FVC.
- The peak features of the obstructive patterned cough, peak position; peak left base and right base flagged with (*) for the spirometry parameters FEV1, FVC.
- The peak features of the restrictive patterned cough, peak position; peak left base and right base flagged with (**) for the spirometry parameter FEV1/ FVC.

The below table illustrates the comparison of peak height and base distance of coughs in different respiratory diseases with the help of box plots.





Discussion

The findings underscore the potential of RMSE peak analysis in discerning between the normal and pathological conditions and distinguishing the severity of respiratory conditions. Analyzing both the male and female subjects in detail contributes to a holistic understanding of the variation of acoustic features across diverse demographics and respiratory conditions. Moreover, the exploration of peak height, peak prominence, and base distance as distinctive parameters for characterizing cough patterns provides nuanced understanding of the acoustic signatures associated with various respiratory conditions.

Additionally, the combination of spectrogram analysis and RMSE peak analysis also offers a multi-faceted approach to characterizing cough sounds. The correlation of the peak energy features with respiratory conditions may open avenues for more precise diagnostic tools and monitoring systems.

Thus, the findings of the study presented herein might contribute to the ongoing efforts to enhance diagnostic capabilities, fostering a new phase in the assessment and management of respiratory health. Our future studies might aim in the addition of peak analysis to ML models to increase its accuracy in cough detection and thereby to explore the correlation between acoustic features and clinical parameters, enhancing the applicability of our findings in healthcare settings.

Limitations

One notable limitation of the study is the impediment encountered during peak analysis, primarily attributed to the presence of noise in the data, that might introduce complexity in accurately isolating and characterizing peak energy features.

Conclusion

In conclusion, our comprehensive analysis of cough sounds through spectrogram and RMSE peak analysis provides a novel foundation for the development of diagnostic tools for respiratory conditions, particularly COPD. The study also contributes valuable insights into the peak energy analysis of the acoustic characteristics of cough sounds, showcasing the potential for acoustic analysis as a non-invasive and informative tool in the assessment of respiratory health and improving clinical diagnostics.

Data availability statement:

Due to the nature of this research, participants of this study did not agree for their data to be shared publicly. However, the detailed analysis can be shared by the author “NRS” upon reasonable request.

Ethical clearance:

The study was registered under Clinical Trials Registry- India (XXX), and was begun after getting the approval from the CMC- IRB (Institutional Review Board).

Author Contributions:

STC and BT defined study protocol, including the study design and methodology. NRS conceptualized the idea of using cough sounds for screening and diagnosing COVID-19. GR performed literature review and data analysis. BM, HVR, SDP and NKRB were involved in device development. VY and MJ created value proposition for the device. SS assisted in executing the project at Christian Medical College by providing all the resources and extending research capabilities. CG and GR performed data analysis, sample size estimation and result analysis. KLPK, SS, NJ, VSP, ST and SV provided subject matter expertise. GR and JG wrote the manuscript. All the authors provided intellectual inputs and helped in preparing the manuscript.

References:

1. Aneeqa Ijaz, Muhammad Nabeel, Usama Masood, Tahir Mahmood, Mydah Sajid Hashmi, Iryna Posokhova, Ali Rizwan, Ali Imran, Towards using cough for respiratory disease diagnosis by leveraging Artificial Intelligence: A survey, Informatics in Medicine Unlocked, Volume 29, 2022, 100832.
2. L. Xing, E.A. Krupinski, J. Cai. Artificial Intelligence will soon change the landscape of medical physics research and practice.
3. M.A. Elaziz, K.M. Hosny, A. Salah, M.M. Darwish, S. Lu, A.T. Sahlol. New machine learning method for image-based diagnosis of covid-19. PLoS One, 15 (6) (2020), Article e0235187
4. G. Chambres, P. Hanna, M. Desainte-Catherine. “Automatic detection of patient with respiratory diseases using lung sound analysis 2018 International conference on content-based multimedia indexing (CBMI), IEEE (2018), pp. 1-6
5. Alqudaihi KS, Aslam N, Khan IU, Almuhaideb AM, Alsunaidi SJ, Ibrahim NMAR, Alhaidari FA, Shaikh FS, Alsenbel YM, Alalharith DM, Alharthi HM, Alghamdi

- WM, Alshahrani MS. Cough Sound Detection and Diagnosis Using Artificial Intelligence Techniques: Challenges and Opportunities. *IEEE Access*. 2021 Jul 15;9:102327-102344.
6. Kumar A, Abhishek K, Ghalib MR, Nerurkar P, Shah K, Chandane M, Bhirud S, Patel D, Busnel Y. Towards cough sound analysis using the internet of things and deep learning for pulmonary disease prediction. *Trans Emerging Telecommun Technol*. 2022. 33(10), e4184.
 7. Kapoor T, Pandhi T, Gupta B. Cough Audio Analysis for COVID-19 Diagnosis. *SN Comput Sci*. 2023;4(2):125.
 8. Shabut A. M., Tania M. H., Lwin K. T., Evans B. A., Yusof N. A., Abu-Hassan K. J., and Hossain M. A., “An intelligent mobile-enabled expert system for tuberculosis disease diagnosis in real time,” *Expert Syst. Appl.*, vol. 114, pp. 65–77.
 9. Hee, H.I.; Balamurali, B.; Karunakaran, A.; Herremans, D.; Teoh, O.H.; Lee, K.P.; Teng, S.S.; Lui, S.; Chen, J.M. Development of Machine Learning for Asthmatic and Healthy Voluntary Cough Sounds: A Proof of Concept Study. *Appl. Sci*. 2019, 9, 2833.
 10. Infante, C.; Chamberlain, D.; Fletcher, R.; Thorat, Y.; Kodgule, R. Use of cough sounds for diagnosis and screening of pulmonary disease. In *Proceedings of 2017 IEEE Global Humanitarian Technology Conference (GHTC)*, San Jose, CA, USA, 19–22 October 2017; pp. 1–10.
 11. Al-khassaweneh, M.; Bani Abdelrahman, R.E. A signal processing approach for the diagnosis of asthma from cough sounds. *J. Med. Eng. Technol*. 2013, 37, 165–171.
 12. Enseki, M.; Nukaga, M.; Tadaki, H.; Tabata, H.; Hirai, K.; Kato, M.; Mochizuki, H. A breath sound analysis in children with cough variant asthma. *Allergol. Int*. 2019, 68, 33–38.
 13. Parker, D.; Picone, J.; Harati, A.; Lu, S.; Jenkyns, M.H.; Polgreen, P.M. Detecting paroxysmal coughing from pertussis cases using voice recognition technology. *PLoS ONE* 2013, 8, e82971.
 14. Pramono, R.X.A.; Imtiaz, S.A.; Rodriguez-Villegas, E. A cough-based algorithm for automatic diagnosis of pertussis. *PLoS ONE* 2016, 11, e0162128.
 15. Sharan, R.V.; Abeyratne, U.R.; Swarnkar, V.R.; Porter, P. Automatic croup diagnosis using cough sound recognition. *IEEE Trans. Biomed. Eng*. 2018, 66, 485–495.

16. Koehler, U.; Hildebrandt, O.; Fischer, P.; Gross, V.; Sohrabi, K.; Timmesfeld, N.; Peter, S.; Urban, C.; Steiß, J.-O.; Koelsch, S. Time course of nocturnal cough and wheezing in children with acute bronchitis monitored by lung sound analysis. *Eur. J. Pediatrics* 2019, 178, 1385–1394
17. Kosasih, K.; Abeyratne, U.R.; Swarnkar, V.; Triasih, R. Wavelet augmented cough analysis for rapid childhood pneumonia diagnosis. *IEEE Trans. Biomed. Eng.* 2014, 62, 1185–1194.
18. Sfayyih, A.H., Sulaiman, N. & Sabry, A.H. A review on lung disease recognition by acoustic signal analysis with deep learning networks. *J Big Data* 10, 101 (2023)
19. Ren Z, Chang Y, Bartl-Pokorny KD, Pokorny FB, Schuller BW. The Acoustic Dissection of Cough: Diving Into Machine Listening-based COVID-19 Analysis and Detection. *J Voice*. 2022 Jun 15:S0892-1997(22)00166-7.
20. Ashby, A., Meister, J. A., Soldar, G., & Nguyen, K. A. (2022). A novel cough audio segmentation framework for COVID-19 detection. 1-8. Paper presented at Symposium on Open Data and Knowledge for a Post-Pandemic Era, Brighton, United Kingdom. <https://doi.org/10.14236/ewic/ODAK22.1>
21. Windmon, A., Minakshi, M., Bharti, P., Chellappan, S., Johansson, M., Jenkins, B. A., & Athilingam, P. R. (2018). TussisWatch: A Smartphone System to Identify Cough Episodes as Early Symptoms of Chronic Obstructive Pulmonary Disease and Congestive Heart Failure. *IEEE Journal of Biomedical and Health Informatics*
22. Chung Y, Jin J, Jo HI, Lee H, Kim SH, Chung SJ, Yoon HJ, Park J, Jeon JY. Diagnosis of Pneumonia by Cough Sounds Analyzed with Statistical Features and AI. *Sensors (Basel)*. 2021 Oct 23;21(21):7036.
23. Islam R, Abdel-Raheem E, Tarique M. A study of using cough sounds and deep neural networks for the early detection of Covid-19. *Biomed Eng Adv*. 2022 Jun;3:100025.
24. Lee KK, Matos S, Ward K, et al. Sound: a non-invasive measure of cough intensity. *BMJ Open Resp Res* 2017;4:e000178.
25. Eni M, Mordoh V, Zigel Y (2022) Cough detection using a non-contact microphone: A nocturnal cough study. *PLoS ONE* 17(1): e0262240.
26. Korpas J, Sadlonova J, Vrabec M. Analysis of the cough sound: an overview. *Pulm Pharmacol*. 1996;9:

27. Piirila P, Sovijarvi AR. Differences in acoustic and dynamic characteristics of spontaneous cough in pulmonary diseases. *Chest*. 1989;**96**:46.
28. Hashimoto Y, Murata A, Mikami M, Nakamura S, Yamanaka E, Kudoh S. Influence of the rheological properties of airway mucus on cough sound generation. *Respirology*. 2003;**8**:45.
29. Murata A, Taniguchi Y, Hashimoto Y, Kaneko Y, Takasaki Y, Kudoh S. Discrimination of productive and non-productive cough by sound analysis. *Intern Med*. 1998;**37**:732.
30. Samantha J Barry, Adrie D Dane, Alyn H Morice and Anthony D Walmsley. The automatic recognition and counting of cough. BioMed Central, DOI 10.1186/1745-9974-2-8.
31. Patentee. A system for analyzing risk associated with cough sounds (14 December 2017) Intellectual Property India 308156