

1 **Technical and ethical challenges in polygenic embryo selection**

2

3 Shinichi Namba^{1-3,28}, Masato Akiyama⁴, Haruka Hamanoue⁵, Kazuto Kato⁶, Minae
4 Kawashima⁷, Itaru Kushima^{8,9}, Koichi Matsuda^{10,11}, Masahiro Nakatochi¹², Soichi
5 Ogishima^{13,14}, Kyuto Sonehara¹⁻³, Ken Suzuki², Atsushi Takata¹⁵, Gen Tamiya¹⁶⁻¹⁸, Chizu
6 Tanikawa¹⁹, Kenichi Yamamoto^{2,20-22}, Natsuko Yamamoto²³⁻²⁵, The BioBank Japan Project,
7 Norio Ozaki²⁶, and Yukinori Okada^{1-3,22,27,28}

8

9 ¹Department of Genome Informatics, Graduate School of Medicine, The University of Tokyo,
10 Tokyo 113-8654, Japan.

11 ²Department of Statistical Genetics, Osaka University Graduate School of Medicine, Suita
12 565-0871, Japan.

13 ³Laboratory for Systems Genetics, RIKEN Center for Integrative Medical Sciences,
14 Yokohama 230-0045, Japan.

15 ⁴Department of Ocular Pathology and Imaging Science, Graduate School of Medical
16 Sciences, Kyushu University, Fukuoka 812-8582, Japan.

17 ⁵Department of Clinical Genetics, Yokohama City University Hospital, Yokohama 236-0004,
18 Japan.

19 ⁶Department of Biomedical Ethics and Public Policy, Osaka University Graduate School of
20 Medicine, Suita 565-0871, Japan.

21 ⁷Database Center for Life Science, ROIS-DS, Kashiwa 277-0871, Japan.

22 ⁸Department of Psychiatry, Nagoya University Graduate School of Medicine, Nagoya 466-
23 8550, Japan.

24 ⁹Medical Genomics Center, Nagoya University Hospital, Nagoya 466-8550, Japan.

25 ¹⁰Laboratory of Genome Technology, Human Genome Center, Institute of Medical Science,

26 **NOTE: This preprint reports new research that has not been certified by peer review and should not be used to guide clinical practice.**
The University of Tokyo, Tokyo 108-8639, Japan.

27 ¹¹Laboratory of Clinical Genome Sequencing, Department of Computational Biology and
28 Medical Sciences, Graduate School of Frontier Sciences, The University of Tokyo, Tokyo 108-
29 8639, Japan.

30 ¹²Public Health Informatics Unit, Department of Integrated Health Sciences, Nagoya
31 University Graduate School of Medicine, Nagoya 461-8673, Japan.

32 ¹³INGEM, Tohoku University, Sendai 980-8573, Japan.

33 ¹⁴Department of Informatics for Genomic Medicine, Tohoku Medical Megabank Organization,
34 Tohoku University, Sendai 980-8573, Japan.

35 ¹⁵Laboratory for Molecular Pathology of Psychiatric Disorders, RIKEN Center for Brain
36 Science, Wako 351-0198, Japan.

37 ¹⁶Department of AI and Innovative Medicine, Tohoku University Graduate School of Medicine,
38 Sendai 980-8573, Japan.

39 ¹⁷Department of Statistical Genetics and Genomics, Tohoku Medical Megabank Organization,
40 Tohoku University, Sendai 980-8573, Japan.

41 ¹⁸Statistical Genetics Team, RIKEN Center for Advanced Intelligence Project, Tokyo 103-
42 0027, Japan.

43 ¹⁹Department of Computational Biology and Medical Sciences, Graduate School of Frontier
44 Sciences, The University of Tokyo, Tokyo 108-8639, Japan.

45 ²⁰Laboratory of Children's health and Genetics, Division of Health Science, Osaka University
46 Graduate School of Medicine, Suita 565-0871, Japan.

47 ²¹Department of Pediatrics, Osaka University Graduate School of Medicine, Suita 565-0871,
48 Japan.

49 ²²Laboratory of Statistical Immunology, Immunology Frontier Research Center (WPI-IFReC),
50 Osaka University, Suita 565-0871, Japan.

51 ²³Ethical, Legal, and Social Issues Core, Institute for Datability Science, Osaka University,
52 Suita 565-0871, Japan.

53 ²⁴Department of Biomedical Ethics and Public Policy, Osaka University Graduate School of
54 Medicine, Suita 565-0871, Japan.

55 ²⁵Osaka University Research Center on Ethical, Legal, and Social Issues (ELSI Center),
56 Suita 565-0871, Japan.

57 ²⁶Pathophysiology of Mental Disorders, Nagoya University Graduate School of Medicine,
58 Nagoya 466-8550, Japan.

59 ²⁷Premium Research Institute for Human Metaverse Medicine (WPI-PRIME), Osaka
60 University, Suita 565-0871, Japan.

61 ²⁸Co-corresponding authors: Shinichi Namba and Yukinori Okada.

62

63 Shinichi Namba, M.D., Ph.D.

64 Address: 2-2 Yamadaoka, Suita, Osaka 565-0871, Japan

65 Phone: +81-6-6879-3971

66 E-mail: snamba@sg.med.osaka-u.ac.jp

67

68 Yukinori Okada, M.D., Ph.D.

69 Address: 2-2 Yamadaoka, Suita, Osaka 565-0871, Japan

70 Phone: +81-6-6879-3971

71 E-mail: yokada@sg.med.osaka-u.ac.jp

72

73 **Conflict of Interest**

74 The authors declare no competing interests.

75

76 **Abstract**

77 Whereas best practice of clinical prediction of human phenotypes by polygenic risk score
78 (PRS) has yet to be fully implemented, commercial industries already offer pre-implantation
79 genetic testing for PRS (PGT-P) to select embryos with 'desirable' potential. However, its
80 efficacy is questionable due to the current technical challenges, which also raise ethical
81 concerns. Our *in-silico* simulations utilizing biobank resources revealed that the embryo
82 selected by PGT-P substantially differs depending on the choice of methods and the random
83 fluctuation of the PRS construction. Here, we outline the technical challenges and also the
84 ethical concerns that remain even if the technical challenges are solved, and hope to call on
85 a society-wide discussion for this technology.

86

87

88 **Main**

89 Estimating genetic susceptibility to clinical and non-clinical phenotypes has been increasingly
90 successful with the advent of genome-wide association study (GWAS) and its derived score,
91 polygenic risk score (PRS)¹. PRS is generally calculated by aggregating the effects of
92 common genetic variants associated with a phenotype and can effectively predict disease
93 risk and other phenotypic values. Clinical implementation of PRS is one of the active research
94 fields for the early detection and intervention of human diseases². However, prior to clinical
95 implementation, private enterprises marketed PRS analyses of embryos as pre-implantation
96 genetic testing (PGT; PGT-P) for *in vitro* fertilization³. They claim that selected embryos have
97 the potential to acquire desirable traits and are less susceptible to diseases. Although they
98 are advancing ahead with PGT-P⁴, this technology raises various questions about its efficacy
99 and ethical validity.

100 In this comment, we summarize the challenges and limitations of PRS which affects the
101 efficacy of PGT-P, and highlight the non-deterministic nature of PRS by virtually selecting
102 embryos using different PRS methods. We then address the ethical concerns of PGT-P and
103 outline issues to be addressed and communicated society-wide.

104

105 **Current challenges and limitations of PRS in applying to PGT-P**

106 One of the important challenges in using PRS for embryo selection is that PRS captures
107 relatively limited phenotypic variance than consumers might expect. PRS explains no more
108 than 5.8% of the variance in body mass index in Martin AR *et al.*,⁵ for example, and typically
109 much less for diseases, often falling below 5% and even 1%⁶. The main reason for this is the
110 difficulty in constructing PRS because the effect sizes of common variants are relatively small
111 and estimated with error⁷. Due to this small variance captured by PRS, phenotypic gain by
112 PGT-P will be inconspicuous and may not be clinically meaningful. The embryos from the
113 same parents are genetically akin to each other just like dizygotic twins, making the expected

114 phenotypic gain in PGT-P even smaller⁸. For example, the average gain was estimated to be
115 2.5 cm in height⁹, one of the most successful targets of PRS. The distribution of embryonic
116 PRS will be even narrower than that in a general population. In addition, there are genetic
117 determinants not captured by common variants (e.g., rare pathogenic variants), which can
118 have large effect sizes at the individual level. The effect sizes of rare variants were indeed
119 estimated to be up to 1.8cm for height in the Japanese population¹⁰, which is comparable to
120 the gain by PGT-P. While one company has reported its methodology for genotyping both
121 common and rare variants¹¹, the way to integrate them into a calibrated score has yet to be
122 established. Therefore, it will be difficult to justify the efficacy of PGT-P postnatally, and PGT-
123 P may be disappointing for parents wishing to receive PGT-P.

124 PRS might have unintentional effects on non-targeted phenotypes because one variant
125 can be associated with multiple phenotypes (i.e., pleiotropy). Epidemiological disease
126 correlations can also cause unintentional pleiotropic effects. It is difficult to forecast the
127 pleiotropy, or more generally, to reveal the biology of PRS because most variants used for
128 PRS are not causal by themselves, merely tagging correlated causal variants.

129 Moreover, the characteristics of PRS depend on the discovery GWAS from which PRS
130 was constructed. Sample size and subsequent statistical power of the GWAS determine the
131 maximum accuracy of phenotypic prediction by PRS. In addition, if GWAS is confounded by
132 factors other than direct phenotypic relationships, PRS would be confounded likewise. As the
133 confounding factors include ethically controversial and ancestry-correlated traits like skin
134 tanning and hair color¹², selecting embryos based on a particular phenotype may actually
135 result in selecting particular ancestries. In addition, PRS distribution can be implausibly
136 different across populations¹³, which might also lead to the selection of particular ancestries
137 when parents' populations are different. Finally, PRS is less predictable when applied to
138 populations not mainly included in its discovery GWAS. As GWAS has been conducted
139 primarily on the European population, PRS predictability is generally lower in other

140 underrepresented populations, which may foster health disparities⁵.

141

142 **Selected embryos vary across PRS construction methods**

143 Various PRS construction methods have been proposed^{1,14–18} to improve the accuracy of
144 phenotype prediction by PRS. While these methods are gaining popularity in PRS studies,
145 no single state-of-the-art method exists, and individual researchers pick up their preferred
146 method. Through our simulation utilizing biobank resources, we showed that this concern is
147 indeed one of the biggest problems with PGT-P.

148 First, we constructed PRS for adult height using six popular PRS methods^{1,14–18}. By using
149 publicly available genotype data from Biobank Japan, we virtually created a random mate
150 pair and generated genotypes of ten embryos by simulating recombination between the
151 haplotypes of the mate pair. We then ranked the embryos in the descending order of PRS
152 (**Supplementary Methods**). We repeated this process 500 times and in no more than half
153 the cases was the same embryo selected as the top-ranked one in any combinations of PRS
154 methods (median 30.0% [range, 20.4–41.6%], **Figure 1a**). Strikingly, the top-ranked embryo
155 by a particular PRS method was lowest-ranked by at least one other method with a median
156 5.9% chance (3.4–8.0%, **Figure 1b**), and vice versa (median 5.2% [4.0–7.8%], **Figure 1c**).
157 These results imply that unselected embryos would be selected if other PRS methods were
158 used, raising serious ethical concerns about selecting embryos and consequently discarding
159 other embryos in an unreliable way.

160 As a larger GWAS sample size improves accuracy in phenotype prediction by PRS, one
161 might think that a larger GWAS sample size might also solve the inconsistent selection of
162 embryos between PRS methods. We simulated saturated GWAS summary statistics¹⁹ with a
163 sample size larger than any GWAS to date ($N_{case} = 5 \times 10^6$ and $N_{control} = 5 \times 10^6$) and with high
164 heritability ($h^2 = 0.8$), and repeated the embryo ranking simulation (**Supplementary**
165 **Methods**). However, the top-ranked embryos were still different across PRS methods at a

166 rate similar to the previous one (median 24.0 [18.6-34.8%], **Supplementary Figure 1**),
167 indicating that the inconsistency between PRS methods cannot be easily solved in the current
168 GWAS framework.

169 The inconsistent selection of embryos highlights the difference in statistical models
170 across PRS methods. They use different formulas and make different assumptions for the
171 distribution of causal variants in the human genome^{1,14-18}. As some PRS methods adopt
172 Bayesian optimization, even simply repeating the same PRS method produced a slightly
173 different embryo ranking (**Figure 1d and e**). This non-deterministic nature of PRS illustrates
174 that PRS construction is a probabilistic process with fluctuation, and makes PGT-P distinct
175 from other PGTs. Although there is an established PGT targeting genetic variants (PGT for
176 monogenic diseases, PGT-M), its targets are rare variants with verified pathogenicity. In
177 contrast, embryos with a high score of a disease PRS is merely predicted to be at high risk
178 by a particular statistical model with random fluctuation.

179 180 **Ethical concerns of PGT-P independent of PRS efficacy**

181 As shown in the simulations, embryo selection by PRS is currently not robust enough to be
182 implemented as PGT-P. Moreover, the concept of PGT-P itself may raise yet other ethical
183 concerns. PGT-P sorts out the value of embryos along with arbitrary traits desirable for
184 consumers, leading to potential eugenic thinking. Although the established PGTs other than
185 PGT-P also sort out embryos based on their genetic features, their purposes are treating
186 infertility and preventing severe genetic disorders, different from PGT-P. Even for these PGTs,
187 each country has set law and ethical guidelines after long debates. In Japan, as in some
188 countries²⁰, the target diseases of the established PGTs are strictly limited, and the PGTs are
189 not practiced for screening purposes. Only parents approved by specialists' review are able
190 to receive PGTs after repeated genetic counseling²¹. Therefore, there is a gap between the
191 current ethical guidelines and the targeting of healthy embryos by PGT-P. Considering the

192 strict restrictions of the target diseases for the established PGTs, it is also questionable
193 whether common diseases should be subject to embryo selection because common diseases
194 include to some extent preventable and controllable diseases by the postnatal lifestyle.

195 Another ethical concern is the PGT-P's effects on children's identity establishment. When
196 consumers have excessive expectations for the effectiveness of PGT-P, PGT-P might
197 negatively affect the parent-child relationship. For example, children may feel burdened that
198 they were selected because they are 'genetically superior' if informed that they were born
199 with PGT-P. Besides these concerns about increasing power imbalances between parents
200 and children, the impact of unexpected changes in the environment of children born with
201 PGT-P, such as the death or remarriage of their parents, is also unknown. Genetic
202 counseling should be at least mandatory to accurately understand the risk-benefit of PGT-P.
203 Nonetheless, counseling parents alone is insufficient, as it does not necessarily convey
204 accurate knowledge to their children. As there already exist children born with PGT-P, careful
205 support for these children is also required. At the same time, it is important not to treat children
206 differently for being born PGT-P in order to respect their dignity.

207 Despite these ethical concerns, more than half of the participants in a U.S. survey
208 reported no moral objection to PGT-P and the participants showed a willingness to use PGT-
209 P to some extent²². Because this survey was taken place in the U.S., a country where PGT-
210 P is already provided as a private service, we might not jump to generalize this survey report
211 globally. However, it is safe to say that the experts may not have communicated the ethical
212 concerns to the public appropriately, while PGT-P seems to be in demand. Discussing the
213 technical challenges and the ethical concerns by both experts and the public is mandatory to
214 regulate PGT-P or seek its tolerable usage in preparation for future technical innovations.

215

216 **Conclusion**

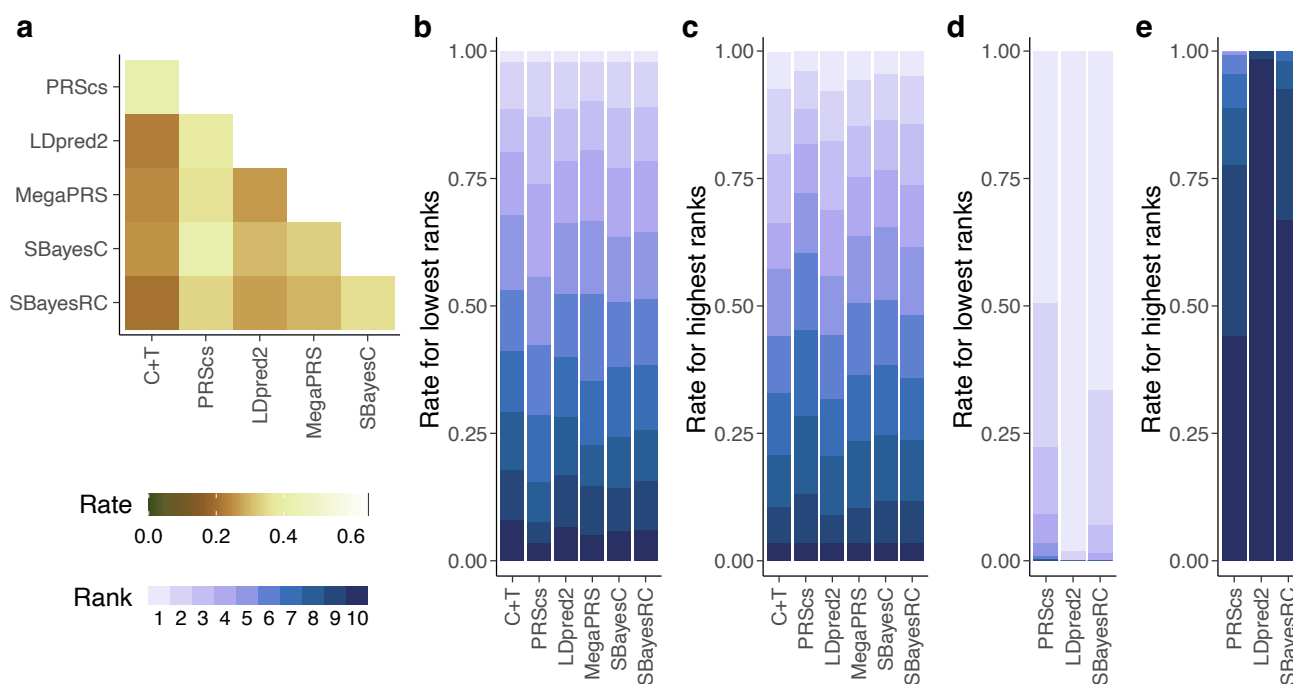
217 We summarize current technical challenges and ethical concerns for PGT-P in **Box 1**. PGT-

218 P to date is not sufficiently effective or robust for embryo selection. Technical challenges
219 stemming from PRS also need to be addressed, and these challenges are generally
220 applicable to the clinical implementation of PRS. Some ethical concerns arise from the
221 technical challenges, including the unreliable and confounded selection of embryos. In this
222 regard, we provide a new viewpoint by showing the inconsistent selection of embryos across
223 PRS construction methods and across replicates of the same methods. Furthermore, there
224 are ethical concerns about sorting out life and children's self-identity that technical
225 development cannot solve. These concerns must be addressed before PGT-P is accepted
226 as an ethically approved examination. Given these challenges and concerns, we advocate
227 that PGT-P is currently premature for implementation, although we take seriously the desire
228 of parents to take on the new challenge of selecting embryos using PGT-P for a variety of
229 reasons. We clarify that these concerns do not affect the dignity of children already born with
230 PGT-P. We rather call on a society-wide discussion and expect it will be consistent with
231 previous arguments on the established PGTs.

232

233 **Figure and box descriptions**

234 **Figure 1. Prominent inconsistency of embryo selection rank across PRS methods.**



235

236 **a**, the rate at which two PRS methods chose the same embryo as the top-ranked in 500
 237 simulations. **b**, the distribution of lowest ranks across all PRS methods for the embryo top-
 238 ranked by the PRS method in the x coordinate. Rank 1 means the embryo top-ranked by the
 239 PRS method in the x coordinate was also top-ranked by any other methods. On the contrary,
 240 rank 10 means the embryo top-ranked by the PRS method in the x coordinate was bottom-
 241 ranked by at least one other PRS method. **c**, same as **b**, but of the highest ranks for the
 242 bottom-ranked embryo. **d**, the distribution of lowest ranks among 10 PRS replicates by the
 243 same method, for the embryo top-ranked by the PRS constructed in the first repeat. **e**, same
 244 as **d**, but of the highest ranks for the bottom-ranked embryo. PRS, polygenic risk score. C+T,
 245 clumping and thresholding.

246

247 **Box 1. Technical challenges and ethical concerns in PGT-P.**

- Technical challenges specific to PGT-P
 - The expected phenotypic gain by PGT-P can be too small to be validated or to have clinical meanings.
 - The selected embryo differs across PRS construction methods and even across replications of the same method.
- Technical challenges stemming from PRS
 - PRS ignores genetic determinants other than common variants.
 - PRS can have unintentional pleiotropic effects on non-targeted phenotypes.
 - PRS can take over the confounding factors of its discovery GWAS.
 - The efficacy and distribution of PRS are different across populations.
- Ethical concerns
 - PGT-P may be used eugenically to sort out the value of life.
 - Without appropriate support, children born with PGT-P may have difficulty establishing their identity.
 - Public understanding of ethical concerns is not sufficient.

249 **Data and code availability**

250 The genotype data of Biobank Japan are available at NBDC Human Database
251 (<https://humandbs.biosciencedbc.jp/en/>) with the accession ID of JGAS000114 and
252 JGAS000412. The GWAS summary statistics for height and the height PRS calculated with
253 SBayesC are publicly available at
254 https://portals.broadinstitute.org/collaboration/giant/index.php/GIANT_consortium_data_file
255 s. We constructed PRS using the following publicly available tools: LDpred2
256 (<https://privefl.github.io/bigsnpr/articles/LDpred2.html>), PRScs
257 (<https://github.com/getian107/PRScs>), SBayesC (<https://cnsgenomics.com/software/gctb>),
258 SBayesRC (<https://github.com/zhilizheng/SBayesRC>), and MegaPRS
259 (<https://dougsspeed.com/>).

260

261 **Acknowledgment**

262 S.N. was supported by Takeda Science Foundation. Y.O. was supported by JSPS KAKENHI
263 (22H00476), AMED (JP21gm4010006, JP22km0405211, JP22ek0410075, JP22km0405217,
264 JP22ek0109594, JP223fa627002, JP223fa627010, JP233fa627011, JP23zf0127008), JST
265 Moonshot R&D (JPMJMS2021, JPMJMS2024), Takeda Science Foundation, Bioinformatics
266 Initiative of Osaka University Graduate School of Medicine, Institute for Open and
267 Transdisciplinary Research Initiatives and Center for Infectious Disease Education and
268 Research (CiDER), and Center for Advanced Modality and DDS (CAMaD), Osaka University.
269 N.O. was supported by AMED (JP22dk0307113).

270

271 **References**

- 272 1. Choi, S. W., Mak, T. S.-H. & O'Reilly, P. F. *Nat. Protoc.* **15**, 2759–2772 (2020).
- 273 2. Torkamani, A., Wineinger, N. E. & Topol, E. J. *Nat. Rev. Genet.* **19**, 581–590 (2018).
- 274 3. Goldberg, C. *Bloomberg* [https://www.bloomberg.com/news/articles/2021-09-](https://www.bloomberg.com/news/articles/2021-09-17/picking-embryos-with-best-health-odds-sparks-new-dna-debate)
- 275 [17/picking-embryos-with-best-health-odds-sparks-new-dna-debate](https://www.bloomberg.com/news/articles/2021-09-17/picking-embryos-with-best-health-odds-sparks-new-dna-debate) (2021).
- 276 4. Kumar, A. *et al. N. Engl. J. Med.* **385**, 1726–1727 (2021).
- 277 5. Martin, A. R. *et al. Nat. Genet.* **51**, 584–591 (2019).
- 278 6. Lambert, S. A. *et al. Nat. Genet.* **53**, 420–425 (2021).
- 279 7. Vilhjálmsón, B. J. *et al. Am. J. Hum. Genet.* **97**, 576–592 (2015).
- 280 8. Turley, P. *et al. N. Engl. J. Med.* **385**, 78–86 (2021).
- 281 9. Karavani, E. *et al. Cell* **179**, 1424–1435.e8 (2019).
- 282 10. Akiyama, M. *et al. Nat. Commun.* **10**, 4393 (2019).
- 283 11. Kumar, A. *et al. Nat. Med.* **28**, 513–516 (2022).
- 284 12. Sanderson, E., Richardson, T. G., Hemani, G. & Davey Smith, G. *Int. J. Epidemiol.*
- 285 **50**, 1350–1361 (2021).
- 286 13. Martin, A. R. *et al. Am. J. Hum. Genet.* **100**, 635–649 (2017).
- 287 14. Privé, F., Arbel, J. & Vilhjálmsón, B. J. *Bioinformatics* **36**, 5424–5431 (2021).
- 288 15. Ge, T., Chen, C. Y., Ni, Y., Feng, Y. C. A. & Smoller, J. W. *Nat. Commun.* **10**, 1–10
- 289 (2019).
- 290 16. Lloyd-Jones, L. R. *et al. Nat. Commun.* **10**, 5086 (2019).
- 291 17. Zheng, Z. *et al. bioRxiv* (2022) doi:10.1101/2022.10.12.510418.
- 292 18. Zhang, Q., Privé, F., Vilhjálmsón, B. & Speed, D. *Nat. Commun.* **12**, 4192 (2021).
- 293 19. Yengo, L. *et al. Nature* **610**, 704–712 (2022).
- 294 20. European Society of Human Reproduction and Embryology. [https://www.eshre.eu/-](https://www.eshre.eu/-/media/sitecore-files/Press-room/Resources/2-Regulation.pdf)
- 295 [/media/sitecore-files/Press-room/Resources/2-Regulation.pdf](https://www.eshre.eu/-/media/sitecore-files/Press-room/Resources/2-Regulation.pdf) (2017).
- 296 21. Sugiura-Ogasawara, M. & Sato, T. *Nat. Med.* **28**, 1732–1733 (2022).
- 297 22. Meyer, M. N., Tan, T., Benjamin, D. J., Laibson, D. & Turley, P. *Science* **379**, 541–
- 298 543 (2023).
- 299