

1 **Renal and systemic hemodynamic effects of**
2 **empagliflozin: Three randomized, double blind,**
3 **placebo controlled cross-over trials**

4 **Authors:**

5 Steffen Flindt Nielsen, MD^{1,2} Camilla Lundgreen Duus, MD^{1,2} Niels Henrik Buus, MD, Ph.D.^{2,3}
6 Jesper Nørgaard Bech, MD, Ph.D.^{1,2} and Frank Holden Mose, MD, Ph.D.^{1,2}

7
8
9 **Affiliations:**

10 ¹University Clinic in Nephrology and Hypertension, Gødstrup Hospital, Denmark

11 ²Department of Clinical Medicine, Aarhus University, Denmark

12 ³Department of Renal Medicine, Aarhus University Hospital, Denmark

13
14 **Short title:**

15 **Renal and systemic hemodynamic effects of empagliflozin**

16
17 **Corresponding author:**

18 **Steffen Flindt Nielsen**

19 **e-mail: stfnel@rm.dk**

20 **Adress: Gødstrup Hospital, Hospitalsparken 15, 7400 Herning, Denmark**

21
22 **Total word count: 4153**

NOTE: This preprint reports new research that has not been certified by peer review and should not be used to guide clinical practice.

23 **Abstract**

24 **Background:** Sodium-glucose cotransporter 2 inhibitors (SGLT2i) improve renal outcomes in type
25 2 diabetes mellitus (DM2) and chronic kidney disease (CKD). A decrease in renal blood flow
26 (RBF) with attenuation of glomerular hyperfiltration may contribute to this. We examined renal and
27 systemic hemodynamic effects of SGLT2i in relevant patient categories.

28 **Methods:** Using a double-blind placebo controlled cross-over design we randomized patients with
29 DM2 and estimated glomerular filtration rate (eGFR) >60 ml/min/1.73m² (n=16), patients with
30 DM2 and eGFR 20-60 ml/min/1.73m² (n=17) and patients with non-diabetic CKD and eGFR 20-60
31 ml/min/1.73m² (n=16) to empagliflozin 10 mg daily or placebo for four weeks and crossed over to
32 the opposite treatment after two-week washout. RBF was measured with ⁸²Rubidium positron
33 emission tomography/computed tomography (⁸²Rb-PET/CT), GFR as plasma clearance of
34 ^{99m}Technetium- diethylene-triamine-pentaacetate, while 24-hour blood pressure (BP) and total
35 peripheral vascular resistance (TVR) were recorded using the commercially available Mobil-O-
36 graph.

37 **Results:** Compared to placebo empagliflozin reduced RBF by 6% in the DM2-CKD group
38 ($p<0.001$), while there were non-significant decreases of 4% in the DM2 group and 1% in the CKD
39 group ($p=0.29$ and 0.72). Empagliflozin reduced GFR, BP and TVR in all groups. Although total
40 renal vascular resistance (RVR) remained unchanged, calculations based on Gomez' equations
41 revealed a reduction of post-glomerular resistance in the DM2 and CKD groups.

42 **Conclusion:** Short-term empagliflozin treatment reduced RBF in patients with DM2 and CKD,
43 whereas GFR, BP and TVR were reduced in all groups. The lack of reduction in total RVR together
44 with a decrease in post-glomerular resistance and systemic BP suggest SGLT2i protect the
45 glomerulus due to relative pre-glomerular vasoconstriction and post-glomerular vasodilation.

46

47 **Registration:** EU Clinical Trials Register 2019-004303-12, 2019-004447-80 and 2019-004467-50

48

49 **Clinical Perspective**

50 **What is new?**

- 51 • This is the first study of the hemodynamic effects of sodium-glucose cotransporter 2
52 inhibitors in diabetic and non-diabetic chronic kidney disease.
- 53 • We found that the sodium-glucose cotransporter 2 inhibitor empagliflozin reduced renal
54 blood flow in patients with type 2 diabetes and chronic kidney disease.
- 55 • Empagliflozin reduced blood pressure and total vascular resistance in patients with type 2
56 diabetes both with and without chronic kidney disease and in patients with non-diabetic
57 chronic kidney disease.

58

59 **What are the clinical implications?**

- 60 • This is the first time sodium-glucose cotransporter 2 inhibitors have been shown to decrease
61 renal blood flow in patients with type 2 diabetes, corroborating the hypothesis that they
62 exert clinical benefits through attenuation of hyperfiltration
- 63 • Our findings suggest a combined pre- and post-glomerular hemodynamic response that may
64 underlie the beneficial clinical effects.
- 65 • The reduction in blood pressure and total peripheral resistance point to a novel vascular
66 effect of empagliflozin that is present in both patients with and without type 2 diabetes or
67 chronic kidney disease.

68

69

70

71

72 **Non-standard abbreviations and acronyms**

- 73
- 74 ^{82}Rb -PET/CT: ^{82}Rb Rubidium positron emission tomography/computed tomography
- 75 $^{99\text{m}}\text{Tc}$ -DTPA: $^{99\text{m}}\text{Tc}$ Technetium-diethylene-triamine-pentaacetate
- 76 AA: abdominal aorta
- 77 ADPKD: autosomal dominant polycystic kidney disease
- 78 AE: adverse event
- 79 BMI: body mass index
- 80 BP: blood pressure
- 81 CKD: chronic kidney disease
- 82 DM1: type 1 diabetes mellitus
- 83 DM2: type 2 diabetes mellitus
- 84 eGFR: estimated glomerular filtration rate
- 85 ERF: effective renal plasma flow
- 86 EVF: erythrocyte volume fraction
- 87 FF: filtration fraction
- 88 GCP: good clinical practice
- 89 GFR: glomerular filtration rate
- 90 HbA1c: glycated hemoglobin
- 91 IQR: inter quartile range
- 92 MAP: mean arterial pressure
- 93 P_{GLO} : intra glomerular pressure
- 94 R_a : afferent glomerular arteriolar resistance
- 95 RBF: renal blood flow
- 96 R_e : efferent glomerular arteriolar resistance
- 97 RVR: renal vascular resistance
- 98 SAE: serious adverse event
- 99 SD: standard deviation
- 100 SGLT2i: sodium-glucose cotransporter 2 inhibitors
- 101 TGF: tubulo-glomerular feedback
- 102 TVR: total peripheral vascular resistance
- 103 uACR: urinary albumin/creatinine ratio
- 104 VOI: volume of interest

105 **Introduction**

106 Since the emergence of sodium-glucose cotransporter 2 inhibitors (SGLT2i) their precise
107 mechanisms of action have been a topic of debate. According to the tubular hypothesis of
108 hyperfiltration, SGLT2i can confer renal protection via changes in renal hemodynamic function [1].
109 SGLT2 is thought to play a key role in the pathophysiology of diabetic nephropathy, mediating
110 reuptake of excessively filtered sodium and glucose thereby decreasing sodium delivery to the
111 *macula densa*. This triggers a tubulo-glomerular feedback (TGF) response which dilates the afferent
112 arteriole increasing renal blood flow (RBF) and glomerular pressure, leading to hyperfiltration and
113 elevated glomerular filtration rate (GFR). Long term hyperfiltration can lead to glomerular injury
114 and chronic kidney disease (CKD) [2]. Conversely, blockage of SGLT2 reduce sodium and glucose
115 reuptake which increases distal sodium delivery, causing afferent arteriolar vasoconstriction,
116 decreased RBF and alleviation of hyperfiltration, resulting in kidney protection [3-6]. Cherney et al.
117 showed that treatment with empagliflozin reduced effective renal plasma flow (ERPF) and GFR in
118 younger patients with type 1 diabetes (DM1), indicating ameliorated glomerular hyperfiltration [7]
119 and studies in mice have demonstrated that empagliflozin can induce afferent arteriolar
120 vasoconstriction and reduce hyperfiltration at the single nephron level [8].

121

122 In patients with DM2 and/or CKD initiation of SGLT2i is associated with an acute, but reversible,
123 reduction in estimated GFR (eGFR) [9] whereafter it stabilizes, mitigating further decline in renal
124 function [10, 11]. This acute eGFR reduction is not related to increased risk of renal events; on the
125 contrary it predicts better outcomes [12, 13]. This seems to corroborate the above hypothesis,
126 however none of the studies examining renal hemodynamic effects of SGLT2i in patients with DM2
127 have been able to document a decrease in RBF [14-16]. One explanation could be that the

128 hemodynamic effects of SGLT2i differ between patients with DM1 and DM2 with post-glomerular
129 vasodilation being more prominent in the latter [17].

130

131 Despite the extensive use of SGLT2i in patients with diabetic and non-diabetic CKD, their
132 hemodynamic effects have not been studied in these groups. Therefore, we examined the renal and
133 systemic hemodynamic effects of empagliflozin in patients with DM2 with and without
134 concomitant CKD as well as in patients with non-diabetic CKD, reflecting the patient categories
135 who are offered SGLT2i treatment. We employed a novel ⁸²Rubidium positron emission
136 tomography/computed tomography (82Rb-PET/CT) method for estimating RBF, our primary
137 endpoint. Secondary endpoints included GFR, 24-hour ambulatory blood pressure (BP), total
138 peripheral vascular resistance (TVR) and renal vascular resistance (RVR). We hypothesized that
139 empagliflozin would reduce RBF and decrease GFR and BP in all groups.

140

141 **Methods**

142 *Design*

143 We conducted three randomized, double-blind, placebo controlled, single centre cross-over studies
144 including participants with DM2 and preserved kidney function (DM2 group), DM2 and
145 concomitant CKD (DM2-CKD group) and non-diabetic CKD (CKD group). The design and
146 methods of our project, the so called SiRENA project, have been previously published [18]. Here,
147 we report the primary endpoint and selected secondary outcomes. The experimental setup was
148 identical in the three studies (Figure 1). Briefly, participants were randomized to four weeks of
149 treatment with either empagliflozin 10 mg daily or matching placebo and crossed over to four
150 weeks of the opposite treatment after a wash out period of at least 2 weeks. Study endpoints were
151 measured at an examination day at the end of each treatment period. If participants were on an

152 SGLT2i at inclusion, it was discontinued at least two weeks prior to randomization. If necessary, it
153 could be substituted to a different class of anti-diabetic treatment in accordance with national
154 treatment guidelines. All other medications were kept unaltered. Four days prior to each
155 examination, participants were encouraged to adhere to their usual diet and fluid intake was
156 standardized.

157

158 *Study participants*

159 All participants were informed of the study purpose and methods and signed consent was obtained
160 before screening. Participants were screened prior to inclusion, ensuring they fulfilled all inclusion
161 and no exclusion criteria. Inclusion criteria were: Age > 18 years, DM2 with a glycated hemoglobin
162 (Hb1Ac) between 48-70 mmol/mol, diagnosed at least one year prior to inclusion and on stable anti-
163 diabetic treatment for at least 3 months (DM2 and DM2-CKD groups) and eGFR > 60
164 ml/min/1.73m² (DM2-group) or 20-60 ml/min/1.73m² (DM2-CKD and CKD-groups). Fertile
165 women were to use safe contraception. Exclusion criteria were: Anamnestic or clinical signs of
166 heart- or liver failure, active malignancies besides non-melanoma skin-cancers, body mass index
167 (BMI) > 35 kg/m², pregnancy or nursing, alcohol or substance abuse, allergies or unacceptable side
168 effects to the study medication, previous kidney transplantation, autosomal dominant polycystic
169 kidney disease (ADPKD), DM1 (or DM2 for the CKD group) or if participants were deemed unfit
170 to complete the trial. The studies were approved by The Central Denmark Region Committees on
171 Health Research Ethics and the Danish Medicines Agency and were conducted in accordance with
172 the Declaration of Helsinki 2013. The studies were monitored by the Good Clinical Practice (GCP)
173 Unit of Aarhus and Aalborg Universities.

174

175 *Statistics and sample size calculation*

176 Normality was evaluated using histograms and QQ-plots. Variance was evaluated using Bland-
177 Altman and scatter plots. If non-normally distributed, normality was tested on the logarithmic scale.
178 Paired t-test was applied to normally distributed data and is presented as mean \pm standard deviation
179 (SD) or as geometric mean [inter quartile range (IQR)] if on the log scale. The sign-test was applied
180 to non-parametric data. Potential period and carry-over effects were assessed using a linear mixed
181 effects model with treatment, period and carry-over as fixed effects and participant ID as a random
182 effect. Between-group differences were tested using a linear mixed effects model, allowing for
183 unequal variance. p-values <0.05 were considered statistically significant. A power calculation was
184 performed on the primary endpoint. Fifteen patients were needed in each study to detect a minimal
185 relevant difference in RBF of 0.167 ml/min/ccm, with a SD of 0.180 ml/min/ccm, a two-sided α -
186 level of 5% and a power of 90%. All statistical analyses were done using STATA version 18.0
187 (StataCorp LLC, College Station, Texas, US).

188

189 **Study methods:**

190 *RBF*

191 RBF was estimated based on renal uptake of ^{82}Rb measured with ^{82}Rb -PET/CT scans. Scanning
192 procedure and data analysis was performed as described by Langaa et al. [19, 20]. In short, a low
193 dose CT scan was used for attenuation correction. Following bolus injection of 555 MBq of ^{82}Rb ,
194 an 8-minute dynamic PET-scan was performed with the abdominal aorta (AA) and both kidneys
195 within the same field of view. Renal ^{82}Rb activity was estimated using image based iso-contouring
196 of both kidneys. AA activity was defined by placing a volume of interest (VOI) within the proximal
197 AA. Time activity curves were generated on the basis hereof (see Figure S1). We estimated RBF
198 (ml/min/ccm) for each kidney as the single kidney K_1 -value using a 1-tissue compartment model

199 based on renal ^{82}Rb activity uptake with AA activity as input function. Mean RBF was estimated
200 for each participant as the mean K_1 -value. AA measurements were corrected for partial volume and
201 spill-over and all measurements were β -corrected as has been previously described. Analyses were
202 made using PMOD[®] (PMOD Technologies Ltd., Zürich, Switzerland). Total RBF (ml/min) was
203 assessed by multiplying RBF with kidney volume as estimated by the renal iso-contours using the
204 formula:

$$205 \quad \text{Total RBF} = \text{RBF}_{\text{right kidney}} * V_{\text{right kidney}} + \text{RBF}_{\text{left kidney}} * V_{\text{left kidney}}.$$

206 Effective renal plasma flow (ERPF) was calculated as

$$\text{ERPF} = \text{RBF} * (1 - \text{Erythrocyte Volume Fraction (EVF)})$$

207
208 *GFR*

209 GFR was measured by clearance of $^{99\text{m}}\text{Tc}$ -diethylene-triamine-pentaacetate ($^{99\text{m}}\text{Tc}$ -
210 DTPA). First, a zero sample was drawn. Hereafter 25 MBq of $^{99\text{m}}\text{Tc}$ -DTPA was injected intra-
211 venously and blood samples were drawn after three, four and five hours, measuring residual plasma
212 activity. Measurements were standardized for height and weight.

213

214 *Systemic hemodynamics*

215 24-hour BP, heart rate and TVR were measured using a Mobil-O-Graph[®] (I.E.M. GmbH., Aachen,
216 Germany). The Mobil-O-Graph was placed on the upper forearm at the beginning of the
217 examination day and was removed 24 hours later. Measurements were done every 20th minute.

218

219 *Renal hemodynamic calculations*

220 Filtration fraction (FF) was calculated as $FF = \frac{GFR}{\text{total ERPF}}$. Mean arterial pressure (MAP) was

221 calculated as $\text{MAP} = \text{diastolic BP} + \frac{(\text{systolic BP} - \text{diastolic BP})}{3}$, where day-time BP values were used.

222 Renal vascular resistance (RVR) was calculated as $RVR = \frac{MAP}{total\ RBF}$. Intra glomerular pressure
223 (P_{GLO}), afferent and efferent glomerular arteriolar resistance (R_a and R_e) were estimated using the
224 Gomez equations [21].

225

226 *Biochemical analysis*

227 Plasma and urine samples were analysed by the Department of Clinical Biochemistry, Gødstrup
228 Hospital as routine procedures, except for urinary glucose which was measured using an Invitrogen
229 Glucose Colorimetric Detection Kit (ThermoFisher Scientific Inc., Waltham, MA. USA). eGFR
230 was calculated using the CKD-EPI formula. Urinary albumin/creatinine ratio (uACR) was
231 calculated based on measurements of urinary albumin and creatinine from the total voided volume
232 during the examination day (collection time: 5 hours)

233

234 **Results**

235 Inclusion began in April 2021 and was completed by September 2022. Examinations were
236 completed by December 2022. 49 participants completed the studies; 16 in the DM2 group, 17 in
237 the DM2-CKD group and 16 in the CKD group. For further elaboration on inclusion and exclusion,
238 see Figure 2. Baseline characteristics are described in Table 1.

239

240

241 *Renal Blood Flow*

242 Due to poor image quality, two participants were excluded from the analysis, one in the DM2 group
243 and one in the DM2-CKD group. In the DM2-CKD group empagliflozin reduced RBF by 6%
244 (geometric mean ratio: 0.94, 95% CI: 0.91; 0.97, $p < 0.001$). There were non-significant reductions
245 of 4% in the DM2-group and 1% in the CKD-group ($p = 0.29$ and 0.72). Changes in RBF were not

246 significantly different between groups ($p = 0.16$). There was no specific period ($p = 0.53$) or carry-
247 over effect ($p = 0.82$). The RBF results are presented in Table 2 and Figure 3.

248

249 *GFR*

250 Empagliflozin significantly reduced GFR in all groups as compared to placebo. GFR was reduced
251 by 14% in the DM2 group ($p < 0.001$), by 9 % in the DM2-CKD group ($p = 0.019$) and by 11% in
252 the CKD group ($p = 0.018$). Changes between groups did not significantly differ ($p = 0.36$). There
253 was no period or carry over effect ($p = 0.98$). GFR results are presented in Table 2 and Figure 4.

254

255 *Systemic hemodynamics*

256 Empagliflozin treatment reduced 24-hour systolic blood pressure by 5 mmHg in the DM2 group
257 (95% CI: -9; -1 mmHg, $p = 0.015$), as compared to placebo. The mean reduction was 7 mmHg
258 (95% CI: -12; -2 mmHg, $p = 0.0097$) in the DM2-CKD group and 4 mmHg in the CKD-group
259 (95% CI: -9; 0 mmHg, $p = 0.066$). Empagliflozin lowered TVR in all groups. There was no period
260 or carry over effects ($p = 0.70$ and 0.79). Heart rate did not change. One patient from the DM2
261 groups was excluded from this analysis due to missing data. See Table 3 and Figure 5.

262

263 *Renal hemodynamics*

264 RVR did not change during empagliflozin treatment in any of the groups. FF was reduced by 9% in
265 the DM2 group ($p = 0.028$), with no detectable change in the DM2-CKD or CKD groups ($p = 0.42$
266 and 0.72 , respectively). P_{GLO} significantly decreased in the DM2 group with no change in the two
267 other groups. R_e decreased in the DM2 and CKD groups. R_a did not change in any of the groups.
268 Results are presented in Table 2.

269

270 *Changes in glucose and albuminuria*

271 Analysis of uACR only included participants with an uACR of at least 30mg/g at the placebo visit.
272 Empagliflozin significantly reduced uACR by 49% in the DM2-CKD group ($p = 0.014$). Although
273 uACR was reduced by 50% in the DM2 group and 20% in the CKD group, these changes did not
274 reach statistical significance ($p = 0.07$ and $p = 0.24$, respectively). HbA1c did not change between
275 treatments. Urinary glucose excretion was increased in all groups during empagliflozin treatment
276 compared to placebo. See Table S2.

277

278 *Adverse events*

279 The 58 participants who underwent randomization were evaluated for adverse events (AEs). AEs
280 were classified as either related to empagliflozin or placebo treatment. If an AE happened during
281 wash-out, it was ascribed to the previous treatment. 14 participants experienced an AE while treated
282 with empagliflozin, while 19 participants experienced an AE on placebo. Details are presented in
283 Table S1. Two participants dropped out due to AEs, one due to vaginal candidiasis during
284 empagliflozin treatment and one due to an episode of dehydration and worsening of renal function
285 during placebo treatment. One participant experienced a serious adverse event (SAE) of severe
286 erysipelas requiring hospitalization and intra-venous antibiotics. This happened during wash-out
287 after placebo treatment. One participant underwent an elective amputation of a toe due to a pre-
288 existing chronic ulcer present before study enrolment. The amputation occurred during placebo
289 treatment.

290

291 **Discussion**

292 Our main finding is that empagliflozin reduced RBF in patients with DM2 and concomitant CKD.
293 There was a smaller, non-significant decrease in the DM2 group and no change in the CKD group.

294 This is the first time SGLT2i have been shown to affect RBF in patients with DM2. Furthermore,
295 empagliflozin decreased GFR in all groups, reflecting the known acute reduction. [11, 22]. Our
296 findings support the hypothesis that SGLT2i alleviate hyperfiltration in diabetic nephropathy.
297 While, per definition, no participants in the DM2-CKD group had hyperfiltration defined as
298 elevated GFR, it could still be present at the single nephron level [23] and the decrease in RBF and
299 GFR we observe could indicate that empagliflozin reverses the TGF mediated feedback response,
300 normalizes afferent arteriolar tone and diminishes hyperfiltration.

301

302 Another important finding is that empagliflozin decreased TVR in all groups, regardless of DM2 or
303 CKD status. That SGLT2i decreases TVR has been reported in DM1, but to our knowledge never in
304 DM2 or CKD [24]. These findings suggest a novel anti-hypertensive mechanism, perhaps related to
305 a direct vasodilatory effect [25, 26]. Furthermore, we observed a clinically meaningful decrease in
306 ambulatory BP in all groups during empagliflozin treatment in line with the existing evidence [27].
307 The lack of statistical significance in the CKD group probably reflects a small sample size rather
308 than an absence of effect in this population.

309

310 RBF decreased significantly in the DM2-CKD group only. Between-group differences should be
311 interpreted cautiously as the project was not designed for such comparisons, and while there was no
312 statistical difference in RBF changes between groups, the change seems most pronounced in the
313 DM2-CKD group. Diabetic kidney disease is characterized by overexpression and over activation
314 of SGLT2 [28, 29] and sodium reabsorption - the main driver of TGF - increases during episodes
315 of hyperglycaemia [30, 31]. Our findings suggest that individuals with diabetes and CKD
316 experience a more prominent TGF response to SGLT2i. It is noteworthy that while the relative
317 effects of SGLT2i on renal outcomes are similar across different patient categories [32], there is

318 greater absolute treatment benefit in DM2 patients with both albuminuria and reduced eGFR [33].
319 Interestingly, it is also in patients with both DM2 and CKD we observe a marked decrease in RBF.
320 However, as we examined only short-term effects, we cannot say if the changes we describe persist
321 during chronic treatment or how they relate to the long-term benefits.
322 In the CKD group RBF did not change. The hemodynamic effects of SGLT2i have not previously
323 been examined in patients with non-diabetic CKD and though our limited sample size prevents us
324 from reaching a clear conclusion, our results could indicate that SGLT2 mediated changes in RBF
325 could be less pronounced non-diabetic CKD than in diabetic nephropathy. Similarly, SGLT2i
326 induce TGF responses less consistently in animal models with non-diabetic CKD than in those with
327 diabetic nephropathy [34].
328
329 GFR decreased in all groups, while RBF decreased significantly in the DM2-CKD group only,
330 suggesting GFR changes are not solely dependent on RBF. While identifying the exact mechanisms
331 by which SGLT2i impact GFR is beyond the scope of this paper, several potential explanations
332 could be considered. One possibility relates to the interplay between afferent- and efferent arteriolar
333 resistance. While GFR and RBF respond in parallel to changes in afferent arteriolar resistance,
334 changes in efferent resistance can dissociate autoregulation of GFR from RBF [35]. It has
335 previously been suggested that SGLT2i can alleviate hyperfiltration through dilation of the efferent
336 arteriole, eliciting a decrease in GFR without affecting RBF [36]. However, GFR is not determined
337 solely by glomerular pressure; intra-tubular pressure and properties of the glomerular filtration
338 barrier could also be of importance. By inhibiting solute reabsorption from the distal tubule,
339 SGLT2i could theoretically increase tubular pressure leading to reduced pressure gradient across the
340 glomeruli and a decrease in GFR [37]. Additionally, animal studies have shown that dapagliflozin

341 can directly affect podocyte function [38]. SGLT2i could thus potentially exert non-hemodynamic
342 effects on GFR.

343

344 We calculated estimates of intra-renal hemodynamics to further explore the hemodynamic effects of
345 SGLT2i. These calculations are indirect and can at best be indicative of the underlying physiology;
346 the Gomez equations rely on assumptions of normal renal physiology which do not align with the
347 characteristics of our cohort, particularly those with CKD. Furthermore, potential non-
348 hemodynamic effects on GFR are not taken into account [21]. Nevertheless, as more direct methods
349 in humans are lacking, they provide our best estimates. Using these estimates, we found that
350 empagliflozin decreased FF, P_{GLO} and R_e in the DM2 group, which is in agreement with previous
351 findings from van Bommel et al. who studied a comparable cohort of patients with DM2 and
352 preserved kidney function [15]. This supports the current view that SGLT2i could exert effect in
353 DM2 partly through dilation of the efferent glomerular arteriole. We saw a decrease in R_e in the
354 CKD group as well, perhaps indicative of a similar mechanism.

355

356 Despite significant changes in RBF in the DM2-CKD group, we observed no change in RVR in this
357 or any other group, nor did R_a change. This seemingly contrasts the results from Cherney et al., who
358 found that empagliflozin decreased ERPF and increased RVR in patients with DM1 and
359 hyperfiltration, indicating an increase in pre-glomerular resistance [7]. We do not, however, believe
360 our findings preclude an SGLT2i induced effect the afferent arteriole. While R_a did not change,
361 TVR decreased significantly. This is noteworthy, since we would have expected a parallel auto
362 regulatory decrease in R_a to conserve RBF as has previously been described with for example
363 angiotensin receptor blockers [39]. That R_a did not decrease while RBF did suggests a SGLT2i-

364 induced relative afferent vasoconstriction. Our findings thus indicate a combined afferent and
365 efferent arteriolar response. Similar mechanisms were described in a study in diabetic rats [40].
366
367 We measured RBF using a novel ^{82}Rb -PET/CT method. The method has low intra-assay variability
368 and excellent inter-observer reliability, allowing for precise and reliable measurements of relative
369 changes in perfusion [20]. When studying SGLT2i, it has the further advantage compared to para-
370 amino-hippuric acid (PAH) of not being affected by glycosuria [41]. There are disadvantages to the
371 method as well; ^{82}Rb -PET/CT likely underestimates perfusion at high perfusion rates [15] and the
372 method cannot distinguish between cortical and medullar perfusion [19, 42]. Furthermore, ^{82}Rb is a
373 potassium analogue and thus not an inert tracer and we have not taken potential urinary excretion
374 into account [42]. Altogether, ^{82}Rb -PET/CT likely underestimates true RBF, which can explain why
375 the measured values are lower than what have previously been described [15], in a cross over
376 design, absolute values are of less importance as we examine changes within the same individual.
377 Our project has other limitation; the small sample sizes make comparisons between groups difficult.
378 Furthermore, changes in RBF were smaller and variability larger than anticipated in the power
379 calculation, so we cannot rule out potential effects in the DM2 and CKD-groups had the sample
380 sizes been larger. Inclusion in the DM2-CKD group did not require a biopsy verified diagnosis of
381 diabetic nephropathy, so other aetiologies of CKD could be present. Likewise, in the CKD-group
382 the cause of CKD was not reported in half the participants, limiting generalizability. We did not
383 employ glycaemic clamping method nor were participants fasting. While this may add uncertainty
384 to the results, an advantage is that our approach more accurately reflects both the patient
385 populations and conditions in which SGLT2i would be used in a real-world setting.
386 In conclusion, short-term empagliflozin treatment significantly reduces RBF in patients with DM2
387 and concomitant CKD as compared to placebo, while GFR, BP and TVR was reduced in all groups.

388 Our findings suggest that the renal hemodynamic effects of SGLT2i could be caused by relative
389 pre-glomerular vasoconstriction, as well as post-glomerular vasodilation.

390

391 **Funding**

392 This project was funded by The Augustinus Foundation, The Research Foundation of the Central
393 Denmark Region, The Medicine Fund of the Danish Regions, Gødstrup Hospital Research Fund
394 and Boehringer-Ingelheim, who delivered the study medication. Boehringer-Ingelheim was given
395 the opportunity to review the manuscript for medical and scientific accuracy as it relates to a
396 Boehringer-Ingelheim substance, as well as intellectual property considerations. Boehringer-
397 Ingelheim had no role in the design, analysis, interpretation of the results or the writing of this
398 manuscript.

399

400 **Authors contribution**

401 All authors contributed to the manuscript. SFN, FHM, NHB and JNB designed the trials, which
402 were conducted by SFN with support from CLD and FHM. SFN analyzed the data and
403 interpretation was done in cooperation with FHM, JNB and NHB. SFN drafted the manuscript
404 which was revised and accepted by all authors.

405

406 **Acknowledgements**

407 We would like to thank the biomedical laboratory scientists at The University Clinic in Nephrology
408 and Hypertension and The Department of Nuclear Medicine, Gødstrup for making this project
409 possible. Special thanks to Lene Ring Madsen and STENO Diabetes Center, Aarhus for helping
410 with recruitment in the DM2-CKD group and to Stine Sundgaard Langaa for kindly helping with
411 the analysis of the Rb⁸²-PET/CT scans.

412

413 **Conflict of interest disclosures**

414 SFN has disclosed travel expenses covered by AstraZeneca. FHM disclosed advisory board
415 participation and speaker honoraria from Boehringer-Ingelheim and AstraZeneca. JBN disclosed
416 advisory board participation for Bayer, Boehringer-Ingelheim and AstraZeneca. No other
417 disclosures were reported.

418

419 **Data sharing**

420 All study data will be made available upon request.

421

422

423

424

425

426

427

428

429

430

431

432

433

434

435

436

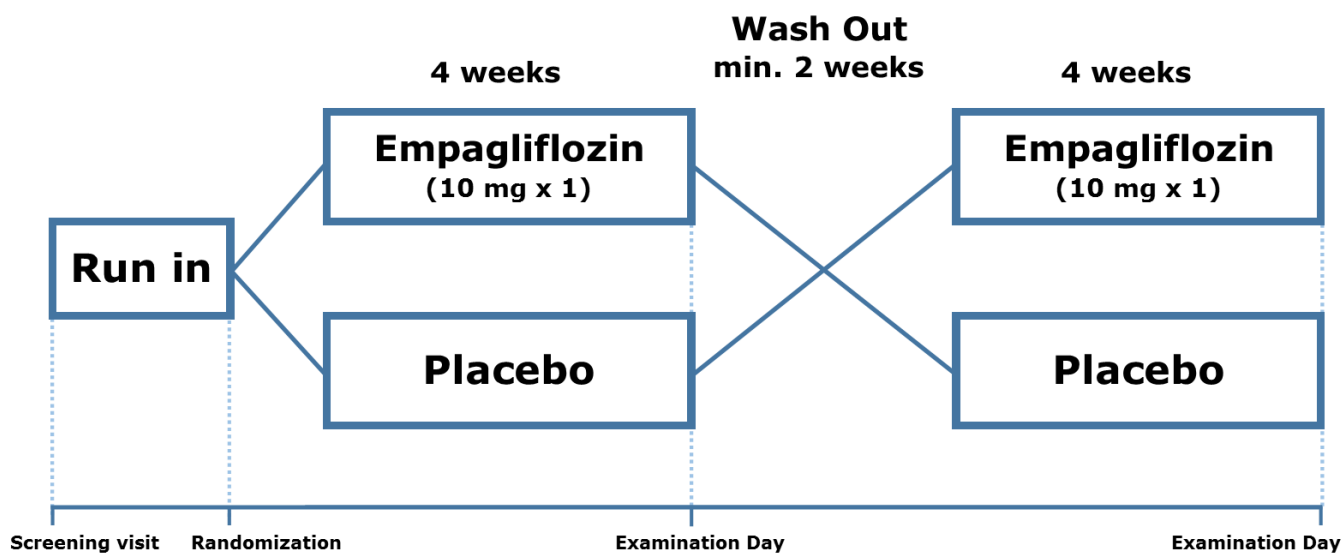
437

- 438 1. Vallon, V. and S.C. Thomson, *The tubular hypothesis of nephron filtration and diabetic*
439 *kidney disease*. Nat Rev Nephrol, 2020. **16**(6): p. 317-336.
- 440 2. Wright, E.M., *SGLT2 Inhibitors: Physiology and Pharmacology*. Kidney360, 2021. **2**(12):
441 p. 2027-2037.
- 442 3. Vallon, V. and S. Verma, *Effects of SGLT2 Inhibitors on Kidney and Cardiovascular*
443 *Function*. Annu Rev Physiol, 2021. **83**: p. 503-528.
- 444 4. Vallon, V., *Renoprotective Effects of SGLT2 Inhibitors*. Heart Fail Clin, 2022. **18**(4): p.
445 539-549.
- 446 5. Packer, M., *Lack of durable natriuresis and objective decongestion following SGLT2*
447 *inhibition in randomized controlled trials of patients with heart failure*. Cardiovasc
448 Diabetol, 2023. **22**(1): p. 197.
- 449 6. Scholtes, R.A., et al., *Natriuretic Effect of Two Weeks of Dapagliflozin Treatment in*
450 *Patients With Type 2 Diabetes and Preserved Kidney Function During Standardized*
451 *Sodium Intake: Results of the DAPASALT Trial*. Diabetes Care, 2021. **44**(2): p. 440-
452 447.
- 453 7. Cherney, D.Z., et al., *Renal hemodynamic effect of sodium-glucose cotransporter 2*
454 *inhibition in patients with type 1 diabetes mellitus*. Circulation, 2014. **129**(5): p. 587-
455 97.
- 456 8. Kidokoro, K., et al., *Evaluation of Glomerular Hemodynamic Function by Empagliflozin*
457 *in Diabetic Mice Using In Vivo Imaging*. Circulation, 2019. **140**(4): p. 303-315.
- 458 9. Perkovic, V., et al., *Renal effects of canagliflozin in type 2 diabetes mellitus*. Curr Med
459 Res Opin, 2015. **31**(12): p. 2219-31.
- 460 10. Herrington, W.G., et al., *Empagliflozin in Patients with Chronic Kidney Disease*. N Engl J
461 Med, 2023. **388**(2): p. 117-127.
- 462 11. Kraus, B.J., et al., *Characterization and implications of the initial estimated glomerular*
463 *filtration rate ‘dip’ upon sodium-glucose cotransporter-2 inhibition*
464 *with empagliflozin in the EMPA-REG OUTCOME trial*. Kidney International, 2021. **99**(3):
465 p. 750-762.
- 466 12. Adamson, C., et al., *Initial Decline (Dip) in Estimated Glomerular Filtration Rate After*
467 *Initiation of Dapagliflozin in Patients With Heart Failure and Reduced Ejection Fraction:*
468 *Insights From DAPA-HF*. Circulation, 2022. **146**(6): p. 438-449.
- 469 13. Heerspink, H.J.L. and D.Z.I. Cherney, *Clinical Implications of an Acute Dip in eGFR after*
470 *SGLT2 Inhibitor Initiation*. Clin J Am Soc Nephrol, 2021. **16**(8): p. 1278-1280.
- 471 14. Ott, C., et al., *Renal hemodynamic effects differ between antidiabetic combination*
472 *strategies: randomized controlled clinical trial comparing empagliflozin/linagliptin with*
473 *metformin/insulin glargine*. Cardiovasc Diabetol, 2021. **20**(1): p. 178.
- 474 15. van Bommel, E.J.M., et al., *The renal hemodynamic effects of the SGLT2 inhibitor*
475 *dapagliflozin are caused by post-glomerular vasodilatation rather than pre-glomerular*
476 *vasoconstriction in metformin-treated patients with type 2 diabetes in the randomized,*
477 *double-blind RED trial*. Kidney Int, 2020. **97**(1): p. 202-212.
- 478 16. Scholtes, R.A., et al., *Kidney Hemodynamic Effects of Angiotensin Receptor Blockade,*
479 *Sodium-Glucose Cotransporter-2 Inhibition Alone, and Their Combination: A Crossover*
480 *Randomized Trial in People With Type 2 Diabetes*. Circulation, 2022. **146**(24): p. 1895-
481 1897.
- 482 17. van Bommel, E.J.M., et al., *Renal hemodynamic effects of sodium-glucose cotransporter*
483 *2 inhibitors in hyperfiltering people with type 1 diabetes and people with type 2*
484 *diabetes and normal kidney function*. Kidney Int, 2020. **97**(4): p. 631-635.
- 485 18. Nielsen SF, D.C., Buus NH, Bech JN, Mose FH, *Empagliflozin in type 2 diabetes with and*
486 *without CKD and non-diabetic CKD: Protocol for 3 randomized, double-blind, placebo*
487 *controlled cross-over trials -The SiRENA project*. JMIR Research Protocols.
488 25/04/2024:56067 (forthcoming/in press), 2024.
- 489 19. Langaa, S.S., et al., *Estimation of renal perfusion based on measurement of rubidium-*
490 *82 clearance by PET/CT scanning in healthy subjects*. EJNMMI Phys, 2021. **8**(1): p. 43.

- 491 20. Langaa, S.S., et al., *Reliability of rubidium-82 PET/CT for renal perfusion determination*
492 *in healthy subjects*. BMC Nephrol, 2022. **23**(1): p. 379.
- 493 21. Bjornstad, P., et al., *The Gomez' equations and renal hemodynamic function in kidney*
494 *disease research*. Am J Physiol Renal Physiol, 2016. **311**(5): p. F967-f975.
- 495 22. Meraz-Muñoz, A.Y., J. Weinstein, and R. Wald, *eGFR Decline after SGLT2 Inhibitor*
496 *Initiation: The Tortoise and the Hare Reimagined*. Kidney360, 2021. **2**(6): p. 1042-
497 1047.
- 498 23. Fattah, H., A. Layton, and V. Vallon, *How Do Kidneys Adapt to a Deficit or Loss in*
499 *Nephron Number?* Physiology (Bethesda), 2019. **34**(3): p. 189-197.
- 500 24. Lytvyn, Y., et al., *Renal and Vascular Effects of Combined SGLT2 and Angiotensin-*
501 *Converting Enzyme Inhibition*. Circulation, 2022. **146**(6): p. 450-462.
- 502 25. De Stefano, A., et al., *Mechanisms of SGLT2 (Sodium-Glucose Transporter Type 2)*
503 *Inhibition-Induced Relaxation in Arteries From Human Visceral Adipose Tissue*.
504 Hypertension, 2021. **77**(2): p. 729-738.
- 505 26. Li, H., et al., *The anti-diabetic drug dapagliflozin induces vasodilation via activation of*
506 *PKG and Kv channels*. Life Sci, 2018. **197**: p. 46-55.
- 507 27. Heerspink, H.J., et al., *Dapagliflozin and Blood Pressure in Patients with Chronic Kidney*
508 *Disease and Albuminuria*. Am Heart J, 2024.
- 509 28. Vallon, V., *Glucose transporters in the kidney in health and disease*. Pflugers Arch,
510 2020. **472**(9): p. 1345-1370.
- 511 29. Wang, X.X., et al., *SGLT2 Protein Expression Is Increased in Human Diabetic*
512 *Nephropathy: SGLT2 PROTEIN INHIBITION DECREASES RENAL LIPID ACCUMULATION,*
513 *INFLAMMATION, AND THE DEVELOPMENT OF NEPHROPATHY IN DIABETIC MICE*. J Biol
514 Chem, 2017. **292**(13): p. 5335-5348.
- 515 30. Rajasekeran, H., D.Z. Cherney, and J.A. Lovshin, *Do effects of sodium-glucose*
516 *cotransporter-2 inhibitors in patients with diabetes give insight into potential use in*
517 *non-diabetic kidney disease?* Curr Opin Nephrol Hypertens, 2017. **26**(5): p. 358-367.
- 518 31. Pollock, C.A., et al., *Tubular sodium handling and tubuloglomerular feedback in*
519 *compensatory renal hypertrophy*. Pflugers Arch, 1992. **420**(2): p. 159-66.
- 520 32. *Impact of diabetes on the effects of sodium glucose co-transporter-2 inhibitors on*
521 *kidney outcomes: collaborative meta-analysis of large placebo-controlled trials*. Lancet,
522 2022. **400**(10365): p. 1788-1801.
- 523 33. Neuen, B.L., et al., *Relative and Absolute Risk Reductions in Cardiovascular and Kidney*
524 *Outcomes With Canagliflozin Across KDIGO Risk Categories: Findings From the CANVAS*
525 *Program*. Am J Kidney Dis, 2021. **77**(1): p. 23-34.e1.
- 526 34. Upadhyay, A., *SGLT2-Inhibitors and Kidney Protection: Mechanisms Beyond Tubulo-*
527 *Glomerular Feedback*. Kidney360, 2024.
- 528 35. Carlström, M., C.S. Wilcox, and W.J. Arendshorst, *Renal autoregulation in health and*
529 *disease*. Physiol Rev, 2015. **95**(2): p. 405-511.
- 530 36. Kim, N.H. and N.H. Kim, *Renoprotective Mechanism of Sodium-Glucose Cotransporter 2*
531 *Inhibitors: Focusing on Renal Hemodynamics*. Diabetes Metab J, 2022. **46**(4): p. 543-
532 551.
- 533 37. Persson, P., P. Hansell, and F. Palm, *Tubular reabsorption and diabetes-induced*
534 *glomerular hyperfiltration*. Acta Physiol (Oxf), 2010. **200**(1): p. 3-10.
- 535 38. Cassis, P., et al., *SGLT2 inhibitor dapagliflozin limits podocyte damage in proteinuric*
536 *nondiabetic nephropathy*. JCI Insight, 2018. **3**(15).
- 537 39. Buus, N.H., et al., *Renal resistance and long-term blood pressure in individuals*
538 *genetically predisposed for essential hypertension: 10-year follow-up of the Danish*
539 *Hypertension Prevention Project*. J Hypertens, 2016. **34**(6): p. 1170-7.
- 540 40. Thomson, S.C. and V. Vallon, *Effects of SGLT2 inhibitor and dietary NaCl on glomerular*
541 *hemodynamics assessed by micropuncture in diabetic rats*. Am J Physiol Renal Physiol,
542 2021. **320**(5): p. F761-f771.
- 543 41. Scholtes, R.A., et al., *Glucosuria Interferes With Measurement of Effective Renal Plasma*
544 *Flow Using para-Aminohippuric Acid, With a Focus on SGLT2 Inhibitors*. Kidney Int Rep,
545 2020. **5**(11): p. 2052-2054.

546 42. Green, M.A. and G.D. Hutchins, *Positron emission tomography (PET) assessment of*
547 *renal perfusion*. *Semin Nephrol*, 2011. **31**(3): p. 291-9.
548

549 **Figures**



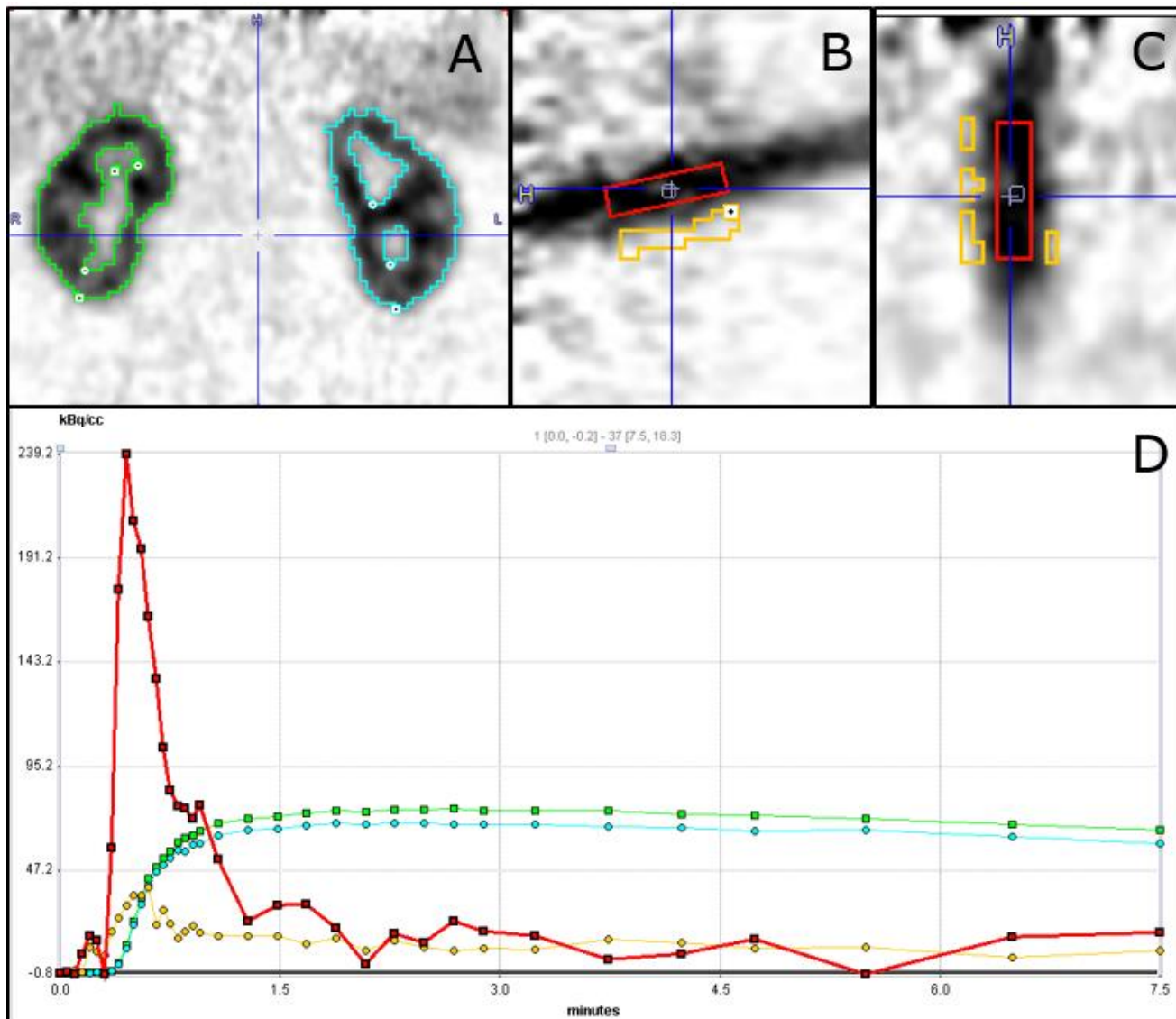
550

551 **Figure 1: Study design.** Schematic view of the study design

552

553

554



555

556 **Figure S1. ^{82}Rb -PET/CT renal scan. A:** Renal activity of ^{82}Rb with iso-contours of the right and
557 left kidney (green and turquoise), coronal view. **B and C:** The abdominal aorta (AA) with volume
558 of interest (VOI) (red) and a background box for partial volume correction (orange), sagittal and
559 coronal views. **D:** Time activity curves of ^{82}Rb activity in the AA (red), right and left kidney (green
560 and turquoise) and AA background (orange)

561

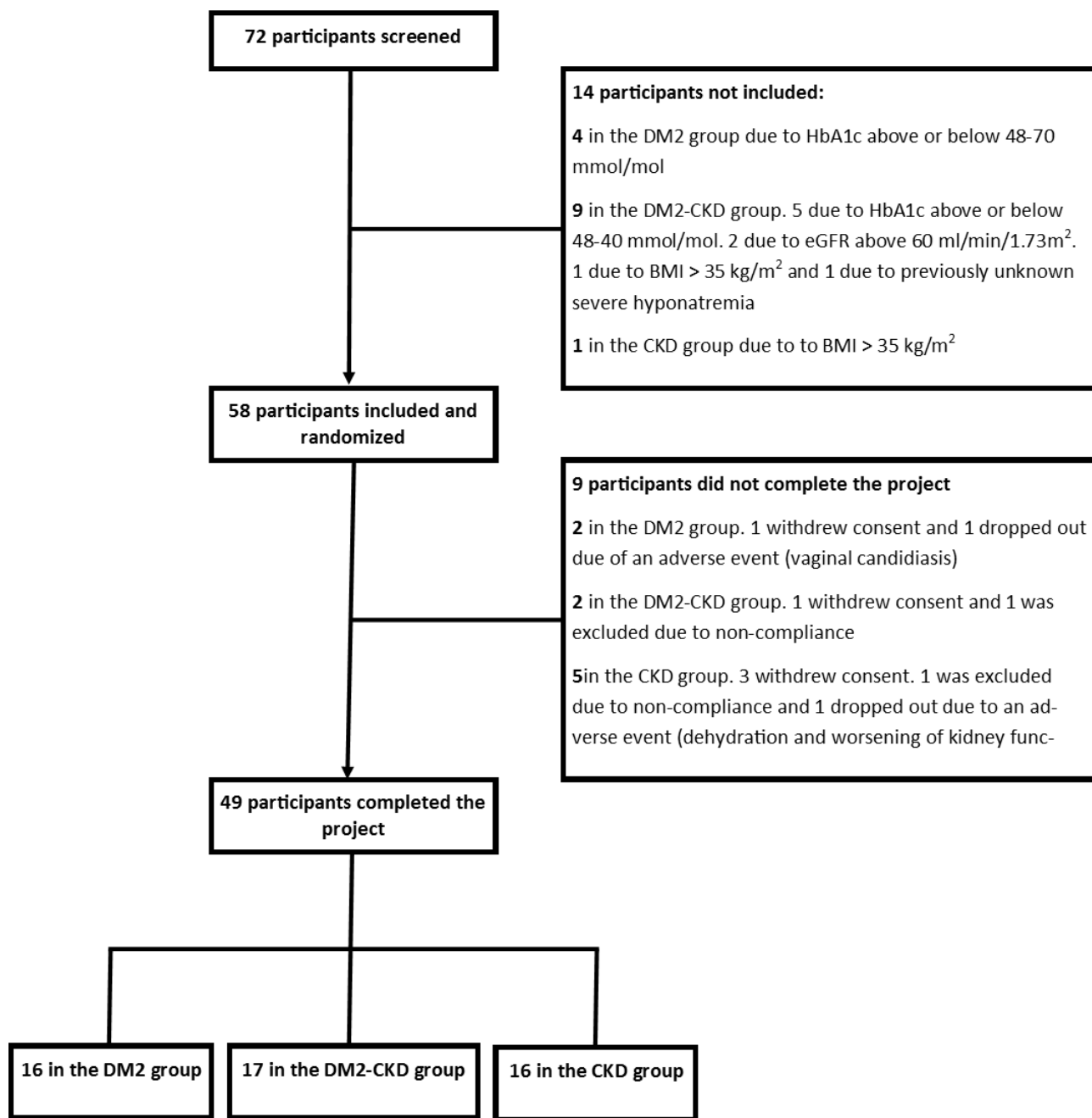
562

563

564

565

566



567

568 **Figure 2:** Flow-chart of screening, inclusion, and exclusion for all studies.

569

570

571

572

573

574

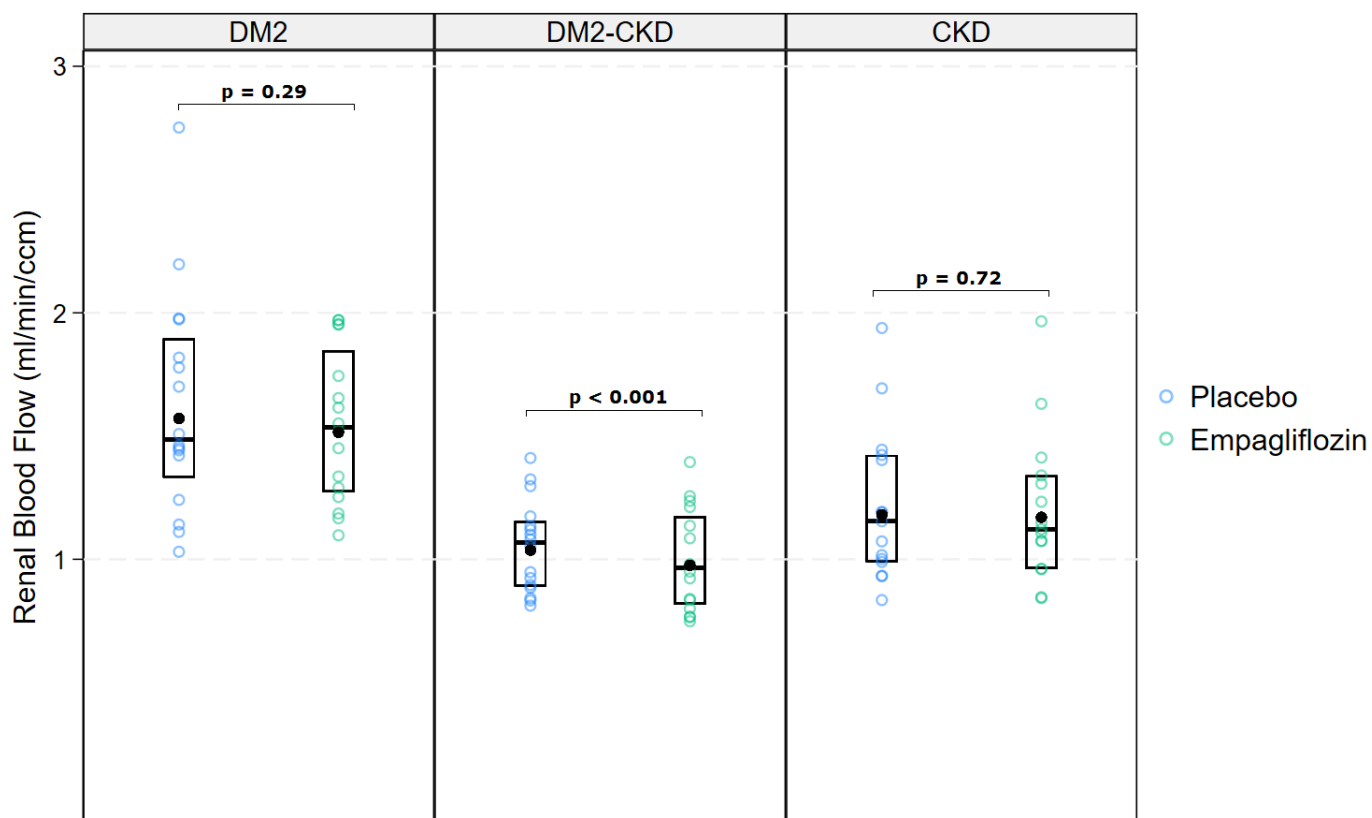


Figure 3: Renal blood flow. Median and interquartile range [IQR], black dot = geometric mean

575

576

577

578

579

580

581

582

583

584

585

586

587

588

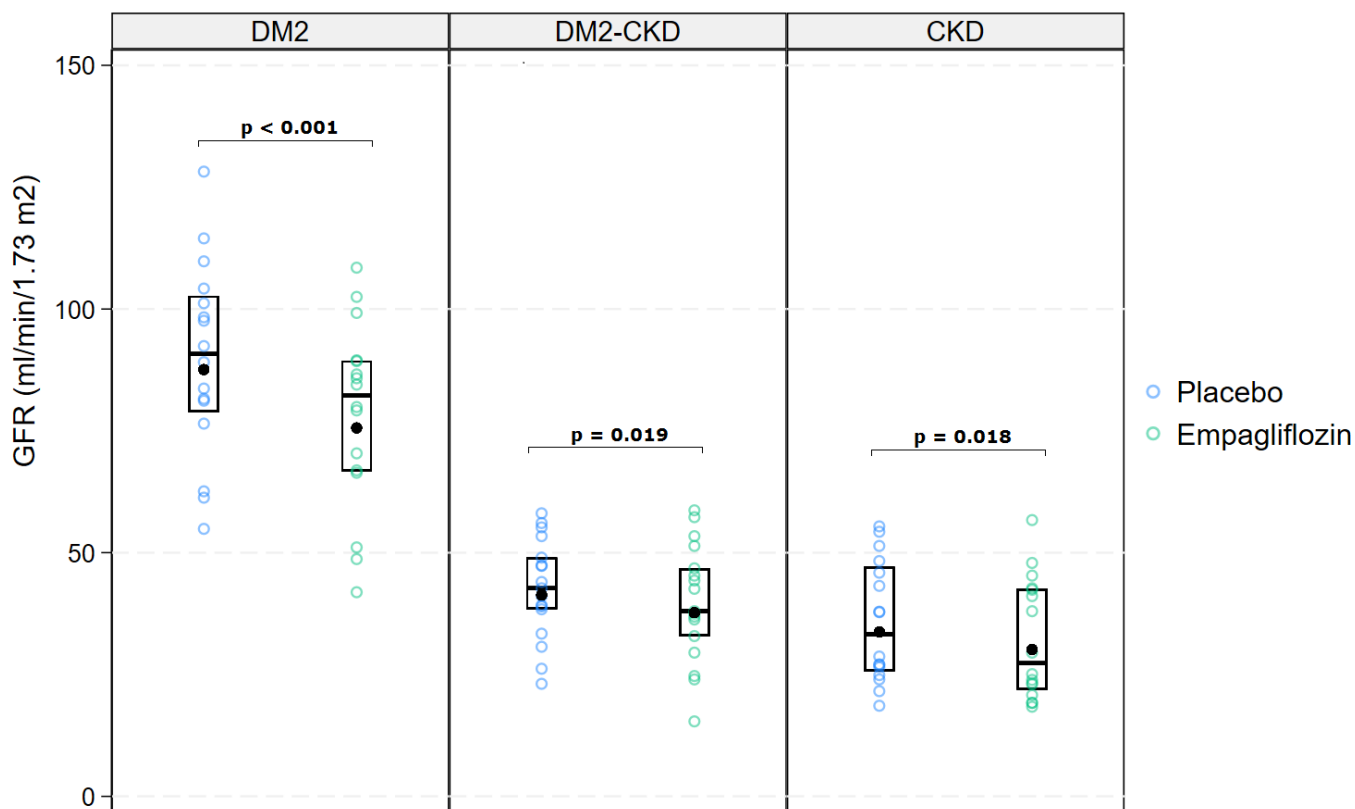


Figure 4: Glomerular filtration rate (GFR). Median and interquartile range [IQR], black dot = geometric mean

589

590

591

592

593

594

595

596

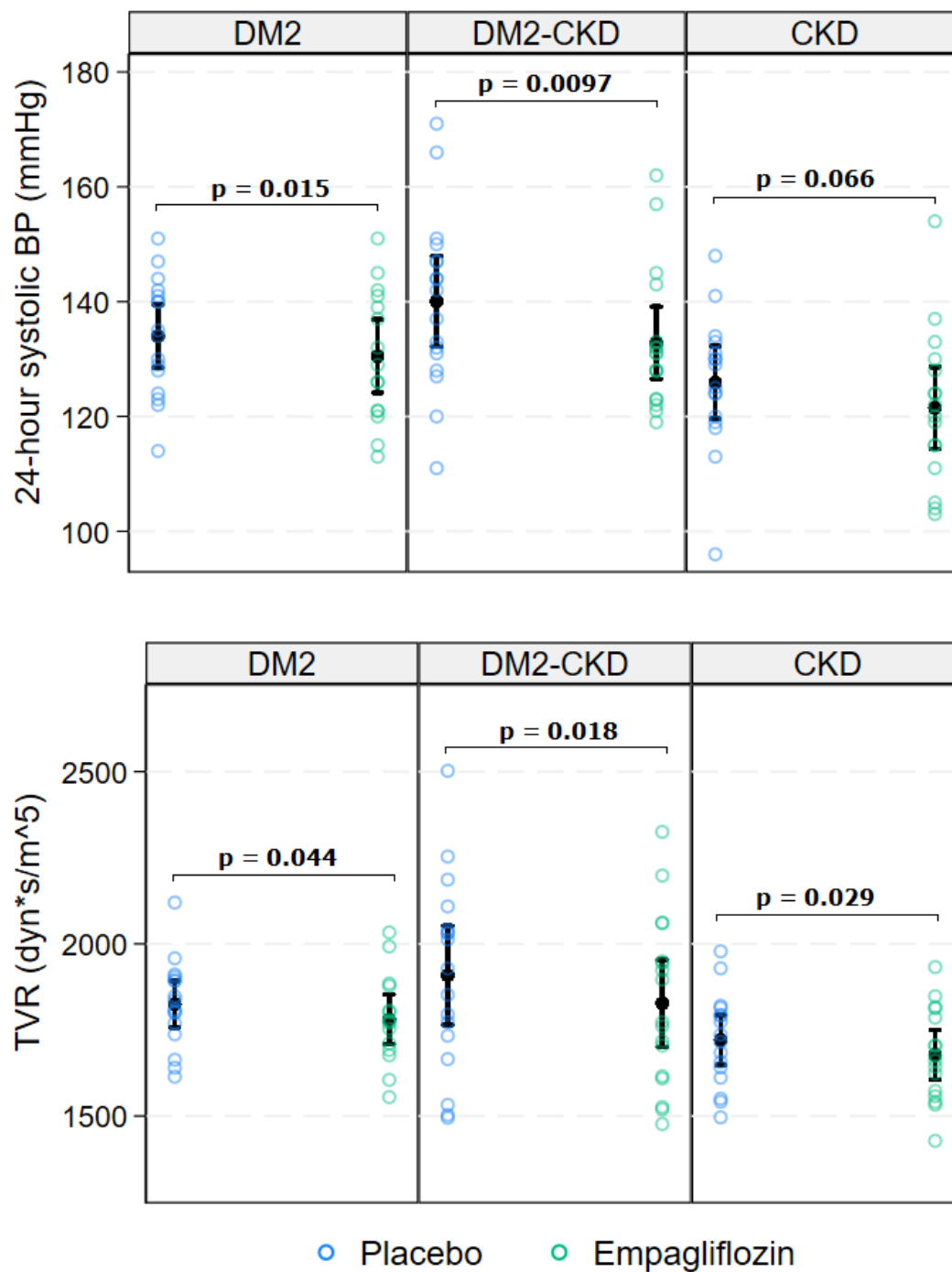
597

598

599

600

601



602 **Figure 5:** 24-hour systolic blood pressure (BP), and total vascular resistance (TVR) with mean and
603 95% confidence interval (95%CI).

604

605

606 **Tables:**

	DM2	DM2-CKD	CKD
Age (years)	68.0 ± 8.5	71.2 ± 5.2	66.9 ± 8.2
Male sex (%)	69%	94%	56%
BMI (kg/m²)	28.4 ± 4.1	29.9 ± 3.6	27.2 ± 4.8
Hba1c (mmol/mol)	55 ± 6.2	56 ± 4.6	37 ± 2.6
eGFR (ml/min/1.73m²)	84.9 ± 13.7	39.0 ± 8.6	34.8 ± 10.8
Duration of diabetes (years)	15.6 ± 8.5	14.8 ± 7.7	-
Duration of kidney disease (years)	-	9.3 ± 4.9	7.3 ± 5.6
Reported cause of kidney disease	-		
Diabetic		82%	0%
Hypertensive		0%	19%
Nephrosclerosis		0%	19%
Retroperitoneal fibrosis		0%	6%
Granulomatosis w. polyangiitis		0%	6%
Focal segmental glomerular sclerosis		6%	0%
Unknown		12%	50%
Hypertension (%)	75%	100%	100%
Ischemic heart disease (%)	19%	24%	19%
Number of anti-hypertensive medications (n)	2.5 [1-4]	3 [2-4]	3 [2-4]
On insulin (%)	31%	59%	-
On SGLT2i (%)	43%	59%	6%
On ACEi or ARB (%)	63%	82%	81%
On diuretics (thiazide or loop diuretics) (%)	44%	59%	50%
uACR (mg/g)	30 [9 - 275]	107 [40 - 1060]	187 [57 - 1622]
uACR > 30 mg/g (%)	25%	76%	75%
Current or former smokers (%)	57%	6%	19%

607 **Table 1:** Baseline demographics. Data is presented as mean \pm SD or median [interquartile range].
608 BMI: body mass index, HbA1c: glycated hemoglobin, eGFR: estimated glomerular filtration rate,
609 uACR: urinary albumin/creatinine ratio, SGLT2i: sodium-glucose cotransporter 2 inhibitors, ACEi:
610 angiotensin converting enzyme inhibitors, ARB: angiotensin receptor blockers.

611

612

613

614

615

616

617

618

619

620

621

622

623

624

625

626

627

628

629

630

631

632

633

Event	Empagliflozin	Placebo
Number of participants with an adverse event:	14	19
Hypoglycemia	1	2
Musculoskeletal	2	6
Urogenital infections	2	1
Dizziness	2	3
Headache	0	1
Infection	2	2
Fatigue	1	0
Amputation (toe)	0	1
Hyperglycemia	0	1
Polyuria	1	0
Diarrhea	1	1
Dehydration	0	1
Worsening of renal function	0	1
Hyponatremia	0	1
Other	5	4

634 **Table S1:** Adverse events

635

	DM2 Group				DM2-CKD group				CKD group			
	Empagliflozin Mean± SD	Placebo Mean± SD	Difference Mean (95% CI)	p-value	Empagliflozin Mean± SD	Placebo Mean± SD	Difference Mean (95% CI)	p-value	Empagliflozin Mean± SD	Placebo Mean± SD	Difference Mean (95% CI)	p-value
24-hour systolic BP (mmHg)	131 ± 12	135 ± 9	DM2 group -5 (-9; -1)	0.015	132 ± 12	140 ± 15	DM2-CKD group -7 (-12; -2)	0.0097	122 ± 13	126 ± 12	CKD group -4 (-8; 0)	0.066
24-hour diastolic BP (mmHg)	77 ± 10	79 ± 8	-2 (-5; 0)	0.029	76 ± 7	80 ± 9	-3 (-7; 0)	0.043	77 ± 10	79 ± 9	-2 (-5; 1)	0.10
Renal plasma flow (ml/min/ccm)	1.32 [1.27-1.85]	1.37 [1.33-1.90]	0.06 (0.90; 1.03)	0.29	0.98 [0.82-1.17]	1.04 [0.89-1.15]	0.06 (0.91; 0.97)	0.001	1.17 [0.96-1.34]	1.18 [0.99-1.42]	0.01 (0.94; 1.05)	0.72
Total Renal Blood Flow (ml/min)	458 [375-581]	475 [324-598]	0.96 (0.90; 1.03)	0.30	262 [214-333]	280 [235-344]	0.94 (0.91; 0.97)	0.001	227 [136-320]	229 [165-328]	0.99 (0.94; 1.04)	0.68
GFR (ml/min/1.73m²)	75.6 [66.7- 94.3]	87.6 [78.9-102.7]	0.86 (0.8; 0.90)	0.001	37.7 [32.9-46.8]	41.3 [38.4-49.0]	0.91 (0.85; 0.98)	0.019	30.1 [21.9-42.6]	33.8 [25.7-47.1]	0.89 (0.82; 0.98)	0.018
FF	0.34 [0.30 - 0.36]	0.37 [0.32 - 0.41]	0.91 (0.83; 0.99)	0.028	0.28 [0.25 - 0.34]	0.29 [0.24 - 0.33]	0.97 (0.89; 1.05)	0.43	0.25 [0.22-0.28]	0.26 [0.22-0.31]	0.93 (0.84; 1.03)	0.18
RVR (mmHg/ml/min)	0.21 [0.15-0.26]	0.22 [0.16-0.29]	0.98 (0.91; 1.06)	0.87	0.38 [0.30-0.44]	0.37 [0.27 - 0.45]	1.01 (0.96; 1.06)	0.60	0.42 [0.29-0.59]	0.43 [0.30-0.56]	0.99 (0.92; 1.06)	0.67
PGLO (mmHg)	59.9 [53.4- 64.1]	64.6 [58.4 - 66.8]	0.93 (0.87; 0.99)	0.024	49.3 [45.8-53.5]	49.7 [47.5 - 53.4]	0.99 (0.95; 1.03)	0.68	46.3 [41.3-52.7]	47.1 [41.4-52.7]	0.98 (0.95; 1.02)	0.37
R_a (dyn*s/m⁵)	6666 [4273-9158]	6885 [4099-8352]	0.97 (0.89; 1.5)	0.42	14804 [11185-19152]	15157 [11686-19608]	0.98 (0.88; 1.08)	0.62	16811 [10324-25388]	16941 [10002-26013]	0.99 (0.90; 1.10)	0.87
R_e (dyn*s/m⁵)	3505 [3017-3782]	4085 [3293-4598]	0.86 (0.76; 0.96)	0.013	3092 [2905-3517]	3243 [2589 - 3804]	0.95 (0.86; 1.05)	0.32	2585 [2014-2858]	2919 [2545 - 3770]	0.89 (0.80; 0.98)	0.03

Table 2: Renal hemodynamics. FF: filtration fraction, RVR: renal vascular resistance, PGLO: intra-glomerular pressure R_a and R_e:afferent and efferent glomerular arteriolar resistance. P-values < 0.05 in bold.

	DM2 Group				DM2-CKD group				CKD group			
	Empagliflozin Mean± SD	Placebo Mean± SD	Difference Mean (95% CI)	p-value	Empagliflozin Mean± SD	Placebo Mean± SD	Difference Mean (95% CI)	p-value	Empagliflozin Mean± SD	Placebo Mean± SD	Difference Mean (95% CI)	p-value
TVR (dyn*s/m⁵) (mmol/mol)	1785 ± 130	1829 ± 131	-48 (-94; 1)	0.024	1827 ± 146	1908 ± 180	-81 (-147; 3)	0.02	1678 ± 136	1724 ± 136	-43 (-82; 0)	0.03
Heart rate (min⁻¹)	67 ± 9	68 ± 9	-1 (-3; 1)	0.15	63 ± 10	64 ± 10	-1 (-2; 1)	0.5853	68 ± 8	69 ± 9	-1 (-4; 1)	0.37

Table 3: Systemic hemodynamics. TVR: total vascular resistance. P-values < 0.05 in bold.

	9.5 ± 2.1	11.1 ± 4.2	-1.6 (-3.4; 0.2)	p = 0.078	9.4 ± 2.4	9.6 ± 2.8	-0.1 (-1.2; 1.0)	P = 0.81	5.6 ± 1.1	5.9 ± 0.9	-0.2 (-0.7; 0.3)	P = 0.32
	Empagliflozin Geometric mean [IQR]	Placebo Geometric mean [IQR]	Difference Geometric mean ratio (95% CI)	p-value	Empagliflozin Geometric mean [IQR]	Placebo Geometric mean [IQR]	Difference Geometric mean ratio (95% CI)	p-value	Empagliflozin Geometric mean [IQR]	Placebo Geometric mean [IQR]	Difference Geometric mean ratio (95% CI)	p-value
Plasma glucose (mmol/L)												
Albumin/creatinine ratio* (mg/g)	347 [133-1087]	694 [286-2063]	0.50 (0.22; 1.12)	p = 0.07	205 [68-644]	399 [136 - 1326]	0.51 (0.31; 0.85)	P = 0.014	280 [57-1332]	350 [80-1921]	0.80 (0.54; 1.29)	p = 0.24
Urinary glucose (mmol/L)	87.9 [53.3 - 138.4]	0.2 [0.0-1.6]	-	p < 0.001	41.1 [38.0-66.2]	0.1 [0.0-0.1]	-	p < 0.001	11.6 [7.3-26.1]	0.0 [0.0-0.0]	-	p < 0.001

Table S2: Glycated hemoglobin (HbA1c), plasma glucose, albumin/creatinine ratio and urinary glucose. P-values < 0.05 in bold.

* Only participants with an uACR > 30 mg/g at the placebo visit. N = 4 in the DM2 group. N = 14 in the DM2-CKD group. N = 11 in the CKD group