

1 *The effect of mentorship as a means of strengthening leadership in the health system at the*
2 *operational level: a case study of the Walungu rural health zone in the eastern Democratic*
3 *Republic of Congo*

4
5 Rosine Bigirinama^{1,2,3,*}, Ghislain Bisimwa^{1,2,4}, Samuel Makali^{1,5}, Aimé Cikomola¹, Janvier
6 Barhobagayana⁶, Jean-Corneille Lembebu¹, Christian Chiribagula¹, Pacifique Mwene-Batu^{1,7},
7 Abdon Mukalay³, Denis Porignon⁸, Albert Tambwe³.

8
9 ¹ Ecole Régionale de Santé Publique, Université Catholique de Bukavu, Bukavu, Democratic
10 Republic of Congo

11 ² School of Medicine, Université Catholique de Bukavu, Bukavu, Democratic Republic of
12 Congo

13 ³ Ecole de Santé Publique, University of Lubumbashi, Lubumbashi, Democratic Republic of
14 Congo

15 ⁴ Centre de Recherche en Sciences Naturelles, Lwiro, Democratic Republic of Congo

16 ⁵ Centre de Recherche (CR3) Politiques et Systèmes de Santé- Santé internationale, École de
17 Santé Publique, Université Libre de Bruxelles, Belgique

18 ⁶ Department of Public Health, College of Health Sciences, Université Officielle de Bukavu,
19 Bukavu, Democratic Republic of Congo

20 ⁷ School of Medicine, Université de Kaziba, Bukavu, Democratic Republic of Congo

21 ⁸ Département des Sciences de la Santé Publique, School of Medicine, Université de Liège,
22 Liège, Belgium

23 *Corresponding Author: Rosine N. Bigirinama, Université Catholique de Bukavu, Avenue
24 Michombero No. 02, Bukavu, Democratic Republic of the Congo. Mail to:

25 rosinebigirinama@gmail.com

NOTE: This preprint reports new research that has not been certified by peer review and should not be used to guide clinical practice.

26

27 **Abstract**

28

29 **Context:** In the rural Health Zone (HZ) of Walungu, eastern Democratic Republic of Congo,
30 major constraints impede health outcomes. From 2015 to 2019, the "RIPSEC" program
31 transformed Walungu into a Learning and Research Zone (LRZ) under the mentorship of a
32 local university to enhance the leadership capabilities of HZ managers, focusing on managing
33 challenges including the proliferation of Informal Healthcare Facilities (IHF).

34

35 **Objective:** This study evaluates the impact of RIPSEC mentorship on leadership
36 development and the performance of the Walungu LRZ, particularly concerning the
37 utilization of integrated curative health services in competition with IHFs.

38

39 **Methods:** We used a mixed method approach, combining retrospective analysis of some key
40 health indicators before (2014) and during RIPSEC program (2015-2019), and in-depth
41 qualitative interviews with members of the HZ management team. Quantitative data were
42 presented as frequencies and proportions. Simple linear regression ($p < 0.05$) measured the
43 influence of IHFs on service use. The functionality and performance of the HZ were assessed
44 using an internal benchmarking approach, with results presented as trend curves. Deductive
45 analysis of interviews allowed for a deeper exploration of quantitative trends.

46

47 **Results:** Despite efforts to manage them, IHFs negatively influenced the use of curative
48 services. RIPSEC mentorship notably enhanced the leadership skills of managers, leading to
49 improved management effectiveness. While the use of curative health services slightly

50 increased during the program, rates remained below 50%, and gains were not sustained post-
51 program.

52

53 **Conclusion:** RIPSEC mentorship has positively impacted leadership and performance in
54 Walungu. However, challenges related to sustainability and financing persist, necessitating
55 comprehensive interventions beyond enhancing managerial leadership solely.

56

57 **Key words:** Leadership, Mentorship, Public Health, Crisis, Learning and Research Site,
58 DRC.

59

60 **Introduction**

61

62 In contexts of prolonged multifaceted crises, healthcare systems face colossal challenges,
63 progressively undermining their ability to provide quality healthcare to the population (1,2). In
64 2021, 4.5 billion people lacked coverage by essential health services, and 1 billion faced
65 catastrophic healthcare costs, with 344 million people living in extreme poverty due to these
66 expenses. (3). This reality is starkly evident in the east of the Democratic Republic of Congo
67 (DRC), where decades of armed conflict have fostered a persistent crisis (4). The ongoing
68 conflict has gradually eroded infrastructure and led to an inadequate distribution of healthcare
69 resources (1), while the state struggles to finance quality, accessible health services for all. With
70 less than 15% of the national budget allocated to health, and only 30% of this amount disbursed,
71 the majority of healthcare financing falls on households, which contribute 40% of the overall
72 health budget, 90% of which is through direct payments (5–8). As a result, health facilities
73 commonly rely on direct payment for care by patients to ensure their operation (7,8). These

74 financial constraints significantly deter the sick from using healthcare services (9), contributing
75 to the population's growing impoverishment and poor health outcomes.

76

77 Moreover, the limited government presence in crisis zones (10) has led to the proliferation of
78 Informal Healthcare Facilities (IHF). These facilities operate marginally within legal
79 frameworks, often failing to meet sectoral standards and posing risks to patient safety (11).
80 Despite these issues, economic constraints and often misleading promises draw people to these
81 facilities (12). The inability of the state to effectively regulate these entities is further
82 complicated by political interferences that undermine the regulatory attempts of HZ managers
83 (11,13). However, strengthening Health Zone (HZ) management is recognized as a pivotal
84 strategy for addressing these challenges, as demonstrated in various contexts, including those
85 similar to the east of the DRC (15-18).

86

87 In the DRC, the organizational arrangements of the health system are such that leadership must
88 be exercised fully at the lowest level of the health system, through the HZ managers gathered
89 in a Health Zone Management Team (HZMT) (18). The HZMT is responsible for managing and
90 coordinating health services, planning interventions, conducting epidemiological surveillance,
91 and supporting primary care structures. They also have the task of ensuring the effective
92 implementation of national health policies (18,19). Previous studies in eastern DRC have
93 identified a notable leadership deficit among managers in crisis zones, with no formal
94 government program currently aimed at enhancing HZ management leadership (11,20). In
95 2015, an evidence-based health system strengthening program named "Renforcement
96 Institutionnel pour des Politiques de Santé basées sur l'Évidence en RD Congo" (RIPSEC) was
97 established in the Walungu HZ, South-Kivu province, targeting it as a "demonstration health
98 zone," a strategy proposed in the DRC's National Health System Strengthening Strategy but

99 not yet implemented (18). Walungu was selected since it met key selection criteria: it presented
100 a minimally acceptable level of functionality, was geographically accessible, and had favorable
101 security conditions. These criteria ensured that the selected zone could provide a safe, stable,
102 and accessible environment for effective HZMT mentoring. Walungu was positioned to serve
103 as a model for other HZs, demonstrating viable strategies for developing and improving health
104 services.

105
106 This study is based on the hypothesis that leadership development through the “demonstration
107 health zone” approach can effectively address the challenges in crisis-affected areas. It
108 specifically examines the impact of RIPSEC mentorship on the leadership capabilities of the
109 Walungu HZMT in the face of competition from IHFs.

110

111 **Methodology**

112

113 **Study region: presentation of the case under study**

114 The study was conducted in the Walungu HZ in the South-Kivu province of eastern Democratic
115 Republic of Congo (DRC). Walungu is one of 519 operational HZs (also known as Health
116 Districts) that form the foundational layer of the DRC’s health system pyramid. Each HZ is
117 structured to provide two primary healthcare service lines. The first line consists of a network
118 of 7 to 25 Health Centers (HCs), each serving its corresponding geographical entity, known as
119 a Health Area (HA), and delivering a minimum package of care. The second line is typically
120 represented by a General Referral Hospital (GRH) that offers a complementary package of care.
121 Some HZs also include secondary hospitals or Referral Health Centers that provide a level of
122 care between the first and second lines. The intermediate coordinating level of the health system

123 pyramid comprises 26 Provincial Health Divisions (DPS), one for each of the country's 26
 124 provinces, while the central normative level is headquartered in Kinshasa, the capital city.

125
 126 Walungu is characterized as a rural HZ with an estimated population of 285 669 in 2019,
 127 distributed across 23 HAs (Table 1). According to the 2020 report from the HZ Central Office,
 128 the estimated coverage rate is 96%. This is defined as the population living within less than 5
 129 km from an integrated health facility without significant geographical barriers (19). Similar to
 130 most HZs in eastern DRC, Walungu is a post-conflict zone that continues to experience sporadic
 131 attacks on its population by armed rebel groups (1,21).

132

133 **Table 1. General characteristics of the Walungu HZ**

	Baseline	RIPSEC Program Years				
	2014	2015	2016	2017	2018	2019
Variables						
Population (inhabitants)	244684	252269	260362	268434	276755	285669
Number HAs	23	23	23	23	23	23
Number of GRH	1	1	1	1	1	1
Number Referral Health Centers	5	5	5	5	5	5
Number of Health Centers	23	23	23	23	23	23
Number of Health Posts	3	4	6	6	6	7
Number of beds in the GRH	200	200	235	233	286	272
Health Coverage	96.4%	96.4%	96.4%	96.4%	96.4%	96.4%
Number of medical doctors	9	9	9	9	9	10
Number of nurses	121	127	137	164	153	201
Medical doctors /10000 inhab.	0.37	0.36	0.35	0.34	0.33	0.35

Nurses / 10000 inhab.	4.9	5.0	5.3	6.1	5.5	7.0
Beds / 10000 inhab.	8.2	7.9	9.0	8.7	10.3	9.5

134

135 **Intervention framework of the RIPSEC program in Walungu**

136 The RIPSEC program, led by a consortium of three Schools of Public Health in the DRC and
137 funded by the European Union, was operational from 2015 to 2019. Its overarching goal was
138 to enhance the use of scientific evidence in health policy development to improve health
139 outcomes. It implemented three LRZs across three provinces, the program led by three main
140 DRC's academic public health institutions: UNILU in Haut-Katanga province (for Kisanga
141 HZ), UNIKIN in Kongo Central province (for Gombe Matadi HZ), and "Ecole Régionale de
142 Santé Publique" of the "Université Catholique de Bukavu" (ERSP-UCB) in South-Kivu
143 province (for Walungu HZ) (22).

144

145 In Walungu, the RIPSEC program included four major "transformation projects" designed to
146 boost the effectiveness of the HZMT. These components were: (i) leadership strengthening, (ii)
147 formative supervision, (iii) enhancement of referral and counter-referral systems, and (iv)
148 transformation of health facilities into model structures for other HZs.

149

150 Leadership development was customized to fit the specific needs of Walungu, focusing on
151 enhancing functionality and ensuring efficient coordination of activities.

152 The mentorship was led by a well-defined profile: a public health expert and experienced
153 former HZ manager who was working, at the time of his selection, as manager of a health
154 program at provincial level. This mentor was responsible for organizing weekly HZMT
155 meetings, providing individual coaching to foster greater commitment and participation in
156 management activities. Formative supervision replaced previous supervisory approaches with

157 interactive, on-the-spot error correction and detailed reporting post-visit. The standardization
158 of referral and counter-referral tools was aimed at harmonizing procedures and improving
159 communication across facilities. Additionally, facilitating exchanges between lower and
160 higher-performing facilities aimed to enhance performance indicators and disseminate best
161 practices. All activities were meticulously documented under the oversight of ERSP-UCB (23).
162

163 **Conceptual framework**

164 The framework (Fig 1) conceptualizes the transformative potential of targeted leadership
165 support within a complex socio-economic, cultural, and administrative context marked by
166 post-conflict recovery. It delineates the process by which leadership enhancement of the
167 HZMT through RIPSEC's mentorship is expected to directly improve the overall functionality
168 and performance of the HZ. Activities are strategically designed to address the unique
169 challenges encountered in Walungu effectively. Expected outcomes include an increased
170 utilization of curative services and a notable reduction in the negative impacts of IHFs, among
171 other potential improvements.

172

173 *Fig 1. Conceptual framework of the RIPSEC program intervention in Walungu LRZ*

174

175 **Definition of concepts**

176 (1) Mentorship: In the context of public health, mentorship refers to a supportive and advisory
177 relationship where an experienced individual (the mentor) guides and assists a less
178 experienced individual (the mentee) in their professional development. The goal is to enhance
179 the mentee's skills, knowledge, and confidence (22). Within the RIPSEC program, a public
180 health expert from the ERSP-UCB was assigned to provide ongoing technical support,

181 training, advice, and local coaching to improve leadership and management skills of the HZ
182 managers (22,23).

183 (2) Learning and Research Zone (LRZ): An LRZ is a designated environment that facilitates
184 learning, research, and the development of improved practices through collaboration between
185 researchers and health managers (13,24). In the RIPSEC context, the Walungu LRZ served as
186 a testbed for innovative strategies and interventions aimed at enhancing the healthcare system
187 and generating evidence. The mentorship activities described in this study are integral
188 components of this LRZ's function (22).

189 (3) Health structures: Walungu HZ encompasses a range of health facilities (HF) offering
190 diverse healthcare needs. These include:

- 191 • Health Centers: First-line HF that deliver a minimum package of services, including
192 curative, preventive, promotional, and rehabilitation activities.
- 193 • Walungu General Referral Hospital: A second-line medical facility that offers a
194 complementary package of activities, including the four essential services of Internal
195 Medicine, Surgery, Gynaeco-obstetrics, and Pediatrics.

196 Additionally, the zone features various other health structures that provide a spectrum of care
197 levels. At one end are Health Posts, offering the most basic care package, and at the other,
198 Reference Health Centers equipped with maternity units and comprehensive medical
199 consultation services, going beyond the minimum care package (19).

200 Among these structures, some are integrated. Integrated structures are state-approved facilities
201 adhering to national health standards and reporting to the Ministry of Health. Conversely,
202 private facilities, though state-approved, are not mandated to report their data to the Ministry
203 of Health(18,25).

204 (4) Informal Healthcare Facilities (IHF) : These are entities that purport to offer care aimed
205 at curing or alleviating illnesses without the requisite quality or authorization. They fall into
206 two categories:

- 207 • Traditional Medicine facilities: Structures claiming to treat illnesses using traditional
208 methods and materials such as plants, leaves, roots, and animal parts not recognized in
209 modern pharmacology.
- 210 • Prayer-based facilities: Facilities that organize prayer sessions or vigils seeking divine
211 healing.

212

213 **Type and period of study**

214 This study is an analysis of the implementation of the RIPSEC program in the Walungu LRZ,
215 employing a single case study approach. We employed a mixed-methods approach for
216 exploratory purposes (Table 2), combining retrospective analysis of key health indicators from
217 2014 (pre-implementation) through the five-year duration of the RIPSEC project (2015-2019),
218 with in-depth qualitative interviews conducted post-program. Data triangulation from these
219 approaches was used to enhance the robustness of our findings.(27-29). Quantitative data were
220 collected continuously from January 1st, 2015, to December 23rd, 2019, and were accessed for
221 analysis on March 23rd, 2022. The qualitative component, focusing on the program's
222 contribution to leadership and governance development, involved interviews with key HZMT
223 members. These interviews were conducted from November 23rd to December 15th, 2022, to
224 assess the enduring impacts and gather reflective insights from the stakeholders involved.

225

226 **Table 2. Summary of study approaches**

Approach	Resources	Information sought
----------	-----------	--------------------

Quantitative	Analysis of health indicators from 2014 to 2019.	Objective evaluation of functionality and performance trends, and the impact of IHFs on service utilization.
Qualitative	Individual interviews with members of the Walungu HZMT who served during 2015-2019.	Retrospective insights on the impact of mentorship on leadership development and problem management within the zone.

227

228 **Sampling and data collection**

229

230 **1) Quantitative component of the study**

231 To assess the evolution of the zone's functionality and performance, exhaustive sampling was
232 employed, focusing on key health indicators at the HZ, particularly those related to service
233 utilization in integrated facilities. During the RIPSEC program period, deidentified data were
234 gathered from secondary sources, specifically health reports at both the HF and HZ Central
235 Office levels, by the program mentor. This data collection process ensured that there was no
236 access to individual identities during and after data collection. The mentor, serving as a part-
237 time technical assistant, played a pivotal role in organizing the HZ, collecting data monthly,
238 and coaching the HZMT. The mentor's presence during the RIPSEC program ensured the
239 reliability of the data recorded in monthly reports. For observations prior to the LRZ
240 establishment, the scope of the data collection was restricted to the year 2014. This limitation
241 was due to the incomplete implementation of the national DHIS2 data system at that time (29)
242 and the absence of the RIPSEC mentor in the zone. Additionally, archival weaknesses during
243 this period further restricted the reliability of any data prior to 2014. Collected data were stored
244 on a secured disk at the ERSP-UCB.

245
 246 Performance indicators were specifically selected to reflect preventive activities at first-line
 247 HFs and curative activities at second-line HFs. This study emphasized the rate of use of
 248 curative services in Walungu’s HFs as a proxy for assessing the population's reliance on
 249 IHFs: a lower usage rate suggests a higher likelihood of the population turning to alternative
 250 curative options. These indicators, presented as rates, were chosen to mirror the impact of
 251 managerial leadership in health service delivery (4,14) (Table 3).

252

253 **Table 3. Performance indicator**

Indicator	Definition	Link with Leadership
First Line of Care (Health Centre)		
First Antenatal Visit Utilization rate	Quotient of the number of pregnant women who attended their first antenatal visit over the total number of eligible pregnant women in the HZ, multiplied by 100.	Reflects the effectiveness of HZ managers in promoting initial prenatal consultations among pregnant women.
Fourth Antenatal Visit Utilization Rate	Quotient of the number of pregnant women who attended all previous antenatal appointments over the total number of eligible pregnant women in the HZ, multiplied by 100.	Demonstrates the ability of managers to ensure continued engagement of pregnant women in ongoing prenatal care.
Third Dose Pentavalent Vaccine Wastage Rate	Difference between the number of children who received the first and third doses of the pentavalent vaccine,	Indicates managerial effectiveness in maintaining adherence to the national child vaccination schedule.

	divided by the number who received the first dose, multiplied by 100.	
Measles Vaccination Rate	Quotient of the number of 9-month-old children vaccinated against measles over the total number of eligible 9-month-old children, multiplied by 100.	Shows the success of managers in sustaining long-term vaccination adherence among caregivers throughout the national child vaccine schedule (from 0 to 9 months old)
Second Line of Care (General Referral Hospital)		
Curative Services Utilization Rate	Quotient of the total number of new cases treated over the population-years, multiplied by 100.	Relates to managers' success in ensuring service availability and accessibility and promoting the utilization of integrated health services.
Rate of Births Attended by Qualified Health Provider	Number of births attended by skilled personnel divided by the total number of births, multiplied by 100.	Indicates effectiveness in encouraging professional birth attendance through proactive management and patient education.
Rate of Reference of patients from HCs to the HGR	Quotient of the number of patients referred from HCs to the HGR over the total number of Health Centre visitors, multiplied by 100.	Reflects managerial efficiency in adhering to care standards and ensuring appropriate care referrals.

<p>In-hospital Mortality Rate</p>	<p>Quotient of the number of in-hospital deaths over total hospital admissions, multiplied by 100.</p>	<p>Measures the impact of managerial actions on care quality, including protocol implementation, staff training, and outcome monitoring.</p>
--	--	--

254

255 For functionality, indicators aligned with leadership and good governance were chosen. These
 256 include organizational and managerial capacities typically found in a HZ manager
 257 demonstrating effective leadership. Such indicators include the frequency of various
 258 meetings, such as the Board of Directors meeting (encompassing HZMT, provincial-level
 259 managers, and technical partners from the zone), Management Board meeting (HZ Central
 260 Office and GRH managers), HZ Central Office Board of Directors meeting, GRH Board of
 261 Directors meeting, HZ Reviews, and Health Development Committee of the HZ meetings
 262 (14).

263

264 To understand the dynamics of the population using IHFs, including traditional medicine and
 265 prayer groups, we employed an indirect indicator—the number of IHF providers identified in
 266 the HAs. We posited that the proliferation of IHFs incentivizes their use (12); thus, the higher
 267 the number of IHFs in a HA, the greater the impact on curative services rates.

268 We categorized Walungu’s HAs into two groups based on the average number of IHFs: “safe
 269 HAs” were those HAs counting less than the average number of IHFs per HA in Walungu, and
 270 “infiltrated HAs” were those counting at least the average number of IHFs within them. Thus,
 271 of the 23 HAs in the zone, 10 have been categorized as “safe HAs” and 13 as “infiltrated HAs”.

272 This data has been available since 2014 and was assumed to be stable through 2019.

273

274 **2) Qualitative component**

275 In-depth interviews were conducted with Walungu HZMT members who had served for at
276 least two consecutive years during or overlapping with the RIPSEC program period. Members
277 eligible for the study were identified from the RIPSEC archives and subsequently contacted.
278 Seven members, all male, agreed to participate. The interviews were carried out either face-
279 to-face or remotely, depending on the participants' availability, and verbal informed consent
280 was obtained prior to each session. Each interview lasted about 43 minutes. The interview
281 guide was developed based on the preliminary analysis of quantitative data, and the
282 interviews were conducted by two senior researchers with extensive experience in qualitative
283 methods. All interview audios and transcripts were securely stored on a disk at the ERSP-
284 UCB.

285

286 **Note:**

287 While the contribution of various technical and financial partners is acknowledged as vital in
288 strengthening the DRC's health system, often described as essential to the basic functioning
289 of the majority of the region's HZs (30), this study deliberately narrows its focus to the
290 specific impact of the RIPSEC program. This focused approach is justified by the unique
291 nature of the RIPSEC intervention, which integrates mentorship and leadership development,
292 components not typically emphasized to the same extent in other partnerships. By isolating
293 the effects of RIPSEC, we aim to assess the distinct influence of its mentorship and training
294 components on the functionality and performance of Walungu. Moreover, treating the
295 interventions of other partners as elements of the overall context allows for a more controlled
296 study of RIPSEC's direct contributions, providing valuable insights into the effectiveness of
297 targeted mentorship and leadership training in health system strengthening. This

298 methodological choice enhances the study's specificity and relevance, for a more precise
299 understanding of how focused leadership initiatives can impact health outcomes in crisis-
300 affected areas.

301

302 **Analysis**

303 The data collected in HFs were organized on MS-Excel spreadsheets, and analyzed using MS-
304 Excel for some, and STATA Version 17 for others. Simple linear regression was used to
305 assess the influence of IHF presence on curative service utilization in 2014 and during the
306 LRZ years (2015-2019), with significance set at $p < 0.05$.

307

308 Functionality and performance were evaluated using an internal benchmarking method
309 (31,32), starting with indicator selection, and scoring (ranging from 0 to 4, where 4 indicates
310 the target achieved). Scores were adjusted based on expected results and predefined standards,
311 allowing for comparative analysis. Walungu's performance in the 13 selected indicators was
312 benchmarked comparatively to standards used by the DRC's health system to assess HZs
313 achievements (4,31,33). Results were illustrated through curves showing changes from 2014
314 to 2019.

315

316 For the qualitative data, a deductive thematic analysis was applied to the interview transcripts,
317 which were anonymized and coded from RP1 to RP7. The analysis framework was based on
318 the interview guide, enriched by the initial quantitative findings. Themes included (i) the
319 mentorship's contribution to leadership, (ii) its effect on HZ functionality and performance, and
320 particularly, (iii) its effect on curative service usage confronted to IHFs. Manual coding
321 identified relevant categories, and thematic grouping facilitated theory development and sub-
322 theme identification.

323

324 **Ethical considerations**

325 The research protocol for this study was approved by the ethics committee of the Université
326 Catholique de Bukavu under the reference number UCB/CIES/NC/019/2021. The approval
327 was granted under the title “Support for Strengthening the Management and Leadership Skills
328 of the National Malaria Control Program Management Team”. All stages of the study
329 complied with the relevant guidelines and regulations. All participants provided informed
330 consent before taking part in the study.

331

332 **Results**

333

334 **The use of curative services before and during RIPSEC program**

335 We observed an improvement in the use of curative care services in Walungu's safe HAs
336 from the LRZ years onwards (Fig 2), while there was a deterioration in infiltrated HAs over
337 the same period. Safe HAs consistently showed better rates of curative service utilization. In
338 2018, there was a sharp decline in the rates for both types of HAs, which subsequently
339 recovered in 2019. It is important to note that the utilization rates for curative services
340 remained below 50% across all HAs at all times.

341

342 *Fig 2. Curative healthcare services utilization rate trends (the dotted line delimits the*
343 *periods before and during RIPSEC)*

344

345 **Influence of IHFs on the use of curative services**

346 Table 4 presents the results from a simple linear regression that assesses the influence of IHFs
 347 on the rate of use of curative services in Walungu’s HAs. The β value for safe HAs before
 348 RIPSEC indicated a trend towards higher use of curative services compared to infiltrated
 349 HAs, although this difference was not statistically significant ($p=0.062$). During the
 350 mentorship years, safe HAs had a statistically significant higher average rate of use of
 351 curative services ($\beta=0.10$, $p=0.007$) compared to infiltrated HAs. These findings suggest that
 352 the presence of IHFs negatively influences the utilization of curative services.

353

354 **Table 4. Use of curative services and IHFs before and during RIPSEC program**

Variables	Before RIPSEC (2014)		During RIPSEC (2015-2019)	
	β (95% CI)	p-value	β (95% CI)	p-value
Types of HAs				
Safe HAs	0.07 (-.001 ; 0.13)	0,062	0.10 (0.03 ; 0.17)	0.007
Infiltrated HAs	0		0	

355

356 **Walungu’s achievements before and during RIPSEC program**

357 An analysis of trends in the selected indicators is summarized in the figures above. Generally,
 358 both curative and preventive activities exhibit positive trends, with preventive activities
 359 consistently recording better performance scores than curative ones (Fig 3). Regarding the
 360 management indicators, there is an overall upward trend; however, a distinct decline occurred
 361 in 2018, followed by a recovery. The analysis of the evolution of functionality and
 362 performance (Fig 4) indicates an overall improvement during the RIPSEC years compared to
 363 2014. Notably, performance consistently exceeds functionality across the years, with the same
 364 sharp decline in 2018 as previously observed.

365

366 ***Fig 3. Preventive, curative and managerial activities trends in Walungu (the dotted line***
367 ***delimits the periods before and during RIPSEC)***

368

369 ***Fig 4. Functionality and performance trends in Walungu (the dotted line delimits the***
370 ***periods before and during RIPSEC).***

371

372 **HZMT members' experience of RIPSEC mentorship**

373

374 Our thematic analysis of the interview transcripts deduced three primary themes, with a fourth
375 unexpected theme emerging: the challenges encountered in sustaining the achievements of the
376 RIPSEC program.

377

378 **Leadership under RIPSEC mentorship**

379 The interviews highlighted a strengthening of leadership within the HZ management during
380 the program, emphasizing the significance of a clear vision and effective decision-making.

381 Participants frequently credited the RIPSEC program as a catalyst for this transformation by
382 introducing crucial leadership training and strategies to address identified gaps. Despite
383 financial constraints and limited resources, the training and capacity-building initiatives
384 positively impacted care quality and patient management. Respondents noted improvements
385 in accountability, transparency, and coordination across different health management levels.

386 *"Leadership has really changed the way we run services... now there is more*
387 *accountability and follow-through" (RP1).*

388

389 *"Leadership is crucial. Before RIPSEC leadership training, our efforts were scattered."*
390 *(RP5)*

391

392 *"We needed leaders who understood our challenges and could guide effectively." (RP3)*

393

394 **Improving health outcomes in the area**

395 Respondents recognized staff training and skills development as positive aspects of the
396 RIPSEC program. These initiatives have helped stabilize health indicators in accordance with
397 standards. Specifically, nurse managers at HCs were trained to enhance quality of care within
398 their facilities, which improved clinical skills and positively affected health indicators, case
399 management, and team communication through frequent capacity sharing sessions.

400 *"The training courses have greatly helped our staff to manage cases more effectively"*
401 *(RP5).*

402

403 *"Communication mechanisms have been put in place to enable nurses and referred*
404 *patients to make contact with the doctors who will see patients in hospital." (RP3)*

405

406 *"I can personally say that through the activities that have been carried out with the*
407 *community, my skills and knowledge have increased as a result of sharing experiences*
408 *with others. Although I wasn't directly involved, but with the exchanges of experience*
409 *that we did, it was beneficial for everyone, for the community." (RP7)*

410

411 **Use of curative services in competition from IHFs**

412 Participants discussed how informal care structures, such as prayer houses and traditional
413 healers, significantly attract the population, impacting the use of formal health services,
414 especially in geographically hard to reach HAs. Cultural beliefs and socio-economic
415 challenges as well as poor governance practices have hindered integration of these facilities

416 into a regulated framework. The RIPSEC mentorship attempted to address these issues by
417 developing several initiatives to curb this unregulated competition, leading to improved
418 coordination of care and increased health awareness.

419 *"When you arrive in almost all the zones at the moment, it's the people from X territory*
420 *who have unlicensed structures because they currently have a brother from the same*
421 *territory who is a minister. Now he's encouraged them to open pirate facilities and you, as*
422 *the zone's chief medical officer, have no power over them. "(RP1)*

423
424 *"Within the RIPSEC project, we sought to involve local authorities with the aim of raising*
425 *awareness of the need to monitor informal care homes." (RP4)*

426 *"With the presence of these prayer rooms, many health facilities are not able to attract as*
427 *many patients as they should... We have identified and drawn up a list of these*
428 *problematic facilities in collaboration with community leaders." (RP6)*

429
430 *"RIPSEC had trained and informed the community health workers on how to manage and*
431 *listen carefully to the community's problems... I saw the community health workers*
432 *trained by RIPSEC go out into the community to raise awareness or inform people about*
433 *their rights but also their advantage of attending the integrated health center." (RP7)*

434

435 **Sustaining RIPSEC's achievements**

436 Challenges related to disruptive events were noted. Respondents mentioned, among other
437 things, obstacles such as internal conflicts and the instability of human resources (particularly
438 the 2018 Ebola Virus epidemic, the death of the GRH medical director and the departure of
439 the zone's chief medical officer, in 2018), which significantly slowed down the project's

440 progress. Concerns were raised about resources gaps and the long-term sustainability of
441 improvements.

442 *"Since RIPSEC, we have seen better use of services, but there are still challenges to be*
443 *overcome" (RP3)*

444

445 *"The lack of funding and equipment is a major challenge for us." (RP2)*

446

447 *"In 2018, first there were staff disruptions at hospital level. And then there was the Ebola*
448 *epidemic, there were the unfortunate events that followed: there were doctors who died in*
449 *the hospital in the space of two years, and who had benefited from RIPSEC training."*
450 *(RP5)*

451

452 The limited duration of the program (5 years) was frequently cited as a barrier to achieving
453 lasting success and hindered the transmission of LRZ achievements and good practices to
454 other provincial HZs.

455 *Providers with experience in managing deliveries at the General Referral Hospital*
456 *were going to work in the two health centers in order to raise the level (of competence*
457 *of the providers) in the health centers... RIPSEC stopped when all 4 projects were not*
458 *yet well covered. If I had the power, I would relaunch RIPSEC. And as I said, we were*
459 *a pilot health zone, we were supposed to set an example for the other zones, but*
460 *unfortunately the project came to an end and the other zones stopped coming... (RP1)*

461

462 **Discussion**

463

464 **Overview**

465 The aim of this study was to explore the impact of a mentorship-based leadership
466 development program on the functionality and performance of a HZ, and on its capacity to
467 resolve specific problems, in a crisis context. We focused on the Walungu HZ, faced with the
468 specific problem of the presence of IHFs. We investigated how the transformation of the
469 Walungu into a LRZ under the RIPSEC program's mentorship influenced health outcomes
470 within the HZ. Findings reveal that while the program led to a modest but significant
471 improvement in health service utilization and management capabilities, the persistent
472 influence of IHFs, exacerbated by socio-economic and governance factors, continue to pose
473 significant challenges. Despite the progress made through mentorship, sustainability strategies
474 and continuous support are required to maintain and effectively integrate these initiatives into
475 existing healthcare systems.

476

477 **The challenge of IHFs**

478 The rate of service utilization in Walungu remains low, falling below the standard threshold
479 of 50% (19), in stark contrast to the provincial average which increased from 34% to 53%
480 during the same period (5).

481 Trend curves for the use of curative health services indicate a decline in formal service usage
482 in areas with a high concentration of IHFs, suggesting that regulatory efforts in these areas are
483 less effective. Respondents indicated that influence peddling often places these informal
484 entities beyond legal oversight, undermining the regulatory authority of HZ managers. The
485 limited decision space available to these managers, constrained by political interference, not
486 only diminishes their leadership prerogatives but also hinders the implementation of strategies
487 aimed at enhancing quality service delivery. Research in similar settings has highlighted the
488 detrimental and pervasive impact of such practices (11,34). Additionally, poverty and lack of
489 knowledge are prominent factors driving the community's preference for IHFs. Literature

490 suggests that while lower direct costs attract patients to IHFs (8), dissatisfaction with the
491 formal healthcare system, especially for chronic conditions that require substantial
492 psychosocial support and person-centered care, is also a significant factor (12,35–38).
493 Improving healthcare managers' capabilities is a key not only for enhancing access to care but
494 also for ensuring the quality of care is centered around individual needs, thereby optimizing
495 outcomes despite these external pressures.

496

497 **LRZ performance and functionality**

498 During the mentorship years, a noticeable improvement was observed in both performance
499 and functionality, compared to the baseline year of 2014. According to respondents, these
500 enhancements were primarily driven by the improvement in leadership and strategic planning
501 fostered through the mentorship. This aligns with findings from several other studies that
502 highlight the positive impact of leadership enhancement on health system performance (14–
503 16,20). Analysis of the data shows fluctuating trends, reflecting the influence of various
504 stability-threatening events both internal and external to the HZ, as detailed by our
505 respondents. Additionally, these fluctuations might also represent other destabilizing factors
506 not accounted for in this study, such as sporadic security crises and disruptions in external
507 funding, both of which heavily influence the system. These factors have been noted by other
508 researchers as significantly affecting health outcomes in HZs (4,5,39–41). It is consistently
509 observed that performance surpasses functionality, likely because healthcare activities tend to
510 receive more support from external partners compared to managerial functions (42,43).

511

512 **Leadership development: The Learning Site model?**

513 According to our respondents, the RIPSEC mentorship significantly strengthened the
514 leadership skills of HZ managers, enhancing resource management, decision-making, and

515 strategic planning. This progress aligns with mechanisms identified in other sub-Saharan
516 contexts, where increased self-efficacy and perceived autonomy among managers lead to
517 positive outcomes within supportive and conducive working environments (44,45). These
518 findings are consistent with the realist evaluation approach, which posits that the effectiveness
519 of support depends on specific contextual factors, actors, and mechanisms, encapsulated in
520 the 'Intervention-Context-Actor-Mechanism-Outcome' (ICAMO) configuration (46,47). By
521 fostering psychological safety and trust, RIPSEC mentorship has effectively facilitated
522 knowledge transfer, merging theoretical insights with practical field challenges, and tailored
523 strategies to meet the unique needs of Walungu. The importance of real-time, on-site learning
524 for governance, as highlighted in studies from Kenya and South Africa, complements our
525 observations of enhanced decision-making and strategic planning in Walungu (48). Similarly,
526 the learning sites model, which supported micro-practices of governance, has provided a
527 dynamic setting in which health managers engage in informed decision-making. This method
528 enhances understanding and supports emergent system changes, demonstrating the value of
529 site-based, engaged research programs, as further evidenced by a systematic review of district
530 health system management (49).

531

532 **Sustaining achievements**

533 Our study revealed challenges in maintaining the improvements achieved after the RIPSEC
534 program ended. Immediately after the implementation of the RIPSEC mentorship, initial
535 improvements in service use were observed. However, in 2018, the trend curves indicated a
536 significant disruption in progress due to events such as the loss of skilled human resources
537 and an epidemic emergency, as reported by our respondents. Similar constraints have been
538 noted in other low-income contexts, where the success of interventions like RIPSEC not only
539 relies on initial outcomes but also on the health system's resilience to acute emergencies and

540 the sustainability of funding and managerial practices (4,22,49,50). These findings suggest
541 that while programs like RIPSEC can positively impact health outcomes, they are insufficient
542 on their own to overcome all challenges. The lack of sustainable funding strategies, reliance
543 on external aid, and instability of the health workforce could undermine the progress made in
544 LRZ-type strengthening strategies. Experiences from other Sub-Saharan African LRZs
545 indicate that long-term success and scalability depend on continuous engagement, adaptation
546 of best practices, and integration of research into everyday managerial activities (22) The
547 qualitative assessment of LRZs underscores the need to promote reflexivity in managerial
548 decisions and to focus research on immediate LRZ challenges to foster transformative
549 mentorship. Future studies should explore approaches that integrate these initiatives into
550 existing healthcare systems and ensure ongoing support.

551

552 **Limits of the study**

553 Although this study has provided valuable insights into the impact of the RIPSEC program on
554 leadership strengthening and health service improvement in the Walungu HZ, it is not without
555 limitations. Firstly, the retrospective design of the quantitative analysis constrains our
556 capacity to definitively ascertain causal relationships between the RIPSEC interventions and
557 the observed enhancements in health indicators. Secondly, the qualitative component, while
558 providing depth through participant perspectives, may be influenced by retrospective bias or
559 social desirability, affecting the objectivity of the responses (52). Thirdly, focusing
560 exclusively on a single HZ limits the extent to which the findings can be generalized to other
561 settings. Despite these considerations, the study significantly advances our understanding of
562 the impact of health leadership development programs in contexts of crisis.

563

564 **Conclusion**

565

566 This study demonstrates that the RIPSEC program positively influenced leadership
567 enhancement and health service improvement in the Walungu HZ. Despite these gains,
568 persistent financial challenges and the prevalent informal healthcare facilities (IHF) pose
569 obstacles that the program alone cannot surmount. Mentorship under RIPSEC led to better
570 resource management, decision-making, and strategic planning, contributing to a modest
571 increase in the utilization of formal health services. Yet, the reliance on external support and
572 workforce instability have compromised the long-term sustainability of these improvements.
573 This underscores the necessity for durable strategies to embed such initiatives within the
574 existing health system framework. While the study reaffirms the critical role of leadership in
575 public health, particularly in crisis-affected settings, it also highlights that mentorship alone is
576 insufficient to fully address the managerial challenges HZs face. Support from external aid
577 remains essential in crisis areas to progress towards universal health coverage.

578

579 **Aknowledgments**

580

581 We extend our thanks to all those who contributed to the successful completion of this study.
582 We are particularly grateful to the staff and management of the Walungu Health Zone for
583 their cooperation and assistance throughout the research process. Special thanks to the
584 RIPSEC program for their invaluable mentorship which were pivotal in conducting this
585 research. Our gratitude also goes to staff of researchers of the ERSP-UCB for their support for
586 this study.

587

588 **References**

589

590 1. Bendavid E, Boerma T, Akseer N, Langer A, Malembaka EB, Okiro EA, et al. The
591 effects of armed conflict on the health of women and children. *The Lancet*. 2021 Feb
592 6;397(10273):522–32.

593 2. Bou-Karroum L, El-Harakeh A, Kassamany I, Ismail H, El Arnaout N, Charide R, et
594 al. Health care workers in conflict and post-conflict settings: systematic mapping of the
595 evidence. *PloS One*. 2020;15(5):e0233757.

596 3. Universal health coverage (UHC) [Internet]. [cited 2024 Jan 19]. Available from:
597 [https://www.who.int/news-room/fact-sheets/detail/universal-health-coverage-\(uhc\)](https://www.who.int/news-room/fact-sheets/detail/universal-health-coverage-(uhc))

598 4. Makali SL, Karemere H, Banywesize R, Eboma CM, Mwene-Batu P, Lembebu C, et
599 al. Adaptive Mechanisms of Health Zones to Chronic Traumatic Events in Eastern DRC: A
600 Multiple Case Study. *Int J Health Policy Manag* [Internet]. 2023 Oct 4 [cited 2023 Nov 2];
601 Available from: https://www.ijhpm.com/article_4514.html

602 5. Altare C, Malembaka EB, Tosha M, Hook C, Ba H, Bikoro SM, et al. Health services
603 for women, children and adolescents in conflict affected settings: experience from North and
604 South Kivu, Democratic Republic of Congo. *Confl Health*. 2020 May 27;14(1):31.

605 6. Altare C, Castelgrande V, Tosha M, Malembaka EB, Spiegel P. From Insecurity to
606 Health Service Delivery: Pathways and System Response Strategies in the Eastern
607 Democratic Republic of the Congo. *Glob Health Sci Pract*. 2021 Dec 31;9(4):915–27.

608 7. Ministère de la Santé Publique de la République Démocratique du Congo. Rapport sur
609 les comptes de la santé 2020 [Internet]. 2021. Available from:
610 https://sante.gouv.cd/content/uploads/RAPPORT_CNS_2020_86e645c64a.pdf

611 8. Laokri S, Soelaeman R, Hotchkiss DR. Assessing out-of-pocket expenditures for
612 primary health care: How responsive is the Democratic Republic of Congo health system to
613 providing financial risk protection? *BMC Health Serv Res*. 2018;18(1):1–20.

- 614 9. Alam K, Mahal A. Economic impacts of health shocks on households in low and
615 middle income countries: a review of the literature. *Glob Health*. 2014 Apr 3;10(1):21.
- 616 10. Stearns J, Vogel C. The Landscape of Armed Groups in the Eastern Congo. Stearns
617 Jason Vogel Christoph 2015 Landsc Armed Groups East Congo N Y Congo Res Group N Y
618 Univ CIC [Internet]. 2015 Dec [cited 2022 Apr 7]; Available from:
619 <http://congoresearchgroup.org/essay-the-landscape-of-armed-groups-in-eastern-congo-2/>
- 620 11. Bigirinama RN, Makali SL, Mothupi MC, Chiribagula CZ, St Louis P, Mwene-Batu
621 PL, et al. Ensuring leadership at the operational level of a health system in protracted crisis
622 context: a cross-sectional qualitative study covering 8 health districts in Eastern Democratic
623 Republic of Congo. *BMC Health Serv Res*. 2023 Dec 6;23(1):1362.
- 624 12. Bapolisi WA, Karemere H, Ndogozi F, Cikomola A, Kasongo G, Ntambwe A, et al.
625 First recourse for care-seeking and associated factors among rural populations in the eastern
626 Democratic Republic of the Congo. *BMC Public Health*. 2021 Jul 10;21(1):1367.
- 627 13. Kagwanja N, Waithaka D, Nzinga J, Tsofa B, Boga M, Leli H, et al. Shocks, stress
628 and everyday health system resilience: experiences from the Kenyan coast. *Health Policy
629 Plan*. 2020;35(5):522–35.
- 630 14. Mutale W, Vardoy-Mutale AT, Kachemba A, Mukendi R, Clarke K, Mulenga D.
631 Leadership and management training as a catalyst to health system strengthening in low-
632 income settings: Evidence from implementation of the Zambia Management and Leadership
633 course for district health managers in Zambia. *PLOS ONE*. 2017 Jul 25;12(7):e0174536.
- 634 15. Chelagat T, Rice J, Onyango J, Kokwaro G. An Assessment of Impact of Leadership
635 Training on Health System Performance in Selected Counties in Kenya. *Front Public Health*.
636 2013;8:550796.
- 637 16. Seims LRK, Alegre JC, Murei L, Bragar J, Thatte N, Kibunga P, et al. Strengthening
638 management and leadership practices to increase health-service delivery in Kenya: an

- 639 evidence-based approach. *Hum Resour Health*. 2012 Aug 29;10(1):1–7.
- 640 17. World Health Organisation. Everybody’s business, Strengthening health system to
641 improve health outcomes, WHO’s framework for action. 2007;
- 642 18. Ministère de la Santé Publique, Secrétariat Général, Kinshasa. Stratégie de
643 Renforcement du Système de Santé [Internet]. Ministère de la Santé Publique de la
644 République Démocratique du Congo; 2006 [cited 2023 Jan 13]. Available from:
645 [http://planificationfamiliale-](http://planificationfamiliale-rdc.net/docs/2_StrategieDeRenforcementDuSystemeDeSante_SRSS_Juin2006.pdf)
646 [rdc.net/docs/2_StrategieDeRenforcementDuSystemeDeSante_SRSS_Juin2006.pdf](http://planificationfamiliale-rdc.net/docs/2_StrategieDeRenforcementDuSystemeDeSante_SRSS_Juin2006.pdf)
- 647 19. Ministère de la Santé Publique de la République Démocratique du Congo. Recueil des
648 normes d’organisation et de fonctionnement des structures sanitaires de la zone de santé en
649 République Démocratique du Congo [Internet]. 2012. Available from:
650 [https://docplayer.fr/34761187-Recueil-des-normes-d-organisation-et-de-fonctionnement-des-](https://docplayer.fr/34761187-Recueil-des-normes-d-organisation-et-de-fonctionnement-des-structures-sanitaires-de-la-zone-de-sante-en-republique-democratique-du-congo.html)
651 [structures-sanitaires-de-la-zone-de-sante-en-republique-democratique-du-congo.html](https://docplayer.fr/34761187-Recueil-des-normes-d-organisation-et-de-fonctionnement-des-structures-sanitaires-de-la-zone-de-sante-en-republique-democratique-du-congo.html)
- 652 20. Johnson O, Begg K, Kelly AH, Sevdalis N. Interventions to strengthen the leadership
653 capabilities of health professionals in Sub-Saharan Africa: a scoping review. *Health Policy*
654 *Plan*. 2021;36:117–33.
- 655 21. Vlassenroot K. Households land use strategies in a protracted crisis context: land
656 tenure, conflict and food security in eastern DRC. *Confl Res Group Univ Ghent*. 2005;
- 657 22. Michaux G, Mwembo-Tambwe A, Belrhiti Z, Monet F, Criel B. Développement des
658 Zones de Santé d’Apprentissage et de Recherche en République Démocratique du Congo :
659 enseignements utiles d’une évaluation qualitative des expériences antérieures en Afrique
660 Subsaharienne. *Glob Health Promot*. 2020 Jun 1;27(2):139–48.
- 661 23. RIPSEC RDCongo [Internet]. [cited 2022 May 11]. Programme RIPSEC. Available
662 from: <https://ripsec.org/>
- 663 24. RESYST [Internet]. [cited 2024 Feb 2]. Health system learning sites: understanding

- 664 health systems through research collaboration and engagement. Available from:
665 <https://resyst.lshtm.ac.uk/resources/health-system-learning-sites-understanding-health->
666 [systems-through-research-collaboration](https://resyst.lshtm.ac.uk/resources/health-system-learning-sites-understanding-health-systems-through-research-collaboration)
- 667 25. Ministère de la Santé Publique de la République Démocratique du Congo. Plan
668 National de Développement Sanitaire recadré pour la période 2019-2022 : Vers la couverture
669 sanitaire universelle [Internet]. 2018. Available from:
670 https://www.globalfinancingfacility.org/sites/gff_new/files/documents/DRC_Investment_Cas
671 [e_FR.pdf](https://www.globalfinancingfacility.org/sites/gff_new/files/documents/DRC_Investment_Cas_e_FR.pdf)
- 672 26. Palinkas LA, Mendon SJ, Hamilton AB. Innovations in Mixed Methods Evaluations.
673 *Annu Rev Public Health*. 2019;40(1):423–42.
- 674 27. Yin RK. Case study research and applications [Internet]. Vol. 6. Sage Thousand Oaks,
675 CA; 2018. Available from: [https://us.sagepub.com/en-us/nam/case-study-research-and-](https://us.sagepub.com/en-us/nam/case-study-research-and-applications/book250150)
676 [applications/book250150](https://us.sagepub.com/en-us/nam/case-study-research-and-applications/book250150)
- 677 28. Champagne F, Contandriopoulos AP, Brousselle A, Hartz Z, Denis JL. L'évaluation
678 dans le domaine de la santé : concepts et méthodes. In: Brousselle A, Champagne F,
679 Contandriopoulos AP, Hartz Z, editors. L'évaluation : concepts et méthodes [Internet].
680 Presses de l'Université de Montréal; 2011 [cited 2024 Apr 19]. p. 49–70. Available from:
681 <http://books.openedition.org/pum/6300>
- 682 29. Siyangoli DSS. Implementation of DHIS2 in DRC: processes and challenges.
683 Available from: [https://www.childhealthtaskforce.org/sites/default/files/2018-](https://www.childhealthtaskforce.org/sites/default/files/2018-09/data_wkshp_drc_dhis2_implem.pdf)
684 [09/data_wkshp_drc_dhis2_implem.pdf](https://www.childhealthtaskforce.org/sites/default/files/2018-09/data_wkshp_drc_dhis2_implem.pdf)
- 685 30. Bisimwa G, Makali SL, Karemere H, Molima C, Nunga R, Iyeti A, et al. Contrat
686 unique, une approche innovante de financement du niveau intermédiaire du système de santé
687 en République Démocratique du Congo : processus et défis de mise en œuvre. *Afr J Prim*
688 *Health Care Fam Med*. 2021 Dec 6;13(1):e1–9.

- 689 31. Benson HR. An introduction to benchmarking in healthcare. *Radiol Manage*. 1994 Jan
690 1;16(4):35–9.
- 691 32. Walsh KE, Razzaghi H, Hartley DM, Utidjian L, Alford S, Darwar RA, et al. Testing
692 the Use of Data Drawn from the Electronic Health Record to Compare Quality. *Pediatr Qual*
693 *Saf*. 2021 Jul 1;6(4):e432.
- 694 33. Sicotte C, Champagne F, Contandriopoulos AP, Barnsley J, Beland F, Leggat SG, et
695 al. A Conceptual Framework for the Analysis of Health Care Organizations' Performance.
696 *Health Serv Manage Res*. 1998 Feb 1;11(1):24–41.
- 697 34. Bigirinama RN, Mothupi MC, Mwene-Batu PL, Kozuki N, Chiribagula CZ,
698 Chimanuka CM, et al. Prioritization of maternal and newborn health policies and their
699 implementation in the eastern conflict affected areas of the Democratic Republic of Congo: a
700 political economy analysis. *Health Res Policy Syst*. 2024 Apr 30;22(1):55.
- 701 35. Malembaka EB, Karemere H, Bisimwa Balaluka G, Altare C, Odikro MA, Lwamushi
702 SM, et al. Are people most in need utilising health facilities in post-conflict settings? A cross-
703 sectional study from South Kivu, eastern DR Congo. *Glob Health Action*. 2020;13(1).
- 704 36. World Health Organization. *People-Centred Care in Low- and Countries*. Proceedings
705 of the Third Geneva Conference on Person-Centered Care; Geneva, Switzerland. *World*
706 *Health Organ Health Innov Netw South Lond*. 2010;(May):1–25.
- 707 37. Molima Eboma Ndjangulu C, Karemere H, Bisimwa G, Makali S, Mwene-Batu P,
708 Bwenge Malembaka E, et al. Barriers and facilitators in the implementation of bio-
709 psychosocial care at the primary healthcare level in South Kivu, Democratic Republic of
710 Congo. *Afr J Prim Health Care Fam Med*. 2021;13:a2608.
- 711 38. Rao KD, Mehta A, Noonan C, Peters MA, Perry H. Voting with their feet: Primary
712 care provider choice and its implications for public sector primary care services in India. *Soc*
713 *Sci Med*. 2024 Jan 1;340:116414.

- 714 39. Berman P, Mann C, Ricculi ML. Can Ethiopia finance the continued development of
715 its primary health care system if external resources decline? *Health Syst Reform*.
716 2018;4(3):227–38.
- 717 40. Bräutigam D. *Aid dependence and governance*. Vol. 1. Almqvist & Wiksell
718 International Stockholm; 2000.
- 719 41. Moss TJ, Pettersson G, van de Walle N. *An Aid-Institutions Paradox? A*
720 *Review Essay on Aid Dependency and State Building in Sub-Saharan Africa* [Internet].
721 Rochester, NY; 2006 [cited 2023 Feb 23]. Available from: <https://hdl.handle.net/1813/55015>
- 722 42. Barroy H, André F, Mayaka S, Samaha H. *Investing in Universal Health Coverage :*
723 *Opportunities and Challenges for Health Financing in the Democratic Republic of Congo*.
724 2014 [cited 2024 Jan 8]; Available from:
725 <https://agris.fao.org/search/en/providers/122582/records/6474821dbf943c8c7988adf0>
- 726 43. Ifeagwu SC, Yang JC, Parkes-Ratanshi R, Brayne C. Health financing for universal
727 health coverage in Sub-Saharan Africa: a systematic review. *Glob Health Res Policy*. 2021
728 Dec;6(1):8.
- 729 44. Bosongo S, Belrhiti Z, Chenge F, Criel B, Coppieters Y, Marchal B. The role of
730 provincial health administration in supporting district health management teams in the
731 Democratic Republic of Congo: eliciting an initial programme theory of a realist evaluation.
732 *Health Res Policy Syst*. 2024 Feb 20;22(1):29.
- 733 45. Swanson RC, Atun R, Best A, Betigeri A, de Campos F, Chunharas S, et al.
734 *Strengthening health systems in low-income countries by enhancing organizational capacities*
735 *and improving institutions*. *Glob Health*. 2015;11:1–8.
- 736 46. Emmel N, Monaghan M, Manzano A, Greenhalgh J. *Doing realist research*. 2018;
- 737 47. Mukumbang FC. *A realist evaluation of the antiretroviral treatment adherence club*
738 *programme in the metropolitan area of the Western Cape Province, South Africa*. 2018;

- 739 48. Barasa E, Boga M, Kagwanja N, Kinyanjui S, Molyneux C, Nyikuri M, et al. Learning
740 sites for health system governance in Kenya and South Africa: reflecting on our experience.
741 Health Res Policy Syst. 2020 May 11;18(1):44.
- 742 49. Belrhiti Z, Booth A, Marchal B, Verstraeten R. To what extent do site-based training,
743 mentoring, and operational research improve district health system management and
744 leadership in low-and middle-income countries: a systematic review protocol. Syst Rev.
745 2016;5:1–10.
- 746 50. Kieny MP, Evans DB, Schmets G, Kadandale S. Health-system resilience: reflections
747 on the Ebola crisis in western Africa. Vol. 92, Bulletin of the World Health Organization.
748 SciELO Public Health; 2014.
- 749 51. Atun R, De Andrade LOM, Almeida G, Cotlear D, Dmytraczenko T, Frenz P, et al.
750 Health-system reform and universal health coverage in Latin America. The Lancet.
751 2015;385(9974):1230–47.
- 752 52. Meyor C. La phénoménologie dans la méthode scientifique et le problème de la
753 subjectivité. Rech Qual. 2005;25(1):25.
- 754

INPUTS

- Mentor
- Financial resources (RIPSEC)
- Technical support:
 - ✓ ERSP-UCB
 - ✓ South-Kivu Provincial Health Division

PROCESS

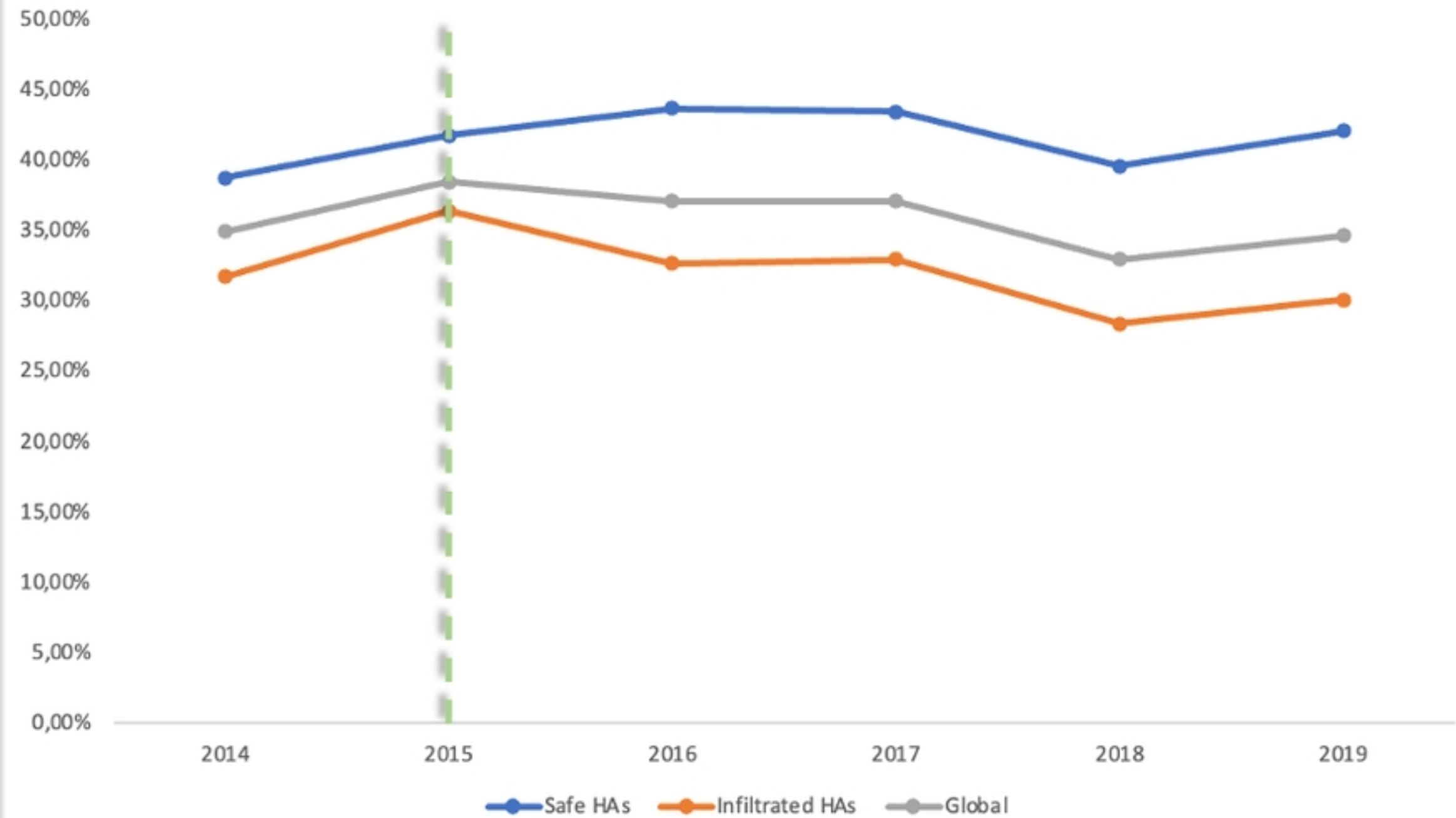
Walungu LRZ transformation

- Leadership strengthening:
 - ✓ Key HZMT members
 - ✓ Individual coaching
 - ✓ Weekly meetings
 - ✓ Exchange of experience
- Supportive activities :
Leadership training, formative supervision, reference-counter-reference, HFs transformation

OUTPUTS

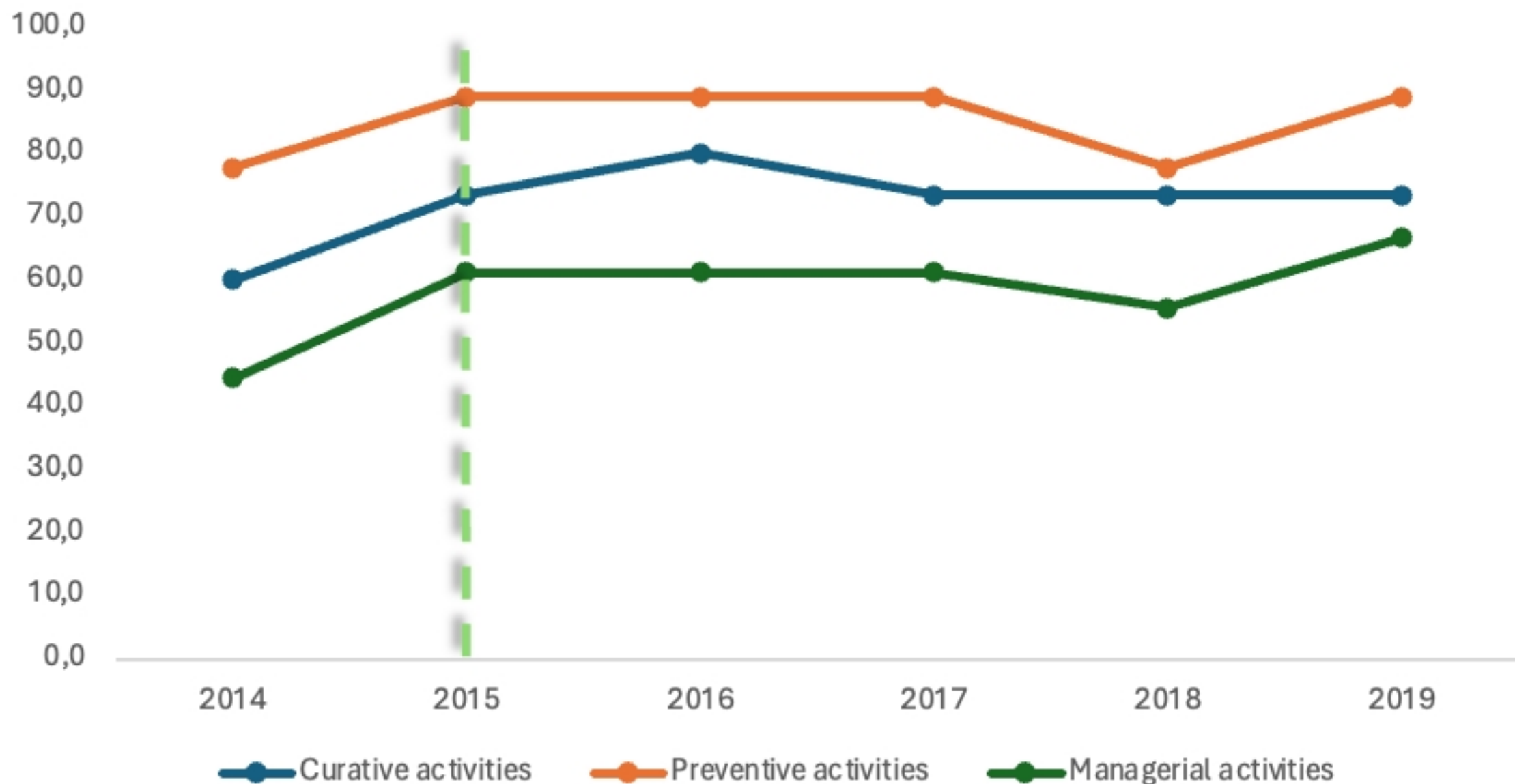
- HZMT leadership Strengthened leading to :
- ↑ Functionality
 - ↑ Performance
 - ↓ IHFs

Curative Services Utilization Rate



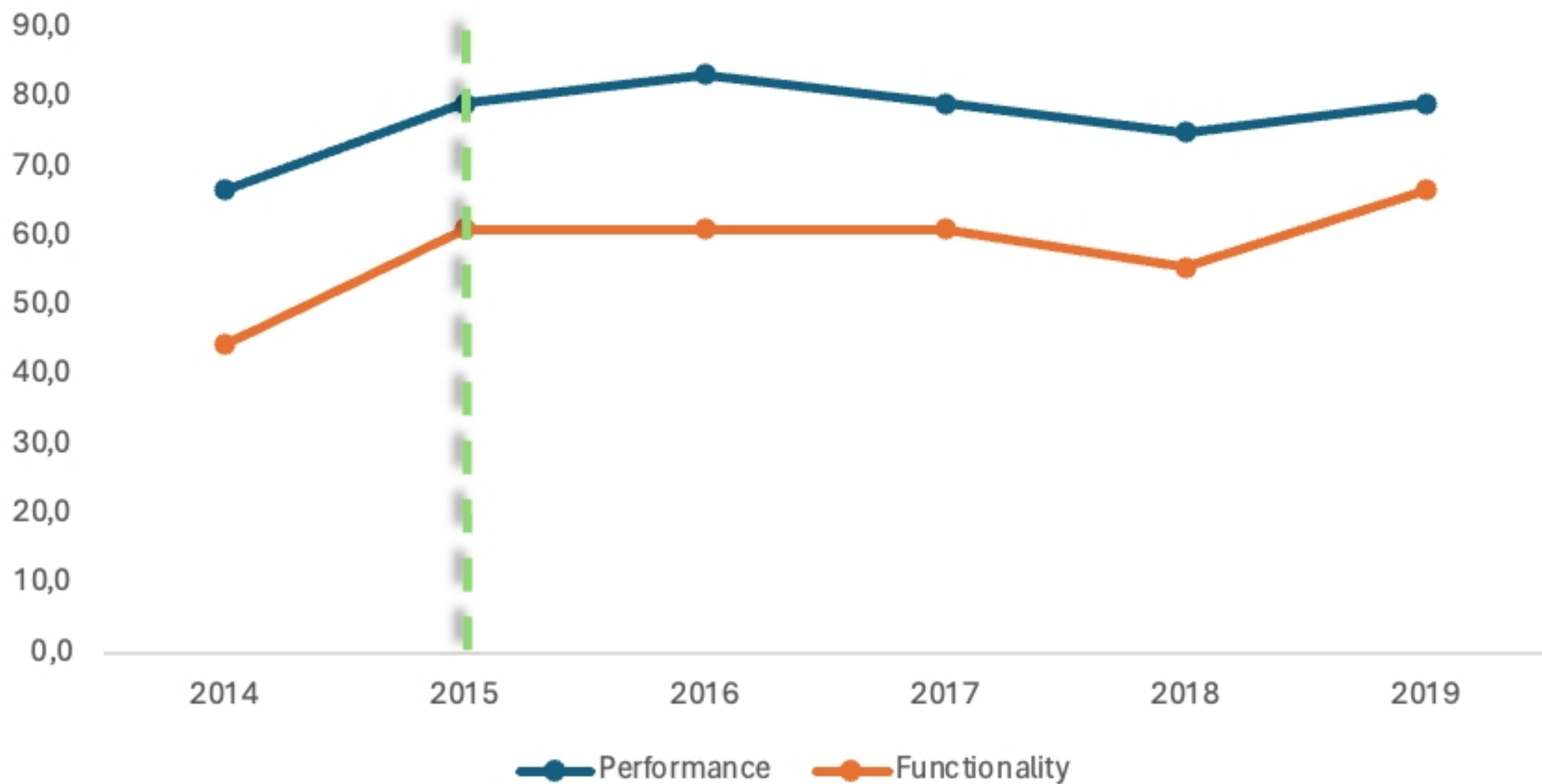
Figure

Curative, Preventive and Managerial activities trends



Figure

Functionality and performance trends



Figure