

1 **Title:** Maternal and neonatal IgG against *Klebsiella pneumoniae* are associated with broad  
2 protection from neonatal sepsis: a case-control study of hospitalized neonates in Botswana

3  
4 **Authors:** Siqu Linsey Zhang\*<sup>1</sup>, Carolyn M. McGann\*<sup>2,6</sup>, Tereza Duranova<sup>1</sup>, Jonathan Stryko<sup>3,4,6</sup>,  
5 Andrew P. Steenhoff<sup>1,4,6</sup>, Alemayehu Gezmu<sup>5</sup>, Britt Nakstad<sup>5</sup>, Tonya Arscott-Mills<sup>3,4</sup>, One  
6 Bayani<sup>5</sup>, Banno Moorad<sup>4</sup>, Nametso Tlhako<sup>4</sup>, Melissa Richard-Greenblatt<sup>7,8</sup>, Paul J. Planet<sup>1,6</sup>, Susan  
7 E. Coffin<sup>1,6</sup>, Michael A. Silverman<sup>1,6</sup>

8  
9 **Affiliation**

10 <sup>1</sup>Division of Infectious Diseases, Children's Hospital of Philadelphia, Philadelphia, PA, USA

11 <sup>2</sup>Division of Neonatology, Children's Hospital of Philadelphia, Philadelphia, PA, USA

12 <sup>3</sup>Department of Pediatrics, Children's Hospital of Philadelphia, Philadelphia, PA, USA

13 <sup>4</sup>Botswana-University of Pennsylvania Partnership, Gaborone, Botswana

14 <sup>5</sup>Faculties of Medicine & Health Sciences, Department of Paediatric & Adolescent Health,  
15 University of Botswana, Gaborone, Botswana

16 <sup>6</sup>Perelman School of Medicine, University of Pennsylvania, Philadelphia, PA, USA

17 <sup>7</sup>Hospital for Sick Children, Toronto, Canada

18 <sup>8</sup>Department of Laboratory and Pathobiology, University of Toronto, Canada

19 \*These authors contributed equally to this paper

20  
21 **ABSTRACT**

22 Sepsis is the leading postnatal cause of neonatal mortality worldwide. Globally *Klebsiella*  
23 *pneumoniae* is the leading cause of sepsis in hospitalized neonates. This study reports  
24 development and evaluation of ELISA for anti-*Klebsiella* IgG using dried blood spot samples and  
25 evaluates the association of anti-*Klebsiella* IgG (anti-Kleb IgG) antibodies in maternal and  
26 neonatal samples and the risk of neonatal sepsis. Neonates and their mothers were enrolled at 0-  
27 96 hours of life in the neonatal unit of a tertiary referral hospital in Gaborone, Botswana and  
28 followed until death or discharge to assess for episodes of blood culture-confirmed neonatal sepsis.  
29 Neonates with sepsis had significantly lower levels of *Kleb*-IgG compared to neonates who did  
30 not develop sepsis (Mann-Whitney U,  $p=0.012$ ). Similarly, samples from mothers of neonates who  
31 developed sepsis tended to have less *Kleb*-IgG compared to mothers of controls ( $p=0.06$ ). The  
32 inverse correlation between *Kleb*-IgG levels and all-cause bacteremia suggests that maternal *Kleb*-  
33 IgG is broadly protective through cross-reactivity with common bacterial epitopes. These data  
34 support the continued use of immunoglobulin assays using DBS samples to explore the role of  
35 passive immunity on neonatal sepsis risk and reaffirm the critical need for research supporting the  
36 development of maternal vaccines for neonatal sepsis.

## 38 INTRODUCTION

39 Sepsis is the leading postnatal cause of neonatal deaths, accounting for nearly one million deaths  
40 annually.(1) The incidence, causative pathogens and mortality attributable to neonatal sepsis vary  
41 globally.(2) In high-income countries, the most common causes of early-onset sepsis (EOS) are  
42 Group B streptococcus (GBS) and *Escherichia coli* whereas the vast majority of late-onset sepsis  
43 (LOS) cases are caused by Gram-positive organisms such as coagulase-negative staphylococci  
44 (CoNS) and *Staphylococcus aureus*.(3-5) In contrast, both EOS and LOS are predominantly  
45 caused by Gram-negative organisms in low- and middle-income countries (LMIC).(6-8) In  
46 Botswana and other sub-Saharan African countries, Gram-negative sepsis accounts for about 60%  
47 of neonatal sepsis, with a predominance of *Klebsiella* spp.(9-11) Notably, over three-quarters of  
48 the global neonatal sepsis deaths occur in LMIC signifying the critical unmet need to better  
49 understand the immune system features that predispose to, or protect against neonatal sepsis in  
50 these settings.(12) There has been a global focus on strategies to prevent neonatal infection,  
51 particularly GBS, including prophylactic antibiotics and a novel vaccine; however, geographic  
52 variation in the causes of neonatal infections highlights the need to better understand the risk  
53 factors for Gram-negative sepsis in neonates.

54 Since neonatal innate and adaptive immune systems are immature at birth, the  
55 immunoglobulins obtained through transplacental transfer and breastmilk provide critical  
56 protection from sepsis.(13-16) Immunoglobulin G (IgG) is the primary antibody transplacentally  
57 transferred and plays an essential role in protecting neonates from infection.(17, 18) Although the  
58 transfer of IgG begins at 13 weeks of gestation, it accelerates significantly after 36 weeks. Thus  
59 preterm, as compared to term, neonates are less protected by passive immunity contributing to  
60 their higher risk of sepsis.(18, 19)

61 We hypothesized that lack of maternal IgG antibodies that target specific pathogenic  
62 bacteria may predispose neonates to develop sepsis. We developed an enzyme-linked  
63 immunosorbent assay (ELISA) to evaluate the degree to which the risk of neonatal sepsis is  
64 associated with the level of IgG from maternal and neonatal serum capable of binding *K.*  
65 *pneumoniae* (Kleb-IgG).

66

## 67 **METHODS**

### 68 **Setting and population**

69 This study used samples collected from a cohort of 467 neonates admitted to the neonatal unit at a  
70 tertiary referral hospital in Gaborone, Botswana from November 1, 2020 – December 31, 2021.  
71 Participants were eligible for enrollment in the parent study if admitted to the neonatal unit within  
72 3 days of life and were followed until discharge or death. A research nurse approached mothers  
73 after delivery to obtain written informed consent in Setswana or English. The study was approved  
74 by the institutional review boards of the Botswana Ministry of Health Research and Development  
75 Committee (protocol 13/18/1, Jan. 16, 2020), the University of Botswana (protocol 147, Dec. 13,  
76 2019), the University of Pennsylvania (protocol 833786, April 22, 2020), the hospital IRB  
77 (protocol 708, April 2, 2020) and Children’s Hospital of Philadelphia (protocol 19-016848, July  
78 25, 2020). Cases of sepsis were matched with controls also admitted to the neonatal unit but  
79 without sepsis in a 1:4 ratio based on nearest sample collection date and gestational age. Subjects  
80 unable to be matched by GA were matched with the nearest GA. Subjects with missing data or  
81 samples were excluded. Patients and the public were not included in the design or implementation  
82 of this study.

83

84 **Sample collection**

85 Dried blood spots (DBS) were collected by heel stick from enrolled neonates and finger stick from  
86 mothers timed with a clinically indicated blood sample and stored on filter paper (Whatman 903,  
87 Cytiva, USA). We were unable to stick a second time if a patient stopped bleeding, thus collected  
88 volumes varied. Blood spots were dried at room temperature for three hours and placed in plastic  
89 bags with desiccant packs. They were stored at room temperature before shipment (13-26°C) and  
90 at -20°C after shipment from Botswana to the United States to enhance stability of the samples.  
91 Samples were transported at room temperature in two shipments: the first was shipped 6-8 months  
92 after collection date and the second shipment contained both neonatal and maternal DBS collected  
93 within 4 months. Sample integrity was established prior to analysis.

94 Blood cultures were drawn at the discretion of the clinical team for suspected clinical sepsis  
95 using conventional clinical criteria.(20) Samples were incubated on an automated blood culture  
96 system (BACT/ALERT, bioMerieux, Marcy l'Etoile, France) for up to 5 days or until blood culture  
97 positivity. Neonatal sepsis was defined as a positive blood culture. CoNS spp. and other skin  
98 commensals were deemed contaminants unless  $\geq 2$  cultures within 7 days grew this organism.(21)  
99

100 **Extraction of antibodies from dried blood spots**

101 To extract antibodies from DBS, a 6.35-mm-diameter punch of a saturated blood spot was placed  
102 in an Eppendorf tube with 500  $\mu$ l of elution buffer (phosphate buffered saline [PBS] with 0.1%  
103 BSA and protease inhibitor cocktail, Roche, catalog no. 04693159001) then were incubated  
104 overnight on a shaker at 4°C. Samples were then centrifuged for 5 mins at 8,000g at 4°C to pellet  
105 debris and the supernatants were collected and stored at -20°C.

106

107 **Immunoglobulin quantification for DBS eluates**

108 To quantify the total amount of IgG and IgA present in each eluate, ELISA was performed using  
109 Bethyl Human ELISA Quantitation Set (E80-100, E80-102, E80-104) per manufacturer  
110 instructions (Bethyl Laboratories, Montgomery, TX, USA).

111

112 **Bacterial-binding IgG quantification for DBS eluates using ELISA**

113 We developed an ELISA using bacteria-coated plates to determine the degree to which neonatal  
114 antibodies bind to bacterial surface epitopes of *Klebsiella pneumoniae* isolate MF391. This isolate  
115 was obtained from a blood culture sample in Botswana. The isolate was subcultured to a Luria  
116 broth (LB) solid media and incubated at 37°C overnight. A single colony was selected and  
117 transferred to 5 mL of LB to establish a liquid culture. The following day, the culture was  
118 centrifuged (10-minute at 4,000xg), fixed with 4% paraformaldehyde for 20 minutes and washed  
119 three times in PBS (pH 7.4). The pellet was resuspended in PBS and diluted to achieve an optical  
120 density of 1.0. A 100 µl volume of bacteria was added to each well of a 96-well ELISA plate  
121 (Thermo Scientific Nunc, 442404). The plate was incubated overnight at 4°C then washed (0.07  
122 M NaCl and 0.025% Tween 20 dissolved in Tris buffer) and blocked (0.007 M NaCl and 1% BSA  
123 in Tris) for 30 minutes at room temperature. DBS eluates were diluted (0.007 M NaCl, 1% BSA,  
124 0.025% Tween 20 in Tris buffer) to a uniform IgG concentration of 0.4 ng/µl. 100 µl of the diluted  
125 DBS samples were added to each well and incubated overnight at 4°C. The wells were then washed  
126 and incubated with horseradish peroxidase-conjugated anti-IgG antibody (1 mg/ml diluted  
127 1:150,000) for an hour and developed for 15 minutes in 3,3',5,5'-tetramethylbenzidine (TMB) with  
128 0.18M H<sub>2</sub>SO<sub>4</sub> as the stopping reagent. The absorbance at 450nm was measured immediately on an  
129 Enspire Multimode Plate Reader.

130 A standard unit (SU) was established using reference serum from a healthy adult to  
131 establish a standard curve to normalize all samples. A standard ELISA was used to determine the  
132 IgG concentration of this serum sample. The sample was then serially diluted to create a standard  
133 curve for each experiment. We defined one SU as the optical density of 0.5  $\mu\text{g/mL}$  IgG of the  
134 reference serum. Due to variability in the amount of blood collected on each card, we normalized  
135 the microbial ELISA assay by adding the same amount of IgG (i.e., 50 ng, an amount determined  
136 by titration experiments) to each well to determine the relative amount of *Klebsiella*-binding IgG  
137 antibodies from each sample.

138 To determine the amount of IgG binding to common bacterial epitopes, we used *E. coli*  
139 lipopolysaccharide and *Salmonella typhimurium* flagellin. A 100  $\mu\text{l}$  volume of diluted flagellin or  
140 LPS (1  $\mu\text{g/mL}$ ) was added to each well of a 96-well ELISA plate and incubated overnight at 4°C.  
141 The remainder of the ELISA was performed as described above. The secondary anti-LPS and anti-  
142 flagellin antibodies were diluted 1:5000.

143

#### 144 **Statistical analysis**

145 Nonparametric Mann-Whitney U tests were used to compare *Kleb*-IgG levels and demographic  
146 characteristics between neonates with sepsis and healthy controls. A Kruskal-Wallis test was used  
147 to compare gestational age categories between the two groups. Simple linear regression was used  
148 to evaluate trends in antibody levels. We conducted an exploratory analysis using logistic  
149 regression to evaluate the association of *Kleb*-IgG levels with sepsis while controlling for both  
150 gestational age and days from storage to sample analysis. We conducted an additional exploratory  
151 analysis using simple linear regression to explore the association between maternal and neonatal

152 antibody levels among neonates with and without sepsis to evaluate whether antibody transfer  
153 differed. Results were considered significant using a two-sided p value ( $p < 0.05$ ).

154

## 155 RESULTS

### 156 Study participant characteristics

157 Of the 467 patients enrolled, 30 (6%) experienced bloodstream infections, 116 (24%) had neonatal  
158 DBS shipped recently and available for analysis of whom 8 were diagnosed with sepsis (**Fig. 1**).  
159 The most common organisms cultured from the neonates with sepsis were *Acinetobacter* spp. and  
160 *Klebsiella* spp. which was similar to the etiologies of sepsis in the parent study (**Fig. 1**). Cases  
161 were matched with controls by gestational age and sample collection dates. Gestational age  
162 remained significantly different between groups, but they were otherwise similar (**Table 1**). Three  
163 neonates were missing paired maternal samples and were excluded from maternal antibody  
164 analyses.

165 **Figure 1. Enrollment numbers, sample numbers, and causes of sepsis in overall cohort and**  
166 **samples included in this analysis.** CoNS= Coagulase negative *Staphylococcus* spp.; MRSA=  
167 methicillin resistant *Staphylococcus aureus*  
168

169 **Table 1. Summary of demographic variables for neonatal sepsis and control groups.**  
170

Variable	Sepsis cases (n=8)	Controls (n=32)	p value
Female sex, n (%)	4 (50)	14 (44)	0.75
Maternal HIV positive, n (%)	2 (25)	10 (31)	0.73
C-section, n (%)	1 (13)	11 (34)	0.23
Parity, median	1	2	0.56
Gestational age, median	29.5	35.5	<b>0.01</b>
Sample collection to analysis, days, median	69	79	0.52

171

### 172 Establishing DBS sample integrity

173 Establishing whether DBS cards stored at room temperature provide valid data is important for  
174 studies in settings where immediate storage at  $-20^{\circ}\text{C}$  may be unavailable. Prior research  
175 demonstrated that most proteins on DBS cards stored at room temperature start degrading after 4  
176 weeks but remain valid for most applications for roughly 6 months, while certain proteins can be  
177 detected after much longer periods of storage.(22-24) We, therefore, included the samples with <  
178 4 months of storage at room temperature in this analysis. We evaluated the concentration of total  
179 IgG and *Kleb*-IgG from each sample since sample collection to estimate the degree of antibody  
180 degradation over time. We recovered lower IgG concentration over time from DBS samples (**Fig.**  
181 **2A**). As such we normalized the amount of total IgG in each sample. Therefore, we did not observe  
182 a decrease in *Kleb*-IgG over time (**Fig. 2B**). Degradation of samples during room temperature  
183 storage was similar in cases compared to controls (**Fig. S1**).

184 **Figure 2. IgG concentration in DBS samples collected within 4 months. A)** Total IgG  
185 concentration recovered from each sample as a function of time interval between sample collection  
186 and extraction. **B)** Relative amount of *Kleb*-IgG in each DBS sample, normalized to  $0.4\text{ng}/\mu\text{L}$  of  
187 total IgG, as a function of time interval between sample collection and extraction. Standard Unit  
188 (SU). Simple linear regression.  
189

190 **Supplementary Figure 1. Immunoglobulin levels over time in cases compared to controls. A)**  
191 Total IgG concentration recovered from each sample as a function of time interval between sample  
192 collection and extraction in sepsis cases compared to controls. **B)** Relative amount of *Kleb*-IgG in  
193 each DBS sample as a function of time interval between sample collection and extraction.  
194 Standard Unit (SU). Slopes were compared by analysis of covariance.  
195

196 As a quality check for both maternal and neonatal sample integrity, we quantified the  
197 amount of immunoglobulin A (IgA) recovered from DBS. IgA is not transplacentally transferred  
198 nor is it produced by neonates in the first weeks of life. As predicted, maternal DBS samples had  
199 detectable serum concentrations of IgA while IgA was not detected in any neonatal samples (**Fig.**  
200 **S2**).



201  
202 **Supplementary Figure 2. Levels of IgA in maternal and neonatal DBS samples.** IgA level was  
203 determined using standard human ELISA from randomly selected paired maternal and neonatal  
204 samples. Mann-Whitney U test. \*\* $p < 0.01$ .  
205

### 206 **Neonates with laboratory-confirmed sepsis have lower levels of *Kleb-IgG***

207 We next investigated whether levels of maternal and neonatal *Kleb-IgG* were associated with  
208 increased risk for neonatal sepsis in this cohort of 8 neonates with sepsis and 32 controls without  
209 sepsis. We found significantly lower levels of *Kleb-IgG* in neonates who developed sepsis  
210 compared to neonates who did not develop sepsis ( $p = 0.012$ , **Fig. 3A**). *Kleb-IgG* levels were lower  
211 in neonates with sepsis regardless of etiology of sepsis ( $p = 0.04$ ) and not significantly different in  
212 samples from neonates with sepsis due to *Klebsiella* compared to other pathogens (**Fig. 3B**). Since  
213 neonatal IgG concentration and specificities reflect maternal serum IgG, we compared the *Kleb-*  
214 *IgG* levels in samples from mothers of neonates with and without sepsis; samples from mothers of  
215 neonates who developed sepsis tended to have less *Kleb-IgG* compared to mothers of controls  
216 ( $p = 0.06$ , **Fig. 3C**). Overall, neonatal and maternal *Kleb-IgG* levels were correlated ( $r = 0.27$ ,  $p < 0.01$ ,  
217 data not shown). In an exploratory analysis, we unexpectedly observed that there appeared to be  
218 an inverse relationship between neonatal and maternal *Kleb-IgG* in dyad samples from patients  
219 with sepsis while a positive association was apparent between neonatal and maternal *Kleb-IgG*  
220 levels in those without sepsis. (**Fig. S3**).

221  
222 **Figure 3. *Kleb-IgG* in neonatal and maternal samples of cases with sepsis compared to**  
223 **controls. A-B)** *Kleb-IgG* binding in neonates who developed sepsis compared to matched controls.  
224 Data were normalized to standard unit, defined as the amount of *Kleb-IgG* in 100 $\mu$ l of reference  
225 serum (healthy adult) with 0.5  $\mu$ g/mL IgG. Mann-Whitney U test (\* $p < 0.05$ ). **C)** *Kleb-IgG* binding  
226 in serum from mothers of neonates who developed sepsis compared to mothers of controls. Kruskal  
227 Wallis test (\* $p < 0.05$ ).  
228

229 **Supplementary Figure 3. Correlation between maternal *Kleb*-IgG and neonatal *Kleb*-IgG**  
230 **levels. A)** *Kleb*-IgG levels for mother-neonate dyads with sepsis, simple linear regression,  $p=0.32$ .  
231 **B)** *Kleb*-IgG levels for mother-neonate dyads with sepsis, simple linear regression,  $p<0.01$ .  
232

233 The association of low *Kleb*-IgG levels with risk for neonatal sepsis from *Klebsiella* or  
234 other bacteria (**Fig. 3B**) suggests that *Kleb*-IgG is likely non-specific and may offer protection  
235 through cross-reactivity with common bacterial epitopes. Recent murine studies demonstrated that  
236 serum IgG antibodies that bind to commensal microbes protect against bacteremia from pathogenic  
237 bacteria.(25, 26) LPS is the most abundant surface molecule in most Gram-negative bacteria, and  
238 anti-LPS IgG antibodies can bind to LPS on a variety of microbes.(27) The levels of anti-LPS  
239 antibodies are associated with the risk for developing sepsis.(28) Similarly, flagellin is a virulence  
240 factor present on many bacteria and a common IgG-targeted epitope. Thus, we evaluated the  
241 degree to which IgG from each sample binds to lipopolysaccharides (LPS) and flagellin. We found  
242 similar levels of anti-LPS IgG antibodies and anti-flagellin IgG antibodies in neonates with sepsis  
243 compared to controls (**Fig. S4**). There was no association of *Kleb*-IgG levels with other potential  
244 confounders including sex, parity, maternal HIV status, or delivery mode (**Fig. S5**).

245 **Supplementary Figure 4. Anti-LPS IgG and anti-flagellin IgG in neonates with and without**  
246 **sepsis. A)** ELISA comparing anti-LPS IgG in neonates with sepsis vs. controls. All units are  
247 normalized to the standard unit, defined as the amount of anti-LPS IgG in 50 ng of reference adult  
248 serum. **B)** ELISA comparing anti-flagellin IgG in neonates with sepsis vs. controls. Mann-Whitney  
249 U test.  
250

251 **Supplementary Figure 5. *Kleb*-IgG level by maternal HIV status, neonatal sex, delivery mode,**  
252 **and maternal parity. A-D)** *Kleb*-IgG binding comparison by the indicated clinical  
253 variables. Mann-Whitney U test or Kruskal-Wallis test.  
254

255 **Low *Kleb*-IgG levels are associated with neonatal sepsis across gestational ages**

256 Given the differences in median gestational age in controls and sepsis cases, we performed  
257 a stratified analysis and found that neonates born at <33 weeks have significantly lower *Kleb*-IgG

258 levels compared to neonates born at  $\geq 37$  weeks ( $p=0.03$ ) (**Fig. 4A**). We evaluated this association  
259 in cases compared to controls and found no statistically significant difference in *Kleb*-IgG levels  
260 in premature neonates with sepsis compared to controls, yet a trend towards lower levels samples  
261 from neonates born at  $< 33$  weeks and between 33-37 weeks (**Fig. 4B**). Indeed, in an adjusted  
262 analysis, *Kleb*-IgG was associated with a decreased odds ratio (OR) of neonatal sepsis when  
263 adjusting for gestational age and days since sample collection (aOR 0.49, 95% CI [0.18, 0.93]).  
264 These analyses indicate that low *Kleb*-IgG levels are associated with neonatal sepsis across  
265 gestational ages.

266 **Figure 4. *Kleb*-IgG level by gestational age. A)** Comparison of *Kleb*-IgG binding in neonates  
267 stratified by gestational age. Kruskal Wallis and Mann-Whitney U test ( $*p<0.05$ ). **B)** Comparison  
268 of *Kleb*-IgG binding in neonates with sepsis compared to controls, stratified by gestational age.  
269 Mann-Whitney U test.  
270

## 271 DISCUSSION

272 We report an association between the level of neonatal and maternal serum IgG that bind  
273 to *K. pneumoniae* and all-cause laboratory-confirmed neonatal sepsis in a cohort of hospitalized  
274 neonates in Botswana. Using an ELISA to detect serum antibody reactivity to a *K. pneumoniae*  
275 blood culture isolate from Gaborone, Botswana, we found that neonates who developed sepsis and  
276 their mothers have lower levels of *Kleb*-IgG compared to controls when adjusting for gestational  
277 age and days of sample storage.

278 *K. pneumoniae* was historically the predominant isolate in blood cultures at this site,(7)  
279 leading to the development of an ELISA against a *K. pneumoniae* isolate from this NICU. During  
280 enrollment, the epidemiology of neonatal sepsis shifted from predominantly *Klebsiella* spp. to a  
281 more diverse set of microbes (**Fig. 1**). Remarkably, neonates with sepsis due to non-*Klebsiella*  
282 bacteria also have lower *Kleb*-IgG compared to controls suggesting that *Kleb*-IgG might provide

283 cross-protection against common bacterial epitopes. However, neither anti-LPS nor anti-flagellin  
284 IgG antibody levels differed between neonates with sepsis compared to controls, which argues  
285 against either being an important cross-reactive microbial epitope in this cohort. These findings  
286 suggest the possibility that cross-reactivity to other common epitopes or that multiple epitopes  
287 function together to provide protection from neonatal sepsis from a range of pathogens.

288 By standardizing the total amount of IgG analyzed from each DBS sample, we expected to  
289 recover similar levels of *Kleb*-IgG across gestational ages, as we assumed that total IgG and  
290 pathogen-specific IgG would cross the placenta at the same rate. However, *Kleb*-IgG levels were  
291 lower in preterm neonates which may result from colonization with *Klebsiella* spp. later in  
292 pregnancy or increased production of anti-commensal antibodies later in gestation. *Klebsiella*  
293 antibodies may vary among pregnant people due to prior infections and differential abundance in  
294 the microbiome based on exposure, antibiotics, and other factors.(29) Similarly, Stach *et al*  
295 reported increased *Kleb*-IgG with increasing birthweight, a variable that is often colinear with  
296 gestational age.(30) Interestingly, another study focusing on pathogen-specific antibodies found  
297 no difference in anti-*Klebsiella* IgG by gestational age category.(31) Neither of these studies  
298 reported sepsis as an outcome.

299 Although there were lower levels of *Kleb*-IgG in preterm neonates in our study, the risk  
300 of sepsis remained significant when adjusting for GA and days since sample collection indicating  
301 that prematurity alone does not explain the association between lower *Kleb*-IgG levels and  
302 neonatal sepsis. Since the rate of sample degradation was similar between cases and controls, this  
303 is unlikely to account for the association (**Fig. S1**). In an exploratory analysis, we noted a positive  
304 linear correlation of maternal and neonatal *Kleb*-IgG among the whole cohort regardless of  
305 gestational age, which has been reported previously.(31) However, when we separated cases and

306 controls, we noted an inverse correlation in dyads with sepsis and a positive correlation in control  
307 dyads which may indicate different rates of placental transfer (**Fig. S3**). Many factors are known  
308 to influence transplacental antibody transfer including parity, history of infections, timing of  
309 vaccination and placental insufficiency.(14, 32) Data on placental health, prior infections and  
310 maternal hypertension were not available in this cohort, thus we are unable to compare with these  
311 findings.

312 Our study highlights the benefits of using DBS for sample collection. Compared to  
313 traditional blood tests, DBS can be obtained via minimally invasive methods (heel stick vs.  
314 venipuncture), requires a minimal blood volume, remains stable when stored at room temperature  
315 for up to 4 months, can be transported easily with minimal risk for contamination, and is an  
316 efficient and feasible method to acquire serum samples for a variety of assays.(33, 34) However,  
317 there are limitations including variation in collection volume and sample degradation which  
318 unfortunately limited the sample size in this study.

319

## 320 CONCLUSIONS

321 We propose that maternal IgG antibodies against *K. pneumoniae* are transferred *in utero*  
322 late in gestation and may be associated with a decreased risk of sepsis from diverse pathogens.  
323 These findings suggest species-specific maternal antibodies may confer broader protection against  
324 common neonatal pathogens. This supports the ongoing development of vaccination strategies  
325 during pregnancy to increase pathogen-binding IgG levels in neonates. Further studies are needed  
326 to explore mechanisms and enhance efficient transfer of protective antibodies to premature  
327 neonates.

328

329 **Acknowledgements**

330 The authors thank Mrs. Relebogile Thipe for helpful input with IRBs. The authors also thank the  
331 study participants and their families, as well as the staff in the Neonatal Unit. This publication was  
332 made possible through core services and support from the Penn Center for AIDS Research (CFAR),  
333 an NIH-funded program (P30 AI 045008).

334

335 **Contributorship Statement**

336 S.Z. and C.M.M. contributed equally to this paper. Conceptualization, S.E.C., C.M.M., S.Z. and  
337 M.A.S.; Methodology, S.Z. and T. D.; Writing – Original Draft, S.Z. and M.A.S.; Writing –  
338 Review & Editing, S.Z., T.D., C.M.M., J.S., A.P.S., M.R.G., S.E.C. and M.A.S.;  
339 Conceptualization of parent study, C.M.M., J.S., O.B., T.A-M., A.P.S., S.E.C.; Enrollment of  
340 patients and data collection, J.S., B.M., N.T.; Provided care for study patients, J.S., B.N., O.B.,  
341 A.G.; Data review, S.Z., T.D., C.M.M., J.S., A.P.S., B.N., T.A-M., M.R-G., P.J.P., S.E.C., M.A.S;  
342 Funding Acquisition, S.E.C., C.M.M., and M.A.S.; Resources, M.A.S.; Supervision, M.A.S. All  
343 authors reviewed the final version of the manuscript prior to submission.

344

345 **Declaration of Interests**

346 We declare no financial conflict of interest.

347

348 **REFERENCES**

- 349
- 350 1. Rudd KE JS, Agesa KM, Shackelford KA, Tsoi D, Kievlan DR, Colombara DV, Ikuta KS,  
351 Kisson N, Finfer S, Fleischmann-Struzek C, Machado FR, Reinhart KK, Rowan K, Seymour  
352 CW, Watson RS, West TE, Marinho F, Hay SI, Lozano R, Lopez AD, Angus DC, Murray CJL,  
353 Naghavi M Global, regional, and national sepsis incidence and mortality, 1990-2017: analysis for  
354 the Global Burden of Disease Study. *Lancet*. 2020;395(10219):200-11.
  - 355 2. Fleischmann-Struzek C, Goldfarb DM, Schlattmann P, Schlapbach LJ, Reinhart K,  
356 Kisson N. The global burden of paediatric and neonatal sepsis: a systematic review. *Lancet Respir*  
357 *Med*. 2018;6(3):223-30.
  - 358 3. Shane AL, Stoll BJ. Neonatal sepsis: progress towards improved outcomes. *J Infect*.  
359 2014;68 Suppl 1:S24-32.
  - 360 4. Flannery DD, Mukhopadhyay S, Morales KH, Dhudasia MB, Passarella M, Gerber JS, et  
361 al. Delivery Characteristics and the Risk of Early-Onset Neonatal Sepsis. *Pediatrics*. 2022;149(2).
  - 362 5. Dong Y, Speer CP. Late-onset neonatal sepsis: recent developments. *Arch Dis Child Fetal*  
363 *Neonatal Ed*. 2015;100(3):F257-63.
  - 364 6. Wen SCH, Ezure Y, Rolley L, Spurling G, Lau CL, Riaz S, et al. Gram-negative neonatal  
365 sepsis in low- And lower-middle-income countries and WHO empirical antibiotic  
366 recommendations: A systematic review and meta-analysis. 2021;18:1-20.
  - 367 7. Gezmu AM BA, Dramowski A, Bekker A, Aucamp M, Souda S, Nakstad B. Laboratory-  
368 confirmed bloodstream infections in two large neonatal units in sub-Saharan Africa.  
369 2021;103:201-7.
  - 370 8. Sands K, Carvalho MJ, Portal E, Thomson K, Dyer C, Akpulu C, et al. Characterization of  
371 antimicrobial-resistant Gram-negative bacteria that cause neonatal sepsis in seven low- and  
372 middle-income countries. *Nat Microbiol*. 2021;6(4):512-23.
  - 373 9. Wen SCH, Ezure Y, Rolley L, Spurling G, Lau CL, Riaz S, et al. Gram-negative neonatal  
374 sepsis in low- and lower-middle-income countries and WHO empirical antibiotic  
375 recommendations: A systematic review and meta-analysis. *PLoS Med*. 2021;18(9):e1003787.
  - 376 10. Mudzikati L, Dramowski A. Neonatal septicaemia: prevalence and antimicrobial  
377 susceptibility patterns of common pathogens at Princess Marina Hospital, Botswana. *Southern*  
378 *African Journal of Infectious Diseases*. 2015;30(3):108-13.
  - 379 11. Gezmu AM, Bulabula ANH, Dramowski A, Bekker A, Aucamp M, Souda S, et al.  
380 Laboratory-confirmed bloodstream infections in two large neonatal units in sub-Saharan Africa.  
381 *Int J Infect Dis*. 2021;103:201-7.
  - 382 12. Global report on the epidemiology and burden of sepsis. In: WHO, editor. 2020.
  - 383 13. Fu C, Lu L, Wu H, Shaman J, Cao Y, Fang F, et al. Placental antibody transfer efficiency  
384 and maternal levels: specific for measles, coxsackievirus A16, enterovirus 71, poliomyelitis I-III  
385 and HIV-1 antibodies. *Sci Rep*. 2016;6:38874.
  - 386 14. Clements T, Rice TF, Vamvakas G, Barnett S, Barnes M, Donaldson B, et al. Update on  
387 Transplacental Transfer of IgG Subclasses: Impact of Maternal and Fetal Factors. *Front Immunol*.  
388 2020;11:1920.
  - 389 15. Relman DA. Maternal IgA: Matchmaking in Early Childhood. *Immunity*. 2019;51(2):211-  
390 3.
  - 391 16. Palmeira P, Quinello C, Silveira-Lessa AL, Zago CA, Carneiro-Sampaio M. IgG placental  
392 transfer in healthy and pathological pregnancies. *Clin Dev Immunol*. 2012;2012:985646.

- 393 17. Fouda GG, Martinez DR, Swamy GK, Permar SR. The Impact of IgG transplacental  
394 transfer on early life immunity. *Immunohorizons*. 2018;2(1):14-25.
- 395 18. Beudeker CR, Vijlbrief DC, van Montfrans JM, Rooijackers SHM, van der Flier M.  
396 Neonatal sepsis and transient immunodeficiency: Potential for novel immunoglobulin therapies?  
397 *Front Immunol*. 2022;13:1016877.
- 398 19. Flannery DD, Edwards EM, Coggins SA, Horbar JD, Puopolo KM. Late-Onset Sepsis  
399 Among Very Preterm Infants. *Pediatrics*. 2022;150(6).
- 400 20. Mwananyanda L PC, Mwansa J, Cowden C, Localio AR, Kapasa ML, Machona S,  
401 Musyani CL, Chilufya MM, Munanjala G, Lyondo A, Bates MA, Coffin SE, Hamer DH  
402 Preventing Bloodstream Infections and Death in Zambian Neonates: Impact of a Low-cost  
403 Infection Control Bundle. *Clin Infect Dis*. 2019;69(8):1360-7.
- 404 21. CDC/NHSN Surveillance Definitions for Specific Types of Infections 2024.
- 405 22. Adam BW, Hall EM, Sternberg M, Lim TH, Flores SR, O'Brien S, et al. The stability of  
406 markers in dried-blood spots for recommended newborn screening disorders in the United States.  
407 *Clin Biochem*. 2011;44(17-18):1445-50.
- 408 23. Bjorkestén J, Enroth S, Shen Q, Wik L, Hougaard DM, Cohen AS, et al. Stability of  
409 Proteins in Dried Blood Spot Biobanks. *Mol Cell Proteomics*. 2017;16(7):1286-96.
- 410 24. Palmer EA, Cooper HJ, Dunn WB. Investigation of the 12-Month Stability of Dried Blood  
411 and Urine Spots Applying Untargeted UHPLC-MS Metabolomic Assays. *Anal Chem*.  
412 2019;91(22):14306-13.
- 413 25. Zheng W, Zhao W, Wu M, Song X, Caro F, Sun X, et al. Microbiota-targeted maternal  
414 antibodies protect neonates from enteric infection. *Nature*. 2020;577(7791):543-8.
- 415 26. Zeng MY, Cisalpino D, Varadarajan S, Hellman J, Warren HS, Cascalho M, et al. Gut  
416 Microbiota-Induced Immunoglobulin G Controls Systemic Infection by Symbiotic Bacteria and  
417 Pathogens. *Immunity*. 2016;44(3):647-58.
- 418 27. Bertani B, Ruiz N. Function and Biogenesis of Lipopolysaccharides. *EcoSal Plus*.  
419 2018;8(1).
- 420 28. Llewelyn M, Cohen J. Anti-Endotoxin Antibodies in Sepsis: A Critical Evaluation. *Sepsis*.  
421 1999;3: 39–45.
- 422 29. Collingwood A, Blostein F, Seekatz AM, Wobus CE, Woods RJ, Foxman B, et al.  
423 Epidemiological and Microbiome Associations Between *Klebsiella pneumoniae* and Vancomycin-  
424 Resistant *Enterococcus* Colonization in Intensive Care Unit Patients. *Open Forum Infect Dis*.  
425 2020;7(1):ofaa012.
- 426 30. Stach SC, Brizot ML, Liao AW, Palmeira P, Francisco RP, Carneiro-Sampaio MM, et al.  
427 Placental transfer of IgG antibodies specific to *Klebsiella* and *Pseudomonas* LPS and to group B  
428 *Streptococcus* in twin pregnancies. *Scand J Immunol*. 2015;81(2):135-41.
- 429 31. Silveira Lessa AL, Krebs VL, Brasil TB, Pontes GN, Carneiro-Sampaio M, Palmeira P.  
430 Preterm and term neonates transplacentally acquire IgG antibodies specific to LPS from *Klebsiella*  
431 *pneumoniae*, *Escherichia coli* and *Pseudomonas aeruginosa*. *FEMS Immunol Med Microbiol*.  
432 2011;62(2):236-43.
- 433 32. Pereira RA, de Almeida VO, Vidori L, Colvero MO, Amantea SL. Immunoglobulin G and  
434 subclasses placental transfer in fetuses and preterm newborns: a systematic review. *J Perinatol*.  
435 2023;43(1):3-9.
- 436 33. Li W, Tse FL. Dried blood spot sampling in combination with LC-MS/MS for quantitative  
437 analysis of small molecules. *Biomed Chromatogr*. 2010;24(1):49-65.



438 34. Garcia Boy R, Henseler J, Mattern R, Skopp G. Determination of morphine and 6-  
439 acetylmorphine in blood with use of dried blood spots. Ther Drug Monit. 2008;30(6):733-9.  
440

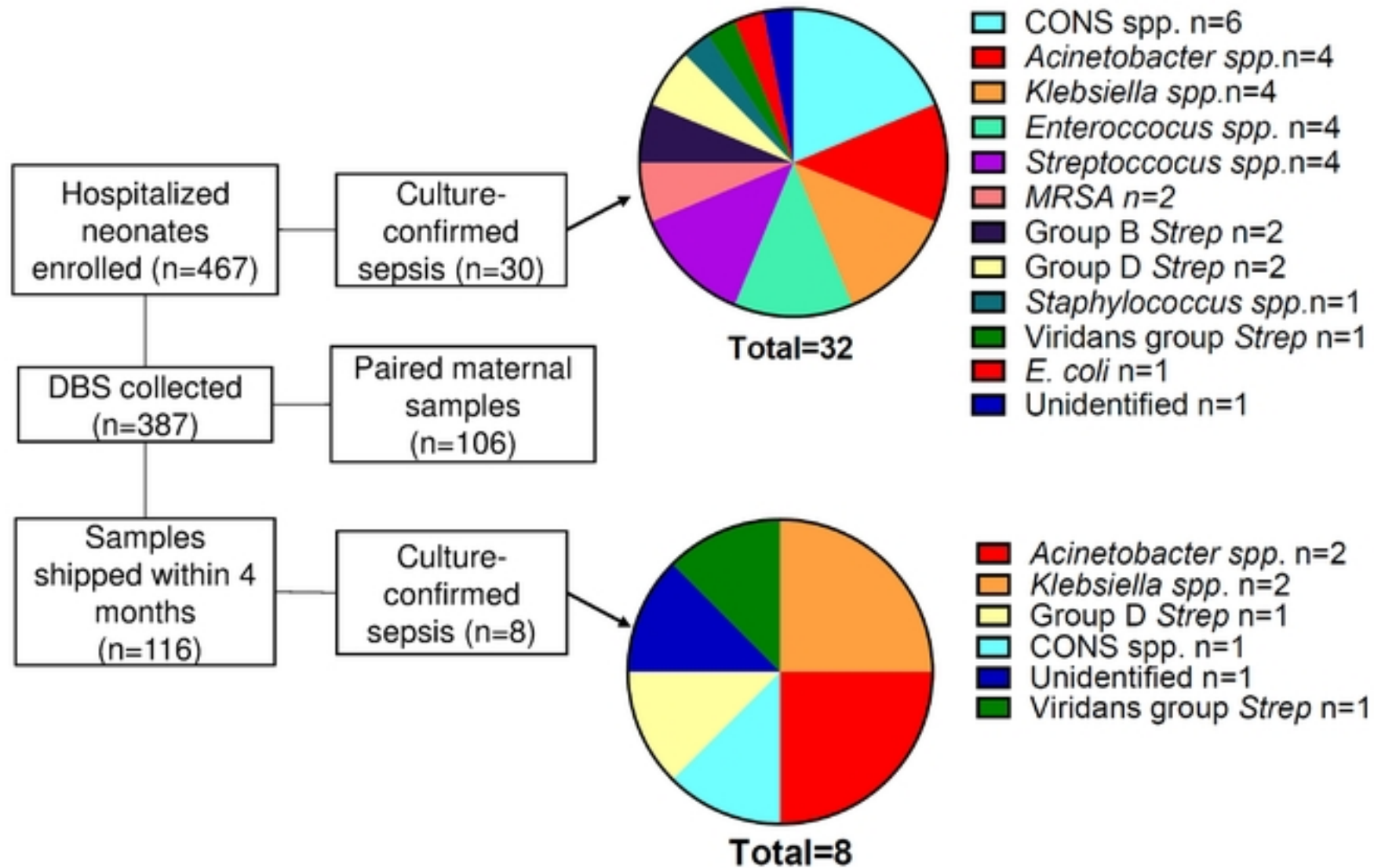


Fig 1

Figure 2

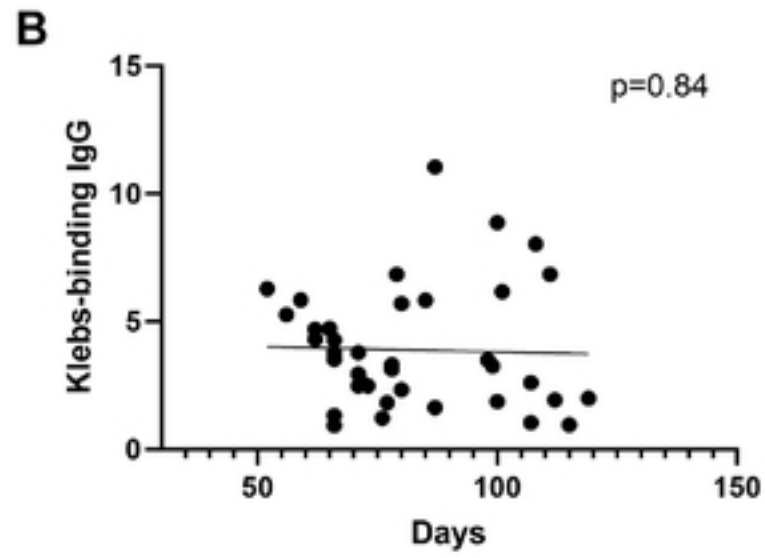
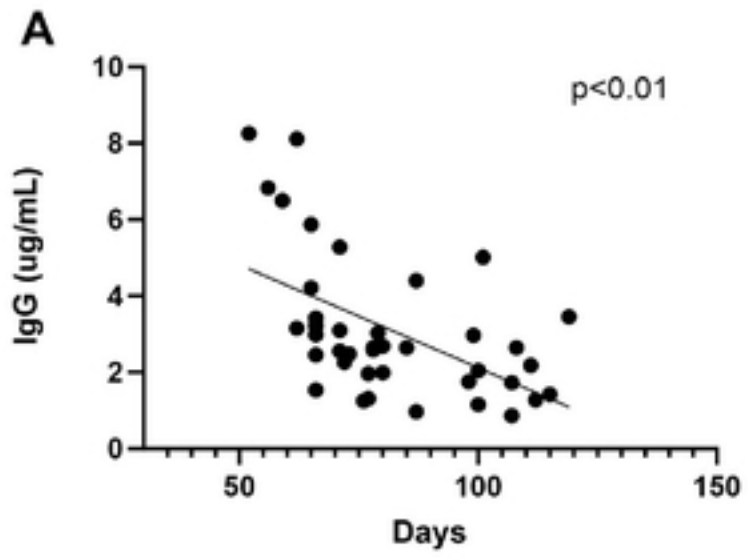


Figure 3

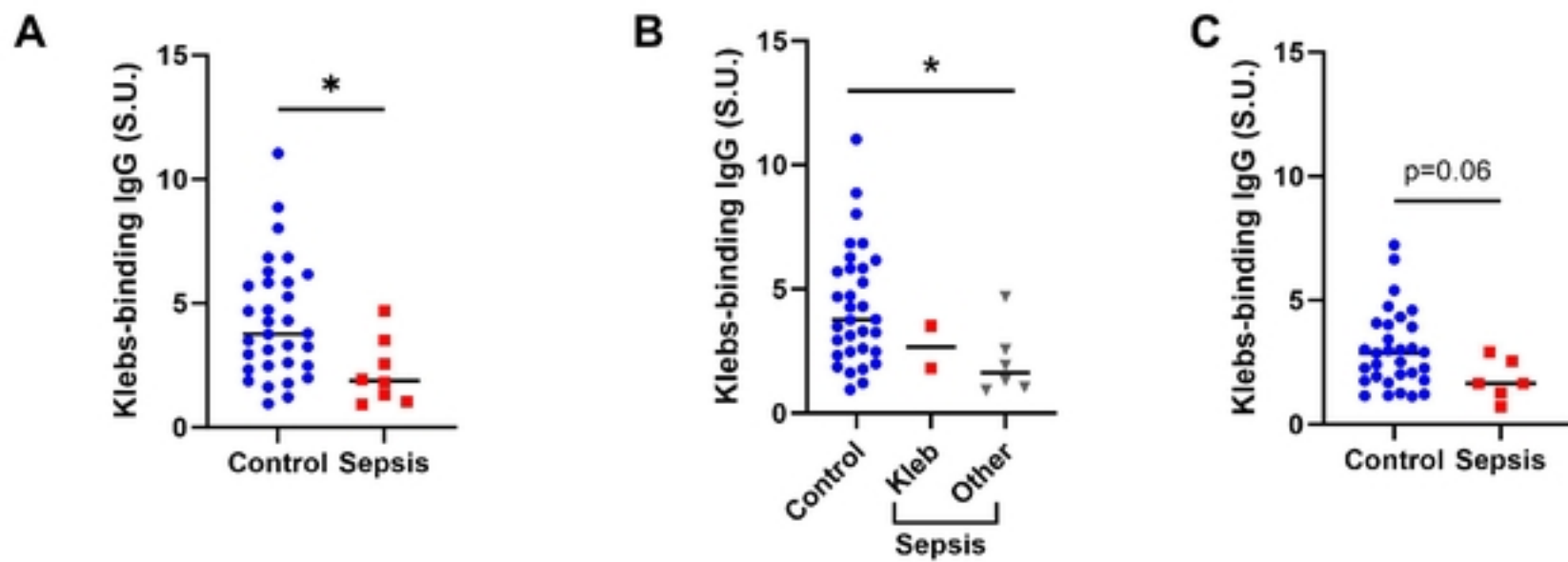


Fig 3

Figure 4

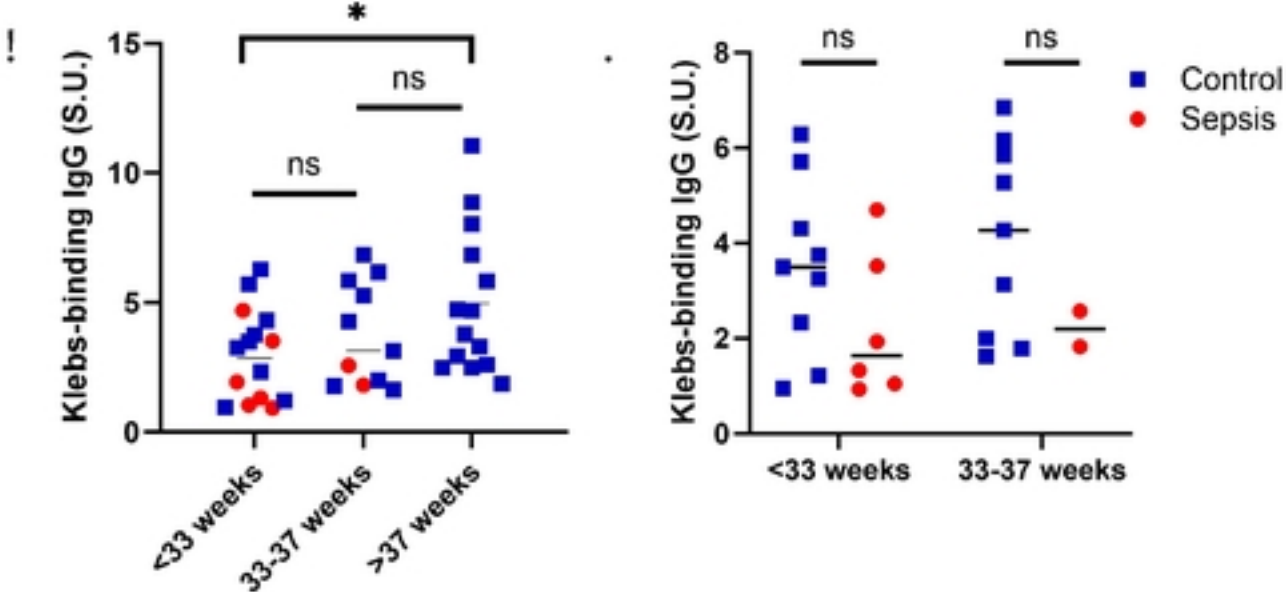


Fig 4

Figure S1

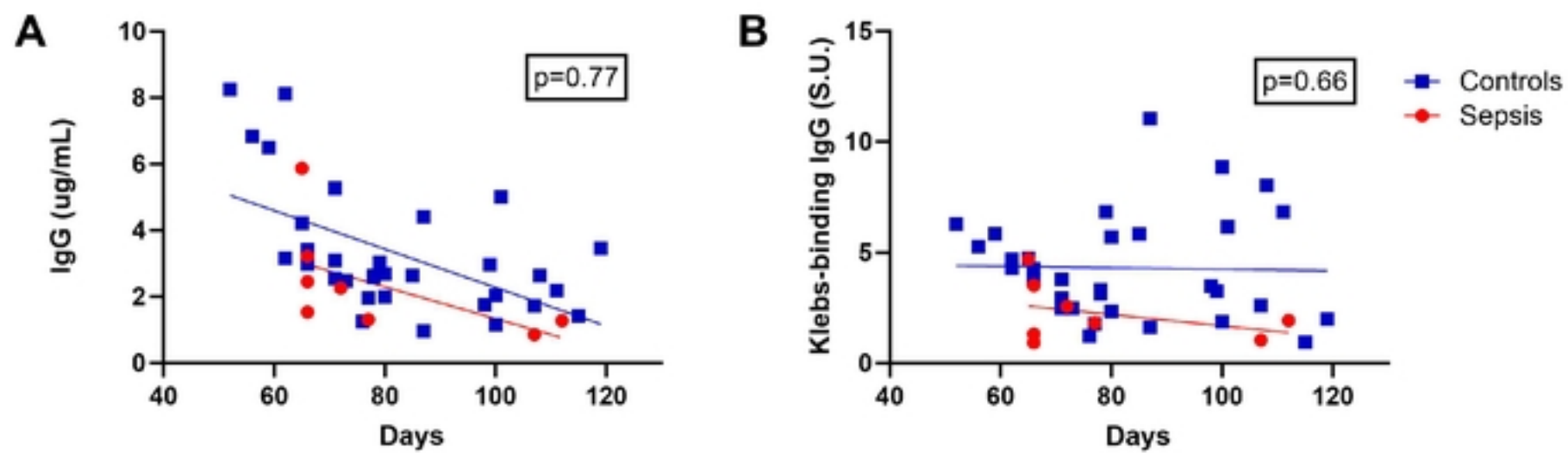


Fig S1

Figure S2

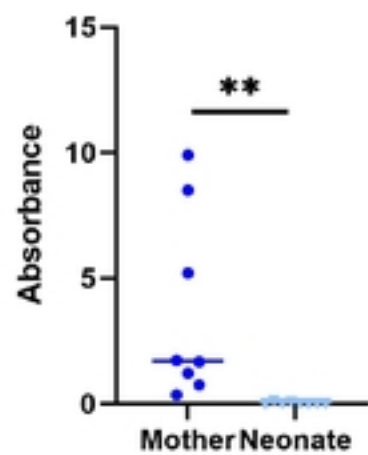


Figure S3

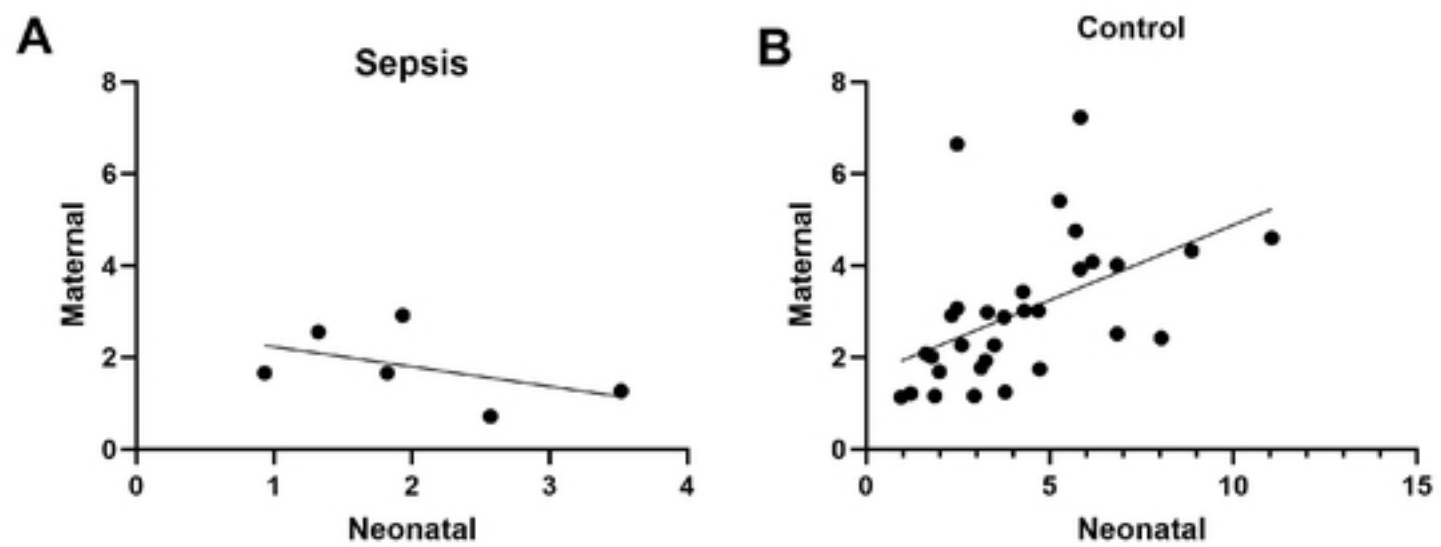


Fig S3



Figure S4

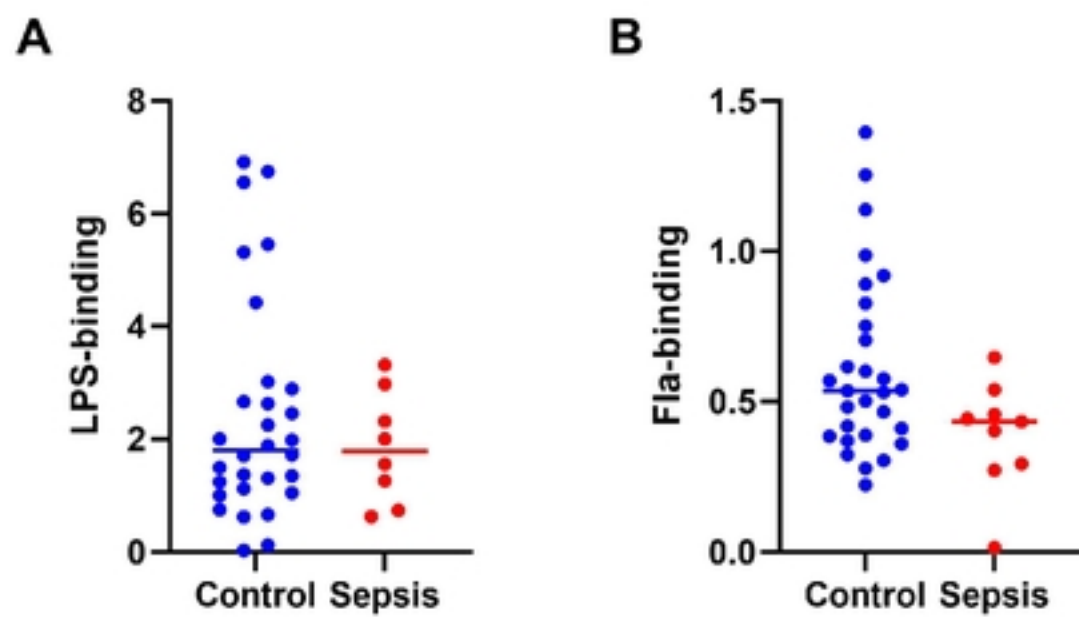


Figure S5

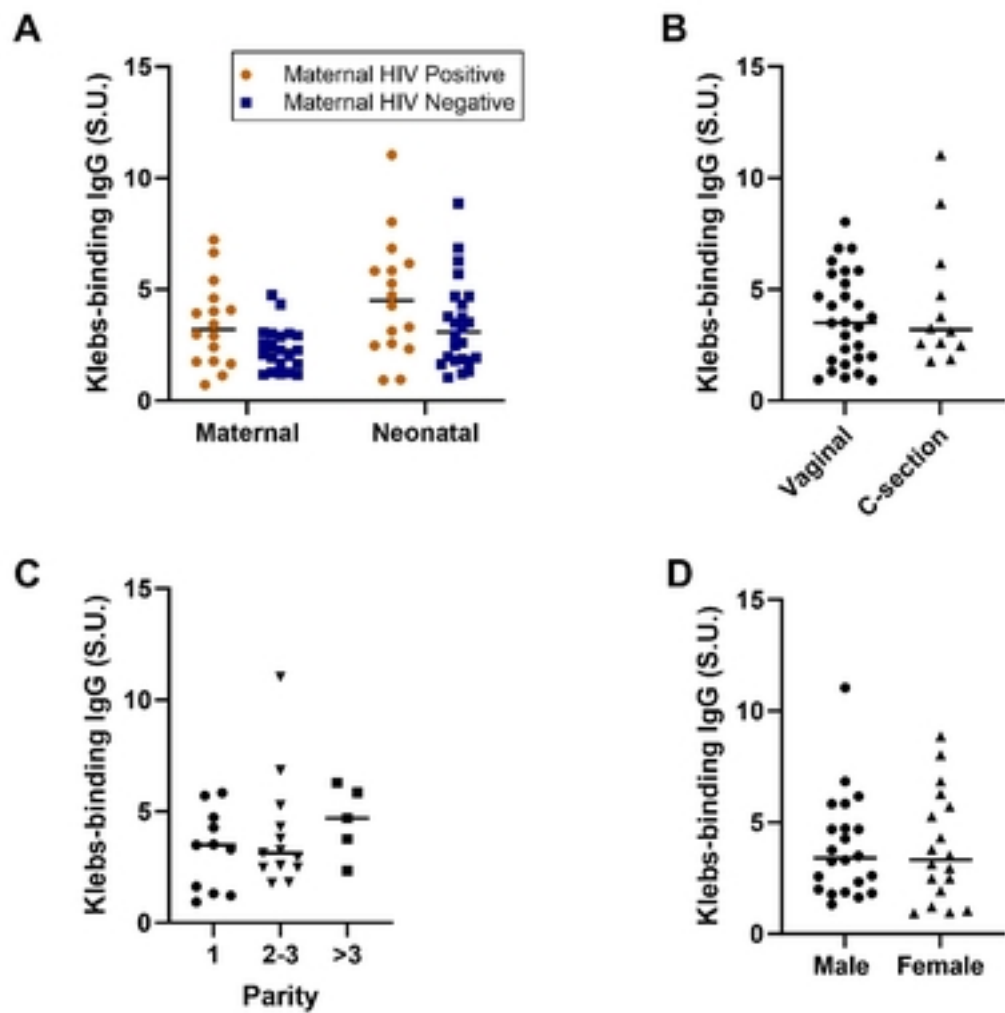


Fig S5