

22 9. Institute of Infectology Emilio Ribas and Laboratory of Protozoology, Institute of Tropical
23 Medicine (LIM 49 HC-FMUSP), Faculdade de Medicina, Universidade de São Paulo, Sao
24 Paulo, Brazil

25 10. Dept. of Microbiology, Sarat Chandra Chattopadhyay Govt. Medical College & Hospital
26 Uluberia, Howrah, West Bengal 711316 India

27 11. Department of Dermatology, College of Medicine and Sagore Dutta Hospital, Kamarhati,
28 Kolkata 700058, India

29 12. Skin Research Centre, Hull York Medical School, University of York, Heslington, York,
30 YO10 5DD, United Kingdom

31 ^Φ First co-authors

32 # Corresponding authors

33 * Senior co-authors

34 **Abstract**

35 **Background:** Localized cutaneous leishmaniasis (LCL) is a chronic ulcerating disease. A
36 literature review identified inconsistencies in clinical trials. The aims of this study were to reach a
37 consensus on the most important domains to measure when assessing LCL, agree on parameters
38 to measure the domains, and develop a tool representing a Core Outcome Set (COS), for use in
39 clinical assessment of LCL.

40 **Methodology & Principal findings:** A literature review was conducted to identify any existing
41 COS for LCL embracing agreed Outcome Domains, i.e. what to measure and any Outcome
42 Measurement Instruments (OMIs). As no COS was available, potential outcome domains for
43 assessment of LCL were identified through an international collaborative approach using e-
44 consultations and virtual discussions with expert stakeholders (n=20) from geographically

45 different LCL endemic countries. Subsequent judgmental validation process included a face-to-
46 face multidisciplinary stakeholders' meeting adopting the Nominal Group Technique. A final
47 consensual agreement on outcome domains and items required to measure these domains was
48 established. "Clinical Cure" was defined as the ideal overall "General Concept". The five Core
49 Outcome Domains included **Signs** capturing clinical morphology, diameter, and induration of an
50 index lesion with the aid of a palpability score, **Treatment Efficacy** assessing percentage change
51 in size of the lesion and re-epithelialization compared to baseline, **Treatment Impact** which
52 included an investigator and patient visual analogue score, and **Clinical Sequelae** rating pigment
53 change, atrophic and hypertrophic/keloid scars. It was agreed that two open-ended questions
54 should be included to capture some aspects of **Health-Related Quality of Life** as a means of
55 capturing a patient-focused approach.

56 **Conclusion:** LeishCOM_LCL was generated to reflect a COS for LCL. This captured
57 demographic details, agreed outcome domains and measures to assess these domains. Validation
58 of LeishCOM_LCL will be reported in a separate paper. Development of a Patient Reported
59 Outcome Measure will be considered in the future.

60 **Keywords: Localized Cutaneous Leishmaniasis, Core Outcome Measure Instrument, Core**
61 **Outcome Domain, Core Outcome Set**

62 **Author Summary**

63 Localized cutaneous leishmaniasis (LCL) is a chronic ulcerating disease caused by the parasite
64 *Leishmania* spp. Literature review identified inconsistencies in methods and parameters used to
65 evaluate treatment/alternative-interventions resulting in difficulties in comparing new
66 treatment/interventions in clinical trials. In our international consensual study, we adopted the

67 face-to-face nominal group technique and a judgment process to identify domains key to
68 assessment of LCL. Subsequent measures for each domain were used to form a Core Outcome Set
69 (COS). LeishCOM_LCL was developed as an outcome measure instrument (OMI) to capture the
70 COS incorporating existing and newly developed tools. “Clinical Cure” was agreed as the
71 “General Concept” to be captured through five domains. It was agreed that “Signs” domain should
72 capture clinical morphology, diameter, and induration of an index lesion with the aid of a
73 palpability score. “Treatment Efficacy” was assessed by recording percentage change in size of
74 the lesion and re-epithelialization compared to baseline. “Treatment Impact” was reflected through
75 an investigator and the patient visual analogue score and “Clinical Sequelae” rated pigment
76 change, atrophic/hypertrophic scars. Two open-ended questions were included to capture some
77 aspects of “Health-Related Quality of Life”. CutLeishCOM also records patient demographic
78 details and was validated in a small cohort of patients.

79 **Introduction**

80 Localized cutaneous leishmaniasis (LCL) is a skin disease caused by an intra-cellular protozoan
81 parasite belonging to the genus *Leishmania* that is transmitted through a bite of an infected female
82 phlebotomine sand fly. It is considered a neglected tropical disease and is endemic in 90 countries
83 with an estimated 1 million new cases reported annually [1]. LCL is usually characterized by the
84 presence of amastigotes localized in skin tissue. It appears in exposed areas of the body and
85 frequently heals with lifelong scars [1]. This form of presentation does not include mucosal lesions
86 and associated disseminated / diffuse CL or Post Kala-azar Dermal Leishmaniasis [1, 2]. The skin
87 lesions are typically chronic in nature and the disease shows a wide range of clinical features
88 ranging from a small papule to extensive ulceration and can often result in permanent physical and
89 psychological sequelae with a potentially life-long impact. Clinicians frequently treat LCL with

90 the aim of minimizing sequelae such as scarring that may result in disfigurement and social stigma
91 [3]. Treatment modalities available for LCL include intra-lesional or parenteral pentavalent
92 antimonial compounds and liposomal amphotericin B as the mainstay of treatment in Old World
93 LCL while miltefosine and pentamidine are also used in the treatment of New World LCL [4-7].
94 Cryotherapy and thermotherapy are some of the commonly used non- pharmacological treatment
95 measures [7].

96 A review of the clinical trials examining different treatment modalities for LCL found studies to
97 be deficient in design, execution, analysis, and reporting [8]. Furthermore, systematic literature
98 reviews demonstrate that most clinical trials on LCL fail to clearly identify consistent and
99 standardized primary and secondary clinical outcome measures [9-12]. There are a few new
100 treatment/alternative-interventions described for LCL [7,13-15]. However, the results of those
101 studies are difficult to compare due to inconsistencies in the methods and the parameters used for
102 the evaluation. Furthermore, most studies have not considered the patients' perspective.
103 Recommendations to assess initial response and define timelines to initial clearance and
104 subsequent cure have been suggested as potential important outcomes [16, 17]. The development
105 of a validated scoring system for LCL based on harmonized methodologies would allow
106 assessment of treatment response in routine clinical settings and enable comparison of the efficacy
107 of existing or new drugs as well as novel alternative interventions and would subsequently support
108 meta-analysis.

109 Core Outcome Sets (COS) represent agreed standardized outcomes that should be reported for all
110 trials conducted in a specific research area, with the intention of reducing bias and ensuring that
111 data from different trials are suitable for meta-analysis [18]. Various COS which embrace agreed
112 Core Outcome Domains and Core Outcome Measures to assess the domains have been developed

113 for several dermatological disorders as a means of evaluating the severity and impact of the
114 condition as well as therapeutic response to treatment in a standardized manner. The development
115 of clinical scores through measurable outcomes using clinimetrics and inclusion and scoping out
116 of clinicians' and patients' perspectives results in improved outcome measures [19, 20].

117 Many measures have been developed based on the cardinal clinical features of each disorder, e.g.
118 the Psoriasis Area and Severity Index (PASI) [21], the Eczema Area and Severity Index (EASI)
119 [22] and the Vitiligo Area Scoring Index (VASI) [23] etc. These instruments only account for the
120 clinical severity of the disease and treatment response but fail to capture the clinical sequelae and
121 the impact of the disease on the quality of life. The Harmonizing Outcome Measures for Eczema
122 (HOME) roadmap was developed and implemented in cooperation with the COMET (Core
123 Outcome Measures in Effectiveness Trials) and COSMIN (COnsensus-based Standards for the
124 selection of health Measurement INstruments) research groups, with the aim of developing a
125 standardized, validated and consensus-based roadmap for developing COS for atopic eczema [24].
126 The process developed for the HOME roadmap has been recommended and adopted for other
127 dermatological conditions [19, 24]. However, this approach has rarely been adopted for neglected
128 diseases of the skin.

129 There are currently only two studies that report a harmonized approach to assess LCL, one
130 describing harmonized measurable clinical methodologies to assess the response to interventions
131 in clinical trials [16] and a second follow-up study [25] assessing the capacity of implementation
132 of the harmonized methodologies across several geographic regions. However, the proposed
133 measurable outcomes in these studies have not been validated. In addition, Patient Reported
134 Outcome Measures (PROMs) that qualitatively assess the impact of the disease and / or the
135 response to treatment or adverse effects from therapy were not considered. The absence of sequelae

136 resulting from LCL is a further gap in current assessments [16, 25]. Therefore, the aim of our
137 study was to reach a consensus on the most important Core Outcome Domains that need to be
138 considered and measured when assessing LCL and to further develop and validate clinical
139 measures as a part of an overall assessment tool to capture the response to treatment in LCL.

140 The overall aim of this work was to adopt a standardized and validated approach to assess agreed
141 clinical aspects of LCL and response to treatment in a measurable manner for use in clinical trials
142 and routine patient care which were then reflected in a practical tool. This paper describes
143 identification through consensus of what to measure in LCL clinical trials (Core Outcome
144 Domains) and how to measure these aspects as well as the process involved in the development of
145 a clinical instrument which captures and measures the areas identified. Once developed, the
146 Leishmaniasis Core Outcome Measure Instrument for Localised Cutaneous Leishmaniasis
147 (LeishCOM_LCL) was incorporated into a case report form (CRF) and the process of face and
148 content validation was undertaken. Further comprehensive validation of the final outcome measure
149 instrument has been conducted through a clinical study. The results from this further validation
150 along with the methodology and detailed data will be reported in a separate manuscript (manuscript
151 under preparation).

152 **Methods**

153 **Ethical clearance**

154 Ethical approval for the study was obtained from the University of Sri Jayewardenepura, Sri Lanka
155 to develop a Core Outcome Measure Instrument aligned to HOME methodology and this included
156 ethical approval to enroll patients for the face validity and future validation of any instrument
157 developed (ERC 52/17).

158 **Identification of Core Outcome Measures**

159 Core Outcome Domains and Measures to assess agreed Domains were identified to inform an
160 Outcome Measure Instrument (OMI; LeishCOM_LCL) for LCL. The HOME methodological
161 framework was adopted using the following steps:

162 *1. Development process; define scope and applicability.*

163 A comprehensive literature review was carried out to identify publications that had identified COS
164 including domains, measures and instruments already aligned to LCL using PubMed, MEDLINE,
165 Cochrane library, COMET initiative, and COSMIN websites. This review identified the already
166 published work on harmonized outcome measures in LCL [16, 17, 25]. The principal investigators
167 laid down the conceptual framework. Formalizing the Core Outcome Domains for LCL had not
168 been established and this was therefore taken forward through a collaborative international
169 approach involving virtual discussions and e-consultations with stakeholder clinicians including
170 dermatologists and their teams who care for LCL from Sri Lanka, India, Brazil and the United
171 Kingdom.

172 *2. Judgment process; define core set of outcome domains*

173 A subsequent judgment process was then undertaken adopting the nominal group technique (NGT)
174 to reach a final consensual agreement on the set of Core Outcome Domains. The NGT approach
175 was performed by having face-to-face discussions at a workshop in March 2018 in Sri Lanka. The
176 NGT approach was selected to ensure that there was an opportunity to share clinical experience
177 and secure clear consensus among stakeholders. A multi-institutional, multi-disciplinary
178 stakeholder panel of international experts from Sri Lanka, India, Brazil, and the United Kingdom
179 comprising of dermatologists, general physicians and parasitologists were included along with a
180 moderator (n= 20). For each Core Outcome Domain, a review of previous approaches to measure

181 the domain was considered [16, 17, 25]. During the workshop, items to measure the domains were
182 also evaluated and multiple rounds of discussions were carried out to secure agreement within the
183 panel of experts on "what to measure" which informed the final Core Outcome Domains as well
184 as "how to measure" the domains. Patient perspectives including clinical and psychological aspects
185 were captured by doing a field visit by the expert stakeholders one day before the NGT meeting to
186 a hospital-based dermatology clinic in a LCL endemic area (Hambantota) in Sri Lanka and had
187 face-to-face discussions with LCL patients. Also, the international clinicians taking care of their
188 LCL patients in other countries presented additional clinical and psychological perspectives within
189 their region to ensure that the most important patients' perspectives encountered in different
190 endemic areas were captured.

191 As noted previously, for each Core Outcome Domain, previous approaches on "how to measure
192 the domains" were considered. The proposed items to measure the domains were then evaluated
193 by multiple rounds until the same panel of experts reached a consensus. Once established, the
194 construction of a novel clinical assessment tool "LeishCOM_LCL" for practical use in the field
195 was developed. The various measures that informed the tool "LeishCOM_LCL" underwent
196 multiple reviews during the period of reaching consensus and this included practical approaches
197 to ensure that the assessments were conducted in a standardized manner.

198 Furthermore, during this process, a subjective judgment of the content validity was done by
199 assessing: i) the degree to which no important items were missing (comprehensiveness), ii) the
200 degree to which the items were correctly understood by the clinician and the patient
201 (comprehensibility), and iii) relevance of the content of OMI for the assessment of healing of LCL
202 lesions. The final version of the tool was incorporated into a case report form (CRF) for
203 downstream application when assessing LCL patients in the field and during this process

204 underwent some face validity with more robust validation which will be described and reported in
205 a separate manuscript.

206

207 ***3. Case Report Form (CRF) for data collection***

208 The case report form (CRF) allowed data collection and validation of LeishCOM_LCL. It captures
209 demographic details, reflects the core outcome domains, agreed outcome measurements, and
210 includes scoring systems for the selected COS including visual analogue scores that capture
211 clinician's and patient's perspectives. The CRF also includes two open-ended questions aimed at
212 capturing some aspects of Health-related quality of life (HRQoL). Once established, the
213 "LeishCOM_LCL" was subjected to an assessment of face validity [26, 27].

214 **Face validity**

215 Face and content validity of the core outcome instrument was assessed at the face-to-face meeting
216 as well as through multiple virtual feedback engagement between stakeholders. Further validation
217 was subsequently conducted by securing feedback from three independent consultant
218 dermatologists who were not involved in the development of the outcome measures. These
219 consultants adopted the outcome measure instrument to assess five LCL patients in each of their
220 clinics (total number of patients (n) =15). As a result of their feedback, further and necessary
221 amendments to LeishCOM_LCL and CRF were made. Although the authors appreciate that the
222 face validity can be subjective [26], they approached this including multiple rounds of virtual
223 stakeholder engagement to ensure that the CRF measured what it was intended to measure [27].

224 Further validation of LeishCOM_LCL was conducted through a subsequent longitudinal pilot
225 study between March 2018 to March 2019 in a small cohort of 40 confirmed (parasitologically

226 positive) LCL patients attending a dermatology clinic in Sri Lanka. Each patient was followed up,
227 for a period of up to 6 months to validate the LeishCOM_LCL tool. The methodology and positive
228 results from this further study will be published elsewhere.

229 **Results**

230 **Approach to the study**

231 We used the HOME methodology to identify core outcome domains for the development of
232 LeishCOM_LCL as summarized in Fig 1. Following the development and judgment processes
233 assessment of “Clinical Cure” was recognized as the overarching “General Concept”. The Core
234 Outcome Domains identified during the development and judgment process are given in Table 1.

23

Step 1: Define scope and applicability of identification of core outcome domains and a set of core outcome sets for LCL

Extensive literature review (*MEDLINE, Cochrane library, COMET initiative, and COSMIN websites*) e-consultation with expert stakeholders



Step 2: Formalization and finalizing of a set of core outcomes to capture the domains

E-consultation & Stakeholders meeting adhering to NGT



Step 3: Development of a set of Core Outcome Measures to capture the COS

Identification and recommendation of COMI at NTG meeting

	Stage 1	Stage 2	Stage 3
Task	Identification of all previously used instruments in LCL	Establish the quality of testing of the instrument	Determining which instruments are good enough to include in the CRF and LeishCOM_LCL and apply downstream in a clinical setting and subject to validation Evaluation of contents of the OMERACT Filter
Methodology	Literature review	Literature review Expert opinion by e-consultation and NGT meeting	Validity was assessed by performing Content and Face validity to develop the core outcome measure. A subsequent clinical study has been performed to further assess Criterion validity (full results to be published separately). *Discrimination was tested by performing reliability (both intra-rater and inter-rater reliability) and sensitivity to change was assessed with the Treatment effect score and Subjective assessments; sum of palpability score and VASi, and Sequelae assessment score. *Feasibility was assessed by assessing the Time taken to apply the tool, Cost and Interpretability of the tool
Output	Preparation of a list of domains and instruments [8-12, 16]	Summarized the results and arrived at consensus by e-consultation and NGT meeting	#Short list of potential instruments that meet the requirements of the OMERACT filter 1. Signs domain: clinical morphology, diameter and induration, palpability score 2. Treatment efficacy domain: Treatment Effect Score (percentage change in size of the lesion) 3. Treatment impact domain: investigator (VASi) and the patient (VASp) on a visual analogue score 4. Clinical sequelae domain: Sequelae assessment score (Global Assessment: Pigmentary changes & scarring) 5. HRQoL domain: two open-ended questions

236 **Fig 1. Summary of development stage of core set of outcomes in LeishCOM_LCL to each**
237 **Core Outcome Domains.** Stage 1-3 in accord with HOME roadmap are described. *Assessed in
238 the Validation process. #described in detail in results section. COMI: Core outcome measure
239 instrument, CRF: case report form, HRQoL: Health Related Quality of Life, LCL: Localized
240 cutaneous leishmaniasis, NGT: nominal group technique, VASi: Visual analogue score
241 investigator, VASp: Visual analogue score patient.

242 **Table 1. The core outcome domains were established based on consensus**

	Identified Core Outcome Domains
1	Signs (Objective and Subjective assessments for localized disease/selected lesions)
2	Treatment efficacy
3	Treatment impact
4	Clinical sequelae (scarring & pigment) assessment
5	HRQoL

243 **Measuring the core outcome domains**

244 As previously described, a review of previous instruments or approaches to measure the domains
245 was thoroughly considered. This identified that there was a paucity of measures used for LCL
246 assessment. Therefore, each domain was discussed in detail and a standardized approach to
247 assessing each domain was agreed on the understanding that this may require further development
248 in the future.

249 **1. Signs:**

250 In the signs domain, to assess the primary efficacy endpoint; re-epithelialization (surface area of
251 the ulcer) and induration, the methods described by Olliaro et al. 2013 [16] were adopted to assess

252 the flattening of the elevated edge of the ulcerated lesions. Furthermore, a new palpability score
253 was developed to assess both the ulcerated and non-ulcerated lesions and included in the
254 assessment. Since erythema was not appreciated as a reliable or reproducible sign in skin of colour
255 and pain was not considered as a universal symptom of LCL by the stakeholders, there was
256 agreement not to measure erythema and pain. However, a free text space was provided in the CRF
257 to record any additional signs and symptoms not captured by the agreed assessment.

258 **2. Treatment efficacy**

259 Reduction of lesion size (re-epithelialization in an ulcerated lesion) and reduced palpability
260 defined as flattening / reduced induration of lesions were agreed as the parameters to measure the
261 “Treatment efficacy” domain. Erythema was not considered a reliable measure of treatment
262 efficacy and scars and pigmentation were noted to be important sequelae which were considered
263 in a separate domain. Table 2 outlines the clinical features for assessment as efficacy measures
264 that were agreed through consensus at the NGT face-to-face meeting.

265 **Table 2: Consensus about the important primary clinical efficacy measures were:**

Primary clinical efficacy measure	Consensus arrived at
Re-epithelialization for ulcerated lesions	ulcer surface area should be the primary efficacy endpoint whenever possible.
Flattening of non-ulcerated lesions	for non-ulcerated lesions, area of induration should be used to measure treatment efficacy
Absence of induration	is a valuable efficacy measure but acknowledged as difficult to standardize

Overall erythema	was thought not sufficiently reliable to act as a measure of treatment efficacy especially in skin of colour.
Presence of scars and pigmentation	were recognized as important sequelae that required assessment/grading as part of a separate domain.

266

267 **3. Treatment Impact**

268 The treatment impact domain was recorded on each day of assessment by capturing the perception
269 by both the investigator and the patient on a visual analogue score.

270 **4. Clinical Sequelae**

271 Pigmentary change (Hypo/hyper) and scarring (atrophic or hypertrophic) were recognized as the
272 parameters to capture for the clinical sequelae assessment domain. It was noted that either hypo or
273 hyperpigmentation could result from LCL and scars could be either atrophic or hypertrophic.
274 Therefore, all 4 changes were considered as clinical areas suitable for rating.

275 **5. HRQoL**

276 The impact of the HRQoL had not been previously considered in LCL and therefore two open-
277 ended questions were included as a preliminary step to try and capture the most important aspects
278 for the patient with a view to informing a novel tool at a later date. It was decided to include open-
279 ended questions to make it easy and straightforward for the patient to respond and to capture the
280 most important aspect of thoughts originated by the patient. This would further ensure that
281 clinicians recognize patient's problems and consider these in patient management.

282

283 **Generation of the Case Report Form (S Appendix 1).**

284 A Case Report Form (CRF) was generated to document the demographic details and reflect the
285 agreed COS (Core Outcome Domains and Measurements) in each patient. The CRF contained a
286 cover page noting the document category, code, title of the CRF, approved version, sponsor, date
287 of release, authorization from the Principal Investigator, and a table of contents to guide the user.
288 The next two pages of the CRF contained instructions for the user on individual items. Written as
289 well as diagrammatic and photographic instructions with clinical examples were provided for
290 measuring and assessing LCL to minimize any potential ambiguities. The rest of the pages
291 contained demographic details of the patient, enrollment particulars; details of obtaining consent,
292 slit skin smear and or punch biopsy details, relevant clinical history and examination details,
293 assessments at baseline, 4 weeks, 3 months, and 6 months from the onset of treatment, a summary
294 of scores over time, details on drug therapy, selected investigation results with dates, final
295 comments, and the investigator's signature with the date. The day of enrollment into the study was
296 taken as the "Baseline". Each time point was calculated from the Baseline. After several further
297 rounds of feedback and revisions from experts as described in Methods, the 14th Version of the
298 CRF with clinical score was agreed as the final consensus version (S Appendix 1).

299

300 **Capture of Signs domain (Objective and Subjective assessments)**

301 **a) Guidelines for selection of lesion to follow up and validation of OMIs**

302 In the context of the study, as patients may have more than one lesion of LCL, guidelines were
303 provided in the CRF to select an "index lesion" to be used throughout the period of clinical
304 assessment. The index lesion represented a recent onset, clinically typical looking localised CL




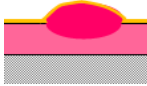
305 lesion which was confirmed with positive parasitology. Each type of lesion was well described
306 (Supplementary Table 1). There was opportunity for the investigator to report “Any other atypical
307 lesions” on the CRF during examination (CRF Section 5.1.14). A further Section 5.1.15 in the
308 CRF captured “Patient reported symptoms e.g. pain, loss of function etc.” This was to build up in
309 the future if any useful signs were reported by the patient during the validation process. The
310 anatomical location of the lesion was identified on a body diagram. A space was provided to record
311 the biopsy site if taken. It was made compulsory to have a laboratory confirmed diagnosis (either
312 the presence of *Leishmania* amastigote in a slit skin smear/biopsy and histology or positive PCR)
313 to enroll patients during the downstream application of CRF on patients in the validation process
314 of LeishCOM_LCL.

315 ***Outcome measurement instrument for signs***

316 Objective assessment (lesion measurements with a ruler & ball-point pen) (S Fig 1 & 2) was
317 described for ulcerated lesions as recommended by the previous harmonised guidance paper [16].
318 Both size of the ulcer and palpability of the induration were taken into consideration. As the panel
319 perceived that palpability was an important feature of disease activity, a newly developed
320 subjective assessment (a palpability score of 0,3,6,9) was described for both non-ulcerated and
321 ulcerated lesions (0=flat, 9=severely raised) (Tables 3 & 4). Schematic images and/or photos
322 alongside descriptions were used to standardise the assessment.

323




324 **Table 3. Description of the palpability score for non-ulcerated lesions***

Category	Score	Description (by clinical evaluation)	
Flat	0	Not Palpable	
Mildly raised	3	Slightly elevated on palpation (whole lesion < 2mm raised from normal skin)	
Moderately raised	6	Moderately elevated on palpation (whole lesion ≥ 2-5 mm raised from normal skin)	
Severely raised	9	Significantly raised on palpation and visibly elevated from the skin (whole lesion ≥ 5mm raised from normal skin)	

325 *Palpating the whole lesion in non-ulcerated lesions; Ball-point pen method (S Fig 2 [16]).

326

327 **Table 4. Description of the palpability score based on the edge for ulcerated lesions***

Category	Score	Description (by clinical evaluation)	
Flat	0	Not Palpable	
Mildly raised	3	Slightly elevated on palpation (edge of the lesion < 2mm raised from normal skin)	
Moderately raised	6	Moderately elevated on palpation (edge of the lesion ≥ 2-5 mm raised from normal skin)	
Severely raised	9	Significantly raised on palpation and visibly elevated from the skin. (edge of the lesion ≥ 5 mm raised from normal skin)	

328 * Instructions: for ulcerated lesions measure by palpating the “edge” of the ulcerated lesion.

329

330 **Capture of “Treatment Efficacy” domain**

331 *Treatment effect score*

332 “Treatment Effect Score” was assessed at week 4 and at 3 & 6 months from initiation of treatment.
333 Since there are no specific guidelines on designing numerical scores, and different numerical
334 scores have been used successfully to predict clinical outcomes [28], the clinicians present at the
335 NGT meeting agreed to rate the “Treatment Efficacy” with scores of 12, 9, 6, 3, 0; a score of
336 “12” was rated for no improvement and “0” for complete clinical cure. The Treatment Effect Score
337 mainly took into account the percentage change of the lesion size from baseline but also embraced
338 factors about re-epithelialization and inflammation at each assessment point in comparison with
339 baseline as a means of trying to prevent any ambiguity and ensure some consistency between raters
340 (Table 5). Although erythema was considered as "**not** sufficiently reliable to act as a measure of
341 treatment efficacy especially in skin of colour", it was decided to include an assessment of
342 "inflammation" (using subjective assessment of erythema by clinical-eyeballing) when doing an
343 Investigator Global assessment of the overall Treatment Effect Score as acute inflammation is
344 known to subside/disappear with wound healing [29]. This was combined with other anticipated
345 features expected with therapeutic resolution of a lesion.

346

347 **Table 5. Treatment effect score: Description of Investigator Global Assessment of an active**
 348 **disease post-treatment**

Score	Expected features	Allocate Score
12	No improvement. Lesion remained active, having the same characteristics, or becoming larger than prior to the start of treatment .	
9	Size of the lesion decreased 50% in comparison with the initial lesion, with fewer inflammatory signs* and discrete re-epithelialization (Size: diameter, length & width)	
6	Size of the lesion decreased between 50–90% in comparison with the initial lesion, and left few inflammatory signs*	
3	Size of the lesion decreased more than 90%, with re-epithelialization and very little inflammation*	
0	Complete re-epithelialization with a characteristic scar and no inflammation. Active disease settled	

349 *Inflammatory signs: erythema by clinical-eyeballing and having anticipated features expected
 350 with therapeutic resolution of a lesion

351 **Capture of “Treatment Impact” Domain**

352 *Treatment impact score*

353 **Visual Analogue Score (VAS)**

354 To measure the impact of the treatment on the “skin problem” at the time of assessment a Visual
 355 Analogue Score (VAS) ranging from 0 - 10 (0=“completely clear skin”, 10=“severely affected
 356 skin”) was described for both investigator (VASi) and patient (VASp) (CRF Section 6.3).
 357 Patients and investigators were asked to consider how they would score the skin problem on the
 358 day of assessment starting at baseline and after commencing treatment. Options were provided
 359 for the investigator and the patient to put a mark on the line to indicate how adversely they
 360 perceived the skin was affected on the day of the assessment (at Baseline, 4 weeks, 3 months & 6

361 months from the onset of treatment). The line of a VAS is 10cm in length and a score is allocated
362 according to the nearest whole cm (Fig 2).

363

364 ***Visual Analogue Score; Investigator’s Score (VASi)***

364

365 How would you score this skin problem from 0-10 today?

365



366

0

10

367

Completely
Clear

Severely
Affected Skin

368

369 ***Visual Analogue Score; Patient’s Score (VASp)***

369

370 How would you score your skin problem from 0-10 today?

370



371

0

10

372

Completely
Clear

Severely
Affected Skin

373

374

375 **Fig 2.** Visual analogue score of the investigator (VASi) and patient (VASp). Each line was 10
376 cm long. Each score is to be allocated according to the nearest whole cm.

377 ***Capture of Clinical sequelae (scarring & pigment) assessment domain***

378 As sequelae including scarring and pigment changes are a common occurrence from LCL, a new
379 Investigator Global Sequelae Assessment score was developed which consisted of “pigment

380 change, atrophic scars, and hypertrophic/keloid scars”. Each of these items was rated from 0-3.
 381 The aim was to establish the frequency of development of sequelae and also to try and assess
 382 whether earlier effective therapy might reduce the likelihood of sequelae. The investigator is asked
 383 to allocate a subjective score to the sequelae assessment. The scoring of pigmentation and scarring
 384 was discussed in detail at the NGT judgment process, and it was decided to compare the colour
 385 change in the lesion and the surrounding area of the lesion with the opposite unaffected side of the
 386 body. Furthermore, photographs taken at the field visit were examined in detail at the NTG meeting
 387 and scores ranging from 0-3 were allocated for pigment change by consensus (Table 6, and S Fig
 388 3 & 4). Scarring was decided to be assessed by palpation and by close clinical examination (Table
 389 6, and S Fig 5 & 6).

390 **Table 6. Investigator Global Assessment of i & ii) Pigment change iii) Atrophic scars iv)**
 391 **Hypertrophic/ Keloid scars**

Score (0-3) Pigment Change (Hyperpigmentation)			Allocate Score
Category	Score	Description	
	0	No hyperpigmentation	
	1	Mild hyperpigmentation	
	2	Moderate hyperpigmentation	
	3	Severe hyperpigmentation	
Score (0-3) Pigment Change (Hypopigmentation)			
Category	Score	Description	
	0	No hypopigmentation	
	1	Mild hypopigmentation	
	2	Moderate hypopigmentation	
	3	Severe hypopigmentation	
Score (0-3) Atrophic scars			
Category	Score	Description	
Clear	0	No scar visible or detectable on palpation	
Mild	1	Minimal atrophic scarring – little change on palpation	
Moderate	2	Atrophic scarring with textural changes of skin	
Severe	3	Deep atrophic / mutilating scar	

Score (0-3) Hypertrophic / Keloid scars			
Category	Score	Description	
Clear	0	No scar visible or detectable on palpation	
Mild	1	Minimal hypertrophic scarring - some palpable change	
Moderate	2	Palpable scarring with textural changes of the skin	
Severe	3	Mutilating scar (with underlying structural involvement)	
TOTAL SCORE			

392

393 **Summarizing the scores of the LeishCOM_LCL**

394 A table to summarize the subjective scores (palpability score & VASi & VASp) and sequelae
 395 assessment scores were included at the end of the clinical score (Table 7). The summary of scores
 396 is to be calculated by each investigator/rater at the end of the assessment at each time point and entered
 397 in the table (Table 7). These data will be used later for analysis and to arrive at conclusions during
 398 clinical trials or at routine treatment clinics (manuscript is being prepared in the completed validation
 399 stage).

400 **Table 7. Summary of scores**

SUBJECTIVE	SCORE
Palpability; Non-ulcerated lesions	(0-9)
Palpability; Ulcerated lesions	(0-9)
Visual Analogue; Investigator	(0-10)
Visual Analogue; Patient	(0-10)
TOTAL	
TREATMENT EFFECT	SCORE
Investigator Assessment	(0-12)
TOTAL	
SEQUELAE ASSESSMENTS	SCORE
Pigment Change; Hyperpigmentation	(0-3)
Pigment Change; Hypopigmentation	(0-3)
Atrophic Scars	(0-3)
Hypertrophic/Keloid Scars	(0-3)
TOTAL	

401

402 **Capture of Health-Related Quality of Life (HRQoL) domains**

403 Studies examining HRQoL in LCL are limited and the published studies have not necessarily
404 acknowledged negative impacts including those caused by treatment [30, 31]. Thus our OMI
405 incorporated two open-ended questions “How does your skin problem affect you?” and “What are
406 the three worst aspects of having your skin problem?” The aim was to assess the patient’s
407 perspectives with a view to adapting the tool or developing a relevant patient reported outcome
408 measure encompassing HRQoL assessment in the future. Information on the two open-ended
409 questions was gathered from patients and thematic analysis was carried out during the validation
410 process in the downstream application of the CRF in a dermatology clinic in Sri Lanka.
411 Psychological impact improved in line with treatment response over a 6 month period from
412 baseline, however, 30% of patients expressed psychological concerns as a result of sequelae such
413 as pigment changes and scarring (Full data and results will be published in a separate manuscript).

414 **Face Validity**

415 The face validity was established on parameters regarding appropriateness of grammar, clarity and
416 unambiguity of items, correct spelling of words, correct structuring of sentences, appropriateness,
417 and adequacy of instruction on the instrument, structure of the instrument in terms of construction
418 and, appropriateness of difficulty level of the instrument for the participants, and reasonableness
419 of items in relation to the purpose of the instrument [27]. The content was addressed following
420 feedback sent by the three consultant dermatologists by applying the OMI to five patients at each
421 of their clinics (total patient number (n=15)) were considered before finalizing and revisions were
422 made by experts with 100% agreement.

423 Further positive results of validity testing of the LeishCOM_LCL has been established including
424 criterion validity. The robust methodology and results from this will be published separately.

425 **Discussion**

426 This paper includes detailed development of a COS for LCL with identification of Core Outcome
427 Domains, measurement of the domains and a development of a subsequent OMI through adoption
428 of stages 1, 2 & 3 of the HOME roadmap [19, 24]. This study was initiated as in-depth literature
429 review revealed the absence of a standardized and validated COS for LCL to assess response to
430 current and novel treatment measures in clinical trials and clinical practice across the globe. This
431 scarcity has led to an overall inability of comparison between trials and recommendations of best
432 of care of management for LCL patients [8]. There was only one study that described a few
433 harmonized outcome measures for use in LCL clinical trials [16] which informed our
434 LeishCOM_LCL. Our study is the first to identify a set of Core Outcome Domains for LCL using
435 recognised and robust methodology in a standardized manner. The study has also included
436 consideration of how to measure the agreed domains in LCL as a means of developing a core
437 outcome set for use in the assessment of LCL. These have informed an outcome measurement tool
438 for LCL (LeishCOM_LCL). As no outcome measures have previously been agreed by broad
439 consensus for each domain, our group has developed and suggested an approach for each domain
440 and incorporated these measures into a practical tool LeishCOM_LCL.

441 The NGT adopted during the development stage of this study is a valid technique, representing an
442 alternative to the Delphi methodology [24]. Participation at the NGT meeting provided opportunity
443 for open dialogue with a moderator and provided time for clinical presentations and translation
444 where necessary.

445 This novel tool captures and scores relevant objective and subjective clinical outcomes embracing
446 active signs including sequelae and takes into account the perspectives of both the patient's and
447 investigator's with respect to the healing process and treatment of LCL lesions. A visual analogue

448 score was used to capture both participants' and investigators' perspectives as VAS is known to
449 be a valid, reliable, and repeatable method of assessment of therapeutic response in other
450 dermatological diseases [32]. The validation process with the small cohort of patients showed that
451 this tool LeishCOM_LCL is reliable with a good face and content validity. This tool will also be
452 useful to assess cure rates, treatment failure, relapse rate and to assess the other case management
453 indicators described in the Manual for case management of cutaneous leishmaniasis in the WHO
454 Eastern Mediterranean Region [17]. Further criterion validity has been performed in a larger
455 cohort and the robust methodology and positive results secured will be published in a separate
456 manuscript.

457 In recent years HRQoL and patient-reported outcome (PROs) have been considered as a very
458 important part of ensuring a patient-centered approach in disease management [33]. Addressing
459 HRQoL in a systematic manner was beyond the scope of this study. However, we recognize that
460 additional measures could further enhance the assessment of LCL particularly in respect of
461 capturing patient-reported outcomes and HRQoL. In LeishCOM_LCL, two open-ended HRQoL
462 questions "How does your skin problem affect you?" and "what are the worst aspects of having
463 your skin problem?" were used to capture patients' perceptions of having LCL and the issues they
464 face during prolonged treatment. We adopted this pragmatic approach in the first instance to try
465 and ensure the patient's perspective was recorded on paper. No previous study to date has
466 attempted to record/report these aspects. The results from this approach were analyzed during the
467 validation process and this highlighted the need to ensure adverse effects from treatments and
468 negative impacts of LCL are fully recognized when assessing this disease thus enabling a patient-
469 focused and empathic approach to management (details are due for publication in a validation
470 paper). The authors suggest that this work could help to inform the development of a more robust

471 PROM specific to LCL in the future and the authors appreciate that systematic qualitative research
472 with audio recordings would be helpful to expand upon this area with robust analysis.

473 The lack of a more diverse group of stakeholders including dermatologists from the Mediterranean
474 region and Africa, patients from diverse geographic areas, and pharmaceutical industry
475 representation was another limitation in this study. However, the stakeholders involved
476 represented important endemic regions for LCL and the authors acknowledge that further
477 improvement and fine-tuning of this OMI may be achieved by including further stakeholders from
478 other LCL endemic regions with a global representation and further individual outcome measures
479 may need to be developed for each Core Outcome Domain, particularly relating to HRQoL. The
480 team also appreciate further engagement with patients from each region as well as personnel from
481 the pharmaceutical industries and regulatory bodies could inform future discussions and adoption.
482 Furthermore, it will be important in the future to assess whether, scarring and pigmentation should
483 remain a primary efficacy endpoint or secondary efficacy endpoint and how these might impact
484 HRQoL. Data analysis secured from the validation process will help to inform future
485 improvements and this approach will complete stage 4 & 5 of HOME methodology.

486 The quality assurance stage (Stages 4 & 5); validity, reliability, responsiveness, interpretability
487 and feasibility of scoring and HRQoL had already been assessed in the newly developed
488 LeishCOM_LCL tool by applying the OMI downstream in a dermatology clinic to a small cohort
489 of patients (n=40) in Sri Lanka in accord with the HOME roadmap [24], COSMIN [34] and
490 Guidance for Industry Patient-Reported Outcome Measures: Use in Medical Product Development
491 to Support Labeling Claims, U.S. Department of Health and Human Services Food and Drug
492 Administration Center 2009 [35]. This will be presented in a future manuscript.

493 In conclusion, the Core Outcome Domains i.e. what to measure in LCL have now been defined
494 through a process of consensus. Agreement on how to measure the agreed Core Outcome Domains
495 was secured following literature review and a multidisciplinary and international stakeholder
496 meeting. The LeishCOM_LCL is the first OMI to be developed in a standardized manner to assess
497 LCL and therefore provides potential for broad adoption for use in clinical trials and routine
498 clinical settings.

499 Our future aim is to update the LeishCOM_LCL to reflect important views of patients when
500 collecting information and to consider developing a PROM specific to LCL. A specific PROM
501 should ensure adverse effects from treatments as well as the negative impacts of LCL are captured
502 when assessing this disease thus enabling a patient-focused and empathic approach to
503 management.

504 **Conflicts of interest:**

505 The authors declare that there are no conflicts of interest.

506 **Funding:** Medical Research Council - Global Challenges Research Fund (MRC-GCRF)
507 MR/P024661/1. Sponsors or funders (other than the named authors) played no role in study design,
508 data collection and analysis, decision to publish or preparation of the manuscript.

509 **Acknowledgments:** We thank and acknowledge the Sri Lanka College of Dermatologists for
510 giving their immense support during the development and validation process of this OMI

511 **References**

512 1. World Health Organization [Internet]. Leishmaniasis [cited 2023 June 27]. Available
513 from: <https://www.who.int/news-room/fact-sheets/detail/leishmaniasis>.

- 514 2. Scorza BM, Carvalho EM, Wilson ME. Cutaneous Manifestations of Human and
515 Murine Leishmaniasis. *Int J Mol Sci.* 2017;18: 1296. doi: 10.3390/ijms18061296.
516 PMID: 28629171.
- 517 3. Reithinger R, Dujardin JC, Louzir H, Pirmez C, Alexander B, Brooker S. Cutaneous
518 leishmaniasis. *Lancet Infect Dis.* 2007;7: 581-96. doi: 10.1016/S1473-3099(07)70209-
519 8. PMID: 17714672.
- 520 4. Garza-Tovar TF, Sacriste-Hernández MI, Juárez-Durán ER, Arenas R. An overview of
521 the treatment of cutaneous leishmaniasis. *Fac Rev.* 2020;22: 28. doi: 10.12703/r/9-28.
522 PMID: 33659960.
- 523 5. Goyonlo VM, Vosoughi E, Kiafar B, Nahidi Y, Momenzadeh A, Taheri AR. Efficacy
524 of intralesional amphotericin B for the treatment of cutaneous leishmaniasis. *Indian J*
525 *Dermatol.* 2014;59: 631. doi: 10.4103/0019-5154.143571. PMID: 25484415.
- 526 6. Mosimann V, Neumayr A, Paris DH, Blum J. Liposomal amphotericin B treatment of
527 Old World cutaneous and mucosal leishmaniasis: A literature review. *Acta Trop.*
528 2018;182: 246-250. doi: 10.1016/j.actatropica.2018.03.016. PMID: 29550282.
- 529 7. WHO Expert Committee on the Control of the Leishmaniases (Eds). WHO Technical
530 Series 949: Control of the leishmaniases. World Health Organization, Geneva; 2010.
- 531 8. López-Carvajal L, Vélez I, Arbeláez MP, Olliaro P. Eligibility criteria and outcome
532 measures adopted in clinical trials of treatments of cutaneous leishmaniasis: systematic
533 literature review covering the period 1991-2015. *Trop Med Int Health.* 2018;23: 448-
534 475. doi: 10.1111/tmi.13048. PMID: 29524291.

- 535 9. González U, Pinart M, Reveiz L, Alvar J. Interventions for Old World cutaneous
536 leishmaniasis. *Cochrane Database Syst Rev.* 2008;8: CD005067. doi:
537 10.1002/14651858.CD005067.pub3. PMID: 18843677.
- 538 10. González U, Pinart M, Rengifo-Pardo M, Macaya A, Alvar J, Tweed JA. Interventions
539 for American cutaneous and mucocutaneous leishmaniasis. *Cochrane Database Syst*
540 *Rev.* 2009;15: CD004834. doi: 10.1002/14651858.CD004834.pub2. PMID: 19370612.
- 541 11. Heras-Mosteiro J, Monge-Maillo B, Pinart M, Lopez Pereira P, Reveiz L, Garcia-
542 Carrasco E, et al. Interventions for Old World cutaneous leishmaniasis. *Cochrane*
543 *Database Syst Rev.* 2017;11: CD005067. doi: 10.1002/14651858.CD005067.pub4.
544 PMID: 29149474.
- 545 12. Pinart M, Rueda JR, Romero GA, Pinzón-Flórez CE, Osorio-Arango K, Silveira Maia-
546 Elkhoury AN, et al. Interventions for American cutaneous and mucocutaneous
547 leishmaniasis. *Cochrane Database Syst Rev.* 2020;8: CD004834. doi:
548 10.1002/14651858.CD004834.pub3. PMID: 32853410.
- 549 13. Ranawaka RR, Weerakoon HS. Randomized, double-blind, comparative clinical trial
550 on the efficacy and safety of intralesional sodium stibogluconate and intralesional 7%
551 hypertonic sodium chloride against cutaneous leishmaniasis caused by *L. donovani*. *J*
552 *Dermatolog Treat.* 2010;21: 286-93. doi: 10.3109/09546630903287445. PMID:
553 20438389.
- 554 14. Ranawaka RR, Weerakoon HS, Opathella N. Liquid nitrogen cryotherapy on
555 *Leishmania donovani* cutaneous leishmaniasis. *J Dermatolog Treat.* 2011;22: 241-5.
556 doi: 10.3109/09546631003762654. PMID: 20818996.

- 557 15. Refai WF, Madarasingha NP, Sumanasena B, Weerasingha S, De Silva A,
558 Fernandopulle R, et al. Efficacy, Safety and Cost-Effectiveness of Thermo-therapy in
559 the Treatment of *Leishmania donovani*-Induced Cutaneous Leishmaniasis: A
560 Randomized Controlled Clinical Trial. *Am J Trop Med Hyg.* 2017;97: 1120-1126. doi:
561 10.4269/ajtmh.16-0879. PMID: 28820681.
- 562 16. Olliaro P, Vaillant M, Arana B, Grogl M, Modabber F, Magill A, et al. Methodology
563 of clinical trials aimed at assessing interventions for cutaneous leishmaniasis. *PLoS*
564 *Negl Trop Dis.* 2013;7: e2130. doi: 10.1371/journal.pntd.0002130. PMID: 23556016.
- 565 17. WHO Regional Office for Eastern Mediterranean. Manual for case management of
566 cutaneous leishmaniasis in the WHO Eastern Mediterranean Region. WHO Regional
567 Publications, Mediterranean Series 35;2014.
- 568 18. Webbe J, Sinha I, Gale C. Core Outcome Sets. *Arch Dis Child Educ Pract Ed.*
569 2018;103: 163-166. doi: 10.1136/archdischild-2016-312117. PMID: 28667046.
- 570 19. Schmitt J, Spuls PI, Thomas KS, Simpson E, Furue M, Deckert S, et al; HOME
571 initiative collaborators. The Harmonising Outcome Measures for Eczema (HOME)
572 statement to assess clinical signs of atopic eczema in trials. *J Allergy Clin Immunol.*
573 2014 ;134: 800-7. doi: 10.1016/j.jaci.2014.07.043. PMID: 25282560.
- 574 20. Richardson E, McEwen A, Newton-John T, Crook A, Jacobs C. Incorporating patient
575 perspectives in the development of a core outcome set for reproductive genetic carrier
576 screening: a sequential systematic review. *Eur J Hum Genet.* 2022;30: 756-765. doi:
577 10.1038/s41431-022-01090-1. PMID: 35347269.
- 578 21. Fredriksson T, Pettersson U. Severe psoriasis--oral therapy with a new retinoid.
579 *Dermatologica.* 1978;157: 238-44. doi: 10.1159/000250839. PMID: 357213.

- 580 22. Hanifin JM, Baghoomian W, Grinich E, Leshem YA, Jacobson M, Simpson EL. The
581 Eczema Area and Severity Index-A Practical Guide. *Dermatitis*. 2022;33: 187-192. doi:
582 10.1097/DER.0000000000000895. PMID: 35594457.
- 583 23. Hamzavi I, Jain H, McLean D, Shapiro J, Zeng H, Lui H. Parametric modeling of
584 narrowband UV-B phototherapy for vitiligo using a novel quantitative tool: the Vitiligo
585 Area Scoring Index. *Arch Dermatol*. 2004; 140:677-83. doi:
586 10.1001/archderm.140.6.677. PMID: 15210457.
- 587 24. Schmitt J, Apfelbacher C, Spuls PI, Thomas KS, Simpson EL, Furue M, et al. The
588 Harmonizing Outcome Measures for Eczema (HOME) roadmap: a methodological
589 framework to develop core sets of outcome measurements in dermatology. *J Invest*
590 *Dermatol*. 2015;135: 24-30. doi: 10.1038/jid.2014.320. PMID: 25186228.
- 591 25. Olliaro P, Grogl M, Boni M, Carvalho EM, Chebli H, Cisse M, et al. Harmonized
592 clinical trial methodologies for localized cutaneous leishmaniasis and potential for
593 extensive network with capacities for clinical evaluation. *PLoS Negl Trop Dis*.
594 2018;12: e0006141. doi: 10.1371/journal.pntd.0006141. PMID: 29329311.
- 595 26. Downing SM. Face validity of assessments: faith-based interpretations or evidence-
596 based science? *Med Educ*. 2006;40: 7-8. doi: 10.1111/j.1365-2929.2005.02361. x.
597 PMID: 16441314.
- 598 27. Desai S and Patel N. ABC of Face Validity for Questionnaire. *Int. J. Pharm. Sci. Rev.*
599 *Res*. 2020;65: 164-168. doi: 10.47583/ijpsrr. 2020.v65i01.025.
- 600 28. Bakhtavar HE, Bagi HRM, Rahmani F, Nia SK, Ettehadi A. Clinical Scoring Systems
601 in Predicting the Outcome of Acute Upper Gastrointestinal Bleeding; a Narrative
602 Review. *Emerg (Tehran)*. 2017;5: e36. PMID: 28286843.

- 603 29. Guo S, Dipietro LA. Factors affecting wound healing. *J Dent Res.* 2010;89: 219-29.
604 doi: 10.1177/0022034509359125. PMID: 20139336.
- 605 30. Ranawaka RR, Weerakoon HS, de Silva SH. The quality of life of Sri Lankan patients
606 with cutaneous leishmaniasis. *Mymensingh Med J.* 2014;23: 345-51. PMID:
607 24858165.
- 608 31. Refai WF, Madarasingha NP, Sumanasena B, Weerasingha S, Fernandopulle R,
609 Karunaweera ND. Cutaneous leishmaniasis in Sri Lanka: effect on quality of life. *Int J*
610 *Dermatol.* 2018;57: 1442-1446. doi: 10.1111/ijd.14240. PMID: 30246447.
- 611 32. Pedersen CB, McHorney CA, Larsen LS, Lophaven KW, Moeller AH, Reaney M.
612 Reliability and validity of the Psoriasis Itch Visual Analog Scale in psoriasis vulgaris.
613 *J Dermatolog Treat.* 2017;28: 213-220. doi: 10.1080/09546634.2016.1215405. PMID:
614 27454156.
- 615 33. Philpot LM, Barnes SA, Brown RM, Austin JA, James CS, Stanford RH, et al. Barriers
616 and Benefits to the Use of Patient-Reported Outcome Measures in Routine Clinical
617 Care: A Qualitative Study. *Am J Med Qual.* 2018;33: 359-364. doi:
618 10.1177/1062860617745986. PMID: 29258323.
- 619 34. Prinsen CA, Vohra S, Rose MR, Boers M, Tugwell P, Clarke M, et al. How to select
620 outcome measurement instruments for outcomes included in a "Core Outcome Set" - a
621 practical guideline. *Trials.* 2016;17: 449. doi: 10.1186/s13063-016-1555-2. PMID:
622 27618914.
- 623 35. U.S. Department of Health and Human Services FDA Center for Drug Evaluation and
624 Research; U.S. Department of Health and Human Services FDA Center for Biologics
625 Evaluation and Research; U.S. Department of Health and Human Services FDA Center

626 for Devices and Radiological Health. Guidance for industry: patient-reported outcome
627 measures: use in medical product development to support labeling claims: draft
628 guidance. Health Qual Life Outcomes. 2006; 4:79. doi: 10.1186/1477-7525-4-79.
629 PMID: 17034633.
630
631

632 **Supplementary tables**

633 **S1 Table. Guidelines for clinical categorization of the Index Lesion***

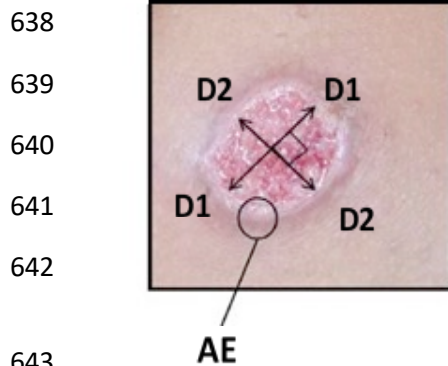
Presenting sign(s): Please indicate which of the following clinical features are evident and the number of lesions at the time of presentation and if possible, the duration of the lesion (s).
5.1.1 Recent onset macule (circumscribed change in the color of skin that is flat on palpation – (excludes scarring and post inflammatory pigmentary change)
5.1.2 Papule (≤ 5 mm diameter, palpable solid elevation)
5.1.3 Nodule (> 5 mm diameter, palpable elevation)
5.1.4 Plaque (flat topped with diameter greater than its height)
Ulcerative change
5.1.5 Dry ulcer (destruction of epidermis of skin with central crusting/scaling)
5.1.6 Wet ulcer (destruction of epidermis of skin with wet exudates)
5.1.7 Nodular ulcerative (> 5 mm diameter, palpable elevation with central ulceration)
Other features associated with acute lesion(s)
5.1.8 Satellite lesions
5.1.9 Halo pigmentation

634

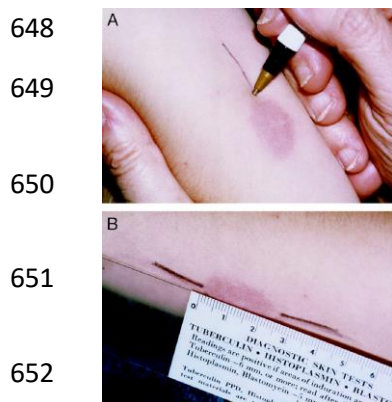
635 *An active lesion of most recent onset which was parasitologically confirmed has to be selected

636 as an “**index lesion**” to be assessed throughout the study from one time point to another.

637 **Supplementary Figures**

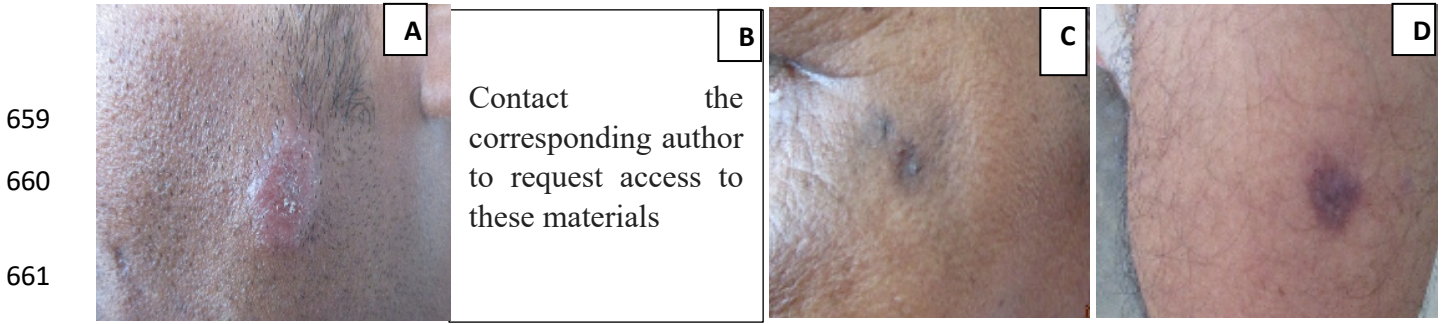


644 **S Fig 1. Instructions to measure the diameters of an ulcerated lesion.** Measure the largest
645 diameter of the ulcerated area [D1] and then select the largest diameter that is perpendicular to
646 the original measurement taken [D2]. If adherent crust evident, assess the 2 largest diameters of
647 the crusted area in the same way [8]. AE: Elevated active edge of the lesion.



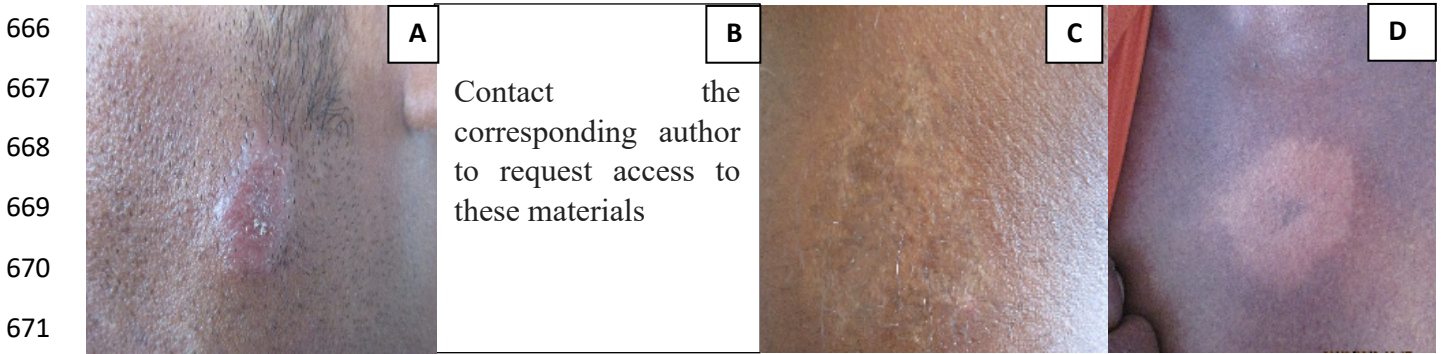
653 **S Fig 2. Instructions to measure the diameters of the indurated area of a non-ulcerated**
654 **lesion.** Identify the widest diameter of the lesion and draw two lines up to the edge of the lesion
655 in line with the largest diameter [A] and then measure the distance between the two lines [B].
656 Similarly find the largest diameter that is perpendicular to the original measurement taken as
657 above.

658



662 **S Fig 3. Grading of hyperpigmentation during the NGT meeting.** A: no hyperpigmentation,
663 B: mild hyperpigmentation, C: moderate hyperpigmentation, D: severe hyperpigmentation. NGT:
664 Nominal group technique

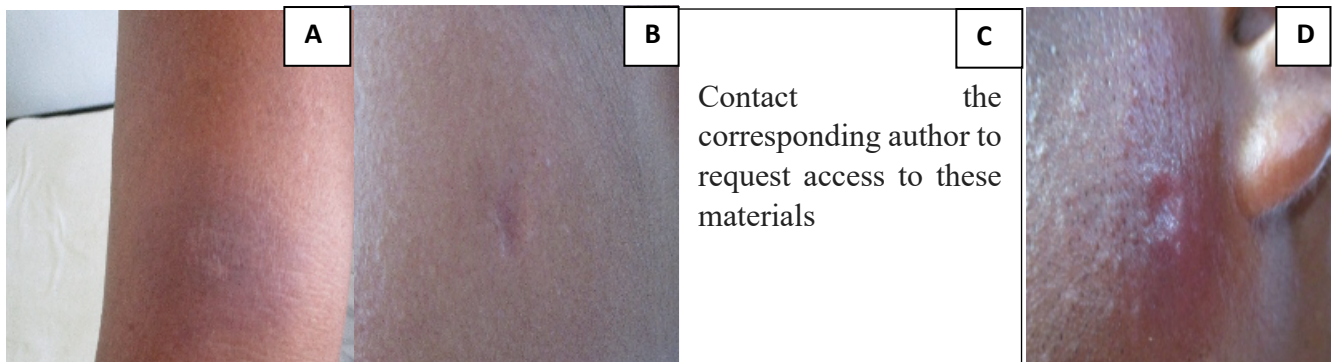
665



672

673 **S Fig 4. Grading of hypopigmentation during the NGT meeting.** A: no hypopigmentation, B:
674 mild hypopigmentation, C: moderate hypopigmentation, D: severe hypopigmentation.

675

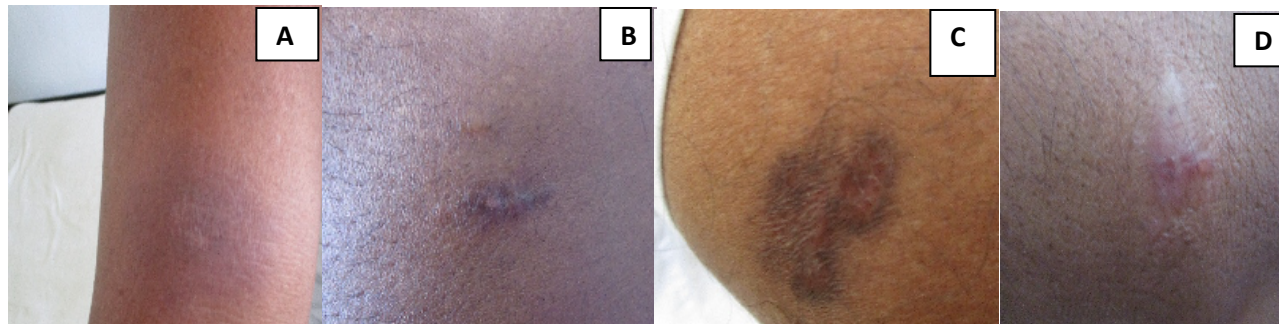


676 **S Fig 5. Grading of atrophic scarring during the NGT meeting.** A: no atrophic scarring, B:
677 mild atrophic scarring, C: moderate atrophic scarring, D: severe atrophic scarring.

678

679

680



681

682

683

684

685 **S Fig 6. Grading of hypertrophic scarring during the NGT meeting.** A: no hypertrophic
686 scarring, B: mild hypertrophic scarring, C: moderate hypertrophic scarring, D: severe
687 hypertrophic scarring.



medRxiv preprint doi: <https://doi.org/10.1101/2024.05.28.24307884>; this version posted May 28, 2024. The copyright holder for this preprint (which was not certified by peer review) is the author/funder, who has granted medRxiv a license to display the preprint in perpetuity. It is made available under a [CC-BY 4.0 International license](#).

CASE REPORT FORM FOR LOCALISED CUTANEOUS LEISHMANIASIS

Towards a global research network for the molecular pathological stratification of leishmaniasis

Document Category: Case Report Form
 Code: LEISHPATHNET_CRF_001
 Title: Localised Cutaneous Leishmaniasis
 Version: 14
 Sponsor: University of York
 Release Date: 19 June 2018

Authorised by	Signature	Date
Paul Kaye, Project Lead, Professor of Immunology		19.06.2018

Table of Contents

Instructions for use	(Pages 2 - 3)
Demographics and details of presentation	(Pages 4 - 6)
Assessments	
• Baseline	(Pages 7 - 11)
• 4 weeks	(Pages 12 - 15)
• 3 months	(Pages 16 - 19)
• 6 months	(Pages 20 - 23)
Summary scores over time	(Page 24)
Drug therapy	(Pages 25 - 26)
Final comments and investigator signature	(Page 27)

1. INSTRUCTIONS FOR MEASURING AND ASSESSING LOCALISED CUTANEOUS LEISHMANIASIS

medRxiv preprint doi: <https://doi.org/10.1101/2024.05.28.24307884>; this version posted May 28, 2024. The copyright holder for this preprint (which was not certified by peer review) is the author/funder, who has granted medRxiv a license to display the preprint in perpetuity. It is made available under a [CC-BY 4.0 International license](https://creativecommons.org/licenses/by/4.0/).

DEFINING LOCALISED CUTANEOUS LEISHMANIASIS

Include patients with up to 5 lesions. Please take a photo of the lesions as per SOP for photography.

INSTRUCTIONS FOR IDENTIFYING LESIONS AND TAKING BIOPSIES

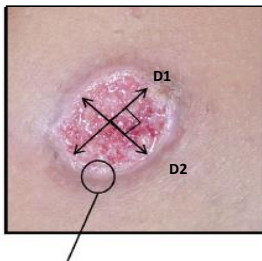
Clearly identify which lesions will be assessed at each visit and where biopsies have been taken on the figures in the CRF

Provide a description of any lesion(s) biopsied and / or being assessed at each visit in the table below the figures as indicated.

OBJECTIVE ASSESSMENTS FOR LOCALISED DISEASE/SELECTED LESIONS

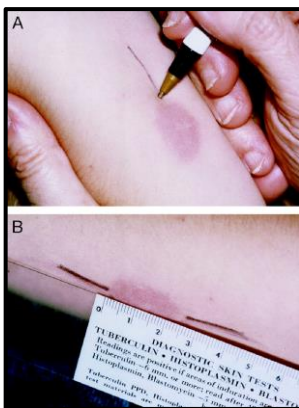
a) Ulcer size

Measure the largest diameter of the ulcerated area [D1] and then select the largest diameter that is perpendicular to the original measurement taken [D2]. If adherent crust evident, assess the 2 largest diameters of the crusted area in the same way [16].







b) Area of induration of the lesion

Identify the widest diameter of the lesion and draw two lines up to the edge of the lesion in line with the largest diameter and then measure the distance between the two lines. Similarly find the largest diameter that is perpendicular to the original measurement taken as above.






SUBJECTIVE ASSESSMENTS FOR LOCALISED DISEASE/SELECTED LESIONS (which was not certified by peer review) is the author/funder, who has granted medRxiv a license to display the preprint in perpetuity. It is made available under a [CC-BY 4.0 International license](https://creativecommons.org/licenses/by/4.0/).

For **non-ulcerated** areas measure by palpating the whole lesion and indicate a palpability score as below

Category	Score	Description (by clinical evaluation)	
Flat	0	Not Palpable	
Mildly raised	3	Slightly elevated on palpation (whole lesion < 2mm raised from normal skin)	
Moderately raised	6	Moderately elevated on palpation (whole lesion ≥ 2-5 mm raised from normal skin)	
Severely raised	9	Significantly raised on palpation and visibly elevated from the skin (whole lesion ≥ 5mm raised from normal skin)	

For **ulcerated lesions** measure by palpating the EDGE of the lesion

Category	Score	Description (by clinical evaluation)	
Flat	0	Not Palpable	
Mildly raised	3	Slightly elevated on palpation (edge of the lesion < 2mm raised from normal skin)	
Moderately raised	6	Moderately elevated on palpation (edge of the lesion ≥ 2-5 mm raised from normal skin)	
Severely raised	9	Significantly raised on palpation and visibly elevated from the skin. (edge of the lesion ≥ 5 mm raised from normal skin)	

VISUAL ANALOGUE SCORE

Please ask healthcare professional **AND** the patient to put a mark on the line to indicate how badly they perceive the skin is affected **on the day of the assessment**. The line is 10cm and the score will be allocated according to the nearest whole cm. 0 represents clear skin and 10 represents the worse the skin can get.

TREATMENT EFFECT SCORES

Please indicate how much improvement there has been at visits 4 weeks, 3 months and 6 months

SEQUELAE ASSESSMENTS

Please score the various potential sequelae from 0-3

MEASURING HRQoL

Please ask patients two open ended questions, as indicated in the CRF.

DATA FOR CASE REPORT FORM FOR LOCALISED CUTANEOUS LEISHMANIASIS May 28, 2024. The copyright holder for this preprint (which was not certified by peer review) is the author/funder, who has granted medRxiv a license to display the preprint in perpetuity. It is made available under a [CC-BY 4.0 International license](https://creativecommons.org/licenses/by/4.0/).

Towards a global research network for the molecular pathological stratification of Leishmaniasis

Protocol No.

Patient's Reference Number:

Date:

1. Subject Demographics

1.1 Name:	1.5 Residential Address with <u>Contact Number</u> (including District)		
1.2 Date of Birth:	1.6 Education:	No schooling	<input type="checkbox"/>
		School education	<input type="checkbox"/>
	Grade:	Graduate	<input type="checkbox"/>
		Postgraduate	<input type="checkbox"/>
1.3 Gender: M <input type="checkbox"/> F <input type="checkbox"/>	1.7 Occupation:		
1.4 OPD Registration Number:	1.8 Monthly Family Income: (in local currency)		

2. Enrolment Particulars

2.1 Consent for Current Study Yes <input type="checkbox"/> No <input type="checkbox"/>	
2.2 Consent for Future Studies Yes <input type="checkbox"/> No <input type="checkbox"/>	
2.3 Subject Code : SL/IN/BR_ _ _	2.5 Date/s of Punch Biopsy & Slit Skin Smear Collection:
2.4 Date of Entry in Study:	2.6 Photography Taken :Yes No
	Date: _____ number/s* _____
	Date: _____ number/s _____
	Date: _____ number/s _____
	Date: _____ number/s _____
	*specific number/s allocated to the photo/s

3. Medical History and Examination

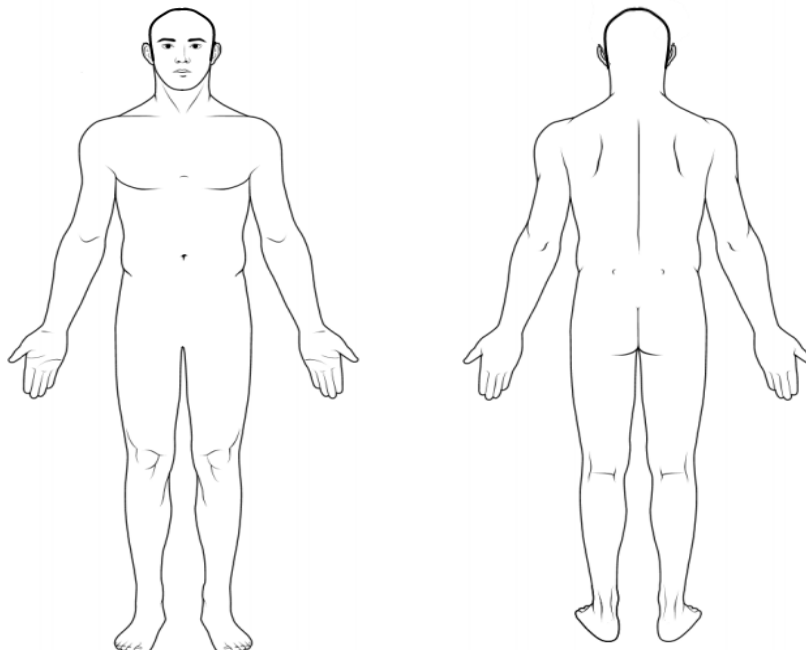
3.1 Past History of Kala-azar/Visceral Leishmaniasis	Date of onset (if known) _____
Yes <input type="checkbox"/> No <input type="checkbox"/> N/A <input type="checkbox"/>	Duration of Treatment _____
	Date of Cure (id known) _____

medRxiv preprint doi: <https://doi.org/10.1101/2024.05.28.24307884>; this version posted May 28, 2024. The copyright holder for this preprint (which was not certified by peer review) is the author/funder, who has granted medRxiv a license to display the preprint in perpetuity. It is made available under a [CC-BY 4.0 International license](https://creativecommons.org/licenses/by/4.0/).

<p>3.2 Any Other Relevant Medical Problems</p> <p>.</p>																	
<p>3.3 Drug History</p> <p>3.3.1 Previous Treatment for Kala-azar/ Visceral Leishmaniasis: Yes <input type="checkbox"/> No <input type="checkbox"/> N/A <input type="checkbox"/></p> <p>3.3.2 Any Other Relevant Medication:</p>	<p>Treatment Details (drugs with duration of therapy)</p>																
<p>3.4 Travel History (specify the country)</p>																	
<table style="width: 100%; border-collapse: collapse;"> <thead> <tr> <th style="text-align: left;">3.5 General Examination</th> <th style="text-align: center;">Yes</th> <th style="text-align: center;">No</th> <th></th> </tr> </thead> <tbody> <tr> <td>3.5.1 Fever</td> <td style="text-align: center;"><input type="checkbox"/></td> <td style="text-align: center;"><input type="checkbox"/></td> <td>If yes, record temperature (°C/°F)</td> </tr> <tr> <td>3.5.2 Pallor</td> <td style="text-align: center;"><input type="checkbox"/></td> <td style="text-align: center;"><input type="checkbox"/></td> <td></td> </tr> <tr> <td>3.5.3 Lymphadenopathy</td> <td style="text-align: center;"><input type="checkbox"/></td> <td style="text-align: center;"><input type="checkbox"/></td> <td>If yes, sites: cervical / axillary / inguinal / generalized Left / Right / Both</td> </tr> </tbody> </table>		3.5 General Examination	Yes	No		3.5.1 Fever	<input type="checkbox"/>	<input type="checkbox"/>	If yes, record temperature (°C/°F)	3.5.2 Pallor	<input type="checkbox"/>	<input type="checkbox"/>		3.5.3 Lymphadenopathy	<input type="checkbox"/>	<input type="checkbox"/>	If yes, sites: cervical / axillary / inguinal / generalized Left / Right / Both
3.5 General Examination	Yes	No															
3.5.1 Fever	<input type="checkbox"/>	<input type="checkbox"/>	If yes, record temperature (°C/°F)														
3.5.2 Pallor	<input type="checkbox"/>	<input type="checkbox"/>															
3.5.3 Lymphadenopathy	<input type="checkbox"/>	<input type="checkbox"/>	If yes, sites: cervical / axillary / inguinal / generalized Left / Right / Both														
<table style="width: 100%; border-collapse: collapse;"> <thead> <tr> <th style="text-align: left;">3.6 Abdominal Examination</th> <th style="text-align: center;">Yes</th> <th style="text-align: center;">No</th> <th></th> </tr> </thead> <tbody> <tr> <td>3.6.1 Hepatomegaly</td> <td style="text-align: center;"><input type="checkbox"/></td> <td style="text-align: center;"><input type="checkbox"/></td> <td>If yes, how many cm below the R costal margin cm</td> </tr> <tr> <td>3.6.2 Splenomegaly</td> <td style="text-align: center;"><input type="checkbox"/></td> <td style="text-align: center;"><input type="checkbox"/></td> <td>If yes, how many cm below the L costal margin cm</td> </tr> </tbody> </table>		3.6 Abdominal Examination	Yes	No		3.6.1 Hepatomegaly	<input type="checkbox"/>	<input type="checkbox"/>	If yes, how many cm below the R costal margin cm	3.6.2 Splenomegaly	<input type="checkbox"/>	<input type="checkbox"/>	If yes, how many cm below the L costal margin cm				
3.6 Abdominal Examination	Yes	No															
3.6.1 Hepatomegaly	<input type="checkbox"/>	<input type="checkbox"/>	If yes, how many cm below the R costal margin cm														
3.6.2 Splenomegaly	<input type="checkbox"/>	<input type="checkbox"/>	If yes, how many cm below the L costal margin cm														

4. SITES AND EXTENT OF DISEASE

Please indicate the site(s)/extent of the lesion(s) on the figure below; at time of recruitment



5. CLINICAL PRESENTATION: lesion characteristics at recruitment
(which was not certified by peer review) is the author/funder, who has granted medRxiv a license to display the preprint in perpetuity. It is made available under a CC-BY 4.0 International license.

*Definition of the "index lesion" - a lesion of recent onset, clinically typical of an active lesion and confirmed positive on parasitologically to be assessed throughout the study from one time point to another.

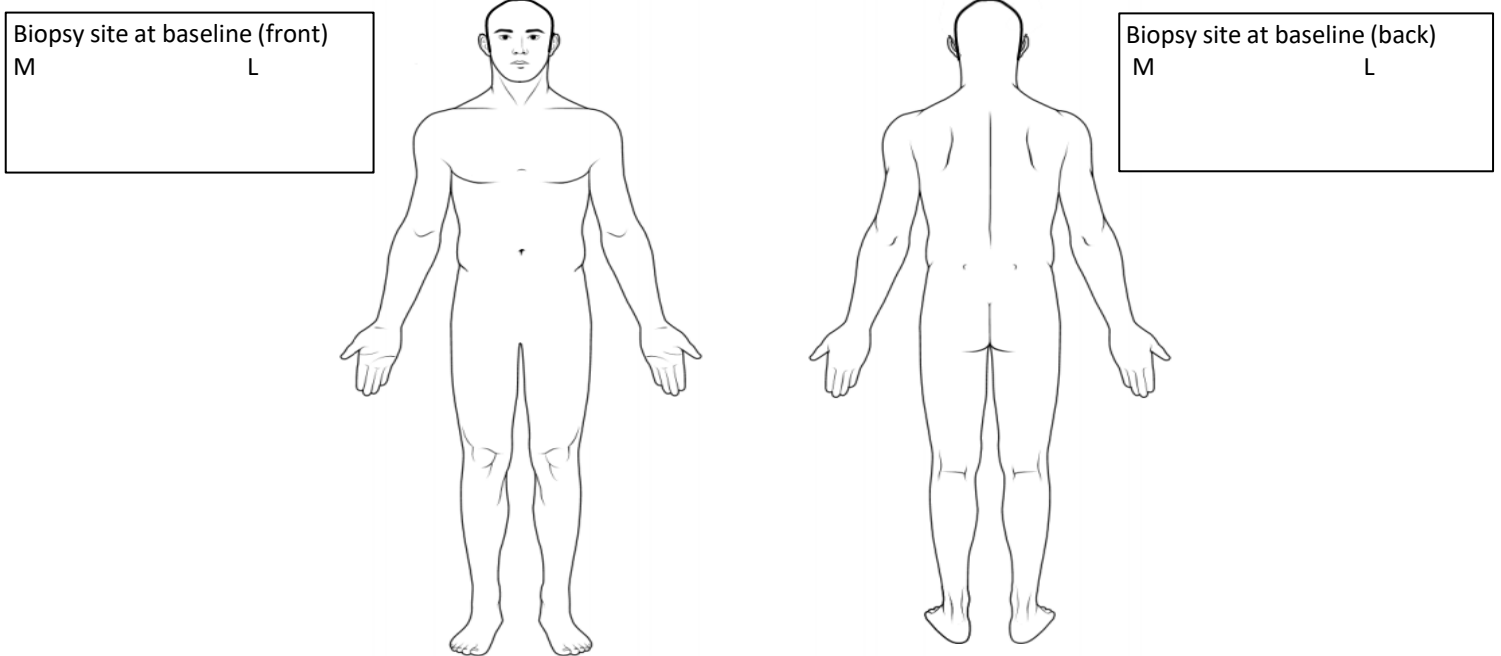
Presenting sign(s): Please indicate which of the following clinical features are evident and the number of lesions at the time of presentation and if possible the duration of the lesion (s).	Presence of lesion types	Number of lesions; tick relevant box	Duration in months (if less than one month in weeks)
5.1.1 Recent onset macule (circumscribed change in the color of skin that is flat on palpation – (excludes scarring and post inflammatory pigmentary change)	Yes <input type="checkbox"/> No <input type="checkbox"/>	1 <input type="checkbox"/> 2-5 <input type="checkbox"/>	
5.1.2 Papule (≤5mm diameter, palpable solid elevation)	Yes <input type="checkbox"/> No <input type="checkbox"/>	1 <input type="checkbox"/> 2-5 <input type="checkbox"/>	
5.1.3 Nodule (>5 mm diameter, palpable elevation)	Yes <input type="checkbox"/> No <input type="checkbox"/>	1 <input type="checkbox"/> 2-5 <input type="checkbox"/>	
5.1.4 Plaque (flat topped with diameter greater than its height)	Yes <input type="checkbox"/> No <input type="checkbox"/>	1 <input type="checkbox"/> 2-5 <input type="checkbox"/>	
Ulcerative change			
5.1.5 Dry ulcer (destruction of epidermis of skin with central crusting/scaling)	Yes <input type="checkbox"/> No <input type="checkbox"/>	1 <input type="checkbox"/> 2-5 <input type="checkbox"/>	
5.1.6 Wet ulcer (destruction of epidermis of skin with wet exudates)	Yes <input type="checkbox"/> No <input type="checkbox"/>	1 <input type="checkbox"/> 2-5 <input type="checkbox"/>	
5.1.7 Nodular ulcerative (> 5mm diameter, palpable elevation with central ulceration)	Yes <input type="checkbox"/> No <input type="checkbox"/>	1 <input type="checkbox"/> 2-5 <input type="checkbox"/>	
Other features associated with acute lesion(s)			
5.1.8 Satellite lesions	Yes <input type="checkbox"/> No <input type="checkbox"/>	1 <input type="checkbox"/> 2-5 <input type="checkbox"/>	
5.1.9 Halo pigmentation	Yes <input type="checkbox"/> No <input type="checkbox"/>	1 <input type="checkbox"/> 2-5 <input type="checkbox"/>	
Sequelae from resolved or resolving lesion(s)			
5.1.10 Hyperpigmentation	Yes <input type="checkbox"/> No <input type="checkbox"/>	1 <input type="checkbox"/> 2-5 <input type="checkbox"/>	
5.1.11 Hypopigmentation	Yes <input type="checkbox"/> No <input type="checkbox"/>	1 <input type="checkbox"/> 2-5 <input type="checkbox"/>	
5.1.12 Atrophic Scarring	Yes <input type="checkbox"/> No <input type="checkbox"/>	1 <input type="checkbox"/> 2-5 <input type="checkbox"/>	
5.1.13 Hypertrophic or Keloid scarring	Yes <input type="checkbox"/> No <input type="checkbox"/>	1 <input type="checkbox"/> 2-5 <input type="checkbox"/>	
5.1.14 Any other atypical lesions – remarks			
5.1.15 Patient reported symptoms e.g. pain, loss of function etc.			

medRxiv preprint doi: <https://doi.org/10.1101/2024.05.28.24307884>; this version posted May 28, 2024. The copyright holder for this preprint (which was not certified by peer review) is the author/funder, who has granted medRxiv a license to display the preprint in perpetuity. It is made available under a CC-BY 4.0 International license.

LOCALISED CUTANEOUS LEISHMANIASIS - BASELINE VISIT PRE-TREATMENT

6.1 Baseline biopsy and index lesion(s) for assessment

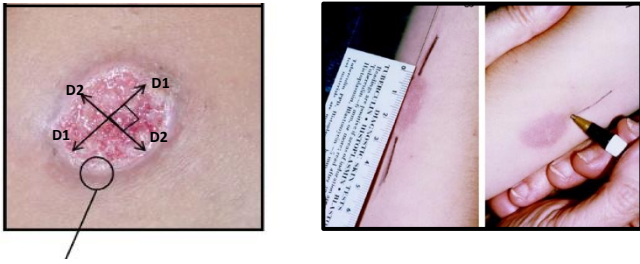
- a) Please indicate on the figure below the site(s) of any biopsy(ies) taken and mark with a letter e.g. A
- b) Draw the lesion(s) biopsied in the box and indicate where the biopsy has been taken (M= medial L = lateral)
- c) Indicate features of the lesion(s) biopsied in the table below
- d) Distinguish any index lesion(s) for assessment throughout the study from the biopsy sites on the figures, and mark with a different letter.



Features of lesion(s) biopsied and under assessment. Please indicate the clinical features of any lesion biopsied as well as any other lesions undergoing assessment. If possible please include the duration of the lesion (s).	Lesion A Biopsy Y/N	Lesion B Biopsy Y/N	Lesion C Biopsy Y/N	Lesion D Biopsy Y/N
Macule (circumscribed change in the color of skin that is flat on palpation – (excludes scarring and post inflammatory pigmentary change)				
Papule (≤5mm diameter, palpable solid elevation)				
Nodule (>5 mm diameter, palpable elevation)				
Plaque (flat topped with diameter greater than its height)				
Ulcerative change				
Dry ulcer (destruction of epidermis of skin with central crusting/scaling)				
Wet ulcer (destruction of epidermis of skin with wet exudates)				
Nodular ulcerative (>5mm diameter, palpable elevation with central ulceration)				
Other features associated with the lesion(s)				
Satellite lesions				
Halo pigmentation				
Hyperpigmentation				
Hypopigmentation				
Atrophic Scarring				
Hypertrophic or Keloid scarring				
Duration of lesion if known				
Any other features – remarks				

6.2 OBJECTIVE ASSESSMENTS: BASELINE (which was not certified by peer review) is the author/funder, who has granted medRxiv a license to display the preprint in perpetuity. It is made available under a [CC-BY 4.0 International license](https://creativecommons.org/licenses/by/4.0/).

Area of Ulcer and Induration; See page 2 for instructions.



Please Indicate Site	Size of the ulcerated area if present 2 largest diameters		Total Area mm ²	Area of induration 2 largest diameters		Total Area mm ²
	Diameter 1 (mm)	Diameter 2 (mm)	D1 x D2	Diameter 1 (mm)	Diameter 2 (mm)	D1 x D2

6.3 SUBJECTIVE ASSESSMENTS: BASELINE

Assessment using a palpability score

For **non-ulcerated** areas measure by palpating the whole lesion and indicate a palpability score, as described. (See page 3 for instructions.)

Score Allocated:

For **ulcerated lesions** measure by palpating the EDGE of the lesion and allocate a score, as described. (See page 3 for instructions.)

Score Allocated:

Visual Analogue Score; Investigator’s Score (See page 3 for instructions)

How would you score this skin problem from 0-10 today?

0 _____ 10
 Completely Clear Severely Affected Skin

Score Allocated:

Visual Analogue Score; Patient’s Score (See page 3 for instructions)

How would you score your skin problem from 0-10 today?

0 _____ 10
 Completely Clear Severely Affected Skin

Score Allocated:

medRxiv preprint doi: <https://doi.org/10.1101/2024.05.28.24307884>; this version posted May 28, 2024. The copyright holder for this preprint (which was not certified by peer review) is the author/funder, who has granted medRxiv a license to display the preprint in perpetuity. It is made available under a [CC-BY 4.0 International license](#).

6.4 TREATMENT EFFECT SCORES: BASELINE

Investigator's assessment of active disease post treatment

Not required for Baseline visit

6.5 SEQUENTIAL ASSESSMENTS BASELINE (which was not certified by peer review) is the author/funder, who has granted medRxiv a license to display the preprint in perpetuity. It is made available under a [CC-BY 4.0 International license](https://creativecommons.org/licenses/by/4.0/).
medRxiv preprint doi: <https://doi.org/10.1101/2024.05.28.24307884>; this version posted May 28, 2024. The copyright holder for this preprint

Investigator Global Assessment of i) Pigment change ii) Atrophic scars iii) Hypertrophic/ Keloid scars

Score (0-3) Pigment Change hyperpigmentation			Allocate Score
Category	Score	Description	
	0	No hyperpigmentation	
	1	Mild hyperpigmentation	
	2	Moderate hyperpigmentation	
	3	Severe hyperpigmentation	
Score (0-3) Pigment Change hypopigmentation			
Category	Score	Description	
	0	No hypopigmentation	
	1	Mild hypopigmentation	
	2	Moderate hypopigmentation	
	3	Severe hypopigmentation	
Score (0-3) Atrophic scars			
Category	Score	Description	
Clear	0	No scar visible or detectable on palpation	
Mild	1	Minimal atrophic scarring – little change on palpation	
Moderate	2	Atrophic scarring with textural changes of skin	
Severe	3	Deep atrophic / mutilating scar	
Score (0-3) Hypertrophic / Keloid scars			
Category	Score	Description	
Clear	0	No scar visible or detectable on palpation	
Mild	1	Minimal hypertrophic scarring - some palpable change	
Moderate	2	Palpable scarring with textural changes of the skin	
Severe	3	Mutilating scar (with underlying structural involvement)	
TOTAL SCORE			

6.6 HRQoL: BASELINE

1) How does your skin problem affect you?

.....

.....

.....

.....

2) What are the 3 worst aspects of having your skin problem?

.....

.....

.....

medRxiv preprint doi: <https://doi.org/10.1101/2024.05.28.24307884>; this version posted May 28, 2024. The copyright holder for this preprint (which was not certified by peer review) is the author/funder, who has granted medRxiv a license to display the preprint in perpetuity. It is made available under a [CC-BY 4.0 International license](#) .

6.7 SUMMARY OF SCORES: BASELINE

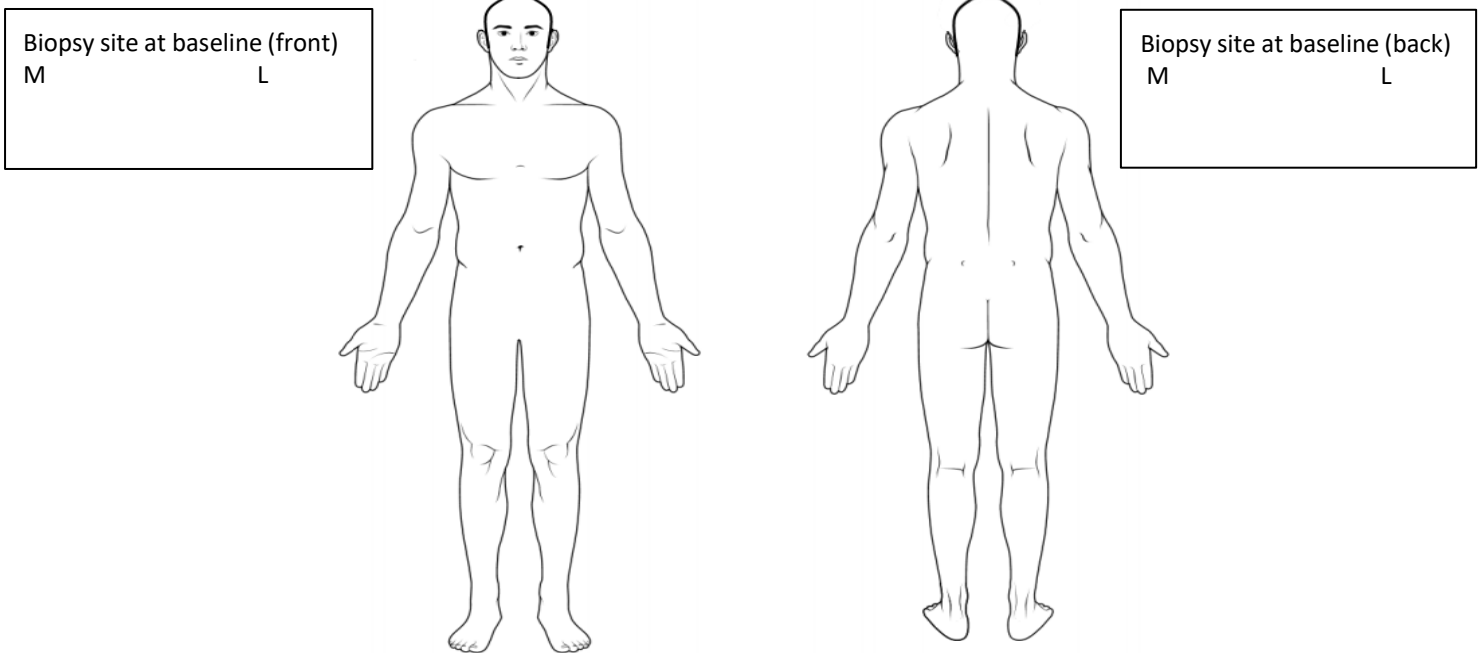
SUBJECTIVE	SCORE
Palpability; non-ulcerated lesions	(0-9)
Palpability; ulcerated lesions	(0-9)
Visual Analogue; investigator	(0-10)
Visual Analogue; patient	(0-10)
TOTAL	
SEQUELAE ASSESSMENTS	SCORE
Pigment Change; hyperpigmentation	(0-3)
Pigment Change; hypopigmentation	(0-3)
Atrophic Scars	(0-3)
Hypertrophic/Keloid Scars	(0-3)
TOTAL	

medRxiv preprint doi: <https://doi.org/10.1101/2024.05.28.24307884>; this version posted May 28, 2024. The copyright holder for this preprint (which was not certified by peer review) is the author/funder, who has granted medRxiv a license to display the preprint in perpetuity.

7. LOCALISED CUTANEOUS LEISHMANIASIS: 4 WEEKS available under a [CC-BY 4.0 International license](https://creativecommons.org/licenses/by/4.0/).

7.1. FOUR WEEK BIOPSY AND INDEX LESION(S) FOR ASSESSMENT

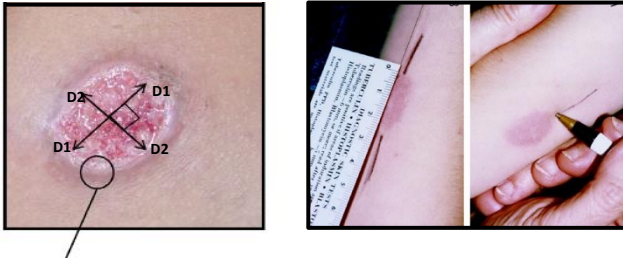
- a) Please indicate on the figure below the site(s) of any biopsy(ies) taken and mark with a letter e.g. A
- b) Draw the lesion(s) biopsied in the box and indicate where the biopsy has been taken (M= medial L = lateral)
- c) Indicate features of the lesion(s) biopsied in the table below
- d) Distinguish any index lesion(s) for assessment throughout the study from the biopsy sites on the figures, and mark with a different letter.



Features of lesion(s) biopsied and under assessment. Please indicate the clinical features of any lesion biopsied as well as any other lesions undergoing assessment.	Lesion A Biopsy Y/N	Lesion B Biopsy Y/N	Lesion C Biopsy Y/N	Lesion D Biopsy Y/N
If possible please include the duration of the lesion (s).				
Macule (circumscribed change in the color of skin that is flat on palpation – (excludes scarring and post inflammatory pigmentary change)				
Papule (≤5mm diameter, palpable solid elevation)				
Nodule (>5 mm diameter, palpable elevation)				
Plaque (flat topped with diameter greater than its height)				
Ulcerative change				
Dry ulcer (destruction of epidermis of skin with central crusting/scaling)				
Wet ulcer (destruction of epidermis of skin with wet exudates)				
Nodular ulcerative (>5mm diameter, palpable elevation with central ulceration)				
Other features associated with the lesion(s)				
Satellite lesions				
Halo pigmentation				
Hyperpigmentation				
Hypopigmentation				
Atrophic Scarring				
Hypertrophic or Keloid scarring				
Duration of lesion if known				
Any other features – remarks				

7.2. OBJECTIVE ASSESSMENTS OF INDEX LESION(S): 4 WEEKS; this version posted May 28, 2024. The copyright holder for this preprint (which was not certified by peer review) is the author/funder, who has granted medRxiv a license to display the preprint in perpetuity. It is made available under a [CC-BY 4.0 International license](https://creativecommons.org/licenses/by/4.0/).

Area of Ulcer and Induration. (See page 2 for instructions)



Please Indicate Site	Size of the ulcerated area if present 2 largest diameters		Total Area mm ²	Area of induration 2 largest diameters		Total Area mm ²
	Diameter 1 (mm)	Diameter 2 (mm)	D1 x D2	Diameter 1 (mm)	Diameter 2 (mm)	D1 x D2

7.3. SUBJECTIVE ASSESSMENTS: 4 WEEKS

Assessment using a palpability score

For **non-ulcerated** areas measure by palpating the whole lesion and indicate a palpability score, as described. See page 3 for instructions.

Score Allocated:

For **ulcerated lesions** measure by palpating the EDGE of the lesion and allocate a score, as described. See page 3 for instructions.

Score Allocated:

Visual Analogue Score; Investigator's Score (See page 3 for instructions)

How would you score this skin problem from 0-10 today?

0 _____ 10

Completely Clear

Severely Affected Skin

Score Allocated:

Visual Analogue Score; Patient's Score (See page 3 for instructions)

How would you score your skin problem from 0-10 today?

0 _____ 10

Completely Clear

Severely Affected Skin

Score Allocated:

medRxiv preprint doi: <https://doi.org/10.1101/2024.05.28.24307884>; this version posted May 28, 2024. The copyright holder for this preprint (which was not certified by peer review) is the author/funder, who has granted medRxiv a license to display the preprint in perpetuity. It is made available under a [CC-BY 4.0 International license](https://creativecommons.org/licenses/by/4.0/).

7.4. TREATMENT EFFECT SCORES: 4 WEEKS

Investigator Global assessment of active disease post treatment

Score	Expected features	Allocate Score
12	No improvement. Lesion remained active, having the same characteristics or becoming larger than prior to the start of treatment .	
9	Size of the lesion decreased 50% in comparison with the initial lesion, with fewer inflammatory signs and discrete re-epithelialization (Size: diameter, length & width)	
6	Size of the lesion decreased between 50–90% in comparison with the initial lesion, and left few inflammatory signs	
3	Size of the lesion decreased more than 90%, with re-epithelialization and very little inflammation.	
0	Complete re-epithelialization with a characteristic scar and no inflammation. Active disease settled	

*Inflammatory signs: erythema by clinical-eyeballing and having anticipated features expected with therapeutic resolution of a lesion

7.5. SEQUELAE ASSESSMENTS: 4 WEEKS

Investigator Global Assessment of i & ii) Pigment change iii) Atrophic scars iv) Hypertrophic/ Keloid scars

Score (0-3) Pigment Change hyperpigmentation			Allocate Score
Category	Score	Description	
	0	No hyperpigmentation	
	1	Mild hyperpigmentation	
	2	Moderate hyperpigmentation	
	3	Severe hyperpigmentation	
Score (0-3) Pigment Change hypopigmentation			
Category	Score	Description	
	0	No hypopigmentation	
	1	Mild hypopigmentation	
	2	Moderate hypopigmentation	
	3	Severe hypopigmentation	
Score (0-3) Atrophic scars			
Category	Score	Description	
Clear	0	No scar visible or detectable on palpation	
Mild	1	Minimal atrophic scarring – little change on palpation	
Moderate	2	Atrophic scarring with textural changes of skin	
Severe	3	Deep atrophic / mutilating scar	
Score (0-3) Hypertrophic / Keloid scars			
Category	Score	Description	
Clear	0	No scar visible or detectable on palpation	
Mild	1	Minimal hypertrophic scarring - some palpable change	
Moderate	2	Palpable scarring with textural changes of the skin	
Severe	3	Mutilating scar (with underlying structural involvement)	
TOTAL SCORE		Page 14 of 27	

7.6. HRQL - 4 WEEKS doi: <https://doi.org/10.1101/2024.05.28.24307884>; this version posted May 28, 2024. The copyright holder for this preprint (which was not certified by peer review) is the author/funder, who has granted medRxiv a license to display the preprint in perpetuity. It is made available under a [CC-BY 4.0 International license](https://creativecommons.org/licenses/by/4.0/).

1) How does your skin problem affect you?

.....

.....

.....

.....

2) What are the 3 worst aspects of having your skin problem?

.....

.....

.....

7.7. SUMMARY OF SCORES: 4 WEEKS

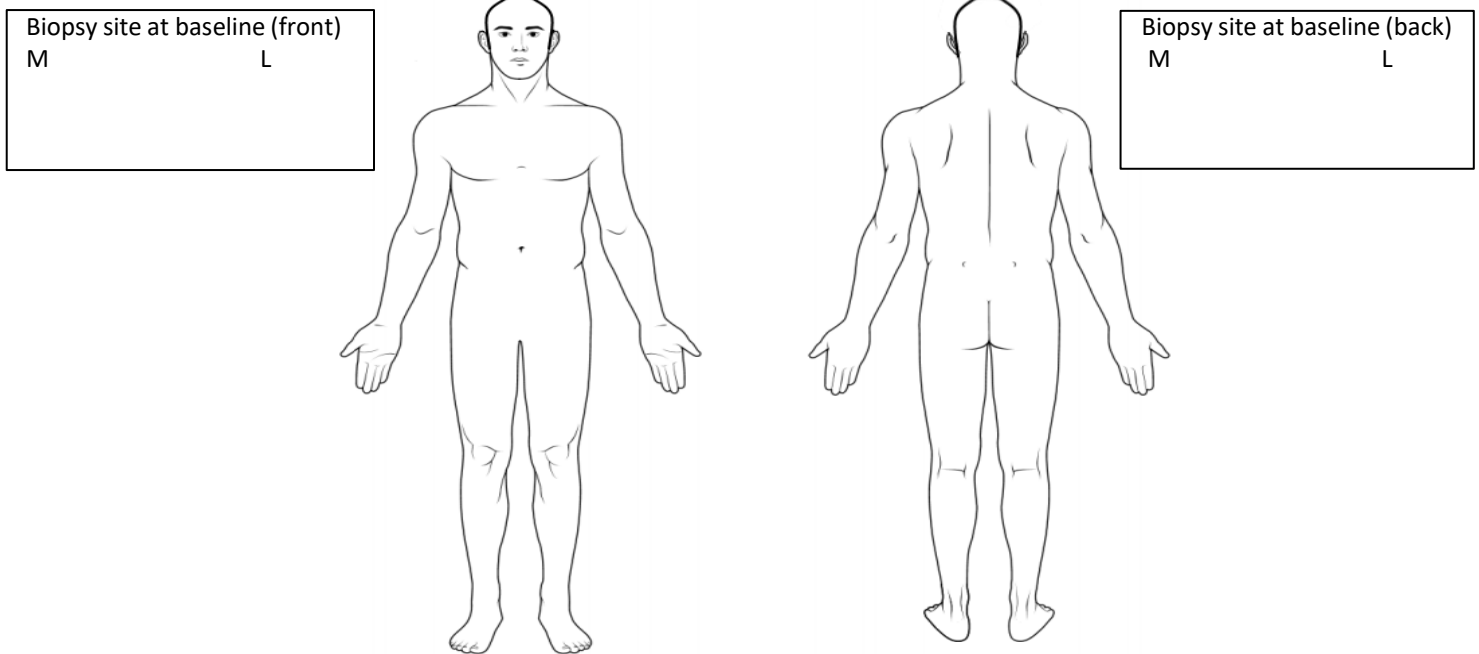
SUBJECTIVE	SCORE
Palpability; Non-ulcerated lesions	(0-9)
Palpability; Ulcerated lesions	(0-9)
Visual Analogue; Investigator	(0-10)
Visual Analogue; Patient	(0-10)
TOTAL	
TREATMENT EFFECT	SCORE
Investigator Assessment	(0-12)
TOTAL	
SEQUELAE ASSESSMENTS	SCORE
Pigment Change; Hyperpigmentation	(0-3)
Pigment Change; Hypopigmentation	(0-3)
Atrophic Scars	(0-3)
Hypertrophic/Keloid Scars	(0-3)
TOTAL	

medRxiv preprint doi: <https://doi.org/10.1101/2024.05.28.24307884>; this version posted May 28, 2024. The copyright holder for this preprint (which was not certified by peer review) is the author/funder, who has granted medRxiv a license to display the preprint in perpetuity. It is made available under a [CC-BY 4.0 International license](https://creativecommons.org/licenses/by/4.0/).

8. LOCALISED CUTANEOUS LEISHMANIASIS: 3 MONTHS

8.1. 3 MONTH BIOPSY (IF TAKEN) AND INDEX LESION(S) FOR ASSESSMENT

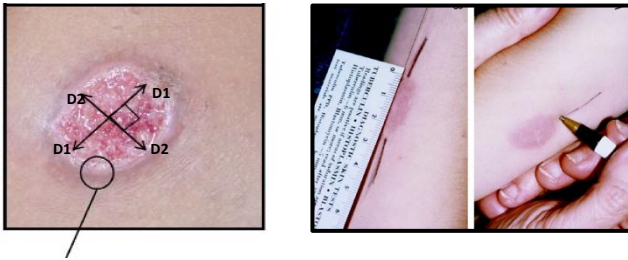
- a) Please indicate on the figure below the site(s) of any biopsy(ies) taken and mark with a letter e.g. A
- b) Draw the lesion(s) biopsied in the box and indicate where the biopsy has been taken (M= medial L = lateral)
- c) Indicate features of the lesion(s) biopsied in the table below
- d) Distinguish any index lesion(s) for assessment throughout the study from the biopsy sites on the figures, and mark with a different letter.



Features of lesion(s) biopsied and under assessment. Please indicate the clinical features of any lesion biopsied as well as any other lesions undergoing assessment.	Lesion A Biopsy Y/N	Lesion B Biopsy Y/N	Lesion C Biopsy Y/N	Lesion D Biopsy Y/N
If possible please include the duration of the lesion (s).				
Macule (circumscribed change in the color of skin that is flat on palpation – (excludes scarring and post inflammatory pigmentary change)				
Papule (≤5mm diameter, palpable solid elevation)				
Nodule (>5 mm diameter, palpable elevation)				
Plaque (flat topped with diameter greater than its height)				
Ulcerative change				
Dry ulcer (destruction of epidermis of skin with central crusting/scaling)				
Wet ulcer (destruction of epidermis of skin with wet exudates)				
Nodular ulcerative (>5mm diameter, palpable elevation with central ulceration)				
Other features associated with the lesion(s)				
Satellite lesions				
Halo pigmentation				
Hyperpigmentation				
Hypopigmentation				
Atrophic Scarring				
Hypertrophic or Keloid scarring				
Duration of lesion if known				
Any other features – remarks				

8.2. OBJECTIVE ASSESSMENTS: 3 MONTHS Preprint medRxiv 2024.05.28.24307884; this version posted May 28, 2024. The copyright holder for this preprint (which was not certified by peer review) is the author/funder, who has granted medRxiv a license to display the preprint in perpetuity. It is made available under a [CC-BY 4.0 International license](https://creativecommons.org/licenses/by/4.0/).

Area of Ulcer and Induration (See page 2 for instructions)



Please Indicate Site	Size of the ulcerated area if present 2 largest diameters		Total Area mm ²	Area of induration 2 largest diameters		Total Area mm ²
	Diameter 1 (mm)	Diameter 2 (mm)	D1 x D2	Diameter 1 (mm)	Diameter 2 (mm)	D1 x D2

8.3. SUBJECTIVE ASSESSMENTS: 3 MONTHS

Assessment using a palpability score

For **non-ulcerated** areas measure by palpating the whole lesion and indicate a palpability score, as described. (See page 3 for instructions.)

Score Allocated:

For **ulcerated lesions** measure by palpating the EDGE of the lesion and allocate a score, as described. (See page 3 for instructions.)

Score Allocated:

Visual Analogue Score; Investigator’s Score (See page 3 for instructions.)

How would you score this skin problem from 0-10 today?

0 _____ 10

Completely Clear

Severely Affected Skin

Score Allocated:

Visual Analogue Score; Patient’s Score (See page 3 for instructions.)

How would you score your skin problem from 0-10 today?

0 _____ 10

Completely Clear

Severely Affected Skin

Score Allocated:

8.4. TREATMENT EFFECT SCORES - 3 MONTHS medRxiv preprint doi: <https://doi.org/10.1101/2024.05.28.24307884>; this version posted May 28, 2024. The copyright holder for this preprint (which was not certified by peer review) is the author/funder, who has granted medRxiv a license to display the preprint in perpetuity. It is made available under a [CC-BY 4.0 International license](https://creativecommons.org/licenses/by/4.0/).

Investigator Global assessment of active disease post treatment

Score	Expected features	Allocate Score
12	No improvement. Lesion remained active, having the same characteristics or becoming larger than prior to the start of treatment .	
9	Size of the lesion decreased 50% in comparison with the initial lesion, with fewer inflammatory signs and discrete re-epithelialization (Size: diameter, length & width)	
6	Size of the lesion decreased between 50–90% in comparison with the initial lesion, and left few inflammatory signs	
3	Size of the lesion decreased more than 90%, with re-epithelialization and very little inflammation.	
0	Complete re-epithelialization with a characteristic scar and no inflammation. Active disease settled	

8.5. SEQUELAE ASSESSMENTS: 3 MONTHS

Investigator Global Assessment of i & ii) Pigment change iii) Atrophic scars iv) Hypertrophic/ Keloid scars

Score (0-3) Pigment Change hyperpigmentation			Allocate Score
Category	Score	Description	
	0	No hyperpigmentation	
	1	Mild hyperpigmentation	
	2	Moderate hyperpigmentation	
	3	Severe hyperpigmentation	
Score (0-3) Pigment Change hypopigmentation			
Category	Score	Description	
	0	No hypopigmentation	
	1	Mild hypopigmentation	
	2	Moderate hypopigmentation	
	3	Severe hypopigmentation	
Score (0-3) Atrophic scars			
Category	Score	Description	
Clear	0	No scar visible or detectable on palpation	
Mild	1	Minimal atrophic scarring – little change on palpation	
Moderate	2	Atrophic scarring with textural changes of skin	
Severe	3	Deep atrophic / mutilating scar	
Score (0-3) Hypertrophic / Keloid scars			
Category	Score	Description	
Clear	0	No scar visible or detectable on palpation	
Mild	1	Minimal hypertrophic scarring - some palpable change	
Moderate	2	Palpable scarring with textural changes of the skin	
Severe	3	Mutilating scar (with underlying structural involvement)	
TOTAL SCORE			

medRxiv preprint doi: <https://doi.org/10.1101/2024.05.28.24307884>; this version posted May 28, 2024. The copyright holder for this preprint (which was not certified by peer review) is the author/funder, who has granted medRxiv a license to display the preprint in perpetuity. It is made available under a [CC-BY 4.0 International license](https://creativecommons.org/licenses/by/4.0/).

8.6. MEASURING PROBLEMS: 3 MONTHS

- 1) How does your skin problem affect you?
-
-
-
-
- 2) What are the 3 worst aspects of having your skin problem?
-
-
-

8.7. SUMMARY OF SCORES: 3 MONTHS

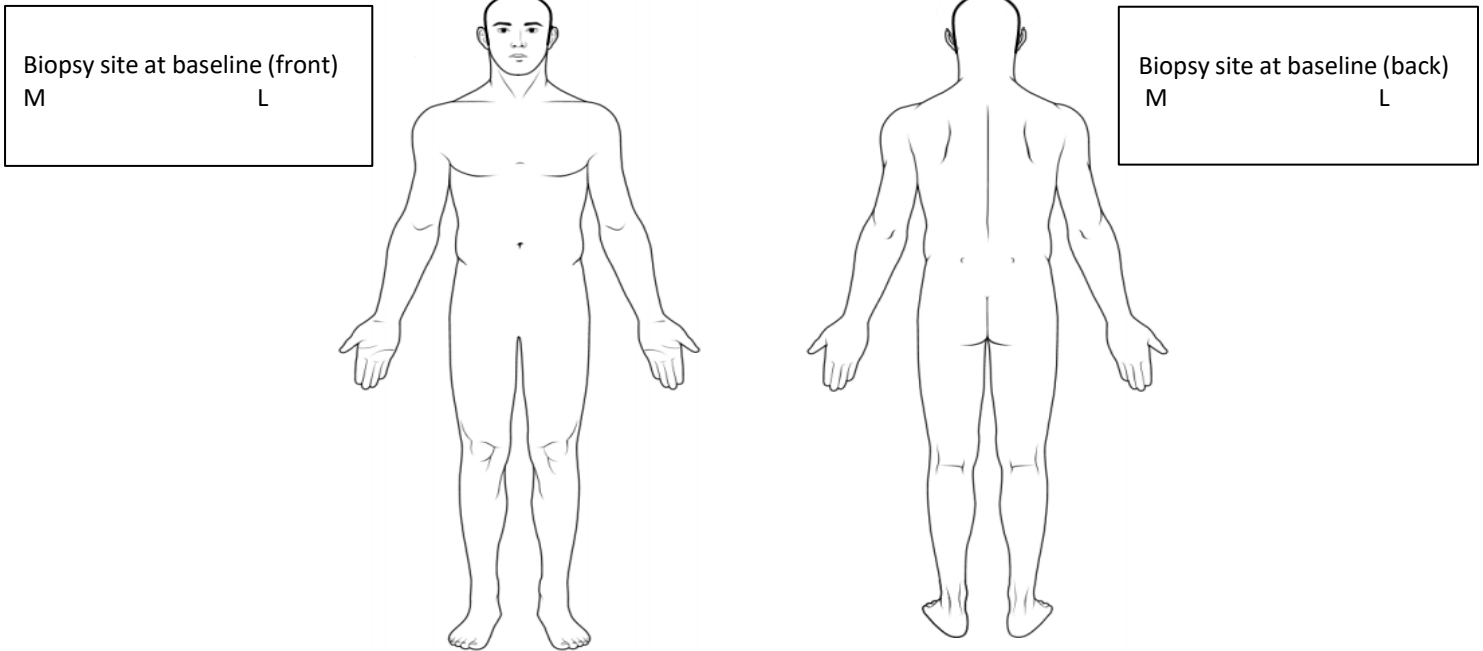
SUBJECTIVE	SCORE
Palpability; Non-ulcerated lesions	(0-9)
Palpability; Ulcerated lesions	(0-9)
Visual Analogue; Investigator	(0-10)
Visual Analogue; Patient	(0-10)
TOTAL	
TREATMENT EFFECT	SCORE
Investigator Assessment	(0-12)
TOTAL	
SEQUELAE ASSESSMENTS	SCORE
Pigment Change; Hyperpigmentation	(0-3)
Pigment Change; Hypopigmentation	(0-3)
Atrophic Scars	(0-3)
Hypertrophic/Keloid Scars	(0-3)
TOTAL	

medRxiv preprint doi: <https://doi.org/10.1101/2024.05.28.24307884>; this version posted May 28, 2024. The copyright holder for this preprint (which was not certified by peer review) is the author/funder, who has granted medRxiv a license to display the preprint in perpetuity. It is made available under a [CC-BY 4.0 International license](https://creativecommons.org/licenses/by/4.0/).

9. LOCALISED CUTANEOUS LEISHMANIASIS: 6 MONTHS

9.1 Baseline biopsy and index lesion(s) for assessment

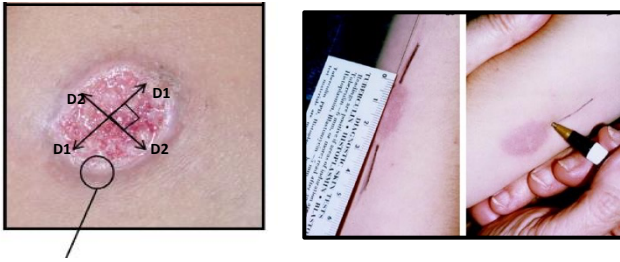
- a) Please indicate on the figure below the site(s) of any biopsy(ies) taken and mark with a letter e.g. A
- b) Draw the lesion(s) biopsied in the box and indicate where the biopsy has been taken (M= medial L = lateral)
- c) Indicate features of the lesion(s) biopsied in the table below
- d) Distinguish any index lesion(s) for assessment throughout the study from the biopsy sites on the figures, and mark with a different letter.



Features of lesion(s) biopsied and under assessment. Please indicate the clinical features of any lesion biopsied as well as any other lesions undergoing assessment.	Lesion A Biopsy Y/N	Lesion B Biopsy Y/N	Lesion C Biopsy Y/N	Lesion D Biopsy Y/N
If possible please include the duration of the lesion (s).				
Macule (circumscribed change in the color of skin that is flat on palpation – (excludes scarring and post inflammatory pigmentary change)				
Papule (≤5mm diameter, palpable solid elevation)				
Nodule (>5 mm diameter, palpable elevation)				
Plaque (flat topped with diameter greater than its height)				
Ulcerative change				
Dry ulcer (destruction of epidermis of skin with central crusting/scaling)				
Wet ulcer (destruction of epidermis of skin with wet exudates)				
Nodular ulcerative (>5mm diameter, palpable elevation with central ulceration)				
Other features associated with the lesion(s)				
Satellite lesions				
Halo pigmentation				
Hyperpigmentation				
Hypopigmentation				
Atrophic Scarring				
Hypertrophic or Keloid scarring				
Duration of lesion if known				
Any other features – remarks				

9.2. OBJECTIVE ASSESSMENTS: 6 MONTHS Preprint medRxiv 2024.05.28.24307884; this version posted May 28, 2024. The copyright holder for this preprint (which was not certified by peer review) is the author/funder, who has granted medRxiv a license to display the preprint in perpetuity. It is made available under a [CC-BY 4.0 International license](https://creativecommons.org/licenses/by/4.0/).

Area of Ulcer and Induration; See page 2 for instructions



Please Indicate Site	Size of the ulcerated area if present 2 largest diameters		Total Area mm ²	Area of induration 2 largest diameters		Total Area mm ²
	Diameter 1 (mm)	Diameter 2 (mm)	D1 x D2	Diameter 1 (mm)	Diameter 2 (mm)	D1 x D2

9.3. SUBJECTIVE ASSESSMENTS: 6 MONTHS

Assessment using a palpability score

For **non-ulcerated** areas measure by palpating the whole lesion and indicate a palpability score, as described. See page 3 for instructions.

Score Allocated:

For **ulcerated lesions** measure by palpating the EDGE of the lesion and allocate a score, as described. See page 3 for instructions.

Score Allocated:

Visual Analogue Score; Investigator’s Score (See page 3 for instructions)

How would you score this skin problem from 0-10 today?

0 _____ 10

Completely Clear

Severely Affected Skin

Score Allocated:

Visual Analogue Score; Patient’s Score (See page 3 for instructions)

How would you score your skin problem from 0-10 today?

0 _____ 10

Completely Clear

Severely Affected Skin

Score Allocated:

9.4. TREATMENT EFFECT SCORES: 6 MONTHS medRxiv preprint doi: <https://doi.org/10.1101/2024.05.28.24307884>; this version posted May 28, 2024. The copyright holder for this preprint (which was not certified by peer review) is the author/funder, who has granted medRxiv a license to display the preprint in perpetuity. It is made available under a [CC-BY 4.0 International license](https://creativecommons.org/licenses/by/4.0/).

Investigator Global assessment of active disease post treatment

Score	Expected features	Allocate Score
12	No improvement. Lesion remained active, having the same characteristics or becoming larger than prior to the start of treatment .	
9	Size of the lesion decreased 50% in comparison with the initial lesion, with fewer inflammatory signs and discrete re-epithelialization (Size: diameter, length & width)	
6	Size of the lesion decreased between 50–90% in comparison with the initial lesion, and left few inflammatory signs	
3	Size of the lesion decreased more than 90%, with re-epithelialization and very little inflammation.	
0	Complete re-epithelialization with a characteristic scar and no inflammation. Active disease settled	

9.5. SEQUELAE ASSESSMENTS: 6 MONTHS

Investigator Global Assessment of i & ii) Pigment change iii) Atrophic scars iv) Hypertrophic/ Keloid scars

Score (0-3) Pigment Change hyperpigmentation			Allocate Score
Category	Score	Description	
	0	No hyperpigmentation	
	1	Mild hyperpigmentation	
	2	Moderate hyperpigmentation	
	3	Severe hyperpigmentation	
Score (0-3) Pigment Change hypopigmentation			
Category	Score	Description	
	0	No hypopigmentation	
	1	Mild hypopigmentation	
	2	Moderate hypopigmentation	
	3	Severe hypopigmentation	
Score (0-3) Atrophic scars			
Category	Score	Description	
Clear	0	No scar visible or detectable on palpation	
Mild	1	Minimal atrophic scarring – little change on palpation	
Moderate	2	Atrophic scarring with textural changes of skin	
Severe	3	Deep atrophic / mutilating scar	
Score (0-3) Hypertrophic / Keloid scars			
Category	Score	Description	
Clear	0	No scar visible or detectable on palpation	
Mild	1	Minimal hypertrophic scarring - some palpable change	
Moderate	2	Palpable scarring with textural changes of the skin	
Severe	3	Mutilating scar (with underlying structural involvement)	
TOTAL SCORE			

medRxiv preprint doi: <https://doi.org/10.1101/2024.05.28.24307884>; this version posted May 28, 2024. The copyright holder for this preprint (which was not certified by peer review) is the author/funder, who has granted medRxiv a license to display the preprint in perpetuity. It is made available under a [CC-BY 4.0 International license](https://creativecommons.org/licenses/by/4.0/).

9.6. HRQoL: 6 MONTHS

- 1) How does your skin problem affect you?
-
-
-
-
-
-
- 2) What are the 3 worst aspects of having your skin problem?
-
-
-

9.7. SUMMARY OF SCORES: 6 MONTHS

SUBJECTIVE	SCORE
Palpability; Non-ulcerated lesions	(0-9)
Palpability; Ulcerated lesions	(0-9)
Visual Analogue; Investigator	(0-10)
Visual Analogue; Patient	(0-10)
TOTAL	
TREATMENT EFFECT	SCORE
Investigator Assessment	(0-12)
TOTAL	
SEQUELAE ASSESSMENTS	SCORE
Pigment Change; Hyperpigmentation	(0-3)
Pigment Change; Hypopigmentation	(0-3)
Atrophic Scars	(0-3)
Hypertrophic/Keloid Scars	(0-3)
TOTAL	

medRxiv preprint doi: <https://doi.org/10.1101/2024.05.28.24307884>; this version posted May 28, 2024. The copyright holder for this preprint (which was not certified by peer review) is the author/funder, who has granted medRxiv a license to display the preprint in perpetuity. It is made available under a [CC-BY 4.0 International license](#).

10. SUMMARY OF SCORES OVER TIME

SUBJECTIVE	BASELINE	4 WEEKS	3 MONTHS	6 MONTHS
Palpability; Non-ulcerated lesions				
Palpability; Ulcerated lesions				
Visual Analogue; Investigator				
Visual Analogue; Patient				
TREATMENT EFFECT				
Investigator Assessment	X			
SEQUELAE ASSESSMENTS				
Pigment Change; Hyperpigmentation				
Pigment Change; Hypopigmentation				
Atrophic Scars				
Hypertrophic/Keloid Scars				
HRQOL				

medRxiv preprint doi: <https://doi.org/10.1101/2024.05.28.24307884>; this version posted May 28, 2024. The copyright holder for this preprint (which was not certified by peer review) is the author/funder, who has granted medRxiv a license to display the preprint in perpetuity. It is made available under a [CC-BY 4.0 International license](https://creativecommons.org/licenses/by/4.0/).

11. Drug therapy related to Leishmaniasis.

Dose (mg)/injection

	Route	Date*	Date	Date	Date	Date	Date	Date	Date	Date	Date	Duration of therapy
		T1	T2	T3	T4	T5	T6	T7	T8	T9	T10	
		Date T11	Date T12	Date T13	Date T14	Date T15	Date T16	Date T17	Date T18	Date T19	Date T20	
Amphotericin B												
Liposomal Amphotericin B												
Miltefosine												
Antimonials/ Sodium Stibogluconate												

*Date (DD/MM/YYYY)

12. Cytokine profiles in dermal Lesions:

Parameter Date	Baseline	At 4 weeks
IFN γ		
IL-2		
IL-10		
IL- 4		
TGF- β		
IL-13		
IL-12		
IL-17		

13. miRNA analysis of blood

Time point	Date	Availability Yes/No
Base line at "0" time point		
At 4 weeks		

medRxiv preprint doi: <https://doi.org/10.1101/2024.05.28.24307884>; this version posted May 28, 2024. The copyright holder for this preprint (which was not certified by peer review) is the author/funder, who has granted medRxiv a license to display the preprint in perpetuity. It is made available under a CC-BY 4.0 International license.

14. Complete Blood Count, Biochemical Parameters, Histopathology: include dates

Parameter	Baseline*	Post t/t 1	Post t/t 2	Post t/t 3	Post t/t 4	Post t/t 5	Post t/t 6	Post t/t 7	At complete healing*
Date									
Hb (g/dl)									
Haematocrit (PCV)(%)									
MCHC (g/dL)									
MCH (pg)									
MCV (fL)									
WBC Total (x10 ³ /mm ³)									
Neutrophils (%)									
Lymphocytes (%)									
Monocytes (%)									
Eosinophils (%)									
Basophils (%)									
RBC (x10 ⁶ /mm ³)									
Platelets (x10 ³ /mm ³)									
ESR (mm/hr)									
Bilirubin (mg/dl)									
ALT (IU/L)									
AST (IU/L)									
Albumin/Globulin									
Blood Urea (mg/dl)									
Serum Creatinine (mg/dl)									
Serum Electrolytes Na + (mmol /L) K+ (mmol /L)									
Serum Amylase (U/L)									
HbA1c (%)									
Skin Histopathology									

* Blood parameters will be carried out in Sri Lankan patients only at "0" time point and at 4 weeks after initiating treatment.

medRxiv preprint doi: <https://doi.org/10.1101/2024.05.28.24307884>; this version posted May 28, 2024. The copyright holder for this preprint (which was not certified by peer review) is the author/funder, who has granted medRxiv a license to display the preprint in perpetuity. It is made available under a [CC-BY 4.0 International license](#).


15. Final Impression (after completion of treatment) and additional comments:

[Empty box for final impression and additional comments]

16. Investigator's details: Name:

Signature:

Date:



GCRF
Global Challenges Research Fund

GCRF Funded Project: MR/P024661/1
Towards a global research network for the molecular pathological stratification of leishmaniasis

