

The Neurodegenerative Disease Knowledge Portal: Propelling Discovery Through the Sharing of Neurodegenerative Disease Genomic Resources

Allison A. Dillio¹⁻², Maria C. Costanzo³, Noël P. Burt³, Sara Bandres-Ciga⁴⁻⁵, Cornelis Blauwendraat⁴⁻⁵, Bradford Casey⁶, Quy Hoang³, Hirotaka Iwaki^{4,7}, Dongkeun Jang³, Jonggeol Jeffrey Kim⁴⁻⁵, Hampton L. Leonard^{4,7}, Kristin S. Levine^{4,7}, Mary Makarios⁴⁻⁵, Trang T. Nguyen³, Guy A. Rouleau^{1-2,8}, Andrew B. Singleton⁴⁻⁵, Patrick Smadbeck³, J Solle⁶, Dan Vitale^{4,7}, Mike A. Nalls^{4-5,7}, Jason Flannick^{3,9-10}, and Sali M.K. Farhan^{1-2,8}

¹Department of Neurology and Neurosurgery, McGill University, Montreal, QC, Canada

²Montreal Neurological Institute-Hospital, McGill University, Montreal, QC, Canada

³Programs in Metabolism and Medical & Population Genetics, The Broad Institute of MIT and Harvard, Cambridge, MA, USA

⁴Center for Alzheimer's and Related Dementias, NIH, Bethesda, MD USA

⁵Laboratory of Neurogenetics, NIH, Bethesda, MD, USA

⁶Michael J. Fox Foundation for Parkinson's Research, NY, NY USA

⁷DataTecnica LLC, Washington, DC, USA

⁸Department of Human Genetics, McGill University, Montreal, QC, Canada

⁹Department of Pediatrics, Boston Children's Hospital, Boston, MA, USA

¹⁰Department of Pediatrics, Harvard Medical School, Boston, MA, USA

Co-Corresponding Authors:

Sali M. K. Farhan

Email: sali.farhan@mcgill.ca

Jason Flannick

Email: Jason.flannick@childrens.harvard.edu

Keywords: Neurodegenerative disease, Knowledge Portal, open-science, genomic resource, genomic tools

Abstract

Although large-scale genetic association studies have proven opportunistic for the delineation of neurodegenerative disease processes, we still lack a full understanding of the pathological mechanisms of these diseases, resulting in few appropriate treatment options and diagnostic challenges. To mitigate these gaps, the Neurodegenerative Disease Knowledge Portal (NDKP) was created as an open-science initiative with the aim to aggregate, enable analysis, and display all available genomic datasets of neurodegenerative disease, while protecting the integrity and confidentiality of the underlying datasets. The portal contains 218 genomic datasets, including genotyping and sequencing studies, of individuals across ten different phenotypic groups, including neurological conditions such as Alzheimer's disease, amyotrophic lateral sclerosis, Lewy body dementia, and Parkinson's disease. In addition to securely hosting large genomic datasets, the NDKP provides accessible workflows and tools to effectively utilize the datasets and assist in the facilitation of customized genomic analyses. Here, we summarize the genomic datasets currently included within the portal, the bioinformatics processing of the datasets, and the variety of phenotypes captured. We also present example use-cases of the various user interfaces and integrated analytic tools to demonstrate their extensive utility in enabling the extraction of high-quality results at the source, for both genomics experts and those in other disciplines. Overall, the NDKP promotes open-science and collaboration, maximizing the potential for discovery from the large-scale datasets researchers and consortia are expending immense resources to produce and resulting in reproducible conclusions to improve diagnostic and therapeutic care for neurodegenerative disease patients.

Introduction

Neurodegenerative diseases are clinically heterogeneous and complex disorders. Given their relatively high estimates of heritability¹⁻⁴, large-scale association studies are particularly useful for gaining a greater understanding of the pathologic mechanisms driving neurodegenerative disease processes, as demonstrated by their discoveries across neurodegenerative conditions, including in Alzheimer's disease, amyotrophic lateral sclerosis (ALS), and Parkinson's disease⁵⁻¹². Yet there are still few appropriate treatment options across these diseases, and diagnoses remain a challenge, as a direct result of a lack of full understanding regarding the neuropathologic mechanisms of the diseases¹³⁻¹⁶. To mitigate these gaps, greater effort must be made to combine resources in the pursuit of novel discovery in neurodegenerative disease genetics.

The application of open-science and data sharing principles in the pursuit of neurodegenerative disease research motivated the deployment of the Neurodegenerative Disease Knowledge Portal (NDKP; <https://ndkp.hugeamp.org/>), consisting of 218 open-access genomic summary statistics and variant datasets of individuals across ten different phenotypic groups, including neurological conditions such as Alzheimer's disease, ALS, Lewy body dementia, and Parkinson's disease¹. Here, we further describe the online, open-access resource including details of the available data and applications for genetic discovery and result replication in the study of neurodegenerative diseases.

Overview of the Neurodegenerative Disease Knowledge Portal

¹ All sample sizes included herein were obtained December 2023. Annual updates to the NDKP are anticipated.

To maximize the potential for discovery from the many large, novel datasets being leveraged for various neurodegenerative disease genetic association studies, and in taking inspiration from the successes of the previously deployed Type 2 Diabetes Knowledge Portal¹⁷, a centralized repository was assembled to securely store these datasets and make their summary results widely available to the research community. The portal was created and deployed by the developers at the Broad Institute of MIT and Harvard in collaboration with the Montreal Neurological Institute-Hospital, the Global Parkinson's Genetics Program (GP2), and National Institutes of Health (NIH) Intramural Center for Alzheimer's and Related Dementias (CARD) into what is now known as the NDKP.

Overall, the aim of the NDKP is to aggregate, enable analysis, and display all available genomic datasets of neurodegenerative disease, while protecting the integrity and confidentiality of the underlying datasets. The NDKP is available to the broad scientific community studying neurodegeneration seeking to unveil novel genetic associations or validate primary findings from other approaches.

Available datasets

Although the goal of the NDKP is to expand our genomic understanding of neurodegenerative diseases, the portal includes genomic datasets from cohorts spanning ten phenotypic groups, including: 1) cerebrovascular magnetic resonance imaging (MRI) traits, 2) COVID-19, 3) immunological, 4) metabolite, 5) musculoskeletal, 6) neurological, 7) psychiatric, 8) sleep and circadian, 9) stroke, and 10) cognitive. Across these groups, 239 sub-phenotypes are captured (**Supplemental Table 1**). Importantly, this allows for the cross analysis of neurodegenerative diseases with possible related and overlapping features. For example, given the known association between cerebrovascular disease features and neurodegeneration risk¹⁸⁻²¹, the NDKP

can be used to identify genes or single nucleotide polymorphisms (SNPs) relevant in both a neurological phenotype such as Alzheimer’s disease and a cerebrovascular MRI feature such as brain microbleeds, as will be discussed further below. In total, 218 genomic datasets are currently captured within the NDKP (**Figure 1**), which can be subdivided into two data types: 1) genotyping studies and 2) sequencing studies (**Figure 2**).

Genotyping studies

The genotyping-based studies within the NDKP largely encompass genome-wide association studies (GWAS), which employ genotyping microarray data and are aimed at identifying associations between SNPs and traits or disease states. GWAS require large sample pools of both individuals with a phenotype of interest and non-affected controls, and depending on the type of quantitative trait, can generate an effect size per variant²². The NDKP includes datasets from 206 GWAS performed between 2010 and 2023, with the largest neurodegenerative disease dataset having been part of the 2023 GP2 GWAS that included 1,028,993 samples across multiple ancestries²³ (**Figure 2**). Summary statistics from many of the GWAS, which include the aforementioned effect sizes per statistically significant, phenotype-associated SNP, are directly downloadable from the NDKP

(https://ndkp.hugeamp.org/research.html?pageid=a2f_downloads_280).

In addition to the case-control variant calls and summary statistics, further datasets have been collated in the NDKP from the GWAS analyses. “Credible sets” include sets of variants near significant genetic association signals that are likely to include the causal variant for the signals and are generated through fine mapping of the GWAS results to further investigate genetic association signals. Additionally, “effector gene lists” encompass lists of variant-adjacent genes potentially mediating the effects of the significantly phenotype-associated variants identified

within the GWAS. Although the methods by which these genes are defined are study-dependent, their inclusion in the NDKP is important as stepping stones for experiments to further define the genes that may be truly causal for a particular phenotype.

Finally, the NDKP also has two datasets from the immunological phenotype group that encompass ImmunoChip (iChip) data. The iChip is a custom-designed Illumina Infinium microarray that includes a specific set of SNPs and small insertion-deletions that were previously associated with autoimmune and inflammatory diseases through GWAS²⁴. It provides the added benefit of being more cost-effective than typical exome- or genome-wide microarrays.

Sequencing studies

Sequencing studies include the data from whole genome, exome, or smaller panel-based next-generation sequencing (NGS) analyses. Typically, these studies include sequences from both affected (individuals with the phenotype of interest) and unaffected individuals, as the data are utilized to perform variant binned association analyses, such as rare variant burden association analysis. Generally, these approaches collapse rare variants into groups that can be dictated by a variety of factors, including, but not limited to: general genomic region, individual genes, pathways of interest, minor allele frequency, or functional consequence²⁵. Various methods can be used to identify associations between the rare variant groups and the phenotype of interest, such as univariate or multivariate regression models. Importantly, sequencing data not only allows for analysis of variant-level associations but also for assessment of gene- and region-level associations, using variants called from the complete sequencing of all loci within a given region of the genome.

Currently, the NDKP includes the data from ten sequencing studies, including seven whole genome and three exome datasets (**Figure 2**). As NGS becomes more cost-effective, we expect larger and more ethnically diverse sequencing datasets to be made available and included in Knowledge Portal initiatives.

Neurological datasets

The NDKP includes 33 datasets within the neurological phenotype subgroup, including 32 GWAS datasets and one exome sequencing dataset (**Table 1**). These neurological phenotype datasets span eight sub-phenotypes, including Alzheimer's disease (general and late-onset), ALS, Parkinson's disease, epilepsy, and Lewy body dementia. While 26 of the datasets are of European ancestry, one dataset has subjects of African ancestry, another has subjects of Hispanic ancestry, and five datasets represent multi-ancestry analyses. In the coming years, it is a priority for the NDKP to continue expanding the ancestral diversity of the available datasets.

Multi-omic datasets

In addition to the genomic datasets available through the NDKP, multi-omic data from the Common Metabolic Diseases Genome Atlas (<https://cmdga.org/>) are integrated through the various search pages and tools provided by the portal¹⁷, as discussed further below. In total, there are 6890 multi-omic datasets produced using a wide-variety of methods including, but not limited to, ATAC-Seq, CaptureC, ChIP-Seq, HiC, and RNA-Seq. Importantly, these datasets allow for the annotation of variants captured within the NDKP based on whether they are encompassed by regions considered accessible chromatin, binding sites, candidate regulatory elements, chromatin state, gene expression, histone modifications, or target variant predictions.

Bioinformatics processing of the data

Upon intake, genetic and genomic datasets are subjected to a suite of bioinformatic methods to glean additional insights from the processed and integrated results. Incoming genetic association datasets are first subjected to quality control and harmonization, including ensuring that standardized column headings are utilized, inferring missing data for non-optional columns (e.g. odds ratios can be used to infer effect sizes), and lifting over all datasets to GRCh37. We also ensure that all effect sizes are in reference to the alternate allele of GRCh37, remove variants with incompatible summary statistics for the subsequent analyses, and perform a linear regression-based effect size scaling for all quantitative phenotypes¹⁷. Variant associations are then meta-analyzed, using the METAL algorithm that infers and accounts for sample overlap between datasets

(https://genome.sph.umich.edu/wiki/METAL_Documentation#Sample_Overlap_Correction) to calculate an integrated “bottom-line” association for each variant and each trait. The bottom-line analysis can both identify novel associations that are not significant at the level of individual datasets but become significant when multiple studies are considered and identify artifactual associations that may be significant in one dataset but are not replicated in others using a fixed effect method. Using these bottom-line associations, we run the Variant Effect Predictor²⁶ to annotate predicted variant impact and perform LD-clumping using the PLINK method²⁷, to group variants into genetically linked sets. We use the MAGMA algorithm per gene²⁸, to calculate gene-level association scores based on nearby common variant associations, and per trait, to generate lists of biological pathways whose constituent genes are enriched for genetic associations for that trait. We apply the LD score regression method (LDSC) in two calculations^{29, 30}. Cross-trait LDSC is used to calculate the genetic correlations between all traits, while stratified LDSC provides a measure of the enrichment of genetic association signals for

each trait within annotated genomic regions such as enhancers and promoters. Finally, we apply the Human Genetic Evidence Calculator (HuGE Calculator) across all associations to categorize the weight of evidence supporting the relevance of each gene to each trait³¹. These methods are documented in the “Help” pages of the NDKP and were also described in detail by Costanzo et al.¹⁷.

Application for the study of neurodegeneration

In addition to securely hosting large genomic datasets, one of the founding aims of the NDKP is to provide accessible workflows and tools to effectively utilize the datasets and assist in the facilitation of customized genomic analyses. To allow users to carry out these aims, the portal offers four core page types, including regional pages, gene pages, variant pages, and phenotype pages, in addition to a variety of tools to allow for more structured analyses. Across these pages and tools, users are provided with summary results derived from the genomic datasets to explore genes, genomic regions, variants, or phenotypes of interest (**Figure 3**).

Exploring genes/regions of interest

Commonly, researchers from disciplines outside the realm of computational or statistical genomics identify genes or regions of the genome of interest from experimental study, such as comparative functional genomic analyses with model organisms, protein-protein interaction analyses, or expression quantitative trait loci (eQTL) analyses^{32, 33}. Following such studies, researchers may wish to further explore whether human genetic and genomic results support the hypotheses generated via experimentation. However, it has often been difficult for these research groups to gain access to the necessary large-scale genotyping or sequencing datasets to explore these results. Further, even if data were freely available, these researchers may have lacked the

expertise to efficiently or accurately pull the required summary-level results to substantiate their hypotheses. The NDKP has aimed to fill this gap, providing a variety of results that may be of interest both to the genetics community and to researchers outside of the discipline to explore regions of the genome and specific genes that may represent new risk loci or therapeutic targets for specific neurodegenerative phenotypes (**Figure 3**).

Following the search of a gene of interest, the NDKP returns a variety of gene- and variant-level association summary results. At the gene-level, the search returns both common variant and rare variant gene-wide trait associations. More specifically, these results represent phenotypes for which a genetic association exists with the genes when common or rare variants, respectively, are binned and the burden of variants within the gene are compared between a cohort of individuals with the phenotype to a control cohort that does not have the phenotype. The NDKP also returns HuGE Calculator trait scores for the gene, which are calculated from a method created by Dornbos et al. and represent the extent of human genetic evidence captured within the Knowledge Portals that supports gene-phenotype associations³¹. For example, the well-established ALS-associated gene, *SOD1*, has a calculated HuGE score of 350, representing a “compelling” level of evidence for involvement of the gene in ALS, whereas the gene *LDLR*, which is traditionally associated with familial hypercholesterolemia and has no known associations with ALS, has a calculated HuGE score of 1.33, representing “anecdotal” evidence.

In addition to gene-level summary results, the search of a gene in the NDKP will also return variant-level summaries, including a list of variants within the gene that have individual associations with any of the phenotypes captured across the various datasets. Similarly, the search of a region of interest will return individual variant-level trait associations that have been identified across the NDKP datasets within the given region. The search of a region of interest

will also return the Genomic Region Miner (GEM) LocusZoom tool, which visualizes variant associations with single or multiple traits. **Figure 4** displays the results of searching for the region surrounding a well-known Parkinson's disease gene, *SNCA* (chr 4:90,571,496-90,809,466). Using the GEM LocusZoom tool, not only can the variants with significant Parkinson's disease associations be visualized, but if other trait-associations are suspected in the region, as is the case for Lewy body dementia in this region, additional phenotypes can be queried. A table of the variant-level data captured by the GEM LocusZoom tool is also provided by the NDKP.

In addition to the genetic association summary results computed and returned by the NDKP, a variety of gene annotations can be found from the search of a given gene or region. The search of a gene of interest returns functional associations of the gene, tissue specific gene expression data, effector gene lists, UniProt cross-reference data, and external resource links as applicable. In contrast, the search of a region of interest returns a list of genes encompassed by the region.

Exploring variants of interest

Variants of interest, such as those identified through GWAS analysis or other association studies, can also be further explored using the NDKP. The search of a variant using the dbSNP identifier will return both variant annotations and phenotype associations based on the datasets encompassed in the portal (**Figure 3**). More specifically, the variant search page will return information regarding the closest gene to the variant or the gene it resides within, as applicable, as well as any predicted variant consequences. The search page also returns results of a phenotype-wide association study (PheWAS), providing the statistical results that describe the level of associations of the variant with any given phenotype captured by the NDKP. For example, when a search of the NDKP is performed for the *APOE* e4 defining SNP, rs429358, an

unsurprising significant association is observed between the variant and an increased risk of late-onset Alzheimer's disease (OR = 3.49, $p = 4.94e-324$); however, the variant is also found to be significantly associated with an increased risk of brain microbleeds (OR = 1.29, $p = 7.48e-10$). Importantly, individual datasets can also be specifically queried for variants of interest, which can provide interesting sources of evidence for ancestry specific analyses or variant curation exercises³⁴.

Exploring phenotypes of interest

Unlike the above examples that are often driven by experimentally derived hypotheses, a researcher may also have a phenotype or disease of particular interest for which they want to develop novel human genomic derived hypotheses. For these instances, the NDKP provides phenotype search page result summaries in addition to specific tools that allow for the exploration of genetic associations (**Figure 3**).

When only a single phenotype is of interest, the phenotype search page provides the greatest amount of information to the user, including both variant-level and gene-level result summaries. All datasets for which the phenotype of interest is captured are clearly outlined. At the variant level, the phenotype search page provides the top genome-wide single-variant associations, and at the gene-level, associations based on the binning of common variants within each potential gene are provided. The search also provides top gene pathway associations, cell/tissue specific genetic correlations, and effector gene predictions for the phenotype, as applicable.

Using ALS as a case study, the user will find seven datasets that capture the ALS phenotype, each of which can be further explored. As anticipated, the top single-variant association signal for ALS is an intronic SNP (rs2453555) within *C9orf72* (OR = 1.19, $p = 1.78e-41$), which tags a

hexanucleotide repeat expansion known to be one of the most common genetic causes of ALS³⁵⁻³⁸. Similarly, *C9orf72* ($p = 3.04e-20$, variants = 24) is the gene with the second highest common variant gene-level association, following *MOB3B* ($p = 6.53e-29$, variants = 95), a gene located nearby *C9orf72*. The NDKP also indicates that ALS is significantly associated with the acanthocytosis pathway ($p = 3.22e-7$) and that ALS genetic associations are significantly enriched within regions annotated as enhancers in central nervous system tissues ($p = 7.07e-5$). In addition to the results captured by the phenotype search pages, the NDKP also assists with single-trait analysis through the use of the HuGE Calculator that computes HuGE scores for any given phenotype-gene combination, which are described further above (<https://ndkp.hugeamp.org/hugecalculator.html?prior=0.3696>).

Of additional utility, the NDKP also offers summary results and tools that allow for effective multi-trait analysis. Directly within the phenotype search page, a list of genetically correlated traits for the phenotype of interest can be found. Using Alzheimer's disease as a case study, it is unsurprising to find a significant genetic correlation with late-onset Alzheimer's disease ($r = 0.90$, $p = 1.22e-70$); however, there is also a significant genetic correlation observed with Parkinson's disease ($r = 0.26$, $p = 7.80e-8$).

In addition, the NDKP hosts three tools that allow for more detailed multi-trait analysis: 1) the Signal Sifter, 2) the Gene Sifter, and 3) the Variant Sifter. The Signal Sifter and Gene Sifter tools work in a similar manner, such that multiple traits can be queried and genetic associations relevant to two or more phenotypes will be returned, but the Signal Sifter returns regions with LD-clumped variants, while the Gene Sifter returns genes. Often the user will explore genetic correlations by beginning with multiple phenotypes that they know, or suspect, are clinically correlated.

Again, using Alzheimer's disease as a primary phenotype, the user may wish to explore its genetic correlations with brain microbleeds based on observations of neurovascular damage that have been observed in cases of neurodegenerative disease³⁹⁻⁴¹. Indeed, upon investigation of these two phenotypes with the NDKP, the Signal Sifter returns regions of LD-clumped variants significantly associated with increased risk of both traits, including the top associated region chr 19:45,387,459-45,428,235 (Alzheimer's associated variant rs11556505, $p = 4.94e-324$; brain microbleed associated variant rs769449, $p = 2.52e-10$) (**Figure 5A**). Similarly, the Gene Sifter returns 138 genes with significant chi-square p-values that represent a measure of overall association for the gene and both traits (**Figure 5B**). The top three of these associated genes are *TOMM40* ($p[X^2] = 1.14e-141$), *PVRL2* ($p[X^2] = 7.40e-137$), and *APOE* ($p[X^2] = 2.68e-102$), expectedly, all of which are captured in the top region identified with Signal Sifter and have been previously associated with the two phenotypes independently^{10, 42-46}.

The Variant Sifter is the Knowledge Portal's most recently developed tool and encompasses a wide range of capabilities, broadly allowing the user to explore variant-phenotype associations based on a range of filter options including focusing on credible sets and tissue-specific epigenomic annotations. Although there are many ways to utilize the tool, the user typically will begin with a phenotype and a region or gene of interest. The Variant Sifter returns a list of variants in the region that are associated with the phenotype that can then be filtered based on user-defined criteria. The filters allow for the identification of variants in credible sets, variants within tissue-specific regulatory region annotations of interest and variants linked to specific genes.

Recently, a novel ALS-associated gene, *KANK1*, was discovered using a rare variant association analysis approach, which not only identified an enrichment of rare variants in coding regions of

the gene in individuals with ALS but also rare variants in non-coding enhancer and promoter regions⁷. The NDKP Variant Sifter can be used to determine if any individual variants within the surrounding regulatory regions of *KANK1* demonstrate a significant association with ALS, which may be important for further functional analyses regarding this gene's association. Following the search of the chr9:370,291-846,105 region using the Variant Sifter tool with respect to the ALS phenotype, the tool returns all variants reported within the NDKP in an association plot (**Figure 6A**). The variants can then be filtered based on a variety of annotations of interest to the researcher. In this case, we were interested in identifying variants within an enhancer regulatory element in the central nervous system linked to *KANK1* (**Figure 6B-C**), and the Variant Sifter tool returned 79 variants, including one variant (chr9:504,491:A>C) demonstrating an association with ALS based on the meta-analysis of NDKP data that is approaching significance ($\beta = 0.238$, $p = 7.01e-4$; **Figure 6D**).

Discussion

As researchers and consortia continue to expend immense effort and resources in producing large-scale genomic analyses, it is essential that the greatest potential for discovery is realized from these datasets. The NDKP offers a centralized knowledge base for researchers that can act as a secure, accessible, and innovative solution for data sharing, not only achieving aims of transparency when reporting novel results, but also allowing for continued discovery in neurodegenerative disease research. Furthermore, the various user interfaces and integration of analytic tools enables consistent extraction of high-quality results at the source, for both genomics experts and those in other disciplines, while protecting the integrity of the data.

In addition to its potential for discovery, the NDKP provides a centralized hub allowing the user to replicate or further investigate findings from their own independent datasets. The generation

of “omics” datasets can be cost prohibitive, particularly considering the need for both discovery and replication subsets⁴⁷; by offering a secondary dataset for replication of novel discoveries, researchers can maximize the statistical power harnessed from their in-house data. Additionally, the breadth of data types and tools available through the portal offer the ability to further explore their findings beyond only replication of results. Our goal is to continue to add available datasets to the portal. Regular data releases are planned, at minimum on a yearly basis, including the addition of at least nine new datasets spanning multiple neurodegenerative diseases and diverse ancestral populations. We aim to prioritize the integration of additional “omic” datatypes, such as single-cell, bulk RNA-seq, and proteomics analyses, in addition to incorporating deeply phenotyped clinical datasets as they become available. Finally, we welcome new collaborations, including the opportunity to incorporate additional data, methods, and tools into the NDKP. Researchers are encouraged to contact the data intake team (amp-dcc-dat@broadinstitute.org) to discuss prospective collaborations and data deposition.

Although effort is being made to expand the portal, it is important to recognize that the NDKP currently has inherent limitations regarding the available data. Most notably, there is an overrepresentation of individuals of European ancestry, largely reflecting the lack of diversity observed across the field of genomics⁴⁸. Further, most currently available datasets represent GWAS summary statistics, which do not represent all information from the original genotyping microarray data. While offering potential for further discovery and replication of common variant signals, GWAS datasets typically do not capture rare genetic biomarkers for phenotypes of interest.

Here, we have provided a comprehensive overview of the vast amount of data included in the NDKP and their possible applications, yet there are unlimited potential use cases. Additional

detailed potential workflows have been outlined by the Knowledge Portal developers, including using the NDKP to perform multi-trait analysis, rare variant association gene-level analysis, and integrative analysis (<https://ndkp.hugeamp.org/help.html?page=950>). The developers have also generated ample tutorials, webinars, and presentations to aid in NDKP use (<https://ndkp.hugeamp.org/help.html?page=1039>). Ultimately, our goal is for available data to be accessible and easy to use for both novel discovery and replication purposes, promoting open-science and collaboration, and resulting in reproducible conclusions that will improve target discovery for neurodegenerative diseases.

Declaration of interests

H.L.L., D.V., H.I., and M.A.N.'s participation in this project was part of a competitive contract awarded to Data Tecnica International LLC by the National Institutes of Health to support open science research. M.A.N. also currently serves on the scientific advisory board for Clover Therapeutics and is a scientific founder at Neuron23 Inc, he also owns stocks.

Funding

This research was supported in part by the Intramural Research Program of the NIH, National Institute on Aging (NIA), National Institutes of Health, Department of Health and Human Services; project number Z01 AG000534, as well as the National Institute of Neurological Disorders and Stroke. It was also supported by the Global Parkinson's Genetics Program (GP2). GP2 is funded by the Aligning Science Across Parkinson's (ASAP) initiative and implemented by The Michael J. Fox Foundation for Parkinson's Research (<https://gp2.org>). For a complete list of GP2 members see <https://gp2.org>.

References

1. Bocchetta M, Mega A, Bernardi L, et al. Genetic Counseling and Testing for Alzheimer's Disease and Frontotemporal Lobar Degeneration: An Italian Consensus Protocol. *J Alzheimers Dis* 2016;51:277-291.
2. Pang SY, Teo KC, Hsu JS, et al. The role of gene variants in the pathogenesis of neurodegenerative disorders as revealed by next generation sequencing studies: a review. *Transl Neurodegener* 2017;6:27.
3. Postuma RB, Berg D, Stern M, et al. MDS clinical diagnostic criteria for Parkinson's disease. *Mov Disord* 2015;30:1591-1601.
4. Strong MJ, Abrahams S, Goldstein LH, et al. Amyotrophic lateral sclerosis - frontotemporal spectrum disorder (ALS-FTSD): Revised diagnostic criteria. *Amyotroph Lateral Scler Frontotemporal Degener* 2017;18:153-174.
5. Farhan SMK, Howrigan DP, Abbott LE, et al. Exome sequencing in amyotrophic lateral sclerosis implicates a novel gene, DNAJC7, encoding a heat-shock protein. *Nat Neurosci* 2019;22:1966-1974.
6. Nicolas A, Kenna KP, Renton AE, et al. Genome-wide Analyses Identify KIF5A as a Novel ALS Gene. *Neuron* 2018;97:1268-1283 e1266.
7. Zhang S, Cooper-Knock J, Weimer AK, et al. Genome-wide identification of the genetic basis of amyotrophic lateral sclerosis. *Neuron* 2022;110:992-1008 e1011.
8. Chang D, Nalls MA, Hallgrimsdottir IB, et al. A meta-analysis of genome-wide association studies identifies 17 new Parkinson's disease risk loci. *Nat Genet* 2017;49:1511-1516.
9. Makarios MB, Lake J, Pitz V, et al. Large-scale rare variant burden testing in Parkinson's disease. *Brain* 2023;146:4622-4632.
10. Bertram L, McQueen MB, Mullin K, Blacker D, Tanzi RE. Systematic meta-analyses of Alzheimer disease genetic association studies: the AlzGene database. *Nat Genet* 2007;39:17-23.
11. Bellenguez C, Kucukali F, Jansen IE, et al. New insights into the genetic etiology of Alzheimer's disease and related dementias. *Nat Genet* 2022;54:412-436.
12. Prokopenko D, Lee S, Hecker J, et al. Region-based analysis of rare genomic variants in whole-genome sequencing datasets reveal two novel Alzheimer's disease-associated genes: DTNB and DLG2. *Mol Psychiatry* 2022;27:1963-1969.
13. Duraes F, Pinto M, Sousa E. Old Drugs as New Treatments for Neurodegenerative Diseases. *Pharmaceuticals (Basel)* 2018;11.
14. Beber BC, Chaves MLF. Evaluation of patients with behavioral and cognitive complaints: misdiagnosis in frontotemporal dementia and Alzheimer's disease. *Dement Neuropsychol* 2013;7:60-65.
15. Bicchi I, Emiliani C, Vescovi A, Martino S. The Big Bluff of Amyotrophic Lateral Sclerosis Diagnosis: The Role of Neurodegenerative Disease Mimics. *Neurodegener Dis* 2015;15:313-321.
16. Selvackadunco S, Langford K, Shah Z, et al. Comparison of clinical and neuropathological diagnoses of neurodegenerative diseases in two centres from the Brains for Dementia Research (BDR) cohort. *J Neural Transm (Vienna)* 2019;126:327-337.
17. Costanzo MC, von Grotthuss M, Massung J, et al. The Type 2 Diabetes Knowledge Portal: An open access genetic resource dedicated to type 2 diabetes and related traits. *Cell Metab* 2023;35:695-710 e696.
18. Schneider JA, Arvanitakis Z, Bang W, Bennett DA. Mixed brain pathologies account for most dementia cases in community-dwelling older persons. *Neurology* 2007;69:2197-2204.
19. Seidel GA, Giovannetti T, Libon DJ. Cerebrovascular disease and cognition in older adults. *Curr Top Behav Neurosci* 2012;10:213-241.
20. Kummer BR, Diaz I, Wu X, et al. Associations between cerebrovascular risk factors and parkinson disease. *Ann Neurol* 2019;86:572-581.
21. Lendahl U, Nilsson P, Betsholtz C. Emerging links between cerebrovascular and neurodegenerative diseases—a special role for pericytes. *EMBO Rep* 2019;20:e48070.

22. Bush WS, Moore JH. Chapter 11: Genome-wide association studies. *PLoS Comput Biol* 2012;8:e1002822.
23. Kim JJ, Vitale D, Otani DV, et al. Multi-ancestry genome-wide association meta-analysis of Parkinson's disease. *Nat Genet* 2024;56:27-36.
24. Cortes A, Brown MA. Promise and pitfalls of the ImmunoChip. *Arthritis Res Ther* 2011;13:101.
25. Asimit J, Zeggini E. Rare variant association analysis methods for complex traits. *Annu Rev Genet* 2010;44:293-308.
26. McLaren W, Gil L, Hunt SE, et al. The Ensembl Variant Effect Predictor. *Genome Biol* 2016;17:122.
27. Purcell S, Neale B, Todd-Brown K, et al. PLINK: a tool set for whole-genome association and population-based linkage analyses. *Am J Hum Genet* 2007;81:559-575.
28. de Leeuw CA, Mooij JM, Heskes T, Posthuma D. MAGMA: generalized gene-set analysis of GWAS data. *PLoS Comput Biol* 2015;11:e1004219.
29. Finucane HK, Bulik-Sullivan B, Gusev A, et al. Partitioning heritability by functional annotation using genome-wide association summary statistics. *Nat Genet* 2015;47:1228-1235.
30. Bulik-Sullivan B, Finucane HK, Anttila V, et al. An atlas of genetic correlations across human diseases and traits. *Nat Genet* 2015;47:1236-1241.
31. Dornbos P, Singh P, Jang DK, et al. Evaluating human genetic support for hypothesized metabolic disease genes. *Cell Metab* 2022;34:661-666.
32. Zhu M, Zhao S. Candidate gene identification approach: progress and challenges. *Int J Biol Sci* 2007;3:420-427.
33. Nica AC, Dermitzakis ET. Expression quantitative trait loci: present and future. *Philos Trans R Soc Lond B Biol Sci* 2013;368:20120362.
34. Richards S, Aziz N, Bale S, et al. Standards and guidelines for the interpretation of sequence variants: a joint consensus recommendation of the American College of Medical Genetics and Genomics and the Association for Molecular Pathology. *Genet Med* 2015;17:405-424.
35. Byrne S, Elamin M, Bede P, et al. Cognitive and clinical characteristics of patients with amyotrophic lateral sclerosis carrying a C9orf72 repeat expansion: a population-based cohort study. *Lancet Neurol* 2012;11:232-240.
36. Majounie E, Renton AE, Mok K, et al. Frequency of the C9orf72 hexanucleotide repeat expansion in patients with amyotrophic lateral sclerosis and frontotemporal dementia: a cross-sectional study. *Lancet Neurol* 2012;11:323-330.
37. Umoh ME, Fournier C, Li Y, et al. Comparative analysis of C9orf72 and sporadic disease in an ALS clinic population. *Neurology* 2016;87:1024-1030.
38. Mezzini R, Flynn LL, Pitout IL, Fletcher S, Wilton SD, Akkari PA. ALS Genetics, Mechanisms, and Therapeutics: Where Are We Now? *Front Neurosci* 2019;13:1310.
39. Ramirez J, Berezuk C, McNeely AA, Scott CJ, Gao F, Black SE. Visible Virchow-Robin spaces on magnetic resonance imaging of Alzheimer's disease patients and normal elderly from the Sunnybrook Dementia Study. *J Alzheimers Dis* 2015;43:415-424.
40. Raz L, Knoefel J, Bhaskar K. The neuropathology and cerebrovascular mechanisms of dementia. *J Cereb Blood Flow Metab* 2016;36:172-186.
41. Akoudad S, Wolters FJ, Viswanathan A, et al. Association of Cerebral Microbleeds With Cognitive Decline and Dementia. *JAMA Neurol* 2016;73:934-943.
42. Lambert JC, Ibrahim-Verbaas CA, Harold D, et al. Meta-analysis of 74,046 individuals identifies 11 new susceptibility loci for Alzheimer's disease. *Nat Genet* 2013;45:1452-1458.
43. Lyall DM, Munoz Maniega S, Harris SE, et al. APOE/TOMM40 genetic loci, white matter hyperintensities, and cerebral microbleeds. *Int J Stroke* 2015;10:1297-1300.
44. Carter CJ. Genetic, Transcriptome, Proteomic, and Epidemiological Evidence for Blood-Brain Barrier Disruption and Polymicrobial Brain Invasion as Determinant Factors in Alzheimer's Disease. *J Alzheimers Dis Rep* 2017;1:125-157.

45. Liang X, Liu C, Liu K, et al. Association and interaction of TOMM40 and PVRL2 with plasma amyloid-beta and Alzheimer's disease among Chinese older adults: a population-based study. *Neurobiol Aging* 2022;113:143-151.
46. Chen YC, Chang SC, Lee YS, et al. TOMM40 Genetic Variants Cause Neuroinflammation in Alzheimer's Disease. *Int J Mol Sci* 2023;24.
47. Studies N-NWGoRiA, Chanock SJ, Manolio T, et al. Replicating genotype-phenotype associations. *Nature* 2007;447:655-660.
48. Landry LG, Ali N, Williams DR, Rehm HL, Bonham VL. Lack Of Diversity In Genomic Databases Is A Barrier To Translating Precision Medicine Research Into Practice. *Health Aff (Millwood)* 2018;37:780-785.

Table 1. Neurological datasets included in the Neurodegenerative Disease Knowledge Portal (NDKP)

Dataset	Publication Year	Cases (n)	Controls (n)	Ancestry	Data Type
Alzheimer's disease GWAS	2019	71880	383378	European	GWAS
Alzheimer's disease GWAS	2021	75024	397844	European	GWAS
Alzheimer's disease GWAS	2022	85934	401577	European	GWAS
Alzheimer's disease GWAS	2023	101061	543127	Multi	GWAS
Alzheimer's disease family history GWAS	2018	314278	N/A*	European	GWAS
Amyotrophic lateral sclerosis exome case-control	2019	3864	7839	European	Exome
Amyotrophic lateral sclerosis GWAS	2016	12577	23475	European	GWAS
Amyotrophic lateral sclerosis GWAS	2017	13811	26325	Multi	GWAS
Amyotrophic lateral sclerosis GWAS	2018	20806	59804	European	GWAS
Amyotrophic lateral sclerosis GWAS	2020	22040	62654	Multi	GWAS
Amyotrophic lateral sclerosis GWAS	2021	29612	122656	Multi	GWAS
Amyotrophic lateral sclerosis GWAS	2021	27205	110881	European	GWAS
Carpal tunnel syndrome GWAS	2019	12312	389334	European	GWAS
Cognitive function GWAS	2016	112067	N/A	European	GWAS
FinnGen r8 complex disease GWAS (Alzheimer's disease)	2023	7129	760059	European	GWAS
Global Parkinson's Genetics Program GWAS	2023	62976	966017	Multi	GWAS
GR@CE Alzheimer's GWAS	2019	4120	3289	European	GWAS
Handedness GWAS	2020	1470460	N/A	European	GWAS
International League Against Epilepsy GWAS	2018	225	24218	European	GWAS
IPDGC Parkinson's disease GWAS (females)	2021	7384	12389	European	GWAS
IPDGC Parkinson's disease GWAS (males)	2021	12054	11999	European	GWAS
IPDGC-UK Biobank Parkinson's disease and proxy cases GWAS (female)	2021	13420	90662	European	GWAS
IPDGC-UK Biobank Parkinson's disease and proxy cases GWAS (male)	2021	20956	89660	European	GWAS
IPDGC-UK Biobank Parkinson's disease GWAS (female)	2021	7947	90662	European	GWAS
IPDGC-UK Biobank Parkinson's disease GWAS (male)	2021	13020	89660	European	GWAS
LARGE-PD Parkinson's disease GWAS	2021	807	690	Hispanic/Latin American	GWAS
Late-onset Alzheimer's GWAS	2013	8572	11312	European	GWAS
Late-onset Alzheimer's GWAS	2019	21982	41944	European	GWAS
Lewy body dementia GWAS	2021	2981	4391	European	GWAS
Parkinson's disease GWAS	2019	56306	426424	European	GWAS
Parkinson's disease GWAS	2023	1200	2445	African	GWAS
Parkinson's disease progression GWAS	2019	4093	N/A	European	GWAS
Parkinson's disease progression GWAS	2020	2848	N/A	European	GWAS

Further details regarding the neurological datasets captured by the Neurodegenerative Disease Knowledge Portal can be accessed online at: <https://ndkp.hugeamp.org/datasets.html>

*25,696 individuals had a maternal family history of Alzheimer's disease and 14,338 individuals had a paternal family history of Alzheimer's disease. Abbreviations: GR@CE, Genome Research at Fundacio ACE; GWAS, genome-wide association study; N/A, not applicable.

Figure 1. Genomic association datasets captured by the Neurodegenerative Disease Knowledge Portal (NDKP) from various phenotypic groups. The NDKP is comprised of genomic datasets from cohorts spanning nine phenotypic groups, including cerebrovascular magnetic resonance imaging (MRI) traits, COVID-19, immunological, metabolite, musculoskeletal, neurological, psychiatric, sleep and circadian, and stroke. Datasets include genotyping data, such as genome-wide association studies (GWAS) and ImmunoChip (iChip), and sequencing studies, such as whole genome sequencing (WGS) and exome sequencing.

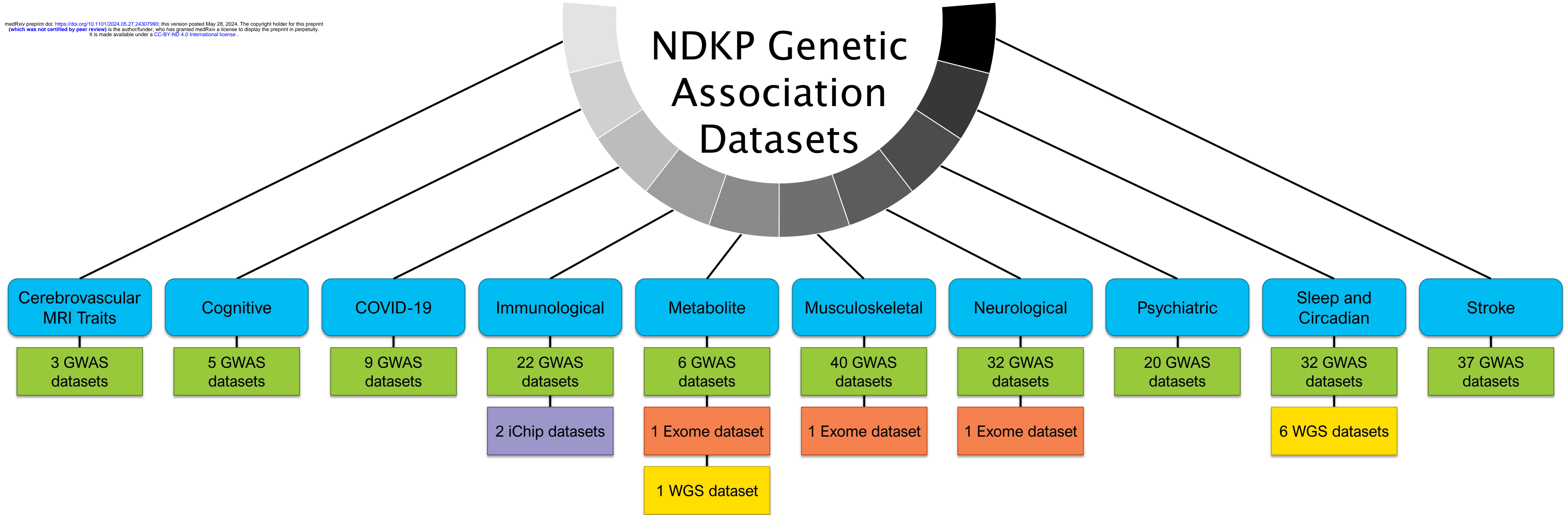
Figure 2. Year of publication and sample size of the 172 genomic association datasets captured by the Neurodegenerative Disease Knowledge Portal (NDKP) from various phenotypic groups. Datasets include genotyping data, such as genome-wide association studies (GWAS) and ImmunoChip (iChip), and sequencing studies, such as whole genome sequencing (WGS) and exome sequencing. For one study that provided pre-published data with no given date of publication, the year of publication 2023 was used. Samples per dataset are presented on a log₁₀ scale.

Figure 3. Potential uses for the data and tools encompassed within the Neurodegenerative Disease Knowledge Portal (NDKP). The NDKP aims to provide accessible workflows and tools to utilize the datasets and assist in the facilitation of customized genomic analyses. The Portal offers four core search pages and a variety of tools to provide summary results derived from the genomic datasets to explore genes, genomic regions, variants, or phenotypes of interest.

Figure 4. Genomic Region Miner (GEM) LocusZoom visualization of variant-phenotype associations within the region surrounding *SNCA* (chr 4:90,571,496-90,809,466). As part of the summary results returned when a region of interest is searched in the Neurodegenerative Disease Knowledge Portal (NDKP), the GEM LocusZoom tool provides a visualization of all variants within that region identified across the NDKP datasets and their associations with the regions most highly associated phenotype. In the case of the region surrounding *SNCA*, Parkinson's disease represents the most highly associated phenotype. However, the GEM LocusZoom tool also allows for customized visualization of variant associations with additional phenotypes, as is shown here for Lewy body dementia.

Figure 5. Multi-trait analysis using tools integrated into the NDKP, which demonstrated genomic associations with Alzheimer's disease and brain microbleeds. (A) Signal Sifter identified regions of LD-clumped variants significantly associated with risk of both traits. (B) Gene Sifter identified 138 genes with a significant chi-square p-value, indicating overall associations between the genes and both traits.

Figure 6. Exploration and filtration of variant associations with amyotrophic lateral sclerosis (ALS) within the surrounding region of *KANK1* (chr9:370291-846105). **A)** Association plot of all variants identified within the meta-analyzed datasets encompassed within the Neurodegenerative Disease Knowledge Portal (NDKP) within the surrounding region of *KANK1* in reference to their meta-analyzed associations with ALS. **B)** Filtration of variants to only those in enhancer regulatory element within the central nervous system. **C)** Filtration of variants to only those linked to *KANK1*. **D)** All remaining variants following the annotation filters applied using the Variant Sifter tool. The star represents a variant of interest that has been manually selected based on its association with ALS that is approaching significance.



medRxiv preprint doi: <https://doi.org/10.1101/2024.05.27.24307990>; this version posted May 28, 2024. The copyright holder for this preprint (which was not certified by peer review) is the author/funder, who has granted medRxiv a license to display the preprint in perpetuity. It is made available under a [CC-BY-ND 4.0 International license](https://creativecommons.org/licenses/by-nd/4.0/).

Samples per Dataset

1,000,000

100,000

10,000

1,000

Year

Ancestry

- European
- Mixed
- ▲ African
- ◆ East Asian
- × Hispanic or Latin American
- ⊠ Middle Eastern
- ⊕ South Asian

Phenotype Group

- Cerebrovascular MRI Traits
- Cognitive
- COVID-19
- Immunological
- Metabolite
- Musculoskeletal
- Neurological
- Psychiatric
- Sleep and Circadian
- Stroke

2010 2011 2012 2013 2014 2015 2016 2017 2018 2019 2020 2021 2022 2023

2010 2011 2012 2013 2014 2015 2016 2017 2018 2019 2020 2021 2022 2023

NDKP Potential Use Cases

Gene/Region of Interest

Gene Annotations

- Functional associations
- Tissue specific gene expression
- Effector gene lists
- UniProt cross-reference
- External Resources

Gene-Level Associations

- Human Genetic Evidence (HuGE) trait scores
- Common variant trait associations
- Rare variant trait associations

Variant-Level Associations

- Genomic Region Miner (GEM) LocusZoom for single- and multi- trait associations
- Individual variant-trait associations within gene/region

Variant of Interest

Variant Annotations

- Closest gene
- Predicted variant consequences
- Locations with tissue-specific epigenomically annotated regions

Phenotype Associations

- Phenotype-wide association studies (PheWAS)
- Variant Sifter identification of phenotypic associations with annotated variants

Phenotype of interest

Single-Trait Associations

- Genome-wide single variant associations
- Common variant gene-level associations
- Human Genetic Evidence (HuGE) gene scores
- Effector gene predictions
- Top gene pathway associations
- Cell/tissue specific genetic correlations

Multi-Trait Associations

- Global genetic trait associations
- Signal Sifter identification of multi-trait associated regions
- Gene Sifter identification of multi-trait associated genes

medRxiv preprint doi: <https://doi.org/10.1101/2024.05.27.24307990>; this version posted May 28, 2024. The copyright holder for this preprint (which was not certified by peer review) is the author/funder, who has granted medRxiv a license to display the preprint in perpetuity. It is made available under a CC-BY 4.0 International license.

Genomic Region Miner (GEM)

The [LocusZoom](#) interactive visualization allows you to explore [bottom-line](#) variant associations for multiple phenotypes across this region. Find complete documentation [here](#). Use the "Add phenotypes" menu below to stack up plots for multiple phenotypes. Click the "Filter plots and table" tab to filter variants shown in the plot(s) and table by predicted consequence, closest gene, p-value, or direction of effect.

Go to the Variant Sifter to explore genetic associations, credible sets, and epigenomic annotations in this region

Parkinson's disease

Lewy body dementia

Add phenotypes

Filter plots and table

Add Phenotypes

Select one or more phenotypes

Parkinson's disease X

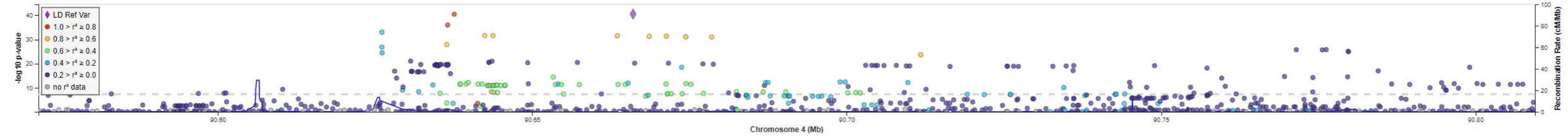
Lewy body dementia X

LD Population: ALL

Save PNG

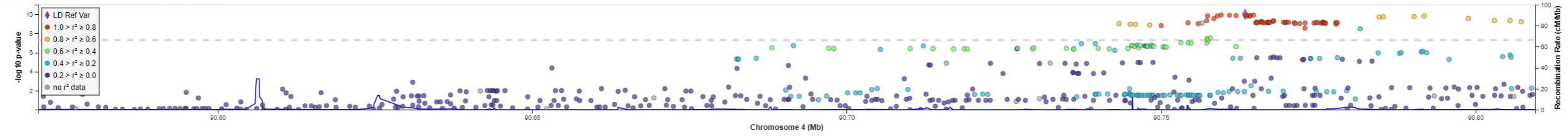
Parkinson's disease Variant Catalog

Parkinson's disease Variant Associations



Lewy body dementia Variant Catalog

Lewy body dementia Variant Associations



←SNCA

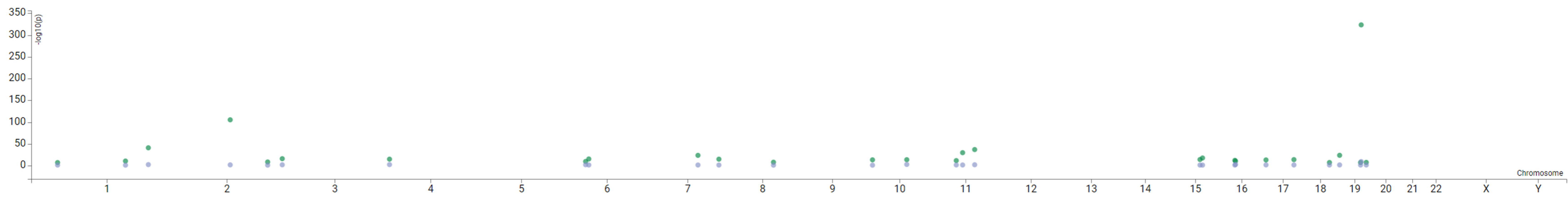
MMRN1→

A) Signal Sifter

Associations (Ancestry: All)

Alzheimer's disease P-Value (s) Effect (+/-)

Brain microbleeds, any P-Value (s) Effect (+/-)



Download

Alzheimer's disease (lead SNP)				Brain microbleeds, any		
Clump	Variant	P-Value	Odds Ratio	Variant	P-Value	Odds Ratio
19:44,320,101-46,072,844	rs59007384	4.94e-324	▲1.1646	rs769449	2.52e-10	▲1.3254
2:127,772,047-127,895,574	rs6733839	3.46e-106	▲1.0993	rs13032148	0.008113	▲1.0805
1:207,297,680-207,914,598	rs10779335	5.76e-42	▼0.9272	rs6700168	0.002247	▼0.9122
11:85,456,506-85,902,464	rs2508379	5.88e-38	▲1.0622	rs596864	0.004392	▼0.9228
11:59,812,501-60,107,027	rs1582763	8.56e-31	▼0.9767	rs12799799	0.01461	▼0.8705
19:991,968-1,136,885	rs12151021	9.66e-25	▼0.9802	rs8178963	0.01167	▲1.0898
7:99,459,144-100,465,440	rs7384878	1.31e-24	▲1.0229	rs13223792	0.01878	▲1.0753
19:5,396,009-163,818,630	rs11618011	1.42e-18	▲1.0253	rs11854966	0.03171	▲1.0959
2:233,968,153-234,117,916	rs10933431	5.98e-17	▲1.0193	rs10176895	0.005677	▼0.8242
6:47,315,180-47,708,880	rs9381563	2.41e-16	▼0.9825	rs72866681	0.01635	▲1.1695

medRxiv preprint doi: <https://doi.org/10.1101/2024.05.27.24307990>; this version posted May 28, 2024. The copyright holder for this preprint (which was not certified by peer review) is the author/funder, who has granted medRxiv a license to display the preprint in perpetuity. It is made available under a [CC-BY-ND 4.0 International license](https://creativecommons.org/licenses/by-nd/4.0/).

« < 1 2 3 > »

⚡ This symbol indicates that the direction of effect for the clumped SNP has been flipped to align it with the lead SNP.

B) Gene Sifter

Build search criteria

Add data

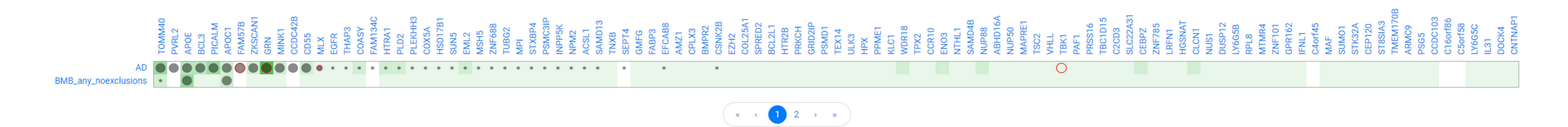
Phenotype Tissue-specific gene expression Effector gene predictions

Search Criterion phenotype = Alzheimer's disease X phenotype = Brain microbleeds, any X

Filter results

Filter by HuGE Score (≥) Common variant p-value (≤) Rare variant p-value (≤) Genes with rare variant results

Matching genes: 138
 Common variant p-value: ● ≤0.0000025 ● ≤0.00001 ● ≤0.001
 Rare variant p-value: ○ ≤0.0000025 ○ ≤0.00001 ○ ≤0.001
 HuGE Score: Compelling >= 350 | Extreme >= 100 | Very Strong >= 30 | Strong >= 10 | Moderate >= 3 | Anecdotal > 1 | No Evidence <= 1



Common variant p-value: ≤0.0000025 ≤0.00001 ≤0.001 Rare variant p-value: ≤0.0000025 ≤0.00001 ≤0.001

Download

Gene	P-Val(X ²)	Trait	HuGE Score	P-val (Common)	P-val (Rare)	Samples	Variant Sifter
TOMM40	1.14e-141	AD	47(very-strong)	7.06e-140	-	420,307	View
		BMB_any_noexclusions	3(moderate)	0.0000491	-	10,426	View
PVRL2	7.40e-137	AD	-no-evidence	2.86e-137	-	505,974	View
		BMB_any_noexclusions	-no-evidence	0.0081024	-	10,991	View
APOE	2.68e-102	AD	20(strong)	1.53e-96	-	404,151	View
		BMB_any_noexclusions	45(very-strong)	7.30e-9	-	10,386	View
BCL3	5.55e-67	AD	20(strong)	1.49e-67	-	444,742	View
		BMB_any_noexclusions	1(no-evidence)	0.023667	-	9,761	View
PICALM	2.71e-28	AD	45(very-strong)	8.79e-29	-	561,942	View
		BMB_any_noexclusions	1(no-evidence)	0.045543	-	11,372	View

A)

Build search criteria

Phenotype: Amyotrophic lateral scler
 Gene or Region: 9:370291-846105
 Compare data: [New search] [Search]

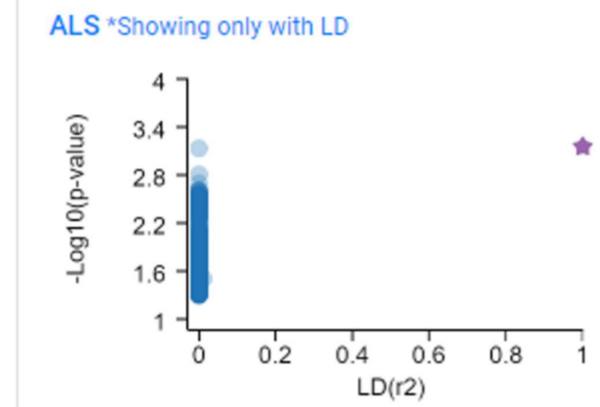
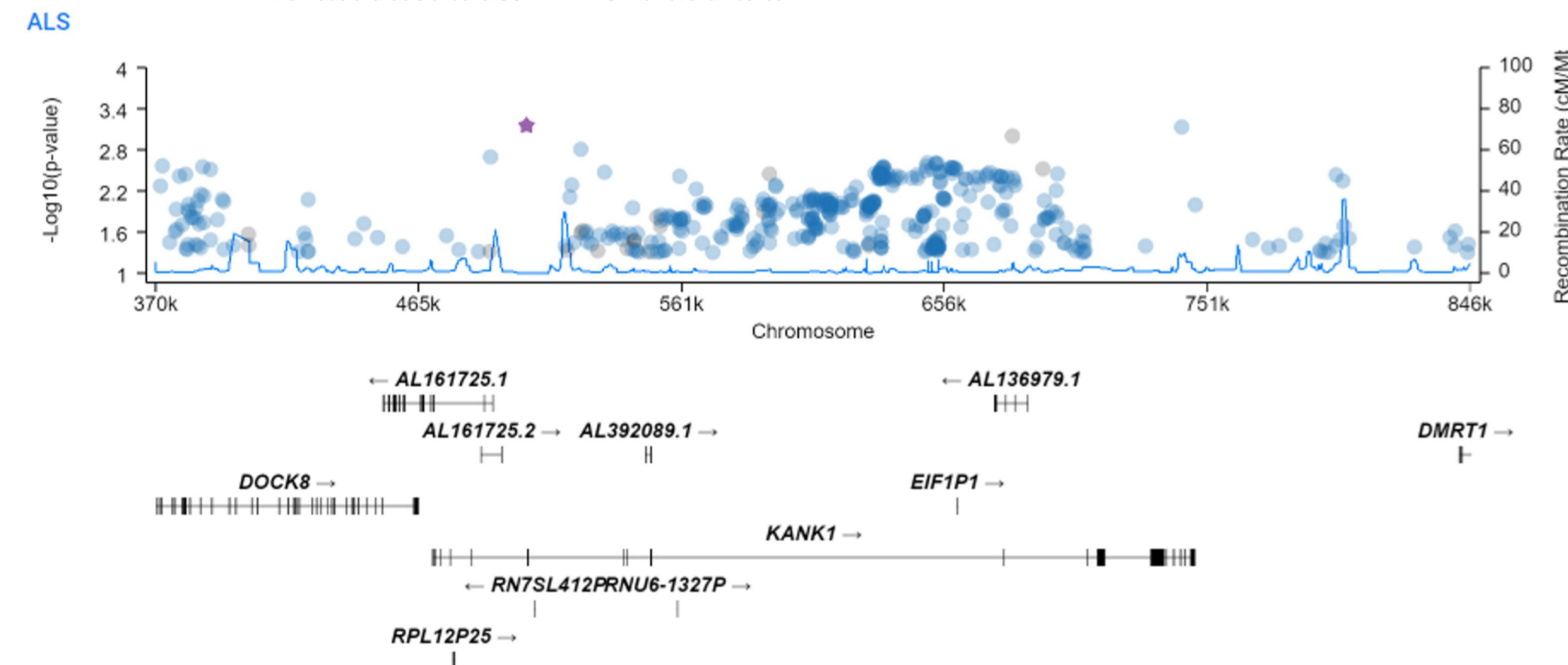
Filter data

Variant ID	rsID	P-Value (<=)	LD score (>=)	EAF (>=)	Beta (>=)	Z Score (>=)	Consequence
<input type="text"/>	<input type="text"/>	<input type="text"/>	<input type="text"/>	<input type="text"/>	<input type="text"/>	<input type="text"/>	<input type="text"/>

Zoom plots [Magnifying Glass] [Move viewing area [Left Arrow] [Right Arrow]]

Linkage disequilibrium (LD) values in the association plot are drawn from the 1000 Genomes reference panel via the [Michigan Imputation Server](#). The LD plot on the right shows only variants for which LD information is available.

medRxiv preprint doi: <https://doi.org/10.1101/2024.05.27.24307990>; this version posted May 28, 2024. The copyright holder for this preprint (which was not certified by peer review) is the author/funder, who has granted medRxiv a license to display the preprint in perpetuity. It is made available under a CC-BY-ND 4.0 International license.



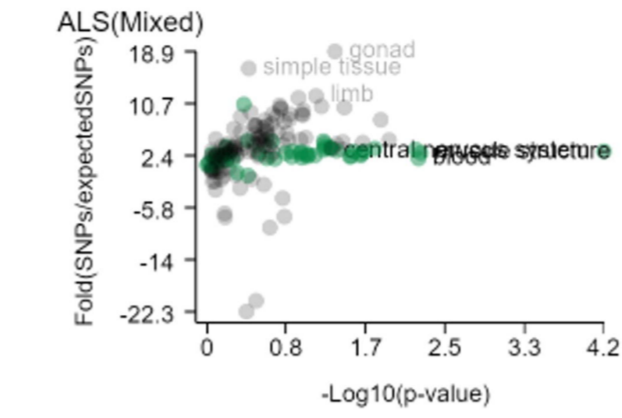
B)

Filter associated variants by location within regulatory regions annotated in broad tissue categories.

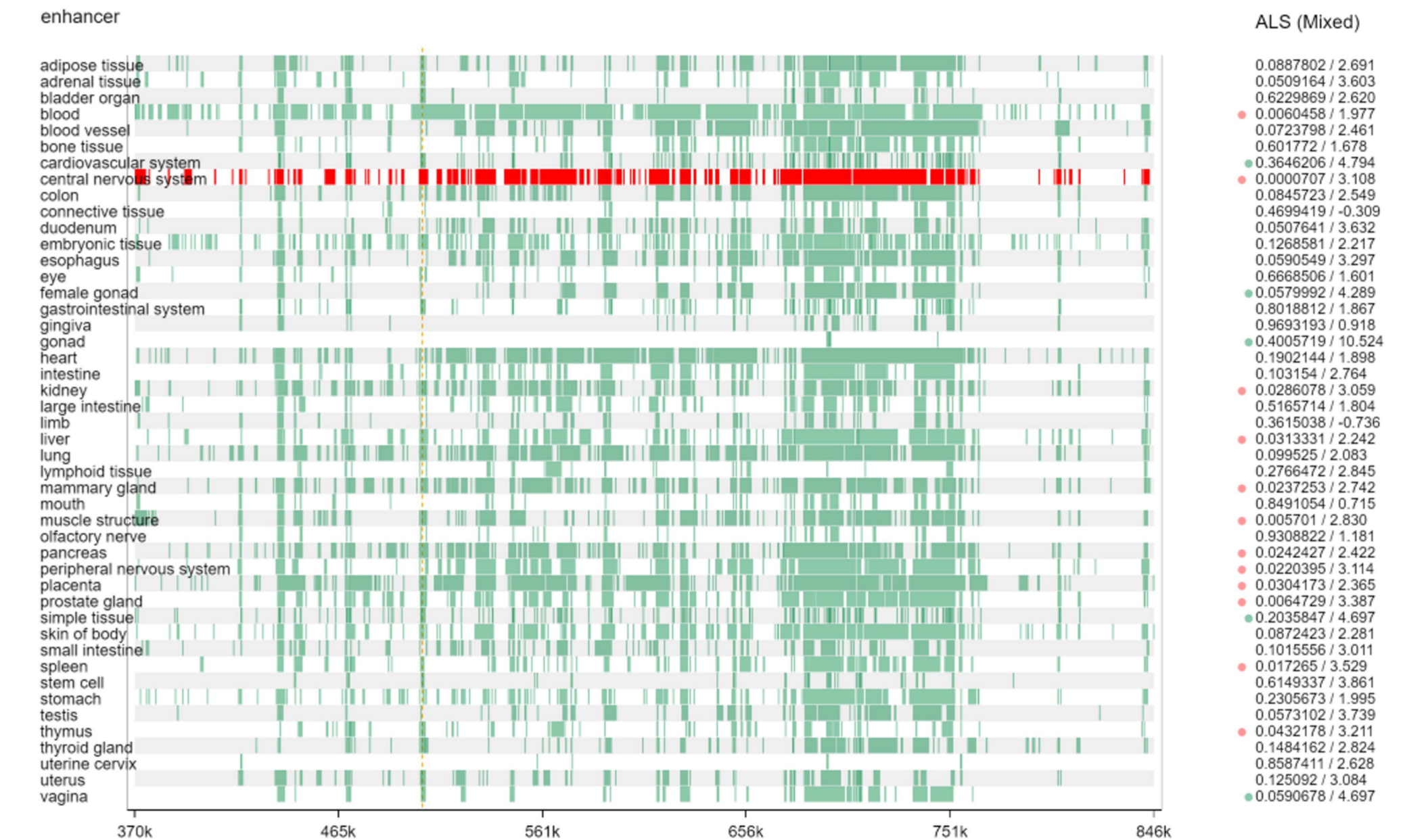
Select Annotation: enhancer [Hide filter]

Global Enrichment

● accessible_chromatin ● enhancer ● binding_sites ● promoter



Click on a tissue track to see annotations in specific cell types.

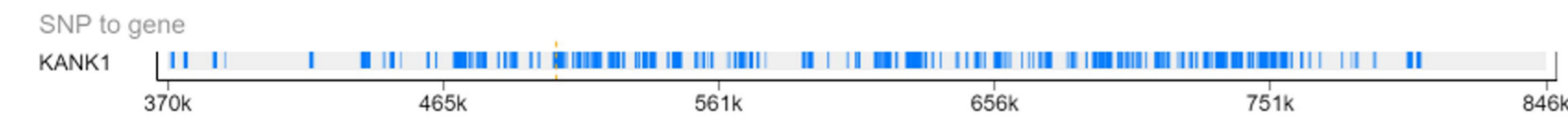


C)

Filter associated variants by links to genes.

Select Tissue: central nervous system [Hide filter]

Select SNP 2 Gene: SNP to Gene [SNP to gene X]



Select all [Unselect all]

Methods

combined S2G strategy (cS2G)

Genes

C9orf66 CBWD1 DMRT1
 DMRT2 DMRT3 DOCK8
 FOXD4 KANK1

D)

Total rows: 79

Compare annotated regions: Or Rows per page: 10 [Save as CSV] [Save as JSON] [show/hide columns]

Variant ID	rsID	Ref/Alt	P-Value	Beta	MAF	Standard Error	Z Score	Consequence	Annotation Overlap	central nervous system	Linked Genes	Evidence
9:372045_G/A	rs34788676	G/A	0.005346	0.1162	0.008	0.0417	2.7865708	intron_variant	370200-375600	enhancer: 370200-375600	KANK1	View
9:385986_G/A	rs7847076	G/A	0.0192	-4.44e-1	0.1256	0.1895	-2.34e+0	intron_variant	385800-386600	enhancer: 385800-386600	KANK1	View
9:386552_A/C	rs12337427	A/C	0.04284	-1.07e-1	0.0389	0.0528	-2.03e+0	intron_variant	385800-386600	enhancer: 385800-386600	KANK1	View
9:386556_C/T	rs7862253	C/T	0.007082	-5.52e-1	0.0942	0.2051	-2.69e+0	intron_variant	385800-386600	enhancer: 385800-386600	KANK1	View
9:504491_A/C	rs374964617	A/C	0.0007018	0.2379	0.0054	0.0702	3.3888888	intron_variant	502800-507200	enhancer: 502800-507200	KANK1	View
9:518493_A/G	rs10974958	A/G	0.04014	-6.03e-1	0.0154	0.2938	-2.05e+0	intron_variant	518400-518800	enhancer: 518400-518800	KANK1	View
9:524134_A/G	rs12352268	A/G	0.02576	0.0343	0	0.0105	2.23	intron_variant	522400-524800	enhancer: 522400-524800	KANK1	View
9:524170_A/T	rs73639341	A/T	0.001558	-6.53e-1	0.0717	0.2063	-3.16e+0	intron_variant	522400-524800	enhancer: 522400-524800	KANK1	View
9:535492_C/G	rs1571484	C/G	0.02438	0.0303	0.3343	0.0091	2.251	intron_variant	529200-538800	enhancer: 529200-538800	KANK1	View
9:544519_C/T	rs9408628	C/T	0.04641	-4.58e-2	0.0479	0.0157	-1.99e+0	intron_variant	542600-550600	enhancer: 542600-550600	KANK1	View