

Statistical analysis plan (SAP)

Section 1: Administrative information

1.1	Title and trial registration number	Risk of revision for different types of cup fixation in elderly patients with primary hip osteoarthritis. A study of XXX,XXX primary total hip arthroplasties from the Nordic Arthroplasty Register Association (NARA).
1.2	Names, affiliations and roles of SAP contributors	Roshan Latifi Simon Kornvig Maziar Mohaddes Ardebili Claus Varnum Søren Overgaard In collaboration with authors from Sweden, Norway, and Finland as part of the Nordic Arthroplasty Register Association (NARA)
1.3	Principal investigator/project lead	Roshan Latifi
1.4	Statistician/data analyst	Simon Kornvig
1.5	Reference to protocol version being used	
1.6	SAP version and revision history	3
1.7	Date for approval of final SAP version	
1.8	Timeframe for conducting the proposed analysis	Q2 2024

2: Introduction

2.1	Describe briefly background, research questions and rationale behind the study	It is debated whether uncemented or cemented cup fixation should be used in older patients in total hip arthroplasty.
2.2	Describe briefly objectives and/or hypotheses	<p>Overall aim:</p> <p>The overall aim was to compare the risk of THA revision with cemented and uncemented acetabular cups.</p> <p>The overall aim will be divided into 3 sub-aims:</p> <ol style="list-style-type: none"> 1 Compare the risk of cup revision due to any reason after THA with cemented vs. uncemented acetabular cups <ol style="list-style-type: none"> 1.1 Perform analysis 1) stratified by sex, 5-year age groups and type of bearing (PE vs. XLPE) 1.2 Perform analysis 1) the first 2 years and the subsequent years after surgery 2 Compare the overall cause-specific risk of cup revision after THA with cemented vs. uncemented acetabular cups <ol style="list-style-type: none"> 2.1 Perform analysis 2) stratified by sex, 5-year age groups and type of bearing (PE vs. XLPE) 2.2 Perform analysis 2) the first 2 years and the subsequent years after surgery 3 Compare the risk of cup and/or stem revision to any reason after THA with cemented vs. uncemented acetabular cups <ol style="list-style-type: none"> 3.1 Perform analysis 3) stratified by sex, 5-year age groups and type of bearing (PE vs. XLPE) 3.2 Perform analysis 3) the first 2 years and the subsequent years after surgery

Section 3: Study methods

3.1	<p><u>Study design</u></p> <p>Describe type of study (i.e. experimental/observational, parallel group/cross over, singlecenter/multicenter ect.) and describe briefly interventions</p>	International register-based multicenter study
3.2	<p><u>Randomization details (if applicable)</u></p> <p>Describe randomization i.e. allocation ratio, potential factors randomization will be stratified for and describe how and when randomization will be performed</p>	N.A.
3.3	<p><u>Sample size</u></p> <p>Describe calculation of sample size or reference to sample size calculation in study protocol</p>	Approx. XXX,XXX THA procedures performed between 1995-2019
3.4	<p><u>Hypotheses framework</u></p> <p>Describe hypotheses framework i.e. superiority, equivalence or noninferiority hypothesis testing and which group comparisons will be analysed</p>	N.A (two-sided testing)
3.5	<p><u>Statistical interim analyses and stopping guidelines (if applicable)</u></p> <p>Describe how and when interim analyses will be performed, and potential planned adjustment of significance level due to interim analyses. Describe guidelines for stopping the trial early.</p>	N.A.
3.6	<p><u>Timing of outcome assessments and follow-up</u></p> <p>Describe time points at which outcomes/covariates will be measured (consider</p>	N.A. (register-based follow-up)

	a figure to visualize the time windows of measurements – see appendix)	
3.7	<u>Timing of final analysis</u> i.e. all outcomes analysed collectively or analyses performed according to planned follow-ups	Collectively

Section 4: Statistical principles and protocol deviations

4.1	<u>Confidence intervals and P-values</u> Specification of level of statistical significance and confidence intervals to be reported. Describe, if relevant, rationale for adjustment for multiple testing and how type 1 error will be controlled for	95% CI will be applied P-values <0.05 will be considered statistically significant. All hypothesis-testings will be two-sided. In case of multiple testing, Holm-Bonferroni correction will be applied to control type 1 error rate.
4.2	<u>Adherence/compliance and protocol deviations</u> Define adherence/compliance and how this is assessed in the study. Define protocol deviations and which protocol deviations will be summarized and presented	N.A.
4.3	<u>Analysis populations</u> Define analysis population i.e. intention-to-treat, per-protocol, complete case, safety population	Complete-case

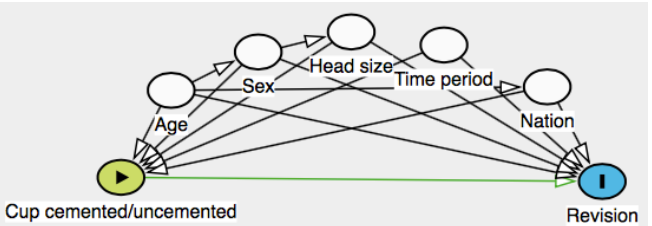
Section 5: Study population

5.1	<p><u>Screening (if applicable)</u></p> <p>Describe screening data to determine eligibility (i.e. scoring and scales)</p>	N.A.
5.1	<p><u>Eligibility</u></p> <p>Summarize in- and exclusion criteria</p>	<p><u>Inclusion</u></p> <ul style="list-style-type: none"> • Primary THA during January 1, 1995 to December 31, 2018. • Performed on the indication primary osteoarthritis (coded 1), idiopathic femoral head necrosis/Perthes disease (coded 5, 12, 13), developmental dysplasia of the hip (coded 10) and epifysiolysis capitis femoris (coded 11, 13) <p><u>Exclusion</u></p> <ul style="list-style-type: none"> • Age < 65 years • Inverse hybrid • Dual mobility cup • Resurfacing (variable Fixtype) • Implant used < 50 times in each country • Missing data on confounders • Patients registered with negative survival years • Second THA in case of bilateral
5.2	<p><u>Recruitment and flow chart</u></p> <p>Specification of steps in the recruitment process i.e. enrollment, screening allocation for use in flow chart (see appendix)</p>	<p>Roshan will draft the flow-chart – see appendix for the STROBE template.</p> <p>Simon will provide the numbers.</p>
5.3	<p><u>Withdrawal/loss to follow-up</u></p> <p>Specification on how reason and timing of withdrawal or loss to follow-up will be recorded and presented (i.e. in the flow chart – see appendix)</p>	<p>Loss to follow-up may not have been registered in case of immigration etc., however survived years has been calculated as time from primary surgery date to death or end of follow up (December 31, 2020)</p>

5.4	<p><u>Baseline patient characteristics</u></p> <p>List of baseline characteristics and how these data will be descriptively summarized in a “Table 1” (see appendix)</p>	<p>Roshan is responsible for drafting the tables – see appendix for suggestions.</p> <p>Simon will provide the numbers.</p>
-----	--	--

Section 6: Analysis

6.1	<p><u>Exposure and outcome definitions</u></p> <p>Describe details on exposure i.e. assessment, definitions, units and thresholds or the intervention/treatment under study.</p> <p>List and describe details on primary and secondary outcomes i.e. definition of outcome and timing, specific clinical measurements and units (i.e. mmol/mol) or any calculation or transformation of data to derive the outcome (i.e. sum score, change from baseline, logarithm, quality-of-life scoring algorithm)</p>	<p><u>Exposure:</u></p> <p>All analyses will compare patients with cemented cups vs. uncemented acetabular cups. The exposure groups will be defined as:</p> <p>Cemented = fixtype “cemented” (coded 1) Uncemented = fixtype “uncemented” (coded 2) and “hybrid” (3)</p> <p><u>Outcome:</u></p> <p>Sub-aim 1) and 2) will consider cup revision defined as surgery procedure “Both cup and stem replaced”, “Only cup replaced” and “Definitive extraction (Girdlestone)”.</p> <p>For sub-aim 2, cause-specific revision will be defined as Dislocation (coded as RevCause 5), Aseptic Loosening (RevCause 1) and Others (RevCause 2,3,7,9 and missing).</p> <p>Sub-aim 3) will consider both cup and/or stem revision defined as the above-mentioned and in addition “Only stem replaced”, “others” and “missing”.</p> <p>Only first revision will be considered.</p>
6.2	<p><u>Primary analysis methods</u></p> <p>Describe in details which statistical methods will be used (i.e. regression), how treatment effects will be presented (i.e. which effect measure - OR, HR etc.) and if estimates will be adjusted for covariates (see appendix).</p> <p>If analyses will be adjusted for covariates, describe</p>	<p>The following analysis will be performed according to the listed sub-aims:</p> <p>1 Compare the risk of cup revision due to any reason after THA with cemented vs. uncemented acetabular cups</p> <p>Crude cumulative incidence function will be calculated and plotted using the Aalen-Johansen method for cemented cups and uncemented cups.</p> <p>Risk of cup revision will be analysed using Cox regression models and reported as Hazard ratios (HR) with corresponding 95% CI. HRs will be</p>

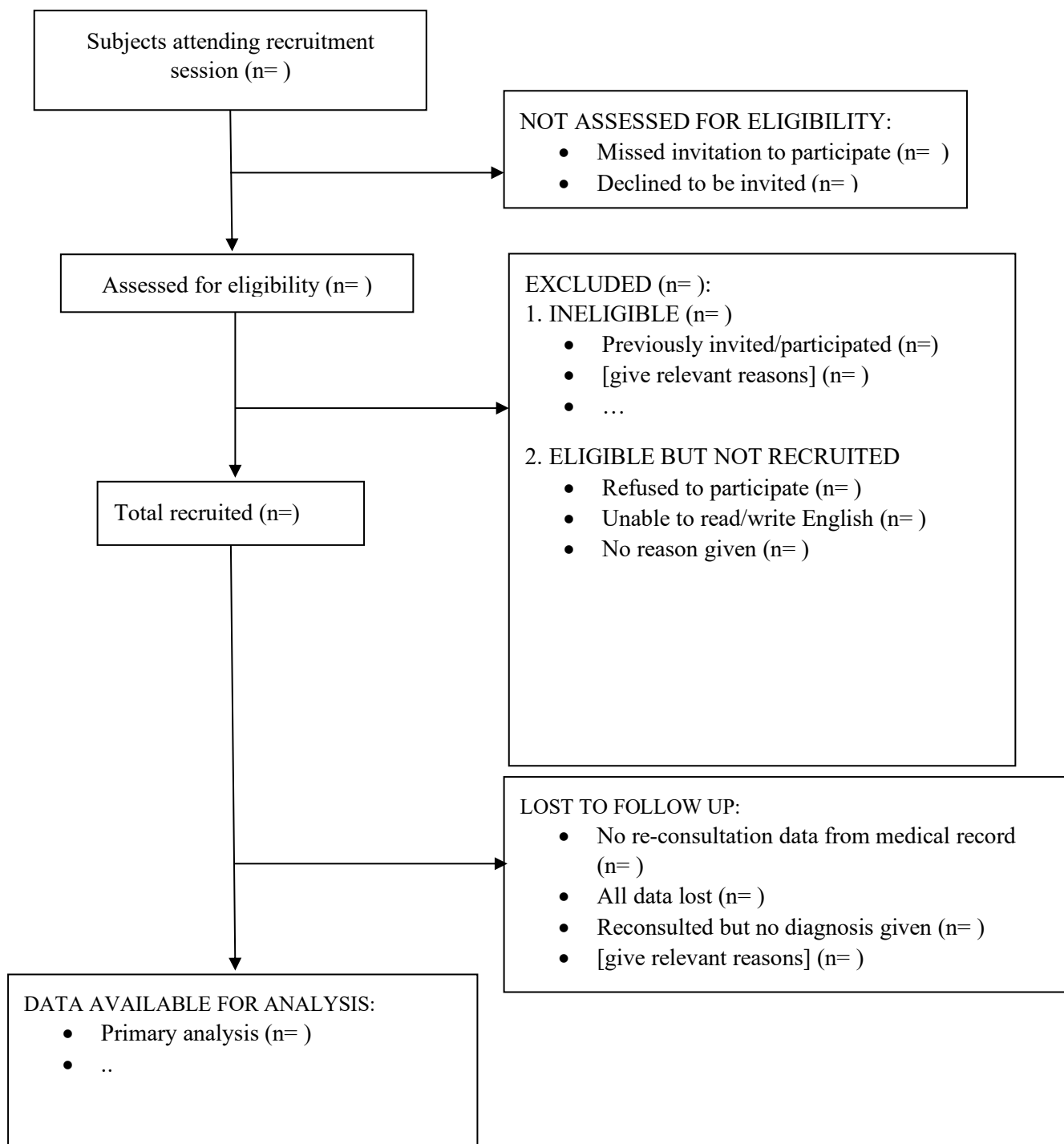
<p>how the sufficient adjustment set will be defined (i.e. using DAGs)</p> <p>Describe methods used to check assumptions (i.e. normality, proportional hazards) behind the statistical models, and alternative methods if assumptions about distribution do not hold.</p>	<p>reported crude and adjusted for potential confounders. A minimal adjustment set for the multivariate model is defined using Directed Acyclic Graphs (DAGs).</p>  <p>Minimal adjustment set: Age, sex, head size, time period and nation</p> <p>Time period will be divided into 4 groups: 1995-1999, 2000-2005, 2006-2011, 2012-2018</p> <p>Assumption of proportional hazards will be checked using log-log plots, and in case of uncertainty, supplied by Schoenfelds residuals.</p> <p>1.1 Perform analysis 1) stratified by sex, 5-year age groups and type of bearing (PE vs. XLPE) 1.2 Perform analysis 1) the first 2 years and the subsequent years after surgery</p> <p>Age groups will be defined with 5-year intervals according to age at primary surgery: 65-69 years, 70-74 years, 75-79 years and 80+</p> <p>2 Compare the cause-specific risk of cup revision after THA with cemented vs. uncemented acetabular cups</p> <p>Cause-specific revision will be analysed in cause-specific Cox regression models taking into account competing risk from remaining revision causes and mortality. Estimates will be reported as HR with corresponding 95% CI. HRs will be reported crude and adjusted for potential confounders. A minimal adjustment set for the multivariate model is defined using DAGs (same as in 1)).</p> <p>Assumptions will be checked according to 1).</p> <p>2.1 Perform analysis 2) stratified by sex, 5-year age groups and type of bearing (PE vs. XLPE) 2.2 Perform analysis 2) the first 2 years and the subsequent years after surgery</p> <p>Age groups will be defined with 5-year intervals according to age at primary surgery: 65-69 years, 70-74 years, 75-79 years and 80+</p> <p>3 Compare the risk of revision (cup and/or stem) due to any reason after THA with cemented</p>
---	--

		<p>vs. uncemented acetabular cups</p> <p>Crude cumulative incidence function will be calculated and plotted using the Aalen-Johansen method for cemented cups and uncemented cups.</p> <p>Risk of revision will be analysed using Cox regression models and reported as HR with corresponding 95% CI. HRs will be reported crude and adjusted for potential confounders. A minimal adjustment set for the multivariate model is defined using DAGs (same as in 1)).</p> <p>Assumptions will be checked according to 1).</p> <p>3.1 Perform analysis 3) stratified by sex, 5-year age groups and type of bearing (PE vs. XLPE)</p> <p>3.2 Perform analysis 3) the first 2 years and the subsequent years after surgery</p> <p>Age groups will be defined with 5-year intervals according to age at primary surgery: 65-69 years, 70-74 years, 75-79 years and 80+</p>
6.3	<p><u>Additional analysis methods</u></p> <p>Describe any planned sensitivity and subgroup analysis including how subgroups will be defined (see appendix).</p>	<p>Sensitivity analyses:</p> <p>Aim 1) and 3) will be analysed in Fine&Grey regression models taking into account the competing risk from mortality.</p>
6.4	<p><u>Missing data</u></p> <p>Describe how missing data will be explored and which assumptions and methods will be used to handle missing data (i.e. multiple imputation)</p>	<p>Proportion and patterns of missing data will be explored, and in case of <5% missing data analyses will be performed as complete case. If the amount of missing data is comprehensive (>5%) or suggestive for biased estimates, appropriate methods of imputation will be applied depending on the patterns of missingness.</p>
6.5	<p><u>Harms (only applicable in experimental studies)</u></p> <p>Describe the collection of safety data i.e. data on severity, expectedness, causality. Describe grouping and analyses planned i.e. incidence analyses on grade 3-4 events only.</p>	<p>N.A.</p>
6.6	<p><u>Statistical software:</u> Specify statistical packages to be used for the analyses</p>	<p>STATA 17 or newer</p>

Appendix: Figure and table templates

5.2-3 Flow chart template for observational studies

STROBE flow chart (4)



5.4 Baseline table ("Table 1") template

Table 1: Characteristics of the study population

	Intervention (N = xx)	Control (N = xx)	All (N = xx)	Missing
Age, mean \pm SD	xx (xx)	xx (xx)	xx (xx%)	xx (xx%)
Sex, N (%F)	xx (xx%)	xx (xx%)	xx (xx%)	xx (xx%)
BMI, median (IQR)	xx (xx-xx)	xx (xx-xx)	xx (xx-xx)	xx (xx-xx)
missing	xx (x%)	xx (x%)	xx (x%)	xx (x%)
Smoking status, N(%)				
Current	xx (x%)	xx (x%)	xx (x%)	xx (x%)
Past	xx (x%)	xx (x%)	xx (x%)	xx (x%)
Never	xx (x%)	xx (x%)	xx (x%)	xx (x%)
Missing	xx (x%)	xx (x%)	xx (x%)	xx (x%)
Chemotherapy,N(%)	xx (x%)	xx (x%)	xx (x%)	xx (x%)
etc.				
etc.				

6.2 Table example for reporting relative effect measures

Table 2: Relative effect measures on binary exposure and outcome

	Crude RR (95% CI)	Adjusted RR (95% CI)	P-value
Primary exposure			
No	1 (ref)	1 (ref)	
Yes	xx (xx-xx)	xx (xx-xx)	xx
Secondary exposure			
No	1 (ref)	1 (ref)	
Yes	xx (xx-xx)	xx (xx-xx)	xx

6.3 Table example for reporting subgroup-analysis

Table 3: Subgroup-analysis on ordinal exposure and binary outcome reported with relative effect measure

	Subgroup A (N=XX)		Subgroup B (N=XX)	
	Crude HR (95% CI)	Adjusted HR (95% CI)	Crude HR (95% CI)	Adjusted HR (95% CI)
Exposure groups				
No smoking	1 (ref)	1 (ref)	1 (ref)	1 (ref)
<5 pack years	x (xx-xx)	x (xx-xx)	x (xx-xx)	x (xx-xx)
5-20 pack years	x (xx-xx)	x (xx-xx)	x (xx-xx)	x (xx-xx)
>20 pack years	x (xx-xx)	x (xx-xx)	x (xx-xx)	x (xx-xx)