

1 **Exploring community-based reporting of livestock abortions for Rift Valley Fever**
2 **surveillance in Uganda: A pilot study**

3

4

5 Abel Wilson Walekhwa^{1,2*}, Andrew JK Conlan¹, Stella Acaye Atim^{6,7}, Anna Rose
6 Ademun⁶, Emmanuel Hasahya^{3,6}, James L.N. Wood¹ and Lawrence Mugisha^{4,5}.

7

8

9 **Affiliations**

10 ¹Diseases Dynamics Unit, Department of Veterinary Medicine, University of Cambridge.

11 ²IDEMU Mathematical Modelling Unit, Kampala, Uganda

12 ³International Livestock Research Institute (ILRI), Kampala, Uganda

13 ⁴Makerere University College of Veterinary Medicine, Animal Resources and Biosecurity,
14 Kampala, Uganda

15 ⁵Ecohealth Research Group, Conservation and Ecosystem Health Alliance (CEHA), Kampala,
16 Uganda

17 ⁶National Animal Disease Diagnostics and Epidemiology Centre, Ministry of Agriculture,
18 Animal Industry and Fisheries, Entebbe, Uganda

19 ⁷MRC/UVRI and LSHTM Uganda Research Unit, Entebbe Uganda

20 **Corresponding Author**

21 Abel Wilson Walekhwa, wabelwilson@gmail.com

22

23 **Word count**

24 Abstract: 299

25 Manuscript: 5,970

26 **NOTE: This preprint reports new research that has not been certified by peer review and should not be used to guide clinical practice.**

27 **Abstract**

28 Between March and June 2023, we carried out a pilot study to explore the feasibility of using
29 self-reporting of livestock abortions as a method of syndromic surveillance for Rift Valley
30 fever disease (RVF) in Isingiro District, Uganda. We established a call centre in the office of
31 the District Veterinary Officer which was promoted through stakeholder meetings, media
32 engagement and distribution of sensitization materials.

33 We collected 200 sera and 269 vaginal swabs from cattle, sheep and goats that experienced an
34 abortion within a target 14-day period. The apparent IgG seroprevalence of RVF was 38%
35 [95% CI 29 – 47] in cattle, 33% [95% CI 14 – 61] in sheep and 20% [95% CI 12 – 31] in goats.
36 For IgM, sheep showed the highest prevalence at 8% [95% CI 1 – 35], cattle at 2% [95% CI 1
37 – 6]. Host species was significantly associated with IgG positive status, with cattle having the
38 highest risk of RVF seropositivity (OR = 3 [95%CI: 1 - 7], p = 0.014).

39 Our results demonstrate the potential for a community led model for collecting abortion alerts
40 through local call centres. If routinely implemented, such syndromic data collection could be
41 used to develop early warning systems and prioritise case investigations. The IgG
42 seroprevalence in our sample is comparable to the levels seen in endemically infected
43 countries, suggesting historical circulation of RVF within the livestock population in this
44 community. Our pilot study demonstrates a proof-of-principle that community-driven reporting
45 of abortions could be used to build a surveillance system for RVF. However, the lack of
46 confirmation of infection through PCR means we cannot draw a firm causal link between the
47 reported abortions and RVF. To build a robust case of abortion surveillance, longitudinal
48 studies are needed to measure seasonal variation in the distribution of abortion cases and
49 incidence of active RVF infections.

50 **Key words:** *Livestock abortions, surveillance, Rift valley fever, Uganda.*

51

52

53

54

55 **Author's Summary**

56 Rift Valley fever disease is a growing zoonotic disease with high potential to disrupt national
57 and international trade and biosecurity. In this work, we contribute to the epidemiology of RVF
58 in Uganda and propose a system for self-reporting of livestock abortions that could provide a
59 pathway to syndromic surveillance for RVF and thus contribute to safer human and animal
60 communities. Engaging communities in setting up call centres for early notification and follow-
61 up of animal diseases is a cost-effective and participatory approach which could be sustainable
62 even with limited resources. Livestock abortions are a common symptom for other diseases
63 like Q-fever, brucellosis, campylobacter among others and therefore, caution should be used
64 when using it as an early warning signal for RVF. Establishing routine reporting could
65 potentially allow for the identification and association of patterns of abortions with different
66 infections. Our pilot study demonstrates the feasibility and active interest and engagement from
67 farmers for such a surveillance system.

68 **Background**

69 Rift valley fever disease (RVF) is a zoonotic mosquito-borne viral infection caused by the Rift
70 valley fever virus (RVFV), a member of the genus *Phlebovirus* and family *Bunyaviridae*
71 (Sasaya et al., 2023). The disease is primarily transmitted by *Aedes* and *Culex* mosquitoes and
72 blood feeding flies (Ebogo-Belobo et al., 2023). The virus was identified in 1931 during an
73 epidemic among sheep on a farm in the Kenyan Rift Valley (Bailey, 1988; Hartman, 2017)
74 affecting both livestock and wildlife (Clark et al., 2018). In humans, infection with RVFV leads
75 to clinical outcomes ranging from a mild flu-like illness to severe haemorrhagic fevers with
76 mortality rates of up to 27% (Ebogo-Belobo et al., 2023). The disease has the potential to
77 disrupt countries' livestock production due to mortalities (Ahmed et al., 2019). In lieu of the
78 potential for RVF to cause economic disruptions, the World Health Organisation (WHO) and
79 Food Agricultural Organisation and World Organization for Animal Health (WOAH) have
80 prioritized it among the key zoonotic diseases that have pandemic potential (Jenkin et al.,
81 2023). The African Union Commission (AUC) has ranked it among the priority diseases for
82 Africa, while in Uganda it is ranked third on the list of priority zoonotic diseases (PZDs)
83 together with other viral haemorrhagic fevers (VHFs) including Ebola, Marburg and Crimean-
84 Congo Haemorrhagic fever (Sekamatte et al., 2018) by the Global Health Security Agenda
85 (Kabami, 2023; Muturi et al., 2023). In some African countries like Sudan, Uganda, RVF has

86 been reported as causing 10% mortality among adult livestock and abortions in ~ 80-90%
87 pregnant animals (Bird et al., 2009; Birungi et al., 2021; Hassan et al., 2020).

88 Uganda reported the isolation of the RVFV from mosquitoes in 1944 in Semliki Forest,
89 Western Uganda (Dick, 1953). However, the first laboratory confirmed cases from animals and
90 humans were not reported until 2016 from Kabale District (Shoemaker et al., 2019). Since then
91 there have been sporadic RVF outbreaks in different parts of the country and these have been
92 investigated by Ministry of Health (MoH) and Ministry of Agriculture, Animal Industries and
93 Fisheries (MAAIF)'s surveillance departments (Aceng et al., 2023; Birungi et al., 2021;
94 Kabami, 2023; Nyakarahuka et al., 2018a, 2023c, 2023a; Tumusiime et al., 2023a, 2023c).
95 However, RVF surveillance is typically only carried out responsively after outbreaks that have
96 already led to the loss of human lives or livestock. Proactive early warning surveillance systems
97 based on known signs and symptoms, such as anomalous patterns of abortion in livestock,
98 could help to minimize human RVF incidence and to promote livestock health (Gachohi et al.,
99 2024).

100 The rate of abortion among pregnant ewes is reported to be almost 100% and over 90% of
101 lambs infected with RVF die (WHO, 2022). Livestock abortions are a well-documented
102 production and economic burden to farmers, especially among livestock farming communities
103 and countries that depend on agriculture (Gachohi et al., 2024; Kaur et al., 2023; Lokamar et
104 al., 2020). In addition to the lost fetuses, abortion poses an additional excess mortality risk for
105 female animals (Muma et al., 2006). Livestock owners lose the potential financial benefits that
106 would be achieved through the sale of lost animals and animal products including beef, hides,
107 skins and milk (Kabami, 2023; Muturi et al., 2023).

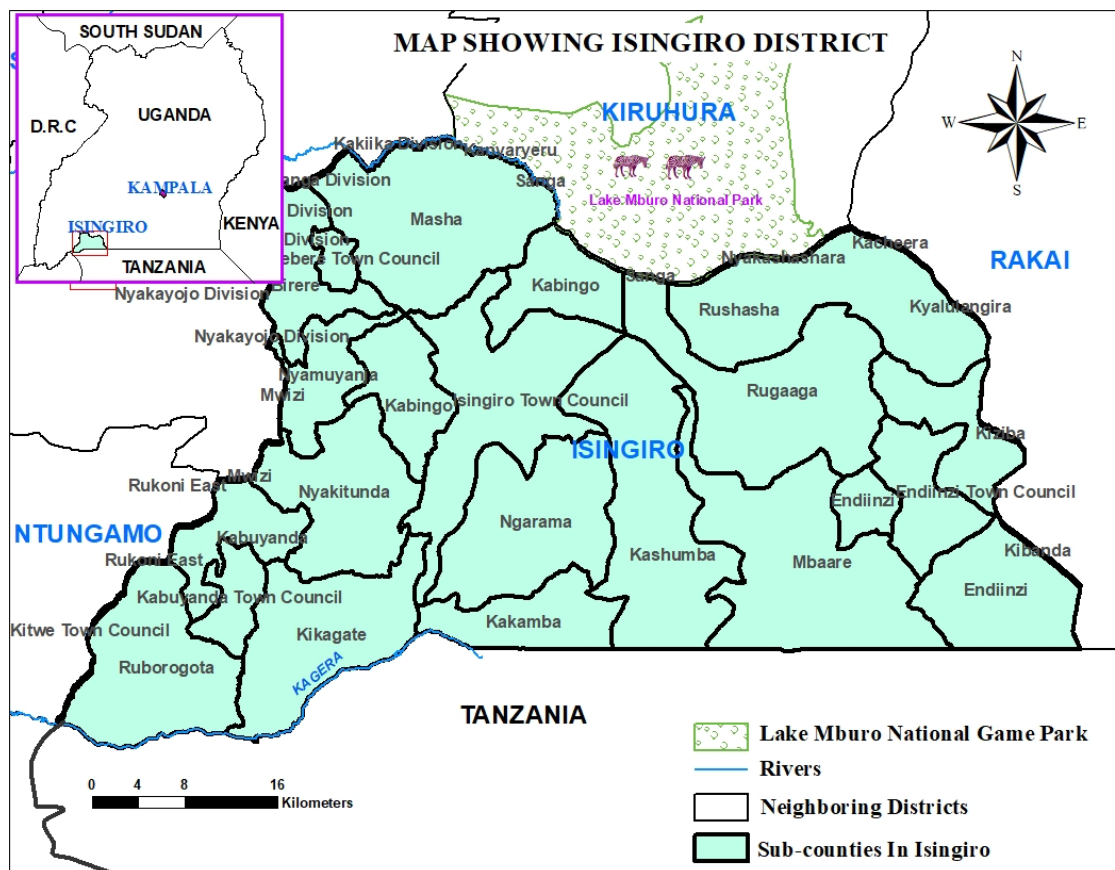
108 Budasha et al. conducted a random cross sectional study of livestock abortions in Kisoro
109 district, Uganda (close to our study area in Isingiro) and reported an overall prevalence for
110 livestock abortions of 17% with sheep having the highest prevalence of all livestock kept in
111 the district (Budasha et al., 2018). Our study was motivated by Budasha et al. and de Glanville,
112 W. A. et al.'s observation that RVF antibodies could be detected in abortions and their
113 recommendation that these could be used as an early warning signal for RVF in endemic areas
114 (de Glanville et al., 2022; Glanville et al., 2022). In Uganda and many African countries where
115 animal health surveillance is not systematic (Hasahya et al., 2023; Qiu et al., 2023) livestock
116 abortions are neither routinely documented nor reported for action, yet could be leveraged as
117 cost-effective proxies for arboviruses surveillance in ruminants (Walt et al., 2023).

118 In this project we piloted a community led reporting system for abortions based on farmers
119 self-reporting using phones. Reports were followed up by investigation and collection of
120 samples to establish the potential exposure to RVF among recent cases of abortion (less than
121 14 days) using ELISA. ELISA kits are commonly used in low-resource settings (Domfe et al.,
122 2022) and are recommended by the World Organization for Animal Health for the purpose of
123 estimating the prevalence of infection of RVF (Petrova et al., 2020). A similar syndromic
124 surveillance system piloted in rural settings of Kenya showed that animal health illness events
125 were 15 times more likely to be reported by phone-based surveillance than home visits by
126 veterinary health workers (Thumbi et al., 2019). Thumbi et al. recommended that a phone-
127 based surveillance system could be implemented to enable the early detection of zoonotic
128 diseases like RVF (Thumbi et al., 2019). In our project, we built on the methodology of Thumbi
129 et al. adding publicity through social media channels, community sensitizations to increase
130 awareness, and laboratory confirmation of reported and investigated abortions cases in
131 livestock with a focus on RVF.

132 **Materials and Methods**

133 **a) Study area**

134 Isingiro district (0.84° S, 30.80° E) is located in southwestern Uganda, about 297 kilometres
135 from the capital city, Kampala, and 47 km from Mbarara city. Isingiro shares a border with
136 Tanzania in the south and three further districts of Uganda: Kiruhura, Rakai and Ntungamo
137 (Fig 1). These districts are characterised by livestock rearing being the major industry on which
138 residents depend for their livelihood (Adonia, 2013; Bwengye et al., 2023; Mubiru et al., 2023).
139 The district also neighbors Lake Mburo National Game Park which harbours wildlife species
140 susceptible to RVF. Both wildlife and livestock share common water sources, along the shores
141 of Lake Mburo and the Kagera River which spans the district. Isingiro district has an estimated
142 cattle, goats and sheep of population of 368,246, 422,108 and 88,621 respectively (UBOS,
143 2024) and human population of 486,360 based on projections from human 2014 census
144 respectively (Tumusiime et al., 2023a;). Isingiro district has 35 lower administrative units
145 (sub counties) with 18 where animal rearing is conducted. The district experiences a tropical
146 savannah climate with an average annual rainfall of 1200mm, and a temperature range of 17 -
147 30°C (Kweyu et al., 2023; Nagasha et al., 2019). The district has two rainy seasons in each
148 year: March to April, and September to November. The people in this area rear livestock and
149 practice crop agriculture as their main economic activities (Taremwa et al., 2020).



150

151 **Figure 1: Map of Uganda showing Isingiro District and sites for sample collection**

152 **a) Study Design**

153 We conducted a cross sectional study from March to June 2023. A call centre was established
154 in consultation with livestock owners (farmers), local authorities and District Veterinary
155 Officers (DVO), to receive and record reported livestock abortions. First, we carried out formal
156 entry/information meetings to explain the purpose of the study, the information to be collected,
157 how they were expected to participate and how to use the call centre. Further meetings were
158 held with staff at the National Animal Diseases Diagnostics Epidemiological Centre
159 (NADDEC), MAAIF and local veterinary caregivers briefing them on procedures for sample
160 collection, packing and transportation to the laboratory in Entebbe for analysis.

161 The call centre was officially established in the office of the DVO at Isingiro district on 1st
162 March 2023 and co-managed by the corresponding author and a local contact officer who
163 served as a liason person between this project and the DVO (Figure 2). Following the official
164 set-up of the call centre, we were keen to follow-up abortion alerts that had occurred within the
165 target 14 days period (14th February 2023 onwards). However, we also considered and
166 responded to abortion cases which had occurred before the set-up of the call centre.

167 Establishment of the call centre was followed by different stakeholder engagements through
168 meetings and mass sensitization of livestock owners and local leaders. Information Education
169 and Communication (IEC) materials on RVF were created. These materials were then
170 distributed to public gatherings, barazas and similar events to advocate for the reporting of
171 abortions.

172 The contact officer was provided with a data collection tool, KoboCollect
173 (Lakshminarasimhappa, 2022) installed on android phones which enabled tracking of all
174 incoming calls regarding livestock abortions. At the design phase we expected that these
175 phones could facilitate reporting through phone calls, SMS, and social media alerts (WhatsApp,
176 Facebook) in addition to verbal reporting through walk-ins to the office. We set up two days'
177 of orientation meetings with different stakeholders including the research team that we had
178 recruited. During these meetings, the participants were taken through the line-up of activities
179 and their expected roles. This was necessary to ensure that stakeholders appreciated the scope
180 of the project and would be more likely to support it. For the research team this was necessary
181 as it helped them to understand the project protocol. On the last day of the orientation, consent
182 was sought and a social media channel group ([WhatsApp](#)) was formed. This was done to
183 coordinate the reporting of livestock abortion reports across the district. High-level
184 coordination of activities and events was carried out through a separate social media group
185 (WhatsApp group) which included the corresponding author, District Health Officer (DHO),
186 DVO, Assistant District Health Officer-Environmental Health (ADHO-EH), call centre staff
187 and all research assistants. There were also weekly update meetings organised to review
188 progress.

189 We provided two telephone numbers (the DVO and the contact officer) on materials to enable
190 livestock abortions to continue to be reported after the end of the project. IEC materials in the
191 form of flyers and brochures (in English, S2 Appendix and S3 Appendix) were adapted from
192 RVF risk communication materials created by the Ugandan Ministry of Health. These materials
193 were distributed and displayed in public places in the community and provided to local
194 authority leaders for use in addressing the public during community/social events like burials,
195 ceremonies, radio talk shows and community barazas. We also made announcements on local
196 radio and carried out sensitizations with community health workers. To inform the necessary
197 scale of the study we carried out a sample size calculation to ensure we could estimate the
198 expected prevalence (p) in the area to a reasonable precision (d). We used the Kish-Leslie
199 formula ($n = z^2pq/d^2$) where the desired confidence interval was taken to be 95% (5%

200 significance level) and expected prevalence of RVF during abortions (effect size) was taken as
201 21% (De Glanville, Allan et al. 2022) which gave a target sample size of 325.

202 **Field data collection**

203 To provide capacity building in the local area and in an attempt to build in sustainability for
204 our project, we identified and recruited veterinary and laboratory staff employed in the Isingiro
205 district into the project. Working with staff that were already employed in this study area was
206 not only cost-effective but later proved beneficial as it enabled expedition of activities as the
207 local staff understood the local geography which eased the logistics of data collection. Through
208 this project, we brought on board both veterinary staff working in public and private practice.
209 In preparation for fieldwork, these veterinary and laboratory staff were given safety training on
210 laboratory Standard Operating Procedures (SOPs), use of Personal Protective Equipment
211 (PPE), human handling and restraint of animals. These SOPs enabled staff to adhere to animal
212 welfare principles, but also to ensure personnel safety and adherence to biosecurity measures
213 to curtail spread of disease between farms. The team was also trained on the approved study
214 protocol and data collection tools for two days.

215 The investigation team was provided with equipment and consumables for collecting sera and
216 vaginal swabs from aborted livestock. We responded to 78% (329/423) of the reported alerts.
217 This was intended to inspire farmers to report abortion alerts to the call centre. After every
218 alert, there was an investigation by the corresponding author and the veterinary staff. During
219 these investigations, a questionnaire was used to collect background information from the
220 animal owners/farmers. The collected information included key demographic and
221 epidemiological variables such as herd size, RVF vaccination history, alert channel used,
222 environmental factors like stagnate water, presence of shrubs/forests, irrigation dams,
223 vegetation cover, economic activities. The blood and vaginal swab samples collected were
224 transported in ice-conditioned icepacks (approximately four hours after sample collection) to
225 Rwenkubo Health Centre IV (central laboratory hub for Isingiro district) and were stored at
226 -20°C. This laboratory received daily vaginal swab samples from the veterinary staff. We
227 collected 200 sera samples and 269 vaginal swabs and transported to NADDEC for analysis,
228 which were then tested for both RVF and Brucellosis. The samples were transported through
229 the Ministry of Health accredited National Laboratory system (Hub) (Kiyaga et al., 2013) under
230 cold chain conditions specified by the manufacturer to the central testing laboratory
231 (NADDEC) (Monje et al., 2021). Due to budgetary constraints these have not yet been
232 analysed.

233 **d) Laboratory analysis**

234 Blood samples were tested by Enzyme-linked immunosorbent assay (ELISA) for anti- RVF
235 and anti- Brucella antibodies using validated commercial kits. Brucella has a high prevalence
236 in Uganda (Bugeza et al., 2023) compared to other infections associated with abortion storms
237 (Akwongo and Kakooza, 2022; Aruho et al., 2021; Muma et al., 2006). For RVF we used the
238 RVF competitive multi-species ELISA Kit (ID VET, Montpellier, France) (Petrova et al.,
239 2020). Although vaccination against RVF could stimulate the production of specific antibodies
240 producing a positive IgM test result (Matsiela et al., 2023) vaccine status of animals was
241 verified with farmers with none reporting they had purchased or used vaccines for RVF.
242 Brucella assays were done using IBL - America IgG-ELISA Kits (Minneapolis, MN) as
243 described by Nyamota et al (Nyamota et al., 2023).

244 **e) Statistical Analysis**

245 All data analyses were carried out using R statistical software version 4.3.1 (R Core Team
246 (2023), n.d.). Confidence intervals (CI) for the binomial proportion of apparent prevalence of
247 exposure to RVF and Brucella were calculated using the Clopper-Pearson method as
248 implemented in the “binomial” function of the “DescTools” package (Signorell A (2023), n.d.).
249 We developed logistic regression models to identify factors associated with test-positivity for
250 RVF. The small number (3/184) of IgM positive sera found precluded their use for this purpose,
251 so we used IgG test status as the dependent variable. Following univariate screening for farm
252 level risk factors (S1 Table) with a cutoff of $p < 0.2$ for inclusion in a multivariable model, we
253 developed a multivariable model. Known biological risk factors (stage of pregnancy, animal
254 host, history of animal movements, environmental conditions) were also forced into the
255 multivariable model regardless of the univariate significance (Nyakarahuka et al., 2023c). The
256 associations were assessed by odds ratios, with a 5% level for statistical significance. Time
257 series data were visualised using ggplot2 (Hadley Wickham, 2016) and the tidyverse packages
258 (Hadley et al, 2019). We tested the logistic regression output for 174 samples collected during
259 the target period (less than 14 days) and found minimal changes to the qualitative model results.

260

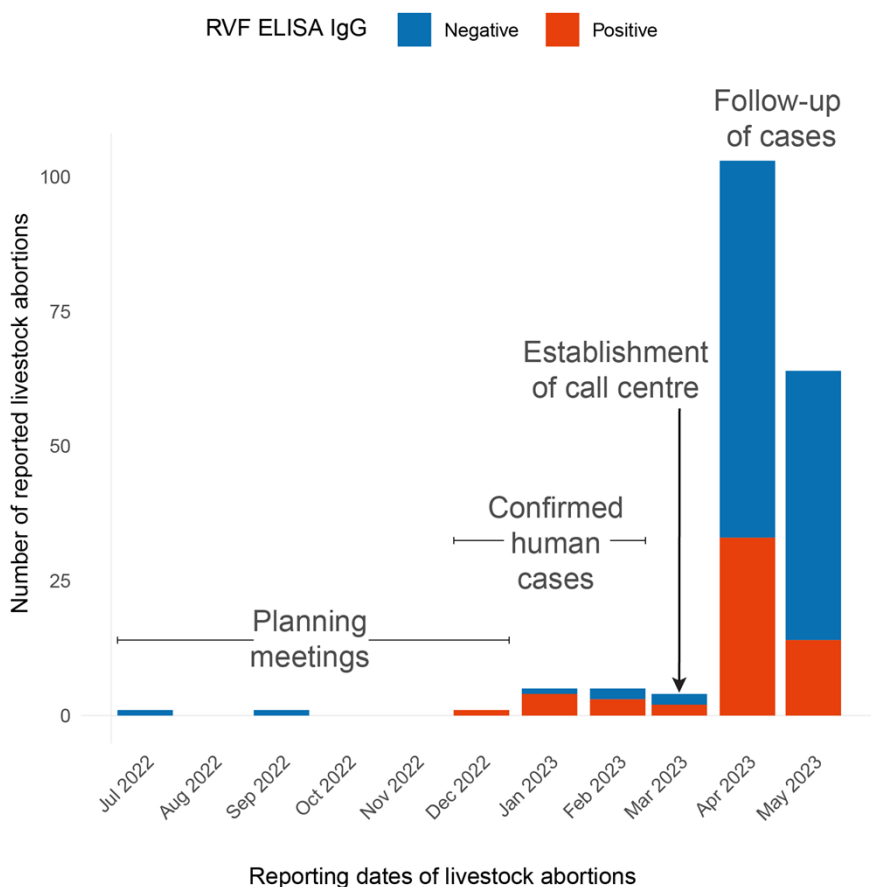
261

262

263 **Results**

264 At the planning phase of the fieldwork (21st January 2023), there were a small number (5) of
265 reports of livestock abortions that had been recorded by the DVO's office independent of our
266 study (Fig 2, S2 Table). We received a total of 53 call alerts leading to 423 abortions reported
267 during the pilot from 53 farms/herds owners and 184 of these alerts were investigated and for
268 this paper we report 184 samples (S3 Table). The number of samples collected during the target
269 period were 174 with 10 that occurred before the establishment of the call centre. The ten
270 abortions that occurred before establishment of the call centre were all from cattle reported
271 from Bugango Town Council (6/10) and Mbaare subcounty (4/10). The 4/10 and 6/10 were
272 estimated to be at early stage and middle of pregnancy respectively (S2 Table). All of the
273 reports were through telephone calls as opposed to social media platforms like facebook and
274 WhatsApp. There was high interest in participating in this pilot and demand from farmers to
275 understand the cause for the livestock abortions. This pilot had been planned to take place over
276 six months but due to the high rate of reports, and delay in starting due to logistic factors, it
277 was completed within three months (Fig 2). Regarding the delay between the date of reporting
278 and investigation, the majority were in less than one day. However, the mean delay was skewed
279 to the right due to few cases that were reported before setting up the call centre (S1 Appendix).

Time series for Number of Reported Livestock Abortions in Isingiro District, Uganda



280

281 **Figure 2: Time-series for livestock abortions reporting in Isingiro District, Uganda**

282 Of the collected samples from abortions, the greatest number 106/184 (58%) were from cattle,
283 followed by goats 66/184 (36%). The majority of cattle were crossbred 25/52 (48%) and 22/52
284 (42%) were local breeds. There was no history of RVF vaccination reported by farmers and the
285 majority (98%) did not report any history of cross-border or inter-district movement. The
286 median number of livestock abortions reported per herd was (4.0; IQR 3.0). The majority of
287 our reporters were male 158/184 (86%) and 159/184 (86%) described herdsman as their main
288 occupation. The median household size was 10; IQR 4.25 with majority, 81/184 (44%)
289 described with no formal education. The reported clinical presentation of animals at farm level
290 included; sudden onset of abortion among pregnant animals, weakness, unsteady gait,
291 mucopurulent nasal discharge, profuse fetid diarrhoea and high fever. The observed
292 environmental and climatic factors near the livestock farms and homestead included; bushes,
293 recent rainfall (less than 14 days), heavy forests and stagnant water. The reported abortions
294 originated from 18/33 (61%) of the sub counties where livestock was reared (S1 Table).

295 The seroprevalence of RVF IgG in cattle was 38% [95%CI 29 – 47], 33% in sheep [95%CI 14
 296 – 61] and 20% in goats [95%CI 12 – 31]. The IgM seroprevalence was lower, with 8% in sheep
 297 [95%CI 1 – 35] followed by cattle at 2% [95%CI 1 – 6]. With respect to brucellosis, goats had
 298 a seroprevalence of 36% [95%CI 25 – 49]; 16% of cattle were positive [95%CI 11 – 23] but
 299 no sheep tested positive (Table 1).

300 **Table 1: Serological results for RVF and Brucellosis**

| RVF IgG | Host | Apparent prevalence of exposure (%) (95% CI) | Negative | Positive | Total number of animals, n (%) |
|--------------------------------|--------------|--|----------|----------|--------------------------------|
| | Cattle | 38 (29 - 47) | 66 | 40 | 106 (58%) |
| Goats | 20 (12- 31) | 53 | 13 | 66 (36%) | |
| Sheep | 33 (14 - 61) | 8 | 4 | 12 (6%) | |
| RVF IgM | Cattle | 2 (1 - 6) | 104 | 2 | 106 (58%) |
| | Goats | 0 | 66 | 0 | 66 (36%) |
| | Sheep | 8 (1 - 35) | 11 | 1 | 12 (6%) |
| IgG Brucellosis ELISA | Cattle | 16 (11 - 23) | 106 | 20 | 125 (63%) |
| | Goats | 36 (25 - 49) | 37 | 21 | 58 (29%) |
| | Sheep | 0 | 16 | 0 | 16 (8%) |
| Both IgG (RVF and Brucellosis) | Cattle | 9 (5 - 15) | 54 | 9 | 106 (58%) |
| | Goats | 2 (0 - 8) | 42 | 1 | 66 (36%) |
| | Sheep | 25 (9 - 53) | 5 | 3 | 12 (6%) |

301
 302 Sheep were the species most likely to be positive to both RVF and brucellosis tests with 25%
 303 [95% CI 9 – 53] positive to IgG and the Brucellosis IgG ELISA, followed by cattle at 9% [95%
 304 CI 5 – 15] and lastly goats at 2% (95%CI 0 - 8) (Table 1).

305 Only one risk factor (host species) was statistically significantly associated with RVF IgG
 306 status. Cattle had the highest risk of positivity than goats and sheep (OR = 2.9 [95%CI: 1.27 -
 307 7.07], p = 0.014). The presence of any favourable conditions (*Bushes, Recent rainfall (less than*
 308 *14 days), Heavy forests, Stagnant water*) near the farm/herd (OR = 1.5 [95%CI: 0.6 - 4.0], p =
 309 0.4) and history of movement (OR = 3.0 [95%CI: 0.1 - 71.0], p = 0.5) were not statistically
 310 significant in our sample despite their previously reported associations with risk of exposure to
 311 RVF (Table 2). As a sensitivity analysis, we refitted the multivariate model excluding the small

312 number (10) of reports where the delay between alert and investigation was greater than 14
 313 days. The qualitative results in terms of identified risk factors and magnitude of effects were
 314 unchanged for the smaller data set.

315

316 **Table 2: Multivariate regression model output for IgG RVF occurrence and associated**
 317 **risk factors**

| Variable | Number n | Estimate | Std Error | Z value | OR ¹ | 95% CI ¹ | p-value |
|--|-------------|----------|-----------|---------|-----------------|---------------------|---------------|
| Animal Hosts | | | | | | | |
| Goats | 66 | REF | - | - | - | - | - |
| Cattle | 106 | -1.07 | 0.44 | 2.45 | 2.9 | 1.3, 7.1 | 0.014* |
| Sheep | 12 | 1.012 | 0.73 | 1.39 | 2.8 | 0.6, 11.3 | 0.2 |
| Stage of animal pregnancy | | | | | | | |
| Early stage (1-3 months) | 73 | REF | - | - | - | - | - |
| Middle stage (4-6 months) | 62 | -0.74 | 0.48 | -1.51 | 0.5 | 0.18, 1.2 | 0.13 |
| Late stage (7-9months) | 45 | -0.56 | 0.41 | - 1.37 | 0.6 | 0.3, 1.3 | 0.20 |
| Not sure | 4 | -16.77 | 1181.54 | - 0.01 | 0.0 | - | 1.0 |
| Environmental features at the farm/herd level | | | | | | | |
| A** | 81 | REF | - | - | - | - | - |
| B** | 52 | 0.34 | 0.41 | 0.83 | 1.4 | 0.6, 3.2 | 0.41 |
| C** | 15 | 0.19 | 0.74 | 0.25 | 1.2 | 0.2, 4.8 | 0.80 |
| D** | 36 | 0.43 | 0.48 | 0.90 | 1.5 | 0.6, 4.0 | 0.37 |
| History of Animal movement | | | | | | | |
| No | 181 | REF | - | - | - | - | - |
| Yes | 3 | 0.96 | 1.47 | 0.65 | 2.6 | 0.1, 71.0 | 0.52 |
| ¹ OR = Odds Ratio, CI = Confidence Interval | | | | | | | |

318 **Statistically significant variable*

319 ***A: Bushes, Recent rainfall (less than 14 days), Heavy forests, Stagnant water. B: Only 03*
 320 *present; Bushes, Stagnant water, Heavy forests. C: Only two present; Bushes, Recent rainfall*
 321 *(less than 14 days). D: Only one present.*

322
323
324
325
326
327
328
329
330
331
332
333
334
335
336
337
338
339
340
341
342
343
344
345
346
347
348
349
350
351
352
353
354
355

Discussion

This study is the first of its kind in Uganda, testing a community-led system for reporting livestock abortions to detect Rift Valley Fever (RVF). After setting up a call center in Isingiro district, most incidences of abortion were reported, recorded in the log book and cattle showed the highest RVF prevalence, followed by sheep and then goats. Regarding brucellosis, goats had the highest prevalence than cattle. These findings align with previous research conducted in Uganda and Kenya (Birungi et al., 2021; Kabami, 2023; Ndumu et al., 2021; Nyakarahuka et al., 2018a, 2023a, 2023b, 2023c; Nyamota et al., 2023; Tumusiime et al., 2023b).

Through this pilot we have demonstrated the feasibility of setting up a call centre for abortions. Such call centres are particularly valuable for animal disease surveillance in settings like Uganda where the majority of livestock farmers have phones but do not necessarily have internet access. When a similar pilot study was carried out in Kenya the authors recommended pathogen specific abortions reporting and investigation which our work has contributed to (Gachohi et al., 2024). Such call centres can provide added value to both farmers and policy makers. For example, farmers can seek technical guidance on farm management and have the opportunity to report any unusual or suspected conditions at the farm. At a policy level, they can complement existing surveillance infrastructure at Uganda's Ministry of health and office of the Prime Minister such as the national level emergence operations centre (Ario et al., 2022) and the National One Health Platform (Buregyeya et al., 2020) respectively. These organisations have technical staff who can analyse and interpret phone reports. Furthermore, from the animal health sector perspective, the set up of a national level abortions surveillance system could build on existing systems like the electronic infectious diseases surveillance (eIDS) system under MAAIF. Looking beyond Uganda, neighbouring Kenya has already established such an integrated animal health system (Njenga et al., 2021). Setting up call centres has been previously championed under the Ministry of Health Uganda during both peak moments of different epidemics such as the SARS-CoV2 pandemic (Katana et al., 2024), for Ebola Virus disease (Kiggundu, 2022) and for longer-term endemic infections such as HIV/AIDS and Tuberculosis. Establishing district-level call centres in DVO offices to facilitate livestock abortions reporting could provide a cost-effective and sustainable path to improve animal health surveillance in Uganda.

356 Syndromic surveillance is cheap as most people/farmers have phones, although the follow-
357 up/investigation of such reported cases may be expensive and require government investment.
358 Investment in development of pen-side diagnostics for RVF or by expanding access to existing
359 diagnostics through commercial or social enterprises could play an important role in addressing
360 this limitation. However, the high costs of investigating reported cases could also be minimised
361 by prioritising investigation of anomalous reports of abortions (either seasonally or
362 geographically). Establishing such criteria will require a longer, and more geographically
363 representative study than was possible for this pilot. Syndromic surveillance based on livestock
364 abortions may be imprecise in estimating the risk of RVF, due to the other circulating diseases
365 like brucellosis and Q-fever which will contribute to abortions, but is likely to be cheaper than
366 entomological surveillance. We found a high demand and interest from farmers to participate
367 in an abortion surveillance programme as they were eager to know the causes. This interest
368 could be leveraged to promote community level reporting through call centres. The access and
369 utilization of such point-of-care diagnostics would be built on grounds that farmers are willing
370 to invest in diagnosing and treating their sick animals.

371

372 Our results suggest that RVF was circulating among livestock within these communities as
373 evidenced by high IgG positivity across all livestock species. The relatively lower IgM
374 positivity is suggestive of less current circulation despite the confirmed presence of RVF in
375 four districts of Isingiro, Mbarara, Rubanda and Kazo in the 16th – 20th epidemiological weeks
376 (Kabami, 2023). The presence of RVF antibodies in Isingiro district could also be explained
377 by previous outbreaks in 2018, 2020 (Nyakarahuka et al., 2023c). The nationwide
378 seroprevalence study by Nyakarahuka et al showed that RVF was circulating in over 37/135
379 districts across the five regions in Uganda (Nyakarahuka et al., 2023c). An ecological niche
380 model for Uganda also suggested that Isingiro district was a high risk area and the authors
381 recommended surveillance activities to be targeted in such areas (Tumusiime et al., 2023a). In
382 comparison with Kenya's IgG RVF cattle seroprevalence picture (an indication to previous
383 exposure to RVF), Owange et al reported 13.1% (183/1396) in 2014 (Owange et al., 2014a),
384 Nanyingi et al reported 33.3% (95% CI [6.7–60]) in 2017, Bett et al reported 37.10% (30.72 –
385 43.84) in 2018. Our IgG seroprevalence of 38% is not dissimilar to that seen in endemically
386 infected populations, however our study population of animals with recent abortion might be
387 expected to be at a higher risk of exposure.

388

389 In our study, abortions were reported across different stages of pregnancy, ranging from early
390 to late stages, which would be highly suggestive of endemic RVF (Oymans et al., 2020).
391 According to the World Organization of Animal Health differential diagnosis of livestock
392 diseases, RVF is expected to cause abortion storms (for epidemic) conditions but under
393 endemic conditions it repeatedly causes abortions at different stages of pregnancy (Gerdes,
394 2004), as reported here.

395

396 We found animals with both RVF and brucellosis antibodies. Given that our entry point was
397 livestock abortions to confirm potential causes, our screening for RVF and brucellosis was
398 important as both are likely to contribute to the occurrence of abortions. This finding
399 underscores the need to set up integrated livestock diseases surveillance which could be
400 supported by development and deployment of point-of-care diagnostics that have multiple
401 assays. Early warning systems could be designed with different signals to distinguish the
402 contribution of RVF to observed abortions in comparison to other abortion causing pathogens.
403 Cattle had a higher risk to be positive for IgG antibodies for RVF. This observed higher risk of
404 exposure in cattle may simply be done to the longer expected lifespan of this species compared
405 to sheep and goats. This longer duration could be linked to thus the IgG antibodies. Several
406 studies have reported similar findings, linking higher prevalence in cattle to the greater
407 opportunity for exposure to RVF virus (Jeanmaire et al., 2011; Nyakarahuka et al., 2018b;
408 Owange et al., 2014b). However, this observation is quite different from the historically known
409 RVF epidemiology which implicates sheep and goats more than cattle (Anywaine et al., 2022;
410 Birungi et al., 2021). This discrepancy could potentially be explained by the far higher number
411 of cattle in our study and the distinction between risk of clinical illness and the presence of IgG
412 antibodies which we measure.

413 Cattle contributed the highest number of samples collected followed by goats and sheep.
414 Multiple reports/samples taken from the same farm could have skewed distribution towards
415 cattle, or it may be that farmers were more likely to report cattle due to their value. Previous
416 studies in Uganda (Nyakarahuka et al., 2018, 2023a, 2023c) and neighbouring countries like
417 Kenya (Hassan et al., 2020; Muturi et al., 2023) have also found surprisingly low rates of
418 reports of abortions in sheep. However, the small number of sheep included in the study, means
419 we could not measure the (relative) risk of infection infection in this species. The small number
420 of sheep in the study is a representative of national-wide livestock statistics picture, for example

421 the 2021 livestock census showed that Uganda had 17.4 million goats, 14.5 Million cattle and
422 4.4 million sheep (UBOS, 2024).

423 The risk of introduction of RVF through livestock movements has also been highlighted by
424 previous studies (Kim et al., 2021; Tigoï et al., 2020). Despite hearing anecdotal reports of
425 cross-border movements between Uganda and Tanzania throughout Isingiro District through
426 the porous borders and nomadic grazing grounds, livestock movement was not a statistically
427 significant factor in our study. This could be a consequence of our sample size but most likely
428 the fewer number of farms reporting livestock movements. For example only 3/184 farms
429 reported history of animal movements. The tracking of animal movements in Uganda is not
430 well established and synchronized (González-Gordon et al., 2023; Hasahya et al., 2023; Payne
431 et al., 2021). For example, the available animal movement tracking efforts are for those to be
432 transported on major/highway roads and the motivation is trade and revenue generation. The
433 movements at sub-national/districts level like our study area is hardly tracked yet such data
434 would be very important. Even with the minimal animal movements reported could not be
435 verified at farm level by the research team. In addition, there is poor book keeping at farm level
436 in our study area. Therefore, there should be caution in interpreting our model output on this
437 particular variable. We recommend an intentional animal movement registry at farm level that
438 could synchronize with a national-level database for animal movements. This is specifically
439 important at farm level because the few national-level tracked animal movements 34% are for
440 breeding purposes yet this movement poses a risk for disease transmission between farms.

441 We had expected that social media platforms would have enhanced the ease of reporting but
442 found that telephone was overwhelmingly the preferred mode of reporting livestock abortions.
443 We attribute this to the rural nature of the study area that is faced with challenges for electricity
444 and internet connectivity which jeopardises the use of internet-based/online based reporting
445 systems (J et al., 2023; Lo and Kibalya, 2023). Our results therefore suggest that mobile phones
446 are still the most effective platform for the establishment of syndromic surveillance system in
447 low-income countries where internet connectivity is not well developed.

448 Our study area was characterized by environmental features such as shrubs and grass, areas of
449 stagnant water and the slow flow of River Kagera all of which are likely to contribute to
450 survival and breeding of the Culex and Aedes mosquito species which are critical for RVF
451 spread (Muturi et al., 2023; Nanyingi et al., 2015). Given the ubiquity of these features in the
452 study area it is perhaps not surprising that environmental factors were not identified as risk
453 factors.

454

455 Our study had a number of strengths; we have piloted the establishment of livestock abortions
456 reporting/surveillance and showed that this is feasible. We have also demonstrated that
457 investigation of livestock abortions can aid diagnosis of brucellosis and RVF. We have added
458 a further justification on the prioritisation of phone-based reporting for community level
459 disease surveillance in low-income countries where internet/online platforms are not well
460 developed. We innovatively recruited private veterinary officers/practitioners who sell
461 veterinary services like drugs to the livestock farmers. The integration of private practitioners
462 in surveillance could be adopted by MAAIF to help meet the most pressing animal health needs
463 of the community. We developed RVF IEC materials and built capacity for public health and
464 veterinary staff working with Isingiro district which is very important for sustainability of
465 livestock abortions surveillance.

466 There were some limitations in our study; we conducted this study over a relatively short period
467 (March – June 2023) and could therefore not measure any seasonal patterns in livestock
468 abortions. The high demand from farmers mean that we exhausted our resources for testing in
469 only three months (rather than the six months originally planned). Better understanding of the
470 seasonal pattern of abortions would help the development of early warning systems for RVF
471 given the strong seasonal risk of exposure driven by mosquito population dynamics. The
472 demand and willingness for farmers to participate in this pilot study demonstrates the feasibility
473 of carrying out a longer study in these communities. Extending our study over (at least) a year
474 and a wider geographic range could allow the association between abortion rates and RVF
475 transmission to be modelled and potentially to identify early warning signals that do not depend
476 on expensive diagnostics.

477 We only sampled animals with evidence of recent abortions denying us the opportunity to
478 assess the risk of RVF in the general livestock population. Being a cross-sectional study, we
479 cannot test for a causal relationship between livestock abortions and RVF infection. Due to
480 budget constraints, we only screened for RVF and Brucellosis, yet there are other pathogens
481 (parasitic, fungal, viral and bacterial) which are also known to cause abortions in livestock (in
482 particular bluetongue virus, Q fever and *Campylobacter* spp.). Ticks are common in the study
483 area which could contribute to abortions from other causes.

484

485

486

487

488

489

490 **Conclusion**

491
492 Through this study, we established the feasibility of setting up call centres for surveillance of
493 livestock abortions in Uganda and found a high prevalence of exposure to RVF in animals that
494 have recently experienced abortions. The demand and interest of livestock farmers to
495 participate in such a surveillance programme was high as they are eager to know the cause(s)
496 of abortions. Despite this, reporting may only be sustained if reported calls result in follow-up
497 investigations and results disseminated to the farmers. This being a cross sectional study, it is
498 not possible to infer a causal association between RVF and abortions but our estimates of
499 seroprevalence are similar to those in neighbouring countries like Kenya where RVF is
500 endemic.

501 **Acknowledgments**

502 First, we acknowledge technical guidance and permission to conduct this study from Dr. Anna
503 Rose Ademun, the commissioner Animal Health – MAAIF. We are grateful for funding for
504 this fieldwork from Biotechnology and Biological Sciences Research Council (BBSRC)
505 Impact Acceleration Account award, Public Engagement Starter Grant, Nigeria Travel Grant
506 from University of Cambridge Centre for African Studies. AJKC and JLNW were supported
507 by The Alborada Trust. AWW was supported by Cambridge Trust for his doctoral studies at
508 University of Cambridge, United Kingdom. Furthermore, special appreciation to CEHA for
509 administrative support during this fieldwork in Uganda.

510 We acknowledge Dr Robert Ofwete and Micheal Wambi for their support in spatial
511 visualization of Fig 1 and 2 respectively. We acknowledge the farmers whom we worked
512 closely during the establishment of this pilot project in Isingiro District, Uganda. The technical
513 guidance during initial stages of conceptualization of this idea from Drs Jennifer Lord and
514 Joshua Longbottom are highly appreciated. The incredible grateful support from Ministry of
515 Agriculture, Animal Industries and Fisheries and Isingiro District Local Government for my
516 fieldwork in Uganda. Specifically, Isingiro staff including Dr Bruhan Kasozi (District
517 Veterinary Officer), Dr Edson Tumusherure (District Health Officer), Marion Alowo, Pius
518 Manigaruhanga, entire district health team and veterinary staff. MAAIF staff; Dr Dan
519 Tumusiime (Senior Veterinary Officer), Dr Ben Ssenkera (Senior Veterinary Officer), Dr
520 Robert Mwebe (Principal Veterinary Officer), Mr Olympia Mugarura and Mr Milton Bahati,
521 both laboratory technologists. Lastly, we appreciate the contribution of different research
522 assistants led by Mellon Ainembabazi and Noel Emma Esutu.

523

524 **Ethical Considerations**

525 This study is part of the corresponding authors PhD project. We sought and received ethical
526 approval to conduct the research from Makerere University School of Public Health (Reference
527 No: *SPH-2022-364*), Uganda National Council of Science and Technology (UNCST)
528 (Reference No: *A264ES*), and Human Biology Research Ethics Committee, University of
529 Cambridge, United Kingdom (Reference No: *HBREC.2023.02*). Lastly, we sought
530 administrative clearance from Isingiro district local governments' administration specifically
531 from the Chief Administrative Officer's office (dated *20th March 2023*) for this study to be
532 conducted.

533 Written informed consent from the research participants (Farmers/livestock owners) was
534 obtained for free and voluntary participation in the study. This was after understanding the
535 purpose and costs of the study. During the blood and vaginal swab collection, we also sought
536 written consent for photographing of the animals for potential detection of RVF and follow-up
537 for actions in future. These photos were only for identification of the animals should the vaginal
538 swabs turn positive for RVF for control strategies by Isingiro district Veterinary department or
539 MAAIF. To enhance understanding, we translated all the data collection tools and informed
540 consent into the local language (Runyankole) which was the most spoken language in the
541 Isingiro district. This will ease the understanding of the entire project for the participants to
542 consent. We further kept the information confidential by keeping identifying information
543 (telephone numbers) under key and lock but also coded. The data was analysed and published
544 in aggregate form to avoid identification of individual participants. The data is currently stored
545 under key and lock for the five years after publication as stipulated by UNCST.

546 **Author Contributions**

547 AWW, AJKC and JLNW conceptualized the study, developed protocols and analysed the data.
548 AJKC mobilized funds to implement this pilot study, LM supervised AWW during his
549 fieldwork in Uganda. EH, ARA and SAA gave technical guidance to AWW during fieldwork
550 in Isingiro district and laboratory analysis at NADDEC. AWW and AJKC drafted the first
551 version of the manuscript. EH, LM, SAA, ARA and JLNW reviewed and gave technical input
552 to the manuscript. All authors approved the final version of the manuscript.

553

554

555

556 **References**

- 557
- 558 Aceng, F.L., Kayiwa, J., Elyanu, P., Ojwang, J., Nyakarahuka, L., Balinandi, S., Byakika-
- 559 Tusiime, J., Wejuli, A., Harris, J.R., Opolot, J., 2023. Rift valley fever outbreak in
- 560 Sembabule District, Uganda, December 2020. *One Health Outlook* 5, 16.
- 561 <https://doi.org/10.1186/s42522-023-00092-3>
- 562 Adonia, B.K.K., 2013. The cost of poor land use practices in Lake Nakivale Wetland in Isingiro
- 563 District, Uganda. *African Journal of Environmental Science and Technology* 7, 448–
- 564 456. <https://doi.org/10.5897/AJEST2013.1490>
- 565 Ahmed, H., Yoder, J., de Glanville, W.A., Davis, A., Kibona, T.J., Mmbaga, B.T., Lankester,
- 566 F., Swai, E.S., Cleaveland, S., 2019. Economic burden of livestock disease and drought
- 567 in Northern Tanzania. *Journal of Development and Agricultural Economics* 11, 140–
- 568 151. <https://doi.org/10.5897/JDAE2018.1028>
- 569 Akwongo, C.J., Kakooza, S., 2022. Exposure to *Brucella* spp. in Goats and Sheep in Karenga
- 570 District, Uganda Diagnosed by Modified Rose Bengal Method. *Zoonotic Diseases* 2,
- 571 163–171. <https://doi.org/10.3390/zoonoticdis2030015>
- 572 Animal Diseases [WWW Document], n.d. . WOAHP - World Organisation for Animal Health.
- 573 URL [https://www.woah.org/en/what-we-do/animal-health-and-welfare/animal-](https://www.woah.org/en/what-we-do/animal-health-and-welfare/animal-diseases/)
- 574 [diseases/](https://www.woah.org/en/what-we-do/animal-health-and-welfare/animal-diseases/) (accessed 2.2.24).
- 575 Anywaine, Z., Lule, S.A., Hansen, C., Warimwe, G., Elliott, A., 2022. Clinical manifestations
- 576 of Rift Valley fever in humans: Systematic review and meta-analysis. *PLOS Neglected*
- 577 *Tropical Diseases* 16, e0010233. <https://doi.org/10.1371/journal.pntd.0010233>
- 578 Ario, A.R., Makumbi, I., Kadobera, D., Bulage, L., Ocom, F., Kwesiga, B., Jarvis, D.F.,
- 579 Nabatanzi, S., Homby, J., Banage, F., Brown, V., Harris, J.R., Boore, A.L., Nelson, L.J.,
- 580 Binder, S., Mwebesa, H.G., Aceng, J.R., 2022. Uganda National Institute of Public
- 581 Health: Establishment and Experiences, 2013–2021. *Global Health: Science and*
- 582 *Practice* 10. <https://doi.org/10.9745/GHSP-D-21-00784>
- 583 Aruho, R., MacLeod, E.T., Manirakiza, L., Rwego, I.B., 2021. A serological survey of
- 584 brucellosis in wildlife in four major National Parks of Uganda. *BMC Vet Res* 17, 95.
- 585 <https://doi.org/10.1186/s12917-021-02782-4>
- 586 Bailey, J.M.M., Charles L., 1988. RIFT Valley Fever, in: *The Arboviruses*. CRC Press.
- 587 Bett, B., Lindahl, J., Sang, R., Wainaina, M., Kairu-Wanyoike, S., Bukachi, S., Njeru, I.,
- 588 Karanja, J., Ontiri, E., Njenga, M.K., Wright, D., Warimwe, G.M., Grace, D., 2019.
- 589 Association between Rift Valley fever virus seroprevalences in livestock and humans

- 590 and their respective intra-cluster correlation coefficients, Tana River County, Kenya.
591 *Epidemiology & Infection* 147, e67. <https://doi.org/10.1017/S0950268818003242>
- 592 Bird, B.H., Ksiazek, T.G., Nichol, S.T., MacLachlan, N.J., 2009. Rift Valley fever virus. *Javma*
593 234, 883–893. <https://doi.org/10.2460/javma.234.7.883>
- 594 Birungi, D., Aceng, F.L., Bulage, L., Nkonwa, I.H., Mirembe, B.B., Biribawa, C.,
595 Okethwangu, D., Opio, N.D., Monje, F., Muwanguzi, D., Ndumu, D.B., Aruho, R.,
596 Lumu, P., Lutwama, J., Kwesiga, B., Ario, A.R., 2021. Sporadic Rift Valley Fever
597 Outbreaks in Humans and Animals in Uganda, October 2017–January 2018. *Journal of*
598 *Environmental and Public Health* 2021, e8881191.
599 <https://doi.org/10.1155/2021/8881191>
- 600 Budasha, N.H., Gonzalez, J.-P., Sebhatu, T.T., Arnold, E., 2018. Rift Valley fever
601 seroprevalence and abortion frequency among livestock of Kisoro district, South
602 Western Uganda (2016): a prerequisite for zoonotic infection. *BMC Veterinary*
603 *Research* 14, 271. <https://doi.org/10.1186/s12917-018-1596-8>
- 604 Bugeza, J., Roesel, K., Moriyon, I., Mugizi, D., Alinaitwe, L., Kivali, V., Kankya, C., Cook,
605 E.A.J., 2023. Sero-prevalence and factors associated with anti-Brucella antibodies in
606 slaughter livestock in Uganda. *Front. Epidemiol.* 3.
607 <https://doi.org/10.3389/fepid.2023.1213592>
- 608 Buregyeya, E., Atusingwize, E., Nsamba, P., Musoke, D., Naigaga, I., Kabasa, J.D., Amuguni,
609 H., Bazeyo, W., 2020. Operationalizing the One Health Approach in Uganda:
610 Challenges and Opportunities. *J Epidemiol Glob Health* 10, 250–257.
611 <https://doi.org/10.2991/jegh.k.200825.001>
- 612 Bwengye, E., Nagawa, G.M., Tumwesigye, W., 2023. Diversity of the On-Farm Crop Dry
613 Spell Adaptation Technologies in Isingiro Town Council, Isingiro District, Uganda.
614 *African Journal of Climate Change and Resource Sustainability* 2, 102–116.
615 <https://doi.org/10.37284/ajccrs.2.1.1275>
- 616 Clark, M.H.A., Warimwe, G.M., Nardo, A.D., Lyons, N.A., Gubbins, S., 2018. Systematic
617 literature review of Rift Valley fever virus seroprevalence in livestock, wildlife and
618 humans in Africa from 1968 to 2016. *PLOS Neglected Tropical Diseases* 12, e0006627.
619 <https://doi.org/10.1371/journal.pntd.0006627>
- 620 de Glanville, W.A., Allan, K.J., Nyarobi, J.M., Thomas, K.M., Lankester, F., Kibona, T.J.,
621 Claxton, J.R., Brennan, B., Carter, R.W., Crump, J.A., Halliday, J.E.B., Ladbury, G.,
622 Mmbaga, B.T., Mramba, F., Nyasebwa, O.M., Rubach, M.P., Rostal, M.K., Sanka, P.,
623 Swai, E.S., Szemiel, A.M., Willett, B.J., Cleaveland, S., 2022. An outbreak of Rift

- 624 Valley fever among peri-urban dairy cattle in northern Tanzania. *Transactions of The*
625 *Royal Society of Tropical Medicine and Hygiene* 116, 1082–1090.
626 <https://doi.org/10.1093/trstmh/trac076>
- 627 Dick, G.W.A., 1953. Paper: Epidemiological notes on some viruses isolated in Uganda (Yellow
628 fever, Rift Valley fever, Bwamba fever, West Nile, Mengo, Semliki forest,
629 Bunyamwera, Ntaya, Uganda S and Zika viruses). *Transactions of the Royal Society of*
630 *Tropical Medicine and Hygiene* 47, 13–48. [https://doi.org/10.1016/0035-](https://doi.org/10.1016/0035-9203(53)90021-2)
631 [9203\(53\)90021-2](https://doi.org/10.1016/0035-9203(53)90021-2)
- 632 Domfe, T., Njengele-Tetyana, Z., Mhlanga, N., Tetyana, P., Skepu, A., Ngila, J.C.,
633 Sikhwivhilu, L.M., 2022. Development of a Versatile Half-Strip Lateral Flow Assay
634 toward the Detection of Rift Valley Fever Virus Antibodies. *Diagnostics* 12, 2664.
635 <https://doi.org/10.3390/diagnostics12112664>
- 636 Ebogo-Belobo, J.T., Kenmoe, S., Abanda, N.N., Bowo-Ngandji, A., Mbagu, D.S., Magoudjou-
637 Pekam, J.N., Kame-Ngasse, G.I., Tchatchouang, S., Menkem, E.Z., Okobalemba, E.A.,
638 Noura, E.A., Meta-Djoms, D., Maïdadi-Foudi, M., Kenfack-Zanguim, J., Kenfack-
639 Momo, R., Kengne-Nde, C., Esemu, S.N., Mbacham, W.F., Sadeuh-Mba, S.A., Ndip,
640 L., Njouom, R., 2023. Contemporary epidemiological data of Rift Valley fever virus in
641 humans, mosquitoes and other animal species in Africa: A systematic review and meta-
642 analysis. *Veterinary Medicine and Science* 9, 2309–2328.
643 <https://doi.org/10.1002/vms3.1238>
- 644 Gachohi, J., Njoki, P., Mogoa, E., Otieno, F., Muturi, M., Mwatondo, A., Ngere, I., Dawa, J.,
645 Nasimiyu, C., Osoro, E., Bett, B., Njenga, K., 2024. Higher livestock abortion burden
646 in arid and semi-arid lands, Kenya, 2019–2020. *PLOS ONE* 19, e0297274.
647 <https://doi.org/10.1371/journal.pone.0297274>
- 648 Gerdes, G.H., 2004. Rift Valley fever. *Rev Sci Tech* 23, 613–623.
649 <https://doi.org/10.20506/rst.23.2.1500>
- 650 Glanville, W.A. de, Nyarobi, J.M., Kibona, T., Halliday, J.E.B., Thomas, K.M., Allan, K.J.,
651 Johnson, P.C.D., Davis, A., Lankester, F., Claxton, J.R., Rostal, M.K., Carter, R.W.,
652 Jong, R.M.F. de, Rubach, M.P., Crump, J.A., Mmbaga, B.T., Nyasebwa, O.M., Swai,
653 E.S., Willett, B., Cleaveland, S., 2022. Inter-epidemic Rift Valley fever virus infection
654 incidence and risks for zoonotic spillover in northern Tanzania. *PLOS Neglected*
655 *Tropical Diseases* 16, e0010871. <https://doi.org/10.1371/journal.pntd.0010871>
- 656 González-Gordon, L., Porphyre, T., Muwonge, A., Nantima, N., Ademun, R., Ochwo, S.,
657 Mwiine, N.F., Boden, L., Muhanguzi, D., Bronsvort, B.M. de C., 2023. Identifying

- 658 target areas for risk-based surveillance and control of transboundary animal diseases: a
659 seasonal analysis of slaughter and live-trade cattle movements in Uganda. *Sci Rep* 13,
660 18619. <https://doi.org/10.1038/s41598-023-44518-4>
- 661 Hadley Wickham, n.d. *ggplot2: Elegant Graphics for Data Analysis*. Springer-Verlag New
662 York.
- 663 Hadley Wickham and Mara Averick and Jennifer Bryan and Winston Chang and Lucy
664 D'Agostino McGowan and Romain François and Garrett Grolemund and Alex Hayes
665 and Lionel Henry and Jim Hester and Max Kuhn and Thomas Lin Pedersen and Evan
666 Miller and Stephan Milton Bache and Kirill Müller and Jeroen Ooms and David
667 Robinson and Dana Paige Seidel and Vitalie Spinu and Kohske Takahashi and Davis
668 Vaughan and Claus Wilke and Kara Woo and Hiroaki Yutani, n.d. Welcome to the
669 {tidyverse}.
- 670 Hartman, A., 2017. Rift Valley Fever. *Clinics in laboratory medicine* 37, 285.
671 <https://doi.org/10.1016/j.cll.2017.01.004>
- 672 Hasahya, E., Thakur, K., Dione, M.M., Kerfua, S.D., Mugezi, I., Lee, H.S., 2023. Analysis of
673 patterns of livestock movements in the Cattle Corridor of Uganda for risk-based
674 surveillance of infectious diseases. *Frontiers in Veterinary Science* 10.
- 675 Hassan, A., Muturi, M., Mwatondo, A., Omolo, J., Bett, B., Gikundi, S., Konongoi, L., Ofula,
676 V., Makayotto, L., Kasiti, J., Oele, E., Onyango, C., Gura, Z., Njenga, K., Munyua, P.,
677 2020. Epidemiological Investigation of a Rift Valley Fever Outbreak in Humans and
678 Livestock in Kenya, 2018. *Am J Trop Med Hyg* 103, 1649–1655.
679 <https://doi.org/10.4269/ajtmh.20-0387>
- 680 J, W.L., J, and A.S.E.W.L., E, and A.S., 2023. SOLVING THE ELECTRICITY ACCESS
681 DILEMMA IN RURAL UGANDA: A CASE STUDY OF SANGA SUB COUNTY
682 AND SANGA TOWN COUNCIL. *Top Academic Journal of Environmental and*
683 *Agricultural Sciences* 1, 9–22.
- 684 Jeanmaire, E.M., Rabenarivahiny, R., Biarmann, M., Rabibisoa, L., Ravaomanana, F.,
685 Randriamparany, T., Fy Andriamandimby, S., Diaw, C.S., Fenzara, P., de La Rocque,
686 S., Reynes, J.-M., 2011. Prevalence of Rift Valley Fever Infection in Ruminants in
687 Madagascar After the 2008 Outbreak. *Vector-Borne and Zoonotic Diseases* 11, 395–
688 402. <https://doi.org/10.1089/vbz.2009.0249>
- 689 Jenkin, D., Wright, D., Folegatti, P.M., Platt, A., Poulton, I., Lawrie, A., Tran, N., Boyd, A.,
690 Turner, C., Gitonga, J.N., Karanja, H.K., Mugo, D., Ewer, K.J., Bowden, T.A., Gilbert,
691 S.C., Charleston, B., Kaleebu, P., Hill, A.V.S., Warimwe, G.M., 2023. Safety and

- 692 immunogenicity of a ChAdOx1 vaccine against Rift Valley fever in UK adults: an
693 open-label, non-randomised, first-in-human phase 1 clinical trial. *The Lancet Infectious*
694 *Diseases* 23, 956–964. [https://doi.org/10.1016/S1473-3099\(23\)00068-3](https://doi.org/10.1016/S1473-3099(23)00068-3)
- 695 Kabami, Z., 2023. Notes from the Field: Rift Valley Fever Outbreak — Mbarara District,
696 Western Uganda, January–March 2023. *MMWR Morb Mortal Wkly Rep* 72.
697 <https://doi.org/10.15585/mmwr.mm7223a6>
- 698 Katana, E., Ndyabakira, A., Migisha, R., Gonahasa, D.N., Amana, G., Byaruhanga, A.,
699 Chebrot, I., Oundo, C., Kadobera, D., Bulage, L., Ario, A.R., Okello, D.A., Harris, J.R.,
700 2024. Use of a toll-free call center for COVID-19 response and continuity of essential
701 services during the lockdown, Greater Kampala, Uganda, 2020: a descriptive study.
702 *The Pan African Medical Journal* 47.
703 <https://doi.org/10.11604/pamj.2024.47.141.36203>
- 704 Kaur, A., Kumar, R., Sharma, A., 2023. Rift Valley Fever in Livestock Wildlife and Humans:
705 A Review. *Journal of Zoonotic Diseases* 7, 325–332.
706 <https://doi.org/10.22034/jzd.2023.16766>
- 707 Kiggundu, T., 2022. Notes from the Field: Outbreak of Ebola Virus Disease Caused by Sudan
708 ebolavirus — Uganda, August–October 2022. *MMWR Morb Mortal Wkly Rep* 71.
709 <https://doi.org/10.15585/mmwr.mm7145a5>
- 710 Kim, Y., Métras, R., Dommergues, L., Youssouffi, C., Combo, S., Godais, G.L., Pfeiffer, D.U.,
711 Cêtre-Sossah, C., Cardinale, E., Filleul, L., Youssouf, H., Subiros, M., Fournié, G.,
712 2021. The role of livestock movements in the spread of Rift Valley fever virus in
713 animals and humans in Mayotte, 2018–19. *PLOS Neglected Tropical Diseases* 15,
714 e0009202. <https://doi.org/10.1371/journal.pntd.0009202>
- 715 Kiyaga, C., Sendagire, H., Joseph, E., McConnell, I., Grosz, J., Narayan, V., Esiru, G., Elyanu,
716 P., Akol, Z., Kirungi, W., Musinguzi, J., Opio, A., 2013. Uganda’s New National
717 Laboratory Sample Transport System: A Successful Model for Improving Access to
718 Diagnostic Services for Early Infant HIV Diagnosis and Other Programs. *PLOS ONE*
719 8, e78609. <https://doi.org/10.1371/journal.pone.0078609>
- 720 Kweyu, R.M., Asokan, S.M., Ndesanjo, R.B., Obando, J.A., Tumbo, M.H., 2023. Climate
721 Governance in Eastern Africa: The Challenges and Prospects of Climate Change
722 Adaptation Policies, in: Onyango, G. (Ed.), *State Politics and Public Policy in Eastern*
723 *Africa: A Comparative Perspective*. Springer International Publishing, Cham, pp. 347–
724 369. https://doi.org/10.1007/978-3-031-13490-6_16

- 725 Lakshminarasimhappa, M.C., 2022. Web-Based and Smart Mobile App for Data Collection:
726 Kobo Toolbox / Kobo Collect. *Journal of Indian Library Association* 57, 72–79.
- 727 Lo, K., Kibalya, B., 2023. Electric cooperatives and the political economy of rural
728 electrification in Africa: Insights from Uganda. *The Electricity Journal* 36, 107238.
729 <https://doi.org/10.1016/j.tej.2023.107238>
- 730 Lokamar, P.N., Kutwah, M.A., Atieli, H., Gumo, S., Ouma, C., 2020. Socio-economic impacts
731 of brucellosis on livestock production and reproduction performance in Koibatek and
732 Marigat regions, Baringo County, Kenya. *BMC Veterinary Research* 16, 61.
733 <https://doi.org/10.1186/s12917-020-02283-w>
- 734 Matsiela, M.S., Naicker, L., Khoza, T., Mokoena, N., 2023. Safety and immunogenicity of
735 inactivated Rift Valley Fever Smithburn viral vaccine in sheep. *Virology* 20, 221.
736 <https://doi.org/10.1186/s12985-023-02180-2>
- 737 Monje, F., Kadobera, D., Ndumu, D.B., Bulage, L., Ario, A.R., 2021. Trends and spatial
738 distribution of animal bites and vaccination status among victims and the animal
739 population, Uganda: A veterinary surveillance system analysis, 2013-2017. *PLoS Negl
740 Trop Dis* 15, e0007944. <https://doi.org/10.1371/journal.pntd.0007944>
- 741 Mubiru, S., Marshall, K., Lukuyu, B.A., Oba, P., Ahumuza, R., Ouma, E.A., 2023. Beef value
742 chain situation analysis for Uganda. ILRI.
- 743 Muema, C., Ngarega, B.K., Muturi, E., Wei, H., Yang, H., 2021. Present and Future Ecological
744 Niche Modeling of Rift Valley fever in East Africa in Response to Climate Change.
745 <https://doi.org/10.1101/2021.03.03.433832>
- 746 Muma, J.B., Samui, K.L., Siamudaala, V.M., Oloya, J., Matope, G., Omer, M.K., Munyeme,
747 M., Mubita, C., Skjerve, E., 2006. Prevalence of antibodies to *Brucella* spp. and
748 individual risk Factors of Infection in Traditional Cattle, Goats and Sheep Reared in
749 Livestock–Wildlife Interface Areas of Zambia. *Trop Anim Health Prod* 38, 195–206.
750 <https://doi.org/10.1007/s11250-006-4320-9>
- 751 Muturi, M., Mwatondo, A., Nijhof, A.M., Akoko, J., Nyamota, R., Makori, A., Nyamai, M.,
752 Nthiwa, D., Wambua, L., Roesel, K., Thumbi, S.M., Bett, B., 2023. Ecological and
753 subject-level drivers of interepidemic Rift Valley fever virus exposure in humans and
754 livestock in Northern Kenya. *Sci Rep* 13, 15342. <https://doi.org/10.1038/s41598-023-42596-y>
- 755
- 756 Nagasha, J.I., Mugisha, L., Kaase-Bwanga, E., Onyuth, H., Ocaido, M., 2019. Effect of climate
757 change on gender roles among communities surrounding Lake Mburo National Park,
758 Uganda. *Emerald Open Research* 1. <https://doi.org/10.1108/EOR-06-2023-0002>

- 759 Nanyingi, M.O., Muchemi, G.M., Thumbi, S.M., Ade, F., Onyango, C.O., Kiama, S.G., Bett,
760 B., 2017. Seroepidemiological Survey of Rift Valley Fever Virus in Ruminants in
761 Garissa, Kenya. *Vector-Borne and Zoonotic Diseases* 17, 141–146.
762 <https://doi.org/10.1089/vbz.2016.1988>
- 763 Nanyingi, M.O., Munyua, P., Kiama, S.G., Muchemi, G.M., Thumbi, S.M., Bitek, A.O., Bett,
764 B., Muriithi, R.M., Njenga, M.K., 2015. A systematic review of Rift Valley Fever
765 epidemiology 1931–2014. *Infection Ecology & Epidemiology* 5, 28024.
766 <https://doi.org/10.3402/iee.v5.28024>
- 767 Ndumu, D.B., Bakamutumaho, B., Miller, E., Nakayima, J., Downing, R., Balinandi, S.,
768 Monje, F., Tumusiime, D., Nanfuka, M., Meunier, N., Arinaitwe, E., Rutebarika, C.,
769 Kidega, E., Kyondo, J., Ademun, R., Njenga, K.M., Veas, F., Gonzalez, J.-P., 2021.
770 Serological evidence of Rift Valley fever virus infection among domestic ruminant
771 herds in Uganda. *BMC Veterinary Research* 17, 157. [https://doi.org/10.1186/s12917-](https://doi.org/10.1186/s12917-021-02867-0)
772 [021-02867-0](https://doi.org/10.1186/s12917-021-02867-0)
- 773 Njenga, M.K., Kemunto, N., Kahariri, S., Holmstrom, L., Oyas, H., Biggers, K., Riddle, A.,
774 Gachohi, J., Muturi, M., Mwatondo, A., Gakuya, F., Lekolool, I., Sitawa, R., Apamaku,
775 M., Osoro, E., Widdowson, M.-A., Munyua, P., 2021. High real-time reporting of
776 domestic and wild animal diseases following rollout of mobile phone reporting system
777 in Kenya. *PLOS ONE* 16, e0244119. <https://doi.org/10.1371/journal.pone.0244119>
- 778 Nyakarahuka, L., Kyondo, J., Telford, C., Whitesell, A., Tumusiime, A., Mulei, S., Baluku, J.,
779 Cossaboom, C.M., Cannon, D.L., Montgomery, J.M., Lutwama, J.J., Nichol, S.T.,
780 Balinandi, S., Klena, J.D., Shoemaker, T.R., 2023a. A Countrywide
781 Seroepidemiological Survey of Rift Valley Fever in Livestock, Uganda, 2017. *Am J*
782 *Trop Med Hyg* 109, 548–553. <https://doi.org/10.4269/ajtmh.22-0504>
- 783 Nyakarahuka, L., Kyondo, J., Telford, C., Whitesell, A., Tumusiime, A., Mulei, S., Baluku, J.,
784 Cossaboom, C.M., Cannon, D.L., Montgomery, J.M., Lutwama, J.J., Nichol, S.T.,
785 Balinandi, S., Klena, J.D., Shoemaker, T.R., 2023b. A Countrywide
786 Seroepidemiological Survey of Rift Valley Fever in Livestock, Uganda, 2017. *Am J*
787 *Trop Med Hyg* 109, 548–553. <https://doi.org/10.4269/ajtmh.22-0504>
- 788 Nyakarahuka, L., Maurice, A. de S., Purpura, L., Ervin, E., Balinandi, S., Tumusiime, A.,
789 Kyondo, J., Mulei, S., Tusiime, P., Lutwama, J., Klena, J.D., Brown, S., Knust, B.,
790 Rollin, P.E., Nichol, S.T., Shoemaker, T.R., 2018a. Prevalence and risk factors of Rift
791 Valley fever in humans and animals from Kabale district in Southwestern Uganda,

- 792 2016. PLOS Neglected Tropical Diseases 12, e0006412.
793 <https://doi.org/10.1371/journal.pntd.0006412>
- 794 Nyakarahuka, L., Maurice, A. de S., Purpura, L., Ervin, E., Balinandi, S., Tumusiime, A.,
795 Kyondo, J., Mulei, S., Tusiime, P., Lutwama, J., Klena, J.D., Brown, S., Knust, B.,
796 Rollin, P.E., Nichol, S.T., Shoemaker, T.R., 2018b. Prevalence and risk factors of Rift
797 Valley fever in humans and animals from Kabale district in Southwestern Uganda,
798 2016. PLOS Neglected Tropical Diseases 12, e0006412.
799 <https://doi.org/10.1371/journal.pntd.0006412>
- 800 Nyakarahuka, L., Whitmer, S., Klena, J., Balinandi, S., Talundzic, E., Tumusiime, A., Kyondo,
801 J., Mulei, S., Patel, K., Baluku, J., Akurut, G., Namanya, D., Kamugisha, K.,
802 Cossaboom, C., Whitesell, A., Telford, C., Graziano, J., Montgomery, J., Nichol, S.,
803 Lutwama, J., Shoemaker, T., 2023c. Detection of Sporadic Outbreaks of Rift Valley
804 Fever in Uganda through the National Viral Hemorrhagic Fever Surveillance System,
805 2017–2020. *Am J Trop Med Hyg* 108, 995–1002. [https://doi.org/10.4269/ajtmh.22-](https://doi.org/10.4269/ajtmh.22-0410)
806 0410
- 807 Nyamota, R., Maina, J., Akoko, J., Nthiwa, D., Mwatondo, A., Muturi, M., Wambua, L.,
808 Middlebrook, E.A., Bartlow, A.W., Fair, J.M., Bett, B., 2023. Seroprevalence of
809 *Brucella* spp. and Rift Valley fever virus among slaughterhouse workers in Isiolo
810 County, northern Kenya. *PLOS Neglected Tropical Diseases* 17, e0011677.
811 <https://doi.org/10.1371/journal.pntd.0011677>
- 812 Owange, N.O., Ogara, W.O., Affognon, H., Peter, G.B., Kasiiti, J., Okuthe, S., Onyango-
813 Ouma, W., Landmann, T., Sang, R., Mbabu, M., 2014a. Occurrence of rift valley fever
814 in cattle in Ijara district, Kenya. *Preventive Veterinary Medicine* 117, 121–128.
815 <https://doi.org/10.1016/j.prevetmed.2014.08.008>
- 816 Owange, N.O., Ogara, W.O., Affognon, H., Peter, G.B., Kasiiti, J., Okuthe, S., Onyango-
817 Ouma, W., Landmann, T., Sang, R., Mbabu, M., 2014b. Occurrence of rift valley fever
818 in cattle in Ijara district, Kenya. *Preventive Veterinary Medicine* 117, 121–128.
819 <https://doi.org/10.1016/j.prevetmed.2014.08.008>
- 820 Oymans, J., Schreur, P.J.W., Keulen, L. van, Kant, J., Kortekaas, J., 2020. Rift Valley fever
821 virus targets the maternal-foetal interface in ovine and human placentas. *PLOS*
822 *Neglected Tropical Diseases* 14, e0007898.
823 <https://doi.org/10.1371/journal.pntd.0007898>
- 824 Payne, A., Ogweng, P., Ståhl, K., Masembe, C., Jori, F., 2021. Spatial-Temporal Movements
825 of Free Ranging Pigs at the Wildlife-Livestock Interface of Murchison Falls National

- 826 Park, Uganda: Potential of Disease Control at a Local Scale. *Front. Vet. Sci.* 8.
827 <https://doi.org/10.3389/fvets.2021.689377>
- 828 Petrova, V., Kristiansen, P., Norheim, G., Yimer, S.A., 2020. Rift valley fever: diagnostic
829 challenges and investment needs for vaccine development. *BMJ Global Health* 5,
830 e002694. <https://doi.org/10.1136/bmjgh-2020-002694>
- 831 Qiu, Y., Guitian, J., Webster, J.P., Musallam, I., Haider, N., Drewe, J.A., Song, J., 2023. Global
832 prioritization of endemic zoonotic diseases for conducting surveillance in domestic
833 animals to protect public health. *Philosophical Transactions of the Royal Society B:*
834 *Biological Sciences* 378, 20220407. <https://doi.org/10.1098/rstb.2022.0407>
- 835 R Core Team (2023)., n.d. R: A Language and Environment for Statistical Computing_. R
836 Foundation for Statistical Computing, Vienna, Austria. <<https://www.R-project.org/>>.
- 837 Sasaya, T., Palacios, G., Briese, T., Di Serio, F., Groschup, M.H., Neriya, Y., Song, J.-W.,
838 Tomitaka, Y., 2023. ICTV Virus Taxonomy Profile: Phenuiviridae 2023. *Journal of*
839 *General Virology* 104, 001893. <https://doi.org/10.1099/jgv.0.001893>
- 840 Sekamatte, M., Krishnasamy, V., Bulage, L., Kihembo, C., Nantima, N., Monje, F., Ndumu,
841 D., Sentumbwe, J., Mbolanyi, B., Aruho, R., Kaboyo, W., Mutonga, D., Basler, C.,
842 Paige, S., Behravesh, C.B., 2018. Multisectoral prioritization of zoonotic diseases in
843 Uganda, 2017: A One Health perspective. *PLOS ONE* 13, e0196799.
844 <https://doi.org/10.1371/journal.pone.0196799>
- 845 Seroprevalence and Associated Risk Factors of Rift Valley Fever in Domestic Small
846 Ruminants in the North Region of Cameroon [WWW Document], n.d. URL
847 <https://www.hindawi.com/journals/vmi/2019/8149897/> (accessed 4.22.24).
- 848 Shoemaker, T.R., Nyakarahuka, L., Balinandi, S., Ojwang, J., Tumusiime, A., Mulei, S.,
849 Kyondo, J., Lubwama, B., Sekamatte, M., Namutebi, A., Tusiime, P., Monje, F.,
850 Mayanja, M., Ssendagire, S., Dahlke, M., Kyazze, S., Wetaka, M., Makumbi, I.,
851 Borchert, J., Zufan, S., Patel, K., Whitmer, S., Brown, S., Davis, W.G., Klena, J.D.,
852 Nichol, S.T., Rollin, P.E., Lutwama, J., 2019. First Laboratory-Confirmed Outbreak of
853 Human and Animal Rift Valley Fever Virus in Uganda in 48 Years. *Am J Trop Med*
854 *Hyg* 100, 659–671. <https://doi.org/10.4269/ajtmh.18-0732>
- 855 Signorell A (2023), n.d. DescTools: Tools for Descriptive Statistics.
856 [sub-handbook.pdf](#), n.d.
- 857 Taremwa, I.M., Ashaba, S., Ayebazibwe, C., Kemeza, I., Adrama, H.O., Omoding, D., Yatuha,
858 J., Hilliard, R., 2020. Mind the gap: scaling up the utilization of insecticide treated
859 mosquito nets using a knowledge translation model in Isingiro district, rural south

860 western Uganda. *Health Psychology and Behavioral Medicine* 8, 383–397.
861 <https://doi.org/10.1080/21642850.2020.1814782>

862 Thumbi, S.M., Njenga, M.K., Otiang, E., Otieno, L., Munyua, P., Eichler, S., Widdowson, M.-
863 A., McElwain, T.F., Palmer, G.H., 2019. Mobile phone-based surveillance for animal
864 disease in rural communities: implications for detection of zoonoses spillover.
865 *Philosophical Transactions of the Royal Society B: Biological Sciences* 374, 20190020.
866 <https://doi.org/10.1098/rstb.2019.0020>

867 Tigoi, C., Sang, R., Chepkorir, E., Orindi, B., Arum, S.O., Mulwa, F., Mosomtai, G., Limbaso,
868 S., Hassan, O.A., Irura, Z., Ahlm, C., Evander, M., 2020. High risk for human exposure
869 to Rift Valley fever virus in communities living along livestock movement routes: A
870 cross-sectional survey in Kenya. *PLOS Neglected Tropical Diseases* 14, e0007979.
871 <https://doi.org/10.1371/journal.pntd.0007979>

872 Tumusiime, D., Isingoma, E., Tashoroora, O.B., Ndumu, D.B., Bahati, M., Nantima, N.,
873 Mugizi, D.R., Jost, C., Bett, B., 2023a. Mapping the risk of Rift Valley fever in Uganda
874 using national seroprevalence data from cattle, sheep and goats. *PLOS Neglected*
875 *Tropical Diseases* 17, e0010482. <https://doi.org/10.1371/journal.pntd.0010482>

876 Tumusiime, D., Isingoma, E., Tashoroora, O.B., Ndumu, D.B., Bahati, M., Nantima, N.,
877 Mugizi, D.R., Jost, C., Bett, B., 2023b. Mapping the risk of Rift Valley fever in Uganda
878 using national seroprevalence data from cattle, sheep and goats. *PLOS Neglected*
879 *Tropical Diseases* 17, e0010482. <https://doi.org/10.1371/journal.pntd.0010482>

880 Tumusiime, D., Nijhof, A.M., Groschup, M.H., Lutwama, J., Roesel, K., Bett, B., 2023c.
881 Participatory survey of risk factors and pathways for Rift Valley fever in pastoral and
882 agropastoral communities of Uganda. *Preventive Veterinary Medicine* 106071.
883 <https://doi.org/10.1016/j.prevetmed.2023.106071>

884 UBOS, 2024. NATIONAL LIVESTOCK CENSUS 2021 MAIN REPORT.

885 Walt, M. van der, Rakaki, M.E., MacIntyre, C., Mendes, A., Junglen, S., Theron, C., Anthony,
886 T., O'Dell, N., Venter, M., 2023. Identification and Molecular Characterization of
887 Shamonda Virus in an Aborted Goat Fetus in South Africa. *Pathogens* 12, 1100.
888 <https://doi.org/10.3390/pathogens12091100>

889
890
891
892
893

894 **Supporting information**

895 **S1 Table: Socio-demographic characteristics of respondents**

| Variable | Frequency (n) | Percentages (%) |
|---|----------------------|------------------------|
| Animal species tested for RVF | | |
| Cattle | 106 | 58 |
| Goats | 66 | 36 |
| Sheep | 12 | 7 |
| Animal breeds in the study area (n=52) | | |
| Exotic | 5 | 10 |
| Crossbreed/hybrid | 25 | 48 |
| Locals (Ankole (<i>Bos taurus indicus</i>), East African shorthorn Zebu (<i>Bos indicus</i>)) | 22 | 42 |
| Gender of respondent | | |
| Females | 26 | 14 |
| Males | 158 | 86 |
| Means of reporting to the call centre (n=52) | | |
| Phone Calls | 52 | 100 |
| Number of livestock abortions reported (n=52) | | |
| Median (4.0 IQR 3.0) | | |
| Occupation of the respondent | | |
| Transport cyclist | 2 | 1 |
| Teacher | 6 | 3 |
| Small scale farmers | 5 | 3 |
| Herdsmen | 159 | 86 |
| Political leaders | 5 | 3 |
| Others (religious leader, soldier, business) | 4 | 2 |
| Education level of the respondent | | |
| Advanced level | 14 | 8 |
| Bachelors | 5 | 3 |
| Certificate | 13 | 7 |
| Diploma | 12 | 7 |
| No education | 81 | 44 |
| Ordinary level | 58 | 32 |
| Masters degree | 1 | 0 |
| Household size | | |
| Median; 10 IQR 4.25 | | |
| Animal Clinical presentations at farm level* | | |
| W | 95 | 52 |
| X | 29 | 16 |
| Y | 18 | 10 |
| Z | 24 | 13 |
| I don't know | 18 | 10 |
| Stages of the pregnancy | | |
| Early stage (1-3 months) | 73 | 40 |
| Middle stage (4-6 months) | 62 | 34 |
| Late stage (7-9 months) | 45 | 24 |

| | | |
|---|------------|------------|
| Not sure | 4 | 2 |
| Environmental Conditions around the farm** | | |
| A | 81 | 44 |
| B | 52 | 28 |
| C | 15 | 8 |
| D | 36 | 20 |
| History of animal movement | | |
| No | 181 | 98 |
| Yes | 3 | 2 |
| Reported Animal vaccination status | | |
| No | 184 | 100 |
| Total | 184 | 100 |

896 *W: Sudden onset of abortion among pregnant animals, Weakness /Unsteady gait
897 Mucopurulent nasal discharge, Profuse fetid diarrhoea, High fever. X: Any three of the above
898 symptoms, Y: Any two of the above symptoms, Z: Any one of the above symptoms
899 ** A: Bushes, Recent rainfall (less than 14 days), Heavy forests, Stagnant water. B: Only 3
900 present; Bushes, Stagnant water, Heavy forests. C: Only two present; Bushes, Recent rainfall
901 (less than 14 days). D: Only one present.

902
903
904
905
906
907
908
909
910
911
912
913
914
915
916
917
918
919
920
921
922
923
924
925
926
927
928
929
930
931
932
933

934 **S2 Table: Period for reporting of abortion cases**

935

| Variable | Before call centre establishment N = 10 | Target period (within 14 days) N = 174 | Total |
|-----------------------------------|--|---|--------------|
| Host | | | |
| Goats | 0 | 66 | 66 |
| Cattle | 10 | 96 | 106 |
| Sheep | 0 | 12 | 12 |
| Sub county | | | |
| Bugango Town council | 6 | 8 | 14 |
| Endinzi | 0 | 1 | 1 |
| Endinzi Town council | 0 | 1 | 1 |
| Kakamba | 0 | 17 | 17 |
| Kashumba | 0 | 40 | 40 |
| Kikagati | 0 | 6 | 6 |
| Mbaare | 4 | 10 | 14 |
| Ngarama | 0 | 13 | 13 |
| Ruborogota | 0 | 19 | 19 |
| Rugaaga | 0 | 43 | 43 |
| Rushasha | 0 | 12 | 12 |
| Rwanjogyera | 0 | 4 | 4 |
| Stage of pregnancy | | | |
| Early stage (1-3 months) | 4 | 69 | 73 |
| Middle stage (4-6 months) | 6 | 56 | 62 |
| Late stage (7-9 months) | 0 | 45 | 45 |
| Not sure | 0 | 4 | 4 |
| Environmental features | | | |
| A | 0 | 81 | 81 |
| B | 0 | 52 | 52 |
| C | 0 | 15 | 15 |
| D | 10 | 26 | 36 |
| History of animal movement | | | |
| No | 10 | 171 | 181 |
| Yes | 0 | 3 | 3 |
| Total | | | 184 |

936

937

938

939

940

941

942

943

944

945

946

947

S3 Table: Total number of abortion cases reported at the call centre

| Call centre Alert # | Geographical locations (subcounties) | Number of reported abortions (N) | Abortion cases investigated/ Sera samples collected (n) | Proportion sampled (%) | | |
|---------------------|--------------------------------------|----------------------------------|---|------------------------|---|---|
| 1 | Masha | 3 | * | | | |
| 2 | Masha | 1 | * | | | |
| 3 | Rwentango | 10 | * | | | |
| 4 | Ngarama | 21 | 13 | 57 | | |
| 5 | Ngarama | 2 | | | | |
| 6 | Kashumba | 4 | 40 | 66 | | |
| 7 | Kashumba | 3 | | | | |
| 8 | Kashumba | 1 | | | | |
| 9 | Kashumba | 30 | | | | |
| 10 | Kashumba | 3 | | | | |
| 11 | Kashumba | 5 | | | | |
| 12 | Kashumba | 4 | | | | |
| 13 | Kashumba | 8 | | | | |
| 14 | Kashumba | 3 | | | | |
| 15 | Bugango | 2 | | | * | |
| 16 | Bugango T/C | 6 | 14 | 100 | | |
| 17 | Bugango T/C | 3 | | | | |
| 50 | Bugango T/C | 5 | | | | |
| 18 | Mbaare | 10 | 14 | 78 | | |
| 19 | Mbaare | 8 | | | | |
| 20 | Nakivale | 1 | * | | | |
| 21 | Nakivale | 2 | * | | | |
| 22 | Nakivale | 1 | * | | | |
| 23 | Nakivale | 2 | * | | | |
| 24 | Kakamba | 24 | 17 | 71 | | |
| 25 | Rushasha | 28 | 12 | 43 | | |
| 26 | Endizi T/C | 10 | 1 | 2 | | |
| 27 | Endizi T/C | 8 | | | | |
| 28 | Endizi T/C | 6 | | | | |
| 29 | Endizi T/C | 5 | | | | |
| 30 | Endizi T/C | 6 | | | | |
| 31 | Endizi T/C | 5 | | | | |
| 32 | Endizi T/C | 3 | | | | |
| 35 | Endizi T/C | 5 | | | | |
| 36 | Endizi T/C | 14 | | | | |
| 37 | Endizi T/C | 5 | | | | |
| 38 | Endizi T/C | 4 | | | | |
| 39 | Endizi T/C | 3 | | | | |
| 40 | Endizi Subcounty | 16 | | | 1 | 3 |
| 41 | Endizi Subcounty | 3 | | | | |
| 42 | Endizi Subcounty | 8 | | | | |
| 43 | Endizi Subcounty | 4 | | | | |
| 44 | Endizi Subcounty | 3 | | | | |

| | | | | |
|----|------------------|------------|------------|----|
| 45 | Endizi Subcounty | 6 | | |
| 46 | Rugaga | 9 | 43 | 72 |
| 47 | Rugaga | 25 | | |
| 48 | Rugaga | 23 | | |
| 49 | Rugaga | 3 | | |
| 51 | Ruborogota | 22 | 19 | 86 |
| 52 | Kikagati | 30 | 6 | 19 |
| 53 | Kikagati | 2 | | |
| 33 | Rwanjogyera | 4 | 4 | 80 |
| 34 | Rwanjogyera | 1 | | |
| | Total | 423 | 184 | |

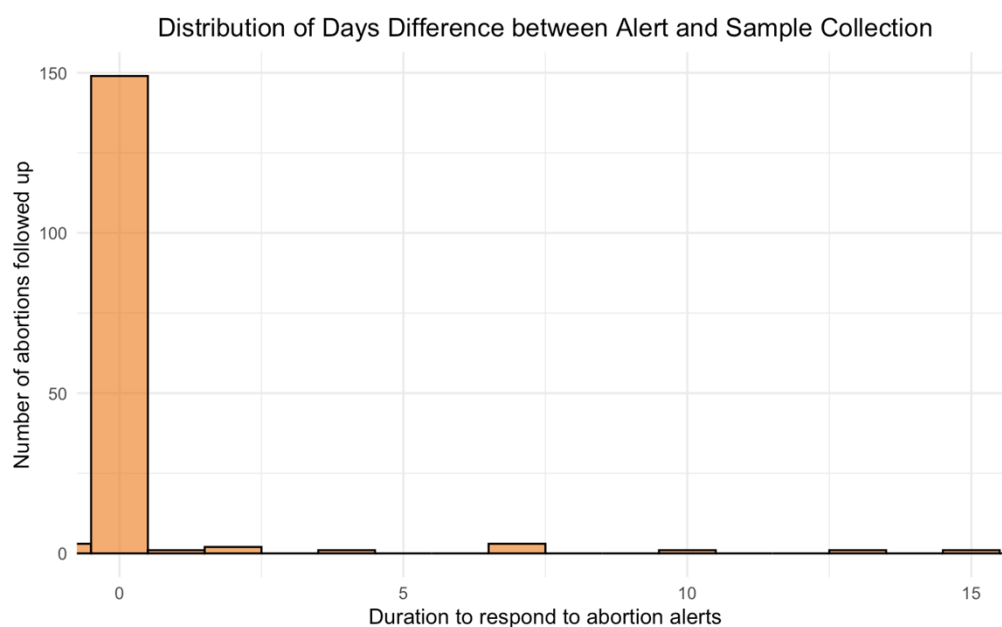
948 *Lost samples due to labelling loss during transportation to the national laboratory

949

950

951

952



953

954 *S1 Appendix: Delay between alert and investigation (days)*

955

956

957 **S2 Appendix: Questionnaire (Replicated from Predictive Factors and Risk Mapping for Rift**
958 **Valley Fever Epidemics in Kenya [1]**

02/02/2023, 08:30

Tool 1 (To be filled in by the call center)

Tool 1 (To be filled in by the call center)

Checklist for Community early warning system and reporting of abortions

Every entry is an abortion

1. Unique Id

2. Subcounty where abortion is reported

3. Village

4. Name of the reporter

5. Telephone number

6. Host species

- Cattle
- Goats
- Sheep

7. Age

8. Breed

- Local
- Exotic
- Mixed

9. Number of abortions reported

10. Action taken

- Ignored
- Investigated
- Referred

<https://ee.kobotoolbox.org/x/d5eezqxP>



02/02/2023, 08:30

Tool 1 (To be filled in by the call center)

11. Reporting platform

- SMS
- Facebook
- Whatsapp
- Calls

12. Date reported to the call center

yyyy-mm-dd

959

02/02/2023, 08:32

Tool 2 (To be filled in the community)

Tool 2 (To be filled in the community)

1. Unique Id

2. Gender of the respondent

- Male
 Female
 Prefer not to say

3. Age

4. Education level

- PhD
 Masters
 Bachelors
 Diploma
 Certificate
 Advanced level
 Ordinary level
 Illiterate

5. Occupation

6. Household size

7. Subcounty

- Birere
 Endizi
 Kabingo
 Kabuyanda
 Kashumba
 Kikagate
 Masha
 Nyakitunda
 Ngarama
 Rugaaga

8. Parish

9. Village

10. Date for the alert

yyyy-mm-dd

11. Date for investigation

yyyy-mm-dd

12. Date for vaginal swab collection

yyyy-mm-dd

13. Vaginal swab code

<https://ee.kobotoolbox.org/x/skXReSS2>



02/02/2023, 08:32

Tool 2 (To be filled in the community)

14. Any clinical presentation of the animal

- High mortality of new-born
- Sudden onset of abortion among pregnant animals
- Weakness /Unsteady gait
- Mucopurulent nasal discharge
- Profuse fetid diarrhea
- High fever
- I don't know

15. Is the animal vaccinated

- Yes
- No

16. Herd size

17. Number of animals vaccinated for RVF

18. Any environmental features observed

- Bushes
- Recent rainfall (less than 14 days)
- Stagnant water
- Shrubs
- Heavy forests
- Others

Others

19. History of animal movement

- Yes
- No

If yes state:

20. Origin

21. Destination

22. Image of animal

Click here to upload file. (< 10MB)

23. GPS coordinates

latitude (x,y °)

longitude (x,y °)

altitude (m)

accuracy (m)



<https://ee.kobotoolbox.org/x/skXRcSS2>

Tool 3 (To be filled in by the Lab Assistant)

1. Unique Id

2. Vaginal swab id

3. Number of tests done

4. Results of ELISA, IgM

5. Mean OD value of each serum sample

6. Results of ELISA, IgG

7. Mean OD value of each serum sample

8. Id of the lab technician

9. Date for the results

yyyy-mm-dd

<https://ee.kobotoolbox.org/x/N2kkkCff>



1/1

962
963
964
965
966
967

¹Munyua PM, Murithi RM, Ithondeka P, Hightower A, Thumbi SM, Anyangu SA, Kiplimo J, Bett B, Vrieling A, Breiman RF *et al*: **Predictive Factors and Risk Mapping for Rift Valley Fever Epidemics in Kenya.** *PLoS One* 2016, **11**(1):e0144570.

UNIVERSITY OF CAMBRIDGE
Department Of Veterinary Medicine

LIVESTOCK ABORTIONS REPORTING IN ISINGIRO DISTRICT

RIFT VALLEY FEVER
(what everyone needs to know)

Rift Valley Fever (RVF) is an acute, fever-causing viral disease that several affects domestic and wild animals (such as cattle, sheep & goats) as well as humans.

How Do Humans Get RVF

- As a result of bites from mosquitoes that serve as vectors of RVF
- Direct contact with either blood, meat or other body fluids of infected animals, assisting with animal births.
- Through drinking unpasteurized or uncooked milk or Infected animals

Please report any abortion to Isingiro call centre to
075 259 8184 / 077 356 8057

968
969

S2 Appendix: IEC Materials for RVF used during sensitizations (Front page)

TARGET ANIMALS

- 1 SHEEP
- 2 GOATS
- 3 CATTLE
- 4 BUFALLOS
- 5 CAMELS

Signs and symptoms

In Animals

- Fever
- Weakness
- Abortions (loss of pregnancy)
- A high rate of severe illness and death, particularly among young animals.

In Humans

- Fever
- Weakness
- Back pain
- Dizziness at the onset of illness.

What to do in case of any community/farm abortions

If you see any community/farm livestock abortions notify the following stakeholders by WhatsApp, SMS, phone call.

- ★ LC at village, parish, subcounty or district
- ★ VHT member
- ★ Veterinary services provider
- ★ District call centre - 075 259 8184 / 077 356 8057

Spread of RVF

- People can get RVF through contact with blood, body fluids, or tissues of infected animals.
- Heavy rains and prolonged flooding increase habitat suitability for vector populations, determining massive hatching of RVF competent mosquitoes (e.g. Aedes and Culex), thus influencing the risk of RVF emergence, transmission spread.

Please report any abortion to Isingiro call centre to
075 259 8184 / 077 356 8057

970
971

S3 Appendix: IEC Materials for RVF used during sensitizations (Back page)