

1 **Role of human challenge trials (HCTs) in drug development for respiratory syncytial virus**  
2 **(RSV)**

3  
4 Prosenjit Kundu, PhD<sup>1</sup>, Mark Quinn, MPH<sup>2</sup>, Jared C. Christensen, PhD<sup>1</sup>, Elaine Thomas, PhD<sup>2</sup>,  
5 Sima S. Toussi, MD<sup>3</sup>, Negar Niki Alami, MD<sup>3</sup>, Anindita Banerjee, PhD<sup>1\*</sup>

6 <sup>1</sup>Pfizer Inc., Cambridge, MA, USA

7 <sup>2</sup>USA Pfizer Ltd, London, UK

8 <sup>3</sup>Pfizer Inc., New York, NY

9  
10  
11  
12 **Abstract**

13 Human challenge trials (HCTs) are powerful in establishing early proof-of-concept for  
14 experimental drugs and understanding disease pathogenesis. In this study, we conducted a  
15 comprehensive assessment of HCTs to understand the viral load dynamics and symptom score  
16 kinetics of respiratory syncytial virus (RSV) to facilitate drug development for RSV. We estimated  
17 viral load (VL) and symptom related measures in placebo and relative reduction (RR) of the  
18 measures in the experimental drug using a systematic search on double-blind, placebo-controlled  
19 RSV HCTs from clinical databases. We used random-effects meta-analysis, except for time to  
20 mean peak VL and time to mean peak total symptom score (TSS), where descriptive statistics were  
21 summarized. Number of studies varied across measures, from 4 (151 subjects in total) to 7 (247  
22 subjects in total). Overall, treatment reductions of 54% (95% CI: 32% – 76%,  $I^2 = 91%$ ) and 76%  
23 (95% CI: 68% – 85%,  $I^2 = 19%$ ) are observed in mean VL area under curve (AUC) and mean TSS  
24 AUC, respectively. In placebo, mean time to mean peak VL/TSS was 6.99/7.09 days (95% CI:  
25 6.24/6.06 – 7.74/8.12 days). In comparison to other viruses in HCTs, peak VL occurs earlier for  
26 influenza (1.7 days) and at similar time for SARS-nCoV-2 (7 days), whereas peak TSS occurs  
27 earlier for influenza (2.9 days) and later for SARS-nCoV-2 (7.9 days). Our findings will inform  
28 researchers on disease course and VL kinetics, critical data needed for designing RSV treatment  
29 studies and understanding implications in clinical practice.

30  
31  
32  
33  
34  
35  
36 \*Correspondence to: Anindita Banerjee, Pfizer Inc., 1 Portland St, Cambridge, MA-02139, US,  
37 [anindita.banerjee@pfizer.com](mailto:anindita.banerjee@pfizer.com)

39 **Introduction:**

40  
41 Respiratory Syncytial Virus (RSV) remains a major global health concern, particularly among  
42 vulnerable populations, including infants, the elderly, and individuals with underlying medical  
43 conditions<sup>1,2</sup>. In the United States and globally, RSV infection continues to cause severe  
44 respiratory illnesses in high-risk populations, often requiring hospitalization and posing a  
45 significant burden on healthcare systems<sup>3-7</sup>. In response to this ongoing public health challenge,  
46 numerous randomized clinical trials have been conducted to assess the efficacy of various anti-  
47 viral treatments for RSV as a proof of mechanism. However, the landscape of RSV treatment is  
48 complex and remains an unmet medical need, with a wide array of interventions being tested, and  
49 outcomes that vary across studies.

50  
51 Human challenge trials (HCTs), also known as controlled human infection studies, involve  
52 intentionally exposing participants to a pathogen to test the effectiveness of treatments or  
53 vaccines<sup>8</sup>. For drug development it is important to assess proof of mechanism and assess signal of  
54 efficacy early in development. A human challenge model allows us to understand the effect of the  
55 drug early during development and establish proof of mechanism.<sup>9</sup> By running these standard  
56 human challenge studies, it is feasible to gauge some sign of efficacy before running larger late  
57 phase studies and de-risk later development. For RSV several companies have studied  
58 investigational drugs using the available human challenge model.

59  
60 In this manuscript, we provide the first comprehensive assessment of placebo measures and  
61 treatment efficacy reported in RSV human challenge studies. By conducting meta-analysis<sup>10,11</sup> a  
62 widely popular statistical approach for combining studies, we seek to synthesize the available  
63 evidence, elucidate RSV VL kinetics and characterize the effectiveness of various interventions  
64 for RSV based on data from the HCTs. The main objectives of this meta-analysis include  
65 summarizing the collective findings of RSV human challenge studies from published literature  
66 or/and online clinical databases, identifying potential sources of heterogeneity across studies, such  
67 as patient populations, intervention types, and study designs, assessing overall placebo measures  
68 and treatment responses for outcomes from human challenge studies. These outcomes include viral  
69 load (VL) area under the curve (AUC), total symptom score (TSS) AUC, peak VL, time to peak  
70 VL and time to peak TSS. The estimated overall measures in placebo from this meta-analysis  
71 would inform the design of future RSV clinical trials. Further, we compare the placebo measures  
72 for some of the outcomes with those from published literature for influenza and SARS-nCoV-2<sup>12-</sup>  
73 <sup>14</sup>, to understand the clinical profile of RSV.

74  
75

76 **Results:**

77  
78 **Study Characteristics**

79  
80 Following the search strategy from PRISMA guidelines<sup>15</sup>, seven HCTs<sup>16-22</sup> were identified to be  
81 included in the meta-analysis (Figure 1). The search started with a total of 428 RSV studies from  
82 clinical databases and literature websites with key words “respiratory syncytial virus”, “RSV”,  
83 “healthy volunteers”, “healthy patients”, “healthy cohort”, “healthy participants”, “healthy adults”.  
84 The search strategy was limited to English language papers only and publication from 1990 to

85 present, with any pharmaceutical product as the intervention. The websites ClinicalTrials.gov and  
86 EudraCT were searched with the key words “respiratory syncytial virus”, “RSV”, “human  
87 challenge”, “viral challenge”. Out of the 428 studies, 11 studies were from HCTs. We excluded 4  
88 studies, one due to unavailability of data on the outcomes considered in our analyses, one due to  
89 study design and objective (pre-exposure prophylaxis treatment) as our study aims at treatments  
90 after inoculation to challenge virus, one due to assay used other than RT-qPCR as our study looked  
91 at VL measurements assessed from RT-qPCR assay and one due to vaccine as the investigational  
92 treatment. The exclusion criterion led to 7 studies included in our analyses. These studies covered  
93 7 different interventions in development, two of which are currently being evaluated in Phase 2 or  
94 Phase 2/3 trials, EDP-938 and Sisunatovir (RV521), respectively. The study characteristics,  
95 including demographics, are reported in Table 1. The number of subjects varied from 45 to 115  
96 with a total of 544 subjects (including multiple cohorts from each studies), average age across the  
97 studies ranged from 23 to 28 years, proportion of females varied from 25 to 38% except for one  
98 study from Johnson & Johnson<sup>21</sup> which recruited male subjects only, the year of recruitment  
99 ranged from 2012 to 2018 and all were UK-based studies.

100

### 101 **Assessment of Risk of Bias**

102

103 We reported the assessment of risk of bias for each of the HCT’s in Supplementary Figure 1.  
104 Overall, the biases are low for most of the domains as the studies are well-controlled, quarantine  
105 and are run at a single site by the same vendor.

106

107

### 108 **VL specific outcome measures**

109

#### 110 ***Mean placebo VL AUC***

111

112 This analysis included 7 studies ranging in size from 12 to 30 participants, with a total of 128  
113 participants. Individually, the placebo mean VL AUC dose varied from 432.80 to 790.20  
114  $\log_{10}$ PFUe.hr/mL (Figure 2). The  $I^2$  statistic was used to assess the heterogeneity across studies  
115 and was equal to 82% ( $p < 0.01$ ) indicating considerable degree of heterogeneity (Figure 2). Under  
116 a random effects model, the placebo mean VL AUC was 605.98  $\log_{10}$ PFUe.hr/mL (95% CI: 491.60  
117 – 720.37  $\log_{10}$ PFUe.hr/mL) (Figure 2).

118

#### 119 ***Relative reduction (RR) of mean VLAUC in treatment group compared to placebo***

120

121 This analysis involved 7 studies ranging in size from 20 to 55 participants and included a total of  
122 247 participants. Individually, the RR of mean VL AUC in treatment group compared to placebo,  
123 varied from 1% to 88% (Figure 3). The  $I^2$  statistic was used to assess the heterogeneity across  
124 studies and was equal to 91% ( $p < 0.01$ ) indicating considerable degree heterogeneity (Figure 3).  
125 Under a random effects model, the RR of mean VL AUC was 54% (95% CI: 32% – 76%) compared  
126 to placebo (Figure 3).

127

#### 128 ***Mean placebo VL at peak***

129

130 This analysis included 7 studies ranging in size from 12 to 30 participants, with a total of 128  
131 participants. Individually, the mean placebo VL at peak varied from 4.7 to 6.24  $\log_{10}$ PFUe/mL

132 (Figure 4). The  $I^2$  statistic was used to assess the heterogeneity across studies and was equal to  
133 55% ( $p = 0.04$ ) indicating a moderate degree of heterogeneity (Figure 4). Under a random effects  
134 model, the mean placebo VL at peak was 5.38  $\log_{10}$ PFUe/mL (95% CI: 4.94 – 5.81  $\log_{10}$ PFUe/mL)  
135 (Figure 4).

136

### 137 *Time (in days) to mean placebo peak VL*

138

139 Since most of the studies reported time to mean peak VL rather than mean time to peak VL for  
140 placebo subjects, we summarized the descriptive statistics for time to mean peak VL which are  
141 evaluated assuming each study serves as a random subject. This analysis involved 6 studies ranging  
142 in size from 12 to 30 participants, a total of 124 participants were included. Individually, the time  
143 to mean placebo peak VL from inoculation ranged from 6.2 to 7.75 days. The mean and median  
144 time to mean placebo peak VL were 6.99 days (95% CI: 6.24 – 7.74 days) and 6.74 days (95% CI:  
145 6.2 – 8 days), respectively. In comparison to other viral diseases, time to mean peak VL occurs  
146 much earlier for influenza (~ 2 days)<sup>13,14</sup> and at a similar time in disease course for SARS-nCoV-  
147 2 (~7.3 days)<sup>12</sup>.

148

149

### 150 Symptom specific outcome measures

151

#### 152 *Mean placebo total symptom score area under the curve (TSS AUC)*

153

154 This analysis involved 4 studies ranging from 12 to 30 participants, 80 participants in total were  
155 included. Individually, the mean placebo TSS AUC varied from 269.40 to 606.90 (Supplementary  
156 Figure 2). The  $I^2$  statistic was used to assess the heterogeneity across studies and was equal to 48%  
157 ( $p = 0.12$ ) indicating a moderate degree of heterogeneity (Supplementary Figure 2). Under a  
158 random-effects model, the placebo mean TSS AUC was 404.96 (95% CI: 272.84 - 537.08)  
159 (Supplementary Figure 2).

160

#### 161 *Relative Reduction (RR) of mean total symptom score area under the curve (TSS AUC)*

162

163 This analysis involved 4 studies ranging in size from 20 to 55 participants, a total of 151  
164 participants were included. Individually, the RR of mean TSS AUC in the treatment group  
165 compared to placebo varied from 29% to 82% (Figure 5). The  $I^2$  statistic was used to assess the  
166 heterogeneity across studies and was equal to 19% ( $p = 0.30$ ) indicating low heterogeneity across  
167 the studies (Figure 5). As a result, both common effect and random effects model produced the  
168 same estimates of the RR of mean TSS AUC in the treatment group compared to placebo which  
169 was 76% (95% CI: 68% - 85%) (Figure 5).

170

#### 171 *Time (in days) to mean placebo peak total symptom score (TSS)*

172

173 We report the descriptive statistics as most of the studies reported time to mean peak TSS instead  
174 of mean time to peak TSS for placebo subjects. The statistics were evaluated in an analogous way  
175 to those described above for VL. This analysis involved 5 studies ranging from 12 to 30  
176 participants, 107 participants in total were included. Individually, time to mean placebo peak TSS  
177 from inoculation varied from 6 to 8.04 days. The mean and median time to mean placebo peak  
178 TSS were 7.09 days (95% CI: 6.06 – 8.12 days) and 6.87 days (95% CI: 6 – 8.04 days) respectively.

179 In comparison to other viral diseases, peak TSS occurs earlier for influenza (~3 days)<sup>13,14</sup> and later  
180 in disease course for SARS-nCoV-2 (~9.4 days)<sup>12</sup>.

181

### 182 **Prediction Interval for a future HCT and Reference Interval for an individual recruited in a** 183 **future HCT**

184

185 We report the prediction interval and reference range for placebo VL AUC, placebo VL at peak  
186 and placebo TSS AUC. From Supplementary Table 1, the 95% prediction interval for mean placebo  
187 VL AUC, mean placebo VL at peak and mean placebo TSS AUC in a future HCT are (218.97 –  
188 993.0 log<sub>10</sub>PFUe.hr/mL), (4.13 – 6.63 log<sub>10</sub>PFUe/mL) and (0 – 892.11), respectively. From  
189 Supplementary Table 2, based on a frequentist approach, the 95% reference interval or the  
190 “normal” range where 95% of the measurements from individuals recruited in a future HCT would  
191 lie are (0 – 1295.54 log<sub>10</sub>PFUe.hr/mL), (1.58 – 9.18 log<sub>10</sub>PFUe/mL) and (0 – 1288.25) for placebo  
192 VL AUC, placebo VL at peak and placebo TSS AUC. We have also provided the plots including  
193 prediction intervals at study-level and reference interval at an individual-level (Supplementary  
194 Figure 3, Supplementary Figure 4, Supplementary Figure 5).

195

196

### 197 **Discussion:**

198

199 We conducted the first of its kind systematic review and meta-analysis of RSV outcomes from  
200 human challenge trials. We provided overall estimates for placebo group and relative reduction in  
201 the treatment compared to placebo for the key measures including amount of viral load (VL) and  
202 total symptom score (TSS) based on 10-symptom diary card, both evaluated during the window of  
203 quarantine period. Further, where traditional meta-analysis was not possible, we used descriptive  
204 statistics to provide overall estimates for some of the key time measures such as time to peak VL  
205 and TSS. We compared these estimates with influenza and SARS-nCoV-2 since these are anti-viral  
206 diseases that have approved treatments. Comparing the viral dynamics for RSV disease course to  
207 other viral diseases, it appears that the time to mean peak VL is similar to SARS-nCoV-2 but occurs  
208 much later compared to influenza. Moreover, comparing the symptom dynamics of these viral  
209 diseases with RSV, peak TSS occurs later for SARS-nCoV-2, but early on for influenza.  
210 Additionally, it appears that the mean time to reach the peak VL and the mean time to reach the  
211 peak TSS coincide for RSV. However, there is a delay of ~ 2 days for SARS-nCoV-2 and ~1 day  
212 for influenza in reaching the peak TSS compared to peak VL. Additionally, we provided 95%  
213 prediction interval for mean placebo VL AUC, mean placebo VL at peak and mean placebo TSS  
214 AUC in a new HCT and 95% reference interval for placebo VL AUC, placebo VL at peak and  
215 placebo TSS AUC at an individual-level.

216

217 Generally, RSV challenge studies assess for RSV positivity from day 2 to day 5 post-inoculation  
218 prior to randomizing participants to study treatment. However, typically by day 5 it is assumed  
219 that all participants may be RSV positive and are therefore randomized. The analysis for all the  
220 efficacy endpoints in challenge studies is designed for RSV positive randomized patients, however,  
221 a small proportion of the subjects in the challenge studies may become positive after randomization  
222 and therefore don't fully represent the clinical treatment situation. Imbalance in the viral load and  
223 symptom severity, prior infection timing across the underlying populations from challenge studies  
224 and varying mechanism of action of drugs across the challenge studies could be a potential source  
225 of heterogeneity, in addition to residual confounding due to unmeasured confounders.

226 Some of the potential limitations of our study can be attributed to the drawbacks of HCTs<sup>9</sup>. For  
227 example, study sample size and number of studies are usually low due to ethical concerns and  
228 safety risks. Available RSV HCT data evaluate treatment response in healthy adults with known  
229 baseline RSV level seropositivity by controlled challenge strain that causes upper respiratory tract  
230 infection limiting the evaluation of treatment response for lower respiratory tract infection.  
231 Findings from challenge trials may not be directly applicable to the general population, as  
232 participants are young, healthy, White and/or Caucasian adults, and their response to the pathogen  
233 may differ from other demographic groups and those with co-morbidities or risk factors for severe  
234 RSV disease. Results from challenge trials may be specific to the target population and the strain  
235 of the pathogen used (the challenge virus in our review is RSV-A Memphis-37b), potentially  
236 limiting the generalizability of the findings to other strains and other populations. Future studies  
237 and research are needed to understand and assess the disease mechanisms for individuals in  
238 placebo and treatment groups for other strains such as RSV-B and should include the ethnic/racial  
239 populations that are under-represented in the current HCTs, and the young and older individuals  
240 with comorbidities that bare the greatest burden of disease. Other limitations of our study can be  
241 attributed to inconsistent availability of outcomes. For example, not all the study outcomes are  
242 reported in all seven studies (only 4 studies report mean TSS AUC) restricting the power for those  
243 outcomes. Studies mostly reported time to mean peak VL/TSS instead of mean time to peak  
244 VL/TSS which restricted us from performing the traditional meta-analysis.

245  
246 Despite these limitations, our comprehensive assessment of the RSV HCTs provides detailed  
247 understanding of the VL and symptom score kinetics that will enhance understanding of RSV  
248 disease pathogenesis. Meta-analysis and descriptive statistics of the key measures allowed us to  
249 evaluate the overall placebo group characteristics and relative reduction by combining information  
250 across studies, thus increasing the overall sample size, and addressing the limitation of low sample  
251 size from a single HCT. Reference interval for some of the key measures will guide the clinician  
252 to determine if the patient's measurement lies within the normal range, and thus validating the  
253 patient's inclusion in the HCT. Our study mainly focused on HCTs that used RSV-A Memphis-  
254 37b as the challenge virus in the experimental stage and therefore the results from our study are  
255 applicable to RSV-A which is the most prevalent strain. These results can be used to contextualize  
256 effects to other potential experimental drugs when tested on the same strain. Overall, findings from  
257 our analysis can help researchers and clinicians in significantly accelerating the development of  
258 RSV treatment interventions.

259

260

## 261 **Methods:**

262

### 263 **Search Strategy/Study Eligibility**

264

265 The search parameters for studies to be included in this meta-analysis were as follows; randomized  
266 controlled trials (RCT) that featured an intervention of a small molecule antiviral investigational  
267 product for the indication respiratory syncytial virus (RSV). These studies had to be conducted  
268 under the human viral challenge model, with healthy volunteers, and had to have a total number  
269 of inoculated participants greater than ten. Additionally, we only included studies that had viral  
270 load AUC as the primary endpoint and measured at least one of the following: peak viral load,  
271 time to peak viral load, peak total symptom score, total symptom score AUC, and time to peak

272 symptom score. The search was conducted using Biosis Previews, Embase, Ovid MEDLINE,  
273 PubMed, ClinicalTrials.gov and EudraCT from data inception to August 2023. The search strategy  
274 we used was provided by a cross-functional team of researchers with expertise in conducting  
275 systematic reviews and meta-analyses on RSV research (all authors).

### 276 **Assessment of Risk of Bias**

277  
278  
279 Bias from each of the studies are assessed independently by four reviewers based on Cochrane's  
280 domain-based criterion. The risk of bias is evaluated using the visualization tool robvis<sup>23</sup>.

### 281 **Statistical Analysis**

282  
283  
284 We considered seven different outcome measures, broadly classified into VL specific measures  
285 and symptom specific measures. VL specific measures included (1) mean placebo VL AUC where  
286 the AUC is calculated from first dose until end of quarantine period (window length of ~12-13  
287 days for the studies included), (2) relative reduction (RR) of mean VL AUC in treatment group  
288 compared to placebo from the same study, (3) mean placebo VL at peak, (4) time (in days) to mean  
289 placebo peak VL. Symptom specific measures included (5) mean placebo TSS AUC where the  
290 window length is similar to mean placebo VL AUC in (1), (6) RR of mean TSS AUC in treatment  
291 group compared to placebo from the same study, and (7) time (in days) to mean placebo peak TSS.  
292 Both the time variables (4) and (7) are measured from inoculation. We derived the estimate of RR,  
293 (2) and (6) from the corresponding treatment and placebo estimates reported in the studies. For  
294 deriving the time variables (4) and (7), we assumed a uniform distribution for the time (in days)  
295 from RSV inoculation to first dose assignment, where the range varied from the day of inoculation  
296 to the day of first dose assignment. This assumption is applicable for the studies which did not  
297 report data on time variables (4) and (7) from inoculation but from assignment of first dose. In  
298 studies that reported multiple doses for treatment regimens, we chose the cohort with the highest  
299 dose for evaluating RR measures. Further, most (n=5) of the studies report the unit of VL AUC in  
300 log<sub>10</sub> PFUe.hr/mL (log<sub>10</sub> PFUe.hr/mL = log (base 10) plaque-forming unit equivalents per  
301 milliliter times hour), while some (n=2) report in log<sub>10</sub> copies.hr/mL. For our analysis we assumed  
302 equivalence between these units as confirmed as appropriate by the hVIVO. hVIVO is a contract  
303 research organization specializing in infectious disease vaccines and therapeutics using human  
304 challenge clinical trials<sup>24</sup>.

305  
306 We constructed a database for each of the study outcome measures. The databases included the  
307 corresponding outcome measure and associated SD for all the studies passing the  
308 inclusion/exclusion criterion (see Figure 1). Details of evaluation of mean and SD from the  
309 literature is provided in Supplementary Methods. Frequentist random-effects model (using  
310 restricted maximum likelihood estimation)<sup>25</sup> was implemented for each of the study outcomes  
311 (except for time to mean peak VL and time to mean peak TSS) using the R package "meta"<sup>26</sup>,  
312 where the constructed database associated with the respective study outcome served as an input  
313 for the function "metamean" from the "meta" package. Forest plots were generated using the  
314 function "forest.meta". We evaluate the prediction interval of a new study and reference interval  
315 for an individual recruited in HCT using the Rshiny app: RIMeta<sup>27</sup>. A 95% reference interval for a  
316 particular measure is defined to be the interval in which we would expect 95% of the individual's  
317 measurements from a future HCT to lie.

318  
319 Most of the studies reported time to mean peak VL/TSS instead of mean time to peak VL/TSS.  
320 Mean time to peak VL/TSS is assessed by first calculating the day of peak VL/TSS for each subject  
321 and then taking the mean over days. In this case, each study would have provided a mean estimate  
322 over subjects and therefore would have fallen into the framework of traditional meta-analysis.  
323 However, on the other hand, time to mean peak VL/TSS is assessed by first calculating the mean  
324 VL/TS curve over subjects at each day and then looking at the day where the peak is achieved.  
325 Each study, therefore, provided a single observation for the time (in days) to peak VL/TSS. We  
326 treated each study as a subject and used descriptive statistics (instead of traditional meta-analysis)  
327 such as mean and median to provide overall estimates for time to mean peak VL/TSS accounting  
328 for study-level uncertainty. 95% CI for median is calculated non-parametrically from quantiles<sup>28</sup>,  
329 while for mean, we calculate it from Student's t-distribution.

330  
331

### 332 **Acknowledgement**

333  
334 We thank Dr. Haitao Chu, Senior Director and Statistics Lead at Pfizer Inc., for providing  
335 insightful comments to the paper.

336  
337  
338  
339  
340

### 341 **References:**

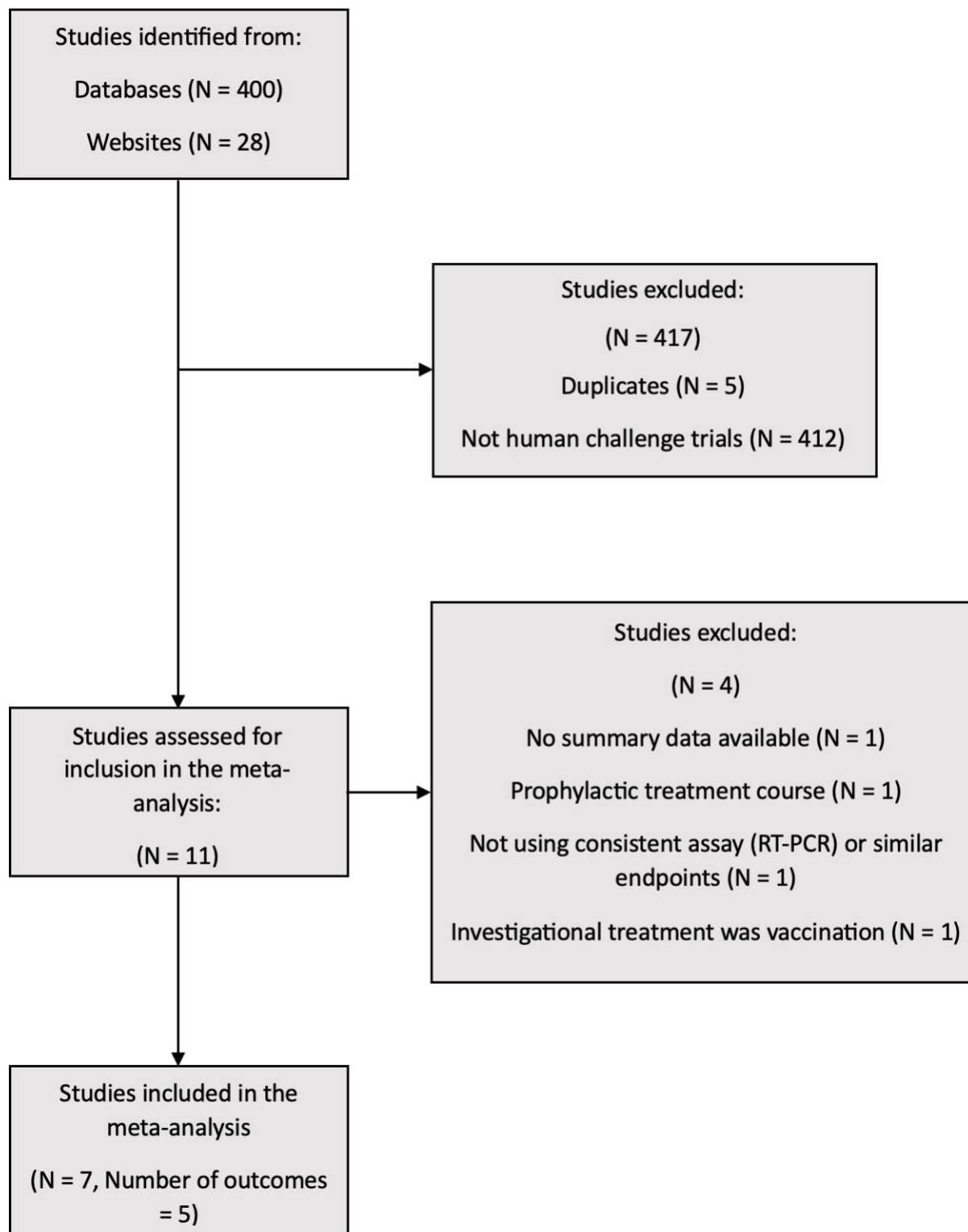
- 342  
343 1. Li Y, Wang X, Blau DM, et al. Global, regional, and national disease burden estimates of  
344 acute lower respiratory infections due to respiratory syncytial virus in children younger than 5  
345 years in 2019: a systematic analysis. *Lancet*. May 28 2022;399(10340):2047-2064.  
346 doi:10.1016/S0140-6736(22)00478-0
- 347 2. Nguyen-Van-Tam JS, O'Leary M, Martin ET, et al. Burden of respiratory syncytial virus  
348 infection in older and high-risk adults: a systematic review and meta-analysis of the evidence  
349 from developed countries. *Eur Respir Rev*. Dec 31 2022;31(166)doi:10.1183/16000617.0105-  
350 2022
- 351 3. Hall CB, Weinberg GA, Iwane MK, et al. The burden of respiratory syncytial virus  
352 infection in young children. *N Engl J Med*. Feb 5 2009;360(6):588-98.  
353 doi:10.1056/NEJMoa0804877
- 354 4. Langley JM, Bianco V, Domachowske JB, et al. Incidence of Respiratory Syncytial Virus  
355 Lower Respiratory Tract Infections During the First 2 Years of Life: A Prospective Study Across  
356 Diverse Global Settings. *J Infect Dis*. Aug 26 2022;226(3):374-385. doi:10.1093/infdis/jiac227
- 357 5. McLaughlin JM, Khan F, Begier E, Swerdlow DL, Jodar L, Falsey AR. Rates of Medically  
358 Attended RSV Among US Adults: A Systematic Review and Meta-analysis. *Open Forum Infect Dis*.  
359 Jul 2022;9(7):ofac300. doi:10.1093/ofid/ofac300
- 360 6. McLaughlin JM, Khan F, Schmitt HJ, et al. Respiratory Syncytial Virus-Associated  
361 Hospitalization Rates among US Infants: A Systematic Review and Meta-Analysis. *J Infect Dis*.  
362 Mar 15 2022;225(6):1100-1111. doi:10.1093/infdis/jiaa752



- 363 7. Zheng Z, Warren JL, Shapiro ED, Pitzer VE, Weinberger DM. Estimated incidence of  
364 respiratory hospitalizations attributable to RSV infections across age and socioeconomic groups.  
365 *Pneumonia (Nathan)*. Oct 25 2022;14(1):6. doi:10.1186/s41479-022-00098-x
- 366 8. Darton TC, Blohmke CJ, Moorthy VS, et al. Design, recruitment, and microbiological  
367 considerations in human challenge studies. *Lancet Infect Dis*. Jul 2015;15(7):840-51.  
368 doi:10.1016/S1473-3099(15)00068-7
- 369 9. Valdés E. Human Challenge Trials in Pandemics: Risks and Benefits. In: Valdés E, Lecaros  
370 JA, eds. *Handbook of Bioethical Decisions Volume I: Decisions at the Bench*. Springer  
371 International Publishing; 2023:373-384.
- 372 10. Cornell JE, Mulrow CD, Localio R, et al. Random-effects meta-analysis of inconsistent  
373 effects: a time for change. *Ann Intern Med*. Feb 18 2014;160(4):267-70. doi:10.7326/M13-2886
- 374 11. DerSimonian R, Laird N. Meta-analysis in clinical trials. *Control Clin Trials*. Sep  
375 1986;7(3):177-88. doi:10.1016/0197-2456(86)90046-2
- 376 12. Killingley B, Mann AJ, Kalinova M, et al. Safety, tolerability and viral kinetics during SARS-  
377 CoV-2 human challenge in young adults. *Nat Med*. May 2022;28(5):1031-1041.  
378 doi:10.1038/s41591-022-01780-9
- 379 13. Carrat F, Vergu E, Ferguson NM, et al. Time lines of infection and disease in human  
380 influenza: a review of volunteer challenge studies. *Am J Epidemiol*. Apr 1 2008;167(7):775-85.  
381 doi:10.1093/aje/kwm375
- 382 14. Bagga B, Woods CW, Veldman TH, et al. Comparing Influenza and Rsv Viral and Disease  
383 Dynamics in Experimentally Infected Adults Predicts Clinical Effectiveness of Rsv Antivirals.  
384 *Antiviral Therapy*. 2013;18(6):785-792. doi:10.3851/imp2629
- 385 15. Page MJ, McKenzie JE, Bossuyt PM, et al. The PRISMA 2020 statement: an updated  
386 guideline for reporting systematic reviews. *BMJ*. Mar 29 2021;372:n71. doi:10.1136/bmj.n71
- 387 16. Ahmad A, Eze K, Noulin N, et al. EDP-938, a Respiratory Syncytial Virus Inhibitor, in a  
388 Human Virus Challenge. *N Engl J Med*. Feb 17 2022;386(7):655-666.  
389 doi:10.1056/NEJMoa2108903
- 390 17. DeVincenzo J, Cass L, Murray A, et al. Safety and Antiviral Effects of Nebulized PC786 in a  
391 Respiratory Syncytial Virus Challenge Study. *J Infect Dis*. Jun 15 2022;225(12):2087-2096.  
392 doi:10.1093/infdis/jiaa716
- 393 18. DeVincenzo J, Tait D, Efthimiou J, et al. A Randomized, Placebo-Controlled, Respiratory  
394 Syncytial Virus Human Challenge Study of the Antiviral Efficacy, Safety, and Pharmacokinetics of  
395 RV521, an Inhibitor of the RSV-F Protein. *Antimicrob Agents Chemother*. Jan 27  
396 2020;64(2)doi:10.1128/AAC.01884-19
- 397 19. DeVincenzo JP, McClure MW, Symons JA, et al. Activity of Oral ALS-008176 in a  
398 Respiratory Syncytial Virus Challenge Study. *N Engl J Med*. Nov 19 2015;373(21):2048-58.  
399 doi:10.1056/NEJMoa1413275
- 400 20. DeVincenzo JP, Whitley RJ, Mackman RL, et al. Oral GS-5806 activity in a respiratory  
401 syncytial virus challenge study. *N Engl J Med*. Aug 21 2014;371(8):711-22.  
402 doi:10.1056/NEJMoa1401184
- 403 21. Stevens M, Rusch S, DeVincenzo J, et al. Antiviral Activity of Oral JNJ-53718678 in  
404 Healthy Adult Volunteers Challenged With Respiratory Syncytial Virus: A Placebo-Controlled  
405 Study. *J Infect Dis*. Jul 24 2018;218(5):748-756. doi:10.1093/infdis/jiy227

- 406 22. Limited B. A Randomised, Phase 2a, Double-Blind, Placebo-Controlled Study to Evaluate  
407 the Safety and Antiviral Activity Against Respiratory Syncytial Virus Infection, and the  
408 Pharmacokinetics of Multiple Oral Doses of BTA-C585 in the Virus Challenge Model. 23 Sep  
409 2018. 2015-004296-77. Accessed 15 Aug 2023. [https://www.clinicaltrialsregister.eu/ctr-](https://www.clinicaltrialsregister.eu/ctr-search/trial/2015-004296-77/results)  
410 [search/trial/2015-004296-77/results](https://www.clinicaltrialsregister.eu/ctr-search/trial/2015-004296-77/results)
- 411 23. McGuinness LA, Higgins JPT. Risk-of-bias VISualization (robvis): An R package and Shiny  
412 web app for visualizing risk-of-bias assessments. *Research Synthesis Methods*. 2020/04/26  
413 2020;n/a(n/a)doi:10.1002/jrsm.1411
- 414 24. hVIVO. Accessed January, 30, 2024, 2024. <https://hvivo.com>
- 415 25. Langan D, Higgins JPT, Jackson D, et al. A comparison of heterogeneity variance  
416 estimators in simulated random-effects meta-analyses. *Res Synth Methods*. Mar 2019;10(1):83-  
417 98. doi:10.1002/jrsm.1316
- 418 26. Balduzzi S, Rucker G, Schwarzer G. How to perform a meta-analysis with R: a practical  
419 tutorial. *Evid Based Ment Health*. Nov 2019;22(4):153-160. doi:10.1136/ebmental-2019-300117
- 420 27. Jiang Z, Cao W, Chu H, Bazerbachi F, Siegel L. RIMeta: An R shiny tool for estimating the  
421 reference interval from a meta-analysis. *Res Synth Methods*. May 2023;14(3):468-478.  
422 doi:10.1002/jrsm.1626
- 423 28. Conover WJ. *Practical Nonparametric Statistics*. vol 3rd Edition. Wiley; 1999:608.  
424  
425  
426  
427  
428  
429  
430  
431  
432  
433  
434  
435  
436  
437  
438  
439  
440  
441  
442  
443  
444  
445  
446  
447  
448  
449

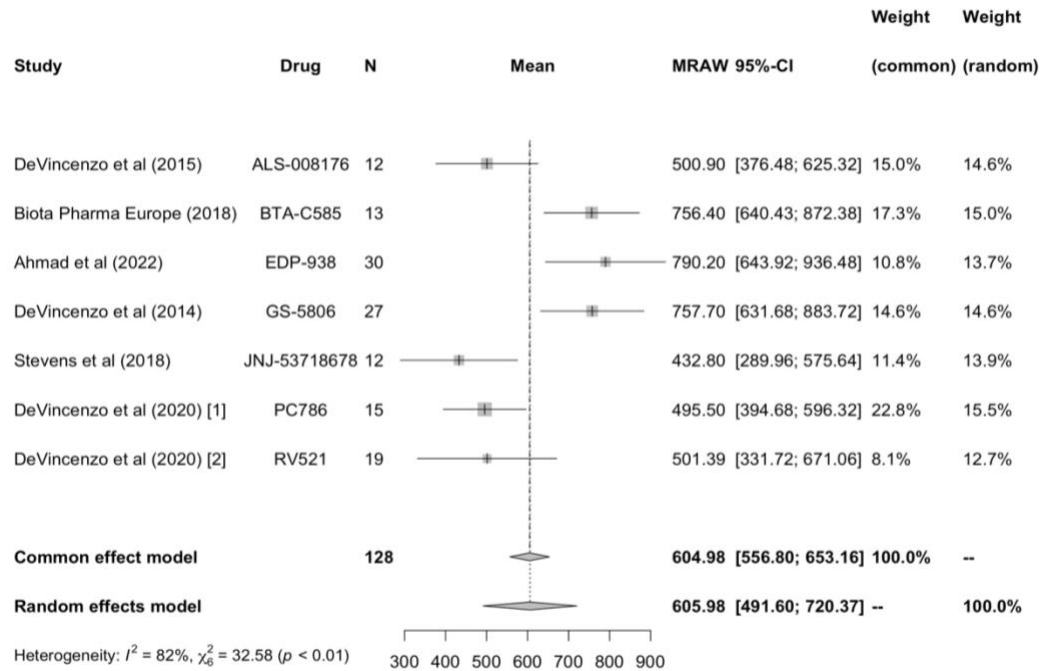
450 **Figure 1: PRISMA Flow Diagram**



451  
452  
453  
454

*Note: The meta-analysis is performed for 5 of the 7 study outcomes. Descriptive statistics is reported for the other 2 outcomes.*

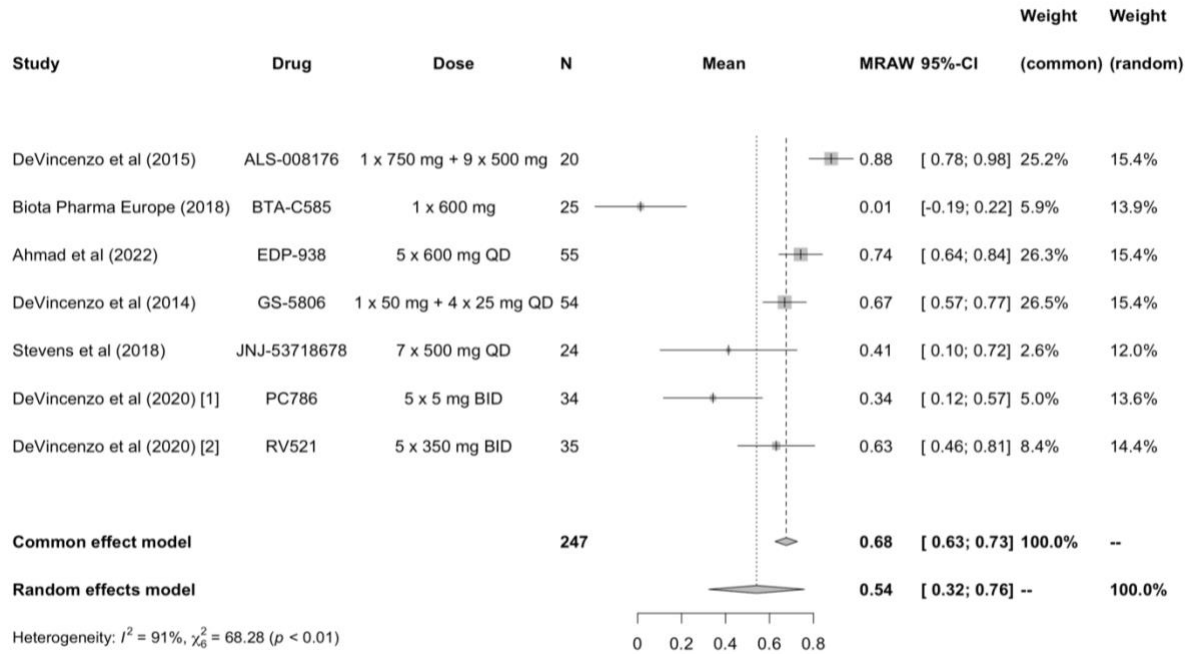
455 **Figure 2: Forest plot for mean viral load area under the curve (VL AUC) in placebo.**



456  
457  
458  
459  
460  
461  
462  
463  
464

Note: VL is assessed using RT-qPCR assay. Studies report the unit of VL in log10 copies/mL or log10 PFUe/mL, where log10 PFUe/mL = log (base 10) plaque-forming unit equivalents per milliliter. In our analysis, we assumed a conversion factor of 1 across the units and is confirmed from hVIVO. Unit of VL AUC is log10 PFUe.hr/mL.

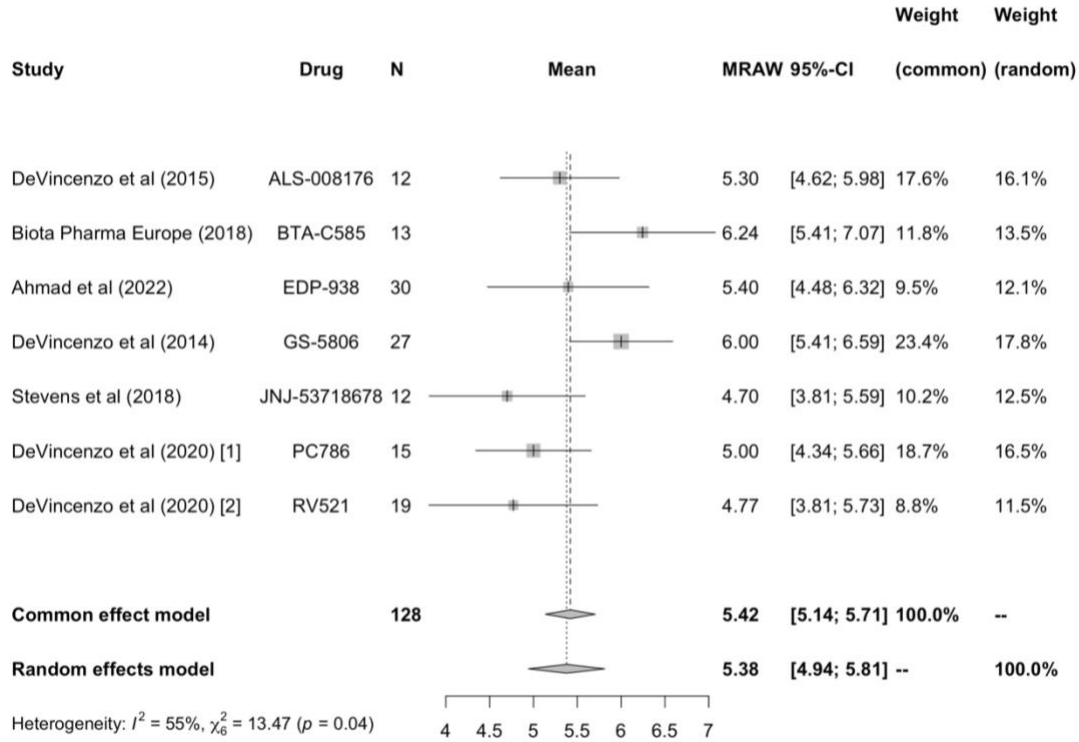
465 **Figure 3: Forest plot for relative reduction (RR) of mean viral load area under the curve (VL**  
 466 **AUC) in treatment compared to placebo.**



467  
 468  
 469  
 470  
 471  
 472

Note: VL is assessed using RT-qPCR assay. Studies report the unit of VL in log<sub>10</sub> copies/mL or log<sub>10</sub> PFUe/mL, where log<sub>10</sub> PFUe/mL = log (base 10) plaque-forming unit equivalents per milliliter. In our analysis, we assumed a conversion factor of 1 across the units and is confirmed from hVIVO. Unit of VL AUC is log<sub>10</sub> PFUe.hr/mL.

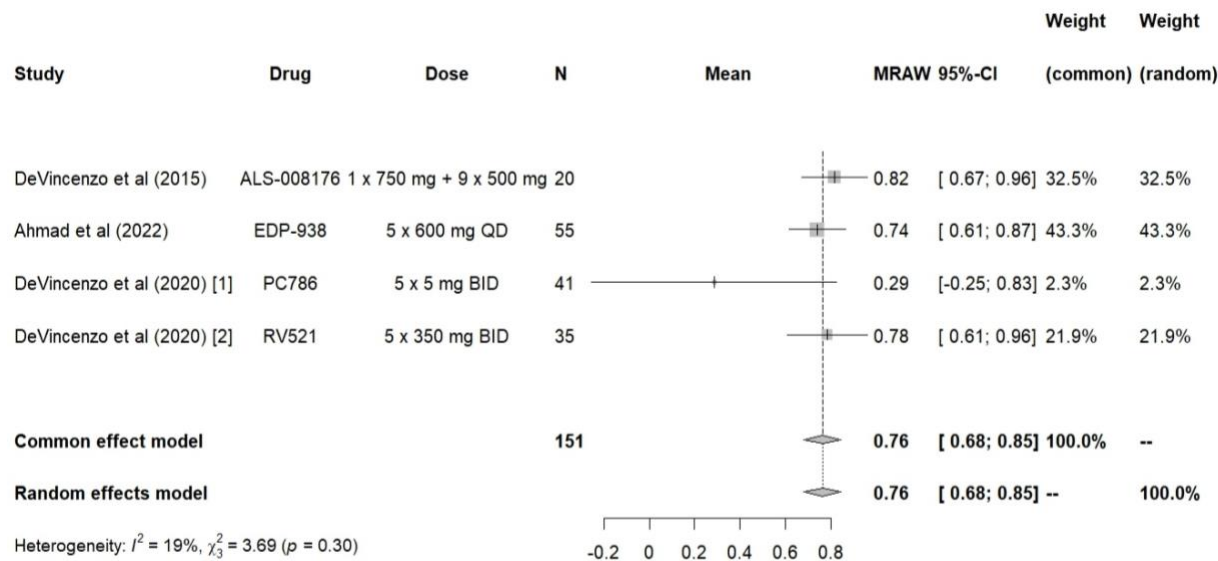
473 **Figure 4: Forest plot for mean viral load at peak in placebo.**



474  
475  
476  
477  
478  
479  
480  
481  
482  
483  
484  
485  
486  
487  
488  
489  
490  
491  
492  
493  
494  
495  
496  
497  
498  
499  
500  
501  
502  
503

Note: VL is assessed using RT-qPCR assay. Studies report the unit of VL in log10 copies/mL or log10 PFUe/mL, where log10 PFUe/mL = log (base 10) plaque-forming unit equivalents per milliliter. In our analysis, we assumed a conversion factor of 1 across the units and is confirmed from hVIVO.

504 **Figure 5. Forest plot for relative reduction (RR) of mean total symptom score area under the**  
 505 **curve (AUC) in treatment compared to placebo.**



506 *Note: The total symptom score is evaluated based on 10 clinical symptoms from symptom dairy card. The reported AUC from*  
 507 *each study is based on a window length of approximately 12-13 days.*  
 508  
 509