

1 **TITLE PAGE**

2 **FULL TITLE**

3 An outbreak of Chagas disease through oral transmission: 115 years after discovery by  
4 Carlos Chagas, the disease is still hard to manage.

5 **SHORT TITLE**

6 Oral Chagas disease outbreak: 115 years onwards, still hard to manage.

7

8 **AUTHORS AND AFFILIATIONS**

9 Eudes Alves Simões-Neto<sup>1</sup>, Daniel Wagner de Castro Lima Santos<sup>2</sup>, Maria Rosa

10 Quaresma Bomfim<sup>3</sup>, Jackson Maurício Lopes Costa<sup>4</sup>, Amanda Ferreira Simões<sup>5</sup>, Lucas

11 Dias Vasconcelos<sup>1</sup>, Domingos Carvalho Sodr e<sup>4</sup>, Ana Cleide Mineu Costa<sup>4</sup>, Samuel Vieira

12 Rodrigues Dumont<sup>4</sup>, Bruna de Oliveira de Melo<sup>3</sup>, Concei o de Maria Pedrozo e Silva de

13 Azevedo<sup>6</sup>.

14 <sup>1</sup> Federal University of Maranh o (UFMA), Pinheiro, Maranh o, Brazil.

15 <sup>2</sup> Presidente Dutra University Hospital (HU-UPD), Brazilian Company of Hospital Services  
16 (EBSERH), Federal University of Maranh o (UFMA), Brazil. D'or Research and Teaching  
17 Institute (IDOR), Brazil.

18 <sup>3</sup> Ceuma University (UNICEUMA), S o Lu s, Maranh o, Brazil.

19 <sup>4</sup> State Health Department of Maranh o (SES/MA), S o Lu s, Maranh o, Brazil.

20 <sup>5</sup> Bras lia University Hospital (HUB), Brazilian Company of Hospital Services (EBSERH),  
21 Bras lia University (UnB), Bras lia, Brazil.

22 <sup>6</sup> Federal University of Maranh o (UFMA), S o Lu s, Maranh o, Brazil.

23

24 **Corresponding author:**

25 Eudes Alves Simões-Neto.

26 e-mail: [eudesimoes@gmail.com](mailto:eudesimoes@gmail.com); [eudes.simoes@ufma.br](mailto:eudes.simoes@ufma.br)

27 ORCID: <https://orcid.org/0000-0001-5449-5908>

28

29 **Author contributions**

30 **Eudes Alves Simões-Neto:** Conceptualization, Data curation, Methodology, Formal  
31 analysis, Investigation, Data curation, Writing-original draft, Writing-review and editing,

32 Project administration, Visualization; **Daniel Wagner de Castro Lima Santos:**

33 Methodology, Validation, Writing-review and editing. **Maria Rosa Quaresma Bomfim:**

34 Methodology, Investigation, Resources, Validation, Writing-review and editing; **Jackson**

35 **Maurício Lopes Costa:** Conceptualization, Investigation; **Amanda Ferreira Simões:**

36 Investigation, Visualization; **Lucas Dias Vasconcelos:** Writing-original draft; **Domingos**

37 **Carvalho Sodré:** Investigation; **Ana Cleide Mineu Costa:** Investigation; **Samuel Vieira**

38 **Rodrigues Dumont:** Investigation; **Bruna de Oliveira de Melo:** Investigation; **Conceição**

39 **de Maria Pedrozo e Silva de Azevedo:** Conceptualization, Formal analysis, Supervision,

40 Project administration, Validation, Writing-review and editing.

41

42 **ABSTRACT**

43 **Background:**

44 Orally transmitted acute Chagas disease (ACD) mostly affects low-visibility and low-

45 income individuals, mainly in tropical and subtropical zones. However, even more than 100

46 years after Carlos Chagas' discovery, several difficulties in managing ACD are still faced.

47 Ita expansion to other, non-endemic areas through globalization processes has  
48 transformed it into a global health problem.

49 **Methodology and findings:**

50 This report addresses an outbreak of 39 cases of ACD due to oral transmission. A clinical-  
51 epidemiological investigation with an entomological search was performed. Laboratory  
52 criteria (positive peripheral blood smear (PBS), seroconversion of IgG and 2x increase in  
53 IgG titer) and clinical-epidemiological criteria (clinical findings, epidemiological exposure  
54 and at least one positive IgG) were used for diagnoses. In-house conventional polymerase  
55 chain reaction (PCR) was performed on 33 samples. All patients were treated with  
56 benznidazole. After 4.5 years, IgG was investigated in 26 individuals. Their mean age was  
57 33.6 years, with no difference in gender distribution; the mean incubation period was 13.8  
58 days and mean time between symptom onset and treatment was 16.6 days. The most  
59 frequent symptoms were fever and lymphadenopathy (90%). For 66.6%, laboratory criteria  
60 yielded the diagnosis and for 23%, clinical-epidemiological criteria, while 10.2% showed  
61 negative tests but were treated due to high clinical suspicion. Test positivity rates: PBS  
62 69.7%; serology 91.4%; PCR 100%. There were no deaths. Serological cure was achieved  
63 for 34.6% and decreased IgG titers for 15.3%.

64 **Conclusions and significance:**

65 We present all the barriers encountered in managing real-life situations: vulnerability of the  
66 population; dependence on old diagnostic techniques; lack of standardization of molecular  
67 biology techniques; and few therapeutic options. We demonstrated the importance of rapid  
68 surveillance action with early treatment, such that this outbreak did not give rise to deaths.  
69 We also propose that conventional PCR should become standardized within the diagnostic  
70 routine.

71

72 **KEYWORDS**

73 Chagas disease, *Trypanosoma cruzi*, food-borne disease, polymerase chain reaction,  
74 disease outbreaks, neglected disease

75

76 **AUTHOR SUMMARY (150-200 words)**

77 In this study we present an outbreak of orally transmitted acute Chagas disease (ACD), a  
78 neglected tropical disease. The source of transmission was bacaba juice served at a  
79 celebration held in a quilombola community and 39 individuals were affected. The focus of  
80 this study was clinical-epidemiological investigation and diagnostic tools. There were no  
81 deaths due to this event, probably because of the quick action of the surveillance team  
82 and the early start of treatment. We show all the difficulties facing a real-life situation  
83 (vulnerability of population affected, weaknesses regarding good food safety practices and  
84 obstacles to following what guidelines recommend), discuss the performance and  
85 executability of the diagnostic method used and address the global threat that Chagas  
86 disease may pose. Furthermore, we propose that the polymerase chain reaction should  
87 become standardized in diagnosing acute disease, given that this was the only method  
88 with 100% positivity, even among patients whose other tests were all negative.

89

90 **1. Introduction**

91 Chagas disease (CD) is a chronic systemic anthrozoosis in the Americas caused by  
92 *Trypanosoma cruzi*, a hemoflagellate intracellular parasite discovered in 1909 [1,2].  
93 American trypanosomiasis is classified by the World Health Organization (WHO) as one of  
94 the 20 neglected tropical diseases (NTDs) and it affects low-visibility and low-income

95 individuals and populations in developing countries, mainly in tropical and subtropical  
96 zones [3]. Furthermore, its status as a NTD means that controlling or eradicating it by  
97 applying public health strategies remains possible, even though it has been neglected by  
98 laboratories, pharmaceutical companies and local governments.

99 Even 115 years after the little girl Berenice and the publication [4,5,6,7] of Carlos Chagas'  
100 work, in which he describes the etiological agent, some domestic and wild reservoirs, the  
101 vector, the life cycle, clinical manifestations and complications of the disease, CD  
102 continues to be endemic in Latin American countries, especially in Brazil, Argentina,  
103 Mexico, Bolivia and Chile. Although the prevalence rate per 100,000 population decreased  
104 in many countries between 1990 and 2019, in Brazil an increase of 12.8% in the estimated  
105 number of cases was observed over this period [8]. The high numbers of disability-  
106 adjusted life-years (DALYs), years of life lost (YLLs) and years lived with a disability  
107 (YLDs) due to CD worldwide are still challenging. Curiously, a decrease in DALYs was  
108 observed in Brazil over the same period, although a representative magnitude for society  
109 remained [8,9].

110 Over the past few decades, enhanced vector control programs and mandatory screening  
111 for blood transfusions have decreased the burden of this disease in Latin America [3].  
112 However, while the typical vectorial transmission route has become controlled, the other  
113 forms of acquiring the disease have represented a challenge over the last 20 years. Food-  
114 borne transmission has gained great importance, as it can cause outbreaks secondary to  
115 contamination of food and beverages and because of its pathophysiology and clinical  
116 features [10]. The vector most frequently associated with this route is *Panstrongylus*  
117 *geniculatus*, and transmission through this route occurs when whole triatomines or their  
118 feces carrying metacyclic trypomastigotes of *T. cruzi* taint juices made from sugar cane,

119 bacaba, açai or palm wine. Transmission through ingestion of infected wild-animal meats  
120 also occurs [1,10,11,12].

121 Currently, oral infection with *T. cruzi* is the most important transmission route in Brazil.  
122 Several outbreaks have especially been documented in the Amazon region (states of Pará  
123 and Amazonas), and in some states in the northeastern and southern regions.  
124 Furthermore, the trend over the years has been increasing [13]. This oral transmission  
125 represents a major challenge for implementation of resolution CD49.R19, created by the  
126 49<sup>th</sup> Directing Council of PAHO in 2009, which promotes the elimination or reduction of  
127 neglected diseases and other related poverty diseases, including Chagas disease in all its  
128 forms of presentation [14].

129 Regarding diagnosis, there are still major challenges ahead. Some tools standardized  
130 through international guidelines are difficult to use and require several samples, and many  
131 of them are archaic. For chronic Chagas disease (CCD), use of two different serological  
132 tests continues to be recommended (enzyme-linked immunosorbent assay – ELISA,  
133 hemagglutination inhibition assay – HAI, or indirect immunofluorescence – IIF). In limited-  
134 resource settings or difficult-to-access areas, a single ELISA test may be considered, but  
135 requires confirmation with another test prior to starting treatment [15]. Over recent years,  
136 some studies have presented encouraging results regarding the performance of rapid tests  
137 (immunochromatographic) for diagnosing CCD [16,17]. However, for acute Chagas  
138 disease (ACD), we continue to rely on microscopy (with variable sensitivity) and  
139 conventional immunological tests, both often requiring several samples. To date, there is  
140 no standard for molecular biology techniques for diagnosis, such as the polymerase chain  
141 reaction (PCR), and these techniques are restricted to surveillance laboratories and  
142 research centers [18]. There is also currently no point-of-care test for diagnosing ACD.

143 The treatment options for Chagas disease are even more restricted. The two trypanocide  
144 drugs available, benznidazole and nifurtimox, have been used for over 50 years. However,  
145 due to the long-term treatment (60 to 90 days) and high frequency of side effects (about  
146 40%), there is a high dropout rate [19,20]. Some initiatives in this field deserve to be  
147 highlighted, such as Drugs for Neglected Disease (DNDi), which helped to develop the first  
148 formulation of benznidazole for pediatrics, in addition to promoting studies with lower  
149 doses and shorter treatment time [21,22]. However, many more actions are necessary in  
150 order to achieve the greater objective: a highly effective medication, with low cost, shorter  
151 treatment time and fewer side effects.

152 The present study evaluates the clinical-epidemiological characteristics and diagnostic  
153 aspects of an autochthonous outbreak of ACD due to oral transmission that occurred in  
154 the state of Maranhão, Brazil, which had previously not been considered an area of high  
155 prevalence or high risk of disease transmission. We have described the epidemiological  
156 surveillance and diagnostic methods, including molecular tools, and discussed the genetic  
157 analysis of *T. cruzi*. These data have allowed us to better understand the risks associated  
158 with transmission, as well as the diagnostic and therapeutic challenges involved in the  
159 standard treatment available in Brazil.

160

## 161 **2. Methods**

162 This was a prospective cohort study in which patients with ACD from an outbreak due to  
163 oral transmission were followed up for 4.5 years.

164 2.1. **Ethical statements:** Formal written consent was obtained from all the patients  
165 and the parent/guardian in case of children. Ethics approval for this study was

166 obtained from the University Hospital Research Ethics Committee of the Federal  
167 University of Maranhão, through protocol number 4.357.642.

168 2.2. **Population evaluated and period:** The study involved 39 patients with ACD  
169 from the same outbreak. The information relates to the period during which the  
170 outbreak occurred (2018) and another period 4.5 years later (2022).

171 2.3. **Clinical evaluation:** The following were investigated: incubation period, time  
172 taken to initiate the therapy, duration of therapy and clinical findings (fever,  
173 asthenia, chills, myalgia, facial edema, dyspnea, headache, cough, abdominal  
174 pain, lower limbs edema, thoracic pain, diarrhea and inoculation chagoma).

175 2.4. **Diagnostic criteria and tools:** To define ACD cases, diagnostic criteria already  
176 established in the literature and guidelines were used: (a) laboratory criteria (at  
177 least one of the following tests: positive direct microscopic examination of  
178 peripheral blood smear, seroconversion of IgG or 2x increase in IgG titer with at  
179 least 15 days interval); (b) clinical-epidemiological criteria (clinical findings,  
180 epidemiological exposure and at least one positive IgG finding). The direct  
181 microscopic examination consisted of use of the technique of blood smears from  
182 peripheral blood with Giemsa staining from Merck®; and the serological tests  
183 used were ELISA from Bioclin®, IIF from Bio Manguinhos® and HAI from Wama  
184 Diagnostica®. It was not possible to perform the IgM test due to lack of  
185 resources and the inherent difficulty in the technique. Additionally, *in house*  
186 conventional PCR was performed on 33 of the 39 stored samples. A description  
187 of the storage of samples and PCR steps is presented as supplementary data  
188 (Supporting information).



189       2.5. **Epidemiological surveillance:** An investigative process was conducted,  
190           consisting of interviews among the local population, observation of the  
191           production process of the drink involved in the outbreak and distribution of  
192           triatomine information stations (Portuguese acronym PIT) for six months. PITs  
193           are a strategy used by the Oswaldo Cruz Foundation (FIOCRUZ) to monitor  
194           vectors. They consist of boxes containing visual information about triatomine  
195           species that are distributed across the localities of concern. These boxes are  
196           disseminated among the population. Whenever a resident finds a suspicious  
197           arthropod, they deposit it in a PIT and report this finding to surveillance workers,  
198           who, in turn, analyze the insect and look for *T. cruzi* in its feces.

199       2.6. **Treatment:** All 39 patients were treated with benznidazole: adults with 5  
200           mg/kg/day (maximum of 300 mg/day) and children with 5-10 mg/kg/day, for at  
201           least 30 days.

202       2.7. **Long term follow-up:** After an interval of 4.5 years, serological tests (ELISA  
203           and IIF) were performed on 26 patients. The others were lost to follow-up  
204           because they had changed their place of residence to another state.

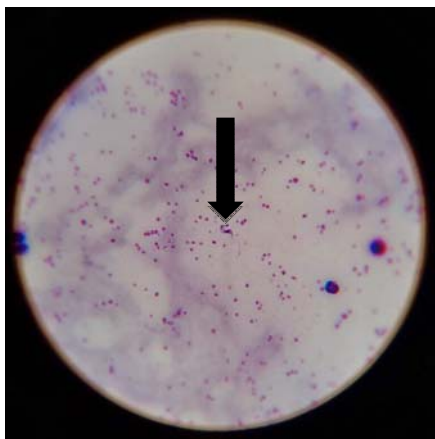
### 205       **3. Results**

#### 206       3.1. **Outbreak report**

207       In February 2018, a sexagenarian woman from a quilombo community, in Maranhão state,  
208       Brazil, who had previously been admitted to and discharged from a municipal hospital  
209       twice, with two negative malaria blood smears, came to the Regional Epidemiological  
210       Surveillance Center of Pinheiro, Maranhão, Brazil, to undergo a third malaria blood smear.  
211       The patient had an 11-day history of abdominal pain, myalgia, asthenia, chills and fever in  
212       the late afternoon. The first two tests, previously found to be negative for malaria, were

213 reviewed. Both of them tested positive for trypomastigote forms of *T. cruzi*, thus confirming  
214 that the patient had ACD (Figure 1). She was treated with 300 mg/day of benznidazole and  
215 became asymptomatic in less than a week.

216 **Fig 1. Trypomastigote form of *T. cruzi* (arrow) in a peripheral blood smear stained**  
217 **using the Giemsa stain technique, from the index case (optical microscopy, 700x**  
218 **magnification).**



219

220 An epidemiological investigation found that other people living in the same village also had  
221 similar symptoms. Moreover, they all had attended a celebration on January 2018 (three  
222 weeks earlier) at which bacaba juice was served, which was the likely transmission route.  
223 Within two weeks after the first case, 85 people were evaluated and tested. An outbreak of  
224 39 cases of ACD was diagnosed and treatment was started for all these individuals.

### 225 3.2. **Epidemiological investigation:**

226 An investigation team was deployed to the area. The village is a quilombo community,  
227 located in the municipality of Pedro do Rosário, state of Maranhão, northeastern Brazil  
228 (Figure 2), in the pre-Amazon region. There was no paved road access. It is close to an  
229 environmental protection area (EPA), the Baixada Maranhense EPA, which is a Ramsar  
230 site.

231 **Fig 2. Map of the geographic location of Pedro do Rosário, state of Maranhão,**  
232 **northeastern Brazil.**



233

234 The residents of this village live in extreme poverty, in mud houses (Figure 3) with no basic  
235 sanitation (no sewage disposal system and no treated water) and with few healthcare  
236 resources. The area is inhabited by several species that act as reservoirs of *T. cruzi*, but  
237 the one most likely involved in this outbreak was the “mucura”, a marsupial species of  
238 opossum from the Didelphidae family, which has the habit of living or hiding in the palm  
239 tree canopy. Triatomines, which feed on the blood of these mammals, also make their  
240 home in the palm canopy. When the fruit is extracted and processed, the insects may be  
241 accidentally crushed and those infected by *T. cruzi* end up contaminating the beverage.

242 **Fig 3. Typical house (made of mud) in the outbreak location**



243

244

245 *Oenocarpus bacaba* (“bacaba”) is a palm tree native to the Amazon and its fruit resembles  
246 that of *Euterpe edulis* (“juçara” or “açai”). It can reach up to 20 meters in height and 20 to  
247 25 centimeters in diameter (Figure 4). Its fruit is widely consumed in the region and is often  
248 the only source of food for the local population. It is a tradition for this community to hold a  
249 celebration every year during the bacaba seasonal period.

250 **Fig 4. *Oenocarpus bacaba* palm tree (a) and fruit (b).**



251

252 The juice production process is completely artisanal and does not follow good practices.  
253 The bacaba bunch is placed in a plastic bag on the ground where the fruits are removed.  
254 The fruits are then placed in a bucket of untreated water where it remains for a few  
255 minutes to remove excess straw and wood. The water is then removed, and the fruits are  
256 crushed by hand to extract the juice. The liquid is then passed through a sieve to remove  
257 the seeds and skins of the fruit. Finally, the liquid is slightly warmed over a wood fire, but  
258 does not reach boiling temperature. After cooling, the juice is served.

259 For the entomological investigation, triatomine information stations (Portuguese acronym  
260 PIT) were distributed throughout the community and kept there for six months. Through  
261 their use, 25 specimens of *Rhodnius pictipes* and two of *R. robustus* were found, all in

262 peridomestic areas, with an infection rate of 33.3% (Table 1). No specimens of any  
263 species were found inside the houses.

264

265 **Table 1. Quantities of triatomines captured and *T. cruzi* infection rate during the**  
266 **outbreak period.**

Months	Triatomines captured (n)	Triatomines positive for <i>T. cruzi</i> (n / %)
March	3	0 / 0
April	5	1 / 20%
May	3	1 / 33.3%
June	2	2 / 100%
September	6	2 / 33.3%
October	8	3 / 37,5%
Total	27	9 / 33.3%

267

268

### 269 3.3. Demographic, clinical and laboratory characteristics

270 The clinical and diagnostic characteristics of the outbreak are summarized in Table 2. The  
271 patients' mean age was 33.6 years (ranging from 10 months to 78 years). There was no  
272 difference in gender distribution (20 women and 19 men). The mean incubation period was  
273 13.8 days (ranging from 2 to 28 days). The mean length of time between symptom onset  
274 and treatment was 16.6 days (ranging from 6 to 54 days). The most frequent symptoms  
275 were fever and lymphadenopathy (90%; 35/39), asthenia (56%; 22/39), chills (51%;  
276 20/39), myalgia (48%; 18/39), facial edema and dyspnea (38%; 15/39) and headache and  
277 cough (31%; 12/39).

279 **Table 2. Demographic, clinical and laboratory characteristics of 39 cases of acute Chagas disease**

ID	SEX	Age range (years)	SYMPTOMS	Incubation (days)	Number of days between symptoms and blood smear	Blood smear result	PCR result	IgG ELISA result (1 <sup>st</sup> sample)	IgG IIF result (1 <sup>st</sup> sample)	IgG ELISA result (2 <sup>nd</sup> sample)	IgG HAI result (2 <sup>nd</sup> sample)	IgG ELISA result (4.5 years later)	IgG IIF result (4.5 years later)
Patients diagnosed through laboratory criteria: positive parasitological findings OR seroconversion of IgG OR 2x increase in titers of IgG IIF													
19	M	10-15	Fever, lymphadenopathy, asthenia, dyspnea, chest pain, facial edema	10	16	POS	POS	NEG	INDET 1/40	POS	INCONC	POS	POS 1/160
24	F	66-70	Fever in evening, lymphadenopathy, asthenia, cough, dyspnea, facial edema, diarrhea	15	11	POS	POS	INDET	INDET 1/40	POS	POS	-	-
39	F	66-70	Fever in evening, lymphadenopathy, chill, myalgia, asthenia, abdominal pain.	14	11	POS	-	NEG	POS 1/160	POS	POS	POS	INDET 1/40
1	F	11-15	Fever in evening, lymphadenopathy, headache, asthenia, facial edema	17	15	POS	-	POS	POS 1/80	POS	POS	POS	POS 1/80
2	F	36-40	Fever in evening, lymphadenopathy, chill, dyspnea, facial edema, abdominal pain	14	11	POS	POS	POS	POS 1/160	POS	POS	POS	INDET 1/40
3	M	56-60	Fever in evening, lymphadenopathy, asthenia, cough, dyspnea, diarrhea	4	19	POS	POS	NEG	NEG	NEG	NEG	NEG	NEG
8	M	31-35	Fever in evening, lymphadenopathy, chill, myalgia, asthenia	5	27	POS	POS	POS	POS 1/160	POS	POS	-	-
10	F	36-40	Fever in evening, lymphadenopathy, chill, cough, dyspnea, chest	14	17	POS	POS	POS	POS 1/80	POS	NEG	-	-

				pain, lower limb edema, inoculation chagoma??										
11	F	11-15		Fever in evening, lymphadenopathy, chill, headache, asthenia	19	13	POS	POS	POS	POS 1/80	INCONC	INCONC	-	-
12	F	36-40		Headache, asthenia, cough, dyspnea, facial edema	19	13	POS	POS	NEG	NEG	NEG	NEG	POS	POS 1/80
13	M	51-55		Fever, lymphadenopathy, chill, headache, myalgia, dyspnea, abdominal pain	2	30	POS	POS	POS	POS 1/80	POS	POS	-	-
15	M	26-30		Fever in evening, lymphadenopathy, chill, myalgia, asthenia	11	20	POS	POS	POS	POS 1/80	-	-	-	-
16	F	51-55		Fever in evening, lymphadenopathy, chill, cough, dyspnea, lower limb edema	12	20	POS	-	INDET	INDET 1/40	IND.	NEG	POS	POS 1/80
17	M	26-30		Fever, lymphadenopathy, chill, asthenia	18	13	POS	POS	NEG	INDET 1/40	-	-	-	-
18	F	11-15		Fever in evening, lymphadenopathy, headache, asthenia, facial edema	7	19	POS	POS	INDET	POS 1/80	-	-	-	-
20	M	21-25		Fever, lymphadenopathy, chill, headache, asthenia, abdominal pain	15	11	POS	POS	POS	POS 1/80	POS	POS	-	-
21	M	56-60		Fever in evening, lymphadenopathy, cough, dyspnea, abdominal pain	10	16	POS	POS	POS	POS 1/160	POS	POS (IIF)	IND	NEG
22	F	26-30		Fever, lymphadenopathy, chill, headache, myalgia, cough, dyspnea, abdominal pain	13	18	POS	POS	POS	POS 1/80	POS	POS	POS	POS 1/80

23	M	11-15	Fever in evening, lymphadenopathy, headache, myalgia, cough, facial edema	7	19	POS	POS	POS	INDET 1/40	POS	POS	POS	POS 1/160
25	F	16-20	Fever, lymphadenopathy, myalgia, cough	15	11	POS	POS	POS	POS 1/80	POS	POS	NEG	NEG
26	F	11-15	Fever in evening, lymphadenopathy, headache, myalgia, facial edema, abdominal pain	10	16	POS	POS	NEG	NEG	INCONC	INCONC	POS	POS 1/80
27	F	31-35	headache, cough, dyspnea, facial edema, abdominal pain	17	15	POS	POS	POS	POS 1/80	POS	POS	POS	POS 1/80
32	F	1-5	Fever, lymphadenopathy, facial edema, abdominal pain, diarrhea	15	23	POS	POS	NEG	INDET 1/40	NEG	NEG	POS	POS 1/160
5	M	31-35	Fever in evening, lymphadenopathy, chill, myalgia, asthenia	16	-	-	POS	POS	INDET 1/40	POS	POS IIF 1/160	POS	POS 1/160
33	M	11-15	Fever, lymphadenopathy, Chill at evening, asthenia, dyspnea,	28	-	-	POS	NEG	POS 1/80	POS	POS	-	-
37	F	66-70	lower limb edema, facial edema	12	-	-	-	INDET	INDET 1/40	POS	POS	POS	POS 1/160
Patients diagnosed through epidemiological criteria: clinical findings AND epidemiological link AND at least one positive IgG finding													
4	M	26-30	Fever at evening, lymphadenopathy, chill, myalgia	5	26	NEG	-	POS	POS 1/80	POS	POS	NEG	NEG
6	M	36-40	Fever at evening, lymphadenopathy, chills, myalgia, asthenia	24	8	NEG	-	POS	POS 1/80	POS	POS	POS	POS 1/80
7	M	46-50	Fever, lymphadenopathy, asthenia	26	7	NEG	POS	POS	POS 1/80	POS	POS	NEG	NEG
9	M	26-30	Fever in evening, lymphadenopathy, headache, myalgia, asthenia, dyspnea	15	17	NEG	POS	POS	POS 1/160	POS	POS	POS	POS 1/80
14	M	1-5	Fever in evening,	13	13	NEG	POS	POS	INDET	POS	POS	POS	POS



			lymphadenopathy, chill, facial edema						1/40				1/80
28	M	46-50	Fever in evening, lymphadenopathy, chill, myalgia, asthenia	12	11	NEG	POS	POS	POS 1/160	POS	POS	POS	POS 1/80
29	M	21-25	Fever at evening, lymphadenopathy, chill, myalgia, asthenia	30	-	-	POS	POS	POS 1/160	POS	POS	-	-
34	F	31-35	Fever in evening, lymphadenopathy, chill, headache, myalgia, dyspnea, chest pain, lower limb edema, facial edema	16	7	NEG	POS	INDET	POS 1/160	INCONC	INCONC	NEG	NEG
38	F	41-45	Fever in evening, lymphadenopathy, myalgia, asthenia, edema III, facial edema	7	-	-	-	POS	POS 1/80	-	-	-	-

Patients without diagnostic criteria: clinical findings AND epidemiological link AND negative tests

30	M	1-5	Fever	16	22	NEG	POS	NEG	NEG	NEG	NEG	NEG	NEG
31	F	11-15	Fever, lymphadenopathy, asthenia	13	-	-	POS	NEG	NEG	-	-	NEG	NEG
35	F	76-80	Fever in evening, lymphadenopathy, chill, myalgia, asthenia, cough, dyspnea, facial edema, abdominal pain	11	22	NEG	POS	NEG	NEG	NEG	NEG	-	-
36	F	61-65	Fever in evening, lymphadenopathy, asthenia, cough	15	16	NEG	POS	NEG	NEG	NEG	NEG	NEG	NEG

ID, patient identity number; M, male; F, female; PCR, polymerase chain reaction; ELISA, enzyme-linked immunosorbent assay; HAI, hemagglutination inhibition assay; IIF, indirect immunofluorescence test; POS, positive; NEG, negative; INDET, indeterminate; INCONC, inconclusive.

280

281 Out of the 39 cases, 66.6% (26/39) were diagnosed through laboratory criteria and 23%  
282 (9/39) through clinical-epidemiological criteria, while 10.2% (4/39) had negative tests but  
283 were considered to be cases of ACD due to high clinical suspicion. We performed one  
284 peripheral blood smear, and also two sequential serological evaluations 50 days apart.  
285 The positivity rates of the tests were as follows: peripheral blood smear in 69.7% (23/33) of  
286 the cases; first serological sample in 66.6% (26/39) of the cases, and seroconversion OR  
287 2x increase in IgG titer in 17.7% (6/35) of the cases. The overall positivity of the  
288 serological tests was 91.4% (32/35). Sequential samples were not collected on time in the  
289 cases of four patients.

290 All 33 samples (100%) amplified through PCR and sequencing with the specific primers  
291 allowed us to identify *T. cruzi*. These included nine of the thirteen patients diagnosed  
292 through clinical-epidemiological criteria and all four patients for whom all other test results  
293 were negative. The sequences from these samples have been deposited in GenBank  
294 under the following accession numbers: ON037202 to ON037234. Alignment of these  
295 sequences with *T. cruzi* sequences previously deposited in GenBank showed a genetic  
296 similarities ranging from 94.8 to 100.0% with samples from the state of Pará, which is  
297 located in the northern region of Brazil. Through phylogenetic analysis (S1 Figure 1), it  
298 was possible to ascertain the evolutionary relationships between our sequences and those  
299 from GenBank, as detailed in the supplementary data (Supporting information).

300 All 39 patients were treated with benznidazole: adults with 5 mg/kg/day (maximum of 300  
301 mg/day) and children with 5-10 mg/kg/day, for 60 days. Only two patients withdrew from  
302 the treatment before the end of the schedule, but they completed at least 30 days of  
303 treatment. One of them had to be hospitalized due to a drug reaction consisting of

304 eosinophilia and systemic symptoms (DRESS) syndrome, which was resolved with  
305 corticosteroids and antihistamines. There were no deaths due to this outbreak.

306 After an interval of 4.5 years, ELISA and IIF IgG were performed on 26 individuals, which  
307 showed that serological cure had been achieved (negative tests) in 34.6% of the cases  
308 (9/26), while decreased IgG titers were found in 15.3% of the cases (4/26). The other  
309 patients were lost to follow-up because they had changed their place of residence to  
310 another state.

#### 311 4. Discussion:

312 Here, we present an epidemic outbreak of acute Chagas disease due to oral transmission  
313 in a high-vulnerability population in the state of Maranhão, Brazil. It was the largest  
314 reported outbreak to date in this state.

315 In 2021, the Human Development Index (HDI) of the state of Maranhão was 0.676, the  
316 lowest in Brazil. Hunger, malnutrition, social exclusion and deficient basic sanitation are a  
317 hallmark of the state. More than 50% of the population lives on a per capita income of less  
318 than \$81 per month. Only 56.5% of the population of Maranhão has access to a piped  
319 water system and 43.5% do not have access to drinkable water [23].

320 All these associated factors have given rise to an explosion of endemic diseases in this  
321 state, including increased numbers of cases and outbreaks of ACD. Until 2010, cases in  
322 Maranhão were recorded only through the classic vectorial route in a predominantly wild  
323 environment. Most cases of orally transmitted ACD were imported from the state of Pará.  
324 Over the last 15 years an increase in autochthonous cases through this route has been  
325 reported, making ACD an emerging disease [13]. Cutrim (2017) reported that there was a  
326 significant increase in orally transmitted ACD from 2010 onwards [24]. The outbreak  
327 described here was the largest in the state, which emphasized that the actions of the

328 public healthcare system must focus on promoting improvements in basic sanitation, in  
329 addition to developing a safe food production program for the population. At the time of the  
330 present study, there was no record of public policies that included safe production of these  
331 products by the population.

332 Orally transmitted Chagas disease has particularities that are worth mentioning. In contrast  
333 to vector-borne transmission, the higher parasite load after oral ingestion makes  
334 controlling the disease more difficult for the immune system [25]. This is demonstrated  
335 through higher parasitemia and increased tissue invasion [2]. It may lead to a shorter  
336 incubation period, [26,27], early cardiac involvement and increased severity [28,29,30].  
337 However, the clinical manifestations may be nonspecific, which makes diagnosis a real  
338 challenge for clinicians, given that ACD can be confused with other acute febrile illnesses,  
339 such as leptospirosis, visceral leishmaniasis, malaria, enteric fever, rickettsiosis and some  
340 arboviruses [10].

341 The possibility of orally acquired CD should always be suspected in situations in which an  
342 epidemiological link exists, such as in endemic areas or with more than one simultaneous  
343 case with ingestion of suspected food. A good clinical clue is the presence of fever for  
344 more than a week, associated with facial edema or bipalpebral edema and  
345 lymphadenopathy in patients with an epidemiological link. High frequency of fever and  
346 lymphadenopathy (90%) and low frequency of facial edema (38%) were found in the  
347 present study, which is in line with other reports [31,32,33].

348 The difficulty in establishing the diagnosis in real life was demonstrated here. The tools  
349 available that are recommended in the guidelines are low in efficiency, as they require  
350 several visits and involve complex and often rudimentary processes. The gold standard in  
351 diagnosing ACD is direct parasitological methods, but these have variable sensitivity, as

352 they are operator-dependent and need to be repeated on multiple samples [15, 34].  
353 Therefore, the best recommendation is to combine methods [15].  
354 In infectious disease, identification of the agent is often the gold standard. In Chagas  
355 disease, there are direct and indirect methods. Xenodiagnosis and blood culture are  
356 among the indirect methods. Xenodiagnosis is an old but sophisticated procedure. It was  
357 the first method used when CD was discovered. Laboratory-reared vectors are induced to  
358 bite patients, and 30 to 60 days later, their excreta are analyzed to search for the parasite.  
359 There are clearly some disadvantages in this technique, such as the time and resources  
360 required to perform the procedure, as well as the risks associated with handling insect  
361 vectors. Hemoculture is another indirect method, in which the examination should be  
362 performed monthly for as long as six months. However, both xenodiagnosis and  
363 hemoculture have low sensitivity [35,36] (around 20%) and are best suited for the chronic  
364 phase of the disease [15,34].  
365 The most sensitive of the direct parasitological methods consists of examination of fresh  
366 blood in association with concentration methods [15,34,37] (Strout, buffy coat or  
367 microhematocrit). However, considering that the region of the present study is endemic for  
368 malaria, the blood smear technique is the tool that is most available, and it is easily  
369 performed by some laboratory technicians in Maranhão. Furthermore, it is recommended  
370 that the parasitological test should be repeated every 12-24 hours while the clinical  
371 condition persists, until the parasite is found or another diagnosis is established [15,34,37].  
372 Unfortunately, due to the logistical difficulty in collecting samples in remote areas, it was  
373 not possible to repeat this test in a timely manner. Also, there has been a shortage of  
374 qualified technicians to perform good-quality microscopy over the years, thus posing a  
375 threat to making diagnoses of ACD. In the present study, the peripheral blood smear

376 technique was used and positivity of 69.7% was found in a single-sample analysis, which  
377 was higher than had been found in other reports [38]. Nonetheless, variable sensitivity has  
378 been reported in the literature, with the best results found in reference laboratories  
379 [31,39,40].

380 In diagnosing ACD, serological tests are considered to be the tool with the greatest  
381 sensitivity [18] and specificity, through detecting IgG seroconversion or an IgG titer that  
382 more than doubles over a minimum interval of 2 weeks. However, this is not the most  
383 recommended tool, given the time required for achieving confirmation [34,37]. Moreover,  
384 use of IgM has serious limitations in ACD: there are no commercial kits; positive controls  
385 are hard to find; it remains positive for several years in chronic patients; and it might give  
386 false positives with rheumatoid factor and in cases of other infectious diseases such as  
387 leishmaniasis [37]. In the outbreak of the present report, two sequential serological tests  
388 were performed, with an interval of 50 days between them. ELISA and IIF were used for  
389 the first sample and ELISA and HAI for the subsequent sample. We found positivity of  
390 66.6% (26/39) in the first sample and 17.7% seroconversion (6/35). Four samples were  
391 lost in sequential analysis. The overall positivity of the serological tests was 91.4% (32/35).  
392 This result was in line with those of several other publications [35,42,42]. It was not  
393 possible to perform IgM, given that this is a complex technique and that it could present  
394 false positive results, especially with leishmaniasis (an endemic disease in this region),  
395 and the reference laboratory did not have the resources to do this test. If this test had been  
396 performed, we could have found higher values, but with conflicting results.

397 Regarding the cure criteria, some remarks must be made. There are no gold standard  
398 serological tests or biomarkers that define situations of CD cure. Molecular biology  
399 analyses and non-conventional serological tests aimed at specific forms of *Trypanosoma*

400 like anti-live trypomastigote (FC-ALTA), anti-fixed epimastigote (FC-AFEA) and anti-three  
401 evolutive forms (FC-ATE) or antigen tests (ELISA-F29) have been tested with inconclusive  
402 results [43,44,45,46,47]. Therefore, reversion to negative seen through conventional  
403 serological tests is considered to be the most reliable indicator of successful cure [48,49],  
404 and this is associated with the absence of parasitemia [50]. In long-term follow-up, after 54  
405 months (4.5 years), we were able to perform serological tests (ELISA and IIF) on 26  
406 individuals and found serological cure (negative tests) in 34.6% (9/26) and decreased IgG  
407 titers in 15.3% (4/26). The other patients were lost to follow-up because they had changed  
408 their place of residence to another state. These rates were lower than other reports on  
409 ACD (up to 70% after 5 years) [50], considering that the total negativity or decline of  
410 antibodies achieved 4.5 years after the outbreak was only 50%. This finding brings to light  
411 the possibility of hypotheses such as pre-exposure or re-exposure to the pathogen.  
412 Moreover, if additional samples had been obtained after shorter time intervals, this would  
413 have enabled better analysis on the kinetics of antibodies. Nonetheless, it has previously  
414 been noted that the decline in IgG titers can take many years, depending on the form of  
415 infection [51,52].

416 Molecular diagnosis has restricted use, and is performed only by research centers or  
417 reference laboratories, due to the lack of defined protocols and standardized operational  
418 procedures, as well as the lack of commercial kits for use in routine surveillance. Despite  
419 the diagnostic complexity of CD in all of its phases, we obtained excellent results using  
420 conventional PCR to detect and identify *T. cruzi* in the clinical samples evaluated. These  
421 specific primers were previously described in the literature by Wincker et al. (1994) [53]  
422 and have been widely used as an adjunct to serological tests in diagnosing this disease. In  
423 a recent meta-analysis, in which several molecular biology methods were compared,

424 Pascual-Vázquez et al. (2023) [54] demonstrated that it is not yet possible to determine  
425 the most effective molecular protocol because of the heterogeneity of the studies. In the  
426 present study, positivity was found through conventional PCR in 100% of the samples  
427 tested, even in patients whose other tests were all negative. This result is in line with  
428 reports on other outbreaks [55,56,57]. There is an urgent need, even without commercial  
429 platforms, for standardization of at least one molecular biology technique, so that this  
430 method can be used for routine diagnosis of ACD.

431 Genotyping is a powerful tool for investigating orally transmitted outbreaks of CD. *T. cruzi*  
432 is divided into at least seven lineages, as discrete typing units (DTUs), from TcI to TcVI  
433 and Tcbat (there is no consensus regarding the definition of the latter as a distinct DTU)  
434 [58,59,60]. Velásquez-Ortiz et al. (2022) demonstrated that DTUs are widely distributed  
435 across all countries, and in Brazil most cases are associated with TcI [61]. However, it is  
436 important to highlight that other genotypes have also been reported, like TcIII and TcIV  
437 [57,62,63]. In northeastern Brazil, the most frequent forms are TcI and TcIV [64]. The  
438 present study did not have the aim of analyzing the clonal aspect of *T. cruzi* strains.  
439 However, construction of a phylogenetic tree containing 33 sequences from this outbreak  
440 together with another 77 sequences extracted from another Brazilian outbreak from Pará  
441 state showed a genetic similarity ranging from 94.8 to 100.0%, demonstrated that the  
442 evolutionary distances are low and may represent a common source. Molecular studies  
443 are needed in order to better evaluate the transmission dynamics or origin of these strains.  
444 In the oral transmission route, the triatomine is accidentally macerated together with fruit or  
445 food is directly contaminated by its feces when left unprotected. The species most  
446 frequently involved in Colombia and Venezuela is *P. geniculatus*. In Brazil, greater  
447 variability of species has been found, but most of them have belonged to the genera



448 *Triatoma* and *Panstrongylus* [65]. Entomological surveillance is of great importance for  
449 better understanding the life cycle and persistence of *T. cruzi* in nature. We distributed  
450 PITs throughout the community and kept them there for six months. In this study, 27 viable  
451 triatomines were found, of which more than 90% were *Rhodnius pictipes*, all in  
452 peridomestic areas. No species were found inside houses. Previously, only two outbreaks  
453 (in Brazil and Colombia) had reported this vector as probably involved in transmission  
454 [66,67], but its ability to transmit the disease was recently demonstrated in an experimental  
455 study [68]. The infection rate was 33.3%, which despite being higher than in most  
456 surveillance in Brazil, was in line with findings from studies in other states, where rates  
457 above 30% and up to 70% were found in peridomestic areas [69,70,71].

458 All the patients were treated with the only drug available in Brazil, benznidazole. This is a  
459 medication with a high rate of adverse reactions. Fortunately, suspension of the  
460 medication was only necessary due to adverse reactions in the cases of two patients, and  
461 both of these individuals received the treatment for 30 days, a period considered  
462 adequate. However, management of the treatment was quite arduous, given the need to  
463 use symptomatic medication in most patients. It is imperative that new initiatives, such as  
464 DNDi, are funded to develop new drugs or shorter therapeutic regimens.

465 The lethality of an outbreak is quite variable and can be influenced by four factors: the  
466 phenotype of the pathogen; the ingested parasite load; the individuals' susceptibility; and  
467 whether treatment was started early on. A recent meta-analysis demonstrated that the  
468 overall lethality of ACD is around 1%, but it also showed that lethality can reach up to 30%  
469 in large outbreaks (with more than 10 patients) [72]. It was not possible to analyze the first  
470 three factors mentioned above. Regarding early treatment, the mean length of time  
471 between symptom onset and treatment was 16.6 days (ranging from 6 to 54 days). This

472 demonstrates that action was implemented quickly by the surveillance center, which may  
473 have had an impact on the absence of lethal outcomes.

474 Most orally transmitted ACD cases have occurred after ingestion of fresh juices, like açai  
475 (*Euterpe oleracea*) and sugar cane (*Saccharum spp.*). However, other beverages have  
476 also been cited [72]. In this event, the most probable source was bacaba juice. This was  
477 the first time that this fruit had been reported to be involved in an outbreak in the state of  
478 Maranhão, but reports of this in Venezuela and another Brazilian state have already been  
479 published [63,73]. At first sight, it may seem that this is a problem restricted to remote and  
480 highly vulnerable locations, but a study demonstrated the presence of *T. cruzi* in açai  
481 products sold in markets in Rio de Janeiro, Brazil, which is well outside the Amazon region  
482 [74]. Furthermore, from the perspective of the "One Health approach", with intense human  
483 migration and exporting of natural products from endemic areas, CD can already be  
484 considered to be a global health problem: papers published in European and North  
485 American countries have demonstrated this concern [75]. It is also important to mention a  
486 study that demonstrated the presence of infected triatomines in a densely populated area  
487 in the northeastern region of the United State, a non-endemic area [76]. Therefore, there is  
488 an urgent need to implement safe food production programs, aligned with better diagnostic  
489 and therapeutic tools.

490 After this outbreak, a series of training sessions were conducted among the municipality's  
491 healthcare team and communities, with the aim of raising awareness of the importance of  
492 Chagas disease. Given that the foods involved in its transmission are the only source of  
493 survival for most people in the region, stopping eating them is not an option. The  
494 population was trained to produce this food in a safer way, while maintaining the artisanal  
495 process, but this did not constitute a guidance policy extended to the entire state.

496 This event demonstrates that there is still a long way to go before this disease is  
497 controlled. As mentioned previously, the status of CD as a neglected tropical disease  
498 means that controlling or eradicating it through applying public health strategies remains  
499 possible. Despite the contemporary nature of the difficulties described here, they remain  
500 very similar to those at the time of its discovery. Even after more than a century, Carlos  
501 Chagas is still right when he said:

502                                   “Will it be possible, within public hygiene, to find efficacious ways of  
503                                   attenuating this affliction? We believe so, if this problem—most surely  
504                                   a problem of the State and of humanity—becomes the concern of a  
505                                   scientifically well-advised statesman.” (Chagas, 1917).

506 As globalization breaks all borders through the migration of people and the exporting of  
507 raw materials, we postulate here that we must spread Carlos Chagas' thoughts throughout  
508 the world.

509

## 510       **5. Conclusions**

511 Chagas disease is a classic NTD with a special characteristic: it is called "the silent  
512 disease". The ability of this disease to keep the host virtually asymptomatic for a long time  
513 allows it to thrive. In this study, we present all the barriers encountered in managing real-  
514 life situations of an acute event: the vulnerability of the population; the dependence on old  
515 diagnostic techniques, together with little interest in developing microscopy professionals;  
516 lack of standardization of molecular biology techniques; and few therapeutic options, with  
517 many side effects. We demonstrated that rapid surveillance action with early initiation of  
518 treatment culminated in an outbreak without deaths. To improve early treatment, it is  
519 necessary to invest in better diagnostic techniques and make them widely available. We

520 also demonstrated and propose that polymerase chain reaction should be standardized  
521 within the diagnostic routine. Acute Chagas disease is a threat to public health. While  
522 advances in vector control have been achieved, the peridomestic and sylvatic cycle  
523 remains active, thus perpetuating the parasite in nature. The most vulnerable populations  
524 continue to be those in extreme poverty, without access to basic sanitation, or who live  
525 near the Amazon rainforest. However, as the beverages that are classically involved in  
526 oral transmission are increasingly exported to other regions, and with the intense human  
527 migration that has been occurring increasingly, outbreaks in non-endemic regions are an  
528 additional concern in relation to controlling CD. Until everyone looks at the problem from a  
529 "One Health" perspective, no nation is safe from Chagas disease.

530

### 531 **Acknowledgements**

532 The authors thank the State Health Department of Maranhão (SES/MA) and the Oswaldo  
533 Cruz Institute - Central Public Health Laboratory of Maranhão (IOC-LACEN/MA) for their  
534 logistical support and analyses on laboratory tests. The authors also thank the Foundation  
535 for Support of Scientific Research and Technological Development of Maranhão  
536 (FAPEMA) and the National Council for Scientific and Technological Development (CNPq).

537

### 538 **References**

539

- 540 1. Lidani KCF, Andrade FA, Bavia L, et al. Chagas Disease: From Discovery to a  
541 Worldwide Health Problem. *Front Public Health*. 2019;7:166. Published 2019 Jul 2.  
542 doi:10.3389/fpubh.2019.00166

- 543 2. Rassi A Jr, Rassi A, Marin-Neto JA. Chagas disease. *Lancet*. 2010;375(9723):1388-  
544 1402. doi:10.1016/S0140-6736(10)60061-X
- 545 3. Malecela MN, Ducker C. A road map for neglected tropical diseases 2021-2030. *Trans*  
546 *R Soc Trop Med Hyg*. 2021;115(2):121-123. doi:10.1093/trstmh/trab002
- 547 4. Chagas C 1908. Trypanosoma minasense: Nota preliminar. *Brasil Médico* 22: 471.
- 548 5. Chagas C 1909 c. Nova espécie mórbida do homem, produzida por um Trypanozoma  
549 (Trypanozoma cruzi): Nota prévia. *Brasil Médico* 23: 161.
- 550 6. Chagas C 1909 d. Nova tripanossomíase humana: Estudos sobre a morfologia e o  
551 ciclo evolutivo do Schizotrypanum cruzi n. gen., n. sp., agente etiológico de nova  
552 entidade mórbida do homem. *Memórias do Instituto Oswaldo Cruz* 1: 159-218.
- 553 7. Chagas C 1910 a. Aspecto clínico geral da nova entidade mórbida produzida pelo  
554 Schizotrypanum cruzi: Nota prévia. *Brasil Médico* 24: 263-265
- 555 8. Gómez-Ochoa SA, Rojas LZ, Echeverría LE, Muka T, Franco OH. Global, Regional,  
556 and National Trends of Chagas Disease from 1990 to 2019: Comprehensive Analysis  
557 of the Global Burden of Disease Study. *Glob Heart*. 2022;17(1):59. Published 2022  
558 Aug 24. doi:10.5334/gh.1150
- 559 9. Martins-Melo FR, Castro MC, Werneck GL. Levels and trends in Chagas disease-  
560 related mortality in Brazil, 2000-2019. *Acta Trop*. 2021;220:105948.  
561 doi:10.1016/j.actatropica.2021.105948
- 562 10. Franco-Paredes C, Villamil-Gómez WE, Schultz J, et al. A deadly feast: Elucidating the  
563 burden of orally acquired acute Chagas disease in Latin America - Public health and  
564 travel medicine importance. *Travel Med Infect Dis*. 2020;36:101565.  
565 doi:10.1016/j.tmaid.2020.101565

- 566 11. Rassi A Jr, Rassi A, Marin-Neto JA. Chagas disease. *Lancet*. 2010;375(9723):1388-  
567 1402. doi:10.1016/S0140-6736(10)60061-X
- 568 12. Pérez-Molina JA, Molina I. Chagas disease. *Lancet*. 2018;391(10115):82-94.  
569 doi:10.1016/S0140-6736(17)31612-4
- 570 13. Brazil, Ministry of Health. Notifiable Diseases Information System - Sinan Net; 2024  
571 [cited 2024 Apr 5<sup>th</sup>]. [Internet]. Available from:  
572 <http://tabnet.datasus.gov.br/cgi/tabcgi.exe?sinannet/cnv/chagasbr.def>
- 573 14. Pan American Health Organization. 49th Directing Council, 61th session of the regional  
574 committee of WHO for the Americas. Washington, D.C.: PAHO; 2009. [Internet].  
575 Available from: <https://iris.paho.org/handle/10665.2/20>
- 576 15. Pan American Health Organization. Guidelines for the diagnosis and treatment of  
577 Chagas disease. Washington, D.C.: PAHO; 2019. [Internet]. Available from:  
578 <https://www.who.int/publications/i/item/9789275120439>
- 579 16. Egüez KE, Alonso-Padilla J, Terán C, et al. Rapid diagnostic tests duo as alternative to  
580 conventional serological assays for conclusive Chagas disease diagnosis. *PLoS Negl*  
581 *Trop Dis*. 2017;11(4):e0005501. Published 2017 Apr 3.  
582 doi:10.1371/journal.pntd.0005501
- 583 17. Rivero R, Santini MS, Lopez-Albizu C, et al. Comparative evaluation of four rapid  
584 diagnostic tests that detect human *Trypanosoma cruzi*-specific antibodies to support  
585 diagnosis of Chagas Disease in urban population of Argentina. *PLoS Negl Trop Dis*.  
586 2024;18(3):e0011997. Published 2024 Mar 15. doi:10.1371/journal.pntd.0011997
- 587 18. Candia-Puma MA, Machaca-Luque LY, Roque-Pumahuanca BM, et al. Accuracy of  
588 Diagnostic Tests for the Detection of Chagas Disease: A Systematic Review and Meta-

- 589 Analysis. *Diagnostics (Basel)*. 2022;12(11):2752. Published 2022 Nov 10.  
590 doi:10.3390/diagnostics12112752
- 591 19. Molina I, Salvador F, Sánchez-Montalvá A, et al. Toxic Profile of Benznidazole in  
592 Patients with Chronic Chagas Disease: Risk Factors and Comparison of the Product  
593 from Two Different Manufacturers. *Antimicrob Agents Chemother*. 2015;59(10):6125-  
594 6131. doi:10.1128/AAC.04660-14
- 595 20. Lascano F, García Bournissen F, Altcheh J. Review of pharmacological options for the  
596 treatment of Chagas disease. *Br J Clin Pharmacol*. 2022;88(2):383-402.  
597 doi:10.1111/bcp.14700
- 598 21. González S, Wall RJ, Thomas J, et al. Short-course combination treatment for  
599 experimental chronic Chagas disease. *Sci Transl Med*. 2023;15(726):eadg8105.  
600 doi:10.1126/scitranslmed.adg8105
- 601 22. Cafferata ML, Toscani MA, Althabe F, et al. Short-course Benznidazole treatment to  
602 reduce *Trypanosoma cruzi* parasitic load in women of reproductive age (BETTY): a  
603 non-inferiority randomized controlled trial study protocol. *Reprod Health*.  
604 2020;17(1):128. Published 2020 Aug 24. doi:10.1186/s12978-020-00972-1
- 605 23. IBGE - INSTITUTO BRASILEIRO DE GEOGRAFIA E ESTATÍSTICA. Censo Brasileiro  
606 de 2022; Rio de Janeiro: IBGE, 2022. [cited 2024 Apr 15]. [Internet]. Available from:  
607 <https://cidades.ibge.gov.br/brasil/ma/panorama>
- 608 24. Cutrim FSRF. Estudo dos casos agudos de doença de Chagas no Maranhão, Brasil, e  
609 sua relação com a pobreza. Rio de Janeiro, 2017. PhD Thesis, Instituto Oswaldo Cruz.  
610 2017. Available from: <https://www.arca.fiocruz.br/handle/icict/49474>
- 611 25. Silva-Dos-Santos D, Barreto-de-Albuquerque J, Guerra B, et al. Unraveling Chagas  
612 disease transmission through the oral route: Gateways to *Trypanosoma cruzi* infection

- 613 and target tissues. *PLoS Negl Trop Dis*. 2017;11(4):e0005507. Published 2017 Apr 5.  
614 doi:10.1371/journal.pntd.0005507
- 615 26. Pinto AY, Valente SA, Valente Vda C, Ferreira Junior AG, Coura JR. Fase aguda da  
616 doença de Chagas na Amazônia brasileira: estudo de 233 casos do Pará, Amapá e  
617 Maranhão observados entre 1988 e 2005 [Acute phase of Chagas disease in the  
618 Brazilian Amazon region: study of 233 cases from Pará, Amapá and Maranhão  
619 observed between 1988 and 2005]. *Rev Soc Bras Med Trop*. 2008;41(6):602-614.  
620 doi:10.1590/s0037-86822008000600011
- 621 27. Nóbrega AA, Garcia MH, Tatto E, et al. Oral transmission of Chagas disease by  
622 consumption of açaí palm fruit, Brazil. *Emerg Infect Dis*. 2009;15(4):653-655.  
623 doi:10.3201/eid1504.081450
- 624 28. Coura JR, Viñas PA. Chagas disease: a new worldwide challenge. *Nature*.  
625 2010;465(7301):S6-S7. doi:10.1038/nature09221
- 626 29. Noya BA, Díaz-Bello Z, Colmenares C, et al. Update on oral Chagas disease outbreaks  
627 in Venezuela: epidemiological, clinical and diagnostic approaches. *Mem Inst Oswaldo*  
628 *Cruz*. 2015;110(3):377-386. doi:10.1590/0074-02760140285
- 629 30. Shikanai-Yasuda MA, Carvalho NB. Oral transmission of Chagas disease. *Clin Infect*  
630 *Dis*. 2012;54(6):845-852. doi:10.1093/cid/cir956
- 631 31. Shikanai-Yasuda MA, Marcondes CB, Guedes LA, et al. Possible oral transmission of  
632 acute Chagas' disease in Brazil. *Rev Inst Med Trop Sao Paulo*. 1991;33(5):351-357.  
633 doi:10.1590/s0036-46651991000500003
- 634 32. Bastos CJ, Aras R, Mota G, et al. Clinical outcomes of thirteen patients with acute  
635 chagas disease acquired through oral transmission from two urban outbreaks in



- 636 northeastern Brazil. *PLoS Negl Trop Dis*. 2010;4(6):e711. Published 2010 Jun 15.
- 637 doi:10.1371/journal.pntd.0000711
- 638 33. Vargas A, Malta JMAS, Costa VMD, et al. Investigação de surto de doença de Chagas
- 639 aguda na região extra-amazônica, Rio Grande do Norte, Brasil, 2016 [Investigation of
- 640 an outbreak of acute Chagas disease outside the Amazon Region, in Rio Grande do
- 641 Norte State, Brazil, 2016]. *Cad Saude Publica*. 2018;34(1):e00006517. Published 2018
- 642 Feb 5. doi:10.1590/0102-311X00006517
- 643 34. Brazil, Ministry of Health. Health Surveillance Guide: vol 2; 6. Ed, Brasília, Health
- 644 Ministry, 2023 [Internet]. Available from: [https://www.gov.br/saude/pt-br/centrais-de-](https://www.gov.br/saude/pt-br/centrais-de-conteudo/publicacoes/svsa/vigilancia/guia-de-vigilancia-em-saude-volume-2-6a-edicao/view)
- 645 [conteudo/publicacoes/svsa/vigilancia/guia-de-vigilancia-em-saude-volume-2-6a-](https://www.gov.br/saude/pt-br/centrais-de-conteudo/publicacoes/svsa/vigilancia/guia-de-vigilancia-em-saude-volume-2-6a-edicao/view)
- 646 [edicao/view](https://www.gov.br/saude/pt-br/centrais-de-conteudo/publicacoes/svsa/vigilancia/guia-de-vigilancia-em-saude-volume-2-6a-edicao/view)
- 647 35. Schijman AG, Alonso-Padilla J, Longhi SA, Picado A. Parasitological, serological and
- 648 molecular diagnosis of acute and chronic Chagas disease: from field to
- 649 laboratory. *Mem Inst Oswaldo Cruz*. 2022;117:e200444. Published 2022 May 23.
- 650 doi:10.1590/0074-02760200444
- 651 36. de Castro AM, Luquetti AO, Rassi A, Chiari E, Galvão LM. Detection of parasitemia
- 652 profiles by blood culture after treatment of human chronic *Trypanosoma cruzi*
- 653 infection. *Parasitol Res*. 2006;99(4):379-383. doi:10.1007/s00436-006-0172-5
- 654 37. de Sousa AS, Vermeij D, Ramos AN Jr, Luquetti AO. Chagas disease. *Lancet*.
- 655 2024;403(10422):203-218. doi:10.1016/S0140-6736(23)01787-7
- 656 38. Noya BA, Díaz-Bello Z, Colmenares C, et al. The performance of laboratory tests in the
- 657 management of a large outbreak of orally transmitted Chagas disease. *Mem Inst*
- 658 *Oswaldo Cruz*. 2012;107(7):893-898. doi:10.1590/s0074-02762012000700009

- 659 39. Pinto AYN, Farias JR, Marcal AS, Galucio AL, Costi RR, Valente VC, Valente SAS.  
660 Doença de Chagas Aguda grave autóctone na Amazônia brasileira. *Revista Paraense*  
661 *de Medicina* 2007; 21:7–12.
- 662 40. Steindel M, Kramer Pacheco L, Scholl D, et al. Characterization of *Trypanosoma cruzi*  
663 isolated from humans, vectors, and animal reservoirs following an outbreak of acute  
664 human Chagas disease in Santa Catarina State, Brazil. *Diagn Microbiol Infect Dis.*  
665 2008;60(1):25-32. doi:10.1016/j.diagmicrobio.2007.07.016
- 666 41. Suárez C, Nolder D, García-Mingo A, Moore DAJ, Chiodini PL. Diagnosis and Clinical  
667 Management of Chagas Disease: An Increasing Challenge in Non-Endemic Areas. *Res*  
668 *Rep Trop Med.* 2022;13:25-40. Published 2022 Jul 22. doi:10.2147/RRTM.S278135
- 669 42. Gabaldón-Figueira JC, Skjefte M, Longhi S, et al. Practical diagnostic algorithms for  
670 Chagas disease: a focus on low resource settings. *Expert Rev Anti Infect Ther.*  
671 2023;21(12):1287-1299. doi:10.1080/14787210.2023.2279110
- 672 43. Krettli AU, Brener Z. Resistance against *Trypanosoma cruzi* associated to anti-living  
673 trypomastigote antibodies. *J Immunol.* 1982;128(5):2009-2012.
- 674 44. Galvao LM, Nunes RM, Cançado JR, Brener Z, Krettli AU. Lytic antibody titre as a  
675 means of assessing cure after treatment of Chagas disease: a 10 years follow-up  
676 study. *Trans R Soc Trop Med Hyg.* 1993;87(2):220-223. doi:10.1016/0035-  
677 9203(93)90501-g
- 678 45. Martins-Filho OA, Eloi-Santos SM, Teixeira Carvalho A, et al. Double-blind study to  
679 evaluate flow cytometry analysis of anti-live trypomastigote antibodies for monitoring  
680 treatment efficacy in cases of human Chagas' disease. *Clin Diagn Lab Immunol.*  
681 2002;9(5):1107-1113. doi:10.1128/cdli.9.5.1107-1113.2002

- 682 46. Wendling AP, Vitelli-Avelar DM, Sathler-Avelar R, et al. The use of IgG antibodies in  
683 conventional and non-conventional immunodiagnostic tests for early prognosis after  
684 treatment of Chagas disease. *J Immunol Methods*. 2011;370(1-2):24-34.  
685 doi:10.1016/j.jim.2011.05.003
- 686 47. Fabbro D, Velazquez E, Bizai ML, et al. Evaluation of the ELISA-F29 test as an early  
687 marker of therapeutic efficacy in adults with chronic Chagas disease. *Rev Inst Med*  
688 *Trop Sao Paulo*. 2013;55(3):S0036-46652013000300167. doi:10.1590/S0036-  
689 46652013000300005
- 690 48. de Lana M, Martins-Filho OA. Revisiting the Posttherapeutic Cure Criterion in Chagas  
691 Disease: Time for New Methods, More Questions, Doubts, and Polemics or Time to  
692 Change Old Concepts?. *Biomed Res Int*. 2015;2015:652985. doi:10.1155/2015/652985
- 693 49. Moreira CHV, Bierrenbach AL, Taconeli CA, de Oliveira-da Silva LC, Buss LF, Keating  
694 SM, Manuli ER, Carvalho NB, Guastini C, Coco SB, Lindoso JA<sup>^</sup> L, Franco LAM,  
695 Ghilardi F, Sales FCdS, Contestable P, Di Germanio C, Busch MP and Sabino EC  
696 (2023) Parasitemia and antibody response to benznidazole treatment in a cohort of  
697 patients with chronic Chagas disease. *Front. Parasitol*. 2:1235925. doi:  
698 10.3389/fpara.2023.1235925
- 699 50. Buss LF, Campos de Oliveira-da Silva L, Moreira CHV, et al. Declining antibody levels  
700 to *Trypanosoma cruzi* correlate with polymerase chain reaction positivity and  
701 electrocardiographic changes in a retrospective cohort of untreated Brazilian blood  
702 donors. *PLoS Negl Trop Dis*. 2020;14(10):e0008787. Published 2020 Oct 27.  
703 doi:10.1371/journal.pntd.0008787

- 704 51. Rodriques Coura J, de Castro SL. A critical review on Chagas disease  
705 chemotherapy. *Mem Inst Oswaldo Cruz*. 2002;97(1):3-24. doi:10.1590/s0074-  
706 02762002000100001
- 707 52. Cancado JR. Long term evaluation of etiological treatment of chagas disease with  
708 benznidazole. *Rev Inst Med Trop Sao Paulo*. 2002;44(1):29-37.
- 709 53. Wincker P, Britto C, Pereira JB, Cardoso MA, Oelemann W, Morel CM. Use of a  
710 simplified polymerase chain reaction procedure to detect *Trypanosoma cruzi* in blood  
711 samples from chronic chagasic patients in a rural endemic area. *Am J Trop Med Hyg*.  
712 1994;51(6):771-777. doi:10.4269/ajtmh.1994.51.771
- 713 54. Pascual-Vázquez G, Alonso-Sardón M, Rodríguez-Alonso B, et al. Molecular diagnosis  
714 of Chagas disease: a systematic review and meta-analysis. *Infect Dis Poverty*.  
715 2023;12(1):95. Published 2023 Oct 16. doi:10.1186/s40249-023-01143-7
- 716 55. Hernández C, Cucunubá Z, Flórez C, et al. Molecular Diagnosis of Chagas Disease in  
717 Colombia: Parasitic Loads and Discrete Typing Units in Patients from Acute and  
718 Chronic Phases [published correction appears in *PLoS Negl Trop Dis*. 2016 Oct 28;10  
719 (10):e0005112]. *PLoS Negl Trop Dis*. 2016;10(9):e0004997. Published 2016 Sep 20.  
720 doi:10.1371/journal.pntd.0004997
- 721 56. Souza-Lima Rde C, Barbosa Md, Coura JR, et al. Outbreak of acute Chagas disease  
722 associated with oral transmission in the Rio Negro region, Brazilian Amazon. *Rev Soc*  
723 *Bras Med Trop*. 2013;46(4):510-514. doi:10.1590/0037-8682-1367-2013
- 724 57. Santana RAG, Guerra MGVB, Sousa DR, et al. Oral Transmission of *Trypanosoma*  
725 *cruzi*, Brazilian Amazon. *Emerg Infect Dis*. 2019;25(1):132-135.  
726 doi:10.3201/eid2501.180646

- 727 58. Zingales B, Miles MA, Campbell DA, et al. The revised *Trypanosoma cruzi* subspecific  
728 nomenclature: rationale, epidemiological relevance and research applications. *Infect*  
729 *Genet Evol.* 2012;12(2):240-253. doi:10.1016/j.meegid.2011.12.009
- 730 59. Lima L, Espinosa-Álvarez O, Ortiz PA, et al. Genetic diversity of *Trypanosoma cruzi* in  
731 bats, and multilocus phylogenetic and phylogeographical analyses supporting Tcbat as  
732 an independent DTU (discrete typing unit). *Acta Trop.* 2015;151:166-177.  
733 doi:10.1016/j.actatropica.2015.07.015
- 734 60. Zingales B, Macedo AM. Fifteen Years after the Definition of *Trypanosoma cruzi* DTUs:  
735 What Have We Learned?. *Life (Basel).* 2023;13(12):2339. Published 2023 Dec 14.  
736 doi:10.3390/life13122339
- 737 61. Velásquez-Ortiz N, Herrera G, Hernández C, Muñoz M, Ramírez JD. Discrete typing  
738 units of *Trypanosoma cruzi*: Geographical and biological distribution in the  
739 Americas. *Sci Data.* 2022;9(1):360. Published 2022 Jun 24. doi:10.1038/s41597-022-  
740 01452-w
- 741 62. Monteiro WM, Magalhães LK, Santana Filho FS, Borborema M, Silveira H, Barbosa  
742 Md. *Trypanosoma cruzi* TcIII/Z3 genotype as agent of an outbreak of Chagas disease  
743 in the Brazilian Western Amazonia. *Trop Med Int Health.* 2010;15(9):1049-1051.  
744 doi:10.1111/j.1365-3156.2010.02577.x
- 745 63. Esper HR, Freitas VLT, Assy JGPL, et al. Fatal evolution of acute Chagas disease in a  
746 child from Northern Brazil: factors that determine poor prognosis. *Rev Inst Med Trop*  
747 *Sao Paulo.* 2019;61:e27. doi:10.1590/S1678-9946201961027
- 748 64. Freitas VLT, Piotto MR, Esper HR, et al. Detection of *Trypanosoma cruzi* DTUs TcI and  
749 TcIV in two outbreaks of orally-transmitted Chagas disease in the Northern region of

- 750 Brazil. *Rev Inst Med Trop Sao Paulo*. 2023;65:e7. Published 2023 Jan 16.  
751 doi:10.1590/S1678-9946202365007
- 752 65. López-García A, Gilbert JA. Oral transmission of Chagas disease from a One Health  
753 approach: A systematic review. *Trop Med Int Health*. 2023;28(9):689-698.  
754 doi:10.1111/tmi.13915
- 755 66. Valente SA, da Costa Valente V, das Neves Pinto AY, et al. Analysis of an acute  
756 Chagas disease outbreak in the Brazilian Amazon: human cases, triatomines, reservoir  
757 mammals and parasites. *Trans R Soc Trop Med Hyg*. 2009;103(3):291-297.  
758 doi:10.1016/j.trstmh.2008.10.047
- 759 67. Hernández C, Vera MJ, Cucunubá Z, et al. High-Resolution Molecular Typing of  
760 *Trypanosoma cruzi* in 2 Large Outbreaks of Acute Chagas Disease in Colombia. *J*  
761 *Infect Dis*. 2016;214(8):1252-1255. doi:10.1093/infdis/jiw360
- 762 68. de Abreu AP, Lucas da Silva HF, Sarto MPM, et al. Infection susceptibility and vector  
763 competence of *Rhodnius robustus* Larrousse, 1927 and *R. pictipes* Stal, 1872  
764 (Hemiptera, Reduviidae, Triatominae) for strains of *Trypanosoma cruzi* (Chagas, 1909)  
765 (Kinetoplastida, Trypanosomatidae) I, II and IV. *Parasit Vectors*. 2022;15(1):239.  
766 Published 2022 Jun 30. doi:10.1186/s13071-022-05350-3
- 767 69. Barbosa-Silva AN, Câmara AC, Martins K, et al. Characteristics of Triatomine  
768 infestation and natural *Trypanosoma cruzi* infection in the State of Rio Grande do  
769 Norte, Brazil. *Rev Soc Bras Med Trop*. 2016;49(1):57-67. doi:10.1590/0037-8682-  
770 0300-2015
- 771 70. Barbosa-Silva AN, Souza RCM, Diotaiuti L, et al. Synanthropic triatomines (Hemiptera:  
772 Reduviidae): infestation, colonization, and natural infection by trypanosomatids in the

- 773 State of Rio Grande do Norte, Brazil. *Rev Soc Bras Med Trop.* 2019;52:e20190061.
- 774 Published 2019 Jul 18. doi:10.1590/0037-8682-0061-2019
- 775 71. Paixão DDS, Portela Madeira F, Costa de Jesus A, et al. Mapping the Silent Threat: A  
776 Comprehensive Analysis of Chagas Disease Occurrence in Riverside Communities in  
777 the Western Amazon. *Pathogens.* 2024;13(2):176. Published 2024 Feb 15.  
778 doi:10.3390/pathogens13020176
- 779 72. Bruneto EG, Fernandes-Silva MM, Toledo-Cornell C, et al. Case-fatality From Orally-  
780 transmitted Acute Chagas Disease: A Systematic Review and Meta-analysis. *Clin*  
781 *Infect Dis.* 2021;72(6):1084-1092. doi:10.1093/cid/ciaa1148
- 782 73. Benitez JA, Araujo B, Contreras K, et al. Urban outbreak of acute orally acquired  
783 Chagas disease in Táchira, Venezuela. *J Infect Dev Ctries.* 2013;7(8):638-641.  
784 Published 2013 Aug 15. doi:10.3855/jidc.3620
- 785 74. Ferreira RTB, Cabral ML, Martins RS, et al. Detection and genotyping of *Trypanosoma*  
786 *cruzi* from açai products commercialized in Rio de Janeiro and Pará, Brazil. *Parasit*  
787 *Vectors.* 2018;11(1):233. Published 2018 Apr 10. doi:10.1186/s13071-018-2699-6
- 788 75. Gonzalez-Sanz M, Crespillo-Andújar C, Chamorro-Tojeiro S, Monge-Maillo B, Perez-  
789 Molina JA, Norman FF. Chagas Disease in Europe. *Trop Med Infect Dis.*  
790 2023;8(12):513. Published 2023 Dec 1. doi:10.3390/tropicalmed8120513
- 791 76. Peterson JK, Hoyos J, Bartlett CR, et al. First Report of Chagas Disease Vector  
792 Species *Triatoma sanguisuga* (Hemiptera: Reduviidae) Infected with *Trypanosoma*  
793 *cruzi* in Delaware. *Am J Trop Med Hyg.* Published online March 26, 2024.  
794 doi:10.4269/ajtmh.23-0915

795

796 **Supporting information**

797

## 798 **Methodology of Polymerase Chain Reaction**

### 799 **Extraction of the parasite's genetic material from blood samples and amplification**

800 **by PCR:** for the DNA extraction process from blood samples, the commercial QIAamp

801 DNA Blood kit (QIAGEN® GmbH, Hilden, Germany), were used, according to the

802 manufacturer's instructions. The DNA obtained were quantified in Nanodrop (ND1000® -

803 Thermo Fisher Scientific, Waltham, MA) and stored at -20°C until use. For each PCR

804 reaction, 25 µl of the reaction kit mix containing 0.2 mM of each of the dNTPs, 2 mM

805 MgSO<sub>4</sub>, 1 × high-fidelity Taq buffer 10X PCR Gold Buffer, 1 U were added to a PCR tube

806 of Platinum Taq DNA polymerase (Life Technologies®, Carlsbad CA) and 0.6 µM of each

807 primer specific for the kinetoplast minicircle region (kDNA) of *T. cruzi* and previously

808 described by (WINCKER et al., 1994), primer Forward Tc121

809 5'AAATAATGTACGGGKGAGATGCATGA-3' and Reverse Tc122 5'-

810 GGTTCGATTGGGGTTGGTGTAATATA-3', and 1 µL of template DNA. The final volume

811 was completed to 50 µL with RNase and DNase free water. The thermal amplification

812 cycle began with 2 min of activation at 95 °C, followed by 35 cycles of 95 °C for 40s, 63.5

813 °C for 1 minute, 72 °C for 1 min, and a final extension cycle at 72 °C for 5 min.

814 **Analysis of PCR amplified products:** to verify the efficiency of the PCR assays and

815 determine the size of the amplified DNA fragment, around 8 µL of the PCR product plus 2

816 µL of sample buffer (Blue/Orange 6X Loading Dye) was applied to a 2% agarose gel

817 (Promega®, USA) of boric acid at 100 V for 1 hour (MANIATIS; SAMBROOK et al., 1989).

818 After electrophoresis, the gels were stained with Gel Red from Biotium® (1:1000) for 20

819 minutes and observed on an ultraviolet transilluminator. To determine the size of the PCR



820 products, a 100bp DNA ladder molecular size marker (INVITROGEN®, Life Technologies,  
821 USA) was included in each run.

822 **Purification of PCR products and sequencing:** purification of the PCR product of the  
823 specific 330bp fragment was done using the Wizard® SV Gel and PCR Clean-Up System  
824 (PROMEGA®) kit according to the manufacturer's instructions. To verify purity, the  
825 integrity and concentration of the purified product were checked in nanodrop. Sequencing  
826 of the purified PCR product was carried out using the dideoxynucleotide chain termination  
827 method of Sanger et al. (1977). Each DNA strand will be sequenced in both directions of  
828 the double strand (positive sense and negative sense) with the “ABI Prism BigDye Kit®” on  
829 the automatic sequencer ABI 3130 Genétic Analyzer (Applied Biosystems®). Samples  
830 were sequenced at least twice in each direction of the strand, making a total of four  
831 sequences from the same sample. All sequencing were carried out by the company  
832 Myleus Biotecnologia Ltda®, based in Belo Horizonte-MG.

833 **Computational analysis of sequences:** to check the quality of the sequences, the  
834 electropherograms obtained during the sequencing process were analyzed using the  
835 ChromasPro ® data program (Technelysium Pty Ltd®). The similarity between the  
836 nucleotide sequences obtained was verified by the BLASTn program from the BLAST 2.0®  
837 package (Basic Alignment Search Tool (ALTSCHUL et al., 1997), from where The *T. cruzi*  
838 reference sequences from Genbank were also selected for comparative analyzes through  
839 alignment using the MEGA® version 4.0 program (TAMURA et al., 2013) and construction  
840 of a phylogenetic tree.

841

842 **S1 Figure 1. Phylogenetic tree of the 33 samples from the outbreak along with 77**  
843 **samples from another outbreak**

HG008278.1 Homo sapiens genomic DNA containing Trypanosoma cruzi kinetoplast minicircle DNA family B parent 048 clone PA412  
HG008275.1 Homo sapiens genomic DNA containing Trypanosoma cruzi kinetoplast minicircle DNA family B parent 048 clone PA411  
HG008433.1 Homo sapiens genomic DNA containing Trypanosoma cruzi kinetoplast minicircle DNA family C parent 078 clone PA807  
HG008280.1 Homo sapiens genomic DNA containing Trypanosoma cruzi kinetoplast minicircle DNA family B parent 050 clone PA419  
HG008184.1 Homo sapiens genomic DNA containing Trypanosoma cruzi kinetoplast minicircle DNA family B parent 025 clone PA473  
HG008447.1 Homo sapiens genomic DNA containing Trypanosoma cruzi kinetoplast minicircle DNA family C parent 080 clone PA827  
HG008212.1 Homo sapiens genomic DNA containing Trypanosoma cruzi kinetoplast minicircle DNA family B parent 032 clone PA487  
HG008281.1 Homo sapiens genomic DNA containing Trypanosoma cruzi kinetoplast minicircle DNA family B parent 048 clone PA481  
HG008277.1 Homo sapiens genomic DNA containing Trypanosoma cruzi kinetoplast minicircle DNA family B parent 048 clone PA413  
HG008189.1 Homo sapiens genomic DNA containing Trypanosoma cruzi kinetoplast minicircle DNA family B parent 018 clone PA224  
HG008435.1 Homo sapiens genomic DNA containing Trypanosoma cruzi kinetoplast minicircle DNA family C parent 078 clone PA809  
HG008410.1 Homo sapiens genomic DNA containing Trypanosoma cruzi kinetoplast minicircle DNA family C parent 075 clone PA587  
HG008282.1 Homo sapiens genomic DNA containing Trypanosoma cruzi kinetoplast minicircle DNA family B parent 050 clone PA425  
HG008278.1 Homo sapiens genomic DNA containing Trypanosoma cruzi kinetoplast minicircle DNA family B parent 048 clone PA414  
HG008318.1 Homo sapiens genomic DNA containing Trypanosoma cruzi kinetoplast minicircle DNA family C parent 061 clone PA873  
HG008482.1 Homo sapiens genomic DNA containing Trypanosoma cruzi kinetoplast minicircle DNA family C parent 087 clone PA870  
HG008442.1 Homo sapiens genomic DNA containing Trypanosoma cruzi kinetoplast minicircle DNA family C parent 080 clone PA820  
HG008472.1 Homo sapiens genomic DNA containing Trypanosoma cruzi kinetoplast minicircle DNA family C parent 084 clone PA784  
HG008445.1 Homo sapiens genomic DNA containing Trypanosoma cruzi kinetoplast minicircle DNA family C parent 080 clone PA824  
HG008393.1 Homo sapiens genomic DNA containing Trypanosoma cruzi kinetoplast minicircle DNA family C parent 073 clone PA575  
HG008231.1 Homo sapiens genomic DNA containing Trypanosoma cruzi kinetoplast minicircle DNA family B parent 038 clone PA287  
HG008315.1 Homo sapiens genomic DNA containing Trypanosoma cruzi kinetoplast minicircle DNA family C parent 080 clone PA522  
HG008443.1 Homo sapiens genomic DNA containing Trypanosoma cruzi kinetoplast minicircle DNA family C parent 080 clone PA822  
HG008205.1 Homo sapiens genomic DNA containing Trypanosoma cruzi kinetoplast minicircle DNA family B parent 028 clone PA503  
HG008230.1 Homo sapiens genomic DNA containing Trypanosoma cruzi kinetoplast minicircle DNA family B parent 038 clone PA298  
HG008206.1 Homo sapiens genomic DNA containing Trypanosoma cruzi kinetoplast minicircle DNA family B parent 028 clone PA504  
HG008441.1 Homo sapiens genomic DNA containing Trypanosoma cruzi kinetoplast minicircle DNA family C parent 078 clone PA817  
HG008432.1 Homo sapiens genomic DNA containing Trypanosoma cruzi kinetoplast minicircle DNA family C parent 078 clone PA808  
HG008438.1 Homo sapiens genomic DNA containing Trypanosoma cruzi kinetoplast minicircle DNA family C parent 079 clone PA814  
FM 207199.1 Homo sapiens genomic DNA containing Trypanosoma cruzi kinetoplast minicircle DNA parent 1491 34 clone 170E  
FM 207196.1 Homo sapiens genomic DNA containing Trypanosoma cruzi kinetoplast minicircle DNA parent 1491 34 clone 187E  
HG008425.1 Homo sapiens genomic DNA containing Trypanosoma cruzi kinetoplast minicircle DNA family C parent 077 clone PA701  
HG008273.1 Homo sapiens genomic DNA containing Trypanosoma cruzi kinetoplast minicircle DNA family B parent 049 clone PA409  
HG008489.1 Homo sapiens genomic DNA containing Trypanosoma cruzi kinetoplast minicircle DNA family C parent 083 clone PA855  
HG008232.1 Homo sapiens genomic DNA containing Trypanosoma cruzi kinetoplast minicircle DNA family B parent 038 clone PA288  
HG008471.1 Homo sapiens genomic DNA containing Trypanosoma cruzi kinetoplast minicircle DNA family C parent 083 clone PA857  
HG008457.1 Homo sapiens genomic DNA containing Trypanosoma cruzi kinetoplast minicircle DNA family C parent 081 clone PA838  
HG008454.1 Homo sapiens genomic DNA containing Trypanosoma cruzi kinetoplast minicircle DNA family C parent 081 clone PA835  
HG008272.1 Homo sapiens genomic DNA containing Trypanosoma cruzi kinetoplast minicircle DNA family B parent 048 clone PA407  
HG008434.1 Homo sapiens genomic DNA containing Trypanosoma cruzi kinetoplast minicircle DNA family C parent 078 clone PA808  
HG008439.1 Homo sapiens genomic DNA containing Trypanosoma cruzi kinetoplast minicircle DNA family C parent 078 clone PA808  
HG008458.1 Homo sapiens genomic DNA containing Trypanosoma cruzi kinetoplast minicircle DNA family C parent 081 clone PA840  
HG008166.1 Homo sapiens genomic DNA containing Trypanosoma cruzi kinetoplast minicircle DNA family B parent 016 clone PA220  
HG008470.1 Homo sapiens genomic DNA containing Trypanosoma cruzi kinetoplast minicircle DNA family C parent 083 clone PA856  
HG008377.1 Homo sapiens genomic DNA containing Trypanosoma cruzi kinetoplast minicircle DNA family C parent 071 clone PA565  
HG008392.1 Homo sapiens genomic DNA containing Trypanosoma cruzi kinetoplast minicircle DNA family C parent 073 clone PA574  
ON037212.1 Trypanosoma cruzi strain PRM A77 minicircle kinetoplast complete sequence  
HG008436.1 Homo sapiens genomic DNA containing Trypanosoma cruzi kinetoplast minicircle DNA family C parent 078 clone PA810  
ON037208.1 Trypanosoma cruzi strain PRM A72 minicircle kinetoplast complete sequence  
HG008440.1 Homo sapiens genomic DNA containing Trypanosoma cruzi kinetoplast minicircle DNA family C parent 079 clone PA816  
HG008208.1 Homo sapiens genomic DNA containing Trypanosoma cruzi kinetoplast minicircle DNA family B parent 031 clone PA327  
HG008281.1 Homo sapiens genomic DNA containing Trypanosoma cruzi kinetoplast minicircle DNA family B parent 050 clone PA420  
HG008418.1 Homo sapiens genomic DNA containing Trypanosoma cruzi kinetoplast minicircle DNA family C parent 078 clone PA597  
ON037211.1 Trypanosoma cruzi strain PRM A74 minicircle kinetoplast complete sequence  
HG008354.1 Homo sapiens genomic DNA containing Trypanosoma cruzi kinetoplast minicircle DNA family C parent 087 clone PA545  
ON037228.1 Trypanosoma cruzi strain PRM A120 minicircle kinetoplast complete sequence  
HG008446.1 Homo sapiens genomic DNA containing Trypanosoma cruzi kinetoplast minicircle DNA family C parent 080 clone PA825  
HG008320.1 Homo sapiens genomic DNA containing Trypanosoma cruzi kinetoplast minicircle DNA family C parent 081 clone PA874  
HG008456.1 Homo sapiens genomic DNA containing Trypanosoma cruzi kinetoplast minicircle DNA family C parent 081 clone PA837  
HG008274.1 Homo sapiens genomic DNA containing Trypanosoma cruzi kinetoplast minicircle DNA family B parent 048 clone PA410  
HG008341.1 Homo sapiens genomic DNA containing Trypanosoma cruzi kinetoplast minicircle DNA family C parent 084 clone PA712  
HG008455.1 Homo sapiens genomic DNA containing Trypanosoma cruzi kinetoplast minicircle DNA family C parent 081 clone PA836  
HG008371.1 Homo sapiens genomic DNA containing Trypanosoma cruzi kinetoplast minicircle DNA family C parent 086 clone PA557  
HG008229.1 Homo sapiens genomic DNA containing Trypanosoma cruzi kinetoplast minicircle DNA family B parent 038 clone PA285  
ON037207.1 Trypanosoma cruzi strain PRM A70 minicircle kinetoplast complete sequence  
ON037224.1 Trypanosoma cruzi strain PRM A94 minicircle kinetoplast complete sequence  
ON037220.1 Trypanosoma cruzi strain PRM A89 minicircle kinetoplast complete sequence  
ON037221.1 Trypanosoma cruzi strain PRM A90 minicircle kinetoplast complete sequence  
ON037227.1 Trypanosoma cruzi strain PRM A109 minicircle kinetoplast complete sequence  
ON037210.1 Trypanosoma cruzi strain PRM A73 minicircle kinetoplast complete sequence  
ON037219.1 Trypanosoma cruzi strain PRM A88 minicircle kinetoplast complete sequence  
ON037231.1 Trypanosoma cruzi strain PRM A125 minicircle kinetoplast complete sequence  
ON037202.1 Trypanosoma cruzi strain PRM A28 minicircle kinetoplast complete sequence  
ON037234.1 Trypanosoma cruzi strain PRM A141 minicircle kinetoplast complete sequence  
ON037213.1 Trypanosoma cruzi strain PRM A80 minicircle kinetoplast complete sequence  
ON037222.1 Trypanosoma cruzi strain PRM A91 minicircle kinetoplast complete sequence  
ON037214.1 Trypanosoma cruzi strain PRM A83 minicircle kinetoplast complete sequence  
ON037217.1 Trypanosoma cruzi strain PRM A86 minicircle kinetoplast complete sequence  
ON037225.1 Trypanosoma cruzi strain PRM A58 minicircle kinetoplast complete sequence  
ON037205.1 Trypanosoma cruzi strain PRM A56 minicircle kinetoplast complete sequence  
ON037215.1 Trypanosoma cruzi strain PRM A84 minicircle kinetoplast complete sequence  
ON037228.1 Trypanosoma cruzi strain PRM A123 minicircle kinetoplast complete sequence  
ON037232.1 Trypanosoma cruzi strain PRM A127 minicircle kinetoplast complete sequence  
ON037203.1 Trypanosoma cruzi strain PRM A29 minicircle kinetoplast complete sequence  
ON037230.1 Trypanosoma cruzi strain PRM A124 minicircle kinetoplast complete sequence  
ON037204.1 Trypanosoma cruzi strain PRM A48 minicircle kinetoplast complete sequence  
ON037228.1 Trypanosoma cruzi strain PRM A105 minicircle kinetoplast complete sequence  
ON037223.1 Trypanosoma cruzi strain PRM A92 minicircle kinetoplast complete sequence  
ON037233.1 Trypanosoma cruzi strain PRM A128 minicircle kinetoplast complete sequence  
ON037206.1 Trypanosoma cruzi strain PRM A69 minicircle kinetoplast complete sequence  
ON037216.1 Trypanosoma cruzi strain PRM A85 minicircle kinetoplast complete sequence  
ON037218.1 Trypanosoma cruzi strain PRM A87 minicircle kinetoplast complete sequence  
ON037208.1 Trypanosoma cruzi strain PRM A71 minicircle kinetoplast complete sequence  
HG008325.1 Homo sapiens genomic DNA containing Trypanosoma cruzi kinetoplast minicircle DNA family C parent 082 clone PA528  
HG008401.1 Homo sapiens genomic DNA containing Trypanosoma cruzi kinetoplast minicircle DNA family C parent 074 clone PA717  
HG008488.1 Homo sapiens genomic DNA containing Trypanosoma cruzi kinetoplast minicircle DNA family C parent 083 clone PA854  
HG008488.1 Homo sapiens genomic DNA containing Trypanosoma cruzi kinetoplast minicircle DNA family C parent 087 clone PA868  
FM 207299.1 Homo sapiens genomic DNA containing Trypanosoma cruzi kinetoplast minicircle and ORF302 DNA case 1420 15 clone 302  
HG008705.1 Homo sapiens genomic DNA containing Trypanosoma cruzi kinetoplast minicircle DNA family D parent 082 clone PH184