

**“Even things they won’t share with their sisters-in-law” – Assessing an integrated  
Community Health Worker intervention on person-centered postpartum contraception in  
rural Nepal**

**Authors**

Nandini Choudhury<sup>1,2</sup> ¶\*  
Wan-Ju Wu<sup>2,3,4,5</sup> ¶  
Rekha Khatri<sup>6</sup>  
Aparna Tiwari<sup>6</sup>  
Aradhana Thapa<sup>6,7</sup>  
Samrachna Adhikari<sup>1</sup>  
Indira Basnett<sup>6</sup>  
Ved Bhandari<sup>6,8</sup>  
Aasha Bhatta<sup>6</sup>  
Bhawana Bogati<sup>6,9</sup>  
Laxman Datt Bhatt<sup>6,10</sup>  
David Citrin<sup>2,3,11,12</sup>  
Scott Halliday<sup>2,13</sup>  
Sonu Khadka<sup>6</sup>  
Yashoda Kumari Bhat Ksetri<sup>6</sup>  
Lal Bahadur Kunwar<sup>6,14</sup>  
Kshitiz Rana Magar<sup>15</sup>  
Nutan Marasini<sup>6, 16</sup>  
Duncan Maru<sup>2,3,5,17</sup>  
Isha Nirola<sup>2</sup>  
Rashmi Paudel<sup>6,18</sup>  
Bala Rai<sup>19</sup>  
Ryan Schwarz<sup>2,20,21,22</sup>  
Sita Saud<sup>6,23</sup>  
Dikshya Sharma<sup>6</sup>  
Goma Niroula Shrestha<sup>19,24</sup>  
Ramesh Shrestha<sup>6,25</sup>  
Poshan Thapa<sup>6,26</sup>  
Hari Jung Rayamazi<sup>6</sup>  
Sheela Maru<sup>2,3,4,5</sup> &  
Sabitri Sapkota<sup>3,6</sup> &

\*Corresponding author

E-mail: [Nandini.Choudhury@nyulangone.org](mailto:Nandini.Choudhury@nyulangone.org)

¶ *These authors contributed equally as first authors*

& *These authors contributed equally as senior authors*

<sup>1</sup> Department of Population Health, New York University Grossman School of Medicine, New York, NY, USA

<sup>2</sup> Possible, New York, NY, USA

<sup>3</sup> Arnhold Institute for Global Health, Icahn School of Medicine at Mount Sinai, New York, NY, USA

<sup>4</sup> Department of Obstetrics, Gynecology, and Reproductive Science, Icahn School of Medicine at Mount Sinai, New York, NY, USA

<sup>5</sup> Elmhurst Hospital, New York City Health + Hospitals, New York, NY, USA

<sup>6</sup> Possible, Kathmandu, Nepal

<sup>7</sup> Global Health and Development Program, Laney Graduate School, Emory University, Atlanta, GA, USA

<sup>8</sup> Patan Academy of Medicine, Kathmandu, Nepal

<sup>9</sup> Nyaya Health Nepal, Kathmandu, Nepal

<sup>10</sup> Division of Community Health and Humanities, Memorial University of Newfoundland, St. John's, Newfoundland, Canada

<sup>11</sup> Department of Global Health, University of Washington, Seattle, WA, USA

<sup>12</sup> Department of Anthropology, University of Washington, Seattle, WA, USA

<sup>13</sup> Washington State Department of Children, Youth & Families, Olympia, WA, USA

<sup>14</sup> Medic, Kathmandu, Nepal

<sup>15</sup> Transcultural Psychosocial Organization Nepal, Kathmandu, Nepal

<sup>16</sup> FrontBooth Solutions, Kathmandu, Nepal

<sup>17</sup> Department of Internal Medicine, Icahn School of Medicine at Mount Sinai, New York, NY, USA

<sup>18</sup> Boston University School of Public Health, Boston, MA, USA

<sup>19</sup> Nursing and Social Security Division, Kathmandu, Nepal

<sup>20</sup> Department of Medicine, Division of Global Health Equity, Brigham and Women's Hospital, Boston, MA, USA

<sup>21</sup> Department of Medicine, Harvard Medical School, Boston, MA, USA

<sup>22</sup> Department of Medicine, Division of General Internal Medicine, Massachusetts General Hospital, Boston, MA, USA

<sup>23</sup> Civil Service Hospital, Kathmandu, Nepal

<sup>24</sup> Department of Health Service, Ministry of Health and Population, Kathmandu, Nepal

<sup>25</sup> School of Health and Allied Sciences, Pokhara University, Pokhara, Nepal

<sup>26</sup> School of Population and Global Health, McGill University, Quebec, Canada

## Abstract

Postpartum contraceptive counseling and access are challenging in Nepal's remote, hilly areas, driving a disproportionately higher unmet need for contraception. Community health workers (CHWs) play an important role in delivering healthcare in difficult to reach places in Nepal, but there is limited evidence on the ideal CHW model and its impact over time. We implemented a pilot program in two rural districts in Nepal where full-time, salaried, and supervised CHWs delivered a bundled reproductive, maternal, newborn, and child health (RMNCH) intervention. This included a person-centered contraceptive counseling component adapted from the *Balanced Counseling Strategy*. Applying a type 2 hybrid effectiveness-implementation study approach, we conducted a non-randomized pre-post study with repeated measurements and nested qualitative data collection to assess the intervention's reach, effectiveness, adoption, implementation, and maintenance. This paper describes the postpartum contraceptive outcomes associated with the integrated RMNCH intervention over a five-year period. Compared to the pre-intervention period, we observed a higher ward-level post-intervention postpartum contraceptive prevalence stratified by early postpartum (RR: 2.20; 95% CI: 1.96, 2.48) and late postpartum (RR: 1.70; 95% CI: 1.50, 1.93) periods, after adjusting for district and intervention site. Although we observed high rates of lactational amenorrhea method (LAM) in most intervention sites, the proportion of women who switched from LAM to another effective method was relatively low. Qualitative data indicate that CHWs' longitudinal engagement enabled them to build trust with participants in their community, which likely contributed to their uptake of modern contraceptive methods. Barriers to modern contraceptive use included fear of side effects, limited autonomy for women, peer influence, and contraceptive unavailability. Implementation barriers included distance, challenging physical terrain, and increased travel times during the rainy season. This study contributes to the implementation research literature on community-based interventions to improve postpartum contraception use and may inform other CHW programs in similar contexts.

## 1 **Background**

2 Contraceptive access is an important precursor that supports women and girls in making  
3 decisions pertaining to their sexual and reproductive health (1-4). The postpartum period is a  
4 particularly critical time to provide women with quality contraceptive counseling and services.  
5 Since short interval pregnancies are associated with adverse maternal and child outcomes, the  
6 World Health Organization (WHO) recommends at least 24 months of spacing between births  
7 (5-7). However, the unmet need for postpartum contraception remains high globally (7-9) despite  
8 postpartum family planning being an important strategy to address maternal mortality in low and  
9 middle-income countries (LMICs) (10).

10 In Nepal, 21% of married women have an unmet need for contraception (11) with likely  
11 higher rates among postpartum women (12, 13). Between 1996 and 2006, modern contraceptive  
12 use among married women increased from 26 to 44%, and has remained unchanged since (11,  
13 14). Forty-two percent of women in Nepal do not attend any postnatal visit, an important missed  
14 opportunity for counseling, initiation, and continuation of voluntary postpartum contraception  
15 (15). Only an estimated 13% of women who had live births reported being counseled on family  
16 planning after delivery (16). Contraceptive counseling and access are especially challenging in  
17 Nepal's remote, hilly areas where the nearest health facility can be hours away on foot, driving a  
18 disproportionately higher unmet need for contraception (17, 18).

19 Nepal's cadre of Female Community Health Volunteers (FCHVs) has historically played  
20 a significant role overcoming barriers to maternal and child care (19-21). Such community health  
21 workers (CHWs), who typically belong to the communities they serve, can help address social  
22 and cultural barriers and expand access through home-visits, thereby connecting communities  
23 with facility-based resources (22). FCHVs, however, as "volunteers" have faced issues with  
24 quality of care and inadequate supervision structures (19). The Government of Nepal endeavors  
25 to design, implement, and evaluate improved CHW care models in pursuit of universal health  
26 care (23). In recent years, increasing evidence advocates for CHWs to receive training, salaries,  
27 and substantial support to optimize their role in achieving universal health coverage (24). There  
28 is limited evidence, however, assessing the impact of such professionalized CHW models on  
29 reproductive, maternal, newborn, and child health (RMNCH) outcomes in Nepal at scale and  
30 over time.

31 To address this evidence gap, *Nyaya Health Nepal*, a Nepali non-governmental  
32 organization and *Possible*, a US-based non-profit organization, partnered with the Government  
33 of Nepal Ministry of Health and Population to design, implement, and evaluate a pilot integrated  
34 RMNCH intervention (25). The intervention, delivered by CHWs, sought to reach an estimated  
35 population of 300,000 in two rural districts. In line with WHO recommendations (24), CHWs  
36 were local, full-time, salaried, trained and supervised employees, and used a mobile platform that  
37 facilitated counseling support and longitudinal data collection to deliver the intervention (25, 26).  
38 Contraceptive counseling was integrated into this bundled intervention based on evidence  
39 supporting the effectiveness of integrated contraception interventions over stand-alone ones (8,  
40 27, 28). In a previously published analysis of a sub-population receiving this intervention, we

41 found that postpartum women had twice the odds of using modern contraception one-year post-  
42 intervention compared to pre-intervention (29).

43 We sought to study both the implementation process and effectiveness of this integrated  
44 RMNCH intervention using a type 2 hybrid effectiveness-implementation study design (30, 31).  
45 Guided by the RE-AIM framework, we conducted a non-randomized, single arm, pre-post study  
46 with repeated measurements, and nested qualitative methods to assess the intervention's *reach*  
47 (did the target population receive the intervention?), *effectiveness* (was the intervention  
48 effective?), *adoption* (were relevant stakeholders willing and able to initiate it?), *implementation*  
49 (was the intervention delivered as planned?), and *maintenance* (can the intervention be  
50 sustained?) (31, 32). We have previously reported the bundled intervention's outcomes on  
51 antenatal and postnatal care (26). In this paper, we focus on postpartum contraceptive outcomes  
52 associated with the integrated RMNCH intervention over a five-year period in two districts.

53

## 54 **Methods**

55

### 56 ***Study Site***

57 We conducted this study in Achham and Dolakha districts in Nepal. Achham, located in  
58 the hilly, far western region, suffers from poverty and the aftermath of civil war, with the  
59 nation's highest neonatal and under-five mortality rates at 41 per 1000 live births and 69 per  
60 1000 live births, respectively (16, 33). Dolakha, located about 6 hours by road from the capital  
61 Kathmandu, suffered a major earthquake in 2015 which devastated its infrastructure. Despite  
62 their locations in different regions in Nepal, Achham and Dolakha share similar challenges to  
63 healthcare access due to hilly terrain, long distances to health care facilities, and poor road  
64 infrastructure.

65 During the study period, *Possible/Nyaya Health Nepal* managed a government hospital in  
66 each district through a public private partnership model. In addition to these two hospitals, each  
67 ward (the smallest administrative unit) had a health post that provided basic primary care  
68 services. Larger primary health care centers staffed by a medical officer or physician existed  
69 every few wards. Travel to health facilities could take up to five hours and be significantly  
70 lengthened during the monsoon season. Modern contraceptive availability varied by type of  
71 method in both districts; condoms, pills, and injectables were relatively consistently available at  
72 health posts, primary health care centers, and the two hospitals. Long-acting methods, including  
73 IUDs and implants, were available at a limited number of facilities where there were trained  
74 staff. Sterilization procedures were only performed at the hospitals.

75 We implemented the RMNCH intervention in stepped fashion in both districts between  
76 2015 and 2019, with 11 non-random steps in implementation expansion that we refer to as  
77 "hubs". Each "hub" was a cluster of 2 to 14 wards. Intervention expansion was determined by  
78 local stakeholders, and was subject to real-world implementation constraints including  
79 unanticipated delays. In 2017, following Nepal's constitutional transition to federalism, the  
80 intervention catchment areas were restructured into municipalities. Since "hubs" were defined  
81 prior to this restructuring, they do not completely align with current municipal boundaries.

82 **Figure 1: Stepped implementation timeline (not to scale)**

83

84 ***Study Design***

85 Guided by the RE-AIM framework, we employed a non-randomized, single arm, pre-post  
 86 study design with repeated measurements to assess the outcomes in Table 1, and used nested  
 87 qualitative data collection to further contextualize our results. Implementation of the RMNCH  
 88 intervention could not be randomized as it was pragmatic and stepped, with roll-out sequence  
 89 determined by local needs and constraints. Further, data collection was built into CHWs’ regular  
 90 care delivery to participants, rendering it practically infeasible and unethical to include  
 91 comparison sites without providing healthcare services. For this analysis, we calculated  
 92 postpartum modern contraceptive outcomes pre- and post-implementing the bundled  
 93 intervention, with repeated measures.

94

95 **Table 1: Reach, Effectiveness, Adoption, Implementation and Maintenance (RE-AIM)**  
 96 **metrics for postpartum contraception through bundled RMNCH intervention**

97

RE-AIM Construct	Metric
Reach	<ol style="list-style-type: none"> <li>1. Proportion of women with live births who were offered and received balanced counseling at least once within their first year postpartum</li> <li>2. Proportion of married women of reproductive age who were offered and received balanced counseling at least once during each post-intervention year</li> </ol>
Effectiveness	<p>Primary outcome: Postpartum modern contraceptive prevalence rate (PPCPR) for women, stratified by early postpartum (0-5 months) and late postpartum (6-11 months) periods</p> <p>Secondary outcomes:</p> <ol style="list-style-type: none"> <li>1. Contraceptive method mix, stratified by early postpartum (0-5 months) and late postpartum (6-11 months) periods</li> <li>2. Proportion of postpartum women using lactational amenorrhea who switched to another modern contraception method</li> <li>3. Proportion of infants (0-5 months) who were exclusively breastfed</li> </ol>
Adoption	Time from participant enrollment to implementation of postpartum BCS within each intervention step (hub)
Implementation	Fidelity to workflow, measured as timing of first BCS session (median days postpartum when first BCS session was offered)
Maintenance	No quantified metric; qualitative discussion

98

99 ***Study Population***

100 All married women of reproductive age (“MWRA”; 15-49 years) and children under two  
 101 years old living in the study sites were eligible to receive the integrated RMNCH intervention.  
 102 The intervention focused on MWRA based on guidance from local stakeholders on cultural  
 103 norms. We employed a census approach, with CHWs attempting to visit all homes in the study  
 104 sites and offering enrollment to the integrated RMNCH care program for all eligible persons  
 105 (34). Individuals were excluded from the study if they declined enrollment in the intervention or  
 106 enrolled in the CHW program without consenting to data use for research purposes.

107 Study participants for qualitative data included a subset of enrolled women, and the  
108 program team that implemented the intervention, including community health nurses (who  
109 supervised CHWs), CHWs, and program managers. Program team members were purposively  
110 selected considering the duration of their engagement in the program and representation from  
111 different intervention sites. Among intervention participants, we purposively selected from those  
112 who had given birth during the study period to glean insights from their experiences of engaging  
113 with CHWs from pregnancy through postpartum.

114

### 115 ***Integrated RMNCH intervention***

116 The integrated RMNCH intervention included five components: (i) home-based antenatal  
117 and postnatal care counseling and care coordination, (ii) continuous and active pregnancy  
118 screening for all reproductive-age women, (iii) Community-Based Integrated Management of  
119 Newborn and Childhood Illness for children under age two, (iv) group antenatal and postnatal  
120 care, and (v) person-centered contraceptive counseling using the *Balanced Counseling Strategy*  
121 (BCS). CHWs delivered this bundled intervention using CommCare, an open-source, mobile  
122 platform that guided counseling, provided decision support, and allowed for offline data  
123 collection. The full details of the intervention and its implementation, and sociodemographic  
124 characteristics of the study site are published elsewhere (25, 26, 29).

125 CHWs received training on CommCare use, data collection, informed consent, and  
126 clinical topics. For the contraceptive counseling component, training materials emphasized best  
127 practices including shared decision-making, respect for autonomy, and anticipatory guidance on  
128 potential side effects (29, 35-37). CHWs typically served one ward (population: 1000 to 6000),  
129 and larger wards had two assigned CHWs. CHWs visited all enrolled MWRA every three  
130 months to actively screen them for pregnancy using at-home urine pregnancy tests. Women who  
131 reported undesired pregnancies were referred for options counseling and abortion care. Pregnant  
132 women with desired pregnancies received monthly home visits where CHWs provided  
133 gestational age-specific counseling and screened for pregnancy danger signs. Pregnant women  
134 also received four group antenatal care sessions at local health posts that were co-facilitated by  
135 CHWs and government nurse midwives. CHWs also visited women after they gave birth and  
136 visited all children monthly until two years of age for counseling, and screening and referrals for  
137 early childhood illnesses.

138

### 139 ***The contraceptive counseling intervention component***

140 General counseling on available contraceptive options was integrated into the eighth  
141 month antenatal home visit and the group antenatal care sessions for pregnant women. For  
142 postpartum women, CHWs offered interactive, person-centered contraceptive counseling using  
143 an adapted *Balanced Counseling Strategy* (BCS) during home visits. BCS is a toolkit to facilitate  
144 high-quality, individualized contraceptive counseling (38-40). It uses a series of questions to  
145 narrow method choices to those most consistent with a person's reproductive values and  
146 preferences. The counseling is guided using visual aids that illustrate the relative effectiveness of

147 contraceptive methods. In Nepal, BCS has been used in facility-based post-abortion care settings  
148 to improve contraceptive method mix (41).

149 We adapted BCS for CHW-delivered postpartum contraceptive counseling, and built  
150 counseling modules into CommCare to guide counseling sessions. We also adapted BCS to  
151 include materials on lactational amenorrhea (LAM), and given cultural norms, trained CHWs to  
152 involve husbands and mothers-in-law. CHWs were also trained to offer repeat counseling  
153 sessions during the first year postpartum, if desired by the participant. Women who selected a  
154 contraceptive method through counseling were referred to the nearest health facility where the  
155 method was available. CHWs followed up at subsequent home visits to check whether women  
156 initiated their chosen methods, help address barriers to access, and provide ongoing counseling  
157 regarding potential side effects. CHWs did not distribute contraceptives at home visits.

158 CHWs also provided counseling on the benefits of breastfeeding and the importance of  
159 transitioning from LAM to another effective contraceptive method at six months postpartum, if  
160 women did not desire another pregnancy. If women self-reported high-risk medical conditions,  
161 such as hypertension, CHWs referred them to the local health post or to the CHW's community  
162 health nurse supervisor, who would visit them to further review safety of contraceptive methods  
163 chosen.

164 During the first year of implementation in the initial two hubs, CHWs visited postnatal  
165 women every month until 12 months postpartum and offered BCS at postpartum months 1, 5,  
166 and 10. However, CHWs provided feedback that the majority of the women were exclusively  
167 breastfeeding at 1 month postpartum and contraceptive counseling at this visit was less relevant.  
168 They preferred to focus on screening for high-risk postpartum conditions and counseling on  
169 newborn care at the initial monthly visits. In response, we modified the CHW schedule to offer  
170 BCS only starting at 3 months postpartum. After the first two months, CHWs visited postpartum  
171 women every three months along with all MWRA, and offered BCS during these visits. CHWs  
172 continued to visit children monthly up to the age of two years. Although the intervention  
173 originally focused on contraception for postpartum women, after the first year of  
174 implementation, the program team felt that the person-centered counseling strategy would be  
175 beneficial to all women considering contraception. This led to an expansion of BCS to *all*  
176 enrolled married women of reproductive age in the study sites regardless of postpartum status.  
177 By design, women were not offered BCS during situations where they did not need  
178 contraception, such as during pregnancy, post-menopause, or if they had hysterectomies or  
179 sterilizations.

180

### 181 ***Implementation strategies***

182 We employed several implementation strategies to optimize the intervention. These included  
183 training for CHWs, and their longitudinal engagement with intervention recipients through  
184 regular home visits. CHWs participated in regular meetings and received close, ongoing  
185 supervision from community health nurses, who helped plan and oversee their tasks and  
186 problem-solve any challenges. Further, the CommCare tool provided a standardized workflow  
187 and algorithm for care-delivery. The overall implementation process was iterative, and



188 adjustments were made to the workflow based on feedback from those implementing it. Further,  
189 as described above, we adapted intervention components to fit local needs and norms.

190

### 191 ***Data collection***

192 CHWs collected data on contraceptive use through CommCare, except during pre-  
193 intervention data in the oldest hub where they used SurveyCTO, a different mobile platform. In  
194 addition to built-in data validation mechanisms within CommCare, the research team regularly  
195 conducted data quality checks during data collection. Although we originally planned for data  
196 collection through December 2020, Nepal underwent a national lockdown because of the  
197 COVID-19 pandemic at the end of March 2020. Given this constraint, our analysis includes hubs  
198 that had both: i) pre-intervention data, and ii) at least one year of post-implementation data  
199 before April 2020. Based on the timing of intervention roll out, 7 of the total 11 hubs had at least  
200 one full year of post-implementation data before the lockdown, so our analysis spans these 7  
201 hubs (50 wards) across Achham and Dolakha districts. For all seven included hubs, we used data  
202 available through December 31, 2020.

203 The time from enrollment to complete roll-out of all RMNCH intervention components  
204 *within* a hub varied, ranging from 1 to 10 months, mostly due to differing logistical constraints.  
205 As noted previously, the duration *between* expanding the intervention from one hub to another  
206 was pragmatic and depended on local government, and varied from 1 to 13 months. At the time  
207 we conducted this analysis, the earliest hub had four years of data following the intervention  
208 start, and the newer hubs had one year of data each.

209 During the enrollment phase in each hub, CHWs collected baseline data for all enrolled  
210 women. Baseline data included families' demographic characteristics and a birth history for the  
211 preceding two years. CHWs also asked about baseline contraceptive use and type, which served  
212 as the pre-intervention data for our main effectiveness outcome (PPCPR). Following enrollment,  
213 as CHWs delivered the intervention, they prospectively recorded data on postpartum  
214 contraceptive use and balanced counseling during postnatal home visits or pregnancy screening  
215 visits. CHWs recorded data on exclusive breastfeeding during follow-up visits with children up  
216 to six months of age. These data on contraception and breastfeeding served as our post-  
217 intervention data.

218 *Qualitative data:* A female qualitative researcher (co-author R. Khatri), who was not a  
219 part of the care delivery team, used an ethnographic approach including interviews, focus group  
220 discussions (FGDs), and participant observation to better understand the implementation process.  
221 RK conducted 17 semi-structured individual interviews in Nepali with intervention recipients,  
222 community health nurses, and program managers, and three FGDs each with 10-11 CHWs. For  
223 participant observation, she accompanied CHWs during home visits and maintained regular field  
224 notes. All interviews were audio recorded, transcribed, and translated into English by a  
225 professional transcription service.

226

### 227 ***Data analysis***

228 *Quantitative data*

229           *Reach*: We used data from CHW home visits to assess the *reach* of postpartum  
230 contraceptive counseling using BCS in each hub. We first determined one-year observation  
231 periods following intervention roll-out for each hub (Figure 1). For example, in one hub,  
232 postpartum contraceptive counseling component started in February 2017, so we defined the first  
233 post-intervention year as February 2017 - January 2018, and so on. Thus, given the stepped  
234 implementation, the post-intervention periods for each hub corresponded to its intervention roll-  
235 out timing. We describe the observation periods for each hub in a supplementary table. Within  
236 each hub, we identified all women who had a live birth during each time period, and calculated  
237 the proportions who had at least one CHW visit where BCS was offered, completed, and a  
238 contraceptive method was chosen within their first year postpartum. Similarly, we calculated the  
239 proportion of *all* married women of reproductive age who were offered and received balanced  
240 counseling at least once during each post-intervention year. We excluded CHW visits where  
241 women were pregnant, postmenopausal and/or had sterilization or hysterectomies because they  
242 were not offered contraceptive counseling.

243           *Effectiveness*: We calculated the main *effectiveness* outcome (PPCPR) at the ward level,  
244 disaggregated by 0-5 months and 6-11 months postpartum periods. For pre-intervention data in  
245 all hubs, we summarized the proportion of postpartum women in each ward who reported using a  
246 modern method of contraception at enrollment. In one hub (comprising eight wards), due to a  
247 change in workflow, postpartum women were not asked about contraception during the  
248 enrollment period. We calculated a proxy pre-intervention PPCPR for this hub, using the first  
249 available, non-missing contraception data recorded in the four months immediately following the  
250 enrollment period. To calculate post-intervention PPCPR for all hubs, we chose the last six  
251 months of each time period for all wards, during which we identified the most recent record of  
252 contraceptive use for each woman, also stratified by 0-5 or 6-11 months postpartum periods. We  
253 repeated this calculation for each year post-intervention with data available and also used these  
254 data to summarize contraceptive method mix.

255           We summarized the ward level, unadjusted postpartum contraceptive prevalence rates  
256 over intervention periods (years). We fitted a mixed-effects Poisson regression model to assess  
257 changes in ward-level PPCPR post-intervention compared to pre-intervention, stratified by early  
258 (0-5 months) and late (6-11 months) postpartum periods. We used a binary variable *intervention*  
259 as the independent variable, representing pre-intervention (0) or post-intervention (1). We  
260 adjusted for random effects of *hub*, assuming intervention implementation variations between  
261 hubs. We also included *district* (*Achham* or *Dolakha*) to account for all measured and  
262 unmeasured differences across both implementing contexts. Our models thus assessed the  
263 association between *intervention* and PPCPR, adjusting for district, and random effects of hubs.  
264 In a second set of models (also stratified by early and late postpartum periods), we used a  
265 discrete *time period* variable representing the number of years of intervention implementation (0  
266 representing pre-intervention, or intervention years 1, 2, 3, and 4) instead of the binary  
267 “intervention” variable to assess whether PPCPR was associated with duration of intervention.  
268 We exponentiated coefficients from all models to obtain rate ratios.

269           The following metrics were calculated using *only* post-intervention programmatic data:

270 *Secondary effectiveness variables:* To calculate the proportion of women who switched  
271 to a modern contraception method after LAM, we identified the subset of women who reported  
272 using LAM at any point within their first six months postpartum. Among these individuals, we  
273 identified the first non-missing, non-LAM contraceptive use within their first year postpartum. If  
274 no contraception data were recorded during 6-11 months postpartum for those previously on  
275 LAM, we assumed they did not switch to a modern method, even if they did so after 365 days.  
276 We calculated exclusive breastfeeding rates for each observation period using the last available  
277 exclusive breastfeeding status for each child under six months old.

278 *Adoption:* We summarized time (in months) from enrollment to the start of postpartum  
279 contraceptive counseling using BCS in each hub from a project Gantt chart that was updated  
280 throughout the implementation period.

281 *Implementation:* We calculated the median days postpartum when women were first  
282 offered BCS in each hub for each available time period to assess fidelity to the intervention  
283 workflow. In hubs 1 and 2, BCS should have been offered within the first month or first CHW  
284 visit postpartum. After updating the workflow (as described above) based on CHW input, this  
285 changed to offering BCS at the first contact or starting at 3 months postpartum across all hubs.

286 We conducted all quantitative analyses using SAS 9.4 and used PowerBI and Microsoft  
287 Office to generate graphics. We used R to fit the mixed effects Poisson regression model.

288

#### 289 *Qualitative data*

290 For qualitative data analysis, all transcripts were uploaded into Dedoose Version 9.0.17.  
291 Author R. Khatri developed codes using an inductive content analysis approach to qualitatively  
292 understand how the integrated intervention influenced postpartum contraceptive uptake,  
293 including facilitators and barriers to CHW provision of care and experiences of the participants  
294 enrolled in the intervention. The codes also included new concepts introduced by the data. We  
295 extracted themes and subthemes relevant to the implementation of contraceptive counseling and  
296 postpartum contraception utilization.

297

#### 298 *Ethics approval*

299 The Nepal Health Research Council (461/2016), the Brigham and Women's Hospital  
300 institutional review board (2017P000709/PHS), and Mount Sinai institutional review board  
301 (MSSM IRB-18-01091) provided human subjects approval for the study. The Boston Medical  
302 Center (H-38196) institutional review board exempted the study since the first author W. Wu had  
303 moved from Brigham and Women's Hospital to Boston Medical Center after the data collection  
304 process was already complete. At that point, only de-identified data were being used for analysis  
305 and manuscript preparation. Since the study already had approval from the Nepal Health  
306 Research Council and Brigham and Women's institutional review boards, the primary author's  
307 scope of work was not considered human subjects research that the Boston Medical Center was  
308 engaged in and was considered exempt.

309

310 During enrollment into the RMNCH intervention, CHWs read the consent form and obtained  
 311 verbal informed consent to enroll households and individuals into the CHW program, provide  
 312 care, and use their programmatic data for research. Consent was documented electronically in  
 313 CommCare. Households and individuals could choose to participate only in the care program and  
 314 decline use of their data in research activities. Their data were excluded from this study. For the  
 315 children who were under two years, their mothers provided verbal consent for enrollment into  
 316 the care program and use of their data for research. For the qualitative interview and FGD  
 317 participants, the research team member read a structured script and obtained verbal informed  
 318 consent. Consent included use of de-identified quotes for publication purposes. We opted for  
 319 verbal consent since illiteracy was a concern in our study population, which made it infeasible  
 320 and unethical to ask for written consent. Further, in the local context of our study sites,  
 321 fingerprinting on paper had election/political connotations, and participants would have been  
 322 hesitant to participate if asked to provide a fingerprint. We also took into consideration the local  
 323 rules and local IRB at the time, which did not require written consent. Finally, given the study's  
 324 low level of risk, i.e. consent to use of data from routine clinical care, verbal consent was  
 325 considered appropriate.

## 326 **Results**

### 327 **Reach**

328 We found that most (83%-97%) women who had live births in each hub were offered  
 329 BCS at least once in their first year postpartum (Table 2). Agreement to participate and actual  
 330 completion of counseling sessions was lower, and ranged from 39% to 81% across the hubs.  
 331 Among those who completed at least one session, nearly all chose a contraceptive method at the  
 332 end of the session.

333 **Table 2: Balanced counseling for postpartum women (who had live births)**

District	Hub	Postpartum women n (%)	Intervention year (hub-specific)			
			Year 1	Year 2	Year 3	Year 4
Achham	1	<i>Participated in CHW visit</i>	-	542	536	527
		<i>Was offered balanced counseling</i>	-	530 (83%)	508 (91%)	509 (93%)
		<i>Completed balanced counseling</i>	-	373 (59%)	361 (64%)	300 (55%)
	2	<i>Participated in CHW visit</i>	454	441	389	-
		<i>Was offered balanced counseling</i>	449 (92%)	428 (94%)	380 (96%)	-
		<i>Completed balanced counseling</i>	318 (65%)	260 (57%)	153 (39%)	-
	4	<i>Participated in CHW visit</i>	458	425	-	-
		<i>Was offered balanced counseling</i>	443 (90%)	408 (89%)	-	-
		<i>Completed balanced counseling</i>	397 (81%)	359 (78%)	-	-
	5	<i>Participated in CHW visit</i>	129 (96%)	122 (98%)	-	-
		<i>Was offered balanced counseling</i>	125 (93%)	121 (97%)	-	-
		<i>Completed balanced counseling</i>	82 (61%)	41 (33%)	-	-
	6	<i>Participated in CHW visit</i>	543	-	-	-

		<i>Was offered balanced counseling</i>	511 (92%)	-	-	-
		<i>Completed balanced counseling</i>	402 (73%)	-	-	-
<b>Dolakha</b>	3	<i>Participated in CHW visit</i>	260	298	-	-
		<i>Was offered balanced counseling</i>	256 (97%)	286 (95%)	-	-
		<i>Completed balanced counseling</i>	183 (70%)	172 (57%)	-	-
	7	<i>Participated in CHW visit</i>	252 (99%)	-	-	-
		<i>Was offered balanced counseling</i>	247 (97%)	-	-	-
		<i>Completed balanced counseling</i>	102 (40%)	-	-	-

336

337

338

339

340

Women’s participation and completion of BCS sessions may be dependent on several factors. Our qualitative data suggest that it was difficult for women to spare time for counseling, especially during seasons when they had to work in the fields. In addition, spouses or other family members could also influence their participation as described by a CHW below:

341

342

343

344

345

346

347

*I laid out the cards in front of her for counseling and at the same time, her husband arrived. Generally, he is a nice man but I don’t know what happened that day, he got angry. I asked him to stay together for counseling but he didn’t. I was a little scared seeing his face thinking he might say something. His behavior was changed....He told his wife that they have to eat.... His wife was also scared and said that she will use depo [injectable contraception] only..... I collected the cards and kept them in my bag. He later said that they know that they will have a baby after sexual intercourse and they know what to do and I don’t have to tell them.*

348

FGD with CHWs, Achham

349

350

351

352

353

354

355

356

A few other CHWs highlighted women’s lack of autonomy in making decisions around contraceptive use. One CHW described a woman who could not think about using contraceptives without asking her husband, who was working in India at the time. Another CHW described how a woman’s family members were upset that they were not consulted about her contraception choices. The family members scolded the CHW, and asked her to be responsible if anything happened to their daughter-in-law, as described in the quote below. Women’s willingness to accept contraceptive counseling was thus influenced by concerns about their husband’s or family members’ reactions.

357

358

359

360

361

362

363

*There is a woman who had used implant. She was fine but when I went near her house, the members of the household scolded her and me....saying I have to be responsible for their daughter-in-law. Her father-in-law was angry that the daughter-in-law didn’t take his/ family’s permission [for contraception use], but consulted with me [CHW]. [They had said] the daughter-in-law would get cancer and her arm would have to be cut off. There was another woman in the neighborhood who was ready to use the implant but because of them, she didn’t use it.*

364

FGD with CHWs, Achham

365 **Table 3: Balanced counseling for all married, reproductive age women**

District	Hub	Married, reproductive age women n (%)	Intervention year (hub-specific)			
			Year 1	Year 2	Year 3	Year 4
Achham	1	Participated in CHW visit	-	3302	4703	4252
		Was offered balanced counseling	-	861 (26%)	3478 (74%)	4128 (97%)
		Completed balanced counseling	-	553 (17%)	1246 (26%)	1552 (37%)
	2	Participated in CHW visit	2768	2651	2629	-
		Was offered balanced counseling	831 (30%)	2284 (86%)	2605 (99%)	-
		Completed balanced counseling	612 (22%)	351 (13%)	488 (19%)	-
	4	Participated in CHW visit	2749	2546	-	-
		Was offered balanced counseling	2076 (76%)	2497 (98%)	-	-
		Completed balanced counseling	1525 (55%)	1571 (62%)	-	-
	5	Participated in CHW visit	798	705 (89%)	-	-
		Was offered balanced counseling	705 (88%)	695 (99%)	-	-
		Completed balanced counseling	252 (32%)	138 (20%)	-	-
	6	Participated in CHW visit	3842	-	-	-
		Was offered balanced counseling	3691 (96%)	-	-	-
		Completed balanced counseling	2455 (64%)	-	-	-
Dolakha	3	Participated in CHW visit	2928	2673	-	-
		Was offered balanced counseling	2022 (69%)	2650 (99%)	-	-
		Completed balanced counseling	290 (10%)	509 (19%)	-	-
	7	Participated in CHW visit	1842	-	-	-
		Was offered balanced counseling	1791 (97%)	-	-	-
		Completed balanced counseling	362 (20%)	-	-	-

366

367 According to post-intervention programmatic data, the proportion of all married women  
 368 of reproductive age who were offered contraceptive counseling using BCS increased over time  
 369 (Table 3). By the last available post-intervention year for each hub, which roughly corresponded  
 370 with calendar year 2020, over 95% of MWRA in all hubs had been *offered* BCS at least once.  
 371 Completion of BCS tended to remain low in most hubs ( $\leq 20\%$ ), except in hub 4 where it was  
 372 over 50%.

373

### 374 **Effectiveness**

375 The box plots of unadjusted ward-level postpartum contraceptive prevalence rates by  
 376 intervention time period (Figure 2), suggest an association between the intervention and PPCPR  
 377 in both the 0-5 and 6-11 months postpartum women populations.

378

### 379 **Figure 2: Unadjusted ward-level postpartum contraceptive prevalence rates by** 380 **intervention time period**

381 Adjusting for district and random effects of hubs, the ward-level PPCPR for women between 0-5  
 382 months postpartum was higher post-intervention compared to pre-intervention (Rate ratio: 2.20;  
 383 95% CI: 1.96, 2.48). Similarly, adjusting for district, and random effects of hubs, the ward-level

384 PPCPR for women between 6-11 months postpartum was higher post intervention compared to  
 385 pre-intervention (RR: 1.70; 95% CI: 1.50, 1.93).

386 **Table 4a: Associations between RMNCH intervention and ward-level postpartum**  
 387 **contraceptive prevalence rate**

	Postpartum contraception prevalence rate			
	Early postpartum (0-5 months)		Late postpartum (6-11 months)	
	Rate Ratio (95% CI)	p-value	Rate Ratio (95% CI)	p-value
<b>Pre-intervention (Year 0)</b>	1.00		1.00	
<b>Post-intervention</b>	2.20 (1.96, 2.48)	<0.001*	1.70 (1.50, 1.93)	<0.001*
<b>District - Achham</b>	1.00		1.00	
<b>District - Dolakha</b>	1.33 (1.06, 1.69)	0.006*	2.60 (1.69, 3.99)	<0.001*

388 **Table 4b: Associations between years of RMNCH intervention and ward-level postpartum**  
 389 **contraceptive prevalence rate**

	Postpartum contraception prevalence rate			
	Early postpartum (0-5 months)		Late postpartum (6-11 months)	
	Rate Ratio (95% CI)	p-value	Rate Ratio (95% CI)	p-value
<b>Pre-intervention (Year 0)</b>	1.00		1.00	
<b>Year 1</b>	2.17 (1.91, 2.47)	<0.001*	1.51 (1.31, 1.74)	<0.001*
<b>Year 2</b>	1.93 (1.67, 2.23)	<0.001*	1.80 (1.55, 2.11)	<0.001*
<b>Year 3</b>	2.50 (2.09, 2.97)	<0.001*	2.01 (1.64, 2.46)	<0.001*
<b>Year 4</b>	3.16 (2.63, 3.79)	<0.001*	2.24 (1.77, 2.82)	<0.001*
<b>District - Achham</b>	1.00		1.00	
<b>District - Dolakha</b>	1.4 (1.15, 1.69)	<0.001*	2.76 (1.9, 3.98)	<0.001*

390  
 391 There was also an association between PPCPR in both early and late postpartum periods and the  
 392 number of years of the bundled intervention (Table 4b). In year 4 (which we only observed in hub  
 393 1), the ward-level PPCPR for women between 0-5 months postpartum was 3.16 times the pre-  
 394 intervention rate (95% CI: 2.63, 3.79). The ward-level PPCPR in Dolakha also tended to be higher  
 395 compared to that in Achham, especially in the late postpartum period (Tables 4a and 4b).  
 396

397  
 398 *Other effectiveness outcomes:*

399 Contraceptive method mix (Figure 3) for women 0-5 months postpartum showed an  
 400 overall increase in LAM use from pre-intervention to post-intervention. Injectables were the  
 401 second most common method of contraception in the 0-5 month postpartum period, and the most  
 402 common method in the 6-11 month postpartum period. Injectable use was particularly high in  
 403 Dolakha district, with up to 57% of 6-11 month postpartum women using injectables by the  
 404 second post-intervention year in hub 3. There also appeared to be an increase in long acting and

405 permanent methods (LAPM) in the 6-11 month postpartum period in Achham district, and an  
406 unanticipated increase in traditional methods in hub 7 post-intervention.

407

### 408 **Figure 3: Postpartum contraceptive method mix**

409

410 The proportion of women on LAM within 0-5 months postpartum who switched to  
411 another modern method of contraception remained quite low, and ranged from 10% to 30% in  
412 most hubs, except for hub 3 where it was over 60%. Exclusive breastfeeding among infants (0-5  
413 months old) was quite high (Figure 4) in all hubs and appeared to increase over time post-  
414 intervention.

415 One likely determinant for intervention effectiveness was the trusting longitudinal  
416 relationships the CHWs built with women in their community. The overall trust women had in  
417 the CHWs likely contributed to the apparent association of the intervention with increase in  
418 contraceptive use postpartum.

419 *They share with us, considering us very close to them; even things they won't share with their*  
420 *sisters-in-law. They ask us what to do in certain situations. Even though we are relatively young,*  
421 *women from our mothers' age group also share things without any hesitation. When they do so,*  
422 *we feel that they trust us.*

423 *Initially, they hesitated to answer and wouldn't open up when asked about family planning but*  
424 *now they treat us as their friends and openly tell us. Some of them will not tell others in the*  
425 *village about their contraceptive use but will tell us what they are using.*

426

427 *We go everyday and if some problems happen, we go there as well. We have understood them*  
428 *and their problems. They trust us because we have been able to address their issues.*

429

430 FGD with CHWs, Achham

### 431 **Figure 4: Proportion of infants (0-5 months) who were exclusively breastfed (%)**

432 Participants from both Dolakha and Achham districts also appreciated the benefits of CHWs  
433 visiting them to discuss counseling for contraceptives.

434 *Who understands the plight of women? Earlier, our life was like that of cattle...got married,*  
435 *gave birth but we knew nothing. Now that they [CHWs] come to our doorsteps to teach us these*  
436 *things, we can't explain how happy we are.*

437

Intervention participant, Dolakha

438 *She teaches us things we didn't know, new things. She explains things we don't understand. It*  
439 *has made things easy [to learn].*



440 Intervention participant, Achham

441 In addition to building trust among women in the community, CHWs also noted  
442 improving relationships with facility-based staff as they implemented the intervention. CHWs  
443 demonstrated the capacity to help bridge care from the home to the health facility.

444  
445 *People in the community call me and trust me when they are facing any troubles; in those times I*  
446 *feel like I have been able to do something for the community. People in the health post also*  
447 *remember us. They tell us about women who didn't come for visits and ask us to remind them. At*  
448 *this time, we feel recognized for our work.*

449 FGD with CHWs, Achham

450 Barriers that the CHWs noted for contraceptive utilization included negative perceptions  
451 and fear of side effects. For instance, one CHW observed:

452 *To make them understand about family planning has been very difficult because they*  
453 *think use of family planning will cause cancer, and other problems.*

454 FGD with CHWs, Achham

455 During a FGD, CHWs shared that some women expressed a fear of infertility after using  
456 contraceptives because of some instances where women reported difficulty conceiving again  
457 after using some contraceptives like injectables:

458 *They think that using family planning measures early on causes infertility. We had gone to meet*  
459 *[a postpartum woman] who had two days left to reach 45 days. We did the counseling and she*  
460 *went the next day after completing 45 days and used depo [injectables]. Now, her child is 3*  
461 *years old. She hasn't had another baby; she had discontinued depo; her husband is also at home.*  
462 *Now, they are not able to have another baby; she even went to [the hospital] for treatment. She*  
463 *told me that I made her use that injection and now she is not able to give birth to a son.*

464 FGD with CHWs, Achham

465 One CHW noted that some women did not feel secure with having only one son and wanted  
466 more sons; therefore, they do not want to use contraceptives. Son preference seems to be one  
467 underlying reason for fear around contraceptive use. Another CHW reported that women feared  
468 permanent sterilization would weaken their physical strength and hinder their ability to perform  
469 farm work. CHWs reported a similar fear among women regarding vasectomies:

470 *We have not been successful in permanent measures because if we tell the woman about a*  
471 *permanent family planning camp, she will say that she will get weak. They say, "We need to*  
472 *work in such a big field, we have to carry the animals, we will not have anything to eat, we will*  
473 *be weak."* This perception still prevails. We have not been able to get rid of this.

474 *Women say that they would do it themselves rather than men... They think men will get weaker.*  
475 *They say that men have to go outside, do hard labor like crushing stones... Women have more*  
476 *burden but they don't see theirs, rather see that of men.*

477 FGD with CHWs, Achham

478 Peer influence was one important factor affecting women's decisions around  
479 contraceptive use. CHWs observed that if somebody in the community had negative experiences  
480 with contraception or vice-versa, that would affect others' uptake of contraception.

481 *The effect is both ways. If they have heard that it has done good, then others will say that they*  
482 *will also use it and go about using it.*

483 FGD with CHWs, Achham

484 Contraceptive uptake was also affected by access to methods in health facilities. In Dolakha,  
485 CHWs noted that women would choose a method during BCS, but were unable to access those  
486 methods when they went to the health facilities. A CHW noted:

487 *Women from my community who had come for implant and IUCD were given condoms and sent*  
488 *away. A woman shared that she was scolded at the MCH (Maternal Child Health) clinic and*  
489 *therefore, she went to a health post at [hub 7] to keep an implant instead of coming to the [...]*  
490 *hospital again.*

491 CHW, Dolakha

492

### 493 ***Adoption***

494 Of the 19 intended municipalities, 10 adopted the RMNCH intervention, and 7 of those  
495 adopted it within the anticipated timeline. The intervention's postpartum BCS component was  
496 implemented in all hubs where the bundled intervention was introduced. For all the hubs  
497 included in the analysis for this paper, except for one, BCS was implemented as part of postnatal  
498 care almost immediately after enrollment was completed. The exception to this was hub 2, where  
499 postnatal care was rolled out four months after enrollment completion. Since hub 2 was the  
500 second implementation step, this additional time was used to update workflows and data  
501 collection tools in the mobile platform based on feedback from the implementation experience in  
502 the first hub.

503

### 504 ***Implementation***

505 As described above, the intervention used an iterative approach, guided by feedback from  
506 the program's team. After the first year of implementing postpartum contraceptive counseling,  
507 the program team proposed a more streamlined home visit schedule whereby postpartum women

508 were visited and offered BCS starting at the third month postpartum, consistent with the general  
 509 MWRA schedule of home visits every 3 months.

510 Table 5 indicates the timing in median days postpartum when BCS was offered to  
 511 women. The post-intervention year 2 for hub 1 and year 1 for hub 2 correspond to the same  
 512 calendar year (February 2017 - January 2018), during which postpartum women were receiving  
 513 monthly visits from CHWs. Hence, on average, women were about two weeks postpartum when  
 514 they were first offered BCS counseling in that year. After the switch in timing of home visits to  
 515 once every three months postpartum, BCS counseling was offered closer to 90 days postpartum.

516

517 **Table 5: Timing of offering BCS counseling (in days postpartum)**

District	Hub	Intervention year (hub-specific)			
		Year 1 Median [Q1, Q3]	Year 2 Median [Q1, Q3]	Year 3 Median [Q1, Q3]	Year 4 Median [Q1, Q3]
Achham	1	-	15 [7, 27]	92.5 [17, 126.5]	81 [20, 119]
	2	13 [5, 48]	80 [10, 113]	80 [45, 106]	-
	4	86 [10, 123]	78 [29, 121.5]	-	-
	5	103 [68, 124]	66 [6, 114]	-	-
	6	90 [74, 110]	-	-	-
	Dolakha	3	27.5 [8, 103]	78 [37, 108]	-
7		80 [66, 117]	-	-	-

518

519 Additionally, implementation barriers included distance, challenging physical terrains  
 520 that CHWs traversed to reach some remote communities, and increased travel times during the  
 521 rainy season. Stable electricity and therefore, mobile phone service and communication with the  
 522 participants was less reliable during the rainy season. These barriers are also described further in  
 523 detail elsewhere (26).

524

525 *And the other thing is geographical difficulties. Some areas are so far that we need to stay*  
 526 *there... We cannot skip such areas; we have to go there. We have to go to provide services to the*  
 527 *people there.*

528

Supervisor 2, Achham

529

530 *When we work in a community, we face community related challenges like having to walk in the*  
 531 *rain, and the public vehicles do not run during the rainy season, our staff have to walk for 6-7*  
 532 *hours... Those kinds of challenges we face in our roles.*

533

Supervisor 1, Achham

534

535

536 CHWs also brought up social issues like caste as a barrier to delivering care and counseling -  
 537 some CHWs reported not being permitted in certain spaces because of their caste:

538

539 *People would say that I haven't washed and dried my hair after menstruation [One has to wash*  
540 *and dry their hair after four days of menstruation to be considered "pure"]. They would tell me*  
541 *to not come saying that I am Dalit [low caste].*

542 FGD with CHWs, Achham

543

#### 544 **Maintenance**

545 BCS continues to be delivered by CHWs in the study sites after the study period. The nonprofit  
546 *Nyaya Health Nepal* leads implementation in Achham district, while implementation in Dolakha  
547 district has transitioned to the community health program of the Dhulikhel Hospital-Kathmandu  
548 University Hospital. Furthermore, the integrated RMNCH intervention described in this study  
549 served as the foundation for a similar pilot delivered by community health nurses in two other  
550 municipalities in Nepal (42). This new pilot, which also includes BCS, is being led by the  
551 Nursing and Social Security Division under the Ministry of Health and Population of the  
552 Government of Nepal, with technical assistance from *Possible*.

553 Our qualitative data explored maintenance of behavior change and the potential for  
554 longer term impact from the CHW home visits and counseling. Some women mentioned that  
555 they will remember what the CHWs had "taught" them and will try to follow the advice. Most  
556 program staff also described believing that the women will follow CHWs' counseling, despite  
557 changes in visit frequency. They anticipate that behavior change built on longitudinal care within  
558 an integrated program will have a longer lasting impact rather than standalone one-off programs:

559

560 *We are assured that they will do it because sometimes when we go to their household, we may*  
561 *not meet the person but we will find that the child has been immunized; later on we find out that*  
562 *they have gone for a check-up. For them to continue, this is what gave us hope. I am hopeful,*  
563 *now, that even if we are not in this job, they will continue to do so, they will do it.*

564

565 FGD with CHWs, Achham

566

567 *[CHWs] used to tell them things from time to time...And now if CHWs do not visit in a long time,*  
568 *then those things also might be missed. They remember many things such as advantages of*  
569 *family planning, and advantages of visiting the health institution. But some things they might*  
570 *forget in the long run like, about follow-up, right, like these things.*

571

572 Supervisor 2, Achham

#### 573 **Discussion**

574 We studied the impact of a CHW-delivered integrated RMNCH intervention in two  
575 districts in rural Nepal on postpartum contraceptive outcomes, and observed an overall increase  
576 in modern contraceptive use within one year postpartum. Adjusting for district and hubs, we  
577 observed higher post-intervention ward-level PPCPR (0-5 months postpartum) compared to pre-  
578 intervention (Rate ratio: 2.20; 95% CI: 1.96, 2.48). Similarly, we observed higher ward-level  
579 post intervention PPCPR (6-11 months) compared to pre-intervention (IRR: 1.70; 95% CI: 1.50,

580 1.93). We observed an overall increase in LAM use with the intervention, and high exclusive  
581 breastfeeding rates among infants (0-5 months old) in all hubs, which appeared to increase over  
582 time post-intervention. The proportion of women who switched from LAM to another modern  
583 contraceptive method tended to be lower, ranging from 10% to 30% in most hubs, except one  
584 hub where it was over 60%. Qualitative data helped us to understand factors affecting the  
585 effectiveness of the intervention, such as the trust that CHWs developed with women in the  
586 community through their longitudinal engagement, and the relationships they built with  
587 healthcare providers. CHWs also noted several factors that affected implementation and  
588 women's uptake of contraception, including gender norms, spousal and family involvement, fear  
589 of side effects, and the influence of peers.

590 Our results are consistent with evidence from a review of 35 interventions in LMICs that  
591 concluded incorporating contraceptive counseling and services across the reproductive health  
592 care continuum is the ideal strategy for improving postpartum contraception (28). CHW  
593 programs are an example of how this can be implemented. A quasi-experimental trial in  
594 Bangladesh that integrated family planning counseling into an existing maternal and newborn  
595 health intervention delivered by CHWs showed that the intervention arm had higher  
596 contraceptive prevalence rate at 12 months postpartum, lower short interval pregnancy of <24  
597 months, and lower preterm birth rates (43, 44). Similarly, in our intervention, contraceptive  
598 counseling was embedded into a longitudinal CHW program that supports women pre-  
599 pregnancy, antenatally and into the extended postnatal period.

600 Longitudinal follow-up and providing contraceptive counseling into the extended  
601 postnatal period is also important as women's pregnancy intentions and desire to use  
602 contraception are dynamic and change over time (45). In Nepal, the most common reason  
603 women report for not using contraception postpartum is spousal separation mostly due to  
604 migration for work (46). Additional reasons include low self-perceived risk of getting pregnant,  
605 fear of side effects, breastfeeding, not having resumed sex postpartum, and amenorrhea (46, 47).  
606 Based on DHS data, 25-37% of married women in our study sites lived apart from their spouses,  
607 and more than half of those women reported that their spouses are away for more than 12 months  
608 (47). Women's self-perceived risk for pregnancy and contraceptive use are thus influenced by  
609 their husbands' absence, which likely affected their acceptance of contraceptive counseling in  
610 our study (48, 49).

611 We found that nearly all (83%-97%) women across the hubs who had live births were  
612 offered BCS counseling at least once in their first year postpartum. These observed rates are  
613 quite high, likely due to the clinical decision support built into the CommCare app that prompted  
614 CHWs to offer BCS during their visits. However, acceptance and completion of BCS were  
615 variable across hubs. In the first year, completion of BCS ranged from 40-81% and in year two,  
616 33-59%. In addition to spousal migration, qualitative data highlighted other factors that  
617 influenced whether women accepted contraceptive counseling from CHWs. These included  
618 unsupportive family members and husbands, fertility concerns, and limited time to spare for  
619 counseling especially during busy farming seasons. Also, as there appeared to be a decrease in  
620 BCS completion rates over time in all hubs, which may have been due to intervention

621 participants finding repeated BCS counseling redundant, or diminishing implementation fidelity  
622 over time.

623 Despite increasing rates of facility-based deliveries by skilled birth attendants, about 40%  
624 of women in Nepal still do not receive a postnatal check-up and few report receiving family  
625 planning counseling after giving birth (47). The quality of family planning counseling that  
626 women receive remains concerning, with women reporting poor experiences, including not  
627 feeling like they were being listened to (15). BCS embedded within an RMNCH intervention  
628 delivered by CHWs offers a community-based, person-centered contraceptive counseling  
629 strategy. While this study does not evaluate the quality of contraceptive counseling, in our  
630 previous sub-study, women and their husbands found BCS acceptable and noncoercive, and  
631 appreciated the visual aids and the description of the range of available methods (29). BCS does  
632 have some limitations - while it prioritizes each woman's reproductive intentions and goals, the  
633 counseling algorithm is guided by tiered effectiveness, where the most effective methods are  
634 presented first (39). We acknowledge that effectiveness may not be the priority for every woman.  
635 As our qualitative data indicate, other social and cultural factors including gender norms, fear of  
636 side effects, spousal migration, and opinions of family members may be more influential in  
637 decision-making.

638 Our data shows high rates of exclusive breastfeeding among children under 6 months in  
639 the study areas ranging from 79-97%, which is significantly higher than national estimates of  
640 56% (11). This may be related to the intervention's emphasis on CHW counseling on the benefits  
641 of breastfeeding. The median duration of postpartum amenorrhea in Nepal is 6 months (16),  
642 suggesting that many women are likely protected from pregnancy in the first 6 months  
643 postpartum. We observed high rates of reported LAM use that increased with the intervention  
644 years. Our data, however, show relatively low rates of transition from LAM to another effective  
645 method of contraception. In settings with early postpartum uptake of short-acting contraceptive  
646 methods and high rates of lactational amenorrhea, there is concern that women will discontinue  
647 their short-acting method by the time they are no longer protected from pregnancy by LAM (28,  
648 50). Additional research is needed to better understand these low transition rates and how to  
649 facilitate the transition from LAM to another effective contraceptive method for women who do  
650 not desire pregnancy.

## 651 652 **Limitations**

653 Our study had several limitations. Given the pragmatic study design, we did not have a  
654 separate comparison group of hubs, but collected pre- and post-intervention data for each hub.  
655 Since all post-intervention quantitative data was programmatic data extracted from the  
656 CommCare app as CHWs delivered the intervention, it was neither feasible nor ethical to collect  
657 data from other sites where we did not implement the intervention. Further, the implementation  
658 process was driven by local stakeholders making it infeasible to employ randomization. Thus, we  
659 are limited in our ability to make causal inferences about observed increases in contraceptive  
660 uptake despite attempting to account for variations in district and hubs in our analysis.

661 In addition, we used contraceptive prevalence as the main effectiveness indicator in this  
662 study, which is not a person-centered outcome and does not take into account women’s  
663 satisfaction with their method (51). Any target prevalence is likely set by public health advocates  
664 and not based on individual woman’s decisions and reproductive autonomy (52). Evaluating  
665 program success based on contraceptive prevalence may thus inadvertently incentivize providers  
666 to prioritize method uptake and lead to coercive practices (52). Future studies may include  
667 additional person-centered outcomes including women’s satisfaction with their method,  
668 autonomy in making contraceptive decisions, or use of a non-preferred contraceptive method  
669 (53).

670 There were several data-related limitations. For instance, we did not include data on  
671 contraceptive counseling with BCS post-abortion and may have slightly underestimated  
672 contraceptive counseling among all married women of reproductive age as we did not start  
673 collecting this data until the second year of the program. For one hub, we had to calculate a  
674 proxy pre-intervention PPCPR using programmatic data because of data limitations, which may  
675 have led to overestimation of the pre-intervention contraceptive use. There may have also been  
676 some bias introduced since CHWs delivered care and simultaneously collected data. For  
677 instance, CHWs may have felt their performance was measured by their success in being able to  
678 “convince” women to adopt modern contraception. There are some concerns about reproductive  
679 coercion, particularly in hubs with very high contraceptive prevalence. Further qualitative data  
680 will need to be collected in these hubs to understand factors that contribute to the high rates.

681 In addition, since the intervention expansion in all originally planned hubs was delayed  
682 for various reasons, we were only able to include data from hubs where we had at least one year  
683 of post-intervention data before the national COVID-19 lockdown. Thus, it is possible that the  
684 improvements we observed in the hubs included in our analyses may not have been observed in  
685 other hubs where the intervention was delayed.

686 Finally, broader structural and socio-cultural factors that impact access to and use of  
687 contraception including poverty, gender inequality, weak supply changes, and poor road  
688 infrastructure were not directly addressed through our intervention (17, 34, 54, 55). For instance,  
689 while CHWs facilitate community-facility linkages, additional efforts are needed to improve  
690 physical access to facilities and quality of care at facilities.

## 691 692 **Conclusion**

693 Despite these limitations, however, this study assesses the real-world implementation of  
694 an integrated RMNCH intervention delivered by CHWs with a person-centered contraceptive  
695 counseling component in a low-resource setting where contraception is underutilized. Our  
696 findings suggest the intervention’s potential to increase in modern contraceptive uptake in  
697 community settings. Perhaps more importantly, our results underscore the importance of  
698 longitudinal engagement and trust-building that position CHWs to drive longer-term change in  
699 their communities especially around sensitive topics. This study contributes to the  
700 implementation research literature on community-based interventions to improve postpartum  
701 contraception use and may inform other CHW programs in similar contexts.

## 702 References

- 703 1. Galati AJ. Onward to 2030: Sexual and Reproductive Health and Rights in the Context of  
704 the Sustainable Development Goals. 2015;18(4):8.
- 705 2. Starbird E, Norton M, Marcus R. Investing in Family Planning: Key to Achieving the  
706 Sustainable Development Goals. *Global Health: Science and Practice*. 2016;4(2):191-210.
- 707 3. Hardee K, Harris S, Rodriguez M, Kumar J, Bakamjian L, Newman K, et al. Achieving  
708 the goal of the London Summit on Family Planning by adhering to voluntary, rights-based  
709 family planning: what can we learn from past experiences with coercion? *International*  
710 *perspectives on sexual and reproductive health*. 2014;40(4):206-14.
- 711 4. United Nations Population Fund. Family Planning [Available from:  
712 <https://www.unfpa.org/family-planning#readmore-expand>.
- 713 5. Conde-Agudelo A, Rosas-Bermúdez A, Kafury-Goeta AC. Birth spacing and risk of  
714 adverse perinatal outcomes: a meta-analysis. *JAMA*. 2006;295(15):1809-23.
- 715 6. World Health Organization. Report of a WHO technical consultation on birth spacing:  
716 Geneva, Switzerland 13-15 June 2005. World Health Organization; 2007.
- 717 7. Moore Z, Pfitzer A, Gubin R, Charurat E, Elliott L, Croft T. Missed opportunities for  
718 family planning: an analysis of pregnancy risk and contraceptive method use among postpartum  
719 women in 21 low- and middle-income countries. *Contraception*. 2015;92(1):31-9.
- 720 8. Dev R, Kohler P, Feder M, Unger JA, Woods NF, Drake AL. A systematic review and  
721 meta-analysis of postpartum contraceptive use among women in low- and middle-income  
722 countries. *Reproductive Health*. 2019;16(1):154.
- 723 9. Gilmore K, Gebreyesus TA. What will it take to eliminate preventable maternal deaths?  
724 *The Lancet*. 2012;380(9837):87-8.
- 725 10. Ahmed S, Li Q, Liu L, Tsui AO. Maternal deaths averted by contraceptive use: an  
726 analysis of 172 countries. *The Lancet*. 2012;380(9837):111-25.
- 727 11. Government of Nepal Ministry of Health and Population. Nepal Demographic and Health  
728 Survey Key Indicators Report. 2022.
- 729 12. Puri MC, Huber-Krum S, Canning D, Guo M, Shah IH. Does family planning counseling  
730 reduce unmet need for modern contraception among postpartum women: Evidence from a  
731 stepped-wedge cluster randomized trial in Nepal. *PLOS ONE*. 2021;16(3):e0249106.
- 732 13. Mehata S, Paudel YR, Mehta R, Dariang M, Poudel P, Barnett S. Unmet need for family  
733 planning in Nepal during the first two years postpartum. *Biomed Res Int*. 2014;2014.
- 734 14. Pant PD, Pandey JP, Bietsch K. Unmet need for family planning and fertility in Nepal:  
735 levels, trends, and determinants. *DHS Further Analysis Report*. 2019(119).
- 736 15. Puri MC, Moroni M, Pearson E, Pradhan E, Shah IH. Investigating the quality of family  
737 planning counselling as part of routine antenatal care and its effect on intended postpartum  
738 contraceptive method choice among women in Nepal. *BMC Women's Health*. 2020;20:29.
- 739 16. Ministry of Health NNEaI. Nepal Demographic and Health Survey 2016. Kathmandu,  
740 Nepal; 2017.
- 741 17. Maru DS-R, Andrews J, Schwarz D, Schwarz R, Acharya B, Ramaiya A, et al. Crossing  
742 the quality chasm in resource-limited settings. *Global Health*. 2012;8:41.
- 743 18. Mehata S, Paudel YR, Dariang M, Aryal KK, Lal BK, Khanal MN, et al. Trends and  
744 Inequalities in Use of Maternal Health Care Services in Nepal: Strategy in the Search for  
745 Improvements. *Biomed Res Int*. 2017;2017:5079234.
- 746 19. Khatri RB, Mishra SR, Khanal V. Female Community Health Volunteers in Community-  
747 Based Health Programs of Nepal: Future Perspective. *Front Public Health*. 2017;5:181.



- 748 20. Schwarz D, Sharma R, Bashyal C, Schwarz R, Baruwal A, Karelis G, et al.  
749 Strengthening Nepal's Female Community Health Volunteer network: a qualitative study of  
750 experiences at two years. *BMC Health Services Research*. 2014;14(1):473.
- 751 21. Nepal P, Schwarz R, Citrin D, Thapa A, Acharya B, Acharya Y, et al. Costing Analysis  
752 of a Pilot Community Health Worker Program in Rural Nepal. *Global Health: Science and  
753 Practice*. 2020;8(2):239-55.
- 754 22. Organization WH. What do we know about community health workers? A systematic  
755 review of existing reviews. 2020.
- 756 23. Division FW, Population MoHa, Government of Nepal. NEPAL SAFE MOTHERHOOD  
757 AND NEWBORN HEALTH ROAD MAP 2030 2019.
- 758 24. World Health Organization. WHO guideline on health policy and system support to  
759 optimize community health worker programmes. 2018.
- 760 25. Maru S, Nirola I, Thapa A, Thapa P, Kunwar L, Wu W-J, et al. An integrated community  
761 health worker intervention in rural Nepal: a type 2 hybrid effectiveness-implementation study  
762 protocol. *Implementation Science*. 2018;13(1):53.
- 763 26. Tiwari A, Thapa A, Choudhury N, Khatri R, Sapkota S, Wu W-J, et al. A Type II hybrid  
764 effectiveness-implementation study of an integrated CHW intervention to address maternal  
765 healthcare in rural Nepal. *PLOS Global Public Health*. 2023;3(1):e0001512.
- 766 27. Gaffield ME, Egan S, Temmerman M. It's about time: WHO and partners release  
767 programming strategies for postpartum family planning. *Global Health: Science and Practice*.  
768 2014;2(1):4-9.
- 769 28. Cleland J, Shah IH, Daniele M. Interventions to Improve Postpartum Family Planning in  
770 Low- and Middle-Income Countries: Program Implications and Research Priorities. *Studies in  
771 Family Planning*. 2015;46(4):423-41.
- 772 29. Wu W-J, Tiwari A, Choudhury N, Basnett I, Bhatt R, Citrin D, et al. Community-based  
773 postpartum contraceptive counselling in rural Nepal: a mixed-methods evaluation. *Sex Reprod  
774 Health Matters*. 2020;28(2):1765646.
- 775 30. Curran GM, Bauer M, Mittman B, Pyne JM, Stetler C. Effectiveness-implementation  
776 Hybrid Designs. *Med Care*. 2012;50(3):217-26.
- 777 31. Glasgow RE, Vogt TM, Boles SM. Evaluating the public health impact of health  
778 promotion interventions: the RE-AIM framework. *American journal of public health*.  
779 1999;89(9):1322-7.
- 780 32. Glasgow RE, Harden SM, Gaglio B, Rabin B, Smith ML, Porter GC, et al. RE-AIM  
781 planning and evaluation framework: adapting to new science and practice with a 20-year review.  
782 *Front Public Health*. 2019;7:64.
- 783 33. Vaidya NK, Wu J. HIV epidemic in Far-Western Nepal: effect of seasonal labor  
784 migration to India. *BMC Public Health*. 2011;11:310.
- 785 34. Citrin D, Thapa P, Nirola I, Pandey S, Kunwar LB, Tenpa J, et al. Developing and  
786 deploying a community healthcare worker-driven, digitally-enabled integrated care system for  
787 municipalities in rural Nepal. *Healthc (Amst)*. 2018;6(3):197-204.
- 788 35. Dehlendorf C, Grumbach K, Schmittiel JA, Steinauer J. Shared decision making in  
789 contraceptive counseling. *Contraception*. 2017;95(5):452-5.
- 790 36. Dehlendorf C, Krajewski C, Borrero S. Contraceptive counseling: best practices to ensure  
791 quality communication and enable effective contraceptive use. *Clinical obstetrics and  
792 gynecology*. 2014;57(4):659.

- 793 37. Holt K, Zavala I, Quintero X, Mendoza D, McCormick MC, Dehlendorf C, et al.  
794 Women's preferences for contraceptive counseling in Mexico: results from a focus group study.  
795 *Reproductive Health*. 2018;15:1-11.
- 796 38. Agarwal S, Lasway C, L'Engle K, Homan R, Layer E, Ollis S, et al. Family Planning  
797 Counseling in Your Pocket: A Mobile Job Aid for Community Health Workers in Tanzania.  
798 *Global Health: Science and Practice*. 2016;4(2):300-10.
- 799 39. Population C. The Balanced Counseling Strategy Plus: A Toolkit for Family Planning  
800 Service Providers Working in High HIV/STI Prevalence Settings. *Reproductive Health*. 2015.
- 801 40. Liambila W, Warren C, Mullick S, Askew I, Homan R, Mohammed I, et al. Feasibility,  
802 acceptability, effect, and cost of integrating counseling and testing for HIV within family  
803 planning services in Kenya. *Reproductive Health*. 2008.
- 804 41. Sapkota S, Rajbhandary R, Lohani S. The Impact of Balanced Counseling on  
805 Contraceptive Method Choice and Determinants of Long Acting and Reversible Contraceptive  
806 Continuation in Nepal. *Matern Child Health J*. 2017;21(9):1713-23.
- 807 42. Government of Nepal Ministry of Health and Population Department of Health Services  
808 Nursing and Social Security Division. National Guideline on Community Health Program 2078.  
809 2021.
- 810 43. Baqui AH, Ahmed S, Begum N, Khanam R, Mohan D, Harrison M, et al. Impact of  
811 integrating a postpartum family planning program into a community-based maternal and  
812 newborn health program on birth spacing and preterm birth in rural Bangladesh. *J Glob Health*.  
813 2018;8(2):020406.
- 814 44. Ahmed S, Ahmed S, McKaig C, Begum N, Mungia J, Norton M, et al. The effect of  
815 integrating family planning with a maternal and newborn health program on postpartum  
816 contraceptive use and optimal birth spacing in rural Bangladesh. *Studies in Family Planning*.  
817 2015;46(3):297-312.
- 818 45. Keogh SC, Urassa M, Kumogola Y, Kalongoji S, Kimaro D, Zaba B. Postpartum  
819 Contraception in Northern Tanzania: Patterns of Use, Relationship to Antenatal Intentions, and  
820 Impact of Antenatal Counseling. *Studies in Family Planning*. 2015;46(4):405-22.
- 821 46. Joshi AK, Tiwari DP, Poudyal A, Shrestha N, Acharya U, Dhungana GP. Utilization of  
822 family planning methods among postpartum mothers in Kailali district, Nepal. *International  
823 journal of women's health*. 2020:487-94.
- 824 47. Staveteig S, Shrestha N, Gurung S, Kampa KT. Barriers to family planning use in Eastern  
825 Nepal: Results from a mixed methods study. 2018. Contract No.: 21.
- 826 48. Shattuck D, Wasti SP, Limbu N, Chipanta NS, Riley C. Men on the move and the wives  
827 left behind: the impact of migration on family planning in Nepal. *Sex Reprod Health Matters*.  
828 2019;27(1):248-61.
- 829 49. Hendrickson ZM, Owczarzak J, Lohani S, Thapaliya Shrestha B, Underwood CR. The  
830 (re) productive work of labour migration: the reproductive lives of women with an absent spouse  
831 in the central hill region of Nepal. *Culture, health & sexuality*. 2019;21(6):684-700.
- 832 50. Mumah JN, Machiyama K, Mutua M, Kabiru CW, Cleland J. Contraceptive adoption,  
833 discontinuation, and switching among postpartum women in Nairobi's urban slums. *Studies in  
834 family planning*. 2015;46(4):369-86.
- 835 51. Dehlendorf C, Reed R, Fox E, Seidman D, Hall C, Steinauer J. Ensuring our research  
836 reflects our values: The role of family planning research in advancing reproductive autonomy.  
837 *Contraception*. 2018;98(1):4-7.
- 838 52. Senderowicz L. "I was obligated to accept": A qualitative exploration of contraceptive  
839 coercion. *Soc Sci Med*. 2019;239:112531.

- 840 53. Bullington BW, Sawadogo N, Tumlinson K, Langer A, Soura A, Zabre P, et al.  
841 Prevalence of non-preferred family planning methods among reproductive-aged women in  
842 Burkina Faso: results from a cross-sectional, population-based study. *Sex Reprod Health*  
843 *Matters*. 2023;31(1):2174244.
- 844 54. Bhatt N, Bhatt B, Neupane B, Karki A, Bhatta T, Thapa J, et al. Perceptions of family  
845 planning services and its key barriers among adolescents and young people in Eastern Nepal: A  
846 qualitative study. *PLOS ONE*. 2021;16(5):e0252184.
- 847 55. Sigdel A, Bista A, Sapkota H, Teijlingen Ev. Barriers in accessing family planning  
848 services in Nepal during the COVID-19 pandemic: A qualitative study. *PLOS ONE*.  
849 2023;18(5):e0285248.  
850

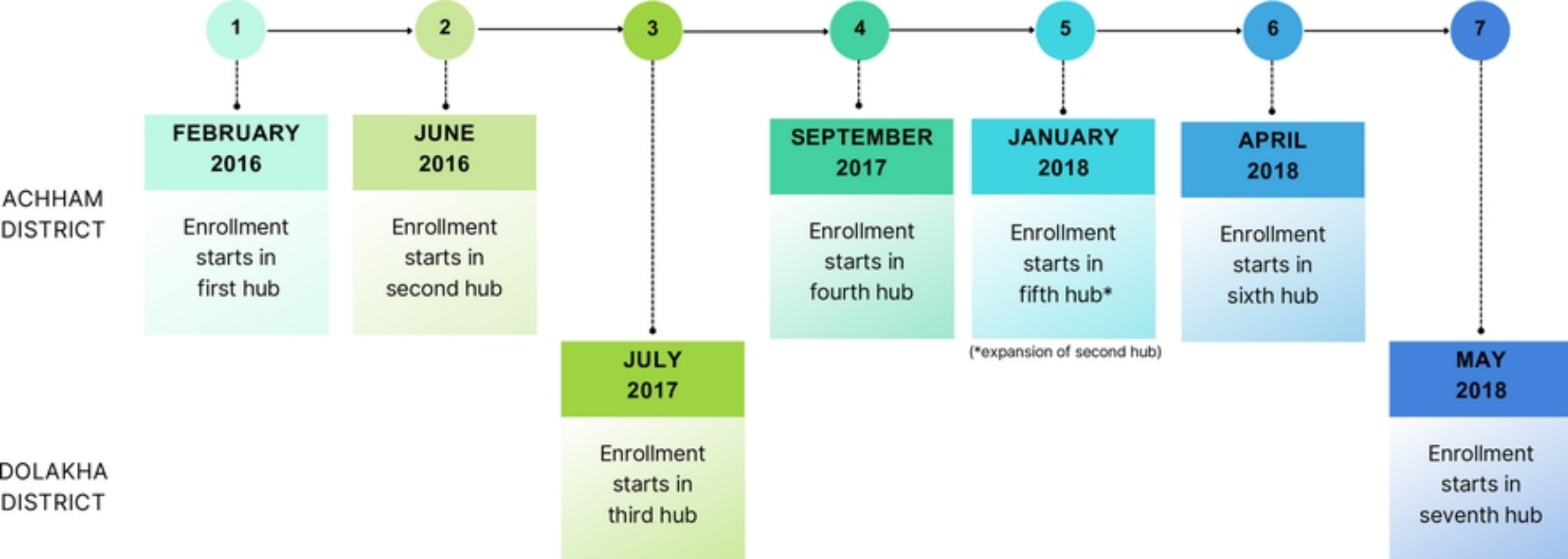
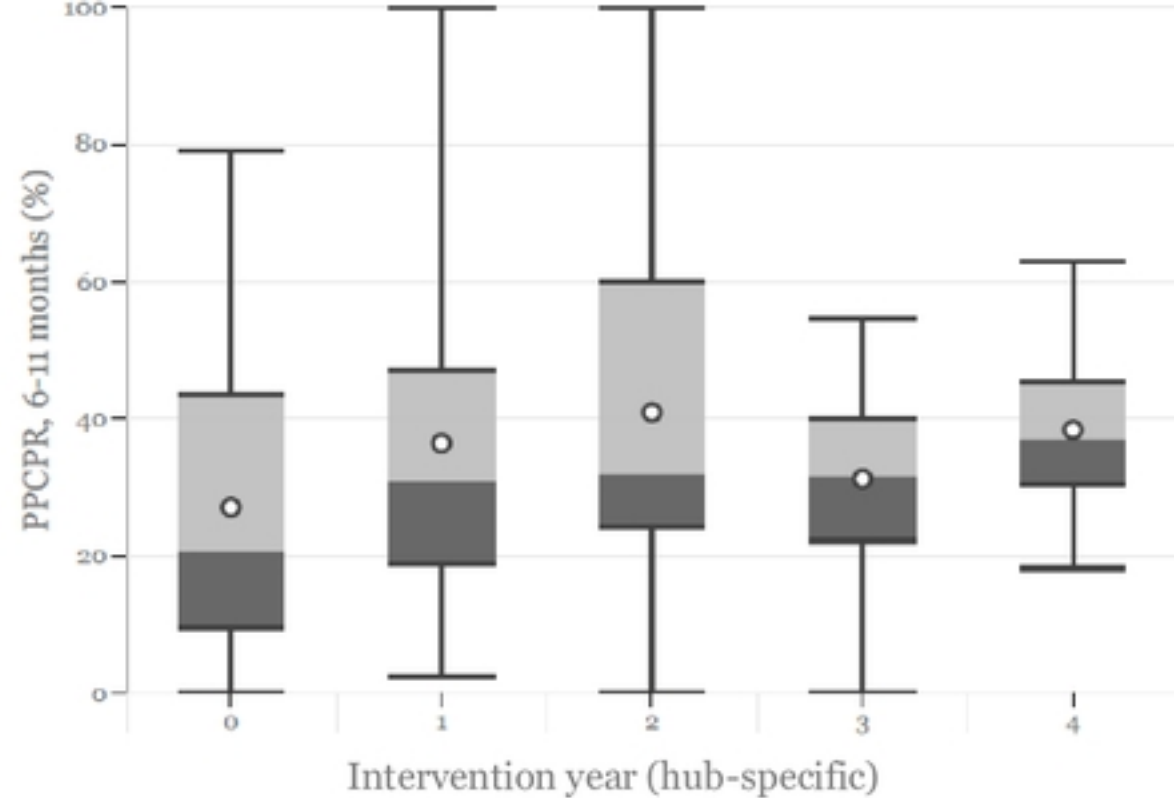
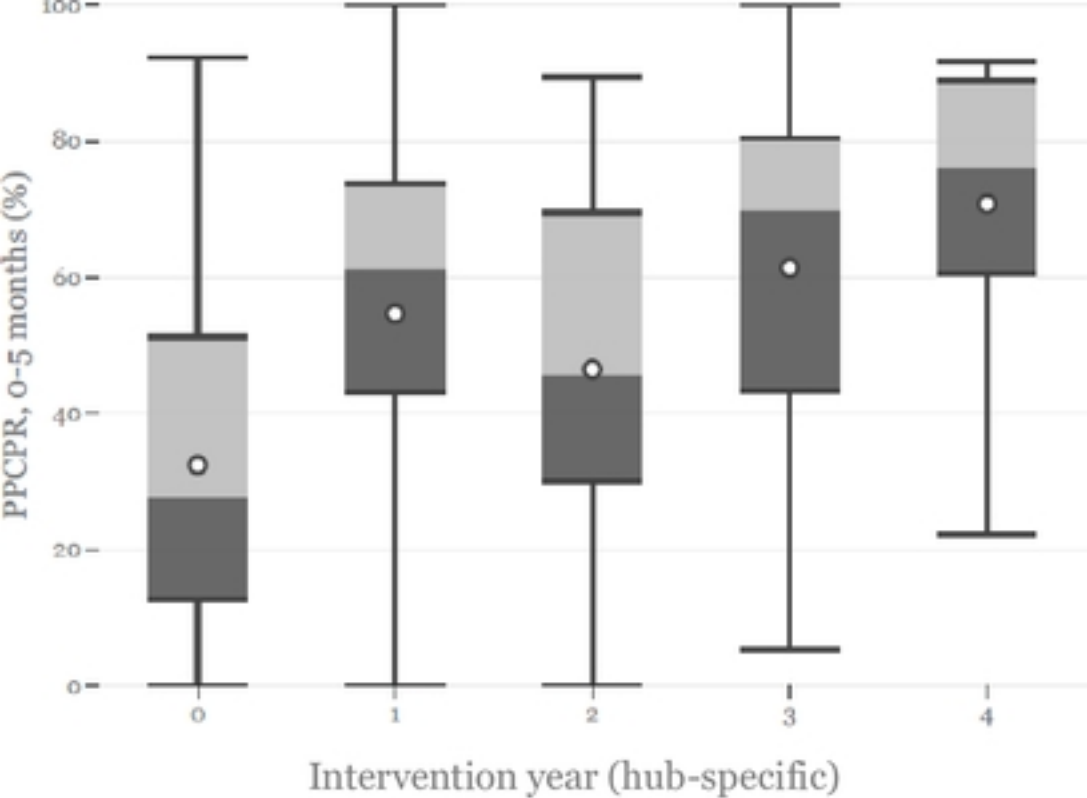


Figure 1



0: Pre-intervention  
1: Year 1 of intervention in hub  
2: Year 2 of intervention in hub  
3: Year 3 of intervention in hub  
4: Year 4 of intervention in hub

Figure 2

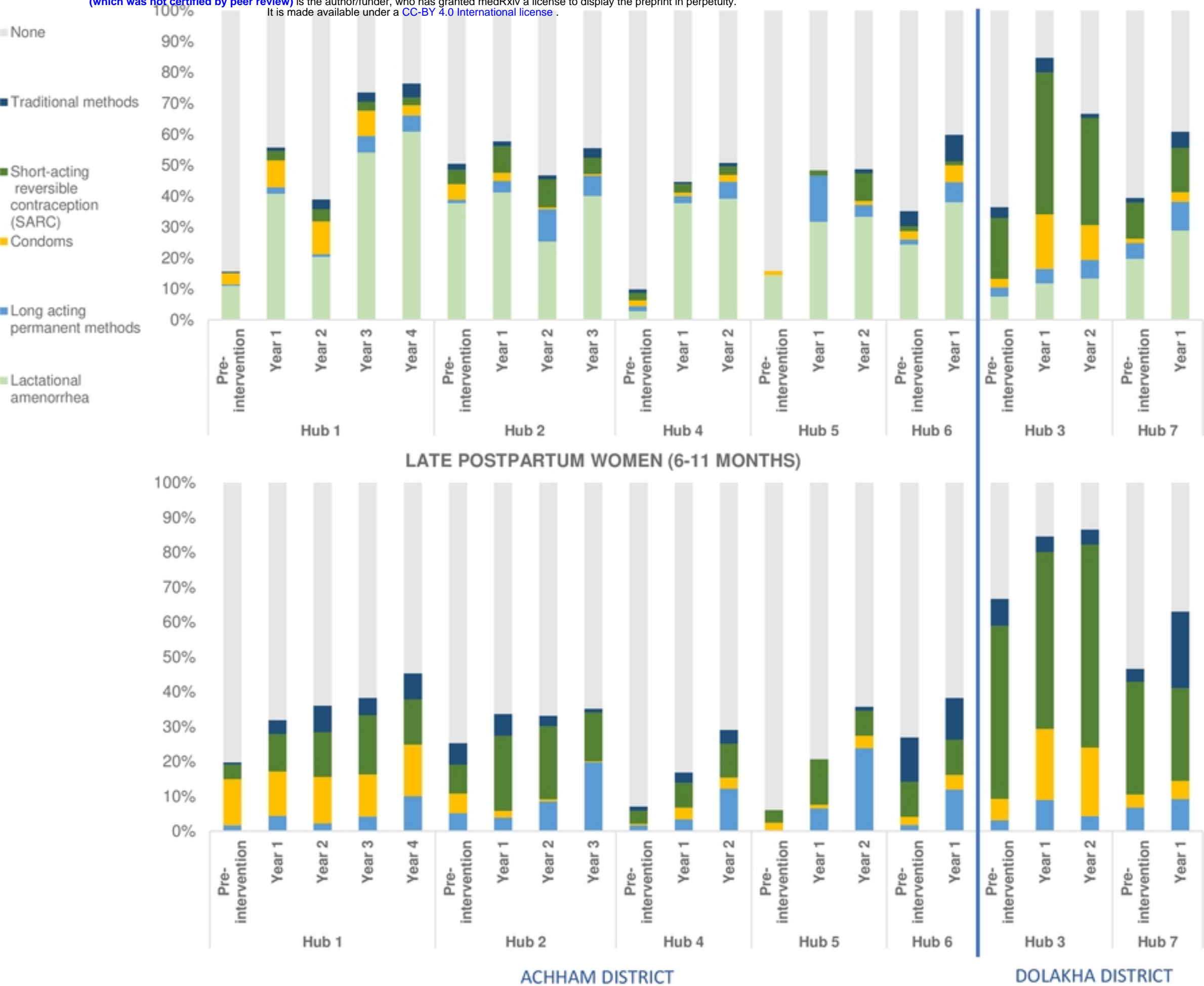


Figure 3

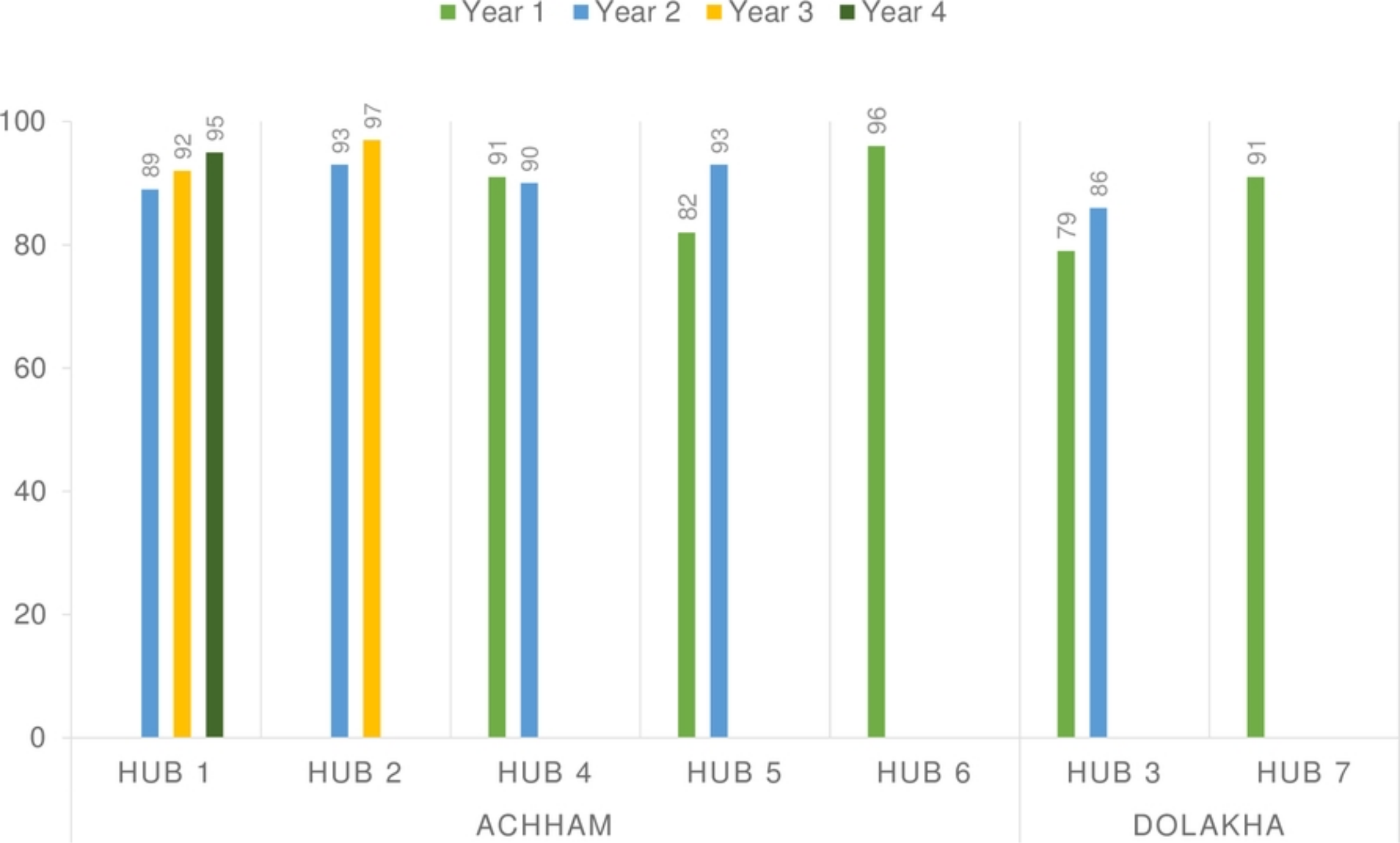


Figure 4