

1 **TITLE:** An International Longitudinal Natural History Study of Danon Disease  
2 Patients: Unique Cardiac Trajectories Identified Based on Sex and Heart Failure  
3 Outcomes

4  
5 **AUTHORS' NAMES:** Kimberly N. Hong<sup>1</sup>, Emily Eshraghian<sup>1,2</sup>, Tarek Khedro<sup>1,3</sup>,  
6 Alessia Argirò<sup>1,4</sup>, Jennifer Attias<sup>1</sup>, Garrett Storm<sup>5</sup>, Melina Tsotras<sup>1</sup>, Tanner Bloks<sup>5</sup>,  
7 Isaiah Jackson<sup>5</sup>, Elijah Ahmad<sup>5</sup>, Sharon Graw<sup>5</sup>, Luisa Mestroni<sup>5</sup>, Quan M. Bui<sup>1</sup>,  
8 Jonathan Schwartz<sup>6</sup>, Stuart Turner<sup>6</sup>, Eric D. Adler\*<sup>1</sup>, Matthew Taylor\*<sup>5</sup>  
9 \*The authors contributed equally to the manuscript.

10  
11 **TOTAL WORD COUNT:** 3,413

12  
13 **AFFILIATIONS:** <sup>1</sup>University of California, San Diego, La Jolla, California;  
14 <sup>2</sup>University of Minnesota Medical School, Minneapolis, Minnesota; <sup>3</sup>Royal  
15 College of Surgeons in Ireland, Dublin, Ireland; <sup>4</sup>Cardiomyopathy Unit, University  
16 of Florence, Florence, Italy; <sup>5</sup>University of Colorado Anschutz Medical Center,  
17 Denver, Colorado; <sup>6</sup>Rocket Pharmaceuticals Inc., New York, New York

18  
19 **MEETING PRESENTATION:** *American Heart Association, Scientific Sessions*  
20 *2023*

21  
22 **FUNDING:** Grant MDA 67944.

23  
24 **DISCLOSURES:** AA and QBI report consulting fees from Lexeo Therapeutics.  
25 JS and ST are employees and shareholders of Rocket Pharmaceuticals. EDA  
26 serves as Chief Medical Officer and Head of Research for Lexeo Therapeutics, is  
27 a shareholder of Rocket Pharmaceuticals, Founder of Papillion Therapeutics,  
28 and Founder, Scientific board member, and shareholder of Corstasis  
29 Therapeutics. MT serves as principal investigator on a research grant from  
30 Rocket Pharmaceuticals. The remaining authors have nothing to disclose.

31  
32 **CORRESPONDING AUTHOR:**

33 Kimberly N. Hong, MD MHSA  
34 University of California San Diego, San Diego, California, USA  
35 9434 Medical Center Dr, La Jolla, CA 92037  
36 [knhong@health.ucsd.edu](mailto:knhong@health.ucsd.edu)

37

<b>Abbreviations Table</b>	
Danon disease	DD
left ventricular	LV
lysosome-associated membrane protein-2	LAMP-2
ejection fraction	EF
left ventricular end diastolic diameter	LVEDD
left ventricular septal wall thickness	LVSW
left ventricular posterior wall thickness	LVPW
left ventricular hypertrophy	LVH
left ventricular assist device	LVAD
heart failure	HF
transplantation	TXP
cardiovascular implantable electronic device	CIED
atrial fibrillation	AF

38 **ABSTRACT**

39 **Introduction:** Danon disease (DD) is a rare X-linked dominant cardioskeletal myopathy  
40 caused by mutations in the lysosome-associated membrane protein-2 gene. Though the  
41 severe morbidity of disease in males is well established, longitudinal studies describing  
42 the trajectory of cardiovascular disease in both sexes have not been performed. Herein  
43 we performed an analysis using the International Danon Disease Registry, a  
44 retrospective dataset that includes longitudinal data from a cohort of males and females  
45 with DD.

46 **Methods:** Data were from the International Danon Disease Registry and includes  
47 patients from 2005 to 2022. Records were obtained from the first episode of care to the  
48 date of enrollment and included demographics, clinical characteristics,  
49 echocardiographic and laboratory values, and outcomes. The primary outcome in this  
50 study was a heart failure (HF) composite defined as either transplant (TXP), left  
51 ventricular assist device (LVAD) or death.

52 **Results:** The analysis included 116 DD patients: female (n=64, 55%) and male (n=52,  
53 45%). Median age of diagnosis for the entire cohort was 15.2 years (10.0-25.2 years),  
54 and 21.9 years (15.0-34.9 years) and 12.4 years (7.1-15.6 years) for females and males  
55 respectively. The incidence of HF outcome was higher in males compared to females  
56 ( $p<0.001$ ). Regarding trends in echocardiographic parameters over time, LVEF  
57 decreased and LVEDD increased regardless of sex and HF outcome, however, rate of  
58 change was increased in patients who experienced a HF outcome in both sexes.  
59 Increasing LV mass occurs in males but not females. Consistent with this, LV wall  
60 hypertrophy continues in males who have not yet experienced a HF outcome and  
61 stabilizes prior to HF outcome, while females have progressive LV thinning regardless of  
62 HF outcome. Analyses stratified by age of HF outcome in females found two distinct  
63 groups of females, one who experienced HF outcome prior to 26 years of age and

64 another after.

65 **Conclusions:** In this largest longitudinal natural history study of DD to date, we  
66 confirmed that males present on average a decade earlier and demonstrate more  
67 progressive cardiac hypertrophy and heart failure than females. Of note, there may be a  
68 subset of females who are phenotypically similar to males with profound LV hypertrophy  
69 that appears to stabilize or regress prior to HF outcome. Correlations between structural  
70 changes including LV hypertrophy, dilation and dysfunction and disease progression  
71 may allow for risk stratification of Danon patients and refinement of treatment algorithms  
72 while also informing therapeutic trial design.

73 **Abstract Word Count: 392**

## 74 INTRODUCTION

75 Danon disease (DD) is a rare X-linked dominant cardioskeletal myopathy caused by  
76 mutations in the lysosome-associated membrane protein-2 (*LAMP2*) gene.<sup>1</sup> It is  
77 characterized by a severe cardiomyopathy associated with skeletal myopathy and  
78 cognitive impairment. DD in males is typically lethal without cardiac transplantation, and  
79 while disease severity is variable in females, there is a subset of females who require  
80 cardiac transplantation at similar ages to males.<sup>2-5</sup> As an X-linked disorder, disease  
81 course varies by sex, with males typically developing extracardiac symptoms early in  
82 childhood. Cardiac manifestations present soon after and reach end-stage in males by  
83 the second or third decade of life. Female extracardiac symptoms are variable, with  
84 cardiac manifestations in the 2<sup>nd</sup> or 3<sup>rd</sup> decade of life typically being the first symptoms.<sup>5-8</sup>  
85 Understanding natural disease progression is critical to improving outcomes in DD  
86 patients, as it provides not only a basis for assessing the efficacy of treatments, but also  
87 allows appropriate identification of patients for evolving therapeutics. The purpose of this  
88 paper is to describe differences in disease progression as characterized by longitudinal  
89 changes in echocardiographic and laboratory parameters prior to death, heart  
90 transplantation or ventricular assist device in males and females with DD.

91

## 92 METHODS

93 Data were from the International Danon Disease Registry that includes patients from the  
94 United States and Europe consented between 2005 and 2022. There were two enrolling  
95 sites in the United States, University of Colorado and University of California, San Diego.  
96 Patients were referred by their physician or self-referred through patient community and  
97 outreach sites including [www.DanonDisease.org](http://www.DanonDisease.org), [https://rarediseases.org/rare-](https://rarediseases.org/rare-diseases/danon-disease/)  
98 [diseases/danon-disease/](https://rarediseases.org/rare-diseases/danon-disease/), and two Facebook groups (Danon Disease Support Group  
99 and Danon Disease Support). All patients were required to have a history of positive

100 genetic testing (defined as pathogenic or likely pathogenic *LAMP2* variations) or  
101 confirmed genealogy to a known DD carrier prior to enrollment. Specific genetic data  
102 was collected for 50% (n=60) of the patient cohort. Records were obtained from the first  
103 episode of care to the date of enrollment. These data include patients born between the  
104 years of 1943 and 2020.

105 Data collected included demographics, clinical characteristics such as involvement of  
106 extracardiac systems and concomitant cardiac conditions, echocardiographic  
107 parameters, laboratory values, cardiovascular implantable electronic device (CIED)  
108 implantation and ablation. Specific echocardiographic parameters that were collected  
109 included left ventricular (LV) thickest wall which was defined as the largest measurement  
110 between septal and posterior wall thickness, LV ejection fraction (LVEF), LV end  
111 diastolic diameter (LVEDD), which is the distance measured between the LV septal and  
112 posterior walls in the parasternal view, and LV mass which was calculated using the  
113 Cube formula ( $LV\ mass = (0.8 * 1.04 [(IVS + LVEDD + PWd)^3 - LVEDD^3] + 0.6\ grams)$ ),  
114 wherein LV measurements are in cm).<sup>9</sup> Outcome measures include heart  
115 transplantation, left ventricular assist device and death. Z-scores were calculated for LV  
116 septal and posterior wall, LVEDD and LV mass measurements in patients with  
117 echocardiograms completed prior to the age of 18 years.

118 Laboratory values, including skeletal muscle, cardiac, and liver biomarkers, were  
119 collected. These included creatine phosphokinase (mcg/L), brain natriuretic peptide  
120 (pg/mL), aspartate transaminase (AST, IU/L), alanine aminotransferase (ALT, IU/L),  
121 alkaline phosphatase (IU/L) and total bilirubin (mg/dL).

122 All data were analyzed with the statistical software package Stata 17 (Stata Corp,  
123 College Station, TX). Continuous variables were reported as either mean with standard

124 deviation or median with interquartile range depending on normality testing and  
125 compared with either Student's t-test or Wilcoxon Rank Sum non-parametric test as  
126 appropriate. To compare categorical variables, the Pearson's  $X^2$  was used. The  
127 conventional probability value of 0.05 or less was used to determine statistical  
128 significance. All reported *P*-values are two-sided. For longitudinal analysis, Wilcoxon  
129 Rank Sum testing was used to compare first and last echocardiograms and linear mixed  
130 models were used to test for trends in echocardiography parameters over time/age. For  
131 the echocardiography measures, separate mixed models were run for measures with  
132 pediatric z-scores (included echocardiograms completed prior to the age of 18 years of  
133 age) and for all values (included all echocardiograms). Age was the fixed effect, and the  
134 individual patient the random effect. For survival analysis, Kaplan-Meier analysis was  
135 used for time-to-HF event analysis, with log-rank test used to assess differences across  
136 sex. Patients alive at last follow-up were censored on the day of last known follow-up.

## 137 **RESULTS**

138 The analysis included 116 DD patients and was stratified by sex: female (n=64, 55%)  
139 and male (n=52, 45%). [Table 1] Median age of diagnosis for the entire cohort was 15.2  
140 years (10.0-25.2 years), and 21.9 years (15.0-34.9 years) and 12.4 years (7.1-15.6  
141 years) for females and males respectively. Median age at last follow-up time for the  
142 entire cohort was 23.0 years (IQR: 16.5 – 34.5 years), and 32.0 years (IQR: 22.5 – 46.0  
143 years) and 18.5 years (14.0 – 23.0 years) for females and males respectively. Median  
144 follow up time was 5.82 years (2.67 – 11.76 years) for the entire cohort, and 5.82 years  
145 (2.67 – 14.96 years) and 5.86 years (2.93 – 8.51 years) for females and males  
146 respectively. The majority of patients in the registry were White (72.4%). Regarding  
147 arrhythmia characteristics, 19.8% (n=23) of patients had WPW, 18.1% (n=21) had atrial  
148 fibrillation (AF) and 38.8% (n=45) of patients had a CIED; there were no differences in

149 prevalence of WPW ( $p=0.429$ ) or CIED ( $p=0.653$ ) implantations between males and  
150 females. AF occurred more frequently in females compared to males ( $p=0.004$ ). Within  
151 patients who received a CIED, 2 males (3.8%) were implanted with pacemakers alone;  
152 the remaining patients were implanted with an AICD, of which 5.2% ( $n=2$ ) were for  
153 secondary prevention.

154

#### 155 *Heart Failure Outcomes*

156 The incidence of the HF outcome was higher in males compared to females ( $p=0.031$ ),  
157 and actuarial median age of HF outcome was younger in males compared to females  
158 with median time to HF outcome being 25 years in males and 63 years in females  
159 ( $P<0.001$ ). [Figure1] While age of HF outcome in males (19 years (16-23 years)) was  
160 numerically lower compared to females (26 years (14-39 years)) who did experience HF  
161 outcome, this did not reach statistical significance ( $p=0.162$ ). This may be due to a  
162 possible bimodal distribution in age at which females experience a HF outcome [Figure  
163 2]. Median age of HF outcome in females with HF outcome  $\geq 26$ yo ( $n=7$ ) and  $<26$ yo  
164 ( $n=7$ ) was 39 (28-47yrs) and 14 (11-20yrs) respectively ( $p=0.002$ ). Additional analyses  
165 stratifying females by age of HF outcome are presented below.

166

#### 167 *Echocardiographic Parameter Analyses*

168 A total of 95 (82%) patients had echocardiographic results, of which 75 (92%) had serial  
169 echocardiograms. Ages of first echocardiogram in patients with serial echocardiograms  
170 were 15.9 years (11.3-19.9 years) and 25.8 years (17.0-42.2 years) in males and  
171 females respectively. Median time from first to last echocardiogram in all patients was  
172 4.7 years (IQR: 1.1-8.9 years), and 4.2 years (IQR: 0.7-6.1 years) and 6.1 years (IQR  
173 1.2-11.3 years) in males and females respectively.

174



175 LV Function. In longitudinal analyses of LVEF which compared first and last LVEF by  
176 echocardiogram, LVEF decreased in both males ( $p=0.003$ ) and females ( $p=0.02$ ) over  
177 time. [Table 2] In analyses stratified by HF outcome, based on comparison of  
178 coefficients and 95% confidence intervals from the linear mixed effects models, the rate  
179 of LVEF decline is higher in patients who experience a HF outcome compared to those  
180 who have not. [Figure 3] Specifically, mixed effects model coefficients in both males and  
181 females, suggest a decrease in LVEF by  $\sim 2.4\%$  per year in patients that experience a  
182 HF outcome. [Table 3] Notably, in patients who experienced a HF outcome, LVEF from  
183 baseline to last echocardiogram decreased from 58% to 33% ( $p=0.021$ ) and from 57% to  
184 37% ( $p=0.054$ ) in males and females respectively. [Table 2]

185

186 LV Structure. In regard to LV remodeling, LV dilation occurs in both females and males  
187 over time, however, similar to LVEF, based on mixed model coefficients and non-  
188 overlapping confidence intervals, LV dilation is more pronounced in patients who  
189 experience a HF outcome compared to those who do not. [Figure 4] [Table 3] In mixed  
190 effect modeling of z-scores that included only pediatric echocardiograms, LVEDD  
191 increased in females who experienced a HF outcome ( $p<0.001$ ). Females who did not  
192 experience a HF outcome ( $p=0.516$ ) and males regardless of HF outcome ( $p$ -values: HF  
193 outcome 0.704, no HF outcome 0.157) had no significant change in LVEDD based on z-  
194 scores during their pediatric years.

195

196 In regards to LVH, males who experienced the HF outcome had thicker LV walls  
197 ( $p=0.015$ ) on first echocardiogram, however, progressive LV hypertrophy until the time of  
198 HF outcome does not occur ( $p=0.734$ ). LV hypertrophy continues in males who have not  
199 yet experienced a HF outcome ( $<0.001$ ). [Table 3, Figure 5] Notably, in the mixed effect  
200 model of pediatric echocardiograms, LVH continues until the age of 18 years regardless

201 of HF outcome ( $p < 0.001$ ). In females, unlike males, there is regression in LV thickness  
202 over time in both those who experience a HF outcome, as well as, those who do not. In  
203 the mixed effect model of LV wall thickness in pediatric echocardiograms only,  
204 regression in LV wall thickness was noted in females who experienced a HF outcome  
205 ( $p < 0.001$ ), but not in females who did not ( $p = 0.387$ ). [Figure 5] LV mass increases in  
206 males regardless of HF outcome and begins in childhood and continues through  
207 adulthood. In females, LV mass does not change significantly with age, likely due to  
208 progressive thinning and dilation that occurs over time in females. [Figure 6] In the  
209 pediatric z-score analysis, mixed effect model showed decreasing LV mass in females  
210 who experience a HF outcome ( $p = 0.012$ ).

211

#### 212 *Female stratified analyses*

213 Given the results above, we chose to further evaluate outcomes specifically among  
214 females. In stratified analyses of females by HF outcome before 26 years old ( $< 26$  yo,  
215  $n = 7$ ) and at or after 26 years old ( $\geq 26$ yo,  $n = 7$ ), age of diagnosis was significantly earlier  
216 ( $p = 0.025$ ) in the  $< 26$ yo cohort (14 years (10 – 20 years)) compared to the  $\geq 26$ yo cohort  
217 (34 years (28 – 40 years)). Regarding clinical characteristics, prevalence of CIED (86%  
218 vs 43%,  $p = 0.094$ ) and WPW (43% vs 0%,  $p = 0.051$ ) were numerically higher in the  
219  $< 26$ yo compared to  $\geq 26$ yo groups. Analysis of echocardiographic parameters suggests  
220 increased LV hypertrophy in the  $< 26$ yo compared to  $\geq 26$ yo group, with higher numerical  
221 values at both first and last echocardiogram [Table 6]. Notably, although all females  
222 who reached a HF outcome met criteria for LV hypertrophy at some point during their  
223 life, patients in the  $< 26$ yo group developed more significant hypertrophy compared to  
224 those in the  $\geq 26$ yo (2.36cm (2.30 – 3.26 cm) vs 1.4cm (0.9 – 1.5 cm);  $p = 0.020$ ). In  
225 regards to overall longitudinal change in LVWT, in the  $< 26$ yo group there was no change  
226 in LVWT as these females aged, while in the  $\geq 26$ yo, there was LV thinning over time.

227 [Table 7] If longitudinal change in LVWT in the <26yo group was measured starting from  
228 the echocardiogram with the greatest LV hypertrophy, females in the <26yo group  
229 (mixed effects coefficient: -0.3258 (-0.434, -0.218);  $p < 0.001$ ) were noted to have  
230 ventricular thinning similar to the  $\geq 26$ yo group prior to experiencing a HF outcome. At  
231 individual levels, some females (including those who experienced HF outcomes in the  
232 <26yo group) appear to have had progressive hypertrophy with subsequent decreases  
233 in LVWT and LVM. [Figures 5-7] LVEF decreased in both groups, however, the  
234 progression of LV dysfunction was more pronounced in the <26yo compared to the  
235  $\geq 26$ yo group. LVEDD increased in both groups, however, the rate of dilation over time  
236 was higher in the <26yo compared to the  $\geq 26$ yo group. In longitudinal analysis, LV  
237 mass continued to increase in the <26yo group, while in the  $\geq 26$ yo LV mass remained  
238 unchanged. [Table 7]

239

#### 240 *Laboratory Analyses*

241 The availability of laboratory values differed by lab test and sex. For males, availability  
242 of laboratory values ranged from 44-63% and in females 31-50%. [Table 4] None of the  
243 skeletal muscle, cardiac and liver biomarkers changed between first and last  
244 measurement. First laboratory values in patients revealed higher CPK, AST, ALT and  
245 alkaline phosphatase in males compared to females ( $p$ -value $<0.001$ ). In longitudinal  
246 analyses by mixed effect models, in males, CPK decreased in patients who did not  
247 experience a HF outcome ( $p < 0.001$ ) and AST and ALT decreased in patients who  
248 experienced a HF outcome ( $p < 0.001$  and  $p = 0.004$  respectively). Alkaline phosphatase  
249 decreased regardless of HF outcome in males ( $p < 0.01$ ). In females, AST and alkaline  
250 phosphatase decreased in all patients regardless of HF outcome ( $p < 0.02$ ), and ALT  
251 decreased only in females who did not experience a HF outcome ( $p = 0.046$ ). [Table 5]

252

## 253 **DISCUSSION**

254 To date, while there are several natural history studies and meta-analyses that provide  
255 cross sectional analyses of patient characteristics and outcomes, none include  
256 longitudinal echocardiographic data that parallel disease progression.<sup>2, 5-8, 10</sup> This current  
257 study analyzes the largest DD cohort to date and is the only study that provides insight  
258 into longitudinal changes in echocardiographic parameters with disease progression. By  
259 stratifying analyses by HF outcome, this study provides insight into what changes in  
260 specific echocardiographic parameters may suggest worsening disease.

261

### 262 *Heart Failure Outcomes*

263 As an X-linked disease, disease penetrance in males with DD is complete, and males  
264 will express a severe disease phenotype that results in death in the absence of left  
265 ventricular assist device or cardiac transplantation by the 2<sup>nd</sup> or 3<sup>rd</sup> decade of life.<sup>2, 5-8,10</sup>  
266 Consistent with this expected disease course, the incidence of HF outcome in our cohort  
267 was greater in males compared to females. Similar to our previously published data on  
268 DD patients who underwent transplantation, while there was a trend towards HF  
269 outcome occurring at an earlier age in males compared to females, this did not reach  
270 statistical significance.<sup>4</sup> This is likely due to there being a distinct subset of females who  
271 experience a HF outcome at an earlier age in the absence of advanced heart failure  
272 therapies. In this study group, when female patients who reached HF outcome were  
273 stratified into early (less than 26 years old) and late (greater than or equal to 26 years  
274 old) HF outcome groups, 2 distinct age groups were noted (p=0.002). Specifically,  
275 median age at time of HF outcome in the early and late groups were 14 years and 39  
276 years, respectively. Further research is needed to better characterize and identify  
277 females who are at risk of a malignant clinical course similar to males.

278

279 *Echocardiographic Changes Over Time*

280 A corollary to characterizing longitudinal changes in LV structure over time is how this  
281 data can impact clinical decision making. Specific to our findings is utilizing changes in  
282 LVEF and structure to assist in patient management, risk stratification as well as  
283 identification of surrogate markers of disease progression and clinical outcomes. Our  
284 primary longitudinal findings are the differential changes in LV function and structure that  
285 may discriminate patients who will experience a HF outcome from those who will not.  
286 Specifically, while LVEF drops irrespective of sex and HF outcome over time, the  
287 degradation of LVEF is more accelerated in those who experience a HF outcome.  
288 Similarly, while LV dilation occurs regardless of sex and HF outcome, which may be due  
289 to age-appropriate growth in this patient population that includes pediatric and adult  
290 data, the rate of LV dilation is also higher in those who experience a HF outcome. This  
291 may be contributed to by decreases in LVEF and stabilization of LVH in males who  
292 experience a HF outcome and also observed thinning in females regardless of HF  
293 outcome. These findings suggest that LVEF and LVEDD may be used to predict HF  
294 outcome and can be used by clinicians to escalate surveillance intervals and risk stratify  
295 DD patients for advanced therapies. Notably, progressive disease in hypertrophic  
296 cardiomyopathy is also marked by increasing LVEDD and also by decreased LVEF.<sup>11</sup>

297

298 A major difference in phenotypes between sexes is that in males who have not yet  
299 experienced HF outcome, LV hypertrophy continues. This suggests that eventual LVH  
300 stabilization may be a marker for end-stage disease in males particularly when paired  
301 with progressive LV dysfunction and dilation. The pattern of LV remodeling in this cohort  
302 of females was different, with LV thinning occurring over time regardless of HF outcome.  
303 Consistent with the aforementioned differences in LV remodeling between males and

304 females, LV mass increases over time in males, while no change was found in females.  
305 Of note, the analyses stratifying females by age of HF outcome suggests that there may  
306 be a female subgroup who are phenotypically similar to males, experiencing end-stage  
307 heart failure or death earlier in life. Females who experience a HF outcome earlier in life  
308 have more severe LV hypertrophy compared to females who experience a HF outcome  
309 later in life. Additionally, like males, their LV mass increases significantly over time.  
310 These finding highlight the importance of additional studies elucidating varying Danon  
311 disease phenotypes and mechanisms impacting disease expression in females.

312

313 Analyses of normalized pediatric echocardiographic parameters provides some insight  
314 into disease progression as trends in LV hypertrophy and increasing LVEDD through  
315 adulthood were not seen during the pediatric years, suggesting that several of the  
316 variables that are seen in patients with HF outcome likely occur later in the disease  
317 process. Prior case report studies utilizing cardiac MRI for tissue characterization, have  
318 shown that increased late gadolinium enhancement and mass have been associated  
319 with a composite endpoint that includes death, heart transplantation and ICD  
320 implantation for secondary prevention.<sup>12-14</sup> Furthermore, a study evaluating longitudinal  
321 strain in Danon disease patients found that strain was similarly associated with death  
322 and advanced heart failure requiring either transplantation or ventricular assist device.<sup>15</sup>  
323 Additionally longitudinal studies to assess how progressive fibrosis may be contributing  
324 to these sex specific changes with disease progression are needed.

325

### 326 *Laboratory Changes Over Time*

327 Interpretation of laboratory values is limited by sample size, with majority of laboratory  
328 values presented having ~50% completion, and the selection bias in those who ended  
329 up getting repeat laboratory studies completed. To this end, interpretation of longitudinal

330 trends is challenging and instead will highlight the cross-sectional analysis that showed  
331 that CPK, AST and ALT were all markedly elevated in males compared to females.  
332 Notably, total bilirubin was neither elevated nor different between sexes and alkaline  
333 phosphatase, while higher in males compared to females, was only mildly elevated.  
334 These patterns suggest that the CPK, AST and ALT elevations are likely explained by  
335 increased severity of skeletal myopathy in males compared to females.

336

### 337 *Clinical Trial Design*

338 Additionally, although cardiac transplantation remains the only therapeutic option with a  
339 survival benefit, a Phase I gene therapy trial in DD has completed and a Phase II AAV9  
340 gene therapy trial is pending enrollment.<sup>16</sup> Major barriers to designing a DD comparative  
341 effectiveness trial with a traditional control population include low disease prevalence,  
342 incidence of outcomes and treatment effect sizes. To mitigate the effect of these  
343 barriers, the FDA has encouraged: 1) non-traditional trial design, including the use of  
344 historical controls and 2) pathways for accelerated drug approval which include using  
345 surrogate endpoints that predict traditional clinical outcomes associated with improved  
346 patient functional status, quality of life and survival.<sup>17,18</sup> To this end, natural history  
347 studies are an important adjunct to understanding disease course and developing  
348 therapeutics that will impact disease progression and outcomes. The results from this  
349 study suggest that potential surrogate endpoints for therapeutic trials could include  
350 LVEF, LV mass, LVEDD and LV wall thickness in males, and LVEF, LVEDD and LV wall  
351 thickness in females. Additionally, because LV hypertrophy was a prominent feature in  
352 those experiencing a HF outcome, particularly in males and also females who  
353 experienced a HF outcome earlier in life, trial design including hypertrophy as an entry  
354 criteria can be considered.

355

356 **Limitations.** While this study reports outcomes from the largest cohort of Danon  
357 Disease patients, the sample size remains small and limits generalizability. Patient  
358 registries often suffer from variability in data entry and due to the retrospective nature of  
359 the study and also standard of care data collection that spanned enrollment over several  
360 decades, data collection intervals and parameters were not consistent. Notably,  
361 echocardiography was obtained in >80 percent of the patient population, however,  
362 laboratory values were only collected in ~50%, with CPK and BNP only collected in  
363 ~30% of female patients. All patients included within the study had outcomes data  
364 collected though. Even with these limitations, this remains the largest cohort with  
365 longitudinal echocardiographic and laboratory data.

366

## 367 **CONCLUSIONS**

368 DD is a disease without disease-modifying therapies, although gene therapy trials are  
369 underway. Understanding the natural history of DD will inform patient selection and trial  
370 design for new therapies. Disease progression as characterized by changes in  
371 echocardiographic parameters can differ by sex and HF outcome suggesting that  
372 longitudinal changes in LV structure and function should be used for clinical risk  
373 stratification and incorporated into clinical trial endpoints as surrogates of clinical  
374 progression and end stage heart failure or death.

375

376 Funding: Investigator-initiated sponsor research agreement with Rocket

377 Pharmaceuticals.

378



379 TABLES/FIGURES

380 Table 1. Summary statistics for patients stratified by sex.

	Males		Females		Total	
	#	IQR/%	#	IQR/%	#	IQR/%
n	52	44.8	64	55.2	116	
Age (median)	19	16-23	26	14-39	20	16-27
Hispanic	3	5.8	1	1.6	4	3.4
White	38	73.1	46	71.9	84	72.4
Black	--	--	--	--	--	--
Asian	1	1.9	3	4.7	4	3.4
WPW	12	23.1	11	17.2	23	19.8
LVEF (%)						
At first echo	66.1	60-72	60.6	51.5-72.5	62.2	55-72
At last echo	57.5	42.7-68	55	38.7-64.8	55	38.7-65
LVWT (cm)						
At first echo	1.11	(0.86-1.93)	1.1	(0.81-1.50)	1.1	(0.83-1.60)
At last echo	1.36	(0.95-2.18)	1.19	(1.00-1.73)	1.29	(1.00-1.85)
LV Mass (g)						
At first echo	140	(80-263)	159	(97-242)	91	(148-242)
At last echo	430	(120-647)	235	(140-287)	238	(140-430)
HF Outcome	21	40.4	14	21.9	35	30.2
TXP	17	32.7	13	20.3	30	25.9
LVAD	2	3.8	2	3.1	4	3.4
Death	7	13.5	2	3.1	6	5.2
Age at HF Outcome	19	(16-23)	26	(14-39)	20	(16-27)
CIED	19	36.5	26	40.6	45	38.8
Pacemaker	2	3.8	0	0.0	2	1.7
AICD	17	32.7	26	40.6	43	37.1
2° prevention	2	3.8	4	6.3	6	5.2

AICD: automatic implantable cardioverter defibrillator, CIED: Cardiac Implantable Electrical Devices, IQR: interquartile range, LVEF: left ventricular ejection fraction, LVAD: left ventricular assist device, TXP: heart transplant, WPW: Wolff-Parkinson-White

381 **Table 2. Echocardiographic measurements at first and last exam stratified by sex. Within and between sex comparisons**

382 **between first and last measurement were completed and p-values reported. Statistically significant p-values were bolded.**

	Total			HF Outcome (+)			HF Outcome (-)			p-value^
	Median	IQR	p-value*	Median	IQR	p-value*	Median	IQR	p-value*	
Males										
LVEF (%)										
First	66	(57-71)	<b>0.003</b>	58	(50-68)	<b>0.021</b>	67	(62-76)	<b>0.0135</b>	<b>0.030</b>
Last	55	(28-64)		33	(20-52)		58	(50-68)		<b>0.011</b>
Thickest LV wall (cm)										
First	1.2	(0.9-1.9)	0.245	1.7	(1.2-2.4)	0.713	1.1	(0.8-1.5)	0.173	<b>0.015</b>
Last	1.5	(1.0-2.5)		1.9	(1.6-2.5)		1.4	(1.0-2.3)		0.268
LV Mass (g)										
First	154	(87-413)	0.12	327	(209-541)	0.285	111	(80-163)	0.172	<b>0.005</b>
Last	275	(143-613)		596	(285-690)		161	(77-377)		<b>0.020</b>
LVEDD (cm)										
First	3.9	(3.4-4.6)	0.185	4	(3.6-4.6)	0.115	3.8	(3.4-4.7)	0.712	0.851
Last	4.4	(3.7-5.3)		6.3	(4.8-6.6)		4	(3.7-4.7)		<b>0.038</b>
Females										
LVEF (%)										
First	61	(55-70)	<b>0.020</b>	57	(52-77)	0.054	61	(55-69)	0.221	0.929
Last	56	(35-65)		37	(23-47)		56	(47-66)		<b>0.014</b>
Thickest LV wall						0.962			0.105	
First	1.1	(0.8-1.5)	0.162	1.1	(1.0-1.6)		1.1	(0.8-1.4)		0.416

Last	1.2	(1.0-1.7)		1.2	(0.9-2.0)		1.2	(1.0-1.7)		0.937
LV Mass (g)										
First	165	(97-262)	0.132	296	(80-320)	0.723	157	(106-227)	0.088	0.381
Last	224	(140-272)		232	(218-288)		187	(132-272)		0.554
LVEDD										
First	4.3	(3.6-4.9)	<b>0.012</b>	4.4	(2.8-5.2)	<b>0.018</b>	4.3	(3.9-4.8)	0.144	0.974
Last	4.7	(4.1-5.8)		5.9	(5.5-6.4)		4.5	(4.0-5.3)		<b>0.003</b>
*comparing first and last echocardiograms; ^comparing HF Outcome (+) and HF Outcome (-) LVEF: left ventricular ejection fraction, LVEDD: left ventricular end diastolic dimension										

383

384

385 **Table 3. Longitudinal trend analysis of echocardiographic parameters over time. Coefficients derived from mixed effect**  
 386 **regression models represent the magnitude of change in the parameter as patient ages.**

	No HF Outcome					HF Outcome				
	Patients (n)	Values (n)	Coefficient	95%CI	p-value	Patients (n)	Values (n)	Coefficient	95%CI	p-value
<b>Males</b>										
LVEF*	20	97	-0.888	(-1.521, -0.254)	0.006	12	93	-2.461	(-3.026, -1.898)	<0.001
LV wall thickness*	23	117	0.101	(0.069, 0.133)	<0.001	13	89	0.008	(-0.036, 0.051)	0.734
LV mass	20	101	28.424	(19.094, 37.755)	<0.001	13	85	34.183	(20.548, 47.817)	<0.001
LVEDD*	22	105	0.123	(0.082, 0.162)	<0.001	14	92	0.231	(0.176, 0.287)	<0.001
<b>Female</b>										
LVEF*	34	161	-0.832	(-1.164, -0.500)	<0.001	9	72	-2.391	(-3.477, -1.305)	<0.001
LV wall thickness	33	164	-0.012	(-0.022, -0.003)	<0.009	9	76	-0.026	(-0.0372, -0.016)	<0.001
LV mass	29	150	-0.631	(-2.482, 1.219)	0.5037	9	72	1.868	(-3.342, 7.078)	0.482
LVEDD*	31	156	0.05	(0.031, 0.069)	<0.001	9	76	0.175	(0.109, 0.240)	<0.001

\*significant difference in coefficients by HF outcome status based on non-overlapping 95% confidence intervals (CI)

387

388 **Table 4. Laboratory measurements at first and last exam stratified by sex. Within and between sex comparisons between**  
 389 **first and last measurement were completed and p-values reported. Statistically significant p-values were bolded.**

	Males				Females				p-value <sup>^</sup>
	n	Median	IQR/%	p-value*	n	Median	IQR/%	p-value*	
CPK	27				20				
At first lab draw		891	609-1258	0.6		73.5	53-124	0.74	<b>&lt;0.001</b>
At last lab draw		834	541-1868			77	42-114		<b>&lt;0.001</b>
BNP	32				32				
At first lab draw		227	30-999	0.119		383	141-997	0.726	0.29
At last lab draw		746	129-1208			353	200-1321		0.518
AST	23				20				
At first lab draw		269	186-383	0.468		43	25-71	0.636	<b>&lt;0.001</b>
At last lab draw		234	128-396			39	27-55		<b>&lt;0.001</b>
ALT	32				32				
At first lab draw		234	113-381	0.6011		28	22-36	0.696	<b>&lt;0.001</b>
At last lab draw		205	106-388			26	21-35		<b>&lt;0.001</b>

Alk Phos	32				32				
At first lab draw		181	(111-264)	0.087		70	(55-93)	0.916	<b>&lt;0.001</b>
At last lab draw		117	(85-232)			70	(57-89)		<b>&lt;0.001</b>
Total bilirubin	33				32				
At first lab draw		0.8	(0.5-1.2)	0.152		0.7	(0.4-0.8)	0.59	0.128
At last lab draw		0.5	(0.4-0.8)			0.5	(0.4-0.8)		0.763
* comparing first and last lab draw; ^ comparing male and female values									

390

391 **Table 5. Longitudinal trend analysis of laboratory parameters over time. Coefficients derived from mixed effect regression**  
 392 **models represent the magnitude of change in the parameter as patient ages.**

	No HF Outcome			HF Outcome		
	Coefficient	95%CI	p-value	Coefficient	95%CI	p-value
<b>Males</b>						
CPK	99.99	(45.03, 154.96)	<0.001	-3.67	(-47.20, 39.85)	0.869
AST	3.87	(-1.85, 9.59)	0.185	-21.63	(-30.45, -12.81)	<0.001
BNP	88.45	(-53.47, 230.36)	0.222	-48.48	(-196.94, 99.97)	0.522
ALT	-0.02	(-6.15, 6.11)	0.994	-12.17	(-20.39, -3.94)	0.004
Alkaline Phosphatase	-35.03	(-57.63, -12.44)	0.002	-9.00	(-12.70, -5.31)	<0.001
Total Bilirubin	0.01	(-0.15, 0.17)	0.897	-0.05	(-0.11, 0.02)	0.158
<b>Female</b>						
CPK	-0.90	(-3.47, 1.67)	0.492	-4.47	(-11.12, 2.18)	0.187
AST	-0.94	(-1.44, -0.43)	<0.001	-1.92	(-3.42, -0.42)	0.012
BNP	-2.33	(-19.26, 14.60)	0.787	-42.09	(-114.90, 30.73)	0.257
ALT	-0.32	(-0.63, -0.01)	0.046	-1.21	(-2.84, 0.42)	0.146
Alkaline Phosphatase	-1.32	(-2.09, -0.54)	<0.001	-1.01	(-1.40, -0.62)	<0.001
Total Bilirubin	-0.02	(-0.07, 0.03)	0.456	-0.06	(-0.25, 0.13)	0.550

AST aspartate aminotransferase; ALT alanine transaminase; BNP B-type natriuretic peptide; CPK creatine phosphokinase

393

394 **Table 6. Echocardiographic measurements in females who experienced a HF outcome at first and last exam stratified by**  
 395 **age of HF outcome. Between group comparisons for first and last measurement were completed and p-values reported.**

	<26 years old		≥26 years old		p-value
	Median	IQR	Median	IQR	
LVEF (%)					
First	77	(52-78)	55	(35-57)	0.302
Last	37	(23-55)	30	(22-39)	0.739
Thickest LV wall (cm)					
First	1.4	(1.1-2.3)	1.0	(0.90-1.02)	0.121
Last	1.5	(1.0-2.3)	0.83	(0.55-1.10)	0.182
LV Mass (g)					
First	318	(80-381)	170	(26-296)	0.302
Last	232	(220-277)	194	(101-287)	0.643
LVEDD (cm)					
First	3.9	(2.8-4.8)	5.2	(1.3-5.7)	0.796
Last	6.1	(5.6-6.6)	5.8	(5.5-6.1)	0.643
LVEF left ventricular ejection fraction; LVEDD left ventricular end diastolic dimension					

396



397 **Table 7. Longitudinal trend analysis of echocardiographic parameters over time in female patients who experienced a HF**  
 398 **outcome stratified by age of HF outcome. Coefficients derived from mixed effect regression models represent the**  
 399 **magnitude of change in the parameter as patient ages.**

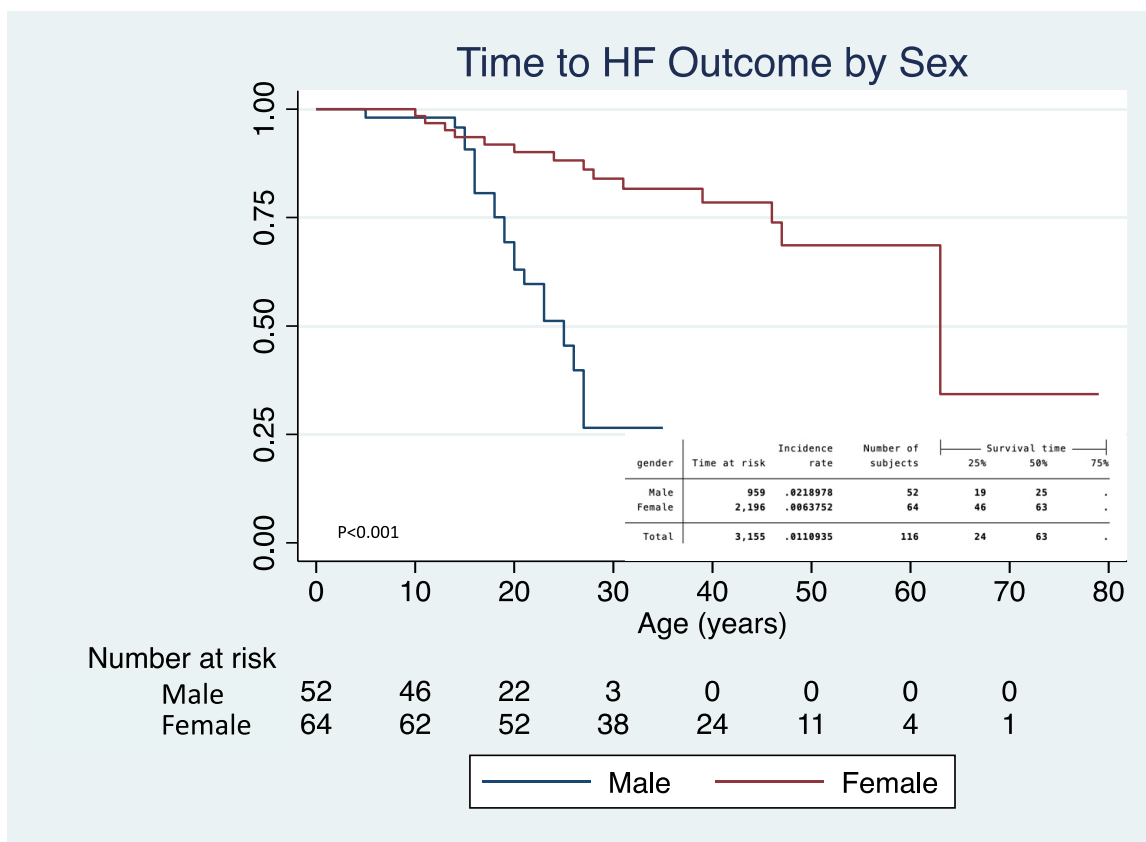
400

	<26 years old					≥26 years old				
	Patients (n)	Values (n)	Coefficient	95%CI	p-value	Patients (n)	Values (n)	Coefficient	95%CI	p-value
LVEF*	6	42	-3.285	(-4.690, -1.880)	<0.001	3	30	-1.239	(-1.684, -0.793)	<0.001
LV wall thickness	6	45	-0.020	(-0.055, 0.016)	0.273	3	31	-0.021	(-0.033, -0.009)	<0.001
LV mass*	6	42	9.800	(3.440, 16.160)	0.003	3	30	-1.913	(-4.520, 0.695)	0.151
LVEDD*	6	42	0.249	(0.183, 0.315)	<0.001	3	34	0.068	(0.028, 0.109)	0.001

\*significant difference in coefficients by age of HF outcome based on non-overlapping 95% confidence intervals (CI)

401

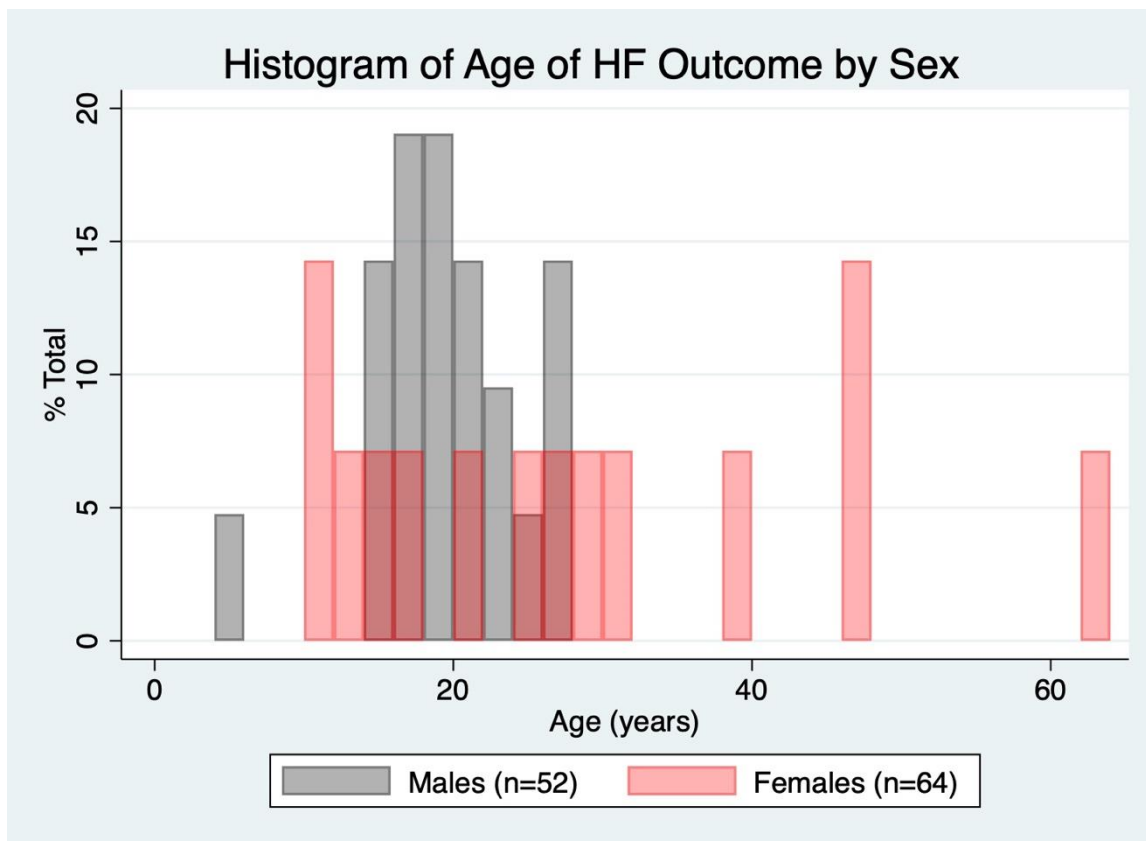
402 **Figure 1.** Kaplan Meier Time to HF Outcome Analysis Stratified by Sex



403

404

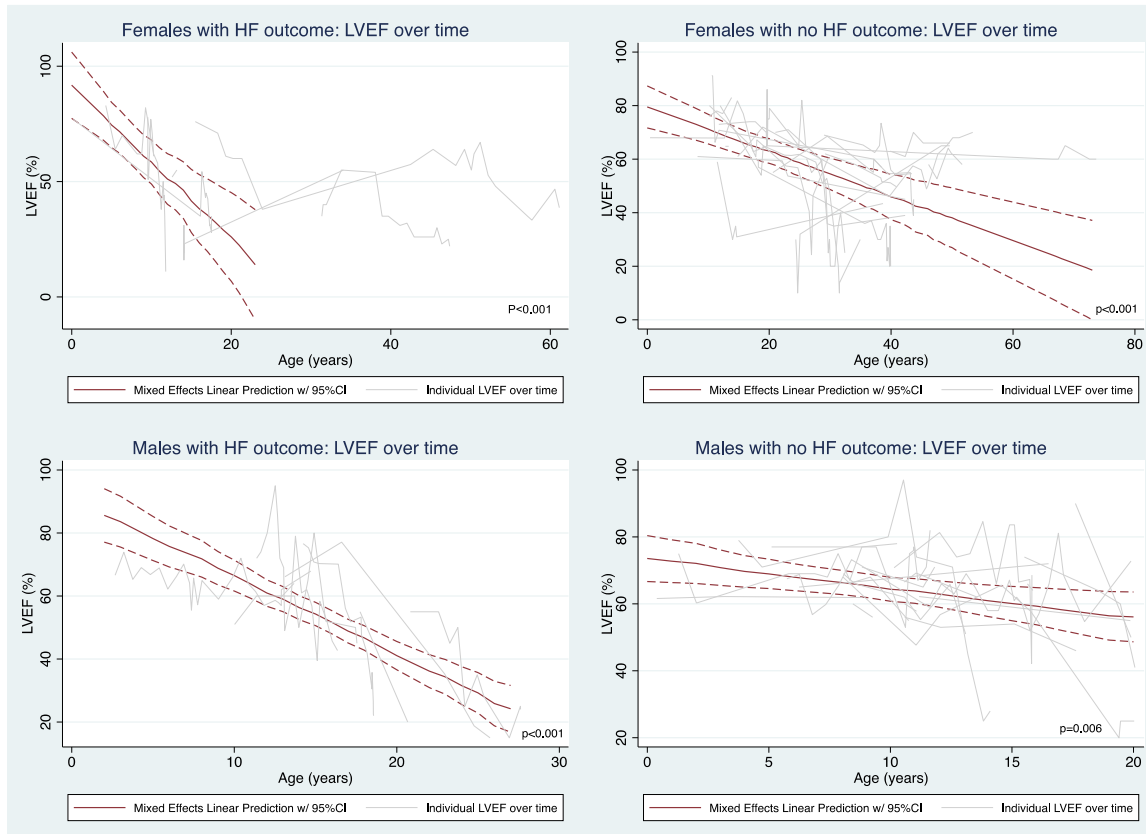
405 **Figure 2.** Histogram of age at heart failure outcome stratified by sex. There is a  
406 suggestion of a bimodal distribution for HF outcome in females.



407

408

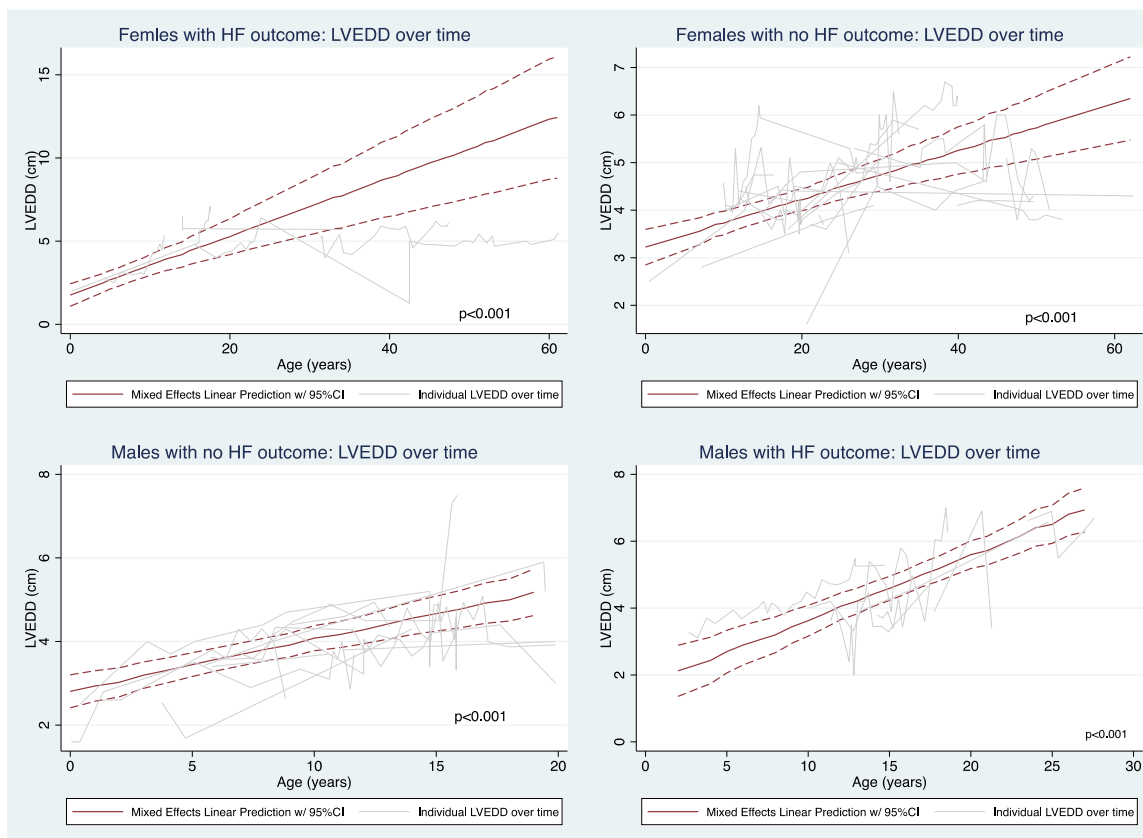
409 **Figure 3.** LVEF changes over time, as represented by linear mixed effects regression  
410 plot and individual spaghetti plots, stratified by sex and HF outcome. In females  
411 experiencing HF outcome, mixed effects regression plot for patients experiencing HF  
412 outcome prior to the age of 26 years old was graphed.



413

414

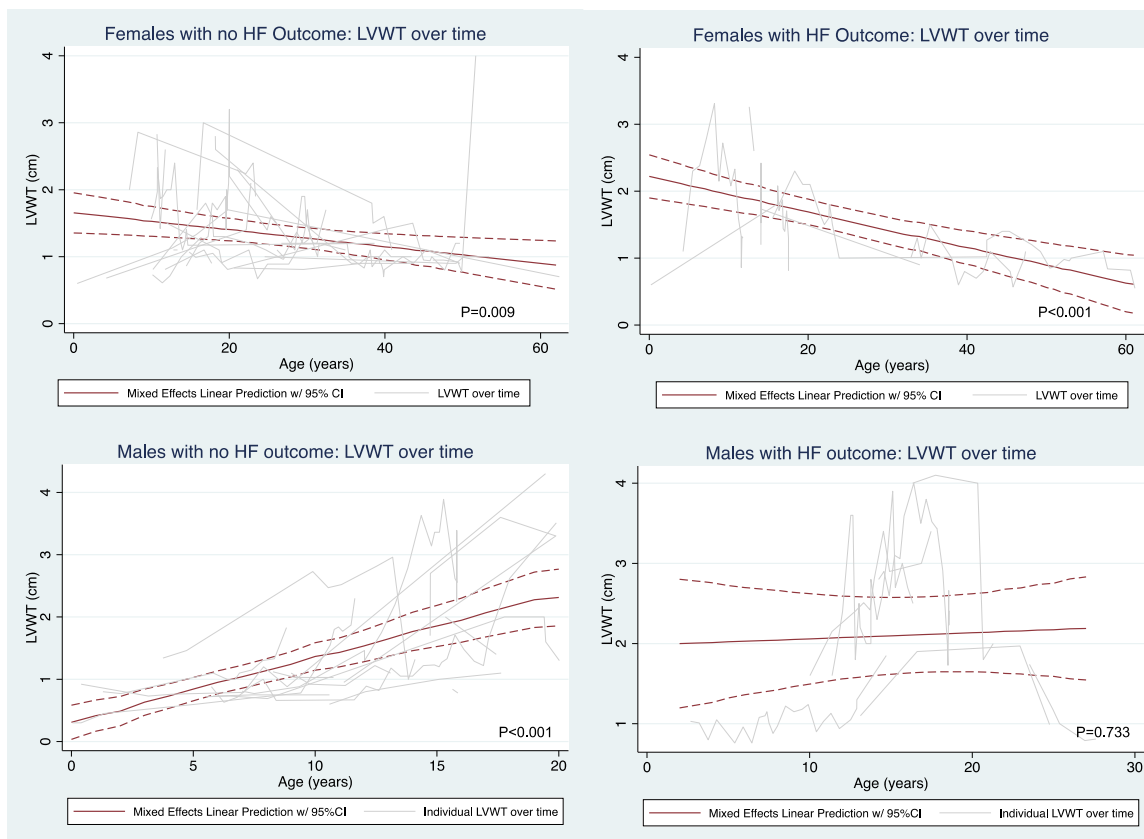
415 **Figure 4. LVEDD over time by sex and HF outcome**



416

417

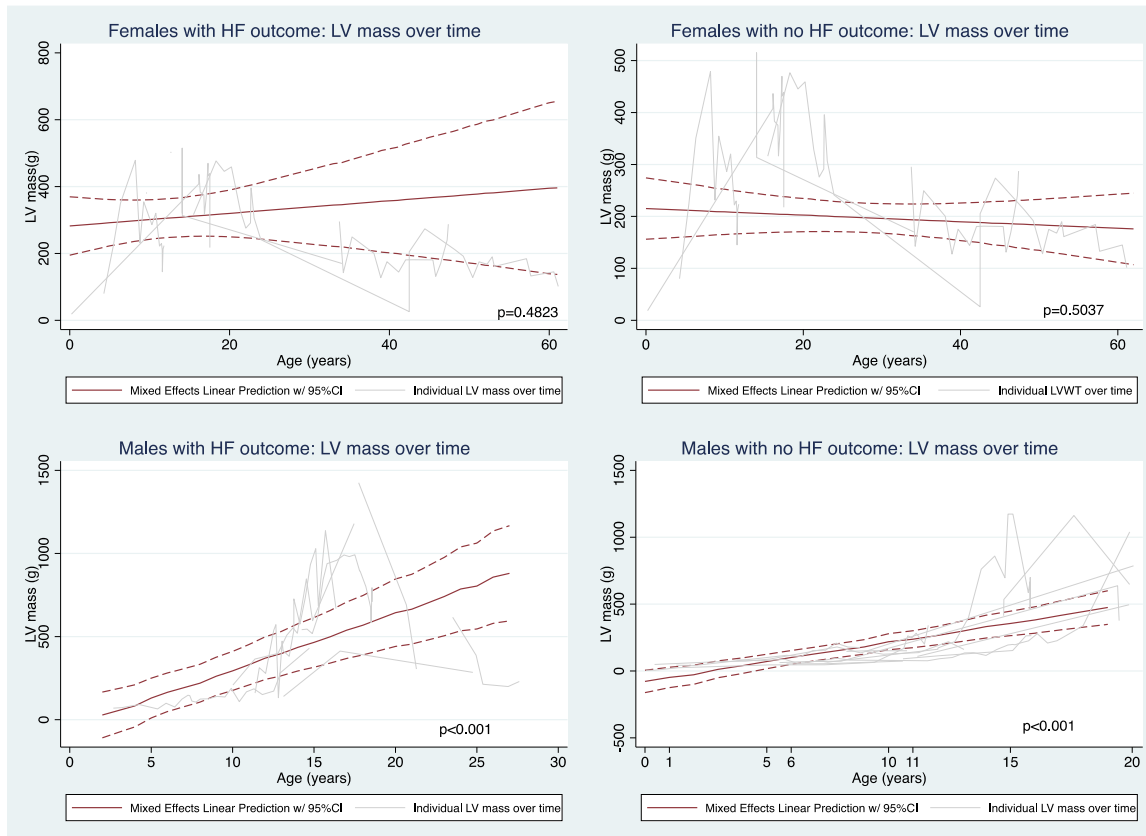
418 **Figure 5.** LV wall thickness measurement over time by sex and HF outcome. Thickest  
419 septal or posterior wall measurement reported.



420

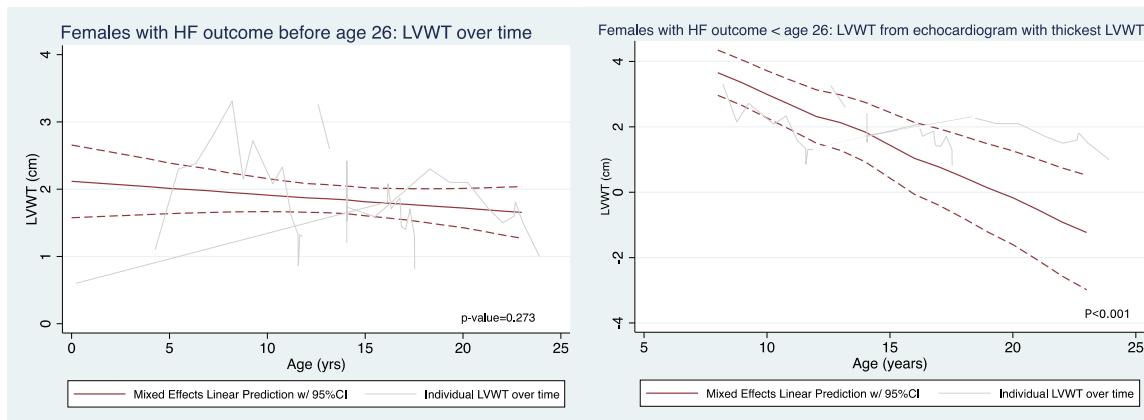
421

422 **Figure. 6** LV Mass measurement over time by sex and HF outcome



423

424 **Figure. 7** LVWT in females who experience HF outcome prior to 26 years of age at all  
425 time points and from time of thickest LVWT.



426



427 **REFERENCES**

- 428 [1] Hong KN, Eshraghian EA, Arad M, Argirò A, Brambatti M, Bui Q, Caspi O, de Frutos  
429 F, Greenberg B, Ho CY, Kaski JP, Olivotto I, Taylor MRG, Yesso A, Garcia-Pavia P,  
430 Adler ED. International Consensus on Differential Diagnosis and Management of  
431 Patients With Danon Disease: JACC State-of-the-Art Review. *J Am Coll Cardiol*. 2023  
432 Oct 17;82(16):1628-1647.
- 433 [2] Boucek D, Jirikowic J, Taylor M. Natural history of Danon disease. *Genet Med*.  
434 2011;13(6):563-568.
- 435 [3] Maron BJ, Roberts WC, Arad M, Haas TS, Spirito P, Wright GB, Almquist AK, Baffa  
436 JM, Saul JP, Ho CY, Seidman J, Seidman CE. Clinical outcome and phenotypic  
437 expression in LAMP2 cardiomyopathy. *JAMA*. 2009 Mar 25;301(12):1253-9. doi:  
438 10.1001/jama.2009.371. PMID: 19318653; PMCID: PMC4106257.
- 439 [4] Hong KN, Battikha C, John S, Lin A, Bui QM, Brambatti M, Storm G, Boynton K,  
440 Medina-Hernandez D, Garcia-Alvarez A, Castel MA, Garcia-Guereta L, Diez Lopez C,  
441 Perez-Gomez L, Miani D, Symanski JD, Taylor MR, Garcia-Pavia P, Adler ED. Cardiac  
442 Transplantation in Danon Disease. *J Card Fail*. 2022 Apr;28(4):664-669.
- 443 [5] Lotan D, Salazar-Mendiguchía J, Mogensen J, et al. Clinical Profile of Cardiac  
444 Involvement in Danon Disease: A Multicenter European Registry. *Circ Genomic Precis*  
445 *Med*. 2020:660-670.
- 446 [6] López-Sainz Á, Salazar-Mendiguchía J, García-Álvarez A et al. Clinical Findings and  
447 Prognosis of Danon Disease. An Analysis of the Spanish Multicenter Danon Registry.  
448 *Rev Esp Cardiol (Engl Ed)*. 2019 Jun;72(6):479-486. English, Spanish. doi:  
449 10.1016/j.rec.2018.04.035. Epub 2018 Aug 11. PMID: 30108015.

- 450 [7] Brambatti M, Caspi O, Maolo A, Koshi E, Greenberg B, Taylor MRG, Adler ED.  
451 Danon disease: Gender differences in presentation and outcomes. *Int J Cardiol.* 2019  
452 Jul 1;286:92-98.
- 453 [8] Sugie K, Komaki H, Eura N, Shiota T, Onoue K, Tsukaguchi H, Minami N, Ogawa M,  
454 Kiriya T, Kataoka H, Saito Y, Nonaka I, Nishino I. A Nationwide Survey on Danon  
455 Disease in Japan. *Int J Mol Sci.* 2018 Nov 8;19(11):3507.
- 456 [9] Lang RM, Badano LP, Mor-Avi V, Afilalo J, Armstrong A, Ernande L, Flachskampf  
457 FA, Foster E, Goldstein SA, Kuznetsova T, Lancellotti P, Muraru D, Picard MH,  
458 Rietzschel ER, Rudski L, Spencer KT, Tsang W, Voigt JU. Recommendations for  
459 cardiac chamber quantification by echocardiography in adults: an update from the  
460 American Society of Echocardiography and the European Association of Cardiovascular  
461 Imaging. *J Am Soc Echocardiogr.* 2015 Jan;28(1):1-39.e14.
- 462 [10] Cenacchi G, Papa V, Pegoraro V, Marozzo R, Fanin M, Angelini C. Review: Danon  
463 disease: Review of natural history and recent advances. *Neuropathol Appl Neurobiol.*  
464 2020 Jun;46(4):303-322. [11] Olivotto I, Cecchi F, Poggese C, Yacoub MH. Patterns of  
465 disease progression in hypertrophic cardiomyopathy: an individualized approach to  
466 clinical staging. *Circ Heart Fail.* 2012 Jul 1;5(4):535-46.
- 467 [12] Rigolli M, Kahn AM, Brambatti M et al. Cardiac Magnetic Resonance Imaging in  
468 Danon Disease Cardiomyopathy. *JACC Cardiovasc Imaging.* 2020 Sep 26;S1936-  
469 878X(20)30728-2.
- 470 [13] Rigolli M, Kahn A, Brambatti M et al. Cardiomyopathy characterization and risk-  
471 stratification by cardiac magnetic resonance in Danon Disease. *Journal of the American*  
472 *College of Cardiology.* 2020 Mar 24;75(11 Supplement 1):1681.
- 473 [14] Wei X, Zhao L, Xie J, Liu Y, Du Z, Zhong X, Ye W, Wang Y, Chen Y, Lu M, Liu H.  
474 Cardiac Phenotype Characterization at MRI in Patients with Danon Disease: A  
475 Retrospective Multicenter Case Series. *Radiology.* 2021 May;299(2):303-310.

- 476 [15] Bui QM, Hong KN, Kraushaar M, Ma GS, Brambatti M, Kahn AM, Battiha CE,  
477 Boynton K, Storm G, Mestroni L, Taylor MRG, DeMaria AN, Adler EA. Myocardial Strain  
478 and Association With Clinical Outcomes in Danon Disease: A Model for Monitoring  
479 Progression of Genetic Cardiomyopathies. J Am Heart Assoc. 2021 Dec  
480 7;10(23):e022544. doi: 10.1161/JAHA.121.022544. Epub 2021 Nov 30. PMID:  
481 34845930; PMCID: PMC9075351.
- 482 [16] <https://clinicaltrials.gov/study/NCT06092034> [visited 11/11/2023]
- 483 [17] Rare Diseases: Natural History Studies for Drug Development. FDA Guidance  
484 Document. March 2019. FDA Guidance for Industry. March 2019.  
485 <https://www.fda.gov/media/122425/download> (accessed 11/11/2023)
- 486 [18] Fast Track, Breakthrough Therapy, Accelerated Approval, Priority Review. FDA. 23  
487 February 2018. [https://www.fda.gov/patients/learn-about-drug-and-device-](https://www.fda.gov/patients/learn-about-drug-and-device-approvals/fast-track-breakthrough-therapy-accelerated-approval-priority-review)  
488 [approvals/fast-track-breakthrough-therapy-accelerated-approval-priority-review](https://www.fda.gov/patients/learn-about-drug-and-device-approvals/fast-track-breakthrough-therapy-accelerated-approval-priority-review)  
489 (accessed 11/11/2023)