

1 Time to Hyperkalemia and Other Outcomes Post-Implementation of the 2021

2 CKD-EPI Creatinine Equation: An Observational Cohort Study

3 Charlotte Baker, DrPH, MPH<sup>1</sup>, Brianna M. Goodwin Cartwright, MS<sup>1</sup>, Samuel Gratzl, PhD<sup>1</sup>,

4 Duy Do, PhD<sup>1</sup>, Patricia J. Rodriguez, PhD, MPH<sup>1</sup>, Michael Simonov, MD<sup>1</sup>, Nicholas L Stucky,

5 MD, PhD<sup>1\*</sup>

6 <sup>1</sup>Truveta, Incorporated, Bellevue, WA

7 \*Corresponding author:

8 Nicholas Stucky, MD, PhD

9 Truveta, Incorporated

10 1745 114th Ave SE, Bellevue, WA 98004

11 Email: nicholass@truveta.com

12

13 **Abstract**

14 Background

15 Timely diagnosis can delay progression to poor clinical outcomes and biomarker endpoints in

16 CKD. Our objective was to analyze how the implementation of the 2021 CKD-EPI Creatinine

17 Equation (CKD-EPI 2021) affected time to the doubling of serum creatinine, prescription or

18 dispense of potassium-lowering drugs, hyperkalemia, and creation of arteriovenous graft fistula

19 for dialysis within one year of CKD diagnosis.

20 Methods

21 We used retrospective EHR data to create two cohorts of adult patients based on date of

22 diagnosis. We followed patients from their CKD diagnosis to the occurrence of each outcome,

23 their last medical encounter, or 1-year post diagnosis, whichever occurred first. The first cohort

24 was diagnosed in 2021 when the CKD-EPI 2009 Creatinine Equation (pre-update cohort) was  
25 recommended. The second cohort was diagnosed in 2022 when CKD-EPI 2021 (post-update  
26 cohort) was recommended. Multivariable models for the time relationship between cohort and  
27 each outcome were adjusted for demographics, social determinants of health, and comorbidities.  
28 As CKD-EPI 2021 was race-free, we also considered the interaction between cohort and race.

## 29 Results

30 We found 261,774 patients with a first-time CKD diagnosis. After implementation of CKD-EPI  
31 2021, patients were less likely to have a diagnosis of hyperkalemia, potassium-lowering drug  
32 prescription, a doubling of serum creatinine, or an arteriovenous graft fistula placement within a  
33 year of CKD diagnosis. Black patients in the post-update cohort were less likely to be diagnosed  
34 with hyperkalemia compared to Black patients in the pre-update cohort (AHR 0.83; CI 0.80,  
35 0.86), but Black patients overall were significantly more likely than non-Black patients to have  
36 hyperkalemia.

## 37 Conclusions

38 Time to poor clinical outcomes and biomarkers differs by the date of CKD diagnosis. Future  
39 work should elucidate the mechanisms driving these differences, whether there have been  
40 significant changes in treatment practices since the CKD-EPI 2021 recommendation, and long-  
41 term effects of each outcome.

## 42 Introduction

43 Chronic kidney disease (CKD) is a major public health issue. In the Americas, CKD was  
44 the 8<sup>th</sup> leading cause of death and the 10<sup>th</sup> leading cause of years of life lost as of 2019.(1) CKD  
45 affects 15% of the US population (37 million adults); 100.6 people per 1,000 population die  
46 annually.(1,2)

47 Timely diagnosis enables treatment and can delay progression. Suggested clinical  
48 guidelines recommend annual screening for people with risk factors for CKD such as  
49 hypertension, diabetes, or being over 50 years of age.(3) The National Kidney Foundation and  
50 the American Society of Nephrology Task Force on Reassessing the Inclusion of Race in  
51 Diagnosing Kidney Disease recommend estimating GFR using the race-free 2021 Chronic  
52 Kidney Disease Epidemiology Collaboration (CKD-EPI) Creatinine Equation (CKD-EPI  
53 2021).(4)

54 Black or African-American patients (Black) are four times more likely to be diagnosed  
55 with end-stage kidney disease (ESKD) than white patients.(5) Hispanic patients are twice as  
56 likely to be diagnosed compared to non-Hispanic or Latino white patients. Like differences in  
57 diagnosis, ESKD treatment and outcomes vary by demographics and social determinants of  
58 health (SDOH) such as age, race, geography, and access to care.(6,7)

59 Sixty-six percent of hemodialysis patients have an arteriovenous graft fistula (AVF), the  
60 gold standard method for providing hemodialysis.(8–10) Yet, many patients have significant  
61 morbidity prior to needing dialysis including having an increased risk of hyperkalemia;  
62 medications to treat CKD and comorbidities (e.g. diabetes, hypertension) can induce this  
63 condition.(10–14) Potassium-lowering drugs such as patiromer can be used alongside other  
64 medicines to reduce blood potassium and lower cardiac risk.(10,15) A doubled serum creatinine  
65 value is an accepted biomarker for a significant negative change in GFR, a sign of worsening  
66 CKD.(16–18) This endpoint helps focus clinical trials and treatments for patients and those with  
67 comorbidities.

68

69 CKD-EPI 2021 uses age and sex to help estimate GFR.(4) Prior to this equation, race  
70 (dichotomized as Black and non-Black) was included as a marker for a presumed higher muscle  
71 mass in Black people.(19,20) The use of CKD-EPI 2021 has resulted in more severe especially  
72 for Black patients.(21) Although we know there were changes in time-to-diagnosis with the  
73 implementation of CKD-EPI 2021, it is unknown if implementation was also associated with a  
74 change in time from diagnosis to poor clinical outcomes and biomarker endpoints. Further, it is  
75 unknown if these differences are dependent on race.

76 This study examines the association between the implementation of the CKD-EPI 2021  
77 and time from CKD diagnosis to each of the following outcomes: hyperkalemia, prescription or  
78 dispense of a potassium-lowering drug, doubling of serum creatinine, and AVF placement.  
79 Furthermore, the study investigates whether and how these associations vary by race.

## 80 **Methods**

### 81 *Data source*

82 This study used a subset of Truveta Data. Truveta provides access to continuously updated and  
83 linked electronic health record (EHR) from a collective of US health care systems, including  
84 structured information on demographics, encounters, diagnoses, vital signs (e.g., weight, BMI,  
85 blood pressure), medication requests (prescriptions), medication administration, medication  
86 dispense (fills), laboratory and diagnostic tests and results, and procedures. Updated EHR data  
87 are provided daily to Truveta by constituent health care systems. In addition to EHR data, SDOH  
88 information are made available through linked third-party data. Data are normalized into a  
89 common data model through syntactic and semantic normalization. Truveta Data are then de-  
90 identified by expert determination under the HIPAA Privacy Rule. In accordance with 45 C.F.R.  
91 § 46.101 Protection of Human Subjects, our study did not require Institutional Review Board

92 approval because it used only deidentified medical records. Data for this study were accessed on  
93 February 6, 2024.

#### 94 *Study population*

95 We included patients first diagnosed with CKD at or after January 1, 2021 (using ICD-9,  
96 ICD-10, and SNOMED CT codes; see supplement). Patients were categorized into two mutually  
97 exclusive cohorts based on their first date of diagnosis. The first (pre-update cohort) was  
98 diagnosed between January 1, 2021 and December 31, 2021 (inclusive). These patients were  
99 diagnosed when the race-based 2009 CKD-EPI Creatinine Equation (CKD-EPI 2009) was  
100 recommended. The second cohort (post-update cohort) was diagnosed between January 1, 2022  
101 and December 31, 2022 (inclusive), when CKD-EPI 2021 was recommended. Patients in both  
102 cohorts were followed from their index diagnosis of CKD until the first occurrence of the  
103 outcome of interest (each outcome was studied separately), the last medical encounter recorded  
104 in the data, or the end of the 1-year follow-up period, whichever occurred first.

#### 105 *Inclusion/Exclusion*

106 We included adult patients aged 18 years and older at the time of their index CKD  
107 diagnosis. Patients must have interacted with the health care system within 36 months prior to  
108 their CKD diagnosis. We dichotomized race (Black and non-Black) to correlate with CKD-EPI  
109 2009 race categories. All white, Asian, Native Hawaiian and Pacific Islander, American Indian  
110 and Alaska Native, and ‘other’ patients were categorized as ‘Not Black or African-American’  
111 (non-Black). Unknown race and ‘choose not to answer’ were excluded.

112 Three outcomes had specific exclusion criteria independent of all other outcomes. These  
113 included: patients with a history of hyperkalemia at or at least one day before CKD diagnosis  
114 (time to hyperkalemia); patients that had a prescription or dispense of a potassium lowering drug

115 at or at least one day prior to CKD diagnosis (time to potassium lowering drugs); and evidence  
116 of a procedure or condition for AVF at or at least one day prior to CKD diagnosis (AVF  
117 placement).

118 Patients were excluded if they had a diagnosis of renal failure, polycystic kidney disease,  
119 or acute kidney injury (AKI) (defined using ICD-10 or SNOMED billing codes) at any time prior  
120 to their CKD diagnosis. AKI patients were excluded primarily due to 1) the potential for AKI to  
121 occur because of CKD or for CKD to occur because of AKI (high collinearity); and 2) the  
122 possibility of AKI patients to be sicker than other patients that develop CKD.(22–24) We were  
123 unable to discern these issues accurately in the data.

#### 124 *Study Outcomes*

125 We examined the time between the first CKD diagnosis and the first occurrence of four  
126 independent outcomes. For all outcomes, we calculated time to event by finding the difference  
127 between CKD diagnosis and the first time the outcome occurred. All ICD-9, ICD-10, SNOMED  
128 CT, RXNORM, CPT, and LOINC codes used to define outcomes are available in the  
129 supplement.

- 130 • Hyperkalemia
  - 131 ○ We identified the first hyperkalemia diagnosis after CKD diagnosis using
  - 132 laboratory values (LOINC codes).
- 133 • Prescription of potassium-lowering drugs
  - 134 ○ We identified the first date of either a prescription or dispense of a potassium
  - 135 binder (i.e., patiromer, sodium zirconium cyclosilicate, sodium polystyrene
  - 136 sulfonate, and calcium polystyrene sulfonate product) after diagnosis using
  - 137 RXNORM codes.

- 138 • Doubling of serum creatinine
  - 139 ○ We identified the first non-hospitalization related serum-creatinine laboratory
  - 140 value for each patient at or after their CKD diagnosis using LOINC codes. We
  - 141 allowed serum creatinine values on the day of diagnosis to be included to have
  - 142 baseline value as close to diagnosis as possible. We identified the first date the
  - 143 serum creatinine value was exactly or more than twice the baseline.
- 144 • AVF placement
  - 145 ○ To estimate time to dialysis, we identified the first AVF placement after CKD
  - 146 diagnosis using diagnosis (SNOMED CT) and procedure (CPT) codes.

#### 147 *Statistics*

148 Unadjusted Kaplan-Meier curves stratified by cohort and race were used to describe the  
149 probability of the outcome within one year of CKD diagnosis. We fit Cox-proportional hazards  
150 models assessing the relationship between cohort and time to event adjusting for demographics,  
151 SDOH, and comorbidities present at least one day prior to CKD diagnosis. We extended these  
152 models to include an interaction term between cohort and race to assess disparities in the time to  
153 outcome. A two-sided p-value < 0.05 was considered statistical significance. We used Python  
154 3.10.13 to clean the data and R 4.2.3 for statistics.

#### 155 *Covariates*

156 We created binary variables (yes/no) for obesity ( $BMI \geq 30$ ), type 2 diabetes, chronic  
157 hypertension, and hyperlipidemia. We used the Elixhauser Comorbidity Index with van  
158 Walraven weights as a summary measure of disease burden.(25,26) We excluded renal disease  
159 from the list of comorbidities included in index.(26) For the interpretation of the Elixhauser  
160 Comorbidity Index, weighted scores of less than 11 were categorized as "low comorbidity", 11 to

161 15 were categorized as "medium comorbidity", and greater than 15 were categorized as "high  
162 comorbidity".(27) Comorbidities were defined using ICD-9, ICD-10, and SNOMED CT codes  
163 (supplement).

164 Demographic variables included age (18 – 44, 45 – 64, and 65+ years), sex (female and  
165 male), and ethnicity (Hispanic or Latino, not Hispanic or Latino). Four SDOH variables were  
166 included. Income impacts health processes and outcomes including access to care. Annual patient  
167 income was categorized into 6 groups: \$0 – 30,000, 30,001 – 50,000, 50,001 – 80,000, 80,001 –  
168 100,000, 100,001 – 120,000, and more than \$120,000.

169 As a marker of housing stability, we included the number of address changes in the last  
170 year (0, 1, and 2 or more). We included two social and familial support determinants. First, we  
171 included distance to a family or other close connection; categories were < 25 miles away, 25 to  
172 100 miles away, 100 to 500 miles away, or > 500 miles away. Patients with no information on the  
173 proximity of their closest tie were categorized as ‘no information’. Second, if a patient was  
174 divorced, widowed, in a domestic partnership or civil union, or married their marital status was  
175 categorized as ‘ever married or partnered’. Patients that were unmarried or never married were  
176 categorized as ‘unmarried or never married’; patients whose status was unknown or did not fit in  
177 these categories was categorized as ‘other’.

## 178 **Results**

179 We identified 261,774 patients with a first-time CKD diagnosis. Black patients accounted for  
180 15% of the population (Table 1). Within a year of diagnosis, 140,995 (54.0%) had a diagnosis of  
181 hyperkalemia, 5,283 (2.0%) patients had a prescription of a potassium-lowering drug, 2,446  
182 (0.9%) had a doubling of serum creatinine, and 330 (0.1%) had an AVF.



183 In Figure 1 and Figure 2, the scale for the outcomes of prescription of potassium lowering  
184 drugs (B) has a y-axis of 0% to 5% while doubling of serum creatinine (C) and placement of an  
185 AVF (D) and have a y-axis of 0% to 2% due to small probabilities. The probability of all  
186 outcomes over time differed across cohorts (Figure 1) and across cohorts by race (Figure 2). In  
187 Figure 1, we see patients in the post-update cohort were significantly less likely than patients in  
188 the pre-update cohort to have any of the four outcomes. Black patients in the pre-update cohort  
189 have a higher risk of being prescribed or dispensed a potassium-lowering drug than Black  
190 patients in the post-update cohort (Figure 2) but Black patients in both cohorts have a greater  
191 probability than their non-Black counterparts, especially as time increases.

192 After controlling for comorbidities, SDOH, and demographics, we identified significant  
193 interaction between race and cohort in the time-to-hyperkalemia (Table 2). Overall, while both  
194 Black and Non-Black patients in the post-update cohort had reductions in the time-to-  
195 hyperkalemia compared to patients in the pre-update cohort, we found a greater reduction in the  
196 diagnosis of hyperkalemia within a year of CKD diagnosis for Non-Black patients compared to  
197 Black patients (Table 2, Table 3;  $p < 0.001$ ). Non-Black patients in the post-update cohort were  
198 less likely than those in the pre-update cohort to be diagnosed with hyperkalemia within a year of  
199 CKD diagnosis (AHR 0.78; CI 0.77, 0.79). Black patients in the post-update cohort were less  
200 likely than those in the pre-update cohort to be diagnosed with hyperkalemia (AHR 0.83; CI  
201 0.80, 0.86). Patients with hyperlipidemia (AHR 1.34; CI 1.23, 1.26) and patients with high  
202 comorbidity (AHR 1.29; CI 1.27, 1.31) were more likely to be diagnosed with hyperkalemia than  
203 patients without hyperlipidemia and patients with low comorbidity.

204 We found a significant difference by cohort in time to prescription of potassium-lowering  
205 drugs (Table 4), doubling of serum creatinine (Table 5), and AVF placement (Table 6) after

206 controlling for all covariates. However, changes in the chance of each outcome were not different  
207 for Black and non-Black patient in each cohort. (Table 2).

208 Prescription of potassium-lowering drugs was less likely for patients in the post-update  
209 cohort than those in the pre-update cohort when considering covariates (AHR 0.87; CI 0.82,  
210 0.93). Black patients were more likely (AHR 1.27; CI 1.17, 1.38) to obtain potassium lowering  
211 drugs than non-Black patients. Patients that were obese (AHR 0.84; CI 0.79, 0.90) and those that  
212 had chronic hypertension (AHR 0.73; CI 0.68, 0.78) were less likely to have a prescription or  
213 dispense of a potassium-lowering drug.

214 The probability of serum creatinine doubling within one year was lower for patients in  
215 the post-update cohort compared to patients in the pre-update cohort (AHR 0.74; CI 0.68, 0.81).  
216 This probability significantly decreased as income increased (Table 5). Patients with chronic  
217 hypertension experienced a lower probability of serum creatinine doubling than patients without  
218 chronic hypertension (AHR 0.74; CI 0.67, 0.81). Patients with Type 2 diabetes were more likely  
219 to have a doubled serum creatinine than patients without Type 2 diabetes (AHR 1.53; CI 1.40,  
220 1.68).

221 The probability of having an AVF within a year after CKD diagnosis was 23% lower for  
222 patients in the post-update cohort than patients in the pre-update cohort (AHR 0.67; CI 0.53,  
223 0.85). Non-Hispanic or Latino patients (AHR 0.43; CI 0.31, 0.59), patients that were ever  
224 married or partnered (AHR 0.65; CI 0.49, 0.87), and patients with chronic hypertension (AHR  
225 0.25; CI 0.19, 0.33) were less likely to get an AVF within a year of diagnosis compared to  
226 Hispanic or Latino patients, patients that were never married or partnered, and patients without  
227 chronic hypertension respectively.

228 **Discussion**

229           The purpose of this retrospective cohort study was to identify changes in time between  
230 first CKD diagnosis and four clinical endpoints tied to ESKD – hyperkalemia, prescription of  
231 potassium-lowering drugs, doubling of serum creatinine, and hemodialysis (as measured by AVF  
232 placement) – after the implementation of the race-free CKD-EPI 2021. Hyperkalemia was the  
233 most probable of the four outcomes investigated in this study of 261,774 patients within the first  
234 year after CKD diagnosis after controlling for comorbidities, demographics, and SDOH.  
235 Hyperkalemia was the only outcome with a significant change in probability of diagnosis when  
236 considering the interaction of the recommended equation (cohort) and race.

#### 237 *Hyperkalemia disparities by race*

238           Both non-Black and Black patients were less likely to be diagnosed with hyperkalemia  
239 after the CKD-EPI 2021 implementation than before the implementation. However, Black  
240 patients were still significantly more likely than Non-Black patients to be diagnosed with  
241 hyperkalemia within a year of diagnosis. This is consistent with literature suggesting Black  
242 patients have high levels of serum potassium and have a higher risk of hyperkalemia within one  
243 year of diagnosis compared to white patients.(28) The observed increased risk in this study for  
244 Black patients is potentially due to the CKD-EPI 2009 race-adjustment that led to late diagnosis  
245 and worse staging at diagnosis than non-Black patients; however, this question is outside the  
246 scope of this study.

#### 247 *Prescription of potassium lowering drugs does not show the same trend*

248           Hyperkalemia can be treated with potassium binders; newer medications include  
249 patiromer and sodium zirconium cyclosilicate. Longer term potassium-lowering drug use has  
250 been associated with lower mortality for patients with hyperkalemia.(32) These drugs can be  
251 expensive in the US, especially for patients that are underinsured or uninsured, which may drive  
252 the low utilization in this study and in others.(12)

253 Fifty-four percent of the present study's patient population developed hyperkalemia but  
254 only 0.1% of patients obtained a prescription for potassium-lowering drugs (Table 1). The higher  
255 probability of prescription observed for Black patients could be due to earlier diagnosis, lower  
256 staging of disease at diagnosis, and earlier access to treatment since race was removed from the  
257 CKD-EPI creatinine equation.(21) The longer CKD-EPI 2021 is used, more data will be  
258 available to observe time based changes in treatment and diagnosis.

#### 259 *Doubling of serum creatinine*

260 Doubling of serum creatinine is accepted by the US Food and Drug Administration as a  
261 surrogate for kidney failure development and mortality in clinical trials.(16,18,38) Other studies  
262 have estimated that the doubling of serum creatinine is equal to a 30% to 50% decrease in a  
263 patient's GFR.(18,39,40) The race-inclusive CKD-EPI 2009 equation and the race-free CKD-EPI  
264 2021 equation provide different GFR estimations especially for Black patients, affecting both the  
265 initial GFR estimation and calculations of GFR change over time. Whereas the change in GFR is  
266 also dependent on other baseline patient characteristics, treatments, and comorbidities, the  
267 present study findings support including the CKD-EPI GFR estimation recommendation as a  
268 factor in clinical trials and longitudinal studies to reduce bias in study results.(16,17,38,39)

#### 269 *Placement of an AVF*

270 We found a difference in time to AVF placement based on which equation was  
271 recommended at time of CKD diagnosis. However, the results were non-informative as we did  
272 not have a large enough population of patients with an AVF placement within one year of CKD  
273 diagnosis. While disparities exist and are known to exist for the timing to start dialysis, we did  
274 not see a significant difference in placement of an AVF by race in this study.(41,42) A longer  
275 study period may improve our ability to examine this outcome.

276 *The impact of SDOH and comorbidities*

277 SDOH and disease comorbidities are important for the development of CKD and disease  
278 progression.(5,21,28,43) These factors were significant contributors to potassium-lowering drug  
279 prescription and serum creatinine doubling within a year of CKD diagnosis. This may be due to a  
280 lack of consistent medical care due to frequent moves, poor access to care or medications,  
281 structural barriers leading to late diagnosis, or biased diagnostic guidelines such as CKD-EPI  
282 2009.

283 Further statistical exploration of individual comorbidities, multimorbidity, and utilizing  
284 alternative SDOH variables could result in a stronger understanding of how patient and system  
285 factors contribute to these outcomes and when intervention may be needed.

286 *Calculating incidence as future work*

287 Most available population estimates of CKD, including those from the CDC, Kidney  
288 Disease Surveillance System, and the United States Renal Data System, are prevalence estimates  
289 not incidence.(5,44–46) However, incidence numbers are readily available for ESKD.(44,45)  
290 The Kidney Disease Surveillance System’s published healthcare system estimate of CKD  
291 incidence uses Veterans Health Administration data, a population not representative of the adult  
292 US population.(47) Determining the incidence of CKD from prevalence is difficult as the  
293 average duration of the disease differs by stage and age.(48) While challenging, future work  
294 should target systematically identifying an accurate incidence for the US adult population.

295 *Strengths and limitations*

296 *Strengths*

297 This study included 261,774 patients with CKD and had equal follow-up for patients  
298 diagnosed before and after the change in the CKD-EPI GFR estimation equation in 2021. The  
299 richness of our SDOH data allowed us to consider and adjust for individual level factors that are

300 important for the occurrence of both the development of CKD and each outcome. Having this  
301 information at the patient level strengthened our belief in how race and ethnicity affected the  
302 time to event for CKD patient outcomes before and after the recommendations to adopt CKD-  
303 EPI 2021; it has highlighted additional areas for future research. Using EHR data allowed us to  
304 easily examine individual level time-based aspects surrounding the time between CKD diagnosis  
305 and each outcome of interest.

### 306 *Limitations*

307 Our study had several limitations. First, we used the placement of an AVF as opposed to a  
308 direct measure of dialysis treatment, which likely underestimated the true probability of receipt  
309 of dialysis within one year of diagnosis. Second, until 2021, primary diagnosis for CKD was  
310 based on equations that incorporated race and have demonstrated racial bias.(4,19,49) As we  
311 used the race categories that match CKD-EPI 2009 – Black and non-Black – we did not extend  
312 the study to examine a change in outcomes across more groups. Examining these outcomes  
313 across more diverse populations is necessary to improve clinical care.

314 EHR data is subject to a variety of limitations.(50) We are only able to identify events  
315 that are captured by the constituent health care systems that are a part of the Truveta member  
316 system. This means we will not capture disease diagnoses, medications, procedures, or  
317 laboratory values reported or diagnosed by a health care system that is not a part of the Truveta  
318 data. This limitation means we may have missed patients in the implementation of our inclusion  
319 and exclusion criteria.

### 320 **Conclusions**

321 We found that the change in recommended CKD-EPI equation to CKD-EPI 2021  
322 combined with race significantly decreased the time to hyperkalemia diagnosis within one year  
323 of CKD diagnosis. After the change to CKD-EPI 2021, there was a significant drop in the

324 likelihood of patients being prescribed potassium-lowering drugs or having a doubled serum  
325 creatinine within a year of CKD diagnosis. While we expected the implementation of the race-  
326 free CKD-EPI 2021 to have a greater effect for Black patients than non-Black patients, we did  
327 not see this for most clinical endpoints. We did see decreased probabilities of all four outcomes  
328 in the post-update cohort which may indicate that implementation of the race-free CKD-EPI  
329 equation may result in the diagnosis of patients earlier in their disease course. Future work  
330 should elucidate the mechanisms driving these differences, whether there have been significant  
331 changes in treatment practices since the change in the GFR estimation equation, and long-term  
332 effects of each outcome.

333

334

335

336

## References

- 337 1. Pan American Health Organization: The burden of kidney diseases in the Region of the  
338 Americas, 2000-2019 [Internet]. 2021 Available from:  
339 <https://www.paho.org/en/enlace/burden-kidney-diseases>
- 340 2. Centers for Disease Control and Prevention, National Center for Health Statistics: National  
341 Vital Statistics System, Provisional Mortality on CDC WONDER Online Database. Data  
342 are from the final Multiple Cause of Death Files, 2018-2021, and from provisional data for  
343 years 2022-2024, as compiled from data provided by the 57 vital statistics jurisdictions  
344 through the Vital Statistics Cooperative Program. [Internet]. 2024 Available from:  
345 <http://wonder.cdc.gov/mcd-icd10-provisional.html>
- 346 3. Farrell DR, Vassalotti JA: Screening, identifying, and treating chronic kidney disease: why,  
347 who, when, how, and what? *BMC Nephrol* [Internet] 25: 34, 2024 Available from:  
348 <https://doi.org/10.1186/s12882-024-03466-5>
- 349 4. Delgado C, Baweja M, Crews DC, Eneanya ND, Gadegbeku CA, Inker LA, Mendu ML,  
350 Miller WG, Moxey-Mims MM, Roberts GV, St. Peter WL, Warfield C, Powe NR: A  
351 Unifying Approach for GFR Estimation: Recommendations of the NKF-ASN Task Force  
352 on Reassessing the Inclusion of Race in Diagnosing Kidney Disease. *J Am Soc Nephrol*  
353 [Internet] 32: 2994, 2021 Available from:  
354 <http://jasn.asnjournals.org/content/32/12/2994.abstract>
- 355 5. Centers for Disease Control and Prevention: Chronic Kidney Disease in the United States,  
356 2023 [Internet]. Available from: [https://www.cdc.gov/kidneydisease/publications-](https://www.cdc.gov/kidneydisease/publications-resources/CKD-national-facts.html)  
357 [resources/CKD-national-facts.html](https://www.cdc.gov/kidneydisease/publications-resources/CKD-national-facts.html)
- 358 6. Snow KK, Patzer RE, Patel SA, Harding JL: County-Level Characteristics Associated with  
359 Variation in ESKD Mortality in the United States, 2010-2018. *Kidney360* 3: 891–899, 2022
- 360 7. Smothers L, Patzer RE, Pastan SO, DuBay D, Harding JL: Gender Disparities in Kidney  
361 Transplantation Referral Vary by Age and Race: A Multiregional Cohort Study in the  
362 Southeast United States. *Kidney Int Rep* 7: 1248–1257, 2022
- 363 8. Davita Inc.: Arteriovenous (AV) Fistula — The Gold Standard Hemodialysis Access  
364 [Internet]. 2024 Available from: [https://www.davita.com/treatment-](https://www.davita.com/treatment-services/dialysis/preparing-for-dialysis/arteriovenous-av-fistula-the-gold-standard-hemodialysis-access)  
365 [services/dialysis/preparing-for-dialysis/arteriovenous-av-fistula-the-gold-standard-](https://www.davita.com/treatment-services/dialysis/preparing-for-dialysis/arteriovenous-av-fistula-the-gold-standard-hemodialysis-access)  
366 [hemodialysis-access](https://www.davita.com/treatment-services/dialysis/preparing-for-dialysis/arteriovenous-av-fistula-the-gold-standard-hemodialysis-access)
- 367 9. Lee T: Fistula First Initiative: Historical Impact on Vascular Access Practice Patterns and  
368 Influence on Future Vascular Access Care. *Cardiovasc Eng Technol* [Internet] 8: 244–254,  
369 2017 Available from: <https://doi.org/10.1007/s13239-017-0319-9>
- 370 10. National Kidney Foundation: Facts About High Potassium in Patients with Kidney Disease  
371 [Internet]. 2024 Available from: <https://www.kidney.org/atoz/content/hyperkalemia/facts>



- 372 11. Provenzano M, Minutolo R, Chiodini P, Bellizzi V, Nappi F, Russo D, Borrelli S, Garofalo  
373 C, Iodice C, De Stefano T, Conte G, Heerspink HJL, De Nicola L: Competing-Risk  
374 Analysis of Death and End Stage Kidney Disease by Hyperkalaemia Status in Non-Dialysis  
375 Chronic Kidney Disease Patients Receiving Stable Nephrology Care. *J Clin Med* 7: 2018
- 376 12. Esposito P, Conti NE, Falqui V, Cipriani L, Picciotto D, Costigliolo F, Garibotto G, Saio M,  
377 Viazzi F: New Treatment Options for Hyperkalemia in Patients with Chronic Kidney  
378 Disease. *J Clin Med* [Internet] 9: 2337, 2020 Available from: [https://www.mdpi.com/2077-](https://www.mdpi.com/2077-0383/9/8/2337)  
379 [0383/9/8/2337](https://www.mdpi.com/2077-0383/9/8/2337) [cited 2024 May 2]
- 380 13. Montford JR, Linas S: How Dangerous Is Hyperkalemia? *J Am Soc Nephrol* [Internet] 28:  
381 2017 Available from:  
382 [https://journals.lww.com/jasn/fulltext/2017/11000/how\\_dangerous\\_is\\_hyperkalemia\\_.8.asp](https://journals.lww.com/jasn/fulltext/2017/11000/how_dangerous_is_hyperkalemia_.8.aspx)  
383 [x](https://journals.lww.com/jasn/fulltext/2017/11000/how_dangerous_is_hyperkalemia_.8.aspx)
- 384 14. Sarnowski A, Gama RM, Dawson A, Mason H, Banerjee D: Hyperkalemia in Chronic  
385 Kidney Disease: Links, Risks and Management. *Int J Nephrol Renov Dis* 15: 215–228,  
386 2022
- 387 15. Pitt B, Bakris GL, Bushinsky DA, Garza D, Mayo MR, Stasiv Y, Christ-Schmidt H,  
388 Berman L, Weir MR: Effect of patiromer on reducing serum potassium and preventing  
389 recurrent hyperkalaemia in patients with heart failure and chronic kidney disease on RAAS  
390 inhibitors. *Eur J Heart Fail* [Internet] 17: 1057–1065, 2015 Available from:  
391 <https://doi.org/10.1002/ejhf.402> [cited 2024 Apr 23]
- 392 16. Inker L, Levey A, Coresh J, Greene T, Lambers Heerspink H: How can we better define  
393 outcomes in progression of CKD? [Internet]. 2016 Available from: [https://kdigo.org/wp-](https://kdigo.org/wp-content/uploads/2017/02/Inker-CKD-outcomes_final.pdf)  
394 [content/uploads/2017/02/Inker-CKD-outcomes\\_final.pdf](https://kdigo.org/wp-content/uploads/2017/02/Inker-CKD-outcomes_final.pdf)
- 395 17. Heerspink HJL, Jongs N, Neuen BL, Schloemer P, Vaduganathan M, Inker LA, Fletcher  
396 RA, Wheeler DC, Bakris G, Greene T, Chertow GM, Perkovic V: Effects of newer kidney  
397 protective agents on kidney endpoints provide implications for future clinical trials. *Kidney*  
398 *Int* [Internet] 104: 181–188, 2023 Available from:  
399 <https://doi.org/10.1016/j.kint.2023.03.037> [cited 2024 Apr 23]
- 400 18. Levey AS, Inker LA, Matsushita K, Greene T, Willis K, Lewis E, de Zeeuw D, Cheung AK,  
401 Coresh J: GFR Decline as an End Point for Clinical Trials in CKD: A Scientific Workshop  
402 Sponsored by the National Kidney Foundation and the US Food and Drug Administration.  
403 *Am J Kidney Dis* [Internet] 64: 821–835, 2014 Available from:  
404 <https://doi.org/10.1053/j.ajkd.2014.07.030> [cited 2024 Apr 24]
- 405 19. Eneanya ND, Boulware LE, Tsai J, Bruce MA, Ford CL, Harris C, Morales LS, Ryan MJ,  
406 Reese PP, Thorpe RJ, Morse M, Walker V, Arogundade FA, Lopes AA, Norris KC: Health  
407 inequities and the inappropriate use of race in nephrology. *Nat Rev Nephrol* [Internet] 18:  
408 84–94, 2022 Available from: <https://doi.org/10.1038/s41581-021-00501-8>
- 409 20. Deyrup A, Graves JL: Racial Biology and Medical Misconceptions. *N Engl J Med*  
410 [Internet] 386: 501–503, 2022 Available from: <https://doi.org/10.1056/NEJMp2116224>

- 411 21. Baker C, Gratzl S, Rodriguez PJ, Simonov M, Cartwright BMG, Brar R, Stucky NL:  
412 Effects of changes in calculating GFR using KDIGO standards: Discordance in the Staging  
413 and Timing of Diagnosis of Chronic Kidney Disease. *medRxiv* [Internet]  
414 2023.12.21.23300415, 2024 Available from:  
415 <http://medrxiv.org/content/early/2024/01/03/2023.12.21.23300415.abstract>
- 416 22. He L, Wei Q, Liu J, Yi M, Liu Y, Liu H, Sun L, Peng Y, Liu F, Venkatachalam MA, Dong Z:  
417 AKI on CKD: heightened injury, suppressed repair, and the underlying mechanisms. *Kidney*  
418 *Int* [Internet] 92: 1071–1083, 2017 Available from:  
419 <https://linkinghub.elsevier.com/retrieve/pii/S0085253817304994> [cited 2024 May 3]
- 420 23. Bedford M, Farmer C, Levin A, Ali T, Stevens P: Acute Kidney Injury and CKD: Chicken  
421 or Egg? *Am J Kidney Dis* [Internet] 59: 485–491, 2012 Available from:  
422 <https://linkinghub.elsevier.com/retrieve/pii/S0272638611013989> [cited 2024 May 3]
- 423 24. Rifkin DE, Coca SG, Kalantar-Zadeh K: Does AKI Truly Lead to CKD? *J Am Soc Nephrol*  
424 [Internet] 23: 979–984, 2012 Available from: [https://journals.lww.com/00001751-](https://journals.lww.com/00001751-201206000-00007)  
425 201206000-00007 [cited 2024 May 3]
- 426 25. Van Walraven C, Austin PC, Jennings A, Quan H, Forster AJ: A modification of the  
427 Elixhauser comorbidity measures into a point system for hospital death using administrative  
428 data. *Med Care* [Internet] 47: 626–633, 2009 Available from:  
429 <https://pubmed.ncbi.nlm.nih.gov/19433995/>
- 430 26. Elixhauser A, Steiner C, Harris DR, Coffey RM: Comorbidity measures for use with  
431 administrative data. *Med Care* 36: 8–27, 1998
- 432 27. Velu JF, Jr. JB: Elixhauser Comorbidity Score Is the Best Risk Score in Predicting Survival  
433 After Mitraclip Implantation. *Struct Heart* [Internet] 2: 53–57, 2018 Available from:  
434 <https://doi.org/10.1080/24748706.2017.1404172>
- 435 28. Kim T, Rhee CM, Streja E, Soohoo M, Obi Y, Chou JA, Tortorici AR, Ravel VA, Kovesdy  
436 CP, Kalantar-Zadeh K: Racial and Ethnic Differences in Mortality Associated with Serum  
437 Potassium in a Large Hemodialysis Cohort. *Am J Nephrol* [Internet] 45: 509–521, 2017  
438 Available from: <https://www.karger.com/Article/FullText/475997> [cited 2024 May 2]
- 439 29. Cleveland Clinic: Hyperkalemia (High Potassium) [Internet]. 2023 Available from:  
440 <https://my.clevelandclinic.org/health/diseases/15184-hyperkalemia-high-blood-potassium>
- 441 30. De Nicola L, Di Lullo L, Paoletti E, Cupisti A, Bianchi S: Chronic hyperkalemia in non-  
442 dialysis CKD: controversial issues in nephrology practice. *J Nephrol* [Internet] 31: 653–  
443 664, 2018 Available from: <http://link.springer.com/10.1007/s40620-018-0502-6> [cited 2024  
444 May 2]
- 445 31. Sarafidis PA, Blacklock R, Wood E, Rumjon A, Simmonds S, Fletcher-Rogers J,  
446 Ariyanayagam R, Al-Yassin A, Sharpe C, Vinen K: Prevalence and Factors Associated with  
447 Hyperkalemia in Predialysis Patients Followed in a Low-Clearance Clinic. *Clin J Am Soc*

- 448 *Nephrol* [Internet] 7: 1234–1241, 2012 Available from: [https://journals.lww.com/01277230-](https://journals.lww.com/01277230-201208000-00008)  
449 201208000-00008 [cited 2024 May 2]
- 450 32. Obi Y, Thomas F, Dashputre AA, Goedecke P, Kovesdy CP: Long-term Patiromer Use and  
451 Outcomes Among US Veterans With Hyperkalemia and CKD: A Propensity-Matched  
452 Cohort Study. *Kidney Med* [Internet] 6: 100757, 2024 Available from:  
453 <https://linkinghub.elsevier.com/retrieve/pii/S2590059523001759> [cited 2024 May 2]
- 454 33. Little DJ, Nee R, Abbott KC, Watson MA, Yuan CM: Cost-utility analysis of sodium  
455 polystyrene sulfonate vs. potential alternatives for chronic hyperkalemia. *Clin Nephrol*  
456 [Internet] 81: 259–268, 2014 Available from:  
457 [http://www.dustri.com/article\\_response\\_page.html?artId=11324&doi=10.5414/CN108103](http://www.dustri.com/article_response_page.html?artId=11324&doi=10.5414/CN108103&L=0)  
458 &L=0 [cited 2024 May 2]
- 459 34. Larivée NL, Michaud JB, More KM, Wilson J-A, Tennankore KK: Hyperkalemia:  
460 Prevalence, Predictors and Emerging Treatments. *Cardiol Ther* [Internet] 12: 35–63, 2023  
461 Available from: <https://link.springer.com/10.1007/s40119-022-00289-z> [cited 2024 May 2]
- 462 35. Jaques DA, Stucker F, Hernandez T, Alves C, Martin P-Y, De Seigneux S, Saudan P:  
463 Comparative efficacy of patiromer and sodium polystyrene sulfonate on potassium levels in  
464 chronic haemodialysis patients: a randomized crossover trial. *Clin Kidney J* [Internet] 15:  
465 1908–1914, 2022 Available from: <https://academic.oup.com/ckj/article/15/10/1908/6583291>  
466 [cited 2024 May 2]
- 467 36. Huda AB, Langford C, Lake J, Langford N: Hyperkalaemia and potassium binders:  
468 Retrospective observational analysis looking at the efficacy and cost effectiveness of  
469 calcium polystyrene sulfonate and sodium zirconium cyclosilicate. *J Clin Pharm Ther*  
470 [Internet] 47: 2170–2175, 2022 Available from:  
471 <https://onlinelibrary.wiley.com/doi/10.1111/jcpt.13766> [cited 2024 May 2]
- 472 37. Bakris GL, Pitt B, Weir MR, Freeman MW, Mayo MR, Garza D, Stasiv Y, Zawadzki R,  
473 Berman L, Bushinsky DA: Effect of Patiromer on Serum Potassium Level in Patients With  
474 Hyperkalemia and Diabetic Kidney Disease: The AMETHYST-DN Randomized Clinical  
475 Trial. *JAMA* [Internet] 314: 151, 2015 Available from:  
476 <http://jama.jamanetwork.com/article.aspx?doi=10.1001/jama.2015.7446> [cited 2024 May 2]
- 477 38. Badve SV, Palmer SC, Hawley CM, Pascoe EM, Strippoli GFM, Johnson DW: Glomerular  
478 filtration rate decline as a surrogate end point in kidney disease progression trials. *Nephrol*  
479 *Dial Transplant* [Internet] 31: 1425–1436, 2016 Available from:  
480 <https://academic.oup.com/ndt/article-lookup/doi/10.1093/ndt/gfv269> [cited 2024 May 16]
- 481 39. Inker LA, Lambers Heerspink HJ, Mondal H, Schmid CH, Tighiouart H, Noubary F, Coresh  
482 J, Greene T, Levey AS: GFR Decline as an Alternative End Point to Kidney Failure in  
483 Clinical Trials: A Meta-analysis of Treatment Effects From 37 Randomized Trials. *Am J*  
484 *Kidney Dis* [Internet] 64: 848–859, 2014 Available from:  
485 <https://linkinghub.elsevier.com/retrieve/pii/S0272638614011846> [cited 2024 May 16]

- 486 40. Greene T, Teng C-C, Inker LA, Redd A, Ying J, Woodward M, Coresh J, Levey AS: Utility  
487 and Validity of Estimated GFR–Based Surrogate Time-to-Event End Points in CKD: A  
488 Simulation Study. *Am J Kidney Dis* [Internet] 64: 867–879, 2014 Available from:  
489 <https://linkinghub.elsevier.com/retrieve/pii/S027263861401186X> [cited 2024 May 16]
- 490 41. Norris KC, Williams SF, Rhee CM, Nicholas SB, Kovesdy CP, Kalantar-Zadeh K, Ebony  
491 Boulware L: Hemodialysis Disparities in African Americans: The Deeply Integrated  
492 Concept of Race in the Social Fabric of Our Society. *Semin Dial* [Internet] 30: 213–223,  
493 2017 Available from: <https://onlinelibrary.wiley.com/doi/10.1111/sdi.12589> [cited 2024  
494 May 16]
- 495 42. Vélez-Bermúdez M, Adamowicz JL, Askelson NM, Lutgendorf SK, Fraer M, Christensen  
496 AJ: Disparities in dialysis modality decision-making using a social-ecological lens: a  
497 qualitative approach. *BMC Nephrol* [Internet] 23: 276, 2022 Available from:  
498 <https://bmcnephrol.biomedcentral.com/articles/10.1186/s12882-022-02905-5> [cited 2024  
499 May 16]
- 500 43. Norton JM, Moxey-Mims MM, Eggers PW, Narva AS, Star RA, Kimmel PL, Rodgers GP:  
501 Social Determinants of Racial Disparities in CKD. *J Am Soc Nephrol* 2016
- 502 44. Centers for Disease Control and Prevention: Kidney Disease Surveillance System, Trends  
503 in Prevalence of CKD among U.S. Adults [Internet]. 2024 Available from:  
504 <https://nccd.cdc.gov/CKD/detail.aspx?Qnum=Q9#refreshPosition>
- 505 45. United States Renal Data System: 2023 USRDS Annual Data Report: Epidemiology of  
506 kidney disease in the United States [Internet]. National Institutes of Health, National  
507 Institute of Diabetes and Digestive and Kidney Diseases, Bethesda, MD %8, 2023 Available  
508 from: <https://adr.usrds.org/2023>
- 509 46. Ying M, Shao X, Qin H, Yin P, Lin Y, Wu J, Ren J, Zheng Y: Disease Burden and  
510 Epidemiological Trends of Chronic Kidney Disease at the Global, Regional, National  
511 Levels from 1990 to 2019. *Nephron* [Internet] 148: 113–123, 2024 Available from:  
512 <https://karger.com/doi/10.1159/000534071> [cited 2024 May 16]
- 513 47. Centers for Disease Control and Prevention: Trends in Incidence Rate of CKD among U.S.  
514 Veterans, Kidney Disease Surveillance System [Internet]. 2024 Available from:  
515 <https://nccd.cdc.gov/CKD/detail.aspx?Qnum=Q89&topic=1#refreshPosition>
- 516 48. Neild GH: Life expectancy with chronic kidney disease: an educational review. *Pediatr*  
517 *Nephrol Berl Ger* 32: 243–248, 2017
- 518 49. Levey AS, Titan SM, Powe NR, Coresh J, Inker LA: Kidney Disease, Race, and GFR  
519 Estimation. *Clin J Am Soc Nephrol* [Internet] 15: 1203–1203, 2020 Available from:  
520 <http://cjasn.asnjournals.org/content/15/8/1203.abstract>
- 521 50. Kataria S, Ravindran V: Electronic Health Records: A Critical Appraisal of Strengths and  
522 Limitations. *J R Coll Physicians Edinb* [Internet] 50: 262–268, 2020 Available from:  
523 <https://doi.org/10.4997%2Fjrcpe.2020.309>

524 **Tables**

525 Table 1. Descriptive statistics of patients with poor outcomes within 1 year of chronic kidney  
 526 disease diagnosis by Recommended CKD-EPI Creatinine Equation

<b>Characteristic</b>	<b>Overall, N = 261,774</b>	<b>CKD-EPI 2009 (Pre- update), N = 87,903</b>	<b>CKD-EPI 2021 (Post- update), N = 173,871</b>
<b>Race, n (%)</b>			
Not Black*	222,647 (85%)	76,038 (87%)	146,609 (84%)
Black*	39,127 (15%)	11,865 (13%)	27,262 (16%)
<b>Age Group, n (%)</b>			
18-44	11,748 (4.5%)	4,041 (4.6%)	7,707 (4.4%)
45-64	55,848 (21%)	18,877 (21%)	36,971 (21%)
65+	194,178 (74%)	64,985 (74%)	129,193 (74%)
<b>Sex, n (%)</b>			
Female	135,909 (52%)	45,327 (52%)	90,582 (52%)
Male	125,865 (48%)	42,576 (48%)	83,289 (48%)
<b>Ethnicity, n (%)</b>			
Hispanic or Latino	20,481 (7.8%)	6,960 (7.9%)	13,521 (7.8%)
Not Hispanic or Latino	227,193 (87%)	76,307 (87%)	150,886 (87%)
Unknown	14,100 (5.4%)	4,636 (5.3%)	9,464 (5.4%)
<b>Marital Status, n (%)</b>			
Unmarried and Never Married	43,449 (17%)	14,115 (16%)	29,334 (17%)
Ever Married or Partnered	200,434 (77%)	67,363 (77%)	133,071 (77%)
Other	1,546 (0.6%)	457 (0.5%)	1,089 (0.6%)
Unknown	16,345 (6.2%)	5,968 (6.8%)	10,377 (6.0%)
<b>Distance in Miles to Closest Ties, n (%)</b>			
Less than 25 miles	204,375 (91%)	70,511 (91%)	133,864 (91%)
25 - 100 miles	3,949 (1.8%)	1,420 (1.8%)	2,529 (1.7%)

<b>Characteristic</b>	<b>Overall, N = 261,774</b>	<b>CKD-EPI 2009 (Pre- update), N = 87,903</b>	<b>CKD-EPI 2021 (Post- update), N = 173,871</b>
100 - 500 miles	3,636 (1.6%)	1,239 (1.6%)	2,397 (1.6%)
Over 500 miles	4,411 (2.0%)	1,559 (2.0%)	2,852 (1.9%)
No Information	7,789 (3.5%)	2,894 (3.7%)	4,895 (3.3%)
<b>Estimated Annual Income Range, n (%)</b>			
0 - 30,000	20,338 (9.1%)	6,897 (9.0%)	13,441 (9.2%)
30,001 - 50,000	99,636 (45%)	34,607 (45%)	65,029 (45%)
50,001 - 80,000	71,460 (32%)	23,958 (31%)	47,502 (33%)
80,001 - 100,000	17,761 (8.0%)	6,565 (8.5%)	11,196 (7.7%)
100,001 - 120,000	8,396 (3.8%)	3,087 (4.0%)	5,309 (3.6%)
More than 120K	4,849 (2.2%)	1,812 (2.4%)	3,037 (2.1%)
<b>Number of Address Changes in Last 12 Months, n (%)</b>			
0	201,368 (90%)	69,776 (90%)	131,592 (90%)
1	19,349 (8.6%)	6,668 (8.6%)	12,681 (8.7%)
2 or More	3,446 (1.5%)	1,179 (1.5%)	2,267 (1.5%)
<b>Elixhauser Comorbidity Index Score**, n (%)</b>			
0- < 11	186,444 (71%)	62,350 (71%)	124,094 (71%)
11 - 15	29,832 (11%)	10,046 (11%)	19,786 (11%)
> 15	45,498 (17%)	15,507 (18%)	29,991 (17%)
<b>Chronic Hypertension (Yes/No), n (%)</b>			
No	99,532 (38%)	33,323 (38%)	66,209 (38%)

<b>Characteristic</b>	<b>Overall, N = 261,774</b>	<b>CKD-EPI 2009 (Pre- update), N = 87,903</b>	<b>CKD-EPI 2021 (Post- update), N = 173,871</b>
Yes	162,242 (62%)	54,580 (62%)	107,662 (62%)
Type 2 Diabetes (Yes/No), n (%)			
No	141,577 (54%)	47,255 (54%)	94,322 (54%)
Yes	120,197 (46%)	40,648 (46%)	79,549 (46%)
Hyperlipidemia (Yes/No), n (%)			
No	73,074 (28%)	24,970 (28%)	48,104 (28%)
Yes	188,700 (72%)	62,933 (72%)	125,767 (72%)
Obesity (Yes/No), n (%)			
No	128,164 (49%)	42,481 (48%)	85,683 (49%)
Yes	133,610 (51%)	45,422 (52%)	88,188 (51%)
Hyperkalemia, n (%)			
No	120,779 (46%)	34,538 (39%)	86,241 (50%)
Yes	140,995 (54%)	53,365 (61%)	87,630 (50%)
Potassium Drug Prescription Request, n (%)			
No	256,491 (98%)	85,907 (98%)	170,584 (98%)
Yes	5,283 (2.0%)	1,996 (2.3%)	3,287 (1.9%)
Doubling of Serum Creatinine, n (%)			
No	259,328 (99%)	86,868 (99%)	172,460 (99%)
Yes	2,446 (0.9%)	1,035 (1.2%)	1,411 (0.8%)
Fistula Placement, n (%)			
No	261,444 (100%)	87,750 (100%)	173,694 (100%)
Yes	330 (0.1%)	153 (0.2%)	177 (0.1%)

\*Black refers to Black or African American Individuals

\*\*Elixhauser Comorbidity Index computed using van Walraven weights. Categories correlate to low, medium, and high comorbidity.

527

528

529 Table 2. Comparison of adjusted cox-proportional hazard ratios by cohort and race for time to  
 530 prescription of potassium-lowering drugs, arteriovenous graft fistula placement, hyperkalemia  
 531 diagnosis, and doubling of serum creatinine after chronic kidney disease diagnosis

	Hyperkalemia Diagnosis	Prescription of Potassium- lowering Drugs	Doubling of Serum Creatinine	Arteriovenous Graft Fistula Placement
AHR Black* Post-Update (Reference Black* Pre-Update)	0.83	0.79	0.82	0.78
AHR Non-Black* Post-Update (Reference Non- Black* Pre- Update)	0.78	0.90	0.72	0.64
p-value**	<0.001	0.12	0.25	0.53

\*Black refers to Black or African American Individuals

\*\*Each p-value from the respective adjusted Cox-proportional hazards model for each outcome. Each model measures the time to the outcome by cohort (CKD-EPI 2021 and CKD-EPI 2009) considering interaction of cohort with race (Black\* and non-Black\*). A significant p-value ( $\leq 0.05$ ) that does not include 1.00 indicates that there is interaction between cohort and race in the respective model.

All models are adjusted for age group, sex, ethnicity, marital status, distance in miles to closest ties, estimated annual income range, number of address changes in the last 12 months, Elixhauser Comorbidity Index Score with van Walraven weights, chronic hypertension, type 2 diabetes, hyperlipidemia, and obesity.

Definitions: AHR = adjusted hazard ratio; CKD-EPI 2021 = CKD-EPI 2021 Creatinine Equation; CKD-EPI 2009 = CKD-EPI 2009 Creatinine Equation

532  
533

534

535

536



537 Table 3. Impact of Demographics, Social Determinants and Comorbidities on Hyperkalemia  
 538 After Chronic Kidney Disease Diagnosis

<b>Characteristic</b>	<b>HR<sup>1</sup></b>	<b>95% CI<sup>1</sup></b>	<b>p-value</b>
<b>CKD-EPI Serum Creatinine Formula</b>			
CKD-EPI 2009 (Pre-update)	—	—	
CKD-EPI 2021 (Post-update)	0.78	0.77, 0.79	<0.001
<b>Race</b>			
Not Black*	—	—	
Black*	1.02	0.99, 1.04	0.26
<b>Age Group</b>			
18-44	—	—	
45-64	1.03	1.00, 1.07	0.049
65+	1.03	1.0, 1.06	0.10
<b>Sex</b>			
Female	—	—	
Male	0.95	0.94, 0.96	<0.001
<b>Ethnicity</b>			
Hispanic or Latino	—	—	
Not Hispanic or Latino	0.93	0.91, 0.95	<0.001
Unknown	0.84	0.81, 0.87	<0.001
<b>Marital Status</b>			
Unmarried and Never Married	—	—	
Ever Married or Partnered	1.08	1.06, 1.10	<0.001
Other	1.06	0.98, 1.14	0.13
Unknown	1.18	1.15, 1.22	<0.001
<b>Distance in Miles to Closest Ties</b>			
Less than 25 miles	—	—	
25 - 100 miles	1.04	1.00, 1.09	0.050
100 - 500 miles	1.04	0.99, 1.08	0.13
Over 500 miles	1.05	1.01, 1.09	0.019
No Information	1.04	1.01, 1.08	0.005
<b>Estimated Annual Income Range (USD\$)</b>			
0 - 30,000	—	—	
30,001 - 50,000	1.03	1.00, 1.05	0.016
50,001 - 80,000	1.06	1.04, 1.08	<0.001
80,001 - 100,000	1.08	1.05, 1.12	<0.001
100,001 - 120,000	1.09	1.05, 1.13	<0.001

<b>Characteristic</b>	<b>HR<sup>1</sup></b>	<b>95% CI<sup>1</sup></b>	<b>p-value</b>
More than 120K	1.05	1.00, 1.09	0.045
<b>Number of Address Changes in Last 12 Months</b>			
0	—	—	
1	1.02	1.00, 1.05	0.018
2 or More	1.08	1.03, 1.13	0.001
<b>Elixhauser Comorbidity Index Score**</b>			
0- < 11	—	—	
11 - 15	1.12	1.11, 1.14	<0.001
≥ 15	1.29	1.27, 1.31	<0.001
<b>Chronic Hypertension (Yes/No)</b>			
No	—	—	
Yes	1.00	0.99, 1.02	0.52
<b>Type 2 Diabetes (Yes/No)</b>			
No	—	—	
Yes	1.08	1.06, 1.09	<0.001
<b>Hyperlipidemia (Yes/No)</b>			
No	—	—	
Yes	1.24	1.23, 1.26	<0.001
<b>Obesity</b>			
No	—	—	
Yes	1.11	1.10, 1.12	<0.001
<b>CKD-EPI Serum Creatinine Formula * Race</b>			
CKD-EPI 2021 * Black*	1.06	1.02, 1.09	<0.001

\*Black refers to Black or African American Individuals

\*\*Elixhauser Comorbidity Index computed using van Walraven weights. Categories correlate to low, medium, and high comorbidity

<sup>1</sup>HR = Hazard Ratio, CI = Confidence Interval

539

540

541

542 Table 4. Impact of Demographics, Social Determinants and Comorbidities on Prescription of  
 543 Potassium-lowering Drugs After Chronic Kidney Disease Diagnosis

Characteristic	HR <sup>1</sup>	95% CI <sup>1</sup>	p-value
<b>CKD-EPI Serum Creatinine Formula</b>			
CKD-EPI 2009 (Pre-update)	—	—	
CKD-EPI 2021 (Post-update)	0.87	0.82, 0.93	<0.001
<b>Race</b>			
Not Black*	—	—	
Black*	1.27	1.17, 1.38	<0.001
<b>Age Group</b>			
18-44	—	—	
45-64	1.00	0.87, 1.14	0.96
65+	0.76	0.67, 0.87	<0.001
<b>Sex</b>			
Female	—	—	
Male	1.33	1.25, 1.42	<0.001
<b>Ethnicity</b>			
Hispanic or Latino	—	—	
Not Hispanic or Latino	0.57	0.52, 0.64	<0.001
Unknown	0.72	0.61, 0.85	<0.001
<b>Marital Status</b>			
Unmarried and Never Married	—	—	
Ever Married or Partnered	0.81	0.75, 0.89	<0.001
Other	1.49	1.12, 1.98	0.007
Unknown	1.03	0.90, 1.19	0.66
<b>Distance in Miles to Closest Ties</b>			
Less than 25 miles	—	—	
25 - 100 miles	1.30	1.06, 1.60	0.011
100 - 500 miles	0.96	0.75, 1.24	0.78
Over 500 miles	1.17	0.95, 1.45	0.13
No Information	0.86	0.72, 1.03	0.11
<b>Estimated Annual Income Range (USD\$)</b>			
0 - 30,000	—	—	
30,001 - 50,000	0.73	0.67, 0.81	<0.001
50,001 - 80,000	0.64	0.58, 0.72	<0.001
80,001 - 100,000	0.55	0.47, 0.65	<0.001
100,001 - 120,000	0.57	0.46, 0.70	<0.001

<b>Characteristic</b>	<b>HR<sup>1</sup></b>	<b>95% CI<sup>1</sup></b>	<b>p-value</b>
More than 120K	0.54	0.41, 0.71	<0.001
<b>Number of Address Changes in Last 12 Months</b>			
0	—	—	
1	1.27	1.15, 1.40	<0.001
2 or More	1.32	1.07, 1.64	0.009
<b>Elixhauser Comorbidity Index Score**</b>			
0- < 11	—	—	
11 - 15	1.02	0.91, 1.13	0.79
≥ 15	1.14	1.04, 1.24	0.006
<b>Chronic Hypertension (Yes/No)</b>			
No	—	—	
Yes	0.73	0.68, 0.78	<0.001
<b>Type 2 Diabetes (Yes/No)</b>			
No	—	—	
Yes	1.82	1.70, 1.95	<0.001
<b>Hyperlipidemia (Yes/No)</b>			
No	—	—	
Yes	0.72	0.67, 0.77	<0.001
<b>Obesity (Yes/No)</b>			
No	—	—	
Yes	0.84	0.79, 0.90	<0.001

\*Black refers to Black or African American Individuals

\*\*Elixhauser Comorbidity Index computed using van Walraven weights. Categories correlate to low, medium, and high comorbidity

<sup>1</sup>HR = Hazard Ratio, CI = Confidence Interval

544

545

546 Table 5. Impact of Demographics, Social Determinants and Comorbidities on Doubling of Serum  
 547 Creatinine After Chronic Kidney Disease Diagnosis

Characteristic	HR <sup>1</sup>	95% CI <sup>1</sup>	p-value
<b>CKD-EPI Serum Creatinine Formula</b>			
CKD-EPI 2009 (Pre-update)	—	—	
CKD-EPI 2021 (Post-update)	0.74	0.68, 0.81	<0.001
<b>Race</b>			
Not Black*	—	—	
Black*	1.33	1.19, 1.49	<0.001
<b>Age Group</b>			
18-44	—	—	
45-64	0.81	0.67, 0.97	0.024
65+	0.60	0.50, 0.72	<0.001
<b>Sex</b>			
Female	—	—	
Male	0.93	0.85, 1.02	0.12
<b>Ethnicity</b>			
Hispanic or Latino	—	—	
Not Hispanic or Latino	0.80	0.68, 0.93	0.005
Unknown	0.75	0.58, 0.97	0.026
<b>Marital Status</b>			
Unmarried and Never Married	—	—	
Ever Married or Partnered	0.95	0.84, 1.07	0.37
Other	0.98	0.60, 1.62	0.94
Unknown	1.17	0.96, 1.43	0.12
<b>Distance in Miles to Closest Ties</b>			
Less than 25 miles	—	—	
25 - 100 miles	1.08	0.79, 1.47	0.64
100 - 500 miles	0.95	0.67, 1.34	0.75
Over 500 miles	1.06	0.79, 1.44	0.69
No Information	0.86	0.67, 1.11	0.24
<b>Estimated Annual Income Range (USD\$)</b>			
0 - 30,000	—	—	
30,001 - 50,000	0.71	0.63, 0.81	<0.001
50,001 - 80,000	0.59	0.51, 0.68	<0.001
80,001 - 100,000	0.65	0.53, 0.80	<0.001
100,001 - 120,000	0.51	0.38, 0.69	<0.001

<b>Characteristic</b>	<b>HR<sup>1</sup></b>	<b>95% CI<sup>1</sup></b>	<b>p-value</b>
More than 120K	0.60	0.42, 0.85	0.005
<b>Number of Address Changes in Last 12 Months</b>			
0	—	—	
1	1.16	1.01, 1.34	0.035
2 or More	1.08	0.78, 1.50	0.63
<b>Elixhauser Comorbidity Index Score**</b>			
0- < 11	—	—	
11 - 15	1.14	0.99, 1.31	0.066
≥ 15	1.46	1.30, 1.64	<0.001
<b>Chronic Hypertension (Yes/No)</b>			
No	—	—	
Yes	0.74	0.67, 0.81	<0.001
<b>Type 2 Diabetes (Yes/No)</b>			
No	—	—	
Yes	1.53	1.40, 1.68	<0.001
<b>Hyperlipidemia (Yes/No)</b>			
No	—	—	
Yes	1.00	0.90, 1.11	>0.99
<b>Obesity (Yes/No)</b>			
No	—	—	
Yes	1.07	0.98, 1.18	0.12

\*Black refers to Black or African American Individuals

\*\*Elixhauser Comorbidity Index computed using van Walraven weights. Categories correlate to low, medium, and high comorbidity

<sup>1</sup>HR = Hazard Ratio, CI = Confidence Interval

548

549

550 Table 6. Impact of Demographics, Social Determinants and Comorbidities on Fistula Placement  
 551 After Chronic Kidney Disease Diagnosis

Characteristic	HR <sup>I</sup>	95% CI <sup>I</sup>	p-value
<b>CKD-EPI Serum Creatinine Formula</b>			
CKD-EPI 2009 (Pre-update)	—	—	
CKD-EPI 2021 (Post-update)	0.67	0.53, 0.85	<0.001
<b>Race</b>			
Not Black*	—	—	
Black*	1.13	0.83, 1.55	0.44
<b>Age Group</b>			
18-44	—	—	
45-64	1.13	0.74, 1.73	0.56
65+	0.64	0.42, 1.00	0.048
<b>Sex</b>			
Female	—	—	
Male	1.36	1.07, 1.72	0.013
<b>Ethnicity</b>			
Hispanic or Latino	—	—	
Not Hispanic or Latino	0.43	0.31, 0.59	<0.001
Unknown	0.35	0.18, 0.69	0.002
<b>Marital Status</b>			
Unmarried and Never Married	—	—	
Ever Married or Partnered	0.65	0.49, 0.87	0.004
Other	1.29	0.47, 3.53	0.62
Unknown	0.67	0.39, 1.16	0.15
<b>Distance in Miles to Closest Ties</b>			
Less than 25 miles	—	—	
25 - 100 miles	1.44	0.71, 2.91	0.32
100 - 500 miles	0.21	0.03, 1.47	0.12
Over 500 miles	0.92	0.38, 2.24	0.86
No Information	1.06	0.58, 1.96	0.84
<b>Estimated Annual Income Range (USD\$)</b>			
0 - 30,000	—	—	
30,001 - 50,000	1.40	0.93, 2.11	0.10
50,001 - 80,000	1.27	0.81, 1.98	0.30
80,001 - 100,000	0.64	0.31, 1.35	0.24
100,001 - 120,000	1.24	0.57, 2.67	0.59

<b>Characteristic</b>	<b>HR<sup>1</sup></b>	<b>95% CI<sup>1</sup></b>	<b>p-value</b>
More than 120K	1.59	0.68, 3.69	0.29
<b>Number of Address Changes in Last 12 Months</b>			
0	—	—	
1	1.11	0.77, 1.61	0.58
2 or More	0.69	0.26, 1.86	0.46
<b>Elixhauser Comorbidity Index Score**</b>			
0- < 11	—	—	
11 - 15	0.40	0.21, 0.75	0.004
≥ 15	0.34	0.18, 0.63	<0.001
<b>Chronic Hypertension (Yes/No)</b>			
No	—	—	
Yes	0.25	0.19, 0.33	<0.001
<b>Type 2 Diabetes (Yes/No)</b>			
No	—	—	
Yes	1.66	1.30, 2.13	<0.001
<b>Hyperlipidemia (Yes/No)</b>			
No	—	—	
Yes	0.64	0.49, 0.82	<0.001
<b>Obesity (Yes/No)</b>			
No	—	—	
Yes	0.75	0.58, 0.96	0.022

\*Black refers to Black or African American Individuals

\*\*Elixhauser Comorbidity Index computed using van Walraven weights. Categories correlate to low, medium, and high comorbidity

<sup>1</sup>HR = Hazard Ratio, CI = Confidence Interval

552

553

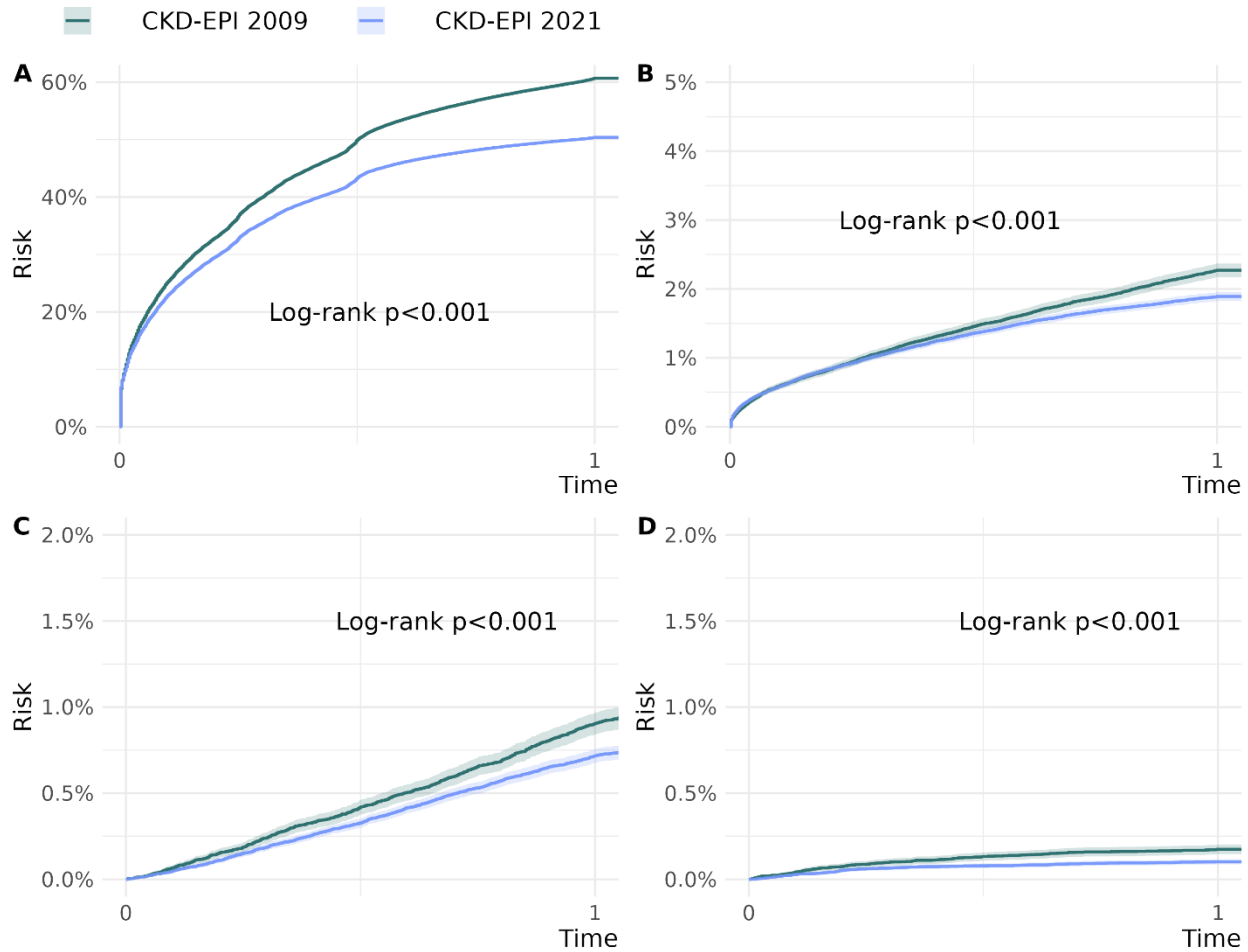
554



555 **Figures**

556 Figure 1. Time to Poor Chronic Kidney Disease Outcomes After Diagnosis by Cohort

**Time to Poor Chronic Kidney Disease Outcomes After Diagnosis By Cohort**



For visibility, the four Kaplan-Meier curves have different axes. Plot A is scaled from 0 - 20% on the y-axis; Plot B is scaled from 0 - 5% on the y axis; and Plots C and D are scaled from 0 - 2% on the y axis.

All outcomes are within one year of chronic kidney disease diagnosis:

A - Hyperkalemia.

B - Prescription or dispense of potassium-lowering drugs.

C - Doubling of serum creatinine.

D - Arteriovenous Fistula Graft Placement.

Strata specific time to event were compared using the log-rank test. P-values from this test are presented on each graph.

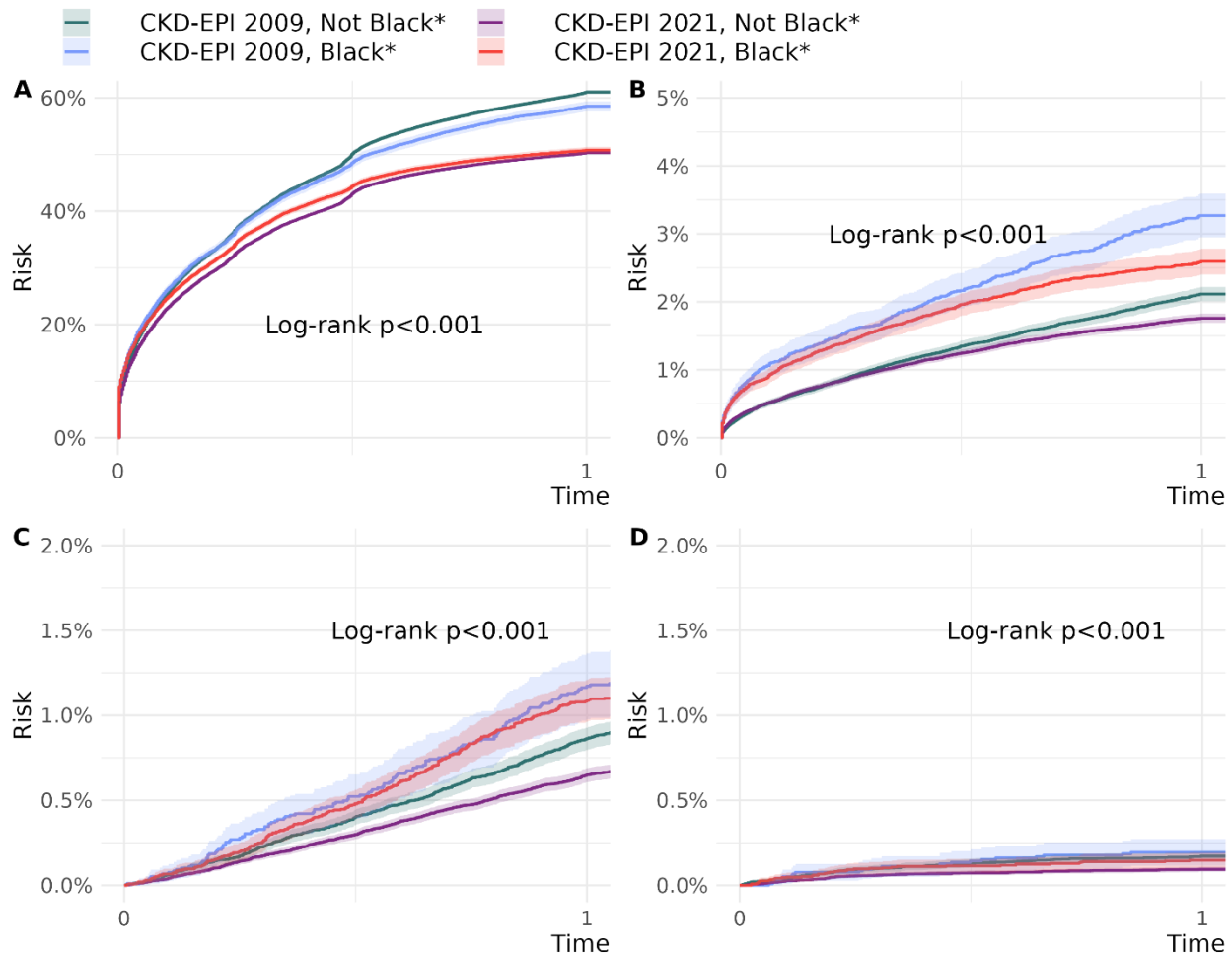
557

558

559

560 Figure 2. Time to Poor Chronic Kidney Disease Outcomes After Diagnosis by Cohort and Race

**Time to Poor Chronic Kidney Disease Outcomes After Diagnosis By Cohort and Race**



For visibility, the four Kaplan-Meier curves have different axes. Plot A is scaled from 0 - 20% on the y-axis; Plot B is scaled from 0 - 5% on the y axis; and Plots C and D are scaled from 0 - 2% on the y axis.

All outcomes are within one year of chronic kidney disease diagnosis:

- A - Hyperkalemia.
- B - Prescription or dispense of potassium-lowering drugs.
- C - Doubling of serum creatinine.
- D - Arteriovenous Fistula Graft Placement.

Strata specific time to event were compared using the log-rank test. P-values from this test are presented on each graph.

561

562

563

564

565 **Declarations**

566 • **Funding**

567 ○ No external funding was obtained for this work.

568 • **Competing interests**

569 ○ **All authors** are employees of Truveta, Incorporated.

570 • **Ethics approval and consent to participate**

571 ○ Normalized electronic health record data are de-identified by expert determination  
572 under the HIPAA Privacy Rule before being made available to researchers. In  
573 accordance with 45 C.F.R. § 46.101 Protection of Human Subjects, our study did  
574 not require Institutional Review Board approval because it used only deidentified  
575 medical records. All data used in this study are publicly available to Truveta  
576 subscribers and may be accessed at [studio.truveta.com](http://studio.truveta.com).

577 • **Availability of Data and Materials**

578 ○ The data and code used in this study is available to all Truveta subscribers and  
579 may be accessed at <http://studio.truveta.com>.

580 • **Author contributions**

581 ○ Conceptualization: **CB, NLS, PJR, MS**. Methodology: **CB, PJR, RB, SG**. Data  
582 acquisition: **CB, SG, BMGC, RB**. Data analysis: **CB, SG, BMGC, PJR**.  
583 Interpretation: **CB, MS, NLS, PJR**. Initial draft: **CB**. Revisions: **CB, SG,**  
584 **BMGC, NLS, MS, PJR**. Final document review and approval for publication: All  
585 authors.

586

587