

Wearable Data Reveals distinct Characteristics of Individuals with Persistent Symptoms after a SARS-CoV-2 Infection

Katharina Ledebur^{1,2,3†*}, Marc Wiedermann^{3†}, Christian Puta^{4,5,6}, Stefan Thurner^{1,2,7}, Peter Klimek^{1,2,8,9}, Dirk Brockmann^{3,10,11}

¹Institute of the Science of Complex Systems, CeDAS, Medical University of Vienna, Spitalgasse 23, A-1090 Vienna, Austria

²Complexity Science Hub, Josefstädter Strasse 39, A-1080 Vienna, Austria

³ Computational Epidemiology Group, Robert Koch Institute, 13353 Berlin, Germany

⁴ Department of Sports Medicine and Health Promotion, Friedrich-Schiller-University Jena, Jena, Germany

⁵ Center for Sepsis Control and Care (CSCC), Jena University Hospital/Friedrich-Schiller-University Jena, Jena, Germany

⁶ Center for Interdisciplinary Prevention of Diseases Related to Professional Activities, Jena, Germany

⁷Santa Fe Institute, 1399 Hyde Park Road, Santa Fe, NM 87501, USA

⁸Supply Chain Intelligence Institute Austria, Josefstädter Strasse 39, A-1080 Vienna, Austria

⁹Division of Insurance Medicine, Department of Clinical Neuroscience, Karolinska Institutet, SE-17177 Stockholm, Sweden

¹⁰ Center Synergy of Systems & Center for Interdisciplinary Digital Sciences, TUD Dresden University of Technology, 01069 Dresden, Germany

¹¹ Faculty of Biology, TUD Dresden University of Technology, 01069 Dresden, Germany

* ledebur@csh.ac.at

† Lead authors of the manuscript.

Abstract

Evidence on long-term health effects of SARS-CoV-2 infection remains scarce. Using a wearable-derived behavioral and physiological dataset ($n = 20,815$), we identified 137 individuals characterized by self-reported persistent fatigue and shortness of breath following a SARS-CoV-2 infection. Compared with symptom-free COVID-19 positive and negative controls, these individuals had higher resting heart rates (mean difference 2.37/1.49 bpm) and lower daily step counts (mean 3,030/2,909 steps fewer), even at least three weeks *prior* to SARS-CoV-2 infection. In addition, persistent COVID-19 symptoms were associated with a significant reduction in mean quality of life (WHO-5, EQ-5D), even *before* infection. Analysis of individual wearable time series suggests that individuals with persistent symptoms may have been more exposed to pre-existing health conditions/lower fitness levels prior to SARS-CoV-2 infection. Our study demonstrates the potential of wearable devices to track physiological and physical activity dynamics under natural conditions in the context of infectious and chronic diseases.

Introduction

SARS-CoV-2 infections exhibit a diverse range of long-term impacts on individual health. The WHO defines post-COVID-19 condition (PCC) as *the continuation or development of new symptoms 3 months after* ~~NOTE: this preprint reports new research that has not been certified by peer review and should not be used to guide clinical practice~~ *infection* [1]. PCC is a multi-systemic condition [2] that has led to increased demand for health care due to increased disease burden [3]. Studies on persistent symptoms post-SARS-CoV-2 infection vary

42 widely in design, including differences in symptoms studied, follow-up duration, and study populations
43 [4,7]. In addition, challenges in data availability - such as a lack of adequate control cohorts, insuf-
44 ficient pre-infection health data, a focus on severe cases, and a reliance on subjective self-reports or
45 infrequent measurements - have limited our understanding of persistent symptoms post-SARS-CoV-2
46 and those affected by it [5,8-12].

47
48 Data from wearable devices such as smartwatches or fitness trackers, offer a novel approach to un-
49 derstanding the long-term impact of SARS-CoV-2 by providing objective measurements of heart rate,
50 physical activity, step count, and sleep duration [13-15]. Combining this data with individual symp-
51 tom reports not only enables the detection of critical events (e.g infection onset) but also provides
52 a deeper understanding of how consequences of a SARS-CoV-2 infection affect individual physiology
53 and behavior [16-18]. These datasets provide a unique opportunity to establish pre-infection health
54 baselines through continuous, non-invasive, and cost-effective measurements.

55
56 During the COVID-19 pandemic, several initiatives were launched to collect such data [18-20]. One
57 such initiative is the Corona Data Donation project [13,21-23] by the Robert Koch Institute, Ger-
58 many's federal agency for public health research. Between April 2020 and December 2022, over 500,000
59 voluntary participants registered for the project, obtained and activated the Corona Data Donation
60 Application (CDA), and over 120,000 submitted more than 600 days of their basic wearable data (such
61 as resting heart rate (RHR) and step count) using a custom-made smartphone application. In addition
62 to daily averages, wearable data is available with exceptional resolution, down to the order of seconds.
63 This permits a deep analysis of wearable-derived time-series, e.g. short high-intensity activities, regu-
64 larities, and potential disruptions under natural conditions. Moreover, the high temporal resolution of
65 the data and its coverage of long periods of time permit a detailed analysis of wearable data signals in
66 all phases of a SARS-CoV-2 infection, i.e. the acute phase (from the week of the positive SARS-CoV-2
67 test to four weeks after the test), the sub-acute phase (four weeks to 12 weeks after the test), and the
68 post-acute phase (12 weeks after the test date) [24]. One can clearly distinguish between individuals
69 exhibiting weak regulation responses following infection (Fig. 1a,b) from those with strong ones (Fig.
70 1c,d). Participants also completed monthly and weekly surveys about COVID-19 tests, symptoms as
71 well as their subjective wellbeing and health-related Quality of Life (QoL).

72
73 We leveraged the unique combination of wearable data and survey data from the Corona Data
74 Donation project to analyze the physical health of individuals reporting persistent symptoms following
75 a SARS-CoV-2 infection. We focused on cohort-level averages of physiological metrics (specifically
76 RHR) behavioral (step count) metrics. To make sense of the observed changes in wearable data, we
77 then compared these objective measures with self-reported QoL (WHO-5 and EQ-5D) to show how
78 signals in passively measured health data translate directly into subjectively experienced changes or
79 limitations in daily life.

80 Our study aims to investigate resting heart rate, step count, subjective symptoms report and
81 self reported quality of life to analyse possible interactions with pre-existing health conditions before
82 infection, time-course of infection and post-infection phases. To this end, we first identified a cohort
83 of individuals that reported a positive SARS-CoV-2 test (*COVID - 19[+]*) along with their negative
84 controls (*COVID - 19[-]*). Within *COVID - 19[+]* we compared those that reported long-lasting
85 symptoms (*COVID - 19[+]PS*) with those that did not (*COVID - 19[+]NS*) to characterize the
86 PCC phenotype.

87 Results

88 Increased frequency of reports on prolonged symptoms after infection

89 We evaluated the relative frequency of the reported symptoms of shortness of breath and fatigue in
90 the *full cohort* (Fig.2) in pre- (< 0 weeks to the reported COVID-19 test), acute- (0-4 weeks), sub-
91 acute (5-12 weeks), and post-phase (>12 weeks) [24]. During the acute phase of infection, fatigue
92 was reported as a symptom by up to 69.76% (SE = 0.54%) of individuals in *COVID - 19[+]* and

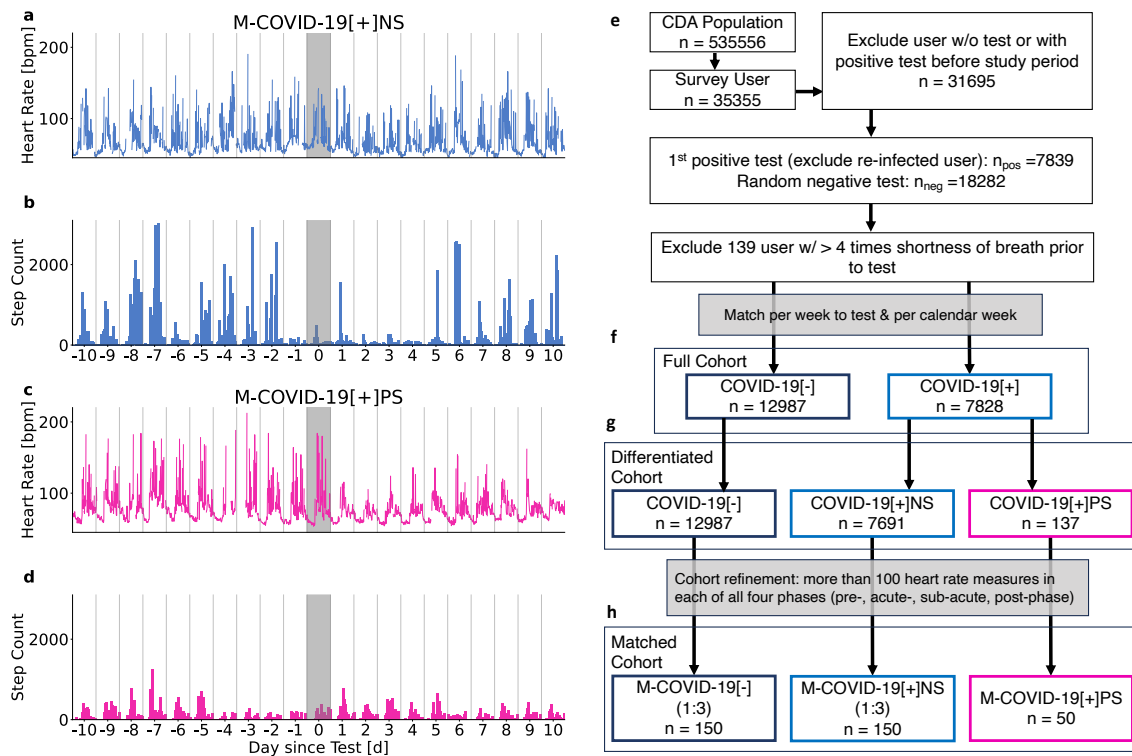


Fig 1. Time series of two representative individuals from the CDA population (a-d) and cohort diagram (e-h). Average daily heart rate [bpm] (a,c) and step counts (b,d) per 15 minutes relative to the day of the reported positive SARS-CoV-2 test (shaded grey area). Heart rate and step count for an individual without persistent symptoms 10 days before and after a reported positive test (a-b). Response in RHR and step count is more pronounced for an individual reporting persistent shortness of breath and fatigue (c-d). Both participants exhibited reduced step count a day prior to the test and in the following days, with the participant reporting persistent symptoms showing prolonged reduction. (e) Workflow of cohort creation. (f) Full cohort encompassing a positive cohort ($COVID - 19[+]$) and negative control cohort ($COVID - 19[-]$). (g) *Differentiated cohort* encompassing the persistent symptoms cohort ($COVID - 19[+]PS$), the positive control cohort ($COVID - 19[+]NS$), and the negative control cohort ($COVID - 19[-]$). (h) *Matched cohort* consisting of the persistent symptoms match cohort ($M - COVID - 19[+]PS$), the positive match cohort ($M - COVID - 19[+]NS$) and the negative match cohort ($M - COVID - 19[-]$).

93 by 19.53% (SE = 0.46%) of individuals in $COVID - 19[-]$. Fatigue was reported significantly more
 94 often in $COVID - 19[+]$ than in $COVID - 19[-]$ for at least 6 weeks starting from the week of the
 95 reported SARS-CoV-2 test, Fig. 2a. Shortness of breath was reported by up to 13.55% (SE = 0.51%)
 96 and 2.46% (SE = 0.23%) by individuals in $COVID - 19[+]$ and $COVID - 19[-]$, respectively. It was
 97 increasingly reported for 15 weeks in $COVID - 19[+]$ (Fig. 2b). The combination of both symptoms
 98 was reported by up to 12.2% (SE = 0.09%) and 1.84% (SE = 0.05%) by individuals in $COVID - 19[+]$
 99 and $COVID - 19[-]$ and at increased frequency in $COVID - 19[+]$ for a minimum of 11 weeks, see
 100 Fig. 2c.

101 Both, shortness of breath and fatigue, are potentially long lasting symptoms that could help identify
 102 individuals suffering from PCC [2, 25, 26]. Other assessed symptoms (cough, chills, loss of smell/taste,
 103 fever, diarrhea, limb ache and runny nose) did not significantly persist beyond the sub-acute phase
 104 when comparing $COVID - 19[+]$ with $COVID - 19[-]$ (Supplementary Figure 1).

105
 106 Based on these findings, we defined a subset of $COVID - 19[+]$ as those individuals who reported
 107 shortness of breath and fatigue on at least 5 occasions from the week of the reported positive SARS-
 108 CoV-2 test ($COVID - 19[+]PS$). Individuals in $COVID - 19[+]PS$ reported on average 6.2 (Std
 109 = 2.33, SE = 0.2) unique symptoms during the acute phase compared to 2.41 (Std = 2.39, SE =
 110 0.01) symptoms reported by individuals with a positive SARS-CoV-2 test but no persistent symptoms

Table 1. Characterization of the study cohorts as defined in Fig. 1. For additional information on the reported health states per cohort, see Tab. S1.

	COVID-19 [+] ¹	COVID-19 [-]	COVID-19 [+] ^{NS2}	COVID-19 [+] ^{PS3}	M-COVID-19 [-]	M-COVID-19 [+] ^{NS4}	M-COVID-19 [+] ^{PS5}
N	7,691	12,987	7,669	137	150	150	50
Vaccinated [%]	90.0***	88.3	90.0***	88.3	91.3	90.0	88.0
Not vaccinated [%]	0.4	0.5	0.4	0.7	0.0	0.0	2.0
Mean Age	52.4***	55.0	52.4***	52.7	53.6	53.6	53.6
(Std)	(11.9)	(12.0)	(11.9)	(11.7)	(10.5)	(10.5)	(10.5)
Female [%]	36.1**	34.1	35.9**	47.4**	50.0	50.0	50.0
Male [%]	54.4	54.7	54.7	40.1**	40.0	40.0	40.0
Unspecified [%]	9.8***	11.9	9.8***	11.7	10.0	10.0	10.0
Mean BMI	26.2	26.5	26.2	27.7*	26.9	25.5	27.4
(Std)	(4.7)	(5.1)	(4.7)	(5.7)	(6.2)	(4.0)	(4.6)

¹ COVID-19[+] vs. COVID-19[-]; ² COVID-19[+]NS vs. COVID-19[-]; ³ COVID-19[+]PS vs. COVID-19[+]NS; ⁴ M-COVID-19[+]NS vs. M-COVID-19[-]; ⁵ M-COVID-19[+]PS vs. M-COVID-19[+]NS. p-values: *p < 0.05, **p < 0.01, ***p < 0.001.

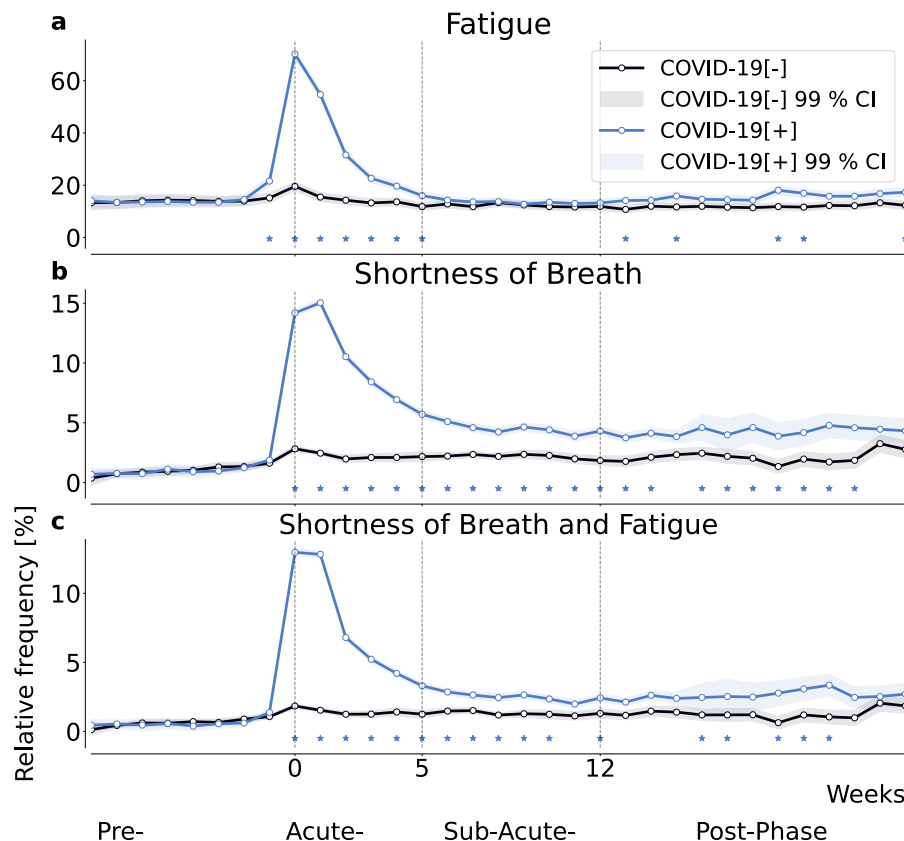


Fig 2. Relative frequency of self-reported fatigue (a), shortness of breath (b), and their combination (c), all relative to the week of the reported SARS-CoV-2 test for positive (P) individuals and a matched negative control (NC) cohort. Shading indicates the 99% confidence interval, i.e, 2.576 times the standard error of a binomial distribution. Asterisks indicate significant differences between the cohorts using a two-sided two proportion z -test with a significance level of 0.01.

111 (*COVID-19[+]NS*) and 0.59 (Std = 1.14, SE = 0.00) symptoms reported by individuals in *COVID-*
112 *19[-]* (Supplementary Figure 2).

113 Supplementary Figure 3 illustrates relative frequencies of all symptoms in all phases, relative to
114 the test date window for all cohorts, comprehensively.

115 Persistent symptoms correspond to more pronounced and prolonged RHR-changes

116 We analyzed wearable-derived data around the SARS-CoV-2 test (Fig 3) for the three age- and gender-
117 matched (1:3) cohorts: *M-COVID-19[+]PS*, *M-COVID-19[+]NS* and *M-COVID-19[-]*
118 (Fig 1h).

119 To assess differences in RHR, we computed the average RHR for each individual over the last seven
120 days, obtaining one data point per day relative to the test date. We adjusted for seasonal differences
121 by subtracting the daily mean RHR of the CDA population (see Supplementary Figure 4a for seasonal
122 differences in RHR).

123 To standardize the data and ensure comparability between individuals, we calculated per-user z-
124 scores by subtracting each user's average RHR and dividing by the standard deviation in the seven
125 days prior to a reported SARS-CoV-2 test. This normalization centers all time series around zero,
126 measured in units of standard deviation. We then averaged these Z-scores across all individuals within
127 each cohort (see Methods for details).

128
129 We observed distinct RHR regulation patterns between the cohorts (Fig. 3 a). Individuals in
130 $M - COVID - 19[+]NS$ and $M - COVID - 19[-]$ had comparable levels of mean RHR except during
131 the acute phase.

132 The minimum Z-score during the acute phase for the $M - COVID - 19[+]PS$ cohort was -0.86,
133 compared to -0.45 for the $M - COVID - 19[+]NS$ cohort, indicating that the average RHR in the
134 $M - COVID - 19[+]PS$ cohort was 0.86 standard deviations below the pre-phase mean, compared to
135 0.45 standard deviations for the $M - COVID - 19[+]NS$ cohort. The range between the maximum
136 and minimum deviation in the period 14 days before to 20 days after the test was more pronounced
137 for the $M - COVID - 19[+]PS$ cohort, with a factor difference of 1.3 in the corresponding z-scores.
138 In addition, $M - COVID - 19[+]PS$ individuals had a transient tachycardia followed by prolonged
139 relative bradycardia, that did not return to baseline ($z\text{-score} \geq 0$) until 18 days after infection. The
140 relative bradycardia of $M - COVID - 19[+]NS$ individuals persisted until 15 days after infection.

141 Notably, $M - COVID - 19[+]PS$ individuals have on average an elevated RHR compared to the
142 two control cohorts already *prior* to the reported SARS-CoV-2 test (inset in Fig. 3a). Specifically,
143 $M - COVID - 19[+]PS$ individuals exhibited an average increase of 2.37 bpm and 1.49 (between 21
144 to 7 days to the test) compared to $M - COVID - 19[+]NS$ and $M - COVID - 19[-]$ individuals,
145 respectively.

146 Physical activity profiles in acute and sub-acute infection regulation

147 To assess differences in physical activity patterns between individuals in the $M - COVID - 19[+]PS$,
148 $M - COVID - 19[+]NS$, and $M - COVID - 19[-]$ cohorts, we analyzed the average step count
149 per user per day in the pre-, acute-, sub-acute and post-phase of the *match cohort* (Fig. 3b). Seasonal
150 differences in activity (i.e., higher and lower step count during summer and winter, respectively, see
151 (Supplementary Figure 4b)), were accounted for by subtracting the average of all participants in the
152 CDA population from the average steps per day, see Methods Section for details. Results are presented
153 relative to the mean steps per day during pre-phase of the $M - COVID - 19[-]$ cohort.

154
155 The respective median step count for $M - COVID - 19[+]PS$ -individuals was consistently below
156 the median of both control cohorts in all four phases. Although the three cohorts are age- and sex-
157 matched, the lower step counts in the $M - COVID - 19[+]PS$ cohort may reflect reduced activity
158 levels. The mean step count per day was also below the mean step count of the two control cohorts
159 in all four phases. During the pre-phase, the mean step count of the $M - COVID - 19[+]PS$ cohort
160 was 3,030 steps less than that of the $M - COVID - 19[+]NS$ cohort and 2,909 steps less than the
161 $M - COVID - 19[-]$ cohort. This indicates a generally lower level of activity compared to individuals
162 from the $M - COVID - 19[+]NS$ and $M - COVID - 19[-]$ cohort. In addition, $M - COVID - 19[+]PS$
163 individuals engaged at least three weeks prior to the infection in 1.12 and 0.99 days of high physical
164 activity less than individuals from the $M - COVID - 19[+]NS$ and $M - COVID - 19[-]$ cohorts,
165 respectively (Supplementary Figure 5).

166 Persistent symptoms relate to lower well-being and quality of life

167 To explore the relationship between wearable data characteristics and perceived well-being and QoL,
168 we analyzed responses to an adapted version of the WHO-5 wellbeing index [27, 28] and a modified

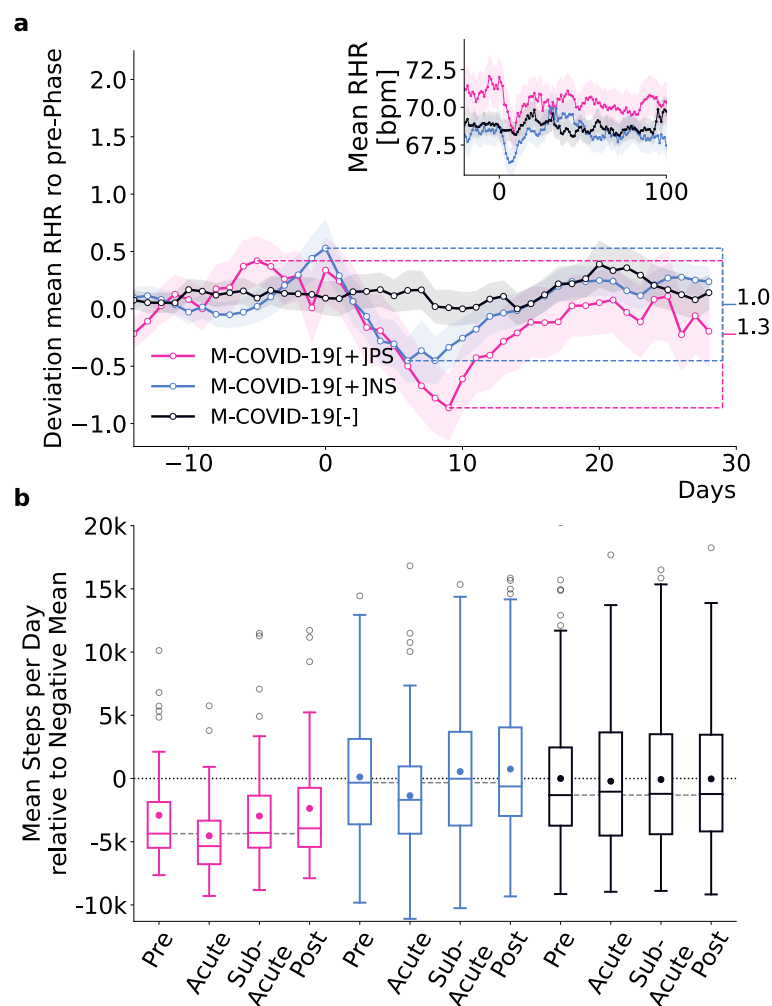


Fig 3. Wearable data analysis of the *match cohort*. (a) Z-transformed mean RHR (average of all 15-minute RHR measurements within the last seven days) relative to the seasonal mean RHR with respect to the mean and standard deviation up to seven days prior to the date of the reported test of all individuals in the *M – COVID – 19[+]PS* (pink), *M – COVID – 19[+]NS* (blue) and *M – COVID – 19[-]* (black) cohorts. The difference between the maximum and minimum z-transformed RHR within 14 to and 20 days after the date of the reported SARS-CoV-2 test was more pronounced (1.3 vs 1.0) and more prolonged for *M – COVID – 19[+]PS* than for *M – COVID – 19[+]NS*. Shading indicates standard errors. The inset shows the average RHR relative to the SARS-CoV-2 test date. Already prior to the SARS-CoV-2 test, *M – COVID – 19[+]PS*-individuals showed an increased RHR compared to *M – COVID – 19[+]NS* and *M – COVID – 19[-]*. (b) Average steps per day relative to the mean of *M – COVID – 19[-]* during pre-phase (adjusted for seasonal variation) in all four phases for all individuals in all three cohorts. Boxes indicate quartiles, whiskers the range of the distribution of mean steps per day, scatter points outside the boxes mark the outliers (we do not show outliers > 20k steps per day), and scatter points within the box mark the mean. The dashed grey line indicates the median of the mean steps per day during the pre-phase. Median values for *M – COVID – 19[+]PS* were consistently below the seasonal mean of the CDA population and below the median of the two control cohorts across all phases, indicating lower activity levels compared to the control cohorts. Mean number of steps per day for *M – COVID – 19[+]PS* were below the mean number of steps per day of the two control cohorts in all four phases. Likewise we found a reduction in the variance of the *M – COVID – 19[+]PS* compared to the two control cohorts.

169 EQ-5D health-related QoL survey (see SI for details) across the *differentiated cohort* (Fig. 1g), see
170 Fig. 4. Due to the timing of the EQ-5D administration (post-2022), responses were not differentiated
171 by pre- or post-SARS-CoV-2 test periods. By then, most participants had already reported a test (see
172 Supplementary Figure 8).

173
174 Our version of the WHO-5 wellbeing index is constructed from five questions rated on a five-point
175 scale (ranging from never (1) to always (5), with (3) is neutral; see SI for details). We examined the
176 response for each individual question as well as the average response (Fig. 4a, c-g). The overall distri-
177 bution of wellbeing in *COVID-19[+]PS* was skewed towards low values, (Fig. 4a) with a mean value
178 of 2.62 (Std = 0.55, SE = 0.05) for the *COVID-19[+]PS* cohort and a mean of 3.22 (Std = 0.63,
179 SE = 0.01) and 3.2 (Std = 0.69, SE = 0.01) for the *COVID-19[+]NS* and *COVID-19[-]* cohort,
180 respectively. We also observed lower wellbeing scores for all individual outcomes (Fig. 4c-g). Users in
181 *COVID-19[+]PS* reported particularly low scores for feeling energetic and rested upon waking up
182 (Fig. 4d), possibly indicating activity and sleep issues. Statistically significant differences ($\alpha = 0.001$)
183 between the *COVID-19[+]PS* and the control cohorts were found in regards to all WHO-5 questions,
184 as determined by the Mann-Whitney U test. Likewise, we found statistically significant differences be-
185 tween the reports of the two control cohorts except for the questions “In the past four weeks I felt fresh
186 and rested when waking up” (d), “In the past four weeks I was calm and relaxed” (g), and the mean of
187 wellbeing. We observed statistically significant differences between all three cohorts, nevertheless the
188 significance level (p-value) was lower when comparing the *COVID-19[+]PS* cohort to the control
189 cohorts than for the intra-control cohort comparison.

190
191 In addition, we examined EQ-5D health-related QoL assessed by five questions answered on an
192 ordinal scale ranging from the best (“I have no problems/No”; coded as 5) to the worst outcome (“I am
193 not able to do that/extreme”; coded as 1) (Fig. 4b, h-l). The average response to the five questions, a
194 measure of overall QoL, was systematically lower for individuals in *COVID-19[+]PS* compared to
195 the control cohorts (Fig. 4b) with a mean of 2.79 (Std = 0.62, SE = 0.06). Again, *COVID-19[+]NS*
196 and *COVID-19[-]* show similar values across modified EQ-5D questions and overall with a mean
197 of 3.55 (Std = 0.46, SE = 0.01) and 3.52 (Std = 0.52, SE = 0.01) for *COVID-19[+]NS* and
198 *COVID-19[-]*, respectively. Likewise, *COVID-19[+]PS*-individuals reported lower QoL across
199 all five questions (Fig. 4h-l) compared to the control cohorts, particularly concerning problems moving
200 around and pain and physical symptoms (Fig. 4b and k), again possibly indicating the presence of
201 comorbidities or pre-existing conditions.

202 The answers of the *COVID-19[+]PS* cohort were significantly different from the control cohorts
203 for all QoL questions ($\alpha = 0.001$). Notably, also the answers of the *COVID-19[+]NS* compared
204 to the *COVID-19[-]* cohort were significantly different except for the the mean of QoL (b) and
205 the question “Do you have problems moving around?” (h), and “Do you have problems when it comes
206 to general activities (work, studying, housework, family- or leisure activities)?” (j). However, the
207 significance level was again lower when comparing the *COVID-19[+]PS* cohort to the two control
208 cohorts than for the intra-control cohort comparison.

209
210 We also analyzed the responses to the wellbeing and QoL questions before (Supplementary Figure
211 6) and after (Supplementary Figure 7) the reported SARS-CoV-2 tests and found systematically lower
212 values of wellbeing and QoL for the *COVID-19[+]PS* cohort before as well as after the reported
213 test compared to the *COVID-19[+]NS* and *COVID-19[-]* cohorts. This suggests that individu-
214 als with lower levels in wellbeing and QoL may be at higher risk of developing long-term symptoms,
215 possibly due to pre-existing general physical or mental health problems that may be related to another
216 underlyingly condition.

217
218 In addition, we performed simple logistic regression analysis to identify characteristics that might
219 serve as predictors of the development of persistent symptoms. Given the imbalance between the *M-
220 COVID-19[+]PS* and *M-COVID-19[+]NS* cohorts, we focused on the area under the precision-
221 recall curve (AUPRC). Using 10-fold cross-validation with stratified sampling, the model achieved an

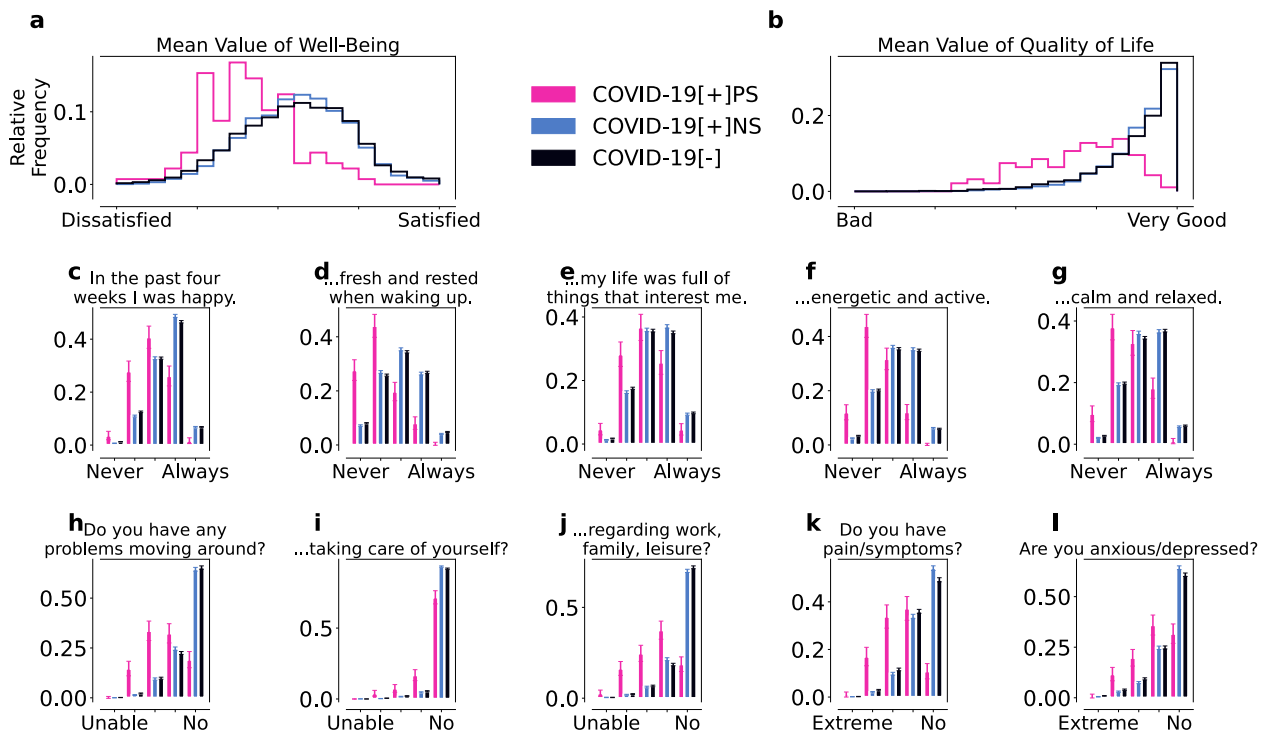


Fig 4. WHO-5 wellbeing (a,c-g) and modified EQ-5D/QoL (b,h-l) for the *COVID – 19[+]PS* (pink), *COVID – 19[+]NS* (blue), and *COVID – 19[-]* (black) cohorts. The individual WHO-5 and modified EQ-5D scores were both averaged to obtain the overall wellbeing (a) and QoL (b) scores, respectively. Overall, *COVID – 19[+]PS* individuals reported more issues with wellbeing (c-g) and QoL (h-l) than the control cohorts. Error bars indicate standard errors. The responses from all *COVID – 19[+]PS* cohort were significantly different ($\alpha < 0.001$) from the responses of the two control cohorts, as determined by the Mann-Whitney U test. All responses of the two control cohorts were significantly different as well except for the mean value of wellbeing (a), the mean value of QoL (b), and the questions “In the last four weeks I was calm and relaxed” (g) and “Do you have problems going around” (h).

222 AUPRC of 0.75, indicating moderate predictive performance. Feature importance analysis, based on
223 mean coefficients and odds ratios across cross-validation folds, identified number of unique symptoms
224 reported during the acute-phase of infection, chronic bronchitis, unspecified sex, and allergies as the
225 most influential features, with mean odds ratios (OR) of 4.40, 1.65, 1.53, and 1.35, respectively. Mean
226 pre-infection RHR also emerged as a notable predictor, with a mean OR of 1.31. These findings suggest
227 that integrating wearable-derived data such as RHR with traditional clinical variables can enhance the
228 identification of individuals at higher risk of developing persistent symptoms. This highlights the
229 potential value of wearable technology in supplementing conventional approaches for early detection
230 and management of PCC.

Table 2. Predictive features for developing long COVID based on logistic regression analysis. The table shows the mean coefficients, standard deviations, and mean odds ratios from 10-fold cross-validation.

Feature	Mean Coefficient	Std Coefficient	Mean Odds Ratio
Number of Symptoms	1.482	0.119	4.40
Chronic Bronchitis	0.498	0.089	1.65
Gender (Unspecified)	0.427	0.178	1.53
Allergies	0.298	0.135	1.35
Mean RHR Pre-Phase	0.273	0.149	1.31
Mental Health Condition	0.260	0.109	1.29
Age	0.142	0.152	1.15
Gender (Male)	0.058	0.157	1.06
Steps During Acute Phase	0.058	0.161	1.06
Asthma	0.053	0.103	1.05
Increased Blood Lipids/Cholesterol	-0.030	0.084	0.97
Other Conditions	-0.075	0.076	0.93
No Disease	-0.078	0.163	0.93
Hypertensive Disease	-0.226	0.132	0.80
Mean RHR Acute-Phase	-0.372	0.179	0.69
Gender (Female)	-0.485	0.123	0.62
Mean Steps per Day Pre-Infection	-0.750	0.143	0.47
WHO-5 Wellbeing Score	-1.038	0.115	0.35

231 Discussion

232 Our study comprehensively characterizes how persistent self-reported symptoms in acute and post-
233 acute COVID-19 infection relate to changes in resting heart rate and physical activity measured by
234 consumer grade wearable sensors. This observational study provides a descriptive analysis of the
235 variation in heart rate, physical activity, and self-reported health status among different cohorts, and
236 highlights patterns that may be linked to persistent symptoms following SARS-CoV-2 infection. Based
237 on RHR, step count, and survey-based QoL, we identified patterns associated with a phenotype of per-
238 sistent COVID-19 symptoms compared to COVID-19 positive and negative controls. Individuals with
239 this phenotype are characterized by persistent (sub-acute and post-phase) shortness of breath and
240 fatigue, and tended to have elevated RHR levels and less physical activity *prior* to infection, as well
241 as, on average, lower well-being and health-related QoL scores compared with positive and negative
242 controls.

243
244 We found notable differences in the prevalence of fatigue, shortness of breath, and their co-
245 occurrence in SARS-CoV-2 positive and negative individuals. Both symptoms have been reported
246 as typical, persistent symptoms of COVID-19 which are common in individuals with PCC [2, 5, 6, 29].
247 Indeed, according to a WHO case definition, fatigue and dyspnoea (shortness of breath) are the main
248 symptoms of PCC [30]. Our analysis confirmed that these symptoms were significantly more frequent
249 in the positive cohort than in the controls, with a marked persistence beyond the acute phase. Other
250 symptoms did not show the same prolonged pattern, highlighting the specificity of these particular
251 symptoms in relation to PCC.

252 A comparison of the wearable data (RHR and step count) revealed that during the acute phase
253 (0-4 weeks after positive SARS-CoV-2 test) of COVID-19, individuals who reported persistent symp-
254 toms exhibited (1) higher RHR before infection, (2) on average more pronounced bradycardia up to

255 18 days after the positive SARS-CoV-2 test, and (3) lower physical activity before during and after in-
256 fection compared to positive controls. Similar differences have been observed in previous studies when
257 comparing SARS-CoV-2 positive and negative individuals [13, 14]. Individuals that later reported
258 persistent symptoms already exhibited an elevated average RHR (mean increase of 2.37 bpm/1.49
259 bpm) compared to positive/negative control cohorts prior to their SARS-CoV-2 testing. In addition,
260 these individuals were less likely to engage in high-intensity activities (i.e. regular physical activity
261 and/or training) and were generally less active than the two control cohorts. Specifically, their daily
262 step count was on average 3,030/2,909 steps less and they engaged in high activity 1.12/0.99 days
263 less during the pre-phase than the positive/negative controls. Given the known inverse relationship
264 between RHR and physical activity [31, 32], these patterns suggest that lower physical fitness levels,
265 possibly due to pre-existing conditions, could increase susceptibility to developing long-term symptoms.

266
267 When comparing the *COVID – 19[+]* and *COVID – 19[-]* cohorts and the *COVID – 19[+]NS*
268 and *COVID – 19[-]* cohorts, we found significantly higher reported vaccination rates in the positive
269 cohorts, but no significant difference in the proportion reporting no vaccination. This suggests that
270 the observed difference in vaccination rates may be due to reporting bias rather than actual differences
271 in health status.

272 The positive cohorts (*COVID – 19[+]* and *COVID – 19[+]NS*) were also generally younger than
273 the negative cohort (*COVID – 19[-]*). This age difference may lead to an underestimation of our
274 results. There were also fewer individuals in the negative cohort who reported their gender, suggesting
275 a potential reporting bias.

276 When comparing the *COVID – 19[+]PS* (persistent symptoms) and *COVID – 19[+]NS* (no
277 persistent symptoms) cohorts, we observed a significantly higher proportion of women in the persistent
278 symptom group, suggesting an association between female gender and the development of persistent
279 symptoms, consistent with the existing literature [4, 33].

280 We observed a significantly higher BMI in the *COVID – 19[+]PS* cohort compared to the *COVID –*
281 *19[+]NS* cohort. While this suggests that individuals with persistent symptoms (*COVID – 19[+]PS*)
282 may have a higher BMI, it is important to note that the number of participants who provided both
283 weight and height information was too small to reliably include BMI in the logistic regression analysis.

284 The *COVID – 19[-]* cohort reported fewer cases of "no disease in the past 12 months," indicating
285 more comorbidities compared to the positive cohorts. They had higher rates of conditions such as
286 hypertension, elevated cholesterol, chronic bronchitis, and mental health diagnoses. This suggests that
287 the negative cohort may be less healthy overall, which may cause our results to represent a lower bound
288 of the true effect, as the negative cohort may be less healthy overall.

289 When comparing the *COVID – 19[+]PS* cohort to the *COVID – 19[+]NS* cohort, the *COVID –*
290 *19[+]PS* group reported more allergies, asthma, chronic bronchitis, mental illness, and "other con-
291 ditions". This suggests a higher burden of comorbidities among those with persistent symptoms.
292 Similarly, in the matched cohorts (*M – COVID – 19[+]PS* vs. *M – COVID – 19[+]NS*), the
293 *M – COVID – 19[+]PS* cohort had higher rates of allergies, chronic bronchitis, and mental illness,
294 supporting the notion that pre-existing health conditions may play a role in the development of per-
295 sistent symptoms. This is in line with findings on the association of these conditions and the risk of
296 developing PCC [34, 35].

297
298 It is important to note that our findings should not be interpreted in a way that increased RHR,
299 lower step count, and pre-existing health conditions solely determine the manifestation of persistent
300 symptoms. Instead they emphasize that individuals displaying these characteristics should be given
301 extra attention and protection measures.

302
303 Our analysis of self-reported well-being and QoL showed significantly lower levels for individuals
304 with persistent symptoms compared to the control cohorts, both before and after the reported SARS-
305 CoV-2 test. This suggests the possibility of underlying physical or mental health problems, such as
306 chronic conditions or allergies (see Supplementary Table 1), that may predispose individuals to per-
307 sistent symptoms. Specifically we find a mean difference of 0.6/0.58 in mean well-being score and a

308 mean difference of 0.76/0.73 between *COVID – 19[+]PS* and *COVID – 19[+]NS/COVID – 19[–]*
309 individuals. This is in line with recent findings, where individuals reporting persistent symptoms also
310 reported poorer mental health in comparison to a control group [36], as well as a study reporting
311 disturbed sleep as an important risk factor for PCC [37].

312
313 In addition to our descriptive study, we analyzed the importance of variables associated with the
314 risk of developing persistent symptoms in a predictive model. We found that the number of symptoms
315 during the acute infection phase, chronic bronchitis, unspecified sex, allergies, and mean pre-infection
316 RHR were among the most influential factors. Wearable-derived data may thus complement previously
317 identified risk factors for the development of persistent symptoms [38, 39].

318 While "unspecified gender" emerged as a risk factor, this likely reflects differences in reporting
319 behavior rather than biological risk. Individuals who do not report gender may differ in unmeasured
320 characteristics, such as privacy concerns or health-seeking behaviors, that affect symptom reporting or
321 health outcomes. Thus, this finding should be interpreted with caution, as it may reflect data com-
322 pleteness issues or participant behavior rather than a direct risk for developing persistent symptoms.

323
324 The use of wearable data allows detailed examination of activity and heart rate patterns, provid-
325 ing insight not only into how SARS-CoV-2 infection may affect behavior and physiology in the long
326 term, but also into the health status of individuals prior to contracting the disease. The data provides
327 distinct advantages for evaluating the general health state of individuals holistically, continuous, under
328 natural conditions, and outside of healthcare facilities [40, 41]. Wearables thus have the potential to
329 improve patient-centered care by empowering individuals to monitor their health and manage their
330 symptoms more effectively [42, 43]. In addition, data donation projects allow us to investigate individ-
331 uals across a broad spectrum of SARS-CoV-2 infection severity, since participants enter the study prior
332 to an infection. This approach enables us to establish a healthy state baseline, based on measurements
333 prior to an infection, for individuals without biasing the study towards specific infection severities. In
334 other words, participants are not selectively enrolled into the study based on their expected severity
335 of subsequent SARS-CoV-2 infection symptoms or outcomes. This is of particular significance in the
336 context of PCC research, since this condition is not exclusively linked to severe COVID-19 cases [44].

337
338 Several factors should be considered when interpreting our results. The Corona Data Donation
339 Project had an overrepresentation of males and an underrepresentation of adolescents and the elderly
340 (65+), who are at higher risk for long-term consequences of SARS-CoV-2 [13, 45]. The study population
341 is likely to be more health-conscious than the general population because of the association of wearable
342 device use with health-related habits [46]. We did not explicitly account for vaccination status, as most
343 participants are partially vaccinated or did not report their status (see Table 1). This, along with other
344 cohort-specific characteristics, highlights the need to interpret our findings in the context of our study
345 population, which may not be fully generalizable to other groups. We also did not differentiate between
346 variants of concern (VoC), which may trigger different immune responses and heart rate regulation.
347 However, most participants reported their SARS-CoV-2 test date in 2022, when the Omicron variant
348 (B.1.1.529) was dominant in Germany.

349 Keeping all these considerations in mind, it is reasonable to assume that our results under-represent
350 the true disease burden of persistent symptoms and rather provide a lower bound for expected long-
351 term imprints of an infection [36, 47–50]. We also did not control for wear time, but Supplementary
352 Figure 9 shows similar distributions across cohorts.

353 The sample size of the study is limited by the requirement for sufficient wearable data (at least 100
354 heart rate measurements) in all four phases (pre, acute, sub-acute, and post) around a SARS-CoV-2
355 test. We also used strict criteria for defining persistent symptoms (at least five cases of shortness of
356 breath and fatigue after the test), focusing on the most common symptoms observed in PCC [5–7,
357 29, 30]. While this focused approach inevitably introduces a degree of selection bias by targeting a
358 specific subset of individuals with persistent symptoms, it is critical for accurately identifying those
359 who are clearly affected and understanding their unique health profiles. We recognize that this targeted
360 selection may limit the generalizability of our findings to broader populations. However, it allows for

361 a more precise examination of the physiological and behavioral characteristics unique to those with
362 persistent symptoms, thereby increasing the relevance and specificity of our findings.

363 The two cohorts studied for symptom reporting are not matched by age and gender, only by calen-
364 dar week and time relative to a SARS-CoV-2 test. The small differences in age (2.6 years) and gender
365 (1.5%) distributions between these cohorts are unlikely to affect the results (Table 1). Previous studies
366 have found gender differences in symptoms only after the reported SARS-CoV-2 test for symptoms
367 not included in our study [5].

368
369 Further studies are needed on the use of wearables to monitor physiological parameters and activity
370 levels over time in individuals with PCC. Particularly, focusing on other persistent symptoms apart
371 from shortness of breath and fatigue can aid in recognizing different patterns of symptom progression
372 and immune response triggers. Moreover, high-frequency heart rate and activity can potentially be
373 relevant for studying postural orthostatic tachycardia syndrome (POTS), a potential consequence of
374 an infection with SARS-CoV-2 and a likely criterion for identifying PCC [51, 52]. Further combination
375 of survey and wearable data would provide a deeper understanding of the relationship between subjec-
376 tive symptom reports and objective wearable data, allowing physiological and behavioural measures to
377 be properly translated into experienced alterations to patients' everyday lives. Further integration of
378 wearable technology with telemedicine platforms facilitating the monitoring of symptoms in real-time
379 and enabling remote consultation with healthcare professionals for individuals suffering from PCC can
380 benefit patients and ease the burden on healthcare providers.

381
382 The unique advantage of wearable technologies is that continuous real-time data can be collected
383 cheaply and on a large scale to provide fine-grained information on individual health, which is an ideal
384 complement to traditional point-wise measurements in clinical research.

385 Methods

386 Data Characteristics

387 From April 12, 2020, to December 31, 2022, a total of 535,556 individuals downloaded and used the
388 Corona-Datenspende App (CDA) [23], actively contributing a minimum of one essential data point
389 each. The wearable data, i.e. RHR and step count, was submitted by linking the the app with
390 consumer-grade smartwatches and fitness trackers. Participants could additionally consent to engage
391 in periodic surveys on matters related to COVID-19, e.g., test results, weekly symptoms and monthly
392 questions on QoL.

393 Weekly symptom reports were collected starting from October 21, 2021. By November 9, 2022,
394 35,355 individuals had participated in at least one survey. Participants could choose to report no
395 symptoms or select one or more symptoms from a predefined list: Shortness of Breath, Fatigue,
396 Headache, Sore Throat, Loss of Smell and Taste, Diarrhea, Runny Nose, Cough, Chills, Limb Ache,
397 and Fever.

398 Comparisons were made between individuals who reported a positive SARS-CoV-2 test ($COVID - 19[+] = 7,691$ individuals) and a negative control cohort ($COVID - 19[-] = 12,987$ individuals) (see
399 Methods and Fig 1e). Participants in the $COVID - 19[+]$ cohort reported symptoms an average of
400 18.4 times (standard deviation (Std) = 11.2). Participants in the NC cohort submitted reports 11.1
401 times on average (Std = 11.4). The $COVID - 19[+]$ cohort was further split in sub-cohorts, one with
402 individuals that reported persistent symptoms ($COVID - 19[+]PS = 137$ individuals) and the rest
403 ($COVID - 19[+]NS = 7669$ individuals), which together with the $COVID - 19[-]$ cohort yielding
404 in three cohorts, see Methods and Fig 1e) for details on cohort creation.

405
406
407 For these cohorts we analysed survey responses on wellbeing and QoL. The questions on WHO-5
408 well-being were distributed since October 2021 and rolled out together with the symptom surveys.
409 35,492 individuals submitted corresponding answers. Particularly, all 137 individuals reporting per-
410 sistent symptoms, 7,609 individuals from the $COVID - 19[+]NS$ cohort and 12,866 users from the
411 $COVID - 19[-]$ cohort answered the survey on well-being at least once. The WHO-5 wellbeing index

412 [27, 28] is answered on a six-point scale ranging from never(0) to always (5). For technical reasons the
413 CDA uses a slightly altered version that utilizes a five-point scale ranging from 1 to 5 with 3 being
414 neutral. The five questions ask: 'In the past four weeks I was happy and in a good mood.', '... I felt
415 calm and relaxed.', '... I felt energetic and active.', '... I felt fresh and rested when waking up.', and
416 '... my everyday life was full of things that interest me.'

417 The modified EQ-5D survey on QoL was distributed since April 2022 to 12,179 participants. 92
418 individuals with persistent symptoms, 2,647 from the *COVID-19[+]NS* cohort and 12,866 individuals
419 from the *COVID-19[-]* cohort answered the five questions on QoL at least once. The survey asks to
420 indicate what best describes the state of health today: 'Do you have any problems moving around?', 'Do
421 you have any problems taking care of yourself, washing or dressing yourself?', 'Do you have problems
422 when it comes to general activities (work, studying, housework, family- or leisure activities)?', 'Do
423 you have pain/physical symptoms?', and 'Are you anxious or depressed?'. The answers are on an
424 ordinal scale ranging from the best possible outcome ("I have no problems/No"; coded as 5) to the
425 worst possible outcome ("I am not able to do that/extreme"; coded as 1). For three age- and gender
426 matched cohorts (1:3) denoted *persistent symptoms match* ($M - COVID - 19[+]PS = 50$), *positive*
427 *match* ($M - COVID - 19[+]NS = 150$) and *negative match* ($M - COVID - 19[-] = 150$), we analyzed
428 high frequency longitudinal data on RHR and step count (see Methods and Fig. 1e). Data on RHR
429 and step count were collected in intervals as low as 60 seconds. We show four exemplary timeseries
430 spanning three weeks each in Fig. 1a-d.

431 Cohort creation

432 To study reported symptoms relative to a reported positive SARS-CoV-2 test (*COVID-19[+]PS*)
433 and compared them with a negative control (*COVID-19[-]*) cohort we looked at 35,355 individuals
434 who filled out the corresponding surveys. We excluded 3,660 individuals who reported a positive SARS-
435 CoV-2 test in a previously distributed one-time questionnaire to avoid previous infections with SARS-
436 CoV-2 in the population. We divided the population into two groups: those with at least one positive
437 SARS-CoV-2 test and those with all negative tests. Both cohorts are limited to the period between
438 October 21, 2021, and November 9, 2022. For individuals with positive tests, we used the date of
439 their first positive test if multiple tests were positive. To avoid including individuals with re-infections,
440 we excluded those reporting a test more than 28 days after the chosen test date, resulting in 7839
441 individuals. Among the 18,282 individuals reporting only negative tests, we randomly selected a test
442 date. We also excluded users who reported shortness of breath more than four times before their test
443 result, as a proxy for pre-existing respiratory conditions. To account for seasonal effects in symptom
444 reporting, we adjusted the negative cohort to match the relative frequency of negative reports per
445 calendar week and the temporal distance to the test week observed in the positive cohort. This yields
446 a positive cohort (*COVID-19[+]NS*) of 7,691 individuals and a negative control (*COVID-19[-]*)
447 of 12,987 individuals (full cohort, Fig. 1f).

448 For the analysis of WHO-5 and modified EQ-5D, we selected individuals from *COVID-19[+]* who
449 reported both shortness of breath and fatigue at least five times after their positive SARS-CoV-2 test.
450 This subset, comprising 137 individuals, forms the persistent symptoms cohort (*COVID-19[+]PS*).
451 We compared their survey responses with those of the remaining 7,669 individuals in the Positive
452 Cohort (referred to as the positive control cohort (*COVID-19[+]NS*)) and the 12,987 individuals
453 from the negative control (*COVID-19[-]*) cohort (differentiated cohort Fig. 1g).

454 To study differences and changes in physiological parameters (RHR) and behavior (step count)
455 between the *COVID-19[+]NS*, *COVID-19[-]*, and *COVID-19[+]PS* cohorts, we analyzed
456 fine-grained wearable data collected by wearable devices. We standardized the data by aggregating
457 high-frequency measurements into 15-minute intervals. Four phases relative to the reported SARS-
458 CoV-2 test are defined: pre-phase (start of data collection until the week of the positive test), acute
459 phase (zero to four weeks after the test), sub-acute phase (five to twelve weeks), and post-phase (twelve
460 weeks or more after the positive test), aligning with recent definitions of COVID-19 disease stages [24].
461 After excluding individuals with less than 100 15-minute interval heart rate measurements across all
462 phases, the persistent symptoms match ($M - COVID - 19[+]PS$) cohort comprises 50 individuals.
463 We created (1:3) age- and gender-matched positive match ($M - COVID - 19[+]NS$) and negative

464 match ($M - COVID - 19[-]$) cohorts, each with 150 individuals selected from the $COVID - 19[+]NS$
465 and $COVID - 19[-]$ cohorts, respectively (match cohort, Fig. [1h](#)). We chose a 1:3 matching, common
466 in medical research, to increase statistical power and to improve the generalizability of our findings by
467 ensuring that the control group more accurately represents the population from which the cases and
468 controls were drawn.

469 For characteristics of the cohorts see Tabs. [1](#) and S1.

470 Data processing and statistical analysis

471 Statistical analysis of group differences.

472 To analyze group differences in our study cohorts, we used different statistical tests tailored to the
473 nature of the data. Continuous variables, such as age and BMI, were analyzed using the Kruskal-
474 Wallis test. Categorical variables, including sex, vaccination status, and comorbidities, were assessed
475 using Fisher's exact test.

476 We performed these comparisons in three main cohort analyses: In the *full cohort* analysis, we
477 compared the positive and negative cohorts ($COVID - 19[+]$ vs. $COVID - 19[-]$). In the *differentiated*
478 *cohort* analysis, we compared the positive without persistent symptoms cohort and the negative cohort
479 ($COVID - 19[+]NS$ vs. $COVID - 19[-]$) as well as the positive with persistent symptoms cohort and
480 the positive without persistent symptoms cohort ($COVID - 19[+]PS$ vs. $COVID - 19[+]NS$). In
481 the *matched cohort* analysis, we compared differences between the matched positive without persistent
482 symptoms cohort and the matched negative cohort ($M - COVID - 19[+]NS$ vs. $M - COVID - 19[-]$)
483 and the matched positive with persistent symptoms cohort and the matched positive without persistent
484 symptoms cohort ($M - COVID - 19[+]PS$ vs. $M - COVID - 19[+]NS$).

485 For all statistical tests, significance levels were set at three thresholds: $\alpha = 0.05$, $\alpha = 0.01$, and
486 $\alpha = 0.001$.

487 Weekly reports on symptoms.

488 For the $COVID - 19[+]$ and the $COVID - 19[-]$ cohorts, we compared the relative frequency of
489 symptom reports relative to the calendar week in which a SARS-CoV-2 test was reported. We de-
490 tected differences between the two groups at 99% confidence using a two-sided two proportion z -test
491 and a significance level of 0.01. To investigate whether pairs of symptoms are significantly concordant,
492 we compared the relative frequency of reports where individuals report both symptoms.

493 Resting heart rate and step count.

494 To ensure data consistency, we only analyzed one source/device per participant (e.g., Apple Health,
495 Fitbit, or Garmin). If a user has multiple devices, we prioritized the one with the most data points,
496 potentially leading to missing information if different devices are used for different activities. Observa-
497 tions are based on measurement intervals ranging from less than one minute to several hours, resulting
498 in overlapping intervals in a few instances and a slight overestimation of daily activity. This is rare
499 compared to the total data volume. In our data pre-processing approach, intervals longer than one
500 minute were split into one-minute segments and duplicate intervals are removed. These one-minute
501 intervals were then resampled to 15-minute intervals by calculating the mean of the RHRs and the
502 sum of the steps. In cases where a user contributes data from multiple sources, only the source with
503 the highest number of entries is considered.

504 To compare RHRs between the $M - COVID - 19[+]PS$ cohort, the $M - COVID - 19[+]NS$
505 cohort and the $M - COVID - 19[-]$ cohort, for each user and each day we first computed (relative
506 to the reported SARS-CoV-2 test) an average of all 15 minute intervals within the past seven days.
507 We only computed the average if there were more than 20 entries within that seven-day window. We
508 then computed the average RHR over all users in a cohort, again relative to the reported SARS-CoV-2
509 test. To evaluate tachycardia during the acute phase of the infection, we z -transformed the average
510 of all 15 minute intervals within the last seven days per user relative to the mean RHR prior to the
511 test (window of 62 days to 7 days before the date of the reported test). We additionally controlled for
512 seasonal fluctuations by z -transforming the average RHR relative to the seasonal mean of the CDA
513 population (Supplementary Figure 4a).

514 To examine differences in behavioral changes around a SARS-CoV-2 infection between cohorts, we
515 investigated the average step count for the cohort members. As the daily step count shows seasonal

516 variations [13], we always assessed this metric by subtracting the respective mean value per day and
517 device within the entire set of participants of the whole Corona Data Donation project, see also
518 Supplementary Figure 4b. We show the difference to the mean daily step count (adjusted for seasonal
519 variation) of the $M - COVID - 19[-]$ cohort during pre-phase. A positive/negative value then
520 indicates that an individual is more/less active than the $M - COVID - 19[-]$ cohort during pre-phase
521 average. To assess variations or shifts in high-intensity physical activity, such as sports, we established
522 a criterion where a day is considered to be high-intensity physical activity if the step count is more
523 than one standard deviation above the seasonal average step count.

524 **Monthly surveys on well-being and quality of life.**

525 For the analysis of the surveys on well-being/QoL we calculated the mean response to each question
526 per user over all answers (not discriminating between before and after day of reported SARS-CoV-2
527 test) and showed the relative frequency of each possible answer value per cohort. Error bars indicate
528 the standard error. The answers to each one of the five WHO-5 Well-Being questions are designed so
529 that they can be averaged to obtain a mean value of well-being. Note, that the WHO-5 well-being
530 is usually measured on a six-point scale. Due to technical reasons however, our survey provides an
531 ordinal five-point scale. This also applies to the five modified EQ-5D QoL questions. The modification
532 is attributed to different translations of questions and answers, along with one missing question. For
533 both the WHO-5 and the modified EQ-5D, we show a histogram of the distribution of the respective
534 mean scores for all three cohorts studied.

535 **Logistic Regression.**

536 We performed logistic regression analysis to identify variables associated with the risk of developing
537 persistent symptoms after SARS-CoV-2 infection. To ensure robustness, we used 10-fold stratified
538 cross-validation to assess model performance and calculate the area under the precision-recall curve
539 (AUPRC). Feature importance was assessed by calculating mean coefficients, standard deviations and
540 odds ratios across cross-validation folds.

541 **Ethical consideration**

542 Participation in the study was voluntary and self-recruited. All individuals participating in the Corona
543 Data Donation Project provided informed consent electronically via the app. Consent was provided
544 separately for submitting wearable data and participating in the in-app surveys. Participation is
545 only possible for German residents age 16 and older and data is only stored pseudonymously, using a
546 randomly generated unique user ID. Participant age is rounded to 5 years. The study is subject to strict
547 compliance with the data protection provisions set out in the EU General Data Protection Regulation
548 (GDPR) and the Federal Data Protection Act (BDSG). A comprehensive privacy impact assessment
549 was conducted through an external law-firm specialized in e-Health and research projects. The study
550 was reviewed and approved by the Data Privacy Officer at the Robert Koch Institute (internal operation
551 number 2021-009) in agreement with the Federal Commissioner for Data Protection and Freedom of
552 Information (BfDI), Germany's highest independent supreme federal authority for data protection and
553 freedom of information. Ethical approval for this study was obtained from the ethics board at the
554 University of Erfurt (approval number 20220414).

555 **Data availability**

556 The data analyzed in this study concerns the health condition of individual persons. As per the General
557 Data Protection Regulation (GDPR) such data constitutes sensitive information and is protected as a
558 "special category of personal data". For this reason, the data must not be directly shared in a public
559 repository, but interested parties can request access to the data following registration with the Data
560 Privacy Officer at the Robert Koch-Institute. All initial data inquiries should be addressed to Dirk
561 Brockmann (dirk.brockmann@tu-dresden.de) or the general contact address of the Corona Data
562 Donation project (synosys@tu-dresden.de).

563 Code availability

564 Python 3.11.6 was used to perform the simulations and data analysis. The simulation and analysis
565 code for this study will be available under MIT license in the repository at [https://github.com/
566 katharinaledibur/characteristics_persistent_symptoms.git](https://github.com/katharinaledibur/characteristics_persistent_symptoms.git).

567 Acknowledgements

568 This study was financed with funds from the overall funding program of the City of Vienna MA7. Fund-
569 ing was also received from the Federal Ministry of Health of Germany (Grants “Corona-Datenspende”,
570 CD21, DS22 and DS23).

571 Author contributions

572 MW and KL conceptualized the study. MW supervised the project. DB devised and created the Corona
573 Data Donation project. MW and KL devised the analytic methods. KL carried out the analysis and
574 produced the plots and graphics. KL and MW directly accessed and verified the underlying data
575 reported in the manuscript. KL and MW wrote the first draft of the manuscript. CP, DB, ST and PK
576 made critical comments regarding the manuscript. CP contributed medical expertise regarding the
577 medical interpretation of the findings and in developing medical hypotheses. KL, MW, CP, PK, DB
578 and ST conducted reviewing and editing of the manuscript. All authors read and approved the final
579 manuscript.

580 Competing interests

581 The authors declare no competing interests.

582 References

- 583 1. World Health Organization. *Post COVID-19 condition (Long COVID)* <https://www.who.int/europe/news-room/fact-sheets/item/post-covid-19-condition#:~:text=It%20is%20defined%20as%20the,months%20with%20no%20other%20explanation>.
- 584 2. Davis, H. E., McCorkell, L., Vogel, J. M. & Topol, E. J. Long COVID: major findings, mechanisms and recommendations. en. *Nature Reviews Microbiology* **21**, 133–146. ISSN: 1740-1526, 1740-1534. <https://www.nature.com/articles/s41579-022-00846-2> (Mar. 2023).
- 585 3. Menges, D. *et al.* Burden of post-COVID-19 syndrome and implications for healthcare service planning: A population-based cohort study. en. *PLOS ONE* **16** (ed Simuunza, M. C.) e0254523. ISSN: 1932-6203. <https://dx.plos.org/10.1371/journal.pone.0254523> (July 2021).
- 586 4. Radin, J. M. *et al.* Long-term changes in wearable sensor data in people with and without Long Covid. *npj digital medicine* (2024).
- 587 5. Ballering, A. V., Van Zon, S. K. R., Olde Hartman, T. C. & Rosmalen, J. G. M. Persistence of somatic symptoms after COVID-19 in the Netherlands: an observational cohort study. en. *The Lancet* **400**, 452–461. ISSN: 01406736. <https://linkinghub.elsevier.com/retrieve/pii/S0140673622012144> (Aug. 2022).
- 588 6. Nasserie, T., Hittle, M. & Goodman, S. N. Assessment of the Frequency and Variety of Persistent Symptoms Among Patients With COVID-19: A Systematic Review. en. *JAMA Network Open* **4**, e2111417. ISSN: 2574-3805. <https://jamanetwork.com/journals/jamanetworkopen/fullarticle/2780376> (May 2021).
- 589 7. Davis, H. E. *et al.* Characterizing long COVID in an international cohort: 7 months of symptoms and their impact. en. *eClinicalMedicine* **38**, 101019. ISSN: 25895370. <https://linkinghub.elsevier.com/retrieve/pii/S2589537021002996> (2023) (Aug. 2021).
- 590 8. Marjenberg, Z. *et al.* Risk of long COVID main symptoms after SARS-CoV-2 infection: a systematic review and meta-analysis. *Scientific Reports* **13**, 15332 (2023).
- 591 9. Høeg, T. B., Ladhani, S. & Prasad, V. How methodological pitfalls have created widespread misunderstanding about long COVID. *BMJ Evidence-Based Medicine* **29**, 142–146 (2023).
- 592 10. O’Mahoney, L. *et al.* The prevalence and long-term health effects of Long Covid among hospitalised and non-hospitalised populations: a systematic review and meta-analysis. *eClinicalMedicine* **55**, 101762 (2023).
- 593 11. Koc, H. C., Xiao, J., Liu, W., Li, Y. & Chen, G. Long COVID and its Management. en. *International Journal of Biological Sciences* **18**, 4768–4780. ISSN: 1449-2288. <https://www.ijbs.com/v18p4768.htm> (2022).
- 594 12. Han, Q., Zheng, B., Daines, L. & Sheikh, A. Long-Term Sequelae of COVID-19: A Systematic Review and Meta-Analysis of One-Year Follow-Up Studies on Post-COVID Symptoms. *Pathogens* **11**, 269 (2022).
- 595 13. Wiedermann, M. *et al.* Evidence for positive long- and short-term effects of vaccinations against COVID-19 in wearable sensor metrics. en. *PNAS Nexus* **2** (ed Levine, B.) pgad223. ISSN: 2752-6542. <https://academic.oup.com/pnasnexus/article/doi/10.1093/pnasnexus/pgad223/7225910> (2023) (July 2023).
- 596 14. Radin, J. M. *et al.* Assessment of Prolonged Physiological and Behavioral Changes Associated With COVID-19 Infection. en. *JAMA Network Open* **4**, e2115959. ISSN: 2574-3805. <https://jamanetwork.com/journals/jamanetworkopen/fullarticle/2781687> (July 2021).
- 597 15. Natarajan, A., Su, H.-W. & Heneghan, C. Occurrence of Relative Bradycardia and Relative Tachycardia in Individuals Diagnosed With COVID-19. en. *Frontiers in Physiology* **13**, 898251. ISSN: 1664-042X. <https://www.frontiersin.org/articles/10.3389/fphys.2022.898251/full> (May 2022).

- 629 16. Mishra, T. *et al.* Pre-symptomatic detection of COVID-19 from smartwatch data. en. *Nature*
630 *Biomedical Engineering* **4**, 1208–1220. ISSN: 2157-846X. <https://www.nature.com/articles/s41551-020-00640-6> (2023) (Nov. 2020).
- 632 17. Gadaleta, M. *et al.* Passive detection of COVID-19 with wearable sensors and explainable machine
633 learning algorithms. en. *npj Digital Medicine* **4**, 166. ISSN: 2398-6352. <https://www.nature.com/articles/s41746-021-00533-1> (Dec. 2021).
- 635 18. Quer, G. *et al.* Wearable sensor data and self-reported symptoms for COVID-19 detection. en.
636 *Nature Medicine* **27**, 73–77. ISSN: 1078-8956, 1546-170X. <https://www.nature.com/articles/s41591-020-1123-x> (Jan. 2021).
- 638 19. Varsavsky, T. *et al.* Detecting COVID-19 infection hotspots in England using large-scale self-
639 reported data from a mobile application: a prospective, observational study. en. *The Lancet*
640 *Public Health* **6**, e21–e29. ISSN: 24682667. <https://linkinghub.elsevier.com/retrieve/pii/S2468266720302693> (Jan. 2021).
- 642 20. Menni, C. *et al.* Vaccine side-effects and SARS-CoV-2 infection after vaccination in users of the
643 COVID Symptom Study app in the UK: a prospective observational study. en. *The Lancet In-*
644 *fectious Diseases* **21**, 939–949. ISSN: 14733099. <https://linkinghub.elsevier.com/retrieve/pii/S1473309921002243> (July 2021).
- 646 21. Robert-Koch Institute. *Corona Data Donation Project* <https://corona-datenspende.github.io/en/>.
647 Accessed: 2024-09-16.
- 648 22. Kolb, J. J. *et al.* Prevalence of Positive COVID-19 Test Results Collected by Digital Self-report
649 in the US and Germany. *JAMA Network Open* **6(1)**:e2253800 (2023).
- 650 23. Robert Koch Institute and Research on Complex Systems of Humboldt University of Berlin.
651 *Corona Data Donation* <https://corona-datenspende.github.io/en/>.
- 652 24. Nalbandian, A. *et al.* Post-acute COVID-19 syndrome. en. *Nature Medicine* **27**, 601–615. ISSN:
653 1078-8956, 1546-170X. <https://www.nature.com/articles/s41591-021-01283-z> (2023) (Apr.
654 2021).
- 655 25. Michelen, M. *et al.* Characterising long COVID: a living systematic review. en. *BMJ Global Health*
656 **6**, e005427. ISSN: 2059-7908. <https://gh.bmj.com/lookup/doi/10.1136/bmjgh-2021-005427>
657 (2023) (Sept. 2021).
- 658 26. Canas, L. S. *et al.* Profiling post-COVID-19 condition across different variants of SARS-CoV-
659 2: a prospective longitudinal study in unvaccinated wild-type, unvaccinated alpha-variant, and
660 vaccinated delta-variant populations. en. *The Lancet Digital Health* **5**, e421–e434. ISSN: 25897500.
661 <https://linkinghub.elsevier.com/retrieve/pii/S2589750023000560> (2023) (July 2023).
- 662 27. Topp, C. W., Østergaard, S. D., Søndergaard, S. & Bech, P. The WHO-5 Well-Being Index: A
663 Systematic Review of the Literature. en. *Psychotherapy and Psychosomatics* **84**, 167–176. ISSN:
664 0033-3190, 1423-0348. <https://www.karger.com/Article/FullText/376585> (2023) (2015).
- 665 28. WHO (World Health Organisation). *WHO-5 Well-Being Index* [https://www.corc.uk.net/
666 outcome-experience-measures/the-world-health-organisation-five-well-being-index-
667 who-5/](https://www.corc.uk.net/outcome-experience-measures/the-world-health-organisation-five-well-being-index-who-5/) (2023).
- 668 29. Nguyen, N. N. *et al.* Clinical patterns of somatic symptoms in patients suffering from post-acute
669 long COVID: a systematic review. en. *European Journal of Clinical Microbiology & Infectious*
670 *Diseases* **41**, 515–545. ISSN: 0934-9723, 1435-4373. [https://link.springer.com/10.1007/
671 s10096-022-04417-4](https://link.springer.com/10.1007/s10096-022-04417-4) (2023) (Apr. 2022).
- 672 30. Soriano, J. B., Murthy, S., Marshall, J. C., Relan, P. & Diaz, J. V. A clinical case definition of
673 post-COVID-19 condition by a Delphi consensus. en. *The Lancet Infectious Diseases* **22**, e102–
674 e107. ISSN: 14733099. <https://linkinghub.elsevier.com/retrieve/pii/S1473309921007039>
675 (2023) (Apr. 2022).
- 676 31. Reimers, A. K., Knapp, G. & Reimers, C.-D. Effects of Exercise on the Resting Heart Rate: A
677 Systematic Review and Meta-Analysis of Interventional Studies. *Journal of Clinical Medicine* **7**.
678 ISSN: 2077-0383. <https://www.mdpi.com/2077-0383/7/12/503> (2018).

- 679 32. Huang, G., Shi, X., Davis-Brezette, J. A. & Osness, W. H. Resting heart rate changes after
680 endurance training in older adults: a meta-analysis. *Medicine and science in sports and exercise*
681 **37**, 1381–1386. ISSN: 0195-9131. [https://journals.lww.com/acsm-msse/Fulltext/2005/](https://journals.lww.com/acsm-msse/Fulltext/2005/08000/Resting_Heart_Rate_Changes_after_Endurance.18.aspx)
682 [08000/Resting_Heart_Rate_Changes_after_Endurance.18.aspx](https://journals.lww.com/acsm-msse/Fulltext/2005/08000/Resting_Heart_Rate_Changes_after_Endurance.18.aspx) (2005).
- 683 33. Bai, F. *et al.* Female gender is associated with long COVID syndrome: a prospective cohort
684 study. *Clinical Microbiology and Infection* **28**, 611.e9–611.e16. ISSN: 1198-743X. [https://www.](https://www.sciencedirect.com/science/article/pii/S1198743X21006297)
685 [sciencedirect.com/science/article/pii/S1198743X21006297](https://www.sciencedirect.com/science/article/pii/S1198743X21006297) (2022).
- 686 34. Philip, K. *et al.* Impact of COVID-19 on people with asthma: a mixed methods analysis from a
687 UK wide survey. *BMJ Open Res* **9**(1), e001056 (2022).
- 688 35. Wang, S. *et al.* Associations of Depression, Anxiety, Worry, Perceived Stress, and Loneliness Prior
689 to Infection With Risk of Post–COVID-19 Conditions. *JAMA Psychiatry* **79**, 1081–1091 (2022).
- 690 36. Atchison, C. J. *et al.* Long-term health impacts of COVID-19 among 242,712 adults in England.
691 en. *Nature Communications* **14**, 6588. ISSN: 2041-1723. [https://www.nature.com/articles/](https://www.nature.com/articles/s41467-023-41879-2)
692 [s41467-023-41879-2](https://www.nature.com/articles/s41467-023-41879-2) (2023) (Oct. 2023).
- 693 37. Schilling, C. *et al.* Pre-existing sleep problems as a predictor of post-acute sequelae of COVID-19.
694 *Journal of Sleep Research* **33**, e13949 (2024).
- 695 38. Antony, B. *et al.* Predictive models of long COVID. en. *eBioMedicine* **96**, 104777. ISSN: 23523964.
696 <https://linkinghub.elsevier.com/retrieve/pii/S2352396423003432> (2024) (Oct. 2023).
- 697 39. Zang, C. *et al.* Identification of risk factors of Long COVID and predictive modeling in the
698 RECOVER EHR cohorts. en. *Communications Medicine* **4**, 130. ISSN: 2730-664X. [https://www.](https://www.nature.com/articles/s43856-024-00549-0)
699 [nature.com/articles/s43856-024-00549-0](https://www.nature.com/articles/s43856-024-00549-0) (2024) (July 2024).
- 700 40. Yetisen, A. K., Martinez-Hurtado, J. L., Ünal, B., Khademhosseini, A. & Butt, H. Wearables
701 in Medicine. en. *Advanced Materials* **30**, 1706910. ISSN: 1521-4095. [https://onlinelibrary.](https://onlinelibrary.wiley.com/doi/abs/10.1002/adma.201706910)
702 [wiley.com/doi/abs/10.1002/adma.201706910](https://onlinelibrary.wiley.com/doi/abs/10.1002/adma.201706910) (2018).
- 703 41. Adams, J. L. *et al.* A real-world study of wearable sensors in Parkinson’s disease. en. *npj Parkin-*
704 *son’s Disease* **7**. Number: 1 Publisher: Nature Publishing Group, 1–8. ISSN: 2373-8057. [https:](https://www.nature.com/articles/s41531-021-00248-w)
705 [//www.nature.com/articles/s41531-021-00248-w](https://www.nature.com/articles/s41531-021-00248-w) (2024) (Nov. 2021).
- 706 42. Khondakar, K. R. & Kaushik, A. Role of Wearable Sensing Technology to Manage Long COVID.
707 en. *Biosensors* **13**, 62. ISSN: 2079-6374. <https://www.mdpi.com/2079-6374/13/1/62> (2023)
708 (Dec. 2022).
- 709 43. Burki, T. Wearable technology and COVID-19. en. *The Lancet Respiratory Medicine* **10**, 934–
710 935. ISSN: 22132600. <https://linkinghub.elsevier.com/retrieve/pii/S2213260022003514>
711 (2023) (Oct. 2022).
- 712 44. Crook, H., Raza, S., Nowell, J., Young, M. & Edison, P. Long covid—mechanisms, risk factors,
713 and management. en. *BMJ* **374**, n1648. ISSN: 1756-1833. [https://www.bmj.com/lookup/doi/](https://www.bmj.com/lookup/doi/10.1136/bmj.n1648)
714 [10.1136/bmj.n1648](https://www.bmj.com/lookup/doi/10.1136/bmj.n1648) (2023) (July 2021).
- 715 45. Carvalho-Schneider, C. *et al.* Follow-up of adults with noncritical COVID-19 two months after
716 symptom onset. en. *Clinical Microbiology and Infection* **27**, 258–263. ISSN: 1198743X. [https:](https://linkinghub.elsevier.com/retrieve/pii/S1198743X20306066)
717 [//linkinghub.elsevier.com/retrieve/pii/S1198743X20306066](https://linkinghub.elsevier.com/retrieve/pii/S1198743X20306066) (2023) (Feb. 2021).
- 718 46. Wu, Q., Sum, K. & Nathan-Roberts, D. How Fitness Trackers Facilitate Health Behavior Change.
719 *Proceedings of the Human Factors and Ergonomics Society Annual Meeting* **60**, 1068–1072 (Sept.
720 2016).
- 721 47. Richard, S. *et al.* Persistent COVID-19 Symptoms at 6 Months After Onset and the Role of
722 Vaccination Before or After SARS-CoV-2 Infection. *JAMA Network Open* **6**(1), e2251360 (2023).
- 723 48. Hernández-Aceituno, A., García-Hernández, A. & Larumbe-Zabala, E. COVID-19 long-term se-
724 quelae: Omicron versus Alpha and Delta variants. *Infectious Diseases Now* **53**, 104688 (2023).

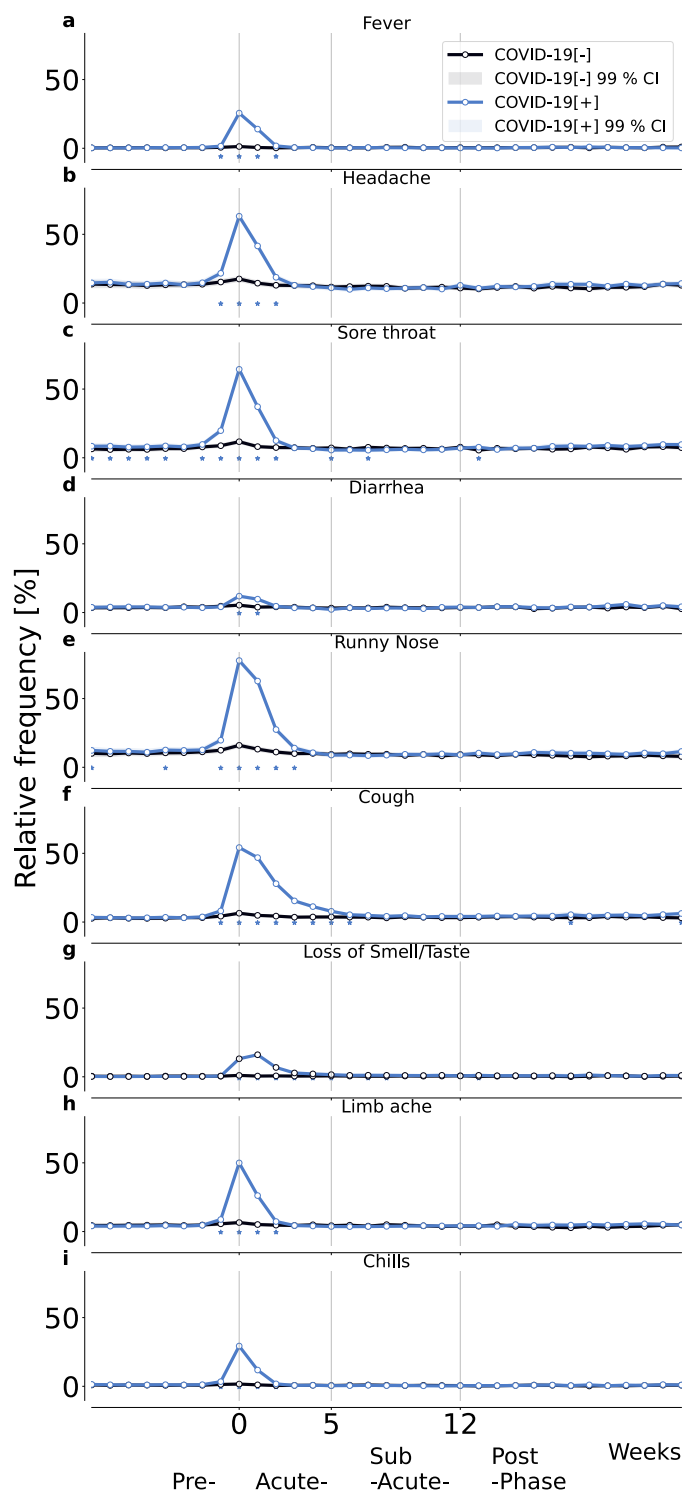
- 725 49. Marra, A. R. *et al.* The effectiveness of COVID-19 vaccine in the prevention of post-COVID con-
726 ditions: a systematic literature review and meta-analysis of the latest research. en. *Antimicrobial*
727 *Stewardship & Healthcare Epidemiology* **3**, e168. ISSN: 2732-494X. [https://www.cambridge.org/](https://www.cambridge.org/core/product/identifier/S2732494X23004473/type/journal_article)
728 [core/product/identifier/S2732494X23004473/type/journal_article](https://www.cambridge.org/core/product/identifier/S2732494X23004473/type/journal_article) (2023) (2023).
- 729 50. Nealon, J. & Cowling, B. J. Omicron severity: milder but not mild. en. *The Lancet* **399**, 412–
730 413. ISSN: 01406736. <https://linkinghub.elsevier.com/retrieve/pii/S0140673622000563>
731 (2023) (Jan. 2022).
- 732 51. Raj, S. A. *et al.* Long-COVID postural tachycardia syndrome: an American Autonomic Society
733 statement. *Clin Auton Res* **31**, 365–368 (2021).
- 734 52. Ormiston, C. K., Świątkiewicz, I. & Taub, P. R. Postural orthostatic tachycardia syndrome
735 as a sequela of COVID-19. *Heart Rhythm* **19**, 1880–1889. ISSN: 1547-5271. [https://www.](https://www.sciencedirect.com/science/article/pii/S1547527122021853)
736 [sciencedirect.com/science/article/pii/S1547527122021853](https://www.sciencedirect.com/science/article/pii/S1547527122021853) (2022).

SUPPLEMENTARY INFORMATION: WEARABLE DATA REVEALS DISTINCT CHARACTERISTICS OF INDIVIDUALS WITH PERSISTENT SYMPTOMS AFTER A SARS-COV-2 INFECTION

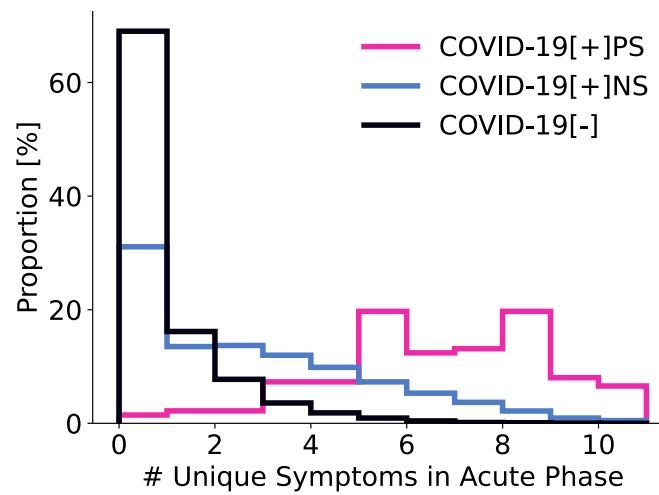
Supplementary Table I. Information on other diseases and conditions of all studied cohorts. See Materials and Methods (Section IV) for further details on the specifics of the assignments.

	COVID-19 [+] ¹	COVID-19 [-]	COVID-19 [+]NS ²	COVID-19 [+]PS ³	M-COVID-19 [+]NS ⁴	M-COVID-19 [-]	M-COVID-19 [+]PS ⁵
N	7,828	12,987	7,691	137	150	150	50
% answered	89.9***	87.7	89.9***	88.3	90.0	89.3	90.0
No disease in the past 12 months [%]	48.5***	44.3	49.0***	24.8***	54.1	41.0	31.1*
Allergies [%]	30.4	30.0	30.0	50.4***	25.2	32.1	46.7**
Hypertension [%]	18.2***	22.6	18.1***	23.1	16.3	25.4	20.0
Asthma [%]	9.3	9.3	9.0	24.0***	11.1	11.9	22.2
Increased blood lipid/ cholesterol levels [%]	10.4***	12.8	10.3***	15.7	8.1	12.7	17.8
Chronic Bronchitis [%]	2.1***	3.1	2.0***	6.6**	1.5	1.5	8.9*
Other [%]	10.5***	13.9	10.3***	19.8*	10.4	9.7	22.2
Mental Illness Diagnose [%]	19.5**	22.2	19.2††	39.7***	15.6	20.1	44.4***

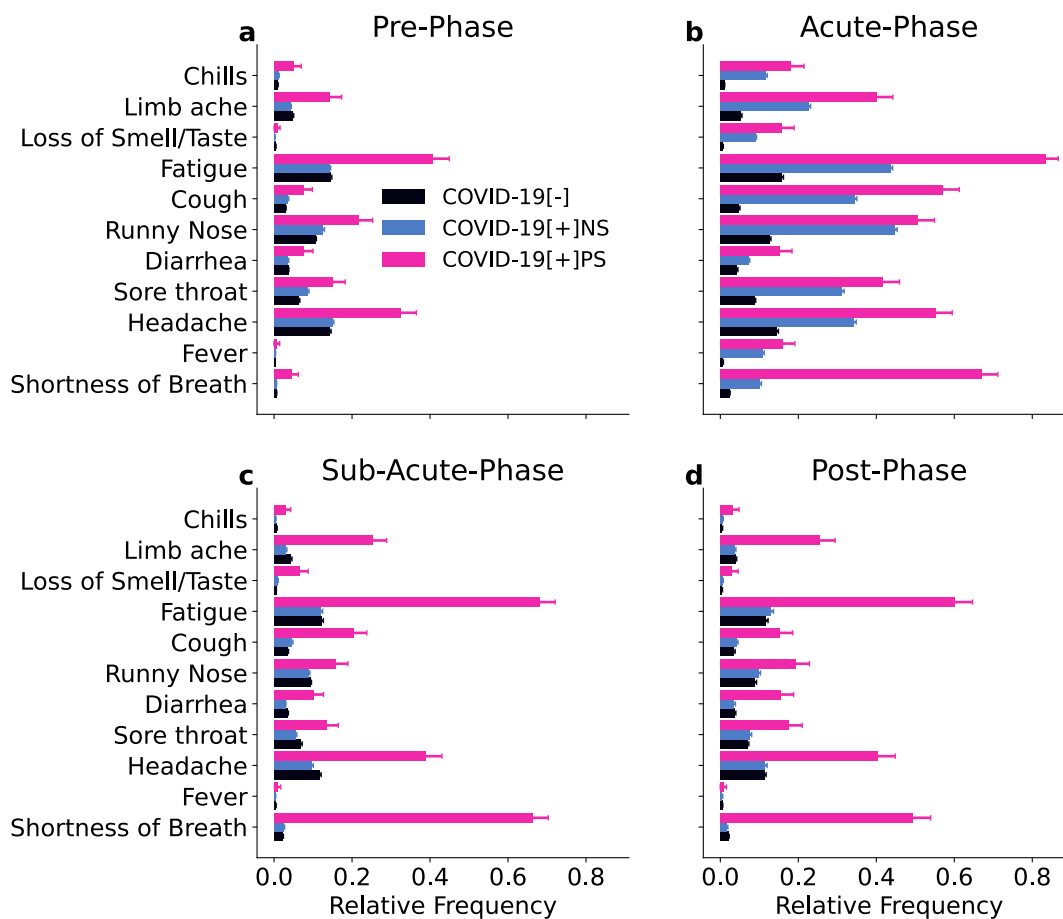
¹ COVID - 19[+] vs. COVID - 19[-]; ² COVID - 19[+]NS vs. COVID - 19[-]; ³ COVID - 19[+]PS vs. COVID - 19[+]NS; ⁴ M - COVID - 19[+]NS vs. M - COVID - 19[-]; ⁵ M - COVID - 19[+]PS vs. M - COVID - 19[+]NS . p-values: *p < 0.05, **p < 0.01, ***p < 0.001.



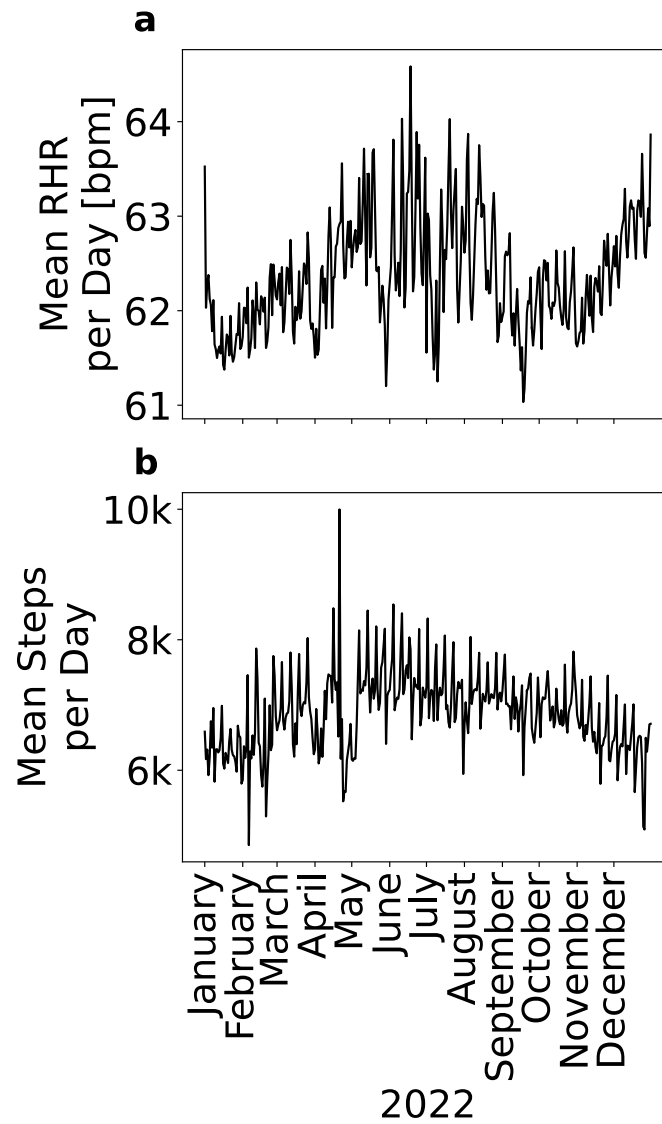
Supplementary Figure 1. Relative frequency of symptoms relative to week of reported SARS-CoV-2 test for positive cohort in blue (*COVID-19[+]*) and negative control cohort (*COVID-19[-]*) in black. The symptoms are fever (a), headache (b), sore throat (c), diarrhea (d), runny nose (e), cough (f), loss of smell/taste (g), limb ache (h), and chills (i). Shading indicates the 99% confidence interval, i.e., 2.576 times the standard error of a binomial distribution. Asterisks indicate significant differences between the cohorts using a two-sided two proportion z -test with a significance level of 0.01.



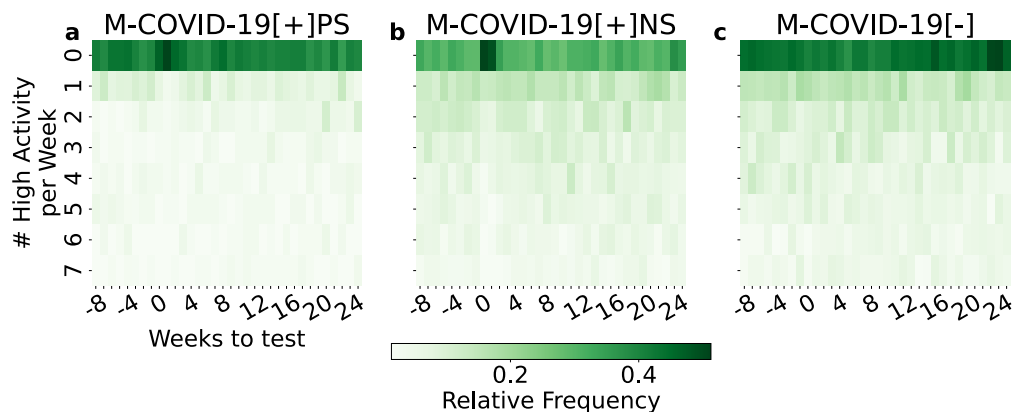
Supplementary Figure 2. Distribution of number of unique reported symptoms during acute phase of the infection (0-4 weeks to the reported SARS-CoV-2 test). We show the proportion of individuals per number of unique symptoms during the acute-phase of the infection for the persistent symptoms in pink (*COVID-19[+]PS*), positive control in blue (*COVID-19[+]NS*) and negative control cohort in black (*COVID-19[-]*).



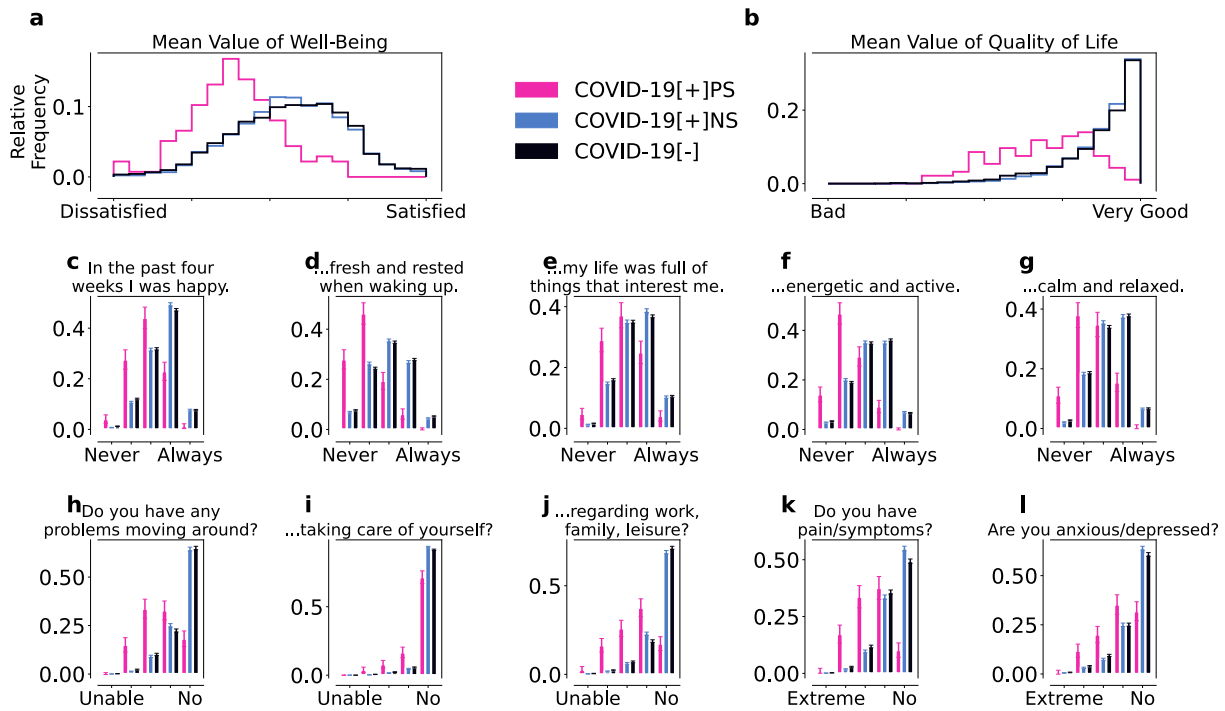
Supplementary Figure 3. Relative frequency per symptom. For pre- (a), acute- (b), sub-acute (c) and post (d) phase we show the relative frequency per reported symptom for all three groups in the matched cohort: negative match in black ($M - COVID - 19[-]$), positive match in blue ($M - COVID - 19[+]NS$) and persistent symptoms match in pink ($M - COVID - 19[+]PS$).



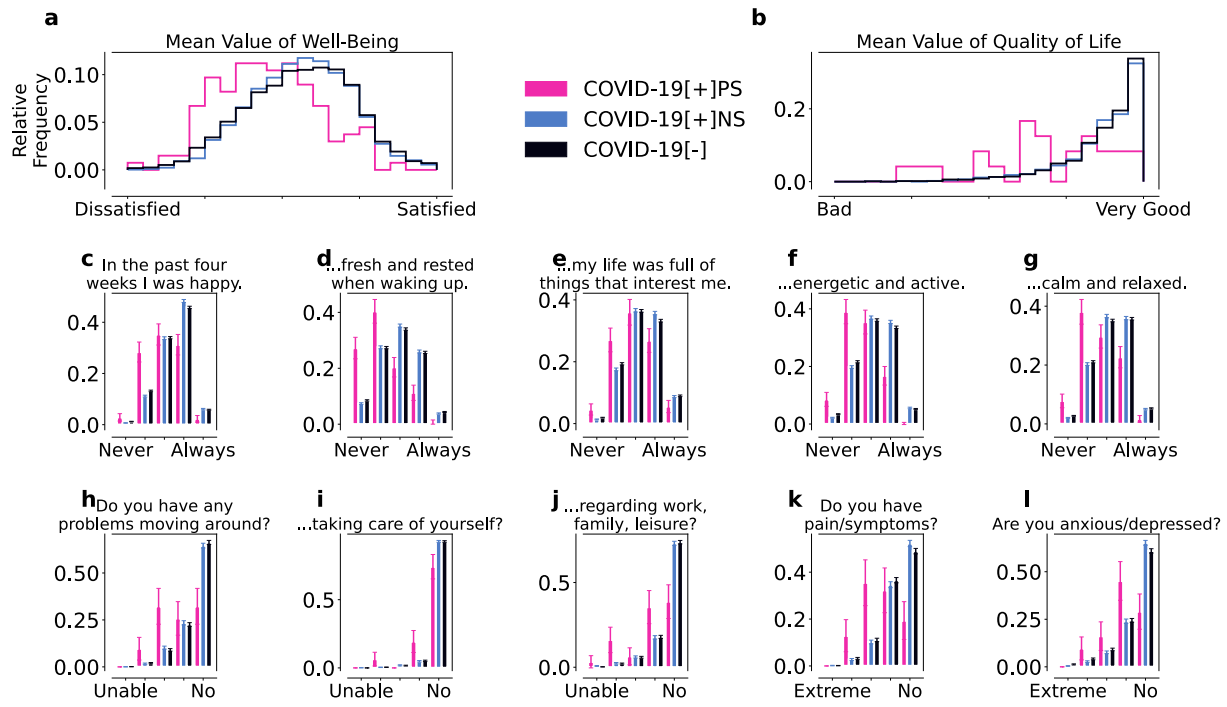
Supplementary Figure 4. Seasonal trends in wearable data. Exemplary timeseries of mean RHR per day (a) and mean steps per day (b) over the CDA Population for one example year (2022) and one example donation-source (Apple).



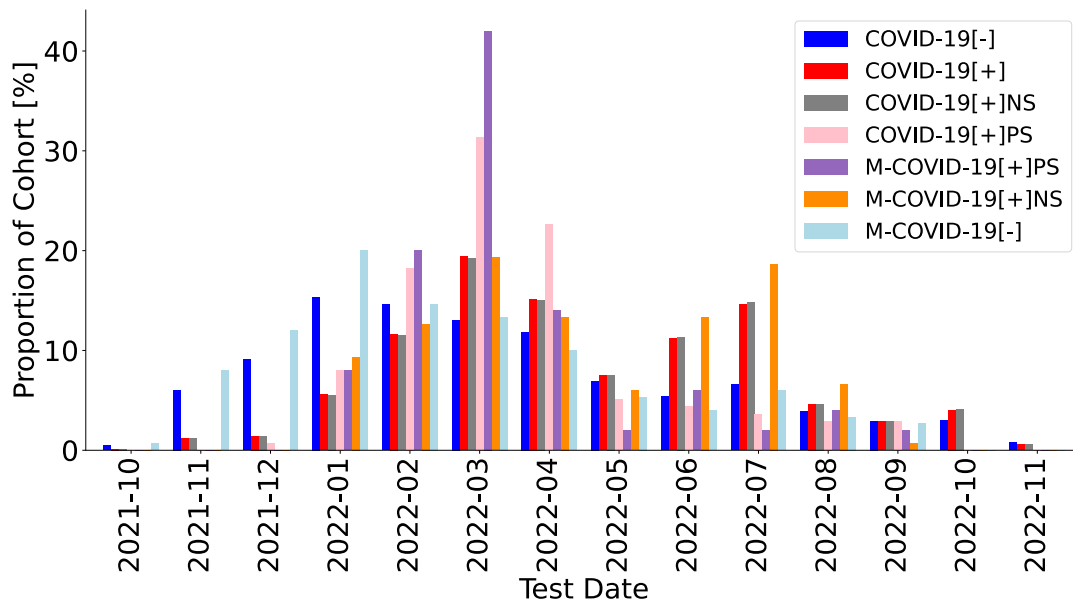
Supplementary Figure 5. High activity profiles of the *matched cohort*. Relative frequency of the number of high activity days per week relative to the SARS-CoV-2 test date for $M - COVID - 19[+]PS$ (a), $M - COVID - 19[+]NS$ (b) and $M - COVID - 19[-]$ (c). A day is defined as a high activity day when the corresponding number of steps per day exceed one standard deviation over the seasonal mean taken over the whole set of users in the Corona Data Donation Project (CDA Population).



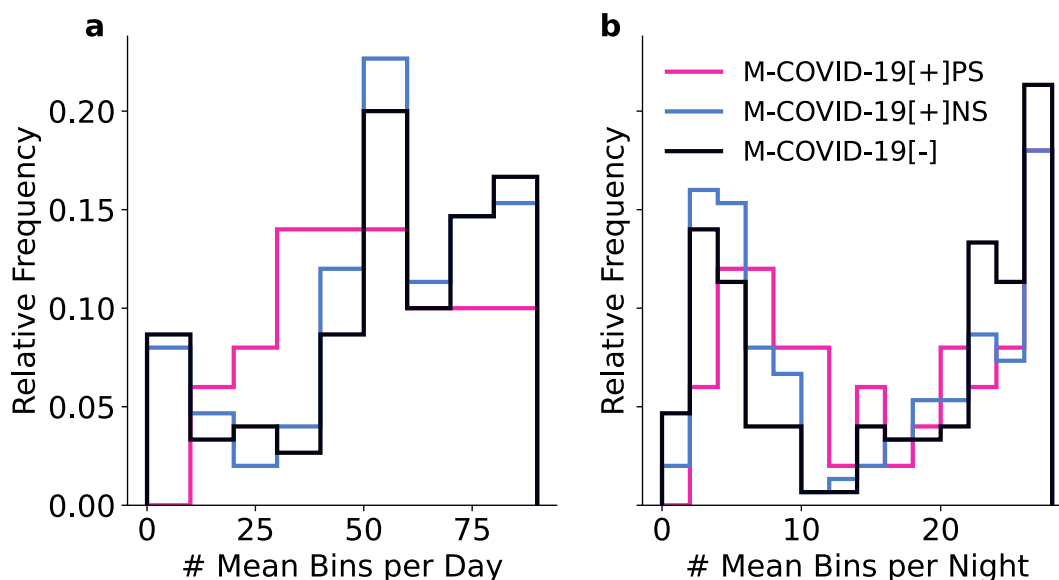
Supplementary Figure 6. Answers to WHO-5 wellbeing and EQ-5D questionnaires before the reported SARS-CoV-2 test for the persistent symptoms (pink), positive control (blue) and negative control cohort (black). WHO-5 wellbeing (a,c-g) and modified EQ-5D/QoL (b,h-l) for the *COVID – 19[+]PS* (pink), *COVID – 19[+]NS* (blue), and *COVID – 19[-]* (black) cohorts before the reported SARS-CoV-2 test. The individual WHO-5 and modified EQ-5D scores were both averaged to obtain the overall wellbeing (a) and QoL (b) scores, respectively. Overall, *COVID – 19[+]PS* individuals reported more issues with wellbeing (c-g) and QoL (h-l) than the control cohorts. Error bars indicate standard errors.



Supplementary Figure 7. Answers to WHO-5 wellbeing and EQ-5D questionnaires after the reported SARS-CoV-2 test for the persistent symptoms (pink), positive control (blue) and negative control cohort (black). WHO-5 wellbeing (a,c-g) and modified EQ-5D/QoL (b,h-l) for the *COVID – 19[+]PS* (pink), *COVID – 19[+]NS* (blue), and *COVID – 19[-]* (black) cohorts after the reported SARS-CoV-2 test. The individual WHO-5 and modified EQ-5D scores were both averaged to obtain the overall wellbeing (a) and QoL (b) scores, respectively. Overall, *COVID – 19[+]PS* individuals reported more issues with wellbeing (c-g) and QoL (h-l) than the control cohorts. Error bars indicate standard errors.



Supplementary Figure 8. Distribution of reported SARS-CoV-2 testdates of studied cohorts. We show per month ranging from October 2021 to November 2022 the proportion of individuals who indicated their SARS-CoV-2 test in the respective month for the COVID-19[-] (negative, black), COVID-19[+] (positive, red), COVID-19[+]NS (positive control, grey), COVID-19[+]PS (persistent symptoms, pink), M-COVID-19[+]PS (persistent symptoms match, blue), M-COVID-19[+]NS (positive match, orange), and M-COVID-19[-] (negative match cohort, light black).



Supplementary Figure 9. Distribution of time-worn of wearable devices. Number of 15 minute heart rate measurements as a proxy for wearing time for the three age and sex matched cohorts M-COVID-19[+]PS (persistent symptoms match, blue), M-COVID-19[+]NS (positive match, pink), and M-COVID-19[-] (negative match cohort, black) in 24 hours (a) and during night time from 11pm until 6am (b).