

1 **Global and regional associations of enteric infections and asthma**

2 Duan Ni, PhD^{1,2,3}, Ralph Nanan, Dr. Med. Habil (Germany)^{1,2,3*}

3 1 Sydney Medical School Nepean, The University of Sydney, Sydney, NSW, Australia

4 2 Charles Perkins Centre, The University of Sydney, Sydney, NSW, Australia

5 3 Nepean Hospital, Nepean Blue Mountains Local Health District, Sydney, NSW, Australia

6 *Correspondence:

7 Ralph Nanan

8 ralph.nanan@sydney.edu.au

9 Sydney Medical School Nepean, The University of Sydney.

10 Nepean Hospital, Level 5, South Block, Penrith NSW, 2751, Australia

11 Telephone: +61 2 4734 1614

12 Fax: +61 2 4734 1144

13

14

15

16

17

18

19

20

21

22

23

24 **Abstract**

25 Asthma is one of the most common chronic diseases globally. There are various risk factors for
26 asthma, including respiratory infections, like rhinovirus and respiratory syncytial virus infections.
27 Nevertheless, impacts from non-respiratory tract infections on asthma remain unresolved.
28 Globally, enteric infections are the most common infections. Their target organ, the intestinal
29 system, shares the same embryonic origin, the endoderm, as the respiratory tract. These led us to
30 inspect the potential associations between enteric infections and asthma.

31 We analyzed three independent epidemiological datasets with the cutting-edge generalized
32 additive model (GAM). Consistently, in two regional datasets (America and Japan) and a global
33 dataset, we found that enteric infection incidence was generally linked to increased asthma
34 disease burden.

35 This is the first study to our knowledge to comprehensively elucidate the positive associations
36 between enteric infections and asthma. Our findings would be instructive to both clinical practice
37 and mechanistic study for asthma.

38

39

40

41

42

43

44

45

46

47

48

49

50

51

52

53

54 Asthma is one of the most common chronic diseases worldwide, with considerable disease
55 burden in developed countries [1, 2]. Established risk factors for asthma other than genetics
56 include asthmagen exposure, obesity, smoking and air pollution. Socioeconomic factors are
57 critically implicated as well [1, 3]. Additionally, respiratory tract infections, triggered by
58 rhinovirus and respiratory syncytial virus (RSV), have been linked to asthma [2]. However, the
59 influences of non-respiratory tract infections on asthma remain elusive. Globally, gastrointestinal
60 infections are the most prevalent, even exceeding respiratory tract infections [4]. Given their
61 significant disease burden and the shared endodermal origins of their target organs [5], namely,
62 the respiratory and gastrointestinal systems, we aimed to inspect the potential associations
63 between enteric infections and asthma.

64
65 For this purpose, we interrogated the relationship between the disease burden of enteric
66 infections and asthma, harnessing the unprecedented comprehensive epidemiological data from
67 the Global Burden of Disease (GBD) database ([https://www.healthdata.org/research-](https://www.healthdata.org/research-analysis/gbd)
68 [analysis/gbd](https://www.healthdata.org/research-analysis/gbd)). Age-standardized incidence rates for enteric infection (EI%) and asthma
69 (asthma%) for both sexes from countries and areas under study were first collated. They covered
70 over 150 countries from 1990-2018. Annual gross domestic product (GDP) per capita was used
71 as reflections of socioeconomic status. Global GDP data was obtained from the Maddison project
72 [6]. GDP data for individual states in America were from the U.S. Department of Commerce,
73 Bureau of Economic Analysis and GDP data for individual prefecture in Japan were from the
74 Organisation for Economic Co-operation and Development (OECD). EI% and asthma% were
75 first log₁₀-transformed and then modelled with generalized additive model (GAM) with the
76 *mgcv* package [7], a powerful analytical tool to systematically elucidate the effects from multiple
77 parameters and their interactions, including non-linear effects. GDP was adjusted as a
78 confounder, while the regions from which the data originated were accounted as random effects.
79 For most analyses, the model below is favored based on Akaike information criterion [8], in
80 which the main effects from EI%, GDP and time are modelled with smooth term *s*() and their
81 interactions are modelled with tensor production interaction *ti*(). This model revealed the
82 interactive effects among EI%, GDP and time on asthma%.

83
$$gam(Asthma\% \sim s(EI\%) + s(time) + s(GDP) + s(Country, bs = "re") +$$

84
$$ti(EI\%, time, GDP) + ti(EI\%, time) + ti(EI\%, GDP) + ti(GDP, time))$$

85 While for the modelling for Japan, the time factor was excluded, considering that data were only
86 available at two timepoints.

87
88 We first focused on individual countries with high-resolution regional data. EI% and asthma%
89 from 50 states in America from 2008 to 2017 were analyzed. As shown in Figure 1A, EI%
90 strikingly correlated with increased asthma%, independent of GDP. Analysis of a separate

91 independent dataset across 47 prefectures in Japan at timepoints of 1999 and 2018 yielded
92 similar results (Figure 1A).

93 We next approached the analyses at a global scale and analyzed GBD data for asthma and enteric
94 infections spanning over 150 countries from 1990 to 2018. Figure 1B showed the modelling for
95 2018 as the most recent representative results, with GDP stratified at 25% (red), 50% (green) and
96 75% (blue) quantiles. In alignment with aforementioned results, EI% generally correlated with
97 elevated asthma%, most pronounced in low GDP countries (red line) (Figure 1B). Interestingly,
98 such correlations seemed to reach plateaus at about log₁₀-transformed EI% of 4.6 (i.e.
99 EI%~39810), but slightly increased again in high GDP countries (blue line) beyond 5.1 log₁₀-
100 transformed EI% (i.e. EI%~125892).

101 In comparison, a common respiratory tract infection, otitis media, only mildly correlated with
102 reduction in asthma% (Figure 1C).

103 There are 4 major types of enteric infections documented in the GBD dataset (diarrheal diseases,
104 typhoid, paratyphoid and invasive non-typhoidal Salmonella (iNTS) infection). Generally, with
105 results from 2018 shown as representatives in Figure 1D, diarrheal diseases seemed to be the
106 main contributor to the positive associations between EI% and asthma%, while typhoid, though
107 previously reported as a triggering factor for asthma [9], was not strongly correlated. Intriguingly,
108 in low GDP countries (red line), paratyphoid was also associated with asthma% elevation, while
109 in high GDP countries (blue line) iNTS infection was linked to higher asthma%.

110

111 Collectively, here, we present to our knowledge the first comprehensive analyses of the
112 associations of various enteric infections and asthma. At both global and regional levels, we
113 delineated the positive correlations between EI% and asthma%, independent of GDP and time.

114 Some previous studies documented the links between asthma with intestinal manifestations [10],
115 though their causality remains unclear. Developmentally, respiratory and gastroenteric tracts are
116 from the same embryonic origin, endoderm. Whether there might be some shared endodermal
117 intrinsic defect that could account for the correlations between these pathologies requires more
118 in-depth investigation. In contrast, little correlation was found for otitis media and asthma,
119 possibly due to the complex developmental origins of the middle ear, forming from all three
120 embryonic germ layers [11].

121 Another possible explanation for the connection between intestinal infection and asthma might
122 be via the gut microbiome. It is well-established that gut dysbiosis is linked to asthma
123 development [12]. Infection of the enteric system inevitably disrupts gut homeostasis and
124 microbiome, which might contribute to the observed increase in asthma%.

125 Our present analyses only cover 4 main types of enteric infections, diarrheal diseases, typhoid,
126 paratyphoid, and iNTS. In contrast to these diseases which show no clear bias towards a Th2

127 phenotype [13, 14], critical for asthma pathogenesis, some intestinal helminth infections, like
128 gastric helminthiasis in children, were positively associated with asthma [15], possibly because
129 of the Th2 responses mounted upon infections. Hence, more detailed interrogations regarding the
130 types of infectious agent and the severity of enteric infections are needed to decipher the
131 potential underlying mechanistic links.

132 In conclusion, we identified in three independent epidemiological datasets on global and regional
133 levels associations between enteric infections and asthma. This warrants more surveillance of
134 their concurrence in clinical practice and could prompt more in-depth mechanistic discoveries
135 towards their immunopathology.

136

137 **Figure legend**

138 **Figure 1. A.** Modelled effects of log₁₀-transformed enteric infection incidence rate (EI%) on
139 log₁₀-transformed asthma incidence rate (asthma%) across 50 states in America (left) and 47
140 prefectures in Japan (right), stratified by 25% (red), 50% (green) and 75% (blue) quantiles of
141 GDP. **B.** Modelled effects of EI% on asthma% globally, stratified by 25% (red), 50% (green) and
142 75% (blue) quantiles of GDP. **C.** Modelled effects of log₁₀-transformed otitis media incidence
143 rate on asthma% globally. **D.** Modelled effects of log₁₀-transformed incidence rates of diarrheal
144 disease, typhoid, and paratyphoid and invasive non-typhoidal Salmonella (iNTS) infection on
145 asthma% globally.

146

147 **Ethics statement:** Not applicable

148 **Conflicts of interest:** The authors declare no conflicts of interest.

149 **Support statement:** This study was supported by the Norman Ernest Bequest Fund.

150

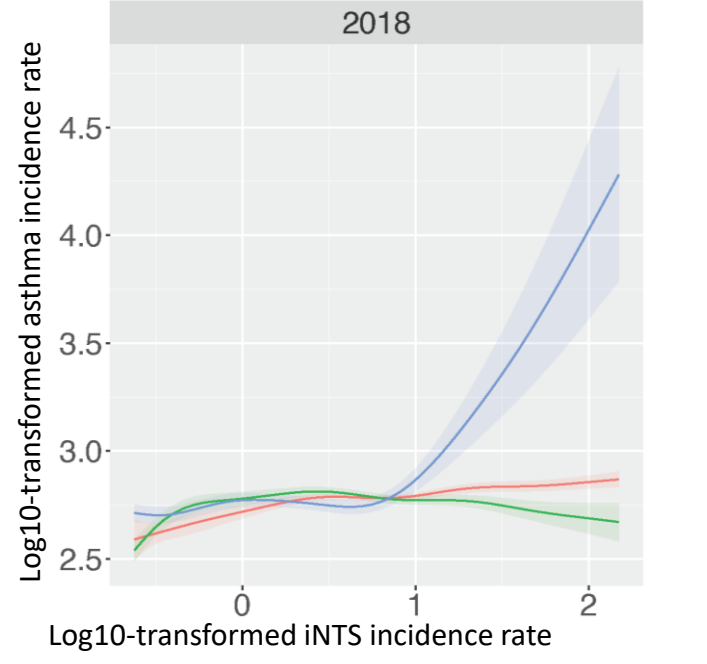
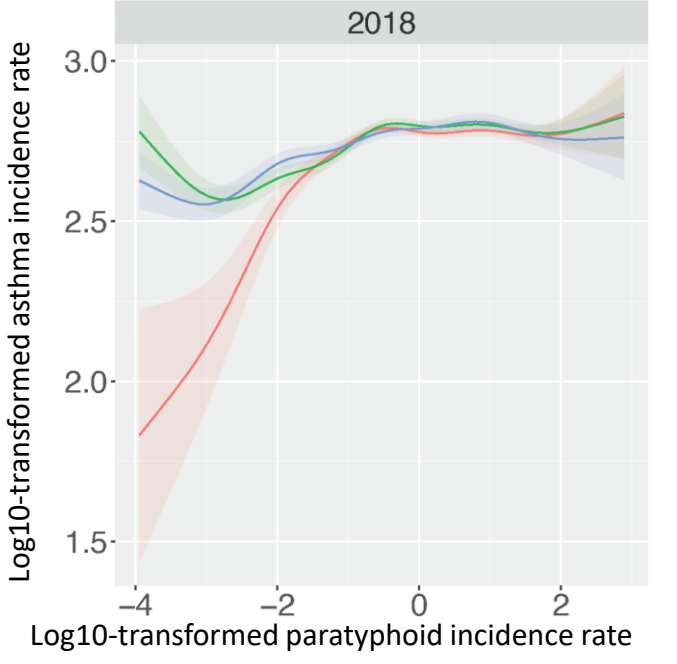
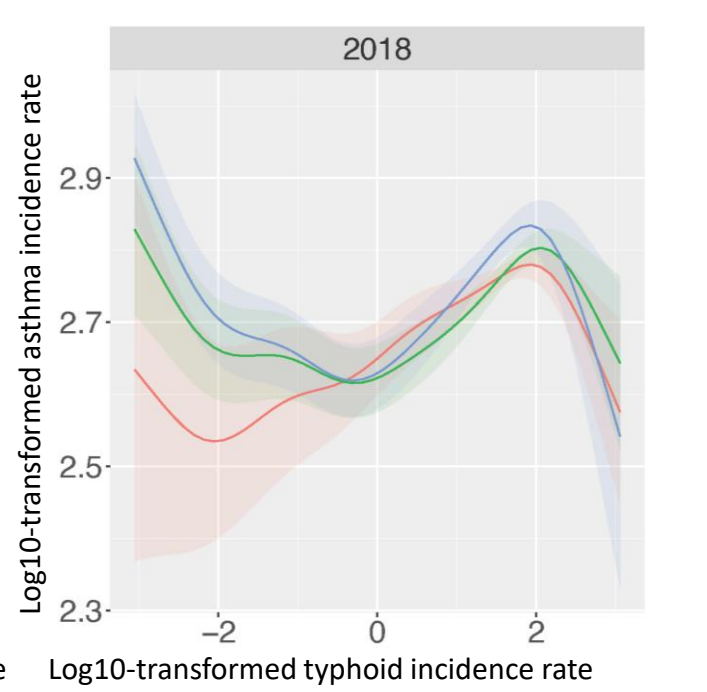
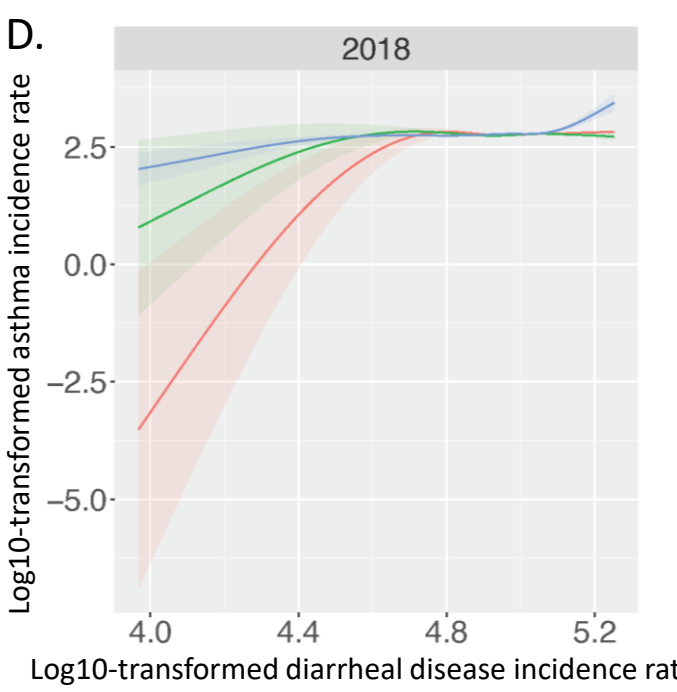
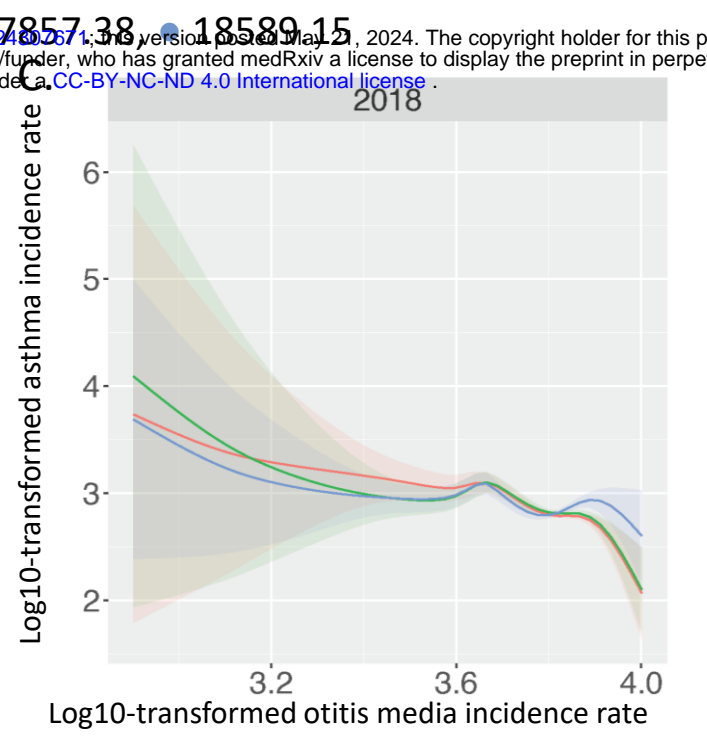
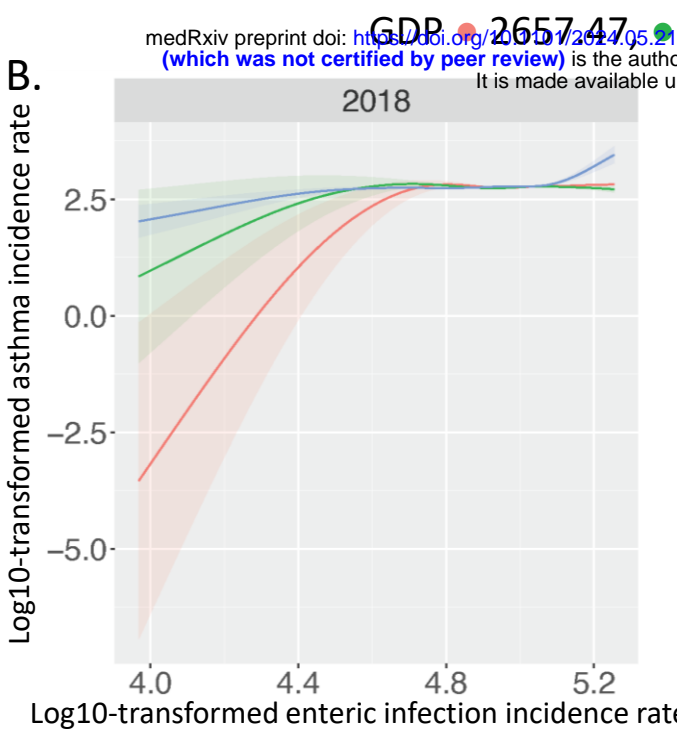
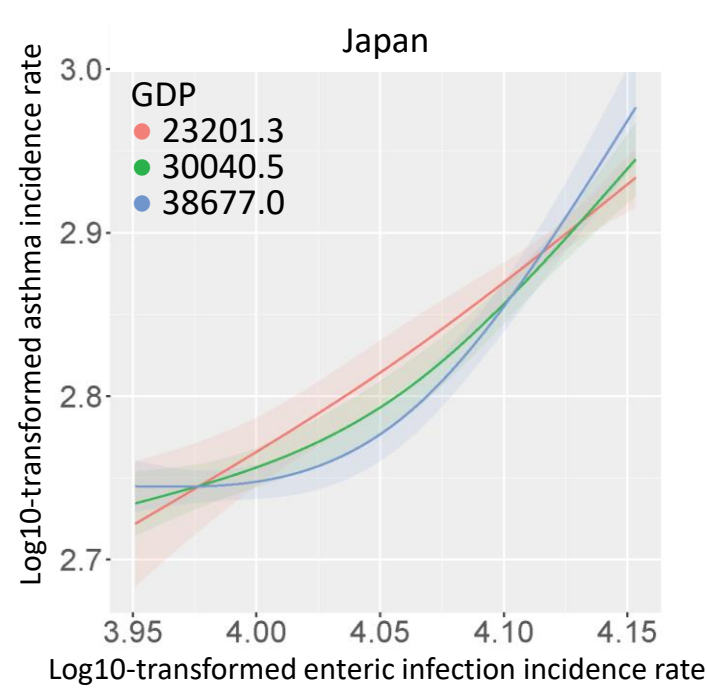
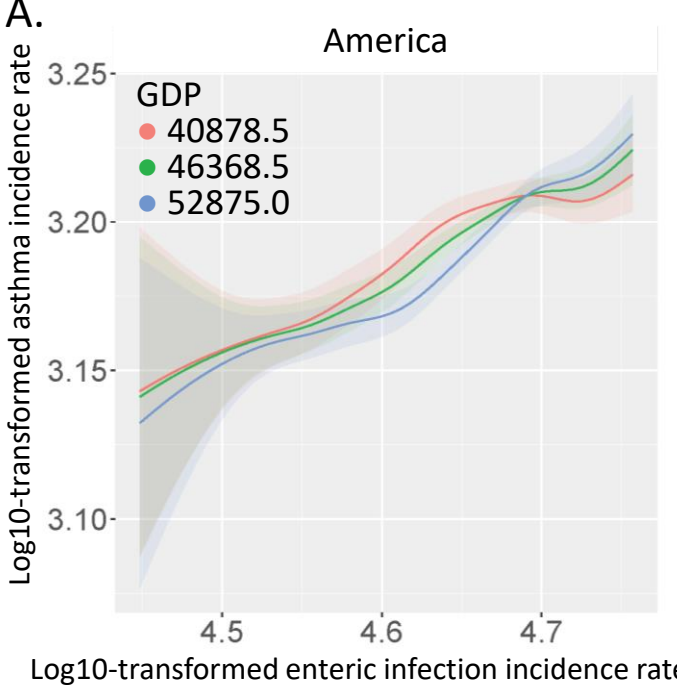
151 **References**

152

- 153 1. Shin YH, Hwang J, Kwon R, Lee SW, Kim MS, Collaborators GBDAD, Shin JI,
154 Yon DK. Global, regional, and national burden of allergic disorders and their risk factors
155 in 204 countries and territories, from 1990 to 2019: A systematic analysis for the Global
156 Burden of Disease Study 2019. *Allergy* 2023; 78(8): 2232-2254.
- 157 2. Holgate ST, Wenzel S, Postma DS, Weiss ST, Renz H, Sly PD. Asthma. *Nat Rev*
158 *Dis Primers* 2015; 1(1): 15025.
- 159 3. Ni D, Senior AM, Raubenheimer D, Simpson SJ, Macia L, Nanan R. Global
160 associations of macronutrient supply and asthma disease burden. *Allergy* 2024.

- 161 4. Diseases GBD, Injuries C. Global burden of 369 diseases and injuries in 204
162 countries and territories, 1990-2019: a systematic analysis for the Global Burden of
163 Disease Study 2019. *Lancet* 2020; 396(10258): 1204-1222.
- 164 5. Faure S, de Santa Barbara P. Molecular embryology of the foregut. *J Pediatr*
165 *Gastroenterol Nutr* 2011; 52 Suppl 1(Suppl 1): S2-3.
- 166 6. Jutta Bolt RI, Herman de Jong, and Jan Luiten van Zanden. Rebasings
167 'Maddison': New income comparisons and the shape of long-run economic development.
168 Groningen Growth and Development Center, GGDC Research Memorandum, 2018.
- 169 7. Wood SN. Generalized Additive Models: An Introduction with R. Chapman and
170 Hall/CRC, 2017.
- 171 8. Akaike H. Information theory and an extension of the maximum likelihood
172 principle Second International Symposium on Information Theory, Budapest, 1973.
- 173 9. Wardhana, Surachmanto EE, Datau EA. Typhoid fever as a triggering factor in
174 acute and intractable bronchial asthma attack. *Acta Med Indones* 2013; 45(4): 312-320.
- 175 10. Kisiel MA, Sedvall M, Malinovschi A, Franklin KA, Gislason T, Shlunssen V,
176 Johansson A, Modig L, Jogi R, Holm M, Svanes C, Lindholdt L, Carlson M, Janson C.
177 Inflammatory bowel disease and asthma. Results from the RHINE study. *Respir Med*
178 2023; 216: 107307.
- 179 11. Anthwal N, Thompson H. The development of the mammalian outer and middle
180 ear. *J Anat* 2016; 228(2): 217-232.
- 181 12. Thorburn AN, McKenzie CI, Shen S, Stanley D, Macia L, Mason LJ, Roberts LK,
182 Wong CH, Shim R, Robert R, Chevalier N, Tan JK, Marino E, Moore RJ, Wong L,
183 McConville MJ, Tull DL, Wood LG, Murphy VE, Mattes J, Gibson PG, Mackay CR.
184 Evidence that asthma is a developmental origin disease influenced by maternal diet and
185 bacterial metabolites. *Nat Commun* 2015; 6: 7320.
- 186 13. Rapaka RR, Wahid R, Fresnay S, Booth JS, Darton TC, Jones C, Waddington
187 CS, Levine MM, Pollard AJ, Sztein MB. Human Salmonella Typhi exposure generates
188 differential multifunctional cross-reactive T-cell memory responses against Salmonella
189 Paratyphi and invasive nontyphoidal Salmonella. *Clin Transl Immunology* 2020; 9(9):
190 e1178.
- 191 14. Pham OH, McSorley SJ. Protective host immune responses to Salmonella
192 infection. *Future Microbiol* 2015; 10(1): 101-110.
- 193 15. Senaratna CV, Perera PK, Arulkumaran S, Abeysekara N, Piyumanthi P,
194 Hamilton GS, Nixon GM, Rajakaruna RS, Dharmage SC. Association of helminth
195 infestation with childhood asthma: a nested case-control study. *Int J Infect Dis* 2023;
196 128: 272-277.

197



medRxiv preprint doi: <https://doi.org/10.1101/2024.05.21.24026713>; this version posted May 25, 2024. The copyright holder for this preprint (which was not certified by peer review) is the author/funder, who has granted medRxiv a license to display the preprint in perpetuity. It is made available under a [CC-BY-NC-ND 4.0 International license](https://creativecommons.org/licenses/by-nc-nd/4.0/).