

1 **Estimates of Actual and Potential Lives Saved in the United States from the use of**
2 **COVID-19 Convalescent Plasma**

3 Quigly Dragotakes¹, Patrick W. Johnson², Matthew R. Buras³, Rickey E. Carter⁴, Michael J.
4 Joyner⁵, Evan Bloch⁶, Kelly A. Gebo⁷, Daniel F. Hanley⁸, Jeffrey P. Henderson⁹, Liise-anne
5 Pirofski¹⁰, Shmuel Shoham⁷, Jonathon W. Senefeld¹¹, Aaron AR Tobian⁶, Chad C. Wiggins¹², R.
6 Scott Wright¹³, Nigel S. Paneth¹⁴, David J. Sullivan¹, Arturo Casadevall¹

7 ¹Department of Molecular Microbiology and Immunology, Johns Hopkins School of Public
8 Health, Baltimore, MD

9 ² Division of Clinical Trials and Biostatistics, Mayo Clinic, Jacksonville, FL, USA.

10 ³ Division of Clinical Trials and Biostatistics, Mayo Clinic, Rochester, MN, USA

11 ⁴Department of Quantitative Health Sciences, Mayo Clinic, Jacksonville, FL, USA

12 ⁵Department of Anesthesiology and Perioperative Medicine, Mayo Clinic, Rochester, MN

13 ⁶Department of Pathology, Johns Hopkins School of Medicine, Johns Hopkins University, Baltimore,
14 Maryland, USA

15 ⁷Department of Medicine, Division of Infectious Diseases, Johns Hopkins School of Medicine, Johns
16 Hopkins University, Baltimore, Maryland, USA

17 ⁸Department of Neurology, Brain Injury Outcomes Division, Johns Hopkins School of Medicine, Johns
18 Hopkins University, Baltimore, Maryland, USA

19 ⁹Department of Medicine, Division of Infectious Diseases, Washington University School of Medicine,
20 Louis, St. Louis, MO

21 ¹⁰Division of Infectious Diseases, Albert Einstein College of Medicine, New York, NY

22 ¹¹Department of Health and Kinesiology, University of Illinois Urbana-Champaign, Urbana, IL

23 ¹²Department of Kinesiology, Michigan State University, East Lansing, MI

24 ¹³Departments of Cardiovascular Medicine and Human Research Protection Program, Mayo
25 Clinic, Rochester, MN, USA

26 ¹⁴Department of Epidemiology and Biostatistics and Department of Pediatrics and Human Development,
27 Michigan State University, East Lansing, MI

28

29

30 **Abstract**

31 In the Spring of 2020, the United States of America (USA) deployed COVID-19 convalescent
32 plasma (CCP) to treat hospitalized patients. Over 500,000 patients were treated with CCP
33 during the first year of the pandemic. In this study, estimated the number of actual inpatient lives
34 saved by CCP treatment in the USA based upon CCP weekly use, weekly national mortality
35 data, and CCP mortality reduction data from meta-analyses of randomized controlled trials and
36 real-world data. We also estimate the potential number of lives saved if CCP had been deployed
37 for 100% of hospitalized patients or used in 15% to 75% of outpatients. Depending on the
38 assumptions modeled in stratified analyses, CCP was estimated to have saved between 16,476
39 and 66,296 lives. The CCP ideal use might have saved as many as 234,869 lives while
40 preventing 1,136,133 hospitalizations. CCP deployment was a successful strategy for
41 ameliorating the impact of the COVID-19 pandemic in the USA. This experience has important
42 implications for convalescent plasma used in future infectious disease emergencies.

43 **Significance statement**

44 When the COVID-19 pandemic struck in 2020, the population lacked immunity, no validated
45 therapies were available, and mortality was high. COVID-19 convalescent plasma (CCP) was
46 authorized in the United States for treatment of hospitalized patients based on historical
47 evidence of convalescent plasma (CP) efficacy and findings from a nationwide registry
48 suggesting that it reduced mortality. However, this decision was controversial because it was not
49 based on evidence from randomized controlled clinical trials. In this study, we leveraged CCP
50 use and mortality data combined with CCP efficacy data to show that CCP reduced mortality
51 and saved tens of thousands of lives the first year of the pandemic. This provides a powerful
52 basis to consider CP deployment in future infectious disease emergencies.

53

54

55

56 Introduction

57 In the spring of 2020, the United States of America (USA) faced a rapidly worsening coronavirus
58 disease 2019 (COVID-19) pandemic caused by a novel infectious agent, SARS-CoV-2. In the
59 absence of specific therapies for COVID-19, the USA Food and Drug Administration made
60 COVID-19 convalescent plasma (CCP) available in 2020, first under compassionate use in late
61 March, then under an Expanded Access Program (EAP) and registry in early April, and finally
62 under Emergency Use Authorization (EUA) in late August (1). CCP was qualified initially based
63 on the donors having had a previously positive SARS-CoV-2 nucleic acid test, not on specific
64 antibody levels. The EAP registry enrolled approximately 105,000 patients by late August 2020
65 (1) and produced early evidence of safety (2, 3) and efficacy (4, 5). By the Fall of 2020 as many
66 as 40% of hospitalized patients were being treated with CCP (6). However, disappointing results
67 from several randomized controlled trials (RCTs) assessing CCP efficacy in hospitalized patients
68 in India (7), Argentina (8), the United Kingdom (9), and Italy (10), combined with the availability
69 of small molecule antivirals in the form of remdesivir, led to a substantial decline in use by early
70 2021; we previously estimated this decline was associated with as many as 30,000 excess
71 deaths by mid-2021 (6).

72 In retrospect, early RCTs examining CCP efficacy in hospitalized patients were unlikely to show
73 benefit because of design flaws that included use of plasma with inadequate specific antibody
74 concentrations, inexact endpoints, late CCP administration (*e.g.* use during the inflammatory
75 phase rather than the viral phase of COVID-19), and/or insufficient power (11, 12). The early
76 phase of the pandemic in the USA also precluded a number of factors vital for conduct of
77 successful RCTs including: (i) training of sites and site initiation visits; (ii) precise pre-
78 deployment of CCP; (iii) a moving pandemic that affected different geographic regions
79 differently; (iv) impaired access to research staff due to work lockdowns ; and (v) the lack of a
80 national network to conduct pandemic related research smoothly and seamlessly. Although not
81 known at the time, later retrospective analysis of EAP data showed that distance between CCP
82 collection and use also reduced efficacy (13), adding another variable that could have
83 influenced the outcome of some RCTs. Subsequent trials of CCP using units with high levels of
84 spike-protein specific IgG (high titer CCP) early in disease eventually established its efficacy
85 (14, 15). However, by the time this information was available, rapid acquisition of antibody
86 immunity from natural infection and vaccination in the general population, combined with
87 widespread availability of small molecule antiviral agents and monoclonal antibodies (mAbs),
88 lowered the demand for this passive antibody therapy. Nonetheless, CCP has retained a role in
89 the COVID-19 therapeutic armamentarium in immunosuppressed patients, in whom, even in the
90 first year of the pandemic there was evidence for efficacy (16). With the loss of mAb efficacy
91 due to continued SARS-CoV-2 evolution (17), CCP is again the only available antibody-based
92 with activity against SARS-CoV-2 (18).

93 Four lines of evidence show that CCP reduces COVID-19 inpatient mortality when used early in
94 disease: 1) registry data from the USA (5), Argentina (19) and Italy (20); 2) real world data from
95 use in the USA (21); 3) a meta-analysis of over 30 RCTs (22); and 4) epidemiologic data
96 showing a strong negative correlation between CCP use and mortality, with a reciprocal
97 relationship between weekly use and the national death rate (6). From the available
98 epidemiological data, it was estimated that had the USA not deployed CCP in 2020,
99 approximately 96,000 additional deaths would have occurred during the first year of the
100 pandemic (6). In the present analysis we revisit the question of how CCP use affected overall

101 USA mortality by combining CCP usage data with mortality statistics and efficacy measures
102 from RCTs and real-world data.

103 **Results**

104 Actual lives saved in hospitalized patients. Although most patients hospitalized with COVID-19
105 had progressed past the interval of optimal CCP efficacy, virtually all CCP used in the USA
106 involved hospitalized patients, reflecting the initial EUA restriction to inpatient use. Only in
107 December 2021, after an outpatient RCT revealed efficacy (14), did the FDA authorize
108 outpatient use, and then only in immunosuppressed patients. Using the 647,795 CCP units
109 dispensed from July 2020 to March 2021 as a measure of the number of patients treated and
110 applying the mortality reduction measures from various published studies (21, 22), we
111 calculated that CCP deployment in the United States saved between 16,585 to 67,706 lives in
112 this period of the pandemic (Table 1). Importantly, even with the conservative estimate of
113 mortality reduction of 13%, a significant number of lives were saved (95% Credible Interval (CI):
114 4,356 to 36,032) (Table 1). The range in crude estimates reflects the different assumptions and
115 methods used in calculating the estimate. Although this range is large, all models converge
116 upon the conclusion that CCP saved lives, as indicated by the credible intervals.

117 Potential lives saved with optimal CCP deployment. We next estimated the hypothetical efficacy
118 of CCP treatment if infrastructure had already been in place to collect, manufacture, and
119 distribute high titer CCP to 100% of hospitalized patients within 3 days of admission.
120 Depending on the COVID-19 mortality estimate Models 3 and 4 yield from 37,467 to 149,318
121 and 53,943 to 215,614 lives saved, respectively, each of which would be statistically significant
122 based on the credible intervals (Table 1).

123 Using data from five outpatient RCTs (15), it is possible to estimate the effect of CCP on
124 mortality had this therapy been authorized for outpatient use in the early days of the pandemic.
125 However, outpatient deployment would have required specialized infrastructure that was not
126 immediately available at the time. Furthermore, some physicians were concerned about
127 potential side effects such as antibody-dependent enhancement and antibody-triggered cytokine
128 storms (23). Early outpatient use of CCP would have required a monitored environment similar
129 in some ways to the inpatient environment (24). But by May 2020 (2), we had learned that CCP
130 is a safe inpatient therapy (25), and by Fall 2020 it had been used successfully in an outpatient
131 RCT (26) without safety concerns (27).

132 Although the logistics of outpatient CCP use are more complicated than in-hospital use (24),
133 successful deployment of outpatient mAb therapy and the availability of outpatient RCT data
134 (14, 28) established the feasibility of this option in the USA. Efficacy of outpatient use of CCP
135 was estimated in three ways: a 30% reduction in hospitalization based on a meta-analysis of
136 five trials (29); a 54% reduction based on findings of the largest RCT (14); and an 80%
137 reduction based on findings from the subset treated within 5 days in the largest RCT (30).
138 However, the more complex logistics of outpatient CCP use make it unlikely that everyone at
139 risk for progression would have received this therapy as only 15% of eligible patients received
140 mAb outpatient therapy (31). Had a similar percentage of high-risk individuals been treated with
141 CCP in the first year of the pandemic, we estimate that between 85,268 and 227,377
142 hospitalizations could have been avoided, depending on the efficacy estimate. Using the 21%
143 overall mortality rate for hospitalized patients at that time, this would have further prevented

144 about 17,693 to 46,974 deaths, depending on the efficacy estimate, since most deaths from
145 COVID-19 occurred in hospitals (Figure 1, Table 1).

146 Reduction in hospitalizations would have also reduced stress on the health care system, which
147 itself was associated with 2,000-80,000 additional deaths from causes other than COVID-19 in
148 the first year of the pandemic (32). These estimates suggest that the secondary effects in
149 reducing hospital stress might have saved additional lives, increasing our estimates of lives
150 saved according to Model 1 (Table 1) from a minimum of 18,476 (16,476 + 2000) to a maximum
151 of 146,296 (66,296 + 80,000). Had public health and medical authorities been able to provide
152 CCP to 75% of high-risk patients (Model 4), these numbers would have risen to between 55,943
153 (53,943 + 2000) to 395,6147 (215,614 + 80,000). With 407,100 USA deaths during the first year
154 of the pandemic, such a deployment would have reduced mortality by 13-72% and substantially
155 mitigated the impact of the pandemic in the USA. Given an average hospitalization cost of
156 \$41,000 per patient (33) and an average cost of \$750 per unit of CCP, we estimate outpatient
157 deployment with treatment of only 15% of eligible patients, with a 54% reduction in progression
158 to hospitalization (14), would have saved the USA approximately \$6 billion. If given to 75% of
159 eligible patients, savings would approach \$31 billion.

160 Figure 1 shows estimated lives saved with different mortality reduction assumptions and
161 potential lives saved had universal CCP use been instituted for hospitalized patients. Because it
162 is uncertain which mortality reduction value is most tenable, we opted to present all the
163 estimates in Table 1 and the most conservative estimates only in Figure 1. Despite these
164 variations, all estimates show that thousands of lives were saved by CCP deployment.

165 Safety of CCP. Intrinsicly linked to the conclusion that CCP saved lives is the assumption that
166 transfusion of CCP is safe. Numerous observational studies and RCTs have established that
167 CCP is a safe therapy (34). However, like all generally safe drugs such as penicillin that can
168 occasionally trigger fatal reactions (35), plasma administration was associated with severe
169 reactions on rare occasions. The standard transfusion reactions - transfusion related acute lung
170 injury (TRALI) and transfusion associated circulatory overload (TACO) were very rare, and while
171 antibody-dependent enhancement was feared, it was not observed (2, 3). TRALI occurs after
172 transfusion in 1 of 2000 plasma components and is fatal in 5-10% of cases (36-38). Among
173 20,000 individuals who received CCP there were 36 reports of TACO, 21 reports of TRALI and
174 21 reports of severe allergic transfusion reactions, which was similar to complication rates
175 associated with infusion of fresh frozen plasma (3), of which about 2,000,000 units are
176 transfused in the USA each year primarily to provide replacement of coagulation factors (39). At
177 least one fatal reaction to CCP infusion has been described in the literature (40). When
178 considering presumptive severe reactions from CCP administration occurring in critically ill
179 patients, it is often difficult to distinguish these from worsening of the underlying illness,
180 especially in the face of concurrent pneumonia, ARDS, ongoing mechanical ventilation,
181 ventricular dysfunction, and arrhythmias. Nevertheless, in our estimates we sought to consider
182 the worst possible scenario for CCP in contributing to COVID-19 related deaths to provide the
183 most conservative estimate of lives saved. The EAP registry recorded 63 deaths among 20,000
184 individuals transfused with CCP within 4 h of plasma infusion, of which 10 were judged as
185 possibly related to CCP. Extrapolating this mortality rate to our study, given that 647,795 units
186 were administered, would mean that 32 to 324 deaths from CCP would have to be subtracted
187 from the total number of lives saved.

188 A model for how CCP reduced mortality in COVID-19. A causal association between CCP
189 usage and lives saved is strengthened by an understanding of the CCP mechanism of action.
190 CCP administration has been shown to reduce SARS-CoV-2 viral load in macaques (41),
191 hamsters (42, 43), and mice made susceptible to this coronavirus by expressing the human
192 angiotensin-converting enzyme 2 (ACE2) receptor (44, 45). In hospitalized patients,
193 administration of CCP with greater neutralizing antibody content was associated with greater
194 SARS-CoV-2 viral load reduction (46). Both animal and clinical studies thus establish CCP as
195 an antiviral therapy, consistent with the accepted view that specific antibody can neutralize viral
196 particles in vivo. For both CCP and mAb preparations, the active ingredient against SARS-CoV-
197 2 is a specific antibody. Consistent with the antiviral activity of both preparations, monoclonal
198 antibody RCTs reported increased rates of viral clearance in the intervention arms (47),
199 confirming the efficacy of specific antibody as an antiviral agent.

200 Dose response effects are powerful tools for establishing causality in science and medicine
201 (48). In this regard, several studies reported dose-response effects between CCP specific
202 antibody content and favorable clinical outcomes (5, 19, 29, 49-52). Greater viral load reduction
203 was also observed in hospitalized patients receiving greater quantities of CCP (two units) in an
204 RCT (53). Given that specific antibody is an effective antiviral, greater efficacy for CCP units
205 with higher specific antibody content can be expected to mediate stronger antiviral effects, that
206 should translate into favorable outcomes.

207 A third line of evidence for a causal association between CCP use and reduced mortality comes
208 from its effects on inflammatory markers, which served as surrogate markers of COVID-19
209 severity. CCP administration was associated with a reduction in markers of inflammation,
210 including C-reactive protein (54-56) and IL-6 (54, 57-59). Since increased levels of IL-6
211 correlate with increased mortality and anti-IL-6 therapy reduces COVID-19 mortality (60), CCP-
212 associated reductions in IL-6 could have contributed to its effect on mortality. The anti-
213 inflammatory effect of CCP could be a consequence of its antibody-mediated antiviral effect
214 where reduced viral load elicits less inflammation and/or other components (61). Most patients
215 with COVID-19 die because of profuse pulmonary inflammation that impairs gas-exchange (62).
216 In a Belgian RCT, CCP transfused within 48 hours of mechanical ventilation reduced
217 deaths(63). Consequently, CCP anti-inflammatory effects can be incorporated into a model for
218 mortality reduction whereby reduced CCP reduces viral load and inflammatory cytokines and
219 thus lowers the probability of disease progression to end stage pulmonary compromise (Figure
220 2). In this regard, viral clearance from both small molecule antivirals and specific antibody is a
221 surrogate for clinical efficacy in preventing progression of disease (47). Consistent with the
222 critical role of specific antibody in host defense, the absence of antibody to SARS-CoV-2 is a
223 poor prognostic marker associated with increased mortality in COVID-19 (64, 65), which
224 provides an additional explanation how the administration of CCP reduced mortality by providing
225 recipients with antibody to the virus.

226 **Discussion**

227 Our estimates indicate that CCP deployment in the USA in 2020 saved thousands of lives. This
228 public health benefit is in alignment with the decisions to authorize its use during a national
229 emergency, particularly early in the pandemic when there was a great need for effective
230 therapies. Furthermore, these data support the use of this therapy in future infectious disease
231 outbreaks. Our results suggest that, had more CCP use been encouraged, and had its
232 availability been prioritized by medical and governmental authorities, more lives would have

233 been saved. Despite receiving emergency use authorization by the FDA in August 2020, CCP
234 use was not often recommended by guideline committees for COVID management, which held
235 out for RCT data before making recommendations, but such evidence was not available early in
236 the pandemic. Had CCP been universally deployed in hospitals, as was done for supplemental
237 oxygen and corticosteroids in hypoxic individuals, we estimate that the total lives saved among
238 hospitalized patients would have increased ranging from 36,838 to 215,195 depending on the
239 model used and the assumed efficacy. Universal use would not have been possible in the early
240 days of the pandemic when CCP was scarce but by the Fall of 2020 supplies were plentiful and
241 up to 40% of hospitalized patients in the USA were receiving CCP (6). COVID-19 was
242 particularly devastating for residents of long-term care facilities (66). Mortality rates due to
243 COVID-19 in these facilities were particularly high (67) and CCP deployment may have had an
244 outsized impact upon this population.

245 In considering our estimates, we acknowledge several limitations of the analysis. The number of
246 CCP units used for the calculations provided by the BCA does not capture all the CCP used in
247 the USA, particularly in the early days of the pandemic when some CCP was sourced locally.
248 While the exact number of units used is unknown, the estimates used in this study capture the
249 great majority of CCP used in the USA. The mortality reduction estimates used to calculate the
250 lives saved varied widely and the extent to which they resembled use and efficacy in more
251 2,000 clinical settings that used CCP throughout the USA is uncertain. Of note, CCP efficacy
252 was found to vary with distance between donor collection to patient administration sites, with a
253 significant reduction in efficacy when the distance exceeded 150 miles, likely reflecting donor-
254 recipient mismatches arising from local viral evolution (68), a phenomenon consistent with
255 geographic antigenic variation by SARS-CoV-2 (13). We did not model this distance effect on
256 the potential of CCP for saving lives. Had all CCP been locally sourced our estimates of lives
257 saved would have been higher.

258 In a previous epidemiologic study using regression analysis of USA population data correlating
259 weekly mortality figures with CCP use, CCP deployment was estimated to have saved about
260 96,000 lives in the first year of the pandemic (6). The difference in lives saved between the
261 epidemiologic study and the modeling estimates of the present study could arise from lower
262 efficacy in hospitalized populations studied in RCTs or from trial-associated methodological
263 differences in CCP administration. For example, RCTs inevitably included enrollment and
264 randomization protocols that may have further delayed the administration of CCP, thus reducing
265 its efficacy (11). Additionally, epidemiological analyses could have overestimated the lives saved
266 if the assumptions used to correlate overall mortality with CCP usage did not account for
267 possible confounders. Finally, this previous model estimated a base mortality of 25% which is
268 notably higher than the approximately 21% estimated in this study and the referenced literature,
269 and the higher the base mortality the more lives saved. Nevertheless, both the prior (6) and
270 current analyses are consistent in concluding that CCP deployment saved tens of thousands of
271 lives.

272 Despite the apparent success of CCP in lowering COVID-19 mortality in the USA, we note that
273 many aspects of its deployment were suboptimal. Early in the pandemic the ability to test
274 donated plasma for antibody content was limited and many patients received units with little or
275 no specific antibody to SARS-CoV-2 (69, 70). In a future emergency where public health
276 authorities are again confronted with a situation where it is difficult to ascertain antibody levels
277 they might consider using two plasma units from separate donors to increase the probability of

278 providing sufficient specific antibody to the recipient (71). Once antibody levels can be
279 determined, the optimal units for plasma therapy should be those in the upper 2-3 deciles of
280 geometric mean antibody levels, which after a ten-to-twenty-fold dilution are still in the protective
281 range (71). In addition, many patients in the first year of the pandemic were treated after three
282 days of hospitalization (72), when CCP administration was likely to have little or no effect on
283 outcome (5). The COVID-19 pandemic has yielded voluminous information on effective use of
284 passive antibody therapies that reinforce the historical evidence (11), including the importance
285 of using them early in the course of disease (29), the efficacy immunocompromised individuals
286 (18), and the need to use units with high pathogen-specific immunoglobulin content (51).

287 In less than a quarter of this new century, humanity has confronted no fewer than seven major
288 viral outbreaks with pandemic potential: Severe Acute Respiratory Syndrome (SARS) in 2003,
289 Middle Eastern Respiratory Syndrome (MERS) in 2008, Influenza H1N1 in 2009, Ebola virus
290 (2013), Zika virus in 2015, SARS-CoV-2 in 2019 and mPox in 2022. For SARS (73), MERS
291 (74), influenza H1N1 (75), Ebola (76), SARS-CoV-2 (this study) and mPox (77), convalescent
292 plasma (CP) was either used clinically or considered. The USA experience with CCP provides a
293 roadmap for future deployments of convalescent plasma (CP). Our models demonstrate that
294 the use of CP at least as a stopgap measure until additional treatments are developed and
295 mobilized should be considered part of pandemic preparedness. In addition, our estimates
296 provide robust evidence that preparedness for a future pandemic includes an outpatient
297 infrastructure that can facilitate early delivery of high titer CP. As was the case with COVID-19,
298 CP is likely to be the only pathogen-specific therapy available for new infectious disease until
299 drugs, mAbs and vaccines become available. The long record of serotherapy efficacy dates to
300 its first use in the 1890's for diphtheria management (78) and includes efficacy during the 1918
301 influenza pandemic (79). The availability of CP as soon there are survivors supports CP use
302 while safety and efficacy data are obtained as was permitted by the EAP in the USA (1).

303 The careful recording of the results of CP deployment in a registry such as the EAP (1) provides
304 information on this therapy which can inform the design of RCTs if necessary. RCTs of CP
305 efficacy should not be launched until the optimal dose and timing of the intervention is
306 established. Without this information, one runs the of risk of misleading negative trials using
307 suboptimal treatment, as occurred frequently in the early CCP trials (80). The argument that CP
308 deployment inhibits the conduct of RCTs is mistaken; at least five RCTs were completed in the
309 USA while CCP was available as part of the EAP and its subsequent use under the EUA (80).
310 Our analysis provides reassurance that FDA decisions on the deployment of CCP and the
311 enormous efforts made by physicians, blood bankers, and the public in securing plasma in the
312 first year of the pandemic saved thousands of lives.

313 **Methods**

314 The overarching goal of the analysis was to estimate the lives saved based on the availability of
315 CCP. To achieve this objective, we developed several models based on available CCP use and
316 mortality data from 7/18/20 through 3/6/21. Each of these models was selected to test various
317 assumptions about how the public health benefit could be measured based on published studies
318 examining the efficacy and national trends in hospitalizations and CCP utilization. Crude
319 estimates of the lives saved were obtained through direct computation using the modeling
320 frameworks described below. The specified models and crude estimates were then combined
321 with Bayesian estimation to produce credible bounds to measure the precision in the estimates

322 (see Supplement 1 for details on the Bayesian modeling). The following sections detail how the
323 hyperparameters and modeling frameworks were selected.

324 CCP units used and patients treated. The number of CCP units dispensed in the USA in the first
325 year of the pandemic was obtained from the Blood Centers of America Inc (BCA, West Warwick,
326 RI), based on the reported number of units shipped from all blood supplies to hospitals
327 nationwide (6). This number does not capture CCP produced by independent hospitals and
328 transfusion centers (6) as some CCP was collected and processed locally, as previously
329 described (53, 81). Nevertheless, BCA data represents approximately 90% of all units given in
330 the US. Given that the USA FDA recommendations for CCP use in 2020 were to use one unit
331 per patient, our estimates assumed that the number of units used corresponded to the number
332 of patients treated.

333 CCP mortality reduction percentages. We made two estimates of this parameter – one based on
334 RCT's and propensity matched studies, and another based on real world data. From a meta-
335 analysis of all controlled studies through 2022 (39 RCTs with 21,529 participants; 70 propensity
336 matched cohort studies with 50,160 participants) we estimate that CCP reduced mortality by
337 13% in all hospitalized patients and by 37% in inpatients treated early with high titer units (22).

338 Using real world data, CCP was estimated to reduce mortality in all hospitalized patients by 29%
339 and by 47% when high titer units were used early in hospitalization (21). These mortality ranges
340 include the most recent RCT in hospitalized patients reporting a 21% reduction in mortality (63),
341 published after the above meta-analysis. Justification for the assumption of early in-hospital use
342 comes from Mozaffari et al (72), who reported that by Fall 2020 over 83% of a large sample of
343 patients in the United States treated with CCP were being treated in the first three days of
344 hospitalization. Confidence intervals reported in these studies were used to generate prior
345 distributions in the Bayesian framework.

346 Estimating hospitalized lives saved by deployment of CCP. The weekly number of hospitalized
347 individuals, weekly deaths associated with COVID-19 estimated as previously described (6),
348 and weekly hospital admissions were acquired from the United States Centers for Disease
349 Control and Prevention (CDC) COVID-19 reporting databases. The proportion of early
350 administered CCP was calculated according to Mozaffari et al (72) who provided the
351 percentages of individuals treated by hospital day in a database representing 20% of all USA
352 hospitals.

353 Lives saved by CCP were calculated using the four separate estimates of mortality benefit
354 conferred by CCP shown above in hospitalized patients (22), i.e. 13% or 29% for any treatment
355 in hospitals; 37% or 47% if treatment was early with high titer plasma (21).

356 **Model 1.** Evaluates the question: how many lives did CCP save in comparison to a situation
357 where CCP was never used? In this scenario:

358 Total Deaths = (Untreated Patients * Untreated Mortality%) + (Treated Patients * Treated
359 Mortality%)

360 We estimated the untreated mortality each week by substituting that term with [Recorded
361 Deaths / (Admissions - Treated Patients * Mortality Reduction)]. We then calculated the lives
362 saved as the difference between the above and (Admissions * Untreated Mortality) where the
363 comparison is to the absence of CCP treatment, using the four mortality reduction fractions

364 described above from trial and real-world data (*i.e.* 13%, 29%, 37% and 47%) obtained from
365 (21, 22).

366 **Model 2.** This model for estimating actual lives saved differs from Model 1 in that we added
367 consideration of optimal use of plasma, *i.e.* in the first three days of hospitalization. For this
368 estimate we used the timing of CCP administration as reported by Mozzafari (72), who reported
369 that by December 2020, in a sample of 20% of US hospitals, 83% of patients were receiving
370 CCP in the first three days of hospitalization. We used the real-world efficacy data from Arnold
371 *et al.* (21) of a 47% reduction in mortality if given in the first 3 days and no efficacy if used
372 thereafter. We assumed that post-December 2020 usage resembled rates observed in
373 December as USA physicians had apparently learned the need to use it early in the course of
374 hospitalization and CCP was plentiful. The lives saved estimated from this model was calculated
375 using the same methodology as model 1 except that the number of treated patients each week
376 and the untreated mortality rate were recalculated according to estimated early plasma use.

377 **Models 3 and 4** estimate the number of lives that would have been saved had CCP been
378 administered to 100% of hospitalized patients, using the four measures of efficacy in reducing
379 mortality described above. Both models are similar to model 1 except for the assumption that all
380 hospitalized patients received CCP.

381 Total Deaths = (Admissions) * (Treated Mortality%)

382 Model 3 Total Lives Saved = Recorded Deaths – (Admissions * Treated Mortality%)

383 Model 4 Total Lives Saved = (Admissions * Untreated Mortality) – (Admissions * Treated
384 Mortality%)

385 Models 3 and 4 both compare the number of deaths that we estimate could have been saved if
386 all hospitalized patients had been treated in the first three days but differ in the way deaths were
387 estimated. Model 3 uses a weighted estimate of 21% average mortality based on a regression
388 analysis of weekly death rates previously established (6). Model 4 uses the actual number of
389 deaths reported by the USA CDC, synchronizing these to the number of admissions with a two-
390 week lag to allow for deaths to occur. These assumptions add different uncertainties. The
391 accuracy of Model 3 is dependent on a regression analysis estimate while in Model 4 not all
392 deaths occurred exactly two weeks after admission and the model does not account for the
393 proportion of patients who did receive CCP, since the USA CDC mortality numbers reflect all
394 who died including those treated with CCP.

395 **Model 5: Estimating potential lives saved had CCP been deployed for outpatient use.**

396 Given the greater efficacy of CCP when used early in the course of disease is likely that
397 outpatient use could have saved even more lives than inpatient use. A RCT of CCP outpatient
398 efficacy early in the pandemic reported a 48% relative risk reduction in progression to severe
399 illness likely to lead to hospitalization in elderly patients (28). Subsequently, a large RCT of
400 CCP outpatient use reported a 54.3% efficacy in reducing hospitalization (14). Consequently, we
401 estimated the potential lives saved by outpatient use based on outpatient CCP efficacy data
402 obtained during the pandemic. When CCP was given in the first five days of symptoms its
403 efficacy in reducing progression to hospitalization rose to 79.9%, similar to monoclonal
404 antibodies (30). A more conservative figure of 30% for outpatient CCP emerges from a meta-
405 analysis of five RCTs including international trials (29). We used all three estimates – 30%, 54%
406 and 80% - as shown in Table 1. Although not all patients who died of COVID-19 died in

407 hospitals, the vast majority did (82). Consequently, it is possible to estimate lives saved by
408 deployment of outpatient CCP since individuals not admitted to hospital were assumed to
409 contribute little to the overall death rate. In this estimate, the number of lives saved is seen as
410 proportional to the number of hospitalizations avoided, assuming that the mortality rate would
411 otherwise be unchanged in the hospitalized proportion of patients:

412 Total lives saved = Recorded Deaths * proportion of patients treated * efficacy of CCP

413

414 **Table 1. Estimates of lives saved from the deployment of CCP in the USA.**

Mortality Reduction		Crude Estimate	Lives Saved¹
Model 1			
13%		16,585	16,476 (4,356 - 36,032)
29%		39,089	38,500 (21,151 - 60,311)
37%		51,338	50,697 (27,185 - 78,682)
47%		67,706	66,296 (55,752 - 77,300)
Model 2			
47%		53,001	55,663 (43,668 - 69,267)
Model 3			
13%		38,492	37,467 (9,939 - 81,676)
29%		90,302	87,180 (48,091 - 136,024)
37%		118,285	114,485 (61,736 - 176,767)
47%		155,450	149,318 (125,861 - 173,712)
Model 4			
13%		55,078	53,943 (14,295 - 117,707)
29%		129,394	125,680 (69,242 - 196,335)
37%		169,620	165,182 (88,921 - 255,448)
47%		223,157	215,614 (181,612 - 251,012)
Model 5			
Mortality Reduction²	Plasma Usage³	Crude Estimate	Total Lives Saved⁴
30%	15%	20,755	17,693 (9,061 - 27,813)
54%	15%	34,736	31,762 (15,884 - 47,056)
80%	15%	49,880	46,974 (32,058 - 56,595)
30%	75%	90,669	88,465 (45,307 - 139,066)
54%	75%	160,589	158,810 (79,419 - 235,279)
80%	75%	236,328	234,869 (160,292 - 282,974)
Mortality Reduction²	Plasma Usage³	Crude Estimate	Total Hospitalizations Avoided⁴
30%	15%	85,268	85,587 (43,833 - 134,541)
54%	15%	153,578	153,642 (76,835 - 227,623)
80%	15%	227,377	227,227 (155,077 - 273,767)
30%	75%	426,331	427,933 (219,165 - 672,708)
54%	75%	767,396	768,212 (384,173 - 1,138,121)
80%	75%	1,136,880	1,136,133 (775,382 - 1,368,842)

415 ¹Posterior median and 95% credible bound estimated from a Bayesian model. See Supplement
416 1 for details.

417 ²Model 5 used three percentages of efficacy in reducing mortality and hospitalizations: The 30%
418 value comes from a meta-analysis of five outpatient RCTs that evaluated the efficacy of CCP

419 (15); the 54% value comes from the largest RCT of outpatient CCP completed (14); and the
420 efficacy of 80% comes from use of CCP in the first five days of symptoms (30).

421 ³Percentage of use of 15% was estimated from the actual use of mAbs during the pandemic,
422 which was given to patients at high risk for hospitalization. The 75% estimate assumes a major
423 national effort to deploy outpatient plasma.

424 ⁴Lives Saved are calculated according to CDC recorded deaths with a two-week lag period as
425 previously described (6), while hospitalizations avoided are calculated based on hospital
426 admissions with no lag period. Hypothetically the number of lives saved would be 21% of
427 hospitalizations avoided, but observed deaths were used to reflect a real-life outcome.

428 **References**

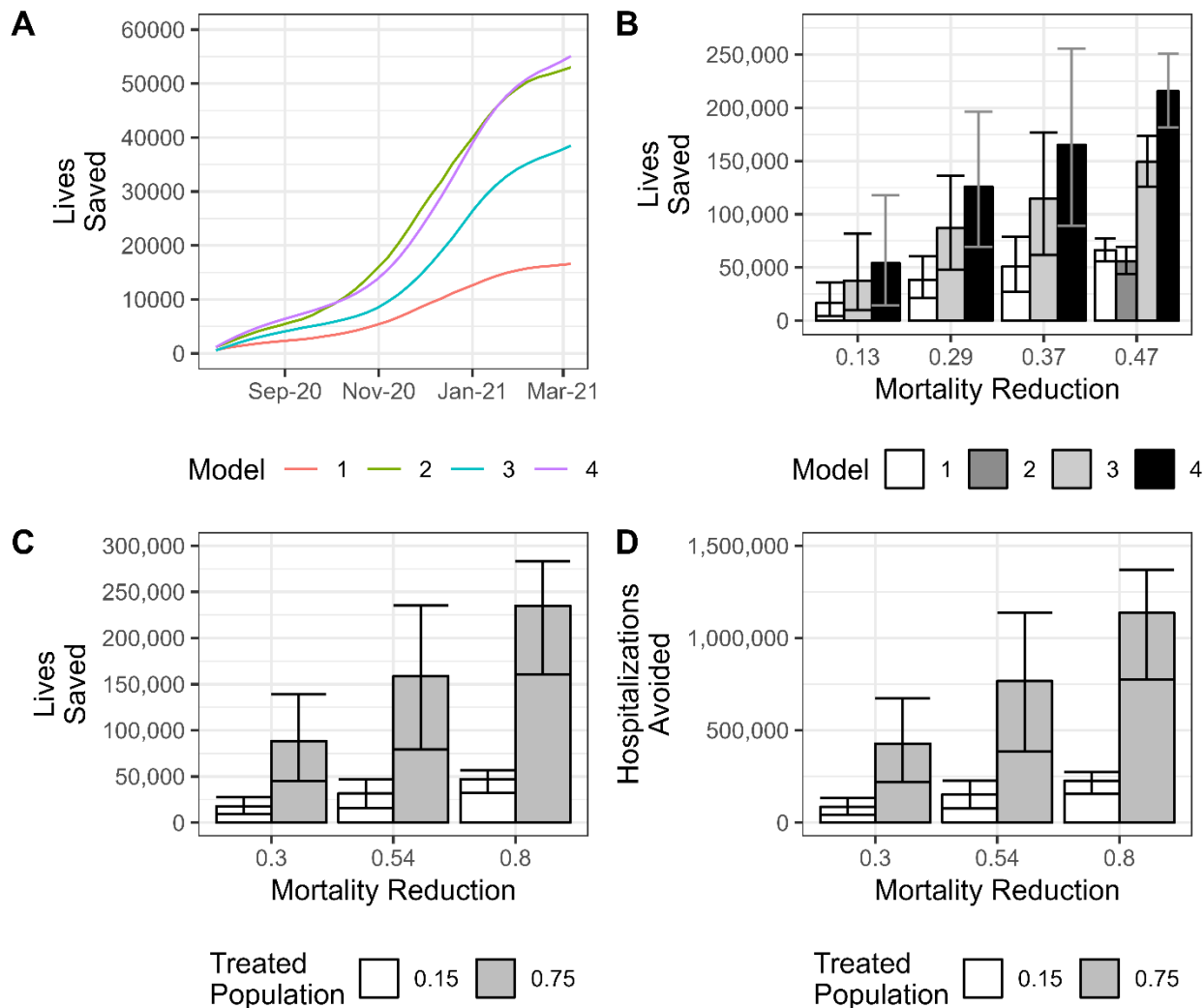
- 429
- 430 1. Senefeld JW, et al. (2021) Access to and safety of COVID-19 convalescent plasma in
431 the United States Expanded Access Program: A national registry study. *PLoS Med*
432 18(12):e1003872.
 - 433 2. Joyner MJ, et al. (2020) Early safety indicators of COVID-19 convalescent plasma in
434 5000 patients. *The Journal of clinical investigation* 130(9):4791-4797.
 - 435 3. Joyner MJ, et al. (2020) Safety Update: COVID-19 Convalescent Plasma in 20,000
436 Hospitalized Patients. *Mayo Clinic proceedings* 95(9):1888-1897.
 - 437 4. Joyner MJ, et al. (2020) Evidence favouring the efficacy of convalescent plasma for
438 COVID-19 therapy. *medRxiv*:2020.2007.2029.20162917.
 - 439 5. Joyner MJ, et al. (2021) Convalescent Plasma Antibody Levels and the Risk of Death
440 from Covid-19. *The New England journal of medicine* 384(11):1015-1027.
 - 441 6. Casadevall A, et al. (2021) Convalescent plasma use in the USA was inversely
442 correlated with COVID-19 mortality. *Elife* 10.
 - 443 7. Agarwal A, et al. (2020) Convalescent plasma in the management of moderate covid-19
444 in adults in India: open label phase II multicentre randomised controlled trial (PLACID
445 Trial). *BMJ* 371:m3939.
 - 446 8. Simonovich VA, et al. (2021) A Randomized Trial of Convalescent Plasma in Covid-19
447 Severe Pneumonia. *The New England journal of medicine* 384(7):619-629.
 - 448 9. Anonymous (2021) Convalescent plasma in patients admitted to hospital with COVID-19
449 (RECOVERY): a randomised controlled, open-label, platform trial. *Lancet*
450 397(10289):2049-2059.
 - 451 10. Menichetti F, et al. (2021) Effect of High-Titer Convalescent Plasma on Progression to
452 Severe Respiratory Failure or Death in Hospitalized Patients With COVID-19
453 Pneumonia: A Randomized Clinical Trial. *JAMA network open* 4(11):e2136246.
 - 454 11. Casadevall A, et al. (2023) Convalescent plasma therapy in COVID-19: Unravelling the
455 data using the principles of antibody therapy. *Expert review of respiratory medicine*:1-15.
 - 456 12. Focosi D, et al. (2022) COVID-19 Convalescent Plasma and Clinical Trials:
457 Understanding Conflicting Outcomes. *Clin Microbiol Rev*:e0020021.
 - 458 13. Kunze KL, et al. (2021) Mortality in individuals treated with COVID-19 convalescent
459 plasma varies with the geographic provenance of donors. *Nature communications*
460 12(1):4864.
 - 461 14. Sullivan DJ, et al. (2022) Early Outpatient Treatment for Covid-19 with Convalescent
462 Plasma. *The New England journal of medicine* 386(18):1700-1711.
 - 463 15. Levine AC, et al. (2023) COVID-19 Convalescent Plasma Outpatient Therapy to Prevent
464 Outpatient Hospitalization: A Meta-analysis of Individual Participant Data From Five
465 Randomized Trials. *Clinical infectious diseases : an official publication of the Infectious*
466 *Diseases Society of America*.
 - 467 16. Thompson MA, et al. (2021) Association of Convalescent Plasma Therapy With Survival
468 in Patients With Hematologic Cancers and COVID-19. *JAMA oncology* 7(8):1167-1175.
 - 469 17. Focosi D, McConnell S, Sullivan DJ, & Casadevall A (2023) Analysis of SARS-CoV-2
470 mutations associated with resistance to therapeutic monoclonal antibodies that emerge
471 after treatment. *Drug resistance updates : reviews and commentaries in antimicrobial*
472 *and anticancer chemotherapy* 71:100991.
 - 473 18. Senefeld JW, et al. (2023) COVID-19 Convalescent Plasma for the Treatment of
474 Immunocompromised Patients: A Systematic Review and Meta-analysis. *JAMA network*
475 *open* 6(1):e2250647.
 - 476 19. González SE, et al. (2022) Timing of convalescent plasma administration and 28-day
477 mortality in COVID-19 pneumonia. *Journal of investigative medicine : the official*
478 *publication of the American Federation for Clinical Research* 70(5):1258-1264.

- 479 20. De Silvestro G, *et al.* (2022) Outcome of SARS CoV-2 inpatients treated with
480 convalescent plasma: One-year of data from the Veneto region (Italy) Registry.
481 *European journal of internal medicine* 97:42-49.
- 482 21. Arnold Egloff SA, *et al.* (2021) Convalescent plasma associates with reduced mortality
483 and improved clinical trajectory in patients hospitalized with COVID-19. *The Journal of*
484 *clinical investigation* 131(20).
- 485 22. Senefeld JW, *et al.* (2023) Rates Among Hospitalized Patients With COVID-19 Treated
486 With Convalescent Plasma: A Systematic Review and Meta-Analysis. *Mayo Clinic*
487 *Proceedings: Innovations, Quality & Outcomes* 7(5):499-513.
- 488 23. de Alwis R, Chen S, Gan ES, & Ooi EE (2020) Impact of immune enhancement on
489 Covid-19 polyclonal hyperimmune globulin therapy and vaccine development.
490 *EBioMedicine* 55:102768.
- 491 24. Bloch EM, *et al.* (2022) How do I implement an outpatient program for the administration
492 of convalescent plasma for COVID-19? *Transfusion* 62(5):933-941.
- 493 25. Joyner MJ, *et al.* (2020) Safety Update: COVID-19 Convalescent Plasma in 20,000
494 Hospitalized Patients. *Mayo Clinic proceedings*, (Elsevier).
- 495 26. Libster R, *et al.* (2020) Prevention of severe COVID-19 in the elderly by early high-titer
496 plasma. *medRxiv:2020.2011.2020.20234013*.
- 497 27. Huaman MA, *et al.* (2023) Transfusion reactions associated with COVID-19
498 convalescent plasma in outpatient clinical trials. *Transfusion* 63(9):1639-1648.
- 499 28. Libster R, *et al.* (2021) Early High-Titer Plasma Therapy to Prevent Severe Covid-19 in
500 Older Adults. *The New England journal of medicine* 384(7):610-618.
- 501 29. Levine AC, *et al.* (2022) COVID-19 Convalescent Plasma Outpatient Therapy to Prevent
502 Outpatient Hospitalization: A Meta-analysis of Individual Participant Data From Five
503 Randomized Trials. *medRxiv*.
- 504 30. Sullivan DJ, *et al.* (2023) Outpatient randomized controlled trials to reduce COVID-19
505 hospitalization: Systematic review and meta-analysis. *J Med Virol* 95(12):e29310.
- 506 31. McCreary EK, Escobar ZK, & Justo JA (2023) Monoclonal Antibodies for the Treatment
507 of COVID-19-Every Day You Fight Like You're Running Out of Time. *JAMA network open*
508 6(4):e239702.
- 509 32. French G, *et al.* (2022) Impact of hospital strain on excess deaths during the COVID-19
510 pandemic-United States, July 2020-July 2021. *American journal of transplantation : official*
511 *journal of the American Society of Transplantation and the American Society of*
512 *Transplant Surgeons* 22(2):654-657.
- 513 33. Ohsfeldt RL, *et al.* (2021) Inpatient Hospital Costs for COVID-19 Patients in the United
514 States. *Adv Ther* 38(11):5557-5595.
- 515 34. Franchini M, *et al.* (2024) Safety and Efficacy of Convalescent Plasma Combined with
516 Other Pharmaceutical Agents for Treatment of COVID-19 in Hospitalized Patients: A
517 Systematic Review and Meta-Analysis. *Diseases* 12(3):41.
- 518 35. Rosenthal A (1954) Eight fatal anaphylactic reactions to penicillin. *New York state journal*
519 *of medicine* 54(10):1485-1487.
- 520 36. Popovsky MA & Moore SB (1985) Diagnostic and pathogenetic considerations in
521 transfusion-related acute lung injury. *Transfusion* 25(6):573-577.
- 522 37. Bux J (2005) Transfusion-related acute lung injury (TRALI): a serious adverse event of
523 blood transfusion. *Vox Sang* 89(1):1-10.
- 524 38. Webert KE & Blajchman MA (2005) Transfusion-related acute lung injury. *Curr Opin*
525 *Hematol* 12(6):480-487.
- 526 39. Arya RC, Wander G, & Gupta P (2011) Blood component therapy: Which, when and how
527 much. *Journal of anaesthesiology, clinical pharmacology* 27(2):278-284.

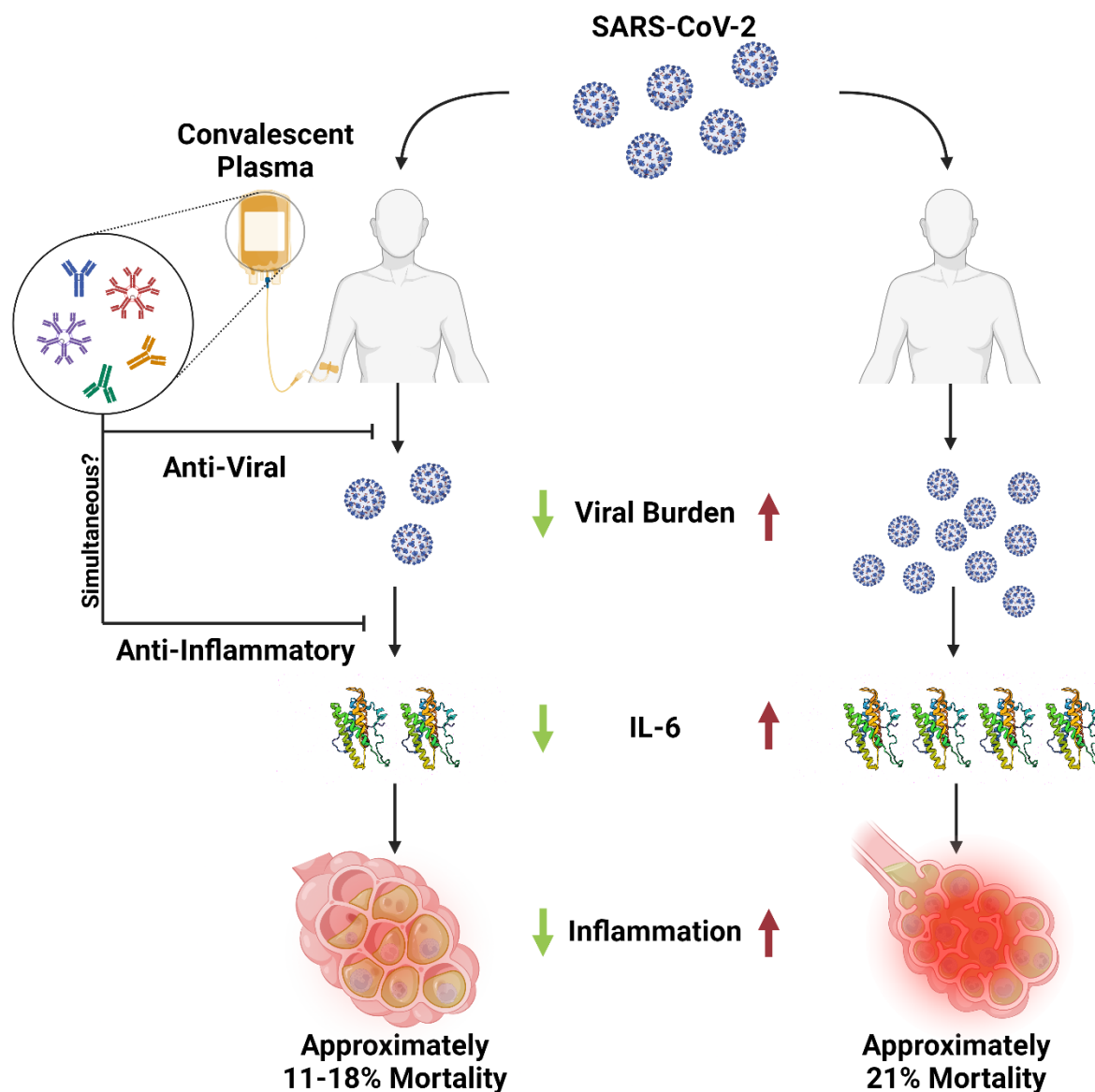
- 528 40. Amrutiya V, *et al.* (2021) Transfusion-related acute lung injury in a COVID-19-positive
529 convalescent plasma recipient: a case report. *The Journal of international medical*
530 *research* 49(8):3000605211032814.
- 531 41. Carroll TD, *et al.* (2024) Vaccine-Boosted CCP Decreases Virus Replication and
532 Hastens Resolution of Infection Despite Transiently Enhancing Disease in SARS-CoV-2-
533 Infected Hamsters. *The Journal of infectious diseases*.
- 534 42. Haagmans BL, *et al.* (2021) SARS-CoV-2 Neutralizing Human Antibodies Protect
535 Against Lower Respiratory Tract Disease in a Hamster Model. *J Infect Dis* 223(12):2020-
536 2028.
- 537 43. Takamatsu Y, *et al.* (2022) Highly neutralizing COVID-19 convalescent plasmas potently
538 block SARS-CoV-2 replication and pneumonia in Syrian hamsters. *Journal of Virology*
539 96(4):e01551-01521.
- 540 44. Van Rompay KKA, *et al.* (2022) Early post-infection treatment of SARS-CoV-2 infected
541 macaques with human convalescent plasma with high neutralizing activity had no
542 antiviral effects but moderately reduced lung inflammation. *PLoS pathogens*
543 18(4):e1009925.
- 544 45. Deere JD, *et al.* (2021) SARS-CoV-2 Infection of Rhesus Macaques Treated Early with
545 Human COVID-19 Convalescent Plasma. *Microbiology spectrum* 9(3):e0139721.
- 546 46. Marconato M, *et al.* (2022) Antibodies from convalescent plasma promote SARS-CoV-2
547 clearance in individuals with and without endogenous antibody response. *The Journal of*
548 *clinical investigation* 132(12).
- 549 47. Elias KM, *et al.* (2024) Viral clearance as a surrogate of clinical efficacy for COVID-19
550 therapies in outpatients: a systematic review and meta-analysis. *The Lancet. Microbe*.
- 551 48. Hill AB (1965) THE ENVIRONMENT AND DISEASE: ASSOCIATION OR CAUSATION?
552 *Proceedings of the Royal Society of Medicine* 58(5):295-300.
- 553 49. Begin P, *et al.* (2021) Convalescent plasma for hospitalized patients with COVID-19: an
554 open-label, randomized controlled trial. *Nature medicine* 27(11):2012-2024.
- 555 50. Maor Y, *et al.* (2020) Compassionate use of convalescent plasma for treatment of
556 moderate and severe pneumonia in COVID-19 patients and association with IgG
557 antibody levels in donated plasma. *EClinicalMedicine* 26:100525.
- 558 51. Park HS, *et al.* (2024) Outpatient COVID-19 convalescent plasma recipient antibody
559 thresholds correlated to reduced hospitalizations within a randomized trial. *JCI insight*.
- 560 52. Park H, *et al.* (2024) Association between COVID-19 convalescent plasma antibody
561 levels and COVID-19 outcomes stratified by clinical status at presentation. *BMC*
562 *infectious diseases* 24(1):639.
- 563 53. Bar KJ, *et al.* (2021) A randomized controlled study of convalescent plasma for
564 individuals hospitalized with COVID-19 pneumonia. *The Journal of clinical investigation*.
- 565 54. Pratedrat P, *et al.* (2023) Dynamics of Cytokine, SARS-CoV-2-Specific IgG, and
566 Neutralizing Antibody Levels in COVID-19 Patients Treated with Convalescent Plasma.
567 *Diseases* 11(3).
- 568 55. Duan K, *et al.* (2020) Effectiveness of convalescent plasma therapy in severe COVID-19
569 patients. *Proceedings of the National Academy of Sciences of the United States of*
570 *America* 117(17):9490-9496.
- 571 56. Perotti C, *et al.* (2020) Mortality reduction in 46 severe Covid-19 patients treated with
572 hyperimmune plasma. A proof of concept single arm multicenter trial. *Haematologica*.
- 573 57. Bandopadhyay P, *et al.* (2021) Nature and Dimensions of Systemic Hyperinflammation
574 and its Attenuation by Convalescent Plasma in Severe COVID-19. *The Journal of*
575 *infectious diseases* 224(4):565-574.
- 576 58. Habtehyimer F, *et al.* (2024) COVID-19 convalescent plasma therapy decreases
577 inflammatory cytokines: a randomized controlled trial. *Microbiology spectrum*
578 12(1):e0328623.

- 579 59. Acosta-Ampudia Y, *et al.* (2021) COVID-19 convalescent plasma composition and
580 immunological effects in severe patients. *Journal of autoimmunity* 118:102598.
- 581 60. Ghosn L, *et al.* (2023) Interleukin-6 blocking agents for treating COVID-19: a living
582 systematic review. *The Cochrane database of systematic reviews* 6(6):Cd013881.
- 583 61. Focosi D, *et al.* (2021) COVID-19 Convalescent Plasma Is More than Neutralizing
584 Antibodies: A Narrative Review of Potential Beneficial and Detrimental Co-Factors.
585 *Viruses* 13(8).
- 586 62. Wu M, *et al.* (2020) Transcriptional and proteomic insights into the host response in fatal
587 COVID-19 cases. *Proceedings of the National Academy of Sciences of the United States*
588 *of America* 117(45):28336-28343.
- 589 63. Misset B, *et al.* (2023) Convalescent Plasma for Covid-19-Induced ARDS in
590 Mechanically Ventilated Patients. *The New England journal of medicine* 389(17):1590-
591 1600.
- 592 64. Dispinseri S, *et al.* (2021) Neutralizing antibody responses to SARS-CoV-2 in
593 symptomatic COVID-19 is persistent and critical for survival. *Nature communications*
594 12(1):2670.
- 595 65. Martin-Vicente M, *et al.* (2022) Low anti-SARS-CoV-2 S antibody levels predict
596 increased mortality and dissemination of viral components in the blood of critical
597 COVID-19 patients. *Journal of internal medicine* 291(2):232-240.
- 598 66. Bagchi S, *et al.* (2021) Rates of COVID-19 Among Residents and Staff Members in
599 Nursing Homes - United States, May 25-November 22, 2020. *MMWR. Morbidity and*
600 *mortality weekly report* 70(2):52-55.
- 601 67. Lee D, Counard C, Tang A, Brister S, & Ezike N (2022) Notes from the Field: COVID-19-
602 Associated Mortality Risk Among Long-Term Care Facility Residents and Community-
603 Dwelling Adults Aged ≥ 65 Years - Illinois, December 2020 and January 2022. *MMWR.*
604 *Morbidity and mortality weekly report* 71(24):803-805.
- 605 68. Kunze KL, *et al.* (2021) Mortality in individuals treated with COVID-19 convalescent
606 plasma varies with the geographic provenance of donors.
607 *medRxiv:2021.2003.2019.21253975*.
- 608 69. Zhang S, *et al.* (2023) High-Throughput Neutralization and Serology Assays Reveal
609 Correlated but Highly Variable Humoral Immune Responses in a Large Population of
610 Individuals Infected with SARS-CoV-2 in the US between March and August 2020.
611 *mBio:e0352322*.
- 612 70. Klein SL, *et al.* (2020) Sex, age, and hospitalization drive antibody responses in a
613 COVID-19 convalescent plasma donor population. *The Journal of clinical investigation*
614 130(11):6141-6150.
- 615 71. Sullivan D & Casadevall A (2023) COVID-19 Serology Data Provide Guidance for Future
616 Deployments of Convalescent Plasma. *mBio:e0042823*.
- 617 72. Mozaffari E, *et al.* (2022) Clinical Management of Hospitalized Coronavirus Disease
618 2019 Patients in the United States. *Open forum infectious diseases* 9(1):ofab498.
- 619 73. Cheng Y, *et al.* (2005) Use of convalescent plasma therapy in SARS patients in Hong
620 Kong. *European journal of clinical microbiology & infectious diseases : official publication*
621 *of the European Society of Clinical Microbiology* 24(1):44-46.
- 622 74. Ko JH, *et al.* (2018) Challenges of convalescent plasma infusion therapy in Middle East
623 respiratory coronavirus infection: a single centre experience. *Antiviral therapy* 23(7):617-
624 622.
- 625 75. Hung IF, *et al.* (2011) Convalescent plasma treatment reduced mortality in patients with
626 severe pandemic influenza A (H1N1) 2009 virus infection. *Clinical infectious diseases :*
627 *an official publication of the Infectious Diseases Society of America* 52(4):447-456.
- 628 76. van Griensven J, *et al.* (2016) Evaluation of Convalescent Plasma for Ebola Virus
629 Disease in Guinea. *N Engl J Med* 374(1):33-42.

- 630 77. Bloch EM, *et al.* (2022) The Potential Role of Passive Antibody-Based Therapies as
631 Treatments for Monkeypox. *mBio* 13(6):e0286222.
- 632 78. Roux E, Martin L, & Chaillou A (1894) Trois cents cas de diphtérie traités par le sérum
633 antidiphtérique. *Ann Inst Pasteur* 8:640-661.
- 634 79. Luke TC, Kilbane EM, Jackson JL, & Hoffman SL (2006) Meta-analysis: convalescent
635 blood products for Spanish influenza pneumonia: a future H5N1 treatment? *Annals of*
636 *internal medicine* 145(8):599-609.
- 637 80. Senefeld JW, Marks P, Casadevall A, & Joyner MJ (2023) The value of observational
638 registry studies for the next infectious disease emergency. *mBio* 14(6):e0256523.
- 639 81. Salazar E, *et al.* (2020) Significantly decreased mortality in a large cohort of COVID-19
640 patients transfused early with convalescent plasma containing high titer anti-SARS-CoV-
641 2 spike protein IgG. *The American journal of pathology*.
- 642 82. Pathak EB, Garcia RB, Menard JM, & Salemi JL (2021) Out-of-Hospital COVID-19
643 Deaths: Consequences for Quality of Medical Care and Accuracy of Cause of Death
644 Coding. *American journal of public health* 111(S2):S101-s106.
- 645



646
 647 **Figure 1.** Bayesian estimates of total lives saved with confidence intervals given various models
 648 of CCP usage and efficiency from July 2020 through March 2021. **A.** Summations of estimated
 649 lives saved using the most conservative parameters of each model as a function of time
 650 throughout the entire period. **B.** Estimated lives saved in models 1 through 4 with confidence
 651 intervals depicted by error bars. **C.** Estimated lives saved in model 5 with confidence
 652 intervals depicted by error bars. **D.** Estimated hospitalizations avoided in model 5 with confidence
 653 intervals depicted by error bars.



654

655 **Figure 2.** Proposed scheme for the reduction of COVID-19 mortality by CCP. In the USA CCP
656 was used almost exclusively in hospitalized patients, of whom the majority were admitted
657 because of some pulmonary compromise. Hence, the reduced mortality described here is
658 proposed to reflect the subset that were sufficiently early in the course of disease such that the
659 administration of antibody could modify the progression of disease to result in better outcomes.
660 CCP has been shown to have antiviral activity and to be associated with reduced inflammatory
661 mediators including IL-6. According to this scheme, CCP administration led to reduced
662 inflammation that translated into lower mortality for a subset of treated hospitalized patients.
663 Created with BioRender.com