

Title:

Tuberculosis healthcare service disruptions during the COVID-19 pandemic in Brazil, India and South Africa: A model-based analysis of country-level data

Authors:

Abigail K. de Villiers ^{*1,2,3}; Muhammad Osman ^{1,4}; Claudio J. Struchiner⁵; Anete Trajman⁶ Dheeraj Tumu⁷; Vaibhav V. Shah⁷; Guilherme L. Werneck⁸; Layana C. Alves⁹; Megha Choudhary ¹⁰; Sunita Verma¹⁰; Sanjay K. Mattoo⁷; Sue-Ann Meehan ¹; Urvasi B. Singh¹⁰; Anneke C. Hesselink ¹; Florian M. Marx ^{1,2,3}

Affiliations:

¹Desmond Tutu TB Centre, Department of Paediatrics and Child Health, Faculty of Medicine and Health Sciences, Stellenbosch University, South Africa

²South African Centre for Epidemiological Modelling and Analysis, Stellenbosch University, Stellenbosch, South Africa

³Department of Infectious Diseases and Tropical Medicine, Heidelberg University Hospital, Heidelberg, Germany

⁴School of Human Sciences, Faculty of Education, Health and Human Sciences, University of Greenwich, United Kingdom

⁵School of Applied Mathematics, Fundação Getúlio Vargas, Rio de Janeiro, Brazil

⁶Department of Internal Medicine, Medical School, Federal University of Rio de Janeiro, Brazil

⁷Central TB Division, National TB Elimination Program, Ministry of Health, Government of India

⁸Department of Epidemiology, State University of Rio de Janeiro, Brazil

⁹Collective Health Institute, Federal University of Bahia, Salvador, Brazil

¹⁰Department of Microbiology, All India Institute of Medical Sciences, New Delhi, India

***Corresponding author:**

E-mail: abigail.devilliers@uni-heidelberg.de

Manuscript pages: 21

Main text: 2759 words

References: 36

Tables: 3

Figures: 3 colour figures

Supporting information: 1 Table, 2 Figures

Abstract

Tuberculosis (TB) is the leading infectious disease cause of death worldwide. In recent years, stringent measures to contain the spread of SARS-CoV-2 have led to considerable disruptions of healthcare services for TB in many countries. The extent to which these measures have affected TB testing, treatment initiation and outcomes has not been comprehensively assessed. We aimed to estimate TB healthcare service disruptions occurring during the COVID-19 pandemic in Brazil, India, and South Africa. We obtained country-level TB programme and laboratory data and used autoregressive integrated moving average (ARIMA) time-series models to estimate healthcare service disruptions with respect to TB testing, treatment initiation, and treatment outcomes. We quantified disruptions as the percentage difference between TB indicator data observed during the COVID-19 pandemic compared with values for a hypothetical no-COVID scenario, predicted through forecasting of trends during a three-year pre-pandemic period. Annual estimates for 2020-2022 were derived from aggregated monthly data. We estimated that in 2020, the number of bacteriological tests conducted for TB diagnosis was 24.3% (95% uncertainty interval: 8.4%;36.6%) lower in Brazil, 27.8% (19.8;34.8%) lower in India, and 32.0% (28.9%;34.9%) lower in South Africa compared with values predicted for the no-COVID scenario. TB treatment initiations were 17.4% (13.9%;20.6%) lower than predicted in Brazil, 43.3% (39.8%;46.4%) in India, and 27.0% (15.2%;36.3%) in South Africa. Reductions in 2021 were less severe compared with 2020. The percentage deaths during TB treatment were 13.7% (8.1%; 19.7%) higher than predicted in Brazil, 1.7% (-8.9%;14.0%) in India and 21.8% (7.4%;39.2%) in South Africa. Our analysis suggests considerable disruptions of TB healthcare services occurred during the early phase of the COVID-19 pandemic in Brazil, India, and South Africa, with at least partial recovery in the following years. Sustained efforts to mitigate the detrimental impact of COVID-19 on TB healthcare services are needed.

1 **Introduction**

2

3 Tuberculosis (TB) continues to be a serious threat to population health globally. In 2022, an
4 estimated 10.6 million individuals worldwide developed TB and 1.6 million TB-related deaths
5 occurred [1] making TB the single most common infectious disease cause of death worldwide
6 [2]. The SARS-CoV-2 pandemic exacerbated TB as a public health concern [3]. The World
7 Health Organization reported that in 2020, 1.4 million fewer people received TB treatment,
8 compared with those reported in 2019 [4, 5]. Low- and middle-income countries (LMICs),
9 which account for 95% of all TB deaths worldwide, were severely affected by the social and
10 economic consequences of the COVID-19 pandemic and related response measures [6].

11 During lockdowns implemented to contain SARS-CoV-2 transmission, individuals faced
12 difficulties in accessing TB healthcare services due to movement restrictions, increased
13 financial constraints and elevated fear of contracting COVID-19 in healthcare settings [7, 8].
14 Healthcare service delivery was negatively impacted as human and financial resources were
15 redirected towards addressing the demands of the COVID-19 pandemic. Staff shortages due to
16 COVID-19 illness further impacted TB testing and treatment [9, 10]. Consequently, these
17 disruptions may have driven delayed and missed TB diagnoses, reduced numbers of people
18 initiating TB treatment, and increased rates of unfavourable TB treatment outcomes [11].

19 Several countries have emphasized disruptions to TB healthcare services due to efforts to
20 reduce the spread of SARS-CoV-2. A survey of Global Fund-supported programmes across
21 106 countries found that 78% of TB programmes experienced substantial disruptions, with
22 17% experiencing high or very high levels of disruption [12]. According to WHO data from
23 March 2021, COVID-19 disruptions had a significant impact on TB care in over 84 countries;
24 it was estimated that these disruptions could be as high as 25%-50% [13].

25

26 A review of studies on COVID-19 impact on TB published in 2021 found that substantial
27 disruptions to TB services and increased vulnerability to TB had occurred [14]. Early
28 evaluations quantifying country-level disruptions to TB healthcare services in Brazil [15, 16],
29 India [17] and South Africa [18, 19] have been conducted [12]. However, these studies were
30 limited in capturing the full extent of TB healthcare service disruptions as they relied on
31 relatively short observation periods conducted before and after comparisons of indicators
32 without taking seasonal or annual trends into account, or did not include an assessment of data
33 on TB treatment outcomes.

34

35 This study formed part of the IMPAC₁₉T_B project, a large multi-national research project on
36 the epidemiological impact and intersection of the COVID-19 and tuberculosis pandemics in
37 Brazil, Russia, India and South Africa [20]. Using country-level TB programmatic and
38 laboratory data, we aimed to estimate the extent of TB healthcare service disruptions from the
39 onset of the COVID-19 pandemic in Brazil, India, and South Africa.

40

41 **Methods**

42 **Study setting**

43 This study focused on Brazil, India and South Africa, three countries which rank among the
44 30 countries with the highest TB burden in terms of estimated incident TB cases and were
45 also severely affected by the COVID-19 pandemic [1]. Key indicator data for COVID-19 and
46 TB for the three countries are provided in Table 1.

47

48 **Table 1. Population size, TB incidence and COVID-19 cases and deaths per country.**

	Population size (2022) [21]	Total TB incidence (2022) [1]	HIV-positive TB incidence (2022) [1]	COVID-19 cases – cumulative* [22]	COVID-19 deaths* [22]
Brazil	215,313,498	105,000 (89,000-121,000)	19,000 (16,000-23,000)	38,210,864	708,638
India	1,417,173,173	2,820,000 (2,390,000-3,280,000)	48,000 (40,000-55,000)	45,020,333	533,049
South Africa	59,893,885	280,000 (182,000-398,000)	152,000 (99,000-217,000)	4,076,463	102,595

49 *29th January 2020- 12th January 2024.

50

51 **Indicators and data sources**

52 We assessed country-level trends in selected key TB indicators as proxy information to
53 estimate the extent of TB healthcare service disruptions during the COVID-19 pandemic (Table
54 2).

55 We hypothesized that numbers of bacteriological tests conducted for the diagnosis of TB may
56 be impacted by reduced access to TB testing and/or reduced testing capacity during the
57 COVID-19 pandemic. Numbers of people initiating TB treatment may have been impacted by
58 either reduced access to TB testing, or losses and delays prior to the uptake of treatment.
59 Standard TB treatment outcomes may be impacted by diagnostic delays as well as reduced

60 access, supervision, and support during treatment. Data for these key indicators were collected
 61 from in-country routine programmatic clinical and laboratory data sources (Table 3).

62

63 **Table 2. TB indicators evaluated**

TB indicator	Description
TB testing data	
Number of TB tests conducted	Number of bacteriological TB tests* conducted
Test positivity	Number of bacteriological TB tests with a positive test result divided by the number of bacteriological tests conducted
TB treatment initiation data	
Number of people initiating TB treatment	Number of individuals reported to have initiated TB treatment; based on case notification data recorded in TB treatment registers
TB treatment outcome data[†]	
Percentage unfavourable treatment outcomes	Number of patients who had a standard treatment outcome other than treatment success (i.e. either failure, death, or loss to follow-up) divided by the total number of patients with reported TB treatment outcomes
Percentage treatment failure	Number of patients with the standard treatment outcome ‘treatment failure’ divided by the total number of patients with reported TB treatment outcomes
Percentage death during treatment	Number of patients with the standard treatment outcome ‘death’ divided by the total number of patients with reported TB treatment outcomes
Percentage loss to follow-up	Number of patients with the standard treatment outcome ‘loss to follow-up from treatment’ divided by the total number of patients with reported TB treatment outcomes

64 * TB test data represent numbers of bacteriological tests conducted per unit time. For Brazil and
 65 South Africa bacteriological tests included WHO-recommended rapid diagnostics (WRDs) as per
 66 National TB Programme guidelines whilst for India, tests included sputum smear microscopy and
 67 WRDs.

68 † Percentage treatment outcomes refer to individuals who initiated TB treatment in that month
 69 (outcome cohort) excluding outcomes reported as unknown or not evaluated.

70

71 **Table 3. TB programmatic available time periods and data sources**

Data type	Country	Time period	Source	Date accessed
TB testing	Brazil	2017 - 2022	Tuberculosis Rapid Test Network (RTR-TB, Rede de Testes Rápidos da Tuberculose)	18/12/2022
	India	2019 – 2022 ^a	Nikshay Portal, Central TB division, Ministry of health and family welfare [23]	02/08/2023
	South Africa	2017 – 2022 ^b	National Health Laboratory Service (NHLS) via National Institute for Communicable Diseases (NICD)	04/07/2022
TB treatment initiation	Brazil	2017 - 2022	Notifiable Diseases Information System, Ministry of Health [24]	10/04/2023
	India	2017 - 2022	Nikshay Portal, Central TB division, Ministry of health and family welfare [23]	02/08/2023
	South Africa	2018 - 2021	Health Informatics Directorate of the National Department of Health	04/07/2022
TB treatment outcomes	Brazil	2017 - 2021	Notifiable Diseases Information System, Ministry of Health [24]	10/04/2023
	India	2017 - 2021	Nikshay Portal, Central TB division, Ministry of health and family welfare [23]	02/08/2023
	South Africa	2018 - 2020	Health Informatics Directorate of the National Department of Health	04/07/2022

72 ^a Quarterly-level estimates only

73 ^b until 06/2022

74

75 **Modeling approach**

76 We used autoregressive integrated moving average (ARIMA) time-series models to investigate
77 TB healthcare service disruptions with respect to TB testing, treatment initiation and outcomes
78 during the first 2 years of the COVID-19 pandemic (April 2020-December 2021). ARIMA
79 models are statistical models which are fitted to time-series data to predict (forecast) values for
80 future points in time [25]. They combine auto-regression with moving averages to account for
81 secular and seasonal growth or decline and random variation in the data. The ARIMA models
82 were implemented in R studio (version 2022.02.2) using the *auto.arima()* function from the
83 *forecast* package [26].

84 We estimated monthly healthcare service disruptions during the COVID-19 pandemic as the
85 percentage difference between indicator data observed during the pandemic compared with
86 values predicted through forecasting of pre-pandemic trends using reported data from a three-
87 year (2017-2019) pre-COVID-19 period (no-COVID scenario).

88 While forecasting of pre-COVID trends referred to monthly (and quarterly) time points, we
89 then derived aggregated annual estimates of percentage differences for each indicator as
90 follows. We sampled 10,000 predicted values from the ARIMA model using the *simulate()*
91 function

$$92 \quad \tilde{y}_{t,i} = \text{simulate}(\text{object}, \text{nsim}) \quad [27]$$

$$93 \quad i = 1:10000$$

94 where $\tilde{y}_{t,i}$ represents the i^{th} sampled estimate of the predicted TB indicator value at time t (calendar
95 month), the *object* is the ARIMA model function and *nsim* the number of predicted time points
96 t . We then calculated predicted annual estimates as the sums of monthly estimates

$$97 \quad \tilde{y}_{T,i} = \sum_{t=1}^{t=12} \tilde{y}_{t,i} \quad (2)$$

98 where t represents the calendar month and T the calendar year.

99

100 Estimates of annual percentage difference (observed vs. predicted) with 95% uncertainty
101 intervals (UI) were then derived from the 10,000 sampled estimates using the following
102 formulas

$$103 \quad PD_{T,i} = ((y_T - \tilde{y}_{T,i}) / \tilde{y}_{T,i}) \times 100 \quad (3)$$

$$104 \quad PD_{T, \text{best estimate}} = \text{mean}(PD_{T,i}) \text{ for all } i \quad (4)$$

$$105 \quad PD_{T, \text{lower uncertainty interval}} = 2.5\text{th percentile}(PD_{T,i}) \text{ for all } i \quad (5)$$

$$106 \quad PD_{T, \text{upper uncertainty interval}} = 97.5\text{th percentile}(PD_{T,i}) \text{ for all } i \quad (6)$$

107

108 where PD represents the percentage difference, y represents the observed value, \hat{y} represents
109 the value predicted by the ARIMA model and T represents the time (calendar year).

110

111 **Ethics**

112 This was part of the IMPAC₁₉T_B project approved by the Ethics Committee of the Institute of
113 Social Medicine, University of the State of Rio de Janeiro, Brazil (4.784.355), the Ethics
114 Committee of the All India Institute of Medical Sciences in India (IEC-305/07.04.2021, RP-
115 21/2021) and the Health Research Ethics Committee of Stellenbosch University, South Africa
116 (N21/05/013_COVID-19) and local/national TB program approvals were obtained. All
117 analyses for this study were based on aggregated (de-identified) programmatic and laboratory
118 data.

119

120 **Results**

121 **Trends in TB testing, treatment initiation and outcomes during the pre-** 122 **COVID-19 period (2017-2019)**

123 Prior to the COVID-19 pandemic, between 2017 and 2019, the number of TB tests conducted
124 had been slightly increasing over time in Brazil and India, while South Africa maintained stable
125 test numbers with well-described seasonal short-term periodic decreases in December each
126 year (Figure 1). The number of TB treatment initiations had been increasing in Brazil, India,
127 and South Africa, with India showing the most substantial increase (Figure 1). The percentage
128 of patients with unfavorable treatment outcomes had been increasing in Brazil, stable or
129 slightly decreasing in India, and stable in South Africa (Figure 2).

130

131 **TB testing, test positivity and treatment initiations during the COVID-19** 132 **pandemic**

133 We found considerable reductions in the number of TB tests conducted during the first year of
134 the COVID-19 pandemic in all three countries (Figure 1a-c). Between April and December
135 2020, the number of TB tests were lower by 24.3% (95% uncertainty interval: 8.4%; 36.6%)
136 in Brazil, 27.8% (19.8%; 34.8%) in India and 32.0% (28.9%; 34.9%) in South Africa compared
137 with predictions from the pre-COVID-19 period (Figure 3a). In 2021, reductions in the number
138 of TB tests conducted were less severe compared with 2020 (Figure 1a-c). In 2022, all three
139 countries—Brazil, India, and South Africa—surpassed the predicted number of bacteriological
140 tests conducted during the pre-COVID period (Table S1). Notably, data from India suggested
141 a substantial increase in the number of TB tests conducted relative to predicted values (Figure
142 1b).

143 Between April and December 2020, TB test positivity (Figure 1d-f) was 27.4% (21.4%; 33.8%)
144 higher in Brazil, 22.0% (7.1%; 40.7%) higher in India and 12.5% (-8.6%; 37.4%) higher in
145 South Africa compared with predictions from the pre-COVID period (Figure 3b). In India, a
146 substantial increase in test positivity was observed in 2021, the year of the highest COVID-19
147 disease burden in the country. This was then followed by a decline to pre-COVID-19 levels in
148 2022 (Figure 1e).

149

150 The numbers of individuals initiating TB treatment (Figure 1g-i) were 17.4% (13.9%; 20.6%)
151 lower than predicted in Brazil, 43.4% (39.8%; 46.4%) in India, and 27.0% (15.2%; 36.3%) in
152 South Africa (Figure 3c). Reductions in treatment initiations were less severe in 2021 in all
153 three countries. Additional analysis using data for South Africa showed that declines in TB
154 treatment initiations were consistent with reductions in TB testing (Figure S1).

155

156 **Figure 1. Time series data and ARIMA model forecast results for TB testing and treatment**
157 **initiation in Brazil, India, and South Africa.** White dots: observed TB test data; connected blue dots:
158 ARIMA model forecasts; grey shaded areas: 95% prediction intervals; only annual TB test data were
159 available for 2018 in India ,therefore quarterly estimates were estimated from annual figures (assuming
160 no seasonal variation).

161

162 **TB treatment outcomes during the COVID-19 pandemic**

163 In South Africa and Brazil, we observed a relative increase in the percentage of unfavourable
164 TB treatment outcomes (Figure 2a,c), in particular death during TB treatment (Figure 2d,f), in
165 the early phase of the COVID-19 pandemic. We estimated that in 2020, the percentage of
166 unfavourable TB treatment outcomes was 8.1% (5.9%; 10.4%) higher than predicted in Brazil
167 and 17.7% (3.5%; 34.8) higher in South Africa, compared with same-year predictions during
168 the pre-COVID-19 period (Figure 3d). Annual percentages of death during TB treatment in
169 2020 were 13.7% (8.1%; 19.7%) higher in Brazil and 21.8% (7.4%; 39.2%) in South Africa
170 (Figure 3e). In South Africa, we found a tendency toward higher percentages of loss to follow-
171 up and treatment failure (Figure 2i,j). In 2021, relative increases remained stable in Brazil
172 (Figure 3d,e; no data available for South Africa).

173 In India, percentages of unfavourable treatment outcomes and TB deaths during treatment in
174 2020 were consistent with pre-pandemic trends. The estimated percentage difference was 0.4%
175 (-2.1%; 2.9%) for unfavourable treatment outcomes and 1,7% (-8.9%; 14.1%) for TB deaths
176 during treatment relative to predictions from the pre-COVID-19 period in India (Figure 3d).
177 Unfavourable treatment outcomes were lower than predicted in 2021 (Figure 3d).

178

179 **Figure 2. Time-series data and ARIMA model forecast results for unfavourable TB treatment**
180 **outcomes in Brazil, India, and South Africa.** White dots: observed TB test data; connected blue dots:
181 ARIMA model forecasts; grey shaded areas: 95% prediction intervals

182

183 **Figure 3. Average annual percentage differences between observed and predicted TB indicator**
184 **values for the periods April-December 2020 and January-December 2021 in Brazil, India and**
185 **South Africa.** Error bars: 95% uncertainty intervals; negative percentage differences represent
186 reductions in observed vs. predicted values; *Data bars without error bars show data for which
187 uncertainty intervals could not be estimated as a log-transformation was used to prevent the ARIMA
188 model from forecasting negative values.

189

190 **Discussion**

191 In this study, we used time-series modelling to estimate the extent of disruptions to TB
192 healthcare services during the COVID-19 pandemic in Brazil, India, and South Africa. Our
193 findings suggest that TB healthcare services were seriously impacted in 2020, the first year of
194 the pandemic, with at least partial reconstitution in the following years.

195
196 Our analysis revealed substantial reductions in the number of bacteriological tests for TB
197 conducted during 2020 in all three countries compared with predictions from the pre-COVID
198 period. Our findings are consistent with other reports from the early phase of the pandemic in
199 Brazil [28] and South Africa [19] highlighting considerable reduction in TB tests performed.
200 Our results also align with earlier reports of reduced TB service provision in these countries,
201 indicating that laboratories redirected health and human resources to COVID-19, as well as
202 reduced access to services due to restricted movement, loss of wages, and the fear of stigma
203 [9]. We observed less severe reductions in TB testing in 2021, and relative increases in 2022,
204 suggesting a partial recovery of TB diagnostic service and/or a catch-up in TB diagnoses were
205 made.

206
207 Along with reduced TB testing, our analysis revealed substantial reductions in the number of
208 people who initiated TB treatment during the COVID-19 pandemic in all three countries. Using
209 data for South Africa, we found that the extent of relative reductions observed for treatment
210 initiations compared well with TB tests conducted, suggesting that reduced TB testing during
211 the COVID-19 pandemic was a main driver of reductions in the number of people initiating
212 TB treatment.

213

214 Trends in TB treatment initiation based on data obtained and used for this study compare well
215 with those of country-level TB case notifications reported by the WHO (Figure S2) [1]. One
216 notable exception are case notifications in South Africa in the first half of 2020, which showed
217 a more pronounced decline than that reported by the WHO. These differences may reflect later
218 data updates and were communicated with the South African National TB Programme; a data
219 review is currently under way.

220

221 We found higher TB test positivity rates than predicted from the pre-COVID period in Brazil
222 and India, and a tendency toward higher test positivity in South Africa, consistent with a
223 preliminary report by the South African National Institute for Communicable Diseases
224 published in May 2020 [18] and a retrospective analysis of data from a hospital setting in India
225 [29]. Higher test positivity rates than predicted could be due to differential healthcare seeking,
226 more selective TB testing among people with presumptive TB, and/or differential reporting
227 during the COVID-19 pandemic [30].

228

229 We found higher percentages of unfavorable treatment outcomes compared with predictions in
230 the early phase of the COVID-19 pandemic, including for death during TB treatment. Increases
231 in unfavourable treatment outcomes and a significant increase in death rates were previously
232 reported for Eswatini (neighbouring South Africa) during the COVID-19 period [31] and an
233 earlier time-series analyses found that COVID-19 caused a decline in TB cure rates in Brazil
234 [16]. The rise in TB-related deaths among individuals undergoing TB treatment during the
235 pandemic may be attributable to delays in TB diagnosis leading to more advanced and severe
236 disease by the time treatment is initiated, as well as insufficient care during treatment. Higher
237 numbers of deaths during TB treatment could also, at least in part, be attributed to COVID-19
238 [32].

239

240 Overall, the findings of this study are consistent between the three countries. However, we
241 found notable differences. In contrast to Brazil and South Africa, model estimates for India do
242 not suggest a notable recovery in treatment initiations in 2021, corresponding with the later
243 peak of the COVID-19 crisis in the country. Furthermore, India witnessed more substantial
244 increases in test positivity, reaching values of up to 30% in 2021 from 10% in prior years.
245 Surprisingly, unlike for Brazil and South Africa, we did not estimate a relative increase in
246 unfavorable treatment outcomes including deaths during TB treatment in India. Consistent with
247 previously published reports [33], our data show a decline in TB deaths in India during the
248 years 2020-2022 (Figure 2e), a reversal of trends observed in previous years. Whether
249 challenges in reporting deaths and other adverse outcomes might serve to explain this, is
250 currently not known. Alternatively, interventions implemented in India before and during the
251 pandemic to support TB patients may be a reason why treatment outcomes in India did not
252 worsen as much during the pandemic compared with other countries. Examples of these
253 interventions include home delivery of TB medications, decentralized “drug refill facilities” in
254 cities, involvement of commercial pharmacies in maintaining drug supplies, and the
255 introduction of the 'TB Aarogya Sathi' app, a digital solution to enable direct interactions
256 between TB patients and healthcare providers [34-36].

257

258 This study has several limitations. We evaluated numbers of bacteriological tests performed
259 but were unable to investigate trends in the number of people accessing TB care. We are
260 therefore unable to determine whether reductions in testing were attributable to reductions in
261 care-seeking or shortages of TB tests. The use of cross-sectional aggregated data means that
262 we could not link testing and treatment data on an individual level and could not investigate
263 delays in healthcare service provision. We estimated differences in TB healthcare service

264 indicators relative to pre-COVID trends but were unable to examine underlying factors and
265 mechanisms that may have contributed to these differences. We are therefore unable to
266 disentangle underlying causes. Most notably, we were unable to better understand and explain
267 the considerable changes in tests conducted and test positivity in India. The accuracy,
268 completeness, and timeliness of the data used in this study may be affected due to reduced
269 staffing, increased workload during the pandemic affecting routine collection and reporting.
270 Limited data points, statistical uncertainty, and random error in data from the pre-COVID
271 period may have affected the accuracy of predicted (forecasted) trends in the indicators,
272 affecting our ability to estimate relative differences during the pandemic period at varying
273 degree. Finally, other external factors unrelated to the pandemic, for example increases in
274 diagnostic coverage or in treatment initiations during the pre-pandemic period may have added
275 uncertainty to model forecasts and thus have affected our findings.

276

277 In conclusion, our analysis reveals considerable disruptions to TB healthcare services in Brazil,
278 India, and South Africa occurring during the early phase of the COVID-19 pandemic, including
279 severe reductions in the number of TB tests performed and of TB treatment initiations during
280 the early phase of the COVID-19 pandemic. We also estimated higher rates of unfavourable
281 treatment outcomes, in particular TB deaths during treatment, in Brazil and South Africa. Our
282 findings suggest at least partial recovery of services in the second and third year of the
283 pandemic.

284

285 The substantial impact of the COVID-19 measures on TB healthcare service provision
286 underscores the need for mitigation strategies to alleviate these detrimental effects. Especially
287 in TB high-burden countries, plans for future pandemic preparedness should entail well-
288 defined measures to prevent health-care service disruptions for TB and other diseases. This

289 should include measures to preserve access to care during lockdowns as well as adequate
290 staffing, and resources to sustain diagnostic and treatment services during pandemic times. As
291 future pandemics are not unlikely, progress in ending the global TB pandemic in the
292 forthcoming decades may depend on such efforts.

Acknowledgments

We thank the Ministry of Health in Brazil, the Ministry of Health and Family Welfare in India, the TB Think Tank (Task Team: Epidemiology, Modelling and Health Economics) and the National Department of Health in South Africa as well as the National TB Programmes in all three countries for supporting this study. We are grateful to Nimalan Arinaminpathy (World Health Organization, Global TB Programme), Claudia Denkinger (Heidelberg University Hospital) and Cari van Schalkwyk (South African Centre for Epidemiological Modelling and Analysis) for helpful feedback to this manuscript.

References

1. World Health Organization. Global tuberculosis report 2022. 2022.
2. The Lancet. Tuberculosis needs accelerated and continued attention. *The Lancet*; 2019. p. 896.
3. Pai M, Kasaeva T, Swaminathan S. Covid-19's devastating effect on tuberculosis care—a path to recovery. *New England Journal of Medicine*. 2022;386(16):1490-3.
4. Chakaya J, Petersen E, Nantanda R, Mungai BN, Migliori GB, Amanullah F, et al. The WHO Global Tuberculosis 2021 Report—not so good news and turning the tide back to End TB. *International Journal of Infectious Diseases*. 2022;124:S26-S9.
5. Chakaya J, Khan M, Ntoumi F, Aklillu E, Fatima R, Mwaba P, et al. Global Tuberculosis Report 2020—Reflections on the Global TB burden, treatment and prevention efforts. *International Journal of Infectious Diseases*. 2021;113:S7-S12.
6. World Health Organization. Pulse survey on continuity of essential health services during the COVID-19 pandemic: interim report, 27 August 2020. World Health Organization, 2020.
7. Kant S, Tyagi R. The impact of COVID-19 on tuberculosis: challenges and opportunities. *Therapeutic Advances in Infectious Disease*. 2021;8.
8. Alene KA, Wangdi K, Clements AC. Impact of the COVID-19 pandemic on tuberculosis control: an overview. *Tropical Medicine and Infectious Disease*. 2020;5(3):123.
9. Stop TB Partnership. The impact of COVID-19 on the TB epidemic: A community perspective.
10. Buonsenso D, Iodice F, Biala JS, Goletti D. COVID-19 effects on tuberculosis care in Sierra Leone. *Pulmonology*. 2021;27(1):67.
11. Torres PPT, Rabahi MF. Tuberculosis in times of COVID-19: we cannot lose focus on the diagnosis. *SciELO Brasil*; 2022. p. 1-2.
12. Migliori GB, Thong PM, Alffenaar J-W, Denholm J, Tadolini M, Alyaquobi F, et al. Gauging the impact of the COVID-19 pandemic on tuberculosis services: a global study. *European Respiratory Journal*. 2021;58(5).
13. Bagcchi S. WHO's Global Tuberculosis Report 2022. *The Lancet Microbe*. 2023;4(1):e20.
14. McQuaid CF, Vassall A, Cohen T, Fiekert K, White R. The impact of COVID-19 on TB: a review of the data. *The International Journal of Tuberculosis and Lung Disease*. 2021;25(6):436-46.
15. De Souza C, Coutinho H, Costa M, Magalhães M, Carmo R. Impact of COVID-19 on TB diagnosis in Northeastern Brazil. *The International Journal of Tuberculosis and Lung Disease*. 2020;24(11):1220-2.
16. Berra TZ, Ramos ACV, Alves YM, Tavares RBV, Tartaro AF, Nascimento MCd, et al. Impact of COVID-19 on Tuberculosis Indicators in Brazil: A Time Series and Spatial Analysis Study. *Tropical Medicine and Infectious Disease*. 2022;7(9):247.
17. Behera D. TB control in India in the COVID era. *Indian Journal of tuberculosis*. 2021;68(1):128-33.
18. Ismail N, Moultrie H. Impact of COVID-19 intervention on TB testing in South Africa. *National Institute for Communicable Diseases*. 2020;10.
19. Abdool Karim Q, Baxter C. COVID-19: impact on the HIV and tuberculosis response, service delivery, and research in South Africa. *Current HIV/AIDS Reports*. 2022;19(1):46-53.

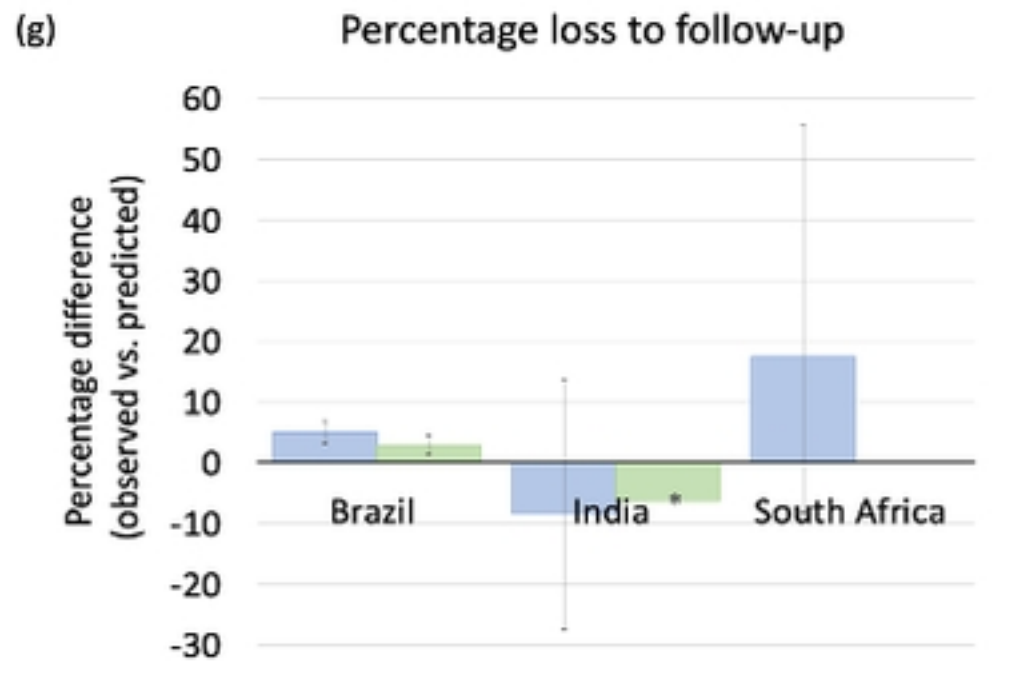
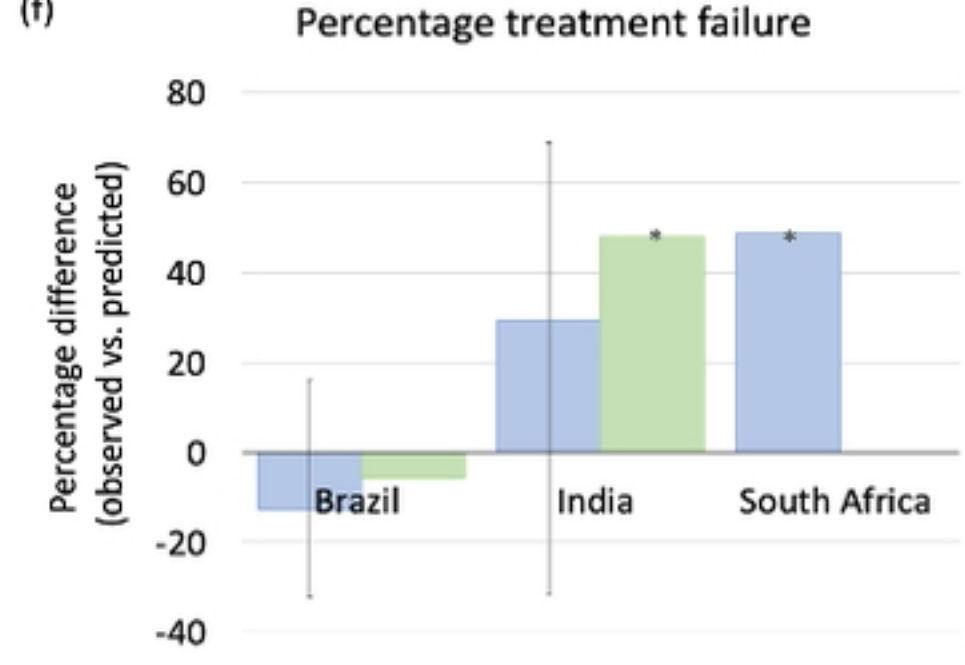
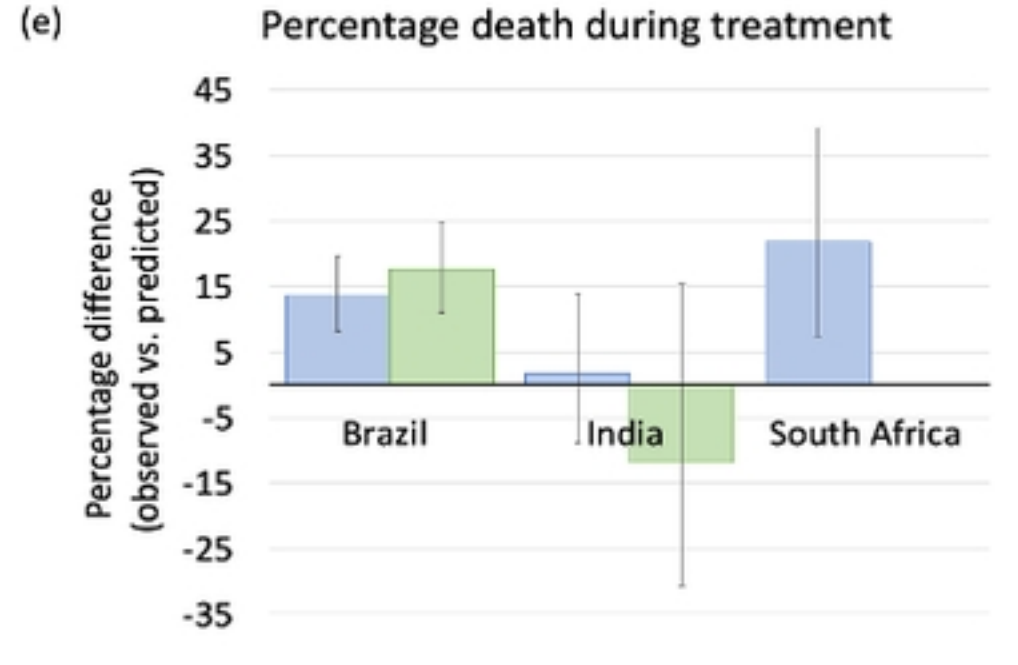
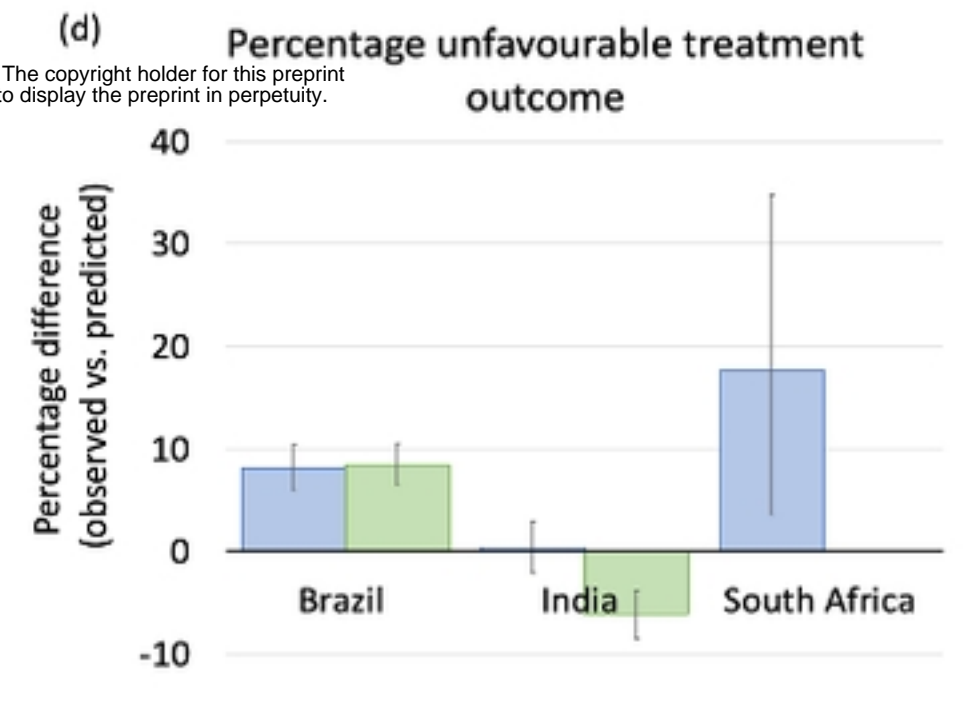
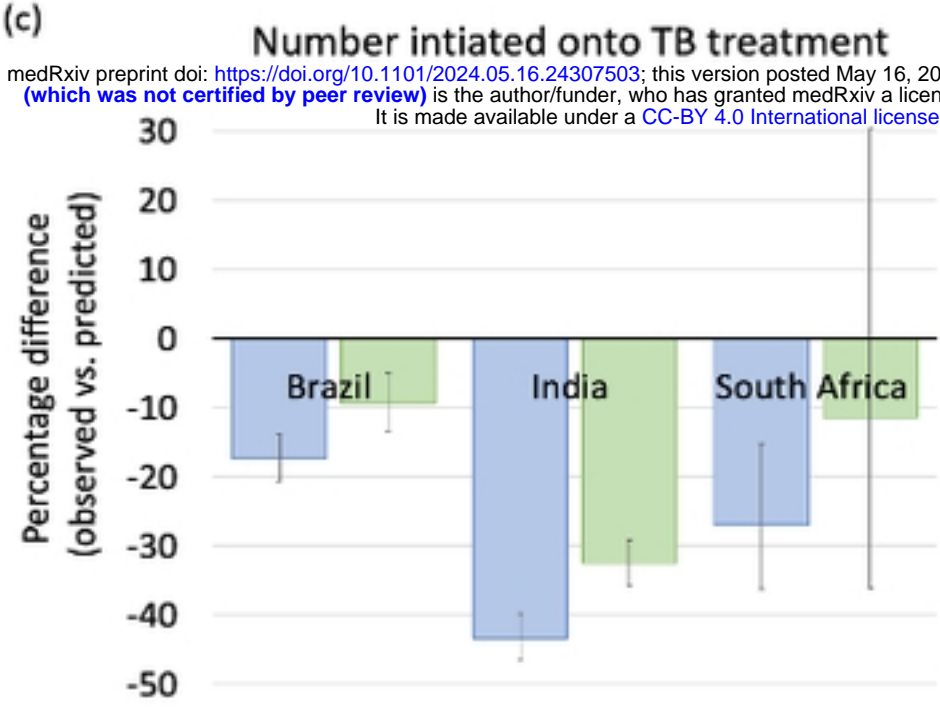
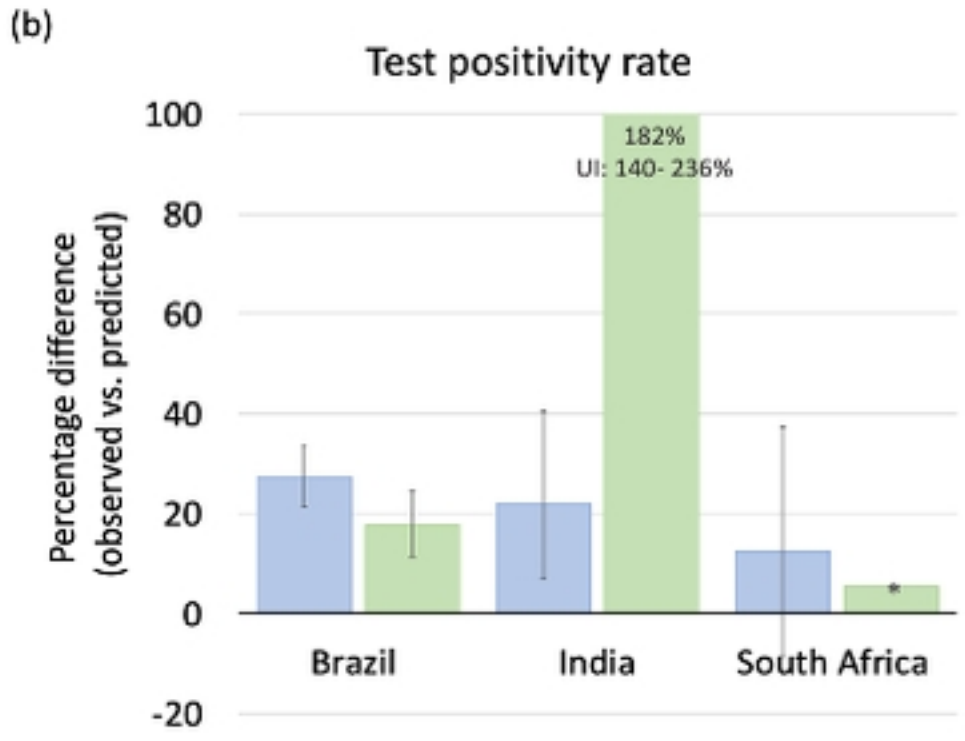
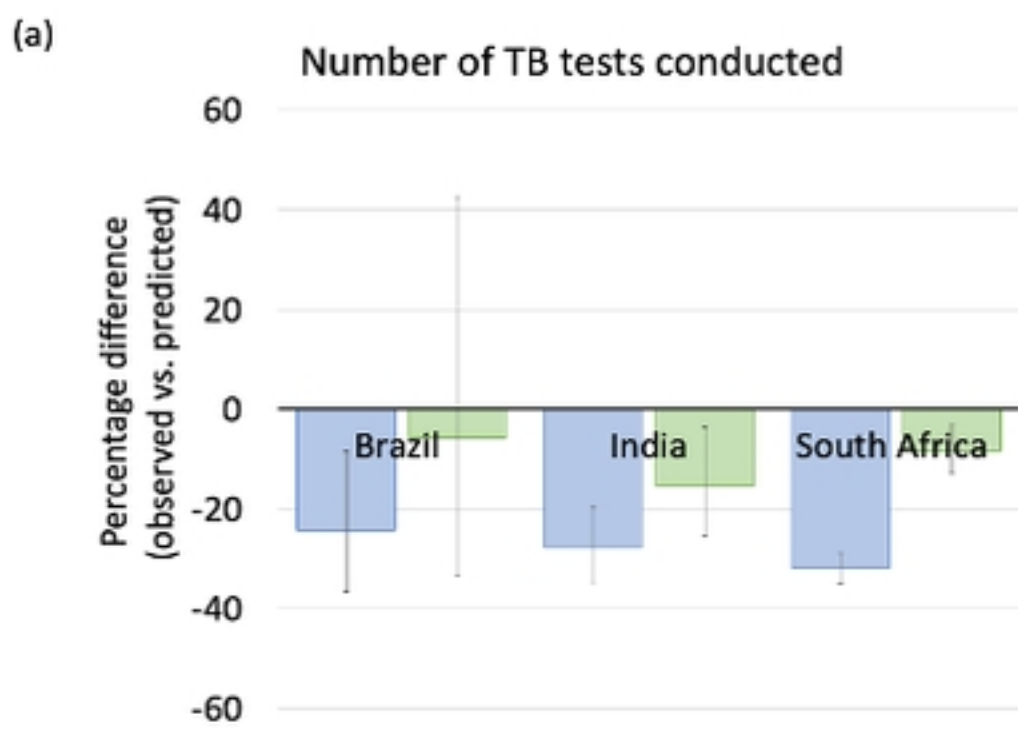
20. Myburgh H, Kaur M, Kaur P, Santos V, Almeida C, Hoddinott G, et al. Lessons for TB from the COVID-19 response: qualitative data from Brazil, India and South Africa. *Public Health Action*. 2023;13(4):162-8.
21. Review WP. *World Population Prospects (2022 Revision)—United Nations Population Estimates and Projections*. 2021.
22. World Health Organization. WHO health emergency dashboard (COVID-19). Geneva (CHE): WHO. 2021.
23. Ni-kshay Reports. Central TB division, Ministry of health and family welfare, India. Available from: <https://nikshay.in/>.
24. Rocha MS, Bartholomay P, Cavalcante MV, Medeiros FCd, Codenotti SB, Pelissari DM, et al. Sistema de Informação de Agravos de Notificação (Sinan): principais características da notificação e da análise de dados relacionada à tuberculose. *Epidemiologia e Serviços de Saúde*. 2020;29:e2019017.
25. Chatfield C, Xing H. *The analysis of time series: an introduction with R*: CRC press; 2019.
26. Hyndman RJ, Khandakar Y. Automatic time series forecasting: the forecast package for R. *Journal of statistical software*. 2008;27:1-22.
27. McQuaid CF, McCreesh N, Read JM, Sumner T, Houben RM, White RG, et al. The potential impact of COVID-19-related disruption on tuberculosis burden. *European Respiratory Journal*. 2020;56(2).
28. de Souza MQ, Dal Pizzol JL, Silva ABS, Vargas FFGR, Brião DS, Martinato CA, et al. Impact of the COVID-19 pandemic on laboratory diagnosis of tuberculosis in southern Brazil. *Revista de Epidemiologia e Controle de Infecção*. 2022;12(2):61-8.
29. Srivastava S, Jaggi N. TB positive cases go up in ongoing COVID-19 pandemic despite lower testing of TB: An observational study from a hospital from Northern India. *Indian Journal of tuberculosis*. 2022;69(2):157-60.
30. Siedner MJ, Kraemer JD, Meyer MJ, Harling G, Mngomezulu T, Gabela P, et al. Access to primary healthcare during lockdown measures for COVID-19 in rural South Africa: an interrupted time series analysis. *BMJ open*. 2020;10(10):e043763.
31. Masina HV, Lin I, Chien L-Y. The Impact of the COVID-19 Pandemic on Tuberculosis Case Notification and Treatment Outcomes in Eswatini. *International Journal of Public Health*. 2022;67:1605225.
32. Western Cape Department of Health in collaboration with the National Institute for Communicable Diseases SA. Risk factors for coronavirus disease 2019 (COVID-19) death in a population cohort study from the Western Cape Province, South Africa. *Clinical Infectious Diseases*. 2021;73(7):e2005-e15.
33. Varshney K, Patel H, Kamal S. Trends in Tuberculosis Mortality Across India: Improvements Despite the COVID-19 Pandemic. *Cureus*. 2023;15(4).
34. Behera D, Behera RK. COVID-19 & the National Tuberculosis Elimination Programme of India. *The Indian Journal of Medical Research*. 2021;153(5-6):533.
35. Central TB Division Ministry of Health and Family Welfare. *TB report 2022: Coming together to end TB altogether*. 2022.
36. World Health Organization. *The COVID-19 pandemic and TB in India: impact and response WHO Global TB Report 2021*. 2022.

Supporting information

Table S1. Average differences (%) between observed and predicted TB indicator values for the period April 2020 - December 2020, January 2021- December 2021 and January-December 2022 in Brazil, India, and South Africa. Negative values represent observed values lower than what was predicted.

Figure S1. Monthly average differences (%) between observed and predicted values for the number of TB tests conducted and TB treatment initiations in South Africa. Negative values represent observed values lower than what was predicted.

Figure S2. Annual number of TB case notifications reported in Brazil, India and South Africa. Blue lines represent WHO published data and the purple lines show the TB data we received for this study from the relevant TB programmes. WHO data was extracted from the 2022 Global Tuberculosis report.



medRxiv preprint doi: <https://doi.org/10.1101/2024.05.16.24307503>; this version posted May 16, 2024. The copyright holder for this preprint (which was not certified by peer review) is the author/funder, who has granted medRxiv a license to display the preprint in perpetuity. It is made available under a [CC-BY 4.0 International license](https://creativecommons.org/licenses/by/4.0/).

■ 2020 Apr - Dec
■ 2021

Figure 3

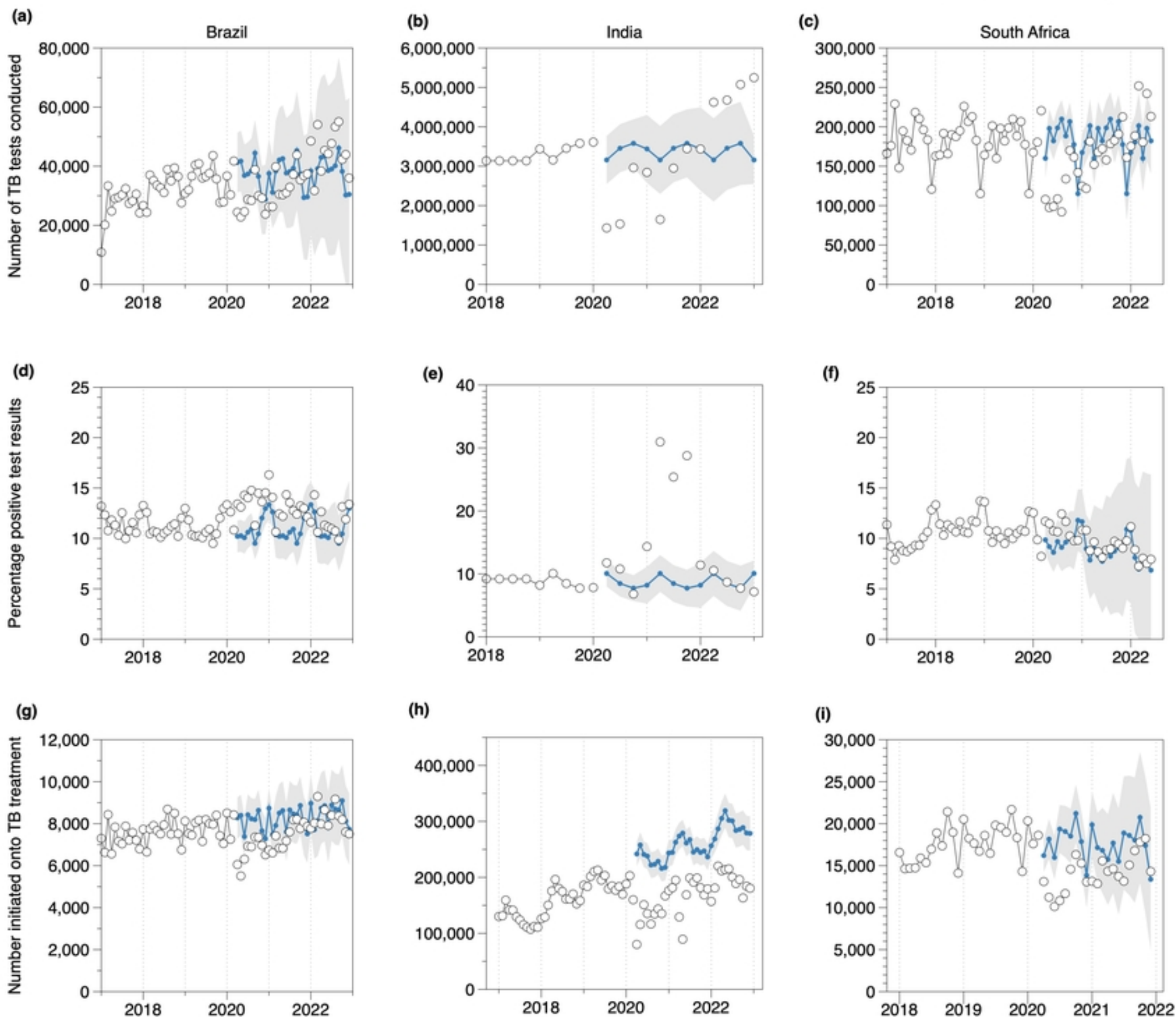


Figure 1

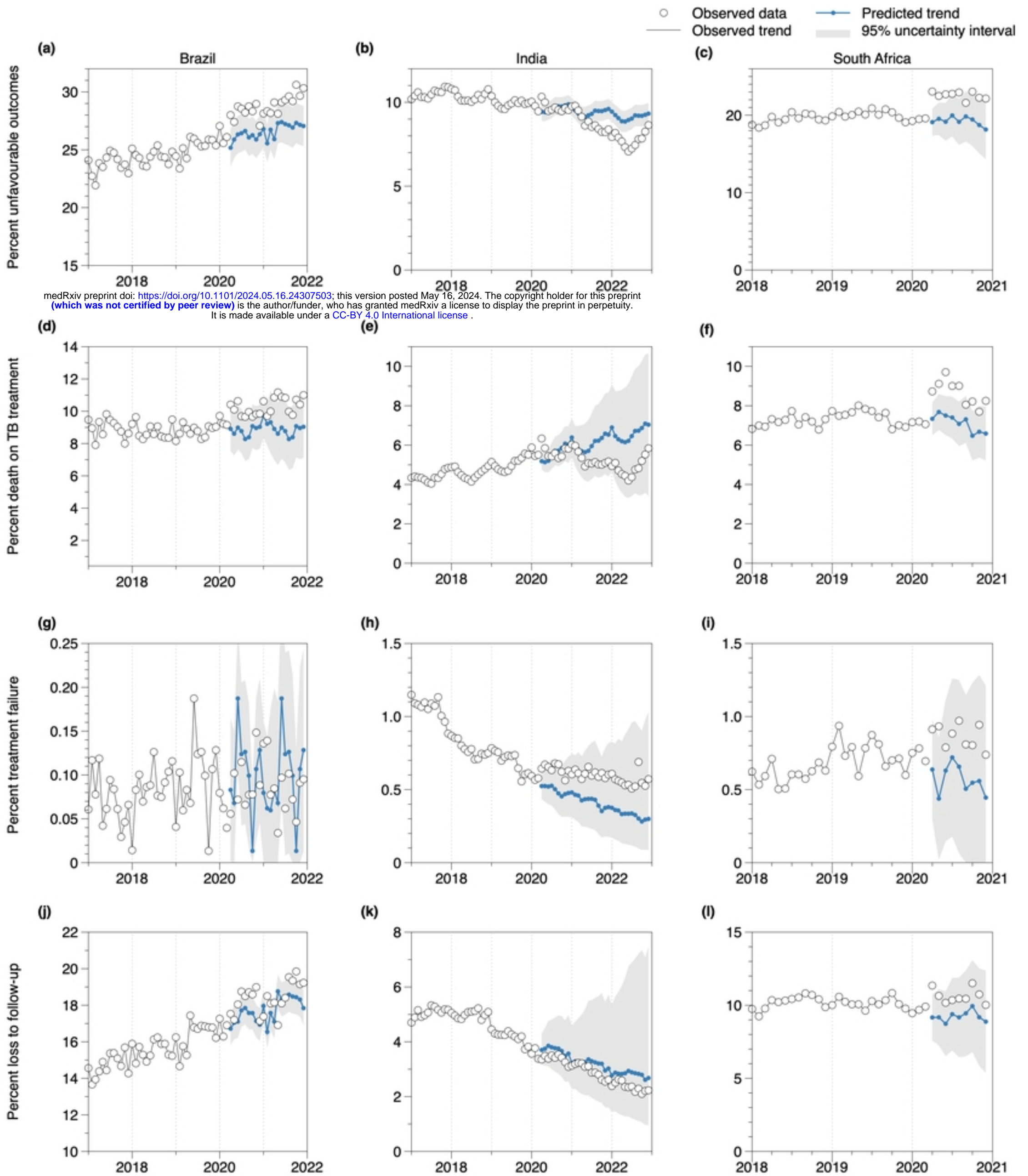


Figure 2

medRxiv preprint doi: <https://doi.org/10.1101/2024.05.16.24307503>; this version posted May 16, 2024. The copyright holder for this preprint (which was not certified by peer review) is the author/funder, who has granted medRxiv a license to display the preprint in perpetuity. It is made available under a [CC-BY 4.0 International license](https://creativecommons.org/licenses/by/4.0/).