

1
2
3
4
5
6
7
8
9
10
11
12
13
14
15
16
17
18
19
20
21

TITLE PAGE

Comparing the value of left atrial strain and HFA-PEFF score in diagnosing heart failure with preserved ejection fraction: a cross-sectional study

Hai Nguyen Ngoc Dang^{1,+}, Thang Viet Luong^{2,+}, Bang Hai Ho², Tien Anh Hoang^{2,*}, Anh Xuan Mai³, Hung Minh Nguyen⁴

¹ The Faculty of Medicine, Duy Tan University, Da Nang, Vietnam

² University of Medicine and Pharmacy, Hue University, Hue, Vietnam

³ Cardiovascular Center, Hue Central Hospital, Hue, Vietnam

⁴ Bach Mai Hospital, Ha Noi, Vietnam

⁺ These authors contributed equally to this work

Corresponding Author:

Tien Anh Hoang

University of Medicine and Pharmacy, Hue University

06 Le Loi Street, Hue city, Thua Thien Hue, 530000, Vietnam

Email address: hatien@hueuni.edu.vn

Word count: 2,581

22 Abstract

23 **Objectives:** Heart failure with preserved ejection fraction (HFpEF) has a high hospitalization
24 rate. While recent guidelines recommend specific parameters like E/e', e' velocity, and left atrial
25 volume index (LAVI) for diagnosing HFpEF, their clinical accuracy remains limited. Left atrial
26 (LA) strain has emerged as a potential diagnostic parameter, yet its role in the Vietnamese
27 population is unclear. This study aims to evaluate LA strain's diagnostic role in HFpEF among
28 Vietnamese patients, exploring its relationship with established parameters of left ventricle (LV)
29 diastolic function to determine its potential utility as a diagnostic tool.

30 **Methods:** A cross-sectional study was conducted from 15/04/2022 to 01/12/2023, involving 118
31 subjects, including 49 patients with HFpEF and 69 individuals without cardiac dysfunction. The
32 study subjects were evaluated for LA strain and HFA-PEFF score. Diagnostic criteria for HFpEF
33 were based on the 2021 European Society of Cardiology guidelines for diagnosing and treating
34 acute and chronic heart failure.

35 **Results:** LA strain including LA reservoir (LASr), conduit (LAScd), and contractile (LASct)
36 functions, in the HFpEF group were 20.80% [26.50 - 13.30], $9.08 \pm 6.18\%$, and $10.89 \pm 5.16\%$,
37 respectively. The control group had corresponding LASr, LAScd, and LASct values of 34.45%
38 [38.07 - 31.14], $17.33 \pm 5.72\%$, and $17.38 \pm 4.41\%$ ($p < 0.001$). The area under the curve (AUC)
39 for LASr, LAScd, LAScr, HFA-PEFF score, LAVI, and GLS to diagnose HFpEF was 0.852,
40 0.770, 0.778, 0.890, 0.615, and 0.701, respectively. Comparing the AUCs for diagnosing HFpEF
41 between LASr and HFA-PEFF score, no difference was found with $p = 0.419$.

42 **Conclusion:** LA strain has a diagnostic value equivalent to the HFA-PEFF score in diagnosing
43 HFpEF. These indices could be incorporated into the existing guidelines to enhance the diagnosis
44 of HFpEF.

45 **Keywords:** echocardiography, heart failure, cross-sectional studies, diagnostic imaging,
46 sensitivity and specificity

47 Strengths and limitations of this study

- 48 • The study provides valuable data specific to the Vietnamese population, enhancing the
49 understanding of heart failure with preserved ejection fraction and potentially leading to
50 more tailored diagnostic strategies and treatments.
- 51 • This study directly evaluates two diagnostic tools by comparing left atrial strain with the
52 HFA-PEFF score, which can help clinicians choose the most appropriate method for
53 diagnosing HFpEF in clinical practice.
- 54 • The inclusion of left atrial strain as a diagnostic metric is relatively novel. It may provide
55 new insights into the pathophysiology of HFpEF, offering a potential alternative or
56 complement to existing diagnostic criteria.
- 57 • The findings can have immediate clinical implications, potentially improving the accuracy
58 of HFpEF diagnosis and leading to better patient outcomes through more precise
59 treatment plans.

- 60 • Our study has limitations, such as a relatively small sample size, sole location, and
61 technical constraints. Addressing these limitations through further research will enhance
62 the robustness and applicability of the findings.

63 **Introduction**

64 Heart failure with preserved ejection fraction (HFpEF) is defined as heart failure with an ejection
65 fraction of 50% or higher at diagnosis, affecting approximately 32 million people worldwide.
66 Patients with HFpEF are hospitalized about 1.4 times per year and have an annual mortality rate
67 of around 15%.¹ Left ventricular (LV) diastolic dysfunction plays a fundamental role,
68 overarching in the pathophysiology of HFpEF.²

69 The recent recommendations of the American Society of Echocardiography/European Society of
70 Cardiovascular Imaging in 2016 used parameters such as E/e', septal e' velocity, lateral e'
71 velocity, maximum tricuspid valve regurgitation flow (TRV) and left atrial volume index (LAVI)
72 to evaluate LV diastolic dysfunction as well as to diagnose HFpEF.³ However, in clinical
73 practice, the recommendations parameters have limited precision in diagnosing HFpEF.⁴

74 Assessing left atrial (LA) function has recently become critical in cardiac evaluation.⁵ The LA
75 function encompasses three primary aspects: blood storage (reservoir function), blood conduction
76 (conduit function), and ejection function (contractile function).⁶ Commonly used indices to assess
77 LA function include LAVI and LA size. Increased LAVI is associated with prolonged chronic
78 LV/LA pressure overload. However, LA size takes time to change, often significantly dilating in
79 later stages, making LAVI less sensitive in the early stages.⁷

80 LA strain is a novel echocardiographic technique that provides a comprehensive evaluation of
81 reservoir, conduit, and contractile functions. This method proves particularly valuable when
82 changes are subtle and challenging to detect using conventional parameters such as LA
83 dimensions and LAVI.⁸ While LA dimensions have been previously utilized, the role of LA
84 function as a biomarker is increasingly under evaluation, both independently and in conjunction
85 with LA size. LA strain serves as a tool to assess LA function and can be measured throughout
86 the cardiac cycle, enabling a thorough and comprehensive evaluation of LA reservoir, conduit,
87 and contractile functions.⁷ Additionally, LA strain offers the advantage of being a technique
88 mostly independent of angle and less susceptible to influences from mitral annulus calcification
89 and bundle branch block effects.⁹

90 Notably, impaired LA strain has been observed in HFpEF patients, indicating its potential
91 diagnostic value.^{4 10 11} Studies conducted in the United Kingdom and China have demonstrated
92 the utility of LA strain in assessing and diagnosing HFpEF.^{9 12} However, its role in the
93 Vietnamese population remains unexplored. Therefore, this study aims to evaluate the diagnostic
94 role of LA strain in HFpEF among Vietnamese individuals, contributing to a deeper
95 understanding of its applicability in clinical practice.

96 **Materials & Methods**

97 **Study Population**

98 The study was conducted by the Declaration of Helsinki, and approved by The Institutional
99 Ethics Committee of Hue University of Medicine and Pharmacy (Approval number: H2022/034).
100 From 15/04/2022 to 01/12/2023, we conducted a cross-sectional study that randomly selecting
101 1014 adults aged 18 and above, who visited the Hue University Hospital for medical
102 examinations. The study participants were fully informed about the benefits of participating in
103 the research, and they were only included in the study if they verbally consented during the
104 interview. After exclusions, we included a total of 118 subjects in the data analysis, comprising
105 49 individuals diagnosed with HFpEF in the disease group, and 69 individuals without cardiac
106 dysfunction in the control group. The sampling process is detailed in **Supplementary Figure 1**.
107 Patients with HFpEF are evaluated according to the standards of ESC in 2021:¹³ (1) Symptoms of
108 heart failure (pulmonary congestion or systemic congestion); (2) Normal LV ejection fraction
109 $LVEF \geq 50\%$; (3) Objective evidence of structural and/or functional cardiac abnormalities
110 consistent with LV diastolic dysfunction; (4) $NT\text{-}proBNP \geq 125$ pg/mL. The four recommended
111 variables for identifying diastolic dysfunction and their abnormal cutoff values are septal $e' < 7$
112 cm/s or lateral $e' < 10$ cm/s, average E/e' ratio > 14 , $LAVI > 34$ mL/m², and $TRV > 2.8$ m/s. If
113 more than half of the available parameters met these cutoff values, LV diastolic dysfunction was
114 considered present. In cases where half of the parameters met the cutoff values (indeterminate),
115 diastolic dysfunction was assumed to be present if patients had $E/A > 2.0$ or if ≥ 2 of the three
116 parameters (E/e' ratio, TRV , and $LAVI$) met the cutoff values.¹⁴ Exclusion criteria included
117 patients who declined participation, severe valvular heart disease, heart failure with $EF < 50\%$,
118 and arrhythmias. Patients with unclear echocardiography images or images lacking clear
119 visualization of the myocardial endocardial layer were also excluded from the study. The control
120 group comprised 69 healthy adults undergoing health screening with no history of heart failure.

121 **Clinical data collection, laboratory tests, and transthoracic echocardiogram**

122 The clinical data collected included personal and family medical histories and clinical variables
123 obtained through direct interviews and medical records. N-Terminal pro-B-type natriuretic
124 peptide (NT-proBNP) levels were measured using a Cobas 8000 analyzer.

125 The echocardiographic procedure followed the American Society of Echocardiography guidelines
126 for performing a comprehensive transthoracic echocardiographic examination in adults. During
127 the procedure, the machine recorded the electrocardiogram alongside the echocardiographic
128 images during the echocardiography procedure. All echocardiograms included in the final data
129 analysis were performed on patients with normal sinus rhythm.¹⁵

130 **Left atrial and left ventricular strain analysis**

131 Echocardiography images in DICOM format, meeting acceptable image quality standards, were
132 uploaded to Philips QLAB Cardiovascular ultrasound quantification software Cardiac Analysis
133 version 15. We conducted LA strain assessment in both the two-chamber and four-chamber
134 views, setting reference points at the onset of the P wave in the cardiac cycle. Measurements of
135 LA strain were acquired during the reservoir, conduit, and contractile phases of LA function,
136 designated as LA strain reservoir function (LASr), LA strain conduit function (LAScd), and LA

137 strain contractile function (LASct), respectively. For LV strain analysis, endocardial borders were
138 traced on the end-systolic frame in three apical views (4-chamber, 2-chamber, and 3-chamber),
139 with end-systole defined by the QRS complex or as the smallest LV volume during the cardiac
140 cycle. The software tracked speckles along the endocardial border and myocardium throughout
141 the cardiac cycle, automatically computing peak longitudinal strain and generating regional data
142 from six segments, as well as an average value for each view. For patients with sinus rhythm,
143 analyses were performed on a single cardiac cycle; for those with atrial fibrillation, strain values
144 were calculated as the average of three cardiac cycles.¹⁶ One strain specialist in the core
145 laboratory, who was blinded to the patients' other data, performed all strain measurements.
146 LV and LA strain results are conventionally represented as negative values. However, for
147 convenience in analysis and display, we utilized the absolute values of these results. The detailed
148 methodology is illustrated in **Supplementary Figure 2**.

149 **Calculation of the HFA-PEFF score**

150 The Heart Failure Association-PEFF (HFA-PEFF) score comprises functional, morphological,
151 and biomarker domains (**Supplementary Table 1**). A patient can score zero, minor (1 point), or
152 major (2 points) for each domain, and then those subscores are summed to produce a total score
153 that ranges from 0 to 6 points. The total score is classified as low likelihood (0 – 1 point),
154 intermediate likelihood (2 – 4 points), and high likelihood (5 – 6 points).¹⁷

155 **Statistics**

156 We performed all statistical analyses using SPSS Version 26 (IBM, New York, United States),
157 MedCalc Software Version 22.019 (MedCalc Software, Ostend, Belgium), and GraphPad Prism
158 Version 10 (GraphPad Software, Boston, United States). Continuous variables were presented as
159 mean \pm standard deviation for normally distributed variables, as determined by the Kolmogorov-
160 Smirnov test. Non-normally distributed variables were expressed as median values with
161 interquartile ranges (25th-75th percentile). Categorical variables were reported as frequencies and
162 percentages. We assessed intergroup differences in categorical variables using Fisher's exact test,
163 while differences in continuous variables were analyzed using the unpaired T-test or the Mann-
164 Whitney U test, as appropriate. To assess the correlations between echocardiographic indices,
165 NT-proBNP, and HFA-PEFF score, we used Spearman's correlation coefficient (r_s). The area
166 under the curve (AUC) was determined using the Wilson/Brown method to diagnose HFpEF. We
167 conducted AUC comparisons to assess the diagnostic value of strain compared to existing
168 guideline criteria, employing the DeLong method.¹⁸ We randomly selected ten subjects from the
169 control group and ten from the disease group to evaluate the intraclass correlation coefficient
170 (ICC). The intraobserver and interobserver variability of LASr, LAScd, and LASct were assessed
171 using the ICC and coefficient of variation. For intraobserver variability, the same operator
172 independently remeasured the data after a 2-week interval. A second operator, blinded to the
173 initial measurements, reanalyzed the data for interobserver variability. All statistical tests were
174 two-sided, and a P-value of < 0.05 was considered significant.

175 **Results**

176 **Baseline characteristics**

177 **Table 1** displays age, sex, BSA, and BMI between the control and disease group, showing no
178 statistically significant differences. The NT-proBNP concentration in the HFpEF group exhibited
179 a non-normal distribution, with a median of 663.20 pg/mL (Quartile: 286.55 pg/mL – 1417.00
180 pg/mL). Additionally, LA strain indices in the HFpEF group were lower than in the control
181 group, with all differences being statistically significant. Further details are illustrated in **Table 1**.

182 **Correlation analysis of the left atrial strains**

183 **Figure 1** depicts the correlation between echocardiography indices, NT-proBNP, and HFA-PEFF
184 score. LASr, LAScd, and LASct showed an inverse correlation with the HFA-PEFF score and
185 NT-proBNP while also correlating with measured cardiac function indices. **Figure 1**
186 demonstrates detailed parameters.

187 **The value of the left atrial strains and other echocardiographic parameters in diagnosing 188 HFpEF**

189 **Table 2** illustrates that the indices LASr (AUC = 0.852), LAScd (AUC = 0.770), LASct (AUC =
190 0.778), HFA-PEFF score (AUC = 0.890) exhibit high accuracy in diagnosing HFpEF. The cutoff
191 points, sensitivity, and specificity of LASr are 29.85%, 83.67%, and 82.61%, respectively.
192 Further detailed information is presented in **Table 2**.

193 **Table 3** reveals the area under the ROC curve for diagnosing HFpEF of HFA-PEFF score and
194 LASr, showing no difference ($p = 0.419$). Moreover, the AUC of conventional echocardiographic
195 indices (LAVI, E/e' , e' , TRV) with HFA-PEFF score and LASr differed significantly. Further
196 detailed information is provided in **Table 3**.

197 **Reliability of the left atrial strain measurements**

198 **Figure 2** presents the intraobserver and interobserver variability for LA strain measurements. The
199 parameters LASr, LAScd, and LASct demonstrated good reproducibility, indicated by high ICC
200 values.

201 **Discussion**

202 In this study, we evaluate the role of LA strain in diagnosing HFpEF. LA function indices such as
203 LASr, LAScd, and LASct decreased significantly in the HFpEF group compared to the control
204 group, with a p -value < 0.001 . This finding is consistent with Aung et al.'s (2017) study on 83
205 patients, which also reported decreased LASr and LASct in the HFpEF group compared to the
206 control group.¹⁹ Similar results were observed in several other studies where LASr, LAScd, and
207 LASct were all reduced in HFpEF patients compared to the control group.^{9 12 20 21} Therefore, our
208 study confirms a significant decline in LA function in the HFpEF group compared to healthy
209 subjects. Reddy et al. also highlighted the critical role of the LA in the progression of HFpEF.
210 They suggested that LA strain reflects the overall LA function, which progressively deteriorates
211 in chronic LV diastolic dysfunction, such as in patients with HFpEF.⁹

212 The American Echocardiography Association and the European Association of Cardiovascular
213 Imaging (ASE/EACVI) recommended using echocardiography to diagnose HFpEF in patients

214 with sinus rhythm using E/A ratio, LAVI, TRV, and E/e'.³ The ESC guidelines for the diagnosis
215 of HFpEF are based on evidence of functional and structural alterations of the heart using the
216 parameters E/e', LVM, LAVI, septal e' velocity, and lateral e' velocity.¹⁴ However, these classic
217 indicators still have many limitations, and many clinical practice cases encounter difficulties
218 when the diagnosis falls into the "undetermined" state, when Doppler measurements cannot be
219 made, such as tachycardia or severe mitral valve disease.²² Compared with Doppler
220 echocardiography, the advantage of speckle tracking echocardiography when compared to
221 conventional echocardiography is that it is independent of angle and less affected by mitral valve
222 disease. On the other hand, the LA strain evaluates the function of the LA throughout the entire
223 cardiac cycle rather than the functional state of a certain time point in the cardiac cycle.⁴ In our
224 study, LA strain indices including LASr (AUC = 0.852), LAScd (AUC = 0.770), and LASct
225 (AUC = 0.778) have high values in diagnosing HFpEF equivalent to the score HFA-PEFF score
226 (AUC = 0.890). At the same time, the ability of LASr to diagnose HFpEF was superior to the
227 LAVI (AUC = 0.615), E/e' (AUC = 0.636), septal e' velocity (AUC = 0.590), and TRV (AUC =
228 0.633) with $p < 0.05$. Many studies have also shown the superiority of LA strain indices in
229 diagnosing HFpEF compared to commonly used classical indices.^{9 23 24}
230 HFA-PEFF is a widely used scoring system for diagnosing HFpEF. However, evaluating this
231 scoring system requires numerous parameters, including echocardiography, NT-proBNP, and
232 atrial fibrillation diagnosis.^{17 25} Our study shows that LA strain indices have demonstrated an
233 AUC equivalent to the HFA-PEFF score. When comparing the AUC of LASr and HFA-PEFF
234 score, our study found no significant difference in the HFpEF diagnostic value of LASr and
235 HFA-PEFF score with $p = 0.419$. The 5-point HFA-PEFF score has 100% specificity, however,
236 the sensitivity is low at only 26.53%, which can cause difficulties in applying this score in
237 clinical practice.
238 In conclusion, LA parameters on speckle tracking echocardiography may be useful in diagnosing
239 HFpEF. Integration into the 2016 EACVI/ASE criteria will improve diagnostic effectiveness with
240 accuracy not inferior to conventional echocardiographic parameters.

241 **Limitations of the study**

242 First, our study exclusively compares non-invasive indices for diagnosing HFpEF and refrains
243 from using invasive interventions for evaluation or comparison with other invasive indices. We
244 employed only one strain-analysis software platform and did not compare different software
245 programs. Second, the speckle tracking echocardiography study was challenging due to image
246 processing requirements, which led to the exclusion of many participants with incomplete data.
247 This potential selection bias could impact the generalizability of our findings. Third, while our
248 sample size for analysis is more significant than that of some studies, it remains relatively small. More
249 extensive studies are necessary to establish cutoff points relevant to clinical practice in Central
250 Vietnam. Additionally, we conducted our study at a single location, which may limit the
251 generalizability of our findings to other populations or settings. Variations in disease prevalence
252 and characteristics across different populations or geographical locations could influence study

253 outcomes. Fourth, during sample collection, technical limitations of Doppler echocardiography
254 may have prevented us from obtaining all possible Doppler echocardiography indices for
255 comparison with LA strain indices. Fifth, this study focused exclusively on subjects in sinus
256 rhythm. However, atrial fibrillation represents a significant risk factor for HFpEF, necessitating
257 further research to determine the optimal integration of LA strain parameters with conventional
258 parameters for HFpEF diagnosis.

259 **Conclusions**

260 The LA strain demonstrates diagnostic efficacy comparable to the HFA-PEFF score in
261 diagnosing HFpEF. Integrating these indices into current guidelines could enhance future HFpEF
262 diagnostics.

263 **Acknowledgments**

264 Not applicable.

265 **Author Contributions**

266 Hai Nguyen Ngoc Dang: Conceptualization, Methodology, Acquisition, Investigation, Data
267 curation, Writing – original draft, Writing – review & editing.

268 Thang Viet Luong: Conceptualization, Methodology, Acquisition, Investigation, Data curation,
269 Writing – original draft, Writing – review & editing.

270 Bang Hai Ho: Conceptualization, Acquisition, Writing – original draft.

271 Tien Anh Hoang: Conceptualization, Acquisition, Writing – original draft.

272 Anh Xuan Mai: Conceptualization, Acquisition, Writing – original draft.

273 Hung Minh Nguyen: Conceptualization, Acquisition, Writing – original draft.

274 All authors have read and agreed to the published version of the manuscript.

275 **Funding Statement**

276 This research was not funded by any specific grant from public, commercial, or not-for-profit
277 organizations.

278 **Competing Interests Statement**

279 The authors declare that the research was conducted in the absence of any commercial or
280 financial relationships that could be construed as a potential conflict of interest.

281 Data Sharing Statement

282 Data cannot be shared publicly due to certain local ethical constraints. Researchers who meet the
283 criteria for access to confidential data may contact the author, Hai Nguyen Ngoc Dang (via email
284 at ngochai123dc@gmail.com).

285 References

- 286 1. Redfield M.M., Borlaug B.A. Heart Failure With Preserved Ejection Fraction: A Review.
287 *JAMA* 2023; 329: 827.
- 288 2. Obokata M., Reddy Y.N.V., Borlaug B.A. Diastolic Dysfunction and Heart Failure With
289 Preserved Ejection Fraction. *JACC: Cardiovascular Imaging* 2020; 13: 245–257.
- 290 3. Nagueh S.F., Smiseth O.A., Appleton C.P., et al. Recommendations for the Evaluation of
291 Left Ventricular Diastolic Function by Echocardiography: An Update from the American
292 Society of Echocardiography and the European Association of Cardiovascular Imaging.
293 *Journal of the American Society of Echocardiography* 2016; 29: 277–314.
- 294 4. Ma C., Liao Y., Fan J., et al. The novel left atrial strain parameters in diagnosing of heart
295 failure with preserved ejection fraction. *Echocardiography* 2022; 39: 416–425.
- 296 5. Boe E., Smiseth O.A. Left atrial strain imaging: ready for clinical implementation in heart
297 failure with preserved ejection fraction. *European Heart Journal - Cardiovascular Imaging*
298 2022; 23: 1169–1170.
- 299 6. Rosca M., Lancellotti P., Popescu B.A., et al. Left atrial function: pathophysiology,
300 echocardiographic assessment, and clinical applications. *Heart* 2011; 97: 1982–1989.
- 301 7. Gan G.C.H., Ferkh A., Boyd A., et al. Left atrial function: evaluation by strain analysis.
302 *Cardiovasc Diagn Ther* 2018; 8: 29–46.
- 303 8. Jarasunas J., Aidielis A., Aidielis S. Left atrial strain - an early marker of left ventricular
304 diastolic dysfunction in patients with hypertension and paroxysmal atrial fibrillation.
305 *Cardiovasc Ultrasound* 2018; 16: 29.
- 306 9. Reddy Y.N.V., Obokata M., Egbe A., et al. Left atrial strain and compliance in the
307 diagnostic evaluation of heart failure with preserved ejection fraction. *European J of Heart*
308 *Fail* 2019; 21: 891–900.
- 309 10. Brand A., Romero Dorta E., Wolf A., et al. Phasic left atrial strain to predict worsening of
310 diastolic function: Results from the prospective Berlin Female Risk Evaluation follow-up
311 trial. *Front Cardiovasc Med* 2023; 10: 1070450.
- 312 11. Kim D., Seo J.H., Choi K.H., et al. Prognostic Implications of Left Atrial Stiffness Index in
313 Heart Failure Patients With Preserved Ejection Fraction. *JACC: Cardiovascular Imaging*
314 2023; 16: 435–445.
- 315 12. Rimbasi R.C., Visoiu I.S., Magda S.L., et al. New insights into the potential utility of the left
316 atrial function analysis in heart failure with preserved ejection fraction diagnosis. *PLoS*
317 *ONE* 2022; 17: e0267962.
- 318 13. McDonagh T.A., Metra M., Adamo M., et al. 2021 ESC Guidelines for the diagnosis and
319 treatment of acute and chronic heart failure. *European Heart Journal* 2021; 42: 3599–3726.
- 320 14. Ponikowski P., Voors A.A., Anker S.D., et al. 2016 ESC Guidelines for the diagnosis and
321 treatment of acute and chronic heart failure: The Task Force for the diagnosis and treatment
322 of acute and chronic heart failure of the European Society of Cardiology (ESC). Developed

- 323 with the special contribution of the Heart Failure Association (HFA) of the ESC. *European*
324 *J of Heart Fail* 2016; 18: 891–975.
- 325 15. Mitchell C., Rahko P.S., Blauwet L.A., et al. Guidelines for Performing a Comprehensive
326 Transthoracic Echocardiographic Examination in Adults: Recommendations from the
327 American Society of Echocardiography. *Journal of the American Society of*
328 *Echocardiography* 2019; 32: 1–64.
- 329 16. Park J.J., Hwang I., Kang S., et al. Myocardial strain for heart failure with preserved ejection
330 fraction but without diastolic dysfunction. *ESC Heart Failure* 2022; 9: 3308–3316.
- 331 17. Pieske B., Tschöpe C., De Boer R.A., et al. How to diagnose heart failure with preserved
332 ejection fraction: the HFA–PEFF diagnostic algorithm: a consensus recommendation from
333 the Heart Failure Association (HFA) of the European Society of Cardiology (ESC).
334 *European Heart Journal* 2019; 40: 3297–3317.
- 335 18. DeLong E.R., DeLong D.M., Clarke-Pearson D.L. Comparing the areas under two or more
336 correlated receiver operating characteristic curves: a nonparametric approach. *Biometrics*
337 1988; 44: 837–845.
- 338 19. Aung S.M., Güler A., Güler Y., et al. Left atrial strain in heart failure with preserved ejection
339 fraction. *Herz* 2017; 42: 194–199.
- 340 20. Obokata M., Negishi K., Kurosawa K., et al. Incremental Diagnostic Value of LA Strain
341 With Leg Lifts in Heart Failure With Preserved Ejection Fraction. *JACC: Cardiovascular*
342 *Imaging* 2013; 6: 749–758.
- 343 21. Ye Z., Miranda W.R., Yeung D.F., et al. Left Atrial Strain in Evaluation of Heart Failure
344 with Preserved Ejection Fraction. *Journal of the American Society of Echocardiography*
345 2020; 33: 1490–1499.
- 346 22. Dzhioeva O., Belyavskiy E. Diagnosis and Management of Patients with Heart Failure with
347 Preserved Ejection Fraction (HFpEF): Current Perspectives and Recommendations. *TCRM*
348 2020; Volume 16: 769–785.
- 349 23. Braunauer K., Dungen H.-D., Belyavskiy E., et al. Potential usefulness and clinical relevance
350 of a novel left atrial filling index to estimate left ventricular filling pressures in patients with
351 preserved left ventricular ejection fraction. *European Heart Journal - Cardiovascular*
352 *Imaging* 2020; 21: 260–269.
- 353 24. Lin J., Ma H., Gao L., et al. Left atrial reservoir strain combined with E/E' as a better single
354 measure to predict elevated LV filling pressures in patients with coronary artery disease.
355 *Cardiovasc Ultrasound* 2020; 18: 11.
- 356 25. Choi K.H., Yang J.H., Seo J.H., et al. Discriminative Role of Invasive Left Heart
357 Catheterization in Patients Suspected of Heart Failure With Preserved Ejection Fraction.
358 *JAHA* 2023; 12: e027581.

359

360 **Figure Legends**

361 **Figure 1. Heatmap depicts the correlation between echocardiography indices, NT-ProBNP,**
362 **and HFA-PEFF.** A: A-wave velocity; E: E-wave velocity; e': e'-wave velocity; HFA-PEFF:
363 Heart Failure Association-PEFF; LAScd: left atrial conduit function; LASct: left atrial contractile
364 function; LASr: left atrial reservoir function; LAVI: left atrial volume index; LV GLS: left
365 ventricular global longitudinal strain; NT-proBNP: N-terminal pro-B-type natriuretic peptide;
366 TRV: tricuspid regurgitation velocity.

367 **Figure 2. Reliability of LA strain measurements.** LAScd: left atrial conduit function; LASct:
368 left atrial contractile function; LASr: left atrial reservoir function; ICC: Intraclass correlation
369 coefficient.
370

371 **Table 1:**
372 **General characteristics of study subjects.**

Characteristics	Control group (n = 69)	HFpEF group (n = 49)	p-value
Baseline demographic and clinical features			
Age (years)	60 [56 - 65]	62 [52 - 73]	0.204
Female	37 (53.62)	27 (55.10)	0.512
BSA (m ²)	1.55 ± 0.13	1.52 ± 0.16	0.357
BMI (kg/m ²)	21.92 ± 2.03	21.71 ± 3.54	0.710
NT-ProBNP (pg/mL)	64.0 [43.5 - 78.0]	663.0 [286.6 - 1417.0]	< 0.001
Left ventricular structure and function			
LVMI (g/m ²)	91.35 [79.38 - 115.49]	123.00 [106.50 - 146.50]	< 0.001
RWT	0.39 [0.35 - 0.44]	0.39 [0.35 - 0.45]	0.761
LV EF (%)	70.22 ± 6.38	63.38 ± 8.22	< 0.001
LV GLS (%)	20.80 [19.60 - 22.05]	16.80 [12.40 - 19.15]	< 0.001
Doppler echocardiography			
e' septal velocity (cm/s)	7.35 [6.29 - 7.98]	6.19 [4.70 - 7.76]	0.010
e' lateral velocity (cm/s)	8.80 [8.11 - 10.85]	7.70 [5.36 - 9.72]	0.005
E/A ratio	0.78 [0.69 - 0.92]	0.87 [0.70 - 1.30]	0.249
Average E/e ratio	7.82 [6.47 - 9.59]	11.81 [9.05 - 14.86]	0.002
TRV (cm/s)	115.00 [94.65 - 143.00]	238.00 [166.50 - 296.10]	< 0.001
Left atrial structure and function			
LAVI (mL/m ²)	18.30 [16.70 - 22.15]	24.00 [16.65 - 33.50]	0.002
LASr (%)	34.45 [38.07 - 31.14]	20.80 [26.50 - 13.30]	< 0.001
LASct (%)	17.33 ± 5.72	9.08 ± 6.18	< 0.001
LAScd (%)	17.38 ± 4.41	10.89 ± 5.16	< 0.001
LASr/LAVI	1.89 ± 0.53	0.95 ± 0.89	< 0.001
LASr/E/e'	4.53 ± 1.41	1.91 ± 1.29	< 0.001
HFA-PEFF score			
HFA-PEFF score	2 [2 - 3]	4 [3 - 5]	<0.001

373 Note:

374 Values are presented as mean ± standard deviation or number (%) or median [IQR, 25th-75th
375 percentile].

376 A, A-wave velocity; BMI, body mass index; BSA, body surface area; E, E-wave velocity; e', e'-
377 wave velocity; LAScd, left atrial conduit function; LASct, left atrial contractile function; LASr,
378 left atrial reservoir function; LAVI, left atrial volume index; LV EF, left ventricular ejection
379 fraction; LV GLS, left ventricular global longitudinal strain; LVMI, left ventricular mass index;
380 NT-proBNP, N-terminal pro-B-type natriuretic peptide; RWT, relative wall thickness; TRV,
381 tricuspid regurgitation velocity.

382

383 **Table 2:**

384 **The performance of the LA strain parameters and existing criteria in diagnosing HFpEF.**

Parameters	AUC	95%CI		p-value	Cut-off point	Sensitivity (%)	Specificity (%)
LAVI (mL/m²)	0.615	0.521	0.703	0.034	34	24.49	98.55
Average E/e'	0.636	0.542	0.722	0.012	14	28.57	98.55
Septal e' velocity (cm/s)	0.590	0.496	0.680	0.091	7	57.14	60.87
TRV (m/s)	0.633	0.539	0.720	0.014	2.8	26.53	100.00
LV GLS (%)	0.701	0.610	0.782	< 0.001	16	48.98	91.30
LASr (%)	0.852	0.775	0.911	< 0.001	29.85	83.67	82.61
LAScd (%)	0.770	0.683	0.842	< 0.001	11.70	59.18	85.51
LASct (%)	0.778	0.692	0.849	< 0.001	15.58	77.55	69.57
HFA-PEFF score	0.890	0.819	0.940	< 0.001	5	26.53	100.00
LASr/LAVI	0.838	0.759	0.899	< 0.001	1.21	71.43	86.96
LASr/E/e'	0.886	0.814	0.937	< 0.001	2.96	81.63	84.06

385 Note:

386 E: E-wave velocity; e': e'-wave velocity; HFA-PEFF: Heart Failure Association-PEFF; LAScd:
 387 left atrial conduit function; LASct: left atrial contractile function; LASr: left atrial reservoir
 388 function; LAVI: left atrial volume index; LV GLS: left ventricular global longitudinal strain;
 389 TRV: tricuspid regurgitation velocity.

390

392
393
394

Table 3:
Correlation matrix with p values between AUC values of variables.

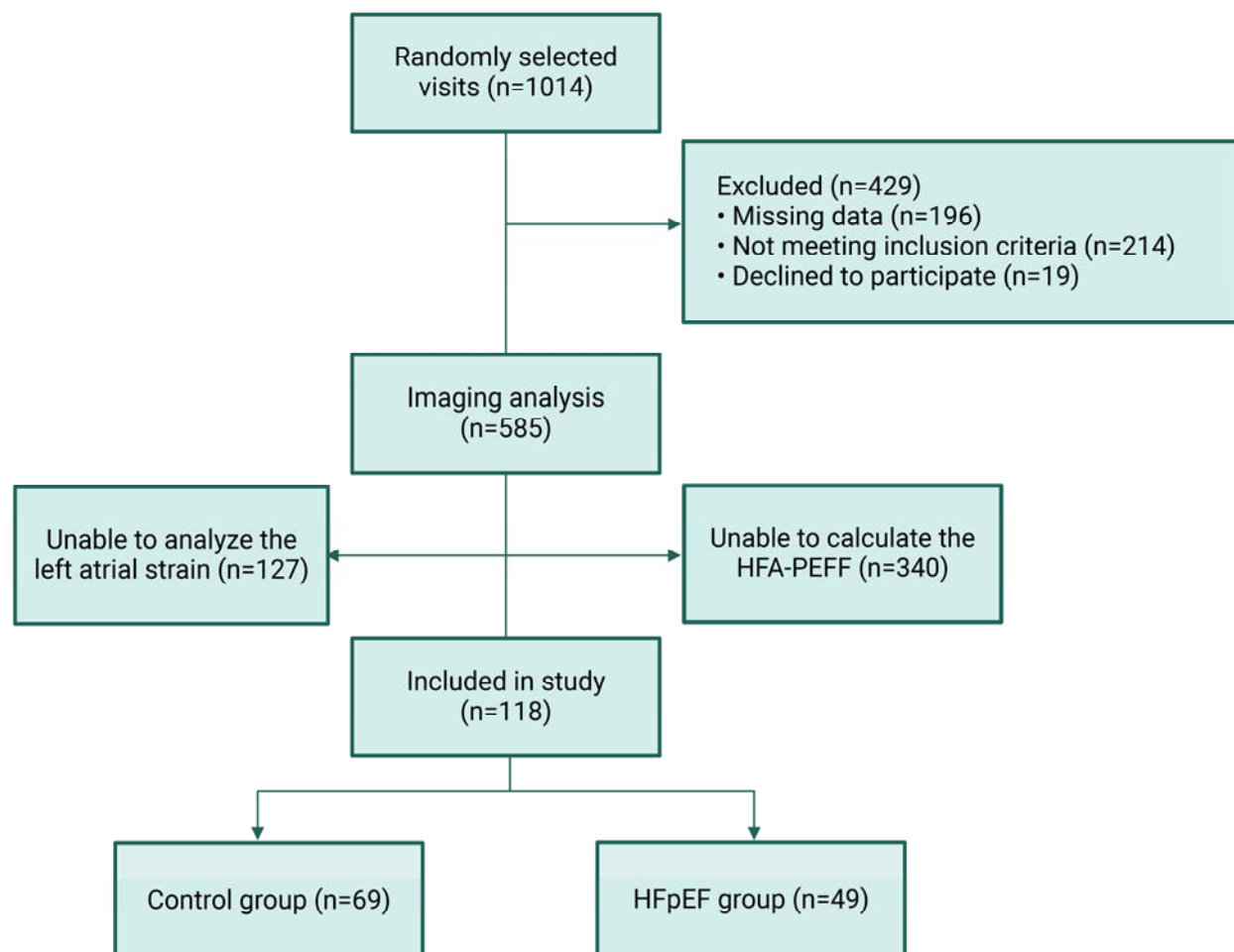
Variables	LAVI	E/e'	Septal e'	TRV	LV GLS	LASr	LAScd	LASct	HFA-PEFF	LASr/LAVI
E/e'	0.787									
Septal e'	0.736	0.483								
TRV	0.817	0.967	0.572							
LV GLS	0.174	0.365	0.115	0.334						
LASr	0.000**	0.000**	0.000**	0.000*	0.013*					
LAScd	0.023*	0.046*	0.008*	0.039*	0.298	0.003*				
LASct	0.018*	0.031*	0.005*	0.029*	0.229	0.073	0.867			
HFA-PEFF	0.000**	0.000**	0.000**	0.000**	0.001*	0.419	0.021*	0.033*		
LASr/LAVI	0.000**	0.001*	0.000**	0.001*	0.031*	0.649	0.083	0.191	0.283	
LASr/E/e'	0.000**	0.000**	0.000**	0.000**	0.002*	0.258	0.003*	0.011*	0.928	0.180

Note:

Statistically significant values are in bold. ** p < 0.001, * p < 0.05.

E: E-wave velocity; e': e' -wave velocity; LAScd: left atrial conduit function; LASct: left atrial contractile function; LASr: left atrial reservoir function; LAVI: left atrial volume index; LV GLS: left ventricular global longitudinal strain; TRV: tricuspid regurgitation velocity.

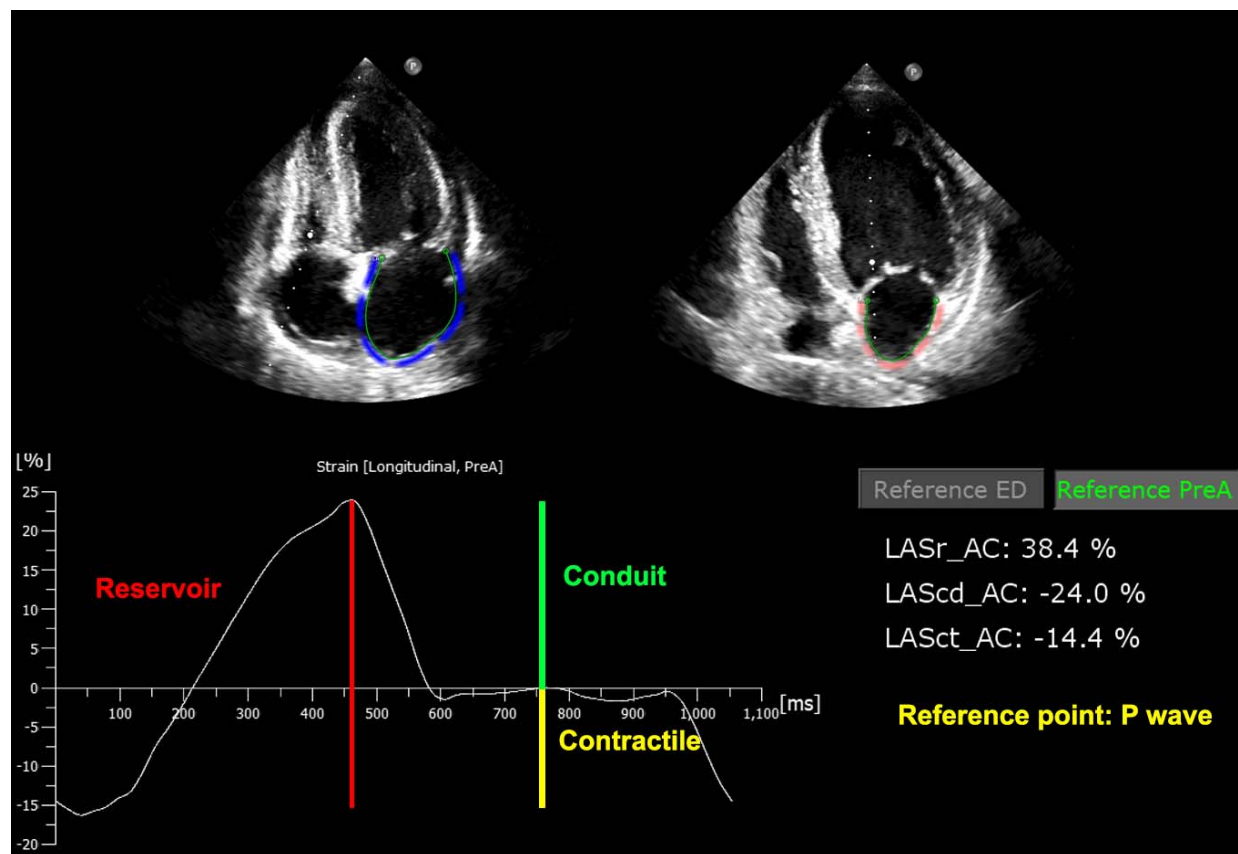
395 **Supplementary Figure 1**



396
397 **Supplementary Figure 1. Flowchart illustrating the sample selection and exclusion process.**

398

399 **Supplementary Figure 2**



400
401 **Supplementary Figure 2. Parameters of LA strain on speckle tracking echocardiography.**
402 LASr (Reservoir) in red, LAScd (Conduit) in green, and LASct (Contractile) in yellow. LAScd:
403 left atrial conduit function; LASct: left atrial contractile function; LASr: left atrial reservoir
404 function.

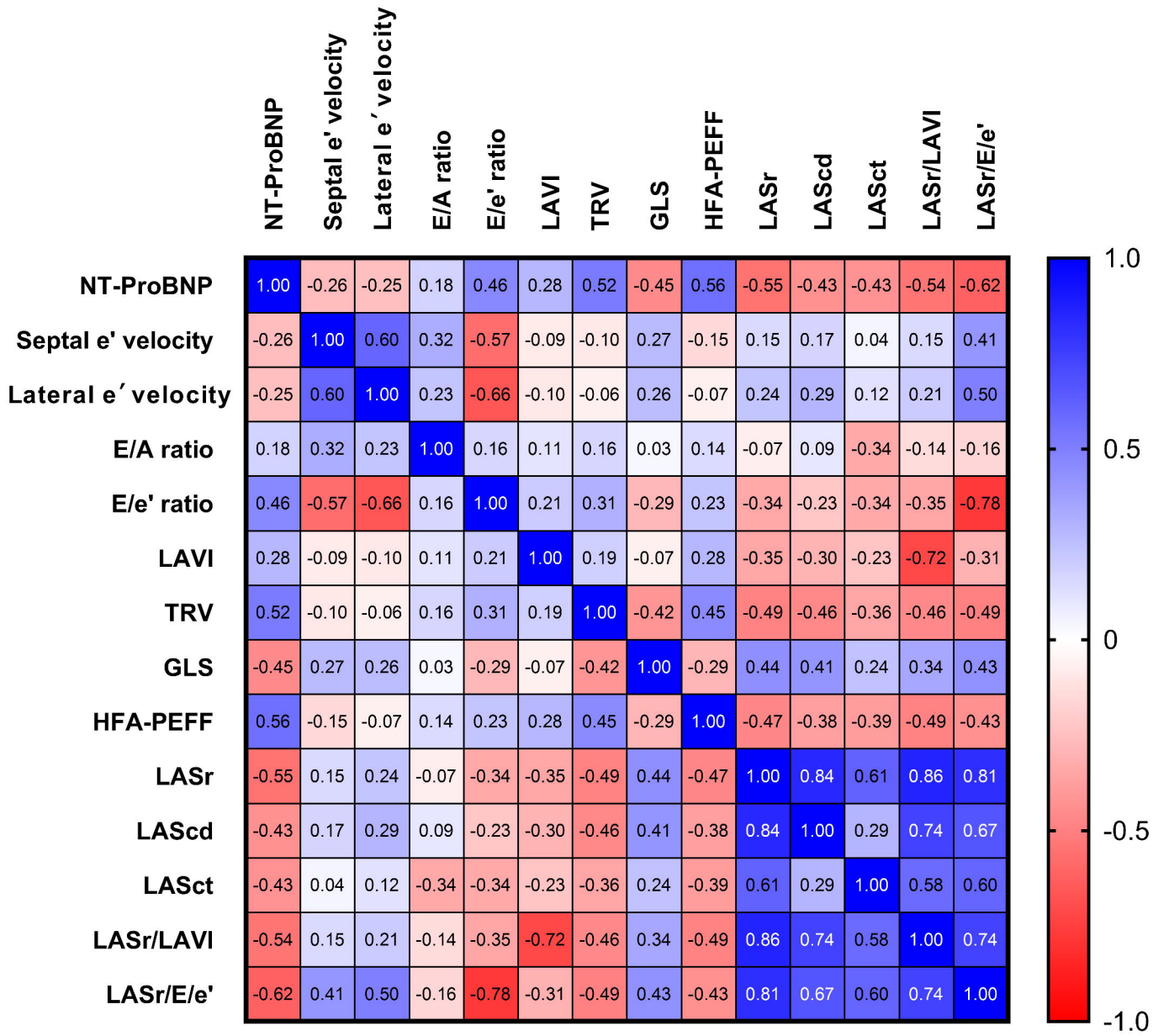
405

406 **Supplementary Table 1. Calculation of HFA-PEFF score**

HFA-PEFF score				
Parameter	Minor		Major	
	Value	Point	Value	Point
Functional	Average E/e' 9 - 14 or GLS < 16%	1	Septal e' < 7 cm/s or lateral e' < 10 cm/s or Average E/e' ≥ 15 or TR velocity > 280 cm/s (PASP > 35 mmHg)	2
Morphological	LAVI 29 – 34 mL/m ² or LVMI ≥ 115/95 g/m ² (female/male) or RWT > 0.42 or LV wall thickness ≥ 12 mm	1	LAVI > 34mL/m ² or LVMI ≥ 149/122 g/m ² (female/male) and RWT > 0.42	2
Biomarker (SR)	NT-proBNP 125 - 220 pg/mL or BNP 35 - 80 pg/mL	1	NT-proBNP > 220 pg/mL or BNP > 80 pg/mL	2
Biomarker (AF)	NT-proBNP 365 - 660 pg/mL or BNP 105 - 240 pg/mL	1	NT-proBNP > 660 pg/mL or BNP > 240 pg/mL	2

407 *Adapted from Heart Failure Association of the European Society of Cardiology*

408 Abbreviations: AF: atrial fibrillation; BNP: B-type natriuretic peptide; E: early transmitral flow
 409 velocity; e': early diastolic mitral annular velocity; GLS: left ventricular global longitudinal
 410 strain; HFA-PEFF: Heart Failure Association-PEFF; LAVI: left atrial volume index; LV: left
 411 ventricle; LVMI: left ventricular mass index; NT-proBNP: N-terminal pro-B-type natriuretic
 412 peptide; PASP: pulmonary artery systolic pressure; RWT: relative wall thickness; SR: sinus
 413 rhythm; TRV: tricuspid regurgitation velocity.



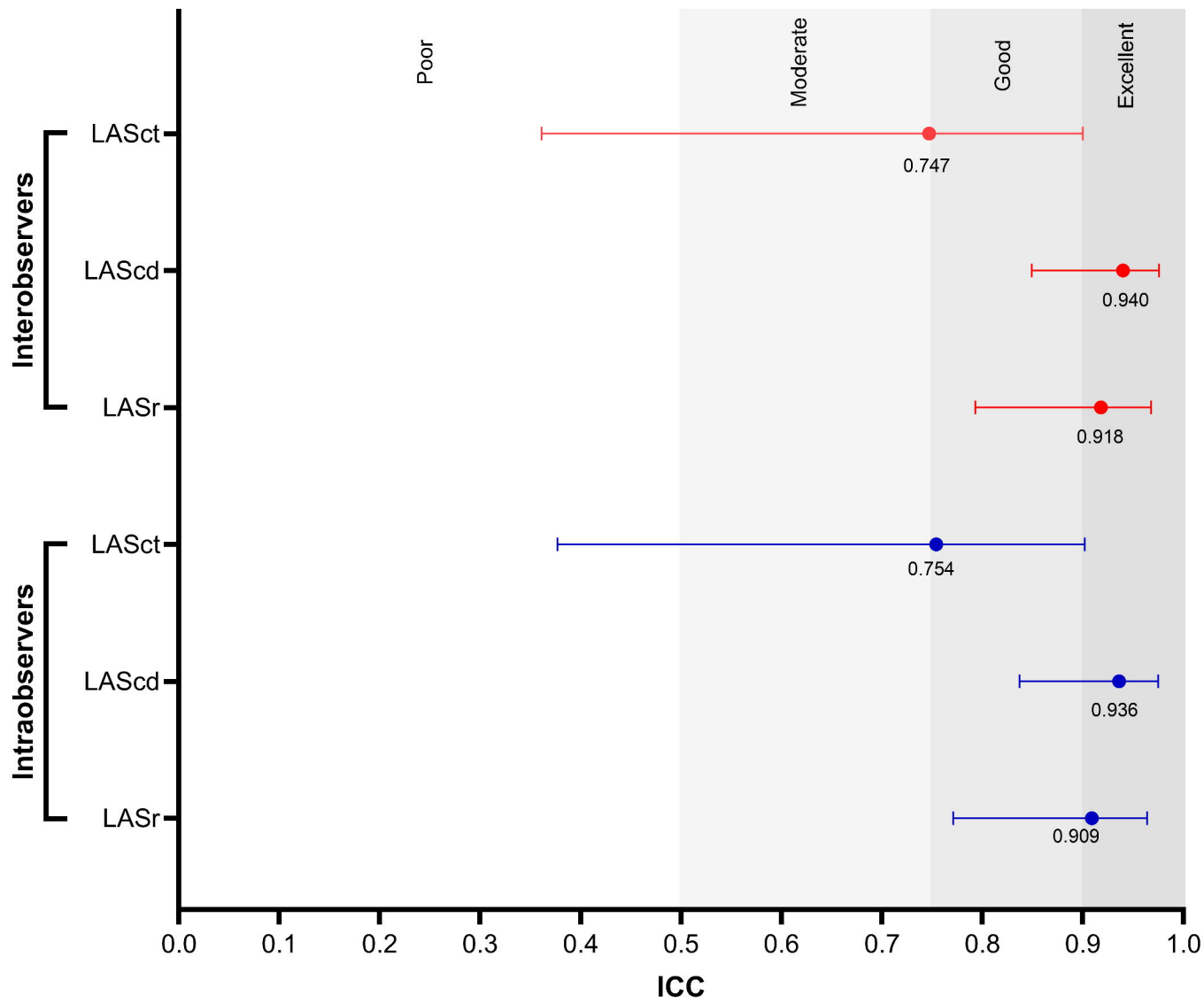


Table 1:
General characteristics of study subjects.

Characteristics	Control group (n = 69)	HFpEF group (n = 49)	p-value
Baseline demographic and clinical features			
Age (years)	60 [56 - 65]	62 [52 - 73]	0.204
Female	37 (53.62)	27 (55.10)	0.512
BSA (m ²)	1.55 ± 0.13	1.52 ± 0.16	0.357
BMI (kg/m ²)	21.92 ± 2.03	21.71 ± 3.54	0.710
NT-ProBNP (pg/mL)	64.0 [43.5 - 78.0]	663.0 [286.6 - 1417.0]	< 0.001
Left ventricular structure and function			
LVMI (g/m ²)	91.35 [79.38 - 115.49]	123.00 [106.50 - 146.50]	< 0.001
RWT	0.39 [0.35 - 0.44]	0.39 [0.35 - 0.45]	0.761
LV EF (%)	70.22 ± 6.38	63.38 ± 8.22	< 0.001
LV GLS (%)	20.80 [19.60 - 22.05]	16.80 [12.40 - 19.15]	< 0.001
Doppler echocardiography			
e' septal velocity (cm/s)	7.35 [6.29 - 7.98]	6.19 [4.70 - 7.76]	0.010
e' lateral velocity (cm/s)	8.80 [8.11 - 10.85]	7.70 [5.36 - 9.72]	0.005
E/A ratio	0.78 [0.69 - 0.92]	0.87 [0.70 - 1.30]	0.249
Average E/e ratio	7.82 [6.47 - 9.59]	11.81 [9.05 - 14.86]	0.002
TRV (cm/s)	115.00 [94.65 - 143.00]	238.00 [166.50 - 296.10]	< 0.001
Left atrial structure and function			
LAVI (mL/m ²)	18.30 [16.70 - 22.15]	24.00 [16.65 - 33.50]	0.002
LASr (%)	34.45 [38.07 - 31.14]	20.80 [26.50 - 13.30]	< 0.001
LASct (%)	17.33 ± 5.72	9.08 ± 6.18	< 0.001
LAScd (%)	17.38 ± 4.41	10.89 ± 5.16	< 0.001
LASr/LAVI	1.89 ± 0.53	0.95 ± 0.89	< 0.001
LASr/E/e'	4.53 ± 1.41	1.91 ± 1.29	< 0.001
HFA-PEFF score			
HFA-PEFF score	2 [2 - 3]	4 [3 - 5]	<0.001

Note:

Values are presented as mean ± standard deviation or number (%) or median [IQR, 25th-75th percentile].

A, A-wave velocity; BMI, body mass index; BSA, body surface area; E, E-wave velocity; e', e'-wave velocity; LAScd, left atrial conduit function; LASct, left atrial contractile function; LASr, left atrial reservoir function; LAVI, left atrial volume index; LV EF, left ventricular ejection fraction; LV GLS, left ventricular global longitudinal strain; LVMI, left ventricular mass index; NT-proBNP, N-terminal pro-B-type natriuretic peptide; RWT, relative wall thickness; TRV, tricuspid regurgitation velocity.

Table 2:

The performance of the LA strain parameters and existing criteria in diagnosing HFpEF.

Parameters	AUC	95%CI		p-value	Cut-off point	Sensitivity (%)	Specificity (%)
LAVI (mL/m²)	0.615	0.521	0.703	0.034	34	24.49	98.55
Average E/e'	0.636	0.542	0.722	0.012	14	28.57	98.55
Septal e' velocity (cm/s)	0.590	0.496	0.680	0.091	7	57.14	60.87
TRV (m/s)	0.633	0.539	0.720	0.014	2.8	26.53	100.00
LV GLS (%)	0.701	0.610	0.782	< 0.001	16	48.98	91.30
LASr (%)	0.852	0.775	0.911	< 0.001	29.85	83.67	82.61
LAScd (%)	0.770	0.683	0.842	< 0.001	11.70	59.18	85.51
LASct (%)	0.778	0.692	0.849	< 0.001	15.58	77.55	69.57
HFA-PEFF score	0.890	0.819	0.940	< 0.001	5	26.53	100.00
LASr/LAVI	0.838	0.759	0.899	< 0.001	1.21	71.43	86.96
LASr/E/e'	0.886	0.814	0.937	< 0.001	2.96	81.63	84.06

Note:

E: E-wave velocity; e': e'-wave velocity; HFA-PEFF: Heart Failure Association-PEFF; LAScd: left atrial conduit function; LASct: left atrial contractile function; LASr: left atrial reservoir function; LAVI: left atrial volume index; LV GLS: left ventricular global longitudinal strain; TRV: tricuspid regurgitation velocity.

Table 3:

Correlation matrix with p values between AUC values of variables.

Variables	LAVI	E/e'	Septal e'	TRV	LV GLS	LASr	LAScd	LASct	HFA-PEFF	LASr/LAVI
E/e'	0.787									
Septal e'	0.736	0.483								
TRV	0.817	0.967	0.572							
LV GLS	0.174	0.365	0.115	0.334						
LASr	0.000**	0.000**	0.000**	0.000*	0.013*					
LAScd	0.023*	0.046*	0.008*	0.039*	0.298	0.003*				
LASct	0.018*	0.031*	0.005*	0.029*	0.229	0.073	0.867			
HFA-PEFF	0.000**	0.000**	0.000**	0.000**	0.001*	0.419	0.021*	0.033*		
LASr/LAVI	0.000**	0.001*	0.000**	0.001*	0.031*	0.649	0.083	0.191	0.283	
LASr/E/e'	0.000**	0.000**	0.000**	0.000**	0.002*	0.258	0.003*	0.011*	0.928	0.180

Note:

Statistically significant values are in bold. ** p < 0.001, * p < 0.05.

E: E-wave velocity; e': e'-wave velocity; LAScd: left atrial conduit function; LASct: left atrial contractile function; LASr: left atrial reservoir function; LAVI: left atrial volume index; LV GLS: left ventricular global longitudinal strain; TRV: tricuspid regurgitation velocity.