

1 **Genomic analysis of *Strongyloides stercoralis* and *Strongyloides fuelleborni***
2 **in Bangladesh**

3

4 Veroni de Ree¹, Tilak Chandra Nath², Dorothee Harbecke¹, Dongmin Lee³,

5 Christian Rödelsperger¹ and Adrian Streit^{1*}

6

7

8 ¹Department of Integrative Evolutionary Biology, Max Planck Institute for

9 Biology Tübingen, Max-Planck-Ring 5, 72076 Tübingen, Germany

10 ²Department of Parasitology, Sylhet Agricultural University, Sylhet 3100,

11 Bangladesh

12 ³International Parasite Resource Bank, Chungbuk National University, 1

13 Chundae-ro, Seowon-gu, Cheongju 28644, Korea

14

15

16 *Corresponding author:

17 adrian.streit@tuebingen.mpg.de

18 Orcid: 0000-0002-7838-621

19

20 Orcid V dR: 0009-0001-9026-4514

21

22 Short title: *Strongyloides* in Bangladesh

23

24 **Abstract**

25 **Background:** About 600 million people are estimated to be infected with
26 *Strongyloides stercoralis*, the species that causes the vast majority of human
27 strongyloidiasis cases. *S. stercoralis* can also infect non-human primates (NHPs),
28 dogs and cats, rendering these animals putative sources for zoonotic human *S.*
29 *stercoralis* infection. *S. fuelleborni* is normally found in old world NHPs but
30 occasionally also infects humans, mainly in Africa. Dogs in southeast Asia carry at
31 least two types of *Strongyloides*, only one of which appears to be shared with
32 humans ("dog only" and "human and dog" types). For *S. stercoralis* with
33 molecular taxonomic information, there is a strong sampling bias towards
34 southeast and east Asia and Australia.

35 **Methodology/Principle findings:** We collected human and dog derived
36 *Strongyloides* spp. and hookworms from two locations in Bangladesh and
37 subjected them to molecular taxonomic and genomic analysis based on nuclear
38 and mitochondrial sequences. All hookworms found were *Necator americanus*.
39 Contrary to earlier studies in Asia, we noticed a rather high incidence of *S.*
40 *fuelleborni* in human samples. Also in this study, we found the two types of *S.*
41 *stercoralis* and no indication for genetic isolation from the southeast Asian
42 populations. However, we found one *S. stercoralis* worm in a human sample that
43 genomically was of the "dog only" type and we found two worms in a dog sample
44 that had the nuclear genomes of the "dog only" type but the mitochondrial
45 genome of the "human and dog" type.

46 **Conclusions/Significance:** *S. fuelleborni* may play a more prominent role as a
47 human parasite in certain places in Asia than previously thought. The
48 introgression of a mitochondria haplotype into the "dog only" population

49 suggests that rare interbreeding between the two *S. stercoralis* types does occur
50 and that exchange of genetic properties, for example a drug resistance, between
51 the two types is conceivable.

52

53

54 **Author Summary**

55 More than 600 million people are infected with the nematode intestinal parasite
56 *Strongyloides stercoralis*. Dogs can also carry *S. stercoralis*. In southeast Asia
57 different genetic types that either infect only dogs or humans and dogs were
58 described. *Strongyloides fuelleborni*, (normally found in old-world monkeys) can
59 also infect humans, mainly in Africa. We collected *Strongyloides* spp. and hook
60 worms, from humans and a dog in Bangladesh and analyzed their nuclear and
61 mitochondrial genomes. All hookworms were *Necator americanus*, one of the
62 two major human hookworm species. Contrary to the general believe that
63 human infections with *S. fuelleborni* are extremely rare in Asia, we found
64 multiple such cases, suggesting that *S. fuelleborni* plays a more important role as
65 a human parasite than previously thought also in Asia.

66 We found the two expected genetic types of *S. stercoralis*. For the first time we
67 found a genomically "dog only" type worm in a person and we found two worms
68 with nuclear genomes of the "dog only" type but mitochondrial genomes of the
69 "human and dog" type. This suggest that rare interbreeding between the two
70 types occurs, such that exchange of genetic properties, such as a drug resistance,
71 between the two types is conceivable.

72

73 **Keywords:** *Strongyloides stercoralis*, *Strongyloides fuelleborni*, parasitic

74 nematode, host specificity, Neglected Tropical Disease.

75

76 **Introduction**

77 Strongyloidiasis is one of the soil-transmitted helminthiasis (STH), which
78 are recognized as neglected tropical diseases (NTDs,
79 https://www.who.int/health-topics/neglected-tropical-diseases#tab=tab_1).
80 However, although clearly more prevalent in tropical and sub-tropical areas, the
81 disease is not limited to these regions and should probably be rather regarded as
82 a disease of socioeconomically disadvantaged people rather than strictly a
83 tropical disease [1, 2]. Until recently, strongyloidiasis was often neglected, even
84 in comparison with other STHs [3] but over the last few years there is increasing
85 interest in this disease [1, 4, 5]. The estimate of the number of people currently
86 infected with *Strongyloides stercoralis*, the species which causes the vast majority
87 of human strongyloidiasis cases, has recently been corrected upwards to "about
88 600 million" [2]. Given the difficulties with diagnosis, the true number may be
89 even higher [6-8]. Although *S. stercoralis* has also been reported to occur in non-
90 human primates (NHPs), dogs and cats, rendering these animals putative sources
91 for zoonotic human *S. stercoralis* infection [6, 9-11]. In NHPs and in cats other,
92 more or less host specific species of *Strongyloides* were also described, i. e. *S.*
93 *fuelleborni* and *S. cebus* in NHPs, and *S. planiceps* and *S. felis* in cats [12]. The
94 species status of *Strongyloides* in dogs has been controversially discussed ever
95 since Brumpt separated the *Strongyloides* in dogs as *S. canis* from the human
96 infective species *S. stercoralis* [13], interestingly based on the very same data
97 that had convinced Fülleborn that the *Strongyloides* he found in the dogs
98 belonged to the same species as the ones in humans [14]. While it became clear
99 that dogs can be experimentally infected with at least some isolates of *S.*
100 *procyonis* (natural host racoon, [15]) and human infective *S. stercoralis*

101 (reviewed in [10]) it remained enigmatic if the species causing most natural
102 *Strongyloides* infections in dogs is different from the one in humans.

103 Over the last years, the Hyper Variable Regions (HVR) I and IV of the
104 nuclear Small SUBunit ribosomal RNA locus (*SSU*) and the mitochondrial *cox-1*
105 loci have emerged as the standard markers for molecular taxonomy within the
106 genus *Strongyloides* spp. and within the species, *S. stercoralis* [16-19]. A
107 nomenclature system for the different haplotypes has been proposed and
108 extended [18, 20, 21]. A few studies, analyzing samples from East and southeast
109 Asia [20, 22-24], and Iran [25] analyzed whole genome data from individual *S.*
110 *stercoralis* worms in addition to the *SSU* and *cox-1* markers. Jaleta et al. [20] and
111 Nagayasu et al. [26] in southeast Asia and Beknazarova et al. in Australia [27]
112 found that dogs carried at least two types of *Strongyloides*, only one of which
113 appeared to be shared with humans in the same region. In this manuscript we
114 will refer to them as "human and dog" and "dog only", respectively. Barratt and
115 Sapp [21] compiled all sequence information available from *S. stercoralis* from
116 different hosts and used machine learning approaches to analyze these data in
117 depth. Their findings suggest that *S. stercoralis* is in fact a complex of closely
118 related species with different but overlapping host spectra. While from these
119 data it appears most likely that zoonotic *S. stercoralis* infections can happen,
120 currently, we do not know how important such infections are for the overall *S.*
121 *stercoralis* epidemiology, compared with human to human transmission [10]. In
122 addition to *S. stercoralis*, *Strongyloides fuelleborni*, which can be distinguished
123 from *S. stercoralis* morphologically [28] and coprologically (from this species eggs
124 are shed with the faeces and not larvae as in *S. stercoralis* [29]), has been found
125 to be able to infect humans. Two subspecies of *S. fuelleborni* have been described,

126 namely *S. fuelleborni fuelleborni* and *S. fuelleborni kellyi* [29]. While the former is
127 the predominant species of *Strongyloides* in old world non-human primates, *S.*
128 *fuelleborni kellyi* has been found only in humans in Papua New Guinea [29].
129 Based on molecular taxonomy [30] we think *S. f. kellyi* should probably be
130 considered a separate species and do not further discuss it in this publication.
131 For the rest of this publication "*S. fuelleborni*" always refers to *S. fuelleborni*
132 *fuelleborni*. Barratt and Sapp [21] described genetic/genomic differences
133 between *S. fuelleborni* in Africa and *S. fuelleborni* in Asia. The vast majority of
134 human *S. fuelleborni* infections were found in Africa and [21] found genetic
135 indication for a human specialized sub-population within the African clade,
136 suggesting human to human transmission. In Asia, on the other hand, no such
137 genetic hint was found and it appears that human *S. fuelleborni* infections are
138 restricted to individuals with close contact to non-human primates, indicating
139 that most, if not all human *S. fuelleborni* cases in Asia are zoonotic [21] and
140 references therein.

141 So far, for *S. stercoralis* with molecular taxonomic information, there is a
142 strong sampling bias towards southeast Asia, East Asia and Australia [21]. To
143 further extend the geographic range, we collected *S. stercoralis* from two
144 locations in Bangladesh. We knew that *S. stercoralis* is prevalent in Bangladesh
145 ([2] lists an estimated overall prevalence of 17.3%), but we are not aware of any
146 published systematic study on *S. stercoralis* in this country. Contrary to earlier
147 studies in Asia, we noticed a rather high incidence of *S. fuelleborni* in humans.
148 Molecular taxonomically these worms grouped clearly with the Asian clade
149 defined by [21]. Molecular taxonomically, the *S. stercoralis*, we found mixed in
150 with the southeast Asian population described earlier [20, 22, 23, 26] and

151 appeared not to form a separate population. However, we found one *S.*
152 *stercoralis* worm in a human sample that was of a type that had been considered
153 dog-specific and we found two worms in a dog sample that had the nuclear
154 genomes of the "dog only" type but the mitochondrial genome of the "human and
155 dog" type, suggesting that occasional interbreeding between the types does
156 occur.

157

158 **Methods**

159 **Ethics statement**

160 All participants were volunteers and gave informed consent. The sampling of
161 human-derived material including the procedures to obtain informed consent,
162 was in accordance with the Bangladeshi legal requirements and with the
163 guidelines of the Sylhet Agricultural University. This study was approved by the
164 Ethical Review Committee, Sylhet Agricultural University Research System
165 (SAURES), Bangladesh (SAURES-UGC-2022-04). Interested putative participants
166 were informed orally about the project and, if they chose to participate, were
167 handed collection containers. All participants remained free to return the
168 container or not.

169

170 **Study area, Sample collection and processing**

171 Human faecal samples were collected from two regions from Bangladesh that
172 had been previously identified as high prevalence areas for helminthiasis: Sylhet,
173 and Dhaka in December 2022. 134 human samples from four different locations
174 in Sylhet; Khadim tea garden, Daldali tea garden, Baluchar and Fotehpur and one
175 dog sample from the premises of Sylhet Agricultural University were analysed. In

176 Dhaka 95 human samples were collected from two locations: Hazaribug and
177 Mohammadpur.
178
179 Stool collection jars with a spoon were distributed to the individuals who agreed
180 to participate in the study after explaining how to properly collect the stool
181 sample without soil contamination. The next day the sample jars were collected.
182 Faecal samples were mixed well with approximately equal volumes of activated
183 charcoal (Roth 5966.1) to facilitate air exchange. Water was added to make the
184 samples well moisturized but not soakingly wet. This mixture was incubated in
185 the room temperature (R.T.) for 24-48hrs with the lid partially open and re-
186 moisturized on need-to basis. Samples were analysed using modified miniature
187 Baermann apparatuses based on 50ml Falcon Tubes as described [31]. In brief,
188 faeces mixture was placed in the centre of a 10x10cm cotton gauze and made it
189 into a pouch secured using a toothpick which was submerged in a 50ml falcon
190 tube filled with lukewarm water. After 3hrs of incubation at ambient
191 temperature the sediment was taken out using a Pasteur pipette and observed
192 under a stereo dissecting microscope for the presence of worms. These worms in
193 part individually and in part bulk preserved in 80% ethanol at the Sylhet
194 Agricultural University as described [32] and brought back to the Max Planck
195 Institute for Biology, Tübingen for molecular/genomic analysis.

196

197 **Single worm lysis and *cox-1*, *SSU HVR-I* and *SSU HVR-IV* genotyping**

198 Single worm lysis for adults and larvae was performed as described [32]. For
199 infective larvae the lysis was extended to 6 hrs at 65°C. The lysate was either
200 freshly used for PCR or stored at -20°C. The *cox-1*, *SSU HVR-I* and *SSU HVR-IV*

201 were PCR amplified using the primers described in [24]. For the *SSU* HVR-I and
202 the *SSU* HVR-IV for all worms the same primer pairs RH5401/RH5402 and
203 18SP4F/18SPCR, respectively, were used. For *cox-1* the primers designed for *S.*
204 *stercoralis* (but also working for some other species) (ZS6985/ZS6986) were
205 used, unless the worm was already known to be a hookworm, in which case the
206 hookworm optimized primer ZS6989 was used as the reverse primer instead of
207 ZS6986. For the PCR, 10µl of QIAGEN *Taq* PCR master mix (x2) (201443), 0.4µl
208 of 10µM forward and reverse primers, 7.2µl of PCR water and as template 2µl of
209 single worm lysate were added. For *S. fuelleborni* the same primers as for *S.*
210 *stercoralis* were used.

211 For sequencing 1µl of PCR product was mixed with 1µl of the relevant
212 sequencing primer (10µM) [24] and 8µl of water and submitted to Genewiz,
213 Leipzig, Germany. *S. stercoralis* P203 iL3 HVR-I PCR product and *S. fuelleborni*
214 *cox-1* PCR products were gel purified (1% agarose, 1X TAE) using the QIAquick
215 gel extraction kit (Qiagen 28706) prior to sequencing. If the sequencing result
216 was not clean, the PCR products were sequenced again using the alternative
217 sequencing primers listed by [24] or the amplification primers. Sequence quality
218 and the presence of hybrid sequences was manually assessed by looking at the
219 chromatograms using the SnapGene® software (from Dotmatrix; available at
220 snapgene.com). The sequences were first compared with published sequences in
221 the National Centre for Biotechnology Information (NCBI) database using the
222 BLAST function (<http://blast.ncbi.nlm.nih.gov/Blast.cgi>) and then
223 phylogenetically analysed using MEGA11 [33] with the Neighbour-joining
224 method and default settings. The robustness of the trees was assessed with 1000
225 boot strap repetitions. Position numbers refer to GeneBank entries AF279916

226 for the *S. stercoralis* and *S. fuelleborni* SSU, LC050212 for the *S. stercoralis* and *S.*
227 *fuelleborni* *cox-1* and AJ417719 for hookworm *cox-1* sequences.

228 We also retrieved *cox-1* sequences from the read data of the whole genome
229 sequenced worms in [20] (see Fig. 4 of this reference) and submitted them to
230 GenBank along with the *cox-1* sequences from this study (accession numbers
231 OR804688-712, OR805174, 81, OR810937-54, OR809277-99).

232

233 **Whole genome sequencing**

234 Whole genome sequencing was done as described [25] with slight differences as
235 follows. In the DNA clean-up step, 11-14µl of lysis were used instead of 10µl. In
236 the pooling and concentration adjustment step the bead clean-up was skipped.
237 The concentrations were calculated for the samples and 2nM of each sample
238 were pooled which resulted in a 1.85nM final concentration in the pool which
239 was then submitted to the MPI for Biology in-house sequencing facility for
240 Illumina NexSeq 2000 sequencing.

241

242 **Analysis of the whole genome sequences**

243 Whole genome tree

244 The paired end sequencing resulted 5.7-21.5 x coverage for the *S. stercoralis*
245 samples. WGS data for 12 *S. stercoralis* samples and three *S. fuelleborni* samples
246 were uploaded to the European Nucleotide Archive under the study accession
247 PRJEB70604.

248 The read alignment, duplicate removal, variant calling, defining heterozygous
249 sites, creating the genotype using variant positions and constructing the NJ tree
250 based on the variant positions were all done as described [25].

251

252 Whole mitochondrial (wmit) tree

253 WG sequencing reads from this study and previous studies were aligned to the *S.*

254 *stercoralis* wmit reference genome (NC_028624.1 [identical to LC050212]) to

255 generate wmit sequence assemblies. The four wmit sequences from [34] were

256 used directly. Read alignment, binary alignment file generation and duplicate

257 removal were done as mentioned above. BAM files were loaded to IGV_2.16.0

258 and the consensus sequences were obtained using the ‘copy consensus sequence

259 function’ in IGV. NJ trees were generated using MEGA 11. The sequence file used

260 as input for MEGA 11 can be found in S1 File.

261 To generate wmit assemblies from the *S. fuelleborni* in this study we first aligned

262 the reads to two mitochondrial whole genome sequences from [35] (OL505577,

263 arrangement A and OL602833, arrangement B) and visualized the BAM files

264 using IGV. Since the tRNA(Met) gene that is present in arrangement B but absent

265 in arrangement A was absent from all our *S. fuelleborni* sequences we decided to

266 use OL505577 as reference. A wmit tree for *S. fuelleborni* was generated using

267 sequences from this study and from [35] as described for *S. stercoralis* above.

268

269 Heterozygosity analysis

270 General heterozygosity analysis was done as described [25].

271

272 Coverage analysis

273 Coverage for both autosomal contigs and X-chromosomal contigs were analysed

274 using samtools (0.1.18) depth command and the coverage was plotted against

275 the number of positions using R studio.

276

277

278 **Results**

279 We analysed 134 human samples (in most cases rather small samples) collected
280 from Sylhet and found worms in 25 of them. In seven samples we found only
281 *Strongyloides*, in five samples *Strongyloides* and hookworms, in 12 samples only
282 hookworms and in one sample we found several worms that, based on their 18S
283 sequence belonged to *Tokorhabditis* spp., which is a genus of free-living
284 nematodes [36]. We think this last case represents a contamination from the
285 ground and this sample is not further discussed. The one dog sample we
286 obtained was positive for *Strongyloides*. From Dhaka, we found *Strongyloides* in
287 only two out of 95 human samples, while, based on 18S sequence, we detected
288 *Caenorhabditis nigoni*, which are free-living nematodes [37] in six of them. These
289 worms likely represent ground contamination and are not discussed further.
290 For 71 hookworms and 99 *Strongyloides* (67 from humans, 32 from the dog) the
291 sequence of at least one out of the *SSU* HVR-I, *SSU* HVR-IV or *cox-1* was
292 successfully determined.

293

294 **The hookworms found were *Necator americanus***

295 Initially 47 worms were confirmed to be hookworms, based on *SSU* sequences.
296 Since the different hookworm species cannot be distinguished based on their *SSU*
297 HVR-I or *SSU* HVR-IV sequences, we determined the *cox-1* sequence using the
298 same primers used in [24], which was successful for 42 worms. Among these
299 worms, we identified 18 different *cox-1* haplotypes (accession numbers
300 OR810937-54), of which six were identical with existing database entries, while
301 12 were new (S1 Table). In several occasions worms with different *cox-1*
302 sequences were found within the same host (S1 Table). All 18 sequences

303 clustered with perfect bootstrap support with the group A [38] which is
304 considered *Necator americanus* (Fig. 1). Within the species *N. americanus*, our
305 samples did not cluster together but intermixed with sequences derived from
306 Africa and Asia, arguing against the presence of a Bangladesh specific sub-
307 population. In addition, 24 larvae for which we amplified the *cox-1* sequence
308 using the primers optimized for *S. stercoralis* turned out to be hookworms. Since
309 these sequences were shorter than the ones generated using the hookworm
310 specific primers, they are not included in Fig. 1. However, all 24 sequences
311 clearly grouped with *Necator americanus* sequences. Hence, overall, we
312 identified 71 worms as hookworms, of which we confirmed 66 to be *Necator* and
313 not *Ancylostoma*.

314

315 **Fig. 1: Neighbour joining tree based on partial hookworm *cox-1* sequences**

316 **(670bp)**. Sequences found in this study are in red, the number of worms this
317 sequence was found in is in (). Triangles indicate haplotypes that had been
318 previously known. For every sample the country of origin (CAR=Central African
319 Republic), the host and the GenBank accession number are given.

320

321

322 **High incidence of *S. fuelleborni***

323 Strikingly, four out of the 12 individuals found to be infected with *Strongyloides*
324 spp. in Sylhet carried *S. fuelleborni* and not *S. stercoralis* (two of them were co-
325 infected with hookworms).

326 At the *SSU*, all 16 *S. fuelleborni* genotyped were HVR-I haplotype XIV and HVR-IV
327 haplotype S (cf. [21]). Out of the 16 worms, *cox-1* sequences were obtained for

328 15. We identified eight different *cox-1* haplotypes (accession numbers
329 OR805174-81), none of which had been reported before (S1 Table). All three
330 persons for whom we obtained the *cox-1* sequence from more than one worm,
331 carried worms with different haplotypes (S1 Table). In a phylogenetic analysis
332 based on the *cox-1* sequences (Fig. 2), all eight sequences clearly grouped with *S.*
333 *fuelleborni* from southeast Asia (mainly Thailand, Myanmar and Laos) described
334 as cluster 3 by [21], further supporting the notion that in *S. fuelleborni* (different
335 from *S. stercoralis*) geographic sub-populations exist and an Asian and an African
336 clade exist [21].

337 From three *S. fuelleborni* derived from three different persons we performed
338 whole genome Illumina short read sequencing (Table 1) and deposited the read
339 data in the European Nucleotide Archive (accession number PRJEB70604). Since
340 there is no reference nuclear genome for this species available, we make these
341 data publicly available here without further analysis. From these data we
342 extracted the full mitochondrial genomes and compared them with the
343 sequences reported by [35]. The sequences analysed are listed in S1 File. All
344 three worms clustered with the samples containing mitochondrial genome
345 arrangement A and did not contain the tRNA(Met) gene that is absent from
346 arrangement A but present in arrangement B. Arrangement A had been
347 observed in *S. fuelleborni* derived from macaques in Myanmar and Japan and was
348 hypothesized to represent the ancestral state [35] (Fig. 3).

349

350 **Fig. 2: Neighbour joining tree based on partial *S. fuelleborni cox-1***

351 **sequences (552bp).** Sequences found in this study are in red, the number of

352 worms this sequence was found in is in (). For every sample the country of origin

353 (CAR=Central African Republic), the host and the GenBank accession number are
354 given.

355

356 **Fig. 3: Neighbour joining tree based on full mitochondrial nucleotide**

357 **sequences.** All non-Bangladesh sequences are from Ko et al. (2023). The Letters

358 (A or B) refer to the genome arrangement described in Ko et al. (2023)

359 (compared with B, arrangement A lacks a tRNA(Met) gene present adjacent to

360 the *S1* gene). For every sample the country of origin, the host and the GenBank

361 accession number or the worm identifier (for sequences from this study) are

362 given. The sequences from this study were extracted from the data available

363 from the European Nucleotide Archive under the accession number

364 PRJEB70604. A FASTA file with all sequences used is provided as S1 File.

365

366

367 ***S. stercoralis* SSU haplotypes**

368 For *SSU* HVR haplotype nomenclature see [21]. At the *SSU* HVR-IV the *S.*

369 *stercoralis* in our samples had either haplotype A (28 individuals), which was

370 described to be indicative for the "human and dog" type [20, 21] or a new

371 haplotype we call U (31 individuals, Fig. 4a). All but one (see below) of the

372 carriers of haplotype U were isolated from the dog. At *SSU* HVR-I, 28 worms had

373 haplotype I, 26 worms had haplotype II and one worm each had haplotype III

374 and V. In all cases where we have the sequences for both HVRs, HVR-IV

375 haplotype A co-occurred with HVR-I haplotype II (24 cases) or III (one case)

376 while HVR-IV haplotype U co-occurred with HVR-I haplotype I (28 cases) or V

377 (one case). Notice that in an earlier study in Cambodia [20], HVR-I haplotype I
378 did also co-occur with HVR-IV haplotype A.

379

380 **Fig. 4: *cox-1*, SSU HVR-I and SSU HVR-IV haplotypes of our samples**

381 **compared with selected published sequences.** A: sequence of the new SSU
382 HVR-IV haplotype U compared with the previously reported haplotypes
383 (nomenclature according to [21]) mentioned in B. Notice that haplotype E was
384 called haplotype C in Zhou et al. (2019). B: neighbour joining tree based on
385 partial *S. stercoralis cox-1* sequences (552bp). Sequences found in this study are
386 in red, the number of worms this sequence was found in is in (). Samples in blue
387 are worms from [20] for which full genome short read sequences are available.
388 For every sample the country of origin (CAR=Central African Republic,
389 USA=United States of America), the host and the GenBank accession number is
390 given. For worms from Cambodia also the worm individual is given after the
391 host to facilitate cross reference with [20]. For each *cox-1* haplotype the SSU
392 HVR-I and SSU HVR-IV haplotypes found in individuals with this *cox-1* haplotype
393 are indicated (if known). Samples from Cambodia are from [20], samples from
394 Laos are from [39], samples from Myanmar, Thailand and Uganda are from [26],
395 samples from Iran are from [25], sample from the USA is from [40], samples
396 from Tanzania, and Japan are from [17], samples from CAR are from [41] and
397 samples from China are from [24]. Haplotypes separated by '/' indicates a
398 heterozygous worm. For a *cox-1* tree with more sequences see S1 Fig. Diamonds
399 label the two worms that showed "human and dog" type mitochondrial but "dog
400 only" type nuclear sequences. The asterisk labels the worm in the "dog only"
401 cluster isolated from a human host.

402

403

404 ***S. stercoralis* *cox-1* haplotypes**

405 In a total of 76 worms, we detected 25 different *cox-1* haplotypes (accession
406 numbers OR804688-712) of which three had been previously reported while 22
407 were new (S1 Table). Each haplotype was present in between one and 15
408 different worms with the previously known haplotypes being the first (15
409 worms), second (11 worms) and fifth (seven worms) most abundant ones (Fig.
410 4). Upon phylogenetic analysis (Fig. 4, S1 Fig) the previously described and five
411 of the new haplotypes (representing 48 worms, two of which had been isolated
412 from the dog) grouped with sequences in the "human and dog" clusters
413 according to [20]. 17 haplotypes (representing 28 worms, of which one had been
414 isolated from a human sample [see below]) grouped with one of the "dog only"
415 clusters according to [20].

416

417 **A "dog only" type *S. stercoralis* in a human host**

418 Strikingly, one of the worms that by *cox-1* sequence fell into the "dog only"
419 cluster had been isolated from a human from Dhaka (worm: Human_J102 - f1,
420 asterisk in Fig. 4B). This was the sole worm found in this particular sample and it
421 carried the new *SSU* HVR-IV haplotype U, and HVR-I haplotype I, like all but one
422 (the one with HVR-I haplotype V) of the other worms from our study in this
423 cluster, which all came from the dog.

424

425 **First finding of a "human and dog" type mitochondrial genome in** 426 **combination with a "dog only" type nuclear genome**

427 In all previous studies that we are aware of, where nuclear and mitochondrial
428 sequences from the same worms were determined [20, 23, 26, 42, 43] both
429 sequence kinds always fell in the same group as defined by [20, 26] ("human and
430 dog" or "dog only"). Here, for the first time, we found worms where the
431 phylogenetic positioning based on the *cox-1* and on the *SSU* sequences was not in
432 agreement. In the dog we found two worms, that based on their *cox-1* sequences
433 fell within the "human and dog" type but had *SSU* haplotypes normally
434 associated with the "dog only" type (diamonds in Fig. 4B). This suggests that rare
435 interbreeding between the two types does occur.

436

437 **The *S. stercoralis* population in humans is genetically close to the one in**
438 **southeast Asia**

439 Since the conclusions above are based on a rather small number of informative
440 positions, we performed Illumina whole genome sequencing of the three notable
441 worms mentioned above along with nine other individuals isolated from humans
442 and the dog (Table 1). Then we compared their mitochondrial and nuclear
443 genomes. The read data are available from the European Nucleotide Archive
444 (accession number PRJEB70604). The extracted whole mitochondrial genomes
445 are listed in S2 File.

446

447 **Table 1: Whole genome sequenced samples**

Sample number	Worm ID	Species	<i>cox-1</i> haplotype (type)	<i>SSU</i> HVR-I haplotype	<i>SSU</i> HVR-IV haplotype	Internal ID in sequencing protocol
1	Human_C19 - f2	<i>S. stercoralis</i>	OR804711	II	A	1

2	Human_C19 - f4	<i>S. stercoralis</i>	OR804711	II	A	3
3	Human_F40 - f1	<i>S. stercoralis</i>	OR804710	II	A	14
4	Human_F10 - f1	<i>S. stercoralis</i>	OR804710	II	A	17
5	Human_F10 - f3	<i>S. stercoralis</i>	OR804709	II	A	19
6	Human_J102 - f1	<i>S. stercoralis</i>	OR804706	I	U	20
7	Dog - f1	<i>S. stercoralis</i>	OR804688	I	U	21
8	Dog - f2	<i>S. stercoralis</i>	OR804689	I	U	22
9	Dog - f4	<i>S. stercoralis</i>	OR804691	I	U	24
10	Dog - f5	<i>S. stercoralis</i>	OR804692	I	U	25
11	Dog - f6	<i>S. stercoralis</i>	OR804693	I	U	26
12	Dog - m2	<i>S. stercoralis</i>	OR804701	I	U	27
13	Human_A22 - f1	<i>S. fuelleborni</i>	OR805174	XIV	S	29
14	Human_G22 - f1	<i>S. fuelleborni</i>	OR805178	XIV	S	33
15	Human_V132 - f1	<i>S. fuelleborni</i>	OR805181	XIV	S	36

448 The *cox-1* haplotypes are referred to by their GenBank accession numbers. The
 449 nomenclature for the *SSU* HVRs is taken from [21] with U being a new haplotype
 450 found for the first time in this publication (Fig. 4A).

451

452 We reconstructed Neighbour Joining cladograms based on the full mitochondrial
 453 (Fig. 5, S2 Fig) and nuclear (Fig. 6, S3 Fig, S4 Fig) genomes. In all cases the
 454 classification as "human and dog" or "dog only" agreed with the one based on
 455 only *cox-1* for the mitochondrial genome (cf. Figs. 5 and 4B) or only the *SSU* HVR-
 456 IV for the nuclear genome (cf. Figs. 6B and 4B). Notice that the nuclear genome
 457 tree should not be interpreted as a phylogenetic tree because it is a within-

458 species tree with genomes possibly undergoing mixing due to meiotic
459 recombination. Neighbour Joining clustering of the "human and dog" type whole
460 nuclear genome sequences showed that the worms from Bangladesh group with
461 the sequences previously described for southeast Asia, Japan and Iran and away
462 from a possibly asexual population described in southern China and the
463 laboratory reference isolate, which originated from the USA (Fig. 6A, for
464 references see figure legend).

465

466 **Fig. 5: Neighbour joining tree based on full mitochondrial genomes**
467 **determined in this study (in red) plus the worms mentioned in Fig. 4 of**
468 **[20] and four worms of the reference isolate [44] for comparison.** For a tree
469 with more sequences see S3 Fig. A FASTA file with all sequences used in this
470 figure and in S3 Fig is provided as S2 File. Diamonds label the two worms that
471 showed "human and dog" type mitochondrial but "dog only" type nuclear
472 sequences. The asterisk labels the worm in the "dog only" cluster isolated from a
473 human host.

474

475 **Fig. 6: Neighbour joining tree (A without and B with "dog only" type**
476 **worms) based on full nuclear genomes determined in this study (in red)**
477 **plus selected worms from earlier studies for comparison.** Diamonds label
478 the two worms that showed "human and dog" type mitochondrial but "dog only"
479 type nuclear sequences. The asterisk labels the worm in the "dog only" cluster
480 isolated from a human host. To get an impression on how different the "dog
481 only" type is from the "human and dog" type, compare in A and B the branch
482 lengths of the samples from the USA and China (boxed), which are the "human

483 and dog" type worms with the greatest genomic difference from the southeast
484 Asian human derived *S. stercoralis*. For a different representation, see S3 Fig and
485 S4 Fig. Sequences from Cambodia are from [20], Thailand are from [22], Iran are
486 from [25], Myanmar and Japan are from [23], the USA are from [44] and China is
487 from [24].

488

489

490 **Whole genome sequence confirms the unexpected worms**

491 When the sequences of the "dog only" cluster are included in the analysis, there
492 remains little resolution in the "human and dog" branch of the nuclear genome
493 tree (Fig. 6B, S2 Fig). This is because, compared with the "dog only" sequences
494 they are very similar to each other and the inclusion of more samples reduced
495 the number of informative sites included in the analysis (only positions covered
496 in all worms in the analysis were considered, see Materials and Methods).

497 However, this analysis confirms the unexpected results based on the *SSU* and the
498 *cox-1* sequences . Worm Human_J102 - f1 (isolated from a human host, marked
499 with an asterisk in Figs. 5 and 6) grouped with respect to the nuclear and with
500 respect to the mitochondrial genome with the "dog only" cluster, while worms
501 Dog_f6 and Dog_m2 (marked with diamonds in Figs. 5 and 6) both show a
502 mitochondrial genome that groups with the "human and dog" cluster but a
503 nuclear genome that belongs to the "dog only" cluster. We conclude from this
504 result that occasional interbreeding of the two types does occur and thereby a
505 "human and dog" type mitochondrial genome introgressed into the "dog only"
506 population. Presumably, a "human and dog" type female and a "dog only" type
507 male interbred and the descendants later bred with "dog only" type partners,

508 thereby rendering the recombining nuclear genome "dog only" type while
509 maintaining the uni-parentally (maternally) inherited mitochondrial genome.

510

511 **Worms belonging to the "human and dog" type show low heterozygosity**

512 In order to compare our samples from Bangladesh with earlier studies [22-25]
513 we performed a heterozygosity analysis (Fig. 7A). The worms of the "human and
514 dog" type from Bangladesh showed very similar heterozygosity like the ones
515 described from southeast Asia [22, 23] and a portion of the worms from a recent
516 study in Iran [25]. The heterozygosity was clearly lower than in the presumably
517 essentially asexual populations in Japan [23] and in southern China [24] and in a
518 portion of the worms from Iran [25].

519

520 **Fig. 7: Measured heterozygosity of the whole genome sequenced worms**

521 **from this and previous studies.** The X axis shows the heterozygosity on the
522 autosomes and the Y axis shows the heterozygosity on the X chromosome. A:
523 only "human and dog" type worms. B: the same worms as in A plus the "dog
524 only" type worms from this study and from [20]. Notice the high heterozygosity
525 on the X chromosome in males of the "dog only" type. The samples are from
526 previous studies are from the following references: Thailand [22], Iran [25], USA
527 [44], Japan and Myanmar [23], Cambodia [20] and China [24].

528

529

530 **Worms belonging to the "dog only" type show high apparent**

531 **heterozygosity that is likely caused in part by structural variations, rather**
532 **than true heterozygosity**

533 When we attempted to include the "dog only" type worms (including the one
534 isolated from a human host) in the heterozygosity analysis we noticed that they
535 showed very high apparent heterozygosity (Fig. 7B). Strikingly, this was also the
536 case for heterozygosity on the X chromosome in males. To determine if this was
537 an anomaly of our samples from Bangladesh we subjected the sequences of the
538 five whole genome sequenced "dog only" type worms from [20] to the same
539 analysis. Except for the worm L6, these sequences showed even higher apparent
540 heterozygosity, including on the X chromosome (all "dog only" type whole
541 genome sequenced individuals by [20] were males). Notice that with respect to
542 the mitochondrial and the nuclear genomes, L6 belongs to a separate sub-cluster
543 of the "dog-only" cluster than the other four worms and the worms isolated in
544 this study. It is not clear, if worms in this subcluster are more closely related to
545 the other "dog only" worms or to the "human and dog" worms (compare the
546 positions of L6 in Figs. 4-6 and Suppl. Figs. 1,2). We think this high apparent
547 heterozygosity is in part a consequence of using a divergent reference genome
548 sequence (the reference sequence for the human infective *S. stercoralis* belongs
549 to 'human and dog' cluster) for calling the heterozygous positions. The argument
550 for this with Figs. is provided in S3 File and briefly summarized here. First, we
551 asked if some of the *S. stercoralis* in Asia, in particular the "dog only" type might
552 not employ XX/X0 sex determination as it is the case in the USA derived *S.*
553 *stercoralis* reference isolate [44]. We therefore performed read coverage analysis
554 for males and females. Overall, in both types the X chromosome showed lower
555 read coverage in males compared with autosomes and with females, suggesting
556 that males of the "dog only" type do only have one X chromosome. We then
557 analysed the heterozygosity over the length of the chromosomes. Males did

558 indeed show very low heterozygosity over large portions of the X chromosome
559 but there were apparent heterozygosity hot spots. These were visible in both
560 males and in females and also on autosomes. We think these apparent
561 heterozygosity hotspots reflect duplications and X to autosome translocations in
562 the genome of the "dog only" type, compared with the *S. stercoralis* reference
563 genome [44].

564

565 **Discussion**

566 Among 12 *Strongyloides* positive persons from the Sylhet region we found four
567 who carried *S. fuelleborni* rather than *S. stercoralis*. This was unexpected, since in
568 Asia infections of humans with *S. fuelleborni* are considered very rare and
569 restricted to people with very close interactions with monkeys [45-47].

570 In the Sylhet region there is a large population of free roaming monkeys. Albeit
571 we have no reason to distrust our study participants, we need to point out that
572 we cannot formally exclude that monkey faeces instead of human stool was
573 returned. In future studies intending to confirm this 'higher than expected'
574 infection of humans with *S. fuelleborni*, an independent confirmation of the host
575 (e.g. through the detection of host specific sequences in the stool), would be
576 desirable in order to dispel all doubts. Based on the *cox-1* sequences, the *S.*
577 *fuelleborni* in Bangladesh were most closely related with worms from Thailand,
578 Myanmar and Laos (cluster 3 in [21]) which makes sense due to geographic
579 proximity.

580 As expected, we also found hookworms. Based on their *cox-1* sequences they
581 were of the species *Necator americanus* (group A in [48]). In agreement with

582 earlier studies [24, 48], we found no indication for population separation
583 between Asia and Africa.

584 Overall, at the level of the nuclear and the mitochondrial genomes, the *S.*
585 *stercoralis* we found in Bangladesh in humans mixed in with the worms
586 described earlier from southeast Asia. Hence, we have no reason to assume that
587 *S. stercoralis* in humans from Bangladesh and from southeast Asia are genetically
588 distinguishable sub-populations. Together with the recent findings of [25] that *S.*
589 *stercoralis* in Iran also share much of their genetic diversity with the ones in
590 southeast Asia, these findings support the proposal by [26] and [34] that *S.*
591 *stercoralis* has only rather recently established in humans after a host switch of a
592 particular genotype from a canine host (possibly upon domestication of dogs)
593 and then spread in the human population. It should, however, be noticed that
594 based on reviewing published *cox-1* sequences, [19] did detect significant
595 population structure and based on whole genome sequence, a possible asexual
596 population of *S. stercoralis* in southern China and the laboratory reference isolate
597 that originates from the USA, are genomically rather different from the southeast
598 Asian *S. stercoralis* [24].

599 We found only one *Strongyloides* positive dog and all worms we analysed from
600 this host individual had nuclear genomes that fell into the "dog only" cluster,
601 based on the nuclear *SSU* and (if determined) whole genome sequences) (cf. [20,
602 21, 26]). *S. stercoralis* of the "dog only" type (based on molecular taxonomy) had
603 so far been described only in southeast Asia [20, 26] and Australia [27] such that
604 our findings extend the range, in which this type is known to occur, further West.
605 The "dog only" type worms in this study showed a new *SSU* HVR-IV haplotype
606 (now called haplotype U) that differs by one nucleotide from haplotype D (c.f.

607 [21]). The fact that based on whole genome neighbour joining clustering all our
608 dog derived worms grouped together with perfect bootstrap support should not
609 be overinterpreted given that these worms were all derived from the same host
610 individual and therefore might have been closely related. It is, however,
611 noteworthy that the one worm that was isolated from a human but appeared
612 genomically to belong to the "dog only" type also grouped with the dog derived
613 worms although it had been isolated from Dhaka while the dog had been
614 sampled in Sylhet. Again, given an N of one, this should not be over interpreted.
615 In this study we made two unexpected observations. First, one of the human
616 derived worms belonged genomically to the type that was so far considered to
617 occur only in dogs. This one "dog only" type worm in a human does not
618 invalidate the general conclusion about species specificity by [20, 21, 26].
619 Occasional zoonotic infections of humans with animal parasitic nematodes have
620 been observed before, for example with filarial nematodes [49-53] or, even
621 rather frequently, with animal parasitic hookworms [54, 55] (and references
622 therein). It is therefore not really astonishing that with increasing sampling such
623 a case emerged also for *Strongyloides*. We must point out that also in this case,
624 we do not have an independent host confirmation and can therefore not exclude
625 with absolute certainty that dog faeces was returned. Second and more
626 importantly, we found two worms in the dog with nuclear genomes of the "dog
627 only" type but mitochondrial genomes of the "human and dog" type. This was
628 rather astonishing because, so far, in all cases where nuclear and mitochondrial
629 sequences from the same worms had been determined [20, 23, 26, 42, 43] both
630 sequence kinds always fell in the same cluster as defined by [20, 26] ("human
631 and dog" or "dog only"). This finding suggests that at least occasional

632 interbreeding of the two types does occur. A rare productive mating between a
633 "human and dog" type female and a "dog only" type male followed by breeding
634 with "dog only" type partners may have led to the introgression of the "human
635 and dog" mitochondrial haplotype into the "dog only" population.
636 We found a very high apparent heterozygosity in worms of the "dog only" type.
637 We think that this is in part an artifact caused by using the *S. stercoralis*
638 reference genome, which is derived from a human infective isolate [44].
639 Compared with the reference, the "dog only" type, which, in our opinion, is likely
640 to be a different species, might have a number of duplications with slightly
641 deviating sequences. The positions that differ between the copies will be falsely
642 considered heterozygous positions when the sequencing reads are aligned to the
643 reference sequence without the duplication. Further, there might be
644 translocations that are X chromosomal in the reference but autosomal in the
645 "dog only" type. We think these findings illustrate that the two types are
646 genomically rather different and that the *S. stercoralis* reference sequence is not
647 suitable as a reference for certain genomic analyses of at least some of the "dog
648 only" type *S. stercoralis*.

649

650

651 **Acknowledgements**

652 We are grateful for infrastructural, logistic and practical field support to
653 Hyeonmo Kim (International Parasite Research Bank) , Tarek Siddiki, Proloy
654 Chakraborty, Mohammad Rokibul Hasan Shanto (Sylhet Agricultural University),
655 Hamida Khanum, Mandira Mukutmoni, Priyanka Barua, Ayan Goswami and
656 Nusrat Jahan Moonmoon (University of Dhaka). We thank Keeseon Eom and the

657 International Parasite Research Bank and the *Caenorhabditis elegans* and
658 Nematode Bank at the Chungbuk National University for organisational support
659 and the MPI for Biology Tübingen Genome centre for assistance with whole
660 genome sequencing.

661

662

663 **References**

- 664 1. Beknaeknazarova M, Whiley H, Ross K. Strongyloidiasis: A Disease of
665 Socioeconomic Disadvantage. *Int J Environ Res Public Health*. 2016;13(5):517.
666 doi: 10.3390/ijerph13050517. PubMed PMID: 27213420; PubMed Central
667 PMCID: PMC4881142.
- 668 2. Buonfrate D, Bisanzio D, Giorli G, Odermatt P, Furst T, Greenaway C, et al.
669 The Global Prevalence of *Strongyloides stercoralis* Infection. *Pathogens*.
670 2020;9(6):468. Epub 2020/06/18. doi: 10.3390/pathogens9060468. PubMed
671 PMID: 32545787; PubMed Central PMCID: PMC7349647.
- 672 3. Olsen A, van Lieshout L, Marti H, Polderman T, Polman K, Steinmann P, et
673 al. Strongyloidiasis--the most neglected of the neglected tropical diseases?
674 *Transactions of the Royal Society of Tropical Medicine and Hygiene*.
675 2009;103(10):967-72. PubMed PMID: 19328508.
- 676 4. Bisoffi Z, Buonfrate D, Montresor A, Requena-Mendez A, Munoz J,
677 Krolewiecki AJ, et al. *Strongyloides stercoralis*: a plea for action. *PLoS Negl Trop*
678 *Dis*. 2013;7(5):e2214. Epub 2013/05/16. doi: 10.1371/journal.pntd.0002214.
679 PubMed PMID: 23675546; PubMed Central PMCID: PMC3649953.

- 680 5. Buonfrate D, Hunt VL, Odermatt P, Streit A. *Strongyloides*: omics to worm-
681 free populations. *Philos Trans R Soc Lond B Biol Sci.* 2024;379(1894):20220448.
682 Epub 20231127. doi: 10.1098/rstb.2022.0448. PubMed PMID: 38008116.
- 683 6. Buonfrate D, Tamarozzi F, Paradies P, Watts MR, Bradbury RS, Bisoffi Z.
684 The diagnosis of human and companion animal *Strongyloides stercoralis*
685 infection: Challenges and solutions. A scoping review. *Adv Parasitol.* 2022;118:1-
686 84. Epub 20220902. doi: 10.1016/bs.apar.2022.07.001. PubMed PMID:
687 36088083.
- 688 7. Page W, Speare R. Chronic strongyloidiasis - Don't look and you won't
689 find. *Aust Fam Physician.* 2016;45(1):40-4. PubMed PMID: 27051986.
- 690 8. Watts MR, G. R, Bradbury RS. The laboratory diagnosis of *Strongyloides*
691 *stercoralis*. *Microbiology Australia.* 2016;37(1):10.1071/MA16003.
- 692 9. Bradbury RS, Pafco B, Noskova E, Hasegawa H. *Strongyloides* genotyping:
693 a review of methods and application in public health and population genetics. *Int*
694 *J Parasitol.* 2021;51(13-14):1153-66. Epub 2021/11/11. doi:
695 10.1016/j.ijpara.2021.10.001. PubMed PMID: 34757088.
- 696 10. Bradbury RS, Streit A. Is strongyloidiasis a zoonosis from dogs? *Philos*
697 *Trans R Soc Lond B Biol Sci.* 2024;379(1894):20220445. Epub 20231127. doi:
698 10.1098/rstb.2022.0445. PubMed PMID: 38008118.
- 699 11. Wulcan JM, Dennis MM, Ketzis JK, Bevelock TJ, Verocai GG. *Strongyloides*
700 spp. in cats: a review of the literature and the first report of zoonotic
701 *Strongyloides stercoralis* in colonic epithelial nodular hyperplasia in cats.
702 *Parasites & vectors.* 2019;12(1):349. Epub 2019/07/14. doi: 10.1186/s13071-
703 019-3592-7. PubMed PMID: 31300009.

- 704 12. Thamsborg SM, Ketzis J, Horii Y, Matthews JB. *Strongyloides* spp.
705 infections of veterinary importance. *Parasitology*. 2017;144(3):274-84. Epub
706 2016/07/05. doi: 10.1017/S0031182016001116. PubMed PMID: 27374886.
- 707 13. Brumpt E. *Strongyloides stercoralis* (Bavay, 1877) [in French]. In: Brumpt
708 E, editor. Précis de Parasitologie. Collection de Précis médicaux. 3ème edition ed.
709 Paris: Mason et Cie; 1922. p. 691-7.
- 710 14. Fulleborn F. Untersuchungen über den Infektionsweg bei *Strongyloides*
711 und *Ancylostomum* und die Biologie dieser Parasiten. *Arch Schiff Tropenhyg*.
712 1914;18:182-236.
- 713 15. Little MD. Seven new species of *Strongyloides* (Nematoda) from Louisiana.
714 *J Parasitol*. 1966;52(1):85-97. PubMed PMID: 5932110.
- 715 16. Hasegawa H, Hayashida S, Ikeda Y, Sato H. Hyper-variable regions in 18S
716 rDNA of *Strongyloides* spp. as markers for species-specific diagnosis. *Parasitol*
717 *Res*. 2009;104(4):869-74. PubMed PMID: 19050926.
- 718 17. Hasegawa H, Sato H, Fujita S, Nguema PP, Nobusue K, Miyagi K, et al.
719 Molecular identification of the causative agent of human strongyloidiasis
720 acquired in Tanzania: dispersal and diversity of *Strongyloides* spp. and their
721 hosts. *Parasitology international*. 2010;59(3):407-13. Epub 2010/07/14. doi:
722 10.1016/j.parint.2010.05.007. PubMed PMID: 20621633.
- 723 18. Barratt JLN, Lane M, Talundzic E, Richins T, Robertson G, Formenti F, et al.
724 A global genotyping survey of *Strongyloides stercoralis* and *Strongyloides*
725 *fuelleborni* using deep amplicon sequencing. *PLoS Negl Trop Dis*.
726 2019;13(9):e0007609. Epub 2019/09/17. doi: 10.1371/journal.pntd.0007609.
727 PubMed PMID: 31525192; PubMed Central PMCID: PMC6762204 Talundzic
728 E, Bradbury R, Olsen C, Flaherty B. Removing Interfering Host Nucleic Acids for

729 Molecular Parasite Detection. Meredith Lane is employed by Synergy America as
730 a contractor to provide laboratory technical service to the Division of Parasitic
731 Diseases and Malaria at the Centers for Disease Control and Prevention. In this
732 capacity, there are no competing Interests in Ms. Lane's employment at Synergy
733 and her authorship of this paper. Meredith Lane is correctly affiliated to this
734 company (Synergy America). Meredith Lane and Synergy America hold no
735 consultancies or patents and have no products in development or marketed
736 products that are competing interests with this publication.

737 19. Spotin A, Mahami-Oskouei M, Nami S. Assessment of the global paradigms
738 of genetic variability in *Strongyloides stercoralis* infrapopulations determined by
739 mitochondrial DNA sequences. *Comp Immunol Microbiol Infect Dis*.
740 2019;67:101354. Epub 2019/10/07. doi: 10.1016/j.cimid.2019.101354. PubMed
741 PMID: 31586852.

742 20. Jaleta TG, Zhou S, Bemm FM, Schar F, Khieu V, Muth S, et al. Different but
743 overlapping populations of *Strongyloides stercoralis* in dogs and humans-Dogs as
744 a possible source for zoonotic strongyloidiasis. *PLoS Negl Trop Dis*.
745 2017;11(8):e0005752. doi: 10.1371/journal.pntd.0005752. PubMed PMID:
746 28793306; PubMed Central PMCID: PMC5565190.

747 21. Barratt JLN, Sapp SGH. Machine learning-based analyses support the
748 existence of species complexes for *Strongyloides fuelleborni* and *Strongyloides*
749 *stercoralis*. *Parasitology*. 2020;147(11):1184-95. Epub 20200616. doi:
750 10.1017/S0031182020000979. PubMed PMID: 32539880; PubMed Central
751 PMCID: PMC5565190.

752 22. Aupalee K, Wijit A, Singphai K, Rodelsperger C, Zhou S, Saeung A, et al.
753 Genomic studies on *Strongyloides stercoralis* in northern and western Thailand.

- 754 Parasites & vectors. 2020;13(1):250. Epub 2020/05/15. doi: 10.1186/s13071-
755 020-04115-0. PubMed PMID: 32404172; PubMed Central PMCID:
756 PMCPMC7222524.
- 757 23. Kikuchi T, Hino A, Tanaka T, Aung MP, Afrin T, Nagayasu E, et al. Genome-
758 Wide Analyses of Individual *Strongyloides stercoralis* (Nematoda: Rhabditoidea)
759 Provide Insights into Population Structure and Reproductive Life Cycles. PLoS
760 Negl Trop Dis. 2016;10(12):e0005253. doi: 10.1371/journal.pntd.0005253.
761 PubMed PMID: 28033376; PubMed Central PMCID: PMC5226825.
- 762 24. Zhou S, Fu X, Pei P, Kucka M, Liu J, Tang L, et al. Characterization of a non-
763 sexual population of *Strongyloides stercoralis* with hybrid 18S rDNA haplotypes
764 in Guangxi, Southern China. PLoS Negl Trop Dis. 2019;13(5):e0007396. Epub
765 2019/05/07. doi: 10.1371/journal.pntd.0007396. PubMed PMID: 31059500.
- 766 25. Beiromvand M, Ashiri A, de Ree V, Harbecke D, Rodelsperger C, Streit A, et
767 al. *Strongyloides stercoralis* genotyping in a human population in southwestern
768 Iran. Parasites & vectors. 2024;17(1):21. Epub 20240116. doi: 10.1186/s13071-
769 023-06103-6. PubMed PMID: 38229164; PubMed Central PMCID:
770 PMCPMC10792921.
- 771 26. Nagayasu E, Aung M, Hortiwakul T, Hino A, Tanaka T, Higashiarakawa M,
772 et al. A possible origin population of pathogenic intestinal nematodes,
773 *Strongyloides stercoralis*, unveiled by molecular phylogeny. Sci Rep.
774 2017;7(1):4844. doi: 10.1038/s41598-017-05049-x. PubMed PMID: 28687738;
775 PubMed Central PMCID: PMC5501853.
- 776 27. Beknazarova M, Barratt JLN, Bradbury RS, Lane M, Whiley H, Ross K.
777 Detection of classic and cryptic *Strongyloides* genotypes by deep amplicon
778 sequencing: A preliminary survey of dog and human specimens collected from

- 779 remote Australian communities. PLoS Negl Trop Dis. 2019;13(8):e0007241.
780 Epub 2019/08/21. doi: 10.1371/journal.pntd.0007241. PubMed PMID:
781 31430282; PubMed Central PMCID: PMC6716672.
- 782 28. Little MD. Comparative morphology of six species of *Strongyloides*
783 (Nematoda) and redefinition of the genus. J Parasitol. 1966;52(1):69-84. PubMed
784 PMID: 5929983.
- 785 29. Viney ME, Ashford RW, Barnish G. A taxonomic study of *Strongyloides*
786 Grassi, 1879 (Nematoda) with special reference to *Strongyloides fuelleborni* von
787 Linstow, 1905 in man in Papua New Guinea and the description of a new
788 subspecies. Systematic Parasitology. 1991;18:95-109.
- 789 30. Dorris M, Viney ME, Blaxter ML. Molecular phylogenetic analysis of the
790 genus *Strongyloides* and related nematodes. International Journal for
791 Parasitology. 2002;32(12):1507-17. PubMed PMID: 12392916.
- 792 31. Gelaye W, Williams NA, Kephau S, Junior AM, Fleitas PE, Marti-Soler H, et al.
793 Performance evaluation of Baermann techniques: The quest for developing a
794 microscopy reference standard for the diagnosis of *Strongyloides stercoralis*.
795 PLoS Negl Trop Dis. 2021;15(2):e0009076. Epub 20210218. doi:
796 10.1371/journal.pntd.0009076. PubMed PMID: 33600434; PubMed Central
797 PMCID: PMC67891789.
- 798 32. Zhou S, Harbecke D, Streit A. From the feces to the genome: a guideline for
799 the isolation and preservation of *Strongyloides stercoralis* in the field for genetic
800 and genomic analysis of individual worms. Parasites & vectors. 2019;12(1):496.
801 Epub 2019/10/24. doi: 10.1186/s13071-019-3748-5. PubMed PMID: 31640777;
802 PubMed Central PMCID: PMC6805601.

- 803 33. Tamura K, Stecher G, Kumar S. MEGA11: Molecular Evolutionary Genetics
804 Analysis Version 11. *Mol Biol Evol.* 2021;38(7):3022-7. doi:
805 10.1093/molbev/msab120. PubMed PMID: 33892491; PubMed Central PMCID:
806 PMC8233496.
- 807 34. Ko PP, Suzuki K, Canales-Ramos M, Aung M, Htike WW, Yoshida A, et al.
808 Phylogenetic relationships of *Strongyloides* species in carnivore hosts.
809 *Parasitology international.* 2020;78:102151. Epub 20200603. doi:
810 10.1016/j.parint.2020.102151. PubMed PMID: 32502520.
- 811 35. Ko PP, Haraguchi M, Hara T, Hieu DD, Ito A, Tanaka R, et al. Population
812 genetics study of *Strongyloides fuelleborni* and phylogenetic considerations on
813 primate-infecting species of *Strongyloides* based on their mitochondrial genome
814 sequences. *Parasitology international.* 2023;92:102663. Epub 20220901. doi:
815 10.1016/j.parint.2022.102663. PubMed PMID: 36058466.
- 816 36. Kanzaki N, Yamashita T, Lee JS, Shih PY, Ragsdale EJ, Shinya R.
817 *Tokorhabditis* n. gen. (Rhabditida, Rhabditidae), a comparative nematode model
818 for extremophilic living. *Sci Rep.* 2021;11(1):16470. Epub 20210813. doi:
819 10.1038/s41598-021-95863-1. PubMed PMID: 34389775; PubMed Central
820 PMCID: PMC8363662.
- 821 37. Felix MA, Braendle C, Cutter AD. A streamlined system for species
822 diagnosis in *Caenorhabditis* (Nematoda: Rhabditidae) with name designations for
823 15 distinct biological species. *PLoS One.* 2014;9(4):e94723. Epub 2014/04/15.
824 doi: 10.1371/journal.pone.0094723. PubMed PMID: 24727800; PubMed Central
825 PMCID: PMC3984244.
- 826 38. Hasegawa H, Modry D, Kitagawa M, Shutt KA, Todd A, Kalousova B, et al.
827 Humans and great apes cohabiting the forest ecosystem in central african

828 republic harbour the same hookworms. PLoS Negl Trop Dis. 2014;8(3):e2715.
829 doi: 10.1371/journal.pntd.0002715. PubMed PMID: 24651493; PubMed Central
830 PMCID: PMC3961186.

831 39. Laymanivong S, Hangvanthong B, Insisiengmay B, Vanisaveth V,
832 Laxachack P, Jongthawin J, et al. First molecular identification and report of
833 genetic diversity of *Strongyloides stercoralis*, a current major soil-transmitted
834 helminth in humans from Lao People's Democratic Republic. Parasitol Res.
835 2016;115(8):2973-80. doi: 10.1007/s00436-016-5052-z. PubMed PMID:
836 27083185.

837 40. Hu M, Chilton NB, Gasser RB. The mitochondrial genome of *Strongyloides*
838 *stercoralis* (Nematoda) - idiosyncratic gene order and evolutionary implications.
839 Int J Parasitol. 2003;33(12):1393-408. PubMed PMID: 14527522.

840 41. Hasegawa H, Kalousova B, McLennan MR, Modry D, Profousova-Psenkova
841 I, Shutt-Phillips KA, et al. *Strongyloides* infections of humans and great apes in
842 Dzanga-Sangha Protected Areas, Central African Republic and in degraded forest
843 fragments in Bulindi, Uganda. Parasitology international. 2016;65(5 Pt A):367-
844 70. doi: 10.1016/j.parint.2016.05.004. PubMed PMID: 27180094.

845 42. Basso W, Grandt LM, Magnenat AL, Gottstein B, Campos M. *Strongyloides*
846 *stercoralis* infection in imported and local dogs in Switzerland: from clinics to
847 molecular genetics. Parasitol Res. 2019;118(1):255-66. doi: 10.1007/s00436-
848 018-6173-3. PubMed PMID: 30552576.

849 43. Sanpool O, Intapan PM, Rodpai R, Laoraksawong P, Sadaow L, Tourtip S, et
850 al. Dogs are reservoir hosts for possible transmission of human strongyloidiasis
851 in Thailand: molecular identification and genetic diversity of causative parasite

852 species. J Helminthol. 2019;94:e110. Epub 2019/12/18. doi:
853 10.1017/S0022149X1900107X. PubMed PMID: 31843028.

854 44. Hunt VL, Tsai IJ, Coghlan A, Reid AJ, Holroyd N, Foth BJ, et al. The genomic
855 basis of parasitism in the *Strongyloides* clade of nematodes. Nat Genet.
856 2016;48(3):299-307. doi: 10.1038/ng.3495. PubMed PMID: 26829753.

857 45. Janwan P, Rodpai R, Intapan PM, Sanpool O, Tourtip S, Maleewong W, et
858 al. Possible transmission of *Strongyloides fuelleborni* between working Southern
859 pig-tailed macaques (*Macaca nemestrina*) and their owners in Southern
860 Thailand: Molecular identification and diversity. Infect Genet Evol.
861 2020;85:104516. Epub 2020/08/30. doi: 10.1016/j.meegid.2020.104516.
862 PubMed PMID: 32860989.

863 46. Thanchomnang T, Intapan PM, Sanpool O, Rodpai R, Sadaow L, Phosuk I,
864 et al. First molecular identification of *Strongyloides fuelleborni* in long-tailed
865 macaques in Thailand and Lao People's Democratic Republic reveals
866 considerable genetic diversity. J Helminthol. 2019;93(5):608-15. Epub
867 2018/07/22. doi: 10.1017/S0022149X18000512. PubMed PMID: 30027858.

868 47. Thanchomnang T, Intapan PM, Sanpool O, Rodpai R, Tourtip S, Yahom S,
869 et al. First molecular identification and genetic diversity of *Strongyloides*
870 *stercoralis* and *Strongyloides fuelleborni* in human communities having contact
871 with long-tailed macaques in Thailand. Parasitol Res. 2017;116(7):1917-23. doi:
872 10.1007/s00436-017-5469-z. PubMed PMID: 28500375.

873 48. Hasegawa H, Shigyo M, Yanai Y, McLennan MR, Fujita S, Makouloutou P, et
874 al. Molecular features of hookworm larvae (*Necator* spp.) raised by coproculture
875 from Ugandan chimpanzees and Gabonese gorillas and humans. Parasitology

876 international. 2017;66(2):12-5. doi: 10.1016/j.parint.2016.11.003. PubMed
877 PMID: 27840196.

878 49. Aupalee K, Saeung A, Srisuka W, Fukuda M, Streit A, Takaoka H. Seasonal
879 Filarial Infections and Their Black Fly Vectors in Chiang Mai Province, Northern
880 Thailand. *Pathogens*. 2020;9(6):512. Epub 20200625. doi:
881 10.3390/pathogens9060512. PubMed PMID: 32630410; PubMed Central PMCID:
882 PMCPMC7350311.

883 50. Huang F, Srisuka W, Aupalee K, Streit A, Fukuda M, Pitasawat B, et al.
884 Diversity of nematodes infecting the human-biting black fly species, *Simulium*
885 *nigrogilvum* (Diptera: Simuliidae) in central Thailand. *Acta Trop*.
886 2021;224:106140. Epub 2021/09/26. doi: 10.1016/j.actatropica.2021.106140.
887 PubMed PMID: 34562429.

888 51. Fukuda M, Uni S, Igari T, Utsumi Y, Otsuka Y, Nakatani J, et al. Human case
889 of *Onchocerca dewittei japonica* infection in Fukushima, Northeastern Honshu,
890 Japan. *Parasitology international*. 2019;72:101943. Epub 20190617. doi:
891 10.1016/j.parint.2019.101943. PubMed PMID: 31220633.

892 52. Takaoka H, Fukuda M, Otsuka Y, Aoki C, Uni S, Bain O. Blackfly vectors of
893 zoonotic onchocerciasis in Japan. *Med Vet Entomol*. 2012;26(4):372-8. Epub
894 20120725. doi: 10.1111/j.1365-2915.2012.01023.x. PubMed PMID: 22827756.

895 53. Wesolowska M, Zajac-Pytrus H, Masny A, Pytrus W, Knysz B, Golab E, et al.
896 *Onchocerca jakutensis* ocular infection in Poland: a new vector-borne human
897 health risk? *Parasites & vectors*. 2020;13(1):61. Epub 20200212. doi:
898 10.1186/s13071-020-3925-6. PubMed PMID: 32051010; PubMed Central
899 PMCID: PMCPMC7017525.

900 54. Hawdon JM, Wise KA. *Ancylostoma caninum* and Other Canine
901 Hookworms. In: Strube C, Mehlhorn H, editors. Dog Parasites Endangering
902 Human Health. Cham: Springer International Publishing; 2021. p. 147-93.
903 55. Aguilar-Rodriguez D, Seco-Hidalgo V, Lopez A, Romero-Sandoval N,
904 Calvopina M, Guevara A, et al. Geographic Distribution of Human Infections with
905 Zoonotic *Ancylostoma ceylanicum* and Anthropophilic Hookworms in Ecuador: A
906 Retrospective Analysis of Archived Stool Samples. *Am J Trop Med Hyg.*
907 2024;110(3):460-9. Epub 20240123. doi: 10.4269/ajtmh.23-0469. PubMed
908 PMID: 38266286.
909
910

911 **Supporting information Captions**

912

913 S1 File: FASTA file of the *S. fuelleborni* whole mitochondrial sequences used in

914 Fig. 3.

915

916 S2 File: FASTA file of the *S. stercoralis* whole mitochondrial sequences used in S2

917 Fig (contains all sequences used in Fig. 5).

918

919 S3 File: Full argument for result section 2.10 Worms belonging to the "dog only"

920 type show high apparent heterozygosity that is likely caused in part by structural

921 variations, rather than true heterozygosity (text and three figures).

922

923 S1 Table: Excel table showing the different *cox-1* haplotypes for the *S. stercoralis*,

924 *S. fuelleborni* and *N. americanus* found in this study in different tabs. The last tab

925 shows the sequences extracted from the *S. stercoralis* whole genome sequencing

926 read data from [20].

927

928 S1 Fig: NJ tree based on *cox-1* with more sequences compared with Fig. 4.

929 Diamonds label the two worms that showed "human and dog" type

930 mitochondrial but "dog only" type nuclear sequences. The asterisk labels the

931 worm in the "dog only" cluster isolated from a human host. Sequences found in

932 this study are in red, the number of worms this sequence was found in is in ().

933 Samples in blue are worms from [20] for which full genome short read

934 sequences are available. For every sample the country of origin (CAR=Central

935 African Republic, USA=United States of America), the host and the GenBank

936 accession number is given. For worms from Cambodia also the worm individual
937 is given after the host to facilitate cross reference with [20]. Samples from
938 Cambodia are from [20], samples from Laos are from [39], samples from
939 Myanmar, Thailand and Uganda are from [26], samples from Iran are from [25],
940 sample from the USA is from [40], samples from Tanzania, and Japan are from
941 [17], samples from CAR are from [41] and samples from China are from [24].

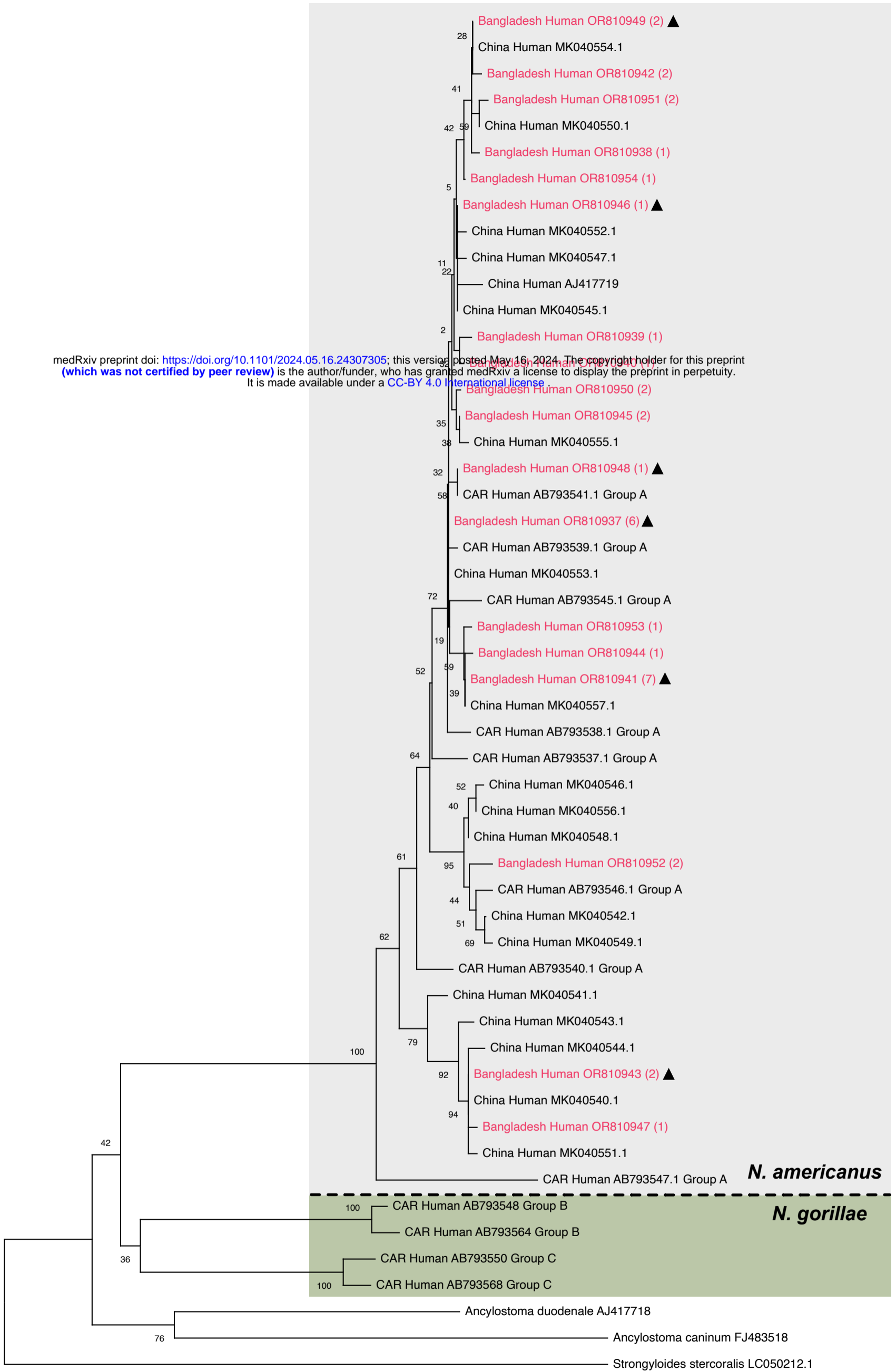
942

943 S2 Fig: NJ tree based on whole mitochondrial genome sequences with more
944 sequences compared with Fig. 5. Diamonds label the two worms that showed
945 "human and dog" type mitochondrial but "dog only" type nuclear sequences. The
946 asterisk labels the worm in the "dog only" cluster isolated from a human host.
947 The sequences from this study are in red. The other sequences were extracted
948 from the whole genome sequencing read data of the following references:
949 Cambodia [20], Thailand [22], Iran [25], Myanmar and Japan [23], USA [44] and
950 China [24]. A FASTA file with all sequences used is provided as S2 File.

951

952 S3 Fig (without the "dog only" cluster) and S4 Fig (including the "dog only"
953 cluster): Different representation of the cladograms based on whole genome
954 sequences compared with Fig. 6. Diamonds label the two worms that showed
955 "human and dog" type mitochondrial but "dog only" type nuclear sequences. The
956 asterisk labels the worm in the "dog only" cluster isolated from a human host.
957 The sequences from this study are in red. The other sequences were extracted
958 from the whole genome sequencing read data of the following references:
959 Cambodia [20], Thailand [22], Iran [25], Myanmar and Japan [23], USA [44] and
960 China [24].

medRxiv preprint doi: <https://doi.org/10.1101/2024.05.16.24307305>; this version posted May 16, 2024. The copyright holder for this preprint (which was not certified by peer review) is the author/funder, who has granted medRxiv a license to display the preprint in perpetuity. It is made available under a [CC-BY 4.0 International license](https://creativecommons.org/licenses/by/4.0/).



0.02

medRxiv preprint doi: <https://doi.org/10.1101/2024.05.16.24307305>; this version posted May 16, 2024. The copyright holder for this preprint (which was not certified by peer review) is the author/funder, who has granted medRxiv a license to display the preprint in perpetuity. It is made available under a [CC-BY 4.0 International license](https://creativecommons.org/licenses/by/4.0/).

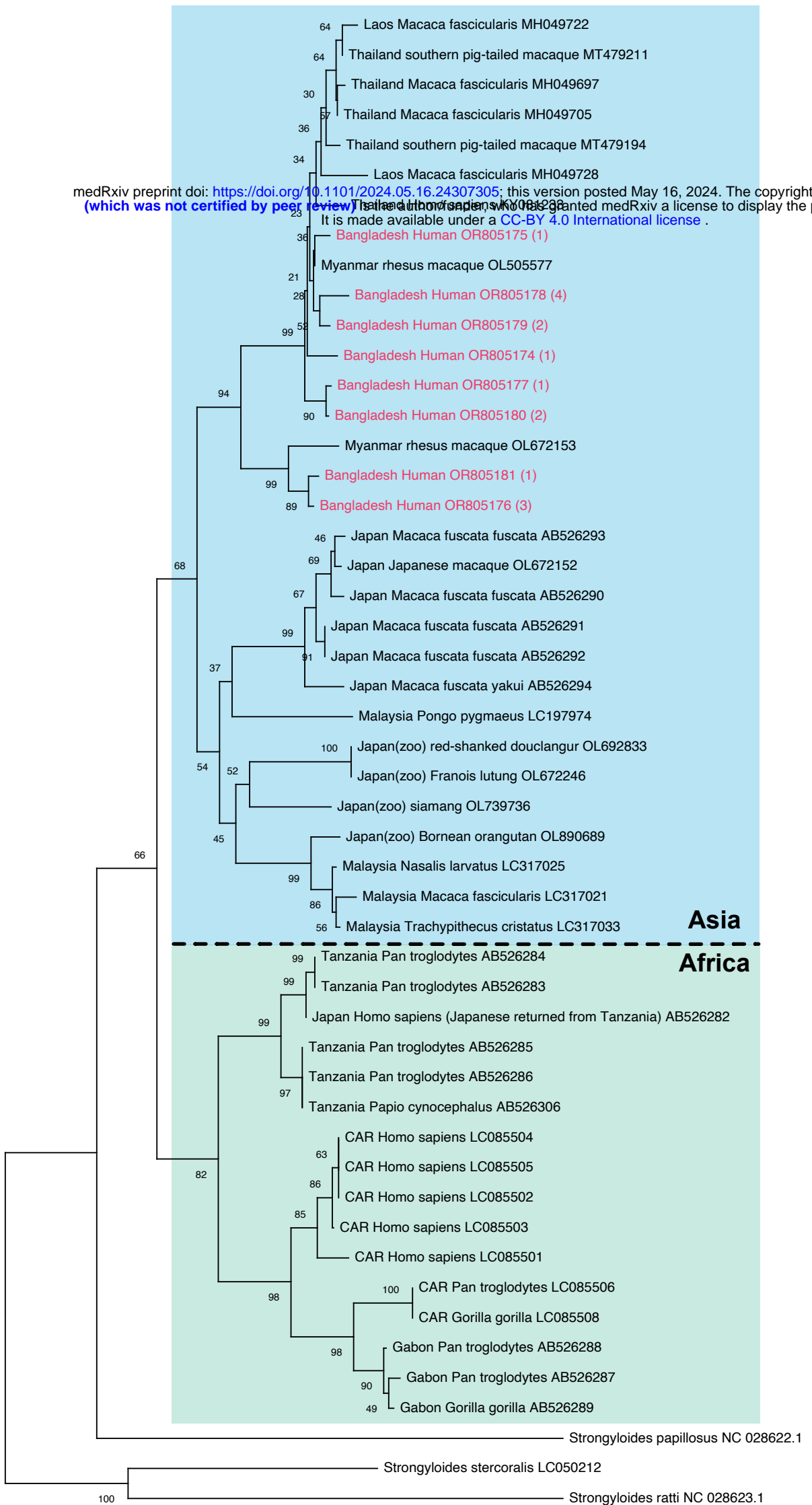
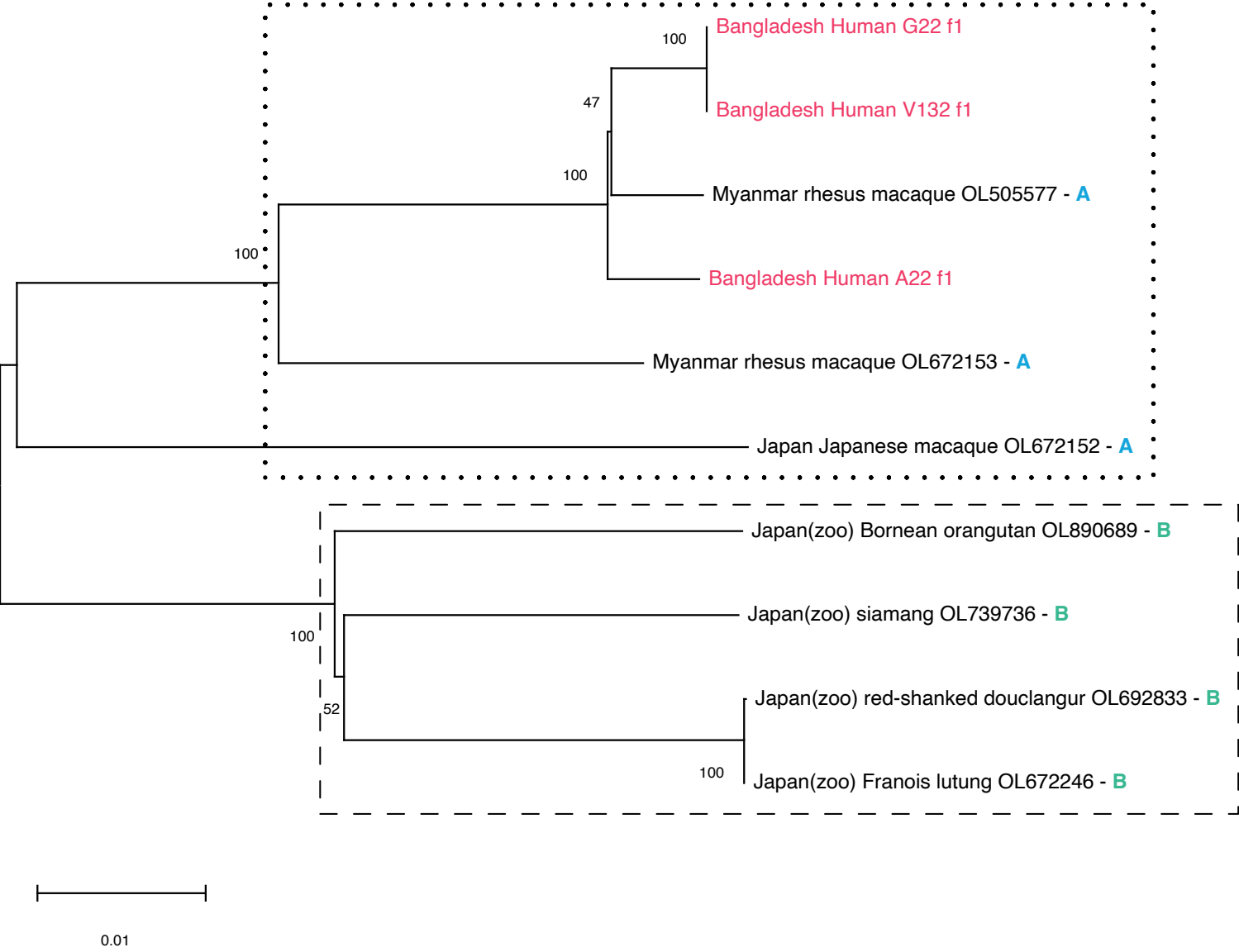


Figure 3

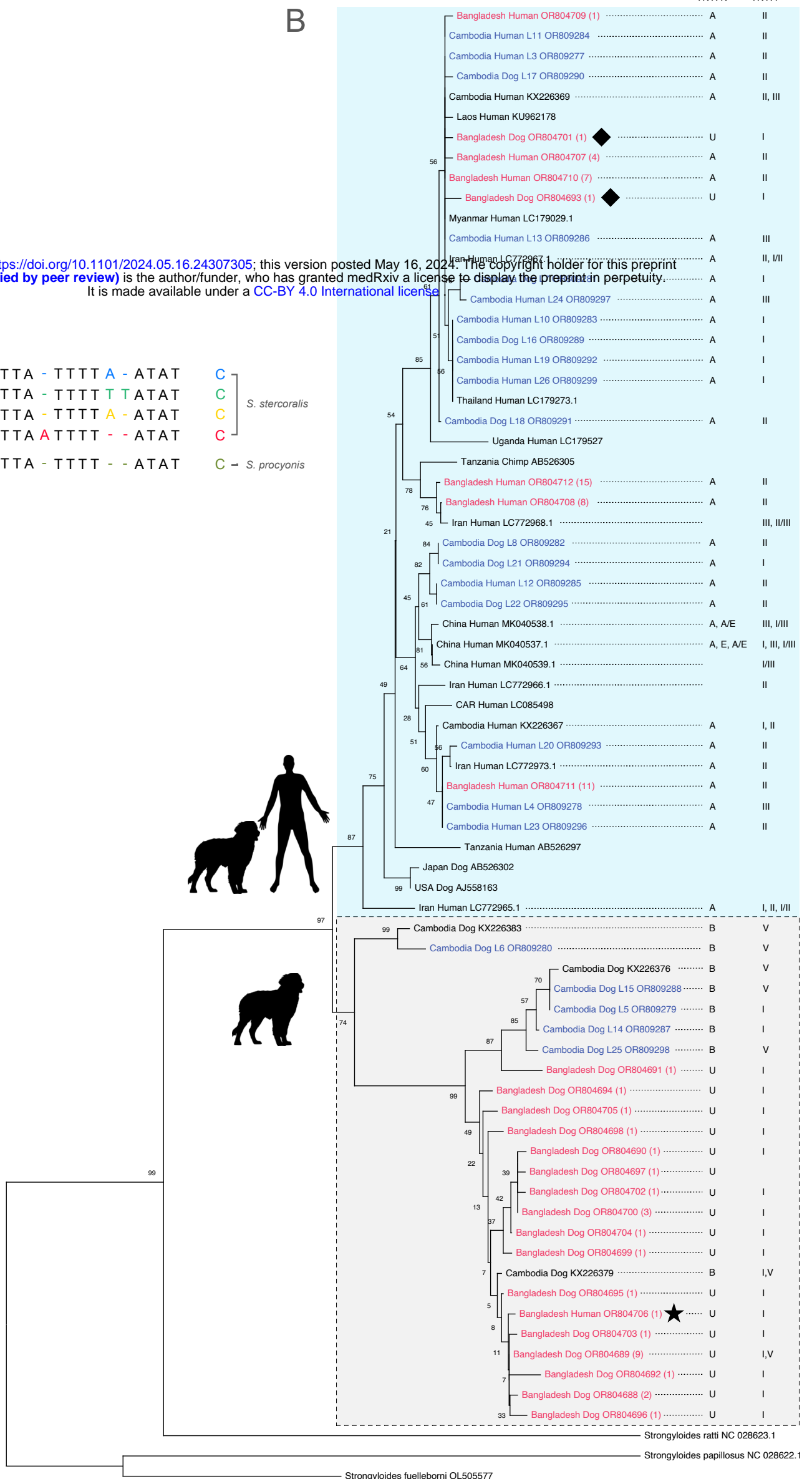
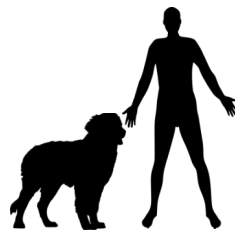


B

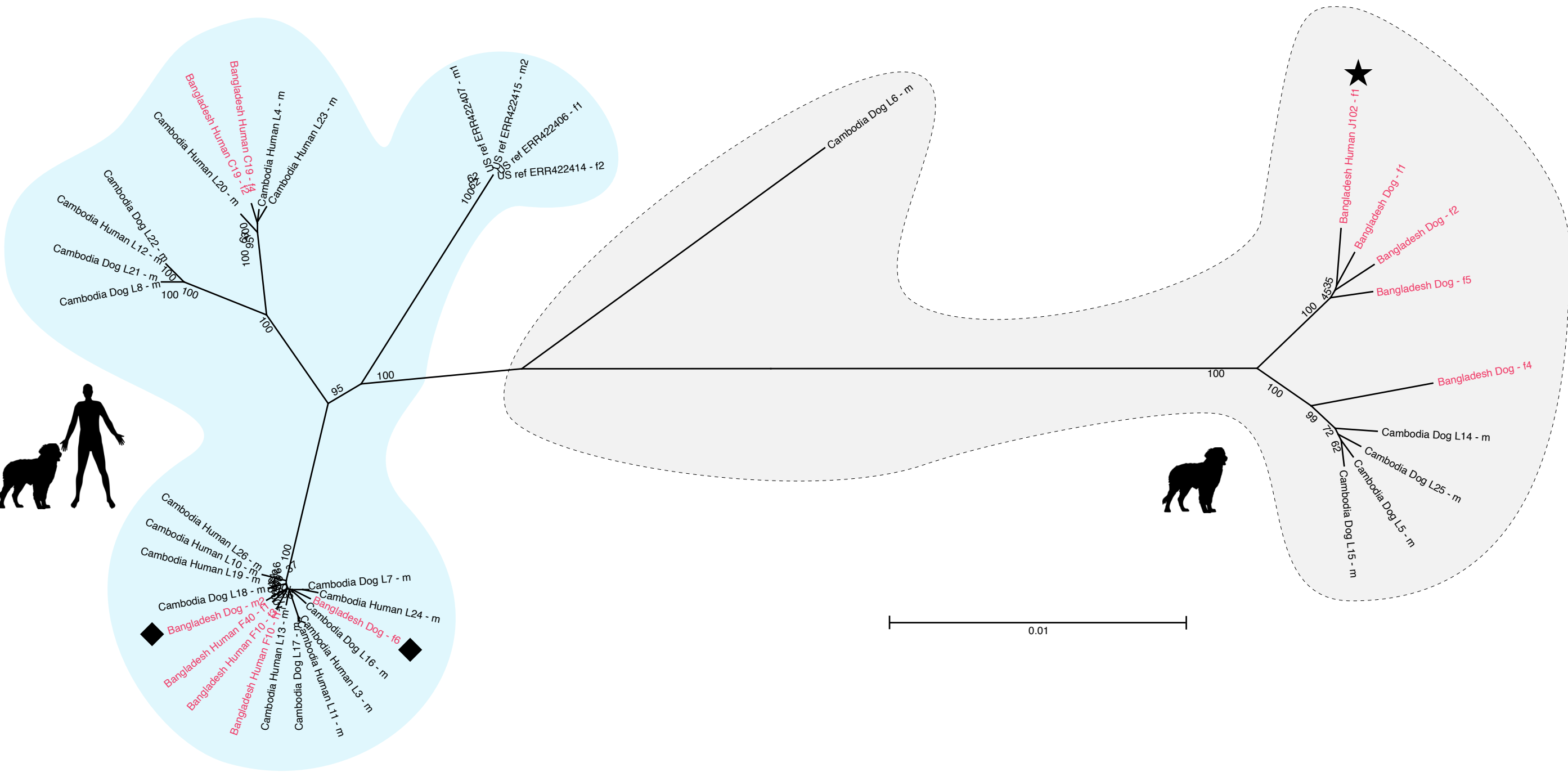
medRxiv preprint doi: <https://doi.org/10.1101/2024.05.16.24307305>; this version posted May 16, 2024. The copyright holder for this preprint (which was not certified by peer review) is the author/funder, who has granted medRxiv a license to display the preprint in perpetuity. It is made available under a [CC-BY 4.0 International license](https://creativecommons.org/licenses/by/4.0/).

A

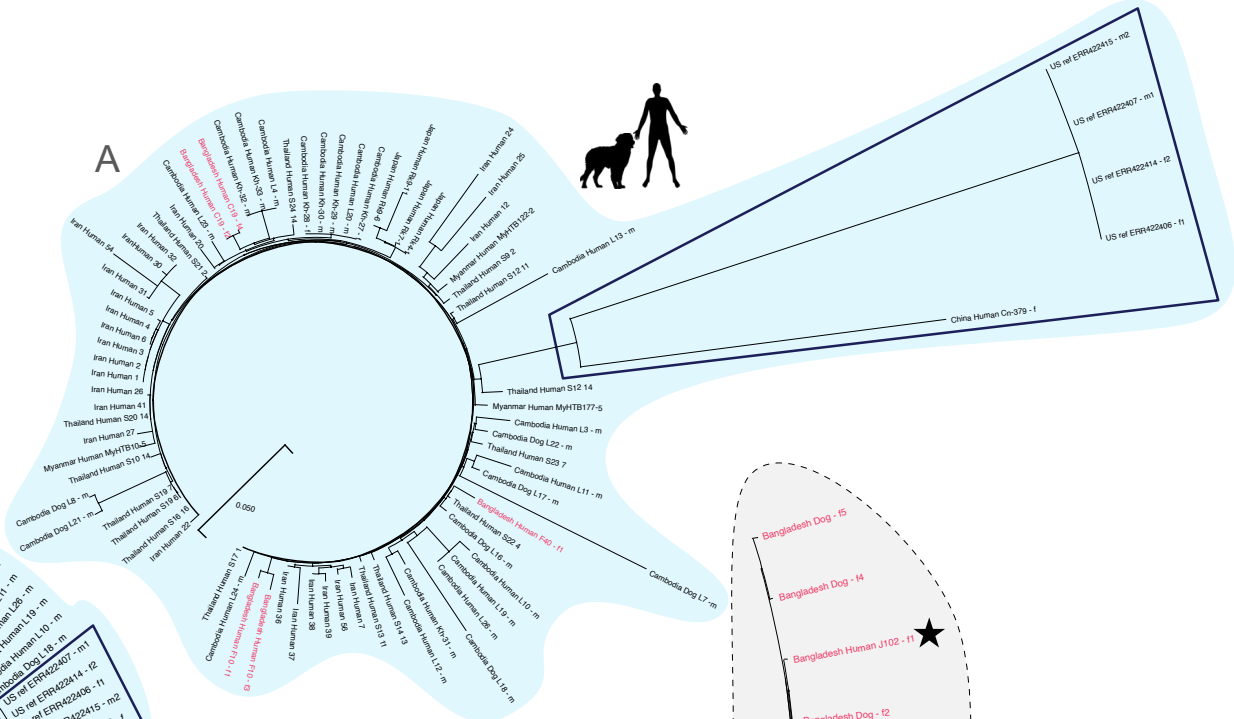
Hap. A:	ATTT T GTTTA - TTTT A - ATAT	C	} <i>S. stercoralis</i>
Hap. B:	ATTT - GTTTA - TTTT T TATAT	C	
Hap. E:	ATTT - GTTTA - TTTT A - ATAT	C	
Hap. U:	ATTT - GTTTA A TTTT - - ATAT	C	
Hap. D:	ATTT - GTTTA - TTTT - - ATAT	C	
		G	} <i>S. procyonis</i>



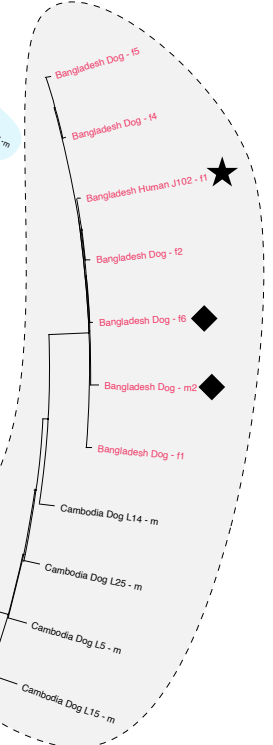
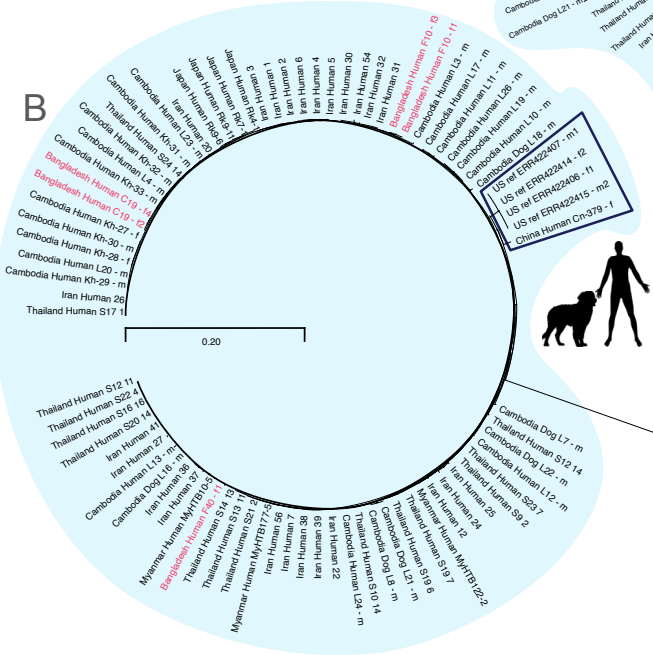
0.02



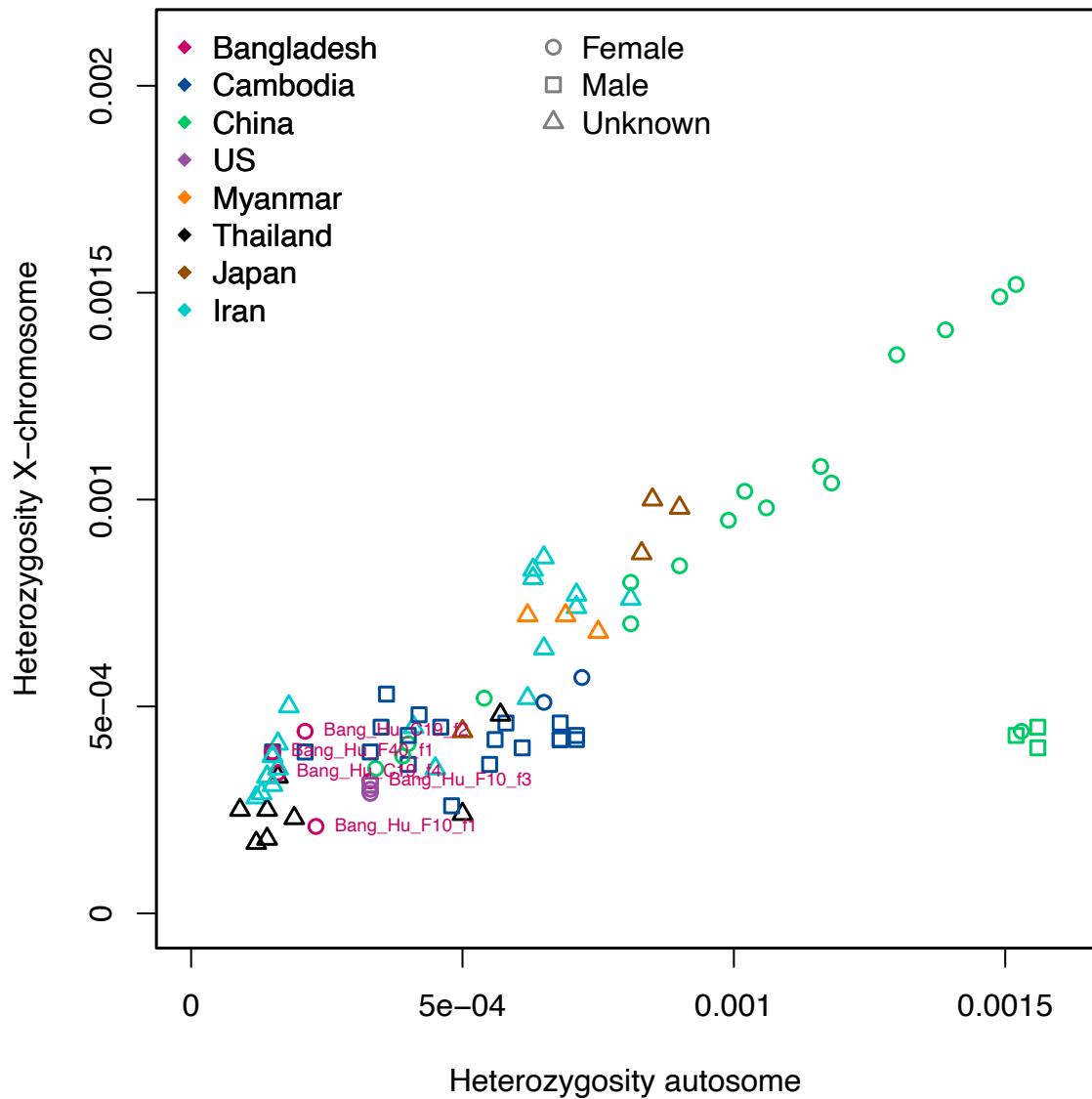
A



B



A



B

