

NEURAL BASES OF NEUROBEHAVIORAL SYMPTOMS IN SOF

Neural Network Correlates of Apathy, Disinhibition, and Executive Dysfunction in Active-Duty United States Special Operations Forces

Natalie Gilmore^{1,2}, Isabella R. McKinney^{1,2}, Chieh-En J. Tseng³, Douglas N. Greve³, Chiara Maffei^{1,2,3}, Brian C. Healy^{2,4}, Nicole R. Zürcher³, Jacob M. Hooker³, Samantha L. Tromly⁵, Daniel P. Perl⁶, Kristen Dams-O'Connor⁷, Christine L. Mac Donald⁸, Brian L. Edlow MD^{1,2,3}, Yelena G. Bodien^{1,2,9}

Author Affiliations:

¹Center for Neurotechnology and Neurorecovery, Massachusetts General Hospital, Boston, MA 02114

²Department of Neurology, Massachusetts General Hospital and Harvard Medical School, Boston, MA 02114

³Department of Radiology, Athinoula A. Martinos Center for Biomedical Imaging, Massachusetts General Hospital and Harvard Medical School, Charlestown, MA 02129

⁴Biostatistics Center, Massachusetts General Hospital, Boston, MA 02114

⁵Institute of Applied Engineering, University of South Florida, Tampa, FL 33612

⁶Department of Pathology, F. Edward Hébert School of Medicine, Uniformed Services University (USU), Bethesda, Maryland 20814

⁷Department of Rehabilitation and Human Performance, Icahn School of Medicine at Mount Sinai, New York, NY 10029

⁸Department of Neurological Surgery, University of Washington, Seattle, WA 98195

⁹Department of Physical Medicine and Rehabilitation, Spaulding Rehabilitation Hospital and Harvard Medical School, Charlestown, MA 02129

Corresponding Author:

Yelena G. Bodien

101 Merrimac Street, Suite 310

Boston, MA 02114

Phone: (617) 643-3956

ybodien@mgh.harvard.edu

Abbreviations:

SOF = Special Operations Forces

ReBlast = Long-Term Effects of Repeated Blast Exposure in United States Special Operations Forces Personnel

GBEV = Generalized Blast Exposure Value

BISQ = Brain Injury Screening Questionnaire

FrSBe = Frontal Systems Behavior Scale

FrSBe_{Self} = FrSBe completed by SOF participant

FrSBe_{Family} = FrSBe completed by designated family member or friend of SOF participant

rs-fMRI = resting-state functional MRI

TSPO = translocator protein

PET = positron emission tomography

SUV_R = standardized uptake value ratio

rACC = rostral anterior cingulate cortex

TBI = traumatic brain injury

USSOCOM = United States Special Operations Command

NEURAL BASES OF NEUROBEHAVIORAL SYMPTOMS IN SOF

Abstract

United States Special Operations Forces (SOF) experience neurobehavioral symptoms that can adversely affect training and combat operations. Understanding the neurobiological basis for these symptoms may guide prevention and treatment. In 29 male active-duty SOF with mean (SD) 17(4) years of service, we tested whether self-reported symptoms of apathy, disinhibition, and executive dysfunction measured by the Frontal Systems Behavior Scale, were related to functional magnetic resonance imaging and positron emission tomography biomarkers (translocator protein and tau) of the limbic, salience, and executive control networks. Higher disinhibition was associated with lower functional connectivity and higher tau signal within the salience network.

Keywords blast injuries, neurobehavioral symptoms, functional magnetic resonance imaging, positron emission tomography, military personnel

NEURAL BASES OF NEUROBEHAVIORAL SYMPTOMS IN SOF

Introduction

Special Operations Forces (SOF) are repeatedly exposed to blast overpressure and blunt head trauma during training and combat.¹ These exposures can lead to neurobehavioral symptoms² that can impact combat performance³ and life satisfaction.⁴ There is evidence that neurobehavioral symptoms, including apathy, disinhibition, and executive dysfunction,⁵ are associated with disruption of the large-scale distributed brain networks⁶ supporting these functions. Yet, the neurobiological correlates of the interaction between network dysfunction and neurobehavioral symptoms have not been examined in active-duty SOF, limiting opportunities for brain health optimization and development of targeted interventions.⁷ We examined, in active-duty United States (US) SOF personnel, the relationship between apathy, disinhibition, and executive dysfunction symptoms and functional magnetic resonance imaging (fMRI) as well as positron emission tomography (PET) biomarkers (translocator protein and tau) of the limbic, salience, and executive control networks.

Methods

We analyzed data collected prospectively as part of the Long-Term Effects of Repeated Blast Exposure in United States Special Operations Forces Personnel (ReBlast) study (ClinicalTrials.gov, NCT05183087). Protocol details have been previously reported.⁸ The ReBlast study was approved by the Mass General Brigham Institutional Review Board (2020P002695) and U.S. Special Operations Command Human Research Protections Office (USSOCOM HRPO; S20010). All participants provided written informed consent.

Participants were male active-duty SOF, age 25 to 45 years, with a history of substantial combat and blast exposure. Over the course of a two-day study visit to Boston, MA, participants completed a comprehensive, multimodal assessment protocol.⁸ Data for the current study included: 1) demographics (e.g., age), military history (e.g., years in service), and exposure to combat (Combat Exposure Scale [CES]⁹); 2) self-reported history of exposure to blast

NEURAL BASES OF NEUROBEHAVIORAL SYMPTOMS IN SOF

(Generalized Blast Exposure Value [GBEV]¹⁰) and blunt head trauma (Brain Injury Screening Questionnaire [BISQ]¹¹); 3) assessment of neurobehavioral symptom severity (46-item Frontal Systems Behavior Scale [FrSBe]¹² completed by the SOF participant [FrSBe_{Self}] and separately by a designated family member or friend [FrSBe_{Family}]); and 4) neuroimaging (structural MRI resting-state fMRI [rs-fMRI], [¹¹C]PBR28 translocator protein [TSPO] positron emission tomography [PET], and [¹⁸F]MK6240 tau PET). Neuroimaging data were acquired on Siemens scanners (Siemens Healthineers, Erlangen, Germany): 1) rs-fMRI data on a 7T Terra MRI scanner with a 32-channel head coil (Nova Medical, Wilmington, MA); and 2) [¹¹C]PBR28 TSPO and [¹⁸F]MK6240 tau PET data on a hybrid PET-MRI scanner with an 8-channel MR head receiver coil (i.e., the BrainPET). Additional information regarding the behavioral and neuroimaging procedures and participant exclusion for specific modalities are included in Supplemental Materials; and procedures have been fully described in our previous work.^{8,13}

We conducted univariate (i.e., unadjusted) regression analyses to test for associations between the primary dependent (i.e., FrSBe_{Self} and FrSBe_{Family} Apathy, Disinhibition, and Executive Dysfunction subscale T-scores) and independent (i.e., mean functional connectivity, mean [¹¹C]PBR28 TSPO standardized uptake value ratio [SUVR], and mean [¹⁸F]MK6240 tau SUVR in the limbic, salience, and executive control networks) variables. We also conducted multivariable regression analyses adjusting for age.

Results

Twenty-nine male participants were mean (SD) 37 (4) years old with mean (SD) 17 (4) years of service. Most participants were enlisted and actively serving in the Army. Combat exposure was moderate-heavy or heavy in 27 out of 29 participants based on the CES. Cumulative blast exposure, as measured by the GBEV, ranged from 387,861 to 363,812,869 with a median value of 9,763,085, which was above a previously-published threshold for symptom reporting.¹⁰ FrSBe subscale T-scores were above the clinical threshold for impairment (i.e., ≥ 65) for 28% to 31%

NEURAL BASES OF NEUROBEHAVIORAL SYMPTOMS IN SOF

of participants on the FrSBe_{Self} and 36% to 43% of participants on the FrSBe_{Family}. All participants reported exposure to blunt head trauma on the BISQ consistent with a mild TBI, based on Veteran Affairs/Department of Defense criteria.¹¹

Results of statistical analyses for FrSBe_{Self} and FrSBe_{Family} Disinhibition Subscale T-scores are presented in Table 2. Higher Disinhibition Subscale T-scores were associated with lower functional connectivity in the salience network on FrSBe_{Self} ($\beta = -0.38$, 95% CI [-0.75, -0.005], $p = 0.047$; Figure 1b) and FrSBe_{Family} ($\beta = -0.37$, 95% CI [-0.76, 0.009], $p = 0.055$). These associations were attenuated after adjusting for age. Higher Disinhibition Subscale T-scores were associated with higher tau signal within the salience network, as measured by [¹⁸F]MK6240 SUVR, on FrSBe_{Self} ($\beta = 0.38$, [0.009, 0.76], $p = 0.045$, Figure 1), but not FrSBe_{Family} ($\beta = 0.29$, [-0.10, 0.69], $p = 0.142$). FrSBe_{Self} associations with tau signal in the salience network were attenuated after adjusting for age. No associations were observed between FrSBe_{Self} or FrSBe_{Family} Disinhibition Subscale T-scores and TSPO as measured by [¹¹C]PBR28 SUVR in the salience network.

Neither FrSBe_{Self} nor FrSBe_{Family} Apathy Subscale T-scores were associated with rs-fMRI or PET biomarkers of the limbic network (Supplemental Table 1). Similarly, neither FrSBe_{Self} nor FrSBe_{Family} Executive Dysfunction Subscale T-scores were associated with rs-fMRI or PET biomarkers of the executive control network (Supplemental Table 2).

Discussion

In active-duty U.S. SOF with repeated blast exposure, higher self-reported disinhibition symptoms were associated with the salience network across two imaging modalities; we observed similar results with family-reported disinhibition symptoms. The salience network is a known contributor to cognitive and emotional dysregulation, and its structural as well as

NEURAL BASES OF NEUROBEHAVIORAL SYMPTOMS IN SOF

functional disruption has been linked to neuropsychiatric disorders for which disinhibition is a hallmark characteristic.¹⁴

Our findings build on recent work in the same cohort of active-duty SOF wherein higher blast exposure was related to higher cortical thickness in bilateral rostral anterior cingulate cortex (rACC) and right insula, and lower TSPO signal in the right rACC, all of which are regions within the salience network.¹³ Interestingly, in a different cohort of active-duty SOF, higher blast exposure was associated with increased TSPO signal in the salience network.¹⁵ The discrepancy in findings across these two studies^{13,15} may have been due to the use of a different tracer (i.e., [18F]DPA-714), a different statistical analytic approach (i.e., applying dimensionality reduction before testing the association between biomarkers and blast exposure), or a different study design (i.e., comparing blast-exposed special operators to non-exposed matched controls). Overall, the present work illustrates the potential neurobehavioral consequences of network-level disruptions in a population heavily exposed to blast and blunt head trauma.

Approximately one-third of participants and their family members reported apathy, disinhibition and executive function symptoms that exceed the clinical threshold for impairment (Table 1). This result is consistent with prior studies showing that a substantial proportion of service members with mild TBI,¹⁶ including SOF,² experience neurobehavioral symptoms. Targeted measures aimed at preventing or treating salience network disruption may promote quality of life for SOF and their families.⁴

Adjusting our statistical models for age attenuated the association between disinhibition and functional connectivity as well as tau signal in the salience network, which supports prior literature showing that disinhibition increases with age.¹⁷ Symptoms of apathy and executive control were not related to neuroimaging biomarkers of the limbic or executive control networks, respectively. The Yeo 7-network atlas,¹⁸ which we used to identify regions of interest, only includes cortical regions. Consequently, the contribution of key subcortical regions could not be

NEURAL BASES OF NEUROBEHAVIORAL SYMPTOMS IN SOF

assessed (e.g., hippocampus and amygdala within the limbic network; thalamus and ventral striatum within the salience network).¹⁴ Furthermore, the neuroanatomical substrates of executive control are highly distributed and poorly defined,¹⁹ potentially contributing to the lack of an association between executive dysfunction symptoms and biomarkers of the executive control network. There was no association between TSPO signal and disinhibition. However, higher tau signal was associated with higher symptoms of disinhibition. While the MK-6240 ligand binds to tau pathology,²⁰ and thus the association between higher tau signal in the salience network and higher disinhibition symptoms may represent neurofibrillary tangles, it could also represent dystrophic neurites and other pathological cellular processes that can only be confirmed by post-mortem examination of the brain. The study was limited by lack of longitudinal data and a small sample size. Nevertheless, the findings contribute to our understanding of the neural network correlates of disinhibition in active-duty SOF.

Conclusions

Higher self-reported symptoms of disinhibition in active-duty SOF with heavy exposure to blast and blunt head trauma were associated with lower functional connectivity and higher tau signal in the salience network, which is known to contribute to emotional and cognitive function. These findings support the use of a multimodal, network-based approach to examine the effects of head trauma on active-duty SOF brain health and highlight a potential role for the salience network in the prevention and treatment of neurobehavioral symptoms in this population.

NEURAL BASES OF NEUROBEHAVIORAL SYMPTOMS IN SOF

Acknowledgments

We thank the participants and their families for their time, candor, and meaningful contributions to this study. We appreciate Katryna Deary and Jessica Kelemen for their assistance in recruitment and screening participants. We value the contributions of the ReBlast MRI Safety Committee (John E. Kirsch, Jacob C. Calkins, Amy L. Kendall, and Grae E. Arabasz) and the regulatory and grants administrative support staff (Jennifer Michaud, Kelsey Radmanesh, Maryam Masood). We also appreciate all those who were involved in MRI (Gabriel Llorden Ramos, Kyle Droppa) and PET data acquisition (Mary Tresvalles, Mariah Manter, Kyle Droppa, Camila Canales, Riana Schleicher, Shirley Hsu, Oliver Ramsay, Alison Brown, Anne Siewko), including PETNET Solutions New York for radiotracer production. This work was funded by the U.S. Department of Defense (USSOCOM Contract No. H9240520D0001) and the Navy SEAL Foundation.

Author Contributions

Author contributions included conception and study design (N.G., I. R. M., N.R.Z, J. M. H., B.C.H., B.L.E, Y.G.B.), data collection or acquisition (N.G., C.J.T., C.M., D.N.G), statistical analysis (N.G., B.C.H.), interpretation of results (N.G., B.C.H., B.L.E., Y.G.B.), drafting the manuscript work or revising it critically for important intellectual content (N.G., I.R.M, C.J.T., D.N.G., C.M., S.L.T., D.P.P., K.D.P., C.L.M., B.L.E., Y.G.B.) and approval of final version to be published and agreement to be accountable for the integrity and accuracy of all aspects of the work (All authors).

NEURAL BASES OF NEUROBEHAVIORAL SYMPTOMS IN SOF

Disclaimer

The opinions and assertions expressed herein are those of the author(s) and do not reflect the official policy or position of the Uniformed Services University of the Health Sciences or the Department of Defense.

Potential Conflicts of Interest

The authors report no conflicts of interest.

Data Availability

USSOCOM policy limits public sharing of data generated and analyzed for the current paper. Any future requests for these data may be submitted to the corresponding author for subsequent vetting and approval by USSOCOM.

Figure 1 Legend

Association of FrSB_{eSelf} Disinhibition Scores with Salience Network Biomarkers. The salience network (a, purple regions) was composed of the left inferior frontal gyrus (i.e., pars opercularis), aspects of the left temporal and occipital lobes, aspects of the right temporal, occipital, and parietal lobes, a right precentral region, a right ventral prefrontal region, and bilateral aspects of the frontal lobe including the operculum and insula, the lateral prefrontal, and medial cortices. Higher FrSB_{eSelf} Disinhibition T-Scores were associated with lower resting-state functional connectivity (b) and higher tau signal as measured by [¹⁸F]MK6240 SUVR (c). There was no association between FrSB_{eSelf} Disinhibition T-Scores and TSPO signal as measured by [¹¹C]PBR28 SUVR (d). Individual data points in b, c, and d are shown as purple

NEURAL BASES OF NEUROBEHAVIORAL SYMPTOMS IN SOF

circles, regression line is black with the 95% confidence intervals indicated in grey shading.

Note: T-scores have a mean of 50 and SD of 10. T-scores ≥ 65 on the FrSBe subscales suggest clinically elevated symptoms. Abbreviations: FrSBe = Frontal Systems Behavior Scale; SUVR = standardized uptake value ratio; TSPO = translocator protein.

NEURAL BASES OF NEUROBEHAVIORAL SYMPTOMS IN SOF

References

1. Carr W, Kelley AL, Toolin CF, Weber NS. Association of MOS-Based Blast Exposure With Medical Outcomes. *Front Neurol*. 2020;11:619. doi:10.3389/fneur.2020.00619
2. Garcia A, Miles SR, Reljic T, et al. Neurobehavioral Symptoms in U.S. Special Operations Forces in Rehabilitation After Traumatic Brain Injury: A TBI Model Systems Study. *Mil Med*. Sep 30 2021;doi:10.1093/milmed/usab347
3. Berry KG, Sakallaris B, Deuster PA. Measuring Special Operations Forces Readiness. *J Spec Oper Med*. Winter 2019;19(4):100-104. doi:10.55460/MPAK-RB6Q
4. Sander AM, Maestas KL, Clark AN, Havins WN. Predictors of emotional distress in family caregivers of persons with traumatic brain injury: a systematic review. *Brain Impairment*. 2013;14(1):113-129.
5. Cummings JL. Frontal-subcortical circuits and human behavior. *Arch Neurol*. Aug 1993;50(8):873-80. doi:10.1001/archneur.1993.00540080076020
6. Menon V. Large-scale brain networks and psychopathology: a unifying triple network model. *Trends Cogn Sci*. Oct 2011;15(10):483-506. doi:10.1016/j.tics.2011.08.003
7. Krylova M, Skouras S, Razi A, et al. Progressive modulation of resting-state brain activity during neurofeedback of positive-social emotion regulation networks. *Scientific reports*. Dec 3 2021;11(1):23363. doi:10.1038/s41598-021-02079-4
8. Edlow BL, Bodien YG, Baxter T, et al. Long-Term Effects of Repeated Blast Exposure in United States Special Operations Forces Personnel: A Pilot Study Protocol. *J Neurotrauma*. Oct 2022;39(19-20):1391-1407. doi:10.1089/neu.2022.0030
9. Keane TM, Fairbank JA, Caddell JM, Zimering RT, Taylor KL, Mora CA. Clinical evaluation of a measure to assess combat exposure. *Psychological Assessment*. 1989;1(1):53-55.
10. Modica LCM, Egnoto MJ, Statz JK, Carr W, Ahlers ST. Development of a Blast Exposure Estimator from a Department of Defense-Wide Survey Study on Military Service Members. *J Neurotrauma*. Jun 15 2021;38(12):1654-1661. doi:10.1089/neu.2020.7405
11. Dams-O'Connor K, Cantor JB, Brown M, Dijkers MP, Spielman LA, Gordon WA. Screening for traumatic brain injury: findings and public health implications. *J Head Trauma Rehabil*. Nov-Dec 2014;29(6):479-89. doi:10.1097/HTR.0000000000000099
12. Grace J, Malloy PF. *Frontal Systems Behavior Scale: Professional manual*. Psychological Assessment Resources, Inc.; 2001.
13. Gilmore N, Tseng CJ, Maffei C, et al. Impact of Repeated Blast Exposure on Active-Duty United States Special Operations Forces *Proceedings of the National Academy of Sciences*. (in press). () : . doi:
14. Seeley WW. The Saliency Network: A Neural System for Perceiving and Responding to Homeostatic Demands. *J Neurosci*. Dec 11 2019;39(50):9878-9882. doi:10.1523/JNEUROSCI.1138-17.2019
15. Stone JR, Avants BB, Tustison N, et al. Neurological effects of repeated blast exposure in Special Operations personnel. *J Neurotrauma*. Nov 11 2023;doi:10.1089/neu.2023.0309
16. Parsey CM, Kang HJ, Eaton JC, et al. Chronic frontal neurobehavioural symptoms in combat-deployed military personnel with and without a history of blast-related mild traumatic brain injury. *Brain Inj*. Aug 24 2023;37(10):1127-1134. doi:10.1080/02699052.2023.2209740
17. Persad CC, Abeles N, Zacks RT, Denburg NL. Inhibitory changes after age 60 and their relationship to measures of attention and memory. *J Gerontol B Psychol Sci Soc Sci*. May 2002;57(3):P223-32. doi:10.1093/geronb/57.3.p223
18. Yeo BT, Krienen FM, Sepulcre J, et al. The organization of the human cerebral cortex estimated by intrinsic functional connectivity. *J Neurophysiol*. Sep 2011;106(3):1125-65. doi:10.1152/jn.00338.2011

NEURAL BASES OF NEUROBEHAVIORAL SYMPTOMS IN SOF

19. Zink N, Lenartowicz A, Markett S. A new era for executive function research: On the transition from centralized to distributed executive functioning. *Neurosci Biobehav Rev.* May 2021;124:235-244. doi:10.1016/j.neubiorev.2021.02.011
20. Kunach P, Vaquer-Alicea J, Smith MS, et al. Cryo-EM structure of Alzheimer's disease tau filaments with PET ligand MK-6240. *bioRxiv.* Sep 22 2023;doi:10.1101/2023.09.22.558671

Figure 1

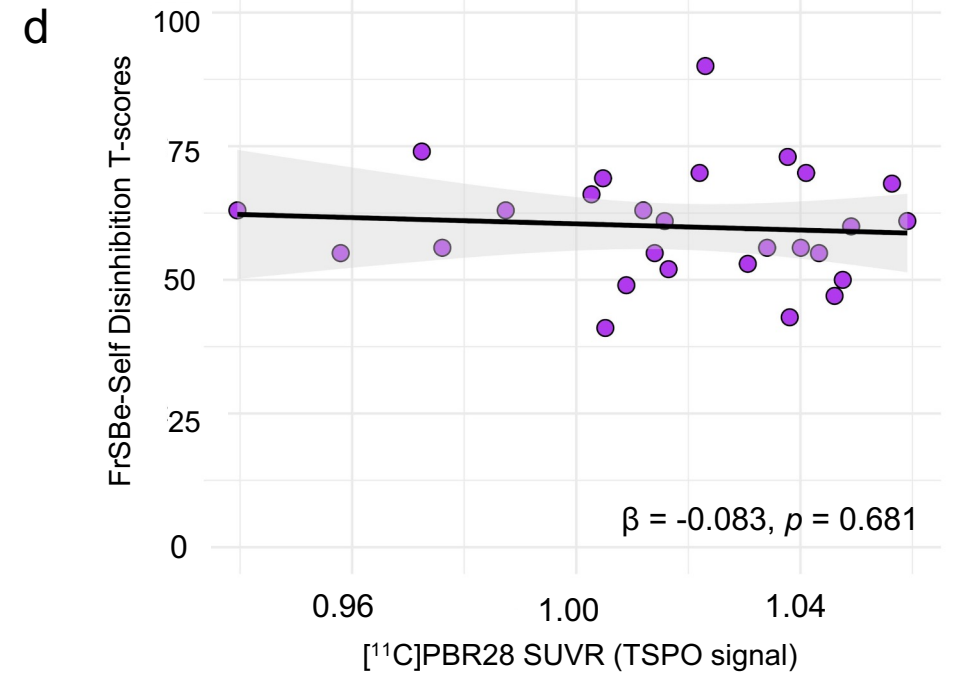
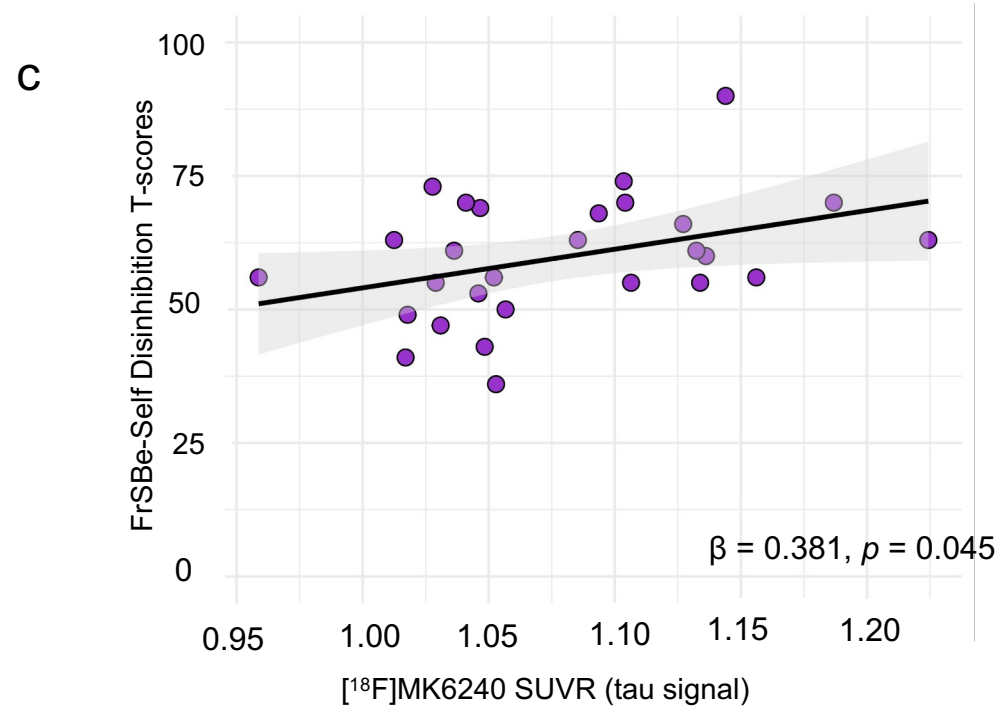
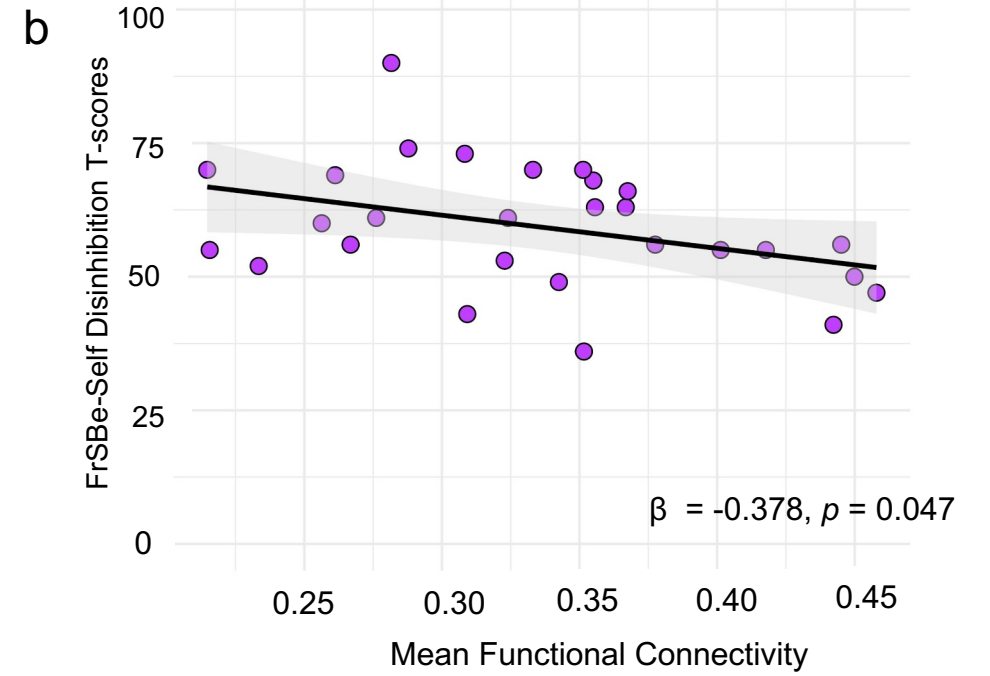
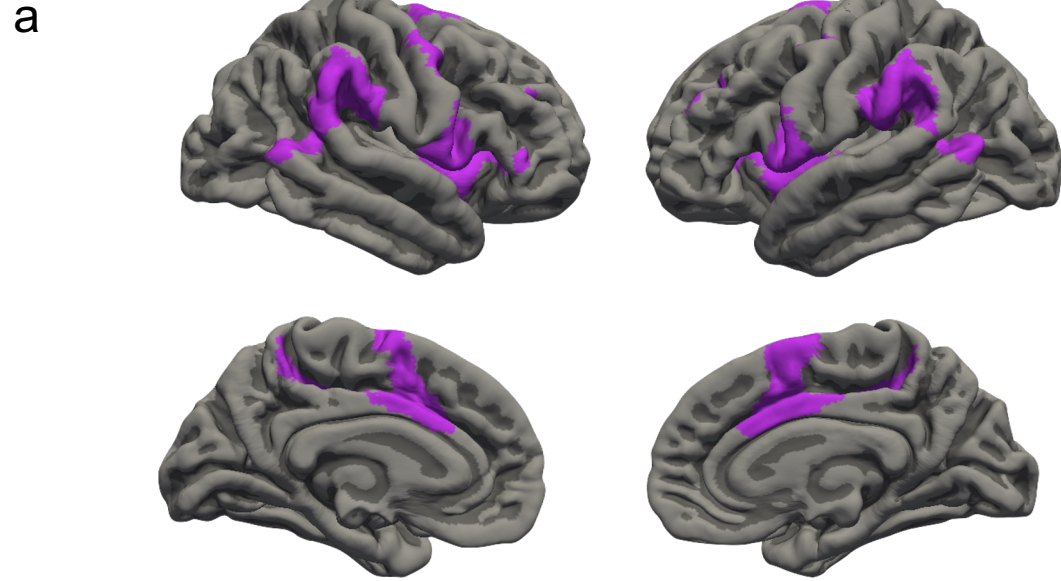


Table 1. Participant Characteristics

Characteristic	N=29
Age in years – mean \pm SD	37 \pm 4
Sex: Male – n	29
Race: White – n	29
Ethnicity: Non-Hispanic – n	26
Education: > 12 years – n	29
Generalized Blast Exposure Value (GBEV) – median [range]	9,763,085 [387,861 to 363,812,869]
Combat Exposure Score (CES) – mean \pm SD	34.14 \pm 4.98
Years in Service – mean \pm SD	17.10 \pm 4.43
Military Branch – n	
Army	20
Navy	4
Air Force	3
Marines	2
Rank – n	
Officer	1
Warrant Officer	4
Enlisted	24
FrSBe _{Self}	
Apathy	56.10 \pm 13.31 [35 - 93], 8 (28%)
Disinhibition	59.48 \pm 11.37 [36 - 90], 9 (31%)
Executive Function	56.34 \pm 12.08 [40 - 83], 8 (28%)
FrSBe _{Family} (n = 28)	
Apathy	65.50 \pm 17.05 [39 - 111], 12(43%)
Disinhibition	60.64 \pm 11.93 [38 - 85], 10(36%)
Executive Function	62.07 \pm 11.30 [41 - 86], 12(43%)

Note. The Frontal Systems Behavior Scale (FrSBe) was administered to the participant (FrSBe_{Self}) and to a significant other or close friend selected by the participant (FrSBe_{Family}). FrSBe subscale scores are reported as T-score mean \pm SD [range], n (%) above cutpoint for clinically elevated symptoms (T-scores of \geq 65).

Table 2. Associations between FrSBe_{Self} and FrSBe_{Family} Disinhibition T-scores and the Salience Network

Resting State Functional Connectivity						
	Unadjusted			Adjusted for Age		
	Salience β	95% CI	p	Salience β	95% CI	p
Self (n = 28)	-0.378	-0.751, -0.005	0.047	-0.287	-0.665, 0.091	0.13
Family (n = 27)	-0.373	-0.756, 0.009	0.055	-0.304	-0.705, 0.096	0.13
[¹¹ C]PBR28 PET (TSPO signal) SUVR						
	Unadjusted			Adjusted for Age		
	Salience β	95% CI	p	Salience β	95% CI	p
Self (n = 27)	-0.083	-0.493, 0.328	0.681	-0.177	-0.561, 0.207	0.351
Family (n = 26)	0.046	-0.374, 0.467	0.824	-0.070	-0.500, 0.361	0.741
[¹⁸ F]MK6240 PET (tau signal) SUVR						
	Unadjusted			Adjusted for Age		
	Salience β	95% CI	p	Salience β	95% CI	p
Self (n = 28)	0.381	0.009, 0.754	0.045	0.31	-0.057, 0.676	0.094
Family (n = 27)	0.291	-0.104, 0.685	0.142	0.223	-0.165, 0.61	0.247

Note. Factors resulting in participants being excluded from Resting State Functional Connectivity and PET analyses are described in Supplementary Methods.

FrSBe = Frontal Systems Behavior Scale; β = standardized regression coefficient; TSPO = translocator protein; PET = positron emission tomography, SUVR = standardized uptake value ratio; CI = confidence interval