

1                   **A cross sectional study on “Behavioral risk factors of**  
2                   **cardiovascular disease among adolescents of secondary level school**  
3                   **in a sub-metropolitan city of Nepal”**

4                   **Sita Bista<sup>1</sup>, Bishow Puri<sup>\*</sup>, Sanju Maharjan<sup>1</sup>, Buna Bhandari<sup>1,2</sup>,**

5                   **1. Central Department of Public Health, Tribhuvan University Institute of Medicine,**  
6                   **Nepal**

7                   **2. Department of Global and Population Health, Harvard Chan School of Public Health,**  
8                   **USA**

9                   **\*Corresponding author**

10                   **E-mail: [bishow.puri.73@gmail.com](mailto:bishow.puri.73@gmail.com)**

11 **ABSTRACT**

12 **Background:** Cardiovascular diseases (CVDs) are the leading cause of death and disability  
13 globally, where one-third of adolescents are affected. There is plenty of evidence that behavioral  
14 factors like physical inactivity, unhealthy diet, smoking, and alcohol use are major risks associated  
15 with CVDs among adolescents/school-going children.

16 **Objective(s):** The main aim of this study was to assess the prevalence of behavioral risk factors  
17 of cardiovascular disease among adolescents of secondary- level schools in Tulsipur Sub  
18 Metropolitan City, Nepal.

19 **Methods:** It was a school-based cross-sectional study among 361 adolescents of grades 11 and 12  
20 between the ages of 16 and 19. The school was selected by using a stratified proportionate  
21 sampling method. Data were collected through a self- administered structured and validated  
22 questionnaire containing socio-demographic characteristics, behavioral risk factors of CVDs and  
23 respective parent's information. Data were analyzed using both descriptive and analytical  
24 statistics.

25 **Results:** The most prevalent behavioral risk factor was consumption of calorie drinks (99%);  
26 followed by sedentary behavior (60%), insufficient fruit and vegetable intake (57%), physical  
27 inactivity (35%), intake of processed food high in salt (33%), refined vegetable oil use in meal  
28 preparation (19%) and added salt intake (15.5%). Similarly, the prevalence of current smoking  
29 tobacco, alcohol use and smokeless tobacco use was 12%, 10% and 9%, respectively. Mother  
30 education, ethnicity, education system were associated factors of majority of behavioral risk  
31 factors of CVDs among adolescents. Mother education, parent's smoking habit and parent's

32 smokeless tobacco use were associated factors of current tobacco smoking. Parent's smokeless  
33 tobacco use and parent's alcohol use were associated factors of current alcohol use.

34 **Conclusions:** This study provided evidence of high prevalence of CVD risk factors among  
35 adolescents in Nepal. It demands an urgent need to effectively design appropriate interventions in  
36 household and school settings to address the risk factors at the municipal level of Nepal.

37 **Keywords: Adolescents, Behavioral risk factors, Cardiovascular Diseases, Non-**  
38 **communicable diseases**

### 39 INTRODUCTION

40 Cardiovascular disease (CVD) is the leading cause of mortality with 17.9 million deaths globally  
41 which attributed to 32% of all deaths in 2019 (1). The burden is high especially at low and middle  
42 income countries (LMICs) that accounts for a three quarters of deaths (1). It is believed that  
43 approximately 23 million individuals will die from CVD by 2030 if current trends persist (2).  
44 CVD affects one third of young school going children globally, making it the largest epidemic to  
45 human population (3). It is one of the most significant public health challenges faced by  
46 adolescents, aged 10-24 years that accounts for over 25% of global population. In 2017, CVDs  
47 contributed to 26.9% of total deaths and 12.8% of total DALYs in Nepal (4). Surprisingly, deaths  
48 from CVD among 15-19 age group was 3.9 deaths per 100,000 that accounts for 4.8% of total  
49 CVD deaths in Nepal (4). This has the potential of creating a huge burden on macroeconomic  
50 conditions as CVD mainly occurs in productive age (1).

51 There are plenty of evidence that physical inactivity, unhealthy diet, smoking, and alcohol use  
52 are major risks associated with CVDs among adolescents and school going children (3). These  
53 risk factors starts in childhood, accelerate during adolescents though early clinical indications of

54 CVD are usually visible in adulthood (2). LMICs including Nepal are going through transition of  
55 rapid unplanned urbanization. Children living in urban areas do not have adequate space for  
56 physical activity. In addition, they are exposed with access to junks and fast foods, making them  
57 vulnerable to negative health impacts including risk of CVDs (5). There is evidence that 12.1 %  
58 of adolescents used tobacco, 15.7% of them used alcohol, 74.3% of them had low fruit and  
59 vegetable intake and 71.4 % reported low physical activity between 2003 and 2011 in LMICs  
60 setting (6). These figures are alarming and need immediate attention especially in this age group  
61 to combat CVD in LMICs such as in Nepal. However, there are limited evidence on CVD risk  
62 factors in the semi urban area of Nepal. Therefore, this study was conducted to assess the  
63 behavioral risk factors of CVDs among adolescents of the semi-urban area of Nepal.

## 64 **METHODS**

65 **Study design and setting:** A cross sectional study was conducted among secondary level school  
66 going adolescents of age between 16-19 years, in Tulsipur Sub-Metropolitan City, Nepal. Tulsipur  
67 Sub-Metropolitan City is in the mid-western region of Nepal, where rapid urbanization has  
68 occurred as people from neighboring districts descend for better education and opportunities.  
69 Provincial capitals being situated in the district, opening of fast-food chains, changing lifestyles,  
70 and feeding habits pose a risk of CVDS.

71 **Study population:** Students of grade 11 and 12 studying in both public and private schools  
72 between the age group of 16-19 years were included in the study. The students with a history of  
73 CVDs and other chronic diseases were excluded.

## 74 **Operational Definition of Key Variables Of The Study**

75 **Current smoker/ smokeless tobacco user/ alcohol user:** Those who are using the products in  
76 past 30 days preceding the study (7).

77 **Inadequate fruits and/ or vegetables intake:** Less than five servings of fruits and/or vegetable a  
78 day was considered as inadequate (7).

79 **Added salt intake:** It was defined for study participants who identified to add dietary salt to food  
80 always or often during eating (7).

81 **Consumption of processed food high in salt:** Processed food high in salt means foods that has  
82 been altered from their natural state, such as packaged salty locally available snacks canned salty  
83 food, salty food prepared at fast food restaurant, cheese, processed meat, etc. Consumption of  
84 processed food high in salt was defined for those participants who used to consume processed food  
85 high in salt always or often (7).

86 **Adequate physical activity:** Adequate physical activity was defined as moderate to vigorous  
87 activity greater than or equal to 60 min/day for all 7 days of previous week (7).

88 **Sedentary behavior:** Sedentary behavior included spending time in school, watching television  
89 and mobiles and playing video games. Spending time only by sitting or lying down for 9 hours or  
90 more, per day as defined as sedentary behavior (8).

## 91 **Data Sources**

92 Sampling frame was obtained from the education section of the sub-metropolitan city and from  
93 administration section of respective schools.

94 **Bias**

95 A self-administered questionnaire was used to assess the risk factors that might lead to self-  
96 reported and recall bias. Collecting data in a group setting might have been subjected to  
97 information bias which was addressed by not allowing more than 15 participants with adequate  
98 spacing. However, we have used standardized questions with appropriate probing. In addition,  
99 enough clarification of questions was provided before data collection to overcome those biases.

100 **Sample size:** The total calculated sample was 367 with the assumptions [ Number of secondary  
101 level school adolescents in Tulsipur Sub-Metropolitan City(N) = 5262 enlisted in sampling frame  
102 provided by education section of Tulsipur Sub-Metropolitan City, level of confidence at  $\alpha= 0.05$ ,  
103  $Z= 1.96$  at 95% of confidence interval,  $p=$  estimated proportion in population= $0.366$  (prevalence  
104 of currently using any tobacco products in Lumbini Province according to STEPs survey Nepal  
105 2019, 10% non-response rate]

106 **Sampling:** Stratified proportionate sampling method was used. First, the two strata were two  
107 secondary public and private schools. The acquired sample size was proportionately distributed to  
108 each stratum based on population distribution. Two secondary public schools and two secondary  
109 private schools were selected at random. Among selected schools, students were enrolled in study  
110 through simple random (lottery) method using random number generator. The students were from  
111 different streams which were further divided into grades 11 and 12 with a proportional distribution  
112 belonging to age group 16-19. Detailed sampling frame is depicted in fig 1

113

114

115

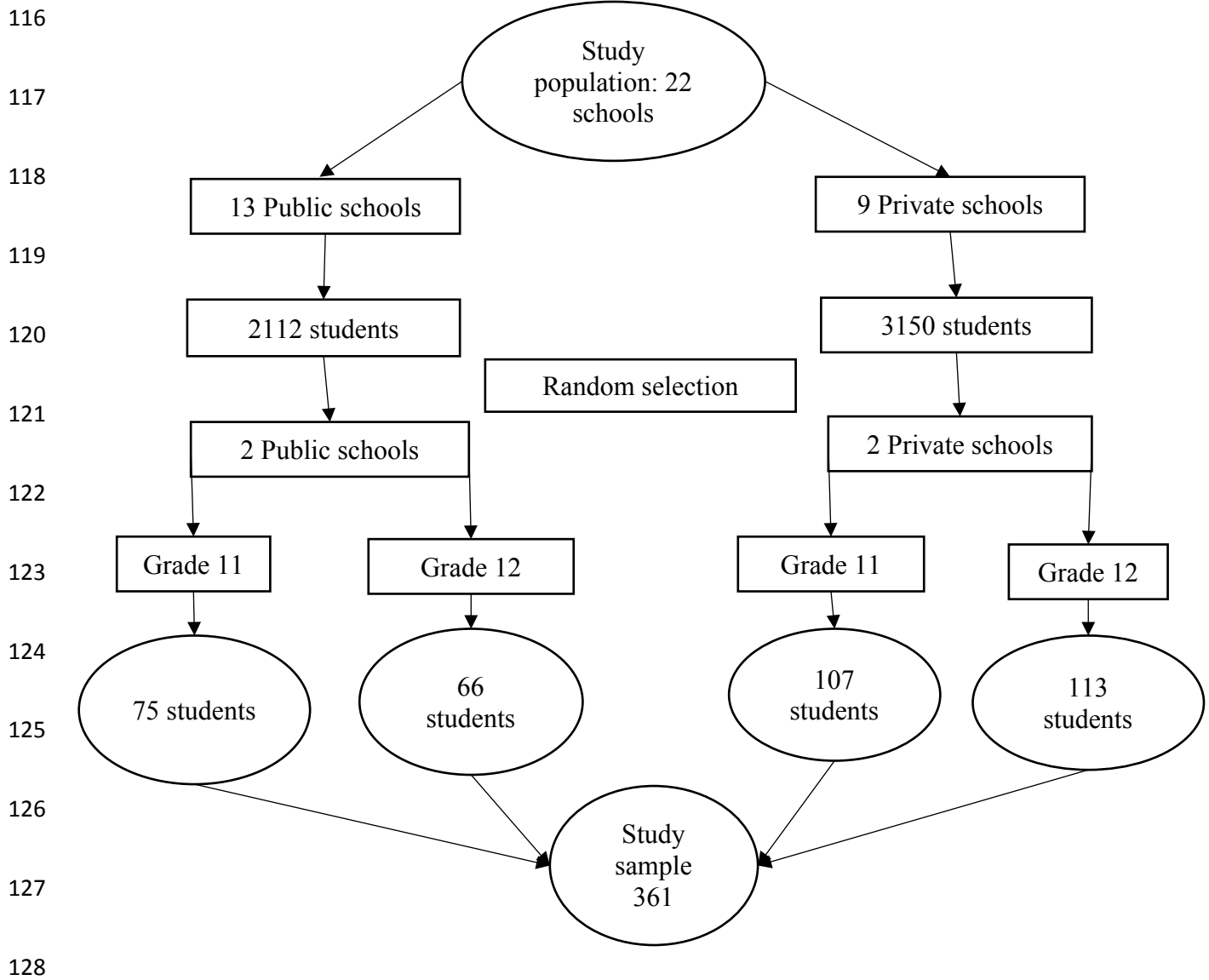


Figure 1 Sampling design

### 130 Data collection tools and techniques

131 Data was collected using self-administered Nepali questionnaire after obtaining written consent  
132 from parents and verbal consent from students. The structured questionnaire was adopted from a  
133 study conducted by Islam.et.al among school going children in Bangladesh after permission was  
134 obtained (9). Which contains 18 screening questions, covering all the five CVD risk behaviors.

135 The questionnaire was translated into Nepali and pretested after among 10 % of sample size in  
136 similar settings and revised as per needed. During data collection, strict supervision was done to  
137 minimize information bias by not keeping more than 15 participants in a room. The questions  
138 were clearly addressed and explained before data collection.

### 139 **Data processing and analysis**

140 All collected information was systematically compiled, coded, checked, and edited on the same  
141 day of data collection. Obtained data was entered in Epi-data version 4.6 and rechecked and  
142 cleaned after entry, to ensure the quality of data. Analysis was done using SPSS version 22.0.  
143 Univariate analysis was done by calculating frequencies, percentages, mean and median for social  
144 and demographic variables of respondents and parent's information. Bivariate analysis was done  
145 using chi-square test for association of socio-demographic characteristics and parents'  
146 information with behavioral risk factors of CVDs at the level of 95% of confidence level.

### 147 **Ethical considerations**

148 Ethics approval was taken from the Institutional Review Committee of Tribhuvan University  
149 Institute of Medicine, Nepal [IRC no: 355(6-11) E2 078/079]. The consent of respective parents  
150 of participants and permission of school authority was taken. Informed written consent was  
151 obtained from the respondents and parents, respectively. Anonymity and confidentiality were  
152 maintained by not sharing individually identifiable information.

### 153 **RESULTS**

154 A total of 367 participants filled in the self- administered questionnaire but six responses needed  
155 to be completed. Hence the final analysis comprised 361 responses.



156 **Sociodemographic characteristics of the school children**

157 The mean  $\pm$  SD age of the participants was 17.5 $\pm$ 0.92. More than half (54 %) of the participants  
158 were female and 52.6% belonged to Chhetri ethnicity. Around half of them (50.4%) were  
159 studying grade 11 and 61% from management faculty. Around three fourth (66.8 %) of them  
160 were from private education system and 76% were living with their family members.

161 **Table 1 Social and demographical characteristics of the participants**

162 n=361

| Socio-demographic characteristics | Number | Percentage |
|-----------------------------------|--------|------------|
| <b>Age</b>                        |        |            |
| 16                                | 60     | 16.6%      |
| 17                                | 113    | 31.3%      |
| 18                                | 143    | 39.6%      |
| 19                                | 45     | 12.5%      |
| Mean $\pm$ SD                     |        | ??         |
| <b>Gender</b>                     |        |            |
| Male                              | 164    | 45.4       |
| Female                            | 195    | 54.0       |
| Don't want to disclose            | 2      | 0.6        |

|                                 |     |      |
|---------------------------------|-----|------|
| <b>Ethnicity</b>                |     |      |
| Chhetri                         | 190 | 52.6 |
| Janajati                        | 68  | 18.8 |
| Brahmin                         | 65  | 18.0 |
| Dalit                           | 32  | 8.9  |
| Muslim                          | 2   | 0.6  |
| Others                          | 4   | 1.1  |
| <b>Religion</b>                 |     |      |
| Hindu                           | 354 | 98.1 |
| Christian                       | 4   | 1.1  |
| Muslim                          | 2   | 0.6  |
| Budhism                         | 1   | 0.3  |
| <b>Grade</b>                    |     |      |
| 11                              | 182 | 50.4 |
| 12                              | 179 | 49.6 |
| <b>Education System</b>         |     |      |
| Private                         | 241 | 66.8 |
| Public                          | 120 | 33.2 |
| <b>Current living condition</b> |     |      |

|                            |     |      |
|----------------------------|-----|------|
| Living with family members | 274 | 76   |
| Renting a room with friend | 61  | 16.9 |
| Alone                      | 21  | 5.8  |
| Others                     | 5   | 1.4  |

163

### 164 **Socio-demographic, medical and behavioral characteristics of parents**

165 Around one quarter (24 %) of respondent's mother and 10.5% of respondent's father had no  
166 formal schooling. The majority of respondent's father (29%) were involved in business whereas  
167 63 % of respondent's mother were homemakers. Overall, 20 % of them reported their parents  
168 have chronic illness, 15% were smoker, 24% consume smokeless tobacco and 27% consume  
169 alcohol.

170

### 171 **Table 2: Socio-demographical and medical characteristics of parents**

172

| Characteristics          | Numbers        | Percentage |
|--------------------------|----------------|------------|
| <b>Mother education</b>  | <b>n= 357*</b> |            |
| No formal schooling      | 90             | 24.9       |
| Less than primary school | 67             | 18.6       |
| Primary school           | 79             | 21.9       |
| Secondary school         | 60             | 16.6       |

|                          |                 |      |
|--------------------------|-----------------|------|
| High School              | 41              | 11.4 |
| College/University       | 18              | 5.0  |
| Post graduate degree     | 2               | 0.6  |
| <b>Mother occupation</b> | <b>n=357*</b>   |      |
| Home maker               | 229             | 63.4 |
| Agriculture              | 47              | 13.0 |
| Business                 | 39              | 10.8 |
| Government employee      | 23              | 6.4  |
| Non-government employee  | 8               | 2.2  |
| Foreign employment       | 6               | 1.7  |
| Unemployed               | 4               | 1.1  |
| Retired                  | 1               | 0.3  |
| <b>Father education</b>  | <b>n=350**</b>  |      |
| No formal education      | 38              | 10.5 |
| Less than primary school | 59              | 16.3 |
| Primary School           | 47              | 13.0 |
| Secondary school         | 101             | 28.0 |
| High School              | 67              | 18.6 |
| College/University       | 26              | 7.2  |
| Post graduate degree     | 13              | 3.6  |
| <b>Father occupation</b> | <b>n=350 **</b> |      |
| Business                 | 105             | 29.1 |
| Agriculture              | 101             | 28.0 |

|   |                 |                           |
|---|-----------------|---------------------------|
| Foreign employment                                  | 41              | 11.4                      |
| Non-government employee                             | 40              | 11.1                      |
| Government employee                                 | 32              | 8.9                       |
| Home-maker  | 15              | 4.2                       |
| Unemployed  | 12              | 3.3                       |
| Retired   | 4               | 1.1                       |
| <b>Chronic illness of father or mother or both</b>  | <b>n=358***</b> | <i>*multiple response</i> |
| Hypertension  | 48              | 13.4                      |
| Heart Disease                                       | 10              | 2.8                       |
| Diabetes mellitus                                   | 11              | 3                         |
| Cancer  | 1               | 0.3                       |
| Chronic respiratory                                 | 4               | 1.1                       |
| <b>Behavioral risks of father or mother or both</b> | <b>n=358***</b> | <i>*multiple response</i> |
| Smoking habit                                       | 53              | 14.8                      |
| Smokeless tobacco                                   | 88              | 24.4                      |
| Alcohol use   | 98              | 27.4                      |

\*4 children don't have mother

\*\*11 children don't have father

\*\*\* 3 children neither have father nor mother

173

174

175

176 **Distribution of CVD risk factors among the participants**

177 The most prevalent behavioral risk factor was the consumption of calorie drinks (99%), followed  
178 by sedentary behavior (60%). The third most prominent behavioral risk for CVD was insufficient  
179 fruit and vegetable intake (57%), followed by physical inactivity (35%), intake of processed food  
180 high in salt (33%), refined vegetable oil use in meal preparation (19%), added salt intake (15.5%).  
181 Similarly, the prevalence of current smoking tobacco, alcohol use and smokeless tobacco use was  
182 12%, 10%and 9%, respectively, as presented in table 3.

183

184

185

186 **Table 3 : Prevalence of behavioral risk factors among secondary school level**  
187 **adolescents**

188 **n=361**

| <b>Behavioral risk factor</b>                                 | <b>Number</b> | <b>Percentage (%)</b> |
|---|---------------|-----------------------|
| Calorie drink consumption                                     | 356           | 99                    |
| Sedentary behavior (Sitting or lying down for 9 hrs. or more) | 217           | 60                    |

|  |     |      |
|--|-----|------|
| Insufficient fruit and vegetable intake (less than 5 servings per day) | 206 | 57   |
| Physical inactivity  | 126 | 34   |
| Processed food high in salt intake (Always or often)                   | 119 | 33   |
| Refined vegetable oil use (cooking)                                    | 70  | 19   |
| Salt addition in food (Always or often)                                | 56  | 15.5 |
| Current smoking tobacco use  | 44  | 12   |
| Current alcohol user   | 37  | 10   |
| Current smokeless tobacco use  | 31  | 9    |

189 Similarly, processed food high in salt intake was associated with grade ( $p = 0.007$ ), ethnicity ( $p =$   
 190  $0.028$ ), and mother's education ( $p = 0.012$ ). In addition, added salt intake was associated with  
 191 mother's education ( $p = 0.049$ ) whereas calorie drink consumption was not found to be associated  
 192 with any factors as presented in Table 4.

193 **Table 4: Association of processed food high in salt consumption, calorie drink**  
 194 **consumption and added salt intake**

195 **n=361**

| <b>Characteristics</b> | <b>Categories</b>      | <b>Processed food consumption (always or often) n (%)</b> | <b>Calorie drink consumption(yes) n (%)</b> | <b>Added salt intake (always or often) n (%)</b> |
|------------------------|------------------------|---|---|--|
| <b>Age</b>             | 16-17                  | 63(36.4%)   | 170(98.3%)                                  | 26(15.0%)  |
|                        | 18-19                  | 56(29.8%)   | 186(98.9%)                                  | 30(16.0%)  |
|                        | p value                | 0.181   | 0.925*                                      | 0.808  |
| <b>Gender</b>          | Male                   | 47(28.7%)   | 164(100%)                                   | 25(15.2%)  |
|                        | Female                 | 72(36.9%)   | 190(97.4%)                                  | 31(15.9%)  |
|                        | Don't want to disclose | 0(0.0%)   | 2(100%)                                     | 0(0.0%)  |
|                        | p value                | 0.199**   | 0.089**                                     | 0.931**  |
| <b>Ethnicity</b>       | Brahmin/Chhetri        | 93(36.5%)   | 250(98.0%)                                  | 40(15.7%)  |
|                        | Others                 | 26(24.5%)   | 106(100%)                                   | 16(15.1%)  |
|                        | p value                | 0.028   | 0.327                                       | 0.887  |
| <b>Religion</b>        | Hindu                  | 116(32.8%)  | 349(98.6%)                                  | 54(15.3%)  |
|                        | Others                 | 3(42.9%)  | 7(100%)                                     | 2(28.6%)   |
|                        | p value                | 0.876*  | 1*  | 0.662*   |
| <b>Grade</b>           | 11                     | 72(39.6%)   | 32(100%)                                    | 33(18.1%)  |
|                        | 12                     | 47(26.3%)   | 68(100%)                                    | 23(12.8%)  |
|                        | p value                | 0.007   | 0.061                                       | 0.166  |
| <b>Education</b>       | Public                 | 43(35.8%)   | 119(99.2%)                                  | 21(17.5%)  |



|                                 |                            |            |            |           |
|---------------------------------|----------------------------|------------|------------|-----------|
| <b>System</b>                   | Private                    | 76(31.5%)  | 237(98.3%) | 35(14.5%) |
|                                 | p value                    | 0.413      | 1          | 0.462     |
| <b>Current living condition</b> | Living with family members | 87 (31.8%) | 271(98.9%) | 43(15.7%) |
|                                 | Others                     | 32(36.8%)  | 85(97.7%)  | 13(14.9%) |
|                                 | p value                    | 0.385      | 0.403      | 0.866     |
| <b>Mother* education</b>        | No formal schooling        | 20(22.2%)  | 89(98.9%)  | 20(22.2%) |
|                                 | Formal schooling           | 98(36.7%)  | 264(98.9%) | 36(13.5%) |
|                                 | p value                    | 0.012      | 1*         | 0.049     |
| <b>Mother* occupation</b>       | Employed                   | 116(33.0%) | 348(98.9%) | 54(15.3%) |
|                                 | Unemployed                 | 2(40.0%)   | 5(100%)    | 2(40.0%)  |
|                                 | p value                    | 1*         | 1*         | 0.375*    |
| <b>Father** education</b>       | No formal schooling        | 13(34.2%)  | 38(100%)   | 7(18.4%)  |
|                                 | Formal schooling           | 105(33.7%) | 308(98.7%) | 48(15.4%) |
|                                 | p value                    | 0.945      | 1*         | 0.627     |
| <b>Father** occupation</b>      | Employed                   | 114(34.1%) | 330(98.8%) | 51(15.3%) |
|                                 | Unemployed                 | 4(25.0%)   | 16(100.0%) | 4(25.0%)  |
|                                 | p value                    | 0.450      | 1*         | 0.488*    |

|   |         |            |            |           |
|---|---------|------------|------------|-----------|
| <b>Parent's***<br/>chronic<br/>illness</b>        | Yes     | 22(31.4%)  | 69(98.6%)  | 8(11.4%)  |
|   | No      | 96(33.3%)  | 285(99.0%) | 48(16.7%) |
|   | p value | 0.761      | 0.583      | 0.279     |
| <b>Parent's**<br/>* smoking<br/>habit</b>         | Yes     | 15(28.3%)  | 51(96.2%)  | 11(20.8%) |
|   | No      | 102(33.4%) | 303(99.3%) | 45(14.8%) |
|   | p value | 0.461      | 0.106      | 0.267     |
| <b>Parent's**<br/>* smokeless<br/>tobacco use</b> | Yes     | 31(35.2%)  | 86(97.7%)  | 16(18.2%) |
|   | No      | 86(31.9%)  | 268(99.3%) | 40(14.8%) |
|   | p value | 0.558      | 0.254      | 0.450     |
| <b>Parent's**<br/>* drinking<br/>habit</b>        | Yes     | 34(34.7%)  | 96(98.0%)  | 16(16.3%) |
|   | No      | 83(31.9%)  | 258(99.2%) | 40(15.4%) |
|   | p value | 0.618      | 0.302      | 0.827     |

\*n= 357 (four children didn't have mother) \*\*n= 350 (eleven children didn't have father)

\*\*\*n= 358(three children didn't have both of parents)

196

197 Further, sedentary behavior was associated with education system (p = 0.003) and physical  
198 inactivity was associated with education system (p <0.001), mother's education (0.025), and father  
199 education (p = 0.046). Insufficient fruit and vegetable intake was not associated with any of the  
200 variables as presented in table 5.

201 **Table 5: Association of sedentary behaviour, insufficient fruit and vegetable intake, and**  
202 **physical inactivity**

203

**n=361**

| <b>Characteristics</b> | <b>Categories</b>      | <b>Sedentary behavior</b> | <b>Insufficient fruit and vegetable intake</b> | <b>Physical inactivity</b> |
|------------------------|------------------------|---------------------------|--|----------------------------|
| <b>Ages</b>            | 16-17                  | 34(56.7%)                 | 96(55.5%)                                      | 54(31.2%)                  |
|                        | 18-19                  | 43(38.1%)                 | 110(58.5%)                                     | 72(38.3%)                  |
|                        | p value                | 0.904                     | 0.563  | 0.158                      |
| <b>Sex</b>             | Male                   | 98(59.8%)                 | 95(57.9%)                                      | 62(37.8%)                  |
|                        | Female                 | 117(60.0%)                | 110(56.4%)                                     | 62(31.8%)                  |
|                        | Don't want to disclose | 2(100%)                   | 1(50.0%)                                       | 2(100%)                    |
|                        | p value                | 0.720                     | 0.928  | 0.066                      |
| <b>Ethnicity</b>       | Brahmin/Chhetri        | 156(61.2%)                | 144(56.5%)                                     | 92(36.1.6%)                |
|                        | Others                 | 61(57.5%)                 | 62(58.5%)                                      | 34(32.1%)                  |
|                        | p value                | 0.512                     | 0.240  | 0.7                        |
| <b>Religion</b>        | Hindu                  | 212(59.9%)                | 203(57.3%)                                     | 123(34.7%)                 |
|                        | Others                 | 5(71.4%)                  | 3(42.9%)                                       | 3(42.9%)                   |
|                        | p value                | 0.820*                    | 0.703*   | 0.964*                     |
| <b>Grade</b>           | 11                     | 104(57.1%)                | 98(53.8%)                                      | 58(31.9%)                  |
|                        | 12                     | 113(63.1%)                | 108(60.3%)                                     | 68(38.0%)                  |

|                                 |                            |              |            |                  |
|---------------------------------|----------------------------|--------------|------------|------------------|
|                                 | p value                    | 0.246        | 0.213      | 0.223            |
| <b>Education system</b>         | Public                     | 85(70.8%)    | 76(63.3%)  | 24(20.0%)        |
|                                 | Private                    | 132(54.8%)   | 130(53.9%) | 102(42.3%)       |
|                                 | p value                    | <b>0.003</b> | 0.089      | <b>&lt;0.001</b> |
| <b>Current living condition</b> | Living with family members | 163(59.5%)   | 155(56.6%) | 98(35.8%)        |
|                                 | Others                     | 54(62.1%)    | 51(58.6%)  | 28(32.2%)        |
|                                 | p value                    | 0.669        | 0.736      | 0.541            |
| <b>Mother* education</b>        | No formal schooling        | 51(56.7%)    | 44(48.9%)  | 46(25.6%)        |
|                                 | Formal schooling           | 164(61.4%)   | 159(59.6%) | 103(38.6%)       |
|                                 | p value                    | 0.425        | 0.077      | <b>0.025</b>     |
| <b>Mother* occupation</b>       | Employed                   | 78(63.4%)    | 75(61.0%)  | 46(37.4%)        |
|                                 | Unemployed                 | 139(58.4%)   | 131(55.0%) | 80(33.6%)        |
|                                 | p value                    | 0.357        | 0.280      | 0.475            |
| <b>Father** education</b>       | No formal schooling        | 18(47.4%)    | 18(47.4%)  | 8(21.1%)         |
|                                 | Formal schooling           | 194(62.2%)   | 184(59.0%) | 117(37.5%)       |
|                                 | p value                    | 0.078        | 0.172      | <b>0.046</b>     |

|  |            |                |            |            |
|--|------------|----------------|------------|------------|
| <b>Father**<br/>occupation</b>                   | Employed   | 203(60.8<br>%) | 196(58.7%) | 118(35.3%) |
|  | Unemployed | 9(56.3%)       | 6(37.5%)   | 7(43.8%)   |
|  | p value    | 0.717          | 0.094      | 0.492      |
| <b>Parent's***<br/>chronic illness</b>           | Yes        | 43(61.4%)      | 37(52.9%)  | 24(34.3%)  |
|  | No         | 172(59.7<br>%) | 168(58.3%) | 102(35.4%) |
|  | p value    | 0.794          | 0.406      | 0.859      |
| <b>Parent's***<br/>smoking habit</b>             | Yes        | 28(52.8%)      | 26(49.1%)  | 18(34.0%)  |
|  | No         | 188(61.6<br>%) | 179(58.7%) | 107(35.1%) |
|  | p value    | 0.226          | 0.191      | 0.875      |
| <b>Parent's***<br/>smokeless<br/>tobacco use</b> | Yes        | 46(47.70<br>%) | 54(61.4%)  | 34(38.6%)  |
|  | No         | 100(37.0<br>%) | 151(55.9%) | 91(33.7%)  |
|  | p value    | 0.075          | 0.371      | 0.399      |
| <b>Parent's***<br/>drinking habit</b>            | Yes        | 64(65.3%)      | 55(56.1%)  | 41(41.8%)  |
|  | No         | 152(58.5<br>%) | 150(57.7%) | 84(32.3%)  |
|  | p value    | 0.238          | 0.789      | 0.092      |

*\*n= 357 (four children don't have mother), \*\*n= 350 (eleven children don't have father),*

*\*\*\*n= 358(three children don't have both of parents)*

204 Likewise, refined vegetable oil use was associated with ethnicity (p=0.014), education system  
 205 (p=0.001), current living condition (p=0.026), parents' chronic illness (0.026), parents' alcohol  
 206 use (p= 0.003). Current smokers were associated with gender (p=0.001), ethnicity (p=0.012),  
 207 mother education (p=0.029), parents smoking habit (p=0.002), parents' smokeless tobacco habit  
 208 (p=0.001). Current alcohol use was significantly associated with ethnicity (p = 0.05), parent's  
 209 smokeless tobacco use (p = 0.017), and parent's alcohol use (p = 0.022), and current smokeless  
 210 tobacco use was significantly associated with gender (p =0.001) as presented in table 6.

211 **Table 6: Association of refined vegetable oil use, current tobacco smoking, current alcohol**  
 212 **use and current smokeless tobacco use**

213 n=361

| Characteristics | Categories      | Refined vegetable oil user n (%) | Current smoker n (%) | Current alcohol user n(%) | Current smokeless tobacco use n(%) |
|-----------------|-----------------|----------------------------------|----------------------|---------------------------|------------------------------------|
| Age             | 16-17           | 34(19.7%)                        | 17(9.8%)             | 11(6.4%)                  | 12(6.9%)                           |
|                 | 18-19           | 36(19.1%)                        | 27(14.4%)            | 26(13.8%)                 | 19(10.1%)                          |
|                 | p value         | 0.904                            | 0.188                | 0.019                     | 0.283                              |
| Gender          | Male            | 32(19.5%)                        | 38(23.2%)            | 34(20.7%)                 | 28(17.1%)                          |
|                 | Female          | 40(20.5%)                        | 6(3.1%)              | 3(1.5%)                   | 3(1.5%)                            |
|                 | p value         | 0.061                            | <0.001               | <0.001                    | <0.001                             |
| Ethnicity       | Brahmin/Chhetri | 41(16.1%)                        | 24(9.4%)             | 21(8.2%)                  | 22(8.6%)                           |

|                                 |                            |           |           |           |          |
|---------------------------------|----------------------------|-----------|-----------|-----------|----------|
|                                 | Others                     | 29(27.4%) | 20(18.9%) | 16(15.1%) | 9(8.5%)  |
|                                 | p value                    | 0.014     | 0.012     | 0.05      | 0.966    |
| <b>Religion</b>                 | Hindu                      | 68(19.2%) | 42(11.9%) | 36(10.2%) | 30(8.5%) |
|                                 | Others                     | 2(28.6%)  | 2(28.6%)  | 1(14.3%)  | 1(14.3%) |
|                                 | p value                    | 0.890*    | 0.450*    | 1*        | 1*       |
| <b>Grade</b>                    | 11                         | 39(21.4%) | 20(11.0%) | 14(7.7%)  | 14(7.7%) |
|                                 | 12                         | 35(19.6%) | 24(13.4%) | 23(12.8%) | 17(9.5%) |
|                                 | p value                    | 0.659     | 0.482     | 0.106     | 0.541    |
| <b>Education system</b>         | Public                     | 37(30.8%) | 18(15.0%) | 14(11.7%) | 10(8.3%) |
|                                 | Private                    | 37(15.4%) | 26(10.8%) | 23(9.5%)  | 21(8.7%) |
|                                 | p value                    | 0.001     | 0.249     | 0.531     | 0.903    |
| <b>Current living condition</b> | Living with family members | 46(16.8%) | 32(11.7%) | 31(11.3%) | 24(8.8%) |
|                                 | Others                     | 24(27.6%) | 12(13.8%) | 6(6.9%)   | 7(8.0%)  |
|                                 | p value                    | 0.026     | 0.599     | 0.237     | 0.836    |
| <b>Mother* education</b>        | No formal schooling        | 21(23.3%) | 5(5.6%)   | 6(6.7%)   | 5(5.6%)  |
|                                 | Formal schooling           | 48(18.0%) | 38(14.2%) | 31(11.6%) | 25(9.4%) |
|                                 | p value                    | 0.266     | 0.029     | 0.183     | 0.260    |
| <b>Mother* occupation</b>       | Employed                   | 67(19.0%) | 42(11.9%) | 35(9.9%)  | 29(8.2%) |
|                                 | Unemployed                 | 2(40.0%)  | 1(20.0%)  | 2(40.0%)  | 1(20.0%) |
|                                 | p value                    | 0.543     | 1         | 0.147     | 0.897    |

|  |                     |           |           |           |           |
|--|---------------------|-----------|-----------|-----------|-----------|
| <b>Father**<br/>Education</b>                | No formal schooling | 8(21.1%)  | 5(13.2%)  | 2(5.3%)   | 2(5.3%)   |
|  | Formal schooling    | 60(19.2%) | 38(12.2%) | 33(10.6%) | 28(9.0%)  |
|  | p value             | 0.789     | 1         | 0.457     | 0.642     |
| <b>Father***<br/>Occupation</b>              | Employed            | 65(19.5%) | 42(12.6%) | 34(10.2%) | 29(8.7%)  |
|  | Unemployed          | 3(18.8%)  | 1(6.3%)   | 1(6.3%)   | 1(6.3%)   |
|  | p value             | 1         | 0.717     | 0.932*    | 1         |
| <b>Parent's***<br/>chronic illness</b>       | Yes                 | 21(30.0%) | 6(8.6%)   | 8(11.4%)  | 6(8.6%)   |
|  | No                  | 52(18.1%) | 37(12.8%) | 29(10.1%) | 24(8.3%)  |
|  | p value             | 0.026     | 0.324     | 0.738     | 0.949     |
| <b>Parent's***<br/>smoking habit</b>         | Yes                 | 15(28.3%) | 13(24.5%) | 9(17.0%)  | 5(9.4%)   |
|  | No                  | 58(19.0%) | 30(9.8%)  | 28(9.2%)  | 25(8.2%)  |
|  | p value             | 0.121     | 0.002     | 0.085     | 0.764     |
| <b>Parent's***<br/>smokeless tobacco use</b> | Yes                 | 22(25.0%) | 20(22.7%) | 15(17.0%) | 9(10.2%)  |
|  | No                  | 51(18.9%) | 23(8.5%)  | 22(8.1%)  | 21(7.8%)  |
|  | p value             | 0.217     | <0.001    | 0.017     | 0.471     |
| <b>Parent's***<br/>alcohol use</b>           | Yes                 | 30(30.6%) | 16(16.3%) | 16(16.3%) | 12(12.2%) |
|  | No                  | 43(16.5%) | 27(10.4%) | 21(8.1%)  | 18(6.9%)  |
|  | p value             | 0.003     | 0.123     | 0.022     | 0.105     |

214 \*n= 357 (four children don't have mother), \*\*n= 350 (eleven children don't have father)

215 \*\*\*n= 358(three children don't have both of parents)



## 216 **DISCUSSION**

217 Our study demonstrated the high burden of behavioural risk factors among school going  
218 adolescents was disproportionately distributed with male children and students from lower grades,  
219 from lower social ethnic groups (considered), private school, staying away from family. In  
220 addition, students whose parents were consuming alcohol, tobacco products and history of chronic  
221 illness had higher rates of behavioural risk factors.

### 222 **Insufficient physical activity and Sedentary behavior**

223 Insufficient physical activity is the 4th leading risk factor for mortality (10). People with  
224 insufficient physical activity have a 20% to 30% increased risk mortality compared to those who  
225 engage moderate intensity physical activity (10). Our study showed the insufficient physical  
226 activity among 35% of adolescents which is higher than insufficient levels of physical activity  
227 (10.8%) among adolescents (15-17) of Nepal as reported in STEPS survey 2019 (7), and study  
228 conducted in Bangladesh (8%) among adolescent (9). However, our finding is comparable (38%)  
229 with the study from Western part of Nepal (11) and very lower (85% ) than the Global School  
230 Based Student health Survey 2015 findings of Nepal (6) The reason of such discrepancies could  
231 be due to recent upgrading of Tulsipur to sub-metropolitan city (urban) from municipality and  
232 other socio-cultural differences. In addition, a higher percentage of students were engaged in  
233 household work and walking was the most preferred method for going school in this study. The  
234 previous study at Lekhnath Municipality showed significant association of physical inactivity with  
235 study grades (11). However, our study found a significant association of physical inactivity with  
236 education system, mother education and father education. Children of parent with upper secondary  
237 education or above have shown significant association with increased physical activity (12).

238 There is evidence that prolonged periods sedentary time was associated with increased risk of CVD  
239 mortality, and each additional sedentary time was associated with an increased CVD mortality risk  
240 (13). Our study also reported a higher (60%) sedentary behavior among adolescents which is  
241 associated with education system. A study from Brazil reported prevalence of sedentary behavior  
242 among adolescent was 58.1% (14). The factors such as public schooling, and no formal parental  
243 education are indirect indicators of lower socio-economic status and several studies have indicated  
244 increased income results in lower physical activities (15). Many other studies have reported that  
245 sedentary behavior is more prevalent in children from urban area (16–18). It might be due to less  
246 availability of playing ground and space for physical activities and high opportunities of sedentary  
247 life style such as access to transportation and other high scree time (video games... etc.).

#### 248 **Low fruit and vegetable intake and Calorie drink consumption**

249 Low fruit and vegetable intake is associated with an increased risk of stroke by 11% and ischemic  
250 heart disease by 31% (19). WHO estimates that 2.7 million lives could be saved each year if fruits  
251 and vegetables are consumed adequately (19). More than half (57.1 %) of adolescents were taking  
252 insufficient fruit and vegetable in our study which is similar (58 %) to the findings of the study  
253 conducted in Western part of Nepal (11). However, our findings is lower than findings of  
254 Bangladesh (98%) among adolescents aged 12-18 (9). The difference in Bangladesh could be due  
255 to differential inclusion criteria of both rural and urban adolescents of age group 12-18 in their  
256 study (9). There were not any associated socio-demographic or parental factors identified in our  
257 study.

258 Our study reported the high consumption (84%) of the calorie drink among adolescents which is  
259 corroborates (83.1%) to study from the Western part of Nepal (11). In contrast, our findings is  
260 higher than that of nation-wide survey Global School Based Student Health Survey Nepal 2015

261 (33.3%) and the study conducted in India (44.8%) (6, 20). These differences could be due to focus  
262 of our study to an age group from urban area. In addition, it could be due to rapid unplanned  
263 urbanization of city replacing access to fruit and vegetable intake by other easily available fast and  
264 junk foods and calorie drinks among adolescents. However, we did not find any association with  
265 calorie drink consumption.

### 266 **Added salt intake and consumption of processed food high in salt**

267 High salt intake is one of the most important determinants of high blood pressure and increased  
268 risk of cardiovascular disease. The prevalence of added salt intake (always or often) was found  
269 15.5% in our study which is lower (66.9 %) than that of study conducted in Bangladesh (9). These  
270 discrepancies could be due to differential study population and food preference practices among  
271 two countries. In addition, mother education was associated (OR 1.8) with added salt intake in  
272 our study. Like most of the South Asia countries, mothers are the one who mostly prepared food  
273 for their kids in Nepal. And due to illiteracy of mothers on harmful health impacts of added extra  
274 table salt, adolescents might be exposed to such risk factors. It demands education to the kids  
275 including their parents is very important to tackle such escalating CVD risk factors among  
276 adolescents.

277 In addition, our study reported 33.0% consumption of processed food high in salt which is lower  
278 (75%) the findings of Global School Health Based Health Survey and then a study conducted in  
279 India (49.2% ) among school children (20,21). The differences of prevalence could be due to  
280 differential presentation of finding as reported in those study as consumption for at least once a  
281 day per week and our study reported basis of always/daily or often/most days a week consumption  
282 of processed food high in salt. In addition, this could be due to socio-economic background

283 associated with consumption of processed food high in salt due to available of more pocket money  
284 among school going adolescents and broadening of health knowledge according to grades.

285

## 286 **Smoking Tobacco use and Smokeless tobacco use**

287 Acute cardiovascular effects, like those caused by cigarette smoking, are seen with the use of  
288 smokeless tobacco. Each year, about 5 million people die as a result of direct tobacco smoking  
289 around the world, with many of these deaths occurring prematurely where tobacco use is  
290 responsible for 10% of all deaths from cardiovascular diseases (22). The prevalence of current  
291 smoking tobacco use found in this study is higher than the prevalence found in Global School  
292 Health Survey and a study conducted in Bangladesh (9, 21). Current smoking tobacco use was  
293 found significantly associated with gender (OR=0.1015), ethnicity (OR=2.238), mother education  
294 (OR=2.821), parent's smoking habit (0.336) and parent's smokeless tobacco use(OR=0.317). The  
295 reasons behind association could be due imitating of parental behavior by adolescent as our study  
296 found the association with parents smoking habits . It is found that children from highest wealth  
297 quintile are likely to be smokers than from lower health quintile, association with no formal  
298 mothers education in our study can be linked with lower socio-economic status (23).

299 In addition, current smokeless tobacco user in our study were similar to the findings of Global  
300 School Health Based Survey and higher than study of Bangladesh (9, 21). The relative risk of  
301 being current user of smokeless tobacco among males was 11 times higher than female in our study  
302 which is comparable to previous studies (23). The reason could be stereotypical society in Nepal  
303 accepting and promoting the tobacco consumption among males. In addition, it could be due to  
304 lack of demand reduction provisions of tobacco adopted by study area and easily accessibility of  
305 cigarette to adolescents in market. Importantly, it could be due to poor implication of tobacco

306 demand reduction policy in Nepal (24) leading to easily accessibility of tobacco products to minors  
307 in the market. Our study had included some independent variables such as education system,  
308 current living condition and socio-demographic, medical and behavioral characteristics of parents  
309 which had not been included in most of previous literature.

### 310 **Harmful use of alcohol**

311 Worldwide, 3 million deaths every year result from harmful use of alcohol which is attributed to  
312 5.3% of all deaths (25). There is evidence that alcohol consumption is positively associated with  
313 risk of atrial fibrillation, heart failure, and hemorrhagic stroke (26–28). Overall 10.2% of  
314 adolescents were found to have drinking alcohol currently which is higher than the findings of  
315 Global School Health Based Survey (6). However, it is lower than the study findings from Western  
316 Nepal (11). The difference could be due to easily accessibility of various alcoholic drinks in the  
317 market (6). This study showed significant association with age (OR=0.401) gender (OR=16.738),  
318 ethnicity (OR=0.505), parent's smokeless tobacco use (OR=2.314) and parent's alcohol use  
319 (2.221). The reason for association with age, gender and parental habits could be due to cultural  
320 background, gender stereotypes and influence of parent's behavior on children. This is an area of  
321 future research and intervention planning focusing on both parents and children.

### 322 **STRENGTHS AND LIMITATIONS**

323 Our study studied the relation of some crucial factors such as the education system, current living  
324 conditions and socio-demographic, medical and behavioral characteristics of parents with CVD  
325 risk, which was focused by limited previous studies to our knowledge.

326 Several factors might affect the findings of this study. First, the results represent the prevalence  
327 of adolescents aged 16-19 years in Tulsipur Sub-Metropolitan City which cannot be generalized

328 in a general adolescent population of the different settings of Nepal, such as rural areas. A self-  
329 administered questionnaire was used to assess the risk factors that might lead to self-reported and  
330 recall bias. Collecting data in a group setting might have been subjected to information bias which  
331 was addressed by not allowing more than 15 participants with adequate spacing. However, we  
332 have used standardized questions with appropriate probing. In addition, enough clarification of  
333 questions was provided before data collection to overcome those biases.

### 334 **CONCLUSION**

335 This study provided evidence that most behavioral cardiovascular disease risk factors were  
336 disproportionately distributed among different subgroups of adolescents, such as males,  
337 underprivileged minority ethnic groups, parental history of CVDs and parental education. A high  
338 prevalence of behavioral cardiovascular disease risk factors among adolescents may result in the  
339 emergence of CVD in their adult age or later stage. This would be alarming in future which needs  
340 high-cost interventions. Thus, there is an urgent need for high-risk group intervention, including  
341 both parents and children. In addition, adequate monitoring of the implementation of already  
342 developed policies, such as banning smoking and alcoholic products for adolescents and  
343 discouraging the marketing of fast/processed foods with salt and high-caloric drink at the  
344 municipal level (local government) is urgently needed.

### 345 **GENERALIBILITY**

346 Tulsipur sub-metropolitan city being situated in inner terai region having characteristics of both  
347 terai and hilly region and with unplanned rapid urbanization it has a mixed feature of urban and  
348 rural area. This study has adequate sample size can be generalized for urban, rural, hilly and plain  
349 settings of LMICs.

350 **FUNDING**

351 This study wasn't funded by any institution or organization.

352 **COMPETING INTERESTS**

353 The authors have no competing interests to declare.

354 **REFERENCES**

- 355 1. World Health Organisation. Fact sheets: Cardiovascular diseases (CVDs). [cited 2022 Nov  
356 12]. Available from: [https://www.who.int/news-room/fact-sheets/detail/cardiovascular-](https://www.who.int/news-room/fact-sheets/detail/cardiovascular-diseases-(cvds))  
357 [diseases-\(cvds\)](https://www.who.int/news-room/fact-sheets/detail/cardiovascular-diseases-(cvds))
- 358 2. Raeside R, Partridge SR, Singleton A, Redfern J. Cardiovascular Disease Prevention in  
359 Adolescents: {eHealth}, {Co}-{Creation}, and {Advocacy}. Med Sci [Internet]. 2019 Feb  
360 [cited 2022 Jan 20];7(2):34. Available from:  
361 <https://www.ncbi.nlm.nih.gov/pmc/articles/PMC6410225/>
- 362 3. Amoah J, Said DSM, Rampal L, Manaf RA, Ibrahim N, Amoah DL. Cardiovascular  
363 {Disease} {Risk} {Factors} among {Secondary} {School} {Students}: {A} {Review}.  
364 Int J Health Sci (Qassim). 2019;(8):11.
- 365 4. Bhattarai S, Aryal A, Pyakurel M, Bajracharya S, Baral P, Citrin D, et al. Cardiovascular  
366 disease trends in {Nepal} – {An} analysis of global burden of disease data 2017. Int J  
367 Cardiol Hear \& Vasc [Internet]. 2020 Jul [cited 2021 Nov 7];30:100602. Available from:  
368 <https://www.ncbi.nlm.nih.gov/pmc/articles/PMC7399110/>
- 369 5. Ramadass S, Gupta SK, Nongkynrih B. Adolescent health in urban India. J Fam Med Prim  
370 Care [Internet]. 2017 [cited 2022 Nov 19];6(3):468. Available from:  
371 [/pmc/articles/PMC5787938/](https://www.ncbi.nlm.nih.gov/pmc/articles/PMC5787938/)
- 372 6. Caleyachetty R, Echouffo-Tcheugui JB, Tait CA, Schilsky S, Forrester T, Kengne AP.  
373 Prevalence of behavioural risk factors for cardiovascular disease in adolescents in low-  
374 income and middle-income countries: an individual participant data meta-analysis. Lancet  
375 Diabetes \& Endocrinol [Internet]. 2015 Jul [cited 2022 May 21];3(7):535–44. Available



- 376 from: <https://www.sciencedirect.com/science/article/pii/S2213858715000765>
- 377 7. ncd-steps-survey-2019-compressed.pdf [Internet]. [cited 2021 Nov 15]. Available from:
- 378 [https://www.who.int/docs/default-source/nepal-documents/ncds/ncd-steps-survey-2019-](https://www.who.int/docs/default-source/nepal-documents/ncds/ncd-steps-survey-2019-compressed.pdf?sfvrsn=807bc4c6_2)
- 379 [compressed.pdf?sfvrsn=807bc4c6\\_2](https://www.who.int/docs/default-source/nepal-documents/ncds/ncd-steps-survey-2019-compressed.pdf?sfvrsn=807bc4c6_2)
- 380 8. Van Dyck D, Cerin E, De Bourdeaudhuij I, Hinckson E, Reis RS, Davey R, et al.
- 381 International Study of Objectively-measured Physical Activity and Sedentary Time with
- 382 Body Mass Index and Obesity: IPEN Adult Study. *Int J Obes (Lond)* [Internet]. 2015 Feb
- 383 11 [cited 2022 Nov 21];39(2):199. Available from: [/pmc/articles/PMC4282619/](https://pubmed.ncbi.nlm.nih.gov/24282619/)
- 384 9. Islam TMM, Banik PC, Barua L, Islam SMS, Chowdhury S, Ahmed MSAM.
- 385 Cardiovascular disease risk factors among school children of {Bangladesh}: a cross-
- 386 sectional study. *BMJ Open* [Internet]. 2020 Oct [cited 2021 Sep 13];10(10):e038077.
- 387 Available from: <https://bmjopen.bmj.com/content/10/10/e038077>
- 388 10. Physical inactivity [Internet]. [cited 2022 Jun 22]. Available from:
- 389 <https://www.who.int/data/gho/indicator-metadata-registry/imr-details/3416>
- 390 11. Ghimire HP, Dhungana A. Cardiovascular Risk Behavior Amongst Adolescents of
- 391 Lekhnath Municipality of Kaski district, Nepal. *J Gandaki Med Coll* [Internet]. 2018 Aug
- 392 17 [cited 2021 Dec 2];11(1):10–3. Available from:
- 393 [https://www.researchgate.net/publication/327085641\\_Cardiovascular\\_Risk\\_Behavior\\_Am-](https://www.researchgate.net/publication/327085641_Cardiovascular_Risk_Behavior_Amongst_Adolescents_of_Lekhnath_Municipality_of_Kaski_district_Nepal)
- 394 [ongst\\_Adolescents\\_of\\_Lekhnath\\_Municipality\\_of\\_Kaski\\_district\\_Nepal](https://www.researchgate.net/publication/327085641_Cardiovascular_Risk_Behavior_Amongst_Adolescents_of_Lekhnath_Municipality_of_Kaski_district_Nepal)
- 395 12. Ruedl G, Niedermeier M, Wimmer L, Ploner V, Pocecco E, Cocca A, et al. Impact of
- 396 Parental Education and Physical Activity on the Long-Term Development of the Physical
- 397 Fitness of Primary School Children: An Observational Study. *Int J Environ Res Public*

- 398 Health [Internet]. 2021 Aug 2 [cited 2022 Dec 4];18(16). Available from:  
399 [/pmc/articles/PMC8391261/](#)
- 400 13. Sedentary {Behavior} and {Cardiovascular} {Disease} {Risk}: {Mediatin}... : {Exercise}  
401 and {Sport} {Sciences} {Reviews} [Internet]. [cited 2022 Jun 22]. Available from:  
402 [https://journals.lww.com/acsm-](https://journals.lww.com/acsm-essr/fulltext/2017/04000/sedentary_behavior_and_cardiovascular_disease.5.aspx)  
403 [essr/fulltext/2017/04000/sedentary\\_behavior\\_and\\_cardiovascular\\_disease.5.aspx](https://journals.lww.com/acsm-essr/fulltext/2017/04000/sedentary_behavior_and_cardiovascular_disease.5.aspx)
- 404 14. Dias PJP, Domingos IP, Ferreira MG, Muraro AP, Sichieri R, Gonçalves-Silva RMV.  
405 Prevalence and factors associated with sedentary behavior in adolescents. Rev Saude  
406 Publica [Internet]. 2014 [cited 2022 Nov 21];48(2):266. Available from:  
407 [/pmc/articles/PMC4206135/](#)
- 408 15. Factors {Associated} with {Physical} {Activity} and {Sedentary} {Behavior} in {Older}  
409 {Adults} from {Six} {Low}- and {Middle}-{Income} {Countries} - {PMC} [Internet].  
410 [cited 2022 Jun 22]. Available from:  
411 <https://www.ncbi.nlm.nih.gov/pmc/articles/PMC5981947/>
- 412 16. Chastin SFM, Buck C, Freiburger E, Murphy M, Brug J, Cardon G, et al. Systematic  
413 literature review of determinants of sedentary behaviour in older adults: a DEDIPAC  
414 study. Int J Behav Nutr Phys Act [Internet]. 2015 Oct 6 [cited 2022 Nov 21];12(1).  
415 Available from: [/pmc/articles/PMC4595239/](#)
- 416 17. Bauman AE, Reis RS, Sallis JF, Wells JC, Loos RJF, Martin BW, et al. Correlates of  
417 physical activity: why are some people physically active and others not? Lancet (London,  
418 England) [Internet]. 2012 Jul 1 [cited 2022 Nov 21];380(9838):258–71. Available from:  
419 <https://pubmed.ncbi.nlm.nih.gov/22818938/>

- 420 18. Kowal P, Chatterji S, Naidoo N, Biritwum R, Fan W, Ridaura RL, et al. Data Resource  
421 Profile: The World Health Organization Study on global AGEing and adult health  
422 (SAGE). *Int J Epidemiol* [Internet]. 2012 Dec 1 [cited 2022 Nov 21];41(6):1639.  
423 Available from: [/pmc/articles/PMC3535754/](https://pubmed.ncbi.nlm.nih.gov/26355754/)
- 424 19. Nepali S, Rijal A, Olsen MH, McLachlan CS, Kallestrup P, Neupane D. Factors affecting  
425 the fruit and vegetable intake in {Nepal} and its association with history of self-reported  
426 major cardiovascular events. *BMC Cardiovasc Disord* [Internet]. 2020 Sep [cited 2022  
427 Jun 22];20(1):425. Available from: <https://doi.org/10.1186/s12872-020-01710-y>
- 428 20. George GM, Sharma KK, Ramakrishnan S, Gupta SK. A study of cardiovascular risk  
429 factors and its knowledge among school children of Delhi. *Indian Heart J* [Internet]. 2014  
430 [cited 2022 Nov 21];66(3):263. Available from: [/pmc/articles/PMC4121766/](https://pubmed.ncbi.nlm.nih.gov/26355754/)
- 431 21. Ma C, Bovet P, Yang L, Zhao M, Liang Y, Xi B. Alcohol use among young adolescents in  
432 low-income and middle-income countries: a population-based study. *Lancet Child &  
433 Adolesc Heal*. 2018 Jun;2(6):415–29.
- 434 22. {WHO} global report. {Mortality} attributable to tobacco. [Internet]. Geneva; 2012 Mar  
435 [cited 2022 Jun 21]. Available from: <https://www.drugsandalcohol.ie/17205/>
- 436 23. Perelman J, Alves J, Pfoertner T, Moor I, Federico B, Kuipers MAG, et al. The  
437 association between personal income and smoking among adolescents: a study in six  
438 {European} cities. *Addiction* [Internet]. 2017 Dec [cited 2022 Jun 22];112(12):2248–56.  
439 Available from: <https://www.ncbi.nlm.nih.gov/pmc/articles/PMC5698771/>
- 440 24. National Tobacco Control Strategic Plan (2013-2016) 4th and Latest Draft National Tobacco  
441 Control Strategic Plan (2013-2016) Government of Nepal Ministry of Health and

- 442 Population. 2013.
- 443 25. Alcohol [Internet]. [cited 2022 Jun 22]. Available from: [https://www.who.int/news-](https://www.who.int/news-room/fact-sheets/detail/alcohol)
- 444 [room/fact-sheets/detail/alcohol](https://www.who.int/news-room/fact-sheets/detail/alcohol)
- 445 26. Alcohol {Consumption} and {Risk} of {Atrial} {Fibrillation}: {A} {Prospective}
- 446 {Study} and {Dose}-{Response} {Meta}-{Analysis} - {ScienceDirect} [Internet]. [cited
- 447 2022 Jun 22]. Available from:
- 448 <https://www.sciencedirect.com/science/article/pii/S0735109714025133?via%3Dihub>
- 449 27. Risk thresholds for alcohol consumption: combined analysis of individual-participant data
- 450 for 599 912 current drinkers in 83 prospective studies - {The} {Lancet} [Internet]. [cited
- 451 2022 Jun 22]. Available from:
- 452 [https://www.thelancet.com/journals/lancet/article/PIIS0140-6736\(18\)30134-X/fulltext](https://www.thelancet.com/journals/lancet/article/PIIS0140-6736(18)30134-X/fulltext)
- 453 28. Differing association of alcohol consumption with different stroke types: a systematic
- 454 review and meta-analysis {\textbar} {BMC} {Medicine} {\textbar} {Full} {Text}
- 455 [Internet]. [cited 2022 Jun 22]. Available from:
- 456 <https://bmcmmedicine.biomedcentral.com/articles/10.1186/s12916-016-0721-4>
- 457