

# 1 Genetic correlation and causality between smoking and 42 2 neuropsychiatric and gastrointestinal diseases

3 Jiayi Xiong<sup>1</sup>, Zheng Wang<sup>1,3,4</sup>, Yuanfeng Huang<sup>1</sup>, Shiyu Zhang<sup>1,5</sup>, Guang Yang<sup>7</sup>, Jiaqi Yang<sup>1</sup>, Shuo  
4 Gao<sup>1</sup>, Tianyang Wang<sup>1,5</sup>, Jinchen Li<sup>1,2,3,6\*</sup>, Guihu Zhao<sup>1,3\*</sup>, Bin Li<sup>1,3\*</sup>

5

6

7

8 \*Correspondence:

9 Jinchen Li, Guihu Zhao, Bin Li

10 Address: No.87 Xiangya Road, Changsha, Hunan, China

11 Telephone: 0731-89752068

12 E-mail address: [lijinchen@csu.edu.cn](mailto:lijinchen@csu.edu.cn), [ghzhao@csu.edu.cn](mailto:ghzhao@csu.edu.cn), [lebin001@csu.edu.cn](mailto:lebin001@csu.edu.cn)

13

14

15

16 <sup>1</sup>Bioinformatics Centre, National Clinical Research Centre for Geriatric Disorders, Department of  
17 Geriatrics, Xiangya Hospital, Central South University, Changsha, Hunan 410008, China.

18 <sup>2</sup>Centre for Medical Genetics & Hunan Key Laboratory, School of Life Sciences, Central South  
19 University, Changsha, Hunan 410008, China.

20 <sup>3</sup>Department of Neurology, Xiangya Hospital, Central South University, Changsha, Hunan 410008,  
21 China.

22 <sup>4</sup>Hunan Key Laboratory of Molecular Precision Medicine, Xiangya Hospital, Central South University,  
23 Changsha, Hunan 410008, China.

24 <sup>5</sup>Xiangya School of Medicine, Central South University, Changsha, Hunan 410013, China.

25 <sup>6</sup>Bioinformatics Centre, Furong Laboratory, Changsha, Hunan 410008, China.

26 <sup>7</sup>Department of Orthopedics, Xiangya Hospital, Central South University, Changsha 410008, Hunan,  
27 China.

28

29

30

31 Jiayi Xiong: [xiongjy@csu.edu.cn](mailto:xiongjy@csu.edu.cn)

32 Zheng Wang: [wangzheng888@csu.edu.cn](mailto:wangzheng888@csu.edu.cn)

33 Yuanfeng Huang: [2025512649@qq.com](mailto:2025512649@qq.com)

34 Shiyu Zhang: [shiyuzhang0522@gmail.com](mailto:shiyuzhang0522@gmail.com)

35 Guang Yang: [228111092@csu.edu.cn](mailto:228111092@csu.edu.cn)

36 Jiaqi Yang: [228111036@csu.edu.cn](mailto:228111036@csu.edu.cn)

37 Shuo Gao: [228111037@csu.edu.cn](mailto:228111037@csu.edu.cn)

38 Tianyang Wang: [wangtianyang@csu.edu.cn](mailto:wangtianyang@csu.edu.cn)

39

40

41

NOTE: This preprint reports new research that has not been certified by peer review and should not be used to guide clinical practice.

## 42 **Abstract**

---

### 43 **Background**

44 Previous investigations have elucidated epidemiological associations linking smoking to  
45 neuropsychiatric and gastrointestinal diseases, yet the underlying causal relationships remain  
46 enigmatic. To shed light on this matter, we undertook a Mendelian randomisation(MR) study  
47 with the aim of gauging the potential causal association between smoking and the susceptibility  
48 to neuropsychiatric and gastrointestinal tract diseases.

### 49 **Methods**

50 We meticulously collected and preprocessed genome-wide association study (GWAS) data  
51 encompassing smoking (280,508 cases and 180,558 controls) as well as neuropsychiatric and  
52 gastrointestinal phenotypes (n= 6,681 to 87,3341). To investigate the genetic correlation  
53 between smoking and diseases, we employed linkage disequilibrium score regression. We  
54 further applied multi-trait analysis of GWAS to identify the shared risk single-nucleotide  
55 polymorphisms (SNPs) implicated in both smoking and diseases. Pleiotropic genes were  
56 annotated by enrichment analysis. Subsequently, bidirectional MR analysis was performed to  
57 infer causality.

### 58 **Results**

59 Our findings, supported by robust evidence derived from an expansive sample size,  
60 demonstrate that smoking exerts a causal influence on merely six of these diseases, while no  
61 disease was found to causally impact smoking. Intriguingly, we discovered 513 pleiotropic  
62 genes enriched in pathways such as the regulation of growth and synapses, suggesting a

63 potential shared genetic basis between smoking and these diseases, leading to aberrant neural  
64 development. Remarkably, among the 42 diseases scrutinized, a significant genetic correlation  
65 was exclusively observed with gastroesophageal reflux disease (GRED). Furthermore, we  
66 identified risk SNPs shared by smoking and GRED.

## 67 Conclusions

68 This study revealed the shared genetic basis and causal effects connecting smoking to  
69 neuropsychiatric and gastrointestinal diseases, thereby providing novel etiological insights into  
70 the role of smoking in these diseases.

## 71 Keywords

72 Smoking; Neuropsychiatric diseases; Gastrointestinal diseases; Mendelian randomisation;  
73 Genetic correlation

## 74 Background

---

75 Tobacco utilization constitutes a momentous global public health concern and stands as a  
76 paramount contributor to preventable mortality(1). Previous epidemiological inquiries have  
77 surfaced, underscoring smoking as a risk factor for many diseases, including cancers,  
78 cardiovascular diseases, chronic obstructive pulmonary disease and so on(2). In recent years,  
79 the advent of genome-wide association studies (GWAS) has engendered a burgeoning body of  
80 evidence, illuminating the shared genetic underpinnings between smoking and various diseases.  
81 Genetic correlation analysis, predicated on GWAS summary statistics, has unveiled the genetic  
82 intertwinement linking smoking to metabolic disorders, autoimmune conditions, psychiatric  
83 disorders and nervous system diseases(3–5). Beyond genetic correlation, methodologies such

84 as Mendelian randomisation (MR), which uses genetic variants as instrumental variables, have  
85 been employed to discern the causal connections between lifestyle choices and diseases(6).  
86 Previous MR endeavors have provided insights into the causal ramifications of smoking on  
87 diseases such as lung cancer, coronary heart disease, and type 2 diabetes(7–9).  
88 It is firmly established that smoking bears an association with neuropsychiatric and  
89 gastrointestinal diseases, both of which bear an intimate nexus with the brain-gut axis(10,11).  
90 The brain-gut axis epitomizes the bidirectional communication interlinking the central nervous  
91 system and the gastrointestinal tract, constituting a pivotal arbiter for homeostasis(10).  
92 Perturbations within the purview of the brain-gut axis have been inextricably implicated in an  
93 assortment of ailments. For instance, patients afflicted with irritable bowel syndrome have  
94 evinced perturbed interactions within the brain-gut axis(12). Although smoking has been linked  
95 to both types of diseases, including Parkinson’s disease(13) and colorectal cancer(14), in  
96 epidemiological studies, the extent of genetic correlation and causation between smoking and  
97 these diseases remains largely unknown.  
98 This pioneering study represents an all-encompassing inquiry, scrutinizing the genetic  
99 correlation between smoking and 42 neuropsychiatric and gastrointestinal diseases.  
100 Furthermore, we unveiled the shared genetic substratum and the potential causative associations.  
101 Our approach embraces an expansive and comprehensive sample size, encompassing a wide  
102 spectrum of diseases, thereby fomenting a holistic comprehension of the mechanistic role  
103 played by smoking. This distinguishing facet sets our investigation apart from previous research,  
104 emphasising the profound genetic insights it yields.

## 105 **Methods**

---

### 106 **2.1 Study overview and data resources**

107 Briefly, this study obtained GWAS summary statistics for smoking and 42 neuropsychiatric  
108 and gastrointestinal diseases. The GWAS summary statistics for smoking and the diseases were  
109 sourced from publicly available databases. Specifically, the smoking GWAS data originated  
110 from a meta-analysis encompassing the UK Biobank and the Tobacco and Genetics Consortium  
111 datasets, focusing on smoking status (ever versus never smoked). This dataset included 280,508  
112 individuals who were ever smokers and 180,558 individuals who were never smokers, all of  
113 European ancestry. The data were obtained from the esteemed MRC-IEU OpenGWAS database,  
114 with the accession ID: ukb-b-20261 (accessible at <https://gwas.mrcieu.ac.uk/>). The GWAS data  
115 pertaining to the 42 diseases were acquired from the MRC-IEU OpenGWAS database, the  
116 Psychiatric Genomics Consortium (PGC), and the GWAS catalog, ensuring a sample size  
117 exceeding 5,000. Detailed summary statistics for the GWAS data employed in this study can  
118 be found in Table 1.

119  
120

**Table 1 | Details of GWAS Summary Data Sources**

| <b>Disease group</b>            | <b>Diseases</b>           | <b>PMID/<br/>IEUID</b> | <b>N_Cases</b> | <b>N_Controls</b> | <b>N_total</b> | <b>Journal</b>    | <b>Source</b> |
|---------------------------------|---------------------------|------------------------|----------------|-------------------|----------------|-------------------|---------------|
| <b>Psychiatric<br/>diseases</b> | ADHD                      | 30478444               | 19099          | 34194             | 53293          | Nature Genetics   | PGC           |
|                                 | Anorexia nervosa          | 31308545               | 16992          | 55525             | 72517          | Nature Genetics   | PGC           |
|                                 | BD                        | 34002096               | 41917          | 371549            | 413466         | Nature Genetics   | PGC           |
|                                 | Cannabis use disorder     | 33096046               | 14080          | 343726            | 357806         | Lancet Psychiatry | PGC           |
|                                 | Panic disorder            | 34737426               | 2248           | 7992              | 10240          | Mol Psychiatry    | PGC           |
|                                 | MDD                       | 30718901               | 170756         | 329443            | 500199         | Nature Neurosci   | PGC           |
|                                 | OCD ( Tourette syndrome ) | 30818990               | 4819           | 9488              | 14307          | Am J Psych        | PGC           |
|                                 | PTSD                      | 31594949               | 23212          | 151447            | 174659         | Nature Commun     | PGC           |

|                                  |                             |             |        |        |        |                   |              |
|----------------------------------|-----------------------------|-------------|--------|--------|--------|-------------------|--------------|
|                                  | Schizophrenia               | 35396580    | 52017  | 75889  | 127906 | Nature            | PGC          |
|                                  | ASD                         | 32747698    | 22196  | 32504  | 55420  | Transl Psychiatry | GWAS Catalog |
|                                  | MS                          | 3160424     | 47429  | 68374  | 115803 | Science           | MRC-IEU      |
|                                  | ALS                         | 34873335    | 27205  | 110881 | 138086 | Nat Genet         | GWAS Catalog |
|                                  | AD                          | 35379992    | 85934  | 401577 | 487511 | Nat Genet         | GWAS Catalog |
| <b>Nervous system diseases</b>   | Lewy body dementia          | 33589841    | 2591   | 4027   | 6681   | Nat Genet         | GWAS Catalog |
|                                  | Epilepsy                    | ukb-b-1600  | 2326   | 460684 | 463010 | -                 | MRC-IEU      |
|                                  | Migraine                    | 35115687    | 102084 | 771257 | 873341 | Nat Genet         | GWAS Catalog |
|                                  | Stroke                      | 34737426    | 6986   | 448317 | 455303 | Nat Genet         | GWAS Catalog |
|                                  | PD                          | ieu-b-7     | 33674  | 449056 | 482730 | Nat Genet         | MRC-IEU      |
|                                  | Dysphagia                   | 34737426    | 4601   | 451747 | 456348 | Nat Genet         | GWAS Catalog |
|                                  | GRED                        | 34187846    | 129080 | 473524 | 602604 | Gut               | GWAS Catalog |
|                                  | Gastritis                   | 34737426    | 17420  | 438928 | 456348 | Nat Genet         | GWAS Catalog |
|                                  | GU                          | 34737426    | 2413   | 453935 | 456348 | Nat Genet         | GWAS Catalog |
|                                  | Dyspepsia                   | ukb-b-14814 | 7662   | 455348 | 463010 | -                 | MRC-IEU      |
|                                  | IBS                         | 34741163    | 53400  | 433201 | 486601 | Nat Genet         | GWAS Catalog |
|                                  | CD                          | 34737426    | 1342   | 455006 | 456348 | Nat Genet         | GWAS Catalog |
|                                  | UC                          | 34737426    | 2569   | 453779 | 456348 | Nat Genet         | GWAS Catalog |
|                                  | IBD                         | 33959723    | 4101   | 480497 | 484598 | Nat Aging         | GWAS Catalog |
|                                  | Colon cancer                | 34737426    | 1482   | 454794 | 456276 | Nat Genet         | GWAS Catalog |
|                                  | Diverticular disease        | 30661054    | 31964  | 419135 | 451099 | Gut               | GWAS Catalog |
|                                  | Duodenitis                  | 34737426    | 2286   | 454062 | 456348 | Nat Genet         | GWAS Catalog |
| <b>Gastrointestinal diseases</b> | Constipation                | 34737426    | 4781   | 451567 | 456348 | Nat Genet         | GWAS Catalog |
|                                  | Fatty liver disease         | 34841290    | 8434   | 770180 | 778614 | Cell Rep Med      | GWAS Catalog |
|                                  | Cholelithiasis              | 34737426    | 7426   | 448922 | 456348 | Nat Genet         | GWAS Catalog |
|                                  | Acute pancreatitis          | 34737426    | 1748   | 454600 | 456348 | Nature            | GWAS Catalog |
|                                  | Acute appendicitis          | 34737426    | 2588   | 453760 | 456348 | Nat Genet         | GWAS Catalog |
|                                  | Peritonitis                 | ukb-b-11751 | 1555   | 461378 | 462933 | -                 | MRC-IEU      |
|                                  | DU                          | ukb-d-K26   | 1291   | 359903 | 361194 | -                 | MRC-IEU      |
|                                  | Polyp of colon              | ukb-b-17845 | 2437   | 460573 | 463010 | -                 | MRC-IEU      |
|                                  | Cholecystitis               | ukb-d-K81   | 1930   | 359264 | 361194 | -                 | MRC-IEU      |
|                                  | Inguinal hernia             | ukb-a-549   | 8815   | 328384 | 337199 | -                 | MRC-IEU      |
|                                  | Oesophagitis                | ukb-b-19354 | 4931   | 458079 | 463010 | -                 | MRC-IEU      |
|                                  | Primary biliary cholangitis | 34033851    | 8021   | 16489  | 24510  | -                 | MRC-IEU      |

Abbreviations: PMID, PubMed unique identifier; IEUID, the ID of the GWAS dataset in MRC IEU OpenGWAS; ADHD, attention deficit hyperactivity disorder; BD, bipolar disorder; MDD, major depressive disorder; OCD, obsessive-compulsive disorder; PTSD, post-traumatic stress disorder; ASD, autism spectrum disorders; MS, multiple sclerosis; ALS, amyotrophic lateral sclerosis; AD, Alzheimer's disease; PD, Parkinson's disease; GRED, gastroesophageal reflux disease; GU, gastric ulcer; IBS, irritable bowel syndrome; CD, Crohn's disease; UC, ulcerative colitis; IBD, inflammatory bowel disease; DU, duodenal ulcer.

121

122

123

## 124 **2.2 Statistical Analysis**

### 125 **2.2.1 Genetic correlation analysis**

126 To explore the genetic correlation between smoking and the aforementioned 42 diseases, we  
127 employed linkage disequilibrium score regression (LDSC)(15). This method involves  
128 regressing the product of z scores from two GWAS scans against a measure of linkage  
129 disequilibrium for each single nucleotide polymorphism (SNP). The genetic correlation results  
130 were subjected to correction for multiple testing using the rigorous Bonferroni correction,  
131 ensuring the statistical integrity of these findings. Genetic correlations with a P-value below the  
132 significance threshold ( $0.05/42 = 1.25 \times 10^{-3}$ ) were deemed statistically significant.

### 133 **2.2.2 Pleiotropy analysis**

134 For diseases exhibiting significant genetic correlation with smoking according to LDSC  
135 analysis, we conducted multitrait analysis of GWAS (MTAG)(16,17) to identify shared  
136 pleiotropic SNPs between smoking and the respective diseases. MTAG is an advanced  
137 statistical fine-mapping method that leverages summary statistics from multiple GWAS to  
138 enhance the power of detecting SNPs associated with traits. It models the effect sizes of each  
139 SNP on different traits, assuming a distribution with a variance–covariance matrix proportional  
140 to the genetic correlation matrix. MTAG was executed with default parameters, and the  
141 genome-wide significance threshold was set at  $P < 5 \times 10^{-8}$ . The results include a residual  
142 correlation matrix between estimated traits, a genetic correlation matrix, and association  
143 statistics for each SNP.

144 To discern pleiotropic genes, we employed MAGMA(18), a gene and pathway analysis tool

145 grounded in a multiple linear principal components regression model utilizing GWAS summary  
146 statistics. The reference panel employed was the linkage disequilibrium structure derived from  
147 European ancestry samples of the 1000 Genomes Project Phase 3. Genes exhibiting a false  
148 discovery rate (FDR)-corrected P value below 0.05 in both smoking and at least one disease  
149 were defined as pleiotropic genes.

150 Pathway enrichment analysis of the identified pleiotropic genes was performed using  
151 Metascape(19). The enriched Gene Ontology (GO) terms were visually represented using the  
152 clusterProfiler(20) R package.

### 153 **2.2.3 Causal inference analysis**

154 To infer potential causal relationships between smoking and the diseases under investigation,  
155 we conducted bidirectional MR analysis using the R package TwoSampleMR(21). The GWAS  
156 summary statistics for smoking served as the exposure variable, while each disease was  
157 considered an outcome variable. Five different MR methods, including inverse variance  
158 weighted (IVW), MR-Egger, weighted median, simple mode, and weighted mode methods,  
159 were adopted. The IVW method was selected as the primary approach due to its high efficiency  
160 and minimal assumptions(22). SNPs with an F statistic greater than 10 were included as  
161 instrumental variables. The MR results were adjusted for multiple testing using the FDR  
162 method. Causal associations were reported solely for analysis without significant heterogeneity  
163 or horizontal pleiotropy, as determined by both Cochran's Q test and the MR-PRESSO test.  
164 For a significant causal relationship, we conducted a leave-one-out analysis to assess whether  
165 the results were driven by any individual SNP.



## 166 **Results**

---

### 167 **3.1 Summary information for GWAS data**

168 The GWAS summary statistics used in this study are presented in Table 1. The smoking GWAS  
169 data encompassed 280,508 individuals classified as ever smokers and 180,558 individuals  
170 classified as never smokers of European ancestry, acquired from the MRC-IEU OpenGWAS  
171 database (ID: ukb-b-20261). The GWAS data for the 42 neuropsychiatric and gastrointestinal  
172 diseases were derived from individuals of European ancestry with sample sizes greater than  
173 5,000 (n = 6,681 to 87,3341). (Table 1)

### 174 **3.2 Genetic correlation analysis**

175 The genetic correlation results between smoking and these 42 diseases estimated by LDSC are  
176 shown in Table 2. Following Bonferroni correction, only one disease, gastroesophageal reflux  
177 disease (GRED), exhibited a statistically significant negative genetic correlation with smoking  
178 ( $r_g = -0.226$ ,  $P = 1.27 \times 10^{-7}$ ). The negative genetic correlation suggests the existence of shared  
179 genetic factors between smoking and GRED, albeit with an inverse association. This implies  
180 that certain genetic variants associated with smoking may confer a protective effect against the  
181 development of GRED. This discovery holds valuable implications for our understanding of  
182 the genetic determinants underlying smoking behavior and its potential impact on disease  
183 susceptibility. Further investigation is warranted to unravel the precise mechanisms underlying  
184 this relationship and explore potential therapeutic avenues for GRED.

185

**Table 2 | Genetic Correlation Between “ever smoked” and 42 Diseases Estimated by LDSC**

---

| Disease group | Diseases | $r_g$ (se) | P | Intercept (se) |
|---------------|----------|------------|---|----------------|
|---------------|----------|------------|---|----------------|

---

|                           |                             |                 |                    |                 |
|---------------------------|-----------------------------|-----------------|--------------------|-----------------|
|                           | ADHD                        | -0.0294(0.0196) | 0.1332             | 0.0143(0.0073)  |
|                           | Anorexia nervosa            | -0.083(0.0616)  | 0.178              | 0.0149(0.0173)  |
|                           | BD                          | 0.0474 (0.027)  | 0.0791             | 0.0205 (0.0126) |
|                           | Cannabis use disorder       | 0.0486(0.0255)  | 0.0564             | -0.0044(0.0072) |
| Psychiatric diseases      | Panic disorder              | 0.0114(0.0359)  | 0.7501             | 0.0006(0.0067)  |
|                           | MDD                         | -0.022(0.0156)  | 0.1598             | 0.0236(0.0084)  |
|                           | OCD ( Tourette syndrome )   | 0.0136(0.0247)  | 0.5825             | -0.0101(0.0069) |
|                           | PTSD                        | -0.018(0.0402)  | 0.6539             | 0.0022(0.0069)  |
|                           | Schizophrenia               | -0.1024(0.038)  | 0.007              | -0.0379(0.0175) |
|                           | ASD                         | -0.028(0.0181)  | 0.1206             | 0.0053(0.0069)  |
|                           | MS                          | -0.0032(0.0412) | 0.938              | -0.0122(0.0139) |
| Nervous system diseases   | ALS                         | 0.0166(0.0206)  | 0.4207             | -0.0085(0.0072) |
|                           | AD                          | -0.0204(0.0176) | 0.246              | 0.0117(0.0076)  |
|                           | Lewy body dementia          | -0.0392(0.0957) | 0.6824             | -0.0035(0.0101) |
|                           | Epilepsy                    | 0.0926(0.1335)  | 0.4883             | 0.014(0.0155)   |
|                           | Migraine                    | 0.0388(0.0365)  | 0.2877             | 0.0023(0.0129)  |
|                           | Stroke                      | 0.0573(0.0674)  | 0.3953             | 0.014(0.0097)   |
|                           | PD                          | -0.0166(0.0531) | 0.7546             | -0.013(0.014)   |
|                           | Dysphagia                   | 0.1192(0.0721)  | 0.0984             | -0.0058(0.0095) |
|                           | <b>GREED</b>                | -0.2259(0.0428) | <b>1.2731E-07*</b> | -0.0724(0.0179) |
|                           | Gastritis                   | 0.0197(0.0565)  | 0.7277             | 0.0152(0.0101)  |
|                           | GU                          | 0.0242(0.1006)  | 0.8097             | -0.0018(0.0095) |
|                           | Dyspepsia                   | -               | -                  | -               |
|                           | IBS                         | -0.0267(0.0193) | 0.1666             | 0.0114(0.0081)  |
|                           | CD                          | -0.0353(0.0636) | 0.5795             | 0.0123(0.0104)  |
|                           | UC                          | 0.1042(0.0473)  | 0.0276             | -0.0064(0.0104) |
|                           | IBD                         | 0.0342(0.0739)  | 0.643              | -0.0284(0.0136) |
|                           | Colon cancer                | 0.0416(0.0997)  | 0.6762             | 0.0037(0.0097)  |
| Gastrointestinal diseases | Diverticular disease        | 0.0009(0.0445)  | 0.9831             | -0.0604(0.0158) |
|                           | Duodenitis                  | -0.0966(0.0811) | 0.2336             | 0.0211(0.0092)  |
|                           | Constipation                | 0.0072(0.1639)  | 0.965              | 0.0106(0.0113)  |
|                           | Fatty liver disease         | -0.0457(0.0353) | 0.1954             | 0.0087(0.007)   |
|                           | Cholelithiasis              | -0.0084(0.0513) | 0.8703             | 0.0033(0.0103)  |
|                           | Acute pancreatitis          | -0.0138(0.1031) | 0.8933             | 0.0065(0.0105)  |
|                           | Acute appendicitis          | -0.1265(0.0834) | 0.1292             | 0.0186(0.0092)  |
|                           | Peritonitis                 | 0.6043(0.9047)  | 0.5041             | -0.0176(0.0204) |
|                           | DU                          | 0.1532(0.1353)  | 0.2574             | 0.003(0.013)    |
|                           | Polyp of colon              | -               | -                  | -0.0002(0.0147) |
|                           | Cholecystitis               | -0.1388(0.1194) | 0.2451             | 0.0272(0.0129)  |
|                           | Inguinal hernia             | 0.004(0.0682)   | 0.9538             | 0.0123(0.0133)  |
|                           | Oesophagitis                | 0.218(0.1189)   | 0.0668             | 0.0053(0.0136)  |
|                           | Primary biliary cholangitis | 0.0332(0.0519)  | 0.5231             | 0.0203(0.0218)  |

---

Abbreviations: LDSC, linkage disequilibrium score regression; rg, genetic correlation estimate; se, standard error; ADHD, attention deficit hyperactivity disorder; BD, bipolar disorder; MDD, major depressive disorder; OCD, obsessive-compulsive disorder; PTSD, post-traumatic stress disorder; ASD, autism spectrum disorders; MS, multiple sclerosis; ALS, amyotrophic lateral sclerosis; AD, Alzheimer's disease; PD, Parkinson's disease; GRED, gastroesophageal reflux disease; GU, gastric ulcer; IBS, irritable bowel syndrome; CD, Crohn's disease; UC, ulcerative colitis; IBD, inflammatory bowel disease; DU, duodenal ulcer.

\*P value reached the Bonferroni-corrected significance level  $P < 1.25 \times 10^{-3}$  (0.05/42)

---

186

### 187 **3.2 Pleiotropy analysis**

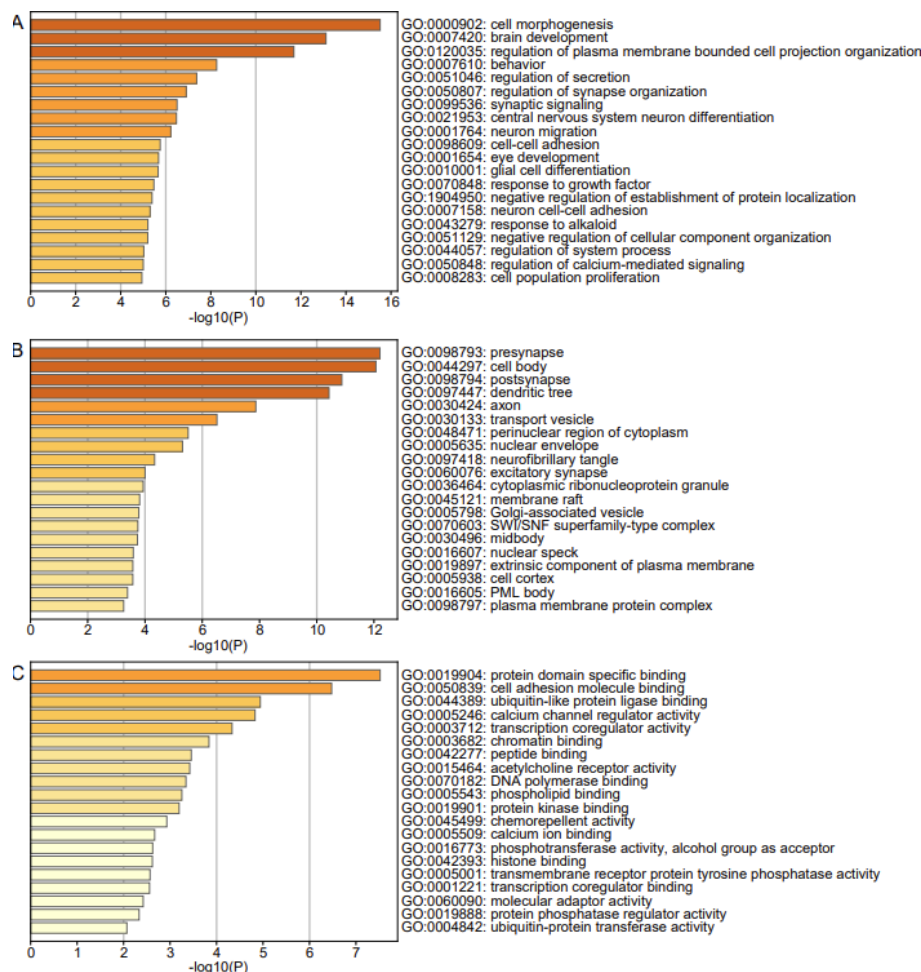
188 Given that only GRED showed a significant genetic correlation with smoking, we proceeded  
189 to perform MTAG between the GWAS data for smoking and GRED. A total of 971,487 SNPs  
190 were included in the meta-analysis by MTAG. Among them, 358 SNPs reached the genome-  
191 wide significance level ( $P < 5 \times 10^{-8}$ ) in the MTAG smoking analysis, indicating their status as  
192 pleiotropic SNPs shared by smoking and GRED (detailed information provided in Additional  
193 file: Supplementary Table S1).

194 Using MAGMA, we identified 513 pleiotropic genes associated with both smoking and at least  
195 one disease after excluding genes on chromosome 6 (Additional file: Supplementary Table S2).

196 These genes are considered candidate pleiotropic genes that are shared between smoking and  
197 multiple diseases, indicating their potential role in modulating the relationship between  
198 smoking and these diseases. Notably, genes such as CRHR1, KANSL1, PLEKHM1, STH and  
199 WNT3 on chromosome 17 as well as MSRA on chromosome 8 were identified as pleiotropic  
200 genes in at least 5 diseases respectively.

201 Pathway enrichment analysis of the identified pleiotropic genes revealed significant enrichment  
202 in multiple GO terms (Figure 1; Additional file: Supplementary Table S3-S5), encompassing  
203 processes such as cell projection morphogenesis, presynapse, and protein domain specific  
204 binding. Importantly, our findings indicate that smoking interacts with these signaling pathways,

205 contributing to the occurrence of 42 neuropsychiatric and gastrointestinal diseases. Remarkably,  
206 our results align with previous literature, substantiating the consistent relationship between  
207 smoking and these diseases at a molecular level.



208  
209 **Fig. 1 Enrichment maps of pleiotropic genes for smoking and 42 diseases.** A GO biological  
210 process enrichment bar chart. B GO cellular component enrichment bar chart. C GO molecular function  
211 enrichment bar chart. From panels A to C, the X-axis is  $-\log_{10}(P)$ , and the Y-axis is the GO term. The  
212 colour represents the enriched significance.

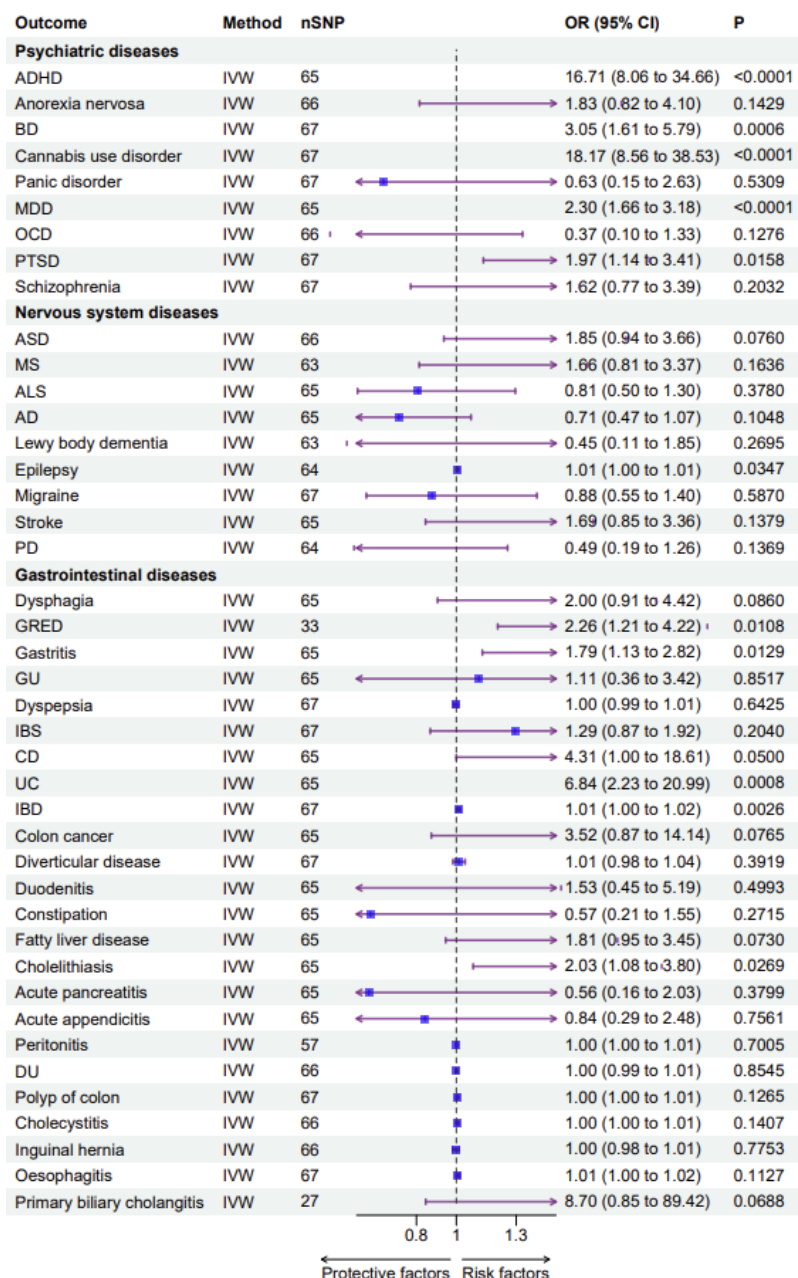
213

### 214 3.3 Causal inference analysis

215 Mendelian randomisation analysis suggested potential causal relationships between smoking  
216 and several diseases. Overall, smoking demonstrated significant positive causal effects on 6  
217 diseases after adjusting for multiple testing using the Benjamini–Hochberg (BH) method for P

218 value adjustment (Figure 2; Additional file: Supplementary Table S6), including ulcerative  
219 colitis (UC) (IVW: odds ratio [OR] = 6.84, 95% confidence interval [CI] 2.23-20.99,  $P < 0.001$ ),  
220 inflammatory bowel disease (IBD) (IVW: OR = 1.01, 95% CI 1.00-1.02,  $P = 0.003$ ), gastritis  
221 (IVW: OR = 1.79, 95% CI 1.13-2.82,  $P = 0.013$ ), post-traumatic stress disorder (PTSD) (IVW:  
222 OR = 1.97, 95% CI 1.14-3.41,  $P = 0.016$ ), cholelithiasis (IVW: OR = 2.03, 95% CI 1.08-3.80,  
223  $P = 0.027$ ) and epilepsy (IVW: OR = 1.01, 95% CI 1.00-1.01,  $P = 0.035$ ). Although Crohn's  
224 disease (CD) and primary biliary cholangitis did not reach the 0.05 significance threshold, they  
225 also exhibited positive causal tendencies. It is important to note that while smoking showed  
226 positive causal effects on attention-deficit/hyperactivity disorder (ADHD), cannabis use  
227 disorder, major depressive disorder (MDD), bipolar disorder (BD), and GRED, further  
228 verification is required for this causal relationship, as indicated by the heterogeneity test and  
229 MR-PRESSO test  $P$  values being  $< 0.05$ , suggesting the presence of pleiotropy and less reliable  
230 MR results.

231



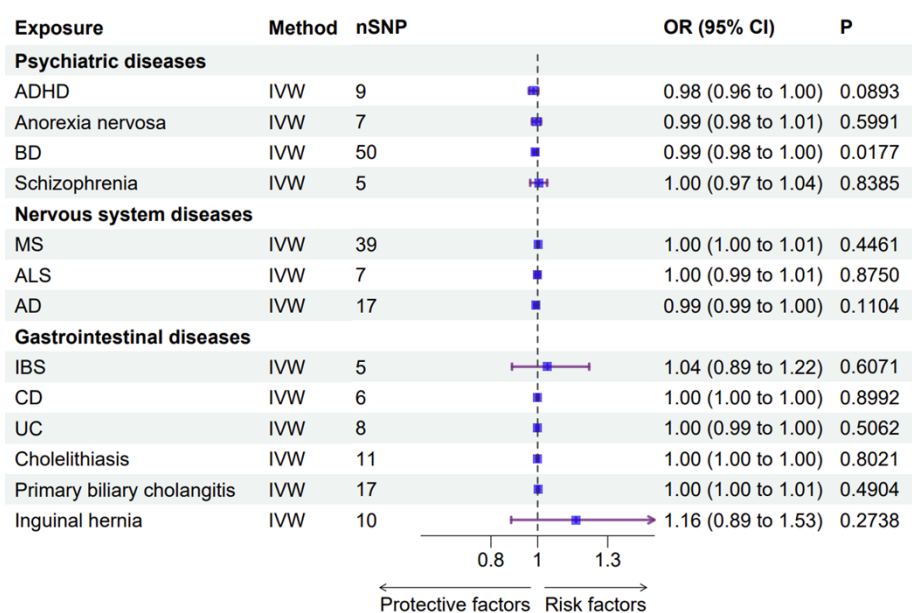
232

233 **Fig. 2 MR estimates for the effect of "ever smoked" on 42 diseases.** Estimates were derived by the  
 234 inverse-variance weighted method. Reported P-values were adjusted for multiple testing using the Benjamini-  
 235 Hochberg procedure. The solid lines represent 95% CI; CI, confidence interval; OR, odds ratio. ADHD, attention  
 236 deficit hyperactivity disorder; BD, bipolar disorder; MDD, major depressive disorder; OCD, obsessive-compulsive  
 237 disorder; PTSD, post-traumatic stress disorder; ASD, autism spectrum disorders; MS, multiple sclerosis; ALS,  
 238 amyotrophic lateral sclerosis; AD, Alzheimer's disease; PD, Parkinson's disease; GRED, gastroesophageal reflux  
 239 disease; GU, gastric ulcer; IBS, irritable bowel syndrome; CD, Crohn's disease; UC, ulcerative colitis; IBD,  
 240 inflammatory bowel disease; DU, duodenal ulcer.

241

242 On the other hand, no disease demonstrated a significant causal effect on smoking after

243 adjusting for multiple testing (Figure 3; Additional file: Supplementary Table S7). Although  
 244 BP (IVW: OR = 0.99, 95% CI 0.98-1.00, P = 0.018) presented a negative causal relationship  
 245 with smoking, in the MR analysis, the result was less reliable due to the detection of horizontal  
 246 pleiotropy. Leave-one-out analysis indicated that the causal relationships were not driven by  
 247 any single SNP.  
 248



249  
 250 **Fig. 3 MR estimates for the effect of 42 diseases on "ever smoked"**. Estimates were derived by the  
 251 inverse-variance weighted method. Reported P-values were adjusted for multiple testing using the Benjamini-  
 252 Hochberg procedure. The solid lines represent 95% CI; CI, confidence interval; OR, odds ratio. ADHD, attention  
 253 deficit hyperactivity disorder; BD, bipolar disorder; MS, multiple sclerosis; ALS, amyotrophic lateral sclerosis; AD,  
 254 Alzheimer's disease; IBS, irritable bowel syndrome; CD, Crohn's disease; UC, ulcerative colitis.

255  
 256 **Discussion**

257 This investigation presents the most extensive compilation of publicly accessible GWAS data,  
 258 enabling a comprehensive characterization of the genetic associations, pleiotropy and causality  
 259 underlying smoking and neuropsychiatric and gastrointestinal diseases. Notably, our findings

260 unveil a significant genetic correlation between smoking and GRED. Moreover, our research  
261 identifies six diseases in which smoking exhibits a causal relationship.

262 In this study, we report, for the first time, that among the 42 neuropsychiatric and  
263 gastrointestinal diseases examined, only GERD exhibits a significant genetic association with  
264 smoking. This finding aligns with previous epidemiological evidence suggesting a connection  
265 between smoking and GRED (23–25). The genetic correlation between smoking and GRED  
266 suggests the presence of shared genetic factors, indicating potential associations between the  
267 two. However, further investigation is required to determine the precise mechanisms underlying  
268 these relationships. Our pleiotropy analysis using MTAG revealed 358 SNPs jointly associated  
269 with both smoking and GRED. However, we found no evidence supporting a significant causal  
270 relationship between smoking and GRED in our MR analysis after horizontal pleiotropy and  
271 heterogeneity tests. This study boasts a substantially larger sample size for GERD,  
272 encompassing 129,080 cases and 473,524 controls, totaling 602,604 samples. This heightened  
273 sample size enhances the statistical power of our results, rendering this study's conclusions  
274 more reliable and compelling in refuting the previous finding(25) of a causal effect of smoking  
275 on GERD (71,522 cases and 261,079 controls) and supporting the notion that the genetic  
276 association is more likely attributable to pleiotropy.

277 Furthermore, we observed a potential genetic link between smoking and psychiatric disorders  
278 such as schizophrenia, which corroborates the findings of previous studies(26,27). It is  
279 noteworthy that both our study, conducted within a European population, and previous studies  
280 conducted in East Asian populations did not find a significant causal relationship between  
281 smoking and schizophrenia(28). Moreover, recent research suggests that the potential genetic



282 association between smoking and schizophrenia may stem from a local genetic correlation at  
283 15q25(29). This discovery contributes to the mounting evidence supporting a genetic link  
284 between smoking and schizophrenia arising from specific loci rather than causal effects.  
285 Additionally, pathway clustering analysis revealed that the 513 pleiotropic genes shared  
286 between smoking and the 42 diseases were enriched for pathways related to growth regulation  
287 and synaptic function. This enrichment suggests that smoking may be implicated in disease  
288 development by influencing neural and developmental processes. The enriched  
289 neurodevelopmental pathways imply that smoking could disrupt crucial growth regulators  
290 during neural maturation, thereby affecting disease risk. The synaptic pathways indicate that  
291 smoking might influence neurotransmitter signaling and synaptic plasticity, thereby impacting  
292 disease pathogenesis. By connecting smoking-associated genes to established disease pathways,  
293 our integrative analysis yields new biological insights distinct from previous observational  
294 studies. Nonetheless, experimental validations are necessary to confirm the functional roles of  
295 the identified genes and pathways in mediating the relationships between smoking and diseases.  
296 Our MR analysis provides compelling evidence of causal relationships between smoking and  
297 several diseases, including UC, IBD, gastritis, PTSD, cholelithiasis, and epilepsy. These  
298 findings underscore the unique strength of our study in comparison to previous research.  
299 Consistent with prior studies, our MR analysis verifies the causal relationship between smoking  
300 and cholelithiasis, IBD, and gastritis(30). Furthermore, our results align with a meta-analysis  
301 reporting an increased risk of gallbladder disease associated with smoking(31). However, our  
302 study diverges from previous research by furnishing robust genetic evidence that smoking does  
303 not causally affect gastric and duodenal ulcers, irritable bowel syndrome, or CD. Our MR

304 analysis, with its larger sample size and rigorous statistical corrections, offers novel genetic  
305 insights into the causal effects of smoking on diseases. In contrast, we did not detect significant  
306 causal effects of the diseases on smoking after multiple testing correction. These null  
307 associations indicate that while smoking may influence disease risk, the reverse direction of  
308 disease liability contributing to smoking initiation is not supported by genetic evidence. Further  
309 studies are warranted to replicate these findings and unravel the biological mechanisms  
310 underlying the identified causal effects.

311 Several limitations merit attention in this study. First, the GWAS data primarily pertain to  
312 European ancestry populations and may not be fully generalizable to other ethnic groups. Future  
313 investigations involving more diverse populations are imperative to validate the findings.  
314 Second, the causal inferences derived from MR analysis require further experimental validation  
315 to elucidate the specific molecular mechanisms. In addition, the GWAS samples for smoking  
316 and diseases may have partial overlap, which could introduce bias and lead to inflated causal  
317 associations. Although we endeavored to maximize the independence between exposure and  
318 outcome samples during MR analysis, it is crucial to consider the potential sample overlap  
319 when interpreting the causal effects. Additionally, the study may be subject to limitations  
320 inherent to the statistical methodology, making it challenging to determine weaker causal  
321 relationships between smoking and certain diseases. Our findings call for further research into  
322 biological pathways to comprehensively delineate the causality between smoking and various  
323 diseases, ultimately advancing precision medicine. Despite these limitations, our study offers  
324 comprehensive insights into the potential causal effects of smoking on a wide range of disease  
325 endpoints within both the neuropsychiatric and gastrointestinal systems. Further rigorous

326 investigations in the future can aid in validating and expanding upon the findings presented  
327 here.

## 328 **Conclusions**

---

329 Overall, by integrating multiple genetic approaches, this study unveils the shared genetics and  
330 potential pathogenic effects linking smoking to neuropsychiatric and gastrointestinal diseases,  
331 providing crucial insights for subsequent research in this domain. Moreover, these findings hold  
332 promise for advancing clinical translational applications that aim to elucidate the intricate  
333 relationships between smoking and various diseases.

## 334 **List of Abbreviations**

---

335 **MR:** Mendelian randomisation  
336 **GWAS:** Genome-wide association study  
337 **SNP:** Single-nucleotide polymorphisms  
338 **GRED:** Gastroesophageal reflux disease  
339 **PGC:** The Psychiatric Genomics Consortium  
340 **LDSC:** The linkage disequilibrium score regression  
341 **MTAG:** Multitrait analysis of GWAS  
342 **FDR:** False discovery rate  
343 **GO:** Gene Ontology  
344 **IVW:** Inverse variance weighted  
345 **BH:** Benjamini–Hochberg  
346 **OR:** Odds ratio

347 **CI:** Confidence interval

348 **UC:** Ulcerative colitis

349 **IBD:** Inflammatory bowel disease

350 **PTSD:** Post-traumatic stress disorder

351 **CD:** Crohn's disease

352 **ADHD:** Attention-deficit/hyperactivity disorder

353 **MDD:** Major depressive disorder

354 **BD:** Bipolar disorder

355

## 356 **Declarations**

### 357 **Ethics approval and consent to participate**

---

358 Not applicable.

### 359 **Consent for publication**

---

360 Not applicable.

### 361 **Availability of data and materials**

---

362 The GWAS datasets supporting the conclusions of this article are available in the GWAS

363 Catalog (<https://www.ebi.ac.uk/gwas/>), the Psychiatric Genomics Consortium

364 (<https://www.med.unc.edu/pgc/>) and the MRC-IEU OpenGWAS database

365 (<https://gwas.mrcieu.ac.uk/>). The Migraine GWAS dataset provided by Hautakangas et al.(32)

366 can be obtained by contacting the International Headache Genetics Consortium. Data analysis

367 was performed using R version 4.2.2. LDSC (<https://github.com/bulik/ldsc/>), MTAG  
368 (<https://github.com/JonJala/mtag/>) and MAGMA(<http://ctglab.nl/software/magma>) were used  
369 for analysis, and Metascape (<https://metascape.org/>) was used for gene ontology enrichment  
370 analysis. This study was not preregistered.

## 371 **Competing interests**

---

372 The authors declare that they have no competing interests.

## 373 **Funding**

---

374 This study was supported by the Fundamental Research Funds for National Key R&D Program  
375 of China (2021YFC2502100), the National Natural Science Foundation of China (82001362),  
376 the Hunan Youth Science and Technology Innovation Talent Project (2022RC1070), and the  
377 Natural Science Foundation of Hunan Province in China (2021JJ31070).

## 378 **Authors' Information**

---

379 Affiliations

380 Bioinformatics Centre, National Clinical Research Centre for Geriatric Disorders, Department  
381 of Geriatrics, Xiangya Hospital, Central South University, Changsha, Hunan 410008, China.

382 Jiayi Xiong, Zheng Wang, Yuanfeng Huang, Shiyu Zhang, Jiaqi Yang, Shuo Gao, Tianyang  
383 Wang, Jinchun Li, Guihu Zhao & Bin Li

384 Centre for Medical Genetics & Hunan Key Laboratory, School of Life Sciences, Central  
385 South University, Changsha, Hunan 410008, China.

386 Jinchun Li

387 Department of Neurology, Xiangya Hospital, Central South University, Changsha, Hunan

388 410008, China.

389 Zheng Wang, Jinchen Li, Guihu Zhao & Bin Li

390 Hunan Key Laboratory of Molecular Precision Medicine, Xiangya Hospital, Central South

391 University, Changsha, Hunan 410008, China.

392 Zheng Wang

393 Xiangya School of Medicine, Central South University, Changsha, Hunan 410013, China.

394 Shiyu Zhang & Tianyang Wang

395 Bioinformatics Centre, Furong Laboratory, Changsha, Hunan 410008, China.

396 Jinchen Li

397 Department of Orthopedics, Xiangya Hospital, Central South University, Changsha 410008,

398 Hunan, China.

399 Guang Yang

400 **Contributions**

401 JCL, GHZ and BL designed and supervised the study, while JYX performed the majority of the

402 analysis and drafted the manuscript. BL provided mentorship, and all authors contributed to the

403 study, interpreted the findings, and reviewed the manuscript. The final version of the

404 manuscript was approved by all authors before publication.

405 **Corresponding author**

406 Correspondence to: Jinchen Li, Guihu Zhao, Bin Li

407 Address: No.87 Xiangya Road, Changsha, Hunan, China

408 Telephone: 0731-89752068

409 E-mail address: [lijinchen@csu.edu.cn](mailto:lijinchen@csu.edu.cn), [ghzhao@csu.edu.cn](mailto:ghzhao@csu.edu.cn), [lebin001@csu.edu.cn](mailto:lebin001@csu.edu.cn)

## 410 Acknowledgements

411 We are grateful for resources from the High-Performance Computing Centre of Central South  
412 University and we would like to thank the International Headache Genetics Consortium for  
413 providing us with the migraine GWAS summary data, the GWAS Catalog and the PGC and the  
414 MRC-IEU OpenGWAS database for providing other GWAS datasets.

## 415 References

---

- 416 1. Cornelius ME, Loretan CG, Jamal A, Lynn BCD, Mayer M, Alcantara IC, et al. Tobacco  
417 Product Use Among Adults – United States, 202. 2023;72(18).
- 418 2. Kamceva G, Arsova-Sarafinovska Z, Ruskovska T, Zdravkovska M, Kamceva-Panova L,  
419 Stikova E. Cigarette Smoking and Oxidative Stress in Patients with Coronary Artery Disease.  
420 Open Access Maced J Med Sci. 2016 Oct 28;4(4):636–40.
- 421 3. Barkhuizen W, Dudbridge F, Ronald A. Genetic overlap and causal associations between  
422 smoking behaviours and mental health. Sci Rep. 2021 Jul 21;11(1):14871.
- 423 4. Papoutsopoulou S, Satsangi J, Campbell BJ, Probert CS. Review article: impact of cigarette  
424 smoking on intestinal inflammation—direct and indirect mechanisms. Alimentary  
425 Pharmacology & Therapeutics. 2020;51(12):1268–85.
- 426 5. Winsvold BS, Harder AVE, Ran C, Chalmer MA, Dalmaso MC, Ferkingstad E, et al. Cluster  
427 Headache Genomewide Association Study and Meta-Analysis Identifies Eight Loci and  
428 Implicates Smoking as Causal Risk Factor. Ann Neurol. 2023 Jul 24;10.1002/ana.26743.
- 429 6. Vandebergh M, Goris A. Smoking and multiple sclerosis risk: a Mendelian randomization

- 430 study. *J Neurol*. 2020 Oct;267(10):3083–91.
- 431 7. Larsson SC, Carter P, Kar S, Vithayathil M, Mason AM, Michaëlsson K, et al. Smoking,  
432 alcohol consumption, and cancer: A mendelian randomisation study in UK Biobank and  
433 international genetic consortia participants. *PLoS Med*. 2020 Jul 23;17(7):e1003178.
- 434 8. Larsson SC, Mason AM, Bäck M, Klarin D, Damrauer SM, Million Veteran Program, et al.  
435 Genetic predisposition to smoking in relation to 14 cardiovascular diseases. *European Heart*  
436 *Journal*. 2020 Sep 14;41(35):3304–10.
- 437 9. Larsson SC, Burgess S. Appraising the causal role of smoking in multiple diseases: A  
438 systematic review and meta-analysis of Mendelian randomization studies. *eBioMedicine*. 2022  
439 Aug;82:104154.
- 440 10. Cryan JF, O’Riordan KJ, Cowan CSM, Sandhu KV, Bastiaanssen TFS, Boehme M, et al. The  
441 Microbiota-Gut-Brain Axis. *Physiological Reviews*. 2019 Oct 1;99(4):1877–2013.
- 442 11. Gong W, Guo P, Li Y, Liu L, Yan R, Liu S, et al. Role of the Gut-Brain Axis in the Shared  
443 Genetic Etiology Between Gastrointestinal Tract Diseases and Psychiatric Disorders: A  
444 Genome-Wide Pleiotropic Analysis. *JAMA Psychiatry*. 2023 Apr 1;80(4):360.
- 445 12. Margolis KG, Cryan JF, Mayer EA. The Microbiota-Gut-Brain Axis: From Motility to Mood.  
446 *Gastroenterology*. 2021 Apr;160(5):1486–501.
- 447 13. Mappin-Kasirer B, Pan H, Lewington S, Kizza J, Gray R, Clarke R, et al. Tobacco smoking  
448 and the risk of Parkinson disease: A 65-year follow-up of 30,000 male British doctors.



- 449        Neurology. 2020 May 19;94(20):e2132–8.
- 450    14. Botteri E, Borroni E, Sloan EK, Bagnardi V, Bosetti C, Peveri G, et al. Smoking and Colorectal  
451        Cancer Risk, Overall and by Molecular Subtypes: A Meta-Analysis. *Am J Gastroenterol*. 2020  
452        Dec;115(12):1940–9.
- 453    15. Schizophrenia Working Group of the Psychiatric Genomics Consortium, Bulik-Sullivan BK,  
454        Loh PR, Finucane HK, Ripke S, Yang J, et al. LD Score regression distinguishes confounding  
455        from polygenicity in genome-wide association studies. *Nat Genet*. 2015 Mar;47(3):291–5.
- 456    16. Turley P, Walters RK, Maghzian O, Okbay A, Lee JJ, Fontana MA, et al. Multi-trait analysis  
457        of genome-wide association summary statistics using MTAG. *Nat Genet*. 2018 Feb;50(2):229–  
458        37.
- 459    17. Zeng R, Jiang R, Huang W, Wang J, Zhang L, Ma Y, et al. Dissecting shared genetic  
460        architecture between obesity and multiple sclerosis. *eBioMedicine*. 2023 Jul;93:104647.
- 461    18. de Leeuw CA, Mooij JM, Heskes T, Posthuma D. MAGMA: generalized gene-set analysis of  
462        GWAS data. *PLoS Comput Biol*. 2015 Apr 17;11(4):e1004219.
- 463    19. Zhou Y, Zhou B, Pache L, Chang M, Khodabakhshi AH, Tanaseichuk O, et al. Metascape  
464        provides a biologist-oriented resource for the analysis of systems-level datasets. *Nat Commun*.  
465        2019 Apr 3;10(1):1523.
- 466    20. Yu G, Wang LG, Han Y, He QY. clusterProfiler: an R Package for Comparing Biological  
467        Themes Among Gene Clusters. *OMICS: A Journal of Integrative Biology*. 2012

- 468 May;16(5):284–7.
- 469 21. Burgess S, Butterworth A, Thompson SG. Mendelian Randomization Analysis With Multiple  
470 Genetic Variants Using Summarized Data. *Genet Epidemiol.* 2013 Nov;37(7):658–65.
- 471 22. Lee CH, Cook S, Lee JS, Han B. Comparison of Two Meta-Analysis Methods: Inverse-  
472 Variance-Weighted Average and Weighted Sum of Z-Scores. *Genomics Inform.*  
473 2016;14(4):173.
- 474 23. Sharma P. Barrett Esophagus: A Review. *JAMA.* 2022 Aug 16;328(7):663.
- 475 24. Maret-Ouda J, Markar SR, Lagergren J. Gastroesophageal Reflux Disease: A Review. *JAMA.*  
476 2020 Dec 22;324(24):2536.
- 477 25. Yuan S, Larsson SC. Adiposity, diabetes, lifestyle factors and risk of gastroesophageal reflux  
478 disease: a Mendelian randomization study. *Eur J Epidemiol.* 2022 Jul;37(7):747–54.
- 479 26. Hahad O, Daiber A, Michal M, Kuntic M, Lieb K, Beutel M, et al. Smoking and  
480 Neuropsychiatric Disease—Associations and Underlying Mechanisms. *IJMS.* 2021 Jul  
481 6;22(14):7272.
- 482 27. Hartz SM, Horton AC, Hancock DB, Baker TB, Caporaso NE, Chen LS, et al. Genetic  
483 correlation between smoking behaviors and schizophrenia. *Schizophrenia Research.* 2018  
484 Apr;194:86–90.
- 485 28. Chen J, Chen R, Xiang S, Li N, Gao C, Wu C, et al. Cigarette smoking and schizophrenia:  
486 Mendelian randomisation study. *Br J Psychiatry.* 2021 Feb;218(2):98–103.

- 487 29. Gerring ZF, Thorp JG, Gamazon ER, Derks EM. A Local Genetic Correlation Analysis  
488 Provides Biological Insights Into the Shared Genetic Architecture of Psychiatric and Substance  
489 Use Phenotypes. *Biological Psychiatry*. 2022 Oct;92(7):583–91.
- 490 30. Yuan S, Chen J, Ruan X, Sun Y, Zhang K, Wang X, et al. Smoking, alcohol consumption, and  
491 24 gastrointestinal diseases: Mendelian randomization analysis. *eLife*. 12:e84051.
- 492 31. Aune D, Vatten LJ, Boffetta P. Tobacco smoking and the risk of gallbladder disease. *Eur J*  
493 *Epidemiol*. 2016 Jul;31(7):643–53.
- 494 32. Hautakangas H, Winsvold BS, Ruotsalainen SE, Bjornsdottir G, Harder AVE, Kogelman LJA,  
495 et al. Genome-wide analysis of 102,084 migraine cases identifies 123 risk loci and subtype-  
496 specific risk alleles. *Nat Genet*. 2022 Feb;54(2):152–60.

497  
498  
499  
500  
501  
502  
503  
504  
505  
506  
507  
508  
509  
510  
511  
512  
513  
514

