

Association of immunoglobulin E levels with glioma risk and survival

Geno Guerra, PhD^{1*}; Taishi Nakase, MS^{2*}; Linda Kachuri, PhD^{2,3}; Lucie McCoy, MPH¹; Helen M. Hansen, BA¹; Terri Rice, MPH¹; Joseph. L. Wiemels, PhD⁴; John K. Wiencke, PhD^{1,5}; Annette M. Molinaro, PhD^{1,5,6}; Margaret Wrensch, PhD¹; Stephen S. Francis, PhD^{1,5,6}

*Authors contributed equally

Affiliations:

1. Department of Neurological Surgery, University of California San Francisco, San Francisco, CA, USA
2. Department of Epidemiology & Population Health, Stanford University School of Medicine, Stanford, CA, USA
3. Stanford Cancer Institute, Stanford University School of Medicine, Stanford, CA, USA
4. Center for Genetic Epidemiology, Department of Preventive Medicine, Keck School of Medicine, University of Southern California, Los Angeles, CA, USA
5. Department of Epidemiology & Biostatistics, University of California San Francisco, San Francisco, CA, USA
6. Weill Institute for Neurosciences, University of California San Francisco, San Francisco, CA, USA

Corresponding Author:

Stephen S. Francis, PhD

Associate Professor

Division of Neuro and Molecular Epidemiology

Department of Neurological Surgery

University of California San Francisco

Stephen.Francis@ucsf.edu

(415) 476-9329

1450 3rd St, San Francisco, CA 94158

ABSTRACT

Background: Previous epidemiologic studies have reported an association of serum immunoglobulin E (IgE) levels with reduced glioma risk, but the association between IgE and glioma prognosis has not been characterized. This study aimed to examine how sex, tumor subtype, and IgE class modulate the association of serum IgE levels with glioma risk and survival.

Methods: We conducted a case-control study using participants from the University of California, San Francisco Adult Glioma Study (1997-2010). Serum IgE levels for total, respiratory and food allergy were measured in adults diagnosed with glioma (n=1319) and cancer-free controls (n=1139) matched based on age, sex, and race and ethnicity. Logistic regression was adjusted for patient demographics to assess the association between IgE levels and glioma risk. Multivariable Cox regression adjusted for patient-specific and tumor-specific factors compared survival between the elevated and normal IgE groups. All statistical tests were 2-sided.

Results: Elevated total IgE was associated with reduced risk of IDH-wildtype (RR=0.78, 95% CI: 0.71-0.86) and IDH-mutant glioma (RR=0.73, 95% CI: 0.63-0.85). In multivariable Cox regression, positive respiratory IgE was associated with improved survival for IDH-wildtype glioma (RR=0.79, 95% CI: 0.67-0.93). The reduction in mortality risk was significant in females only (RR=0.75, 95% CI: 0.57-0.98) with an improvement in median survival of 6.9 months (P<.001).

Conclusion: Elevated serum IgE was associated with improved prognosis for IDH-wildtype glioma, with a more pronounced protective effect in females than males, which has implications for the future study of IgE-based immunotherapies for glioma.

INTRODUCTION

Glioma is a primary malignant brain tumor that causes 11,000 cancer-related deaths in the United States each year^{1,2}. IDH-wildtype glioblastoma (IDH-WT GBM), the most common subtype, carries a median overall survival of 14 months³. GBM has a clear sex bias, where males are more likely to develop glioma and have poorer outcomes than females⁴. In the last two decades, epidemiologic studies have highlighted a putative role of immune-related factors, including viral infections^{5,6}, allergic conditions⁷ and autoimmune disorders⁸ in gliomagenesis.

A history of allergies is generally associated with a 20% to 40% decrease in the risk of developing glioma⁹⁻¹². Using serum immunoglobulin E (IgE) concentrations as a biomarker for allergic sensitization, recent studies have reported an inverse association between elevated IgE levels and glioma risk, where banked serum studies show that this association exists up to 20 years prior to cancer diagnosis^{10,11,13-15}. The association is consistently more robust among females, especially for respiratory IgE and GBM^{13,15}. In a small cohort of GBM patients, elevated IgE levels have previously been associated with improved survival¹⁶, suggesting that IgE-mediated immune responses may not only suppress tumor development but also slow cancer progression in the tumor microenvironment. Based on these observations, we hypothesized that the relationship between IgE levels and survival may be modified by sex, tumor subtype and IgE class.

In this study, we aimed to refine the relationship between IgE levels and glioma risk according to contemporary molecular classifications and analyze the impact of sex, tumor subtype and IgE class on the association between IgE levels and survival in adult glioma patients.

METHODS

Ethics

Patient samples and clinicopathological information were collected with informed consent and relevant ethical review board approval per the tenets of the Declaration of Helsinki from the Institutional

Review Board of the University of California, San Francisco (UCSF), Human Research Protection Program in the Office of Ethics and Compliance (USA).

Study Population

Collection of samples along with demographic and clinical information for participants of the UCSF Adult Glioma Study (AGS) has been previously described^{7,11,17}. Briefly, adults 18 years or older with a newly diagnosed glioma between 1997-1999 (series 2), 2001-2004 (series 3), or 2006-2010 (series 4) who resided in the SF Bay Area were eligible for enrollment in the AGS study. Series 3 and 4 also included eligible adults seeking care at the UCSF Neuro-oncology clinic, regardless of primary residence. The diagnosis of glioma (ICDO-3 codes 9380-9480 or equivalent) was established through histology in all cases according to 2016 World Health Organization (WHO) guidelines. Controls recruited from the SF Bay Area were identified using random digit dialing and were frequency matched to cases based on age, sex, and self-reported race and ethnicity. Treatment information (including use of dexamethasone, temozolomide or other chemotherapy, and radiation) at time of, or prior to, blood draw was recorded for all cases. Follow-up is ongoing for surviving participants.

IgE Measurements

IgE antibody measurements for total, respiratory and food allergy were measured using serum from a single post-diagnosis time point for each case or at the time of the enrollment interview for each control. The full details of IgE measurements have been described in previous analyses of AGS participants^{10,11}. Briefly, IgE levels were measured using the Pharmacia Diagnostics UniCAP fluorescent “sandwich” assay¹⁸. Total IgE measured the sum of all IgE antibodies found in the blood. Total IgE levels <25 kilounits/liter were considered clinically “normal”, and levels ≥ 25 were considered “borderline” or “elevated” (henceforth termed “above normal”). The respiratory IgE panel (Phadiotop) was composed of 15 allergens that encompass 97% of respiratory atopic allergy. The food IgE panel (fx5) consisted of allergy tests for shellfish, peanut, milk, egg, tree nut, and codfish, which comprise most food allergies. Food or respiratory IgE levels <0.35 kilounit/liter were termed “negative”, and levels ≥ 0.35 were called “positive”.

Statistical Analysis

Risk Analysis

Risk ratios (RR) for increased IgE levels in cases versus controls were estimated using parametric g-computation¹⁹ under a logistic regression framework. We applied an inverse probability of treatment weighted (IPTW) approach²⁰ to balance baseline covariates between IgE groups. The propensity models for IgE status (above normal/normal or positive/negative) used logistic regression with age (continuous), sex (M/F) and self-reported race and ethnicity (white/other) as covariates. Balance between the IgE groups was assessed with standardized differences of the baseline covariates, using a threshold of 0.1 to indicate imbalance. The outcome model for glioma used weighted logistic regression with IgE status as the independent variable and AGS recruitment window (series 2, 3 or 4) as a categorical variable. Heterogeneity in sex-specific IgE effects was assessed using Cochran's Q test and the I^2 index.

Survival Analysis

Mortality risk for positive/above normal IgE cases versus negative/normal IgE cases was estimated with IPTW Cox proportional hazards regression²⁰. The propensity scores for IgE status were estimated using logistic regression with age (continuous), sex (M/F), self-reported race and ethnicity (white/other) and chemotherapy use (yes/no) as balancing covariates. The IPTW Cox model for the estimation of mortality risk between IgE groups included adjustment for categorical covariates for dexamethasone use at blood draw, radiation use, type of surgery (resection/biopsy), 1p/19q co-deletion, *TERT* mutation, tumor grade (2, 3 or 4), and AGS recruitment window (series 2, 3 or 4). Heterogeneity in sex-specific IgE effects was assessed using Cochran's Q test and the I^2 index. Substantial heterogeneity was defined as an $I^2 > 50\%$ or a Q test p value < 0.05 ²¹. Kaplan-Meier analyses were used to obtain unadjusted percent survival distributions and generate survival curves for visualization. Follow-up time was calculated from the date of pathological diagnosis to either the date of death or the date of last known contact for censored patients.

Population attributable fraction (PAF) estimates among IDH-WT glioma cases for age at diagnosis (<58 years/≥58 years), surgery (resection/biopsy), chemotherapy use (yes/no), and IgE (above normal/normal) were derived from Cox proportional hazard regression models adjusted for sex (combined only), self-reported race and ethnicity (white/other), dexamethasone use at blood draw, radiation use, 1p19q codeletion, *TERT* mutation, and strata for tumor grade (2, 3 or 4). PAF estimates are reported for 6 months and 12 months of follow-up time.

All statistical analyses were conducted using R v4.0.3. Statistical significance was determined using $P < 0.05$ as the threshold in all comparisons; all P values were 2-sided.

RESULTS

Characteristics of Study Participants

The analysis group consisted of 1319 glioma cases (928 *IDH* wildtype, 391 *IDH* mutant) and 1139 non-glioma controls with at least one IgE antibody measurement. Basic information about glioma cases stratified by *IDH* mutation status as well as non-glioma controls is summarized in **Table 1**. The prevalence of above normal total IgE levels was higher in males than in females for cases (53.5% vs. 40.0%; **Supplementary Table 1**) and controls (63.9% vs. 51.0%; **Supplementary Table 2**). Individuals with positive respiratory IgE were younger and more likely male than those testing negative. The cohort of glioma cases with dexamethasone use at blood draw had a similar proportion of above normal total IgE measurements compared to cases without dexamethasone use (46.4% vs. 49.0%, $P=0.31$). The proportion of individuals with above normal total IgE or positive allergen-specific IgE was comparable across the three recruitment series (**Supplementary Table 3**).

Serum IgE and IDH-specific glioma risk

We examined the association between serum IgE levels and glioma risk stratifying by sex and *IDH* mutation status (**Table 2**). Above normal total IgE was associated with a 22% lower risk of developing IDH-WT glioma (RR=0.78, 95% Confidence Interval (CI): 0.71-0.86, $P < .001$). Similar results were observed when restricting to males (RR=0.80, 95% CI: 0.71-0.89, $P < .001$) and females (RR=0.75,

95% CI: 0.64-0.89, $P < .001$). For IDH-mutant (IDH-MT) gliomas, an inverse association was also identified in the pooled analysis (RR=0.73, 95% CI: 0.63-0.85, $P < .001$), which remained in both males (RR=0.77, 95% CI: 0.64-0.92, $P = 0.005$) and females (RR=0.68, 95% CI: 0.52-0.87, $P = 0.003$). Similar results were obtained when restricting to grade IV IDH-wildtype gliomas (**Supplementary Table 4**).

We found that testing positive for respiratory IgE was associated with a significant decrease in the risk of IDH-WT glioma (RR=0.87, 95% CI: 0.79-0.96, $P = 0.004$), especially in females (RR=0.83, 95% CI: 0.70-0.97, $P = 0.02$). This female-specific attenuation in risk was also observed for IDH-MT glioma (RR=0.76, 95% CI: 0.58-0.99, $P = 0.04$), which showed evidence of sex-based heterogeneity in respiratory IgE effects ($I^2 = 60.2\%$; **Supplementary Table 5**). Positive food IgE was associated with a decrease in the risk of both IDH-WT (RR=0.84, 95% CI: 0.76-0.93, $P < .001$) and IDH-MT glioma (RR=0.55, 95% CI: 0.45-0.67, $P < .001$). This reduction in risk was restricted to males (IDH-WT: RR=0.76, $P = 0.049$; IDH-MT: RR=0.70, $P = 0.002$), with an estimated sex-based heterogeneity of $I^2 = 73.4\%$ for IDH-WT glioma (**Supplementary Table 5**). [Sensitivity analyses restricted to self-reported White participants yielded similar results to the pooled analyses \(Supplementary Table 6\)](#).

Serum IgE and overall survival

Among patients with IDH-WT gliomas, above normal total IgE was associated with improved survival (RR=0.84, 95% CI: 0.71-0.98, $P = 0.03$; **Figure 1, Supplementary Table 7**). IDH-WT glioma cases with above normal total IgE levels showed a median 1.5 months longer survival than cases with normal levels ($P = 0.007$). For cases with IDH-MT glioma, above normal total IgE levels were not associated with altered survival (RR=0.89, 95% CI: 0.63-1.26, $P = 0.50$). The association between IgE and overall survival among patients with IDH-WT glioma was particularly pronounced for respiratory IgE (RR=0.79, 95% CI: 0.67-0.93, $P = 0.005$), with positive cases demonstrating an increase in median survival of 2.2 months ($P < .001$). We did not observe a significant relationship between positive respiratory IgE and mortality risk among IDH-MT glioma patients (RR=0.92, 95% CI: 0.66-1.29, $P = 0.63$). Food IgE was not associated with prognosis in either tumor subtype.

Influence of sex on survival outcomes

Next, we assessed whether survival associations varied by sex (**Figure 2, Supplementary Table 7**). For IDH-WT glioma, above normal total IgE was associated with improved prognosis in females (RR=0.76, 95% CI: 0.59-0.98, P=0.04), but not in males (RR=0.86, 95% CI: 0.71-1.04, P=0.11). In females, median survival in patients with above normal total IgE was 6.2 months longer than in patients with normal levels (P=0.009). In males, the difference in median survival between normal and above normal total IgE groups was 1.2 months (P=0.04). Results were similar when restricting to grade IV IDH-WT gliomas (**Supplementary Table 8**), with above normal total IgE associated with a significantly lower mortality risk among females (RR=0.73, 95% CI: 0.55-0.97, P=0.03), but not among males (RR=0.86, 95% CI: 0.71-1.05, P=0.14).

For IDH-WT glioma, females who were positive for respiratory IgE had a 25% decrease in overall mortality risk (RR=0.75, 95% CI: 0.57-0.98, P=0.04) and a median 6.9 months longer survival than those with negative antibody tests (P<.001). The magnitude of the effect was smaller and not statistically significant for males (RR=0.83, 95% CI: 0.67-1.03, P=0.09), with the improvement in median survival limited to 2.0 months (P=0.01). Evidence of sex-based heterogeneity in overall survival was observed for IDH-WT glioma and respiratory IgE ($I^2=75.8%$, **Supplementary Table 9**), although the association between positive respiratory IgE and mortality did not achieve statistical significance in either females (RR=1.57, 95% CI: 0.92-2.68, P=0.10) or males (RR=0.76, 95% CI: 0.49-1.18, P=0.22). *Although attenuated, similar results were obtained when restricting to self-reported White patients (Supplementary Table 10).*

Quantification of population-level impact on IDH-WT survival

Among patients with IDH-WT gliomas, the PAF at 6 months follow-up for positive respiratory IgE (PAF_{tlgE}=0.14, P=0.004) exceeded that for both chemotherapy (PAF_{chemo}=0.08, P=0.02) and surgery (PAF_{surg}=0.08, P=0.003), but was less than that for age at diagnosis (PAF_{age}=0.25, P<.001) (**Figure 3, Supplementary Table 11**). In contrast, the contribution of total IgE was more similar to treatment factors (PAF_{tlgE}=0.08, P=0.04; **Supplementary Figure 1**). In females, elevated total IgE (PAF_{tlgE}=0.15, P=0.03)

and respiratory IgE ($PAF_{\text{rIgE}}=0.19$, $P=0.01$) had a substantially larger impact on mortality risk than treatment factors, whereas in males, IgE did not significantly contribute to overall survival ($PAF_{\text{tIgE}}=0.06$, $P=0.17$; $PAF_{\text{rIgE}}=0.11$, $P=0.08$). At 12 months follow-up, PAF estimates for IgE were generally attenuated, but remained statistically significant for females (**Supplementary Table 11**).

DISCUSSION

We found that elevated levels of total IgE were associated with reduced risk of both IDH-WT and IDH-MT glioma, recapitulating the results of several previous studies^{10,11,13,14}. In survival analyses, we demonstrated that elevated post-diagnosis serum IgE levels were associated with improved outcomes among patients with IDH-WT tumors. We identified a strong protective effect in IDH-WT female patients, where respiratory IgE seropositivity was associated with a 25% reduction in mortality risk resulting in approximately 7 months of additional survival time. This substantial improvement in median survival rivals the benefit of the principal glioma therapeutic, temozolomide²². Similarly, we observed a higher PAF for positive respiratory IgE than either chemotherapy or surgery in females with IDH-WT glioma. Together, these results highlight substantial differences in immune factors relating to both subtype-specific and sex-specific glioma prognosis.

The mechanism underlying the link between IgE-mediated atopic disease and glioma susceptibility remains unclear. The current prevailing hypothesis is that atopy induces a state of enhanced natural immunosurveillance, which promotes the detection and removal of malignant cells^{23,24}. Though best known for its roles in allergy and protection against parasitic infections, IgE has been shown to exhibit both direct and cell-mediated effects against tumor cells²⁴. These effects include the reprogramming of immunosuppressive tumor-associated macrophages and the activation of antibody-mediated tumor cell cytotoxicity and phagocytosis. [For instance, in murine tumor models, the administration of IgE antibodies has been shown to recruit and re-educate immunosuppressive tumor-associated macrophages toward a tumoricidal phenotype via a \$TNF\alpha\$ /MCP-1 cascade^{25,26}.](#) The association between elevated IgE and improved IDH-WT prognosis suggests that some of these IgE-mediated immune responses may have direct antitumor activity within the central nervous system (CNS).

Recent research has shown that allergic airway inflammation can induce a pro-inflammatory-like state in microglia that reduced tumor growth in mice models^{27,28}. Additionally, previous studies have shown that patients with hyper IgE syndrome (HIES) commonly develop white matter hyperintensities in the cerebral hemispheres²⁹, suggesting that IgE-mediated autoimmunity is active in the CNS. Intriguingly, some forms of HIES have been shown to arise from dominant negative mutations in the signaling transduction and activator of transcription 3 (STAT3) gene³⁰, which has been linked to many cancers including glioma^{31,32}. While the role of *STAT3* and the JAK/STAT pathway has been well studied in IDH-WT GBMs³³⁻³⁵, its significance in IDH-MT glioma is less clear. Further research is needed to investigate the etiologic role of IgE in gliomagenesis, its interaction with genomic alterations and its potential as a therapeutic intervention.

While sex-specific differences in respiratory IgE and GBM risk have been previously reported^{13,15}, this study is the first to suggest sexual dimorphism in the link between IgE and GBM survival. It is well established that males and females exhibit distinct immunological responses to foreign and self-antigens, which contribute to differences in susceptibility to autoimmune diseases, malignancies and allergies³⁶. While adolescent males tend to be more affected by allergies and have higher allergen-specific IgE sensitization than females, rates of atopy and allergic disease in females increase during puberty to levels comparable to that in males³⁷⁻³⁹. Although the mechanisms by which sex hormones modulate allergy-induced inflammation are complex, experimental studies suggest that estrogen enhances immunological recall responses while testosterone dampens such responses^{36,40}. Estrogen is thought to promote a Th2 cell bias^{36,41}, which may enhance allergic inflammation and promote direct anti-GBM activity via IgE antibody dependent cellular cytotoxicity (ADCC)⁴². Intriguingly, in female patients with IDH-MT glioma, positive respiratory IgE appeared to increase mortality risk, although the association did not achieve statistical significance. This finding should be interpreted with caution and further replicated, but it suggests the possibility of female sex hormones interacting with tumor-specific immune features to modify the association between IgE and overall survival. Functional studies are needed to elucidate possible mechanisms by which the differential expression of sex hormones between males and females influences IgE-related immune responses against glioma.

Although we observed improved survival among IDH-WT patients with positive respiratory IgE, elevated food IgE was not associated with mortality risk. Isolated associations between respiratory IgE levels and glioma risk were observed in two previous studies^{13,15}, suggesting that the effect of respiratory IgE may reflect the mechanism by which allergic inflammation influence glioma development and progression. It may be that specific respiratory allergens share epitopes with tumor antigens, such that adaptive immune cells primed by respiratory allergens recognize glioma cells more efficiently and have stronger antitumor effects. However, this hypothesis fails to account for previous reports of an inverse association between contact allergy, a delayed-type hypersensitivity reaction of the skin, and brain cancer^{9,43}, which broadly indicate that the antitumor activity of allergic inflammation may not be linked to specific allergens or IgE itself. Furthermore, we observed a reduction in glioma risk in patients with either positive respiratory IgE or positive food IgE, suggesting that IgE-related effects on gliomagenesis are potentially independent of the class of IgE antibodies. Elevated food IgE was less common than respiratory IgE (6% vs. 41%); therefore, our study may lack statistical power to detect an association with mortality.

In addition to small sample sizes in some stratified analyses, our study has several limitations. Our cohort was initially categorized using WHO 2016 criteria and lacks some somatic mutations necessary for WHO 2021 classification. Nevertheless, *IDH* mutation captures the most prognostically significant glioma feature. Blood samples used to measure IgE antibody levels were collected a median of 95 days post-surgery among cases and may be influenced by the immunosuppressive effects of glioma treatment or the tumor itself. While there is some potential for this to confound the protective effect of IgE on glioma susceptibility, plasma IgE levels collected as much as 20 years before diagnosis have been reported to be associated with glioma risk^{13,14}. Furthermore, in our analyses, adjustment for dexamethasone use did not substantively alter the effect of IgE levels on survival. Although use of dexamethasone and temozolomide were well documented in our cohort, we did not have information on the use of other immunomodulatory medications that have been associated with glioma risk among individuals with a history of allergies .

In this study we replicated the established association between elevated serum IgE and reduced glioma risk in the largest cohort to date. We also discovered that elevated IgE is associated with improved survival, especially in females, where the population attributable fraction to survival time was greater than the effects of treatment. These analyses were rigorously adjusted for potential imbalance in baseline covariates between IgE groups using an IPTW approach²⁰, which can provide less biased and more precise estimates than multivariable regression in highly stratified analyses with few events per confounder⁴⁵. Age, sex, and race/ethnicity have been consistently associated with measured IgE levels and glioma risk. As such, we felt it essential to balance these strong confounders between IgE groups to best assess the direct implications of IgE antibody levels on glioma risk and survival in our observational data. Taken together with known sex differences in immune responses, these results suggest that IgE-related immunologic features may contribute to both the higher risk of glioma in males and the female survival advantage observed among GBM patients. Our results provide support for further investigations including functional studies to assess the therapeutic potential of IgE-based immunotherapies for GBM.

Author contributions: GG and SSF conceived the project. GG, TN, LK and SSF advised on the methodology. GG, LM, HMH, TR, JLW, JKW, AMM, MW and SSF were involved in primary data collection and curation. GG performed the main analyses. TN, GG, LK and SSF drafted the manuscript and all authors contributed to, reviewed and approved the final manuscript.

Data Availability Statement: All data from this study are a part of the University of California, San Francisco Adult Glioma Study and are available upon request from dbGap (accession phs001497.v2.p1).

Funding: Work at the University of California, San Francisco, was supported by the National Institutes of Health (grant numbers R01CA52689, P50CA097257, R01CA126831, R01CA139020, and R01CA266676), as well as the loglio Collective, the National Brain Tumor Foundation, the Stanley D. Lewis and Virginia S. Lewis Endowed Chair in Brain Tumor Research, the Robert Magnin Newman Endowed Chair in Neuro-oncology, and by donations from families and friends of John Berardi, Helen Glaser, Elvera Olsen, Raymond E. Cooper, and William Martinusen. The work at Stanford University was supported by the National Institutes of Health grant R00CA246076. This publication was supported by the National Center for Research Resources and the National Center for Advancing Translational Sciences, National Institutes of Health, through UCSF-CTSI Grant Number UL1 RR024131. Its contents are solely the authors' responsibility and do not necessarily represent the official views of the NIH.

Conflicts of Interest: The authors declare no competing interests.

Acknowledgements: The authors wish to acknowledge study participants, the clinicians, and the research staff at the participating medical centers, the UCSF Cancer Registry, and the UCSF Neurosurgery Tissue Bank. The collection of cancer incidence data used in this study was supported by the California Department of Public Health pursuant to California Health and Safety Code Section 103885; Centers for Disease Control and Prevention's (CDC) National Program of Cancer Registries, under cooperative agreement 5NU58DP006344; the National Cancer Institute's Surveillance, Epidemiology and End Results Program under contract HHSN261201800032I awarded to the University

of California, San Francisco, contract HHSN261201800015I awarded to the University of Southern California, and contract HHSN261201800009I awarded to the Public Health Institute, Cancer Registry of Greater California. The ideas and opinions expressed herein are those of the author(s) and do not necessarily reflect the opinions of the State of California, Department of Public Health, the National Cancer Institute, and the Centers for Disease Control and Prevention or their Contractors and Subcontractors. All analyses, interpretations, and conclusions reached in this manuscript from the mortality data are those of the author(s) and not the State of California Department of Public Health. R01CA52689, P50CA097257, R01CA126831, R01CA139020 provided funding for the UCSF Adult Glioma Study. R01CA266676 (to SSF) provided funding for GG, HMH, and SSF during the time of study. R00CA246076 (to LK) provided funding to LK during the time of study. The funder did not play a role in the design of the study; the collection, analysis, and interpretation of the data; the writing of the manuscript; and the decision to submit the manuscript for publication.

REFERENCES

1. Molinaro AM, Taylor JW, Wiencke JK, Wrensch MR. Genetic and Molecular Epidemiology of Adult Diffuse Glioma. *Nature reviews Neurology*. 2019;15(7):405-417. doi:10.1038/s41582-019-0220-2
2. Ostrom QT, Price M, Neff C, et al. CBTRUS Statistical Report: Primary Brain and Other Central Nervous System Tumors Diagnosed in the United States in 2016—2020. *Neuro-oncology (Charlottesville, Va)*. 2023;25(Supplement_4):iv1-iv99. doi:10.1093/neuonc/noad149
3. Pekmezci M, Rice T, Molinaro AM, et al. Adult infiltrating gliomas with WHO 2016 integrated diagnosis: additional prognostic roles of ATRX and TERT. *Acta neuropathologica*. 2017;133(6):1001-1016. doi:10.1007/s00401-017-1690-1
4. Ostrom QT, Rubin JB, Lathia JD, Berens ME, Barnholtz-Sloan JS. Females have the survival advantage in glioblastoma. *Neuro-Oncology*. 2018;20(4):576-577. doi:10.1093/neuonc/noy002
5. Wrensch M, Weinberg A, Wiencke J, et al. Does Prior Infection with Varicella-Zoster Virus Influence Risk of Adult Glioma? *American Journal of Epidemiology*. 1997;145(7):594-597. doi:10.1093/oxfordjournals.aje.a009155
6. Guerra G, McCoy L, Hansen HM, et al. Antibodies to varicella-zoster virus and three other herpesviruses and survival in adults with glioma. *Neuro-Oncology*. 2023;25(6):1047-1057. doi:10.1093/neuonc/noac283
7. Wiemels JL, Wiencke JK, Sison JD, Miike R, McMillan A, Wrensch M. History of allergies among adults with glioma and controls. *International Journal of Cancer*. 2002;98(4):609-615. doi:10.1002/ijc.10239
8. Brenner AV, Linet MS, Fine HA, et al. History of allergies and autoimmune diseases and risk of brain tumors in adults. *International Journal of Cancer*. 2002;99(2):252-259. doi:10.1002/ijc.10320
9. Wigertz A, Lonn S, Schwartzbaum J, et al. Allergic Conditions and Brain Tumor Risk. *American Journal of Epidemiology*. 2007;166(8):941-950. doi:10.1093/aje/kwm203
10. Wiemels JL, Wiencke JK, Patoka J, et al. Reduced Immunoglobulin E and Allergy among Adults with Glioma Compared with Controls. *Cancer Research*. 2004;64(22):8468-8473. doi:10.1158/0008-5472.CAN-04-1706
11. Wiemels JL, Wilson D, Patil C, et al. IgE, allergy, and risk of glioma: Update from the San Francisco Bay Area Adult Glioma Study in the Temozolomide era. *International Journal of Cancer*. 2009;125(3):680-687. doi:10.1002/ijc.24369
12. Amirian ES, Zhou R, Wrensch MR, et al. Approaching a Scientific Consensus on the Association between Allergies and Glioma Risk: A Report from the Glioma International Case-Control Study. *Cancer Epidemiology, Biomarkers & Prevention*. 2016;25(2):282-290. doi:10.1158/1055-9965.EPI-15-0847

13. Schwartzbaum J, Ding B, Johannesen TB, et al. Association Between Prediagnostic IgE Levels and Risk of Glioma. *JNCI Journal of the National Cancer Institute*. 2012;104(16):1251-1259. doi:10.1093/jnci/djs315
14. Calboli FCF, Cox DG, Buring JE, et al. Prediagnostic Plasma IgE Levels and Risk of Adult Glioma in Four Prospective Cohort Studies. *JNCI Journal of the National Cancer Institute*. 2011;103(21):1588-1595. doi:10.1093/jnci/djr361
15. Schlehofer B, Siegmund B, Linseisen J, et al. Primary brain tumours and specific serum immunoglobulin E: a case-control study nested in the European Prospective Investigation into Cancer and Nutrition cohort. *Allergy*. 2011;66(11):1434-1441. doi:10.1111/j.1398-9995.2011.02670.x
16. Wrensch M, Wiencke JK, Wiemels J, et al. Serum IgE, Tumor Epidermal Growth Factor Receptor Expression, and Inherited Polymorphisms Associated with Glioma Survival. *Cancer Research*. 2006;66(8):4531-4541. doi:10.1158/0008-5472.CAN-05-4032
17. Walsh KM, Codd V, Smirnov IV, et al. Variants near TERT and TERC influencing telomere length are associated with high-grade glioma risk. *Nature Genetics*. 2014;46(7):731-735. doi:10.1038/ng.3004
18. Szeinbach SL, Barnes JH, Sullivan TJ, Williams PB. Precision and accuracy of commercial laboratories' ability to classify positive and/or negative allergen-specific IgE results. *Annals of Allergy, Asthma & Immunology*. 2001;86(4):373-381. doi:10.1016/S1081-1206(10)62481-7
19. Robins J. A new approach to causal inference in mortality studies with a sustained exposure period—application to control of the healthy worker survivor effect. *Mathematical Modelling*. 1986;7(9-12):1393-1512. doi:10.1016/0270-0255(86)90088-6
20. Hernan MA. Estimating causal effects from epidemiological data. *Journal of Epidemiology & Community Health*. 2006;60(7):578-586. doi:10.1136/jech.2004.029496
21. Higgins JPT, Thompson SG. Quantifying heterogeneity in a meta-analysis. *Statistics in Medicine*. 2002;21(11):1539-1558. doi:10.1002/sim.1186
22. Stupp R, Hegi ME, Mason WP, et al. Effects of radiotherapy with concomitant and adjuvant temozolomide versus radiotherapy alone on survival in glioblastoma in a randomised phase III study: 5-year analysis of the EORTC-NCIC trial. *The Lancet Oncology*. 2009;10(5):459-466. doi:10.1016/S1470-2045(09)70025-7
23. Josephs DH, Spicer JF, Corrigan CJ, Gould HJ, Karagiannis SN. Epidemiological associations of allergy, IgE and cancer. *Clinical & Experimental Allergy*. 2013;43(10):1110-1123. doi:10.1111/cea.12178
24. Jensen-Jarolim E, Achatz G, Turner MC, et al. AllergoOncology: the role of IgE-mediated allergy in cancer. *Allergy*. 2008;63(10):1255-1266. doi:10.1111/j.1398-9995.2008.01768.x
25. Karagiannis SN, Josephs DH, Bax HJ, Spicer JF. Therapeutic IgE Antibodies: Harnessing a Macrophage-Mediated Immune Surveillance Mechanism against Cancer. *Cancer Research*. 2017;77(11):2779-2783. doi:10.1158/0008-5472.CAN-17-0428

26. Josephs DH, Bax HJ, Dodev T, et al. Anti-Folate Receptor- α IgE but not IgG Recruits Macrophages to Attack Tumors via TNF α /MCP-1 Signaling. *Cancer Research*. 2017;77(5):1127-1141. doi:10.1158/0008-5472.can-16-1829
27. Chatterjee J, Sanapala S, Cobb O, et al. Asthma reduces glioma formation by T cell decorin-mediated inhibition of microglia. *Nature Communications*. 2021;12(1):7122. doi:10.1038/s41467-021-27455-6
28. Poli A, Oudin A, Muller A, et al. Allergic airway inflammation delays glioblastoma progression and reinvigorates systemic and local immunity in mice. *Allergy*. 2023;78(3):682-696. doi:10.1111/all.15545
29. Freeman AF, Collura-Burke CJ, Patronas NJ, et al. Brain Abnormalities in Patients With Hyperimmunoglobulin E Syndrome. *Pediatrics*. 2007;119(5):e1121-e1125. doi:10.1542/peds.2006-2649
30. Holland SM, DeLeo FR, Elloumi HZ, et al. STAT3 Mutations in the Hyper-IgE Syndrome. *New England Journal of Medicine*. 2007;357(16):1608-1619. doi:10.1056/NEJMoa073687
31. Johnson DE, O'Keefe RA, Grandis JR. Targeting the IL-6/JAK/STAT3 signalling axis in cancer. *Nature Reviews Clinical Oncology*. 2018;15(4):234-248. doi:10.1038/nrclinonc.2018.8
32. Brantley EC, Benveniste EN. Signal Transducer and Activator of Transcription-3: A Molecular Hub for Signaling Pathways in Gliomas. *Molecular Cancer Research*. 2008;6(5):675-684. doi:10.1158/1541-7786.MCR-07-2180
33. Fu W, Hou X, Dong L, Hou W. Roles of STAT3 in the pathogenesis and treatment of glioblastoma. *Front Cell Dev Biol*. 2023;11:1098482. doi:10.3389/fcell.2023.1098482
34. Ganguly D, Fan M, Yang CH, et al. The critical role that STAT3 plays in glioma-initiating cells: STAT3 addiction in glioma. *Oncotarget*. 2018;9(31):22095-22112. doi:10.18632/oncotarget.25188
35. West A, Tsui V, Styli S, et al. The role of interleukin-6-STAT3 signalling in glioblastoma (Review). *Oncol Lett*. Published online July 27, 2018. doi:10.3892/ol.2018.9227
36. Klein SL, Flanagan KL. Sex differences in immune responses. *Nature Reviews Immunology*. 2016;16(10):626-638. doi:10.1038/nri.2016.90
37. Keller T, Hohmann C, Standl M, et al. The sex-shift in single disease and multimorbid asthma and rhinitis during puberty - a study by MeDALL. *Allergy*. 2018;73(3):602-614. doi:10.1111/all.13312
38. Salo PM, Arbes SJ, Jaramillo R, et al. Prevalence of allergic sensitization in the United States: Results from the National Health and Nutrition Examination Survey (NHANES) 2005-2006. *Journal of Allergy and Clinical Immunology*. 2014;134(2):350-359. doi:10.1016/j.jaci.2013.12.1071
39. Wolkewitz M, Rothenbacher D, Löw M, et al. Lifetime prevalence of self-reported atopic diseases in a population-based sample of elderly subjects: results of the ESTHER study.

British Journal of Dermatology. 2007;156(4):693-697. doi:10.1111/j.1365-2133.2006.07659.x

40. Keselman A, Heller N. Estrogen Signaling Modulates Allergic Inflammation and Contributes to Sex Differences in Asthma. *Frontiers in Immunology*. 2015;6. doi:10.3389/fimmu.2015.00568
41. Chakraborty B, Byemerwa J, Krebs T, Lim F, Chang CY, McDonnell DP. Estrogen Receptor Signaling in the Immune System. *Endocrine Reviews*. 2023;44(1):117-141. doi:10.1210/edrev/bnac017
42. Costanza M, Finocchiaro G. Allergic Signs in Glioma Pathology: Current Knowledge and Future Perspectives. *Cancers*. 2019;11(3):404. doi:10.3390/cancers11030404
43. Engkilde K, Thyssen JP, Menne T, Johansen JD. Association between cancer and contact allergy: a linkage study. *BMJ Open*. 2011;1(1):e000084-e000084. doi:10.1136/bmjopen-2011-000084
44. Amirian ES, Marquez-Do D, Bondy ML, Scheurer ME. Antihistamine use and immunoglobulin E levels in glioma risk and prognosis. *Cancer Epidemiology*. 2013;37(6):908-912. doi:10.1016/j.canep.2013.08.004
45. Cepeda MS. Comparison of Logistic Regression versus Propensity Score When the Number of Events Is Low and There Are Multiple Confounders. *American Journal of Epidemiology*. 2003;158(3):280-287. doi:10.1093/aje/kwg115

Table 1: Description of Participants: University of California, San Francisco Adult Glioma Study (1997-2010).

	IDH-wildtype N (%)	IDH-mutant N (%)	Controls N (%)
Total	928 (100)	391 (100)	1139 (100)
Median age (IQR)	56 (18)	40 (16)	57 (23)
Sex			
Male	569 (61.3)	230 (58.8)	588 (51.6)
Female	359 (38.7)	161 (41.2)	551 (48.4)
Race and ethnicity			
Asian	50 (5.4)	28 (7.2)	82 (7.2)
Black or African American	24 (2.6)	9 (2.3)	43 (3.8)
White	827 (89.1)	342 (87.5)	981 (86.1)
Other ^a	27 (2.9)	12 (3.1)	33 (2.9)
UCSF AGS series			
Series 2 ('97-'99)	140 (15.1)	60 (15.4)	289 (25.4)
Series 3 ('01-'04)	467 (50.3)	208 (53.2)	470 (41.3)
Series 4 ('06-'10)	321 (34.6)	123 (31.5)	380 (33.4)
Total IgE ^b			
Normal	479 (51.6)	204 (52.2)	482 (42.3)
Borderline	289 (31.1)	135 (34.5)	396 (34.8)
Elevated	159 (17.1)	51 (13.0)	261 (22.9)
Respiratory IgE ^b			
Negative	586 (63.2)	223 (57.0)	663 (58.2)
Positive	340 (36.6)	167 (42.7)	476 (41.8)
Food IgE ^b			
Negative	873 (94.1)	378 (96.7)	1049 (92.1)
Positive	53 (5.7)	12 (3.1)	90 (7.9)
IDH ^p			
Mutated	0 (0)	391 (100)	—
Wildtype	928 (100)	0 (0)	—
1p/19q ^b			
Codeleted	9 (1.0)	116 (29.7)	—
Non-codeleted	835 (90.0)	242 (61.9)	—
Grade ^b			
II	39 (4.2)	181 (46.3)	—
III	82 (8.8)	135 (34.5)	—
IV	728 (78.5)	62 (15.9)	—
Days to blood draw (IQR)	90 (93)	99 (116)	—
Chemotherapy			
Yes	708 (76.3)	253 (64.7)	—
No	220 (23.7)	138 (35.3)	—
Temozolomide			
Yes	626 (67.5)	212 (54.2)	—
No	302 (32.5)	179 (45.8)	—
Radiation			
Yes	841 (90.6)	241 (61.6)	—
No	87 (9.4)	150 (38.4)	—
Dexamethasone			
Yes	410 (44.2)	89 (22.8)	—
No	518 (55.8)	302 (77.2)	—

For quantitative variables, interquartile range (IQR) is reported. ^aOther includes Native Americans, Pacific Islanders and individuals with no reported race and ethnicity. ^bSum may not equal the total due to individuals with missing values. Tumor-specific and treatment-specific variables are not applicable to controls.

Table 2: Associations between IgE levels and glioma risk stratified by sex and molecular subtype.

	Controls		IDH-wildtype		IDH-mutant		
	N (%)	N (%)	RR (95% CI)	P value	N (%)	RR (95% CI)	P value
Combined							
Total IgE							
Normal	482 (42)	479 (52)	1.00		204 (52)	1.00	
Above normal	657 (58)	448 (48)	0.78 (0.71, 0.86)	<.001	186 (48)	0.73 (0.63, 0.85)	<.001
Respiratory IgE							
Negative	663 (58)	586 (63)	1.00		223 (57)	1.00	
Positive	476 (42)	340 (37)	0.87 (0.79, 0.96)	0.004	167 (43)	0.90 (0.78, 1.04)	0.15
Food IgE							
Negative	1049 (92)	873 (94)	1.00		378 (97)	1.00	
Positive	90 (8)	53 (6)	0.84 (0.76, 0.93)	<.001	12 (3)	0.55 (0.45, 0.67)	<.001
Males							
Total IgE							
Normal	212 (36)	265 (47)	1.00		104 (46)	1.00	
Above normal	376 (64)	303 (53)	0.80 (0.71, 0.89)	<.001	125 (54)	0.77 (0.64, 0.92)	0.005
Respiratory IgE							
Negative	321 (55)	340 (60)	1.00		118 (51)	1.00	
Positive	267 (45)	228 (40)	0.90 (0.80, 1.01)	0.07	112 (49)	0.98 (0.82, 1.18)	0.85
Food IgE							
Negative	535 (91)	537 (94)	1.00		219 (95)	1.00	
Positive	53 (9)	32 (6)	0.76 (0.58, 1.00)	0.049	11 (5)	0.70 (0.56, 0.88)	0.002
Females							
Total IgE							
Normal	270 (49)	214 (60)	1.00		100 (62)	1.00	
Above normal	281 (51)	145 (40)	0.75 (0.64, 0.89)	<.001	61 (38)	0.68 (0.52, 0.87)	0.003
Respiratory IgE							
Negative	342 (62)	246 (69)	1.00		105 (66)	1.00	
Positive	209 (38)	112 (31)	0.83 (0.70, 0.97)	0.02	55 (34)	0.76 (0.58, 0.99)	0.04
Food IgE							
Negative	514 (93)	336 (94)	1.00		159 (100)	—	
Positive	37 (7)	21 (6)	0.95 (0.81, 1.12)	0.52	1 (0)	—	—

Risk ratios (RR) and 95% confidence intervals (CI) were estimated with weighted logistic regression models using inverse probability weighting for age, sex (included in combined analysis only) and self-reported race and ethnicity. Models are also adjusted for AGS recruitment series. Risk analysis for food IgE among female patients with IDH-mutant glioma is not reported due to insufficient individuals with positive food IgE.

Figure 1: Associations between IgE levels and survival stratified by sex and molecular subtype.

Risk ratios (RR) and corresponding 95% confidence intervals (CI) were estimated using IPTW Cox regression models. Propensity models include age, sex (included in combined analysis only), self-reported race and ethnicity, and chemotherapy use. Weighted Cox models were also adjusted for dexamethasone use, surgery type (resection/biopsy only), 1p19q codeletion status, *TERT* mutation, tumor grade and AGS recruitment series. The RR estimate for food IgE and IDH-mutant glioma (combined and female only) are not shown due to insufficient individuals with positive food IgE.

Figure 2: Kaplan-Meier curves for adult glioma cases with serum IgE concentrations. Percent survival distributions for adults with glioma stratified by sex and categorical serum IgE concentration for (A) IDH-wildtype glioma and total IgE and (B) IDH-wildtype glioma and respiratory IgE. +IgE = above normal total IgE or positive respiratory IgE. -IgE = normal total IgE or negative respiratory IgE. P values are shown for the sex-stratified Kaplan-Meier curves.

Figure 3: Population attributable fractions (PAF) for IDH-WT survival stratified by sex and follow-up time. PAF estimates for age at diagnosis (<58 years/≥58 years), surgery (resection/biopsy), chemotherapy use (yes/no), and respiratory IgE (positive/negative) were derived from Cox proportional hazard regression models adjusted for sex (combined only), self-reported race and ethnicity, radiation use, 1p19q codeletion status, *TERT* mutation status, and strata for tumor grade. PAF estimates are reported for 6 months and 12 months of follow-up time. Estimates that do not achieve $P < 0.05$ are indicated by a striped pattern.

IDH-wildtype

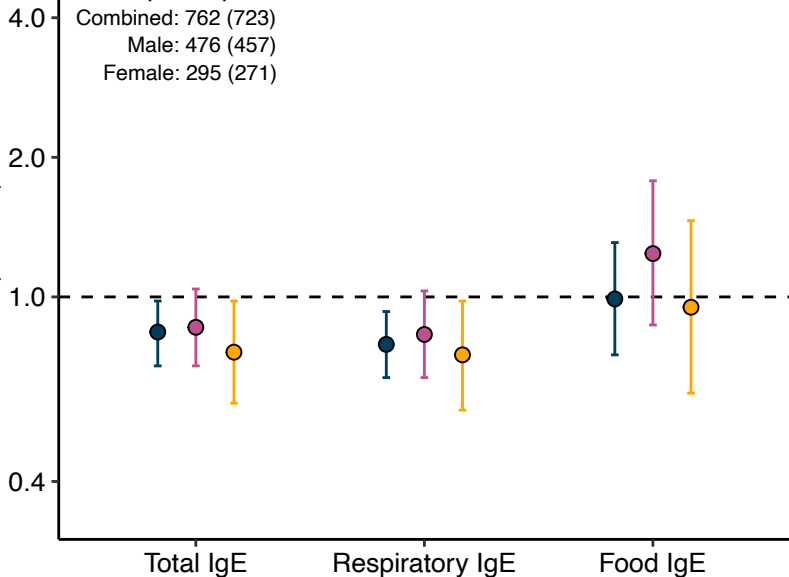
Cases (Deaths)

Combined: 762 (723)

Male: 476 (457)

Female: 295 (271)

RR (95% CI)



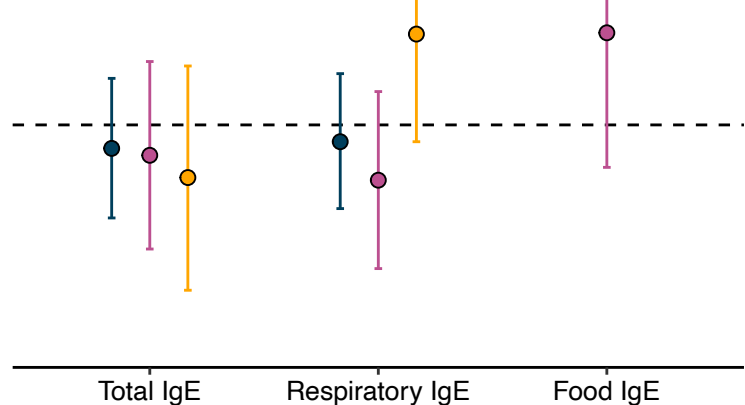
IDH-mutant

Cases (Deaths)

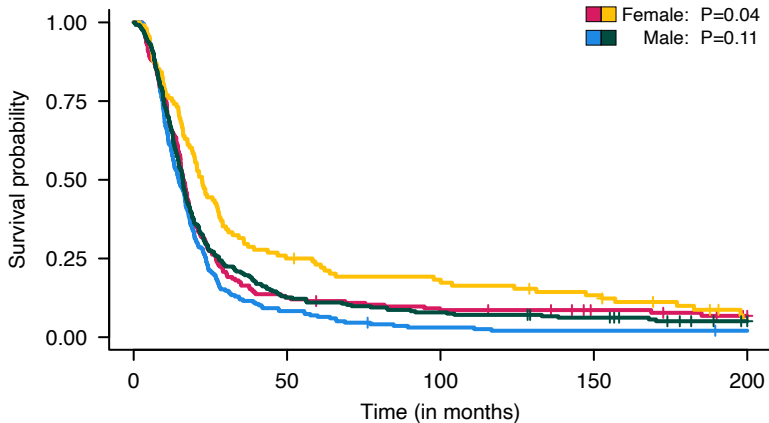
Combined: 300 (176)

Male: 180 (109)

Female: 120 (67)



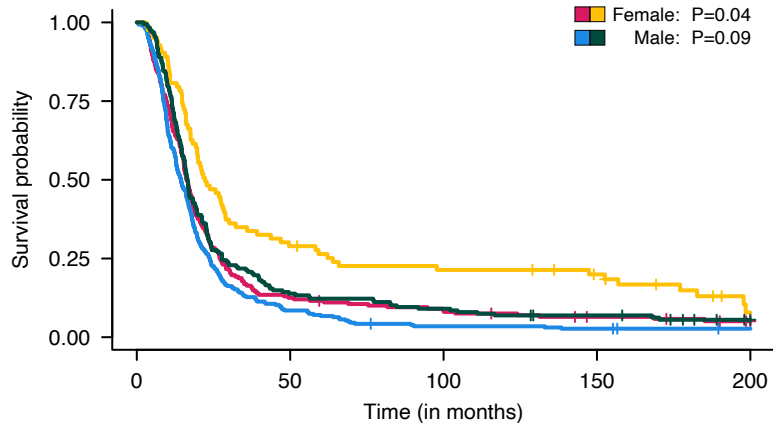
■ Combined ■ Male ■ Female

A**IDH-wildtype, Total IgE**

Number of glioma cases

Female, -IgE	183	24	16	11	6
Female, +IgE	108	28	20	14	4
Male, -IgE	217	19	7	5	4
Male, +IgE	254	33	21	15	5

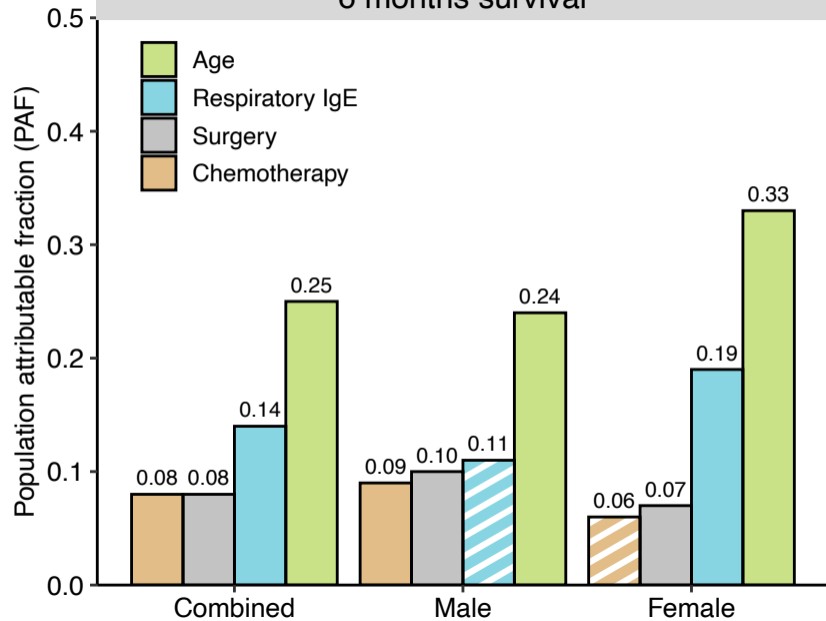
Female, -IgE Male, -IgE
Female, +IgE Male, +IgE

B**IDH-wildtype, Respiratory IgE**

Number of glioma cases

Female, -IgE	208	27	18	11	6
Female, +IgE	83	25	18	14	4
Male, -IgE	283	25	10	8	5
Male, +IgE	188	27	18	12	4

6 months survival



12 months survival

