

## Association of immunoglobulin E levels with glioma risk and survival

Geno Guerra, PhD<sup>1\*</sup>; Taishi Nakase, MS<sup>2\*</sup>; Linda Kachuri, PhD<sup>2,3</sup>; Lucie McCoy, MPH<sup>1</sup>; Helen M. Hansen, BA<sup>1</sup>; Terri Rice, MPH<sup>1</sup>; Joseph. L. Wiemels, PhD<sup>4</sup>; John K. Wiencke, PhD<sup>1,5</sup>; Annette M. Molinaro, PhD<sup>1,5,6</sup>; Margaret Wrensch, PhD<sup>1</sup>; Stephen S. Francis, PhD<sup>1,5,6</sup>

\*Authors contributed equally

### Affiliations:

1. Department of Neurological Surgery, University of California San Francisco, San Francisco, CA
2. Department of Epidemiology & Population Health, Stanford University School of Medicine, Stanford, CA
3. Stanford Cancer Institute, Stanford University School of Medicine, Stanford, CA
4. Center for Genetic Epidemiology, Department of Preventive Medicine, Keck School of Medicine, University of Southern California, Los Angeles, CA
5. Department of Epidemiology & Biostatistics, University of California San Francisco, San Francisco, CA
6. Weill Institute for Neurosciences, University of California San Francisco, San Francisco, CA

### Corresponding Author:

Stephen S. Francis, PhD  
Stephen.Francis@ucsf.edu  
(415) 476-9329  
1450 3rd St, San Francisco, CA 94158

## ABSTRACT

**Background:** Previous epidemiological studies have reported an association of serum immunoglobulin E (IgE) levels with reduced glioma risk, but the association between IgE and glioma prognosis is not well characterized. This study aimed to examine how sex, tumor subtype, and IgE class modulate the association of serum IgE levels with glioma risk and survival.

**Methods:** We conducted a case-control study using participants from the University of California, San Francisco Adult Glioma Study (1997-2010). Serum IgE levels for total, respiratory and food allergy were measured in adults diagnosed with glioma (n=1,696) and cancer-free controls (n=1,135) matched based on age, sex, and race/ethnicity. Logistic regression was adjusted for patient demographics to assess the association between IgE levels and glioma risk. Multivariable Cox regression adjusted for patient-specific and tumor-specific factors compared survival between the elevated and normal IgE groups.

**Results:** Elevated total IgE was associated with reduced risk of *IDH* wildtype (OR=0.65, 95% CI: 0.54-0.78) and *IDH* mutant glioma (OR=0.65, 95% CI: 0.50-0.85). In multivariable Cox regression, elevated respiratory IgE was associated with improved survival for *IDH* wildtype glioma (HR=0.78, 95% CI: 0.67-0.91). The reduction in mortality risk was more pronounced in females (HR=0.71, 95% CI: 0.53-0.96) than in males (HR=0.80, 95% CI: 0.66-0.97), with improvements in median survival of 6.2 months (P<.001) and 1.6 months (P=0.003), respectively.

**Conclusion:** Elevated serum IgE was associated with improved prognosis for *IDH* wildtype glioma, with a more pronounced protective effect in females. These results suggest a possible sexual dimorphism and antitumor activity of IgE-mediated immune responses.

## INTRODUCTION

Glioma is a primary malignant brain tumor that causes 11,000 cancer-related deaths in the United States each year<sup>1,2</sup>. *IDH* wildtype glioblastoma (GBM), the most common subtype, carries a median overall survival of 14 months<sup>3</sup>. GBM has a clear sex bias, where males are more likely to develop glioma and have poorer outcomes than females<sup>4</sup>. In the last two decades, epidemiologic studies have highlighted a putative role of immune-related factors, including viral infections<sup>5,6</sup>, allergic conditions<sup>7</sup> and autoimmune disorders<sup>8</sup>, in gliomagenesis.

A history of allergies is generally associated with a 20% to 40% decrease in the risk of developing glioma<sup>9-12</sup>. Using serum immunoglobulin E (IgE) concentrations as a biomarker for allergic sensitization, recent studies have reported an inverse association between elevated IgE levels and glioma risk, where banked serum studies show that this association exists up to 20 years prior to glioma diagnosis<sup>10,11,13-15</sup>. This association is consistently more robust among females, especially for respiratory IgE and GBM<sup>13,15</sup>. Though less well characterized, elevated IgE levels have also been associated with improved survival among GBM patients<sup>16</sup>, suggesting that IgE-mediated immune responses may not only suppress tumor development but also slow cancer progression in the tumor microenvironment. Based on these observations, we hypothesized that the relationship between IgE levels and survival may be modified by sex, tumor subtype and IgE class.

In this study, we aimed to refine the relationship between IgE levels and glioma risk according to contemporary molecular classifications and analyze the impact of sex, tumor subtype and IgE class on the association between IgE levels and survival in adult glioma patients.

## METHODS

### Ethics

Patient samples and clinicopathological information were collected with informed consent and relevant ethical review board approval per the tenets of the Declaration of Helsinki from the Institutional Review Board of the University of California, San Francisco (UCSF), Human Research Protection Program in the Office of Ethics and Compliance (USA).

## **Study Population**

Collection of samples along with demographic and clinical information for participants of the UCSF Adult Glioma Study (AGS) has been previously described<sup>7,11,17</sup>. Briefly, adults 18 years or older with a newly diagnosed glioma between 1997-1999 (series 2), 2001-2004 (series 3), or 2006-2010 (series 4) who resided in the SF Bay Area were eligible for enrollment in the AGS study. Series 3 and 4 also included eligible adults seeking care at the UCSF Neuro-oncology clinic, regardless of primary residence. The diagnosis of glioma (ICDO-3 codes 9380-9480 or equivalent) was established through histology in all cases according to World Health Organization (WHO) guidelines. Controls recruited from the SF Bay Area were identified using random digit dialing and were frequency matched to cases based on age, sex, and self-reported race and ethnicity. Treatment information (including use of dexamethasone, temozolomide or other chemotherapy, and radiation) at time of, or prior to, blood draw was recorded for all cases. Follow-up is ongoing for surviving participants.

## **IgE Measurements**

IgE antibody measurements for total, respiratory and food allergy were measured using serum from a single post-diagnosis time point for each case or at the time of the enrollment interview for each control. The full details of IgE measurements have been described in previous analyses of AGS participants<sup>10,11</sup>. Briefly, IgE levels were measured using the Pharmacia Diagnostics UniCAP fluorescent “sandwich” assay<sup>18</sup>. Total IgE measured the sum of all IgE antibodies found in the blood. Total IgE levels <25 kilounits/liter were considered clinically “normal”, and levels  $\geq 25$  were considered “borderline” or “elevated” (henceforth termed “above normal”). The respiratory IgE panel (Phadiotop) was composed of 15 allergens that encompass 97% of respiratory atopic allergy. The food IgE panel (fx5) consisted of allergy tests for shellfish, peanut, milk, egg, tree nut, and codfish, which comprise most food allergies. Food or respiratory IgE levels <0.35 kilounit/liter were termed “negative”, and levels  $\geq 0.35$  were called “positive”.

## **Statistical Analysis**

### *Risk Analysis*

Odds ratios (OR) for increased IgE levels in cases versus controls were estimated using logistic regression models, adjusting for age, sex, and self-reported race and ethnicity. All models were stratified by AGS recruitment window (series 2, 3, or 4) to account for temporal heterogeneity, and the risk associations were combined using a fixed-effects meta-analysis. Significantly different effects of IgE on risk across recruitment windows were assessed using Cochran's Q test. Associations were deemed statistically significant if the meta-analysis p-value was less than 0.05. Binary interaction terms were utilized to formally test differential IgE risk associations between sexes.

### *Survival Analysis*

Hazard ratios (HR) for positive/above normal IgE cases versus negative/normal IgE cases were estimated with Cox proportional hazards regression, with adjustment for age, sex, self-reported race and ethnicity, dexamethasone usage at blood draw, any temozolomide usage, type of surgery (resection or biopsy) and 1p/19q chromosomal arm co-deletion, along with strata for tumor grade. Survival analyses were stratified by series and combined using fixed-effects meta-analysis. Heterogeneity in series-specific IgE effects was assessed using Cochran's Q test. Proportionality assumptions for IgE categories were checked via Schoenfeld residuals, and the effect of influential observations was examined using deviance residuals. Follow-up time was calculated from the date of pathological diagnosis to either the date of death or the date of last known contact for censored patients. Kaplan-Meier analyses were used to obtain unadjusted percent survival distributions and generate survival curves for visualization. Binary interaction terms were utilized to formally test statistical interaction between sex and IgE level. All statistical analyses were conducted using R v4.0.3

## **RESULTS**

### **Characteristics of Study Participants**

The analysis group consisted of 1,696 glioma cases (926 *IDH* wildtype, 391 *IDH* mutant) and 1,135 non-glioma controls with at least one IgE antibody measurement. Participants over the age of 89 at time of recruitment were excluded (n=6). Basic information about glioma cases stratified by *IDH* mutation status

as well as non-glioma controls is summarized in **Table 1**. More males (59%) than females (41%) were recruited in this population based study.

The prevalence of above normal IgE levels was higher in males than in females, among cases (53.5% vs. 40.0%; **Supplementary Table 1**) and controls (63.9% vs. 50.9%; **Supplementary Table 2**). Individuals with positive respiratory IgE were younger and more likely male than those testing negative. The proportion of individuals with above normal total IgE or positive allergen-specific IgE was consistent across the three recruitment series (**Supplementary Table 3**).

### **Serum IgE and IDH-specific glioma risk**

We examined the association between serum IgE levels and risk of glioma stratifying by sex and *IDH* mutation status (**Table 2**). Above normal total IgE was associated with a 35% lower risk of developing *IDH* wildtype (*IDH*-WT) glioma (OR=0.65, 95% Confidence Interval (CI): 0.54-0.78,  $P<.001$ ). Similar results were observed when restricting to males (OR=0.65, 95% CI: 0.51-0.83,  $P<.001$ ) and females (OR=0.65, 95% CI: 0.50-0.86,  $P=0.003$ ). For *IDH* mutant (*IDH*-MT) gliomas, the magnitude of the association remained comparable in the pooled analysis (OR=0.65, 95% CI: 0.50-0.85,  $P=0.002$ ), with a more pronounced effect in females (OR=0.60, 95% CI: 0.40-0.90,  $P=0.01$ ).

We found that testing positive for respiratory IgE was associated with a statistically significant decrease in the risk of *IDH*-WT glioma (OR=0.77, 95% CI: 0.64-0.92,  $P=0.005$ ). The attenuation in risk was larger for females (OR=0.73, 95% CI: 0.54-0.97,  $P=0.03$ ) than for males (OR=0.80, 95% CI: 0.63-1.01,  $P=0.06$ ). Among *IDH*-MT gliomas, we observed a weaker inverse association for positive respiratory IgE (OR=0.82, 95% CI: 0.63-1.07,  $P=0.14$ ), with a more pronounced protective effect among females than males in interaction analyses (ratio of ORs=0.70, 95% CI: 0.41-1.20,  $P=0.19$ ; **Supplementary Table 4**). No statistically significant associations for food IgE were observed when the data were stratified by either *IDH* mutation status or sex.

### **Serum IgE and overall survival**

Among patients with *IDH*-WT gliomas, above normal total IgE was associated with improved survival (HR=0.82, 95% CI: 0.71-0.95,  $P=0.009$ ; **Figure 1**; **Supplementary Table 5**). *IDH*-WT glioma cases with

above normal total IgE levels showed a median 1.2 months longer survival than cases with normal levels ( $P=0.006$ ). For cases with *IDH*-MT glioma, above normal total IgE levels were not associated with altered survival (HR=0.84, 95% CI: 0.62-1.14,  $P=0.27$ ).

The association between IgE and overall survival among patients with *IDH*-WT glioma was particularly pronounced for respiratory IgE (HR=0.78, 95% CI: 0.67-0.91,  $P=0.002$ ), with positive cases demonstrating an increase in median survival of 1.9 months ( $P<.001$ ). We did not observe a significant relationship between positive respiratory IgE and mortality among *IDH*-MT glioma patients (HR=1.13, 95% CI: 0.82-1.57,  $P=0.46$ ). Food IgE was not associated with prognosis in either tumor subtype.

### **Influence of sex on survival outcomes**

Next, we assessed whether survival associations varied by sex (**Figure 2; Supplementary Table 5**). For *IDH*-WT glioma, above normal total IgE was associated with an improved prognosis in males (HR=0.71, 95% CI: 0.54-0.93,  $P=0.01$ ) and in females (HR=0.73, 95% CI: 0.55-0.96,  $P=0.02$ ). Median survival in females with above normal total IgE was 6.3 months longer than in female patients with normal levels ( $P=0.02$ ). In males, the difference in median survival between normal and above normal total IgE groups was 0.8 months ( $P=0.02$ ). When further restricted to grade IV *IDH*-WT gliomas, we observed sex-specific differences in survival (**Supplementary Table 6**). Above normal total IgE was associated with a significantly lower mortality risk among females (HR=0.69, 95% CI: 0.52-0.92,  $P=0.01$ ), but not among males (HR=0.86, 95% CI: 0.71-1.05,  $P=0.14$ ).

For allergen-specific IgE, we found that positive respiratory IgE was significantly associated with improved overall survival for *IDH*-WT gliomas in both females and males (**Figure 2; Supplementary Table 5**). Females who were positive for respiratory IgE had a 29% decrease in overall mortality risk (HR=0.71, 95% CI: 0.53-0.96,  $P=0.02$ ) and a median 6.2 months longer survival than those with negative antibody tests ( $P<.001$ ). The magnitude of the effect was smaller for males (HR=0.80, 95% CI: 0.66-0.97,  $P=0.03$ ), with the improvement in median survival limited to 1.6 months ( $P=0.003$ ). Similar associations were observed for grade IV *IDH*-WT gliomas (**Supplementary Table 6**) with a median increase in survival of 5.3 months for females (HR=0.66, 95% CI: 0.48-0.90,  $P=0.010$ ).

and 1.6 months for males (HR=0.83, 95% CI: 0.68-1.02, P=0.08). The interaction analysis between sex and respiratory IgE levels was most pronounced for grade IV *IDH*-WT glioma (ratio of HR=0.74, 95% CI: 0.52-1.04, P=0.08; **Supplementary Table 7**). In contrast, for *IDH*-MT glioma, female patients with positive respiratory IgE had elevated mortality risk compared to those with negative respiratory IgE (HR=2.46, 95% CI: 1.36-4.43, P=0.003).

### **Influence of glioma medications on survival associations**

Among glioma cases with no reported dexamethasone use at blood draw, above normal total IgE was associated with improved survival outcomes (HR=0.76, 95% CI: 0.64-0.91, P=0.003; **Table 3**). For individuals with reported dexamethasone use, the association of total IgE with mortality was in the same direction but attenuated (HR=0.87, 95% CI: 0.74-1.08, P=0.21). For respiratory IgE, the association between a positive IgE test and overall survival was comparable among patients who reported dexamethasone use (HR=0.77, 95% CI: 0.62-0.96, P=0.02) and those that did not (HR=0.81, 95% CI: 0.65-1.02, P=0.07). Results were similar when restricting to *IDH*-WT gliomas (**Supplementary Table 8**). Though effect size estimates varied, the direction of the associations remained consistent with largely overlapping confidence intervals across strata based on dexamethasone use.

When restricting to cases with known temozolomide usage, above normal total IgE was associated with improved survival outcomes for glioma overall (HR=0.81, 95% CI: 0.70-0.95, P=0.01; **Supplementary Table 9**) and *IDH*-WT tumors (HR=0.83, 95% CI: 0.70-0.98, P=0.03; **Supplementary Table 10**). The effect was comparable among subjects with no reported temozolomide use (glioma overall: HR=0.90, 95% CI: 0.68-1.18, P=0.43; *IDH*-WT glioma: HR=0.74, 95% CI: 0.53-1.03, P=0.08). In summary, reported temozolomide use did not demonstrate a substantive impact on associations between IgE and overall survival.

## **DISCUSSION**

We found that elevated levels of total IgE and respiratory IgE were associated with reduced risk of both *IDH*-WT and *IDH*-MT glioma, recapitulating the results of several previous studies<sup>10,11,13,14</sup>. In survival analyses, we demonstrated that elevated post-diagnosis serum IgE levels were associated with improved



outcomes among patients with *IDH*-WT tumors, the most common and deadly form of glioma. We identified a particularly strong protective effect in *IDH*-WT female patients, where respiratory IgE seropositivity was associated with a 29% reduction in mortality risk resulting in approximately 6 months of additional survival time. This substantial improvement in median survival rivals the benefit of temozolomide, the principal glioma therapeutic<sup>19</sup>. Conversely, we observed that females with *IDH*-MT glioma appeared to have an opposite effect with elevated respiratory IgE significantly associated with decreased survival. Together, these results highlight substantial differences in immune factors relating to both subtype-specific and sex-specific glioma prognosis.

The mechanism underlying the link between IgE-mediated atopic disease and glioma susceptibility remains unclear. The current prevailing hypothesis is that atopy induces a state of enhanced natural immunosurveillance, which promotes the detection and removal of malignant cells<sup>20,21</sup>. Though best known for its roles in allergy and protection against parasitic infections, IgE has been shown to exhibit both direct and cell-mediated effects against tumor cells<sup>21</sup>. These effects include the re-education of M2 (immunosuppressive) tumor-associated macrophages towards a pro-inflammatory phenotype<sup>22</sup> and the activation of anti-tumor activity in adipose tissue-derived mast cells<sup>23</sup>. The association between elevated IgE and improved *IDH*-WT prognosis suggests that some of these IgE-mediated immune responses may have direct antitumor activity within the central nervous system (CNS). Recent research has shown that allergic airway inflammation can induce a pro-inflammatory-like state in microglia that reduced tumor growth in mice models<sup>24,25</sup>. Additionally, previous studies have shown patients with hyper IgE syndrome (HIES) commonly develop white matter hyperintensities in the cerebral hemispheres<sup>26</sup>, suggesting that IgE-mediated autoimmunity is active in the CNS. Intriguingly, some forms of HIES have been shown to arise from dominant negative mutations in the signaling transduction and activator of transcription 3 (*STAT3*) gene<sup>27</sup>, which has been linked to many cancers including glioma<sup>28,29</sup>. While the role of *STAT3* and the *JAK/STAT* pathway has been well studied in *IDH*-WT GBMs<sup>30-32</sup>, its significance in *IDH*-MT glioma is less clear. Further research is needed to investigate the etiologic role of IgE in gliomagenesis, its interaction with genomic alterations and its potential as a therapeutic intervention.

While sex-specific differences in respiratory IgE and GBM risk have been previously reported<sup>13,15</sup>, this study is the first to suggest sexual dimorphism in the link between IgE and GBM survival. It is well

established that males and females exhibit distinct immunological responses to foreign and self-antigens, which contribute to differences in susceptibility to autoimmune diseases, malignancies and allergies<sup>33</sup>. While adolescent males tend to be more affected by allergies and have higher allergen-specific IgE sensitization than females, rates of atopy and allergic disease in females increase during puberty to levels comparable to that in males<sup>34–36</sup>. Although the mechanisms by which sex hormones modulate allergy-induced inflammation are complex, experimental studies suggest that estrogen enhances immunological recall responses while testosterone dampens such responses<sup>33,37</sup>. Estrogen is thought to promote a Th2 cell bias<sup>33,38</sup>, which may enhance allergic inflammation and promote direct anti-GBM activity via IgE antibody dependent cellular cytotoxicity (ADCC)<sup>39</sup>. Intriguingly, in female patients with *IDH*-MT glioma, positive respiratory IgE was associated with worse prognosis. This finding should be interpreted with caution and further replicated, but it suggests the possibility of female sex hormones interacting with tumor-specific immune features to modify the antitumor activity of IgE. Functional studies are needed to elucidate possible mechanisms by which the differential expression of sex hormones between males and females influences IgE-mediated immune responses against glioma.

Although we observed lower glioma risk and longer survival among individuals with positive respiratory IgE, elevated food IgE was not associated with either the development or the progression of glioma. An association between respiratory IgE levels and glioma risk was observed in two previous studies<sup>13,15</sup>, suggesting that the effect of respiratory IgE may reflect the mechanism by which allergic inflammation mediates gliomagenesis. It may be that specific respiratory allergens share epitopes with tumor antigens, such that adaptive immune cells primed by respiratory allergens recognize glioma cells more efficiently and have stronger antitumor effects. However, this hypothesis fails to account for previous reports of an inverse association between contact allergy, a delayed-type hypersensitivity reaction of the skin, and brain cancer<sup>9,40</sup>, which broadly indicate that the antitumor activity of allergic inflammation may not be linked to specific allergens or IgE itself. Food IgE was less common than respiratory IgE (6% vs. 41%); therefore, our study may lack statistical power to detect an association.

In addition to small sample sizes in some stratified analyses, our study has several limitations. Our cohort was initially categorized using WHO 2016 criteria and lacks some somatic mutations necessary for WHO 2021 classification. Nevertheless, *IDH* mutation captures the most prognostically significant glioma

feature. Blood samples used to measure IgE antibody levels were collected a median of 95 days post-surgery among cases and may be influenced by the immunosuppressive effects of glioma treatment or the tumor itself. While there is some potential for this to confound the protective effect of IgE on glioma susceptibility, plasma IgE levels collected as much as 20 years before diagnosis have been reported to be associated with glioma risk<sup>13,14</sup>. Furthermore, in our analyses, adjustment for dexamethasone use did not substantively alter the effect of IgE levels on survival. Although use of dexamethasone and temozolomide were well documented in our cohort, we did not have information on the use of other immunomodulatory medications that have been associated with glioma risk among individuals with a history of allergies<sup>41</sup>.

We found that elevated levels of total IgE and respiratory IgE were associated with both a decreased risk of, and improved survival among patients with, *IDH-WT* glioma. The protective effects of respiratory IgE seropositivity on risk and overall survival were more pronounced in females than males, suggesting possible sex-specific differences in how atopic sensitization and allergic recall responses influence glioma. Taken together with known sex differences in immune responses, these results suggest that IgE-mediated immunologic features may underlie the higher risk in males and female survival advantage observed among GBM patients. Our findings suggest that IgE might directly influence glioma and encourage further investigation into the therapeutic potential of IgE antibodies targeting GBM-associated antigens.

**Author contributions:** GG and SSF conceived the project. GG, TN, LK and SSF advised on the methodology. GG, LM, HMH, TR, JLW, JKW, AMM, MW and SSF were involved in primary data collection and curation. GG performed the main analyses. TN, GG, LK and SSF drafted the manuscript and all authors contributed to, reviewed and approved the final manuscript.

**Conflicts of Interest:** The authors declare no competing interests.

**Data Availability Statement:** All data from this study are a part of the University of California, San Francisco Adult Glioma Study and are available upon request from dbGap (accession phs001497.v2.p1).

**Funding:** Work at the University of California, San Francisco, was supported by the National Institutes of Health (grant numbers R01CA52689, P50CA097257, R01CA126831, R01CA139020, and R01CA266676), as well as the loglio Collective, the National Brain Tumor Foundation, the Stanley D. Lewis and Virginia S. Lewis Endowed Chair in Brain Tumor Research, the Robert Magnin Newman Endowed Chair in Neuro-oncology, and by donations from families and friends of John Berardi, Helen Glaser, Elvera Olsen, Raymond E. Cooper, and William Martinusen. The work at Stanford University was supported by the National Institutes of Health grant R00CA246076. This publication was supported by the National Center for Research Resources and the National Center for Advancing Translational Sciences, National Institutes of Health, through UCSF-CTSI Grant Number UL1 RR024131. Its contents are solely the authors' responsibility and do not necessarily represent the official views of the NIH.

**Acknowledgements:** The authors wish to acknowledge study participants, the clinicians, and the research staff at the participating medical centers, the UCSF Cancer Registry, and the UCSF Neurosurgery Tissue Bank. The collection of cancer incidence data used in this study was supported by the California Department of Public Health pursuant to California Health and Safety Code Section 103885; Centers for Disease Control and Prevention's (CDC) National Program of Cancer Registries, under cooperative agreement 5NU58DP006344; the National Cancer Institute's Surveillance, Epidemiology and End Results Program under contract HHSN261201800032I awarded to the University of California, San Francisco,

contract HHSN261201800015I awarded to the University of Southern California, and contract HHSN261201800009I awarded to the Public Health Institute, Cancer Registry of Greater California. The ideas and opinions expressed herein are those of the author(s) and do not necessarily reflect the opinions of the State of California, Department of Public Health, the National Cancer Institute, and the Centers for Disease Control and Prevention or their Contractors and Subcontractors. All analyses, interpretations, and conclusions reached in this manuscript from the mortality data are those of the author(s) and not the State of California Department of Public Health. R01CA52689, P50CA097257, R01CA126831, R01CA139020 provided funding for the UCSF Adult Glioma Study. R01CA266676 (to SSF) provided funding for GG, HMH, and SSF during the time of study. R00CA246076 (to LK) provided funding to LK during the time of study. The funder did not play a role in the design of the study; the collection, analysis, and interpretation of the data; the writing of the manuscript; and the decision to submit the manuscript for publication.

## REFERENCES

1. Molinaro AM, Taylor JW, Wiencke JK, Wrensch MR. Genetic and Molecular Epidemiology of Adult Diffuse Glioma. *Nature reviews Neurology*. 2019;15(7):405-417. doi:10.1038/s41582-019-0220-2
2. Ostrom QT, Price M, Neff C, et al. CBTRUS Statistical Report: Primary Brain and Other Central Nervous System Tumors Diagnosed in the United States in 2016—2020. *Neuro-oncology (Charlottesville, Va)*. 2023;25(Supplement\_4):iv1-iv99. doi:10.1093/neuonc/noad149
3. Pekmezci M, Rice T, Molinaro AM, et al. Adult infiltrating gliomas with WHO 2016 integrated diagnosis: additional prognostic roles of ATRX and TERT. *Acta neuropathologica*. 2017;133(6):1001-1016. doi:10.1007/s00401-017-1690-1
4. Ostrom QT, Rubin JB, Lathia JD, Berens ME, Barnholtz-Sloan JS. Females have the survival advantage in glioblastoma. *Neuro-Oncology*. 2018;20(4):576-577. doi:10.1093/neuonc/noy002
5. Wrensch M, Weinberg A, Wiencke J, et al. Does Prior Infection with Varicella-Zoster Virus Influence Risk of Adult Glioma? *American Journal of Epidemiology*. 1997;145(7):594-597. doi:10.1093/oxfordjournals.aje.a009155
6. Guerra G, McCoy L, Hansen HM, et al. Antibodies to varicella-zoster virus and three other herpesviruses and survival in adults with glioma. *Neuro-Oncology*. 2023;25(6):1047-1057. doi:10.1093/neuonc/noac283
7. Wiemels JL, Wiencke JK, Sison JD, Miike R, McMillan A, Wrensch M. History of allergies among adults with glioma and controls. *International Journal of Cancer*. 2002;98(4):609-615. doi:10.1002/ijc.10239
8. Brenner AV, Linet MS, Fine HA, et al. History of allergies and autoimmune diseases and risk of brain tumors in adults. *International Journal of Cancer*. 2002;99(2):252-259. doi:10.1002/ijc.10320
9. Wigertz A, Lonn S, Schwartzbaum J, et al. Allergic Conditions and Brain Tumor Risk. *American Journal of Epidemiology*. 2007;166(8):941-950. doi:10.1093/aje/kwm203

10. Wiemels JL, Wiencke JK, Patoka J, et al. Reduced Immunoglobulin E and Allergy among Adults with Glioma Compared with Controls. *Cancer Research*. 2004;64(22):8468-8473. doi:10.1158/0008-5472.CAN-04-1706
11. Wiemels JL, Wilson D, Patil C, et al. IgE, allergy, and risk of glioma: Update from the San Francisco Bay Area Adult Glioma Study in the Temozolomide era. *International Journal of Cancer*. 2009;125(3):680-687. doi:10.1002/ijc.24369
12. Amirian ES, Zhou R, Wrensch MR, et al. Approaching a Scientific Consensus on the Association between Allergies and Glioma Risk: A Report from the Glioma International Case-Control Study. *Cancer Epidemiology, Biomarkers & Prevention*. 2016;25(2):282-290. doi:10.1158/1055-9965.EPI-15-0847
13. Schwartzbaum J, Ding B, Johannesen TB, et al. Association Between Prediagnostic IgE Levels and Risk of Glioma. *JNCI Journal of the National Cancer Institute*. 2012;104(16):1251-1259. doi:10.1093/jnci/djs315
14. Calboli FCF, Cox DG, Buring JE, et al. Prediagnostic Plasma IgE Levels and Risk of Adult Glioma in Four Prospective Cohort Studies. *JNCI Journal of the National Cancer Institute*. 2011;103(21):1588-1595. doi:10.1093/jnci/djr361
15. Schlehofer B, Siegmund B, Linseisen J, et al. Primary brain tumours and specific serum immunoglobulin E: a case-control study nested in the European Prospective Investigation into Cancer and Nutrition cohort. *Allergy*. 2011;66(11):1434-1441. doi:10.1111/j.1398-9995.2011.02670.x
16. Wrensch M, Wiencke JK, Wiemels J, et al. Serum IgE, Tumor Epidermal Growth Factor Receptor Expression, and Inherited Polymorphisms Associated with Glioma Survival. *Cancer Research*. 2006;66(8):4531-4541. doi:10.1158/0008-5472.CAN-05-4032
17. Walsh KM, Codd V, Smirnov IV, et al. Variants near TERT and TERC influencing telomere length are associated with high-grade glioma risk. *Nature Genetics*. 2014;46(7):731-735. doi:10.1038/ng.3004

18. Szeinbach SL, Barnes JH, Sullivan TJ, Williams PB. Precision and accuracy of commercial laboratories' ability to classify positive and/or negative allergen-specific IgE results. *Annals of Allergy, Asthma & Immunology*. 2001;86(4):373-381. doi:10.1016/S1081-1206(10)62481-7
19. Stupp R, Hegi ME, Mason WP, et al. Effects of radiotherapy with concomitant and adjuvant temozolomide versus radiotherapy alone on survival in glioblastoma in a randomised phase III study: 5-year analysis of the EORTC-NCIC trial. *The Lancet Oncology*. 2009;10(5):459-466. doi:10.1016/S1470-2045(09)70025-7
20. Josephs DH, Spicer JF, Corrigan CJ, Gould HJ, Karagiannis SN. Epidemiological associations of allergy, IgE and cancer. *Clinical & Experimental Allergy*. 2013;43(10):1110-1123. doi:10.1111/cea.12178
21. Jensen-Jarolim E, Achatz G, Turner MC, et al. AllergoOncology: the role of IgE-mediated allergy in cancer. *Allergy*. 2008;63(10):1255-1266. doi:10.1111/j.1398-9995.2008.01768.x
22. Pellizzari G, Hoskin C, Crescioli S, et al. IgE re-programs alternatively-activated human macrophages towards pro-inflammatory anti-tumoural states. *EBioMedicine*. 2019;43:67-81. doi:10.1016/j.ebiom.2019.03.080
23. Plotkin JD, Elias MG, Fereydouni M, et al. Human Mast Cells From Adipose Tissue Target and Induce Apoptosis of Breast Cancer Cells. *Frontiers in Immunology*. 2019;10. doi:10.3389/fimmu.2019.00138
24. Chatterjee J, Sanapala S, Cobb O, et al. Asthma reduces glioma formation by T cell decorin-mediated inhibition of microglia. *Nature Communications*. 2021;12(1):7122. doi:10.1038/s41467-021-27455-6
25. Poli A, Oudin A, Muller A, et al. Allergic airway inflammation delays glioblastoma progression and reinvigorates systemic and local immunity in mice. *Allergy*. 2023;78(3):682-696. doi:10.1111/all.15545
26. Freeman AF, Collura-Burke CJ, Patronas NJ, et al. Brain Abnormalities in Patients With Hyperimmunoglobulin E Syndrome. *Pediatrics*. 2007;119(5):e1121-e1125. doi:10.1542/peds.2006-2649



27. Holland SM, DeLeo FR, Elloumi HZ, et al. STAT3 Mutations in the Hyper-IgE Syndrome. *New England Journal of Medicine*. 2007;357(16):1608-1619. doi:10.1056/NEJMoa073687
28. Johnson DE, O'Keefe RA, Grandis JR. Targeting the IL-6/JAK/STAT3 signalling axis in cancer. *Nature Reviews Clinical Oncology*. 2018;15(4):234-248. doi:10.1038/nrclinonc.2018.8
29. Brantley EC, Benveniste EN. Signal Transducer and Activator of Transcription-3: A Molecular Hub for Signaling Pathways in Gliomas. *Molecular Cancer Research*. 2008;6(5):675-684. doi:10.1158/1541-7786.MCR-07-2180
30. Fu W, Hou X, Dong L, Hou W. Roles of STAT3 in the pathogenesis and treatment of glioblastoma. *Front Cell Dev Biol*. 2023;11:1098482. doi:10.3389/fcell.2023.1098482
31. Ganguly D, Fan M, Yang CH, et al. The critical role that STAT3 plays in glioma-initiating cells: STAT3 addiction in glioma. *Oncotarget*. 2018;9(31):22095-22112. doi:10.18632/oncotarget.25188
32. West A, Tsui V, Stylli S, et al. The role of interleukin-6-STAT3 signalling in glioblastoma (Review). *Oncol Lett*. Published online July 27, 2018. doi:10.3892/ol.2018.9227
33. Klein SL, Flanagan KL. Sex differences in immune responses. *Nature Reviews Immunology*. 2016;16(10):626-638. doi:10.1038/nri.2016.90
34. Keller T, Hohmann C, Standl M, et al. The sex-shift in single disease and multimorbid asthma and rhinitis during puberty - a study by MeDALL. *Allergy*. 2018;73(3):602-614. doi:10.1111/all.13312
35. Salo PM, Arbes SJ, Jaramillo R, et al. Prevalence of allergic sensitization in the United States: Results from the National Health and Nutrition Examination Survey (NHANES) 2005-2006. *Journal of Allergy and Clinical Immunology*. 2014;134(2):350-359. doi:10.1016/j.jaci.2013.12.1071
36. Wolkewitz M, Rothenbacher D, Löw M, et al. Lifetime prevalence of self-reported atopic diseases in a population-based sample of elderly subjects: results of the ESTHER study. *British Journal of Dermatology*. 2007;156(4):693-697. doi:10.1111/j.1365-2133.2006.07659.x

37. Keselman A, Heller N. Estrogen Signaling Modulates Allergic Inflammation and Contributes to Sex Differences in Asthma. *Frontiers in Immunology*. 2015;6. doi:10.3389/fimmu.2015.00568
38. Chakraborty B, Byemerwa J, Krebs T, Lim F, Chang CY, McDonnell DP. Estrogen Receptor Signaling in the Immune System. *Endocrine Reviews*. 2023;44(1):117-141. doi:10.1210/endrev/bnac017
39. Costanza M, Finocchiaro G. Allergic Signs in Glioma Pathology: Current Knowledge and Future Perspectives. *Cancers*. 2019;11(3):404. doi:10.3390/cancers11030404
40. Engkilde K, Thyssen JP, Menne T, Johansen JD. Association between cancer and contact allergy: a linkage study. *BMJ Open*. 2011;1(1):e000084-e000084. doi:10.1136/bmjopen-2011-000084
41. Amirian ES, Marquez-Do D, Bondy ML, Scheurer ME. Antihistamine use and immunoglobulin E levels in glioma risk and prognosis. *Cancer Epidemiology*. 2013;37(6):908-912. doi:10.1016/j.canep.2013.08.004

**Figure 1: Associations between IgE levels and survival stratified by sex and molecular subtype.**

Hazard ratios (HR) and corresponding 95% confidence intervals (CI) were estimated using Cox regression models adjusted age, sex (included in combined analysis only), self-reported race and ethnicity, dexamethasone use, temozolomide use, surgery type (resection/biopsy only), and 1p19q codeletion status, with strata for tumor grade. The HR estimate for food IgE in *IDH* mutant female patients is not shown due to insufficient individuals with positive food IgE (n=1).

**Figure 2: Kaplan-Meier curves for adult glioma cases with serum IgE concentrations.** Percent survival distributions for adults with glioma stratified by sex and categorical serum IgE concentration for (A) *IDH* wildtype glioma and total IgE and (B) *IDH* wildtype glioma and respiratory IgE. +IgE = above normal total IgE or positive respiratory IgE. -IgE = normal total IgE or negative respiratory IgE. P values are shown for the sex-stratified Kaplan-Meier curves.

**Table 1: Description of Participants: University of California, San Francisco Adult Glioma Study (1997-2010).**

	<b>All glioma N (%)</b>	<b>IDH wildtype N (%)</b>	<b>IDH mutant N (%)</b>	<b>Controls N (%)</b>
Total	1,696 (100)	926 (100)	391 (100)	1135 (100)
Median age (IQR)	51 (21)	56 (18)	40 (16)	57 (22)
Sex				
Male	1,008 (59.4)	569 (61.5)	230 (58.8)	587 (51.7)
Female	688 (40.6)	357 (38.5)	161 (41.2)	548 (48.3)
Race and ethnicity				
White	1,494 (88.1)	825 (89.1)	342 (87.5)	977 (86.1)
Asian	106 (6.3)	50 (5.4)	28 (7.2)	82 (7.2)
Black or African American	43 (2.5)	24 (2.6)	9 (2.3)	43 (3.8)
Other <sup>a</sup>	83 (3.1)	27 (2.9)	12 (3.1)	33 (2.9)
UCSF AGS series				
Series 2 ('97-'99)	224 (13.2)	138 (14.9)	60 (15.4)	288 (25.4)
Series 3 ('01-'04)	874 (51.5)	467 (50.4)	208 (53.2)	468 (41.2)
Series 4 ('06-'10)	598 (35.3)	321 (34.7)	123 (31.5)	379 (33.4)
Total IgE <sup>b</sup>				
Normal	880 (51.9)	478 (51.2)	204 (52.2)	481 (42.4)
Borderline	533 (31.4)	288 (31.3)	135 (34.5)	395 (34.8)
Elevated	280 (16.5)	159 (17.2)	51 (13.0)	259 (22.8)
Respiratory IgE <sup>b</sup>				
Negative	1,020 (60.1)	586 (63.1)	223 (57.0)	660 (58.2)
Positive	672 (39.6)	340 (36.7)	167 (42.7)	475 (41.9)
Food IgE <sup>b</sup>				
Negative	1,610 (94.9)	871 (94.1)	378 (96.7)	1045 (92.1)
Positive	82 (4.8)	55 (5.7)	12 (3.1)	90 (7.9)
IDH <sup>b</sup>				
Mutated	391 (23.1)	0 (0)	391 (100)	N/A
Wildtype	926 (54.6)	926 (100)	0 (0)	N/A
1p/19q <sup>b</sup>				
Codeleted	1,377 (81.2)	9 (1.0)	116 (29.7)	N/A
Non-codeleted	138 (8.1)	834 (90.1)	242 (61.9)	N/A
Grade <sup>b</sup>				
II	297 (17.5)	39 (4.2)	181 (46.3)	N/A
III	267 (15.7)	82 (8.9)	135 (34.5)	N/A
IV	976 (57.6)	727 (78.5)	62 (15.9)	N/A
Days to blood draw (IQR)	95 (107)	90 (93)	99 (116)	N/A
Chemotherapy				
Yes	1,243 (73.3)	707 (76.4)	253 (64.7)	N/A
No	453 (26.7)	219 (23.6)	138 (35.3)	N/A
Temozolomide				
Yes	1,095 (64.6)	626 (67.6)	212 (54.2)	N/A
No	601 (35.4)	300 (32.4)	179 (45.8)	N/A
Radiation				
Yes	1,377 (81.2)	839 (90.6)	241 (61.6)	N/A
No	319 (18.8)	87 (9.4)	150 (38.4)	N/A
Dexamethasone				
Yes	652 (38.4)	410 (44.3)	89 (22.8)	N/A
No	1,044 (61.6)	516 (55.7)	302 (77.2)	N/A

For quantitative variables, interquartile range (IQR) is reported. <sup>a</sup>Other includes Native Americans, Pacific Islanders and individuals with no reported race and ethnicity. <sup>b</sup>Sum may not equal the total due to individuals with missing values. Tumor-specific and treatment-specific variables are not applicable (N/A) to controls.

**Table 2: Associations between IgE levels and risk of glioma stratified by sex and molecular subtype.**

	Controls		IDH wildtype		P value	IDH mutant		P value
	N (%)	N (%)	OR (95% CI)			N (%)	OR (95% CI)	
<b>Combined</b>								
Total IgE								
Normal	481 (58)	478 (52)	1.00		204 (52)	1.00		
Above normal	654 (42)	447 (48)	0.65 (0.54-0.78)	<.001	186 (48)	0.65 (0.50-0.85)		0.002
Respiratory IgE								
Negative	660 (58)	584 (63)	1.00		223 (57)	1.00		
Positive	475 (42)	340 (37)	0.77 (0.64-0.92)	0.005	167 (43)	0.82 (0.63-1.07)		0.14
Food IgE								
Negative	1045 (92)	871 (94)	1.00		378 (97)	1.00		
Positive	90 (8)	53 (6)	0.81 (0.55-1.19)	0.28	12 (3)	0.63 (0.30-1.34)		0.23
<b>Males</b>								
Total IgE								
Normal	212 (36)	265 (47)	1.00		104 (46)	1.00		
Above normal	375 (64)	303 (53)	0.65 (0.51-0.83)	<.001	125 (54)	0.70 (0.48, 1.00)		0.05
Respiratory IgE								
Negative	321 (55)	340 (60)	1.00		118 (51)	1.00		
Positive	266 (45)	228 (40)	0.80 (0.63-1.01)	0.06	112 (49)	0.93 (0.63-1.38)		0.73
Food IgE								
Negative	534 (91)	537 (94)	1.00		219 (95)	1.00		
Positive	53 (9)	32 (6)	0.70 (0.43-1.15)	0.16	11 (5)	0.86 (0.36-2.06)		0.73
<b>Females</b>								
Total IgE								
Normal	269 (49)	213 (60)	1.00		100 (62)	1.00		
Above normal	279 (51)	144 (40)	0.65 (0.50-0.86)	0.003	61 (38)	0.60 (0.40- 0.90)		0.01
Respiratory IgE								
Negative	339 (62)	244 (69)	1.00		105 (66)	1.00		
Positive	209 (38)	112 (31)	0.73 (0.54-0.97)	0.03	55 (34)	0.69 (0.45-1.05)		0.08
Food IgE								
Negative	511 (93)	334 (94)	1.00		159 (100)	1.00		
Positive	37 (7)	21 (6)	1.02 (0.56-1.86)	0.94	1 (0)	0.24 (0.03-1.90)		0.17

Odds ratios (OR) and 95% confidence intervals (CI) were estimated using logistic regression models adjusted for age, sex (included in combined analysis only) and self-reported race and ethnicity.

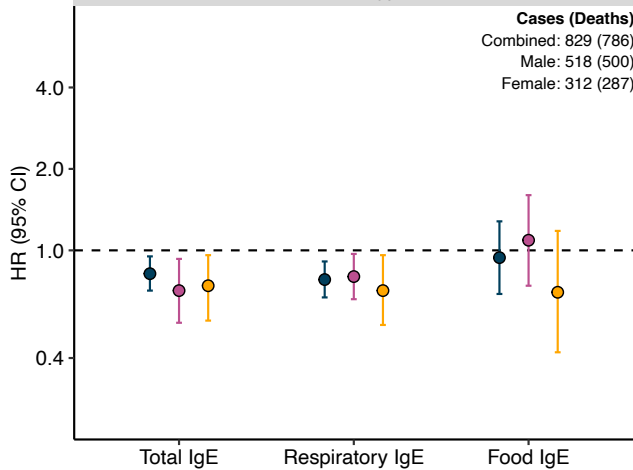
**Table 3: Associations between IgE levels and survival among glioma cases stratified by dexamethasone use.**

	Dexamethasone use				No dexamethasone use			
	Cases (Deaths)	Median Survival (Months)	HR (95% CI)	P value	Cases (Deaths)	Median Survival (Months)	HR (95% CI)	P value
Total IgE								
Normal	252 (241)	15.3	1.00		372 (289)	28.2	1.00	
Above normal	223 (210)	15.7	0.87 (0.70, 1.08)	0.21	332 (252)	44.4	0.76 (0.64, 0.91)	0.003
Respiratory IgE								
Negative	299 (286)	14.5	1.00		427 (347)	27.3	1.00	
Positive	176 (165)	16.4	0.77 (0.62, 0.96)	0.02	267 (195)	61.0	0.81 (0.65, 1.02)	0.07
Food IgE								
Negative	448 (425)	15.5	1.00		674 (515)	37.3	1.00	
Positive	27 (26)	16.0	0.87 (0.57, 1.31)	0.49	30 (27)	45.8	0.98 (0.66, 1.46)	0.92

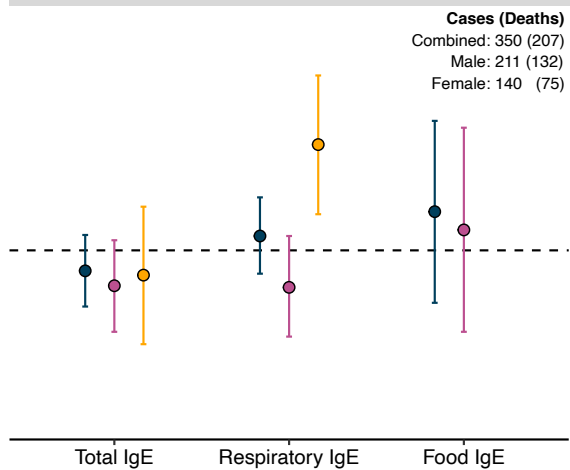
Hazard ratios (HR) and corresponding 95% confidence intervals (CI) were estimated using Cox regression models adjusted age, sex, self-reported race and ethnicity, temozolomide use, surgery type (resection/biopsy only), 1p19q codeletion status, and somatic IDH mutations, with strata for tumor grade.

*IDH wildtype*

**Cases (Deaths)**  
Combined: 829 (786)  
Male: 518 (500)  
Female: 312 (287)

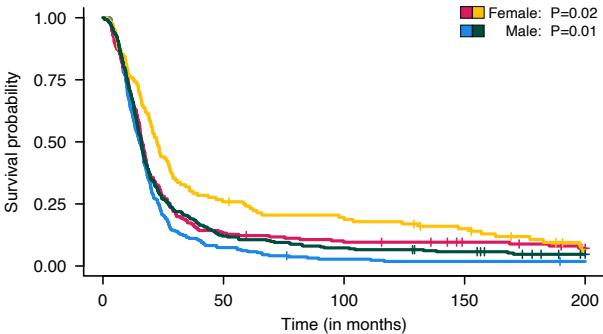
*IDH mutant*

**Cases (Deaths)**  
Combined: 350 (207)  
Male: 211 (132)  
Female: 140 (75)



■ Combined ■ Male ■ Female

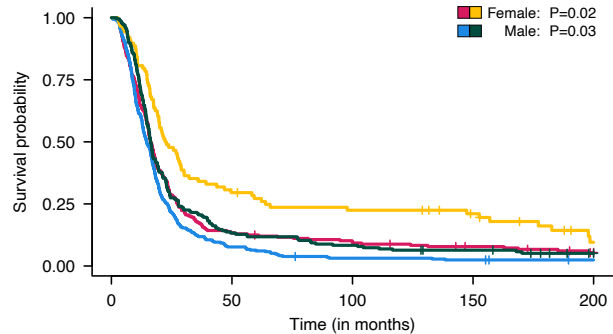


**A****IDH wildtype, Total IgE**

Number of glioma cases

Female, -IgE	196	27	19	14	8
Female, +IgE	116	31	22	16	4
Male, -IgE	243	19	7	5	4
Male, +IgE	274	34	21	15	5

Female, -IgE      Male, -IgE  
Female, +IgE      Male, +IgE

**B****IDH wildtype, Respiratory IgE**

Number of glioma cases

Female, -IgE	224	31	22	15	8
Female, +IgE	88	27	20	15	5
Male, -IgE	313	25	10	8	5
Male, +IgE	204	28	18	12	4