

1 **Title: Serum metabolome indicators of early childhood development in the Brazilian National Survey**  
2 **on Child Nutrition (ENANI-2019)**

3 Marina Padilha, PhD<sup>1</sup>; Victor N. Keller, PhD<sup>1</sup>; Paula Normando, PhD<sup>1</sup>; Raquel M. Schincaglia, PhD<sup>1</sup>;  
4 Nathalia C. Freitas-Costa, PhD<sup>1</sup>; Samary S. R. Freire, MSc<sup>1</sup>; Felipe M. Delpino, PhD<sup>1</sup>; Inês R. R. de Castro<sup>2</sup>,  
5 PhD; Elisa M. A. Lacerda, PhD<sup>3</sup>; Dayana R. Farias, PhD<sup>1</sup>; Zachary Kroezen, BSc<sup>4</sup>; Meera  
6 Shanmuganathan, PhD<sup>4</sup>; Philip Britz-Mckibbin, PhD<sup>4</sup>; Gilberto Kac, PhD<sup>1</sup>

7

8 <sup>1</sup> Department of Social and Applied Nutrition, Federal University of Rio de Janeiro, Josué de Castro  
9 Nutrition Institute, Rio de Janeiro, RJ, Brazil.

10 <sup>2</sup> Department of Social Nutrition, Institute of Nutrition, State University of Rio de Janeiro, Rio de Janeiro,  
11 Brazil

12 <sup>3</sup> Department of Nutrition and Dietetics, Federal University of Rio de Janeiro, Josué de Castro Nutrition  
13 Institute, Rio de Janeiro, RJ, Brazil.

14 <sup>4</sup> Department of Chemistry and Chemical Biology, McMaster University, Hamilton, Canada.

15

16 Corresponding Author: Gilberto Kac, Avenida Carlos Chagas Filho, 373, J2, room 29, Cidade Universitária  
17 – Rio de Janeiro – RJ – 21941902, phone: 55 21 39386595, e-mail: gilberto.kac@gmail.com

18 **Abstract**

19 **Background:** The role of circulating metabolites on child development is understudied. We investigated  
20 associations between children's serum metabolome and early childhood development (ECD).

21 **Methods:** Untargeted metabolomics was performed on serum samples of 5,004 children aged 6-59 months,  
22 a subset of participants from the Brazilian National Survey on Child Nutrition (ENANI-2019). ECD was  
23 assessed using the Survey of Well-being of Young Children's milestones questionnaire. The graded  
24 response model was used to estimate developmental age. Developmental quotient (DQ) was calculated as  
25 the developmental age divided by chronological age. Partial least square regression was used to select  
26 metabolites with a variable importance projection  $\geq 1$ .

27 **Results:** Twenty-eight top-ranked metabolites were included in linear regression models adjusted for  
28 child's nutritional status, diet quality and age. Interaction between these metabolites and child age was  
29 tested. Cresol sulfate ( $\beta = -0.07$ ; adjusted- $p < 0.001$ ), hippuric acid ( $\beta = -0.06$ ; adjusted- $p < 0.001$ ),  
30 phenylacetylglutamine ( $\beta = -0.06$ ; adjusted- $p < 0.001$ ), and trimethylamine-*N*-oxide ( $\beta = -0.05$ ; adjusted- $p$   
31  $= 0.002$ ) showed inverse associations with DQ. We observed opposite directions in the association of DQ  
32 for creatinine (for children aged -1 SD:  $\beta = -0.05$ ;  $p = 0.01$ ; +1 SD:  $\beta = 0.05$ ;  $p = 0.02$ ) and methylhistidine  
33 (-1 SD:  $\beta = -0.04$ ;  $p = 0.04$ ; +1 SD:  $\beta = 0.04$ ;  $p = 0.03$ ).

34 **Conclusion:** Serum biomarkers, including dietary and microbial derived metabolites involved in the gut-  
35 brain axis, may potentially be used to track children at risk for developmental delays.

36 **Funding:** Supported by the Brazilian Ministry of Health and Brazilian National Research Council.

37 **Keywords:** early childhood development, infancy, metabolites, metabolomic, child development, SWYC

## 38 **Introduction**

39 The early years of life are characterized by remarkable growth and neurodevelopment (United Nations  
40 Children’s Fund (UNICEF), 2017). Child development encompasses many dimensions of a child’s well-  
41 being. It is generally described into specific streams or domains of development, including motor  
42 development, speech and language progression, cognitive abilities, and socio-emotional skills (Brown et  
43 al., 2020).

44 Neurogenesis starts in the intrauterine environment, continuing to shape brain morphology and plasticity  
45 after birth (Doi et al., 2022). The interval from birth to eight years represents a unique and critical period  
46 in which the development of a child’s brain can be significantly shaped. This phenomenon encompasses  
47 special sensitivity to experiences that promote cognitive, social, emotional, and physical development  
48 (United Nations Children’s Fund (UNICEF), 2017). The acquisition of developmental skills results from  
49 an interplay between the development of the nervous system and other organ systems (Brown et al., 2020).  
50 Optimal brain development requires a stimulating environment, adequate nutrients, and social interaction  
51 with attentive caregivers (Britto et al., 2017).

52 The early childhood development (ECD) impacts long-term individual and population health outcomes,  
53 including the ability to learn, achievements in school and later life, citizenship, involvement in community  
54 activities, and overall quality of life (van den Heuvel, 2019). An estimated 250 million children under five  
55 years old in low-income and middle-income countries are at risk of not attaining their developmental  
56 potential, leading to an average deficit of 19.8% in adult annual income (Black et al., 2017). In 2015, the  
57 importance of ECD was recognized and incorporated into the “United Nations Sustainable Development  
58 Goals”.

59 Studies have demonstrated that early child metabolome disturbances may be implicated in the pathogenesis  
60 of non-typical neurodevelopment, including autism spectrum disorder (ASD) (Sotelo-Orozco et al., 2023;  
61 Zhu et al., 2022), communication skills development (Kelly et al., 2019), and risk of impaired  
62 neurocognitive development (Moreau et al., 2019).

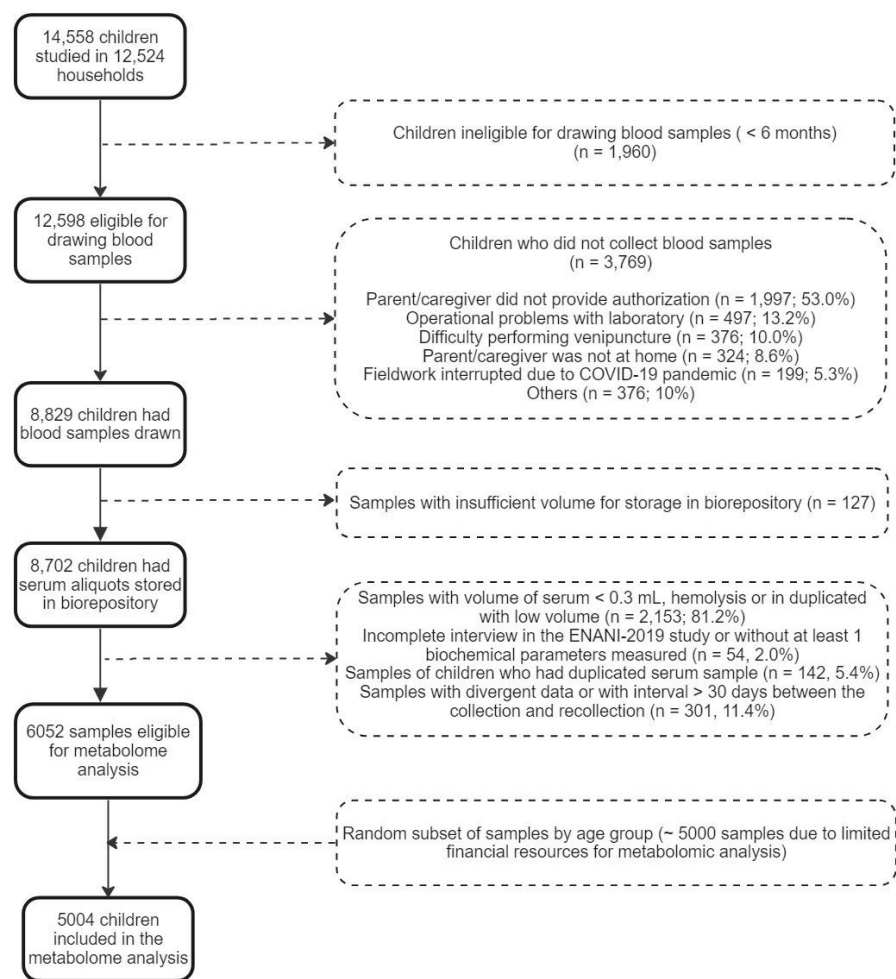
63 Children diagnosed with neurodevelopmental delays tend to experience more favorable treatment outcomes  
64 when these conditions are identified and addressed earlier (Clark et al., 2018; Li et al., 2023). Therefore,  
65 biomarkers are urgently needed to predict an infant’s potential risk for developmental issues while gaining  
66 new insights into underlying disease mechanisms. Although child development has been a focal point of  
67 research for decades, studies in low- to middle-income countries on the potential role of circulating

68 metabolites in early childhood development (ECD) remain limited. The present study aims to identify  
69 associations between children's serum metabolome and ECD. Identifying the relationships between  
70 metabolic phenotypes and ECD outcomes can elucidate pathways and targets for potential interventions,  
71 such as serum metabolites associated with food consumption in infancy (Bruce et al., 2023).

72

### 73 **Results**

74 In total, 14,558 children under five years were evaluated and 12,598 children aged 6-59 months were  
75 eligible for blood collection, of whom 8,829 (70%) had the biological material collected. Infants < 6 months  
76 of age were not included due to the greater difficulty with venipuncture, increased risk of post-blood draw  
77 complications (e.g., bruises), and the lack of reference values for diagnosing micronutrient deficiencies.  
78 Due to the costs involved in the metabolome analysis, it was necessary to further reduce the sample size.  
79 Then, samples were stratified by age groups (6 to 11, 12 to 23, and 24 to 59 months) and health conditions  
80 related to iron metabolism, such as anemia and nutrient deficiencies. The selection process aimed to  
81 represent diverse health statuses, including those with no conditions, with specific deficiencies, or with  
82 combinations of conditions. Ultimately, through a randomized process that ensured a balanced  
83 representation across these groups, a total of 5,004 children were selected for the final sample (**Figure 1**).  
84 The mean age was 34 months, and 48.9% of the participants were between 36 and 59 months. Most children  
85 were normal weight, and 25% were at risk or with excessive weight. The prevalence of MDD was 40%.  
86 Most children lived in households with a monthly income  $\geq$  the Brazilian minimum wage of USD 248.7  
87 (72.4%) and had mother/caregiver with at least  $\geq$  11 years of education (51%) (**Table 1**). The DQ mean  
88 (95% CI) was 0.98 (0.97; 0.99). Overall, children had lower DQs if they were male [ $t(4970) = 7.61, p <$   
89  $0.001$ ], older ( $r = -0.31; p < 0.001$ ), from the northern region [ $F(4, 4999) = 17.77, p < 0.001$ ], had a lower  
90 monthly family income ( $r = 0.05, p < 0.001$ ), and a mother/caregiver with fewer years of education [ $F(3,$   
91  $5000) = 30.95, p < 0.001$ ] (**Supplementary Table 1**).



92

93 **Figure 1.** Flow chart of children included in the metabolome analysis of ENANI-2019 (the Brazilian  
94 National Survey on Child Nutrition).

95 Note: COVID-19, coronavirus disease 2019.

96

97 **Table 1.** Characteristics of children 6-59 months evaluated in a subset sample of ENANI-2019 (the  
98 Brazilian National Survey on Child Nutrition) (n = 5004).

Variables	Mean; Frequency (%)	95% CI
<b>Age (months)</b>	34.0	33.6; 34.5
<b>Age groups (months)</b>		
6 - 23	29.6	28.3; 30.8
24 - 35	21.5	20.4; 22.7
36 - 59	48.9	47.5; 50.3
<b>Sex</b>		
Male	51.1	49.7; 52.5
Female	48.9	47.5; 50.3
<b>Weight for length/height (z-score)</b>	0.3	0.29; 0.36
<b>Weight for length/height categories<sup>1,2</sup></b>		

Underweight (z-score < -2)	1.6	1.3; 2.0
Normal (-2 ≤ z-score ≤ 1)	73.3	72.1; 74.5
Overweight risk (1 < z-score ≤ 2)	17.3	16.3; 18.4
Excessive weight (z-score > 2)	7.3	6.6; 8.0
<b>Mother/caregiver education (years)</b>		
0 to 7	25.5	24.4; 26.8
8 to 10	23.5	22.3; 24.7
≥ 11	51.0	49.6; 52.4
<b>Mode of delivery</b>		
Vaginal	53.7	52.3; 55.1
Elective c-section	19.0	18.0; 20.2
Non-elective c-section	27.3	26.1; 28.5
<b>Monthly family income (USD) <sup>3</sup></b>		
< 62.20	3.8	3.3; 4.4
62.20 to 124.40	4.5	4.0; 5.1
124.50 to 248.70	19.2	18.2; 20.3
> 248.70	72.4	71.2; 73.7
<b>Minimum dietary diversity (MDD) <sup>4</sup></b>		
≥ 5 food groups	59.3	39.4; 42.1
< 5 food groups	40.7	57.9; 60.6

99 Note: CI: Confidence interval; USD: United States dollar.  
 100 <sup>1</sup> 24 missing values; <sup>2</sup> Reference WHO child growth standards, 2006 (World Health Organization (WHO),  
 101 2006); <sup>3</sup> Estimated from the Brazilian minimum wage (R\$ 998.00) and converted to the USD exchange rate  
 102 (R\$ 4.013 = USD 1) in 2019 (Brazilian minimum wage = USD 248.70). <sup>4</sup> MDD: frequency of children  
 103 who received ≥ 5 or < 5 out of eight food groups on the day before the interview, [food groups: (1) breast  
 104 milk; (2) grains, roots and tubers; (3) beans, nuts and seeds; (4) dairy products; (5) flesh foods; (6) eggs;  
 105 (7) vitamin A-rich fruits and vegetables; and (8) fruits and vegetables] (World and Health Organization,  
 106 2021) (World health Organization (WHO) & United Nations Children’s Fund (UNICEF), 2021).  
 107

108 **Supplementary Table 1.** Means and confidence intervals (CI) for developmental quotient (DQ) by  
 109 sociodemographic variables.  
 110

Variables	Mean	95% CI
<b>Region</b>		
North	0.91	0.89; 0.93
Midwest	1.00	0.98; 1.02
Southeast	1.00	0.98; 1.02
Northeast	1.01	0.99; 1.04
South	1.02	0.99; 1.04
<b>Sex</b>		
Male	0.95	0.93; 0.96
Female	1.02	1.01; 1.04

**Age quartiles (months)**

6 - 21	1.14	1.12; 1.16
22 - 35	0.99	0.97; 1.01
36 - 47	0.91	0.90; 0.93
47 - 59	0.88	0.86; 0.89

**Maternal/caregiver education (years)**

0 to 7	0.92	0.90; 0.94
8 to 10	0.98	0.96; 1.00
≥ 11	1.07	1.00; 1.03

**Monthly family income (USD) <sup>1</sup>**

< 62.2	0.97	0.92; 1.02
62.2 - 124.4	0.92	0.88; 0.97
124.4 - 248.7	0.94	0.91; 0.96
> 248.7	1.00	0.99; 1.01

111 Note: CI: Confidence interval; USD: United States dollar.

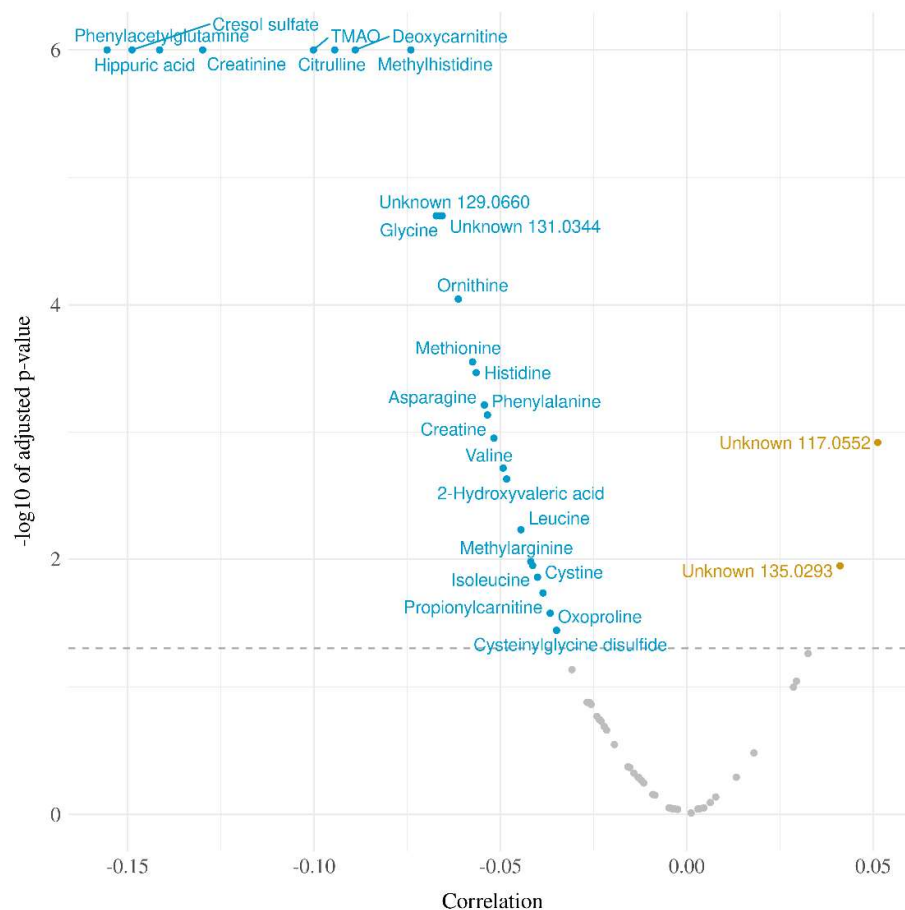
112 <sup>1</sup> Estimated from the Brazilian minimum wage (R\$ 998.00) and converted to the USD exchange rate (R\$  
113 4.013 = USD 1) in 2019.

114

115

116 Pearson's correlation between serum metabolites and DQ indicated 26 negative and 2 positive statistically  
117 significant correlations (**Supplementary Figure 1**). Correlations were found for phenylacetylglutamine  
118 (PAG,  $r = -0.16$ ;  $p < 0.001$ ), cresol sulfate (CS,  $r = -0.15$ ;  $p < 0.001$ ), hippuric acid (HA,  $r = -0.14$ ;  $p <$   
119  $0.001$ ), creatinine (Crtn,  $r = -0.13$ ;  $p < 0.001$ ), trimethylamine-*N*-oxide (TMAO,  $r = -0.10$ ;  $p < 0.001$ ),  
120 citrulline (Cit,  $r = -0.09$ ;  $p < 0.001$ ), deoxycarnitine or *g*-butyrobetaine (dC0,  $r = -0.09$ ;  $p < 0.001$ ), and  
121 methylhistidine (MeHis,  $r = -0.07$ ;  $p < 0.001$ ).

122



123  
124

125

126 **Supplementary Figure 1.** Volcano plot for Pearson correlations between serum metabolome and  
127 developmental quotients of children 6-59 months evaluated in ENANI-2019 (the Brazilian National  
128 Survey on Child Nutrition) (n = 5004).

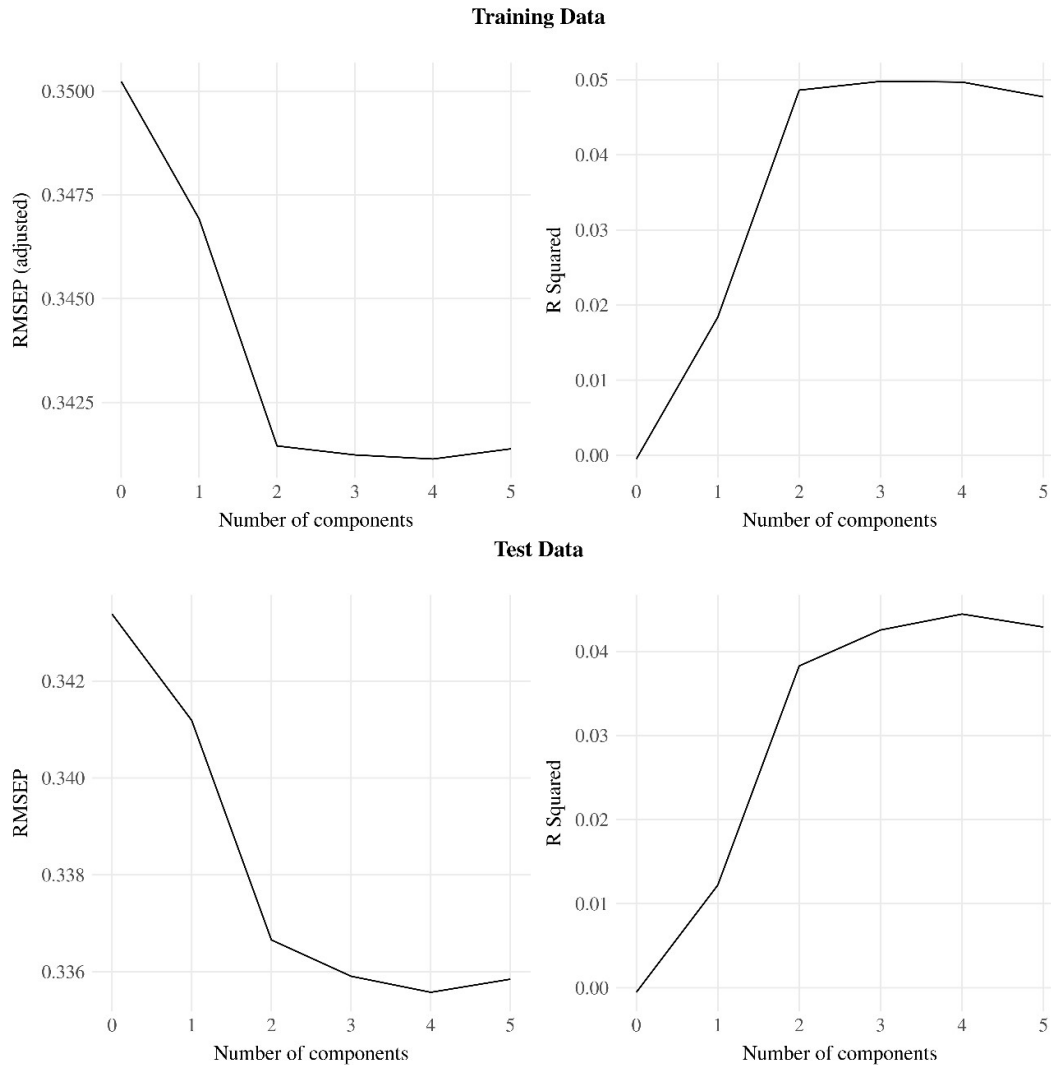
129

130 Note: The Y-axis and X-axis represent the negative logarithm (base-10) of adjusted-p-values of each  
131 correlation coefficient and the correlation coefficient, respectively. Dashed line is the Benjamini-Hochberg  
132 adjusted-p-value for 72 metabolites comparisons. Statistically significant metabolites are labeled on plots.  
133

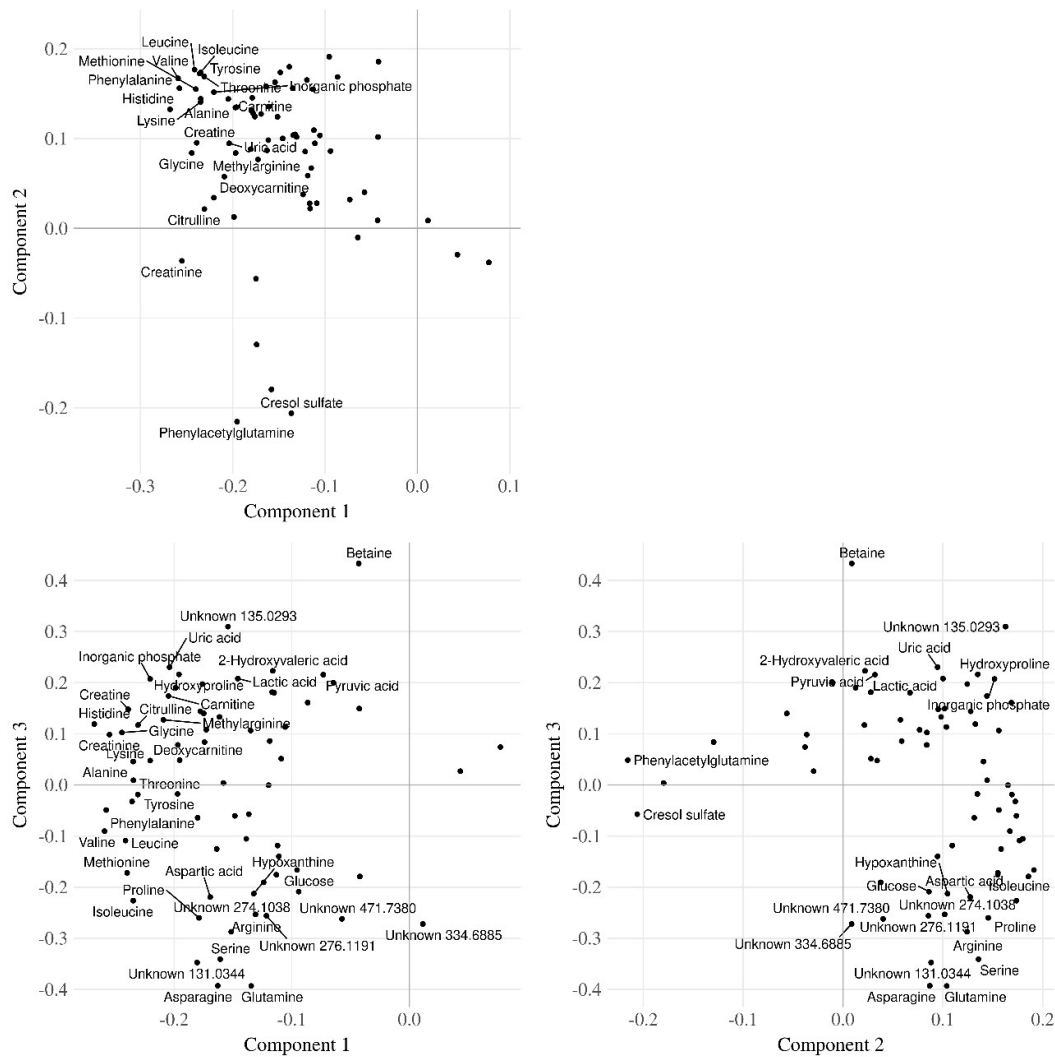
134 In the PLSR, the training data suggested that 3 components best predicted the data, while the test data  
135 showed a slightly more predictive model with 4 components (**Supplementary Figure 2**). The model with  
136 3 components was used for parsimony and to avoid overfitting. The serum metabolites that had the highest  
137 loads on the components were the branched-chain amino acids, including leucine (Leu), isoleucine (Ile),  
138 and valine (Val) on component 1, the uremic toxins, CS and PAG on component 2 and betaine and amino  
139 acids, mainly glutamine (Gln) and asparagine (Asn) on component 3 (**Supplementary Figure 3**). The 3  
140 components accounted for 39.8% of total metabolite variance (**Supplementary Figure 4**) and 4.3% of the



141 DQ variance (**Supplementary Figure 2**). Twenty-eight metabolites showed a  $VIP \geq 1$  (**Figure 2**). These  
142 metabolites were entered into the multiple linear regression adjusted for the child's diet quality (MDD),  
143 nutritional status (w/h z-score), and age (months).  
144



145  
146  
147  
148 **Supplementary Figure 2.** Residual means squared error (RMSEP) and R squared across Partial Least  
149 Square Regression (PLSR) models with different numbers of components.  
150  
151 Note: Training and test datasets were done with 80% (n = 4003) and 20% (n = 1001) of observations,  
152 respectively.  
153



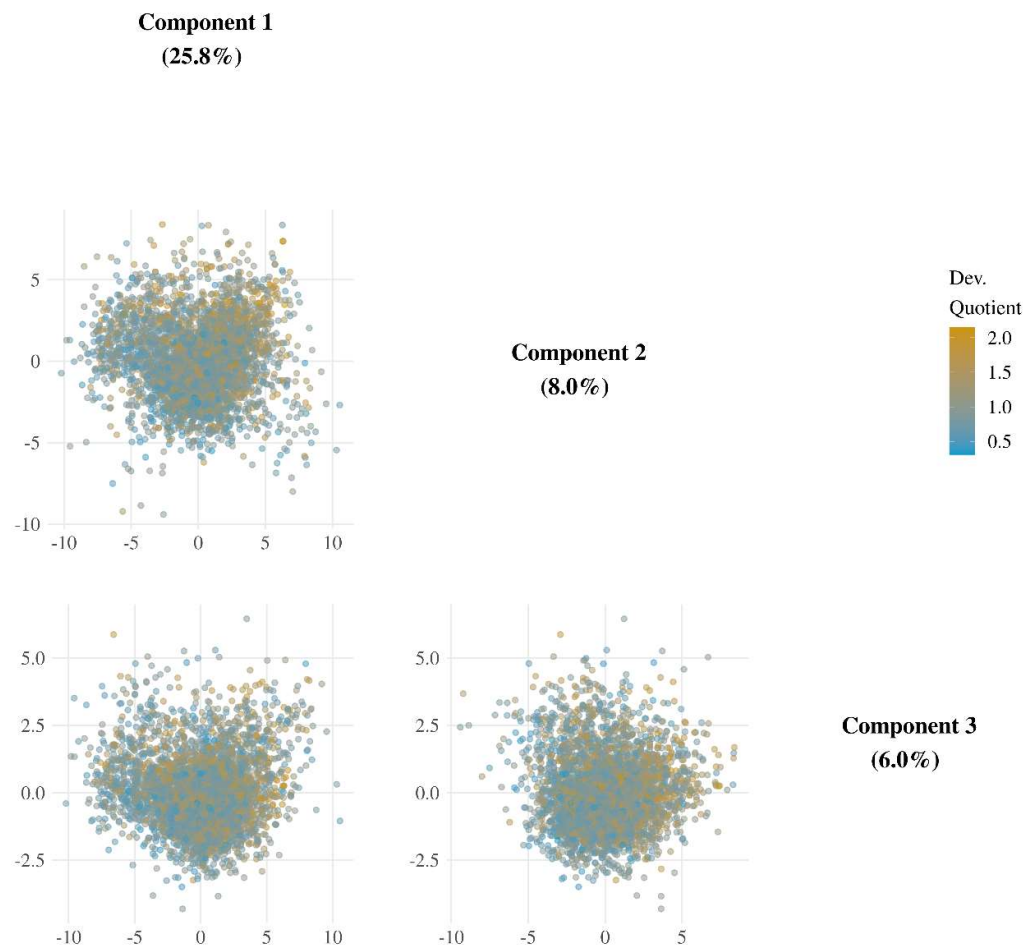
154  
155  
156

157 **Supplementary Figure 3.** Partial Least Square Regression (PLSR) loading plots for components 1, 2, and  
158 3.

159

160 Note: Labeled points are metabolites with loading greater than 0.2 or lower than -0.2 on any of the  
161 components in the plot.

162



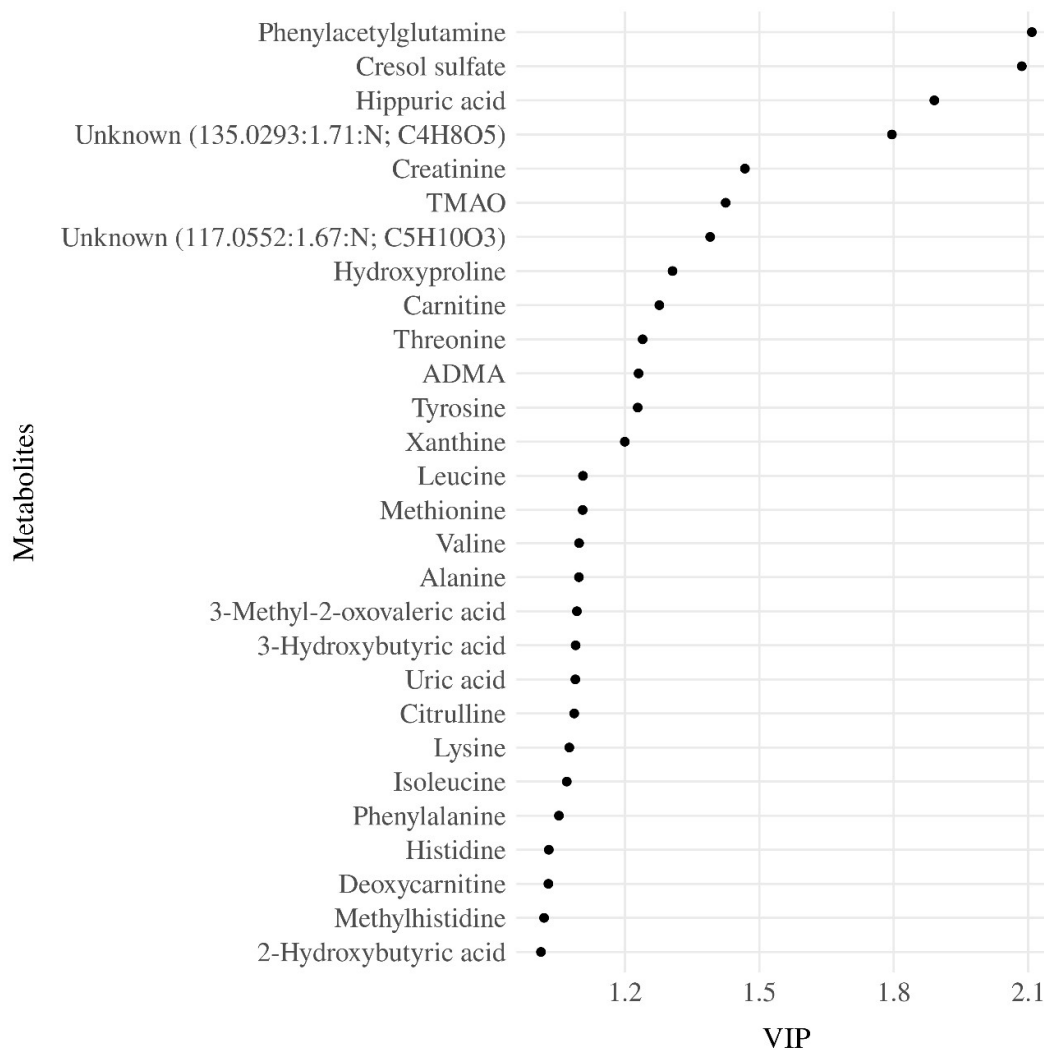
163

164

165 **Supplementary Figure 4.** Partial Least Square Regression (PLSR) score scatterplots for components 1,  
166 2, and 3.

167

168 Note: Percentages in parentheses indicate the total metabolite variance explained by each component. Dots  
169 were colored according to the developmental quotient. The child development was based on the Survey of  
170 Well-being of Young Children – the Brazilian version of the milestones questionnaire which estimates the  
171 child's developmental age considering developmental milestones achieved. The developmental quotient  
172 (DQ) was calculated as the child's developmental age divided by the chronological age (Sheldrick & Perrin,  
173 2013). DQ = 1 indicates that expected age milestones have been attained; DQ <1 and > 1 suggest that the  
174 attainment of specific age milestones occurred below or above expectations, respectively.  
175



176  
 177 **Figure 2.** Variable importance projection (VIP) ranking scores from Partial Least Squares Regression  
 178 (PLSR) analysis were performed to select the most relevant metabolites that explain the developmental  
 179 quotient variability.  
 180

181 Note: Metabolites with higher VIP scores are the most contributory variables, whereas smaller VIP scores  
 182 provide less contribution to explain the developmental quotient variability. Only metabolites with VIP  
 183 scores higher than one are displayed.  
 184

185 We found inverse associations for serum concentrations of CS ( $\beta = -0.07$ ; adjusted- $p < 0.001$ ), HA ( $\beta = -$   
 186  $0.06$ ; adjusted- $p < 0.001$ ), PAG ( $\beta = -0.06$ ; adjusted- $p < 0.001$ ), and TMAO ( $\beta = -0.05$ ; adjusted- $p = 0.002$ )  
 187 with the DQ of children, even after including the interaction between child age and the metabolite in the  
 188 regression analysis (**Table 2**). Considering the interactions between serum metabolites and child age, we  
 189 observed associations for Crtn ( $\beta$ -interaction =  $0.05$ ; adjusted- $p = 0.003$ ), HA ( $\beta$ -interaction =  $0.04$ ;  
 190 adjusted- $p = 0.041$ ), MeHis ( $\beta$ -interaction =  $0.04$ ; adjusted- $p = 0.018$ ), PAG ( $\beta$ -interaction =  $0.04$ ; adjusted-

191  $p = 0.018$ ), TMAO ( $\beta$ -interaction = 0.05; adjusted- $p = 0.003$ ), and Val ( $\beta$ -interaction = 0.04; adjusted- $p =$   
192 0.039) (Table 2).  
193

**Table 2.** Association between serum metabolites and developmental quotient (DQ) of children with and without child age interaction term for children 6–59 months evaluated in a subset sample of ENANI-2019 (the Brazilian National Survey on Child Nutrition) (n = 5004).

Serum Metabolites	Main effect without child age interaction term <sup>1</sup>			Main effect with child age interaction term <sup>1,2</sup>			Interaction term (Metabolites: Child age) <sup>1,2</sup>		
	$\beta$	95% CI	adjusted-p-value	$\beta$	95% CI	adjusted-p-value	$\beta$	95% CI	adjusted-p-value
Asymmetric dimethylarginine	< 0.01	-0.03; 0.02	0.942	< 0.01	-0.03; 0.02	0.984	< 0.01	-0.02; 0.03	0.965
Alanine	-0.02	-0.04; 0.01	0.431	-0.02	-0.04; 0.01	0.414	< 0.01	-0.03; 0.02	0.928
Carnitine	< 0.01	-0.03; 0.03	0.954	< 0.01	-0.03; 0.03	0.985	< 0.01	-0.02; 0.03	0.965
Citrulline	-0.03	-0.05; 0.00	0.164	-0.03	-0.05; 0.00	0.176	0.02	0.00; 0.05	0.186
Creatinine	-0.01	-0.03; 0.02	0.935	< 0.01	-0.03; 0.03	0.985	0.05	0.02; 0.08	<b>0.003</b>
Cresol sulfate	-0.07	-0.10; -0.04	< <b>0.001</b>	-0.06	-0.09; -0.03	< <b>0.001</b>	0.03	0.01; 0.06	0.059
Deoxycarnitine	-0.03	-0.06; -0.01	0.065	-0.03	-0.06; -0.01	0.073	0.02	-0.01; 0.05	0.227
Hippuric acid	-0.06	-0.09; -0.04	< <b>0.001</b>	-0.06	-0.09; -0.03	< <b>0.001</b>	0.04	0.01; 0.06	<b>0.041</b>
Histidine	-0.02	-0.05; 0.00	0.183	-0.02	-0.05; 0.00	0.183	0.02	0.00; 0.05	0.156
Hydroxyproline	-0.01	-0.03; 0.02	0.912	-0.01	-0.03; 0.02	0.976	-0.02	-0.05; 0.01	0.227
Isoleucine	-0.03	-0.05; 0.00	0.164	-0.03	-0.05; 0.00	0.176	0.02	-0.01; 0.04	0.312
Leucine	-0.02	-0.05; 0.00	0.183	-0.02	-0.05; 0.00	0.203	0.03	0.00; 0.05	0.144
Lysine	< 0.01	-0.03; 0.02	0.935	< 0.01	-0.03; 0.02	0.984	0.02	0.00; 0.05	0.194
Methionine	-0.03	-0.05; 0.00	0.164	-0.03	-0.05; 0.00	0.176	0.02	-0.01; 0.05	0.227
Methylhistidine	< 0.01	-0.02; 0.03	0.952	< 0.01	-0.03; 0.03	0.985	0.04	0.02; 0.07	<b>0.018</b>
Phenylacetylglutamine	-0.06	-0.09; -0.04	< <b>0.001</b>	-0.06	-0.09; -0.03	<b>0.001</b>	0.04	0.01; 0.07	<b>0.018</b>
Phenylalanine	-0.03	-0.06; 0.00	0.164	-0.03	-0.05; 0.00	0.176	0.03	0.00; 0.05	0.129
Threonine	< 0.01	-0.03; 0.02	0.953	< 0.01	-0.03; 0.02	0.985	0.01	-0.02; 0.03	0.836
TMAO	-0.05	-0.08; -0.02	<b>0.002</b>	-0.04	-0.07; -0.02	<b>0.010</b>	0.05	0.02; 0.07	<b>0.003</b>
Tyrosine	-0.01	-0.04; 0.02	0.816	-0.01	-0.04; 0.02	0.810	0.02	0.00; 0.05	0.194

Unknown 117.0552:1.67:N; C5H10O3	-0.02	-0.05; 0.01	0.317	-0.02	-0.05; 0.01	0.322	< 0.01	-0.03; 0.03	0.965	194 195
Unknown 135.0293:1.71:N; C4H8O5	0.01	-0.02; 0.04	0.721	0.01	-0.02; 0.04	0.653	-0.01	-0.04; 0.01	0.524	196 197
Uric acid	-0.01	-0.03; 0.02	0.924	< 0.01	-0.03; 0.02	0.984	0.02	0.00; 0.05	0.156	198
Valine	-0.03	-0.05; 0.00	0.164	-0.02	-0.05; 0.00	0.183	0.04	0.01; 0.06	<b>0.039</b>	199 200
2-Hydroxybutyric acid	-0.01	-0.04; 0.02	0.800	-0.01	-0.04; 0.02	0.653	0.03	0.00; 0.06	0.129	201
3-Hydroxybutyric acid	-0.03	-0.05; 0.00	0.164	-0.03	-0.05; 0.00	0.176	< 0.01	-0.03; 0.03	0.965	202
3-Methyl-2-oxovaleric acid	< 0.01	-0.03; 0.03	0.957	< 0.01	-0.03; 0.03	0.985	< 0.01	-0.02; 0.03	0.965	203
Xanthine	< 0.01	-0.02; 0.03	0.954	< 0.01	-0.03; 0.03	0.985	< 0.01	-0.03; 0.03	0.965	204 205

206 Note: CI: Confidence interval; DQ: Developmental quotient; TMAO: Trimethylamine N-oxide.

207 <sup>1</sup> Multiple linear regression adjusted for child's diet quality (minimum dietary diversity), child nutritional status (w/h score), and child age (in months).

208 <sup>2</sup> Child age (in months) was used as interaction in the regression models.

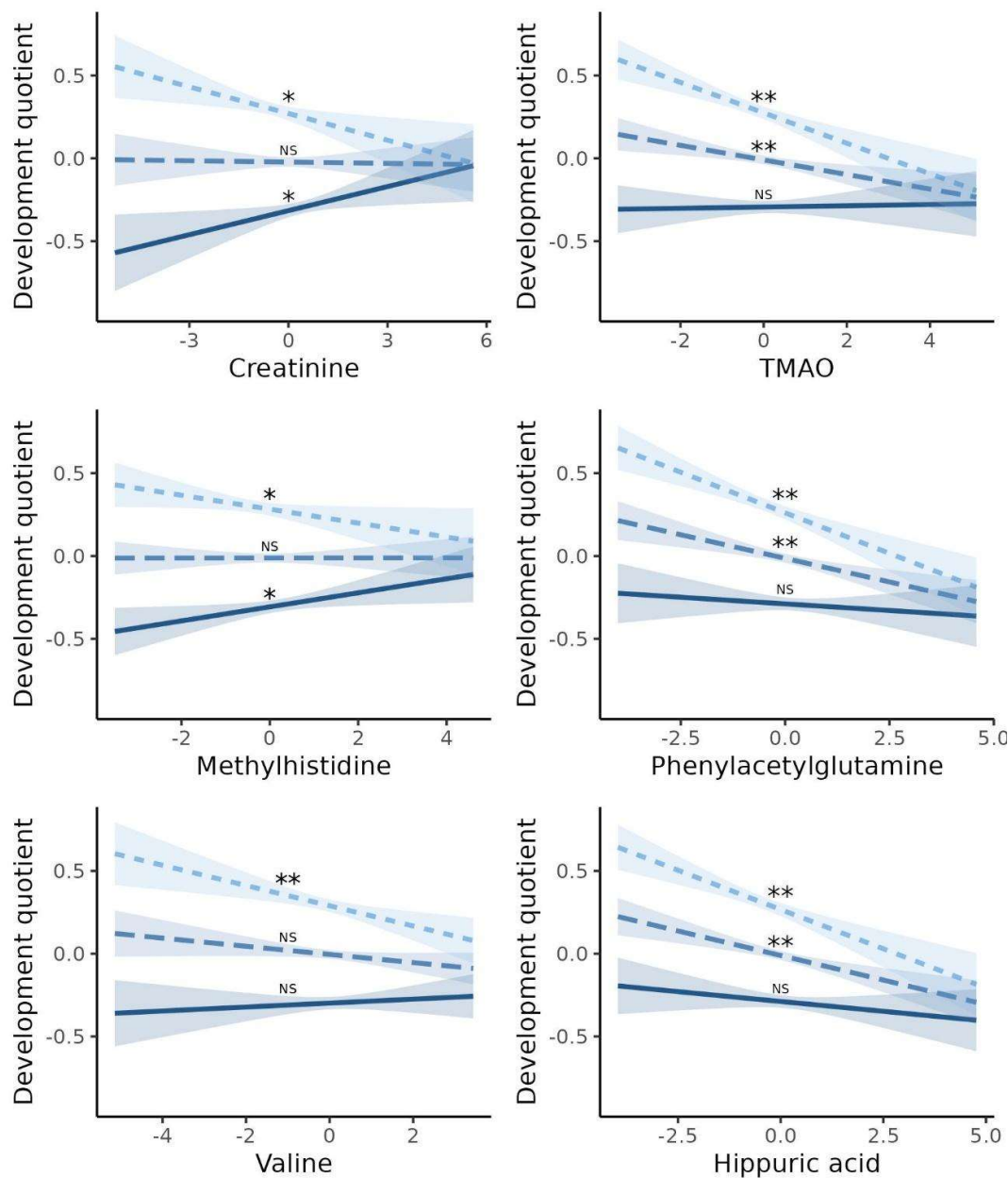
209 Only metabolites with variable importance projection (VIP) scores > 1 were entered in the regressions (29 metabolites). Adjusted-p-values refer to p-values adjusted for multiple  
 210 comparisons by the Benjamini-Hochberg method. The child development was based on the Survey of Well-being of Young Children - the Brazilian version of the milestones  
 211 questionnaire, which estimates the child's developmental age considering developmental milestones achieved. The developmental quotient was calculated as the child's  
 212 developmental age divided by the chronological age (Sheldrick & Perrin, 2013). All variables were scaled before running the regression models. Bold values indicate statistically  
 213 significant adjusted-p-values.

214

215

216 Comparing children one standard deviation (SD) above the mean child age with those one standard  
217 deviation below (49 months vs. 19 months), we observed opposite directions for the association with DQ  
218 for serum Crtn (for children aged - 1 SD:  $\beta = -0.05$ ;  $p = 0.01$ ; + 1 SD:  $\beta = 0.05$ ;  $p = 0.02$ ) and for MeHis (-  
219 1 SD:  $\beta = -0.04$ ;  $p = 0.04$ ; + 1 SD:  $\beta = 0.04$ ;  $p = 0.03$ ) (**Figure 3**). For TMAO, PAG, Val, and HA, the  
220 effect size went from a negative value for younger children to a non-significant value for older children  
221 (**Figure 3**). No association were found for interactions between child sex and each metabolite on DQ (data  
222 not shown).  
223





Child age (months) — + 1 SD — Mean — - 1 SD

224

225 **Figure 3.** Association between serum metabolites with child age interaction and developmental quotient of  
 226 children from 6 to 59 months from ENANI-2019 (the Brazilian National Survey on Child Nutrition, 2019)  
 227 (n = 5004).

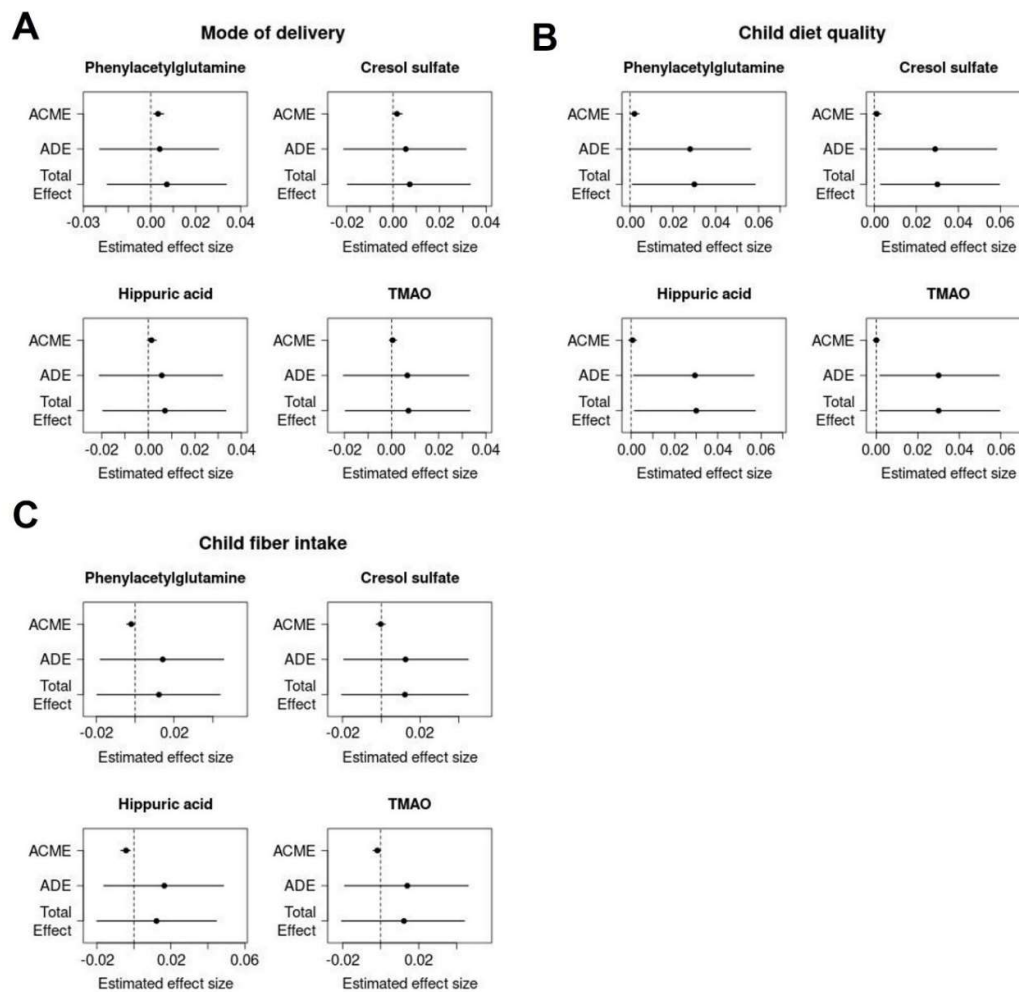
228

229 Note: SD: standard deviation; TMAO: Trimethylamine N-oxide.

230 Only statistically significant interactions at an adjusted p-value for multiple comparisons < 0.05 were  
 231 decomposed into their simple slopes. \*\* refers to simple slopes with p-value < 0.001; \* refers to simple  
 232 slopes with p-value < 0.05; “NS” refers to “not statistically significant”. Regression adjustments used in  
 233 the models: child diet quality, child age (months), and child nutritional status (w/h score). Mean of children  
 234 age = 34 months and standard deviation = 15 months. The child development was based on the Survey of  
 235 Well-being of Young Children - the Brazilian version of milestones questionnaire, which estimates the  
 236 child’s developmental age considering developmental milestones achieved. The developmental quotient

237 (DQ) was calculated as the child's developmental age divided by the chronological age (Sheldrick and  
238 Perrin, 2013). All variables' data were auto-scaled, before running the regression models.  
239

240 Mediation analysis identified that PAG was a mediator for the relationship between mode of delivery  
241 (ACME = 0.003,  $p < 0.001$ ), child's diet quality (ACME = 0.002,  $p = 0.019$ ), and child fiber intake (ACME  
242 = - 0.002;  $p = 0.034$ ) and DQ (Supplementary Figure 5). Serum HA (ACME = - 0.004,  $p < 0.001$ ) and  
243 TMAO (ACME = - 0.002,  $p = 0.022$ ) were also mediators for the relationship between child fiber intake  
244 and DQ (Supplementary Figure 5). According to the mediation analysis, having a vaginal delivery ( $\beta = -$   
245 0.05;  $p < 0.001$ ), not achieving MDD ( $\beta = -0.03$ ;  $p = 0.019$ ), and greater total fiber intake ( $\beta = 0.03$ ;  $p =$   
246 0.031) increased the serum PAG concentration, that in turn was inversely associated with DQ. Moreover,  
247 a higher fiber intake was directly associated with HA ( $\beta = 0.06$ ;  $p < 0.001$ ) and TMAO ( $\beta = 0.03$ ;  $p = 0.018$ ),  
248 which also was inversely associated with DQ.  
249



250

251 **Supplementary Figure 5.** Effect decomposition plots for mediation analysis of mode of delivery (A),  
252 child's diet quality (B), and child fiber intake (C) on child's developmental quotient considering metabolites  
253 as mediators.

254

255 Notes: Dots and lines represent the point estimated and 95% confidence interval based upon the quantiles  
256 of bootstrapped distribution. Lines that are across the vertical dashed indicate the absence of statistical  
257 significance. ACME = Average causal mediation effect; ADE = Average direct effect; Total effect = the  
258 total effect. Only metabolites that showed statistically significant association with a child's developmental  
259 quotient were tested in the mediation models. The linear regression models were adjusted for child  
260 nutritional status (w/h z-score) and child age (in months). Data were auto-scaled before running the models.  
261 The mode of delivery was evaluated as vaginal or c-section; child's diet quality as  $\geq 5$  or  $< 5$  food groups  
262 (minimum dietary diversity), and child fiber intake was given in grams.

263

## 264 **Discussion**

265 A limited number of investigations have examined the link between blood, urine or stool metabolites and  
266 child development, with most studies focusing on comparing the metabolic profile of patients with  
267 developmental disorders against healthy controls (Brydges et al., 2021; Moreau et al., 2019; Needham et  
268 al., 2021; Ruggeri et al., 2014; Sotelo-Orozco et al., 2019). This is the first study to explore the association  
269 between child serum metabolome and ECD on a population-based level. According to our results, serum  
270 concentrations of PAG, CS, HA and TMAO were inversely associated with child DQ. The associations of  
271 PAG, HA, TMAO, and Val on DQ were also age-dependent and showed stronger associations for children  
272  $< 34$  months. In addition, inverse associations were found for serum levels of MeHis and Crtn with DQ for  
273 children  $< 34$  months, whereas direct associations were found for children  $> 34$  months.

274 PAG is the glutamine conjugate of phenylacetic acid generated from the gut microbial dependent  
275 metabolism of phenylalanine (Krishnamoorthy et al., 2023; Poesen et al., 2016). As circulating  
276 concentrations of the essential amino acid, phenylalanine, were not directly associated with DQ in our  
277 study, this suggests that differences in gut microbiome composition impacting PAG formation among  
278 children are likely a major determinant of DQ rather than dietary protein intake. Similarly to our findings,  
279 a previous study involving 76 patients with Attention-Deficit/Hyperactivity Disorder (ADHD) and 363  
280 healthy children aged 1–18 years identified an inverse relationship between urinary PAG and ADHD (Tian  
281 et al., 2022). While the specific pathways contributing to such disorders remain to be fully elucidated, it is  
282 known that PAG is structurally similar to catecholamines and can activate adrenergic receptors (Huynh,  
283 2020). The stimuli of adrenergic receptors may have broader implications on behavioral responses,  
284 potentially influencing neurological activities (Connors et al., 2005; Pliszka et al., 1996).

285 Likewise, in our study, circulating TMAO levels were inversely associated with child DQ. Elevated  
286 concentrations of TMAO in plasma and cerebrospinal fluid are also implicated in age-related cognitive

287 dysfunction, neuronal senescence, and synaptic damage in the brain (Praveenraj et al., 2022). In addition,  
288 its increased levels have been associated with activation of inflammatory pathways (Seldin et al., 2016) and  
289 neurodegenerative diseases (Mudimela et al., 2022). Previous studies reported that TMAO can activate  
290 astrocytes and microglia and trigger a cascade of inflammatory responses in the brain, induce oxidative  
291 stress, superoxide production, and mitochondrial impairment, and cause inhibition of mTOR signaling in  
292 the brain (Mudimela et al., 2022; Praveenraj et al., 2022). In this context, dysregulation of the mTOR  
293 signaling pathway may lead to substantial abnormalities in brain development, contributing to a wide array  
294 of neurological disorders, including ASD, seizure, learning impairments, and intellectual disabilities  
295 (Altomare & Gitto, 2015; Lee, 2015).

296 HA is a glycine conjugate derived from exposure to benzoic acid (i.e., preservative in processed foods), or  
297 generated via intestinal microbial fermentation of dietary polyphenols and phenylalanine (Assem et al.,  
298 2018). Similar to other co-metabolized species, circulating HA concentrations depend on dietary exposures,  
299 host metabolism, and early life gut microbiota colonization and maturation in young children from *in utero*  
300 to after birth (Jian et al., 2021). Khan et al. (Khan et al., 2022) in a case-control study involving 65 children  
301 with ASD and 20 children with typical development, reported that urinary HA was significantly higher in  
302 the ASD group, which corroborates with the inverse association found with DQ in our study. However, the  
303 effect of HA on metabolic health is still controversial as it has been proposed as a potential dietary  
304 biomarker for fruit and vegetable consumption in healthy children and adolescents (Krupp et al., 2012;  
305 Pallister et al., 2017). HA also inhibits the Organic Anion Transporter (OAT) 3 function and contribute to  
306 the toxic action of other compounds, including indoxyl sulfate (Ticinesi et al., 2023), which may affect  
307 cognitive function by disrupting the brain barrier (Lin et al., 2019).

308 CS is a product of tyrosine fermentation in the gut involving more than 55 p-cresol producing bacteria prior  
309 to hepatic sulfate conjugation (Saito et al., 2018). CS was inversely associated with DQ in our study, and it  
310 has been studied in the early stages of life, particularly concerning conditions such as ASD (Guzmán-Salas  
311 et al., 2022; Persico & Napolioni, 2012). Urinary p-cresol and CS have been found elevated in ASD-  
312 diagnosed children < 8 years (Altieri et al., 2011; Persico & Napolioni, 2012). Animal models have shown  
313 that CS is a gut derived neurotoxin that can impact neuronal cell structural remodeling even at low doses  
314 via oxidative stress and secretion of brain-derived neurotrophic factor (Tevzadze et al., 2022). Indeed, p-  
315 cresol might impact developmental processes since it is related to impaired dendritic development,

316 synaptogenesis, and synapse function in hippocampal neurons, which are crucial for cognitive and neural  
317 development in children (Guzmán-Salas et al., 2022).

318 Prior investigations have identified PAG, CS, HA, and TMAO as products of gut microbiota metabolism  
319 (Pallister et al., 2017; Reichard et al., 2022). Specifically, dietary aromatic amino acids are metabolized by  
320 gut microbiota in the large intestine, converting phenylalanine into PAG and HA and tyrosine into CS  
321 (Reichard et al., 2022; Ticinesi et al., 2023). In contrast, TMAO originates from trimethylamine (TMA),  
322 which is produced from betaine compounds, including g-butyrobetaine (dC0), choline, and carnitine via  
323 gut microbiota co-metabolism that is subsequently oxidized to TMAO in the liver (Reichard et al., 2022).  
324 Once these microbiota-derived compounds enter the bloodstream, they may elicit physiological responses  
325 influencing the central nervous system through direct passage across the blood-brain barrier or indirectly  
326 through vagus nerve stimulation (Morais et al., 2021). Such dynamics underscore the complex interactions  
327 within the microbiota-gut-brain axis (Carabotti et al., 2015; Connell et al., 2022) that can be mediated by  
328 environmental exposures early in life, such as mode of birth and child's diet (Azad et al., 2018).

329 Overall, PAG, HA, and TMAO showed a significant average causal mediation effect with dietary fiber  
330 intake that was inversely associated with DQ. However, the interpretation of mediation effects is limited  
331 by the observational nature of the data and third variables may explain unexpected relationships between  
332 the variables in the analysis. Mediation analysis cannot determine causality or rule out spurious effects and  
333 measurement procedures, such as a single measure of dietary intake. These analyses only provide context  
334 for the main findings and point to potential future directions.

335 The age-dependent associations observed in our study are consistent with the age-related changes in  
336 metabolic profile reported by previous studies (Chiu et al., 2016; Gu et al., 2009; Psihogios et al., 2008;  
337 Tian et al., 2022). Increased urinary TMAO and betaine levels were found in children aged six months,  
338 whereas creatine and Crtn levels increased significantly after six months (Chiu et al., 2016). Similar  
339 findings were reported by Gu et al. in a study including children from newborn to 12 years of age. The  
340 urinary Crtn increased with age, whereas glycine, betaine/TMAO, citrate, succinate, and acetone decreased  
341 (Gu et al., 2009). These changes may reflect a physiological age-dependent process related to the rapid  
342 growth occurring in early life (Chiu et al., 2016), besides the dynamic process of gut microbiota maturation  
343 during the first years of life (Derrien et al., 2019).

344 Interestingly, we observed that the child's age changed the direction of the association between Crtn and  
345 MeHis with DQ. Crtn is generated non-enzymatically from creatine, and is related to energy production

346 within skeletal muscle tissue, whereas MeHis is related to protein turn-over and has been evaluated as a  
347 biomarker for the rate of skeletal muscle breakdown (Kreider & Stout, 2021; Wang et al., 2012). For  
348 example, plasma and urinary MeHis are temporally associated with changes to a health-promoting Prudent  
349 diet in contrast to a Western diet, whose concentrations are positively correlated with greater self-reported  
350 daily intake of protein (Wellington et al., 2019). We hypothesize that higher serum concentrations of Crtn  
351 and MeHis in older children (> 49 months) may be due to the greater physical activity/mobility needed  
352 through the first years (Chiu et al., 2016).

353 Our study provided valuable insights into the potential role of serum metabolome on ECD for children aged  
354 6-59 months. One of the strengths of this study is the large sample size, which allows for a more  
355 comprehensive representation of the population on a national level. Furthermore, our study employed a  
356 quantitative targeted and exploratory untargeted metabolomics method. This high-throughput  
357 metabolomics platform is strengthened by implementing rigorous quality control measures and batch-  
358 correction algorithms, ensuring the high accuracy and reproducibility needed for large-scale  
359 epidemiological studies. We used the DQ as a variable for evaluating ECD, which consists of a continuous  
360 parameter that integrates developmental milestones attained with the child's chronological age at its  
361 achievement. Some limitations are worth mentioning. First, the analysis of hydrophobic/water-insoluble  
362 lipids was not included in this study limiting overall metabolome coverage. Also, the inherent limitations  
363 of a cross-sectional study prevent us from making causal inferences concerning the temporal relationship  
364 between serum metabolic phenotypes and ECD trajectories. Moreover, birth weight and breastfeeding  
365 practices were available only for a limited number of participants and were not included in the regression  
366 adjustments. Concerning the child's diet assessment, we estimated dietary diversity and fiber intake based  
367 on one-day food intake reports, with the MDD specifically measuring dietary diversity within diet quality.  
368 In conclusion, this manuscript represents a pioneering effort in Brazil, a population-based survey targeting  
369 children from 6-59 months of age that incorporated metabolome and ECD analysis. We found that serum  
370 PAG, HA, CS, and TMAO were inversely associated with ECD and that age can modify the effect of PAG,  
371 HA, TMAO, Crtn, and MeHis on development. These results suggest that a panel of circulating metabolites  
372 might offer a preliminary warning of developmental risk and potentially be used as a screening tool to help  
373 identify children at risk for developmental delays at early stages of life.

374 Further prospective longitudinal studies, including microbiome analysis, are warranted to validate our  
375 findings and establish targeted intervention biomarkers besides providing further insights into possible  
376 mechanistic pathways.

377

## 378 **Materials and Methods**

### 379 **Study design and participants**

380 This cross-sectional study uses data from the Brazilian National Survey on Child Nutrition (ENANI-2019).  
381 ENANI-2019 is a population-based household survey with national coverage and representativeness of  
382 children aged < 5 years that has investigated dietary intake, anthropometric status, and micronutrient  
383 deficiency. Details of the ENANI-2019 sample design, study completion, and methodology have been  
384 published previously (Alves-Santos et al., 2021; Castro et al., 2021; Vasconcellos et al., 2021). ENANI-  
385 2019 data collection took place from February 2019 and ended in March 2020 due to the COVID-19  
386 pandemic.

387

### 388 **Covariates**

389 Trained interviewers administered a structured questionnaire to collect socio-demographic, health and  
390 anthropometric data (Alves-Santos et al., 2021). The variables included in this study were: the child's age  
391 (in months), sex (male or female), educational level of the mother/caregiver of the child (0–7, 8–10, and ≥  
392 11 completed years of education), mode of delivery (vaginal or c-section), monthly familiar income (< 62.2,  
393 62.2- 24.4, 124.5-248.7, > 248.7 USD). Body weight (kg) and length or height (m) were used to calculate  
394 the weight for length/height z-scores (w/h z-scores). Also, the w/h z-scores were classified considering the  
395 age and sex of the child, according to World Health Organization (WHO) standards (World Health  
396 Organization (WHO), 2006).

397 The child's diet quality was assessed using the minimum dietary diversity (MDD) indicator proposed by  
398 the WHO (World health Organization (WHO) & United Nations Children's Fund (UNICEF), 2021). MDD  
399 requires consumption of foods from at least five of eight food groups during the previous day. The eight  
400 food groups are 1) breast milk; 2) grains, roots, tubers, and plantains; 3) pulses (beans, peas, lentils), nuts,  
401 and seeds; 4) dairy products (milk, infant formula, yogurt, cheese); 5) flesh foods (meat, fish, poultry, organ  
402 meats); 6) eggs; 7) vitamin-A rich fruits and vegetables; and 8) other fruits and vegetables. The variable  
403 was dichotomized as children who had consumed ≥ 5 or < 5 food groups. Data to produce this indicator



404 was derived from the ENANI’s structured questionnaire related to foods consumed the day before the first  
405 interview (Lacerda et al., 2021) Furthermore, in ENANI-2019 caregivers fulfilled one 24-hour food recall  
406 (R24h) reporting all children’s food and beverage intake in the day before the interview. Child fiber intake  
407 (grams) was obtained from the R24h.

408

#### 409 **Assessment of ECD**

410 The Survey of Well-being of Young Children (SWYC) milestones questionnaire was used to assess ECD.  
411 This questionnaire inquiries about motor, language, and cognitive milestones appropriate for the age range  
412 of the form (Whitesell et al., 2015). It is recognized by the American Academy of Pediatrics and is a widely  
413 disseminated screening tool for identifying developmental delays in children aged 1 to 65 months (Lipkin  
414 et al., 2020).

415 The SWYC milestones questionnaire was developed and validated by Sheldrick and Perrin (Sheldrick &  
416 Perrin, 2013), and a version of the SWYC (SWYC-BR) has been translated, cross-culturally adapted, and  
417 validated for use in Brazilian children (Moreira et al., 2019). A recently published study evaluated the  
418 internal consistency of the SWYC-BR milestones questionnaire using the ENANI-2019 data and  
419 Cronbach’s alpha, which showed adequate performance (0.965; 95% CI: 0.963–0.968) (Freitas-Costa et al.,  
420 2023). SWYC-BR comprises 12 distinct forms, each aligned with the recommended age for routine  
421 pediatric wellness visits from 1 to 65 months (specifically at 1–3, 4–5, 6–8, 9–11, 12–14, 15–17, 18–22,  
422 23–28, 29–34, 35–46, 47–58, and 59–65 months). Each form is a 10-item questionnaire. For each item, a  
423 parent/caregiver can choose one of three answers that best describe their child (“not yet”, “somewhat”, or  
424 “very much”).

425 The ENANI-2019 data collection system automatically selected the appropriate set of developmental  
426 milestones according to the child’s age. The corrected age was used to select the proper set of developmental  
427 milestones for children under two years who were born preterm (< 37 gestational weeks) (Gould et al.,  
428 2021).

429

#### 430 **Developmental quotient**

431 The item response theory and graded response models were used to estimate development age (Samejima,  
432 1997). The analysis used the full information method and incorporated the complex sample design in the  
433 Mplus software version 7 (Los Angeles, EUA) (Muthén & Muthén, n.d.). The estimated model allowed the



434 construction of an item characteristic curve (ICC) for each milestone, representing the change in the  
435 probability of a given response (sometimes or always) and the discrimination of each milestone  
436 development by age, estimating the development age (Freitas-Costa et al., 2023). The ICC and its  
437 coefficients were used to estimate developmental age according to the developmental milestones reached  
438 by each child. This methodology has been previously used to assess ECD with the SWYC (Freitas-Costa  
439 et al., 2023; Sheldrick et al., 2019; Sheldrick & Perrin, 2013) and the Denver Test (Drachler et al., 2007).  
440 The developmental quotient (DQ) was calculated by dividing the developmental age by the chronological  
441 age (Freitas-Costa et al., 2023; Sheldrick & Perrin, 2013). DQ equals to 1 indicates that the expected age  
442 milestones are attained. DQ values < 1 or > 1 suggest attaining age milestones below or above expectations,  
443 respectively. This method allows analyzing the outcome as a continuous variable.

444

#### 445 **Blood collection**

446 Details of the procedures adopted for blood collection and laboratory analyses have been previously  
447 described (Castro et al., 2021). Fasting was not required, and changes in medication were not necessary to  
448 draw the blood sample. Briefly, 8 mL of blood sample were drawn and distributed in a trace tube (6 mL)  
449 and EDTA tube (2 mL) and transported in a cooler with a controlled temperature (from 2 °C to 8 °C) to a  
450 partner laboratory. Aliquots from the trace tube were centrifugated and the serum was transferred to a  
451 second trace tube and stored at freezing temperature (-20 °C) until laboratory analyses were performed.  
452 Serum samples with sufficient volume were stored in a biorepository (-80 °C) prior to untargeted  
453 metabolome analysis.

454

#### 455 **Serum processing and metabolome analysis**

456 Untargeted metabolomic analysis was performed on serum samples using a high-throughput platform based  
457 on multisegment injection-capillary electrophoresis-mass spectrometry (MSI-CE-MS). Samples were first  
458 thawed slowly on ice, where 50 µL were aliquoted and then diluted four-fold to a final volume of 200 µL  
459 in deionized water with an internal standard mix containing 40 µM 3-chlorotyrosine, 3-fluorophenylalanine,  
460 2-fluorotyrosine, trimethylamine-N-oxide[D9], g-amino butyrate[D6], choline[D9], creatinine[D3],  
461 ornithine [<sup>15</sup>N<sub>2</sub>], histidine [<sup>15</sup>Na], carnitine[D3], 3-methylhistidine[D3] and 2 mM glucose [<sup>13</sup>C<sub>6</sub>]. Diluted  
462 serum samples were then transferred to pre-rinsed Nanosep ultracentrifuge devices with a molecular weight  
463 cutoff of 3 kDa (Cytiva Life Sciences, Malborough, USA), and centrifuged at 10,000 g for 15 min to remove

464 proteins. Following ultrafiltration, 20  $\mu$ L of diluted serum filtrate samples were transferred to CE-  
465 compatible polypropylene vials and analyzed using MSI-CE-MS. A pooled QC was also prepared to  
466 evaluate technical precision throughout the study using 50  $\mu$ L aliquots collected from the first batch of 979  
467 serum samples processed. Overall, serum specimens were prepared and run as three separate batches of  
468 979, 1990, and 2035 samples over an eighteen-month period. A QC-based batch correction algorithm was  
469 applied to reduce long-term system drift and improve reproducibility with QC samples analyzed in a  
470 randomized position within each analytical run (Wehrens et al., 2016).

471 MSI-CE-MS was performed using an Agilent 6230B time-of-flight mass spectrometer (Agilent, Santa  
472 Clara, USA) with an electrospray ion source coupled to an Agilent G7100A capillary electrophoresis (CE)  
473 instrument (Agilent, Santa Clara, USA). The metabolome coverage comprises primarily  
474 cationic/zwitterionic and anionic polar metabolites when using full-scan data acquisition under positive and  
475 negative ionization modes. Given the isocratic separation conditions with steady-state ionization via a  
476 sheath liquid interface, MSI-CE-MS increases sample throughput using a serial injection format where 12  
477 samples and a pooled QC are analyzed within a single analytical run. Instrumental and data preprocessing  
478 parameters have been previously described (Saoi et al., 2019; Shanmuganathan et al., 2021).

479 The technical precision for serum metabolites measured in pooled QC samples had a median CV of 10.5%  
480 with a range from 2.7 to 31% (n=422), which were analyzed in every run throughout data acquisition by  
481 MSI-CE-MS following batch correction. Overall, seventy-five circulating polar metabolites were measured  
482 in most samples (frequency > 50%) with adequate technical precision (CV < 30%) with the exception of  
483 symmetric dimethylarginine that was removed. Most metabolites were identified by spiking (i.e., co-  
484 migration with low mass error < 5 ppm) and quantified with authentic standards, except for 13 unknown  
485 metabolites that were annotated based on their accurate mass ( $m/z$ ), relative migration time (RMT),  
486 ionization mode (N or P), and most likely molecular formula. The metabolite distributions were severely  
487 asymmetric (average skewness = 40) and leptokurtic (average kurtosis = 1810). Therefore, a log  
488 transformation was performed on each metabolite, which reduced average skewness to 2.4 and kurtosis to  
489 20.8. Metabolite z-scores > 5 or < -5 were considered outliers and were removed (0.12% of the data).

490 Missing data were treated following the procedures recommended by Wei et al. (Wei et al., 2018) with one  
491 modification. Instead of using the “80% rule” of excluding metabolites with < 80% non-missing cases (>  
492 20% missing cases) in all dependent variable categories, a less stringent 50% rule was applied to reduce the  
493 risk of excluding relevant serum metabolites. For the sole purpose of performing the exclusions, the DQ

494 was recoded as a categorical variable ( $DQ \geq 1$  as “within or above expectations”, and  $DQ < 1$  as “below  
495 expectations”) to avoid removing metabolites that had a missingness pattern associated with DQ. Cysteine-  
496 S-sulfate and an unknown anionic metabolite (209.030:3.04:N;  $C_6H_{10}O_8$ ) had  $> 50\%$  missing cases in both  
497 DQ categories and were thus excluded.

498 Of the remaining seventy-two serum metabolites that satisfied the above selection criteria, 12.5% of the  
499 data were missing due to matrix interferences, and 1.5% were missing due to non-detection (i.e., below  
500 method detection limit). Missing data due to matrix interference were imputed using the random forest (RF)  
501 method, and non-detection missing data were imputed using quantile regression imputation of left-censored  
502 data (QRILC) (Wei et al., 2018). The RF method used all serum metabolome data to predict what value  
503 the missing cases would likely have taken.

504

### 505 **Statistical analysis**

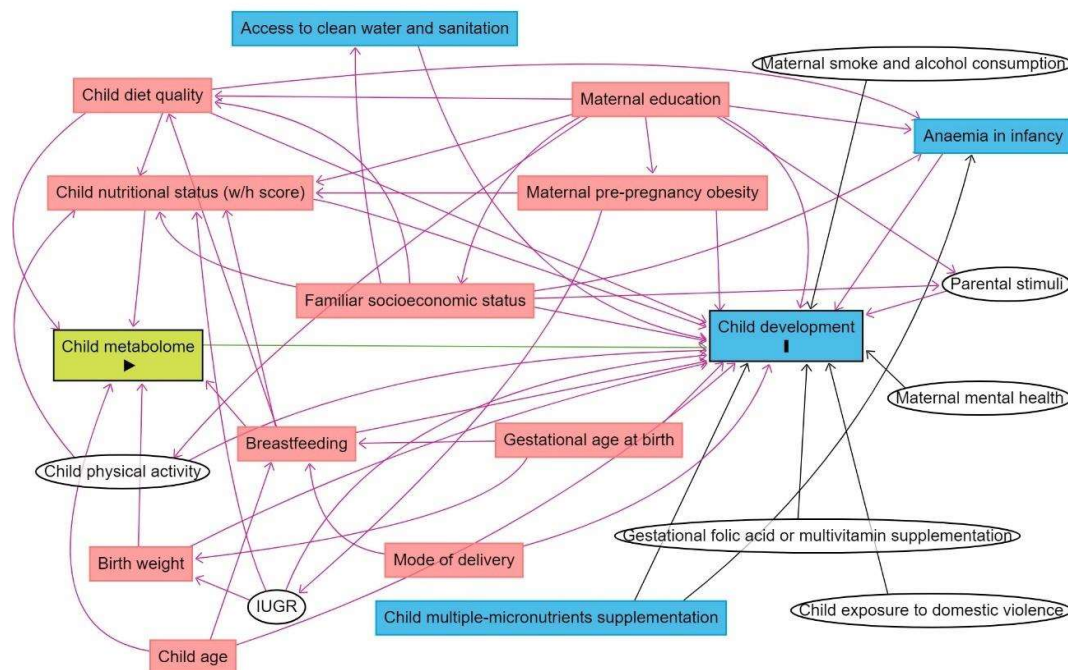
506 We carried out descriptive and inferential analyses. The descriptive analyses were based on frequency with  
507 a 95% confidence interval (95% CI) and *Student t*-test or ANOVA were used to compare DQ in groups.

508 The Pearson correlation was first used to explore the correlations between circulating metabolites  
509 (exposure) and DQ (outcome). We employed partial least squares regression (PLSR) analysis to compare  
510 the metabolites within a single model (Worley & Powers, 2013). The PLSR reduces the metabolites to  
511 orthogonal components, which are maximally predictive of the outcome and generate an indicator of how  
512 much each metabolite contributes to predicting the outcome, called the variable importance projection  
513 (VIP). Because our goal was not to determine the components that are maximally predictive of DQ but to  
514 rank the metabolites on their contribution to predicting the outcome, we only used the VIPs from this  
515 analysis.

516 The PLSR was trained on 80% of the data, and the remaining 20% were used as test data. Training and test  
517 data were randomly allocated. The model with the optimal number of components considering predictive  
518 value and parsimony was used to generate VIP values. Metabolites were selected if they had a  $VIP \geq 1$ .

519 The subsequent step was to disentangle the selected metabolites from confounding variables. A Directed  
520 Acyclic Graph (DAG) was used to identify potential confounding variables of the association between  
521 metabolites and DQ (Breitling et al., 2021). The DAG was produced considering variables related to the  
522 exposure (metabolome) and outcome (DQ) based on evidence reported by systematic reviews or meta-  
523 analysis (**Figure 4**). Birth weight, breastfeeding, child's diet quality, the child's nutritional status, and the

524 child's age were the minimal adjustments suggested by the DAG. Birth weight was a variable with high  
 525 missing data, and indicators of breastfeeding practice data (referring to exclusive breastfeeding until 6  
 526 months and/or complemented until 2 years) were collected only for children aged 0–23 months. Therefore,  
 527 those confounders were not included as adjustments. Child's diet quality was evaluated as MDD, the child's  
 528 nutritional status as w/h z-score, and the child's age in months.  
 529



530  
 531 **Figure 4.** Directed acyclic graph (DAG) of the association between child metabolome and early childhood  
 532 development.

533 Note: IUGR: intrauterine growth restriction.  
 534 Breastfeeding refers to breastfeeding practice exclusively until 6 months and/or complemented until 2  
 535 years. Minimum adjustments suggested by the DAG: Birth weight, breastfeeding, child age, child diet  
 536 quality, child nutritional status (w/h z-score). Blue rectangles: ancestor of the outcome; pink rectangles:  
 537 ancestor of exposure and outcome; white circles: non observed variables in the ENANI-2019.  
 538

539 Multiple linear regression between each metabolite and DQ were performed and adjusted for the  
 540 confounders. Since the child diet and metabolism may change by child's age and that neurodevelopmental  
 541 disorders occur more frequently in boys than in girls, interactions between serum metabolites and child age  
 542 (in months) and between metabolites and child sex were also tested to evaluate a possible modification  
 543 effect of these variables in the models.

544 We employed mediation analyses to explore the potential role of serum metabolites as mediators in the  
 545 relationship between certain exposure variables related to the microbiome establishment in early life, such

546 as mode of delivery (Reyman et al., 2019), child's diet quality (Baldeon et al., 2023), as well as child fiber  
547 intake (Cronin et al., 2021) and DQ. We adopted the approach proposed by Tingley et al. (Tingley et al.,  
548 2014) which provides independent estimates for the average causal mediation effect (ACME - the effect of  
549 the exposure variable on DQ that is mediated by the metabolite), the average direct effect (ADE - controlling  
550 for metabolite concentrations) of the exposure variable on DQ, and the total effect of the exposure variable  
551 on DQ (mediation plus direct effect). Bootstrap tests using 5,000 iterations evaluated whether the effects  
552 were statistically significant. Due to the exploratory nature of the mediation analysis, significance was not  
553 corrected for multiple testing. The child's age (in months) and w/h z-score were entered as covariates.  
554 Results were considered statistically significant at an adjusted- $p \leq 0.05$  after the Benjamini-Hochberg  
555 correction for multiple comparisons. Statistical analyses were carried out using the R programming  
556 language (R Core Team; <http://www.R-project.org>), through JupyterLab, using the following packages:  
557 ggplot2 (<http://ggplot2.org>), interactions (<https://cran.r-project.org>), dplyr (<https://cran.r-project.org>),  
558 tidyverse ([www.tidyverse.org](http://www.tidyverse.org)), pls (Mevik & Wehrens, 2007), plsVarSel  
559 (<https://github.com/khliland/plsVarSel>), mediation (Tingley et al., 2014).

560

#### 561 **Ethical aspects**

562 The ENANI-2019 was approved by the Research Ethics Committee of the Clementino Fraga Filho  
563 University Hospital of the Federal University of Rio de Janeiro (UFRJ) under the number CAAE  
564 89798718.7.0000.5257. Data were collected after a parent/caregiver of the child authorized participation in  
565 the study through an informed consent form and following the principles of the Declaration of Helsinki.

566

567 **Contributors**

568 MP contributed to conceptualization, data curation, formal analysis, investigation, methodology, and  
569 writing – original draft. VNK contributed to data curation, formal analysis, investigation, methodology,  
570 software, and writing – original draft. PN contributed to conceptualization, investigation, methodology,  
571 project administration and writing – original draft. RMS contributed to data curation, formal analysis,  
572 investigation, methodology, validation, and writing – original draft. NCFC contributed to data curation,  
573 methodology, and writing – original draft. SSRF contributed to conceptualization, data curation, and  
574 writing– review & editing. FMD contributed to formal analysis, validation, and writing – original draft.  
575 IRRC, EMAL, DRF contributed to conceptualization, investigation, methodology, validation, visualization,  
576 and writing– review & editing. ZK, MS, and PBM contributed to data curation, formal analysis,  
577 investigation, methodology, visualization, and writing– review & editing. GK contributed to  
578 conceptualization, funding acquisition, investigation, methodology, project administration, resources,  
579 supervision, validation, visualization, writing – original draft, writing– review & editing. All authors read  
580 and approved the final manuscript.

581

582 **Competing interests**

583 All authors declare that they have no competing interests.

584

585 **Acknowledgements**

586 We thank the participating families who made this study possible and the Brazilian National Survey on  
587 Child Nutrition (ENANI-2019) team collaborators for their support in the fieldwork and organization of the  
588 database. We also thank the Brazilian Ministry of Health and Brazilian National Research Council (CNPq;  
589 process n. 440890/2017-9).

590

591 **Data Sharing Statement**

592 Data described in the manuscript, code book, and analytic code will be available upon publication at  
593 <https://dataverse.nutricao.ufrj.br/privateurl.xhtml?token=e44dcdad-6ae3-4d9d-848e-898cbd6eb411>.

594 **References**

- 595 Altieri, L., Neri, C., Sacco, R., Curatolo, P., Benvenuto, A., Muratori, F., Santocchi, E., Bravaccio, C.,  
596 Lenti, C., Saccani, M., Rigardetto, R., Gandione, M., Urbani, A., & Persico, A. M. (2011). Urinary  
597 p-cresol is elevated in small children with severe autism spectrum disorder. *Biomarkers*, *16*(3),  
598 252–260. <https://doi.org/10.3109/1354750X.2010.548010>
- 599 Altomare, D., & Gitto, S. (2015). Recent insights into the pathophysiology of mTOR pathway  
600 dysregulation. *Research and Reports in Biology*, *6*, 1–16. <https://doi.org/10.2147/rrb.s57088>
- 601 Alves-Santos, N. H., de Castro, I. R. R., dos Anjos, L. A., de Aquino Lacerda, E. M., Normando, P., de  
602 Freitas, M. B., Farias, D. R., Boccolini, C. S., De Vasconcellos, M. T. L., Do Nascimento Silva, P.  
603 L., & Kac, G. (2021). General methodological aspects in the Brazilian national survey on child  
604 nutrition (enani-2019): A population-based household survey. *Cadernos de Saude Publica*, *37*(8).  
605 <https://doi.org/10.1590/0102-311X00300020>
- 606 Assem, M., Lando, M., Grissi, M., Kamel, S., Massy, Z. A., Chillon, J. M., & Hénaut, L. (2018). The  
607 impact of uremic toxins on cerebrovascular and cognitive disorders. *Toxins*, *10*, 1–25.  
608 <https://doi.org/10.3390/toxins10070303>
- 609 Azad, M. B., Robertson, B., Atakora, F., Becker, A. B., Subbarao, P., Moraes, T. J., Mandhane, P. J.,  
610 Turvey, S. E., Lefebvre, D. L., Sears, M. R., & Bode, L. (2018). Human milk oligosaccharide  
611 concentrations are associated with multiple fixed and modifiable maternal characteristics,  
612 environmental factors, and feeding practices. *Journal of Nutrition*, *148*, 1733–1742.  
613 <https://doi.org/10.1093/jn/nxy175>
- 614 Baldeon, A. D., McDonald, D., Gonzalez, A., Knight, R., & Holscher, H. D. (2023). Diet quality and the  
615 fecal microbiota in adults in the American Gut Project. *Journal of Nutrition*, *153*, 2004–2015.  
616 <https://doi.org/10.1016/j.tjnut.2023.02.018>
- 617 Black, M. M., Walker, S. P., Fernald, L. C. H., Andersen, C. T., DiGirolamo, A. M., Lu, C., McCoy, D.  
618 C., Fink, G., Shawar, Y. R., Shiffman, J., Devercelli, A. E., Wodon, Q. T., Vargas-Barón, E., &  
619 Grantham-McGregor, S. (2017). Advancing early childhood development: from science through the  
620 life course. *The Lancet*, *389*(10064), 77–90. [https://doi.org/10.1016/S0140-6736\(16\)31389-](https://doi.org/10.1016/S0140-6736(16)31389-7)  
621 *7*. Advancing
- 622 Breitling, L. P., Duan, C., Dragomir, A. D., & Luta, G. (2021). Using dagR to identify minimal sufficient  
623 adjustment sets and to simulate data based on directed acyclic graphs. *International Journal of*  
624 *Epidemiology*, *50*(6), 1772–1777. <https://doi.org/10.1093/ije/dyab167>
- 625 Britto, P. R., Lye, S. J., Proulx, K., Yousafzai, A. K., Matthews, S. G., Vaivada, T., Perez-Escamilla, R.,  
626 Rao, N., Ip, P., Fernald, L. C. H., MacMillan, H., Hanson, M., Wachs, T. D., Yao, H., Yoshikawa,  
627 H., Cerezo, A., Leckman, J. F., & Bhutta, Z. A. (2017). Nurturing care: promoting early childhood  
628 development. *The Lancet*, *389*, 91–102. [https://doi.org/10.1016/S0140-6736\(16\)31390-3](https://doi.org/10.1016/S0140-6736(16)31390-3)
- 629 Brown, K. A., Parikh, S., & Patel, D. R. (2020). Understanding basic concepts of developmental  
630 diagnosis in children. *Translational Pediatrics*, *9*(Suppl 1), S9–S22.  
631 <https://doi.org/10.21037/TP.2019.11.04>
- 632 Bruce, C. Y., Shanmuganathan, M., Azab, S. M., Simons, E., Mandhane, P., Turvey, S. E., Subbarao, P.,  
633 Azad, M. B., Britz-McKibbin, P., Anand, S. S., de Souza, R. J., & Stearns, J. C. (2023). The  
634 relationship between diet, gut microbiota, and serum metabolome of South Asian infants at 1 year.  
635 *The Journal of Nutrition*, *153*, 470–482. <https://doi.org/10.1016/j.tjnut.2022.12.016>
- 636 Brydges, C. R., Fiehn, O., Mayberg, H. S., Schreiber, H., Dehkordi, S. M., Bhattacharyya, S., Cha, J.,  
637 Choi, K. S., Craighead, W. E., Krishnan, R. R., Rush, A. J., Dunlop, B. W., Kaddurah-Daouk, R.,  
638 Penninx, B., Binder, E., Kastenmüller, G., Arnold, M., Nevado-Helgado, A., Blach, C., ... Rinaldo,  
639 P. (2021). Indoxyl sulfate, a gut microbiome-derived uremic toxin, is associated with psychic  
640 anxiety and its functional magnetic resonance imaging-based neurologic signature. *Scientific*  
641 *Reports*, *11*, 21011. <https://doi.org/10.1038/s41598-021-99845-1>



- 642 Carabotti, M., Scirocco, A., Maselli, M. A., & Severi, C. (2015). The gut-brain axis: interactions between  
643 enteric microbiota, central and enteric nervous systems. *Annals of Gastroenterology*, *28*, 203–209.
- 644 Castro, I. R. R., Normando, P., Alves-Santos, N. H., Bezerra, F. F., Citelli, M., Pedrosa, L. de F. C.,  
645 Jordão, A. A., Lira, P. I. C., Kurscheidt, F. A., Silva, P. R. P., Salvatte, K., Lacerda, E. M. A.,  
646 Anjos, L. A., Boccolini, C. S., & Kac, G. (2021). Methodological aspects of the micronutrient  
647 assessment in the Brazilian National Survey on Child Nutrition (ENANI-2019): A populationbased  
648 household survey. *Cadernos de Saude Publica*, *37*(8), e00301120. [https://doi.org/10.1590/0102-](https://doi.org/10.1590/0102-311X00301120)  
649 [311X00301120](https://doi.org/10.1590/0102-311X00301120)
- 650 Chiu, C. Y., Yeh, K. W., Lin, G., Chiang, M. H., Yang, S. C., Chao, W. J., Yao, T. C., Tsai, M. H., Hua,  
651 M. C., Liao, S. L., Lai, S. H., Cheng, M. L., & Huang, J. L. (2016). Metabolomics reveals dynamic  
652 metabolic changes associated with age in early childhood. *PLoS ONE*, *11*(2), e0149823.  
653 <https://doi.org/10.1371/journal.pone.0149823>
- 654 Clark, M. L. E., Vinen, Z., Barbaro, J., & Dissanayake, C. (2018). School Age Outcomes of Children  
655 Diagnosed Early and Later with Autism Spectrum Disorder. *Journal of Autism and Developmental*  
656 *Disorders*, *48*(1), 92–102. <https://doi.org/10.1007/s10803-017-3279-x>
- 657 Connell, E., Le Gall, G., Pontifex, M. G., Sami, S., Cryan, J. F., Clarke, G., Müller, M., & Vauzour, D.  
658 (2022). Microbial-derived metabolites as a risk factor of age-related cognitive decline and  
659 dementia. *Molecular Neurodegeneration*, *17*, 43. <https://doi.org/10.1186/s13024-022-00548-6>
- 660 Connors, S. L., Crowell, D. E., Eberhart, C. G., Copeland, J., Newschaffer, C. J., Spence, S. J., &  
661 Zimmerman, A. W. (2005).  $\beta$ 2-Adrenergic receptor activation and genetic polymorphisms in  
662 autism: data from dizygotic twins. *Journal of Child Neurology*, *20*, 876–884.  
663 <https://doi.org/10.1177/08830738050200110401>
- 664 Cronin, P., Joyce, S. A., O’toole, P. W., & O’connor, E. M. (2021). Dietary fibre modulates the gut  
665 microbiota. *Nutrients*, *13*, 1655. <https://doi.org/10.3390/nu13051655>
- 666 Derrien, M., Alvarez, A. S., & de Vos, W. M. (2019). The gut microbiota in the first decade of life.  
667 *Trends in Microbiology*, *27*(12), 997–1010. <https://doi.org/10.1016/j.tim.2019.08.001>
- 668 Doi, M., Usui, N., & Shimada, S. (2022). Prenatal Environment and Neurodevelopmental Disorders.  
669 *Frontiers in Endocrinology*, *13*, 1–6. <https://doi.org/10.3389/fendo.2022.860110>
- 670 Drachler, M. D. L., Marshall, T., & Leite, J. C. C. (2007). A continuous-scale measure of child  
671 development for population-based epidemiological surveys: A preliminary study using Item  
672 Response Theory for the Denver Test. *Paediatric and Perinatal Epidemiology*, *21*, 138–153.  
673 <https://doi.org/10.1111/j.1365-3016.2007.00787.x>
- 674 Freitas-Costa, N. C., Andrade, P. G., Normando, P., Nunes, K. S. S., Raymundo, C. E., Castro, I. R. R.  
675 de, Lacerda, E. M. de A., Farias, D. R., & Kac, G. (2023). Association of development quotient  
676 with nutritional status of vitamins B6, B12, and folate in 6–59-month-old children: Results from the  
677 Brazilian National Survey on Child Nutrition (ENANI-2019). *American Journal of Clinical*  
678 *Nutrition*, *118*(1), 162–173. <https://doi.org/10.1016/j.ajcnut.2023.04.026>
- 679 Gould, J. F., Fuss, B. G., Roberts, R. M., Collins, C. T., & Makrides, M. (2021). Consequences of using  
680 chronological age versus corrected age when testing cognitive and motor development in infancy  
681 and intelligence quotient at school age for children born preterm. *PLoS ONE*, *16*(9), e0256824.  
682 <https://doi.org/10.1371/journal.pone.0256824>
- 683 Gu, H., Pan, Z., Xi, B., Hainline, B. E., Shanaiah, N., Asiago, V., Gowda, G. A. N., & Raftery, D. (2009).  
684 1H NMR metabolomics study of age profiling in children. *NMR in Biomedicine*, *22*, 826–833.  
685 <https://doi.org/10.1002/nbm.1395>
- 686 Guzmán-Salas, S., Weber, A., Malci, A., Lin, X., Herrera-Molina, R., Cerpa, W., Dorador, C., Signorelli,  
687 J., & Zamorano, P. (2022). The metabolite p-cresol impairs dendritic development, synaptogenesis,  
688 and synapse function in hippocampal neurons: Implications for autism spectrum disorder. *Journal*  
689 *of Neurochemistry*, *161*, 335–349. <https://doi.org/10.1111/jnc.15604>



- 690 Huynh, K. (2020). Novel gut microbiota-derived metabolite promotes platelet thrombosis via adrenergic  
691 receptor signalling. *Nature Reviews Cardiology*, *17*, 265. <https://doi.org/10.1038/s41569-020-0367->  
692 [y](https://doi.org/10.1038/s41569-020-0367-y)
- 693 Jian, C., Carpén, N., Helve, O., de Vos, W. M., Korpela, K., & Salonen, A. (2021). Early-life gut  
694 microbiota and its connection to metabolic health in children: Perspective on ecological drivers and  
695 need for quantitative approach. *EBioMedicine*, *69*, 103475.  
696 <https://doi.org/10.1016/j.ebiom.2021.103475>
- 697 Kelly, R. S., Boulin, A., Laranjo, N., Lee-Sarwar, K., Chu, S. H., Yadama, A. P., Carey, V., Litonjua, A.  
698 A., Lasky-Su, J., & Weiss, S. T. (2019). Metabolomics and communication skills development in  
699 children: evidence from the Ages and Stages Questionnaire. *Metabolites*, *9*(1–17).  
700 <https://doi.org/10.3390/metabo9030042>
- 701 Khan, Z. U. N., Chand, P., Majid, H., Ahmed, S., Khan, A. H., Jamil, A., Ejaz, S., Wasim, A., Khan, K.  
702 A., & Jafri, L. (2022). Urinary metabolomics using gas chromatography-mass spectrometry:  
703 potential biomarkers for autism spectrum disorder. *BMC Neurology*, *22*(101), 1–8.  
704 <https://doi.org/10.1186/s12883-022-02630-4>
- 705 Kreider, R. B., & Stout, J. R. (2021). Creatine in health and disease. *Nutrients*, *13*, 447.  
706 <https://doi.org/10.3390/nu13020447>
- 707 Krishnamoorthy, N. K., Kalyan, M., Hediyaal, T. A., Anand, N., Kendaganna, P. H., Pendyala, G.,  
708 Yelamanchili, S. V., Yang, J., Chidambaram, S. B., Sakharkar, M. K., & Mahalakshmi, A. M.  
709 (2023). Role of the gut bacteria-derived metabolite phenylacetylglutamine in health and diseases.  
710 *ACS Omega*, *9*, 3164–3172. <https://doi.org/10.1021/acsomega.3c08184>
- 711 Krupp, D., Doberstein, N., Shi, L., & Remer, T. (2012). Hippuric acid in 24-hour urine collections is a  
712 potential biomarker for fruit and vegetable consumption in healthy children and adolescents. *The*  
713 *Journal of Nutrition*, *142*(7), 1314–1320. <https://doi.org/10.3945/jn.112.159319>
- 714 Lacerda, E. M. A., Boccolini, C. S., Alves-Santos, N. H., Castro, I. R. R., Anjos, L. A., Crispim, S. P.,  
715 Costa, T. H. M., Ferreira, M. M. M., Farias, D. R., Carneiro, L. B. V., Berti, T. L., & Kac, G.  
716 (2021). Methodological aspects of the assessment of dietary intake in the Brazilian National Survey  
717 on Child Nutrition (ENANI-2019): a population-based household survey. *Cadernos de Saude*  
718 *Publica*, *37*(8), e00301420. <https://doi.org/10.1590/0102-311X00301420>
- 719 Lee, D. Y. (2015). Roles of mTOR signaling in brain development. *Experimental Neurobiology*, *24*(3),  
720 177–185. <https://doi.org/10.5607/en.2015.24.3.177>
- 721 Li, K., Bertrand, K., Naviaux, J. C., Monk, J. M., Wells, A., Wang, L., Lingampelly, S. S., Naviaux, R.  
722 K., & Chambers, C. (2023). Metabolomic and exposomic biomarkers of risk of future  
723 neurodevelopmental delay in human milk. *Pediatric Research*, *93*(6), 1710–1720.  
724 <https://doi.org/10.1038/s41390-022-02283-6>
- 725 Lin, Y. T., Wu, P. H., Liang, S. S., Mubanga, M., Yang, Y. H., Hsu, Y. L., Kuo, M. C., Hwang, S. J., &  
726 Kuo, P. L. (2019). Protein-bound uremic toxins are associated with cognitive function among  
727 patients undergoing maintenance hemodialysis. *Scientific Reports*, *9*, 20388.  
728 <https://doi.org/10.1038/s41598-019-57004-7>
- 729 Lipkin, P. H., Macias, M. M., Hyman, S. L., Levy, S. E., Spooner, S. A., Rodgers, B., Kuo, D. Z., Apkon,  
730 S., Davidson, L. F., Ellerbeck, K. A., Foster, J. E. A., Hyman, S. L., Noritz, G. H., O'Connor  
731 Leppert, M., Saunders, B. S., Stille, C., Yin, L., Brei, T., Davis, B. E., ... High, P. C. (2020).  
732 Promoting optimal development: Identifying infants and young children with developmental  
733 disorders through developmental surveillance and screening. *Pediatrics*, *145*(1), e20193449.  
734 <https://doi.org/10.1542/PEDS.2019-3449>
- 735 Mevik, B. H., & Wehrens, R. (2007). The pls package: principal component and partial least squares  
736 regression in R. *Journal of Statistical Software*, *18*(2), 1–24.  
737 <https://doi.org/https://doi.org/10.18637/jss.v018.i02>

- 738 Morais, L. H., Schreiber, H. L., & Mazmanian, S. K. (2021). The gut microbiota–brain axis in behaviour  
739 and brain disorders. *Nature Reviews Microbiology*, *19*, 241–255. [https://doi.org/10.1038/s41579-](https://doi.org/10.1038/s41579-020-00460-0)  
740 [020-00460-0](https://doi.org/10.1038/s41579-020-00460-0)
- 741 Moreau, G. B., Ramakrishnan, G., Cook, H. L., Fox, T. E., Nayak, U., Ma, J. Z., Colgate, E. R.,  
742 Kirkpatrick, B. D., Haque, R., & Petri, W. A. (2019). Childhood growth and neurocognition are  
743 associated with distinct sets of metabolites. *EBioMedicine*, *44*, 597–606.  
744 <https://doi.org/10.1016/j.ebiom.2019.05.043>
- 745 Moreira, R. S., Magalhães, L. D. C., Siqueira, C. M., & Alves, C. R. L. (2019). Adaptação transcultural  
746 do instrumento de vigilância do desenvolvimento infantil “Survey of Wellbeing of Young Children  
747 (SWYC)” no contexto brasileiro. *Journal of Human Growth and Development*, *29*(1), 28–38.  
748 <https://doi.org/10.7322/jhgd.145001>
- 749 Mudimela, S., Vishwanath, N. K., Pillai, A., Morales, R., Marrelli, S. P., Barichello, T., & Giridharan, V.  
750 V. (2022). Clinical significance and potential role of Trimethylamine N-oxide in neurological and  
751 neuropsychiatric disorders. *Drug Discovery Today*, *27*(11), 1–17.  
752 <https://doi.org/10.1016/j.drudis.2022.08.002>
- 753 Muthén, L. K., & Muthén, B. O. (n.d.). *Mplus User’s Guide* (8th ed., p. 944). <https://doi.org/DOI>
- 754 Needham, B. D., Adame, M. D., Serena, G., Destanie, R. R., Preston, G. M., Conrad, M. C., Campbell, A.  
755 S., Donabedian, D. H., Fasano, A., Ashwood, P., & Mazmanian, S. (2021). Plasma and fecal  
756 metabolite profiles in Autism Spectrum Disorder. *Biological Psychiatry*, *89*(5), 451–462.  
757 <https://doi.org/10.1016/j.biopsych.2020.09.025>
- 758 Pallister, T., Jackson, M. A., Martin, T. C., Zierer, J., Jennings, A., Mohny, R. P., MacGregor, A.,  
759 Steves, C. J., Cassidy, A., Spector, T. D., & Menni, C. (2017). Hippurate as a metabolomic marker  
760 of gut microbiome diversity: modulation by diet and relationship to metabolic syndrome. *Scientific*  
761 *Reports*, *7*, 13670. <https://doi.org/10.1038/s41598-017-13722-4>
- 762 Persico, A. M., & Napolioni, V. (2012). Urinary p-cresol in autism spectrum disorder. *Neurotoxicology*  
763 *and Teratology*, *36*, 82–90. <https://doi.org/10.1016/j.ntt.2012.09.002>
- 764 Pliszka, S. R., McCracken, J. T., & Maas, J. W. (1996). Catecholamines in attention-deficit hyperactivity  
765 disorder: current perspectives. *Journal of the American Academy of Child and Adolescent*  
766 *Psychiatry*, *35*(3), 264–272. <https://doi.org/10.1097/00004583-199603000-00006>
- 767 Poesen, R., Claes, K., Evenepoel, P., De Loo, H., Augustijns, P., Kuypers, D., & Meijers, B. (2016).  
768 Microbiota-derived phenylacetylglutamine associates with overall mortality and cardiovascular  
769 disease in patients with CKD. *Journal of the American Society of Nephrology*, *27*(11), 3479–3487.  
770 <https://doi.org/10.1681/ASN.2015121302>
- 771 Praveenraj, S. S., Sonali, S., Anand, N., Tousif, H. A., Vichitra, C., Kalyan, M., Kanna, P. V., Chandana,  
772 K. A., Shasthara, P., Mahalakshmi, A. M., Yang, J., Pandi-Perumal, S. R., Sakharkar, M. K., &  
773 Chidambaram, S. B. (2022). The role of a gut microbial-derived metabolite, Trimethylamine N-  
774 Oxide (TMAO), in neurological disorders. *Molecular Neurobiology*, *59*, 6684–6700.  
775 <https://doi.org/10.1007/s12035-022-02990-5>
- 776 Psihogios, N. G., Gazi, I. F., Elisaf, M. S., Konstantin, I. S., & Bairaktari, E. T. (2008). Gender-related  
777 and age-related urinalysis of healthy subjects by NMR-based metabolomics. *NMR in Biomedicine*,  
778 *21*, 195–207. <https://doi.org/10.1002/nbm.1176>
- 779 Reichard, C. A., Naelitz, B. D., Wang, Z., Jia, X., Li, J., Stampfer, M. J., Klein, E. A., Hazen, S. L., &  
780 Sharifi, N. (2022). Gut microbiome-dependent metabolic pathways and risk of lethal prostate  
781 cancer: prospective analysis of a PLCO Cancer Screening Trial Cohort. *Cancer Epidemiology*  
782 *Biomarkers & Prevention*, *31*, 192–199. <https://doi.org/10.1158/1055-9965.EPI-21-0766>
- 783 Reyman, M., van Houten, M. A., van Baarle, D., Bosch, A. A. T. M., Man, W. H., Chu, M. L. J. N., Arp,  
784 K., Watson, R. L., Sanders, E. A. M., Fuentes, S., & Bogaert, D. (2019). Impact of delivery mode-

- 785 associated gut microbiota dynamics on health in the first year of life. *Nature Communications*,  
786 10(4997), 1–12. <https://doi.org/10.1038/s41467-019-13014-7>
- 787 Ruggeri, B., Sarkans, U., Schumann, G., & Persico, A. M. (2014). Biomarkers in autism spectrum  
788 disorder: the old and the new. *Psychopharmacology*, 231, 1201–1216.  
789 <https://doi.org/10.1007/s00213-013-3290-7>
- 790 Saito, Y., Sato, T., Nomoto, K., & Tsuji, H. (2018). Identification of phenol- and p-cresol-producing  
791 intestinal bacteria by using media supplemented with tyrosine and its metabolites. *FEMS*  
792 *Microbiology Ecology*, 94(9), 1–11. <https://doi.org/10.1093/femsec/fiy125>
- 793 Samejima, F. (1997). Graded Response Models. In W. J. van der Linden & R. K. Hambleton (Eds.),  
794 *Handbook of Item Response Theory* (pp. 85–100). Springer.  
795 <https://doi.org/10.1201/9781315119144-6>
- 796 Saoi, M., Li, A., McGlory, C., Stokes, T., von Allmen, M. T., Phillips, S. M., & Britz-Mckibbin, P.  
797 (2019). Metabolic perturbations from step reduction in older persons at risk for sarcopenia: plasma  
798 biomarkers of abrupt changes in physical activity. *Metabolites*, 9, 1–19.  
799 <https://doi.org/10.3390/metabo9070134>
- 800 Seldin, M. M., Meng, Y., Qi, H., Zhu, W. F., Wang, Z., Hazen, S. L., Lusic, A. J., & Shih, D. M. (2016).  
801 Trimethylamine N-oxide promotes vascular inflammation through signaling of mitogen-activated  
802 protein kinase and nuclear factor- $\kappa$ B. *Journal of the American Heart Association*, 5, e002767.  
803 <https://doi.org/10.1161/JAHA.115.002767>
- 804 Shanmuganathan, M., Kroezen, Z., Gill, B., Azab, S., de Souza, R. J., Teo, K. K., Atkinson, S., Subbarao,  
805 P., Desai, D., Anand, S. S., & Britz-McKibbin, P. (2021). The maternal serum metabolome by  
806 multisection injection-capillary electrophoresis-mass spectrometry: a high-throughput platform  
807 and standardized data workflow for large-scale epidemiological studies. *Nature Protocols*, 16,  
808 1966–1994. <https://doi.org/10.1038/s41596-020-00475-0>
- 809 Sheldrick, R. C., & Perrin, E. C. (2013). Evidence-based milestones for surveillance of cognitive,  
810 language, and motor development. *Acta Paediatrica*, 13(6), 577–586.  
811 <https://doi.org/10.1016/j.acap.2013.07.001>
- 812 Sheldrick, R. C., Schlichting, L. E., Berger, B., Clyne, A., Ni, P., Perrin, E. C., & Vivier, P. M. (2019).  
813 Establishing new norms for developmental milestones. *Pediatrics*, 144(6), e20190374.  
814 <https://doi.org/10.1542/peds.2019-0374>
- 815 Sotelo-Orozco, J., Hertz-Picciotto, I., Abbeduto, L., & Slupsky, C. M. (2019). Metabolomics analysis of  
816 children with autism, idiopathic-developmental delays, and Down syndrome. *Translational*  
817 *Psychiatry*, 9, 1–15. <https://doi.org/10.1038/s41398-019-0578-3>
- 818 Sotelo-Orozco, J., Schmidt, R. J., Slupsky, C. M., & Hertz-Picciotto, I. (2023). Investigating the urinary  
819 metabolome in the first year of life and its association with later diagnosis of autism spectrum  
820 disorder or non-typical neurodevelopment in the MARBLES study. *International Journal of*  
821 *Molecular Sciences*, 24, 1:20. <https://doi.org/10.3390/ijms24119454>
- 822 Tevzadze, G., Barbakadze, T., Kvergelidze, E., Zhuravliova, E., Shanshiashvili, L., & Mikeladze, D.  
823 (2022). Gut neurotoxin p-cresol induces brain-derived neurotrophic factor secretion and increases  
824 the expression of neurofilament subunits in PC-12 cells. *AIMS Neuroscience*, 9(1), 12–23.  
825 <https://doi.org/10.3934/NEUROSCIENCE.2022002>
- 826 Tian, X., Liu, X., Wang, Y., Liu, Y., Ma, J., Sun, H., Li, J., Tang, X., Guo, Z., Sun, W., Zhang, J., &  
827 Song, W. (2022). Urinary metabolomic study in a healthy children population and metabolic  
828 biomarker discovery of Attention-Deficit/Hyperactivity Disorder (ADHD). *Frontiers in Psychiatry*,  
829 13, 1–12. <https://doi.org/10.3389/fpsy.2022.819498>
- 830 Ticinesi, A., Guerra, A., Nouvenne, A., Meschi, T., & Maggi, S. (2023). Disentangling the complexity of  
831 nutrition, frailty and gut microbial pathways during aging: a focus on hippuric acid. *Nutrients*, 15,  
832 1138. <https://doi.org/10.3390/nu15051138>

- 833 Tingley, D., Yamamoto, T., Hirose, K., Keele, L., & Imai, K. (2014). Mediation: R Package for Causal  
834 Mediation Analysis. *Journal of Statistical Software*, 59(5), 1–38.  
835 <https://doi.org/https://doi.org/10.18637/jss.v059.i05>
- 836 United Nations Children’s Fund (UNICEF). (2017). *Early Moments Matter for every child*. United  
837 Nations Children’s Fund (UNICEF).
- 838 van den Heuvel, M. (2019). Metabolomics, stunting and neurodevelopment. *EBioMedicine*, 44, 10–11.  
839 <https://doi.org/10.1016/j.ebiom.2019.05.067>
- 840 Vasconcellos, M. T. L., Silva, P. L. N., Castro, I. R. R., Boccolini, C. S., Alves-Santos, N. H., & Kac, G.  
841 (2021). Sampling plan of the Brazilian National Survey on Child Nutrition (ENANI-2019): A  
842 populationbased household survey. *Cadernos de Saude Publica*, 37(8), e00037221.  
843 <https://doi.org/10.1590/0102-311X00037221>
- 844 Wang, H., Hu, P., & Jiang, J. (2012). Measurement of 1- and 3-methylhistidine in human urine by ultra  
845 performance liquid chromatography-tandem mass spectrometry. *Clinica Chimica Acta*, 413, 131–  
846 138. <https://doi.org/10.1016/j.cca.2011.09.007>
- 847 Wehrens, R., Hageman, J. A., van Eeuwijk, F., Kooke, R., Flood, P. J., Wijnker, E., Keurentjes, J. J. B.,  
848 Lommen, A., van Eekelen, H. D. L. M., Hall, R. D., Mumm, R., & de Vos, R. C. H. (2016).  
849 Improved batch correction in untargeted MS-based metabolomics. *Metabolomics*, 12, 1–12.  
850 <https://doi.org/10.1007/s11306-016-1015-8>
- 851 Wei, R., Wang, J., Su, M., Jia, E., Chen, S., Chen, T., & Ni, Y. (2018). Missing value imputation  
852 approach for mass spectrometry-based metabolomics data. *Scientific Reports*, 8, 1–10.  
853 <https://doi.org/10.1038/s41598-017-19120-0>
- 854 Wellington, N., Shanmuganathan, M., De Souza, R. J., Zulyniak, M. A., Azab, S., Bloomfield, J., Mell,  
855 A., Ly, R., Desai, D., Anand, S. S., & Britz-McKibbin, P. (2019). Metabolic trajectories following  
856 contrasting prudent and western diets from food provisions: Identifying robust biomarkers of short-  
857 term changes in habitual diet. *Nutrients*, 11, 2407. <https://doi.org/10.3390/nu11102407>
- 858 Whitesell, N. R., Sarche, M., Trucksess, C., Ayoub, C. C., Barnes-Najor, J., Ferron, C., Fitzgerald, H. E.,  
859 Lyon, K., Lundy, C., Meyer, A. L., Myra Parker, J. D., Salvador, M., Walls, M., & Williams, S.  
860 (2015). The survey of well-being of young children: Results of a feasibility study with American  
861 Indian and Alaska Native communities. *Infant Mental Health Journal*, 36(5), 483–505.  
862 <https://doi.org/10.1002/imhj.21526>
- 863 World Health Organization (WHO). (2006). WHO Child Growth Standards: Length/Height-for-Age,  
864 Weight-for-Age, Weight-for-Length, Weight -for-Height and Body Mass Index-for-Age: Methods  
865 and Development. In *Developmental Medicine & Child Neurology*.
- 866 World health Organization (WHO), & United Nations Children’s Fund (UNICEF). (2021). Indicators for  
867 assessing infant and young child feeding practices: definitions and measurement methods. In *World*  
868 *Health Organization*.
- 869 Worley, B., & Powers, R. (2013). Multivariate Analysis in Metabolomics. *Current Metabolomics*, 1(1),  
870 92–107. <https://doi.org/10.2174/2213235x11301010092>
- 871 Zhu, J., Hua, X., Yang, T., Guo, M., Li, Q., Xiao, L., Li, L., Chen, J., & Li, T. (2022). Alterations in gut  
872 vitamin and amino acid metabolism are associated with symptoms and neurodevelopment in  
873 children with autism spectrum disorder. *Journal of Autism and Developmental Disorders*, 52, 3116–  
874 3128. <https://doi.org/10.1007/s10803-021-05066-w>
- 875

(Serum metabolome and childhood development)

876