

1 **HIV-Associated Heart Failure: Phenotypes and Clinical Outcomes in a Safety-Net Setting**

2 Short title: HIV & HF Phenotypes and Outcomes in a Safety Net System

3 Authors: Matthew S. Durstenfeld MD MAS<sup>1\*</sup>, Anjali Thakkar MD MBA<sup>2\*</sup>, Diane Jeon MD  
4 MS<sup>2</sup>, Robert Short MD<sup>3</sup>, Yifei Ma MS<sup>1</sup>, Zian H. Tseng MD MAS<sup>4</sup>, Priscilla Y. Hsue MD<sup>1</sup>

5 Affiliations:

- 6 1. Division of Cardiology at ZSFG and Department of Medicine, University of California,  
7 San Francisco (UCSF), USA
- 8 2. Division of Cardiology, Department of Medicine, University of California, San Francisco
- 9 3. Department of Medicine, University of California, San Francisco
- 10 4. Section of Cardiac Electrophysiology, Division of Cardiology, Department of Medicine,  
11 University of California, San Francisco

12 \*Contributed equally

13 **Address for Correspondence:**

14 Matthew S. Durstenfeld, MD MAS  
15 Division of Cardiology, UCSF at Zuckerberg San Francisco General Hospital  
16 1001 Potrero Avenue, 5G8  
17 San Francisco, CA 94110, USA  
18 Tel: +1 628 206 5562; Fax: +1 628 206 5447  
19 e-mail: [matthew.durstenfeld@ucsf.edu](mailto:matthew.durstenfeld@ucsf.edu)  
20 twitter: @durstenfeld

21 Word Count: 3010

22 **Tweet:** HIV associated with 55% higher mortality after #HeartFailure diagnosis in the safety-  
23 net, mainly from non-CVD causes inc. substance-related @durstenfeld @UCSFCardiology  
24 @UCSF\_HIVIDGM @SF\_POSTSCD

25

26 **Disclosures:** None of the authors have pertinent disclosures or relevant conflicts of interest.

27 **Funding:** Dr. Durstenfeld is funded by NIH grant NIH/NLBI (K12 HL143961). This work was  
28 assisted in part by a CFAR-ARI Boost Award from the UCSF AIDS Research Institute and was  
29 supported by the National Center for Advancing Translational Sciences, National Institutes of  
30 Health, through UCSF-CTSI Grant Number UL1TR001872. Dr. Tseng is funded by R01  
31 HL157247 and the autopsy data were funded by R01HL102090. Dr. Hsue is funded by  
32 K24AI112393. Its contents are solely the responsibility of the authors and do not necessarily  
33 represent the official views of the NIH.

34

35

36 **Clinical Perspectives**

- 37 • People with HIV develop heart failure 10 years earlier than people without HIV, with a  
38 higher proportion with HF<sub>rEF</sub> at diagnosis.
- 39 • HIV is associated with higher mortality among people with heart failure, primarily due to  
40 non-cardiovascular causes including HIV/AIDS and substance use.

41 **Research Perspectives**

- 42 • The reasons for higher mortality in PWH with HF are not yet fully understood; higher  
43 levels of myocardial fibrosis may predispose people with substance use and advanced  
44 HIV disease to increased risk of mortality.

45

46 **Abstract**

47 **Background:** Human immunodeficiency virus (HIV) is associated with increased risk of heart  
48 failure (HF) but data regarding phenotypes of heart failure and outcomes after HF diagnosis,  
49 especially within the safety-net which is where half of people with HIV in the United States  
50 receive care, are less clear.

51 **Methods:** Using an electronic health record cohort of all individuals with HF within a municipal  
52 safety-net system from 2001-2019 linked to the National Death Index Plus, we compared HF  
53 phenotypes, all-cause mortality, HF hospitalization, and cause of death for individuals with and  
54 without HIV.

55 **Results:** Among people with HF (n=14,829), 697 individuals had HIV (4.7%). Persons with HIV  
56 (PWH) were diagnosed with HF ten years younger on average. A higher proportion of PWH had  
57 a reduced ejection fraction at diagnosis (37.9% vs 32.7%). Adjusted for age, sex, and risk  
58 factors, coronary artery disease on angiography was similar by HIV status. HIV was associated  
59 with 55% higher risk of all-cause mortality (HR 1.55; 95% CI 1.37-1.76; P<0.001) and lower  
60 odds of HF hospitalization (OR 0.51; 95% CI 0.39-0.66; P<0.001). Among PWH with HF, cause  
61 of death was less often attributed to cardiovascular disease (22.5% vs 54.6% uninfected;  
62 P<0.001) and more to substance use (17.9% vs 9.3%; P<0.001), consistent with autopsy findings  
63 in a subset (n=81).

64 **Conclusions:** Among people with HF who receive care within a municipal safety-net system,  
65 HIV infection is associated with higher mortality, despite lower odds of HF hospitalization,  
66 attributable to non-cardiovascular causes including substance-related and HIV-related mortality.

67

68 **Key Words:** HIV, Heart Failure, Clinical Outcomes, Mortality

69 **Abbreviations:** HF=Heart Failure; HFrEF=Heart Failure with Reduced Ejection Fraction;  
70 HIV=Human Immunodeficiency Virus; PWH=persons with HIV.

## 71 **Introduction**

72 Human immunodeficiency virus (HIV) infection is associated with increased risk of heart  
73 failure (HF), even in the absence of coronary artery disease, with the highest risk among those  
74 with higher viral load and lower CD4 counts (1-3). The prevalence of clinical heart failure  
75 among persons with HIV (PWH) is estimated to be 6.5%, with higher rates of subclinical LV  
76 systolic and diastolic dysfunction (4). Prior studies within tertiary referral centers and the  
77 Veterans Affairs system found that PWH with HF have higher risk of HF hospitalization and  
78 mortality compared to people with HF without HIV (5-7). In contrast, among people with  
79 incident HF within the Kaiser Permanente integrated care system, HIV was associated with all-  
80 cause mortality but not HF hospitalizations or Emergency Department visits (8). Over half of  
81 PWH in the United States receive benefits through the Ryan White HIV/AIDS Program, the  
82 federal safety-net program for PWH. Outcomes reported within tertiary referral centers or  
83 integrated care systems may not generalize to the majority of PWH in the United States.

84 Therefore, we sought to describe heart failure phenotypes, treatment, outcomes after HF  
85 diagnosis among PWH compared to people with HF without HIV within a safety-net system with  
86 particular attention to mortality, HF hospitalization, and cause of death.

## 87 **Methods**

### 88 *Study Design & Population*

89 This study was an electronic health record-based cohort study of all individuals with HF  
90 who received care within the San Francisco Health Network, the public, municipal safety-net  
91 health system of San Francisco, California from April 2001-July 2019.

### 92 *Exposure*

93           The primary exposure was infection with HIV prior to diagnosis with HF. HF was  
94 manually adjudicated by review of a random subset of EHR records and found to be 97%  
95 specific for possible HF and 94% specific for definite HF. We initially classified people with  
96 HIV using International Classification of Diseases (ICD-9 or ICD-10) codes alone, but by  
97 manual adjudication the specificity was only 60%; 40% were false positives without HIV. To  
98 increase specificity, we further classified only those with and ICD code and at least one CD4  
99 count or viral load result as HIV+ which increased the manually adjudicated specificity to 99.8%  
100 while maintaining 100% sensitivity among adjudicated charts (0 false negatives among 45  
101 adjudicated with HIV ICD codes and neither CD4 nor viral load).

#### 102 *Outcomes*

103           The primary outcome was all-cause mortality. To ascertain mortality, we matched  
104 individuals with the National Death Index and Social Security Death Index using names, date of  
105 birth, and social security numbers. For individuals matched and alive, we censored them at the  
106 last search date (12/31/2019). For unmatched individuals, we used the last EHR contact date and  
107 recorded vital status. Among known deaths, we linked records with the POstmortem Systematic  
108 Investigation of Sudden Cardiac Death (POST SCD Study), an ongoing prospective post-mortem  
109 study of presumed (WHO-defined) sudden cardiac deaths in San Francisco (9,10).

110           Our secondary goals were to characterize HF phenotypes by HIV status including  
111 echocardiographic findings (left ventricular systolic function, pulmonary artery systolic pressure  
112 or pulmonary hypertension, and valvular disease) and angiography results (obstructive coronary  
113 artery disease defined as  $\geq 80\%$  stenosis in a major epicardial vessel or  $\geq 50\%$  left main stenosis).

#### 114 *Covariates*

115 Medical history was obtained from ICD codes available at the time of HF diagnosis with  
116 a 1-year look-back period. Ambulatory medications were obtained from hospital admission and  
117 discharge medication reconciliation and thus were not available for those who were not  
118 hospitalized. Echocardiographic and cardiac catheterization results were obtained through  
119 structured text extraction from clinical reports with manual adjudication and correction of  
120 discrepancies. The primary underlying cause of death was extracted from death certificate data  
121 and classified based on ICD codes.

### 122 *Statistical Analysis*

123 We described differences by HIV status using chi-squared tests for categorical variables  
124 (and Fisher's exact test for autopsy data given limited numbers), t-tests for normally distributed  
125 continuous variables, and Wilcoxon rank sum tests for non-normally distributed continuous  
126 variables. We used Cox proportional hazards models to estimate adjusted hazard ratios for  
127 mortality with censoring for loss of follow up. We used directed-acyclic graphs and expert  
128 knowledge to decide potential measured confounders (namely, those potentially associated with  
129 risk of HIV and with HF outcomes), such that we included age by sex interaction terms,  
130 race/ethnicity, and substance use (alcohol, tobacco, cocaine, methamphetamine, opioids) in  
131 adjusted models. Although more likely to be mediators than confounders, given differences in  
132 past medical history by HIV status we conducted sensitivity analyses including hypertension,  
133 diabetes, chronic kidney disease, COPD, liver disease, and cancer. We conducted additional  
134 sensitivity analyses considering HIV variables (CD4 count, viral load), Hepatitis C co-infection,  
135 and secular trends (pre and post 2011).

### 136 *Approval*

137 The University of California San Francisco Institutional Review Board approved this  
138 study and granted a waiver of consent. Results are reported in accordance with the Strengthening  
139 the Reporting of Observational Studies in Epidemiology (STROBE) guidelines.

## 140 **Results**

141 Among those with HF (n=14,829), 906 (6.1%) individuals an ICD code for HIV and 697  
142 (4.7%) had HIV by ICD code and at least one CD4 count and/or viral load measured. Median  
143 follow up was 3.5 years after diagnosis with HF (IQR 0.9, 8.3). On average, PWH were 10 years  
144 younger at diagnosis. Compared to people without HIV with HF, a higher proportion of PWH  
145 were male and had documented substance use (Table 1,  $p < 0.001$  for each). Among PWH, the  
146 median nadir CD4 count was 133 (IQR 44, 275), and CD4 count at HF diagnosis was 356 (IQR  
147 173, 566).

### 148 *Echocardiographic Findings*

149 Among those with HF, 593 PWH (85%) and 10,579 without HIV (75%) completed at  
150 least one transthoracic echocardiogram linked to their EHR record (Table 2). Using an LVEF  
151 cutoff of 40% (or moderately reduced if LVEF was missing) on the first echocardiogram after  
152 diagnosis, 225 (37.9%) of PWH had HF with reduced ejection fraction (HFrEF) compared to  
153 2,465 (32.7%) without HIV ( $p = 0.009$ ). The proportion with severely reduced LVEF did not  
154 differ significantly by HIV status: 23.0% with HIV versus 20.7% without HIV ( $p = 0.59$  for  
155 ordinal comparison). Mean LVEF and pulmonary artery systolic pressure at diagnosis were  
156 similar between groups ( $p = 0.13$  and  $p = 0.77$ , respectively). A higher proportion with HIV had  
157 severe mitral regurgitation (10.5% with HIV vs 6.8% without;  $p = 0.01$ ), but other valvular  
158 disease including endocarditis did not vary by HIV status.

159 *Ischemic vs Nonischemic Cardiomyopathy*

160 By HIV status, a similar proportion had prior myocardial infarction documented (12.1  
161 PWH vs 14.7% without HIV,  $p=0.06$ ). Likewise, a similar proportion without prior  
162 revascularization completed coronary angiography: 140 (20%) with HIV and 2,714 (19%)  
163 without HIV. Angiographic severity of coronary artery disease did not vary by HIV status  
164 ( $p=0.17$ , Table 1). Adjusted for age, sex, race/ethnicity, comorbidities, and substance use, there  
165 remained no difference in angiography results (OR 0.97; 95% CI 0.70-1.34;  $p=0.87$ ). HIV was  
166 not associated with differences in the proportion revascularized (10.2 vs 9.9%; OR 1.12; 95% CI  
167 0.86-1.46;  $p=0.39$ ) or revascularization strategy (coronary artery bypass graft surgery versus  
168 percutaneous coronary intervention;  $p=0.66$ ).

169 *HF Admission, Medical Therapy, and Device Therapy among those Hospitalized for Heart*  
170 *Failure*

171 A lower proportion of PWH were hospitalized for HF compared to people without HIV  
172 (7.7% versus 11.3%,  $p=0.001$ ). HIV was associated with lower adjusted odds of HF  
173 hospitalization (OR 0.51; 95%CI 0.39-0.66;  $p<0.001$ ). HIV was not associated with all-cause  
174 readmission (OR 0.96; 95%I 0.55-1.67;  $p=0.89$ ) and there was a trend toward lower odds of HF-  
175 specific readmission (OR 0.56; 95%CI 0.31-1.01;  $p=0.06$ ). Among those with HFrEF who were  
176 hospitalized, HIV was associated with higher prescription of HF guideline-directed medical  
177 therapy defined as at least one of angiotensin-converting enzyme inhibitor, angiotensin receptor  
178 blocker, beta blocker, or mineralocorticoid receptor antagonist (53% vs 39%; OR 2.13 95% CI  
179 1.08-4.21;  $p=0.03$ ). HIV was associated with similar rates of statin prescription that was not  
180 statistically significant after adjustment (35% vs 27%; OR 1.77; 95%CI 0.91-3.44;  $p=0.09$ ).  
181 PWH were also more likely to have outpatient follow up within 30 days of HF discharge (80%



182 vs 65%,  $p=0.001$ ). Only four PWH had defibrillators implanted, two each for primary and  
183 secondary prevention: one each were for cardiac resynchronization therapy.

#### 184 *Mortality*

185 In total, 41% died before the end of follow-up time including 354 (50.8%) with HIV and  
186 5,784 (40.9%) without HIV ( $p<0.001$ ). HIV was associated with higher age-, sex-, and substance  
187 use-adjusted risk of all-cause mortality (HR 1.55; 95% CI 1.37-1.76;  $p<0.0001$ ; **Central**  
188 **Illustration**). The median survival after HF diagnosis was 6.1 years (95% CI 5.4-7.1 years)  
189 among PWH compared to a median survival of 11.3 years (95% CI 10.7-11.7) years among  
190 people without HIV. The higher risk remained elevated among PWH accounting for past medical  
191 history (HR 1.37; 95% CI 1.22-1.54;  $p<0.001$ ). Results were similar for 1-year mortality with  
192 adjusted relative risk ratios of 1.72 (95% CI 1.50-1.97) adjusted for age, sex, and substance use,  
193 and 1.47 (95% CI 1.28-1.70) additionally accounting for past medical history. The absolute risk  
194 difference in 1-year mortality among those with HIV compared to without HIV was 11.0% (95%  
195 CI 7.5%-14.4%) and 7.3% (95% CI 4.1-10.4) accounting for other past medical history.

196 Both lower nadir CD4 and lower CD4 at the time of HF diagnosis were associated with  
197 worse survival among PWH: HR 1.37 for nadir CD4 count  $< 200$  (95% CI 1.08-1.75;  $p=0.009$ )  
198 and HR 1.69 for current CD4 count  $< 200$  (95% CI 1.34-2.13;  $p<0.001$ ), respectively. Viral load  
199 less than 500 copies/ml was not associated with mortality (HR 1.02; 95% CI 0.80-1.31;  $p=0.87$ ).  
200 There was not a significant interaction with Hepatitis C coinfection ( $p_{\text{interaction}}=0.53$ ). Restricting  
201 the PWH to only those virally suppressed ( $< 75$  copies per milliliter,  $n=76$ ) compared to people  
202 without HIV yielded similar adjusted hazard for mortality (HR 1.52, 95% CI 1.27-1.83;  
203  $p<0.001$ ).

204 In an exploratory analysis to consider secular trends, we divided the study into 2001-2010  
205 and 2011-2019. Among those diagnosed with HF more recently, HIV was associated with a  
206 smaller increase in mortality relative to people without HIV (HR 1.24, 95% CI 1.02-1.51;  
207  $p=0.03$ ) compared to before 2011 (HR 1.75, 95% CI 1.52-2.01,  $p<0.001$ ,  $p_{\text{interaction}}=0.004$ ).

208 By death certificate data ( $n=3650$ , 262 PWH), there were notable differences by HIV  
209 status (**Figure 1**). Among PWH, 36% had the primary underlying cause of death classified as  
210 HIV/AIDS-related, 19% as cardiovascular, 16% as due to accident/injury (including overdose).  
211 Among those without HIV, 46% of deaths were attributed to cardiovascular causes, 11% to  
212 neoplasms and blood disorders, and only 8% to accidents, injuries, and overdoses. PWH had  
213 twice the odds of cause of death attribution to overdose or substance use (OR 2.1; 95% CI 1.53-  
214 3.00;  $p<0.001$ ), but not after accounting for age, sex, and documented history of substance use  
215 (OR 0.96; 95% CI 0.67-1.37;  $p=0.82$ ). In contrast, HIV was associated with lower odds of  
216 having cardiovascular disease as the primary recorded cause of death (even though all had HF)  
217 with an adjusted OR of 0.32 (95% CI 0.23-0.43;  $p<0.001$ ) accounting for age, sex, substance use,  
218 and comorbidities.

219 Autopsy data were available for 81 individuals (14 PWH), who died between 2011 and  
220 2019 in San Francisco County, 51 of whom were adjudicated as part of the POST SCD Study. Of  
221 PWH, 4 (29%) met the WHO definition for presumed sudden cardiac death, which excludes  
222 those with obvious external cause of death such as trauma or drug paraphernalia at the scene  
223 (11), compared to 38 (56.8%) of those without HIV ( $p=0.08$ ). Among these presumed SCDs,  
224 PWH had a trend towards fewer adjudicated arrhythmic causes (21.4% vs 41.8%,  $p=0.23$ ), and  
225 more non-cardiac causes (78.6% vs 50.8%;  $p=0.08$ ), including occult overdose with toxicology

226 evidence without evidence of drug use at the scene (64.3% vs 37.8% of noncardiac deaths;  
227 p=0.12).

## 228 **Discussion**

229 In this 18-year study of people with HF within a municipal safety-net system, PWH had a  
230 greater all-cause mortality despite lower odds of hospitalization for HF, more often due to non-  
231 cardiovascular causes, especially overdose. PWH developed HF a mean 10 years younger than  
232 people without HIV, with higher rates of documented substance use. HF<sub>rEF</sub> was more  
233 commonly diagnosed in PWH, but echocardiographic and angiographic findings were similar  
234 compared to cases without HIV. Although the mortality gap has narrowed over time, PWH with  
235 HF remain at elevated risk compared to people with HF without HIV. These findings have  
236 implications for targeted strategies to reduce higher mortality in HF for PWH.

### 237 *Similar Associations with Mortality as Compared to Prior Studies*

238 Several prior studies have examined the association of HIV with HF outcomes in very  
239 different patient populations. A study of U.S. Veterans from 1999-2018 that included 5,747  
240 PWH and 33,497 controls found higher mortality and hospitalizations among PWH, but the main  
241 limitation is that they included 98% men (2,7). They also found that PWH develop HF<sub>rEF</sub> at  
242 younger ages (2). Because the VA study focused on men, another study included ambulatory  
243 women within the Partners HealthCare System (now Mass General Brigham) with a primary  
244 outcome of incident HF hospitalization (5). Another study included patients hospitalized with  
245 acute decompensated HF at Bronx-Lebanon Hospital Center in New York in 2011 with primary  
246 outcomes of 30-day readmissions and mortality (6). These studies within tertiary referral centers  
247 both found that HIV is associated with HF hospitalization, in contrast to our findings. Our

248 findings are most consistent with a study within the Kaiser integrated care system, where HIV  
249 was associated with mortality but not HF hospitalizations or Emergency Department visits, (8).  
250 Our study extends these findings to the safety-net where many PWH in the United States receive  
251 care.

252 Our study sheds light on a possible explanation for higher mortality among PWH with  
253 HF. From 2000-2009, presumed sudden cardiac death (SCD) accounted for 86% of cardiac  
254 deaths among PWH in San Francisco, and antecedent HF was strongly associated with SCD (12).  
255 Among these individuals, lower LVEF and diastolic dysfunction were both associated with  
256 increased risk of SCD (13). In California from 2005-2015, PWH had 2.5-fold higher risk of out  
257 of hospital cardiac arrest (14). One group estimated that the risk of SCD was 10% per year  
258 among PWH without indications for primary prevention implantable cardioverter-defibrillators  
259 (15). We found very low use of defibrillators, much lower than would be expected for the  
260 proportion with severely reduced LVEF. A population-based autopsy study in San Francisco  
261 found that PWH were at 2.25 times higher risk of WHO-defined SCD, mostly attributable to  
262 higher rates of occult overdose, with 1.87 times higher incidence of arrhythmic death and  
263 interstitial myocardial fibrosis on histology (16). Our finding that the primary cause of death is  
264 most often attributed to HIV/AIDS suggests that many deaths are non-cardiac even among those  
265 with HF. Our findings that HIV is associated with higher risk of substance-related death are  
266 confirmed in the autopsy subset and are likely attributable to higher rates of substance use among  
267 PWH (17) as the association was attenuated accounting for documented substance use. Rising  
268 rates of substance-associated cardiovascular death across the United States suggest that this  
269 growing problem extends to the general population without HIV (18).

270 One potential explanation for lower rates of HF hospitalization specific to the study  
271 population may be that PWH may be better connected to ambulatory care within the municipal  
272 health system in San Francisco compared to people without HIV, as demonstrated by the higher  
273 rates of ambulatory follow-up after HF hospitalization. This may be in part due to the established  
274 HIV Cardiology Clinic that is embedded within the main HIV primary care clinic at San  
275 Francisco General Hospital. Secondly, among those hospitalized with HFrEF, PWH had higher  
276 prescription rates for guideline directed medical therapy compared to people without HIV.  
277 Although not conclusive, our study suggests that access to cardiology care does not fully address  
278 the increased risk among PWH.

279 How can we mitigate the increased risk of mortality among PWH with HF? Prevention of  
280 myocardial infarction with statins may decrease atherosclerosis and ultimately reduce incident  
281 HF among PWH. Earlier detection of Stage B HF (asymptomatic structural heart disease) among  
282 PWH could allow for initiation of disease-modifying medical therapy. Biomarkers could identify  
283 those at elevated risk (19,20). The MIRACLE HIV trial randomized 40 PWH without known  
284 heart disease (Stage A: asymptomatic with risk factors) 1:1 to eplerenone and placebo for 12  
285 months and found that it prevented worsening of myocardial perfusion and function (21). Animal  
286 models suggest that immune therapy targeting inflammation may prevent cardiomyopathy (22),  
287 although this has not been tested in humans. Most important, however, may be providing high-  
288 quality HIV and primary care to PWH even among those with HF, with particular attention to  
289 substance use treatment and overdose prevention.

### 290 *Limitations*

291 The major limitation of this observational EHR-based study is the risk of residual  
292 confounding which limits causal interpretation—PWH may differ from those without HIV in

293 ways that affect HF outcomes not captured in billing codes. Some covariates are notably  
294 imperfect such as unstable housing and substance use; other socioeconomic variables including  
295 income, education, primary language, immigration status, and current housing were not  
296 measured. Secondly, we did not have time-updated covariates, so we used baseline covariates  
297 assessed at the time of HF diagnosis. Ambulatory medication data were only available for those  
298 who were hospitalized through medication reconciliation, so we were unable to assess use of  
299 antiretroviral therapy or titration of GDMT. Previous studies have suggested that ICD coding has  
300 a low specificity for HF (23), but in our system manual adjudication demonstrated a high  
301 specificity. Emergency department and urgent care visits and specialty provider type for  
302 inpatient physicians were not available, limiting our ability to assess acute care utilization.  
303 Finally, recorded cause of death is a poor measure of actual cause of death, but we confirmed our  
304 findings by linking records with the postmortem data available in the POST SCD Study.

### 305 **Conclusions**

306 Among people with HF who receive care within a municipal safety-net system, HIV is  
307 associated with higher all-cause mortality but not HF hospitalization. In the current era of  
308 antiretroviral therapy, HF phenotypes between those with and without HIV are similar, although  
309 PWH develop heart failure a decade younger and are more likely to present with HF<sub>rEF</sub>. As  
310 recorded on death certificates and found on autopsy, non-cardiovascular causes of death  
311 including substance-related, and HIV/AIDS deaths are predominant among PWH. Further  
312 research is needed to identify and test strategies to mitigate the increased risk of mortality among  
313 PWH with HF including addressing high rates of substance use and treatment of HIV.

314

## 315 References

- 316 1. Butt AA, Chang CC, Kuller L et al. Risk of heart failure with human immunodeficiency  
317 virus in the absence of prior diagnosis of coronary heart disease. *Arch Intern Med*  
318 2011;171:737-43.
- 319 2. Freiberg MS, Chang CH, Skanderson M et al. Association Between HIV Infection and  
320 the Risk of Heart Failure With Reduced Ejection Fraction and Preserved Ejection  
321 Fraction in the Antiretroviral Therapy Era: Results From the Veterans Aging Cohort  
322 Study. *JAMA Cardiol* 2017;2:536-546.
- 323 3. Womack JA, Chang CC, So-Armah KA et al. HIV infection and cardiovascular disease in  
324 women. *J Am Heart Assoc* 2014;3:e001035.
- 325 4. Erqou S, Lodebo BT, Masri A et al. Cardiac Dysfunction Among People Living With  
326 HIV: A Systematic Review and Meta-Analysis. *JACC: Heart Failure* 2019;7:98-108.
- 327 5. Janjua SA, Triant VA, Addison D et al. HIV Infection and Heart Failure Outcomes  
328 in Women. *J Am Coll Cardiol* 2017;69:107-108.
- 329 6. Alvi RM, Afshar M, Neilan AM et al. Heart failure and adverse heart failure outcomes  
330 among persons living with HIV in a US tertiary medical center. *Am Heart J* 2019;210:39-  
331 48.
- 332 7. Erqou S, Jiang L, Choudhary G et al. Heart Failure Outcomes and Associated Factors  
333 Among Veterans With Human Immunodeficiency Virus Infection. *JACC Heart Fail*  
334 2020;8:501-511.
- 335 8. Avula HR, Ambrosy AP, Silverberg MJ et al. Human immunodeficiency virus infection  
336 and risks of morbidity and death in adults with incident heart failure. *Eur Heart J Open*  
337 2021;1:oeab040.
- 338 9. Tseng ZH, Olgin JE, Vittinghoff E et al. Prospective Countywide Surveillance and  
339 Autopsy Characterization of Sudden Cardiac Death: POST SCD Study. *Circulation*  
340 2018;137:2689-2700.
- 341 10. Haghghat L, Ramakrishna S, Salazar JW et al. Homelessness and Incidence and Causes  
342 of Sudden Death: Data From the POST SCD Study. *JAMA Intern Med* 2023;183:1306-  
343 1314.
- 344 11. Marijon E, Narayanan K, Smith K et al. The Lancet Commission to reduce the global  
345 burden of sudden cardiac death: a call for multidisciplinary action. *Lancet* 2023;402:883-  
346 936.
- 347 12. Tseng ZH, Secemsky EA, Dowdy D et al. Sudden cardiac death in patients with human  
348 immunodeficiency virus infection. *J Am Coll Cardiol* 2012;59:1891-6.
- 349 13. Moyers BS, Secemsky EA, Vittinghoff E et al. Effect of left ventricular dysfunction and  
350 viral load on risk of sudden cardiac death in patients with human immunodeficiency  
351 virus. *Am J Cardiol* 2014;113:1260-5.
- 352 14. Sardana M, Nah G, Hsue PY et al. Human Immunodeficiency Virus Infection and Out-  
353 of-Hospital Cardiac Arrest. *Am J Cardiol* 2022;163:124-129.
- 354 15. Alvi RM, Neilan AM, Tariq N et al. The Risk for Sudden Cardiac Death Among Patients  
355 Living With Heart Failure and Human Immunodeficiency Virus. *JACC Heart Fail*  
356 2019;7:759-767.
- 357 16. Tseng ZH, Moffatt E, Kim A et al. Sudden Cardiac Death and Myocardial Fibrosis,  
358 Determined by Autopsy, in Persons with HIV. *N Engl J Med* 2021;384:2306-2316.

- 359 17. West BS, Diaz JE, Philbin MM, Mauro PM. Past-year medical and non-medical opioid  
360 use by HIV status in a nationally representative US sample: Implications for HIV and  
361 substance use service integration. *J Subst Use Addict Treat* 2023;147:208976.  
362 18. Minhas AMK, Kewcharoen J, Hall ME et al. Temporal Trends in Substance Use and  
363 Cardiovascular Disease-Related Mortality in the United States. *J Am Heart Assoc*  
364 2024;13:e030969.  
365 19. Secemsky EA, Scherzer R, Nitta E et al. Novel Biomarkers of Cardiac Stress,  
366 Cardiovascular Dysfunction, and Outcomes in HIV-Infected Individuals. *JACC Heart*  
367 *Fail* 2015;3:591-9.  
368 20. Scherzer R, Shah SJ, Secemsky E et al. Association of Biomarker Clusters With Cardiac  
369 Phenotypes and Mortality in Patients With HIV Infection. *Circ Heart Fail*  
370 2018;11:e004312.  
371 21. Srinivasa S, Walpert AR, Thomas TS et al. Randomized Placebo Controlled Trial to  
372 Evaluate Effects of Eplerenone on Myocardial Perfusion and Function among Persons  
373 with HIV-Results from the MIRACLE HIV Study. *Clin Infect Dis* 2023.  
374 22. Yearley JH, Mansfield KG, Carville AA et al. Antigenic stimulation in the simian model  
375 of HIV infection yields dilated cardiomyopathy through effects of TNFalpha. *Aids*  
376 2008;22:585-94.  
377 23. Steverson AB, Pawlowski AE, Schneider D et al. Clinical characteristics of HIV-infected  
378 patients with adjudicated heart failure. *Eur J Prev Cardiol* 2017;24:1746-1758.

379

380



381

**Table 1. Study Population by HIV Status**

	HIV (n=697)	No HIV (n=14,132)	P-value
Age, years	52.8 (45.6, 59.1)	62.8 (53.4, 75.1)	<0.001
Female	137 (19.7%)	5718 (40.9%)	<0.001
Race/Ethnicity			<0.001
White	259 (37.2%)	3748 (26.5%)	
Black/African American	310 (44.5%)	3820 (27.0%)	
Asian	23 (3.3%)	3153 (22.3%)	
American Indian/Alaskan Native	10 (1.4%)	148 (1.0%)	
Native Hawaiian/ Pacific Islander	0 (0.0%)	47 (0.3%)	
Hispanic/Latino	81 (11.6%)	2727 (19.3%)	
Other/Decline to state	14 (2.0%)	489 (3.5%)	
Documented Unstable Housing	50 (7.2%)	611 (4.3%)	<0.001
<i>Past Medical History</i>			
Hypertension	503 (72.2%)	11413 (80.8%)	<0.001
Diabetes	43 (6.2%)	1204 (8.5%)	0.03
Myocardial Infarction	84 (12.1%)	2072 (14.7%)	0.06
Chronic Kidney Disease	118 (16.9%)	2085 (14.8%)	0.11
COPD	18 (2.6%)	106 (0.8%)	<0.001
Hepatitis C Virus	370 (53.1%)	1686 (11.9%)	<0.001
Hepatitis B Virus	90 (12.9%)	420 (3.0%)	<0.001
<i>Documented Substance Use</i>			

Alcohol	270 (38.7%)	2897 (20.5%)	<0.001
Tobacco	452 (64.8%)	5651 (40.0%)	<0.001
Opioid	235 (33.7%)	1351 (9.6%)	<0.001
Cocaine	265 (38.0%)	1826 (12.9%)	<0.001
Methamphetamine	285 (40.9%)	1477 (10.5%)	<0.001
<i>Heart Failure Guideline Directed Medical Therapy<sup>a</sup></i>			388
Beta Blocker	20 (54.1%)	371 (40.1%)	0.09
ACE inhibitor or Angiotensin Receptor Blocker	19 (51.4%)	382 (41.3%)	0.22
Mineralocorticoid Receptor Antagonist	10 (27.0%)	171 (18.5%)	0.19
<i>Angiography Results<sup>b</sup></i>			396
No Coronary Artery Disease	40 (28.6%)	564 (20.8%)	0.17
Nonobstructive Disease	44 (31.4%)	912 (33.6%)	
Single Vessel Disease	22 (15.7%)	454 (16.7%)	
Multivessel Disease	34 (24.3%)	784 (28.9%)	

398

399 <sup>a</sup>Heart Failure Guideline Directed Medical Therapy was assessed at the time of index hospital  
400 discharge only and includes those with a heart failure hospitalization and HFrEF (left ventricular  
401 ejection fraction <40%): Denominators are 37 PWH and 925 people without HIV.

402 <sup>b</sup>Angiography results are from the first coronary angiogram available and include n=140 PWH  
403 and n=2714 people without HIV without prior revascularization. Multivessel disease was defined  
404 as left main stenosis reported as ≥50% or 2 or more major epicardial vessels with ≥80% stenosis.

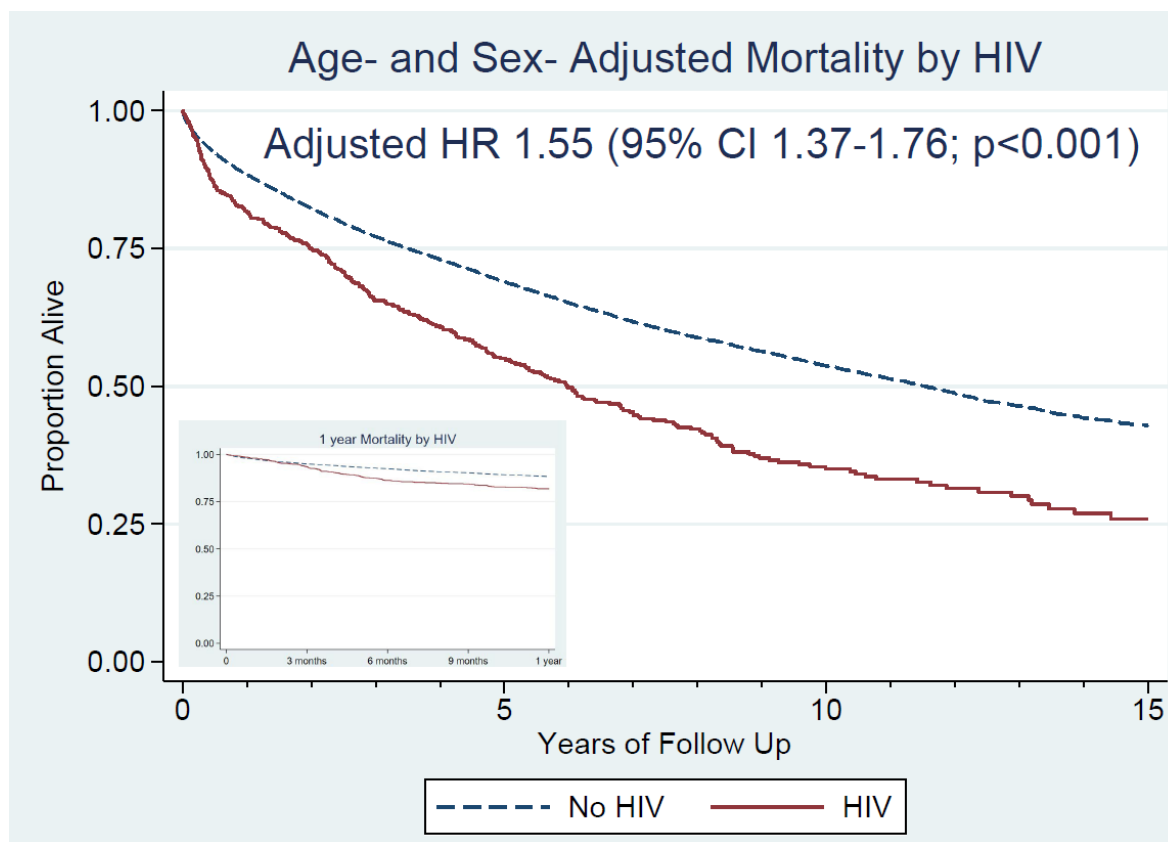
405 **Table 2. Echocardiographic Findings Among those Who Completed an Echocardiogram**

Finding	HIV (n=593)	No HIV (n=10579)	P-value
Echo within 30 days of diagnosis	313 (52.8%)	5968 (56.4%)	0.08
Echo within 6 months of diagnosis	373 (62.9%)	7099 (67.1%)	0.03
HFrEF <sup>a</sup>	225 (37.9%)	3459 (32.7%)	0.008
First EF After HF Diagnosis, %	45.7 (15.7)	44.4 (15.6)	0.13
LV Inner Diameter at End Diastole, cm	5.1 (0.9)	5.0 (1.0)	0.20
<i>Qualitative LV Function</i>			
Hyperdynamic	11 (2.2%)	156 (1.7%)	0.59
Normal	214 (42.7%)	4010 (44.2%)	
Borderline	22 (4.4%)	439 (4.8%)	
Mildly Reduced	47 (9.4%)	842 (9.3%)	
Mild to Moderately Reduced	17 (3.4%)	320 (3.5%)	
Moderately Reduced	50 (10.0%)	779 (8.6%)	
Moderate to Severely Reduced	23 (4.6%)	603 (6.6%)	
Severely Reduced	115 (23.0%)	1879 (20.7%)	
Not reported	2 (0.4%)	46 (0.5%)	
Regional Wall Motion Abnormalities	71 (31.1%)	1023 (34.3%)	0.33
<i>Pulmonary Hypertension</i>			
Severe Pulmonary Hypertension	7 (2.2%)	176 (2.9%)	0.46
PASP, mm Hg, mean (SD)	37.1 (16.8)	36.9 (15.4)	0.85
<i>Valve Disease<sup>b</sup></i>			

Severe Mitral Regurgitation	33 (10.5%)	406 (6.8%)	0.01
Severe Tricuspid Regurgitation	35 (11.2%)	509 (8.5%)	0.10
Endocarditis	5 (0.7%)	54 (0.4%)	0.17

406 Notes: a. HFrEF defined as LVEF<40% or for those missing LVEF, qualitative LV function at  
407 least moderately reduced. b. Fewer than 1% in each group had severe aortic stenosis, severe  
408 aortic regurgitation, and severe mitral stenosis with no differences by group so we did not  
409 include them in the table. Abbreviations: HFrEF=Heart Failure with Reduced Ejection Fraction;  
410 EF=Ejection Fraction; LV=Left Ventricular  
411  
412

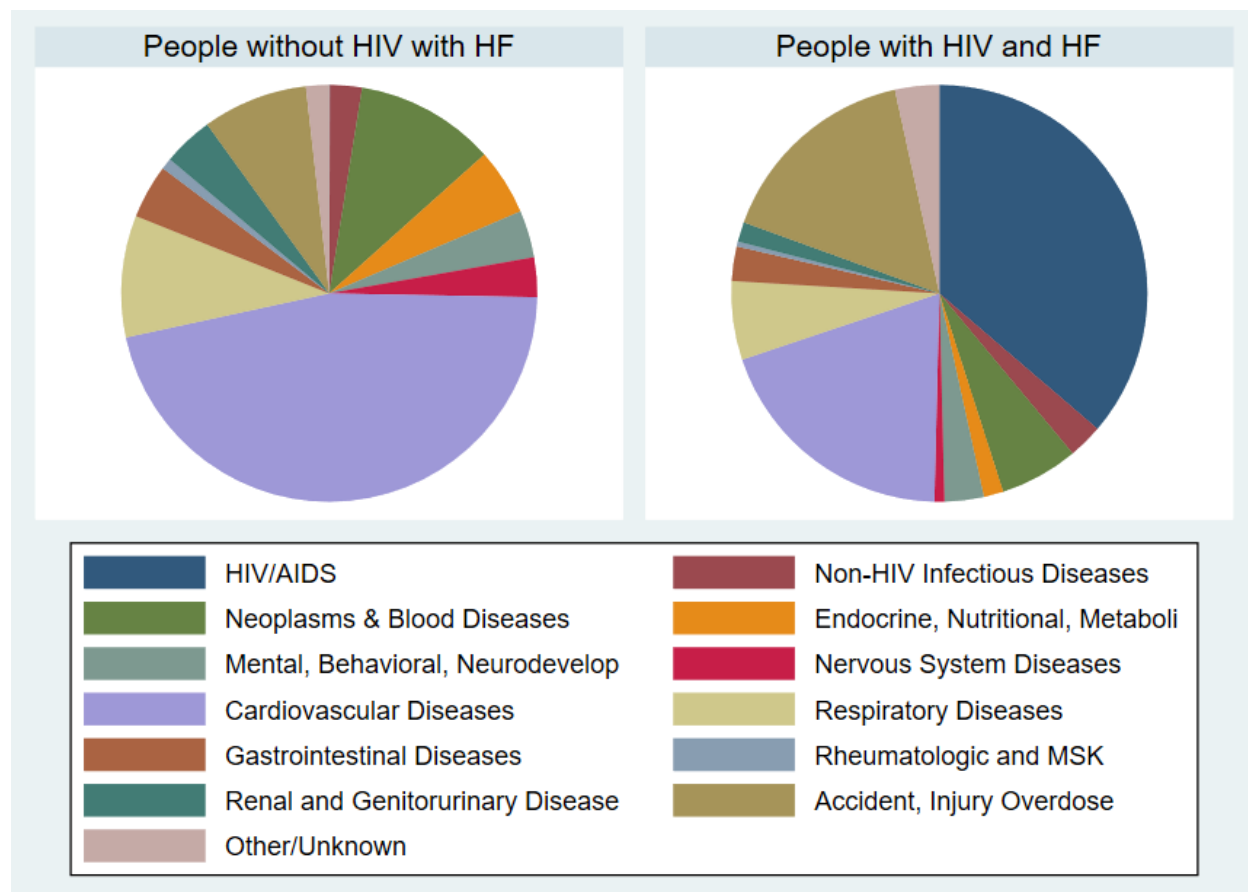
413 **Central Illustration. Kaplan-Meier and Adjusted Survival Plots by HIV**



414  
415 Figure Legend: Age and sex adjusted survival curves for people with and without HIV from  
416 index time of heart failure diagnosis up to 15 years of follow up (main figure) and from 0-12  
417 months (inset). Survival curves separate about 3 months after HF diagnosis (inset), with an  
418 adjusted hazard ratio of 1.55 (95%CI 1.37-1.76;  $p < 0.0001$ ).

419

420 **Figure 1. Primary Underlying Cause of Death among People with Heart Failure as**  
421 **Recorded on Death Certificates by HIV Status**



422  
423 Figure Legend: Primary underlying cause of death as reported on death certificates classified by  
424 International Classification of Diseases (ICD) codes by HIV status. Liver disease is classified  
425 under gastrointestinal diseases.