

Effects of Age and Sex on Systemic Inflammation and Cardiometabolic Function in Individuals with Type 2 Diabetes

Jody Dushay, MD, MMSc,^{1*} Eva S. Rickers, MD,^{2,3*} Enya Wang, BS,⁴ Jessica Gilman, BA,⁴
Ying Zhang, MD, PhD,^{4,5} Ron Blankstein, MD,⁶ Ernest V. Gervino, ScD,⁷ Michael Jerosch-
Herold, PhD,^{2¶} Aristidis Veves MD, DSc.^{4¶}

¹ Division of Endocrinology, Beth Israel Deaconess Medical Center, Harvard Medical School, Boston MA

² Department of Radiology, Brigham and Women's Hospital, Harvard Medical School, Boston MA

³ Medical Faculty, University of Cologne, and Department of Neurology, University Hospital Cologne, Cologne, Germany.

⁴ Rongxiang Xu Center for Regenerative Therapeutics, Microcirculation Lab, Beth Israel Deaconess Medical Center, Harvard Medical School, Boston MA

⁵ Currently at Department of Endocrinology, The Third People's Hospital of Shenzhen, Guangdong Province, China.

⁶ Division of Cardiology, Brigham and Women's Hospital, Harvard Medical School, Boston MA

⁷ Division of Cardiology, Beth Israel Deaconess Medical Center, Harvard Medical School, Boston MA

* Equal contribution as first authors; § Equal contribution as senior authors

Manuscript correspondence address:

Aristidis Veves, MD, DSc.

Beth Israel Deaconess Medical Center,

Palmer 321A, One Deaconess Rd, Boston, MA 02215.

E-mail: aveves@bidmc.harvard.edu

Tel (617) 632-7075; Fax (617) 632-7090

3999 words. 2 Tables. 2 Figures.

ABSTRACT

1 **Objective:** Systemic inflammation, aging, and type 2 diabetes (T2DM) all contribute to the
2 development of cardiovascular dysfunction and impaired aerobic exercise capacity but their
3 interplay remains unclear. This study evaluates the impact of age, sex, and inflammation on
4 coronary and peripheral vascular function and exercise capacity in elderly individuals with and
5 without type 2 diabetes (T2DM).

6 **Research Design and Methods:** Elderly individuals (age ≥ 65 years) underwent biochemical and
7 tissue inflammatory phenotyping, cardiopulmonary exercise testing (CPET), cardiovascular
8 magnetic resonance (CMR) imaging, and vascular reactivity testing. Correlation and regression
9 analyses determined the effects of systemic inflammation, older age, and sex on cardiovascular
10 health, stratified by T2DM status.

11 **Results:** For the 133 recruited individuals (44% female; median age 71, IQR=7 years, 41% with
12 T2DM) the presence of T2DM did not have an effect on most blood serum inflammatory
13 markers and skin biopsies. Hyperemic myocardial blood flow (hMBF), flow-mediated, and flow-
14 independent nitroglycerin induced brachial artery dilation were significantly impaired in males,
15 but not females with T2DM. Peak VO₂ was lower with T2DM ($p=0.022$), mostly because of the
16 effect of T2DM in females. Females showed more adverse myocardial remodeling assessed by
17 extracellular volume ($p=0.008$), independent of T2DM status.

18 **Conclusions:** Our findings suggest that the pathophysiological manifestations of T2DM on
19 vascular function and aerobic exercise capacity are distinct in elderly males and females and this
20 may reflect underlying differences in vascular and myocardial aging in the presence of T2DM.
21

1 INTRODUCTION

2 Cardiovascular disease (CVD) is a leading cause of death among older individuals with
3 type 2 diabetes mellitus (T2DM)^{1,2}. Given its role as a shared pathophysiological hallmark of
4 aging, diabetes, and CVD, systemic inflammation has been a major target of ongoing efforts to
5 mitigate CVD risk in diabetes^{3,4}. Most effects of systemic inflammation on the vasculature
6 manifest phenotypically at the level of the microvasculature, where increased oxidative stress,
7 immune system activation, and epigenetic factors converge to impair microvascular function
8 across coronary and non-coronary beds^{5,6}. These effects are amplified with aging⁷.

9 The multifaceted changes in cardiovascular structure and function with aging, termed
10 "cardiovascular aging," reflect a complex interplay among cumulative clinical risk factors (e.g.
11 obesity, diabetes), modifiable lifestyle traits (e.g. physical activity, diet), and inflammation⁸. yet
12 comprehensive imaging-based studies in older individuals at risk for advanced microcirculatory
13 cardiovascular conditions (particularly those with diabetes) are limited. In this context,
14 cardiovascular magnetic resonance (CMR) offers a capability to assess myocardial blood flow
15 (an index of microcirculatory coronary function) alongside broad organ- and tissue-level
16 myocardial phenotyping (LV mass and volumes, tissue fibrosis) relevant to cardiovascular aging.

17 It remains uncertain whether optimal medical management of CVD risk factors in
18 individuals with T2DM effectively preserves coronary function as compared to age-matched
19 individuals without T2DM, and whether systemic inflammation impairs coronary function
20 similarly in elderly individuals with and without T2DM. Addressing this issue is essential, as the
21 impact of systemic inflammation on coronary function in these specific populations remains
22 uncertain. Additionally, although data indicate increased risk of CVD among females after

23 menopause^{9,10}, there are few studies that focus specifically on females who are 10 or more years
24 post-menopausal.

25 The goal of this study was to investigate the effects of T2DM, advanced age and sex on
26 vascular function, systemic inflammation, and cardiopulmonary exercise capacity. To that end,
27 we performed extensive cardiovascular phenotyping using innovative techniques including a)
28 biochemical assays of cytokines, chemokines and proinflammatory mediators of immune
29 activation and inflammation in blood serum and skin biopsies^{11,12}, b) CMR imaging for
30 assessment of ventricular volumes and function, tissue characterization by T1 mapping¹³⁻¹⁵, rest
31 and stress myocardial perfusion imaging for myocardial blood flow quantification, c)
32 cardiopulmonary exercise testing (CPET), and d) vascular reactivity of the brachial artery and
33 skin. CPET measures VO₂ max during exercise, a measure of cardiovascular fitness, and
34 provides information about cardiopulmonary and muscle physiology¹⁶.

35 **METHODS**

36 **Study Population**

37 We prospectively recruited through local clinics and community advertisements
38 individuals of age 65 years and older, with and without T2DM. The diagnosis of T2DM followed
39 published ADA criteria ¹⁷. Individuals with contraindications to CMR, LV systolic dysfunction
40 (defined as LV ejection fraction < 50% by any imaging modality within 1 year prior to enrollment)
41 and prior ST-elevation myocardial infarction by clinical history or electrocardiographic Q waves (in
42 at least 2 contiguous leads) were excluded. Individuals with HbA1c ≤6.5 % and without previous
43 diagnosis of diabetes were enrolled as healthy volunteers. Additional exclusion criteria were
44 current cigarette or tobacco use, unstable cardiac conditions, severe COPD, use of oral
45 anticoagulant therapy, GFR <50 ml/min, prior hemorrhagic stroke, and any other condition
46 possibly preventing completion of the CPET-study protocol ¹⁸.

47 The initial study visit included review of medical history, physical examination, completion of
48 dietary and physical activity questionnaires assessing baseline self-reported metabolic
49 equivalents (METs) ¹⁹, urine collection, blood draw, vascular reactivity testing, and skin biopsy.
50 A subsequent study visit within 2 weeks included CMR, CPET. A 50 ml blood sample (~35 ml
51 plasma, ~10 ml serum, and a buffy coat in a PAXgene tube) was collected at the screening and
52 follow up visits. Blood was processed via ultracentrifugation and stored at -80 °C. The study was
53 approved by the Institutional Review Board of the Beth Israel Deaconess Medical Center and
54 written informed consent was obtained from all subjects.

55

56 **Stress Cardiac Magnetic Resonance Imaging (CMR)**

57 CMR studies were performed after an overnight fast and 24-hour abstinence from
58 caffeine intake with a 3 Tesla MRI scanner (Siemens Medical Solutions, Erlangen, Germany)
59 with a dedicated 18-element phased body array. The CMR protocol included: a) assessment of
60 ventricular volumes and function with steady state free precession (SSFP) cine imaging; b) first
61 pass contrast-enhanced T1-weighted myocardial perfusion imaging in three short-axis slices
62 (basal, mid, apical levels) through the LV; c) T1 mapping with a modified Look-Locker imaging
63 (MOLLI) sequence before and after gadolinium contrast administration for assessment of
64 extracellular volume expansion, a marker of diffuse fibrosis; and d) imaging of late gadolinium
65 enhancement (LGE) to detect any myocardial scar¹³⁻¹⁵. A contrast bolus dosage of 0.06 mmol of
66 Gd-DTPA (Magnevist, Berlex Inc.) was injected approximately 5 seconds from the start of the
67 perfusion scan, and a total of 80 images were acquired per slice. Rest perfusion imaging was
68 performed first, followed 20 minutes later by stress perfusion imaging after inducing hyperemia
69 by bolus injection of 0.4 mg/5-mL of regadenoson over 10 seconds (Astellas Pharma US, Inc.,
70 Northbrook, IL). After both stress and rest perfusion imaging, an additional gadolinium dose was
71 injected to reach a total of 0.15 mmol/kg before post-contrast T1 mapping.

72 Cine, perfusion, MOLLI, and LGE images were analyzed with QMASS CMR image
73 analysis software (QMASS version 9.3, Medis Medical Imaging Systems, Leiden, The
74 Netherlands) by tracing the endocardial and epicardial contours avoiding the blood pool.
75 Myocardial blood flow (MBF) was quantified in ml/min/g for 16 myocardial segments in three
76 short-axis slices. Using MOLLI T1 mapping, segmental myocardial R1 (1/T1) was plotted
77 against blood R1, to determine the extracellular volume fraction (ECV) using the (same day)

78 measured blood hematocrit. Global longitudinal strain (GLS) of the left ventricle was quantified
79 by feature tracking on long-axis cine images (QStrain, Medis Medical Imaging Systems, Leiden,
80 The Netherlands).

81 **CPET**

82 An IV catheter was placed in an arm vein and 20cc of blood was collected at rest. Subjects
83 then exercised on a stationary bike using a ramp protocol (10-15 watts per stage) until peak
84 volitional fatigue and/or respiratory exchange ratio (RER) >1.20 at which time a second sample of
85 20cc of blood was collected. Continuous ventilatory expired gas analysis was obtained
86 (Medgraphics Ultima CPX Metabolic Stress Testing system, Minneapolis, Minnesota). The
87 oxygen and carbon dioxide sensors were calibrated using gases with known oxygen and carbon
88 dioxide concentrations before each test. The flow sensor was calibrated with a 3L syringe before
89 each test. VO₂ (mL/kg/min), VCO₂ (L/min), and VE (L/min) were collected throughout the
90 exercise test²⁰. The respiratory exchange ratio (RER) was calculated by dividing the carbon
91 dioxide output (VCO₂) by VO₂. The chronotropic index (CI) for CPET was calculated as
92 difference of peak heart rate during exercise and resting heart rate, normalized by the age-
93 adjusted expected heart response, defined as 220 - age [years] - resting heart rate.

94 **Vascular function testing**

95 Endothelial function was assessed by measuring flow mediated dilation (FMD) in
96 accordance with published guidelines²¹. Briefly, brachial artery diameter was measured before
97 and during reactive hyperemia using high resolution ultrasound with a 10.0 MHz linear array
98 transducer and an Aloka Prosound 7 system (Hitachi Aloka Medical Ltd, Tokyo, Japan).
99 Reactive hyperemia was induced by inflating a pneumatic tourniquet distal to the brachial artery

100 to 50 mmHg above systolic blood pressure for 5 minutes and then deflating it rapidly. FMD was
101 expressed as the percentage change between baseline and post-occlusive artery diameter. For
102 nitroglycerin-induced vasodilation (NID), a third and fourth ultrasound of the brachial artery
103 were performed, after 20 minutes of supine rest and again 4-minutes after administration of
104 400 µg sublingual nitroglycerin (NTG). NID was expressed as the percentage change between
105 baseline and post-nitroglycerin brachial artery diameter ²¹⁻²³. NID was not performed in 19
106 subjects with T2DM and 17 without due to contraindication to NTG administration.

107 Skin blood flow was measured in a temperature-controlled environment before and after
108 iontophoresis of acetylcholine (ACh; endothelium-dependent) and sodium nitroprusside (SNP;
109 endothelium-independent) using laser Doppler flowmetry (DRT4 Laser Doppler Blood Flow
110 Monitor, Moor Instruments Ltd, Millwey, Devon, England) ²⁴. The percentage change in skin
111 blood flow after ACh and SNP administration compared to baseline were used as measures of
112 micro-circulatory function.

113 **Skin biopsy**

114 Two 3 mm punch skin biopsies at the volar aspect of the forearm were performed for
115 each participant. The specimen was placed directly into a Cryomold pre-filled with OCT (Tissue-
116 Tek®) solution, stored at -80 °C and used for immunohistochemistry and immunofluorescent
117 measurements to analyze mast cell degranulation and macrophage polarization.

118 **Statistical Analysis**

119 The primary endpoints were differences in inflammatory markers, vascular reactivity,
120 cardiac function and exercise capacity between elderly individuals with and without T2DM. Data
121 were expressed as mean ± standard deviation for normally distributed data or median with

122 interquartile range (IQR) for non-normally distributed data. Between-group comparisons were
123 performed using the Student's t-test or non-parametric tests (Mann-Whitney) when data were not
124 normally distributed. Relationships between quantitative variables were assessed with Pearson's
125 correlation test or Spearman's rank correlation as applicable. The effects of T2DM, sex and their
126 interaction were analyzed by 2-way ANOVA, followed by *post hoc* pairwise comparisons of
127 marginal means using Tukey's method for adjustment of p-values. The Levene test was used to
128 verify the homogeneity of variance across groups in the ANOVA model. Peak VO₂ was
129 analyzed with a linear regression model that included age, BMI, and sex as predictors, as with
130 widely used models for prediction of peak VO₂²⁵. Additional predictors were T2DM status and
131 chronotropic index (CI) to adjust for chronotropic incompetence, and the interactions of BMI and
132 CI with sex. A similar multi-variable linear regression model was built for analyzing peak O₂
133 pulse, but here myocardial ECV was added as predictor to determine any effects of myocardial
134 remodeling on stroke volume. A *p*-value of <0.05 was considered statistically significant.
135 Statistical analyses were performed using SPSS Version 23.0 (IBM Corp., Armonk, NY, USA),
136 the R environment (R version 4.1.2, R Foundation for Statistical Computing, Vienna, Austria)
137 and the Minitab Statistical Package Version 21.3 (Minitab Inc., State College, PA, USA).

138

139 RESULTS

140 Study population baseline characteristics

141 We enrolled 133 individuals, 54 with T2DM and 79 without T2DM (**Table 1**). There
142 were no differences in age, sex, race, or ethnicity between the groups. T2DM participants had
143 higher BMI ($p=0.11$) and waist to hip ratio ($p=0.007$), lower diastolic blood pressure ($p=0.021$),
144 and lower total and LDL cholesterol (both $p<0.0001$). Statin and antihypertensive medication use
145 were significantly higher among individuals with T2DM compared to controls ($p<0.0001$ for
146 both). There were no differences between controls and T2DM in baseline self-reported metabolic
147 equivalents (METs), either for vigorous or moderate exercise or all activities (Table 2). There
148 were no differences in METs between males and females.

149 Cardiac MRI (CMR) Results

150 Due to COVID-19 restrictions, CMR was performed in a subset of 85 subjects (30 T2DM
151 subjects). There were no differences in age or sex between subjects that underwent CMR and
152 those who did not. We did not observe significant differences for any CMR measurements
153 related to T2DM status, including rest (rMBF) and hyperemic myocardial blood flow (hMBF)
154 (**Table 2**). Rest MBF was overall higher in females compared to males ($p<0.05$), also when
155 normalized by the rate pressure product (RPP) (**Figure 1A**). Hyperemic MBF was 0.39 ml/min/g
156 lower in males with T2DM ($p=0.05$) compared to males without T2DM, and within the T2DM
157 group it trended lower in males compared to females ($p=0.089$, **Figure 1B**). Hyperemic MBF
158 correlated negatively with the log-transformed WBC ($r=-0.29$; $p=0.013$; **Figure 1C**).
159 Interleukin-13, an anti-inflammatory type-2 cytokine with a putative protective role against
160 atherosclerosis, correlated positively with hMBF ($r=0.31$; $p=0.014$, **Figure 1D**). Hyperemic

161 MBF correlated negatively with age ($r = -0.28$; $p = 0.016$). The extracellular volume (ECV) was
162 higher in females ($p = 0.008$), and T2DM did not have a significant effect ($p = 0.48$). The LV
163 ejection fraction at rest correlated negatively with ECV in females ($r = -0.43$; $p = 0.011$), but not in
164 males ($r = -0.43$; $p = 0.83$; see **supplementary Figure 1**). Only one participant without T2DM had
165 evidence of myocardial scar by LGE in the LV.

166 **CPET Results**

167 CPET was performed in a cohort subset of 59 subjects (20 T2DM subjects). There were
168 no differences in age or sex between the subjects that underwent CPET and those who did not.
169 The respiratory exchange ratio (RER) averaged 1.12 ± 0.11 , correlated with BMI ($r = -0.49$;
170 $p < 0.001$), and both T2DM and sex had no significant effect on RER. Peak VO₂ was lower with
171 T2DM (17.5 ± 4.8 with T2DM vs. 20.7 ± 5.0 ; $p = 0.022$), mostly because of the effect of T2DM in
172 females (14.2 ± 2.9 with T2DM vs. 19.7 ± 4.1 ml/min/kg; $p < 0.001$, **Figure 2a**). The chronotropic
173 index (CI) reached during CPET was similar in individuals with and without T2DM. The
174 correlation of peak VO₂ with the chronotropic index was noticeably different in males ($r = 0.56$;
175 $p = 0.001$) compared to females ($r = 0.21$; $p = 0.31$; **Figure 2B**). The estimates of for the regression
176 coefficients in the multivariable model for peak VO₂ are shown in **supplemental Table 3A**. The
177 model accounted for $> 50\%$ of the observed variability of peak VO₂ and predicts that peak VO₂
178 was nominally reduced by T2DM ($p = 0.096$), lower in females ($p < 0.001$), decreased with
179 advancing age ($p = 0.003$), and negatively associated with BMI in females ($p = 0.034$) but not
180 males. The effect of CI on peak VO₂ was significantly different between males and females
181 ($p = 0.007$), consistent with **Figure 2B**. Peak O₂ pulse, an index of stroke volume, was
182 significantly lower in females compared to males, and T2DM had no significant effect. Peak O₂
183 pulse correlated strongly with the stroke volume measured at rest with CMR ($r = 0.69$; $p < 0.001$),

184 and with the myocardial ECV ($r=-0.36$; $p=0.015$), a marker of diffuse myocardial fibrosis. The
185 association of ECV with peak O₂ pulse was also significant ($p=0.041$) in a multilinear regression
186 model for peak O₂ including sex as shown in **supplementary Table 3B**.

187 The increase of the serum inflammatory markers IL-6 and IL-8 during CPET (value right
188 after CPET – baseline value) was larger in participants with T2DM than without T2DM.

189

190 **Vascular Reactivity Results**

191 FMD, a measure of vascular endothelial function, was lower in T2DM individuals
192 compared to controls (Table 2). There was a significant interaction between T2DM and sex in
193 their effects on FMD - FMD was reduced in males with T2DM (-4.44 ± 1.36 ; $p=0.002$) compared
194 to male controls, but the effect of T2DM was absent in females ($p=0.972$; **supplementary**
195 **Figure 2A**). Similarly, nitroglycerin induced dilation (NID), a measure of vascular smooth
196 muscle function, was reduced by -6.8 ± 1.99 ($p=0.001$) in males with T2DM compared to males
197 controls, but there was no effect of T2DM in females ($p=0.768$; **supplementary Figure 2B**). No
198 differences were observed in the forearm skin vasodilation (endothelium-dependent and
199 independent) between T2DM and controls. NID correlated with METs for vigorous plus
200 moderate exercise ($r=0.362$, $p=0.018$) and METs for all activities ($r=0.281$, $p=0.079$). NID
201 correlated nominally with hMBF ($r=0.353$; $p=0.055$). The correlation of FMD with hMBF did
202 not reach statistical significance ($r=0.23$; $p=0.083$). Peak VO₂ did not correlate significantly with
203 FMD ($r=0.20$; $p=0.178$) and NID ($r=-0.31$; $p=0.2$).

204

205 Serum and Skin Inflammatory Markers

206 White blood cell count (WBC) was increased in individuals with T2DM ($p=0.01$), mostly
207 because WBC was higher in females with T2DM compared to female controls ($p=0.001$), while
208 in males there was no significant effect of T2DM ($p=0.474$). A 2-way ANOVA model for the
209 WBC confirmed this interaction between T2DM and sex ($p=0.039$), in addition to the main effect
210 of T2DM ($p=0.003$). IL-5 was lower in T2DM participants ($p=0.047$ from Wilcoxon rank sum
211 test; **Supplemental Table 2**). GDF15 was higher in T2DM individuals ($p=0.012$), and 2-way
212 ANOVA model for GDF15 confirmed the effect of T2DM ($p=0.008$), while sex had no
213 significant effect ($p=0.21$). No other major differences were observed between the groups among
214 the inflammatory cytokines, adhesion molecules and growth factors in **Supplemental Table 2**.
215 No differences were observed in the forearm skin biopsies in factors that included mast cell
216 degranulation, number of vessels, macrophages, and round inflammatory cells (data not shown).

217 Peak VO₂ correlated moderately with WBC ($r= -0.540$, $p<0.0001$), IL-4 ($r=0.289$,
218 $p=0.034$), IL-5 ($r=0.273$, $p=0.046$) and IL-13 ($r=0.418$, $p=0.002$). VO₂/WR correlated with
219 ITAC ($r= -0.317$, $p=0.023$), IL-2, ($r=0.282$, $p=0.045$) and IL-13 ($r=0.285$, $p=0.042$), and there
220 was weak evidence for a correlation with IL-4 ($r=0.253$, $p=0.073$).

221

222 **DISCUSSION**

223 By employing state-of-the-art, detailed inflammatory phenotyping, noninvasive cardiac
224 imaging and cardiopulmonary exercise testing, this observational study of elderly (>65 years)
225 individuals explored the independent contributions of T2DM, age, sex and inflammation on
226 cardiovascular health. Our findings in elderly persons with well-managed glycemic control and
227 treatment of comorbidities indicate that older age, the combination of male sex and T2DM, and
228 markers of systemic inflammation are factors contributing to impaired coronary and peripheral
229 (micro)vascular function. Of note is the interaction of the effects of sex and T2DM on
230 microvascular and cardiopulmonary function: both coronary and peripheral vascular function
231 were reduced in males with T2DM and appeared to be largely preserved in females with T2DM,
232 compared to elderly controls without T2DM. In contrast, aerobic exercise capacity was more
233 impaired in females, compared to males, independent of T2DM status. Females had higher levels
234 of adverse myocardial remodeling that may result in exercise-induced diastolic dysfunction.

235 Female sex was associated in previous studies with higher hMBF^{26,27}. The effect of DM
236 on hMBF was not found to be significant in a sub-cohort aged 45 to 85 from the Multi-Ethnic
237 Study of Atherosclerosis, and the authors did not report on any possible interaction of DM with
238 sex²⁷. In a study of premenopausal females with DM, hMBF and coronary perfusion reserve
239 were lower in females with DM than without DM but still higher compared to nondiabetic older
240 (~15 years) post-menopausal females²⁸. This latter finding suggests that older age and change in
241 menopause status can have effects on hMBF of similar magnitude as DM. In a PET study by
242 Haas et al. of individuals with T2DM and good cardiometabolic control, both rest and hyperemic
243 MBF were higher in females (aged 52±8 years) compared to males of similar age, yet the
244 perfusion reserve was lower in females (menopausal status was not specified). In contrast, our

245 study shows a similar myocardial perfusion reserve in elderly males and (postmenopausal)
246 females without T2DM, but hMBF was significantly lower in males with T2DM. Our results
247 suggest that menopause does not blunt the differences of hMBF and coronary reactivity seen in
248 pre-menopausal females, compared to males. Any benefits of better vascular function after
249 menopause, may also lessen the impact of T2DM on coronary vascular function and result in a
250 more pronounced effect on T2DM on coronary microvascular function in males compared to
251 females.

252 An impaired MBF may be confounded by the presence of obstructive coronary lesions
253 ^{14,29}. Only one participant without T2DM showed LGE in the LV, which suggests that
254 obstructive coronary lesions were not a major factor. The consistency of a male-specific effect of
255 T2DM on hMBF, and brachial artery FMD and NID, and the low probability of simultaneous
256 flow-limiting stenosis in both vascular beds without symptoms suggest that obstructive disease
257 was not a major confounder.

258 The measures of peripheral endothelial and smooth muscle vascular function obtained in
259 our study (FMD, NID) provide additional evidence for similar male-specific effects of T2DM as
260 for the coronary hyperemic response. In a study assessing reference intervals and risk factors for
261 FMD across a broad age-range, Holder et al found some evidence of an interaction of sex with
262 DM: age- and sex-specific Z scores for FMD were lower in unmedicated males with DM, but not
263 females ($p=0.08$ for interaction effect), while in individuals taking medications DM had an effect
264 in both sexes with no evidence of an interaction of sex with DM ³⁰. Since our study included
265 only individuals aged ≥ 65 years it provides evidence of an interaction of sex with T2DM without
266 potential confounding by age. Holder et al, who enrolled predominantly individuals aged <65
267 years, reported significantly higher FMD in females compared to males up to the age of 70 years,

268 while in older persons this difference disappeared. This latter finding is consistent with our
269 observation that FMD was not different between elderly males and females *without* T2DM.

270 We found no major differences between T2DM and controls in serum and skin
271 inflammatory markers, apart from increased WBC and lower IL-5 levels among those with
272 T2DM. GDF15 was higher among those with T2DM however this is likely explained by
273 metformin increasing GDF15 levels ³¹. WBC correlated with coronary blood flow, which is in
274 accordance with previous studies that have shown that individuals with elevated WBC have
275 reduced epicardial coronary flow and are at higher risk of acute myocardial infarction ³². A high
276 WBC also mediates insulin resistance and predicts the development of T2DM ³³.

277 Previous studies in individuals with both type 1 and 2 diabetes mellitus have shown that
278 cardiac autonomic neuropathy leading to inability to increase heart rate during exercise was
279 associated with a reduced peak VO₂ ³⁴. During exercise, the healthy heart increases both stroke
280 volume and heart rate. When the cardiac contractility reserve is impaired (e.g. with incipient
281 heart failure), peak VO₂ fails to increase with heart rate as the stroke volume becomes the
282 limiting factor. In our study, peak VO₂ did not increase significantly with the CI in females
283 (**Figure 2B**) suggesting that any chronotropic incompetence would be less of a limiting factor
284 than in men. The sex-related difference in the relation of peak VO₂ with CI was confirmed in a
285 multivariable analysis (**supplemental Table 3A**). We also noted a negative correlation in
286 females of ECV with the resting LV ejection fraction and peak O₂ pulse (**supplemental Table**
287 **3B**). Diffuse myocardial fibrosis can impair augmentation of relaxation velocity as heart rate
288 increases during exercise ³⁵. This suggests that diffuse myocardial fibrosis may cause diastolic
289 dysfunction with exertion not detectable at rest. The stroke volume fails to rise with heart rate,
290 and patients experience dyspnea and fatigue. As ECV was significantly higher in female

291 participants compared to males, effects of diffuse fibrosis on cardiac function may manifest more
292 readily in elderly females. The prevalence of LV diastolic dysfunction markedly increases after
293 menopause and may lead to heart failure³⁶. The moderately strong negative correlation between
294 peak VO₂ and WBC measured at rest suggests a link between reduced exercise capacity and
295 systemic inflammation. Nevertheless, T2DM may exacerbate the effects of inflammation as
296 acute maximal exercise effort caused a larger transient increase in IL-6 and IL-8 in T2DM
297 compared to controls.

298 Our study has several limitations. Owing to the constraints imposed by the COVID-19
299 pandemic, not all participants could complete the entire range of planned examinations. The
300 number of participants with T2DM was lower than the number of without T2DM, however the
301 number of individuals studied was sufficient to provide adequate statistical power for group
302 comparisons. Our study population had a mean duration of diabetes of 15 years and a mean
303 HbA_{1c} of 7 % which reflects good glycemic control for an elderly population³⁷. Our subjects
304 with T2DM had very prevalent use of statins and anti-hypertensive medications, indicating that
305 cardiovascular comorbidities were well controlled. With respect to diabetes management, at the
306 time we conducted our study, glucagon-like peptide 1 (GLP1) receptor agonists and SGLT2
307 inhibitors were not used as commonly as they are now. Given their cardiovascular benefits in
308 T2DM^{38,39}, our results might underestimate the cardiovascular health of T2DM participants
309 currently using these drugs. Our findings may not be generalizable to those with diabetes of
310 much longer or shorter duration, worse glycemic control, or suboptimal management of
311 cardiovascular co-morbidities. Last, our data on physical activity was self-reported. Although we
312 used a validated physical activity assessment⁴⁰, there could be bias in self-reported physical
313 activity data by sex and/or by T2DM/control status.

314

315 **Conclusions**

316 In elderly individuals, whose CVD risk factors are managed according to
317 contemporaneous guidelines, T2DM has a sex-specific effect on coronary and peripheral
318 vascular phenotypes, impairing vascular function and reactivity predominantly in men. In
319 contrast, aerobic exercise capacity was more impaired in females, compared to males,
320 independent of T2DM status, and females showed higher levels of adverse myocardial
321 remodeling that may result in exercise-induced myocardial dysfunction. Our findings suggest
322 that the pathophysiological manifestations of T2DM on vascular function and exercise capacity
323 are distinct in elderly males and females and this may reflect underlying differences in vascular
324 and myocardial aging in the presence of T2DM.

325

326 **Funding:** This work was supported by the by National Institutes of Health (NIH) grant
327 R01AG052282 (AV and MJH). AV received funding from the National Rongxiang Xu
328 Foundation. ER received a scholarship from the Konrad Adenauer Foundation.

329

330 **Duality of Interest:** No potential conflicts of interest relevant to this article.

REFERENCES

1. Tancredi M, Rosengren A, Svensson AM, et al. Excess Mortality among Persons with Type 2 Diabetes. *N Engl J Med*. 2015;373(18):1720-1732. doi:10.1056/NEJMoa1504347
2. Gregg EW, Cheng YJ, Srinivasan M, et al. Trends in cause-specific mortality among adults with and without diagnosed diabetes in the USA: an epidemiological analysis of linked national survey and vital statistics data. *Lancet*. 2018;391(10138):2430-2440. doi:10.1016/S0140-6736(18)30314-3
3. Ridker PM, Everett BM, Pradhan A, et al. Low-Dose Methotrexate for the Prevention of Atherosclerotic Events. *N Engl J Med*. 2019;380(8):752-762. doi:10.1056/NEJMoa1809798
4. Rothman AM, Morton AC, Crossman DC, investigators MIH. Canakinumab for Atherosclerotic Disease. *N Engl J Med*. 2018;378(2):197-198. doi:10.1056/NEJMc1714635
5. Ungvari Z, Tarantini S, Donato AJ, Galvan V, Csiszar A. Mechanisms of Vascular Aging. *Circ Res*. 2018;123(7):849-867. doi:10.1161/CIRCRESAHA.118.311378
6. Guzik TJ, Touyz RM. Oxidative Stress, Inflammation, and Vascular Aging in Hypertension. *Hypertension*. 2017;70(4):660-667. doi:10.1161/HYPERTENSIONAHA.117.07802
7. Chung HY, Kim DH, Lee EK, et al. Redefining Chronic Inflammation in Aging and Age-Related Diseases: Proposal of the Senoinflammation Concept. *Aging Dis*. 2019;10(2):367-382. doi:10.14336/AD.2018.0324
8. Karavidas A, Lazaros G, Tsiachris D, Pyrgakis V. Aging and the cardiovascular system. *Hellenic J Cardiol*. 2010;51(5):421-427. doi:10.1159/000212912

9. Haas A V, Rosner BA, Kwong RY, et al. Sex Differences in Coronary Microvascular Function in Individuals With Type 2 Diabetes. *Diabetes*. 2019;68(3):631-636.
doi:10.2337/db18-0650
10. Ballotari P, Ranieri SC, Luberto F, et al. Sex differences in cardiovascular mortality in diabetics and nondiabetic subjects: a population-based study (Italy). *Int J Endocrinol*. 2015;2015:914057. doi:10.1155/2015/914057
11. Kritchevsky SB, Cesari M, Pahor M. Inflammatory markers and cardiovascular health in older adults. *Cardiovasc Res*. 2005;66(2):265-275. doi:10.1016/j.cardiores.2004.12.026
12. Harris TB, Ferrucci L, Tracy RP, et al. Associations of elevated interleukin-6 and C-reactive protein levels with mortality in the elderly. *Am J Med*. 1999;106(5):506-512.
doi:10.1016/s0002-9343(99)00066-2
13. de Meester de Ravenstein C, Bouzin C, Lazam S, et al. Histological Validation of measurement of diffuse interstitial myocardial fibrosis by myocardial extravascular volume fraction from Modified Look-Locker imaging (MOLLI) T1 mapping at 3 T. *J Cardiovasc Magn Reson*. 2015;17(1):48. doi:10.1186/s12968-015-0150-0
14. Schwitter J, Nanz D, Kneifel S, et al. Assessment of myocardial perfusion in coronary artery disease by magnetic resonance: a comparison with positron emission tomography and coronary angiography. *Circulation*. 2001;103(18):2230-2235.
doi:10.1161/01.cir.103.18.2230
15. Wagner A, Mahrholdt H, Holly TA, et al. Contrast-enhanced MRI and routine single photon emission computed tomography (SPECT) perfusion imaging for detection of subendocardial myocardial infarcts: An imaging study. *Lancet*. 2003;361(9355):374-379.
doi:10.1016/S0140-6736(03)12389-6

16. Lewis GD, Murphy RM, Shah R V, et al. Pulmonary vascular response patterns during exercise in left ventricular systolic dysfunction predict exercise capacity and outcomes. *Circ Heart Fail.* 2011;4(3):276-285. doi:10.1161/CIRCHEARTFAILURE.110.959437
17. American Diabetes Association Professional Practice C. 2. Classification and Diagnosis of Diabetes: Standards of Medical Care in Diabetes-2022. *Diabetes Care.* 2022;45(Suppl 1):S17-S38. doi:10.2337/dc22-S002
18. Gibbons RJ, Balady GJ, Bricker JT, et al. ACC/AHA 2002 guideline update for exercise testing: summary article. A report of the American College of Cardiology/American Heart Association Task Force on Practice Guidelines (Committee to Update the 1997 Exercise Testing Guidelines). *J Am Coll Cardiol.* 2002;40(8):1531-1540. doi:10.1016/s0735-1097(02)02164-2
19. Bertoni AG, Whitt-Glover MC, Chung H, et al. The association between physical activity and subclinical atherosclerosis: the Multi-Ethnic Study of Atherosclerosis. *Am J Epidemiol.* 2009;169(4):444-454. doi:10.1093/aje/kwn350
20. Guazzi M, Adams V, Conraads V, et al. EACPR/AHA Scientific Statement. Clinical recommendations for cardiopulmonary exercise testing data assessment in specific patient populations. *Circulation.* 2012;126(18):2261-2274. doi:10.1161/CIR.0b013e31826fb946
21. Corretti MC, Anderson TJ, Benjamin EJ, et al. Guidelines for the ultrasound assessment of endothelial-dependent flow-mediated vasodilation of the brachial artery: a report of the International Brachial Artery Reactivity Task Force. *J Am Coll Cardiol.* 2002;39(2):257-265. doi:10.1016/s0735-1097(01)01746-6

22. Doupis J, Rahangdale S, Gnardellis C, Pena SE, Malhotra A, Veves A. Effects of diabetes and obesity on vascular reactivity, inflammatory cytokines, and growth factors. *Obesity (Silver Spring)*. 2011;19(4):729-735. doi:10.1038/oby.2010.193
23. Yeh SY, Doupis J, Rahangdale S, Horr S, Malhotra A, Veves A. Total serum bilirubin does not affect vascular reactivity in patients with diabetes. *Vasc Med*. 2009;14(2):129-136. doi:10.1177/1358863X08098273
24. Bakker JP, Baltzis D, Tecilazich F, et al. The Effect of Continuous Positive Airway Pressure on Vascular Function and Cardiac Structure in Diabetes and Sleep Apnea. A Randomized Controlled Trial. *Ann Am Thorac Soc*. 2020;17(4):474-483. doi:10.1513/AnnalsATS.201905-378OC
25. Arena R, Sietsema KE. Exercise in Cardiovascular Disease Cardiopulmonary Exercise Testing in the Clinical Evaluation of Patients With Heart and Lung Disease. Published online 2011. doi:10.1161/CIRCULATIONAHA.109.914788
26. Nickander J, Themudo R, Sigfridsson A, Xue H, Kellman P, Ugander M. Females have higher myocardial perfusion, blood volume and extracellular volume compared to males - an adenosine stress cardiovascular magnetic resonance study. *Sci Rep*. 2020;10(1). doi:10.1038/S41598-020-67196-Y
27. Wang L, Jerosch-Herold M, Jacobs DR, Shahar E, Folsom AR. Coronary risk factors and myocardial perfusion in asymptomatic adults: the Multi-Ethnic Study of Atherosclerosis (MESA). *J Am Coll Cardiol*. 2006;47(3):565-572. doi:10.1016/J.JACC.2005.09.036
28. Di Carli MF, Afonso L, Campisi R, et al. Coronary vascular dysfunction in premenopausal women with diabetes mellitus. *Am Heart J*. 2002;144(4):711-718. doi:10.1016/S0002-8703(02)00147-3

29. Hansson GK. Inflammation, atherosclerosis, and coronary artery disease. *N Engl J Med*. 2005;352(16):1685-1695. doi:10.1056/NEJMra043430
30. Holder SM, Bruno RM, Shkredova DA, et al. Reference Intervals for Brachial Artery Flow-Mediated Dilation and the Relation With Cardiovascular Risk Factors. *Hypertension*. 2021;77(5):1469-1480. doi:10.1161/HYPERTENSIONAHA.120.15754
31. Coll AP, Chen M, Taskar P, et al. GDF15 mediates the effects of metformin on body weight and energy balance. *Nature*. 2020;578(7795):444-448. doi:10.1038/s41586-019-1911-y
32. Barron H V, Cannon CP, Murphy SA, Braunwald E, Gibson CM. Association between white blood cell count, epicardial blood flow, myocardial perfusion, and clinical outcomes in the setting of acute myocardial infarction: a thrombolysis in myocardial infarction 10 substudy. *Circulation*. 2000;102(19):2329-2334. doi:10.1161/01.cir.102.19.2329
33. Nakanishi N, Yoshida H, Matsuo Y, Suzuki K, Tatara K. White blood-cell count and the risk of impaired fasting glucose or Type II diabetes in middle-aged Japanese men. *Diabetologia*. 2002;45(1):42-48. doi:10.1007/s125-002-8243-1
34. Veves A, Saouaf R, Donaghue VM, et al. Aerobic exercise capacity remains normal despite impaired endothelial function in the micro- and macrocirculation of physically active IDDM patients. *Diabetes*. 1997;46(11):1846-1852. doi:10.2337/diab.46.11.1846
35. Zile MR, Brutsaert DL. New concepts in diastolic dysfunction and diastolic heart failure: Part II: causal mechanisms and treatment. *Circulation*. 2002;105(12):1503-1508. doi:10.1161/HC1202.105290

36. Zhao Z, Wang H, Jessup JA, Lindsey SH, Chappell MC, Groban L. Role of estrogen in diastolic dysfunction. *Am J Physiol Heart Circ Physiol*. 2014;306(5).
doi:10.1152/AJPHEART.00859.2013
37. Cosentino F, Grant PJ, Aboyans V, et al. 2019 ESC Guidelines on diabetes, pre-diabetes, and cardiovascular diseases developed in collaboration with the EASD. *Eur Heart J*. 2020;41(2):255-323. doi:10.1093/eurheartj/ehz486
38. Anker SD, Butler J, Filippatos G, et al. Empagliflozin in Heart Failure with a Preserved Ejection Fraction. *N Engl J Med*. 2021;385(16):1451-1461. doi:10.1056/NEJMoa2107038
39. Sattar N, Lee MMY, Kristensen SL, et al. Cardiovascular, mortality, and kidney outcomes with GLP-1 receptor agonists in patients with type 2 diabetes: a systematic review and meta-analysis of randomised trials. *Lancet Diabetes Endocrinol*. 2021;9(10):653-662.
doi:10.1016/S2213-8587(21)00203-5
40. Joseph JJ, Echouffo-Tcheugui JB, Golden SH, et al. Physical activity, sedentary behaviors and the incidence of type 2 diabetes mellitus: the Multi-Ethnic Study of Atherosclerosis (MESA). *BMJ Open Diabetes Res Care*. 2016;4(1):e000185. doi:10.1136/bmjdr-2015-000185

FIGURES AND TABLES

Table 1. Participant Baseline Characteristics

Variable	no T2DM, N = 79 ¹	T2DM, N = 54 ¹	p-value
Female	31 / 79 (39%)	27 / 54 (50%)	0.219
Age [Y]	71 (67, 76)	70 (68, 74)	0.940
BMI [kg/m ²]	27.56 ± 5.23	30.12 ± 5.74	0.011
Waist-to-hip ratio	0.95 ± 0.07	0.98 ± 0.07	0.007
BSA [m ²]	1.85 ± 0.23	1.84 ± 0.23	0.828
BP systolic [mmHg]	129.39 ± 17.57	131.35 ± 15.98	0.509
BP diastolic [mmHg]	76.78 ± 10.59	72.48 ± 10.12	0.021
Heart rate [bpm]	64.42 ± 14.19	68.18 ± 17.97	0.387
RPP [mmHg bpm/1e4]	0.93 ± 0.21	0.93 ± 0.19	0.962
Hx of hypercholesterolemia	8 / 41 (20%)	9 / 23 (39%)	0.088
Hx of hypertension	9 / 41 (22%)	10 / 23 (43%)	0.071
Tobacco use (current/past)	4 / 41 (9.8%)	1 / 23 (4.3%)	0.646
Years of T2DM		15.0 (8.0, 20.0)	
Insulin [µiu/ml]	6.20 (4.15, 9)	10.15 (6.33, 20)	<0.001
Fasting glucose [mg/dL]	90 (84, 95)	115 (93, 145)	<0.001
HOMA-IR	1.68 ± 1.15	6.00 ± 10.60	0.006
Hb A1c	5.50 (5.40, 5.80)	7.00 (6.60, 7.80)	<0.001
Creatinine [mg/dl]	0.82 (0.71, 1.01)	0.84 (0.70, 0.97)	0.939
Sodium [mmol/L]	141 (139, 142)	141 (139, 142)	0.466
Potassium [mmol/L]	4.20 (4.00, 4.60)	4.40 (4.10, 4.50)	0.653
EGFR [ml/min 1.73]	77.77 ± 14.37	77.00 ± 18.96	0.826
Total cholesterol [mg/dL]	187 (164, 216)	153 (137, 177)	<0.001
Triglycerides [mg/dL]	95 (72, 113)	102 (65, 143)	0.356
LDL cholesterol [mg/dL]	106 (81, 134)	76 (61, 93)	<0.001
HDL cholesterol [mg/dL]	60 (47, 76)	55 (43, 68)	0.090
BUN [mg/dL]	17.83 ± 6.38	18.02 ± 7.41	0.892
WBC count [1e6/ml]	5.50 (4.90, 7)	6.50 (5.40, 8)	0.004
RBC count [1e6/mcL]	4.47 (4.33, 5)	4.58 (4.27, 5)	0.813
Blood hematocrit [%]	41.67 ± 3.77	39.74 ± 3.28	0.002
Microalbumin-creatinine ratio	7.55 (3.93, 18.98)	12.55 (7.15, 42.05)	0.038

C-reactive protein [mg/dL]	1.69 (0.73, 3)	1.33 (0.80, 2)	0.718
Statins	21 / 79 (27%)	44 / 54 (81%)	<0.001
Insulin	0 / 79 (0%)	16 / 54 (30%)	<0.001
Oral Antidiabetic	0 / 79 (0%)	45 / 54 (83%)	<0.001
SGLT2 inhibitor	0 / 79 (0%)	1 / 54 (1.9%)	0.406
GLP-1 agonist	0 / 79 (0%)	4 / 54 (7.4%)	0.025
Aspirin	18 / 79 (23%)	25 / 54 (46%)	0.004
Beta Blocker	7 / 79 (8.9%)	11 / 54 (20%)	0.057
Diuretic	6 / 79 (7.6%)	9 / 54 (17%)	0.104
ACEi	1 / 79 (1.3%)	1 / 54 (1.9%)	>0.999
Calcium Channel Blocker	9 / 79 (11%)	6 / 54 (11%)	0.960
ARB	13 / 79 (16%)	23 / 54 (43%)	<0.001
Omega-3	6 / 79 (7.6%)	2 / 54 (3.7%)	0.472
Race			
American Indian/Alaska Native	0 / 14 (0%)	1 / 27 (3.7%)	
Asian	5 / 14 (36%)	3 / 27 (11%)	
Black or African American	7 / 14 (50%)	17 / 27 (63%)	
not provided	1 / 14 (7.1%)	3 / 27 (11%)	
White	1 / 14 (7.1%)	3 / 27 (11%)	
Ethnicity			0.395
hispanic/latino	2 / 79 (2.5%)	3 / 54 (5.6%)	
not hispanic/latino	77 / 79 (97%)	51 / 54 (94%)	
¹ n / N (%); Median (IQR); Mean ± SD			
² Pearson's Chi-squared test; Wilcoxon rank sum test; Welch Two Sample t-test; Fisher's exact test			

Mean ± SD or Median [IQR]

Abbreviations: BMI, body mass index; BSA, body surface area; BP, blood pressure; RPP, rate-pressure-product; HOMA-IR, Homeostasis Model Assessment – Insuline Resistance; Hb, Hemoglobin; EGFR, estimated glomerular filtration rate; LDL, low-density lipoprotein; HDL, high-density lipoprotein; BUN, blood urea nitrogen; WBC, white blood cell; RBC, red blood cell; ACEi, angiotensin-converting enzyme inhibitors; SGLTi, sodium-glucose cotransporter 2

inhibitors; GLP-1, glucagon-like peptide 1; ARB, angiotensin II receptor blocker. Data are expressed as mean \pm SD or n (%) or median with inter quartile range for non-normally distributed data.

Table 2. Cardiac MRI Parameters, Vascular Reactivity and Cardiopulmonary Testing

Variable	Non T2DM	T2DM	p-value²
CARDIAC MRI PARAMETERS	N = 55	N = 30	
LV EDVi [ml/m ²]	70 ± 15.0	69 ± 12.8	0.649
LV ESVi [ml/m ²]	28 ± 8.2	28 ± 8.3	0.881
LV ejection fraction [%]	61 ± 5.7	60 ± 7.6	0.521
LV global longitudinal strain [%]	-23 ± 4.9	-22 ± 4.0	0.828
LV mass index [g/m ²]	50 ± 13.6	50 ± 14.1	0.981
LV mass/EDV ratio [g/ml]	0.72 ± 0.19	0.75 ± 0.26	0.677
Cardiac index [L/min/m ²]	2.79 ± 0.63	2.66 ± 0.57	0.355
RV ESVi [ml/m ²]	30.46 ± 6.55	28.75 ± 8.65	0.351
RV EDVi [ml/m ²]	66.97 ± 13.12	62.22 ± 16.18	0.173
RV ejection fraction [%]	54.38 ± 5.37	53.91 ± 5.94	0.719
Rest MBF [ml/min/g]	0.81 ± 0.18	0.80 ± 0.22	0.909
Rest MBF (RPP-cor.) [ml/min/g]	0.91 ± 0.23	0.88 ± 0.27	0.741
Hyperemic MBF [ml/min/g]	1.96 ± 0.53	1.77 ± 0.48	0.148
Myocardial perfusion reserve	2.47 ± 0.69	2.36 ± 0.72	0.581
Myocardial native T1 [ms]	1,120 ± 47	1,111 ± 38	0.423
ECV	0.28 ± 0.04	0.29 ± 0.03	0.420
Any LV LGE	1 (2.0%)	0 (0%)	>0.999
VASCULAR REACTIVITY	N=67	N=40	
Resting brachial artery diameter (mm)	4.2 ± 0.8	4.7 ± 0.8	0.003
Flow Mediated Dilation (FMD) (% of increase over baseline)	6.5 ± 5.3	4.0 ± 5.0	0.018
Nitroglycerin Induced Dilation (NID) (% of increase over baseline)	9.8 ± 4.8	5.9 ± 7.4	0.040

Acetylcholine induced skin vasodilation (% of increase over baseline)	50 ± 65	41 ± 84	0.531
Sodium nitroprusside skin induced vasodilation (% of increase over baseline)	77 ± 71	73 ± 78	0.772
CARDIOPULMONARY TESTING	N = 39	N = 20	
Peak VO ₂ [ml/min/kg]	20.7 ± 5.0	17.5 ± 4.8	0.022
Peak VO ₂ /WR [ml/min/W]	9.8 ± 1.8	8.7 ± 1.7	0.017
Peak respiratory exchange ratio (RER)	1.11 ± 0.12	1.12 ± 0.10	0.741
O ₂ pulse peak (units?)	12.1 ± 3.8	10.5 ± 3.1	0.098
VE-VCO ₂ slope (units ?)	27.8 ± 3.6	28.2 ± 3.3	0.643
Chronotropic index	0.7 ± 0.3	0.8 ± 0.2	0.451

Mean ± SD

VO₂/WR = Oxygen consumption (ml/min)/Work rate (watts) shows the relationship of oxygen consumption to work performed; RER = Respiratory Exchange Ratio, the volume of carbon dioxide produced to oxygen consumed (also known as RQ, respiratory quotient).

VE/VCO₂ slope = minute ventilation to carbon dioxide produced, a prognostic marker for either cardiac, pulmonary or both as limiting factors such as when there is ventilatory perfusion mismatch often associated with increased cardiac wedge pressure, pulmonary hypertension or pulmonary causes.

Abbreviations: LV, left ventricular; EDVi, enddiastolic volume index; ESVi, endsystolic volume index; RV, right ventricular; MBF, myocardial blood flow; ECV, extracellular volume.

LEGENDS TO FIGURES

Figure 1. Changes in myocardial blood flow by T2DM status and markers of inflammation

A) Rest myocardial blood flow (MBF) was overall higher in female subjects compared to males ($p=0.049$), and this also applied to rest MBF normalized by rate pressure product. The presence of type-2 diabetes mellitus (T2DM) did not affect resting blood flow ($p=0.318$). **B)** MBF during hyperemia induced by regadenoson was lower in participants in males with T2DM ($p=0.05$), but not in females ($p=0.179$). The brackets show p -values from post-hoc pairwise comparisons of the marginal means between males and females within each patient group (with and without T2DM). **C)** The white blood cell count (WBC) was significantly higher in individuals with type-2 diabetes mellitus (5.50 (4.90, 7) vs. 6.50 (5.40, 8) pg/mL; $p = 0.004$) and correlated negatively with myocardial blood flow during hyperemia ($r=-0.29$; $p=0.013$). **D)** Interleukin-13, an anti-inflammatory type-2 cytokine with a putative protective role against atherosclerosis was not significantly different between participants with and without T2DM ($p=0.34$) but correlated positively with hyperemic (“stress”) MBF ($r=0.33$; $p=0.008$).

Figure 2. Cardiopulmonary Exercise Testing

A) Peak VO_2 was reduced in T2DM females but there was no difference in males. **B)** Peak VO_2 correlated significantly in males with the chronotropic index during CPET ($r=0.056$; $p=0.001$), but not in female participants ($r=0.21$; $p=0.31$). The chronotropic index (CI) is defined as the difference of peak heart rate during CPET and the resting heart rate, normalized by the age-adjusted expected heart response, defined as $220 - \text{age} [\text{years}] - \text{resting heart rate}$.

Figure 1. Changes in myocardial blood flow by T2DM status and sex at rest (A) and after hyperemic stress (B). Relationship between hyperemic blood flow and markers of inflammation including white blood cell count (C) and IL-13 (D).

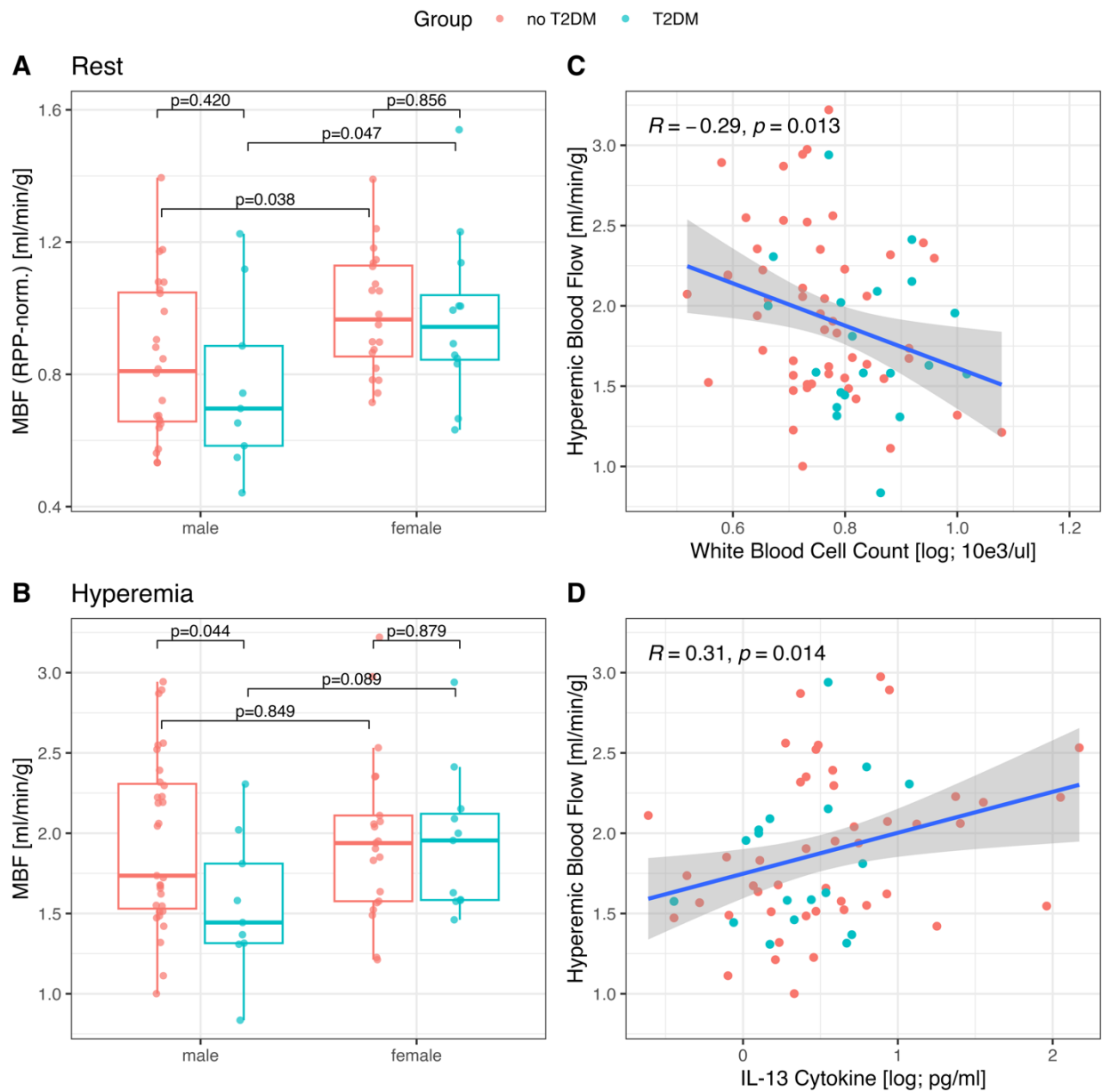
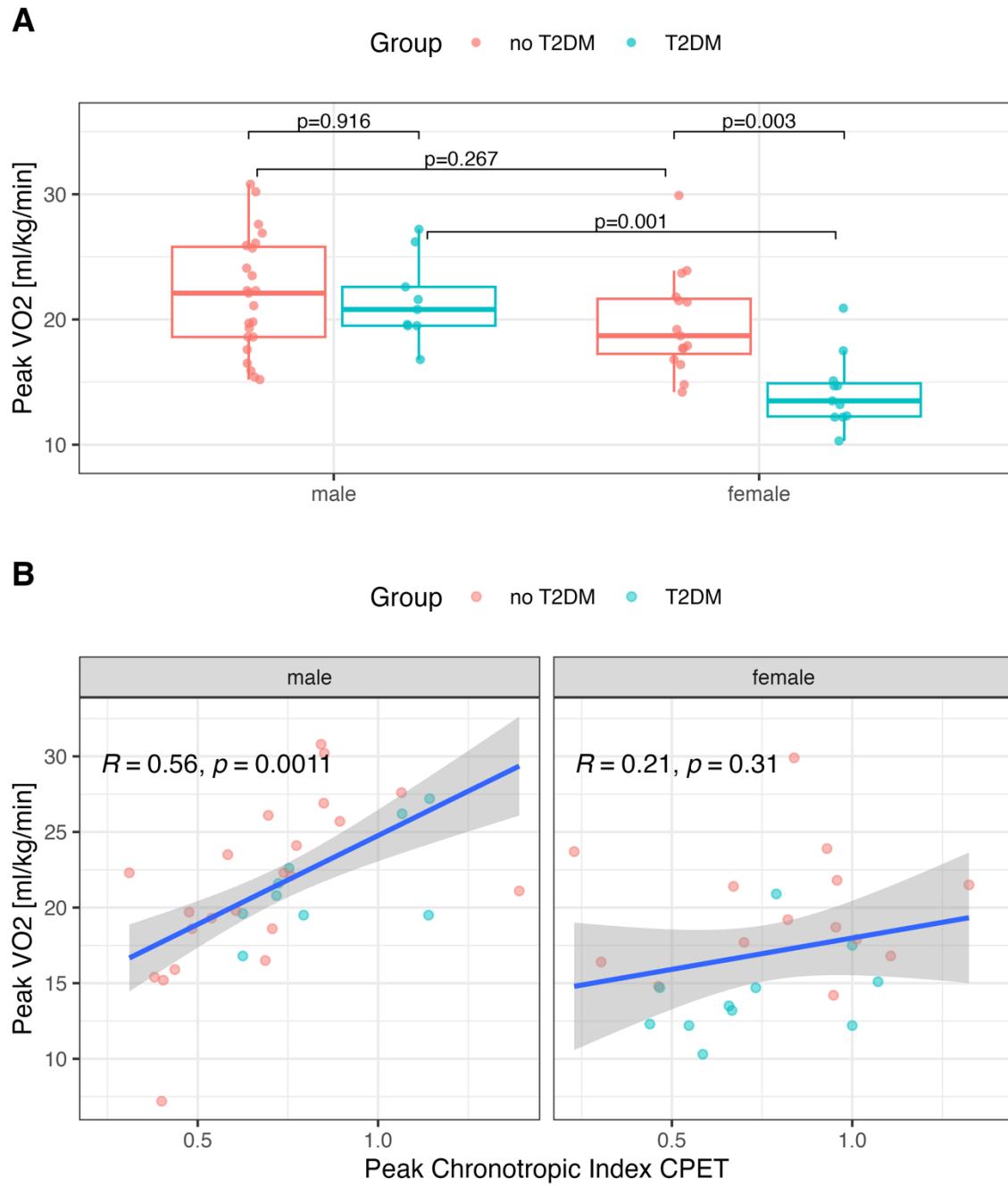


Figure 2. Cardiopulmonary Exercise Testing



SUPPLEMENTAL DATA

Supplemental Table 1: CMR Measurements Stratified by Sex

Variable	Females			Males		
	no T2DM N = 22	T2DM N = 18	p-value	no T2DM N = 33	T2DM N = 12 ^l	p-value
LV EDVi [ml/m ²]	68 ± 12.6	66 ± 12.4	0.517	72 ± 16.5	74 ± 12.5	0.672
LV ESVi [ml/m ²]	27 ± 8.0	26 ± 8.3	0.524	28 ± 8.4	32 ± 7.4	0.180
LV ejection fraction [%]	60 ± 6.4	61 ± 8.0	0.604	61 ± 5.3	57 ± 6.2	0.063
LV GLS [%]	-22 ± 4.9	-23 ± 4.0	0.370	-23 ± 5.0	-21 ± 3.7	0.176
LV mass index [g/m ²]	44 ± 11.9	44 ± 7.7	0.918	54 ± 13.3	61 ± 16.4	0.235
LV mass/EDV ratio [g/ml]	0.64 ± 0.12	0.70 ± 0.16	0.260	0.78 ± 0.21	0.82 ± 0.36	0.736
Cardiac index [L/min/m ²]	2.68 ± 0.69	2.63 ± 0.64	0.818	2.87 ± 0.57	2.72 ± 0.46	0.378
Rest MBF [ml/min/g]	0.85 ± 0.17	0.88 ± 0.21	0.652	0.78 ± 0.18	0.69 ± 0.19	0.218
Rest MBF (RPP-cor.) [ml/min/g]	0.99 ± 0.18	0.97 ± 0.25	0.856	0.84 ± 0.24	0.77 ± 0.26	0.482
Hyperemic MBF [ml/min/g]	1.97 ± 0.51	1.94 ± 0.45	0.872	1.95 ± 0.54	1.55 ± 0.44	0.039
Myocardial native T1 [ms]	1,133 ± 51	1,118 ± 39	0.350	1,108 ± 41	1,103 ± 37	0.698
ECV	0.30 ± 0.03	0.29 ± 0.03	0.675	0.27 ± 0.03	0.29 ± 0.05	0.306
Any LV LGE	0 (0%)	0 (0%)	>0.999	1 (3.3%)	0 (0%)	>0.999

Mean ± SD

Abbreviations: LV: left ventricular; EDVi: enddiastolic volume index; ESVi: endsystolic volume index; GLS: global longitudinal strain; RV: right ventricular; MBF: myocardial blood flow;

ECV: extracellular volume; LGE: late gadolinium enhancement.

Supplemental Table 2: Biomarkers of inflammation and oxidative stress

Variable	no T2DM, N = 79	T2DM, N = 54	P-value
C-reactive protein [mg/l]	1.69 [0.73, 2.84]	1.33 [0.80, 2.44]	0.718
WBC [10e6/ul]	5.50 [4.90, 6.65]	6.50 [5.40, 7.60]	0.004
insulin_uIU_ml	6 [4, 9]	10 [6, 20]	<0.001
ITAC_pg/ml	12 [8, 18]	12 [9, 21]	0.385
GM-CSF_pg/ml	3.9 [1.7, 7.5]	3.6 [2.1, 6.6]	0.959
Fractalkine_pg/ml	58 [25, 78]	56 [40, 72]	0.971
INF-g_pg/ml	9 [3, 13]	8 [5, 13]	0.886
IL-10_pg/ml	3.6 [2.2, 7.9]	3.9 [2.0, 7.4]	0.570
MIP-3a_pg/ml	4.99 [3.29, 7.03]	5.51 [3.82, 7.55]	0.338
IL-12 (p70)_pg/ml	1.48 [0.93, 2.49]	1.32 [0.88, 2.31]	0.506
IL-13_pg/ml	3 [1, 7]	2 [1, 5]	0.405
IL-17A_pg/ml	3.39 [2.05, 5.52]	2.89 [2.05, 4.71]	0.690
IL-1b_pg/ml	0.52 [0.41, 0.87]	0.52 [0.38, 0.75]	0.334
IL-2_pg/ml	1.57 [0.75, 2.34]	1.36 [0.93, 1.86]	0.471
IL-21_pg/ml	2.42 [1.12, 4.01]	2.83 [1.56, 4.20]	0.659
IL-4_pg/ml	20.6 [6.8, 37.8]	12.9 [7.0, 34.5]	0.517
IL-23_pg/ml	57.4 [31.4, 106.9]	39.1 [28.5, 73.0]	0.187
IL-5_pg/ml	1.55 [0.59, 2.67]	0.83 [0.44, 2.03]	0.047
IL-6_pg/ml	2.9 [1.2, 7.9]	1.9 [0.8, 5.1]	0.095
IL-7_pg/ml	16.3 [5.9, 22.8]	15.5 [12.1, 19.0]	0.519
IL-8_pg/ml	5.6 [3.0, 8.1]	6.6 [2.8, 13.8]	0.417
MIP-1a_pg/ml	7.9 [3.4, 9.6]	7.7 [6.2, 9.4]	0.666
MIP-1b_pg/ml	7.5 [5.2, 11.0]	9.0 [6.4, 12.6]	0.153
TNF-a_pg/ml	3.94 [2.04, 4.79]	4.24 [3.41, 5.32]	0.122
EGF_pg/ml	14 [7, 31]	8 [5, 26]	0.174
FGF-2_pg/ml	42 [11, 115]	59 [11, 109]	0.951
VEGF_pg/ml	55 [1, 319]	113 [1, 523]	0.460
MMP-2 [ng/ml]	138 [127, 155]	135 [125, 143]	0.182

Variable	no T2DM, N = 79	T2DM, N = 54	P-value
MMP-9 [ng/ml]	78 [49, 121]	75 [66, 145]	0.365
ADAMTS13_pg/ml	2,316 [1,641, 3,578]	2,619 [1,695, 4,116]	0.242
D-Dimer [ng/ml]	3.0 [1.3, 8.2]	3.5 [1.5, 7.7]	0.930
GDF15_pg/ml	2.1 [1.2, 5.2]	3.9 [1.9, 5.7]	0.012
Myoglobin_pg/ml	159 [83, 245]	145 [71, 257]	0.477
sICAM-1_pg/ml	183 [121, 844]	207 [124, 364]	0.782
MPO_pg/ml	251 [142, 556]	306 [153, 567]	0.502
P-Selectin_pg/ml	194 [131, 328]	179 [125, 308]	0.879
NGAL_pg/ml	152 [91, 281]	161 [102, 320]	0.521
sVCAM-1_pg/ml	1,428 [877, 2,857]	1,415 [886, 2,729]	0.867
SAA [ng/ml]	17 [9, 49]	21 [14, 193]	0.194

Median [IQR]

Abbreviations: WBC, white blood cell count; ITAC, Interferon–inducible T Cell Alpha Chemoattractant; GM-CSF, Granulocyte macrophage colony-stimulating factor; INF-g, Interferon gamma; IL, Interleukin; MIP, Macrophage Inflammatory Protein; TNF-a, tumor necrose factor alpha; EGF, epidermal growth factor; FGF, fibroblast growth factor; VEGF, vascular endothelial growth factor; MMP, matrix metalloproteinase; ADAMTS, von Willebrand factor-cleaving protease; GDF, Growth/Differentiation Factor; sICAM, soluble intracellular adhesion molecule; MPO, myeloperoxidase; NGAL, Neutrophil Gelatinase-Associated Lipocalin; sVCAM, soluble Vascular Cell Adhesin Molecule; SAA, Serum amyloid A protein.

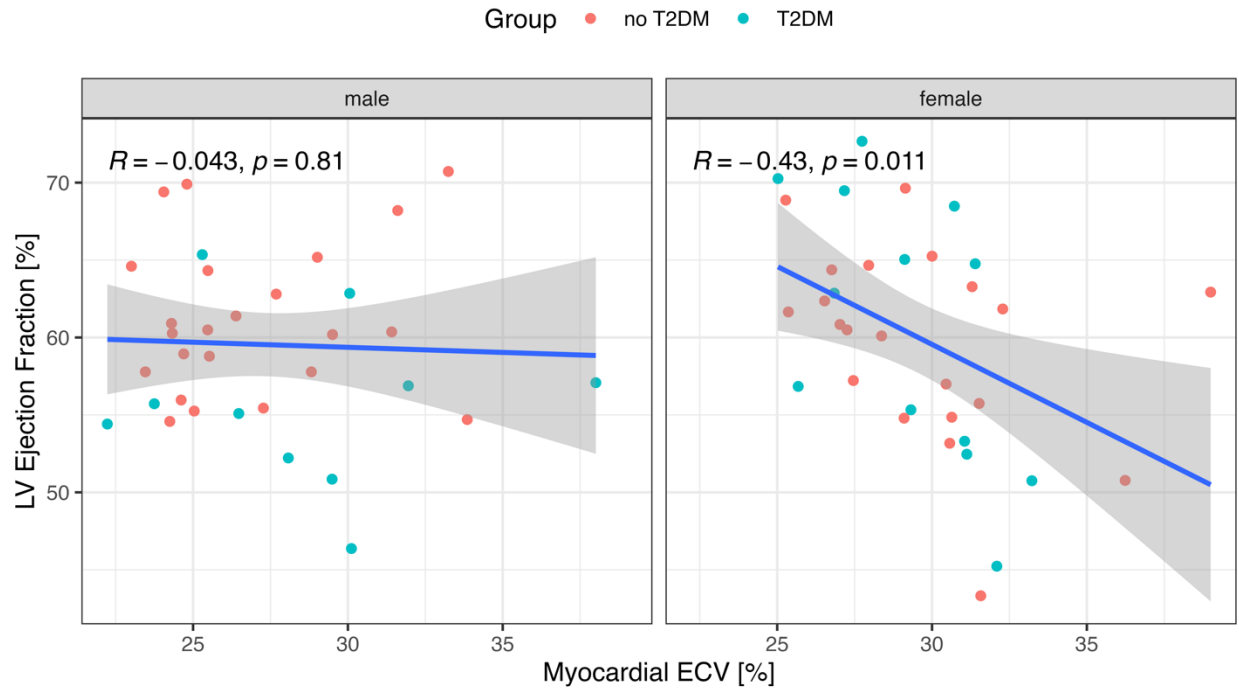
Supplemental Table 3A: Coefficient estimates from linear multi-variable regression model for peak VO₂. Continuous predictors were centered and scaled by their standard deviation. **3B:** Coefficient estimates from linear multi-variable regression model for peak O₂ pulse. The number of observations used for this model (N=42) was smaller than for peak VO₂ because it required paired measurements from CMR and CPET.

A) Linear Model for CPET Peak VO₂

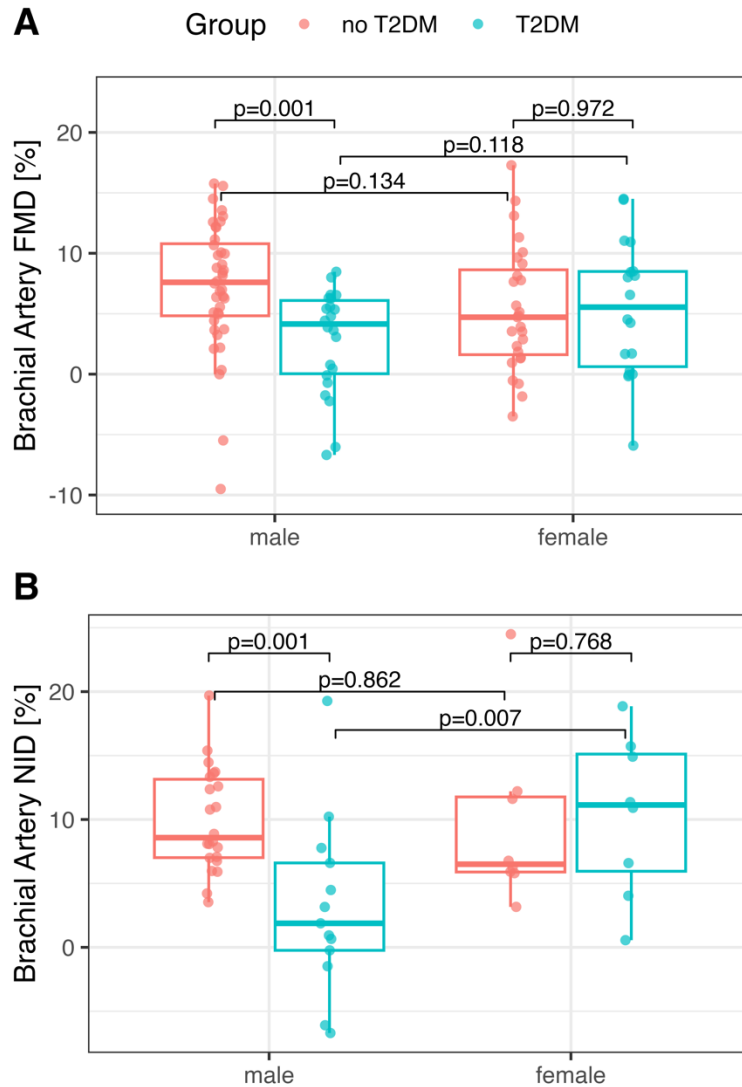
<i>Predictors</i>	Peak VO₂ [ml/kg/min]		
	<i>Estimates</i>	<i>CI</i>	<i>p</i>
(Intercept)	22.10	20.78 – 23.43	<0.001
Chronotropic Index [1 SD]	3.44	2.12 – 4.76	<0.001
Female sex	-5.35	-7.43 – -3.28	<0.001
T2DM	-1.77	-3.87 – 0.33	0.096
Age [Y]	-2.04	-2.98 – -1.11	<0.001
BMI [1SD]	-0.69	-2.39 – 1.02	0.422
Female sex : Chronotropic Index	-2.65	-4.52 – -0.77	0.007
Female sex : BMI	-2.57	-4.95 – -0.20	0.034
Observations	55		
R ² / R ² adjusted	0.666 / 0.616		

B) Linear Model for Peak O2 Pulse

<i>Predictors</i>	Peak O2 Pulse [ml/beat]		
	<i>Estimates</i>	<i>CI</i>	<i>p</i>
(Intercept)	14.66	13.63 – 15.70	<0.001
T2DM	-1.27	-3.15 – 0.60	0.176
Female sex	-4.54	-6.34 – -2.75	<0.001
BMI [1 SD]	1.17	0.24 – 2.09	0.015
Age [1 SD]	-0.44	-1.09 – 0.22	0.186
Myocardial ECV [1 SD]	-0.87	-1.56 – -0.17	0.016
Chronotropic Index [1 SD]	-0.81	-1.44 – -0.17	0.014
Female Sex : T2DM	-0.36	-2.97 – 2.26	0.783
Observations	42		
R ² / R ² adjusted	0.818 / 0.781		



Supplemental Figure 1: Myocardial extracellular volume (ECV), a biomarker of diffuse fibrosis when infiltrative disease can be excluded, correlated significantly in females with the LV ejection fraction at rest, but not in males. Both ECV and LV EF were quantified by cardiac magnetic resonance imaging.



Supplemental Figure 2A: In an ANOVA model for the brachial artery flow mediated dilation (FMD), a measure of endothelial function, there was a significant interaction of sex with T2DM ($p=0.032$). Post-hoc pairwise comparisons with Tukey's adjustment of p-values indicated that FMD was significantly lower in males with T2DM compared to males of similar age without T2DM ($p=0.001$), while in females there was no significant effect of T2DM ($p=0.72$). **2B:** A similar pattern of interaction of sex with T2DM was observed for nitroglycerin-induced vasodilation (NID), indicating that vascular smooth muscle function was abnormal in males with

T2DM, compared to elderly males without T2DM ($p=0.001$), and also elderly females with T2DM ($p=0.007$).