

1 **Oncogenic human papillomavirus and anal microbiota in**  
2 **men who have sex with men and are living with HIV in**  
3 **Northern Taiwan**

4  
5 **Short title:** Human papillomavirus and anal microbiota

6  
7 Shu-Hsing Cheng<sup>1,2,¶</sup>, Yu-Chen Yang<sup>3,¶</sup>, Cheng-Pin Chen<sup>1,4</sup>, Hui-Ting Hsieh<sup>1</sup>, Yi-Chun  
8 Lin<sup>1,5</sup>, Chien-Yu Cheng<sup>1,6</sup>, Kuo-Sheng Liao<sup>7</sup>, Fang-Yeh Chu<sup>8,9,10,&,\*</sup>, Yun-Ru Liu<sup>3,&,\*</sup>

9  
10 <sup>1</sup> Department of Infectious Diseases, Taoyuan General Hospital, Ministry of Health and  
11 Welfare, Taoyuan, Taiwan.

12 <sup>2</sup> School of Public Health, Taipei Medical University, Taipei, Taiwan.

13 <sup>3</sup> Joint Biobank, Office of Human Research, Taipei Medical University, Taipei, Taiwan.

14 <sup>4</sup> Institute of Clinical Medicine, National Yang Ming Chiao Tung University, Taipei, Taiwan.

15 <sup>5</sup> Graduate Institute of Clinical Medicine, College of Medicine, Taipei Medical University,  
16 Taipei, Taiwan.

17 <sup>6</sup> Institute of Public Health, National Yang Ming Chiao Tung University, Taipei, Taiwan.

18 <sup>7</sup> Department of Pathology, Taoyuan General Hospital, Ministry of Health and Welfare,  
19 Taoyuan, Taiwan.

20 <sup>8</sup> Department of Clinical Pathology, Far Eastern Memorial Hospital, New Taipei City,  
21 Taiwan

22 <sup>9</sup> Graduate School of Biotechnology and Bioengineering, Yuan Ze University, Taoyuan City,  
23 Taiwan

**NOTE: This preprint reports new research that has not been certified by peer review and should not be used to guide clinical practice.**

24 <sup>10</sup> School of Medical Laboratory Science and Biotechnology, Taipei Medical University,  
25 Taipei, Taiwan

26

27 **\*Corresponding authors:**

28 Email: [jacpha@mail.femh.org.tw](mailto:jacpha@mail.femh.org.tw) (FYC)

29 Email: [d90444002@tmu.edu.tw](mailto:d90444002@tmu.edu.tw) (YRL)

30

31 ¶ These authors contributed equally as 1<sup>st</sup> authors.

32 & These authors contributed equally as corresponding authors.

33

## 34 **Abstract**

35 Few studies have demonstrated the interplay between human immunodeficiency virus  
36 (HIV), anal human papillomavirus (HPV), and anal microbiota, especially in persons living  
37 with HIV who are men who have sex with men. We therefore explored these  
38 interrelationships in a cohort of persons living with HIV, mainly comprising men who have  
39 sex with men. HPV genotyping using a commercial genotyping kit and ThinPrep cytology  
40 interpreted by Bethesda systems were performed on samples from 291 patients. Samples  
41 were characterized by high-throughput sequencing of dual-index barcoded 16s rRNA (V3–4).  
42 Bacterial diversity was diminished in individuals living with HIV with CD4+ T cells <500  
43 cells/ $\mu$ L and anal cytology yielding atypical squamous cells of undetermined significance or  
44 higher grades (ASCUS+) with detectable HPV 16/18 compared with those with CD4+ T cells  
45  $\geq$ 500 cells/ $\mu$ L with ASCUS+ and HPV 16/18 and those with normal anal cytology or  
46 inflammation without HPV 16/18. Enterobacteriaceae, Ruminococcus, and Bacilli were  
47 significantly abundant in persons living with HIV with CD4+ T cells <500 cells/ $\mu$ L with  
48 ASCUS+ and HPV 16/18. Bacterial diversity, composition, and homogeneity of dispersion  
49 were different in individuals living with HIV with low CD4+ T cells with ASCUS+ and HPV  
50 16/18. These patients should be followed up for the development of anal precancerous  
51 lesions.

52

## 53 **Introduction**

54 Human papillomavirus (HPV) is associated with cancer, including cervical, head and  
55 neck, and genital cancers, and anal squamous cell carcinoma [1,2]. Certain populations have  
56 been noted to have a higher risk of developing anal cancer, namely persons living with  
57 human immunodeficiency virus (HIV) and men who have sex with men (MSM) [3].

58 Persistent oncogenic HPV infections were noted in persons living with HIV (PLWH),  
59 especially with immunocompromised status (CD4 + T cell counts less than 200  $\mu\text{L}/\text{mL}$ ) [4].  
60 Furthermore, the incidence of HPV-related cancer continues to increase in the era of highly  
61 active antiretroviral therapy (HAART) in PLWH [2,5].

62 Recently, there have been many studies on the symbiotic relationship between the  
63 host and indigenous microbiota in establishing viral infections and the progression of virus-  
64 related diseases. Changes in commensal microbiota may affect the prognosis of influenza,  
65 norovirus, and COVID-19 [6-8]. Dysbiosis has been implicated in carcinogenic pathways,  
66 such as chronic B or C hepatitis, hepatocellular carcinoma [9-11], HPV, and cervical  
67 carcinogenesis in women [12,13]. Intestinal dysbiosis and chronic immune activation interact  
68 in PLWH [14,15]. *Peptostreptococcus* and Fusobacteria have been implicated in the  
69 pathogenesis of colorectal cancers [16,17] and are associated with poor prognosis [18].

70 There are fruitful studies on the interaction between the microbiota, HPV acquisition  
71 and persistence, and the development of cervical cancer [13,19,20]. Women with cervical  
72 intraepithelial neoplasia exhibit a microbiota profile with increased bacterial diversity and a  
73 reduced abundance of *Lactobacillus* spp. However, few studies have demonstrated the  
74 interplay between HIV, anal HPV, and anal microbiota, especially in PLWH who are MSM  
75 [20-22]. We explored the interrelationships between HIV, anal HPV, anal precancerous  
76 lesions, and anal microbiota in a PLWH cohort comprising mainly of MSM.

77

## 78 **Materials and Methods**

### 79 **Study participants**

80 Between Jun 1<sup>st</sup>, 2018 and Dec 31<sup>st</sup>, 2021, PLWH who were MSM and visited one of  
81 the outpatient clinics of Taoyuan General Hospital, Taiwan, voluntarily enrolled in this study.

82 Taoyuan General Hospital is a 1,020-bed referral hospital in northern Taiwan serving 2.3  
83 million people, more than 4,300 of whom live with HIV [23]. After providing written  
84 informed consent, the participants completed a self-administered questionnaire that addressed  
85 their education level; marital status; sexual behavior (heterosexuality or homosexuality,  
86 lifetime number of sexual partners, number of new sexual partners within the previous 6  
87 months, frequency of receptive anal sex [always, often, occasionally, seldom, or never],  
88 frequency of condom use during anal sex [always, often, occasionally, seldom, or never],  
89 frequency of chemsex [always, often, occasionally, seldom, or never]; self-reported sexually  
90 transmitted infections (STIs) within the previous 6 months (syphilis, gonorrhea, chlamydial  
91 urethritis, condyloma acuminata, amebic colitis/liver abscess, or other clinical diagnoses of  
92 STIs), and history of HPV vaccination. Saline-wetted Dacron swabs (Amplicor STD Swab  
93 Specimen Collection and Transport Set; Roche Molecular Systems, Branchburg, NJ, USA)  
94 were inserted approximately 5 cm above the anal verge. Rectal swabs were immediately  
95 rinsed in vials of PreservCyt solution (Hologic Inc., Marlborough, MA, USA) and Omnigene  
96 collection tubes (OMR-130; DNA Genotek Inc., Stittsville, ON, Canada).

97 This study was approved by the Institutional Review Board of Taoyuan General  
98 Hospital (IRB#: TYGH106042, TYGH10743 and TYGH108050).

99

## 100 **Anal Pap smears**

101 Anal cytology samples were prepared using thin-preparation Pap smears (ThinPrep;  
102 Hologic Inc., Marlborough, MA, USA) and sent to a certified laboratory for blinded  
103 interpretation by two cytopathology technicians and two pathologists. The results were  
104 classified according to the 2001 Bethesda System [24]. We considered the following as anal  
105 cellular dysplasia: atypical squamous cells of undetermined significance (ASCUS), low-grade  
106 squamous intraepithelial lesions (LSILs), HSILs, and atypical squamous cells that could not

107 exclude HSIL (ASC-H). The cells were preserved in PreservCyt solution and stored at  $-70^{\circ}\text{C}$   
108 for DNA testing.

109

## 110 **Human papillomavirus genotyping**

111 HPV genotyping was performed using polymerase chain reaction (PCR) (Cobas HPV;  
112 Roche Molecular Systems, Branchburg, NJ, USA). Fourteen types of HPV been detected,  
113 including oncogenic types 16 and 18 (as well as types 31, 33, 35, 39, 45, 51, 52, 56, 58, 59,  
114 66, and 68).

115

## 116 **Targeted amplicon library preparation and sequencing**

117 The 16S rRNA gene amplification and library construction were performed according  
118 to Illumina's recommended protocols [25]. Briefly, the universal primers 341F (5'-  
119 CCTACGGGNGGCWGCAG-3') and 805R (5'-GACTACHVGGGTATCTAATCC-3')  
120 containing Illumina overhang adapter sequences in the forward (5'-  
121 TCGTCGGCAGCGTCAGATGTGTATAAGAGACAG-3') and reverse (5'-  
122 GTCTCGTGGGCTCGGAGATGTGTATAAGAGACAG-3') primers were used to amplify  
123 the V3–V4 region of bacterial 16S rRNA using a limited cycle PCR. A Nextera XT Index kit  
124 (Illumina Inc., San Diego, CA, USA) was used to add Illumina sequencing adapters and dual-  
125 index barcodes to the amplicon targets. Quantification and quality of the sequencing libraries  
126 were checked using a QSep100 Analyzer (BiOptic Inc., New Taipei city, Taiwan). Finally,  
127 the libraries were normalized and pooled in an equimolar ratio and sequenced using an  
128 Illumina Miseq instrument, generating paired-end reads of 300 bases in length.

129

## 130 **16S rRNA gene sequence analysis**

131 Universal primer sequences and low-quality reads were trimmed using Cutadapt  
132 (v1.18) [26] and then processed and analyzed using the DADA2/phyloseq workflow in the R  
133 environment. Briefly, filtering, trimming, dereplication, and denoising of forward and reverse  
134 reads were performed using DADA2 (v1.10.0) [27]. Processed reads were merged, and  
135 chimeras were subsequently removed from the cleaned full-length amplicons. Taxonomic  
136 assignment of the inferred amplicon sequence variants (ASVs) was performed using the  
137 SILVA reference database (v138) [28] with a minimum bootstrap confidence of 80. Multiple  
138 sequence alignments of ASVs were performed using DECIPHER (v2.8.1) [29], and a  
139 phylogenetic tree was constructed using RaxML (v8.2.11) [30]. The frequency table,  
140 taxonomy, and phylogenetic tree information were used to create a phyloseq object for  
141 downstream bacterial community analyses using phyloseq (v1.26.0) [31]. The R package  
142 Generalized Unique Fraction (GUniFrac) was used to calculate different versions of Unique  
143 Fraction (UniFrac) distances. Microbiota enrichment analysis was conducted using the Linear  
144 Discriminant Analysis (LDA) effect size (LefSe) method and visualized as a cladogram using  
145 GraPhlAn.

146

## 147 **Statistical analyses**

148 Demographic data are presented as mean  $\pm$  standard deviation (SD) for continuous  
149 variables and percentiles for discrete variables. The distribution of the cytology grading was  
150 calculated, and the HPV genotype results were analyzed. Chi-square tests were used to  
151 compare categorical variables and Student's *t*-tests were used to compare continuous  
152 variables. Anal samples were divided into six groups; group 1: samples from PLWH whose  
153 CD4<sup>+</sup> T cell counts were < 500 cells/ $\mu$ L with anal cytology yielding ASCUS or higher  
154 grades and detectable HPV 16/18; group 2: samples from PLWH whose CD4<sup>+</sup> T cell counts  
155 were  $\geq$  500 cells/ $\mu$ L with anal cytology yielding ASCUS or higher grades with detectable

156 HPV 16/18; group 3: samples from PLWH who had anal cytology yielding ASCUS or higher  
157 grades without HPV 16/18 detection, group 4: samples from PLWH whose CD4+ T cell  
158 counts were < 500 cells/ $\mu$ L and who had normal anal cytology or inflammation with  
159 detectable HPV 16/18; group 5: samples from PLWH whose CD4+ T cell counts  $\geq$  500  
160 cells/ $\mu$ L and who had normal anal cytology or inflammation with detectable HPV 16/18; and  
161 group 6: samples from PLWH who had normal anal cytology or inflammation without HPV  
162 16/18 detection.  $P < 0.05$  was considered statistically significant. All statistical analyses were  
163 conducted using SAS 9.3 software (SAS Institute, Inc., Cary, NC, USA).

164

## 165 Results

166 In total, 338 anal samples were collected. However, 38 (11.2%) failed cytology  
167 interpretation or HPV genotyping tests, and 9 (2.7%) were from heterosexual PLWH. Finally,  
168 291 (86.1%) samples collected from PLWH who were MSM were analyzed (Table 1).

169

170 **Table 1. Demographic characteristics, behavior risks, and immunologic factors for the**  
171 **study cohort of men who have sex with men and live with HIV in northern Taiwan.**

Characteristics	Patients N=291	Percentage or SD
Age, mean (SD)	39.26	(10.06)
Educational year		
6 to 9	14	4.8%
>9 to 12	80	27.5%
>12	197	67.7%
Marriage		



single	271	93.1%
others	20	6.9%
HIV years, mean (SD)	8.55	(5.55)
Smoking	115	39.5%
Drinking	116	39.9%
Betelnut	9	3.1%
Lifetime sexual partner, mean (SD)	21.62	(50.74)
Sexual partner in 1/2 y, mean (SD)	2.17	(4.33)
Condom use during anal sex		
Every time, often	156	53.6%
Occasional	114	39.2%
Rare, never	21	7.2%
Met sexual partners on web	196	67.4%
STDs in 1/2 y	85	29.2%
Circumcision	52	17.9%
HPV vaccination	62	21.3%
Substance use in 1/2 y	42	14.4%
Ever participated in chemsex	95	32.6%
Current CD4+ T cell count, mean (SD)	607.62	(267.11)
Undetectable viral load (VL<50)	267	91.8%

172

173           Among the anal samples from the 291 participants, 199 (68.4%) had detectable

174 oncogenic HPVs, 92 (31.6%) did not, and 68 (23.4%) were positive for HPV type 16/18.

175           Among the anal samples from the 291 participants, 133 (45.7%) yielded cytology  
176 interpretations with ASCUS or higher grades and 158 (52.3%) with normal anal cytology or  
177 inflammation.

178           Among the 133 samples with ASCUS or higher grades in cytology findings, 23  
179 (17.3%) did not have oncogenic HPVs, but 110 (82.7%) had detectable oncogenic HPVs. In  
180 the 110 samples with oncogenic HPVs and ASCUS or higher grades, 66 (60%) were from  
181 PLWH with CD4 +T cell counts of  $\geq 500$  cells/ $\mu$ L, 44 (40%) had CD4+ T cell counts of <  
182 500 cells/ $\mu$ L; and 46 (41.8%) had detectable HPV 16/18. In the 46 samples with HPV 16/18  
183 and ASCUS or higher grades, 25 (54.3%) were from PLWH with CD4+ T cell counts of  $\geq$   
184 500 cells/ $\mu$ L (group 2) and 21 (45.7%) were from PLWH with CD4+ T cell counts of <500  
185 cells/ $\mu$ L (group 1). Anal samples with ASCUS or higher grade and without HPV 16/18 were  
186 in group 3.

187           Of the 158 anal samples with normal or inflamed cytology, 69 (43.7%) did not have  
188 oncogenic HPVs, but 89 (56.3%) had detectable oncogenic HPVs. Of the 89 samples with  
189 oncogenic HPVs and normal cytology findings or inflammation, 54 (60.7%) were from  
190 PLWH with CD4+ cell counts of  $\geq 500$  cells/ $\mu$ L, 35 (39.3%) were from PLWH with CD4 + T  
191 cell counts of <500 cells/ $\mu$ L; and 22 (24.7%) had detectable HPV 16/18. Of the 22 samples  
192 with HPV 16/18 and normal cytology findings or inflammation, 9 (40.9%) were from PLWH  
193 with CD4+ T cell counts of  $\geq 500$  cells/ $\mu$ L (group 5) and 13 (59.1%) were from PLWH with  
194 CD4+ T cell counts of <500 cells/ $\mu$ L (group 4). Anal samples with normal or inflammation  
195 cytology and without HPV 16/18 were included in group 6.

196           We did not find a clear difference in alpha diversity metrics, which implicated the  
197 richness and evenness of bacterial taxa within a community, measured by observed, chao  
198 index, Shannon, and Simpson methods, between samples from PLWH who have anal  
199 cytology yielding ASCUS or higher grades with detectable HPV 16/18 and CD4+ T cell

200 counts of < 500 cells/ $\mu$ L (group 1) and samples from other groups (observed  $p = 0.038$  for  
201 group 1 vs group 2;  $p = 0.014$  for group 1 vs group 6; Chao1  $p = 0.041$  for group 1 vs group  
202 6; Fig 1).

203

204 **Fig 1. Alpha diversity comparing group 1 and groups 2, 3, 4, 5, and 6.** Observed  $p =$   
205  $0.038$  for group 1 vs group 2,  $p = 0.014$  for group 1 vs group 6; Chao1  $p = 0.041$  for group 1  
206 vs group 6. Note: group 1: PLWH whose CD4+ T cell counts were < 500 cells/ $\mu$ L with anal  
207 cytology yielding ASCUS or higher grades and detectable HPV 16/18; group 2: PLWH  
208 whose CD4+ T cell counts were  $\geq 500$  cells/ $\mu$ L with anal cytology yielding ASCUS or higher  
209 grades with detectable HPV 16/18; group 3: PLWH who had anal cytology yielding ASCUS  
210 or higher grades without HPV 16/18 detection, group 4: PLWH whose CD4+ T cell counts  
211 were < 500 cells/ $\mu$ L and who had normal anal cytology or inflammation with detectable HPV  
212 16/18; group 5: PLWH whose CD4+ T cell counts were  $\geq 500$  cells/ $\mu$ L and who had normal  
213 anal cytology or inflammation with detectable HPV 16/18; and group 6: PLWH who had  
214 normal anal cytology or inflammation without HPV 16/18 detection.  
215 ASCUS, atypical squamous cells of undetermined significance; Gr, group; HPV, human  
216 papillomavirus; PLWH, persons living with HIV.

217

218 We also examined beta diversity, which reflects the extent of variation in microbial  
219 community composition between the two groups, using Principal Co-ordinates Analysis  
220 (PcoA) on unweighted UniFrac and weighted UniFrac, PcoA on variance-adjusted weighted  
221 UniFrac, PcoA on GuniFrac with alpha 0.5, Non-metric Multidimensional Scaling (NMDs)  
222 on Bray-Curtis distance (VST), Adonis tests (to examine whether composition between  
223 groups was similar), and the Betadisper test (to test the homogeneity of dispersion between  
224 groups, which is an assumption of Adonis). We found differences at this level between

225 samples from group 1 and those from the other groups (NMDs on Bray-Curtis distance:  
226 Adonis test  $p = 0.0639$  [group 1 vs group 2]; NMDs on Bray-Curtis distance: Adonis test  
227  $0.0149$  [group 1 vs group 3]; PcoA on unweighted UniFrac: Betadisper test  $p = 0.038$  [group  
228 1 vs group 5]; PcoA on unweighted UniFrac: Adonis  $p = 0.014$  [group 1 vs group 6]; PcoA  
229 on variance adjusted weighted UniFrac: Adonis  $p = 0.017$  [group 1 vs group 6]; PcoA on  
230 GuniFrac with alpha 0.5: Adonis  $p = 0.030$  [group 1 vs group 6]; and NMDs on Bray-Curtis  
231 distance (VST): Adonis tests  $p = 0.0006$  [group 1 vs group 6]). For the six groups, plots of  
232 NMDs on the Bray-Curtis distance (VST) showed significant composition differences, as  
233 tested by the Adonis test ( $p = 0.0019$ ; Fig 2a–d).

234

235 **Fig 2. Beta diversity comparing group 1 and groups 2, 3, 4, 5, and 6.** 2a: PcoA on  
236 unweighted UniFrac: Betadisper test  $p = 0.038$  (group 1 vs group 5), Adonis  $p = 0.014$  (group  
237 1 vs group 6); 2b: no significance; 2b: PcoA on variance adjusted weighted UniFrac: Adonis  
238  $p = 0.017$  (group 1 vs group 6); 2c: PcoA on GuniFrac with alpha 0.5: Adonis  $p = 0.030$   
239 (group 1 vs group 6); and 2d: NMDs on Bray-Curtis distance: Adonis test  $p = 0.0639$  (group  
240 1 vs group 2); Adonis test  $0.0149$  (group 1 vs group 3); Adonis tests  $p = 0.0006$  (group 1 vs  
241 group 6). Note: group 1: PLWH whose CD4+ T cell counts were  $< 500$  cells/ $\mu$ L with anal  
242 cytology yielding ASCUS or higher grades and detectable HPV 16/18; group 2: PLWH  
243 whose CD4+ T cell counts were  $\geq 500$  cells/ $\mu$ L with anal cytology yielding ASCUS or higher  
244 grades with detectable HPV 16/18; group 3: PLWH who had anal cytology yielding ASCUS  
245 or higher grades without HPV 16/18 detection, group 4: PLWH whose CD4+ T cell counts  
246 were  $< 500$  cells/ $\mu$ L and who had normal anal cytology or inflammation with detectable HPV  
247 16/18; group 5: PLWH whose CD4+ T cell counts were  $\geq 500$  cells/ $\mu$ L and who had normal  
248 anal cytology or inflammation with detectable HPV 16/18; and group 6: PLWH who had  
249 normal anal cytology or inflammation without HPV 16/18 detection.

250 ASCUS, atypical squamous cells of undetermined significance; Gr, group; HPV, human  
251 papillomavirus; NMDs, Non-metric Multidimensional Scaling; PcoA: Principal Co-ordinates  
252 Analysis; PLWH, persons living with HIV.

253

254 We used the LefSe discovery tool to identify the predictors of abnormal anal  
255 cytology. This method addresses the issue of identifying microorganisms that consistently  
256 explain the differences between  $\geq 2$  microbial communities. When comparing groups 1 and 2,  
257 LefSe showed abundant Enterobacterales, Enterobacteriaceae, and *Mycoplasma* in group 1  
258 and abundant *Fingoldia* in group 2 (Fig 3a). When comparing groups 1 and 3, LefSe showed  
259 abundant Enterobacterales and Enterobacteriaceae in group 1, and abundant *Alloprevotella*  
260 and Erysipelatoclostridiaceae in group 3 (Fig 3b). When comparing groups 1 and 4, LefSe  
261 showed abundant *Ruminococcus* and *Sutterella* in group 1 and abundant  
262 Porphyromonadaceae, *Porphyromonas*, and *Fenollaria* in group 4 (Fig 3c). When comparing  
263 groups 1 and 5, LefSe did not show significant findings. When comparing groups 1 and 6,  
264 LefSe showed abundant Enterobacterales, Enterobacteriaceae, and Bacilli in group 1, and  
265 abundant Bacteroidota, Bacteroidia, Bacteroidales, and Clostridia in group 6 (Fig 3d).

266

267 **Fig 3. Linear discriminant analysis effect size comparing group 1 and groups 2, 3, 4, 5,**  
268 **and 6 and cladogram.** 3a: group 1 vs group 2; 3b: group 1 vs group 3; 3c: group 1 vs group  
269 4, 3d: group 1 vs group 6. Note: group 1: PLWH whose CD4+ T cell counts were < 500  
270 cells/ $\mu$ L with anal cytology yielding ASCUS or higher grades and detectable HPV 16/18;  
271 group 2: PLWH whose CD4+ T cell counts were  $\geq$  500 cells/ $\mu$ L with anal cytology yielding  
272 ASCUS or higher grades with detectable HPV 16/18; group 3: PLWH who had anal cytology  
273 yielding ASCUS or higher grades without HPV 16/18 detection, group 4: PLWH whose  
274 CD4+ T cell counts were < 500 cells/ $\mu$ L and who had normal anal cytology or inflammation

275 with detectable HPV 16/18; group 5: PLWH whose CD4+ T cell counts were  $\geq 500$  cells/ $\mu$ L  
276 and who had normal anal cytology or inflammation with detectable HPV 16/18; and group 6:  
277 PLWH who had normal anal cytology or inflammation without HPV 16/18 detection.  
278 ASCUS, atypical squamous cells of undetermined significance; Gr, group; HPV, human  
279 papillomavirus; PLWH, persons living with HIV.

280

## 281 Discussion

282 The interaction between microbiota, HPV acquisition and persistence, and the  
283 development of cervical cancer in women has been researched in detail [13,19,20]. Based on  
284 the presence or absence of a particular *Lactobacillus* species, Ravel et al. [32] assigned five  
285 different community state types (CSTs); CST I, II, III, and V were dominated by  
286 *Lactobacillus crispatus*, *L. gasseri*, *L. iners*, and *L. jensenii*, respectively, and CST IV  
287 (bacterial vaginosis-associated bacteria) was a heterogeneous group characterized by the  
288 depletion of *Lactobacillus* spp. in the presence of anaerobic species such as *Gardnerella*,  
289 *Megasphaera*, *Sneathia*, and *Prevotella*. The vaginal ecosystem is dominated by *Lactobacillus*  
290 spp. Lactobacilli provide broad-spectrum protection by producing lactic acid, bacteriocins,  
291 and biosurfactants and by adhering to the mucosa, which forms barriers against pathogenic  
292 infections in the vaginal microenvironment [33]. If an imbalance in this defense system  
293 occurs, physicochemical changes arise, inducing selective pressure on the microbiota  
294 (depletion of certain *Lactobacillus* and increase in richness of microbiota) and subsequent  
295 histological alterations of the vaginal mucosa and the cervical epithelium (squamous  
296 intraepithelial neoplasm) [34,35]. A meta-analysis including 12 studies showed bacterial  
297 vaginosis to be associated with higher rates of HPV infection (odds ratio 1.43, 95% CI 1.11–  
298 1.84) [36], implying that a *Lactobacillus*-depleted microbiome may contribute to HPV  
299 persistence in women cervix. Bacterial vaginosis may be associated with the production of

300 reactive oxygen species that may cause double-stranded DNA damage in the host genome  
301 and the HPV episome, facilitating HPV integration and ultimately neoplastic transformation,  
302 a mechanism also employed by the HPV E6 oncoprotein [34]. Women with cervical  
303 intraepithelial neoplasia exhibit a microbiota profile with increased bacterial diversity and a  
304 reduced abundance of *Lactobacillus* spp. [13,19]. These findings were similar in women who  
305 are PLWH and had cervical lesions [37,38].

306 In the pathophysiology of infectious diseases, pathogenic colonization and infection  
307 involve dynamic interactions between microbes and the microbiome, host, and environmental  
308 factors [39]. This biology is also applicable to PLWH who are MSM. A small study of 42  
309 PLWH who were MSM revealed that *Peptostreptococcus*, *Campylobacter*, and *Gardnerella*  
310 were associated with anal precancerous lesions [21]. Another study involving 113 Nigerian  
311 MSM found that a higher proportion of MSM with prevalent HPV16 was associated with a  
312 cluster enriched in *Sneathia* from the family *Fusobacteriaceae* [22]. However, there were only  
313 six PLWH treated with HAART with viral suppression in the study by Nowak et al. [22].  
314 Another study showed that *Ruminococcaceae* NK4A214 group, *Alloprevotella* genus,  
315 *Prevotella melanonigenica*, and *Ruminococcaceae* UCG-014 were the most predictive of  
316 biopsy-proven high-grade squamous intraepithelial lesions (HSIL) [40].

317 In the present study, diminished richness of bacterial diversity was noted in PLWH  
318 with CD4+ T cell counts of < 500 cells/ $\mu$ L and anal cytology yielding ASCUS or higher  
319 grades with detectable HPV 16/18 (group 1) compared with other groups, i.e., PLWH with  
320 CD4+ T cell counts of  $\geq$  500 cells/ $\mu$ L and anal cytology yielding ASCUS or higher grades  
321 with detectable HPV 16/18 (group 2), and PLWH who have normal anal cytology or  
322 inflammation without detectable HPV 16/18 (group 6). The bacterial composition and  
323 homogeneity of the dispersion also differed between the groups. *Enterobacteriaceae*, *Proteus*,  
324 *Morganellaceae*, *Mycoplasma*, *Sutterella*, *Ruminococcus*, and *Bacilli* were significantly

325 abundant in PLWH whose CD4+ T cell counts were < 500 cells/ $\mu$ L and who had anal  
326 cytology yielding ASCUS or higher grades with detectable HPV 16/18 (group 1). In contrast,  
327 Bacteroidales and Clostridia were abundant in PLWH with anal cytology, yielding normal or  
328 inflammatory results without detectable HPV 16/18 (group 6).

329 HIV infection also frequently correlates with increased tissue and circulating  
330 measures of inflammation, such as CD14, IL-6, and CD38+HLA-DR+CD8+ T cells in the  
331 gut [41], as well as increases in traditionally pathogenic bacteria such as Enterobacteriaceae,  
332 including Morganellaceae and *Proteus* [42,43].

333 *Mycoplasma* is the smallest intracellular bacterium that establishes persistent  
334 intracellular infections that can lead to inflammatory cytokine-mediated tissue injury. In  
335 addition, *mycoplasma* infection allows direct interaction with HPV during co-infection of  
336 epithelial cells [44], an observation consistent with our findings. *Sutterella* is a gram-  
337 negative, non-spore-forming rod grown under anaerobic or microaerophilic conditions. It  
338 belongs to the family Betaproteobacteria, is proinflammatory [45], and could explain our  
339 findings regarding abundance of *Sutterella* in the anal samples of group 1 patients.

340 *Ruminococcus*, a gram-positive, spore-forming, anaerobic rod, is a polyphyletic genus with  
341 species belonging to two Firmicutes families, Lachnospiraceae and Ruminococcaceae,  
342 capable of degrading cellulose. Our findings are consistent with those of Ron et al., who  
343 described *Ruminococcus*-predicting HSIL [40]. In contrast, a decreased abundance of  
344 *Ruminococcus* was previously noted in the guts of PLWH [46].

345 Bacilli have been reported to correlate with the progression of HPV-related cervical  
346 lesions [13] and may therefore deserve attention with regard to the progression of anal  
347 lesions.

348 The strength of this study lies in its interpretation of the anal microbial compositions  
349 of a large cohort of PLWH who are MSM and had different stages of HPV-related disease



350 using high-throughput sequencing. The limitations of this study include its cross-sectional  
351 design. Hence, we could not conclude a causal relationship between the anal microbiota and  
352 HPV infection or AIN. Second, nearly 100% of the study cohort received HAART; therefore,  
353 the findings of this study cannot be generalized to PLWH without HAART. Third, previous  
354 studies have mentioned the contribution of *Fusobacterium* and *Sneathia* to HPV-related  
355 lesions [22,39], which could not be proven in this study. Ethnic or environmental factors may  
356 contribute to these findings [13,22]. Finally, the participants in this study were from a single  
357 urban tertiary care hospital, and the results cannot be generalized to different populations.

358 In conclusion, the diminished richness, composition, and homogeneity of dispersion  
359 of bacterial diversity were different in PLWH with low CD4+ T cell counts (< 500 cells/ $\mu$ L)  
360 and who have anal cytology yielding ASCUS or higher grades with detectable HPV 16/18.  
361 These patients should be followed-up for the development of anal precancerous lesions.  
362 Furthermore, the anal swab signature microbiota profiles, such as *Lactobacillus* in the cervix,  
363 warrant further exploration.

364

## 365 **Acknowledgements**

366 We acknowledge the Core Instrument Center of the Taipei Medical University for  
367 providing the next generation sequence service. We also thank the patients and the care team  
368 of Comprehensive AIDS Care Center at Taoyuan General Hospital, Ministry of Health and  
369 Welfare.

370

## 371 **References**

- 372 1. zur Hausen HA. The role of papillomaviruses in anogenital cancer. *Scand J Infect*  
373 *Dis Suppl.* 1990;69:107–111.

- 374 2. de Martel C, Georges D, Bray F, Ferlay J, Clifford GM. Global burden of cancer  
375 attributable to infections in 2018: a worldwide incidence analysis. *Lancet Glob*  
376 *Health*. 2020;8:e180–90. doi: 10.1016/s2214-109x(19)30488-7
- 377 3. Clifford GM, Georges D, Shiels MS, Engels EA, Albuquerque A, Poynten IM, et al.  
378 A meta-analysis of anal cancer incidence by risk group: toward a unified anal cancer  
379 risk scale. *Int J Cancer*. 2021;148:38–47. doi: 10.1002/ijc.33185
- 380 4. Cheng SH, Chu FY, Lin YS, Hsueh YM. Influence of Age and CD4+ T cell counts  
381 on the prevalence of genital human papillomavirus infection among HIV-  
382 seropositive men who have sex with men in Taiwan. *J Med Virol*. 2012;84:1876–  
383 1883. doi: 10.1002/jmv.23413
- 384 5. Jin F, Vajdic CM, Law M, Amin J, van Leeuwen M, McGregor S, et al. Incidence  
385 and time trends of anal cancer among people living with HIV in Australia. *AIDS*.  
386 2019;33:1361–1368. doi: 10.1097/QAD.0000000000002218
- 387 6. Jones MK, Watanabe M, Zhu S, Graves CL, Keyes LR, Grau KR, et al. Enteric  
388 bacteria promote human and mouse Norovirus infection of B cells. *Science*.  
389 2014;346:755–759. doi: 10.1126/science.1257147
- 390 7. Kaul D, Rathnasinghe R, Ferres M, Tan GS, Barrera A, Pickett BE, et al.  
391 Microbiome disturbance and resilience dynamics of the upper respiratory tract  
392 during influenza A virus infection. *Nat Commun*. 2020;11:2537. doi:  
393 10.1038/s41467-020-16429-9. Erratum in: *Nat Commun*. 2020;11:3132. doi:  
394 10.1038/s41467-020-17020-y
- 395 8. Mizutani T, Ishizaka A, Koga M, Ikeuchi K, Saito M, Adachi E, et al. Correlation  
396 analysis between gut microbiota alterations and the cytokine response in patients  
397 with coronavirus disease during hospitalization. *Microbiol Spectr*.  
398 2022;10:e0168921. doi: 10.1128/spectrum.01689-21

- 399 9. Komiyama S, Yamada T, Takemura N, Kokudo N, Hase K, Kawamura YI. Profiling  
400 of tumour-associated microbiota in human hepatocellular carcinoma. *Sci Rep.*  
401 2021;11:10589. doi: 10.1038/s41598-021-89963-1
- 402 10. Liu Q, Li F, Zhuang Y, Xu J, Wang J, Mao X, et al. Alteration in gut microbiota  
403 associated with hepatitis B and non-hepatitis virus related hepatocellular carcinoma.  
404 *Gut Pathog.* 2019;11:1. doi: 10.1186/s13099-018-0281-6
- 405 11. Inoue T, Nakayama J, Moriya K, Kawaratani H, Momoda R, Ito K, et al. Gut  
406 dysbiosis associated with hepatitis C virus infection. *Clin Infect Dis.* 2018;67:869–  
407 877. doi: 10.1093/cid/ciy205
- 408 12. So KA, Yang EJ, Kim NR, Hong SR, Lee JH, Hwang CS, et al. Changes of vaginal  
409 microbiota during cervical carcinogenesis in women with human papillomavirus  
410 infection. *PLoS One.* 2020;15:e0238705. doi: 10.1371/journal.pone.0238705
- 411 13. Chen Y, Qiu X, Wang W, Li D, Wu A, Hong Z, et al. Human papillomavirus  
412 infection and cervical intraepithelial neoplasia progression are associated with  
413 increased vaginal microbiome diversity in a Chinese cohort. *BMC Infect Dis.*  
414 2020;20:629. doi: 10.1186/s12879-020-05324-9
- 415 14. Neff CP, Krueger O, Xiong K, Arif S, Nusbacher N, Schneider JM, et al. Fecal  
416 microbiota composition drives immune activation in HIV-infected individuals.  
417 *EBioMedicine.* 2018;30:192–202. doi: 10.1016/j.ebiom.2018.03.024
- 418 15. Cook RR, Fulcher JA, Tobin NH, Li F, Lee D, Javanbakht M, et al. Effects of HIV  
419 viremia on the gastrointestinal microbiome of young MSM. *AIDS.* 2019;33:793–  
420 804. doi: 10.1097/QAD.0000000000002132
- 421 16. Castellarin M, Warren RL, Freeman JD, Dreolini L, Krzywinski M, Strauss J, et al.  
422 *Fusobacterium nucleatum* infection is prevalent in human colorectal carcinoma.  
423 *Genome Res.* 2012;22:299–306. doi: 10.1101/gr.126516.111

- 424 17. Yu J, Feng Q, Wong SH, Zhang D, Liang QY, Qin Y, et al. Metagenomic analysis of  
425 faecal microbiome as a tool towards targeted non-invasive biomarkers for colorectal  
426 cancer. *Gut*. 2017;66:70–78. doi: 10.1136/gutjnl-2015-309800
- 427 18. Mima K, Nishihara R, Qian ZR, Cao Y, Sukawa Y, Nowak JA, et al. *Fusobacterium*  
428 *nucleatum* in colorectal carcinoma tissue and patient prognosis. *Gut*. 2016;65:1973–  
429 1980. doi: 10.1136/gutjnl-2015-310101
- 430 19. Nieves-Ramírez ME, Partida-Rodríguez O, Moran P, Serrano-Vázquez A, Pérez-  
431 Juárez H, Pérez-Rodríguez ME, et al. Cervical squamous intraepithelial lesions are  
432 associated with differences in the vaginal microbiota of Mexican women. *Microbiol*  
433 *Spectr*. 2021;9:e0014321. doi: 10.1128/Spectrum.00143-21
- 434 20. Kyrgiou M, Mitra A, Moscicki AB. Does the vaginal microbiota play a role in the  
435 development of cervical cancer? *Transl Res*. 2017;179:168–182. doi:  
436 10.1016/j.trsl.2016.07.004
- 437 21. Serrano-Villar S, Vásquez-Domínguez E, Pérez-Molina JA, Sainz T, de Benito A,  
438 Latorre A, et al. HIV, HPV, and microbiota: partners in crime? *AIDS*. 2017;31:591–  
439 594. doi: 10.1097/QAD.0000000000001352
- 440 22. Nowak RG, Bentzen SM, Ravel J, Crowell TA, Dauda W, Ma B, et al. Anal  
441 microbial patterns and oncogenic human papillomavirus in a pilot study of Nigerian  
442 men who have sex with men at risk for or living with HIV. *AIDS Res Hum*  
443 *Retroviruses*. 2019;35:267–275. doi: 10.1089/AID.2018.0158
- 444 23. Taiwan Centers for Disease Control. Statistics of communicable diseases and  
445 surveillance reports in Taiwan area. Taiwan: Ministry of Health and Welfare; Dec  
446 2023. p. 2017. Available from:  
447 <https://www.cdc.gov.tw/Category/Page/rCV9N1rGUz9wNr8lggsh2Q>. Accessed 31  
448 December 2023.

- 449 24. Solomon D, Davey D, Kurman R, Moriarty A, O'Connor D, Prey M, et al. The 2001  
450 Bethesda System: terminology for reporting results of cervical cytology. *JAMA*.  
451 2002;287:2114–2119. doi: 10.1001/jama.287.16.2114
- 452 25. Illumina support center. 16S Metagenomic Sequencing Library Preparation. Illumina  
453 Inc. San Diego, USA; Nov 2013. Available from:  
454 [https://support.illumina.com/downloads/16s\\_metagenomic\\_sequencing\\_library\\_preparation.html](https://support.illumina.com/downloads/16s_metagenomic_sequencing_library_preparation.html). Accessed 31 December 2023.
- 456 26. Martin M. Cutadapt removes adapter sequences from high-throughput sequencing  
457 reads. *EMBnet.journal*. 2011;17:10-12. doi:10.14806/ej.17.1.200
- 458 27. Callahan BJ, McMurdie PJ, Rosen MJ, Han AW, Johnson AJ, Holmes SP. DADA2:  
459 High-resolution sample inference from Illumina amplicon data. *Nat Methods*.  
460 2016;13:581-583
- 461 28. Quast C, Pruesse E, Yilmaz P, Gerken J, Schweer T, Yarza P, Peplies J, Glöckner  
462 FO. The SILVA ribosomal RNA gene database project: improved data processing  
463 and web-based tools. *Nucleic Acids Res*. 2013;41:D590- D596
- 464 29. Wright ES. DECIPHER: harnessing local sequence context to improve protein  
465 multiple sequence alignment. *BMC Bioinformatics* 2015;16:322
- 466 30. Stamatakis A. RAxML version 8: a tool for phylogenetic analysis and post-analysis  
467 of large phylogenies. *Bioinformatics*. 2014;30:1312-1313
- 468 31. McMurdie PJ, Holmes S. Phyloseq: an R package for reproducible interactive  
469 analysis and graphics of microbiome census data. *PLoS One*. 2013;8:e61217.
- 470 32. Ravel J, Gajer P, Abdo Z, Schneider GM, Koenig SS, McCulle SL, et al. Vaginal  
471 microbiome of reproductive-age women. *Proc Natl Acad Sci U S A*.  
472 2011;108:4680–4687. doi: 10.1073/pnas.1002611107

- 473 33. Łaniewski P, Cui H, Roe DJ, Barnes D, Goulder A, Monk BJ, et al. Features of the  
474 cervicovaginal microenvironment drive cancer biomarker signatures in patients  
475 across cervical carcinogenesis. *Sci Rep.* 2019;9:7333. doi: 10.1038/s41598-019-  
476 43849-5
- 477 34. Williams VM, Filippova M, Filippov V, Payne KJ, Duerksen-Hughes P. Human  
478 papillomavirus type 16 E6\* induces oxidative stress and DNA damage. *J Virol.*  
479 2014;88:6751–6761. doi: 10.1128/JVI.03355-13
- 480 35. Piyathilake CJ, Ollberding NJ, Kumar R, Macaluso M, Alvarez RD, Morrow CD.  
481 Cervical microbiota associated with higher grade cervical intraepithelial neoplasia in  
482 women infected with high-risk human papillomaviruses. *Cancer Prev Res (Phila).*  
483 2016;9:357–366. doi: 10.1158/1940-6207.CAPR-15-0350
- 484 36. Gillet E, Meys JF, Verstraelen H, Bosire C, De Sutter P, Temmerman M, et al.  
485 Bacterial vaginosis is associated with uterine cervical human papillomavirus  
486 infection: a meta-analysis. *BMC Infect Dis.* 2011;11:10. doi: 10.1186/1471-2334-11-  
487 10
- 488 37. Curty G, Costa RL, Siqueira JD, Meyrelles AI, Machado ES, Soares EA, et al.  
489 Analysis of the cervical microbiome and potential biomarkers from postpartum HIV-  
490 positive women displaying cervical intraepithelial lesions. *Sci Rep.* 2017;7:17364.  
491 doi: 10.1038/s41598-017-17351-9
- 492 38. Chávez-Torres M, Gómez-Palacio-Schjetnan M, Reyes-Terán G, Briceño O, Ávila-  
493 Ríos S, Romero-Mora KA, et al. The vaginal microbiota of women living with HIV  
494 on suppressive antiretroviral therapy and its relation to high-risk human  
495 papillomavirus infection. *BMC Microbiol.* 2023;23:21. doi: 10.1186/s12866-023-  
496 02769-1

- 497 39. Vonaesch P, Anderson M, Sansonetti PJ. Pathogens, microbiome and the host:  
498 emergence of the ecological Koch's postulates. *FEMS Microbiol Rev.* 2018;42:273–  
499 292. doi: 10.1093/femsre/fuy003
- 500 40. Ron R, Cabello A, Gosalbes MJ, Sánchez-Conde M, Talavera-Rodríguez A, Zamora  
501 J, et al. Exploiting the microbiota for the diagnosis of anal precancerous lesions in  
502 men who have sex with men. *J Infect Dis.* 2021;224:1247–1256. doi:  
503 10.1093/infdis/jiab068
- 504 41. Gootenberg DB, Paer JM, Luevano JM, Kwon DS. HIV-associated changes in the  
505 enteric microbial community: potential role in loss of homeostasis and development  
506 of systemic inflammation. *Curr Opin Infect Dis.* 2017;30:31–43. doi:  
507 10.1097/QCO.0000000000000341
- 508 42. Dinh DM, Volpe GE, Duffalo C, Bhalchandra S, Tai AK, Kane AV, et al. Intestinal  
509 microbiota, microbial translocation, and systemic inflammation in chronic HIV  
510 infection. *J Infect Dis.* 2015;211:19–27. doi: 10.1093/infdis/jiu409
- 511 43. Dubourg G, Lagier JC, Hüe S, Surenaud M, Bachar D, Robert C, et al. Gut  
512 microbiota associated with HIV infection is significantly enriched in bacteria  
513 tolerant to oxygen. *BMJ Open Gastroenterol.* 2016;3:e000080. doi:  
514 10.1136/bmjgast-2016-000080
- 515 44. Klein C, Samwel K, Kahesa C, Mwaeselage J, West JT, Wood C, et al. *Mycoplasma*  
516 co-infection is associated with cervical cancer risk. *Cancers (Basel).* 2020;12:1093.  
517 doi: 10.3390/cancers12051093
- 518 45. Hiippala K, Kainulainen V, Kalliomäki M, Arkkila P, Satokari R. Mucosal  
519 prevalence and interactions with the epithelium indicate commensalism of *Sutterella*  
520 spp. *Front Microbiol.* 2016;7:1706. doi: 10.3389/fmicb.2016.01706

- 521        46. Meng J, Tao J, Abu Y, Sussman DA, Girotra M, Franceschi D, et al. HIV-positive  
522            patients on antiretroviral therapy have an altered mucosal intestinal but not oral  
523            microbiome. *Microbiol Spectr.* 2023;11:e0247222. doi: 10.1128/spectrum.02472-22



Group Gr1 Gr3 Gr5  
Gr2 Gr4 Gr6

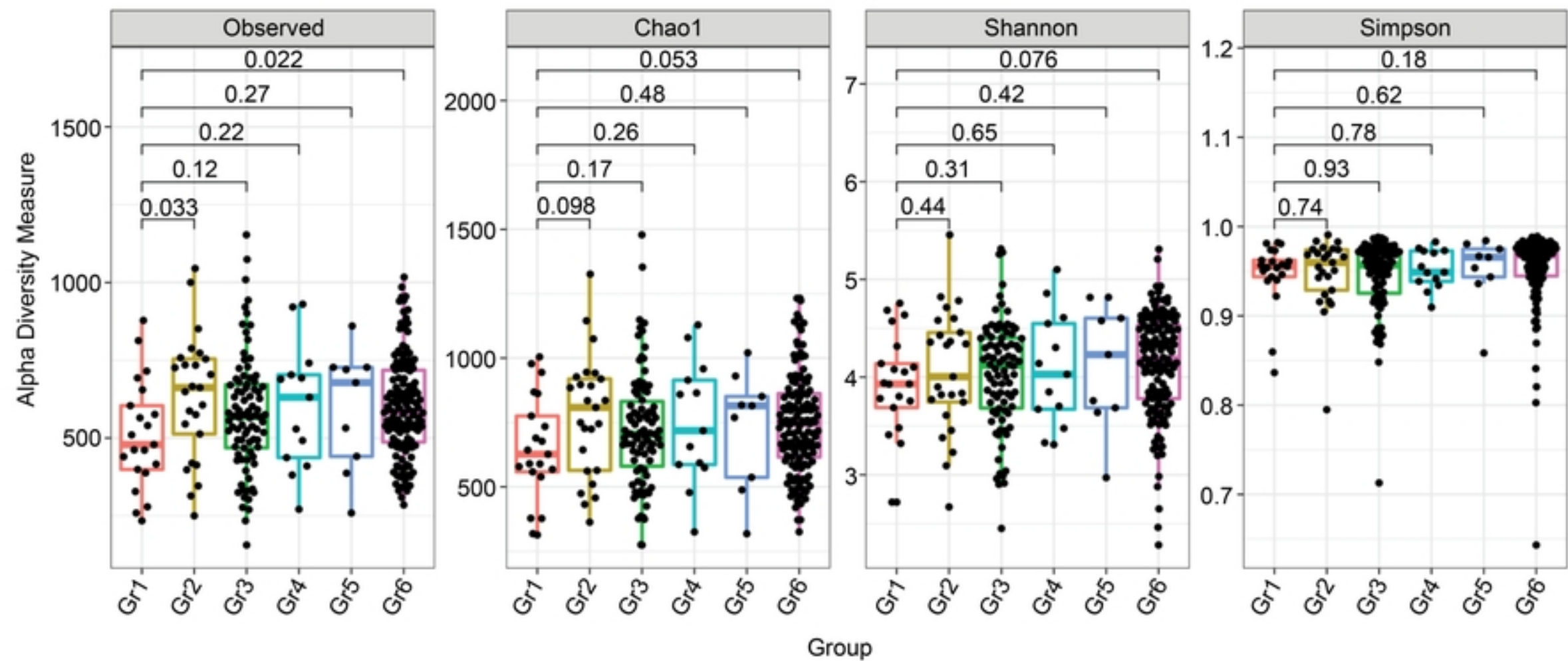


Figure 1

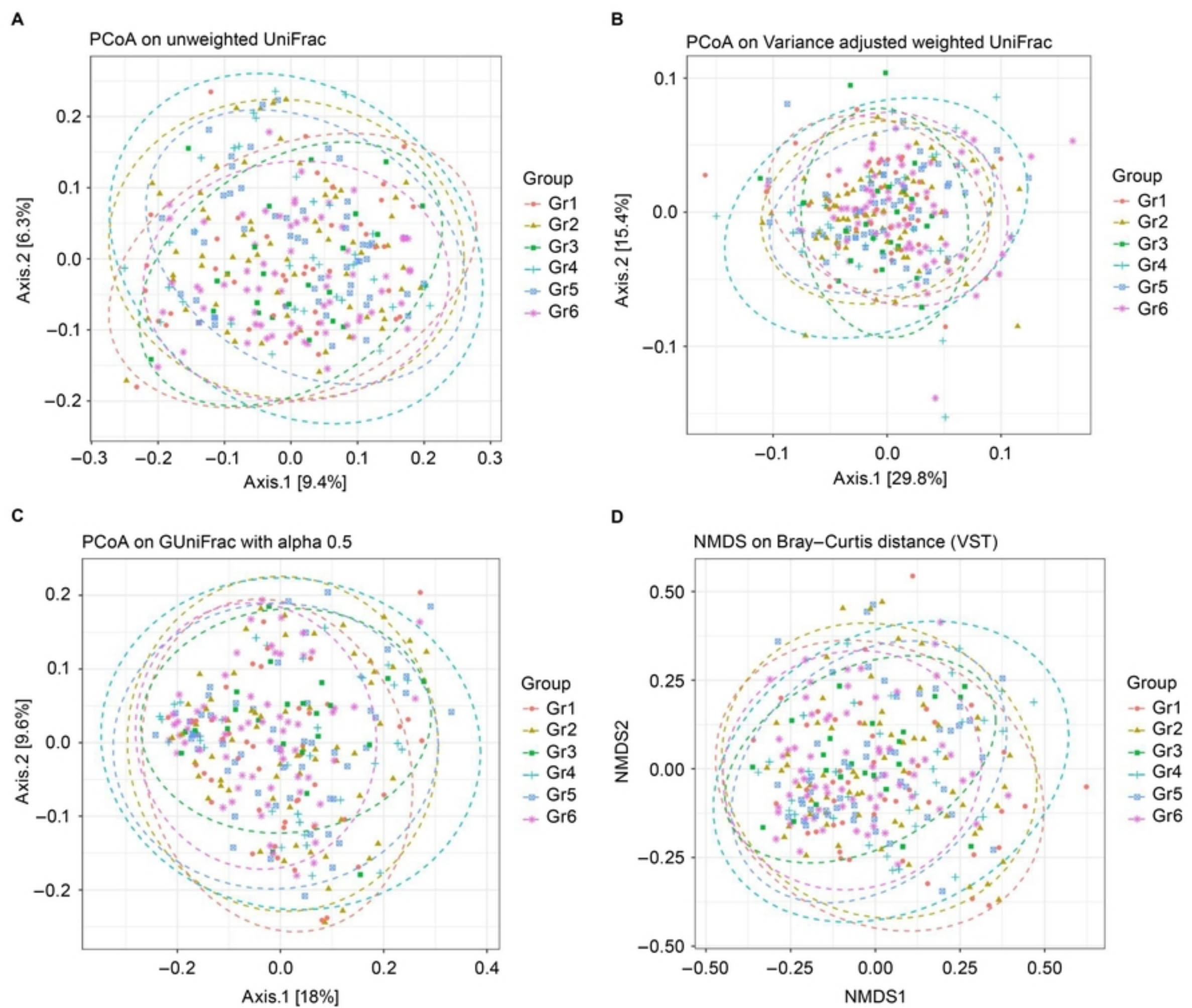
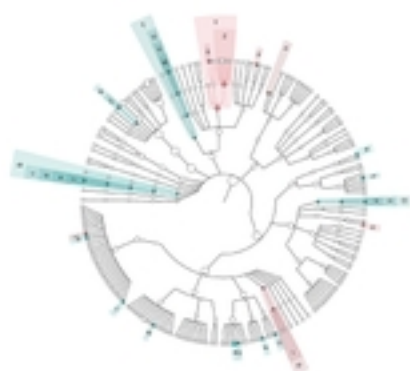


Figure 2

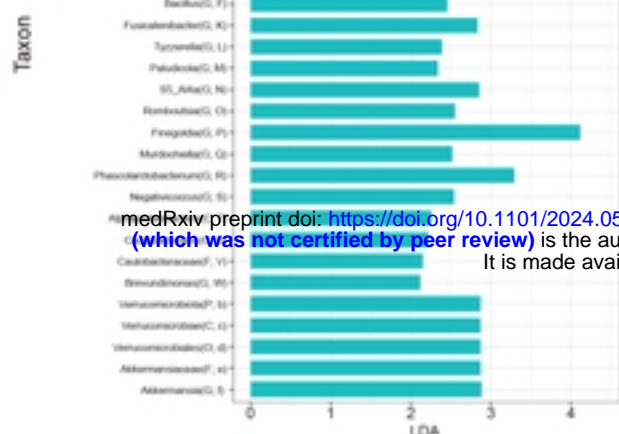
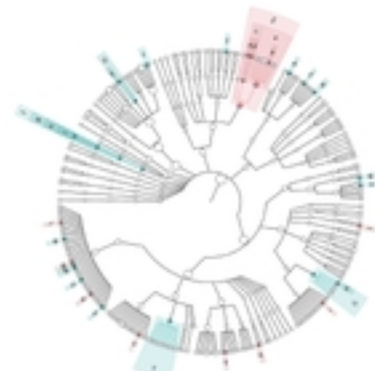
**A**

Linear discriminant analysis (LDA)  
Effect Size Analysis

Gr1

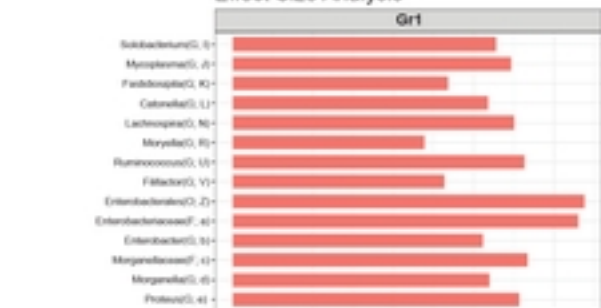


Gr2

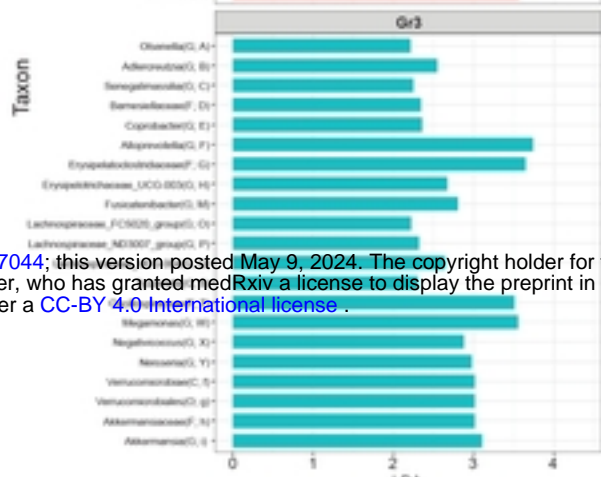
**B**

Linear discriminant analysis (LDA)  
Effect Size Analysis

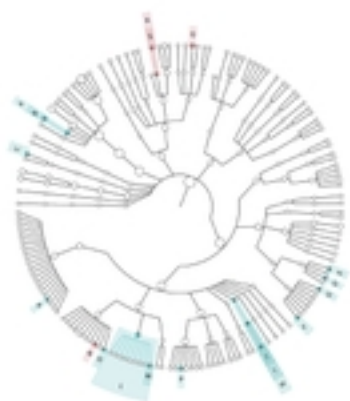
Gr1



Gr3

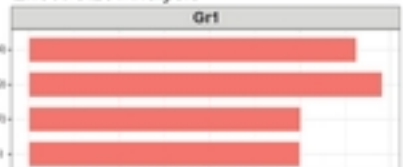


medRxiv preprint doi: <https://doi.org/10.1101/2024.05.08.24307044>; this version posted May 9, 2024. The copyright holder for this preprint (which was not certified by peer review) is the author/funder, who has granted medRxiv a license to display the preprint in perpetuity. It is made available under a [CC-BY 4.0 International license](https://creativecommons.org/licenses/by/4.0/).

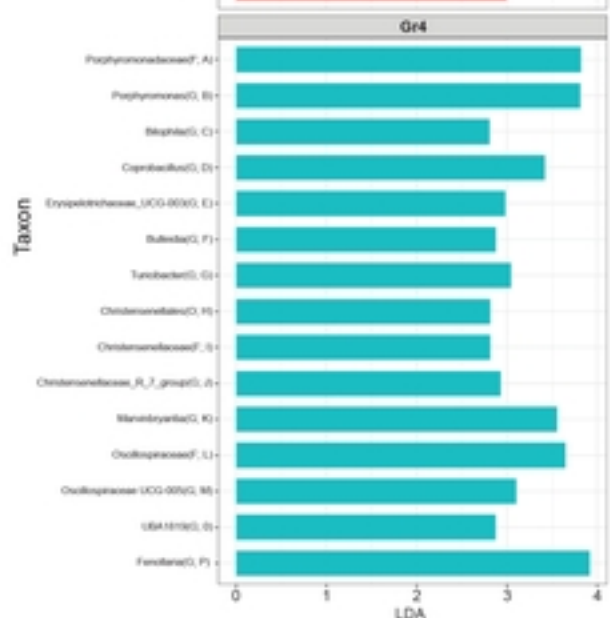
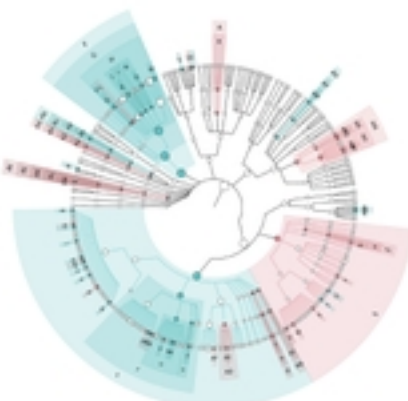
**C**

Linear discriminant analysis (LDA)  
Effect Size Analysis

Gr1

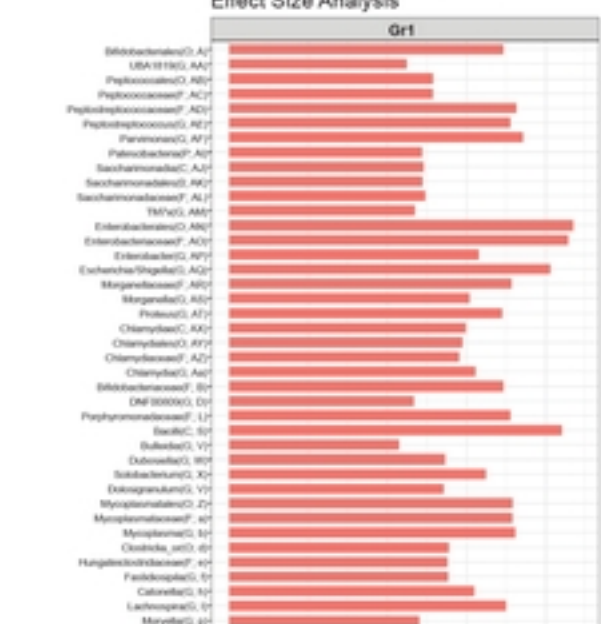


Gr4

**D**

Linear discriminant analysis (LDA)  
Effect Size Analysis

Gr1



Gr6

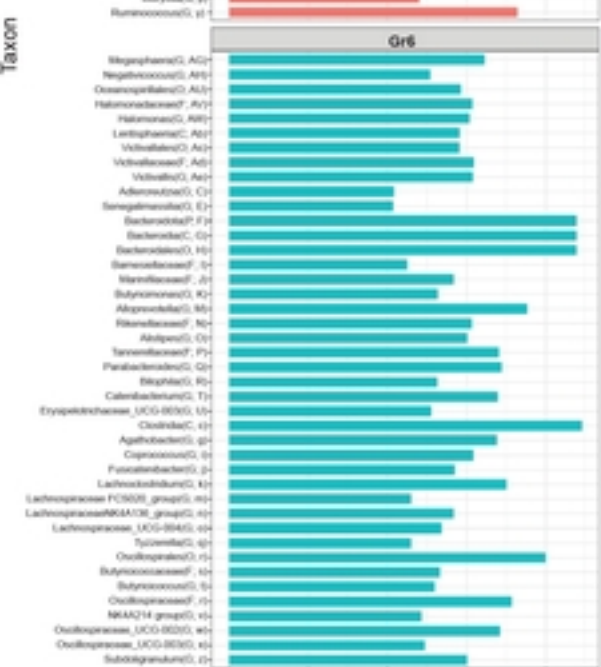


Figure 3