

1 Disentangling seasonal introduction and 2 establishment risk of dengue in Africa

3
4 **Authors:** Jenicca Poongavanan¹, José Lourenço^{2,3}, Joseph L.-H. Tsui⁴, Vittoria Colizza^{5,6}, Yajna
5 Ramphal¹, Cheryl Baxter¹, Moritz U.G. Kraemer^{4,7}, Marcel Dunaïski⁸, Tulio de Oliveira^{1,9}, Houriiyah
6 Tegally¹

7
8 1 Centre for Epidemic Response and innovation (CERI), Stellenbosch University, Stellenbosch, South
9 Africa

10 2 BioISI (Biosystems and Integrative Sciences Institute), University of Lisbon, Lisbon, Portugal AND
11 3 Universidade Católica Portuguesa, Biomedical Research Center, Lisboa, Portugal

12 4 Department of Biology, University of Oxford, Oxford, UK

13 5 Sorbonne Université, INSERM, Institut Pierre Louis d'Epidemiologie et de Santé Publique (IPLESP),
14 Paris, France

15 6 Department of Biology, Georgetown University, Washington, District of Columbia, USA

16 7 Pandemic Sciences Institute, University of Oxford, UK

17 8 Computer Science Division, Department of Mathematical Sciences, Stellenbosch University,
18 Stellenbosch, South Africa

19 9 KwaZulu-Natal Research Innovation and Sequencing Platform (KRISP), University of KwaZulu-
20 Natal, Durban, South Africa

21
22 Corresponding authors: Houriiyah Tegally (houriiyah@sun.ac.za) and Tulio de Oliveira
23 (tulio@sun.ac.za)

24
25 **Keywords:** Arboviruses, Dengue, Introductions, Mobility, Africa, Risk Flow

26
27
28
29
30
31

32 Abstract

33 Background: The dengue virus is a significant global public health concern that poses a threat
34 to Africa. Particularly, African countries are at risk of viral introductions through air travel
35 connectivity with areas of South America and Asia that experience frequent explosive
36 outbreaks. Limited reporting and diagnostic capacity hinder a comprehensive assessment of
37 continent-wide transmission dynamics and deployment of surveillance strategies in Africa.

38

39 Methods: The risk of dengue introduction into Africa from countries of high incidence was
40 estimated based on origin-destination air travel flows and epidemic activity at origin. We
41 produced a novel proxy for local dengue epidemic activity using a composite index of
42 theoretical climate-driven transmission potential and population density, which we used, along
43 with travel information in a risk flow model, to estimate the importation risks.

44

45 Findings: We find that countries in east Africa face higher risk of importation from Asia,
46 whereas for west African countries, larger risk of importation is estimated from South America.
47 Some countries with high risk of importation experience low local transmission potential which
48 likely hampers the chances that importations lead to local establishment and transmission.
49 Conversely, Mauritius, Uganda, Ivory Coast, Senegal, and Kenya are identified as countries
50 susceptible to dengue introductions during periods of persistent transmission suitability.

51

52 Interpretation: Our work improves the data driven allocation of surveillance resources, in
53 regions of Africa that are at high risk of dengue introductions and establishment. This will be
54 critical in detecting and managing imported cases and can improve local response to dengue
55 outbreaks.

56

57 Funding: Rockefeller Foundation, National Institute of Health, EDCTP3 and Horizon Europe
58 Research and Innovation, World Bank Group, Medical Research Foundation, Wellcome Trust,
59 Google.org, Oxford Martin School Pandemic Genomics programme, John Fell Fund

60

61 **Research in context**

62 **Evidence before this study**

63 Despite the significant global burden of dengue virus globally, Africa remains relatively
64 understudied due to limited reporting and diagnostic capabilities. We searched PubMed for
65 articles in English published on and before May 6, 2024, that included “Dengue OR dengue”,
66 “Africa”, and "importation OR imported". Few studies have investigated the introduction of
67 dengue into African countries. Limited evidence includes phylogeographic studies describing
68 a potential introduction of dengue from Brazil into Angola in 2013 and evidence of multiple
69 historical introductions of dengue from Asia to Africa over several years. Before our study,
70 none had employed a modelling framework to investigate the continental risks of importing
71 dengue via viremic travellers into African countries from other regions of high dengue
72 incidence.

73

74 **Added value of this study**

75 This study provides a novel approach to assessing the risk of dengue importation into Africa,
76 integrating temperature-dependent transmission potential and air travel data. By identifying
77 high-risk regions and highlighting the complex interplay between travel patterns, population
78 density, and ecological factors, our findings enhance the understanding of dengue dynamics in
79 Africa. This information enables targeted allocation of surveillance resources, improving
80 preparedness and response to potential dengue outbreaks in susceptible regions.

81

82 **Implications of all the available evidence**

83 The integration of transmission potential as local epidemic activity and air travel data into a
84 risk flow metric provides valuable insights into the risk of dengue importation into African
85 airports from high-incidence countries. These findings have implications for tailored
86 surveillance and prevention strategies in high-risk regions, facilitating early detection and
87 management of potential dengue imported cases outbreaks in Africa.

88

89 Introduction

90 Dengue is an arthropod-borne virus with four main serotypes and is a member of the genus
91 *Flavivirus* in the family *Flaviviridae* (1,2). It is thought to cause between 5.2 million and 390
92 million infections around the world every year, mostly transmitted by *Aedes aegypti* and *Ae.*
93 *albopictus* mosquitoes (3,4). Approximately half of the global human population is estimated
94 to currently live in areas that are environmentally suitable for dengue transmission (3,5,6).
95 Dengue is now endemic in more than 100 countries, with reported outbreaks predominantly in
96 Central America, South America, and Southeast Asia, and has recently established epidemic
97 cycles in parts of Africa and North America (6–8).

98

99 Despite the widespread distribution of mosquito vectors in Africa (9) and favourable
100 transmission conditions characterised by high temperatures and increased urbanisation
101 (7,10,11), severe gaps exist in our understanding of the transmission intensities of the virus on
102 the continent. Limited diagnostic capacity and reporting on dengue incidence make it difficult
103 to assess the true burden of dengue in Africa (3,5). Similarity of symptoms with other febrile
104 illnesses such as malaria also play a role in underdiagnosis (12,13). Consensus of evidence
105 studies have reported that dengue transmission is endemic in 34 countries in the African region
106 (14,15). It is therefore speculated that dengue is more widespread in Africa than previously
107 thought. In 2023 alone, 16 countries in Africa reported large dengue outbreaks (16).

108

109 Risk assessment for dengue in Africa has to consider several mechanisms of transmission.
110 Given frequent explosive dengue outbreaks in South America and Asia, African countries are,
111 for instance, at risk of constant viral introductions through air travel connectivity. Once
112 introduced, dengue can theoretically spread rapidly in large parts of Africa due to the presence
113 of suitable vectors, appropriate environmental conditions and limited population immunity.
114 Even in countries where dengue is thought to be endemic, the risk of importing dengue genetic
115 variants either from high incidence South American or Asian countries can exacerbate the
116 burden of disease or seed new explosive outbreaks.

117

118 The potential for dengue importation into Africa via viremic travellers is a function of
119 transmission in the origin country and the volume of travellers from the origin country to the
120 destination country of interest. It is well documented that increased international travel and
121 trade have facilitated dengue's global spread and mixing of viral serotypes and genotypes

122 (10,6,22,23). The influence of human mobility on pathogen spread has previously been
123 characterised for influenza (24,25), zika (26) and more recently, and very extensively, for
124 SARS-CoV-2 (27,28). Human mobility also plays a key role in shaping individuals'
125 interactions with disease-carrying vectors and consequently affecting pathogen transmission
126 (29,30). Understanding the combination of factors driving dengue introduction and onward
127 transmission is crucial for effective surveillance, prevention, and control in Africa in the
128 absence of antiviral treatment, underdiagnosis, and widespread vaccine cover. This study
129 aimed to identify African airports at high risk of receiving dengue infected passengers. In doing
130 so, it identifies potential high risk areas and optimal periods (at a monthly scale) during which
131 to conduct enhanced disease surveillance.

132 Methods

133 2.1 Data

134 2.1.1 Air Travel

135 The air travel flow data used in this study was obtained from the International Air Transport
136 Association (IATA). It comprises the number of origin-destination passenger tickets and
137 accounts for any connections at intermediate airports for the year 2019. We opted for the year
138 2019 to reflect a recent customary year of travel preceding disruptions due to the COVID-19
139 pandemic. The data comprises monthly passenger volumes from 14 high incidence countries
140 (selection described further down) to 54 African countries, encompassing all commercial
141 airports ($n = 197$) in both the source and destination regions.

142 2.1.2 Transmission Potential Estimate

143 We sourced spatio-temporal estimates of climate-based transmission potential of dengue
144 (referred to as index P) developed and made accessible by estimates from Nakase et al. (2023;
145 <https://doi.org/10.6084/m9.figshare.21502614>). The index used in this study quantifies the
146 transmission capacity of a single adult female mosquito throughout its lifetime in a completely
147 susceptible host population, incorporating factors such as infectious periods and oviposition.
148 The metric was validated with regional dengue data from Brazil and Thailand. The index P
149 metric utilises local temperature and humidity time series (spatial pixel resolution used was

150 $0.25^\circ \times 0.25^\circ$ (~28 km²)) as primary inputs, which enables its application to any location with
151 available climate data.

152

153 We post-processes the raw estimates to define *persistence suitability* as the time period where
154 environmental conditions exceed a predetermined threshold deemed favourable for dengue
155 transmission. An index P threshold of 1.0 was selected as it is directly comparable with the
156 basic reproduction rate. A value of 1.0 means that within a population where the average
157 number of adult female mosquitoes per host is 1.0, interpreted as a reproduction number of 1.
158 Periods of persistence suitability are then defined as the months where transmission potential
159 was > 1.0.

160 2.1.3 Population Density

161 Population density at a given location significantly influences dengue transmission due to its
162 role in determining the availability of human hosts for the virus. To integrate population density
163 into the risk metric, we extracted population densities of each district within countries from the
164 Gridded population of the World, using administrative (level 1) boundary data from the GADM
165 database (31). To calculate the population density of a province, we aggregated the population
166 density values of grid cells intersecting the province boundary. This total population was then
167 divided by the sum of the areas of these grid cells, providing a representation of the province's
168 population density.

169 2.2 Transmission potential as a proxy for case counts

170 To address the challenge of obtaining dengue case data with sufficient spatial and temporal
171 resolution, we explored the possibility of using transmission potential (index P) as a proxy. To
172 assess the viability of replacing dengue case data with transmission potential, we conducted a
173 preliminary correlation test between transmission potential and monthly dengue cases for
174 countries in which we were able to obtain monthly dengue case data (see supplementary figure
175 S1). Moreover, using transmission potential instead of case data would allow for a more fine
176 scale understanding of dengue activity in a country, surpassing the resolution typically
177 available at the national level.

178

179 For this study, we considered countries with large outbreaks of dengue in 2019 as flagged by
180 the European Centre for Disease Prevention and Control (ECDC) (accessed on 10th May 2023;

181 <https://www.ecdc.europa.eu/en/dengue>). These were predominantly in Latin America and
182 Asia. Monthly dengue case data from these countries were then extracted from public health
183 organisations such as the Pan American Health Organisation (PAHO; www3.paho.org), from
184 governmental health reports or bulletins and from statistical bureau websites (governmental
185 reporting websites, WHO reports, etc). The inclusion criteria for countries of high dengue
186 incidence used in this study was based on the availability of monthly case data in 2019 as it
187 allowed for reliable testing of the transmission potential proxy. This resulted in a final selection
188 of 14 countries of high dengue incidence in Latin America and Asia, namely: Brazil, Bolivia,
189 Peru, Sri Lanka, Vietnam, Malaysia, Columbia, Thailand, Nicaragua, India, Bangladesh,
190 Cambodia, Singapore and Belize. We also extracted province-level case data where openly
191 available. In the correlation coefficient computation we also incorporated data from two
192 African countries, Burkina Faso and Mauritius, for which monthly data for the year 2019 were
193 available.

194

195 We use the Spearman's Rank correlation coefficient to examine the relationship between
196 transmission potential and monthly dengue case counts for 16 countries. Following the
197 methodology used by Nakase et al., (2023), we computed correlation strengths between case
198 counts and transmission potential with various month lags (month+0, month+1 and month +2).
199 We find (see appendix figure S1) a significant positive correlation between transmission
200 potential and dengue cases for most countries, with the highest association at a lag of one month
201 (12 out of 16 countries). The strength of the association ranged from -0.204 to 0.954. For some
202 countries ($n = 3$), we found a weak correlation which could be caused by several factors, such
203 as: i) limited case data obscuring seasonal patterns, which results in poor alignment with the
204 index, ii) the national-level index failing to accurately reflect the overall case distribution if
205 cases are concentrated in specific regions.

206

207 While the transmission potential index serves as a valuable indicator of dengue risk in a given
208 region, its standalone consideration is insufficient. Additional factors must be taken into
209 account, including the presence and abundance of mosquito vectors, population density in the
210 area, and various environmental factors that may influence the spatial distribution of vectors.
211 In this study, we address one of these conditions by incorporating population density alongside
212 the transmission potential index. We define a composite index (t):

213

214
$$t_i = \text{Transmission Potential (state } i) * \text{Population Density (state } i)$$

215 which captures the combined influence of the transmission potential and the population density
216 at the district level, by multiplying both elements (see supplementary figure S2). With our
217 chosen approach, we managed to overcome some data constraints especially in view of dengue
218 case numbers, which might have otherwise impacted our results.

219

220

221 2.3 Risk Flow Metric

222 The importation risk to each airport (destination) in each African country was estimated as the
223 probability of importing a case from each state (origin) within each country of high incidence,
224 accounting for the origin–destination travel flows originated from such countries and for their
225 different transmission potential from the originating states. For cross-country comparisons, we
226 aggregated the resulting risk of introduction from each airport to the country level and for
227 visualisation purposes we calculated the average risk across each airport over the 12-month
228 period (January - December 2019).

229

230 The methodology was adapted from Gilbert et al. (2020) and is as follows:

231 Risk flow ($r_{i\alpha}$) from origin state i to destination airport α is calculated by:

$$r_{i\alpha} = \frac{t_i n_i A_{i\alpha}}{\sum_j t_j n_j}$$

232

233 where t_i is the combined transmission potential and population density of state i , n_i is the
234 travel flux from the origin state i , $A_{i\alpha}$ is the probability of a traveller flying from i to α ,
235 conditioned on travelling internationally from i (by construction, $\sum_\alpha A_{i\alpha} = 1$). The denominator
236 accounts for the transmission potential in various states and the potential risk associated with
237 travellers from different origin states. It is constructed as the sum product of all transmission
238 potentials and travel flows originating from each individual state (denoted by j). This
239 normalisation process ensures that the impact of each state's transmission potential and travel
240 flow is proportionally represented in relation to the collective risk from all origin states.

241

242 The total risk of case importation to destination α is then given by

$$R_{\alpha} = \sum_i r_{i\alpha}$$

243

244 This risk is normalised such that $\sum_{\alpha} R_{\alpha} = 1$.

245

246 To summarise and compare the overall introduction risks of dengue into African countries from
247 high incidence countries in Asia and South America, we aggregated the risk originating from
248 Asia and South America separately by summing it across all airports to the district level and
249 then calculating the average value over all months. We then computed the proportions of risk
250 coming from Asia and South America for each district. Additionally, in aggregating the risk
251 for destination countries, we conducted a secondary computation of risk emphasising the
252 locations characterised by persistence suitability (see section 2.1.2). This was done by
253 excluding any estimate of risk that occurred outside of times of persistence suitability (i.e.
254 index $P < 1$) in respective destination locations. In other words, we filter only for estimated
255 risks that are most likely to lead to onward transmission and local outbreaks. We term this
256 introduction suitability while we term the risk based on the non-filtered values the raw
257 introduction risk.

258 Results

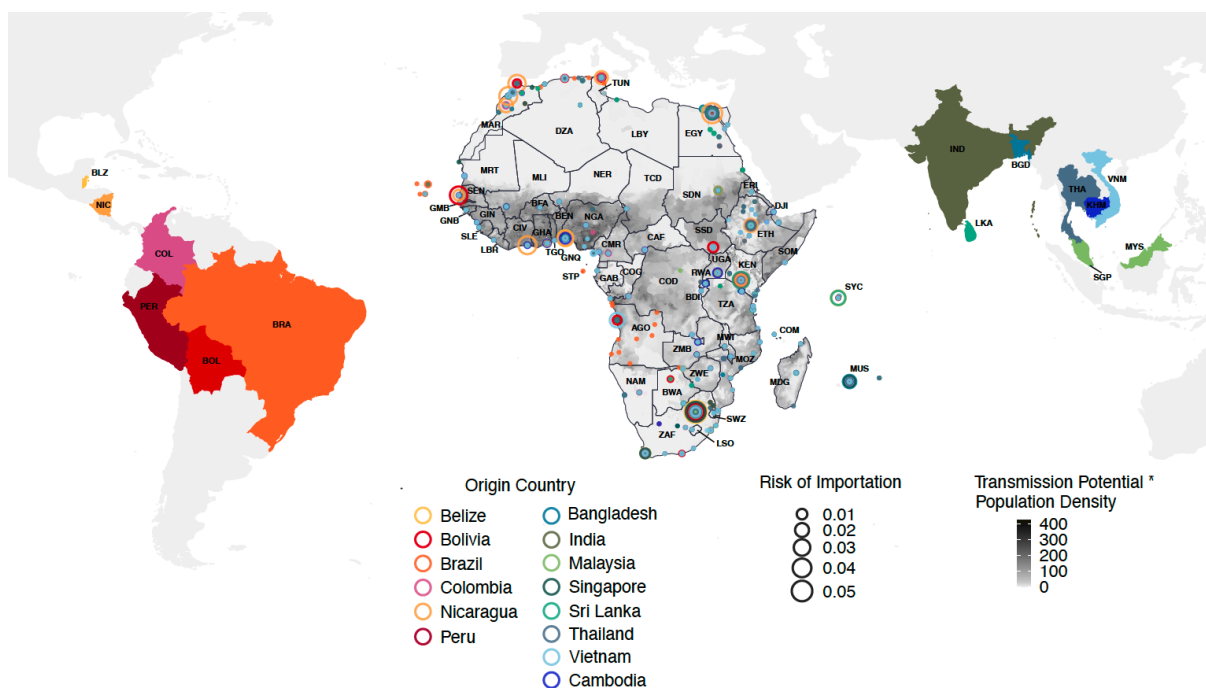
259 **Dengue introduction risks from high incidence Asian and South American countries into Africa**
260 Several countries in Africa are estimated to have high transmission suitability for dengue and
261 simultaneously high population density, indicating elevated potential for local transmission
262 following viral introductions (Supplementary Figure S3). At the same time, certain countries
263 on the continent are receiving variable, and sometimes high volumes of international
264 passengers from various Asian and South American countries (Supplementary Figure S4). In
265 2019, over 504 million travellers entered the African continent from the 14 high-incidence
266 countries. Of the total number of travellers, 39% originated from Southeast Asia, 34% from
267 South Asia and 27% from South America (Supplementary Figure S4). The months with the
268 highest travel volume entering the African continent from these places were November,
269 December, and January.

270

271 The risk flow of dengue from countries with high incidence rates, from Asia and South America
272 show that South Africa and Egypt were the countries at higher risk of dengue importation

273 followed by Kenya, Angola, Morocco, Seychelles and Mauritius (Figure 1). Egypt is exposed
274 to significant risk primarily originating from Asia, specifically its biggest risk coming from
275 Malaysia. Kenya, Mauritius, Tanzania, and Uganda exhibit an elevated risk of introduction
276 from India. Risks from Singapore were also high, especially towards Mauritius, South Africa
277 and Egypt. Risks from Vietnam are relatively low across the entire continent, with the most
278 significant potential impact observed in South Africa and Angola. Additionally, Morocco and
279 Nigeria are identified as regions with a considerable risk of disease introduction from
280 Nicaragua.

281
282 The results reveal a general trend that countries in the southern and eastern African region are
283 faced with higher risks of dengue importation from Asia, whereas central, western and a portion
284 of northern African countries face higher risk of introduction from South America. South
285 Africa is seen to receive large introduction risks from both origin regions. When considering
286 the raw risks of introductions overlaid onto the local transmission suitability index across
287 Africa, it becomes clear that high risk of introduction is not necessarily linked to high
288 transmission suitability. For instance, the high risks of introduction into South Africa do not
289 necessarily translate to transmission locally due to very low dengue transmission suitability.
290 We explore this further in the following sections.



291
292 **Figure 1. Mean risk of dengue introduction into African countries in 2019 from 14**
293 **countries in Asia and Latin America.** The risk of dengue introduction into African countries
294 from 14 origin countries in Asia and Latin America is represented by circles on the African

295 continent. The size of the circles represent the size of the risk averaged over the 12 months for
296 each airport in Africa. The colour of the circles represents the country from which the risk is
297 coming from and the fill colour of those countries are consistently matched. The fill colour of
298 the African continent represents the index of transmission potential multiplied by population
299 density to highlight the hotspots of high transmission at the destination.

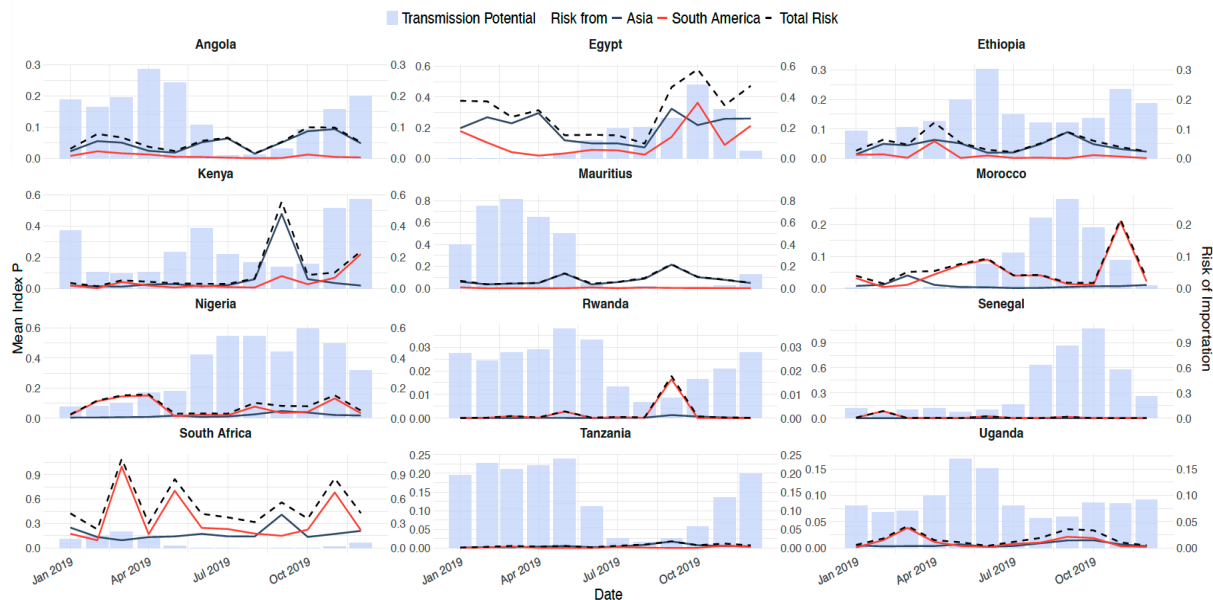
300

301

302 **Spatiotemporal variation in risks of introduction and local transmission suitability**

303 In addition to quantifying the risk of dengue introductions from countries of high incidence
304 from Asia and South America we evaluate the timing of these introductions and whether they
305 arrive at periods of high local transmission suitability in Africa. We do so by mapping the
306 monthly introduction risk to transmission potential at the airport level in Africa. Egypt is
307 estimated to be at high risk of dengue introduction during the second half of the year from both
308 Asia and South America (Figure 2). This temporal pattern aligns with a concurrent period of
309 heightened transmission potential within the country, which could indicate a higher likelihood
310 of viral introductions leading to onward transmission. In fact in 2023, Egypt experienced quite
311 a big dengue outbreak around September to November (33), which coincides with peaks in risk
312 and transmission potential. Angola and Ethiopia both are estimated to have a continuous risk
313 of disease introduction from Asia throughout the year. However, in Angola, the transmission
314 potential is predicted to decline during the months of July, August, and September. Mauritius
315 is also estimated to be at high risk of introduction from Asia during the early part of the year,
316 again coinciding with a period of high transmission potential. On the other hand, we observe
317 high risks of dengue introduction into South Africa but, in general, the country exhibits a low
318 transmission potential throughout the year, indicating these potential introductions as likely
319 impasses for transmission. In Nigeria, the majority of the high risk of introduction from South
320 America are estimated to occur during periods of lower local transmission suitability. The
321 temporal analysis of estimated importation risks and local transmission potential reveal the
322 optimal times to conduct increased surveillance, as the times when the risks of introduction and
323 the potential for transmission are simultaneously high. Therefore, the temporal synchrony
324 between estimated introduction risks and transmission suitability has important implications
325 for which viral introductions are predicted to have the ability to contribute to local outbreak
326 risks.

327



328

329 **Figure 2. Time-varying risk of introduction into selected African countries in 2019.** The
 330 blue and red lines represent the risk of importation from Asia and South America respectively
 331 and the dotted line represents the total risk of importation from both continents across the year.
 332 The risk of importation was aggregated at the national level by summing the individual risks
 333 from all airports within each African destination country. The blue bars represent the time-
 334 varying transmission potential index. Here, we demonstrate countries that had the most
 335 synchronicity between transmission potential and risk of introduction - see supplementary S5
 336 for additional countries.

337

338

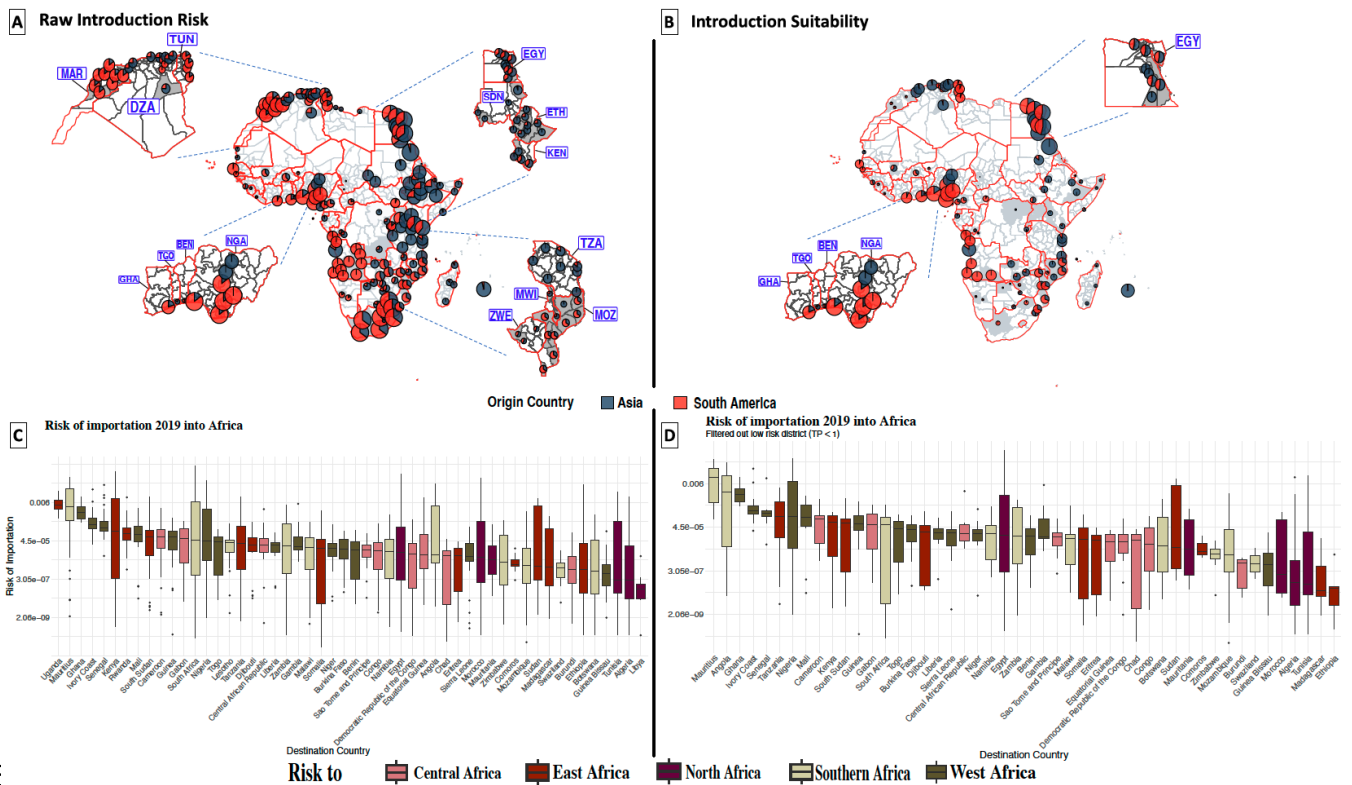
339 Overall introduction suitability in Africa

340 We then filtered for risk estimates that are most likely to lead to onward transmission:
 341 introduction suitability risk, that is, risks that occur during periods of persistence suitability.
 342 Figure 3A illustrates the aggregated raw risk of dengue introduction throughout the year 2019
 343 across individual provinces or districts (administrative level 1) within each African country,
 344 and aggregated as originating either from Latin America or Asia. Conversely, Figure 3B
 345 presents the aggregated introduction suitability of dengue into Africa. Notably, in South Africa,
 346 where the transmission potential remains consistently below 1 throughout the year, the risk of
 347 dengue evolving into an outbreak from an introduction is negligible.

348

349 In our analysis, a noteworthy shift in risk proportionality emerged when focusing on
 350 introduction suitability compared to raw risk. For example, in the case of the Democratic

351 Republic of the Congo (DRC), initially, 73.83% of the total risk was attributed to Asian regions.
 352 However, when looking at periods of persistence suitability for the DRC, the risk distribution
 353 shifted and the proportion of risk attributed to Asia, rose to 98.19% relative to South America.
 354 This outcome underlines the importance of understanding not only the geographic origin of
 355 introduction risks but also the specific temporal and spatial context in which these risks are
 356 introduced.
 357



358
 359
 360 **Figure 3: Overall proportional risk of importation into African countries before and after**
 361 **adjusting for period of persistence suitability (transmission potential greater than 1).** A) The
 362 proportion of risk from Asia and South America throughout the year for each district. The size of the
 363 pie charts are proportional to mean risk of importation across the year and the coloured pies represent
 364 the origin continent. We zoomed in on specific countries within the plot, namely: Ghana, Togo, Benin,
 365 Nigeria, Mozambique, Tanzania, Zimbabwe, Malawi, Morocco, Tunisia, Algeria, Egypt, Sudan,
 366 Ethiopia, and Kenya. B) The proportion of risk from Asia and South America across the year, for
 367 months with high persistence suitability. We zoomed in on specific countries within the plot, namely:
 368 Ghana, Togo, Benin, Nigeria and Egypt. C) Boxplot displaying risk across months and districts for each
 369 African country, colour-coded by their respective African region. D) Boxplot of risk across months and
 370 districts with high persistence suitability.

371 Discussion

372 In this study, we investigated the temporal and spatial intersections of high risks of introduction
373 and heightened transmission potential of dengue in African countries. The exploration of
374 dengue introduction into Africa is imperative due to the potential implications for onward
375 transmission. To this end, we constructed an importation suitability map to depict the spatial
376 and temporal hotspots of dengue introduction and establishment into Africa from high
377 incidence countries in Asia and Latin America.

378
379 We identified that the heterogeneity of the risk across Africa is dependent on the distribution
380 of dengue activity across different provinces or states in the countries of high incidence and
381 their connection to airports in Africa (see supplementary figure S6). Further, we found that
382 seasonal variation plays a crucial role. For example, in India, major outbreaks tend to occur
383 after the monsoon season and thus have a higher transmission potential during these seasons
384 (For example, the main monsoon season spans from June to September) (34–36) and thus we
385 also observe a higher risk of dengue importation from India to African countries following the
386 monsoon season (see supplementary figure S6).

387
388 This research presents an alternative risk assessment by considering modelled dengue
389 transmission potential (7) rather than reported incidence, compared to other studies using case
390 incidence which might suffer from substantially underreporting (37–40). The correlation
391 analyses revealed a robust association between transmission potential and dengue cases for
392 countries where high resolution spatiotemporal case records were available, with a significant
393 correlation observed at a one-month lag (see supplementary figure S1). Our findings are
394 consistent with previous research, demonstrating that 96% of municipalities in Brazil and 95%
395 of provinces in Thailand exhibited incidence dynamics with 0-3 months time delays with
396 estimated transmission potential (7). Our correlation further supports the utility of using
397 transmission potential as a proxy for local dengue circulation.

398
399 Increased international travel and trade have facilitated the global spread of dengue from
400 endemic to non-endemic regions, by enabling the movement of infected individuals and
401 mosquito vectors between regions (Gubler, 2011; Murray et al., 2013; Nakase et al., 2023;
402 Yang et al., 2021). The risk flow results highlight the substantial risks of dengue introduction
403 into certain parts of the African continent from Asia and South America through human

404 mobility. We show that the risk of importation to African countries is highly heterogeneous.
405 The results produced by our model suggest that major airports in South Africa, Egypt,
406 Morocco, Kenya, Seychelles and Mauritius, are potential hotspots for the importation of
407 dengue-infected travellers from high-incidence countries. However, the analysis also revealed
408 important geographical nuances: for example, the broader Southern and Eastern African
409 regions are confronted with elevated risks of dengue importation from Asia, while Central,
410 Western, and a segment of Northern African nations are more susceptible to introductions from
411 South America. This is consistent with a recent phylogeographic study which found that all
412 four dengue serotypes were introduced on multiple occasions to Africa, primarily from
413 southern or Southeast Asia since the 1940s (41). This highlights the significance of our study
414 in obtaining high-resolution and recent temporal and spatial trends for the vulnerability of
415 Africa to dengue introductions.

416
417 To translate the high risks of introduction into the notion of introduction suitability, that is
418 considering potential introductions that are only highly likely to cause onward transmission in
419 the destination countries, it was important to understand the specific temporal and spatial
420 patterns of the risk flow estimates. Angola and Mauritius were identified as being at high-risk
421 of suitable introductions, given that inferred introductions peaked during periods of heightened
422 transmission potential within those countries (Fig 2). When considering introductions that
423 happen during times of high persistence suitability, we notice high risk of introduction into
424 West and North Africa (Fig 3B).

425
426 Epidemiological and genomic surveillance are critical public health measures to mitigate
427 disease burden, and also to understand the spread and evolution of pathogens. For dengue,
428 molecular surveillance also allows public officials to monitor the circulating serotypes while
429 remaining vigilant for the emergence of novel strains or genotypes. At present, there is no
430 approved antiviral treatment for dengue and supportive care is the only option (17–19).
431 However, two dengue vaccines have shown great promise (Takeda and Butantan vaccines)
432 (20). Genomic surveillance can also provide critical information about viral transmission
433 landscape prior to upcoming dengue vaccine rollouts. To determine the optimal locations for
434 conducting genomic surveillance in Africa, it is also important to have a quantitative
435 understanding of the actual risk of a dengue virus epidemic at country level, particularly given
436 limited resources to implement surveillance programs. This study's findings point to the fact
437 that emphasis should be placed on targeted monitoring during periods when the likelihood of

438 risks escalating into an outbreak is higher, and within areas prone to introductions during time
439 of persistence suitability.

440

441 This study should be interpreted in light of several limitations. First, our analysis focuses on
442 the risk of viral movement from high-incidence countries in South America and Asia to African
443 countries, and does not model the potential movement of dengue between African nations,
444 which would also have been dependent on road travel networks. This is an avenue for further
445 exploration especially between highly connected neighbouring countries with known dengue
446 circulation (for example, Burkina Faso and Senegal). Additionally, the measure of transmission
447 potential used for the source locations does not account for specific control measures in place,
448 potentially impacting the accuracy of the estimated dengue incidence. It also does not take into
449 account the presence and abundance of mosquito vectors. Despite this limitation, the chosen
450 transmission potential index P seems to produce realistic estimates for dengue incidence in
451 source locations, considering variations in testing and reporting practices globally. Thirdly,
452 while our findings are founded upon the current travel networks, it is imperative to
453 acknowledge the dynamic nature of travel patterns. Given the expansive reach of air travel and
454 the transformative impact observed during the COVID-19 pandemic, we must remain vigilant
455 to the possibility of shifts in dengue introduction risks. This is particularly relevant as more
456 areas are becoming suitable for transmission of dengue.

457

458 In conclusion, this study provides valuable insights into the complex dynamics of dengue
459 importation risks into Africa. The incorporation of estimated transmission suitability for
460 dengue and population density in risk assessments enhances the accuracy of predictions. The
461 temporal and spatial analyses highlight specific regions and times that warrant intensified
462 surveillance and public health interventions given the likelihood of potential introductions to
463 lead to outbreaks. These findings contribute to a more nuanced understanding of global dengue
464 dynamics, and importantly focus on informing further surveillance on the Africa continent.

465 Data Availability Statement

466 Proprietary air travel data are commercially available from the International Air Transport
467 Association (<https://www.iata.org/>) databases. Transmission potential (index P) estimates are
468 available at <https://doi.org/10.6084/m9.figshare.21502614>. Risk estimates computed from this
469 study can be found at:

470 https://github.com/CERI-KRISP/Dengue_Importation_Risk_Modelling.git

471

472 Acknowledgements

473 CERI and KRISP are supported in part by grants from the Rockefeller Foundation (HTH 017),
474 the National Institute of Health USA (U01 AI151698) for the United World Antivirus Research
475 Network (UWARN), and the INFORM Africa project through IHVN (U54 TW012041), the
476 European Union supported by the Global Health EDCTP3 Joint Undertaking and its members,
477 European Union's Horizon Europe Research and Innovation Programme (101046041), the
478 Health Emergency Preparedness and Response Umbrella Program (HEPR Program), managed
479 by the World Bank Group (TF0B8412), the Medical Research Foundation (MRF-RG-ICCH-
480 2022-100069), and the Wellcome Trust (228186/Z/23/Z). M.U.G.K. acknowledges funding
481 from The Rockefeller Foundation, Google.org, the Oxford Martin School Pandemic Genomics
482 programme, European Union's Horizon Europe programme projects MOOD (#874850) (also
483 V.C.) and E4Warning (#101086640), the John Fell Fund, a Branco Weiss Fellowship and
484 Wellcome Trust grants 225288/Z/22/Z, 226052/Z/22/Z & 228186/Z/23/Z, United Kingdom
485 Research and Innovation (#APP8583) and the Medical Research Foundation (MRF-RG-ICCH-
486 2022-100069). The content and findings reported herein are the sole deduction, view and
487 responsibility of the researcher/s and do not reflect the official position and sentiments of the
488 funding agencies.

489

490

491

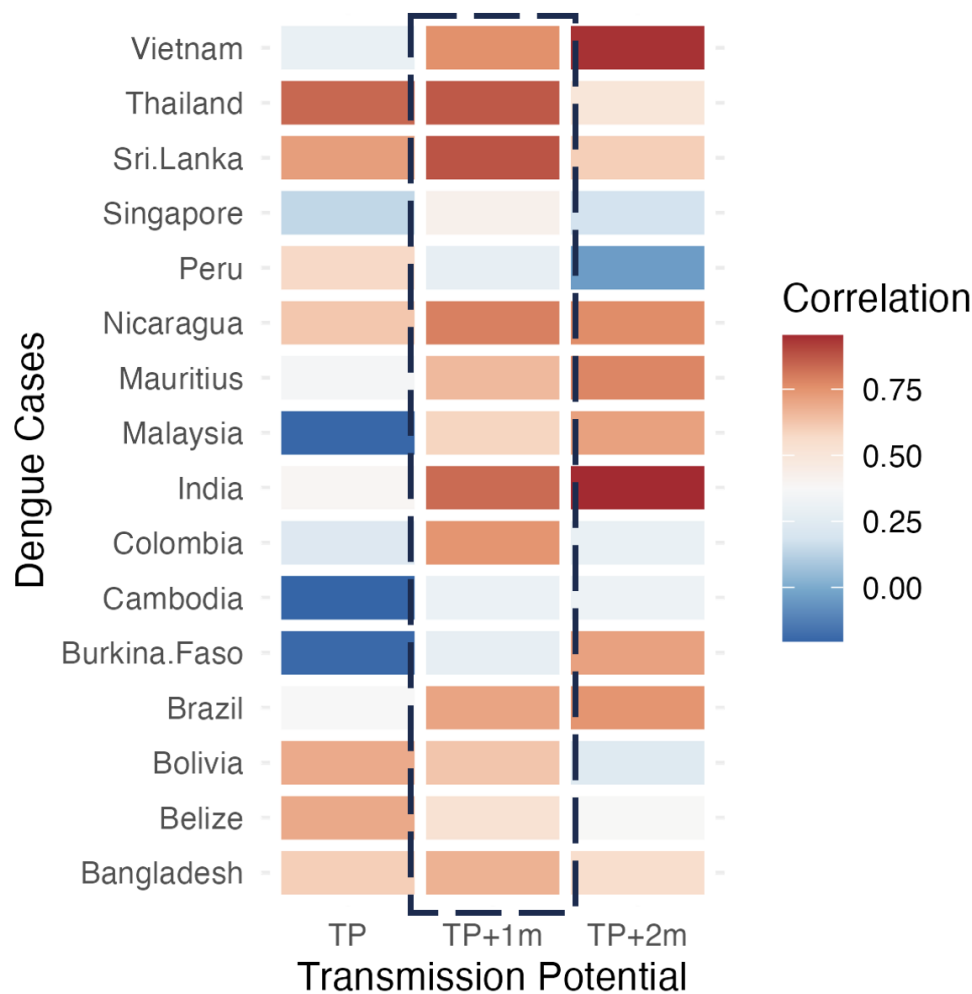
492

493

494

495 Supplementary Figures

496 Figure S1



497

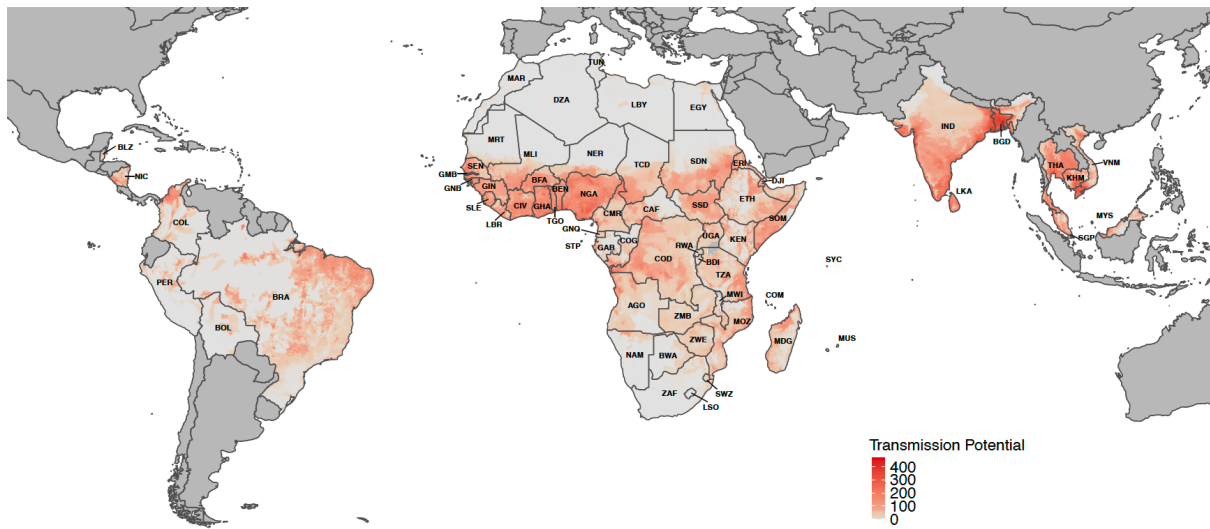
498

499 Figure S1: Temporal correlation between monthly dengue cases from different origin countries to
500 Transmission potential without and with 1 and 2 months lag.

501

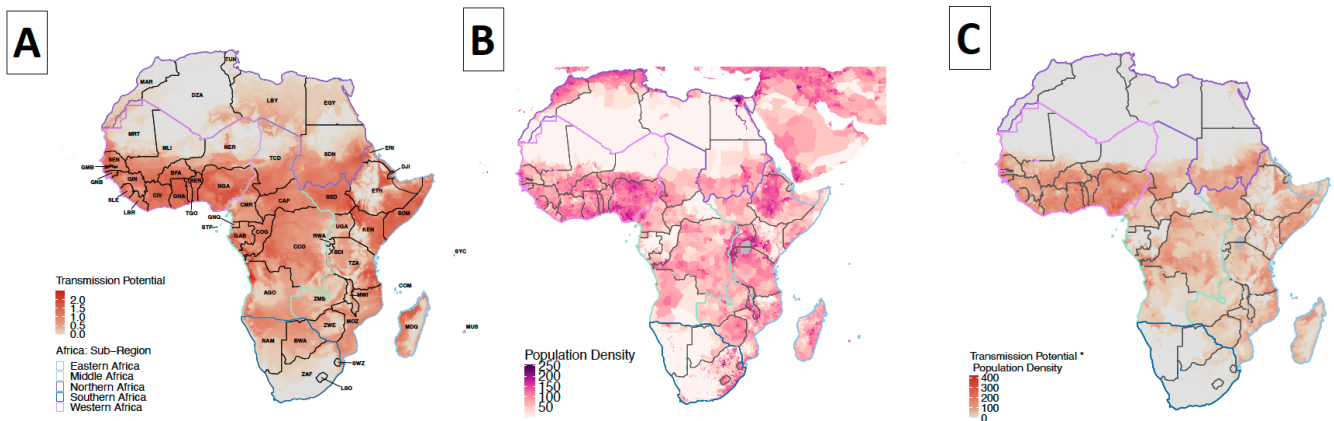
502

503 Figure S2

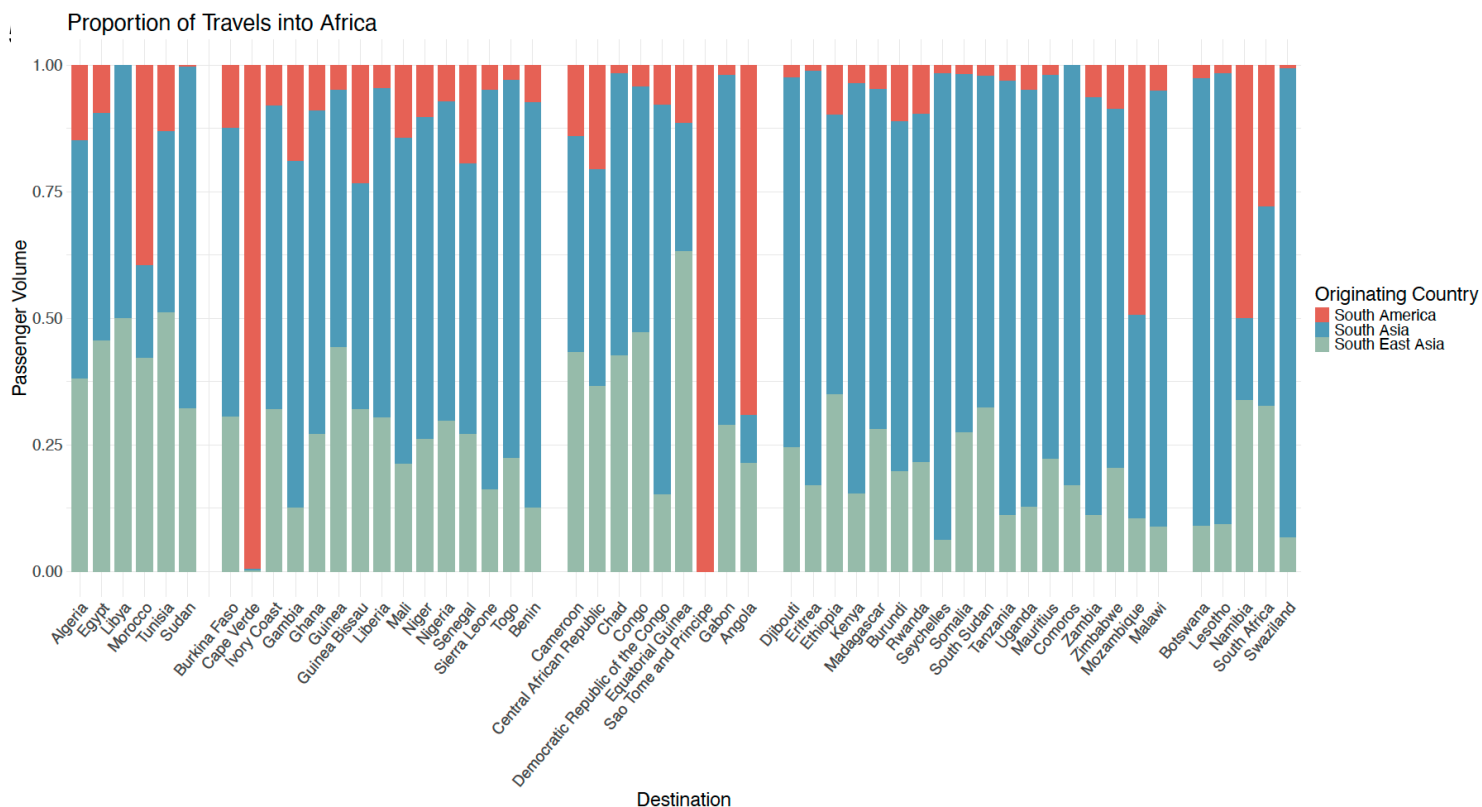


504
505 Fig S2: The figure shows the composite index of Transmission Potential multiplied by Population
506 Density (t_i), used in this study. Here we only show for the 14 countries of high incidence and the
507 African continent, i.e., only for the origin and destination countries used in this study.
508

509 Figure S3



511
512 Fig S3: A) The map background uniformly represents the transmission potential of dengue
513 (mean index P) across Africa, with the continent divided into five distinct regions. B) The
514 population density across Africa and C) Transmission potential multiplied by population
515 density for Africa. We also divide the African continent into 5 regions: Eastern (light blue),
516 Middle (Green), Northern (Purple), Southern (dark blue) and Western Africa (pink) which are
517 outlined on the map.
518



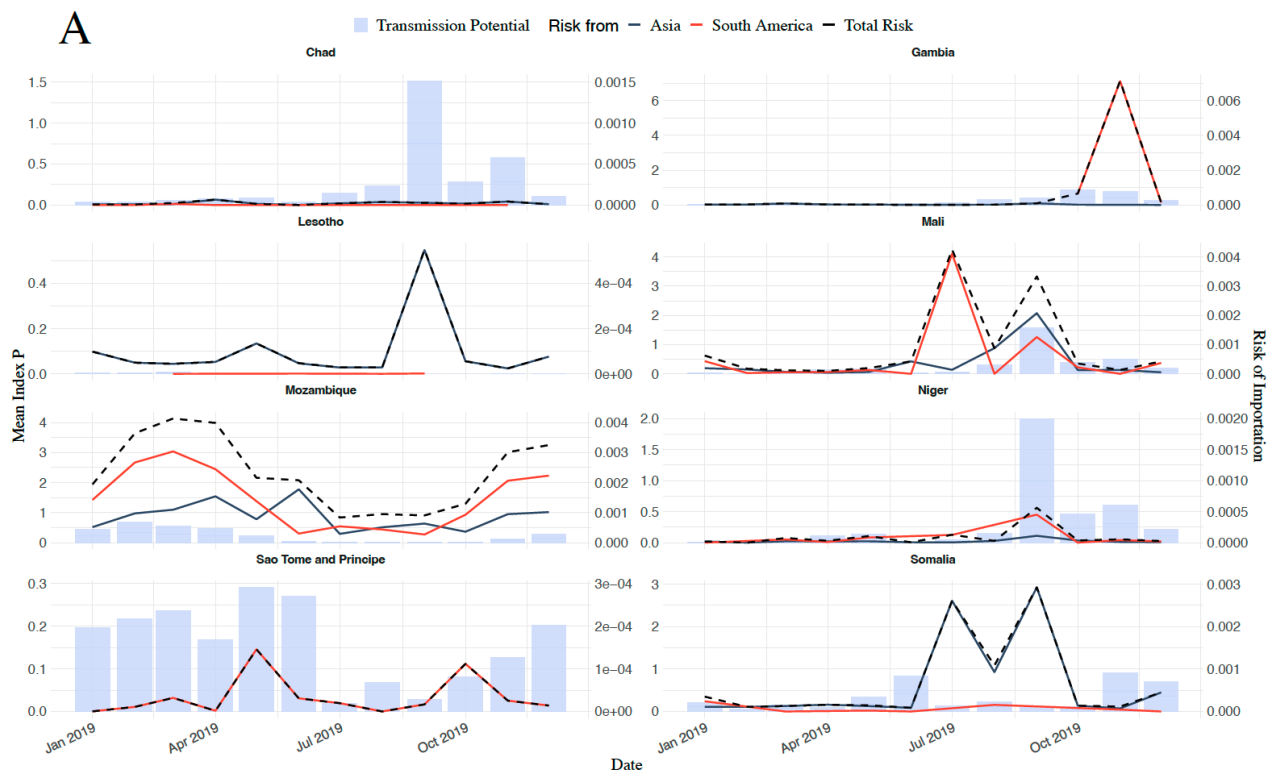
520

521 Fig S4: This figure depicts the proportion of travel volumes from Asia, Southeast Asia, and South
 522 America to African countries over the course of one year.

523

524

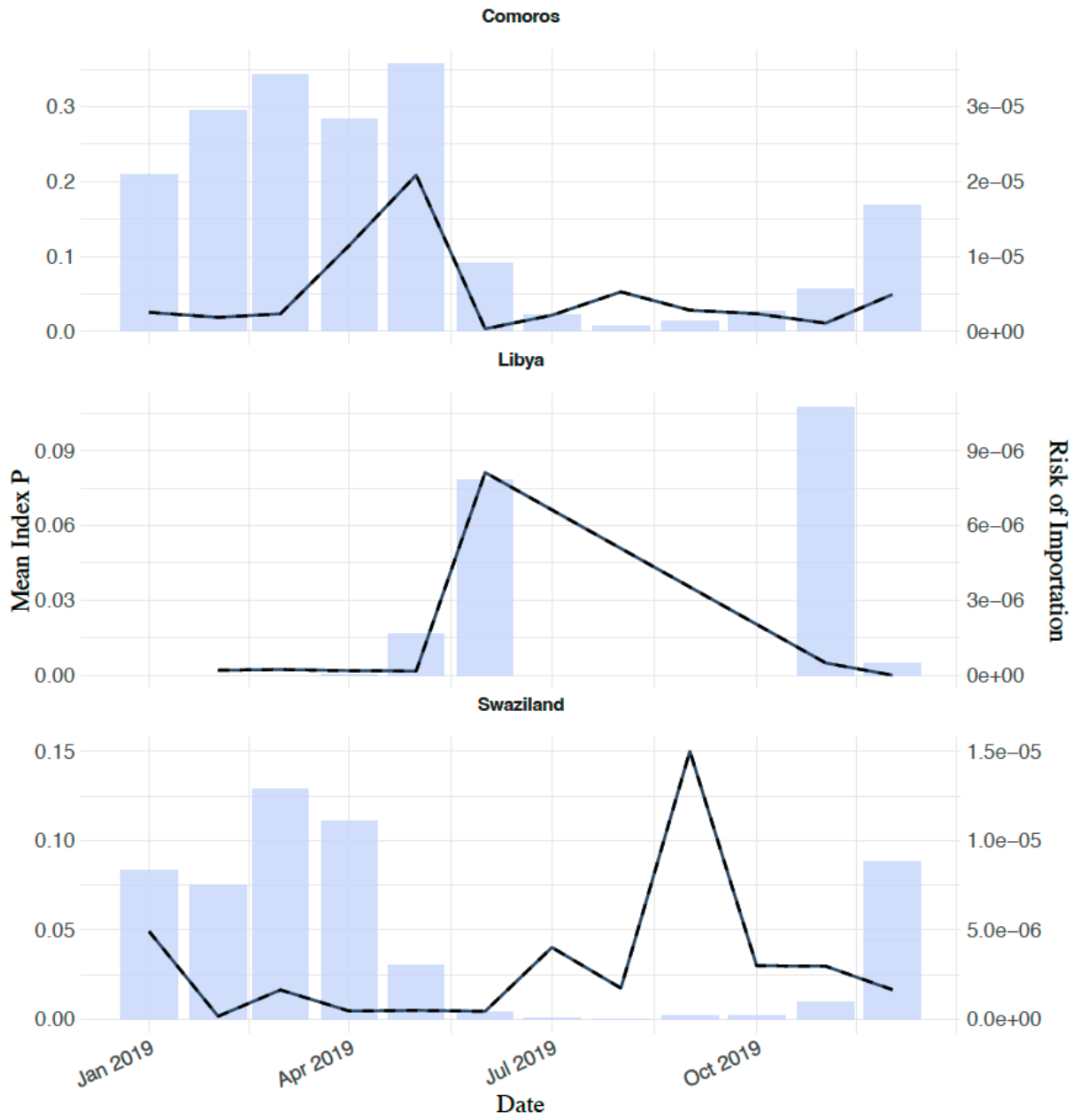
525 Figure S5



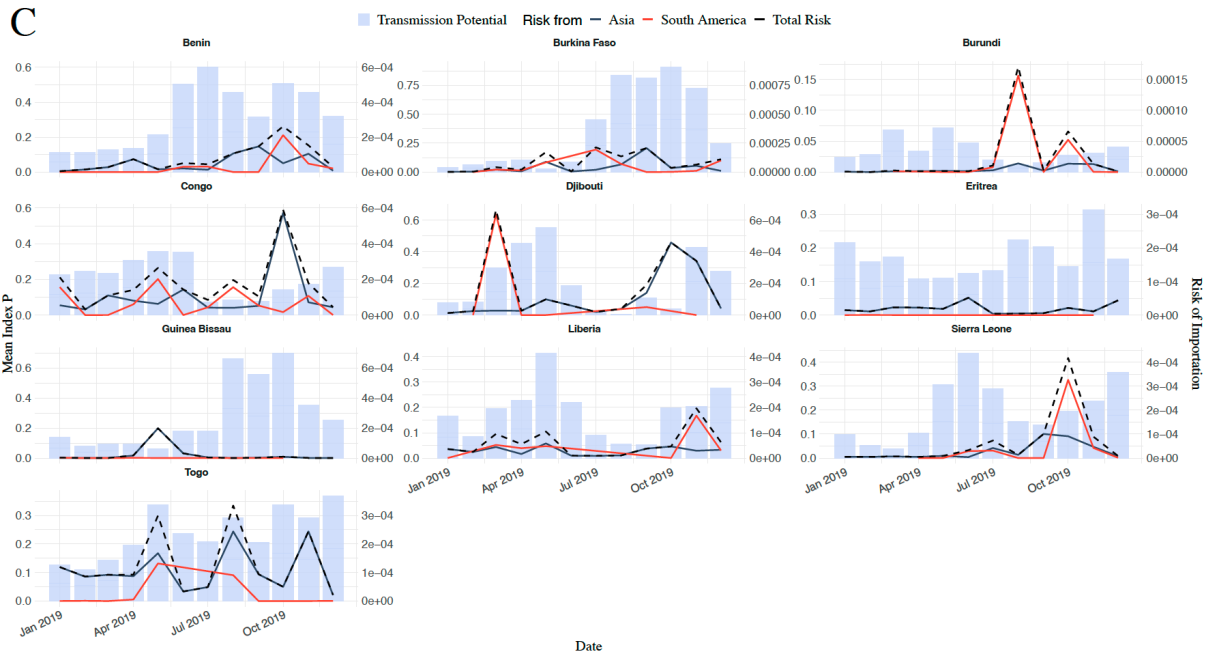
526
527

B

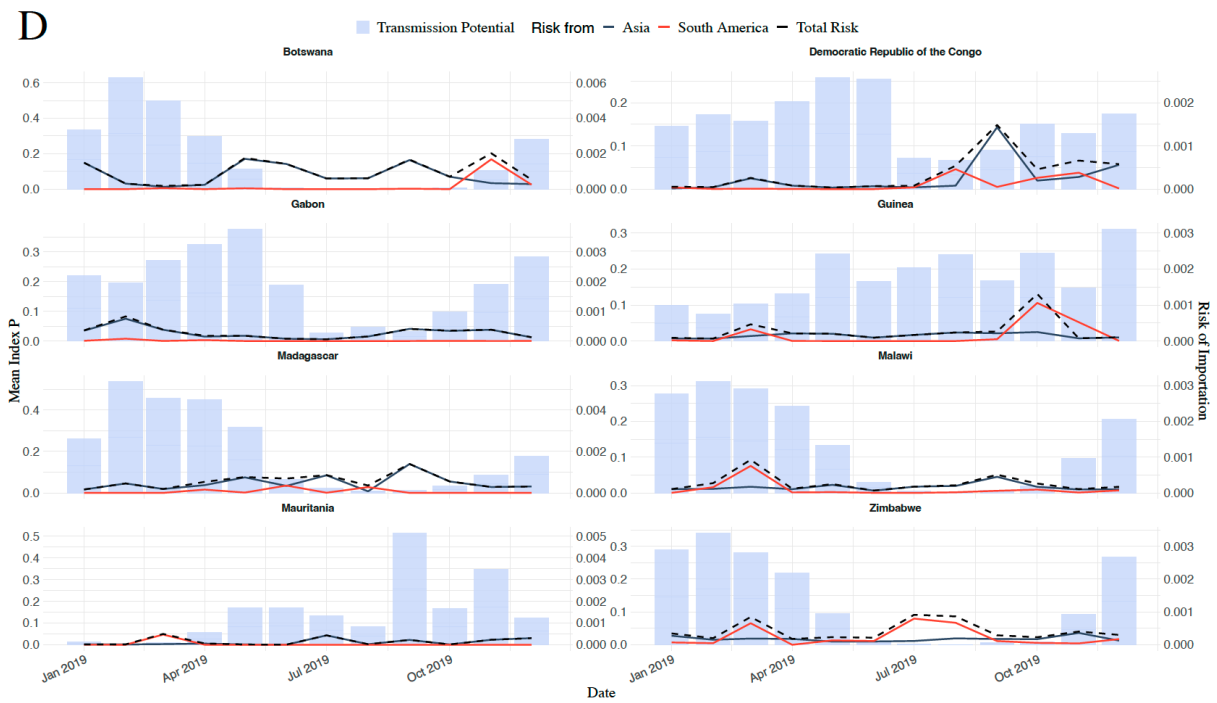
■ Transmission Potential Risk from — Asia — South America — Total Risk



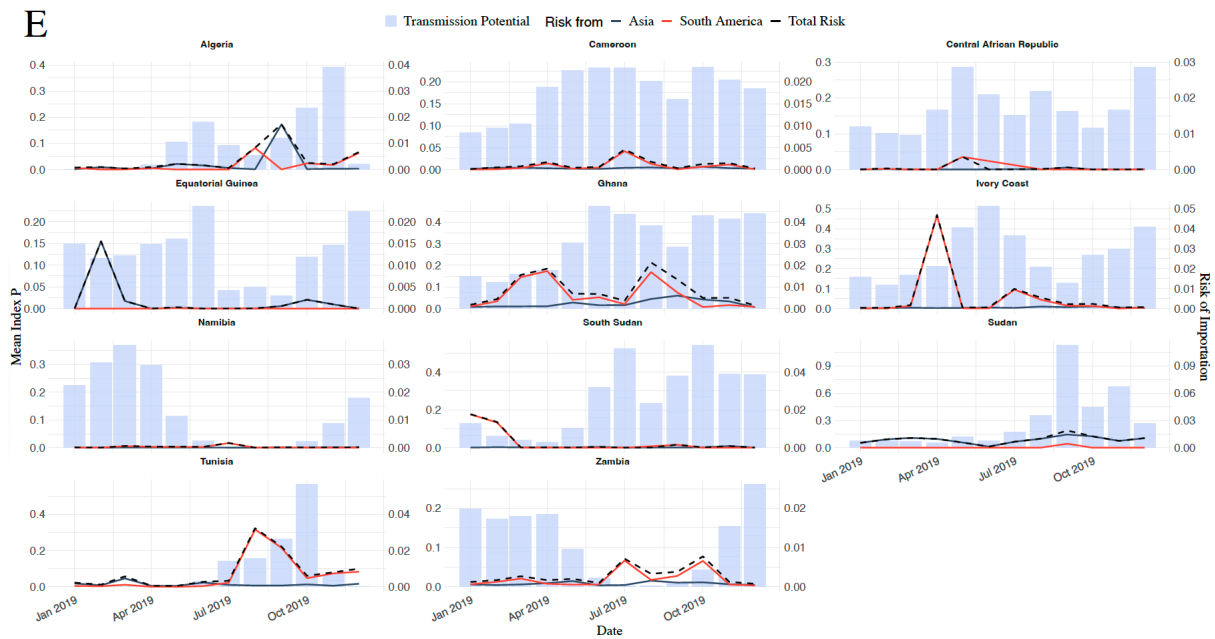
528
529
530
531
532
533
534
535



536
537
538



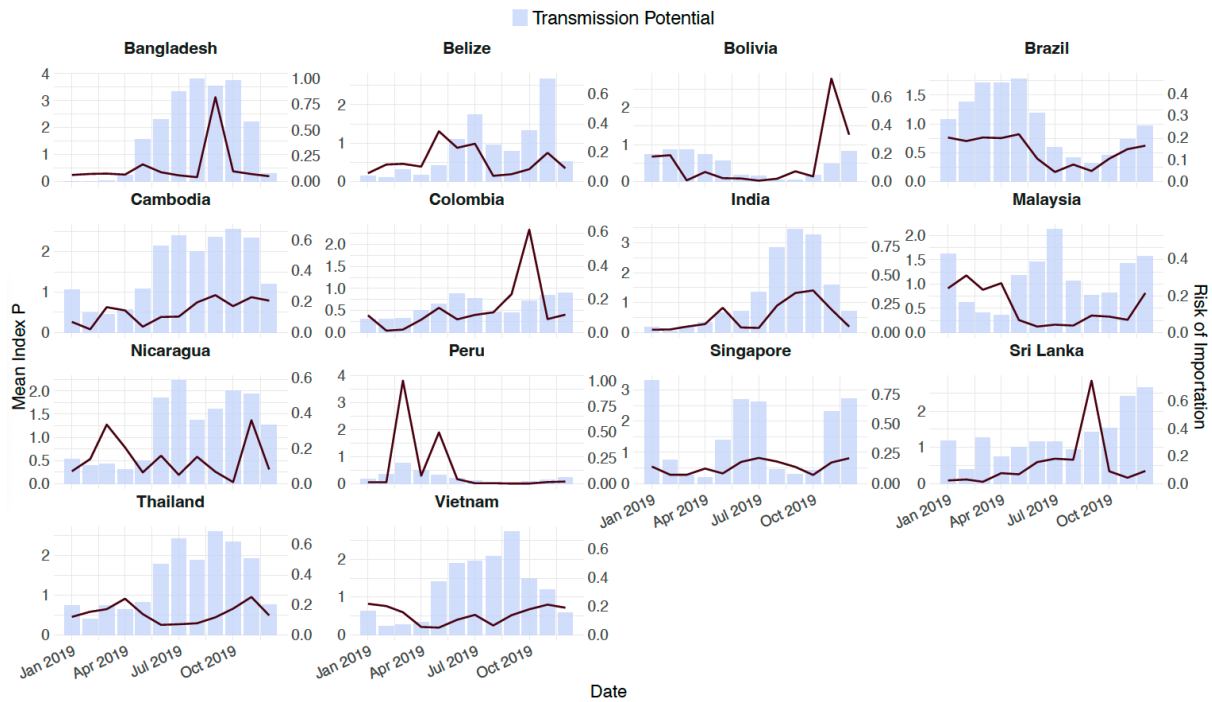
539
540
541



542
543
544
545
546
547
548
549
550
551
552
553
554
555
556
557
558
559
560
561
562
563
564

Fig S5: Time-varying risk of introduction into African countries in 2019 from Asia (blue line) and South America (red line) along with time-varying transmission potential index nationally. The combined risk is represented by the black dotted line. Panel A) Chad, Gambia, Lesotho, Mali, Mozambique, Niger, Sao Tome and Principe, Somalia. B) Comoros, Libya, Swaziland. C) Benin, Burkina Faso, Burundi, Congo, Djibouti, Eritrea, Guinea Bissau, Liberia, Sierra Leone. D) Botswana, DRC, Gabon, Guinea, Madagascar, Malawi, Mauritania, Zimbabwe. E) Algeria, Cameroon, Central African Republic, EquatorialGuinea, Ghana, Ivory Coast, Namibia, South Sudan, Sudan and Tunisia.

565 Figure S6



566
567
568
569
570
571
572
573
574
575
576
577
578
579
580
581
582
583
584
585
586
587
588
589

Fig S6: Risk of Exportation from countries of high incidence (n=14) considered in this study overlaid across their respective transmission potential across the year.

590 References

591 1. Gubler DJ. Dengue and dengue hemorrhagic fever. Clin Microbiol Rev. 1998;11(3):480–

- 592 96.
- 593 2. Paz-Bailey G, Adams LE, Deen J, Anderson KB, Katzelnick LC. Dengue. *The Lancet*.
594 2024 Feb 17;403(10427):667–82.
- 595 3. Brady OJ, Gething PW, Bhatt S, Messina JP, Brownstein JS, Hoen AG, et al. Refining the
596 global spatial limits of dengue virus transmission by evidence-based consensus. 2012;
- 597 4. Stanaway JD, Shepard DS, Undurraga EA, Halasa YA, Coffeng LE, Brady OJ, et al. The
598 global burden of dengue: an analysis from the Global Burden of Disease Study 2013.
599 *Lancet Infect Dis*. 2016;16(6):712–23.
- 600 5. Bhatt S, Gething PW, Brady OJ, Messina JP, Farlow AW, Moyes CL, et al. The global
601 distribution and burden of dengue. *Nature*. 2013 Apr;496(7446):504–7.
- 602 6. Murray NEA, Quam MB, Wilder-Smith A. Epidemiology of dengue: past, present and future
603 prospects. *Clin Epidemiol*. 2013;299–309.
- 604 7. Nakase T, Giovanetti M, Obolski U, Lourenço J. Global transmission suitability maps for
605 dengue virus transmitted by *Aedes aegypti* from 1981 to 2019. *Sci Data*. 2023 May
606 12;10(1):275.
- 607 8. Yang X, Quam MBM, Zhang T, Sang S. Global burden for dengue and the evolving pattern
608 in the past 30 years. *J Travel Med*. 2021 Dec 1;28(8):taab146.
- 609 9. Kraemer MU, Sinka ME, Duda KA, Mylne AQ, Shearer FM, Barker CM, et al. The global
610 distribution of the arbovirus vectors *Aedes aegypti* and *Ae. albopictus*. *elife*.
611 2015;4:e08347.
- 612 10. Gubler DJ. Dengue, urbanization and globalization: the unholy trinity of the 21st century.
613 *Trop Med Health*. 2011;39(4SUPPLEMENT):S3–11.
- 614 11. Morin CW, Comrie AC, Ernst K. Climate and dengue transmission: evidence and
615 implications. *Environ Health Perspect*. 2013;121(11–12):1264–72.
- 616 12. Khan W, Zakai HA, Khan K, Kausar S, Aqeel S. Discriminating clinical and biological
617 features in malaria and dengue patients. *J Arthropod-Borne Dis*. 2018;12(2):108.
- 618 13. Nyenke CU, Nnokam BA, Esiere RK, Nwalozie R. Dengue Fever: Etiology, Diagnosis,
619 Prevention and Treatment. *Asian J Res Infect Dis*. 2023;14(1):26–33.
- 620 14. Bosire C, Mutuku F, Ndenga B, Nzaro M, Mwendwa K, LaBeaud AD. A narrative review
621 of dengue fever infection and epidemic activity in Kenya (2010 to 2020). *PAMJ - One*
622 *Health [Internet]*. 2023 Oct 16 [cited 2024 Mar 19];12(10). Available from: [https://www.one-](https://www.one-health.panafrican-med-journal.com/content/article/12/10/full)
623 [health.panafrican-med-journal.com/content/article/12/10/full](https://www.one-health.panafrican-med-journal.com/content/article/12/10/full)
- 624 15. Gainor EM, Harris E, LaBeaud AD. Uncovering the Burden of Dengue in Africa:
625 Considerations on Magnitude, Misdiagnosis, and Ancestry. *Viruses*. 2022 Feb;14(2):233.
- 626 16. WHO Afro Region. *Weekly Epidemiological Record*, 2023, vol.78. *Wkly Epidemiol Rec*.
627 2023;78(22):279–86.
- 628 17. Foucambert P, Esbrand FD, Zafar S, Panthangi V, Kurupp ARC, Raju A, et al. Efficacy of

- 629 Dengue Vaccines in the Prevention of Severe Dengue in Children: A Systematic Review.
630 Cureus [Internet]. 2022 Sep 7 [cited 2023 Jun 2];14(9). Available from:
631 [https://www.cureus.com/articles/105177-efficacy-of-dengue-vaccines-in-the-prevention-](https://www.cureus.com/articles/105177-efficacy-of-dengue-vaccines-in-the-prevention-of-severe-dengue-in-children-a-systematic-review)
632 [of-severe-dengue-in-children-a-systematic-review](https://www.cureus.com/articles/105177-efficacy-of-dengue-vaccines-in-the-prevention-of-severe-dengue-in-children-a-systematic-review)
- 633 18. Lee TH, Lee LK, Lye DC, Leo YS. Current management of severe dengue infection. *Expert*
634 *Rev Anti Infect Ther*. 2017 Jan 2;15(1):67–78.
- 635 19. Ross TM. Dengue Virus. *Clin Lab Med*. 2010 Mar 1;30(1):149–60.
- 636 20. Thomas SJ. Is new dengue vaccine efficacy data a relief or cause for concern? *Npj*
637 *Vaccines*. 2023 Apr 15;8(1):1–6.
- 638 21. Pintado Silva J, Fernandez-Sesma A. Challenges on the development of a dengue
639 vaccine: a comprehensive review of the state of the art. *J Gen Virol*. 2023;104(3):001831.
- 640 22. Wilder-Smith A, Gubler DJ, Weaver SC, Monath TP, Heymann DL, Scott TW. Epidemic
641 arboviral diseases: priorities for research and public health. *Lancet Infect Dis*.
642 2017;17(3):e101–6.
- 643 23. Ryan SJ, Carlson CJ, Mordecai EA, Johnson LR. Global expansion and redistribution of
644 Aedes-borne virus transmission risk with climate change. *PLoS Negl Trop Dis*.
645 2019;13(3):e0007213.
- 646 24. Charu V, Zeger S, Gog J, Bjørnstad ON, Kissler S, Simonsen L, et al. Human mobility and
647 the spatial transmission of influenza in the United States. *PLoS Comput Biol*.
648 2017;13(2):e1005382.
- 649 25. Merler S, Ajelli M. The role of population heterogeneity and human mobility in the spread
650 of pandemic influenza. *Proc R Soc B Biol Sci*. 2010;277(1681):557–65.
- 651 26. Bogoch II, Brady OJ, Kraemer MUG, German M, Creatore MI, Brent S, et al. Potential for
652 Zika virus introduction and transmission in resource-limited countries in Africa and the
653 Asia-Pacific region: a modelling study. *Lancet Infect Dis*. 2016 Nov 1;16(11):1237–45.
- 654 27. Kraemer MU, Hill V, Ruis C, Dellicour S, Bajaj S, McCrone JT, et al. Spatiotemporal
655 invasion dynamics of SARS-CoV-2 lineage B. 1.1. 7 emergence. *Science*.
656 2021;373(6557):889–95.
- 657 28. Tegally H, Wilkinson E, Tsui JLH, Moir M, Martin D, Brito AF, et al. Dispersal patterns and
658 influence of air travel during the global expansion of SARS-CoV-2 variants of concern.
659 *Cell*. 2023;186(15):3277–90.
- 660 29. Soriano-Paños D, Arias-Castro JH, Reyna-Lara A, Martínez HJ, Meloni S, Gómez-
661 Gardeñes J. Vector-borne epidemics driven by human mobility. *Phys Rev Res*.
662 2020;2(1):013312.
- 663 30. Stoddard ST, Morrison AC, Vazquez-Prokopec GM, Paz Soldan V, Kochel TJ, Kitron U,
664 et al. The role of human movement in the transmission of vector-borne pathogens. *PLoS*
665 *Negl Trop Dis*. 2009 Jul 21;3(7):e481.

- 666 31. Global Administrative Areas. GADM Database. GADM Database Glob Adm Areas
667 [Internet]. 2019; Available from: www.gadm.org.
- 668 32. Gilbert M, Pullano G, Pinotti F, Valdano E, Poletto C, Boëlle PY, et al. Preparedness and
669 vulnerability of African countries against importations of COVID-19: a modelling study. *The*
670 *Lancet*. 2020 Mar 14;395(10227):871–7.
- 671 33. Frank C, Lachmann R, Wilking H, Stark K. Increase in dengue fever in travellers returning
672 from Egypt, Germany 2023. *Eurosurveillance*. 2024 Feb 1;29(5):2400042.
- 673 34. Barik P, Goswami P. Quantifying the Impact of Rainfall Categories on Dengue
674 Occurrence: A Multi-Site Analysis in India. 2023;
- 675 35. Mutheneni SR, Morse AP, Caminade C, Upadhyayula SM. Dengue burden in India: recent
676 trends and importance of climatic parameters. *Emerg Microbes Infect*. 2017 Aug;6(8):e70.
- 677 36. Shil P. Rainfall and dengue occurrences in India during 2010–2016. *Biomed Res J*.
678 2019;6(2):56.
- 679 37. Gardner LM, Fajardo D, Waller ST, Wang O, Sarkar S. A Predictive Spatial Model to
680 Quantify the Risk of Air-Travel-Associated Dengue Importation into the United States and
681 Europe. *J Trop Med*. 2012 Mar 14;2012:e103679.
- 682 38. Huang YM. Contributions to the mosquito fauna of Southeast Asia. XIV. The subgenus
683 *Stegomyia* of *Aedes* in Southeast Asia I-The scutellaris group of species. 1972;
- 684 39. Semenza JC, Sudre B, Miniota J, Rossi M, Hu W, Kossowsky D, et al. International
685 dispersal of dengue through air travel: importation risk for Europe. *PLoS Negl Trop Dis*.
686 2014;8(12):e3278.
- 687 40. Tatem AJ, Rogers DJ, Hay SI. Global transport networks and infectious disease spread.
688 *Adv Parasitol*. 2006;62:293–343.
- 689 41. Alfsnes K, Eldholm V, Gaunt MW, de Lamballerie X, Gould EA, Pettersson JHO. Tracing
690 and tracking the emergence, epidemiology and dispersal of dengue virus to Africa during
691 the 20th century. *One Health*. 2021;13:100337.
- 692 42. Schwartz E, Weld LH, Wilder-Smith A, von Sonnenburg F, Keystone JS, Kain KC, et al.
693 Seasonality, Annual Trends, and Characteristics of Dengue among Ill Returned Travelers,
694 1997–2006. *Emerg Infect Dis*. 2008 Jul;14(7):1081–8.