

1 **Identifying weather patterns affecting household date palm**
2 **sap consumption in Bangladesh, 2013-2016.**

3

4 Jules Jackson¹ Ireen Sultana Shanta², Clifton McKee¹, Stephen P Luby³, Najmul Haider⁴, Yushuf
5 Sharker⁵, Raina Plowright⁶, Peter Hudson⁷, Emily Gurley^{1,3}

6

7

8

9 ¹ Department of Epidemiology, Johns Hopkins Bloomberg School of Public Health, Baltimore, MD,
10 USA.

11 ² International Centre for Diarrhoeal Disease Research, Bangladesh, Dhaka, Bangladesh.

12 ³ Division of Infectious Diseases and Geographic Medicine, Stanford University, Stanford, CA,
13 USA.

14 ⁴ School of Life Sciences, Faculty of Natural Sciences, Staffordshire, United Kingdom

15 ⁵ Center for Data Research and Analytics LLC, Bethesda, MD, USA.

16 ⁶ Department of Public and Ecosystem Health, Cornell University, Ithaca, NY, USA.

17 ⁷ Center for Infectious Disease Dynamics, Pennsylvania State University, State College, PA, USA.

18

19

20

21

22

23

24

25 **Abstract**

26

27 Nipah virus spillovers via consumption of date palm sap in Bangladesh vary substantially
28 between years and have been associated with lower winter temperatures and precipitation.
29 However, the mechanisms driving the interannual variation and the influence of weather remain
30 unexplained. Here we investigated the hypothesis that weather patterns change human sap
31 consumption and explain interannual variation in observed spillovers. We analyzed responses
32 from a nationally representative survey conducted among 10,000 households in Bangladesh in
33 2013-2016 on household date palm sap consumption and weather data for each division of
34 Bangladesh, using logistic regression to examine whether sap consumption is associated with
35 weather variability. We found significant associations of lower minimum temperatures and
36 precipitation with increased household sap consumption during the sap harvesting season. This
37 relationship was largely similar within all months and divisions, and strong associations of
38 temperature ($\chi^2(1, n=5,027) = 7.74, p < 0.01$) and, independently, precipitation ($\chi^2 = 8.00, p <$
39 0.01) remained strong after accounting for month, location, and annual sap season. Interannual
40 variation in date palm sap consumption in Bangladesh is likely best explained by temperature
41 and precipitation patterns, where colder, drier winter days pose a higher risk for Nipah virus
42 spillover. The synthesis of approaches to determine the driving forces of seasonality in our study
43 may be a valuable method for investigating seasonality in other zoonotic pathogens.

44

45

46 **Introduction**

47

48 Date palm sap consumption is a longstanding practice in Bangladesh and nearby regions
49 in South Asia, where date palm trees have been cultivated for centuries for their sap [1]. The
50 practice was linked to Nipah virus spillovers after in-depth interviews and case-control analysis
51 during an outbreak in 2005 [2] and drinking sap has been a consistent risk factor for human
52 Nipah virus infection through years of case-control risk factor analyses [3, 4]. Nipah virus case
53 fatality is approximately 70% in South Asia and person-to-person transmission commonly occurs
54 [5], posing a risk for highly fatal regional outbreaks, or possibly pandemics. Bangladesh has
55 reported more spillover events than any other country since its first reported human cases in
56 2001 [6]. By better understanding the factors that contribute to Nipah spillovers we can better
57 identify key targets for intervention that can prevent future cases of Nipah virus spillovers, and
58 subsequent outbreaks.

59

60 Though date palm sap is tapped year-round for various purposes, the sap is only
61 consumed raw in the winter months between November and April when the temperatures are
62 sufficiently low to keep the sap fresh, herein referred to as the sap season. Bats are thought to
63 introduce the virus into the sap through shedding from bodily fluids (saliva and urine) while
64 consuming the sap during the tapping process [7]. However, current understanding of the
65 nuances of sap consumption in humans remains limited.

66

67 Nipah virus spillovers in Bangladesh have occurred more frequently during years with
68 colder winter temperatures [8]; furthermore, investigation has shown weekly minimum
69 temperatures to be a strong predictor of spillover [9]. Several hypotheses have been suggested to

70 explain this correlation. One hypothesis is that the virus may survive longer in colder and drier
71 conditions. However, examinations of Nipah virus survival in fruit juices with a comparable pH
72 to date palm sap showed a survival time of several days at temperatures warmer than those
73 observed in Bangladesh during the November–April sap harvesting season [10].

74
75 A second hypothesis is that colder temperatures could be affecting the behavior of the
76 reservoir, *Pteropus medius*. The stress of colder weather may impose increased energy demands
77 on bats, and the availability of the fruits that compose the majority of their diet is reduced during
78 the winter months. These conditions may lead bats to turn more frequently to a reliable food
79 source with a high sugar content such as date palm sap when it is available, especially so during
80 the coldest days of the sap season [7]. However, though bats did access sap more frequently
81 during the cooler winter and springtime months, the frequency of *P. medius* visits to date palm
82 trees in winter was not significantly related to temperature on a daily level in a three-year study
83 [11].

84
85 A third hypothesis is that human date palm sap consumption changes based on
86 temperature. A recent study identified significant differences in the frequency of household sap
87 consumption from year to year. One potential explanation is that humans drink more sap during
88 the coldest days of the winter when sap is more abundant and they report that the sap is sweetest
89 [12, 13] (Fig 1). More recently, lower precipitation in the month preceding the spillover event
90 was also observed to be a predictor of spillover risk, along with El Niño Southern Oscillation
91 cycles with a lag of three months [14]. One speculative explanation for this is that rain during the
92 tapping process may dilute the sap, making it less sweet and less appealing to buyers. Of all the

93 proposed hypotheses for the weather-spillover relationship, these have received the least
94 attention.

95

96 In this study, we aim to examine associations between weather patterns in Bangladesh
97 and household date palm sap consumption in Bangladesh 2013-2016.

98

99

100 **Methods**

101

102 **Sap consumption**

103 To investigate changes in date palm sap consumption over time, we used data from a
104 nationally representative household survey of adults in Bangladesh performed between
105 September 2013 and August 2016. Additional details on study design and sampling strategy can
106 be found in Shanta et al., 2023 [15]. The study was conducted in 10,002 households in 1,001
107 communities representing both urban and rural populations across the 7 administrative divisions
108 of Bangladesh. Communities were randomized within 16 strata of population size in all
109 administrative divisions each season of the study period (winter: November–February, summer:
110 March–June, and rainy: July–October) to ensure comparability in terms of number of
111 communities enrolled between each season and location for the duration of the study.
112 Households were identified by a modified random walk method, using the main entrance of the
113 homestead with the most recent wedding in rural communities, and ward entrance as random
114 starting points for urban communities. In rural areas, the house to the left of the main homestead
115 was enrolled first, then every third household was approached in that direction for enrollment

116 until 10 households had been enrolled. In the case that the household declined study
117 participation, each successive household was approached. In urban areas, surveyors chose
118 dwellings by randomly selecting from envelopes containing cardinal directions in each sampled
119 ward. Teams then followed the direction until reaching an administrative boundary of the ward,
120 selecting the first dwelling at the boundary, then approaching every fifth dwelling by proximity
121 for enrollment. Participants were selected from adults within households for their willingness to
122 discuss select household activities that occurred in the past month relative to the date of the
123 survey, including the harvesting and drinking of date palm sap by household members.
124 Participants without a recorded response and those who responded “Don’t know” were excluded
125 from analysis.

126

127 **Weather data**

128 To investigate the association of weather and date palm sap consumption, weather data
129 were retrieved from 10 weather stations in Bangladesh included in the National Centers for
130 Environmental Information’s (NCEI) Past Weather database ([https://www.ncei.noaa.gov/past-
131 weather/](https://www.ncei.noaa.gov/past-weather/)), managed by the National Oceanic and Atmospheric Association (NOAA) (S1 Fig.)
132 The administrative division of each weather station was identified from geographic coordinates
133 provided by the NCEI’s Historical Observing Metadata Repository (HOMR) location
134 information. Further weather data were acquired from the Bangladesh Meteorological
135 Department. Weather data included daily summaries of average, minimum, and maximum
136 temperatures, cumulative precipitation, dew point temperature, surface pressure, and visibility
137 from July 2013 through December of 2016. When multiple stations were included within a single
138 division, daily summary values were averaged across the stations and the resulting mean daily

139 value within that division was used. Daily values for relative humidity were calculated using
140 daily values for dew point and temperature from each station across Bangladesh.

141

142 **Analysis**

143 Monthly averages of daily values of average temperature, minimum temperature,
144 cumulative precipitation, relative humidity, and visibility were calculated over the entire study
145 period. Because survey responses were obtained continuously throughout months, monthly
146 averages were calculated as both categorical (i.e., the average of daily values in the division over
147 the month attributed to all responses in the division that month) and as a moving average. The
148 moving average was determined using the daily observations within the division over the 30 days
149 preceding the response to better cover the time period directly relevant to the survey
150 respondents' household sap consumption ("In the past month..."). When there were insufficient
151 observations to calculate a moving average for that day and location, values were imputed with
152 the last observed value carried forward within the division. For each response, both the
153 categorical monthly averages and 30-day moving averages of weather variables were examined.

154

155 We first investigated the association between sap consumption and weather during the
156 sap season by summarizing consumption across locations, months, and sap seasons. Monthly sap
157 consumption was treated categorically outside of regression analysis. All data analysis and
158 visualization was performed using R (v4.3.1) [16].

159

160 Date palm sap consumption is highly seasonal and limited to the months of November-
161 April; we therefore limited our further statistical analysis to responses from those months to

162 avoid effect size overestimates of the association between date palm sap consumption and
163 weather due to the seasonality of consumption. For our analysis, we focused on the association
164 between household sap consumption and minimum temperature rather than average temperature
165 for purposes of comparability with previous analyses by McKee et al., 2021 [8] and Cortes et al.,
166 2018 [9], as well as to better reflect the nighttime conditions during which sap is allowed to flow
167 before harvest in the morning. For each response, we explored both categorical monthly averages
168 and moving 30-day averages of weather variables.

169
170 We used likelihood ratio χ^2 tests to compare relative fit between null and extended
171 models of sap consumption to determine how weather contributed to model fit past the expected
172 effects of location and month. As significant relationships between division, month, and
173 household sap consumption were previously identified [3], those two variables were included in
174 our null model. We also included sap season in the null model to account for the possibility of
175 year-to-year differences in sap consumption due to previous interventions on sap consumption.
176 Extended models included categorical and moving averages of minimum temperature,
177 cumulative precipitation, visibility, and relative humidity to determine whether interannual
178 variance in weather conditions contributed to explaining patterns of seasonal sap consumption
179 beyond the expected geographic and monthly differences.

180
181 To further explore the possibility that variation in sap consumption may be due to
182 seasonal differences such as changing attitudes towards sap consumption, we used receiver
183 operating characteristic (ROC) curves of weather and season to determine their ability to classify
184 predicted probabilities of date palm sap consumption. We performed model selection to

185 determine the combination of categorical and weather variables that resulted in the best fit using
186 Akaike's information criterion, corrected for the small sample size of the outcome (AICc).

187

188

189 **Results**

190

191 Seven percent (361/5024) of respondents reported household sap consumption in the past
192 month during the sap season (November-April). Data on sap consumption during the sap season
193 was missing for 3 households.

194

195 Reported consumption was highest during the 2013-2014 season, with 12% (193/1675) of
196 respondents reporting consumption (Table 1). Peak sap consumption occurred in January and
197 February in each sap season of the study (S2 Fig), with 15% (124/857) and 15% (102/698)
198 overall.

199

200 There was an inverse relationship between sap consumption and minimum temperature
201 during each sap season, though the strength of the relationship between consumption and
202 minimum temperature varied by season, from weakest during the 2013-2014 season (slope = -
203 6.97) to strongest during the 2015-2016 season (slope = -24.08) (Fig 2A). Though consumption
204 is lowest at the margins of the sap season (November and April), there were relatively high
205 levels of consumption during the November, March, and April of the 2013-2014 season as
206 compared to the 2014 -2015 and 2015-2016 sap seasons (S2 Fig).

207

208 To account for the possibility that the relationship between monthly percentages of
209 household sap consumption and minimum temperatures by location was impacted by the high
210 late-fall and spring temperatures in the November and April of the sap season, we further
211 examined the relationship after limiting the analysis to December-March (Fig 2B).

212

213 Sap consumption remained negatively correlated with average minimum temperatures
214 during each sap season of the study period (slopes -1.98, -11.56, and -8.99, respectively), even
215 after restricting to the coldest months with the most sap consumption.

216

217 The relationship between average monthly minimum temperatures and monthly
218 percentages of household sap consumption was largely similar across all administrative divisions
219 (Fig 3), exhibiting a consistent inverse relationship between sap consumption and monthly
220 averages of daily minimum temperatures. However, districts with low overall average sap
221 consumption, particularly Rangpur (3%), Chittagong (4%), and Sylhet (2%), did not demonstrate
222 this association to the extent that districts with greater sap consumption did.

223

224 The peak time for sap consumption varied by location over the study period (Fig 3C).
225 The peak occurred in January for Barisal (13%), Chittagong (8%), and Khulna (41%), while the
226 peak of the season was in February for Dhaka (16%), Rajshahi (31%), Rangpur (7%), and Sylhet
227 (9%). We found an inverse relationship between average monthly temperature and monthly
228 proportion of sap consumption nearly each month of the sap season with the exclusion of April
229 (Fig 3D).

230

231 We observed greater household sap consumption in the 2013-2014 sap season (Fig 4A),
232 as well as colder monthly averages of daily minimum temperatures (Fig 4B) and lower monthly
233 averages of daily cumulative precipitation (Fig 4C) in the 2013-2014 sap season. Further,
234 minimum temperatures and sap consumption were related by season and location, with not only
235 colder years in general but colder winters in a division being related with greater sap
236 consumption in that division. No association was identified between household sap consumption
237 and relative humidity or visibility (S3 Fig)

238
239 We found that moving averages of minimum temperature contributed significantly to
240 explaining sap consumption ($\chi^2(1, n=5,027) = 7.74, p < 0.01$), though categorical monthly
241 averages did not ($\chi^2 = 1.31, p = 0.252$). A similar observation was made for cumulative
242 precipitation, though both the moving ($\chi^2 = 5.15, p < 0.05$) and categorical ($\chi^2 = 14.69, p <$
243 0.001) averages improved model fit. Further, moving averages of cumulative precipitation
244 contributed to model fit after accounting for the contributions of minimum temperature ($\chi^2 =$
245 $8.00, p < 0.01$), suggesting an independent association of each weather condition with sap
246 consumption after accounting for the contributions of month, location, and sap season. Visibility
247 or relative humidity was not found to be associated with household date palm sap consumption
248 (S1 Table).

249
250 Comparing ROC curves for season and weather variables (S4 Fig), we found that there
251 was no significant difference between the AUC when using only season (0.790) or only weather
252 (0.786) as classifiers alongside month and location ($Z = 0.562, p = 0.574, 95\% \text{ CI: } -0.011-$
253 0.0200). Examining the covariates of season and weather in model selection using AICc, the

254 categorical variable of season provided better fit than moving averages of minimum temperature
255 and precipitation, but the best fit was observed when including both season and weather (S2
256 Table and S4 Fig).

257

258

259 **Discussion**

260

261 A study of human sap consumption during 2013-2016 in Bangladesh reported that
262 consumption decreased across the study period and proposed multiple possible reasons for this
263 decrease, including regional public health interventions advocating against sap consumption that
264 were ongoing during the study period [15]. However, previous evidence highlighting the impacts
265 of decreased temperature and precipitation on Nipah virus spillover [8,9, 14] and evidence
266 suggesting both empiric and anecdotal support for the impacts of weather on date palm sap
267 production [12, 13] support a proposed causal relationship between weather variation and sap
268 consumption. We observed that household date palm sap consumption increased during colder,
269 drier winters, and that relationship was largely generalizable across all months of the sap season
270 and each administrative division in Bangladesh. Further, colder temperatures and less
271 precipitation were associated with greater sap consumption even after accounting for sap season.
272 Thus, we concur with the observation in Shanta et al. [15] that the reported decreases in sap
273 consumption might be better explained by weather patterns during 2013-2016 rather than
274 previous interventions. These findings indicate that weather-driven variability in sap
275 consumption may be one of the major contributors to year-to-year variation in Nipah virus
276 spillover.

277

278 Though identifying the association between winter weather patterns and sap consumption
279 is useful in understanding interannual variability in Nipah virus spillover, the causal mechanisms
280 of the association are still poorly understood. The effects of temperature and precipitation on the
281 quantity or quality of sap produced by date palms remains unclear. It is possible that humans
282 consume more sap during colder winters because the trees produce more sap during colder days,
283 resulting in more opportunities for human consumption. Qualitative evidence from observers,
284 historical records, and interviews with sap harvesters suggest that sap quality and volume may be
285 highest on the coldest nights of the winter sap season [1, 12, 13]. Dilution of the sap from rain
286 may visually impact the quality of the sap, reducing the likelihood that an individual would
287 purchase it for consumption. Future studies into the effects of weather on date palm sap
288 production quantity and quality could clarify the mechanisms that underlie the association
289 between weather and date palm sap consumption. Additionally, as we do not have data on
290 attitudes towards date palm sap consumption during the study period and thus cannot rule out the
291 impact of education sap consumption interventions, future studies should take into account the
292 motivating factors in the purchase of date palm sap beyond the quality of the sap itself.

293

294 Despite these unknowns, however, synthesizing previous evidence and identifying gaps
295 in knowledge to confidently identify the behavioral and ecological processes between bat hosts,
296 date palm trees, weather conditions, and human populations that drive Nipah seasonality
297 exemplifies the benefit of an interdisciplinary approach to zoonotic disease. Utilizing approaches
298 from ecology, virology, epidemiology, and anthropology, we can provide a uniquely broad view
299 of a seasonal zoonotic disease system. Despite the challenge of understanding the numerous

300 factors underlying zoonotic disease spillover, this approach may serve as a model for
301 investigating the underlying interactions that determine seasonal variability in spillover events
302 for other zoonotic pathogens.

303

304

305 **References**

306

307 1. Kamaluddin M, Nath TK, Jashimuddin M. Indigenous practice of Khejur palm (*Phoenix*
308 *sylvestris*) husbandry in rural Bangladesh. *Journal of Tropical Forest Science*
309 1998;10:357–66.

310 2. Luby SP, Rahman M, Hossain M, Blum LS, Husain MM, Gurley ES, et al. Foodborne
311 Transmission of Nipah Virus, Bangladesh. *Emerg Infect Dis.* 2006;12(12):1888-1894.
312 doi: 10.3201/eid1212.060732.

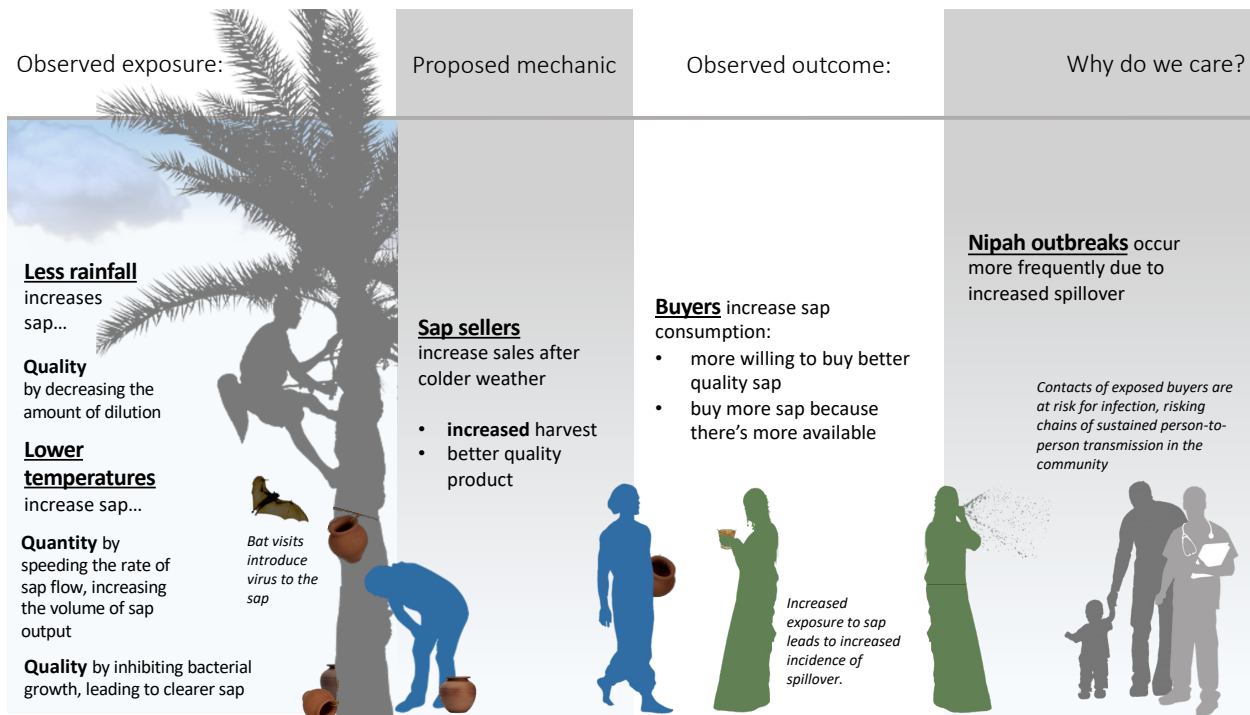
313 3. Rahman MA, Hossain MJ, Sultana S, Homaira N, Khan SU, Rahman M, et al. Date Palm
314 Sap Linked to Nipah Virus Outbreak in Bangladesh, 2008. *Vector-Borne and Zoonotic*
315 *Diseases* 2012;12:65–72. doi: 10.1089/vbz.2011.0656.

316 4. Hegde ST, Sazzad HMS, Hossain MJ, Alam M-U, Kenah E, Daszak P, et al.
317 Investigating Rare Risk Factors for Nipah Virus in Bangladesh: 2001–2012. *EcoHealth*
318 2016;13:720–8. doi: 10.1007/s10393-016-1166-0.

319 5. Luby SP. The pandemic potential of Nipah virus. *Antiviral Research.* 2013 Oct
320 1;100(1):38–43.

- 321 6. Nikolay B, Salje H, Hossain MJ, Khan AKMD, Sazzad HMS, Rahman M, et al.
322 Transmission of Nipah Virus — 14 Years of Investigations in Bangladesh. *New England*
323 *Journal of Medicine* 2019;380:1804–14. doi: 10.1056/NEJMoa1805376.
- 324 7. Khan, SUM, Hossain J, Gurley ES, Nahar N, Sultana R, Luby SP. Use of Infrared
325 Camera to Understand Bats’ Access to Date Palm Sap: Implications for Preventing Nipah
326 Virus Transmission. *EcoHealth* 2010;7:517–25. doi: 10.1007/s10393-010-0366-2.
- 327 8. McKee CD, Islam A, Luby SP, Salje H, Hudson PJ, Plowright RK, et al. The Ecology of
328 Nipah Virus in Bangladesh: A Nexus of Land-Use Change and Opportunistic Feeding
329 Behavior in Bats. *Viruses* 2021;13:169. doi: 10.3390/v13020169.
- 330 9. Cortes MC, Cauchemez S, Lefrancq N, Luby SP, Jahangir Hossain M, Sazzad HMS, et
331 al. Characterization of the Spatial and Temporal Distribution of Nipah Virus Spillover
332 Events in Bangladesh, 2007–2013. *J Infect Dis* 2018;217:1390–4. doi:
333 10.1093/infdis/jiy015.
- 334 10. Fogarty R, Halpin K, Hyatt AD, Daszak P, Mungall BA. Henipavirus susceptibility to
335 environmental variables. *Virus Res* 2008;132:140–4. doi: 10.1016/j.virusres.2007.11.010.
- 336 11. Islam A, McKee C, Ghosh PK, Abedin J, Epstein JH, Daszak P, et al. Seasonality of Date
337 Palm Sap Feeding Behavior by Bats in Bangladesh. *EcoHealth* 2021;18:359–71. doi:
338 10.1007/s10393-021-01561-9.
- 339 12. Nahar N, Sultana R, Gurley ES, Hossain MJ, Luby SP. Date Palm Sap Collection:
340 Exploring Opportunities to Prevent Nipah Transmission. *EcoHealth* 2010;7:196–203. doi:
341 10.1007/s10393-010-0320-3.

- 342 13. Annett HE, Amin BM, Lele GK. The date sugar industry in Bengal : an investigation into
343 its chemistry and agriculture. Calcutta: Published for the Imperial Dept. of Agriculture in
344 India by Thacker, Spink & Co; 1913. doi: 10.5962/bhl.title.27998.
- 345 14. Latinne A, Morand S. Climate Anomalies and Spillover of Bat-Borne Viral Diseases in
346 the Asia–Pacific Region and the Arabian Peninsula. *Viruses* 2022;14:1100. doi:
347 10.3390/v14051100.
- 348 15. Shanta IS, Luby SP, Hossain K, Heffelfinger JD, Kilpatrick AM, Haider N, Rahman T,
349 Chakma S, Ahmed SSU, Sharkar Y, Pulliam JRC, Kennedy ED, Gurley ES. Human
350 Exposure to Bats, Rodents and Monkeys in Bangladesh. *Ecohealth*. 2023 Mar;20(1):53-
351 64. doi: 10.1007/s10393-023-01628-9.
- 352 16. R Core Team (2021). R: A language and environment for statistical computing. R
353 Foundation for Statistical Computing, Vienna, Austria. <https://www.R-project.org/>.
354
355
356
357
358
359
360
361
362
363
364



365

366

367 **Fig 1. Proposed Mechanics of Weather-Spillover Relationship.** Proposed relationships

368 between winter temperatures, precipitation, seasonal sap production, sap consumption, and

369 Nipah virus spillover risk.

370

371

372

373

374

375

376

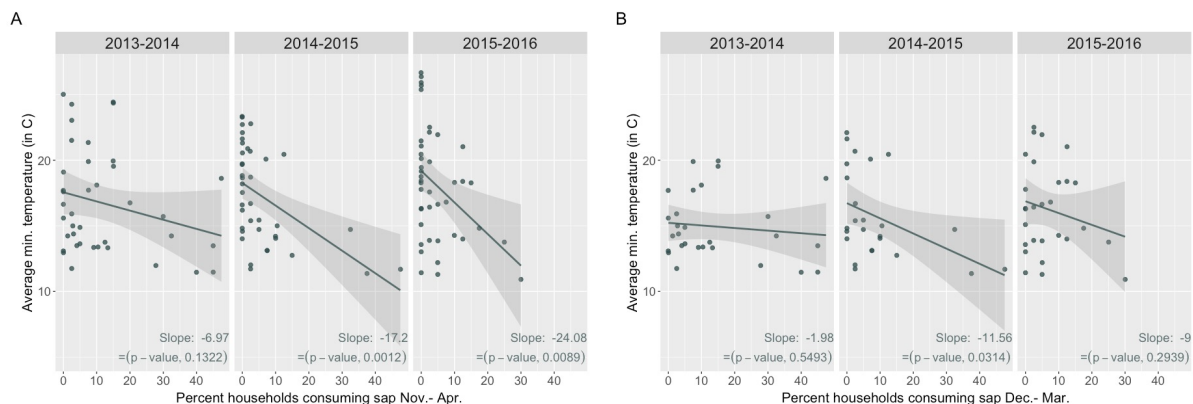
377

378

379 **Table 1.** Geographic and temporal characteristics of date palm sap consumption during the sap
 380 consumption season (Nov.-Apr.) in 10,002 households in 1,001 communities across Bangladesh,
 381 2013-2016.
 382

Response characteristic	Households reporting date palm sap consumption in the past month	
	%	(n/N)
Season		
2013-2014	12	(193/1675)
2014-2015	6	(91/1670)
2015-2016	5	(77/1679)
Month		
November	1	(3/583)
December	5	(50/1075)
January	15	(124/857)
February	15	(102/698)
March	7	(62/881)
April	2	(20/930)
Location		
Barisal	5	(38/720)
Chittagong	4	(30/720)
Dhaka	5	(39/718)
Khulna	18	(126/717)
Rajshahi	13	(96/720)
Rangpur	3	(21/719)
Sylhet	2	(11/710)
Total:	7	(361/5024)

383
 384
 385
 386
 387
 388
 389



390
391 **Fig 2. Sap consumption and minimum temperature by season.** (A) Monthly percentages of
392 household sap consumption and monthly average of daily minimum temperatures by location
393 over sap seasons, Nov.-Apr. (B) Monthly percentages of household sap consumption and
394 monthly average of daily minimum temperatures by location over a subset of months within the
395 sap season, Dec.-Mar.

396

397

398

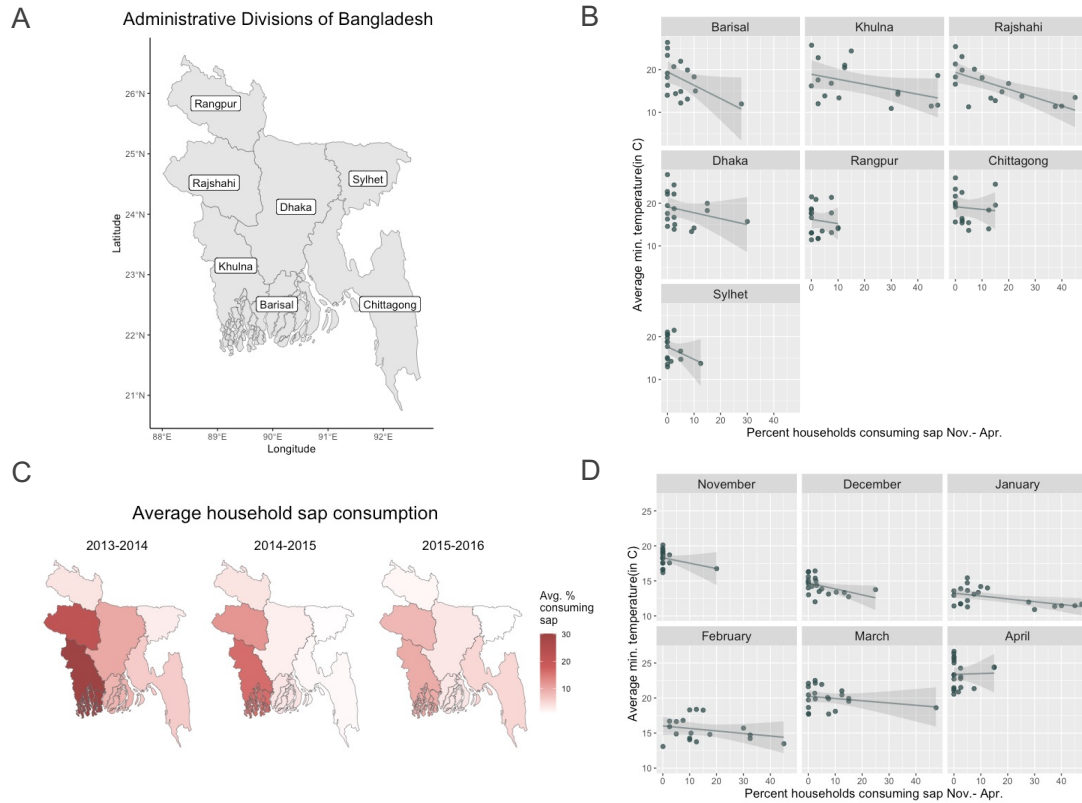
399

400

401

402

403



404

405

406 **Fig 3. Sap consumption and minimum temperature by month and location.** (A) Map of

407 administrative divisions of Bangladesh, (B) Monthly percentages of household sap consumption

408 and monthly average of daily minimum temperatures by location over all sap seasons of the

409 study period, Nov.-Apr. 2013-2016. (C) Average percentages of household sap consumption

410 across sap seasons in each division and (D) Average percentages of household sap consumption

411 and minimum temperatures in each division by month across all sap seasons.

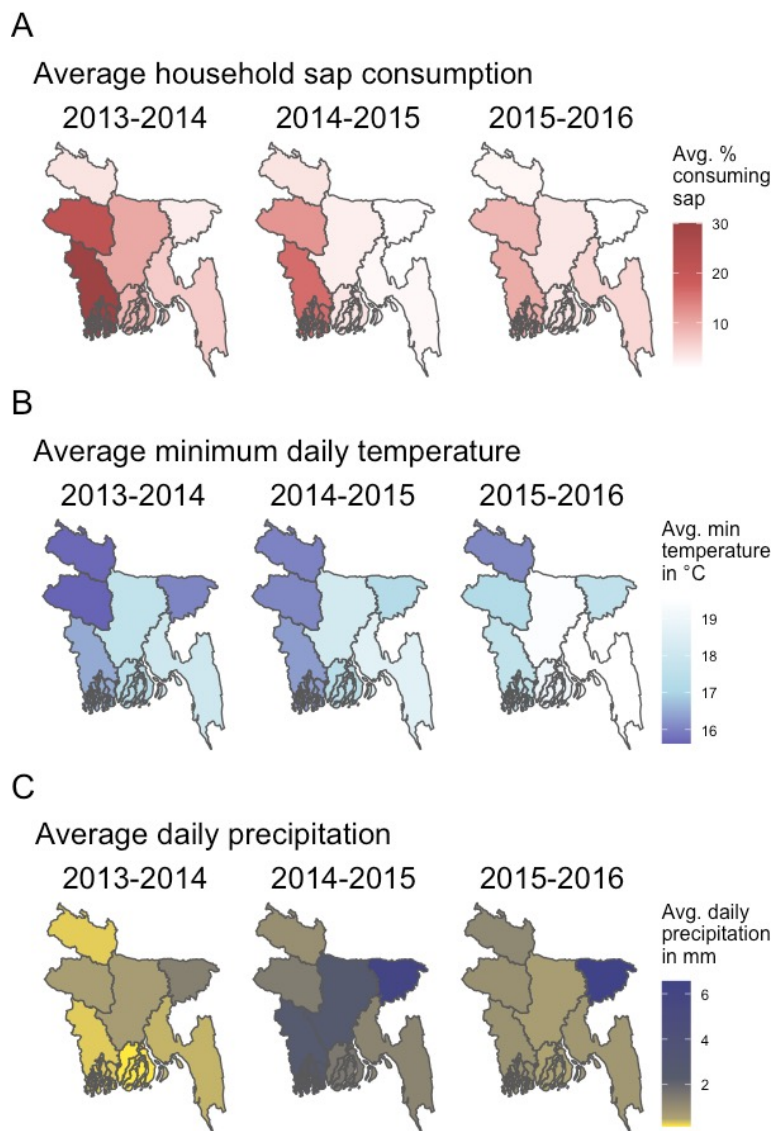
412

413

414

415

416



417

418 **Fig 4. Sap consumption and weather by location and season.** Relationship between date palm

419 sap consumption and weather in Bangladesh, November-April, 2013-2016. (A) Average

420 percentages of household sap consumption over sap seasons by division (B) Average of all daily

421 minimum temperatures in °C over sap seasons by division (C) Average of all daily values of

422 cumulative precipitation in millimeters over sap seasons by division.

423

424