

1 **Association of mid-age Life's Essential 8 score with digital cognitive performance**  
2 **and incident Alzheimer's disease: the Framingham Heart Study**

3 **Running title:** mid-age Life's Essential 8 score with digital cognitive performance

4  
5 Jian **Yang**, MPH<sup>1,\*</sup>; Huitong **Ding**, PhD<sup>2,3,\*</sup>; Yi **Li**, MA<sup>1</sup>; Ting Fang Alvin **Ang**, MD,  
6 MPH<sup>2,3,4</sup>; Sherral **Devine**, PhD<sup>2,3</sup>; Yulin **Liu**, MS<sup>2,3</sup>; Wendy **Qiu**, MD, PhD<sup>2</sup>; Rhoda **Au**,  
7 PhD<sup>2,3,4,5,6</sup>; Jiantao **Ma**, PhD<sup>7</sup>; Chunyu **Liu**, PhD<sup>1,#</sup>

8  
9 <sup>1</sup>Department of Biostatistics, Boston University School of Public Health, Boston, MA,  
10 02118, USA

11 <sup>2</sup>Department of Anatomy and Neurobiology, Boston University Chobanian & Avedisian  
12 School of Medicine, Boston, MA, 02118, USA

13 <sup>3</sup>Framingham Heart Study, Boston University Chobanian & Avedisian School of  
14 Medicine, Boston, MA, 02118, USA

15 <sup>4</sup>Slone Epidemiology Center, Boston University Chobanian & Avedisian School of  
16 Medicine, Boston, MA, 02118, USA

17 <sup>5</sup>Department of Neurology and Medicine, Boston University Chobanian & Avedisian  
18 School of Medicine, Boston, MA, 02118, USA

19 <sup>6</sup>Department of Epidemiology, Boston University School of Public Health, Boston, MA,  
20 02118, USA

21 <sup>7</sup>Division of Nutrition Epidemiology and Data Science, Friedman School of Nutrition  
22 Science and Policy, Tufts University, Boston, MA, 02111, USA

23

24 \* These authors contribute equally

25

26 #Address for Correspondence:

27 Chunyu Liu, PhD; [liuc@bu.edu](mailto:liuc@bu.edu)

28 Crosstown Building 801, Massachusetts Avenue Boston, MA 02118, USA.

29

30

31

32 **ABSTRACT**

33 **Background:** Emerging studies indicate that cardiovascular health (CVH) is a  
34 modifiable risk factor for AD. However, studies on how mid-life Life's Essential 8 (LE8)  
35 scores affect the AD risk and digital cognitive performance are limited.

36 **Objective:** To examine the associations between CVH in middle age, as defined by LE8  
37 scores, and subsequent digital cognitive performance and incident AD.

38 **Methods:** Linear regression and Cox proportional-hazard models were used to examine  
39 the associations of mid-age CVH with dCDT performance and incident AD, respectively.  
40 Prediction performance of mid-age LE8 scores for incident AD were assessed using  
41 ROC curve analysis.

42 **Results:** Every one-SD increase in mid-age LE8 total score was associated with a 0.16-  
43 SD increase in dCDT total score ( $p < 0.001$ ). Ideal CVH in middle age was associated  
44 with higher dCDT scores compared to intermediate CVH. Furthermore, higher mid-age  
45 LE8 scores were associated to a decreased risk of AD, with ideal CVH significantly  
46 lowering AD risk compared to intermediate CVH. The combination of dCDT  
47 performance, mid-age LE8 scores, APOE  $\epsilon 4$  status, and other covariates provided the  
48 best prediction performance for incident AD, with an AUC of 0.84. Notably, mid-life LE8  
49 scores improved its predictive accuracy by 5.7%.

50 **Conclusion:** Our findings emphasize the critical role of CVH in middle age as a  
51 predictor of both digital cognitive performance and the risk of developing AD,  
52 highlighting the importance of early intervention on CVH to delay the progression of  
53 cognitive decline.

54 **Key Words:** Life's Essential 8, Cardiovascular health, Digital cognitive performance,  
55 Alzheimer's disease

## 56 INTRODUCTION

57 Alzheimer's disease (AD) poses a significant challenge to public health due to its  
58 gradual onset and the progressive deterioration of cognitive functions [1]. With effective  
59 treatments for AD being scarce, the focus has shifted towards early detection as a key  
60 strategy for managing the disease [2]. Studies highlight the importance of mitigating  
61 major risk factors, particularly cardiovascular health (CVH), during middle age before  
62 cognitive decline begins, to lower AD risk [3-6]. The American Heart Association (AHA)  
63 has put forward Life's Simple 7 (LS7) as a CVH metric targeting modifiable risk factors  
64 including blood pressure, blood sugar, cholesterol levels, body mass index (BMI),  
65 physical activity, diet, and smoking [7]. Many studies have reported a significant  
66 association between higher LS7 scores and decreased AD risk [8-10]. Building on LS7,  
67 the AHA has recently introduced Life's Essential 8 (LE8), refining the model to  
68 incorporate sleep quality and a 0 to 100 scale for a more precise CVH quantification [11].  
69 Despite this, the effect of mid-life LE8 scores on cognitive health and their influence on  
70 AD risk remains an underexplored area.

71         Understanding the association between mid-life LE8 scores and early cognitive  
72 decline requires accurate tracking of these initial subtle cognitive changes. Advances in  
73 technology have led to the development of precise digital methods for cognitive function  
74 assessment, significantly surpassing traditional neuropsychological (NP) tests in terms  
75 of objectivity and sensitivity to early signs of cognitive decline. The digital Clock Drawing  
76 Test (dCDT) exemplifies such innovation by employing a digitizing ballpoint pen and  
77 grid-patterned paper to replicate the conventional clock drawing test [12]. This approach  
78 utilizes advanced software to track pen movements, thus refining CDT and NP

79 evaluations with standardized administration, objective scoring, and reduced biases.  
80 Additionally, dCDT covers a broad spectrum of cognitive domains and utilizes a  
81 comprehensive scoring system for an in-depth analysis of cognitive abilities [12, 13].  
82 Therefore, determining the association between mid-life CVH, as indicated by LE8  
83 scores, and dCDT's capacity for early cognitive assessment is essential for timely  
84 intervention strategies.

85 The objective of this study was to investigate associations of mid-age LE8 scores  
86 with dCDT and incident AD in the Framingham Heart Study (FHS), aiming to offer  
87 essential insights for the prevention of cognitive decline.

88

## 89 **METHODS**

### 90 **Study population**

91 The FHS, established in 1948, is a community-based cohort study [14]. The Offspring  
92 Cohort of the FHS began in 1971, registering 5,124 individuals, including children of the  
93 Original Cohort and their spouses. These participants are subject to routine health  
94 examinations roughly every four years, with ten such examinations conducted so far,  
95 during which a broad array of health data is gathered [15, 16].

96 This study included 1,413 participants from the FHS Offspring Cohort, each of  
97 whom had participated in at least one dCDT since 2011 and had been involved in at  
98 least one of the FHS core exams from 5 to 9 (1991-2014). Exclusions were made for  
99 participants under 60 years of age (n=67) and those diagnosed with non-AD dementia  
100 (n=25) at the time of dCDT. An additional 123 participants were excluded from the study

101 due to incomplete data on independent and outcome variables, as well as covariates,  
102 resulting in a refined cohort of 1,198 individuals eligible for subsequent analysis  
103 **(Supplementary Figure 1).**

#### 104 **Construction of mid-age LE8 score**

105 We defined "middle age" as the age range of 45 to 65 years across exams 5-9 [17-19],  
106 due to the measurement of most LE8 components starting from exam 5. Considering  
107 participants might have undergone multiple examinations in this period, the average  
108 LE8 scores were calculated for these participants from exams 5-9.

109 The LE8 total score was derived based on the AHA guidelines [11], with  
110 modifications made to fit the FHS cohorts [20]. Briefly, individuals who quit smoking less  
111 than two years ago were given a score of 25 for smoking. The Dietary Approaches to  
112 Stop Hypertension (DASH) [21] diet score was calculated based on components  
113 including the intake of vegetables, fruits, nuts, legumes, and whole grains; as well as  
114 low-fat dairy, and the intake of red and processed meat, sugar-sweetened beverages,  
115 and sodium [22]. The physical activity score was computed by considering the duration  
116 and strength of activities including sleep, sedentary, and different strengths of activities  
117 (i.e. light, moderate, and vigorous) [23]. The other scores such as sleep quality, blood  
118 sugar levels, BMI, blood lipid, blood pressure were derived based on the standard of  
119 AHA [11]. We calculated the mid-age LE8 total score by averaging scores across all  
120 eight LE8 components. Additionally, two sub-scores, LE8 health behavior score and  
121 LE8 health factor score, were also obtained[11]. Furthermore, we classified the mid-age  
122 LE8 total score into three CVH categories: Poor-CVH (LE8 total score below 50),

123 Intermediate-CVH (LE8 total score between 50 and 70), and Ideal-CVH (LE8 total score  
124 above 70) [11].

### 125 **Construction of dCDT scores**

126 The details of the dCDT can be found in previous studies [12, 13, 24-26]. This study  
127 used the dCDT total score, and eight domain-specific scores including COM/COP  
128 Drawing Efficiency scores, COM/COP Simple Motor scores, COM/COP Information  
129 Processing scores, and COM/COP Spatial Reasoning scores.

### 130 **Diagnostic criteria of Alzheimer's disease**

131 The cognitive status of FHS participants has been consistently monitored using a  
132 variety of methods, including periodic assessments with the NP test battery [6, 27, 28].  
133 To ensure accurate diagnoses, a dedicated team comprising neurologists and  
134 neuropsychologists reviewed all available information. This team reaches a consensus  
135 on whether participants meet the Diagnostic and Statistical Manual of Mental Disorders,  
136 4th edition (DSM-IV) criteria for dementia and assigns specific subtype diagnoses as  
137 needed [29]. The diagnostic criteria for AD adhere to the National Institute of  
138 Neurological and Communicative Disorders and Stroke and the AD and Related  
139 Disorders Association [30].

### 140 **Covariates**

141 Covariates included age at dCDT examination, delta age, sex, education levels,  
142 apolipoprotein-E (*APOE*) genotype. The delta age was calculated to show the difference  
143 in years between participants' age at dCDT and their age at the most recent  
144 examination that established their mid-life period. Participants with *APOE*  $\epsilon 2/\epsilon 4$  allele

145 were excluded. The remaining participants were stratified into two groups based on the  
146 presence ( $\epsilon_3/\epsilon_4$  and  $\epsilon_4/\epsilon_4$ ) or absence ( $\epsilon_2/\epsilon_3$ ,  $\epsilon_2/\epsilon_2$  and  $\epsilon_3/\epsilon_3$ ) of the  $\epsilon_4$  allele.

## 147 **Statistical analysis**

148 LE8 scores and dCDT scores were converted to z-scores. Linear regression models  
149 were used to examine the associations of dCDT total score with LE8 total score and  
150 CVH categories. Furthermore, the pairwise associations between LE8 sub-scores and  
151 dCDT sub-scores were analyzed by linear regression models (**Figure 1**). All models  
152 were adjusted for age at dCDT, sex, education level, and delta age. The multiple  
153 comparisons were adjusted by the false discovery rate (FDR) correction [31].

154 Sex-specific analysis was performed to assess the variance in the effect size of  
155 the association between mid-age CVH and dCDT total score. Stratified analysis was  
156 further applied in *APOE*  $\epsilon_4$  allele carriers and non-carriers. To determine whether sex  
157 and the presence of *APOE*  $\epsilon_4$  allele modify the association between mid-age CVH and  
158 dCDT performance, we conducted additional analyses that include interaction terms  
159 (sex\*CVH categories) and (*APOE*  $\epsilon_4$  status\*CVH categories) in the regression models,  
160 respectively.

161 Cox Proportional-Hazard model was used to examine the association between  
162 mid-age LE8 total score and incident AD. Adjustments were made for age at the time of  
163 the last FHS examination during middle age, sex, and education level (**Figure 1**). The  
164 follow-up period was determined from the end of middle age to the earliest occurrence  
165 of AD onset, death, or up to July 12, 2023. Additionally, we applied the Cox model using



166 the categorical variable of mid-age CVH as the main predictor, while adjusting for the  
167 covariates.

168 The association between dCDT performance and incident AD was examined by  
169 Cox model with dCDT total score as primary predictor and AD incidence as the  
170 dependent outcome (**Figure 1**). The covariates included age at dCDT, sex, and  
171 education level. Follow-up time spanned from the dCDT assessment to the earliest  
172 occurrence of AD onset, death, or July 12, 2023. In the secondary analysis, we  
173 conducted Cox model with the eight dCDT subdomain scores as main predictors and  
174 AD onset as outcome, adjusting for the same set of covariates. We tested the  
175 proportional hazard assumption in all Cox models using the Schoenfeld residuals test.

176 We evaluated the predictive ability of the mid-age LE8 total score, dCDT total  
177 score, and various covariates for AD risk by constructing five logistic regression models  
178 and comparing their area under the receiver operating characteristic (ROC) curve  
179 (AUC). The baseline model included covariates with age, sex, and education level.  
180 Three subsequent models incorporated the following additional variables one at a time:  
181 mid-age LE8 total score, dCDT total score, and *APOE*  $\epsilon$ 4 status. The final  
182 comprehensive model encompassed age, sex, education level, mid-age LE8 total score,  
183 dCDT total score, and *APOE*  $\epsilon$ 4 status. All analysis were performed using RStudio  
184 version 4.2.1.

## 185 **RESULTS**

### 186 **Participant characteristics**

187 This study included 1,198 participants (mean age at dCDT measurement  $73\pm 7$ , 56.8%  
188 women, 47.5% college and higher). Forty-five participants were diagnosed with AD  
189 during the median of 17.5 years follow up. The detailed clinical characteristics were  
190 shown in **Table 1**.

### 191 **Association of demographic variables with mid-age LE8 scores and dCDT scores**

192 In the univariate analysis, with each additional year of age, participants' dCDT total  
193 scores decreased by 0.07 SD (95% CI: -0.08, -0.06;  $P<0.001$ ), indicating a decline in  
194 cognitive performance with age (**Supplementary Table 1**). Women demonstrated  
195 superior cognitive performance than men, scoring on average 0.19 SD (95% CI: 0.03,  
196 0.36) higher on the dCDT total scores ( $P=0.02$ ). Additionally, a clear educational  
197 gradient was observed in dCDT performance. No significant association was observed  
198 between education level and mid-age LE8 total score in the study participants  
199 (**Supplementary Table 2**).

### 200 **Association between mid-age LE8 scores and dCDT scores**

201 An increase of one SD in the mid-life LE8 total score was positively associated with a  
202 0.16 SD increase in the dCDT total score (95% CI: 0.06, 0.24;  $P<0.001$ ) (**Figure 2**).  
203 When using participants with intermediate CVH as a reference group, those within the  
204 ideal CVH showed a statistically significant increase of 0.18 SD in their dCDT total  
205 scores (95% CI: 0.01, 0.34;  $P=0.036$ ). In contrast, those categorized with poor CVH had

206 an average decrease of 0.36 SD in their dCDT total scores (95% CI: -0.67, -0.05;  
207  $P=0.024$ ) (**Table 2**).

208 Higher LE8 total score were associated with enhanced dCDT performance  
209 (**Supplementary Figure 2**). The LE8 total score was significantly associated with most  
210 dCDT sub-scores (FDR-adjusted  $P \leq 0.03$ ), except for the scores of drawing efficiency  
211 and information processing under the command task. Compared to the LE8 health  
212 behavior score, the LE8 health factor score showed significant association with more  
213 dCDT sub-scores (4 versus 6) (**Supplementary Figure 2**).

#### 214 **Effect modification by sex**

215 An increase of one SD in the mid-life LE8 total score was significantly associated with a  
216 0.20-SD increase in the dCDT total score among women (95% CI: 0.10, 0.30;  $P<0.001$ )  
217 (**Supplementary Table 3**). For men, this association did not achieve statistical  
218 significance ( $P=0.18$ ). There was no significant interaction effect between mid-life LE8  
219 total score and sex ( $P=0.195$ ) (**Supplementary Table 4**). Women with poor CVH  
220 exhibited dCDT total scores that were, on average, 0.79 SD lower than those with  
221 intermediate CVH (95% CI: -1.22, -0.35;  $P<0.001$ ) (**Supplementary Table 3**). This  
222 association was not observed in men. And the sex significantly influences the  
223 association between mid-life CVH categories and dCDT performance (**Supplementary**  
224 **Figure 3**), with a  $P$  value of 0.016 for interaction term.

#### 225 **Effect modification by APOE $\epsilon 4$ status**

226 No significant interaction effect of APOE  $\epsilon 4$  status with mid-age LE8 scores ( $P=0.053$ )  
227 and CVH categories was observed ( $P=0.249$ ) (**Supplementary Table 4**). There were

228 variations in the strength of the association of dCDT scores with LE8 total score and the  
229 CVH categories when comparing *APOE*  $\epsilon$ 4 carriers to non-carriers (**Supplementary**  
230 **Figure 4**). Specifically, among *APOE*  $\epsilon$ 4 non-carriers, an increase in mid-life LE8 total  
231 score was associated with a 0.12 SD increase in dCDT total score (95% CI: 0.03, 0.21;  
232  $P=0.009$ ). In contrast, *APOE*  $\epsilon$ 4 carriers experienced a more pronounced improvement  
233 of effect size with a beta of 0.29 (95% CI: 0.11, 0.47;  $P=0.002$ ) (**Supplementary Table**  
234 **5**).

### 235 **Association of mid-age LE8 scores with incident AD**

236 An increase of one SD in the mid-life LE8 total score was associated with a 45%  
237 reduction in the risk of incident AD (95% CI: 0.49, 0.87;  $P=0.003$ ) (**Table 3**). Compared  
238 with participants with intermediate CVH, those with the ideal CVH appeared a 53%  
239 decreased AD risk (95% CI: 0.23, 0.98;  $P=0.045$ ). Conversely, participants with poor  
240 CVH in mid-life were observed to have a 43% increased risk of incident AD  
241 (**Supplementary Figure 5**). For each SD increase in the mid-life LE8 behavior score,  
242 there was a 46% reduction in the risk of incident AD (95% CI: 0.49, 0.83;  $P<0.001$ )  
243 (**Supplementary Table 6**). The proportional hazards assumption was consistently  
244 satisfied in all Cox models.

### 245 **Association of dCDT scores with incident AD**

246 Each SD increase in the dCDT total score was associated with a 49% lower risk of  
247 incident AD (95% CI: 0.42, 0.61;  $P<0.001$ ) (**Table 3**). The significant associations  
248 between incident AD and domain-specific performances in all four domains under both  
249 command and copy tasks were observed (FDR-adjusted  $P<0.001$ ) (**Supplementary**

250 **Table 7**). Higher levels of domain-specific cognitive scores were associated with lower  
251 hazards of developing AD during the follow-up period, with HRs ranging from 0.51 to  
252 0.67 (FDR-adjusted  $P < 0.001$ ).

### 253 **ROC Curve Analysis**

254 **Figure 4** illustrates the progression of predictive performance for incident AD starting  
255 from a base model that integrated age, sex, and education level, resulting in an AUC of  
256 0.63. By incorporating the dCDT total score into this base model, the AUC increased to  
257 0.81. Subsequent addition of both the LE8 total score and the *APOE*  $\epsilon 4$  allele status to  
258 the base model each yielded AUCs of 0.69. The most comprehensive model, which  
259 included the dCDT total score, LE8 total score, and *APOE*  $\epsilon 4$  status with the  
260 demographic variables, reached the highest AUC of 0.84.

261

### 262 **DISCUSSION**

263 Our study investigated the association of mid-age LE8 scores with dCDT performance  
264 and incident AD. The results indicated individuals with higher LE8 total score in their  
265 middle ages tend to exhibit better cognitive performance and a reduced risk of incident  
266 AD. In addition, higher mid-age LE8 health factors and lifestyle behavior scores  
267 positively correlate specific cognitive functions in older age. The ROC analysis  
268 illustrated the model containing LE8 total score, dCDT total score, and *APOE*  $\epsilon 4$  status  
269 achieved the highest AUC of 0.84 in predicting incident AD.

270 AD, as a neurodegenerative condition, may progress many years before  
271 noticeable symptoms occur.[32] Previous studies have underscored the importance of

272 detecting and addressing risk factors in midlife in delay and prevention of AD in later  
273 years [33, 34]. Our study builds on this foundation by emphasizing the CVH in midlife as  
274 a critical period for implementing intervention and prevention strategies before the  
275 disease progresses significantly. Previous studies have established various methods of  
276 measuring CVH in middle age and analyzed the associations between mid-age CVH  
277 and AD [35, 36]. Another study discovered that mid-age Framingham Stroke Risk  
278 Profile was significantly associated with memory decline [37]. More studies have used  
279 LS7 to quantify CVH, and found that higher LS7 protect cognition [8, 9, 38-40]. LE8  
280 incorporating eight modifiable risk factors and uses a 100-point scale for assessment,  
281 providing a more comprehensive and nuanced perspective of CVH evaluation [11]. Our  
282 study revealed consistent finding with a superior LE8 score in middle life was  
283 associated with improved cognitive performance and a reduced AD risk.

284 Digital cognitive assessment tests are becoming widely used and hold the  
285 potential to replace traditional paper-based tests as a rapid and more sensitive tool for  
286 detecting early cognitive decline. Establishing the relationship between CVH and these  
287 new modalities of cognitive performance is essential. A prior study that compared the  
288 performance of dCDT with conventional NP test observed that the composite scores  
289 built based on dCDT were superior surrogates for their corresponding NP tests [41].  
290 Specifically, lower standard errors and more significant *P* values were found in the  
291 associations between dCDT composite scores and mild cognitive impairments  
292 compared with associations with NP tests [41].

293 Genetic factors, particularly the presence of the *APOE*  $\epsilon$ 4 allele, are known to  
294 significantly and negatively influence the onset of AD [42, 43]. Our study found that

295 among *APOE*  $\epsilon$ 4 carriers, a correlation exists between CVH condition in middle age and  
296 a more pronounced cognitive decline, aligning with previously reported findings [38].  
297 *APOE*  $\epsilon$ 4 carriers with suboptimal CVH in their middle ages tend to have a greater  
298 increase in the risk of AD. Conversely, *APOE*  $\epsilon$ 4 carriers with ideal CVH in this period  
299 are likely to see a more significant reduction in AD risk. Given the significant impact  
300 genetic factors, particularly the *APOE*  $\epsilon$ 4 allele, on AD onset and the observed  
301 correlation between mid-life CVH and cognitive decline among *APOE*  $\epsilon$ 4 carriers, we  
302 advocate for the adoption of healthy lifestyle habits and the maintenance of optimal  
303 CVH from an early age for all individuals. This approach is particularly emphasized for  
304 those with the *APOE*  $\epsilon$ 4 allele, given their increased risk, but is beneficial universally to  
305 mitigate AD risk.

306 Our study had several strengths. The FHS Offspring Cohort, being a longitudinal  
307 cohort, serves as a reliable and extensive data source. It uniquely offers both  
308 longitudinal LE8 measures and dCDT data, a rarity in other studies. Our study has  
309 limitations in several aspects. First, the FHS Offspring cohort comprises those who are  
310 non-Hispanic White from a relatively affluent town, many of whom have received a  
311 college degree or above education [35]. This may lead to limitations in the  
312 representability of our findings to more diverse populations. Additionally, we have a  
313 relatively small number of incident AD cases during a median of 17.5 years of follow-up  
314 since the middle age. The small sample size in AD poses challenges in conducting  
315 robust subgroup analysis. Therefore, further studies with diverse populations and larger  
316 sample sizes are warranted.

317 In summary, these results underline the importance of mid-life cardiovascular  
318 health in predicting cognitive outcomes and the development of AD. Our results  
319 indicated that optimal mid-age CVH is associated with enhanced cognitive function and  
320 a reduced risk of incident AD, particularly in women and those with higher AD genetic  
321 risk.

322

### 323 **ACKNOWLEDGEMENTS**

324 We express our gratitude to the participants of the Framingham Heart Study for their  
325 commitment, acknowledging that this research could not have been conducted without  
326 their involvement. Additionally, we extend our thanks to the FHS researchers for their  
327 sustained dedication to subject examinations over the years.

328

### 329 **FUNDING**

330 This work was supported by National Heart, Lung, and Blood Institute contract (N01-  
331 HC-25195; HHSN268201500001I), and NIH grants from the National Institute on Aging  
332 (AG008122, AG062109, AG068753)

333

### 334 **AUTHOR CONTRIBUTIONS**

335 Jian Yang (Conceptualization; Methodology; Data Curation; Formal analysis;  
336 Investigation; Writing - Original Draft; Writing - Review & Editing; Visualization); Huitong  
337 Ding (Investigation; Writing - Original Draft; Writing - Review & Editing); Yi Li (Data



338 Curation; Writing - Review & Editing); Ting Fang Alvin Ang, Sherral Devine, Yulin Liu,  
339 Wendy Qiu, Rhoda Au, and Jiantao Ma (Resources; Writing - Review & Editing; Other);  
340 Chunyu Liu (Conceptualization; Methodology; Writing - Original Draft; Writing - Review  
341 & Editing; Visualization; Supervision; Project administration; Funding acquisition; Other).

342

### 343 **CONFLICT OF INTEREST**

344 Dr. Au is a scientific advisor to Signant Health and NovoNordisk, and a consultant to the  
345 Davos Alzheimer's Collaborative. The other authors state that this study was carried out  
346 without any commercial or financial affiliations that might be seen as a possible conflict  
347 of interest.

348

### 349 **DATA AVAILABILITY**

350 The data used in this study could be requested through an application to the  
351 Framingham Heart Study (<https://www.framinghamheartstudy.org/fhs-for-researchers/>).

352

### 353 **ETHICS APPROVAL AND CONSENT TO PARTICIPATE**

354 The study's procedures and protocols received approval from the Institutional Review  
355 Board at Boston University Medical Campus. All participants provided written informed  
356 consent.

357

358 **REFERENCE**

- 359 1. Tiwari, S., et al., *Alzheimer's disease: pathogenesis, diagnostics, and*  
360 *therapeutics*. International journal of nanomedicine, 2019: p. 5541-5554.
- 361 2. Pase, M.P., C.L. Satizabal, and S. Seshadri, *Role of Improved Vascular Health in*  
362 *the Declining Incidence of Dementia*. Stroke, 2017. **48**(7): p. 2013-2020.
- 363 3. Stefanowski, B., et al., *Cognitive decline and dementia in women after*  
364 *menopause: Prevention strategies*. Maturitas, 2023. **168**: p. 53-61.
- 365 4. Povova, J., et al., *Epidemiological of and risk factors for Alzheimer's disease: a*  
366 *review*. Biomed Pap Med Fac Univ Palacky Olomouc Czech Repub, 2012. **156**(2):  
367 p. 108-14.
- 368 5. Crous-Bou, M., et al., *Alzheimer's disease prevention: from risk factors to early*  
369 *intervention*. Alzheimers Res Ther, 2017. **9**(1): p. 71.
- 370 6. Norton, S., et al., *Potential for primary prevention of Alzheimer's disease: an*  
371 *analysis of population-based data*. Lancet Neurol, 2014. **13**(8): p. 788-94.
- 372 7. Han, L., et al., *National Trends in American Heart Association Revised Life's*  
373 *Simple 7 Metrics Associated With Risk of Mortality Among US Adults*. JAMA  
374 Netw Open, 2019. **2**(10): p. e1913131.
- 375 8. Pase, M.P., et al., *Association of Ideal Cardiovascular Health With Vascular*  
376 *Brain Injury and Incident Dementia*. Stroke, 2016. **47**(5): p. 1201-6.
- 377 9. Zhao, Y.L., et al., *Association between Life's Simple 7 and cerebrospinal fluid*  
378 *biomarkers of Alzheimer's disease pathology in cognitively intact adults: the*  
379 *CABLE study*. Alzheimers Res Ther, 2022. **14**(1): p. 74.
- 380 10. Guo, J., et al., *Association of Life's Simple 7 with incident dementia and its*  
381 *modification by the apolipoprotein E genotype*. Alzheimers Dement, 2021. **17**(12):  
382 p. 1905-1913.
- 383 11. Lloyd-Jones, D.M., et al., *Life's Essential 8: Updating and Enhancing the*  
384 *American Heart Association's Construct of Cardiovascular Health: A Presidential*  
385 *Advisory From the American Heart Association*. Circulation, 2022. **146**(5): p. e18-  
386 e43.
- 387 12. Davis, R., et al., *THink: Inferring Cognitive Status from Subtle Behaviors*. Proc  
388 AAAI Conf Artif Intell, 2014. **2014**: p. 2898-2905.

- 389 13. Rentz, D.M., et al., *Association of Digital Clock Drawing With PET Amyloid and*  
390 *Tau Pathology in Normal Older Adults*. *Neurology*, 2021. **96**(14): p. e1844-e1854.
- 391 14. Kannel, W.B., et al., *An investigation of coronary heart disease in families. The*  
392 *Framingham offspring study*. *Am J Epidemiol*, 1979. **110**(3): p. 281-90.
- 393 15. Feinleib, M., et al., *The Framingham Offspring Study. Design and preliminary*  
394 *data*. *Prev Med*, 1975. **4**(4): p. 518-25.
- 395 16. Benjamin, I., et al., *American Heart Association Cardiovascular Genome-*  
396 *Phenome Study: foundational basis and program*. *Circulation*, 2015. **131**(1): p.  
397 100-12.
- 398 17. Burgio, K.L., K.A. Matthews, and B.T. Engel, *Prevalence, incidence and*  
399 *correlates of urinary incontinence in healthy, middle-aged women*. *J Urol*, 1991.  
400 **146**(5): p. 1255-9.
- 401 18. Prineas, R.J., et al., *United States national prevalence of electrocardiographic*  
402 *abnormalities in black and white middle-age (45- to 64-Year) and older (>=65-*  
403 *Year) adults (from the Reasons for Geographic and Racial Differences in Stroke*  
404 *Study)*. *Am J Cardiol*, 2012. **109**(8): p. 1223-8.
- 405 19. Jiang, C.H., F. Zhu, and T.T. Qin, *Relationships between Chronic Diseases and*  
406 *Depression among Middle-aged and Elderly People in China: A Prospective*  
407 *Study from CHARLS*. *Curr Med Sci*, 2020. **40**(5): p. 858-870.
- 408 20. Carbonneau, M., Li, Y., Liu, C., Huan, T., Joehanes, R., Murabito, J., Heard-  
409 Costa, N., Ma, J., & Levy, D, *Abstract 13855: Epigenetic Aging Markers Mediate*  
410 *the Association of Life's Essential Eight With Cardiovascular Disease and All-*  
411 *Cause Mortality*. . *Journal of the American Heart Association*, 2023.  
412 **148**(Suppl\_1).
- 413 21. Appel, L.J., et al., *A clinical trial of the effects of dietary patterns on blood*  
414 *pressure. DASH Collaborative Research Group*. *N Engl J Med*, 1997. **336**(16): p.  
415 1117-24.
- 416 22. Mellen, P.B., et al., *Deteriorating dietary habits among adults with hypertension:*  
417 *DASH dietary accordance, NHANES 1988-1994 and 1999-2004*. *Arch Intern Med*,  
418 2008. **168**(3): p. 308-14.

- 419 23. Kannel, W.B. and P. Sorlie, *Some health benefits of physical activity. The*  
420 *Framingham Study*. Arch Intern Med, 1979. **139**(8): p. 857-61.
- 421 24. Gomes-Osman, J., et al., *Aging in the Digital Age: Using Technology to Increase*  
422 *the Reach of the Clinician Expert and Close the Gap Between Health Span and*  
423 *Life Span*. Front Digit Health, 2021. **3**: p. 755008.
- 424 25. Matusz, E.F., et al., *Dissociating Statistically Determined Normal Cognitive*  
425 *Abilities and Mild Cognitive Impairment Subtypes with DCTclock*. J Int  
426 Neuropsychol Soc, 2023. **29**(2): p. 148-158.
- 427 26. Thompson, L.I., et al., *Digital Clock Drawing as an Alzheimer's Disease*  
428 *Susceptibility Biomarker: Associations with Genetic Risk Score and APOE in*  
429 *Older Adults*. The Journal of Prevention of Alzheimer's Disease, 2023.
- 430 27. Chene, G., et al., *Gender and incidence of dementia in the Framingham Heart*  
431 *Study from mid-adult life*. Alzheimers Dement, 2015. **11**(3): p. 310-320.
- 432 28. Ahl, R.E., et al., *Defining MCI in the Framingham Heart Study Offspring:*  
433 *education versus WRAT-based norms*. Alzheimer Dis Assoc Disord, 2013. **27**(4):  
434 p. 330-6.
- 435 29. Guze, S.B., *Diagnostic and statistical manual of mental disorders, (DSM-IV)*.  
436 American Journal of Psychiatry, 1995. **152**(8): p. 1228-1228.
- 437 30. McKhann, G., et al., *Clinical diagnosis of Alzheimer's disease: Report of the*  
438 *NINCDS-ADRDA Work Group\* under the auspices of Department of Health and*  
439 *Human Services Task Force on Alzheimer's Disease*. Neurology, 1984. **34**(7): p.  
440 939-939.
- 441 31. Benjamini, Y.H., Yosef, *Controlling the False Discovery Rate: A Practical and*  
442 *Powerful Approach to Multiple Testing*. Journal of the Royal Statistical Society,  
443 1995. **Vol.57**(1): p. p.289-300.
- 444 32. Wolk, D.A. and J.A. Detre, *Arterial spin labeling MRI: an emerging biomarker for*  
445 *Alzheimer's disease and other neurodegenerative conditions*. Curr Opin Neurol,  
446 2012. **25**(4): p. 421-8.
- 447 33. Vu, T.T., et al., *Favorable Cardiovascular Health at Young and Middle Ages and*  
448 *Dementia in Older Age-The CHA Study*. J Am Heart Assoc, 2019. **8**(1): p.  
449 e009730.

- 450 34. Lee, Y., et al., *Systematic review of health behavioral risks and cognitive health*  
451 *in older adults*. *Int Psychogeriatr*, 2010. **22**(2): p. 174-87.
- 452 35. Armstrong, N.M., et al., *Associations Between Midlife (but Not Late-Life)*  
453 *Elevated Coronary Heart Disease Risk and Lower Cognitive Performance:*  
454 *Results From the Framingham Offspring Study*. *Am J Epidemiol*, 2019. **188**(12):  
455 p. 2175-2187.
- 456 36. Bleckwenn, M., et al., *Impact of coronary heart disease on cognitive decline in*  
457 *Alzheimer's disease: a prospective longitudinal cohort study in primary care*. *Br J*  
458 *Gen Pract*, 2017. **67**(655): p. e111-e117.
- 459 37. Gupta, A., et al., *Mid-life Cardiovascular Risk Impacts Memory Function: The*  
460 *Framingham Offspring Study*. *Alzheimer Dis Assoc Disord*, 2015. **29**(2): p. 117-  
461 23.
- 462 38. Peloso, G.M., et al., *Cardiovascular health, genetic risk, and risk of dementia in*  
463 *the Framingham Heart Study*. *Neurology*, 2020. **95**(10): p. e1341-e1350.
- 464 39. Tin, A., et al., *Genetic Risk, Midlife Life's Simple 7, and Incident Dementia in the*  
465 *Atherosclerosis Risk in Communities Study*. *Neurology*, 2022. **99**(2): p. e154-  
466 e163.
- 467 40. Malik, R., et al., *Midlife vascular risk factors and risk of incident dementia:*  
468 *Longitudinal cohort and Mendelian randomization analyses in the UK Biobank*.  
469 *Alzheimers Dement*, 2021. **17**(9): p. 1422-1431.
- 470 41. Yuan, J., et al., *Association Between the Digital Clock Drawing Test and*  
471 *Neuropsychological Test Performance: Large Community-Based Prospective*  
472 *Cohort (Framingham Heart Study)*. *J Med Internet Res*, 2021. **23**(6): p. e27407.
- 473 42. Crean, S., et al., *Apolipoprotein E epsilon4 prevalence in Alzheimer's disease*  
474 *patients varies across global populations: a systematic literature review and*  
475 *meta-analysis*. *Dement Geriatr Cogn Disord*, 2011. **31**(1): p. 20-30.
- 476 43. Jefferson, A.L., et al., *APOE and mild cognitive impairment: the Framingham*  
477 *Heart Study*. *Age Ageing*, 2015. **44**(2): p. 307-11.
- 478
- 479

480 **Table 1.** Characteristics of the 1198 participants in the FHS Offspring cohort

Variable	Male (n=517)	Female (n=681)	Total (n=1198)	<i>P</i> value
<b>Age at dCDT (years), mean (SD)</b>	73.2 (6.8)	73.0 (7.0)	73.1 (6.9)	0.654
<b>Age at last FHS exam in mid-age (years), mean (SD)</b>	62.4 (2.1)	62.4 (2.1)	62.4 (2.1)	0.735
<b>Education levels, No. (%)</b>				
No high School	18 (3.5)	14 (2.1)	32 (2.7)	
High School	85 (16.4)	162 (23.8)	247 (20.6)	
Some College	119 (23.0)	231 (33.9)	350 (29.2)	
College and	295 (57.1)	274 (40.2)	569 (47.5)	<0.001
<b>APOE ε4+, No. (%)</b>	110 (21.3)	159 (23.3)	269 (22.5)	0.398
<b>Number of FHS exams in mid-age<sup>a</sup>, median [IQR]</b>	4 [3, 4]	4 [3, 4]	4 [3, 4]	0.869
<b>Mid-age LE8 scores, mean (SD)</b>				
Total score	64.5 (10.5)	68.9 (11.7)	67.0 (11.4)	<0.001
Behavior score	64.4 (14.0)	65.8 (14.0)	65.2 (14.0)	0.0961
Factor score	64.2 (14.5)	72.1 (16.8)	68.7 (16.3)	<0.001
<b>CVH Categories<sup>b</sup>, No. (%)</b>				
Intermediate	315 (60.9)	302 (44.3)	617 (51.5)	
Poor	43 (8.3)	41 (6.0)	84 (7.0)	<0.001
Ideal	159 (30.8)	338 (49.6)	497 (41.5)	
<b>dCDT total score, mean (SD)</b>	70.9 (23.1)	74.0 (22.4)	72.7 (22.7)	0.0197
<b>AD, No (%)</b>	21 (4.1)	24 (3.5)	45 (3.8)	0.740
<b>Time-to-event from last FHS exam in mid-age<sup>c</sup> (years), median [IQR]</b>	17.5 [12.2, 23.9]	17.4 [12.0, 24.0]	17.5 [12.1, 23.9]	0.439
<b>Time-to-event from dCDT<sup>d</sup> (years), median [IQR]</b>	8.9 [6.1, 9.9]	8.9 [5.6, 9.9]	8.9 [5.7, 9.9]	0.313

481 <sup>a</sup>The number of FHS core exams, where the information collected is utilized to calculate  
482 mid-age LE8 scores.

483 <sup>b</sup>These categories were derived based on LE8 total score: Ideal (>70), Intermediate  
484 (50–70), and Poor (<50).

485 <sup>c</sup>The time in years from the last mid age FHS exam in to the onset of AD.

486 <sup>d</sup>The time in years from the time of dCDT examination to the onset of AD.

487 **Table 2.** Association of dCDT total score with LE8 total score and CVH categories

<b>Main Predictor</b>	<b>Beta</b>	<b>95% CI</b>	<b>SE</b>	<b>P value</b>
LE8 total score	0.16	(0.08, 0.24)	0.04	<b>&lt;0.001</b>
CVH categories				
Intermediate	Ref		-	-
Poor	-0.36	(-0.67, -0.05)	0.16	<b>0.024</b>
Ideal	0.18	(0.01, 0.34)	0.08	<b>0.036</b>

488 The association was examined by linear regression model adjusting for age at dCDT  
489 examination, delta age, sex, and education levels.

490

491 **Table 3.** Association of incident AD with LE8 total score, CVH categories, and dCDT  
492 total score

<b>Main Predictor</b>	<b>HR</b>	<b>95% CI</b>	<b>P value</b>
LE8 total score <sup>a</sup>	0.65	(0.49, 0.87)	<b>0.003</b>
CVH categories <sup>b</sup>			
Intermediate	Ref	-	-
Poor	1.43	(0.59, 3.47)	0.433
Ideal	0.47	(0.23, 0.98)	<b>0.045</b>
dCDT total score <sup>c</sup>	0.51	(0.42, 0.61)	<b>&lt;0.001</b>

493 <sup>a</sup>The association of AD with mid-age LE8 total score (z-score) was examined by adjusting for  
494 age at last included FHS exam, sex, and education levels.

495 <sup>b</sup>The association of AD and CVH categories (intermediate was used as the reference group)  
496 was examined by adjusting for age at last included FHS exam, sex, and education levels.

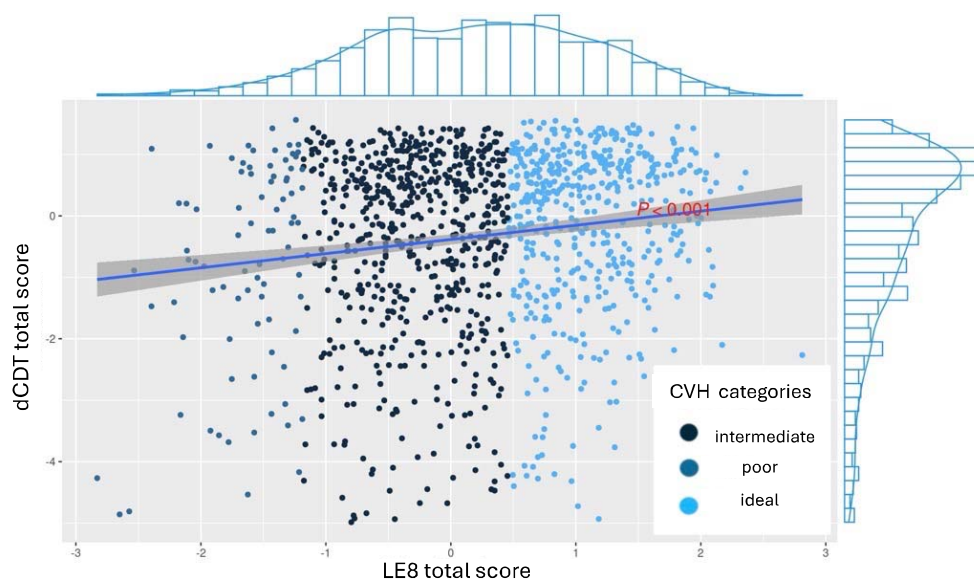
497 <sup>c</sup>The association analyses of AD and dCDT total score (z-score) was examined by adjusting for  
498 age at dCDT, sex, and education levels.

499



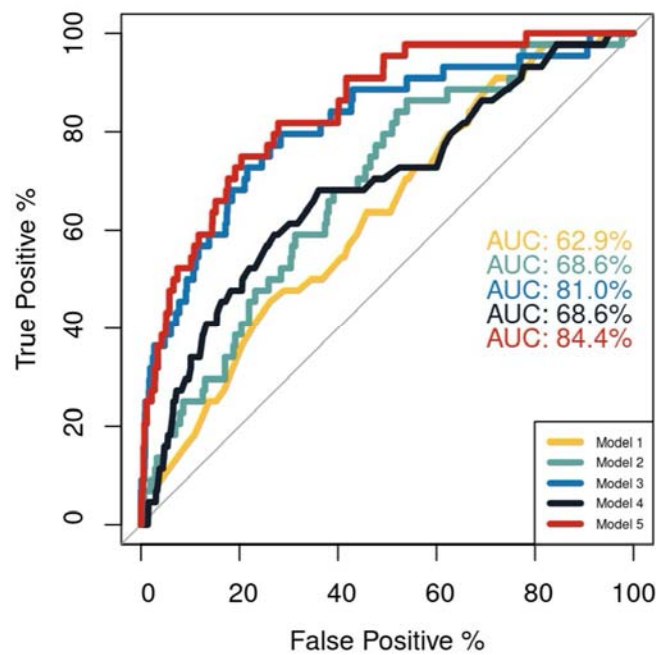


512 **Figure 2.** Association of CVH with dCDT total score and incident AD (n=1,198). A  
513 scatter plot with standardized mid-age LE8 total scores on the x-axis and standardized  
514 dCDT total scores on the y-axis, representing individual data points that are color-coded  
515 according to three levels of CVH: poor (light blue), intermediate (blue), and ideal (dark  
516 blue). A trend line is shown, indicating a positive correlation between LE8 total scores  
517 and dCDT total scores with statistically significant ( $P < 0.0001$ ). The distribution of LE8  
518 total scores and dCDT total scores is illustrated by histograms.



519  
520

521 **Figure 3.** ROC curve plot that compares the AD prediction performance of five different  
522 models. Model 1: AD ~ Age + Sex + Education; Model 2: AD ~ LE8 total score + Age +  
523 Sex + Education; Model 3: AD ~ dCDT total score + Age + Sex + Education; Model 4:  
524 AD ~ *APOE* + Age + Sex + Education; Model 5: AD ~ LE8 total score + dCDT total  
525 score + *APOE* + Age + Sex + Education



526



