

1 **Envelope-dimer epitope-like broadly protective antibodies against dengue in children**  
2 **following natural infection and vaccination**

3

4

5 Patrick I. Mpingabo<sup>1</sup>, Michelle Ylade<sup>2</sup>, Rosemary A. Aogo<sup>1</sup>, Maria Vinna Crisostomo<sup>2</sup>, Devina J.  
6 Thiono<sup>3</sup>, Jedas Veronica Daag<sup>2</sup>, Kristal-An Agrupis<sup>2</sup>, Ana Coello Escoto<sup>1</sup>, Guillermo L. Raimundi-  
7 Rodriguez<sup>1</sup>, Camila D. Odio<sup>1</sup>, Maria Abad Fernandez<sup>3</sup>, Laura White<sup>3</sup>, Aravinda M. de Silva<sup>3</sup>,  
8 Jacqueline Deen<sup>2</sup>, Leah C. Katzelnick<sup>1\*</sup>

9

10 <sup>1</sup>Viral Epidemiology and Immunity Unit, Laboratory of Infectious Diseases, National Institute of  
11 Allergy and Infectious Diseases, National Institutes of Health; Bethesda, MD, 20892-3203,  
12 United States.

13 <sup>2</sup>Institute of Child Health and Human Development, National Institutes of Health, University of  
14 the Philippines-Manila; Ermita 1000 Manila, Philippines.

15 <sup>3</sup>Department of Microbiology and Immunology, University of North Carolina, Chapel Hill, Chapel  
16 Hill, NC, 27599-7290, United States.

17

18 \*Corresponding author: [leah.katzelnick@nih.gov](mailto:leah.katzelnick@nih.gov)

19

20

21 **Abstract:**

22 Cross-reactive antibodies (Abs) to epitopes that span envelope proteins on the virion surface are  
23 hypothesized to protect against dengue. Here, we measured Abs targeting the quaternary  
24 envelope dimer epitope (EDE) as well as neutralizing and binding Abs and evaluate their  
25 association with dengue virus (DENV) infection, vaccine response, and disease outcome in  
26 dengue vaccinated and unvaccinated children (n=252) within a longitudinal cohort in Cebu,  
27 Philippines (n=2,996). Abs targeting EDE were prevalent and strongly associated with broad  
28 neutralization of DENV1-4 in those with baseline multitypic immunity. Subsequent natural  
29 infection and vaccination boosted EDE-like, neutralizing, and binding Abs. EDE-like Abs were  
30 associated with reduced dengue risk and mediated the protective effect of binding and  
31 neutralizing Abs on symptomatic and severe dengue. Thus, Abs targeting quaternary epitopes  
32 help explain broad cross protection in those with multiple prior DENV exposures, making them  
33 useful for evaluation and development of future vaccines and therapeutics.

34

35

36 **Keywords:** Dengue virus, envelope dimer epitope, quaternary, multitypic, immune, Philippines,  
37 broadly neutralizing, cross-reactive, antibody, protection

## 38 INTRODUCTION

39

40 Dengue is caused by infection with any of the dengue virus serotypes 1-4 (DENV1-4) and is the  
41 most prevalent vector-borne viral disease and a serious public health concern <sup>1,2</sup>. Four billion  
42 individuals are at risk of dengue in tropical and subtropical areas of the world including Southeast  
43 Asia, Africa, North and South America, and the Western Pacific regions <sup>3,4</sup>. There is an urgent  
44 need for dengue vaccines and vaccine strategies that elicit protection against all serotypes. Both  
45 licensed dengue vaccines, Dengvaxia and QDENGGA, have shown limited or no protection in DENV-  
46 naive individuals, with evidence that vaccination increases the risk of disease caused by some of  
47 the DENV serotypes <sup>5-11</sup>. Each vaccine contains live-attenuated chimeric replicating viruses with  
48 the envelope and pre-membrane proteins of DENV1-4 in either the 17D yellow fever vaccine  
49 backbone (Dengvaxia) or an attenuated DENV2 strain (QDENGGA) <sup>12</sup>. In contrast, there is  
50 significant vaccine efficacy for both licensed vaccines against dengue and severe dengue after  
51 two doses in individuals who live in endemic areas and had exposure to DENV before vaccination  
52 <sup>5,8,9,12,13</sup>, similar to protection observed after natural exposure to two or more serotypes <sup>14-17</sup>.  
53 However, the molecular basis for this protection is not understood.

54

55 DENV is an enveloped virus belonging to the orthoflavivirus genus, composed of a positive-  
56 stranded RNA genome, with seven non-structural proteins and three structural proteins: the  
57 capsid (C), envelope (E), and pre-membrane (prM) proteins <sup>18</sup>. The E protein is the major target of  
58 binding and neutralizing antibodies (Abs) <sup>19</sup> and is arranged on the virion surface in a herringbone  
59 pattern as 90 antiparallel homodimers that pack laterally into a lipid raft containing three dimers  
60 <sup>18,20</sup>. Each monomer of E protein contains three domains, DI, DII, and DIII <sup>20</sup>. Domain II contains  
61 the fusion loop, which is highly conserved across orthoflaviviruses. The E dimer also presents  
62 quaternary structures that span monomers <sup>19</sup>. Virions differ by the degree to which the pr protein  
63 is cleaved from M by the furin protease, with commonly used laboratory cell lines produce  
64 partially immature particles while virus circulating in humans is more mature <sup>21</sup>.

65

66 Primary infection with any of the DENV serotypes can induce low-affinity, weakly neutralizing  
67 cross-reactive Abs that increase the risk of severe dengue caused by a different serotype <sup>22-24</sup>.  
68 These cross-reactive Abs mediate antibody-dependent enhancement (ADE) by binding to the  
69 fusion loop <sup>25-33</sup> or prM on partially immature particles <sup>22</sup> and promoting the infection of Fc  
70 receptor bearing myeloid cells. Primary infection also induces neutralizing Abs that recognize  
71 type-specific quaternary structure epitopes and are associated with homotypic protection <sup>30,34,35</sup>.  
72 Standard plaque reduction neutralization tests (PRNT), which use partially immature dengue  
73 virions, cannot easily distinguish protective from enhancing antibody populations, and only very  
74 high PRNT titers are protective <sup>16,36-39</sup>. Following secondary infection, the humoral immune  
75 repertoire is dominated by cross-reactive Abs <sup>25,40</sup>. Monoclonal antibodies derived from  
76 plasmablasts from acute secondary infection include both high-avidity fusion loop Abs <sup>25,41</sup> as  
77 well as potent, broadly neutralizing Abs that target quaternary epitopes on E dimer <sup>42-46</sup>.

78  
79 The best characterized group of broad quaternary Abs target the conserved E dimer epitope  
80 (EDE). EDE1 Abs like C8 and C10 require the N-linked glycan at position 154 of the E protein to  
81 bind and neutralize DENV1-4 and ZIKV, while EDE2 Abs like B7 and A11 do not bind the glycan  
82 and only neutralize DENV1-4 <sup>19,42,44,47,48</sup>. Both EDE and potent type-specific Abs neutralize mature  
83 virus, while fusion loop Abs do not, suggesting EDE Abs are more likely to be protective *in vivo*  
84 <sup>41,49</sup>. However, data to support the protective role of Abs targeting EDE has been limited to mouse  
85 studies of protection against ZIKV, not DENV <sup>50,51</sup>. It is unknown whether natural DENV infection  
86 or vaccination consistently induce EDE-like Abs and whether they are a major determinant of  
87 broad protection.

88  
89 Here, we followed both vaccinated and unvaccinated children in a highly dengue-endemic region  
90 in the Philippines before and after a mass vaccination campaign with Dengvaxia. We focused on  
91 children with immunity to multiple DENV serotypes at baseline as measured by a standard PRNT,  
92 a population that is assumed to already have high levels of protection against dengue due to prior  
93 exposure with multiple serotypes. We measured individual-level Ab neutralization of mature  
94 DENV1-4 virions and how this compared to EDE-like Abs measured using a blockade of binding

95 assay (BOB) with a unique stabilized E dimer engineered to reduce binding of fusion loop Abs.  
96 We also measured binding Abs using ELISAs. We evaluated how their pre-existing Abs modified  
97 risk of infection, vaccine response, and dengue disease.

98

99

## 100 **RESULTS**

101

### 102 **Study subjects**

103 In 2017, a cohort was established in Balamban and Bogu City in Cebu province, Philippines, to  
104 follow children who chose to receive Dengvaxia or not during a mass vaccination campaign  
105 (NCT03465254). Samples were collected at study entry in May to June 2017 and 17 to 28 months  
106 later. The vaccination campaign ran from June to August 2017. Children received only a single  
107 dose due to the vaccination program ceasing before administration of the second dose. To  
108 evaluate predictors of protection in this cohort, we performed a nested case-control study  
109 among children identified as having multitypic immunity at baseline. In our study population, we  
110 included children with dengue cases that occurred after collection of follow-up samples and who  
111 had samples available (n=41) and a randomly selected 10% of all multitypic children in the cohort  
112 without cases during this period (n=211). In total, our study included 88 children who were  
113 unvaccinated and 164 children who received a single dose of Dengvaxia. The age of participants  
114 at enrollment ranged from 9 to 14 years with the mean age of 10.66 for unvaccinated and 10.68  
115 years vaccinated subjects. Unvaccinated and vaccinated groups did not differ significantly by sex  
116 or age but did differ by recruitment site (**Table 1**). For this reason, the recruitment site was  
117 included as a covariate in regression models.

118

### 119 **EDE-like Abs contribute to the Ab repertoire in individuals with multitypic DENV immunity**

120

121 To evaluate whether EDE-like Abs were present in multitypic DENV-immune subject sera  
122 collected before the vaccination campaign, we measured the serum Abs that prevent the EDE1  
123 C8 Ab<sup>19,42,44,52</sup> from binding the DENV2 E dimer using a BOB assay (**Fig. 1A**). Although Abs

124 targeting the fusion loop are generally not potently neutralizing, they may interfere with binding  
125 to the EDE. Thus, we used a stabilized DENV2 E dimer engineered to contain a single mutation  
126 (G106D) to limit binding of fusion loop Abs<sup>19</sup>. We evaluated the BOB assay and confirmed that it  
127 detected monoclonal Abs that target EDE and sera with broad neutralization against DENV1-4  
128 but not monoclonal Abs targeting the fusion loop (**Fig. S1**). We observed that the majority  
129 (85.3%) of DENV-immune children in the Philippines cohort were positive for EDE-like Abs by  
130 BOB, defined as  $\geq 50\%$  at a 1:10 dilution (**Fig. 1B**). We compared these responses to Abs measured  
131 by other binding assays. To detect all binding Abs to the wild-type (WT) E protein, including to  
132 the fusion loop, samples were tested separately against the WT E protein of each DENV serotype  
133 using an anti-His capture IgG ELISA. To measure Abs that targeted the dimer regardless of  
134 whether they targeted the EDE epitope, we used an anti-His capture IgG ELISA using the stabilized  
135 DENV2 E dimer. While all individuals had detectable binding Abs in all assays, levels varied across  
136 individuals and antigens (**Fig. 1A**).

137  
138 Because potently neutralizing Abs like those targeting EDE neutralize mature dengue virions,  
139 whereas common enhancing Abs do not<sup>49</sup>, we measured neutralization to mature DENV1-4  
140 virions using a PRNT. We defined the presence of neutralizing Abs to a given serotype as mature  
141 PRNT titers  $\geq 1:20$ . Although our cohort subset only including individuals identified as having  
142 multitypic neutralizing profiles using a standard PRNT (defined as  $\geq 70\%$  neutralization of at least  
143 two DENV serotypes at a 1:40 serum dilution)<sup>53</sup>, we observed that 1% of children did not  
144 neutralize any serotype, while 22%, 29%, 21%, and 27% of children neutralized 1, 2, 3, and 4  
145 serotypes, respectively (**Fig. 1C**). The 27% of children neutralizing all four serotypes demonstrates  
146 the presence of broadly neutralizing Abs in this population. Overall, we observed heterogeneity  
147 in mature neutralization across individuals and serotypes (**Fig. 1A**).

148  
149 **EDE-like Abs are associated with broad neutralization and cross-reactive binding Abs**

150  
151 To determine whether EDE-like Ab potency was associated with the magnitude of neutralization  
152 and binding activity, we performed a correlation analysis among our Ab measures at baseline.  
153 Individual serotype neutralizing Abs titers were weakly correlated with one another, suggesting

154 the titer to any one serotype did not measure the broad neutralizing component (**Fig. 2A**). In  
155 contrast, serotype-specific WT E protein ELISA values were strongly correlated with one another,  
156 indicating that binding was more cross-reactive than neutralization, as expected. We found that  
157 the geometric mean of neutralizing Ab titers and the neutralizing Ab titers to each serotype,  
158 especially DENV2, were more strongly and consistently correlated with EDE-like Abs than to WT  
159 E protein or E dimer-binding Abs. Interestingly, EDE-like Abs were strongly correlated with Abs  
160 measured by all assays, with the strongest correlation with E dimer-binding Abs, and similar  
161 correlation coefficients to the geometric means of neutralizing Abs and WT E protein binding Abs,  
162 which were more weakly correlated with one another (**Fig. 2B**). This finding suggests EDE-like Abs  
163 had shared features with some binding Abs not measured in the geometric mean of neutralizing  
164 Abs.

165  
166 We also evaluated whether EDE-like Abs were associated with neutralization breadth, defined as  
167 number of serotypes with mature PRNT titers  $\geq 1:20$ . Among those who neutralized only one  
168 serotype, those with DENV2-specific neutralizing Abs had higher EDE-like Abs than those specific  
169 to other serotypes (**Fig. 2C**), confirming that the BOB assay detected some quaternary DENV2-  
170 specific Abs such as 2D22-like which could also prevent C8 binding to E-dimer (**Fig. S1**). However,  
171 EDE-like Abs increased significantly with neutralization of more serotypes in a stepwise fashion  
172 (**Fig. 2D**), suggesting a strong association between broad neutralization activity and EDE-like Abs.

### 173 174 **Natural infection and vaccination elicited EDE-like and broadly neutralizing Abs in multitypic** 175 **DENV-immune children**

176  
177 To test whether vaccination and further natural DENV exposure increased Abs in this highly  
178 immune population, we compared paired baseline and follow up samples using the above-  
179 described immunoassays. We observed that 21.60% of the unvaccinated experiencing a  
180 seroconversion or  $\geq 4$ -fold rise to at least two serotypes, while a significantly larger fraction of  
181 vaccinated individuals, 37.20%, experienced such a boost (**Fig. 3A**). This boosting effect was still  
182 observed when we only considered those with baseline multitypic immunity as defined by the

183 mature PRNT, with 17.46% of unvaccinated and 33.08% of vaccinated individuals experienced a  
184 boost. As expected, there were no significant differences between vaccinated and unvaccinated  
185 subjects for any Ab type at baseline (**Figure 3B**). However, between baseline and follow up, WT  
186 E protein-binding, dimer-binding, neutralizing, and EDE-like Abs increased for both vaccinated  
187 and unvaccinated individuals (**Fig. 3B**). There was an unusually large dengue epidemic in Cebu  
188 between baseline and follow up sample collection<sup>53-56</sup>, with the most cases caused by DENV2  
189 (61.7%) followed by DENV3 (30.0%). Vaccinated individuals also had significantly higher  
190 geometric mean neutralizing and EDE-like Abs at follow up than unvaccinated individuals, while  
191 geometric mean WT E protein and E dimer binding Abs were not different (**Fig. 3B**). Thus, both  
192 natural infection and vaccination boosted Abs in already multitypic individuals, with an added  
193 effect of vaccination in this population in eliciting neutralizing Abs and Ab targeting EDE.

194  
195 The vaccine may not have replicated in all vaccinated individuals. To identify individuals in whom  
196 the vaccine replicated, we tested for Abs to yellow fever virus (YFV) non-structural protein 1 (NS1)  
197 using the YFV NS1 luminex assay. Because all the non-structural proteins in Dengvaxia are from  
198 the YFV vaccine strain, and because the Philippines population does not receive the yellow fever  
199 vaccine, detection of YFV NS1 Abs is indicative of a response to the vaccine. The assay was  
200 validated on a panel of well characterized sera<sup>57</sup>. The rate of YFV NS1 positivity was significantly  
201 higher in vaccinated (23.78%) compared to unvaccinated children (4.55%, difference,  $p < 0.0001$ ,  
202 **Fig. 3C**). Even among only baseline multitypic immune children defined by mature PRNT, the rate  
203 of YFV NS1 positivity was still 17.69% following vaccination. When we compared antibody  
204 responses across all groups, vaccinated YFV NS1 positive children had higher Abs than either the  
205 unvaccinated or vaccinated individuals without YFV responses ( $p < 0.05$ ), whereas the latter  
206 groups had similar levels of Abs across all assays ( $p > 0.05$ ) (**Fig. 3D**). However, when we only  
207 looked at individuals in these groups with a boost between baseline and follow up, there were  
208 no longer any significant differences across groups, suggesting vaccine responses did not differ  
209 significantly from natural infection responses (**Fig. S2**). To further delineate natural infection and  
210 vaccine responses, we also measured pre- and post-vaccination Ab responses to DENV1-4 EDIII  
211 and NS1 to identify vaccinated individuals with vaccine responses only (YFV NS1+, DENV NS1-) or



212 with vaccine and natural infection responses (YFV NS1+, DENV NS1+), and natural infection only  
213 (YFV NS1-, DENV NS1+) in both vaccinated and unvaccinated groups (**Fig. S3**). There were no  
214 major differences observed between those with vaccine only, natural infection only, or vaccine  
215 and natural infection responses. Thus, while only a small subset of vaccinated individuals  
216 responded to the vaccine, those who did respond achieved higher quantities of Abs, including  
217 neutralizing and EDE-like Abs, than the multitypic population as a whole and similar levels to  
218 those who were naturally infected during the cohort.

219

### 220 **High baseline EDE-like Abs reduce natural infection and replication of the vaccine**

221

222 Given high immunity against DENV at baseline, we hypothesized that pre-existing Abs might  
223 protect children against natural infection as well as potentially blunt the immunogenicity of the  
224 vaccine, which is live attenuated. Baseline geometric mean neutralizing, EDE-like, and E dimer  
225 binding Abs were significantly lower among vaccinated individuals who boosted compared to  
226 those who did not (**Fig. 4A**). We used logistic regression to model the relationship between  
227 baseline Abs measured in each assay and the probability of a boost in neutralizing Abs, adjusting  
228 for age, sex, and study site. We built models both separately for unvaccinated and vaccinated  
229 participants as well as combined models where we adjusted for vaccine status. In the  
230 unvaccinated group, the factor that protected against boosting was high DENV2 neutralizing  
231 antibody titer at baseline and DENV2 E dimer binding Abs (**Fig. 4B, Table S1**). In the vaccinated  
232 group, EDE-like Abs were protective against boost, in addition to DENV2, DENV4, and GMT of  
233 neutralizing Abs, while in the full model, these predictors in addition to DENV2 E dimer binding  
234 Abs were significantly protective (**Fig. 4B, Table S1**). We performed the same analysis to evaluate  
235 how baseline Ab protected against conversion to YFV NS1 Ab positivity among vaccinated  
236 individuals. EDE-like Abs and DENV2, DENV4, and the geometric mean of neutralizing Abs were  
237 protective (**Fig. 4C, Table S2**). Thus, high neutralizing Abs to DENV2 and DENV4 as well as cross-  
238 reactive immunity (EDE and geometric mean of neutralizing Abs) were associated with reduced  
239 infection, whether of the vaccine strain or natural infection, with the strongest effects observed  
240 for serotype-specific neutralizing Abs.

241

242 **EDE-like Abs help explain protective effect of mature PRNT and WT E protein ELISA Abs**

243

244 EDE-like Abs have been shown to be broadly neutralizing *in vitro* and in one animal study<sup>50</sup>. To  
245 measure the association between EDE-like Abs and dengue outcome, we compared Abs  
246 measured in the follow up sample between those who subsequently had a dengue case and those  
247 who did not. In total, 41 children had symptomatic DENV infections, including 9 cases of DENV1,  
248 10 cases of DENV2, 18 cases of DENV3, 3 cases of DENV4, and 1 case with an unidentified  
249 serotype (**Table S3**). Those with dengue cases had significantly lower geometric mean  
250 neutralizing and WT E protein binding Abs as well as EDE-like Abs than those who did not have  
251 subsequent cases (**Fig. 5A**). We also tested the relationship between Abs and subsequent disease  
252 using unadjusted logistic regression. WT E protein binding, neutralizing, and EDE-like Abs were  
253 significantly associated with reduced odds of dengue disease caused by any serotype (**Fig. 5B**;  
254 **Table S4**). We performed the same analysis by serotype. High geometric mean neutralizing Abs  
255 protected against DENV2 but not DENV3 disease, while high geometric mean WT E protein-  
256 binding Abs were associated only with reduced DENV3 disease. In contrast, high EDE-like Abs  
257 were protective against both DENV2 and DENV3 disease (**Fig. 5B**; **Table S5-6**), suggesting broader  
258 protection across serotypes. Similar effects were observed when the models were adjusted for  
259 age, sex, study site and vaccine status (**Tables S7-10**). Interestingly, vaccination status was not a  
260 significant predictor in any model, while Ab measures remained significant. When we built a  
261 combined model including all assays and covariates using Lasso regression (**Fig. 5C**), a  
262 regularization method that eliminates coefficients with less effect on the outcome from the  
263 model, the WT E protein-binding Abs, neutralizing Abs, and EDE-like Abs remained consistent  
264 predictors. When we look at severity, only EDE-like Abs significantly lower the risk of experiencing  
265 dengue with warning signs (DWWS) (**Fig. S4**). Taken together, we find geometric mean WT E  
266 protein-binding Abs, geometric mean neutralizing Abs, and EDE-like Abs reduce the risk of getting  
267 dengue disease overall, and specifically for some infecting DENV serotypes, with the most  
268 consistent protective effects seen for EDE-like Abs.

269

270 We also evaluated the effect of Abs to each serotype against serotype-specific disease risk.  
271 Neutralizing Abs to DENV2 were protective against DENV2 disease, and neutralizing Abs to  
272 DENV3 against DENV3 disease (**Fig. 5B, Table S5**), suggesting homotypic protection, while only  
273 some heterologous titers were significantly protective. Interestingly, none of the individual  
274 serotype WT E protein-binding Abs were significantly associated with DENV2 disease, while all  
275 were significantly protective against DENV3 disease (**Fig. 5B, Table S6**).

276  
277 Given that high EDE-like Abs were most consistently associated with protection across serotypes,  
278 we investigated whether EDE-like Abs mediate, i.e., help to explain, the protective effect of  
279 neutralizing Abs and WT E protein binding Abs on protection against dengue disease caused by  
280 any serotype. We first conducted a formal mediation analysis to test if high levels of neutralizing  
281 Abs were associated with higher EDE-like Abs which in turn explained a lower risk of dengue  
282 disease. In the first step of the mediation analyses, we performed logistic regression to confirm  
283 that higher neutralizing Abs were significantly associated with lower dengue disease risk ( $b_1 = -$   
284  $0.52$ , OR= 0.59, 95% confidence interval= 0.38 to 0.89,  $p = 0.0162$ , **Table S7**). In the second step,  
285 we demonstrated that high neutralizing Abs were significantly associated with higher EDE-like  
286 Abs ( $b_2 = 0.48$ , 95% confidence interval = 0.37 to 0.59,  $p < 0.0001$ , **Table S11**). In the third step of  
287 the mediation analysis, we performed a multivariable logistic regression analysis to test if  
288 neutralizing Abs still predicted dengue disease risk after controlling for EDE-like Abs ( $b_3 = -0.25$ ,  
289 OR= 0.78, 95% confidence interval= 0.48 to 1.2,  $p = 0.281$ , **Table S8**). In the fourth step, we looked  
290 at the effect size of neutralizing Abs in predicting lower risk of dengue disease, and found it  
291 reduced from -0.52 to -0.25 (**Table S7-8**) and lost statistical significance under control of EDE-like  
292 Abs ( $p = 0.281$ ), while the EDE-like Ab effect remained significant in the multivariable model ( $b_3 =$   
293  $-0.459$ ,  $p_1 = 0.0008 \rightarrow 0.0139$ , **Table S7-8**). We performed the same analysis and found that high  
294 geometric mean WT E protein binding Abs were associated with dengue disease ( $b_1 = -0.477$ , OR=  
295  $0.62$ , 95% confidence interval= 0.44 to 0.87,  $p = 0.0059$ , **Table S7**), E monomer binding Abs were  
296 significantly associated with EDE-Abs ( $b_2 = 0.56$ , 95% confidence interval= 0.45 to 0.66,  $p < 0.0001$ ,  
297 **Table S11**), and after adjustment for EDE-like Abs, monomer-binding Abs lost significance in  
298 predicting dengue disease ( $b_3 = -0.24$ , OR= 0.79, 95% confidence interval = 0.53 to 1.18,  $p = 0.246$ ,

299 **Table 8**) while EDE-like Abs remained significant ( $b_3=-0.438$ ,  $p=0.0008 \rightarrow 0.0236$ , **Table S7-8**).  
300 Overall, combining EDE-like, geometric mean neutralizing, geometric mean WT E protein binding,  
301 and dimer binding Abs together in same adjusted model, EDE-like Abs remain significant  
302 ( $p=0.0189$ ) and confirm their mediator effect (**Table S8**). Determining the contribution of EDE-  
303 like in this mediation, EDE-like Abs explained 47% of the effect of neutralizing Abs on disease and  
304 51% of the effect of WT E protein binding Abs and disease (**Fig. 5D, Table S12**). These findings  
305 demonstrate partial mediation effect of EDE-like Abs in explaining the relationship between  
306 neutralizing Abs and binding Abs on protection against dengue.

307  
308 Given that vaccination was associated with higher Abs across assays, and high Ab levels were  
309 associated with protection, we were surprised that vaccination did not have a protective effect.  
310 Even when our models also accounted for those who responded to the vaccine, we did not  
311 observe protection. Interestingly, those who progressed to disease among vaccinated individuals  
312 with YFV NS1 responses had slightly higher EDE-like and neutralizing Abs than cases that occurred  
313 in vaccinated individuals without YFV NS1 responses or unvaccinated individuals (**Fig. 5E**). These  
314 results suggest that natural infection-induced EDE-like Abs may have been more protective than  
315 those induced by vaccination, as some individuals with high EDE-like and neutralizing Abs still  
316 progressed to disease among the vaccinated.

## 317 318 **DISCUSSION**

319  
320 In this study, we investigated whether natural infection and vaccination induce EDE-like Abs and  
321 whether these Abs protect against viral replication and symptomatic DENV infection among  
322 children with multitypic DENV immunity in the Philippines. We observed high levels of EDE-like  
323 Abs correlated with broad neutralizing responses as well as high E protein binding. Unexpectedly,  
324 both vaccination and natural infection boosted Abs in multitypic children, including neutralizing  
325 and EDE-like Abs. High EDE-like Abs were protective against disease caused by multiple DENV  
326 serotypes and helped explain the protective effect of mature neutralizing and binding Abs. Our

327 study suggests EDE-like Abs strongly explain the cross-reactive protective component of serum  
328 Abs.

329

330 Previous studies have shown that after sequential heterotypic DENV infection, the neutralizing  
331 Ab response can be up to 97% cross-reactive <sup>17,25,26,41</sup>. A model in which low affinity, cross-  
332 reactive antibody secreting B-cell clones induced by primary exposure improve in quality during  
333 each secondary infection to secrete Abs that are high affinity and more broadly neutralizing has  
334 been suggested to explain why sequential infection generates cross-protective immunity <sup>17</sup>.  
335 However, only some of the cross-neutralizing Abs observed during and after secondary DENV  
336 infection are hypothesized to be protective, with high affinity fusion loop Abs are considered to  
337 be less potent than those targeting quaternary structures on the virus surface, like EDE <sup>25,30,44,58-</sup>  
338 <sup>60</sup>. Here, we observed EDE-like Abs in 85% of children with multitypic DENV neutralization as  
339 detected by standard neutralization assay at baseline. Because mature viruses are sensitive to  
340 potent, quaternary type-specific and cross-neutralizing Abs but not low-affinity Abs targeting the  
341 fusion loop, we used a mature neutralization assay in our study. We observed that while WT E  
342 protein binding Abs to each serotype were strongly cross-correlated, mature neutralizing Abs to  
343 each individual serotype were not strongly correlated with one another except between DENV-2  
344 and -4 neutralizing Abs, suggesting binding measured more cross-reactive Abs than mature  
345 neutralization, as expected. However, our results point to a strong association between EDE-like  
346 Abs and mature cross-neutralization magnitude and breadth, with EDE-like Abs strongly  
347 correlated with the geometric mean of neutralizing Abs and number of serotypes a child  
348 neutralized. We also observed an association between EDE-like Abs and DENV2 neutralizing  
349 antibody titer. The correlation of EDE-like Abs with DENV2-specific neutralization was partly  
350 expected because EDE-like Abs were measured for binding to a DENV2 dimer. However, a recent  
351 animal study <sup>61</sup> showed blockade of binding activity of EDE1 C10 was also moderately correlated  
352 with DENV2 monotypic neutralizing Abs <sup>61</sup>, suggesting DENV2 reactivity may be an intrinsic  
353 characteristic of EDE-like Abs. This suggests that some of the Abs, such as 2D22-like, that compete  
354 with EDE1 Abs in our assay may be specific to DENV2.

355

356 Dengvaxia is recommended for DENV-immune individuals who are currently living in dengue-  
357 endemic countries<sup>62,63</sup>. It was previously thought that monotypic individuals would benefit most  
358 from Dengvaxia, as those with multitypic immunity were expected to be protected. However, a  
359 previous study showed similar Dengvaxia efficacy in monotypic and multitypic individuals<sup>64</sup>.  
360 Here, we observed a significant increase WT E protein and E dimer binding, neutralizing, and EDE-  
361 like Abs in both vaccinated and unvaccinated individuals, indicating a robust boosting of the  
362 immune response in both groups. This effect remained when we only evaluated those with  
363 multitypic immunity defined by mature neutralizing Ab response. While there had been a large  
364 dengue epidemic between baseline and follow up sampling, we had not anticipated the degree  
365 of boosting observed among multitypics, who we expected to be mostly protected against viral  
366 replication. However, these results are consistent with high rates of boosting observed in highly  
367 immune adults in Nicaragua following large epidemics<sup>65</sup>. Notably, vaccinated individuals in our  
368 study had significantly higher EDE-like and neutralizing Abs at follow up than unvaccinated  
369 individuals, suggesting vaccination contributed to higher immune responses. When we stratified  
370 vaccinated individuals into those with and without evidence for replication of the vaccine strain  
371 (measured as presence of Abs to YFV NS1), responders had significantly higher Abs by all  
372 measures than non-responders or unvaccinated individuals. This observation suggests that  
373 vaccine replication was associated with a boosting of the immune response. We did not observe  
374 significant differences in Ab magnitude in any assay when we directly compared vaccine to  
375 natural infection responses that occurred during the cohort, suggesting vaccine-induced  
376 immunity did not differ in magnitude from that derived from new natural infections, although  
377 the number of individuals in each group was relatively small, and thus may have limited power.  
378  
379 We observed evidence of vaccine replication in only 23.78% of vaccine recipients. The low rate  
380 of vaccine response was unexpected, given that all individuals received the vaccine. However,  
381 only a single dose was administered to this population, and multiple doses may be required to  
382 consistently induce a robust response<sup>13,66</sup>. Additionally, we measured YFV NS1 Ab responses  
383 using Luminex in this population, which is less sensitive but more specific than when measured  
384 by ELISA. This may mean we have underestimated true vaccine responses in our attempt to

385 reduce false-positive identification of vaccine responses in this highly immune population. We  
386 also observed that high baseline immunity protected against a boost due to natural infection or  
387 vaccination, which may have further limited the vaccine response in this population. We  
388 observed that baseline DENV4 neutralizing Abs reduced boosting in the vaccinated group. This  
389 may be because DENV4 is the dominant replicating component of Dengvaxia<sup>67,68</sup>; whereas  
390 primary infection elicits robust type-specific Abs, Dengvaxia in DENV-naïve individuals induces  
391 type-specific Abs mostly to DENV4, and against other serotypes induces low-level cross-  
392 neutralizing Abs that recognized epitopes conserved across DENV1-4. DENV2 neutralizing Abs  
393 reduced boosting in both vaccinated and unvaccinated individuals, potentially by protecting  
394 against natural DENV2 infection, the dominant serotype to circulate during this period. Cross-  
395 reactive Abs including EDE-like and the geometric mean of neutralizing Abs, but not WT E protein  
396 binding antibodies, were also associated with reduced boosting and vaccine response.

397  
398 Abs that neutralize mature but not standard virus have been associated with protection against  
399 ZIKV challenge in a non-human primate model<sup>69</sup>. However, a recent study in humans found that  
400 both mature and partially mature virus were higher in inapparent compared to symptomatic  
401 infection<sup>70</sup>. Here we show that WT E protein binding, mature neutralizing, and EDE-like Abs are  
402 associated with reduced dengue disease, and specifically against some DENV serotypes, with the  
403 most consistent protective effects seen for EDE-like Abs. Interestingly, we find neutralizing Abs  
404 were more important for protection against DENV2, whereas binding Abs were also protective  
405 against DENV3, consistent with previous findings that binding Abs that mediate complement  
406 deposition are protective against DENV3<sup>70,71</sup>. We also conducted a formal statistical analysis  
407 which demonstrated that EDE-like Abs mediated the relationship between WT E protein binding  
408 and neutralizing Abs in reducing risk of dengue disease, suggesting EDE-like Abs may be directly  
409 measuring the underlying protective determinant of cross-reactive immunity. The strength of  
410 EDE-like Ab protection was even greater against dengue with warning signs. Thus, while we found  
411 EDE-like Abs were slightly less protective against infection, they were more protective against  
412 disease, especially severe disease. We have shown that a single dose of Dengvaxia is not  
413 protective against virologically confirmed dengue but does protect against hospitalized disease



414 in multitypic individuals <sup>72</sup>. It may be that the vaccination and additional natural exposure  
415 induced broadly protective Abs in some participants that protected them against severe disease.  
416

417 While the PRNT is the gold standard for measuring anti-DENV immunity <sup>36,38,39</sup>, it has several  
418 limitations for use in clinical and epidemiological studies, including high variability and difficulty  
419 in performing the assay due to requirements for equipment, skills, and training <sup>73,74</sup>. Previous  
420 studies have shown binding Abs measured by inhibition ELISA and hemagglutination inhibition  
421 assays are associated with dengue outcome, with low to intermediate titers associated with  
422 increased risk of severe dengue disease while high levels are associated with protection against  
423 dengue <sup>31,75</sup>. However, these assays have not defined the epitopes targeted by enhancing or  
424 protective Abs. BOB assays are thus a potentially useful, straightforward tool for measuring the  
425 protective antibody population that recognizes specific both type-specific or cross-reactive  
426 quaternary epitopes *in vitro* <sup>61,76,77</sup>. We show here that the BOB assay appears to measure the  
427 protective component of immunity.

428  
429 While EDE-like Abs were associated with protection, they did not perfectly predict disease; some  
430 individuals with high EDE-like Abs still progressed to disease, especially among the vaccinated.  
431 Notably, Dengvaxia lacks DENV capsid and non-structural proteins, which are important targets  
432 for CD4 and CD8 T cell responses; more limited T cell help may both limit protection against  
433 disease as well as affect the quality of neutralizing Abs induced <sup>78</sup>. Further studies are needed to  
434 formally evaluate EDE-like Abs as vaccine correlates of protection.

435  
436 Limitations of this study are the small number of DENV cases to assess the protective effect of  
437 Abs against all four DENV serotypes. We also had a limited monoclonal Ab panel to tests for  
438 quaternary Abs induced by natural infection to vaccination. A strength of this study is that it  
439 provides the first evidence in humans with previous DENV history that EDE-like Abs are associated  
440 with protection and thus may be useful as correlates of protection and as future vaccine or drug  
441 candidates.

442



443 Overall, we demonstrate that EDE-like Abs are associated with reduced risk of disease in naturally  
444 infected and vaccinated populations, providing insight into the epitopes responsible for  
445 protection following repeat DENV exposure.

446

447 **MATERIALS AND METHODS**

448

449 ***Cebu cohort study, study design and sample characterization***

450 The cohort followed 2,996 children enrolled between the ages of 9 to 14 years with diverse DENV  
451 infection histories. In total, 1,214 children remained unvaccinated while 1,782 children received  
452 a single dose of Dengvaxia in June of 2017 during a mass vaccination campaign. Demographic  
453 information and serum samples were collected one month before vaccination (defined as  
454 baseline) from all participants. Follow up samples were collected from n=2,374 participants 17  
455 to 28 months after the vaccine campaign. All baseline samples were tested by PanBio indirect IgG  
456 ELISA, with results reported as index values (range: 0 – 4.7). An initial screen of DENV1-4  
457 neutralization was performed with a PRNT using standard preparations of DENV1-4 virus (2-  
458 dilutions, 1:40 and 1:200) on a subset of study participants<sup>53</sup>. This previous study showed 100%  
459 (370/370) of individuals with ELISA index values >3 was seropositive by PRNT. Participants with  
460 ≥70% neutralization at a 1:40 dilution against two or more serotypes by a standard PRNT and/or  
461 ELISA index values >3 were defined as multitypic DENV-immune subjects. We selected all  
462 available cases (n=41) and a random subset of 10% of children (n=211) identified as multitypic  
463 and tested their paired baseline and follow up serum Ab levels using various immunoassays. Of  
464 100 total cases among multitypics, we did not consider the 32 cases that occurred before the first  
465 follow sample or the 10 individuals who did not have a follow up sample collected. In total, 58  
466 children had cases that occurred between follow up sample collection and the study close date,  
467 31 October 2022. Based on available samples, we were able measure Abs on 41 children who  
468 progressed to symptomatic dengue after their follow up sample was collected.

469

470 ***Ethics statement***

471 The study protocol was approved by the University of the Philippines – Manila Research Ethics  
472 Board (UPM-REB, protocol number: UPM REB 2016-435-01) and is registered at clinicaltrials.gov  
473 (NCT03465254). Parents or guardians provided written informed consent and children provided  
474 documented oral assent before participation in the study, in accordance with local regulations.

475 All data were anonymized such that no patient identifiers were present in the data files received  
476 for analysis.

477

#### 478 ***Cell, virus, and recombinant proteins***

479 Vero (CCL-81) cells were kindly provided by Dr. Eva Harris, of University of California, Berkeley.  
480 Furin-overexpressing Vero (Vero-furin) cells were generously received from Dr. Ralph Baric,  
481 University of North Carolina, Chapel Hill. Both Vero lines were maintained at 37°C under 5% CO<sub>2</sub>  
482 as a monolayer culture in Opti-Pro serum-free medium (Invitrogen) supplemented with 10% Fetal  
483 bovine serum (FBS) and 4 mM glutamine.

484

485 Low-passage, mature DENV serotype 1 (DENV1, 2014 Sri Lanka strain, GenBank Accession #:  
486 KJ726662), DENV serotype 2 (DENV2, 2016 Sri Lanka strain, MK579857), DENV serotype 3  
487 (DENV3, 1986 Sri Lanka strain, JQ411814), and DENV serotype 4 (DENV4, 1992 Sri Lanka strain,  
488 KJ160504) were produced in Vero-furin cell lines as previously described<sup>79,80</sup>. DENV1-4 strains  
489 were selected to match the genotypes circulating in the Philippines.

490

491 Recombinant DENV1 (FGA/NA strain, REC31679), DENV2 (New Guinea C strain, REC31680),  
492 DENV3 (H87 strain, REC31681), and DENV4 (Philippines/H241 strain, REC31682) WT E protein  
493 were expressed in insect cells (Baculovirus) with C-terminal His-tag were obtained commercially  
494 (The Native Antigen Company, Oxfordshire, United Kingdom). Recombinant stabilized DENV2  
495 (strain 16681) E proteins homodimer (E dimer, SC.10) that contains a fusion loop mutation at  
496 position 106 (G106D) were developed by University of North Carolina, Chapel Hill as previously  
497 described<sup>19</sup>.

498

499

#### 500 ***Plaque Reduction Neutralization Test (PRNT) to Vero-furin produced DENV1-4***

501 Neutralization assays were performed as detailed previously<sup>19,79-81</sup>. Briefly, 1.7x10<sup>4</sup> Vero cells per  
502 well were plated one day prior to infection and incubated at 37°C overnight. Human immune sera  
503 were fourfold serially diluted and mixed with Vero-furin-produced low passage clinical isolates

504 of DENV1-4. Sera-virus mixtures were incubated at 37°C for one hour, then added to confluent  
505 cells. One hour later, 1% methycellulose overlay was added and cells were incubated for 2–3  
506 days. Cells were fixed in 80% methanol, blocked in 5% non-fat dried milk, and immunostained  
507 using mouse 4G2 and 2H2 anti-pan flavivirus monoclonal Abs, secondary horseradish peroxidase  
508 (HRP)-labelled goat anti-mouse IgG antibody (Jackson ImmunoResearch Laboratories), and  
509 developed using TrueBlue HRP substrate. Images of all wells were collected using the Cellular  
510 Technology Limited (CTL) machine and ImmunoSpot software and automated plaque counting  
511 was performed using the Viridot plaque counter package in R <sup>81</sup>. Serum titers for neutralization  
512 assays were estimated by 4-parameter logistic regression at 50% reduction in plaque count  
513 relative to control wells with virus but no serum using the package in R. All titrations for a given  
514 individual were performed in the same assay to reduce variability. The presence of bnAbs was  
515 defined as mature PRNT titers  $\geq 1:20$  against two or more serotypes.

516

#### 517 ***EDE ELISA-based Blockade of Binding (BOB) assay***

518 We developed the EDE BOB ELISA assay to measure the levels of human serum Abs that block  
519 the binding of EDE1 C8 mAb to the stabilized DENV2 E dimer. EDE BOB assays have been  
520 previously described <sup>61,76</sup>. Briefly, High binding 96-well flat-bottom microtiter plates (Microton,  
521 Greiner, Germany) were coated with the capture anti-His mAb (Ref: TA150088, OriGene) in  
522 1xTris-buffered saline (TBS) [50 mM tris-Cl (pH 7.5) and 150 mM NaCl] at 4°C overnight. The anti-  
523 His-coated plates were washed with 0.05% Tween 20 (Ref: P7949, Sigma Aldrich)-contained  
524 1xTBS (TBS-T) and blocked with TBS-T supplemented with 3% non-fat milk (Ref: 232100, BD Difco)  
525 for 1 hour at 37°C. The coated plates were then washed and incubated with 2ug/ml 3% milk TBS-  
526 T-mixed DENV2 E antigen for 1 hour at 37°C. Thus, the plates were washed with TBS-T, then 10-  
527 fold diluted human samples and internal quality controls (IQC; human samples obtained from  
528 DENV-exposed and -naïve individuals) in 3% non-fat milk TBS-T were added and incubated for 2  
529 hours at 37°C. A solution containing in-house Alkaline phosphatase (AP)-labelled DENV EDE1 C8  
530 human monoclonal Ab (TP41002F), at 2µg/mL prepared in 3% milk TBS-T was added to plates  
531 and incubated for 1 hour at 37°C. The plates were washed with TBS-T and developed with AP  
532 substrate (SIGMAFAST) for 15 minutes at room temperature (RT) in dark. The reaction was

533 stopped with 1N sodium hydroxide solution (SS255-1, Fisher chemical) and the plates were read  
534 in a microplate reader at 405 nm. Blocking of binding activity was estimated as percent (%)  
535 inhibition of C8 binding (Optical density, OD) compared to dengue naïve human serum as a  
536 negative control (1). A serum that induces  $\geq 50\%$  inhibition or reduction in C8 OD is considered  
537 positive for EDE Abs.

538

539 (1) % inhibition=  $100 - ((\text{OD sample} / \text{OD negative control}) \times 100)$

540

#### 541 ***DENV1-4 WT E protein and stabilized DENV2 E dimer IgG Enzyme-linked immunosorbent assay***

542 To measure serum antibody binding by ELISA, mouse anti-His antibody-coated high binding plates  
543 incubated at 4°C overnight were used to capture 2 $\mu$ g/ml recombinant DENV1-4 WT E protein and  
544 DENV2 E dimer proteins in 1 $\times$  TBS for 1 hour at 37°C. The plate was washed three times with 1 $\times$   
545 TBS + 0.05% Tween 20 (wash buffer). Next, the plate was blocked with 3% non-fat skim milk  
546 mixed in 0.05% Tween 20 + 1 $\times$  TBS (blocking buffer) for 1 hour at 37°C and subsequently washed  
547 three times with wash buffer. The plate was then incubated for 2 hours at 37°C with human  
548 serum diluted 1:100 in blocking buffer and washed three times with wash buffer. The wells were  
549 accordingly treated with AP-conjugated anti-human IgG (1:2000; Sigma-Aldrich) for 1 hour at  
550 37°C. Then, the plate was washed and developed with AP substrate (Sigma-Aldrich), and the  
551 absorbance was measured at 405 nm. ELISA signals are reported as sample optical density (OD)  
552 which are the average of replicates after normalization to negative control. DENV naïve human  
553 served as negative control, and dengue polyclonal human serum was used as a positive control.

554

#### 555 ***Luminex NS1 and EDIII binding assays***

556 Ab responses to envelope protein domain III (EDIII) and nonstructural 1 protein (NS1) of DENV  
557 serotypes 1-4 and NS1 of Yellow fever virus (YFV) were measured in all participants (n=252) using  
558 Luminex multiplex assay as previously described<sup>57</sup>. Briefly, biotinylated EDIII antigens and  
559 biotinylated bovine serum albumin (BSA) were coupled to unique MagPlex®-Avidin Microspheres  
560 (Luminex) while His-tagged NS1 antigens (The Native Antigen Company) were coupled following  
561 immobilization of anti-His tag antibody (Abcam) onto unique avidin-coated microspheres. The

562 panel of EDIII, NS1 and BSA conjugated microspheres were mixed in equal ratios and plated at  
563 2,500 beads per antigen in 50 $\mu$ L/well in 96 well plates. Diluted human serum (1:500) was  
564 incubated with antigen-conjugated microspheres for one hour at 37°C, 700rpm. Later, immune  
565 complexes were incubated with goat anti-human IgG Fc multi-species SP ads-PE [KL ([2] antibody  
566 (Southern Biotech) following three washes. Antibody responses were detected using a Luminex  
567 200 analyzer and expressed as median fluorescence intensity after subtracting the non-specific  
568 Ab binding signal (to BSA). Selected samples from healthy donors and well-characterized DENV  
569 and ZIKV seropositive individuals were run on multiple assay plates to verify assay performance  
570 and assess inter-assay variability

571

### 572 **Statistical analysis**

573 Statistical analysis and data visualization were performed using GraphPad Prism version 9 and R  
574 version 3.3.2 for Macintosh. PRNT<sub>50</sub> titers for each participant were log-transformed. We used  
575 Wilcoxon and Mann-Whitney tests to measure the differences between the distributions of two  
576 groups of subjects whereas variation between multiple groups were measured by Kruskal-  
577 Wallis's test with multiple comparison. P values at alpha <0.05 were considered statistically  
578 significant. We estimated Pearson's correlation coefficients (r) to determine the similarity  
579 between Ab groups or properties measured using WT E protein ELISA, E dimer ELISA, mature  
580 PRNT, and EDE-like (BOB).

581

582 We used the logistic regression to model the relationship between baseline Abs measured in  
583 each assay and the probability of a boost in neutralizing Abs, adjusting for age, sex, and study  
584 site. The models were built separately for both unvaccinated and vaccinated participants as well  
585 as combined models where it has been adjusted for vaccine status. The boost or seroconversion  
586 to DENV were defined by the 4-fold rise to 2-4 serotypes by mature PRNT and a vaccine response  
587 as seroconversion to YFV NS1. A p-value <0.05 was considered significant. We again build logistic  
588 regression models either unadjusted or adjusted for age, sex, site, and vaccine status with  
589 predictors including the geometric mean of WT E protein ELISA values to DENV1-4, E dimer ELISA  
590 values, the geometric mean of mature PRNT titers to DENV1-4, EDE-like (BOB), and serotype-

591 specific values for the WT E protein ELISA and PRNT to test the predictive effect of each to dengue  
592 disease or serotype-specific dengue disease risk. To confirm the predictors with a maximum  
593 prediction effect (less prediction error) to the outcome, we performed a Least Absolute Shrinkage  
594 and Selection Operator (LASSO) regression, which consists by imposing a constraint on the model  
595 parameters, which ‘shrinks’ the regression coefficients towards zero by forcing the sum of the  
596 absolute value of the regression coefficients to be less than a fixed value ( $\lambda$ ). In a practical sense  
597 this constrains the complexity of the model. Variables with a regression coefficient of zero after  
598 shrinkage are excluded from the model<sup>82</sup>.

599 We also conducted a formal mediation analysis to test whether EDE-like Abs mediated the  
600 relationship between the geometric mean of mature neutralizing Abs or WT E protein binding  
601 Abs on dengue outcome. The mediation analysis model is a hypothetical causal relationship in  
602 which an independent variable (WT E binding or neutralizing Abs) affects the outcome (dengue  
603 disease) indirectly through a mediator variable (EDE-like Abs measured using the BOB assay), and  
604 tests whether EDE-like Abs indeed mediate the protective relationship between geometric mean  
605 (GM) WT E protein binding or GM\_mature PRNT and dengue disease. This mediation relationship  
606 model consists of testing the following four conditions:

- 607 1. A significant relationship between GM\_WT E protein, GM\_mature PRNT, or EDE-like Abs  
608 and dengue disease (path b1, GM\_WT E protein or GM\_mature PRNT or EDE-like dengue  
609 disease).
- 610 2. A significant relationship between GM\_WT E protein or GM\_mature PRNT and EDE-like  
611 Abs (path b2, GM\_WT E protein, or GM\_mature PRNT and EDE-like Abs).
- 612 3. A non-significant relationship between GM\_WT E protein or GM\_mature PRNT and  
613 dengue disease via EDE-like which remains significant (path b3, GM\_WT E protein +  
614 GM\_mature PRNT + EDE-like on dengue disease).
- 615 4. In the regression model with GM\_WT E protein or GM\_mature PRNT and EDE-like Abs as  
616 independent variables and dengue disease as the dependent variable.

617 Condition 2 means that the independent variable, GM\_WT E protein or GM\_mature PRNT, is  
618 significant in the linear regression model with EDE-like Abs as the dependent variable, and  
619 similarly for conditions 1 and 3. The fourth condition is: in the regression model with GM\_WT E

620 protein or GM\_mature PRNT and EDE-like Abs as independent variables and dengue disease as  
621 the dependent variable, the impact of GM\_WT E protein or GM\_mature PRNT is greatly  
622 minimized in the presence of EDE-like Abs in the model, meaning that the GM\_WT E protein or  
623 GM\_mature PRNT coefficient in this regression becomes non-significant or its significance is  
624 greatly reduced. This can also mean that the partial correlation of GM\_WT E protein or  
625 GM\_mature PRNT on dengue disease when factoring out EDE-like Abs noticeably drops <sup>83,84</sup>  
626  
627



628 **REFERENCES**

629

630 1 Brady, O. J., Gething, P. W., Bhatt, S., Messina, J. P., Brownstein, J. S., Hoen, A. G.,  
631 Moyes, C. L., Farlow, A. W., Scott, T. W. & Hay, S. I. Refining the global spatial limits of  
632 dengue virus transmission by evidence-based consensus. *PLoS Negl Trop Dis* **6**, e1760,  
633 doi:10.1371/journal.pntd.0001760 (2012).

634 2 Abe, H., Ushijima, Y., Loembe, M. M., Bikangui, R., Nguema-Ondo, G., Mpingabo, P. I.,  
635 Zadeh, V. R., Pemba, C. M., Kurosaki, Y., Igasaki, Y. *et al.* Re-emergence of dengue virus  
636 serotype 3 infections in Gabon in 2016-2017, and evidence for the risk of repeated  
637 dengue virus infections. *Int J Infect Dis* **91**, 129-136, doi:10.1016/j.ijid.2019.12.002  
638 (2020).

639 3 Messina, J. P., Brady, O. J., Golding, N., Kraemer, M. U. G., Wint, G. R. W., Ray, S. E.,  
640 Pigott, D. M., Shearer, F. M., Johnson, K., Earl, L. *et al.* The current and future global  
641 distribution and population at risk of dengue. *Nat Microbiol* **4**, 1508-1515,  
642 doi:10.1038/s41564-019-0476-8 (2019).

643 4 Cattarino, L., Rodriguez-Barraquer, I., Imai, N., Cummings, D. A. T. & Ferguson, N. M.  
644 Mapping global variation in dengue transmission intensity. *Sci Transl Med* **12**,  
645 doi:10.1126/scitranslmed.aax4144 (2020).

646 5 Sridhar, S., Luedtke, A., Langevin, E., Zhu, M., Bonaparte, M., Machabert, T., Savarino, S.,  
647 Zambrano, B., Moureau, A., Khromava, A. *et al.* Effect of Dengue Serostatus on Dengue  
648 Vaccine Safety and Efficacy. *N Engl J Med* **379**, 327-340, doi:10.1056/NEJMoa1800820  
649 (2018).

650 6 Halstead, S. B., Katzelnick, L. C., Russell, P. K., Markoff, L., Aguiar, M., Dans, L. R. & Dans,  
651 A. L. Ethics of a partially effective dengue vaccine: Lessons from the Philippines. *Vaccine*  
652 **38**, 5572-5576, doi:10.1016/j.vaccine.2020.06.079 (2020).

653 7 Patel, S. S., Rauscher, M., Kudela, M. & Pang, H. Clinical Safety Experience of TAK-003 for  
654 Dengue Fever: A New Tetravalent Live Attenuated Vaccine Candidate. *Clin Infect Dis* **76**,  
655 e1350-e1359, doi:10.1093/cid/ciac418 (2023).

656 8 Biswal, S., Patel, S. S. & Rauscher, M. Safety of Dengue Vaccine? *Clin Infect Dis* **76**, 771-  
657 772, doi:10.1093/cid/ciac808 (2023).

658 9 Rivera, L., Biswal, S., Saez-Llorens, X., Reynales, H., Lopez-Medina, E., Borja-Tabora, C.,  
659 Bravo, L., Sirivichayakul, C., Kosalaraksa, P., Martinez Vargas, L. *et al.* Three-year Efficacy  
660 and Safety of Takeda's Dengue Vaccine Candidate (TAK-003). *Clin Infect Dis* **75**, 107-117,  
661 doi:10.1093/cid/ciab864 (2022).

- 662 10 de Silva, A. & White, L. Immunogenicity of a Live Dengue Vaccine (TAK-003). *J Infect Dis*  
663 **227**, 163-164, doi:10.1093/infdis/jiac424 (2022).
- 664 11 White, L. J., Young, E. F., Stoops, M. J., Henein, S. R., Adams, E. C., Baric, R. S. & de Silva,  
665 A. M. Defining levels of dengue virus serotype-specific neutralizing antibodies induced  
666 by a live attenuated tetravalent dengue vaccine (TAK-003). *PLoS Negl Trop Dis* **15**,  
667 e0009258, doi:10.1371/journal.pntd.0009258 (2021).
- 668 12 Thomas, S. J. Is new dengue vaccine efficacy data a relief or cause for concern? *npj*  
669 *Vaccines* **8**, 55, doi:10.1038/s41541-023-00658-2 (2023).
- 670 13 Coronel-Martínez, D. L., Park, J., López-Medina, E., Capeding, M. R., Cadena Bonfanti, A.  
671 A., Montalbán, M. C., Ramírez, I., Gonzales, M. L. A., DiazGranados, C. A., Zambrano, B.  
672 *et al.* Immunogenicity and safety of simplified vaccination schedules for the CYD-TDV  
673 dengue vaccine in healthy individuals aged 9–50 years (CYD65): a randomised,  
674 controlled, phase 2, non-inferiority study. *The Lancet Infectious Diseases* **21**, 517-528,  
675 doi:10.1016/s1473-3099(20)30767-2 (2021).
- 676 14 Lai, C.-Y., Williams, K. L., Wu, Y.-C., Knight, S., Balmaseda, A., Harris, E. & Wang, W.-K.  
677 Analysis of Cross-Reactive Antibodies Recognizing the Fusion Loop of Envelope Protein  
678 and Correlation with Neutralizing Antibody Titers in Nicaraguan Dengue Cases. *PLOS*  
679 *Neglected Tropical Diseases* **7**, e2451, doi:10.1371/journal.pntd.0002451 (2013).
- 680 15 Moi, M. L., Takasaki, T. & Kurane, I. Human antibody response to dengue virus:  
681 implications for dengue vaccine design. *Trop Med Health* **44**, 1, doi:10.1186/s41182-  
682 016-0004-y (2016).
- 683 16 Katzelnick, L. C., Montoya, M., Gresh, L., Balmaseda, A. & Harris, E. Neutralizing antibody  
684 titers against dengue virus correlate with protection from symptomatic infection in a  
685 longitudinal cohort. *Proceedings of the National Academy of Sciences* **113**, 728-733,  
686 doi:doi:10.1073/pnas.1522136113 (2016).
- 687 17 Patel, B., Longo, P., Miley, M. J., Montoya, M., Harris, E. & de Silva, A. M. Dissecting the  
688 human serum antibody response to secondary dengue virus infections. *PLoS Negl Trop*  
689 *Dis* **11**, e0005554, doi:10.1371/journal.pntd.0005554 (2017).
- 690 18 Rey, F. A., Stiasny, K., Vaney, M. C., Dellarole, M. & Heinz, F. X. The bright and the dark  
691 side of human antibody responses to flaviviruses: lessons for vaccine design. *EMBO Rep*  
692 **19**, 206-224, doi:10.15252/embr.201745302 (2018).
- 693 19 Kudlacek, S. T., Metz, S., Thiono, D., Payne, A. M., Phan, T. T. N., Tian, S., Forsberg, L. J.,  
694 Maguire, J., Seim, I., Zhang, S. *et al.* Designed, highly expressing, thermostable dengue  
695 virus 2 envelope protein dimers elicit quaternary epitope antibodies. *Sci Adv* **7**,  
696 eabg4084, doi:10.1126/sciadv.abg4084 (2021).

- 697 20 Zhang, X., Ge, P., Yu, X., Brannan, J. M., Bi, G., Zhang, Q., Schein, S. & Zhou, Z. H. Cryo-  
698 EM structure of the mature dengue virus at 3.5-Å resolution. *Nat Struct Mol Biol* **20**,  
699 105-110, doi:10.1038/nsmb.2463 (2013).
- 700 21 Raut, R., Corbett, K. S., Tennekoon, R. N., Premawansa, S., Wijewickrama, A.,  
701 Premawansa, G., Mieczkowski, P., Rückert, C., Ebel, G. D., De Silva, A. D. *et al.* Dengue  
702 type 1 viruses circulating in humans are highly infectious and poorly neutralized by  
703 human antibodies. *Proceedings of the National Academy of Sciences* **116**, 227-232,  
704 doi:doi:10.1073/pnas.1812055115 (2019).
- 705 22 Dejnirattisai, W., Jumnainsong, A., Onsirirakul, N., Fitton, P., Vasanawathana, S.,  
706 Limpitikul, W., Puttikhunt, C., Edwards, C., Duangchinda, T., Supasa, S. *et al.* Cross-  
707 reacting antibodies enhance dengue virus infection in humans. *Science* **328**, 745-748,  
708 doi:10.1126/science.1185181 (2010).
- 709 23 Murphy, B. R. & Whitehead, S. S. Immune response to dengue virus and prospects for a  
710 vaccine. *Annu Rev Immunol* **29**, 587-619, doi:10.1146/annurev-immunol-031210-101315  
711 (2011).
- 712 24 Guzman, M. G., Gubler, D. J., Izquierdo, A., Martinez, E. & Halstead, S. B. Dengue  
713 infection. *Nat Rev Dis Primers* **2**, 16055, doi:10.1038/nrdp.2016.55 (2016).
- 714 25 Tsai, W. Y., Lai, C. Y., Wu, Y. C., Lin, H. E., Edwards, C., Jumnainsong, A., Kliks, S.,  
715 Halstead, S., Mongkolsapaya, J., Screaton, G. R. *et al.* High-avidity and potentially  
716 neutralizing cross-reactive human monoclonal antibodies derived from secondary  
717 dengue virus infection. *J Virol* **87**, 12562-12575, doi:10.1128/JVI.00871-13 (2013).
- 718 26 Lai, C. Y., Tsai, W. Y., Lin, S. R., Kao, C. L., Hu, H. P., King, C. C., Wu, H. C., Chang, G. J. &  
719 Wang, W. K. Antibodies to envelope glycoprotein of dengue virus during the natural  
720 course of infection are predominantly cross-reactive and recognize epitopes containing  
721 highly conserved residues at the fusion loop of domain II. *J Virol* **82**, 6631-6643,  
722 doi:10.1128/JVI.00316-08 (2008).
- 723 27 Costin, J. M., Zaitseva, E., Kahle, K. M., Nicholson, C. O., Rowe, D. K., Graham, A. S.,  
724 Bazzone, L. E., Hogancamp, G., Figueroa Sierra, M., Fong, R. H. *et al.* Mechanistic study  
725 of broadly neutralizing human monoclonal antibodies against dengue virus that target  
726 the fusion loop. *J Virol* **87**, 52-66, doi:10.1128/JVI.02273-12 (2013).
- 727 28 Smith, S. A., de Alwis, A. R., Kose, N., Harris, E., Ibarra, K. D., Kahle, K. M., Pfaff, J. M.,  
728 Xiang, X., Doranz, B. J., de Silva, A. M. *et al.* The potent and broadly neutralizing human  
729 dengue virus-specific monoclonal antibody 1C19 reveals a unique cross-reactive epitope  
730 on the bc loop of domain II of the envelope protein. *mBio* **4**, e00873-00813,  
731 doi:10.1128/mBio.00873-13 (2013).

- 732 29 Guzman, M. G., Kouri, G., Valdes, L., Bravo, J., Alvarez, M., Vazques, S., Delgado, I. &  
733 Halstead, S. B. Epidemiologic studies on Dengue in Santiago de Cuba, 1997. *Am J*  
734 *Epidemiol* **152**, 793-799; discussion 804, doi:10.1093/aje/152.9.793 (2000).
- 735 30 de Alwis, R., Beltramello, M., Messer, W. B., Sukopolvi-Petty, S., Wahala, W. M. P. B.,  
736 Kraus, A., Olivarez, N. P., Pham, Q., Brian, J., Tsai, W.-Y. *et al.* In-Depth Analysis of the  
737 Antibody Response of Individuals Exposed to Primary Dengue Virus Infection. *PLOS*  
738 *Neglected Tropical Diseases* **5**, e1188, doi:10.1371/journal.pntd.0001188 (2011).
- 739 31 Katzelnick, L. C., Gresh, L., Halloran, M. E., Mercado, J. C., Kuan, G., Gordon, A.,  
740 Balmaseda, A. & Harris, E. Antibody-dependent enhancement of severe dengue disease  
741 in humans. *Science* **358**, 929-932, doi:doi:10.1126/science.aan6836 (2017).
- 742 32 Dejnirattisai, W., Supasa, P., Wongwiwat, W., Rouvinski, A., Barba-Spaeth, G.,  
743 Duangchinda, T., Sakuntabhai, A., Cao-Lormeau, V.-M., Malasit, P., Rey, F. A. *et al.*  
744 Dengue virus sero-cross-reactivity drives antibody-dependent enhancement of infection  
745 with zika virus. *Nature Immunology* **17**, 1102-1108, doi:10.1038/ni.3515 (2016).
- 746 33 Halstead, S. B. Dengue Antibody-Dependent Enhancement: Knowns and Unknowns.  
747 *Microbiol Spectr* **2**, doi:10.1128/microbiolspec.AID-0022-2014 (2014).
- 748 34 Andrade, D. V., Katzelnick, L. C., Widman, D. G., Balmaseda, A., de Silva, A. M., Baric, R.  
749 S. & Harris, E. Analysis of Individuals from a Dengue-Endemic Region Helps Define the  
750 Footprint and Repertoire of Antibodies Targeting Dengue Virus 3 Type-Specific Epitopes.  
751 *mBio* **8**, doi:10.1128/mBio.01205-17 (2017).
- 752 35 Young, E., Carnahan, R. H., Andrade, D. V., Kose, N., Nargi, R. S., Fritch, E. J., Munt, J. E.,  
753 Doyle, M. P., White, L., Baric, T. J. *et al.* Identification of Dengue Virus Serotype 3  
754 Specific Antigenic Sites Targeted by Neutralizing Human Antibodies. *Cell Host Microbe*  
755 **27**, 710-724.e717, doi:10.1016/j.chom.2020.04.007 (2020).
- 756 36 Katzelnick, L. C. & Harris, E. Immune correlates of protection for dengue: State of the art  
757 and research agenda. *Vaccine* **35**, 4659-4669, doi:10.1016/j.vaccine.2017.07.045 (2017).
- 758 37 Buddhari, D., Aldstadt, J., Endy, T. P., Srikiatkhachorn, A., Thaisomboonsuk, B.,  
759 Klungthong, C., Nisalak, A., Khuntirat, B., Jarman, R. G., Fernandez, S. *et al.* Dengue virus  
760 neutralizing antibody levels associated with protection from infection in thai cluster  
761 studies. *PLoS Negl Trop Dis* **8**, e3230, doi:10.1371/journal.pntd.0003230 (2014).
- 762 38 Moodie, Z., Juraska, M., Huang, Y., Zhuang, Y., Fong, Y., Carpp, L. N., Self, S. G.,  
763 Chambonneau, L., Small, R., Jackson, N. *et al.* Neutralizing Antibody Correlates Analysis  
764 of Tetravalent Dengue Vaccine Efficacy Trials in Asia and Latin America. *J Infect Dis* **217**,  
765 742-753, doi:10.1093/infdis/jix609 (2018).

- 766 39 Balingit, J. C., Phu Ly, M. H., Matsuda, M., Suzuki, R., Hasebe, F., Morita, K. & Moi, M. L.  
767 A Simple and High-Throughput ELISA-Based Neutralization Assay for the Determination  
768 of Anti-Flavivirus Neutralizing Antibodies. *Vaccines* **8**, 297 (2020).
- 769 40 Patel, B., Longo, P., Miley, M. J., Montoya, M., Harris, E. & de Silva, A. M. Dissecting the  
770 human serum antibody response to secondary dengue virus infections. *PLoS neglected*  
771 *tropical diseases* **11**, e0005554 (2017).
- 772 41 Tsai, W.-Y., Durbin, A., Tsai, J.-J., Hsieh, S.-C., Whitehead, S. & Wang, W.-K. Complexity  
773 of Neutralizing Antibodies against Multiple Dengue Virus Serotypes after Heterotypic  
774 Immunization and Secondary Infection Revealed by In-Depth Analysis of Cross-Reactive  
775 Antibodies. *Journal of Virology* **89**, 7348-7362, doi:doi:10.1128/jvi.00273-15 (2015).
- 776 42 Rouvinski, A., Guardado-Calvo, P., Barba-Spaeth, G., Duquerroy, S., Vaney, M.-C., Kikuti,  
777 C. M., Navarro Sanchez, M. E., Dejnirattisai, W., Wongwiwat, W., Haouz, A. *et al.*  
778 Recognition determinants of broadly neutralizing human antibodies against dengue  
779 viruses. *Nature* **520**, 109-113, doi:10.1038/nature14130 (2015).
- 780 43 Rouvinski, A., Dejnirattisai, W., Guardado-Calvo, P., Vaney, M.-C., Sharma, A.,  
781 Duquerroy, S., Supasa, P., Wongwiwat, W., Haouz, A., Barba-Spaeth, G. *et al.* Covalently  
782 linked dengue virus envelope glycoprotein dimers reduce exposure of the  
783 immunodominant fusion loop epitope. *Nature Communications* **8**, 15411,  
784 doi:10.1038/ncomms15411 (2017).
- 785 44 Dejnirattisai, W., Wongwiwat, W., Supasa, S., Zhang, X., Dai, X., Rouvinski, A.,  
786 Jumnainsong, A., Edwards, C., Quyen, N. T. H., Duangchinda, T. *et al.* A new class of  
787 highly potent, broadly neutralizing antibodies isolated from viremic patients infected  
788 with dengue virus. *Nature Immunology* **16**, 170-177, doi:10.1038/ni.3058 (2015).
- 789 45 Durham, N. D., Agrawal, A., Waltari, E., Croote, D., Zanini, F., Fouch, M., Davidson, E.,  
790 Smith, O., Carabajal, E., Pak, J. E. *et al.* Broadly neutralizing human antibodies against  
791 dengue virus identified by single B cell transcriptomics. *eLife* **8**, e52384,  
792 doi:10.7554/eLife.52384 (2019).
- 793 46 Xu, M., Zuest, R., Velumani, S., Tukijan, F., Toh, Y. X., Appanna, R., Tan, E. Y., Cerny, D.,  
794 MacAry, P., Wang, C.-I. *et al.* A potent neutralizing antibody with therapeutic potential  
795 against all four serotypes of dengue virus. *npj Vaccines* **2**, 2, doi:10.1038/s41541-016-  
796 0003-3 (2017).
- 797 47 Sharma, A., Zhang, X., Dejnirattisai, W., Dai, X., Gong, D., Wongwiwat, W., Duquerroy, S.,  
798 Rouvinski, A., Vaney, M. C., Guardado-Calvo, P. *et al.* The epitope arrangement on  
799 flavivirus particles contributes to Mab C10's extraordinary neutralization breadth across  
800 Zika and dengue viruses. *Cell* **184**, 6052-6066.e6018, doi:10.1016/j.cell.2021.11.010  
801 (2021).



- 802 48 Gallichotte, E. N., Baric, T. J., Yount, B. L., Jr., Widman, D. G., Durbin, A., Whitehead, S.,  
803 Baric, R. S. & de Silva, A. M. Human dengue virus serotype 2 neutralizing antibodies  
804 target two distinct quaternary epitopes. *PLOS Pathogens* **14**, e1006934,  
805 doi:10.1371/journal.ppat.1006934 (2018).
- 806 49 Tsai, W. Y., Chen, H. L., Tsai, J. J., Dejnirattisai, W., Jumnainsong, A., Mongkolsapaya, J.,  
807 Sreaton, G., Crowe, J. E., Jr. & Wang, W. K. Potent Neutralizing Human Monoclonal  
808 Antibodies Preferentially Target Mature Dengue Virus Particles: Implication for Novel  
809 Strategy for Dengue Vaccine. *J Virol* **92**, doi:10.1128/jvi.00556-18 (2018).
- 810 50 Fernandez, E., Dejnirattisai, W., Cao, B., Scheaffer, S. M., Supasa, P., Wongwiwat, W.,  
811 Esakky, P., Drury, A., Mongkolsapaya, J., Moley, K. H. *et al.* Human antibodies to the  
812 dengue virus E-dimer epitope have therapeutic activity against Zika virus infection. *Nat*  
813 *Immunol* **18**, 1261-1269, doi:10.1038/ni.3849 (2017).
- 814 51 Barba-Spaeth, G., Dejnirattisai, W., Rouvinski, A., Vaney, M. C., Medits, I., Sharma, A.,  
815 Simon-Lorière, E., Sakuntabhai, A., Cao-Lormeau, V. M., Haouz, A. *et al.* Structural basis  
816 of potent Zika-dengue virus antibody cross-neutralization. *Nature* **536**, 48-53,  
817 doi:10.1038/nature18938 (2016).
- 818 52 Gallichotte, E. N., Widman, D. G., Yount, B. L., Wahala, W. M., Durbin, A., Whitehead, S.,  
819 Sariol, C. A., Crowe, J. E., Jr., de Silva, A. M. & Baric, R. S. A new quaternary structure  
820 epitope on dengue virus serotype 2 is the target of durable type-specific neutralizing  
821 antibodies. *mBio* **6**, e01461-01415, doi:10.1128/mBio.01461-15 (2015).
- 822 53 Lopez, A. L., Adams, C., Ylade, M., Jadi, R., Daag, J. V., Molloy, C. T., Agrupis, K. A., Kim,  
823 D. R., Silva, M. W., Yoon, I. K. *et al.* Determining dengue virus serostatus by indirect IgG  
824 ELISA compared with focus reduction neutralisation test in children in Cebu, Philippines:  
825 a prospective population-based study. *Lancet Glob Health* **9**, e44-e51,  
826 doi:10.1016/s2214-109x(20)30392-2 (2021).
- 827 54 Ylade, M., Agrupis, K. A., Daag, J. V., Crisostomo, M. V., Tabuco, M. O., Sy, A. K., Nealon,  
828 J., Macina, D., Sarol, J., Deen, J. *et al.* Effectiveness of a single-dose mass dengue  
829 vaccination in Cebu, Philippines: A case-control study. *Vaccine* **39**, 5318-5325,  
830 doi:<https://doi.org/10.1016/j.vaccine.2021.07.042> (2021).
- 831 55 Agrupis, K. A., Ylade, M., Aldaba, J., Lopez, A. L. & Deen, J. Trends in dengue research in  
832 the Philippines: A systematic review. *PLOS Neglected Tropical Diseases* **13**, e0007280,  
833 doi:10.1371/journal.pntd.0007280 (2019).
- 834 56 Daag, J. V., Ylade, M., Jadi, R., Adams, C., Cuachin, A. M., Alpay, R., Aportadera, E. T. C.,  
835 Yoon, I. K., de Silva, A. M., Lopez, A. L. *et al.* Performance of Dried Blood Spots  
836 Compared with Serum Samples for Measuring Dengue Seroprevalence in a Cohort of  
837 Children in Cebu, Philippines. *Am J Trop Med Hyg* **104**, 130-135, doi:10.4269/ajtmh.20-  
838 0937 (2021).

- 839 57 Dahora, L., Castillo, I. N., Medina, F. A., Vila, F., Munoz-Jordan, J., Segovia, B., deSilva, A.  
840 M. & Premkumar, L. Flavivirus Serologic Surveillance: Multiplex Sample-Sparing Assay  
841 for Detecting Type-Specific Antibodies to Zika and Dengue Viruses. . *The Lancet*,  
842 doi:10.2139/ssrm.4411430 (2023).
- 843 58 de Alwis, R., Smith, S. A., Olivarez, N. P., Messer, W. B., Huynh, J. P., Wahala, W. M. P. B.,  
844 White, L. J., Diamond, M. S., Baric, R. S., Crowe, J. E. *et al.* Identification of human  
845 neutralizing antibodies that bind to complex epitopes on dengue virions. *Proceedings of*  
846 *the National Academy of Sciences* **109**, 7439-7444, doi:doi:10.1073/pnas.1200566109  
847 (2012).
- 848 59 Zompi, S., Montoya, M., Pohl, M. O., Balmaseda, A. & Harris, E. Dominant Cross-Reactive  
849 B Cell Response during Secondary Acute Dengue Virus Infection in Humans. *PLOS*  
850 *Neglected Tropical Diseases* **6**, e1568, doi:10.1371/journal.pntd.0001568 (2012).
- 851 60 Matheus, S., Deparis, X., Labeau, B., Lelarge, J., Morvan, J. & Dussart, P. Discrimination  
852 between primary and secondary dengue virus infection by an immunoglobulin G avidity  
853 test using a single acute-phase serum sample. *J Clin Microbiol* **43**, 2793-2797,  
854 doi:10.1128/jcm.43.6.2793-2797.2005 (2005).
- 855 61 Keelapang, P., Kraivong, R., Pulmanusahakul, R., Sriburi, R., Prompetchara, E.,  
856 Kaewmaneepong, J., Charoensri, N., Pakchotanon, P., Duangchinda, T.,  
857 Suparattanagool, P. *et al.* Blockade-of-Binding Activities toward Envelope-Associated,  
858 Type-Specific Epitopes as a Correlative Marker for Dengue Virus-Neutralizing Antibody.  
859 *Microbiol Spectr* **11**, e0091823, doi:10.1128/spectrum.00918-23 (2023).
- 860 62 Galula, J. U., Salem, G. M., Chang, G. J. & Chao, D. Y. Does structurally-mature dengue  
861 virion matter in vaccine preparation in post-Dengvaxia era? *Hum Vaccin Immunother* **15**,  
862 2328-2336, doi:10.1080/21645515.2019.1643676 (2019).
- 863 63 Salje, H., Alera, M. T., Chua, M. N., Hunsawong, T., Ellison, D., Srikiatkachorn, A.,  
864 Jarman, R. G., Gromowski, G. D., Rodriguez-Barraquer, I., Cauchemez, S. *et al.* Evaluation  
865 of the extended efficacy of the Dengvaxia vaccine against symptomatic and subclinical  
866 dengue infection. *Nat Med* **27**, 1395-1400, doi:10.1038/s41591-021-01392-9 (2021).
- 867 64 DiazGranados, C. A., Langevin, E., Bonaparte, M., Sridhar, S., Machabert, T., Dayan, G.,  
868 Forrat, R. & Savarino, S. CYD Tetravalent Dengue Vaccine Performance by Baseline  
869 Immune Profile (Monotypic/Multitypic) in Dengue-Seropositive Individuals. *Clin Infect*  
870 *Dis* **72**, 1730-1737, doi:10.1093/cid/cia304 (2021).
- 871 65 Aogo, R. A., Zambrana, J. V., Sanchez, N., Ojeda, S., Kuan, G., Balmaseda, A., Gordon, A.,  
872 Harris, E. & Katzelnick, L. C. Effects of boosting and waning in highly exposed  
873 populations on dengue epidemic dynamics. *Sci Transl Med* **15**, eadi1734,  
874 doi:10.1126/scitranslmed.adi1734 (2023).

- 875 66 Dayan, G. H., Langevin, E., Forrat, R., Zambrano, B., Noriega, F., Frago, C.,  
876 Bouckenooghe, A., Machabert, T., Savarino, S. & DiazGranados, C. A. Efficacy after 1 and  
877 2 doses of CYD-TDV in dengue endemic areas by dengue serostatus. *Vaccine* **38**, 6472-  
878 6477, doi:<https://doi.org/10.1016/j.vaccine.2020.07.056> (2020).
- 879 67 Henein, S., Adams, C., Bonaparte, M., Moser, J. M., Munteanu, A., Baric, R. & de Silva, A.  
880 M. Dengue vaccine breakthrough infections reveal properties of neutralizing antibodies  
881 linked to protection. *J Clin Invest* **131**, doi:10.1172/JCI147066 (2021).
- 882 68 Henein, S., Swanstrom, J., Byers, A. M., Moser, J. M., Shaik, S. F., Bonaparte, M., Jackson,  
883 N., Guy, B., Baric, R. & de Silva, A. M. Dissecting Antibodies Induced by a Chimeric Yellow  
884 Fever-Dengue, Live-Attenuated, Tetravalent Dengue Vaccine (CYD-TDV) in Naive and  
885 Dengue-Exposed Individuals. *J Infect Dis* **215**, 351-358, doi:10.1093/infdis/jiw576 (2017).
- 886 69 Maciejewski, S., Ruckwardt, T. J., Morabito, K. M., Foreman, B. M., Burgomaster, K. E.,  
887 Gordon, D. N., Pelc, R. S., DeMaso, C. R., Ko, S.-Y., Fisher, B. E. *et al.* Distinct neutralizing  
888 antibody correlates of protection among related Zika virus vaccines identify a role for  
889 antibody quality. *Science Translational Medicine* **12**, eaaw9066,  
890 doi:doi:10.1126/scitranslmed.aaw9066 (2020).
- 891 70 Bos, S., Graber, A. L., Cardona-Ospina, J. A., Duarte, E. M., Zambrana, J. V., Ruíz Salinas,  
892 J. A., Mercado-Hernandez, R., Singh, T., Katzelnick, L. C., de Silva, A. *et al.* Protection  
893 against symptomatic dengue infection by neutralizing antibodies varies by infection  
894 history and infecting serotype. *Nature Communications* **15**, 382, doi:10.1038/s41467-  
895 023-44330-8 (2024).
- 896 71 Dias, A. G., Jr., Atyeo, C., Loos, C., Montoya, M., Roy, V., Bos, S., Narvekar, P., Singh, T.,  
897 Katzelnick, L. C., Kuan, G. *et al.* Antibody Fc characteristics and effector functions  
898 correlate with protection from symptomatic dengue virus type 3 infection. *Sci Transl  
899 Med* **14**, eabm3151, doi:10.1126/scitranslmed.abm3151 (2022).
- 900 72 Ylade, M., Crisostomo, M. V., Daag, J. V., Agrupis, K. A., Cuachin, A. M., Sy, A. K., Kim, D.  
901 R., Ahn, H. S., Escoto, A. C., Katzelnick, L. C. *et al.* Effect of single-dose, live, attenuated  
902 dengue vaccine in children with or without previous dengue on risk of subsequent,  
903 virologically confirmed dengue in Cebu, the Philippines: a longitudinal, prospective,  
904 population-based cohort study. *The Lancet Infectious Diseases*,  
905 doi:[https://doi.org/10.1016/S1473-3099\(24\)00099-9](https://doi.org/10.1016/S1473-3099(24)00099-9) (2024).
- 906 73 Salje, H., Rodríguez-Barraquer, I., Rainwater-Lovett, K., Nisalak, A., Thaisomboonsuk, B.,  
907 Thomas, S. J., Fernandez, S., Jarman, R. G., Yoon, I. K. & Cummings, D. A. Variability in  
908 dengue titer estimates from plaque reduction neutralization tests poses a challenge to  
909 epidemiological studies and vaccine development. *PLoS Negl Trop Dis* **8**, e2952,  
910 doi:10.1371/journal.pntd.0002952 (2014).



- 911 74 Thomas, S. J., Nisalak, A., Anderson, K. B., Libraty, D. H., Kalayanarooj, S., Vaughn, D. W.,  
912 Putnak, R., Gibbons, R. V., Jarman, R. & Endy, T. P. Dengue plaque reduction  
913 neutralization test (PRNT) in primary and secondary dengue virus infections: How  
914 alterations in assay conditions impact performance. *Am J Trop Med Hyg* **81**, 825-833,  
915 doi:10.4269/ajtmh.2009.08-0625 (2009).
- 916 75 Salje, H., Cummings, D. A. T., Rodriguez-Barraquer, I., Katzelnick, L. C., Lessler, J.,  
917 Klungthong, C., Thaisomboonsuk, B., Nisalak, A., Weg, A., Ellison, D. *et al.* Reconstruction  
918 of antibody dynamics and infection histories to evaluate dengue risk. *Nature* **557**, 719-  
919 723, doi:10.1038/s41586-018-0157-4 (2018).
- 920 76 Nascimento, E. J. M., Bonaparte, M. I., Luo, P., Vincent, T. S., Hu, B., George, J. K., Áñez,  
921 G., Noriega, F., Zheng, L. & Huleatt, J. W. Use of a Blockade-of-Binding ELISA and  
922 Microneutralization Assay to Evaluate Zika Virus Serostatus in Dengue-Endemic Areas.  
923 *Am J Trop Med Hyg* **101**, 708-715, doi:10.4269/ajtmh.19-0270 (2019).
- 924 77 Balmaseda, A., Stettler, K., Medialdea-Carrera, R., Collado, D., Jin, X., Zambrana, J. V.,  
925 Jaconi, S., Cameroni, E., Saborio, S., Rovida, F. *et al.* Antibody-based assay discriminates  
926 Zika virus infection from other flaviviruses. *Proc Natl Acad Sci U S A* **114**, 8384-8389,  
927 doi:10.1073/pnas.1704984114 (2017).
- 928 78 Tian, Y., Grifoni, A., Sette, A. & Weiskopf, D. Human T Cell Response to Dengue Virus  
929 Infection. *Front Immunol* **10**, 2125, doi:10.3389/fimmu.2019.02125 (2019).
- 930 79 Mukherjee, S., Sirohi, D., Dowd, K. A., Chen, Z., Diamond, M. S., Kuhn, R. J. & Pierson, T.  
931 C. Enhancing dengue virus maturation using a stable furin over-expressing cell line.  
932 *Virology* **497**, 33-40, doi:10.1016/j.virol.2016.06.022 (2016).
- 933 80 Tse, L. V., Meganck, R. M., Dong, S., Adams, L. E., White, L. J., Mallory, M. L., Jadi, R.,  
934 Silva, A. M. d. & Baric, R. S. Generation of Mature DENVs via Genetic Modification and  
935 Directed Evolution. *mBio* **13**, e00386-00322, doi:doi:10.1128/mbio.00386-22 (2022).
- 936 81 Katzelnick, L. C., Coello Escoto, A., McElvany, B. D., Chávez, C., Salje, H., Luo, W.,  
937 Rodriguez-Barraquer, I., Jarman, R., Durbin, A. P., Diehl, S. A. *et al.* Viridot: An  
938 automated virus plaque (immunofocus) counter for the measurement of serological  
939 neutralizing responses with application to dengue virus. *PLOS Neglected Tropical*  
940 *Diseases* **12**, e0006862, doi:10.1371/journal.pntd.0006862 (2018).
- 941 82 Ranstam, J. & Cook, J. A. LASSO regression. *British Journal of Surgery* **105**, 1348-1348,  
942 doi:10.1002/bjs.10895 (2018).
- 943 83 Baron, R. M. & Kenny, D. A. The moderator-mediator variable distinction in social  
944 psychological research: conceptual, strategic, and statistical considerations. *J Pers Soc*  
945 *Psychol* **51**, 1173-1182, doi:10.1037//0022-3514.51.6.1173 (1986).

946 84 Waggoner, J. J., Katzelnick, L. C., Burger-Calderon, R., Gallini, J., Moore, R. H., Kuan, G.,  
947 Balmaseda, A., Pinsky, B. A. & Harris, E. Antibody-Dependent Enhancement of Severe  
948 Disease Is Mediated by Serum Viral Load in Pediatric Dengue Virus Infections. *J Infect Dis*  
949 **221**, 1846-1854, doi:10.1093/infdis/jiz618 (2020).  
950

## 951 **Acknowledgements**

952 We thank the study participants and their families as well as the local collaborators and field staff  
953 from the Philippines for coordinating the cohort and collecting samples. We also thank all  
954 members of Viral Epidemiology and Immunity Unit at Laboratory of Infectious Diseases, NIAID,  
955 NIH for their scientific contribution, Kelsey Lowman for giving useful insight on GraphPad Prism  
956 usage and Saba Firdous for managing and monitoring reagents and various study materials.  
957

## 958 **Funding**

959 This research was supported by the Division of Intramural Research of the National Institute of  
960 Allergy and Infectious Diseases (to LCK). The longitudinal dengue cohort study (clinicaltrials.gov  
961 number: NCT03465254) was funded by the Philippine Department of Health, Hanako Foundation,  
962 World Health Organization, Swedish International Development Cooperation Agency through the  
963 International Vaccine Institute, University of North Carolina - Chapel Hill, La Jolla Institute of  
964 Immunology, the Sustainable Sciences Institute, and the US-NIH grant P01AI106695.  
965

## 966 **Author contributions**

967 JD, MY, MVC, JVD and KAA designed the cohort and developed the clinical study methodology  
968 for participant recruitment, data and sample collection, and participant visits. LCK conceived and  
969 supervised the study. LCK and PIM designed the study and all the experiments. AMS, LW, DJT  
970 designed and provided crucial reagent (DENV2 E dimer protein). LCK, ACE and GLR. performed  
971 the mature plaque reduction neutralization test. PIM performed the Blockade of Binding assay  
972 and the ELISA to DENV1-4 E monomer and DENV2 E dimer. AMS and MAF designed and  
973 performed the Luminex assays. LCK, PIM and CDO visualized the data. LCK, PIM and RAA  
974 performed statistical analysis and prepared Figures and tables. LCK and PIM wrote the first  
975 manuscript draft, and all authors reviewed, edited, and approved the final manuscript version.  
976

977 **Competing interests**

978 MY, MVC, JVD, KAA, AMC, and AKS report receiving salaries from 2017 onwards as part of an  
979 ongoing separate study (effectiveness of the tetravalent dengue vaccine, CYD-TDV [Dengvaxia]  
980 in the Philippines) sponsored by the University of the Philippines Manila and funded by Sanofi  
981 Pasteur. JD was an unpaid external consultant in the Extended Study Group for dengue vaccine  
982 effectiveness evaluation studies in Asia in 2015 convened by Sanofi Pasteur and is an unpaid  
983 investigator of an ongoing separate study (effectiveness of the tetravalent dengue vaccine, CYD-  
984 TDV [Dengvaxia] in the Philippines) sponsored by the University of the Philippines Manila and  
985 funded by Sanofi Pasteur. AMdS is listed as an inventor on pending patent applications filed by  
986 the University of North Carolina related to flavivirus diagnostics. All other authors declare no  
987 competing interests.

988

989 **Data and Materials availability**

990 This study did not generate new unique reagents. All data sources and programs used for  
991 analyses are detailed in the Methods section. All immunological data will be deposited in  
992 Immport and made available at the time of publication. Further information and requests for  
993 resources and reagents should be directed to and will be fulfilled by the lead contact, Leah C.  
994 Katzelnick (leah.katzelnick@nih.gov).

995

996 **FIGURE LEGENDS**

997

998 **Figure 1. Baseline immune repertoire of multitypic DENV-exposed children. A.** EDE-like Abs  
999 measured by BOB assay, ordered from lowest to highest percent inhibition, compared to binding  
1000 Abs to WT E proteins of DENV1-4 and stabilized DENV2 E dimer measured by IgG ELISA, as well  
1001 as neutralizing Abs measured against mature DENV1-4 virions using a PRNT. **B.** Pie chart showing  
1002 the EDE-like Ab positivity in the population, determined as proportion of children with a percent  
1003 inhibition of C8 binding greater and equal than 50. Green and yellow colors represent EDE+ and  
1004 EDE- individuals, respectively. **C.** Pie chart showing the proportion of population by number of  
1005 serotypes neutralized. Neutralization of a given serotype was defined as a mature PRNT titers  
1006  $\geq 1:20$ .

1007

1008 **Figure 2. EDE-like Ab potency is associated with the magnitude and the breadth of**  
1009 **neutralization and binding activity. A, B** refers to the magnitude of neutralization activity. These  
1010 plots show correlation matrix analyses of the relationships between mature neutralizing Ab titers  
1011 to DENV1-4 and the geometric mean of neutralizing Ab titers, EDE-like Abs measured as BOB  
1012 percent inhibition, and binding OD values from E dimer and DENV1-4 WT E protein ELISAs, as well  
1013 as the geometric mean of WT E protein ELISA OD values to DENV1-4 E. Pearson's coefficient  $r$  is  
1014 shown as scaled color magnitude with dark red color for positive correlation and blue color for  
1015 negative correlation. Asterisks indicate the significance level (\* $p < 0.05$ , \*\* $p < 0.01$ , \*\*\* $p < 0.001$ ).  
1016 **B.** A subset of the variables shown in A, but also indicating correlation coefficients, and including  
1017 \*\*\*\* $p < 0.0001$ . **C, D** refers to the breadth of neutralization activity. These scatterplots show the  
1018 association of EDE-like Abs with the number (#) of serotypes neutralized. For those who only  
1019 neutralized one serotype, C8 binding inhibition is shown separately by serotype in panel C. Colors  
1020 described each serotype. Light pink for DENV1, light orange for DENV2, light blue for DENV3 and  
1021 light green for DENV4. Data are represented as mean and 95% confidence intervals. The  
1022 significance level for the comparison of two or more groups have been estimated by the non-  
1023 parametric Kruskal-Wallis tests adjusted for multi-comparison with  $p < 0.05$ .

1024

1025 **Figure 3. In baseline multitypic DENV-immune children, natural infection and vaccination**  
1026 **elicited broadly neutralizing Abs. A.** Scatterplots showing the significant differences in various  
1027 Ab levels elicited in both unvaccinated (light red color) and vaccinated (dark purple color)  
1028 individuals at baseline and follow up. **B.** Pie chart showing the proportion of the population who  
1029 had a  $\geq 4$ -fold rise to 0-1 or 2-4 serotypes between baseline and follow up in both vaccinated and  
1030 unvaccinated groups. **C.** Pie chart showing the proportion of the population who had a vaccine  
1031 response defined as a positive reactivity to yellow fever virus nonstructural protein 1 (YFV NS1)  
1032 in both vaccinated and unvaccinated groups. **D.** Plots demonstrating the difference in Ab level  
1033 between unvaccinated and both YFV NS1- and YFV NS1+ vaccinated individuals. Kruskal-Wallis  
1034 tests were adjusted for multiple comparisons. p value  $< 0.05$  was considered significant.

1035  
1036 **Figure 4. High baseline EDE-like Abs reduce natural infection and replication of the vaccine. A.**  
1037 Scatterplots show the significant differences in baseline Ab level between boost and not-boost  
1038 groups following natural infection and vaccination. The boost or seroconversion to DENV was  
1039 defined by the 4-fold rise to 2-4 serotypes by mature PRNT. Data are represented as means and  
1040 95% confidence intervals. Mann-Whitney tests were used for the comparison of two groups. **B.**  
1041 Heatmap showing the results of logistic regression models of the relationship between baseline  
1042 Abs measured in each assay and the probability of a boost in neutralizing Abs, adjusting for age,  
1043 sex, and study site. **C.** Heatmap showing the results of logistic regression models of the  
1044 relationship between baseline Abs measured in each assay and the probability of having a vaccine  
1045 response to YFV NS1, adjusting for age, sex, and study site. Both models were built separately for  
1046 both unvaccinated and vaccinated participants as well as combined models where it has been  
1047 adjusted for vaccine status. and The odds ratio (OR) is shown as scaled color magnitude with light  
1048 green color for protective associations and light pink color for increased risk. Asterisks indicates  
1049 the significance level (\*p  $< 0.05$ , \*\*p  $< 0.01$ , \*\*\*p  $< 0.001$ , \*\*\*\*p  $< 0.0001$ ). Unvax: unvaccinated,  
1050 vax: vaccinated, all part.: all participants, DV: dengue virus, GM: geometric mean, E: envelope,  
1051 BL: baseline, YFV: yellow fever virus.

1052

1053 **Figure 5. EDE-like Abs, mature neutralizing, and WT E binding Abs are associated with**  
1054 **protection. A.** Scatterplots show the significant differences in Ab level between those without  
1055 cases and with cases across all assays for both vaccinated and unvaccinated children. Data are  
1056 represented as mean and 95% confidence interval. Mann-Whitney tests were used for the  
1057 comparison of two groups. **B.** Heat map showing the relationship between the Abs measured by  
1058 WT E protein ELISA, E dimer ELISA, mature PRNT and EDE-like (BOB) at the follow up time point  
1059 and the risk of subsequent dengue disease using unadjusted logistic regression. All values were  
1060 standardized as Z-score across all variables before the analysis. The left Y-axis indicates the  
1061 independent variables (immune status) whereas the top X-axis represents the outcome. The  
1062 scaled color represents the odds ratio of each variable. Asterisks represent the statistical  
1063 significance. \* $p < 0.5$ , \*\* $p < 0.01$ , \*\*\* $p < 0.001$ , \*\*\*\* $p < 0.0001$ . **C.** Least Absolute Shrinkage and  
1064 Selection Operator (Lasso) analysis plot showing the shrinkage and selection of predictors to  
1065 enhance the prediction accuracy. The left Y-axis represents the regression coefficient whereas  
1066 the bottom X-axis represents LogLambda (Lasso coefficient) and the top X-axis represents the  
1067 degree of freedom which described how many non-zero variables are present in the model at a  
1068 specific LogLambda. Each colored curve corresponds to each colored predictor. **D.** The Path  
1069 diagram indicates a partial mediation effect of EDE-like Abs between either geometric mean WT  
1070 E protein Ab binding or geometric mean neutralizing Ab and dengue disease protection. The  
1071 letter b represents the regression coefficient describing the effect size. For instance, b1 (solid  
1072 black line) corresponds to the direct effect or prediction of either geometric mean WT E protein  
1073 or geometric mean mature neutralizing Ab or EDE-like Abs on dengue disease risk, b2 (solid  
1074 orange line) corresponds to the direct linear effect of geometric mean WT E protein Ab binding  
1075 or geometric mean mature neutralization on EDE-like Abs and b3 (either solid or dashed purple  
1076 line) corresponds to the indirect effect where the effect size of either geometric mean WT E  
1077 protein Ab binding or geometric mean mature neutralizing Ab in predicting lower risk of dengue  
1078 disease under control of EDE-like Abs. p value  $< 0.05$  was considered significant. **E.** Scatterplots  
1079 demonstrating the significant difference in broad neutralizing EDE-like and non-EDE Ab level  
1080 between cases and non-cases within unvaccinated and both YFV NS1- and YFV NS+ vaccinated

1081 individuals. Data are represented as mean and 95% confidence intervals. Mann-Whitney tests  
1082 were used for the comparison of two groups. p value <0.05 was considered significant.  
1083

1084 **TABLES**

1085

1086 **Table 1. Study subjects stratified by age, sex, site, and vaccine status.**

1087

Characteristic	N	Unvaccinated, N=88 <sup>a</sup>	Vaccinated, N=164 <sup>a</sup>	p value <sup>b</sup>
Age	252			0.14
9		20 (22.7%)	47 (28.7%)	
10		31 (35.2%)	35 (21.3%)	
11		17 (19.3%)	33 (20.1%)	
12		9 (10.2%)	25 (15.2%)	
13		5 (5.7%)	17 (10.4%)	
14		6 (6.8%)	7 (4.3%)	
Sex	252			0.69
M		41 (46.6%)	72 (43.9%)	
F		47 (53.4%)	92 (56.1%)	
Sites	252			<b>0.0008</b>
Bogo		53 (60.2%)	131 (79.9%)	
Bolamban		35 (39.8%)	33 (20.1%)	

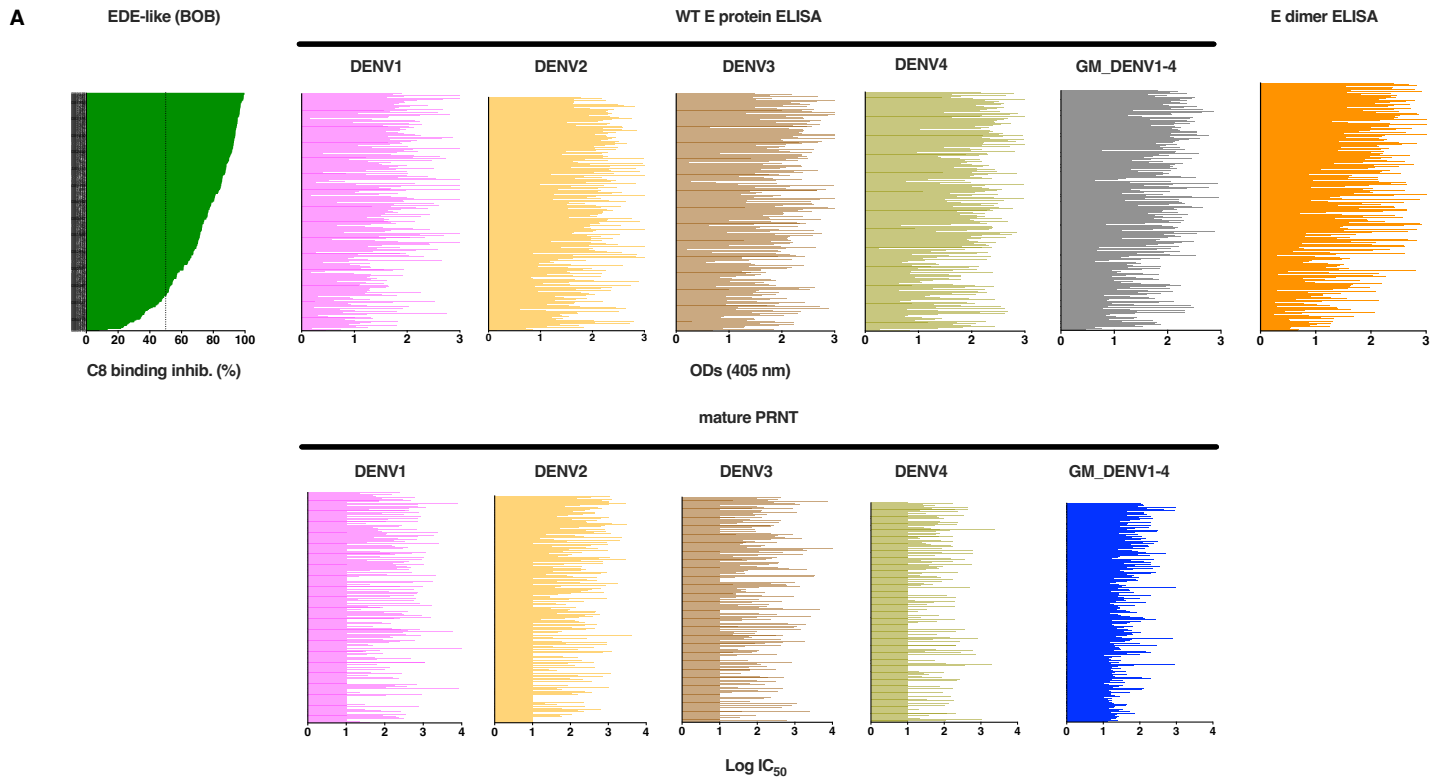
1088 <sup>a</sup>N (%), <sup>b</sup>Fischer's exact test, Pearson's Chi-squared test, **Bold p value <0.05 was considered**

1089 **statistically significant.**

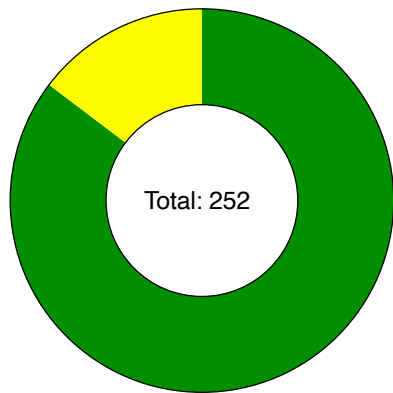
1090



Fig. 1: Mpingabo et al.

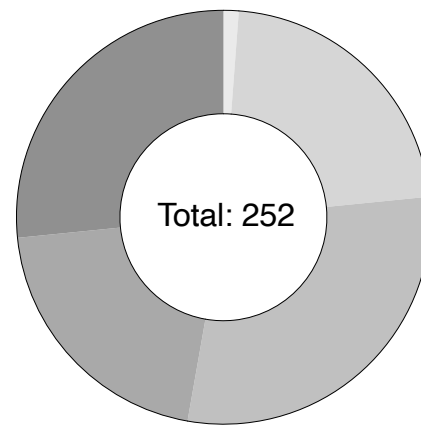


**B**



14.68% EDE-like Abs -  
85.32% EDE-like Abs +

**C**



Number (#) serotypes neutralized

1.19% 0 Serotype  
22.22% 1 Serotype  
29.37% 2 Serotypes  
20.63% 3 Serotypes  
26.59% 4 Serotypes

Fig. 2: Mpingabo et al.

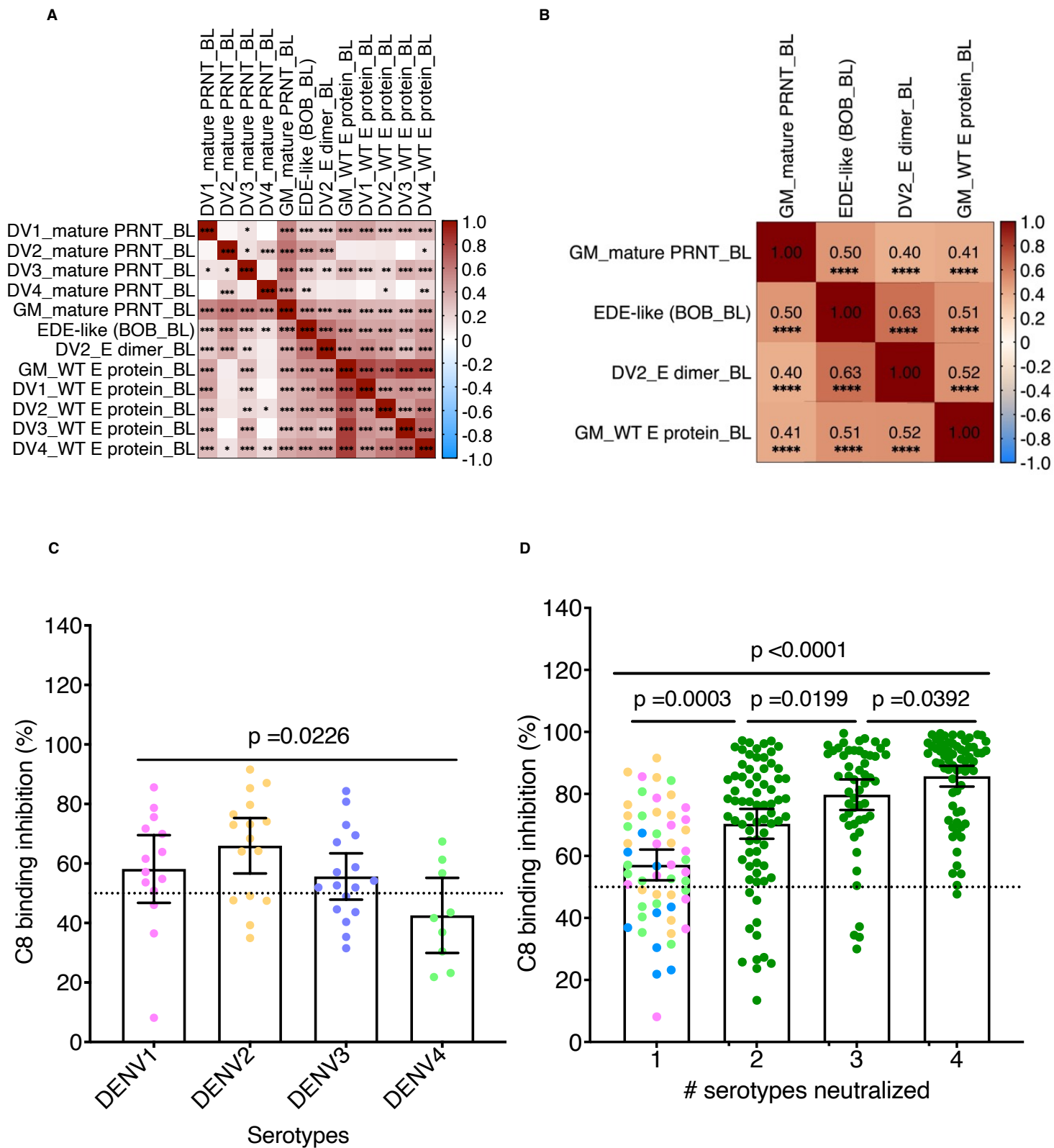


Fig. 3: Mpingabo et al.

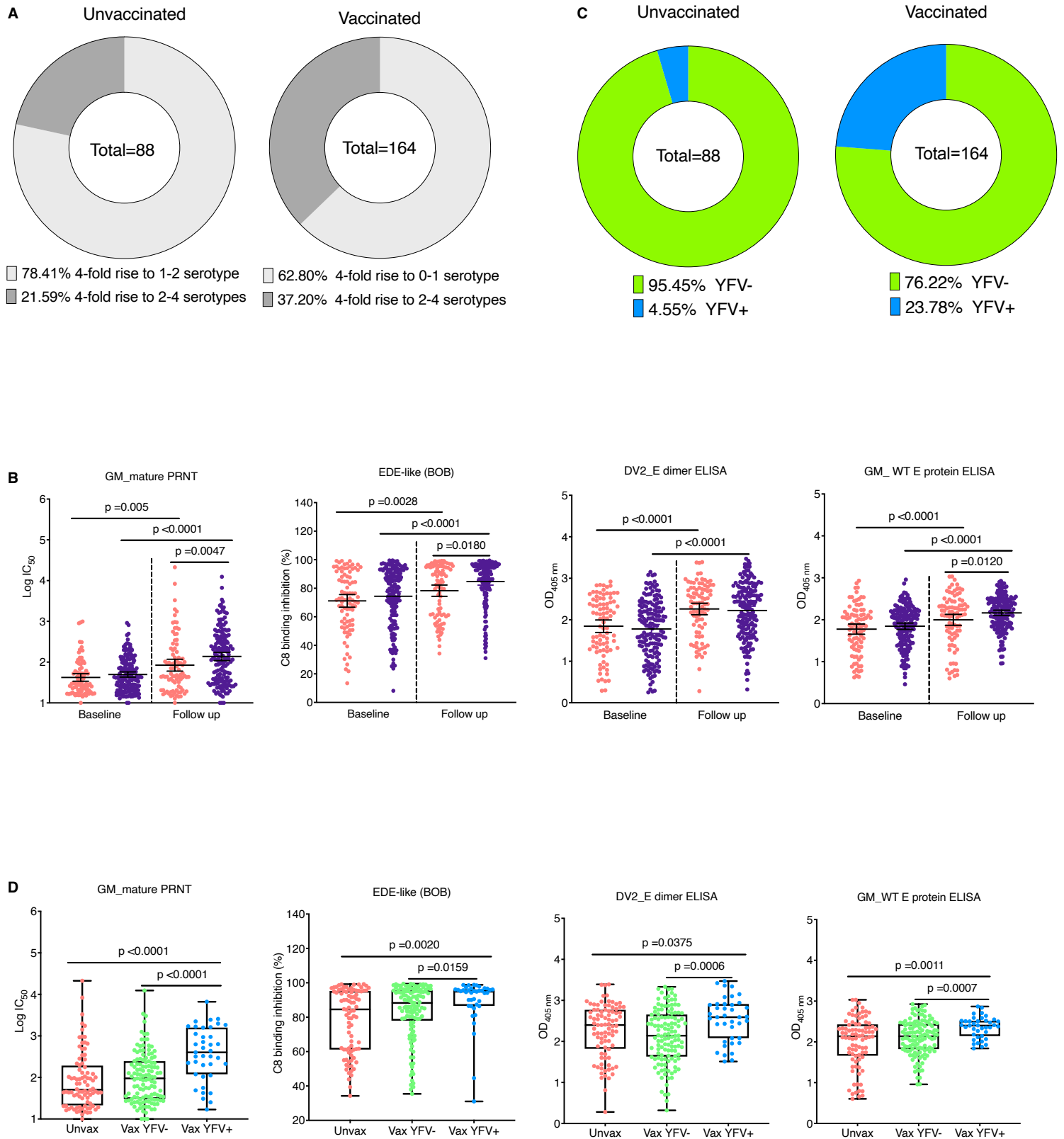


Fig. 4: Mpingabo et al.

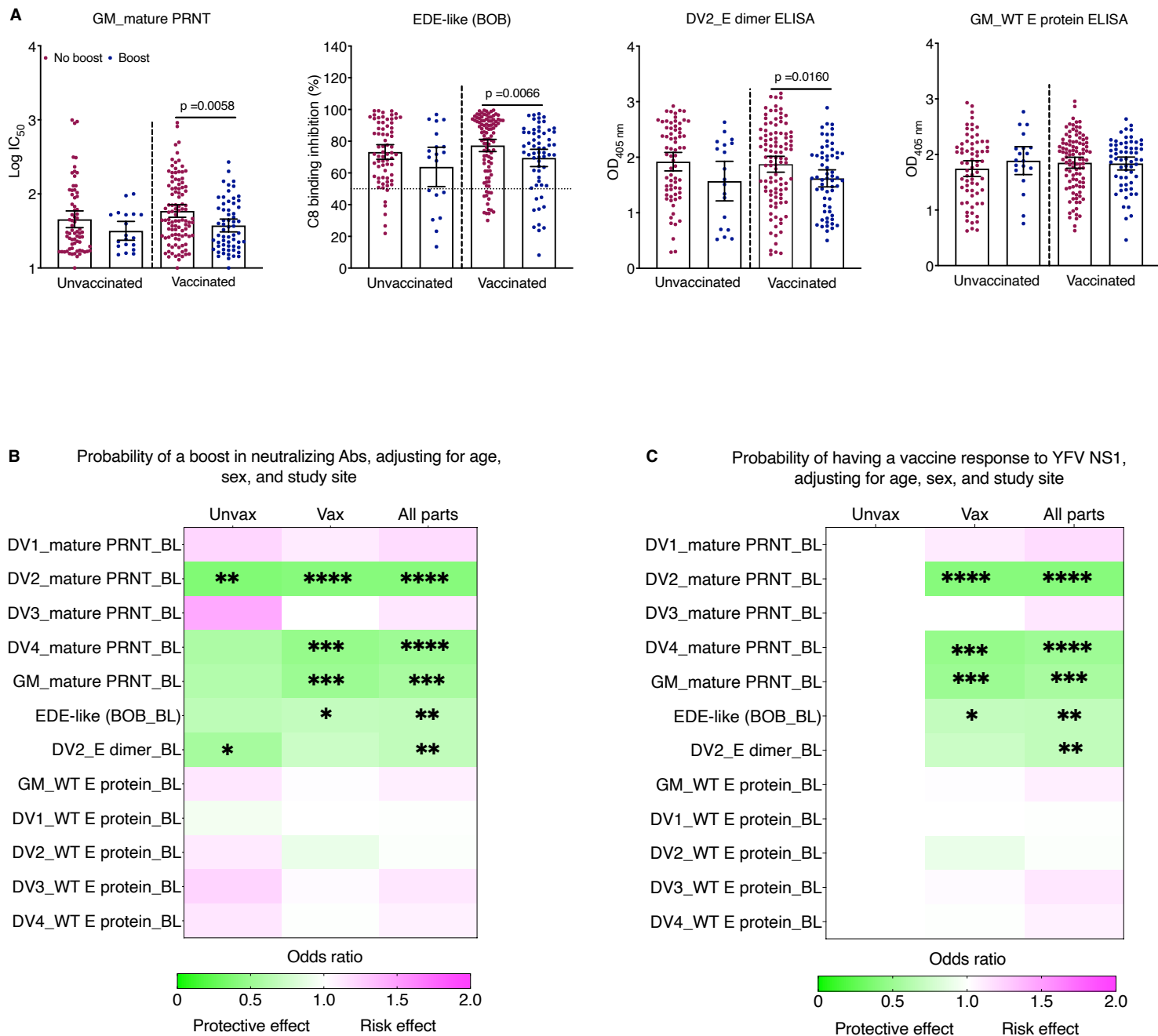
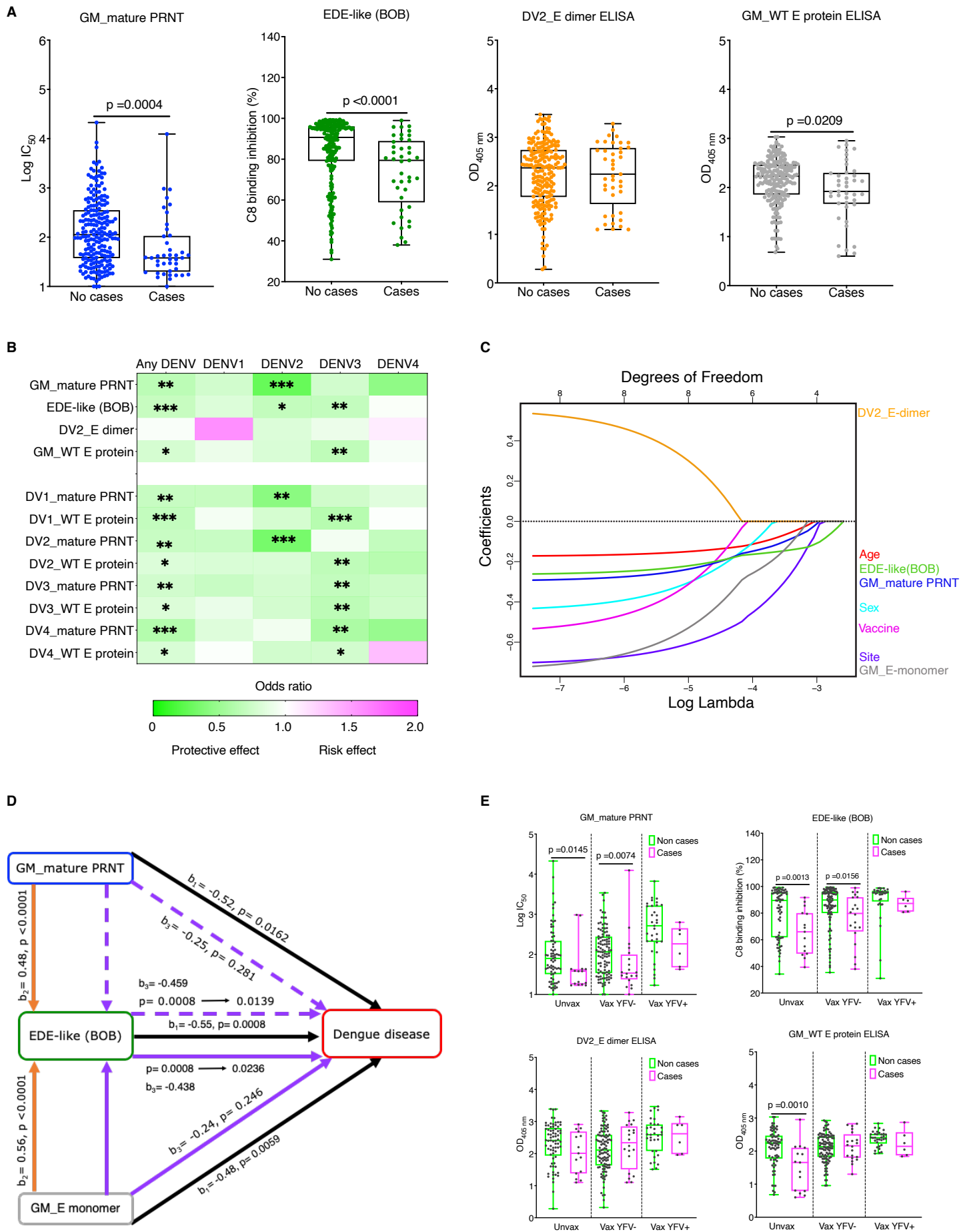
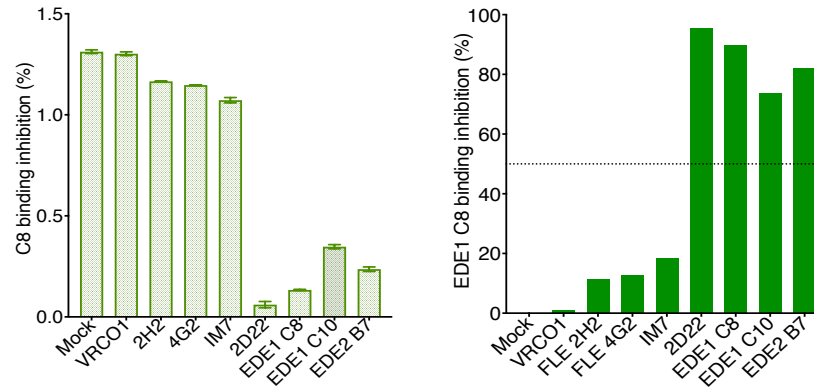


Fig. 5: Mpingabo et al.

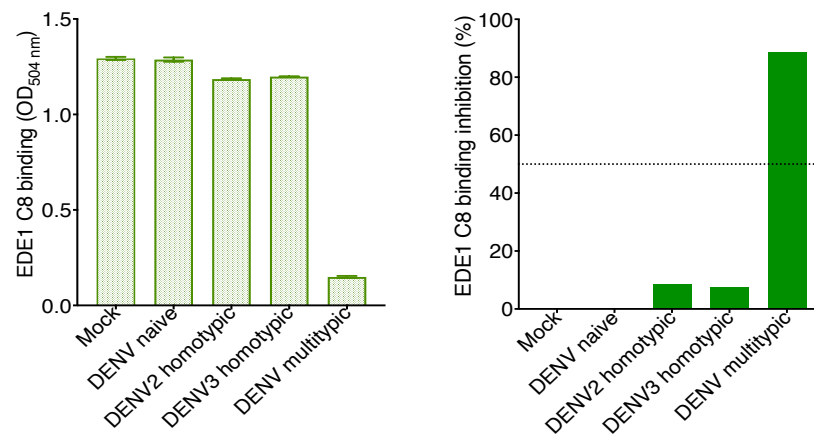


## SUPPLEMENTAL INFORMATION

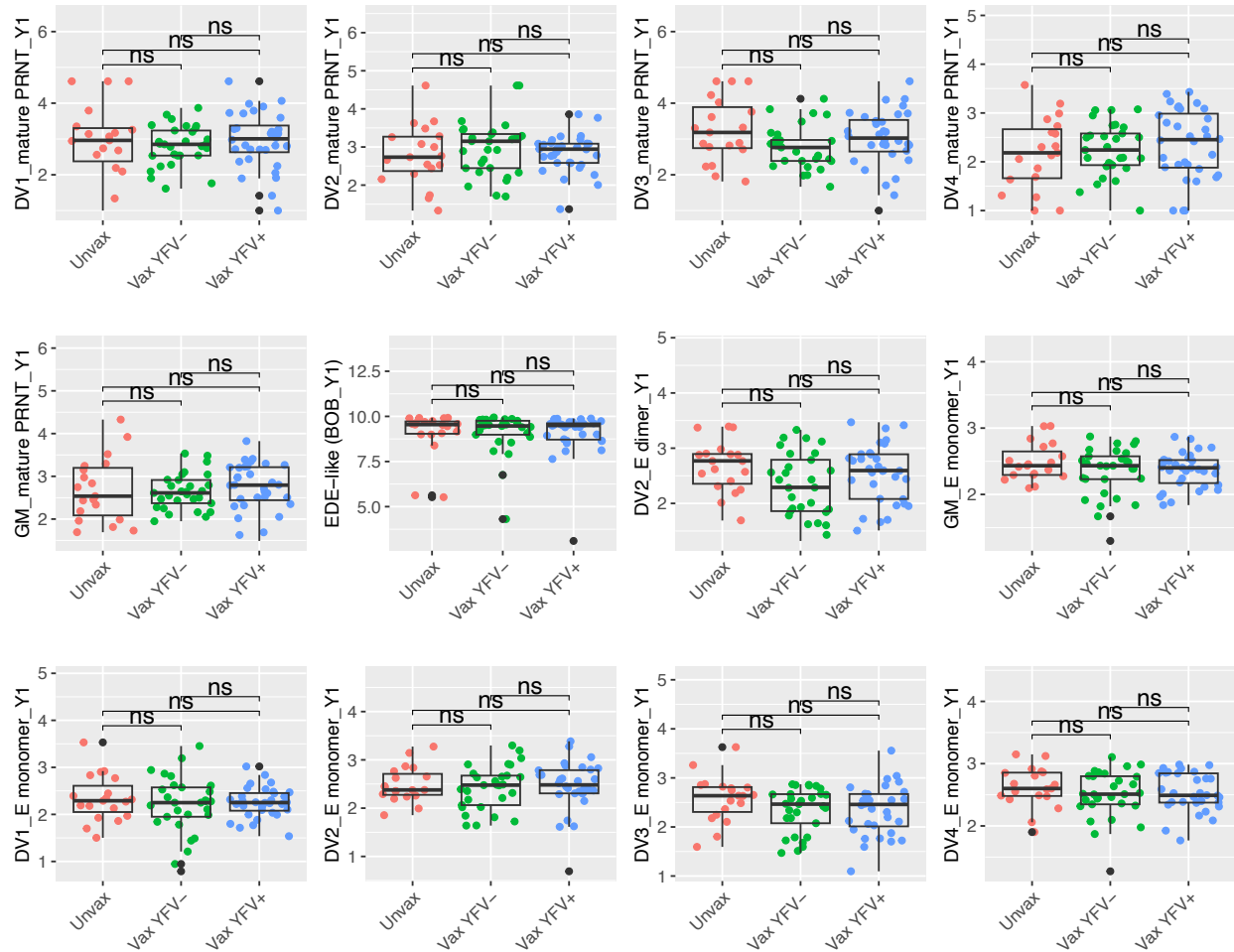
### A Monoclonal antibodies (mAbs)



### B Dengue naïve and polyclonal sera

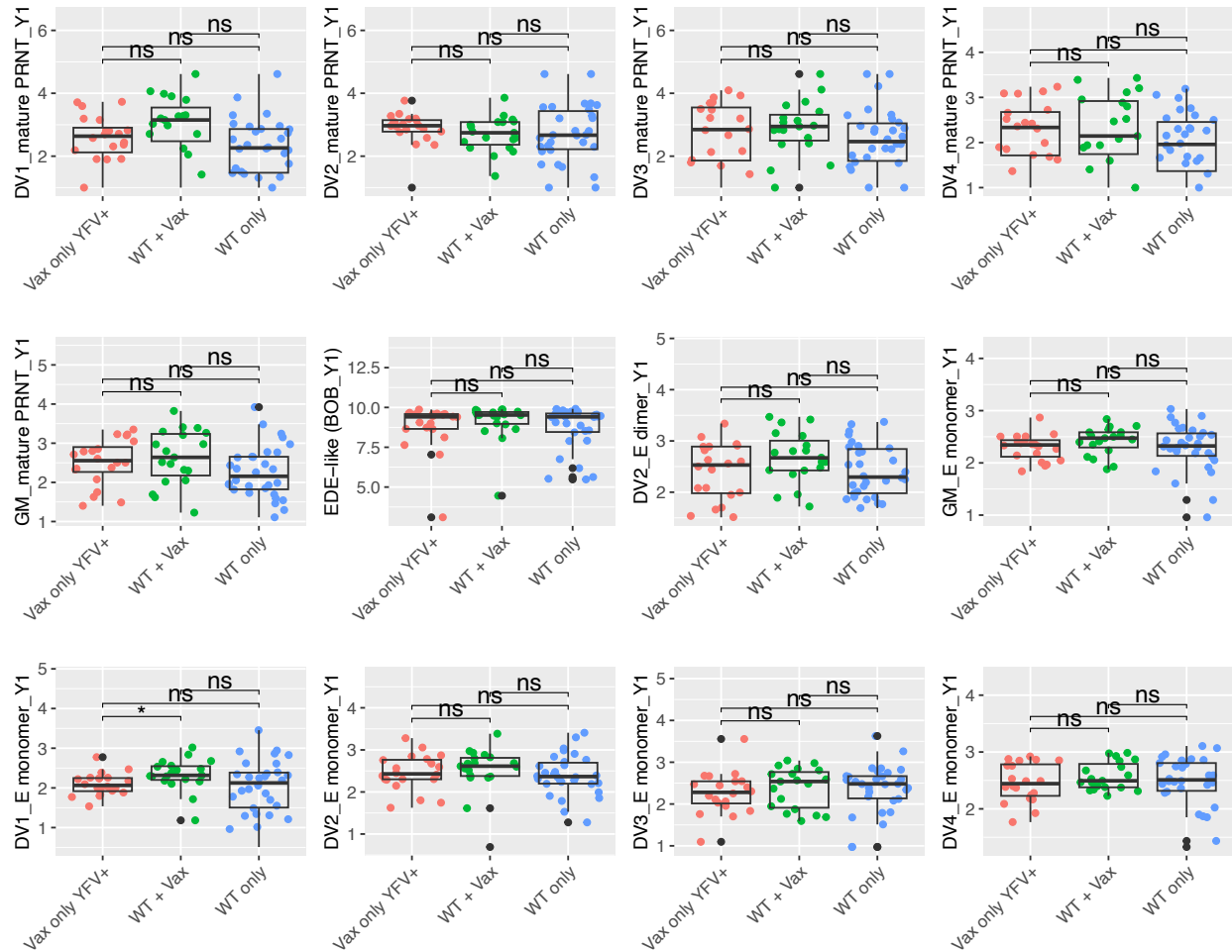


**Figure S1. Blockade of Binding assay (BOB) validation.** Bar graphs showing the level of EDE1 C8 binding to DENV2 E dimer (top and bottom left panels) and its percent inhibition (top and bottom right panels) based on inhibition by various monoclonal Abs (A) and dengue naïve and polyclonal sera (B). The OD<sub>504</sub> was interpreted as the C8 binding intensity and used to calculate the percent inhibition as follows: percent inhibition =  $100 - ((OD_{\text{Sample}} / OD_{\text{Negative control}}) * 100)$ . Samples with a percent inhibition of C8 binding greater and equal than 50 (threshold, dotted line) at a 1:10 dilution were considered positive and declared EDE-like Ab. VRC01: human-derived broadly neutralizing mAb targeting HIV-1 Env gp120 and gp41, 4G2: mouse-derived DENV cross-reactive mAbs targeting EDII, FLE; 2H2, mouse-derived DENV cross-reactive mAb targeting FLE, 1M7: human-derived DENV cross-reactive mAb targeting FLE, 2D22: human-derived DENV2 type specific mAb targeting quaternary epitope, EDE1 C8: human-derived DENV cross-reactive mAb targeting EDII, EDIII, quaternary epitope, EDE1 C10, human-derived DENV cross-reactive mAbs targeting quaternary epitope, EDE2 B7: human-derived DENV cross-reactive mAbs targeting quaternary epitope. Env: Envelope, FLE: Fusion loop epitope, EDE: Envelope dimer epitope. ED: Envelope domain.

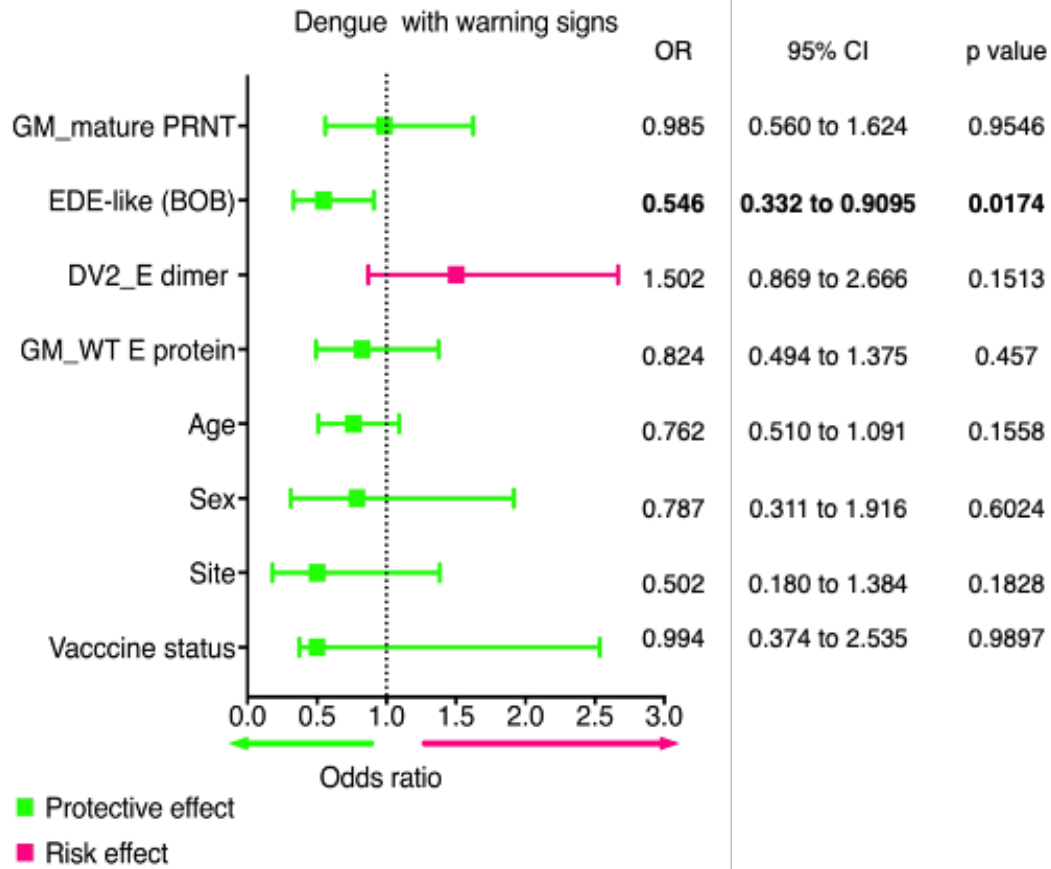


**Figure S2. Comparison of antibody responses among individuals with a boost to  $\geq 2$  serotypes by mature PRNT following natural infection and vaccination.** These plots demonstrate non-significant difference in antibody response defined by the  $\geq 4$ -fold change to 2 or more serotypes by mature PRNT across unvaccinated, vaccinated YFV NS1+, and vaccinated YFV NS1- individuals. p value  $< 0.05$  was considered significant. Wilcoxon and Mann-Whitney tests were used for the comparison of two groups.





**Figure S3. Comparison of antibody responses among individuals grouped by their response to DENV1-4 EDIII and NS1 following natural infection and vaccination.** These plots showing non-significant difference across assays between vaccinated individuals with vaccine responses only (YFV NS1+, DENV NS1-) or with vaccine and natural infection responses (YFV NS1+, DENV NS1+), and natural infection only (YFV NS1-, DENV NS1+). p value <0.05 was considered significant. Wilcoxon and Mann-Whitney tests were used for the comparison of two groups.



**Fig. S4. Odds of Dengue with warning signs (DWWS) by immune status measured at follow up.** Forest plot showing the relationship between the Abs measured by WT E protein ELISA, E dimer ELISA, mature PRNT and EDE BOB at the follow up time point and the risk of getting DWWS using an adjusted logistic regression model. Predictors were standardized as Z-score before the analysis. The left Y-axis indicates the independent variables (immune status) whereas the top X-axis represents the effect size (odds ratio). The green color represents the protective effect while pink color represents the risk effect. Age, sex, site, and vaccine (Vax) status were included in the model as covariates. P value <0.05 was significant. OR: odds ratio, CI: confidence interval.

Table S1. Probability of experiencing a  $\geq 4$ -fold rise in mature PRNT to 2-4 serotypes.

Ab predictors	Unvaccinated (n=88)		Vaccinated (n=164)		All participants (n= 252)	
	<i>OR</i>	<i>p value</i>	<i>OR</i>	<i>p value</i>	<i>OR</i>	<i>p value</i>
DV1_mature PRNT_BL	1.21	0.47	1.10	0.59	1.18	0.24
DV2_mature PRNT_BL	0.37	<b>&lt;0.01</b>	0.40	<b>&lt;0.0001</b>	0.40	<b>&lt;0.0001</b>
DV3_mature PRNT_BL	1.43	0.20	1.00	1.00	1.12	0.41
DV4_mature PRNT_BL	0.57	0.09	0.46	<b>&lt;0.001</b>	0.50	<b>&lt;0.0001</b>
GM_mature PRNT_BL	0.60	0.14	0.49	<b>&lt;0.001</b>	0.55	<b>&lt;0.001</b>
EDE-like (BOB_BL)	0.65	0.09	0.68	<b>0.02</b>	0.67	<b>&lt;0.01</b>
DV2_WT E dimer_BL	0.54	0.03	0.72	0.06	0.67	<b>&lt;0.01</b>
GM_WT E protein_BL	1.12	0.69	1.01	0.97	1.08	0.59
DV1_WT E protein_BL	0.93	0.79	1.00	0.98	0.99	0.95
DV2_WT E protein_BL	1.11	0.72	0.89	0.50	0.98	0.87
DV3_WT E protein_BL	1.22	0.49	1.02	0.89	1.12	0.41
DV4_WT E protein_BL	1.13	0.67	0.99	0.94	1.07	0.66

*Bold p value <0.05 was considered statistically significant.*

*OR: Odds ratio, DV: dengue virus, GM: geometric mean, BL: baseline, E: envelope, BOB: blockade of binding.*

Table S2. Probability of experiencing a seroconversion to YFV NS1.

Ab predictors	Unvaccinated (n=88)		Vaccinated (n=164)		All participants (n= 252)	
	OR	p value	OR	p value	OR	p value
DV1_mature PRNT_BL	1.00	1.00	1.10	0.59	1.18	0.24
DV2_mature PRNT_BL	1.00	1.00	0.40	<b>&lt;0.0001</b>	0.40	<b>&lt;0.0001</b>
DV3_mature PRNT_BL	1.00	1.00	1.00	1.00	1.12	0.41
DV4_mature PRNT_BL	1.00	1.00	0.46	<b>&lt;0.001</b>	0.50	<b>&lt;0.0001</b>
GM_mature PRNT_BL	1.00	1.00	0.49	<b>&lt;0.001</b>	0.55	<b>&lt;0.001</b>
EDE-like (BOB_BL)	1.00	1.00	0.68	<b>0.02</b>	0.67	<b>&lt;0.01</b>
DV2_E dimer_BL	1.00	1.00	0.72	0.06	0.67	<b>&lt;0.01</b>
GM_WT E protein_BL	1.00	1.00	1.01	0.97	1.08	0.59
DV1_WT E protein_BL	1.00	1.00	1.00	0.98	0.99	0.95
DV2_WT E protein_BL	1.00	1.00	0.89	0.50	0.98	0.87
DV3_WT E protein_BL	1.00	1.00	1.02	0.89	1.12	0.41
DV4_WT E protein_BL	1.00	1.00	0.99	0.94	1.07	0.66

*Bold p value <0.05 was considered statistically significant.*

*OR: Odds ratio, DV: dengue virus, GM: geometric mean, BL: baseline, E: envelope, BOB: blockade of binding, YFV: yellow fever.*

Table S3. Proportion of dengue cases by infecting serotype and vaccine status.

Characteristic	N	Unvaccinated, N*	Vaccinated, N*	p value**
No cases	211	73	138	0.86
Cases	41	15	26	
DENV1	9	3 (20.0%)	6 (23.1%)	
DENV2	10	2 (13.3%)	8 (30.8%)	
DENV3	18	8 (53.4%)	10 (38.5%)	
DENV4	3	2 (13.3%)	1 (3.8%)	
Unknown	1	0 (0%)	1 (3.8%)	

\* N (%)

\*\*Fisher's exact test; Pearson's Chi-squared test;  $P < 0.05$

Cases refer to symptomatic DENV infection.

Table S4. Risk of getting any symptomatic dengue or serotype-specific dengue by follow up Ab level.

Predictors	Outcomes				
GM_mature PRNT	Any DENV	DENV1	DENV2	DENV3	DENV4
OR	0.528	0.643	0.201	0.639	0.339
95% CI	0.341 - 0.782	0.294 - 1.234	0.049 - 0.565	0.360 - 1.054	0.0643 - 1.068
p value	<b>0.0025</b>	0.2217	<b>0.0090</b>	0.0995	0.1205
EDE-like (BOB)					
OR	0.582	0.713	0.561	0.563	0.952
95% CI	0.428 - 0.790	0.426 - 1.254	0.328 - 0.969	0.379 - 0.839	0.436 - 2.708
p value	<b>0.0005</b>	0.2089	<b>0.0327</b>	<b>0.0043</b>	0.9108
DV2_E dimer					
OR	0.948	1.656	0.716	0.824	1.164
95% CI	0.682 - 1.329	0.864 - 3.522	0.392 - 1.331	0.530 - 1.298	0.489 - 3.203
p value	0.750	0.154	0.277	0.392	0.745
GM_WT E protein					
OR	0.666	0.824	0.695	0.544	0.917
95% CI	0.485 - 0.915	0.481 - 1.510	0.402 - 1.262	0.361 - 0.820	0.417 - 2.408
p value	<b>0.0115</b>	0.5020	<b>0.2052</b>	<b>0.0033</b>	0.8428

OR, Odds ratio; CI, Confidence interval; DENV, Dengue virus; BOB: Blockade of binding; EDE: E dimer epitope; GM, Geometric mean; DV: Dengue virus; E, Envelope. P value <0.05 was considered significant by simple logistic regression. Bold represent significant association.

Table S5. Risk of getting any symptomatic dengue or serotype-specific dengue by serotype-specific mature PRNT status.

Predictors	Outcomes				
DV1_ mature PRNT	Any DENV	DENV1	DENV2	DENV3	DENV4
OR	0.5880	0.5856	0.3239	0.6358	0.7429
95% CI	0.398 - 0.844	0.275 - 1.118	0.108 - 0.732	0.372 - 1.031	0.258 - 1.812
p value	<b>0.0054</b>	0.1276	<b>0.0170</b>	0.0784	0.5360
DV2_ mature PRNT					
OR	0.593	0.596	0.252	0.880	0.564
95% CI	0.419 - 0.830	0.319 - 1.083	0.0972 - 0.526	0.560 - 1.392	0.217 - 1.356
p value	<b>0.0027</b>	0.0920	<b>0.0009</b>	0.5804	0.2047
DV3_ mature PRNT					
OR	0.639	0.598	0.661	0.564	0.619
95% CI	0.471 - 0.846	0.323 - 0.997	0.359 - 1.104	0.355 - 0.843	0.241 - 1.271
p value	<b>0.0026</b>	0.0692	0.1422	<b>0.0089</b>	0.2405
DV4_ mature PRNT					
OR	0.490	0.725	0.871	0.453	0.374
95% CI	0.317 - 0.724	0.354 - 1.350	0.432 - 1.632	0.236 - 0.784	0.071 - 1.105
p value	<b>0.0006</b>	0.3378	0.6781	<b>0.0088</b>	0.1344

OR, Odds ratio; CI, Confidence interval; DENV, Dengue virus; BOB: Blockade of binding; EDE: E dimer epitope; GM, Geometric mean; DV: Dengue virus; E, Envelope. P value <0.05 was considered significant by simple logistic regression. Bold represent significant association.



Table S6. Risk of getting any symptomatic dengue or serotype-specific dengue by serotype specific-WT E protein Ab binding.

Predictors	Outcomes				
	Any DENV	DENV1	DENV2	DENV3	DENV4
<b>DV1_WT E protein</b>					
OR	0.564	0.895	0.662	0.503	0.979
95% CI	0.416 - 0.755	0.538 - 1.550	0.389 to 1.133	0.334 - 0.742	0.464 - 2.299
p value	<b>0.0002</b>	0.6788	0.1244	<b>0.0007</b>	0.9586
<b>DV2_WT E protein</b>					
OR	0.7147	0.6974	0.6979	0.5460	0.5060
95% CI	0.524 - 0.971	0.411 - 1.204	0.402 - 1.237	0.359 - 0.821	0.234 - 1.091
p value	<b>0.0316</b>	0.1837	0.2041	<b>0.0038</b>	0.0757
<b>DV3_WT E protein</b>					
OR	0.707	0.814	0.656	0.535	0.637
95% CI	0.534 - 0.930	0.497 - 1.334	0.385 - 1.094	0.356 - 0.783	0.298 - 1.307
p value	<b>0.0142</b>	0.4074	0.1083	<b>0.0017</b>	0.2198
<b>DV4_WT E protein</b>					
OR	0.688	0.971	0.642	0.648	1.447
95% CI	0.503 - 0.943	0.555 - 1.867	0.374 - 1.145	0.433 - 0.984	0.583 - 4.972
p value	<b>0.0189</b>	0.9222	0.1138	<b>0.0366</b>	0.4905

OR, Odds ratio; CI, Confidence interval; DENV, Dengue virus; BOB: Blockade of binding; EDE: E dimer epitope; GM, Geometric mean; DV: Dengue virus; E, Envelope. P value <0.05 was considered significant by simple logistic regression. Bold represent significant association.

Table S7. Effect of diverse post-exposure Ab level on the risk of getting any dengue disease.

Variables	Coefficient	Standard errors	OR	95%CI	p value
GM_mature PRNT	-0.524	0.218	0.592	0.377 - 0.888	<b>0.0162</b>
Age	-0.192	0.146	0.825	0.613 - 1.089	0.1881
Sex [M]	-0.191	0.362	0.826	0.400 - 1.672	0.5983
Sites [Bogo]	-0.582	0.39	0.559	0.260 - 1.207	0.1357
Vaccine status [none]	-0.174	0.378	0.84	0.393 - 1.740	0.6448
EDE-like (BOB)	-0.554	0.165	0.575	0.414 - 0.792	<b>0.0008</b>
Age	-0.214	0.143	0.807	0.603 - 1.059	0.1335
Sex [M]	-0.221	0.368	0.802	0.384 - 1.639	0.5477
Sites [Bogo]	-0.779	0.397	0.459	0.209 - 1.003	0.0499
Vaccine status [none]	-0.278	0.389	0.757	0.345 - 1.600	0.4755
DV2_E dimer	-0.123	0.18	0.884	0.622 - 1.265	0.4949
Age	-0.231	0.142	0.793	0.593 - 1.039	0.104
Sex [M]	-0.241	0.358	0.786	0.383 - 1.576	0.5013
Sites [Bogo]	-0.798	0.392	0.45	0.208 - 0.974	<b>0.042</b>
Vaccine status [none]	-0.0861	0.374	0.917	0.431 - 1.887	0.818
GM_WT E protein	-0.477	0.173	0.6204	0.439 - 0.870	<b>0.0059</b>
Age	-0.185	0.145	0.8307	0.617 - 1.096	0.2023
Sex [ M]	-0.204	0.364	0.8153	0.394- 1.654	0.5747
Sites [Bogo]	-0.999	0.406	0.368	0.164 - 0.8143	<b>0.0138</b>
Vaccine status [none]	-0.322	0.392	0.7249	0.327 - 1.538	0.4125

OR, Odds ratio; CI, Confidence interval; DENV, Dengue virus; BOB: Blockade of binding; EDE: E dimer epitope; GM, Geometric mean; DV: Dengue virus; E, Envelope. These models were adjusted for age, sex, site, and vaccine status. Bold p value <0.05 was considered significant by simple logistic regression.

Table S8. Effect of diverse post-exposure Ab level on the risk of getting any dengue, testing multiple Ab measures in the same models.

Variables	Coefficient	Standard errors	OR	95%CI	p value
GM_mature PRNT	-0.250	0.232	0.778	0.481 to 1.202	0.281
EDE-like (BOB)	-0.459	0.186	0.632	0.437 to 0.914	<b>0.0139</b>
Age	-0.201	0.144	0.818	0.609 to 1.077	0.1633
Sex [M]	-0.187	0.371	0.829	0.396 to 1.703	0.6122
Sites [Bogo]	-0.686	0.405	0.504	0.227 to 1.117	0.0902
Vaccine status [none]	-0.293	0.389	0.746	0.339 to 1.576	0.4512
DV2_E dimer	0.272	0.216	1.313	0.866 to 2.026	0.2064
EDE-like (BOB)	-0.685	0.195	0.504	0.340 to 0.736	<b>0.0005</b>
Age	-0.218	0.143	0.804	0.598 to 1.057	0.1296
Sex [M]	-0.277	0.373	0.758	0.359 to 1.562	0.4567
Sites [Bogo]	-0.669	0.406	0.512	0.230 to 1.141	0.0998
Vaccine status [none]	-0.305	0.390	0.737	0.335 to 1.560	0.434
GM_WT E protein	-0.237	0.204	0.789	0.527 to 1.18	0.2465
EDE-like (BOB)	-0.438	0.194	0.645	0.440 to 0.947	<b>0.0236</b>
Age	-0.193	0.145	0.824	0.613 to 1.086	0.181
Sex [M]	-0.201	0.370	0.818	0.391 to 1.679	0.5868
Sites [Bogo]	-0.901	0.414	0.4061	0.179 to 0.915	0.0295
Vaccine status [none]	-0.3746	0.402	0.688	0.304 to 1.483	0.351
GM_mature PRNT	-0.263	0.238	0.768	0.468 - 1.199	0.2688
EDE-like (BOB)	-0.509	0.217	0.601	0.392 - 0.924	<b>0.0189</b>
DV2_E dimer	0.429	0.232	1.536	0.983 - 2.453	0.0645
GM_WT E protein	-0.311	0.221	0.733	0.472 - 1.130	0.16
Age	-0.18	0.148	0.835	0.618 to 1.109	0.2246
Sex [M]	-0.245	0.378	0.782	0.367 - 1.629	0.5156
Sites [Bogo]	-0.68	0.437	0.506	0.213 - 1.193	0.1192
Vaccine status [none]	-0.484	0.413	0.616	0.266 to 1.355	0.2413

OR, Odds ratio; CI, Confidence interval; DENV, Dengue virus; BOB: Blockade of binding; EDE: E dimer epitope; GM, Geometric mean; DV: Dengue virus; E, Envelope. These models were adjusted for age, sex, site, and vaccine status. Bold p value <0.05 was considered significant by simple logistic regression.

Table S9. Effect of diverse post-exposure Ab level on the risk of a dengue case caused by DENV2.

Variables	Coefficient	Standard errors	OR	95% CI	p value
GM_mature PRNT	-1.487	0.691	0.226	0.046 to 0.726	<b>0.0313</b>
Age	-0.363	0.381	0.696	0.297 to 1.373	0.3408
Sex [M]	-0.360	0.749	0.697	0.131 to 2.872	0.6302
Sites [Bogo]	-1.525	0.752	0.218	0.042 to 0.889	0.0425
Vaccine status [none]	-1.366	0.849	0.255	0.035 to 1.158	0.1079
EDE-like (BOB)	-0.550	0.291	0.577	0.322 to 1.031	0.0586
Age	-0.367	0.358	0.693	0.307 to 1.302	0.3045
Sex [M]	-0.554	0.753	0.574	0.112 to 2.377	0.4613
Sites [Bogo]	-1.895	0.773	0.150	0.028 to 0.634	<b>0.0143</b>
Vaccine status [none]	-1.366	0.850	0.255	0.035 to 1.161	0.1081
DV2_E dimer	-0.456	0.339	0.634	0.323 to 1.244	0.1791
Age	-0.416	0.361	0.659	0.291 to 1.251	0.2486
Sex [M]	-0.448	0.749	0.639	0.126 to 2.638	0.5494
Sites [Bogo]	-2.072	0.776	0.126	0.023 to 0.531	<b>0.0076</b>
Vaccine status [none]	-1.206	0.843	0.299	0.042 to 1.349	0.1527
GM_WT E protein	-0.552	0.339	0.575	0.288 to 1.121	0.1033
Age	-0.353	0.364	0.703	0.310 to 1.351	0.3329
Sex [ M]	-0.588	0.746	0.556	0.109 to 2.248	0.4311
Sites [Bogo]	-2.103	0.783	0.122	0.022 to 0.520	<b>0.0072</b>
Vaccine status [none]	-1.558	0.885	0.211	0.027 to 1.007	0.0785
GM_mature PRNT	-1.248	0.802	0.287	0.046 to 1.099	0.1197
EDE-like (BOB)	-0.234	0.399	0.791	0.366 to 1.783	0.5579
DV2_E dimer	0.106	0.430	1.112	0.471 to 2.623	0.8058
GM_WT E protein	-0.117	0.439	0.889	0.368 to 2.125	0.789
Age	-0.317	0.384	0.728	0.305 to 1.444	0.4094
Sex [M]	-0.395	0.770	0.673	0.128 to 2.904	0.6074
Sites [Bogo]	-1.57	0.801	0.208	0.036 to 0.920	0.05
Vaccine status [none]	-1.509	0.905	0.221	0.027 to 1.100	0.0956

OR, Odds ratio; CI, Confidence interval; DENV, Dengue virus; BOB: Blockade of binding; EDE: E dimer epitope; GM, Geometric mean; DV: Dengue virus; E, Envelope. These models were adjusted for age, sex, site, and vaccine status. p value <0.05 was considered significant by simple logistic regression. Bold represent significant association.

Table S10. Effect of diverse post-exposure Ab level on the risk of a dengue case caused by DENV3.

Variables	Coefficient	Standard errors	OR	95%CI	p value
GM_mature PRNT	-0.398	0.279	0.671	0.372 to 1.120	0.1539
Age	-0.136	0.183	0.873	0.597 to 1.235	0.4571
Sex [M]	-0.387	0.493	0.679	0.245 to 1.742	0.432
Sites [Bogo]	0.173	0.552	1.189	0.415 to 3.736	0.7539
Vaccine status [none]	0.163	0.495	1.177	0.430 to 3.077	0.7419
EDE-like (BOB)	-0.558	0.204	0.572	0.382 to 0.8584	<b>0.0062</b>
Age	-0.151	0.179	0.86	0.592 to 1.207	0.3997
Sex [M]	-0.389	0.501	0.678	0.241 to 1.769	0.4371
Sites [Bogo]	0.058	0.561	1.06	0.363 to 3.383	0.9175
Vaccine status [none]	0.068	0.505	1.07	0.384 to 2.842	0.8933
DV2_E dimer	-0.195	0.235	0.823	0.521 to 1.319	0.4069
Age	-0.164	0.18	0.849	0.583 to 1.192	0.3625
Sex [M]	-0.403	0.491	0.668	0.242 to 1.709	0.4115
Sites [Bogo]	-0.033	0.559	0.967	0.331 to 3.072	0.9525
Vaccine status [none]	0.256	0.492	1.292	0.475 to 3.357	0.6029
GM_WT E protein	-0.617	0.225	0.54	0.342 to 0.836	<b>0.0062</b>
Age	-0.097	0.187	0.907	0.617 to 1.295	0.6023
Sex [ M]	-0.375	0.499	0.687	0.245 to 1.784	0.4516
Sites [Bogo]	-0.261	0.576	0.77	0.253 to 2.510	0.6504
Vaccine status [none]	-0.134	0.529	0.874	0.296 to 2.411	0.7993
GM_mature PRNT	-0.038	0.293	0.962	0.517 to 1.656	0.8955
EDE-like (BOB)	-0.478	0.275	0.62	0.365 to 1.088	0.0827
DV2_E dimer	0.357	0.292	1.429	0.812 to 2.578	0.2216
GM_WT E protein	-0.509	0.283	0.601	0.340 to 1.041	0.0725
Age	-0.098	0.187	0.906	0.616 to 1.296	0.599
Sex [M]	-0.444	0.513	0.641	0.222 to 1.708	0.3865
Sites [Bogo]	-0.055	0.607	0.946	0.292 to 3.254	0.9273
Vaccine status [none]	-0.296	0.557	0.744	0.235 to 2.150	0.5956

OR, Odds ratio; CI, Confidence interval; DENV, Dengue virus; BOB: Blockade of binding; EDE: E dimer epitope; GM, Geometric mean; DV: Dengue virus; E, Envelope. These models were adjusted for age, sex, site, and vaccine status. Bold p value <0.05 was considered significant by simple logistic regression.

Table S11. Direct linear effect of GM\_mature PRNT, DV2\_E dimer, GM\_WT E protein Abs on the EDE-like Abs at follow up timepoint.

Variables	Coefficient	Standard errors	95% CI	p value
GM_mature PRNT	0.479	0.057	0.366 to 0.592	<b>&lt;0.0001</b>
Age	-0.014	0.040	-0.093 to 0.065	0.727
Sex [M]	0.005	0.111	-0.215 to 0.224	0.968
Sites [Bogo]	-0.154	0.136	-0.421 to 0.113	0.2574
Vaccine status [none]	-0.251	0.120	-0.486 to -0.015	<b>0.0373</b>
DV2_E dimer	0.522	0.055	0.414 to 0.630	<b>&lt;0.0001</b>
Age	0.009	0.038	-0.067 to 0.085	0.8124
Sex [M]	-0.014	0.108	-0.227 to 0.199	0.8981
Sites [Bogo]	0.246	0.132	-0.015 to 0.507	0.0648
Vaccine status [none]	-0.352	0.115	-0.578 to -0.125	<b>0.0025</b>
GM_WT E protein	0.556	0.055	0.449 to 0.664	<b>&lt;0.0001</b>
Age	-0.021	0.038	-0.096 to 0.054	0.5793
Sex [M]	-0.017	0.106	-0.226 to 0.192	0.8755
Sites [Bogo]	0.284	0.131	0.027 to 0.541	<b>0.0307</b>
Vaccine status [none]	-0.133	0.115	-0.361 to 0.094	0.2486
GM_mature PRNT	0.237	0.056	0.127 to 0.347	<b>&lt;0.0001</b>
DV2_E dimer	0.274	0.057	0.161 to 0.387	<b>&lt;0.0001</b>
GM_WT E protein	0.332	0.0580	0.218 to 0.446	<b>&lt;0.0001</b>
Age	-0.028	0.035	-0.096 to 0.0395	0.4101
Sex [M]	-0.053	0.096	-0.242 to 0.137	0.5838
Sites [Bogo]	0.2193	0.123	-0.024to 0.462	0.0767
Vax status [none]	-0.1595	0.105	-0.367 to 0.047	0.1303

CI, Confidence interval; DENV, Dengue virus; BOB: Blockade of binding; EDE: E dimer epitope; GM, Geometric mean; DV: Dengue virus; E, Envelope. These models were adjusted for age, sex, site, and vaccine status. Bold p value <0.05 was considered significant by simple linear regression.

Table S12. EDE-like contribution on protective effect of GM\_WT E protein or GM\_mature PRNT on symptomatic dengue.

Variables	Proportion mediated (95% CI)	p value
GM_mature PRNT	0.468 (0.196 – 12.45)	<b>0.042</b>
GM_WT E protein	0.507 (0.264 – 5.53)	<b>0.028</b>

*CI, Confidence interval; GM, Geometric mean; p value <0.05 was considered significant. By non-parametric Bootstrap confidence intervals with BCa method.*