

1 Inflammation Proteomic Profiling of Psychosis in Young Adults:
2 findings from the ALSPAC birth cohort

3

4 Authors:

5 Ruby S. M. Tsang^{1,2,3}

6 Nicholas J. Timpson^{1,2}

7 Golam M. Khandaker^{1,2,3,4}

8

9 Affiliations:

10 ¹ MRC Integrative Epidemiology Unit, University of Bristol, Bristol, UK

11 ² Population Health Sciences, Bristol Medical School, University of Bristol, Bristol, UK

12 ³ Centre for Academic Mental Health, Population Health Sciences, University of Bristol,
13 Bristol, UK

14 ⁴ NIHR Bristol Biomedical Research Centre, University Hospitals Bristol and Weston NHS
15 Foundation Trust, Bristol, UK

16

17 Corresponding author:

18 Ruby Tsang

19 Population Health Sciences, Bristol Medical School

20 Oakfield House, Oakfield Grove

21 Bristol BS8 2BN

22 United Kingdom

23 ruby.tsang@bristol.ac.uk

24

25 Declaration of Interest: None.

26

27 **Abstract**

28 Psychotic disorder is associated with altered levels of various inflammatory markers in blood,
29 but existing studies have typically focused on a few selected biomarkers, have not examined
30 specific symptom domains notably negative symptoms, and are based on individuals with
31 established/chronic illness. Based on data from young people aged 24 years from the Avon
32 Longitudinal Study of Parents and Children (ALSPAC), a UK birth cohort, we have examined
33 the associations of 67 plasma immune/inflammatory proteins assayed using the Olink Target
34 96 Inflammation panel with psychotic disorder, positive (any psychotic experiences and
35 definite psychotic experiences) and negative symptoms, using linear models with empirical
36 Bayes estimation. The analyses included between 2641 and 2854 individuals. After
37 adjustment for age, sex, body mass index and smoking and correction for multiple testing,
38 upregulation of CD40 and IL-6 were consistently associated with positive symptoms and
39 psychotic disorder, while psychotic disorder was additionally associated with upregulation of
40 MMP-10. Negative symptoms were associated with upregulation of the highest number of
41 proteins (n=11), including cytokines, chemokines and growth factors which partly overlap
42 with proteins associated with positive symptoms or psychotic disorder (CD40, IL-6 and
43 MMP-10). Our findings highlight associations of inflammatory proteins involved in immune
44 regulation, immune cell activation/migration, blood-brain barrier disruption, and extracellular
45 matrix abnormalities with psychosis or psychotic symptoms in young people, consistent with
46 a role of inflammation and immune dysfunction in the pathogenesis of psychotic disorders.

47

48 **Keywords:** ALSPAC; psychosis; proteomics; inflammation; inflammatory markers; positive
49 symptoms; negative symptoms

50

51 **1. Introduction**

52 Psychosis is an umbrella term that refers to a group of complex neuropsychiatric disorders
53 primarily characterized by positive (e.g., hallucinations, delusions, or confusion) and
54 negative symptoms (e.g., apathy and diminished expression). The median lifetime
55 prevalence for schizophrenia, the archetypal psychotic disorder, is 4.0 per 1000 persons
56 (McGrath et al., 2008), whereas it is 7.5 per 1000 persons for all psychoses (Moreno-
57 Küstner et al., 2018). In contrast, subthreshold psychosis-like experiences are relatively
58 common and are experienced by approximately a quarter of the general population during
59 their lifetime (Bourgin et al., 2020). It has been suggested that the psychosis phenotype is
60 expressed on a continuum, where symptoms may present in non-clinical populations (van
61 Os et al., 2009).

62

63 Schizophrenia is a multifactorial condition with both genetic and environmental contributions.
64 Infection, inflammation and immune dysfunction have been implicated in the pathogenesis of
65 schizophrenia and related psychoses (Benros et al., 2011; Brown and Derkits, 2010;
66 Goldsmith et al., 2016; Khandaker et al., 2015). There is substantial evidence for cross-
67 sectional associations between central and peripheral inflammation and schizophrenia
68 spectrum disorders. Abnormal cerebrospinal fluid (CSF) markers were observed in
69 individuals with schizophrenia spectrum disorders, including elevated total protein, albumin
70 ratio, white blood cell count, glucose, IL-6 and IL-8 levels (Warren et al., 2024). Blood
71 concentrations of a number of inflammatory markers, namely interleukin (IL)-1 β , IL-1
72 receptor antagonist (IL-1RA), soluble IL-2 receptor (sIL-2R), IL-6, IL-8, IL-10, tumor necrosis
73 factor (TNF)- α , and C-reactive protein (CRP) were consistently elevated in individuals with
74 schizophrenia-spectrum disorder compared to healthy controls (Halstead et al., 2023).
75 Subsets of cytokines may be associated with specific features of the disorder, for instance
76 IL-2 and interferon (IFN)- γ were elevated in acute schizophrenia-spectrum disorder whereas
77 IL-4, IL-12 and IFN- γ were reduced in chronic schizophrenia-spectrum disorder (Halstead et
78 al., 2023); another study found elevated IL-6, IL-12, IL-17 and IFN- γ levels were observed in

79 antipsychotic-naïve first-episode psychosis (FEP) while elevated IL-1 β , IL-2, IL-4, IL-6 and
80 TNF- α as well as reduced IL-10, were associated with negative symptoms (Dunleavy et al.,
81 2022). Increased total white blood cell, monocyte and neutrophil counts were also observed
82 in schizophrenia and FEP (Jackson and Miller, 2020). Similar dysregulations of inflammatory
83 markers are also seen in those with subthreshold or transitory symptoms; when comparing
84 subgroups with familial risk and clinical risk of psychosis with controls, the clinical risk
85 subgroup showed higher IL-6 levels than controls, but the study did not find any evidence for
86 markers that predicted transition to psychosis (Misiak et al., 2021).

87

88 Longitudinally, exposures to inflammation during gestation and in childhood have been
89 shown to be associated with psychosis risk. Prenatal exposure to infections and elevated
90 proinflammatory cytokines may be associated with schizophrenia risk and structural and
91 functional brain abnormalities relevant to schizophrenia, though effects may differ by
92 infectious agent and timing of exposure (Khandaker et al., 2013). Furthermore, childhood
93 viral infections involving the central nervous system may be associated with an increased
94 risk of adult schizophrenia (Khandaker et al., 2012). Studies using data from the Avon
95 Longitudinal Study of Parents and Children (ALSPAC) also showed that circulating IL-6 and
96 CRP levels assessed in childhood and adolescence predicted psychosis or schizophrenia
97 risk in adulthood (Khandaker et al., 2014; Metcalf et al., 2017), suggesting that immune-
98 inflammatory changes predate the onset of psychosis or schizophrenia. Two other studies
99 using ALSPAC data compared protein expression levels in childhood between those who did
100 and did not later develop psychotic experiences or disorder in early adulthood, and found
101 dysregulation of the complement and coagulation system was associated with psychosis risk
102 (English et al., 2017; Föcking et al., 2021).

103

104 Genome-wide association studies have identified multiple loci associated with schizophrenia
105 risk, with strongest effects seen from variations in the major histocompatibility complex locus
106 and particularly in complement component 4 genes, implicating immune function and

107 complement activity in the pathogenesis of schizophrenia (Sekar et al., 2016). Furthermore,
108 Mendelian randomization studies support a potentially causal role of IL-6 signaling in
109 schizophrenia, with increased levels of IL-6 and soluble IL-6 receptor (sIL-6R) associated
110 with a higher risk of schizophrenia; additionally, IL-6 appeared to explain the previously
111 reported protective effect of CRP (Hartwig et al., 2017; Perry et al., 2021).

112

113 While existing studies support a role of inflammation in psychosis, there are key gaps in
114 knowledge. For instance, most existing studies have typically focused on a limited number of
115 inflammatory markers, but examining a larger immune proteomic panel can yield greater
116 system-level insights into the pathophysiology of psychosis. Negative symptoms are core to
117 schizophrenia, but there are relatively fewer studies of inflammation and negative symptoms
118 compared to that of positive symptoms (Dunleavy et al., 2022). Negative symptoms
119 represent an unmet clinical need as existing antipsychotic drugs do not adequately improve
120 these symptoms. There is some evidence that inflammatory markers are associated with
121 negative symptoms (Dunleavy et al., 2022; Khandaker et al., 2021); therefore, further studies
122 are needed to examine these associations to understand whether inflammation could be a
123 treatment target for negative symptoms. Finally, most existing studies are based on adults
124 with established psychotic disorder. Studies of people who are relatively early on in the
125 course of illness are required to identify immunological factors that are potentially relevant
126 for incidence, rather than chronicity/prognosis. Studies of young people are also
127 advantageous as this group is relatively unaffected by confounding from chronic
128 inflammation-related diseases of adulthood.

129

130 We present a study examining the associations of a range of inflammatory proteins,
131 assessed using a proteomic panel, with psychotic disorder and positive and negative
132 symptoms of psychosis at age 24 years using data from the Avon Longitudinal Study of
133 Parents and Children (ALSPAC), a UK birth cohort. The aim of this study was to examine the

134 plasma inflammatory proteomic profile of psychotic disorder, and to compare patterns of
135 associations for positive and negative symptoms in young adults.

136

137 **2. Materials and Methods**

138 **2.1. Cohort and sample selection**

139 Pregnant women resident in Avon, United Kingdom with expected dates of delivery between
140 1st April 1991 and 31st December 1992 were invited to take part in the Avon Longitudinal
141 Study of Parents and Children (ALSPAC) (Boyd et al., 2012; Fraser et al., 2012; Northstone
142 et al., 2019). The initial number of pregnancies enrolled was 14,541 and 13,988 children
143 were alive at 1 year of age. Additional recruitment took place when the oldest children were
144 approximately 7 years of age. The total sample size for analyses using any data collected
145 after the age of seven is therefore 15,447 pregnancies, with 14,901 children who were alive
146 at 1 year of age (Generation 1).

147

148 The present study focuses on the subset of Generation 1 participants who had data
149 available for the relevant exposures (psychotic experiences, psychotic disorder, or negative
150 symptoms), outcomes (blood immunological protein levels), and covariables (age, sex at
151 birth, body mass index [BMI], and smoking). The sample selection flow diagram is presented
152 in **Figure 1**.

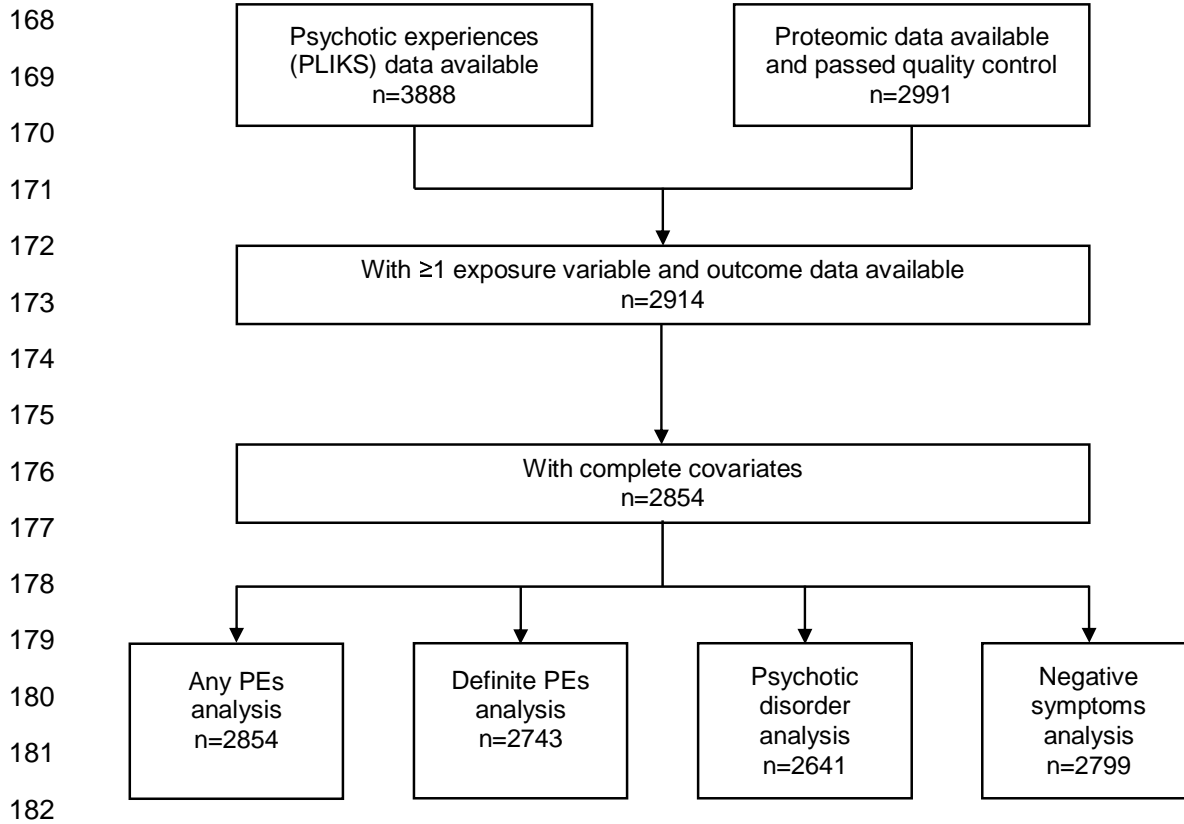
153

154 Study data were collected and managed using Research Electronic Data Capture (REDCap)
155 electronic data capture tools hosted at the University of Bristol (Harris et al., 2009). REDCap
156 is a secure, web-based software platform designed to support data capture for research
157 studies. Please note that the study website contains details of all the data that is available
158 through a fully searchable data dictionary and variable search tool
159 (<http://www.bristol.ac.uk/alspac/researchers/our-data/>).

160

161 **2.2. Ethics**

162 Ethical approval for the study was obtained from the ALSPAC Ethics and Law Committee
163 and the Local Research Ethics Committees. Consent for biological samples has been
164 collected in accordance with the Human Tissue Act (2004). Informed consent for the use of
165 data collected via questionnaires and clinics was obtained from participants following the
166 recommendations of the ALSPAC Ethics and Law Committee at the time.
167



168
169
170
171
172
173
174
175
176
177
178
179
180
181
182
183
184
185

Figure 1. Flow diagram showing data availability in Generation 1 of ALSPAC for the analyses conducted.

186 **2.3. Psychosis-related measures at age 24**

187 Psychotic experiences (PEs) and disorder were identified through the face-to-face, semi-
188 structured Psychosis-Like Symptoms Interview (PLIKSi) administered by trained psychology
189 graduates. The PLIKSi consists of 12 core items derived from the Diagnostic Interview
190 Schedule for Children, Version IV (DISC-IV) (Shaffer et al., 2000) and the Schedules for
191 Clinical Assessment in Neuropsychiatry, Version 2.0 (SCAN 2.0) (World Health Organization
192 Division of Mental Health, 1994). These items assess the presence, frequency and context
193 of experiences associated with psychosis from three main domains of positive psychotic
194 symptoms: hallucinations (visual and auditory), delusions (spied on, persecution, thoughts
195 read, reference, control, grandiosity and other), and experiences of thought interference
196 (broadcasting, insertion and withdrawal). Coding of all items followed glossary definitions,
197 assessment, and rating rules for the SCAN 2.0. The PLIKSi administered at age 24 showed
198 good inter-rater and test-retest reliability (intraclass correlation=0.81 [95% CI = 0.68-0.89]
199 and intraclass correlation=0.90 [95% CI = 0.83-0.95]) (Sullivan et al., 2020).

200

201 Individuals who self-reported PEs were cross-questioned to verify the presence of each of
202 these experiences, which were then rated by interviewers as: PEs not present, suspected
203 PEs, or definite PEs. Cases of psychotic disorder were defined as having an interviewer-
204 rated definite PE not attributable to the effects of sleep or fever, with recurring symptoms of
205 at least once a month over the prior 6 months, which the individual reported as either very
206 distressing, or had a negative impact on their social or occupational life, or led them to seek
207 professional help (Zammit et al., 2013).

208

209 Negative symptoms such as apathy, anergia and asociality were assessed using 10
210 questions based on the Community Assessment of Psychic Experiences (CAPE) self-report
211 questionnaire, where each item was rated on a 4-point scale (0=never; 1=sometimes;
212 2=often; 3=always) and summed. Missing items were handled with median replacement,
213 except where all items were missing, the sum score was coded as missing. We then derived

214 a binary variable based on the sum score, and we assigned those with a score of 14 or
215 above into the 'high negative symptoms' group (Jones et al., 2016); this corresponded to
216 13.9% of the sample.

217

218 For the set of analyses looking at positive symptoms, the exposures were: i) 'any PEs':
219 presence of any PEs, suspected or definite, not attributable to the effects of sleep or fever, ii)
220 'definite PEs': presence of any definite PEs not attributable to the effects of sleep or fever
221 and iii) psychotic disorder as described above. The control group was defined as those who
222 did not meet criteria for suspected/definite PEs or psychotic disorder. For the analysis
223 looking at negative symptoms, the exposure was presence of high negative symptoms.

224

225 **2.4. Blood inflammatory proteins at age 24 years**

226 Blood samples were collected in lithium heparin tubes and placed on ice until processing.
227 Samples were spun at 1300g for 10 minutes at 4-5°C, then plasma was aliquoted from the
228 tube and stored at -80°C. Target time from sample collection until plasma frozen was 90
229 minutes. Heparin-stored plasma samples collected from at approximately age 24 (fasting)
230 were analyzed using the Olink Target 96 Inflammation panel (Olink Analysis Service,
231 Uppsala, Sweden). The Olink Target 96 Inflammation panel measures a selection of 92
232 proteins involved in inflammatory and immune response processes. Data were returned in
233 Normalised Protein eXpression (NPX) values on a log₂ scale, which are calculated from
234 protein concentrations (cycle threshold [Ct] values) with normalization to minimize intra- and
235 inter-assay variation (Olink Proteomics, 2021). Further details on the proteins assayed and
236 quality control procedures applied have been previously reported (see data note by Goulding
237 et al., 2024).

238

239 Samples that did not pass Olink's quality control were excluded from the analysis. Proteins
240 with ≥50% values below the limit of detection (LOD) were excluded (based on values
241 reported in the relevant ALSPAC data note (Goulding et al., 2024); namely ARTN, Beta-NGF,

242 FGF-23, FGF-5, GDNF, IL-1 alpha, IL-10RA, IL-13, IL-15RA, IL-17A, IL-2, IL-20, IL-20RA, IL-
243 22 RA1, IL-24, IL-2RB, IL-33, IL-4, IL-5, LIF, NRT, NT-3, SIRT2, SLAMF1, TSLP), leaving 67
244 proteins to be used as outcomes in the analyses (**Table S1**). NPX values beyond 5 standard
245 deviations (SD) from the mean were recoded as missing. No further normalization
246 procedures were applied to the proteomic data prior to analysis, as it will reduce information
247 available for the empirical Bayes estimation used in the analysis.

248

249 **2.5. Covariables**

250 BMI was computed using the formula: weight (kg) / height² (m²), and we recoded values of
251 <15 or ≥60 as missing. Smoking was assessed via a questionnaire, and we derived a
252 composite smoking variable by coding those who self-reported having smoked in the past 30
253 days and ≥1 cigarettes per day or ≥7 per week as smokers.

254

255 **2.6. Statistical analysis**

256 Sociodemographic characteristics of cases and controls were summarized as n (%), mean
257 (standard deviation) or median [interquartile range] depending on the variable type
258 (continuous or categorical). Group comparisons were conducted using Fisher's exact tests
259 for categorical variables, *t*-tests for normally distributed continuous variables and Kruskal-
260 Wallis tests for non-normally distributed continuous variables.

261

262 Prior to analysis, correlations between inflammatory proteins were examined using
263 Spearman's rho (**Figure S1**) and a principal component analysis was performed to examine
264 the overall distribution of the data and identify potential sample clustering in the inflammation
265 proteomics panel. There was evidence for clustering effects by sex and BMI, but not by age,
266 smoking, batch, or plate (**Figure S2**). Associations between each case definition and
267 inflammatory proteins were evaluated using multiple linear models fitted in the *limma* R
268 package (Ritchie et al., 2015), which uses an empirical Bayes method to moderate the
269 standard errors of the estimated log-fold changes by accounting for information from other

270 markers. For each of the case definitions, we ran a set of unadjusted models and a set of
271 adjusted models with age, sex at birth, BMI and smoking as covariables. Correction for
272 multiple comparisons was performed using the Benjamini-Hochberg procedure with a false
273 discovery rate (FDR) adjusted p -value threshold of <0.05 . We did not apply a fold change
274 threshold as the effects are expected to be small in multifactorial phenotypes in a population-
275 based sample.

276

277 We then examined protein-protein interactions (PPI) between the identified differentially
278 abundant proteins at the nominal $p < 0.05$ level (separately for positive and negative
279 symptoms) and functional enrichment in STRING database (version 12.0; [https://string-](https://string-db.org)
280 [db.org](https://string-db.org)) (Szkarczyk et al., 2019). We used 66 out of the 67 proteins included in the analysis
281 as the statistical background as STRING was not able to map VEGF-A to an entry in the
282 database.

283

284 Data extraction and initial data cleaning was performed in StataMP 18 (StataCorp, 2023).
285 Further data preparation and statistical analyses were conducted in RStudio 2022.07.1 using
286 R v4.2.1 (R Core Team, 2022), using packages *tidyverse* (v2.0.0), *haven* (v2.5.2), *reshape2*
287 (v1.4.4), *tableone* (v0.13.2), and *limma* (v3.54.2). Plots were generated using *ggplot2*
288 (v3.4.2), *ggfortify* (v0.4.16), *ggrepel* (v0.9.3), and *ggpubr* (v0.6.0).

289

290 **3. Results**

291 **3.1. Sample characteristics**

292 Characteristics of the controls (n=2574) and any PEs (n=280), definite PEs (n=169), and
293 psychotic disorder groups (n=67) at age 24 years from the ALSPAC birth cohort are
294 presented in **Table 1**. Group comparisons revealed individuals in the psychotic disorder
295 group were more likely to be female, those in the any PEs group were more likely to have
296 higher BMI and all case groups were more likely to be smokers and report higher negative
297 symptoms than controls. Comparisons between individuals with and without high negative

298 symptoms showed that individuals with high negative symptoms (n=390) were marginally
299 older, more likely to be smokers and less likely to have risky alcohol consumption than those
300 with low or no negative symptoms (**Table 2**).
301

302 **Table 1. Sociodemographic and lifestyle characteristics of the included sample by**
 303 **psychosis outcome**

	Controls (n=2574)	Any PEs (n=280)	Definite PEs (n=169)	Psychotic disorder (n=67)
Age (years), mean (SD)	24.03 (0.85)	24.11 (0.83)	24.10 (0.84)	24.06 (0.83)
Sex at birth (female), n (%)	1623 (63.1%)	178 (63.6%)	111 (65.7%)	53 (79.1%)*
BMI, mean (SD)	23.55 [21.45, 26.68]	24.35 [21.44, 28.69]*	23.51 [21.26, 28.35]	23.20 [20.29, 28.66]
Smoking (Yes), n (%)	690 (26.8%)	117 (41.8%)*	74 (43.8%)*	28 (41.8%)*
AUDIT-C score, median [IQR]	5.00 [4.00, 7.00]	5 [3.00, 7.00]	5.00 [3.00, 7.00]	5.00 [3.00, 6.25]
CAPE score, median [IQR]	6.00 [3.00, 10.00]	10.00 [6.00, 15.00]*	11.00 [6.00, 16.25]*	12.50 [8.00, 19.00]*

304

305 Note: Group comparisons were conducted using chi-square tests for categorical variables, t-
 306 test for normally distributed continuous variables and Kruskal-Wallis tests for non-normally
 307 distributed continuous variables. *p<0.05, **p<0.01, ***p<0.001.

308 Abbreviations: BMI – body mass index; CAPE – Community Assessment of Psychic
 309 Experiences; IQR – interquartile range

310

311 **Table 2. Sociodemographic and lifestyle characteristics by level of negative**
312 **symptoms**

	No/low negative symptoms (CAPE score < 14) (n = 2409)	High negative symptoms (CAPE score ≥ 14) (n = 390)
Age (years), mean (SD)	24.03 (0.84)	24.12 (0.87)*
Sex at birth (female), n (%)	1535 (63.7%)	233 (59.7%)
BMI, mean (SD)	23.58 [21.48, 26.64]	23.81 [21.16, 28.19]
Smoking (Yes), n (%)	646 (26.8%)	142 (36.4%)**
AUDIT-C score, median [IQR]	5.00 [4.00, 7.00]	5.00 [3.00, 6.00]**

313

314 Note: Group comparisons were conducted using chi-square tests for categorical variables, t-
315 test for normally distributed continuous variables and Kruskal-Wallis tests for non-normally
316 distributed continuous variables. *p<0.05, **p<0.01, ***p<0.001.

317 Abbreviations: BMI – body mass index; IQR – interquartile range

318

319 **3.2. Differentially abundant inflammatory proteins in psychosis and related outcomes**

320 The condition ‘any PEs’ was associated with upregulation of 22 inflammatory proteins after
321 covariable adjustment; p-values of 6 of these associations survived FDR correction, which
322 are CUB domain-containing protein 1 (CDCP1), TNF-related apoptosis-inducing ligand
323 (TRAIL), IL-6, hepatocyte growth factor (HGF), monocyte chemoattractant protein-1 (MCP-1)
324 and vascular endothelial growth factor A (VEGF-A) (**Figure 2B**). Definite PEs were
325 associated with upregulation of 17 proteins after covariable adjustment, but only CDCP1 and
326 IL-6 survived FDR correction (**Figure 2B**). Psychotic disorder was associated with
327 upregulation of 11 proteins after covariable adjustment and evidence for three of these
328 proteins, namely CDCP1, IL-6 and matrix metalloproteinase-10 (MMP-10), remained after
329 FDR correction (**Figure 2B**). Full results for each of these models can be found in the
330 **Supplementary Material**.

331

332 High negative symptoms were associated with upregulation of 23 proteins after covariable
333 adjustment, 11 of which survived FDR correction. These proteins were HGF, MMP-10, IL-6,
334 CDCP1, C-C motif chemokine ligand (CCL) 11, TRAIL, C-X3-C motif chemokine ligand 1
335 (CX3CL1), Fms-related receptor tyrosine kinase 3 ligand (FLT3L), fibroblast growth factor 21
336 (FGF-21), IL-10 receptor subunit beta (IL-10RB), CCL25 (**Table 3**). Full results can be found
337 in the **Supplementary Material**.

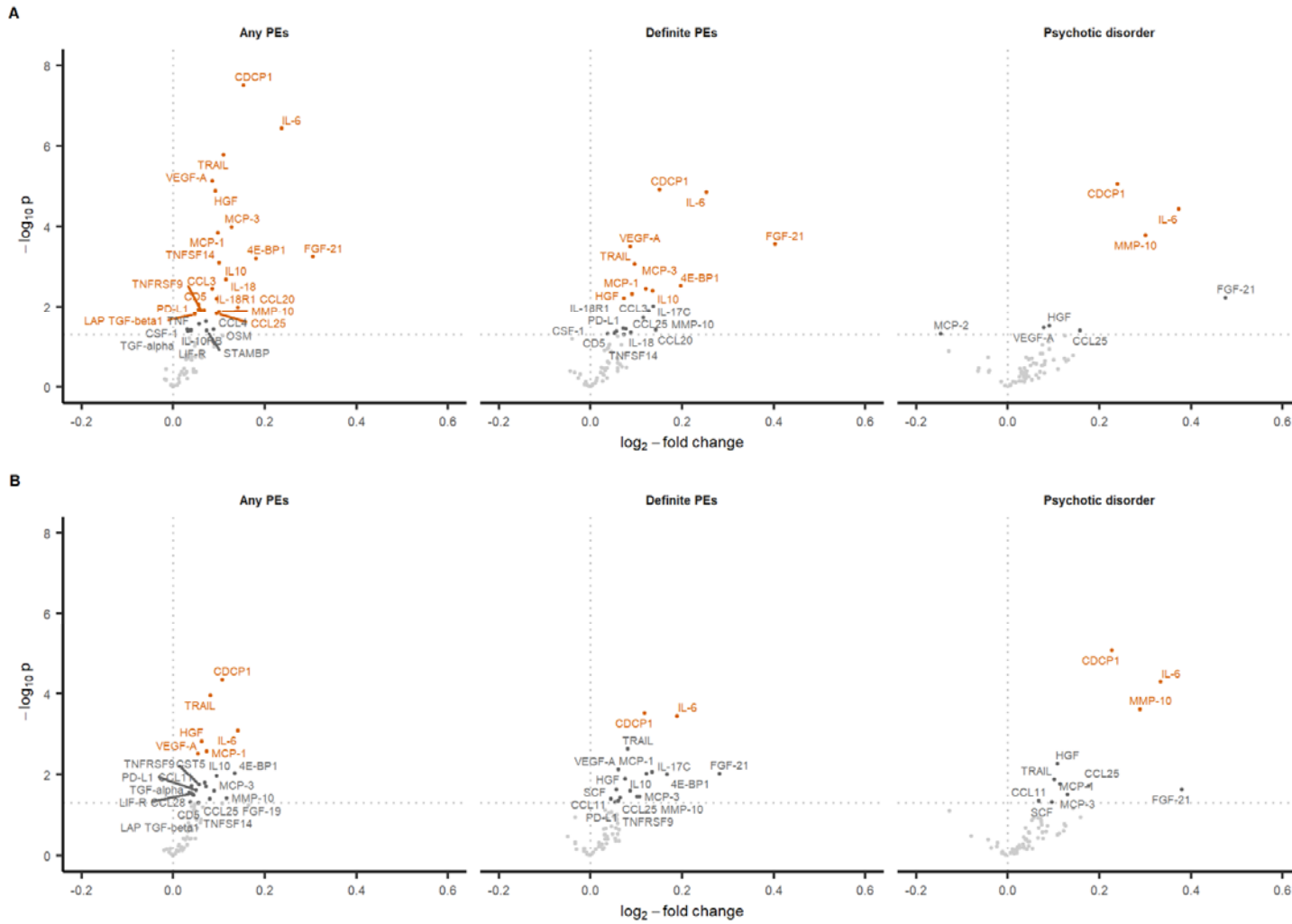
338

339 A total of 15 proteins showed upregulation in both positive and negative symptoms (using
340 the nominal *p*-value cutoff of 0.05), which are CCL11, CCL25, T-cell surface glycoprotein
341 CD5 (CD5), FGF-19, FGF-21, HGF, IL-6, latency-associated peptide transforming growth
342 factor beta-1 (LAP TGF- β 1), MCP-1, MMP-10, stem cell factor (SCF), transforming growth
343 factor alpha (TGF- α), tumor necrosis factor receptor superfamily member 9 (TNFRSF9), and
344 TRAIL.

345

346 **3.3. Protein-protein interactions (PPI) and functional enrichment**

347 Most identified differentially abundant proteins were functionally associated with each other
348 within the protein-protein interaction network, suggesting they jointly contribute to shared
349 functions (**Figures S3-S4**). However, the network showed no evidence of PPI or functional
350 enrichment of Gene Ontology terms against the statistical background of the included list of
351 proteins.



352

353

354 **Figure 2. Differentially abundant blood inflammatory proteins associated with any psychotic experiences not attributable to sleep or**
355 **fever, definite psychotic experiences not attributable to sleep or fever, and psychotic disorder.**
356 Panels A and B show results from unadjusted and adjusted models respectively. The labelled points are proteins that reach a nominal $p < 0.05$,
357 and those in orange indicates upregulated proteins that survived FDR correction.

358 **Table 3. Inflammatory proteins associated with high negative symptoms, before and**
 359 **after FDR correction.**

Protein	Log ₂ fold change	Fold change	t-statistic	p-value	FDR adjusted p-value
HGF	0.07	1.05	4.07	4.78e-5	3.20e-3
MMP-10	0.13	1.10	3.85	1.18e-4	3.97e-3
IL-6	0.13	1.10	3.69	2.27e-4	5.08e-3
CDCP1	0.08	1.06	3.60	3.23e-4	5.41e-3
CCL11	0.05	1.04	3.41	6.58e-4	8.82e-3
TRAIL	0.06	1.04	3.32	9.22e-4	1.03e-2
CX3CL1	0.07	1.05	3.27	1.08e-3	1.03e-2
FLT3L	0.07	1.05	2.98	2.94e-3	2.22e-2
FGF-21	0.22	1.17	2.97	2.98e-3	2.22e-2
IL-10RB	0.05	1.03	2.88	4.06e-3	2.72e-2
CCL25	0.09	1.06	2.69	7.22e-3	4.40e-2
IL-18R1	0.06	1.04	2.58	9.92e-3	5.42e-2
SCF	0.06	1.04	2.56	1.05e-2	5.42e-2
CCL19	0.09	1.06	2.47	1.37e-2	6.56e-2
TGF- α	0.03	1.02	2.39	1.67e-2	7.46e-2
CD5	0.04	1.03	2.37	1.79e-2	7.50e-2
TWEAK	0.05	1.03	2.32	2.06e-2	8.12e-2
MCP-1	0.05	1.03	2.20	2.79e-2	9.99e-2
CCL20	0.10	1.08	2.19	2.83e-2	9.99e-2
FGF-19	0.10	1.07	2.05	4.02e-2	1.34e-1
IL-18	0.06	1.04	2.03	4.21e-2	1.34e-1
TNFRSF9	0.04	1.03	2.00	4.53e-2	1.34e-1
LAP TGF-	0.03	1.02	1.99	4.52e-2	1.34e-1

beta1

360

361

362 **4. Discussion**

363 Our study aimed to identify the plasma immune-inflammatory proteomic profile of psychotic
364 disorder and related outcomes (positive and negative symptoms) in young adults using data
365 from a well-phenotyped birth cohort. We observed upregulation of six, two and three proteins
366 in any PEs, definite PEs and psychotic disorder respectively after covariable adjustment and
367 FDR correction;

368 CDCEP1 and IL-6 were common to all three positive symptom case definitions and psychotic
369 disorder was additionally associated with upregulation of MMP-10. We found upregulation of
370 11 protein in those with high negative symptoms, including CDCEP1, IL-6 and MMP-10.

371 These alterations were of relatively small magnitude, with many showing less than 10%
372 upregulation, but more substantial fold changes were seen in the psychotic disorder group,
373 where there were between 17% and 26% increases in CDCEP1, IL-6 and MMP-10 levels. We
374 observed alterations in different types of proteins, including growth factors, cytokines,
375 chemokines, and matrix metalloproteinases that play roles in immune regulation, T cell
376 activation and migration, macrophage activation and potentially blood-brain barrier (BBB)
377 disruption, suggesting widespread immunological alterations are involved in psychosis.

378

379 We report consistent evidence for associations of IL-6 across all psychosis-related outcomes
380 examined including positive, negative symptoms and psychotic disorder. IL-6 is a pleiotropic
381 cytokine that plays a key role in the regulation of immune responses and inflammation. As
382 the most frequently studied cytokine, there is considerable evidence that suggests circulating
383 concentrations of IL-6 is elevated across the psychosis spectrum, including in those at risk of
384 psychosis (Misiak et al., 2021), in antipsychotic-naïve FEP (Dunleavy et al., 2022) and in
385 both acute and chronic schizophrenia spectrum disorder (Halstead et al., 2023). IL-6 has
386 also been reported to be associated with negative symptoms (Dunleavy et al., 2022). Our
387 findings support an ongoing clinical trial investigating whether inhibition of IL-6 signaling
388 using an anti-IL6R monoclonal antibody, tocilizumab, improves negative symptoms in people
389 with psychosis (Foley et al., 2023). Due to the pleiotropic effects of IL-6, the specific

390 mechanisms underlying the associations between increased IL-6 and psychosis remain
391 poorly understood and further research is required to elucidate the specific biological
392 pathways and cascades involved.

393

394 CDCP1 is a transmembrane glycoprotein with three extracellular CUB domains. It has
395 typically been studied in the context of cancer due to its overexpression in solid tumors and
396 is considered a key regulator of cancer metastasis through its roles in cell migration and
397 invasion, and extracellular matrix degradation via MMP-9 secretion (Miyazawa et al., 2010).

398 More recently, CDCP1 has been found to have immune regulatory roles; it is a ligand for

399 CD6 and regulates T cell activation and migration (Enyindah-Asonye et al., 2017), and

400 reduced IL-6 production was observed in CDCP1 knockout mice in an animal model of

401 Kawasaki disease (Lun et al., 2021). CDCP1 has been shown to participate in a CD6

402 tripartite receptor complex that induces cytoskeleton remodeling and cell barrier tight

403 junction reduction in retinal pigment epithelium cells (Borjini et al., 2023), suggesting this

404 process may underlie disruptions to tissue barriers caused by T cell-mediated inflammation.

405 It is possible that this process also contributes to disrupted BBB and T cell infiltration into the

406 central nervous system, leading to neuroinflammation and neuropsychiatric disorders such

407 as psychosis and schizophrenia spectrum disorders.

408

409 MMPs are a family of zinc-dependent endopeptidases that contribute to tissue remodeling by

410 degradation of extracellular matrix components in normal physiological processes and

411 pathological conditions. In recent years, MMP-9 emerged as a candidate involved the

412 pathophysiology of schizophrenia, as it is known to regulate a range of neurodevelopmental

413 processes including synaptic and dendritic spine plasticity, neuroinflammation and BBB

414 permeability (Bitanirwe and Woo, 2020; Chopra et al., 2019). Although studies examining

415 the candidate functional single nucleotide polymorphism (SNP) -1562 C/T polymorphism

416 (rs3918242) in the *MMP9* gene reported conflicting results (Xia et al., 2019), there is

417 evidence for peripheral MMP-9 upregulation in schizophrenia spectrum disorders
418 (Schoretsantis et al., 2021).
419
420 MMP-10, also known as stromelysin-2, is expressed by macrophages in response to injury,
421 infection or transformation; it is a critical mediator of macrophage activation (McMahan et al.,
422 2016) and has been shown to promote chronic inflammation (Sánchez et al., 2022). MMP-10
423 has rarely been studied in the context of neuropsychiatric disorders, and the limited literature
424 has reported mixed findings in relation to schizophrenia. One study reported that elevated
425 CSF MMP-10 levels were associated with major depressive disorder, but not schizophrenia
426 (Omori et al., 2020); however, another study reported associations between epigenetic
427 proxies of plasma concentrations of MMP-10 and clinical features of schizophrenia
428 (Kiltschewskij et al., 2024). It has also been shown *in vitro* that MMP-10 can activate MMP-9
429 via proteolysis of its precursor pro-MMP9 (Nakamura et al., 1998) and thus may be involved
430 in a cascade that impacts on neurodevelopment and neuroinflammation in psychosis and
431 schizophrenia spectrum disorders.
432
433 The novel markers of CDCP1 and MMP-10 suggest potential roles of BBB dysfunction and
434 extracellular matrix abnormalities in the pathophysiology of psychosis. Neuroinflammation
435 has been shown to contribute to neurovascular endothelial dysfunction and increased BBB
436 permeability in schizophrenia (Najjar et al., 2017). Extracellular matrix abnormalities,
437 including reduced perineuronal nets and reduced extracellular matrix gene expression in
438 several brain regions (Pantazopoulos et al., 2021) and alterations in brain extracellular
439 matrix composition (Rodrigues-Amorim et al., 2022) have also been reported in
440 schizophrenia. Further research is required to better understand the cascade of events
441 including disruption of BBB integrity and extracellular matrix abnormalities in the
442 pathogenesis of psychosis.
443

444 As a result of the cross-sectional design used here, we cannot ascertain whether any of the
445 protein associations are causal for psychosis. However, we looked up evidence of potential
446 causality based on existing Mendelian randomization (MR) studies which use genetic
447 variants as instrumental variables to assess whether the association between an exposure
448 and an outcome is likely to be causal or result of residual confounding or reverse causation
449 (Sanderson et al., 2022). Existing MR studies support a potential causal role of IL-6 in
450 schizophrenia (Hartwig et al., 2017; Perry et al., 2021), with also weak evidence of MCP-1
451 (Perry et al., 2021) that was associated with both positive and negative symptoms in the
452 present study. In addition, a more recent MR study involving 735 immune-related biomarkers
453 reported MR evidence for potential causal effects with schizophrenia for several proteins we
454 found to be associated with psychosis/psychotic symptoms in our sample. These include IL-
455 6, IL-10RB, IL-18, LIF-R, CCL25, FGF-19, and MMP-10 (Dardani et al., 2024). In particular,
456 the study by Dardani and colleagues reported stronger evidence of causality for FGF-19 and
457 MMP-10, though the interpretation may be complicated due to the use of potentially complex
458 genetic instruments derived from trans quantitative trait loci (trans-QTLs) associations. In
459 addition, FGF19 also showed evidence of genetic colocalization whereby the locus
460 associated with blood FGF-19 protein levels were also associated with schizophrenia (Zuber
461 et al., 2022). Taken together, findings from our analysis reported here and existing MR
462 studies suggest that FGF-19 and MMP-10 could be causally relevant for schizophrenia.
463 These proteins (along with others highlighted by our study and existing MR studies) require
464 further investigation.

465

466 Strengths of this study include using detailed blood immune proteomic data, various
467 psychosis-related outcomes across the psychosis spectrum as well as examining both
468 positive and negative symptoms, as well as using a population-based young adult sample.
469 There are several limitations to the existing study. Firstly, this study is cross-sectional in
470 design, making it difficult to ascertain whether any observed associations are causal or result
471 of reverse causality or residual confounding. Further research is required to replicate these

472 associations, determine the temporal order of events and investigate whether these
473 associations are causal. Secondly, as the study sample is drawn from a population-based
474 cohort, there is likely a larger degree of heterogeneity in symptom severity, phase, duration,
475 psychotropic medication use and neuropsychiatric comorbidity within the case groups, for
476 which we have not been able to adjust despite their potential effects on blood protein levels.
477 Lastly, the case groups defined by positive symptoms are rather small and the analyses may
478 be underpowered to detect smaller effects, which may explain why only few signals were
479 found relative to the analysis involving negative symptoms.

480

481 **5. Conclusions**

482 Using data from a well characterized birth cohort, we report that IL-6 and CDCP1 are
483 associated with psychotic disorder and positive symptoms of psychosis, while negative
484 symptoms are associated with changes in a larger number of immune proteins which partly
485 overlap with proteins associated with positive symptoms. In addition to IL-6 that is already
486 well reported in the literature, we identified two novel inflammatory markers, CDCP1 and
487 MMP-10, which are implicated in immune regulation, T cell activation and migration,
488 macrophage activation, BBB disruption, and extracellular matrix abnormalities. Our findings
489 suggest there are widespread alterations in different types of inflammatory markers in young
490 people with psychosis or psychotic symptoms. This is consistent with a role of inflammation
491 and immune dysfunction in the pathogenesis of psychotic disorders.

492

493 **Funding**

494 RSMT is supported by the Tackling Multimorbidity at Scale Strategic Priorities Fund
495 programme (MR/W014416/1) delivered by the Medical Research Council and the National
496 Institute for Health Research in partnership with the Economic and Social Research Council
497 and in collaboration with the Engineering and Physical Sciences Research Council. NJT is
498 the PI of the Avon Longitudinal Study of Parents and Children (MRC & WT 217065/Z/19/Z).
499 GMK acknowledges funding support from the Medical Research Council (MRC), UK
500 (MC_UU_00032/06) which forms part of the Integrative Epidemiology Unit (IEU) at the
501 University of Bristol. GMK acknowledges additional funding support from the Wellcome Trust
502 (201486/Z/16/Z and 201486/B/16/Z), MRC (MR/W014416/1; MR/S037675/1; and
503 MR/Z50354X/1), and the UK National Institute of Health and Care Research (NIHR) Bristol
504 Biomedical Research Centre (NIHR 203315). The views expressed are those of the authors
505 and not necessarily those of the NIHR or the Department of Health and Social Care, UK.

506

507 The UK Medical Research Council (MRC) and Wellcome (grant ref: 217065/Z/19/Z) and the
508 University of Bristol provide core support for ALSPAC. This publication is the work of the
509 authors and RSMT and GMK will serve as guarantors for the contents of this paper. A
510 comprehensive list of grants funding is available on the ALSPAC website

511 (<http://www.bristol.ac.uk/alspac/external/documents/grant-acknowledgements.pdf>). Data
512 collection on psychotic symptoms at the age 24 research clinic was specifically funded by
513 the MRC (grant: MR/M006727/1) awarded to Prof. Stan Zammit.

514

515 The funders had no involvement in study design; in the collection, analysis and interpretation
516 of data; in the writing of the report; or in the decision to submit the article for publication.

517

518 **CRedit authorship contribution statement**

519 Ruby Tsang: Conceptualization, Formal analysis, Writing – original draft, Writing – review &
520 editing

521 Nicholas Timpson: Conceptualization, Writing – review & editing, Supervision

522 Golam Khandaker: Conceptualization, Writing – review & editing, Supervision

523

524 **Acknowledgements**

525 We are extremely grateful to all the families who took part in this study, the midwives for their

526 help in recruiting them, and the whole ALSPAC team, which includes interviewers, computer

527 and laboratory technicians, clerical workers, research scientists, volunteers, managers,

528 receptionists and nurses.

529

530 **References**

- 531 Benros, M.E., Nielsen, P.R., Nordentoft, M., Eaton, W.W., Dalton, S.O., Mortensen, P.B.,
532 2011. Autoimmune Diseases and Severe Infections as Risk Factors for Schizophrenia: A 30-
533 Year Population-Based Register Study. *American Journal of Psychiatry* 168, 1303-1310.
- 534 Bitanhirwe, B.K.Y., Woo, T.-U.W., 2020. A conceptualized model linking matrix
535 metalloproteinase-9 to schizophrenia pathogenesis. *Schizophrenia Research* 218, 28-35.
- 536 Borjini, N., Lun, Y., Jang, G.-F., Crabb, J., Chen, Y., Crabb, J., Fox, D.A., Ivanov, A.I., Lin, F.,
537 2023. CD6 triggers actomyosin cytoskeleton remodeling after binding to its receptor complex.
538 *Journal of Leukocyte Biology* 115, 450-462.
- 539 Bourgin, J., Tebeka, S., Mallet, J., Mazer, N., Dubertret, C., Le Strat, Y., 2020. Prevalence
540 and correlates of psychotic-like experiences in the general population. *Schizophrenia*
541 *Research* 215, 371-377.
- 542 Boyd, A., Golding, J., Macleod, J., Lawlor, D.A., Fraser, A., Henderson, J., Molloy, L., Ness,
543 A., Ring, S., Davey Smith, G., 2012. Cohort Profile: The 'Children of the 90s'—the index
544 offspring of the Avon Longitudinal Study of Parents and Children. *International Journal of*
545 *Epidemiology* 42, 111-127.
- 546 Brown, A.S., Derkits, E.J., 2010. Prenatal Infection and Schizophrenia: A Review of
547 Epidemiologic and Translational Studies. *American Journal of Psychiatry* 167, 261-280.
- 548 Chopra, S., Overall, C.M., Dufour, A., 2019. Matrix metalloproteinases in the CNS:
549 interferons get nervous. *Cellular and Molecular Life Sciences* 76, 3083-3095.

- 550 Dardani, C., Robinson, J.W., Jones, H.J., Rai, D., Stergiakouli, E., Grove, J., Gardner, R.,
551 McIntosh, A.M., Havdahl, A., Hemani, G., Smith, G.D., Richardson, T.G., Gaunt, T.R.,
552 Khandaker, G.M., 2024. Immunological Drivers and Potential Novel Drug Targets for Major
553 Psychiatric, Neurodevelopmental, and Neurodegenerative Conditions. medRxiv,
554 2024.2002.2016.24302885.
- 555 Dunleavy, C., Elsworth, R.J., Upthegrove, R., Wood, S.J., Aldred, S., 2022. Inflammation in
556 first-episode psychosis: The contribution of inflammatory biomarkers to the emergence of
557 negative symptoms, a systematic review and meta-analysis. *Acta Psychiatrica Scandinavica*
558 146, 6-20.
- 559 English, J.A., Lopez, L.M., O’Gorman, A., Föcking, M., Hryniewiecka, M., Scaife, C.,
560 Sabherwal, S., Wynne, K., Dicker, P., Rutten, B.P.F., Lewis, G., Zammit, S., Cannon, M.,
561 Cagney, G., Cotter, D.R., 2017. Blood-Based Protein Changes in Childhood Are Associated
562 With Increased Risk for Later Psychotic Disorder: Evidence From a Nested Case–Control
563 Study of the ALSPAC Longitudinal Birth Cohort. *Schizophrenia Bulletin* 44, 297-306.
- 564 Enyindah-Asonye, G., Li, Y., Ruth, J.H., Spassov, D.S., Hebron, K.E., Zijlstra, A., Moasser,
565 M.M., Wang, B., Singer, N.G., Cui, H., Ohara, R.A., Rasmussen, S.M., Fox, D.A., Lin, F.,
566 2017. CD318 is a ligand for CD6. *Proceedings of the National Academy of Sciences* 114,
567 E6912-E6921.
- 568 Föcking, M., Sabherwal, S., Cates, H.M., Scaife, C., Dicker, P., Hryniewiecka, M., Wynne, K.,
569 Rutten, B.P.F., Lewis, G., Cannon, M., Nestler, E.J., Heurich, M., Cagney, G., Zammit, S.,
570 Cotter, D.R., 2021. Complement pathway changes at age 12 are associated with psychotic
571 experiences at age 18 in a longitudinal population-based study: evidence for a role of stress.
572 *Molecular Psychiatry* 26, 524-533.

- 573 Foley, É.M., Griffiths, S.L., Murray, A., Rogers, J., Corsi-Zuelli, F., Hickinbotham, H., Warwick,
574 E., Wilson, M., Kaser, M., Murray, G.K., Deakin, B., Jadon, D., Suckling, J., Barnes, N.M.,
575 Upthegrove, R., Khandaker, G.M., 2023. Protocol for the Psychosis Immune Mechanism
576 Stratified Medicine (PIMS) trial: a randomised double-blind placebo-controlled trial of single-
577 dose tocilizumab in patients with psychosis. *BMJ Open* 13, e067944.
- 578 Fraser, A., Macdonald-Wallis, C., Tilling, K., Boyd, A., Golding, J., Davey Smith, G.,
579 Henderson, J., Macleod, J., Molloy, L., Ness, A., Ring, S., Nelson, S.M., Lawlor, D.A., 2012.
580 Cohort Profile: The Avon Longitudinal Study of Parents and Children: ALSPAC mothers
581 cohort. *International Journal of Epidemiology* 42, 97-110.
- 582 Goldsmith, D.R., Rapaport, M.H., Miller, B.J., 2016. A meta-analysis of blood cytokine
583 network alterations in psychiatric patients: comparisons between schizophrenia, bipolar
584 disorder and depression. *Molecular Psychiatry* 21, 1696-1709.
- 585 Goulding, N., Goudswaard, L., Hughes, D., Corbin, L., Groom, A., Ring, S., Timpson, N.,
586 Fraser, A., Northstone, K., Suderman, M., 2024. Inflammation proteomics datasets in the
587 ALSPAC cohort [version 2; peer review: 2 approved]. *Wellcome Open Research* 7.
- 588 Halstead, S., Siskind, D., Amft, M., Wagner, E., Yakimov, V., Shih-Jung Liu, Z., Walder, K.,
589 Warren, N., 2023. Alteration patterns of peripheral concentrations of cytokines and
590 associated inflammatory proteins in acute and chronic stages of schizophrenia: a systematic
591 review and network meta-analysis. *The Lancet Psychiatry* 10, 260-271.
- 592 Harris, P.A., Taylor, R., Thielke, R., Payne, J., Gonzalez, N., Conde, J.G., 2009. Research
593 electronic data capture (REDCap)—A metadata-driven methodology and workflow process
594 for providing translational research informatics support. *Journal of Biomedical Informatics* 42,
595 377-381.

- 596 Hartwig, F.P., Borges, M.C., Horta, B.L., Bowden, J., Davey Smith, G., 2017. Inflammatory
597 Biomarkers and Risk of Schizophrenia: A 2-Sample Mendelian Randomization Study. *JAMA*
598 *Psychiatry* 74, 1226-1233.
- 599 Jackson, A.J., Miller, B.J., 2020. Meta-analysis of total and differential white blood cell counts
600 in schizophrenia. *Acta Psychiatrica Scandinavica* 142, 18-26.
- 601 Jones, H.J., Stergiakouli, E., Tansey, K.E., Hubbard, L., Heron, J., Cannon, M., Holmans, P.,
602 Lewis, G., Linden, D.E.J., Jones, P.B., Davey Smith, G., O'Donovan, M.C., Owen, M.J.,
603 Walters, J.T., Zammit, S., 2016. Phenotypic Manifestation of Genetic Risk for Schizophrenia
604 During Adolescence in the General Population. *JAMA Psychiatry* 73, 221-228.
- 605 Khandaker, G.M., Cousins, L., Deakin, J., Lennox, B.R., Yolken, R., Jones, P.B., 2015.
606 Inflammation and immunity in schizophrenia: implications for pathophysiology and treatment.
607 *The Lancet Psychiatry* 2, 258-270.
- 608 Khandaker, G.M., Pearson, R.M., Zammit, S., Lewis, G., Jones, P.B., 2014. Association of
609 Serum Interleukin 6 and C-Reactive Protein in Childhood With Depression and Psychosis in
610 Young Adult Life: A Population-Based Longitudinal Study. *JAMA Psychiatry* 71, 1121-1128.
- 611 Khandaker, G.M., Stochl, J., Zammit, S., Lewis, G., Dantzer, R., Jones, P.B., 2021.
612 Association between circulating levels of C-reactive protein and positive and negative
613 symptoms of psychosis in adolescents in a general population birth cohort. *Journal of*
614 *Psychiatric Research* 143, 534-542.
- 615 Khandaker, G.M., Zimbron, J., Dalman, C., Lewis, G., Jones, P.B., 2012. Childhood infection
616 and adult schizophrenia: A meta-analysis of population-based studies. *Schizophrenia*
617 *Research* 139, 161-168.

- 618 Khandaker, G.M., Zimbron, J., Lewis, G., Jones, P.B., 2013. Prenatal maternal infection,
619 neurodevelopment and adult schizophrenia: a systematic review of population-based studies.
620 *Psychological Medicine* 43, 239-257.
- 621 Kiltchewskij, D.J., Reay, W.R., Geaghan, M.P., Atkins, J.R., Xavier, A., Zhang, X., Watkeys,
622 O.J., Carr, V.J., Scott, R.J., Green, M.J., Cairns, M.J., 2024. Alteration of DNA Methylation
623 and Epigenetic Scores Associated With Features of Schizophrenia and Common Variant
624 Genetic Risk. *Biological Psychiatry* 95, 647-661.
- 625 Lun, Y., Borjini, N., Miura, N.N., Ohno, N., Singer, N.G., Lin, F., 2021. CDCP1 on Dendritic
626 Cells Contributes to the Development of a Model of Kawasaki Disease. *The Journal of*
627 *Immunology* 206, 2819-2827.
- 628 McGrath, J., Saha, S., Chant, D., Welham, J., 2008. Schizophrenia: A Concise Overview of
629 Incidence, Prevalence, and Mortality. *Epidemiologic Reviews* 30, 67-76.
- 630 McMahan, R.S., Birkland, T.P., Smigielski, K.S., Vandivort, T.C., Rohani, M.G., Manicone, A.M.,
631 McGuire, J.K., Gharib, S.A., Parks, W.C., 2016. Stromelysin-2 (MMP10) Moderates
632 Inflammation by Controlling Macrophage Activation. *The Journal of Immunology* 197, 899-
633 909.
- 634 Metcalf, S.A., Jones, P.B., Nordstrom, T., Timonen, M., Mäki, P., Miettunen, J., Jääskeläinen,
635 E., Järvelin, M.-R., Stochl, J., Murray, G.K., Veijola, J., Khandaker, G.M., 2017. Serum C-
636 reactive protein in adolescence and risk of schizophrenia in adulthood: A prospective birth
637 cohort study. *Brain, Behavior, and Immunity* 59, 253-259.

- 638 Misiak, B., Bartoli, F., Carrà, G., Stańczykiewicz, B., Gładka, A., Frydecka, D., Samochowiec,
639 J., Jarosz, K., Hadryś, T., Miller, B.J., 2021. Immune-inflammatory markers and psychosis
640 risk: A systematic review and meta-analysis. *Psychoneuroendocrinology* 127, 105200.
- 641 Miyazawa, Y., Uekita, T., Hiraoka, N., Fujii, S., Kosuge, T., Kanai, Y., Nojima, Y., Sakai, R.,
642 2010. CUB Domain–Containing Protein 1, a Prognostic Factor for Human Pancreatic
643 Cancers, Promotes Cell Migration and Extracellular Matrix Degradation. *Cancer Research*
644 70, 5136-5146.
- 645 Moreno-Küstner, B., Martín, C., Pastor, L., 2018. Prevalence of psychotic disorders and its
646 association with methodological issues. A systematic review and meta-analyses. *PLOS ONE*
647 13, e0195687.
- 648 Najjar, S., Pahlajani, S., De Sanctis, V., Stern, J.N.H., Najjar, A., Chong, D., 2017.
649 Neurovascular Unit Dysfunction and Blood–Brain Barrier Hyperpermeability Contribute to
650 Schizophrenia Neurobiology: A Theoretical Integration of Clinical and Experimental Evidence.
651 *Frontiers in Psychiatry* 8.
- 652 Nakamura, H., Fujii, Y., Ohuchi, E., Yamamoto, E., Okada, Y., 1998. Activation of the
653 precursor of human stromelysin 2 and its interactions with other matrix metalloproteinases.
654 *European Journal of Biochemistry* 253, 67-75.
- 655 Northstone, K., Lewcock, M., Groom, A., Boyd, A., Macleod, J., Timpson, N., Wells, N., 2019.
656 The Avon Longitudinal Study of Parents and Children (ALSPAC): an update on the enrolled
657 sample of index children in 2019 [version 1; peer review: 2 approved]. *Wellcome Open*
658 *Research* 4.
- 659 Olink Proteomics, 2021. White paper: Data normalization and standardization.

- 660 Omori, W., Hattori, K., Kajitani, N., Okada-Tsuchioka, M., Boku, S., Kunugi, H., Okamoto, Y.,
661 Takebayashi, M., 2020. Increased Matrix Metalloproteinases in Cerebrospinal Fluids of
662 Patients With Major Depressive Disorder and Schizophrenia. *International Journal of*
663 *Neuropsychopharmacology* 23, 713-720.
- 664 Pantazopoulos, H., Katsel, P., Haroutunian, V., Chelini, G., Klengel, T., Berretta, S., 2021.
665 Molecular signature of extracellular matrix pathology in schizophrenia. *European Journal of*
666 *Neuroscience* 53, 3960-3987.
- 667 Perry, B.I., Upthegrove, R., Kappelmann, N., Jones, P.B., Burgess, S., Khandaker, G.M.,
668 2021. Associations of immunological proteins/traits with schizophrenia, major depression
669 and bipolar disorder: A bi-directional two-sample mendelian randomization study. *Brain,*
670 *Behavior, and Immunity* 97, 176-185.
- 671 R Core Team, 2022. R: A language and environment for statistical computing. R Foundation
672 for Statistical Computing, Vienna, Austria.
- 673 Ritchie, M.E., Phipson, B., Wu, D., Hu, Y., Law, C.W., Shi, W., Smyth, G.K., 2015. limma
674 powers differential expression analyses for RNA-sequencing and microarray studies. *Nucleic*
675 *Acids Research* 43, e47-e47.
- 676 Rodrigues-Amorim, D., Rivera-Baltanás, T., Fernández-Palleiro, P., Iglesias-Martínez-
677 Almeida, M., Freiría-Martínez, L., Jarmardo-Rodríguez, C., del Carmen Vallejo-Curto, M.,
678 Álvarez-Ariza, M., López-García, M., de las Heras, E., García-Caballero, A., Olivares, J.M.,
679 Spuch, C., 2022. Changes in the Brain Extracellular Matrix Composition in schizophrenia: A
680 Pathophysiological Dysregulation and a Potential Therapeutic Target. *Cellular and Molecular*
681 *Neurobiology* 42, 1921-1932.

- 682 Sánchez, K.E., Bhaskar, K., Rosenberg, G.A., 2022. Apoptosis-associated speck-like protein
683 containing a CARD-mediated release of matrix metalloproteinase 10 stimulates a change in
684 microglia phenotype. *Frontiers in Molecular Neuroscience* 15.
- 685 Sanderson, E., Glymour, M.M., Holmes, M.V., Kang, H., Morrison, J., Munafò, M.R., Palmer,
686 T., Schooling, C.M., Wallace, C., Zhao, Q., Davey Smith, G., 2022. Mendelian randomization.
687 *Nature Reviews Methods Primers* 2, 6.
- 688 Schoretsanitis, G., de Filippis, R., Ntoga, M., Leucht, S., Correll, C.U., Kane, J.M., 2021.
689 Matrix Metalloproteinase 9 Blood Alterations in Patients With Schizophrenia Spectrum
690 Disorders: A Systematic Review and Meta-Analysis. *Schizophrenia Bulletin* 47, 986-996.
- 691 Sekar, A., Bialas, A.R., de Rivera, H., Davis, A., Hammond, T.R., Kamitaki, N., Tooley, K.,
692 Presumey, J., Baum, M., Van Doren, V., Genovese, G., Rose, S.A., Handsaker, R.E., Daly,
693 M.J., Carroll, M.C., Stevens, B., McCarroll, S.A., Schizophrenia Working Group of the
694 Psychiatric Genomics, C., 2016. Schizophrenia risk from complex variation of complement
695 component 4. *Nature* 530, 177-183.
- 696 Shaffer, D., Fisher, P., Lucas, C.P., Dulcan, M.K., Schwab-Stone, M.E., 2000. NIMH
697 Diagnostic Interview Schedule for Children Version IV (NIMH DISC-IV): Description,
698 Differences From Previous Versions, and Reliability of Some Common Diagnoses. *Journal of*
699 *the American Academy of Child & Adolescent Psychiatry* 39, 28-38.
- 700 StataCorp, 2023. *Stata Statistical Software: Release 18*. StataCorp LLC, College Station, TX,
701 USA.
- 702 Sullivan, S.A., Kounali, D., Cannon, M., David, A.S., Fletcher, P.C., Holmans, P., Jones, H.,
703 Jones, P.B., Linden, D.E.J., Lewis, G., Owen, M.J., O'Donovan, M., Rammos, A., Thompson,

- 704 A., Wolke, D., Heron, J., Zammit, S., 2020. A Population-Based Cohort Study Examining the
705 Incidence and Impact of Psychotic Experiences From Childhood to Adulthood, and
706 Prediction of Psychotic Disorder. *American Journal of Psychiatry* 177, 308-317.
- 707 Szklarczyk, D., Gable, A.L., Lyon, D., Junge, A., Wyder, S., Huerta-Cepas, J., Simonovic, M.,
708 Doncheva, N.T., Morris, J.H., Bork, P., Jensen, L.J., Mering, Christian v., 2019. STRING v11:
709 protein–protein association networks with increased coverage, supporting functional
710 discovery in genome-wide experimental datasets. *Nucleic Acids Research* 47, D607-D613.
- 711 van Os, J., Linscott, R.J., Myin-Germeys, I., Delespaul, P., Krabbendam, L., 2009. A
712 systematic review and meta-analysis of the psychosis continuum: evidence for a psychosis
713 proneness–persistence–impairment model of psychotic disorder. *Psychological Medicine* 39,
714 179-195.
- 715 Warren, N., O’Gorman, C., Horgan, I., Weeratunga, M., Halstead, S., Moussiopoulou, J.,
716 Campana, M., Yakimov, V., Wagner, E., Siskind, D., 2024. Inflammatory cerebrospinal fluid
717 markers in schizophrenia spectrum disorders: A systematic review and meta-analysis of 69
718 studies with 5710 participants. *Schizophrenia Research* 266, 24-31.
- 719 World Health Organization Division of Mental Health, 1994. Schedules for Clinical
720 Assessment in Neuropsychiatry. American Psychiatric Press (on behalf of World Health
721 Organization), Washington, DC.
- 722 Xia, Q.-R., Zhang, C., Liang, J., Xu, Y.-Y., 2019. The association of functional polymorphism
723 of matrix metalloproteinase-9 gene (rs3918242) with schizophrenia: a meta-analysis.
724 *International Journal of Psychiatry in Clinical Practice* 23, 207-214.

725 Zammit, S., Kounali, D., Cannon, M., David, A.S., Gunnell, D., Heron, J., Jones, P.B., Lewis,
726 S., Sullivan, S., Wolke, D., Lewis, G., 2013. Psychotic Experiences and Psychotic Disorders
727 at Age 18 in Relation to Psychotic Experiences at Age 12 in a Longitudinal Population-Based
728 Cohort Study. *American Journal of Psychiatry* 170, 742-750.

729 Zuber, V., Grinberg, N.F., Gill, D., Manipur, I., Slob, E.A.W., Patel, A., Wallace, C., Burgess,
730 S., 2022. Combining evidence from Mendelian randomization and colocalization: Review
731 and comparison of approaches. *The American Journal of Human Genetics* 109, 767-782.

732

