

1 **Misleading and avoidable: design-induced biases in observational studies evaluating**
2 **cancer screening—the example of site-specific effectiveness of screening**
3 **colonoscopy**

4
5 **Authors:** Malte Braitmaier, Sarina Schwarz, Vanessa Didelez, Ulrike Haug

6 **Author information:**

7 Malte Braitmaier, Department of Biometry and Data Management, Leibniz Institute for
8 Prevention Research and Epidemiology – BIPS, Bremen, Germany, ORCID: 0000-0001-7534-
9 4068

10 Sarina Schwarz, Department of Clinical Epidemiology, Leibniz Institute for Prevention
11 Research and Epidemiology – BIPS, Bremen, Germany, ORCID: 0000-0002-7926-2032

12 Vanessa Didelez, Department of Biometry and Data Management, Leibniz Institute for
13 Prevention Research and Epidemiology – BIPS, Bremen, Germany & Faculty of Mathematics
14 and Computer Sciences, University of Bremen, Bremen, Germany, ORCID: 0000-0001-8587-
15 7706

16 Ulrike Haug, Department of Clinical Epidemiology, Leibniz Institute for Prevention Research
17 and Epidemiology – BIPS, Bremen, Germany & Faculty of Human and Health Sciences,
18 University of Bremen, Bremen, Germany, ORCID: 0000-0002-1886-2923

19 Corresponding author: Ulrike Haug, haug@leibniz-bips.de

20

21 **Abstract**

22 **Objective:** Observational studies evaluating the effectiveness of cancer screening are often
23 biased due to an inadequate design where I) the assessment of eligibility, II) the assignment
24 to screening vs. no screening and III) the start of follow-up are not aligned at time zero
25 (baseline). Such flaws can entail misleading results but are avoidable by designing the study
26 following the principle of target trial emulation (TTE). We aimed to illustrate this by addressing
27 the research question whether screening colonoscopy is more effective in the distal vs. the
28 proximal colon.

29 **Methods:** Based on a large German health care database (20% population coverage), we
30 assessed the effect of screening colonoscopy in preventing distal and proximal CRC over 12
31 years of follow-up in 55–69-year-old persons at average CRC risk. We applied four different
32 study designs and compared the results: cohort study with / without alignment at time zero,
33 case control study with / without alignment at time zero.

34 **Results:** In both analyses with alignment at time zero, screening colonoscopy showed a similar
35 effectiveness in reducing the incidence of distal and proximal CRC (cohort analysis: 32% (95%
36 CI: 27% - 37%) vs. 28% (95% CI: 20% - 35%); case-control analysis: 27% vs. 33%). Both
37 analyses without alignment at time zero suggested a difference in site-specific performance:
38 Incidence reduction regarding distal and proximal CRC, respectively, was 65% (95% CI: 61%
39 - 68%) vs. 37% (95% CI: 31% - 43%) in the cohort analysis and 77% (95% CI: 67% - 84%) vs.
40 46% (95% CI: 25% - 61%) in the case-control analysis.

41 **Conclusions:** Our study demonstrates that violations of basic design principles can
42 substantially bias the results of observational studies on cancer screening. In our example, it
43 falsely suggested a much stronger preventive effect of colonoscopy in the distal vs. the
44 proximal colon. The difference disappeared when the same data were analyzed using a TTE
45 approach, which is known to avoid such design-induced biases.

46

47 Introduction

48 Randomized controlled trials (RCT) are the gold standard for evaluating the effectiveness of
49 cancer screening. However, existing RCTs in this field do not answer all relevant research
50 questions. For screening colonoscopy, for example, an RCT has recently been published
51 (NordICC trial) demonstrating its effectiveness in reducing colorectal cancer (CRC) incidence
52 overall [1], but it was not powered to compare the effectiveness in the distal vs. the proximal
53 colon.

54 Complementary evidence from observational studies is therefore needed. Apart from potential
55 confounding, there is a high risk of bias and thus of misleading results if such studies are
56 inadequately designed. Indeed, several observational studies have reported a markedly
57 stronger preventive effect of screening colonoscopy in the distal as compared to the proximal
58 colon [2, 3, 4], while a cohort study designed following the principle of target trial emulation
59 (TTE) showed a similar effectiveness of screening colonoscopy in the distal and the proximal
60 colon [5]. We argued that the difference by site in the former studies was due to biases induced
61 by non-alignment at “time zero”, i.e. at baseline. This means that I) the assessment of eligibility,
62 II) the assignment to study arms and III) the start of follow-up were not aligned as they would
63 be in an RCT and as it would be ensured in an observational study designed based on the
64 principle of TTE [6]. Specifically, previous studies often defined exposure based on pre- or
65 post-baseline information on colonoscopy. As we further argued, this lack of alignment in
66 previous studies led to overestimating the effectiveness of screening colonoscopy. Due to the
67 different age pattern of distal and proximal CRC, this bias affected distal CRC more than
68 proximal CRC, i.e. the difference in effectiveness by site was an artefact.

69 To demonstrate this, we compared different study designs with and without alignment at time
70 zero aiming to investigate the question of site-specific effectiveness of screening colonoscopy
71 in reducing CRC incidence. For the two designs without alignment we used a cohort study
72 design, where the assignment to study arms occurs *before* time zero (pre-baseline), and a
73 nested case control study design, where the assignment to study arms occurs *after* time zero

74 (post-baseline). The current paper is part of a growing literature identifying violations of
75 alignment at time zero as a potential source of major bias in observational studies [6, 7, 8].

76 **Methods**

77 *Data source and study population*

78 We used the German Pharmacoepidemiological Research Database (GePaRD) which
79 comprises claims data from four statutory health insurance providers in Germany and covers
80 about 20% of the German population [9]. In GePaRD, information on utilization of screening
81 colonoscopy, offered in Germany to persons aged 55 or older since 2002 (since 2019 also to
82 men aged 50-54), is distinguishable from diagnostic colonoscopy. As previously described, the
83 data source enables the valid identification of incident CRCs [10]. Furthermore, it contains
84 appropriate information to apply in- and exclusion criteria and to adjust for confounding as
85 relevant to the research question on the effectiveness of screening colonoscopy in reducing
86 CRC incidence [5]. For the present study, we used data from 2004 to 2020.

87 Based on this data source, we applied four different study designs to address the research
88 question, specifically a cohort and a case-control study design, each with and without
89 alignment at time zero. The study designs without alignment at time zero were inspired by
90 published examples [2, 11, 12, 13], and were partly complemented by sensitivity analyses. For
91 each of these four studies, persons were selected from the same population. Specifically, the
92 source population was a cohort of persons aged 55–69 at baseline, who were continuously
93 insured for at least three years before baseline.

94 *Cohort study without alignment at time zero*

95 The cohort started in 2009 (baseline). Similar to a previous study [2], individuals were assigned
96 to the screening colonoscopy arm if they had a screening colonoscopy any time before
97 baseline, including the baseline quarter. Individuals were assigned to the control arm if they
98 did not undergo screening colonoscopy any time before baseline, including the baseline
99 quarter. In a sensitivity analysis, we considered both screening and diagnostic colonoscopies

100 for the assignment to the study arms, because some of the previous studies did not distinguish
101 between these examinations. Eligibility criteria were checked at baseline and the outcome
102 variable (incident CRC) was assessed beginning with baseline (start of follow-up). Persons
103 were followed up until end of study period (end of 2020), end of continuous insurance
104 coverage, death or CRC diagnosis, whichever occurred first. We also conducted sensitivity
105 analyses starting the cohort in 2010 and 2011, respectively.

106 When using such a study design, the assessment of eligibility and the start of follow-up are
107 aligned, but the assignment to the screening and the control arm is based on a period *before*
108 time zero (pre-baseline). Specifically, individuals in the colonoscopy arm had the examination
109 in the past (i.e. they were assigned to the screening arm based on past exposure) rather than
110 *at* time zero.

111 *Cohort study with alignment at time zero*

112 As described previously [5], we emulated sequential trials for each calendar quarter from 2007
113 to 2011. The emulation of sequential target trials makes full use of the information from
114 longitudinal data without violating principles of study design by using pre- or post-baseline
115 information for the assignment to study arms. At the baseline quarter of each trial, eligibility
116 was assessed and individuals with previous screening colonoscopy or CRC diagnosis were
117 excluded. Individuals were then assigned to the screening arm if they underwent a screening
118 colonoscopy *in the baseline quarter* of the respective trial and to the control arm otherwise.
119 Individuals were followed up until end of study period (end of 2020, i.e. follow-up was longer
120 than in our previous analysis), end of continuous insurance coverage, death or CRC diagnosis,
121 whichever occurred first. This study design made sure that assessment of eligibility criteria,
122 assignment to the screening and control arm, and start of follow-up were aligned at time zero
123 as would be the case in an RCT.

124 *Case-control study without alignment at time zero*

125 We applied a case-control design frequently used in the published literature [11, 12, 13, 14,
126 15, 16]. Essentially, CRC cases are identified (date of diagnosis corresponds to index date)
127 and matched with controls free of CRC at index date. Then screening colonoscopy use *ever*
128 *before* or within a certain time period *before* the index date is assessed in cases and controls,
129 i.e. colonoscopies leading to CRC diagnosis are not considered as exposure in this type of
130 study. Here, we selected all individuals from the source population entering the cohort in 2009
131 with a CRC diagnosis in 2018-2020. For each case we matched up to five controls on age (+/-
132 one year) and sex (sampling without replacement). The exposure variable was then defined
133 as any screening colonoscopy between 2009 and the index date, i.e. exposure to colonoscopy
134 use was assessed within 10-12 years *before* the index date. Colonoscopies conducted in the
135 six months before CRC diagnosis were not considered in defining the exposure. As mentioned
136 above, this approach corresponds to published case-control studies which ignore
137 colonoscopies conducted as part of the diagnostic process leading to the current diagnosis
138 [11, 12, 13, 14, 15, 16]. In general, it is a fundamental characteristic of traditional case-control
139 studies to assess exposure before disease onset. In a sensitivity analysis, we considered both
140 screening and diagnostic colonoscopies for the assignment to exposure groups. Again, we
141 also conducted sensitivity analyses using the years 2010 and 2011 for cohort entry, i.e. the
142 source population underlying this nested case-control study.

143 In the case-control design we used here (nested within a cohort), the assessment of eligibility
144 and the start of follow-up were aligned, while the assignment to the screening and the control
145 arm occurred *after* time zero (post-baseline) instead of *at* time zero. Note that in case-control
146 studies not nested in a cohort, there typically are additional misalignments [11, 14]. Specifically,
147 eligibility is assessed at index date and the start of follow-up is unclear.

148 *Case-control study with alignment at time zero*

149 Following the approach described by Dickerman et al. [17], a case-control study was nested
150 within the original cohort of sequential emulated target trials, and colonoscopy use was
151 assessed at baseline of each emulated trial. We included CRC patients with an incident CRC

152 diagnosis at any point during follow-up (until 2020) and then used risk set sampling to match
153 up to five controls to each case. We sampled matched controls with replacement, i.e. the same
154 control could be matched to more than one case. Matching variables were the same as above.
155 The key difference to the case-control study without alignment is that exposure assignment
156 was based on information available at the start of the emulated trial, i.e. at time zero, instead
157 of information occurring after time zero. This approach has been shown to avoid self-inflicted
158 biases in the same way as a prospective study using TTE [17].

159 *Data analysis*

160 For the cohort studies, we estimated cumulative incidence functions (CIF) via pooled logistic
161 regressions, which were adjusted for baseline confounders via inverse probability of treatment
162 weighting. Effects were estimated as adjusted relative risks (RR) at the end of follow-up based
163 on these CIFs. As previously shown, adjustment yielded satisfactory covariate balance and a
164 negative control analysis did not indicate any residual confounding [5]. Confidence intervals
165 were estimated via person-level bootstrap. For the case-control studies, effects were estimated
166 as adjusted odds ratios (ORs) obtained via conditional logistic regression. For the case-control
167 analysis with alignment, no confidence intervals could be obtained due to computational
168 limitations: The emulation of sequential trials with repeated cohort entry would require
169 bootstrapping, where matching is repeated for every bootstrap sample, resulting in run times
170 of several months.

171 **Results**

172 *Cohort study without alignment at time zero*

173 We selected a random sample of 200,000 individuals in the control arm and 200,000
174 individuals in the screening colonoscopy arm. The adjusted relative risk after 12 years of follow-
175 up was 0.35 for distal CRC and 0.63 for proximal CRC (Table 1). The adjusted cumulative
176 incidence curves are given in Fig. 1. As shown in Supplement 1, results were similar when the
177 year 2010 or the year 2011 was used as baseline. In sensitivity analyses considering both

178 screening and diagnostic colonoscopies as exposure, the adjusted 12-year relative risk was
179 0.40 for distal CRC and 0.66 for proximal CRC (Supplement 2).

180 *Cohort study with alignment at time zero*

181 Overall, 192,054 persons were included in the screening colonoscopy arm. The 5% random
182 sample (restriction due to computational limitations) of controls assigned to the no screening
183 arm included 116,452 persons (1,241,071 non-unique). The adjusted relative risk after 12
184 years of follow-up was 0.68 for distal CRC and 0.72 for proximal CRC (Table 1). Figure 1
185 shows the adjusted cumulative incidence curves for distal and proximal CRC. The distribution
186 of screen-detected and post-colonoscopy CRCs (i.e. non-screen-detected CRCs) by site is
187 shown in Supplement 6.

188 *Case-control study without alignment at time zero*

189 Overall, 446 cases with distal CRC matched to 2,230 controls and 302 cases with proximal
190 CRC matched to 1,510 controls were included. The adjusted ORs for distal and proximal CRC
191 were 0.23 and 0.54, respectively (Table 2). When the year 2010 or the year 2011 was used to
192 define the source population, the difference by site was similar (Supplement 1). The sensitivity
193 analysis considering both screening and diagnostic colonoscopy as exposure yielded similar
194 results; the adjusted ORs for distal and proximal CRC were 0.20 for distal CRC and 0.44 for
195 proximal CRC, respectively (Supplement 2).

196 *Case-control study with alignment at time zero*

197 Overall, 8,382 cases with distal CRC matched to 40,925 controls and 4,463 cases with
198 proximal CRC matched to 22,175 controls were included. The adjusted ORs for distal and
199 proximal CRC were 0.73 and 0.67, respectively (Table 2).

200 **Discussion**

201 To the best of our knowledge, our study is the first to systematically compare different study
202 designs to assess the effectiveness of screening colonoscopy in reducing CRC incidence in

203 the distal vs. the proximal colon. Our cohort and case-control analyses with alignment at time
204 zero showed no relevant difference in the effectiveness by site. Using study designs without
205 alignment at time zero led to an overestimation of the effectiveness of screening colonoscopy
206 overall. The overestimation affected distal CRCs considerably more than proximal CRCs, i.e.
207 purely by design there appeared to be a difference in effectiveness by site. This finding held
208 up in sensitivity analyses varying data years and the type of examinations considered for the
209 exposure definition (only screening or also diagnostic colonoscopy). Our findings demonstrate
210 that the difference in the effectiveness of colonoscopy by site reported by previous
211 observational studies was due to bias introduced by inadequate study design.

212 As illustrated in Supplement 3 using directed acyclic graphs, the bias underlying studies using
213 pre-baseline information on colonoscopy for the assignment to study arms can be expressed
214 as a form of collider stratification bias [18, 19]. To give an intuitive explanation, let us revisit
215 the study by Guo et al. [2, 5]: At baseline, patients were asked about past colonoscopy use
216 and—based on this information—assigned as exposed or unexposed to colonoscopy. Persons
217 reporting a prior CRC diagnosis at baseline were excluded [2]. Given that colonoscopy is one
218 of the main tools by which CRC is diagnosed, this process removes individuals with previously
219 diagnosed CRC from the exposed group, i.e. it enriches the exposed group with individuals
220 who are known to be free of CRC. No such selection process takes place in the unexposed
221 group. This leads to a lower prevalence of preclinical CRC at baseline in the exposed as
222 compared to the unexposed group. As a consequence, this selection reduces the number of
223 CRCs occurring during follow-up in the exposed group as compared to the unexposed group
224 and thus leads to overestimation of the effect of screening on CRC incidence. As the vast
225 majority of CRCs diagnosed at an age when persons are typically included into screening
226 studies are in the distal colon [20] while proximal CRCs become more common at older age,
227 this bias mainly affects results for distal CRC, i.e. as mentioned above there appeared to be a
228 difference in effectiveness by site purely by design. We note that in addition to the initial
229 exposure assignment, Guo et al. also used an updated exposure variable in a Cox model with

230 time-dependent covariates. However, this does not correct the initial selection issue at the start
231 of follow-up.

232 The above argument applies to studies using pre-baseline information for the assignment to
233 exposure groups. Many other studies used post-baseline information for the assignment to
234 exposure groups, also inducing bias. We illustrated this by the case-control study without
235 alignment at time zero: Whenever after baseline CRC is detected in a person at his or her first
236 colonoscopy, as is the case for most screen-detected CRCs, this person is assigned to the
237 unexposed group as there was no previous colonoscopy and the actual colonoscopy detecting
238 the CRC is not considered as prior exposure. This enriches the unexposed group with CRCs
239 and thus leads to overestimation of the effectiveness of screening. As the majority of screen-
240 detected CRCs are in the distal colon, this bias predominantly affects CRCs in the distal colon
241 and thus leads to an artificial difference in the effectiveness of colonoscopy by site (see also
242 Supplement 4). In our case-control study design embedded in an emulated target trial with
243 alignment at time zero, in which screen-detected CRCs are correctly assigned, no relevant
244 difference in the effectiveness of colonoscopy by site was observed. Of note, misalignment
245 due to post-baseline exposure assignment is typical of but not limited to case-control designs
246 on cancer screening. It can also occur in inadequately designed cohort studies and is not
247 overcome by using a time-varying exposure variable in a hazard model. This is explained in
248 more detail in Supplement 5 based on the example of the study by Nishihara et al. [3]

249 In summary and more generally, both study designs without alignment at time zero have in
250 common that there are mechanisms that lead to inappropriate consideration of screen-
251 detected CRCs, i.e. in the screening arm there was no peak in CRC incidence immediately
252 after baseline as it would be the case in an RCT. Of course, this overestimates the impact of
253 screening on CRC incidence, particularly for distal CRC, as illustrated in Figure 1. The flawed
254 approaches ignore the fact that a screening colonoscopy sometimes comes too late to prevent
255 CRC. Following the publication of the NordICC study, there was a discussion whether it is
256 appropriate to include persons with preclinical CRC, causing the peak at baseline, in a

257 prevention trial [21, 22]. However, from a public health perspective, it is important to also take
258 into account CRCs that are not prevented by screening in order to avoid overestimating the
259 effectiveness of CRC screening at the population level. Apart from this, it should be noted that
260 studies without alignment at time zero do not provide a valid answer to the question regarding
261 the size of the preventive effect of colonoscopy in persons free of CRC at baseline.

262 It should be noted that, although we focus our discussion on biases most relevant for site-
263 specific effectiveness of screening colonoscopy, misalignment at time zero should also be
264 avoided for many other reasons. Rasouli et al. [23] demonstrated that time related issues such
265 as prevalent user bias or time-varying confounding are a threat to case-control designs not
266 embedded in an emulated target trial. Also Dickerman et al. showed—based on case-control
267 studies investigating the impact of statins on CRC risk—the biases inherent to traditional case-
268 control studies and the potential of avoiding bias and wrong conclusions if the study is designed
269 following the principle of TTE [17]. Similarly, there are many examples of biases other than
270 those we discussed here that are inherent to cohort studies without alignment at time zero [8].

271 Our findings have several implications. First, regarding research on CRC screening, previous
272 studies suggesting a lower effectiveness of colonoscopy in the proximal colon stimulated a
273 search for reasons that may explain the occurrence of post-colonoscopy CRCs specifically in
274 the proximal colon. It was suggested that one main reason relates to sessile serrated lesions
275 as they are more difficult to detect and more often occur in the proximal colon [24]. While we
276 do not question the important role of these lesions, our findings may encourage a broadening
277 of the discussion of potential reasons leading to post-colonoscopy CRCs. Indeed, in our
278 emulated target trial on screening colonoscopy, the proportion of post-colonoscopy CRCs
279 located in the distal vs. the proximal colon was rather similar (Supplement 6). A one-sided
280 focus on lesions that occur more frequently in the proximal colon therefore seems too narrow
281 regarding the identification of lesions possibly leading to post-colonoscopy CRCs.

282 Our results also have implications beyond the specific research question of our study.
283 Observational data are often used to evaluate the effectiveness of cancer screening. They

284 represent a valuable data source to complement RCT evidence in this field, as RCTs on cancer
285 screening are scarce, were often conducted many years ago and are typically not powered to
286 estimate, for example, subgroup-specific effects or differences by cancer subtype. However,
287 our study illustrates that—in addition to appropriate control of confounding—it is of key
288 importance to design these studies in a way to ensure alignment at time zero. This means that
289 assessment of eligibility, assignment to the screening and control arm and start of follow-up
290 must be aligned. Otherwise, there is a high risk of bias.

291 Specific strengths of our study include the systematic comparison of different study designs as
292 well as the comprehensive sensitivity analyses. Given that all analyses were conducted using
293 the same data source and referred to the same setting, there is no heterogeneity regarding,
294 for example, the study variables or setting-related factors such as the uptake of surveillance
295 colonoscopy or colonoscopy quality. This strengthens our conclusion that differing results of
296 the analyses with and without alignment at time zero are exclusively due to the study design.

297 It should be noted that our findings apply to the population aged 55-69, covering the typical
298 screening age range of CRC screening. Whether screening colonoscopy is equally effective in
299 the distal and proximal colon in older age groups cannot be answered by our study, nor did we
300 address the endpoint CRC mortality. These research questions were beyond our study's
301 scope, as our primary objective was to illustrate the relevance of design-induced biases and
302 the possibility to avoid them using TTE, exemplified by investigating site-specific effectiveness
303 of screening colonoscopy in reducing CRC incidence.

304 In conclusion, our study demonstrates that violation of alignment at time zero can substantially
305 bias the results of observational studies on cancer screening. In our example, it falsely
306 suggested an almost doubled preventive effect of colonoscopy in the distal vs. the proximal
307 colon. The difference disappeared when the same data were analyzed using a TTE approach,
308 which is known to avoid design-induced biases.

309

310 References

- 311 1 Bretthauer M, Loberg M, Wieszczy P, Kalager M, Emilsson L, Garborg K, *et al.* Effect of
312 colonoscopy screening on risks of colorectal cancer and related death. *N Engl J Med* 2022;**387**:1547-
313 56.
- 314 2 Guo F, Chen C, Holleczeck B, Schottker B, Hoffmeister M, Brenner H. Strong reduction of
315 colorectal cancer incidence and mortality after screening colonoscopy: prospective cohort study from
316 Germany. *Am J Gastroenterol* 2021;**116**:967-75.
- 317 3 Nishihara R, Wu K, Lochhead P, Morikawa T, Liao X, Qian ZR, *et al.* Long-term colorectal-
318 cancer incidence and mortality after lower endoscopy. *N Engl J Med* 2013;**369**:1095-105.
- 319 4 Brenner H, Stock C, Hoffmeister M. Effect of screening sigmoidoscopy and screening
320 colonoscopy on colorectal cancer incidence and mortality: systematic review and meta-analysis of
321 randomised controlled trials and observational studies. *BMJ* 2014;**348**:g2467.
- 322 5 Braitmaier M, Schwarz S, Kollhorst B, Senore C, Didelez V, Haug U. Screening colonoscopy
323 similarly prevented distal and proximal colorectal cancer: a prospective study among 55-69-year-
324 olds. *J Clin Epidemiol* 2022;**149**:118-26.
- 325 6 Garcia-Albeniz X, Hsu J, Hernan MA. The value of explicitly emulating a target trial when using
326 real world evidence: an application to colorectal cancer screening. *Eur J Epidemiol* 2017;**32**:495-500.
- 327 7 Wakabayashi R, Hirano T, Laurent T, Kuwatsuru Y, Kuwatsuru R. Impact of "time zero" of
328 Follow-Up Settings in a Comparative Effectiveness Study Using Real-World Data with a Non-user
329 Comparator: Comparison of Six Different Settings. *Drugs Real World Outcomes* 2023;**10**:107-17.
- 330 8 Hernan MA, Sauer BC, Hernandez-Diaz S, Platt R, Shrier I. Specifying a target trial prevents
331 immortal time bias and other self-inflicted injuries in observational analyses. *J Clin Epidemiol*
332 2016;**79**:70-5.
- 333 9 Haug U, Schink T. German Pharmacoepidemiological Research Database (GePaRD). In:
334 Sturkenboom M, Schink T, eds. *Databases for pharmacoepidemiological research*. Cham,
335 Switzerland: Springer, 2021:119-24.
- 336 10 Schwarz S, Hornschuch M, Pox C, Haug U. Colorectal cancer after screening colonoscopy: 10-
337 year incidence by site and detection rate at first repeat colonoscopy. *Clin Transl Gastroenterol*
338 2023;**14**:e00535.
- 339 11 Baxter NN, Goldwasser MA, Paszat LF, Saskin R, Urbach DR, Rabeneck L. Association of
340 colonoscopy and death from colorectal cancer. *Ann Intern Med* 2009;**150**:1-8.
- 341 12 Mulder SA, van Soest EM, Dieleman JP, van Rossum LG, Ouwendijk RJ, van Leerdam ME, *et al.*
342 Exposure to colorectal examinations before a colorectal cancer diagnosis: a case-control study. *Eur J*
343 *Gastroenterol Hepatol* 2010;**22**:437-43.
- 344 13 Doubeni CA, Weinmann S, Adams K, Kamineni A, Buist DS, Ash AS, *et al.* Screening
345 colonoscopy and risk for incident late-stage colorectal cancer diagnosis in average-risk adults: a
346 nested case-control study. *Ann Intern Med* 2013;**158**:312-20.
- 347 14 Brenner H, Chang-Claude J, Seiler CM, Rickert A, Hoffmeister M. Protection from colorectal
348 cancer after colonoscopy: a population-based, case-control study. *Ann Intern Med* 2011;**154**:22-30.
- 349 15 Kahi CJ, Pohl H, Myers LJ, Mobarek D, Robertson DJ, Imperiale TF. Colonoscopy and colorectal
350 cancer mortality in the veterans affairs health care system: a case-control study. *Ann Intern Med*
351 2018;**168**:481-8.
- 352 16 Baxter NN, Warren JL, Barrett MJ, Stukel TA, Doria-Rose VP. Association between
353 colonoscopy and colorectal cancer mortality in a US cohort according to site of cancer and
354 colonoscopist specialty. *J Clin Oncol* 2012;**30**:2664-9.
- 355 17 Dickerman BA, Garcia-Albeniz X, Logan RW, Denaxas S, Hernan MA. Emulating a target trial in
356 case-control designs: an application to statins and colorectal cancer. *Int J Epidemiol* 2020;**49**:1637-
357 46.
- 358 18 Greenland S. Quantifying biases in causal models: classical confounding vs collider-
359 stratification bias. *Epidemiology* 2003;**14**:300-6.
- 360 19 Hernan MA, Hernandez-Diaz S, Robins JM. A structural approach to selection bias.
361 *Epidemiology* 2004;**15**:615-25.

- 362 20 Meza R, Jeon J, Renehan AG, Luebeck EG. Colorectal cancer incidence trends in the United
363 States and United kingdom: evidence of right- to left-sided biological gradients with implications for
364 screening. *Cancer Res* 2010;**70**:5419-29.
- 365 21 Song M, Bretthauer M. Interpreting epidemiologic studies of colonoscopy screening for
366 colorectal cancer prevention: understanding the mechanisms of action is key. *Eur J Epidemiol*
367 2023;**38**:929-31.
- 368 22 Brenner H, Heisser T, Cardoso R, Hoffmeister M. When gold standards are not so golden:
369 prevalence bias in randomized trials on endoscopic colorectal cancer screening. *Eur J Epidemiol*
370 2023;**38**:933-7.
- 371 23 Rasouli B, Chubak J, Floyd JS, Psaty BM, Nguyen M, Walker RL, *et al.* Combining high quality
372 data with rigorous methods: emulation of a target trial using electronic health records and a nested
373 case-control design. *BMJ* 2023;**383**:e072346.
- 374 24 Crockett SD, Nagtegaal ID. Terminology, molecular features, epidemiology, and management
375 of serrated colorectal neoplasia. *Gastroenterology* 2019;**157**:949-66 e4.

376

377

378 **Statements & Declarations**

379 ***Funding***

380 BIPS intramural funding

381 ***Competing interests***

382 MB, SS, VD and UH are working at an independent, non-profit research institute, the Leibniz
383 Institute for Prevention Research and Epidemiology – BIPS. Unrelated to this study, BIPS
384 occasionally conducts studies financed by the pharmaceutical industry. These are post-
385 authorization safety studies (PASS) requested by health authorities. The design and conduct
386 of these studies as well as the interpretation and publication are not influenced by the
387 pharmaceutical industry. The study presented was not funded by the pharmaceutical industry
388 and was performed in line with the ENCePP Code of Conduct.

389 ***Author contributions***

390 MB: Conceptualization, data curation, formal analysis, investigation, methodology, software,
391 visualization, writing – original draft, writing – review and editing; SS: Conceptualization,
392 investigation, writing – review and editing; VD: Conceptualization, investigation, methodology,
393 supervision, writing – review and editing; UH: Conceptualization, funding acquisition,
394 investigation, methodology, project administration, resources, supervision, writing – original
395 draft, writing – review and editing.

396 ***Ethics approval & consent to participate***

397 In Germany, the utilisation of health insurance data for scientific research is regulated by the
398 Code of Social Law. All involved health insurance providers as well as the German Federal
399 Office for Social Security and the Senator for Health, Women and Consumer Protection in
400 Bremen as their responsible authorities approved the use of GePaRD data for this study.
401 Informed consent for studies based on claims data is required by law unless obtaining consent
402 appears unacceptable and would bias results, which was the case in this study. According to
403 the Ethics Committee of the University of Bremen studies based on GePaRD are exempt from
404 institutional review board review.

405 ***Data availability***

406 As we are not the owners of the data we are not legally entitled to grant access to the data of
407 the German Pharmacoepidemiological Research Database. In accordance with German data
408 protection regulations, access to the data is granted only to employees of the Leibniz Institute
409 for Prevention Research and Epidemiology – BIPS on the BIPS premises and in the context
410 of approved research projects. Third parties may only access the data in cooperation with BIPS
411 and after signing an agreement for guest researchers at BIPS.

412

413 **Tables and Figures**

414

415 *Table 1: Results of cohort study designs without and with alignment at time zero (adjusted for*
 416 *baseline covariates).*

	Control group	Screening group	Adjusted relative risk	(95% CI)
Design without alignment at time zero				
Number at risk	200,000	200,000		
Number of CRC cases				
Distal CRC	2,472	829	0.35	(0.32-0.39)
Proximal CRC	1,290	823	0.63	(0.57-0.69)
Design with alignment at time zero				
Number at risk	1,241,071	192,054		
Number of CRC cases				
Distal CRC	16,750	1,678	0.68	(0.63-0.73)
Proximal CRC	8,548	919	0.72	(0.65-0.80)

417

418

419 *Table 2: Results of case-control study designs without and with alignment at time zero.*

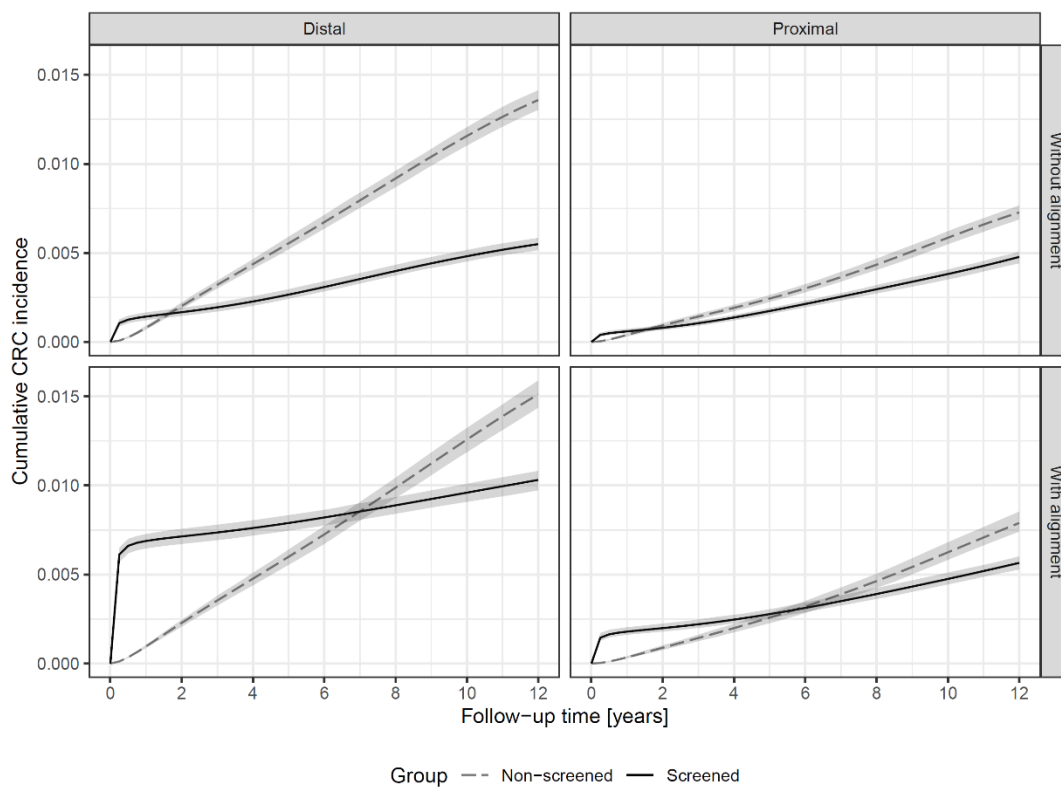
Site	Case status		Adjusted OR (95% CI)[§]
	Cases	Controls	
Design without alignment at time zero			
Number of distal CRCs / controls	446	2,230	
Thereof exposed	36	653	0.23 (0.16-0.33)
Number of proximal CRCs / controls	302	1,510	
Thereof exposed	54	434	0.54 (0.39-0.75)
Design with alignment at time zero			
Number of distal CRCs / controls	8,382	40,925	
Thereof exposed	799	5,695	0.73
Number of proximal CRCs / controls	4,463	22,175	
Thereof exposed	409	3,013	0.67

[§]: Confidence intervals could not be obtained for the case-control analysis with alignment at time zero due to computational limitation (see methods section).

OR: Odds Ratio

420

421



422

423 **Fig. 1:** Adjusted cumulative incidence functions for distal and proximal CRC from the cohort
424 study design without alignment at time zero (top row) and the cohort study design with
425 alignment at time zero (bottom row)

426

427

428

429

430

431

432

433

Supplement

434 **Supplement 1: Cohort and case-control study without alignment at time zero for**
435 **different baseline years**
436

437 As mentioned in the methods section, for the study designs without alignment at time zero, we
438 selected individuals from the source population entering the cohort in 2009. In sensitivity
439 analyses, we varied the baseline year, i.e. individuals entering the cohort in 2010 and 2011,
440 respectively. The respective results are shown in Table S1 and Figure S1 for the cohort study
441 and in Table S2 for the case-control study. For comparison, also the results of the base case
442 analysis (baseline year 2009) are shown.

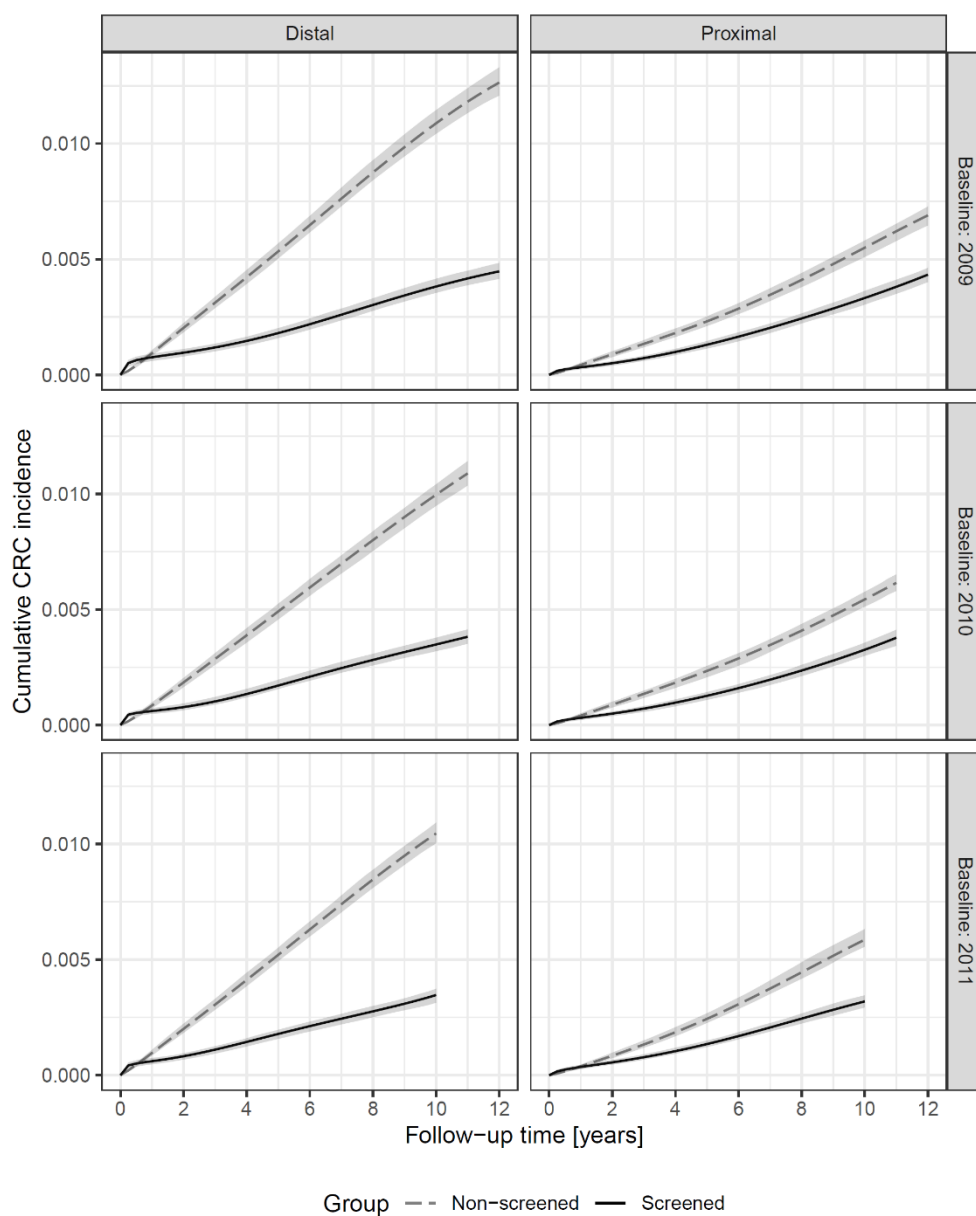
443 *Table S1: Results of cohort study designs without alignment at time zero for different baseline*
444 *years.*

Baseline year		Control group	Screening group	Adjusted relative risk	(95% CI)
	Number at risk	200,000	200,000		
	Number of CRC cases				
2009	Distal, n	2,472	829	0.35	(0.32-0.39)
	Proximal, n	1,290	823	0.63	(0.57-0.69)
2010	Distal, n	2,101	709	0.35	(0.32-0.39)
	Proximal, n	1,131	702	0.61	(0.56-0.68)
2011	Distal, n	2,048	642	0.33	(0.30-0.37)
	Proximal, n	1,056	640	0.54	(0.49-0.59)

445

446

447



448

449 *Figure S1: Adjusted cumulative incidence functions for distal and proximal CRC from the*
450 *cohort study design without alignment at time zero for different baseline years.*

451

452

453 *Table S2: Results of case-control designs without alignment at time zero for different baseline*
 454 *years.*

455

Site	Case status		Adjusted OR (95% CI)
	Cases	Controls	
Baseline year 2009			
Number of distal CRCs / controls	446	2,230	
Thereof exposed	36	653	0.23 (0.16-0.33)
Number of proximal CRCs / controls	302	1,510	
Thereof exposed	54	434	0.54 (0.39-0.75)
Baseline year 2010			
Number of distal CRCs / controls	430	2,150	
Thereof exposed	29	607	0.19 (0.13-0.29)
Number of proximal CRCs / controls	264	1,320	
Thereof exposed	38	345	0.46 (0.32-0.68)
Baseline year 2011			
Number of distal CRCs / controls	408	2,040	
Thereof exposed	24	500	0.20 (0.13-0.31)
Number of proximal CRCs / controls	254	1,270	
Thereof exposed	31	298	0.47 (0.31-0.71)

456

457

458 **Supplement 2: Cohort and case-control study without alignment at time zero:**
 459 **considering both screening and diagnostic colonoscopy for the assignment to**
 460 **exposure groups**
 461

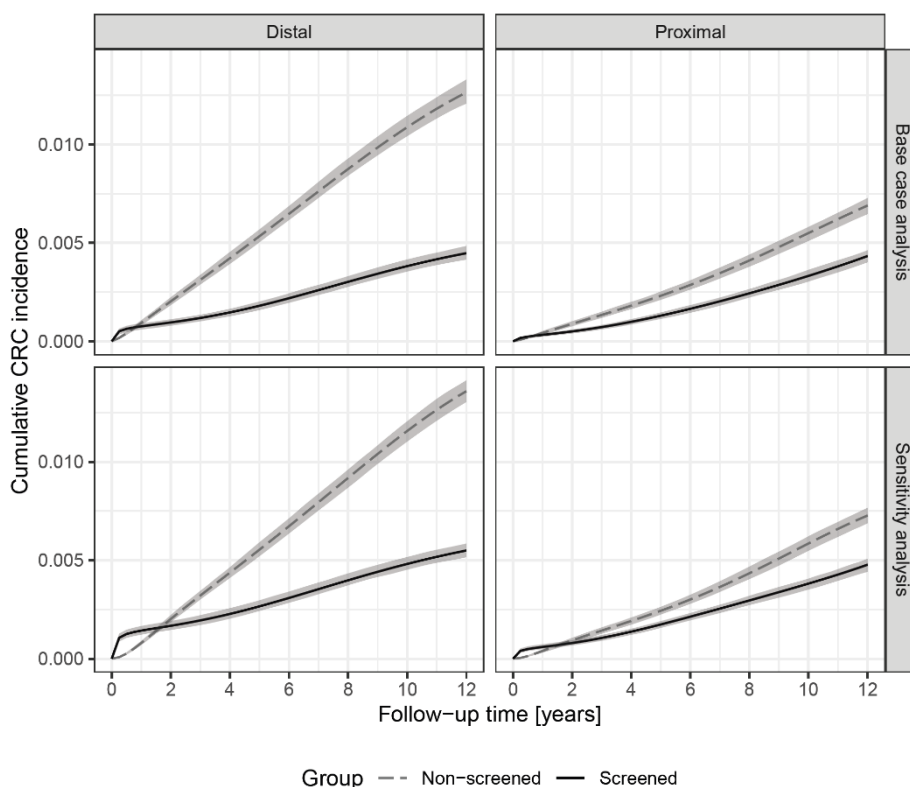
462 As mentioned in the methods section regarding the study designs without alignment at time
 463 zero, only screening colonoscopies were considered for the assignment to exposure groups in
 464 the base case analysis. In a sensitivity analysis, we considered both screening and diagnostic
 465 colonoscopies for the exposure assignment. The respective results are shown in Table S4 and
 466 Figure S2 for the cohort study design and in Table S5 for the case-control study.

467
 468 *Table S4: Results of cohort study designs without alignment at time zero: sensitivity analyses*
 469 *considering both screening and diagnostic colonoscopy for the assignment to exposure*
 470 *groups. For comparison, also the results of the base case analysis are shown.*

	Control group	Screening group	Adjusted relative risk	(95% CI)
Base case analysis				
Number at risk	200,000	200,000		
Number of CRC cases				
Distal, n	2,472	829	0.35	(0.32-0.39)
Proximal, n	1,290	823	0.63	(0.57-0.69)
Sensitivity analysis				
Number at risk	200,000	200,000		
Number of CRC cases				
Distal, n	2,657	982	0.40	(0.37-0.44)
Proximal, n	1,348	893	0.66	(0.60-0.72)

471

472



473

474 *Figure S2: Adjusted cumulative incidence functions for distal and proximal CRC from the cohort*
 475 *study design without alignment at time zero: sensitivity analysis considering both screening*
 476 *and diagnostic colonoscopy for the assignment to exposure groups. For comparison, also the*
 477 *cumulative incidence functions of the base case analysis are shown.*

478

479 *Table S5: Results of case-control designs without alignment at time zero: sensitivity analyses*
 480 *considering both screening and diagnostic colonoscopy for the assignment to exposure*
 481 *groups. For comparison, also the results of the base case analysis are shown.*

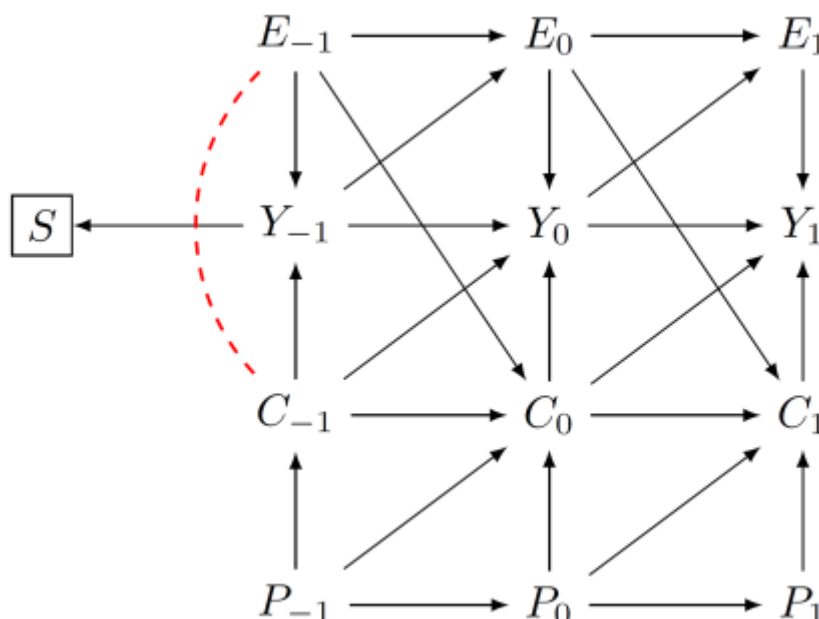
482

Site	Case status		Adjusted OR (95% CI)
	Cases	Controls	
Base case analysis			
Number of distal CRCs / controls	446	2,230	
Thereof exposed	36	653	0.23 (0.16-0.33)
Number of proximal CRCs / controls	302	1,510	
Thereof exposed	54	434	0.54 (0.39-0.75)
Sensitivity analysis			
Number of distal CRCs / controls	446	2,230	
Thereof exposed	60	1,020	0.20 (0.15-0.26)
Number of proximal CRCs / controls	302	1,510	
Thereof exposed	82	685	0.44 (0.33-0.58)

483

484 **Supplement 3: Structural explanation of the bias inherent to study designs using pre-**
 485 **baseline information for the assignment to exposure groups**

486 For simplicity, we divide time into three periods $t \in \{-1, 0, 1\}$ with $t = -1$ being the pre-baseline
 487 period, $t = 0$ the baseline and $t = 1$ the post-baseline or follow-up period. Let $E_t \in \{0, 1\}$
 488 described a person's exposure to screening colonoscopy at time t . Let $P_t \in \{0, 1\}$ indicate the
 489 presence of colorectal precursors at time t and $C_t \in \{0, 1\}$ the onset of preclinical CRC by time
 490 t . Let $Y_t \in \{0, 1\}$ indicate a diagnosis of colorectal cancer by time t . Finally, let $S = 1$ denote
 491 selection into the study cohort.



492
 493 *Figure S3: DAG of bias resulting from violation of alignment at time zero in the form of exposure assessment based*
 494 *on pre-baseline information.*

495 As shown in Figure S3, at time point t the causal mechanism that leads to a diagnosis of CRC
 496 is as follows: Precursors P_t lead to the development of CRC C_t , which in turn progress to the
 497 outcome of interest, CRC diagnosis Y_t . At the same time, exposure to screening colonoscopy
 498 E_t leads to CRC diagnosis Y_t at the same time point, if the disease is present. Furthermore,
 499 exposure at time t prevents disease onset at the later time $t + 1$ by removing precursor stages
 500 present at time t .

501 Importantly, the variable Y_t is a collider variable on the path $P_t \rightarrow C_t \rightarrow Y_t \leftarrow E_t$. When cohort
 502 selection S is based on this collider, a non-causal association is introduced between E_t and C_t .
 503 If the cohort selection process excludes individuals with CRC diagnosis before baseline (Y_{-1})
 504 while including individuals with past exposure E_{-1} in the exposed group of the analysis dataset,
 505 the unexposed group appears to have a higher CRC incidence. Individuals who were screened
 506 in the past and had prevalent CRC received a diagnosis and were filtered out of the study
 507 cohort. Individuals who were screened in the past and did not have prevalent CRC are included
 508 in the exposed group. No such selection takes place in the unexposed group, where individuals
 509 must not have had any screening colonoscopy before baseline. Therefore, there is a non-
 510 causal association between exposure before baseline and prevalent, undiagnosed CRC before
 511 baseline. This non-causal association means that there are now open backdoor paths from

512 exposure before baseline to the study outcome at later time points. The resulting bias,
513 therefore, can be expressed as a form of collider stratification bias.

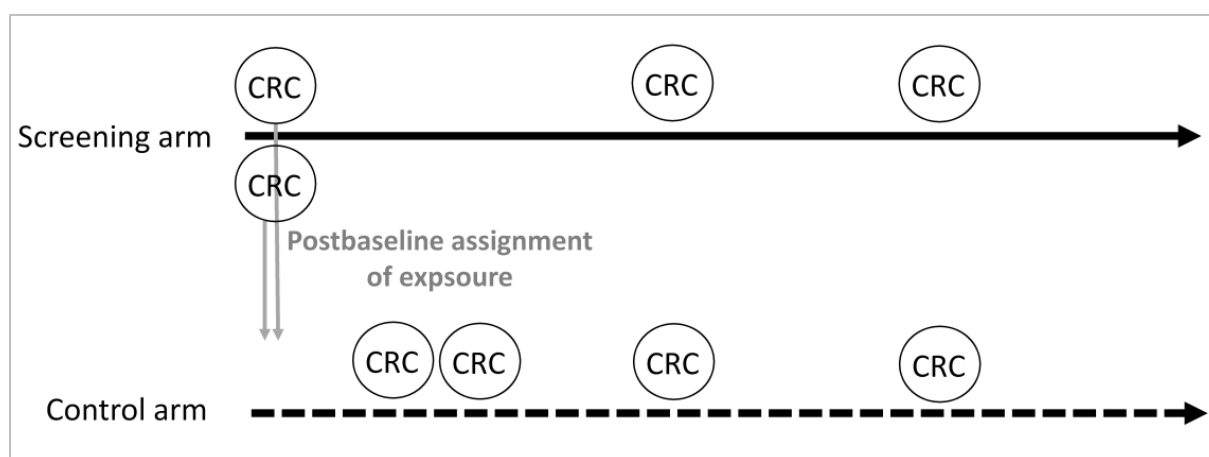
514 Importantly, the strength of the bias will depend on the prevalence of C_{-1} . If, conceptually, the
515 prevalence of CRC before baseline were to approach zero, no such selection would take place.
516 In the age group under study here, the prevalence of proximal CRC before baseline will be
517 much lower than the prevalence of distal CRC before baseline, which means that this bias will
518 impact the effect estimate for distal CRC more severely.

519

520

521 **Supplement 4: Illustration of the mechanism underlying the misallocation of screen-**
522 **detected CRCs in case-control studies without alignment at time zero**

523 Figure S4 illustrates the mechanism that underlies the misallocation of screen-detected CRCs
524 in case-control studies without alignment at time zero, resulting in an overestimate of the
525 effectiveness of screening colonoscopy. First, let us imagine a hypothetical RCT investigating
526 the effectiveness of screening colonoscopy on CRC incidence. At baseline, screening-naïve
527 persons are randomly assigned to either the screening or the control arm. Analysing this data
528 as a case-control study without alignment at time zero would mean that for CRCs occurring in
529 both arms, it is assessed whether they had a colonoscopy *before* CRC diagnosis. Given that
530 screen-detected CRCs did not have a colonoscopy *before* CRC diagnosis, they are assigned
531 (post-baseline, i.e. after randomization) to the control arm and are thereby classified as
532 unexposed. This overestimates the effectiveness of screening given that CRCs accumulate in
533 the control group (unexposed group). Given that screen-detected CRCs are more frequent in
534 the distal colorectum, the resulting bias affects distal CRC more severely than proximal CRC.



535
536 *Figure S4: Illustration of the mechanism of misallocation of screen-detected CRCs in case-control studies without*
537 *alignment at time zero*

538 Of note, in published case-control studies investigating the effectiveness of screening
539 colonoscopy based on primary data, selection bias in the control arm (higher prevalence of
540 screening colonoscopy as compared to the general population) can—as an additional
541 mechanism—also contribute to overestimating the effectiveness of screening colonoscopy, but
542 it is not expected that this bias leads to a difference in the effectiveness by site.

543 In our case-control study without alignment at time zero, there was a second mechanism
544 leading to overestimating the effectiveness of screening colonoscopy due a compromise we
545 had to make because of the left truncation of our data. Specifically, we had to select CRC
546 cases diagnosed in 2018-2020 from those entering the cohort in 2009 (see methods section)
547 in order to be able to assess exposure in the 10 years prior to CRC diagnosis. CRCs diagnosed
548 between 2009 and 2017 in the context of screening, which are more often in the distal than in
549 the proximal colon, were not included in the final set of cases, i.e. distal CRCs exposed to
550 screening colonoscopy were underrepresented in the final set of cases. We conducted
551 additional analyses to disentangle the effect of both mechanism (data not shown), which did
552 not change our conclusion, i.e. that the mechanism described in Figure S4 (also) leads to an
553 artificial difference in the effectiveness of colonoscopy by site.

554 **Supplement 5: Bias due to post-baseline information for exposure assignment in a**
555 **cohort study**

556 In the cohort study by Nishihara et al. the assessment of eligibility criteria (e.g. no prior cancer
557 except for nonmelanoma skin cancer, no prior endoscopy) as well as the start of follow-up was
558 in 1988 (baseline). As part of a questionnaire administered every 2 years, participants were
559 then asked whether they had undergone either sigmoidoscopy or colonoscopy and, if so, the
560 reason for the investigation and whether there was a diagnosis of colorectal polyps. This
561 means that the assignment to exposure groups used information after the assessment of
562 eligibility and the start of follow-up, and it was updated every two years, i.e. post-baseline
563 information was used to determine exposure. The outcome was the incidence of colorectal
564 cancer, which was compared between participants without a lower endoscopy (control group),
565 participants with a polypectomy, participants with a negative sigmoidoscopy and participants
566 with a negative colonoscopy.

567 The mechanism described for the case-control study without alignment at time zero also
568 applies to this design. In each two-year time interval CRCs detected in persons who had their
569 first colonoscopy during this two-year time interval are—per definition—assigned to the
570 unexposed group as they had no colonoscopy prior to CRC diagnosis. This overestimates the
571 effectiveness of screening because CRCs are filtered to the unexposed group. As the majority
572 of screen-detected CRCs are in the distal colon, this bias predominantly affects CRCs in the
573 distal colon and thus leads to an artificial difference in the effectiveness of colonoscopy by site.

574

575 **Supplement 6: Post-colonoscopy CRC diagnoses**

576

577 For the cohort analysis with alignment at time zero, we quantified the occurrence of post-
578 colonoscopy CRC diagnoses occurring in the screening arm and assessed their site
579 distribution. CRC diagnoses with a screening colonoscopy in the same calendar quarter or in
580 the 180 days before CRC diagnosis were considered screen-detected and were not counted
581 as post-colonoscopy CRC. The frequencies and percentages are given in the below Table:

<i>Site</i>	<i>N</i>	<i>%</i>
Distal CRC	541	39.3
Proximal CRC	633	46.0
Both/unknown	203	14.7
Total	1377	

582

583