

# Impact of year-long cannabis use for medical symptoms on brain activation during cognitive processes

## Authors

Debbie Burdinski<sup>1,2</sup>, BS; Alisha Kodibagkar<sup>1,3</sup>, MSE; Kevin Potter, PhD<sup>2,4</sup>; Randi Schuster, PhD<sup>2,4</sup>; A. Eden Evins, MD<sup>2,4</sup>; Satrajit Ghosh<sup>\*1,2</sup>, PhD; Jodi Gilman<sup>\*2,4,5</sup>, PhD

\* co-supervised

## Author Affiliations

<sup>1</sup>McGovern Institute for Brain Research, MIT, Cambridge, MA

<sup>2</sup>Harvard Medical School, Boston, MA

<sup>3</sup>University of Pennsylvania School of Engineering and Applied Science, Philadelphia, PA

<sup>4</sup>Center for Addiction Medicine, Massachusetts General Hospital, Boston, MA

<sup>5</sup>Athinoula A. Martinos Center for Biomedical Imaging, Department of Radiology, Massachusetts General Hospital

## Author Emails

Debbie Burdinski: [dclb@mit.edu](mailto:dclb@mit.edu)

Alisha Kodibagkar: [akodibag@seas.upenn.edu](mailto:akodibag@seas.upenn.edu)

Kevin Potter: [kpotter5@mgh.harvard.edu](mailto:kpotter5@mgh.harvard.edu)

Randi Schuster: [rschuster@mgh.harvard.edu](mailto:rschuster@mgh.harvard.edu)

A. Eden Evins: [aeevins@mgh.harvard.edu](mailto:aeevins@mgh.harvard.edu)

Jodi Gilman: [jgilman1@mgh.harvard.edu](mailto:jgilman1@mgh.harvard.edu)

Satrajit Ghosh: [satra@mit.edu](mailto:satra@mit.edu)

## Correspondence

Jodi M. Gilman, PhD, MGH Center for Addiction Medicine, 101 Merrimac Street, Ste 320 Boston MA 02114, [jgilman1@mgh.harvard.edu](mailto:jgilman1@mgh.harvard.edu), Tel: 617-643-7293, Fax: 617-643-1998

## Manuscript Word Count

3429

## Key Points

**Question:** This study investigated the impact of year-long cannabis use for medical symptoms on brain activation during cognitive processes implicated in cannabis use.

**Findings:** Functional magnetic resonance imaging during a working memory, reward, and inhibitory control task was collected at baseline and after one year of medical cannabis card ownership. After one year, brain activation did not differ statistically from baseline and was not associated with changes in cannabis use frequency.

**Meaning:** The absence of activation differences suggests that adults using cannabis for medical conditions may not experience significant neural effects in regards to reward, working memory, or inhibitory control.

## Abstract

**Importance:** Cannabis is increasingly being used to treat medical symptoms, but the effects of cannabis use on brain function in those using cannabis for these symptoms is not known.

**Objective:** To test whether brain activation during working memory, reward, and inhibitory control tasks, areas of cognition impacted by cannabis, showed increases following one year of cannabis use for medical symptoms.

**Design:** This observational cohort study took place from July 2017 to July 2020 and is reported on in 2024.

**Setting:** Participants were from the greater Boston area.

**Participants:** Participants were recruited as part of a clinical trial based on seeking medical cannabis cards for anxiety, depression, pain, or sleep disorders, and were between 18 and 65 years. Exclusion criteria were daily cannabis use and cannabis use disorder at baseline.

**Main Outcomes and Measures:** Outcomes were whole brain functional activation during tasks involving working memory, reward and inhibitory control at baseline and after one year of cannabis use.

**Results:** Imaging was collected in participants before and one year after obtaining medical cannabis cards; 57 at baseline (38 female [66.7%]; mean [SD] age, 38.0 [14.6] years) at baseline, and 54 at one-year (37 female [68.5%]; mean [SD] age, 38.7 [14.3] years). Imaging

was also collected in 32 healthy control participants (22 female [68.8%]; mean [SD] age, 33.8 [11.8] years) at baseline. In all groups and at both time points, functional imaging revealed canonical activations of the probed cognitive processes. No statistically significant difference in brain activation between the two timepoints (baseline and one-year) in those with medical cannabis cards and no association of changes in cannabis use frequency with brain activation were found.

**Conclusions and Relevance:** Findings suggest that adults do not show significant neural effects in the areas of cognition of working memory, reward, and inhibitory control after one year of cannabis use for medical symptoms. The results warrant further studies that probe effects of cannabis at higher doses, with greater frequency, in younger age groups, and with larger, more diverse cohorts.

**Trial Registration:** NCT03224468, <https://clinicaltrials.gov/>

## Introduction

Accumulating evidence has shown that regular cannabis use can alter brain function, especially in networks that support working memory, cognitive control, and reward processing.<sup>1</sup> Several prior reviews have described the functional impact of chronic cannabis use in both adults and adolescents,<sup>2-4</sup> largely concluding that the domains of executive functioning and memory are most strongly affected by regular cannabis use.<sup>5,6</sup> However, most of the evidence for brain changes with cannabis use is derived from between-group brain differences between those who use cannabis and those who do not, rather than from longitudinal changes at pre- and post-cannabis timepoints, raising the question of whether pre-existing differences between users and non-users underlie observed changes. Longitudinal studies, such as the ABCD study,<sup>7</sup> are underway, however to date, few studies focused on adults using cannabis to treat medical symptoms. Little is known about effects of cannabis on the brain in medical populations, who may also experience illness-related cognitive weaknesses and may have different use patterns and age ranges compared to recreational users.

Delta-9-tetrahydrocannabinol (THC), the main psychoactive compound in cannabis, binds to endogenous cannabinoid CB1 receptors located in brain regions such as the hippocampus, amygdala, basal ganglia, prefrontal cortex, substantia nigra and globus pallidus,<sup>8,9</sup> making frontal-limbic neurocircuitry particularly susceptible to cannabis-related effects in the brain.<sup>10</sup> Specifically, THC binding inhibits release of neurotransmitters usually modulated through endocannabinoids.<sup>11</sup> Many factors can modulate THC's impact on the brain, including duration, frequency and quantity of use, age of initiation, potency, accompanying cannabidiol content, presence of cannabis use disorder (CUD), concurrent use of other substances, and sex and genetics.<sup>12</sup>

The question of how cannabis affects the brain is particularly relevant to those using cannabis to treat medical symptoms. Currently in the US, 37 states and the District of Columbia have medical cannabis programs, and enrollment in medical cannabis programs increased 4.5-fold from 2016 to 2020.<sup>13</sup> In Massachusetts, obtaining a medical cannabis card (MCC) gives patients access to tax-exempt cannabis purchases and additional medical dispensaries. However, evidence for the effectiveness of plant-based cannabis for any medical condition is sparse.<sup>14</sup> In dispensaries, a myriad of products (e.g. candies, gummies, smoked, vaped) are available to those using medically, and the neural effects of these products are unknown.

We sought to describe cognitive and brain-based changes in a longitudinal sample of participants beginning to use cannabis for medical symptoms, specifically for anxiety, depression, pain, and insomnia symptoms. We first conducted a pragmatic randomized clinical trial (RCT NCT03224468) of cannabis for medical symptoms to assess its effect on target symptoms when compared to a waitlist control group.<sup>15,16</sup> In the current report, we describe the secondary outcomes of the clinical trial, a longitudinal analysis of task-based functional magnetic resonance imaging (fMRI) data from those who were assigned to obtain MCCs immediately. We explore the extent to which cannabis affects the brain during cognitive processes previously implicated in cannabis use, using neuroimaging tasks that probe working memory, reward processing, and inhibitory control. We hypothesized, based on previous literature,<sup>17-19</sup> that a year of cannabis use would be associated with generally increased activation in brain regions underlying these processes and that an increase in cannabis use frequency would be associated with this increased activation, with few differences in task performance.

## Methods

### Study Recruitment

This study analyzed the fMRI data collected as part of a pragmatic, single-site, single-blind, RCT assessing MCC-seeking patients in the greater Boston area from July 1, 2017, to July 31, 2020 (see *NCT03224468*).<sup>15,16</sup> Briefly, participants were between the ages of 18 and 65, and were seeking to obtain MCCs for the first time for depression, anxiety, pain, or insomnia symptoms, the most commonly reported conditions in those seeking cannabis for symptom management. Exclusion criteria included daily cannabis use, CUD diagnosis at screening or baseline, cancer, psychosis, and current substance use disorders (except for mild or moderate alcohol use disorder and nicotine use disorder).

### Study Protocol

Participants were randomized to either receive their MCC immediately or to delay acquisition by 12 weeks. In the current study, only data from the immediate acquisition MCC group as well as an age- and sex-matched healthy control (HC) group are presented. Demographic variables were collected at baseline using self-report. Behavioral data collected at baseline, 2, 4, 12, 24, and 52 weeks included past-month frequency of cannabis use and validated scales to assess CUD, insomnia, depression and anxiety, and pain symptoms. In addition, urinalysis for cannabis metabolites was conducted at the time of study visits. Structural and functional brain imaging data was collected only in the MCC group (n=70, eFigure 1). At baseline imaging was also collected in the HC group (n=32). fMRI tasks included a working memory (N-back) task, a reward processing (monetary incentive delay, MID) task and an inhibitory response (stop signal, SST) task.<sup>20-22</sup> See the supplementary methods for a detailed description of the experimental paradigm (eFigures 2-4). Participants provided written informed consent and were financially



compensated for their participation in the study. The clinical trial was approved by the Massachusetts General Brigham institutional review board. This report focuses on the analysis of the task-based functional imaging, which followed a pretest-posttest design with a control group at baseline. Clinical outcomes of the RCT are reported elsewhere.<sup>15,16</sup>

## Participant Characteristics Analysis

Demographic metrics were compared across the four groups (HC participants at baseline, MCC participants at baseline, MCC participants at one-year, MCC participants imaged at both time points) using a one-way ANOVA for numerical variables, a Fisher's exact test for categorical variables with less than 5 observations in a category, and a Chi-squared test for all other categorical variables. Cannabis metrics in the MCC participants who were imaged at both time points were compared across the two time points (baseline and one-year) using a t-test for numerical variables, a Fisher's exact test for categorical variables with less than 5 observations in a category, and a Chi-squared test for all other categorical variables.

## MRI Data Analysis

### Pre-Processing

Volumes were pre-processed using version 23.0.1 of the *fMRIPrep* software, which included head-motion estimation, slice time correction, fieldmap-based distortion correction, EPI to T1 registration and resampling to both MNI volumetric and grayordinate space.<sup>23,24</sup> Quality control metrics were derived using the *MRIQC* software.<sup>25</sup> See the supplementary methods for details on MRI acquisition and pre-processing.

### General Linear Modeling

To corroborate the robustness of our findings, two general linear model analyses were conducted, one in volumetric and the other in grayordinate space, in *Python 3.9.13* using the

package *Nilearn 0.9.2*.<sup>26,27</sup> Time series were scaled and smoothed. First-level modeling removed noise using motion, drift and anatomical CompCor regressors. For the N-back task, a single image contrast of the two-back vs. zero-back stimuli was calculated. For the MID task, given the number of possible contrasts, this study focused on those from two recent publications.<sup>28,29</sup> Anticipation contrasts included high reward vs. neutral anticipation, low reward vs. neutral anticipation, reward vs. neutral anticipation, high reward vs. low reward anticipation, high reward vs. implicit baseline, high loss vs. neutral anticipation, low loss vs. neutral anticipation, and high loss vs. low loss anticipation. Feedback contrasts included high reward vs. neutral hit feedback, reward vs. missed reward feedback, high loss vs. neutral hit feedback and loss vs. avoided loss feedback. For the SST task, contrasts calculated include correct inhibition (successful STOP vs. GO), incorrect inhibition (unsuccessful STOP vs. GO), and unsuccessful inhibitory control (unsuccessful STOP vs. successful STOP). Two runs were collected for the MID and SST tasks, which were combined using a second linear model prior to group-modeling.

Individual effect sizes for the contrasts were passed to a group-level model to assess group averages at a given time point, differences across groups and time points, and the role of cannabis use frequency (two-sided tests for contrast or parameter significance in the setting of an ordinary least squares regression model with covariates). Covariates included sex, age, and past-month cannabis use frequency (at the time point of the analysis unless specified below), mean-centered for numerical variables.

Whole brain activation was compared between MCC users and a matched control group at baseline using a contrast between group-level intercepts. For the across time analyses of the MCC group, observations were limited to those participants with imaging at both timepoints. It was assessed whether, on average, there was a whole brain activation difference between

baseline and one-year timepoints in an individual, controlling for baseline cannabis use frequency to account for individual differences in use at the outset of the study. Further, the effect of the change in cannabis use frequency across time on whole brain activation at one-year was assessed, adding the additional covariates of brain activation and cannabis use frequency at baseline.

Runs were excluded if they were statistical outliers at a study time point based on their signal-to-noise ratio, temporal signal-to-noise ratio, ghost-to-signal ratio along the two phase encoding directions, if their mean framewise displacement (FD) was above 0.2 (unless <30% of a scan had a FD above the FD threshold), or if more than 30% of their volumes were motion outliers as determined by *fMRIPrep*. Further FD cutoffs were assessed to corroborate our findings. Effect sizes at the group level were standardized for visualization purposes.<sup>30,31</sup> Statistical inference was FDR controlled at 0.05 using the Benjamini-Hochberg procedure. See the supplementary methods for details on the general linear modeling approach.

### Behavioral Data Analysis

Differences between the HC and MCC groups at baseline and between the two time points of the MCC participants in regards to reaction time and accuracy across the two-back, zero-back and combined stimuli of the N-back task were assessed using a two-sided t-test (paired in the case of MCC participants across time). Differences between the groups (HC at baseline, MCC at baseline, MCC at one-year) for stop signal reaction time (the inferred mean latency between the stop signal and response inhibition; SSRT) were estimated via an additive multilevel linear model with a participant-varying intercept.

## Results

### Participant Characteristics

We collected brain imaging data in 70 MCC and in 32 control participants. Briefly, at baseline 57 MCC participants (38 female [66.7%]; mean [SD] age, 38.0 [14.6] years) and 32 control participants (22 female [68.8%]; mean [SD] age, 33.8 [11.8] years) were imaged. After one year 54 MCC participants (37 female [68.5%]; mean [SD] age, 38.7 [14.3] years) were imaged. Out of all MCC participants, 41 presented for imaging at both time points (28 female [68.3%]; mean [SD] age, 39.6 [14.4] years). The four groups did not differ significantly in any of the characteristics assessed, including sex, age, race, ethnicity, education years, and handedness, and the three MCC subsets did not differ in the symptoms they enrolled in the study for (Table 1).

To capture changes in cannabis use throughout the year of having the MCC, severity of CUD symptoms, CUDIT - R summed score, cannabis use frequency per month, and positive urine THC were compared between the baseline and one-year time point (eTable 1). There was a statistically significant difference between the two time points in all metrics, which all tended towards higher cannabis use at the one-year time point compared to at baseline.

### N-back Task

Activation in prefrontal and parietal cortical regions was observed for the two-back vs. zero-back image contrast in all three participant groups, including MCC participants at baseline and one-year as well as control participants (Figure 1). No difference in activation between the groups at

baseline (HC n=22, MCC n=40) or between the two timepoints of the MCC group (n=25), and no effect of cannabis use frequency change on one-year activation of the MCC group were noted at the statistical significance threshold.

Control participants compared to MCC participants at baseline, as well as MCC participants compared across the two time points restricted to those with imaging at both time points, also did not differ in accuracy or reaction time for the zero-back or two-back conditions of the N-back task at a statistical threshold of  $p < 0.05$  (eTable 2).

### MID Task

During all cue contrasts, activation in the bilateral basal ganglia was observable in all three participant groups, though only reached statistical significance in the High Reward Cue vs. Baseline contrast (Figure 2, eFigures 5,6).<sup>32</sup> During the reward vs. missed reward feedback contrast, activation in the bilateral basal ganglia is observed, while during all other feedback contrasts, deactivation in the bilateral basal ganglia and insula is observed, though only statistically significant in the high loss vs. neutral hit contrast in the volumetric analysis (Figure 2, eFigures 5,6). No difference in activation between the groups at baseline (HC n=23, MCC n=35) or between the two timepoints of the MCC group (n = 21 for High Reward vs. Neutral Hit and High Loss vs. Neutral Hit contrasts; n=22 for all other contrasts), and no effect of cannabis use frequency change on one-year activation of the MCC group were noted at the statistical significance threshold.

## SST Task

Activation in inhibitory control-related regions, including the right inferior frontal gyrus, frontal gyrus, and insula, was observed for the correct inhibition, incorrect inhibition and successful inhibitory control contrasts in all three participant groups, including MCC participants at baseline and one-year as well as control participants (Figure 3, eFigures 7,8). No difference in activation between the groups at baseline (HC n=25, MCC n=40) or between the two timepoints of the MCC group (n=26), and no effect of cannabis use frequency change on one-year activation of the MCC group were noted at the statistical significance threshold.

At baseline, HC participants had significantly faster SSRT ( $259 \pm 43$ ms) compared to MCC participants ( $276 \pm 40$ ms),  $\beta = -16.2$  (SE=7.7),  $p = 0.035$ . MCC participants had a nonsignificant reduction in SSRT from baseline ( $276 \pm 40$ ms) to year 1 ( $264 \pm 43$ ms),  $\beta = -10.0$  (SE=5.1),  $p = 0.050$ .

Relaxing the FD threshold from 0.2 to 0.3 and not removing any quality control outliers did not change the results above (eFigures 9-14).

## Discussion

After year-long cannabis use for medical symptoms, we did not observe functional differences during working memory, reward processing, or inhibitory control tasks or an association of changes in cannabis use frequency with brain activation. Similarly, no significant changes in behavioral performance emerged. This suggests that cannabis use for medical purposes, within the snapshot of cognition captured by these tasks and within a mostly older, white, female and generally well-educated population, does not have a significant neural impact.

Prior studies have found that cannabis use, especially in adolescents, is associated with impairments in cognitive processes beyond acute intoxication.<sup>11</sup> Such studies have largely been cross-sectional, have generally not focused on adults using cannabis for medical purposes, and have focused primarily on heavy cannabis use. Further, conclusions of studies comparing individuals who use cannabis with those who do not often are limited by inherent group differences at the outset. Thus, the neural impact of cannabis use for medical purposes has remained largely unknown. Because participants in this study did not use cannabis heavily at baseline and obtained MCCs for the first time for their medical symptoms, the study was uniquely positioned to examine the brain before and after adults began to use cannabis regularly, a period that is difficult to capture. This study is one of the first studies to evaluate brain activation differences in an ecologically valid setting in those who began using cannabis for medical and psychological symptoms.

Memory is one of the most consistently reported processes that is affected by cannabis.<sup>33</sup> Prior studies comparing those who use cannabis to those who do not have found significant changes in activation of frontal regions during the N-back task,<sup>34–37</sup> though it should be noted that other

studies did not report statistically significant difference in any regions.<sup>38,39</sup> Reward-related activation has also been implicated in cannabis use, as prior studies have found significant changes in activation of striatal regions during the MID task.<sup>40–45</sup> Finally, inhibitory control activation differences have been reported,<sup>46,47</sup> particularly in fronto-basal-ganglia circuits.<sup>48</sup> However, these studies mainly consist of those who began using cannabis during adolescence or those who use cannabis frequently. Contrary to our initial hypothesis and this literature, our findings indicate that activation to working memory, reward processing, and inhibitory control tasks is largely unchanged in adults using cannabis to alleviate medical symptoms for one year. There are potential reasons for the lack of neural changes in this study compared to previous studies of recreational cannabis, including differences in use patterns, amounts, motivations for use, lower use in adolescence or other factors.

The findings of the study are corroborated by the results of the control group and by the brain activation patterns observed at both timepoints. Brain activation differences were not found between healthy controls and MCC participants at baseline, suggesting that the MCC group did not differ significantly at baseline from those who were not intending to use cannabis, thus addressing some of the limitations in previous studies. The working memory and inhibitory control tasks yielded statistically significant canonical activations in the control and MCC group at baseline and in the MCC group at the one-year timepoint.<sup>20,28,48,49</sup> The reward processing task also yielded canonical activations for the cue contrasts.<sup>28,29,32,50,51</sup> Activations to the feedback contrasts were also in line with what has been observed in the past, though the literature is less consistent in regards to the feedback contrast.<sup>29,50,51</sup> Of note, only two of the MID contrasts reached statistical significance. This suggests that the response to the task was more heterogeneous in this participant sample, and perhaps a larger sample or a differently designed reward task would have been needed to achieve more robust activation. It was recently noted that the MID task has low reliability, with the most consistent contrasts being those involving an



implicit baseline, which is consistent with our limited findings.<sup>52</sup> Overall, the activation patterns of all three tasks were consistent with those observed in the literature, demonstrating that in the comparison across time, brain activation from the desired cognitive processes is being compared.

## Limitations

This study should be interpreted in light of its limitations. First, the sample was predominantly female, white, older, and well-educated, which may limit the generalizability of our findings. Future studies should thus focus on recruiting a more diverse sample. Second, longitudinal effects not related to cannabis use, such as age-related changes, cannot be separated from cannabis-specific effects. Thus, future studies should compare brain imaging from a non-using control group across two time points as well. It is further possible that the lack of difference in task-based activation was due to limited power. We note that the maximal absolute effect size difference between the two time points in the MCC group is smaller than the maximal absolute effect size across the two time points for all three tasks. Thus, even if we did not detect a difference despite one existing, the change in brain activation after year-long cannabis use would still be small.

Importantly, adult-onset use of cannabis for medical symptoms may have different brain implications compared to adolescent use, something that should be studied in future investigations. Moreover, comorbid conditions (eg. depression or pain) may influence the impact of cannabis on the brain. While our sample size was too small for a subgroup analysis of each of the symptoms that participants sought the MCC for, future studies should enroll sufficient participants to be able to discover potential differences of the impact of cannabis across symptoms. Lastly, in this study participants freely chose cannabis products at local dispensaries to simulate the typical use of cannabis for medical symptoms. It is important to note that since

participants could choose their own products and doses, it is possible that doses of cannabinoids were too low to observe brain changes. Further research is warranted to understand how differences in product type, amounts, and patterns of use might affect the brain in cannabis users for medical symptoms.

The tasks included in this study only capture a snapshot of cognition, probing aspects of working memory, reward processing and inhibitory control. Brain activation during tasks that probe the same cognitive processes from a different angle or that probe other cognitive processes could change after yearlong cannabis use for medical symptoms. While this study selected classic tasks probing areas of cognition known to be affected by recreational cannabis use, it cannot ascertain that no facet of cognition is impacted by medical use of cannabis and future studies should explore additional tasks or functional connectivity independent of a specific task.

## Conclusions

In this study, brain activation during working memory, reward processing, and inhibitory control tasks was not statistically different after year-long cannabis use for medical symptoms and no effect of changes in cannabis use was noted. Our results suggest that adults who use cannabis, generally with light-to-moderate patterns, for such symptoms experience no significant long-term neural effects in these areas of cognition.

## Acknowledgments

**Author Contributions:** Drs Gilman and Ghosh had full access to all the data in the study and take responsibility for the integrity of the data and the accuracy of the data analysis.

*Concept and design:* Burdinski, Gilman, Ghosh, Evins.

*Acquisition, analysis, or interpretation of data:* Burdinski, Kodibagkar, Potter, Gilman, Ghosh.

*Drafting of the manuscript:* Burdinski, Kodibagkar, Gilman.

*Critical revision of the manuscript for important intellectual content:* Burdinski, Gilman, Ghosh, Evins, Schuster.

*Statistical analysis:* Burdinski, Potter.

*Obtained funding:* Gilman, Ghosh.

*Administrative, technical, or material support:* Burdinski, Gilman, Ghosh.

*Supervision:* Gilman, Ghosh.

**Conflict of Interest Disclosures:** AEE has served as a consultant to Charles River Analytics (NIDA SBIR grant) and Karuna Pharmaceuticals (Chair Data Monitoring Board). Other investigators report no potential conflicts.

**Funding/Support:** This work was funded by 5R01DA042043; PI: JMG. DB and SG were partially supported by P41EB019936 and by the Lann and Chris Wohrle Fund.

**Role of Funder/Sponsor:** The funder had no role in the design and conduct of the study; collection, management, analysis, and interpretation of the data; preparation, review, or approval of the manuscript; and decision to submit the manuscript for publication.

**Meeting Presentation:** This work was presented at the 2023 Organization of Human Brain Mapping Meeting; July 22-26, 2023; Montréal, Canada.

**Other disclosures:** ChatGPT 3.5 and Codeium 1.6.8 were used in the generation of some of the code.

**Data Sharing Statement:** The data are shared with and accessible through the ENIGMA consortium.<sup>53</sup> All preprocessing and analysis code is available here: <https://github.com/burdinskid13/cannabis-paper>.

## References

1. Burggren AC, Shirazi A, Ginder N, London ED. Cannabis effects on brain structure, function, and cognition: considerations for medical uses of cannabis and its derivatives. *Am J Drug Alcohol Abuse*. 2019;45(6):563-579.
2. Batalla A, Bhattacharyya S, Yücel M, et al. Structural and functional imaging studies in chronic cannabis users: a systematic review of adolescent and adult findings. *PLoS One*. 2013;8(2):e55821.
3. Yanes JA, Riedel MC, Ray KL, et al. Neuroimaging meta-analysis of cannabis use studies reveals convergent functional alterations in brain regions supporting cognitive control and reward processing. *J Psychopharmacol*. 2018;32(3):283-295.
4. Mason NL, Theunissen EL, Hutten NRPW, et al. Reduced responsiveness of the reward system is associated with tolerance to cannabis impairment in chronic users. *Addict Biol*. 2021;26(1):e12870.
5. Crane NA, Schuster RM, Fusar-Poli P, Gonzalez R. Effects of cannabis on neurocognitive functioning: recent advances, neurodevelopmental influences, and sex differences. *Neuropsychol Rev*. 2013;23(2):117-137.
6. Lisdahl KM, Wright NE, Kirchner-Medina C, Maple KE, Shollenbarger S. Considering Cannabis: The Effects of Regular Cannabis Use on Neurocognition in Adolescents and Young Adults. *Curr Addict Rep*. 2014;1(2):144-156.
7. Jernigan TL, Brown SA, ABCD Consortium Coordinators. Introduction. *Dev Cogn Neurosci*. 2018;32:1-3.

8. Mackie K. Distribution of cannabinoid receptors in the central and peripheral nervous system. *Handb Exp Pharmacol*. 2005;(168):299-325.
9. Piomelli D. The molecular logic of endocannabinoid signalling. *Nat Rev Neurosci*. 2003;4(11):873-884.
10. Martín-Santos R, Fagundo AB, Crippa JA, et al. Neuroimaging in cannabis use: a systematic review of the literature. *Psychol Med*. 2010;40(3):383-398.
11. Dellazizzo L, Potvin S, Giguère S, Dumais A. Evidence on the acute and residual neurocognitive effects of cannabis use in adolescents and adults: a systematic meta-review of meta-analyses. *Addiction*. 2022;117(7):1857-1870.
12. Volkow ND, Swanson JM, Evins AE, et al. Effects of Cannabis Use on Human Behavior, Including Cognition, Motivation, and Psychosis: A Review. *JAMA Psychiatry*. 2016;73(3):292-297.
13. Boehnke KF, Dean O, Haffajee RL, Hosanagar A. U.S. Trends in Registration for Medical Cannabis and Reasons for Use From 2016 to 2020 : An Observational Study. *Ann Intern Med*. 2022;175(7):945-951.
14. National Academies of Sciences, Engineering, and Medicine, Health and Medicine Division, Board on Population Health and Public Health Practice. *Therapeutic Effects of Cannabis and Cannabinoids*. National Academies Press (US); 2017.
15. Gilman JM, Schuster RM, Potter KW, et al. Effect of Medical Marijuana Card Ownership on Pain, Insomnia, and Affective Disorder Symptoms in Adults: A Randomized Clinical Trial. *JAMA Netw Open*. 2022;5(3):e222106.
16. Cooke ME, Potter KW, Jashinski J, et al. Development of cannabis use disorder in medical

- cannabis users: A 9-month follow-up of a randomized clinical trial testing effects of medical cannabis card ownership. *Front Psychiatry*. 2023;14:1083334.
17. Filbey FM, Dunlop J, Ketcherside A, et al. fMRI study of neural sensitization to hedonic stimuli in long-term, daily cannabis users. *Hum Brain Mapp*. 2016;37(10):3431-3443.
  18. Schweinsburg AD, Nagel BJ, Schweinsburg BC, Park A, Theilmann RJ, Tapert SF. Abstinent adolescent marijuana users show altered fMRI response during spatial working memory. *Psychiatry Res*. 2008;163(1):40-51.
  19. Becker B, Wagner D, Gouzoulis-Mayfrank E, Spuentrup E, Daumann J. The impact of early-onset cannabis use on functional brain correlates of working memory. *Prog Neuropsychopharmacol Biol Psychiatry*. 2010;34(6):837-845.
  20. Owen AM, McMillan KM, Laird AR, Bullmore E. N-back working memory paradigm: a meta-analysis of normative functional neuroimaging studies. *Hum Brain Mapp*. 2005;25(1):46-59.
  21. Knutson B, Westdorp A, Kaiser E, Hommer D. FMRI visualization of brain activity during a monetary incentive delay task. *Neuroimage*. 2000;12(1):20-27.
  22. Logan GD, Schachar RJ, Tannock R. Impulsivity and Inhibitory Control. *Psychol Sci*. 1997;8(1):60-64.
  23. Glasser MF, Sotiropoulos SN, Wilson JA, et al. The minimal preprocessing pipelines for the Human Connectome Project. *Neuroimage*. 2013;80:105-124.
  24. Esteban O, Markiewicz CJ, Blair RW, et al. fMRIPrep: a robust preprocessing pipeline for functional MRI. *Nat Methods*. 2019;16(1):111-116.
  25. Esteban O, Birman D, Schaer M, Koyejo OO, Poldrack RA, Gorgolewski KJ. MRIQC: Advancing the automatic prediction of image quality in MRI from unseen sites. *PLoS One*.

2017;12(9):e0184661.

26. Friston KJ, Holmes AP, Worsley KJ, Poline JP, Frith CD, Frackowiak RSJ. Statistical parametric maps in functional imaging: A general linear approach. *Hum Brain Mapp.* 1994;2(4):189-210.
27. Abraham A, Pedregosa F, Eickenberg M, et al. Machine learning for neuroimaging with scikit-learn. *Front Neuroinform.* 2014;8:14.
28. Chaarani B, Hahn S, Allgaier N, et al. Baseline brain function in the preadolescents of the ABCD Study. *Nat Neurosci.* 2021;24(8):1176-1186.
29. Demidenko MI, Weigard AS, Ganesan K, et al. Interactions between methodological and interindividual variability: How Monetary Incentive Delay (MID) task contrast maps vary and impact associations with behavior. *Brain Behav.* 2021;11(5):e02093.
30. Bossier H, Nichols TE, Moerkerke B. Standardized Effect Sizes and Image-Based Meta-Analytical Approaches for fMRI Data. *bioRxiv.* Published online December 6, 2019:865881. doi:10.1101/865881
31. Hedges LV. Distribution Theory for Glass's Estimator of Effect Size and Related Estimators. *J Educ Behav Stat.* 1981;6(2):107-128.
32. Wilson RP, Colizzi M, Bossong MG, et al. The Neural Substrate of Reward Anticipation in Health: A Meta-Analysis of fMRI Findings in the Monetary Incentive Delay Task. *Neuropsychol Rev.* 2018;28(4):496-506.
33. Dougherty DM, Mathias CW, Dawes MA, et al. Impulsivity, attention, memory, and decision-making among adolescent marijuana users. *Psychopharmacology.* 2013;226(2):307-319.

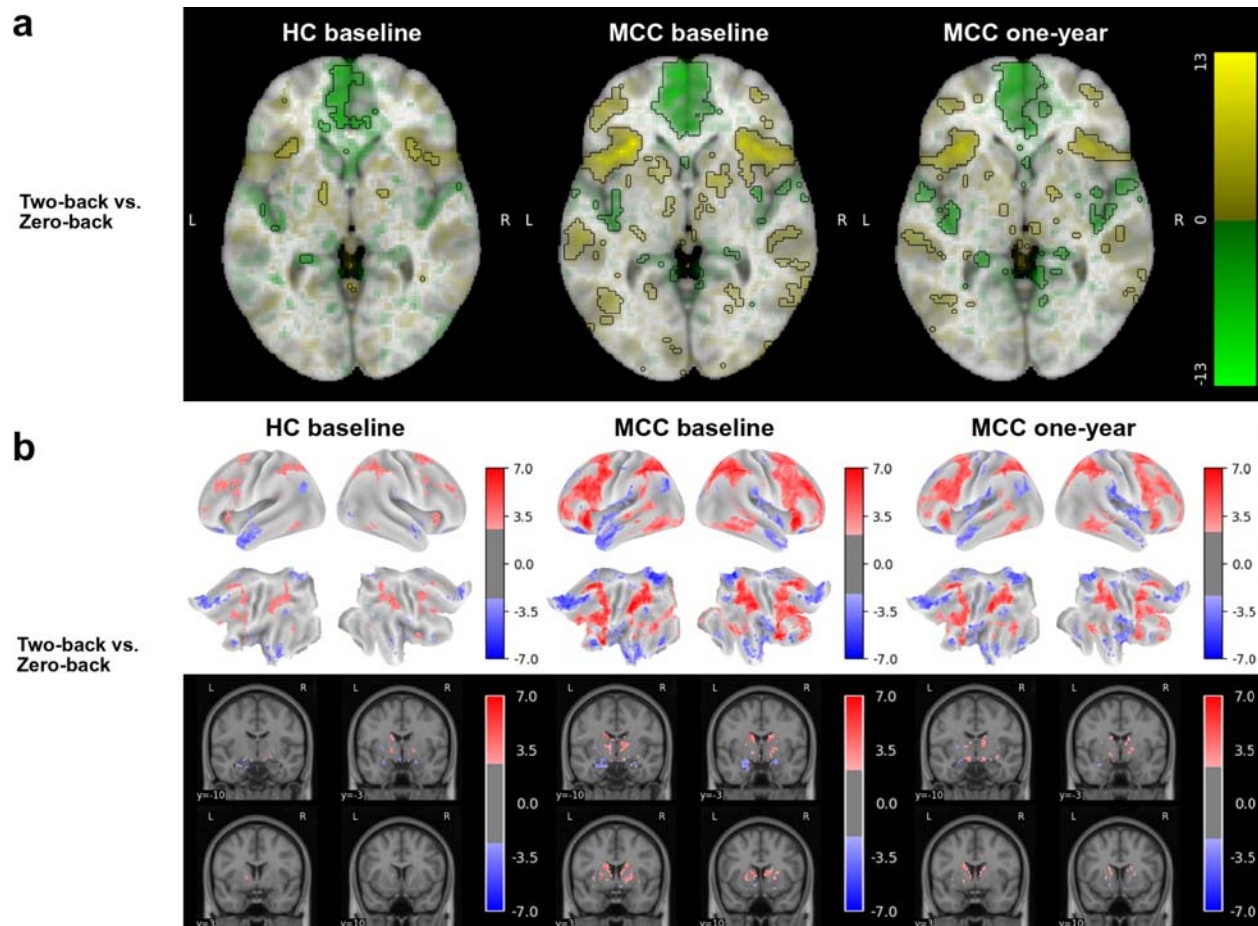


34. Smith AM, Longo CA, Fried PA, Hogan MJ, Cameron I. Effects of marijuana on visuospatial working memory: an fMRI study in young adults. *Psychopharmacology* . 2010;210(3):429-438.
35. Ma L, Steinberg JL, Bjork JM, et al. Fronto-striatal effective connectivity of working memory in adults with cannabis use disorder. *Psychiatry Res Neuroimaging*. 2018;278:21-34.
36. Taurisano P, Antonucci LA, Fazio L, et al. Prefrontal activity during working memory is modulated by the interaction of variation in CB1 and COX2 coding genes and correlates with frequency of cannabis use. *Cortex*. 2016;81:231-238.
37. Hatchard T, Byron-Alhassan A, Mioduszewski O, et al. Working overtime: Altered functional connectivity in working memory following regular cannabis use in young adults. *Int J Ment Health Addict*. 2021;19(4):1314-1329.
38. Cousijn J, Wiers RW, Ridderinkhof KR, van den Brink W, Veltman DJ, Goudriaan AE. Effect of baseline cannabis use and working-memory network function on changes in cannabis use in heavy cannabis users: a prospective fMRI study. *Hum Brain Mapp*. 2014;35(5):2470-2482.
39. Cousijn J, Vingerhoets WAM, Koenders L, et al. Relationship between working-memory network function and substance use: a 3-year longitudinal fMRI study in heavy cannabis users and controls. *Addict Biol*. 2014;19(2):282-293.
40. van Hell HH, Vink M, Ossewaarde L, Jager G, Kahn RS, Ramsey NF. Chronic effects of cannabis use on the human reward system: an fMRI study. *Eur Neuropsychopharmacol*. 2010;20(3):153-163.
41. Spechler PA, Stewart JL, Kuplicki R, Tulsa 1000 Investigators, Paulus MP. Attenuated reward activations associated with cannabis use in anxious/depressed individuals. *Transl*

- Psychiatry*. 2020;10(1):189.
42. Martz ME, Trucco EM, Cope LM, et al. Association of Marijuana Use With Blunted Nucleus Accumbens Response to Reward Anticipation. *JAMA Psychiatry*. 2016;73(8):838-844.
  43. Enzi B, Lissek S, Edel MA, et al. Alterations of monetary reward and punishment processing in chronic cannabis users: an fMRI study. *PLoS One*. 2015;10(3):e0119150.
  44. Nestor L, Hester R, Garavan H. Increased ventral striatal BOLD activity during non-drug reward anticipation in cannabis users. *Neuroimage*. 2010;49(1):1133-1143.
  45. Yip SW, DeVito EE, Kober H, Worhunsky PD, Carroll KM, Potenza MN. Pretreatment measures of brain structure and reward-processing brain function in cannabis dependence: an exploratory study of relationships with abstinence during behavioral treatment. *Drug Alcohol Depend*. 2014;140:33-41.
  46. Spechler PA, Stewart JL, Kuplicki R, Paulus MP, Tulsa 1000 Investigators. Parsing impulsivity in individuals with anxiety and depression who use Cannabis. *Drug Alcohol Depend*. 2020;217:108289.
  47. Filbey F, Yezhuvath U. Functional connectivity in inhibitory control networks and severity of cannabis use disorder. *Am J Drug Alcohol Abuse*. 2013;39(6):382-391.
  48. Verbruggen F, Logan GD. Response inhibition in the stop-signal paradigm. *Trends Cogn Sci*. 2008;12(11):418-424.
  49. Verbruggen F, Aron AR, Band GP, et al. A consensus guide to capturing the ability to inhibit actions and impulsive behaviors in the stop-signal task. *Elife*. 2019;8.  
doi:10.7554/eLife.46323
  50. Oldham S, Murawski C, Fornito A, Youssef G, Yücel M, Lorenzetti V. The anticipation and

outcome phases of reward and loss processing: A neuroimaging meta-analysis of the monetary incentive delay task. *Hum Brain Mapp.* 2018;39(8):3398-3418.

51. Knutson B, Fong GW, Adams CM, Varner JL, Hommer D. Dissociation of reward anticipation and outcome with event-related fMRI. *Neuroreport.* 2001;12(17):3683-3687.
52. Demidenko MI, Mumford JA, Poldrack RA. Impact of analytic decisions on test-retest reliability of individual and group estimates in functional magnetic resonance imaging: a multiverse analysis using the monetary incentive delay task. *bioRxiv.* Published online March 20, 2024:2024.03.19.585755. doi:10.1101/2024.03.19.585755
53. Thompson PM, Stein JL, Medland SE, et al. The ENIGMA Consortium: large-scale collaborative analyses of neuroimaging and genetic data. *Brain Imaging Behav.* 2014;8(2):153-182.

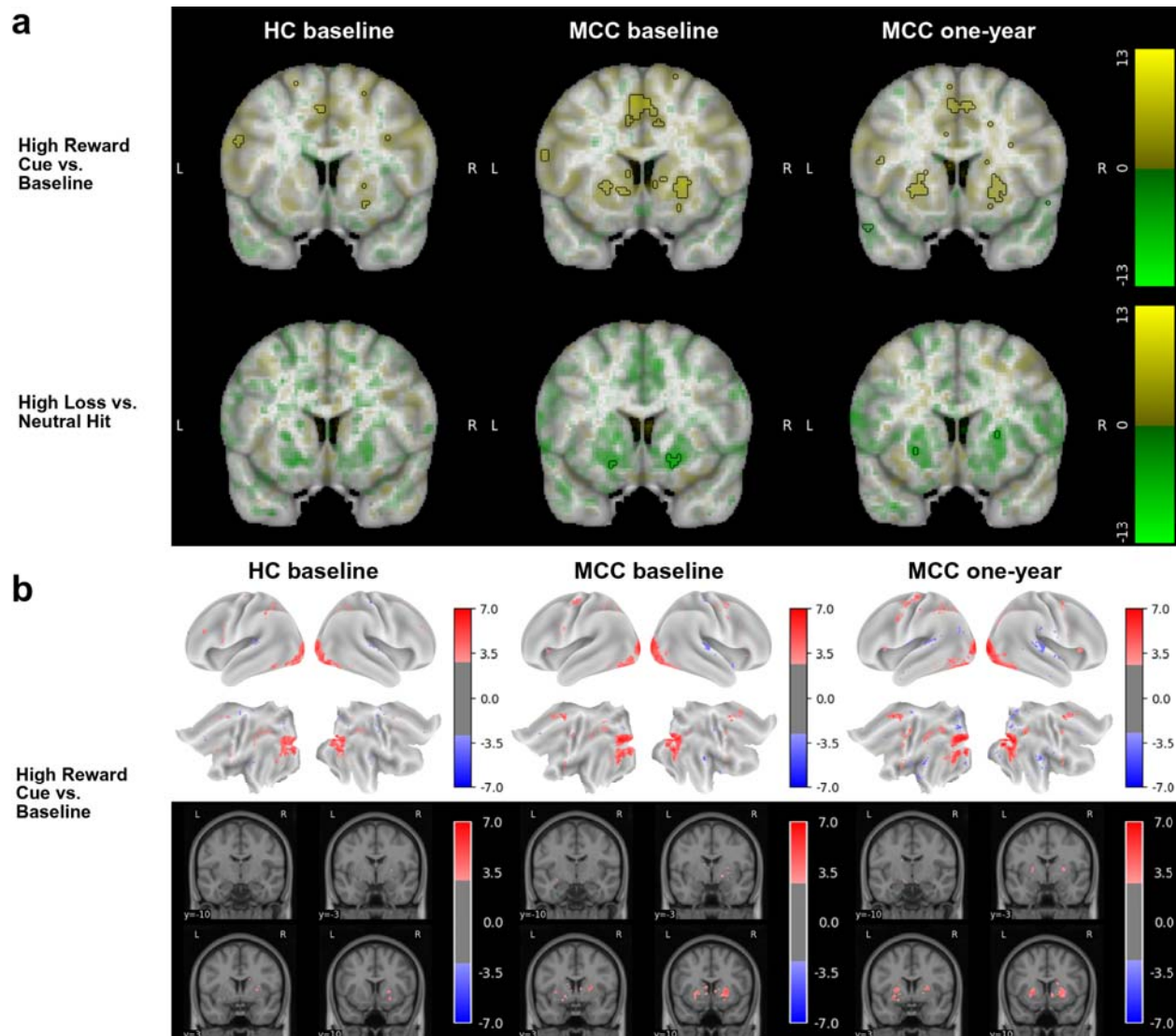


**Figure 1: Brain activation for the N-back task's two-back vs. zero-back contrast across groups and timepoints**

The HC group at baseline (n=22), the MCC group at baseline (n=40), and the MCC group at one-year (n=40) did not show activation differences between the two groups at baseline or between the two time points of the MCC group. Cannabis use frequency changes were not associated with brain activation at one-year. **Figure 1a:** Voxel-wise average brain activation, colored by effect size and opacity-scaled by z-scores with significance threshold (FDR=0.05) outlined, for the two-back vs. zero-back contrast of the N-back task. z-thresholds: HC group at baseline=3.05; MCC group at baseline=2.47, and MCC at one-year=2.60. Colorbar displays effect size. **Figure 1b:** Grayordinate-wise average brain activation z-scores above significance threshold (FDR=0.05) for the two-back vs. zero-back contrast of the N-back task. z-thresholds:

HC group at baseline=2.60), MCC group at baseline=2.21, and MCC at one-year=2.35.

Colorbar displays z-scores. HC=healthy control; MCC=medical cannabis card.

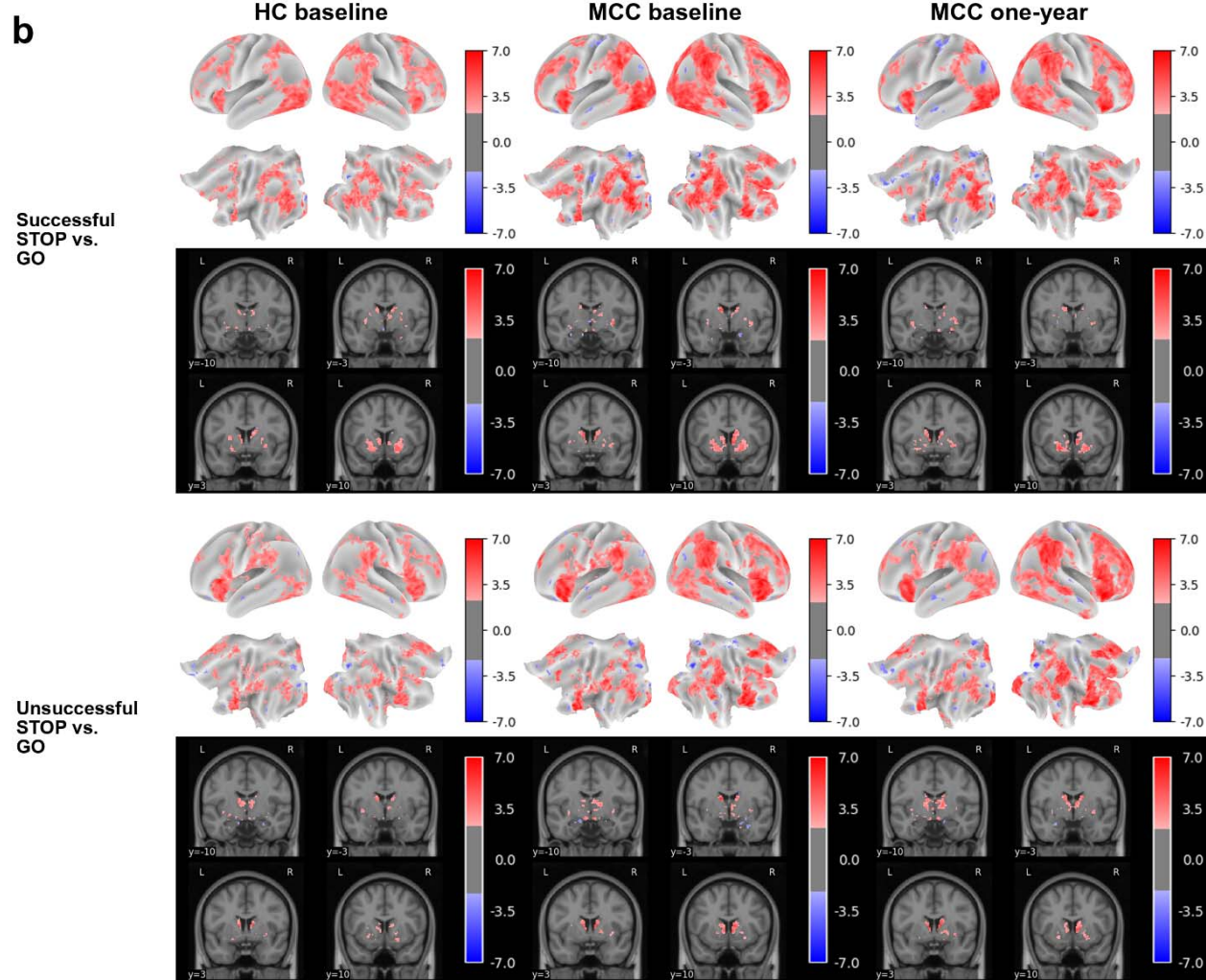
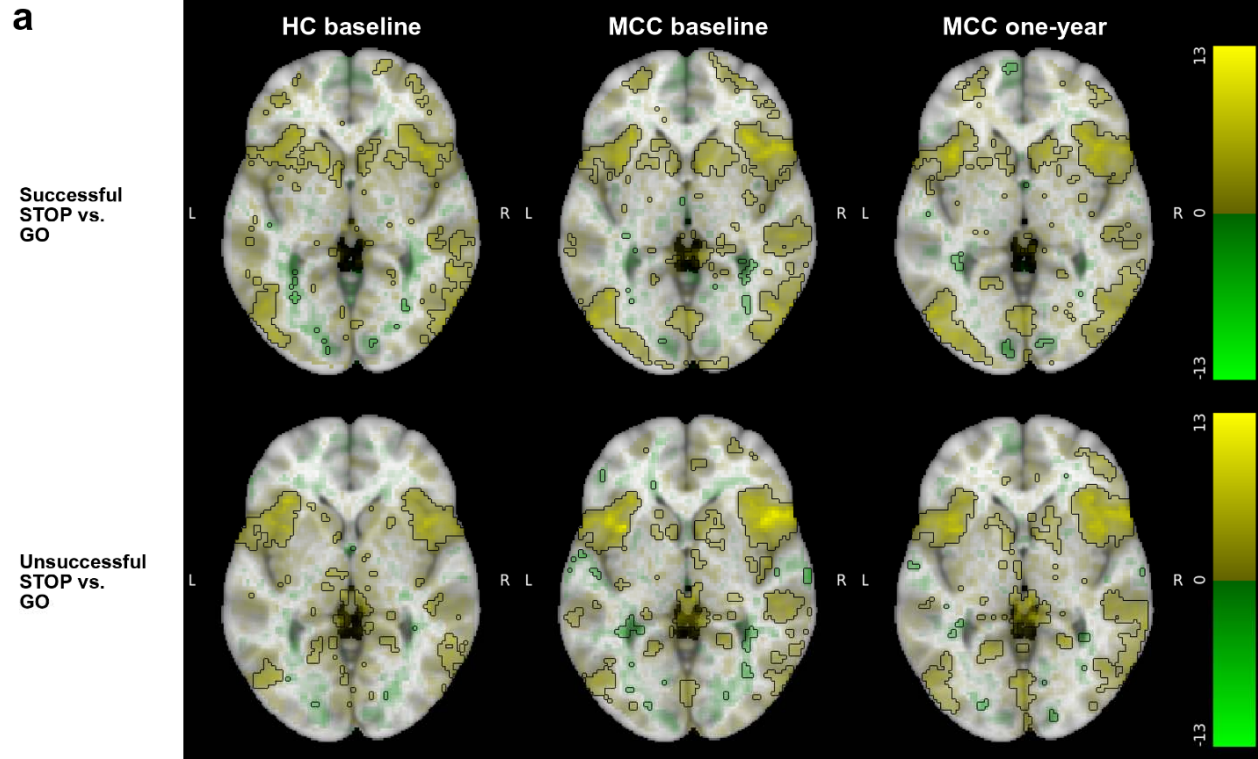


**Figure 2: Brain activation for various contrasts of the MID task across groups and timepoints**

The HC group at baseline (n=23), the MCC group at baseline (n=35), and the MCC group at one-year (n=40; except High Loss vs. Neutral Hit: n=39) did not show activation differences between the two groups at baseline or between the two time points of the MCC group. Cannabis use frequency changes were not associated with brain activation at one-year. **Figure 2a:** Voxel-wise average brain activation, colored by effect size and opacity-scaled by z-scores with significance threshold (FDR=0.05) outlined, for the high reward cue vs. baseline contrast (top row) and the high loss vs. neutral hit feedback contrast (bottom row) of the MID task. z-

thresholds: HC group at baseline=3.37 (top) and undetermined (bottom), MCC group at baseline=3.24 (top) and 4.34 (bottom), and MCC at one-year=3.10 (top) and 4.65 (bottom). Note that activation for the other contrasts was below threshold. Colorbar displays effect size. Undetermined z-threshold indicates that no voxel was statistically significant. **Figure 2b:** Grayordinate-wise average brain activation z-scores above significance threshold (FDR=0.05) for the high reward cue vs. baseline contrast of the MID task. z-thresholds: HC group at baseline=2.91, MCC group at baseline=2.74, and MCC at one-year=2.70. Note that activation for the other contrasts was below threshold. Colorbar displays z-scores. HC=healthy control; MCC=medical cannabis card.







### **Figure 3: Brain activation for the SST task's two STOP vs. GO contrasts across groups and timepoints**

The HC group at baseline (n=25), the MCC group at baseline (n=40), and the MCC group at one-year (n=44) did not show activation differences between the two groups at baseline or between the two time points of the MCC group. Cannabis use frequency changes were not associated with brain activation at one-year. **Figure 3a:** Voxel-wise average brain activation, colored by effect size and opacity-scaled by z-scores with significance threshold (FDR=0.05) outlined, for the successful STOP vs. GO contrast (top row) and the unsuccessful STOP vs. GO contrast (bottom row) for the SST task. z-thresholds: HC group at baseline=2.77 (top) and 2.87 (bottom); MCC group at baseline=2.56 (top) and 2.62 (bottom), and MCC at one-year=2.62 (top) and 2.55 (bottom). Colorbar displays effect size. **Figure 3b:** Grayordinate-wise average brain activation z-scores above significance threshold (FDR=0.05) for the successful STOP vs. GO contrast (top row) and the unsuccessful STOP vs. GO contrast (bottom row) for the SST task. z-thresholds: HC group at baseline=2.25 (top) and 2.31 (bottom); MCC group at baseline=2.15 (top) and 2.20 (bottom), and MCC at one-year=2.22 (top) and 2.13 (bottom). Colorbar displays z-scores. HC=healthy control; MCC=medical cannabis card.

Items	Levels	HC baseline <sup>a</sup>	MCC baseline <sup>b</sup>	MCC one-year <sup>c</sup>	MCC paired <sup>d</sup>
n	NA	32	57	54	41
Sex, n (%)	Female	22 (68.8)	38 (66.7)	37 (68.5)	28 (68.3)
Age, mean (SD)	NA	33.8 (11.8)	38.0 (14.6)	38.7 (14.3)	39.6 (14.4)
Race, n (%)	Black	2 (6.2)	6 (10.5)	4 (7.4)	2 (4.9)
Race, n (%)	Other	3 (9.4)	6 (10.5)	2 (3.7)	2 (4.9)
Race, n (%)	White	27 (84.4)	45 (78.9)	48 (88.9)	37 (90.2)
Ethnicity, n (%)	Hispanic or Latino	3 (9.4)	1 (1.8)	1 (1.9)	1 (2.4)
Education years, mean (SD)	NA	17.8 (2.7)	16.6 (2.4)	17.0 (2.3)	17.1 (2.3)
Condition, n (%)	Depression/anxiety symptoms	0	27 (47.4)	24 (44.4)	19 (46.3)
Condition, n (%)	Insomnia symptoms	0	12 (21.1)	13 (24.1)	9 (22.0)
Condition, n (%)	Pain symptoms	0	18 (31.6)	17 (31.5)	13 (31.7)
Handedness, n (%)	Right-handed	29 (90.6)	49 (86.0)	46 (85.2)	35 (85.4)

**Table 1: Characteristics of the study participants**

<sup>a</sup> HC baseline corresponds to the imaging control group at baseline

<sup>b</sup> MCC baseline corresponds to the medical cannabis card group's participants imaged at baseline

<sup>c</sup> MCC one-year corresponds to the medical cannabis card group's participants imaged at one-year

<sup>d</sup> MCC paired corresponds to the medical cannabis card group's participants imaged at both timepoints