

1 Inpatient treatment for severe obesity: a retrospective 2 cohort study in Brazil

3 **Short title:** Inpatient treatment for severe obesity

4 Domingos L. S. Rios 1, 2.; Márcia C. A. M. Oliveira 1, 2; Sérgio Q. Braga¹; Matheus J.
5 Chamorro 2; Beatriz L. B. Cunha 2; Ana C. R. Reis 2; Ana P. Guimarães²; Ana D. N. Silva
6 2; Dandara A. R. Silva 1, 2; Edilene M. Q. Araújo 2; Magno M. W. Pimentel 2

7

8 ¹Hospital da Obesidade, Camaçari, Bahia, Brazil.

9 ²Departamento de Ciências da Vida - DCV, Universidade do Estado da Bahia, Salvador,
10 Bahia, Brazil.

11

12 E-mail of the corresponding author: drios@uneb.br

13

14

15

16

17

18

19

NOTE: This preprint reports new research that has not been certified by peer review and should not be used to guide clinical practice.

20 Abstract

21 **Introduction:** Very low-calorie diets with hospitalization have demonstrated promise as a
22 viable therapeutic option for severe obesity and its associated comorbidities. However,
23 large studies providing a comprehensive longitudinal observation of patients undergoing
24 this therapy are lacking. We evaluated the effectiveness of treating severe obesity in
25 hospitalized patients, using very low-calorie diets and clinical support to develop lifestyle
26 changes.

27 **Methods:** A retrospective cohort study with a pre-post quasi-experimental design analyzed
28 secondary data from 2016–2022 medical records of patients with severe obesity (grade II
29 or III) treated in a Brazilian obesity specialist hospital. The patients underwent a very low-
30 calorie diet (500–800 kCal/day) and immersive changes in lifestyle habits, monitored by a
31 multidisciplinary team. At 3 months, 777 patients presented complete data and 402
32 presented complete data at 6 months. The study compared changes in bioimpedance and
33 laboratory tests, between men and women and age groups (elderly vs. non-elderly).

34 **Results:** Three months of hospitalization yielded significant reductions in weight, body
35 mass index (BMI), body fat, skeletal muscle mass, glucose, inflammatory, and lipid
36 parameters. These reductions were more pronounced after 6 months, nearly doubling
37 those observed at 3 months. In women, BMI and fat mass reduced by 10.4% and 15.2% at
38 3 months and 20.4% and 31.3% at 6 months, respectively. In men, BMI and fat mass
39 decreased by 12.9% and 25.3 at 3 months and 23.6% and 45.3% at 6 months,
40 respectively. Elderly individuals (aged ≥ 60 years) had smaller reductions in BMI and fat
41 mass than non-elderly individuals (aged < 60 years) but still presented significant
42 improvements.

43 **Conclusion:** This study suggests the viability of treating severe obesity by hospitalization
44 with low-calorie diets and immersive lifestyle changes. This treatment modality significantly
45 improves anthropometric measurements, glucose, lipids, and inflammatory markers,
46 thereby reducing cardiovascular risk.

47 **Keywords:** severe obesity; inpatient treatment; very low-calorie diet

48

49

50

51

52

53

54

55

56

57

58

59

60

61 Introduction

62 Obesity is a clinical condition characterized by increased body weight resulting from
63 excessive fat accumulation, influenced by genetic, biological, environmental, and
64 sociocultural factors [1].

65 Considered a public health problem, obesity is associated with the development of several
66 chronic non-communicable diseases, including metabolic syndrome, dyslipidemia, insulin
67 resistance, cardiovascular diseases, type 2 diabetes mellitus, osteoarthritis, sleep apnea,
68 infertility, cancer, and psychological problems [2-3]. The global prevalence of obesity has
69 increased, partly due to changes in eating patterns, with increased consumption of calorie-
70 rich foods and unhealthy lifestyle habits, such as sedentarism.

71 Very low-calorie diets (VLCDs) have been proposed as a valid treatment option for grade II
72 and III obesity, with or without comorbidities [4]. This diet involves altering and optimizing
73 energy metabolism, stimulating the production of ketone bodies by the liver through the
74 breakdown of fat, inducing weight loss, and improving other parameters such as insulin
75 sensitivity and glycemic control [5-6].

76 Owing to the multiple interactions of causal factors, treating obesity requires an
77 interdisciplinary and integrated therapeutic approach focused on lifestyle changes. In this
78 scenario, hospitalization emerges as an interesting therapeutic strategy, offering a
79 multidisciplinary intervention that successfully achieves weight loss [7].

80 This study aimed to evaluate the effectiveness of treating severe obesity (grades II and III)
81 in hospitalized patients, using VLCD and clinical support to develop lifestyle changes.

82

83 **Materials and Methods**

84 **Type of study- sample design**

85 This retrospective cohort study was conducted using secondary data from the medical
86 records of patients hospitalized in a controlled environment for weight loss from October
87 2016 to October 2022. It employed a quasi-experimental design with an interventional
88 before-after (pre-post) design.

89 The research was conducted at a Brazilian hospital specialized in obesity treatment. The
90 sample size was convenience-based, initially comprising 1,151 individuals with severe
91 obesity hospitalized for 3 and/or 6 months. The inclusion criteria were age over 12 years,
92 obesity grade II or III upon admission, and at least 3 months of inpatient treatment. We
93 excluded 293 patients without data from laboratory tests and/or bioimpedance. We
94 included 858 patients in the analysis. Of these, 321 presented complete data at 3 and 6
95 months, 456 presented complete data at 3 months alone, and 81 presented complete data
96 at 6 months alone. Therefore, the analysis included 777 patients with data available at 3
97 months and 402 with data available at 6 months. Data was imported directly from the
98 electronic medical records of each patient into an Excel table and then converted directly
99 into SPSS format using SPSS software ver. 29.0.1.0 (IBM corporation, New York, USA) for
100 statistical analysis. Data was assessed from electronic medical records from July 31, 2023
101 for research purposes. The authors had no access to information that could identify
102 individual participants during and after data collection.

103

104

105 **Therapeutic interventions and multi-professional support**

106 The treatment involved a multidisciplinary approach with key components including low-
107 calorie diets (LCDs) and VLCDs, physical activity, individual cognitive behavioral therapy
108 (CBT), participation in educational groups aimed at lifestyle changes, and multidisciplinary
109 clinical support.

110 Patients received LCDs (800 to 1,200 kCal/day) or VLCDs (less than 800 kCal/day) during
111 hospitalization. Both diets provided a higher percentage of protein (70 to 100 g/day or 0.8
112 to 1.5 g /kg of ideal body weight/day) and a low carbohydrate content. These diets were
113 supplemented with vitamins, minerals, electrolytes, and essential fatty acids to ensure
114 adequate nutrition, following Brazilian guidelines for treating obesity [8].

115 Patients engaged in lower-impact physical activities due to frequent arthropathies,
116 including water aerobics exercises at least thrice a week, horizontal biking twice a week
117 with a light load, and weight training thrice a week.

118 The patients underwent individual one-hour CBT sessions with a psychologist twice
119 weekly. Patients also participated in educational group activities, using active
120 methodologies and experiences aimed at lifestyle changes, consisting of daily one-hour
121 meetings [9-10].

122 Daily clinical evaluations were conducted, with periodic consultations by endocrinologists,
123 cardiologists, orthopedists, and psychiatrists. A team of physiotherapists, occupational
124 therapists, and nurses assessed and monitored each patient's condition, providing
125 necessary interventions in their respective areas.

126

127 **Bioimpedance and anthropometry**

128 All patients had their weight and height measured and underwent bioimpedance testing
129 upon admission and at 3 and/or 6 months. Height was measured using a stadiometer
130 (Tonelli Medical Devices, Brazil), and weight was measured using a bioelectrical
131 impedance device. Body composition was assessed using a 3-frequency bioelectrical
132 impedance device (5kHz, 50kHz, and 5,00kHz—Ottoboni-inbody570), utilizing a tetra polar
133 system with eight points (tactile electrodes) to obtain 15 impedance measurements of
134 each of the five body segments (right arm, left arm, trunk, right leg, and left leg). Obesity
135 severity was assessed using body mass index (BMI): grade I, if BMI was between 30 and
136 34.9 kg/m²; grade II, between 35 and 39.9 kg/m²; and grade III, ≥ 40 kg/m².

137

138 **Laboratory tests**

139 Measurements of gamma-glutamyl transferase (GGT), blood glucose, triglycerides, total
140 cholesterol, and high-density cholesterol (HDL) were performed using the enzymatic
141 colorimetric method; low-density cholesterol (LDL) was calculated using the Friedewald
142 formula. Serum zinc levels were measured using the flame atomic absorption
143 spectrometry method. Electrochemiluminescence was used to measure ferritin and basal
144 insulin levels. Oxaloacetic (GOT) and pyruvic (GPT) transaminases were measured using
145 the UV-kinetic method; creatine phosphokinase (CPK) by the UV method; glycated
146 hemoglobin HbA1c by turbidimetric inhibition immunoassay; C-reactive protein (CRP) by
147 immunoturbidimetry. All tests were performed using an automated device and in the same
148 laboratory.

149

150 **Statistical analysis**

151 The bioimpedance parameters were described as median and inter-quartil interval. To
152 compare values measured at admission with those observed after 3 and 6 months of
153 hospitalization it was used the Wilcoxon test. The percentage change in each
154 bioimpedance parameter was calculated by subtracting the values measured at admission
155 from those obtained at 3 and 6 months of hospitalization, respectively. This difference was
156 divided by the original hospitalization value and multiplied by 100. These percentage
157 values were compared between men and women and between elderly (≥ 60 years) and
158 non-elderly patients (< 60 years) using a Mann-Whitney test. Laboratory measurements on
159 admission and at 3 and 6 months of hospitalization were compared using a Wilcoxon test.
160 Kaplan-Meier curves were used to compare the time to reach 20% weight loss and 35%
161 fat mass reduction between male and female and between elderly and no elderly patients.
162 To evaluate the factors associated with the success to reach median values of fat mass
163 loss at 3 and 6 months of hospitalization, a multivariate logistic regression was performed:
164 the dependent variables were the success of reach the median percentage of fat mass
165 loss in each period of hospitalization (17% and 35% at 3 and 6 months hospitalization,
166 respectively). The independent variables were included in the model, using the "forward
167 conditional" method, the initial following dummy variables were used in the analysis: age \geq
168 60 years, male sex, Diabetes Mellitus, current smoking, drinking habits, hypothyroidism,
169 hepatic steatosis, sedentary life style and altered admission levels of glycated hemoglobin
170 ($> 5.6\%$), zinc ($< 69.93 \mu\text{g/dL}$), CRP ($> 6 \text{ mg/L}$), and CPK ($> 200 \text{ U/L}$). A significance level
171 of 5% was adopted.

172

173 **Ethical aspects**

174 This research was conducted following the principles of bioethics in accordance with
175 resolution 466/2012 (CONEP/Brazil) and met aspects related to the Declaration of
176 Helsinki. The Research Ethics Committee of the State University of Bahia (UNEB)
177 approved the project with CAAE number 65578822.1.0000.0057. Informed consent
178 paperwork could not be obtained due to the retrospective design of this analysis; patients
179 were no longer available to sign informed consent. The Research Ethics Committee
180 approved this.

181

182 **Results**

183 Table 1 presents the clinical and epidemiological data. Women were the majority (70%)
184 with a median age of approximately 44 years, not differing significantly between the groups
185 by length of hospitalization. Regarding lifestyle habits, smoking (3 months: 22.1% vs. 6
186 months: 23.4%), drinking habits (3 months: 50.6% vs. 6 months: 49.3%) and sedentary
187 lifestyle (3 months: 82.5% vs. 6 months: 85.6%) were prevalent and similar between the
188 two groups.

189

190 **Table 1. Clinical and epidemiological characteristics**

191

Variable	Three months treatment	Six months treatment	p*
	(n=777)	(n=402)	
Female sex	70.3% (546)	70.6% (284)	0.947
Age (years)	44 (33-59)	46 (34-61,2)	0.102**
Current smoking	22.1% (172)	23.4% (94)	0.680
Drinking habits	50.6% (393)	49.3% (198)	0.711
Sedentary lifestyle	82.5% (641)	85.6% (344)	0.205
Diabetes Mellitus	34.6% (269)	32.6% (131)	0.526
Hypertension	53% (412)	52% (209)	0.783
Hypercholesterolemia	44.3% (344)	42.8% (172)	0.670
Hypertriglyceridemia	30.9% (240)	31.1% (125)	0.995
Hypothyroidism	15.3% (119)	17.4% (70)	0.397
Coronary Artery Disease	16% (124)	17.4% (70)	0.579
Sleep apnea	75.3% (585)	78.1% (314)	0.314
Hepatic steatosis	75.8% (589)	74.4% (299)	0.640
Depression ***	30.8% (239)	33.1% (133)	0.454
Obesity grade II	37.1% (288)	24.1% (97)	<0.001
Obesity grade III	62.9% (489)	75.9% (305)	<0.001

192 * Pearson chi-square with Yates' correction;

193 ** MannWhitney test, data is presented as median and interquartile interval values;

194 *** Self-referred.

195

196 The prevalence of diabetes mellitus (3 months: 32.6% vs. 6 months: 34.6%), hypertension
 197 (3 months: 52% vs. 6 months: 53%), hypercholesterolemia (3 months: 42.8% vs. 6
 198 months: 44.3%) and hypertriglyceridemia (3 months: 31.1% vs. 6 months: 30.9%) was
 199 high and did not differ significantly between groups by length of hospitalization. Hepatic
 200 steatosis (3 months: 74.4% and 6 months: 75.8%), sleep apnea (3 months: 78.1% and 6
 201 months: 75.3%) and depression (3 months: 33.1% and 6 months: 30.8%) were prevalent
 202 in both periods of hospitalization. Patients with 6 months of hospitalization had a higher

203 percentage of most severe obesity (grade III: 75.9%) than patients who remained
 204 hospitalized for 3 months (62.9%) (Table 1).

205

206 **Table 2. Changes in bioimpedance based on length of hospitalization**

Parameters	Admission n = 777	Three months n = 777	p*	Admission n = 402	Six months n = 402	*p*
Weight (kg)	112.7 (100.9-126.3)	100.2 (89.7-111.7)	<0.001	116.4 (103.7-130.2)	91.6 (83.8-101.9)	<0.001
BMI (kg/m ²)	40.9 (39.1-44.5)	36.4 (34.7-39.4)	<0.001	42.6 (40.0-46.1)	33.4 (31.5-36.4)	<0.001
Fat mass (kg)	55.7 (50.4-63.9)	45.8 (40.6-52.3)	<0.001	58.9 (52.9-67.2)	38.0 (32.9-44.9)	<0.001
Body fat percentage(%)	51.3 (48.6-53.3)	47.8 (43.0-51.3)	<0.001	52.0 (50.0-53.7)	43.2(37.6-48.0)	<0.001
Skeletal muscle mass (kg)	31.3 (27.3-36.9)	28.9 (24.8-34.4)	<0.001	30.6 (27.1-36.3)	29.0 (25.4-34.6)	<0.001
Basal metabolic rate (kCal)	1568.0 (1436.8-1775.5)	1498.5 (1354.5-1698.8)	<0.001	1549.0 (1423.5-1760.0)	1497.0 (1368.0-1697.5)	<0.001
Waist to hip ratio	1.07 (1.00-1.14)	1.00 (0.95-1.05)	<0.001	1.08 (1.02-1.13)	1.03 (0.98-1.08)	<0.001

207
 208

209 *Wilcoxon test, data is presented as median and interquartile interval values.

210 After 3 months of hospitalization, body weight reduced from 112.7kg to 100.2kg, BMI from
 211 40.9 kg/m² to 36.4 kg/m², fat mass from 55.7kg to 45.8kg, fat percentage from 51.3% to
 212 47.8%, skeletal muscle mass from 31.3kg to 28.9kg, basal metabolic rate from 1,568 kCal
 213 to 1,498 kCal, and waist-to-hip ratio (WHR) from 1.07 to 1.00 (Table 2).

214 Patients hospitalized for 6 months demonstrated an even greater reduction in all analyzed
 215 bioimpedance parameters. Body weight reduced from 116.4kg to 91.6kg, BMI from
 216 42.6kg/m² to 33.4kg/m²; fat mass from 58.9kg to 38kg, fat percentage from 52% to 43.2%,
 217 skeletal muscle mass from 30.6kg to 29kg, basal metabolic rate from 1,549 kCal to 1,497
 218 kCal, and WHR from 1.08 to 1.03 (Table 2).

219 After 3 months of hospitalization, men exhibited a higher percentage of reduction than
 220 women in the following bioimpedance parameters: weight (men: 12.9% vs. women:
 221 10.4%), BMI (men: 12.9 % vs. women: 10.4%), fat mass (men: 25.3% vs. women: 15.2%),
 222 body fat percentage (men: 13.6% vs. women: 5.2%), and WHR (men: 6.5% vs. women:
 223 3.3%). However, for basal metabolic rate (men: 2.5% vs. women: 3.8%) and skeletal
 224 muscle mass (men: 3.8% vs. women: 5.9%), men exhibited a lower reduction than women
 225 (Table 3).

226

227 **Table 3. Changes in bioimpedance by sex**

Parameters	Three months			Six months		
	Female n = 546	Male n = 231	P*	Female n = 284	Male n = 118	P*
Wheight lost percentual (%)	10.4 (8.9-12.0)	12.9 (11.1-14.7)	<0.001	20.4 (17.4-23.4)	23.6 (20.9-27.4)	<0.001
BMI lost percentual (%)	10.4 (8.9-12.0)	12.9 (11.1-14.7)	<0.001	20.4 (17.4-23.4)	23.6 (20.9-27.4)	<0.001
Fat mass lost percentual (%)	15.2 (12.3-18.5)	25.3 (19.6-30.0)	<0.001	31.3 (26.0-37.8)	45.3 (36.0-51.6)	<0.001
Reduction in body fat percentual (%)	5.2 (3.0-8.6)	13.6 (8.7-18.3)	<0.001	14.3 (8.4-20.5)	27.3 (17.7-35.3)	<0.001
Skeletal muscle mass lost percentual (%)	5.9 (7.3-8.3)	3.8 (1.4 - 6.4)	<0.001	8.7 (5.4-12.8)	6.6 (2.3-10.2)	<0.001
Basal metabolic rate reduction percentual (%)	3.8 (1.9-5.5)	2.5 (0.7 - 4.3)	<0.001	5.5 (2.9-8.5)	4.3 (1.4-7.0)	0.002
Waste to rip ratio reduction percentual (%)	3.3 (0-6.2)	6.5 (3.2 - 9.6)	<0.001	6.2 (1.2-9.5)	10.0 (3.8-16.6)	<0.001

228

229 * MannWhitney test, data is presented as median and interquartile interval values.

230

231 **Fig 1. Weight loss survival curve by sex during inpatient treatment.**

232 Medians to reach 20% of weight loss: Female 5 months (95%CI: 4.8-5.2 months); Male 4
233 months (95%CI: 3.8-4.2 months); Log rank (Mantel-Cox test): 73.03; $p < 0.001$.

234

235 **Fig 2. Fat mass loss survival curve by sex during inpatient treatment.**

236 Medians to reach 35% of fat mass loss: Female 6 months (95%CI: 5.8-6.2 months); Male
237 4 months (95%CI: 3.8-4.2 months); Log rank (Mantel-Cox test): 236.885; $p < 0.001$.

238

239 Similarly, but to a greater extent, at 6 months of hospitalization, men exhibited higher
240 percentages of loss in weight (men: 23.6% vs. women: 20.4%), BMI (men: 23.6% vs.
241 women: 20.4%), fat mass (men: 45.3% vs. women: 31.3%), body fat percentage (men:
242 27.3% vs. women: 14.3%), and WHR (men: 10% vs. women: 6.2%). Conversely, women
243 had higher rates of loss of skeletal muscle mass (men: 6.6% vs. women 8.7%) and basal
244 metabolic rate (men: 4.3% vs. women: 5.5%) (Table 3).

245 The Survival Kaplan-Meier curves compares male and female for the time to reach
246 reductions of 20% weight (Figure 1) and 35% fat mass (Figure 2) in the period of
247 treatment. The females reach 20% weight reduction by the fifth month while males reach
248 this by the fourth month of treatment ($p < 0.001$). The females reach 35% fat mass
249 reductions by the sixth month while males reach this in the fourth month of treatment
250 ($p < 0.001$).

251 After 3 months of hospitalization, the elderly (≥ 60 years) demonstrated a lower
252 percentage of loss in weight (elderly: 10.2% vs. non-elderly: 11.4%), BMI (elderly: 10.3%

253 vs. non-elderly: 11, 4%), fat mass (elderly: 14.5% vs. non-elderly: 17.6%), body fat
 254 percentage (elderly: 4.9% vs. non-elderly: 7.3%), and WHR (elderly: 3.6% vs. non-elderly:
 255 4.4%) than the non-elderly. The percentage differences in skeletal muscle mass loss
 256 (elderly: 5.9% vs. non-elderly: 5.2%) but not in the basal metabolic rate (elderly: 3.8% vs.
 257 non-elderly: 3.3%) was higher in elderly as compared to no elderly patients (Table 4).

258 Similarly, after 6 months of hospitalization, the elderly had a lower percentage of loss in
 259 weight (elderly: 19.8% vs. non-elderly: 21.8%), BMI (elderly: 19.8% vs. non-elderly:
 260 21.8%), fat mass (elderly: 30.5% vs. non-elderly: 37.0%), body fat percentage (elderly:
 261 12.9% vs. non-elderly: 18.9%) and WHR (elderly: 4.4% vs. non-elderly: 7.6%). Contrary to
 262 the observation after 3 months, elderly individuals had a higher percentage of loss of
 263 skeletal muscle mass (elderly: 10.2% vs. non-elderly: 7.2%) and basal metabolic rate
 264 (elderly: 6.3 % vs. non-elderly: 4.6%) at 6 months of hospitalization (Table 4).

265 **Table 4. Changes in bioimpedance by age**

Parameters	Three months		p*	Six months		p*
	Non-elderly n = 598	Elderly n = 179		Non-elderly n = 290	Elderly n = 112	
Weight lost percentual (%)	11.4 (9.6-13.0)	10.2 (8.4-12.1)	<0.001	21.8 (18.8-25.4)	19.8 (17.0-22.7)	<0.001
BMI lost percentual (%)	11.4 (9.6-13.0)	10.2 (8.4-12.1)	<0.001	21.8 (18.8-25.4)	19.8 (17.0-22.7)	<0.001
Fat mass lost percentual (%)	17.6 (13.8-23.5)	14.5 (11.4-19.5)	<0.001	37.0 (29.4-45.4)	30.5 (24.9-35.9)	<0.001
Reduction in body fat percentual (%)	7.3 (4.1-12.4)	4.9 (2.8-9.7)	<0.001	18.9 (11.9-27.1)	12.9 (8.0-17.2)	<0.001
Skeletal muscle mass lost percentual (%)	5.2 (2.3-7.7)	5.9 (3.7-8.1)	0.026	7.2 (3.9-11.8)	10.2 (6.6-12.8)	<0.001
Basal metabolic rate reduction percentual (%)	3.3 (1.3-5.2)	3.8 (2.0 - 5.3)	0.124	4.6 (2.3-8.0)	6.3 (3.9-8.2)	<0.001
Waist to hip ratio reduction percentual (%)	4.4 (1.1-7.3)	3.6 (-1.0 - 6.7)	0.006	7.6 (3.0-12.3)	4.4 (-2.0 - 8.7)	<0.001

266

267 * Mann-Whitney test, data is presented as median and interquartile interval values.

268

269 **Fig 3. Weight loss survival curve by age during inpatient treatment.**

270 Medians to reach 20% of weight loss: Non-elderly patients 5 months (95%CI: 4.8-5.2
271 months); Elderly patients 6 months (95%CI: 5.8-6.2 months); Log rank (Mantel-Cox test):
272 29.47; $p < 0.001$.

273

274 **Fig 4. Fat mass loss survival curve by age during inpatient treatment.**

275 Medians to reach 35% of fat mass loss: Non-elderly patients 5 months (95%CI: 4.8-5.2
276 months); Elderly patients 6 months (95%CI: 5.8-6.2 months); Log rank (Mantel-Cox test):
277 29.465; $p < 0.001$.

278

279 Three months of hospitalization yielded a significant reduction in the levels of fasting
280 glucose (admission: 93.0 mg/dL vs. 3 months: 88.0 mg/dL), insulin (admission: 22.2
281 $\mu\text{IU/mL}$ vs. 3 months: 16.8 $\mu\text{IU/mL}$) and glycated hemoglobin (admission: 5.6% vs. 3
282 months: 5.3%); triglycerides (admission: 119.0 mg/dL vs. 3 months: 94.0 mg/dL), HDL
283 (admission: 45 mg/dL vs. 3 months: 43 mg/dL), LDL (admission: 114 mg/dL vs. 3 months:
284 90 mg/dL), and total cholesterol (admission: 185 mg/dL vs. 3 months: 153 mg/dL).
285 Regarding liver injury and inflammatory markers, CRP (admission: 8.2 mg/L vs. 3 months:
286 5.2 mg/dL), ferritin (admission: 165 ng/mL vs. 3 months: 137 ng/mL), and GGT (admission:
287 35 mg/dL vs. 3 months: 25 mg/dL) levels significantly reduced after 3 months of treatment.
288 However, GPT increased slightly (admission: 24.5 mg/dL vs. 3 months: 27.2 mg/dL) while
289 GOT remained unchanged during this period of hospitalization (Table 5).

290 Similarly, but to a greater extent, after 6 months of hospitalization, almost all parameters
291 evaluated reduced significantly, including fasting glucose (admission: 93.5 mg/dL vs. 6
292 months: 87.0 mg/dL); insulin (admission: 22.1 μ U/mL vs. 6 months: 13.7 μ U/mL);
293 glycated hemoglobin (admission: 5.6% vs. 6 months: 5.3%); triglycerides (admission: 119
294 mg/dL vs. 6 months: 85 mg/dL); LDL (admission: 115 mg/dL vs. 6 months: 98 mg/dL), and
295 total cholesterol (admission: 186 mg/dL vs. 6 months: 164 mg/dL). However, HDL levels
296 remained unchanged (admission: 46 mg/dL vs. 6 months: 45.5 mg/dL). Regarding liver
297 injury and inflammatory parameters, a significant reduction was observed in the values of
298 GGT (admission: 37 mg/dL vs. 6 months: 24 mg/dL), GPT (admission: 23.1 mg/dL vs. 6
299 months: 22.7 mg/dL), CRP (admission: 8 mg/L vs. 6 months: 6.5 mg/L), and ferritin
300 (admission: 165 ng/mL vs. 6 months: 139 ng/mL). Contrary to the observation at 3 months,
301 GOT levels increased within the normal range (admission: 22.7 mg/dL vs. 6 months: 21.9
302 mg/dL) (Table 5).

303 The Survival Kaplan-Meier curves compares non-elderly and elderly patients for the time
304 to reach reductions of 20% in weight (Figure 3) and 35% in fat mass (Figure 4) during
305 treatment. Elderly patients reach 20% weight ($p < 0.001$) and 35% fat mass ($p < 0.001$)
306 reductions by the sixth month of treatment as compared to 5 months for non-elderly
307 patients.

308

309 **Table 5. Changes* in glycid, lipid, and hepatic parameters**

Parameters	Admission	Three months	p	Admission	Six months	p
	n=777	n=777		n=402	n=402	
Fasting glucose (mg/dL)	93.0 (85.0-106.0)	88.0 (82.0-95.0)	<0.001	93.5 (85.0-107.0)	87.0 (81.0-93.2)	<0.001
Insulin (μUI/mL)	22.2 (15.5-31.7)	16.8 (11.3-23.2)	<0.001	22.1 (15.6-32.6)	13.7 (9.2-18.6)	<0.001
Glycated haemoglobin (%)	5.6 (5.3-6.0)	5.3 (5.0-5.7)	<0.001	5.6 (5.3-6.0)	5.3 (5.0-5.6)	<0.001
Triglycerides (mg/dL)	119.0 (91.0-161.0)	94.0 (77.0-119.0)	<0.001	119.0 (93.0-156.0)	85.0 (70.0-106.0)	<0.001
HDL (mg/dL)	45.0 (38.0-53.0)	43.0 (37.0-50.0)	<0.001	46.0 (39.0-55.0)	45.5 (40.0-54.0)	0.865
LDL (mg/dL)	114.0 (91.0-139.0)	90.0 (68.0-111.0)	<0.001	115.0 (93.0-138.2)	98.0 (76.8-117.2)	<0.001
Total Cholesterol (mg/dL)	185.0 (159.0-215.0)	153.0 (130.0-177.0)	<0.001	186.0 (162.8-216.2)	164.0 (142.0-186.2)	<0.001
C reactive protein (mg/L)	8.2 (4.2-13.8)	5.2 (2.6-10.5)	<0.001	8.0 (4.5-13.7)	6.5 (3.0-8.7)	<0.001
Ferritin (ng/mL)	165.0 (82.5-286.0)	137.0 (67.5-259.0)	<0.001	165.0 (80.8-285.2)	139.0 (68.0-257.0)	0.001
GOT (mg/dL)	22.3 (18.0-29.9)	23.1 (18.7-30.2)	0.282	22.7 (18.0-30.0)	21.9 (17.7-29.7)	0.431
GPT (mg/dL)	24.5 (17.3-37.0)	27.2 (18.7-40.6)	0.001	23.1 (17.1-37.2)	22.7 (16.3-34.6)	0.009
GGT (mg/dL)	35.0 (23.5-56.0)	25.0 (17.0-41.0)	<0.001	37.0 (24.0-59.0)	24.0 (17.0-44.0)	<0.001

310 *Wilcoxon test, data is presented as median and interquartile interval values.

311

312

313 Table 6 presents the multivariate logistic regression with the factors, measured at
 314 admission, associated with the success to reach the median percentage of fat mass loss
 315 during hospitalization. After three months, male sex, drinking habits, CPK above normal
 316 range (>200 U/L) were associated with a higher odds ratio to reach the median percentage
 317 of body fat mass loss (17%). An inverse association was observed with elderly (age ≥ 60
 318 years), C-reactive protein level above the normal range (> 6mg/dl), and zinc level below
 319 the normal range (< 69,93 µg/dL) [Table 6].

320 At six months of hospitalization, some of these predictors lost significance, with male sex,
 321 hepatic steatosis, and elderly remaining significant. Similar to the results at 3 months,
 322 elderly people presented a lower odds ratio to reach the median percentage of body fat
 323 mass loss at 6 months (34%), while males presented higher odds ratio to reach such loss.
 324 Alcohol consumption and glycated hemoglobin levels, testosterone, zinc, and magnesium
 325 were no longer significant predictors of body fat mass loss at 6 months (Table 6).

326

327 **Table 6. Factor associated with body fat mass loss* in both periods of**
 328 **inpatient treatment.**

Variables	Three months R2 = 0.335			Six months R2 = 0.287		
	Odss ratio	95% CI	p	Odss ratio	95% CI	p
Constant	0.809		0.256	0.484		0.004
Male sex	7.51	4.96-11.38	<0.001	7.36	4.29-12.64	<0.001
Elderly (age ≥ 60 years)	0.34	0.22-0.52	<0.001	0.28	0.17-0.47	<0.001
Drink habit	1.50	1.08-2.09	0.016			
Hepatic steatosis				1.92	1.12-3.30	0.018
C reactive protein > 6mg/L	0.52	0.36-0.75	0.001			
Creatine phosphokinase > 200 U/L	2.21	1.50-3.26	<0.001			
Zinc < 69.93µg/dL	0.51	0.29-0.89	0.018			

329

330 *Multiple Logistic Regression. The independent variable was the success to reach the median value for fat
331 mass reduction percentage (17% by the third month and 35% by the sixth month). The independent
332 variables were included in the model, using the "forward conditional" method, the initial following dummy
333 variables were used in the analysis: age \geq 60 years, male sex, Diabetes Mellitus, current smoking, drinking
334 habits, hypothyroidism, hepatic steatosis, sedentary life style and altered admission levels of glycated
335 hemoglobin ($>$ 5.6%), zinc ($<$ 69.93 μ g/dL), CRP ($>$ 6 mg/L), and CPK ($>$ 200 U/L). 95% CI: 95% Confidence
336 Interval.

337

338 Discussion

339 Most hospitalized patients were women, presented with drinking habits, and had a
340 sedentary lifestyle. The most prevalent comorbidities were hypertension, diabetes,
341 hypercholesterolemia, hypertriglyceridemia, hypothyroidism, coronary artery disease,
342 sleep apnea, hepatic steatosis, and self-reported depression. These data did not differ
343 between the 3 and 6-month hospitalization groups. The group that underwent 6 months of
344 treatment had a higher percentage of patients with grade III obesity, which partly justifies
345 the longer hospital stay in this group. In a study of patients with obesity grade III who
346 underwent outpatient dietary treatment in Rio de Janeiro, Brazil, most participants were
347 women (76.3%) and adults (average age of 45 years), similar to this study. However, there
348 was a higher prevalence of hypertension (80%) and diabetes (46%) and a lower incidence
349 of drinking habits (37%), sleep apnea (31%), and dyslipidemia (16%) [11], compared to the
350 patient profile of this study. This study is based on a Brazilian, mixed population of
351 predominantly African (50.5%) and European (42.4%) ancestry and fewer Native
352 Americans (5.8%) [12].

353 Both groups revealed significant changes in body composition parameters throughout
354 each period, with a more significant improvement in these variables after 6 months of
355 hospitalization.

356 After 3 months, we observed a significant decrease in weight, BMI, fat mass, body fat
357 percentage, skeletal muscle mass, basal metabolic rate, and WHR. These results indicate
358 a positive response to short-term treatment, suggesting the effectiveness of hospitalization
359 in promoting weight loss and improving body composition. This finding aligns with a study
360 [13] that investigated the effects of short-term multidisciplinary interventions in patients
361 with obesity and demonstrated significant reductions in fat mass, percentage of body fat,
362 and BMI. Skeletal muscle mass and basal metabolic rate also reduced significantly but at
363 a magnitude approximately six times smaller than the fat mass loss (1.6 kg vs. 10.9 kg,
364 respectively), even at six months of treatment.

365 Patients hospitalized for 6 months demonstrated more significant changes in body
366 composition measured by bioimpedance. The magnitude of these changes, especially in
367 the loss of weight (men: 23.6% and women: 20.4%) and fat mass (men: 45.3% and
368 women: 31.3%), suggests that 6 months of hospitalization doubles the reduction in these
369 parameters, with an eight times smaller loss of skeletal muscle mass.

370 In both periods, men exhibited higher percentages of loss in weight, fat mass, percentage
371 of body fat, and WHR, in addition to lesser loss of skeletal muscle mass compared to
372 women. These results corroborate previous findings demonstrating that in short periods of
373 intervention, men experience a more pronounced response in weight reduction with
374 greater preservation of skeletal muscle mass [14-15].

375 In addition to the differences in bioimpedance parameters previously discussed, the
376 unequal reduction in WHR between men and women was notable in both periods of

377 hospitalization. Men demonstrated a significantly greater reduction (almost double) in
378 WHR. This observation is consistent with previous findings that men have a more
379 pronounced loss of visceral fat and, consequently, a greater reduction in WHR [16-17].

380 Reduced WHR is associated with cardiovascular benefits and reduced health-related
381 adverse events. Epidemiological studies highlight that a lower WHR reduces the risk of
382 cardiovascular diseases, hypertension, and type 2 diabetes [18]. This association lies in
383 the direct relationship between WHR and visceral fat and, consequently, with insulin
384 resistance and inflammation caused by excess of this fat, factors that play crucial roles in
385 increasing the risk of cardiovascular diseases [19-20]. Despite the different reduction
386 levels in WHR, both sexes improved these measures, suggesting that both men and
387 women experience the benefits in cardiovascular risk resulting from these reductions.

388 Regarding elderly and non-elderly patients, a reduction in weight, BMI, fat mass,
389 percentage of body fat mass, and WHR was observed in both periods. However, non-
390 elderly patients presented better results than elderly patients. A previous study [21] also
391 evaluated the repercussions of treating severe obesity in an inpatient setting in elderly and
392 non-elderly patients. Their results are consistent with ours because although both groups
393 obtained significant results, non-elderly patients exhibited a greater BMI, weight, and waist
394 circumference reduction than the elderly patients.

395 The aging process naturally modifies body composition, which can lead to an increase of 2
396 to 5% in total fat mass each decade from the age of 40, in addition to a reduction in
397 muscle mass [22]. In this study, the differences in the loss of skeletal muscle mass and
398 reduction in basal metabolic rate were not significant between age groups during the 3-
399 month hospitalization. However, during the 6-month hospitalization, elderly patients
400 exhibited greater loss of skeletal muscle mass and, consequently, a greater reduction in

401 basal metabolic rate. This result necessitates the development of strategies and different
402 nutritional protocols for the elderly, which can minimize this loss of muscle mass during a
403 longer period of hospitalization.

404 The relationship between LCD and weight loss and its effects on glucose, lipid, and
405 inflammatory parameters are well documented in the scientific literature (8). In this study,
406 the reduction in blood glucose, insulin, glycated hemoglobin, triglycerides, LDL- and total
407 cholesterol, and CRP was significant in both periods of hospitalization. A small reduction in
408 HDL cholesterol was observed only in the short term and was not maintained after 6
409 months of hospitalization. These results suggest that inpatient treatment improves the
410 metabolic and inflammatory profile of patients with severe obesity, with implications for
411 reducing cardiovascular risk.

412 Reducing body weight by 5 to 10% improves cardiovascular health, as lipid parameters
413 tend to reduce significantly within this range of weight loss when they are at abnormal
414 levels [23]. The non-significant long-term reduction in HDL cholesterol can be partly
415 explained by the progressive increase in physical activity during hospitalization, associated
416 with improved eating patterns. Therefore, multidisciplinary therapy aimed at lasting
417 changes in lifestyle habits is crucial.

418 Hepatic transaminase GGT levels reduced significantly throughout both periods of
419 hospitalization. GPT levels increased slightly in the first 3 months but decreased at 6
420 months. Despite not changing significantly in the first 3 months of hospitalization, the GOT
421 level increased slightly at 6 months. This increase may be because of weight loss during
422 hospitalization; it was within the normal range and without clinical implications.

423 Fasting blood glucose, insulin, and glycated hemoglobin levels were significantly reduced
424 in this study, indicating an improvement in glycemic control and insulin resistance,

425 corroborating previous reports [24-25]. This improvement in glucose parameters
426 demonstrates that this treatment reduces weight and body fat, achieves positive metabolic
427 profile results, and removes the patient from pre-diabetes classification.

428 In both periods of hospitalization, inflammatory marker levels, CRP, and ferritin were also
429 reduced significantly. Reducing weight and body fat mass reduces free fatty acid levels
430 that activate the pro-inflammatory cascade. This increases adiponectin levels, reducing
431 CRP production by reducing the release of interleucin-6 by adipose tissue [24-26].
432 Elevated ferritin is an important marker of chronic inflammation, cardiovascular risk, and
433 insulin resistance and is associated with inflammation in adipose tissue [27-28]. Therefore,
434 the reduction in ferritin and CRP levels observed in this study reflects an improvement in
435 the inflammatory parameters of patients with severe obesity.

436 A logistic multivariate regression analysis was conducted to understand the factors,
437 measured at admission, associated with the success to reach the median value of fat
438 mass loss percentage at 3 and 6 months of treatment. The model explained approximately
439 33.5%% and 28.7% of the success to reach such levels of fat mass loss percentage
440 variation after 3 and 6 months of treatment, respectively. Male sex was a significant
441 predictor of the percentage of fat mass loss at both treatment times. Previous reports have
442 indicated greater weight and fat loss in men who underwent interventions to treat obesity
443 [15,29]. A higher percentage of lean mass in men, a greater amount of estrogen produced
444 by women, and differences in insulin resistance between sexes may justify these different
445 responses to treatment [29-30]. Another significant predictor was age; elderly people
446 presented lower chance of reach median values of fat mass loss percentage in both
447 periods of hospitalization, corroborating previous data [21]. Metabolic changes inherent to

448 advancing age, associated with reduced muscle mass and strength [31-32], may explain
449 this negative association with age.

450 Alcoholism reported on admission was related to a higher chance to reach median
451 percentage of fat mass loss in the first 3 months of hospitalization but not at 6 months.
452 Upon admission, patients stop drinking alcoholic beverages, contributing to a reduction in
453 caloric intake and, consequently, a reduction in fat mass in the short term. Hepatic
454 steatosis was a predictor associated with a higher chance of reach median percentage of
455 fat mass loss at six months of hospitalization. As the liver is one of the main metabolic
456 regulatory organs, hepatic steatosis indicates an altered and compromised metabolism,
457 which seems to respond better to a six months inpatient treatment.

458 Patients with high CPK levels on admission had a higher percentage of fat mass loss in
459 both periods of hospitalization. CPK is an enzyme in muscle cells, with only small amounts
460 released into the bloodstream [33-36]. However, high body fat levels can generate
461 changes in the cell membrane, increasing circulating CPK levels [37]. As the main source
462 of CPK is muscle tissue, the levels of this enzyme can indicate muscle mass, justifying its
463 association with a better response in the loss of body fat. However, more studies are
464 necessary to verify this association. CRP level was a negative predictor of fat mass loss at
465 patient admission in this study. CRP level is an important indicator of subclinical systemic
466 inflammation in individuals with severe obesity [38]. Therefore, the greater difficulty in
467 losing fat mass in patients with higher CRP levels could be explained by a worse
468 inflammatory profile resulting from more dysfunctional adipose tissue. However, more
469 studies are needed to address this question.

470 The zinc level below normal range was associated with a lower chance to reach median
471 level of fat mass reduction at 3 but not at 6 months of treatment. Zinc plays an important

472 role in controlling appetite, has anti-inflammatory action, and is involved in the production
473 of hormones associated with energy metabolism, insulin resistance, and diabetes [39-40].
474 Therefore, the zinc association reported herein could be explained by its protective effects
475 against insulin resistance, chronic inflammation, and hyperglycemia, leading to higher fat
476 mass loss. Its effect loss at 6 months may be because this micronutrient is supplemented
477 during hospitalization, correcting possible deficiencies and their effects in the long term.

478 **Conclusion**

479 Three and 6 months of inpatient treatment substantially reduced anthropometric
480 measurements in severe obesity, with 6 months yielding better results with approximately
481 20% reduction in weight, 31% in fat mass, and 6% in the WHR. Furthermore, glucose,
482 lipid, and inflammatory profiles significantly improved in both treatment periods. These
483 results were maintained in elderly and non-elderly patients, men and women, resulting in
484 an improvement in cardiovascular risk and escape from pre-diabetes. This study suggests
485 that VLCD in an inpatient facility with immersive lifestyle changes under multidisciplinary
486 supervision is an alternative and effective intervention for managing severe obesity in the
487 real world.

488 **Acknowledgment**

489 We thank all the professionals of Hospital da Obesidade for their kind support.

490

491

492

493

494 **References**

- 495
- 496
- 497 1. The GBD 2015 Obesity Collaborators. Health Effects of Overweight and Obesity in 195
498 Countries over 25 Years. *N Engl J Med*. 2017;377(1):13–27.
- 499 2. Bray GA. Medical Consequences of Obesity. *The Journal of Clinical Endocrinology &*
500 *Metabolism*. 2004;89(6):2583–9.
- 501 3. McCafferty BJ, Hill JO, Gunn AJ. Obesity: Scope, Lifestyle Interventions, and Medical
502 Management. *Techniques in Vascular and Interventional Radiology*. 2020;23(1):100653.
- 503 4. Caprio M, Infante M, Moriconi E, Armani A, Fabbri A, Mantovani G, et al. Very-low-
504 calorie ketogenic diet (VLCKD) in the management of metabolic diseases: systematic
505 review and consensus statement from the Italian Society of Endocrinology (SIE). *J*
506 *Endocrinol Invest*. 2019;42(11):1365–86.
- 507 5. Muscogiuri G, Barrea L, Laudisio D, Pugliese G, Salzano C, Savastano S, et al. The
508 management of very low-calorie ketogenic diet in obesity outpatient clinic: a practical
509 guide. *J Transl Med*. 2019;17(1):356.
- 510 6. Gupta L, Khandelwal D, Kalra S, Gupta P, Dutta D, Aggarwal S. Ketogenic diet in
511 endocrine disorders: Current perspectives. *J Postgrad Med*. 2017;63(4):242.
- 512 7. Dalle Grave R, Calugi S, Molinari E, Petroni ML, Bondi M, Compare A, et al. Weight
513 Loss Expectations in Obese Patients and Treatment Attrition: An Observational Multicenter
514 Study. *Obesity Research*. 2005;13(11):1961–9.
- 515 8. ABESO. Associação Brasileira para o Estudo da Obesidade e da Síndrome
516 Metabólica- ABESO. Diretrizes brasileiras de obesidade. Posicionamento sobre o

- 517 Tratamento Nutricional do Sobrepeso e da Obesidade [Internet]. 2022. Available from:
518 https://abeso.org.br/wp-content/uploads/2022/11/posicionamento_2022-alterado-nov-22-
519 1.pdf
- 520 9. Terapia Cognitiva na Prática: Fundamentos Científicos e Técnicos. Artmed; 2021.
- 521 10. Boff RM, Segalla CD, Feoli AMP, Gustavo AS, Oliveira MS. O modelo transteórico
522 para auxiliar adolescentes obesos a modificar estilo de vida. *Temas Psicol.*
523 2018;26(2):1055–67.
- 524 11. Reis ECD, Passos SRL, Santos MABD, Silva LMLE, Oliveira RDVCD, Camara APS, et
525 al. Características de adultos com obesidade grave em tratamento ambulatorial no Rio de
526 Janeiro e fatores associados à perda de peso. *Cad saúde colet.* 2022;30(2):201–14.
- 527 12. Lima-Costa MF, Rodrigues LC, Barreto ML, Gouveia M, Horta BL, Mambrini J, et al.
528 Genomic ancestry and ethnoracial self-classification based on 5,871 community-dwelling
529 Brazilians (The Epigen Initiative). *Sci Rep.* 2015;5(1):9812.
- 530 13. Gasparri C, Perna S, Peroni G, Riva A, Petrangolini G, Faliva MA, et al.
531 Multidisciplinary residential program for the treatment of obesity: how body composition
532 assessed by DXA and blood chemistry parameters change during hospitalization and
533 which variations in body composition occur from discharge up to 1-year follow-up. *Eat*
534 *Weight Disord.* 2022;27(7):2701–11.
- 535 14. O’neil PM, Currey HS, Hirsch AA, Riddle FE, Taylor CI, Malcolm RJ, et al. Effects of
536 sex of subject and spouse involvement on weight loss in a behavioral treatment program:
537 A retrospective investigation. *Addictive Behaviors.* 1979;4(2):167–77.

- 538 15. Millward DJ, Truby H, Fox KR, Livingstone MBE, Macdonald IA, Tothill P. Sex
539 differences in the composition of weight gain and loss in overweight and obese adults. *Br J*
540 *Nutr.* 2014;111(5):933–43.
- 541 16. Kuk JL, Ross R. Influence of sex on total and regional fat loss in overweight and obese
542 men and women. *Int J Obes.* 2009;33(6):629–34.
- 543 17. Wirth A, Steinmetz B. Gender Differences in Changes in Subcutaneous and
544 Intra-abdominal Fat during Weight Reduction: An Ultrasound Study. *Obesity Research.*
545 1998;6(6):393–9.
- 546 18. Megnien J, Denarie N, Cocaul M, Simon A, Levenson J. Predictive value of waist-to-
547 hip ratio on cardiovascular risk events. *Int J Obes.* 1999;23(1):90–7.
- 548 19. Welborn TA, Dhaliwal SS, Bennett SA. Waist–hip ratio is the dominant risk factor
549 predicting cardiovascular death in Australia. *Medical Journal of Australia.*
550 2003;179(11):580–5.
- 551 20. Czernichow S, Kengne AP, Huxley RR, Batty GD, De Galan B, Grobbee D, et al.
552 Comparison of waist-to-hip ratio and other obesity indices as predictors of cardiovascular
553 disease risk in people with type-2 diabetes: a prospective cohort study from ADVANCE.
554 *European Journal of Cardiovascular Prevention & Rehabilitation.* 2011;18(2):312–9.
- 555 21. Budui S, Bigolin F, Giordano F, Leoni S, Berteotti M, Sartori E, et al. Effects of an
556 Intensive Inpatient Rehabilitation Program in Elderly Patients with Obesity. *Obes Facts.*
557 2019;12(2):199–210.
- 558 22. Tchernof A, Després JP. Pathophysiology of Human Visceral Obesity: An Update.
559 *Physiological Reviews.* 2013;93(1):359–404.

- 560 23. Dattilo A, Kris-Etherton P. Effects of weight reduction on blood lipids and lipoproteins:
561 a meta-analysis. *The American Journal of Clinical Nutrition*. 1992;56(2):320–8.
- 562 24. Abbas H, Perna S, Shah A, Gasparri C, Rondanelli M. Efficacy and Safety of a Long-
563 Term Multidisciplinary Weight Loss Intervention under Hospitalization in Aging Patients
564 with Obesity: An Open Label Study. *Nutrients*. 2022;14(16):3416.
- 565 25. Von Bibra H, Wulf G, St John Sutton M, Pfützner A, Schuster T, Heilmeyer P. Low-
566 carbohydrate/high-protein diet improves diastolic cardiac function and the metabolic
567 syndrome in overweight-obese patients with type 2 diabetes. *IJC Metabolic & Endocrine*.
568 2014;2:11–8.
- 569 26. Kwaifa IK, Bahari H, Yong YK, Noor SM. Endothelial Dysfunction in Obesity-Induced
570 Inflammation: Molecular Mechanisms and Clinical Implications. *Biomolecules*.
571 2020;10(2):291.
- 572 27. Ryan BJ, Van Pelt DW, Guth LM, Ludzki AC, Gioscia-Ryan RA, Ahn C, et al. Plasma
573 ferritin concentration is positively associated with *in vivo* fatty acid mobilization and insulin
574 resistance in obese women. *Experimental Physiology*. 2018;103(11):1443–7.
- 575 28. Justi A, Tatsch P, Siqueira LO. Ferritina: biomarcador de doenças cardiovasculares
576 em pacientes diabéticos. *ABCS Health Sci [Internet]*. 2019 [citado 10 de janeiro de
577 2024];44(1). Available from: <https://www.portalnepas.org.br/abcshs/article/view/1145>
- 578 29. Williams RL, Wood LG, Collins CE, Callister R. Effectiveness of weight loss
579 interventions – is there a difference between men and women: a systematic review.
580 *Obesity Reviews*. 2015;16(2):171–86.

- 581 30. Wu BN, O'Sullivan AJ. Sex Differences in Energy Metabolism Need to Be Considered
582 with Lifestyle Modifications in Humans. *Journal of Nutrition and Metabolism*. 2011;2011:1–
583 6.
- 584 31. S. Fry C, B. Rasmussen B. Skeletal Muscle Protein Balance and Metabolism in the
585 Elderly. *CAS*. 2011;4(3):260–8.
- 586 32. Rezuş E, Burlui A, Cardoneanu A, Rezuş C, Codreanu C, Pârvu M, et al. Inactivity and
587 Skeletal Muscle Metabolism: A Vicious Cycle in Old Age. *IJMS*. 2020;21(2):592.
- 588 33. Andres RH, Ducray AD, Schlattner U, Wallimann T, Widmer HR. Functions and effects
589 of creatine in the central nervous system. *Brain Research Bulletin*. 2008;76(4):329–43.
- 590 34. Saks VA, Rosenshtraukh LV, Smirnov VN, Chazov EI. Role of creatine phosphokinase
591 in cellular function and metabolism. *Can J Physiol Pharmacol*. 1978;56(5):691–706.
- 592 35. Levitsky DO, Levchenko TS, Saks VA, Sharov VG, Smirnov VN. The Role of Creatine
593 Phosphokinase in Supplying Energy for the Calcium Pump System of Heart Sarcoplasmic
594 Reticulum. *Membrane Biochemistry*. 1978;2(1):81–96.
- 595 36. Moghadam-Kia S, Oddis CV, Aggarwal R. Approach to asymptomatic creatine kinase
596 elevation. *CCJM*. 2016;83(1):37–42.
- 597 37. Kim J, Yoon JH. Does Obesity Affect the Severity of Exercise-Induced Muscle Injury?
598 *Journal of Obesity & Metabolic Syndrome*. 2021;30(2):132–40.
- 599 38. Ion RM, Sibianu M, Hutanu A, Beresescu FG, Sala DT, Flavius M, et al. A
600 Comprehensive Summary of the Current Understanding of the Relationship between
601 Severe Obesity, Metabolic Syndrome, and Inflammatory Status. *JCM*. 2023;12(11):3818.

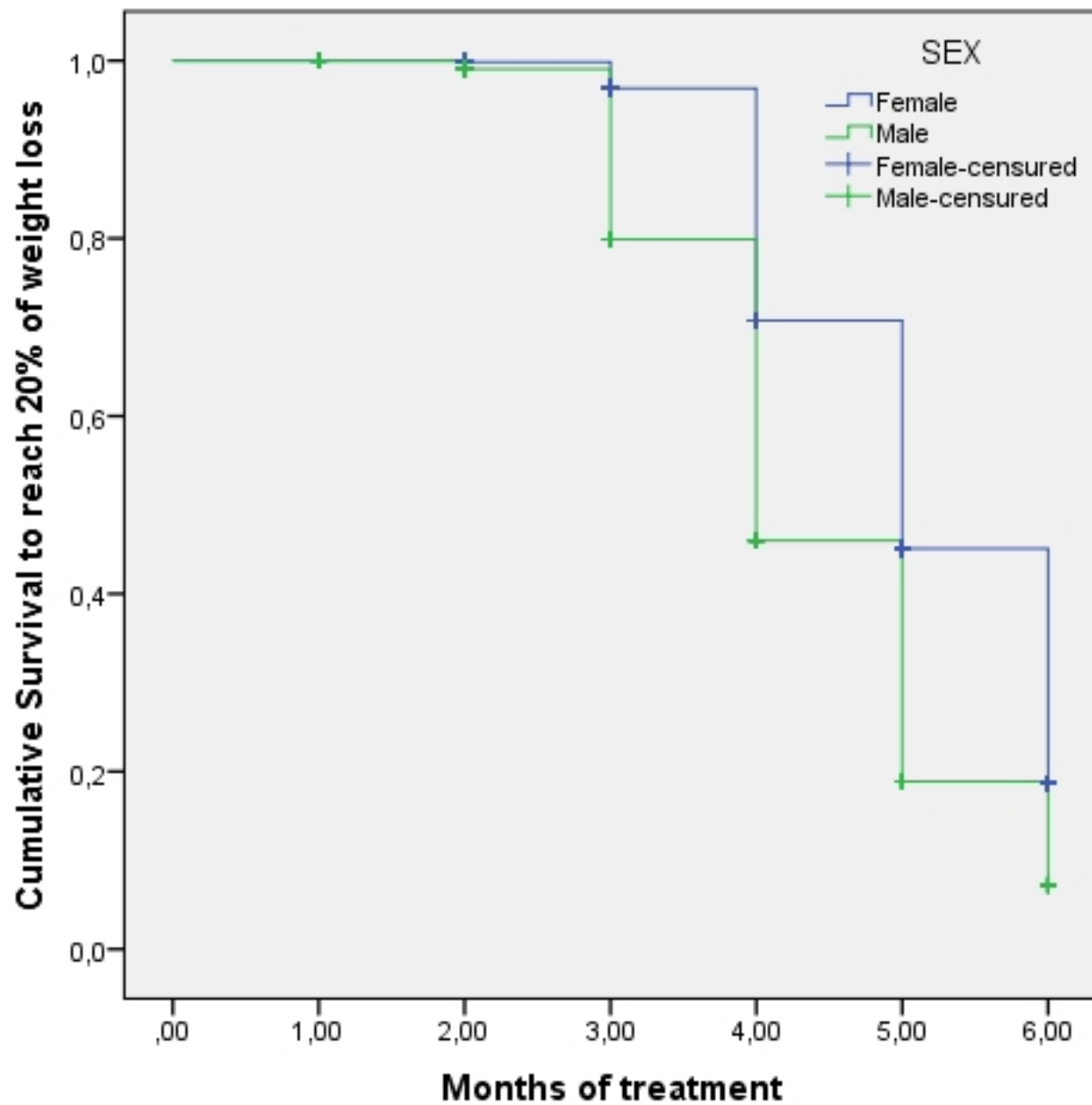
602 39. Shay NF, Mangian HF. Neurobiology of Zinc-Influenced Eating Behavior. The Journal
603 of Nutrition. 2000;130(5):1493S-1499S.

604 40. Skalny AV, Aschner M, Tinkov AA. Zinc. Advances in Food and Nutrition Research.
605 2021; 96:251–310. Available from:
606 <https://linkinghub.elsevier.com/retrieve/pii/S1043452621000036>

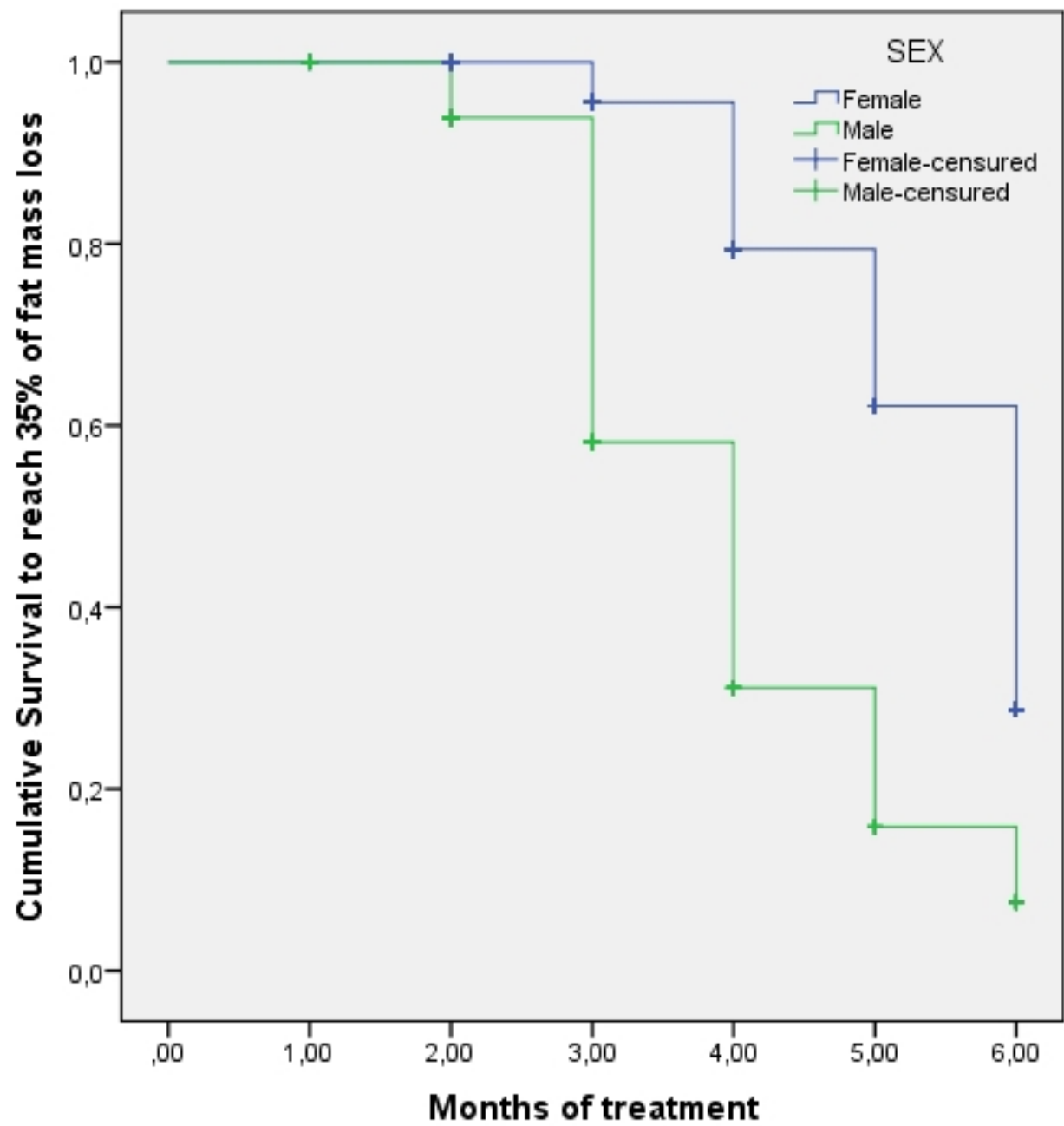
607

608

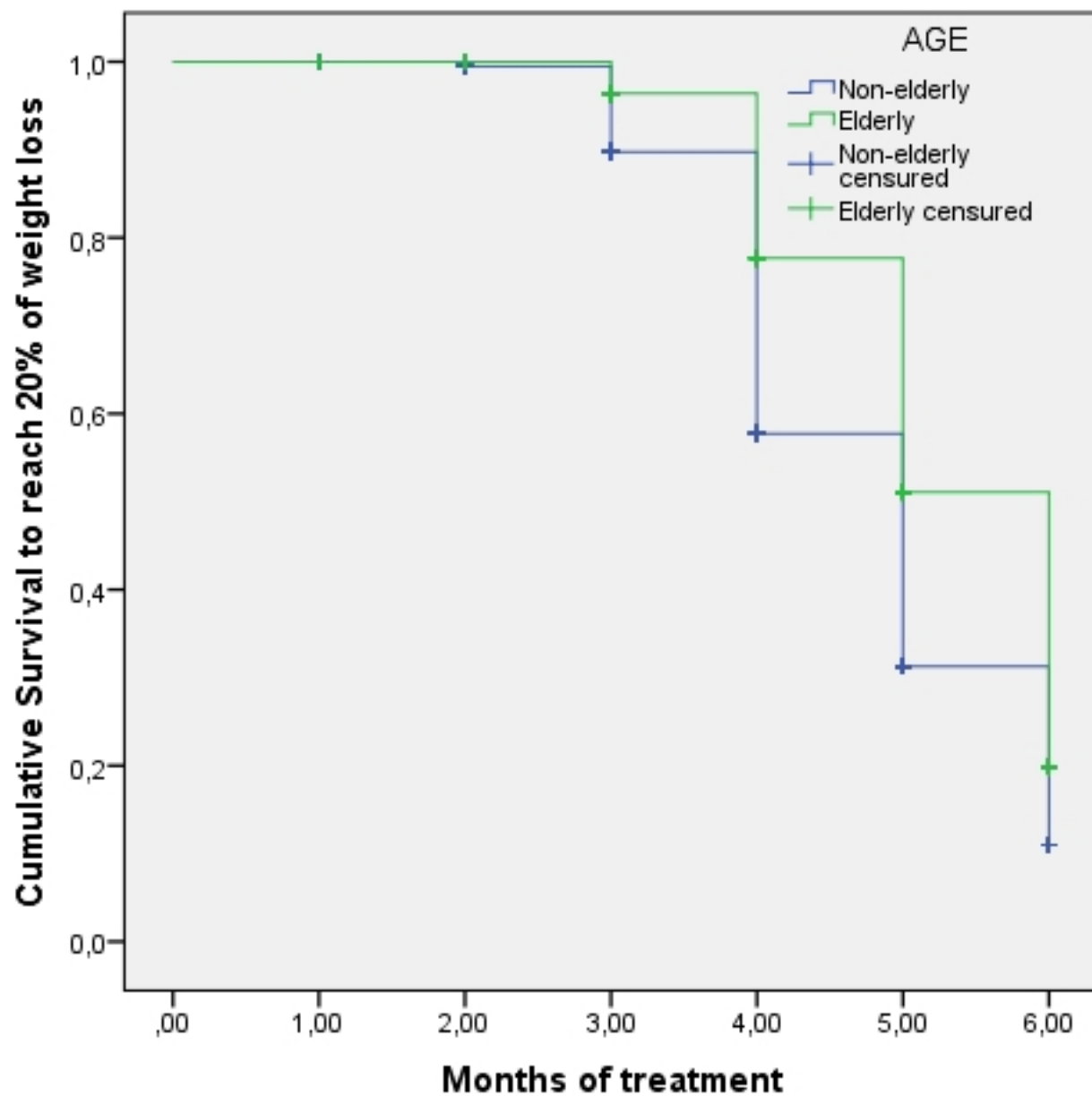
609



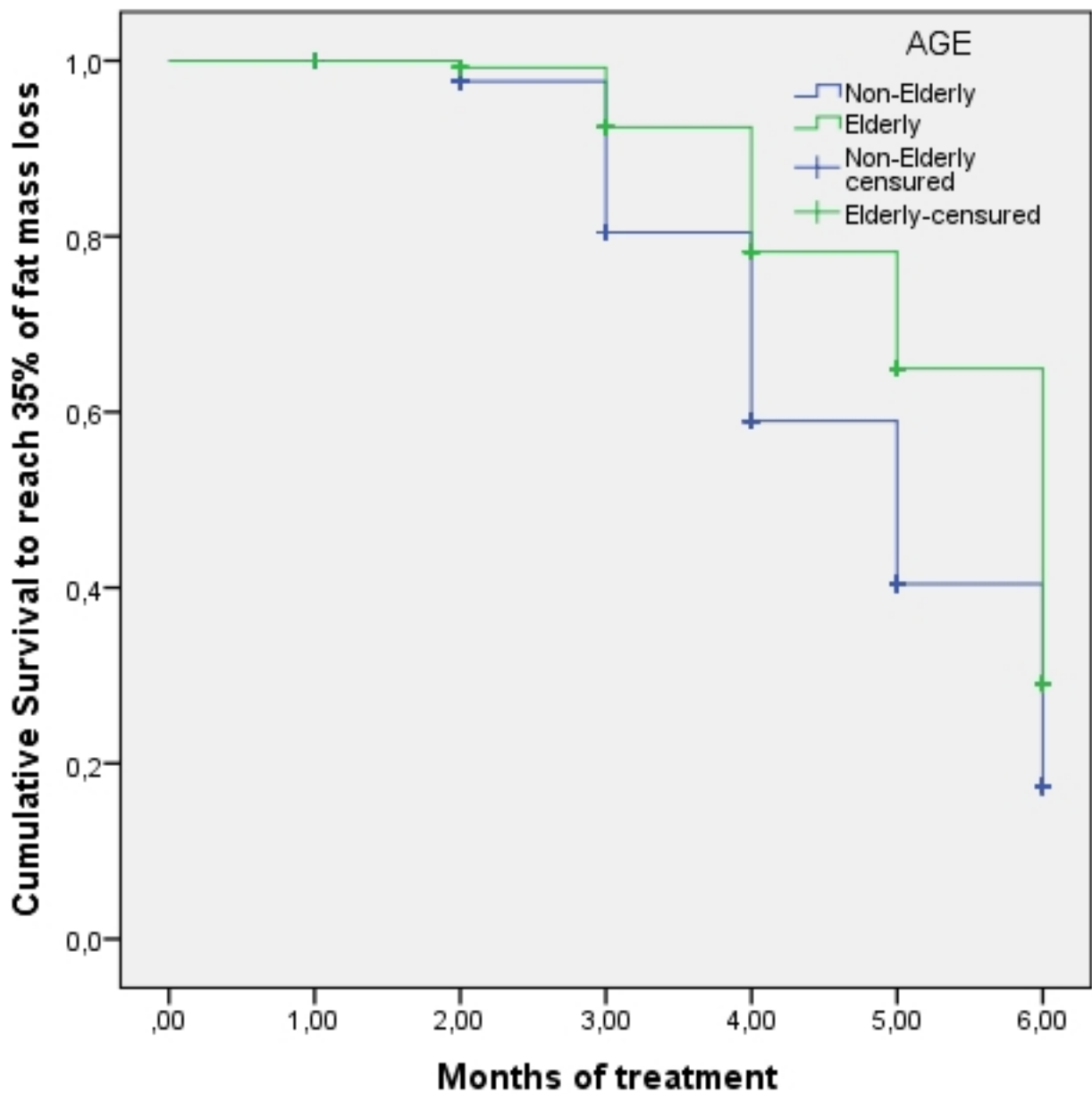
Figure



Figure



Figure



Figure