

1 **Unveiling the threat: Characterization of *Clostridioides difficile* Infection in**
2 **the Northwest Region of Buenos Aires between 2019-2023 and Associated**
3 **Risk Factors redefined through a Meta-Analysis**

4 Angela María Barbero^{1,2,#}, Nicolás Diego Moriconi^{1,#}, Sabina Palma^{1,2,#}, Josefina
5 Celano¹, María Gracia Balbi³, Lorenzo Sebastián Morro¹, María Martina Calvo
6 Zarlenga⁴, Jorgelina Suárez^{3,5}, María Guadalupe Martínez³, Mónica Graciela
7 Machain³, Carlos Gabriel Altamiranda⁴, Gabriel Erbiti^{4,5}, Rodrigo Emanuel
8 Hernández Del Pino^{1,2, ζ}, Virginia Pasquinelli^{1,2, *, ζ}.

9 1 Centro de Investigaciones Básicas y Aplicadas (CIBA), Universidad Nacional del
10 Noroeste de la Provincia de Buenos Aires (UNNOBA). B6000DNE, Buenos Aires,
11 Argentina.

12 2 Centro de Investigaciones y Transferencias del Noroeste de la Provincia de
13 Buenos Aires (CIT NOBA), UNNOBA-Universidad Nacional de San Antonio de
14 Areco (UNSAAdA)-Consejo Nacional de Investigaciones Científicas y Técnicas
15 (CONICET). Buenos Aires, Argentina.

16 3 Servicio de Laboratorio, Sala de Microbiología, Hospital Interzonal General de
17 Agudos (HIGA) Dr. Abraham F. Piñeyro, Junín, Buenos Aires, Argentina

18 4 Clínica Centro Médico Privado SRL, Junín, Buenos Aires, Argentina

19 5 Universidad Nacional del Noroeste de la Provincia de Buenos Aires (UNNOBA).
20 B6000DNE, Buenos Aires, Argentina.

21 # Angela María Barbero, Nicolás Diego Moriconi and Sabina Palma share first
22 authorship.

23 ζ Rodrigo Emanuel Hernández Del Pino Rodrigo and Virginia Pasquinelli share the
24 last authorship.

25 *Corresponding author: virpasquinelli@gmail.com, Tel: +5492364582417, Address:
26 Coronel Borges 379, Junín (Postal Code 6000), Buenos Aires, Argentina.

27 **Conflict of interest.** *The authors declare that the research was conducted in the*
28 *absence of any commercial or financial relationships that could be construed as a*
29 *potential conflict of interest.*

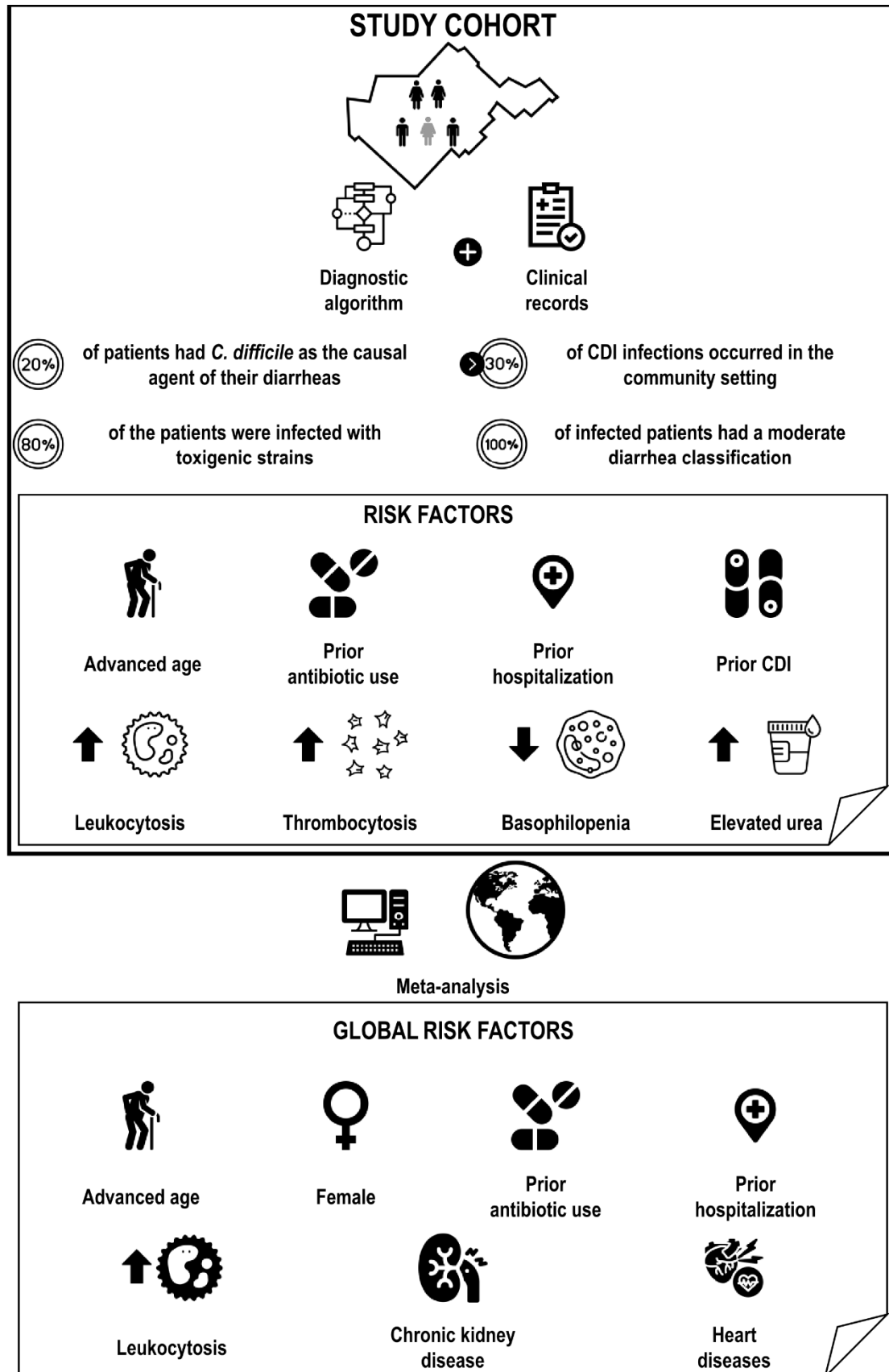
30 1 in 5 diarrheas is caused by *C. difficile* in the Northwest region of Buenos Aires,
31 Argentina. One third of the cases were community-acquired and involved toxigenic
32 strains. Comparison through meta-analysis identified known and also new risk
33 factors.

34 **Abstract**

35 *Clostridioides difficile* stands as the leading cause of hospital acquired enteric
36 infection in developed countries. In Argentina, the epidemiology of *Clostridioides*
37 *difficile* infection (CDI) is currently poorly characterized. Therefore, we conducted a
38 retrospective case-control study evaluating the prevalence of CDI in 249 stool
39 samples collected between 2019 and 2023 in the Northwest region of Buenos
40 Aires. The presence of *C. difficile* was detected by combining three techniques
41 (EIA, PCR and toxigenic culture) in a diagnostic algorithm. Clinical and
42 demographic data from patients was also analyzed to identify CDI-associated risk
43 factors. 1 in 5 patients presented *C. difficile* as the etiological agent of diarrhea and
44 the 80% of CDI+ cases carried toxigenic strains, with a third of cases acquired in
45 the community. Age ≥ 69 years, previous use of antibiotics, previous hospitalization
46 and previous episodes of CDI emerged as predisposing factors for CDI in our study
47 cohort. Blood parameters such as an elevated number of leukocytes and platelets,
48 a decreased basophil count, and an increased urea concentration were identified
49 as indicators of CDI. We also carried out a systematic review and a meta-analysis
50 where we contrasted our results with 39 studies selected from different countries
51 around the world. At the global level, the meta-analysis highlighted advanced age,
52 previous consumption of antibiotics and previous hospitalization as CDI risk factors
53 and the leukocyte count as an indicator of CDI. These results emphasize the
54 importance of epidemiological studies and reveal crucial information for healthcare
55 decision-making regarding CDI.

56 **Keywords:** *C. difficile*, epidemiology, risk factors, meta-analysis

57 **Running title:** Risk factors and meta-analysis of CDI



59 Introduction

60 *Clostridioides difficile* infection (CDI) is considered as the most frequent hospital-
61 acquired disease^{1,2}. Since 2019, the Centers for Disease Control (CDC) have
62 identified *C. difficile* as an “urgent threat”, with the immediate need to implement
63 prevention and control actions³. *C. difficile* is a Gram positive, anaerobic and
64 spore-forming bacterium that causes intestinal damage primarily through the
65 production of two main toxins: toxin A (TcdA) and toxin B (TcdB)⁴. These toxins
66 play a crucial role in the pathogenesis of CDI by damaging the cells lining the gut.
67 CDI can be life-threatening, ranging from mild diarrhea to pseudomembranous
68 colitis and causing nearly 500,000 cases per year in the United States⁵.

69 CDI is also a major economic burden to the health care systems, which is closely
70 linked to the high recurrence rates of this infection. Although standard treatments
71 resolve CDI in most cases, up to 35% of CDI-treated patients will experiment a
72 recurrence of the disease with aggravated symptoms⁵. Common therapy for CDI
73 includes antibiotics such as metronidazole for mild cases and vancomycin or
74 fidaxomicin for moderate to severe cases⁶. Therapies with the human antibody
75 bezlotoxumab against *C. difficile* toxin B or Fecal Microbiota Transplant (FMT) to
76 restore the balance of the microbiome have been recommended to treat or prevent
77 recurrences^{7,8}.

78 Regarding global epidemiology, while healthcare-associated CDI has declined in
79 recent years, the incidence of community-acquired CDI is on the rise⁹⁻¹⁴. The main
80 transmission route for *C. difficile* is through direct Person-to-Person contact by the
81 fecal-oral route¹⁵. *C. difficile* spores constitute the main form of resistance and can
82 persist in the environment for long periods^{16,17}. Then, contaminated surfaces, food
83 or water, as well as asymptomatic carriers, are typical sources of community
84 transmission¹⁸⁻²⁰.

85 Several risk factors are associated with the development of CDI. The use of
86 antimicrobials with emphasis on broad-spectrum antibiotics, has been described as
87 the most significant risk factor for CDI^{21,22}. These antibiotics can disrupt the normal
88 balance of bacteria in the gastrointestinal tract, generating dysbiosis and so
89 allowing *C. difficile* overgrowth in the gut. Hospitalization in healthcare facilities and
90 advanced age, which can be related to weakened immune systems and a higher
91 likelihood of residing in healthcare settings, also constitute important risk factors²².
92 The use of stomach acid regulators, such as proton pump inhibitors (PPIs) and H2
93 blockers, has been associated with an increased risk of CDI²³; however, this is still
94 under debate. Previous episodes of CDI increase the risk of recurrence²⁴. Finally,
95 several underlying health conditions that could compromise the immune system
96 could contribute to increased susceptibility or severity of the infection.
97 Comorbidities such as Inflammatory Bowel Disease (IBD)²⁵, Crohn's disease²⁵,
98 ulcerative colitis²⁵, diabetes²⁶ and chronic kidney disease (CKD)²⁷ can enhance
99 the risk of CDI.

100 Certain clinical procedures (e.g. chemotherapy treatments and gastrointestinal
101 surgery), malnutrition or enteral nutrition, organ transplantation along with
102 immunosuppressive medications and blood disorders may also elevate the risk of
103 CDI^{28,29}.

104 Understanding geographical variations in prevalence by studying CDI epidemiology
105 and risk factors is essential for preventing, controlling, and managing the infection.
106 In Latin America, and particularly in Argentina, comprehensive epidemiological
107 data on CDI are limited. It has been reported that patients with diarrhea are not
108 routinely tested for *C. difficile* in developing countries and, when tested, very often
109 only the enzyme immunoassay (EIA) is used³⁰⁻³². This could lead to an
110 underestimation in the diagnosis and high economic burdens for the health system.
111 Our retrospective study (2019-2023) assesses the prevalence of *C. difficile* among
112 health care centers of the Northwest region of Buenos Aires, Argentina.
113 Furthermore, with the aim to characterize our study cohort, we analyzed the
114 demographic and clinical data of the patients and we conducted a meta-analysis to
115 compare our findings with global reports.

116 Methodology

117 Human Samples and Participating Institutions

118 The research was carried out in accordance with the Declaration of Helsinki (2013)
119 and approved by the UNNOBA (Universidad Nacional del Noroeste de la Provincia
120 de Buenos Aires) Ethics Committee (COENOBA).

121 Fecal samples from hospitalized adult patients with diarrhea were collected after
122 obtaining informed consents and frozen at -20 °C until use. The samples were
123 derived from the following health-care centers: Hospital Interzonal General de
124 Agudos (HIGA) Abraham Félix Piñeyro, Clínica Centro Médico Privada SRL and
125 Clínica IMEC. Samples received between January 1, 2019 and December 31,
126 2023 from Sanitary Region III of Buenos Aires, Argentina (**Supplementary Fig. 1**)
127 were included in this analysis.

128 Patients characterization

129 The presence of *C. difficile* was determined in the fecal samples using a diagnostic
130 algorithm (**Supplementary Fig. 2**) as recommended by Crobach et al. in 2016³³.
131 Briefly, three tests were used in a retrospective approach: Enzyme immunoassay
132 (EIA, CoproStrip™ *C. difficile* GDH + Toxin A + Toxin B (Savyon® Diagnostics
133 Ltd)), Polymerase Chain Reaction from stool samples (PCR, Taq Phire Tissue
134 Direct PCR Master Mix (Thermo Fisher)) and Toxigenic culture (stool culture in
135 CHROMAgar™ *C. difficile* plates + PCR from isolated *C difficile* colonies).

136 Patients were defined as CDI+ or CDI- and clinical, demographic and blood
137 parameters were evaluated (**Table 1**).

138 CDI classifications by setting of acquisition and severity were defined according to
139 the Infectious Diseases Society of America (IDSA) criteria³⁴.

| Clinical-demographical parameters | Blood parameters |
|--|--------------------------------------|
| Age | Leukocytes (cells/mm ³) |
| Biological Sex | Neutrophils (cells/mm ³) |
| Previous hospitalization | Monocytes (cells/mm ³) |
| Previous consumption of Antibiotics | Lymphocytes (cells/mm ³) |
| Antibiotics use during hospitalization | Eosinophils (cells/mm ³) |
| Presence of comorbidities | Basophils (cells/mm ³) |

| | |
|--|------------------------------------|
| Previous consumption of Proton Pump Inhibitors | Platelets (cells/mm ³) |
| Previous CDI | Urea (mg/dl) |
| Place of hospitalization | Creatinine (mg/dl) |
| Need for Intensive Care Unit (ICU) | Albumin (g/dl) |
| Origin | |
| Diarrhea classification | |
| Shock | |
| Death | |

140

141 **Table 1.** Clinical, demographic and blood parameters evaluated in CDI+ and CDI-
142 patients.

143 **Meta-analysis design**

144 A bibliographic search was carried out using PubMed and Google Scholar
145 databases in addition to the AI SciSpace tool. The reports that fulfilled the definition
146 criteria of cases and controls were selected. The meta-analysis workflow is
147 summarized in **Fig. 4**.

148 **Statistical Analysis**

149 For clinical, demographic and blood parameters comparisons, parametric t-test or
150 non-parametric Mann-Whitney test for unpaired samples were used. Fisher's exact
151 test was used to analyze the frequency distribution of qualitative/nominal variables.
152 Data was analyzed using GraphPad Prism 8.0.1 software (San Diego, CA, USA)
153 and p values <0.05 were considered statistically significant.

154 For the meta-analysis, the “Metafor” package from RStudio (2023.06.1+524
155 version) was used³⁵. The Odds Ratio (OR, for categorical variables) and the
156 Standardized Mean Difference (SMD, for continuous variables) were calculated
157 and a REML (Random Effect Maximum Likelihood) model was employed. Models
158 with a p value <0.05 were considered as potential predictors of CDI incidence risk.

159 Results and Discussion

160 CDI prevalence in Northwest Buenos Aires

161 In Argentina, studies and reports on CDI are scarce and heterogeneous^{36–39}. In
162 order to contribute to a better understanding of the disease, we conducted a
163 retrospective analysis of 249 fecal samples received between 2019–2023 from
164 Sanitary Region III of Buenos Aires.

165 We determined *C. difficile* as the causal agent of one in five diarrheas (21.29%)
166 (**Fig. 1 a**) and we detected that more than the 80% of the patients were infected
167 with toxigenic strains; indicated by the presence of *C. difficile* Toxin B in the stool
168 samples (**Fig. 1 b**). This percentage was similar to the worldwide reported
169 prevalence, where CDI is the underlying cause of 15 to 20% of diarrhea associated
170 with the use of antibiotics⁴⁰.

171 When analyzing the cases on an annual basis, the frequency of CDI ranged
172 around 20% from 2019 to 2023 (**Fig. 1 c**). Interestingly, the highest incidence in
173 our study cohort was observed during 2020, duplicating the percentage of CDI+
174 cases compared to the rest of the years (**Fig. 1 c**). In relation to this, the COVID-19
175 pandemic brought about the preventive use of broad-spectrum antibiotics to avoid
176 bacterial coinfections; which could be associated with the increase in detection^{41–}
177⁴⁴. Nevertheless, CDI detection could have been impacted by the decrease in the
178 number of tests, a fact that was corroborated in multiple studies carried out during
179 the early stages of the pandemic^{45–47}. Additionally, there could also be an
180 underestimation of CDI cases^{48,49} since SARS-CoV-2 frequently causes
181 gastrointestinal symptoms similar to those of *C. difficile*⁵⁰.

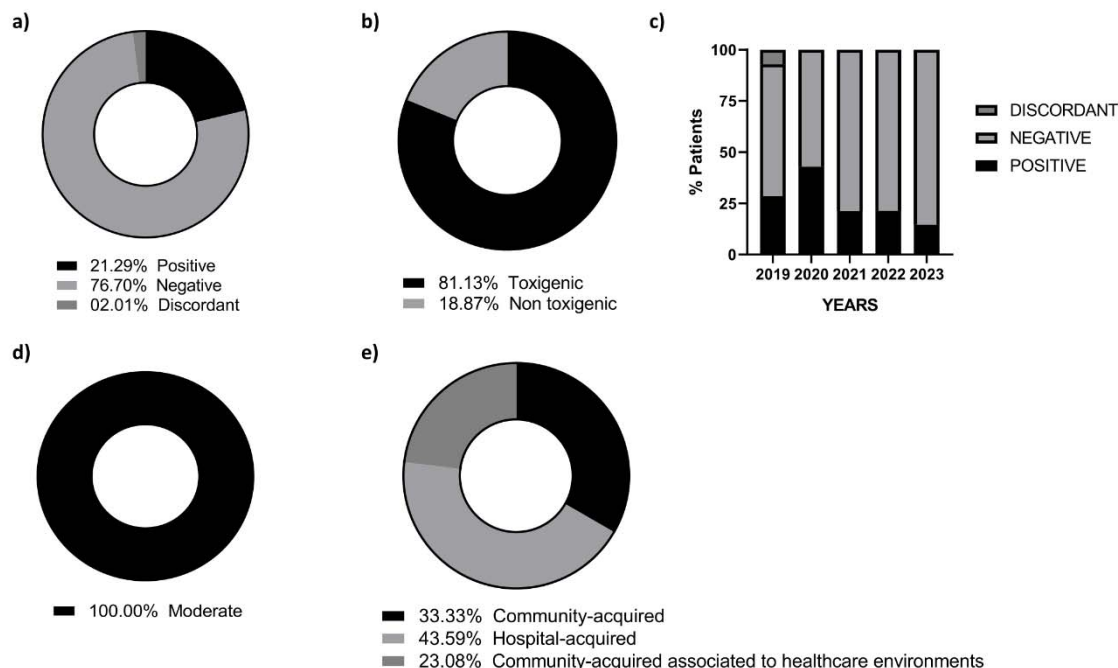
182 Regarding the severity of the diarrhea, all infected patients had a moderate
183 classification (**Fig. 1 d**). Importantly, the majority of CDI infections occurred in the
184 community setting (56.41%) (**Fig. 1 e**). 33.33% of the patients presented with
185 community-acquired CDI, 23.08% with community-acquired CDI associated with
186 healthcare environments, and the remaining 43.59% of the patients were hospital-
187 acquired (**Fig. 1 e**). This is particularly notable, since the epidemiology of CDI has
188 changed in the last two decades. The 027 strain, responsible for clinical outbreaks
189 in the early 2000s⁵¹, has recently decreased its incidence in part due
190 fluoroquinolones restriction, prevention measures and to improvements in
191 detection tests that have allowed a better characterization of the circulating
192 ribotypes^{52–56}. Additionally, an increase in strains associated with community
193 infection (e.g. 078, 014 in Europe and 106 in the US) has been reported in recent
194 years, with community-acquired cases rising above 40%^{11,57–59}.

195

196

197

198



199

200 **Figure 1.** CDI prevalence in Northwestern Buenos Aires.

201 249 stool samples were evaluated using the diagnostic algorithm. a) Donut graph
202 showing positive, negative and discordant results for the presence of *C. difficile*. b)
203 Donut graph showing the percentage of toxicogenic strains (presence of Toxin B)
204 detected in the stool samples. c) CDI+ and CDI- results classified on an annual
205 basis from 2019 to 2023. d) CDI classification. e) CDI classification by setting of
206 acquisition.

207

208 Risk factors

209 After classifying the patients as CDI+ or CDI-, we determined the risk factors that
210 could be involved in the prevalence of CDI.

211 As seen in **Fig. 2 a**, we found significant differences in the age of CDI+ and CDI-
212 populations, with the CDI+ patients presenting a higher average age (CDI+: mean
213 = 72 years vs. CDI-: mean = 65 years). By using a ROC curve analysis, we
214 established a cut-off point of 69 years for advanced age as a risk factor in our
215 cohort (**Fig. 2 b**). Elderly patients have a greater probability of receiving broad-
216 spectrum antibiotics, being hospitalized or staying longer in hospital settings partly
217 due to the presence of comorbidities^{60,61}.

218 With age, the immune system decreases its functions and also older individuals
219 develop inflammaging, which could impact in the resolution of the infection; a fact
220 that was observed for neutrophils⁶² and serum IgG against *C. difficile* toxins^{63–65}.

221 Regarding biological sex, no differences were found for the proportion of males
222 and females between both patient populations (**Fig. 2 c**).

223 Consumption of antibiotics in the 3 months prior to the diagnosis of CDI, as well as
224 previous hospitalizations and infections with *C. difficile*, could be considered risk
225 factors that predisposes to CDI in our study cohort (**Fig. 2 d, e and f**). Hospitals
226 and healthcare facilities are common environments for *C. difficile* transmission
227 since they can be easily colonized by spores that persist on surfaces for months
228^{66,67}. Previous consumption of antibiotics is directly related to the dysbiosis of the
229 microbiota that enables the colonization of *C. difficile* and is typically considered as
230 the main risk factor for CDI^{68,69}. Some antibiotics, such as clindamycin, broad-
231 spectrum penicillins, cephalosporins and fluoroquinolones alter the microbiota to a
232 greater extent than others^{68,70,71}. When analyzing the families of antibiotics
233 consumed by CDI+ patients, we observed that 56.52% had taken some kind of
234 penicillin prior to diagnosis (**Fig. 2 g**).

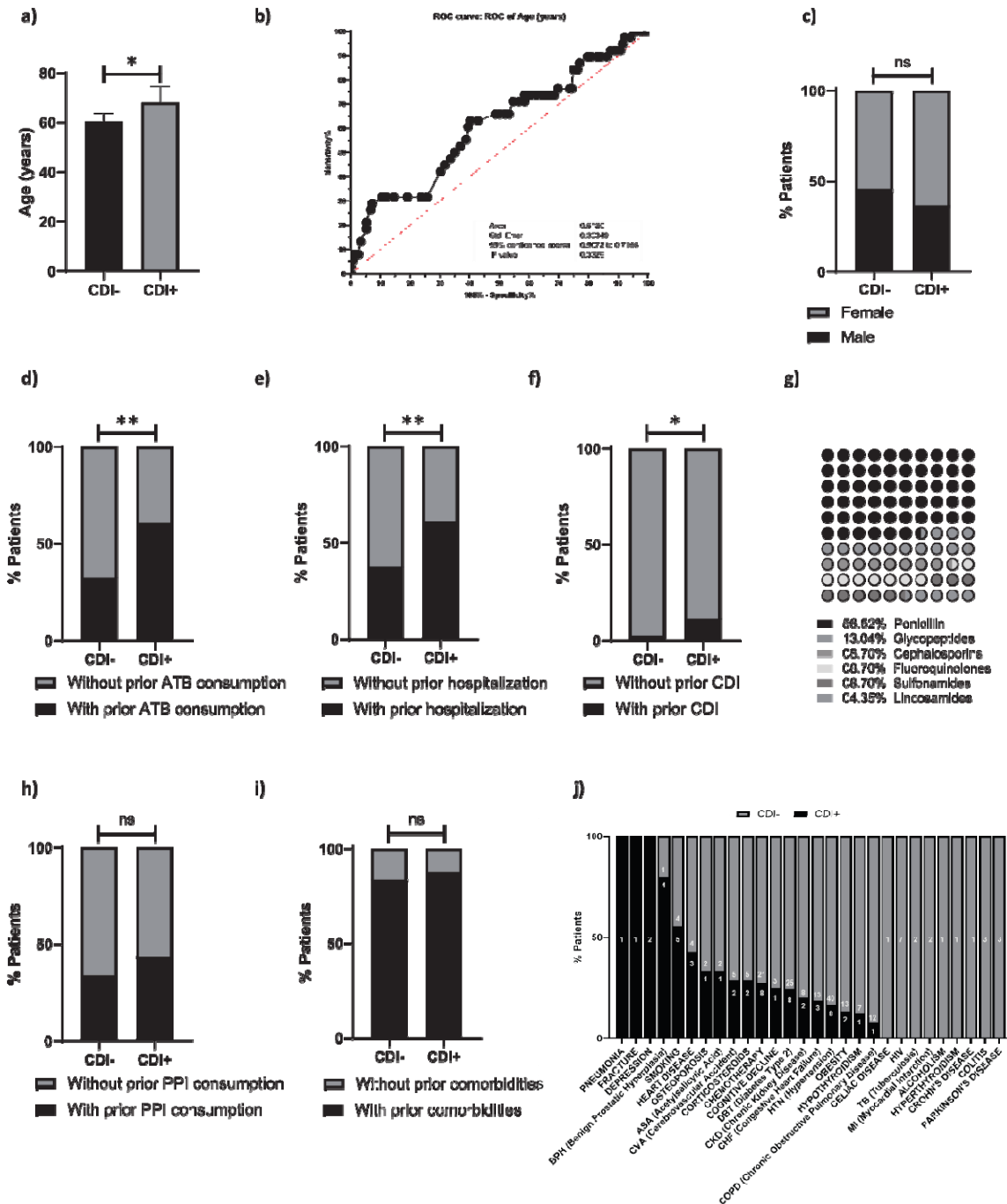
235 On the other hand, the consumption of proton pump inhibitors (PPI) prior to
236 diagnosis and the presence of comorbidities did not show significant differences
237 between CDI- and CDI+ patients (**Fig. 2 h and i**). **Fig. 2 j** shows a breakdown of
238 the comorbidities reported in the patients under study. Although they were
239 analyzed individually, no substantial variations were found between the CDI+ and
240 CDI- population for any of them.

241 No differences were found regarding the variables referring to the evolution of
242 patients during admission to health centers such as *hospitalization in common floor*
243 *or ICU, need for ICU, shock and death* (**Supplementary Fig. 3**).

244

245

246



247

248 **Figure 2.** CDI associated risk factors.

249 Evaluation of risk factors associated with CDI. a) Age (years), b) ROC curve to
 250 establish the age cut-off point, c) biological sex, d) prior antibiotics (ATB)
 251 consumption, e) prior hospitalization, f) prior CDI, g) antibiotic breakdown by family,
 252 h) prior PPI consumption, i) comorbidities, j) breakdown of specific comorbidities
 253 (the white number inside the bars represents the number of patients with the
 254 comorbidity).

255 a) Mann-Whitney test. c, d, e, f, h, and i) Fisher's exact test. Stacked bars
256 represent the percentage of patients for each parameter. ns= non-significant; *, p

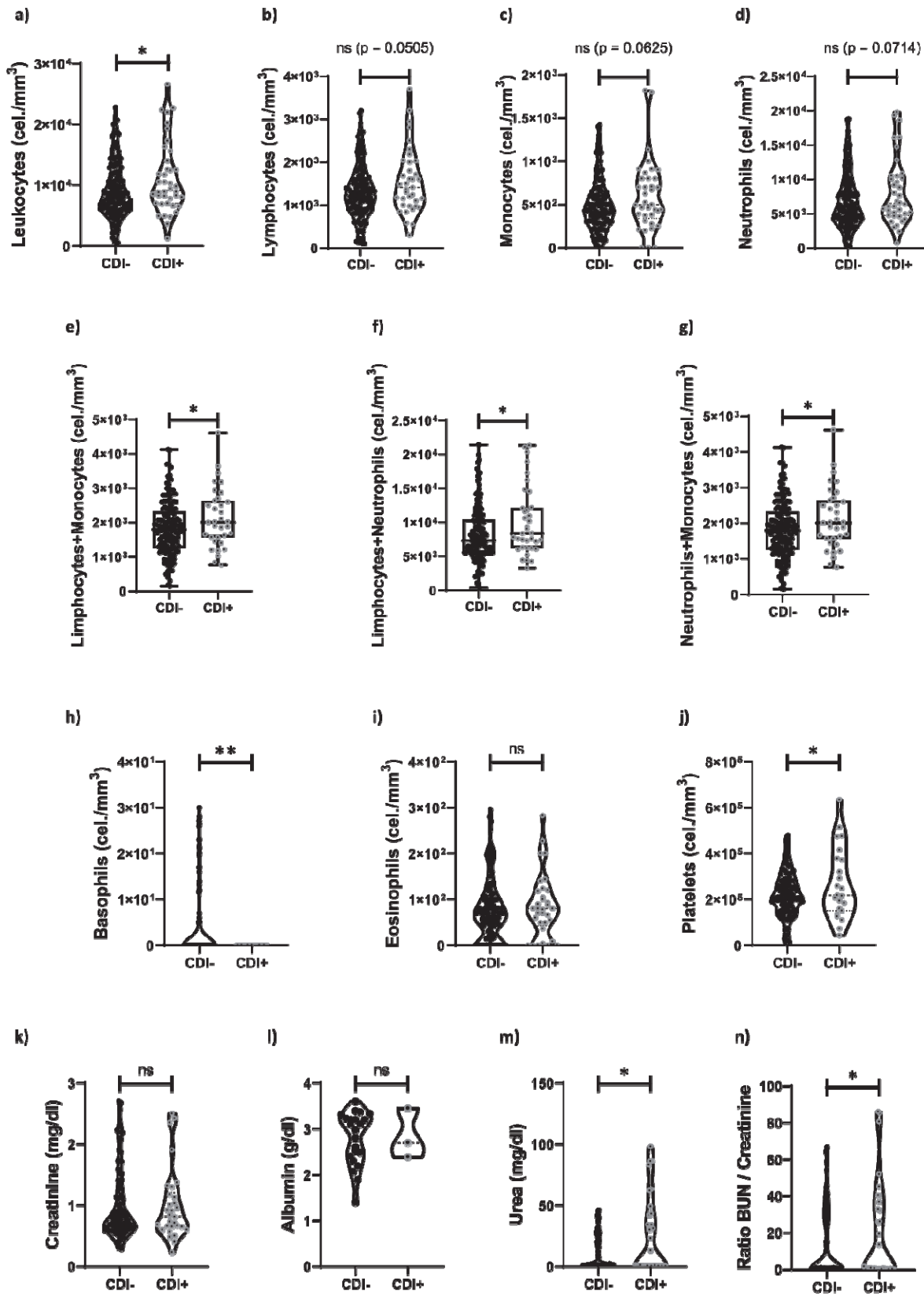
257 **Blood and serum parameters**

258 We also analyzed the patients' blood counts and serum parameters that were
259 measured on the day of fecal sample collection.

260 We observed a significant increase in the number of leukocytes (**Fig. 3 a**) and
261 platelets (**Fig. 3 j**) in patients infected with *C. difficile*. When analyzing the count of
262 lymphocytes, monocytes and neutrophils individually between both patient
263 populations, although an increase was evident, we did not find significant
264 differences (**Fig. 3 b, c and d**). However, it is important to note that CDI+ patients
265 had increased at least two of these leukocyte populations compared to CDI-
266 patients at the time of diagnosis (**Fig. 3 e, f and g**). Although some studies have
267 highlighted that an elevated white blood cell (WBC) count is frequently observed in
268 the context of CDI ^{72 73 74}, little has been explored in using elevated WBC count as
269 a predictor of this infection. In this regard, we agree with Vargas et al. ⁷⁵ in that the
270 total leukocyte count alone is not a specific indicator for CDI. Previous work
271 evaluating platelet count in CDI episodes reported controversial results, assigning
272 them both a beneficial and detrimental role in relation to clinical symptoms ⁷⁶⁻⁸⁵.
273 We have recently shown that platelets bind to *C. difficile* and promote its uptake by
274 human macrophages using macropinocytic pathways ⁸⁶. Therefore, we consider
275 that platelets in CDI could be fundamental for the resolution of the infection and
276 that further studies are needed to unravel their role during CDI.

277 Regarding the rest of the blood parameters evaluated, while a significant decrease
278 in basophils count was observed (**Fig. 3 h**), the eosinophil count was not affected
279 by the presence of *C. difficile* (**Fig. 3 i**). To the best of our knowledge, to date there
280 are no reports on the role of basophils in CDI. Nevertheless, the potential role of
281 CCL-5, a basophilic recruiter chemokine, has been highlighted in CDI ^{87,88}

282 No differences were evident for creatinine and albumin levels (**Fig. 3 j and k**), but
283 an elevated urea concentration stood out in patients infected with *C. difficile* (**Fig. 3**
284 **m**). Moreover, the BUN (Blood Urea Nitrogen)/Creatinine ratio was significantly
285 elevated in CDI patients (**Fig. 3 n**). Elevated BUN ratios have been associated with
286 complications of CDI ⁸⁹ as well as with higher mortality rates ⁹⁰ and high urea levels
287 were also proposed as a risk factor for severe CDI ⁹¹.



289 **Figure 3.** Blood and serum parameters in CDI+ and CDI- patients.

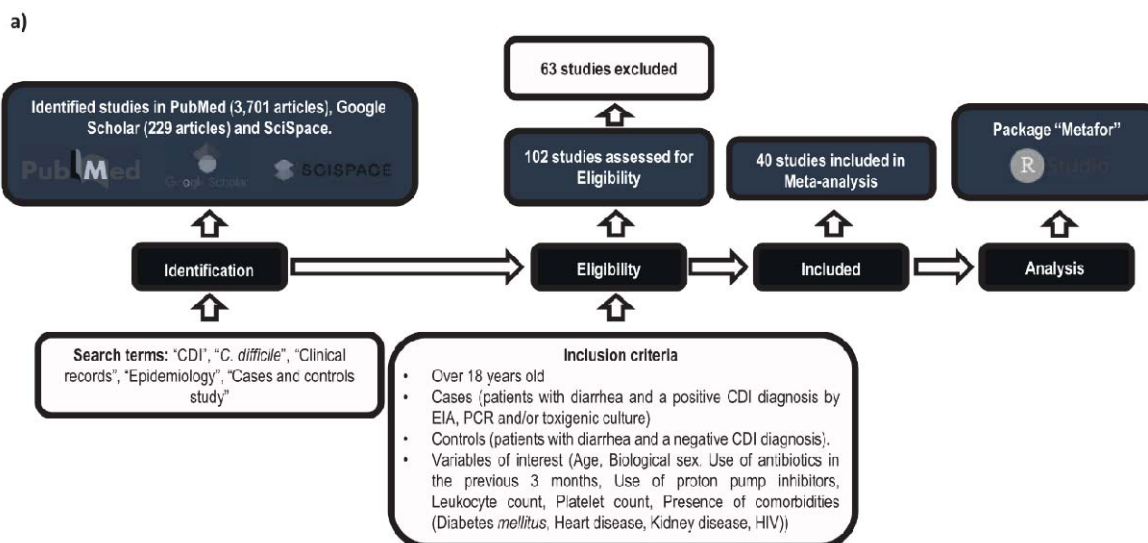
290 Number of a) Leukocytes (cells/mm³), b) lymphocytes (cells/mm³), c) monocytes
291 (cells/mm³), d) neutrophils (cells/mm³), e) lymphocytes plus monocytes
292 (cells/mm³), f) lymphocytes plus neutrophils (cells/mm³), g) neutrophils plus
293 monocytes (cells/mm³), h) basophils (cells/mm³), i) eosinophils (cells/mm³) and j)
294 platelets (cells/mm³). Levels of k) creatinine (mg/dl), l) albumin (g/dl) and m) urea
295 (mg/dl). n) BUN (blood urea nitrogen)/creatinine ratio.

296 a-i and k-n) Mann-Whitney test. j) unpaired t test. Violin plots show the distribution
297 of the data. ns= non-significant; *, p<0.05; **, p<0.01.

298 **Meta-analysis**

299 We finally performed a meta-analysis to obtain more robust and reliable
300 conclusions about the CDI associated parameters evaluated in our cohort. We
301 defined the selection criteria (**Fig. 4 a**) and carried out a systematic review that
302 allowed us to select 40 independent case/control type studies (**Table 2**) from the
303 countries shown in light grey in **Fig. 4 b**.

304



305

b)



306

307 **Figure 4.** Flow chart of the studies and countries screened and included in the
308 Meta-analysis.

309 a) The obtained results regarding clinical and demographic characteristics of the
310 CDI+ and CDI- patients in our cohort were contrasted against findings of other
311 studies through a meta-analysis by RStudio package “Metafor”. After initial
312 identification, eligibility criteria were applied and 39 reports were included in the
313 meta-analysis along with our data. CDI- patients were considered as the control
314 group.

315 b) World map showing the countries from which the studies included in the meta-
316 analysis come (light gray). The circles contain the number of studies selected per
317 country.

318

319

320

321

322

323

324

| Countries | Studies |
|----------------|---|
| Argentina | Lopardo, G. et al, 2015 ³⁹ OUR study |
| Brazil | Lopes Cançado, G. G. et al, 2018 ⁹² |
| Canada | Lowe, D. O. et al, 2006 ⁹³ |
| China | Dai, W. et al, 2020 ⁹⁴ |
| | Li, Y. et al, 2016 ⁹⁵ |
| | Lv, Z. et al, 2014 ⁹⁶ |
| | Tang, C. et al, 2018 ⁹⁷ |
| | Zhou, F, F, et al, 2014 ⁹⁸ |
| Colombia | Carvajal, C. et al, 2017 ⁹⁹ Salazar, C, L. et al, 2017 ¹⁰⁰ |
| Denmark | Soes, L. M. et al, 2014 ¹⁰¹ |
| France | Le Monnier, A. et al, 2022 ¹⁰² |
| Hungary | Kurti, Z. et al, 2015 ¹⁰³ |
| Iceland | Vesteinsdottir, I. et al, 2012 ¹⁰⁴ |
| India | Ingle, M. et al, 2011 ¹⁰⁵ |
| | Ingle, M. et al, 2013 ¹⁰⁶ |
| Japan | Mori, N. et al, 2015 ¹⁰⁷ |
| Mexico | Morfin-Otero, R. et al, 2016 ¹⁰⁸ |
| Poland | Czepiel, J. et al, 2014 ¹⁰⁹ |
| South Africa | Legenza, L. et al, 2018 ¹¹⁰ |
| | Rajabally, N. et al, 2013 ¹¹¹ |
| South Korea | Han, S. H. et al, 2014 ¹¹² |
| Taiwan | Lee, Y. C. et al, 2012 ¹¹³ ; Lin C. Y. et al, 2022 ¹¹⁴ |
| Thailand | Thipmontree, W. et al, 2011 ¹¹⁵ |
| Turkey | Ergen, E. K. et al, 2009 ¹¹⁶ |
| United Kingdom | Dial, S. et al, 2005 ¹¹⁷ |
| | Dial, S. et al, 2008 ¹¹⁸ |
| | Marwick, C. A. et al, 2013 ¹¹⁹ |
| | Suissa, D. et al, 2012 ¹²⁰ |
| | Wilcox, M. H. et al, 2008 ¹²¹ |
| United States | Baxter, R. et al, 2008 ¹²² |
| | Haddad, F. G. et al, 2019 ¹²³ |
| | Kuntz, J. L. et al, 2011 ¹²⁴ |
| | Kutty, P. K. et al, 2010 ¹²⁵ |
| | Kwon, S. et al, 2017 ¹²⁶ |
| | Naggie, S. et al, 2011 ¹²⁷ |
| | Tabak, P. Y. et al, 2015 ¹²⁸ |
| | Tartof, S. Y. et al, 2015 ¹²⁹ |

325

326

327 **Table 2.** Countries and studies included in the meta-analysis.

328 The effects for each of the variables evaluated in the meta-analysis are
329 summarized in **Table 3**.

| | RISK PREDICTOR | OR |
|-----|---|----------|
| 330 | Age | 1,19 ** |
| 331 | Biological sex | 0,89 * |
| | Prior ATB consumption | 3,02 *** |
| 332 | Prior PPI consumption | 1,29 ns |
| | Prior hospitalization | 2,45 *** |
| 333 | Prior CDI | 1,76 ns |
| | WBC (10^9 cel/mm ³) | 1,35 * |
| 334 | Platelets (10^9 cel/ mm ³) | 1,54 ns |
| | Comorbidities | |
| 335 | Diabetes <i>mellitus</i> | 1,26 ns |
| | Heart disease | 1,41 * |
| 336 | Kidney disease | 2,23 *** |
| 337 | HIV | 1,00 ns |

338 **Table 3.** Summary of risk predictors from the meta-analysis.

339 The dataset included 11,596 individuals with CDI and 536,467 matched controls
340 (**Table 4**). Overall, the distribution of biological sex was 40.06% male vs. 59.94%
341 female, being 44.33% vs. 55.67% in the CDI+ population and 39.98% vs. 60.02%
342 in the control group. The demographic parameters Age (OR= 1.19; 95% CI, 1.06 to
343 1.35) and Biological Sex (OR= 0.89; 95% CI, 0.81 to 0.99) obtained significant
344 models, which implies that, globally, advanced age and female biological sex are
345 associated with a higher risk of CDI (**Fig. 5 a and b**).

346 9.11% of the included individuals were previously exposed to antibiotics and
347 22.18% to PPI. Both antibiotic (CDI+ 39.95% vs. CDI- 8.52%) and PPI (CDI+
348 29.87% vs. CDI- 21.76%) consumption was higher among those patients infected
349 with *C. difficile* (**Table 4**). In this analysis, which ignored antibiotic subclasses, we
350 found that the pooled impact of any antibiotic exposure (OR= 3.02; 95% CI, 2.32 to
351 3.94) increased the risk of CDI by a multiple of 3 (**Fig. 5 c**). A longer duration of
352 antibiotic therapy, as well as a greater number of antibiotics administered increase
353 the probability of CDI⁷⁰. The risk of acquiring CDI could be 8 to 10 times higher
354 during antibiotic therapy, even three months after its completion, with the first
355 month being the one with the highest risk¹³⁰.

356 Regarding PPIs as risk factors for CDI, there is an arduous discussion with some
357 reports showing around 40-71.4% of hospitalized patients received PPI therapy
358 during hospitalization¹³¹⁻¹³³ and others supporting the idea that PPIs could trigger
359 long-term adverse effects through changes on the microbiota composition^{134,135}. In
360 our meta-analysis, there was no evidence of the impact of PPI on CDI risk (**Fig. 5**
361 **d**).

362 Previous hospitalization emerged as the second most influential predictor for CDI
 363 risk (OR= 2.46; 95% CI, 1.90 to 3.17) (**Fig. 5 e**). Among the CDI+ patients included
 364 in the meta-analyses, 27.88% had been hospitalized prior to diagnosis (**Table 4**)
 365 while only 16.80% in the control group.

366 Previous episodes of CDI are widely reported as a risk factor for subsequent cases
 367 and/or recurrences in patients. However, in this meta-analysis previous CDI was
 368 not a predictor of risk (**Fig. 5 f**) which could be attributed to the fact that only 4 of
 369 the 40 included studies provided this type of data^{56,103,120,123}. Actually, when
 370 evaluating the Forest Plot for this variable in detail, the studies show the same
 371 trend as our epidemiological study when considering previous CDI as a risk factor.

372 When evaluating comorbidities, both heart diseases (OR= 1.41; 95% CI, 1.02 to
 373 1.94) and chronic kidney disease (OR= 2.23; 95% CI, 1.38 to 3.61) exhibited
 374 models with significant effects (**Fig. 5 g and h**), indicating that these pathologies
 375 increase the risk of CDI. The rest of the tested comorbidities were not associated
 376 with a higher risk of infection (**Fig. 5 i and j**). The presence of comorbidities has
 377 been widely reported as a condition that facilitates colonization and infection by *C.*
 378 *difficile*¹³⁶. A previous meta-analysis found IBD, diabetes, leukemia or lymphoma,
 379 kidney failure and solid cancer as the CDI risk-related comorbidities¹³⁷.

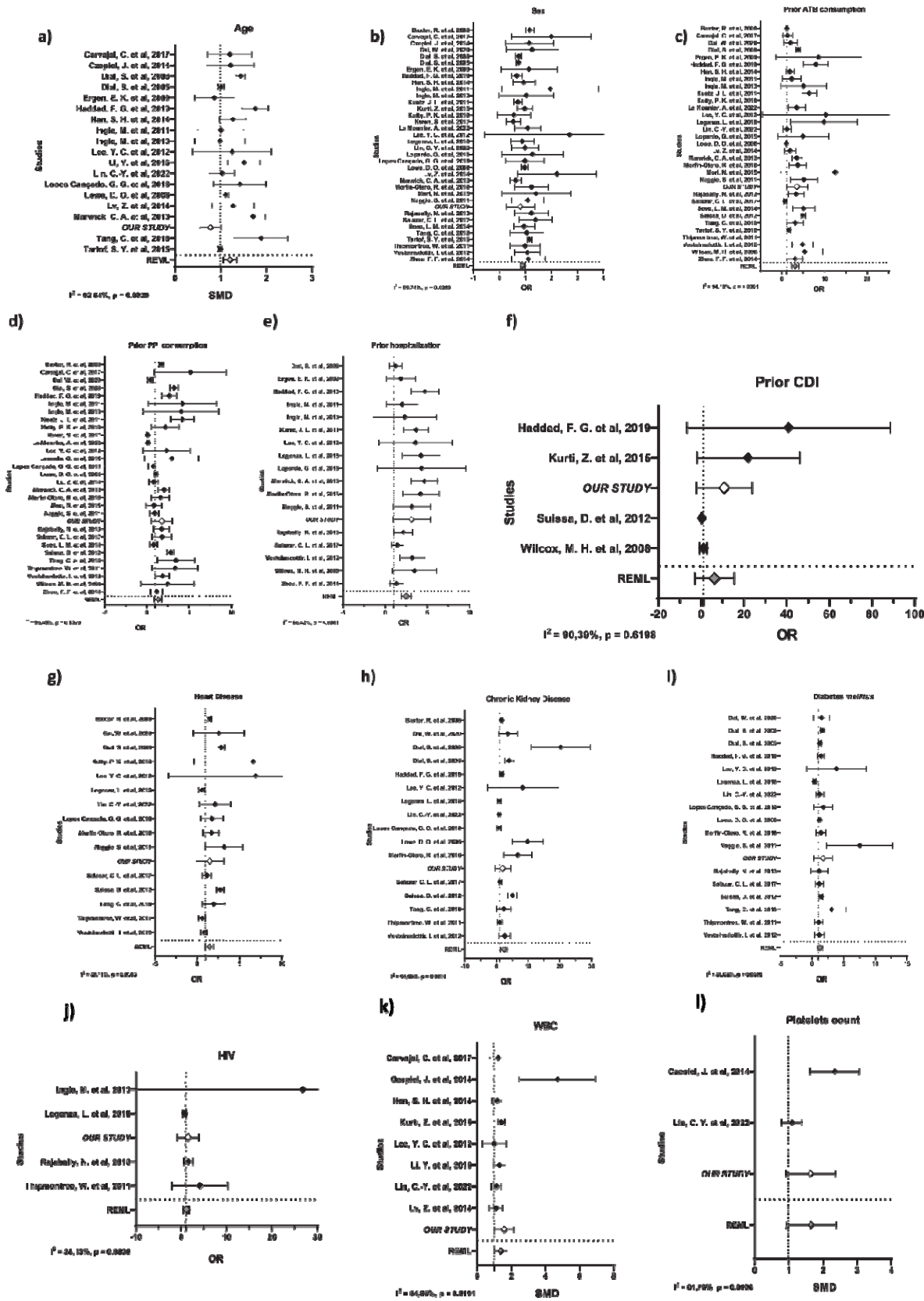
380 Finally, blood parameters were analyzed. Increased leukocytes count was also a
 381 potential predictor of CDI according to our comparative analysis (OR= 1.36; 95%
 382 CI, 1.05 to 1.75) (**Fig. 5 k**). Although the number of platelets did not show a
 383 statistically significant effect (**Fig. 5 l**), it is important to note that only 2 studies
 384 apart from ours evaluated this parameter.

385

| | | CDI+ | CDI- | TOTAL |
|------------------------------|---------|--------|--------|--------|
| Nº of individuals | | 11596 | 536467 | 548467 |
| Sex | Male | 44.33% | 39.98% | 40.06% |
| | Female | 55.67% | 60.02% | 59.94% |
| Prior ATB consumption | With | 39.95% | 8.52% | 9.11% |
| | Without | 60.05% | 91.48% | 90.89% |
| Prior PPI consumption | With | 29.87% | 21.76% | 22.18% |
| | Without | 70.13% | 78.24% | 77.82% |
| Prior hospitalization | With | 27.88% | 16.80% | 17.07% |
| | Without | 72.12% | 83.20% | 82.93% |

393 **Table 4.** Meta-analysis dataset.

394



395

396 **Figure 5** Forest plots of risk predictors.

397 Forest plots representative of each variable evaluated in the meta-analysis. a) Age,
398 b) biological sex, c) previous ATB consumption, d) previous PPI consumption, e)
399 prior hospitalization, f) prior CDI, g) heart disease, h) chronic kidney disease, i)
400 diabetes *mellitus*, j) HIV, k) white blood cells (WBC) count (cells/mm³), l) platelets
401 count (cells/mm³).

402 A REML (Random Effect Maximum Likelihood, gray diamond) random effects
403 model was applied. Models with $p < 0.05$ (OR/SMD \pm CI values less or greater than
404 1) were considered as potential risk predictors for CDI. Black diamonds represent
405 the means of each of the variables in each study. Bars indicate the lower and
406 upper confidence extremes. Our study (white diamond) is mentioned as *OUR*
407 *STUDY*.

408 OR= odds ratio. SMD= standard media deviation. CI= confidence interval

409

410 **Conclusions**

411 We have defined risk factors associated with CDI and detected modulations in
412 different blood parameters in our study cohort in Argentina. We have also explored
413 the relevance of our findings at a global level by a systematic review and meta-
414 analysis. Our results emphasize the need to detect *C. difficile* as a causal agent of
415 infectious diarrhea in a country where testing is not standardized or routinely
416 performed in the health institutions. Our report provides valuable insights that could
417 contribute to a more efficient surveillance of CDI, diagnosis and follow-up of
418 patients.

419 **Author contributions**

420 Conceptualization: all authors

421 Formal analysis: AMB, NDM, JC, SP, LSM and REHDP.

422 Funding acquisition: AMB, SP, REHDP and VP.

423 Investigation: AMB, NDM, SP, REHDP and VP.

424 Methodology: all authors.

425 Software: NDM and REHDP.

426 Supervision: REHDP and VP.

427 Writing: AMB wrote the original draft. All authors contributed to the review & editing
428 of this manuscript.

429 **Role of the funding source**

430 This work was supported by Universidad Nacional del Noroeste de la Provincia de
431 Buenos Aires [grant numbers SIB 0618/2019, SIB 2113/2022 and “Proyectos de
432 Investigación Interdisciplinarios de la UNNOBA” Res. CS 2190/2022, to VP].
433 Agencia Nacional de Promoción Científica y Tecnológica, Fondo para la
434 Investigación Científica y Tecnológica [ANPCyT-FONCyT, grant numbers PICT A
435 2017-1896 and PICT-2021-I-A-01119 to VP; PICT 2018-03084 IB to RHDP, PICT-
436 2021-I-INVI-00584 to AB and PICT-2021-I-INVI-00208 to SP]. UNNOBA FONCyT
437 [grant number PICTO 2019-00007 to RHDP and VP]. Consejo Nacional de
438 Investigaciones Científicas y Técnicas [CONICET, grant number PIP 2021
439 11220200103137CO to VP and RHDP].

440 **Acknowledgements**

441 We thank all the patients who voluntarily participated of this study. We also thank
442 Natalia Menite, Lucia Romano and Gastón Villafañe for their technical assistance.
443 We acknowledge the laboratory personnel, medical staff and biochemists who
444 have collaborated in the collection of samples and data during the study period of
445 this report. Finally, we thank Flaticon for the icons used in the graphical abstract of
446 this work.

447 References

- 448 1. Brazier JS. . 1998;47–57.
- 449 2. Zhang S, Palazuelos-Munoz S, Balsells EM, et al. . *BMC Infect Dis*;16 . Epub
450 ahead of print 2016. DOI: 10.1186/s12879-016-1786-6.
- 451 3. Center for Disease Control and Prevention. . *CDC*;10 . Epub ahead of print
452 2019. DOI: 10.1186/s13756-020-00872-w.
- 453 4. Smits WK, Lyras D, Lacy DB, et al. . DOI: 10.1038/nrdp.2016.20.
- 454 5. Feuerstadt P, Theriault N, Tillotson G. . *BMC Infect Dis*. 2023;23:1–8.
- 455 6. Di X, Bai N, Zhang X, et al. . *Brazilian J Infect Dis*. 2015;19:339–349.
- 456 7. Bainum TB, Reveles KR, Hall RG, et al. . *Microorganisms*. 2023;11:1–22.
- 457 8. Phanchana M, Harnvoravongchai P, Wongkuna S, et al. . *World J*
458 *Gastroenterol*. 2021;27:7210–7232.
- 459 9. Burke KE, Lamont JT. . *Gut Liver*. 2014;8:1–6.
- 460 10. Freeman J, Bauer MP, Baines SD, et al. . *Clinical Microbiology Reviews*.
461 2010;23:529–549.
- 462 11. Goorhuis A, Bakker D, Corver J, et al. . *Clin Infect Dis*. 2008;47:1162–1170.
- 463 12. Chitnis AS, Holzbauer SM, Belflower RM, et al. . *JAMA Intern Med*.
464 2013;173:1359–1367.
- 465 13. Ruiten-Ligeti J, Vincent S, Czuzoj-Shulman N, et al. . *Obstet Gynecol*.
466 2018;131:387–391.
- 467 14. Gupta A, Khanna S. . *Infect Drug Resist*. 2014;7:63–72.
- 468 15. Alice Y. Guh, MD, MPH and Preeta K. Kutty, MD M. . *Physiol Behav*.
469 2019;169:248–256.
- 470 16. Lawler AJ, Lambert PA, Worthington T. . *Trends Microbiol*. 2020;28:744–
471 752.
- 472 17. Paredes-Sabja D, Shen A, Sorg JA. . *Trends Microbiol*. 2014;22:1–15.
- 473 18. Hernández Del Pino RE, Barbero AM, Español LÁ, et al. . *J Leukoc Biol*.
474 2021;109:195–210.
- 475 19. Lim SC, Knight DR, Riley T V. . *Clin Microbiol Infect*. 2020;26:857–863.
- 476 20. Donskey CJ. . *Clin Infect Dis*. 2010;50:1458–1461.
- 477 21. Dicks LMT. . *Microorganisms*;11 . Epub ahead of print 2023. DOI:
478 10.3390/microorganisms11092161.
- 479 22. Czepiel J, Drózdź M, Pituch H, et al. . *Eur J Clin Microbiol Infect Dis Off*
480 *Publ Eur Soc Clin Microbiol*. 2019;38:1211–1221.

- 481 23. Huang CH, Tseng YH, Tsai WS, et al. . *Infect Dis Ther* . Epub ahead of print
482 2024. DOI: 10.1007/s40121-024-00922-5.
- 483 24. Song JH, Kim YS. . *Gut Liver*. 2019;13:16–24.
- 484 25. Nitzan O, Elias M, Chazan B, et al. . *World J Gastroenterol*. 2013;19:7577–
485 7585.
- 486 26. Qu H-Q, Jiang Z-D. . *Diabetes Res Clin Pract*. 2014;105:285–294.
- 487 27. Dudzicz S, Wiecek A, Adamczak M. . *J Clin Med*. 2021;10:1–13.
- 488 28. Sartelli M, Malangoni MA, Abu-Zidan FM, et al. . *World J Emerg Surg*.
489 2015;10:1–23.
- 490 29. Khanna S, Pardi DS. . *Mayo Clin Proc*. 2012;87:1106–1117.
- 491 30. Curcio D, Cané A, Fernández FA, et al. . *Infect Dis Ther*. 2019;8:87–103.
- 492 31. Roldan GA, Cui AX, Pollock NR. . *J Clin Microbiol*;56 . Epub ahead of print
493 March 2018. DOI: 10.1128/JCM.01747-17.
- 494 32. Acuña-Amador L, Quesada-Gómez C, Rodríguez C. . *Anaerobe*;74 . Epub
495 ahead of print 2022. DOI: 10.1016/j.anaerobe.2022.102547.
- 496 33. Crobach MJT, Planche T, Eckert C, et al. . *Clin Microbiol Infect*.
497 2016;22:S63–S81.
- 498 34. Johnson S, Lavergne V, Skinner AM, et al. . *Clin Infect Dis*. 2021;73:e1029–
499 e1044.
- 500 35. Viechtbauer W. . *J Stat Softw*. 2010;36:1–48.
- 501 36. Fernandez Canigia L, Nazar J, Arce M, et al. . *Rev Argent Microbiol*.
502 2001;33:101–107.
- 503 37. Legaria MC, Lumelsky G, Rosetti S. . *Anaerobe*. 2003;9:113–116.
- 504 38. Goorhuis A, Legaria MC, van den Berg RJ, et al. . *Clin Microbiol Infect*.
505 2009;15:1080–1086.
- 506 39. Lopardo G, Morfin-Otero R, Moran-Vazquez II, et al. . *Brazilian J Infect Dis*.
507 2015;19:8–14.
- 508 40. Bartlett JG, Gerding DN. . *Clinical Infectious Diseases*;46 . Epub ahead of
509 print January 2008. DOI: 10.1086/521863.
- 510 41. Pan L, Mu M, Yang P, et al. . *Am J Gastroenterol*. 2020;115:766–773.
- 511 42. Granata G, Petrosillo N, Al Moghazi S, et al. . *Anaerobe*. 2022;74:102484.
- 512 43. Huttner BD, Catho G, Pano-Pardo JR, et al. . *Clin Microbiol Infect Off Publ*
513 *Eur Soc Clin Microbiol Infect Dis*. 2020;26:808–810.
- 514 44. Chen N, Zhou M, Dong X, et al. . *Lancet (London, England)*. 2020;395:507–

- 515 513.
- 516 45. Adams-Sommer V, Fu Y, Grinspan LT, et al. . *Infect Control Hosp Epidemiol.*
517 2021;42:1165–1166.
- 518 46. Laszkowska M, Kim J, Faye AS, et al. . *Dig Dis Sci.* 2021;66:4398–4405.
- 519 47. Hawes AM, Desai A, Patel PK. . *Anaerobe.* 2021;70:102384.
- 520 48. Luo M, Liu Y, Wu P, et al. . 8 . Epub ahead of print 2017. DOI:
521 10.3389/fphys.2017.00822.
- 522 49. Khanna S, Kraft CS. . *Future Microbiol.* 2021;16:439–443.
- 523 50. Tariq R, Saha S, Furqan F, et al. . *Mayo Clin Proc.* 2020;95:1632–1648.
- 524 51. Louie TJ, Cannon K, Byrne B, et al. . *Clin Infect Dis an Off Publ Infect Dis*
525 *Soc Am.* 2012;55 Suppl 2:S132-42.
- 526 52. Guh AY, Mu Y, Winston LG, et al. . *N Engl J Med.* 2020;382:1320–1330.
- 527 53. Gentry CA, Williams RJ 2nd, Campbell D. . *Diagn Microbiol Infect Dis.*
528 2021;100:115308.
- 529 54. McDermott LA, Thorpe CM, Goldstein E, et al. . *Open Forum Infect Dis.*
530 2022;9:ofac492.1299.
- 531 55. Dingle KE, Didelot X, Quan TP, et al. . *Lancet Infect Dis.* 2017;17:411–421.
- 532 56. Wilcox MH, Shetty N, Fawley WN, et al. . *Clin Infect Dis.* 2012;55:1056–
533 1063.
- 534 57. Khanna S, Pardi DS, Aronson SL, et al. . *Am Coll Gastroenterol*;107.
- 535 58. European Centre for Disease Prevention and Control. . *Annu Epidemiol Rep*
536 *Commun Dis Eur.* 2016;40:335–348.
- 537 59. Carlson TJ, Blasingame D, Gonzales-Luna AJ, et al. . *Anaerobe.*
538 2020;62:102142.
- 539 60. Kincaid SE. . *Consult Pharm J Am Soc Consult Pharm.* 2010;25:834–836.
- 540 61. Owens RC. . *Drugs.* 2007;67:487–502.
- 541 62. Bassaris HP, Lianou PE, Legakis NJ, et al. . *Med Microbiol Immunol.*
542 1984;173:49–55.
- 543 63. Nakamura S, Mikawa M, Nakashio S, et al. . *Microbiol Immunol.*
544 1981;25:345–351.
- 545 64. Bacon AE, Fekety R. . *Diagn Microbiol Infect Dis.* 1994;18:205–209.
- 546 65. Simor AE, Bradley SF, Strausbaugh LJ, et al. . *Infect Control Hosp*
547 *Epidemiol.* 2002;23:696–703.
- 548 66. Guerrero DM, Nerandzic MM, Jury LA, et al. . *Am J Infect Control.*

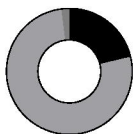
- 549 2012;40:556–558.
- 550 67. Edwards AN, Karim ST, Pascual RA, et al. . *Front Microbiol.* 2016;7:1698.
- 551 68. Clark T, Wiselka M. . *Clin Med.* 2008;8:544–547.
- 552 69. Schroeder MS. . *Am Fam Physician.* 2005;71:921–928.
- 553 70. Hessen MT. . *Ann Intern Med.* 2010;153:ITC41-15; quiz ITC416.
- 554 71. Dubberke ER, Wertheimer AI. . *Infect Control Hosp Epidemiol.* 2009;30:57–
555 66.
- 556 72. Wanahita A, Goldsmith EA, Marino BJ, et al. . *Am J Med.* 2003;115:543–546.
- 557 73. Wanahita A, Goldsmith EA, Musher DM. . *Clin Infect Dis an Off Publ Infect*
558 *Dis Soc Am.* 2002;34:1585–1592.
- 559 74. Bulusu M, Narayan S, Shetler K, et al. . *Am J Gastroenterol.* 2000;95:3137–
560 3141.
- 561 75. Vargas E, Apewokin S, Madan R. . *Anaerobe.* 2017;45:101–105.
- 562 76. Mihăilă RG, Cătană C, Olteanu AL, et al. . *Biomarkers.* 2019;24:389–393.
- 563 77. Buchrits S, Gafter-Gvili A, Bishara J, et al. . *J Clin Med*;10 . Epub ahead of
564 print July 2021. DOI: 10.3390/jcm10132957.
- 565 78. Lee DY, Chung EL, Guend H, et al. . *Ann Surg.* 2014;259:148–156.
- 566 79. Byrn JC, Maun DC, Gingold DS, et al. . *Med Hist.* 2012;143:150–154.
- 567 80. Nseir W, Khamisy-Farah R, Amara A, et al. . *Isr Med Assoc J.* 2019;21:658–
568 661.
- 569 81. Allegretti JR, Marcus J, Storm M, et al. . *Dig Dis Sci.* 2020;65:1761–1766.
- 570 82. Zhao L, Luo Y, Bian Q, et al. . *Infect Drug Resist.* 2020;13:171–181.
- 571 83. Pant C, Madonia PN, Jordan P, et al. . *J Investig Med.* 2009;57:40–42.
- 572 84. Yan D, Chen Y, Lv T, et al. . *J Med Microbiol.* 2017;66:1483–1488.
- 573 85. Phanchana M, Phetruen T, Harnvoravongchai P, et al. . *Sci Rep.* 2020;10:1–
574 8.
- 575 86. Barbero AM, Hernández Del Pino RE, Fuentes F, et al. . 2024;1–14.
- 576 87. Rao K, Erb-Downward JR, Walk ST, et al. . *PLoS One.* 2014;9:e92578.
- 577 88. Abhyankar MM, Ma JZ, Scully KW, et al. . *Am Soc Microbiol.* 2020;11:1–10.
- 578 89. Abou Chakra CN, McGeer A, Labbe AC, et al. . *Clin Infect Dis.*
579 2015;61:1781–1788.
- 580 90. Sartelli M, Di Bella S, McFarland L V., et al. . *World J Emerg Surg.*
581 2019;14:1–29.

- 582 91. Bermejo Boixareu C, Tutor-Ureta P, Ramos Martínez A. . *Rev Esp Geriatr*
583 *Gerontol.* 2020;55:225–235.
- 584 92. Lopes Cançado GG, Silveira Silva RO, Rupnik M, et al. . *Anaerobe.*
585 2018;54:65–71.
- 586 93. Lowe DO, Mamdani MM, Kopp A, et al. Proton Pump Inhibitors and
587 Hospitalization for Clostridium Difficile-Associated Disease: A Population-
588 Based Study.
- 589 94. Dai W, Yang T, Yan L, et al. . *BMC Infect Dis*;20 . Epub ahead of print April
590 2020. DOI: 10.1186/s12879-020-05014-6.
- 591 95. Li Y, Huang Y, Li Y, et al. . *Pakistan J Med Sci.* 2016;32:736–741.
- 592 96. Lv Z, Peng GL, Su JR. . *Brazilian J Med Biol Res.* 2014;47:1085–1090.
- 593 97. Tang C, Li Y, Liu C, et al. . *Am J Infect Control.* 2018;46:285–290.
- 594 98. Zhou FF, Wu S, Klena JD, et al. . *Eur J Clin Microbiol Infect Dis.*
595 2014;33:1773–1779.
- 596 99. Carvajal C, Pacheco C, Jaimes F. . *Biomedica.* 2017;37:53–61.
- 597 100. Salazar CL, Reyes C, Atehortua S, et al. . *PLoS One*;12 . Epub ahead of
598 print September 2017. DOI: 10.1371/journal.pone.0184689.
- 599 101. Soes LM, Holt HM, Böttiger B, et al. . *Epidemiol Infect.* 2014;142:1437–1448.
- 600 102. Le Monnier A, Candela T, Mizrahi A, et al. . *J Hosp Infect.* 2022;129:65–74.
- 601 103. Kurti Z, Lovasz BD, Mandel MD, et al. . *World J Gastroenterol.*
602 2015;21:6728–6735.
- 603 104. Vesteynsdottir I, Gudlaugsdottir S, Einarsdottir R, et al. . *Eur J Clin Microbiol*
604 *Infect Dis.* 2012;31:2601–2610.
- 605 105. Ingle M, Deshmukh A, Desai D, et al. . *Indian J Gastroenterol.* 2011;30:89–
606 93.
- 607 106. Ingle M, Deshmukh A, Desai D, et al. . *Indian J Gastroenterol.* 2013;32:179–
608 183.
- 609 107. Mori N, Aoki Y. . *J Infect Chemother.* 2015;21:864–867.
- 610 108. Morfin-Otero R, Garza-Gonzalez E, Aguirre-Diaz SA, et al. . *Brazilian J Infect*
611 *Dis.* 2016;20:8–13.
- 612 109. Czepiel J, Biesiada G, Brzozowski T, et al. . *J Physiol Pharmacol an Off J*
613 *Polish Physiol Soc.* 2014;65:695–703.
- 614 110. Legenza L, Barnett S, Rose W, et al. . *BMJ Glob Heal*;3 . Epub ahead of
615 print July 2018. DOI: 10.1136/bmjgh-2018-000889.
- 616 111. Rajabally N, Pentecost M, Pretorius G, et al. . *South African Med J.*

- 617 2013;103:168–172.
- 618 112. Han SH, Kim H, Lee K, et al. . *J Med Microbiol*. 2014;63:1542–1551.
- 619 113. Lee YC, Wang JT, Chen AC, et al. . *J Microbiol Immunol Infect*.
620 2012;45:287–295.
- 621 114. Lin C-Y, Cheng H-T, Kuo C-J, et al. . *Microbiol Spectr*;10 . Epub ahead of
622 print August 2022. DOI: 10.1128/spectrum.00486-22.
- 623 115. Thipmontree W, Kiratisin P, Manatsathit S, et al. Epidemiology of Suspected
624 *Clostridium difficile*-Associated Hospital-Acquired Diarrhea in Hospitalized
625 Patients at Siriraj Hospital. 2011.
- 626 116. Ergen EK, Akalin H, Yilmaz E, et al. . *Med Mal Infect*. 2009;39:382–387.
- 627 117. Dial S, Delaney JAC, Barkun AN, et al. . *JAMA*. 2005;294:2989–2995.
- 628 118. Dial S, Kezouh A, Dascal A, et al. . *C Can Med Assoc J*. 2008;179:767–772.
- 629 119. Marwick CA, Yu N, Lockhart MC, et al. . *J Antimicrob Chemother*.
630 2013;68:2927–2933.
- 631 120. Suissa D, Delaney JAC, Dial S, et al. . *Br J Clin Pharmacol*. 2012;74:370–
632 375.
- 633 121. Wilcox MH, Mooney L, Bendall R, et al. . *J Antimicrob Chemother*.
634 2008;62:388–396.
- 635 122. Baxter R, Ray GT, Fireman BH. . *Infect Control Hosp Epidemiol*.
636 2008;29:44–50.
- 637 123. Haddad FG, Zaidan J, Polavarapu A, et al. . *Z Gastroenterol*. 2019;57:1183–
638 1195.
- 639 124. Kuntz JL, Chrischilles EA, Pendergast JF, et al. . *BMC Infect Dis*;11 . Epub
640 ahead of print July 2011. DOI: 10.1186/1471-2334-11-194.
- 641 125. Kutty PK, Woods CW, Sena AC, et al. . *Emerg Infect Dis*. 2010;16:197–204.
- 642 126. Kwon SS, Gim JL, Kim MS, et al. . *Anaerobe*. 2017;48:42–46.
- 643 127. Naggie S, Miller BA, Zuzak KB, et al. . *Am J Med*;124 . Epub ahead of print
644 March 2011. DOI: 10.1016/j.amjmed.2010.10.013.
- 645 128. Tabak YP, Johannes RS, Sun X, et al. . *Infect Control Hosp Epidemiol*.
646 2015;36:695–701.
- 647 129. Tartof SY, Rieg GK, Wei R, et al. . *Infect Control Hosp Epidemiol*.
648 2015;36:1409–1416.
- 649 130. Hensgens MPM, Goorhuis A, Dekkers OM, et al. . *J Antimicrob Chemother*.
650 2012;67:742–748.
- 651 131. Nardino RJ, Vender RJ, Herbert PN. . *Am J Gastroenterol*. 2000;95:3118–

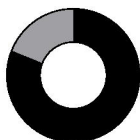
- 652 3122.
- 653 132. Herzig SJ, Howell MD, Ngo LH, et al. . *JAMA*. 2009;301:2120–2128.
- 654 133. Pham CQD, Regal RE, Bostwick TR, et al. . *Ann Pharmacother*.
655 2006;40:1261–1266.
- 656 134. Freedberg DE, Lebwohl B, Abrams JA. . *Clin Lab Med*. 2014;34:771–785.
- 657 135. Singh A, Cresci GA, Kirby DF. . *Nutr Clin Pract Off Publ Am Soc Parenter*
658 *Enter Nutr*. 2018;33:614–624.
- 659 136. van Prehn J, Reigadas E, Vogelzang EH, et al. . *Clin Microbiol Infect*.
660 2021;27:S1–S21.
- 661 137. Furuya-Kanamori L, Stone JC, Clark J, et al. . *Infect Control Hosp Epidemiol*.
662 2015;36:132–141.
- 663

a)



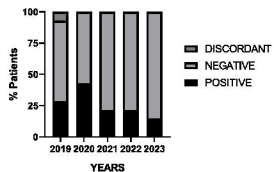
■ 21.29% Positive
 ■ 76.70% Negative
 ■ 02.01% Discordant

b)



■ 81.13% Toxigenic
 ■ 18.87% Non-toxicogenic

c)



d)

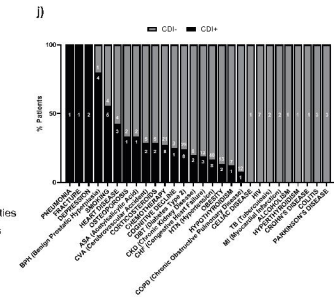
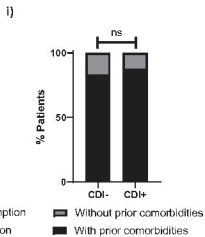
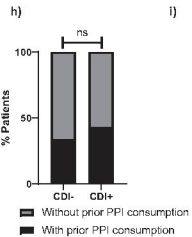
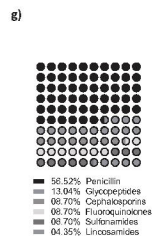
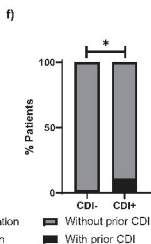
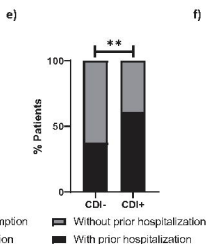
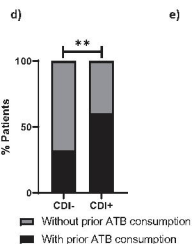
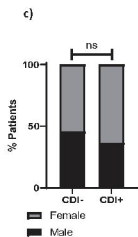
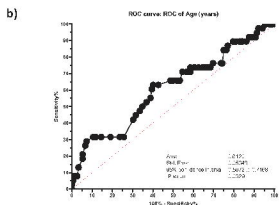
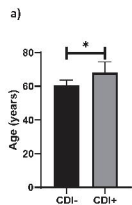


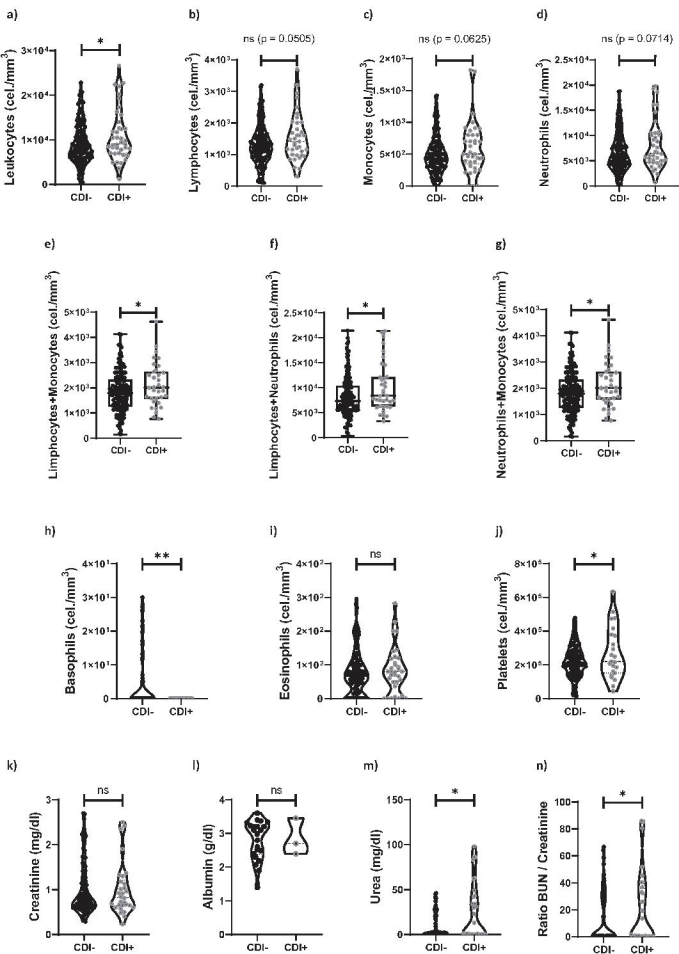
■ 100.00% Moderate

e)

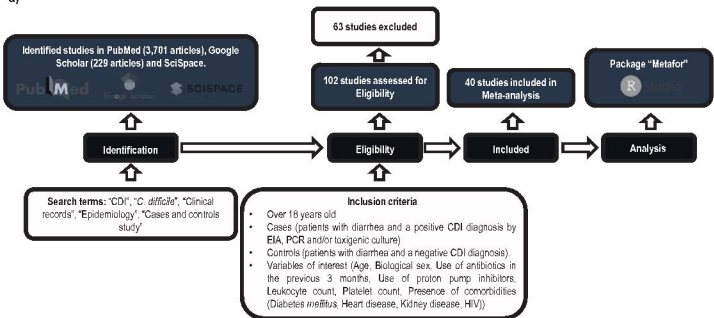


■ 33.33% Community-acquired
 ■ 43.59% Hospital-acquired
 ■ 23.08% Community-acquired associated to healthcare environments



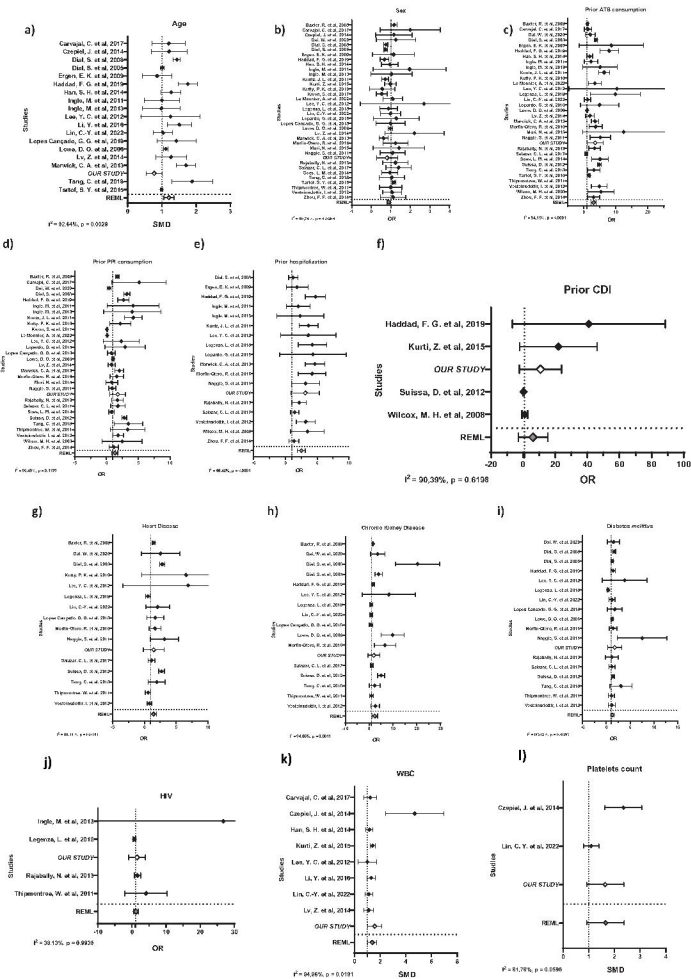


a)



b)





STUDY COHORT



Diagnostic
algorithm



Clinical
records

20%

of patients had *C. difficile* as the causal agent of their diarrheas

>30%

of CDI infections occurred in the community setting

80%

of the patients were infected with toxigenic strains

100%

of infected patients had a moderate diarrhea classification

RISK FACTORS



Advanced age



Prior
antibiotic use



Prior
hospitalization



Prior CDI



Leukocytosis



Thrombocytosis



Basophilopenia



Elevated urea



Meta-analysis

GLOBAL RISK FACTORS



Advanced age



Female



Prior
antibiotic use



Prior
hospitalization



Leukocytosis



Chronic kidney
disease

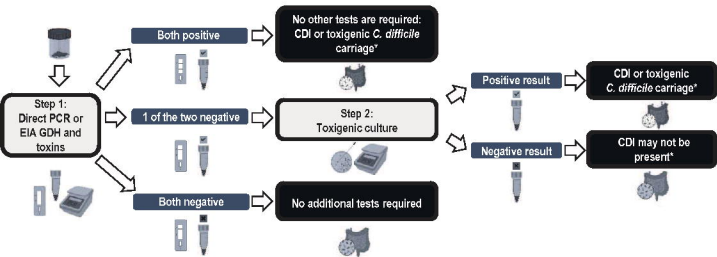


Heart
diseases

SANITARY REGION III

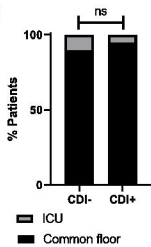


- Hospital Interzonal General de Agudos Abraham Piñeyro
- C.P.A.: Provincial Center for Addiction Care

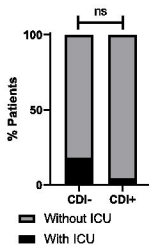


**clinical evaluation is required in all cases*

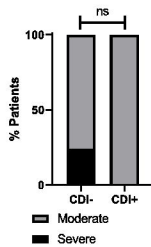
a)



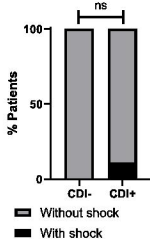
b)



c)



d)



e)

