

## 1 **Age-patterns of severity of clade I mpox in historically endemic countries**

2 Lilith K Whittles<sup>1\*</sup>, Placide Mbala-Kingebeni<sup>2,3</sup>, Neil M Ferguson<sup>1</sup>

3 1. MRC Centre for Global Infectious Disease Analysis, and Jameel Institute, School of  
4 Public Health, Imperial College London, 90 Wood Lane, London, W12 0BZ, UK

5 2. Institut National de Recherche Biomédicale, Kinshasa, Democratic Republic of Congo

6 3. Service de Microbiologie, Département de Biologie médicale, Cliniques Universitaires de  
7 Kinshasa, Université de Kinshasa

8 \*Corresponding author: Lilith Whittles, Imperial College London, 90 Wood Lane, London,  
9 W12 0BZ, UK. [l.whittles@imperial.ac.uk](mailto:l.whittles@imperial.ac.uk)

### 10 **ABSTRACT**

11 **Background** The last two years have seen mpox emerge as a notable pandemic threat. The  
12 global 2022-23 outbreak of clade II mpox caused over 93,000 cases worldwide, while the  
13 2023-24 epidemic of the more severe clade I virus in the Democratic Republic of Congo  
14 (DRC) has caused over 14,000 cases and over 650 deaths thus far. Of particular concern is  
15 that both case incidence and mortality in the DRC outbreak are concentrated in children.  
16 However, quantification of age variation in severity for clade I infections has been lacking to  
17 date.

18 **Methods** Using Bayesian binomial regression models, we analysed data from systematically  
19 reviewed clade I outbreaks to estimate case fatality ratios (CFR) by age, smallpox  
20 vaccination status and over time. We compared model predictive performance using leave-  
21 one-out cross-validation and compared our findings to the ongoing DRC outbreak.

22 **Findings** The CFR had a near-reciprocal relationship with age, declining from 9.7% (95%  
23 credible interval: 6.9%-13.0%) among 5-year-olds to 1.2% (95%CrI: 0.3%-3.7%) by age 30.  
24 Accounting for vaccination status in addition to age did not improve model fit, but posterior  
25 parameter estimates suggest substantial vaccine-protection against death. Reanalysis  
26 incorporating cases from the ongoing DRC outbreak suggested less steep declines in  
27 severity with age and a protective effect of vaccination against death of 64% (95%CrI: -  
28 3.4%-95.6%) and reduction in severity over time.

29 **Interpretation** We provide estimates of the mpox clade I CFR in historically endemic  
30 settings by vaccine status, and find the highest risk of death in the youngest children.

31 **Funding** Wellcome, NIHR, MRC, Community Jameel

## 32 INTRODUCTION

33 Mpox is a viral zoonosis endemic to sylvatic rodent populations in West and Central Africa  
34 that has caused spill-over outbreaks among humans since its discovery in 1970 (1).  
35 Vaccination against smallpox, another orthopoxvirus, provides cross-protection against  
36 mpox infection (2). Smallpox vaccination campaigns ceased after its global eradication in  
37 1980 and while vaccine-conferred protection is long-lasting, demographic turnover has  
38 reduced population-level vaccine-coverage worldwide, with marked regional variation (3).  
39 Susceptibility to orthopoxviruses is therefore concentrated in individuals born after 1980,  
40 who have never been infected with smallpox and are unlikely to have been vaccinated  
41 against it. With the waning of population immunity, mpox outbreaks have been increasingly  
42 frequent (1). In 2022 this culminated in a global outbreak comprising over 93,000 cases  
43 across 117 countries, during which sexual transmission was noted for the first time and was  
44 the key driver, with cases heavily concentrated among men who have sex with men (MSM)  
45 (4).

46 The mpox virus (MPXV) has been separated into distinct strains based on genetic  
47 differences: clade I (formerly known as the Congo Basin strain) and clade II (formerly the  
48 West African strain, a sub-clade of which, IIb, was responsible for the 2022 outbreak) (5).  
49 Severity of human MPXV infection differs by strain, the case fatality ratio (CFR) for clade I  
50 has been estimated at 10.6% (95%CI 8.4%-13.3%) compared with 4.6% (95%CI 2.1%-  
51 8.6%) for clade II, based on cases in endemic regions (1), while the CFR in the 2022-23  
52 global clade IIb outbreak was much lower at <0.1% (6). Biological evidence supports strain-  
53 specific differences in virulence; in mice, clade I was estimated to be 1000x more severe  
54 than clade II based on fatal outcomes, with no deaths observed in sub-clade IIb (5).

55 In 2023 there were 14,626 suspected clade I mpox cases in the Democratic Republic of  
56 Congo (DRC), more than double the 6,216 cases recorded in 2020 (7,8). Sexual  
57 transmission of clade I mpox has been observed for the first time, with outbreaks among  
58 MSM networks and in commercial sex workers (7,8). However, unlike the clade IIb outbreak  
59 where over 95% of infections recording demographic data were among adult men (4), cases  
60 in the ongoing DRC epidemic have been concentrated in children, with 69% (3125/4538) of  
61 cases in the first 12 weeks of 2024 reported in under 15 year-olds, reflecting age-patterns  
62 observed in previous outbreaks in historically-affected countries (8). Furthermore, early  
63 evidence from DRC suggests that children under 15 years have accounted for 86%  
64 (254/296) of reported deaths in 2024, suggesting potential increased severity at young ages  
65 (8).

66 Age-specific variation in severity has important implications for understanding disease  
67 burden and how to best target interventions to reduce overall morbidity and mortality.  
68 However, there are currently no age-specific estimates of severity for mpox clade I.  
69 Furthermore, the extent to which age differences in severity can be explained by the  
70 concentration of vaccine-coverage at older ages is unclear.

71 Here, using data from systematically reviewed past outbreaks (1), we fitted mathematical  
72 models to quantify the relationship between the case fatality ratio (CFR) of mpox clade I and  
73 age at infection, the impact of vaccination status (either confirmed, or inferred based on birth  
74 date) on CFR, and looked for evidence of temporal changes in severity. We repeated the  
75 analysis incorporating information from the ongoing outbreak in DRC to assess the impact  
76 on our estimates.

## 77 **METHODS**

### 78 **Data**

79 We extracted data from a 2022 systematic review (1) on 550 case outcomes and year of  
80 symptom onset from studies reporting clade I outbreaks. Thirteen studies contained data on  
81 125 individual cases including patient age and outcome (9–21). The individually reported  
82 cases ranged in age from eight months to 41 years. A further three studies reported 425  
83 case outcomes grouped by age-band (22–24). The youngest age band in the grouped data  
84 was 0–3 years and the eldest was 40–69 years. Vaccination status of cases was recorded  
85 as ‘confirmed’ or ‘unvaccinated’ based on reported visual examination of vaccination scars.  
86 For the remaining cases we assigned vaccination status as ‘probable’ or ‘doubtful’ based on  
87 whether the patient was born before or after 1980, when routine smallpox vaccination  
88 ceased (3). We assessed the sensitivity of our findings to this assumption by repeating the  
89 analysis excluding all cases assigned as ‘probable’. We conducted supplementary analyses,  
90 assessing the impact of incorporating information from the ongoing outbreak in DRC,  
91 extracting 4538 age-grouped case outcomes (<1y, 1–5y, 5–14y, 15y+) reported in the DRC  
92 sitrep for the first 12 weeks of 2024 (11). We assigned ‘doubtful’ vaccination status to all  
93 cases from the ongoing DRC outbreak, including the 1413 aged over 15, implicitly assuming  
94 that all cases were aged under 44 years (*i.e.* were born after 1980).

### 95 **Statistical analysis**

96 In an exploratory analysis, we grouped the case data into five-year bands according to both  
97 age ( $a$ ) and year of infection ( $y$ ), as well as by vaccination status ( $v$ ) We compared patterns  
98 of cases ( $C_j$ ) and deaths ( $D_j$ ) in each group  $j = \{a, y, v\}$ , and calculated crude estimates of

99 the case fatality ratio by dividing the number of deaths by the number of cases  $CFR_j =$   
100  $D_j/C_j$ . We constructed exact 95% confidence intervals for the CFR using the by calculating  
101 the Clopper-Pearson interval.

102 We assessed the association between the CFR under each model,  $p_M(\underline{x})$ , and combinations  
103 of case covariates, including age ( $x_a$ ), year of onset ( $x_y$ ), and vaccination status  $x_v$  (where  
104  $x_v = 1$  denotes probable or confirmed smallpox vaccination and  $x_v = 0$  denotes doubtful or  
105 no vaccination). When data was reported in age groups, we approximated the age of each  
106 case using the median age for each group, where reported, and otherwise calculated the  
107 midpoint of each age band. For the DRC data we assumed the average age of cases (and  
108 deaths) over the age of 15 was 34y, in line with national demography, and assessed the  
109 impact of our assumption in sensitivity analysis using a lower estimate of 21y.

110 We modelled the data using binomial regression and performed analyses both excluding and  
111 including the DRC sitrep data. We considered ten models (M1-M10) in total, allowing the  
112 CFR to depend on each of the three model covariates (age, vaccination status, year of  
113 onset) alone and in combination, and considering two different functional forms (logistic and  
114 Hill) for the dependency on age. For all models considered, the CFR can be represented in a  
115 generalised form:

$$116 \quad p_M(\underline{x}) = \frac{f_M(\underline{x})}{1 + \left(\frac{g_M(x_a)}{g_M(a_{50})}\right)^b}$$

117 Here  $b = 0$  in the models where the CFR does not depend on age,  $g_{\{A=1\}}(x_a) = e^{x_a}$  in the  
118 logistic models, and  $g_{\{A=2\}}(x_a) = x_a$  in the Hill function models. In models depending on age  
119 only, the numerator function  $f_{\{V=0,Y=0\}}(x) = \theta$ , where  $\theta$  is a parameter specifying the value of  
120  $p_M(\underline{x})$  at age zero in unvaccinated individuals. For models including vaccination status,  
121  $f_{\{V=1,Y=0\}}(x) = \theta(1 - \phi x_v)$ , where  $\phi$  denotes the relative difference in CFR for vaccinated  
122 versus unvaccinated individuals. In models including year,  $f_{\{V=0,Y=1\}}(x) = \theta_{y=1970} +$   
123  $\frac{\theta_{y=2024} - \theta_{y=1970}}{2024 - 1970} x_y$ , such that severity is assumed to vary linearly by year of onset between the  
124 two fitted endpoints. Last, in models including both year and vaccination status  
125  $f_{\{V=1,Y=1\}}(x) = f_{\{V=1,Y=0\}}(f_{\{V=0,Y=1\}}(x))$ .

126 The model parameters can be intuitively interpreted, such that  $\theta$  is the CFR at age zero for  
127 unvaccinated individuals, with year of onset  $\theta_{y \in \{1970, 2024\}}$  where applicable;  $\phi$  is the vaccine  
128 effectiveness against death given symptomatic infection;  $a_{50}$  is the age by which the CFR

129 has declined to half of its initial value of  $\theta_y$ ; and  $b$  controls the slope of the decline in CFR  
130 with age, where  $b = 1$  describes a reciprocal relationship.

131 We fitted the models in a Bayesian framework using the R package brms v2.20.4 which  
132 serves as a frontend for the probabilistic programming language Stan (25,26). We used  
133 weakly informative uniform priors such that  $\{\theta_y\} \sim U(0,1)$ ,  $a_{50} \sim U(0,70)$ , and  $b \sim U(0,3)$ . For  
134 the estimate of vaccine protection against death we adopted a deliberately conservative  
135 prior,  $\phi \sim U(-1,1)$ , allowing parameter values below zero to enable the model to detect  
136 whether the protective effect was statistically significant. We obtained posterior parameter  
137 estimates for each model using an adaptive Hamiltonian Monte Carlo no U-turn sampler  
138 comprising four MCMC chains of 5,000 iterations each. We assessed convergence of the  
139 chains by ensuring the Gelman-Rubin criterion was  $\approx 1$  and the effective sample size (ESS)  
140  $> 1,000$  for each parameter.

141 We compared the predictive performance of the ten fitted models via leave-one-out cross-  
142 validation, via the R package loo v2.6.0 (27) and applied a moment matching correction to  
143 the importance sampling for observations that were indicated as problematic, based on  
144 Pareto  $k$  diagnostic  $> 0.7$  (28).

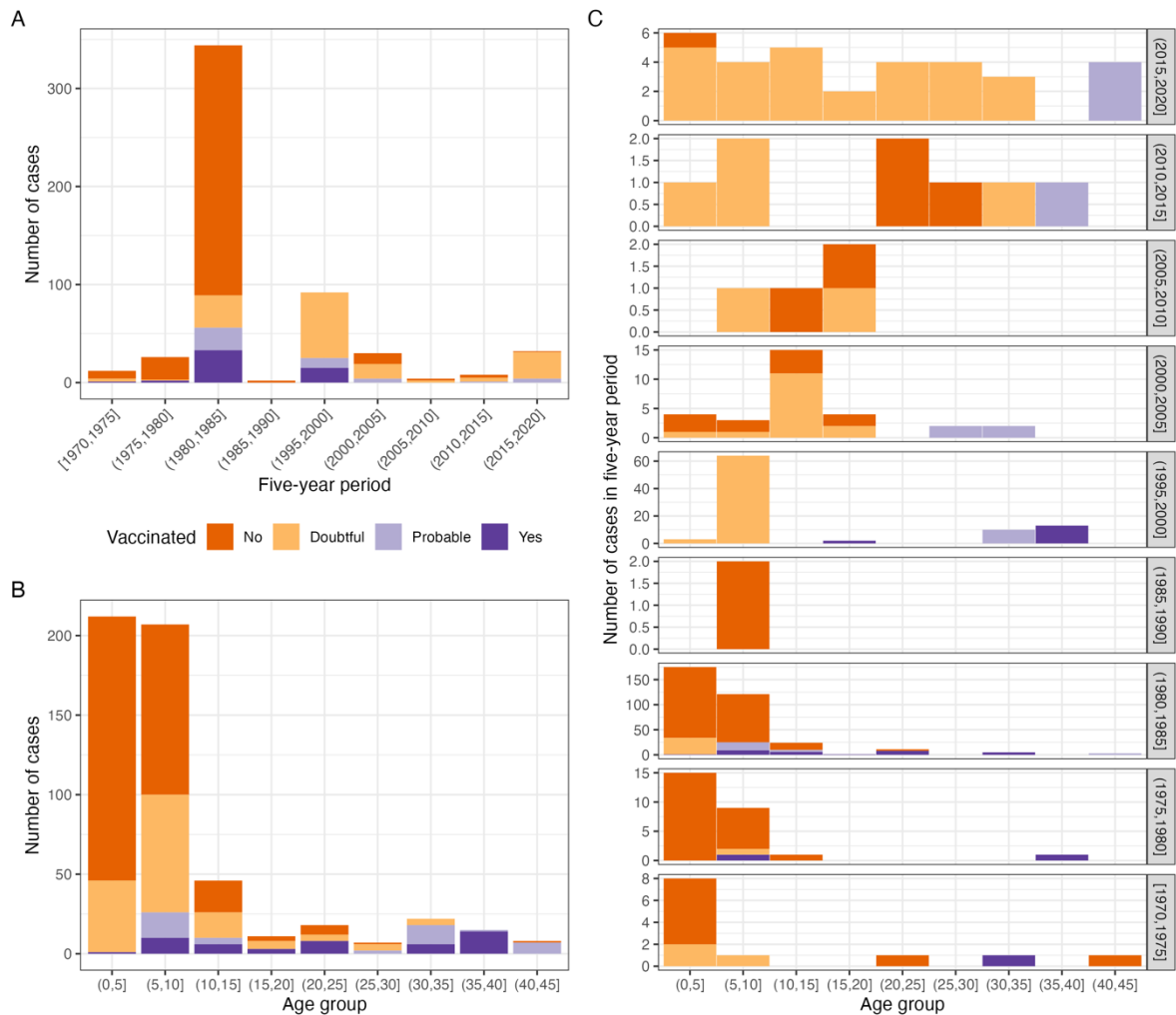
145 The data and code needed to reproduce the analysis are freely available at:

146 [https://github.com/mrc-ide/mpox\\_clade\\_i\\_severity](https://github.com/mrc-ide/mpox_clade_i_severity)

## 147 **RESULTS**

### 148 **Age and temporal trends in case data**

149 Across the period 1970-2020, most data arose from the reports of outbreaks in DRC in the  
150 early 1980s and late 1990s (Figure 1A) (22,23). Cases over the whole period were  
151 concentrated in young age groups, with 38.5% ( $n=212/550$ ) in children under 5 years old  
152 (Figure 1B). Most cases were unlikely to have been vaccinated against smallpox, with 55.5%  
153 ( $n=305$ ) confirmed unvaccinated and 27.6% ( $n=152$ ) unlikely to have been vaccinated due to  
154 being born after 1980. Only 9.3% ( $n=51$ ) had confirmed smallpox vaccine scars. We  
155 assigned the remaining 7.6% ( $n=42$ ) 'probable' vaccination status based on birth date prior  
156 to 1980. When cases were disaggregated into five-year age and time bands, there was a  
157 clear trend of cases occurring more frequently in adults in recent years, likely associated  
158 with the reductions in the proportion of adults protected by prior smallpox vaccination over  
159 time (Figure 1C).



160

161 Figure 1 Number of cases recorded between 1970 and 2020 in studies identified by the  
 162 Bunge et al. systematic review (1). A) in each five-year period over all ages, B) in each five-  
 163 year age group over the whole period and C) split by both period and age. Stacked bars are  
 164 coloured by vaccination status, where confirmed, and otherwise considered as 'probable' or  
 165 'doubtful' depending on whether an individual was born before or after 1980 (when routine  
 166 smallpox vaccination ceased), respectively.

167 **Patterns of case severity by age and vaccination status**

168 The overall crude CFR estimate from the pre-2021 case data was 9.5% (n=52/550; 95%CI  
 169 7.1%-12.2%). We performed preliminary analysis of age-trends in severity by stratifying the  
 170 case data into broad age groups (children aged under five years, 5-14 years and "adults"  
 171 aged 15 and over) which revealed more severe outcomes at younger ages. We estimated a  
 172 crude CFR of 17.5% (n=37/212; 95%CI 12.6%-23.2%) in under 5 year-olds compared to  
 173 7.4% (n=13/175; 95%CI 4.0%-12.4%) in children aged 5-14 and 2.4% (n=2/85; 95%CI 0.3%-



174 8.2%) in those aged 15 and over (Table 1)**Error! Reference source not found..** A similar  
 175 age-pattern of severity was also apparent in the 2024 DRC sitrep, although the decline in  
 176 severity with age was less steep. The crude CFR in children under 5 was lower than the  
 177 systematic review estimate with non-overlapping confidence intervals, at 10.5%  
 178 (n=192/1832; 95%CI 9.1%-12.0%), declining to 4.8% (n=62/1293; 95%CI 3.7%-6.1%) in  
 179 children aged 5-14 and 3.0% (n=42/1213; 95%CI 2.2%-4.0%) in those aged 15 and over.

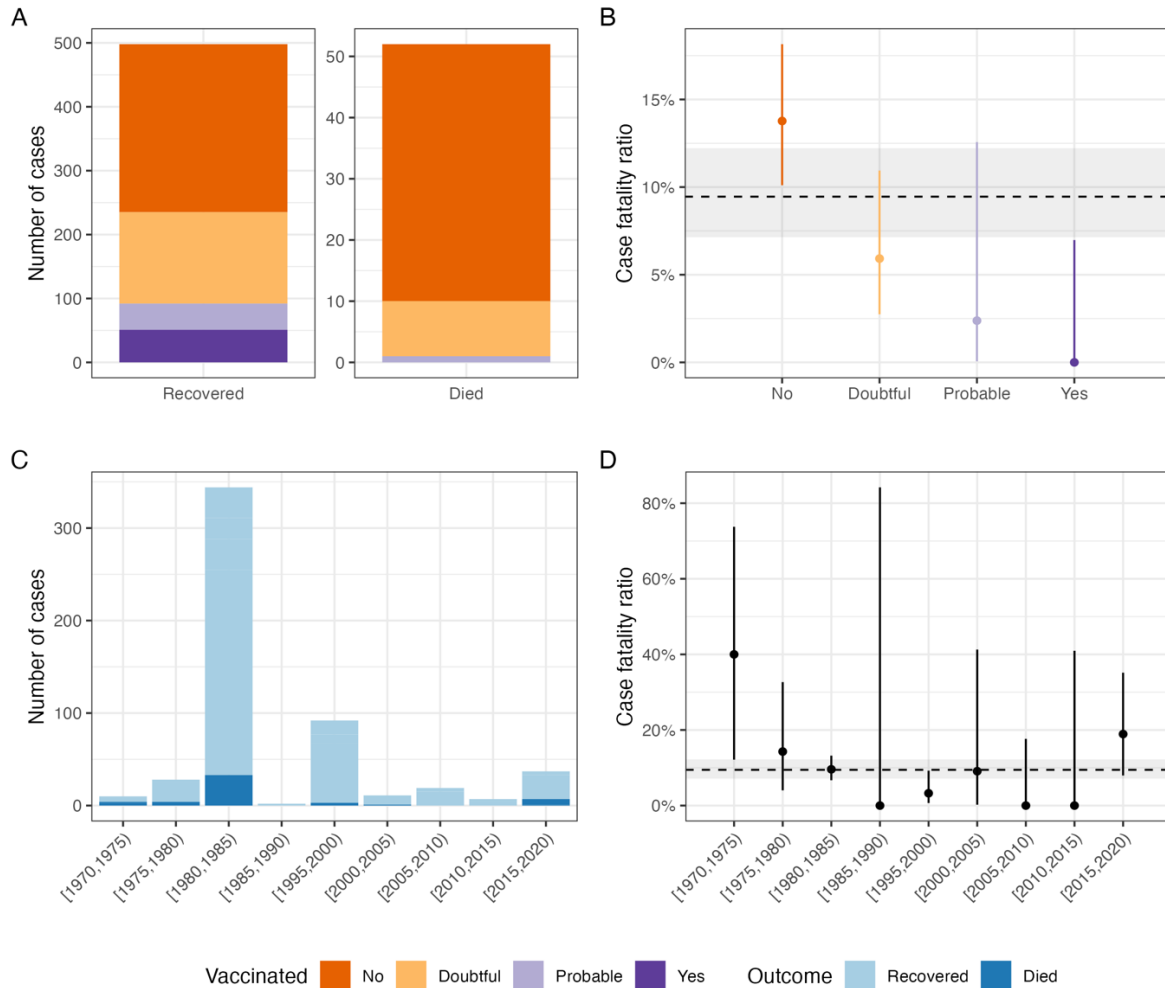
180 Table 1 Analysis of crude CFR by age-group based on studies of clade I outbreaks included  
 181 in Bunge et al. (1) only, and additionally incorporating 2024 DRC sitrep (8).

Country*	Author, year	Age band: Study period	<5y		5-14y		≥15y	
			Cases	Deaths	Cases	Deaths	Cases	Deaths
DRC	Breman, 1980 (10)	1970-1979	23	6	11	2	4	0
DRC	Jezek, 1986 (13)	May - Jul 1983	2	1	3	0	0	0
DRC	Jezek, 1988 (22)	1981-1986	140	24	117	8	20	0
CAR	Khodakevich, 1985 (17)	Jan 1984	0	0	0	0	1	0
CAR	Herve, 1989 (15)	1980s	0	0	2	0	0	0
DRC	Mwanbal, 1997 (23)	Feb 1996 - Feb 1997	33	0	20	0	3	0
RoC	Learned, 2005 (18)	Apr – Jun 2003	1	1	1	0	0	0
SS	Formenty, 2010 (14)	2005	1	0	3	0	6	0
RoC	Reynolds, 2013 (21)	Apr – Nov 2010	3	0	6	1	2	0
CAR	Berthet, 2011 (9)	Jun 2010	0	0	1	0	1	0
DRC	McColum, 2015 (19)	2011-2014	3	3	0	0	25	0
CAR	Nakouné, 2017; Kalthan 2016 (16,20)	Dec 2015 - Feb 2016	1	1	2	1	10	1
DRC	Eltvedt, 2020 (12)	Dec 2016	0	0	0	0	3	0
RoC	Doshi, 2019 (11)	Jan – 5 Apr 2017	5	1	8	1	9	1
Total from systematic review studies (1)			<b>212</b>	<b>37</b>	<b>175</b>	<b>13</b>	<b>85</b>	<b>2</b>
CFR:			17.5% (12.6%, 23.2%)		7.4% (4.0%, 12.4%)		2.4% (0.3%, 8.2%)	
DRC Sitrep 2024 (8)			1832	192	1293	62	1413	42
CFR:			10.5% (9.1%, 12.0%)		4.8% (3.7%, 6.1%)		3.0% (2.2%, 4.0%)	
Total			<b>2024</b>	<b>229</b>	<b>1468</b>	<b>75</b>	<b>1498</b>	<b>44</b>
CFR:			11.2% (9.9%, 12.7%)		5.1% (4.0%, 6.4%)		2.9% (2.1%, 3.9%)	

182 \* CAR = Central African Republic, RC = Democratic Republic of the Congo, RoC = Republic of the  
 183 Congo, SS = South Sudan; Based on 472 / 550 cases for which age-band could be definitively  
 184 determined

185 There were striking differences in case outcomes by vaccination status (Figure 2A); The  
 186 crude CFR in the systematic review data was highest among unvaccinated individuals at  
 187 13.8% (n=42/263; 95%CI:10.1%-18.2%) (Figure 2B). By comparison, there were no  
 188 recorded deaths among 51 cases in confirmed vaccinees. Indeed, the only fatal case that  
 189 could potentially have been vaccinated was documented in a 40-year-old man, who was

190 born three years before the cessation of smallpox vaccination in 1980 (11). The majority of  
 191 cases in the systematic review data were recorded during the early 1980s outbreak in DRC  
 192 (Figure 2C) (22), giving limited power to resolve temporal trends in CFR (Figure 2D).



193

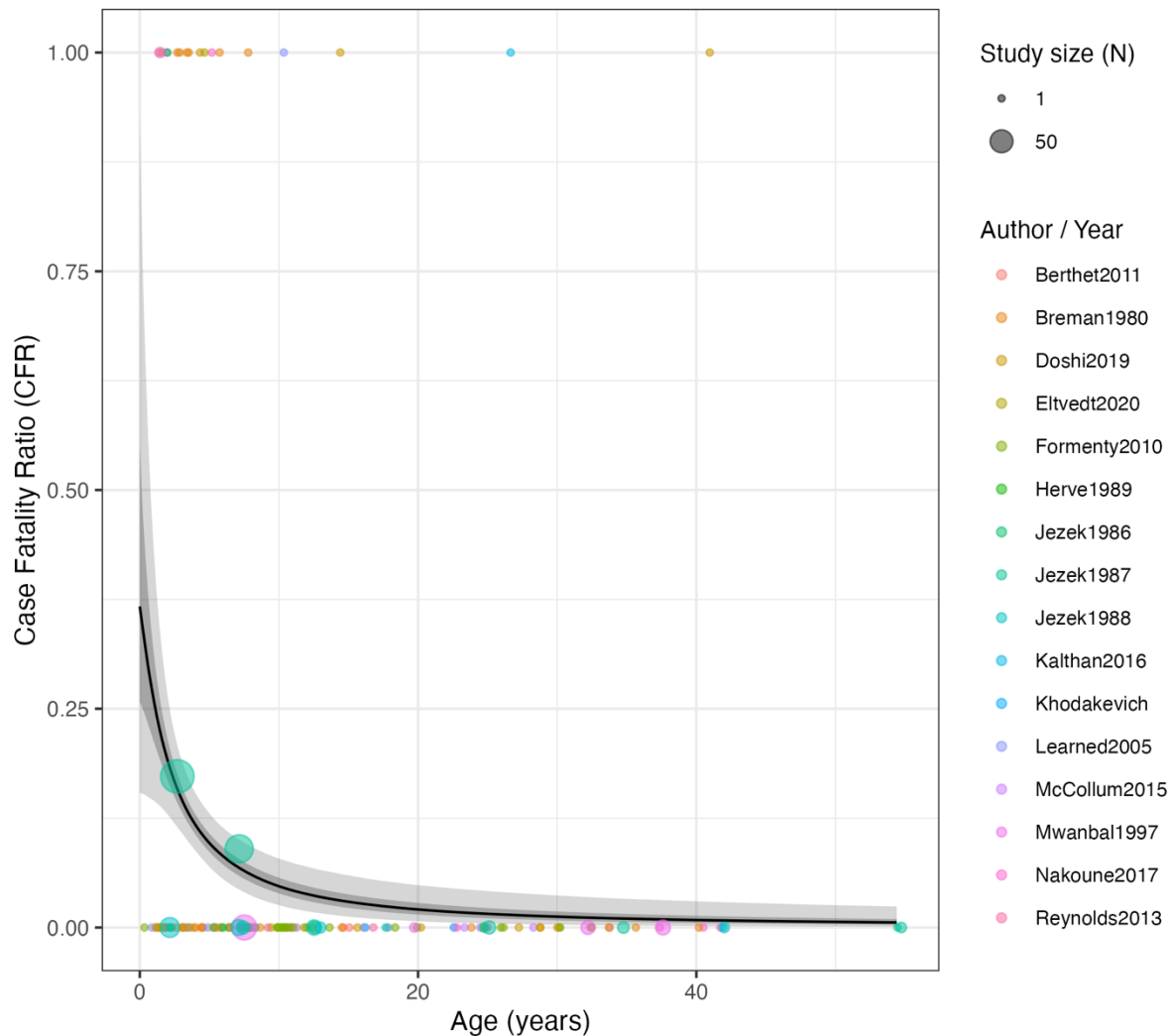
194 Figure 2 Case outcomes in studies identified by the Bunge et al. systematic review (1). A) by  
 195 vaccination status with B) corresponding crude case fatality ratio (CFR); and C) in each five-  
 196 year period since 1970 with D) corresponding crude CFR. In CFR plots (B,D), points depict  
 197 the central estimate (deaths / cases) with error bars showing 95% exact binomial confidence  
 198 intervals. Dashed horizontal lines and shaded bands show overall CFR (all ages, vaccine  
 199 status and years) with 95% CI.



## 200 **Modelling the CFR**

201 To formally characterise age variation in CFR while accounting for the potential confounding  
202 effects of temporal trends and differences in vaccine coverage by age, we fitted binomial  
203 regression models to the data reported in the systematic review (1). Leave-one-out cross  
204 validation confirmed that predictive performance was better for models assuming age  
205 dependence followed a Hill function (M7-10) than when logistic age dependence was  
206 assumed (M1,4-6) or models without age-dependence (M2-3), based on a difference in the  
207 expected log posterior density (ELPD) >4 (Table S1).

208 Increasing age was significantly associated with a decline in severity in all models. Modelling  
209 CFR as a Hill function of age only (M7), provided the best fit to data based on smallest  
210 ELPD, and capture. Comparing the modelled CFR by age-band to observed estimates from  
211 the data showed good correspondence (Figure S1). The posterior estimates of  $a_{50}$  and  $b$   
212 were 2.9 (95% CrI 0.5 – 8.3) and 1.4 (95% CrI: 0.7 – 2.3) suggesting a near-reciprocal  
213 relationship between CFR and age. We estimate that CFR declines steeply from 26%  
214 (95%CrI 15% - 43%) at age 1 to 5% (95%CrI 3% - 8%) by age 10, falling to 1% (95%CrI 0%  
215 - 4%) by age 30 (Figure 3).



216

217 Figure 3 Estimated CFR by age for mpox clade I under Model 7 (Hill function, age-only). The  
 218 solid line depicts the median posterior estimate, with shaded bands showing the 50% and  
 219 95% credible intervals. Points are coloured according to study and show the outcome of  
 220 individual cases where reported (0 = recovery, 1 = death). Larger points depict the crude  
 221 CFRs calculated in studies reporting outcome by age-group (plotted according to the middle  
 222 age in the group range), with point size reflecting the number in each group.

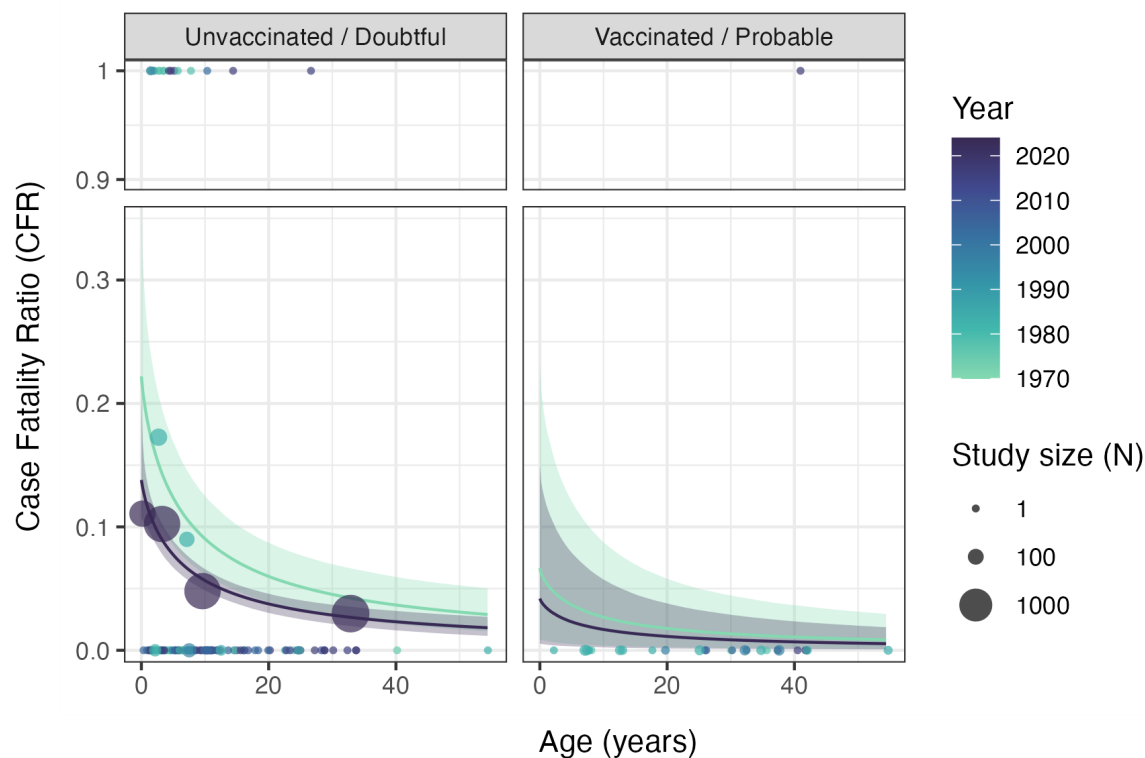
223 Models that incorporated vaccination status in addition to age (M8,10) had similar ELPD  
 224 (albeit with substantial uncertainty) to the simpler model including age only (M7), indicating  
 225 that the inclusion of vaccine status did not substantially improve model fit. However, there  
 226 was some suggestion of a protective effect of vaccination. Adding an effect of vaccination to  
 227 the best fit model (M7) gave an estimated vaccine effectiveness (VE) against death of 44%  
 228 (94%CrI: -55%, 94%), with 86% of posterior samples giving VE greater than zero (model M8  
 229 in Table S1). The posterior mean estimate was lowered by the deliberately conservative

230 prior on vaccine effect, however the marginal posterior modal estimate was  $VE = 74\%$   
231 (Figure S 2). Repeating the analysis assuming a more biologically plausible  $\phi \sim U[0,1]$  prior  
232 gave an estimated vaccine effectiveness (VE) against death of 57% (94%CrI: 6%, 95%).  
233 While models incorporating year of onset had similar ELPD values to the best-fitting age-  
234 only model (M7), there were insufficient data in recent years to be informative about changes  
235 in the CFR over time, with little evidence to distinguish the estimate of  $\theta_{y=2024}$  from its prior  
236 (Figure S 2).

237 We assessed the sensitivity of our results to the assumption that individuals born before  
238 1980 whose vaccine status was unknown were 'probable' vaccinees. Refitting the models  
239 excluding these 42 cases (including one death) produced similar ELPD estimates for all Hill  
240 function models, however the model incorporating vaccination (M8) had the lowest value  
241 overall, with similar parameter estimates and quality of fit to the main results (Table S2; Figure  
242 S3; Figure S4). While the analysis was underpowered to provide a statistically significant estimate of  
243 vaccine protection against death, the posterior was maximized at  $VE = 88\%$  (Figure S 5).

#### 244 **Analysis including data from DRC sitrep**

245 We repeated model parameter estimation incorporating the data on mpox cases and deaths  
246 by age band (<1y, 1-4y, 5-14y, 15y+) reported in the 2024 DRC sitrep. Inclusion of the sitrep  
247 data changed the preferred model; Leave-one-out cross validation selected Model 10, where  
248 CFR was modelled as a Hill function of age and depended on both vaccination status and  
249 calendar time (Figure 4). The magnitude of the age-effect was diminished compared with the  
250 model fit based on historic data alone: the inferred CFR at age 0 was lower at 23% (95% CrI:  
251 13% - 40%) in 1970 falling to 14% (95% CrI: 10% - 22%) in 2024, compared with 42% (95%  
252 CrI 15% - 93%) when the sitrep data was not included (Table S 3). Estimated vaccine  
253 efficacy against death increased to a mean of 64% (95% CrI: -2% - 96%) with 97% posterior  
254 support that vaccine efficacy was >0, with the posterior maximised at  $VE = 82\%$  (Figure S 6).  
255 In addition, the estimate of  $a_{50}$  increased to 6.8y (95% CrI: 1.6y - 12.9y) and that of  $b$ , the  
256 slope of the Hill function, decreased to 0.91 (95% CrI: 0.57- 1.28) (Table S 3)



257

258 Figure 4 Estimated CFR by age, inferred vaccination status, and year of onset for mpox  
259 clade I under Model 10 (Hill, age, vaccination status, year) based on data incorporating the  
260 DRC 2024 sitrep. Solid lines depict the median posterior estimate for the posterior mean  
261 CFR at each age inferred for 1970 and 2024, with shaded bands showing the 50% and 95%  
262 credible intervals. Points are coloured according to year of outbreak and show the outcome  
263 of individual cases where reported (0 = recovery, 1 = death). Larger points depict the crude  
264 CFRs calculated in studies reporting outcome by age-group (plotted according to the median  
265 age in the group, where reported and mid-point of the age range otherwise), with point size  
266 reflecting the number in each group.

267 We assessed the sensitivity of these results to uncertainty around the age of adult cases in  
268 the 2024 DRC outbreak. In the analysis presented above, we assumed that the mean age of  
269 cases in the 15+ age group was 34y (in line with DRC demography). Reducing the average  
270 age of adult cases to 21y and repeating the analysis produced qualitatively unchanged  
271 results in terms of model selection and parameter estimates for the better fitting Hill function  
272 models (Table S4; Figure S8; Figure S 9; Figure S10).

273 Table 2 tabulates CFR estimates for two of the best fitting model variants from the main  
274 analysis and the best fitting model from the supplementary analysis which also included the  
275 2024 DRC sitrep data.

276 Table 2 Modelled clade I case fatality ratio (CFR; %) by age, based on posterior mean and  
 277 95% credible interval for models M7 (Hill function, age-only) and M8 (Hill function, age and  
 278 vaccination status) for the main analysis (including data from the Bunge et al. systematic  
 279 review) and M10 for the analysis additionally incorporating data from the 2024 DRC sitrep,  
 280 presenting CFR for 2024.

Data Model Age	Bunge et al. systematic review			Including DRC sitrep	
	M7: Hill, age	M8: Hill, age, vaccination		M10: Hill, age, vaccination, year=2024	
		Unvaccinated	Vaccinated	Unvaccinated	Vaccinated/
5	9.7 (6.9 - 13.0)	10.2 (7.3 - 13.7)	4.8 (0.6 - 14.7)	11.9 (10.2 - 13.7)	4.8 (0.7 - 15.6)
10	4.7 (2.6 - 7.9)	5.4 (2.8 - 9.8)	2.5 (0.3 - 7.5)	8.2 (7.3 - 9.3)	3.3 (0.5 - 10.5)
15	2.9 (1.2 - 6.0)	3.5 (1.4 - 8.3)	1.6 (0.2 - 5.2)	6.0 (5.2 - 6.9)	2.4 (0.3 - 7.6)
20	2.1 (0.7 - 4.8)	2.6 (0.8 - 7.3)	1.2 (0.1 - 4.1)	4.7 (3.9 - 5.5)	1.9 (0.3 - 6.0)
25	1.6 (0.5 - 4.2)	2.0 (0.5 - 6.6)	0.9 (0.1 - 3.4)	3.9 (3.1 - 4.7)	1.5 (0.2 - 4.9)
30	1.2 (0.3 - 3.7)	1.6 (0.4 - 6.0)	0.7 (0.1 - 2.9)	3.3 (2.6 - 4.1)	1.3 (0.2 - 4.2)
35	1.0 (0.2 - 3.3)	1.3 (0.3 - 5.5)	0.6 (0.1 - 2.6)	2.8 (2.1 - 3.7)	1.1 (0.2 - 3.7)
40	0.9 (0.2 - 3.0)	1.2 (0.2 - 5.2)	0.5 (0.1 - 2.3)	2.5 (1.8 - 3.4)	1.0 (0.1 - 3.3)

281

## 282 DISCUSSION

283 Our analysis provides strong evidence for variation in the CFR of mpox clade I by age in  
 284 endemic regions. Modelling based on data included in the Bunge et al. systematic review  
 285 suggests a near-reciprocal relationship between the CFR and age, with estimates of 9.7%  
 286 (95% CrI 6.9% - 13.0%) for children aged 5, to 1.2% (95% CrI 0.3% - 3.7%) by age 30.  
 287 While incorporating probable smallpox vaccination status in addition to age did not improve  
 288 the model's predictive ability, posterior estimates indicate protection against death for  
 289 individuals who are vaccinated but nevertheless become symptomatically infected with  
 290 mpox, although our analysis of the scant historical data was statistically underpowered with  
 291 broad credible intervals overlapping zero.

292 Cases and deaths from the DRC epidemic reported in the first 12 weeks of 2024 imply a  
 293 CFR of 10.5% (n=192/1832; 95% CI: 9.1%-12.0%) in <5s, 4.8% (n=62/1293; 95% CI: 3.7%-  
 294 6.1%) in 5-14 year olds, and 3.0% (n=42/1413; 95% CI: 2.2%- 4.0%) in over 15s (8).  
 295 Reanalysis of the CFR combining these data with the earlier data collated by Bunge et al.  
 296 showed age was still the most important determinant of severity. However, the magnitude of  
 297 age differences was diminished compared with the analysis of data from the systematic  
 298 review. With the expanded dataset, the model incorporating vaccination status and calendar  
 299 time in addition to age was preferred over the model of age only. There was strong posterior  
 300 support for a protective effect against death, with a vaccine efficacy estimate of 64% (95%

301 CrI: -2% - 96%). In addition, there was support for a reduction in CFR between 1970 and  
302 2024, although this was driven entirely by the 2024 outbreak data. The cause for the  
303 reduction in severity is unclear with potential contributing factors including differences in  
304 case ascertainment, improvements in population health and/or access to care, or changing  
305 virulence as the clade evolves, with further work needed to attribute causality and  
306 implications.

307 A key strength of our analysis include is its synthesis of evidence from systematically  
308 identified outbreaks within a robust Bayesian framework incorporating model selection to  
309 provide the first quantitative estimates of the CFR for clade I mpox in endemic settings.  
310 However, there are also important limitations. Transmission of mpox clade I is concentrated  
311 in central Africa and has not caused major outbreaks outside of this endemic region to date.  
312 As such, our analysis is restricted to cases from DRC, Republic of Congo, Central African  
313 Republic, and South Sudan. The level of surveillance, case ascertainment, prevalence of co-  
314 morbidities, and access to healthcare vary substantially between settings worldwide, so  
315 estimates of severity presented here are not necessarily transferrable to other contexts. We  
316 did not have data on underlying heterogeneities in susceptibility to severe mpox outcomes,  
317 which may be associated with age. Qualitatively, case reports of clade I infections reveal co-  
318 morbidities, such as measles co-infection, and preventable exacerbating conditions, such as  
319 dehydration and bacterial superinfection of lesions, suggesting wide scope for improvement  
320 of outcomes with appropriate care (16,20,22).

321 In the absence of genomic evidence, we considered cases to part of clade I based on  
322 location, in accordance with the systematic review underlying the analysis and geographical  
323 spread described by WHO (1). Transmission of clade II in clade I endemic areas could  
324 therefore lead to misspecification, although prior to the 2022 clade IIb outbreak this is likely  
325 to have been minimal.

326 The interpretation and applicability of our CFR estimates depends upon both case definition  
327 and ascertainment, which will vary depending on reporting system, e.g. via surveillance or  
328 active epidemiological investigation. Severe cases, especially those with fatal outcomes, are  
329 more likely to be identified than mild infections, which may lead to CFR being over-  
330 estimated. Furthermore, if reporting of severe outcomes is associated with age, for example  
331 if deaths in children are more likely to be reported than deaths in adults, the concentration of  
332 severity at young ages may be overestimated, however it is equally likely that case  
333 ascertainment overall is higher in children. The data underlying our analysis were limited and  
334 restricted to the details provided in published case reports, with the quantity and quality of

335 data varying between outbreaks and locations. Case ascertainment in the current DRC  
336 epidemic is unclear with the majority of cases being suspected but unconfirmed; due to  
337 diagnostic capacity constraints, only around 10% of suspected cases are sampled for  
338 laboratory analysis. As such, some suspected mpox cases could be misattributed, leading to  
339 potential inclusion of other diseases that cause skin lesions, such as chickenpox, in the case  
340 count. Furthermore, as the DRC epidemic is ongoing, right-censoring of case-outcomes in  
341 the naïve estimator (29) may lead to CFR being underestimated – perhaps explaining the  
342 apparent reduction in CFR over time seen in our analysis which included 2024 DRC data in  
343 the case count.

344 Smallpox vaccination status was confirmed in only 65% of case reports in the systematic  
345 review and none of the 2024 DRC sitrep cases, so we inferred probable vaccination status  
346 based on birth dates. The implicit assumption that all birth cohorts before 1980 were  
347 vaccinated likely overestimates coverage in older age groups, as it exceeds the 80% target  
348 coverage set by WHO during its smallpox vaccination campaign (3), we addressed this  
349 limitation by including a sensitivity analysis excluding the 42 individuals born before 1980  
350 whose vaccine status was unconfirmed, which favoured the model including age and  
351 vaccination status (M8) over age alone (M7), but otherwise made little qualitative difference  
352 to our results. Furthermore, misclassifying fatal case outcomes as being vaccinated lowers  
353 estimates of vaccine efficacy, making the assumption conservative in this respect.

354 While data from the ongoing DRC outbreak suggest a reduction in the CFR over time, an  
355 increase in sexual transmission of clade I mpox may adversely impact future trends in  
356 severity. During the 2022 clade IIb outbreak, people living with HIV were more likely to be  
357 infected with mpox, and those with advanced HIV infection were more likely to suffer severe  
358 mpox disease and death, indicating increased severity due to immune compromise (30). HIV  
359 prevalence is <1% in DRC (among 83% of people who know their status) but this rises to 7%  
360 in key populations (7), and we currently lack clade I CFR estimates in immunocompromised  
361 patients.

362 In conclusion, age dependent severity, together with the concentration of susceptibility to  
363 mpox infection at young ages due to lack of prior infection and the discontinuation of  
364 smallpox vaccination, raises important questions for future epidemic response. Despite  
365 mounting reports of sexual transmission of clade I infection in the ongoing DRC outbreak,  
366 the majority of cases are still reported in young children, suggestive of a generalised  
367 epidemic with sustained community transmission. Additional epidemiological studies backed  
368 by mathematical modelling are urgently needed to help decision-makers understand the



369 interaction between drivers of transmission and the age-patterns of severity we present here,  
370 and their implications for targeting future vaccination campaigns.

### 371 **Contributors**

372 The study was conceived by LKW. Study data was extracted by LKW. The analysis was  
373 designed and implemented by LKW with input from NMF. The report was drafted by LKW  
374 and revised by all authors. All authors had access to the data and accept responsibility for  
375 submission for publication.

### 376 **Declaration of interests**

377 LKW reports personal fees from WHO-EURO for consulting on the 2022-23 Mpox clade II  
378 outbreak. LKW reports grants from the Wellcome Trust and NIHR, personal fees from Pacific  
379 Life Re, honoraria from the Luxembourg National Research Fund and Lancet Infectious  
380 Diseases for rapid peer review, and participating on a DSMB for the Wellcome Trust, all  
381 outside the submitted work. NMF reports grants from the Wellcome Trust, NIHR, the Bill and  
382 Melinda Gates Foundation, Gavi, a philanthropic donation from Community Jameel and fees  
383 for journal editing from eLife.

### 384 **Data sharing**

385 All data and code to reproduce the analysis are available at [https://github.com/mrc-](https://github.com/mrc-ide/mpox_clade_i_severity)  
386 [ide/mpox\\_clade\\_i\\_severity](https://github.com/mrc-ide/mpox_clade_i_severity)

### 387 **Funding**

388 LKW acknowledges funding from the Wellcome Trust (grant number 218669/Z/19/Z). LKW  
389 and NMF acknowledge funding from the MRC Centre for Global Infectious Disease Analysis  
390 (reference MR/R015600/1), jointly funded by the UK Medical Research Council (MRC) and  
391 the UK Foreign, Commonwealth & Development Office (FCDO), under the MRC/FCDO  
392 Concordat agreement and is also part of the EDCTP2 programme supported by the  
393 European Union. NMF acknowledges funding provided by the NIHR Health Protection Unit in  
394 Modelling and Health Economics (reference NIHR200908) and the Jameel Institute  
395 (supported by a philanthropic donation from Community Jameel). The views expressed are  
396 those of the authors and not necessarily those of the funders.

### 397 **License**

398 For the purpose of open access, the author has applied a 'Creative Commons Attribution  
399 (CC BY) licence to any Author Accepted Manuscript version arising.

## 400 REFERENCES

- 401 1. Bunge EM, Hoet B, Chen L, Lienert F, Weidenthaler H, Baer LR, et al. The changing  
402 epidemiology of human monkeypox—A potential threat? A systematic review. *PLoS*  
403 *Negl Trop Dis*. 2022;16(2):1–20.
- 404 2. Deputy NP, Deckert J, Chard AN, Sandberg N, Moulia DL, Barkley E, et al. Vaccine  
405 Effectiveness of JYNNEOS against Mpox Disease in the United States. *N Engl J Med*.  
406 2023 Jun 29;388(26):2434–43.
- 407 3. Taube JC, Rest EC, Lloyd-Smith JO, Bansal S. The global landscape of smallpox  
408 vaccination history and implications for current and future orthopoxvirus susceptibility: a  
409 modelling study. *Lancet Infect Dis*. 2022 Nov;S1473309922006648.
- 410 4. World Health Organization. 2022-23 Mpox (Monkeypox) Outbreak: Global Trends  
411 [Internet]. [cited 2023 Sep 14]. Available from:  
412 [https://worldhealthorg.shinyapps.io/mpx\\_global/#2\\_Global\\_situation\\_update](https://worldhealthorg.shinyapps.io/mpx_global/#2_Global_situation_update)
- 413 5. Ulaeto D, Agafonov A, Burchfield J, Carter L, Happi C, Jakob R, et al. New nomenclature  
414 for mpox (monkeypox) and monkeypox virus clades. *Lancet Infect Dis*. 2023  
415 Mar;23(3):273.
- 416 6. Mitjà O, Ogoina D, Titanji BK, Galvan C, Muyembe JJ, Marks M, et al. Monkeypox.  
417 *Lancet Lond Engl*. 2023 Jan 7;401(10370):60–74.
- 418 7. Mpox (monkeypox)- Democratic Republic of the Congo [Internet]. [cited 2023 Dec 5].  
419 Available from: [https://www.who.int/emergencies/disease-outbreak-news/item/2023-](https://www.who.int/emergencies/disease-outbreak-news/item/2023-DON493)  
420 [DON493](https://www.who.int/emergencies/disease-outbreak-news/item/2023-DON493)
- 421 8. La variole simienne (monkeypox) en République démocratique du Congo: Rapport de la  
422 Situation Epidémiologique Sitrep N°005 (du 18 - 24 mars 2024) - Democratic Republic of

- 423 the Congo | ReliefWeb [Internet]. 2024 [cited 2024 Apr 10]. Available from:  
424 [https://reliefweb.int/report/democratic-republic-congo/la-variole-simienne-monkeypox-en-](https://reliefweb.int/report/democratic-republic-congo/la-variole-simienne-monkeypox-en-republique-democratique-du-congo-rapport-de-la-situation-epidemiologique-sitrep-no005-du-18-24-mars-2024)  
425 [republique-democratique-du-congo-rapport-de-la-situation-epidemiologique-sitrep-](https://reliefweb.int/report/democratic-republic-congo/la-variole-simienne-monkeypox-en-republique-democratique-du-congo-rapport-de-la-situation-epidemiologique-sitrep-no005-du-18-24-mars-2024)  
426 [no005-du-18-24-mars-2024](https://reliefweb.int/report/democratic-republic-congo/la-variole-simienne-monkeypox-en-republique-democratique-du-congo-rapport-de-la-situation-epidemiologique-sitrep-no005-du-18-24-mars-2024)
- 427 9. Berthet N, Nakouné E, Whist E, Selekon B, Burguière AM, Manuguerra JC, et al.  
428 Maculopapular lesions in the Central African Republic. *The Lancet*. 2011 Oct  
429 8;378(9799):1354.
- 430 10. Breman JG, Kalisa-Ruti, Steniowski MV, Zanotto E, Gromyko AI, Arita I. Human  
431 monkeypox, 1970-79. *Bull World Health Organ*. 1980;58(2):165–82.
- 432 11. Doshi RH, Guagliardo SAJ, Doty JB, Babeaux AD, Matheny A, Burgado J, et al.  
433 Epidemiologic and Ecologic Investigations of Monkeypox, Likouala Department,  
434 Republic of the Congo, 2017. *Emerg Infect Dis*. 2019 Feb;25(2):273–81.
- 435 12. Eltvedt AK, Christiansen M, Poulsen A. A Case Report of Monkeypox in a 4-Year-Old  
436 Boy from the DR Congo: Challenges of Diagnosis and Management. *Case Rep Pediatr*.  
437 2020 Apr 9;2020:e8572596.
- 438 13. Jezek Z, Arita I, Mutombo M, Dunn C, Nakano JH, Szczeniowski M. Four generations of  
439 probable person-to-person transmission of human monkeypox. *Am J Epidemiol*. 1986  
440 Jun;123(6):1004–12.
- 441 14. Formenty P, Muntasir MO, Damon I, Chowdhary V, Opoka ML, Monimart C, et al.  
442 Human Monkeypox Outbreak Caused by Novel Virus Belonging to Congo Basin Clade,  
443 Sudan, 2005. *Emerg Infect Dis*. 2010 Oct;16(10):1539–45.
- 444 15. Herve VMA, Belec L, Yayah G, Georges AJ. Monkeypox in central africa. About two  
445 strains isolated in Central African Republic. *Med Mal Infect*. 1989 May;19(5):322–4.

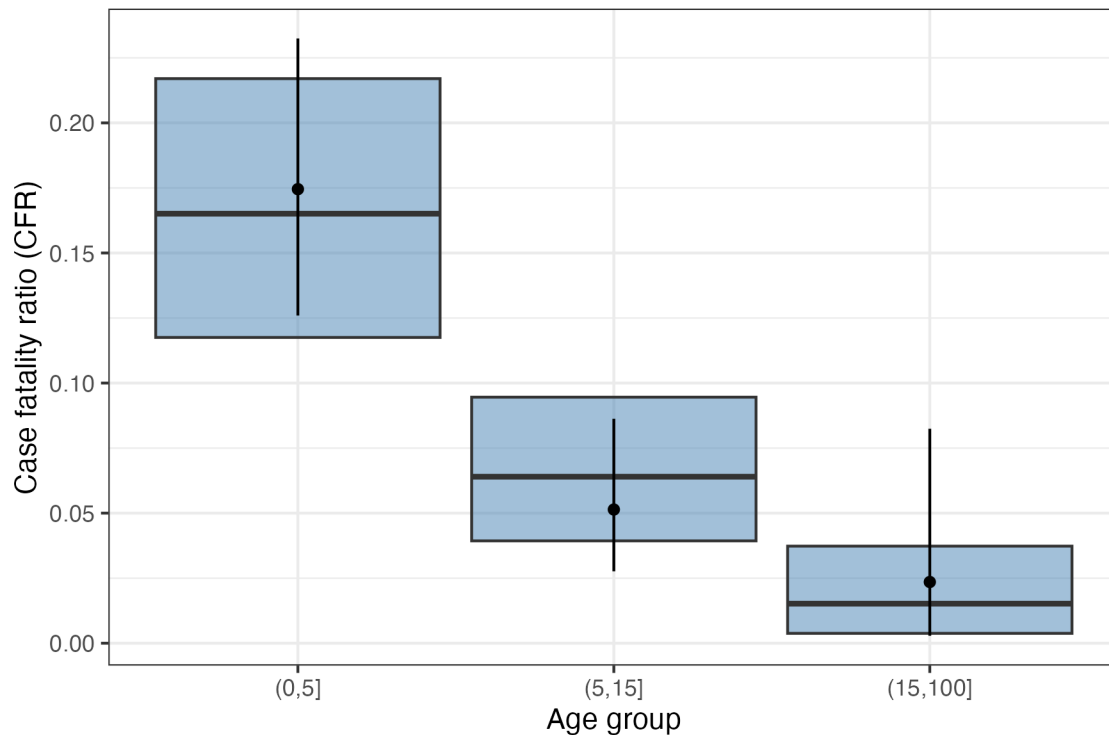
- 446 16. Kalthan E, Dondo-Fongbia JP, Yambele S, Dieu-Creer LR, Zepio R, Pamatika CM.  
447 Epidémie de 12 cas de maladie à virus monkeypox dans le district de Bangassou en  
448 République Centrafricaine en décembre 2015. Bull Société Pathol Exot. 2016 Dec  
449 1;109(5):358–63.
- 450 17. Khodakevich L, Widy-Wirski R, Arita I, Marennikova SS, Nakano J, Meunier D. Monkey  
451 pox virus infection in humans in the Central African Republic. Bull Soc Pathol Exot  
452 Filiales. 1985 Jan 1;78(3):311–20.
- 453 18. Learned LA, Reynolds MG, Wassa DW, Li Y, Olson VA, Karem K, et al. Extended  
454 interhuman transmission of monkeypox in a hospital community in the Republic of the  
455 Congo, 2003. Am J Trop Med Hyg. 2005 Aug;73(2):428–34.
- 456 19. McCollum AM, Nakazawa Y, Ndongala GM, Pukuta E, Karhemere S, Lushima RS, et al.  
457 Human Monkeypox in the Kivus, a Conflict Region of the Democratic Republic of the  
458 Congo. Am J Trop Med Hyg. 2015 Oct 7;93(4):718–21.
- 459 20. Nakoune E, Lampaert E, Ndjapou SG, Janssens C, Zuniga I, Van Herp M, et al. A  
460 Nosocomial Outbreak of Human Monkeypox in the Central African Republic. Open  
461 Forum Infect Dis. 2017 Nov 3;4(4):ofx168.
- 462 21. Reynolds MG, Emerson GL, Pukuta E, Karhemere S, Muyembe JJ, Bikindou A, et al.  
463 Detection of Human Monkeypox in the Republic of the Congo Following Intensive  
464 Community Education. Am J Trop Med Hyg. 2013 May 1;88(5):982–5.
- 465 22. Jezek Z, Grab B, Szczeniowski M, Paluku KM, Mutombo M. Clinico-epidemiological  
466 features of monkeypox patients with an animal or human source of infection. Bull World  
467 Health Organ. 1988;66(4):459–64.

- 468 23. Mwanbal. Human Monkeypox -- Kasai Oriental, Zaire, 1996-1997 [Internet]. [cited 2023  
469 Dec 5]. Available from: <https://www.cdc.gov/mmwr/preview/mmwrhtml/00048673.htm>
- 470 24. Jezek Z, Szczeniowski M, Paluku KM, Mutombo M. Human monkeypox: clinical features  
471 of 282 patients. *J Infect Dis.* 1987 Aug;156(2):293–8.
- 472 25. Bürkner PC. Bayesian Item Response Modeling in R with brms and Stan. *J Stat Softw.*  
473 2021 Nov 30;100:1–54.
- 474 26. Carpenter B, Gelman A, Hoffman MD, Lee D, Goodrich B, Betancourt M, et al. Stan: A  
475 Probabilistic Programming Language. *J Stat Softw.* 2017 Jan 11;76:1–32.
- 476 27. Vehtari A, Gelman A, Gabry J. Practical Bayesian model evaluation using leave-one-out  
477 cross-validation and WAIC. *Stat Comput.* 2017;27(5):1413–32.
- 478 28. Paananen T, Piironen J, Bürkner PC, Vehtari A. Implicitly adaptive importance sampling.  
479 *Stat Comput.* 2021 Feb 9;31(2):16.
- 480 29. Ghani AC, Donnelly CA, Cox DR, Griffin JT, Fraser C, Lam TH, et al. Methods for  
481 estimating the case fatality ratio for a novel, emerging infectious disease. *Am J*  
482 *Epidemiol.* 2005;162(5):479–86.
- 483 30. Yinka-Ogunleye A, Dalhat M, Akinpelu A, Aruna O, Garba F, Ahmad A, et al. Mpox  
484 (monkeypox) risk and mortality associated with HIV infection: a national case-control  
485 study in Nigeria. *BMJ Glob Health.* 2023 Nov 30;8(11):e013126.
- 486

487

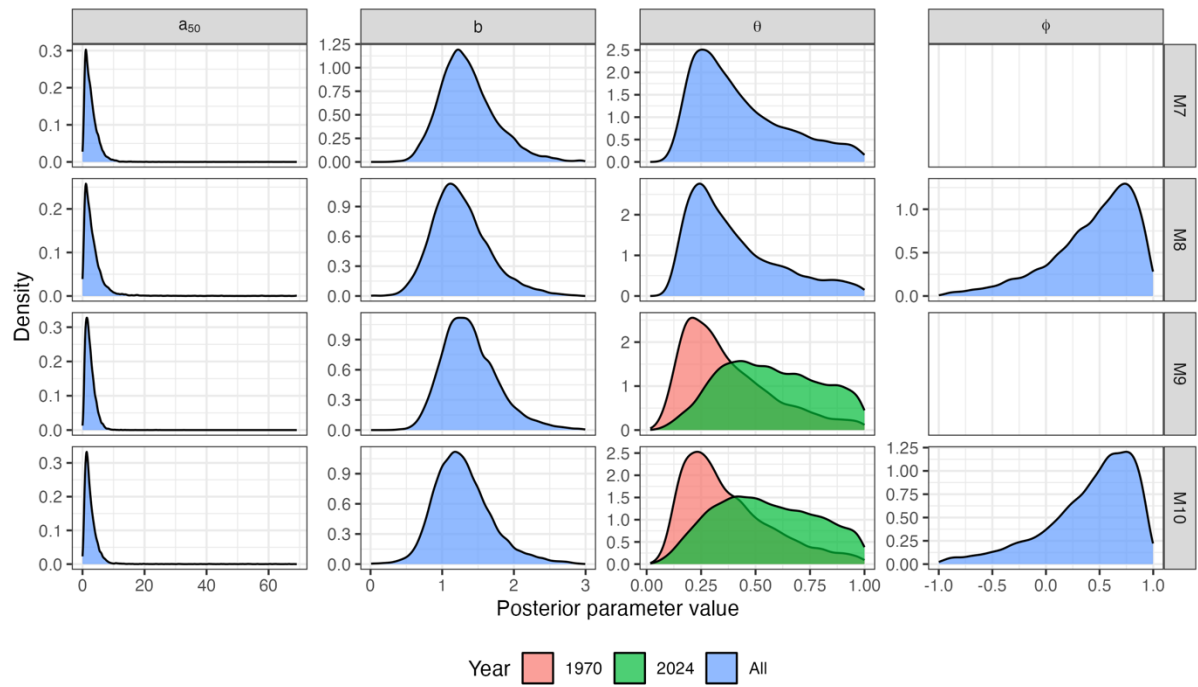
## Supplementary Appendix

488 **Main analysis: systematic review data**



489

490 Figure S1 Observed vs expected case fatality ratio by age-group under best-fitting model to  
491 data extracted from the Bunge et al. systematic review, M7 (Hill function, age-only). Bars  
492 show mean and 95% credible intervals predicted by the model. Points and bars show the  
493 crude CFR calculated from the data and 95% binomial confidence intervals.



494

495 Figure S 2 Posterior parameter densities for Hill function models of clade I CFR (M6-10)

496 fitted to data extracted from the Bunge et al. systematic review.

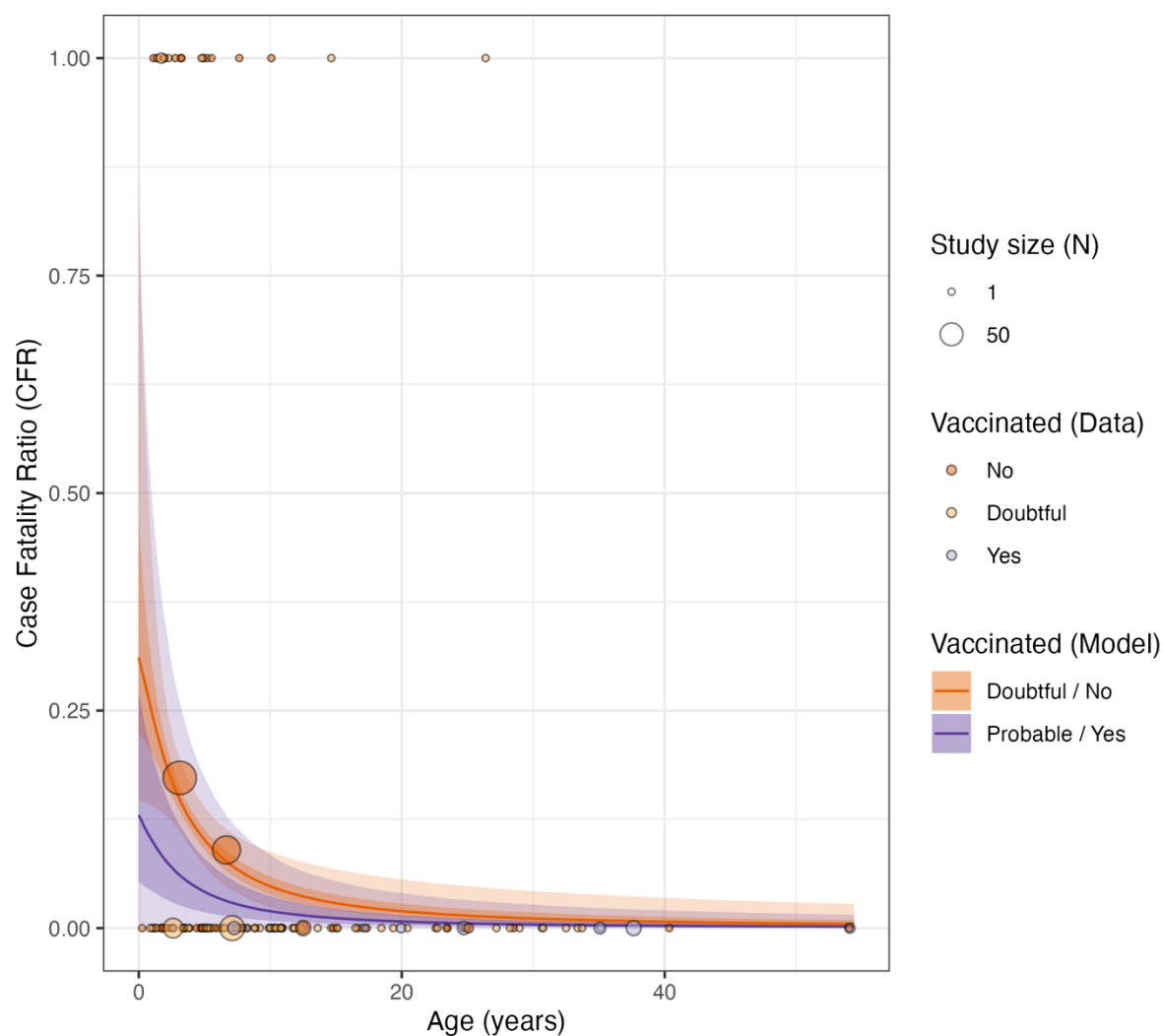


497 Table S1 Description of fitted binomial regression models and posterior parameter estimates fitted to data reported in the Bunge et al  
 498 systematic review (1), with difference in the expected log posterior density (ELPD) for each model compared to the best-fitting model (M7).

M	Description \ Prior	$\theta_{1970}$	$\theta_{2024}$	$\phi$	$a_{50}$	$b$	Difference in ELPD
		CFR at age zero $\sim U(0, 1)$		Vaccine effectiveness against death $\sim U(-1, 1)$	Age of 50% maximum CFR $\sim U[0, 70]$	Slope of Hill function $\sim U[0, 3]$	Mean (s.e.)
1	Logistic, age only	0.248 (0.098,0.414)			7.133 (0.137,49.591)	0.176 (0.053,0.746)	-8.9 (4.7)
2	No age, vaccination status only	0.111 (0.085,0.142)		0.808 (0.474,0.977)			-6.0 (6.5)
3	No age, year of onset only	0.106 (0.066,0.151)	0.081 (0.024,0.152)				-13.1 (7.8)
4	Logistic, age and vaccination status	0.173 (0.089,0.360)		0.703 (0.027,0.968)	31.844 (0.431,68.388)	0.777 (0.023,2.838)	-8.5 (5.7)
5	Logistic, age and year of onset	0.247 (0.104,0.433)	0.382 (0.103,0.819)		3.696 (0.073,16.541)	0.149 (0.059,0.252)	-8.9 (4.9)
6	Logistic, age, vaccination status, year of onset	0.207 (0.086,0.394)	0.258 (0.042,0.714)	0.633 (-0.230,0.963)	20.846 (0.127,67.362)	0.526 (0.020,2.783)	-9.7 (5.7)
7	Hill, age only	0.424 (0.154,0.928)			2.860 (0.464,8.310)	1.358 (0.721,2.275)	Ref
8	Hill, age and vaccination status	0.400 (0.144,0.917)		0.441 (-0.548,0.942)	3.773 (0.424,14.037)	1.261 (0.607,2.198)	-0.5 (1.4)
9	Hill, age and year of onset	0.372 (0.107,0.892)	0.570 (0.178,0.972)		2.469 (0.519,6.326)	1.390 (0.764,2.320)	-0.3 (0.9)
10	Hill, age, vaccination status, year of onset	0.374 (0.112,0.881)	0.548 (0.155,0.966)	0.412 (-0.649,0.929)	2.961 (0.459,8.334)	1.290 (0.633,2.250)	-0.5 (1.6)

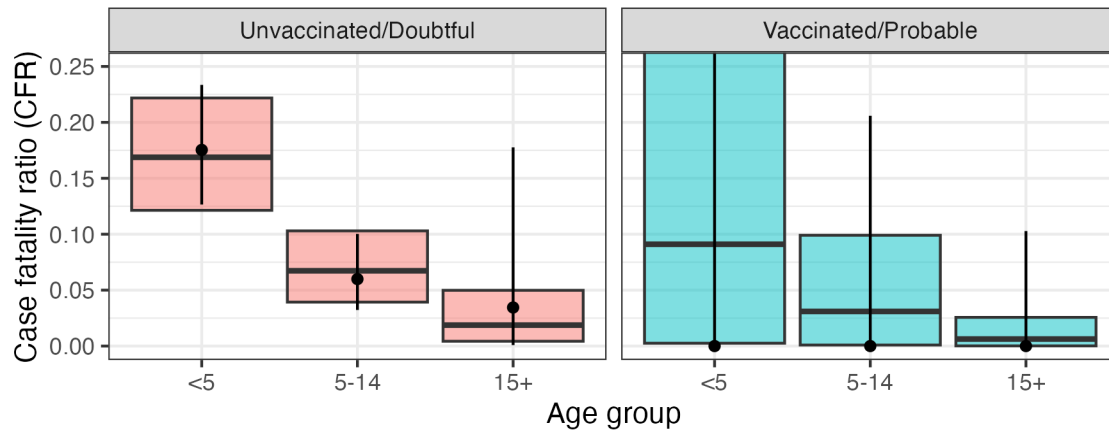
499

## 500 Sensitivity analysis: excluding 'probable' vaccinees



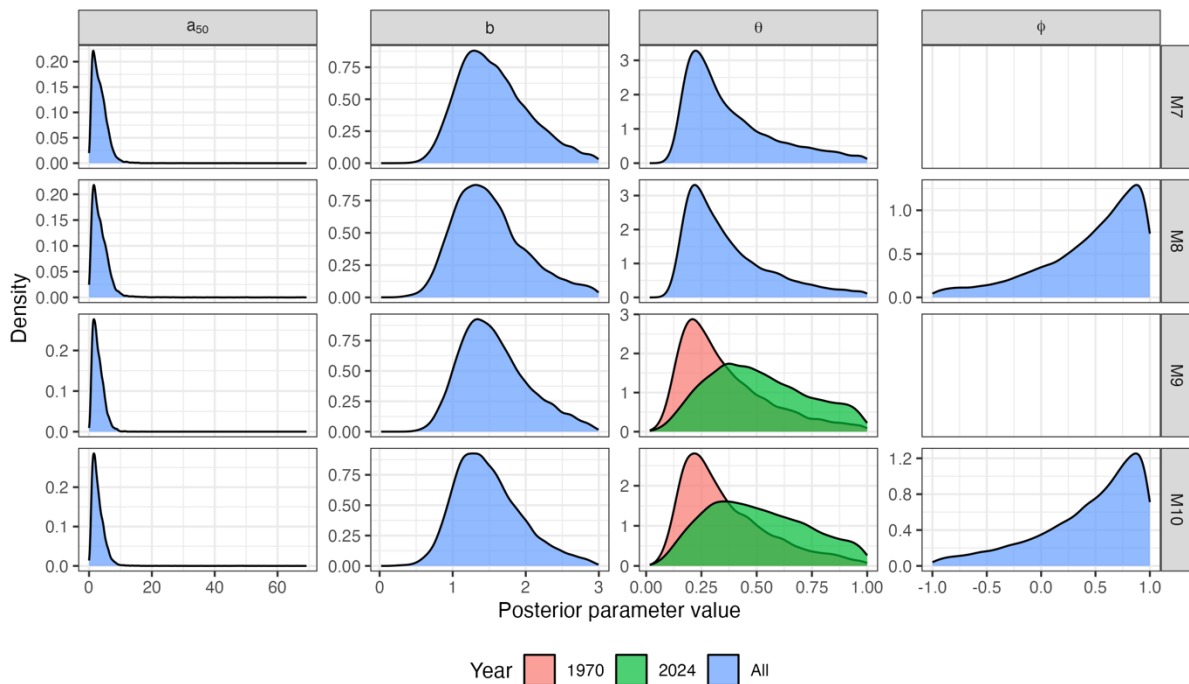
501

502 Figure S3 Estimated CFR by age and inferred vaccination status for mpox clade I under  
503 Model 8 (Hill, age and vaccination status) in the sensitivity analysis using data extracted  
504 from the Bunge et al. systematic review but excluding all cases born before 1980 whose  
505 vaccination status was unconfirmed (previously classified as 'probable' vaccinees). Solid  
506 lines depict the median posterior estimate for probable/vaccinated and  
507 doubtful/unvaccinated individuals, with shaded bands showing the 50% and 95% posterior  
508 predictive intervals. Points are coloured according to inferred vaccination status and show  
509 the outcome of individual cases where reported (0 = recovery, 1 = death). Larger points  
510 depict the crude CFRs calculated in studies reporting outcome by age-group (plotted  
511 according to the median age in the group, where reported and mid-point of the age range  
512 otherwise), with point size reflecting the number in each group.



513

514 Figure S4 Observed vs expected case fatality ratio by age-group and vaccination status  
 515 under best-fitting model (M8: Hill function, age and vaccination) in the sensitivity analysis  
 516 using data extracted from the Bunge et al. systematic review but excluding all cases born  
 517 before 1980 whose vaccination status was unconfirmed (previously classified as 'probable'  
 518 vaccinees). Bars show mean and 95% credible intervals predicted by the model. Points and  
 519 bars show the crude CFR calculated from the data and 95% binomial confidence intervals.



520

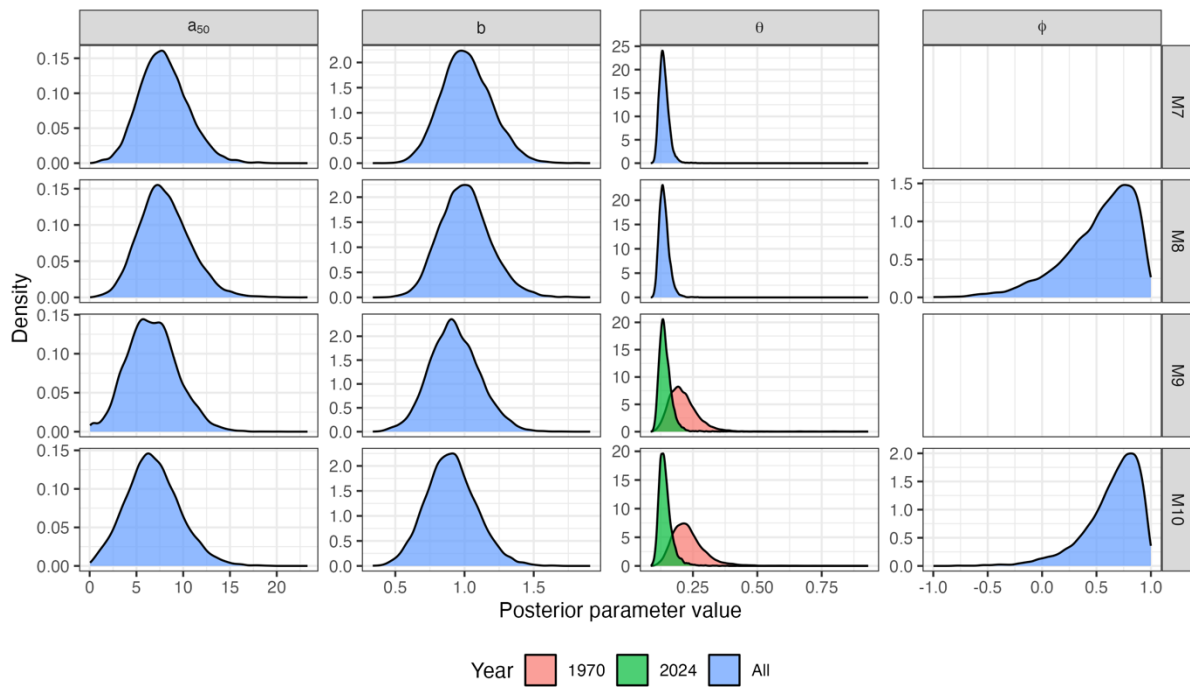
521 Figure S 5 Posterior parameter densities for Hill function models of clade I CFR (M6-10)  
 522 fitted to data extracted from the Bunge et al. systematic review but excluding all cases born  
 523 before 1980 whose vaccination status was unconfirmed (previously classified as 'probable'  
 524 vaccinees)

525 Table S2 Posterior parameter estimates for sensitivity analysis excluding DRC sitrep data and cases born before 1980 for whom vaccine status  
 526 is unknown (assigned as 'probable' vaccinees in main analysis), with difference in the expected log posterior density (ELPD) for each model  
 527 compared to the best-fitting model (M8).

M	Description \ Prior	$\theta_{1970}$	$\theta_{2024}$	$\phi$	$a_{50}$	$b$	Difference in ELPD
		CFR at age zero $\sim U(0, 1)$		Vaccine efficacy against death $\sim U(-1, 1)$	Age of 50% maximum CFR $\sim U[0, 70]$	Slope of Hill function $\sim U[0, 3]$	Mean (s.e.)
1	Logistic, age only	0.326 (0.148,0.554)			3.249 (0.102,12.104)	0.225 (0.104,0.362)	-4.4 (3.2)
2	No age, vaccination status only	0.111 (0.084,0.142)		0.823 (0.335,0.995)			-7.4 (6.4)
3	No age, year of onset only	0.117 (0.071,0.164)	0.080 (0.020,0.161)				-12.9 (6.6)
4	Logistic, age and vaccination status	0.301 (0.105,0.524)		0.468 (-0.701,0.985)	6.487 (0.091,48.082)	0.307 (0.085,2.079)	-5.3 (3.3)
5	Logistic, age and year of onset	0.304 (0.130,0.542)	0.491 (0.139,0.938)		2.316 (0.077,7.766)	0.230 (0.114,0.353)	-4.4 (3.3)
6	Logistic, age, vaccination status, year of onset	0.302 (0.123,0.538)	0.464 (0.103,0.925)	0.415 (-0.782,0.984)	3.126 (0.066,13.365)	0.235 (0.098,0.370)	-4.6 (3.3)
7	Hill, age only	0.379 (0.150,0.890)			3.400 (0.599,8.660)	1.568 (0.808,2.660)	-0.4 (0.5)
8	Hill, age and vaccination status	0.369 (0.147,0.879)		0.454 (-0.747,0.984)	3.715 (0.556,9.976)	1.517 (0.741,2.714)	Ref
9	Hill, age and year of onset	0.355 (0.106,0.869)	0.508 (0.145,0.946)		2.893 (0.629,6.999)	1.574 (0.832,2.644)	-0.9 (0.8)
10	Hill, age, vaccination status, year of onset	0.362 (0.110,0.859)	0.505 (0.134,0.952)	0.440 (-0.736,0.983)	2.982 (0.600,7.612)	1.493 (0.765,2.578)	-0.5 (0.7)

528

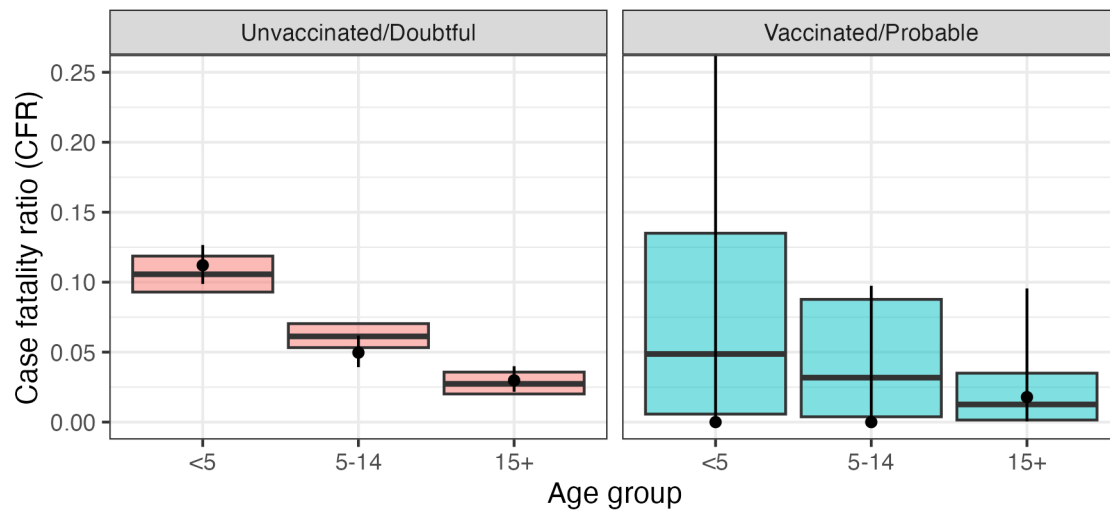
529 **Analysis incorporating DRC sitrep data**



530

531 Figure S 6 Posterior parameter densities for Hill function models of clade I CFR (M6-10)  
532 fitted to data data extracted from the Bunge et al. systematic review and additionally  
533 incorporating the DRC 2024 sitrep data.

534



535

536 Figure S7 Observed vs expected case fatality ratio by age-group and vaccination status  
537 under best-fitting model (M10: Hill function, age, vaccination status, year of onset) based on  
538 data incorporating the DRC 2024 sitrep. Bars show mean and 95% credible intervals  
539 predicted by the model. Points and bars show the crude CFR calculated from the data and  
540 95% binomial confidence intervals.

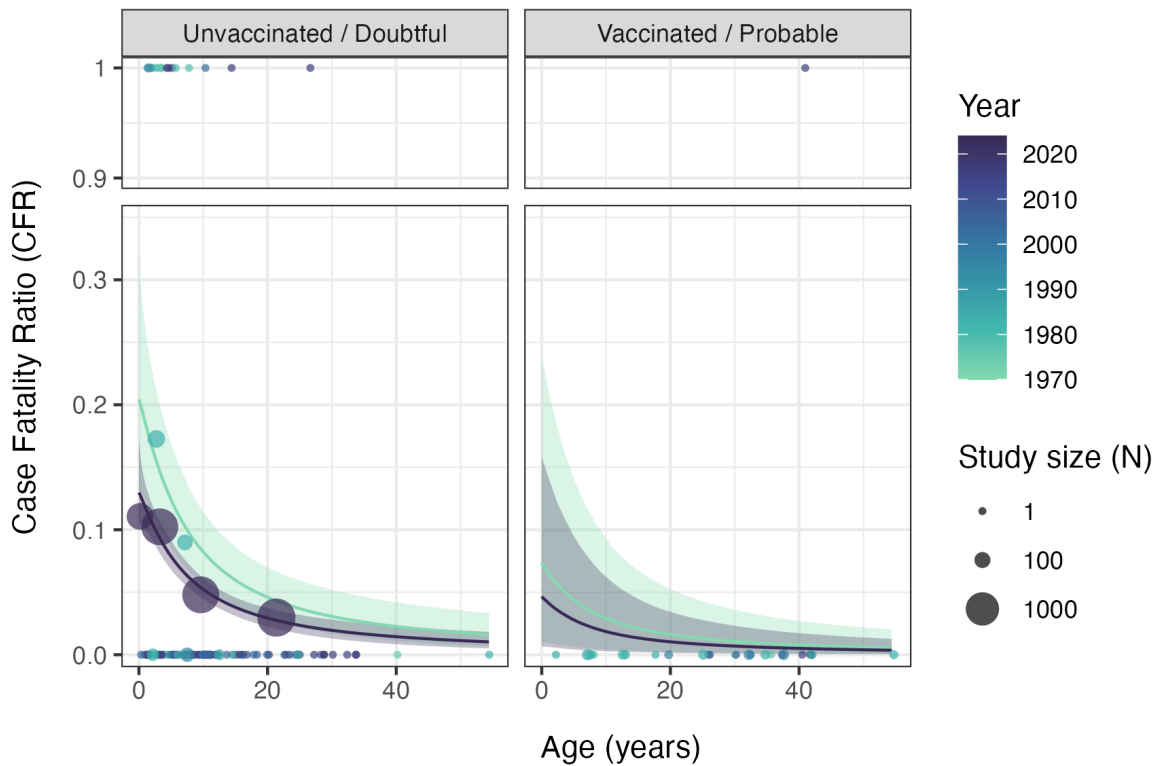
541 Table S 3 Description of fitted binomial regression models and posterior parameter estimates including DRC data, with difference in the  
 542 expected log posterior density (ELPD) for each model compared to the best-fitting model (M10).

M	Description \ Prior	$\theta_{1970}$	$\theta_{2024}$	$\phi$	$a_{50}$	$b$	Difference in ELPD
		CFR at age zero $\sim U(0, 1)$		Vaccine efficacy against death $\sim U(-1, 1)$	Age of 50% maximum CFR $\sim U[0, 70]$	Slope of Hill function $\sim U[0, 3]$	Mean (s.e.)
1	Logistic, age only	0.180 (0.128,0.221)			4.602 (0.134,14.609)	0.066 (0.051,0.083)	-14.0 (11.3)
2	No age, vaccination status only	0.069 (0.063,0.077)		0.691 (0.124,0.963)			-54.0 (29.7)
3	No age, year of onset only	0.111 (0.078,0.150)	0.066 (0.059,0.073)				-57.7 (28.4)
4	Logistic, age and vaccination status	0.181 (0.128,0.221)		0.548 (-0.240,0.945)	4.718 (0.128,15.009)	0.065 (0.051,0.082)	-12.5 (10.9)
5	Logistic, age and year of onset	0.245 (0.153,0.348)	0.177 (0.128,0.215)		4.173 (0.112,13.668)	0.064 (0.050,0.081)	-16.0 (10.4)
6	Logistic, age, vaccination status, year of onset	0.265 (0.166,0.376)	0.175 (0.124,0.214)	0.661 (0.049,0.959)	4.424 (0.126,14.897)	0.063 (0.048,0.080)	-13.2 (9.4)
7	Hill, age only	0.138 (0.108,0.182)			7.928 (3.361,13.323)	1.015 (0.687,1.387)	-2.6 (4.4)
8	Hill, age and vaccination status	0.138 (0.108,0.184)		0.526 (-0.280,0.944)	8.030 (3.226,13.875)	1.006 (0.681,1.396)	-1.5 (4.0)
9	Hill, age and year of onset	0.215 (0.129,0.360)	0.144 (0.108,0.208)		6.708 (1.798,12.283)	0.930 (0.595,1.302)	-2.4 (2.4)
10	Hill, age, vaccination status, year of onset	0.232 (0.138,0.392)	0.143 (0.107,0.211)	0.643 (-0.015,0.958)	6.800 (1.604,12.862)	0.905 (0.570,1.279)	Ref

543

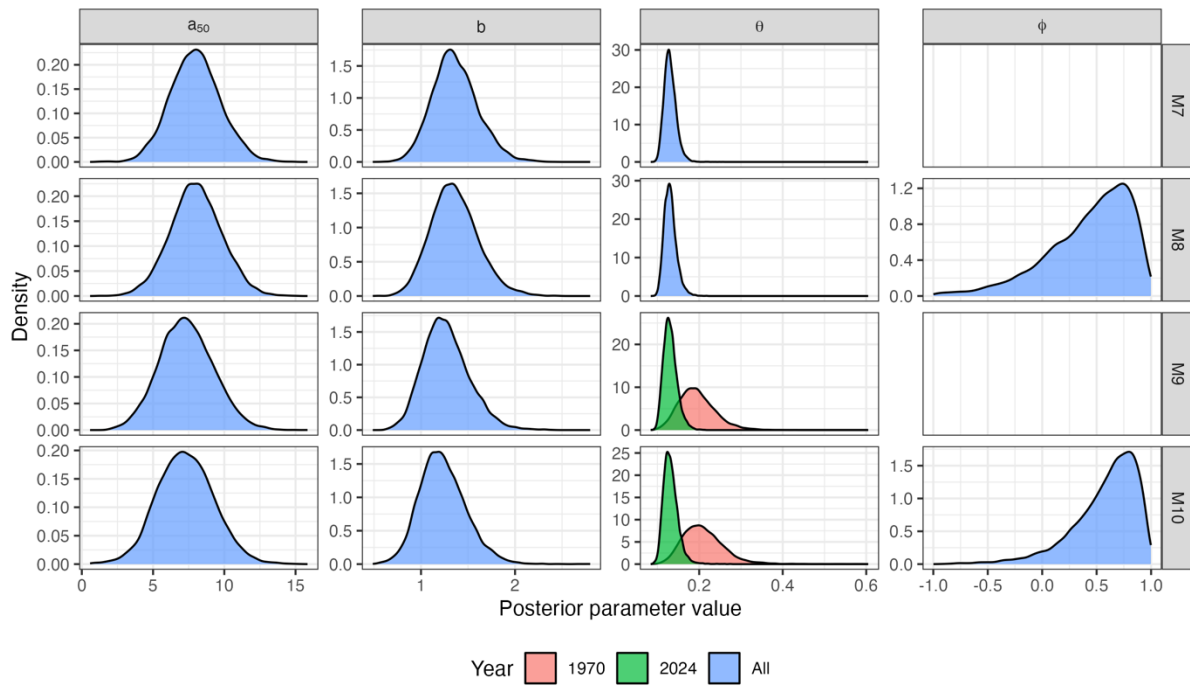


544 **Sensitivity analysis: average age of cases in DRC sitrep data**



545

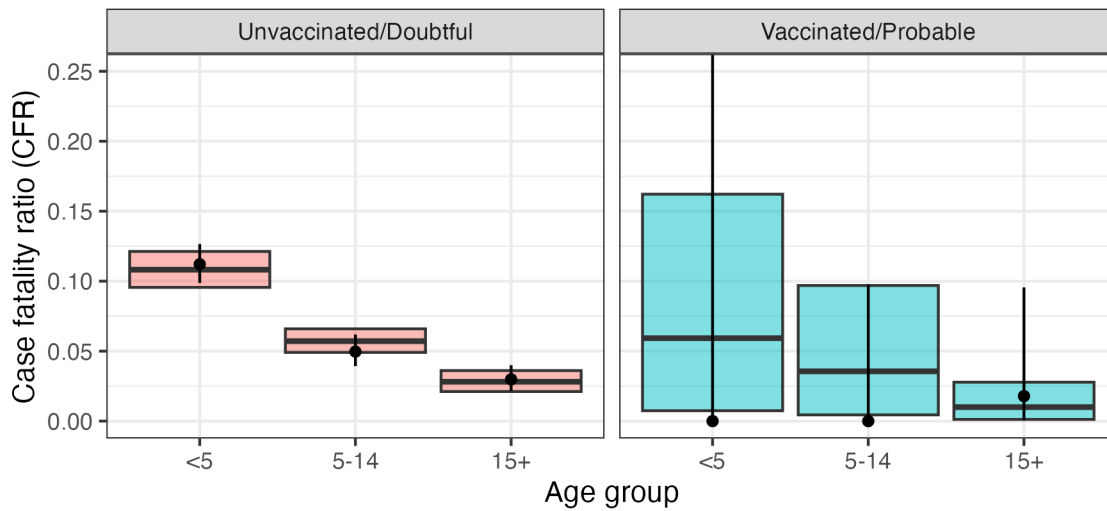
546 Figure S8 Estimated CFR by age, inferred vaccination status, and year of onset for mpox  
547 clade I under Model 10 (Hill, age, vaccination status, year) in the sensitivity analysis using  
548 data incorporating the 2024 DRC sitrep but assuming an average age of 21y among cases  
549 >15y. Solid lines depict the median posterior estimate for the posterior mean CFR at each  
550 age inferred for 1970 and 2024, with shaded bands showing the 50% and 95% credible  
551 intervals. Points are coloured according to year of outbreak and show the outcome of  
552 individual cases where reported (0 = recovery, 1 = death). Larger points depict the crude  
553 CFRs calculated in studies reporting outcome by age-group (plotted according to the median  
554 age in the group, where reported and mid-point of the age range otherwise), with point size  
555 reflecting the number in each group.



556

557 Figure S 9 Posterior parameter densities for Hill function models of clade I CFR (M6-10)  
558 fitted to data data extracted from the Bunge et al. systematic review and additionally  
559 incorporating the DRC 2024 sitrep data, assuming an average age of 21y among cases  
560 >15y

561



562

563 Figure S10 Observed vs expected case fatality ratio by age-group and vaccination status  
564 under best-fitting model (M10: Hill function, age, vaccination status and year) based on data  
565 incorporating the DRC 2024 sitrep, assuming an average age of 21y among cases >15y.  
566 Bars show mean and 95% credible intervals predicted by the model. Points and bars show  
567 the crude CFR calculated from the data and 95% binomial confidence intervals.

568 Table S4 Posterior parameter estimates including DRC sitrep data assuming an average age of 21y among cases >15y, with difference in the  
 569 expected log posterior density (ELPD) for each model compared to the best-fitting model (M10).

M	Description \ Prior	$\theta_{1970}$	$\theta_{2024}$	$\phi$	$a_{50}$	$b$	Difference in ELPD
		CFR at age zero $\sim U(0, 1)$		Vaccine efficacy against death $\sim U(-1, 1)$	Age of 50% maximum CFR $\sim U[0, 70]$	Slope of Hill function $\sim U[0, 3]$	Mean (s.e.)
1	Logistic, age only	0.202 (0.144,0.251)			2.838 (0.086,8.626)	0.106 (0.084,0.132)	-4.7 (6.4)
2	No age, vaccination status only	0.069 (0.063,0.077)		0.691 (0.124,0.963)			-57.7 (31.5)
3	No age, year of onset only	0.111 (0.078,0.150)	0.066 (0.059,0.073)				-61.4 (30.1)
4	Logistic, age and vaccination status	0.202 (0.142,0.250)		0.426 (-0.507,0.922)	2.945 (0.089,9.112)	0.106 (0.084,0.132)	-4.1 (6.3)
5	Logistic, age and year of onset	0.281 (0.177,0.400)	0.198 (0.143,0.243)		2.588 (0.083,8.162)	0.104 (0.083,0.128)	-5.3 (5.1)
6	Logistic, age, vaccination status, year of onset	0.295 (0.183,0.421)	0.196 (0.139,0.241)	0.552 (-0.272,0.946)	2.714 (0.089,8.553)	0.103 (0.082,0.128)	-4.3 (5.0)
7	Hill, age only	0.131 (0.106,0.163)			7.970 (4.607,11.501)	1.364 (0.928,1.881)	-0.9 (3.7)
8	Hill, age and vaccination status	0.131 (0.107,0.165)		0.428 (-0.516,0.931)	8.012 (4.484,11.535)	1.357 (0.911,1.893)	-0.2 (3.4)
9	Hill, age and year of onset	0.195 (0.122,0.292)	0.131 (0.104,0.169)		7.348 (3.749,11.201)	1.269 (0.853,1.800)	-0.4 (2.0)
10	Hill, age, vaccination status, year of onset	0.210 (0.132,0.322)	0.132 (0.105,0.172)	0.579 (-0.186,0.947)	7.274 (3.486,11.241)	1.232 (0.800,1.766)	Ref

570