

## Evaluation of Dengue virus IgG Tests for pre-vaccination screening

### 1 **Comparison of the Sensitivity and Specificity of Commercial Anti-Dengue Virus IgG Tests** 2 **to Identify Persons Eligible for Dengue Vaccination**

3 Medina, Freddy A.<sup>1</sup>, Vila, Frances<sup>1</sup>, Adams, Laura E.<sup>1</sup>, Cardona, Jaime<sup>1</sup>, Carrion, Jessica<sup>1</sup>,  
4 Lamirande, Elaine<sup>3</sup>, Acosta, Luz, N.<sup>1</sup>, De León-Rodríguez, Carlos M.<sup>1</sup>, Beltran, Manuela<sup>1</sup>, Grau,  
5 Demian<sup>1</sup>, Rivera-Amill, Vanessa<sup>2</sup>, Balmaseda, Angel<sup>4,5</sup>, Harris, Eva<sup>6</sup>, Madewell, Zachary J.<sup>1</sup>,  
6 Waterman, Stephen H.<sup>1</sup>, Paz-Bailey, Gabriela<sup>1</sup>, Whitehead, Stephen<sup>3</sup>, Muñoz-Jordán, Jorge L.<sup>1\*</sup>

- 7 1. Centers for Disease Control and Prevention (CDC), San Juan, PR, USA  
8 2. Ponce Health Sciences University/Ponce Research Institute, Ponce, PR, USA  
9 3. National Institutes of Health (NIH), Bethesda, MD, USA  
10 4. Laboratorio Nacional de Virología, Centro Nacional de Diagnóstico y Referencia,  
11 Ministerio de Salud, Managua, Nicaragua  
12 5. Sustainable Sciences Institute, Managua, Nicaragua  
13 6. Division of Infectious Diseases and Vaccinology, School of Public Health, University of  
14 California, Berkeley, Berkeley, California USA

15  
16 **Keywords:** Zika, dengue, virus, pre-vaccination, vaccine, screening, cross-reactivity, IgG,  
17 ELISA, rapid diagnostic test

18  
19 **Running title:** Evaluation of dengue virus IgG Tests for pre-vaccination screening

20

21

22

## Evaluation of Dengue virus IgG Tests for pre-vaccination screening

23 **Abstract Word Count: 239**

24 **Text Word Count:** 2,631 words, exclusive of the abstract, Materials and Methods, references,  
25 tables, and figure legends

26 **Figures: 2**

27 **Tables: 5**

28 **Supplemental tables: 1**

29 **Supplemental figures: 12**

30

31

32

33

34

35

36

37

38

39

40

41

## Evaluation of Dengue virus IgG Tests for pre-vaccination screening

### 42 **Abstract**

43 The Advisory Committee on Immunization Practices (ACIP) recommended that dengue pre-  
44 vaccination screening tests for Dengvaxia administration have at least 98% specificity and 75%  
45 sensitivity. This study evaluates the performance of commercial anti-DENV IgG tests to identify  
46 tests that could be used for pre-vaccination screening. First, for 7 tests, we evaluated sensitivity  
47 and specificity in early convalescent dengue virus (DENV) infection, using 44 samples collected  
48 7-30 days after symptom onset and confirmed by RT-PCR. Next, for the 5 best performing tests  
49 and two additional tests (with and without an external test reader) that became available later, we  
50 evaluated performance to detect past dengue infection among a panel of 44 specimens collected  
51 in 2018-2019 from healthy 9-16-year-old children from Puerto Rico. Finally, a full-scale  
52 evaluation was done with the 4 best performing tests using 400 specimens from the same  
53 population. We used virus focus reduction neutralization test and an in-house DENV IgG ELISA  
54 as reference standards.

55 Of seven tests, five showed  $\geq 75\%$  sensitivity detecting anti-DENV IgG in early convalescent  
56 specimens with low cross-reactivity to Zika virus. For the detection of previous DENV infections  
57 the tests with the highest performance were the Euroimmun NS1 IgG ELISA (sensitivity 84.5%,  
58 specificity 97.1%) and CTK Dengue IgG rapid test R0065C with the test reader (sensitivity  
59 76.2% specificity 98.1%). There are IgG tests available that can be used to accurately classify  
60 individuals with previous DENV infection as eligible for dengue vaccination to support safe  
61 vaccine implementation.

62

## Evaluation of Dengue virus IgG Tests for pre-vaccination screening

### 63 **Introduction**

64 The mosquito-borne dengue virus (DENV) is a growing threat globally. Approximately half of  
65 the world's population lives in at-risk areas, and there are almost 400 million infections annually  
66 (1, 2). There are four related, but antigenically distinct DENV serotypes that can produce  
67 symptomatic disease in approximately 25% of infections. Individuals with dengue can  
68 experience a range of symptoms, from mild manifestations to severe disease that requires  
69 hospitalization and can result in death. Infection with one DENV serotype is thought to provide  
70 lifelong immunity against the infecting serotype. After a primary DENV infection, the antibody  
71 levels wane after 6-9 months to a level where they remain stable for years, and the risk of  
72 developing severe illness during a second infection with any of the other three serotypes  
73 increases (3). The risk of severe dengue decreases for the third and fourth DENV infections.

74 Implementing Dengvaxia<sup>®</sup>, the first licensed dengue vaccine is complicated by the necessity of  
75 confirming a previous dengue infection prior to vaccination. In 2019, the Food and Drug  
76 Administration (FDA) approved Dengvaxia<sup>®</sup> for individuals aged 9-16 years who have a  
77 laboratory-confirmed previous DENV infection and live in endemic areas of the United States.  
78 After careful review, the Centers for Disease Control and Prevention (CDC) Advisory  
79 Committee on Immunization Practices (ACIP) recommended the use of Dengvaxia<sup>®</sup> in 2021, and  
80 provided guidance for its implementation in the United States and its territories and freely  
81 associated states (4). Tests to be used for determining previous dengue infections prior to  
82 vaccination must have a minimum of  $\geq 75\%$  sensitivity and  $\geq 98\%$  specificity, with a  
83 neutralizing antibody titer at 50% inhibition (NT50) as the reference standard for the United  
84 States (4, 5). These criteria were based on evidence that although a previous DENV infection can  
85 be demonstrated by laboratory-confirmed RT-PCR detection or a positive NS1 test during the

## Evaluation of Dengue virus IgG Tests for pre-vaccination screening

86 acute phase of infection, a large proportion of DENV infections are asymptomatic or mildly  
87 symptomatic and may not have been tested or records of previous testing may not have been  
88 maintained. Evidence of a previous DENV infection by serological testing for anti-DENV IgG  
89 antibodies is the most feasible recommendation but can be problematic due to the cross-  
90 reactivity between DENV and other flaviviruses such as Zika virus (ZIKV), which circulated in  
91 many dengue-endemic areas. Although there are many commercial tests for the detection of anti-  
92 DENV IgG, none of them are currently licensed by the FDA, and most were developed for  
93 diagnostic purposes during the early convalescent phase of infection, when antibody levels are  
94 high, rather than for determining serostatus years after infection when antibody levels are lower.  
95 Moreover, many of the currently available commercial anti-DENV IgG tests were developed  
96 prior to the emergence of ZIKV and little is known about the level of flavivirus cross-reactivity  
97 that occurs in these tests. A systematic review in 2019 did not identify studies describing the  
98 evaluation of lateral flow tests for the detection of anti-DENV IgG long after ( $\geq 1$  year) infection  
99 that could indicate a potential use of these tests for pre-vaccination screening (6). Since then,  
100 limited publications describe evaluations of tests for the purpose of pre-vaccination screening;  
101 but studies using side-by-side comparisons of commercial tests with specimens from typical  
102 eligible healthy candidates are lacking (7-11). Comparative studies are needed to determine the  
103 best commercial anti-DENV IgG tests to guide dengue vaccine implementation efforts in the  
104 United States.

105 Our aim in this study was to determine the sensitivity and specificity of commercial anti-DENV  
106 IgG tests that could be used to accurately classify individuals with previous DENV infection  
107 (PDI) as eligible for dengue vaccination in the United States as recommended by the ACIP.  
108 Serum specimens used for comparisons were obtained from Puerto Rico, the jurisdiction with the

## Evaluation of Dengue virus IgG Tests for pre-vaccination screening

109 largest population at risk for dengue transmission in the United States. The specimens were from  
110 two sources: early convalescent, well-characterized specimens from people with DENV or ZIKV  
111 confirmed by RT-PCR or negative for both viruses, and samples from healthy 9–16-year-old  
112 children whose immune status was characterized by the combined results of a DENV/ZIKV  
113 focus reduction neutralization test (FRNT) and the CDC DENV IgG ELISA.

114

115

116

117

118

119

120

121

122

123

124

125

126

127

## Evaluation of Dengue virus IgG Tests for pre-vaccination screening

### 128 **Methods**

129

### 130 **Participant enrollment and ethics statement**

131 Early convalescent specimens were retrospectively obtained from the Sentinel Enhanced Dengue  
132 and Acute Febrile Illness Surveillance System (SEDSS), as described previously (12, 13).

133 Samples to evaluate test performance for previous dengue infections were retrospectively  
134 obtained from the Communities Organized to Prevent Arboviruses (COPA) project in Puerto  
135 Rico that conducts annual serosurveys among participants 1-50 years of age. Participants were  
136 recruited into COPA as previously described with written informed consent or assent obtained  
137 from all study participants according to a protocol approved by Institutional Review Boards at  
138 the Centers for Disease Control and Prevention (CDC) and Ponce Medical School Foundation,  
139 Inc (PMSF). We used random samples among non-ill children 9-16 years of age collected in  
140 2018 and 2019 (14). Specimens from primary ZIKV infections were obtained from a pediatric  
141 cohort in Nicaragua collected in 2018 and 2019 (15). The ZIKV infections were confirmed by  
142 real-time RT-PCR during the acute episodes in 2016, and absence of DENV infections was  
143 confirmed in paired annual samples tested with a DENV inhibition ELISA (16).

144

### 145 **Test selection**

146 A search was performed for commercial tests that detect anti-DENV IgG. A total of 60 tests (46  
147 ELISA and 14 rapid diagnostic tests [RDT]) from 34 manufacturers were identified. This group  
148 was narrowed down to 23 tests (11 ELISAs, 12 RDTs) by selecting only tests that reported  
149 performance data on their website or in their instructions for use. All but two tests reported

## Evaluation of Dengue virus IgG Tests for pre-vaccination screening

150 greater than 90% specificity. The tests with sensitivity lower than 75% were removed from  
151 consideration. This group was further reduced to 7 tests (5 ELISAs, 2 RDTs) since some  
152 manufacturers or representatives were not reached after multiple attempts to contact them by  
153 both e-mail and telephone (n=9), or if the manufacturer stated that the product was withdrawn  
154 from sale (n=5). The 7 tests selected were included in the first phase of the evaluation to  
155 determine performance in early convalescent specimens, as these tests have been manufactured  
156 for use in disease diagnosis. Based on their performance, 5 of these tests were selected for further  
157 analysis. During this evaluation, two versions of a rapid test manufactured by CTK Biotech  
158 became available for the detection of IgG antibodies as an indication of prior DENV infection in  
159 asymptomatic individuals. CTK Biotech also offers the Alta rapid test reader (RTR-1) as an  
160 optional tool to automate and standardize the presence or absence of test line bands. Therefore, 7  
161 tests moved to another round of the evaluation using a panel of samples from patients with  
162 confirmed previous dengue infection: the 5 tests with highest accuracy selected from the  
163 evaluation with early convalescent specimens and the 2 CTK test modalities. The 4 best  
164 performing tests were further evaluated for detection of previous dengue infection in a survey of  
165 healthy individuals. The tests used in these evaluations were purchased directly from the  
166 manufacturers, stored at the recommended temperatures, and used prior to their expiration dates.  
167 The 9 tests evaluated are listed in Table 1.

168

### 169 **Focus reduction neutralization test (FRNT)**

170 FRNT assays for DENV-1-4 were performed blinded at the Laboratory of Viral Diseases,  
171 National Institute for Allergy, and Infectious Disease (NIAID), National Institutes of Health  
172 (NIH) as previously described (17). Viruses used in the assay included: DENV-1 Western Pacific



## Evaluation of Dengue virus IgG Tests for pre-vaccination screening

173 (Nauru/74), DENV-2 NGC Prototype (1944), DENV-3 Sleman/78, and DENV-4 814669  
174 (Dominica/81). Serum specimens were used at dilutions of 1:5, 1:20, and 1:80 with antibody  
175 titers defined as the highest serum dilution that resulted in >50% reduction (FRNT50) in the  
176 number of immunostained virus foci. A specimen was considered positive for neutralization  
177 against the infecting serotype when the FRNT titer was >4 for DENV-1, >15 for DENV-2, >15  
178 for DENV-3, and >4 for DENV-4 (Supplemental Figure S1). Specimens with no neutralizing  
179 antibodies against a virus were given a value of 4. We used the FRNT50, considered the gold  
180 standard for measuring neutralizing antibodies against dengue virus and other flaviviruses, in  
181 combination with the CDC DENV IgG test as our reference standard.

182

### 183 **CDC DENV IgG ELISA**

184 The CDC DENV IgG assay was calibrated based on the NIH FRNT50 assay and a modified  
185 version of Miagostovich *et. al* (18). Capture antibody (4G2 Mouse anti-Flavivirus Envelope  
186 Protein, Native Antigen Company, Oxford, United Kingdom) was diluted 1:6,000 in 0.1 M  
187 carbonate–bicarbonate buffer pH 9.6 and plates were incubated overnight at 4°C. Plates were  
188 washed three times in phosphate buffered saline (PBS) and incubated with blocking buffer (PBS  
189 pH 7.4/0.05% Tween 20/3% normal goat serum) for 1 hour at 37°C. After removing blocking  
190 buffer, a DENV-1-4 antigen mix (DENV-1-4 virus-like particle [VLP] recombinant antigens)  
191 titrated between 0.1 ng/μl-0.7 ng/μl for each antigen, Native Antigen Company, Oxford, United  
192 Kingdom) diluted in blocking buffer was added to each well and incubated covered for 1 hour at  
193 37°C. Plates were washed three times in PBS. Each plate contained a high positive control, low  
194 positive control, high negative control, two low negative controls, and a cutoff control. Serum  
195 specimens, positive controls, negative controls, and a cutoff control were diluted 1:100 in a

## Evaluation of Dengue virus IgG Tests for pre-vaccination screening

196 solution of PBS pH 7.4 containing 3% non-fat dry milk/ 0.05% Tween-20 and tested in  
197 duplicate. The positive and cutoff controls were created using pooled early convalescent  
198 specimens collected 7–30 days post-onset (DPO) of symptoms from RT-PCR confirmed DENV-  
199 1–4 cases and diluted in PBS. Plates were washed three times in PBS and a horse radish  
200 peroxidase conjugated anti-human IgG diluted in a solution of PBS pH 7.4 containing 3% non-  
201 fat dry milk/ 0.05% Tween-20 was added and incubated in the dark for 1 hour uncovered at room  
202 temperature. Plates were washed six times with PBS and ABTS substrate added to each well.  
203 After a 60-minute room temperature incubation in the dark, plates were read in a microplate  
204 spectrophotometer at 405 nm without a blank. Optical density (OD) values and antibody index  
205 ratio (AIR) calculations for the controls and samples are needed for test run validation and  
206 interpretation of results, accordingly.

$$207 \text{ AIR} = ([\text{control or sample OD} / \text{cutoff control OD}] * 10)$$

208 Positive:  $\text{AIR} \geq 15$

209 Equivocal:  $\text{AIR} 10\text{-}14.99$

210 Negative:  $\text{AIR} < 10$

211 Non-concordant results were repeated twice by CDC DENV IgG ELISA and FRNT50 to  
212 confirm results. All specimens except one were concordant in both assays.

213

### 214 **ZIKV EDIII IgG ELISA**

215 The ZIKV EDIII IgG ELISA was performed as previously described in Adams et. al. with the  
216 modification of using diluted human monoclonal antibody ZKA190 as a cutoff control for inter-

## Evaluation of Dengue virus IgG Tests for pre-vaccination screening

217 plate consistency (19). High-binding microtiter 96-well plates (Greiner Bio-One) were coated  
218 with streptavidin diluted to 4 µg/mL in Tris-buffered saline (TBS, pH 7.4), and incubated for 1  
219 hour at 37°C to ensure optimal binding. After incubation, the plate was decanted, washed thrice  
220 with wash buffer (TBS containing 0.2% Tween 20). To minimize non-specific binding, the plate  
221 was blocked using a blocking solution (3% milk in TBS containing 0.05% Tween 20) for 1 hour  
222 at 37°C. Biotinylated EDIII antigen diluted at a concentration of 2 µg/mL in blocking buffer was  
223 captured in plates after a 1-hour incubation at 37°C. Plates were washed thrice with wash buffer.  
224 After removal of the blocking solution, serum samples at a 1:20 dilution in blocking buffer were  
225 added to each well and incubated for 1 hour at 37°C for binding of ZIKV-specific IgG antibodies  
226 to the captured EDIII antigen. Following another series of three washes, goat anti-human IgG  
227 alkaline phosphatase-conjugated secondary antibody (Sigma) was added at a 1:2,500 dilution and  
228 incubated for 1 hour at 37°C. After a final washing, SigmaFast AP substrate was added, and the  
229 reaction was developed in the dark for 30 minutes at room temperature. The plate was then read  
230 at a 405 nm wavelength setting without a blank. For validation and interpretation of results,  
231 optical density (OD) values and antibody index ratio (AIR) calculations were necessary for  
232 controls and samples.

$$233 \text{ AIR} = ([\text{control or sample OD} / \text{cutoff control OD}] * 10)$$

234 Positive:  $\text{AIR} > 10$

235 Negative:  $\text{AIR} \leq 10$

236

237

238

## Evaluation of Dengue virus IgG Tests for pre-vaccination screening

### 239 **Laboratory testing**

#### 240 *Early convalescent specimens*

241 A serum panel was assembled with early convalescent specimens (EC panel, N=44) collected 7–  
242 30 (average = 12) days post-onset (DPO) of symptoms from cases in a convenience series within  
243 SEDSS. These cases were confirmed as either DENV or ZIKV positive or negative by RT-PCR  
244 on the first specimen collected from each case (DPO 0-5) and whose immune status was  
245 determined based on testing a convalescent sample with the CDC DENV IgG or ZIKV IgG  
246 assays, as previously described (19). Unexposed specimens (n=8) were negative in the CDC  
247 Trioplex RT-PCR, negative for DENV and ZIKV IgG, and IgM negative in the acute and early  
248 convalescent specimens for DENV and ZIKV. Specimens from ZIKV RT-PCR positive cases  
249 with negative and DENV IgG negative results were named primary ZIKV (n=14). DENV  
250 primary specimens (n=12) were DENV RT-PCR-positive and DENV and ZIKV IgG-negative.  
251 DENV secondary specimens (n=8) were DENV RT-PCR positive, negative for ZIKV IgG, and  
252 positive for DENV IgG.

253

#### 254 *Previous DENV infection specimens*

255 The following immune status classification criteria were established for samples from a  
256 serosurvey of asymptomatic 9-16 Y/O children (COPA) that were available for this study:  
257 Specimens were classified as positive for DENV only if they were positive in the DENV FRNT  
258 and CDC DENV IgG ELISA. Specimens that neutralized a single DENV serotype and were not  
259 positive in the ZIKV EDIII IgG ELISA were classified as monotypic DENV, and specimens that  
260 neutralized two or more DENV serotypes and were not positive by ZIKV EDIII IgG ELISA

## Evaluation of Dengue virus IgG Tests for pre-vaccination screening

261 were classified as multitypic DENV. Specimens that did not neutralize any DENV serotype and  
262 were ZIKV EDIII IgG ELISA positive were classified as primary ZIKV. Specimens that  
263 neutralized any DENV serotype and were positive in the ZIKV EDIII IgG ELISA were classified  
264 as multi-flavivirus. Specimens that did not neutralize DENV nor tested ZIKV EDIII IgG ELISA  
265 positive, and specimens that were only positive in the CDC DENV IgG ELISA or FRNT50 were  
266 classified as unexposed.

267 We constructed a panel with 44 specimens selected out of from the total COPA serosurvey to  
268 assess previous DENV infections (PDI). The 44 samples were classified according to the above-  
269 stated immune status classification criteria for asymptomatic cases with the following  
270 proportions: unexposed (n=8), primary ZIKV (n=14), monotypic DENV (n=13) and multitypic  
271 DENV (n=9). Multi-flavivirus samples were not included in this panel. We then expanded our  
272 evaluation to a panel of 400 samples from the COPA serosurvey, which included a blinded  
273 selection of 50 specimens from each year of age (9–16), within a total of 750 participants of that  
274 age group. These specimens were classified according to the same immune status clarification  
275 criteria (Table 2). FRNT50 titers for the 400 samples for each DENV serotype according to their  
276 immune status classification can be found in supplementary Figure S1.

277

### 278 *Additional evaluation for cross-reactivity with ZIKV specimens*

279 To ensure that the tests with high performance for pre-vaccination screening with Puerto Rico  
280 specimens had little cross-reactivity with ZIKV, we tested an additional 22 well-characterized  
281 RT-PCR-confirmed past ZIKV infections from a cohort in Nicaragua and an additional 41  
282 specimens from unexposed healthy individuals from Puerto Rico, both obtained from cases of a

## Evaluation of Dengue virus IgG Tests for pre-vaccination screening

283 convenience series. In addition, 12 challenging samples from primary ZIKV positive patients  
284 were selected for their high ZIKV neutralizing and binding antibody levels. The specimens were  
285 collected at 3-4 months after RT-PCR confirmed infections in 2016-2017.

286 All serum specimens used in these evaluations were stored frozen after arrival to the CDC  
287 Dengue Branch, thawed and prepared in aliquots for virus neutralization, CDC DENV IgG  
288 ELISA, or commercial assay testing.

### 289 *Specimen testing*

290 Specimen testing was conducted contemporaneously with the index tests and reference standards  
291 to ensure consistency and reliability in the results. All tests were performed and interpreted  
292 according to the manufacturer's instructions for use and all specimens were tested in index tests  
293 and the reference standard. There was no missing data. ELISA equivocal/borderline/weakly  
294 reactive results were considered negative for calculations of test performance. Testing was  
295 performed by the same laboratory technician for all ELISA assays. Rapid tests were  
296 independently interpreted visually by two laboratory technicians who were blinded to specimen  
297 classifications. The CTK OnSite Dengue IgG Rapid Tests were also read with the CTK Alta  
298 Rapid Test Reader RTR-1 optimized for visual readout with the large panel (PDI, n=400)  
299 collected from healthy children 9-16 years of age in Puerto Rico. There were no adverse events  
300 associated with performing the index tests or the reference standard. This study was carried out  
301 and documented following the Standards for Reporting Diagnostic Accuracy Studies (STARD)  
302 guidelines (20). Participant flow and outcomes for the index tests are depicted using STARD  
303 flow diagrams (Figures S2-12). This study was conducted and reported in accordance with the  
304 Standards for Reporting Diagnostic Accuracy Studies (STARD) guidelines. The flow of  
305 participants for the index tests and their results was presented using STARD diagrams.

## Evaluation of Dengue virus IgG Tests for pre-vaccination screening

### 306 **Sample Size Calculation**

307 The sample size for our diagnostic accuracy of previous DENV infection specimens was  
308 calculated based on the expected prevalence (45%) of Dengue in Puerto Rico and for the  
309 diagnostic tests expected to achieve a sensitivity of at least 75% and a specificity of 98% with a  
310 margin of error of  $\pm 3\%$ . The significance level ( $\alpha$ ) was set at 0.05. Using the previously  
311 described parameters for calculations, the minimum sample size required was 374.

312

### 313 **Data analysis**

#### 314 *Sensitivity*

315 Test sensitivity was measured as the evaluated test's ability to correctly identify specimens that  
316 are positive for DENV IgG antibodies through two reference standards: the CDC DENV IgG  
317 ELISA and the DENV FRNT50 assays. A specimen was confirmed as DENV IgG positive if it  
318 tested positive in both assays serving as reference standards. Sensitivity was calculated as the  
319 number of anti-DENV positive specimens correctly detected by the test under evaluation,  
320 divided by the total number of anti-DENV positive specimens confirmed by CDC DENV IgG  
321 ELISA and classified as DENV immune by FRNT50, multiplied by 100.

322

#### 323 *Specificity*

324 Test specificity was measured as the evaluated test's ability to correctly identify specimens that  
325 were not exposed to DENV (negative for DENV IgG antibodies) or were exposed to ZIKV only  
326 (positive for ZIKV IgG antibodies but negative for DENV IgG antibodies). For this evaluation,

## Evaluation of Dengue virus IgG Tests for pre-vaccination screening

327 we considered non-concordant specimens—those that test positive in either the CDC DENV IgG  
328 ELISA or the DENV FRNT50 assay but not in both—as negative for DENV IgG antibodies.  
329 Specificity was calculated by adding the number of specimens that the evaluated tests correctly  
330 identified as negative (including true negative, equivocal/borderline/weakly reactive and non-  
331 concordant specimens) and only ZIKV exposed, divided by the total number of specimens  
332 classified as ZIKV primary (based on a positive result in the ZIKV EDIII IgG ELISA and a  
333 negative result in the DENV FRNT50) or DENV unexposed (based on negative results in both  
334 the CDC DENV IgG ELISA and the FRNT50), multiplied by 100.

### 335 *Confidence interval*

336 The 95% confidence interval (CI) of the estimated sensitivity and specificity was calculated  
337 using the formula:  $P \pm 1.96\sqrt{P(1-P)/N}$ , where P is the sensitivity or specificity, and N is the  
338 number of specimens tested. If the sensitivity or specificity was 100% it was substituted with  
339 99.9% for P in the equation.

340

341

342

343

344

345

346

347



## Evaluation of Dengue virus IgG Tests for pre-vaccination screening

### 348 **Results**

#### 349 *Performance on early convalescent specimens*

350 Seven tests were first evaluated for their capacity to detect anti-DENV IgG and their potential to  
351 minimize detection of cross-reactive ZIKV IgG in early convalescent specimens (n=44) (Table  
352 1). All (7/7) tests had at least overall moderate (75%) to high (100%) sensitivity for anti-DENV  
353 IgG (Figure 1). The detection of anti-DENV IgG from secondary DENV was universal for all  
354 tests; but differences in test sensitivity were observed for primary DENV. Sensitivity for anti-  
355 DENV IgG in primary DENV specimens was lower in RDTs in comparison with ELISA tests.  
356 The RDTs detected over half of the primary DENV specimens. ELISA tests displayed high  
357 sensitivity for anti-DENV IgG in primary specimens, except for the SCIMEDX Dengue IgG  
358 serum microwell ELISA, which had a sensitivity comparable to RDTs. Despite the high  
359 sensitivity observed in the Focus DENV IgG DxSelect and InBios DENV Detect IgG ELISAs,  
360 they were excluded from further evaluation due to the high (50-57 %) reactivity observed in  
361 primary ZIKV specimens. Cross-reactivity in the remaining tests was low (7-14%) and  
362 warranted further evaluation. No test had false positives in specimens from unexposed  
363 individuals.

#### 364 *Performance to detect previous dengue infections with a small panel of 44 specimens*

365 The 44-sample panel of specimens from non-ill children was used to assess 7 commercial anti-  
366 DENV IgG tests for their performance to detect previous dengue infections (PDI-SP, n=44);  
367 which included 5 tests that passed the EC panel and 2 IgG tests from CTK Biotech that became  
368 commercially available during the course of our evaluation (Table 1). The tests with the highest  
369 performance (specificity and sensitivity, respectively) were the Euroimmun DENV-1-4 IgG

## Evaluation of Dengue virus IgG Tests for pre-vaccination screening

370 ELISA (86%, 86%), the Euroimmun DENV NS1 IgG ELISA (95%, 68%), the CTK Onsite  
371 Dengue IgG Rapid Test R0065C (95%, 82%) and the CTK Onsite Dengue IgG Rapid Test  
372 R0065C 1.0 (95%, 68%) (Figure 2). The sensitivity of Biocan Dengue IgG/IgM Antibody Test  
373 (27%), CTK Biotech OnSite Dengue IgG/IgM Combo Rapid (0%), and SCIMEDX Dengue IgG  
374 serum microwell ELISA (23%) was overall very low and not suitable for pre-vaccination  
375 screening. The test with the highest ZIKV cross-reactivity was the Euroimmun anti-DENV Type  
376 1-4 ELISA IgG ELISA, which uses VLP antigen and had 3/14 primary ZIKV specimens test  
377 positive.

378 *Performance to detect previous dengue virus infection with a community survey of 400*  
379 *specimens*

380 The full-scale evaluation was done with the two Euroimmun ELISAs and the two CTK OnSite  
381 Dengue IgG rapid tests. From the 750 children (age 9-16) in the COPA cohort, 400 specimens  
382 were selected for the test evaluation and categorized by immune status using the DENV/ZIKV  
383 FRNT and an in-house DENV IgG assay, with a total of 36 monotypic DENV infections, 77  
384 multitypic DENV infections, 56 primary ZIKV infections, 80 multi-flavivirus infections, and 151  
385 unexposed (Table 2 and supplementary table 1). The four tests evaluated displayed a sensitivity  
386 near or above the ACIP recommendation (74.1%-91.2%); and high specificity (91.8%-98.6%);  
387 but only both versions of the CTK OnSite Dengue IgG rapid test reached the ACIP  
388 recommended target of  $\geq 98\%$  specificity (Table 3). The CTK OnSite rapid tests displayed a  
389 similar low proportion ( $\sim 1.8\%$ ) of false positives in the ZIKV primary and unexposed  
390 specimens. Of those two tests, only the CTK OnSite Dengue IgG rapid test R0065C with 76.2%  
391 sensitivity surpassed the  $\geq 75\%$  performance recommended by the ACIP. The CTK OnSite  
392 Dengue IgG Rapid Test R0065C-1.0 with equipment read yielded a sensitivity of 74.1% and

## Evaluation of Dengue virus IgG Tests for pre-vaccination screening

393 nearly achieved the desired performance standards. The visual reads of the CTK OnSite Dengue  
394 IgG rapid test obtained by both laboratory technicians were identical for all specimens. Results  
395 showed that although the higher sensitivity (89.6% for R0065C, 81.9% for R0065C-1.0) of the  
396 rapid tests obtained when laboratory technicians performed the test read compared to the  
397 equipment reads, came at the cost of reduced specificity (95.7% for R0065C, 96.6% for R0065C-  
398 1.0) (Table 3). The ELISAs achieved 100% specificity in unexposed specimens but displayed  
399 some cross-reactivity against ZIKV. Although the Euroimmun anti-DENV NS1 Type 1-4 ELISA  
400 displayed a sensitivity (84.5%) high enough for pre-vaccination screening, it fell short on  
401 specificity (97.1%). A higher specificity was observed in the Euroimmun ELISA using NS1 than  
402 with the ELISA using VLPs as antigen that yielded a 91.8% specificity and sensitivity of 91.2%.  
403 (Table 3). Differences in sensitivity between tests were more pronounced in the detection of  
404 monotypic DENV specimens. Sensitivity for monotypic DENV was low to moderate (25.0-  
405 72.2%) for most tests. Multitypic DENV specimens and those with DENV and ZIKV exposure  
406 (multi-flavivirus) were detected with moderate to high sensitivity ( $\geq 83\%$ ) for all tests. The two  
407 CTK OnSite Dengue IgG rapid test versions showed a reduction in sensitivity when read by the  
408 manufacturer's equipment compared to the visual read (Table 3). Because the Alta reader may  
409 not be available in all settings, we evaluated the performance of a combination of tests that could  
410 be used without the reader. We found that combining the Euroimmun anti-DENV NS1 Type 1-4  
411 ELISA and the CTK OnSite R0065C read visually by the laboratory technician in a two-test  
412 algorithm, resulted in a specificity of 100% [98.2-100.0] and a sensitivity of 80.3% [74.0-85.7];  
413 which meets the ACIP recommended performance criteria. Supplemental Figures 2-12 show  
414 flow diagrams for all test combinations indicated in Table 3.

415

## Evaluation of Dengue virus IgG Tests for pre-vaccination screening

### 416 *Additional evaluation of cross-reactivity*

417 The current and future challenge of pre-vaccination screening arises largely because many  
418 dengue endemic countries also experienced ZIKV transmission. Therefore, to ensure dengue test  
419 specificity the Euroimmun anti-DENV NS1 Type 1-4 ELISA and CTK OnSite Dengue IgG rapid  
420 tests were evaluated with an additional 63 specimens from unexposed healthy individuals from  
421 Puerto Rico and well-characterized RT-PCR-confirmed past ZIKV infections from Nicaragua  
422 (Table 4).

423 The highly specific Euroimmun anti-DENV NS1 Type 1-4 ELISA and CTK OnSite Dengue IgG  
424 rapid tests were evaluated with 12 samples from primary ZIKV specimens with high ZIKV  
425 neutralizing and binding antibody levels. The Euroimmun anti-DENV NS1 Type 1-4 ELISA IgG  
426 ELISA yielded 4/12 positives and the CTK OnSite Dengue IgG Rapid Tests both had 1/12  
427 positives (Table 5). Both numbers are higher than expected and suggest that high ZIKV antibody  
428 levels could have an impact on test performance.

429

430

431

432

433

434

435

436

## Evaluation of Dengue virus IgG Tests for pre-vaccination screening

### 437 **Discussion**

438 The FDA approval and subsequent ACIP recommendation of Sanofi Pasteur's Dengvaxia<sup>®</sup> has  
439 created a need for a highly accurate test for pre-vaccination screening. In the current study, we  
440 evaluated the performance of commercial anti-DENV IgG tests to determine which tests reached  
441 the ACIP's required performance characteristics. Our study used well-characterized DENV and  
442 ZIKV specimens and included unexposed individuals from a dengue-endemic area, Puerto Rico,  
443 the United States territory with the largest number of dengue cases (4). The unbiased selection of  
444 specimens from healthy individuals should approximate the expected test performance in the  
445 community since most individuals experience asymptomatic DENV and ZIKV infections. As a  
446 reference standard, we used a combination of the CDC DENV IgG assay and DENV FRNT50.  
447 The correlation between the two assays was high with 399/400 specimens having concordant  
448 results. Our results showed that only the CTK OnSite Dengue IgG rapid test R0065C read with  
449 equipment reached the ACIP performance recommendation as a single test. Two tests were very  
450 close to meeting the recommendations but missed either for sensitivity (CTK OnSite Dengue  
451 IgG rapid test R0065C-1.0 with equipment read) or for specificity (Euroimmun anti-DENV NS1  
452 Type 1-4 ELISA). Visual readings by the laboratory technicians resulted in increased CTK  
453 OnSite Dengue IgG rapid test sensitivity, but decreased specificity. Therefore, test interpretation  
454 must be determined by reading with the manufacturer's equipment to ensure performance  
455 standards are maintained. In settings in the United States where the reader is not available,  
456 laboratory technicians could consider a visual read of the CTK OnSite Dengue IgG rapid test  
457 R0065C for pre-vaccination screening if a two-test algorithm is implemented with the  
458 combination of the Euroimmun anti-DENV NS1 Type 1-4 ELISA. Importantly, the effectiveness  
459 of screening is the same, regardless of whether the CTK OnSite Dengue IgG rapid test R0065C

## Evaluation of Dengue virus IgG Tests for pre-vaccination screening

460 or the Euroimmun anti-DENV NS1 Type 1-4 ELISA is performed first. The combined use of  
461 these two tests resulted in the most sensitive and specific test algorithm that meets ACIP  
462 recommendations. Our data shows that there are commercial tests available for use as a pre-  
463 vaccination screening tool to confirm previous dengue infections and support safe vaccination  
464 practices (21). The CDC Dengue Branch has serum specimen sets for additional test evaluations  
465 and will provide updates of the results of these tests as they become available.

466 Our evaluation examined ZIKV cross-reactivity since it could interfere with pre-vaccination  
467 screening. False-positives in the CTK OnSite Dengue IgG rapid test R0065C occurred at the  
468 same frequency between ZIKV and non-ZIKV exposed individuals, but the Euroimmun anti-  
469 DENV NS1 Type 1-4 ELISA yielded more false-positives for those exposed to ZIKV than for  
470 those unexposed. We also performed limited testing with challenging ZIKV specimens that had  
471 high antibody binding and neutralizations titers that suggest there is a possibility of an increase  
472 in false positives in the event of ZIKV re-emergence.

473 Evaluations of commercial anti-DENV IgG tests have been limited by using convenient samples  
474 of well-characterized acute specimens from different cohorts that may not represent real-world  
475 scenarios (6). Moreover, a study evaluating commercial tests used for dengue diagnostics in  
476 Puerto Rico suggest they would not meet ACIP recommendations (8). Another study, which  
477 utilized data on virologically confirmed dengue infections collected before the Zika epidemic,  
478 found that the sensitivities of rapid diagnostic tests (RDTs) (40-70%) were lower than those of  
479 ELISAs ( $\geq 90\%$ ). However, consistent with our observations, ELISAs yielded a higher number of  
480 false positives than RDTs in specimens with ZIKV or flavivirus exposure. (7). Another factor  
481 that influences differences between the studies are the variance in the respective FRNT  
482 comparator such as assay conditions, virus strains, and cut-off (FRNT50 vs. FRNT90). Only few

## Evaluation of Dengue virus IgG Tests for pre-vaccination screening

483 studies evaluated flavivirus cross-reactivity and did so separately from the specificity estimates.  
484 Studies on samples from non-ill individuals show high sensitivity (>90%), but inadequate  
485 specificity (<93.4%) for pre-vaccination screening. Most of the false positives were due to cross-  
486 reactivity with other flaviviruses (10, 11).

487 Our study is not without limitations. Due to the low number of monotypic DENV specimens and  
488 the low circulation of some DENV serotypes in Puerto Rico it was not possible for us to  
489 determine sensitivity by serotype. It is also possible that some of our specimens are  
490 misclassified. Our method of classifying specimens based on DENV IgG testing of acute (DPO  
491 0-5) specimens was shown to correctly classify specimens approximately 85% of the time (22).  
492 We could not definitively classify DENV specimens as primary and secondary DENV in healthy  
493 individuals in the COPA cohort. Therefore, the impact of vaccination could be underestimated if  
494 only monotypic DENV specimens were classified as primary DENV cases. Some of the  
495 multitypic DENV specimens could indeed be primary DENV cases due to the cross-reactivity  
496 between the DENV serotypes. The cross-reactivity could also cause the misclassification of a  
497 small number of primary ZIKV specimens as multi-flavivirus and thereby result in a reduction of  
498 test sensitivity. Lastly, we limited the number of tests evaluated to those with publicly available  
499 information on test performance. It is possible that there are tests we did not evaluate that could  
500 be used for pre-vaccination screening of previous dengue infection either alone or in  
501 combination with another test.

502 In summary, the CTK OnSite Dengue IgG rapid test R0065C with equipment read was the only  
503 test able to satisfy the ACIP recommendations for test performance to determine previous DENV  
504 infection. However, the performance of this test in a two-test algorithm with the Euroimmun  
505 anti-DENV NS1 Type 1-4 ELISA results in a performance that surpasses the minimum test

## Evaluation of Dengue virus IgG Tests for pre-vaccination screening

506 recommendations and reduces the concern of vaccinating individuals without previous dengue  
507 infection while providing the benefits of vaccination, including decreased illness and  
508 hospitalizations from dengue in the population at risk.

509



Evaluation of Dengue virus IgG Tests for pre-vaccination screening

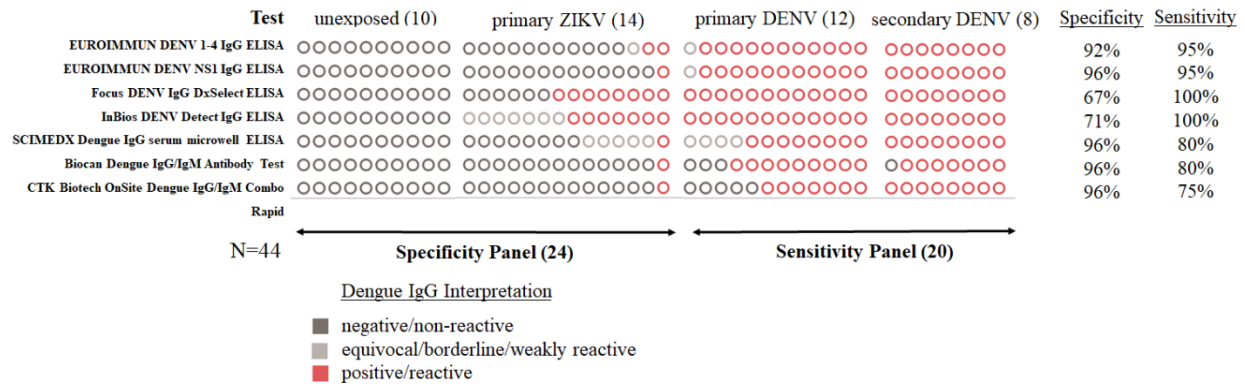
510 Table 1: Commercial anti-DENV IgG diagnostic tests evaluated.

Manufacturer	Product name	Test type	Catalog number	Package insert, date	Recommended specimen types	Period evaluated	Time to result	Required test volume
Biocan	Dengue IgG/IgM Antibody Test	Lateral flow	B803C	B803C, Rev 02/2016	S, P, & WB	EC, PDI-SP	15-20 min.	10 µL
CTK Biotech	Dengue IgG/IgM 3.0 Combo Rapid Test CE	Lateral flow	R0061C	PI-R0061C-RUO Rev. IP, 03/07/2019	S, P, & WB	PDI-SP, PDI-LP	20-25 min.	5 µL
CTK Biotech	CTK OnSite Dengue IgG Rapid Test	Lateral flow	R0065C	PI-R0065C-RUO Rev. B1.0, 10/20/2020	S, P, & WB	PDI-SP, PDI-LP	20-25 min.	5 µL
CTK Biotech	CTK OnSite Dengue IgG Rapid Test	Lateral flow	R0065C-1.0	PI-R0065C-A-RUO Rev. B1.1, 12/03/2021	S, P, & WB	PDI-SP, PDI-LP	20-25 min.	5 µL
Euroimmun	anti-DENV NS1 Type 1-4 ELISA IgG ELISA	ELISA	EI 266a-9601-1 G	EI_266a-1G_A_UK_C02.doc, 02/28/2019	S, & P	EC, PDI-SP, PDI-LP	Minimum 2.5 hr	10 µL
Euroimmun	anti-DENV Type 1-4 ELISA IgG ELISA	ELISA	EI 266a-9601-2 G	EI_266a-2G_A_UK_C01.doc, 08/05/2019	S, & P	EC, PDI-SP, PDI-LP	Minimum 2.5 hr	10 µL
Focus Diagnostics	Dengue Virus IgG DxSelect™	ELISA	EL1500G	PI.EL1500G.OUS, Rev O 03/31/2011	S	EC	Minimum 2.5 hr	10 µL
InBios	DENV Detect™ IgG ELISA	ELISA	DDGS-R	9000089-04, 05/01/2018	S	EC	Minimum 2.5 hr	4 µL
SCIMEDX	Dengue IgG Serum Microwell ELISA	ELISA	DEN-G	DEN-G Rev F, 06/19/17	S	EC, PDI-SP	Minimum 0.5 hr	10 µL

511 Note: serum (S), plasma (P), whole blood (WB), early convalescence (EC, n=44), remote prior dengue infection small panel(PDI-SP, n=44), and  
 512 large panel (PDI-LP, n=400)

Evaluation of Dengue virus IgG Tests for pre-vaccination screening

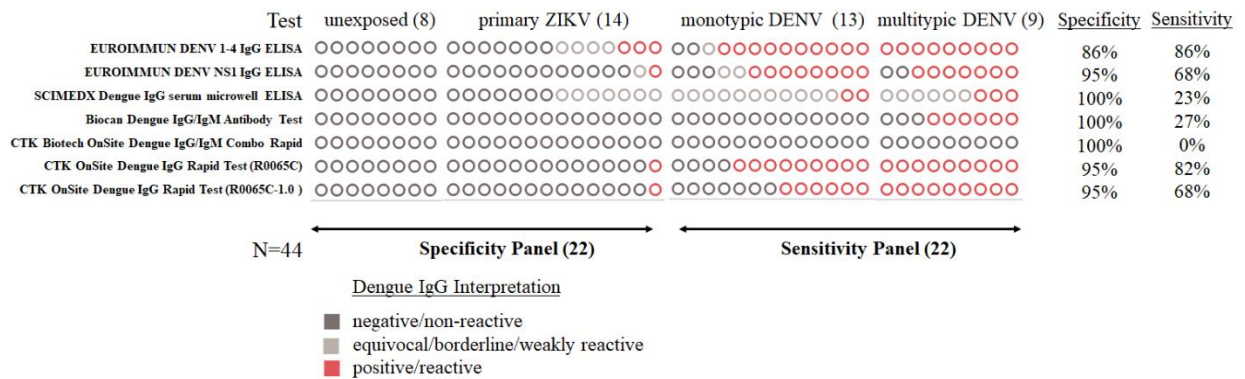
513 Figure 1. Comparison of anti-DENV IgG commercial tests evaluated for specificity and sensitivity with  
 514 specimens collected during early convalescence.



515

516 Note: Circles represent the number of specimens tested and are not in the same order by column.

517 Figure 2. Comparison of anti-DENV IgG commercial tests evaluated for specificity and sensitivity of  
 518 previous dengue infection in serum specimens collected from non-ill children (9-16 years of age).



519

520 Note: Circles represent the number of specimens tested and are not in the same order by column.

521

522

Evaluation of Dengue virus IgG Tests for pre-vaccination screening

523 Table 2: Immune status classification of 400 specimens used to evaluate use of DENV IgG tests to  
 524 determine PDI.

<b>Immune Status</b>	<b>NIH FRNT50 DENV</b>	<b>ZIKV EDIII IgG ELISA</b>	<b>CDC DENV IgG</b>	<b>TOTAL = 400</b>
Monotypic DENV	POSITIVE (one serotype)	NEGATIVE	POSITIVE	DENV-1= 16 DENV-2= 12 DENV-3= 4 <u>DENV-4= 4</u> ALL= 36
Multitypic DENV	POSITIVE (≥2 serotypes)	NEGATIVE	POSITIVE	77
Primary ZIKV	NEGATIVE	POSITIVE	ANY RESULT	56
Multi-flavivirus	POSITIVE (≥1 serotype)	POSITIVE	POSITIVE	80
Unexposed	NEGATIVE	NEGATIVE	NEGATIVE	150
Unexposed	POSITIVE	NEGATIVE	NEGATIVE	0
Unexposed	NEGATIVE	NEGATIVE	POSITIVE	1

525

526

527

528

529

530

531

532

533

Evaluation of Dengue virus IgG Tests for pre-vaccination screening

534 Table 3: Specificity and sensitivity of commercial anti-DENV IgG tests used to determine previous dengue infection in 400 healthy  
 535 individuals with specimens classified by virus neutralization and CDC DENV IgG ELISA

TEST	% Specificity [95% CI]		% Cross-reactivity [95% CI]	% Sensitivity [95% Confidence Intervals]			
	UNEXPOSED + ZIKV PRIMARY N=207	UNEXPOSED N=151	ZIKV PRIMARY N=56	ALL DENV N=193	MONOTYPIC DENV N=36	MULTITYPIC DENV N=77	MULTI- FLAVIVIRUS N=80
Euroimmun anti-DENV NS1 Type 1-4 ELISA IgG ELISA	<b>97.1</b> [93.8-98.9]	<b>100</b> [97.6-100.0]	<b>10.7</b> [4.0-21.9]	<b>84.5</b> [78.6-89.3]	<b>55.6</b> [38.1-72.1]	<b>92.2</b> [83.8-97.1]	<b>90.0</b> [81.2-95.6]
Euroimmun anti-DENV Type 1-4 ELISA IgG ELISA	<b>91.8</b> [87.2-95.1]	<b>100</b> [97.6-100.0]	<b>30.4</b> [18.8-44.1]	<b>91.2</b> [86.3-94.8]	<b>72.2</b> [54.8-85.8]	<b>96.1</b> [89.0-99.2]	<b>95.0</b> [87.7-98.6]
CTK OnSite Dengue IgG Rapid Test R0065C visual read	<b>95.7</b> [91.9-98.0]	<b>94.7</b> [89.8-97.7]	<b>1.8</b> [0.0-9.6]	<b>89.6</b> [84.5-93.6]	<b>66.7</b> [49.0-81.4]	<b>94.8</b> [87.2-98.6]	<b>95.0</b> [87.7-98.6]
CTK OnSite Dengue IgG Rapid Test R0065C equipment read	<b>98.1</b> [95.1-99.5]	<b>98.0</b> [94.3-99.6]	<b>1.8</b> [0.0-9.6]	<b>76.2</b> [69.5-82.0]	<b>38.9</b> [23.1-56.5]	<b>83.1</b> [72.9-90.7]	<b>86.3</b> [76.7-92.9]
CTK OnSite Dengue IgG Rapid Test R0065C-1.0 visual read	<b>96.6</b> [93.2-98.6]	<b>96.0</b> [91.6-98.5]	<b>1.8</b> [0.0-9.6]	<b>81.9</b> [75.7-87.0]	<b>44.4</b> [27.9-61.9]	<b>90.9</b> [82.2-96.3]	<b>90.0</b> [81.2-95.6]
CTK OnSite Dengue IgG Rapid Test R0065C-1.0 equipment read	<b>98.6</b> [95.8-99.7]	<b>98.7</b> [95.3-99.8]	<b>1.8</b> [0.0-9.6]	<b>74.1</b> [67.3-80.1]	<b>25.0</b> [12.1-42.2]	<b>85.7</b> [75.9-92.7]	<b>85.0</b> [75.3-92.0]
+ CTK OnSite Dengue IgG Rapid Test R0065C visual read	<b>100</b> [98.2-100.0]	<b>100</b> [97.6-100.0]	<b>0.0</b> [0.0-6.4]	<b>80.3</b> [74.0-85.7]	<b>38.9</b> [23.1-56.5]	<b>89.6</b> [80.6-95.4]	<b>90.0</b> [81.2-95.6]
+ CTK OnSite Dengue IgG Rapid Test R0065C equipment read	<b>100</b> [98.2-100.0]	<b>100</b> [97.6-100.0]	<b>0.0</b> [0.0-6.4]	<b>75.7</b> [69.0-81.5]	<b>33.3</b> [18.6-51.0]	<b>84.4</b> [74.4-91.7]	<b>86.3</b> [76.7-92.9]
+ CTK OnSite Dengue IgG Rapid Test R0065C-1.0 visual read	<b>100</b> [98.2-100.0]	<b>100</b> [97.6-100.0]	<b>0.0</b> [0.0-6.4]	<b>76.2</b> [69.5-82.0]	<b>27.8</b> [14.2-45.2]	<b>87.0</b> [77.4-93.6]	<b>87.5</b> [78.2-93.8]
+ CTK OnSite Dengue IgG Rapid Test R0065C-1.0 equipment read	<b>100</b> [98.2-100.0]	<b>100</b> [97.6-100.0]	<b>0.0</b> [0.0-6.4]	<b>73.6</b> [66.8-79.7]	<b>25.0</b> [12.1-42.2]	<b>84.4</b> [74.4-91.7]	<b>85.0</b> [75.3-92.0]
+ Euroimmun anti-DENV Type 1-4 ELISA IgG ELISA	<b>98.1</b> [95.1-99.5]	<b>100</b> [97.6-100.0]	<b>7.1</b> [2.0-17.3]	<b>82.9</b> [76.8-87.9]	<b>50.0</b> [32.9-67.1]	<b>90.9</b> [82.2-96.3]	<b>90.0</b> [81.2-95.6]

Combined with Euroimmun  
anti-DENV NS1 Type 1-4  
ELISA IgG ELISA

Evaluation of Dengue virus IgG Tests for pre-vaccination screening

536 Table 4: Specificity of high performing commercial anti-DENV IgG tests used to determine PDI with  
 537 specimens from unexposed healthy individuals from Puerto Rico and past ZIKV infections from  
 538 Nicaragua.

<b>% Specificity [95% CI]</b>			<b>% Cross- reactivity [95% CI]</b>
<b>TEST</b>	<b>UNEXPOSED + ZIKV PRIMARY N=63</b>	<b>UNEXPOSED N=41</b>	<b>ZIKV PRIMARY N=22</b>
Euroimmun anti-DENV NS1 Type 1-4 ELISA IgG ELISA	<b>96.8</b> [89.0-99.6]	<b>100</b> [91.4-100.0]	<b>9.1</b> [1.1-29.2]
Euroimmun anti-DENV Type 1-4 ELISA IgG ELISA	<b>95.2</b> [86.7-99.0]	<b>100</b> [91.4-100.0]	<b>13.6</b> [2.9-34.9]
CTK OnSite Dengue IgG Rapid Test R0065C visual read	<b>98.4</b> [91.5-99.7]	<b>100</b> [91.4-100.0]	<b>4.6</b> [0.1-22.8]
CTK OnSite Dengue IgG Rapid Test R0065C-1.0 visual read	<b>98.4</b> [91.5-99.7]	<b>100</b> [91.4-100.0]	<b>4.6</b> [0.1-22.8]

539

540

541

542

543

544

545

546

547

548

## Evaluation of Dengue virus IgG Tests for pre-vaccination screening

549 Table 5. Specimens with high ZIKV antibody tested in commercial anti-DENV IgG tests.

Test	Cross-reactivity
Euroimmun anti-DENV NS1 Type 1-4 ELISA IgG ELISA	4/12 (33%)
CTK OnSite Dengue IgG Rapid Test R0065C	1/12 (8%)
CTK OnSite Dengue IgG Rapid Test R0065C-1.0	1/12 (8%)

551

552

553

554

555

556

557

558

559

560

561

562

563

564

565

## Evaluation of Dengue virus IgG Tests for pre-vaccination screening

### 566 **References**

- 567 1. Bhatt S, Gething PW, Brady OJ, Messina JP, Farlow AW, Moyes CL, Drake JM, Brownstein JS,  
568 Hoen AG, Sankoh O, Myers MF, George DB, Jaenisch T, Wint GR, Simmons CP, Scott TW, Farrar  
569 JJ, Hay SI. 2013. The global distribution and burden of dengue. *Nature* 496:504-7.
- 570 2. Messina JP, Brady OJ, Golding N, Kraemer MUG, Wint GRW, Ray SE, Pigott DM, Shearer FM,  
571 Johnson K, Earl L, Marczak LB, Shirude S, Davis Weaver N, Gilbert M, Velayudhan R, Jones P,  
572 Jaenisch T, Scott TW, Reiner RC, Hay SI. 2019. The current and future global distribution and  
573 population at risk of dengue. *Nature Microbiology* 4:1508-1515.
- 574 3. Katzelnick LC, Zambrana JV, Elizondo D, Collado D, Garcia N, Arguello S, Mercado JC, Miranda T,  
575 Ampie O, Mercado BL, Narvaez C, Gresh L, Binder RA, Ojeda S, Sanchez N, Plazaola M, Latta K,  
576 Schiller A, Coloma J, Carrillo FB, Narvaez F, Halloran ME, Gordon A, Kuan G, Balmaseda A, Harris  
577 E. 2021. Dengue and Zika virus infections in children elicit cross-reactive protective and  
578 enhancing antibodies that persist long term. *Sci Transl Med* 13:eabg9478.
- 579 4. Paz-Bailey G, Adams L, Wong JM, Poehling KA, Chen WH, McNally V, Atmar RL, Waterman SH.  
580 2021. Dengue Vaccine: Recommendations of the Advisory Committee on Immunization  
581 Practices, United States, 2021. *MMWR Recomm Rep* 70:1-16.
- 582 5. Fongwen N, Wilder-Smith A, Gubler DJ, Ooi EE, EM TS, de Lamballerie X, Olliaro PL, Peeling RW.  
583 2021. Target product profile for a dengue pre-vaccination screening test. *PLoS Negl Trop Dis*  
584 15:e0009557.
- 585 6. Luo R, Fongwen N, Kelly-Cirino C, Harris E, Wilder-Smith A, Peeling RW. 2019. Rapid diagnostic  
586 tests for determining dengue serostatus: a systematic review and key informant interviews. *Clin*  
587 *Microbiol Infect* 25:659-666.
- 588 7. Bonaparte M, Zheng L, Garg S, Guy B, Lustig Y, Schwartz E, DiazGranados CA, Savarino S,  
589 Ataman-Onal Y. 2019. Evaluation of rapid diagnostic tests and conventional enzyme-linked  
590 immunosorbent assays to determine prior dengue infection. *J Travel Med* 26.
- 591 8. Bonaparte M, Huleatt J, Hodge S, Zheng L, Lustig Y, DiazGranados CA, Ataman-Onal Y, Savarino  
592 S. 2020. Evaluation of dengue serological tests available in Puerto Rico for identification of prior  
593 dengue infection for prevaccination screening. *Diagn Microbiol Infect Dis* 96:114918.
- 594 9. Echegaray F, Laing P, Hernandez S, Marquez S, Harris A, Laing I, Chambers A, McLennan N,  
595 Sugiharto VA, Chen HW, Villagran SV, Collingwood A, Montoya M, Carrillo FB, Simons MP,  
596 Cooper PJ, Lopez A, Trueba G, Eisenberg J, Wu SJ, Messer W, Harris E, Coloma J, Katzelnick LC.  
597 2021. Adapting Rapid Diagnostic Tests to Detect Historical Dengue Virus Infections. *Front*  
598 *Immunol* 12:703887.
- 599 10. Lopez AL, Adams C, Ylade M, Jadi R, Daag JV, Molloy CT, Agrupis KA, Kim DR, Silva MW, Yoon IK,  
600 White L, Deen J, de Silva AM. 2021. Determining dengue virus serostatus by indirect IgG ELISA  
601 compared with focus reduction neutralisation test in children in Cebu, Philippines: a prospective  
602 population-based study. *Lancet Glob Health* 9:e44-e51.
- 603 11. Daag JV, Ylade M, Adams C, Jadi R, Crisostomo MV, Alpay R, Aportadera ETC, Yoon IK, White L,  
604 Deen J, de Silva AM, Lopez AL. 2021. Evaluation of a new point-of-care test to determine prior  
605 dengue infection for potential use in pre-vaccination screening. *Clin Microbiol Infect* 27:904-908.
- 606 12. Medina FA, Vila F, Premkumar L, Lorenzi O, Paz-Bailey G, Alvarado LI, Rivera-Amill V, de Silva A,  
607 Waterman S, Muñoz-Jordán J. 2021. Capacity of a Multiplex IgM Antibody Capture ELISA to  
608 Differentiate Zika and Dengue Virus Infections in Areas of Concurrent Endemic Transmission.  
609 *The American journal of tropical medicine and hygiene*.
- 610 13. Tomashek KM, Lorenzi OD, Andujar-Perez DA, Torres-Velasquez BC, Hunsperger EA, Munoz-  
611 Jordan JL, Perez-Padilla J, Rivera A, Gonzalez-Zeno GE, Sharp TM, Galloway RL, Glass Elrod M,

## Evaluation of Dengue virus IgG Tests for pre-vaccination screening

- 612 Mathis DL, Oberste MS, Nix WA, Henderson E, McQuiston J, Singleton J, Kato C, Garcia Gubern C,  
613 Santiago-Rivera W, Cruz-Correa J, Muns-Sosa R, Ortiz-Rivera JD, Jimenez G, Galarza IE, Horiuchi  
614 K, Margolis HS, Alvarado LI. 2017. Clinical and epidemiologic characteristics of dengue and other  
615 etiologic agents among patients with acute febrile illness, Puerto Rico, 2012-2015. *PLoS Negl*  
616 *Trop Dis* 11:e0005859.
- 617 14. Sanchez-Gonzalez L, Adams LE, Saavedra R, Little EM, Medina NA, Major CG, Bruck M, Miranda  
618 J, Rosado-Santiago C, Ryff K, Ortiz M, Brown G, Barrera R, Perez-Guerra CL, Rivera-Amill V, Paz-  
619 Bailey G. 2021. Assessment of community support for Wolbachia-mediated population  
620 suppression as a control method for *Aedes aegypti* mosquitoes in a community cohort in Puerto  
621 Rico. *PLoS Negl Trop Dis* 15:e0009966.
- 622 15. Katzelnick LC, Narvaez C, Arguello S, Lopez Mercado B, Collado D, Ampie O, Elizondo D, Miranda  
623 T, Bustos Carillo F, Mercado JC, Latta K, Schiller A, Segovia-Chumbez B, Ojeda S, Sanchez N,  
624 Plazaola M, Coloma J, Halloran ME, Premkumar L, Gordon A, Narvaez F, de Silva AM, Kuan G,  
625 Balmaseda A, Harris E. 2020. Zika virus infection enhances future risk of severe dengue disease.  
626 *Science* 369:1123-1128.
- 627 16. Katzelnick LC, Gresh L, Halloran ME, Mercado JC, Kuan G, Gordon A, Balmaseda A, Harris E.  
628 2017. Antibody-dependent enhancement of severe dengue disease in humans. *Science* 358:929-  
629 932.
- 630 17. Durbin AP, Karron RA, Sun W, Vaughn DW, Reynolds MJ, Perreault JR, Thumar B, Men R, Lai CJ,  
631 Elkins WR, Chanock RM, Murphy BR, Whitehead SS. 2001. Attenuation and immunogenicity in  
632 humans of a live dengue virus type-4 vaccine candidate with a 30 nucleotide deletion in its 3'-  
633 untranslated region. *Am J Trop Med Hyg* 65:405-13.
- 634 18. Miagostovich MP, Nogueira RM, dos Santos FB, Schatzmayr HG, Araujo ES, Vorndam V. 1999.  
635 Evaluation of an IgG enzyme-linked immunosorbent assay for dengue diagnosis. *J Clin Virol*  
636 14:183-9.
- 637 19. Adams C, Jadi R, Segovia-Chumbez B, Daag J, Ylade M, Medina FA, Sharp TM, Munoz-Jordan JL,  
638 Yoon IK, Deen J, Lopez AL, de Silva AM, Premkumar L. 2021. Novel Assay to Measure  
639 Seroprevalence of Zika Virus in the Philippines. *Emerg Infect Dis* 27:3073-3081.
- 640 20. Bossuyt PM, Reitsma JB, Bruns DE, Gatsonis CA, Glasziou PP, Irwig L, Lijmer JG, Moher D, Rennie  
641 D, de Vet HC, Kressel HY, Rifai N, Golub RM, Altman DG, Hooft L, Korevaar DA, Cohen JF, Group  
642 S. 2015. STARD 2015: an updated list of essential items for reporting diagnostic accuracy studies.  
643 *BMJ* 351:h5527.
- 644 21. Prevention CfDca. 05/10/2022 2022. Laboratory Testing Requirements for Vaccination with  
645 Dengvaxia Dengue Vaccine (For Healthcare Providers).  
646 <https://www.cdc.gov/dengue/vaccine/hcp/testing.html>. Accessed 11/18/2022.
- 647 22. Nguyen THT, Clapham HE, Phung KL, Nguyen TK, TT DI, Nguyen THQ, Tran VN, Whitehead S,  
648 Simmons C, Wolbers M, Wills B. 2018. Methods to discriminate primary from secondary dengue  
649 during acute symptomatic infection. *BMC Infect Dis* 18:375.

650

651

652

653

654

655



## Evaluation of Dengue virus IgG Tests for pre-vaccination screening

### 656 **Acknowledgements**

657 We are grateful to Dr. Luisa I. Alvarado, the SEDSS and COPA staff and study participants for  
658 their contribution to this study.

659

### 660 **Financial Support**

661 Funding was provided by the Division of Vector Borne Infectious Diseases, Centers for Disease  
662 Control and Prevention, the Intramural Research Program of the NIAID, NIH and by grant  
663 numbers U01CK000437 and U01CK000580 to Vanessa Rivera-Amill.

664

### 665 **Disclosures**

666 No competing financial interests exist.

667

### 668 **Disclaimer**

669 The findings and conclusions in this report are those of the authors and do not necessarily  
670 represent the views of the Centers for Disease Control and Prevention.

671

672

673

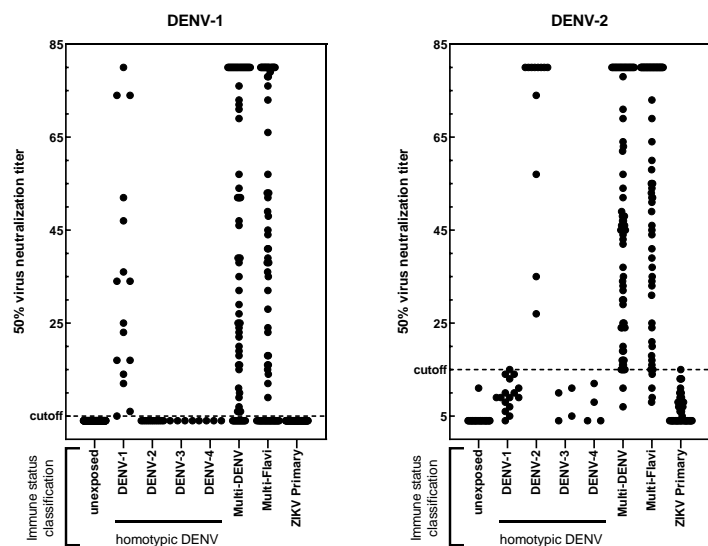
674

675

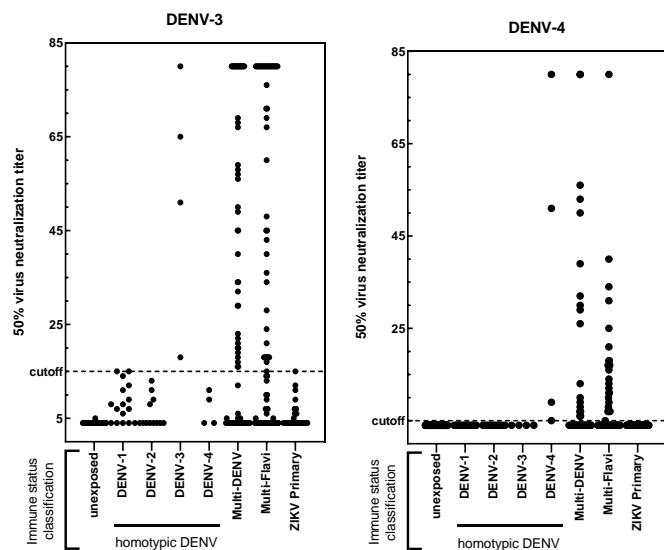
## Evaluation of Dengue virus IgG Tests for pre-vaccination screening

676 Figure S1. Sera from healthy children (ages 9-15) (n=400) living in Puerto Rico were tested in a focus  
677 reduction neutralization test and 50% virus neutralization titers (FRNT50) for DENV-1 (A), DENV-2 (B),  
678 DENV-3 (C), DENV-4 (D) and ZIKV (E) were determined as described in materials and shown according to  
679 immune status classification.

680



682



684

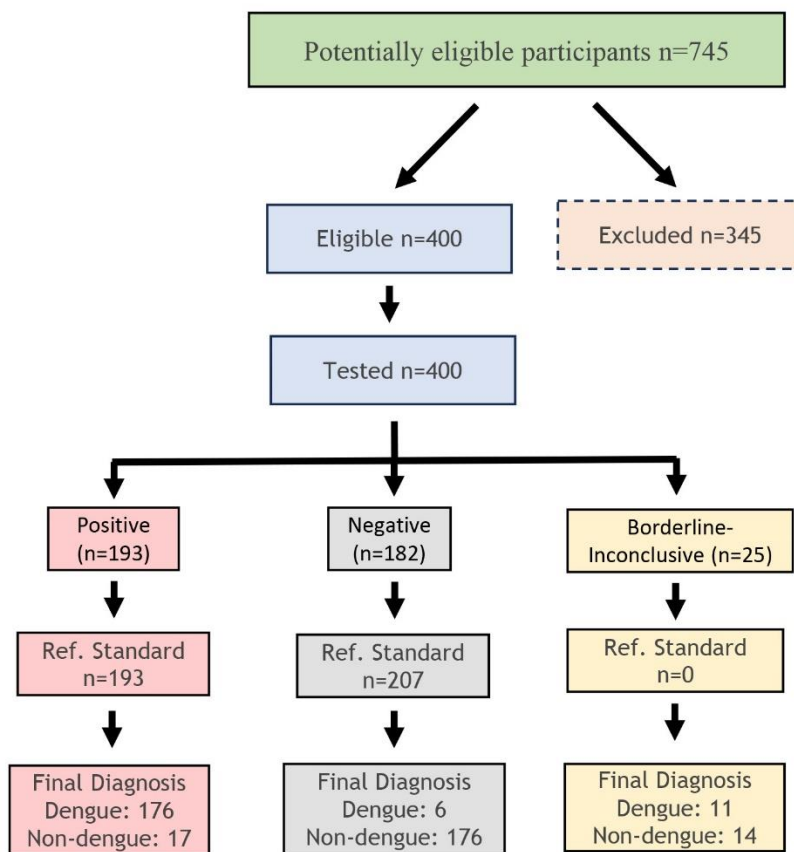
685

686

687

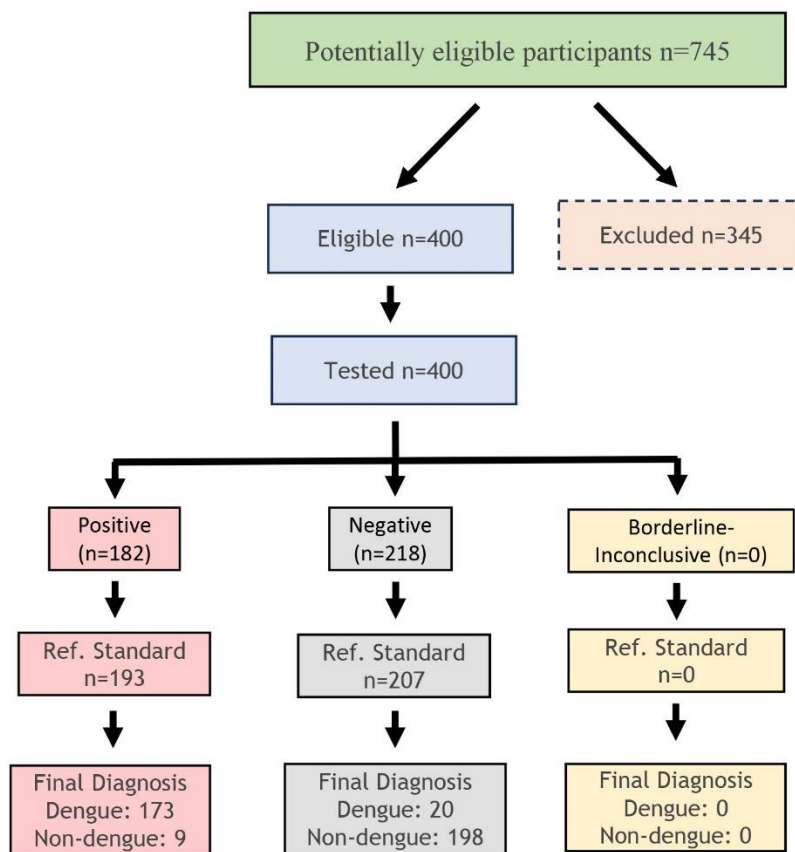
## Evaluation of Dengue virus IgG Tests for pre-vaccination screening

Figure S2. STARD flow diagram for Euroimmun anti-DENV Type 1-4 ELISA IgG ELISA



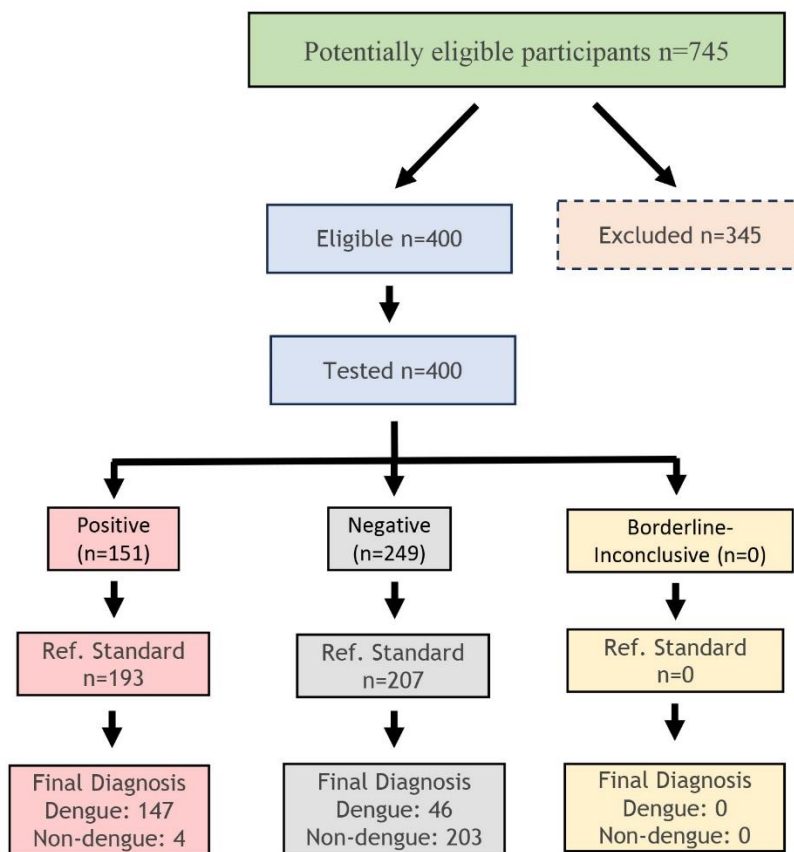
## Evaluation of Dengue virus IgG Tests for pre-vaccination screening

Figure S3. STARD flow diagram for CTK OnSite Dengue IgG Rapid Test R0065C visual read



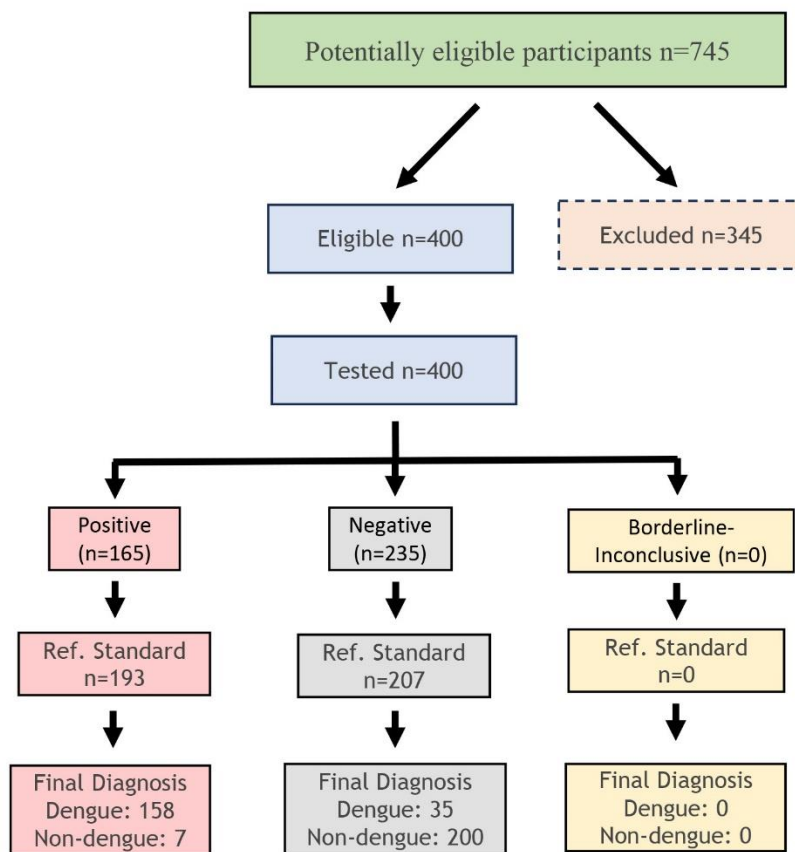
## Evaluation of Dengue virus IgG Tests for pre-vaccination screening

Figure S4. STARD flow diagram for CTK OnSite Dengue IgG Rapid Test R0065C equipment read



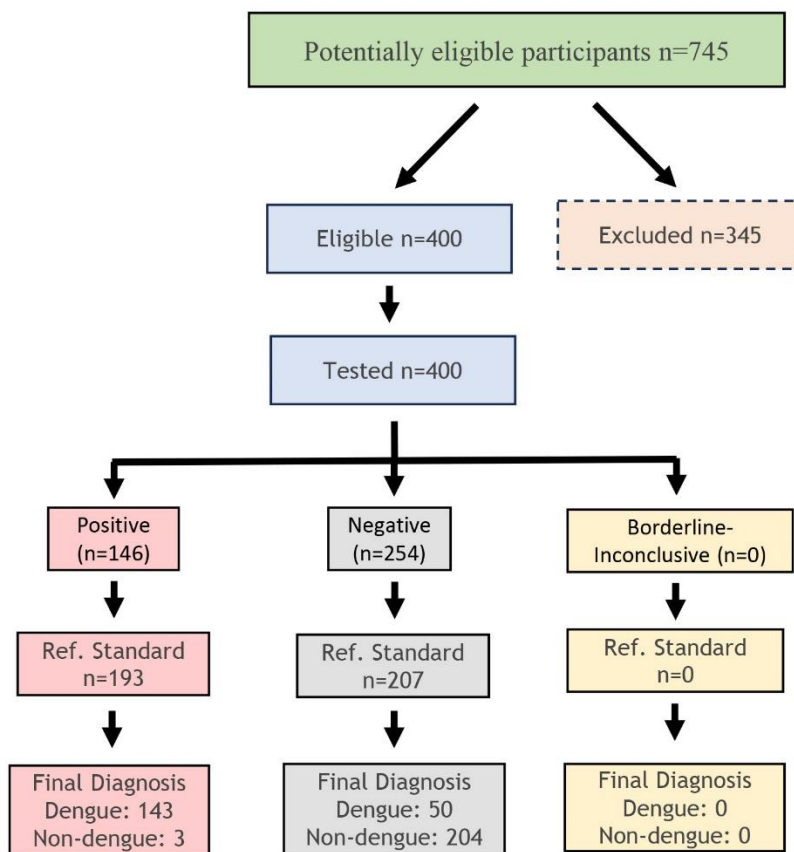
## Evaluation of Dengue virus IgG Tests for pre-vaccination screening

Figure S5. STARD flow diagram for CTK OnSite Dengue IgG Rapid Test R0065C-1.0 visual read



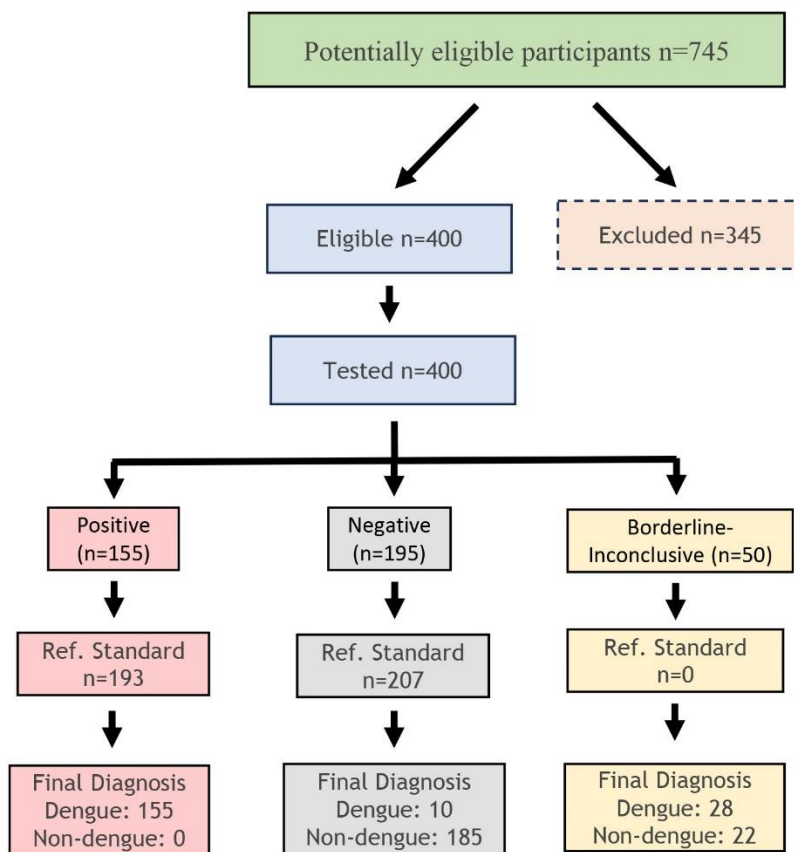
## Evaluation of Dengue virus IgG Tests for pre-vaccination screening

Figure S6. STARD flow diagram for CTK OnSite Dengue IgG Rapid Test R0065C-1.0 equipment read



## Evaluation of Dengue virus IgG Tests for pre-vaccination screening

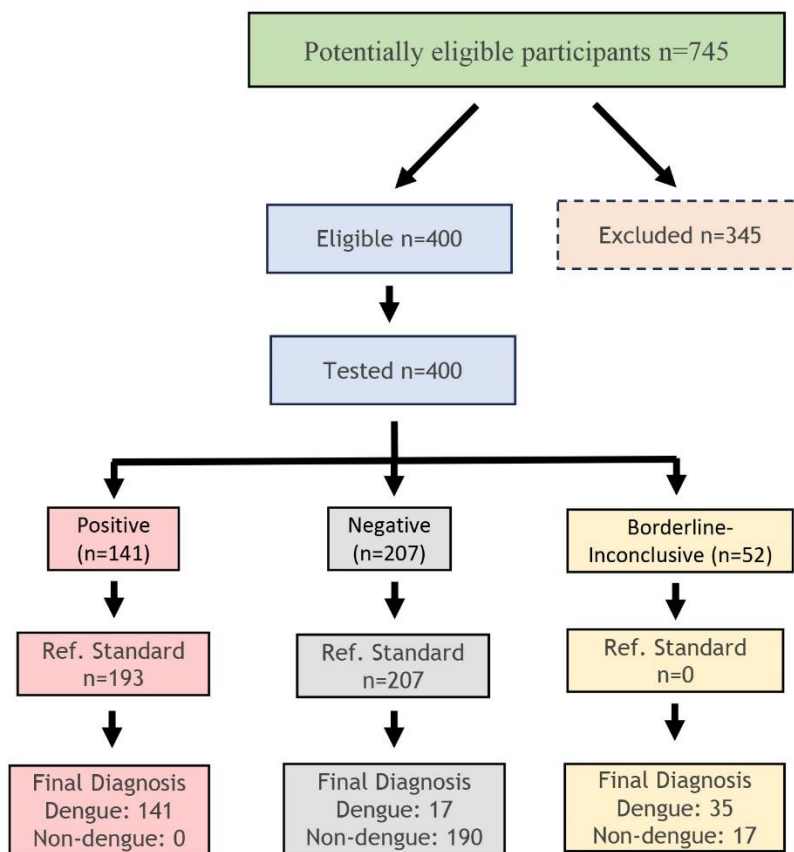
Figure S7. STARD flow diagram for Euroimmun DENV NS1 Type 1-4 IgG ELISA + CTK OnSite Dengue IgG Rapid Test R0065C visual read





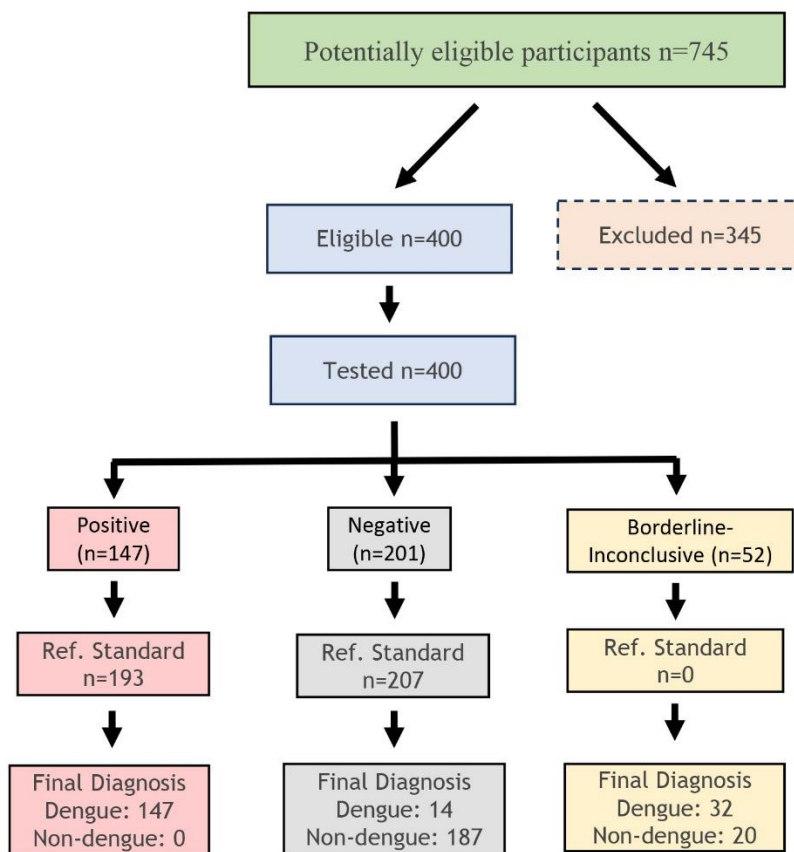
## Evaluation of Dengue virus IgG Tests for pre-vaccination screening

Figure S8. STARD flow diagram for Euroimmun DENV NS1 Type 1-4 IgG ELISA + CTK OnSite Dengue IgG Rapid Test R0065C equipment read



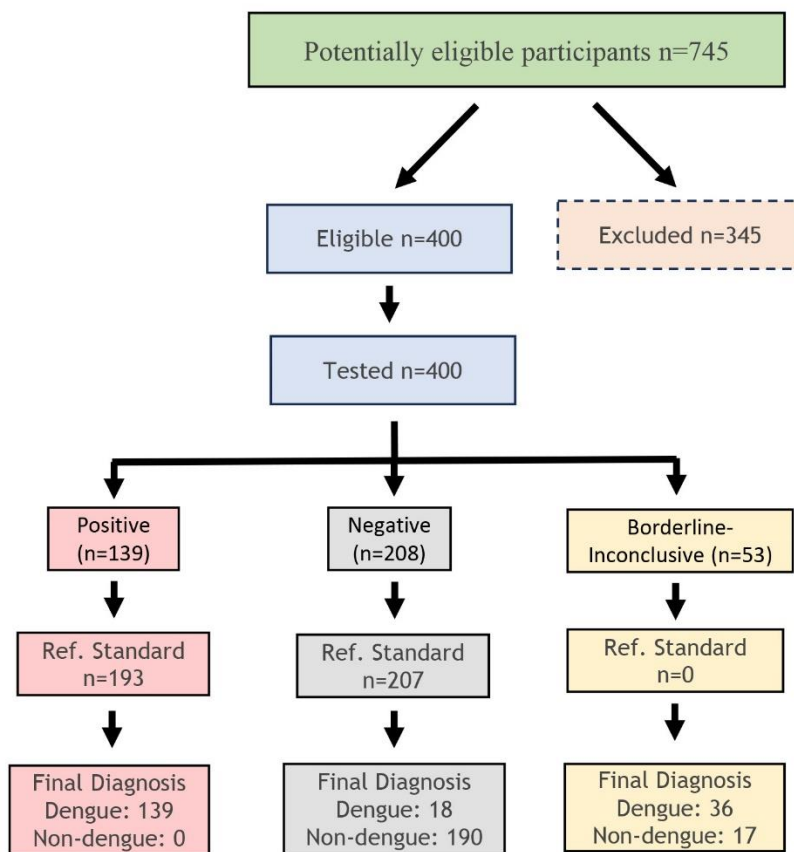
## Evaluation of Dengue virus IgG Tests for pre-vaccination screening

Figure S9. STARD flow diagram for Euroimmun DENV NS1 Type 1-4 IgG ELISA + CTK OnSite Dengue IgG Rapid Test R0065C-1.0 visual read



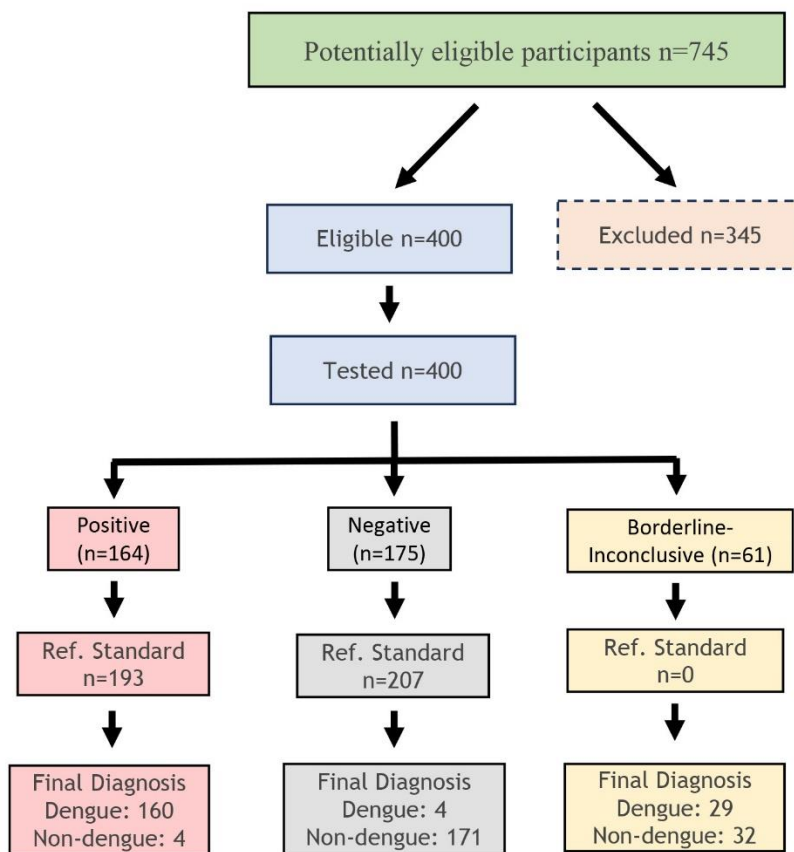
## Evaluation of Dengue virus IgG Tests for pre-vaccination screening

Figure S10. STARD flow diagram for Euroimmun DENV NS1 Type 1-4 IgG ELISA + CTK OnSite Dengue IgG Rapid Test R0065C-1.0 equipment read



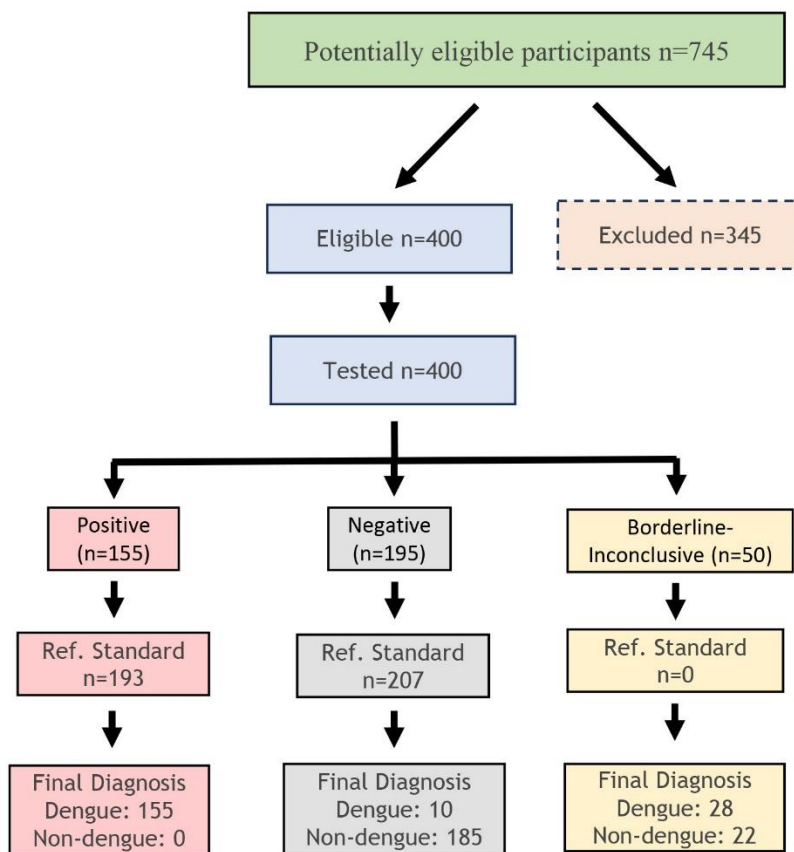
## Evaluation of Dengue virus IgG Tests for pre-vaccination screening

Figure S11. STARD flow diagram for Euroimmun DENV NS1 Type 1-4 IgG ELISA + CTK OnSite Dengue IgG Rapid Test R0065C visual read



## Evaluation of Dengue virus IgG Tests for pre-vaccination screening

Figure S12. STARD flow diagram for Euroimmun DENV NS1 Type 1-4 IgG ELISA + CTK OnSite Dengue IgG Rapid Test R0065C visual read



## Evaluation of Dengue virus IgG Tests for pre-vaccination screening

### 699 STARD checklist

700

Section & Topic	No	Item	Reported on page #
<b>TITLE OR ABSTRACT</b>			
	<b>1</b>	Identification as a study of diagnostic accuracy using at least one measure of accuracy (such as sensitivity, specificity, predictive values, or AUC)	1
<b>ABSTRACT</b>			
	<b>2</b>	Structured summary of study design, methods, results, and conclusions (for specific guidance, see STARD for Abstracts)	3
<b>INTRODUCTION</b>			
	<b>3</b>	Scientific and clinical background, including the intended use and clinical role of the index test	4-6
	<b>4</b>	Study objectives and hypotheses	5-6
<b>METHODS</b>			
<i>Study design</i>	<b>5</b>	Whether data collection was planned before the index test and reference standard were performed (prospective study) or after (retrospective study)	7
<i>Participants</i>	<b>6</b>	Eligibility criteria	7
	<b>7</b>	On what basis potentially eligible participants were identified (such as symptoms, results from previous tests, inclusion in registry)	7
	<b>8</b>	Where and when potentially eligible participants were identified (setting, location, and dates)	7
	<b>9</b>	Whether participants formed a consecutive, random or convenience series	7
<i>Test methods</i>	<b>10a</b>	Index test, in sufficient detail to allow replication	13
	<b>10b</b>	Reference standard, in sufficient detail to allow replication	8-11
	<b>11</b>	Rationale for choosing the reference standard (if alternatives exist)	9
	<b>12a</b>	Definition of and rationale for test positivity cut-offs or result categories of the index test, distinguishing pre-specified from exploratory	14 (established by manufacturers)
	<b>12b</b>	Definition of and rationale for test positivity cut-offs or result categories of the reference standard, distinguishing pre-specified from exploratory	8
	<b>13a</b>	Whether clinical information and reference standard results were available to the performers/readers of the index test	14
	<b>13b</b>	Whether clinical information and index test results were available to the assessors of the reference standard	8
<i>Analysis</i>	<b>14</b>	Methods for estimating or comparing measures of diagnostic accuracy	15-16
	<b>15</b>	How indeterminate index test or reference standard results were handled	14
	<b>16</b>	How missing data on the index test and reference standard were handled	16
	<b>17</b>	Any analyses of variability in diagnostic accuracy, distinguishing pre-specified from exploratory	N/A
	<b>18</b>	Intended sample size and how it was determined	14
<b>RESULTS</b>			
<i>Participants</i>	<b>19</b>	Flow of participants, using a diagram	30-40
	<b>20</b>	Baseline demographic and clinical characteristics of participants	7
	<b>21a</b>	Distribution of severity of disease in those with the target condition	26, Table 3
	<b>21b</b>	Distribution of alternative diagnoses in those without the target condition	26, Table 3
	<b>22</b>	Time interval and any clinical interventions between index test and reference	14

## Evaluation of Dengue virus IgG Tests for pre-vaccination screening

		standard	
<i>Test results</i>	<b>23</b>	Cross tabulation of the index test results (or their distribution) by the results of the reference standard	24, 26
	<b>24</b>	Estimates of diagnostic accuracy and their precision (such as 95% confidence intervals)	26, Table 3
	<b>25</b>	Any adverse events from performing the index test or the reference standard	12
<b>DISCUSSION</b>			
	<b>26</b>	Study limitations, including sources of potential bias, statistical uncertainty, and generalisability	21
	<b>27</b>	Implications for practice, including the intended use and clinical role of the index test	22
<b>OTHER INFORMATION</b>			
	<b>28</b>	Registration number and name of registry	
	<b>29</b>	Where the full study protocol can be accessed	
	<b>30</b>	Sources of funding and other support; role of funders	31