

Asymptomatic seroconversion in healthy people against dengue and chikungunya in Kandy district of Sri Lanka

L.E.A.D.A. Edirisinghe¹, T.A.N. Mahakapuge¹, S.A.M.Kularatne²,
S.A.M.D.A.Kularatne³R.P.V.J. Rajapakse¹

¹ *Department of Pathobiology, Faculty of Veterinary Medicine and Animal Science, University of Peradeniya, Sri Lanka*

² *Department of Medicine, Faculty of Medicine, University of Peradeniya, Sri Lanka*

³ *Faculty of Medicine, University of Peradeniya, Sri Lanka*

Abstract

Background: Both dengue and chikungunya are transmitted by *Aedes aegypti* and have many similarities in epidemiology and clinical manifestations. These two viruses are known to cause asymptomatic infection, however, studies to assess the seroprevalence in healthy individuals are limited. Our objective is to estimate the asymptomatic seroconversion status of both these infections Sri Lanka where dengue has been endemic and the last notable outbreak of chikungunya occurred in 2007.

Methods: The study was performed using venous blood samples of 454 healthy individuals (age range 11-78) in Kandy district, who had no known history of dengue or chikungunya infections in the past or present. Samples were tested for dengue NS1 antigen, dengue IgM, dengue IgG, Chikungunya IgM and Chikungunya IgG by using commercially available ELISA kits. Statistical data analysis was performed using SPSS software version 16.0 (SPSS, Inc., Chicago, IL, USA). *P* value <0.05 was considered statistically significant.

Results: Of the 454 healthy individuals, 287 (63.2%) were positive for dengue IgG indicating a past infection and 18 (4%) were positive for dengue-specific IgM. Of the same total, 82 (18.1%) were positive chikungunya chikungunya-specific IgM and only 6 (1.3%) were positive for chikungunya-specific IgM. The number of individuals positive for both dengue IgG and Chikungunya IgG, indicating dual antibody prevalence or exposure to both diseases asymptotically was 61(13.43%). For dengue specific IgG, the highest sero-conversion rate (80.4%) was observed in 51-60 year age group whilst the lowest (50%) in the age group 11-20. Out of the MOH areas, the highest prevalence (71.4%) of positives were observed in Bambaradeniya and the lowest prevalence (53.1%) in Yatinuwara suburbs in Kandy. The highest percentage of dengue IgM prevalence (6.3%) was observed in the age group 21-30 years and the lowest percentage (1.5%) was observed in the age group 11-20.

Conclusions: An asymptomatic seroconversion rate was observed in both dengue and Chikungunya infections. Dengue records a high rate due to its endemicity and periodic outbreaks. It is interesting to note the low-grade prevalence of Chikungunya infection contrary to the belief its non-existence in the island currently.

1. Introduction

Sri Lanka is a tropical country having favorable environmental conditions for vector-borne infections. Dengue and chikungunya are two such infections in Sri Lanka. Both these diseases share many similarities in terms of epidemiology and clinical manifestations (Furuya-Kanamori *et al.*, 2016). Dengue is endemic on the island where the last two decades witnessed increased disease burden and severity leading to significant morbidity and mortality (Senaratne and Noordeen, 2014). However, the last outbreak of chikungunya occurred in 2006 -07 without apperen endemicity (Wijesinghe *et al.*, 2009).

Dengue

Dengue is a single-stranded icosahedral-enveloped RNA virus belonging to the *Flaviviridae* family and genus *Flavivirus*. It exists as four closely related antigenically distinct serotypes - DENV-1, DENV- 2, DENV-3, and DENV-4 (Balmaseda *et al.*, 2006). The infection is transmitted by infected female *Aedes* mosquitos. Abrupt onset of high fever, headache, myalgia and backache are the common symptoms (Kalayanarooj, 2011). Most of the patients have uncomplicated clinical course categorized as dengue fever (DF), but some patients develop dengue hemorrhagic fever (DHF) and dengue shock syndrome (DSS) characterized by increased vascular permeability, plasma leakage, hemorrhage, and multiple organ dysfunction. Pathogenesis of DHF is due to the loss of capillary endothelial integrity as a result of an abnormal immune response and a disturbance in immune regulation (Wagenaar, Mairuhu and van Gorp, 2004). Thrombocytopenia and leucopenia are characteristic haematological manifestations in dengue infection (De Azeredo, Monteiro and De-Oliveira Pinto, 2015). The prediction of progression to DHF is difficult but factors such as serotype/ genotype of the virus, previous exposure to dengue virus, and the age of the patient are postulated (Tissera *et al.*, 2016). The diagnosis of dengue infection is best done by detection of viral nucleic acid with real time quantitative reverse transcriptase PCR, virus isolation in cell culture, NS1 antigen detection, and/ or detection of virus-specific antibodies in paired sera like IgM ,IgG detection through ELISA and neutralization tests (Ku *et al.*, 2016).

There is a global increase of the incidence of dengue over the last decades. A recent estimate indicated about 390 million dengue infections occurring annually in the world with 96 million clinical cases (Who.int, 2018). A systematic review covering 1990-2015 showed that the outbreaks virtually occurring in tropical and subtropical regions in particular India, China, and Brazil (Zhou *et al.*, 2017). In Sri Lanka, dengue had been reported since 1960 and ensuing

years showed regular incidence of DF/DHF throughout the year with outbreaks during the rainy seasons (Kularatne, Gawarammana and Kumarasiri, 2005, P.D.N.N. Sirisena and Noordeen, 2014, Wijewickrama *et al.*, 2018). Sri Lanka had experienced a major outbreak in 2017 due to the shift of DENV serotype 1 to serotype 2, with 186101 hospitalized cases (Wijewickrama *et al.*, 2018).

Chikungunya

Chikungunya is an alphavirus of the family *Toga viridae* which contains single-stranded RNA and is transmitted by the female *Aedes* mosquito. Clinical manifestations of the disease includes sudden onset of fever with chills, headache, vomiting, malaise, myalgia, arthralgia or arthritis (Razmy, 2014a). Ocular manifestations such as anterior uveitis and retinitis were reported (Mahendradas, 2016). Most of the clinical and laboratory investigations of chikungunya infection are similar to dengue infection and arthritis is characteristic (Kularatne *et al.*, 2009). It has been identified that the life cycle of this virus belongs to two primary transmission cycles. In Asia, it is mainly the mosquito-human-mosquito with *Aedes aegypti* being the primary transmission vector whereas in Africa, it is mainly the sylvatic cycle including non-human primates (Pulmanusahakul *et al.*, 2011). For diagnosis, virus detection, serological tests and molecular techniques are used (Mahendradas, Avadhani and Shetty, 2013). During the initial viremic phase, virus isolation and the real time polymerase chain reaction (RT-PCR) are useful in identification of the illness. During the later phase of the disease detection of antibodies through serological assays would be useful (Mahendradas, 2016).

According to the geographical distribution over the years, there are 3 distinct Chikungunya virus genotypes recognised-West African, East Central South African and Asian. In 1958, the Asian strain was identified in Thailand transmitted by the suspected vector (Mowatt and Jackson, 2014). Since then Chikungunya had been circulating sporadically in South East Asian countries and transmission to humans by *A. aegypti* was documented in 2006 during the outbreak in Malaysia (Mowatt and Jackson, 2014). Massive outbreaks of Chikungunya had been reported in India in 2005 and the re-emergence of this virus was confirmed in 2006 after four decades of absence (Hapuarachchi *et al.*, 2010). In Sri Lanka an outbreak of this disease was recognized in 2006 in parallel with Malaysia, Andaman and Nicobar Islands. During 2006-2007, more than 100 000 cases had been reported in Sri Lanka (Razmy, 2014b).

Since both these pathogens are transmitted by *Aedes* mosquito, it is reasonable to expect similarities of epidemiology of two diseases (Furuya-Kanamori *et al.*, 2016). Due to overlap of clinical picture of both infection, misdiagnosis can lead unexpected outcomes (Furuya-Kanamori *et al.*, 2016). Apart from clinical infection, asymptomatic seroconversion is known to occur in these infections in endemic situations. However, there is paucity of literature on asymptomatic seroconversion and thus seroprevalence. Such knowledge is important to predict epidemics and the disease severity. The aim of this study is to estimate the asymptomatic seroconversion rates of these two infections during years of dengue outbreak.

2. Materials and Methods

Sample selection: In this study venous blood samples were collected from 454 healthy individuals of age ranging from 11 to 78 years from Kandy District, Sri Lanka where 2017 experienced major outbreak of dengue, between the period of 14th January, 2018 to 17th June, 2018. It was confirmed that the study subjects did not have any known history of dengue or Chikungunya fever in the past history through an interviewer-based questionnaire. Investigators perused all medical records of the subjects and encouraged them to recall call febrile illness in the past.

Sample collection: 4mL of venous blood was collected from healthy participants into K₂EDTA tubes. Samples were transported from the site of collection to the laboratory in a cool box maintaining the cold temperature. Then the total WBC count, differential WBC count (WBC/DC), PCV, estimated hemoglobin and total plasma protein were measured from whole blood before centrifugation. Samples were then centrifuged at 1500 rpm for 5 minutes at 5°C. The separated plasma was then stored at -20°C until the serological tests were performed.

Ethics statement: Ethical clearance for this project was obtained from the Institutional Ethical Review Committee, Faculty of Medicine, University of Peradeniya. Written consent was obtained from each participant before obtaining the blood samples along with a questionnaire. Age, gender, residence and records of past infection with dengue or Chikungunya were taken into consideration for this study.

Blood parameters: Whole blood was diluted 1: 20 in WBC diluting fluid and the WBC counts were taken by using the hemocytometer according to the standard protocols. Differential count of WBC was done manually by a Leishmann's stained blood smear. The PCV was calculated

by hematocrit method. Estimated hemoglobin concentration was obtained by using the hematocrit value. Total plasma protein was measured by using refractometer.

Serological tests: The pre-separated plasma samples were tested for Dengue NS1 antigen, Dengue IgM, Dengue IgG, Chikungunya IgM and Chikungunya IgG by using commercially available EUROIMMUN Medizinische Labor diagnostika AG ELISA kit for Dengue NS1 antigen, Dengue IgM, Dengue IgG, Chikungunya IgM and Chikungunya IgG.

Data Analysis: Statistical Analysis of data was performed by using SPSS software version 16.0 (SPSS, Inc., Chicago, IL, USA). *P* value <0.05 was considered statistically significant.

3. Results

Demographic data: Among the 454 healthy subjects, 267 (58.8%) were males and 187 (41.2%) were females. Of them, 68 (15%) belonged to the age group of 11-20, 127 (28%) in 21-30, 115 (25.3%) in 31-40, 70 (15.4%) in 41-50, 51 (11.2%), and 23 (5.1%) in the age group of more than 61 years. The Medical Officer of Health (MOH) divisions of Kandy district where they resided were 35 (7.7%)-Bambaradeniya, 129 (28.4%)-Gangawatakorale, 82 (18.1%)-Udunuwara, 38 (8.4%)-Werellagama, 111 (24.4%)-Yatinuwara and the rest 59 (13%) belonged into other MOH areas including Akurana, Doluwa, Galagedara, Galaha, Gampola, Hatharaliyadda, Kundasale, Menikhinna, and Waththegama.

Blood Parameters: To assess the general health of the subjects WBC/DC, total plasma protein, PCV and haemoglobin were tested for all the participants and also to exclude any infection at the time when the samples collection. Accordingly, the mean values of these blood parameters were calculated. The results indicated that the mean values are within the normal range in every parameter checked (Table 1).

Table 1. Mean values of the laboratory parameters of the participants of the study

Parameter	Normal range	Mean value	Standard Deviation	Standard Error
-----------	--------------	------------	--------------------	----------------

WBC count	(4.00-11.00)× 10 ⁹ /L	7.25 × 10 ⁹ /L	2.28	0.11
DC; Neutrophils	(40-80)%	62%	12.6	0.61
Lymphocytes	(20-40)%	29%	12.6	0.60
Monocytes	(02-10)%	04%	02.6	0.12
Eosinophils	(01-06)%	03%	03.1	0.15
Basophils	>(01-02)%	0.6%	00.8	0.04
PCV	(40-47) %	44%	00.6	0.03
Hemoglobin	(13.0-17.0) g/L	14.5%	02.0	0.09
Total Plasma Protein	(6.4-8.3) g/dL	8.1 g/dL	06.1	0.29

Dengue Specific IgG results: Among the 454 healthy individuals, 287 (63.2%) were positive for Dengue IgG indicating the past infection and 12 (2.6%) showed borderline results as per manufacturer's instructions. Table 2 shows the prevalence of Dengue IgG among gender groups, age categories and the MOH areas of Kandy district. In the age groups, the highest sero-conversion rate (80.4%) was observed in 51-60 year whilst lowest (50%) in the age group 11-20. Out of the MOH areas, highest prevalence (71.4%) of positives were observed in Bambaradeniya and the lowest prevalence (53.1%) in Yatinuwara. There was no much difference observed between the males and females. (Males: 62.9% and females: 63.6%).

Dengue Specific IgM results: Out of the 454 individuals, 18 (4%) were positive for Dengue specific IgM and 19 (4.2%) indicated borderline results as per manufacturer's instructions. According to the age categories the highest percentage of Dengue IgM prevalence (6.3%) was observed in the age group 21-30 and the lowest percentage (1.5%) was observed in the age group 11-20. The highest percentage of IgM prevalence was observed in Werellagama (7.9%) and no one was positive for Dengue IgM in Bambaradeniya. As observed in Dengue IgG prevalence, there was no significant difference of Dengue IgM prevalence with gender (Females: 5.3% and Males 3.0%). The percentages of Dengue IgM categorized according to gender, age groups and MOH areas in Kandy district are indicated in Table 2.

Table 2. Characteristics of residents (N=454) with anti-Dengue immunoglobulins.

Characteristic	No. of positives/ Total no. tested		Positive percentage %	
	IgM	IgG	IgM	IgG
Overall	18/454	287/454	04.0	63.2
Gender				

Female	10/187	119/187	05.3	63.6
Male	08/267	168/267	03.0	62.9
Age Category				
11-20	01/068	34/068	01.5	50.0
21-30	08/127	64/127	06.3	50.4
31-40	03/115	83/115	02.6	72.2
41-50	03/070	49/070	04.3	70.0
51-60	02/051	41/051	03.9	80.4
>61	01/023	16/023	04.3	69.6
MOH Area				
Bambaradeniya	00/035	25/035	00.0	71.4
Gangawatakorale	03/129	85/129	02.3	65.9
Udunuwara	05/082	54/082	06.1	65.8
Werellagama	03/038	26/038	07.9	68.4
Yatinuwara	05/111	59/111	04.5	53.1
Other MOH	02/059	38/059	03.4	64.4

areas in Kandy district

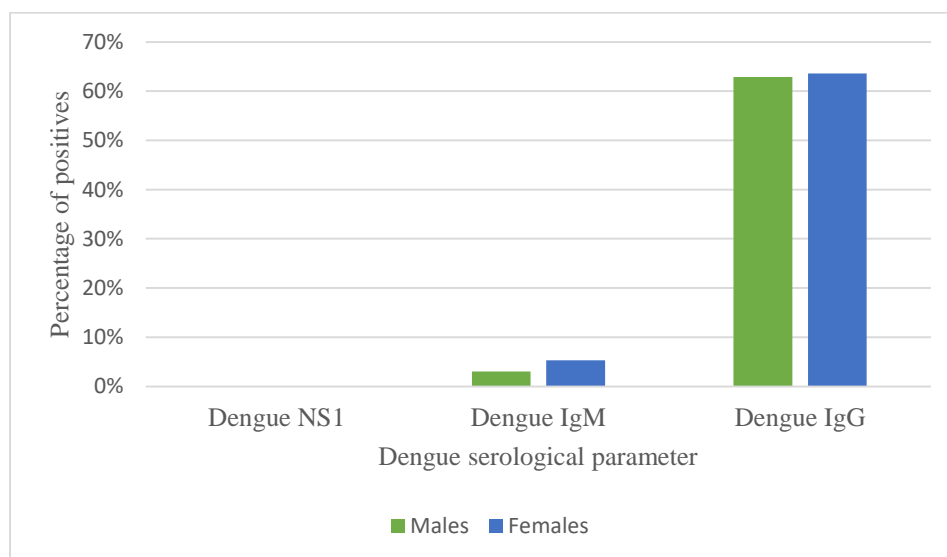


Figure 2.1: Seroprevalence of Dengue antigens and antibodies in healthy individuals. The bar chart indicates the positive percentages (y-axis) relative to the Dengue serological parameters; Dengue NS1 antigen, Dengue IgM antibody and Dengue IgG antibody (x-axis).

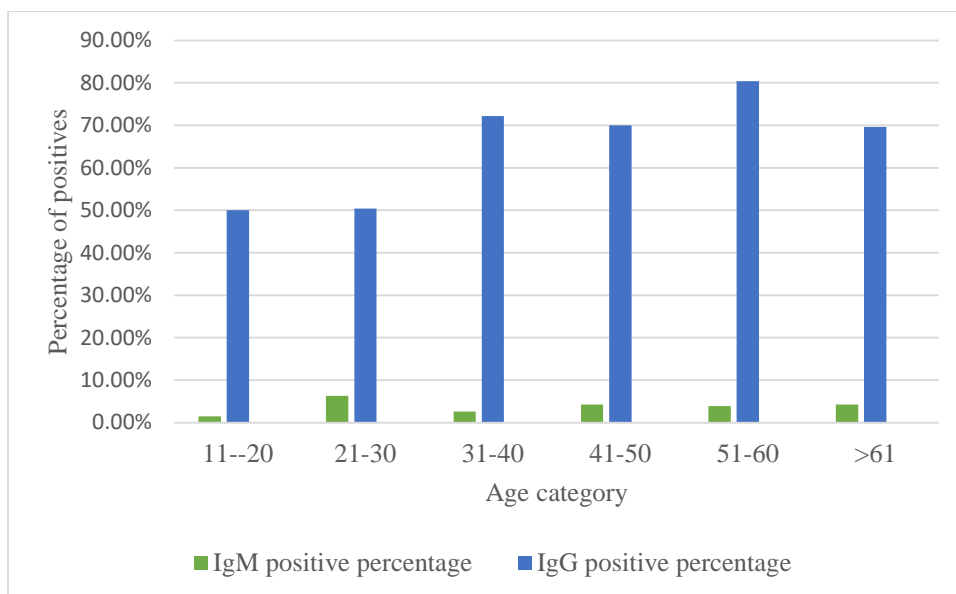


Figure 2.2: Prevalence of Dengue immunoglobulins with age categories. The bar chart represents the positive percentages (y-axis) of Dengue IgM and Dengue IgG antibodies relative to the age categories (x-axis).

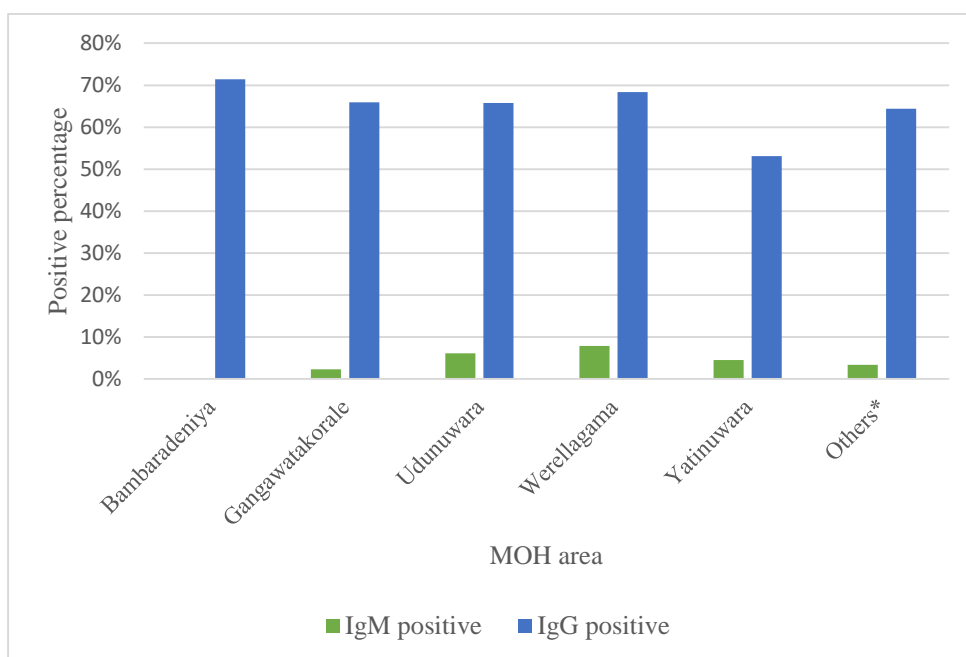


Figure 2.3: Prevalence of Dengue immunoglobulins in MOH areas- Kandy. The bar chart represents the positive percentages of Dengue IgM and IgG antibodies (y-axis) relative to the MOH areas in Kandy district (x-axis)

Chikungunya Specific IgG results: Out of the 454 individuals, 82 (18.1%) were positive and 12 (2.6%) participants showed borderline results. When considering the age categories, the highest positive percentage was shown in the age group >60 which was 26.1%. The lowest

percentage was in the age group 51-60 and it was 5.9%. Gangawatakorale MOH area showed the highest percentage (24%) of Chikungunya IgG prevalence and Uduwara had the lowest exposure (12.2%). There was no significant difference between males and females in IgG prevalence (Females: 16.6% and Males: 19.1%) The percentages of Chikungunya IgG with respect to gender, age and the MOH areas of Kandy district are indicated in Table 3.

Chikungunya Specific IgM results: In the ELISA performed for the detection of Chikungunya IgM for the participants of this study 6 indicated positive and 10 indicated the borderline results (Table 1.2). The positives of this test were in between the age range of 11-40 and the highest number of them (4/6) were from Gangawatakorale MOH area. Table 3 indicates this data in detail.

Table 3. Characteristics of residents (N=454) with anti-Chikungunya immunoglobulins.

Characteristic	No. of positives/ Total no. tested		Positive percentage %	
	IgM	IgG	IgM	IgG
Overall	06/454	82/454	01.3	18.1
Gender				
Female	02/187	31/187	01.5	16.6
Male	04/267	51/267	01.1	19.1
Age Category				
11-20	02/068	08/068	02.9	11.8
21-30	03/127	24/127	02.4	18.9
31-40	01/115	24/115	00.9	20.9
41-50	00/070	17/070	00.0	24.3
51-60	00/051	03/051	00.0	5.9
>61	00/023	06/023	00.0	26.1
MOH Area				
Bambaradeniya	00/035	08/035	00.0	22.8

Gangawatakorale	04/129	31/129	03.1	24.0
Udunuwara	01/082	10/082	01.2	12.2
Werellagama	00/038	07/038	00.0	18.4
Yatinuwara	00/111	15/111	00.0	13.5
Other MOH areas in Kandy district	01/059	11/059	01.7	18.6

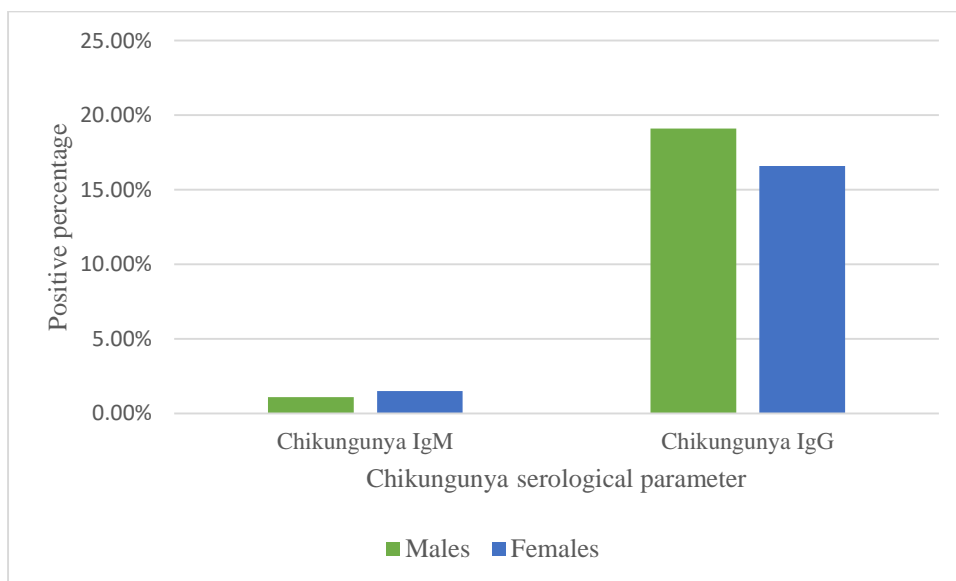


Figure 3.1: Seroprevalence of Chikungunya antibodies in healthy individuals. The bar chart indicates the positive percentages of males and females (y-axis) relative to Chikungunya IgM and IgG antibodies (x-axis).

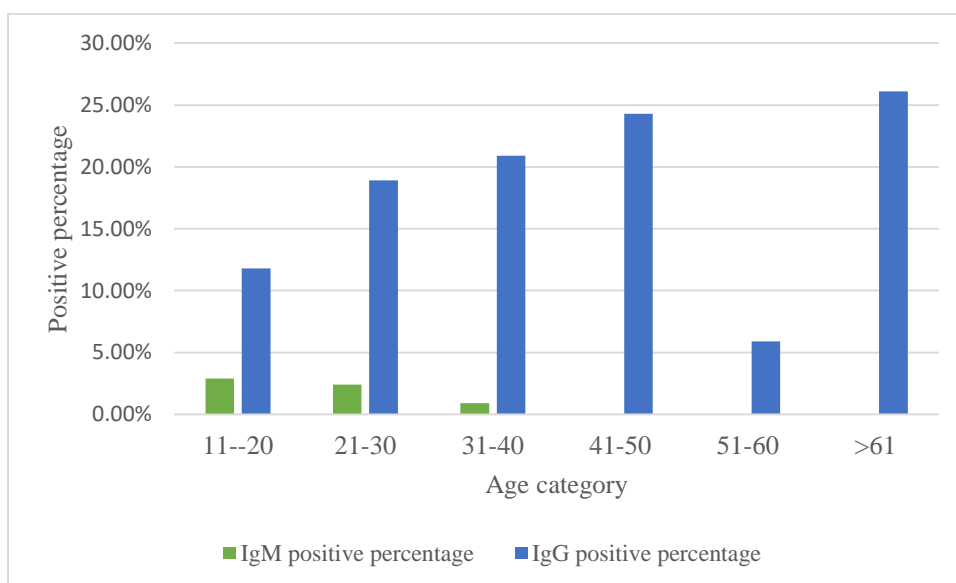


Figure 3.2: Prevalence of Chikungunya immunoglobulins with age categories. The bar chart indicates the positive percentages of Chikungunya IgM and IgG antibodies (Y-axis), relative to the age categories (x-axis).

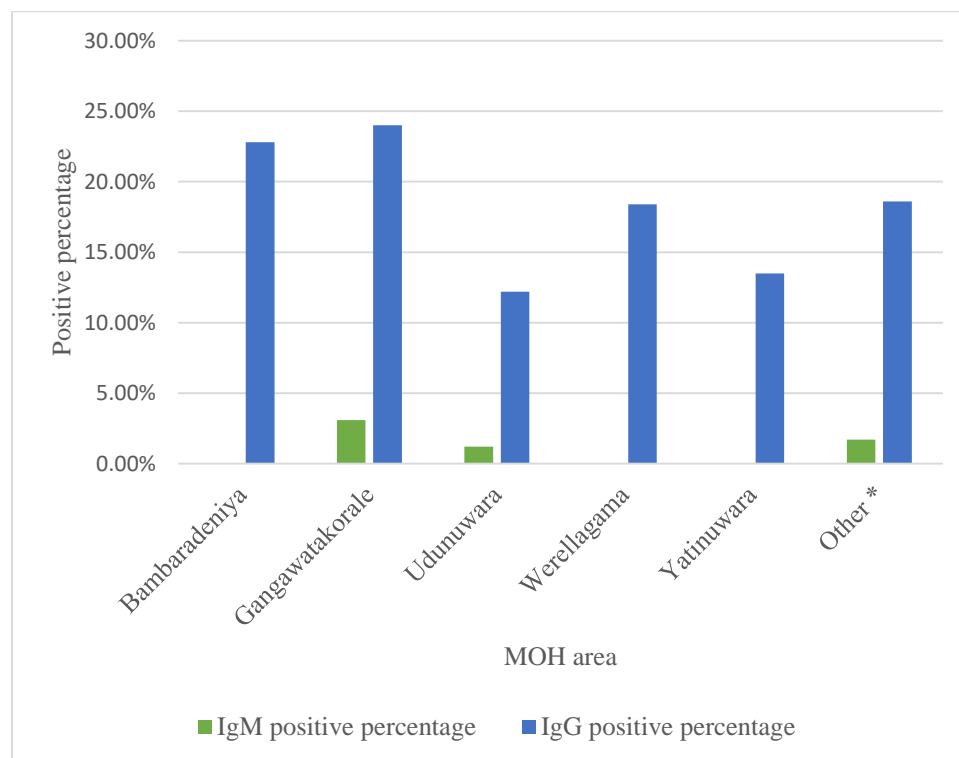


Figure 3.3: Prevalence of Chikungunya immunoglobulins in MOH areas- Kandy. The bar chart represents the positive percentages of Chikungunya IgM and IgG antibodies (y-axis) related to the MOH areas in Kandy (x-axis).

Prevalence of anti-CHIKV and anti-DENV antibodies together: From the data obtained on the prevalence of Dengue and Chikungunya antibodies, percentages of dual antibody prevalence were calculated in order to determine the exposure to both diseases. None of the participants were positive for IgM antibodies together. However, of the 454 individuals, 61(13.43%) were positive for both Dengue IgG and Chikungunya IgG. The highest percentage of this dual positiveness in IgG was observed in the age group 31-40 which is 34.42% (21/61) and the lowest percentage was in the two ends of the age categorization which are 11-20 and >61 age groups (8.19%). When considering the MOH areas, Gangawatakorale showed the highest percentage (36.06%). Among the 287 Dengue IgG positive individuals, 21.25% were positive to Chikungunya (61/287) and in contrast, from the 82 individuals who were positive to Chikungunya, 74.39% were positive to Dengue (61/82). Table 4 indicates further details on

evidence of dual anti-DENV and anti-CHIKV antibody prevalence according to gender, age group and MOH areas in Kandy district.

Table 4. Evidence of dual anti-CHIKV and anti-DENV antibodies

Characteristic	No. of individuals positive with both Dengue IgG and Chikungunya IgG/ Total no. of positives
Overall	61/454 (13.43%)
Gender: Females	24/61 (39.34%)
Males	37/61 (60.65%)
Age: 11-20	05/61 (08.19%)
21-30	14/61 (22.95%)
31-40	21/61 (34.42%)
41-50	13/61 (21.31%)
51-60	03/61 (04.91%)
>61	05/61 (08.19%)
MOH area: Bambaradeniya	08/61 (13.11%)
Gangawatakorale	22/61 (36.06%)
Udunuwara	09/61 (14.75%)
Werellagama	06/61 (09.83%)
Yatinuwara	06/61 (09.83%)
Rest of the MOH areas in Kandy district	10/61 (16.39%)

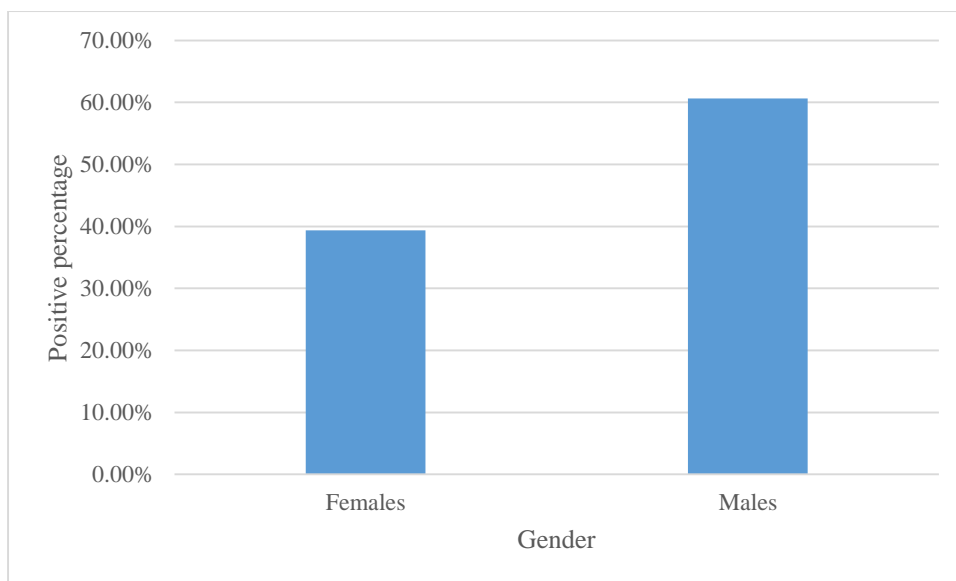


Figure 4.1: Prevalence of dual anti-CHIKV and anti-DENV antibodies with gender. The bar chart represents the positive percentages of both the Chikungunya and Dengue IgG antibodies (y-axis) relative to the gender (x-axis).

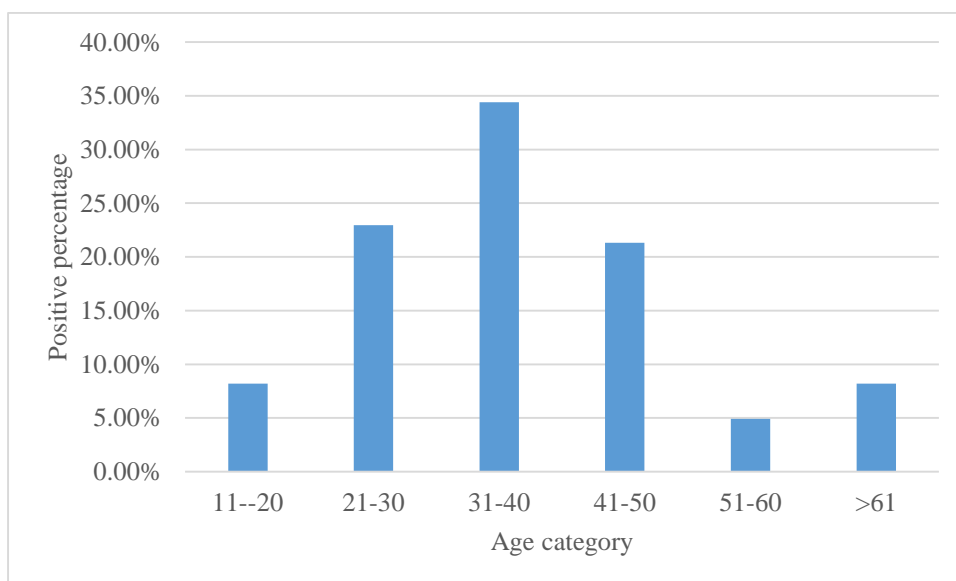


Figure 4.2: Prevalence of dual anti-CHIKV and anti-DENV antibodies with age categories. The bar chart represents the positive percentages of both the Chikungunya and Dengue IgG antibodies (y-axis) relative to the age categories (x-axis).

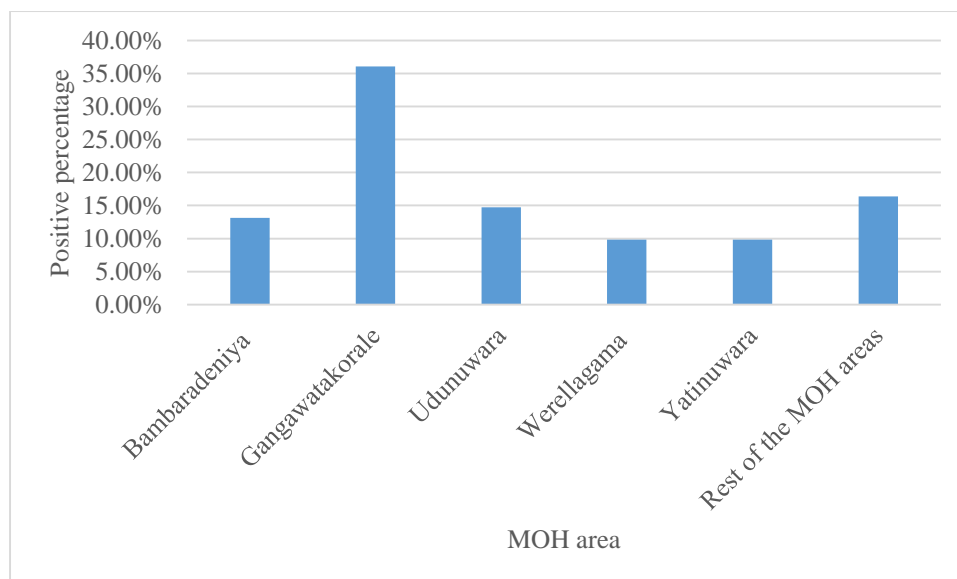


Figure 4.3: Prevalence of dual anti-CHIKV and anti-DENV antibodies with MOH areas in Kandy district. The bar chart represents the positive percentages of both the Chikungunya and Dengue IgG antibodies (y-axis) relative to the MOH areas in Kandy district (x-axis).

4. Discussion

We recruited 454 healthy individuals of Kandy district, Sri Lanka who did not have any history of hospitalization due to dengue and Chikungunya or any other infection before our study. We found 63.2% of the healthy individuals were seropositive for dengue IgG which indicates past asymptomatic exposure to dengue virus and 4.0% were seropositive for dengue IgM antibodies indicating recent asymptomatic exposure. Similarly, it was revealed that among the participants 18.1% were positive for Chikungunya IgG indicating the past exposure to the virus and only 1.3% were positive for Chikungunya IgM indicating recent exposure.

Dengue and Chikungunya have caused a significant public health impact globally, including Sri Lanka. When considering the environment associated risk factors for occurrence of these two diseases, presence of suitable breeding sites for the primary vector, *Aedes aegypti*, within perimeters of residential areas had an association with dengue seropositivity. High vegetation density, elevation above sea level and presence of animals have been associated with Chikungunya seropositivity (Kajeguka *et al.*, 2017). Sri Lanka being a tropical country, has a favorable environment for both these diseases. In order to predict the disease severity and the future outbreaks, seroprevalence studies are important. Although there is adequate information about the patients who had been hospitalized due to dengue and Chikungunya infections,

limited amount of data is available on the seroprevalence of these diseases in the healthy individuals. It would be useful in planning the control strategies in advance.

All four serotypes of dengue have been circulating in Sri Lanka for several decades. In 2006, 2009 and 2010 dengue serotype 1 had been responsible for outbreaks of DF/DHF in Sri Lanka (P. D.N.N. Sirisena and Noordeen, 2014). But in 2017 a huge outbreak of Dengue occurred in Sri Lanka due to shifting serotype of the dengue virus from serotype 1 to 2 (Dengue *et al.*, 2018). Since the samples for our study were collected in 2018, after the outbreak of 2017, there is a possibility that active transmission of serotype 2 as suggested by positives Dengue IgM. However negative Dengue NS1 in all sample exclude active disease. A study done in Colombo district in Sri Lanka in a randomly selected children of less than 12 years revealed that 52% of the study cohort was positive for Dengue IgG (Tissera *et al.*, 2010). This result is comparable our finding that 50% of the individuals were in the age group of 11-20 years. The seroconversion rate of 80.4% is highest in the age group of 51-60 having high risk of secondary dengue infection, however, does it happen clinically is doubtful. In secondary dengue infection the virus bound immune complexes are recognized by the Fcγ receptors which facilitate the virus entry and replication in the target immune cells (Katzelnick *et al.*, 2017). Among the MOH areas of Kandy district, Bambaradeniya MOH area had the highest percentage of Dengue IgG prevalence. But in contrast this area did not have anyone positive for Dengue IgM probably due to cessation of active transmission.

Compared to Dengue IgG prevalence, Chikungunya IgG prevalence is significantly low. Similar pattern is observed in between the IgM antibodies of both the diseases as well. Unlike Dengue, in Chikungunya reinfection is unlikely due to lifelong immunity (LAOPRASOPWATTANA *et al.*, 2016). A previous study in Sri Lanka to study prevalence of Chikungunya during a Dengue outbreak in 2006 revealed absence of Chikungunya antibodies in Kandy district (Wijesinghe *et al.*, 2009). However, we found seroconversion against Chikungunya with IgM and IgG antibodies highest in Gangawatakorale MOH area. This area is more urban and suggests presence of high density of infected mosquitos. After the outbreak of Chikungunya in the Central province of Sri Lanka in 2006, a study had been conducted in a hamlet belonging to Kandy district of the same province. During this study it had been revealed that 51% of the people had symptomatic Chikungunya and the peak incidence observed in the age group 40-50 years (Abeyrathna *et al.*, 2012).

Several seroprevalence studies of both infections had been done in many countries in healthy individuals. However, comparison is difficult due to the differences of the age groups, study population, method of antibody detection and many other reasons. However, in Singapore, among the residents of age 18-79 years, the seroprevalence rate of Chikungunya antibodies were 1.9% which is much less than that of the current study which indicated 18.1% positivity for Chikungunya IgG antibodies. In the same study highest seroprevalence was observed in the elderly of age group between 70-79 years and significant difference had been observed in between males and females (Ang *et al.*, 2017). In Thailand, among the individuals of age ranging from 6 months to 60 years, 26.8% were seropositive for CHIKV, 79.2% were seropositive for DENV and 24.4% had shown dual positivity to both antibodies. In the same study, seroprevalence of DENV antibodies were three times that of Chikungunya which agrees with the current study (Vongpunsawad *et al.*, 2017). In Pakistan (District Lahore), 2012, seroprevalence of Dengue in healthy individuals of age above 15 years was 67.2% in 2012 (Hafeez *et al.*, 2017). A study done using the residents of Qatar, it had been revealing that Asian Nationals had higher adjusted odds of being seropositive for anti-DENV and anti-CHIKV antibodies compared to nationals of Middle East, North Africa and Qatar. This study has also shown that anti-DENV antibody seropositive rate was higher among the anti-CHIKV antibody seropositive individuals comparable with the present study in Sri Lanka, suggesting co-circulation of these viruses (Humphrey *et al.*, 2019).

Including Sri Lanka (Kularatne, 2009), evidence of dengue and Chikungunya co-infection have been found in many countries like Angola, Gabon, India, Madagascar, Malaysia, Myanmar, Nigeria, Saint Martin, Singapore, Tanzania, Thailand and Yemen (Furuya-Kanamori *et al.*, 2016). In Sri Lanka, the first case report of both Dengue and Chikungunya co-infection confirmed with molecular assays was reported in 2006 and during 2006-2007, 3 cases had been reported in Kandy-Sri Lanka.(Hapaurachchi *et al.*, 2008)(Kularatne *et al.* 2009). When considering globally, data on co-infection of these diseases is relatively low. However according to some comparative studies performed to check biological and clinical symptoms between mono infected and dual infected patients, no severe manifestations had been observed in mixed infections (Kularatne, 2009). This suggests that the two viruses do not exert additive effects (Hapaurachchi *et al.*, 2008). In the current study, seroprevalence of dual antibodies for anti-DENV and anti-CHIKV was calculated. The calculated percentage of the dual antibody prevalence was less than that of a similar study performed in Thailand (Vongpunsawad *et al.*, 2017). The current study also has revealed that 21.25% of the Dengue IgG positive healthy

individuals are positive for Chikungunya IgG and 74.39% of Chikungunya IgG positive healthy individuals were positive for Dengue IgG. According to these results, it can be expected that there can be a relationship between Chikungunya and Dengue virus antibodies where exposure to Chikungunya makes it more vulnerable to Dengue but the vice versa is not.

Having accurate and reliable seroprevalence data would be much useful in predicting the disease burden and for the public health implications. In case of Dengue, it is much complicated due to four serotypes and reinfection involving different serotype cause DHF due to Antibody Dependent Enhancement (ADE)" (Flipse *et al.*, 2016). Therefore, the current study is much useful in assessing the risk of severe dengue outbreak. On the contrary Chikungunya has one serotype giving immunity against future infections. However, renewing the population with added new generations, outbreak can be predicted due to its asymptomatic endemicity.

Abbreviations

K₂EDTA- Di Potassium Ethylene Diammine Tetra Aciticacid.

DF- Dengue fever

DSS- Dengue Shock Syndrome

DHF- Dengue Hemorrhagic fever

WBC- White Blood Cells

PCV- Packed Cell Volume

PCR – Polymerase Chain Reaction

WBC- White Blood Cells

DC- Differential Count

RT-PCR – Real time polymerase chain reaction

CHIKV- Chikungunya virus

DENV- Dengue virus

MOH- medical Officer of Health

Author contribution

RPVJR and SAMK did conceptualization and LEADAE and TNAM collected data. LEADAE, SAMK and SAMDA analyzed the data and drafted the paper. All authors did intellectual contribution and involved in final version of the manuscript.

3. References

- Abeyrathna, A., Weerasinghe, S. C., Dharmarathne, S., Kularatne, S. A. M., Wickramasinghe, S., Gihan, C. and Jayalath, T. (2012) ‘Epidemiology, Clinical Manifestations, and Long-Term Outcomes of a Major Outbreak of Chikungunya in a Hamlet in Sri Lanka, in 2007: A Longitudinal Cohort Study’, *Journal of Tropical Medicine*, 2012(October 2006), pp. 1–6. doi: 10.1155/2012/639178.
- Ang, L. W., Kam, Y. W., Lin, C., Krishnan, P. U., Tay, J., Ng, L. C., James, L., Lee, V. J. M., Goh, K. T., Ng, L. F. P. and Lin, R. T. P. (2017) ‘Seroprevalence of antibodies against chikungunya virus in Singapore resident adult population’, *PLoS Neglected Tropical Diseases*, 11(12), pp. 1–13. doi: 10.1371/journal.pntd.0006163.
- De Azeredo, E. L., Monteiro, R. Q. and De-Oliveira Pinto, L. M. (2015) ‘Thrombocytopenia in dengue: Interrelationship between virus and the imbalance between coagulation and fibrinolysis and inflammatory mediators’, *Mediators of Inflammation*, 2015. doi: 10.1155/2015/313842.
- Balmaseda, A., Hammond, S. N., Pérez, L., Tellez, Y., Saborío, I., Mercado, J. C., Cuadra, R., Rocha, J., Pérez, M. A., Silva, S., Rocha, C. and Harris, E. (2006) ‘Serotype-Specific Differences in Clinical Manifestations of Dengue’, 74(3), pp. 449–456. Available at: <http://www.ajtmh.org/docserver/fulltext/14761645/74/3/0740449.pdf?expires=1547712736&id=id&acname=guest&checksum=F96E4220064DD2EC428344BB7923CD1F>.
- Dengue, N., Unit, C., Tv, H., Derana, T. and Tv, V. (2018) ‘Dengue DREF Final Report’, (May).
- Flipse, J., Diosa-Toro, M. A., Hoornweg, T. E., Van De Pol, D. P. I., Urcuqui-Inchima, S.

and Smit, J. M. (2016) ‘Antibody-Dependent Enhancement of Dengue Virus Infection in Primary Human Macrophages; Balancing Higher Fusion against Antiviral Responses’, *Scientific Reports*. Nature Publishing Group, 6(June), pp. 1–13. doi: 10.1038/srep29201.

Furuya-Kanamori, L., Liang, S., Milinovich, G., Soares Magalhaes, R. J., Clements, A. C. A., Hu, W., Brasil, P., Frentiu, F. D., Dunning, R. and Yakob, L. (2016) ‘Co-distribution and co-infection of chikungunya and dengue viruses’, *BMC Infectious Diseases*, 16(1), p. 84. doi: 10.1186/s12879-016-1417-2.

Hafeez, S., Nazeer, H., Zahra, U., Nabeel, H. and Mahmood, S. (2017) ‘Corrigendum to “Seroprevalence of Dengue IgG Antibodies among Healthy Adult Population in Lahore, Pakistan”’, *International Scholarly Research Notices*, 2017, pp. 1–1. doi: 10.1155/2017/6138754.

Hapaurachchi, H., Bandara, K., Hapugoda, M., Williams, S. and Abeyewickreme, W. (2008) ‘Laboratory confirmation of dengue and chikungunya co-infection’, *Ceylon Medical Journal*, 53(3), p. 104. doi: 10.4038/cmj.v53i3.252.

Hapuarachchi, H. C., Bandara, K. B. A. T., Sumanadasa, S. D. M., Hapugoda, M. D., Lai, Y.-L., Lee, K.-S., Tan, L.-K., Lin, R. T. P., Ng, L. F. P., Bucht, G., Abeyewickreme, W. and Ng, L.-C. (2010) ‘Re-emergence of Chikungunya virus in South-east Asia: virological evidence from Sri Lanka and Singapore’, *Journal of General Virology*, 91(4), pp. 1067–1076. doi: 10.1099/vir.0.015743-0.

Humphrey, J. M., Al-Absi, E. S., Hamdan, M. M., Okasha, S. S., Al-Trmanini, D. M., El-Dous, H. G., Dargham, S. R., Schieffelin, J., Abu-Raddad, L. J. and Nasrallah, G. K. (2019) ‘Dengue and chikungunya seroprevalence among Qatari nationals and immigrants residing in Qatar’, *PLoS ONE*, 14(1), pp. 1–13. doi: 10.1371/journal.pone.0211574.

Kajeguka, D. C., Msonga, M., Schiøler, K. L., Meyrowitsch, D. W., Syrianou, P., Tenu, F., Alifrangis, M., Mosha, F. W. and Kavishe, R. A. (2017) ‘Individual and environmental risk factors for dengue and chikungunya seropositivity in North-Eastern Tanzania’, *Infection, Disease and Health*. Elsevier Ltd, 22(2), pp. 65–76. doi: 10.1016/j.idh.2017.04.005.

Kalayanarooj, S. (2011) ‘Clinical Manifestations and Management of Dengue/DHF/DSS’, *Tropical Medicine and Health*, 39(4SUPPLEMENT), pp. S83–S87. doi: 10.2149/tmh.2011-S10.

Katzelnick, L. C., Gresh, L., Halloran, M. E., Mercado, J. C., Kuan, G., Gordon, A., Balmaseda, A. and Harris, E. (2017) ‘Antibody-dependent enhancement of severe dengue disease in humans’, *Science*, 358(6365), pp. 929–932. doi: 10.1126/science.aan6836.

Ku, K. B., Balasuriya, U. B. R., Tsai, Y.-L., Chou, P.-H., Chang, H.-F. G., Lee, P.-Y. A., Wang, H.-T. T., Go, Y. Y., Liu, Y.-L., Nam, S., Kularatne, S. A. M. and Rajapakse, R. P. V. J. (2016) ‘A Pan-Dengue Virus Reverse Transcription-Insulated Isothermal PCR Assay Intended for Point-of-Need Diagnosis of Dengue Virus Infection by Use of the POKKIT Nucleic Acid Analyzer’, *Journal of Clinical Microbiology*, 54(6), pp. 1528–1535. doi: 10.1128/jcm.00225-16.

Kularatne, S. A. M., Gawarammana, I. B. and Kumarasiri, P. R. V (2009) ‘Epidemiology, clinical features, laboratory investigations and early diagnosis of dengue fever in adults: a descriptive study in Sri Lanka. DB - IMSEAR DP - <http://www.globalhealthlibrary.net>’, (October 2015).

Kularatne, S. A. M., Gihan, M. C., Weerasinghe, S. C. and Gunasena, S. (2009) ‘Concurrent outbreaks of Chikungunya and Dengue fever in Kandy, Sri Lanka, 2006-07: a comparative analysis of clinical and laboratory features’, *Postgraduate Medical Journal*, 85(1005), pp. 342–346. doi: 10.1136/pgmj.2007.066746.

LAOPRASOPWATTANA, K., SUNTHARASAJ, T., PETMANEE, P., SUDDEAUGRAI, O. and GEATER, A. (2016) ‘Chikungunya and dengue virus infections during pregnancy: seroprevalence, seroincidence and maternal–fetal transmission, southern Thailand, 2009–2010’, *Epidemiology and Infection*, 144(02), pp. 381–388. doi: 10.1017/S0950268815001065.

Mahendradas, P. (2016) ‘Chikungunya’, in *Intraocular Inflammation*. Berlin, Heidelberg: Springer Berlin Heidelberg, pp. 1247–1251. doi: 10.1007/978-3-540-75387-2_119.

Mahendradas, P., Avadhani, K. and Shetty, R. (2013) ‘Chikungunya and the eye: a review’, *Journal of Ophthalmic Inflammation and Infection*, 3(1), p. 35. doi: 10.1186/1869-5760-3-35.

Mowatt, L. and Jackson, S. T. (2014) ‘Chikungunya in the Caribbean: An Epidemic in the Making’, *Infectious Diseases and Therapy*, 3(2), pp. 63–68. doi: 10.1007/s40121-014-0043-9.

Pulmanusahakul, R., Roytrakul, S., Auewarakul, P. and Smith, D. R. (2011) ‘Chikungunya

in Southeast Asia: Understanding the emergence and finding solutions’, *International Journal of Infectious Diseases*. doi: 10.1016/j.ijid.2011.06.002.

Razmy, A. M. (2014a) ‘Clinical features of chikungunya infection in Sri Lanka’, *Asian Pacific Journal of Tropical Disease*, 4(2), pp. 131–134. doi: 10.1016/S2222-1808(14)60329-7.

Razmy, A. M. (2014b) ‘Clinical features of chikungunya infection in Sri Lanka’, *Asian Pacific Journal of Tropical Disease*, 4(2), pp. 131–134. doi: 10.1016/S2222-1808(14)60329-7.

Senaratne, T. N. and Noordeen, F. (2014) ‘Diagnosis of dengue in Sri Lanka: improvements to the existing state of the art in the island’, *Transactions of the Royal Society of Tropical Medicine and Hygiene*, 108(11), pp. 685–691. doi: 10.1093/trstmh/tru131.

Sirisena, P. D. N. N. and Noordeen, F. (2014) ‘Evolution of dengue in Sri Lanka—changes in the virus, vector, and climate’, *International Journal of Infectious Diseases*. International Society for Infectious Diseases, 19(1), pp. 6–12. doi: 10.1016/j.ijid.2013.10.012.

Sirisena, P. D. N. N. and Noordeen, F. (2014) ‘Evolution of dengue in Sri Lanka—changes in the virus, vector, and climate’, *International Journal of Infectious Diseases*, 19, pp. 6–12. doi: 10.1016/j.ijid.2013.10.012.

Tissera, H. A., De Silva, A. D., Abeysinghe, M. R. N., de Silva, A. M., Palihawadana, P., Gunasena, S., Tam, C. C., Gamage, T. M., De Silva, T., Rajapaksa, L. C., Amarasinghe, A., Letson, G. W. and Margolis, H. S. (2010) ‘Dengue Surveillance in Colombo, Sri Lanka: Baseline seroprevalence among children’, *Procedia in Vaccinology*, 2(1), pp. 107–110. doi: 10.1016/j.provac.2010.03.020.

Tissera, H., Amarasinghe, A., Gunasena, S., DeSilva, A. D., Yee, L. W., Sessions, O., Muthukuda, C., Palihawadana, P., Lohr, W., Byass, P., Gubler, D. J. and Wilder-Smith, A. (2016) ‘Laboratory-Enhanced Dengue Sentinel Surveillance in Colombo District, Sri Lanka: 2012-2014’, *PLOS Neglected Tropical Diseases*. Edited by A. Bingham, 10(2), p. e0004477. doi: 10.1371/journal.pntd.0004477.

Vongpunsawad, S., Intharasongkroh, D., Thongmee, T. and Poovorawan, Y. (2017) ‘Seroprevalence of antibodies to dengue and chikungunya viruses in Thailand’, *PLoS ONE*, 12(6), pp. 1–11. doi: 10.1371/journal.pone.0180560.

Wagenaar, J. F. P., Mairuhu, A. T. A. and van Gorp, E. C. M. (2004) ‘Genetic influences on dengue virus infections’, *Dengue Bulletin*. doi: 10.1002/celc.201500568.

Wijesinghe, S., Kularatne, S. A. M., Drosten, C., Panning, M., Wichmann, D., Grywna, K. and Annan, A. (2009) ‘No evidence of chikungunya virus and antibodies shortly before the outbreak on Sri Lanka’, *Medical Microbiology and Immunology*, 198(2), pp. 103–106. doi: 10.1007/s00430-009-0110-0.

Wijewickrama, A., Fernando, S., Jayarathne, G. S. B., Asela, P., Abeynaike, S. A., Gomes, L., Jeewandara, C., Tippalagama, R., Dilani, D., Rajendran, A., Abeyesekere, R., Goonawardhana, S., Silva, A. D. De, Malavige, G. N., Lanka, S., Lanka, S. and Lanka, S. (2018) ‘Emergence of a Dengue virus serotype 2 causing the largest ever dengue epidemic in Sri Lanka’, *Unpublished*, 94(0). doi: 10.1101/329318.

Zhou, Z., Xiao, D., Wang, H., Jing, C., Wu, J., Ou, M., Huang, S., Zeng, C., Wen, Z., Han, Y., Yang, G., Zou, X., Guo, C., Liu, D., Zeng, E. Y., Ye, X. and Liu, Y. (2017) ‘Global Epidemiology of Dengue Outbreaks in 1990–2015: A Systematic Review and Meta-Analysis’, *Frontiers in Cellular and Infection Microbiology*, 7(July), pp. 1–11. doi: 10.3389/fcimb.2017.00317.

