

1 Outcome of community onset severe sepsis, Sepsis-3 sepsis,  
2 and bacteremia in Sweden – a prospective population-based  
3 study.

4

5

6

7

8 Lars Ljungström<sup>1,2\*</sup>, Rune Andersson<sup>1,3,4</sup>, Gunnar Jacobsson<sup>1,2,3</sup>

9

10 <sup>1</sup>Department of Infectious Diseases, Institute of Biomedicine, Sahlgrenska Academy,  
11 Gothenburg University, Gothenburg, Sweden

12 <sup>2</sup>Region Västra Götaland, Skaraborg Hospital, Department of Infectious Diseases, Skövde,  
13 Sweden

14 <sup>3</sup>CARe – Center for Antibiotic Resistance Research, Gothenburg University, Gothenburg,  
15 Sweden

16 <sup>4</sup>Department of Clinical Microbiology, Sahlgrenska University Hospital, Gothenburg,  
17 Sweden

18

19

20 \* Corresponding author

21 Email address: [lars.ljungstrom@vgregion.se](mailto:lars.ljungstrom@vgregion.se) (LL)

22

23 **Corresponding author:** Lars Ljungström, Department of Infectious Diseases, Skaraborg  
24 Hospital Skövde, 541 85 Skövde, Sweden. [lars.ljungstrom@vgregion.se](mailto:lars.ljungstrom@vgregion.se)

25 **Conflict of interest:** All authors declare no conflict of interest.

26 **Funding:** The project received funding from the Research Fund at Skaraborg Hospital,  
27 Skövde, Sweden; the Skaraborg Institute for Research and Development and from The  
28 Healthcare sub-committee, Region Västra Götaland.

29

30

## 31 Abstract

## 32 Background

33 Register-based studies are common in sepsis epidemiology. Chart review is considered gold  
34 standard but is time consuming. This is one of few such studies.

## 35 Methods

36 In a 9-month prospective and consecutive study conducted in 2011-12, chart review was used  
37 to investigate outcomes in patients with severe sepsis, Sepsis-3 sepsis, and bacteremia in a  
38 population of 256,700 inhabitants in southwest Sweden. All adult patients aged  $\geq 18$  years  
39 admitted to hospital and given intravenous antibiotic treatment within 48 hours were evaluated,  
40  $N=2,196$ . Cohort mortality was calculated up to 10 years after admission.

## 41 Results

42 Among 2,072 adults with any infection, 429 patients had severe sepsis of which 59 had septic  
43 shock. The 28-day case fatality rate (CFR) was 25%, 41% in those with septic shock. Sepsis-3  
44 sepsis was diagnosed in 1,299 patients. The 28-day CFR was 12%. Among the 1,299, 393 also  
45 had severe sepsis. In 906 patients with Sepsis-3 sepsis but not severe sepsis, the 28-day CFR  
46 was 6%. For both sepsis definitions, the 28-day CFR increased 10-fold between the youngest  
47 and the oldest age groups. Age  $>75$  years, and renal dysfunction were the strongest independent  
48 risk factors for 28-day case fatality. Bacteremia occurred in 283/2,072 (13%) patients. The 28-  
49 day CFR was 13% overall, 25% in severe sepsis and 4% in non-severe sepsis. Even 10 years  
50 after admission, the mortality rate was higher in sepsis patients by either definition.

## 51 Conclusions

52 The 28-day case fatality rate (CFR) in patients with Sepsis-3 sepsis, 12%, is the result of a large  
53 group of patients with a low 28-day CFR, 6%, camouflaging a group with severe sepsis and a  
54 high 28-day CFR, 25%. Age >75 years is an independent risk factor for case fatality. The 28-  
55 day CFR in patients with bacteremia is a function of severe sepsis, not bacteremia *per se*. Even  
56 after ten years, mortality is increased in both sepsis groups.

57 Key words: bacteremia, epidemiology, community onset sepsis, Sepsis-2, Sepsis-3, severe  
58 sepsis, respiratory, infection.

59

## 60 Introduction

61 In an American consensus meeting in 1991, sepsis (Sepsis-1) was defined as the presence of  
62 two of four criteria for the systemic inflammatory reaction syndrome (SIRS), if caused by an  
63 infection (1). Sepsis with organ dysfunction was called “severe sepsis”, but organ dysfunction  
64 was not clearly defined. A second international consensus meeting on sepsis definitions in 2001  
65 (Sepsis-2), expanded the criteria for sepsis, but could not present unanimous criteria for severe  
66 sepsis either (2). Thus, similar yet different criteria for organ dysfunction in severe sepsis have  
67 been used in studies up until 2016, and in some cases later. In 2011, a work group within the  
68 Swedish Infectious Disease Society published criteria for severe sepsis and septic shock that  
69 were used in this study (3) ([S 1 Table](#)). These are similar to the criteria presented in 2012 by  
70 the Surviving Sepsis Campaign (4). The main difference from mostly used criteria for organ  
71 dysfunction in sepsis studies is the stricter criteria for respiratory dysfunction. In the Swedish  
72 definition, fulfilling two out of four SIRS criteria could be replaced by “documented infection”.  
73 The Sepsis-2 definition of septic shock in adults was severe sepsis together with persistent  
74 arterial hypotension. Hypotension was defined as “systolic arterial pressure below 90 mmHg,  
75 mean arterial pressure lower than 60, or a reduction in systolic blood pressure of more than  
76 40 mmHg from baseline, despite adequate volume resuscitation” (2).

77 In 2016 a new sepsis definition, commonly called Sepsis-3, was launched. Sepsis is now defined  
78 as “organ dysfunction caused by a dysregulated host response to infection” (5). The criterion  
79 for sepsis according to Sepsis-3 is a 2-point increase from a patient’s base line values in the  
80 Sequential Organ Failure Assessment (SOFA) score. At the same time, septic shock was  
81 redefined. The clinical criterion in adult patients is now “hypotension requiring vasopressor  
82 therapy to maintain a mean arterial blood pressure (MAP) of 65 mm Hg or greater and having  
83 a serum lactate level greater than 2 mmol/L after adequate fluid resuscitation” (6).

84 For studies on sepsis epidemiology, chart review is considered gold standard (7). Chart reviews  
85 are time consuming and are rarely used for whole populations. In this 9-month prospective  
86 study in 2011-2012, chart review was used to investigate the incidence of community onset  
87 severe sepsis in a well-defined population of 256,700 inhabitants in southwest Sweden. The  
88 incidence was 279/100,000/year. After the new Sepsis-3 definition was published in 2016, the  
89 Sepsis-3 criteria were retrospectively applied to this cohort. The incidence of community onset  
90 Sepsis-3 sepsis was 846/100,000/year. The differing incidences were mainly due to the milder  
91 criteria for respiratory dysfunction used in Sepsis-3 (8). In Sepsis-3 the criterion for lung  
92 dysfunction corresponds to a saturation level of  $\leq 91\%$  in otherwise healthy patients, but in  
93 severe sepsis it is  $\leq 86\%$  or  $\leq 78\%$  if the lung is the focus of the infection.

94 Both severe sepsis and Sepsis-3 sepsis are associated with high case-fatality rates (CFR)  
95 ranging between 5-55% (9-11). The large variation can be explained by differences in methods  
96 of data abstraction, populations studied, criteria used, definitions of infection, and application  
97 of these variables (12).

98 Bacteremia, often referred to as “blood stream infection”, is highly associated with sepsis,  
99 having a CFR of approximately 10-15% (13, 14). Bacteremia studies are mostly retrospective,  
100 performed on laboratory databases of positive blood cultures, and can therefore be said to  
101 represent bacteremia in whole populations. On the other hand, data on organ dysfunction is  
102 generally not available, so the relationship between CFR and organ dysfunction has not been  
103 evaluated comprehensively.

104 Among factors affecting outcome, early appropriate antibiotic treatment is said to be of key  
105 importance (15). This has been shown for patients with septic shock (16), but is more widely  
106 debated concerning patients with severe sepsis.

107 Increasing age is a risk factor for case fatality in sepsis patients (17). Some studies even show  
108 age to be an independent risk factor for sepsis-related CFR (18-20), but the age factor is not  
109 often discussed in sepsis studies.

110 Elevated body temperature is one of the hallmarks of infection. Yet not all patients with sepsis  
111 are febrile at initial presentation. Low temperature on arrival has been described as an  
112 independent risk factor for case fatality in patients with bacteremia (21) and in patients with  
113 severe sepsis treated in the ICU (22, 23).

114 Long-term mortality is increased following sepsis, indicating that sepsis may cause lasting  
115 injury to the individual even several years after the insult (24-26).

116 The aim of this study was to describe short-term outcomes in patients with severe sepsis, Sepsis-  
117 3 sepsis, and bacteremia in this population. We also investigated risk factors for case fatality,  
118 focusing on time to antibiotic treatment, age, and temperature at presentation. Finally, we  
119 briefly describe the long-term mortality in those who had sepsis by either definition compared  
120 to those who did not have sepsis.

## 121 **Methods**

122 The original study was approved by the Ethical Review Board at the University of Gothenburg  
123 (permit 376/2011). The 10-year follow up was approved by the Swedish Ethical Review  
124 Authority (2022-04814-02).

125 In a 9-month prospective and consecutive study chart review was used to investigate the  
126 incidences of community onset severe sepsis, Sepsis-3 sepsis, and bacteremia in a 256,700  
127 population in southwest Sweden. All adult patients aged  $\geq 18$  years admitted to the hospital  
128 between September 8, 2011 - June 7, 2012, and treated with intravenous antibiotics within 48  
129 hours were evaluated, N=2,196 (8).

130 This cohort was analysed for patient risk factors and outcomes in those with severe sepsis,  
131 Sepsis-3 sepsis, and bacteremia. Data from the hospital electronic health record were used for  
132 patient risk factors. The 28-day, 1-year, and 10-year case fatality rates (CFR) were calculated  
133 by use of the unique Swedish personal identification number and the Swedish death registry.  
134 Data for septic shock could only be evaluated for septic shock using Sepsis-2 criteria. Septic  
135 shock according to sepsis-3 criteria could not be evaluated since lactate measurements at the  
136 time of the study were performed on a local instrument in the ICU and the results were not  
137 entered into the electronic health record. For bacteremia, only the 28-day CFR was calculated.  
138 Base-line data refers to the most deviating laboratory values or vital signs registered by the  
139 Emergency Medical Services (EMS) or in the Emergency Department (ED), or in the ward  
140 within 48 hours after admission, when sepsis was first suspected. Dependent as well as  
141 independent risk factors for case fatality were calculated.

## 142 Definitions

143 Appropriate empirical antibiotic treatment refers to antibiotic treatment according to current  
144 national guidelines. Appropriate etiological treatment refers to antibiotic treatment according  
145 to antibiotic susceptibility pattern.

## 146 Statistical analyses

147 Descriptive statistics as mean and standard deviation for continuous data and frequencies and  
148 percentages for categorical data are presented. For ordinal data or skewed distributed data  
149 median with quartiles are presented. Both parametrical and non-parametrical tests were used  
150 for univariate comparisons, depending on data type.

151 In a univariate analysis, age groups, empiric antibiotic treatment, time to appropriate antibiotic  
152 treatment, co-morbidities, gender, vital signs at baseline, biochemistry at baseline and  
153 individual organ dysfunctions were evaluated for association with 28-day case fatality. All

154 variables with a p-value <0.2 in univariate comparisons were included in a multivariate  
155 regression analysis.

156 Logistic regression was used as model to explore in which degree severe sepsis, Sepsis-3 and  
157 other factors are associated with 28-day CFR. One- and 10-years survival was analysed, and  
158 different groups were compared by Kaplan-Meier analysis and log-rank test. Two-sided testing  
159 was used for all analyses, and a p-value <0.05 was regarded as statistically significant. Data  
160 were analysed using IBM SPSS version 25.0 (Inc, Chicago, IL).

## 161 Results

### 162 Baseline characteristics

163 Baseline characteristics in 28-day survivors versus non-survivors by either sepsis definition are  
164 displayed in **Table 1**. Organ dysfunction in Sepsis-3 sepsis was defined for each organ system  
165 as a  $\geq 2$  point increase in the SOFA score from baseline. The 173 patients with Sepsis-3 sepsis  
166 having only 1-point increases in any organ system were excluded in this calculation. In  
167 summary, non-survivors were significantly older than survivors, had significantly more organ  
168 dysfunctions and significantly more comorbidities. For baseline characteristics of the whole  
169 cohort, see [S2 Table](#).

170 **Table 1. Baseline characteristics in 28-day survivors versus non survivors having severe**  
171 **sepsis or Sepsis-3-sepsis respectively.**

|                         | Severe sepsis, N=429 |                            |         | Sepsis-3 sepsis, N=1,299 |                            |         |
|-------------------------|----------------------|----------------------------|---------|--------------------------|----------------------------|---------|
|                         | Survivors<br>n=322   | Non-<br>survivors<br>n=107 | p-value | Survivors<br>n=1,144     | Non-<br>survivors<br>n=155 | p-value |
| Age years, mean (SD)    | 73 (16)              | 80 (11)                    | <0.001  | 73 (16)                  | 81 (10)                    | <0.001  |
| Age years, median (IQR) | 75 (65-84)           | 82 (73-87)                 | <0.001  | 77 (66-84)               | 83 (76-88)                 | <0.001  |
| Male sex, n (%)         | 174 (54)             | 57 (53)                    | 0.890   | 627 (55)                 | 81 (52)                    | 0.550   |
| Age-group, n (%)        |                      |                            | <0.001  |                          |                            | <0.001  |
| 18-49 years             | 28 (9)               | 1 (1)                      |         | 94 (8)                   | 2 (1)                      |         |
| 50-64 years             | 46 (15)              | 7 (6)                      |         | 168 (15)                 | 8 (5)                      |         |
| 65-74 years             | 79 (25)              | 20 (19)                    |         | 249 (22)                 | 24 (16)                    |         |



|   |                 |                 |        |               |               |        |
|---|-----------------|-----------------|--------|---------------|---------------|--------|
| <b>75-84 years</b>                              | 92 (29)         | 35 (33)         |        | 350 (31)      | 49 (32)       |        |
| <b>≥85 years</b>                                | 77 (24)         | 44 (41)         |        | 283 (25)      | 72 (46)       |        |
| <b>Any co-morbidity, n (%)</b>                  | 288 (89)        | 104 (97)        |        | 1,031 (90)    | 149 (96)      |        |
| <b>Cardiovascular</b>                           | 200 (62)        | 74 (69)         | 0.189  | 713 (62)      | 111 (72)      | 0.024  |
| <b>Chronic pulmonary disease</b>                | 56 (17)         | 19 (18)         | 0.931  | 236 (21)      | 27 (17)       | 0.351  |
| <b>Chronic renal disease</b>                    | 21 (7)          | 8 (8)           | 0.733  | 75 (7)        | 12 (8)        | 0.579  |
| <b>Chronic hepatic disease</b>                  | 1 (0.3)         | 1 (0.9)         | 0.412  | 6 (0.5)       | 2 (1)         | 0.253  |
| <b>Diabetes mellitus</b>                        | 78 (24)         | 27 (25)         | 0.833  | 227 (20)      | 30 (19)       | 0.886  |
| <b>Malignancy, any</b>                          | 50 (16)         | 30 (28)         | 0.004  | 198 (17%)     | 43 (28%)      | 0.002  |
| <b>Immunosuppression</b>                        | 14 (4)          | 6 (6)           | 0.592  | 47 (4)        | 8 (5)         | 0.541  |
| <b>No comorbidity</b>                           | 34 (11)         | 3 (3)           | 0.013  | 113 (10)      | 6 (4)         | 0.015  |
| <b>Average co-morbidity, mean (SD)</b>          | 1.7 (1.0)       | 2.0 (1.0)       | 0.005  | 1.6 (1.0)     | 1.9 (1.0)     | 0.001  |
| <b>Bacteremia, n (%)</b>                        | 94 (29)         | 29 (27)         | 0.679  | 180 (16)      | 31 (20)       | 0.177  |
| <b>Organ dysfunction</b>                        |                 |                 |        |               |               |        |
| <b>Hypotension, n (%)</b>                       | 130 (40)        | 49 (47)         | 0.235  | 131 (20)      | 48 (41)       | <0.001 |
| <b>Hypoperfusion, n (%)</b>                     | 165 (51)        | 58 (54)         | 0.222  | 138 (21)      | 56 (48)       | <0.001 |
| <b>Lactate mg/L, mean (SD)</b>                  | 4.6 (1.8)       | 5.5 (2.9)       | 0.047  | 4.6 (1.9)     | 5.5 (2.9)     | 0.062  |
| <b>Pulmonary dysfunction, n (%)</b>             | 103 (32)        | 57 (55)         | <0.001 | 104 (16)      | 58 (50)       | <0.001 |
| <b>Renal dysfunction, n (%)</b>                 | 54 (18)         | 40 (44)         | <0.001 | 55 (9)        | 40 (39)       | <0.001 |
| <b>Hepatic dysfunction, n (%)</b>               | 3 (1)           | 5 (5)           | 0.010  | 3 (0.5)       | 5 (4)         | <0.001 |
| <b>Coagulation dysfunction, n (%)</b>           | 30 (10)         | 17 (17)         | 0.037  | 30 (5)        | 17 (15)       | <0.001 |
| <b>Cerebral dysfunction, n (%)</b>              | 82 (26)         | 45 (42)         | 0.001  | 157 (14)      | 55 (36)       | <0.001 |
| <b>Septic shock, n (%)</b>                      | 35 (12%)        | 24 (25%)        | 0.001  | n.d.          | n.d.          | n.d.   |
| <b>Average dysfunctioning organs, mean (SD)</b> | 1.8 (1.0)       | 2.5 (1.6)       | <0.001 | 1.2 (0.6)     | 1.5 (0.8)     | <0.001 |
| <b>Treatment in the ICU, n (%)</b>              | 83 (26)         | 24 (22)         | 0.488  | 102 (9)       | 28 (18)       | <0.001 |
| <b>Biochemistry on arrival, median (IQR)</b>    |                 |                 |        |               |               |        |
| <b>Hemoglobin, g/L</b>                          | 130 (118-145)   | 123 (111-141)   | 0.016  | 130 (117-142) | 124 (108-140) | <0.001 |
| <b>WBC x 10<sup>9</sup>/L</b>                   | 13.1 (10-17)    | 13.1 (8-18)     | 0.566  | 12.3 (9-16)   | 13.0 (9-18)   | 0.170  |
| <b>Neutrophils, x 10<sup>9</sup>/L</b>          | 11.4 (7.1-15.8) | 11.6 (5.7-17.3) | 0.830  | 10.0 (7-14)   | 11.0 (6-17)   | 0.106  |
| <b>Lymphocytes, x 10<sup>9</sup>/L</b>          | 0.7 (0.4-1.1)   | 0.8 (0.4-1.3)   | 0.198  | 0.8 (0.5-1.2) | 0.8 (0.5-1.3) | 0.672  |
| <b>NLCR</b>                                     | 16.2 (9-28)     | 14.6 (6-21)     | 0.039  | 11.4 (7-21)   | 14.4 (7-22)   | 0.465  |
| <b>CRP, mg/L</b>                                | 164 (102-253)   | 201 (108-302)   | 0.047  | 138 (80-200)  | 192 (90-280)  | <0.001 |
| <b>Lactate, mmol/L</b>                          | 3.3 (2-4)       | 3.3 (2-4.6)     | 0.093  | 1.9 (1.4-2.6) | 2.6 (1.9-3.8) | <0.001 |
| <b>Temperature, °C, mean (SD)</b>               | 38.0 (1.2)      | 37.4 (1.0)      | <0.01  | 38.1 (1.1)    | 37.4 (1.2)    | <0.01  |
| <b>SIRS ≥2 n (%)</b>                            | 289 (90)        | 91 (85)         | 0.185  | 955 (83)      | 128 (83)      | 0.778  |

172 ICU = Intensive Care Unit; WBC = White Blood cell Count; NLCR = Neutrophil to Lymphocyte Count Ratio;  
 173 SIRS = Systemic Inflammatory Response Syndrome.

## 175 Case fatality rates in severe sepsis and Sepsis-3 sepsis

176 The 28-day CFR in the 2,196 individual patients in the study was 8.6% (188/2,196). In  
177 124/2,196 of the patients (6%) no infection could be diagnosed. The 28-day CFR was 12%  
178 (15/124). In 429 patients having severe sepsis the 28-day CFR was 25% (107/429). In those  
179 with infection but not severe sepsis, it was 4% (66/1,643). **Fig 1.**

180 In 1,299 patients with Sepsis-3 sepsis, the 28-day CFR was 12% (155/1,299), and among those  
181 with infection but not Sepsis-3 sepsis it was 2% (18/773). **Fig 1.**

182  
183 **Fig 1.** The 28-day case fatality rates in severe sepsis and Sepsis-3 sepsis within a cohort of  
184 2,196 consecutive patients with suspected community onset infection treated with intravenous  
185 antibiotics within 48 hours after admission.

186 The Sepsis-3 group of 1,299 patients consisted of subgroups with varying 28-day CFRs. One  
187 subgroup of 393 patients (30%) also had severe sepsis and a 28-day CFR of 26%. Another  
188 subgroup of 173 patients (13%) obtained a  $\geq 2$ -point increase in the SOFA score by addition of  
189 1-point organ dysfunction values only. The 28-day CFR was 2.9% (5/173). When adjusted for  
190 age, there was no statistical difference in the 28-day CFR between these patients and those  
191 having infection but not Sepsis-3 sepsis. Of these 173 patients, 27 also had severe sepsis.  
192 Among those 27 with severe sepsis were 4 of the 5 deaths. All 4 had elevated lactate levels  $>4$   
193 mmol/L. In the remaining 760 patients with Sepsis-3 sepsis, (1,299-393-173+27) the 28-day  
194 CFR was 7%. **Fig 2, Table 2.**

195  
196 **Fig 2.** The distribution of subgroups with 28-day CFRs within a cohort of 1,299 patients with  
197 Sepsis-3 sepsis. Among the 173 who got a Sepsis-3 diagnosis by addition of 1-point changes in  
198 the SOFA score only, 27 also had severe sepsis.

199

200 **Table 2. The odds ratio for 28-day CFR in subgroups of 1,299 patients with Sepsis-3**  
 201 **sepsis and for patients with infection but not Sepsis-3 sepsis.** Adjusted for age by logistic  
 202 regression analysis.

|                                | <b>Infection but not Sepsis-3 sepsis</b><br>N=773 | <b>Sepsis-3 sepsis</b><br>N=1,299 | <b>Addition of 1-point values only</b><br>N=173 | <b>At least 2 points in any organ system but NOT severe sepsis</b><br>N=760 | <b>At least 2 points in any organ system AND severe sepsis</b><br>N=366 |
|--------------------------------|---|-----------------------------------|---|---|---|
| <b>Age years, Mean (SD)</b>    | 60 (20)   | 74 (15)                           | 66 (18)   | 75 (15)   | 76 (13)   |
| <b>Age years, Median (IQR)</b> | 64 (46-76)  | 78 (67-85)                        | 69 (57-81)                                      | 78 (68-86)  | 79 (69-86)  |
| <b>28-day CFR, N (%)</b>       | 18 (2.3)  | 155 (11.9)                        | 5 (2.9)   | 51 (6.7)  | 99 (27.0)   |
| <b>OR for death</b>            | reference   | 1.06                              | 1.0   | 3.02  | 15.55   |
| <b>95 % CI</b>                 | reference   | 1.04-1.07                         | 0.36-2.75                                       | 1.75-5.21   | 9.23-26.19  |
| <b>p-value</b>                 | reference   | <0.001                            | =0.99   | <0.001  | <0.001  |

203 CFR = Case Fatality Rate. OR = Odds Ratio. CI = Confidence Interval. SD = Standard Deviation. IQR  
 204 = Interquartile Range

205 In 59 patients with septic shock according to Sepsis-2 criteria, the 28-day CFR was 41%  
 206 (24/59). **Fig 1.** Thirty-five were men and 24 were women.

207

## 208 Risk factors for 28-day case fatality in severe sepsis

209 Out of 429 patients with severe sepsis, 25% (107/429) died within 28 days. In the univariate  
 210 analysis, age  $\geq 85$  years, respiratory dysfunction, renal dysfunction and low temperature on  
 211 arrival were the strongest risk factors for case fatality. Notably, bacteremia did not turn out as  
 212 a risk factor for case fatality. Since the p-value was  $>0,2$  it is not in the table.

213 In the multivariate regression analysis, only age group  $>85$  years, age group 75-84 years, renal  
 214 dysfunction, cerebral dysfunction (RLS), elevated CRP level, and low temperature on arrival,  
 215 remained as independent risk factors for case fatality. **Table 3.**

216 **Table 3. Risk factors for 28-day case fatality in 429 patients with community onset**  
 217 **severe sepsis.**

| Variable                       | Univariate analysis<br>OR with 95% CI | p-value | Multivariate<br>analysis <sup>1</sup><br>OR with 95% CI | p-value |
|--------------------------------|---------------------------------------|---------|---|---------|
| <b>Age group, years</b>        |                                       |         |   |         |
| <65                            | reference                             |         |   |         |
| 65-74                          | 2.31 (0.96-5.57)                      | 0.062   | 1.63 (0.41-6.46)  | 0.490   |
| 75-84                          | 3.47 (1.52-7.94)                      | 0.003   | 4.08* (1.10-15.15)                                      | 0.036   |
| ≥85                            | 5.21 (2.30-11.82)                     | <0.001  | 8.23* (2.18-31.0)                                       | 0.002   |
| <b>Any co-morbidity</b>        | 4.09 (1.23-13.61)                     | 0.022   | 1.27 (0.30-5.34)  | 0.740   |
| <b>Respiratory dysfunction</b> | 2.57 (1.63-4.05)                      | <0.001  | 1.70 (0.76-3.81)  | 0.199   |
| <b>Renal dysfunction</b>       | 3.69 (2.21-6.14)                      | <0.001  | 3.20* (1.44-7.10)                                       | 0.004   |
| <b>Hematologic dysfunction</b> | 1.96 (1.03-3.74)                      | 0.040   | 0.81 (0.28-2.33)  | 0.698   |
| <b>Cerebral dysfunction</b>    | 2.12 (1.34-3.36)                      | 0.001   | 2.04 (0.60-6.91)  | 0.253   |
| <b>Hepatic dysfunction</b>     | 5.50 (1.29-23.45)                     | 0.021   | 1.17 (0.12-11.27)                                       | 0.890   |
| <b>RLS</b>                     | 2.21 (1.35-3.36)                      | 0.002   | 5.37* (1.45-19.90)                                      | 0.012   |
| <b>Temperature</b>             | 0.65 (0.53-0.80)                      | <0.001  | 0.66* (0.49-0.91)                                       | 0.011   |
| <b>Saturation</b>              | 0.97 (0.95-0.99)                      | 0.005   | 0.99 (0.95-1.02)  | 0.486   |
| <b>History of fever/rigors</b> | 0.62 (0.40-0.97)                      | 0.036   | 1.08 (0.54-2.16)  | 0.827   |
| <b>Hemoglobin</b>              | 0.99 (0.98-0.998)                     | 0.020   | 0.99 (0.98-1.01)  | 0.386   |
| <b>Lymphocytes</b>             | 1.06 (0.97-1.16)                      | 0.190   | 1.09 (0.85-1.39)  | 0.500   |
| <b>NLCR</b>                    | 0.99 (0.97-1.003)                     | 0.133   | 0.99 (0.97-1.01)  | 0.163   |
| <b>CRP</b>                     | 1.003 (1.001-1.005)                   | 0.002   | 1.005* (1.002-1.008)                                    | 0.001   |
| <b>INR</b>                     | 1.19 (0.93-1.15)                      | 0.157   | 1.01 (0.71-1.45)  | 0.945   |
| <b>Lactate</b>                 | 1.11 (1.02-1.23)                      | 0.023   | 1.12 (0.95-1.32)  | 0.162   |

218 <sup>1</sup>Multivariate logistic regression analysis with 28-day case fatality rate as outcome. RLS,  
 219 Reaction Level Scale. NLCR, Neutrophil to lymphocyte count ratio. CRP, C-reactive protein.  
 220 INR, International Normalized Ratio.

221

## 222 Risk factors for 28-day case fatality in sepsis-3 sepsis

223 Out of 1,299 patients with sepsis-3 sepsis, 155 (12%) died within 28 days. In the multivariate  
 224 regression analysis, only age group 75-84 years, >85 years, respiratory dysfunction, renal  
 225 dysfunction, CRP, and low temperature on arrival, remained as independent risk factors for case  
 226 fatality. Age ≥85 years, respiratory dysfunction, renal dysfunction, and CRP, were the variables  
 227 with the highest statistical significance. **Table 4.**

228 **Table 4. Risk factors for 28-days case fatality in 1,299 patients with sepsis-3 sepsis.**

| Variable | Univariate model |         | Multivariate model |         |
|----------|------------------|---------|--------------------|---------|
|          | OR with 95% CI   | p-value | OR with 95% CI     | p-value |

|                                       |                     |        |                      |        |
|---------------------------------------|---------------------|--------|----------------------|--------|
| <b>Age group, years</b>               |                     |        |                      |        |
| <65                                   | ref                 | -      |                      |        |
| 65-74                                 | 2.52 (1.18-5.37)    | 0.017  | 1.65 (0.52-5.20)     | 0.392  |
| 75-84                                 | 3.65 (1.82-7.35)    | <0.001 | 3.44* (1.18-10.01)   | 0.024  |
| ≥85                                   | 6.64 (3.35-13.14)   | <0.001 | 6.97* (2.41-20.18)   | <0.001 |
| <b>Any co-morbidity</b>               | 2.72 (1.18-6.30)    | 0.019  | 1.46 (0.38-5.60)     | 0.583  |
| <b>Respiratory dysfunction</b>        | 5.24 (3.44-7.99)    | <0.001 | 3.15* (1.61-6.19)    | <0.001 |
| <b>Renal dysfunction</b>              | 6.58 (4.06-10.67)   | <0.001 | 3.55* (1.73-7.29)    | <0.001 |
| <b>Hematological dysfunction</b>      | 3.63 (1.93-6.84)    | <0.001 | 0.92 (0.32-2.67)     | 0.881  |
| <b>Cerebral dysfunction</b>           | 3.46 (2.39-5.00)    | <0.001 | 0.97 (0.35-2.74)     | 0.959  |
| <b>Hepatic dysfunction</b>            | 9.77 (2.30-41.47)   | 0.002  | 1.39 (0.21-9.15)     | 0.729  |
| <b>Vital signs at baseline</b>        |                     |        |                      |        |
| <b>RLS baseline</b>                   | 3.16 (2.12-4.70)    | <0.001 | 2.90 (0.96-8.71)     | 0.058  |
| <b>Temperature</b>                    | 0.56 (0.47-0.67)    | <0.001 | 0.72* (0.55-0.93)    | 0.011  |
| <b>Saturation</b>                     | 0.95 (0.93-0.97)    | <0.001 | 0.98 (0.95-1.02)     | 0.360  |
| <b>History of fever/rigors</b>        | 0.45 (0.30-0.67)    | <0.001 | 0.93 (0.52-1.66)     | 0.819  |
| <b>Laboratory results at baseline</b> |                     |        |                      |        |
| <b>Hemoglobin</b>                     | 0.99 (0.98-1.00)    | 0.005  | 0.99 (0.98-1.01)     | 0.567  |
| <b>Lymphocytes</b>                    | 1.01 (0.99-1.02)    | 0.234  | n.s.                 |        |
| <b>NLCR</b>                           | 1.004 (0.99-1.01)   | 0.396  | n.s.                 |        |
| <b>CRP</b>                            | 1.004 (1.002-1.006) | <0.001 | 1.005* (1.002-1.007) | <0.001 |
| <b>INR</b>                            | 0.88 (0.59-1.30)    | 0.512  | n.s.                 |        |
| <b>Lactate</b>                        | 1.38 (1.26-1.52)    | <0.001 | 1.12 (0.96-1.31)     | 0.154  |

229

## 230 Age and sex

231 In patients with severe sepsis or septic shock, the 28-day CFR increased more than 10-fold from  
 232 3-36% between the youngest and the oldest age group. In patients with Sepsis-3 sepsis, the 28-  
 233 day CFR also increased 10-fold, from 2-20%, with increasing age group. In the age group 18-  
 234 49 years, the 28-day CFR was 2%. In the age-group 50-64 it was 5%, in the age-group 65-74 it  
 235 was 9%, in the age-group 75-84 it was 12% and in those >85 years it was 20%. **Fig 3.** For  
 236 number of patients in each group, see [S3 Table](#). There was no statistically significant difference  
 237 in 28-day CFR between men and women in any age group.

238

239 **Figure 3.** The 28-day case fatality rate related to age and sex in 1,299 patients having Sepsis-  
 240 3 sepsis and 429 patients having severe sepsis. For numbers, see [S3 Table](#).

## 241 Appropriate antibiotic treatment

242 Considering the suspected focus of infection on admission, more than 98% of all patients were  
 243 evaluated as having received appropriate empirical antibiotic treatment. In 952/2,072 (46%)  
 244 patients with infection, a bacterial diagnosis was verified by culture. Of the 952 patients, 760  
 245 (80%) received appropriate etiological antibiotic treatment and 192 did not. The 28-day CFR  
 246 was 7.8% and 5.7% respectively. The difference was not statistically significant (p-value 0,34),  
 247 not even when adjusted for age (p-value 0.27).

## 248 Time to appropriate antibiotic treatment

249 The 28-day case fatality rates in relation to time to start of antibiotic treatment is shown in  
 250 **Table 5**. None of the differences in the 28-day CFRs are statistically significant. This data was  
 251 not adjusted for age groups.

252 **Table 5. The 28-day case fatality rate in relation to time to start of antibiotic treatment.**

|  | Severe sepsis<br>N=429 | Infection but not<br>severe sepsis<br>N=1,643 | Sepsis-3 sepsis<br>N=1,299 | Infection but not<br>Sepsis-3 sepsis<br>N=773 |
|--|------------------------|---|----------------------------|---|
| Time to start of<br>antibiotics, hours | 28-day CFR, %<br>(N)   | 28-day CFR, %<br>(N)                          | 28-day CFR, %<br>(N)       | 28-day CFR, %<br>(N)                          |
| <b>0-0.99</b>                          | 23.1 (21)              | 4.9 (8)                                       | 14.5 (29)                  | 0 (0)   |
| <b>1-1.99</b>                          | 20.6 (27)              | 2.2 (10)                                      | 8.9 (35)                   | 1 (2)   |
| <b>2-3.99</b>                          | 33.0 (36)              | 3.6 (22)                                      | 12.8 (53)                  | 1.6 (5)                                       |
| <b>4-11.99</b>                         | 21.8 (12)              | 5.6 (16)                                      | 10.5 (20)                  | 5.4 (8)                                       |
| <b>&gt;12</b>                          | 25.6 (11)              | 8.5 (10)                                      | 17.5 (18)                  | 5.3 (3)                                       |
| <b>All</b>                             | 24.9 (107)             | 4.0 (66)                                      | 11.9 (155)                 | 2.3 (18)                                      |

253

254 There was a tendency towards shorter median length of hospital stay (LoS) for all patients with  
 255 infection who received appropriate antibiotic treatment within 12 hours after admission. The  
 256 difference was most pronounced in patients with severe sepsis, 11 versus 8 days. The  
 257 calculations included only patients who survived 28 days but were not adjusted according to  
 258 age group. **Table 6**.

259 **Table 6. Length of hospital stay, LoS, (days) related to time to start of antibiotic**  
 260 **treatment in patients with community onset infection.**

|   | <b>Time to start of antibiotic treatment, hours.</b> | <b>Patients, N</b> | <b>Mean LoS, days (SD)</b> | <b>Median LoS, days (IQR)</b> | <b>p-value<sup>1</sup></b> |
|---|--|--------------------|----------------------------|-------------------------------|----------------------------|
| <b>Severe sepsis<br/>N=322</b>                      | 0–0.99   | 69                 | 11.1 (9.3)                 | 8 (4–15)                      | 0.045                      |
|   | 1–1.99   | 104                | 8.1 (5.4)                  | 7 (4–11)                      | <0.001                     |
|   | 2–3.99   | 73                 | 14.2 (14.6)                | 9 (5–16)                      | 0.150                      |
|   | 4–11.99  | 42                 | 12.3 (8.5)                 | 10.5 (7–14)                   | 0.419                      |
|   | >12  | 32                 | 16.6 (16.8)                | 11 (8–19)                     | ref.                       |
| <b>Infection, not<br/>severe sepsis<br/>N=1,577</b> | 0–0.99   | 159                | 6.6 (9.1)                  | 4 (3–7)                       | 0.002                      |
|   | 1–1.99   | 469                | 6.1 (5.8)                  | 4 (3–8)                       | <0.001                     |
|   | 2–3.99   | 630                | 6.4 (6.8)                  | 4 (3–8)                       | <0.001                     |
|   | 4–11.99  | 303                | 7.0 (6.8)                  | 5 (3–9)                       | 0.014                      |
|   | >12  | 120                | 8.6 (9.1)                  | 5 (4–11)                      | ref.                       |
| <b>Sepsis-3 sepsis<br/>N=1,144</b>                  | 0–0.99   | 170                | 8.6 (7.8)                  | 6 (4–11)                      | 0.007                      |
|   | 1–1.99   | 357                | 7.6 (6.2)                  | 6 (3–10)                      | <0.001                     |
|   | 2–3.99   | 359                | 8.9 (9.5)                  | 6 (4–11)                      | 0.004                      |
|   | 4–11.99  | 169                | 9.8 (8.0)                  | 8 (4–12)                      | 0.371                      |
|   | >12  | 85                 | 11.6 (12.2)                | 8 (4–14)                      | ref.                       |
| <b>Infection, not<br/>sepsis-3 sepsis<br/>N=755</b> | 0–0.99   | 53                 | 4.4 (3.5)                  | 3 (2–5)                       | 0.003                      |
|   | 1–1.99   | 198                | 4.4 (3.9)                  | 3 (2–5)                       | <0.001                     |
|   | 2–3.99   | 306                | 5.3 (6.1)                  | 3.5 (2–6)                     | 0.003                      |
|   | 4–11.99  | 141                | 5.3 (5.2)                  | 4 (2–6)                       | 0.011                      |
|   | >12  | 54                 | 7.2 (6.8)                  | 5 (3–10)                      | ref.                       |

261 <sup>1</sup>p-values consider pairwise comparisons to reference category.

## 262 Temperature

263 Low temperature on arrival was an independent risk factor for 28-day case fatality regardless  
 264 of sepsis category or not, but most pronounced in those having severe sepsis. **Table 3 and 4.**

## 265 Treatment in the intensive care unit

266 Out of 2,072 patients with infection of any severity, 170 (8%) were treated in the intensive care  
 267 unit (ICU). The 28-day CFR was 21% (36/170). Severe sepsis or septic shock was diagnosed  
 268 in 122/170. The 28-day CFR was 21% (25/122). Sepsis-3 sepsis was diagnosed in 163/170. The  
 269 28-day CFR was 22% (36/163).

270

## 271 The accumulated case fatality rates up to 10 years after the first 272 admission

273 The accumulated 1-year mortality rate for all 2,072 patients with infection was 23%  
274 (482/2,072), being up to twice as high for any age group as the 28-day CFR. The 1-year  
275 mortality in either the severe sepsis or the Sepsis-3 sepsis group was more than twice as high  
276 in each year group compared to those who had infection but not severe sepsis or Sepsis-3-sepsis.

277 **Fig 4.** For patients with septic shock, the 1-year mortality was 64%.

278 **Figure 4.** Accumulated 1-year mortality in different age-groups in patients with either severe  
279 sepsis or Sepsis-3 sepsis or not.

280 These differences remained during the whole follow up period of 10 years after first  
281 admission and were more pronounced in those with severe sepsis, regardless of age group. [S1](#)  
282 [Fig.](#)

283

## 284 Bacteremia

285 In 283 patients with a clinically relevant bacteremia the 28-day CFR was 12% (35/283). The  
286 28-day CFR increased with increasing age in those having severe sepsis as well as in those  
287 having Sepsis-3 sepsis. **Table 7, 8.** Most of the 28-day case fatalities were seen in the 75-84  
288 and  $\geq 85$ -year age groups, 76% (22/29) among those with severe sepsis and 74% (23/31) among  
289 those with Sepsis-3 sepsis. The 28-day CFR was dependent on whether the patient had organ  
290 dysfunction or not. In patients with no organ dysfunction, it was not higher than in patients with  
291 no bacteremia. It also varied with etiology, but these figures are not adjusted for age. Bacteremia  
292 with *Staphylococcus aureus* had the highest 28-day CFR, 24%, followed by *non-pneumococcal*  
293 *streptococcus spp.*, 18%. For the most found bacteria, *Escherichia coli*, the 28-day CFR was  
294 8%. The highest 28-day CFR was seen in those with *S. aureus* and severe sepsis, 53% (10/19).



295 **Table 7. Patient characteristics and 28-day case fatality rates in 2,072 patients with**  
 296 **infection depending on bacteremia or no bacteremia, severe sepsis or no severe sepsis. Due**  
 297 **to small numbers, the 28-day CFRs according to etiology have not been adjusted for age.**

|   | Severe sepsis, N=429 |                     | No severe sepsis N=1,643 |                       |
|---|----------------------|---------------------|--------------------------|-----------------------|
|   | Bacteremia N=123     | No bacteremia N=306 | Bacteremia N=160         | No bacteremia N=1,483 |
| Age, years, mean (SD)                   | 77 (13)              | 73 (16)             | 72 (15)                  | 67 (19)               |
| Age, years, median (IQR)                | 80 (68-87)           | 76 (67-85)          | 76 (65-83)               | 71 (57-81)            |
| 28-day CFR, % (N)                       | 24 (29/123)          | 25 (78/306)         | 4 (6/160)                | 4 (60/1,483)          |
| 28-day CFR per age group, % (N)         |                      |                     |                          |                       |
| 18-49 years, N=310                      | 0 (0/5)              | 4 (1/24)            | 7 (1/14)                 | 0 (0/267)             |
| 50-64 years, N=360                      | 13 (2/16)            | 14 (5/37)           | 0 (0/26)                 | 1 (3/281)             |
| 65-74 years, N=432                      | 21 (5/24)            | 20 (15/75)          | 0 (0/36)                 | 2 (5/297)             |
| 75-84 years, N=545                      | 25 (9/36)            | 29 (26/91)          | 2 (1/53)                 | 5 (18/365)            |
| ≥85 years, N=425                        | 31 (13/42)           | 39 (31/79)          | 13 (4/31)                | 13 (34/273)           |
| 28-day CFR according to etiology, % (N) |                      |                     |                          |                       |
| <i>E. coli</i>                          | 14 (6/44)            | n.a.                | 4 (2/54)                 | n.a.                  |
| <i>K. pneumoniae</i>                    | 13 (1/8)             | n.a.                | 0 (0/12)                 | n.a.                  |
| <i>S. aureus</i>                        | 53 (10/19)           | n.a.                | 6 (2/32)                 | n.a.                  |
| <i>S. pneumoniae</i>                    | 25 (3/12)            | n.a.                | 0 (0/8)                  | n.a.                  |
| <i>Non-pneumococcal streptococci</i>    | 33 (6/18)            | n.a.                | 3 (1/29)                 | n.a.                  |

298

299 **Table 8. Patient characteristics and 28-day case fatality rates in 2,072 patients with**  
 300 **infection depending on bacteremia or no bacteremia, Sepsis-3- sepsis or not Sepsis-3**  
 301 **sepsis. Due to small numbers, the 28-day CFRs according to etiology have not been adjusted**  
 302 **for age.**

|                                   | Sepsis-3 sepsis, N=1,299 |                       | Not sepsis-3 sepsis, N=773 |                     |
|-----------------------------------|--------------------------|-----------------------|----------------------------|---------------------|
|                                   | Bacteremia N=211         | No bacteremia N=1,088 | Bacteremia N=72            | No bacteremia N=701 |
| Age, years, mean (SD)             | 76 (14)                  | 74 (16)               | 69 (16)                    | 60 (20)             |
| Age, years, median (IQR)          | 79 (68-86)               | 77 (66-85)            | 71 (62-81)                 | 63 (45-75)          |
| 28-day CFR, % (n/N)               | 15% (31/211)             | 11% (124/1088)        | 6% (4/72)                  | 2% (14/701)         |
| 28-day CFR per age group, % (n/N) |                          |                       |                            |                     |
| 18-49 years, N=310                | 8% (1/12)                | 1% (1/84)             | 0% (0/7)                   | 0% (0/207)          |
| 50-64 years, N=360                | 9% (2/23)                | 4% (6/153)            | 0% (0/19)                  | 2% (3/165)          |
| 65-74 years, N=432                | 11% (5/44)               | 8% (19/229)           | 0% (0/16)                  | 1% (1/143)          |
| 75-84 years, N=545                | 13% (9/69)               | 12% (40/330)          | 5% (1/20)                  | 5% (6/126)          |

|  |             |              |            |           |
|--|-------------|--------------|------------|-----------|
| <b>≥85 years, N=425</b>                          | 22% (14/63) | 20% (58/292) | 30% (3/10) | 7% (4/60) |
| <b>28-day CFR according to etiology, % (n/N)</b> |             |              |            |           |
| <i>E. coli</i> (N=250)                           | 10% (7/73)  | n.a.         | 4% (1/23)  | n.a.      |
| <i>K. pneumoniae</i> (N=36)                      | 6% (1/18)   | n.a.         | 0% (0/2)   | n.a.      |
| <i>S. aureus</i> (N=105)                         | 29% (10/35) | n.a.         | 14% (2/14) | n.a.      |
| <i>S. pneumoniae</i> (N=73)                      | 19% (3/16)  | n.a.         | 0% (0/4)   | n.a.      |
| <i>Non-pneumococcal streptococci</i> (N=109)     | 19% (6/32)  | n.a.         | 8% (1/13)  | n.a.      |

303

## 304 Discussion

305 In this chart-based population study, the 28-day CFR in patients with severe sepsis was 25%  
306 and in patients with Sepsis-3 sepsis it was 12%. This is in line with the results in many previous  
307 studies. When comparing the groups, we found that the lower 28-day CFR in Sepsis-3 sepsis  
308 was achieved by adding to a group of patients with severe sepsis (393/429) and a high 28-day  
309 CFR (26%) a large group of equally old patients with a low 28-day CFR (6%). Thus, the lower  
310 28-day CFR seen in Sepsis-3 sepsis was achieved by diluting the high 28-day CFR in patients  
311 having severe sepsis with a more than twice as large and equally old group of patients with a  
312 low 28-day CFR. Further, the 28-day CFR in the age-group 18-49 years was only 2%, not higher  
313 than in those with infection but not sepsis. In the age-groups 50-64 and 65-74 it was less than  
314 the 10% postulated by *Singer et.al.* for Sepsis-3 (5). It should be debated whether these patient  
315 groups with a 28-day CFR less than 10% really qualify for the Sepsis-3 definition of sepsis  
316 (“life-threatening organ dysfunction”) and if not the SOFA score should be revised, as  
317 suggested by *Szczeklik and Fronczek* (27). Especially the respiratory criterion for organ  
318 dysfunction should be stricter.

319 An increase of 1-point in the SOFA score can be obtained by mild organ dysfunction, in some  
320 cases for values that lie within the normal reference values for each parameter. In 173 patients

321 with Sepsis-3 sepsis (13%), the diagnosis was achieved by addition of 1-point changes only.  
322 These patients had the same low 28-day CFR (3%) as those with infection but no organ  
323 dysfunction. This raises the question whether the 1-point values have any place in diagnosing  
324 organ dysfunction in Sepsis-3. From a clinical viewpoint it is difficult to appreciate that these  
325 patients should have “life-threatening organ dysfunction”.

326 The stricter criteria for respiratory dysfunction in the Swedish severe sepsis criteria from 2011  
327 and in the Surviving Sepsis Campaign (SSC) criteria from 2012, seem to perform better in  
328 separating those having a truly “life-threatening organ dysfunction”, 25% 28-day CFR, from  
329 those having not, 4% 28-day CFR than the Sepsis-3 criteria. Though the 28-day CFR is high in  
330 patients with severe sepsis, it is so mainly because of the high CFR in the age groups >65 years  
331 old.

332 Increasing hospital mortality with increasing age in patients with severe sepsis was described  
333 in 2001 by Angus *et.al.* (17). Martin-Loechse *et.al.* found age to be an independent risk factor  
334 for case fatality, though only analyzing patients  $\geq 65$  years of age and only two age groups (19).  
335 Martin *et.al.* found age >65 years to be an independent risk factor for death from severe sepsis  
336 (18). In our population, both age groups 75-84 years and >85 years were independent risk  
337 factors for case fatality. We did not specifically study why there is an increase in CFRs with  
338 increasing age but believe that age is a surrogate marker for an ageing immune system,  
339 immunosenescence and reduced reserve capacity in organ functions. This view is to some extent  
340 supported by the fact that the average number of co-morbidities did not increase with increasing  
341 age-group (8). Interestingly, patients under the age of 50 years rarely died from community  
342 onset severe sepsis or Sepsis-3 sepsis. This is important knowledge but not so much high-  
343 lighted in the literature. Though our cohort may be too small for such a conclusion, it is well in  
344 line with our more than 30-year experience from serving this population. In sepsis studies, case  
345 fatality rates should always be accounted for according to age or age groups.

346 Mortality rates depending on sex have varied in previous studies. We found a higher incidence  
347 of severe sepsis in men than in women (8) but no difference between the sexes in the 28-day  
348 CFR. Thus, men seem to be more prone to develop severe sepsis, but when severe sepsis is  
349 manifest, there is no difference in the 28-day CFR between the sexes. This supports the findings  
350 in the nationwide study on severe sepsis in the US by Angus *et.al.* in 2001 (20) but differs from  
351 the seasonal excess mortality seen for example in the Covid-19 pandemic where the case fatality  
352 rates among men are higher than in women, as described by *Nielsen et.al.* (28).

353 Bacteremia is a serious condition given the high CFRs in population studies, 10-13% (14, 29).  
354 In our study it was 12%. However, an increased CFR was seen only in those having organ  
355 dysfunction. Using severe sepsis criteria, only 43% of patients with bacteremia had organ  
356 dysfunction. Using Sepsis-3 criteria it was 75%. In non-sepsis patients the CFRs were not  
357 higher in patients with bacteremia than in those with infection but no bacteremia. Increasing  
358 age was also a significant risk factor for a high 28-day CFR. Another important factor affecting  
359 the CFR in bacteremia is the bacterial species. Thus, *E. coli* bacteremia is associated with a  
360 lower overall CFR (8%) (30) than *S. aureus* (20%) (31). Our study confirmed this. The highest  
361 CFR was seen in patients with *S. aureus* bacteremia and severe sepsis, 53%, compared to  
362 patients with *E. coli* bacteremia and severe sepsis, 14%. Most population studies on bacteremia  
363 are register-based, with no information about organ dysfunction. In a chart-based study like  
364 this, we see that it is not bacteremia per se that is associated with a high 28-day CFR, but  
365 whether the patient has organ dysfunction or not.

366 Is time to appropriate antibiotic treatment important for survival? In patients with septic shock,  
367 it probably is, as well as in certain cases of severe sepsis, but in this cohort, it could not be  
368 demonstrated. This may seem reasonable, since the median age of sepsis patients is high, and  
369 many have significant co-morbidities. In two studies from southern Sweden by *Rosenqvist et.al.*  
370 on a subgroup of patients with severe sepsis, not even appropriate antibiotic treatment within

371 one hour after arrival affected the in-hospital mortality (32, 33). In a meta-analysis of studies  
372 on patients with bacterial infections, Naucler *et. al.* found that apart from patients with septic  
373 shock and acute bacterial meningitis, in-hospital mortality was not increased if antibiotic  
374 treatment was started up to 12 hours after hospital admission (34). In one study, Rhee *et. al.*  
375 estimated that only 11 out of 300 sepsis-associated deaths may have been prevented by more  
376 timely antibiotic treatment (35). This raises the question whether mortality is the most relevant  
377 outcome measure in sepsis studies. Most sepsis patients survive, and to them morbidity may be  
378 a better outcome measure, though difficult to define. In this study, we could see a tendency  
379 towards shorter length of hospital stay (LoS) in all patient groups with infection if appropriate  
380 empirical antibiotic treatment was started within two to four hours after arrival. This effect was  
381 most pronounced in patients with severe sepsis.

382 Temperature on arrival has been shown to correlate inversely to in-hospital mortality in a cohort  
383 of Swedish sepsis patients treated in the ICU, Sundén-Cullberg *et.al.* (22). In this population  
384 we found this to be true for all patients with infection, though most pronounced in those with  
385 severe sepsis.

386 The long-term CFR was higher in those having severe sepsis, versus those having not, and  
387 higher in those having Sepsis-3 sepsis versus those having not. Thus, this population-based  
388 study verifies the results of previous studies done on different cohorts reaching the same  
389 conclusion (36).

## 390 Conclusion

391 This is to our knowledge the only chart-based prospective and consecutive study on the outcome  
392 of community onset severe sepsis in adults in a whole population.

393 In this single center study on community onset sepsis

- 394       • Sepsis-2 criteria with stricter criteria for respiratory dysfunction are better for separating  
395       those with a truly life-threatening organ dysfunction from those having not, than the  
396       Sepsis-3 criteria.
- 397       • there is a ten-fold difference in the 28-day CFR between the youngest and the oldest age  
398       groups.
- 399       • age is an independent risk factor for case fatality in sepsis.
- 400       • the lower CFR seen in Sepsis-3 sepsis is due to a dilution of a group of patients with  
401       severe sepsis and a high CFR with a twice as large, equally old, group of patients with  
402       a low CFR.
- 403       • patients who obtain  $\geq 2$  points in the SOFA score by addition of 1-point values only,  
404       have the same low CFR as patients who do not have Sepsis-3 sepsis.
- 405       • the 28-day CFR in patients with bacteremia, or “blood stream infection”, is related to  
406       organ dysfunction, not to bacteremia *per se*.
- 407       • time to appropriate antibiotic treatment does not affect the 28-day CFR but tends to  
408       shorten the LoS for all patient groups with infection, mainly for those with severe sepsis.
- 409       • temperature on arrival is inversely associated with the 28-day CFR for all groups with  
410       infection.
- 411       • the long-term mortality in patients with sepsis is increased for each age group up to ten  
412       years after the first episode and is more pronounced in those with severe sepsis.

413

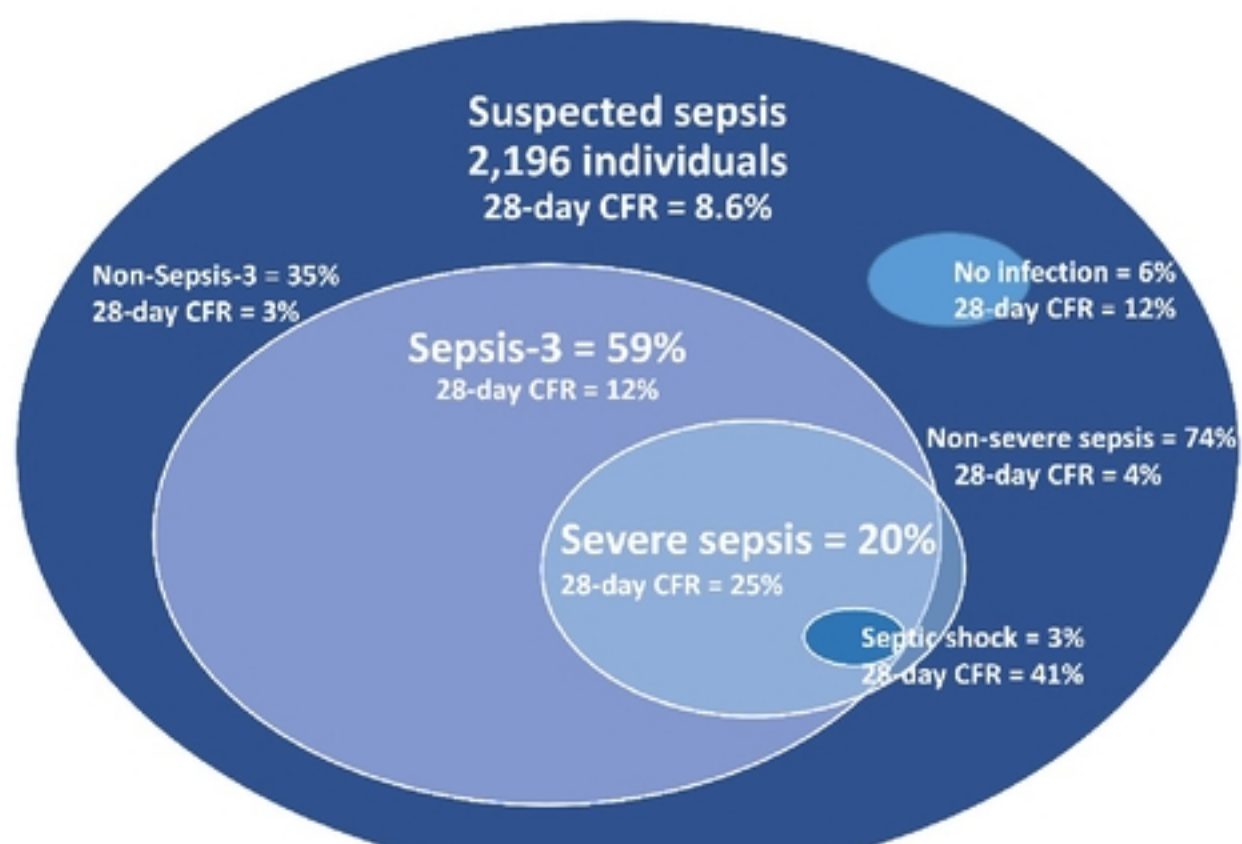
## 414 References:

- 415 1. Bone RC, Balk RA, Cerra FB, Dellinger RP, Fein AM, Knaus WA, et al. Definitions for  
416 sepsis and organ failure and guidelines for the use of innovative therapies in sepsis. *Chest*.  
417 1992;101(6):1644-55.
- 418 2. Levy MM, Fink MP, Marshall JC, Abraham E, Angus D, Cook D, et al. 2001  
419 sccm/esicm/accp/ats/sis international sepsis definitions conference. *Intensive care medicine*.  
420 2003;29(4):530-8.
- 421 3. Ljungström LR, Steinum O, Brink M, Gårdlund B, Martner J, Sjölin J. Diagnostik och  
422 diagnoskodning av svår sepsis och septisk chock. *Läkartidningen*. 2011;108(8):276-8.
- 423 4. Dellinger RP, Levy MM, Rhodes A, Annane D, Gerlach H, Opal SM, et al. Surviving  
424 Sepsis Campaign: international guidelines for management of severe sepsis and septic shock, 2012.  
425 *Intensive care medicine*. 2013;39(2):165-228.
- 426 5. Singer M, Deutschman CS, Seymour CW, Shankar-Hari M, Annane D, Bauer M, et al.  
427 The third international consensus definitions for sepsis and septic shock (sepsis-3). *Jama*.  
428 2016;315(8):801-10.
- 429 6. Shankar-Hari M, Phillips GS, Levy ML, Seymour CW, Liu VX, Deutschman CS, et al.  
430 Developing a new definition and assessing new clinical criteria for septic shock: for the Third  
431 International Consensus Definitions for Sepsis and Septic Shock (Sepsis-3). *Jama*. 2016;315(8):775-87.
- 432 7. Rhee C, Dantes R, Epstein L, Murphy DJ, Seymour CW, Iwashyna TJ, et al. Incidence  
433 and trends of sepsis in US hospitals using clinical vs claims data, 2009-2014. *Jama*.  
434 2017;318(13):1241-9.
- 435 8. Ljungström L, Andersson R, Jacobsson G. Incidences of community onset severe sepsis,  
436 Sepsis-3 sepsis, and bacteremia in Sweden—A prospective population-based study. *PloS one*.  
437 2019;14(12):e0225700.
- 438 9. Gille-Johnson P, Hansson KE, Gårdlund B. Severe sepsis and systemic inflammatory  
439 response syndrome in emergency department patients with suspected severe infection.  
440 *Scandinavian journal of infectious diseases*. 2013;45(3):186-93.
- 441 10. Hatfield KM, Dantes RB, Baggs J, Sapiano MR, Fiore AE, Jernigan JA, et al. Assessing  
442 variability in hospital-level mortality among US medicare beneficiaries with hospitalizations for  
443 severe sepsis and septic shock. *Critical care medicine*. 2018;46(11):1753.
- 444 11. Luhr R, Cao Y, Soederquist B, Cajander S. Trends in sepsis mortality over time in  
445 randomised sepsis trials: a systematic literature review and meta-analysis of mortality in the control  
446 arm, 2002–2016. *Critical Care*. 2019;23(1):1-9.
- 447 12. Kempker JA, Martin GS. The changing epidemiology and definitions of sepsis. *Clinics in*  
448 *chest medicine*. 2016;37(2):165-79.
- 449 13. Laupland K. Incidence of bloodstream infection: a review of population-based studies.  
450 *Clinical microbiology and infection*. 2013;19(6):492-500.
- 451 14. Holmbom M, Giske CG, Fredrikson M, Balkhed ÅÖ, Claesson C, Nilsson LE, et al. 14-  
452 Year Survey in a Swedish County Reveals a Pronounced Increase in Bloodstream Infections (BSI).  
453 Comorbidity-An Independent Risk Factor for Both BSI and Mortality. *PloS one*.  
454 2016;11(11):e0166527.
- 455 15. Evans L, Rhodes A, Alhazzani W, Antonelli M, Coopersmith CM, French C, et al.  
456 Surviving sepsis campaign: international guidelines for management of sepsis and septic shock 2021.  
457 *Intensive care medicine*. 2021;47(11):1181-247.
- 458 16. Kumar A, Roberts D, Wood KE, Light B, Parrillo JE, Sharma S, et al. Duration of  
459 hypotension before initiation of effective antimicrobial therapy is the critical determinant of survival  
460 in human septic shock. *Critical care medicine*. 2006;34(6):1589-96.

- 461 17. Angus DC, Linde-Zwirble WT, Lidicker J, Clermont G, Carcillo J, Pinsky MR.  
462 Epidemiology of severe sepsis in the United States: analysis of incidence, outcome, and associated  
463 costs of care. *Critical care medicine*. 2001;29(7):1303-10.
- 464 18. Martin GS, Mannino DM, Moss M. The effect of age on the development and outcome  
465 of adult sepsis. *Critical care medicine*. 2006;34(1):15-21.
- 466 19. Martin-Loeches I, Guia MC, Vallecocchia MS, Suarez D, Ibarz M, Irazabal M, et al. Risk  
467 factors for mortality in elderly and very elderly critically ill patients with sepsis: a prospective,  
468 observational, multicenter cohort study. *Annals of intensive care*. 2019;9(1):1-9.
- 469 20. Baek MS, Kim JH, Kwon YS. Cluster analysis integrating age and body temperature for  
470 mortality in patients with sepsis: a multicenter retrospective study. *Scientific Reports*. 2022;12(1):1-  
471 9.
- 472 21. Weinstein MP, Towns ML, Quartey SM, Mirrett S, Reimer LG, Parmigiani G, et al. The  
473 clinical significance of positive blood cultures in the 1990s: a prospective comprehensive evaluation  
474 of the microbiology, epidemiology, and outcome of bacteremia and fungemia in adults. *Clinical  
475 Infectious Diseases*. 1997;24(4):584-602.
- 476 22. Sundén-Cullberg J, Rylance R, Svefors J, Norrby-Teglund A, Björk J, Inghammar M.  
477 Fever in the Emergency Department Predicts Survival of Patients With Severe Sepsis and Septic Shock  
478 Admitted to the ICU. *Critical care medicine*. 2017;45(4):591-9.
- 479 23. Park S, Jeon K, Oh DK, Choi EY, Seong GM, Heo J, et al. Normothermia in patients with  
480 sepsis who present to emergency departments is associated with low compliance with sepsis bundles  
481 and increased in-hospital mortality rate. *Critical Care Medicine*. 2020;48(10):1462-70.
- 482 24. Lemay AC, Anzueto A, Restrepo MI, Mortensen EM. Predictors of long-term mortality  
483 after severe sepsis in the elderly. *The American journal of the medical sciences*. 2014;347(4):282-8.
- 484 25. Wang HE, Szychowski JM, Griffin R, Safford MM, Shapiro NI, Howard G. Long-term  
485 mortality after community-acquired sepsis: a longitudinal population-based cohort study. *BMJ open*.  
486 2014;4(1):e004283.
- 487 26. Prescott HC, Osterholzer JJ, Langa KM, Angus DC, Iwashyna TJ. Late mortality after  
488 sepsis: propensity matched cohort study. *bmj*. 2016;353.
- 489 27. Szczeklik W, Fronczek J. Should we revise the SOFA score? Yes. *Acta Anaesthesiologica  
490 Scandinavica*. 2022;n/a(n/a).
- 491 28. Nielsen J, Nørgaard SK, Lanzieri G, Vestergaard LS, Moelbak K. Sex-differences in  
492 COVID-19 associated excess mortality is not exceptional for the COVID-19 pandemic. *Scientific  
493 reports*. 2021;11(1):20815.
- 494 29. Kontula KSK, Skogberg K, Ollgren J, Järvinen A, Lyytikäinen O. Population-Based Study  
495 of Bloodstream Infection Incidence and Mortality Rates, Finland, 2004-2018. *Emerging infectious  
496 diseases*. 2021;27(10):2560-9.
- 497 30. MacKinnon MC, McEwen SA, Pearl DL, Lyytikäinen O, Jacobsson G, Collignon P, et al.  
498 Mortality in *Escherichia coli* bloodstream infections: a multinational population-based cohort study.  
499 *BMC Infectious Diseases*. 2021;21(1):1-10.
- 500 31. Tom S, Galbraith JC, Valiquette L, Jacobsson G, Collignon P, Schøheyder HC, et al. Case  
501 fatality ratio and mortality rate trends of community-onset *Staphylococcus aureus* bacteraemia.  
502 *Clinical Microbiology and Infection*. 2014;20(10):O630-O2.
- 503 32. Rosenqvist M, Fagerstrand E, Lanbeck P, Melander O, Åkesson P. Sepsis Alert—a triage  
504 model that reduces time to antibiotics and length of hospital stay. *Infectious diseases*.  
505 2017;49(7):507-13.
- 506 33. Rosenqvist M, Bengtsson-Toni M, Tham J, Lanbeck P, Melander O, Åkesson P.  
507 Improved outcomes after regional implementation of sepsis alert: a novel triage model. *Critical care  
508 medicine*. 2020;48(4):484-90.
- 509 34. Nauclér P, Huttner A, Van Werkhoven C, Singer M, Tattevin P, Einav S, et al. Impact of  
510 time to antibiotic therapy on clinical outcome in patients with bacterial infections in the emergency  
511 department: implications for antimicrobial stewardship. *Clinical Microbiology and Infection*.  
512 2021;27(2):175-81.

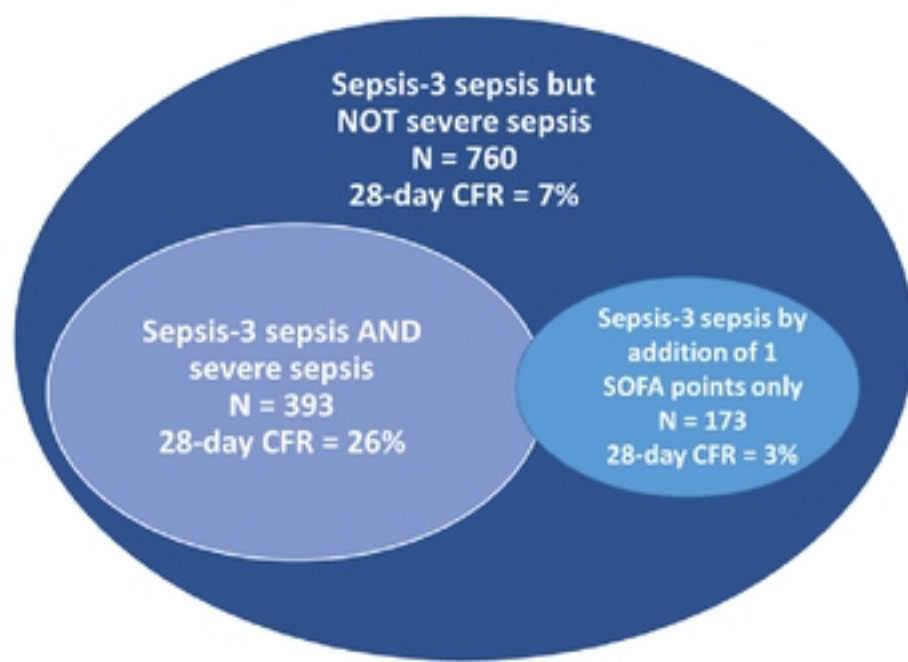


- 513 35. Rhee C, Jones TM, Hamad Y, Pande A, Varon J, O'Brien C, et al. Prevalence, underlying  
514 causes, and preventability of sepsis-associated mortality in US acute care hospitals. JAMA network  
515 open. 2019;2(2):e187571-e.
- 516 36. Schmidt K, Gensichen J, Fleischmann-Struzek C, Bahr V, Pausch C, Sakr Y, et al. Long-  
517 Term Survival Following Sepsis: Results of a Single-Center Registry Study with 4-Year Follow-Up.  
518 Deutsches Ärzteblatt International. 2020;117(46):775.
- 519

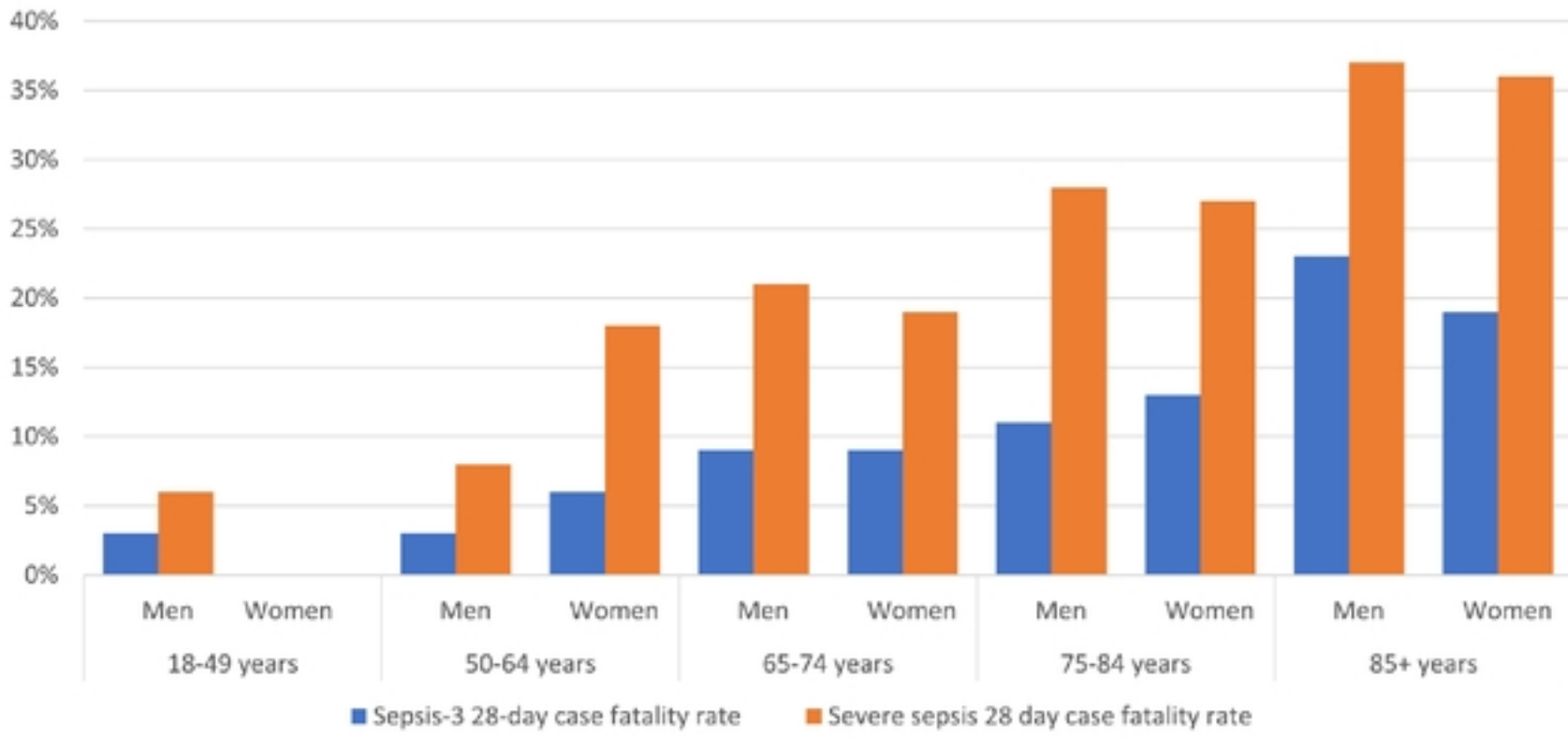


medRxiv preprint doi: <https://doi.org/10.1101/2024.04.18.24300009>; this version posted April 22, 2024. The copyright holder for this preprint (which was not certified by peer review) is the author/funder, who has granted medRxiv a license to display the preprint in perpetuity. It is made available under a [CC-BY 4.0 International license](https://creativecommons.org/licenses/by/4.0/).

Figure 1

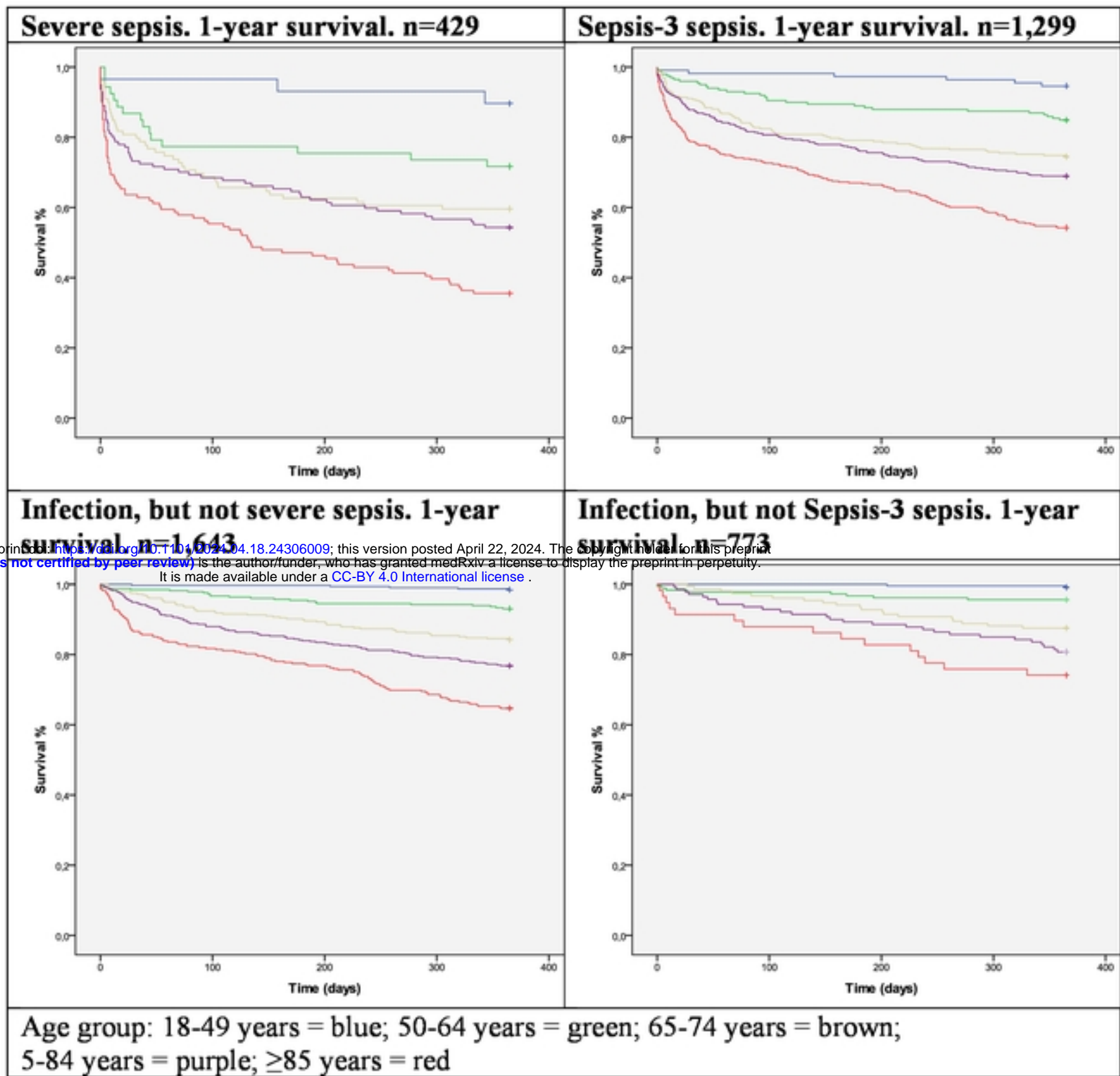


medRxiv preprint doi: <https://doi.org/10.1101/2024.04.18.24306009>; this version posted April 22, 2024. The copyright holder for this preprint (which was not certified by peer review) is the author/funder, who has granted medRxiv a license to display the preprint in perpetuity. It is made available under a [CC-BY 4.0 International license](https://creativecommons.org/licenses/by/4.0/).



medRxiv preprint doi: <https://doi.org/10.1101/2024.04.18.24306009>; this version posted April 22, 2024. The copyright holder for this preprint (which was not certified by peer review) is the author/funder, who has granted medRxiv a license to display the preprint in perpetuity. It is made available under a [CC-BY 4.0 International license](https://creativecommons.org/licenses/by/4.0/).

Figure 3



medRxiv preprint doi: <https://doi.org/10.1101/2024.04.18.24306009>; this version posted April 22, 2024. The copyright holder for this preprint (which was not certified by peer review) is the author/funder, who has granted medRxiv a license to display the preprint in perpetuity. It is made available under a [CC-BY 4.0 International license](https://creativecommons.org/licenses/by/4.0/).

Figure 4