

1 **Adiposity, metabolites and endometrial cancer risk: Mendelian randomization and Observational**
2 **analyses**

3 Matthew A Lee^{1,2,3*}, Vanessa Y. Tan^{1,2*}, Dimitri J Pournaras⁴, Sabrina Wang³, Laure Dossus³, Marc J.
4 Gunter^{3,5}, Kaitlin H. Wade^{1,2}, Laura J. Corbin^{1,2}, Nicholas J. Timpson^{1,2}

5 *These authors contributed equally to this work

6 ¹Medical Research Council (MRC) Integrative Epidemiology Unit, Population Health Sciences, Bristol
7 Medical School, University of Bristol, Bristol, United Kingdom.

8 ²Population Health Sciences, Bristol Medical School, University of Bristol, Bristol, United Kingdom.

9 ³International Agency for Research on Cancer, World Health Organization, Lyon, France

10 ⁴Department of Upper GI and Bariatric/Metabolic Surgery, North Bristol NHS Trust, Southmead Hospital,
11 Bristol, UK.

12 ⁵Cancer Epidemiology and Prevention Research Unit, School of Public Health, Imperial College London,
13 United Kingdom.

14

15 **Corresponding author:** Professor Nicholas J. Timpson, Address: MRC Integrative Epidemiology Unit,
16 University of Bristol, Oakfield House, Oakfield Grove, Bristol, BS8 2BN, email: N.J.Timpson@bristol.ac.uk

17 **Key words:** Adiposity, Metabolites, Endometrial cancer, Mendelian randomization

18 **Main text words:** 4,279 ; **Abstract:** 417 ; **References:** 55 ; **Tables & Figures:** 9 ; **Supplementary files:** 4

19 **Abstract**

20 **Introduction**

21 Increased and excess adiposity is associated with increased risk of endometrial cancer (EC)
22 and both of these are associated with circulating metabolite profiles. However, how
23 metabolites relate to the adiposity-EC relationship remains unclear.

24

25 **Methods**

26 We have brought together evidence from Mendelian randomization (MR) and observational
27 analyses to evaluate the effect of i) adiposity traits on endometrial cancer, ii) adiposity traits
28 on circulating metabolites and iii) adiposity-associated metabolites on EC. We have also
29 evaluated the potential role of metabolites in the adiposity-EC relationship using
30 multivariable MR. Observational analyses were conducted using individual level data from UK
31 Biobank (N = 1,005 cases and 215,339 controls). MR analyses were performed using female-
32 specific summary statistics from genome-wide association studies of body mass index (BMI;
33 N up to 434,794), waist-to-hip ratio (WHR; N up to 381,152), 249 metabolites and ratios from
34 targeted nuclear magnetic resonance metabolomics (N up to 140,768) and EC risk (12,906
35 cases and 108,979 controls).

36

37 **Results**

38 In observational analyses, higher BMI and WHR were associated with elevated odds of overall
39 EC (odds ratio (OR) per standard deviation (SD) increase in BMI = 1.37; 95% confidence
40 interval (CI) = 1.19, 1.57; OR per SD increase in WHR= 1.15; 95% CI = 1.01, 1.32). In MR
41 analysis, higher BMI was associated with elevated odds of overall EC risk (OR per SD increase
42 in BMI = 1.80; 95% CI = 1.56, 2.07), endometrioid cancer (OR = 1.71; 95% CI = 1.45, 2.02) and
43 non-endometrioid cancer (OR = 2.20; 95% CI = 1.55, 3.12). There was weaker evidence for a
44 causal relationship with WHR. BMI was associated with 165 metabolites and ratios after
45 Bonferroni-correction in MR analyses, several of which were associated with EC and 25 of
46 which were directionally consistent with an intermediate role in the effect of BMI on EC risk
47 from two-step MR and observational analyses. In MVMR analyses, there was evidence
48 suggesting that the effect of BMI on non-endometrioid EC was mediated by several lipid
49 metabolites; for example, the univariable MR OR for non-endometrioid EC per 1 SD increase

50 in BMI was 2.51 (95%CI = 1.47, 4.29), whereas on adjusting for free cholesterol to total lipids
51 ratio in medium LDL, the MVMR OR for non-endometrioid EC per 1 SD increase in BMI was
52 1.18 (95%CI = 0.53, 2.66). Further bioinformatic analyses highlighted a mixture of other
53 potential shared pathways (including height, adiposity traits and blood cell traits) that could
54 influence the risk of EC.

55

56 **Conclusion**

57 Evidence here suggests that higher BMI causes a higher risk of overall and all histological
58 subtypes of EC and variation in numerous circulating metabolites. Several of these
59 metabolites showed relationships consistent with an intermediate role between BMI and
60 non-endometrioid EC, however, further bioinformatic analyses highlighted other potential
61 shared mechanisms that could influence the risk of EC.

62

63

64

65

66

67

68

69 Introduction

70 Endometrial cancer (EC; cancer of the lining of the uterus) is the most common gynaecological
71 cancer among women with more than 380,000 new cases diagnosed globally¹. Based on
72 differences in histology and clinical outcomes, there are two main subtypes of EC:
73 endometrioid carcinomas (type 1 tumours) with good prognosis and non-endometrioid
74 carcinomas (type 2 tumours) with worse prognosis². Endometrioid EC is more commonly
75 hormonally driven compared with non-endometrioid EC³.

76
77 Excess body weight is robustly associated with EC, with support from observational studies⁴.
78 Mendelian randomisation⁵ (MR) studies, which use genetic variants as instruments (or
79 proxies), of adiposity traits further support the evidence base for a causal relationship with
80 EC⁶⁻⁸. However, whilst the relationship between adiposity and EC is well-established,
81 understanding of the mechanisms and covariables involved in the adiposity-EC relationship
82 remains incomplete. Furthermore, evidence of associations between body fat distribution,
83 measured as waist-hip-ratio (WHR), has only been supported with observational studies^{4,6,8}.

84
85 Metabolic reprogramming is recognised as a hallmark of tumorigenesis⁹ and there is evidence
86 that metabolic dysfunction drives the development and progression of EC^{10,11}. Findings from
87 a recent prospective study suggest that concentrations of glycine, serine, sphingomyelin and
88 free carnitine may represent specific pathways involved in EC development¹². Increased
89 adiposity causes changes to an individual's systemic metabolic profile¹³⁻¹⁵. Observational and
90 MR studies support an effect of adiposity (proxied using body mass index [BMI]), on raised
91 amino acids, fatty acids and inflammatory glycoprotein acetyls¹⁵, leading to suggestions that
92 a potential mechanism linking adiposity and EC could be adiposity-induced metabolic
93 changes¹⁰. A recent prospective study showed that EC is positively associated with adiposity-
94 associated metabolic changes including specific amino acids and lipids¹⁶; however, whether
95 these relationships are causal is unclear.

96
97 We aimed to better understand the potential role of circulating metabolites as intermediates
98 in the association between adiposity and EC risk by triangulating evidence from summary-

99 level univariable two-step¹⁷ MR and multivariable MR approaches in combination with
100 observational analyses in UK Biobank.

101

102 **Methods**

103 **Analytical strategy**

104 This study has four main analyses that were performed sequentially (**Figure 1**) to estimate:
105 (**Part I**) the effect of adiposity measures on EC, (**Part II**) the effect of adiposity measures on
106 circulating metabolites, (**Part III**) the effect of adiposity-associated metabolites on EC, and
107 (**Part IV**) the potential intermediate role of adiposity-associated metabolites in the
108 relationship between adiposity and EC (identified in **Part II** and **III**). Observational analyses
109 were performed for Parts I-III. MR analyses were performed for Parts I-IV; Metabolite data
110 from UK Biobank were used in both the MR and observational analyses. This study is reported
111 as per the Strengthening the Reporting of Observational Studies in Epidemiology (STROBE)
112 and STROBE-MR guidelines (**Supplementary Table S1** and **S2**)^{18,19}.

113

114 **Observational analyses (Part I-III)**

115 ***Study population***

116 UK Biobank is a nation-based health project that recruited more than 500,000 participants
117 (aged 37-73 years, 56.3% were women) between 2006 and 2020^{20,21}. In addition to the
118 collection of biological samples (blood, saliva and urine), health, demographic and
119 anthropometric data were collected in 22 assessment facilities across England, Wales and
120 Scotland²². Participants provided written informed consent. Ethical approval was obtained
121 from the Northwest Multi-centre Research Ethics Committee (11/NW/0382). Data from UK
122 Biobank were accessed via application number 16391 and 30418. Data for adiposity measures
123 and endometrial cancer outcome was extracted on the 08/07/2021 and the ¹H-NMR
124 metabolite data was extracted on the 08/02/2023.

125

126 ***Adiposity measures***

127 BMI was calculated as weight (kg)/height² (m²) and WHR as waist circumference (cm)/hip
128 circumference (cm). Height was measured to the nearest centimetre, using a Seca 202
129 stadiometer, and body weight to the nearest 0.1kg, using a Tanita BC-418 body composition

130 analyser. Waist circumference was measured at the natural indent (the umbilicus was used if
131 the natural indent could not be observed); hip circumference was measured at the widest
132 part of the hips. BMI and WHR were inverse rank normal transformed prior to observational
133 analyses and represent normalised SD units.

134

135 Metabolite measures

136 Non-fasting EDTA plasma samples were collected from approximately 275,000 participants, a
137 random subset of the original ~500,000, who provided samples at the 2006-2010 assessment
138 (N=275,000) or at a subsequent assessment in 2012-2013 (N=17,000) (around 15,000 of these
139 have both baseline and repeat assessment). A total of 249 metabolic traits (168
140 concentrations plus 81 ratios) were quantified using ¹H-NMR spectroscopy (data pre-
141 processing and quality control steps conducted by Nightingale Health are described
142 previously^{23,24}). Inverse rank normal transformed metabolite concentrations were used in all
143 analyses and represent normalised SD units.

144

145 Endometrial cancer

146 EC was defined as a malignant neoplasm of the endometrium. The UK Biobank database
147 contained a record of all cancers including their subtype occurring either before or after
148 participant enrolment using the International Classification of Diseases, 9th and 10th revision
149 (ICD-10, ICD-9). The following ICD-10 and ICD-9 codes were used to define EC: ICD10 codes
150 (C540, C541, C542, C543, C549 and C55) and ICD9 codes (179, 1799, 180, 182, 1820, 1821 and
151 1828). Cases were characterised as incident or prevalent using 'age when they attended the
152 centre' and 'age when first reported EC cancer'. Participants were defined as incident cases if
153 their 'attending age' was less than their 'cancer diagnosis age'. In total, there were 1,935 EC
154 cases with 1,005 being incident cases and 930 prevalent cases. Only incident cases (N=1,005)
155 were included in our analyses. Controls (n=215,339) were defined as female participants who
156 had no record of any type of cancer, in-situ carcinoma, or an undefined neoplasm.

157

158 Covariables

159 We included potential confounders of the BMI-metabolite-EC relationships in our analyses.
160 The potential confounders were sociodemographic factors (age at assessment, physical

161 activity, smoking status, alcohol consumption and educational attainment) and female-
162 specific factors (history of hormone replacement therapy (HRT) use, age at first live birth, age
163 at last live birth, age at menarche and menopausal status). Age, smoking status, alcohol
164 consumption, education attainment and female-specific factors were self-reported at the
165 baseline assessment by questionnaire. Physical activity level over a typical week was self-
166 reported using the International Physical Activity Questionnaire and reported as metabolic
167 equivalent of task (MET) per week.

168

169 **Statistical analyses**

170 Observational associations between: I) adiposity measures and EC (**Figure 1, Part I**) were
171 assessed using multivariable logistic regression, II) adiposity measures and metabolites
172 (**Figure 1, Part II**) were assessed using multivariable linear regression for cases and controls
173 combined in one cohort and III) adiposity-associated metabolites and EC (**Figure 1, Part III**)
174 were assessed using multivariable logistic regression. All analyses were initially adjusted for
175 age at assessment and centre. Models were additionally adjusted for potential confounders
176 (smoking status, alcohol consumption, education status, physical activity, hormone
177 replacement therapy use, age at first live birth, age at last live birth, age at menarche and
178 menopausal status). To account for multiple testing, we used the Bonferroni-adjusted p value
179 threshold ($0.05/249$) for the association between adiposity measures and metabolites and p -
180 value < 0.05 for all other tests. Multivariable linear and logistic regression analyses were
181 performed using the `lm` and `glm` functions, respectively, in R.

182

183 **Genome-wide association study results and Mendelian randomisation analyses (Part I-IV)**

184 ***Data sources and study populations***

185 *Adiposity instruments*

186 We identified single nucleotide polymorphisms (SNPs) that were independently associated
187 (low linkage disequilibrium (LD), $R^2 < 0.001$) with BMI and WHR (unadjusted for BMI) at $p < 5 \times 10^{-9}$
188 from a recent large-scale female-specific genome-wide association study (GWAS) meta-
189 analysis of 434,794 female adults of European ancestries from the Genetic Investigation of
190 Anthropometric Traits (GIANT) consortium and the UK Biobank²⁵ (**Supplementary Table 3**).
191 Adiposity measures were inverse rank normal transformed prior to genome-wide analysis and

192 units therefore represent a normalised standard deviation (SD). In total, 271 (average F-
193 statistic = 41) and 227 (average F-statistic = 45) SNPs were identified for BMI and WHR,
194 respectively.

195

196 *Metabolite GWAS in UK Biobank and selection of metabolite instruments*

197 A random subset of non-fasting baseline plasma samples, consisting of 275,000 UK Biobank
198 participants and 17,000 repeat-visit samples (around 15,500 of these have both a baseline
199 and repeat assessment), were measured using targeted high-throughput ¹H-Nuclear
200 magnetic resonance (¹H-NMR) metabolomics (Nightingale Health Ltd; biomarker
201 quantification version 2020)^{24,26}. Genotype data was available for 488,377 individuals, of
202 which 49,979 were genotyped using the UK BiLEVE array and 438,398 using the UK Biobank
203 axiom array. Pre-imputation QC, phasing and imputation have been described previously²¹.
204 Genotype imputation was performed using IMPUTE2 algorithms²⁷ to a reference set
205 combining the UK 10K haplotype and HRC reference panels²⁸. Post-imputation QC was
206 performed as described in the “UK Biobank Genetic Data: MRC-IEU Quality Control”
207 documentation^{29,30}. We conducted a female-specific GWAS for the 249 ¹H-NMR-derived
208 metabolites and ratios in UK Biobank female participants of European descent (N=140,768)
209 using the MRC IEU UK Biobank GWAS pipeline³⁰. We restricted the samples to individuals of
210 European ancestry as defined by the largest cluster in an in-house k-means clustering of
211 genetic ancestry data (K=4) after standard exclusions including withdrawn consent, mismatch
212 between genetic and reported sex and putative sex chromosome aneuploidy²⁹⁻³¹
213 **(Supplementary Table 3)**. Metabolite measures were inverse rank normal transformed prior
214 to genome-wide analysis and units therefore represent a normalised SD. Genome-wide
215 association analysis was conducted using a linear mixed model (LMM) as implemented in
216 BOLT-LMM (v2.3)³². Population structure was modelled using 143,006 directly genotyped
217 SNPs (MAF > 0.01; genotyping rate > 0.015; Hardy-Weinberg equilibrium p-value < 0.0001 and
218 LD pruning to an r² threshold of 0.1 using PLINK(v2.00)). Genotype array and fasting time
219 were adjusted for in the model. We identified 11-167 independent SNPs (r²<0.001 and
220 p<5x10⁻⁸) for each of the ¹H-NMR-derived metabolites (average F-statistics: ranged from 40.6-
221 81.6).

222

223 Endometrial Cancer GWAS data

224 We obtained SNP estimates from the largest GWAS (as log odds ratio (OR)) for EC to date⁸,
225 including up to 12,906 cases and 108,979 controls from 13 studies (**Supplementary Table 3**).
226 Of the 12,906 cases and 108,979 controls, 636 cases (5%) and 62,853 controls (58%) were
227 from UK Biobank. Summary statistics were also available for the association between genetic
228 variation and the EC subtypes, endometrioid (8,758 cases) and non-endometrioid (1,230
229 cases) cancer; both GWASs used the full set of controls (N = 108,979). None of the
230 endometrial subtype cases were from UK Biobank. Histological subtypes of EC were
231 confirmed based on pathology reports and detailed study descriptions have previously been
232 reported⁸.

233

234 **Statistical analysis**

235 In each instance, MR estimates are interpreted as the change in outcome per SD unit change
236 in exposure. Estimates for metabolite outcomes reflect SD unit change, and estimates for EC
237 outcomes reflect odds ratios (OR). All analyses were performed using R version 3.5.3³³.
238 Univariable MR analyses were performed using the TwoSampleMR (version 0.4.22) package²⁶.
239 Multivariable MR analyses were performed using the MVMR (version 0.3) package³².

240

241 First, we examined the association between BMI and WHR with overall, endometrioid and
242 non-endometrioid EC risk using summary-level data from female-specific GWAS of BMI, WHR
243 and EC (**Figure 1, Part I**). Details of the SNPs included in each analysis, and proxies used (where
244 SNPs were not available in the outcome data), are provided in **Supplementary Table 4**.
245 Summary statistics were harmonised using the `harmonise_data` function within the
246 TwoSampleMR R package (version 0.4.22)³³. Univariable causal estimates were combined
247 using the inverse-variance weighted (IVW) multiplicative random effects (IVW-MRE) model³⁴.
248 Where possible (i.e., where there were three or more instruments), the assumption of no
249 pleiotropy among genetic instruments and outcomes were explored using MR-Egger³⁵,
250 weighted median³⁶ and weighted mode³⁷ estimators. These methods are sensitive to the
251 effects of potential pleiotropy under different assumptions. No *p*-value threshold
252 requirements were set for these methods and, instead, consistency between the IVW model
253 and the three sensitivity MR methods (MR-Egger, weighted median and weighted mode) was
254 assessed.

255

256 Second, adiposity traits (BMI and WHR) that showed evidence of an effect on EC with p values
257 < 0.05 from IVW-MRE models and with consistent associations across the three sensitivity MR
258 methods, were taken forward and examined for associations with the $^1\text{H-NMR}$ -measured
259 metabolites (**Figure 1, Part II**). Summary-level data were obtained from a female-specific
260 GWAS for adiposity traits and $^1\text{H-NMR}$ metabolites, and we examined the effect of adiposity
261 traits on $^1\text{H-NMR}$ -measured metabolites using the four MR models described above.
262 Metabolites that were associated with the adiposity traits with p values $< 0.05/249$
263 (Bonferroni-adjusted p -value threshold) from IVW-MRE models were taken forward and
264 examined for association with EC risk using IVW-MRE model (if ≥ 2) or Wald ratio (if 1 SNP)
265 (**Figure 1, Part III**).

266

267 Multivariable MR (MVMR)^{38,39} was conducted to test the hypothesis that adiposity-associated
268 metabolites (identified in **Part II and III**) may act as intermediate factors in the effect of BMI
269 on EC (**Figure 1, Part IV**). Only metabolites that showed a consistent direction of effect across
270 the adiposity-EC, adiposity-metabolite, and metabolite-EC analyses from both MR and
271 observational analyses (identified in **Part II and III**) were included in the MVMR analyses. For
272 the MVMR analyses, we fitted a model with BMI and EC and included each BMI-associated
273 metabolite in turn to estimate the direct causal effect of BMI on EC. We used female-specific
274 SNPs for BMI based on an earlier (lower-powered) GWAS⁴⁰ for the multivariable models to
275 avoid a relative dilution of metabolite instrument strength⁴¹ given that the number of SNPs
276 for BMI from the latest BMI GWAS far outnumbered those for metabolites. Conditional F-
277 statistics were used to evaluate instrument strength³⁹. Heterogeneity was quantified using an
278 adapted version of the Q statistic (Q_A ; also a further modification of Cochran's Q)³⁹.

279

280 **Sensitivity analyses**

281 Sample overlap between exposure and outcome GWAS can bias MR estimates towards the
282 confounded observational estimate (inflated type 1 error) in the presence of weak instrument
283 bias in a manner proportional to the degree of overlap⁴². This bias can be inflated by "Winner's
284 curse", in which weights for genetic instruments are derived from discovery samples that
285 overlap with outcome samples. There was sample overlap across our MR analyses as the
286 adiposity, $^1\text{H-NMR}$ metabolite and EC GWAS all included participants from UK Biobank. Given

287 the random selection of samples for metabolomics analysis and the inclusion of almost all
288 samples within the adiposity GWAS it is not possible to precisely quantify the degree of
289 sample overlap but we make the assumption of 100% sample overlap between the adiposity
290 and ¹H-NMR metabolite GWAS. There was also approximately 5% overlap for both the
291 adiposity and ¹H-NMR metabolite GWAS with the overall EC GWAS. Given this, we conducted
292 sensitivity analyses to evaluate the influence of sample overlap in our MR analyses. First, for
293 analyses examining the association between adiposity traits with endometrial cancer risk
294 (**Figure 1, Part I**), we re-performed MR analyses using alternative GWAS data for BMI
295 (n=171,977) and WHR (N=118,004) where there was no sample overlap^{40,43} with either the EC
296 GWAS conducted by ECAC⁸ or an alternative EC GWAS conducted by ECAC which excluded UK
297 Biobank participants (personal correspondence) (N for overall EC=12,270 cases and 46,126
298 controls; N for endometrioid EC=8,758 cases and 46,126 controls and N for non-endometrioid
299 EC = 1,230 cases and 35,447 controls)⁸. Second, for analyses examining the association
300 between adiposity traits with ¹H-NMR metabolites (**Figure 1, Part II**), we re-performed MR
301 analyses using alternative GWAS data for BMI where there was no sample overlap^{40,43}. Third,
302 for analyses examining the association between ¹H-NMR metabolites and endometrial cancer
303 risk (**Figure 1, Part III**), we re-performed MR analyses using the alternative GWAS for EC which
304 had excluded UK Biobank participants⁸ (**Supplementary Table 3**).

305

306 **Examining off-target effects using PhenoScanner (Part V)**

307 Due to the shared genetic architecture and pleiotropic nature of instruments for
308 metabolites^{44–46}, it is possible for variants acting as proxies for metabolites to exert off-target
309 or pleiotropic effects on EC through other biological mechanisms. This presents the possibility
310 that intermediate associations are reflecting common, but unmeasured, biological
311 underpinnings rather than more obvious hypothesised pathway effects. To investigate this,
312 we assessed whether genetic instruments for adiposity- and EC-associated, (and apparently
313 intermediate) metabolites were associated with other traits ($p < 1E-10$) in a manner different
314 to that expected by chance given documented genotype/metabolite/trait associations. Using
315 PhenoScanner^{47,48}, we assessed the co-association of adiposity- and EC-associated
316 metabolites with other phenotypes and outcomes before performing the same procedure
317 over 100 iterations, but for randomly selected metabolites taken from the 244 metabolites
318 not found to underlie the association between adiposity and EC risk. The overall profile of

319 these redraws were compared with that from the adiposity- and EC-associated instruments,
320 i.e. counts of detectable associations with trait domains for adiposity- and EC-associated
321 instruments versus SNPs associated with random metabolites.

322

323 **Results**

324 **Population and data overview**

325 The observational analyses within UK Biobank included up to 1,005 female participants who
326 had a diagnosis of incident EC and up to 215,339 controls (**Table 1**). The cases and controls
327 had a mean (SD) age of 59.63 (6.43) years and 55.83 (8.02) years, respectively. Mean BMI was
328 higher among cases than controls (at 30.33kg/m² (7.07) and 27.06kg/m² (5.17), respectively).
329 Mean WHR was higher among cases than controls (at 0.84 (0.07) and 0.82 (0.07),
330 respectively). 3.66% reported having a diagnosis of diabetes, and this was more common
331 among cases than controls (8.99% and 2.64%, respectively).

332

333 **Association between adiposity measures and endometrial cancer (Part I)**

334 For BMI, observational analyses showed evidence that higher BMI (per SD) was associated
335 with 1.61 (95% CI = 1.49, 1.75) times higher odds of overall EC; these results were consistent
336 when adjusting for all covariables (OR = 1.37; 95% CI = 1.19, 1.57) (**Figure 2; Table 2**). This was
337 supported by univariable MR analysis, which found that higher BMI (per SD) was associated
338 with 1.80 (95% confidence interval (CI) = 1.56, 2.07) times higher odds of overall EC using the
339 IVW-MRE model (**Figure 2; Supplementary Table 5**). Similar results were found for
340 endometrioid cancer (OR = 1.71; 95% CI = 1.45, 2.02) and non-endometrioid cancer (OR = 2.20;
341 95% CI = 1.55, 3.12) (**Supplementary Table 5**). This finding was consistent across sensitivity
342 analyses using methods that consider potential genetic pleiotropy and when using
343 instruments from non-overlapping samples (**Supplementary Table 5**).

344

345 For WHR, observational analyses showed evidence that higher WHR (per SD) was associated
346 with 1.23 (95% CI = 1.13, 1.34) times higher odds of overall EC; these results were consistent
347 when adjusting for all covariables (OR = 1.15; 95% CI = 1.01, 1.32) (**Figure 2; Table 2**). Evidence
348 of association between WHR (per SD) and overall EC (OR = 1.10; 95% CI = 0.93, 1.29),
349 endometrioid EC (OR = 1.09; 95% CI = 0.91, 1.30) and non-endometrioid EC (OR = 1.43; 95% CI

350 = 0.96, 2.12) in univariable MR was weaker (**Figure 2; Supplementary Table 5**). Sensitivity
351 analyses were broadly consistent for overall and endometrioid EC. However, findings were
352 less consistent for non-endometrioid EC in sensitivity analyses where the MR-Egger estimate
353 (OR = 3.99; 95% CI = 1.14; 13.95) was greater in magnitude compared to the IVW estimates
354 (**Supplementary Table 5**) and when using instruments from non-overlapping samples (IVW
355 OR= 1.93; 95% CI = 1.17, 3.18) (**Supplementary Table 5**).

356

357 **Association between adiposity measures and metabolites (Part II)**

358 Higher BMI (per SD) was associated with 175 metabolites after correcting for multiple testing
359 and using the IVW-MRE model (**Figure 3; Supplementary Table 6**). Of these metabolites, 165
360 had consistent directions of effect in all four MR models and the fully-adjusted observational
361 analyses (**Supplementary Figure 1 and 2; Supplementary Table 7**) and were taken forward
362 for subsequent analysis with EC. These findings were broadly consistent across sensitivity
363 analyses using instruments from non-overlapping samples ($r=0.94$) (**Supplementary Table 6**).

364

365 BMI had a broad effect on the metabolomic profile, with associations across many metabolite
366 classes including numerous lipid metabolites and their ratios such as total cholesterol, total
367 lipids, triglycerides and cholesteryl esters in high density lipoprotein (HDL) and very low-
368 density lipoprotein (VLDL). For example, higher BMI led to 0.40 SD (95% CI = 0.34, 0.46) and
369 0.39 SD (95% CI = 0.38, 0.39) lower levels of total cholesterol in very large HDL in MR and
370 observational analyses, respectively. There was also evidence that higher BMI increased levels
371 of several amino acids including valine, isoleucine, leucine, tyrosine, and phenylalanine
372 (**Supplementary Table 6**). For example, higher BMI led to 0.23 SD (95% CI = 0.19, 0.27) and
373 0.26 SD (95% CI = 0.25, 0.27) higher levels of valine in MR and observational analyses,
374 respectively.

375

376 **Association between BMI-associated metabolites and endometrial cancer (Part III)**

377 Of the 165 BMI-associated metabolites, 25 metabolites (representing 27 adiposity-
378 metabolite-EC associations) were directionally consistent with an intermediate role in the
379 association between BMI and overall EC (2 associations), endometrioid EC (1 association) and
380 non-endometrioid EC (24 associations) from MR analyses (**Figure 4 and Supplementary Figure**

381 **3; Supplementary Table 8).** Observational analyses were only possible for overall EC. The two
382 BMI-associated metabolites (phospholipid to total lipids ratio in medium VLDL and cholesteryl
383 esters to total lipids ratio in medium HDL) had directions of effects consistent with MR
384 analyses in the fully adjusted observational analysis (**Supplementary Table 9**).

385
386 Of the 25 BMI-associated metabolites, 2 were associated with two EC outcomes in the MR
387 analyses: phospholipids to total lipids ratio in medium VLDL was associated with overall (OR
388 = 0.87; 95% CI = 0.75, 1.00) and endometrioid EC (OR = 0.85, 95% CI = 0.72, 0.99) and
389 cholesteryl esters to total lipids ratio in medium HDL was associated with overall (OR = 0.86,
390 95% CI = 0.75, 0.98) and non-endometrioid EC (OR = 0.61, 95% CI = 0.44, 0.85). The remaining
391 23 metabolites - mainly of the lipoprotein subclasses - were associated with just one EC
392 outcome, which was predominantly non-endometrioid cancer. For example, the largest
393 positive and negative effects were observed for the association between cholesteryl esters to
394 total lipids ratio in medium LDL (OR = 1.85; 95% CI = 1.15, 2.98) and total esterified cholesterol
395 (OR = 0.57; 95% CI = 0.36, 0.90) and non-endometrioid cancer using the IVW-MRE model
396 (**Figure 4**).

397
398 **Examining the intermediate role of metabolites in the effect of adiposity on EC: Multivariable MR**
399 **analyses (Part IV)**

400 We used MVMR to investigate whether the 25 BMI-associated metabolites were potential
401 intermediates of the effect of BMI on EC risk. In MVMR, there was little evidence that the
402 association of BMI with overall and endometrioid EC was strongly attenuated following
403 adjustment for most metabolites (**Figure 5**). For non-endometrioid EC, the association of BMI
404 with non-endometrial cancer was attenuated following adjustment for various metabolites
405 (**Figure 5**); for example, the univariable MR OR for non-endometrioid EC per 1 SD higher BMI
406 was 2.51 (95%CI = 1.47, 4.29), whereas the MVMR OR for non-endometrioid EC per 1 SD
407 increase in BMI was 1.18 (95%CI = 0.53, 2.66) after adjusting for free cholesterol to total lipids
408 ratio in medium LDL. The conditional F statistics for BMI and metabolites instruments are
409 presented in **Supplementary Table 10**.

410

411 ***Examining off-target effects***

412 Given the highly pleiotropic nature of the metabolite instruments, it is possible that the
413 instruments might be proxying other common, but unmeasured, biological pathways rather
414 than having a direct effect through the metabolites. Using a commonly used catalogue of
415 genetic association results (PhenoScanner^{47,48}), we conducted a phenome scan for the genetic
416 instruments proxying metabolites potentially underlying the adiposity-EC relationship and
417 compared the traits association profiles with those of randomly selected metabolites. We
418 identified a larger than expected proportion of instruments associated with several lipid traits
419 including HDL, LDL, triglycerides and total cholesterol, as well as anthropometric (height and
420 adiposity) and blood cell traits for the metabolites underlying the adiposity-EC relationship
421 compared to the randomly selected metabolites. This suggests that the metabolite
422 instruments could be proxying for or are a response read-out of other potentially shared
423 biological pathways (**Figure 6**).

424

425 **Discussion**

426 This study aimed to identify potential metabolic intermediates of the effects of adiposity on
427 EC risk using MR and observational analyses. Higher BMI increased risk of overall EC and EC
428 stratified by histological subtypes. BMI was associated with numerous metabolites; 25 of
429 which were also found to increase EC risk. There was evidence from both two-step and
430 multivariable MR analyses that the effect of BMI on EC was mediated strongly by several lipid
431 metabolites; however, further bioinformatic analysis highlighted numerous potential
432 pleiotropic and shared mechanisms that could potentially explain associations and patterns
433 of intermediate effect.

434

435 Adiposity is a well-recognised risk factor for EC^{49–51}. Our analyses found that higher BMI and
436 WHR were positively associated with EC. In contrast, in MR analyses, we only found strong
437 evidence that higher BMI increased EC risk. This is consistent with findings from recent MR
438 studies where genetically elevated BMI, but not WHR, was found to be causally linked to
439 EC^{6,8,52,53}. It is well-established in the literature that obesity is associated with both
440 endometrioid and non-endometrioid EC, with stronger associations of an effect on

441 endometrioid EC, as compared to non-endometrioid EC^{6,8,52,54-60}. Interestingly, the effect of
442 BMI on non-endometrioid EC was slightly greater than endometrioid EC in our study.
443 Although rarer, non-endometrioid tumours are more aggressive and have a poorer prognosis.
444 Little is known about the etiology of non-endometrioid EC and the association with obesity
445 warrants further investigation. WHR is widely used as a proxy measure of central adiposity
446 and, notwithstanding variation in the statistical performance of analyses here and the impact
447 of measurement error and the genetic architecture of these traits on the nature of MR
448 analyses, these findings may suggest that central adiposity may be less relevant for EC risk
449 than overall adiposity. This is supported by a recent MR study which found little evidence for
450 a causal link between trunk fat ratio (proxy for abdominal adiposity) and EC but found strong
451 evidence that BMI and arm fat ratio (proxy for overall body fat) had a strong positive effect
452 on EC⁵³.

453

454 Adiposity leads to perturbations in systemic metabolism which may have an impact on EC^{16,61}.
455 In both MR and observational analyses, BMI was associated with a wide array of metabolites;
456 the effect estimates for a majority of metabolites (including HDL, VLDL, triglycerides,
457 apolipoproteins A and B, glycolysis-related metabolites and amino acids) were generally
458 consistent in terms of direction and magnitude with previous studies^{15,41,62,63}; however, the
459 associations of BMI with several metabolites including LDL cholesterol, total cholesterol,
460 sphingomyelin and fatty acids were inconsistent with patterns previously observed in an MR
461 study conducted in young adults¹⁵. For example, our study found evidence of an inverse effect
462 of BMI on LDL cholesterol which is in contrast to the previous MR study¹⁵ which supported a
463 positive effect of BMI. It has been suggested that the inconsistencies could be partly
464 attributable to higher prevalence of statin use in UK Biobank (22% of men and 12% of
465 women)⁶².

466

467 Of the BMI-associated metabolites, 25 metabolites were also associated with either overall,
468 endometrioid or non-endometrioid EC. Our two-step and multivariable MR suggested that
469 several lipid metabolites - the majority of which were metabolite ratios - could be potential
470 intermediates between BMI and non-endometrioid EC risk. Cholesterol is an essential
471 structural component of cell membranes and altered cholesterol metabolism can drive the
472 onset and progression of cancer⁶⁴. In the circulation and within cells, free cholesterol is

473 converted to cholesteryl esters (CE) by acylCoA-cholesteryl-acyl-transferase (ACAT).
474 Numerous studies have shown that increased expression and activity of ACAT and subsequent
475 accumulation of cholesteryl esters in cancer cells is linked to the development and
476 progression of cancers, including endometrial cancer^{65,66}. We did not find strong evidence
477 that total cholesterol esters attenuated the effect of BMI on non-endometrioid EC risk in our
478 MVMR analyses. Interestingly, we found evidence that cholesteryl esters to total lipids ratio
479 in small and medium LDL were positively associated with both BMI and non-endometrioid EC
480 risk while free cholesterol to total lipids ratio in medium and large LDL were inversely
481 associated with BMI and in turn associated with reduced risk of non-endometrioid EC. These
482 metabolite ratios could represent flux through a biochemical pathway⁶⁷ and further studies
483 could be conducted to investigate their role in the development of EC.

484

485 Triglycerides, a major component of adipose tissues, are often elevated in adiposity and have
486 been suggested to drive EC development either directly or indirectly through deregulation of
487 peroxisome proliferator-activated receptors (PPARs)⁶⁸. We observed that triglycerides in LDL
488 and triglycerides to total lipids ratio in VLDL, LDL and LDL particles were positively associated
489 with both BMI and non-endometrioid endometrial cancer risk. The positive relationship
490 between triglycerides and endometrial cancer risk is consistent with several observational
491 studies⁶⁸⁻⁷¹; however, a recent Mendelian randomization analysis study found little evidence
492 of a causal link between the role of triglycerides in the development of both endometrioid
493 and non-endometrioid EC⁷². To this end, further research is required to clarify the role of
494 triglycerides in non-endometrioid EC development.

495

496 Understanding how metabolites may be potential intermediates between risk factors and
497 disease outcomes is a compelling research topic. However, major challenges persist for
498 identifying instruments to proxy circulating metabolites due to the complex genetic
499 architecture of blood metabolites⁴⁴⁻⁴⁶. First, owing to the high correlational structure of many
500 metabolites, instruments for metabolites are often associated with other metabolites^{46,73}.
501 Second, due to the high degree of pleiotropy (or basic biological overlap) for metabolite
502 instruments with other modifiable risk factors and disease endpoints, it is often not
503 straightforward to determine the exact molecular mechanism by which they impact the
504 outcome. Indeed, when considering whether we are reliably instrumenting the effect of BMI-

505 associated metabolites on EC, we identified other shared pathways including height and
506 several adiposity and blood cell traits that could influence associations with EC. This suggests
507 that when compared with a (hypothetically null) set of randomly selected metabolites,
508 instruments for implicated metabolites could be flagging biological pathways that may be
509 driving causal associations; however, importantly, it is difficult to distinguish whether the
510 biological pathways highlighted are due to vertical pleiotropy (i.e., the mechanism by which
511 the SNP influences the outcome is via metabolites) or horizontal pleiotropy (i.e., the SNP
512 could influence the outcome through a pathway independent of metabolites). Our approach
513 to the examination and characterisation of signal metabolites is conceptually similar to a cis-
514 versus-trans MR analysis of proteins that looks to clarify inference from MR methods through
515 prior information available on the instruments in question. Using this approach, a recent
516 study⁷⁴ demonstrated that the observed relationship between small HDL particle count and
517 sepsis were - in part - driven by potential confounding between interleukin 6 (IL-6) and HDL,
518 where IL-6 signalling is the true mechanism.

519

520 This work adds to the body of evidence suggesting a causal relationship between adiposity
521 and adiposity-associated metabolites with overall, endometrioid, and non-endometrioid EC
522 risk. In our study, we focussed predominantly on lipid-based metabolites identified via ¹H-
523 NMR metabolomics rather than mass spectrometry, which is not yet available at sufficient
524 scale. Mass spectrometry-based metabolomic analyses offers a broader representation of
525 metabolites beyond lipid subclasses and there is a growing body of evidence that metabolites
526 detected by mass spectrometry are altered in EC patients^{12,75}. Future metabolomic studies
527 using mass spectrometry should be conducted to comprehensively evaluate the role of
528 metabolites as intermediates between adiposity and EC.

529

530 Given the common shared genetic architecture, high correlation structure, and shared biology
531 of metabolites, it is likely that a perturbation in any one metabolite does not happen in
532 isolation. This is exemplified in recent work which has shown that the variance explained by
533 a metabolite's instrument is often greater for another^{45,73,76}. Here, we use a naïve approach
534 to instrumentation in a hypothesis generating analysis; however, given many metabolite
535 instruments include only a handful of SNPs, statistical methods aiming to measure the
536 potential effects of pleiotropy (e.g., MR-Egger) do not always lead to meaningful results. This

537 also applies to techniques designed to evaluate the effect of multiple correlated exposures
538 (e.g., MVMR).

539

540 In two-sample univariable MR analyses, sample overlap can bias estimates towards the
541 confounded observational estimate (inflated type 1 error) in the presence of weak
542 instruments in a manner proportional to the degree of overlap⁴². For our main analyses, we
543 likely have 100% overlap between the adiposity and metabolites GWAS and up to a maximum
544 5% overlap for both of these with the overall EC GWAS. However, given bias due to sample
545 overlap is negligible in the presence of strong instruments⁷⁷ and that the results across
546 sensitivity analyses using non-overlapping samples were generally consistent with the main
547 analyses, it is unlikely that estimates from our analyses are meaningfully impacted by such
548 bias.

549

550 Another limitation is the unrepresentative nature of UK Biobank (initial response rate ~5%)⁷⁸
551 and the potential for selection bias. Given the age of the UK Biobank participants, the
552 prevalence of statin use is high (~16% in UK Biobank vs ~11% in the general UK adult
553 population in 2014⁷⁹). For our MR analyses, we used summary-level data from the ¹H-NMR
554 metabolite GWAS conducted using data from UK Biobank. This approach limits the capacity
555 to fully explore the effects of other factors such as age and medication use (including statin
556 use and HRT), which may influence the association between adiposity traits, metabolites and
557 EC. Our analyses were limited to women of European ancestries; thus, these findings may
558 not apply to individuals of other ancestries. Furthermore, given that we used the same ¹H-
559 NMR data from UK Biobank for both our MR and observational analyses examining the
560 associations between adiposity traits and metabolites, these analyses cannot be considered
561 independent. Replication of this study in other large cohort studies and in other ethnicities
562 will allow a more robust characterisation of the metabolic profile associated with adiposity
563 and the subsequent impact on EC.

564

565 **Conclusions**

566 Our study suggests that higher BMI causes a higher risk of overall and all histological subtypes
567 of EC and variation in numerous circulating metabolites. Several of these metabolites showed
568 relationships consistent with an intermediate role in the effect of BMI on non-endometrioid

569 EC from two-step and MVMR MR analyses; however, further bioinformatic analyses
570 highlighted other potential shared mechanisms that could influence the risk of EC.
571

572 **Declarations**

573 DP receives consulting fees from Johnson & Johnson and Novo Nordisk and payments for
574 lectures, presentations, and educational events from Johnson & Johnson, Medtronic, and
575 Novo Nordisk.

576 **Ethics approval**

577

578 **Author contributions**

579 MAL: conceptualization, data curation, formal analysis, investigation, methodology, project
580 administration, validation, visualization, writing (original draft preparation), writing (review &
581 editing)

582

583 VT: conceptualization, data curation, formal analysis, investigation, methodology, project
584 administration, validation, visualization, writing (original draft preparation), writing (review &
585 editing)

586

587 DP: resources, supervision, writing (review & editing)

588

589 SW: writing (review & editing)

590

591 LD: writing (review & editing)

592

593 MJG: writing (review & editing)

594

595 LJC: resources, supervision, writing (review & editing)

596

597 KHW: resources, supervision, writing (review & editing)

598

599 NJT: conceptualization, resources, supervision, writing (review & editing)

600

601 **Acknowledgments**

602 We would like to express our appreciation to UK Biobank participants and staff for providing
603 the research community with this valuable source of data. This work used data from
604 application number 16391.

605

606 **Code and data availability**

607 Univariable MR analyses were performed using TwoSampleMR³³(version 0.4.22).;
608 multivariable MR analyses were performed using MVMR³⁹ (version 0.3) R package; forest
609 plots were created using ggforestplot (version 0.1)⁸⁰ R package; circos plots were created
610 using EpiViz⁸¹⁻⁸³ (version 0.1) R package. All publicly available data, code, and results used in
611 this work are available on GitHub:
612 https://github.com/mattlee821/adiposity_metabolites_endometrial_cancer. This includes
613 all exposure data used in all MR analyses. The full summary statistics for BMI and WHR are
614 available from the GIANT consortium
615 (https://portals.broadinstitute.org/collaboration/giant/index.php/GIANT_consortium_data_files)
616 and Zenodo (<https://zenodo.org/record/1251813#.Yk7O25PMIUE>), data files 4, 5, 7, and
617 8. The full summary statistics for the endometrial cancer GWAS are available from the
618 OpenGWAS database (<https://gwas.mrcieu.ac.uk/datasets/>); IDs for endometrial cancer
619 GWAS: ebi-a-GCST006464, ebi-a-GCST006465, and ebi-a-GCST006466; This can be accessed
620 via the TwoSampleMR (<https://mrcieu.github.io/TwoSampleMR/>) and ieugwasr
621 (<http://gwas-api.mrcieu.ac.uk/>) R packages or directly from OpenGWAS in GWAS-VCF
622 format⁵⁰. The full summary statistics for the ¹H-NMR metabolites will be made available at
623 the University of Bristol data repository. The individual level data used in this work is not
624 publicly available and can only be obtained from UK Biobank with an approved application.

625

626 **Funding**

627 This work was supported by the Wellcome Trust through a Wellcome Trust Investigator award
628 to NJT (202802/Z/16/Z, 2016-2023). MAL is funded by a Medical Research Council GW4
629 studentship (grant number: MR/R502340/1). NJT was a Wellcome Trust Investigator
630 (202802/Z/16/Z, 2016-2023), is the PI of the Avon Longitudinal Study of Parents and Children
631 (MRC & WT 217065/Z/19/Z), is supported by the University of Bristol NIHR Biomedical

632 Research Centre (BRC-1215-2001), the MRC Integrative Epidemiology Unit (MC_UU_00011/1)
633 and works within the CRUK Integrative Cancer Epidemiology Programme (C18281/A29019).
634 VT, NJT, SW, LD and MG are supported by the Cancer Research UK (grant number: PRCPJT-
635 May22\100028). L.J.C. was supported by N.J.T.'s Wellcome Investigator Award
636 (202802/Z/16/Z) 2016-2023, and by MC_UU_00032/1 since 2023. All authors work in the
637 MRC Integrative Epidemiology Unit at the University of Bristol, which is supported by the
638 Medical Research Council (grant numbers: MC_UU_00011/1-7) and the University of Bristol.
639 KHW is supported by the University of Bristol and Cancer Research UK [grant number
640 RCCPDF\100007]. DJP has been funded by the Royal College of Surgeons of England. He
641 receives consulting fees from Johnson & Johnson and Novo Nordisk and payments for
642 lectures, presentations, and educational events from Johnson & Johnson, Medtronic,
643 and Novo Nordisk. This research was funded in whole, or in part, by the Wellcome Trust
644 [202802/Z/16/Z, 217065/Z/19/Z]. For the purpose of Open Access, the author has applied a
645 CC BY public copyright licence to any Author Accepted Manuscript version arising from this
646 submission.

647

648 **Disclaimer**

649 Where authors are identified as personnel of the International Agency for Research on
650 Cancer/World Health Organization, the authors alone are responsible for the views expressed
651 in this article and they do not necessarily represent the decisions, policy or views of the
652 International Agency for Research on Cancer/World Health Organization.

653

654 **Conflict of interest**

655 None declared

656

657 **References**

- 658 1. Bray, F. *et al.* Global cancer statistics 2018: GLOBOCAN. *CA Cancer J Clin* (2018)
659 doi:10.3322/caac.21492.
- 660 2. Tavassoli, F. a & Devilee, P. Classification of Tumours. Pathology and Genetics of
661 Tumours of the Breast and Female Genital Organs. *World Health Organization* (2003).
- 662 3. Amant, F. *et al.* Endometrial cancer. *The Lancet* **366**, 491–505 (2005).
- 663 4. Aune, D. *et al.* Anthropometric factors and endometrial cancer risk: A systematic
664 review and dose-response meta-analysis of prospective studies. *Annals of Oncology*
665 vol. 26 Preprint at <https://doi.org/10.1093/annonc/mdv142> (2015).
- 666 5. Smith, G. D. & Ebrahim, S. ‘Mendelian randomization’: Can genetic epidemiology
667 contribute to understanding environmental determinants of disease? *International*
668 *Journal of Epidemiology* vol. 32 Preprint at <https://doi.org/10.1093/ije/dyg070> (2003).
- 669 6. Painter, J. N. *et al.* Genetic risk score mendelian randomization shows that obesity
670 measured as body mass index, but not waist:hip ratio, is causal for endometrial cancer.
671 *Cancer Epidemiology Biomarkers and Prevention* **25**, (2016).
- 672 7. Lee, M. A. *et al.* Systematic review and meta-analyses: What has the application of
673 Mendelian randomization told us about the causal effect of adiposity on health
674 outcomes? *Wellcome Open Res* **7**, (2022).
- 675 8. O’Mara, T. A. *et al.* Identification of nine new susceptibility loci for endometrial
676 cancer. *Nat Commun* **9**, 3166 (2018).
- 677 9. Hanahan, D. & Weinberg, R. A. Hallmarks of cancer: The next generation1. Hanahan,
678 D. & Weinberg, R. A. Hallmarks of cancer: The next generation. *Cell* **144**, 646–674
679 (2011). *Cell* **144**, (2011).
- 680 10. Njoku, K. *et al.* Metabolomic Biomarkers for the Detection of Obesity-Driven
681 Endometrial Cancer. *Cancers* vol. 13 Preprint at
682 <https://doi.org/10.3390/cancers13040718> (2021).
- 683 11. Yang, X. & Wang, J. L. The role of metabolic syndrome in endometrial cancer: A
684 review. *Frontiers in Oncology* vol. 9 Preprint at
685 <https://doi.org/10.3389/fonc.2019.00744> (2019).
- 686 12. Dossus, L. *et al.* Prospective analysis of circulating metabolites and endometrial cancer
687 risk. *Gynecol Oncol* **162**, 475–481 (2021).
- 688 13. Kahn, S. E., Hull, R. L. & Utzschneider, K. M. Mechanisms linking obesity to insulin
689 resistance and type 2 diabetes. *Nature* vol. 444 Preprint at
690 <https://doi.org/10.1038/nature05482> (2006).
- 691 14. Rosen, E. D. & Spiegelman, B. M. What we talk about when we talk about fat. *Cell*
692 vol. 156 Preprint at <https://doi.org/10.1016/j.cell.2013.12.012> (2014).
- 693 15. Würtz, P. *et al.* Metabolic Signatures of Adiposity in Young Adults: Mendelian
694 Randomization Analysis and Effects of Weight Change. *PLoS Med* **11**, (2014).
- 695 16. Kliemann, N. *et al.* Metabolic signatures of greater body size and their associations
696 with risk of colorectal and endometrial cancers in the European Prospective
697 Investigation into Cancer and Nutrition. *BMC Med* **19**, (2021).
- 698 17. Relton, C. L. & Davey Smith, G. Two-step epigenetic mendelian randomization: A
699 strategy for establishing the causal role of epigenetic processes in pathways to disease.
700 *Int J Epidemiol* **41**, (2012).
- 701 18. Davey Smith, G. *et al.* STROBE-MR: Guidelines for strengthening the reporting of
702 Mendelian randomization studies. *PeerJ Prepr* **7**, (2019).
- 703 19. von Elm, E. *et al.* The strengthening the reporting of observational studies in
704 epidemiology (STROBE) statement: Guidelines for reporting observational studies.
705 *International Journal of Surgery* **12**, (2014).

- 706 20. Sudlow, C. *et al.* UK Biobank: An Open Access Resource for Identifying the Causes
707 of a Wide Range of Complex Diseases of Middle and Old Age. *PLoS Med* **12**, (2015).
- 708 21. Bycroft, C. *et al.* The UK Biobank resource with deep phenotyping and genomic data.
709 *Nature* **562**, (2018).
- 710 22. Collins, R. What makes UK Biobank special? *The Lancet* **379**, 1173–1174 (2012).
- 711 23. Julkunen, H., Cichońska, A., Slagboom, P. E., Würtz, P. & Initiative, N. H. U. K. B.
712 Metabolic biomarker profiling for identification of susceptibility to severe pneumonia
713 and COVID-19 in the general population. *Elife* **10**, e63033 (2021).
- 714 24. Würtz, P. *et al.* Quantitative serum nuclear magnetic resonance metabolomics in large-
715 scale epidemiology: a primer on-omic technologies. *Am J Epidemiol* **186**, 1084–1096
716 (2017).
- 717 25. Pulit, S. L. *et al.* Meta-analysis of genome-wide association studies for body fat
718 distribution in 694 649 individuals of European ancestry. *Hum Mol Genet* **28**, 166–174
719 (2019).
- 720 26. Soininen, P. *et al.* High-throughput serum NMR metabolomics for cost-effective
721 holistic studies on systemic metabolism. *Analyst* (2009) doi:10.1039/b910205a.
- 722 27. Howie, B., Marchini, J. & Stephens, M. Genotype Imputation with Thousands of
723 Genomes. *G3: Genes|Genomes|Genetics* **1**, 457–470 (2011).
- 724 28. Huang, J. *et al.* Improved imputation of low-frequency and rare variants using the
725 UK10K haplotype reference panel. *Nat Commun* **6**, 8111 (2015).
- 726 29. Mitchell, R, Hemani, G, Dudding, T, Paternoster, L. UK Biobank Genetic Data: MRC-
727 IEU Quality Control, Version 1. (2017)
728 doi:<https://doi.org/10.5523/bris.3074krb6t2frj29yh2b03x3wxj>.
- 729 30. Mitchell R, Hemani G, Dudding T, Corbin L, Harrison S, P. L. UK Biobank Genetic
730 Data: MRC-IEU Quality Control, version 2.
731 <https://doi.org/10.5523/bris.1ovaau5sxunp2cv8rcy88688v> (2019).
- 732 31. Anderson, C. A. *et al.* Data quality control in genetic case-control association studies.
733 *Nat Protoc* (2010) doi:10.1038/nprot.2010.116.
- 734 32. Loh, P. R. *et al.* Efficient Bayesian mixed-model analysis increases association power
735 in large cohorts. *Nat Genet* (2015) doi:10.1038/ng.3190.
- 736 33. Hemani, G. *et al.* The MR-Base platform supports systematic causal inference across
737 the human phenome. *Elife* **7**, e34408 (2018).
- 738 34. Hemani, G., Tilling, K. & Davey Smith, G. Orienting the causal relationship between
739 imprecisely measured traits using GWAS summary data. *PLoS Genet* **13**, e1007081
740 (2017).
- 741 35. Bowden, J., Davey Smith, G. & Burgess, S. Mendelian randomization with invalid
742 instruments: effect estimation and bias detection through Egger regression. *Int J*
743 *Epidemiol* **44**, 512–525 (2015).
- 744 36. Burgess, S. *et al.* Dissecting Causal Pathways Using Mendelian Randomization with
745 Summarized Genetic Data: Application to Age at Menarche and Risk of Breast
746 Cancer. *Genetics* **207**, 481–487 (2017).
- 747 37. Hartwig, F. P., Davey Smith, G. & Bowden, J. Robust inference in summary data
748 Mendelian randomization via the zero modal pleiotropy assumption. *Int J Epidemiol*
749 (2017) doi:10.1093/ije/dyx102.
- 750 38. Sanderson, E., Davey Smith, G., Windmeijer, F. & Bowden, J. An examination of
751 multivariable Mendelian randomization in the single-sample and two-sample summary
752 data settings. *Int J Epidemiol* **48**, 713–727 (2018).
- 753 39. Sanderson, E., Spiller, W. & Bowden, J. Testing and correcting for weak and
754 pleiotropic instruments in two-sample multivariable Mendelian randomization. *Stat*
755 *Med* **n/a**, (2021).

- 756 40. Locke, A. E. *et al.* Genetic studies of body mass index yield new insights for obesity
757 biology. *Nature* **518**, 197–206 (2015).
- 758 41. Bull, C. J. *et al.* Adiposity, metabolites, and colorectal cancer risk: Mendelian
759 randomization study. *BMC Med* **18**, (2020).
- 760 42. Burgess, S., Davies, N. M. & Thompson, S. G. Bias due to participant overlap in two-
761 sample Mendelian randomization. *Genet Epidemiol* **40**, (2016).
- 762 43. Shungin, D. *et al.* New genetic loci link adipose and insulin biology to body fat
763 distribution. *Nature* **518**, 187–196 (2015).
- 764 44. Gallois, A. *et al.* A comprehensive study of metabolite genetics reveals strong
765 pleiotropy and heterogeneity across time and context. *Nat Commun* **10**, (2019).
- 766 45. Smith, C. J. *et al.* Integrative analysis of metabolite GWAS illuminates the molecular
767 basis of pleiotropy and genetic correlation. *Elife* **11**, (2022).
- 768 46. Lotta, L. A. *et al.* Cross-platform genetic discovery of small molecule products of
769 metabolism and application to clinical outcomes. *Nat Genet* **53**, (2021).
- 770 47. Kamat, M. A. *et al.* PhenoScanner V2: An expanded tool for searching human
771 genotype-phenotype associations. *Bioinformatics* **35**, (2019).
- 772 48. Staley, J. R. *et al.* PhenoScanner: A database of human genotype-phenotype
773 associations. *Bioinformatics* **32**, (2016).
- 774 49. Raglan, O. *et al.* Risk factors for endometrial cancer: An umbrella review of the
775 literature. *International Journal of Cancer* vol. 145 Preprint at
776 <https://doi.org/10.1002/ijc.31961> (2019).
- 777 50. Kyrgiou, M. *et al.* Adiposity and cancer at major anatomical sites: Umbrella review of
778 the literature. *BMJ (Online)* vol. 356 Preprint at <https://doi.org/10.1136/bmj.j477>
779 (2017).
- 780 51. Kalliala, I. *et al.* Obesity and gynaecological and obstetric conditions: umbrella review
781 of the literature. *BMJ* **359**, (2017).
- 782 52. Nead, K. T. *et al.* Evidence of a Causal Association between Insulinemia and
783 Endometrial Cancer: A Mendelian Randomization Analysis. *J Natl Cancer Inst* **107**,
784 (2015).
- 785 53. Freuer, D. *et al.* Body fat distribution and risk of breast, endometrial, and ovarian
786 cancer: A two-sample mendelian randomization study. *Cancers (Basel)* **13**, (2021).
- 787 54. Hazelwood, E. *et al.* Identifying molecular mediators of the relationship between body
788 mass index and endometrial cancer risk: a Mendelian randomization analysis. *BMC*
789 *Med* **20**, (2022).
- 790 55. Renehan, A. G. *et al.* Incident cancer burden attributable to excess body mass index in
791 30 European countries. *Int J Cancer* **126**, (2010).
- 792 56. Bhaskaran, K. *et al.* Body-mass index and risk of 22 specific cancers: a population-
793 based cohort study of 5·24 million UK adults. *The Lancet* **384**, (2014).
- 794 57. Sollberger, T. L., Gavriluk, O. & Rylander, C. Excess body weight and incidence of
795 type 1 and type 2 endometrial cancer: The norwegian women and cancer study. *Clin*
796 *Epidemiol* **12**, (2020).
- 797 58. Setiawan, V. W. *et al.* Type i and II endometrial cancers: Have they different risk
798 factors? *Journal of Clinical Oncology* **31**, (2013).
- 799 59. Yang, H. P. *et al.* Endometrial cancer risk factors by 2 main histologic subtypes. *Am J*
800 *Epidemiol* **177**, (2013).
- 801 60. Lauby-Secretan, B. *et al.* Body Fatness and Cancer — Viewpoint of the IARC
802 Working Group. *New England Journal of Medicine* **375**, (2016).
- 803 61. O’Flanagan, C. H., Bowers, L. W. & Hursting, S. D. A weighty problem: Metabolic
804 perturbations and the obesity-cancer link. *Hormone Molecular Biology and Clinical*
805 *Investigation* vol. 23 Preprint at <https://doi.org/10.1515/hmbci-2015-0022> (2015).

- 806 62. Bell, J. A. *et al.* Effects of general and central adiposity on circulating lipoprotein,
807 lipid, and metabolite levels in UK Biobank: A multivariable Mendelian randomization
808 study. *The Lancet Regional Health - Europe* **21**, (2022).
- 809 63. Wulaningsih, W., Proitsi, P., Wong, A., Kuh, D. & Hardy, R. Metabolomic correlates
810 of central adiposity and earlier-life body mass index. *J Lipid Res* **60**, (2019).
- 811 64. Riscal, R., Skuli, N. & Simon, M. C. Even Cancer Cells Watch Their Cholesterol!
812 *Molecular Cell* vol. 76 Preprint at <https://doi.org/10.1016/j.molcel.2019.09.008> (2019).
- 813 65. Omsj , I. H. & Norum, K. R. CHOLESTEROL ESTERIFICATION IN HUMAN
814 SECRETORY ENDOMETRIUM AND IN ENDOMETRIAL CANCER TISSUE:
815 Demonstration of Microsomal ACYL-COA-Cholesterol ACYL-transferase (ACAT)
816 Activity. *Acta Obstet Gynecol Scand* **64**, (1985).
- 817 66. Ayyagari, V. N. *et al.* Evaluation of sterol-o-acyl transferase 1 and cholesterol ester
818 levels in plasma, peritoneal fluid and tumor tissue of patients with endometrial cancer:
819 A pilot study. *Oncol Lett* **25**, (2023).
- 820 67. Petersen, A. K. *et al.* On the hypothesis-free testing of metabolite ratios in genome-
821 wide and metabolome-wide association studies. *BMC Bioinformatics* **13**, (2012).
- 822 68. Lindemann, K., Vatten, L. J., Ellstr m-Engh, M. & Eskild, A. Serum lipids and
823 endometrial cancer risk: Results from the HUNT-II study. *Int J Cancer* **124**, (2009).
- 824 69. Trabert, B. *et al.* Metabolic syndrome and risk of endometrial cancer in the United
825 States: A study in the SEER-medicare linked database. *Cancer Epidemiology*
826 *Biomarkers and Prevention* **24**, (2015).
- 827 70. Bj rge, T. *et al.* Metabolic syndrome and endometrial carcinoma. *Am J Epidemiol* **171**,
828 (2010).
- 829 71. Seth, D. *et al.* Lipid profiles and the risk of endometrial cancer in the Swedish amoris
830 study. *Int J Mol Epidemiol Genet* **3**, (2012).
- 831 72. Kho, P. F. *et al.* Mendelian randomization analyses suggest a role for cholesterol in the
832 development of endometrial cancer. *Int J Cancer* **148**, (2021).
- 833 73. Guida, F. *et al.* The blood metabolome of incident kidney cancer: A case-control study
834 nested within the MetKid consortium. *PLoS Med* **18**, (2021).
- 835 74. Hamilton, F., Pedersen, K. M., Ghazal, P., Nordestgaard, B. G. & Smith, G. D. Low
836 levels of small HDL particles predict but do not influence risk of sepsis. *Crit Care* **27**,
837 (2023).
- 838 75. Audet-Delage, Y., Villeneuve, L., Gr goire, J., Plante, M. & Guillemette, C.
839 Identification of metabolomic biomarkers for endometrial cancer and its recurrence
840 after surgery in postmenopausal women. *Front Endocrinol (Lausanne)* **9**, (2018).
- 841 76. Surendran, P. *et al.* Rare and common genetic determinants of metabolic individuality
842 and their effects on human health. *Nat Med* **28**, (2022).
- 843 77. Sadreev, I. I. *et al.* Navigating sample overlap, winner’s curse and weak instrument
844 bias in Mendelian randomization studies using the UK Biobank. *medRxiv* (2021).
- 845 78. Munaf , M. R., Tilling, K., Taylor, A. E., Evans, D. M. & Smith, G. D. Collider scope:
846 When selection bias can substantially influence observed associations. *Int J Epidemiol*
847 **47**, (2018).
- 848 79. Curtis, H. J., Walker, A. J., MacKenna, B., Croker, R. & Goldacre, B. Prescription of
849 suboptimal statin treatment regimens: A retrospective cohort study of trends and
850 variation in English primary care. *British Journal of General Practice* **70**, (2020).
- 851 80. Scheinin, I. , *et al.* ggforestplot: Forestplots of Measures of Effects and Their
852 Confidence Intervals.
853 <https://nightingalehealth.github.io/ggforestplot/index.html>, <https://github.com/nightingalehealth/ggforestplot>. (2023).
- 854

- 855 81. Lee M. A. *et al.* Epiviz: an implementation of Circos plots for epidemiologists.
856 <https://github.com/mattlee821/EpiViz> (2020).
- 857 82. Gu, Z., Gu, L., Eils, R., Schlesner, M. & Brors, B. circlize implements and enhances
858 circular visualization in R . *Bioinformatics* **30**, 2811–2812 (2014).
- 859 83. Gu, Z., Eils, R. & Schlesner, M. Complex heatmaps reveal patterns and correlations in
860 multidimensional genomic data. *Bioinformatics* **32**, 2847–2849 (2016).
861

Table 1. Baseline characteristics of UK Biobank participants included in our study

	N (Cases/Control)	Endometrial cancer Cases (N=1,005)	Controls (N=215,339)
Continuous variables			
Age at assessment (year)	1,005/215,339	59.63 (6.43)	55.83 (8.02)
Body mass index (kg/m ²), mean (SD)	979/211,756	30.33 (7.07)	27.06 (5.17)
Waist to Hip Ratio, mean (SD)	1,000/214,835	0.84 (0.07)	0.82 (0.07)
Age at first birth (year)	632/145,456	24.54 (4.23)	25.38 (4.64)
Age at last birth (year)	632/145,149	29.32 (4.55)	30.35 (4.90)
Menarche age (year)	971/208,424	12.64 (1.55)	12.98 (1.62)
Categorical variables			
Smoking	997/214,285		
Never		643 (64.49%)	129,857 (60.60%)
Previous		303 (30.39%)	65,775 (30.70%)
Current		51 (5%)	18,653 (8.70%)
Alcohol intake	1,002/214,865		
Daily or almost daily		143 (14.27%)	34,152 (15.89%)
3-4 times a week		160 (15.97%)	44,464 (20.69%)
Once or twice a week		252 (25.15%)	55,476 (25.82%)
1-3 times a month		139 (13.87%)	28,241 (13.14%)
Special occasions only		193 (19.26%)	32,134 (14.96%)
Never		115 (11.48%)	20,398 (9.49%)
Diabetes	1,001/214,512		
Yes		90 (8.99%)	7,807 (2.64%)
No		911 (91%)	206,705 (96.36%)
Education	774/177,857		
College/University degree		304 (39.28%)	68,385 (38.45%)
A levels/AS levels or equivalent		106 (13.70%)	25,756 (14.48%)
O levels/GCSEs or equivalent		215 (27.78%)	49,943 (28.08%)
CSEs or equivalent		49 (6.33%)	11,924 (6.70%)
NVQ or HND or HNC or equivalent		33 (4.26%)	9,676 (5.44%)
Other professional qualifications		67 (8.66%)	12,173 (6.84%)
Physical activity (No. of days/week of vigorous physical activity)	923/202,664		
0 days		394 (42.69%)	80,448 (39.70%)
1 days		156 (16.90%)	29,567 (14.59%)
2 days		148 (16.03%)	32,675 (16.12%)
3 days		106 (11.48%)	28,260 (13.94%)
4 days		46 (4.98%)	12,212 (6.02%)
5 days		36 (3.9%)	10,652 (5.26%)
6 days		12 (1.3%)	2,676 (1.32%)
7 days		25 (2.71%)	6,714 (3.31%)
Had Menopause	1,002/214,649		
Yes		822 (82.04%)	126,379 (58.88%)
No		180 (17.96%)	88,270 (41.12%)
Ever used HRT	999/214,185		
Yes		382 (38.24%)	78,769 (36.78%)
No		617 (61.76%)	135,416 (63.22%)

kg, kilograms; m², meters squared; SD, standard deviation; p, p value; HRT, hormone replacement therapy; N, sample size

Table 2. Observational estimates of the association between adiposity measures and endometrial cancer.

Exposure	Outcome	Adjusted for age and centre		Fully adjusted	
		OR (95%CI)	<i>p</i>	OR (95%CI)	<i>p</i>
BMI	Incident EC	1.61 (1.49, 1.75)	7.63x10 ⁻³⁰	1.37 (1.19, 1.57)	1.07x10 ⁻⁵
WHR	Incident EC	1.23 (1.14, 1.34)	4.30x10 ⁻⁰⁷	1.15 (1.01, 1.32)	0.03

BMI, Body mass index; WHR, waist hip ratio; EC, endometrial cancer; OR, odds ratio; CI, confidence interval; *p*, *p* value

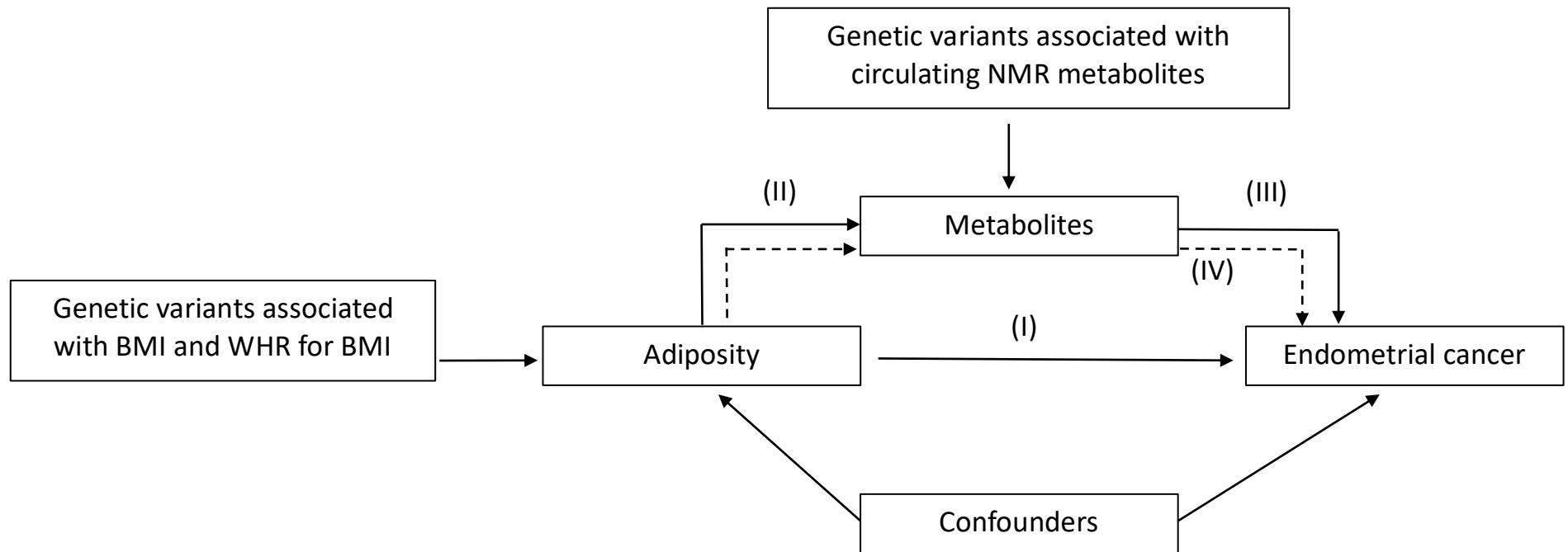


Figure 1. Study overview.

This study has four main analyses that were performed sequentially to estimate: **(Part I)** the effect of adiposity measures on EC, **(Part II)** the effect of adiposity measures on metabolites, **(Part III)** the effect of adiposity-associated metabolites and EC, and **(Part IV)** the potential intermediate role of adiposity-associated metabolites in the relationship between adiposity and EC (identified in **Part II** and **III**). Conventional observational analyses were performed for Part I-III; Mendelian randomization analyses were performed for Parts I-IV.

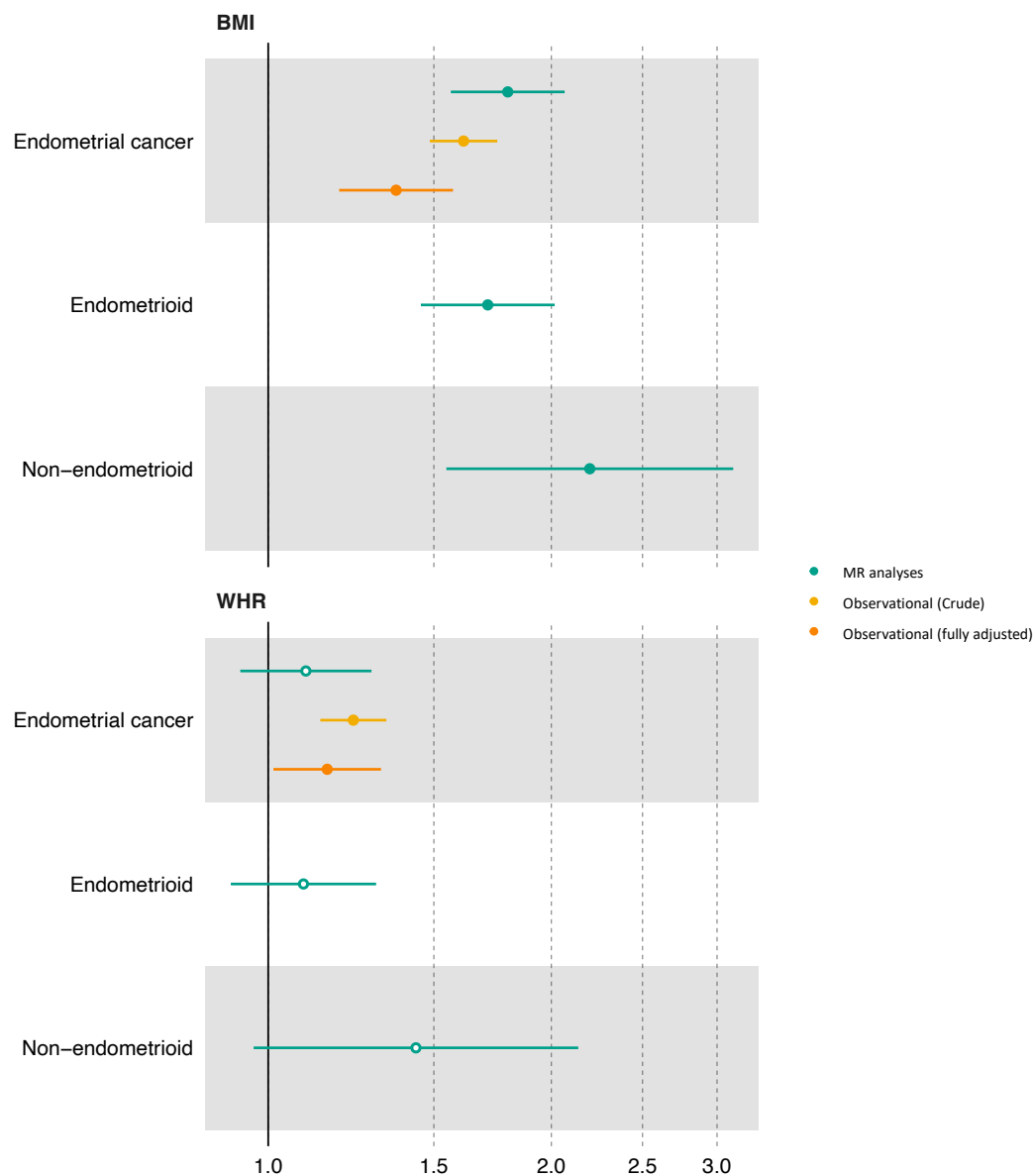


Figure 2. Mendelian randomization and observational estimates of the effect of BMI and WHR on endometrial cancer

The forest plot shows the estimates of the association between BMI and WHR with overall, endometrioid and non-endometrioid endometrial cancer from MR analyses (IVW method) using summary data from the Endometrial Cancer Association Consortium (ECAC) (n=12,906 endometrial cancer cases and 108,979 controls) and conventional observational analyses using individual level data from UK Biobank. Symbols represent point estimates from individual analyses. Horizontal lines represent 95% confidence intervals. Close circles represent $p < 0.05$.

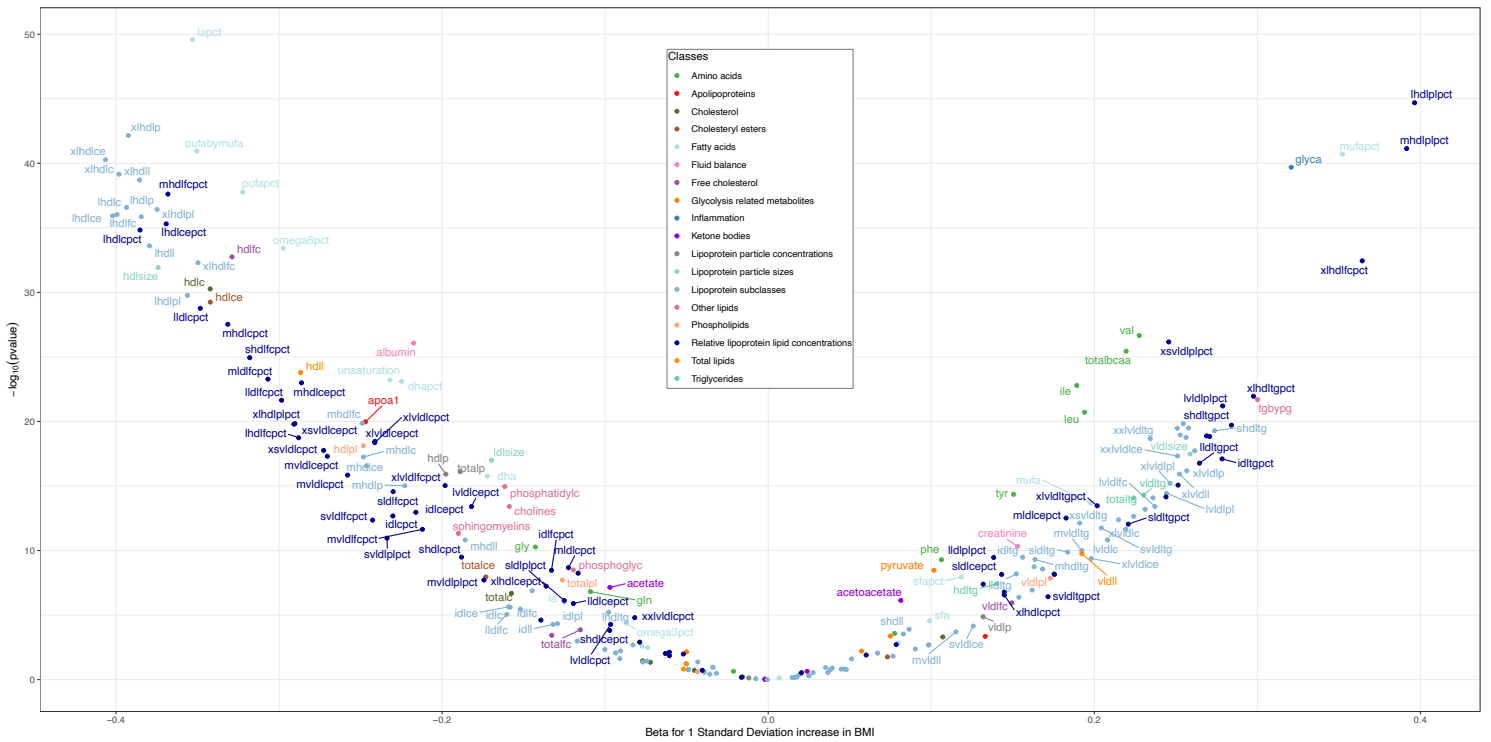


Figure 3. Mendelian randomization estimates of the effect of BMI on metabolites

The volcano plot shows the estimates of the effect of BMI on circulating metabolites from Mendelian randomization analyses. Metabolites associated with BMI at $p < 0.05$ after correcting for multiple testing using Bonferroni correction are labelled.

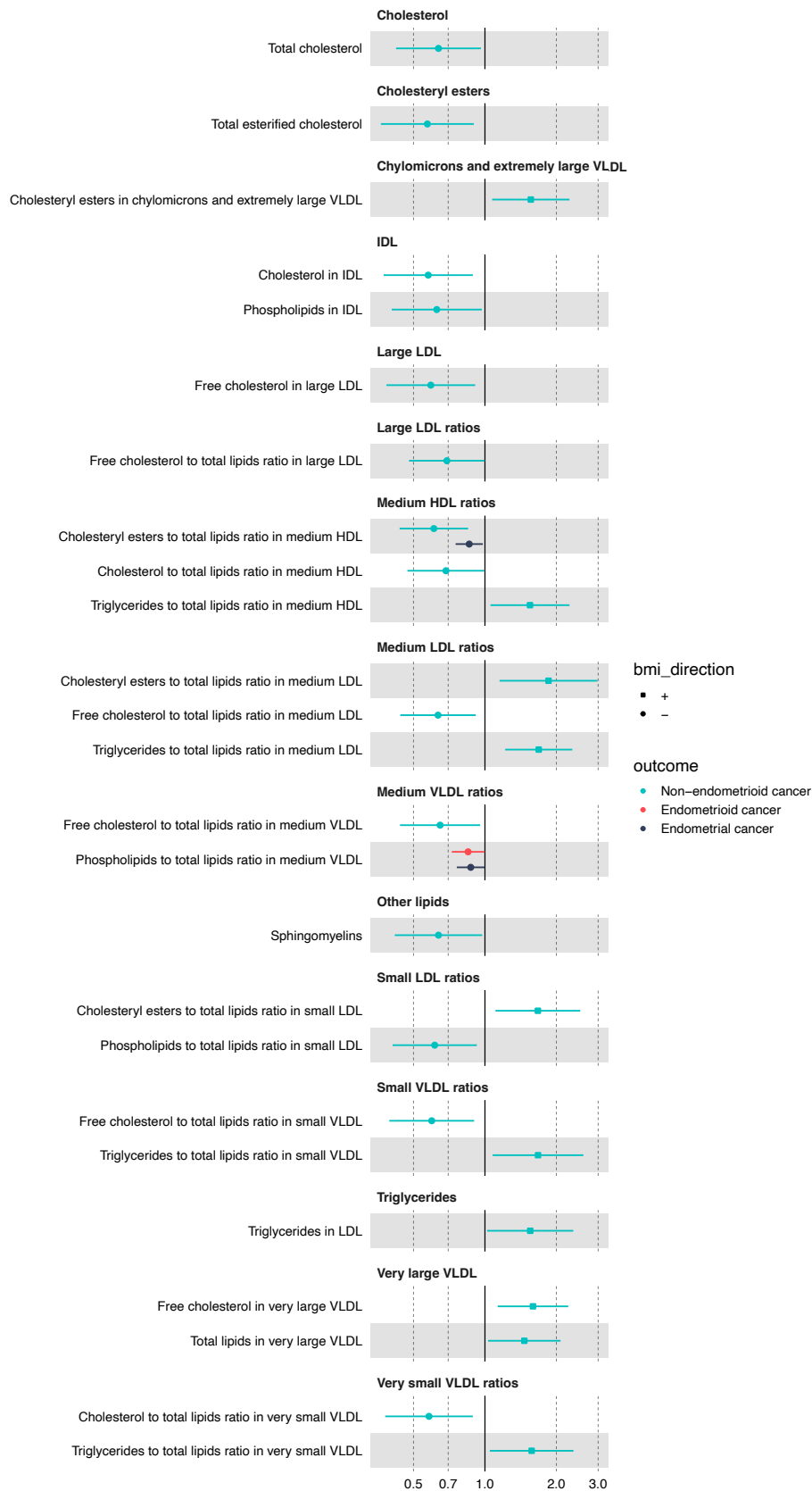


Figure 4. Estimates of the causal effect of the BMI-associated metabolites on endometrial cancer risk

The forest plot shows the estimate of the causal effect of the BMI-associated metabolites and overall, endometrioid and non-endometrioid endometrial cancer based on two-sample MR (IVW method) from female-specific analyses. Only metabolites associated with endometrial cancer with a $p < 0.05$ are shown in this figure. Symbols represent point estimates from individual analyses. Horizontal lines represent 95% confidence intervals. Squares represent metabolites that are positively associated with BMI and circles represent metabolites that are negatively associated with BMI.

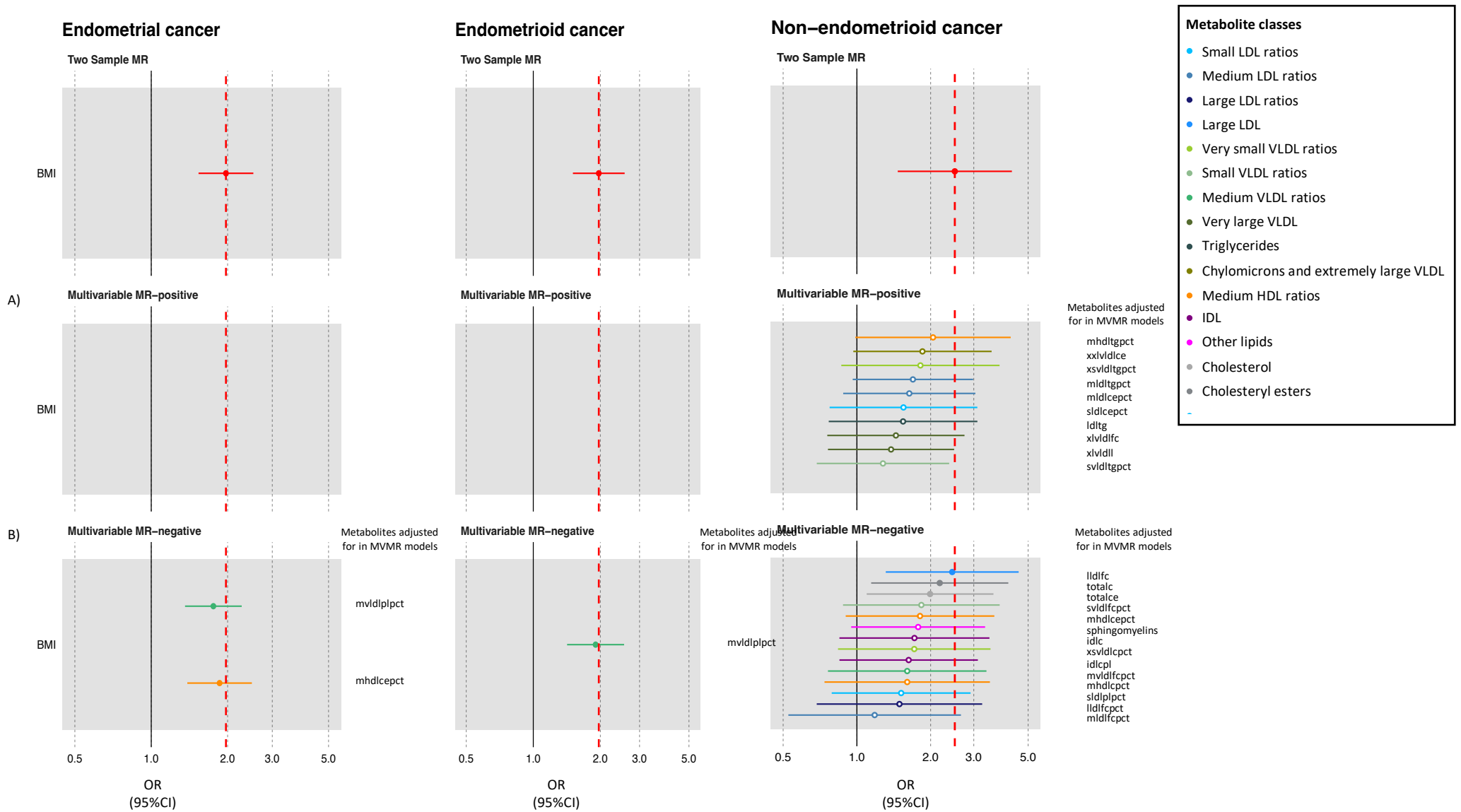


Figure 5. Multivariable mendelian randomization estimates of the direct effect of BMI on endometrial cancer after adjustment for various BMI-associated metabolites

The forest plot shows the estimate of the direct causal effect of BMI on overall, endometrioid and non-endometrioid endometrial cancer based on multivariable MR analyses after adjustment for various metabolites that were associated with A) increased association with both BMI and endometrial cancer or B) decreased association with both BMI and endometrial cancer. Symbols represent point estimates of the direct effect of BMI on endometrial cancer after adjustment for various BMI-associated metabolites separately from multivariable MR analyses. Dotted red line represents the estimates of the indirect effect of BMI on endometrial cancer obtained from univariable IVW analyses.

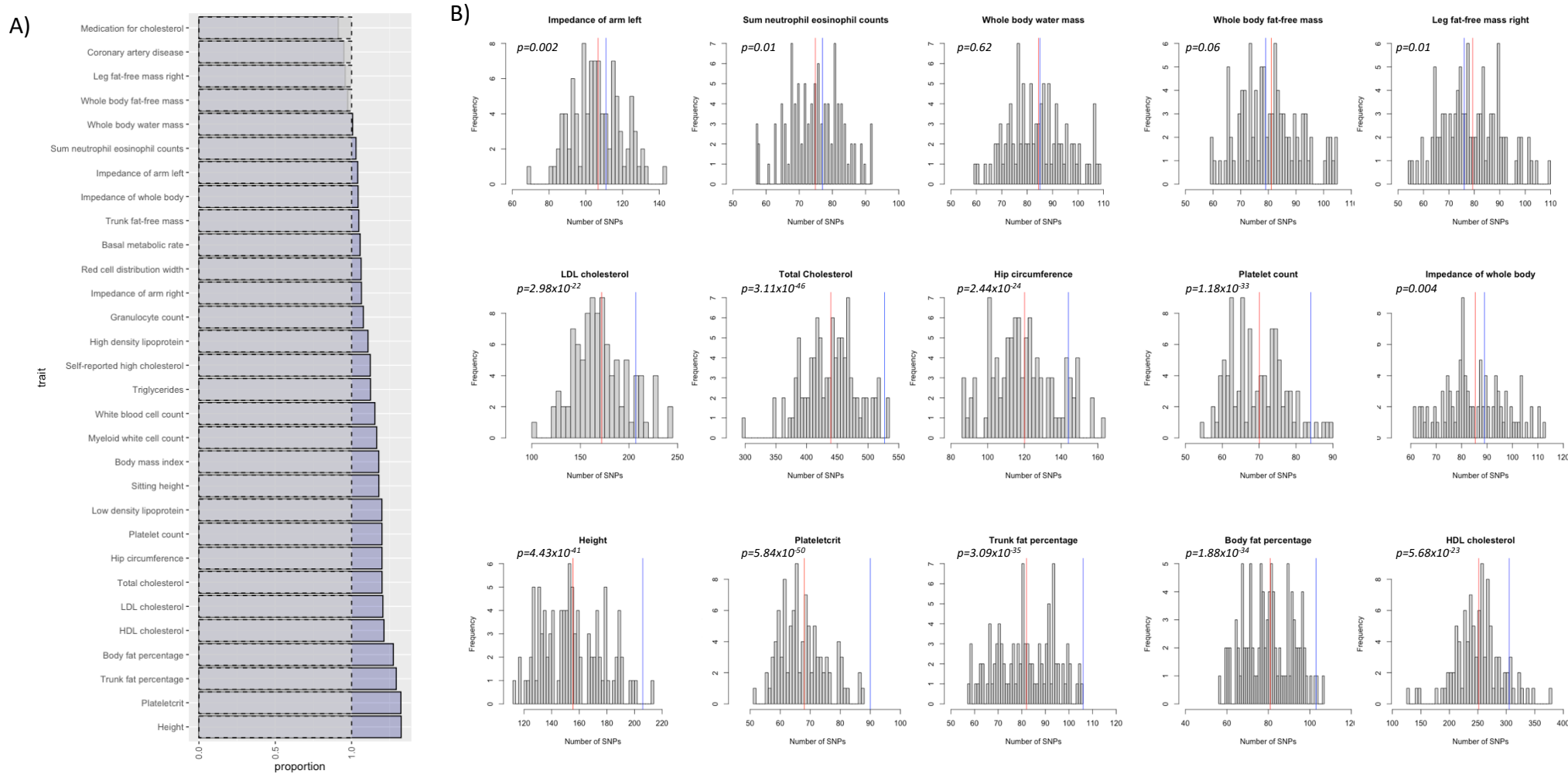


Figure 6. Traits associated with genetic instruments for metabolites underlying effect of BMI on endometrial cancer

A) The blue bars represent the proportion of genetic instruments associated with the top 30 traits identified in PhenoScanner for metabolites underlying the effect of BMI on endometrial cancer relative to the negative control (grey bars). The negative control was obtained by iteratively (N=100) looking up traits associated with instruments for 25 randomly selected metabolites not underlying the association between BMI and endometrial cancer; B) the histograms represent the frequency of the number of SNPs associated with trait from the negative control analysis. The red line represents the mean of the number of SNPs associated with each trait for the negative control and the blue line represents the number of SNPs associated with the metabolites underlying the effect of BMI on endometrial cancer risk associated with each trait.