



32 only for 6 months. Both groups were assessed at baseline and 6 months. Data was analysed  
33 with Stata version 17 (StataCorp LLC) with level of significance at 0.05. Primary outcome was  
34 lifestyle modification while secondary outcome was BP control both at 6 months.

35 **Results:** The age of the participants ranged from 24 to 65 years with a mean age of  $51.5 \pm 10.0$   
36 years. The blood pressure control at baseline was 24%. At the end of the six-month study, there  
37 was a statistically significant improvement in the lifestyle pattern of the intervention group  
38 compared to control except smoking in which the difference was not statistically significant  
39 ( $p=0.150$ ). Blood pressure control significantly improved from 24% at baseline to 48% post-  
40 intervention ( $p=0.014$ ).

41 **Conclusion:** The study found a significant positive association between motivational  
42 interviewing and lifestyle modification. The study also found a significant improvement in  
43 blood pressure control following motivational interviewing. There is a need to incorporate  
44 motivational interviewing into the management of hypertension for better outcomes.

45 **Keywords:** motivational interviewing, hypertension, blood pressure control, lifestyle  
46 modification, Nigeria.

#### 47 **Introduction**

48 Hypertension is a leading cause of morbidity and mortality globally.<sup>1</sup> It is the leading cause of  
49 preventable death globally.<sup>2</sup> It is also the leading global disease burden accounting for over  
50 80%.<sup>3,4</sup> According to the World Health Organization, an estimated 1.28 billion adults aged 30  
51 to 79 years globally are hypertensive with two-thirds of them in low- and middle-income  
52 countries.<sup>5</sup> Hypertension is the leading risk factor by attributable disability-adjusted life-years  
53 (DALYs).<sup>6-8</sup> It accounts for 15 million deaths of persons 30 to 69 years with 80% of these  
54 premature deaths occurring in low- and medium-income countries including Nigeria.<sup>9</sup>

55 Risk factors for hypertension include older age, genetic predisposition, being overweight or  
56 obese, not being physically active, high-salt diet, poor sleep, inadequate fruit and vegetable  
57 intake, smoking and excess alcohol consumption.<sup>5,6,10-13</sup>

58 Blood pressure control among hypertensives is poor both globally and nationally.<sup>14-16</sup>  
59 According to the World Health Organisation (WHO), only 21% of adults with hypertension  
60 have their blood pressure controlled.<sup>5</sup> One in four patients with hypertension is unable to  
61 achieve adequate blood pressure control despite medications.<sup>17-19</sup> The limited health insurance  
62 coverage in Nigeria resulting in out-of-pocket spending leads to catastrophic health expenditure  
63 and further worsens the already poor blood pressure control among Nigerian hypertensives.<sup>4</sup>

64 Lifestyle modification is key to the prevention and control of hypertension as well as the  
65 reduction in the risk of CVD and is therefore recommended in all major guidelines for the  
66 management of hypertension.<sup>20-24</sup> It has also been advocated by the WHO as the first-line  
67 treatment for uncomplicated hypertension with drug therapy only initiated if control is not  
68 achieved with lifestyle modification alone.<sup>5</sup> Lifestyle modification is also advocated to be  
69 continued even after initiating drug therapy, as it has been shown to improve outcomes and  
70 reduce the risk of CVD.<sup>5,20-24</sup> Healthy lifestyle practices like increased physical activity,  
71 healthy diet, dietary salt reduction, reduction/cessation of alcohol consumption, smoking  
72 cessation and weight control, reduced blood pressure and improved control of hypertension  
73 and cardiovascular health.<sup>2,6,25</sup> However, adherence to recommended lifestyle modification is  
74 very low despite routine lifestyle modification counselling.<sup>26-30</sup>

75 Motivational interviewing (MI) is a focused patient-centred and goal-directed counselling  
76 technique that motivates individuals to change by exploring and resolving ambivalence.<sup>31</sup> The  
77 counsellor evokes the client to make his/her own decision to change by facilitating the process  
78 of change.<sup>32</sup> This is important as studies have shown that hypertension can be controlled and

79 this control is mainly by the patient.<sup>33-35</sup> Motivational interviewing helps patients with  
80 hypertension achieve control if properly implemented. It is a special type of patient-centred  
81 counselling that leverages on the framework that accesses risk behaviour, advises change,  
82 agrees on goals and plans through shared decision-making, assists with treatment and arranges  
83 for follow-up.<sup>34-38</sup> It has been used to effect changes in health behaviour through self-reflection  
84 thereby helping individuals prevent unhealthy behaviours and promoting healthy  
85 behaviours.<sup>35,37</sup> This has resulted in weight loss in overweight or obese patients and, a reduction  
86 in triglyceride levels, waist circumference, and systolic blood pressure.<sup>34</sup>

87 This study aimed to determine the effect of Motivational Interviewing on lifestyle modification  
88 and blood pressure control among patients with hypertension in the Family Medicine Clinics  
89 of Irrua Specialist Teaching Hospital, Irrua, Edo State, South-South Nigeria.

## 90 **Conceptual Framework**

91 This study used the transtheoretical model of change that was developed by Prochaska and  
92 Diclemente to describe individual behaviour change in dealing with addictions.<sup>39</sup> The study  
93 was built on the concept that MI would help motivate patients with hypertension to adopt  
94 desired healthy lifestyle habits of physical activity, salt reduction, fruit and vegetable intake,  
95 smoking cessation and alcohol reduction/cessation. This would in turn lead to blood pressure  
96 control as established by studies. The conceptual framework is illustrated in Fig 1.

97

## 98 **Methods**

### 99 **Study Design**

100 The study was a double-blind, parallel-group randomised controlled trial (RCT). It was  
101 registered with the Pan African Clinical Trial Registry with trial registration no  
102 PACTR202301917477205. The protocol was designed using the SPIRIT 2013 Checklist for

103 clinical trial protocol and related documents and published in the West African Journal of  
104 Medicine.<sup>40</sup> The study was conducted between 17<sup>th</sup> April 2023 and 1<sup>st</sup> December 2023 and  
105 reported using the CONSORT 2010 checklist for reporting a randomised trial.

## 106 **Study Setting**

107 The study was conducted in the Family Medicine Clinics of Irrua Specialist Teaching Hospital  
108 (ISTH), a tertiary hospital in Irrua, a semi-urban town and headquarters of Esan Central Local  
109 Government Area in Edo Central Senatorial District, Edo State, South-South Nigeria. Irrua  
110 has an area of 4,346 KM<sup>2</sup> and a population of 60,545 with 50.4 per cent of them being  
111 males.<sup>41</sup> The Family Medicine Clinics consist of the General Outpatient Department (GOPD)  
112 and the Staff/National Health Insurance Authority (NHIA) clinics. All patients presenting to  
113 the hospital are first seen in the Family Medicine Clinics except for emergencies. Hospital  
114 records show that between 70 to 80 per cent of patients with hypertension attending ISTH are  
115 seen at the Family Medicine clinics. The clinics see about 400 patients with hypertension  
116 monthly with about 300 seen in the GOPD and the remaining 100 seen in Staff/NHIA clinic  
117 respectively.

## 118 **Study Population**

119 Adult patients aged 18 to 65 years with hypertension, including newly diagnosed patients,  
120 presenting to the Family Medicine Clinics of the hospital who consented to the study. Exclusion  
121 criteria included Patients with cognitive impairment (assessed through a mini-mental state  
122 examination conducted for all participants at baseline ) who may not be able to understand or  
123 comprehend well; those with physical disability that would limit them from exercising; the  
124 severely ill patients whose conditions would not allow them to be interviewed on review dates;  
125 those with hypertensive complications like renal disease and stroke (Renal disease was ruled  
126 out through a baseline urinalysis test for all patients and patients with marked proteinuria were

127 excluded from the study); as well as pregnant women (A pregnancy test was done for all female  
128 patients of reproductive age and those who tested positive were excluded from the study).

### 129 **Sample Size Estimation**

130 The sample size was determined at a confidence level of 95 per cent using the sample size  
131 formula for RCT by Walters:<sup>42</sup>

$$132 \quad n = \frac{2\sigma^2 [Z_{1-\alpha/2} + Z_{1-\beta}]^2}{\delta^2}$$

133

134 where n is the sample size per group;  $\sigma$  = Standard Deviation;  $Z_{1-\alpha/2}$  is the Z value corresponding  
135 to 95% level of significance = 1.96,  $Z_{1-\beta}$  is the Z value corresponding to 80 per cent power =  
136 0.84 and  $\delta$  is the target or anticipated difference in mean outcomes between the two groups.  
137 Steffen et al<sup>43</sup> in a study to evaluate the effectiveness of motivational interviewing in the  
138 management of Type 2 diabetes and arterial hypertension in primary healthcare in Brazil found  
139 the mean reduction in systolic BP to be  $14.4 \pm 10.8$ . Using the standard deviation from Steffen  
140 et al, the sample size was calculated as follows:

$$141 \quad \frac{2 \times 0.11 [1.96 + 0.84]^2}{0.14^2}$$

142

143 =88.

144 Assuming an attrition rate of 20 percent, (which approximates to 18), the minimum sample size  
145 was calculated to give 106. Therefore, 106 patients were to be recruited for each arm of the  
146 study, bringing the total number of participants to 212. However, 125 patients were recruited  
147 in each arm of the study to increase the power of the study.

### 148 **Recruitment and Randomization**

149 Adults with hypertension presenting to the Family Medicine Clinics were recruited using  
150 systematic sampling. The Family Medicine clinics of ISTH attend to about 400 patients with  
151 hypertension monthly. The sampling interval was calculated by dividing the population of the

152 study (400 patients monthly for the 3 months (April to June 2023) the baseline data collection  
153 lasted=1200) by the calculated sample size= $1200/303=3.96\approx 4$ . A sampling interval of 1:4 was  
154 used as it gave all eligible subjects equal chances of being selected within the period of study.  
155 The first patient was selected from the first four patients with hypertension by simple random  
156 sampling; subsequently, every fourth patient was selected. However, if the prospective  
157 participant to be selected was not eligible or refused to participate, the next eligible participant  
158 was selected. Each patient's card was tagged. The identification sticker was left on all selected  
159 cards until the study was over to avoid a repeat selection. This was done on every clinic day  
160 (Mondays to Fridays except on public holidays) until the sample size was achieved.  
161 Proportionate recruitment of patients from both the GOPD and the Staff/NHIA clinic was done  
162 at a 3:1 ratio as hospital records showed that the GOPD saw about three times the number of  
163 patients with hypertension than the Staff/NHIA clinic.  
164 Patients were then randomised into Intervention and Control Groups. Blinding of the  
165 participants, data collectors, and analysts was ensured throughout the process. During  
166 randomisation, opaque envelopes were numbered serially and with cards to indicate if a patient  
167 belonged to either the intervention or control arm. Randomisation was done by professionals  
168 who were not part of the research team. The allocation ratio was 1:1. Blinded allocation was  
169 guaranteed by storing the randomised list in an electronic file whose access was restricted to  
170 those in charge of recruitment. Participants were blinded as to which arm of the study group  
171 they belonged to. The data collectors were blinded to the outcome of the study as they did not  
172 have access to the results. During analysis, blinding was ensured by coding the intervention  
173 arm and the control arm. Those in charge of analysis did not know which group was  
174 intervention or control.  
175 The intervention group had monthly sessions of Motivational Interviews with three trained  
176 physician research assistants who had undergone 20 hours of prior training in MI. They

177 received intensive training in MI from basic principles to reflective listening, resolving  
178 ambivalence, working with resistance and change evocation. The training was conducted in the  
179 seminar room of the Department of Family Medicine, ISTH. It was conducted for them by  
180 professionals who had undergone similar training from professionals and had wide experience  
181 in the training and administration of MI. Training sessions were in the form of didactic lectures  
182 and practical sessions. Knowledge and skills of MI were assessed before and after the training  
183 sessions which lasted a total of 20 hours using a pre- and post-training questionnaire.

184 The MI sessions were at baseline, and then monthly for six months. This was in addition to  
185 the standard care given to patients with hypertension coming to the hospital. The control group  
186 had only the standard care without the Motivational Interview Session. This was administered  
187 by three physician research assistants who had not undergone prior training in MI. Outcome  
188 measurement was determined for both groups at six months. The primary outcome of the study  
189 was lifestyle modification at six months while the secondary outcome was blood pressure  
190 control at six months. The flow chart is illustrated in Fig 2.

191

192

### 193 **Study Instruments**

194 A semi-structured questionnaire was employed for data collection. The questionnaire was made  
195 up of both open and close-ended questions covering relevant information on patients'  
196 demographic information, employment status, and occupation. The questionnaire called  
197 Lifestyle Factors in Hypertension (LFH) Questionnaire was developed by the researcher in line  
198 with the study objectives. It was made up of four sections namely Sociodemographic data;  
199 Medical History; Lifestyle History; and Clinical Findings.



- 200 • Section A contained questions assessing participants' sociodemographic characteristics  
201 such as age; sex; occupation which was categorised as civil servant, artisan, farmer,  
202 trader and unemployed (Housewives and students were categorised as unemployed);  
203 educational status, whether non-formal, primary, secondary or tertiary level of  
204 education; ethnic group; monthly income; and NHIA status.
- 205 • Section B assessed the medical history of respondents including the duration of  
206 hypertension, the current anti-hypertensive medications patients were taking, whether  
207 patients were regular on medication or not, and if not regular, the reasons for skipping  
208 medications.
- 209 • Section C contained questions on the lifestyle history of respondents. Physical activity,  
210 fruit and vegetable consumption, salt intake, smoking, and alcohol consumption were  
211 determined.
- 212 • Section D was the clinical findings from study participants.

### 213 **Validity of the Questionnaire**

214 The questionnaire was evaluated by a team of experts in Family Medicine, Lifestyle Medicine,  
215 Community Medicine and Mental & Behavioural Health. It was also given to Cardiology,  
216 Epidemiology, Biostatistics, Exercise Medicine, and Nutrition Medicine experts. The  
217 questionnaire was also subjected to construct and content validity to ensure all areas of the  
218 study objectives were covered. Corrections and modifications were made where necessary.

### 219 **Reliability of the Questionnaire**

220 To ensure the reliability and internal consistency of the questionnaire, it was administered to  
221 22 patients with hypertension attending the Family Medicine Clinics of ISTH who met the  
222 study's eligibility criteria. The data collected were coded, entered into SPSS statistical software

223 and subjected to Cronbach's Alpha coefficient. A Cronbach's alpha coefficient of 0.85 was  
224 obtained. This was done before the commencement of the study.

## 225 **Variables and their Definitions/Measurements**

226 **Level of Physical Activity:** Their level of physical activity was assessed. Those who met the  
227 WHO criteria of at least 30 minutes of daily moderate to intense physical activity for at least  
228 five days a week or a cumulative 150 minutes of moderate to intense physical activity per week  
229 were categorised as physically active while the others were categorised as inactive (sedentary).  
230 Moderate to intense physical activity as defined by the study was based on the WHO definition  
231 and included brisk walking, jogging, dancing, cycling, skipping, swimming and running.<sup>44</sup>

232 **Salt intake:** Their salt intake was assessed by asking if they added extra salt to food after  
233 serving. Those who added extra salt were categorised as taking excess salt while the others  
234 were categorised as taking moderate salt.<sup>45</sup>

235 **Fruits and Vegetables intake:** The number of servings of fruits and vegetables consumed  
236 daily was also assessed. A serving of fruit is a moderate-sized fruit while a serving of  
237 vegetables is half a cup of raw or cooked vegetables. Consumption of five or more servings of  
238 fruits and vegetables per day was considered adequate. Participants who consumed less than  
239 five servings were categorised as not having adequate intake of fruits and vegetables.<sup>46</sup>

240 **Tobacco smoking:** Tobacco smoking was assessed using Pack Years which was determined  
241 by multiplying the number of packets of cigarettes smoked per day by the duration of smoking  
242 in years. Participants were however categorised into smokers for those who currently smoked  
243 and non-smokers for those who never smoked or have quit smoking as no amount of tobacco  
244 smoking is safe.<sup>47</sup>

245 **Alcohol Consumption:** Alcohol consumption was determined and for those who drank  
246 alcohol, the number of units was assessed. A unit of alcohol was determined by multiplying

247 the total volume in millilitres of drink consumed by the Alcohol by Volume (ABV) of the  
248 particular drink and dividing the result by 1,000. Patients were categorised as drinkers and non-  
249 drinkers as studies have shown that even a unit of alcohol increases the risk of hypertension  
250 and no level of alcohol is safe for consumption.<sup>48,49</sup>

251 **Height (in meters):** It was taken using a portable stadiometer (Secca 240 wall mounted,  
252 Hamburg Germany) and recorded to the nearest 0.01 metre. With the patient barefooted and  
253 caps/headgear removed, the patient was made to stand erect with the back against the metre  
254 and the value was recorded.

255 **Weight (in kilograms):** It was measured using a weighing scale (Secca 770 Floor Digital  
256 Scale, Hamburg Germany) with each subject in light clothing and bare feet. Weight was  
257 recorded to the nearest 0.1kg.

258 **Body mass index (BMI):** It was determined by dividing the weight (in kilograms) by the  
259 square of the height (in meters). Patients were categorized based on their BMI as Underweight  
260 (<18kg/m<sup>2</sup>), normal weight (18 to 24 kg/m<sup>2</sup>), overweight (25 to 29 kg/m<sup>2</sup>), and obese (≥30  
261 kg/m<sup>2</sup>).

262 **Waist Circumference (in metres):** It was measured using a flexible, non-stretchable tape rule.  
263 It was measured horizontally at a point midway between the inferior costal margin and the iliac  
264 crest.

265 **Hip Circumference (in metres):** It was also measured using the tape rule above at the level  
266 of the greater trochanter which is the widest diameter of the buttocks.

267 **Waist Hip Ratio (WHR):** This was determined by dividing the waist circumference (in  
268 metres) by the hip circumference (in metres). Patients with WHR of < 1.0 for men and < 0.9  
269 for women were categorized as normal while others were categorized as obese.<sup>50</sup>

270 **Waist Height Ratio (WHtR):** It was determined by dividing the waist circumference (in  
271 metres) by the height (in metres). Patients were categorized as obese if their WHtR was  $\geq 0.5$   
272 and not obese if their WHtR was  $< 0.5$ .<sup>50</sup>

273 **Pulse Rate (beats per minute)** was obtained using an Omron digital sphygmomanometer  
274 (OMRON M2 Classic Intellisense)<sup>®</sup> which measures both pulse and blood pressure accurately.

275 **Office SBP and DBP** were obtained using an Omron digital sphygmomanometer (OMRON  
276 M2 Classic Intellisense)<sup>®</sup> to measure BP correctly using the appropriate cuff sizes with an  
277 average of three BP measurements at 10 minutes intervals and adapted cuff (as shown in Table  
278 1) at the brachial artery while the patient was seated in a chair with the back supported and the  
279 arm bare and at heart level. Blood pressure was measured in both arms and the arm with the  
280 higher BP value will be chosen. Three consecutive measurements were obtained; the first 10  
281 minutes after sitting down, the second and the third after 10 minutes apart. The mean of the  
282 last two systolic values and the mean of the last two diastolic values of each subject were  
283 recorded as the office SBP and the office DBP respectively. A large adult-sized cuff was used  
284 to measure BP in individuals with large arms. Participants were told to avoid Tobacco, exercise  
285 and caffeine at least 30 minutes before BP measurements were taken. Respondents were  
286 categorised as normal if their blood pressure was  $\leq 120/80$ mmHg; pre hypertensive if their  
287 blood pressure was between 121-139/81-89mmHg and hypertensive if their blood pressure was  
288  $\geq 140/90$ mmHg. This was based on the JNC 7 classification of hypertension.<sup>51</sup>

## 289 **Data Collection**

290 A semi-structured interviewer-administered questionnaire was used to obtain baseline  
291 information on sociodemographic characteristics, lifestyle patterns and clinical parameters  
292 from both groups. The intervention group were then given monthly sessions of MI counselling  
293 on the adoption of positive lifestyle modification in addition to standard care for hypertension  
294 for six months while the control group had standard care for hypertension which included

295 routine counselling on lifestyle modification monthly after which outcome parameters were  
296 determined.

297 All participants (intervention arm and control arm) however received standard care for the  
298 management of hypertension which included routine history, examination, investigations,  
299 medications, and health education on healthy lifestyle choices.

300 **Training of other Research Assistants:** There was employment and training of research  
301 assistants, and pre-testing of questionnaires before the commencement of the fieldwork. They  
302 were trained for two days in the area of the job description. The research assistants were being  
303 monitored daily throughout the study. Completed questionnaires were kept to prevent  
304 unauthorized people from gaining access to them.

305 Adequate mechanisms were put in place to safeguard and guarantee data accuracy, and quality  
306 and devoid of any bias, editing of completed questionnaires, and data entry. Such mechanisms  
307 included coding of the data, pass-wording of the computer containing the data to avoid third-  
308 party access, and the use of only one computer for entering the information.

### 309 **Data Analysis**

310 Data were collected from both groups and analysed using Stata, version 17 (StataCorp LLC,  
311 College Station, Texas, USA). The background characteristics of respondents were analysed  
312 descriptively and reported with their proportions. The Shapiro-Wilk test was used to assess the  
313 normality of continuous variables while the McNemar chi-square test and the Paired t-test were  
314 used to compare participants' baseline and characteristics. Lifestyle modification (physical  
315 activity, diet, alcohol reduction, and smoking cessation) was measured and McNemar's chi-  
316 square test was used to compare participants' outcome variables. The difference in BP from  
317 baseline measurement to the end of the study was calculated for each patient. The McNemar  
318 chi-square test was used to compare outcome variables while the paired t-test was used to  
319 compare the difference in mean BP between baseline BP and at 6 months for the control and

320 intervention groups. Furthermore, blood pressures were categorized as either being controlled  
321 or not and presented as a proportion. Data was expressed as frequencies and percentages.  
322 Cohen's d was applied in the assessment of the effect of MI. For all tests, a p-value < 0.05 was  
323 considered statistically significant.

### 324 **Ethical Approval**

325 Ethical approval was sought and obtained for the study from the Ethics and Research  
326 Committee of Irrua Specialist Teaching Hospital, where the research was conducted  
327 (ISTH/HREC/20230802/446). Written consents were obtained from respondents before the  
328 study after a detailed explanation to them. Researchers and research assistants have undergone  
329 prior ethical training, especially on the consenting of participants. Research assistants obtained  
330 consent from patients before recruitment and randomization. The consent was translated into  
331 the local dialect with the aid of trained assistants who were proficient in the local dialect. Strict  
332 confidentiality was ensured and data were encrypted and protected from third parties.

### 333 **Trial Registration**

334 This randomised clinical trial is registered with the Pan African Clinical Trial Registry  
335 ([www.pactr.org](http://www.pactr.org)) database. The unique identification number for the registry is  
336 PACTR202301917477205.

### 337 **RESULTS**

338 A total of 356 hypertensive patients were screened for participation in the study, out of whom,  
339 37 did not meet the eligibility criteria and 16 declined to participate, leaving 303 who met the  
340 eligibility criteria and agreed to participate (Fig 2). However, among the 303 agreed  
341 participants, 53 did not provide complete information at baseline and were thus excluded from  
342 the RCT, leaving 250 participants for inclusion in the study (effective response rate: 250/319

343 eligible participants=78.4%). All the 250 patients completed the study over the nine months  
 344 (April to December 2023) and their results were analysed per protocol.

345

### 346 **Sociodemographic Variables**

347 The age of the participants ranged from 24 to 65 years with a mean age of  $51.5 \pm 10.0$  years.  
 348 The majority of participants were in their 50s 92 (36.8 per cent) followed by those who were  
 349 aged 60 and above 65 (26.0 per cent). Participants were mostly females 156 (62.4 per cent),  
 350 married 135 (54.0 per cent), and Christians 134 (53.6 per cent). They were predominantly  
 351 traders 87 (34.8 percent) and civil servants 86 (34.4 percent) with most participants having an  
 352 average monthly income of between N50,000 and N99,999 118 (47.2 percent). Half of the  
 353 participants were Esan by tribe from Edo Central Senatorial district where the study was  
 354 conducted 125 (50.0 per cent) while 113 (45.2 per cent) were from Afenmai tribe in Edo North  
 355 Senatorial District, the two districts mainly served by the hospital. The majority of patients did  
 356 not have health insurance coverage. There was no significant difference between the  
 357 sociodemographic characteristics of both the intervention and control groups. Table 1.

358

359

360

361 **Table 1: Sociodemographic Characteristics of Respondents**

362

Variable	Intervention N=125 n (%)	Control N=125 n (%)	Total N=250 N (%)	$\chi^2$	p- value
<b>Age as at last birthday (years)</b>					
< 40	31 (24.8)	15 (12.0)	46 (18.4)	7.0516	0.070
40 – 49	21 (16.8)	27 (21.6)	48 (19.2)		
50 – 59	44 (35.2)	48 (38.4)	92 (36.8)		
≥ 60	29 (23.2)	35 (28.0)	64 (25.6)		
<b>Sex</b>					
Female	78 (62.4)	78 (62.4)	156 (62.4)	0.000	1.000
Male	47 (37.6)	47 (37.6)	94 (37.6)		

<b>Marital status</b>					
Single	5 (4.0)	7 (5.6)	12 (4.8)	5.111	0.164
Married	73 (58.4)	62 (49.6)	135 (54.0)		
Separated/Divorced	17 (13.6)	30 (24.0)	47 (18.8)		
Widowed	30 (24.0)	26 (20.8)	56 (22.4)		
<b>Occupation</b>					
Artisan	14 (11.2)	18 (14.4)	32 (12.8)	8.482	0.075
Civil servant	53 (42.4)	33 (26.4)	86 (34.4)		
Farmer	10 (8.0)	19 (15.2)	29 (11.6)		
Trader	41 (32.8)	46 (36.8)	87 (34.8)		
Unemployed	7 (5.6)	9 (7.2)	16 (6.4)		
<b>Average monthly income (₦)</b>					
< 50,000	32 (25.6)	40 (32.0)	72 (28.8)	1.731	0.641 <sup>#</sup>
50,000 – 99,999	60 (48.0)	58 (46.4)	118 (47.2)		
100,000 – 199,999	28 (22.4)	24 (19.2)	52 (20.8)		
≥ 200,000	5 (4.0)	3 (2.4)	8 (3.2)		
<b>Religion</b>					
Christianity	70 (56.0)	64 (51.2)	134 (53.6)	1.486	0.526 <sup>#</sup>
Islam	55 (44.0)	60 (48.0)	115 (46.0)		
Traditional religion	0 (0.0)	1 (0.8)	1 (0.4)		
<b>Ethnic group</b>					
Esan	67 (53.6)	58 (46.4)	125 (50.0)	6.386	0.215 <sup>#</sup>
Afenmai	51 (40.8)	62 (49.6)	113 (45.2)		
Others (Yoruba, Hausa, Igbo and Kogi)	7 (5.6)	5 (4.0)	12 (4.8)		
<b>Health Insurance Coverage</b>					
Enrolee	30 (24.0)	27 (21.6)	57 (22.8)	0.175	0.676
Non-Enrolee	95 (76.0)	98 (78.4)	193 (77.2)		

363 Mean age ± SD in years = 51.5 ± 10.0

364 <sup>#</sup>Fisher's exact test

365

### 366 Lifestyle Pattern of Respondents at Baseline

367 The lifestyle pattern of respondents at baseline is illustrated in Table 2. About three-quarters

368 of respondents, 184 (73.6 per cent) were not physically active based on the WHO definition of

369 150 minutes of moderate to intense exercise weekly. The majority of the study participants

370 took moderate salt 139 (55.6 per cent), did not smoke 210 (84.0 per cent), and did not take

371 alcoholic drinks 193 (78.0 per cent). However, only 37 (14.8 per cent) participants consumed



372 up to five servings of fruits and vegetables daily. There was no significant difference in the  
 373 lifestyle pattern of both the intervention and control groups.

374 **Table 2: Lifestyle Pattern of Respondents at Baseline**  
 375

Variable	Interventi on group N=125 n (%)	Control group N=125 n (%)	Total N=250 n (%)	$\chi^2$	p-value
<b>General Obesity (BMI)</b>					
Not obese	73 (58.4)	77 (61.6)	150 (60.0)	0.267	0.606
Obese	52 (41.6)	48 (38.4)	100 (40.0)		
<b>Central Obesity (WHtR)</b>					
Not obese	54 (43.2)	46 (36.8)	100 (40.0)	1.067	0.302
Obese	71 (56.8)	79 (63.2)	150 (60.0)		
<b>Engagement in exercise</b>					
Yes	33 (26.4)	33 (26.4)	66 (26.4)	0.000	1.000
No	92 (73.6)	92 (73.6)	184 (73.6)		
<b>Daily intake of added salt</b>					
Extra salt after serving	51 (40.8)	60 (48.0)	111 (44.4)	1.313	0.252
No extra salt after serving	74 (59.2)	65 (52.0)	139 (55.6)		
<b>Daily servings of fruits and vegetables</b>					
Less than 5	101 (80.8)	112 (89.6)	213 (85.2)	3.838	0.050
5 or more	24 (19.2)	13 (10.4)	37 (14.8)		
<b>Smoking</b>					
No	108 (86.4)	102 (81.6)	210 (84.0)	1.071	0.301
Yes	17 (13.6)	23 (18.4)	40 (16.0)		
<b>Alcohol intake</b>					
No	101 (80.8)	94 (75.2)	195 (78.0)	1.142	0.285
Yes	24 (19.2)	31 (24.8)	55 (22.0)		

376 **Blood Pressure Control at Baseline**

377 The majority of respondents 166 (66.4 per cent) had elevated systolic blood pressure at  
 378 baseline, while 152 (60.8 per cent) had elevated diastolic blood pressure at baseline. The mean  
 379 systolic blood pressure of patients was  $144 \pm 23$  while their mean diastolic blood pressure was  
 380  $89 \pm 15$ . The blood pressure of respondents at baseline is shown in Table 3.

381

382 **Table 3: Blood Pressure Measurements at Baseline**  
 383

Variable	Frequency	Per cent
----------	-----------	----------

	(n=250)	(%)
<b>Systolic blood pressure (mmHg)</b>		
< 120	26	10.4
120 – 139	58	23.2
≥ 140	166	66.4
<b>Diastolic blood pressure (mmHg)</b>		
< 80	36	14.4
80 – 89	62	24.8
≥ 90	152	60.8

384 Mean ± SD of systolic blood pressure (mmHg) = 144 ± 23

385 Mean ± SD of diastolic blood pressure (mmHg) = 89 ± 15

386

387 The blood pressure control at baseline is illustrated in Fig 3. The blood pressure control rate  
 388 was 24 percent with over three quarter of respondents having uncontrolled blood pressure at  
 389 the commencement of the study.

390

### 391 **Effect of Motivational Interview on Lifestyle Modification**

392 At the end of the six-month study, there was an improvement in the lifestyle pattern of the  
 393 intervention group compared to control as shown in Table 4. This was statistically significant  
 394 in all the parameters studied except smoking in which the difference was not statistically  
 395 significant (p=0.150).

396 There was a statistically significant difference in the proportion of participants who engaged in  
 397 exercise before and after the intervention (26.4 vs 35.2 per cent; p=0.004). Before the  
 398 intervention 26.4 per cent of the intervention group engaged in exercise while after the  
 399 intervention, the proportion significantly increased to 35.2 per cent.

400 A total of 23 participants changed their behaviour after the intervention, all of whom reported  
 401 an increase in their fruit and vegetable intake from less than five servings to five or more  
 402 servings. The difference was statistically significant (p<0.001).

403 Before the intervention, 40.8 per cent of respondents in the intervention group used extra salt  
 404 after serving, while after the intervention, the percentage using extra salt dropped to 32.8 per  
 405 cent. This difference was statistically significant ( $p < 0.001$ ).

406 Only three people reported a change in their smoking behaviour after the intervention, all of  
 407 whom reported no longer smoking. Before the intervention, 13.6 percent of respondents in the  
 408 intervention group smoked while after the intervention the proportion reduced to 11.2 percent.  
 409 The difference was however not statistically significant ( $p = 0.150$ ).

410 A total of nine people reported a change in their alcohol intake after the intervention, of whom  
 411 only one reported a change from not taking alcohol to now taking alcohol. All the other eight  
 412 reported a change from taking alcohol to no longer taking alcohol. Before the intervention, 19.2  
 413 per cent of respondents in the intervention group reported using alcohol while after the  
 414 intervention, the proportion using alcohol dropped to 13.6 per cent. The difference was  
 415 statistically significant ( $p = 0.017$ ).

416  
 417  
 418  
 419  
 420  
 421  
 422  
 423  
 424  
 425

426 **Table 4: Effect of motivational Interview on Lifestyle Modification (N=250)**  
 427

Variable	Baseline		$\chi^2$	p-value	At 6 Months		$\chi^2$	p-value
	Intervention group N=125 n (%)	Control group N=125 n (%)			Intervention group N=125 n (%)	Control group N=125 n (%)		
<b>General (BMI)</b>								
<b>Obesity</b>								
Not obese	73 (58.4)	77 (61.6)	0.267	0.606	73 (58.4)	77 (61.6)	0.267	0.606
Obese	52 (41.6)	48 (38.4)			52 (41.6)	48 (38.4)		

<b>Central (WHtR)</b>	<b>Obesity</b>							
Not obese	54 (43.2)	46 (36.8)	1.06	0.30	65 (52.0)	48 (38.4)	4.667	0.031*
Obese	71 (56.8)	79 (63.2)			60 (48.0)	77 (61.6)		
<b>Engagement in exercise</b>								
Yes	33 (26.4)	33 (26.4)	0.00	1.00	44 (35.2)	24 (19.2)	8.080	0.004*
No	92 (73.6)	92 (73.6)			81 (64.8)	101 (80.8)		
<b>Daily intake of added salt</b>								
Extra salt after serving	51 (40.8)	60 (48.0)	1.31	0.25	41 (32.8)	75 (60.0)	18.59	<0.001*
No extra salt after serving	74 (59.2)	65 (52.0)			84 (67.2)	50 (40.0)		
<b>Daily servings of fruits and vegetables</b>								
Less than 5	101 (80.8)	112 (89.6)	3.83	0.05	78 (62.4)	112 (89.6)	25.35	<0.001*
5 or more	24 (19.2)	13 (10.4)			47 (37.6)	13 (10.4)		
<b>Smoking</b>								
No	108 (86.4)	102 (81.6)	1.07	0.30	111 (88.8)	103 (82.4)	2.077	0.150
Yes	17 (13.6)	23 (18.4)			14 (11.2)	22 (17.6)		
<b>Alcohol intake</b>								
No	101 (80.8)	94 (75.2)	1.14	0.28	108 (86.4)	93 (74.4)	5.711	0.017*
Yes	24 (19.2)	31 (24.8)			17 (13.6)	32 (25.6)		

428 **Effect of Motivational Interview on Blood Pressure Control**

429 Nearly half of those in the intervention group (48.0 per cent) had controlled blood pressure  
 430 after the intervention compared to only about a third of those in the control group (32.8 per  
 431 cent) who had controlled blood pressure. This association was statistically significant  
 432 (p=0.014). This is illustrated in Table 5.

433 **Table 5: Effect of Motivational Interview on Blood Pressure Control (N=250)**

434

<b>Variable</b>	<b>Control group N=125</b>	<b>Intervention group N=125</b>	<b><math>\chi^2</math></b>	<b>p-value</b>
-----------------	--------------------------------	-------------------------------------	----------------------------	----------------

	n (%)	n (%)		
<b>Baseline</b>				
Uncontrolled	96 (76.8)	95 (76.0)	0.022	0.882
Controlled	29 (23.2)	30 (24.0)		
<b>At 6 months</b>				
Uncontrolled	84 (67.2)	65 (52.0)	5.997	0.014*
Controlled	41 (32.8)	60 (48.0)		

435 \*Statistically significant

436

437 Post-intervention, the mean systolic and diastolic blood pressures reduced significantly by  
 438 12.0mmHg and 7.5mmHg respectively ( $p < 0.001$ ) as shown in Table 6. However, patients who  
 439 had standard care only also had a significant mean systolic and diastolic blood pressure  
 440 reduction of 8.2 and 4.6mmHg respectively ( $p < 0.001$ ).

441 **Table 6: Effect of Motivational Interview on Blood Pressure Reduction**

442

Variable	At baseline Mean $\pm$ SD	After intervention Mean $\pm$ SD	Mean difference (95% CI)	t (paired t- test)	p- value
<b>Control Group</b>					
Systolic BP in mmHg (n=125)	145.3 $\pm$ 23.5	137.1 $\pm$ 16.6	8.2 (4.8 – 11.7)	4.705	<0.001
Diastolic BP in mmHg (n=125)	89.4 $\pm$ 15.4	84.8 $\pm$ 11.4	4.6 (2.4 – 6.8)	4.184	<0.001
<b>Intervention Group</b>					
Systolic BP in mmHg (n=125)	141.9 $\pm$ 22.4	129.9 $\pm$ 14.6	12.0 (8.0 – 16.0)	5.931	<0.001
Diastolic BP in mmHg (n=125)	88.8 $\pm$ 14.1	81.3 $\pm$ 7.5	7.5 (5.2 – 9.7)	6.573	<0.001

443 Though patients in the intervention group had a higher systolic and diastolic mean blood  
 444 pressure reduction compared to the control group (12.0mmHg vs 8.2mmHg) and (7.5mmHg  
 445 vs 4.6mmHg) respectively, the difference was not statistically significant ( $p = 0.930$ ). Fig 4.

446

## 447 **DISCUSSION**

448 This Randomised Controlled Trial was aimed at determining the effect of motivational  
 449 interviewing on lifestyle modification and blood pressure control among patients with

450 hypertension attending the Family Medicine Clinics of Irrua Specialist Teaching Hospital,  
451 Irrua, Edo State, Nigeria.

### 452 **Effect of Motivational Interview on Lifestyle Modification among Respondents.**

453 This study demonstrated a significant improvement in lifestyle modification in the intervention  
454 group compared to control. Motivational interviewing was found to result in significant  
455 improvement in the WHtR ( $p=0.031$ ), physical activity level ( $p=0.004$ ), salt reduction  
456 ( $p<0.001$ ), increased intake of fruits and vegetables ( $p<0.001$ ), quality of sleep ( $p=0.002$ ) as  
457 well as alcohol reduction ( $p=0.017$ ). It also led to a reduction in BMI and smoking. However,  
458 the observed reduction did not reach statistical significance (BMI  $p=0.606$ ; Smoking  $p=150$ ).

459 Motivational interviewing led to a significant reduction in WHtR but not BMI. Whereas the  
460 World Health Organization has recommended BMI for the population-level measurement of  
461 obesity in adults as it does not vary with sex or age, it however cautions that it should be used  
462 as a rough guide since it may not measure the degree of fatness of the individuals.<sup>52</sup> Measure  
463 of central obesity using WHtR has been recommended as the best measure of adiposity.<sup>53</sup> Our  
464 study however found an improvement in both BMI and WHtR, this implies that MI if well  
465 delivered by trained health professionals can be useful in weight reduction programmes. This  
466 is important because obesity is a risk factor for non-communicable diseases such as CVDs  
467 (including stroke and heart disease), diabetes, osteoarthritis and other musculoskeletal  
468 disorders, and some cancers (such as breast, ovarian, colon, kidney and prostate cancers) with  
469 their risks increasing with increasing BMI.<sup>52-54</sup> Obesity is also associated with premature death,  
470 hypertension, breathing difficulties, increased risk of fractures and other disability in adulthood  
471 when present in children.<sup>52,54,55</sup> Findings from our study compare to findings from an RCT  
472 assessing the effect of MI on wellness which found a significant improvement in BMI and WC  
473 following intervention with MI over 6 months compared to controls.<sup>38</sup> A prospective

474 intervention study that involved the use of MI among hypertensive patients in Sweden over 1  
475 year found a statistically significant improvement in weight, BMI and waist circumference.<sup>56</sup>

476 Our study revealed a notable correlation between motivational interviewing and engaging in  
477 physical activity. ( $p=0.004$ ). This is in line with the findings of a systematic review on the  
478 effect of MI on lifestyle modification that found moderate evidence of the beneficial effect of  
479 MI on promoting physical activity participation.<sup>34</sup> An intervention study using Telephone MI  
480 conducted among the Dutch population found a significant relationship between the percentage  
481 of MI adherent expressions and change in the level of PA from baseline to 47-week follow-up,  
482 with a small effect size ( $p<0.05$ ).<sup>37</sup>

483 Participants, in our research, also raised their daily consumption of fruits and vegetables to 5  
484 servings or more after undergoing motivational interviewing intervention. This increase was  
485 statistically significant ( $p<0.001$ ). A similar intervention study found a statistically significant  
486 improvement in fruit consumption in patients following the use of MI compared to controls.  
487 However, the research did not identify a significant correlation between the utilization of  
488 motivational interviewing and vegetable intake.<sup>37</sup>

489 There was a significant reduction in salt intake ( $p=0.002$ ) among participants in the intervention  
490 group after undergoing six monthly sessions of MI delivered by a physician. This is similar to  
491 the findings of an intervention study that used telehealth to deliver MI to patients which found  
492 a significant reduction in salt intake by 638 mg/day from a baseline of 2,919 mg/day ( $P <$   
493  $.001$ ).<sup>57</sup>

494 We found a marginal improvement in the number of respondents who smoked following  
495 intervention from 13.6% at baseline to 11.2% at 6 months. However, the disparity was not  
496 statistically significant. ( $p=0.250$ ). A systematic review revealed a noteworthy enhancement in  
497 smoking behaviours with motivational interviewing intervention as opposed to standard care.<sup>31</sup>

498 Yet another systematic review discovered moderate evidence supporting the positive impact of  
499 motivational interviewing on smoking cessation.<sup>34</sup>

500 A statistically significant decrease in alcohol consumption ( $p=0.039$ ) was observed among  
501 participants in the intervention group. A systematic review found 8 out of 13 studies on MI  
502 providing consistent evidence that MI had a beneficial effect on the frequency and/or volume  
503 of alcohol consumption over a short period but with less consistent evidence after four  
504 months.<sup>34</sup>

### 505 **Effect of Motivational Interview on Blood Pressure Control among Respondents.**

506 In our study, we observed a noteworthy enhancement in blood pressure control within the  
507 intervention group, increasing from 24.0% at baseline to 48.0% at 6 months. In comparison,  
508 the control group started with a baseline blood pressure control rate of 23.2%, which rose to  
509 32.8% at 6 months. This difference was statistically significant ( $p=0.014$ ). Post-intervention,  
510 there was a mean reduction in systolic and diastolic blood pressures by 12.0mmHg and  
511 7.5mmHg respectively and this was statistically significant ( $p<0.001$ ). A systematic review on  
512 the effectiveness of MI on lifestyle modification in patients at risk of developing CVD or those  
513 with established CVD found MI to improve SDP and DBP but the difference was not  
514 statistically significant.<sup>31</sup> An intervention study in Sweden found a significant reduction in SDP  
515 and DBP of 8.7mmHg and 4.0mmHg respectively after one year of lifestyle intervention  
516 involving the use of MI.<sup>56</sup> MI through telephone counselling was also found to significantly  
517 reduce SDP and DBP at 12 months from baseline by 5.7 mm Hg and 4.1mmhg respectively.<sup>57</sup>  
518 A systematic review and meta-analysis on the effect of motivational interview and blood  
519 pressure control found a statistically significantly greater reduction in systolic blood pressure  
520 ( $P = 0.001$ ) in intervention programmes incorporating MI compared with no intervention or  
521 minimal intervention. The study also found programmes incorporating MI having statistically  
522 significantly greater reduction in systolic blood pressure ( $P = 0.040$ ) compared to programmes



523 with lower intensity interventions. The study also found a statistically significant benefit of  
524 diastolic blood pressure reduction from programmes incorporating motivational interviewing  
525 compared with no or minimal additional intervention ( $P < 0.001$ ). Programmes incorporating  
526 motivational interviewing did not, however, outperform the lower-intensity interventions in  
527 diastolic blood pressure reduction ( $P = 0.600$ ).<sup>58</sup> The study found interventions combining  
528 individual and group delivery modes having a larger effect on diastolic blood pressure  
529 reduction compared to those delivered individually.

### 530 **Study Strengths**

531 To the best of our knowledge, this study represents the initial randomized control trial  
532 conducted in Nigeria to assess the impact of motivational interviews on lifestyle modification  
533 and blood pressure control in individuals with hypertension.

534 The study examined the implementation of behavioural motivation to instigate lifestyle  
535 changes in adults with hypertension.

536 Additionally, the research investigated alternatives to pharmacotherapy by incorporating  
537 lifestyle modifications in the management of hypertension among adult individuals in Edo  
538 State, Nigeria.

### 539 **Study Limitations**

540 The study was conducted in the Family Medicine Clinics of the hospital. Patients who accessed  
541 care in other clinics like the Cardiology and Nephrology clinics where a lot of patients with  
542 hypertension access care were left out. However, this would not significantly affect the findings  
543 from the study as most of the patients in these specialist clinics have other comorbidities.

544 Also, it was a hospital-based study, thus excluding hypertensive patients who sought care in  
545 other health facilities as well as non-health facilities.

546 Another limitation was that salt intake was assessed based on participants not adding extra salt  
547 to serving. This does not take into account participants who cook with excess salt or eat  
548 processed food with much salt.

549 Also, BP was measured in the clinic. An 8-day home measurement would have been more  
550 accurate.

### 551 **Conclusion**

552 The study found that most patients with hypertension attending the Family Medicine Clinics  
553 of ISTH, Irrua, Edo State had central obesity and engaged in unhealthy lifestyle practices like  
554 living a sedentary lifestyle, and did not take adequate amounts of fruits and vegetables. They  
555 however mostly took moderate salt, did not smoke and did not consume alcohol. Their blood  
556 pressure was also poorly controlled.

557 The implementation of motivational interviewing resulted in a notable enhancement in physical  
558 activity, consumption of fruits and vegetables, reduction in salt intake, and diminished alcohol  
559 consumption. While there was progress in smoking cessation within the intervention group of  
560 patients compared to the control group, the observed difference did not reach statistical  
561 significance.

562 Likewise, the application of motivational interviewing resulted in a significant improvement  
563 in blood pressure control.

### 564 **Recommendations**

565 Based on our findings, it is recommended to educate the general public about the risks  
566 associated with unhealthy lifestyles. Emphasis should be placed on promoting routine blood  
567 pressure checks and implementing measures to enhance blood pressure control in individuals  
568 with hypertension. Physicians are encouraged to address barriers to healthy living during  
569 consultations and prescribe appropriate lifestyle modifications.

570 Motivational interviewing, a technique beneficial for behaviour change, should be integrated  
571 into counselling sessions, conducted not only by physicians but also by nurses and social health  
572 workers. This approach applies to various health counselling aspects, including medication  
573 adherence. Extensive training in motivational interviewing for healthcare providers is  
574 advocated to enable effective implementation.

575 Further research on a larger scale is necessary to validate and apply these findings more  
576 broadly. Additionally, we recommend integrating motivational interviewing into the National  
577 Guidelines for Hypertension Management in Nigeria.

578 **Acknowledgements:** We thank the Head, Department of Family Medicine, Irrua Specialist  
579 Teaching Hospital, Irrua, Edo State, Nigeria, Dr BT Adewuyi and other staff of the department  
580 for making this study possible. We also thank the management of ISTH led by the Chief  
581 Medical Director, Prof Reuben Eifediyi for the support throughout the study. Finally, we  
582 acknowledge the Department of Family Medicine, University of Calabar Teaching Hospital for  
583 their immense contribution to the success of this project.

#### 584 **Author Contributions**

585 **Conceptualization:** Tijani Idris Ahmad OSENI, Afiong Oboko OKU, Roseline Ekanem  
586 DUKE, Ndifreke Ekpo UDONWA.

587 **Formal analysis:** Osahon OTAIGBE.

588 **Investigation:** Tijani Idris Ahmad OSENI, Sulaiman Dazumi AHMED, Osahon OTAIGBE.

589 **Methodology:** Tijani Idris Ahmad OSENI, Afiong Oboko OKU, Ifeoma N MONYE, Osahon  
590 OTAIGBE, Ndifreke Ekpo UDONWA.

591 **Supervision:** Afiong Oboko OKU, Roseline Ekanem DUKE, Ndifreke Ekpo UDONWA.

592 **Validation:** Tijani Idris Ahmad OSENI, Afiong Oboko OKU, Ifeoma N MONYE, Sulaiman  
593 Dazumi AHMED, Roseline Ekanem DUKE, Ndifreke Ekpo UDONWA.

594 **Writing – original draft:** Tijani Idris Ahmad OSENI, Afiong Oboko OKU, Ifeoma N  
595 MONYE, Sulaiman Dazumi AHMED, Roseline Ekanem DUKE, Osahon OTAIGBE, Ndifreke  
596 Ekpo UDONWA.

597 **Writing – review & editing:** Tijani Idris Ahmad OSENI, Afiong Oboko OKU, Ifeoma N  
598 MONYE, Sulaiman Dazumi AHMED, Roseline Ekanem DUKE, Osahon OTAIGBE, Ndifreke  
599 Ekpo UDONWA.

600

## 601 **REFERENCES**

6021. Adeloye D, Owolabi EO, Ojji DB, Auta A, Dewan MT, Olanrewaju TO, et al. Prevalence,  
603 awareness, treatment, and control of hypertension in Nigeria in 1995 and 2020: A systematic  
604 analysis of current evidence. *J Clin Hypertens*. 2021;23:963–977.

6052. Schutte AE, Jafar TH, Poulter NR, Damasceno A, Khan NA, Nilsson PM et al. Addressing  
606 global disparities in blood pressure control: perspectives of the International Society of  
607 Hypertension. *Cardiovascular Research*. 2023; 119, 381–409  
608 <https://doi.org/10.1093/cvr/cvac130>

6093. Gakidou E, Afshin A, Abajobir AA, Abate KH, Abbafati C, Abbas KM, Abd-Allah F, Abdulle  
610 AM, Abera SF, Aboyans V, Abu-Raddad LJ. Global, regional, and national comparative risk  
611 assessment of 84 behavioural, environmental and occupational, and metabolic risks or clusters  
612 of risks, 1990–2016: a systematic analysis for the Global Burden of Disease Study 2016. *The*  
613 *Lancet*. 2017 Sep 16;390(10100):1345-422.

6144. Oguanobi NI. Management of hypertension in Nigeria: The barriers and challenges. *J Cardiol*  
615 *Cardiovasc Med*. 2021;6(1):23–25

6165. WHO. Hypertension. Available at [https://www.who.int/news-room/fact-](https://www.who.int/news-room/fact-sheets/detail/hypertension)  
617 sheets/detail/hypertension. Accessed on 12th October 2023
6186. Adeke AS, Chori BS, Neupane D, Sharman JE, Odili AN. Socio-demographic and lifestyle  
619 factors associated with hypertension in Nigeria: results from a country-wide survey. *Journal of*  
620 *Human Hypertension*. 2022 Mar 24:1-6.
6217. Murray CJ, Aravkin AY, Zheng P, Abbafati C, Abbas KM, Abbasi-Kangevari M, et al. Global  
622 burden of 87 risk factors in 204 countries and territories, 1990–2019: a systematic analysis for  
623 the Global Burden of Disease Study 2019. *The lancet*. 2020 Oct 17;396(10258):1223-1249.
6248. Nwakile PC, Chori BS, Danladi B, Umar A, Okoye IC, Nwegbu M, et al. Removing the mask  
625 on hypertension (REMAH) study: Design; quality of blood pressure phenotypes and  
626 characteristics of the first 490 participants. *Blood Pressure*: 2019; 28:4, 258-267, DOI:  
627 10.1080/08037051.2019.1612706
6289. Idris A, Olaniyi O. Analysis of Economic Burden of Hypertension in Nigeria: Empirical  
629 Evidence from the Federal Capital Territory, Abuja. *Nigerian Journal of Economic and Social*  
630 *Studies*. 2020; 62(2): 147-174
63110. Okoro TE, Edafe EA, Leader JT. The American Heart Association Classification of Blood  
632 Pressure and the Determinants of Hypertension among Medical Practitioners in Bayelsa State:  
633 A Cross-Sectional Study. *J Biomed Res Clin Pract*:2021;4(1):1-17.
63411. Opara CJ, Maduka O. An Evaluation of Obesity and Hypertension among Primary School  
635 Teachers in an Urban Region of South-South Nigeria. *J Hypertens Manag*: 2020;6:050. doi.  
636 org/10.23937/2474-3690/1510050

63712. Gnugesser E, Chwila C, Brenner S, Deckert A, Dambach P, Steinert JI et al. The economic  
638 burden of treating uncomplicated hypertension in Sub-Saharan Africa: a systematic literature  
639 review. BMC Public Health. 2022; 22:1507 <https://doi.org/10.1186/s12889-022-13877-4>

64013. Banigbe BF, Itanyi IU, Ofili EO, Ogidi AG, Patel D, Ezeanolue EE. High prevalence of  
641 undiagnosed hypertension among men in North Central Nigeria: Results from the Healthy  
642 Beginning Initiative. PLoS ONE: 2020; 15(11): e0242870. [https://doi.](https://doi.org/10.1371/journal.pone.0242870)  
643 [org/10.1371/journal.pone.0242870](https://doi.org/10.1371/journal.pone.0242870)

64414. Odili AN, Chori BS, Danladi B, Nwakile PC, Okoye IC, Abdullahi U, et al. Prevalence,  
645 awareness, treatment and control of hypertension in Nigeria: data from a nationwide survey  
646 2017. Global Heart. 2020;15(1).

64715. Ojji DB, Baldrige AS, Orji IA, Shedul GL, Ojo TM, Ye J, et al. Characteristics, treatment,  
648 and control of hypertension in public primary healthcare centers in Nigeria: baseline results  
649 from the Hypertension Treatment in Nigeria Program. Journal of hypertension. 2022 May  
650 21;40(5):888-96.

65116. Chow CK, Gupta R. Blood pressure control: a challenge to global health systems. The Lancet.  
652 2019 Aug 24;394(10199):613-5.

65317. Zeng Z, Chen J, Xiao C, Chen W. A global view on prevalence of hypertension and human  
654 development index. Annals of Global Health. 2020;86(1): 67.

65518. Princewel F, Cumber SN, Kimbi JA, Nkfusai CN, Keka EI, Viyoff VZ, et al. Prevalence and  
656 risk factors associated with hypertension among adults in a rural setting: the case of Ombe,  
657 Cameroon. The Pan African Medical Journal. 2019;34:147.

65819. Noah SP, Etukumana EA, Udonwa N, Morgan UM. Risk Factors for Hypertension among  
659 Adult Patients Attending the General Outpatient Clinics of a Tertiary Hospital in Uyo, South-  
660 South Nigeria. *West African Journal of Medicine*. 2020;37(5):490-8.
66120. Unger T, Borghi C, Charchar F, Khan NA, Poulter NR, Prabhakaran D, et al. 2020 International  
662 society of hypertension global hypertension practice guidelines. *Hypertension* 2020;75:1334–  
663 1357.
66421. Carey RM, Wright JT Jr, Taler SJ, Whelton PK. Guideline-driven management of  
665 hypertension: an evidence-based update. *Circ Res* 2021;128:827–846.
66622. Whelton PK, Carey RM, Aronow WS, Casey DE Jr, Collins KJ, Dennison Himmelfarb C, et  
667 al. 2017 ACC/AHA/AAPA/ABC/ACPM/AGS/APhA/ASH/ASPC/NMA/PCNA guideline for  
668 the prevention, detection, evaluation, and management of high blood pressure in adults: a report  
669 of the American College of Cardiology/American Heart Association Task Force on Clinical  
670 Practice Guidelines. *Circulation*. 2018; 138:e484–e594.
67123. Leung AA, Daskalopoulou SS, Dasgupta K, McBrien K, Butalia S, Zarnke KB, et al.  
672 Hypertension Canada’s 2017 guidelines for diagnosis, risk assessment, prevention, and  
673 treatment of hypertension in adults. *Can J Cardiol*. 2017;33:557–576.
67424. Williams B, Mancia G, Spiering W, Agabiti Rosei E, Azizi M, Burnier M, et al. 2018 ESC/ESH  
675 guidelines for the management of arterial hypertension. *Eur Heart J*. 2018; 39:3021–3104
67625. Challa HJ, Ameer MA, Uppaluri KR. DASH diet to stop hypertension. InStatPearls [Internet]  
677 2021. StatPearls Publishing.
67826. Andualem A, Gelaye H, Damtie Y. Adherence to Lifestyle Modifications and Associated  
679 Factors Among Adult Hypertensive Patients Attending Chronic Follow-Up Units of Dessie

- 680 Referral Hospital, North East Ethiopia. *Integrated Blood Pressure Control*. 2020;13:145-156,  
681 DOI: 10.2147/IBPC.S275575
68227. Elbur AI. Level of adherence to lifestyle changes and medications among male hypertensive  
683 patients in two hospitals in Taif; Kingdom of Saudi Arabia. *Int J Pharm Sci*. 2015;7(4):168–  
684 172.
68528. Verma P, Srivastava M, Ratan K. Assessment of extent of lifestyle modification among  
686 diagnosed patients of hypertension attending tertiary care hospital. *Int J Med Health Sci*.  
687 2015;4(2):196–201.
68829. Okwuonu C, Emmanuel C, Ojimadu N. Perception and practice of lifestyle modification in the  
689 management of hypertension among hypertensives in south-east Nigeria. *Int J Med Biomed*  
690 *Res*. 2014;3 (2):121–131. doi:10.14194/ijmbr.3.2.8
69130. Ademe S, Aga F, Gela D. Hypertension self-care practice and associated factors among patients  
692 in public health facilities of Dessie town, Ethiopia. *BMC Health Serv Res*. 2019;19(1):51.  
693 doi:10.1186/s12913-019-3880-0 1
69431. Lee WWM, Choi KC, Yum RW, Yu DS, Chair SY. Effectiveness of motivational interviewing  
695 on lifestyle modification and health outcomes of clients at risk or diagnosed with  
696 cardiovascular diseases: a systematic review. *Int J Nurs Stud*. 2016;53:331–341.
69732. Nijs J, Wijma AJ, Willaert W, Huysmans E, Mintken P, Smeets R, et al Integrating  
698 motivational interviewing in pain neuroscience education for people with chronic pain: a  
699 practical guide for clinicians. *Physical therapy*. 2020;100(5):846-59.



70033. Zabolypour S, Alishapour M, Behnammoghadam M, Larki RA, Zoladl M. A Comparison of  
701 the Effects of Teach-Back and Motivational Interviewing on the Adherence to Medical  
702 Regimen in Patients with Hypertension. *Patient Preference and Adherence*.2020;14:401-410.
70334. Sawyer AT, McManus K. Understanding patient experiences in a motivational interviewing  
704 intervention to improve whole-person lifestyle among individuals with hypertension or type 2  
705 diabetes: a qualitative focus group study. *International journal of qualitative studies on health  
706 and well-being*. 2021 Jan 1;16(1):1978373.
70735. Frost H, Campbell P, Maxwell M, O'Carroll RE, Dombrowski SU, Williams B, et al.  
708 Effectiveness of motivational interviewing on adult behaviour change in health and social care  
709 settings: a systematic review of reviews. *PloS one*. 2018 Oct 18;13(10):e0204890.
71036. Miller WR, Rollnick S. *Motivational Interviewing, Helping People Change*. New York: The  
711 Guilford Press; 2013
71237. Mesters I, van Keulen HM, de Vries H, Brug J. Intervention fidelity of telephone motivational  
713 interviewing on physical activity, fruit intake, and vegetable consumption in Dutch outpatients  
714 with and without hypertension. *International Journal of Behavioral Medicine*. 2023  
715 Feb;30(1):108-121.
71638. Sawyer AT, Wheeler J, Jennelle P, Pepe J, Robinson PS. A randomized controlled trial of a  
717 motivational interviewing intervention to improve whole-person lifestyle. *Journal of Primary  
718 Care & Community Health*. 2020 May;11:2150132720922714.
71939. Del Rio Szupszynski KP, de Ávila AC. The Transtheoretical Model of Behavior Change:  
720 Prochaska and DiClemente's Model. *Psychology of Substance Abuse: Psychotherapy, Clinical  
721 Management and Social Intervention*. 2021:205-216.

72240. Oseni TIA, Oku AO, Udonwa NE, Duke RE. Effect of Motivational Interviewing on Lifestyle  
723 Modification among Patients with Hypertension Attending the Family Medicine Clinics of  
724 ISTH, Irrua, Nigeria (Milmaph Study) – A Randomised Control Trial Study Protocol. West  
725 African Journal of Medicine. 2024; 41(2): 126-134
72641. Irrua Specialist Teaching Hospital. Five – year strategic plan (2007-2011). 2022.  
727 <https://fdocuments.in/doc>.
72842. Walters SJ, Jacques RM, dos Anjos Henriques-Cadby IB, Candlish J, Totton N, Xian MT.  
729 Sample size estimation for randomised controlled trials with repeated assessment of patient-  
730 reported outcomes: what correlation between baseline and follow-up outcomes should we  
731 assume?. *Trials*. 2019 Dec;20:1-6.
73243. Steffen PL, Mendonça CS, Meyer E, Faustino-Silva DD. Motivational interviewing in the  
733 management of type 2 diabetes mellitus and arterial hypertension in primary health care: an  
734 RCT. *American Journal of Preventive Medicine*. 2021 May 1;60(5):e203-12.
73544. WHO: WHO Guidelines on physical activity and sedentary behaviour. 2020. Available from  
736 <https://www.who.int/publications/i/item/9789240015128> (Accessed on 2nd November, 2023).
73745. Odili AN, Chori BS, Danladi PC, Nwakile PC, Ogedengbe JO, Nwegbu MMA, et al. Salt intake  
738 in Nigeria: a nationwide population survey. *European Health Journal*. 2020;22(12):2266-75.
73946. Locke A, Schneiderhan J, Zick SM. Diets for health: Goals and guidelines. *American Family  
740 Physician*. 2018; 97: 721–728.
74147. Masters NJ. Smoking pack years calculator. *British Journal of General Practice*. 2020; 70: 230.

74248. WHO. No level of alcohol consumption is safe for our health. 2023. Available from  
743 [https://www.who.int/europe/news/item/04-01-2023-no-level-of-alcohol-consumption-is-safe-](https://www.who.int/europe/news/item/04-01-2023-no-level-of-alcohol-consumption-is-safe-for-our-health)  
744 [for-our-health](https://www.who.int/europe/news/item/04-01-2023-no-level-of-alcohol-consumption-is-safe-for-our-health) (Accessed on 2nd November, 2023).

74549. Chi FW, Parthasarathy S, Palzes VA, Kline-Simon A H, Weisner CM, Satre DD, et al.  
746 Associations between alcohol brief intervention in primary care and drinking and health  
747 outcomes in adults with hypertension and type 2 diabetes: a population-based observational  
748 study. *BMJ open*, 2023;13(1), e064088.

74950. Alwadeai KS, Almeshari MA, Alghamdi AS, Alshehri AM, Alsaif SS, Al-Heizan MO, et al.  
750 Relationship Between Heart Disease and Obesity Indicators Among Adults: A Secondary Data  
751 Analysis. *Cureus*. 2023 Mar 27;15(3).

75251. Rahman M, Halder HR, Yadav UN, Mistry SK. Prevalence of and factors associated with  
753 hypertension according to JNC 7 and ACC/AHA 2017 guidelines in Bangladesh. *Scientific*  
754 *reports*, 2021;11(1):1- 10.

75552. WHO. Obesity and overweight. 2021. Available at: [https://www.who.int/news-room/fact-](https://www.who.int/news-room/fact-sheets/detail/obesity-and-overweight)  
756 [sheets/detail/obesity-and-overweight](https://www.who.int/news-room/fact-sheets/detail/obesity-and-overweight) (Accessed 10<sup>th</sup> November, 2023).

75753. Moosaie F, Fatemi Abhari SM, Deravi N, Karimi Behnagh A, Esteghamati S, Dehghani  
758 Firouzabadi F, et al. Waist-to-height ratio is a more accurate tool for predicting hypertension  
759 than waist-to-hip circumference and BMI in patients with type 2 diabetes: A prospective study.  
760 *Frontiers in Public Health*. 2021 Oct 7;9:726288.

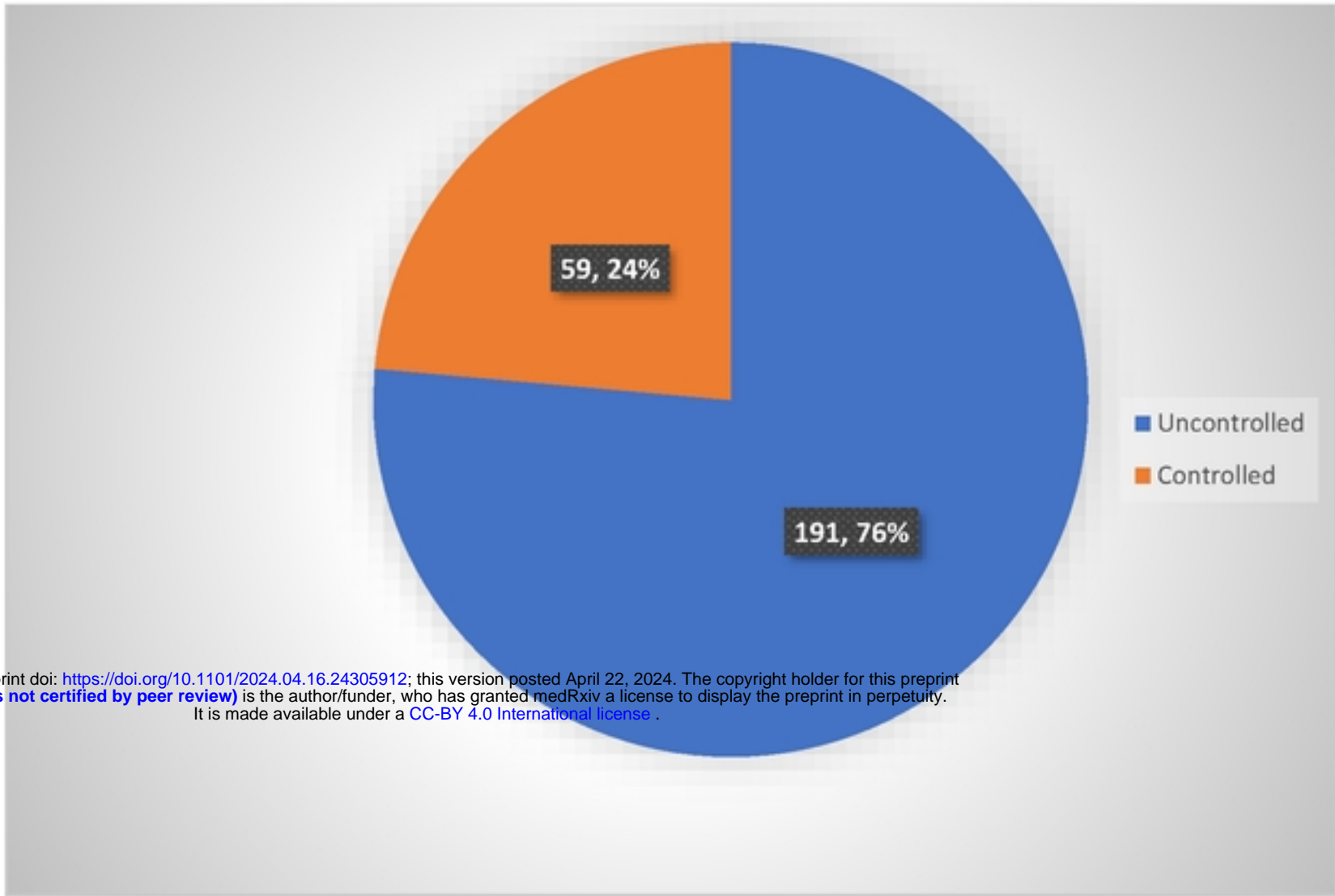
76154. Ayogu RN, Ezeh MG, Udentia EA. Epidemiological characteristics of different patterns of  
762 obesity among adults in rural communities of south-east Nigeria: a population-based cross-  
763 sectional study. *BMC nutrition*, 2022;8(1):1-10.

76455. Chukwuonye II, Ohagwu KA, Ogah OS, John C, Oviasu E, Anyabolu EN, et al. Prevalence of  
765 overweight and obesity in Nigeria: systematic review and meta-analysis of population-based  
766 studies. *PLOS Global Public Health*. 2022 Jun 10;2(6):e0000515.
76756. Lönnberg L, Ekblom-Bak E, Damberg M. Reduced 10-year risk of developing cardiovascular  
768 disease after participating in a lifestyle programme in primary care. *Upsala journal of medical  
769 sciences*. 2020 Jul 2;125(3):250-256.
77057. Schrauben SJ, Inamdar A, Yule C, Kwiecien S, Krekel C, Collins C, et al. Effects of dietary  
771 app-supported tele-counseling on sodium intake, diet quality, and blood pressure in patients  
772 with diabetes and kidney disease. *Journal of Renal Nutrition*. 2022 Jan 1;32(1):39-50.
77358. Huang X, Xu N, Wang Y, Sun Y, Guo A. The effects of motivational interviewing on  
774 hypertension management: a systematic review and meta-analysis. *Patient Education and  
775 Counseling*. 2023 Apr 14:107760.

medRxiv preprint doi: <https://doi.org/10.1101/2024.04.16.24305912>; this version posted April 22, 2024. The copyright holder for this preprint (which was not certified by peer review) is the author/funder, who has granted medRxiv a license to display the preprint in perpetuity. It is made available under a [CC-BY 4.0 International license](https://creativecommons.org/licenses/by/4.0/).



**Fig 1: Conceptual Framework**

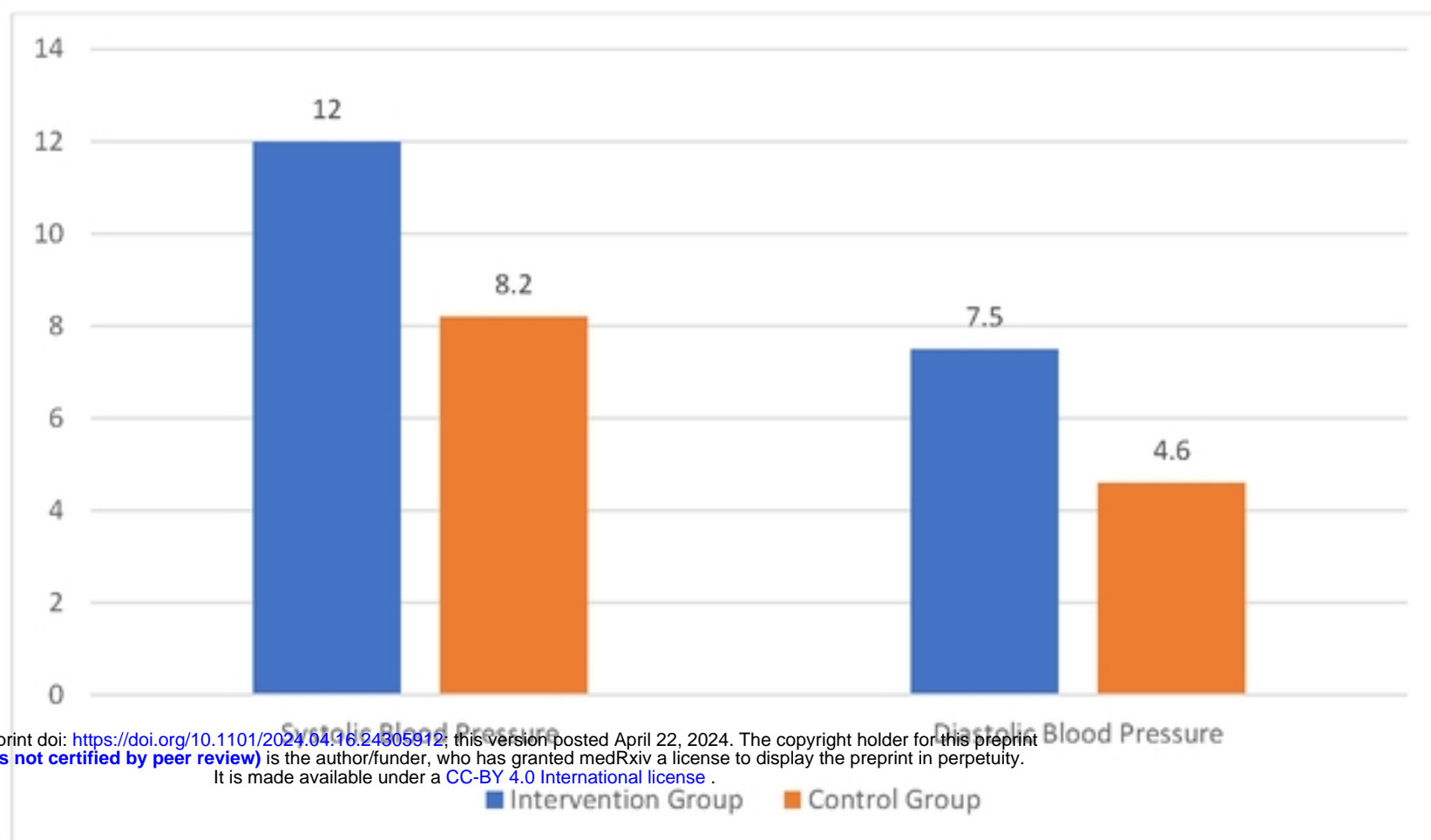


medRxiv preprint doi: <https://doi.org/10.1101/2024.04.16.24305912>; this version posted April 22, 2024. The copyright holder for this preprint (which was not certified by peer review) is the author/funder, who has granted medRxiv a license to display the preprint in perpetuity. It is made available under a [CC-BY 4.0 International license](https://creativecommons.org/licenses/by/4.0/).

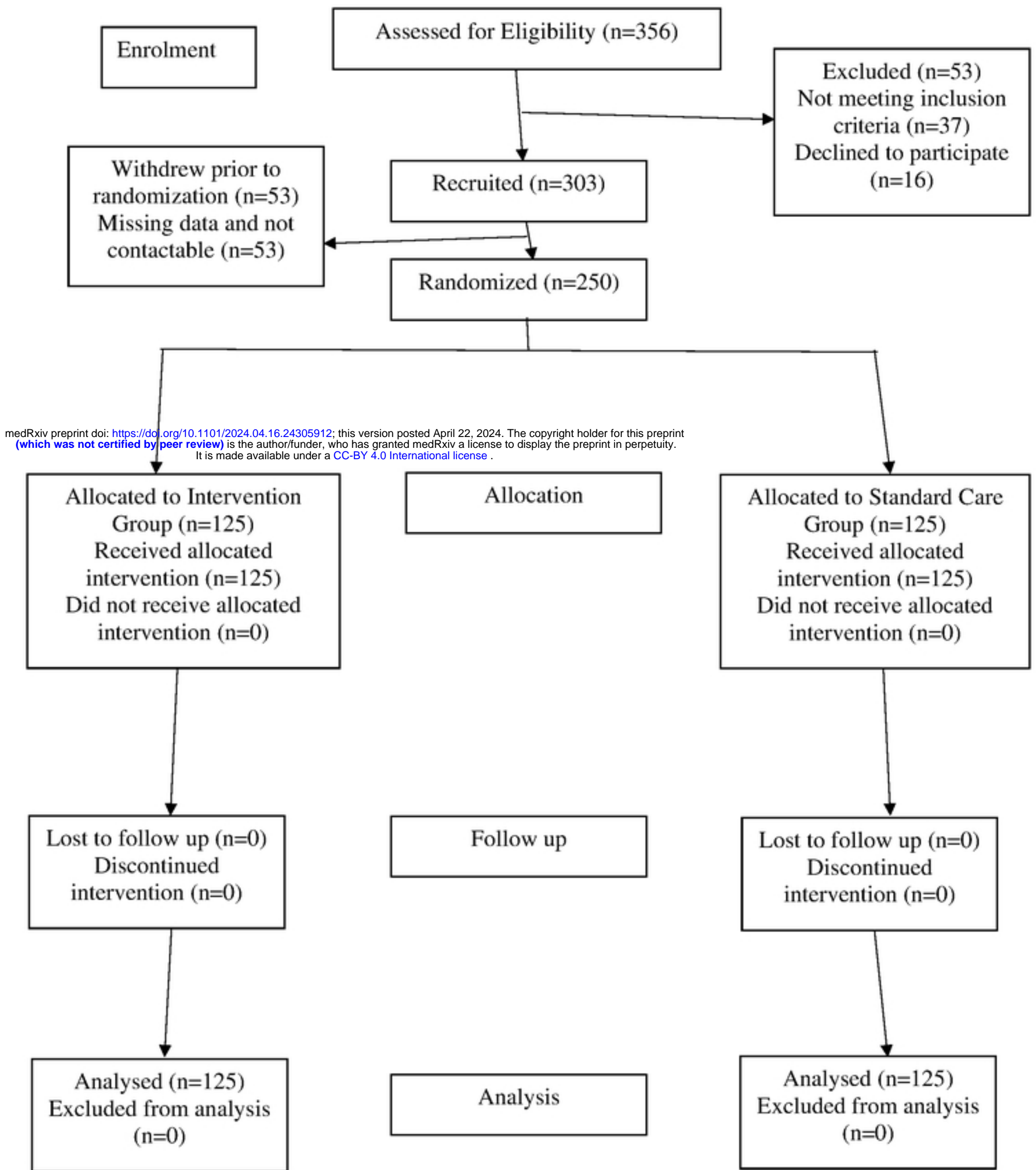
**Fig 3: Blood Pressure Control at Baseline (N=250)\***

\*Controlled BP is systolic bp <140mmHg or diastolic bp <90mmHg while uncontrolled BP is systolic bp ≥140mmHg or diastolic bp ≥90mmHg

medRxiv preprint doi: <https://doi.org/10.1101/2024.04.16.24305912>; this version posted April 22, 2024. The copyright holder for this preprint (which was not certified by peer review) is the author/funder, who has granted medRxiv a license to display the preprint in perpetuity. It is made available under a [CC-BY 4.0 International license](https://creativecommons.org/licenses/by/4.0/).



**Fig 4: Mean Blood Pressure Reduction**



**Fig 2: Consort Flow Diagram**